

**University Symphony Orchestra  
ASU Choral Union**

## **“Music of Johannes Brahms”**

**Timothy Russell and David Schildkret, conductors  
Jonathan Swartz, violin**

**School of Music  
Herberger College of Fine Arts  
Arizona State University**

**Friday, October 21, 2005  
7:30 p.m.  
Gammage Auditorium**

## Text and Translations

### *Schicksalslied*

*Ihr wandelt droben im Licht  
Auf weichem Boden, selige Genien!  
Glänzende Götterlüfte  
Rühren Euch leicht,  
Wie die Finger der Künstlerin  
Heilige Saiten.*

*Schicksallos, wie der schlafende  
Säugling, atmen die Himmlischen;  
Keusch bewahrt  
in bescheidener Knospe,  
Blühet ewig  
Ihnen der Geist,  
Und die seligen Augen  
Blicken in stiller  
Ewiger Klarheit.*

*Doch uns ist gegeben,  
Auf keiner Stätte zu ruhn;  
Es schwinden, es fallen  
Die leidenden Menschen  
Blindlings von einer  
Stunde zur andern,  
Wie Wasser von Klippe  
Zu Klippe geworfen,  
Jahrlang ins Ungewisse hinab.*

—Friedrich Hölderlin

### **Song of Destiny**

You walk on high in the light  
upon soft ground, blessed spirits!  
Splendid, divine breezes  
touch you lightly,  
like the finger of an artist  
as she plays on the strings of a heavenly harp.

Free from the care of Death, like a sleeping  
infant, breathe the Heavenly Ones.  
Chastely protected  
in a modest bud,  
their spirits  
bloom eternally,  
and their blessed eyes  
gaze in calm,  
eternal clarity.

But to us is granted  
no rest anywhere.  
Vanishing, falling,  
suffering humanity  
goes down blindly from one  
hour to the next,  
like water tossed  
from crag to crag,  
year after year into uncertainty.

—tr. David Schildkret

## Program

Academic Festival Overture, Op. 80 ..... Johannes Brahms  
(1833 - 1897)  
Timothy Russell, conductor

Schicksalslied (Song of Destiny), Op. 54 ..... Johannes Brahms  
David Schildkret, conductor

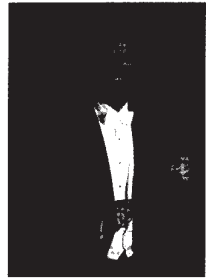
Nänie, Op. 82 ..... Johannes Brahms

### **Intermission**

Violin Concerto in D major, Op. 77 ..... Johannes Brahms  
Allegro ma non troppo  
Adagio  
Allegro giocoso, ma non troppo vivace  
Jonathan Swartz, violin  
Timothy Russell, conductor

**Out of respect for the performers and those audience members around you, please  
turn all pagers, cell phones and watches to silent mode. Thank you.**

## Biographies



**Timothy Russell** is in his 13<sup>th</sup> year as a Professor of Music and Director of Orchestras at Arizona State University. He is one of America's most versatile and dynamic conductors and foremost music educators. He is equally at home conducting the great symphonic literature, music for chamber orchestra, ballet, large choral works, pops concerts and children's programs. An articulate spokesperson for the arts, his obvious joy in discussing music and building new audiences is only surpassed by the insight and energy that his concerts possess...entertaining and enlightening programs of music spanning over four centuries, powerfully presented for listeners of all ages. In addition to his conducting at ASU, Dr. Russell directs the School's graduate orchestral conducting program. He is also the co-founder and music director of the award-winning ProMusica Chamber Orchestra of Columbus, Ohio.

Russell has been a frequent guest conductor with The Phoenix Symphony including highly acclaimed full-length productions of Tchaikovsky's *Swan Lake* and *Nutcracker* ballets. This season he will also lead Prokofiev's *Romeo and Juliet*. Other guest conducting appearances have included the Charlotte Symphony, Baton Rouge Symphony, American Classical Orchestra, Hawaii Symphony Orchestra, South Dakota Symphony, Spokane Symphony, Baltimore Chamber Orchestra, Pittsburgh New Music Ensemble, Lehigh Valley Chamber Orchestra, Summit Brass, and symphony orchestras in Arkansas, Indiana, Iowa, Missouri, Montana, and Texas.

As conductor/producer of 25 CDs, Russell has received two Grammy nominations. All of his recordings have been enthusiastically received by listeners and critics alike, as has his vital and imaginative orchestral leadership.

Maestro Russell just celebrated his 26th season as music director of ProMusica. His achievements with that ensemble have been remarkable and diverse. A recipient of the Greater Columbus Arts Council's "Artistic Excellence Award," the orchestra continues to maintain its outstanding reputation for artistic performance and exciting, adventuresome programming. On eight occasions the American Society of Composers, Authors, and Publishers (ASCAP) has honored Russell and ProMusica for their service to contemporary music. Together, they have been active in the commissioning of new works. Russell has conducted the world premiere performances of more than 90 new compositions.

This past summer Dr. Russell guest conducted at the Oklahoma Arts Institute and the Music in the Mountains Festival in Durango, Colo. In recent years, he has conducted All-State Orchestras in Illinois, Iowa, Kansas, Minnesota, Missouri, New Mexico, Ohio, Oklahoma and Texas.

Prior to coming to the Valley of the Sun, Maestro Russell served for nine seasons as the music director and conductor of The Naples Philharmonic. For the last four years of his tenure, he was the resident conductor in Naples, Fla. in addition to serving as Director of Music Education for the city's spectacular Philharmonic Center for the Arts.

A Danforth Foundation Fellow, Dr. Russell has held academic appointments at Ohio State University and the University of Rochester including in its Eastman School of Music as an Associate Professor of Conducting and Ensembles. Dr. Russell regularly leads pre-concert talks and symposia and continues to be a featured speaker at music conferences and workshops. He is actively involved in research and publication, currently writing two books with renowned Harvard psychologist Ellen Langer, *Mindful Music* and *Mindful Tennis*.

Timothy Russell and his wife, Jill, and their children, Kathryn and Geoffrey, reside in Phoenix, Ariz.

## Nänie

*Auch das Schöne muß sterben!  
Das Menschen und Götter bezwinget,  
nicht die eberne Brust  
rührt es des stygischen Zeus.  
Einmal nur erweichte die Liebe  
den Schattenbeherrscher,  
und an der Schwelle noch, streng,  
rief er zurück sein Geschenk.  
Nicht stillt Aphrodite  
dem schönen Knaben die Wunde  
die in den zierlichen Leib grausam  
der Eber geritzt.  
Nicht errettet den göttlichen Held  
die unsterbliche Mutter,  
wenn er, am skäischen Thor fallend,  
sein Schicksal erfüllt.  
Aber sie steigt aus dem Meer  
mit allen Töchtern des Nereus,  
und die Klage hebt an  
um den verherrlichten Sohn.  
Siehe, es weinen die Götter,  
es weinen die Göttinnen alle,  
daß das Schöne vergeht,  
daß das Volkommene stirbt.  
Auch ein Klaglied zu sein  
im Mund der Geliebten, ist herrlich,  
denn das Gemeine  
geht klanglos zum Orkus hinab.*

—Friedrich Schiller

## Elegy

Even the beautiful must die!  
That which conquers men and gods  
leaves the iron heart  
of the Stygian Zeus [Hades] unmoved.  
Only once, at the pleading of Eros,  
the Lord of the Shadows relented,  
but on the brink he sternly  
revoked his gift. [the story of Orpheus and Eurydice]  
Aphrodite could not calm  
the fair youth's [Adonis's] wounds,  
cruelly torn into his graceful body  
by the wild boar.  
The godlike hero [Achilles] could not be rescued  
by his immortal mother  
when he, falling at the gates of Troy,  
fulfilled his destiny.  
But she rises from the sea  
with all the daughters of Nereus  
and raises the lamentation  
for her glorified son.  
Behold, the Gods weep,  
and all the Goddesses are weeping,  
that the beautiful pass away;  
that the perfect die.  
Even a song of lament  
on the lips of a loved one is glorious,  
for the ordinary  
descends, unsung, into the Underworld.

—tr. David Schildkret



**Jonathan Swartz**, a native of Toronto, has a varied and prolific performing career, appearing in major cultural cities including New York City, Houston, Cleveland, Santa Barbara, Halifax, Montreal, Ottawa and Toronto. As both soloist and chamber musician, he has appeared in Colorado at the Strings in the Mountains Chamber Festival, in Canada at the Ottawa International Chamber Music Festival, the Mooredale Concert Series and the Artists Series at Roy Thompson Hall sponsored by the Royal Bank of Canada and Roy Thompson Hall, in addition to many venues under the auspices of Les Jeunesses Musicales du Canada. As a collaborative artist,

Swartz performs regularly with his sister, Jennifer Swartz, principal harpist of The Montreal Symphony Orchestra, as well as with his wife, American pianist Wendy Chen.

He has performed with the Houston Symphony Orchestra, ProMusica Chamber Orchestra in Columbus, Ohio, and is currently a member of the IRIS Chamber Orchestra, under conductor Michael Stern. Swartz has also worked with distinguished conductors Christoph Eschenbach, Robert Spano, Larry Rachleff, Jeffrey Tate and Kurt Masur.

In addition to giving master classes throughout North America, Swartz has served as director of the outreach program at the Musicorda Summer String Program and as visiting assistant professor of Violin and Viola at the University of Texas in El Paso. Currently, Swartz serves as Assistant Professor of Violin and String Area Coordinator at Arizona State University, and is on the summer faculties of the Interlochen Center for the Arts in Interlochen, Mich., and the Rocky Mountain Summer Conservatory in Steamboat Springs, Colo.

Swartz has a Bachelor of Music cum laude from Rice University, a Master of Music from the Mannes College of Music, and a Doctor of Musical Arts from Rice University. Swartz has worked with artists Julius Levine, Norman Fischer, John Perry, Philippe Muller, Sergiu Luca and Felix Galamir. His principal violin teachers have included Kathleen Winkler, James Buswell and Ani Kavafian. Swartz plays on a J.B. Ceruti violin from the year 1800.



**David Schildkret** is Professor of Music and Director of Choral Activities at Arizona State University. He conducts ASU's Choral Union and the highly select Concert Choir, teaches classes in conducting and choral repertory, and oversees the doctoral program in choral conducting. Schildkret, a conductor, scholar, performer and educator, holds Doctor of Music and Master of Music degrees in Choral Conducting from Indiana University School of Music and a Bachelor of Arts in Music from Rutgers University.

Prior to his appointment at ASU, he served for seven years as the Dean of the Salem College School of Music in Winston-Salem, N.C., where he conducted choirs and taught courses in music history and conducting. He has also taught at Centre College in Danville, Ky., and at the University of Rochester. Since 1999, he has been the music director of the Mount Desert Summer Chorale in Bar Harbor, Maine. In 2003, he became director of music at Scottsdale United Methodist Church.

His conducting experience includes nine seasons as music director of the Finger Lakes Symphony Orchestra in Geneva, N.Y., numerous appearances as guest conductor with regional choirs at all levels, and appearances with various small orchestras and ensembles, in addition to conducting his collegiate groups. These have included select choirs, men's and women's choirs, and college-community ensembles. He has been a frequent guest conductor with the Piedmont Chamber Singers, a semi-professional chorus in Winston-Salem, N.C., with whom he gave a highly acclaimed performance of Bach's B-Minor Mass. His choirs at Salem College produced an outstanding CD of Christmas music and were featured in the musical score to the film *Changing Habits*.

A noted expert on the music of the 18<sup>th</sup> century, Schildkret has given numerous talks and published papers on the music of Bach, Mozart and Handel. His articles have appeared in the newsletters of the Mozart Society of America and the Society for 17<sup>th</sup>-Century Music, in the *Choral Journal*, *Bach*, *Eighteenth Century Life* and the *NATS Bulletin*. He has published reviews in the *American Choral Review* and has written liner notes for numerous recordings.

Schildkret is active in a number of professional societies, including The American Bach Society, which he served for nine years as secretary-treasurer, the American Musicological Society, the Arizona Music Educators Association and the College Music Society. He is the Repertoire and Standards chair for Colleges and Universities in the Arizona Chapter of the American Choral Directors Association and represents the state of Arizona on the board of the newly-formed National Collegiate Choral Organization.

## ASU Choral Union

Founded in the 1950s, the Arizona State University Choral Union has an outstanding reputation, both nationally and internationally. Members are auditioned volunteer singers from the ASU community including students, faculty and staff, and residents of the Phoenix metropolitan area. Most of the members are professionally trained and have had extensive choral experience. Intensive weekly rehearsals are held from August through May. International tours take place every second or third summer, with approximately 80 to 100 singers from the ensemble joining with outstanding orchestras from the touring area. Recent tours include Australia in 2000 and Italy in 2002. Choral Union's repertoire includes works by Poulenc, Orff, Haydn, Brahms, Verdi, Beethoven, Mahler and Vaughan Williams. The 2004-05 season included Fauré's *Requiem*, Bruckner's *Te Deum*, and Prokofiev's *Alexander Nevsky*. To join the Choral Union, contact the ASU Choral Office at 480-965-3706.

To learn more about the ASU choral program, please visit us on the Web at <http://music.asu.edu/performance/choral.htm>

## ASU Orchestra Program

The **Arizona State University Orchestra Program** in the Herberger College of Fine Arts School of Music is dedicated to providing the finest musical and educational opportunities for those qualified individuals interested in studying and performing a wide variety of orchestral music. The faculty and administration are committed to the training and development of professional orchestral performers (instrumentalists and conductors), orchestral music educators and therapists, musicologists, theorists, composers, arts administrators and future arts supporters. The students share in this commitment, aspiring to the highest possible standards of musical excellence.

Currently the program includes three ensembles: the University Symphony Orchestra, the Chamber Orchestra and the Sinfonietta. The University Symphony Orchestra presents approximately seven concerts on the ASU campus each year in the internationally acclaimed Gammage Auditorium for Performing Arts, designed by Frank Lloyd Wright. In February 2005, the ASU Symphony Orchestra performed the featured concluding concert at the American String Teachers Association's National Conference in Reno, Nev. They offered "An Evening of Jazz" with the acclaimed jazz violinist Regina Carter, her quintet and members of our own ASU string faculty. In recent years, the orchestra has collaborated with the Bolshoi Ballet and Ballet Arizona in highly acclaimed performances. Soloists with the orchestra include renowned faculty performers as well as such visiting guest artists as violinists Glenn Dicterow, Szymon Goldberg, Dylana Jenson, Ani Kavafian and Edvard Melkus; cellists Colin Carr, Stephen Kates and Lazlo Varga; pianists Ursula Oppens and Jeffrey Siegel; guitarist Manuel Lopez-Ramos; sopranos Faye Robinson, Anna Christy and mezzo-soprano Isola Jones, the Roger Wagner Chorale; guest conductors Lukas Foss and Vincent Persichetti; and the hilarious PDQ Bach and Victor Borge. Annually the orchestra combines with the University Choral Union to present a "Holiday Concert" to sold-out houses – featuring such works as Handel's *Messiah*, the Vaughan Williams *Hodie*, Bernstein's *Chichester Psalms*, and other great choral works. They also collaborated on such giant masterworks as the Verdi and Brahms Requiems, Orff's *Carmina Burana*, and Mahler's "Resurrection" Symphony.

Outstanding student soloists, chosen through a rigorous competition on campus are presented in a "Concert of Soloists" each spring. Each year the ASU Symphony Orchestra also presents the world premiere performance of the work that has won the annual ASU Student Composition Contest. The University Symphony Orchestra has a commitment to the performance of contemporary music and has premiered pieces by Michael Conway Baker, Randall Shinn and Chinary Ung, and performed concerts with visiting composers Michael Daugherty, Joan Tower, Phillip Glass, George Walker, and Gunther Schuller. The Symphony Orchestra has also produced two CD recordings, one of works by Eugene Anderson called *Perception*, available on d'Note Classics, and the other of music by Pulitzer Prize-winner George Walker, entitled *Lilacs* and available on the Summit label.

Please visit our Web sites at <http://music.asu.edu> for further information on the Arizona State University School of Music, and <http://music.asu.edu/performance/orchestras.htm> for its Orchestra Program.

# University Symphony Orchestra

Timothy Russell, conductor

## Violin I

Shanna Swaringen\*\*  
Xian Meng  
Steven Crichlow  
Shumin Lin  
Laura Speck  
Patricia Cole  
Agnieszka Laskus  
Angela Cassette  
Amy Cote  
Brian Chen  
Xi Wang  
Jamie Brooke Forseth  
Melissa Nino  
Aeryn Burley

## Violin II

Sarah Bowlin\*  
Rachael Massengill  
Tamara Freida  
Lauren Rausch  
Gina Dyches  
Chrystal Smothers  
Taylor Morris  
Amy Anderson  
Melyssa Ostler  
Danica Terzic  
Allison Kellis  
Lindsay Parker  
Holly Roberts  
Bonnie Teplik

## Viola

Michi Aceret\*  
Ryan Berkseth  
Louis Privitera  
Alexander Vittal  
Elizabeth Rexroat  
Jackie Son  
Matthew W. Gordon  
Cicely DeSalle  
Jenwei Yu  
Crystal Gheen  
Ellen Tollefson

## Cello

Nick Alvarez\*  
Jenna Dalbey  
Erin Richardson  
Hope Shepherd  
Adele Stein  
Jennifer Hartman  
Ajay Patel  
Michael Levin  
Derek J. Stein  
Vanessa Belknap  
Annemarie Smith  
Kathleen Snyder  
Sara Starks  
Amy L. Huzjak  
Stefanie Schatz

## Bass

Waldir Bertipaglia\*  
Christopher Rose  
Blake Thomson  
Krunoslav Kupresanin  
Daniel Stotz  
Nicholas Villalobos  
Robert Flanz  
John Chapman  
David Kopper  
William Brichetto  
Allison Zenner  
Barrett Brickner

## Flute

Elany Mejia Lynch^  
Monica Sauer^  
Katie Valadez  
David Nischwitz

## Oboe

Rebecca Jolly^  
Ashley Williams^  
Katie Mordarski  
Chris Nguyen

## Clarinet #

Josh Gardner  
Sarah Brown  
Duy Tran  
Haley Ross

## Bassoon

Benjamin Yingst^  
Ian Newton^  
Kristilyn Woods  
Julie Link

## Horn

Gustavo Camacho^  
Sally Bailey^  
Eric Damashek  
Ryan Gastonguay  
Robbie Buss  
David Simon

## Trumpet

Eric Baker^  
Daniel Thrower^  
Kent Foss  
Tim Wootton

## Trombone

Matthew Petterson\*  
Samuel Winston Price

## Bass Trombone

Keith Munson

## Tuba

Edwin Brown

## Harp

Celeste Smith\*  
Ingrid Lincoln

## Timpani/Percussion

Matt Holm\*  
Darrell Thompson  
Chris Cameron  
Laura Wiedenfeld

\*\* Concertmaster

\* Principal

^ Co-principals

# For this concert,  
this section is  
using a rotating  
seating plan.

## Orchestra Assistants

Jana Minov  
Daniel O'Bryant

## Orchestra Librarian

Jacob Harrison

## Orchestra Managers

Jana Minov  
Derek J. Stein

Special thanks to

Katie McLin  
Danwen Jiang  
Nancy Buck  
Thomas Landschoot  
Catalin Rotaru  
Robert Spring  
Sam Pilafian

# Upcoming Events

## University Symphony Orchestra and Sinfonietta

### *40 years with the Aeolian-Skinner Organ*

Monday, November 21, 2005

7:30 p.m.

Gammage Auditorium – free admission

Timothy Russell, Jana Minov, Daniel O'Bryant, and Joel Neves, conductors

## University Symphony Orchestra and ASU Choral Union

### *Holiday Concert*

Sunday, December 4, 2005

2:30 p.m.

Gammage Auditorium

Admission: \$12.50 general, \$7.50 students

Call ASU Gammage Box Office, 480-965-3434

www.asugammage.com

Katie McLin, violin

Timothy Russell and David Schildkret, conductors

## University Symphony Orchestra

### *Concert of Soloists*

Monday, February 6, 2006

7:30 p.m.

Gammage Auditorium – free admission

Jana Minov, guest conductor

## University Symphony Orchestra performs with Lyric Opera Theatre

### *Poulenc's Dialogue of the Carmelites*

February 24-March 4, 2006

Admission: \$20 general, \$5 students

Herberger College Box Office: 480-965-6447

<http://herbergercollege.asu.edu/tickets>

## University Symphony Orchestra and ASU Trumpet Ensemble

### *A Celebration of the 100<sup>th</sup> Birthday of Rafael Mendez*

Wednesday, March 8, 2006

7:30 p.m.

Gammage Auditorium – free admission

David Hickman, Jens Lindemann and Allen Vizzutti, trumpet soloists

## University Symphony Orchestra, ASU Choral Union,

### *Concert Choir, University Choir, Herberger Singers,*

### *Sun Devil Singers, and Women's Chorus*

Friday, April 28, 2006

7:30 p.m.

Gammage Auditorium – free admission

Carole FitzPatrick, soprano

Isola Jones, mezzo-soprano

# Arizona State University Choral Union

David Schildkret, conductor

## Soprano

Moriel Adimor  
Tammy L. Allgood  
Ginny Andrews  
Karen R. Annis  
Lauren Bass  
Jeannie Chang  
Anne Christensen  
Tiffany Clark  
Lila Deidiker  
Elena Eleftheriadou  
Barbara Gould  
Danielle Grabois  
J-me Haugen  
Rocio Hernandez  
Krista Hetsler  
Ingrid Israel  
Dellamae Jennison  
Leslie Jhung  
Crysta Johnson  
Ella Johnson  
Patricia A. Kenady  
Hyunjung Kim  
Elizabeth D. Knudtson  
Colleen Krause  
Allyson Lorens  
Sr. Joan Marie Madden  
Katelyn Marr  
Alissa McCarthy  
Linda McCormick  
Lynda Nolan  
Michaline Olijnyk  
Mary Price  
Janis Ryan  
Shari Samuelson-  
Wesely  
Kathryn Sawyer  
Linda Louise Shell  
Courtney Sherman  
Riki Sloan  
Rychelle Smith  
Jean J. Steele  
Erika Taillole  
Kristen Megan  
Thomasson  
Doris Tyldesley  
Eleanore Wardlaw

Stacy Williams  
Bonnie Wilson  
Lauren Winston-  
McPherson  
Rebecca Woolf

## Alto

Amanda Joy Block  
Marilyn Brafford  
Alice Buseck  
Lara Carlson  
Barbara Daniel  
Carole Deans  
Diane DeLello  
Arlys Eaton  
Pamela Eck  
Lisa Ehlers  
Susan L. Fuhrer  
Gini Gregg  
Joan Grey  
Lindsey Hoffman  
Jennifer Kidman  
Jarrett  
Dorothy Johnsen  
Ellen Kaufmann  
Jan Kurdziel  
Jenni Lee  
Jane Little  
Jackie Medina  
Susan Miles  
Jennifer Mitchell  
Katie Mogerman  
Sherin Moustafa  
Christina Newburg  
Lynda Kidman  
Nolan  
Mindy Nolls  
Muriel Osder  
Jennifer Palumbo  
Irene P. Pappas  
Glenda M. Rauscher  
Diane Renne  
Nancy Rosenthal  
Cleta Sagramoso  
Lu Sanford  
Pat Stamper  
Christine Storey

Anne Stumpf  
Patricia Vest  
Judy Waltz  
Diana Wenner Crump

## Tenor

Richard Fawley  
Brent C. Gardner  
Richard S. Haines  
Melanie Henrichs  
Mike Kaiser  
Jeong H. Kim  
Gary Lee Kinder II  
Zane Knudtson  
Vincent Lane  
Robert Moodie  
David Rukstales  
John F. Schiffer  
Bernard Van Emden  
Philip VanderMeer  
Richard E. Watt  
Donald E. Weaver

## Bass

Yevgeniy Chainikov  
William Coghlan  
David F. Doeller  
Gary W. Ehlers  
Edward H. Flora  
Christoph Paul Gales  
Paul M. Gales  
Paul Michael Gales, Jr.  
James Newell  
Gastonguay  
Ryan Gastonguay  
David Hale  
Allen Holloway  
Norman Jenson  
Robert J. Johnsen  
Thomas A. Koontz II  
Herman Krehbiel  
Anthony Lacagnina  
Michael Lacagnina  
Richard Larsen  
Michael McDowell  
Joel Neves  
Charles C. Newton

Charles Ratliff  
Warren Riggers  
Robert Rosenthal  
Dan Ryan  
Dan Sagramoso  
John Schiffer  
Wayne D. Shelton  
Robert B. Simington  
Mark Sims  
Richard Wall

## Assistant Conductor

Joel Neves

## Rehearsal

### Accompanist

Norman Jenson