



PLAYBILL
FALL 2005

JOIN THE MAGIC OF MAINSTAGE!

See the stars of tomorrow today. Guest artists and renowned faculty work side-by-side with bright, new talent. This fall offers everything from family friendly to urban edgy plays, musicals, dances and music.



MAINSTAGE LYRIC OPERA THEATRE

Mainstage Lyric Opera Theatre brings three great shows to life this fall. *The Boyfriend* is a musical introducing mistaken identities and

secret romances. *American Gothic* is an original opera and musical that attempts to get behind the meaning of the painting of the stoic farm couple. *Amahl and the Night Visitors* is a holiday favorite defining faith, love and good deeds.

The Boyfriend runs Sept. 30–Oct. 9.
American Gothic runs Nov. 18 and 19.
Amahl and the Night Visitors runs Nov. 20–Dec. 3.



MAINSTAGE DANCE

Mainstage Dance presents one of its best seasons with two inspired concerts this fall. *Celebrating the Nagrin Legend* features signature pieces created

by Daniel Nagrin and performed by a guest dancer specially chosen by Nagrin. *Expanding Borders* introduces the work of Ecuadorian choreographer Pablo Cornejo, who created a new piece expressly for this concert and will be performed by the best ASU dancers.

Celebrating the Nagrin Legend runs Sept. 16–18.
Expanding Borders runs Dec. 1–3.



MAINSTAGE THEATRE

Mainstage Theatre introduces a bold assortment of shows. *Orchids in the Moonlight* revisits the careers of legendary actresses from

Mexican cinema. *The King Stag* is a whimsical 18th-century comic fable for all ages. *A Festival of New Work* premieres a trio of intriguing plays by ASU faculty and students: *Taking Leave* brings the impact of war and responsibility to the front line; *We Lost It at the Movies* follows a Chilean woman's dream to live in her fabled Hollywood; and *La Vida Loca* is a young Mexican man's saucy reflections on a range of topics including politics and sexuality.

Orchids in the Moonlight runs Oct. 7–22.
The King Stag runs Oct. 28–Nov. 6.
A Festival of New Work runs Nov. 17–22.



MAINSTAGE ORGAN

The entire season of Mainstage Organ is devoted to the music of Johann Sebastian Bach in seven diverse, thematic programs called *Genesis*

of Genius, performed by Kimberly Marshall and Jeffrey Campbell. In addition, Kimberly Marshall and the ASU Organ Studio ensemble will be presenting family favorites at the *Third Annual Christmas Concert*. The program includes seasonal carols and noels—some for four hands and feet!

Genesis of Genius runs from October through March.
Third Annual Christmas Concert runs Dec. 10–11.

All Mainstage productions are on ASU's Tempe Campus in the Paul V. Galvin Playhouse, the Evelyn Smith Music Theatre, the Lyceum Theatre, Dance Studio Theatre or the Organ Concert Hall.

Mainstage tickets on sale now!

For more information about individual shows and purchasing tickets:
Online: <http://herbergercollege.asu.edu/tickets>
Box Office: 480.965.6447

Herberger College
of Fine Arts

ARIZONA STATE UNIVERSITY

Bach through a Wide-Angled Lens.

Kimberly Marshall, organ

2:30 p.m. – October 9, 2005

School of Music
Herberger College of Fine Arts
Arizona State University

Organ Hall
Music Building



Program

Prelude and Fugue in B Minor, BWV 544..... Johann Sebastian Bach

Trio Sonata V in C Major, BWV 529

Allegro
Largo
Allegro

Prelude and Fugue in A Major, BWV 536

Prelude and Fugue in C Major, BWV 531..... J. S. Bach

Concerto in G Major, BWV 592..... Johann Ernst/arr, Bach

[Allegro] (1696-1715)
Grave
Presto

Prelude and Fugue in C Major, BWV 547

Biography



Kimberly Marshall, Associate Director for Graduate Studies, and Professor of Music, Patricia and Leonard Goldman Professor of Organ, holds a bachelor's in French from the University of North Carolina at Chapel Hill, and a D.Phil. in Music from University College, Oxford. She has the Médaille d'Or in Organ Performance from the Lyon Conservatory and won a unanimous jury award of first prize in organ from the Toulouse Conservatory. She is currently a project leader for Göteborg Organ Research Center (GOArt) at the University of Gothenburg, Sweden. She has previously taught at the Royal Academy of Music, London, and at Stanford University. She has been a Fulbright Senior Scholar teaching at the Sydney Conservatorium in Australia.

Among her solo compact disc records are *Kimberly Marshall plays the Cavallé-Coll Organ of Saint-Sernin, Toulouse*, Priory Records' Great Organs of Europe series, number 11, PRCD 261, 1989; *Bach and the Italian Influence*, recorded on the Fisk organ at Stanford University, Pickwick Group, PCD 965, 1991; *Sienese Splendour: Italian Renaissance Organ Music on the Piffaro Organ, 1519*, Pickwick Group, PCD 971, 1991; *El órgano histórico español: Antonio de Cabezón*, project sponsored by the Quinto Centenario España, Auvidis Valois, V 4645, 1992; *Divine Euterpe: Organ Music from the 15th-20th Centuries by Women Composers*, recorded on the Rosales organ at Trinity Episcopal Church, Portland, Oregon, Gamut Recordings, GAM CD 539, 1993. Three other CDs are forthcoming.

Dr. Marshall has one book, *Iconographical Evidence for the Late-Medieval Organ in French, Flemish and English Manuscripts*, published by Garland, 1989, an edited collection of essays on female traditions of music-making entitled "Rediscovering the Muses," published by Northeastern University Press, 1993, and a forthcoming edition of music: *The Origins of Keyboard Music: Surviving Repertoire before 1550*, in two volumes (Vol. I: Late-Medieval Music; Vol. II: Renaissance Music), Colfax: Wayne Leupold Publishing. Dr. Marshall joined the ASU faculty in the Fall of 1998.

Join Us!

Genesis of Genius

October, 2005 – March, 2006, 2:30 p.m., Organ Hall
A panorama of Bach's free works for organ.

The Youthful Bach

Oct. 23, 2005 – Performed by Kimberly Marshall

Bach and the North German Style

Nov. 13, 2005 – Performed by Kimberly Marshall

Bach and the French Influence

Feb. 5, 2006 – Performed by Kimberly Marshall

Bach the Virtuoso

Feb. 26, 2006 – Performed by Jeffrey Campbell

Bach in Leipzig

Mar. 5, 2006 – Performed by Kimberly Marshall

Bach and the Italian Influence

Mar. 26, 2006 – Performed by Jeffrey Campbell

3rd Annual Organ Christmas Concert

Dec. 10, 2:30 p.m. & 5 p.m., Organ Hall

Dec. 11, 2:30 p.m., Organ Hall

Kimberly Marshall and the ASU Organ Studio ensemble invite you to a special holiday concert celebrating the beautiful music of the season! The Organ Hall is beautifully decorated for the occasion, and the program includes seasonal carols and noëls – some for four hands and feet!

Tickets on Sale Now! Two ways to buy:

Visit <http://herbergercollege.asu.edu/tickets/> or call 480-965-6447

GENERAL INFORMATION

BOX OFFICE

Serving Mainstage Dance, Lyric Opera Theatre, Theatre and Organ series; Faculty Artist Recital series; Guitar Concert series; and School of Music ticketed events. Paul V. Galvin Playhouse/ Nelson Fine Arts Center, 480-965-6447.
Hours: 10:30 a.m.-6 p.m.,
Tuesday-Friday; noon-4 p.m., Saturday.

FACILITY POLICIES

In observance of copyright laws and as a courtesy to patrons, the use of cameras and recording devices is strictly prohibited; cameras should be given to the house manager to lock up. Watch alarms, pagers and cell phones should be turned off. No food, beverages or smoking are permitted in the facilities.

LOST AND FOUND

Galvin Playhouse: 480-965-6447
Gammage Auditorium: 480-965-3497
Lyceum Theatre: 480-965-6447
Evelyn Smith Music Theatre: 480-965-6603
Physical Education Bldg. East: 480-965-6447

CHANGE OF ADDRESS

Mainstage Season subscribers are encouraged to notify the Herberger College Box Office about a change of their street or e-mail address by calling 480-965-6536.

CURTAIN CALL!

New members of the Director's Circle – please take a bow! You've earned the Herberger College's applause and gratitude.

Financial support from Director's Circle members helps us to retain promising students as they face the expense of obtaining an arts education. At the same time, Director's Circle support strengthens the college's role as one of the nation's leading centers for the study, practice and development of the arts.

To learn more about Director's Circle, contact Deanna Stulgaitis, Assistant Director of Development, 480-965-8985.

EMERGENCY MESSAGES

Physicians and other patrons expecting calls during a performance are asked to give their seat locations and paging devices to the house manager. All checked paging devices will be monitored throughout the performance and afterward can be picked up from the house manager. Patrons who need to make an emergency phone call should contact an usher or the house manager for assistance.

SPECIAL NEEDS FOR PATRONS

Please notify Box Office staff (480-965-6447) of any specific needs when purchasing tickets. The following services are offered: wheelchair accessible seating, assistive listening devices and ASL Interpretation at designated performances. Parking spaces designated for patrons who have a disability placard or license plate are located in all parking lots.

ASSISTIVE LISTENING SYSTEM

A hearing-impaired assistive listening device system is available for patrons in the Evelyn Smith Music Theatre and the Galvin Playhouse. There is no charge for its use. Each venue has 20 sets. To reserve a device, call the Herberger College Box Office, 480-965-6447. Patrons may also check before a performance to see if any devices are still available.



Charles and Kim Adornetto
Mark Anderson
George Angelis
Nedra Bannister
Ann Boal
David and Gail Burstein
Janet Deeever
Paul Dygert
Joyce and Arlyn Foster-Larson
Bruce Genthner
James and Ruth Gourley
Dora and Bernie Jacobs
James Johnson
David and Donna Mercier
Ralph and Georgia Peterson
Alfred Cocanower and Kathleen Reilly
Alta Thompson
Beth Vershure
Dr. Toni Verson
Robert Williford and Stacey Bonn



MOZART

250 @ ASU

THE MOZART BIRTHDAY
CELEBRATION

A Year-long Celebration of Musical Genius

ASU and the Herberger College School of Music are honoring the 250th anniversary of Wolfgang Amadeus Mozart's birth with events from September 2005-May 2006.

- Concerts & Recitals
- Films
- Exhibits
- Lectures

Mark your calendars for Friday, January 27, 2006 when Mozart turns 250! Activities all day.

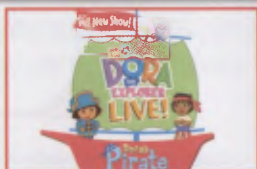
- Performances
- Lectures
- Viennese Coffee House
- "Serenade" Concert & Reception

For more information, go to <http://music.asu.edu/mozart250> or call 480-965-6447

BANK ROADWAY in ARIZONA ALL SEATS, ALL SHOWS ON SALE NOW!



SEPTEMBER 6-18, 2005



OCTOBER 26-30, 2005



NOVEMBER 1-6, 2005



DECEMBER 6-11, 2005



DEC. 27, 2005 - JAN. 1, 2006



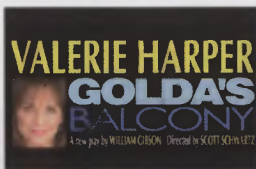
JAN. 29 - FEB. 5, 2006



FEB. 28 - MAR. 5, 2006



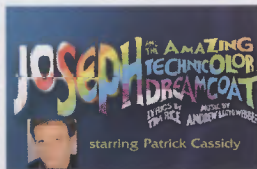
MARCH 28 - APRIL 2, 2006



APRIL 11-16, 2006



MAY 16-21, 2006



JUNE 6-11, 2006

SEASON TICKET PACKAGES ARE STILL AVAILABLE!