

## List of Figures

Fig. 1 - Schematic diagram of a continuous flow biofilm reactor (CFBR)

Fig. 2 - Seeding and control operation of all reactors during the first 60 days (Line and symbol represent the simulated results and experimental results, respectively). The symbols and error bars represent the average and standard deviation in the operational data from the four reactors. The fluctuations during the first 10 days were caused by the gradual conversion from suspended biomass to biofilm.

Fig. 3 - Experimental and simulated results of CFBRs from days 50 to 200: a) Control operation of Reactor 1 allowed sustained full nitrification and b) DO-limited operation of Reactor 2 gave partial nitrite accumulation when the DO was 2.5 mg/L.

Fig. 4 - Experimental and simulated results of CFBRs from days 50 to 200: a) FA-inhibited operation of Reactor 3 did not lead to long-term nitrite accumulation and b) FA-inhibited and DO-limited operation of Reactor 4 led to long-term nitrite accumulation.

Fig. 5 - Simulated biomass profiles with operational conditions in CFBRs at day 200. Broken straight lines represent the measured biofilm depth at the end of experiments. The table presents the total biomass throughout the biofilm of each reactor.

Fig. 6 -  $\text{NO}_2^-$  utilization rate of NOB in each biofilm reactor

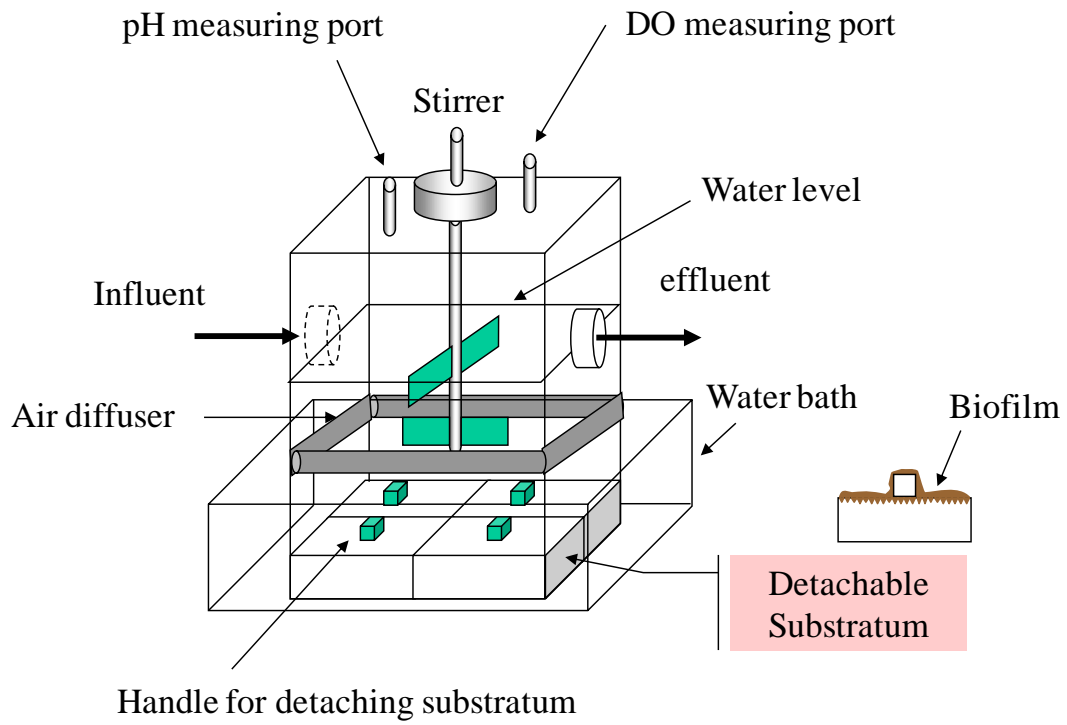


Fig. 1 - Schematic diagram of a continuous flow biofilm reactor (CFBR)

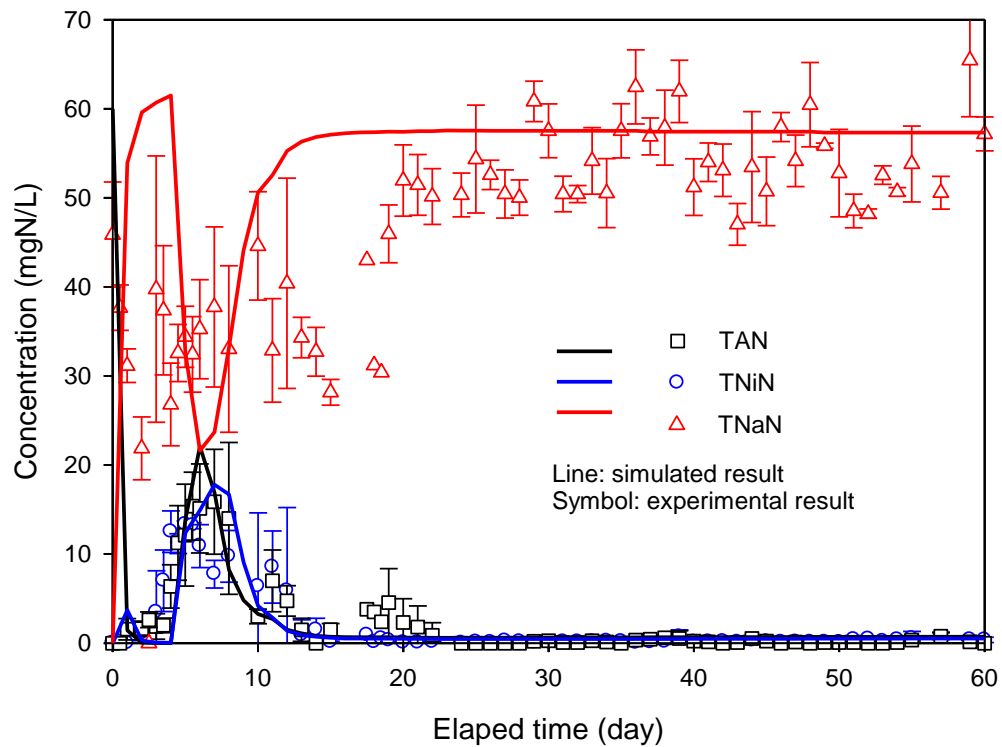


Fig. 2 - Seeding and control operation of all reactors during the first 60 days (Line and symbol represent the simulated results and experimental results, respectively). The symbols and error bars represent the average and standard deviation in the operational data from the four reactors. The fluctuations during the first 10 days were caused by the gradual conversion from suspended biomass to biofilm.

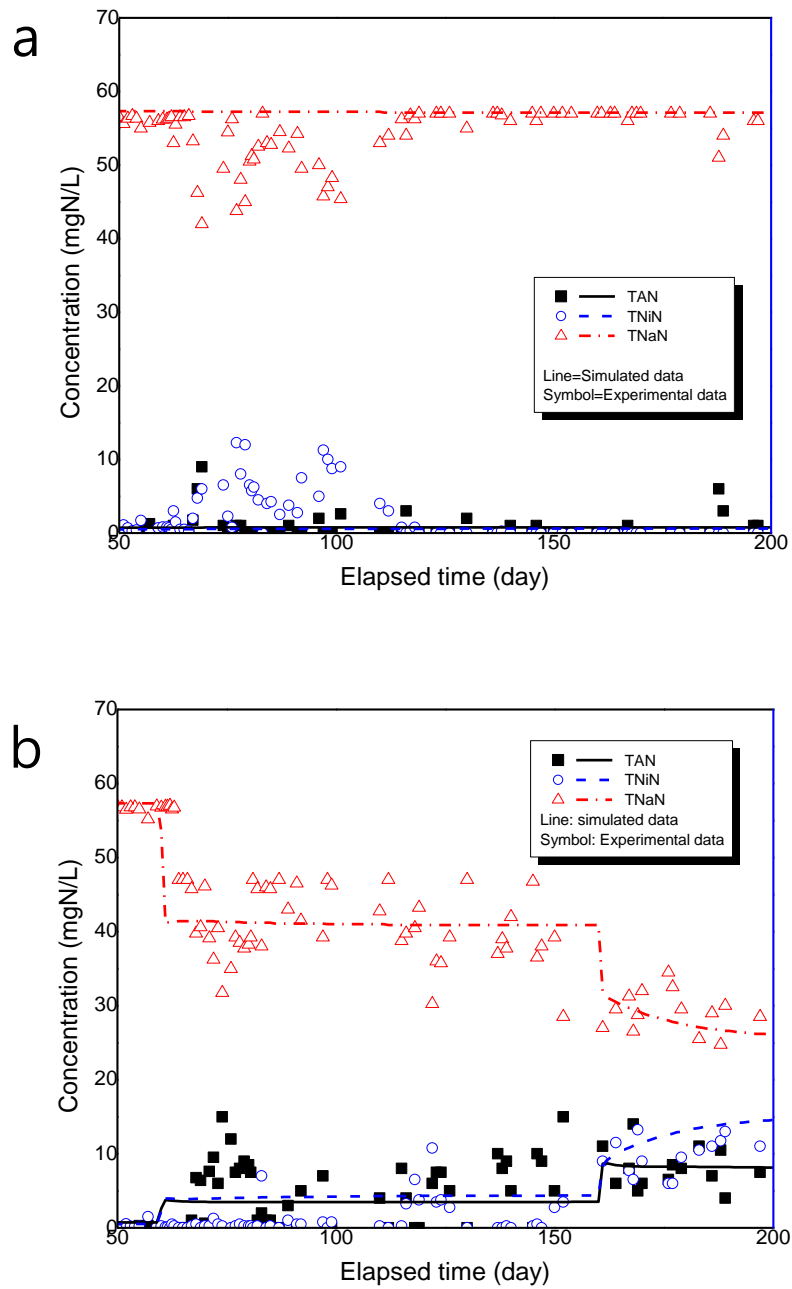


Fig. 3 - Experimental and simulated results of CFBRs from days 50 to 200: a) Control operation of Reactor 1 allowed sustained full nitrification and b) DO-limited operation of Reactor 2 gave partial nitrite accumulation when the DO was 2.5 mg/L.

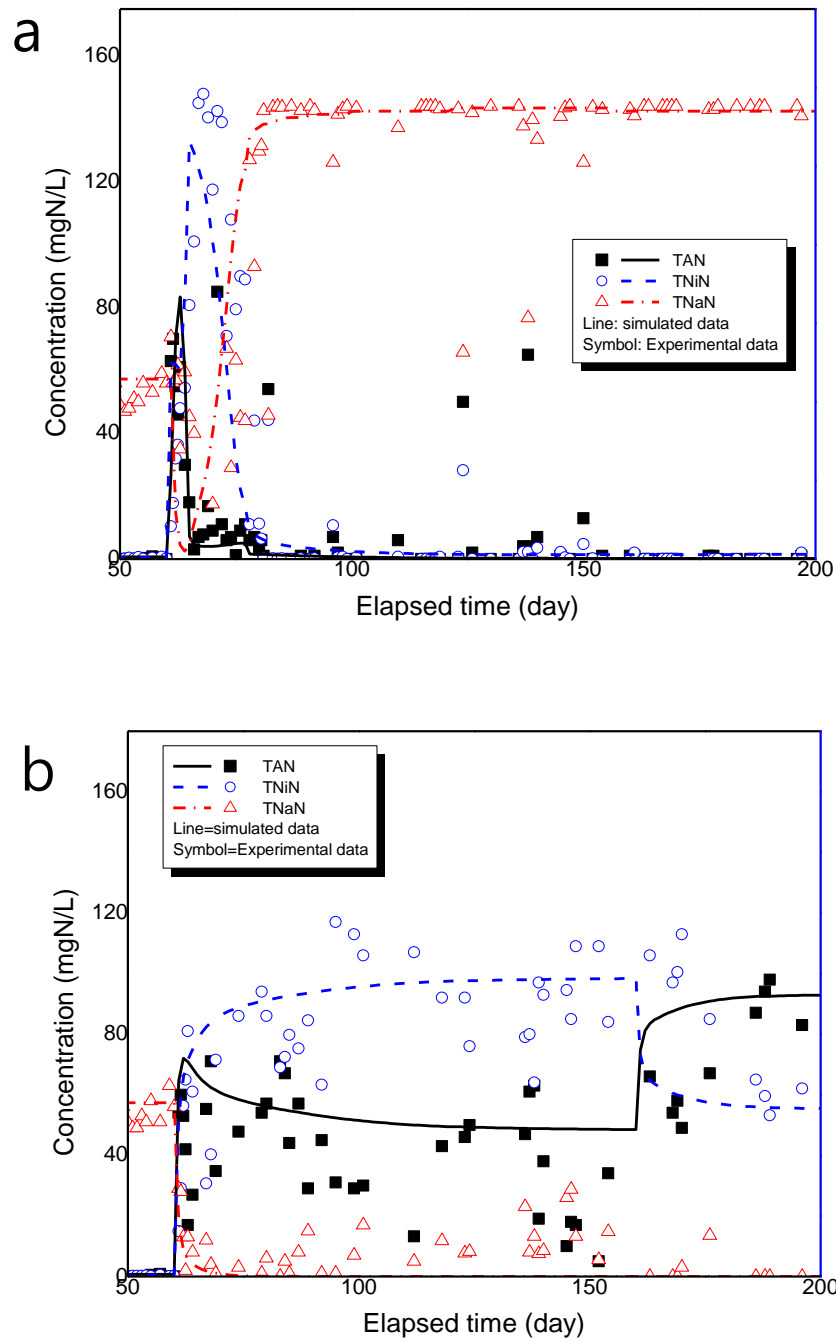
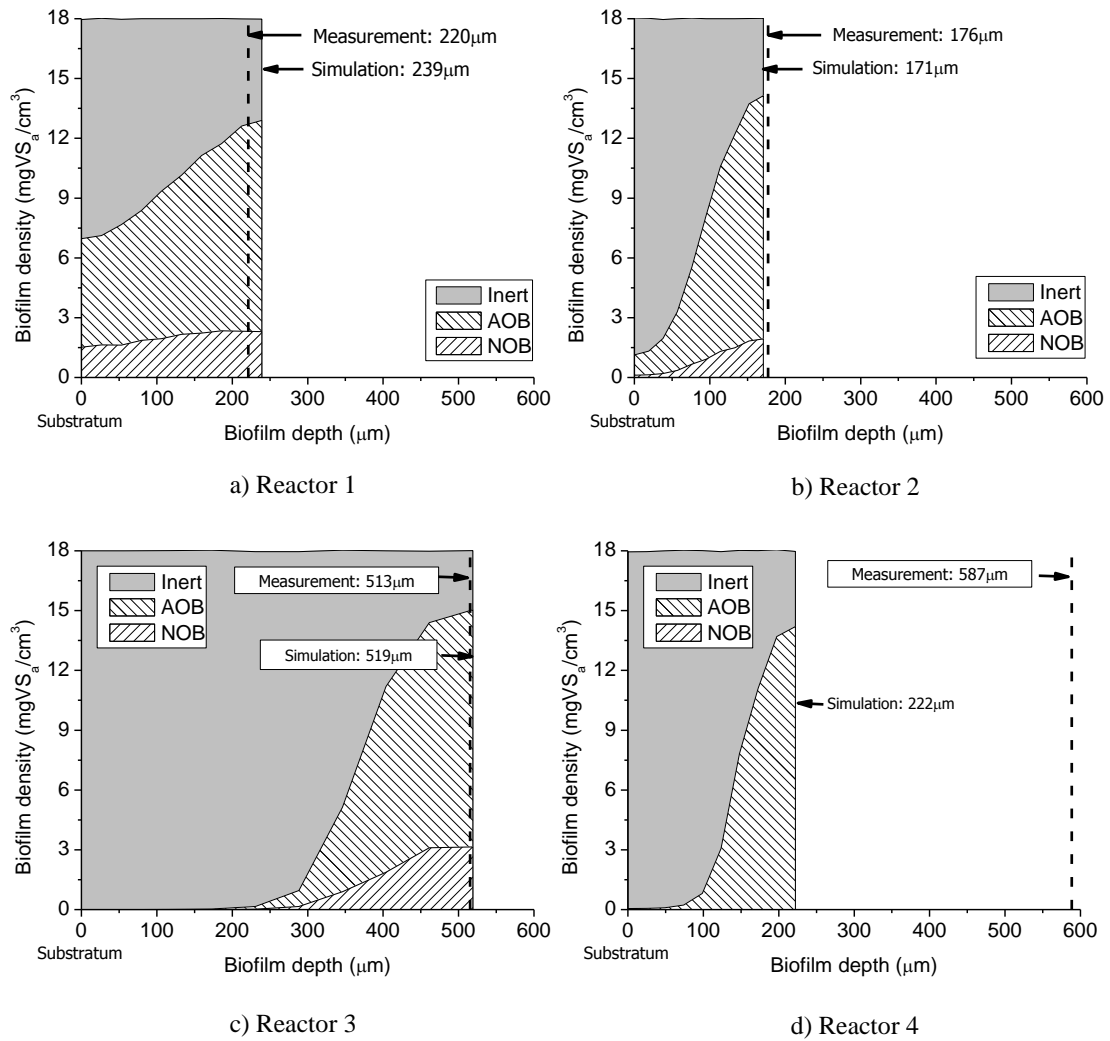


Fig. 4 - Experimental and simulated results of CFBRs from days 50 to 200: a) FA-inhibited operation of Reactor 3 did not lead to long-term nitrite accumulation and b) FA-inhibited and DO-limited operation of Reactor 4 led to long-term nitrite accumulation.



mg	AOB <sup>I</sup>	NOB <sup>II</sup>	Inert <sup>III</sup>	Active <sup>IV</sup> I+II	Total <sup>V</sup> I+II+III	Active/Total IV/V	NOB/total II/V
Reactor 1	139.5	35.9	147.1	175.4	322.6	0.54	0.11
Reactor 2	80.5	11.3	139.2	91.8	230.9	0.40	0.05
Reactor 3	137.5	32.9	530.1	170.4	700.6	0.24	0.05
Reactor 4	81.4	0.0	218.3	81.4	299.7	0.27	0.00

Fig. 5 - Simulated biomass profiles with operational conditions in CFBRs at day 200. Broken straight lines represent the measured biofilm depth at the end of experiments. The table presents the total biomass throughout the biofilm of each reactor.

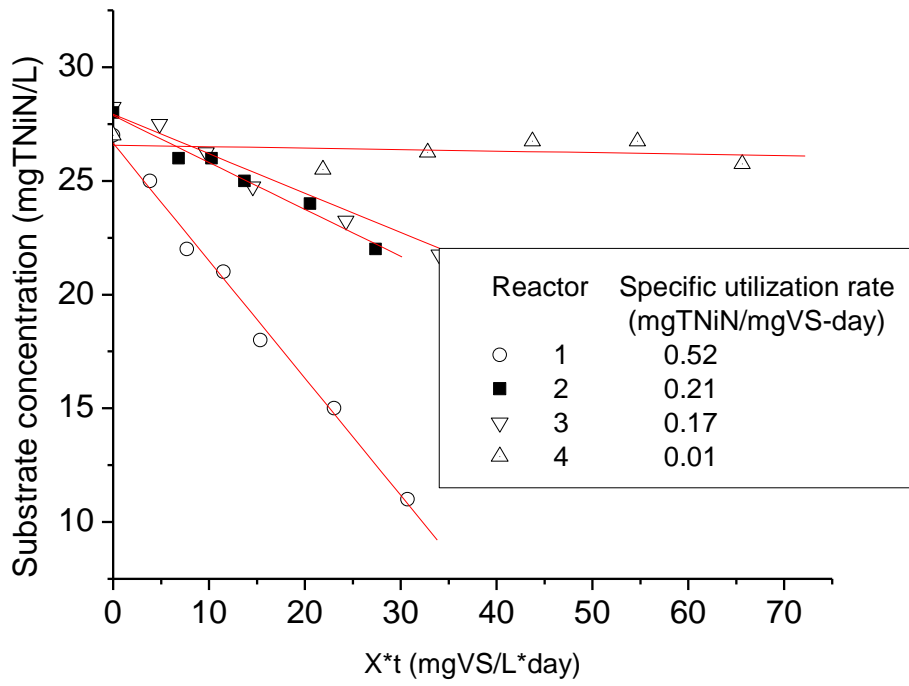


Fig. 6 -  $\text{NO}_2^-$  utilization rate of NOB in each biofilm reactor