

INSIDE	
Classifieds	17
Comics	12
Crossword	10
Horoscopes	19
Opinion	4
Police Report	9
Sports	13

ARIZONA STATE UNIVERSITY  
**STATE PRESS**

©Copyright, State Press, 1997  
Tempe, Arizona  
Vol. 81 No. 118

An Independent Morning Daily

Monday, April 7, 1997

# Ortiz, Maddin to compete in ASASU run-off

BY LIDIA E. KELLY  
STATE PRESS

Associated Students of ASU presidential hopefuls Andy Ortiz and Brent Maddin will face each other in a runoff after surviving the initial election last week.

The results were announced Friday amidst a flurry of claims of election code violations.

Ortiz finished first with 1,234 out of a total of 3,518 votes cast. Maddin followed with 968 votes. To win the election, a candidate needs 50 percent of the votes plus one.

Joshua Carr beat out Adrian Fontes for executive vice president.

Audrey Church defeated Richard Bosco in her successful bid for campus affairs vice president.

Autumn Ness and Erik Noland will compete head to head in a runoff for activities vice president.

Elections are scheduled for April 15 and 16.

"I am very, very excited," Ortiz said. "I am happy students trust experience."

He attributed the high number of votes cast in his favor to his focus on groups that historically have low turnout — such as Native Americans and engineering and international students.

"They were the sleeping giants," Ortiz said.

Maddin said he felt good about the results.

"I think that students appreciated the signs I have had," Maddin said. "I put my platform on them and that reached many more people than I could have talked to personally."

Both candidates said that since the race is not over, their main focus will be on a strong and effective campaign.

Both candidates also face charges brought to the attention of the elections commission.

Ortiz will confront accusations brought by Elections Coordinator Chip Ahlswede that he neglected to include

TURN TO ELECTION, PAGE 2.



Erik Guzowski/State Press

ASASU Presidential candidate Brent Maddin gets a hug from newly elected campus affairs vice president Audrey Church on Hayden lawn Friday. Maddin will face Andy Ortiz in a runoff for the presidential spot.

# Student input sought for ABOR tuition meeting

BY VIVI STENBERG  
STATE PRESS

The Arizona Board of Regents is getting ready to set tuition for next year and ASU students have a chance to influence the outcome at an on-campus meeting Thursday.

ABOR will host a multi-site tuition hearing, where representatives from the three state universities can testify on tuition, financial aid and other financial matters through interactive television.

"It's a great chance for students to participate in the tuition-setting process," said

Christine Thompson, executive director of the Arizona Students Association.

Thompson said ASA is recommending a tuition increase between zero and 2 percent. The group has also taken a stand against suggested tuition increases at the ASU and UofA law schools.

Students can comment on any proposed tuition increases at 7:30 p.m. Thursday in Room 328 of the College of Business C-wing.

ASA has also suggested regents move away from the traditional comparison of other state's tuition levels. Instead, the regents

should consider quality issues, Thompson said.

"We're a unique state that has a constitutional provision to provide students with as nearly free education as possible," she said.

An ABOR study group that reviewed the tuition setting process developed a policy requiring universities to reveal their list of priorities a tuition increase would pay for.

In previous years, students have had to respond to tuition hikes without having the insight as to how the increase would benefit or malign them.

ASU Provost Milton Glick said President

Lattie Coor will present the list of priorities prior to the Thursday meeting. Glick said that although he had not reviewed the budget appropriations concerning tuition, he did not anticipate a large increase.

Thompson said the relatively large appropriation from the state Legislature was the reason ASA recommended the low tuition hike.

"Boy, would we be happy if we could avoid a new tuition increase," Thompson said.

The regents are expected to set final tuition during their meeting at ASU East April 24 and 25.



Erik Guzowski/State Press

Leonard Montenegro stands in the wave tank that has been drained so that better observational lighting can be installed. Montenegro helped design and build the wave research tank for the Technology Center.

# Wave pool aids Navy, environment studies

BY BEN LEATHERMAN  
STATE PRESS

In one of ASU's many laboratories, a chunk of military money allows some scientists to hang around a pool all day.

They recently discovered that more cash is on the way.

Researchers with the Environmental Fluid Dynamics Lab used a three year, \$350,000 grant from the U.S. Navy in March 1995 to construct a 140-foot water tank to study the physics of waves for the Office of Naval Research.

The group was awarded an additional \$100,000 last week, which was requested to augment the projects and bring more stu-

dents on board. Currently, three graduate students are involved with the project.

Construction of the tank, which takes up two rooms at the Technology Center, began in April 1995. Researchers began doing the wave last October.

Leonard Montenegro, professor of mechanical engineering, said the military wants to know how tides interact with objects, such as mines, that could wash ashore. However, there will also be some civilian uses.

"We'll test some military applications, but there will be some environmental research, such as beach erosion," he said.

TURN TO WAVES, PAGE 2.

# TODAY

Campus clubs and organizations may submit written entries to the State Press in the basement of the Matthews Center. Requests will not be taken over the phone or via fax.

Deadline for requests is noon the day before publication and entries will not be accepted more than three working days before publication. Only one entry per organization per day is permitted.

Entries must contain the full name of the club or organization, a description of the event, date, time and the full address of the location. All requests are subject to editing for content, space and clarity. Incomplete or illegible entries will be discarded.

The Today Section is a daily calendar of events printed as a service to the ASU community. Requests are accepted on a first-come, first-served basis and are printed as space permits.

- **Career Services** — Marketing your Liberal Arts Degree Workshop at 12:40 p.m. in MU 212. Completing the Puzzle Workshop at 4 p.m. in the Career Development Center.
- **College of Liberal Arts and Sciences** — Council meeting at 4:30 p.m. in the MU Gila room, second floor.
- **Golden Key National Honor Society** — General meeting at 5:30 p.m. in the McClintock Hall Study Lounge.
- **MUAB Gallery Committee** — Meeting at 4:30 p.m. in the MU conference room 1A, third floor.
- **Christian Science Organization** — Meeting at 4:30 p.m. in the Danforth Chapel.
- **Coalition of Justice and Peace** — Meeting at noon in M Mohave.
- **ORAL Interpreter's Theater** —

"Breathing Life into Literature" at 5 p.m. in Stauffer Hall 318.

• **Malaysian Students' Association** — Expo Malaysia '97 from 10 a.m. to 3 p.m. in the Southeast corner of Hayden Lawn.

• **SCA College of Brymstonne** — Medieval and renaissance dance practice at 6:30 p.m. in MU Yavapai 209.

• **Habitat for Humanity Campus Chapter** — General meeting at 5:19 p.m. in the MU meeting room, second floor.

• **Collegiate National Association of the Deaf** — Tickets for the formal banquet "Good Vibrations" at the Buttes Hotel on April 26 at 6 p.m. are \$45. For more info and tickets call 921-1561.

• **AFL-CID Union Summer** — If you interested in working for a union during the summer or as a possible career opportunity see Lisa Farella at the MU Multicultural conference room.

• **Students Towards Educational Progress Honor Society** — General meeting will have Dr. Louise Baca speaking on racial ethnic development at 4:30 p.m. in MU Pinal 215.

• **Muslim Student Association** — Movie showing: Book of Science will be a documentary exploring the relationship between science and religion with discussion of Islam at 4 p.m. in the MU Theater (Basement).

• **Kundalini Yoga Club** — Meeting at 7 p.m. in MU Gold 203, will discuss the weekend retreat planned for the last weekend of April (26th & 27th).

• **Counselor Training Center** — Free counseling available for full-time students and staff at Payne Hall, room 402. For more information or an appointment, call 965-5067.

# Election

CONTINUED FROM PAGE 1.

items on his financial statement. Additionally, Maddin and his staff filed three other complaints accusing Ortiz representatives of campaigning illegally.

Maddin, however, said he plans to withdraw the complaints today.

"I think the elections should be decided by voters — not by disqualification of a candidate," he said. "The other reason is that the complaints are against Andy's staff and I don't think Andy himself was aware of the illegal actions."

Richard Golden, a staff member of former presidential candidate Damon Pace, also filed charges against Ortiz's staff, alleging they campaigned within 75 feet of polling booths.

"It is not against Andy," said Golden, a junior political science and sociology major.

"But if he is in the run-offs, he needs to be aware that his campaign manager is a jerk."

College of Education Sen. Craig Reid filed a complaint against run-off contender Maddin accusing him of campaigning over the Internet and using an honors college e-mail list.

"Chip told all of us this was wrong," Reid said in the complaint. Reid is asking the election commission to assess Maddin 120 penalty points.

Other complaints also have been filed against activities vice presidential candidates Autumn Ness and Erik Noland. Several other former candidates for executive and senatorial positions also face complaints.

Open hearings for complaints begin today.

# Waves

CONTINUED FROM PAGE 1.

"It's the study of the motion of the solid objects and their interaction with the waves."

Small model mines used in the 10,000 gallon tank are batted about by waves generated by a computer-controlled paddle, which can generate any type of wave. The whitecaps, which can reach amplitudes of 3 feet, are then analyzed for how they break as well as how the objects mix with the makeshift sand beach at one end of the pool.

Approximately 6,000 gallons of filtered water are used during a session.

Researchers Don Boyer and Bill Huston have analyzed enough data to come up with

a mathematical model that indicates how a particular wave type moves.

Montenegro said their results are compared with field studies conducted by the Navy's Coastal Dynamics Program in Mississippi.


"We'll start the erosion portion this summer, which will help to see what kind of forces the wave has on the beach materials, such as rocks and sand," Montenegro said.

The project lasts until December, but researchers plan to apply for an additional three years of funding. Even if their attempt fails, Montenegro said they will continue to use the pool for environmental studies.


# MUAB BE A PART OF THE ACTION!

MEMORIAL UNION ACTIVITIES BOARD


<h2 style="text-align: center;">OVAL OFFICE DREAMS?</h2> <p style="text-align: center;"><b>MUAB SELECTION Process Schedule</b></p> <p>Wed. 4/16 <i>Committee Chairperson Applications Due</i></p> <p>Mon. 4/21 <i>Interviews for Committee Chairpersons</i></p> <p>Fri. 5/2 <i>Spring Banquet/Inauguration</i></p>	<div style="border: 2px solid black; padding: 10px; margin: 0 auto; width: 80%;"> <h2 style="margin: 0;">DEBATE</h2> <p style="margin: 0;"><i>OPINIONS FORUM</i></p> <p style="margin: 0;"><b>WEDNESDAY</b></p> <p style="margin: 0;"><b>APRIL 9TH, 1997</b></p> <p style="margin: 0;"><b>12:40-1:30</b></p> <h2 style="margin: 0;">ASASU PRESIDENTIAL DEBATE</h2> <p style="margin: 0;"><b>MU PROGRAMMING LOUNGE</b></p> <h2 style="margin: 0;">DEBATE</h2> <p style="margin: 0;"><i>A real debate, moderated by a real talk show host.</i></p> </div>	<h2 style="text-align: center;">ARTS AND CRAFTS FAIR</h2> <p style="text-align: center;"><b>APRIL 8-11</b></p> <p style="text-align: center;"><i>8am-4am daily</i></p> <p style="text-align: center;"><b>Cady Mall</b></p>
--	---	--



RECREATION



CULTURE & ART

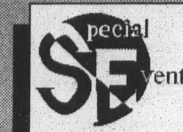


MARKETING


LOCATED ON TOP OF THE UNION!

MU • 3RD FLOOR

965•6822



SPECIAL EVENTS



GALLERY



FILM



COMEDY

## Deteriorating fuel cell cuts short mission

BY MARCIA DUNN  
ASSOCIATED PRESS

CAPE CANAVERAL, Fla. — Space shuttle Columbia and its seven astronauts will return to Earth on Tuesday, 12 days earlier than planned, because of a deteriorating and potentially explosive power generator.

It is only the third time in space shuttle history that a mission has been cut short by equipment failure.

While NASA considers commander James Halsell Jr. and his crew to be in no immediate danger, shuttle managers did not want to take any chances with the generator and, on Sunday, cut short the 16-day science mission.

"The conservative thing to do is land on Tuesday," shuttle program manager Tommy Holloway announced at a hastily arranged news conference.

Holloway said a Monday landing was ruled out in order to allow for an orderly return, and because Columbia's two other electricity-producing fuel cells were working fine.

The fear was that hydrogen fuel and oxygen in the degraded generator could mix, overheat and blow up if voltage in the unit dropped far enough. Flight controllers had the astronauts turn off the unit Sunday to reduce, if not eliminate, that risk. The crew also shut down all non-critical equipment to conserve power.

"Our plans would be to manage this fuel cell in a way that's not a threat to crew safety and, indeed, we are extremely confident in the two remaining fuel cells and their ability to support an orderly and methodical preparation for landing, and landing," Holloway said.

To slow the decline in voltage, Mission

Control first had the astronauts reduce the power load on the degraded fuel cell. But the voltage continued to dwindle. Engineers debated a few hours before deciding to shut down the unit — once turned off, it cannot be restarted in the event another fuel cell fails.

While a shuttle can land safely with two fuel cells, it's uncertain what would happen if only one fuel cell was available because of all the vital systems that would have to be shut down for lack of power.

Each \$5 million fuel cell uses hydrogen and oxygen to generate electricity for the numerous shuttle systems, and produces water as a byproduct. National Aeronautics and Space Administration flight rules stipulate that all three fuel cells be working properly in orbit, otherwise a mission must be cut short.

Mission Control had been monitoring

the mysterious decline in voltage in the fuel cell since Friday's liftoff. As it turns out, brief jumps in voltage were detected in the unit several hours before launch, but managers determined it was working properly and cleared Columbia for flight.

Holloway admitted that "with 20-20 hindsight," the countdown should have been halted and the fuel cell replaced. Launch controllers made the best decision at the time with the data available, he said.

Engineers have no idea why the fuel cell slowly was losing voltage. The unit has flown before in space without problems.

A failed fuel cell forced an early landing during NASA's second shuttle flight in 1981; in that case, the unit was flooded with water. The only other time a shuttle mission was cut short for equipment failure was in 1991, because of a failed navigation unit.

## Blizzard halts movement on northern Plains

BY JEREMIAH GARDNER  
ASSOCIATED PRESS

BISMARCK, N.D. — A blizzard shut down much of the northern Plains on Sunday with blinding wind-blown snow and drifts up to 20 feet high, stranding travelers and making life miserable for volunteers sandbagging flood-threatened towns.

Hundreds of miles of highways were closed in Wyoming, the Dakotas, Nebraska and the eastern edge of Montana. Thousands were without electricity.

The blowing snow rebuilt drifts that had begun melting after a winter of record snowfall.

"My mailbox is probably 30 yards away. At times I can't see it," said Chad Klinske, who lives about a mile outside Grafton, N.D. "My drifts that were down to 4 or 5 feet are now 12 feet."

With the electricity off, Klinske had to borrow a generator to run a small space heater and run the sump pump keeping water out of his basement.

"Right now, I'm walling off the living room with cushions from the couch, to try to reduce the area I've got to heat," he said Sunday afternoon.

Snowbound day-shift employees couldn't get to work Sunday at the Elim Nursing Home in Fargo. The overnight crew put out a call for help from people in the neighborhood, and 15 to 20 volunteers showed up, administrative assistant Louise Swanson said.

"They're making beds. They're helping feed the residents and just doing whatever they can to help," Swanson said.

North Dakota Gov. Ed Schafer asked President Clinton to declare the state a disaster area. "We've got the whole state virtually paralyzed," he said.

Across the state line in west-central Minnesota, dikes failed throughout much of Breckenridge during the night, letting the Red River pour as much as 3 feet deep into streets. Most of the downtown was knee-deep in water and snow-crusted ice, and parked cars were frozen in place.

Hundreds of people had been evacuated in Breckenridge because of the flood caused by melting snow from previous



John Davis/Associated Press

People help each other free cars stuck in the snow Sunday, in Aberdeen, S.D., as snow and winds in excess of 40 miles per hour create blizzard conditions in the area. Most of eastern South Dakota, including Aberdeen, spent the last week dealing with flooding from snow melt when the spring snow storm hit early Sunday.

storms, and others were stranded by the blizzard, police Chief Dennis Milbrandt said Sunday. Temperatures were in the 20s and the wind-chill was below zero.

"We've had officers going door-to-door with chest waders," Milbrandt said. "We thought about boats, but there's so much ice and wind, we're concerned about that. We don't want to put anybody else in danger."

In Montevideo, Minn., 100 miles southeast of Breckenridge, waves driven by 40 mph wind crashed against dikes along the bloated Minnesota River, splashing volunteers as they piled sandbags and coating their clothing and men's beards with ice.

"It doesn't get any worse than this. We had flooding last week, but that was in warm weather. This is bad," said Ronald Olson, a volunteer firefighter from Clara City, Minn., who was piling sandbags in Montevideo.

At Watertown, S.D., Lake Kampeska, fed by the swollen Big Sioux River, had reached a record 42 1/2 inches above the full mark and residents of a 30-block area were urged to evacuate.

Most highways were closed in North Dakota, including all 600 miles of Interstates 94 and 29. Amtrak's Empire Building passenger train was stranded in Fargo by signal failures.

## Army drops charge that Aberdeen female private lied

BY DAVID DISHNEAU  
ASSOCIATED PRESS

ABERDEEN PROVING GROUND, Md. — The Army on Sunday dropped its allegation that a female trainee lied about having sex with an instructor.

The Army said the charge against Pvt. Toni Moreland wasn't a priority and it didn't want to bring in an out-of-town witness. The soldier's attorney accused the Army of ducking a confrontation over its investigation of the Aberdeen sex scandal.

Ms. Moreland, 21, pleaded guilty to other minor charges Sunday at a summary court-martial, the lowest level of military court. She was sentenced to 16 days in a military prison and fined \$300.

Ms. Moreland was the first of five Army privates who accused Army inves-

tigators of trying to bully them into falsely claiming they were raped by instructors at the weapons training school at the Army's Aberdeen Proving Ground in northern Maryland.

Ms. Moreland was charged with two counts of making a false statement after she recanted a sworn statement that she had consensual sex with Staff Sgt. Marvin Kelley. She repeated Sunday that she never had sex with Kelley and signed the statement only to appease investigators. She said investigators were pressuring her to claim he raped her.

Consensual sex between superiors and subordinates is prohibited in the military.

No charges were filed based on Ms. Moreland's original statement. Army officials have denied that investigators tried to force

false accusations from interview subjects.

Kelley has been charged with other offenses, including adultery and obstruction of justice.

Ms. Moreland's attorney, Stuart Robinson, suggested the Army was ducking a confrontation over the tactics used by investigators.

"It gives absolute credence to the characterization of how the investigation was handled," by the Army's criminal investigations division, he told reporters outside the courtroom.

Ms. Moreland said she regretted not being able to face the investigators.

"I believe they're trying to make some kind of example of things that happened here. I think they got carried away," she told reporters.

One false-statement count was dropped because the government didn't want to fly in at least one out-of-town witness, according to Maj. Susan Gibson, the second-highest legal adviser at Aberdeen.

The court-martial's presiding officer dismissed the other count because it was too vague and because Ms. Moreland may not have been properly advised of her rights.

Ms. Gibson said proving the charges wasn't a high Army priority.

"This is just a summary court. We don't ordinarily bring witnesses back for summary courts," she said.

Ms. Moreland was convicted of one count each of being absent without leave, failing to report for extra duty, disobeying an order and breaking restriction to certain areas of the post.

## STATE PRESS Editorial

*Ballots were cast, but voting season is not over*

**W**HEW! Finally, elections are over! We can forget about making tough decisions affecting the entire ASU population and concentrate on our own lives, right? Sorry, it's not over yet.

The students of ASU will face two more episodes which could change things around here for the next year — the Associated Students of ASU runoff elections and the upcoming tuition increase.

The circus that is the 1997 Associated Students of ASU elections will stay in town a bit longer. Not only are many of the candidates facing complaints filed against them, but there will also be runoff elections for the positions of president and activities vice president.

Students can again vote April 15 and 16.

For those students who would like to represent themselves to an organization determining the fate of tuition money next year, there will be a meeting on Thursday. The Arizona Board of Regents plans to hear testimony via a multi-site interactive TV meeting, in which students can participate.

The Arizona Students' Association is suggesting an increase somewhere between zero to 2 percent. Now, when we hear the words 'tuition increase,' we simultaneously sigh in disgust. But in doing the math, the increase is really very slight.

Here's some help for those without a calculator. Rounding the increase to 2 percent and basing it on 1997 spring fees for students taking 12 or more credit hours, we find the increase would mean an additional \$19.40 paid by residents of Arizona and another \$83.08 paid by out-of-state students. That would mean a resident would pay \$989.40 and a non-resident would pay \$4,237.08.

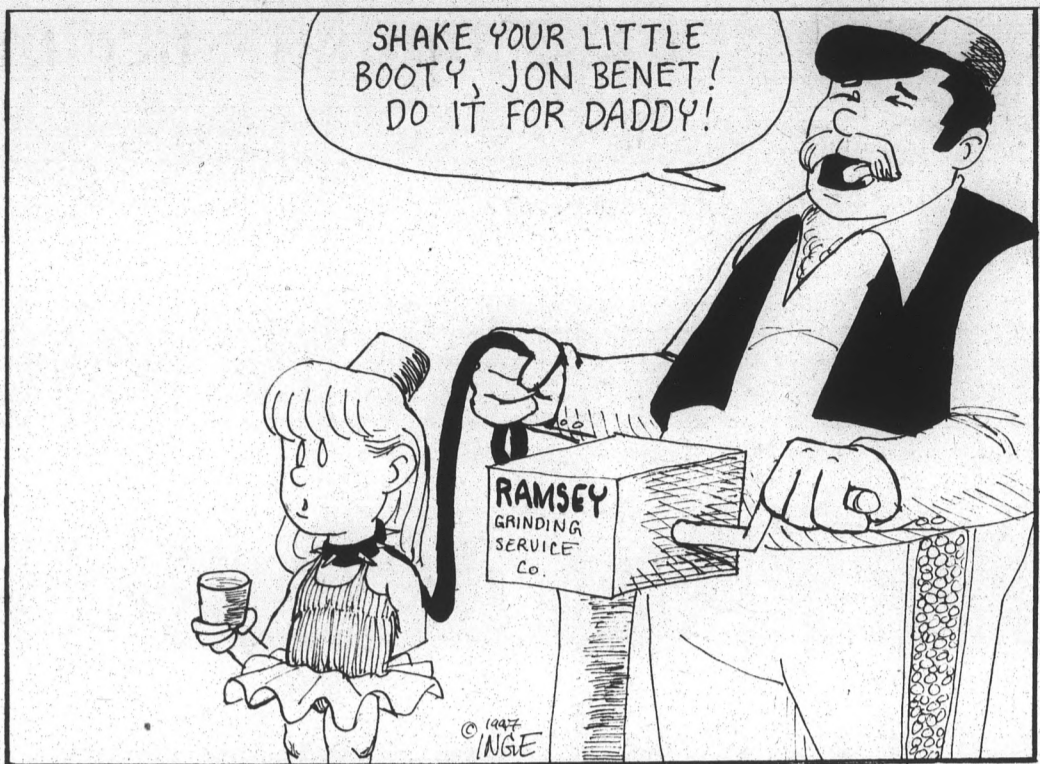
Some students may feel ASU is already sticking it to us, but we feel that a 2 percent increase or less is really quite fair. Now if anyone suggests a larger increase, then we doth protest.

"Yeah, that does sound fair, but then why should I go to this meeting on Thursday? What's the point?" a student may ask.

There are plenty of reasons. First of all, attending this meeting shows interest and concern in tuition matters. Secondly, students need to support a low to nil tuition increase or the powers that decide the increase may believe it doesn't matter to us and instate a higher tuition increase. Keep in mind that what ASA suggests is not necessarily what ABOR initiates.

Students pay a good deal of money to attend this University; therefore, they have every right to express their opinions and concerns about tuition increases. Some have no problem expressing those opinions with friends during lunch, but opinions need to be voiced to the right people.

We urge the students of ASU to attend the meeting on Thursday and let ABOR know the concern about tuition increases. If ASASU is important to you, then go vote again in the runoff elections. The pessimist in us says maybe these steps won't matter, but you won't know if you don't try.



## Positive actions result from attitude

Have you ever wondered what makes people successful? Have you ever thought of a person's language as a prime factor — the way a person uses language in their every day life and especially in the work force?

According to Steve Chandler, it does. Chandler gives self-improvement seminars across the country. He is also the author of *100 Ways to Motivate Yourself*. My father recently attended one of his seminars, after which he and I discussed what he learned from this humorous speaker.

Chandler's concept is that language is a key factor in whether or not a person succeeds. One of his examples was the difference in people who over-use the word "should."

These people tend to say things like, "Well, I *should* finish this before the weekend, but I can do it on Monday." Or one that is spoken quite often is, "I *should* lose weight."

The opposite, of course, are people who say, "I'm going to finish this before the weekend because then I won't have to worry about it on Monday." I suppose the idea he is trying to get across is that people speak what they believe of themselves.

The "should" in the first example signifies a realization of the necessity to do something, but a lack of desire and motivation to do so. Have you ever noticed that people who over-use the word "should" usually say these kinds of things their whole lives, but never really get around to doing them?

Essentially, motivation is brought on only through a positive attitude. If you know that things need to get done and you never get around to doing them (procrastination), then you are bound to have somewhat of a negative attitude about things and the effort it takes to accomplish them.

The only way to make a difference and to take action is to change. You can't just say that you will change — you have to change. This not only means your outlook on life, but the way you speak, your attitude and possibly

even your atmosphere.

Have you ever realized how hard it is to break a bad habit when you are constantly surrounded by things that remind you of this habit? This usually tends to wear down a person and causes the person to give in and fall into the opportunity to change, causing them to come up short in their desire to better themselves.

Technically, Chandler is a professional speaker and writer who teaches workers and employees through seminars sponsored by well-noted companies about how to succeed. He presents ways and steps in which they can accomplish this. He tries to motivate them to better themselves and make a difference in their lives and in the company they work for. Another factor besides language that he mentioned was creativity.

Most people don't think of themselves as creative. His definition of a creative person is any individual who has an imagination. This should classify every living individual. You would be surprised, though, to know that the few people who do think that they are creative usually work harder, enjoy their work and are therefore happy and successful.

If you can imagine several middle-aged people in one lecture room, listening to this speaker and taking notes on how to better their lives and make themselves more successful, you will realize how effective this speaker and topic are.

Sure, it takes time and effort, but these people are ordinary people like you and me, too. Everyone wants to be happy and work in a happy atmosphere. His suggestion was to sing "Zippidee Doo Dah," instead of the song his son listens to, which has lyrics having something to do with rage and being a "rat in a cage."

We may not be able to change our atmosphere or our job, but we can certainly be more positive wherever we are. Everyone has a given birthright to be happy. So find your song. Sing it as loud as you can and get your family, roommates and co-workers to sing along with you. Don't hesitate because you want to be macho and not look like an idiot. Believe me, if you are worried about what other people think, you will never truly be happy.

*Michelle Hardt is a freshman studying journalism and can be reached at zeek1@asu.edu.*



## STATE PRESS STAFF

BRIAN ANDERSON, Editor  
DUSTIN KRUGEL, Managing Editor

CARYL MICALIZO .....Night Editor  
TIMOTHY TAIT .....City Editor  
RAY STERN .....Asst. City Editor  
THERESA VALLES .....Opinion Editor  
CHRISTA CERRENTANO .....News Editor  
LORI CAIN .....Photo Editor  
JIM POULIN .....Photo Editor  
RANDY JONES .....Sports Editor  
ED ODEYEN .....Asst. Sports Editor  
TIM BAXTER .....Magazine Editor  
LEYLA SALMASSIAN .....Asst. Magazine Editor

**REPORTERS:** Sara Bush, Kevin Culwell, Deanna Darr, Rowe Edgell, Lidia Kelly, Ben Leatherman, Melody McDonald, Jennifer Netherby, Vivi Stenberg.  
**SPORTS REPORTERS:** Josh DeFamio, Percy Ednalino Jr., Lori Haro, Matt Paulson, John Sheehy.

**COPY EDITORS:** Jodi Bafundo, Lorie Roberts.  
**PHOTOGRAPHERS:** Erik Guzowski, Pat Shannahan.  
**COLUMNISTS:** Kevin J. Berlat, Michelle Carson, Olga Fuentes, Steve Forsberg, Rachel Gordon, Michelle Hardt, Diane C. Jacobs, George D. Rose, Sr., David Ruffolo, Adam Schiffer, Steven Stein, Karin Wadsack.  
**CARTOONISTS:** Brian Fairrington, David Gould, Jonathan T. Inge, Maurice Mitchell, Steve Tansley, Michael S. Whiteman.  
**PRODUCTION:** Jeff Chua, Adrianna Garcia, Kai Haisch-Risley, Diana Kessinger, John Kestner, Wendy Luney, Erik Noland, Sara Pike, Shellie Scott.  
**SALES REPRESENTATIVES:** Cari Dewald, Dan Ellstrom, David Goodwin, Brandon Mudd, Nick Pezzorello, Jess Rankin, Mark Santiago, Todd Shields, Shane Siren, Jesse Stetteland.  
**CLASSIFIEDS:** Heidi Hejster, Wayne Hoover, Sarah Kimmel, Stacey Thayer, Joy Thompson.

Unsigned editorials reflect the views of the editorial board, decided by a majority voted among its members. They do not reflect the opinion of the *State Press* staff as a whole.  
Board members include:  
BRIAN ANDERSON Editor  
DUSTIN KRUGEL Managing Editor  
THERESA VALLES Opinion Editor  
CHRISTA CERRENTANO News Editor  
The *State Press* is published Monday through Friday during the academic year, except holidays and exam periods, at Matthews Center, Room 15, Arizona State University, Tempe, Ariz. 85287-1502. We do not answer questions of a general nature.  
The *State Press* is the only newspaper exclusively published for and circulated on the ASU campus. The news and views published in this newspaper are not necessarily those of the ASU administration, faculty, staff or student body.

## STATE PRESS PHONE NUMBERS

Information.....965-7572  
Newsroom.....965-2292  
Magazine.....965-1695  
Advertising.....965-6555  
Classifieds.....965-6735

<http://news.vpsa.asu.edu>

## Men's traditional shopping succumbs to its feminine side

For years, Tim Allen's stand-up routine was based on the assumption that Sears was a man's store. With its linoleum floors, bright fluorescent lighting and sparse decorating, Sears was simple, reasonable and most significantly, masculine. Sears never went for the frilly, floral and feminine decorating so many stores moved to.

**RACHEL GORDON**  
Columnist

I remember as a child going into Sears with my father, looking for household items. My father saw himself as Bob Villa reincarnate, although he remains much closer to Tim Taylor or Cliff Huxtable. He could not hang a picture straight or differentiate between photo hangers and house building nails.

To say he is not a handyman is an understatement. However, if you were to look inside any of his five tool boxes, you would think him a master carpenter. Dad loved Sears, they always had tools, and he had several different sizes and versions with updates of each. We always went to Sears, "the man's store," for tools.

I would accompany Dad on his tool buying excursions, frustrating him with my lack of understanding. I could not comprehend this need to buy tools. To me, they all looked the same. If these four hammers all say they do the same thing, then why do we need all four? He needed all four hammers because they were just slightly different. It was always an excuse to go into Sears.

These shopping trips to Sears were not my favorite thing to do. Although I loved spending the time with my dad, I did not like the starkness of the store. To me, it was nothing more than never-ending rows of hammers, nails, lawn

mowers, snow blowers and so on. I have yet to understand why needle-nose pliers have the name that they have and what they're used for. But never fear — there are about six in the basement of his home. As far as the eyes could see lay nothing but tools, appliances and lawn equipment.

Shopping for those household items was one of Dad's favorite past-times. Only during the holiday season did my mother venture into Sears looking extremely out of place in a store that could almost have had "no girls allowed" signs posted up like a childhood clubhouse. She and I would wander aimlessly until some kind of grandpa-type gentleman would come and take pity upon her, this poor woman coming into "our" store. Explaining that we needed a gift for Dad, we would be led off to yet another row looking remarkably like the previous ones, full of Craftsman tools and the like. Once an acceptable gift was obtained, we would pay and head out into the main part of the mall, almost as if returning from enemy camp. Not that the employees in Sears were hostile; they genuinely tried to help all customers. But the fact remained it was not a store for women.

There were no pastel-colored walls, floral arrangements, grand pianos, overstuffed chairs or sofas scattered throughout the store. While many other department stores evolved and mainstream shopping became more like Victoria's Secret one store at a time, Sears continued to hold out. Tradition kept it going. Men wanted a store where they felt comfortable, truly believing that Sears remained the one-stop shopping center for all gift needs. Shall we compare the years mom received a microwave or new pots and pans for Mother's Day? Not exactly the personal gifts she envisioned.

The main difference today is that Sears is no longer billing itself as a man's store. If you walk into one at your local mall, you will find cosmetic counters, aromatherapy products, overstuffed chairs, soft lighting and so on. Gone are the fluorescent light fixtures and linoleum floors. Sears has gone soft. I have to wonder what this is doing to the American male who grew up believing, as I did, that Sears was a place really for men only.

Day by day, the stores begin to resemble Victoria's Secret more and more. Sears advertises their "softer side," an entire campaign based upon a man entering the store in search of some tool while the woman finds lingerie, clothing or something for the kids. "Come see the softer side of Sears" is sung in soft tones with light music behind it on television commercials. I can't imagine the old Sears advertising this way.

As so many aspects of society are evolving, it is understandable that Sears would want to update its image for the 1990s. However, it just seems as though we've lost a true part of Americana.

Generations of fathers and daughters to come may still venture into Sears in search of the perfect new tool for Daddy, but the store will not seem so alien to the daughters. They will now feel comfortable — no fluorescent tube lights glaring down from the ceiling, carpeting on the floors ... how will they ever understand what it once was like? Little boys will not grow up idealizing shopping in Sears. I know my brother does not feel the same way about shopping there as Dad did. Since Sears has gone soft, what will happen next ...?

Rachel Gordon is a sophomore studying broadcasting and can be reached at Rachel.Gordon@asu.edu.

## 'Cult' beliefs wrong only when compared to our own

To satisfy my own curiosity, I picked up a dictionary yesterday. There it was: "cult" — n. 1a. A religion or religious sect generally considered to be extremist or false, with its followers often living communally under an authoritarian, charismatic leader." I needed that dose of reality.

**RICK LILJGREN**  
Columnist



You see, all the rhetoric about the Heaven's Gate "cult" seems to gloss over the fact that these were nice people. By this, I mean that they didn't bother anyone and kept their beliefs to themselves. So far, there is no evidence of hypocritical behavior on the part of their leader or any of the members. A lot of conventional religions cannot say this.

But "cult" has a negative context in our society. When you say "cult," people picture bald men in orange robes selling flowers at airports. This perception is not entirely unfounded.

The funny thing is, depending on what perspective the observer has, any religion can be classified as a cult by this definition. It's a value judgment. The only thing that can't be considered a cult on some level is your own religion. Just a little reality check for everyone — because 39 people made an unorthodox decision last week, and the world is judging them by their own beliefs.

It's ironic, somehow, that these people made a living by working on computers, dealing with the most modern, up-to-date pieces of technology, yet their deaths rest on one of the oldest traditional harbingers of doom or transcendence: the comet. This light in the sky overrode all of

the conventional information at their fingertips on the Information Superhighway.

What's also funny about this is that our society, as a whole, will believe these natural things and put aside all the collected knowledge science has to offer in favor of superstition. Superstition is, after all, in our very bones. It blows on windy nights and covers our brow during eclipses. It is a part of who we are and whispers to us as we deal with the unknown.

It was definitely a part of what the Heaven's Gate leader, Marshall Applewhite, wanted to preach — but instead, he found himself in music. As an adult, he taught music at the University of St. Thomas in Houston, Texas. He married and had two children. This is where his normal life ended.

According to CNN, he had an affair with a male student. He was discharged for mental health reasons, and went to a psychiatric hospital to try and rid himself of homosexual desires. There he met Bonnie Lu Nettles, a nurse who convinced him to join a fringe religious group after he had a near-death experience. He left his wife and lived with Nettles in a sexless union until her death in 1985.

Applewhite and Nettles made headlines in 1975, when they convinced a group to leave their homes in Oregon and move to east Colorado, where they would rendezvous with a spaceship. The ship never came. The group resurfaced in the early 90s.

Applewhite preached celibacy, and the group clothed themselves in loose, unisex clothing. Several of the male members, including Applewhite, were castrated. They lived in New Mexico, Arizona and finally in the Rancho Santa Fe, Calif. house where they committed suicide by washing down Phenobarbital in pudding or applesauce with vodka, then placing plastic bags over their heads.

Applewhite taught — and seemed to believe — that his group would be picked up by a spaceship. The group believed the ship to pick them up was following the Hale-Bopp comet. They thought it was time to "ascend." To many of us, including myself, this sort of ascension goes against our personal moral code.

But there have been polls recently showing that about half of us believe in UFOs. Is it such a jump, if you believe in them, to believe one is coming to pick you up, when you have a charismatic leader you believe to be credible telling you they are coming? I'm not sure.

Once the initial disbelief passes, human beings are capable of accepting a lot of things that seem far-fetched. Christians, as an example, believe Christ raised Lazarus from the dead, among other miracles. Logical? Probably not, but rather a matter of faith.

The Heaven's Gate cult believed some things that most of us can't swallow as truth. But they were sincere about it. They didn't have a plan to rule the world, they just had their own belief in ascension. I can't quite believe their "authoritarian charismatic leader" was trying to victimize his followers, as many other cult leaders have done. Applewhite lived with his followers, castrated himself and died with his followers.

The evidence unearthed so far does not paint him as an evil man — misguided, not entirely sane and different, yes. Not evil. I just don't want to convict him in absentia when the facts are not all in. Right now all we can say with surety is that the members of this group had beliefs most of us cannot share. I even hope, for the sake of all of the Heaven's Gate members, that they and their leader were right.

But I don't think they were.  
Rick Liljgren is a graduate student of creative writing and can be reached at Rick.Liljgren@asu.edu.

## 'Stress Free Day' only reminder to hang loose

In response to your April 2 slam editorial on Stress-Free Day, I do not believe that anyone was expecting the entire student body to actually have a stress-free 24-hour period as a result of the proclamation of Tuesday as Stress-Free Day.

However, the acknowledgment of the University atmosphere as stressful, combined with the compassionate interest of others who wish to help in the reduction of stress can be a great catalyst for a positive lifestyle change.

This event provides a chance for us to re-focus on the most important things in life and learn how better planning of school and work requirements (even scheduling time for fun events) can go a long way for our personal happiness and toward lowering stress levels.

Personally, a Stress-Free Day smiley sticker, a kind

word from a stranger and a free sample of lotion this past Tuesday helped me have a much better day than I usually would have.

Maybe if your staff wore a Stress-Free Day smiley sticker and shared the good word that we are all here to learn and have fun together, it would make this campus community one of the best around. Taking 10 minutes to talk to someone who cares is a whole lot better than whining about an elusive stress-free, responsibility-free day that will never come. I applaud and would like to thank the Student Health personnel who put the booth on. It made my day.

Jennifer Russell  
Junior  
Communication

### Quotables ...

"I don't want any yes-men around me. I want everyone to tell me the truth even if it costs them their jobs."

— Samuel Goldwyn  
(1882-1974)

# Art Festival fun



Photo by Pat Shannahan/ State Press

Three year old Katie Zellner of Mesa gets a picture of Barney painted on her face by clown Cherry Pie, Sunday afternoon at the Tempe Art Festival. The festival included games, rides, food, live music and booths displaying artists' works. The festival was held Friday through Sunday.

## STATE PRESS

### Crosswords

They aren't harsh words. They're just across-words.

**ROSITAS**  
fine MEXICAN FOOD

Serving Lunch and Dinner 7 Days a Week  
Bringing Fine Food and Friends Together Since 1963  
Mama Rosa's Traditional Sonoran Mexican Food Recipes  
Are Simply the Best!

Featuring New Selections to Enhance Your Healthy Lifestyle

**Fabulous Fajitas - Beef • Shrimp • Chicken**

■ Camaron Ranchera and Diablo (Shrimp)    ■ Savory Black Beans  
■ Steaming Sides of Fresh Vegetables    ■ Incredible Fish Tacos

FAMOUS GIANT GOLDEN MARGARITAS

**ROSITAS**

**\$ 1/2 PRICE DINNER**

With the purchase of one dinner of equal or greater value.  
Not good with any other offer or discount.  
Offer good after 2 p.m. Expires 4-15-97.

WITH THIS AD

**ROSITAS**

**Happy Hour Buffet**

4-7 p.m.  
Monday-Friday

**ROSITAS**

**Tempe**

960 W. University  
(Northeast Corner University & Hardy)  
966-0852

**Mesa**  
2023 W. Guadalupe  
(Southwest Corner Dobson & Guadalupe)  
897-9411

**Happy Hour Buffet**  
4-7 p.m.  
Monday-Friday

**Tempe**  
960 W. University  
(Northeast Corner University & Hardy)  
966-0852

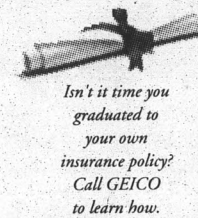


### Car insurance from GEICO.

Because it's never too early to begin making sound financial decisions.

Whether you already have your own car insurance policy or you're ready to start one, our **great student rates** make GEICO a wise choice.

We'll answer questions and handle claims **24 hours a day**. And in many cases, your claim can be **settled within 48 hours** of reporting the details of an incident.



**GEICO**  
The sensible alternative.

And GEICO offers a variety of **convenient payment plans** to meet your needs.

Join over 2 million drivers who have already switched to an auto insurance company that's got an **A++ rating**. Call GEICO today, and find out just how much you could save.

**(602) 931-0766**

## CAMPUS CORNER

712 S. COLLEGE  
(COLLEGE & UNIVERSITY)  
967-4049

**2 LOCATIONS**

- Beer & Soda
- Photo Developing
- Health & Beauty Aids

609 S. MILL  
ACROSS FROM COFFEE PLANTATION  
858-0567  
BEER NOT AVAILABLE AT THIS LOCATION

Photo Finishing  
Everyday Low Price

**\$4.99**

24 exposure  
**DOUBLE PRINTS**

color C-41 process  
Best price in town.

### MID WEEK MADNESS!

MON - WED ONLY

**LARGE CHEESE PIZZA**  
ONLY \$3.99

TOPPINGS \$1.00 EACH

OR  
**EXTRA LARGE CHEESE**  
ONLY \$5.99

\*5" MIN FOR DELIVERY

### DRUNKEN STOOPER

EXTRA LARGE 1-ITEM  
AND  
LARGE POKEY STIX  
OR  
LARGE CHEESE PIZZA  
ONLY \$7.99

10PM - Close everyday!

## GOT THE MUNCHIES? GUMBY'S HAS THE CURE!



www.gumbyspizza.com

**921-FAST**

**921-3278**

offers may expire w/o notice

### HOKEY POKEY

X-TRA LARGE 16"  
PIZZA W/ 2 TOPPINGS  
ONLY \$7.99

### DINNER FOR 2

MEDIUM 12"  
2-TOPPING PIZZA  
W/ 2 SODAS  
ONLY \$6.99

### BONUS BUYS

ADD A MEDIUM  
CHEESE PIZZA  
OR  
SMALL POKEY STIX  
FOR \$2.99

**FAST, FREE DELIVERY**

Hours of Operation:  
11:30am Fri-Sat  
(1:30 Sun-Thur)

# Keep on smiling ...



Photos by Eric Guzowski/State Press

Autumn Ness, ASASU activities vice presidential candidate stands next to newly elected campus affairs vice president Audrey Church. Ness will compete against Erik Noland for the ASASU position.

ASASU presidential candidate Andrew Ortiz talks with newly elected executive vice president Joshua Carr after hearing the election results on Hayden lawn Friday. Ortiz will be in a runoff against Brent Maddin.

**STATE PRESS ONLINE**  
<http://news.vpsa.asu.edu>  
**IT'S INTERACTIVE!**  
 You can submit ...  
**LETTERS TO THE EDITOR**  
**STORY/TOPIC IDEAS TO THE NEWSDESK**  
**CLASSIFIED ADS**  
 ... ALL FROM THE COMFORT OF YOUR VERY OWN HOME  
 (OR FROM THE COMMONS)

**HOROSCOPE'S GUARANTEED  
 OR YOUR MONEY BACK! ON PAGE 19.**

**KBAQ** **APRIL PERFORMANCES**  
 PRODUCTION STUDIO A Part of KAET-TV/Phoenix Listen to 89.5 FM

**SOUTHWEST SEASON TICKET TUESDAYS AT 7 PM**  
 Excellence in Arizona, recorded by the KBAQ Production Studio team.

**APRIL 8** Scottsdale: Chopin, Schumann, Scarlatti and pianist Stephen Hough  
**APRIL 15** Tucson: The Locke Consort celebrates the bicentennial of Henry Purcell  
**APRIL 22** Tucson: The New York Chamber Soloists recall "Paris in the 1920s"  
**APRIL 29** Scottsdale: Pianist André-Michel Schueb: Mussorgsky's *Pictures at an Exhibition* and more

**ASU IN CONCERT THURSDAYS AT 7 PM**  
 The finest from the concert halls of ASU.

**APRIL 10** Guitarist Antonio Lopez features the music of Manuel Ponce  
**APRIL 17** Lyric Opera Theatre: Benjamin Britten's chilling adaptation of Henry James' *The Turn of the Screw*  
**APRIL 24** Oboist Nancy Clauter performs Britten, Francis Poulenc, and J.C. Bach

**THE GREEN ROOM WEDNESDAYS AT 9 PM THROUGH APRIL 23**  
 Our weekly concert-preview program of Arizona classical music events closes its third season with features on: The National Symphony Orchestra; pianist Christopher O'Riley; Phoenix Symphony guests pianist Jean-Yves Thibaudet, percussionist Evelyn Glennie, and the ASU Choral Union; Dan Laurin and his recorder; the New York City Opera Touring Company's *La Boheme*; Venezuela's Cuarteto Rios Reyna with pianist Monique Duphil; oboist Martin Schuring; and the Amadeus Piano Trio at the Sedona Chamber Music Festival.

**THE FABULOUS FRITTS SUNDAYS AT 7 PM**  
 Recorded before packed houses on ASU's historic Fritts & Co. organ.

**APRIL 13** Susan Ferré offers music from Germany and Spain  
**APRIL 20** Roberta Gary's repertoire includes Schumann and Mendelssohn

**The Party of the Summer is Coming to Queen Creek AZ**

**APRIL 24-25-26-27**

**featuring:**

- Ricochet • Jeff Foxworthy
- John Michael Montgomery
- Sons of the Desert
- Bill Engvall • Deana Carter
- Joe Diffie • Chris LeDoux
- Sawyer Brown • Kevin Sharp
- Confederate Railroad
- Billy Dean • LeAnn Rimes
- Blackhawk • Tim McGraw

*Artists Subject to Change*

**KMLE presents COUNTRY THUNDER U S A**

**The deal of the summer is coming to you!**  
**Two for One Tickets**  
 One-Day 2/\$40 • Three-day 2/\$80  
 With student ID  
 Call: 602-966-9920 for tickets or free color brochure

# Gay, lesbian and bisexual activists unite for day of community pride

BY SARA BUSH  
STATE PRESS

Organizers of the first ASU Community Pride Day refused to take credit for the rainbow-colored cement 'A' that graced Tempe Butte on Friday.

But the lesbian, gay, bisexual and transgender student activists said it coincided nicely with their community-building event held Friday afternoon in the Memorial Union.

"This is the first pride event at ASU so far," said Tina Van Puymbroeck, a doctoral student in counseling psychology who helped organize the event. "We really wanted to mobilize the various groups of students on campus."

About 150 students and faculty members gathered in the MU Programming Lounge. Those in attendance participated in group dialogues about the experience of being gay, lesbian, bisexual or transgender at ASU.

Campus groups involved in the pride event included Progression, the Lambda League, Ubiquity, Coming Out discussion group, the Lesbian/Bisexual Women's

Discussion Group and the Graduate Lesbian/Bisexual Women's Group. The groups came up with the idea for Community Pride Day earlier this year, prompted by some anti-gay legislation being discussed in the Legislature.

"We asked all student leaders to come together to talk," said Kris Ewing, a program coordinator for Student Life who helped organize Friday's activities. "They started talking, and after a lot of input from all of them, they decided to have this event. Each student leader organized his or her own group."

Leslie Fischer, a research technician in the botany department, also helped organize the day's events. Fischer said that in the future, the Community Pride Festival will expand to include the whole campus, but this year they decided to focus on building pride in their own community.

"We wanted to get as many people as possible, including people who don't go to any of the organizations," Fischer said. "The idea is that people are out together and everyone can see that they're not alone."

# Questions probe inner psyche of potential bombing trial jurors

BY STEVEN K. PAULSON  
ASSOCIATED PRESS

DENVER — What kind of bumper stickers do you have on your car? Read any good books lately? Ever had a disagreement with police?

Depending on your answers, you might be a good candidate for the Oklahoma City bombing jury.

Nearly three dozen prospective jurors were asked those questions last week by U.S. District Judge Richard Matsch and lawyers trying to seat a panel to hear the case against Timothy McVeigh.

The prospects already have filled out two lengthy questionnaires, detailing their knowledge of the case, potential hardships and views on the death penalty.

The surveys pared the jury pool from nearly 1,000 to 350. From the remaining group, both sides hope to find 18 people who can set aside their biases, ignore peer pressure and vote their consciences after seeing the evidence against McVeigh, accused of the worst terrorist attack on American soil.

The judge has withheld the questionnaires to help guard the candidates' identities, but details emerged during jury questioning last week as the candidates read their answers in open court.

It's not a test, say Matsch, prosecutors and attorneys for McVeigh.

"There are no wrong answers," prosecutor Patrick Ryan told one prospective juror. "Actually, the only wrong answer is an answer that's untruthful."

"You can tell a lot what a person thinks by the bumper sticker on their car," said Denver lawyer Andrew Cohen, who is following the case. "It's a very quick way to find out about a person's political and social beliefs."

Cohen said one man, a researcher for the Environmental Protection Agency, disclosed a lot about himself when he reported that he had a bumper sticker reading "Mean people suck."

"It's a social statement, not a political statement. It's the same as bumper stickers that read 'Random acts of kindness,'" Cohen said.

But Cohen said some soul-bearing statements can be misinterpreted, which is why the judge and lawyers are quizzing the jurors about their answers.

Cohen said prosecutors might like the bumper sticker because it can be read as opposing criminals, while defense attorneys might interpret it as someone who favors the underdog.

McVeigh faces murder, conspiracy and weapons-related charges in the bombing of the Oklahoma City federal building on April 19, 1995. The explosion killed 168 and injured more than 500. No trial date has been set for co-defendant Terry Nichols.






OPEN  
11AM -  
2AM  
DAILY!

NOW SERVING WINGS!

FAST, FREE DELIVERY!  
**829-0064**

MONDAY MADNESS  
14" LARGE  
1-ITEM PIZZA \$5.50

TUESDAY SPECIAL  
16"  
2-ITEM PIZZA  
\$6.50

WILD WEDNESDAY  
16" COMBO \$9.99  
12" \$6.99

## CROSSWORD

by THOMAS JOSEPH

ACROSS 47 Bart's dad

1 Arrangement 48 Razor sharpener

6 Be of advantage DOWN

11 Without help 1 Beheld

12 Señor's squiggle 2 Inventor

13 Breezes 3 Cargo amount

14 Movie rentals 4 Polling answer

15 "—, Brute?" 5 Basil-based sauce

17 Used a stool 6 Makes harmonious

18 Store-employee's perk 7 By way of

22 Opposed to 8 Yodeling site

23 Brewing aid 9 Brainstorm

27 Frogs' kin 10 For fear that

29 Quarterback Young 16 Egypt's

30 Lansbury of "Murder, She Wrote"

32 "— bien"

33 Gymnast's concern

35 Balloon fill

38 Vincent Van Gogh's brother

39 Islamic God

41 More pleasant

45 Play place

46 Custom

Go ahead ...  
do it in ink.



boy-king a snake  
18 Factual info 31 Cigar waste  
19 Privy to date 34 Bills of fare  
20 Without a date 35 Deep cut  
21 Skin-art creator 36 Choir member  
24 Llama's land 37 Close loudly  
25 Kitchen fixture 40 Epoch  
26 Exam 42 Auto  
28 Move like 43 Conceit  
44 Agt.

1	2	3	4	5	6	7	8	9	10
11					12				
13					14				
		15			16		17		
18	19	20				21			
22				23			24	25	26
27				28		29			
30					31		32		
				33			34		
35	36	37		38					
39			40			41	42	43	44
45						46			
47						48			

DAILY CRYPTOQUOTES — Here's how to work it:

AXYDLBAAXR  
is LONGFELLOW

One letter stands for another. In this sample A is used for the three L's, X for the two O's, etc. Single letters, apostrophes, the length and formation of the words are all hints. Each day the code letters are different.

4-7 CRYPTOQUOTE

OPFND HC KCN FIPDI  
NC IUZDN BTDN  
AIFPTDI NYIM PQI  
ZEKCIQH.—PGHCTD YTUGIM

© 1997 by King Features Syndicate, Inc.


# NAILS

Yes NAIL

675-9978


Complete Nail Care Salon for Ladies and Gentleman  
Scottsdale & McKellips  
1442 N. Scottsdale Rd • Union Plaza

<p><b>FULLSET</b> Tip Overlay only \$19.99 and up With coupon. Valid with other offers. Exp. 5-30-97</p>	<p><b>FILLS</b> Only \$12.99 Includes Pre-Block With coupon. Valid with other offers. Exp. 5-30-97</p>	<p>MANICURE \$10 PEDICURE \$15 BOTH ONLY \$20 With coupon. Valid with other offers. Exp. 5-30-97</p>
--	--	--



A.C.S. KARATE

Southeast Corner of  
Broadway & McClintock




Learn practical, street-smart self defense.

KENPO KICK-BOXING TAI CHI

Mention this ad for 50% off the  
Introductory Training Package !!  
(2 private training sessions and 1 group class — \$35 Value)

968-2068



Present:  
Tuesday,  
APRIL 15

"The WEB Files..."  
Literature sightings  
on the Internet.  
A presentation by  
Julie Knapp, Associate  
Director of Student  
Publications

&  
Borders, Books  
& Music

Program is free to the public and held at:  
**Borders Books and Music**  
2402 E. Camelback Road, Phoenix  
(in the Biltmore Fashion Square)  
**7:30 pm**

TUESDAY NIGHT READING SERIES

# POLICE REPORT

ASU police reported the following incidents over the weekend:

- A male student reported that someone unlawfully entered his vehicle and removed a stereo while it was parked in Lot 59.
- A female employee reported that someone removed a vacuum cleaner from Sahuaro Hall.
- A female student was arrested, cited and released at 701 Alpha Drive on charges of public consumption of alcohol. Another female student was arrested on charges of underage consumption of alcohol and providing false information to a police officer at this location.
- A male not affiliated with the University was arrested, cited and released at University Drive and McAllister Avenue on charges of driving with a suspended license.

- A male student reported that someone criminally damaged a window at 717 Alpha Drive.
- A female employee was contacted at the Engineering Building G-wing, where she had become ill. She was transported to a local hospital.
- A female student reported that someone removed her wallet and its contents from the new Music Building.
- A male not affiliated with the University was arrested, cited and released on charges of shoplifting at Tower Records.
- A male student reported that someone removed a laser light box from 406 E. Adelphi Drive.

Tempe police reported the following incidents over the weekend:

- A 34-year-old female was arrested on charges of contributing to the delinquency of a minor and criminal trespassing after a police investigation revealed she brought her child to school to fight another student. Police said the woman failed to check in with the office when she entered campus. She was booked into Tempe City Jail.
- A 21-year-old male was arrested at Third Street and Ash Avenue on charges of criminal trespassing and theft. Police said the suspect entered a building under construction inside a fenced area, where he removed a hard hat. The suspect later admitted to the theft and was booked into Tempe City Jail.

Police reports compiled by State Press reporter Melody McDonald.

## Lost Cessna found off Grand Canyon's north rim, no survivors

GRAND CANYON NATION PARK (AP) — After more than three days of searching, the Park Service found the wreckage of a small plane Sunday off the north rim of the Grand Canyon.

After spotting the plane from the air, rescuers had to hike to the heavily forested site on snowshoes, and were only able to find one of the two bodies believed to be aboard the Cessna 210.

They tentatively identified James Eldredge, who officials believe was with his wife, Darla, in the plane when it radioed in a trouble call Wednesday night.

The couple are from Salt Lake City.

Poor weather had grounded the search on and off, including more than three feet of snow and heavy clouds. By Sunday, more than 100 people from state, federal and local agencies were involved in the search, which was centered about seven miles north of the canyon's north rim.

Park Service officials say extensive damage to the plane's fuselage may interfere with evidence critical to determining the cause of the accident. The National Transportation Safety Board was due to arrive Monday to investigate.

The plane, which was traveling from Wichita, Kan., to Las Vegas, Nev., had last made a stop in Las Vegas, N.M. on Wednesday night when it radioed to Los Angeles that there was trouble. The National Park Service was alerted that the plane had disappeared from the radar while above the Grand Canyon.

## Paradise Pizza

Your healthy alternative pizza!

- We make our ingredients fresh daily
- We use 1/3 less oil in our pizza dough

BUY ONE PIZZA AT REGULAR PRICE & RECEIVE A SECOND OF EQUAL OR LESSER VALUE AT HALF PRICE

**WE DELIVER TO YOU!**

33 E. Southern Ave. • Tempe  
S.E. Corner of Mill & Southern  
858-9445

DEFINITION • MASS • POWER • ENDURANCE • STRENGTH

## STEROIDS

HIGHER TESTOSTERONE MEANS FASTER • EASIER • MUSCLE GROWTH

**NOW — THERE IS A SAFE REPLACEMENT FOR STEROIDS — WITH NO HARMFUL SIDE EFFECTS.**

**BORON STERO COMPLEX** CAN INCREASE YOUR TESTOSTERONE LEVELS DRAMATICALLY. HIGHER TESTOSTERONE MEANS EASIER, FASTER MUSCLE GROWTH!

**BORON STERO COMPLEX** IS THE RESULT OF YEARS OF RESEARCH COMBINED WITH THE EXPERIENCE OF PROFESSIONAL ATHLETES.

**BORON STERO COMPLEX** OFFERS YOU THE OPPORTUNITY TO BUILD INCREDIBLE LEAN MUSCLE MASS IN JUST 8 WEEKS. EXCELLENT FOR ANYONE WHO WANTS TO INCREASE THEIR INTENSITY, GREATLY ENHANCING YOUR PHYSICAL APPEARANCE, SCULPTING YOUR BODY WITH HEALTHY HARD MUSCLE.

**NOW IN THE USA EXCLUSIVELY THRU P.H.D. PHARMACEUTICALS**  
5603-B W. Friendly Ave., #260, Greensboro, NC 27410

**1-910-378-0586**

<p>NAME _____</p> <p>ADDRESS _____</p> <p>CITY, STATE, ZIP _____</p> <p>PHONE (____) _____</p>	<p>ONE BOTTLE, (8 WEEK CYCLE) \$29.95 + \$4 S&amp;H</p> <p>TWO BOTTLES, (16 WEEK CYCLE) 2nd BOTTLE 1/2 off, \$44.95 + \$4 S&amp;H</p> <p>CHECK <input type="checkbox"/> MONEY ORDER <input type="checkbox"/></p>
--	--

DEFINITION • MASS • POWER • ENDURANCE • STRENGTH

**the alternative copy shop**  
915 South Mill Ave. • Tempe • 829-7992  
Southeast Corner of Mill & University

## Color Copies

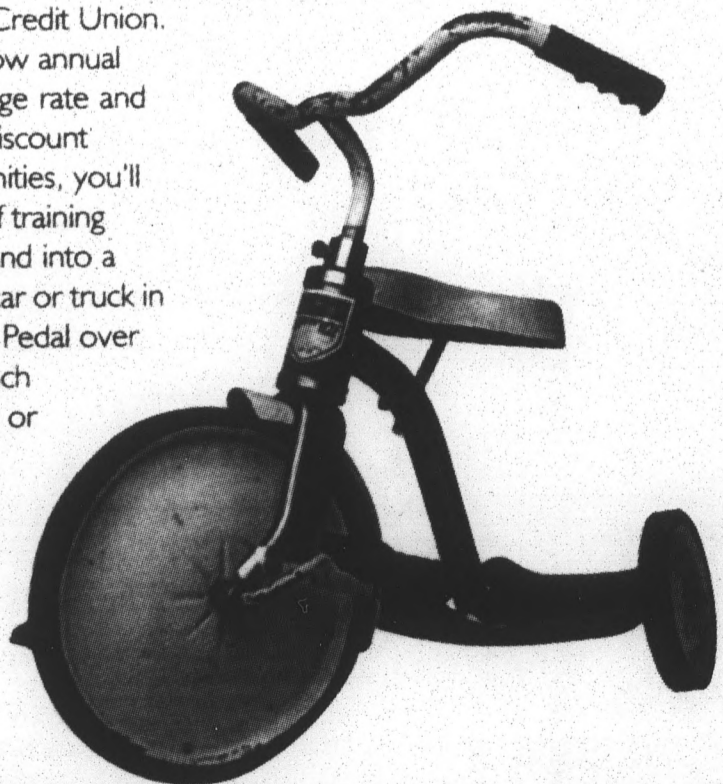
# 49¢

8.5" x 11" white paper printed on 1 side • no limit (enlargements/reductions & editing are extra) expires 4-6-97

copying • binding • laminating • computer rentals  
full color print & copy • scanning • typesetting

## Still riding your bike to school?

Maybe it's time you applied for an auto loan from Desert Schools Federal Credit Union. With a low annual percentage rate and special discount opportunities, you'll be out of training wheels and into a sportin' car or truck in no time. Pedal over to a branch near you or call us!



**DESERT SCHOOLS**  
FEDERAL CREDIT UNION

433-7000

All ASU students are eligible to join

\* Depending on income and credit history, a co-signer may be required for loan requests.

## CAN YOU AFFORD NOT TO ATTEND?

**"ACHIEVE GREATER RESULTS AT A YOUNGER AGE"**

**INSTRUCTORS**

**Brian Tracy**  
International Sales Guru

**Pat Croce**  
Owner, Philadelphia Phillies

**David Bach**  
Senior Vice President, Dean Witter

**Rick Neuheisel**  
Head Football Coach, Colorado University

VS.

**INSTRUCTORS**

**Rieva Lesonsky**  
Editor in Chief, Entrepreneur Magazine

**Mike Trope**  
NFL Sports Agent, Attorney at Law

**Phil Jones**  
Owner, L.A. Ski & Sun Tours

**Chris Howard**  
Director of Athletics, Club Med

TYPICAL COLLEGE GRADUATE VS. BUSINESS CAMP GRADUATE

**STARTING SALARY**  
HIGHLY TRAINED

- Taking Tests
- Studying
- WELL DEVELOPED
- Enthusiasm

**STARTING SALARY**  
HIGHLY TRAINED

- Negotiation
- Sales
- Organizing
- Letter Writing
- Proposal R&D
- Prospecting
- WELL DEVELOPED
- Goals
- Values
- Sense of Direction

Featuring the Next Generation of Business Professionals

**BUSINESS CAMP**

JUNE 1ST-8TH IN KEystone, COLORADO  
ENROLL NOW 1-888-312-CAMP

# Japanese author, Nobel Prize winner lectures at ASU

By SARA BUSH  
STATE PRESS

Japanese literature should become as important to world literature as western works have been to 20th century Japanese writers, Japanese Nobel laureate Kenzaburo Oe said at ASU Friday.

Oe, who won the 1994 Nobel Prize for literature, delivered his lecture to a crowd overflowing the aisles of Neeb Hall.

"Though blessed with lots of excellent translations, Japanese literature is peripheral," Oe said. "Because of this

marginal status, however, it definitely possesses critical potential and can add to the diversity of world literature.

"By critical potential, I mean the ability, while remaining an invisible person, to have the eyesight of one who observes very carefully," he said. "By diversity, I mean the character that comes out of re-evaluating oneself and the other party with these very eyes."

Oe read passages translated from his novel *An Echo of Heaven* to demonstrate the influence non-Japanese writers such as Flannery O'Connor have had on his writing.

"As the author, I am an average Japanese intellectual

who does not believe in any particular faith or creed, but Flannery O'Connor's life and literature have made a deep impression upon me," Oe said. "O'Connor conceives of a future humanity that has passed through and survived the profoundest knowledge of disease and death."

After the lecture, Oe answered audience questions regarding his relationship with his handicapped son and his year long position at Princeton University.

Oe was introduced by President Lattie Coor and James Foard, professor of religious studies, who helped host the famous author.

You'll never know unless you read your HOROSCOPE.  
In the CLASSIFIED section.

STATE  
PRESS

SPORTS

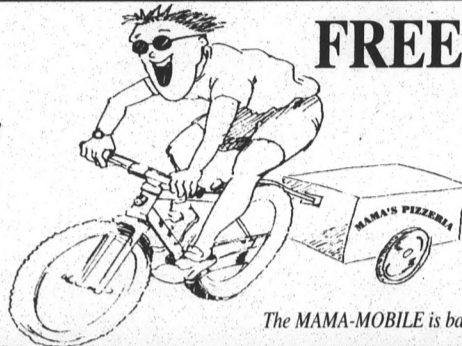
Share in the GLORY  
of victory and the  
AGONY of defeat.

MAMA'S PIZZERIA  
Home of the  
'Killer' Calzone

1 block East of Mill Ave. on University

894-MAMA

MAMA KNOWS BEST



The MAMA-MOBILE is back!

FREE CAMPUS DELIVERY!

Environmentally Friendly, Daytime Delivery

To Any Building On Campus - FAST!

\$10 Minimum Order

**\$3<sup>00</sup> OFF**  
ANY 16" PIZZA  
With coupon. Void with other offers. 1 coupon per pizza. Exp. 4/20/97  
MAMA'S PIZZERIA 894-MAMA

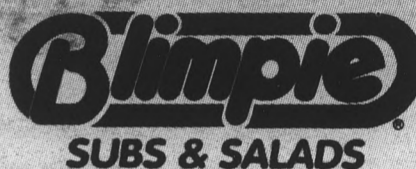
# FREE FOOT-LONG SUB

Buy any foot-long Regular Blimpie Sandwich and a Large Drink at menu price  
and get the 2nd foot-long sandwich of equal or lesser value FREE.

Expires 4/19/97. With coupon only. Please present coupon before ordering. Void with other offers. One coupon per customer. One order per customer per visit. Bigger Bite & Extras not included. Customer must pay any sales tax due. Cash value 1/100 of one cent.



WE SUPPORT THE  
ASU ICE DEVILS  
Offer good at Broadway &  
Rural store only.



S.E. corner Broadway & Rural  
Mon-Sat 8am-10pm  
Sunday 10am-8pm  
921-9222

# 1-800-COLLECT®

Proudly Sponsors Intramural Sports At  
**Arizona State University**

Intramural **1-800-COLLECT®** Champions



## Basketball

- Men's A - Beer Good
- Men's B - Sigma Phi Epsilon
- Men's C - Supreme Court
- 5' 10" - Cap Club USA
- Women's - 36 Minutes of Hell
- Co-Rec - NDN Outlaws

1-800-COLLECT® congratulates  
these Intramural Sports  
Champions

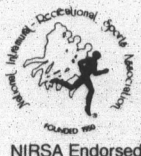
## Soccer

- Men's A - Jammers
- Men's B - Free Agents
- Women's - Sparkey's
- Co-Rec - B-Munchers

Coming Up: Track & Field  
Sun Angel Stadium - April 23 & 24

Entries due April 14

For further information, contact Intramural Sports at 965-5835 (9 am - 5 pm)



See Your  
Intramural  
Recreational  
Department

**1-800-COLLECT®**  
It's Fast. It's Easy. It Saves.

# Federal grant provides more cops for Tempe streets

By KEVIN CULWELL  
STATE PRESS

Thanks to a federal grant, 10 new police officers will hit the streets of Tempe in June. Five more are expected to be ready by September.

The Universal Cops grant, implemented by Congress last October, will provide 75 percent of salary costs for the 15 new Tempe police officers. The funds will be phased in over a three-year period.

After the initial three years, Tempe will take full responsibility for the payroll, using additional revenues and cost offsets to account for the salaries, Sgt. Mark Bach said.

The city will weigh which revenues and cost offsets to use in a couple of years, he said.

"I'm not sure about what funds we're going to use," said Jim McGeorge, City of Tempe spokesman.

Salaries for new recruits range from \$35,000 to \$40,000, while salaries for officers who have been on the force three to four years range from \$60,000 to \$65,000, he said.

To account for the other 25 percent of the new offi-

cers' salaries, the Tempe City Council in February approved use of the Local Law Enforcement Block Grant, worth more than \$203,000.

This grant, which also was allocated in October by Congress, was given to cities based on its population. Tempe has a population of more than 155,000. The City of Phoenix, with a population of more than 983,000, received just over \$1 million.

"The City of Tempe got a favorable amount of money for comparable cities," Bach said.

The block grant money will also be used to pay for equipment necessary to support the new officers.

The average cost of equipment per employee is more than \$18,000, Bah said. That equipment includes cars, radios, guns, laptop computers, bullet-resistant vests, office furniture, bikes and related equipment.

"There's a lot of extraneous equipment that is needed for newly-hired officers," he said. "The costs depend on each officers' duties. Bike patrolmen obviously need different equipment than regular patrol officers."

The 15 additional officers will include six downtown officers, four patrol officers, three adopt-a-school offi-

cers, one narcotics sergeant and an internal affairs sergeant, Bach said.

Police Chief Ron Burns said the department is currently in the process of hiring the five other officers, who should be ready by September.

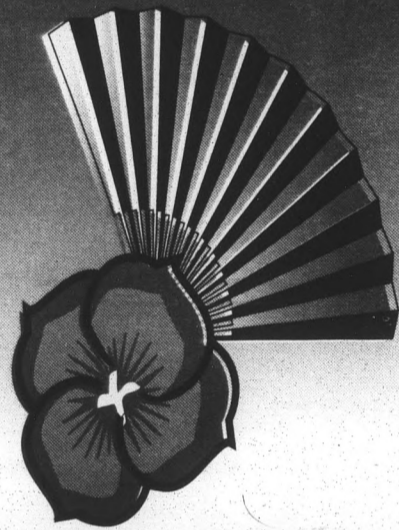
"This is a great opportunity for us to augment with the assistance of the Feds," he said. "It will allow us to put more officers in schools."

Bach said the six officers assigned to the downtown area will give the police department the opportunity to expand the bike squad and have more patrolmen available.

He said the four patrol officers will be assigned to the new shopping mall being constructed on Priest Drive and Baseline Road, which is set to open in November. The three adopt-a-school officers will be used for juvenile detention at local elementary schools, and the narcotics and internal affairs sergeants will provide additional help for the current sergeants.

"We're very pleased with the grant because it gives us a lot more flexibility," Burns said. "These extra officers are much needed."

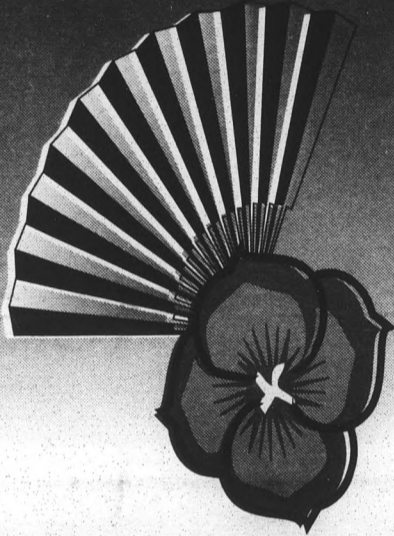
STATE PRESS SPORTS We're there when you can't be.



ASIAN  
CULTURE  
WEEK

April 7-12  
1997

Arizona State University



## Monday, April 7

10:00 am to 3:00 pm • Hayden Lawn

-Malaysian Expo

12:00 to 1:00 pm • Hayden Lawn

-Lion Dance

Kung Fu

## Tuesday, April 8

11:15pm to 12:00 • Hayden Lawn

-Indian Traditional Dance

12:00 to 1:00 pm • Memorial Union

Programming Lounge

-Art Exhibition by Haru Kawamitsu

2:30 to 4:30 pm • Ventana Room 226A

-Documentary: "Slaying the Dragon"

4:00 to 6:00 pm • Memorial Union Cinema

-Film: "Super Cop"

by Jackie Chan



## Wednesday, April 9

12:00 to 1:00 pm • Hayden Lawn

-Filipino Dance

1:00 to 2:00 pm • Hayden Lawn

-Tinikling Filipino Performers

6:30 to 8:30 pm • Memorial Union Cinema

-Film: "Super Cop"

by Jackie Chan

## Thursday, April 10

6:30 to 8:30 pm • Memorial Union Cinema

-Film: "Super Cop"

by Jackie Chan

## Friday, April 11

11:00 to 11:15 am • Hayden Lawn

-Indonesian Seudari Dance

11:30 am to 12:00 pm • Hayden Lawn

-Indonesian Fashion Show

12:00 to 12:30 pm • Hayden Lawn

-Chinese Musical Instrument

5:00 to 8:00 pm • Memorial Union

Programming Lounge

-Cultural Fashion Show & other special events.

by Haru Kawamitsu

10:00 am to 2:00 pm • Hayden Lawn

-Asian Awareness Booth

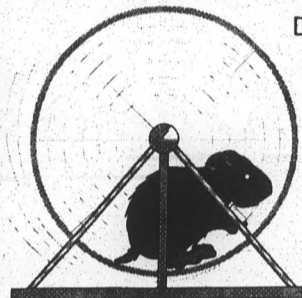
## Saturday, April 12

6:00 to 10:00 pm • Memorial Union Pima Room

- "Asian Talent Night"

## On Campus !

### Spinning Your Financial Wheels?



Discover the benefits available to all A.S.U. Students, Faculty, Staff and Alumni.

FREE lifetime membership, FREE checking, LOW cost student loans, FREE 24-hour

account access and a CONVENIENT auto buying program. Stop by and see us today!

Arizona  
State Savings  
& Credit Union

A.S.U. West  
Univ. Center  
543-5626

A.S.U. Main  
Memorial Union  
965-4426

A.S.U. East  
\* Opening \*  
Spring '97

Offices in Phoenix, Mesa, Scottsdale and Throughout Arizona

### Invitation to apply for

## STATE PRESS EDITORSHIP

The ASU Student Publications Advisory Board is now soliciting applications for the STATE PRESS editorship for the Fall Semester 1997.

Applicants for the position of editor:  
must be a full-time student at ASU in good standing (not on academic or disciplinary probation);  
must have a cumulative grade index of 2.50 or better;  
must have served two semesters on the staff of the STATE PRESS;  
must have completed a minimum of 15 hours of journalism courses including news writing, reporting, editing and journalism law;  
must not graduate prior to the completion of the term of appointment.

### Applicants must also:

submit at least two letters of recommendation from university faculty members and/or professional journalists;  
list on the application form the titles of all journalism courses completed and the grades earned in those courses;  
submit at least two examples of a news story, feature story, or editorial written for the STATE PRESS or another newspaper;  
and describe on the application form the functions and responsibilities of previous positions held on the staff of the STATE PRESS or other newspapers.

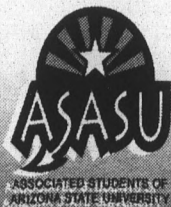
Applicants must pick up application forms at the STATE PRESS office, Matthews Center north basement. The completed forms must be typewritten.

The deadline for receipt of applications will be noon, Wednesday, April 9, 1997.

Director, Student Publications  
Matthews Center, Room 133



ASIAN  
SUNNEWS



• Office of the Vice President of Student Affairs •  
• Office of the Sr. Vice President and Provost Sr. Staff •  
• Associated Students of Arizona State University •

• Japanese American Citizens League •

• Asian SUNews • Asian American Faculty and Staff Association •

For more info: 948-8748

# COMICS

## TRIALS & TRIBULATIONS

BY JONATHAN INGE

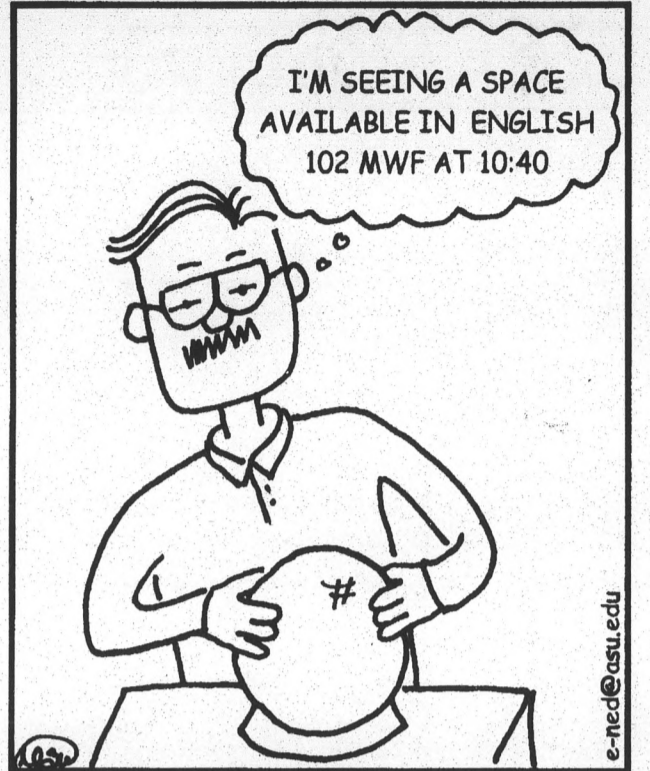
NED!

BY MIKE



## JOCULAR PARABLE

BY DAVID GOULD



PRE-REGISTRATION NED

## WORKING IT OUT

BY MAURICE MITCHELL



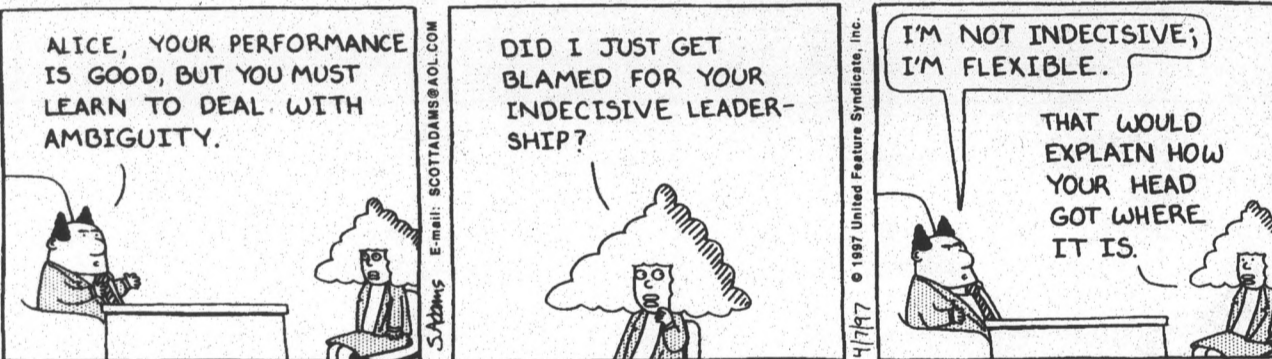
## OFF THE MARK

BY MARK PARISI



## DILBERT®

BY SCOTT ADAMS





## BLACKJACK PIZZA®

BETTER PIZZA BETTER PRICE™

**LARGE PIZZA**

**\$5.99**

order by item number GS1

**X-LARGE PIZZA**

**\$6.99**

order by item number GS2

NO COUPONS NECESSARY!  
FREE DELIVERY!

Side Items: Ben & Jerry's Ice Cream • Fresh Salads • Wings! Wings! Hot • Mild • BBQ

# 967-21 21

OPEN LATE  
SUN - THURS 11AM - 2AM  
FRI - SAT 11AM - 2:30AM  
818 W. BROADWAY RD.

## Trouble with Algebra?

Schaum's Guides can help. More than 50 subjects.

A lot more than just textbooks!

Forest College University

966-6226  
704 S. College

Student Book Center

**The BRAKE Pro™**

**FRONT OR REAR**

**\$69.95**

Many Vehicles

- Per Axle
- Semi Metallic Higher
- Premium Pads/Shoes
- Resurface Rotors/Drums

**The CLUTCH Pro®**

**CLUTCH REPLACEMENT**

**\$295.00**

Many RWD Vehicles & P.U.'s

- Pressure Plate
- Friction Disc
- Release Bearing
- Labor

Coupon Expires 5/31/97

FREE 8 POINT DIAGNOSTIC CHECK

## Mr. Clutch® & Brakes

EST. 1981

Phoenix

864-8338  
8820 N. BLACK CANYON HWY (DUNLAP & I-17)

955-1996  
3310 E. THOMAS RD. (32ND & THOMAS)

788-5443  
17209 N. CAVE CREEK RD.

Tempe

731-9490  
1395 E. APACHE BLVD. (WEST OF M. CLINTOCK)

WATCH FOR OTHER METRO AREA OPENINGS

ASK ABOUT OUR FREE LIFETIME WARRANTY ON COMPLETE CLUTCH & BRAKE REPAIRS.

# Women's golf team denied repeat of PING/ASU title

BY MATT PAULSON  
STATE PRESS

Despite shooting its lowest three-round total of the season, the No. 3-ranked ASU women's golf team finished second behind the UofA Wildcats at this weekend's PING/ASU Invitational held at the Karsten Golf Course in Tempe.

It was the first time in four years that ASU failed to take top honors at its annual tournament.

The Sun Devils completed rounds of 300, 299 and a team-tournament low 293 on Sunday, for a score of 892.

No. 1 UofA ended a blistering 12 strokes ahead of ASU, shooting a 16-over par 880.

The Wildcats were led by sophomore-sensation Marisa Baena, the current No. 1 collegiate player in the nation. Baena dominated the entire tournament and led from start to finish. She shot a tournament low round of 5-under 67 on Friday. Baena followed that performance with a 73 on Saturday and 71 on Sunday to end the weekend 5-under at 211.

Afterwards, ASU head coach Linda Vollstedt couldn't say enough about Baena, the only player to finish under par.

"Great player. She's got it all," Vollstedt said. "She's got the whole game. She's got the attitude, the game, the experience. She carries herself really well out there. She's wonderful for collegiate golf."

The Sun Devils were paced by junior

Kellee Booth (73-75-71) who was second behind Baena with a 3-over par 219. It was Booth's highest placing of the 1996-'97 campaign and her third top-five finish in seven tournaments this season.

Even with the excellent numbers put up by the Sun Devils, Booth was still a little frustrated with the results.

"There is little bit of disappointment," said Booth. "I think it's more disappointing because it is our home course and you almost feel like you should play better than everyone else because you do know it so well. But I still think we played well."

Vollstedt, however, didn't share the same outlook.

"(I'm)not really (disappointed)," she said. "We're still a young team. We don't have any seniors. We accomplished a lot of things we wanted to accomplish. I don't feel badly at all. Sure it's nice to continue the tradition, but we've still got a lot of golf left."

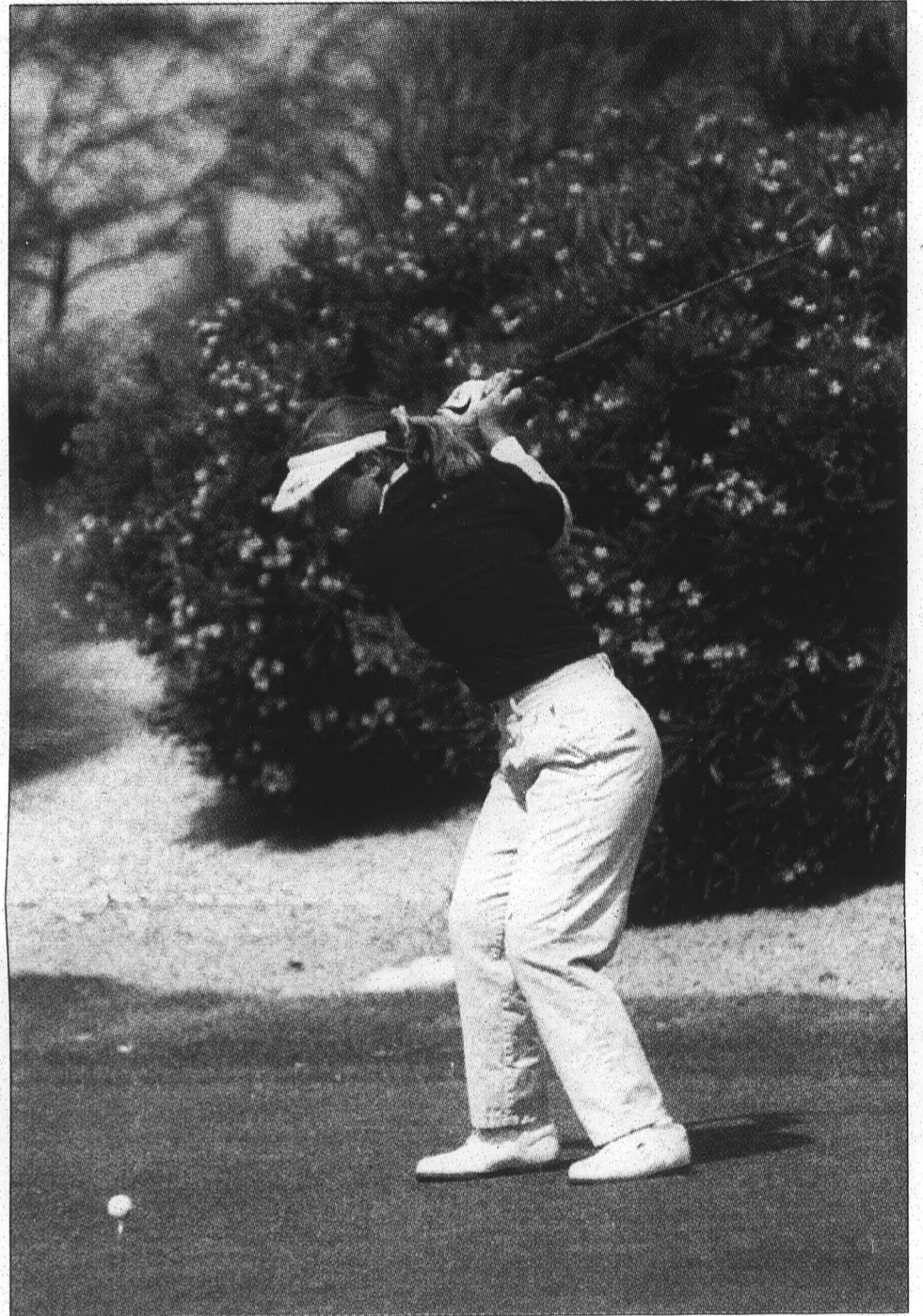
Junior Jeanne-Marie Busuttill recorded her second consecutive top-10 finish and tied for fifth with rounds of 78, 74 and 70 for 6-over par 222.

Sophomore Tui Selvaratnam, who played her best golf of the season, was another integral part of the Sun Devils performance. Selvaratnam, who highest previous finish this year was a tie for 23rd, shot rounds of 75, 74 and 77 to finish tied for

TURN TO PING, PAGE 14.



Junior Jeanne-Marie Busuttill digs herself out of the fourth-hole bunker Saturday during the ASU/Ping Invitational where she finished tied for fifth.



Sophomore Keri Cornelius tees off at the third hole during weekend action of the ASU/Ping Invitational at Karsten Golf Course. Cornelius, who finished tied for 27th, helped ASU capture second place.

## Men's golf heads to Southern Cal

BY JOHN SHEEHY  
STATE PRESS

The ASU men's golf team heads to Southern California today, to tee it up in the 20th annual USC Cleveland Southwestern Invitational. The tournament will be held at the North Ranch Country Club in Westlake Village, Calif.

USC is the host school of the event, while ASU is the defending team champion.

The Sun Devils will be led by Senior All-American Chris Hanell. He is currently the top-ranked college golfer in the country, according to the Rolex Rankings. He also

leads the nation in top-five finishes with four, and has yet to finish out of the top ten this year. In his most recent event, Hanell won the *Golf Digest* Invitational three weeks ago.

Darren Angel had to overcome a great deal of adversity to get to this point. The sophomore, who finished third at the NCAA Championships last year, has missed most of the season with an injury.

Angel rejoined the Sun Devils with a top-10 finish in Hawaii.

Joining Hanell and Angel on the Links for this event will be Brad Cannon, Scott Johnson, Tim Mickelson, and Greg Padilla.

# SUN DEVIL UPDATE

## BASEBALL

SUN DEVILS TAKE 2 OF 3 FROM UCLA.

PAGE 16



## TRACK

SUN ANGEL CLASSIC CONTIUES TRADITION.

PAGE 16



## INASTICS

VANCES TO NATIONALS.

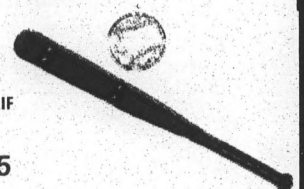
14



## SOFTBALL

SQUAD SPLITS PAIF

PAGE 15



# Gymnasts headed back to NCAAs

By RANDY JONES  
STATE PRESS

Gymnast Meagan Wright did the same thing after Saturday's Midwest Regional that she has done each of the past two seasons — she cried.

However, this year the junior all-arounder shed tears of joy — not pain — as the Sun Devils ended a two-year drought and qualified for the NCAA Championships.

"Oh my gosh, yeah. This was the biggest relief," Wright said, of the teams' second-place finish at Salt Lake City.

"Ever," she added after a brief pause.

Head coach John Spini agreed.

"We are all really excited (about qualifying)," he said. "The kids just stayed focused and worked really hard. (They) kept doing what they always do in workouts. We just wanted to be in one of the top-two positions leaving this meet."

ASU did just that, finishing .475 points behind the Utah Utes, who claimed their 10th straight Midwest Region crown. The Sun Devils' score of 195.225 gave them a ninth-place seeding for the championships which take place in Gainesville, Fla., on April 17-19.

The 12 teams in order of seeding for the championships are: Michigan, UCLA, Alabama, LSU, Florida, Georgia, Washington, Utah, ASU, Nebraska, Minnesota and Penn State.

ASU's second-place finish at regionals marks the highest the team has finished at the meet since taking second in 1988. The Sun Devils were the last team to defeat the Utes in the regional back in 1987. That meet took place in Tempe.

The championship is divided into two sections, each composed of six of the 12 teams which qualified. The Sun Devils will compete in the night session, which Spini said was an advantage.

"I think we are going to match up well at nationals," he said. "The second session, starting out in the evening. We've been real lucky. One-tenth too high, one too low and we could have been starting somewhere else. We are in the drivers seat."

ASU will start out on vault, an event which has been its most consistently high-scoring all season. The Sun Devils' vault squad ranks No. 3 in the country on the event.

"It (the session) is good for us because it is just like a home meet for us," Wright said.

After the first session, the top six teams advance to the "Super Six" and battle for the honor of being the No. 1 squad in the country.

"I think we have a real good chance to get to the Super Six," Spini said. "For some reason I think everything was meant to be this year."

Wright and junior Carie Courtney led the Sun Devils' regional showing with all-around scores of 39.175 (third place) and 38.675 (14th), respectively.

Courtney was in the running for the all-around title until two falls on vault caused her to fall out of the race.

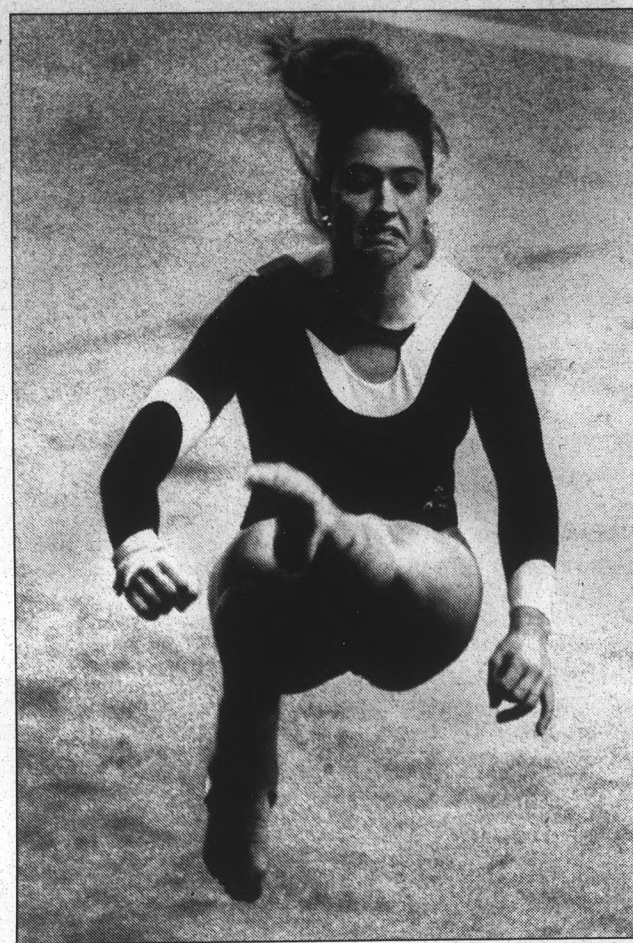
Wright praised the efforts of Courtney during the meet and for her leadership beforehand.

"Carie is an awesome all-arounder," she said. "A lot of people don't recognize how good of a gymnast she is. She carries the team. She is a great leader and a good motivator."

Three-event performer Elizabeth Reid had one of her best performances of the year. The freshman took home first place on the floor exercise (9.875) and balance beam (9.925). She also tied for ninth-place on the uneven bars with a 9.8.

"(She was) amazing," Spini said of Reid. "The kid was second after three events in the all-around. If we had her on in vault, she still was in the top four in the all-around. The freshman was fantastic. She is an Olympic-quality athlete."

Other ASU finishers in the top 10 included Wright (second) and sophomore Lisa Vincijanovic (ninth) on floor exercise, Courtney (third) on balance beam, Courtney, Reid and freshman Amy Shelton at ninth on bars and Wright (first), Shelton (seventh) and Vincijanovic and freshman Michelle Hess (ninth) on vault.



Erik Guzowski/State Press

Junior Carie Courtney and the rest of the ASU women's gymnastics team will be making a return to the NCAA Championships after a two-year hiatus as a result of their second-place finish at the Midwest Regionals in Salt Lake City over the weekend.

## PING

CONTINUED FROM PAGE 13.

13th at 40-over par 226.

Vollstedt said Selvaratnam's dedicated work effort finally paid off.

"Tui played great," Vollstedt said. "She's been practicing hard and just had a wonderful tournament. It's nice to see someone rewarded for their great play."

After jumping out to a 14-stroke lead after two days, UofA assistant coach Tom Brill started to get a little worried when the Wildcats lost some ground on the front nine Sunday.

"It's a tough place to play because they (the crowd) don't clap for the Wildcats,"

Brill said. "But they clap twice as loud for the Sun Devils. Once Booth got way under, and Jeanne got way under, I said 'Here we go. We're in for a real dog fight.'"

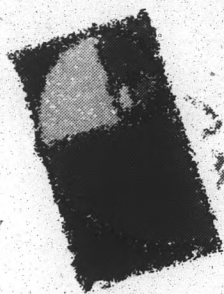
Last season, the Sun Devils were down 14 strokes to the Wildcats going into the final round of the Pac-10 championships but

came back and won. Booth said she thought her team could do the same on Sunday.

"I thought we could (win)," she said. "We tried to go out there and make it up shot by shot, but we ran into the back side and had some struggles. Arizona started playing really well. And that made the difference."

In just 12 years, Sybase has evolved into a major player in the software/services industry, and is now one of the largest independent software companies in the world.

Sybase, Inc. markets products and services under two brand names. Sybase products are focused on scalable database and middleware solutions. Powersoft products are focused on the development tools marketplace. These product lines, combined with our award-winning consulting services, provide the most comprehensive solutions to the IT requirements of industry leaders and small companies alike.



CS, Engineering and IS majors planning a future as ASSOCIATE CONSULTANTS should attend our:

■ INFORMATION SESSION ■  
(casual dress)

Monday, April 21, 6-8 p.m., Coconino Room 224  
Memorial Union Building

■ ON-CAMPUS INTERVIEWS ■

Tuesday, April 22  
Sign Up in Career Services

Forward your resume to:

■ E-mail: college@sybase.com

■ FAX: (800)700-0076

■ Mail:

University Relations

Sybase, Inc.

6425 Christie Ave., 5th Floor  
Emeryville, CA 94608

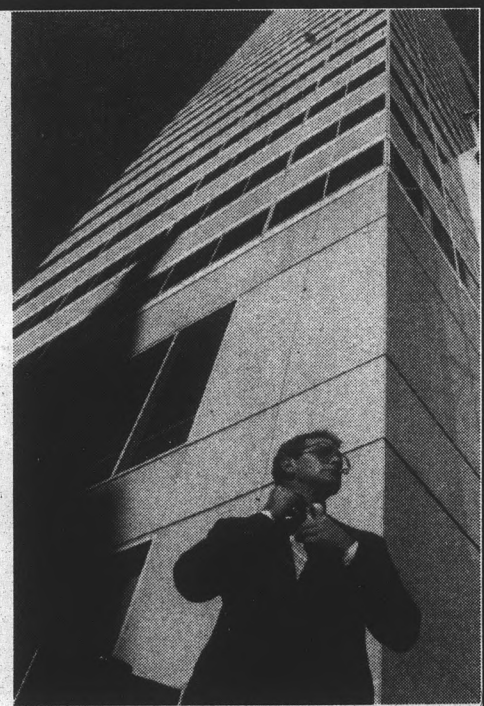
Sybase is an equal opportunity employer that values the strength diversity brings to the workplace.

**SYBASE**

<http://www.sybase.com/careers/college>

Corner  
the job  
market.

Choose  
ASU.



An ASU degree can give you a competitive edge. Now, take classes off-campus, evenings, weekends or through our virtual campus—TV, CD-ROM, Internet and correspondence study.

Take the first step!  
Call 965-3986 for a free catalog.

**ASU**

ARIZONA STATE UNIVERSITY

Extended Campus

<http://www.asu.edu/xed>

# Softball team hopes to rise after split with Huskies

By JOSH DEFAMIO  
STATE PRESS

The Arizona State softball team won one, lost one, and may have vaulted into the top 10 in the latest poll.

The rankings will not be released until later today, but the players and coaches feel the split against No. 5 Washington (25-7, 1-1 Pac-10) by No. 11 ASU (28-8, 6-4) will allow the Sun Devils to jump up a few notches in the rankings.

The Sun Devils wasted no time in breaking open the first game. After junior Roxanne Tsosie retired the side in top of the first, ASU loaded the bases on two walks and a hit batter with only one out. Washington starter Eve Gaw was able to strike out senior Stacey Slick, but sophomore Holly Smith whacked a shot down the third base line that brought in two runs.

Sophomore Carla Fortune then knocked in another run with a single to left that scored the Sun Devil's third run and knocked Gaw from the game.

ASU added another run in the second, ending the scoring

until the top of the seventh. Two nice defensive plays by outfielders brought Tsosie within one out of her seventh shutout. But after a shoe-string grab by Slick in center and a against-the-wall grab by senior Tina Ruff in left, Tsosie ran into trouble. She walked the next batter, then gave up a single to Washington's Shelly Brown. After another single loaded the bases, Sara Pickering brought home two runs with Washington's third consecutive single.

But the Sun Devils' defense killed the rally in dramatic fashion. With runners on the corners, cleanup hitter Becky Newbry blooped one that looked as if it would drop for another hit. But second bagger Raja Woods dropped back for it, got a glove on it, and held on even after the ball originally popped out.

"I saw the ball coming," Woods said. "I just kind of squeezed my glove down and the ball stayed in there."

Despite the rocky seventh, Wells stuck with Tsosie, who picked up her 13th win and ninth complete game of the season.

"Roxie really didn't pitch well all night," she said. "But she

was getting the people out, so I decided to stick with her."

Game two turned out to be a pitcher's duel. ASU's Carrie Breedlove and UW's Jennifer Spediacci battled for five innings, with a third-inning Husky run the only scoring in the game.

But Breedlove was chased from the game after giving up a run in the sixth, and Spediacci allowed no Sun Devils runners past first base in picking up the shutout.

"Certainly, for the evening, we have to credit our pitching," Wells said. "In the second game, we just didn't have the offense."

ASU was also victimized by two controversial calls. Senior Lisa Dacquisto and Tammy Lohmann were both called for leaving the base too early after each had singled to lead off the first and second innings, respectively.

"That was really ridiculous," Ruff said. "They took away our runners, two of our best runners, on those calls."

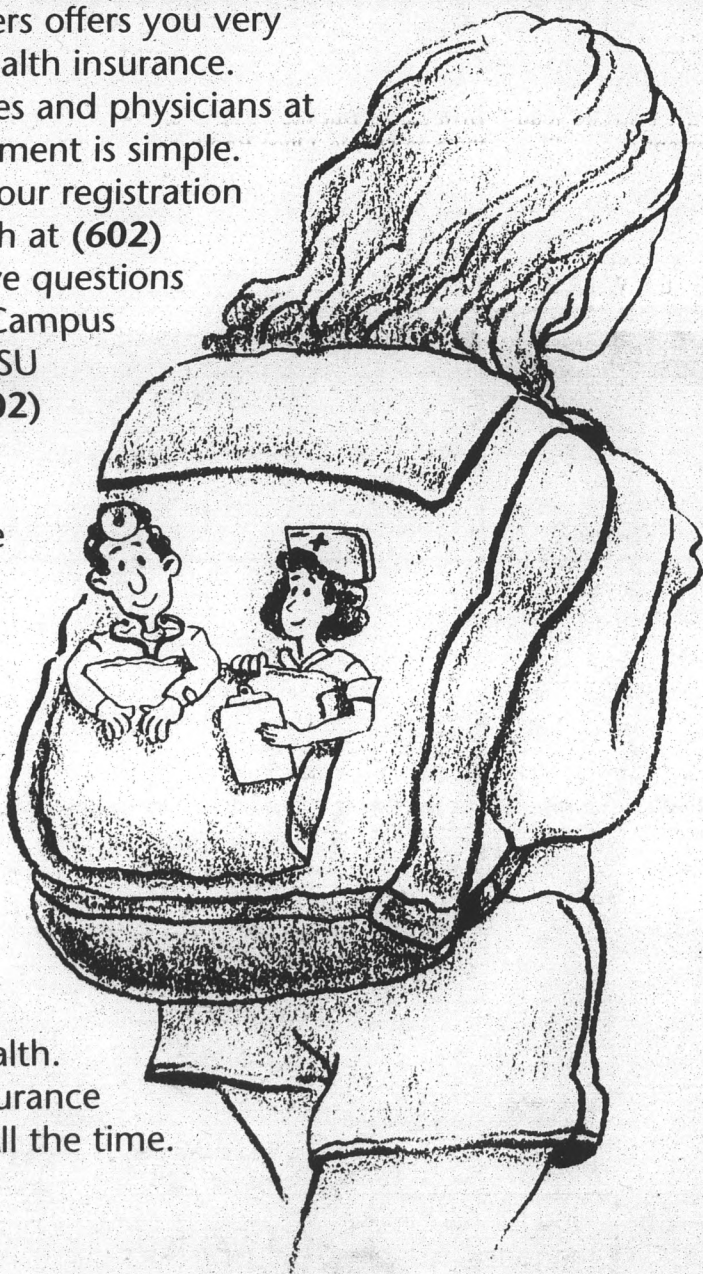
ASU's next challenge will be against No. 1 Arizona. The Sun Devils will host their rivals in a doubleheader Wednesday night at Sun Devil Club stadium.

## Health Care You Can Count On.

Campus HealthPartners offers you very affordable student health insurance. Great benefits, services and physicians at the right price. Enrollment is simple. Just check "yes" on your registration form. Or, call In Touch at (602) 350-1500. If you have questions about enrollment in Campus HealthPartners, call ASU Student Health at (602) 965-2411.

Be smart and prepare for the unexpected. Maintain your good health by signing up for Campus HealthPartners during Early Registration.

Campus HealthPartners Insurance Company and ASU Student Health. Affordable health insurance you can count on. All the time. Every time.



**HealthPartners**  
Insurance Company

FORMERLY  
SAMARITAN HEALTH INSURANCE COMPANY

HPIADV.03

### ATTENTION GRADUATES

Order your graduation announcements today.

Great Prices • Great Service

Class Rings From \$159

**ROTHER'S BOOKSTORE**

Rother's Pays the HIGHEST PRICES For Your Used Books  
625 E. Apache 967-5445 Open 7 days a week

**10% off**  
with any Student I.D.

You'll never guess how affordable Sterling Silver Can Be

The Cool Jewel  
414 S. Mill Ave. #121  
Tempe, AZ 85281  
(behind the Spaghetti Co.)  
602.829.1127  
Importers  
Designers  
Fine Sterling  
Silver

### GRE Computer Countdown



**Computer Test Phobic?**

**GRE**

Only a few more chances to take the GRE on Paper.

- ① April 13, 1996
- ② October 12, 1996
- ③ December 14, 1996
- ④ April 12, 1997
- ⑤ ????????????????

Hurry! Classes are filling fast!

Call today to enroll.

Take it now. Your scores are good for 5 years.

**KAPLAN**  
1-800-KAP-TEST  
www.kaplan.com

E-mail: GRE@kaplan.com America Online: keyword "kaplan"

\*GRE is the registered trademark of Educational Testing Service.  
Proud Sponsors of Golden Key National Honor Society

# Baseball team wins 'ugly' over No. 2 Bruins, 15-14

BY PERCY EDNALINO JR.  
STATE PRESS

You're guaranteed of two things during a Sunday game in the Six-Pac:

One, pitching won't be as stellar as it is during a Friday or Saturday matchup.

And two, nothing is ever guaranteed. Just ask anyone on the ASU baseball team.

The No. 23-ranked Sun Devils edged past No. 2 UCLA 15-14 on Sunday in front of an announced attendance of 3,165 at Packard Stadium. ASU won the three-game weekend series 2-1 with the Sun Devils losing 5-2 on Friday and winning 4-3 on Saturday.

The wins were a welcome change from the shutout ASU received from USC last weekend. And with a tough road trip against Stanford on deck for this weekend, the wins helped the Sun Devils build momentum.

ASU head coach Pat Murphy said the first two games of the series were well-played in comparison to Sunday's win.

"It was an ugly baseball game," Murphy said. "We didn't play great."

"That's all we can do is keep winning," reliever Ryan Bradley said. "We really don't care any more. Ugly or not, just get it done."

Yet Murphy said the Bruins should not have turned the game into the high-scoring affair it was.

"We had a chance to bury them early," Murphy said.

After four innings, ASU led 8-2. The fifth inning saw the Bruins score five runs on four

hits off ASU starter Jeff Cermak. ASU responded with a four-run seventh to take a 14-8 lead.

The Sun Devils allowed just two home runs during the series — both to UCLA shortstop Troy Glaus. Murphy said a big part of winning the weekend series was in preventing the Bruins from getting the big hits.

"That's one of the things our assistant coaches came up with," Murphy said. "In the scouting report, they said if you keep the ball in the park, you've got a chance. Except for Glaus, we kept the ball in the park pretty good."

Glaus stroked his 19th home run of the season on Sunday with a ninth-inning grand slam off Bradley, who came in for Ben Byrd in the ninth. That grand slam allowed the Bruins, who were trailing 15-10, to close ASU's lead to one.

With two outs in the ninth and ASU up 15-9, Byrd walked UCLA's Nick Theodorou and Chad Matoian, then loaded the bases when he hit leadoff hitter Jon Heinrichs with a pitch.

Theodorou then scored after Byrd hit Eric Bymes with a pitch. That prompted Murphy to pull Byrd off the mound and put Bradley in against Glaus, who responded with a home run to right center field.

Eric Valent then hit a long fly ball to center fielder Rudy Arguelles to end the game.

"He's a good hitter," Bradley said of Glaus. "It was a fastball and it was down, but he hit it out. At least I came back and got Eric (Valent) out."

Bradley, who picked up his sixth save of



Lori Cain/State Press

ASU's Andrew Beinbrink, left, congratulates teammate Richy Leon after scoring during the eighth inning of Sunday's win over No. 2 UCLA. Leon went 2-for-4 with three runs scored while Beinbrink ended going 2-for-5 with a double.

the season, spent most of series playing first base. Murphy said the junior right hander has struggled lately on the mound, but playing first base has helped Bradley find a way to settle into the game easier.

"He's a good first baseman, that's for

sure," Murphy said. "He played first base all summer and I toyed with the idea of just putting him in there and letting him go, but he's too valuable to us as a pitcher."

Bradley finished the game going 2-for-4 with one RBI and three runs scored.

## Texas torches tennis team

BY LORI HARO  
STATE PRESS

The ASU women's tennis team moved to 13-3 overall, 10-1 in non-conference play after it was unable to close its non-conference season with a perfect record, losing to No. 5 Texas 7-2 Sunday.

"We got beat by a better team today, Texas came on and played really well," head coach Sheila McInerney said. "We certainly didn't play as well as we could, but all credit to Texas, they came out today firing away."

The bright spot of the match was Stephanie Lansdorp and Katy Propstra's win against the No. 3 doubles team in the nation of Cristina Moros and Farley Taylor 8-4. The No. 3-seeded doubles team of Reka Cseresnyes and Kerry Giardino were able to hold off Anne Pastor and Michelle Faucher winning 8-6.

Texas swept all of the singles matches in straight sets. Moros, ranked No. 5, beat ASU's top-player Cseresnyes 6-3, 6-2. Lansdorp and Propstra were also unable to pull out wins. Lansdorp lost to Sureephong 7-5, 6-2, and Propstra lost to Berendt 7-6, 6-4. Nash and Giardino drove their second set to seven games, but also came up short. Nash lost to Faucher 6-3, 7-6, and Pastor beat Giardino 6-4, 7-5. At the fifth seed Moll fell to Taylor 6-3, 6-2.

## Sun Angel continues tradition

BY LORI HARO  
STATE PRESS

Featuring teams like USC, UofA, and Florida and elite athletes including an Olympic champion, the 18th annual Sun Angel Classic continued to be one of the most successful meets for the ASU track and field team.

"I thought it was a great event overall," head coach Greg Kraft said. "As an event it was one of the bright spots on the schedule."

Kraft said that the Sun Devils had a very good meet on the men's side.

Mika Laiho took second in the hammer throw with a toss of 225-feet, 9-inches. Ari Rodriguez reached his personal-best time in the 1500-meter run, taking third in 3:48.52. Vondre Armour, redshirting the season, ran unattached and placed third in the 800 in 1:49.78. Matt Repak took fourth in the 5000 with a time of 14:47.84.

"It was more competitive than I expected it to be," Armour said. "I had a few problems early in my race, but I think it went okay."

For the women's team, Charity Amana took second in the javelin with a toss of 154-03. Joronda White placed third in the 400 in 54.78. Fiona Daly took fourth in the high jump with a leap of 5-10. The women's 4x400 team also placed fourth with a time of 3:44.45. Karen Vigilant continued to be consistent in the 400 hurdles taking fourth in 59.90.

"I improved my time, but I thought I could do better," Vigilant said. "I was too worried about finishing strong."

The event also showcased elite athletes including former ASU assistant coach Lynda Tolbert-Goode, former NCAA Champions Anna Sorderberg and Nick Hysong, as well as Olympic gold medalist Inger Miller.

Goode was unable to defend her 100-meter hurdles title as she took second behind Miesha McKelvey of San Diego State with a time of 13.24. Sorderberg won the women's discus with a throw of 188-11, and Hysong won the pole vault with 17-06.5. Miller took first in the 100-meter dash in 11.21.

# CLASSIFIEDS

Notice to our readers: Before responding to any advertisement requesting money be sent or invested, you may wish to investigate the company and offer. The State Press cannot assume responsibility for the validity of the offers advertised in our classified section. For more information and assistance regarding the investigation of an advertisement, please contact the Better Business Bureau at 264-1721.

### ANNOUNCEMENTS

AVON - SUN care, sales, and free skincare evaluations! Call Jodi @ 964-2664 today!

NEEDED BADLY, transportation vehicle. Some work OK. Have cash. Please call 265-0551.

### APARTMENTS

1 & 2 bd avail, laundry, 2 bks from ASU, quiet small complex. 939 S. Farmer. 675-0928.

1214 E. ORANGE, Marianna Apts. 1bd & studios. \$50 off move-in w/ad. 966-8597.

ASU VILLAGE/ Cortez Ponds: Studio- \$395, 2bd- \$525, 3bd- \$625. ReMax 100, Rose 820-0500.

Classifieds WORK!

### APARTMENTS

STUDIO APT w/1 year lease. \$260/mo + util \$200 sec dep. 1 occupant, 117 S. Wilson, Apt 2. Evap. cool. Call 265-1413.

SUMMER SUBLET. 1 bd in the Enclave Apts; fully furn. 5 min from ASU. \$550/mo. 777-8158.

4BD/2 BA Dobson Ranch. Prvt. pool, tennis, park. Price/Baseline. \$950/mo. 897-7892

### APARTMENTS

2 Bedroom Apartments Immediate Move-In Apache Terrace Apartments 968-6383

### HOMES FOR RENT

WALK TO ASU 3bd 2ba \$875, 5bd 2ba \$1250, 4bd 2ba w/ pool \$1400. Call Tim 894-0288

WALK TO ASU. 1 bd/1ba \$450 mo. 3 bd/2ba \$925 mo., 4bd/2ba with pool. Tim 894-0288.

WALK TO ASU: 2, 3, & 4bd open for summer & fall. Tim 894-0288

Find it FAST in the Classifieds

### APARTMENTS

Attention Summer Students Short term rentals Available. Studio, 1 & 2 bedrooms Gorgeous community. Call now! Meridian Corners 966-5818

### TOWNHOMES/ CONDOS FOR RENT

2 BD Condo Papago Park \$800/mo. Bob Bullock Realty Executives 998-2992.

PAPAGO PARK- 2bd/ 2ba, w/d, 2 pools, 2 jacuzzis, 1 mi to ASU. \$795/mo. Harris Properties 829-0902

Classifieds 965-6735

HELP WANTED- GENERAL

### RESIDENTIAL COUNSELORS

Social Service Agency has FT/PT positions available working with adults who are developmentally and mentally challenged in group homes & apartment settings located in Phx., Mesa & Tempe. \$6.00-\$6.50/hr. DOE. Pd. training. Call 431-9511.

### TOWNHOMES/ CONDOS FOR RENT

QUESTA VIDA lux condo 3bd/3ba, 2 stry, vld ceilings, sky lights, w/d, dish, micro, 2 pools, spa, rqt ball. 1 mi. to ASU, \$1195/ mo. Harris Properties 829-0902.

HELP WANTED- GENERAL

### RENTAL SHARING

FEMALE STUDENT looking for responsible, laid back roommate to move into nice 2bd/2ba apt 2 mi. from ASU. Avail. end of April. Call Pam @ 844-2048

Classifieds 965-6735

HELP WANTED- GENERAL

More Trivia...  
Tony the Tiger turns 42 in 1997.

Devil DEALS  
ASU's Coupon Book  
Made for ASU students, by ASU students to save you money all over town!

Meridian Corners Apartments  
Beat the Rush! Make your reservation for FALL now  
• Spacious Studios  
• 1 & 2 bedrooms  
• Beautiful park-like setting  
• Close to campus  
• Limited availability  
Call us or stop by today.  
966-5819  
1440 E. Broadway

2 Bedroom Apartments Immediate Move-In Apache Terrace Apartments 968-6383

DO YOU HAVE A PASSION FOR SALES?  
Alamo Rent-A-Car, a leader in the car rental industry, has openings for full & part time RENTAL AGENTS  
• Hourly pay plus bonus  
• We'll work around your classes  
• Marketing students a plus!  
• Highest paid bonus in the business  
• Exciting airport location  
• Career options worldwide after graduation  
244-0897  
Call Scott at Ext. 109 Mon-Fri 10am-2pm to schedule interview  
Alamo Rent-A-Car

**AUTOMOBILES**

**CASH TODAY!!!**  
I BUY ALL Used  
Cars/Trucks/  
Jewelry/Misc. Items.  
874-3268

**TRAVEL**

**FLY CHEAP!!**  
★**Courier Air Fares**★  
London \$99, Mexico \$150, Rio \$250,  
Tokyo \$350, Sydney \$420 (all RT)  
**60-90% OFF ALL FARES**  
Air Courier International  
**800-298-1230 24 hr**

**RENTAL SHARING**

MALE/FEMALE STUDENT to share condo at the Lakes. Pool, gym, tennis, volleyball, sat. tv. Start August \$225/mo. 777-9019.

NEED RMTE for my Tempe tnm. Own bd/ba. \$250/mo + 1/2 util + 1/2 phone. Lse from 2-8 mo. n/s, fem only 820-3483

*This should be your ad - Call 965-6735*

**RENTAL SHARING**

NEEDED 2M rmtes to share apt w/ 2F at Apache Commons. 2/bd 2/ba fully furn. \$350/mo incl \$80 util. Call 784-0055

ROOM IN nice home; w/d, garage, sec. sys., sat. dish. 2 mi from ASU. \$450/mo includes everything. Laura 921-2640.

ROOMMATE WTD nice house w/ pool & spa. w/d 275 + 1/3 util close to campus 470-8467

ROOMS AVAIL. in home. Util., H2O, gas, sec. sys., w/d, garage, pool. 8 min. from ASU all for \$395/mo. 456-0717

**ROOMS FOR RENT**

ROOM FOR rent Chnd Glt area. Big house, no smk pets party. \$300 + 1/2 util. M/F ok. Leave msg. 963-4727

SCOTTSDALE \$350 + 1/3 util. 10 min from ASU. Must have ref. 949-2452.

**HOMES FOR SALE**

ASU INCOME property 4bd, 1 1/4 ba, fenced, irrigated + 1bd guest cottage. Maple/Ash area \$145,000. 968-5074

NO QUALIF. 1 1/2 mi. east of ASU. 3 bdr/2ba, fp, vault ceil, pool, jacuzzi + appli. Exclusive comm. \$76,900. Jim Wascalo pgr. 306-0922 office 996-4411.

**TOWNHOMES/ CONDOS FOR SALE**

PAPAGO PARK, Questa Vida, & others! 2 & 3 bdrms. Own for less than rent. Greg, Realty Executives. 966-0016.

**FURNITURE**

COUCHES 8 mo. old, excellent cond. Standard couch & love-seat. \$275 obo 938-3879

NEED MONEY for trip to Europe. For Sale: 65VW Bug \$300, MAC computer \$2000, and old English oak desk \$250. Call Patrick wk 965-1257 11am-11pm or hm 968-3776.

**AUTOMOBILES**

1986 300 ZX 2+2, blue, ac, automatic, ps, am/fm cass. 110k mi Nissan car in great shape \$3,500. Call 957-2662

1986 TOYOTA Camry \$500 runs. Needs some work. Call Lori 736-1946.

1991 CHEVY CAVALIER, auto, a/c, cruise, very sharp, many other clean cars in this price range. \$3995. 949-7600

**AUTOMOBILES**

1991 TOYOTA CAMRY 5sp., full power, tilt cruise, only 50,000 miles, beautiful Scottsdale trade \$7495. 949-7600

FOR SALE- Bronco 2 great in shape '85, 9200 orig miles, asking \$4500 call Mike or Summer 755-7575

GOOD DEPENDABLE used car, Chrysler Lebaron. Everything new \$4200 314-5728. Call after 6pm on wknds.

**MOTORCYCLES**

94 KAWAS. Ninj 250EX \$1950 Recently adjusted. New rear tire, leather bra. 966-8267

**BICYCLES**

BOB'S BICYCLE Barn 25% off tune up, repairs on all makes, bike rentals. Home of GT mtb bikes in Tempe. Cornerstone Mall. 894-6852.

MOUNTAIN BIKE Mechanic & tour leader for adventure company. Part-time/flexible. Call David at Venture Up, 955-9100

**TRAVEL**

ADC HAS free cars avail. for most areas. Gas allowance. Auto Driveway Co. 952-0339.

**HELP WANTED- GENERAL**

\$57 HOUR. Beat the heat. Great company, great hrs., no exp necess. to work in our a/c Tempe telephone renewal dept. If 3-8pm M-F works for you & if you have the determination to succeed then cal us at Orca Interntnl 438-8095.

**HELP WANTED- GENERAL**

**HELP WANTED- GENERAL**

**\*\*\*Science and PreMed Majors\*\*\***  
**CLINICAL CONDUCT ASSOCIATES**  
Harris Laboratories, a leader in the pharmaceutical testing industry, has opportunities available for persons to monitor activities of Study Participants and collect and document data. Great experience for science, nursing or premed majors. Ability to work a flexible schedule required. Apply at:  
**HARRIS**  
HUMAN RESOURCES, J-SPR  
4639 SOUTH 36TH STREET  
PHOENIX, AZ 85040  
AA/EOE

Your ad should be here!  
Call 965-6735

**HELP WANTED- GENERAL**

**PART TIME**  
Warehouse Operator for small fast-paced company. We need a conscientious individual with a professional work ethic and good communications skills. Responsibilities include: Pulling, boxing, packing, shipping and inventory management. Hourly rate \$6.50  
ATTN: Ron  
**940-9220**

**HELP WANTED- GENERAL**

**Instructors Needed**  
F/T, P/T, temp, substitute workers needed at agency for adults w/developmental disabilities. Call 994-5704 or apply 7507 E. Osborn Road, Scottsdale. EOE

**SPM**  
Every Thursday

**HELP WANTED- GENERAL**

Summer Swim Instructor ages 6 wks-adult. M-Th, 7:30am-12:30pm & 5pm-7:30pm. WSI & CPR/First Aid cert. nec. \$6.75-\$7.75/hr. DOE. Call 831-7464.

**HELP WANTED- GENERAL**

**SCOTTSDALE CAMELBACK Resort & Spa** has the following employment opportunities:  
**Front Desk Clerk**  
2nd Shift  
3pm - 11:30pm  
Please apply in person.  
Interviewing and application hours are from 10-4, M-F  
Scottsdale Camelback Resort & Spa is an equal opportunity employer.

**Icon Office Solutions,**

a Digital Litigation Support Company, seeks to hire

**DOCUMENT CODERS**

Must type 45 WPM. Relaxed work environment. Flexible hours \$8-\$12+ per hour average.

Scottsdale Airport location Call Viki @ 922-9442 ext. 26 or Fax resume to 922-4669

**THE SPOTLIGHT IS ON YOU**  
**TAKE CENTER STAGE EARN \$16.00/HOUR OR MORE**  
MCI's average telemarketers earn \$9/hour - \$13/hour. Join MCI at \$7.50/hour plus great incentives.  
Stop by any time Monday through Saturday between 8:00 am and 5:00 pm. Meet our managers and employees to learn about our great benefits:  
• Tuition Reimbursement  
• 401(k) and stock purchase plan  
• Medical, Dental, Vision, Life  
• Free long distance credit  
• Average earnings are **\$9-\$13/hour**  
**OUTBOUND SALES REPRESENTATIVE**  
• Various full-time and part-time positions now available  
• We have 2 new shifts:  
• 6:00 am - 12 noon Monday-Friday  
• 7:00 am - 5:45 pm Friday & Saturday  
• **\$7.50/HOUR PLUS CONTESTS AND LUCRATIVE INCENTIVES**  
Take your place with MCI. Come to 1801 E. Camelback Road, Suite 201, Colonnade Mall, Phoenix, AZ or call our Job Hotline at: (602) 248-6812. MCI is proud to be an equal opportunity employer, M/F/D/V.

**DONOR EGGS NEEDED**  
Healthy women (ages 21-32, all ethnic groups) needed to donate eggs anonymously to help infertile couples achieve pregnancy. Must have health insurance, 7-10 clinic visits and injections involved.  
**Accepted donors compensated \$2000.**  
For more information call **602-860-4792**

*Grand Opening*  
**Be One of America's Favorite Neighbors!**  
If you are interested in a fun, exciting, lively environment, then Applebee's is the place for you!  
Applebee's needs energetic, fun-loving individuals who want to have a good time, and earn BIG BUCKS in the process.  
We offer both part-time and full-time positions, & an excellent benefit package!  
Accepting applications for the following:  
★ Cooks ★ Server Assistants  
★ Host/Hostesses ★ Bartenders  
★ Server ★ Dishwashers  
Apply in person  
Mon - Sat from 8am - 7pm  
909 East Broadway Road  
Tempe, AZ  
For management opportunities fax a resume to:  
Norma Cardwell  
(606) 254-4558  
**Applebee's**  
Neighborhood Grill & Bar

**Telefund Now Hiring**  
10-30 hrs/week  
Flexible  
**\$5.50 - \$7.45/hr**  
Open for Summer  
Please call for interview  
**965-6754**

**Get some coins in your pocket!**  
**3 Locations**  
**Casual work place**  
**NO SELLING!**  
**Call Excell 808-0008**

**WANTED**  
**Valet Parking for the Valley's hottest nightclubs, hotels & restaurants. Manager positions available.**  
**1-800-701-3763**



**As We Grow, So Do You!**  
Interested in getting in on a fast-track for promotion, advancement and success? Stuck in a dead-end job that's taking you nowhere fast? Then FACS, the Phoenix area's hottest new employer, wants to talk to you! The FACS Group, Inc. provides financial, credit and administrative services for Federated Department Stores, Inc. including Macy's, as well as other companies. Business is excellent so we're looking for dependable, motivated, service-oriented people to join our dynamic team. In our fast-paced environment, advancement opportunities abound - in as little as 120 days, you can move up to a position of greater responsibility and reward.  
**CUSTOMER SERVICE • COLLECTIONS • AUTHORIZATIONS**  
**CENTRAL STORE OPERATORS • EXPRESS CREDIT**  
Join the dynamic team at our offices in Tempe and enjoy:  
• **\$7.50/hour to start for most positions**  
• Complete benefits for full-time  
• Generous discounts on most Macy's purchases  
• Service & performance awards  
• Variety of full-time and part-time shifts  
• Fully paid training on phone and CRT online applications  
• Recreation and social activities  
All of this plus with our casual dress code you can even wear shorts to work!  
A typing test is required for all positions. Mon.-Fri. 8 a.m. - 5 p.m. at 1345 S. 52nd Street (northeast corner of 52nd Street and West 14th Street between Broadway Road and University Drive).  
For more information call: **1-888-284-3227** (toll free, 24 hours)  
**FACS**  
FINANCIAL and CREDIT SERVICES  
Equal opportunity for all

**A HOST of Job Opportunities!**  
Host Marriott Services, Corp. is the nation's leading operator of Food, Beverage and Retail concessions servicing the traveling public at over 170 airports, travel plazas and tourist attractions worldwide.  
Currently at Phoenix Sky Harbor Airport we have positions for:  
• Food & Beverage Assistant Manager  
• Food & Beverage Store Manager  
• Food Servers/Cashier  
• Sales Associate  
• Maintenance Technicians  
• Utility  
Host offers excellent benefits including:  
• Medical/dental/life • 401(k)  
• Tuition reimbursement • Free meals  
• Paid parking or partial bus pass reimbursement  
Apply in person at: Host Marriott, Sky Harbor Airport, Terminal 3, west end level 3, Monday - Friday, 8am - 4pm.  
Apply by phone at 1-800-555-5718 ext. 4003.  
**Host MARRIOTT SERVICES**  
Drug-Free Workplace M/F/D  
An Equal Opportunity Employer.

**HELP WANTED-GENERAL**

**ARIZONA STYLISTS.** We offer the best pay & benefits in the business. Stay busy, make money! No Appointment Family Haircutters. Cornerstone. Call Pila 968-8008

**ASU STUDENTS** wanted now. \$7-\$11/hr. If you can say "free," call me. Also have clerical position. Start now. 784-2270. Ask for Bill.

**BOYS GROUP** home staff needed @ Tempe loc. Eve & wknd. Clean MVR & fingerprinting req. Training prov for upward mobility. Call 864-1159.

**CNA NEEDED** for 10-bed adult care home in Ahwatukee - all shifts avail. 893-1370.

**COUNSELOR POSITIONS:** position-openings in all team & individual sports + waterfront + art + drama + RN's + coaching. Competitive salary. Located Berkshire Mts of Massachusetts - 2 1/2 hrs from NYC/Boston. Call Greylock 1-800-842-5214. Camp Romaca for girls 1-888-2-ROMACA.

**GYMNASTICS COACH** wanted. Must enjoy working w/kids. M-F, after 3:15 pm, & wknds. Great pay, flex. hrs, immed. & summer positions req'd. 941-3496.

**PHONE SALESPERSON NEEDED!!!**  
Telemarketers needed for large banking center in Tempe. Will be making outbound calls to existing customer base. Previous exp. is helpful but not required. Pay is \$7.31+DOE, plus incentives. ASK ABOUT OUR REFERRAL BONUSES!!  
**VOLT SERVICES GROUP**  
Tempe  
730-1808

**ACCOUNTING CLERK**  
Part-time  
(24 hrs./wk)  
U-Haul International, located in central Phoenix, has a part-time opening for a person with general clerical skills to assist our Tax department. You will answer department phones, file, work on a PC using Windows applications, and process tax returns. You must have good communication skills and work well under pressure. Flexible hours available. Drug testing may be required. Fax resumes to 351-9899 or apply to:  
**U-Haul International**  
2727 N. Central Ave.  
Phoenix, AZ 85004  
EOE  
**A DRUG-FREE ENVIRONMENT!**

**Marriott**  
HOTELS • RESORTS • SUITES  
has openings for:  
• Front Desk Clerks  
• AM Host/Hostess  
• AM Server  
• Housekeeping  
Apply in person  
Scottsdale  
Marriott Suites  
7325 E. Third Ave.  
Scottsdale  
874-6042  
Equal Opportunity Employer

**HELP WANTED-GENERAL**

**GYMNASTICS TEACHER** enthusiastic, fun coach for 5-12 yr olds. Exp. pref. \$7.50-\$9.00/per hr. 955-7805.

**HAVE FUN** this summer & get paid for it! The Ahwatukee Foothills YMCA is looking for energetic, self-motivating people to be Summer Camp Leaders, Teen camp leaders, & swim lesson instructors. Starting pay is \$5.25-\$6.69 for 15-35 hrs./wk. The YMCA is also looking for soccer referees for April & May. Apply now at the Ahwatukee Foothills YMCA. 3233 E. Chandler Blvd., Ste. 6B, Phx, AZ 85044

**LOOKING FOR** personable, professional stud. w/ prof in MS Office & Win 95 interested in real estate & finance industry. Must have filing & phone exp. P/t & F/t up to \$8/hr. REFCO 614-2996 ask for Vincent.

**MODELS/ACTORS.** Int'l scouts want you for music videos and local print work. 941-6922.

*This should be your ad - Call 965-6735*

**CAMP COUNSELOR WANTED**  
Trinidad Fitness, camp located in the Catskill Mountains of NY. All Sports: Water-skiing, Canoeing, Rafting, Lifeguards, Crafts, Dance, Aerobics, Nutrition, Kitchen, Office, 120 positions. Call Camp Shane (800) 292-3333

**HELP WANTED-GENERAL**

**MORTGAGE BNKR.** Learn the mortgage business. Earn \$ now and prepare for a six figure income upon grad. Call Matt 990-1010 ext. 235.

**OFFICE/DRIVER POSITION:** clean MVR, pt, good hrs. 1pm-7pm, no wknds, computer work. 24th St./Univ. mature, responsible 244-1114

**OUTSIDE JOBS - Now hiring!** National Parks, Beach Resorts, Rafting Co.'s. Nationwide openings. Benefits! Bonuses! Call (919) 918-7767, ext R105

**P/T OPERATOR** for Tempe based answering service. 7am-2pm or 2-9pm, some wkend work. \$6/hr. to start 303-2222

**PART-TIME FILE** clerk - small company 6 miles from ASU is seeking help, heavy filing and other admin. tasks. Flex. hours, great working atmos. \$7.50/hr. Call Sandi 276-1733.

**SHORT ON CASH?**  
Plasma Makes a Lot of Cents!  
New Donors Earn \$80 For Your First Three Donations  
• Free Supervised Child Care  
• Generous Bonuses  
• \$650 Cash Drawing in April  
1334 E. Broadway, Suite 102  
Tempe  
894-2250  
**CENTEON**

**HELP WANTED-GENERAL**

**SCOTTS. VINE**  
Ld cooks & line sups needed. Apply within. 946-0696. Scottsdale Rd. & Oak.

**SMALL NON-PROFIT** company seeks Macintosh network administrator for part-time retainer work \$15-20/hr. DOE For more info: 655-1948

**OUTDOOR ADVENTURE** company now hiring: Mac fluent office assistant, adventure sales staff, mechanic & bookkeeper. \$5.50-8+/hr to start. Flex hrs Must have own transportation. Gilbert & McKellips location. Fax resume to 962-0597 or call Ed 962-6620.

**SPORTS MINDED**  
Now hiring 6-8 individuals for immediate emp. \$8 guar. to start at 15:30 flex. hrs/wk. Call Jon for intv. between 3-5, 921-8282

Find it **FAST** in the Classifieds

**HELP WANTED-GENERAL**

**SWIM INSTRUCTORS** at client homes valley-wide. WSI + strong exp. \$12-14/hr + bonuses, flex sched. Christi 569-5504

**THE PICNIC** Company Gourmet Cafe is now hiring delivery drivers & counter help. Ft/pt. 1415 E. University, 2 blks E. of Rural 968-7740

**TRADER JOE'S**  
p/t clerks & stockpeople wanted. Flex hrs. & good pay. Must be enthusiastic & energetic. Scottsdale 948-9886

**Classifieds 965-6735**

**Head Coach Mesa Swim team, ages 5-17. Lifeguard/WSI & coaching exp. nec. \$2300/June 1 - July 31. Call 831-7464**

**HELP WANTED-GENERAL**

**PART-TIME SERVICE** Reps. United Blood Services, a non-profit organization, is hiring for morning, evening & wkend shifts. \$6.87/hr plus shift differential for evening hours. Good customer service skills and pleasant phone voice preferred. Call 431-9500. Tempe location. Employee drug testing required. EOE/M/F/D/V.

**VALET PARKING** attendants, must be clean cut, good attitude, \$7-\$12/hr. 548-0599.

**JOB OPPORTUNITIES**

**ALASKA EMPLOYMENT**  
Earn to \$3,000-\$6,000+/mo. in fisheries, parks, resorts. Airfare! Food/Lodging! Call (800) 968-5197, ext. A105

**Cruise Lines Hiring**  
Earn to \$2,000/mo. plus free world travel (Europe, Caribbean, etc.) Get the #1 source. Ring (800) 968-5197, ext. C105 (Member Better Business Bureau - CAFE Program)

**National Parks Hiring**  
Also Beach Resorts, Ranches, Rafting Companies. Up to \$12/hour. Nationwide openings. Call (919) 918-7707, ext. 8115

**BECOME A BARTENDER**  
EARN \$15 TO \$30 PER HOUR (YOU CAN START BARTENDING AT AGE 19)  
**Bartending Academy**  
1250 E. Apache Blvd.  
#108 • TEMPE  
921-9925  
TEMPE'S ONLY BARTENDING SCHOOL!

**HELP WANTED-GENERAL**

**PART TIME**  
Data Entry/Customer Service for small fast-paced company. We need a conscientious individual with a professional work ethic and good communications skills to assist in providing quality service to our customers. Responsibilities include: sales order data entry, answering phones and responding to customer requests for information. Hourly rate \$6.50  
ATTN: Ron  
940-9220

**HELP WANTED-GENERAL**

**VINEONCAMPUS**  
Doorperson, barback needed. Apply within Vine on campus 894-2662.

**WE WANT YOU**  
Don't call another ad until you hear what we have to offer! Resort Reservations Dept. has 20 pos. avail. 9am-1pm or 5pm-9pm. \$9-\$12/hr avg, no selling!! Start immed. Call Beth 491-4921.

**RESTAURANTS/BARS**

**At The Dash**  
**Happy Hour**  
1/2 Price Appetizers  
50¢ Drafts  
\$1 Margaritas  
4-7pm  
7 Days a Week  
**MONDAY**  
10¢ Wings  
BBQ or Hot  
4-7pm  
731 E. Apache • 894-6445

**C. LUIGI'S PIZZA**  
BRINGING NEW YORK TO TEMPE  
FAST, FREE DELIVERY!  
**894-8424**  
MED. 12" 2-ITEM PIZZA & 12 HOT WINGS  
ONLY \$8.99  
PICK UP OR DELIVERY  
EXPIRES 4-16-97  
405W. UNIVERSITY #101  
WEST OF MILL AVE.  
NEXT TO TOPS LIQUOR

**SUPPORT LOCAL MUSIC**  
**Balboa Cafe**  
Call for Info  
**REVERSE HAPPY HOUR**  
Balboa Cafe  
404 S. Mill Ave.  
966-1300

**BUSINESS OPPORTUNITIES**

**\$819,000!**  
If you have the courage to call it can make you rich!!  
(602) 351-3971  
(24 hr. message)

**30 DATA ENTRY CLERKS!!!!**  
Needed for large bankcard center in Tempe beginning in early April!! Long term positions with great opportunities!!! Must have 10,000KSH. Day shifts and possibly 2nd and 3rd shifts avail.  
Pay is \$7.50-\$8.00, DOE.  
**VOLT**  
ASK ABOUT OUR REFERRAL BONUSES!!!  
PLEASE CALL MONDAY!!!!  
**Volt Services Group**  
730-1808 Tempe

*When school's out, will you need a job? Don't sell yourself short with fast food, check out TERMINIX for rewarding*  
**SPRING & SUMMER JOBS**  
We're one of the country's fastest growing Fortune 500 Service companies. We're looking for enthusiastic individuals with intelligence and dependable work habits.  
*For this and other opportunities call Gregg Brown @ 443-0541.*  
EOE M/F  
**TERMINIX**  
Success Breeds Success

**Gain Valuable Experience**  
DBC needs people to work with children, adolescents, and young adults who are Developmentally, Emotionally, and Behaviorally challenged.  
Earn \$6.50 - \$8.00 per Hour Working With Adolescents  
Incentives:  
Tuition Reimbursement, Paid Time Off, Advancement Potential, 6 Month Raises, Paid Training, Full Benefits Package  
**Submit Applications To:**  
DBC Residential Services  
2405 E. Southern Ave. #9  
Tempe, AZ 85282  
756-1223

**Tired of working weekends? Do you enjoy working with Children? Looking for a job to fit with your school schedule?**  
**Work at a place where we focus on fun!**  
Openings available in:  
NE Scottsdale 391-2728  
NE Phoenix 493-1167  
42nd/Chandler Blvd 759-4063  
Arrowhead Lakes 561-7757  
Chandler 460-2040  
**KinderCare**  
EOE  
Prior experience working with children preferred. Students majoring in education, psych, PE & child development encouraged to apply. For more information, call one of the above centers, or check the white pages for a center near you!

• Employment Opportunities • Benefits • Medical • 401K • Credit Union • Tuition Reimbursement • Stock Purchase Plans • Merchandise Discounts • Golf Discounts  
**MARRIOTT'S**  
**Camelback Inn**  
RESORT, GOLF CLUB & SPA  
and  
**MARRIOTT'S**  
**Mountain Shadows**  
RESORT AND GOLF CLUB  
Look for these and many other positions to be available now and in the near future:  
★ Food & Beverage ★ Golf  
★ Rooms & Related ★ Spa  
★ Plus Other Opportunities  
Excellent Benefits Package Available  
Marriott proudly supports a Drug Free Work Environment.  
EOE/Minority/F/V/D  
Call our job hotline for current positions • 596-7034  
• Room Discounts • Food/Beverage Discounts •

**Customer Service Reps**  
Over 100 Positions Available  
Valley - Wide Locations  
Minimum Experience Required  
1st and 2nd Shifts Available  
Full or Part Time  
\$6.50 - \$8.75 DOE  
Call Today - Work Tomorrow!  
**Remedy**  
INTELLIGENT STAFFING  
go places with REMEDY  
Call today on UNITED AIRLINES



HIRING NOW

**The State Press is now hiring a qualified student to work days in the State Press production department. QuarkXpress experience is required and must be familiar with Macintosh software.**

**Stop by the State Press offices in the basement of Matthews Center to pick up an application today or call the production department at 965-2097 for more information.**

ARIZONA STATE UNIVERSITY  
**STATE PRESS**

**GOING EXTREME IS AS EASY AS 1-2-3-4**

AT BOSTON MARKET™

**NEW! EXTREME CARVER SANDWICHES**

- 1** Turkey BLT Melt
- 2** Chicken Cheesesteak™
- 3** Bacon Ham 'n Cheese Melt
- 4** Meat Loaf Monster™

(careful... they're loaded!)

Extreme Carver™ Combo  
**ONLY \$3.99**

Includes your choice of one Extreme Carver™ Sandwich, an individual side item and a regular drink.

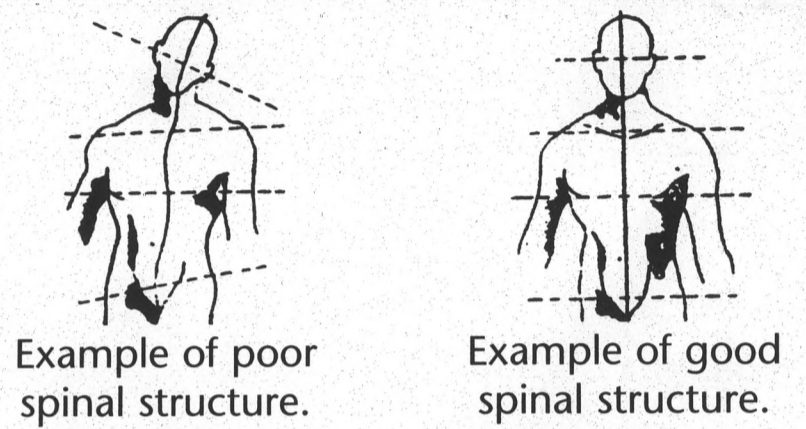
Good at all participating Boston Market locations. Present coupon when ordering. Only one coupon per visit per customer. Coupon is not redeemable for cash, for gift certificates, or with any other coupon or special offer. No reproductions allowed. Applicable taxes paid by bearer. No cash refund. Offer expires 4/27/97.

To introduce you to the healing world of chiropractic, please accept my special offer.

**SPINAL EXAMINATION AND X-RAYS ONLY \$25**

Initial Visit - Does not include first adjustment  
 Offer expires 4-10-97

I will include an orthopedic test, a neurological test, a spinal alignment check, an examination for restricted or excess motion in the spine, x-ray and a private consultation to discuss the results.



**Twelve Danger Signals**

1. Numbness in arms and hands
2. Restless nights
3. Pain between shoulders
4. Stiffness of neck
5. Nerve tension
6. Depression
7. Headaches
8. Anxiety in the chest
9. Stiffness or pain in the lower back
10. Tired hips and legs
11. Painful joints
12. Whiplash

Life Force  
 Innate Intelligence

**Do You Understand the Damaging Effects of Subluxation?**

- Only Damaged Tissue Gives You Symptoms.
- You Can Build Disease Without Knowing It.

**O'NEAL CHIROPRACTIC**

Celebrating 17 Years In Practice  
**CALL TODAY FOR AN APPOINTMENT**  
 Personal Injury, Workman's Compensation, Insurance and Cash Accepted.

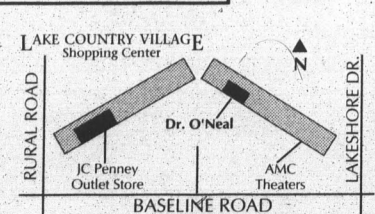
Most Workman's Compensation Cases Eligible For Care - Call For Details

**From ASU**  
 South on Rural, turn left on Baseline & go 1/4 mile, turn left into Lake Country Village Center at Winchell's and Firestone Tire. Look for O'Neal Chiropractic neon sign on right, 4 doors from AMC Theater box office.

**491-1242**

For your convenience,  
 call 8:30am - 6:00pm Mon.-Fri.  
 for appointment.

Our office is designed to keep waiting to an absolute minimum!



**Dr. Richard L. O'Neal,**  
 Palmer Graduate  
 Team Physician  
 Sport and Fitness Council  
 World Olympic Chiropractic Committee



**1070 E. Baseline Rd., Tempe**