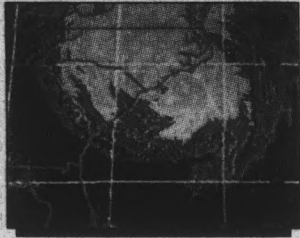


96-9-6

WORLD/NATION
HURRICANE FRAN DOCKS IN
SOUTH CAROLINA
PAGE 3



SPORTS
SUN DEVIL FOOTBALL TEAM READY
AND WAITING FOR HUSKIES
SPECIAL INSERT



INSIDE	
Classifieds	20
Comics	18
Crossword	14
Horoscopes	23
Opinion	4
Police Report	7
Sports	19

ARIZONA STATE UNIVERSITY STATE PRESS

©Copyright, State Press, 1996
Tempe, Arizona

Vol. 81 No. 8

An Independent Morning Daily

Friday, September 6, 1996

Blade runner



Lori Cain/State Press

Don Follett, field superintendent for Sun Devil Stadium, cuts the grass in preparation for ASU's first game of the season against Washington on Saturday at 7 p.m.

ASASU looking to strengthen SES radio signal

BY JENNIFER NETHERBY
STATE PRESS

The Safety Escort Service's ongoing radio transmitter problems — which are blocking communication to escort carts — will cost up to \$1,400 to remedy.

The SES has had transmitter problems for the past month and a half because of "obstructions" blocking the signal, said Keith Menard, Associated Students of ASU campus affairs vice president.

ASASU is looking at several options to fix the problems.

One option is to buy a \$1,400 remote system and move the base closer to the antenna on the roof of the Memorial Union, Menard said. A cheaper alternative would be to get an amplifier to strengthen the transmitter's signal.

SES Director Matthew Rubino said the SES has been told that amplifiers are used primarily for amateur radio, and no big companies make them.

"If it's amateur, I'd kind of be wary of taking that route," he said.

Another possible solution would be to strengthen the base station signal strength.

"One thought is to get a more powerful base," Menard said. "The problem is, we need to find out how much we're licensed for (from the Federal Communications Commission)."

Rubino said interference from construction and the increase in radios on campus are part of the problem.

"I wouldn't say there's a lot of problems,

TURN TO SES, PAGE 2.

ASU astronomers make galactic find

BY JEFF OWENS
STATE PRESS

Peering back in time through the Hubble Space Telescope, ASU astronomers have discovered some galaxies far, far away which may prove to be the building blocks of the early universe.

A team led by ASU graduate student Sam Pascarella published findings in the Sept. 5 issue of the journal *Nature* detailing

the discovery of 18 faint blue galaxies — primeval "cosmic seeds" from which, it is theorized, modern giant galaxies form.

Rogier Windhorst, associate professor of astronomy and a co-author of the study, said discovery of the seeds of giant galaxies has been an elusive goal of galactic astronomy.

"The Hubble telescope can just barely see them," he said. "If this is the Holy

TURN TO HUBBLE, PAGE 6.

Clinton to visit Arizona; support for Dole waning

BY SARA BUSH
SPECIAL TO THE STATE PRESS

President Bill Clinton will visit Phoenix Wednesday in an effort to win Arizonans' votes as opponent Bob Dole drops in popularity in statewide polls.

The Clinton campaign believes that Democrats could win the state of Arizona this year for the first time in almost 50 years.

According to Lisa MacSpadden, press director for the Arizona Clinton-Gore campaign, Democrats are coming to realize that Arizona might be a "winnable state."

"We came so close in 1992 to winning the state," MacSpadden said. "I am confident that we can win this time."

Despite Clinton's decision, Republican party officials remain certain that Dole's support in the state will increase as the election nears.



CLINTON

"I think Arizona is a conservative Republican state," said Dodie Londen, Arizona Republican Party Chairperson. "There is a long time between now and Nov. 5. I have no doubt that Dole will win this state."

According to Londen, Dole has not yet made any comment on Clinton's decision to campaign here, but campaign representatives are expecting Dole to visit Arizona before the election.

With both candidates planning to make stops in the state before the election, Arizona's national political importance seems to be rising.

Londen said that losing Arizona would significantly hurt Dole's nationwide chances of winning the presidency, but stressed that Republican loss was not expected.

"Republicans haven't lost here since Harry Truman was elected," she said.

Though Arizona is traditionally a Republican stronghold, recent polls have shown Dole trailing Clinton. KAET-TV (Channel 8) polled registered Arizona voters during last week's Democratic National Convention and found that 43 percent said they would vote for Clinton,

while 35 percent said they would vote for Dole.

According to MacSpadden, if Clinton won Arizona this year, "the message would be extremely clear; Arizona hasn't voted for a Democrat since 1948."

MacSpadden was not sure which issues Clinton might focus on during his

time here, but said that he would probably discuss "issues that directly affect citizens in the state of Arizona."

Campaign officials are still organizing President Clinton's schedule for his Wednesday visit to Phoenix.

We came so close in 1992 to winning the state. I am confident that we can win this time.

— Lisa MacSpadden, press director for the Arizona Clinton-Gore campaign

TODAY

Campus clubs and organizations may submit written entries to the State Press in the basement of Matthews Center. Requests will not be taken over the phone or via fax.

Deadline for requests is noon the day before publication and entries will not be accepted more than three working days before publication. Only one entry per organization per day is permitted.

Entries must contain the full name of the club or organization, a description of the event, date, time and the full address of the location. All requests are subject to editing for content, space and clarity. Incomplete or illegible entries will be discarded.

The Today Section is a daily calendar of events printed as a service to the ASU community. Requests are accepted on a first-come, first-served basis and are printed as space permits.

- **Sigma Delta Tau Sorority** — Informational open house. Free food and fun from 7 to 8:30 p.m. in MU Turquoise Room.
- **Asian Students Association** — First general meeting of the semester. Come for free ice cream and fun at 3:30 p.m. in MU Yuma Room 211.
- **ABF Christian Fellowship** — Kick off party '96. Come for free dinner. Trip to Malibu Grand Prix to follow. All starts at 7 p.m. in MU Coconino Room 224.
- **Baptist Student Union** — *Back to School Poly Party*. Come for food and fun at 7:30 p.m. at the BSU Center, 1322 S. Mill Ave.
- **AIESEC** — First general meeting of the semester to discuss overview of the semester and the planning of rush week. Everyone welcome to meet at 4 p.m. in MU Cochise Room 212-E.
- **Early Elections** — All Maricopa County registered voters may vote early for the September 10 primary. From 8 a.m. to 4 p.m. in MU Apache Room 221.
- **Vietnamese Student Association** — General meeting. Everyone welcome from 3:30 to 5 p.m. in MU Mohave Room 222.
- **Student Life Learning Resource Center** — Free computer skills workshops. Powerpoint 95 at 9 a.m., Publisher 95 at 10 a.m., Pine and Word 7.0 at 11 a.m. in SSV 361.
- **Alpha Phi Omega** — General meeting at 4 p.m. in the MU. Check the monitors for room number.
- **Asociación de Estudiantes Caribeños en ASU** — Organizational meeting and elections at 8 p.m. at 113 W. 11th St. (across from Gammage).
- **Buddhist Association at ASU** — Discussion: Six Reflections on Three Refugees and Virtue. Conversation in Mandarin. Meet at 7:30 p.m. in MU Navajo Room 219. Call 966-2155 for more information.
- **Counselor Training Center** — Counseling graduate students will provide free counseling to ASU students, friends and family. Call Malinda López at 965-5067 for more information or an appointment.

SES

CONTINUED FROM PAGE 1.

but the problems haven't reduced," Menard said. "There is no risk yet, but we want to fix it before it becomes one."

SES carts lose contact with the base or other carts when they are in certain areas on campus, he said.

However, Rubino said there is not a safety problem yet.

"Most areas where there are problems, it (the signal) comes in scratchy or there's a phone nearby to call DPS or the base," he said. "There still is a link of communication."

Menard said the problem stems primarily from signal loss through a long cable to the antenna.

"We're running too much cable, and it's depleting the signal before it reaches the antenna," he said.

ASU Chief of Police Lanny Standridge said from a safety standpoint, the problems are not an immediate concern.

"I wouldn't be overly concerned, but we shouldn't be lulled into complacency," Standridge said. "For the most part, the radios are a matter of coordination and basic communication. They're also helpful in the event there is a problem."

Menard said they will choose which option will work best by Tuesday. He said it's not known how long it will take to fix.

THE
STATE PRESS
ON THE
WWW
<http://news.vspa.asu.edu>

ASU STUDENTS...MARK SEPTEMBER 7TH ON YOUR CALENDARS NOW!

DON'T MISS EXCITING PAC-10 FOOTBALL AS THE NATIONALLY RANKED SUN DEVIL FOOTBALL TEAM HOSTS WASHINGTON IN THE 1996 SEASON OPENER. BEFORE THE GAME, VISIT THE ASU STUDENT PRE-GAME TAILGATE PARTY ON THE SOUTH SIDE OF THE UAC!



ASU STUDENT PRE-GAME TAILGATE PARTY

Co-sponsored by ASU Athletics and ASASU
South Side of the University Activity Center
5:00 - 7:00 p.m. prior to the
ASU vs. Washington football game

1996 SUN DEVIL FOOTBALL SEASON OPENER

ASU VS. WASHINGTON
Saturday, September 7, 1996
Sun Devil Stadium
7:15 p.m.

ASU STUDENT SEASON TICKETS ARE NOW ON SALE FOR ONLY \$32!
VISIT THE SUN DEVIL TICKET OFFICE TODAY AND RESERVE YOUR SEATS

Fran boards S. Carolina

BY BRUCE SMITH
ASSOCIATED PRESS

MYRTLE BEACH, S.C. — Hurricane Fran began battering the Carolinas with 115 mph winds and even higher gusts Thursday, bending trees and blowing rain sideways as thousands of people scrambled for storm supplies or the road out of town.

Fran accelerated and veered slightly to the east Thursday night, on a path that would bring the eye over Cape Fear, N.C., at about 7:30 p.m., the National Hurricane Center said.

At 7 p.m., Air Force hurricane-hunter planes located Fran's 25-mile wide eye roughly 20 miles south-southeast of Southport, N.C., on the west side of the Cape Fear river, where gusts of 120 mph were being reported.

More than a half-million tourists and residents had been ordered to evacuate the coast in North and South Carolina as Fran drew near, leaving a string of deserted beach towns.

"Believe you me, we wanted to get out of there," said Audrey Landers, who fled her townhouse a block from the ocean with her neighbors and their children. They took shelter at a high school in Conway, 15 miles inland.

Hurricane warnings were posted from Edisto Beach, S.C., to the Virginia line. People living as far inland as West Virginia were warned to expect tropical storm-force winds and 5 to 10 inches of rain.

Waves were crashing 10 feet high along the shore at Myrtle Beach, where the usually bustling Ocean Boulevard was deserted and driving was all but impossible with sheets of rain blown horizontal by gusts reaching 55 mph.

Even 15 miles in from the coast, tree limbs and flooded highways made moving around hazardous. Thousands of people took refuge in hundreds of shelters in the Carolinas.

Back in Calabash, Thomas Wynn's neighbors heeded the mandatory evacuation, but the 72-year-old World War II veteran decided to ride out the storm in his wood frame house. "I've been under fire before," he said.

Lynn High, owner of Calabash Marina and Storage,



People walk past a long line of television news trucks parked along "the Battery" in the historical district of Charleston, S.C., as news crews from around the country gather to cover Hurricane Fran.

pulled boats out of the water, put plywood over windows, then took off — with memories of Hurricane Hugo on her mind.

That huge storm caused almost \$8 billion in damage, mostly in South Carolina, and killed 35 people as it tore through the Caribbean and up the East Coast with 135 mph winds in 1989.

"I'm more worried about this one," High said. "We're in a little cove here, but I think we'll have a lot more wind and water than even during Hugo."

Fran was slightly less powerful than Hugo, but just as large — winds of 74 mph or more swirled 140 miles out from the center.

The governors of both North and South Carolina declared emergencies. Businesses closed early, buses

stopped running at noon, boat owners pulled their vessels out of the water and Amtrak trains and commercial flights were suspended.

In South Carolina, more than 2,000 National Guardsmen helped direct traffic and provide security in evacuated areas.

Most coastal residents heeded warnings. If someone refuses to leave, "we ask for next of kin," said Georgetown County sheriff's Maj. Mike Schwartz.

Long lines formed at grocery checkout counters and gas stations as people stocked up on fuel, food and bottled water. Hotel and motel rooms were booked hundreds of miles in from the coast.

In Georgetown, about midway between Charleston and Myrtle Beach, merchants rushed to empty their storefronts, where Hugo left 6 feet of water.

Suspect who plotted to blow up planes convicted

BY KAREN MATTHEWS
ASSOCIATED PRESS

NEW YORK — A Muslim militant who allegedly masterminded the World Trade Center bombing was convicted Thursday with two other men of plotting to blow up 12 U.S. jetliners in a two-day campaign of terror.

Ramzi Yousef and his co-defendants, Abdul Hakim Murad and Wali Khan Amin Shah, face a mandatory sentence of life in prison Dec. 5. In addition, Yousef faces trial later this year in the 1993 Trade Center bombing.

The three men showed no emotion and stared straight ahead upon hearing the verdicts, reached by the federal jury in its fourth day of deliberations.

"Each and every one of you got an extraordinarily fair trial," U.S. District Judge Kevin Duffy told the defendants.

The series of attacks was supposed to take place over Asia in 1995 but was never carried out. Prosecutors said the bombings would have killed 4,000 people in planes headed to Los Angeles, San Francisco, Honolulu and New

York City, and were aimed at forcing the United States to pull out of the Middle East and stop supporting Israel.

The defendants were convicted of all seven charges related to the conspiracy. Yousef also was found guilty of killing a man with a bomb placed aboard a Philippines Airlines jet in 1994. That bombing was a test run for the plot, prosecutors said. Shah also was convicted of escaping from prison.

Prosecutors said the plot was hatched in the Philippines, where Yousef had turned his Manila apartment into a bomb factory.

Yousef, 28, was captured last year in Pakistan with the help of a \$2 million reward. He had fled the United States hours after the World Trade Center was bombed.

During the four-month trial, Yousef acted as his own lawyer. With a good command of English, he argued that evidence was fabricated by the Philippine government to curry favor with the United States.

Prosecutors said the final attack plan was being drawn up in a Manila apartment on Jan. 6, 1995, when it nearly

blew up in Yousef's face — he goofed while mixing chemicals and started a fire.

Yousef fled the smoky apartment, leaving a laptop computer containing flight times and itineraries for three U.S. airlines. Also left was a letter signed by the same group that sent a threatening letter after the Trade Center bombing, in which six people were killed and more than 1,000 injured.

Murad was arrested by Philippine police after claiming he started the fire while celebrating the new year with firecrackers. Shah was arrested in the Philippines, escaped, then was captured in Malaysia and brought to the United States.

Yousef and Murad both claimed they were detained by police and tortured during the time prosecutors alleged they were hatching the plot.

Yousef was accused of ordering nitric acid, sulfuric acid, thermometers, filters and other tools of the bomb trade, and plotting along with his cohorts to convert cheap plastic watches into timing devices that would be attached to bombs placed on the planes.

Methamphetamine regulations begin to crystallize

BY MARCY GORDON
ASSOCIATED PRESS

WASHINGTON — With teenagers' drug use a key campaign issue, some lawmakers pushed Thursday for quick passage of legislation to crack down on methamphetamine, the fastest growing drug problem in much of the Far West and Southwest.

Lawmakers of both parties agree that action is needed to fight the home-brewed drug, but there is disagreement over how stiff the criminal penalties for selling it should be.

The Justice Department and many lawmakers believe the penalties should be the same as for crack cocaine: a five-year mandatory minimum sentence for five grams or more and a 10-year sentence for 50 grams or more.

Methamphetamine can be even more dangerous than crack cocaine because its euphoric "high" lasts much longer — often up to six hours, Harold Wankel, chief of

operations for the Drug Enforcement Administration, told a hearing of the House Judiciary subcommittee on crime.

Methamphetamine, known by the nicknames meth, crank and speed, has a potent effect on the central nervous system and often creates delusions, paranoia and aggressive behavior.

There have been 2,439 deaths related to methamphetamine reported between 1991 and 1995, Wankel said, 73 percent of which, or 1,878, occurred in Los Angeles, Phoenix, San Diego and San Francisco. He called the drug "an abuse problem involving hundreds of thousands of Americans, with the concomitant mental and physical injury, loss of opportunity and disruption of families."

Sen. Orrin Hatch, R-Utah, chairman of the Senate Judiciary Committee, told the House panel, "We simply must make it a top national priority to implement a serious, national initiative to crack down on illegal importation and manufacture of methamphetamine."

But some Democrats, including Sen. Edward Kennedy of Massachusetts, don't want mandatory minimum sentences in the legislation. In a compromise with Kennedy, the Senate methamphetamine bill now awaiting final action was changed to provide that federal sentencing guidelines be used instead.

But the House version, authored by Rep. Fred Heineman, R-N.C., a former police chief, contains the mandatory minimums.

Heineman cited the case of Eric Starr Smith, an Arizona man accused of hacking off his son's head and throwing it out of his van in July 1995, apparently under the influence of methamphetamine.

Hatch and Rep. Bill McCollum, R-Fla., the House subcommittee chairman, said they hoped legislation could be passed and sent to President Clinton before Congress adjourns in a month or so.

STATE PRESS Boos & Bravos

BRAVO — To the Arizona citizens behind the Gov. Fife Symington recall movement. Although the state constitution has provided the means to impeach the governor, it is obvious that our elected officials have abandoned the people of Arizona in favor of an unethical, immoral carpetbagger. The *State Press* urges registered voters to sign the recall and, at the same time, take a closer look at those legislators who supposedly "represent" the people.

BOO — To the people who reelected Symington in the first place. Who are you?

BRAVO — To President Clinton for hauling his Democratic carcass to Arizona. The state may vote mainly along Republican party lines, but considering the shoddy treatment of university funding in Arizona, Clinton could make a lot of friends here.

BOO — To whatever is causing the IMAP1 and IMAP2 servers to go down more often than the Arizona Cardinals lose games. The recent server upgrade would lead you to believe e-mail accounts would run smoothly for the semester. But there are more problems with the accounts now than there were prior to the upgrade. It's almost enough to make you part with some serious cash (or plastic) and buy your own computer so you can get an outside Internet service provider.

BRAVO — To the ASU Clothesline Project, a display of T-shirts created by domestic violence survivors. The issue of domestic violence is a serious one that can get drowned out in the midst of the plethora of other problems plaguing the United States. It's nice to see that ASU isn't shying away from raising awareness.

BOO — To the ditzy, dimwit drivers who don't let you merge on the freeway. Look, we're all in a hurry, but running other people off the road in your pursuit of beating the clock is not only annoying, but dangerous. If you can't use your brain when you drive, walk.

BRAVO — To the rain. We were tempted to grab some Ramen noodles and make soup.

BOO — To the humidity. We know, we know ... how can we expect there to be rain without the resulting humidity? If you figure it out, enlighten us with your wisdom.

BRAVO — To everyone who showed up Wednesday at the State Capitol to express dissatisfaction with the funding of new schools. So much emphasis is put on the tragedy of today's uneducated youth, and yet education funding cuts abound. People must make their complaints clear to the powers that be, or our little urchins will face a frightening educational system.

BOO — To the black hole of decent-tasting soda pop on campus. The sickeningly sweet Pepsi products in vending machines are enough to make us spew. Here's hoping we get some Coke machines in here, and fast.

BRAVO — To ASU for surveying students about the food service at the Memorial Union. It's nice to know our opinions on the UFOs (unidentified food objects) we slam down our throats count for something.



Rape isn't just 'womens' issue

It's time to air out some dirty laundry.

Not for the first time in my life, I am appalled by the insensitivity and/or arrogance that abounds when men take up issues that directly affect women.

Two items on the *State Press* opinion pages from Aug. 30 are fodder for my disgust this time. All in one day, even.

It's not my style to attack other columns and letters to the editor, but well, I'm a little fed up. The items deal directly with rape and coming on top of the fact that the ASU Clothesline Project is going on and October is National Domestic Violence Month, I'm going to do what Gloria Yamato suggests when we see an injustice.

I'm calling them on it.

Steve Forsberg lumps rape into the category of whining along with the hassles of standing in line and Aaron Bachler writes in to say that keeping your keys handy can help prevent rape.

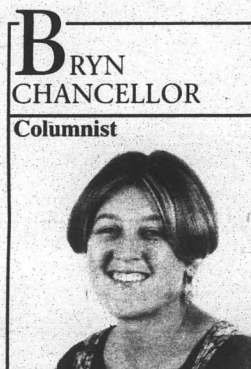
Well, damn, I've been missing the boat. Thanks for pointing that out, guys. Now, let me point something out to you.

Each year, women are the victims of more than 4.5 million violent crimes, including approximately 500,000 rapes or other sexual assaults, according to the U.S. Department of Justice.

The National Organization for Women reports that every day, four women die in this country as a result of domestic violence — that's about 1,400 women per year.

And that's just what is reported. It is estimated that two to six times the reported number are raped and two to four million women of all races and classes are battered each year.

I'm going to go out on a limb here and say that standing



BRYN CHANCELLOR
Columnist

in line hasn't killed four people today just yet. So while Forsberg aligns "whining" about rape in the same breath with high tuition costs and the Phoenix heat, I have a somewhat different perspective. As far as I know, things like boring nightlife and nit-picky police aren't a national social crisis which scars women in far too many ways that far too many women could tell you about.

Pardon me, but I think I'll whine a little bit more.

Bachler writes-in with a well-intentioned letter about rape prevention, saying, "Things like walking with a friend at night on campus, keeping your dorm room open when members of the opposite sex are present and keeping your keys handy when going to your car are all common sense things that rarely are ever practiced. Rape clinics commonly report that many cases of rape could have been prevented by simply using those common knowledge approaches."

I agree with those approaches. I alone keep the pepper spray factory in business. We all should be smart about where we go and what we do. Of course.

But the fact is, we're not talking about using a condom to prevent STDs or putting dirt on your campfire to prevent forest fires. What Bachler is talking about is the Band-Aid solution to a social problem.

No amount of pepper spray is going to prevent rape. Period. Because rape is about more than walking to the car.

Plus, 29 percent of violent crimes against women were perpetrated by intimates — husbands, former husbands, boyfriends or former boyfriends. More than half of the rapes and sexual assaults were committed by friends or acquaintances and 26 percent were committed by intimates. Only one in five cases were strangers responsible.

So when you see the Clothesline Project — the display of "dirty" laundry created by survivors of domestic violence to help the healing process — get up close and personal. Read carefully and listen up. These are women talking about the issues that affect them.

These are the issues that affect all of us.

Bryn Chancellor is a graduate student studying English.

STATE PRESS STAFF

ANGELA MULL, Editor
BRIAN ANDERSON, Managing Editor

KEVIN J. ADEYNight Editor
TIM BAXTERCity Editor
ANDREA HEALEYCity Editor
KELLY WENDELOpinion Editor
TIMOTHY TAITNews Editor
TIM HACKERPhoto Editor
JIM POULINPhoto Editor
JEREMY STEINSports Editor
LIZ MONTALBANOMagazine Editor
LESLE LINDGRENAsst. Magazine Editor

REPORTERS: Kennes Bolig, Dane D'Antuono, Deanna Darr, Becky Hill, Melody McDonald, Jennifer Netherby, Jeff Owens, Ray Stern.
SPORTS REPORTERS: Doug Cook, Josh DeFamio, Randy Jones, Dustin Krugel, Ed Odeven.
COPY EDITORS: Christa Correntano, Theresa Valles.

PHOTOGRAPHERS: Lori Cain, Pat Shannahan.
COLUMNISTS: Bryn Chancellor, Marc Cohen, Tim Elizondo, Steve Forsberg, David G. Galantowicz, Rick Liljegen, Damian Shaw, Joshua Solovskoy, Theresa Valles.
CARTOONISTS: Brian Fairrington, Steve Tansley.
PRODUCTION: Aaron R. Brucher, Adrianna Garcia, Diana Kessinger, John Kestner, Jeremy Meyer, Corey Saunders, Shellie Scott.
SALES REPRESENTATIVES: Cari Dewald, Dan Ellstrom, Chris Ferrugia, David Goodwin, Nickelle Kastein, Sean Lambright, Branden Mudd, Jess Rankin, Simon Roberts, Shane Siren, Jesse Sletteland, Leslie Vegter.
CLASSIFIEDS: Lisa Bayless, Heidi Heister, Wayne Hoover, Stacey Thayer, Joy Thompson.

Unsigned editorials reflect the views of the editorial board, decided by a majority voted among its members. They do not reflect the opinion of the *State Press* staff as a whole. Board members include:
ANGELA MULLEditor
BRIAN ANDERSONManaging Editor
KELLY WENDELOpinion Editor

The *State Press* is published Monday through Friday during the academic year, except holidays and exam periods, at Matthews Center, Room 15, Arizona State University, Tempe, Ariz. 85287-1502. We do not answer questions of a general nature.

The *State Press* is the only newspaper exclusively published for and circulated on the ASU campus. The news and views published in this newspaper are not necessarily those of the ASU administration, faculty, staff or student body.

STATE PRESS PHONE NUMBERS

Information.....965-7572
Newsroom.....965-2292
Magazine.....965-1695
Advertising.....965-6555
Classifieds.....965-6735

<http://news.vspa.asu.edu>

Greedy businesses prove history repeats

"History," as we history majors are oft reminded, "does not often repeat itself, but it rhymes." And far too often, the poetry it produces is as disgusting and vile as any obscene limerick found in the pages of a dirty magazine.

Over and over and over again, some sad event or practice once thought to be stamped out, returns again in a slightly modified form like a term paper continuously re-plagiarized by freshman English students.

Food producers, in a variation of a theme that goes back a long way in U.S. history, are finding yet another way to rhyme "make a lot of money" and "treat workers like animals." In the process they are setting the stage for a future filled with class and racial conflict. The lessons that apparently haven't been learned in the Midwest are not only being repeated there but are also being played out along the East Coast.

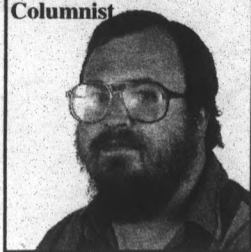
The two examples, which sound like a good breakfast, are steak and eggs. The two settings, which are about as geographically diverse as you can get, are Nebraska and Maine. And the two eras, which are intrinsically linked, are the past and the present. What exactly is going on? I'll start with the Nebraska of my youth

"Niggers at Central / whites at Burke / If you want it different / Then you're a jerk!" This little ditty is not listed as the state song of Nebraska but, unlike the state song, it was well known to elementary school kids in Omaha in the early 1970s. It was the theme song (or very close to it) of the suburban PTA types who, to say the least, did not like court-ordered bussing. But what led up to the conditions making bussing necessary in Omaha, anyway? It was beef and pork.

Meat packing plants, which used to be known as slaughterhouses in the good old days, were labor intensive places.

STEVE FORSBERG

Columnist



As soon as workers organized and began demanding humane treatment and decent wages, the bosses had to figure out a way to come up with a more compliant workforce. Looking beyond the Great Plains to the old South, they found an easy answer: African-Americans. Their labor was cheaper and, perhaps more importantly, African-Americans were an underclass. Treatment that, when applied to white workers, would result in a public stink, was tolerated when applied to black workers.

So black labor was imported to Nebraska. Since they weren't getting paid much and were not welcome in white society anyway, the African-Americans were housed in virtual shantytowns and left to their own devices. It seemed like a perfect answer: cheap labor that didn't mix with the "respectable" white middle class.

But decades later, the process of segregation having gone as far as it could, the bill came due and the painful process of integration had to be undertaken at a rapid pace. At the time everyone agreed that things had been let go far too long, and that such a thing should never happen again. But now it is rhyming.

A new generation of regional meat packers, in places like South Sioux City and Norfolk, in Nebraska, are beginning to reach once again for that old standby — a cheap, underclass labor force. African-Americans, having finally achieved a measure of equal standing in this nation, are no longer candidates so the bosses are looking south once again, but this time at the Hispanic population.

Shipped north to live in company shanty towns that are

often conveniently located outside any city limits (and pesky city codes), these workers live in their own closed society rather than integrate with the Anglo natives. And once again, we are running on borrowed time.

In Maine, it is eggs that are leading to this dangerous social situation. DeCoster Egg Farms has recently been fined \$3.6 million for safety violations and for putting workers in substandard housing ("Living amid rats and cockroaches" in trailers with "gaping holes in the walls and the floor" as described by the *New York Times*. Ahhh, yes, farm living in rustic Maine!).

What struck me most about the story was it only mentioned one worker by name, a certain Juanita Pena, from Texas. The owner, Jack DeCoster, is well regarded by the more established community members, after all he built the local Baptist church. How much do you want to bet that Juanita and her ilk are not particularly welcome in that church? Are the imported Hispanic workers becoming members of the community, or are they ostracized and segregated, just as the black workers were in Nebraska?

"Jack pays a lot of taxes in our town," explains Selectman William Jones, "He employs a lot of people. He brings in a lot of money." I certainly hope that the city elders are socking some of that money away. It might take a generation or two, but the bills for creating an underclass will come due. We can only hope that they won't lead to social and moral, as well as economic, bankruptcy.

Steve Forsberg is a senior studying journalism.

A new generation of regional meat packers, in places like South Sioux City and Norfolk, in Nebraska, are beginning to reach once again for that old standby — a cheap, underclass labor force. African-Americans, having finally achieved a measure of equal standing in this nation, are no longer candidates so the bosses are looking south once again, but this time at the Hispanic population.

CHAC pushes rape awareness

In reference to the article "Rape Prevention requires forceful stand by administrators" written by Tim Elizondo, we the students of Associated Students of ASU Counseling Health Advisory Committee, the health aspect of student government, would like to thank you for your concern and awareness of the vulnerability of students to rape and sexual assault, especially during the first two weeks of school. ASASU-CHAC have been working collectively with the administration to create an awareness on campus about issues which you have presented. It may seem as if orientation is geared toward having fun and pushing issues such as rape numbers "under the proverbial rug" but in reality, serious issues are addressed while having fun.

ASASU-CHAC worked extremely hard to have 5,000 copies of a "Personal Safety and Security On Campus and In the World Beyond" to be distributed with orientation packets to incoming students who live in the residence halls. The packets were aimed especially toward freshmen. These packets included information such as general safety tips, safety in residence halls, safety on campus and off, how to reduce the risk of acquaintance rape, what to do if you are raped and a list of important contact numbers on and off campus.

These packets were targeted at freshman during their first two weeks of school knowing that this time of year is "rape sea-

son." We are also working toward a follow-up by having these packets printed, along with a "Dater's Bill of Rights" in the ASU telephone directory. Furthermore, ASASU-CHAC and members of the administration meet each month on a rape prevention committee in order to discuss and work toward a growing awareness on campus about such issues. The main goal for the semester being to establish a 24-hour hotline that could be called by students in case of emergency and make campus policies concerning rape and sexual assault available to students.

As a group we are concerned with the same issues that you have written about and would extend an invitation for you or any student that feels these issues need to be addressed further to come to the third floor of the Memorial Union and get involved in ASASU-CHAC.

Our current event is the Clothesline Project, a strong visual display of T-shirts that bear witness to violence against women. The display will be against the west side of the Hayden Library railing, located on Cady Mall, at different times until Oct. 16. I strongly urge everyone to stop by and take a look and, if at all possible, stop talking and take action. Donate an hour to help create the awareness you feel the administration is ignoring.

Dawn Kosnoski
Junior, Social Work
Associate Director ASASU-CHAC

Tempe needs better bussing

On Sept. 10, Tempe residents will decide whether a 20-hour, seven day (20/7) bus service is worth raising the city sales tax one-half of one percent. Although the primary election on Sept. 10 is mainly a partisan affair, independent voters may still cast a ballot for referendum questions such as Proposition 400, and are urged to do so.

Current bus service on most routes in metropolitan Phoenix, including Tempe, is provided Monday through Saturday from approximately 6 a.m. until 7 p.m. Limited service is offered on Saturdays; none on Sundays or major holidays. Such restricted hours make public transit unattractive to many potential riders. Not everyone can count on leaving their places of work or study by 6 p.m. in order to catch the last bus home.

All too frequently, their only alternative is to drive alone. With 20/7 service, perhaps some who do not now ride the bus because of limited service hours will give it a try. Any reduction in single-occupancy vehicle use will help to solve the Valley's pollution and traffic congestion problems.

Approval of Proposition 400 will result in an almost immediate service hour extension (from 5 a.m. until 1 a.m.) on Tempe's major bus routes such as "66" (Mill Avenue) and "72" (Rural Road). Within five years, new routes will be added and most service frequencies increased to 15 minutes (peak) and 30

minutes (non-peak).

Should Tempe voters approve Proposition 400, their city will join the long list of progressive communities that have chosen to make public transportation a high priority. Many cities smaller than Phoenix and Tempe already operate transit systems that offer 20/7 service; not all face environmental problems as acute as ours. They realize that public transit can go a long way toward improving a community's quality of life. They also realize that in order to be successful, a transit system must operate with reasonably frequent service intervals from early morning until late in the evening.

One could well argue that the proposal being put forth will be of limited utility; extended-hour service will largely be provided only within Tempe's borders. One could also argue that this plan is but a start. Elected officials in neighboring cities have already expressed interest in extending the service hours of their own transit systems. They will be watching closely. Should Tempe's plan prove successful, it should not be long before evening and Sunday public transportation service is commonplace throughout the Valley. Just as it is commonplace in almost every other city — major and minor — worldwide.

Larry Sternbane
Graduate Student
College of Business

E-mail to the editor:

STPRESS@ASU.EDU

Hubble

CONTINUED FROM PAGE 1.

Grail, then the Hubble found it to be in dozens of pieces."

The galaxies are all within 2 million light years of each other, a relatively small space in astronomical terms. This is the first time so many star-producing objects have been seen in a space that small. Each galaxy measures about 2,000 light years across.

"That's not very big," said Stephen Odewahn, an ASU researcher who also co-authored the study. "Our own galaxy is 100,000 light years across."

The galaxies are so far away that the images captured by the telescope are about 12 billion years old, which is about three times the age of the Earth.

The discovery may help astronomers answer a fundamental question about the creation of the universe: Did the "Big Bang" create small clusters of stars and matter that gradually coalesced into today's gigantic spiral and elliptical galaxies, or did it create vast, pancake-shaped superclusters of stars that gradually broke up into galaxies and small clusters of stars?

Windhorst said he believes that the answer is likely to include elements of both theories.

"The idea that small (star) clumps grow into bigger ones is very effective," he said. "It explains a lot of things, but it doesn't quite explain the existence of very large structures early on."

Whether or not the small galaxies are part of a larger unseen star group has yet to be determined.

"Some people might argue our team simply got lucky, that we looked at an unusual patch of sky, and that the objects are not part of a large-scale structure," Pascarelle said.

Astronomers are beginning to find evidence of similar groups of objects at similar distances, though.

"That would show that this kind of large-scale structure exists throughout and confirm our basic hypothesis that galaxies form from mergers of smaller clumps," Pascarelle said.



Associated Press/NASA

This photo, made from separate exposures taken between June 1994 and June 1995 by the Hubble Space Telescope's Wide Field Planetary Camera 2, shows 18 young galaxies or galactic building blocks. Each galaxy contains dust, gas and a few billion stars. Each of these objects is 11 billion light-years from Earth and much smaller than today's galaxies.

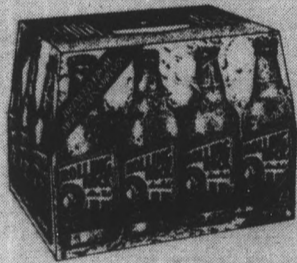
712 S. College
(College & University)
967-4049

CAMPUS CORNER

- Beer & Soda
- Photo Developing
- Health & Beauty Aids

609 S. Mill
(Across from Coffee Plantation)
858-0567
Beer only at College Ave.

ROLLING ROCK



\$2.99

6 PACK BOTTLES



Coors
LIGHT
KEGS
\$39.99

BRING YOUR I.D.'s

KEYSTONE

\$3.99



12 PACK CANS
NO LIMIT

SALE ENDS 9-8-96 (while supply lasts)

SELDON-TYSON



WBA HEAVYWEIGHT CHAMPIONSHIP
SATURDAY, SEPTEMBER 7

WORLD CHAMPIONSHIP FIGHTS

KINGVISION
CLOSED CIRCUIT TV,
SEE IT HERE!
ON CAMPUS
MU
CINEMA
LOWER LEVEL MU
see it on our
extra large screen and
state of the
art equipment!



Card Subject To change Without Notice Presented by Don King Production, Inc., in association with the MGM Grand, Las Vegas. Distributed by King Vision. ©1996 SET Pay View, a Viacom Company. All rights reserved.

RECHARGEABLE



the Unprecedented

change the GAME



IN THE CORNERSTONE

829-7473

ARIZONA STATE UNIVERSITY
STATE PRESS
 The only free thing at ASU.

PERFORMANCE FOOTWEAR
 See Our Ad on Opposite Page

SPECIAL
Back-to-School
OFFER ANY SHOE PURCHASE

\$8.00 OFF

Sandals Not Included.
 Not Valid With Other Offers

WITH COUPON
 thru Sept. 30, '96

IN THE CORNERSTONE N.E. Corner Rural & University
 829-7473

Harkins Luxury Theatres
 \$3.50 Shows before 6PM • Advance Ticket Sales • Stereo Surround Sound
 FREE Refill on Large Popcorn & Large Drink • Best of Phoenix Gourmet Snack Bar

SALE! Souvenir T-Shirts only \$6 exclusively at Centerpoint 11 & Fashion Square 7

A REEL DEAL! FREE POPCORN the rest of this year when you wear our 1996 souvenir t-shirt to the movies!
Quantities limited • Offer valid while supplies last

SISKEL & EBERT RAVE
TWO THUMBS UP, WAY UP!

"TERRIFIC! ONE OF THE YEAR'S BEST MOVIES!"
Gene Siskel, SISKEL & EBERT

EXCEPTIONAL! THE GIFT POURS OUT!
Jeffrey Wright is magnetic. Peter Travers, ROLLING STONE

"DAVID BOWIE IS EXCEPTIONALLY FUNNY!"
David Deitch, NEW YORK MAGAZINE

"FASCINATING! Dennis Hopper provides ace color."
Owen Gleiberman, ENTERTAINMENT WEEKLY

BASQUIAT

NOW SHOWING Camelview Luxury 5
 A Harkins Exclusive! Goldwater Blvd. n. of Camelback • Scottsdale 423-9900

CORNERSTONE 6 Rural and University 829-8899

THE STUPIDS (PG)	(Fri-Sun) 11:40, 2:10, 4:40
THE FAN (R)	(Fri-Sun) 7:05, 9:50
EMMA (PG) A Harkins Exclusive!	(Fri-Sun) 1:30, 4:30, 7:30, 10:30
JACK (PG-13)	(Fri-Sun) 11:50, 2:45, 5:00, 7:45, 10:15
INDEPENDENCE DAY (PG-13)	(Fri-Sun) 1:05, 4:00, 7:00, 10:10
TRAINSPOTTING (R)	(Fri-Sun) 12:00, 2:30, 5:10, 8:00, 10:40
LONESTAR (R)	(Fri-Sun) 12:30, 4:15, 7:15, 10:25

CENTERPOINT 11 Mill and University 966-6655

BOGUS (PG) A	(Fri-Sun) 11:15, 1:50, 4:30, 7:30, 10:10 (12:50 am Fri, Sat only)
BULLETPROOF (R) A	(Fri-Sun) 11:40, 2:20, 4:40, 7:35, 9:55 (12:35 am Fri, Sat only) DIGITAL
THE SPITFIRE GRILL (PG-13) A	(Fri-Sun) 11:50, 2:40, 5:20, 8:05, 10:50 IIR
THE CROW: CITY OF ANGELS (R) A	(Fri-Sun) 12:00, 2:50, 5:10, 7:55, 10:20 (12:45 am Fri, Sat only) IIR DIGITAL
FIRST KID (PG) A	(Fri) 11:30, 2:10, 5:00, 7:45, 10:35, 12:55 am (Sat) 11:30, 2:10, 7:45, 10:35, 12:55 am (Sun) 11:30, 5:00, 7:45, 10:35
THE TRIGGER EFFECT (R) A	(Fri-Sun) 12:20, 3:00, 5:30, 8:10, 10:55 (1:05 am Fri, Sat only)
THE ISLAND OF DR. MOREAU (PG-13) A	(Fri-Sun) 12:50, 3:10, 5:40, 8:20, 10:45 (1:05 am Fri, Sat only) IIR DIGITAL
SHE'S THE ONE (R) A	(Fri-Sun) 11:20, 2:00, 4:20, 7:05, 9:35 (12:20 am Fri, Sat only)
A VERY BRADY SEQUEL (PG-13)	(Fri-Sun) 12:10, 2:30, 4:50, 7:20, 9:45 (12:30 am Fri, Sat only)
TIN CUP (R) A	(Fri-Sun) 12:40, 4:00, 7:00, 10:00 (1:00 am Fri, Sat only)
A TIME TO KILL (R)	(Fri-Sun) 12:30, 3:50, 7:15, 10:30 DIGITAL
SNEAK!! FLY AWAY HOME (PG)	Sat 9/7 5:15 pm & Sun 9/8 2:10 pm

FASHION SQUARE 7 Inside the mall Scottsdale & Camelback 423-1400

THE SPITFIRE GRILL (PG-13) A	(Fri) 11:15, 1:45, 4:20, 7:20, 10:10 IIR (Sat) 10:20, 1:10, 4:10, 7:20, 10:10 (Sun) 10:20, 1:10, 4:10, 7:20, 9:55
THE CROW: CITY OF ANGELS (R) A	(Fri) 12:00, 2:30, 5:10, 8:00, 10:30 (Sat) 10:30, 12:40, 3:00, 5:10, 8:00, 10:30 (Sun) 10:30, 12:40, 3:00, 5:10, 8:00, 10:30
FIRST KID (PG) A	(Fri) 11:50, 2:00, 4:30, 7:30, 10:00 (Sat) 11:00, 1:30, 4:20, 10:00 (Sun) 11:00, 1:30, 7:30, 10:00
A VERY BRADY SEQUEL (PG-13)	(Fri) 11:40, 2:40, 4:40, 7:10, 9:50 (Sat, Sun) 10:00, 12:10, 2:30, 5:00, 7:10, 9:50
TIN CUP (R) A	(Fri) 11:30, 2:10, 5:00, 7:50, 10:40 (Sat) 10:40, 1:40, 4:45, 7:50, 10:40 (Sun) 10:40, 1:40, 4:45, 7:45, 10:15 IIR DIGITAL
A TIME TO KILL (R)	(Fri) 12:30, 4:00, 7:00, 10:20 (Sat) 10:05, 1:00, 4:00, 7:00, 9:45... DOLBY
A TIME TO KILL (R)	(Sat) 10:10, 1:15, 4:30, 7:40, 10:50 (Sun) 10:10, 1:15, 4:30, 7:25, 10:10
SNEAK!! FLY AWAY HOME (PG)	Sat 9/7 7:30 pm & Sun 9/8 4:20 pm

CAMELVIEW 5 Goldwater Blvd. n. of Camelback 423-9900

In Scottsdale's Largest Auditorium - 600 Seats!
 Two Thumbs Up! - SISKEL & EBERT (Fri) 1:30, 4:15, 7:00, 9:45

EMMA (PG) A Harkins Exclusive!	(Sat, Sun) 10:50, 1:30, 4:15, 7:00, 9:45 IIR
BOGUS (PG) A	(Fri) 2:00, 4:45, 7:30, 10:00 (Sat, Sun) 11:30, 2:00, 4:45, 7:30, 10:00
BULLETPROOF (R) A	(Fri) 1:00, 3:10, 5:15, 7:50, 10:05 IIR DIGITAL
BASQUIAT (R) A Harkins Exclusive!	(Fri) 1:45, 4:30, 7:15, 9:50 (Sat, Sun) 11:15, 1:45, 4:30, 7:15, 9:50
THE TRIGGER EFFECT (R)	(Fri) 2:15, 5:00, 7:40, 9:55 (Sat, Sun) 11:45, 2:15, 5:00, 7:40, 9:55

CAMELBACK 3 Camelback W. of Scottsdale Rd. 949-5200

JACK (PG-13)	(Fri) 2:00, 4:30, 7:10 (Sat, Sun) 11:30, 2:00, 4:30, 7:10 WIDE SCREEN
THE ISLAND OF DR. MOREAU (PG-13)	(Fri) 3:15, 5:30, 7:45 (Sat, Sun) 1:00, 3:15, 5:30, 7:45
SHE'S THE ONE (R)	(Fri) 2:15, 5:00, 7:30 (Sat, Sun) 12:00, 2:15, 5:00, 7:30

Showtimes subject to change. Please call theatre to verify.
 ▲ DENOTES SPECIAL ENGAGEMENT

POLICE REPORT

ASU police reported the following incidents Thursday:

- A male student was contacted at the Student Recreation Center, where he had become ill. He was transported to a local hospital.
- A female affiliated with ASU reported that someone removed a parking meter head from Lot 60.
- A male student reported that someone unlawfully entered his vehicle and removed ASU season tickets.
- A female student reported that someone removed her bicycle from the bike rack at the Memorial Union, where it was secured with a lock.
- A male affiliated with ASU reported that someone removed a vacuum cleaner from the University Activity Center.
- A male affiliated with ASU reported that he lost one key belonging to ASU.

• A male affiliated with ASU reported that he found bolt cutters in Hayden Hall.

Tempe police reported the following incidents Thursday:

- A woman was arrested at an ABCO store at 5120 S. Rural Road after the store's meat manager observed her concealing four packs of steaks down the front of her pants while walking down an aisle toward the front doors. The manager grabbed the woman's arm, and the woman resisted. She then fell down on the floor where two managers detained her. In addition to the steaks, eight packs of lunch meat were found in her purse. The woman admitted to shoplifting, but denied resisting. She had no identification on her and was booked in Tempe City Jail.
- A man was stopped at 3200 S. Rural Road after the arresting officer observed him driving his vehicle erratically. Investigations revealed the man was in possession of a white powdery substance believed to be cocaine. He was transported to Tempe St. Luke's for treatment and observation.

Compiled by State Press reporter Kennes Bolig.

FRIDAY

DRINKS UNDER \$2.00

\$2 Shots 10:30-Close
Doors Open @ 8PM

SATURDAY

LADIES NIGHT

LADIES GET IN FREE until 10PM.
99¢ LONGNECKS for EVERYONE until 10:30
DOORS OPEN @ 8PM

411 S. MILL - 966-2020



Photo by Pat Shannahan/State Press

An unidentified student walks past the AIDS quilt Thursday located in the stairwell on the south-eastern side of the Memorial Union. The quilt will be displayed on the mall in Washington D.C. from Oct. 11-13 along with 40,000 other panels. All the pieces of the quilt put together will take up a space as big as 20 football fields.



STATE PRESS SPORTS We cover good sports, bad sports, rich sports and poor sports.

Now You Can SAVE Even MORE with Arizona State University's AT&T ACUS[®] Service

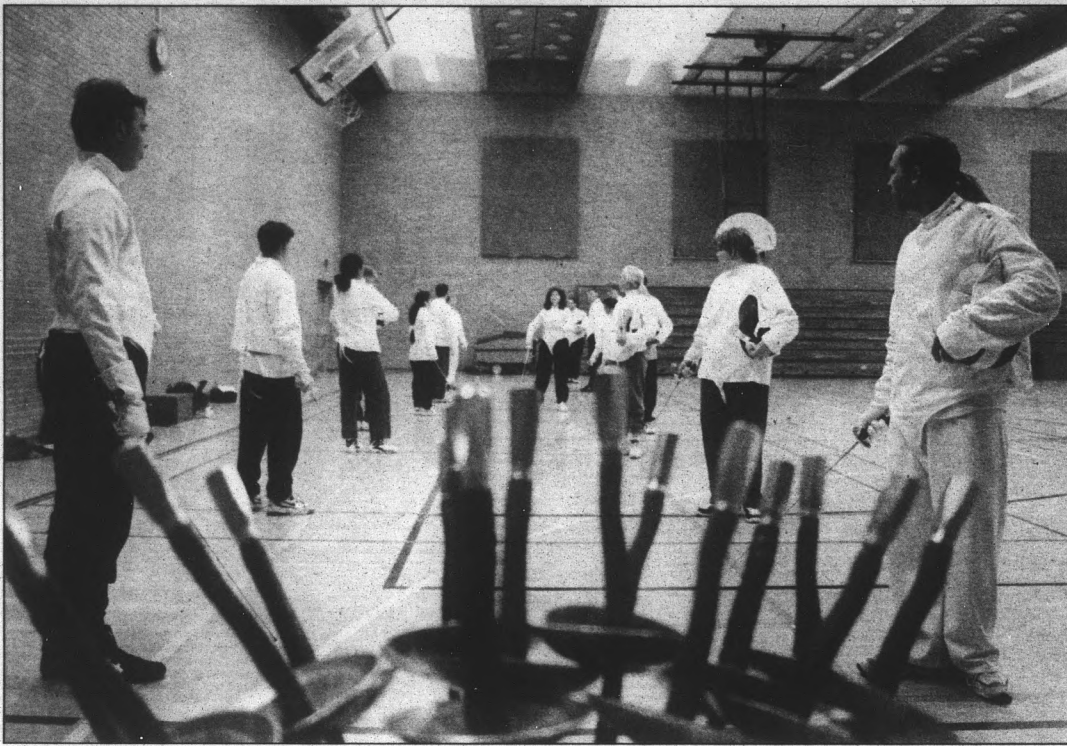
Campus Residents using AT&T ACUS Service receive
BIGGER DISCOUNTS than ever before. This semester,
you get **15% OFF** standard AT&T direct dial rates for
long distance calls to **ANYWHERE** in the United States.

Get in on the savings now.
If you don't already have an ACUS Service account and Personal Security Code,
call **1 800 445-6063** today.

It's the **BEST VALUE** available on campus.

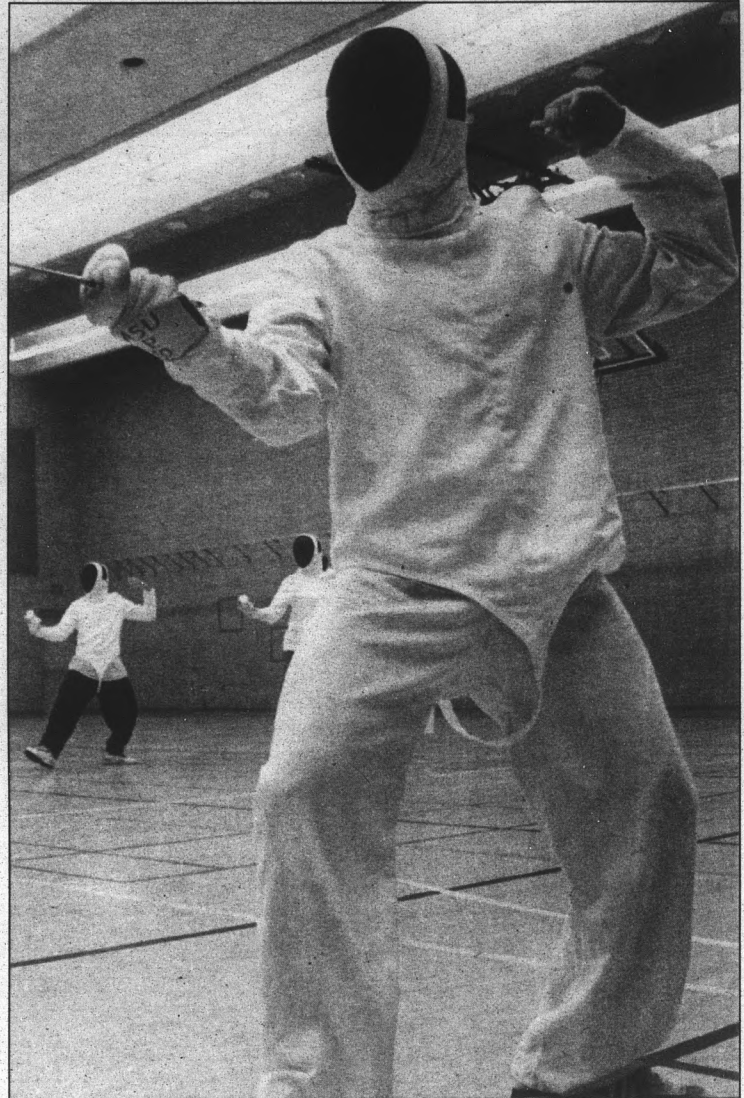


Foiled again



Photos by Pat Shannah/State Press

Donna Landers (top middle), a fencing instructor, teaches the fundamentals of fencing during a class Thursday in Physical Education East. Mark Schwartz (at right), a junior exercise science major, practices his advance and retreat.



STATE PRESS Crosswords They aren't harsh words. They're just across-words.

Unlimited Tanning
\$9.95 mo.

bring in this coupon
and receive \$1.00
off haircut

SYSTÈME BIOLAGEBODY®

Best read
after a beer
or two.

BRAIN TRICKS

Coping with your Defective Brain

David L. Weiner

Are our minds
deceiving us?
Do we have a clue?
Are we part of some
bizarre joke?

Now in paperback, available at
student bookstore. Brain/mind limbic
quizzes (power, sex, etc.), reviews,
features, student rebate at
<http://www.braintricks.com>

PROMETHEUS BOOKS

On Sale NOW!

End of
Power 92FM
Summer
Jam '96
Sunday • September 22

Bone
things-a-harmony

Sweat Keith

with:
112
Groove Theory
& special guests
to be announced!

Listen to POWER 92 for details!

Lite

MAJOR LEAGUE MUSIC
FOR PRO ENIX
BLOCKBUSTER DESERT SKY PAVILION

THE WAREHOUSE/ROCKHOUSE/MAY
TOWER/BLOCKBUSTER MUSIC
602/784-4444
CALL FOR TX

ARIZONA STATE UNIVERSITY
STATE PRESS

INTENTIONAL MISUSE OF
THIS PRODUCT MAY CAUSE SERIOUS INJURY.

**what's
in a**

As low as
\$36.22*
per month

Designed for
Microsoft Windows
intel inside
pentium

Microsoft
ZENITH
DATA SYSTEMS

Microsoft Encarta, Natural, Powerpoint, Windows and the Windows logo are trademarks of Microsoft Corporation. Z-Station is a registered trademark of Zenith Data Systems Corporation. Intel Inside and the Pentium Processor logos are registered trademarks of Intel Corporation. Specifications and pricing subject to change without notice. Price shown is the ZDS direct price. Retailer price may be higher or lower than the ZDS direct price. © 1996 Zenith Data Systems Corporation. * Each loan is subject to credit approval and minimum annual income required is \$15,000. The monthly variable interest rate on the Campus Z-Station Loan is based upon the prime rate plus 4.25%. The prime rate is the rate of interest reported in the Wall Street Journal on the first business day of such month. Any changes to such rate will take effect on the fifth business day each calendar month and will remain in effect until further changed. For example, the month of May 1996 had an interest rate of 12.50%. The loan has a 7 year term with no pre-payment penalty. If you were to borrow \$2,020.00 and maintained a constant variable rate of 12.50% during a 7 year repayment period, then your APR would be 14.59%, and your monthly payment would be \$36.22 for 84 months. Any increase in the prime rate may take the form of higher payments.

Everything.

- Complete multimedia computer customize for students
- Campus Z-Station® features:
 - Powerful Intel® processor
 - Large capacity hard drive
 - Plenty of memory to run today's hottest applications
 - Plug & Play into your campus network with a high-speed modem
- Desktop Systems include Microsoft® Natural® Keyboard and Microsoft Mouse
- Loaded with Microsoft software for study and fun
 - Microsoft Office for Windows 95 with Word, Microsoft Excel, PowerPoint, Microsoft Access, Schedule+, Encarta 96 Encyclopedia, Microsoft Internet Assistants
 - Microsoft Windows 95 with Microsoft Internet Explorer 2.0
 - Microsoft Plus!
 - Games for Windows 95
 - Norton AntiVirus and more
- Hewlett Packard Color Deskjet available
- Ask about Microsoft Programmer's Dream Pack

Processor	Pentium 100 MHz	Pentium 133 MHz	Pentium 166 MHz
Hard drive	1.2GB	1.6GB	2.1GB
Monitor	14" (13.2" viewable)	15" (13.7" viewable)	15" (13.7" viewable)
Price	\$1799	\$2199	\$2499
with LAN card	\$1899*	\$2299	\$2599

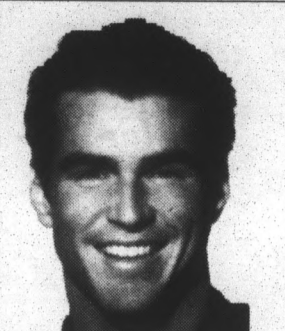
Experience Campus Z-Station.

Tech Shop
602-965-1207



<http://www.zds.com>
education@zds.com

STATE PRESS SPORTS
We're there when you can't be.



GROOMING
GH
HUMANS
HAIR STUDIO
966-5462

Located in The Arches Plaza


Mill	College	M-TH	9-8
Forest	University	Fri.	9-6
		Sat.	9-5

FIRST-TIME CLIENT SPECIAL

\$9⁹⁵ Long Hair \$2 More

CONSULT • SHAMPOO
CONDITION • CUT

Reg. '17 men/'19 women
Expires 9/19/96



DEPOT CANTINA

Welcome Back Students!

HAPPY HOUR

MON-FRI 4-8

NOW ACCEPTING APPLICATIONS

300 SOUTH ASH • TEMPE • 966-6677

'Smelly, puking habit' campaign expanded

BY JEFF OWENS
STATE PRESS

A half-hour television program will air this weekend showing how the Arizona Department of Health Services is kicking some serious ash in its effort to stop young people from smoking.

Tobacco Taxed will be broadcast Saturday at noon on KTVK-TV (Channel 3), and at 4:30 p.m. on KASW-TV (Channel 10). A repeat is scheduled for Sept. 15 at 4 p.m. on KPNX-TV (Channel 12).

The program profiles the state's "tumor-causing, teeth-staining, smelly, puking habit" ad campaign, and is interspersed with statistics and facts about tobacco.

"This program was produced to educate and inform Arizona voters, who approved the Proposition 200 tobacco tax in 1994, about how these funds are being used," said Tim Riester, president of Riester Corp., the advertising agency that devised the campaign.

Brad Christensen of the ADHS said the campaign is about much more than the "glitzy TV ads," though.

He said the campaign also includes:

- An effort directly targeted at pregnant women
- A South Phoenix mail-order merchandise center with goods rivaling anything depicting Joe Camel
- A toll-free Arizona Smokers' Helpline
- A 43-foot-long mobile education center — the "Ash Kicker" — which Christensen described as a cross between a horror show

and a Disneyland ride. The Ash Kicker will be unveiled at an as-yet unscheduled press conference next week.

"We're changing attitudes," said Riester's David Anderson, who added that the teen-targeted TV spots examined in the show have become phenomenally popular.

He laughed as he recounted the unusual advertising strategy the firm stumbled upon.

"Who would have thought the word 'puking' would work so well?" he asked.

Christensen said 35 different state health departments have contacted the ADHS for information on how to conduct campaigns of their own.

He added that only two other states, California and Massachusetts, have similar tobacco tax-funded prevention programs, but that Arizona's is by far the most vigorous.

Jack Dillenberg, director of ADHS, said, "These funds are being used to wage an incredibly important war against public health enemy number one. Tobacco use, which begins almost always as a childhood addiction, kills more people than all murders, suicides, fires, auto accidents, alcohol, illegal drugs and AIDS cases combined."

The ADHS mail order merchandising center can be reached at 1-888-828-7774, and is located at 2810 S. 24th Street, Phoenix, Ariz., 85034.

The Arizona Smokers' Helpline can be reached at 1-800-556-6222.

PARK AND RIDE

AND GET TO CLASS ON TIME



If you park on the outskirts of campus or live close enough to ride, The Boulder is an easy, affordable way to get to class on time. Forget shuttle busses and being delayed in traffic, now you can ride all the way to class — and get there *faster!*

GIANT

Boulder 500

BOULDER 500 MOUNTAIN BIKE

\$169⁹⁵

Reg. \$209.95

FREE WITH EVERY NEW GIANT — Lifetime warranty - frame & fork
1 year adjustments - brake & derailleur
30 day wheel truing

U-LOCK \$5 OFF

Reg. Price with carrying bracket & \$1,000 guarantee

15% OFF ACCESSORIES & PARTS

EXCLUDES BIKES & LABOR

HALOGEN HEADLIGHT \$11.95 Reg. \$19.95

BE ROAD LEGAL & SEEN AT NIGHT!

WITH COUPON. VOID WITH OTHER OFFERS. Exp. 9/15/96. BICYCLE WHEELERS 968-8011

"Your collegiate bike shop"

968-8011

Open 7 days a week
2010 S. Rural Rd.
Tempe, AZ.



Apache

Rural

Broadway



AMERICA'S BEST

The customers have voted Brown & Brown Nissan AMERICA'S BEST DEALER!
Based on the customers buying experience, finance experience and overall service experience, independent surveys of America's highest volume dealers have placed Brown & Brown Nissan ON TOP!

Ask About Our \$1000 College Graduate Program!



NEW 1996 NISSAN PICKUP

AM/FM Cassette, Alloy Wheels, Sliding Rear Window, Chrome Bumpers

\$99

24 Month Lease



ZERO DOWN!

DOGS LOVE TRUCKS!

NEW 1996 NISSAN SENTRA GXE

AM/FM Cassette, Air Conditioning, Tilt & Cruise, Power Locks & Windows

\$149

36 Month Lease



ZERO DOWN!

Brown & Brown

MESA - 461-4300

Broadway Rd. Across From The Price Club

TEMPE - 598-6000

I-10 & Elliot In The Tempe Autoplex

Reach Us On Our Web Site at...[HTTP://WWW.BROWNDANBROWN.COM](http://www.browndanbrown.com)

1996 Nissan Regular Cab 4x2 V6: 24 month closed-end lease with purchase option at \$10,497 residual value. Total payments: \$2,339. Allowable mileage of 24,000 over term. 15¢ per mile penalty over 24,000. Consumption payment of 1st month lease \$106.94, security deposit \$125.00, license fee \$315.25 plus doc fee \$119.50. 1996 Nissan Sentra GXE: 36 month closed-end lease with purchase option at \$8,927 residual value. Total payments: \$5,339. Allowable mileage of 36,000 over term. 15¢ per mile penalty over 36,000. Consumption payment of 1st month lease \$159.35, security deposit \$175.00, license fee \$362.25 plus doc fee \$119.50.

CET pushes importance

By DEANNA DARR
STATE PRESS

The Campus Environment Team plans to take a "more proactive role" in alleviating racial tensions on campus this year, team leaders said at the group's first meeting Thursday.

"We always hear the environment for students is not what it should be," said Art Carter, dean of Student Life. "We need to find a different way to look at diversity, not just race."

He said factors such as sexual preference and disabled students need to be considered.

The CET wants to be in front of, not reacting to particular issues, said Barbara Mawhiney, director of the Affirmative Action/Equal Employment Office.

CET Chairman Michael Wong said the group wants to involve more student leaders in their meetings and promote goodwill between students and the administration.

New CET goals include community outreach programs, more open forums and inter-group discussions as well as more student representation at their meetings.

The CET has scheduled a student reception for Sept. 26. This event will give members of select student organizations an opportunity to meet the members of CET as well as learn about CET in general.

A campus-wide forum has also been planned for Oct. 1 from 11:30 a.m. to 1 p.m. in the Memorial Union. This program is targeted at faculty and staff to give them the opportunity to learn more about CET.

The idea of having a diversity fair as part of the Martin Luther King, Jr. Week Celebrations was also discussed.

The fair would give on- and off-campus groups the opportunity to reach students with their messages.

"We could bring diversity groups from the community to meet their student (counterparts)," Carter said. "It's in the vision of Dr. King to have a community plunge."

"The crux of it (CET) is in programs and how to be proactive on campus," Wong said.

Disabled parking following law

By BECKY HILL
STATE PRESS

If there appear to be an unnecessary number of disabled parking spots on campus, that's because there are — sort of.

The Americans with Disabilities Act says a certain percentage of total available parking must be reserved for the disabled.

According to the act, ASU is required to have 207 spots. The campus has 274.

Though some parking areas may look like they have an overabundance of disabled spaces, University experts said that is not the case.

Linda Riegel, associated director of Parking Services, said ASU needs to look at utilization as well as formulas to determine the number of handicapped parking spaces.

"In Arizona, because of the weather and flat terrain, we have one of the largest permanently disabled populations in the U.S.," she said.

Barb Mawhiney, director for the affirmative action-equal opportunity office, said wider spaces may also give the impression of too many spots.

"Some spots have to be van-accessible. This requires additional space to move in and out of the van and to stay out of the way of traffic," she said.

Tedde Scharf, associate director of Disabled Student

Resources, said that due to mechanical failures, all of the campus' disabled spots are necessary and almost all have high usage.

"Lot Four by the Fine Arts Complex has sloping floors and chairs roll away as people attempt to exit their vehicle, so it is probably used the least," she said. "In the summer we have some spaces standing open. These are the two exceptions."

Scharf said ASU is no longer putting elevators in the parking structures.

"This means in many garages the spaces are concentrated on the ground floor where people initially try to park," she said.

In addition to monitoring by DSR and ASU's Department of Public Safety, Scharf said re-evaluations of parking availability are also scheduled based on feedback.

She said no complaints about an excessive numbers of spots come to mind and only one student has recently complained about insufficient parking.

"He wants to convert a visitor spot to a disabled spot because it is closer than where he currently parks. Our department, however, did not support his request," Scharf said. "Disabled parking is not meant to provide superior parking but equal parking."

"It's just like anyone else. If you want the best parking you have to arrive early."

ANY DAY - ANY PIZZA - ANY SIZE - ANY TOPPING - ONLY \$8.99!

When it's **midnight** and you have to study for **another 6 hours** and every organ in your **biology** textbook starts to look like **delicious fresh pizza** toppings, you know **it's time for Domino's Pizza**

We're Open Late!
 •Sun.-Thur. 'til 1:30 a.m.
 •Fri. & Sat. 'til 2:30 a.m.

For hot and wow call **Domino's Pizza** Now!

MEASURE YOUR TOE AT THE COOL JEWEL

Toe Rings
Ankle Bracelets
Nose Rings
(Fake Nose Rings)
Hoops, Cuffs, Studs and Lots of Single Earrings

THE COOL JEWEL
4143 N. 12th Ave. #12
(behind The Spaghetti Company)
85012

MODEL AND TALENT SEARCH

This Thursday, September 12, 1996
A.S.U. Memorial Union
Tempe, AZ
From 2-8 pm

John Casablancas will be conducting a Seminar & Evaluation for Potential Models and Actors. Don't delay, this could be your chance of a lifetime.
SPACE IS LIMITED
Qualified candidates will have the opportunity to train in the John Casablancas Modeling/Acting Program.
CALL NOW FOR RESERVATIONS 941-4838

Use Your Marriot Maroon & Gold Card Here!
CALL US! 968-5555 - 903 S. RURAL ROAD

<p>SUN DEVIL SPECIAL ONLY \$6.99 Large One-item Pizza Expires 10/31/96 Valid at this location only. <small>© 1996 Domino's Pizza, Inc. Coupon not valid with any other offer. Offer valid with coupon only. Valid at participating stores only. Prices may vary. Customer pays sales tax where applicable. Our drivers carry less than \$20. Cash value 1/20¢.</small></p>	<p>ASU DOUBLE DEAL ONLY \$9.99 Two medium one-item pizzas ONLY \$11.99 Two large one-item pizzas Expires 10/31/96 Valid at this location only. <small>© 1996 Domino's Pizza, Inc. Coupon not valid with any other offer. Offer valid with coupon only. Valid at participating stores only. Prices may vary. Customer pays sales tax where applicable. Our drivers carry less than \$20. Cash value 1/20¢.</small></p>	<p>FREE FOOTBALL SPORTS JUG With purchase of any large pizza. Valid at this location only. One jug per order. While supplies last. <small>© 1996 Domino's Pizza, Inc. Coupon not valid with any other offer. Offer valid with coupon only. Valid at participating stores only. Prices may vary. Customer pays sales tax where applicable. Our drivers carry less than \$20. Cash value 1/20¢.</small></p>
--	--	--

©1996 DOMINO'S PIZZA, INC. LIMITED TIME ONLY. OFFER MAY VARY. PARTICIPATING STORES ONLY. LIMITED DELIVERY AREAS DESIGNED WITH SAFETY IN MIND.
ASU'S BEST PIZZA & WINGS ASU'S BEST PRICE

Committee launches Symington recall drive

PHOENIX (AP) — A statewide committee launched a drive Thursday to recall Gov. Fife Symington, acknowledging the difficulty of gathering more than 280,000 petition signatures in just three months but predicting success for the campaign.

The Symington Recall Committee now has until Jan. 3 to collect the signatures of some 282,000 registered voters to force a recall election next spring.

"It's going to be a monumental task," said committee chairman John Ahearn. "I don't think there has ever been a requirement to get this many signatures."

But Ahearn and former state Rep. John Kromko, the campaign's statewide coordinator, said there appears to be widespread support for the effort and pointed to recent polls that show nearly half of the state's voters support the recall and that a majority don't approve of the Republican governor's performance in office.

Symington faces 23 federal charges of fraud, lying under oath and extortion mostly stemming from his finan-



SYMINGTON

cial dealings as a developer prior to taking office. He filed for bankruptcy in September, claiming debts of nearly \$25 million left over from his failed development business.

Ahearn and Kromko acknowledged that their fund-raising efforts have not been as successful as they hoped. Kromko had said in July when the recall committee was formed that the goal was to raise \$100,000 and that he would not consider going ahead with the campaign without at least \$40,000 in the bank.

"We're not there," Ahearn admitted. "We're more like at \$20,000."

Ahearn said groups representing educators, environmentalists, minorities, the clergy and organized labor have expressed interest in the recall campaign and that the committee is counting on members of those groups working as volunteers.

"There has been no commitment of their organizations and there won't be," he said. "Our goal is to identify members of those groups who will work with us."

Kromko said the group likely would have to have paid as well as volunteer petition circulators in order to meet the Jan. 3 deadline.

"I'd always like to have more money," he said. "I'd like

to have more volunteers. I'd always like to have more of everything."

Other members of the recall drive include former Secretary of State Richard Mahoney, Cochise County Supervisor Mike Palmer and retired Sun City accountant Walter Bush.

Joel Barr, who publishes a Phoenix newspaper that is sold on street corners by homeless people, began circulating recall petitions earlier in the summer. He said his drive is still under way and that if it fails, he'll join Kromko's campaign.

"Ours is still going to be there but we also will be supporting theirs. We will be carrying their petitions," Barr said.

The deadline for Barr to turn in his petitions is Oct. 12. Symington was in Page on Thursday and not available for comment, said his spokeswoman, Amy Rezzonico. But she repeated what has become the governor's stock answer when asked about the recall.

"Every Arizona citizen has the right to circulate recall petitions," Rezzonico said.

If the recall is successful, the election could be held as early as next spring or as late as August.

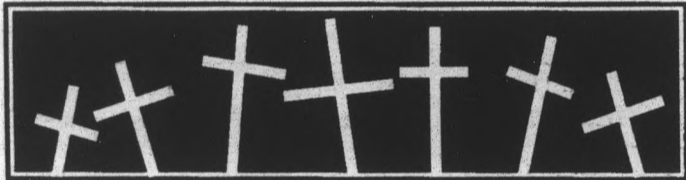
STATE PRESS
Classifieds
The bargains
are in the
back.

THE PRINCETON REVIEW
GMAT
Classes start SEP. 14!
1-800-2REVIEW

The Princeton Review is not affiliated with GMAC or Princeton University

ARIZONA SHUTTLE SERVICE
SERVING PHOENIX SINCE 1987
WE APPRECIATE YOU!
PLEASE JOIN US IN CELEBRATING OUR MONTH-LONG APPRECIATION FOR MAKING ARIZONA SHUTTLE SERVICE YOUR #1 TRANSPORTATION BETWEEN PHOENIX AND TUCSON SINCE 1987
THANK YOU
\$10 WITH COUPON
WE NOW MAKE YOUR RIDE MORE COMFORTABLE WITH BOTTLED WATER ON EVERY VAN. PLUS, WE ARE LOWERING OUR PRICES FROM AUGUST 19, 1996 TO SEPTEMBER 19, 1996. OUR ONE-WAY FARE FOR A LIMITED TIME IS ONLY \$10. VALID WITH STUDENT I.D. WELCOME BACK!
1-800-888-2749

CROSSROADS



EPISCOPAL CHRISTIANS ON CAMPUS

EPISCOPALIAN?

Interested in some fun activities this year?

Crossroads would love to have lunch with you **TODAY AT NOON** at the **MU Pizza Hut**.

Help us plan this year's activities.

For more information about our programs, please call 254-7126

FRIDAY, SEPTEMBER 6
98KUPD PUCK PATROL PARTY
6-8 PM
1st 500 people will receive commemorative numbered Phoenix Coyote puck
PRIZES & GIVEAWAYS • BUD ICE GIRLS
LATE NIGHT LIVE MUSIC
UNCLE CHARLIE'S BAND

McDUFFY'S
FOOTBALL CAPITAL OF THE WORLD
5th & Ash • Tempe, AZ

SATURDAY, SEPTEMBER 7 COLLEGE FOOTBALL SATURDAY

DOORS OPEN @ 9AM

9:00 AM
MICHIGAN STATE VS. NEBRASKA
RICE VS. OHIO STATE
GEORGIA TECH VS. NCSU

9:30 AM
ARIZONA VS. IOWA

12:30 PM
USC VS. ILLINOIS
LOUISVILLE VS. PENN STATE
TCU VS. OKLAHOMA
DUKE VS. FLORIDA STATE

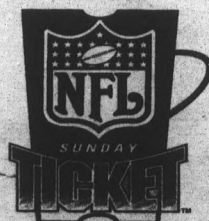
7:00 PM
ASU VS. WASHINGTON

LATE NIGHT LIVE MUSIC

DIGGER
with LEMON ANGST

5th & ASH • 966-5600

OFF-TRACK BETTING
DRINK SPECIALS NIGHTLY



McDUFFY'S

SUNDAY, SEPTEMBER 8

DOORS OPEN @ 9AM

EVERY NFL
GAME LIVE!

Beer bucks help city kids

BY RAY STERN
STATE PRESS

Buying a beer, burger or bottled water at Sun Devil Stadium this weekend will mean more than just a full stomach and high spirits.

A percentage of purchases from concession volunteers working Sun Devils and Cardinals games is going to help inner-city kids, thanks to the Phoenix-based charity group, "Every Kid Counts."

The organization sponsors scholarship programs, athletic programs and other cultural programs for needy kids, said Robert Barnes, who coordinates volunteers for the group.

Barnes, 25, a sophomore political science/economics major at ASU, said that the Fine Host Corporation recently donated 800 tickets for the ASU game Saturday. "We gave (them) to different youth organizations in the Valley (like) the Scottsdale Boys and Girls Club, Big Brothers and Big Sisters, the City of Phoenix University Park and others."

Rob Perelka, the group's president, said he started Every Kid Counts in 1994 with help from the business community and two Arizona Rattlers players.

"Basically there are a lot of elements in our society that are not right," he said. "(Every Kid Counts) provides opportunities they ordinarily wouldn't have as a youth."

In addition to the gray-shirted volunteer workers they'll supply at concession stands, the group also buys and sells bottled water, with profits going to youth programs.

Sheila Stubler, a Phoenix recreation coordinator, said they are working closely with the group.

Every Kid Counts provided the tickets for a group of 20 to attend Saturday's game, Stubler said, and the kids who go will work concessions for Sunday's Cardinals game.

"A lot of these kids don't realize they could be students at ASU," she said. "They can go on to college there if they want to — it doesn't matter if they grew up in a certain neighborhood."

For more information call 784-0315 or 949-2405.

Health Care You Can Count On.

Campus Care offers you very affordable student health insurance. Great benefits, services and physicians at the right price. Enrollment is simple. Just check "yes" on your registration form.

Or, call In Touch at (602) 350-1500.

If you have questions about enrollment in Campus Care, call ASU Student Health at (602) 965-2411.

Be smart and prepare for the unexpected. Maintain your good health by signing up for Campus Care. The fall semester begins August 16, 1996; the enrollment deadline is September 10, 1996.

Campus Care. From HealthPartners Insurance Company and ASU Student Health. Affordable health insurance you can count on. All the time. Every time.



HealthPartners
Insurance Company

FORMERLY
SAMARITAN HEALTH INSURANCE COMPANY

HPI ADV.04

EARN \$1,160

ASSIST MEDICAL RESEARCH

You can earn up to **\$1,160** by participating in a medical research study at Harris Laboratories. If you are in good medical condition and meet the criteria below, call us at **1-800-598-1360** to find out more.

- men and women
- 18 to 60 years old
- nonsmokers
- availability: weekend and weekday stays

Harris testing pays.
Call **1-800-598-1360** today!



CROSSWORD

by THOMAS JOSEPH

ACROSS

- 1 Baseball's Tony
- 6 Delicate jewel
- 11 Stupid ones
- 12 Some exams
- 13 Glue
- 14 Kitchen fixture
- 15 Soccer legend
- 17 Com serving
- 18 Neck arteries
- 22 Right away, in memos
- 23 Adds up
- 27 Less
- 29 "West Side Story" heroine
- 30 Losers in Super Bowl XV
- 32 Pack down
- 33 "Rocks," in a bar
- 35 Pea holder
- 38 Cheering words
- 39 Stun
- 41 Peer
- 45 "Be quiet," slangily
- 46 Swell
- 47 Ensnares
- 48 Strengthened

DOWN

- 1 Poem of exaltation
- 2 Cut off
- 3 Altar
- 4 General promise
- 4 General sentiment
- 5 To date
- 6 Ennui
- 7 Writer
- 8 Peter Levin
- 8 Peter Fonda's sis
- 9 Gymnast
- 9 Korbut
- 10 Addict
- 16 Set fire to
- 18 Arrived
- 19 Land east of the Urals
- 20 Told
- 21 Existing conditions
- 24 Speedy horse
- 25 Bar fruit
- 26 Drains of strength
- 28 Classified data
- 31 Mariner's place
- 34 Treasure
- holder
- 35 Treaty
- 36 Poet
- Khayyam
- 37 Carvey of comedy
- 40 Close a jacket
- 42 Fancy vase
- 43 Longevity
- 44 Conducted

1	2	3	4	5	6	7	8	9	10
11						12			
13						14			
			15		16			17	
18	19	20					21		
22				23			24	25	26
27			28		29				
30					31		32		
			33			34			
35	36	37		38					
39			40			41	42	43	44
45						46			
47						48			

STATE PRESS

CROSSWORDS

Go ahead ... do them in ink.



DAILY CRYPTOQUOTES — Here's how to work it:

A XYDLB A A X R
is L O N G F E L L O W

One letter stands for another. In this sample A is used for the three L's, X for the two O's, etc. Single letters, apostrophes, the length and formation of the words are all hints. Each day the code letters are different.

8-26 CRYPTOQUOTES
NDJW EWDEM W O Q K Z X O Q H O
T D B O D L N H Z T Z G L N W N B H Z
E G O N B L H J A M W T W Y Y N
A H B X K Z O D O Q W N Q W M M . —

T D L D O Q S B H Z I K W M T
Saturday's Cryptoquote: I AM IN FAVOR OF CUTTING UP THE WILD LANDS INTO PARCELS, SO THAT EVERY POOR MAN CAN HAVE A HOME.—ABE LINCOLN

FTC launches crackdown on scholarship scams

WASHINGTON (AP) — Bogus scholarship search services bilk students and their families of millions of dollars every year, the Federal Trade Commission said Thursday in launching a crackdown on such fraud.

Late last month, the FTC filed charges in federal district court against five companies that the government claims stole nearly \$10 million from college-bound students and their families looking for money to pay rising tuition and fees.

An estimated 300,000 students and parents fall victim every year to 100 to 200 fraudulent scholarship search services, according to Mark Kantrowitz, who has written a guide to scholarships. These companies charge a fee to find — often guarantee — scholarships or grants for students, but never do.

Kantrowitz of Pittsburgh, Pa., has developed an Internet page on financial aid sponsored by the National Association of Student Financial Aid Administrators and maintains a database of complaints about scholarship scam artists that he shares with the FTC and National Fraud Information Center.

"A good rule of thumb is if you have to pay money to get money, it might be a scam," Kantrowitz said. "Ninety-nine percent of all legitimate scholarship foundations do not charge applications fees. I know of only three that do."

The FTC cautions students to be wary of companies that claim:

- "The scholarship is guaranteed, or your money back."
- "I just need your credit card or bank account number to hold this scholarship."
- "We'll do all the work."

Peter Narbonne, outside scholarships coordinator for Massachusetts Institute of Technology, said the rising cost of higher education has left students in a desperate search for money. Fraudulent companies obtain university phone books and send direct mail flyers to prospective clients, he said.

These operations typically prey on lower-income students who are the first in their families to go to college — the same families who will likely be offered the largest grants and scholarships from colleges and universities, said David Warren, president of the National Association of Independent Colleges and Universities.

Information on available scholarships and grants can be readily obtained from high school counselors, college financial aid officers, the Internet and public libraries, said Dallas Martin, president of the National Association of Student Financial Aid Administrators.

In each of the five cases, the FTC has obtained a temporary restraining order prohibiting the company from engaging in activities the agency has challenged. In addition, the companies' assets have been frozen, said Jodie Bernstein, director of FTC's bureau of consumer protection. The FTC plans to seek permanent injunctions against the companies

and restitution for consumers.

Suits were filed against: Career Assistance Planning Inc., Atlanta, Ga.; Christopher Ebere Nwaigwe, who lists various addresses in Washington, D.C. and Maryland; Student Aid Incorporated of New York, N.Y.; College Assistance Services Inc. of Sunrise, Fla.; and Student Assistance Services Inc. of Fort Lauderdale, Fla.

"It's unbelievable that the federal government could come in here and do this. They've frozen all the assets and basically closed down the business," said James Lewis, an attorney for two defendants in the case involving Student Assistance Services.

He said the company complied with the Florida state attorney general's request to change wording on postcards the company sent to prospective clients. Clients paid a \$179 fee, but it was refunded if the customer was not satisfied, he said.

"The allegations that the FTC is making are not true," Lewis said. "My clients can't even go to a restaurant because the government has frozen all their assets."

Alan Jay Braverman, an attorney for College Assistance Services, denied FTC's allegations against his client, saying the company refunded its customers' fees if they did not succeed in getting at least \$1,000 in aid.

Efforts to reach the other three companies were unsuccessful.

PEOPLE

NEW YORK (AP) — "Superman" actress Margot Kidder, found dazed and filthy in a Los Angeles back yard in April, says she is "much humbled" and feeling fine.

In her first interview since the episode, the 47-year-old Kidder told Barbara Walters on ABC's "20/20" that she has suffered for years from manic depression.

"It wasn't my mood swings that alarmed me as much as the altered states that I would go into," Kidder said in the interview, which airs today. "I likened them to LSD trips without the LSD."

Kidder, who played Lois Lane opposite "Superman" Christopher Reeve, also said she tried to kill herself, the first time at 14. "The first time I took pills, the second time I slit my wrist," she said.

The actress had been relegated to B-movie parts and hit bottom last spring when she was found disoriented and paranoid. She was taken to a psychiatric ward.

DETROIT (AP) — He's a little bit rock 'n roll and a little bit ... hurt.

A throat injury will force 38-year-old Donny Osmond to miss the first three weeks of the musical "Joseph and the Amazing Technicolor Dreamcoat."

Osmond, who has the title role in the Andrew Lloyd Webber production, injured his vocal cords three weeks

ago while performing in Boston. He aggravated the injury Tuesday doing voice exercises.

LUBBOCK, Texas (AP) — You, too, can stand shoulder to shoulder with the Duke.

Pilar Wayne, John Wayne's widow, will paint anyone into oil scenes of the movie star for a fee. She displayed her work Thursday as the National Cowboy Symposium honored her late husband with a Lifetime Achievement Award.

Mrs. Wayne has immortalized the actor in scores of oil paintings since his 1979 death. An original portrait of Wayne costs about \$250,000.

"Last spring was my fifth year to show my exhibit in Paris," Mrs. Wayne said. "They really love him over there. Everyone loves the Duke."

State Press Newspaper Delivery Person needed **TODAY!**

THIS IS WHAT YOU'LL DO:

- Use the State Press truck (has A/C and a radio!)
- Pick up the papers at the printers in Phoenix at 5 am, Monday - Friday
- Have papers delivered on campus by 7:30 am each day.
- Keep truck fueled and maintained.

YOU MUST BE:

- dependable
- motivated
- responsible
- a morning person
- able to lift heavy bundles

YOU'LL EARN:

- \$125 a week

If this sounds like a job you can handle, apply today and begin delivery on Monday morning.

Call Jackie Eldridge at 965-6555 **NOW** or stop by Room 47 in Matthews Center today. Previous delivery experience helpful.

ARIZONA STATE UNIVERSITY
STATE PRESS
ASU's morning daily newspaper

The Most Fun You Can Have On Two Wheels!



INTRODUCING THE
1 YEAR WARRANTY! **ELECTRIC BICYCLE**

- A great way to get around campus!
- **NO** insurance needed
- Easy recharge — 5¢ recharge cost
- **NO** parking permit needed!!

You can't get a used car for **\$1,399**

Just turn on the motor and let the **EV Warrior** do the work for you.

Exclusively At

Kachina Electric Bicycle Co.

1200 N. Scottsdale Rd.

945-1200

Call us for more information or stop in for a test drive.

Be the first to own the first generation of electric vehicles.

Give your parents a gift they will really appreciate

Give them a subscription to the *State Press*

Let your parents read the up-to-date news about what's happening on campus ... they'll appreciate such a thoughtful gift.



Cut out the coupon below and send in your *State Press* subscription

DO IT NOW AND SAVE!

IT'S *YOUR* NEWSPAPER

STATE PRESS
ASU's morning daily newspaper
ASU'S Morning Daily Newspaper
Serving ASU since 1890

Fill out this form and mail it with payment to:
State Press Subscriptions, Box 871502, Tempe, AZ 85287-

SUBSCRIPTION

- FALL SEMESTER only \$39 (71 issues)
- SPRING SEMESTER only \$39 (70 issues)
- FALL, SPRING & SUMMER \$74 (151 issues)

For first class mail, add \$35 per semester to above prices.

YOUR BEST BET IS FALL, SPRING AND SUMMER ONLY \$74

PARENT NAME _____
 Address _____
 City _____ State _____ Zip _____
 Phone (____) _____

CHECK ENCLOSED
 Charge my Visa MasterCard
 American Express
 Card Number _____
 Expiration Date _____
 Signature _____

NEED MORE INFO? CALL OUR SUBSCRIPTION DEPT. AT (602) 965-7572

Party's stance reveals tolerance of women

By DANE D'ANTUONO
STATE PRESS

A Republican is joining the Democratic Women's outreach effort in Arizona.

Berry Sweet, political director for Arizona Right-to-Choose, was named to head the women's outreach for the Arizona Democratic Coordinated Campaign in August. The program is geared specifically towards women voters.

The issue for Arizona women is which presidential candidate and which political party demonstrates trust and respect for women, Sweet said.

The abortion battle fought at the Republican Party platform hearings in San Diego during August led her to make the decision to work for the Democrats and the re-election of President Bill Clinton.

During the meetings the "tolerance" plank in the GOP's platform was rejected.

"I don't want to be tolerated for my views," Sweet said.

"I want to be respected."

Sweet said she intends to change her party registration. She has been a registered Republican since the early 1980s.

"It is only one issue," Sweet said. "If a candidate believes that a women cannot be trusted to make this personal decision on her own and the government has to step in and tell her what to do, then what does that say about the candidate?"

According to Sweet, the Republican Party's official stand is that abortion is wrong and should be illegal. They advocate a constitutional amendment to ban abortion.

Seth Ettwein, secretary for the College Republicans — an ASU campus organization that supports conservative viewpoints — said he can't make a comment about what the Republican Party's official stand is but he can say it is pro-life.

"The abortion issue should not be a political one," Ettwein said. "It is an important issue but it shouldn't be as

blown out of proportion as it is, other problems like crime, economy and racial tensions should be looked at first."

Sweet said, "The reality is that I'm finding more and more about where the administrations stand on family and economic issues ... there is much more upon which to base one's vote. President Clinton has elevated the concerns of women and their families to the top of the national agenda."

Gloria Furman, Arizona Coordinator for the Democratic National Committee's Women's Outreach, said she plans to work with Sweet to ensure that all Arizona women understand the choices ahead of them.

"She, like many Republican women, understand that we are in danger of losing some of the rights we've gained over the last 25 years," Furman said.

Sweet added, "I raised two children and stayed home with them. I appreciate the wife and mother's role in the family. However, I don't feel it's the government's role to tell me what I must do and what I am capable of doing."

Planning to streak the MU?
Call the STATE PRESS photographers at 965-6826.
Remember to plan ahead!

ARIZONA STATE UNIVERSITY
STATE PRESS

No cover charge.

FREE
Admission

GMAT PRACTICE TEST

SATURDAY, SEPTEMBER 7, 2:00 TO 6:30PM

967-1480

THE PRINCETON REVIEW

The Princeton Review is not affiliated with Princeton University or GMAC.

Call for a
Reservation!

ATTENTION ASU STUDENTS

"Ignite The Flame"

ATTEND THE 3RD ANNUAL LEADERSHIP BLUEPRINT CONFERENCE

- Learn valuable leadership skills
- Learn how to get involved at ASU
- Meet new people with similar interests
- Hear renowned speaker, Dr. Evan Culp
- Attend ASU's largest leadership conference

SATURDAY, SEPTEMBER 21
9am - Memorial Union

REGISTER NOW!

SPOTS ARE FILLING UP FAST!
DEADLINE TO REGISTER IS SEPT. 13
FOR MORE INFO, CALL TOM STUDDERT @ 965-5809

CONFERENCE REGISTRATION

Name: _____

Address: _____

Phone: _____

ASU ID: _____

Class Standing: (please circle)

FR SO JR SR GRAD

Organization(s) affiliated with: _____

Conference Fees:

- ~Early Bird (deadline, Sept. 13): \$10
- ~Regular Registration: \$12
- ~Registered Student Organizations with 10+ members: \$8 each

Method of Payment:

Cash: _____ Check: _____

REGISTER TODAY

PLEASE RETURN THIS COMPLETED
REGISTRATION FORM TO THE REACH DESK
ON THE THIRD FLOOR OF THE M.U.

FOR MORE INFORMATION, PLEASE CALL 965-2255

REGISTRATION DEADLINE IS 9-13-96

Kingdoms



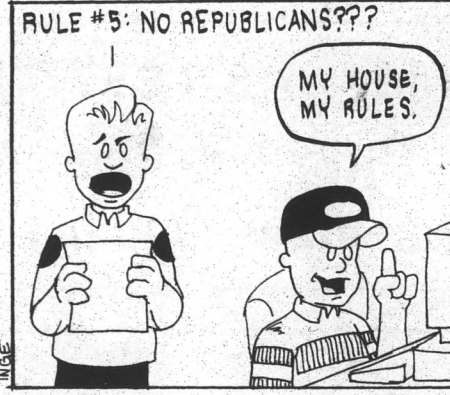
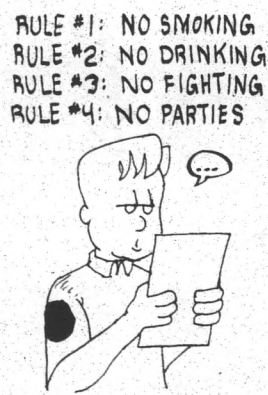
by Carrie Behrens

off the mark

by Mark Parisi



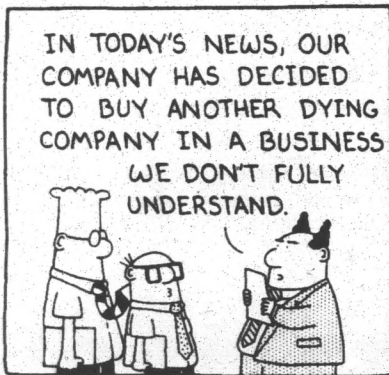
Trials and Tribulations



by Jonathan Inge

Dilbert

by Scott Adams



TWO DOWN, 15 TO GO!
 Hope you enjoyed Week Two at ASU!

State Press Online
<http://news.vpsa.asu.edu>

MAMA'S PIZZERIA
 Home of the "Killer" Calzone

894-MAMA

**FREE DAYTIME
 CAMPUS DELIVERY**

106 E. University Dr.
 1 block East of Mill Ave.
 on University



**FRIDAY NIGHT
 SPECIAL
 5-7PM**

**HALF
 PRICED
 PIZZA**

- Any In-House Pizza
- Any Size
- Any Toppings

"Mama Knows Best"

Art & Photography Majors

Color artwork and black & white photography needed for publication in *Hayden's Ferry Review*, ASU's national award-winning literary magazine. All levels of expertise are encouraged to apply. If interested, please deliver 5-20 slides, SASE, resume, and any other pertinent materials to the *HFR* office in the basement of Matthews Center, or mail to:

Tiffany Owens, Art Editor
Hayden's Ferry Review
 Box 871502
 Arizona State University
 Tempe, AZ 85287-1502

Deadline for submissions is September 30, 1996.
 For more information, call 965-1243.

STATE
 PRESS

BEST
 IF
 USED
 BY

09-06-96

Soccer hits road for start of 'real' season

BY RANDY JONES
STATE PRESS

As far as Coach Terri Patraw is concerned, today's trip to Los Angeles for her team's first two regular season games marks the "real" beginning of ASU's first season of women's soccer.

The team takes on the Cal State-Northridge Matadors (1-0) at 2 p.m. today and the Loyola Marymount Lions (0-2) at 4 p.m. on Sunday. Both games will be played at LMU.

After losing an exhibition to Division II Grand Canyon on Monday, Patraw wants to wipe that memory out of her and the team's mind.

"(Losing) was my worst nightmare come true," Patraw said, referring to what she told the team after the loss. "I think the team is excited to get over the last game. That just left a bad taste in all our mouths."

Freshman defender Meghan Mullin said Patraw made it clear she expects better results.

"She was not happy (with the performance)," Mullin said. "She told us that we're a better team than that. We didn't play that well. We promised that we would get them (Grand Canyon) back later in the season."

The two games are also a chance for the Sun Devils to start making their mark for this inaugural season.

"My first question to the kids, even before the exhibition game was, 'Are you ready to make history?'" Patraw said. "Everything we do is going to make history. Everything is going to set records for the time being at least."

But before making history, the team must improve, especially on defense, Patraw said. And the team spent much of the last two days on it.

"We worked a lot on closing down space, we lost our mark a lot (Monday)," Mullin said. "For me it was lack of experience. That's not speed (getting beat), it's just being smart."

Patraw has seen some improvement.

"Practice this week has been good," she said. "We've had two of the best practices (so far) this week. We've tried to improve our organizational defending, team defending and attacking attitude."

That attitude is something Patraw feels was lacking in the exhibition.

"I think we definitely have to be more aggressive," she said. "We've talked about taking responsibility and being a



PATRAW



The ASU soccer team, shown here in its loss to Grand Canyon, heads to California for two games this weekend. Following Monday's exhibition loss to the Antelopes, the Sun Devils are anxious to redeem themselves.

go-to player. Saying 'It's going to be me.' If we get four or five people saying that, it would be a good thing."

The Matadors are coming off an impressive 6-1 victory over Cal State-Los Angeles. The number of goals and their reeling off 28 shots doesn't faze the Sun Devils.

"We haven't heard anything about them," freshman forward Sarah Blaska said. "To me every team is just a team. If they beat someone else, we've still got to beat them. It's not going to matter how bad they beat the other team."

The Lions enter the game winless, having lost to San Diego State and Cal State-Fullerton. But, don't expect the Sun Devils to take them lightly, as they have already learned not to look past opponents.

"Don't take anyone lightly," Patraw said with a laugh, referring to the exhibition. "I don't think you really would take anyone lightly in your first year. But I think we did

overlook Grand Canyon a little bit."

Injuries should not be a problem for the Sun Devils. Midfielder Kim Wagner has a contusion on her knee, but will play and goalie Amy Moxley remains sidelined with a sprained knee.

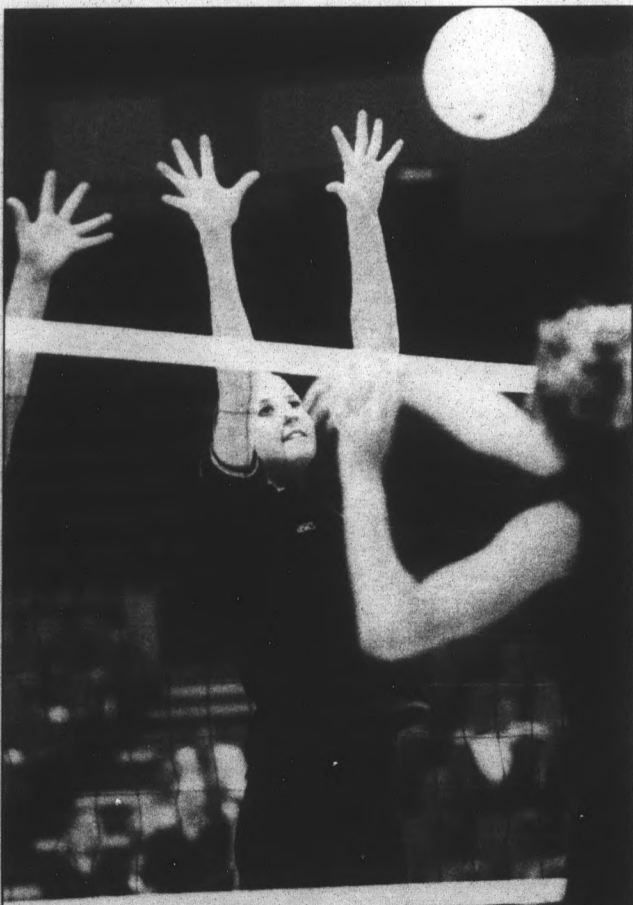
Moxley's absence has not been a problem, as freshman Erin Reinke has stepped right in, said Patraw.

"Erin is doing very well," she said. "She used her athleticism to come off the line and make her job easier, making easier saves. I think the team has full confidence in her now after the game."

On the two games, Mullin believes that ASU will do fine.

"I think we've improved," she said. "We can definitely pull it off. I think we'll be all right. We'll definitely do better than last game."

Sun Devil volleyball team closes out preseason in D.C.



Freshman middleblocker Laura Hibsman attempts to block a shot during last weekend's Phoenix Hilton/Sun Devil Challenge. Hibsman and the rest of the Sun Devils begin play in Washington, D.C. today in their final preseason tournament.

BY DOUG COOK
STATE PRESS

ASU volleyball head coach Patti Snyder-Park was ecstatic after her young, untried team won each of its three matches in the Phoenix Hilton/Sun Devil Challenge last weekend at the University Activity Center.

But, the Sun Devils (3-0) will face stiffer competition today in Washington, D.C., site of the Capital Premiere Tournament, where ASU will see its final preseason action before the Pac-10 season begins.

The Sun Devils are led by junior outside hitter Terri Cox, junior middle blocker Kirstin Mattson and senior setter Tracy Heflin.

Cox is averaging 6.8 kills and 5 digs per game after the Sun Devil Challenge. Mattson is leading the team in hitting percentage with a .380, while averaging 3.9 kills and 2.6 digs per game. And Heflin, who is fifth all-time in career assists at ASU with 1,263, recorded a career-high 25 digs in ASU's win over NAU last Saturday.

Of the three matches the Sun Devils play in D.C., the one with Arkansas at 1 p.m. today will be ASU's most difficult.

"It is going to be as tough a team as we've seen," Snyder-Park said of the Lady Razorbacks. "They're definitely a top-20 team."

Arkansas (4-0), which opened up preseason play last weekend at the Pizza Inn Classic, goes into this weekend's tournament with a .333 hitting percentage and an average of 13.38 kills per game.

The Lady Razorbacks are led by senior Denise Baez and juniors Tina Rico and Krystal Osborne, each selected to the Classic's all-tournament team. This will be the

first meeting between ASU and Arkansas.

Snyder-Park had nothing but praise for the Lady Razorbacks' abilities on the court.

"They're big at the net, have good attackers and possess good ball control skills," she said. "They will be the stiffest competition we see prior to the Pac-10 season."

ASU's other opponents, Stephen F. Austin and George Washington, should not be as competitive. The Sun Devils will face the Lady Jacks first at 3:30 p.m. Saturday followed by the Patriots later that evening at 7:30.

Stephen F. Austin (2-2) won two of its first four matches last week at the Holiday Inn Classic, hosted by Southern Mississippi. Krisna Jacquett led the team with a combined 76 kills and 76 digs. The Lady Jacks are hitting at a .209 clip with an 11.8 kills per game average. This too will be an inaugural match for the Sun Devils.

George Washington has yet to compete this season. The team posted an impressive 30-6 overall record last year, advancing to the first round of the NCAA tournament where it lost to Texas. The Patriots were also impressive in Atlantic 10 competition, notching an 18-2 record. ASU is 2-0 all-time against GW.

Snyder-Park said she expects her team to rise to the forefront this weekend.

"We should beat all three teams, but I think the match against Arkansas will tell us what we can do this year," she said.

ASU will play in an alumnae game next Friday at the University Activity Center before beginning the Pac-10 season at home against California on Sept. 20. Both games will begin at 7 p.m.

ADDICTED TO SPEED

By TONY BERASTEGUI
SPECIAL TO THE STATE PRESS

Besides majoring in journalism, ASU freshman Nicole Schwab also manages to make time for a fast hobby. Schwab, 19, is a professional corvette race car driver and is a member of the Sports Car Club of America, the National Council of Corvette Clubs and the Desert Corvette Association.

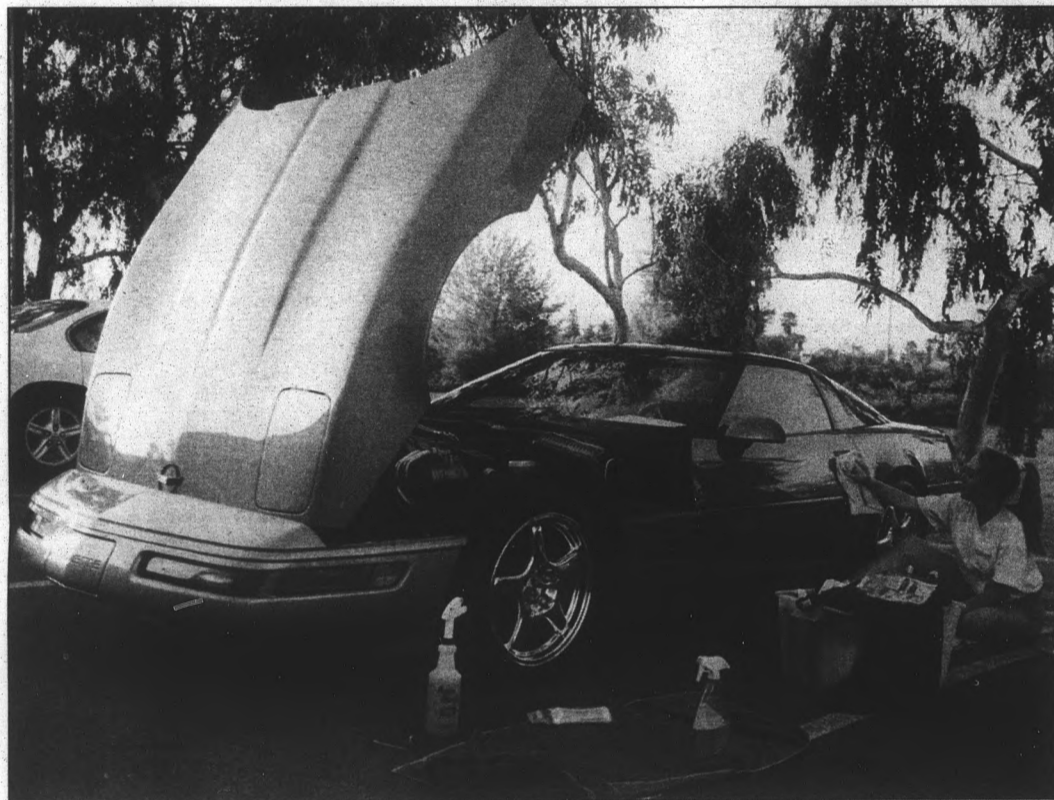
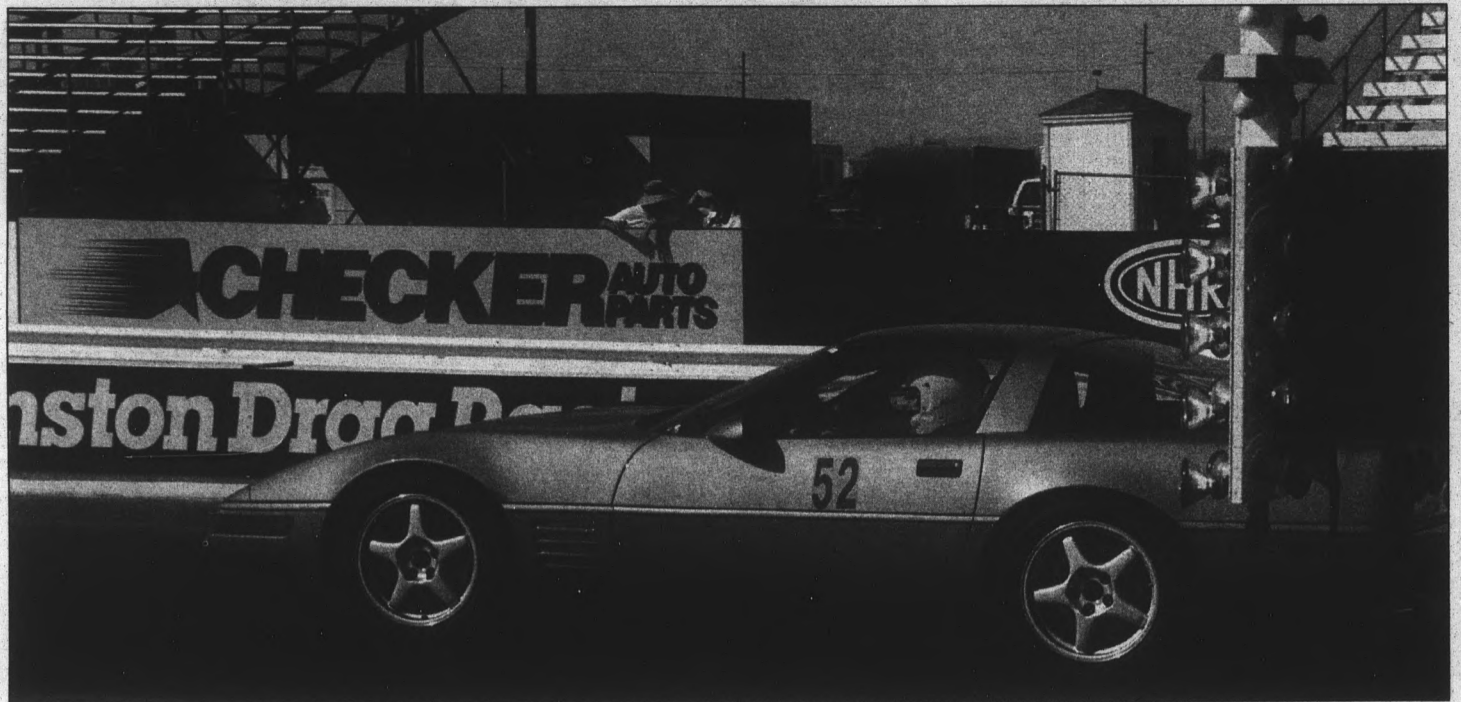
"I've always been around race cars. It's all I know," Schwab said.

At the age of 16, Schwab graduated from the Bob Bondurant School of High Performance Driving and has been racing corvettes ever since.

"I would have been racing sooner, but my parents had me wait until my 16th birthday," Schwab said.

Last weekend Schwab participated in the Millard Fillmore Corvette Classic 20 at Firebird International raceway and won the overall competition, making her the youngest to ever win in this category.

Corvette racing is a big part of her life, but Schwab also puts time into a full class schedule and pursues prospects in acting and modeling.



Above — Drag racing is one of the categories the overall competitor participates in at the Millard Fillmore Corvette Classic 20. Nicole steps on the gas at the green light and speeds down the 1/4 mile track.

Left — At the Millard Fillmore Corvette Classic 20, Nicole details and prepares her corvette for the Concours D' Elegance competition. Her vehicle will be judged chiefly on excellence of appearance and turnout. Nicole won 2nd place in this contest.

Right — Winning comes easy for Nicole, as she proudly displays some of her most recent trophies. Nicole won the very large trophy last weekend, taking 1st place as an overall competitor at the Millard Fillmore Corvette Classic 20.



Photos by Tony Berastegui/Special to the State Press

The BLUE NOTE

\$2 JACK DANIELS ON FRI.

ASU'S ONLY ALL-WEEK BLUES CLUB
DON'T MISS OUR INCREDIBLE
HAPPY HOUR — 7 DAYS/WEEK
10 AM - 7 PM
\$1.50 LONGNECKS/\$1.50 WELL
M-F COMPLIMENTARY PIZZA DURING HAPPY HOUR!
OR
STOP IN FOR LUNCH M-F 10-6
REGISTER SEPT 8-21 FOR MAZATZAL CASINO HOTEL PACKAGE
REGISTER TO WIN JETHRO TULL TICKETS TIL SEPT 7

FRI. & SAT.
HOT ICE BLUES BAND

SUN.
COLD SHOT & THE HURRICANE HORNS

MON.
T-BONE BLUES BAND

TUES.
THE CARVIN JONES BAND
LINGERIE SHOW 4-6

WED.
SISTAH BLUE

THURS.
JOHNNY TANNER & THE TONE MASTERS
LINGERIE SHOW 4-6

8708 E McDOWELL RD. • SCOTTSDALE • AZ • 946-6227




GILGINS SAND BAR & SCRIMP HUT

TONITE THURSDAY

SAM ADAM NITE SAM'S \$9.99 SCRIMP COCKTAIL VEGAS
FRIDAY: ALL U CAN EAT FISH N' CHIPS \$5.75
SPECIALS EVERY 15 MINS. 4 TIL 8

SAT: JAGER NITE 2 1/2 BUCK SHOTS
SCRIMP DAY

SUN: 2 1/2 SOUTH PAW - RED DOG
MILLER RED - SHIVER BOCK PINT

ALL U CAN EAT CAT FISH
MON: DOUBLE DOLLAR DOUBLE ANY WELLS \$5.75
OYSTER SHOOTERS EAT LOTS

TUE: IMPORTED 2.75
STEAMERS ALL DAY ALL NITE

WED - FAT WED.
BRAIN FREEZES

LCRAWBADS

4215 North WINFIELD SCOTT IN SCOTTSDALE, AZ
EAST OF BLUEBIRD ROAD & BETWEEN 17th & 18th AVENUE
CALL 874-2284

5TH AVE. X 10AVE.

OVER 100 BEERS
BEST SCRIMP '96
JUMP TIKI
CAMEL BACK

CLASSIFIEDS

STATE PRESS

Friday, September 6, 1996

Page 21

Notice to our readers: Before responding to any advertisement requesting money be sent or invested, you may wish to investigate the company and offer. The *State Press* cannot assume responsibility for the validity of the offers advertised in our classified section. For more information and assistance regarding the investigation of an advertisement, please contact the Better Business Bureau at 264-1721.

World Trivia...
The top all-time American movie was *E.T.* with a gross of \$399.8 million.

ANNOUNCEMENTS

SKYDIVE DOA ASU's only skydiving club will be holding a seminar. Feel the ultimate rush at 130 mph! MU Pima room Thurs. 5th 9:30-11. Friday, 6th 1-2:30.

WEIGHT WATCHERS® is coming to ASU Sept. 24! Attend a free meeting 9/10/96 at noon in the MU YUMA 211 (2nd fl) to learn about this 13-wk session. Tel. 248-0303

APARTMENTS

1214 E. ORANGE, Marianna Apts. Studios. \$50 off move in w/ad. 966-8597.

2 BEDROOM, 2 ba, pool, close to ASU. \$650. Apartment Renters 831-5900

Quiet Tempe Neighborhood
Great for grad students & Faculty

- Studios \$395
- 1 Bdrm \$495
- 2 Bdrm \$568

Hayden Place Apartments
625 W. First St.
968-5444
Assistive Pets Only

Devil DEALS
ASU's Coupon Book
Made for ASU students, by ASU students to save you money all over town!

APARTMENTS

2 BEDROOM, 2 ba, utilities included, close to ASU, \$690 mo. Apartment Renters 831-5900

1 BD/1 BA, 2 blocks from campus, pool, spa, laundry, covered parking, available now, no pets. 1700 S. College Ave. 967-7212

GUEST HOUSE type apartment for 1.1 mile from ASU. \$375 includes utilities. Irene 840-0739.

ONE BEDROOM, pool, close to ASU. \$495 mo., Apartment Renters 831-5900

UTIL. INCLUDED, 1 bedroom, 3 miles from ASU. \$525 mo. Apartment Renters 831-5900

UTILITIES PAID, 1-2BDR, pool, covered parking, laundry, Mill & Broadway, \$475/\$575. 517-1318

HOMES FOR RENT

4 BD, 2BA with pool walk to ASU \$1100/mo. Call 894-0288.

FOR RENT, Walking distance to ASU, 3bd/1+3/4ba, carport, 1 car garage, sm private yard. \$800 w/rebate. 331-8176.

WALK TO ASU! 1 bd 1 ba condo with w/d. \$410/mo. 4 bd 3 ba, pool \$1075/mo. 894-0288

TOWNHOMES/ CONDOS FOR RENT

2BD, 2BA furnished near University/Evergreen \$800/month includes utilities ava. until mid December. Call 838-6621.

APARTMENTS

◆ Private balcony/patio
◆ Free hot water
◆ Free cable TV-37 stations
◆ Covered parking

QUADRANGLE'S VILLAGE APARTMENTS
1255 E. University Drive
Tempe, Arizona 85281
968-8118

The Sun Deal
Spark Yearbook
Order yours today!
\$44.94

TOWNHOMES/ CONDOS FOR RENT

FURN. CONDO

2bd 2ba 1100 sq ft. w/d, full kitchen, loc. Commons on Lemon, walk to ASU. \$800/mo 838-6621

PAPAGO PARK spacious 1 bd condo for rent, 1 mi. from ASU \$600/mo Todd 829-9346.

PAPAGO PARK- 2bd, 2 ba, w/d, 2 pools, 2 jacuzzis. Avail. immed., \$750/mo. 829-0902

RENTAL SHARING

A ROOMIE needed-2bd/2ba condo w/ w/d 2 mi. from ASU, 2 pools, jacuzzi, racquetball, \$350 + 1/2 util. Trey 968-4300.

FM RMMTE needed to share frnd luxury apt. immediately. Call Lauren 777-2419.

RMMTE NEEDED Ahwatukee house w/pool. Must like young dog. \$425/mo incl everything but telephone. 753-0194.

RMMTE WNTD to share 3 b-rm in Questa Vida, 2 miles from campus, fall only. Call 829-7021

ROOMMATE TO share my 2bd 2ba Hayden Sq. condo \$445/mo. 894-6464. Must like dogs.

RMTE WANTED to share 2bd 1 ba apt. M or F. n/s inside, serious student. \$290/mth + 1/2 util. Bike to ASU. Call Stephen @ 829-6344

WANTED FEMALE assistant to work with female. Free room heat, air & pool 2 1/2 mi. from ASU. Exp w/handicapped pref. Able to learn hoyer lift. 1 hr. daily 7 dys/wk. Will work around your schedule. Some light cleaning & laundry non-smoker \$5/wk. Call 968-7314.

ROOMS FOR RENT

ASIAN LADY with room for rent, private entrance and bath, Call 246-7109

COMFORTABLE HOME in South Tempe, furnished, kitchen privileges, cable, \$325 incl basic utils & many extras. 838-6224.

MOTORCYCLES

AFFORDABLE TRANSPORTATION

- Motorcycles
- Scooters/Mopeds
- New & Used
- Financing Available
- Parts/Accessories
- Service-Free Pick-up Available

LOGAN'S VALLEY MOTORCYCLES
1440 W. Main Street
On Main St. (Apache) between
Dobson & Alma School
962-1700

ROOMS FOR RENT

LARGE PRIVATE bd & ba, n/s, n/d. Call Ron 835-0060 & Sandra 969-9244

ROOM FOR rent for fem n/s. 5 min. from ASU, quiet home. \$350/mth. Call 897-9701.

ROOM FOR rent. Nice house with pool & spa. Close to campus. Female pref. \$275 1/3 util Deposit 470-8467

ROOM IN 3 bdrm home 235 + util. M share ba w/d garage firepl. Close to ASU. 894-9623

TWO ROOMS for rent; by Fiesta Mall. \$350/\$375 + dep., utilities and cable incld. Prvt. spa, wshr/dryer. N/S preferred. Pager # 669-0216, put * 1 and then your number.

HOMES FOR SALE

HUD HOMES many selections in Tempe & metro Phx. Hurry! TJ Carty Realty Exec. 8310322.

TERRIFIC 4 BDRM, 2 full bath and two car garage home just 25 minutes from ASU. Excellent condition with new carpet and fresh paint. Priced below comps for a quick sale-only \$112,900. Call Scott at 267-0500

TOWNHOMES/ CONDOS FOR SALE

2BR/2BA CONDO near ASU, huge bdrms, w/d, pools, tennis. \$50k. 844-7862.

PAPAGO PARK villi 2Br/1Ba new pnt&carpt \$68500 1Br/1Ba new pnt incl. all app. TJ Carty Rlty Ex. 8310322

QUESTA VIDA condo 2 bd 2 ba \$75,000 upscale. Goodheart Realty. Leah 264-7750

REAL ESTATE

UNDEVELOPED LAND in Northern AZ for sale. 2 1/2 acres just north of Ash Fork in Kaibab Estates. Call 894-2150 for more info.

GARAGE SALES

TEMPE - RURAL/SOUTHERN Fri/Sat 7-12. Furniture, w/d, dressers, lawn mower, clothing, lots of misc. household items. 725 E. Fairmont. Follow signs.

MISCELLANEOUS FOR SALE

BIKE, BEER signs, books, pictures, wood carvings, miscellaneous 967-1106

AUTOMOBILES

CASH TODAY!!!
I BUY ALL Used Cars/Trucks/Jewelry/Misc. Items.
481-9053

MISCELLANEOUS FOR SALE

DRAFTING EQUIPMENT Warehouse New Chairs! Low prices on new & used drafting equipment and supplies. Student discounts and specials. With a \$20 purchase receive a FREE twin mech. pencil pack! 1525 E. Apache (near McClintock) 858-0024.

DRAFTING/DRAWING STUDIO set. 48" x 36" drawing table, stool, 2 tube, elbow lamp, t-square, complete set of ellipses compass & much more. \$375 Call Heather 829-8079

GRE VERBAL Software for Windows. \$24.95 VS/MC/COD. <http://net-mode.com/curve> 1-888-lrnaide. (576-2433) Toll free.

REDWOOD LOFT for sale by former chi-o. Excellent condition \$110. For info. Roger 838-0477 838-0935

SCHWINN 10 spd bike \$95, lrg new Toshiba microwave \$125, 2 white wicker chairs \$7.50 ea, VW van \$1800 967-1287

FURNITURE

2ND TIME Around - Check out our fine quality used furniture. Buy, sell & trade. Scottsdale, 946-9784 or Mesa, 827-8672.

BDRM FURN:ALMOND mica. Perfect for co-ed. Must sell. \$225 for 4 pieces. eves: 502-0984

BED SETS in fact. wrappers w/ free frame. Twin \$69.95, full \$79.95, queen \$99.95. Chests starting at \$43.95, daybeds w/ mat \$139.95. Full size futon w/ pad \$159.95. Can deliver 256-7675

BEDS: TWIN \$59, full \$69, qn \$79, kg \$149. Sofa set \$299 daybd \$135, chest \$50 962-0749

KING SIZE waterbed 6 drawer pedestal mirror, bookshelf headboard, padded rails, semi-motionless mattress, filtering kit good cond. \$75 963-8954.

LIQUIDATORS - Over 200 offices of furniture to sell. Desks, chairs, files, bookcases, computer tables & more. AZ Office Liquidators, 3920 E. Broadway Rd., Phx. 437-2224

MATTRESSES - queen set \$125, full set \$110. In plastic, free delivery. 649-2625

SECTIONAL COUCH with bed and two recliners. Cost \$1399 sacrifice for \$800 Less than 1.5 yrs old. Call Nick @ 804-0476

USED BED & Furniture sale. Student discounts. Kings, Queens, Fulls, Singles; very inexpensive. Call 788-8633.

WASHER, DRYER, Weber propane grill, queen bed, TV, VCR lamps and antique desk. Call 956-7989.

COMPUTERS

486-SX, 4MG RAM, 162mg hd, 14" monitor, Dos 6.2, Win 3.1, WP 6.0. \$400. 494-4817.

COMPUTER- MAC classic, full screen monitor, keyboard, cables. \$225. Call eves- 502-0984

HELP WANTED- GENERAL

THE ARIZONA REPUBLICAN PARTY NEEDS YOU!
PART-TIME HRS.
\$6+/HR.
JAMES
957-7770

COMPUTERS

MAC PB-165 6/80 fax mdm, lthr case, ext kybrd \$650, also lsr wrtr \$450, 2mg, paper tray. 952-9669.

MAC POWERBOOK 520 4/160 \$800 or obo 483-1610

MACINTOSH PLUS computer w/expandable hardware and printer. Exclt cond. Great price \$275. Kurt 946-8421.

MACINTOSH POWERBOOK 145, monochrome display, 6 meg \$650 303-9744 after 6pm.

MACPOWERBOOK 145. Upgraded memory hardrive. Lots of original software. Case and battery charger. \$650 Call 956-4331.

STUDENTS, MIS. purchasers. Custom made pc/bsd/unix, and hardware. Low prices. Visit: <http://www.asacomputers.com>

TICKETS

ASU VS. Nebraska wanted, lower level adult tickets, sideline seats only. Top \$ paid. 253-3800.

HOOTIE TICKETS \$60 & up. ASU vs. Nebraska \$45 & up. Call Pat at 990-2592 or 408-8041

HOOTIE TICKETS great seats, great price! Call 590-8299. Will sell cheap.

RAGE AGAINST the Machine the Tragically Hip, & all concerts at desert Sky & America West Arena. 254-3300

AUTOMOBILES

1983 HONDA ACCORD 116K miles, cold ac, power steering, very reliable, automatic, grey \$1500 Call Thomas 970-7643

1986 JEEP CJ7 6 cyl auto-trans. 72K mi. xlnt. cond. 730-5148. evenings & weekends.

1990 CHEVY Lumina 4dr, great shape, automatic, v-6, a/c, call 4 details. 963-6663 \$5800.

1990 NISSAN SENTRA 5spd, a/c, 99k mls, new clutch, runs perfect. \$2,850 obo. 756-3127.

1990 NISSAN Sentra well main. 2dr. gray/gray int., tint, at, ac, ps, removable am/fm cass. 79,000 miles, tags til 6/97 \$3,000 obo Ask for Sam 914-4179.

1990 TOYOTA Corolla 4dr, at, a/c, looks & runs great, light blue, \$3500 obo. 756-3127.

86 SUBARU 2 dr hatchback, 4 spd, am/fm stereo \$1200 obo Runs great. 303-9549

87 CABRIOLET CONV. white, 5sp, tint, pull-out am/fm cd, alarm, low miles, runs good. \$4200 obo. 494-2846.

89 VOLKSWAGEN Cabriolet red w/black top, new brakes, clutch, tires, & battery. Good condition. Jennifer 967-7698.

SEIZED CARS from \$175. Porsches, Cadillacs, Chevy's, BMW's, Corvettes. Also Jeeps, 4WD's. Your area. Toll free 1-800-898-9778 Ext. A-1676 for current listings.

MOTORCYCLES

1984 KAWASAKI GP2550 \$1500 obo, classic; runs xlnt. 265-2200w, 756-0734h, Chris

91 KAW NINJA 500 black, exclnt. cond. low miles \$2595 obo 752-2639

93 HONDA NIGHTHAWK \$800 obo. 250cc economical & fun, runs excellent, recent maintenance. 731-9897.

HELP WANTED- GENERAL

\$8/HR + COMM.
Appointment setter, travel industry, friendly atm., no sales. Eves., Tempe. Call now! 231-9500.

BICYCLES

19" MONGOOSE Ibob Pro mountain bike. Good cond. Some extras. \$175. 807-4791

TRAVEL

DISCOUNT TRAVEL: Cheap in your name. I specialize in quick departures. Most places worldwide. I also buy transferable coupons/awards. 968-7283

HELP WANTED- GENERAL

FUN PEOPLE
Wanted: Outgoing, energetic appointment setters for Universal Portraits. \$6-10/hr. Call Carrie at 777-1054.

A COOL JOB!

Set fun free appts., for \$7/hr. + ca\$h. Friendly office, near Fiesta Mall in Mesa. 2-9 Mon-Thur., 11-5 Sat. CALL 649-9580 ASAP.

ACME BAR & Grill \$\$\$\$ now hiring qualified wait staff. Apply in person, after 3 p.m. Mon-Fri. 4245 N. Craftsman Ct. Scottsdale. Must be 21.

ARIZONA COUNTRY Club is hiring pm p/t food servers. Great p/t job. No exp. necc. Apply at 5668 E. Orange Blossom Ln. Phx (56th St./Thomas) E.O.E.

ASU STUDENTS the time is now to apply for the ASU Telefund, we are still hiring students. We offer a part-time position where you only have to work 10 hrs. a week and you choose the shifts you want to work and if you want to work more you can. We contact ASU alumni to update information, inform them about advancements here and ask for financial support. Work with 40 other students and acquire substance for your resume not just trivial jobs that fill up a resume. Contact us at 965-6754 and see what we are all about.

ATTENDANT FOR male quadriplegic. 3 weekday mornings. 1 mile from ASU. 967-1223.

ATTENDANTS WTD for female in Quadrangle Apts. morning/aftrns. must be 21 or over w/good driving rec. no lifting req. hrs flex. Ellen 968-6284.

BABYSITTER. P/T 1-2 days wk. Transportation nec. 2 children: 5 & 2 yrs old. 860-8466.

BARRO'S PIZZA is looking for deliv. drivers. ft, pt. day and evening shifts. \$8-11/hr. Please call Brian at 820-9282.

BARRO'S PIZZA. Assist. manager/crew chief posit. avail. Delivery drivers earning potential \$8-12/hr. Call 897-1825.

BARTENDERS WANTED. Will train. Call Bogey's at 437-1246 ask for Carla.

BLUE JEAN position avail. Citrus tree grower in Mesa seeks ft sales/nursery help. Dependable, cust. oriented, ability to work alone w/little direction. Horticultural exp. pref. Computer exp. essential. \$7+/hr doe. 830-8000. Greenfield Citrus Nursery

BUSINESS/COMMUNICATION MAJORS, local marketing company seeking sales oriented individual to conduct promotions for local businesses. Flexible schedule. Earn \$12/hr+\$200 new hire bonus. Call 921-7755 for interview.

BUSY FRONT ofc seeks prof receipt. w/ 3 yrs exp: high vol clients, phones, sched appt. detail oriented. computers a +. hs dipl/GED req. Geri 947-6353

CAREGIVER FOR active quadriplegic. Healthy, smoke/drug free, positive attitude. Great school job. Will train. Tom 949-7241 lv. msg.

DELIVERY DRIVERS needed Day, night, late night shift. Earn up to \$10/hr., own car req. Call Jake's Pizza 894-8424

Find it FAST in the Classifieds

STATE DIGITAL PRESS

EXCELLENCE
Walter Cronkite School of Journalism and Telecommunication

Arizona State University

ASU NEWS NETWORK

HAYDEN'S FERRY REVIEW

XXX-RATED
1995-96 Sun Devil Spark

FEATURES

Have you been here yet?
Check out the ASU News Network at: <http://news.vpsa.asu.edu>

- State Press
- Daily stories
- Search the Today section
- Coverage for special features
- Classified pages uploaded daily
- Order Classifieds online
- Hayden's Ferry Review
- Sun Devil Spark yearbook
- Devil Deals
- Walter Cronkite School of Journalism & Telecommunication

Check it out!

HELP WANTED-GENERAL

DIRECTORY INFORMATION operator, 30 wpm, good area knowledge, all shifts, \$6.50/hr start, 225-9661. Metro One, 5025 E. Washington #110.

DO YOU have lots of energy & love working w/people? We are looking for you to twist balloons at restaurants & parties. We will train you. All you need is reliable transportation. Pt/flex hrs. Great money. Call 486-5879.

DRIVER FOR moving & storage company. ft/pt, good pay. Call Nick 838-2722.

EARN EXTRA \$\$\$ Students w/disabilities need personal care attendants. Flex. schedules Mon-Sun. Call today if dependable. Dec 965-1362 Leave message.

EXTRA INCOME
Local environmental co. seeks a few people to help with area expansion. Flex. hrs for students. People skills and professionalism a must. Call 840-5336

FAMOUS SAM'S is hiring dependable, hardworking servers/cooks. Call 491-0776

FRIENDLY PEOPLE. Young nation wide company looking for young motivated people. Great training and support. No exp. necess. Great \$\$\$ potential. Call 862-9937

FULL SERVE attendant part time, flexible hours. \$6/hr. Debbie 949-0051.

FUN JOB, great pay! Gym coach for daycare p/t, needs gymnastics exp, chalk/van a plus. Call Tumble Town at 821-4640

GOOD SALARY + comm. for outgoing, friendly, sales-minded people at Scotts, Fashion Square. Call John 494-4260

HELP WANTED: P/T, nights, wknds. Ice skate rink guards, skate attendants, snack bar personnel, cashiers. Apply in person, daily, 11am-5pm. Ocean-side Ice Arena, 1520 N. McClintock Dr., Tempe.

HELP WANTED-GENERAL

HOTEL NIGHT auditor/ front desk clerk (p/t). Needed now!! Two shifts at 11-7 and one 3-11. Min. of 24hrs/wk. Apply in person at the small town friendly Tempe Travelodge, 1005 E. Apache Tempe.

IF YOU are the woman who wanted to work 8-10 hrs./wk at the law offices of Richardson & Silverman, please contact Vicki at 968-7715

INSTRUCTIONAL. ASST. Mesa Jr. High Sp. Ed class (ED). 25hrs/wk. Call Cheryl at 831-7919.

INTERNSHIPS AVAILABLE Sun America Securities. Call Brian 368-5513

JR. OR Sr. real estate secretary. Must know PC's and some Mac, must type and be a good speller. Afternoons, 5 days/wk. Call 922-8159

KENNEL WORKER needed p/t. Must be neat, dependable. 7311 E. Thomas, Scottsdale 945-7692.

MAINTENANCE SUPERVISOR, maint. men, painters. \$8-12.50/hr. doe. Tim 894-0288

MECHANICAL TECHNICIAN ft or pt, good advancement, start \$6-8/hr. 15 min to ASU 956-8200

MERRILL LYNCH financial consultant assistant. Opportunity for F/T pos. Qualifications: individual who is highly motivated, very aggressive, self driven to make money. Please call Jason Smith 481-2721 or 947-7042.

MODELS/ACTORS. Int'l scouts want you for music videos and local print work. 941-6922.

NEEDED: YOUTH sports officials/ youth sports coaches. Officials \$10-12/ per game. Coaches \$10-12/hr. 644-3368 or 644-2767

Cashier
Full/part time
Am/Pm Shifts
Apply at
Johnny Rockets
Fashion Square Mall
423-1505

HELP WANTED-GENERAL

OCCASIONAL ON campus work for students. \$10 per hour picking up inserts that fall out of the State Press. We have 3 to 4 days per month where we need people to help us pick up the fallen inserts. If you have times available between 8am to 1pm any day of the week, please come to Matthews Center basement info desk and fill out an application. It's a great way to make some dough and get exercise without a huge time commitment. Do it today!

OFFICE HELP needed with data entry exp., ability to lift min. 100 lbs., 40 hrs./wk. from 6-3pm. Call Lorriea 968-1700 for interview.

OFFICIALS NEEDED for junior high and elementary after school sports prog. for Mesa Parks and Recreation. Contact Cori 644-4226 or Mike 644-2191 after 1pm.

PART TIME driver. Daytime hrs. M-F. Valley wide delivery. 894-0055.

PART-TIME RECEPTIONIST - Tempe firm looking for an outgoing person to answer 4 incoming lines. Please contact Kim Browning at 929-0282.

PERSONAL ASSISTANT for male wheelchair user in Tempe. p/t. \$6.55/hr, no exp nec. Heavy lifting required. 804-0300.

PM ROSES. - McC & Univ seeks on call del. person around campus. Stop by after 11am.

HELP WANTED-GENERAL

PREST-O-FIT MFG. Now hiring start at \$5.50/hr. Flexible hours. Please call Rick at 967-4224 M-F 9-6.

PT EVE. & wknd pos. avail. for drink servers & delivery rep. Must be 19yrs. Frozen Drinks Ultd. 944-4432.

PT/SET OWN hrs./commission only--get sponsorships from local business to donate our books to children--own transpo nes. TLC CompuServices. 730-8586 ext. 211.

RECEPTIONIST FOR hair salon in Phoenix, exp. preferred, flex. hours. 381-6565.

RECEPTIONIST/VET ASST., people skills a must. No exp. nec. p/t M-F 7:30am-noon. Contact Dr. John Clark @ 997-6313 fax 371-1936.

RESORT TOUR coordinators. Make reservations/coordinate tours for resorts. 25 positions, 9-1 or 5-9, \$7-12.50/hr guar. Training, start immed, people skills a must. Beth 491-4921.

SPORTS MINDED
Now hiring 6-8 individuals for immediate emp. \$8 guaranteed to start at 15-30 flexible hrs/wk. Flex. holiday hrs. avail. Call Jon for intv. between 3-5. 921-8282.

STUDENTS
Flexible hours to work around school schedule, local company seeks individual with sharp image, positive attitude & great smile. Not telemarketing. 840-0308

HELP WANTED-GENERAL

TELEPHONE OPERATORS. 12-29hrs/wk morns. & eves. Close to ASU. \$5.50/hr + raises. Efficient typing, spelling, cust. serv. skills a must. Familiarity of Metro Phx & Tucson a +. Bilingual helpful. 966-8798.

TRIANGLES BIKINI Shop hiring! Needs pt/time wknds. Retail experience preferred. Must have reliable transportation. 2013 N. Scottsdale Rd. 10 a.m.-10 p.m.

VIDEO STORE. Weekend evenings now available. \$5/hr. Corner of Scotts. & McKelps. 970-1744.

WORK IN exciting downtown Tempw as Downtown Ambassador. Must like to talk to people and be in good shape. Flexible schedules, mostly weekends, \$6/hr start. Call Ken at 921-2300

HELP WANTED-SALES

CUSTOMER SERVICE top pay, 4-8pm M-F Wknd shift 8-1 pm. Start immed. 736-0034

Find it **FAST** in the Classifieds

HELP WANTED-GENERAL

FRITO-LAY
Part-Time Warehouse
Position will work in warehouse with Frito-Lay product. Shifts are 11am-5pm and 5pm-10pm.
Please apply in person. 1001 S. Edwards (University and Priest) Tuesday through Friday 3pm-8pm.
NO PHONE CALLS PLEASE.
M/F/V/H/F-L IS OOE

Wanted:
Beginning HTML programmer with knowledge of WWW, UNIX, Java, CGI experience a + but not req'd - training provided. Flexible hours - will work around your school schedule. Prefer someone studying in a related field to fulfill a full or part-time position as an Internet Marketing Specialist. Sub mit resume to tina@idsweb.com, or fax to (602) 899-8923. or call Tina (602) 899-7654.

NEEDED:
Graduate student from Sept. '96 - May '97 to tutor in:
• high school Span. 1 & 2
• high school Alg. 1 & 2
• high school Chemistry (All 3 required)
\$8 to \$12 per hour Mon.-Thurs.
Must work at least 2 week-days from 1:30-8:30pm
Call 953-3070 ASAP \$654 - \$1,632/month Located in Scottsdale - reliable transportation a must. Wonderful, steady position for Master's or Doctoral student. Also, state certified Elementary teachers to apply for elementary positions.

HELP WANTED-SALES

DKNY
Donna Karan has P/T sales pos. Must have flexibility, excell. organizational skills & strong interpersonal skills. Please call or fax your resume 602-862-0057 Arizona Factory Shops on I-17, 17 mi. N. of Bell Rd.

DOLLARS AND fun, Brand new all natural health and cosmetic line launching in area. Looking for sales rep with management potential. Will train. 862-9401.

DOOR-TO-DOOR SURVEY taking for local plumbing co. 10 hrs. per wk. \$5/hr. + commission. Scott 968-4625 or eves. 839-1392

WANTED TELEMARKETER at PaineWeber, previous telemarketing exp. appreciated \$6.75/hr., 4 hrs. day or evening. Call Bart 957-5129

PERSONALS

ATTENTION BIRTHDAYKIDS
If
• you turn 26 tomorrow
• your initials are RLK
• you know
dass ich dich liebhole than hast du mindestens einen wunsch frei
(Please present coupon when ordering)

RESTAURANTS/BARS

SUNNY'S
PIZZA & PASTA
Where ASU Goes for Pizza
\$200 OFF ANY PIZZA
12" or 16"
1 Coupon Per Pizza
Dine-In or Pick-Up or \$1 Off Delivery
968-6666
1301 E. University

WOODSHED I
CASH Pool Tourney Sat. Nite 9:00
Pool & Darts
Home of the \$1.25 Shot
Satellite TV (NFL) (NBA) & (MLB)
Greeks Welcome
Ladies Nite Thurs. \$2 Teas
1/2 Your Wing Order FREE Sun. & Mon.
831-WOOD
Baseline & Mill

JOB OPPORTUNITIES

EASTERN EUROPE JOBS
Teach basic conversational English in Prague, Budapest, or Krakow. No teaching certificate or European languages required. Inexpensive Room & Board + other benefits.
(206) 971-3680 Ext. K59184

HELP WANTED-GENERAL

HELP WANTED-SALES

WE NEED YOU
Ground floor opportunity. Energetic, outgoing, enthusiastic individual w/ excellent comm. skills. As f/t marketing/sales assist. for local digital imaging/computer graphics co. MAC/PC exp. a plus. Fax resume attn.: sales to 940-5488

HELP WANTED-CLERICAL

ADMINISTRATIVE ASSISTANT permanent P/T. Professional office has immed. position for assistant. Computer literate, client research, answer phones, filing. 12-15 hrs a week. Hrly rate DOE. Contact Mary @ 225-0504 or fax resume to 225-9024.

Classifieds WORK!

PERSONALS

ADOPTION? PREGNANT?
Think about it! Choosing the right family to adopt your baby involves more than reading ads and calling 800 numbers. I'm an adoption consultant who can help. With us, you read about the couple and decide if they are the right family for you and your baby before you speak to them. Open or closed adoptions. You CHOOSE!
1-800-675-3407

RESTAURANTS/BARS

LOCAL MUSIC SUPPORT
Balboa CAFE
TONIGHT
KONGO SHOCK
Saturday Night
SOUL CRACKER
Sunday Night
THE CHADWICKS
Happy Hour Free Food Buffet 5-7 M-F
Balboa Cafe
404 S. Mill Ave.
966-1300

JOB OPPORTUNITIES

CRUISE JOBS
Students Needed! Earn up to \$2,000+/mo. working for Cruise Ships or Land-Tour companies. Seasonal and Full-Time employment available. Call: (206) 971-3550 ext. C59187

HELP WANTED-GENERAL

STATE PRESS
NEWSPAPER DELIVERY PERSON NEEDED TODAY!

This is what you'll do:

- Use the State Press truck (has A/C & a radio)
- Pick up the papers at the printer in Phoenix at 5am, Monday through Friday
- Have papers delivered on campus by 7:30 am each day
- Keep truck fueled & maintained

You must be:

- Dependable • Motivated
- Responsible • A morning person
- Able to lift heavy bundles

You'll earn:

- \$125/week

IF THIS SOUNDS LIKE A JOB YOU CAN HANDLE, APPLY TODAY AND BEGIN DELIVERY ON MONDAY MORNING.

Call Jackie Eldridge at 965-6555 NOW or stop by room 47 in Matthews Center basement today.

Previous delivery experience helpful.

Drivers Needed

To transport students, staff, and faculty with disabilities from class to class. Looking for people who:

- Can work 3 or more continuous hours MWF and/or TH
- Pleasant personality and calm disposition
- Hold a current driver's license and a good driving record
- Are very familiar with the ASU campus
- Are receiving financial aid and have work-study eligibility

Student Employment referral number is 3477A
Our operating hours are 7am - 5pm Mon-Fri
Starting pay is \$5.18 per hour

Apply at: Disability Resources for Student Matthews Center or call Jim Morin @ 965-8491

COMMUNICATION ASSISTANTS
Type 50 wpm 75% Accuracy
No selling! Flex hours/Casual Dress
Pd. Benefits, Pd. Training
Near ASU \$6.30 Rapid Adv.
929-4848

Residential Counselors
Social Service Agency has positions available working with adults who are developmentally and mentally challenged in group homes & Apt. settings located in Phx., Mesa & Tempe. \$6.00-\$6.50/hr DOE. Pd. training 431-9511, 12-4 or Job line 438-8617

City of Scottsdale Parks and Recreation Division
WANTED: YOUTH SPORTS COACHES & OFFICIALS
Boys & Girls
Flag Football Volleyball
\$6.81 - \$9.10 per hour
For application information contact the Student Employment Office, Job referral #7308-J
Applications will be accepted until Friday, September 13, 994-7642

IMMEDIATE POSITIONS AVAILABLE
selling drinks at
SUN DEVIL STADIUM
Average individual earns
\$50 per game!
Contact Chad Barns at 203-3589

\$\$\$\$\$\$ FAST \$\$\$\$\$\$
The Student Affairs Research Office is looking for ASU students to conduct telephone surveys from September 15th through September 19th and possibly September 22nd through September 24th. Surveys will be conducted on Sundays from 3:00 pm - 9:00 pm and Monday through Thursdays from 5:00pm - 9:00 pm. There is a mandatory paid training session on Friday, September 13th from 2:00 pm - 4:00 pm in the Memorial Union Hopi room #208C. \$5.50/Hour
To apply stop by Student Affairs Research located in the Memorial Union Room 110 (by the Art Gallery) or call 965-4070 for more information.

HELP WANTED-CLERICAL

ACCTING CLERK 10 key PT. Computer exp. Tempe Chris 893-6884.

M/W/F AFTERNOONS & every other Sat. Phones, filing, dispatch. Must know valley. 966-8795. City Wide Plumbing.

You can VIEW and SEARCH the State Press Classifieds on the Internet! http://news.vpsa.asu.edu/

SERVICES

WE BUY & SELL USED LEVI'S! THE BLUE JEAN BUYER Call for Details 947-8245

GREAT BEER LIVE MUSIC BANDERSNATCH 5th St. & Forest 966-4438

ASTROLOGICAL FORECAST by Frances Drake Friday, September 6, 1996

ARIES (March 21 to April 19) One-upmanship plays are likely on the job. Don't let others take advantage of you. It's in the social sphere where you shine, especially once the sun sets. TAURUS (April 20 to May 20) A turnabout in career interests puts you on top. Capitalize on current opportunities. A self-focused attitude toward children and possessions needs curtailing. GEMINI (May 21 to June 20) Impatience could undermine plans you have for the day. Get yourself centered through meditation or deep breathing exercises. Dealings with friends at a distance are favored during evening hours. CANCER (June 21 to July 22) Make a point of saving rather than spending. A career matter is brought to a successful conclusion, thanks to your diligence. Be diplomatic with an eccentric acquaintance. LEO (July 23 to Aug. 22) Pay attention to personal appearance and compliments will surely come your way. Accent practicality in business as opposed to unconventional methods. Enjoyable travel is likely as luck is with you. VIRGO (Aug. 23 to Sept. 22) Opportunity comes in quiet places and away from your usual routine. Use leisure time constructively and don't give in to a tendency to fantasize and dawdle. A friend has an interesting proposition for you. LIBRA (Sept. 23 to Oct. 22) Participation in group activities is favored. In romance, you're enthusiastic but need to keep your feet on the ground. Watch that propensity to indulge in day-dreaming. SCORPIO (Oct. 23 to Nov. 21) Handle household chores early in the day. A family problem arises later that could perplex you. New

HELP WANTED-FOOD SERVICE

CORK'NCLEAVER Accepting apps. for lunch host(ess) & lunch food server. Will train, p/t. Concern w/ appearance, reliability & personality are important. Apply in person M-F 2-5p.m. or by appt. 5101 N. 44th St. 952-0585.

HOUSTON'S RESTAURANT in Scottsdale hiring food servers & kitchen employees. Applications accepted 3-4 Monday-Thursday 922-7775.

JUICE WORKS-Now hiring for Phx & Tempe stores, am/pm, ft/pt. Contact Tyler or Brandi at 957-1231

NEED SERVER 5-10pm M-S, exp. preferred 1324 S. Rural Tempe 85281. Apply in person.

POSITIONS AVAIL. at fun cajun restaurant at both locations. Please call Shannon at Baby Kay's before 11am or after 3pm at 955-0011

SERVICES

Available for College Federal Gov't Has Money for You! For Information, Call: (602) 464-2561

ATTENTION ALL STUDENTS!!! GRANTS & SCHOLARSHIPS AVAILABLE FROM SPONSORS! NO REPAYMENTS EVER! \$\$\$ FOR INFO CALL: 1-800-400-0209

HELP WANTED-FOOD SERVICE

RED ROBIN Tempe. Cooks enjoy top wages, paid vacations, bonuses, & growth opportunities. Apply today 1375 W. Elliot.

UNIVERSITY CLUB, located on campus between the Student Health Center & Old Main, now hiring ft & p/t food service personnel. Flex hrs. & good compensation package. Apply in person M-F 8-11 am or 3-6 pm

YC'S MONGOLIAN BBQ-Phx. Hiring cashiers. \$5.25/hr. Call after 3pm 944-6818.

HELP WANTED-CHILD CARE

AFTER SCHOOL nanny for 2 kids, 7 & 3 yrs, M-F 3-5:30pm, safe car & ref req, 32nd St & Lincoln. 957-8366 days, 468-1973 eves, \$7 per hour.

BABY-SITTER NEEDED 3 to 4 afternoons/week. Scottsdale area. Call 905-3156.

BABYSITTER NEEDED in N. Scottsdale home for 2 children. Must like to do floor play. Days & Hrs. flexible Ref. Call 991-5547. Lv. msg.

BABYSITTERS & Nannies. flex schedules, 15-40hrs/wk. Must have a reliable car. \$4.75/hr & up. 460-1200.

Make your advertising \$\$\$ work harder! Put it in the Classifieds!

SERVICES

It's no longer necessary to borrow money for college. We can help you obtain funding. Thousands of awards available to all students. Immediate qualification call Toll Free: CALL 1-888-600-4565

HELP WANTED-CHILD CARE

CHILD CARE wanted 2-3 afternoons a wk. for (almost) 5 yr old girl. Located near Scotts. Fasc. Sq. Must have safe reliable transportation. Exc. refs. Approx. 10-15 hrs a wk. \$7/hr. Please call 618-4753.

ENERGETIC, EXPERIENCED fun-loving babysitter for toddler in Scotts. home 2 days/wk. Need trans. 948-1849

FUN BABYSITTER needed, flex. hrs., kids ages 2 & 4, Hayden & McCormick 922-9221

NANNY/HOUSEKEEPER for cleaning, laundry, ironing, cooking. Must have reliable car to drive children 8 & 11 to activities. ns home, M-F 20+ hrs. \$6-8/hr. S. Tempe. Call Sonja Winter 940-3839.

PARENTS OF A 6yr old autistic child desire to hire 2 psychology or spec. education majors p/t to provide (Lovaas) Behavior Modification Therapy in their Tempe home. No exp. nec. Training will be provided. 829-6105

PRE-SCHOOL Teachers ft and p/t positions for experienced creative & energetic educators. Benefits 839-3306

JOB OPPORTUNITIES

\$1,000'S POSSIBLE reading books. Part time, At home. Toll free (1)800-898-9778 Ext. R-1676 for listings.

\$1,000'S POSSIBLE reading books. Part time, At home. Toll free (1)800-898-9778 Ext. R-1676 for listings.

SERVICES

JOB OPPORTUNITIES

ALASKA SUMMER employment- Fishing Industry. Earn up to \$3,000-\$6,000+ per month. Room & board! Transportation! Male/Female. No experience necessary! (206)971-3510 ext A59188

PREPAID CALLING card rep for Tempe, Phoenix, Scottsdale area. Big commissions, rechargeable commissions paid. (602) 280-7655.

BUSINESS OPPORTUNITIES

CASH FOR college. Learn to bartend with video & drink recipe manual 1-800-92-LEARN

MAKE MORE money in one day than most people make in a month. Call 1-800-899-0035 ext. 540

RESTAURANTS/BARS

BARTENDING VIDEO Learn to tend bar with instruct. video; teaches basics to tend bar anywhere. Send \$29.95 to T.S. Productions, P.O. Box 3495, Rock Island, Illinois 61204-3495

DELIVERY DRIVER - now hiring. Great pay, short hrs. The Picnic Company Gourmet Cafe 1415 E. University 968-7740

PERSONALS

\$19.99 FOR a full set of nails is an awesome deal at Wizzards Hair Studio. 967-2360

\$9.99 GETS a custom haircut. Avoid the 'chop shops'. Wizzards Hair Studio. 967-2360

PAINTBALL! I have cheap tickets to sell. Groups or indivs. Call 226-1081 for info.

POST-RUSH BBQ All are welcome to attend a BBQ at the Lambda Chi Alpha house on Fri. afternoon @ 3pm. Call 965-6128 for info.

SERVICES

EVER THOUGHT ABOUT A CLASSIFIED DISPLAY AD? Small businesses welcome, Limited budget, need lots of exposure, Student organizations - what's up? or join our club, Student personalized message. Call me about design & scheduling Jess Rankin • State Press Ad Consultant • 965-6737

PERSONALS

WHO'S TONY ??? He's an expert in finding easy & fun ways to make money. Call him today. 924-2452.



Hey Squad 1, you girls are the best pic playin', stick twirlin', ankle kneein' 8-to-5-in' examples of Sun Devil pride the SDMB has ever seen! Squad of the year here we come! Love ya, XY

SERVICES

ARE YOU LOOKING FOR GRANTS OR SCHOLARSHIPS? Read this first. ASU Student Financial Assistance can help find money for you without charging a processing fee. Call 965-3355. If you choose to use a private company to obtain grants or scholarships, be sure to get verifiable references before re-mitting.

ATTENTION ALL Students! Over \$6 Billion in public and private sector grants & scholarships is now available. All students are eligible. Let us help. For more info. call: 1-800-263-6495 ext. F59186

HEALTH & FITNESS

HERBALIFE INDEPENDANT distributor. Call for products. 817-1406.

WHAT A DEAL

Bally's Health Fitness Premiere plus membership lifetime. Dues paid thru '97 \$699 + transfer fee, dues only \$5 per month, nationwide use. Call Chris 965-5457 day, 759-2378 night.

TYPING/WORD PROCESSING

\$1.98 PG. APA/MLA. Exp'd edit. Fast, accurate. Rural/Univ. Full editing Jim 967-2360

SERVICES

Soft Suds Car Wash Apache & Terrace Self Service or Brushless Automatic 3 Blocks East of Rural 24 Hours

State Press Classifieds Classified Ad Order Form ASU Box 871502 Tempe, AZ 85287-1502 Fax: 965-4706

SERVICES

\$1.99/PG, \$15/RES. Proofed. APA/MLA. Same day. DTP. Near ASU. Brian 967-5987.

AFFORDABLE - Typing for all your typing needs. Townsend W/P. Maureen, 955-0969.

APA/MLA EXPERIENCED typing/word processing. Need it fast? Call Jessie, 945-5744. Editing services available.

TUTORS

LEARN QUICKLY, easily to use ASU Macs/PCs. Reports, e-mail, Internet. Barking Dog Consulting. \$10/hr. 966-2232

STUDY PARTNER needed for beautiful HS sophomore girl who is an artist & a dancer. You can study along w/ her. Only excellent students need to apply. Bring transcript w/ you to interview. \$6/hr. Call 970-0776 & lv. msg.

WANTED

HAIR MODELS needed for Southwest hair show. Free hair services. Please call 392-4166 for more info.

MISCELLANEOUS

UGLY OR NOT Photographers require compelling personas for portrait portfolio. Interested? lv. msg. 736-1492

INTERNET URLS

ARIZONA SECULAR Humanists on the Internet: http://getnet.com/~huey/ash.html

CHECK OUT your student government. http://www.asu.edu/studentlife/ASASU

GET ON the web! Home page design starting at only \$10! http://www.goodnet.com/~apollow

World Wide Web http://news.vpsa.asu.edu/

SERVICES

Free .19¢ per min. Phone Card. Zero Balance. Rechargeable. Good anytime, anywhere in U.S. Int'l calls also. Rates vary. Card starts with zero minutes. Call 800 # on card to activate min. act. \$25 credit card or check. Recharge anytime at same low rate. To save \$ on all your calls, phone 351-3008 or 351-3014.

LOW LOW COST HEALTH INSURANCE Lowest Cost Plans per semester or month Most pre-existing conditions OK International Health Plans Dependent Health Plans Call now for your FREE Enrollment Kit 941-7979 Western Health Services



**Of course it does it's a fragrance.*

it's recyclable
 it's for men it's
 for women it's
 for me it's for
 you it's for
 everyone on
 the planet
 and it
 smells
 good.*

paco
Paco Rabanne

Shown:
 Eau de Toilette natural spray, 3.4-oz.
 39.00.

Dillard's

Not available at Dillard's Chris-Town Clearance Center.

Shop Monday-Saturday 10-9 and Sunday 12-6 in Phoenix at Arrowhead, Metrocenter, Paradise Valley, Fiesta Mall, Scottsdale, Westridge and Superstition Springs.
 Shop Monday-Friday 10-9, Saturday 10-7 and Sunday 12-6 at Chris-Town.

We welcome your Dillard's Credit Card, The American Express® Card, Diners Club International, Mastercard® Visa® and The Discover Card.