

# ARIZONA STATE UNIVERSITY STATE PRESS

©Copyright, State Press, 1995  
Tempe, Arizona

Vol. 80 No. 6

An Independent Morning Daily

Monday, August 28, 1995

## Fraternity: Severe beating not a hate crime

Sigma Chi member jailed, faces aggravated assault charges

BY TIMOTHY TAIT  
STATE PRESS

Sigma Chi Fraternity claims the black man allegedly beaten by one of its members Friday was trespassing and hostile, denying ASU police's belief that the attack was a hate crime.

Sigma Chi President Mark Buntz, in a written statement, claims that the victim was found drunk early Friday morning inside the fraternity house. Members asked the man to

leave; however, they never called police.

"Numerous requests were made in hopes that the man would quietly leave the premises. In addition, he was offered a ride home on many occasions," Buntz wrote.

"We wanted to handle it as gently as possible, but it didn't turn out that way," he said.

Bryan Southard, a 21-year-old junior economics major, was arrested in connection with the incident and charged with aggravated assault. ASU



SOUTHARD

police continue to investigate the beating as a hate crime, but do not anticipate any more arrests.

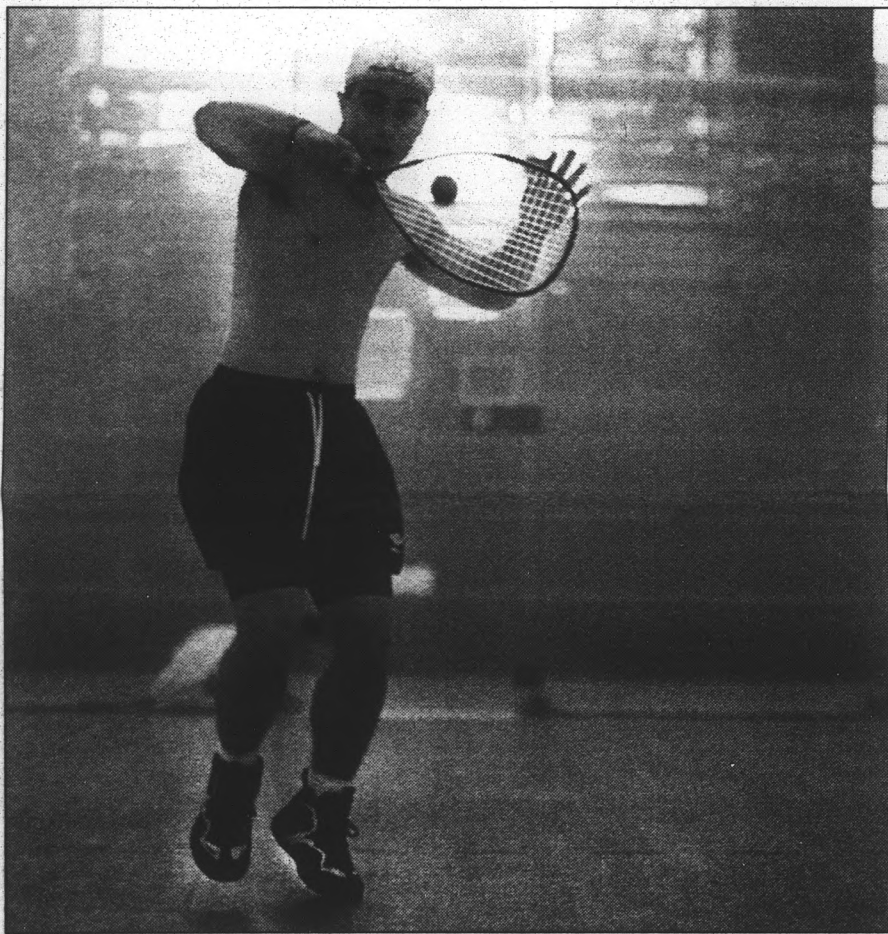
Southard was arrested Friday afternoon after police searched the fraternity house and found evidence linking him to the crime, said ASU police spokesman Keith Jennings.

Southard was being held at the Madison Street Jail on \$20,000 bail.

The 30-year-old victim, whose name has been withheld, was released Saturday from Tempe St. Luke's Hospital. He suffered facial lacerations. Jennings said the beating was "fairly severe."

TURN TO ASSAULT, PAGE 2.

## Right back at 'ya



Robert Anderson/State Press

ASU freshman Dylan Thomas returns a volley during a little friendly racquetball competition Sunday at the ASU Recreation Center.

## Classes need more profs, fewer TAs, provost says

BY CODY V. AYCOCK  
STATE PRESS

University administrators want more professors to teach lower-division classes, but are concerned the move would hurt upper-division and graduate programs, said ASU Provost Milton Glick.

Glick, addressing the Arizona Board of Regents Friday in Tucson, discussed cutting the number of classes taught by teaching assistants.

Regent George Amos said increased exposure to ranked faculty is one of the most important concerns facing undergraduate students.

"(Being taught by teaching assistants) is one of the biggest complaints that I get," he said.

However, by decreasing the number of TAs, administrators face the problem of balancing professors' workloads between lower- and upper-division classes, Glick said.

"We don't have any choice at upper-division and graduate level — we have to use ranked faculty," Glick said. "It is one of those restraints in the ecology that we need to worry about."

ASU has 4,100 freshman; the number of seniors and graduate students exceeds 25,000, he said.

Glick noted that the University must remain mindful of graduate students' needs, while at the same time work to improve the undergraduate program.

"We must be cautious when trying to improve the undergraduate experience that the University not take away from the graduate experience," he said.

University President Lattie Coor also cautions students against stereotyping TAs based on a bad experience in the past. Rather, students should consider the class they are taking and whether a TA is capable of effectively teaching the material, he said.

Currently, 78 percent of lower-division students have two or more courses taught by full professors. Officials want to increase the number to 95 percent by fall 1998.

Glick said the University is looking for ways to improve its curricula, while effectively managing the faculty workload.

"We have to make sure we do a good job at every level, and we know that the higher we go, the more critical it is to have tenured faculty teaching," Glick said. "I see our responsibility as to make sure we deploy our resources to maximize every student's learning."

## Magazine ranks School of Design as No. 1

BY BRIAN ANDERSON  
STATE PRESS

ASU's School of Design received top honors from a group of 78 distinguished interior design educators in a recent magazine poll.

In the August issue of *Interior Design* magazine, the design school was ranked first out of more than 500 schools across the country.

Bob Wolfe, director of the School of Design, said he was elated that the school received such high praise because industry professionals will gain more respect for the program.

"(The ranking) will get us recognition," he said. "It will then continue to gain respect for the program and respect for the students who are graduating from the program."

Wolfe said voters were asked which schools they thought were the most professional, had the most comprehensive program, gave students the most marketability and had the highest success rate in terms of graduation and post-graduation employment rates. ASU's School of Design placed first in the overall category.

Michael Kroelinger, interior design coordinator, said he was thankful that others in the industry are aware of ASU's program.

"We're extremely pleased that our peer faculty at other institutions recognize the caliber of the ASU program and the contributions the faculty and students make," he said. "I certainly believe it's a worthwhile milestone for us."

TURN TO DESIGN SCHOOL, PAGE 1.

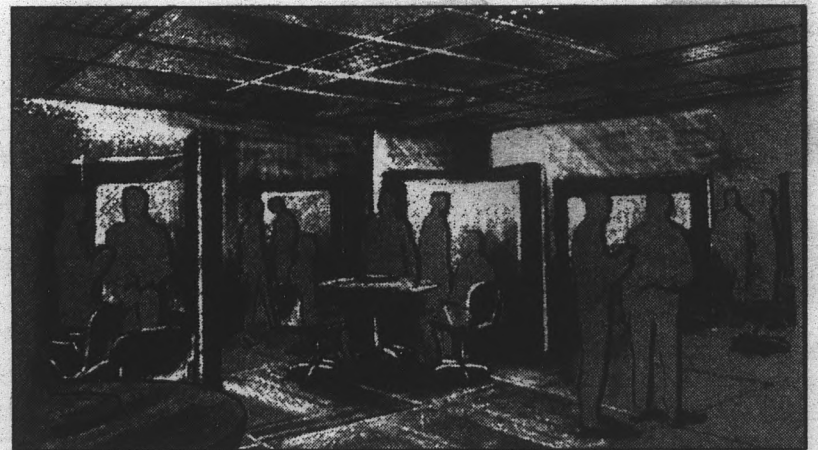


Photo courtesy of ASU School of Design

ASU's School of Design, where work such as this is produced, was placed first in a recent magazine poll by *Interior Design* magazine. The No. 1 rating was given because of the school's comprehensive program and high graduation and employment rates.

## INSIDE STATE PRESS

**Weather Outlook**  
Hot with chance of evening thunderstorms.  
High 105°, low 81°.



### World/Nation

A collision between a casino bus and a van in Colorado kills two and leaves at least 41 injured.

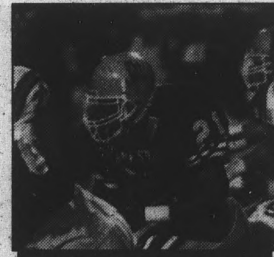
Page 3



### Sports

Senior tailback Chris Hopkins will take a leadership role in the youthful Sun Devil backfield.

Page 13



### Where To Find It

Classifieds	16
Comics	12
Crossword	6
Horoscopes	19
Opinion	4
Police Report	9
Sports	13
Today's Activities	2
World/Nation	3

# Assault

CONTINUED FROM PAGE 1.

The victim is not affiliated with the University or the fraternity.

"The assault was classified as a hate crime ... because the victim alleged that the alleged assailant said he did not like black people," Jennings said.

Witnesses, however, dispute the victim's claim.

The county attorney will make the final determination if the assault will be prosecuted as a hate crime.

Police also interviewed other members of the fraternity and stated that the investigation is ongoing.

Director of ASU Police Bill Bess said Southard and the victim began arguing around 3 a.m. outside the fraternity's house at 606 Alpha Drive. The argument, propelled by alcohol, turned violent.

According to Buntz, fraternity members attempted to keep Southard and the victim apart. But the effort failed when the victim pushed the fraternity members aside.

"It must be understood, however, that this was an altercation between two individuals, not our fraternity at large," Buntz wrote. "What must be realized is that this is not a hate crime."

The Campus Environment Team met Friday afternoon to discuss ways to avoid more violence. The group was formed in 1989 to discuss "provocative issues" following an incident on campus involving some fraternities that had racial overtones, said Charles Calleros, chairman of the team.

"There may be some tensions. We want to get the

message out that this incident is being handled by DPS," Calleros said.

"We want everyone to stay calm."

Calleros said that although the vast majority of the campus population is tolerant because of the size of the campus, there will always be some who hold hostilities. He estimated that between five and 10 percent of the student population holds hostile feelings toward minorities.

"We just hope that hostility does not erupt into misconduct. Rather than retaliation, we hope to let an event like this educate us that there are some problems to address on campus," Calleros said.

"An event like this is always electrifying."

## TODAY

The Today Section is a daily calendar of events printed as a service to the ASU community. Requests are accepted on a first-come, first-served basis and are printed as space permits.

Campus clubs and organizations may submit written entries to the State Press in the basement of Matthews Center. Requests will not be taken over the phone or via fax.

Entries must contain the full name of the club or organization, a description of the event, date, time and the full address of the location. All requests are subject to editing for content, space and clarity. Incomplete or illegible entries will be discarded.

Deadline for requests is noon the day before publication and entries will not be accepted more than three working days before publication. Only one entry per organization per day is permitted.

• **Alpha Kappa Psi Business Fraternity** — Rush event 6:30 p.m. at Balboa's. See table on Dean's Patio.

• **College Republicans** — Holding weekly meeting; new members welcome; 3:30 p.m. in room 212 east of the Memorial Union.

• **Gamma Alpha Omega Sorority** — ASU's first Hispanic-founded sorority will be holding informational meetings in the Memorial Union; 5:30 today in the Yuma room and 5:30 p.m. Tuesday in Ventana B. Everyone is welcome.

## Design school

CONTINUED FROM PAGE 1.

Kroelinger said ASU's School of Design is so good because of the outstanding work of the faculty and students.

"We have an excellent faculty that works together as a team," he said. "We believe we have outstanding students entering the upper division of the program and their individual performances go a long way toward helping the program."

Angelo Carpinelli, an industrial design major, said he was excited about the survey results, but he didn't need a poll to inform him that the design school is top notch.

"I'm actually extremely satisfied," he said. "One of the reasons I chose to come to ASU is because I knew that the school was progressive. I really felt that I had a lot to learn from a university like (ASU)."

Carpinelli said one of the problems with some design schools is they concentrate too intensely on artistic factors.

"A lot of schools just focus on the art end of it," he said. "In industrial design, there's just so much more to it than just art. I just view ASU as being the most well-rounded school for design."

Paul Fife, also an industrial design major, said the instructors are the people who make the School of Design a

great institution.

"In general, it's the dedication of the teachers to their craft of teaching," he said. "They have a deeper commitment than just getting the students through. They want to make sure that the students have the skills to go out into the workplace and be competitive."

Carpinelli said he recommends that prospective students visit ASU before deciding to attend another school because the School of Design offers a well-balanced curriculum.

Kroelinger said the results of the survey will eventually make graduates of the school more marketable.

"In essence, it is an indication to potential employers that we are well known and that by and large (students) should be a hot commodity in the marketplace," he said.

Calls from several East Coast firms expressing interest in developing internship programs with the School of Design have already been coming in.

Wolfe added that the importance of the survey is that students are the ones who will benefit in the end.

"The whole purpose of (the survey) is to benefit the student," he said. "There's no reason to get your degree somewhere if it's not going to get you a job."

# ASASU unplugged

ASSOCIATED STUDENTS OF ASU

**What your student government is doing on your campus!**

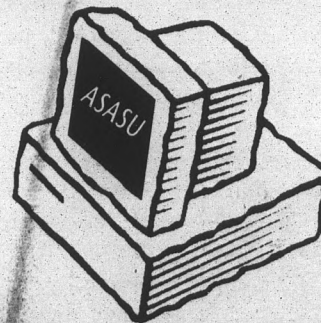
### President's Office

- Applications for Supreme Court Justice are available at the receptionist's desk.
- 2 seats are open.
- Requirements: 2.0 GPA and shall have attained at least 45 semester hours of university credit.
- Deadline for application: Friday, Sept. 8, 5 p.m.

### Web Development

Come visit the ASASU World Wide Web page and win **FREE TICKETS** to ASU football games and other **FREE STUFF** from your student government!!

<http://aspin.asu.edu/provider/ASASU>



**ASASU is located on the 3rd floor • MU • 965-3161**

## Around Arizona

### Possible satanic tie to body found in Mesa

MESA (AP) — A transient and a juvenile were arrested Sunday after authorities unearthed a body in a shallow back-yard grave of a home filled with possible satanic artifacts.

The parents of Michael Trenam, 24, called police early Saturday morning after they found what appeared to be a makeshift grave in the back yard of their son's home. They had reported him missing hours earlier.

Sgt. Earle Lloyd, a Mesa Police Department spokesman, said officers dug into a 3-foot pile of dirt and discarded furniture and uncovered a human leg wrapped in plastic.

After obtaining a search warrant, authorities uncovered the entire body and removed it by late Saturday.

The Maricopa County Medical Examiner's Office was trying to determine the victim's identity and cause of death Sunday.

Lloyd said Michael Ashenfelter, a 23-year-old transient, was arrested in the case and booked into jail on suspicion of first-degree murder.

Trenam's roommate — Chad Boudreau, 17 — was arrested on suspicion of burglary, according to Lloyd, who could not immediately provide additional details.

Detectives were trying to sort through neighbors' reports that Trenam might have been involved in cult activity including devil worship.

Lloyd said a small graveyard was in Trenam's front yard, hanging cloves of garlic were at the front door and skulls of sheep and cows were inside the house.

Neighbors described Trenam as a quiet man who usually came out only at night and built a graveyard on his front yard to keep Jehovah's Witnesses away.

### New Audubon president says wildlife in danger

TUCSON (AP) — Arizona must control growth or risk losing its rich biological diversity, according to the new National Audubon Society president.

John Flicker became president of Audubon on July 1 after serving as Florida's Nature Conservancy director.

"In Florida, there are state and county programs to buy important wildlife habitats," he said in an interview with *The Arizona Daily Star*. "Arizona needs its own solutions, but it must act or developers will determine its future."

Audubon is involved in what it considers key Arizona issues — protecting the San Pedro River from nearby ground-water pumping and stopping a University of Arizona telescope project on Mount Graham.

The society also is taking strong stands on two issues with major implications for Arizonans — livestock grazing on public lands and efforts to save rare wildlife species.

The Audubon society already is in federal court trying to stop the UofA's effort to build a telescope near Mount Graham in the Pinaleno Mountains southwest of Safford.

The group is one of four plaintiffs in the Mount Graham Coalition that so far have won favorable rulings against the telescope, reaching as far as the Ninth U.S. Circuit Court of Appeals in San Francisco.

The courts halted the UofA's work on a \$60 million Large Binocular Telescope until agencies do more study of its impact on an endangered subspecies of red squirrel.



The body of one of two people killed in an accident involving a gambling shuttle bus and a van near Black Hawk, Colo., is carried from Clear Creek by rescue workers. At least 41 others were injured in the accident when the bus struck a van head-on and both vehicles plunged down the embankment to the creek.

## Colorado gamblers' bus hits van

### Two passengers killed; 41 others injured

BLACK HAWK, Colo. (AP) — A bus carrying dozens of gamblers to a Colorado casino collided head-on with a van and plunged into a creek Sunday, killing two passengers. At least 41 people were injured.

Authorities said the bus was heading northwest on two-lane Colorado 119 when the van tried to pass a vehicle in the opposite lane and crossed over.

The collision sent the bus veering off the road and into Clear Creek, where it landed on its side on a stretch of dry creek bed.

At least two people trapped under a boulder were screaming for help, said Jennifer Manley, a nurse who stopped at the accident site about 35 miles northwest of Denver.

"I was trying every little thing I could do with no equipment to assess to see what injuries people had," she said. "Everyone was covered with blood."

The dead were two women who were among the 42 people on the bus. The van driver was critically injured. It was not immediately clear whether he was alone in the van.

Of the bus passengers who were hurt, 11

suffered critical or serious injuries, officials said.

The Casino Transportation Inc. shuttle bus was carrying gamblers from Golden to Black Hawk and Central City, one of three Colorado communities where limited-stakes gambling is allowed. The other is Cripple Creek.

Mary Ellen Floy, 54, said the bus rolled twice and she was ejected through a window.

Staggering about in shock, "I just kept saying the Lord's Prayer over and over. I just thank God I'm alive."

## Unexploded bomb found on Paris railway

PARIS (AP) — Fear that France was falling victim to a new wave of terrorism heightened following the weekend discovery of an unexploded bomb on a high speed train line heavily used by vacationers.

The bomb, found on the track between Lyon and Paris, comes after two Paris bombings — thought to be the work of Algerian Muslim extremists — killed seven people, injured about 100 others and put the nation on a high security alert this summer.

The Lyon-Paris rail route is a major artery for those returning from a holiday on the Cote d'Azur during this traditional end-of-summer weekend. Fast trains on that line normally trav-

el at nearly 140 mph.

The bomb's triggering mechanism malfunctioned and it failed to explode even though an estimated 15 trains passed by. The device, a gas canister filled with 55 pounds of a powdery substance, was placed at the base of an electric pylon about 13 miles outside Lyon at Cailloux-sur-Fontaines. It was taken to the police laboratory in Paris for examination.

"The threat of terrorism continues to weigh on our country," Premier Alain Juppe said Sunday, when news of the bomb was made public. The bomb had been found Saturday morning.

Juppe conceded that new security precautions — which

TURN TO BOMB, PAGE 7.

## College uses trading cards to get students to meet

WORCESTER, Mass. (AP) — Matthew Denicourt had been on campus only a few days and already he was a marked man. He was the Cageball man, the kid with the trading card all the other freshmen needed.

It was Tuesday, and Denicourt and his 690 classmates had just one more day to finagle their way into complete sets of 50-campus trading cards, the latest ploy to help new students get to know Worcester Polytechnic Institute — and each other — quickly.

It's orientation time for incoming freshmen and transfer students at colleges nationwide. And schools are trying to keep their introductions interesting, mixing cookouts with community service, discussion groups with square dances.

Or scavenger hunts. Human bingo. Even a giant game or two of Twister.

But at WPI, the craze is cards.

Each student received a set of 50 cards. That is, 50 of the same card; the same picture on the front, the same information on the back. The idea is to trade off with other students to complete the

TURN TO CARDS, PAGE 7.

## STATE PRESS Editorial

### Open minds

Two common factors that often go hand-in-hand when reading studies on hate crimes are college fraternity members and alcohol.

An unfortunate incident that occurred on ASU's fraternity row over the weekend threatens to become yet another supporting case.

Hate crimes are defined as violent acts committed against individuals because of their race, ethnicity, nationality, religious affiliation or sexual orientation.

While what transpired over the weekend between a white fraternity member and a Black male unaffiliated with ASU has not yet been proven to be a hate crime, it should act as a wake-up call to those who like to believe this campus is immune to such acts.

Though the details are sketchy, these are the facts given by the police:

On Friday morning, a police officer found four white men standing over a Black man lying face down in the middle of the street near Lot 59.

The man, who was severely beaten, had apparently been walking by Fraternity row when a fight occurred between him and a member of the Sigma Chi fraternity. Police said alcohol was involved. After they investigated the incident further, one of the frat members was taken to Maricopa County Jail and charged with aggravated assault.

The Arizona Department of Public Safety is labeling the beating as a hate crime. But because it might jeopardize their investigation, they refuse to release specific reasons why the crime is being deemed as such.

The details are still sketchy — and conflicting.

The victim told police that his attacker used racial statements during the altercation. But the fraternity denies race was a factor, saying that the argument was simply between two people and does not represent the view of the fraternity at large.

As usual, there are two sides to the story.

But if further investigation reveals that the incident is indeed a hate crime, this could become a potentially explosive situation, not only on campus but also across the country.

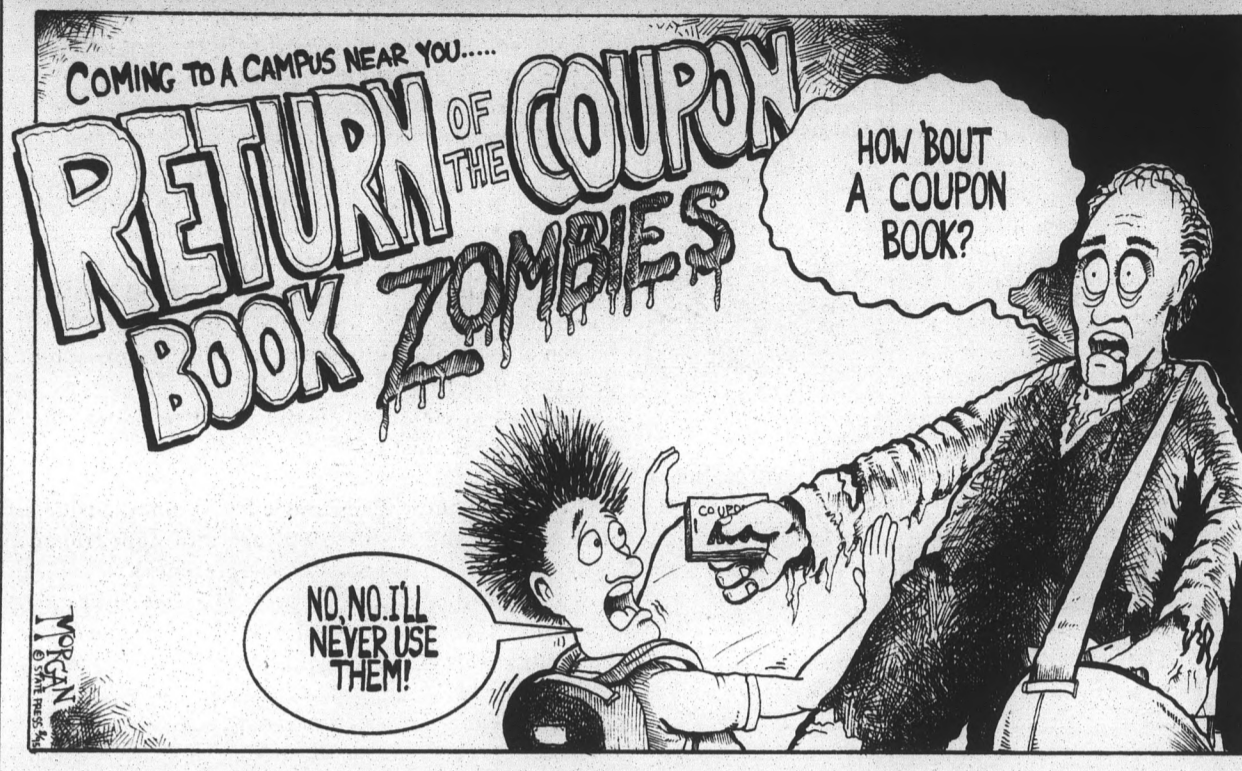
If race was a factor in the attack, the University must bring harsh punishment upon the attacker and anyone else who may have been involved.

So far the University's response to the matter has been encouraging.

ASU has been quick to release information to the public, and President Lattie Coor issued a statement Friday condemning such acts. The Campus Environment Team, an organization set up six years ago to handle cultural diversity issues after an incident of racial prejudice occurred, has met to discuss the matter and submitted a letter to the *State Press*.

Whatever the outcome, this should act as an opportunity for reevaluating the attitudes that pervade this campus. We are fortunate to have a diverse University. Let's begin to treat the differences between us with open minds rather than closed fists.

Morgan



## Wake-up call given to ASU after alleged hate-crime incident

As I draft this letter on Saturday morning, radio news programs have reported the arrest of an ASU fraternity member for the severe beating of an African-American man on campus.

**CHARLIE CALLEROS**  
Guest Columnist

Although the suspect is presumed innocent until found guilty, and the facts are still sketchy, the Maricopa County Attorney is considering prosecuting this as a "hate crime," — one fueled by racial hostility.

If the evidence does show a racially motivated crime, we should be particularly appalled, but perhaps not completely surprised.

A campus of 40,000 students is a microcosm of society. Although the vast majority of students are tolerant, and though many affirmatively celebrate diversity, a small percentage will inevitably harbor varying degrees of fear or hostility toward others who are different from them. We can only hope that educational and cultural structures on campus will encourage such persons to test, evaluate, and perhaps modify their views in academic forums rather than vent their hostilities in violent, criminal conduct such as that which occurred Friday morning.

The suspect may argue that he had some justification to confront the victim. But even if true, that explanation itself prompts an important admonition — anytime someone engages in actions on campus that might prompt a violent confrontation, you should call DPS and let them handle it. If you engage in "self-help," you may get injured even if you were in the right, or you may be arrested if you act wrongly.

In this case, the fraternity member is charged with an abhorrent crime that tests the spirit of a university campus. A more divided student population than ASU's might dissolve into racial tensions and fears for personal security. And a less cautious campus might unfairly blame all frater-

nity members for the actions of one. But the ASU community has shown in the last few years a capacity to learn from such incidents and to respond constructively to address the hate and anger that lie at their root.

I am reminded of the racist poster at Cholla Hall a few years ago, a poster that electrified the campus community. Rather than dividing along racial lines, diverse students across campus joined together with administrators to denounce and morally defeat the message of hate reflected by the poster. Ethnic minority student leaders joined with fraternity leaders to successfully call for multicultural education programs to address the ignorance about other cultures that promoted the hostile stereotypes reflected by the poster. Rossie Turman, the African-American leader of this student movement, was later elected student government president and is now a first-year law student at Columbia Law School.

The aggravated assault that occurred on Friday morning is much more serious than the hateful but constitutionally protected Cholla Hall poster. It calls not just for counter-speech and education, but also for vigorous prosecution. Beyond that, however, the need is greater than ever for student leaders like Rossie Turman to come forward and use this event to bring the campus community together.

We must not let the 30-year-old African-American victim suffer his injuries in vain. Let's remember him by avoiding the division his attacker presumably would promote. Let diverse groups on campus work with one another in ways that demonstrate a unified stance against bigotry and violence. The Campus Environment Team, a committee of students, staff, and faculty formed several years ago partly to encourage such constructive responses to events such as this, stands ready to assist. But the ideas and energy must come from the community, starting with you.

*Charles Calleros is a law professor serving as Chair of the CET for the second time in six years.*

## STATE PRESS STAFF

DAVID STROW, Editor  
GARIN GROFF, Managing Editor

MICHELLE MARIE SHEETZ.....Night Editor  
DAVID PROFFITT.....City Editor  
KENNES BOLIG.....Asst. City Editor  
CHRISTINA BAILEY.....Opinion Editor  
BRYN CHANCELLOR.....Copy Chief  
JIM POULIN.....Photo Editor  
DI'ANNE R. BARTSCH.....Asst. Photo Editor  
DAN MILLER.....Sports Editor  
DAMIAN SHAW.....Asst. Sports Editor  
JOSH KRIST.....Magazine Editor  
ADRIANNA GARCIA.....Asst. Magazine Editor  
REPORTERS: Brian Anderson, Cody Aycock, Tim Baxter, RuthAnn Hogue, Patty King, David Kovacs, Angela Mull, Dan Siegel, Timothy Tait, Kelly Wendel, Greg Zemeida.  
SPORTS REPORTERS: Lisa Eskey, Dustin Krugel, Ron Matejko, Dawn Wagner.

COPY EDITORS: Andrea Healey, Kim Herman, Liz Montalbano.  
PHOTOGRAPHERS: Sara Abbott, Robert Anderson, Paul Besing, Tim Hacker.  
COLUMNISTS: Enrique Chaurand, Betty Farrish, Steve Forsberg, Tina Holder, Delia Maldonado, Liz Montalbano.  
CARTOONISTS: Brian Fairrington, Stacy Holmstedt, Bryce Morgan, Steve Tansley.  
PRODUCTION: Aaron R. Brutcher, Jodi Goldblatt, Diana Kessinger, Jeremy Meyer, Prashant Sampat, Skip Schrader, Eloise Young.  
SALES REPRESENTATIVES: Naomi Cobb, Cari Dewald, Dan Ellstrom, David Goodwin, Jennifer Hughes, Nickelle Kastein, Jess Rankin, Shane Siren.

Unsigned editorials reflect the views of the editorial board, decided by a majority voted among its members. They do not reflect the opinion of the *State Press* staff as a whole.

Board members include:  
DAVID STROW Editor  
GARIN GROFF Managing Editor  
CHRISTINA BAILEY Opinion Editor

The *State Press* is published Monday through Friday during the academic year, except holidays and exam periods, at Matthews Center, Room 15, Arizona State University, Tempe, Ariz. 85287-1502. We do not answer questions of a general nature.

The *State Press* is the only newspaper exclusively published for and circulated on the ASU campus. The news and views published in this newspaper are not necessarily those of the ASU administration, faculty, staff or student body.

## STATE PRESS PHONE NUMBERS

Information.....965-7572  
Newsroom.....965-2292  
Magazine.....965-1695  
Advertising.....965-6555  
Classifieds.....965-6735

## Disney's Pocahontas more fiction than fact

My seven-year-old son called me up the other day, as he does almost every day. While we were talking, his father got on the phone and informed me that he was taking our son to see *Pocahontas*. I had already told my son I didn't want him to see the movie and he wanted to know what the big deal was.

The cartoon was done by Disney — who cared if it was "historically correct" as long as it was entertaining, he said.

Entertaining?

Absolutely! For years Disney has been the hallmark of fine animation and memorable tunes, capturing the youth of the world. *Pocahontas* is no exception. The animation is first-rate and the music is incredibly well written.

Until you hear what the singing is all about.

"Just Around the River Bend" is a song we are inundated with on a daily basis through film and any number of fast food joint advertisements.

Why?

Because it is a beautiful, motivational, heartfelt song that makes the listener relaxed and happy. It brings to mind thoughts of a beautiful land.

But it may be a little harder to stomach such good food while listening to lyrics which promote the wholesale slaughter of a race of people. It may be a little harder for the general public to get into *Pocahontas* if they listened to the words about the "savages."

**TINA**  
**HOLDER**

Columnist



Think I'm kidding? Here's a sample:

*What can you expect from filthy little heathens?*

*Their whole disgusting race is like a curse.*

*Their skin's a hellish red.*

*They're only good when dead.*

*They're vermin, as I said and worse.*

Is this what a child should learn? What happens when a child sings this to an Indian child at school?

This is teaching hatred and racism. Period.

Try explaining to a child what is "good" or wholesome about this song when it's telling people that if a person's skin color is different or if his or her culture is different, then he or she should be dead.

But that is OK, right? After all, it is Disney that is doing this so it must be.

Right?

Like I said before, this movie has stunning visual animation. But the history, culture and appearance of Native Americans is grossly misrepresented.

Take Pocahontas, for instance. She looks like a dark-skinned ... Caucasian. Not only do her facial features bear no resemblance to that of a Native American woman, but her large breasts, buttocks and a waist small enough to encircle with your hands, does not either.

While we are a beautiful people, we are not Barbie dolls.

Native American women are also very proud and extremely modest people. No native woman I know would be caught dead in the type of "dress" the character wears in the movie.

The characters weren't the same age either. Historically, it is known that Capt. John Smith was between 30 and 40 years of age at the time of his meet-

ing with Pocahontas. She was between the ages of 10 and 14. Pocahontas was eventually kidnapped and taken to England where she married a man named John Rolfe and eventually died without ever returning to the land she loved. Not even close to Disney's story line.

Pocahontas and John Smith, as far as anyone knows, never had a romantic interest in one another. I think if there were one, we would call that child molestation.

This movie makes me very angry! It is humiliating, racist and stereotypical. I think it should be banned.

This company has had this type of influence for so long that people ignore blatant examples of sexism, racism, child molestation and genocide simply because the name on the box is "Disney."

Unfortunately, my "ex" is like most of the people in this country — he sees nothing wrong with the movie and plans on taking our son to see it whether I like it or not. According to him, if he started allowing me to say that the child couldn't see a movie like this then he would have to stop letting him watch westerns or at the very least sit down and explain them to him.

He finally informed me of that he would teach our son "the right way," which for him translated into "the white way."

If you want wholesome, educational entertainment for your children, then read to them from the stories of their ancestors. Build in them the respect and pride inherent to their particular cultural background and do this without bashing another race or culture. I think people will find that these children will pass this practice on to their children, who will pass it on to their children and so on.

Tina Holder is a senior justice studies major

## Ito should take the law into his own hands

Even lawyers will agree that there are times when the law and the pursuit of justice can be much too complicated.

We're seeing an example of this needless complexity in the latest wacky developments in the O.J. Simpson trial.

As you probably know, Detective Mark Fuhrman has managed to insult Judge Lance Ito's wife.

He did this while telling a movie scriptwriter how loathsome L.A. cops can be.

Apparently Fuhrman is an expert on loathsome behavior, because he reportedly told the scriptwriter how the cops use phony evidence to frame innocent people, bully minorities and otherwise amuse themselves.

While blabbing this stuff into a tape recorder, he made unflattering comments about Ito's wife, who is a high-ranking L.A. cop and used to be Fuhrman's boss.

Details haven't come out, but what he said about Ito's wife was nasty enough to almost move the judge to tears.

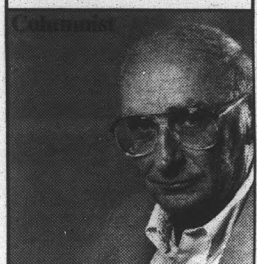
This really shouldn't have anything to do with the ultimate question of whether O.J. chopped up two people. But it does.

And for a while, it appeared that Fuhrman's yapping could throw the case up for grabs or upside down or in some other strange direction.

It created the possibility that Ito might have to be replaced, assuming all the other judges didn't flee the state. The experts weren't sure what this could mean, but so significant a switch in the drama's cast of characters could easily confuse the TV audience.

It also prompted lawyers on both sides to whine and moan and accuse each other of being unscrupulous, unpro-

**MIKE**  
**ROYKO**



fessional and unethical—which surely brought cheers from the viewers.

But there was no reason why Fuhrman's remarks about Ito's wife should disrupt the progress of the case.

Fuhrman is significant, but only because Simpson's lawyers say he is a bigot and a perjurer.

They want the jury to hear the tape because he is reported to have repeatedly used the infamous N-word while talking to the scriptwriter about how cops treated African-Americans, who, in Fuhrman's vocabulary, are N-words.

And if the defense can get the tapes admitted into evidence, the jury will remember that Fuhrman testified that he has not used the N-word even once in the last 10 years. He did that with a straight face, although he might have had his fingers crossed.

If the jury hears the tapes, the defense hopes that jurors, especially those who might have been called N-words themselves, will say: "Ho-hoo, fibber Fuhrman, you told us that you didn't use that bad word. But you did, and this tape clinches it. You have proved yourself a racist and a liar, so it follows logically that you must have framed O.J., although we haven't the faintest idea how you did it. Therefore, our verdict is not guilty and bring on the book contracts."

But what does Ito's wife have to do with that? Nothing. So instead of creating a big legal fuss, Fuhrman's ungentlemanly remarks should be responded to in the time-honored way.

Which is for Ito to haul off and punch Fuhrman in

the mouth.

That is the way husbands have been handling insults to their wives since the institution of marriage began, and probably even before.

In many societies, it was common for duels to be fought with swords or pistols. Before he became president, Andrew Jackson plugged a cad who spoke ill of his wife. At least that's the way I remember Charlton Heston doing it in a movie.

An insult to a wife has always been considered a serious affront, requiring immediate manly action. Unless, of course, the husband concurs in the insult. But even in such cases, a husband is expected to express anger because someone intruded on a right that is his alone.

But as socially unacceptable as such insults are, the fact is there are some offenses for which the legal system can't provide remedies. And an insult to a wife is clearly one of them. It is the sort of thing we're expected to deal with ourselves.

I doubt if the most needy, threadbare lawyer would show enthusiasm if a man walked into his office and said:

"I want to sue my neighbor for insulting my wife."

"What did he say?"

"He said she is a real dog."

"What does your wife look like?"

"Here's her picture."

"I see. Sorry, I don't think I can handle this kind of case."

"What kind of cases do you handle?"

"Well, he didn't happen to say anything bad about your dog, did he?"

*An insult to a wife has always been considered a serious affront, requiring immediate manly action. Unless, of course, the husband concurs in the insult.*

### STATE PRESS Letters to the editor

The State Press welcomes and encourages written response from our readers on any topic. All letters must be typed, double-spaced and no longer than two pages to be eligible for publication. Please include your full name, class standing, major (or any other affiliation with the University) and phone number. Only signed letters will be considered for publication. Requests for anonymity will be granted only with an appropriate reason. Letters are subject to editing by the opinion page editor for factual errors and print space availability. Letters containing obvious factual errors will be rejected. All letters must either be brought in person with a photo I.D. to the State Press front desk in the basement of the Matthews Center, or addressed to State Press, Box 871502, Arizona State University, Tempe Ariz., 85287-1502. No faxes, please.



**Q**uotables ...  
*There are few things in the world as dangerous as sleepwalkers.*  
— Ralph Ellison

## Disney's Pocahontas more fiction than fact

My seven-year-old son called me up the other day, as he does almost every day. While we were talking, his father got on the phone and informed me that he was taking our son to see *Pocahontas*. I had already told my son I didn't want him to see the movie and he wanted to know what the big deal was.

The cartoon was done by Disney — who cared if it was "historically correct" as long as it was entertaining, he said.

Entertaining?

Absolutely! For years Disney has been the hallmark of fine animation and memorable tunes, capturing the youth of the world. *Pocahontas* is no exception. The animation is first-rate and the music is incredibly well written.

Until you hear what the singing is all about.

"Just Around the River Bend" is a song we are inundated with on a daily basis through film and any number of fast food joint advertisements.

Why?

Because it is a beautiful, motivational, heartfelt song that makes the listener relaxed and happy. It brings to mind thoughts of a beautiful land.

But it may be a little harder to stomach such good food while listening to lyrics which promote the wholesale slaughter of a race of people. It may be a little harder for the general public to get into *Pocahontas* if they listened to the words about the "savages."

**TINA  
HOLDER**

Columnist



Think I'm kidding? Here's a sample:

*What can you expect from filthy little heathens?*

*Their whole disgusting race is like a curse.*

*Their skin's a hellish red.*

*They're only good when dead.*

*They're vermin, as I said and worse.*

Is this what a child should learn? What happens when a child sings this to an Indian child at school?

This is teaching hatred and racism. Period.

Try explaining to a child what is "good" or wholesome about this song when it's telling people that if a person's skin color is different or if his or her culture is different, then he or she should be dead.

But that is OK, right? After all, it is Disney that is doing this so it must be.

Right?

Like I said before, this movie has stunning visual animation. But the history, culture and appearance of Native Americans is grossly misrepresented.

Take Pocahontas, for instance. She looks like a dark-skinned ... Caucasian. Not only do her facial features bear no resemblance to that of a Native American woman, but her large breasts, buttocks and a waist small enough to encircle with your hands, does not either.

While we are a beautiful people, we are not Barbie dolls.

Native American women are also very proud and extremely modest people. No native woman I know would be caught dead in the type of "dress" the character wears in the movie.

The characters weren't the same age either. Historically, it is known that Capt. John Smith was between 30 and 40 years of age at the time of his meet-

ing with Pocahontas. She was between the ages of 10 and 14. Pocahontas was eventually kidnapped and taken to England where she married a man named John Rolfe and eventually died without ever returning to the land she loved. Not even close to Disney's story line.

Pocahontas and John Smith, as far as anyone knows, never had a romantic interest in one another. I think if there were one, we would call that child molestation.

This movie makes me very angry! It is humiliating, racist and stereotypical. I think it should be banned.

This company has had this type of influence for so long that people ignore blatant examples of sexism, racism, child molestation and genocide simply because the name on the box is "Disney."

Unfortunately, my "ex" is like most of the people in this country — he sees nothing wrong with the movie and plans on taking our son to see it whether I like it or not. According to him, if he started allowing me to say that the child couldn't see a movie like this then he would have to stop letting him watch westerns or at the very least sit down and explain them to him.

He finally informed me of that he would teach our son "the right way," which for him translated into "the white way."

If you want wholesome, educational entertainment for your children, then read to them from the stories of their ancestors. Build in them the respect and pride inherent to their particular cultural background and do this without bashing another race or culture. I think people will find that these children will pass this practice on to their children, who will pass it on to their children and so on.

Tina Holder is a senior justice studies major

## Ito should take the law into his own hands

Even lawyers will agree that there are times when the law and the pursuit of justice can be much too complicated.

We're seeing an example of this needless complexity in the latest wacky developments in the O.J. Simpson trial.

As you probably know, Detective Mark Fuhrman has managed to insult Judge Lance Ito's wife.

He did this while telling a movie scriptwriter how loathsome L.A. cops can be.

Apparently Fuhrman is an expert on loathsome behavior, because he reportedly told the scriptwriter how the cops use phony evidence to frame innocent people, bully minorities and otherwise amuse themselves.

While blabbing this stuff into a tape recorder, he made unflattering comments about Ito's wife, who is a high-ranking L.A. cop and used to be Fuhrman's boss.

Details haven't come out, but what he said about Ito's wife was nasty enough to almost move the judge to tears.

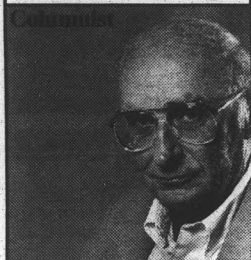
This really shouldn't have anything to do with the ultimate question of whether O.J. chopped up two people. But it does.

And for a while, it appeared that Fuhrman's yapping could throw the case up for grabs or upside down or in some other strange direction.

It created the possibility that Ito might have to be replaced, assuming all the other judges didn't flee the state. The experts weren't sure what this could mean, but so significant a switch in the drama's cast of characters could easily confuse the TV audience.

It also prompted lawyers on both sides to whine and moan and accuse each other of being unscrupulous, unpro-

**MIKE  
ROYKO**



fessional and unethical—which surely brought cheers from the viewers.

But there was no reason why Fuhrman's remarks about Ito's wife should disrupt the progress of the case.

Fuhrman is significant, but only because Simpson's lawyers say he is a bigot and a perjurer.

They want the jury to hear the tape because he is reported to have repeatedly used the infamous N-word while talking to the scriptwriter about how cops treated African-Americans, who, in Fuhrman's vocabulary, are N-words.

And if the defense can get the tapes admitted into evidence, the jury will remember that Fuhrman testified that he has not used the N-word even once in the last 10 years. He did that with a straight face, although he might have had his fingers crossed.

If the jury hears the tapes, the defense hopes that jurors, especially those who might have been called N-words themselves, will say: "Ho-hoo, fibber Fuhrman, you told us that you didn't use that bad word. But you did, and this tape clinches it. You have proved yourself a racist and a liar, so it follows logically that you must have framed O.J., although we haven't the faintest idea how you did it. Therefore, our verdict is not guilty and bring on the book contracts."

But what does Ito's wife have to do with that? Nothing. So instead of creating a big legal fuss, Fuhrman's ungentlemanly remarks should be responded to in the time-honored way.

Which is for Ito to haul off and punch Fuhrman in

the mouth.

That is the way husbands have been handling insults to their wives since the institution of marriage began, and probably even before.

In many societies, it was common for duels to be fought with swords or pistols. Before he became president, Andrew Jackson plugged a cad who spoke ill of his wife. At least that's the way I remember Charlton Heston doing it in a movie.

An insult to a wife has always been considered a serious affront, requiring immediate manly action. Unless, of course, the husband concurs in the insult. But even in such cases, a husband is expected to express anger because someone intruded on a right that is his alone.

But as socially unacceptable as such insults are, the fact is there are some offenses for which the legal system can't provide remedies. And an insult to a wife is clearly one of them. It is the sort of thing we're expected to deal with ourselves.

I doubt if the most needy, threadbare lawyer would show enthusiasm if a man walked into his office and said:

"I want to sue my neighbor for insulting my wife."

"What did he say?"

"He said she is a real dog."

"What does your wife look like?"

"Here's her picture."

"I see. Sorry, I don't think I can handle this kind of case."

"What kind of cases do you handle?"

"Well, he didn't happen to say anything bad about your dog, did he?"

*An insult to a wife has always been considered a serious affront, requiring immediate manly action. Unless, of course, the husband concurs in the insult.*

### STATE PRESS Letters to the editor

The State Press welcomes and encourages written response from our readers on any topic. All letters must be typed, double-spaced and no longer than two pages to be eligible for publication. Please include your full name, class standing, major (or any other affiliation with the University) and phone number. Only signed letters will be considered for publication. Requests for anonymity will be granted only with an appropriate reason. Letters are subject to editing by the opinion page editor for factual errors and print space availability. Letters containing obvious factual errors will be rejected. All letters must either be brought in person with a photo I.D. to the State Press front desk in the basement of the Matthews Center, or addressed to State Press, Box 871502, Arizona State University, Tempe Ariz., 85287-1502. No faxes, please.



### Quotables ...

*There are few things in the world as dangerous as sleepwalkers.*

— Ralph Ellison

# Law student wins cultural diversity essay contest

By DAVID KOVACS  
STATE PRESS

Second-year ASU law student Fidelis Garcia has won the first Judge Thomas Tang Writing Competition for his essay, "No Mexicans, Blacks or Dogs Allowed."

The inspiration for the essay's title was a sign that hung in a northern Arizona restaurant where his father worked as a busboy when he was a young man, Garcia said.

In the essay, Garcia emphasized the need for patience and objectivity by the Arizona legal system in creating diversity within its profession.

"I didn't write my essay to favor any group," Garcia said. "The scales of justice are supposed to be blind whether you're black or white or Hispanic."

Garcia will receive a \$1000 scholarship; however, he said money wasn't his motivation for entering the competition.

"I wrote the essay to challenge thought," he said, adding he has been considering it for about three years.

The competition, sponsored by the State Bar of Arizona, was designed to promote cultural diversity within the law profession. Both Arizona law schools submitted essays.

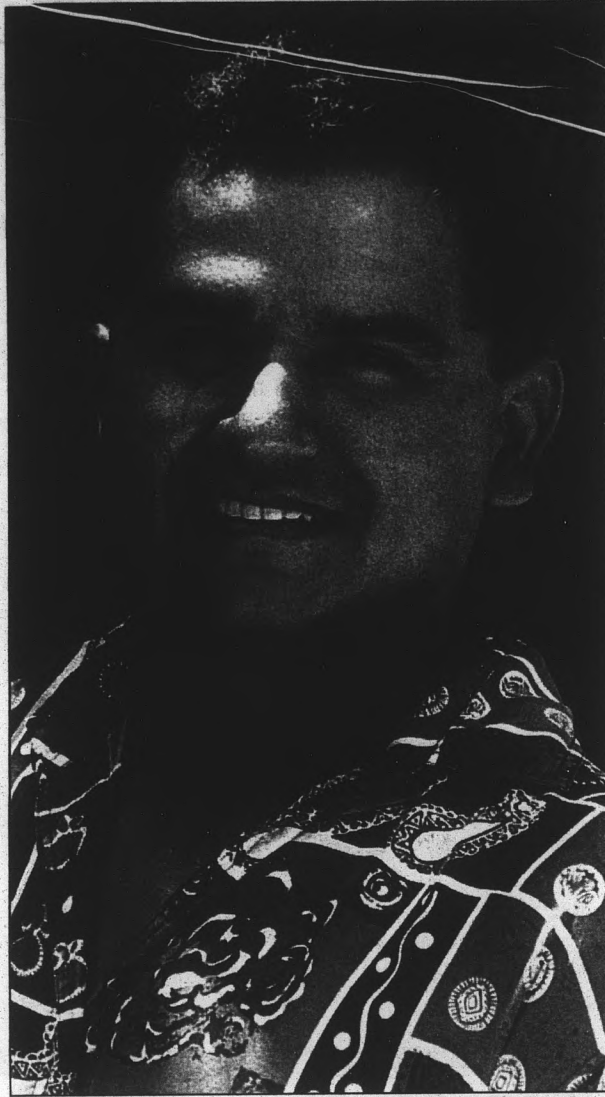
To make diversity a reality in the Arizona legal profession, Garcia said employers must recruit and promote qualified minorities. In turn, minorities must offer substantial contribution to the legal profession, he said.

"Education is very important in my family," Garcia said.

Garcia said providing diversity is an emotional issue that needs to be considered intellectually.

"We need to take a step back and look at it objectively," he said. "We want to see results today but it's an evolutionary process."

The Tang award was created to honor the late Judge Thomas Tang, said Rebecca Winer, director of public relations for the State Bar of Arizona. He was the senior judge of the 9th Circuit U.S. Court of Appeals. His opinions influenced legislation concerning job discrimination, equal pay and drug testing.



Robert Anderson/State Press

Fidelis Garcia, a second-year law student, will receive a \$1000 scholarship for winning the first Judge Thomas Tang Writing Competition. The scholarship is sponsored by the State Bar of Arizona.

Garcia is a resident of Guadalupe and is the youngest of nine children, seven of whom graduated from ASU. Garcia's father also received his master's from the University.

## CAMPUS CORNER

- Beer & Soda
- Photo Developing
- Health & Beauty Aids

712 S. College  
(College & University)  
967-4049

TWO  
LOCATIONS

609 S. Mill  
(Across from Coffee Plantation)  
858-0567

---

**EVEREADY**

# ENERGIZER®

\$ 3.99

Your choice of

Sale Ends 9-10-95



1	2	3	4	5	6	7	8	9	
10			11				12		
13			14				15		
			16			17			
18	19	20			21		22	23	
24						25			
26			27		28				
		29		30					
31	32		33				34	35	36
37			38				39		
40			41				42		

- ACROSS**
- 1 Has fewer than New York
  - 4 Worthless or oversimplified ideas
  - 7 What Bullitt rode
  - 10 American time
  - 11 Flower petals
  - 12 Hogshead, abbr.
  - 13 Plays the rookie
  - 15 Clod
  - 16 Being in a direct line of descent from an ancestor
  - 18 Traded in the Mission
  - 21 Heave on a swell
  - 24 Smear
  - 25 Peter, Paul, and Mary, e.g.
  - 26 American marsh plants with yellow flowers
  - 28 Silicon rich rocks
  - 29 Plays the senior cop
  - 31 Phone company
  - 33 Gives advice
  - 37 Degrees
  - 38 Premenstrual syndrome
  - 39 UC Berkeley
  - 40 Turns into noun
  - 41 The compass point midway between south and southeast
  - 42 The bill in a restaurant
- DOWN**
- 1 Rechewed food
  - 2 Volcanic mountain in Japan
  - 3 British thermal unit
  - 4 Steep cliffs (Hawaiian)
- 5** Ladd, actor
- 6** Bullfighting maneuvers
- 7** Tropical disease
- 8** Satisfaction
- 9** Radio direction finder, abbr.
- 14** Hispanic chanteuse
- 17** Performing services temporarily
- 18** Telephone switch
- 19** Town in Cambridgeshire
- 20** Investigators do
- 22** A quantity of no importance
- 23** Runs PCs
- 27** Swats
- 28** Take hold of (Brit.)
- 30** Database management system
- 31** Licensed for Wall Street
- 32** Someone who is morally reprehensible
- 34** Play a role
- 35** Indoleacetic acid
- 36** Bachelor of Laws

WTC	BAA	RADIO
AAR	AIN	AMASS
CYANIDE	NACKA	
GAL	MSG	HUG
TAKE	HIT	CARE
ABU	HEARER	
EMPIRE	ESTATE	
	ASLEEP	VAC
MOMA	EDT	CEBU
APO	SRI	ERR
CELLO	CENTRAL	
ORACH	TAD	EDO
NARDO	SRO	DAB

Friday's Answers



Located in the Arches Plaza

Mill College  
Forest University

M-Th 9-8  
Fri 9-6  
Sat 9-5

FIRST-TIME CLIENT SPECIAL

# \$9.95

Long Hair \$2.00 More

AMERICAN EXPRESS

Grooming Humans Hair Studio

966-5462

CONSULT • SHAMPOO  
CONDITION • CUT

Reg. \$16<sup>95</sup> / \$18<sup>95</sup>  
Expires 9-19-95

ARIZONA STATE UNIVERSITY

# STATE PRESS

---

No cover charge.

# CHIC & CHEAP #3

## GRAND OPENING

AZ's Most Unique Upscale Thrift Boutique

New and Gently Used Fashions

Quality Collectibles

Electronic & Household Items

Visit our Ladies' Boutique for Fine Jewelry and Fashions

**Saks Fifth Avenue**

**Guess**

**Espirit**

**Anne Klein**

**Ralph Lauren**

**Nieman Marcus**

**Liz Claiborne**

**and more!**

**1911 W. Main St., Mesa**

**Main & Dobson**

## 20% OFF STORE COUPON



# Bomb

CONTINUED FROM PAGE 3.

include police reinforcements, baggage checks of travelers and hermetically sealed trash cans in subways — "cannot, alas, be 100 percent effective."

The Rhone region, where the bomb was found, stepped up security with new patrols along rail lines, air surveillance and other undisclosed measures, local officials announced Sunday.

No one immediately claimed responsibility for placing the bomb, and the Interior Ministry said no direct link could be established between the explosive device and the two Paris bombings.

Still, some similarities were apparent. Gas canisters, increasingly used by Islamic extremists in attacks in Algeria, were used in all three bomb incidents in France, and the bombing sites were all prominent gathering points.

A little-known Algerian extremist group has claimed responsibility for both the July 25 Paris subway bombing that killed seven people and injured 84 others, and the Aug. 17 bomb near the Arc de Triomphe that injured 17.

The subway blast was the first deadly bombing in Paris since a wave of attacks in 1986 that were blamed on an Iranian-backed Lebanese group seeking the release of pris-

oners.

The latest bomb had an apparently defective ignition system placed about 35 yards away. A small attachment meant to set off the device when a train passed remained on the tracks, officials said.

A train driver first spotted the suspicious object, giving the alert at 8:34 a.m., after surveillance trains that check the tracks each morning had reported nothing unusual.

The train authority stepped up security, adding an extra agent to the surveillance trains.

# Cards

CONTINUED FROM PAGE 3.

set of 24 professors, 14 buildings and 12 WPI traditions.

Assistant Dean Chris Jachimowicz and other school officials had toyed with using a more high-tech approach to break the ice, but figured the trading cards would force the math and science whiz kids attracted to the school to mingle a little more.

Jachimowicz grew up trading cards. A friend's father had been a security guard at Topps Co. in Brooklyn and often brought home odd packs of cards and bubble gum for the boys.

He never really got into collecting the sports cards, but still has complete sets from some 1970s television shows, like Welcome Back, Kotter and The Six Million Dollar Man. The pride of his collection, though, is a set from the 1968 movie Planet of the Apes.

So when Jachimowicz took charge of the new student

orientation, the trading card format seemed a natural fit.

"There is a lot of information the students need in the first few weeks," he said. "The people who have the information they need? They need to know what they look like. The buildings? There they are."

The cards really took off, too.

Within minutes of their distribution, about 200 students huddled in a parking lot for some frenzied trading that at one point blocked traffic. By early afternoon, some students needed just one more card.

Denicourt's card.

"At first it was really cool. People would swarm me," the 18-year-old from Johnston, R.I., said while waiting in line to sign up for classes. "I got like 30 cards for one Cageball."

"Now, though, it's like people hate me. They say, 'Hey,

he's the guy with all the Cageball.'"

Cageball, for those who either didn't attend WPI or haven't seen the trading card, caught on here in the 1930s and pits teams of 50 against each other in a pushing match over an 8-foot-wide leather ball.

Adam Viera had never heard of it and hoped never to again. "Don't talk to me about Cageball," the 17-year-old from Assonet, Mass., said with a groan. He gave up trading cards with 30 to go.

But not Sarah Tranes. She needed just one more card — and it wasn't a Cageball card, either. She got that one for free.

"The information on these things has been really helpful, but this hasn't been a real friendship sort of thing. You are wheeling and dealing for something you want," said Tranes, a pre-veterinary major from Norwich, Conn.

**USA Student Getaways**

San Diego \$ 34\*  
 San Francisco \$ 54\*  
 New York \$178\*  
 Boston \$178\*  
 Washington, DC \$178\*  
 Toronto \$178\*

\*Fares are each way from Phoenix based on a roundtrip purchase. Restrictions apply and taxes not included. Call for other worldwide destinations.

**Council Travel**  
 Drop by for a FREE Student Travels magazine  
 130 E. University, Ste. A Tempe, AZ 85281  
 Located at Forest and University (directly across from ASU.)  
**966-3544**  
 Eurailpasses issued on-the-spot!

There's more to life than the **POLICE REPORT** and the **comics ...** try reading the **NEWS!**

## The Biggest Attraction Is The Value

# \$169<sup>95</sup> Reg. \$189.95

**GIANT "ATTRACTION" MOUNTAIN BIKE**

- Giant Comfort MTB Saddle
- High Rise Stem for Upright Riding Position
- 15 Speed Shimano Indexed Shifting System
- Strong and Durable Oversized MTB Tubing
- Wide 26" x 1.95" MTB Dual Tread Tires
- Sturdy Chrome Plated Rims

- FREE Water Bottle & Cage with Each Bike Purchase
- Lifetime Warranty on Frame & Fork
- 1-Year Free Adjustments

**100's of More Bikes to Choose From!**

<p><b>U-LOCKS</b>  <b>\$14<sup>95</sup></b>                  with Carrying Bracket  <small>With coupon. Void on other offers. Exp. 9/30/95.</small>                  Bicycle Wheelers 968-8011</p>	<p><b>HELMETS</b>  <b>\$10 OFF</b>                  Regular Price  <small>With coupon. Void on other offers. Exp. 9/30/95.</small>                  Bicycle Wheelers 968-8011</p>	<p><b>TUNE-UP SPECIAL</b>  <b>\$25<sup>00</sup></b> Reg. \$40  <small>Adjust gears, brakes, hubs, ball bearings, headset, wheel truing, complete lubrication and cleaning. With coupon. Void on other offers. Exp. 9/30/95.</small>                  Bicycle Wheelers 968-8011</p>
--	---	--

**BICYCLE WHEELERS** 2010 S. Rural Rd. Tempe 968-8011

Student Discounts Layaway • Financing Open 7 Days a Week

**Lasts longer than most diets.**

**Longer than some relationships.**

**Longer than any check from home.**



Soft & Dri® Solid anti-perspirant is powerful protection against odor and wetness in a time-release formula that lasts and lasts and lasts.

**The most important thing you put on.**

# POLICE REPORT

ASU police reported the following incidents over the weekend:

- A man not affiliated with ASU was contacted at Parking Structure 5 while he was passed out on the ground. He was waiting for a friend to drive him home.
- Person(s) unknown burglarized a male student's vehicle while it was parked in Parking Structure 4.
- Person(s) unknown damaged the north entrance of the Nelson Fine Arts Center.
- Person(s) unknown stole a female student's backpack from a locker at the ASU Bookstore.
- Person(s) unknown stole a female student's purse from the Education Lecture Hall.
- Person(s) unknown stole a computer worth \$1,000 from Physical Education East.
- A male student was contacted at the Student Recreation Center after sustaining an injury. He was treated at the scene by the Tempe Fire Department and taken to Tempe St. Luke's Hospital.
- A man not affiliated with ASU was arrested, cited and released for assault at 500 Stadium Drive.
- A man not affiliated with ASU was contacted in Parking Structure 5 while acting suspiciously. He was warned of trespassing and loitering and left the area.
- A man not affiliated with ASU was arrested on an outstanding warrant from the Maricopa County Sheriff's Office for fraud. He was able to post bond and was released.
- A male juvenile not affiliated with ASU was arrested for shoplifting at 3 E. Ninth St.
- A man not affiliated with ASU was arrested on an outstanding warrant from ASU police for failure to appear. He was able to post bond and was released.
- A man not affiliated with ASU was arrested, cited and released for trespassing at 615 Alpha Drive.
- A male student was arrested, cited and released for underage drinking at 525 S. Forest Ave.
- A green leafy substance and cigarette rolling papers were impounded for destruction after they were found in the area of Oak Street and Apache Boulevard.
- A male student was arrested, cited and released for public consumption of alcohol at 617 E. Apache Blvd.
- Three bikes were reported stolen.

Compiled by State Press reporter Greg Zemeida

# Lunch at Monti's

## LUNCH MENU SERVED 11 A.M. TO 4 P.M.

No Coupons Necessary - Best Value Anywhere!

- |   |   |
|---|---|
| <p>1. Ground Sirloin Steak Sandwich from Ground Beef, on Cheese Toast with Slice of Cheese, Choice of French Fries or Spaghetti .....\$3.10<br/>with bacon.....\$3.50</p> <p>2. Cubed Sirloin Steak Sandwich on Cheese Toast with Slice of Cheese, Choice of French Fries or Spaghetti .....\$3.45<br/>with bacon.....\$3.85</p> <p>3. 7-oz. Prime Rib Choice of Baked Potato, French Fries, or Spaghetti.....\$6.00</p> <p>4. Breaded and Deep-Fish Catfish Sandwich with Lettuce, Tomato, Cheese &amp; Pickles, Choice of French Fries or Spaghetti .....\$2.90</p> <p>5. Filet Mignon Steak Open-Faced on Cheese Toast, Lettuce, Tomato, Choice of Baked Potato, French Fries or Spaghetti .....\$4.90</p> <p>6. Bar B-Q Beef with French Fries.....\$2.90</p> | <p>7. Pork Chop with Cheese Toast, Lettuce, Tomato, Choice of Baked Potato, French Fries or Spaghetti, Apple Sauce .....\$3.00</p> <p>8. Diet Center Salad Plate Shrimp, Sliced Egg on Bed of Lettuce, Choice of Diet Salad Dressing, Crackers (approx. 23 grams of protien).....\$4.65</p> <p>9. 1/2 Order Baby Back BBQ Pork Ribs Salad, Bread &amp; Butter, Choice of French Fries, Baked Potato or Spaghetti .....\$7.00</p> <p>10. Casa Burger 1/2 lb. with Lettuce, Onion and Pickles, Choice of French Fries or Onion Rings .....\$3.50<br/>with cheese.....\$3.60</p> <p>11. Italian Chicken Seasoned Filet of Chicken on Whole Wheat Bun with Choice of Vegetables, French Fries .....\$3.65</p> |
|---|---|

And Don't Forget Dinner - Served 11A.M. to Closing

★ **Monti's Famous Dinner Specials** ★  
Served after 3 p.m.

MONDAYS	TUESDAYS	WEDNESDAYS
<p><b>7 oz. FILET MIGNON</b> \$6.25</p>	<p><b>PORK CHOPS</b> 2 Pork Chops OR <b>BEEF KABOBS</b> <small>bell peppers, tomatoes, mushrooms, onions</small> \$5.99</p>	<p><b>6-7 oz. SIRLOIN</b> \$5.99</p>

All Entrees Served with Our Special Hot Roman Bread and Tossed Salad, Honey Mustard, Garlic, 1000 Island, Ranch or French Dressing, Baked Potato or French Fries or Spaghetti or Rice.



**3 West First Street  
TEMPE**

AT THE FOOT OF THE BRIDGE

Just a Short Walk from ASU!

PLENTY OF PARKING, TOO.

**967-7594**

Sunday - Thursday — 11A.M. to 11 P.M. Friday - Saturday — 11A.M. to Midnight

I KNOW WHAT I KNOW, WE COME & WE GO. IT'S IN THE BACK OF MY EYES.

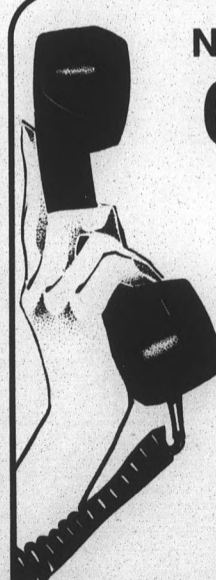


**ICONOGRAPHICS**  
ORIGINAL MOVIE POSTERS  
LARGEST TRAVELING MOVIE POSTER SHOW ON THE PLANET

For Two Weeks Only in The Memorial Union Gallery

Monday - Friday,  
Aug. 21-25 & Aug. 28 - Sept 1  
9AM-5PM

Sponsored by **MUAB**  
Memorial Union Activities Board



Need phone service?

Get hooked up with **US WEST**

It's close, fast and easy.

So, you're new in town. Or maybe just returning for another year at ASU ... and you need phone service. Just visit us one block south of campus! US West at Office Max, Broadway and Rural.

**STOP BY TODAY**

**USWEST** at OfficeMax, Inc.

**BROADWAY & RURAL • 917 E. BROADWAY**  
(Located Inside OfficeMax)

ASU	Apache	Order your phone service today at US West inside Office Max	<b>Hours:</b> Mon - Fri 9am-7pm Saturday 9am-6pm Sunday 11am-6pm
Rural	Broadway		

# Student-planned satellite prepares for the 'real world'

KELLY WENDEL  
STATE PRESS

ASU's satellite program faces a thorough trial of the unit's systems in the upcoming week, and a successful test will move the team one step closer to space.

"This qualification testing is an important milestone from Orbital Sciences Corporation point-of-view," said graduate student Joel Rademacher, ASUSat-1 program manager.

Orbital Sciences donated space aboard a Pegasus rocket to the ASU Satellite program. But before OSC will add the ASU satellite to the Dec. 15 launch, it must undergo a rigorous agenda of tests.

The testing consists of vibration and shock analysis replicating lift-off and the stresses of space flight, as well as a thermal-cycle test that will take the unit to extremes of heat and cold.

"OSC is going to look at the results, and that will help them decide if we are going to be on board with them. It

will tell OSC that we are safe. We are not going to fly apart and break their satellite, which is a multimillion dollar satellite," Rademacher said. "This testing will make sure nothing breaks, comes off, or freezes."

"One of the big problems of going from a paper design to an actual design is (that) you find there are things that cannot be built or are too expensive and complicated to be built," said Jordi Puig, an adviser for ASUSat-1. "Building this satellite is a good opportunity to prepare students for the real world."

The student-designed and constructed satellite weighs just 10 pounds and cost less than \$200,000 to build. Costs were cut by using student-designed parts, saving the program thousands of dollars.

"The cost of hardware was pretty low," said Rademacher. "We got a lot of things donated to us, and lot of things at a reduced cost." The team also received technical and engineering advising from Honeywell Space Systems Group, transmitters from the Jet Propulsion

Laboratory and other support from area businesses.

Orbiting the earth at an altitude of more than 160 miles, the satellite will measure the concentration of ions — electrically-charged particles smaller than atoms — in the atmosphere as a way to generate energy, and test an electrostatic attitude-control system.

Students will also observe the decay of the satellite's orbit by marking its location relative to the earth's geography using Global Positioning technology and micro-chip cameras.

The satellite will orbit the earth for at least 22 days, gradually falling back down to the planet. However, the satellite could last for as long as four months with minimal solar-flare activity, which creates ions that give the satellite more resistance in the outer reaches of the atmosphere.

When the satellite drops far enough, it will burn up in earth's atmosphere and glow like a shooting star.

"I sure would like to see that shooting star," Rademacher said.

## GEAR UP FOR Campus Survival!

### IN THE DORM



**49<sup>99</sup>**

**Voice-activated micro answerer**

Don't miss important calls when you're not in your room. Remote operation. #43-752MB



**59<sup>99</sup>**

**Upright cordless phone won't tie you down**

CCT circuitry provides excellent clarity and range. Handy base-to-handset paging. #43-1005MB



**24<sup>99</sup>**

**Basic trim phone saves space**

Lighted keypad for dialing in the dark. Three colors. White, #43-585MB. Almond, #43-586MB. Gray, #43-587MB



**79<sup>99</sup>**  
EACH

**Shielded die-cast 2-way A/V speaker**

Great for use near PC or TV. 4" woofer and 1" soft-dome tweeter.

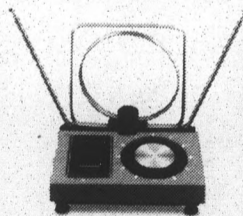
Black, #40-2048MB. White, #40-2059MB



**34<sup>99</sup>**

**AM/FM cassette music system with E-Bass**

Compact speakers let you share the music, headphones let you listen privately. #14-1209MB



**19<sup>99</sup>**

**Indoor TV/FM antenna improves reception**

Fine-tuning control for clearer picture and sound. #15-1808MB

### IN THE CLASSROOM



**39<sup>99</sup>**

**Microcassette recorder**

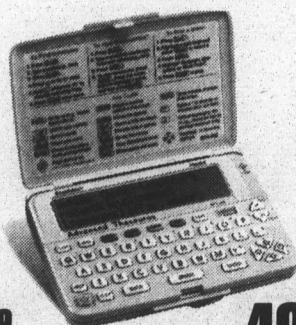
Great for recording class notes. Easy one-hand operation. Two speeds. #14-1159MB



**39<sup>99</sup>**

**Scientific calculator**

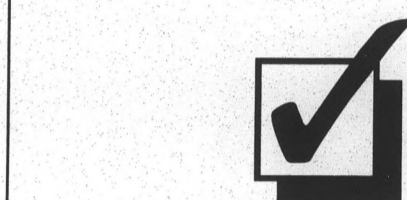
Stores up to 12 frequently used formulas and runs them with just a few keystrokes. #65-808MB



**49<sup>99</sup>**

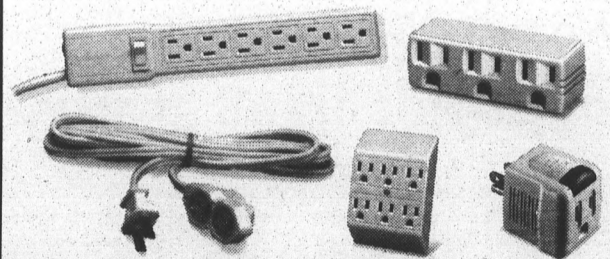
**Advanced thesaurus**

Small enough to carry in your backpack or purse. #63-2110MB Franklin is a registered trademark of Franklin Electronic Publishing, Inc.



## Survival check list

- Phone cords and accessories
- Alarm clock or clock radio
- TV, VCR and video accessories
- Security devices
- Computer and accessories
- Batteries
- Stereo equipment, speakers and audio accessories
- Heavy-duty flashlight
- Smoke alarm
- Part-time job (see the manager of your local Radio Shack store)



### AC accessories to power your dorm

- 4-outlet adapter. 2-prong. #61-2621MB ..... 2.99
- 6-outlet surge protector in metal housing. #61-2131M ..... 22.99
- 6-outlet adapter. For 3-prong outlets. #61-2622MB ..... 3.99
- 6-outlet power strip. Master on/off switch. #61-2150MB ..... 8.99
- Single outlet spike protector. #61-2791MB ..... 6.99
- 6-ft. 3-outlet ext. cord. White, #61-2744MB. Brown, #61-2745MB ..... 1.99
- 9-ft. 3-outlet ext. cord. White, #61-2746MB. Brown, #61-2747MB ..... 2.39
- 15-ft. 3-outlet extension cord. #61-2748MB ..... 3.49

Prices apply at participating Radio Shack stores and dealers. Items not available at a participating store can be special-ordered (subject to availability) at the advertised price. A participating store will offer a comparable value if the product is sold out. Independent Radio Shack dealers and franchisees may not be participating in this ad or stock or special-order every item advertised. Copies of applicable warranties are available upon request at stores for inspection before sale, or by writing Customer Relations, 1400 One Tandy Center, Fort Worth TX 76102. FedEx trademarks used by permission.

**Radio Shack**  
Gift Express®

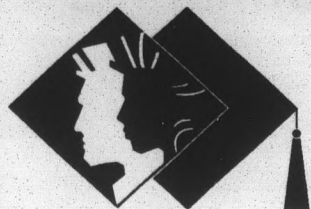
We can wrap a gift, add a card and ship it anywhere in the US via FedEx® delivery service. For a store near you or to order, call 1-800-THE-SHACK™

**Radio Shack**

You've got questions. We've got answers.™

**THE REPAIR SHOP**  
at  
**Radio Shack**

Out of whack? Out of warranty? We fix most major brands of out-of-warranty electronics. For a store near you, call 1-800-THE-SHACK™



## WELCOME CLASS OF '96!

Best Wishes in the future. We welcome your family and friends. InnSuites Hotel Tempe/Phoenix Airport is offering your Suite choice.

**Plus, enjoy these complimentary Suiteners:**

- Social Hour for Guests
- Continental Breakfast
- Airport Shuttle
- Local Phone Calls
- Morning Newspaper
- Cable TV, HBO & ESPN
- Wednesday Manager's BBQ
- Only 10 min. to ASU!

A One Room Suite for **\$49** 1-4 persons. Tax not included.  
 or stay in our  
 Two Room Suite for **\$59**

For Information & Reservations

Call **800-841-4242**



1651 W. Baseline Rd. at I-10 Freeway  
 Tempe, AZ 85283  
 Rates good through September 18, 1995

## Can't Get Rug Burn Without CARPET in Your Dorm!

**REMNANT SALE • \$49 & UP**

**HUNDREDS TO CHOOSE FROM**



**CARPET ONE STORES**

With the Buying Power of Over 500 Stores Nationwide



**HURRY WHILE SUPPLIES LAST!!**

**967-8877** on Apache east of McClintock **1920 E. APACHE**

# STATE PRESS

EACH PAPER PROVIDES YOUR DAILY REQUIREMENTS OF 11 ESSENTIAL VITAMINS AND MINERALS.

STATE  
 PRESS  
 POLICE  
 REPORTS  
 – Too  
 bizarre  
 to be  
 any-  
 thing  
 but  
 real.

## You can be hit in more ways than one by riding the wrong way!

### Did You Know That...

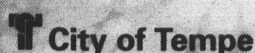
- ⊗ In 96% of all bicycle accidents in Tempe, the bicyclist was injured or killed.
  - ⊗ Wearing a helmet will reduce the chance of a serious head injury by 85%, and is much cheaper than a trip to the hospital.
  - ⊗ The majority of bicycle-car accidents occur at intersections, and in 69% of such accidents the bicyclist was at fault.
  - ⊗ Riding against the traffic flow is a major cause of all bicycle accidents in Tempe.
- Avoid Being Cited...**
- ⊗ Any bicyclist or pedestrian citation will cost you between \$65 and \$95.
  - ⊗ Never ride against the flow of traffic on sidewalks or streets. Always ride with the traffic flow.
  - ⊗ Obey all traffic control signals, signs, and laws.
  - ⊗ At night, you are required to ride with a white light on the front of your bicycle and a red rear reflector on the back of your bicycle.

### And Always...

- ⊗ Yield to all traffic when entering a street (roadway) from a sidewalk, bikeway, or bicycle path.
- ⊗ Slow down when approaching intersections.
- ⊗ Do not assume you are safe because you have the right-of-way. In a car-bicycle collision, the bicyclist always loses.
- ⊗ Remember to wear your helmet!

Follow the traffic laws. Failure to do so can cost you more than a ticket... it can cost you your life.

For more information, call 350-8204.



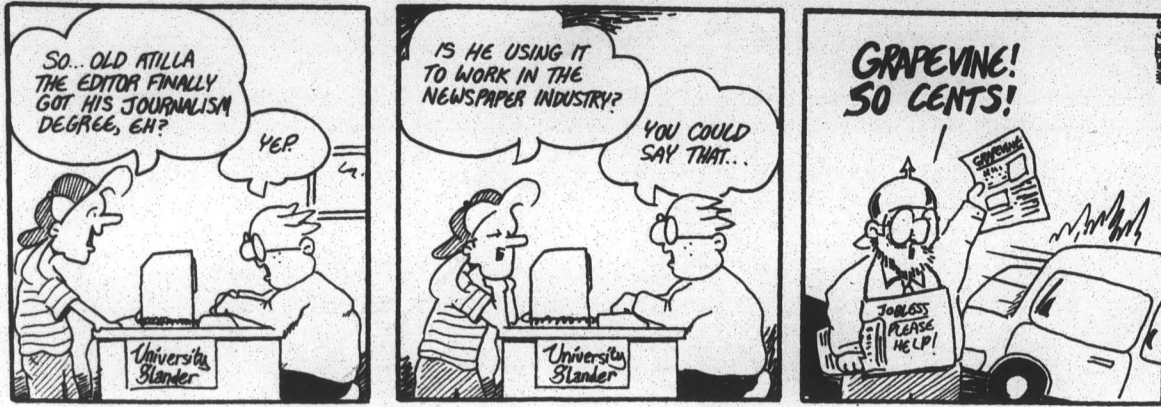
**Make it a safe school year!**

**BICYCLISTS**

# Comics

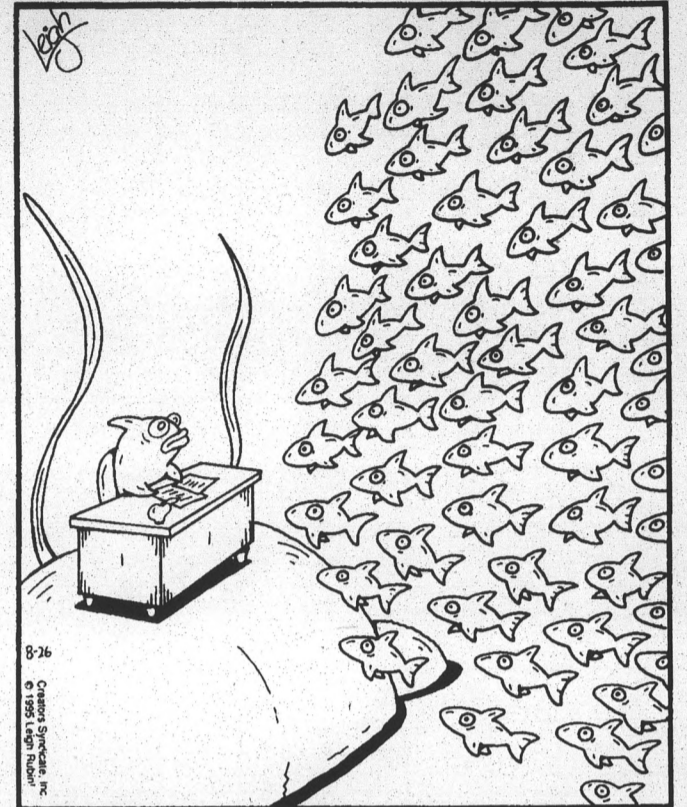
## Generation Hexed

by Stacy Holmstedt



## RUBES®

By Leigh Rubin



Mrs. Smith knew firsthand the daily challenge of teaching in an overcrowded school.

## Calvin and Hobbes

by Bill Watterson



## Doonesbury

BY GARRY TRUDEAU



## STATE PRESS

INTENTIONAL MISUSE OF  
THIS PRODUCT MAY CAUSE  
SERIOUS INJURY.

**The Sun Devil Spark Yearbook** Order yours today for \$42.30  
Matthews Center basement, Rm 50

### DRAFTING EQUIPMENT WAREHOUSE

has

STUDENT DISCOUNTS

All Sizes of Drafting  
Tables and Desks

NEW & USED

ADE Required Tools

1525 E. Apache Blvd., Tempe • 858-0024

## Now Hiring!

The 1995-96 *Sun Devil Spark* yearbook is  
looking for energetic people.

Applications for the following positions are being accepted:

- ✓ Photo Editor
- ✓ Section Editors: Sports, Greeks, Student Life,  
Organizations, Residence Life, Academics
- ✓ Photographers
- ✓ Copy Writers

Applications are  
available, and accepted, at the  
State Press reception desk,  
Student Publications, Matthews Center.

The Sun Devil

# Spark

Yearbook

## Alpha Kappa Psi

The Professional Business Fraternity

Cordially invites Arizona State University students interested in Business as a major or minor to rush during the week of August 28 to 31. The benefits of AKPsi include:

- Involvement with those who have similar interests and goals
- A new circle of friends, acquaintances, and business connections.
- Development of leadership, organizational, and interpersonal skills.
- Learning and teaching new and creative ways to accomplish your goals.

Alpha Kappa Psi is proudly sponsored by

## SENIOR LEADER

Tailback Hopkins hoping to improve on lackluster 1994

By DAN MILLER  
STATE PRESS

ASU tailback Chris Hopkins doesn't need any more reminders of last year's unproductive running game.

He already has enough.

"We're on a video game and our running game sucks," Hopkins said, referring to Nintendo's "Bill Walsh 1996 football" game, which is designed to simulate the actual strengths and weaknesses of teams. "I think that's a direct reflection on last year."

Hopkins' frustration stems from the collective struggle in last season's backfield, which gained only 1,418 yards and finished the year ranked eighth in the Pac-10. Hopkins, a 6-foot, 189-pound senior rushed for a team-leading 688 yards in 1994.

"Last year was sort of an embarrassment for us, not only for the position but for the offensive backfield in general," Hopkins said. "I think we underachieved."

Now, in what Head Coach Bruce Snyder calls a "logjam" in the backfield, Hopkins appears to be the frontrunner to start at tailback when ASU opens its season Saturday at Washington.

"I really would hope that Chris Hopkins has the job and that he can prove that he's as good as he thinks he is and he's as good as I think he is," said Snyder, who is also juggling starting pushes from sophomores Michael Martin, Terry Battle and Marlon Farlow.

Hopkins said he never considered the battle for the starting job a cut-throat competition.

"It wasn't like we went to camp talking about 'may the best man win,'" he said. "It's football. I don't even know if I came out on top. And I'm not even the (1995) starter yet. I think I can be. But they haven't penciled me in yet."

Regardless of whether or not Hopkins gets the nod, he has already assumed the duties of being the elder statesmen.

"I am the 'old man,' and it feels good too," Hopkins said. "It feels good that they

TURN TO HOPKINS PAGE 15.



ASU tailback Chris Hopkins (21) explodes through the line of scrimmage against UCLA last Nov. 12. Hopkins, a senior, who was the team's leading rusher last year, will take a leadership role this season in the youthful Sun Devil backfield.

Jim Poulin/StatePress

## Sun Devil makes pitch for Olympic team



Tim Hacker/StatePress

ASU pitcher Kaipo Spenser loosens up at Packard Stadium Sunday afternoon. Spenser, who pitched for the U.S. National baseball team over the summer, has a shot at making the 1996 Olympic Team.

By DUSTIN KRUGEL  
STATE PRESS

ASU pitcher Kaipo Spenser is entertaining thoughts of throwing strikes in the 1996 Olympics in Atlanta, Ga., after playing for the U.S. National Baseball Team this past summer.

"When you play (a team) like Cuba and you're standing out there with five or six thousand people and they're playing the national anthem and you're part of that USA team, you're going to be thinking about that a lot," Spenser said of playing on the Olympic team. "It's one of my goals, but to me this school comes first."

"It's in the back of my mind, but I'm focused more on the season than the Olympics. It all starts with your season (and) how your season goes."

The Sun Devils' right-handed ace spent two months this summer competing against the world's best baseball talents in the ABC Baseball Challenge, a qualifying tournament for the Olympics which featured several international teams.

"We swept the reigning world champs, Cuba, and we ended up having the best summer for any U.S. team," said Spenser, whose team lost only six games all summer.

Spenser, along with 39 other sophomores and freshmen, was invited to the U.S. National Team tryouts last March.

"I had a pretty good idea I'd get invited because I was having a pretty good season," said Spenser, who had an 18-

5 overall record in his first two years at ASU, including an 8-5 record last season. "I was just happy to be chosen so I could go out there and tryout."

Spenser and nine other pitchers made the final roster cut, which was eventually trimmed to 22 players in June.

"I went into the summer just trying to develop my change-up and slider because during the season I really don't throw those pitches," he said. "So I went into the summer wanting to better my control and better my other two pitches; they got a lot better."

ASU baseball coach Pat Murphy said the Olympics could be in Spenser's future, but it's up to him.

"He's got to take one more step," Murphy said. "He has to be more consistent with his pitches, but he definitely has a chance."

Spenser said playing on the national team helped him gain more knowledge that could help him earn a spot on Team USA next year.

"There's a lot of pitchers just like myself out there," he said. "You can't just go into a game with your fastball. Asian teams turn your fastball around quick. You have to have something else to rely on. You've got to hit your spots."

Spenser began the summer as a reliever but quickly moved into a starting role. After shuffling between starting and closing for the Sun Devils in 1995, Murphy said

TURN TO SPENSER, PAGE 15.



**ARIZONA'S  
BEST  
HEALTH  
CLUBS!**

**\$25 A MONTH\***  
PREPAID ONE YEAR \$249

**FITNESS PLANET**  
WE SHAPE THE WORLD. ®

**JUST MINUTES FROM CAMPUS**

SCOTTSDALE		TEMPE	
7303 E. Earll Drive		1425 West 14th St.	
CENTRAL	NORTHWEST	PARADISE VALLEY	WEST VALLEY
240 W. Indian School Rd.	8221 N. 23rd Ave.	3202 E. Greenway Rd.	4502 W. Indian School Rd.

**MAKE AN INVESTMENT IN YOUR LIFETIME**

Order your copy of *The 1995-96 Sun Devil Spark Yearbook* today!

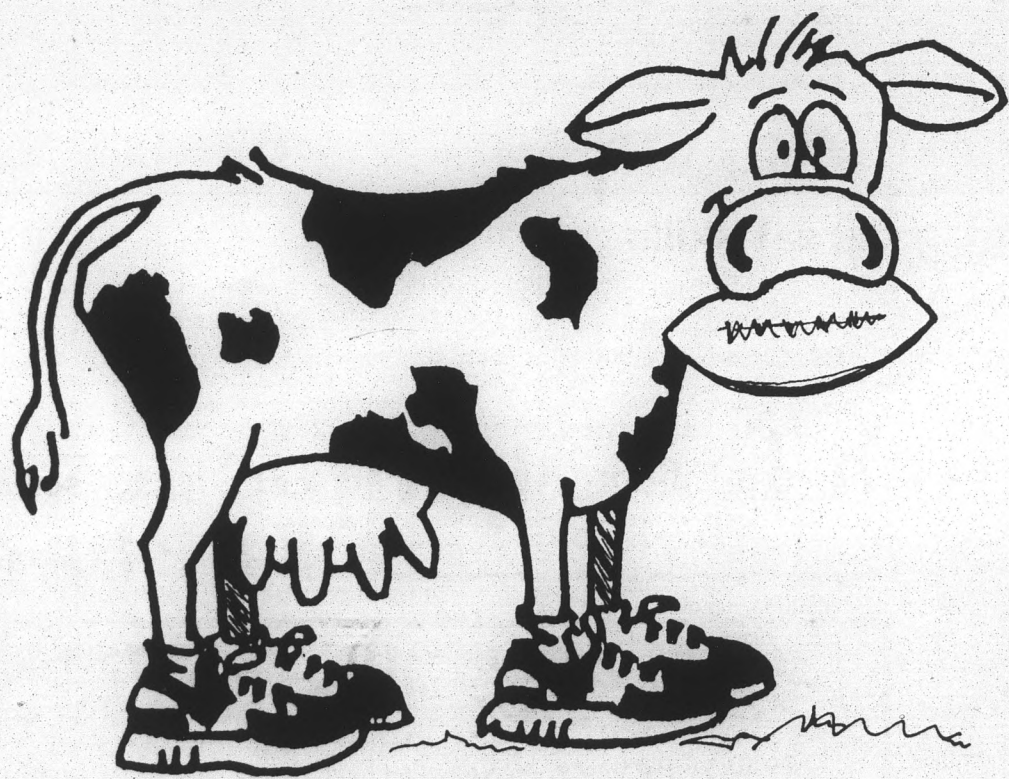
Matthews Center basement, Rm 50  
965-6881

ARIZONA STATE UNIVERSITY

**STATE PRESS**

SEE IF YOU'RE MENTIONED IN THE

**POLICE REPORT.**



**WIN  
A FIESTA BOWL  
SCHOLARSHIP**

for a college-eligible Arizona Resident\*

1st Prize - \$4,000 Scholarship  
2nd Prize - \$3,000 Scholarship  
3rd Prize - \$2,000 Scholarship

Three winners will be selected each week by random drawing. They will receive a pair of tickets to the next home game of ASU, U of A or NAU - depending on which post office box the winning entry is mailed to.

Enter weekly contest of school of your choice.



MAIL ENTRIES TO:

"Fiesta Bowl Scholarship Sweepstakes" to your choice of the following post office boxes.

- ASU - P.O. Box 520, Tempe, AZ 85280
- NAU - P.O. Box 1448, Tempe, AZ 85280
- U of A - P.O. Box 560, Tempe, AZ 85280

Winners of weekly drawings will also receive a pair of choice seats for the FIESTA BOWL Football Game New Year's Day where 3 of the 33 finalists will win scholarships. Enter as often as you wish (no purchase necessary). One entry per envelope. Each entry must include the name of an eligible scholarship recipient\* and the nutrition information panel (or facsimile) from any size carton of milk.

**PLEASE PRINT NAME, COMPLETE ADDRESS, AND TELEPHONE NUMBER ON PIECE OF PAPER AND INCLUDE WITH NUTRITION INFORMATION PANEL.**

\*Scholarship nominee must be an Arizona resident eligible for 1996 term or be currently enrolled at any Arizona College or University. (Employees and family members of Arizona milk producers are not eligible.) Entries must be received by November 10, 1995.

Sponsored by United Dairymen of Arizona



# Hopkins

CONTINUED FROM PAGE 13.

(the young players) want to know what to do and I'm glad that I can help them at times. That's what it's about. That's what happens when you get old."

That senior guidance is something Hopkins missed when former ASU tailback Mario Bates left early to turn pro.

"It was kind of too bad Mario left when he did. I didn't really get a chance," said Hopkins. "Last year I felt that I really had to learn through trial and error and I wish I had somebody that kind of helped me through it."

New running backs Coach John Pettas describes Hopkins as a 'slasher', who can be versatile and go north and south with regularity.

"I think he's just starting to get to his potential," said Pettas. "He's more consistent in terms of making the right reads. He's a runner, blocker and receiver and knows everything that comes with that."

Hopkins, meanwhile, said being smart is his greatest attribute.

"I don't have 4.3 speed (in the 40-yard dash). I'm not 210 (pounds)," he said. "I can catch the ball and I can run

the ball but I'm not Deion (Sanders). I'm not high stepping down the field. I'm just doing what I need to do. I think everybody on the field is a creator and I'm just trying to create. I'm an artist."

That artistic touch didn't arrive overnight, he admitted.

**"I can catch the ball and I can run the ball but I'm not Deion (Sanders). I'm not high-stepping down the field. I'm just doing what I need to do. I think everybody on the field is a creator and I'm just trying to create. I'm an artist."**

—ASU senior tailback Chris Hopkins

"I was about the worst running back in the Pac-10 when I got here. I probably didn't even belong in football," said Hopkins, a 1992 graduate of Salpointe High in Tucson. "I roll with the punches. I mean I'm not up for the (Heisman Trophy). But I think that I'm a decent enough back that if I

don't go any farther than here, I feel that I've done things that I can reflect on and be happy about."

Now he equates his early ASU career with a former sitcom.

"It's time for me to show my ware. I've been just growing up and I had some growing pains. I'm the Kirk Cameron of ASU," he joked.

Most respected publications and preseason polls have issued a gloomy forecast for the youthful Sun Devils this season. But Hopkins maintains ASU is much better than the so-called experts say and it already possesses the most important thing at this stage.

"The best rating I could give will be on Sunday, September 3," said Hopkins. "But for right now we're confident. That's what counts."

Hopkins' confidence is evident in his perspective on the eve of his senior campaign.

"I don't have anything to prove. Why? It's only a game," he said. "If I was O.J., I'd have something to prove."

# Spenser

CONTINUED FROM PAGE 13.

Spenser will be in the starting rotation for the Sun Devils in 1996.

"I feel more comfortable as a starter, but if they need me to close I can do that too," Spenser said. "In closing, you might have to come in with the bases loaded and one out in the bottom of the ninth. In starting, you start out with no one on (base). You still have to be mentally tough for both roles, but I think in closing you have to be able to bear down and throw strikes."

On the mound, Spenser's toughness is never questioned, as he exudes a completely different persona.

"He's definitely not as laid back as he is in person," Murphy said of his demeanor on the hill.

"Off the field I'm just quiet and I really don't talk a lot," Spenser said. "I guess once I get on the field, I change a little. I get a little more intense. I want things done; I want

everything hard. There's a lot of guys with better fastballs, but I don't think they have the same makeup as me.

"Intimidation plays a big role. You've got a whole team ragging you and you can come back and strikeout two in row. That will shut them up quick."

Sometimes Spenser's emotions will draw the wrath from the opposing coaches and players, but he does not try to disrespect them.

"I don't yell at the batters, I yell at myself. They just think I'm yelling at them," he said. "I don't purposely go out there to show up another team, except if it's the UofA."

As Spenser enters his third campaign with the Sun Devils, he relishes his new role of team co-captain and leader.

"Some of them may be scared (or) a little nervous with all these expectations. I'm just going to try to keep them in

line," he said of the newcomers. "I mean, it's baseball. It's a game. It shouldn't control your life."

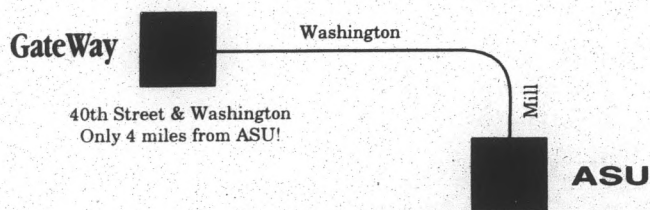
Teammate Cody McKay, who is being tabbed as the starting catcher next year, can't wait to call signs for Spenser in the spring.

"I expect to go out there and win everyday (with him)," McKay said. "He's one of the best to come out of ASU's program."

Oddly enough, McKay and Spenser almost met each in a one-on-one confrontation this summer. McKay played for the Canadian national team this summer.

"There was the possibility I was going to have to pitch against him, but it was rained out. He was lucky," Spenser joked.

**Can't get the class you need?  
The solution is nearby.**



Come to GateWay. We're just minutes from ASU and there's plenty of free parking close to class. Day or evening classes are easy to fit into your schedule. Courses are just \$34 per credit hour for in-county residents, and most academic credits transfer to ASU. Call today.

GateWay Course:	Description:	Transfers to ASU as:
ASB 102	Intro to Cultural & Soc Anthropology	ASB 102
BIO 181	General Biology (Majors)	BIO 181
CHM 151	General Chemistry	CHM 113
CIS 105	Computer Information Systems	CIS 200/CSE 180
COM 100	Intro to Communication	COM 100
ENG 101,102	Freshman English	ENG 101,102
HIS 103	Hist of West Civilization	HIS 100
MAT 155	College Algebra	MAT 117
MHL 141	Appr & Lit Music 1800s+	MUS 107
PSY 101	Intro to Psychology	PGS 100
PSY 240	Dev Psychology	PGS 341
SOC 101	Intro to Sociology	SOC 101
SPA 101,201	Spanish	SPA 101,201



Classes begin August 26. To register, call 392-5000.

This is a partial listing. Call for a complete class schedule. Class offerings subject to change.

Ask About Tuition Assistance

**great scores . . .**

GRE GMAT

Kaplan helps you focus your test prep study where you need it most. We'll show you the proven skills and test-taking techniques that help you get a higher score.

**great skills . . .**

Kaplan has the most complete arsenal of test prep tools available. From videos to software to virtual reality practice tests with computerized analysis to great teachers who really care, nobody offers you more ways to practice.

**310 S. Mill Ave.  
Hayden Square Tempe  
967-2967**

Proud Sponsors of Golden Key National Honor Society

**get a higher score  
KAPLAN**

**Tucker  
Bromson  
TIRE & AUTOMOTIVE**

2033 W. UNIVERSITY, MESA  
DOBSON & UNIVERSITY  
644-1201

**ONLY 3 MILES FROM ASU**

**COAST-TO-COAST**  
LIMITED SERVICE WARRANTY

**Our Tire & Service Warranties Are Honored At Over 8,000 Affiliated Dealers Nationwide**

90 DAYS NO PAYMENT\*\*\*  
90 DAYS NO INTEREST\*\*\*  
NO ANNUAL FEE  
LOW MONTHLY PAYMENTS

\*\*\*OAC

**LUBE • OIL • FILTER**

**\$9.88** WITH COUPON

**Mobil**

- Lubricate your vehicle & chassis
- Drain old oil
- Add up to 5 qts. of new oil
- Install a new oil filter
- Includes a 17 pt. inspection
- Diesel extra
- Most cars and light trucks
- No appointment necessary

Featuring High Performance Valvoline Oil Filters

**COMPUTERIZED WHEEL BALANCE & 4 TIRE ROTATION**

**\$12.88** WITH COUPON

- Check Inflation On All Tires
- Computerized Balance On 4 Tires
- Four Tire Rotation
- Most Cars & Light Trucks

Not to be combined with another offer on same product/service or used to reduce outstanding debt. Plus \$1.75 Environmental Fee.

VISA MasterCard AMERICAN EXPRESS DISCOVER

**"ARIZONA'S BEST TERIYAKI!"**

**SAMURAI SAM'S**  
TERIYAKI GRILL

403 W. University  
Next to Tops Liquor  
**968-9250**

**FREE**

STATE PRESS You don't need a decal to use it.

**ROSITA'S**  
fine MEXICAN FOOD

Serving Lunch and Dinner 7 Days a Week

Bringing Fine Food and Friends Together Since 1963  
Mama Rosa's Traditional Sonoran Mexican Food Recipes  
Are Simply the Best!

Featuring New Selections to Enhance Your Healthy Lifestyle

Fabulous Fajitas - Beef • Shrimp • Chicken

- Camaron Ranchera and Diablo (Shrimp)
  - Savory Black Beans (Shrimp)
  - Steaming Sides of Fresh Vegetables
  - Incredible Fish Tacos
- FAMOUS GIANT GOLDEN MARGARITAS

**1/2 PRICE DINNER**  
With the purchase of one dinner of equal or greater value.  
Not good with any other offer or discount.  
Offer good after 2 p.m. Expires 9-5-95.

**Mesa**  
2023 W. Guadalupe  
(Southwest Corner  
Dobson & Guadalupe)  
**897-9411**

**Happy Hour Buffet**  
4-7 p.m.  
Monday-Friday

**Tempe**  
960 W. University  
(Northeast Corner  
University & Hardy)  
**966-0852**

**MIGUEL'S MUSIC CENTER**

- METRONOMES • ACCESSORIES • ETC.
  - ELECTRIC & ACOUSTIC GUITARS
  - AMPS • ELECTRIC EFFECTS • SHEET MUSIC
  - LESSONS (Rock • Contemporary • Folk • Classic Guitar)
  - REPAIRS ► On All Instruments!
- ...and much MORE!

In The Arches Shopping Center  
130 E. University Dr. **968-2310**

STATE PRESS Crosswords - Go ahead...do them in ink.

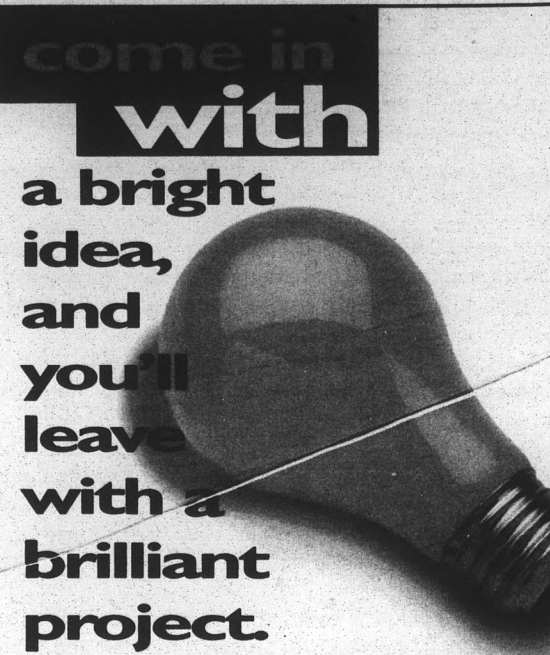
Master Card VISA

OPEN 11AM - 2AM DAILY!

**FAST, FREE DELIVERY!**  
**829-0064**

**MONDAY MADNESS**  
14" LARGE 1-ITEM PIZZA \$5.50

**TUESDAY SPECIAL** 16" 2-ITEM PIZZA \$6.50  
**WILD WEDNESDAY** 12" PIZZA UNLIMITED TOPPINGS \$6.99



Introducing the Apple Color LaserWriter  
Color prints from Mac or Windows. Now at Kinko's.



Color makes all the difference in your presentations.  
Rent Kinko's Mac or IBM computers at the regular price  
and make up to 5 full-color laserprints for free!

**kinko's**  
Your branch office

Tempe: 933 E. University 894-1797  
Paradise Valley: 13637 N. Tatum 494-4399 • Phoenix: 4801 N. Central 241-9440  
Glendale: 4920 W. Thunderbird 978-5050 • Ahwatukee: 4940 E. Ray Rd. 893-0700  
Scottsdale: 4000 N. Scottsdale Rd. 946-0500 • North Valley: 402 E. Greenway 863-2200  
Mesa: 1840 W. Southern 969-3323 • East Mesa: 1437 E. Main 833-0036

**Open 24 hours a day, 7 days a week.**  
Over 800 branch offices worldwide. For the nearest location call 1-800-2-KINKOS.

# Classifieds

Notice to our readers: Before responding to any advertisement requesting money be sent or invested, you may wish to investigate the company and offer. The State Press cannot assume responsibility for the validity of the offers advertised in our classified section. For more information and assistance regarding the investigation of an advertisement, please contact the Better Business Bureau at 264-1721.

Good is that which imparts truth to the known and the power of knowing to the knower.  
-Plato

**ANNOUNCEMENTS**

**FREE FINANCIAL Aid!** Over \$6 billion in private sector grants & scholarships is now available. All students are eligible regardless of grades, income, or parent's income. Let us help. Call Student Financial Services: 1-800-263-6495 ext. F59181.



MICHEAL and Millicent Lanin are proud to announce the birth of their beautiful daughter Gabrielle Rebecca Lanin on August 10, 1995. 7 pounds 14 ounces.

**ANNOUNCEMENTS**

**NEED MONEY** for college? UNLL aimed scholarships avail. Recorded message gives details. 786-0327 ext. 7.

**APARTMENTS**

- 1 BDRM \$495, 2 bdrm \$585, 2 bdrm, 2 bath \$650, util incl. Apt Renters 649-0077
- 2 BDRM W/D, garage \$650. Apt. Renters 649-0077.
- 3 BDRM \$715, 2 bdrm \$475, 1 bdrm \$475. Pool, Tennis court. Call Apt Renters 649-0077.

**BEAUTIFUL NEWLY** Renovated complex 1/4 mile from ASU. Studios and one bedrooms starting at \$405. New carpet and tons of amenities. For info call 968-0101.

**STUDIO WALKING** distance to ASU, pool \$380. Apt Renters 649-0077.

**STUDIO, 1BA, 1** block from ASU, laundry, \$265/mo. Jacob, John Hall & Ass. 844-5900.

**TOWNHOMES/ CONDOS FOR RENT**

**2BDRM PAPAGO PK** Pool side, \$690 & \$800. 2 bdrm Questa vita master suites pool side, \$1750. incl. all appliances. Realty Exec. Bob Bullock 998-2992.

**BIKE/WALK TO ASU.** Tempe. 3bd, 2ba, fenced yard, A/C, avail. now \$675 +util 991-2388

**HERMOSA PL.** 2bd 2ba condo, avail Sept10, w/d, pool, nr ASU, 510 W.Univ, \$635,966-0987.

**TOWNHOMES/ CONDOS FOR RENT**

**GREAT STUDENT** Condo, 2br-2ba Questa Vida, sub-rent 2 beds & make your home payments. Gene Baird, Realty Executives; 998-2992-See value increase.

**QUESTA VIDA lux** condo 3bd/3ba, 2 stry, vlt ceilings, sky lights, w/d, dish, micro, 2 pools, spa, rqt ball. 1 mi. to ASU, avail immed., \$1100/ mo 829-0902.

**HOMES FOR RENT**

**2 BD MOBILE HOME** on 5 acre farm, foothills of S. Mountain. Park area, rural, private, large yard, A/C, large kit. and liv. rm. Ron 276-9385.

**REMODELED 3 BDRM,** 1 1/2 ba, pool, walk to ASU, \$1075/mo. Tim 894-0288.

**WALK TO ASU**

**Apartments**  
1 bd/1 ba \$375/mo  
2 bd/1 ba \$450/mo

**Houses**  
Small mansion  
• 3000 sq ft  
• 25'x35' living room  
• 3bd/2ba  
• Uptown Phx  
• \$775/mo

**Secluded cabin**  
• in forest with creek  
• 45 min to ASU  
• \$375/mo  
**967-6000**

**HOMES FOR RENT**

**NICE HOME,** 4bd/3ba, near ASU, tile & marble, jacuzzi. Rich, evenings, 777-9113, \$1200.

**REMODELED 4-5 BDRM,** 2ba w/pool, tile floors, \$1250/mo. Tim 894-0288.

**RENTAL SHARING**

**3/4MI FROM ASU,** quiet, pool view, nice apt. Male n/s to have own rm \$350/mo + 1/2 util. or share a rm for \$180/mo + 1/3 util. Call 968-1038.

**FEM RMTE wanted - 2bd/2ba,** 5 min. from campus. \$290 + 1/2 util. Non-smoker please. Call Michelle @ 967-6568.

**RMTE WANTED,** fem., responsible, & clean. \$205 + 1/3 util. Call Kristen at 897-7382.

**MATURE NS female 2bd/2bath** apt. near ASU Prefer Japanese, but will consider others. \$273mo + 1/2 util. 966-8615.

**MATURE NS female 2bd/2bath** apt. near ASU Prefer Japanese, but will consider others. \$273mo + 1/2 util. 966-8615.

**M/F GRAD student,** n/s, nice area, 1 1/2 miles from campus, pool & jacuzzi, \$450 + utils, first & last month. 946-2335.

**MALE RMTE.** Wntd/pref. stdt. N/S, clean; \$205+130util. @ cam creek; Joe or Rich 467-2184.

**ROOMMATE NEEDED,** Marlgorough Park townhome, bdrm for \$350/mon. and big loft for \$325 plus 1/3 utilities. Call Jeremy at 874-1445, lve mess.

**CLASSIFIEDS WORK!**

**MISCELLANEOUS FOR SALE**

**RAYBAN SUNGLASSES;** the hottest and newest styles at low prices direct to you, call for free catalog. Visions 800-248-5499.

**BOOKS**

**\$\$\$ FOR BOOKS!** Cash or credit for your quality used books. Trading hours: Mon-Fri. 10am - 8pm. Changing Hands Bookstore, 414 Mill Avenue, 966-0203.

**ECE 313, ECE 334, ece 340,** ece 352, phy 361, rea 394, mgt 301. \$35-\$55 obo. Wendy @ 858-0709.

**FURNITURE**

**2 BRENTWOOD LOVE** seats. Good cond. \$100 each. Round kitchen table, pedestal base \$30. Call after 8pm 981-7249.

**CLEAN DORM carpet** for sale. L/t gray, 12x14, ex cond. \$60 obo 554-9387 8-5, 786-5763 eve.

**FUTON FAVE** Natural comfort special. 2604 W. 1st St. #34 804-1554.

**KING SIZE Waterbed** w/heater & headboard; \$225. Call Greg at 596-1442.

**LIQUIDATORS.** OVER 200 offices of furn. to sell. Desks, files, chairs, book cases, comp. tables & more. Arizona Office Liquidators 5064 S. 40th St. Phoenix ( 1/2 mi. S of Broadway) 437-2224.

**SLEEPER SOFA** w/queen size bed. Good shape, brown. Asking \$200 or best offer. 431-0381

**SOFA & LOVESEAT**(w/incliner), light green. Like new orig. \$1200 now \$500, 497-9370

**FURNITURE**

**SOFA & LOVESEAT** for sale, 7yrs old, light tan color. Good condition - \$175/obo. Perfect for college apt. Call 940-9526(or 9535 after 5pm).

**SOFA SET \$295,** Queen bed \$85, King \$180, futon bed \$135, Dinette \$160, day bed \$180, Sleeper \$265. 351-3031.

**TEAK WOOD single bed** with trundle and matching teak wood bookcase headboard, mattress included. Excellent condition, \$200. Antique credenza with three drawers and fold down desktop that has pigeon holes for office supplies storage and bookshelves on either side of the drawers, \$200. Two oak finish ceiling fans with lights \$50. Furniture delivered free. Call after 6pm 834-1481.

**USED BED & Furniture** sale. Student discounts. Kings, Queens, Fulls, Singles; very inexpensive. Call 788-8633.

**COMPUTERS**

**486/DX33 COMPUTER** 8 meg ram, 230mb hd. Dos, Win, Word; \$800 phone 203-4651.

**AUTOMOBILES**

**1988 VW CABRIOLET** red w/blk top, loaded, ac, cc, 5 spd, phone, fog lts, sheepskins, new tires, batt, 53k mi., orig ownr. \$7500 obo. 481-9050. Great car!

**\$CASH TODAY\$**  
I buy all used cars, trucks, misc. items.  
Call Al 994-4369

**AUTOMOBILES**

**85 VW SCIROCO,** 2nd own. New a/c; t - belt, brakes 72k mi. \$3250 obo, 258-8840 all records.

**RED 1991 Shadow conv.,** exc. cond., new top, ext. warr., auto, ac, p/w, am/fm, low miles, \$6950. Call 831-7113.

**QUICK CASH\$**

**Sell Your Auto Today!**  
Top Dollar Paid!



**Brian**  
246-3499

**MAJESTIC CAR CO.**

Quality used cars & trucks  
Financing avail.  
This week:  
Honda Preludes:  
3 to choose from  
Just north of 202 on Scottsdale Rd.  
**267-1820**

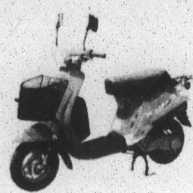
**MOTORCYCLES**

**94 KAWASAKI Ninja 250R,** 3400 mi, 2yr warranty; \$3000. Call 835-5733 or 491-2205.

State Press Classifieds

MOTORCYCLES

ALL CYCLES  
sales • parts • service



New Scooters  
from  
\$795<sup>00</sup>

- Affordable Transportation
- Easy To Park
- Used Scooters & Motorcycles

open 7 days a week  
1850 E. University Dr.  
829-7111 731-9003

BICYCLES

2 RALEIGH cross bikes, 10 speeds, his/her, like new. \$75 each. Call Spencer 951-3217.

DIAMONDBACK APEX Mtn. bike 18 spd, 18.5 in. Deodre, smoke fms., comp., rack. Exc. cond. 175/firm 894-0069.

MOUNTAIN BIKE, mongoose crossway 850, 1 mo. old. Paid \$675. Great components! Price \$450. Eric 835-6316.

TREK 12 Speed road bike, very good quality and condition. \$150. Day 966-1645, evening 968-2739.

HELP WANTED-GENERAL

\$6 PER HOUR

Outgoing, energetic appointment setters for Universal Portraits. Call James or Carey, 496-8029.

\*\$7/HR + CASH!\*

Set fun free appts., for health services. Friendly office, near Fiesta Mall in Mesa. Eves & Sat. or f/t. Join our team 649-9580!

100 DOLLARS to keep homeopathic journal for six weeks. Healthy people needed. Call 274-1340 M-F mornings only.

100 DOLLARS to keep homeopathic journal for six weeks. Healthy people needed. Call 274-1340 M-F mornings only.

A BIG CHECK

Hey telemarketers! Tired of working in boiler rooms? No freedom? Need a good p/t job while you go to school? No selling! Great pay \$200/400 wkly. Near ASU 303-0935.

ASSISTS., CLASS rm. & after school, in Montessori toddler and 3-6 programs. 730-8886.

MISCELLANEOUS FOR SALE

HELP WANTED-GENERAL

AHWATUKEE FOOTHILLS YMCA is seeking recreational supervisors, pre-school and assistant teachers, enrichment instructors, intramural coaches. Flexible hours \$5-10 dollars/hour. Apply at 3233 E. Chandler Blvd., Phx.

AHWATUKEE FOOTHILLS YMCA is seeking recreational supervisors, pre-school and assistant teachers, enrichment instructors, intramural coaches. Flexible hours \$5-10 dollars/hour. Apply at 3233 E. Chandler Blvd., Phx.

ATTENTION ENTHUSIASTIC & Friendly individuals: Why not enjoy a relaxed & casual atmosphere while earning \$5.50-\$7.25/hr in our advertising dept. M-F 4-8 p.m. Call Dan before 12p.m. or after 4p.m. 894-9442.

CAMPUS CHEVRON

Cashier/Sales. Must have automobile knowledge, p/t ft. Wage DOE. Apply in person SW corner of Rural/Apache.

CASHIER & full serve attendant, dependable, p/t, flex hrs. Scotts, Chevron. 941-8899.

CASHIER NEEDED for pro. bike shop, computer exp. nec. Bike exp. helpful. Ft/pt, benefits. Apply Domenics Cycling 1004 S. Mill. 967-7700.

CHILD CARE (1 child) & gen. asst., PT/S. Tempe. \$5.75/Hr; refs req.; leave mess. 838-5357.

COSMIC PIZZA hiring delivery drivers p/t ft Apply within at 1523 E. Apache Rd.

DOOR KNOCKERS

Get paid for everyone you sign up for a free grocery drawing. The more sign-ups- the more money. Nights & weekends. Car nec. Call 829-4962 3-6 pm.

DRIVERS

+ phone help needed \$10-\$15/ hr flex hrs. Call Tom Delicious Deliveries 220-0000

DRIVERS NEEDED immediately Earn \$10 to \$15 per hour. Call Dash and Dine at 967-7632

EARLY AM Cleaning; ASU area, 3hrs/day, 7days/wk, \$6/hr. small truck helpful; 951-3839.

EARN \$ SELLING Music. P/T Flexible Hours, unlimited potential. Call 922-4840.

EARN \$\$\$BIG\$\$\$ MONEY! Excellent opportunity in the multi-billion \$ telecommunications industry. Sell for us or become a distributor yourself. Call now 800-211-2493.

EARN MONEY - great job, we have a student position avail. for a resp. stndt. Job duties are various and some comp exp. needed: Student job number 485H, at student employment.

FAMILY AMUSEMENT park-seeking daytime cashier & outside ride operators. Apply in person 1155 W. Elliot Rd.

MISCELLANEOUS FOR SALE

HELP WANTED-GENERAL

ENERGETIC FRIENDLY people needed to organize children for a photography co. Flexible hours, mainly wknd morns. Own trans. nec. Call Erin 303-9417 between 1-5pm.

ENTRY LEVEL Phone tech. support pos. w/the valley's leading internet provider. All shifts. Prefer some internet know. Must have comp. exp. Hiring ASAP. Call 274-0100.

EXECUTIVE ANSWERING Service has immed. opening for P/t operator, 11pm - 7am, Fri. + Sat. \$8.50/hr. Must type 45wpm, know 10 key by touch. Have comp. exp. call 264-4000.

F/T, P/T positions available providing assistance to adult individuals with mental & physical disabilities. Paid benefits & training, no exp. nec. Call 431-9511.

FANTASY SPORTS

Now hiring for immed. employ. p/t 15-25 hrs/wk Flex. day hrs. Near ASU \$6/hr to start. Call 967-2300.

HELP WANTED-GENERAL

FLEXIBLE PT/FT

Mr. Goodcents Subs & Pasta now hiring pt/ft positions. All shifts, flex hrs. Lunch & wknd delivery drivers. 894-6065, 528 W. Broadway.

GECKOS, SCOTTSDALE Now hiring doorstaff and cocktail wait staff. Doorman must poss. knowledge of liquor laws and ID'S. P/T, 7316 E Stetson, 1/2 block East of IMAX. 947-1000.

GYMNASTICS TEACHER, enthusiastic, happy, in shape. Teachers who love to teach 3-12 yr olds gymnastics. Central Phx area, \$6-9/hr. P/t 955-7805.

HOUSEKEEPER NEEDED make own hrs. 1 blk from Asu. 966-4918.

IMAX THEATRE

Welcome back ASU! Come join our team! The Imax Theatre in Scottsdale is looking for enthusiastic, smiling faces to fill hosting positions, 15-30 hours per week. All shifts. Call 949-3100x204.

HELP WANTED-GENERAL

INTERNSHIPS

Paid! 3 college credits! Senior bus. majors. Position in financial services. Call Life Investors 967-6619

KENNEL HELP Needed for Scottsdale animal hosp. PT mornings and eves. must be dependable. 7311 E. Thomas Rd. Apply in person. Call 945-7692.

LEARNING CNTR. Inst. & Gym Sup. for after school program. 3-6 M-F, 897-6247.

LICENSED AGENCY seeks m/f 18-30 actors/models for 4 month promotion. Sat. & Sun. only, \$10/hr. If seriously interested call Jessica 966-1102.

MALE MODELS

Local Production Company needs young men 18-30 for magazine layouts and cards. Call David for an interview. Extra! Extra! 391-2329.

MARKET RESEARCH Interviewer.Pt/Ft 11/2mi. from ASU, no sales, no exp. req. 967-4441.

HELP WANTED-GENERAL

NEED EXTRA MONEY?

Telemarketing pos. avail., flex hrs, opp. for advancement & comm. Fun & casual, all you need is a friendly voice & be comp. friendly. Call for interview. Beginright Temporary Service, 1131 E. Highland Ave. Phx. 277-4050.

P/T DANCE instructor wanted. Exp. w/ children a must. Comp. pay. Call Brenda at 437-0780.

P/T EVES/WKND. outgoing/good phone voice. No sales! \$6/hr + bonus. Call Mr. Allen, 838-4333, ext. 24.

P/T HELP wanted for cart at Scotts Fash Sq. Mall run by ASU student. Eves wknds \$5.50/hr. Call Glassalacart 970-3415.

P/T OFFICE work 20hrs/wk. Work own hrs. Job involves Acc & Data entry. Exp. helpful but not required. Leave msg. at 970-1270, days.

PART TIME, flexible hours, no sales. Close to ASU. \$5.50/hour. Call 966-2301.

PEOPLE PERSON

Excitement, fun, cash, shopping. Full Time/Part Time. Call 967-0222

HELP WANTED-GENERAL

PART-TIME

Actors/Actresses wanted for product demos. Develop confidence, timing, people skills while making money. PM/ weekends. Car nec. Tempe location. Call 829-8007 3-6 pm.

PERSONAL ASSISTANT for male wheelchair user in Tempe. P/t, \$7/hr, no exp nec. Heavy lifting required. 804-0300.

PERSONAL CARE Attendant Wid. mornings/eves. Must be 21 or over w/good driving record. No lifting req. Hrs. flexible. Call Ellen 968-6284.

<PHOENIX ZOO> Available imm., work weekends & flex. week days. \*Admission/sales, \*Custodians. \$5.68/hr. Apply daily at 455 N. Galvin Pkwy.

PHONE RECEPTIONIST for portrait studio. Days/evenings. Niki, 496-0255.

PHOTOGRAPHERS NEEDED for childrens sports photography co. Flex. hrs., mainly wknds. Own trans. nec. Call Erin at 303-9417 between 1-5pm.

PROPERTY MANAGER needs asst. Prefer AM hrs \$6.50+ mlg. Alma Schl & Baseline. Contact Kent Remax Realtors 820-0500

\$7.00 PER HOUR + INCENTIVE  
FULL BENEFITS

Zales Regional Credit Center is seeking motivated individuals for:

P/T COLLECTORS

HOURS: M-F 5-9 p.m. & 2 Saturdays per month 9-1p.m.

ALL POSITIONS offer excellent paid training and a competitive salary and benefits package through:  
**ZALE CORPORATION**

the world's largest jewelry retailer. If you would like to become part of our success, we invite you to find out more about these opportunities.



Jewelers  
Financial  
Services

Apply in Person  
9a.m. - 4 p.m., M-F  
2035 W. 4th Street  
North of University/West of 52nd Street  
Tempe, AZ • 829-5804

Equal Opportunity Employer • Drug-Free Environment

GREAT OPPORTUNITIES!

Radisson  
RESORT SCOTTSDALE

Invites you to our first annual  
JOB FAIR

Wednesday, September 6, 1995

10:00 am to 6:00 pm

7171 N. Scottsdale Road

Between Indian Bend & McCormick Pkwy

Marquis Room (enter through side entrance off main lobby)

Come learn about our beautiful, full service resort.  
and employment possibilities in:

- Front Desk •
- Guest Service •
- Food & Beverage Service •
- Room Service •
- Night Audit •
- Recreation •
- Communications •
- Security •
- Banquet Service •
- Stewarding •
- Housekeeping •
- Kitchen •

AND MORE!

(positions are part time, full time and on call - varied shifts)

There will be department booths, videos, refreshments and property tours.

Excellent Wages, Exciting Benefits  
and Employee Programs for our YES I CAN! employees.

OUR JOB HOTLINE IS:  
945-2825

GREAT PLACE TO BE!

Yes I Can!

SEARS

Repair Services

is now hiring Telemarketing Sales  
Representatives in Mesa.

Sears Offers:

- > Paid Training
- > Paid Vacations & Holidays
- > Real Advancement Opportunities
- > 401k Retirement Plan
- > Life & Health Insurance
- > Pre-qualified leads
- > Free Home Study Course
- > Employee Optical Discount Program
- > Immediate Sears Employee Discount
- > Flexible Hours

Monday - Friday 4-9, Saturday 8-5;  
Two Sundays per month 11-4

Apply at: 952 E. Baseline Rd., Suite 111, Mesa

Cross Streets

EOE Stapley - Baseline M/F/D/V

NEED A JOB?  
WANT TO:

- \* Earn \$10 to \$20 an hour?
- \* Be able to work when you don't have class?
- \* Work full or part time?



CALL  
NOW!!

BARTENDING ACADEMY  
921-9925

ATTENTION ASU ALUMNI



Original, mint condition orange crate label, circa 1952. This colorful old lithograph, framed by hand in glass and copper, is ready to hang in home or office. This rare collectable was recently discovered in limited numbers and is available at \$85.00 + \$10.00 S/H. Send check or Visa/MC # to:

Antique Label Company  
4207 Calle Juno  
San Clemente, Ca. 92673

**HELP WANTED-GENERAL**

**POOL CLEANING**-Co. needs pool cleaning tech. Must have trans. only hard & eager workers need respond. P/t work, around school schedule. Please call Matt at 840-9518.

**PT/FT EVENINGS/WEEKENDS** over 21 a plus. Walgreens on Mill & Broadway. Tempe Apply in person.

**SPORTS/ FITNESS** natl co. experiencing massive growth. Need innovative self-mot. people for p/t to earn 1k-4k/mo. Call Len at 852-0604 for appt

**STUDENT COURIER:** Hours 1-5pm M-F. Previous driving exp. AZ driver's license required. Call ASU Distance Learning Technology. 965-6738.

**TELEMARKETERS**

Excellent customer service skills & phone voice are required for this non-sales position. Ft & p/t immediate career opportunities. Must be able to work well as a team and follow specific instructions. Inquire in person at 2322 S. McClintock, Suite 2, Tempe. Ask for Barbara.

**THE BEST**

Here is a great pt. job for all students, am/pm pos., no exp. nec., training provided, no selling! Earn an extra \$180/300 wkly, call for your interview today, near ASU. 303-0939.

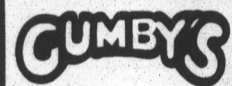
**THE PICNIC** Company Gourmet Cafe. Now hiring delivery drivers, f/t-p/t, good day shift hours. 1415 E. University, Tempe. 2blk E. of Rural.

**TUX & TAILS** is looking for enthusiastic people to work in a fun & challenging environment. P/t, f/t positions available. Call Dave at 838-3193.

**UNIV. VET. Hosp.** seeks p/t kennel help. 2 pos. avail. m-f, 7-11am., or wknds only. Apply in person 925 W. Broadway. Tempe. No phone calls please.

**VALET PARKING** attendants: for lunches on m,w,f, 11-3 or t,th 11-3. Also valets for 2-3 nights/wk. At least 20 years old, good driving record, clean cut, willing to drive to Scotts, Phoenix, etc. Apply at 34 W. Dunlap m-f between 1:30-4:30. Directions to apply from Tempe: Squaw Peak Freeway north to Glendale, go left to central, go right to Dunlap, go left, American Valet Co. is 1 1/2 blocks up on the right.

**State Press Classifieds**  
Matthews Center  
Basement  
965-6735



**Gumby's Pizza**  
needs  
Delivery Drivers

- Immediate Positions Available
- Flexible Hours

Call Todd or Toby  
**921-3278**

**HELP WANTED-SALES**

**PT/FT OUTSIDE** sales positions avail. 25-30hrs/wk. Must have reliable transportation. Mail work history or resume to Automotive Group c/o 2720 S. Hardy, Suite 4 Tempe, AZ 85282 or walk in applications between 8am-2pm. Also include days & hours avail. for work.

**START NOW**

**HIRING FOR** Promotional sales. We've got a fun, part time job for you...flexible evening hours, convenient Tempe location. Expect 12 hrs to start. (Our exp reps earn over \$25/hour) those interested in sales and marketing careers encouraged to apply. Please call 921-7755 for personal interview.

**HELP WANTED-CLERICAL**

**MID-SCOTTSDALE. WORD-PROCESS.** laser printer-term papers, resumes. Lianne 948-4275

**OFFICE ASST. P/T** organized, good communication, dependable. Tempe ASU area. 437-1048.

**HELP WANTED-FOOD SERVICE**

**CAFETERIA SERVICE** attend. Good \$, includes meals 12-6:30. M-F. 1/2 mi campus 966-2884

**CLUCK-U**

Come join the Cluck-U-Chicken team. Now hiring delivery drivers. Earn \$8-12/hr. Counter/line help, cooks, cocktail servers, bouncers. Apply in person. 855 S. Rural, Tempe. 1 block south of University.

**CORK N' CLEAVER**

Excepting aps for lunch host(ess) & lunch food server, will train, pt time. Concern w/ the parents, reliability & personality are important. Apply in person m-f 2-5p.m. or by app. 5101 N. 44th st. 952-0585.

**DELI PERSON,** full time & part time positions, flexible hours, apply in person. Capistrano's Italian Deli, 655 W. Warner, Tempe, 496-9044.

**GREAT JOB AWAITS!**

Local co. seeking energetic resp. ind. to operate hot dog cart program w/ Home Depot. Flex. shifts M,W,F or T, Th, Sat & Sun. Full & p/t hrs., up to \$9.00/hr. Call 561-6253.

**LOOKING FOR** energetic indiv. Ft & p/t food service clerks; flex. hrs. M-F apply Country Glazed Ham, 2501 E. Camelback/Esplanad. 955-8069.

**PATRIOT PEST & TERMITE CONTROL WANTS YOU!**

**\$7/hr + commission**  
Telemarketing & phone survey  
- 10 minutes from campus - flexible days & hours

Call Gregg  
**861-2277**

**HELP WANTED-FOOD SERVICE**

**PAPILLONS SPORTS** Bar accepting apps. for all positions. Cooks, Bartenders, Waitstaff, etc. Apply in person. 1250 E. Apache Blvd. Tempe.

**PHOENIX ZOO**

Available immediately. Must work weekends. \*Food Service \*Cashiers \*Food Prep. \*Shift Managers \*Bartenders \$5+up/hr. Apply at 455 N. Galvin Pkwy.

**SANDWICH PREP/DELIVERY** Apply at Brown's on 6th. 570 S. College.

**KILOWATT'S**

SINCE Captain Kilowatt's arrival in the valley, the demand for Kilowatt's delectable delivery food has risen dramatically. Our super-powered hero can no longer handle it alone. Captain K needs a few good citizens to fill the following positions: Delivery drivers, flyer distributors, and only the finest pizza cooks Tempe has to offer. Call the Captain's hotline at 804-0999 for more information.

**HELP WANTED-CHILD CARE**

**AFTER SCHOOL** Caregiver wanted for boy age 7 & girl age 11. M-F. Avg. 20hrs/wk: \$6.00/HR. S. Tempe area. Call or leave message 839-6542.

**ASST DIRECTOR,** f/t & p/t teaching pos. avail. at NAEYC. Accrd. child care center, near ASU. educ + exp req. 921-2737.

**BABYSITTERS & NANNIES.** Set your own schedule. Days, eves &/or wknds. \$4.25-\$6.70/hr. 345-2433

**MOTHER'S HELPER/Nanny** \$200/wk. 45hr/wk-flexible. 16mos & 4yr old. Furn., guest house+perks. Deborah 483-8489.

**NANNY M-F, Sat eves:** 18-26 hrs, 2-6p.m. \$6/hr. Ref. 56th & Camelback. 840-7818.

**NANNY/MOTHER'S HELPER** needed for four young children; Arcadia area; eves. & weekends. Call 970-5372.

**PD. WORKER** Needed for after noon shift at daycare ministry. Great hrs. for morning student. Light & Life Christian Day Care. 985-0221.

**SEEKING RESP.** Day care imm. for 17mo. old, Nights, my home (pref). 7p.m. start, incl. 4wk days & sat eves. 491-6596

**JOB OPPORTUNITIES**

\$257,000 MY 2nd yr income. 2yrs out of college. Let me show you how. Free info. Call 926-3870.

**Need host(ess) • cashier • line cooks • server**

PT 8am - 2pm  
Must work weekends + 1 or 2 days a week.  
Call **961-8609**  
or apply in person

**Le Peep Grill**  
Chandler  
6245 W. Chandler Blvd.

**JOB OPPORTUNITIES**

**ALASKA EMPLOYMENT** - Students Needed! fishing Industry. Earn up to \$3,000-\$6,000+ per month. Room and Board! Transportation! Male or Female. No experience necessary. Call (206)545-4155 ext A59181.

**CRUISE SHIPS** now hiring - Earn up to \$2,000+/month working on cruise ships or land-tour companies. World travel. Seasonal & full-time employment available. No experience necessary. For more information call 1-206-634-0468 ext. C59181.

**• INT'L EMPLOYMENT •**

Make up to \$25-\$45/hr. teaching basic conversational English abroad. Japan, Taiwan, and S. Korea. For more information call: (206) 632-1146 ext. J59181

**SKI JOBS**

Ski Resorts are now hiring for winter season. Call Vertical Employment Group today! (206) 634-0469 ext. V59181

**RESTAURANTS/BARS**

**SUNNY'S**  
PIZZA & PASTA

**\$100 OFF ANY PIZZA**

12" or 16"  
1 Coupon  
Per Pizza  
Dine-In, Pick-Up,  
Delivery

**968-6666**  
1301 E. University

**HELP WANTED-GENERAL**

**Receptionist Part-time**  
Experienced receptionist needed part-time for a busy department. Excellent communication, telephone and organizational skills required. Typing and computer skills helpful. Drug testing may be required. Apply in person to: U-HAUL International 2727 N. Central Ave. Phoenix, AZ 85004 EOE U-HAUL IS A DRUG FREE ENVIRONMENT!

**RESTAURANTS/BARS**

**10c WINGS DRAFTS \$1**  
Bud, Bud Light  
Mon-Thur 3-7 p.m.  
Sat 11 a.m.-5 p.m.  
Sun 12-9 p.m.  
**BANDERSNATCH**  
5th St. & Forest BREWPUB

**MUSIC**

**VEDDER IS GOD!**  
White t-shirt, black print, cool design!! Order now. Sizes L, XL-\$17.95, XXL-\$18.95. Send check or M.O. to: Mr. Mktg., P.O. 1132 ombard, IL 60148.

**SERVICES**

**ATTN ALL Students!** Grants & scholarships are ofrd by pvt sector. Qualify regardless of inc or grds. For more info call 1-800-400-0209.

**ELECTROLYSIS** BY Degna. Multi-probe & blend methods. Rural/Southern area. 921-1146.

**FREE \$\$ for college.** 1-900-336-6181 ext. 1561. Average call 3 minutes \$2.99 per minute, 18+. Procall Co. 602-954-7420.

**HUNDREDS & THOUSANDS** of grants & scholarships available to all students. Let our years of research benefit you. Immediate qualification. Call 1-800-270-2744.

**HEALTH & FITNESS**

**CO-EDS, ATHLETES,** late night studiers. Medically approved herbal product that is sweeping the nation. If you need to lose a few lbs, increase your strength & energy level, or improve mental alertness call 1-800-839-1924.

**TYPING/WORD PROCESSING**

\$52/PG. \$15/RES. Proofed. Laser. APA/MLA. Same day. DTP. Near ASU. Brian, 967-5987.

\$25+ RESUMES From Scratch in 1 visit, updates, 100% success laser, 7 days, Tempe 968-7735.

**Résumés That Get Results!**  
Entry Level Experts. Special Student Discounts! Complete career support services.  
**The Write Résumé**  
967-0125  
2121 S. Mill #206  
1 1/2 blks S. of Broadway

**HELP WANTED-GENERAL**

**STATE PRESS Classifieds**  
Matthews Center Basement  
**965-6735**  
Hours:  
Monday-Friday 9 a.m.-5 p.m.

**Private Party Rates**  
1-4 days, \$1.35 per line/per day  
5-9 days, \$1.30 per line/per day  
10+ days, \$1.15 per line/per day  
(3 line minimum)

**Commercial Rates**  
1 day, \$2.20 per line  
2-4 days, \$1.65 per line/per day  
5-9 days, \$1.40 per line/per day  
10+ days, \$1.25 per line/per day  
(3 line minimum)

**Personals**  
(Student rate, must show ID)  
\$2 for 3 lines, \$1 for each additional line

**Deadline:**  
Noon, one day prior to publication

**HELP WANTED-GENERAL**

**THE ARIZONA REPUBLICAN PARTY NEEDS YOU!**  
PART-TIME HRS.  
\$6+/HR.  
**MAT SULLIVAN**  
957-7770

**HELP WANTED-GENERAL**

**ASU STUDENTS**  
Earn money on the side while gaining sales experience. Sell MCI long distance to businesses and residences on your own time. Commissions are paid in advance. For more information, call 957-2733 and ask about our MCI program.

City of Scottsdale Parks and Recreation Division

**WANTED: YOUTH SPORTS COACHES & OFFICIALS**

Boys & Girls  
Flag Football Volleyball  
\$6.68-\$8.92 per hour

For application information contact the Student Employment Office, Job referral #2967-J  
Applications will be accepted until  
Friday, September  
**994-2408**

**NCM, Inc.**

**MAKING THE DIFFERENCE**  
*The Difference Is In The Outstanding People:*

HELPFUL & KNOWLEDGEABLE TRAINER  
EXPERIENCED & SUPPORTIVE MANAGEMENT  
FRIENDLY & ENTHUSIASTIC COWORKERS

We have permanent FT & PT positions that offer  
**\$8.00 per hour**  
Plus:  
Casual Dress Code  
Relaxed Environment  
No Experience Necessary  
Real Advancement Potential  
Comprehensive Paid Training  
Brand New Facility Underway  
Flexible Schedules Between 6a.m. & 9p.m.  
**Call 894-9816 Today!**  
2020 S. Mill, Suite 200 • Tempe, AZ 85282

**ProMark** Telemarketing for the Image Conscious  
ProMark One Marketing Services, Inc.

**NOW HIRING**

ProMark One is now accepting applications for our dynamic, new Tempe Center.

**250 POSITIONS**  
Full-time and Part-time

- Health & Dental Benefits
- Paid Vacations
- Paid Holidays
- Flexible Schedules
- Professional Work Environment
- Promotion From Within
- No Experience Necessary
- Paid Training
- Advancement Opportunities
- \$6.00 An Hour Plus Commission (Top Reps Can Earn \$12.00+ Hourly)
- Relocation Opportunities

**• Call Today to Set Up An Interview •**  
**•777-0877 •**

"ProMark One is the 166th Fastest Growing Company in America" - INC 500 Magazine  
We are the 6th Largest, and 3rd Fastest Growing Telemarketing Firm in the Nation  
**EQUAL OPPORTUNITY EMPLOYER**

TYPING/WORD PROCESSING

AFFORDABLE- TERM papers, reports, theses, resumes. Fast turnaround. Townsend W/P. Maureen, 955-0969.

TYPING/WORD PROCESSING

APA/MLA EXPERIENCED typing/word processing. Need it fast? Call Jessie, 945-5744.

TYPING/WORD PROCESSING

ASAP? NO Problem. Papers, resumes, APA/MLA. 20yrs exp. + legal. Tempe. 838-1911.

WANTED

USED VERBAL advantage cass. tape set - 24 au. tapes & work book. Call 864-6513; lve messg.

State Press back issues can be picked up at the Information Desk in the Basement of Matthews Center

BUY ONE PERSONAL AD GET ONE FREE

coupon expires 9/11/95 one coupon per visit

We need your HELP

Every weekday, we give you the State Press absolutely free. Great news. Great features. Even a magazine. Crosswords and horoscopes. Not to mention the huge savings from all the coupons.

We do this for you every day. Will you do something for us? Good! Thanks!

When the State Press has inserts, they tend to flop to the ground and create a safety hazard as well as an eyesore.

Would you be so socially correct as to bend over and pick an insert that might slip out of your State Press? Thanks.

We appreciate your help. And so does the earth.

SERVICES

ANYTHING ASU!!! Let us help you get through ASU

- Financial Aid, Residency, Transcripts, Parking, Admissions, Graduation, Advising, Calendar/Reminder

SERVICES

TWO WEEKS Unlimited Tanning \$20 Your Place To Tan Bronze Beach 968-5258

CUSTOMIZED RESUMES, start at 5/\$25, professional & prompt. Call for info 569-5282.

KINKO'S COPY Center makes the grade! Get reports, resumes, & flyers fast!

TUTORS

TUTORING FOR all types of electrical engineering & math classes, from basics to advanced. \$10/Hr. Call Mark 244-1665.

PERSONALS

PERSONALS

PERSONALS

Fall Rush '95 Delta Upsilon Building better men since 1834 For RUSH info call 902-0769

SERVICES

ATTENTION ALL STUDENTS!!! GRANTS & SCHOLARSHIPS OFFERED BY PRIVATE SECTOR.

TUTORS

TUTORS

TUTORS

TUTORS

ANYONE CAN CLAIM TO BE THE "BEST", BUT OUR REPUTATION SPEAKS LOUDER THAN ANY WORDS... We offer tutorial for the following classes: Algebra, Calculus/Precalculus, Finite Math, Statistics, Physics, Chemistry, Advanced Math

Back-to-School SPECIAL! 10 TANS \$25 with this ad thru 9-30-95 NEW BEDS! ON UNIVERSITY Just 2 Blocks East of Rural 1301 E. University (Next to Beauvais) 829-1737

ASTROLOGICAL FORCAST

SYDNEY OMARR

ASTROLOGICAL FORECAST by Sydney Omarr

Monday, August 28, 1995

Insights: Taurus is one of the most fascinating signs, as are people born with this zodiacal designation. Two examples: Jack Nicholson and Lorenz Hart.

you. Mechanical object located, everything is ready, you'll be chief attraction. Taurus represented.

SCORPIO (Oct. 23-Nov. 21): Views vindicated. Individual who said, "I can no longer love you" will reverse gears.

SAGITTARIUS (Nov. 22-Dec. 21): Everything you dreamed about becomes reality. Spotlight on home, decoration, remodeling, love and marriage.

ARIES (March 21-April 19): What was lost will be recovered - includes lost love. Focus on illusion, romance, creativity, marital status.

CAPRICORN (Dec. 22-Jan. 19): Energetic Cancer native says, "Let's not stand still, sign up and off we go!"

TAURUS (April 20-May 20): Emphasis on organization, added recognition, legitimate opportunity to hit financial jackpot.

AQUARIUS (Jan. 20-Feb. 18): Many will express surprise, declaring, "We never knew about your practical side!"

GEMINI (May 21-June 20): Relationship that apparently ended reignites. Scenario could include travel, language study, tasting of foreign cuisine.

PISCES (Feb. 19-March 20): Spotlight no longer stolen. Fame, fortune beckons - let go of status quo, imprint your own style.

CANCER (June 21-July 22): Light up the house! You'll receive and provide enlightenment - living quarters no longer dank, dark.

IF AUGUST 28 IS YOUR BIRTHDAY: You are independent, creative, stubborn, inventive, romantic. Mother and father clashed, seemed to be of opposite natures.

LEO (July 23-Aug. 22): Observe Cancer message. Follow hunch, communicate with eccentric Aquarian.

VIRGO (Aug. 23-Sept. 22): Cycle continues high where clandestine arrangements are concerned. Money equates to power, you'll be briefly noting, "I have both!"

LIBRA (Sept. 23-Oct. 22): Waiting for you! You'll be told that project was postponed while we waited for

© 1995, Los Angeles Times Syndicate

State Press Classifieds Matthews Center, Basement Office: 965-6735

ASU Box 87150 Tempe, AZ 85287-1502 Fax: 965-8484

Classified Ad Order Form

Name, Home Phone, Business Phone, Address, City, State, Zip

Please print one letter per box, leave a blank box between words.

Grid for printing name and address

Please be sure to check your ad. Make sure it reads exactly as you wish it to appear in the State Press, including punctuation.

Rate table for Private Party and Commercial ads

Check# Please include Driver's license# Dates you wish your ad to run: Price per Day # of Days Total

- 098 Adoption, 065 Airplanes, 010 Announcements, 020 Apartments, 061 Automobiles, 064 Bicycles, 051 Books, 077 Business Opportunities, 054 Computers, 086 Free Lost/Found, 088 Fundraising, 052 Furniture, 049 Garage Sales, 101 Health & Fitness, 074 Help Wanted-Child Care, 072 Help Wanted-Clerical, 073 Help Wanted-Food Service, 070 Help Wanted-General, 071 Help Wanted-Sales, 030 Homes for Rent, 040 Home for Sale, 102 Housecleaning, 107 Instruction, 103 Insurance, 056 Jewelry, 076 Job Opportunities, 015 Legal Notices, 120 Miscellaneous, 050 Miscellaneous for Sale, 045 Mobile Homes, 063 Motorcycles, 082 Music, 090 Personals, 084 Pets, 110 Photography, 097 Pregnancy Counseling, 047 Real Estate, 035 Rental Sharing, 080 Restaurants/Bars, 037 Rooms for Rent, 100 Services, 081 Sports & Recreation, 058 Tickets, 031 Townhomes/Condos for Rent, 041 Townhomes/Condos for Sale, 060 Transportation, 067 Travel, 108 Tutors, 105 Typing/Word Processing, 115 Wanted

To introduce you to the healing world of chiropractic, please accept my special offer.

# FREE SPINAL EXAMINATION AND X-RAYS

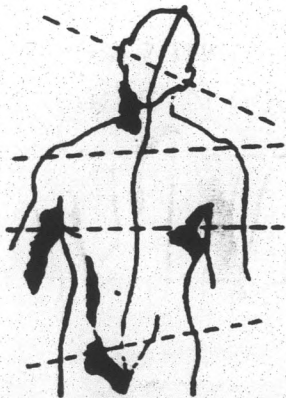
\$150 Value

Offer Expires 8/31/95

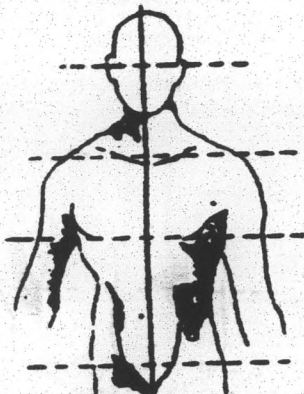
I will include an orthopedic test, a neurological test, a spinal alignment check, an examination for restricted or excess motion in the spine, x-ray and a private consultation to discuss the results.

## Twelve Danger Signals

1. Numbness in arms and hands
2. Restless nights
3. Pain between shoulders
4. Stiffness of neck
5. Nerve tension
6. Depression
7. Headaches
8. Anxiety in the chest
9. Stiffness or pain in the lower back
10. Tired hips and legs
11. Painful joints
12. Whiplash



Example of poor spinal structure.

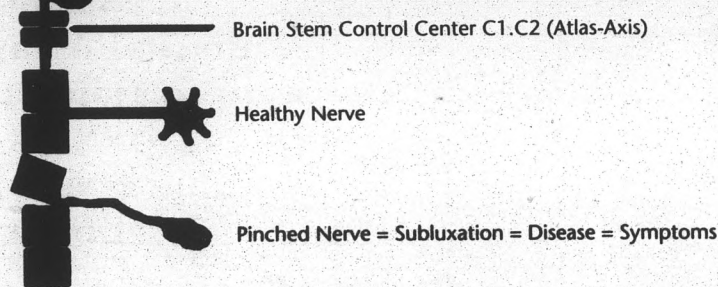


Example of good spinal structure.

Life Force  
Innate Intelligence

### Do You Understand the Damaging Effects of Subluxation?

- Only Damaged Tissue Gives You Symptoms.
- You Can Build Disease Without Knowing It.



## CALL TODAY FOR APPOINTMENT

ASU's Samaritan Insurance, Personal Injury, Workman's Compensation, Insurance and Cash Accepted.

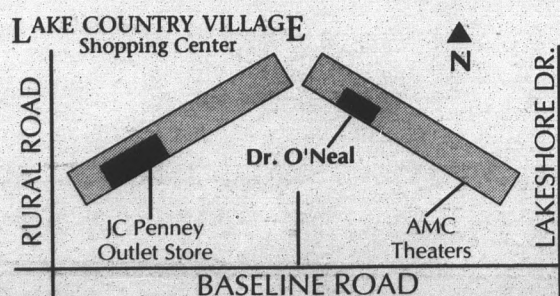
# O'NEAL CHIROPRACTIC

Dr. Richard L. O'Neal, Palmer Graduate

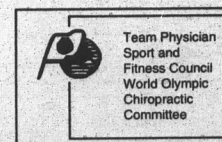
From ASU  
South on Rural, turn left on Baseline & go 1/4 mile, turn left into Lake Country Village Center at Winchell's and Firestone Tire. Look for O'Neal Chiropractic neon sign on right, 4 doors from AMC Theater box office.

### 491-1242

Celebrating 15 Years In Practice



1070 E. Baseline Rd., Tempe



Our office is designed to keep waiting to an absolute minimum!

For your convenience, call 8:30am - 6:45pm Mon.-Fri. for appointment.