

ARIZONA STATE UNIVERSITY STATE PRESS

©Copyright, State Press, 1995
Tempe, Arizona

Vol. 79 No. 69

An Independent Morning Daily

Friday, January 20, 1995



ASASU President Alan Frost is currently finalizing a proposal that would form a separate government for graduate students attending ASU. Mark Kramer/State Press

Frost to propose graduate student government plan

By LISA CARY
STATE PRESS

Associated Students of ASU President Alan Frost is about to unveil a plan for a separate student government for graduates, but it will come with a price tag — additional fees for graduate students.

The graduate student government would use the fees to allocate money for endeavors such as graduate research, keynote speakers and expos.

"If graduate students see on their registration bill that they are being charged a few dollars, like \$2 for a student government for them, they would be more willing to pay the fee," said Frost, who is a graduate student.

Fees could range from \$2 to \$20 a semester, student leaders said.

As a bonus, students in executive positions might have their tuition waived, said Hari Rao, director of the

Graduate Resources Support Office.

Rao added that ASASU, which is comprised mostly of undergraduates, doesn't understand what ASU's 11,000 graduates want and repeatedly turns down graduate students' proposals.

"Undergraduates can't understand graduate life," he said.

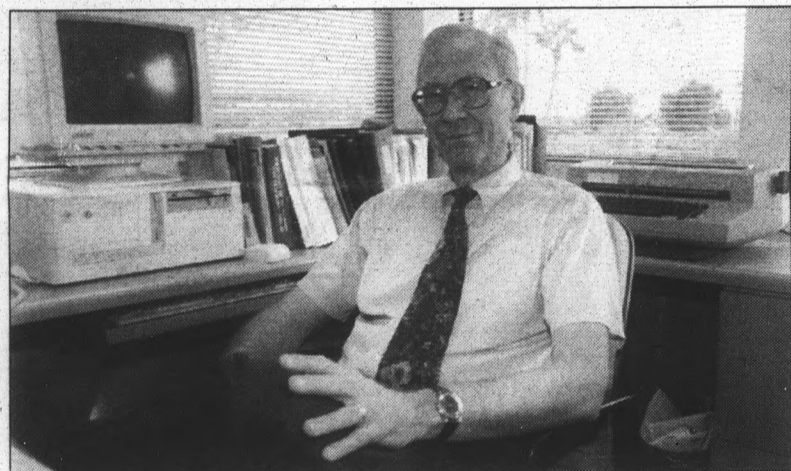
Rao said he wouldn't mind paying a registration fee to go toward a graduate student government.

"The fee would be very small, but it would add up," said Rao. "It's a minor investment for a major service."

Such a fee must first be approved by the Arizona Board of Regents in its March meeting, but Frost said so far graduate students are accepting the idea.

The fee would not be the only source of the proposed government's revenue, Frost said, adding that he

TURN TO GOVERNMENT, PAGE 2.



Law professor Alan Matheson will head a five member panel that will serve as the nursing students' representatives in hopes of resolving the students' complaints against the Nursing school. Jim Poulin/State Press

ASU creates panel to deal with complaints of nursing students

Some say panel won't do any good

By LORRIE COHEN
STATE PRESS

Complaints to the Arizona Board of Regents last fall by ASU nursing students who couldn't get into required classes to graduate have led to the creation of a University advisory panel to settle continuing disputes.

Barbara Duran, dean of nursing, said she hopes the panel will put the past conflicts between the school and students behind them.

"I think it's a fine idea and I hope people will be satisfied that they will

get a fair hearing," she said.

But some nursing students who were shut out of required classes are not as optimistic.

"As far as I'm concerned this panel won't do any good," said Kathleen Mumane, who is considering transferring to Wichita State University to finish her degree. "Maybe they will change it for others and maybe explain to other universities why I am taking blow-off classes just to keep my financial aid. I've wasted money and a

TURN TO NURSING, PAGE 2.

Administration bringing about student service improvement plan

By ANGELA MULL
STATE PRESS

Students frustrated with traveling from building to building for student services will begin to receive relief by the end of 1995, thanks to a Student Process Reengineering Project.

The University-wide SPRP, which began in October 1993, recently completed examining interactions between students and administrative processes and is now planning a specific course of action.

"One of the principles of the project is that when the student has a point of contact, the contact is able to answer and meet more and more of their needs," said co-chairman Darrel Huish, director of Administrative Information Technology.

The first changes begin next week with improvements to financial services, advising and admission, but it will be three to four years before students see the final results. Students currently must go to different locations to receive information from these services.

"The challenge is, we are trying to make these improvements at the same time that we are trying to provide day-to-day service to the students," Huish said.

Co-Chairwoman and Registrar Lou Ann Denny said the project plans to link up student services through computers so information can be obtained from different campus sites.

Debbie Johnson, a junior marketing major, said she favors simplifying the process by which students access information.



Marketing junior Debbie Johnson says she's sick of having to "run all over the place" for information on campus. Lance D. Terry/State Press

"It seems like you have to run all over the place to find the buildings where you can get the information you need," she said.

Huish said one critical area that needs correction is

TURN TO SERVICES, PAGE 2.

INSIDE STATE PRESS

Weather Outlook
Partly cloudy.
High 64, low 36.



World/ Nation

Chechnya's presidential palace falls as rebel leaders vow to fight on.

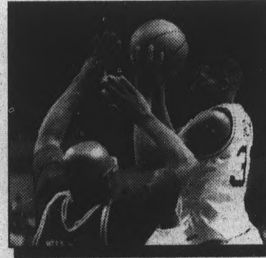
Page 3



Sports

Junior Ron Riley and the No. 13 Sun Devil men's basketball team shot down the USC Trojans 81-71 Thursday night.

Page 15



Where To Find It

Classifieds	17
Comics	14
Crossword	9
Horoscopes	19
Opinion	4
Police Report	9
Sports	15
Today's Activities	2
World/Nation	3

TODAY

The Today Section is a daily calendar of events printed as a service to the ASU community. Requests are accepted on a first-come, first-serve basis and are printed on a space-available basis.

Campus clubs and organizations may submit written entries to the State Press in the basement of Matthews Center, Room 15. Requests will not be taken over the phone. Faxed entries will also not be accepted.

Entries must contain the full name of the club or organization, a description of the event, date, time and the full address of the location. All requests are subject to editing for content, space and clarity. Incomplete or illegible entries will be discarded.

Deadline for requests in noon the day before publication and entries will not be accepted more than three working days before publication. Only one entry per organization per day is permitted.

• **Native American Business Organization** — General meeting; nominations for new officers. 3:30 p.m., American Indian Institute.

• **All Saints Catholic Newman Center** — Welcome back student supper. All are welcome to share this free home-cooked meal, following the 5 p.m. Mass. 6 p.m., Newman Center Cafe; corner of College and University.

• **Gamma Alpha Omega** — ASU's first Hispanic-founded society; rush tables. 9:30 a.m.-2 p.m., Cady Mall.

• **ASASU/SRC/ICA** — Van pool vehicle display. Valley Metro displays a full luxury-equipped, lease-available model van available to students, faculty and staff for travel reduction. 9 a.m.-1 p.m., Parking Structure #1.

• **Sun Devil Spark Yearbook** — Weekly meeting, attendance is mandatory. If you are interested in becoming a member of the Spark staff, feel free to attend. 12:30 p.m., Matthews Center, Room 50.

Saturday, Jan. 21:

• **Literacy Outreach** — Orientation meeting for those interested in becoming a volunteer reading tutor. For information and directions, call Pam at 784-8307. 4 p.m., Best Hall Classroom.

Government

CONTINUED FROM PAGE 1.

doesn't yet know how the government would raise additional money.

Melanie Smith, president of Graduate Student Council, said a majority of graduate students at a forum last semester expressed support for a graduate student government and a fee not to exceed \$20.

"We've talked about part of the fee going towards hiring a lobbyist for the Arizona government," Smith said.

Frost said he is almost ready to unveil a constitution for the graduate student government which will spell out the details of how the government will work.

"We are working on the third draft of the constitution," Frost said.

Frost said he and 15 graduate students are working on forming bylaws, a timeline and a

budget.

The graduate student government at ASU comes about a year and a half after the UofA formed such an organization.

Mitzi Forbes, a graduate student at UofA and the president of Graduate and Professional Student Council, said that the Tucson campus' student government is a two-part legislature with Associated Students of University of Arizona.

"Laws have to pass both legislative bodies and each has its own budget," she said. "The officers are elected internally for council elections."

UofA's GPSC is funded by taking 5 percent from the undergraduate student government budget.

Nursing

CONTINUED FROM PAGE 1.

whole semester of my life."

Last fall, more than 100 students applied for the 60 practical nursing spots, or clinicals, available per semester. More than 40 did not gain entry.

Several nursing students who were not admitted alleged that nursing advisers and administrators promised them admission as long as they completed prerequisites and had the minimum GPA for entry. They claimed they were told they could be deferred once, but no more.

Nursing officials deny these charges, saying that students were notified that more lower-level classes were opening and that nursing was becoming more competitive.

ASU President Lattie Coor agreed to open 10 more slots for this spring only, but students with the highest GPAs were taken rather than those waiting the longest, which "defeated the purpose," students said.

The five-member panel was headed by law professor Alan Matheson, the former dean of the College of Law. Also on the panel are three past presidents of the Academic Senate: Bill Arnold, Dickinson McGaw and Arlene Metha. Associated Students of ASU President Alan

Frost will serve as a student representative.

To be eligible for review by the panel, nursing students must fit into four categories:

- Qualify for admission, which consists of all prerequisites;
- Maintain a minimum 2.7 GPA;
- Have applied and were turned down at least twice for clinicals;
- Notify the committee by today.

As of Thursday, nine of the 17 students affected responded.

The conflict is not limited to ASU Main Campus.

One pre-nursing student at ASU West who has been turned down several times for clinicals said the College of Nursing goofed and now is trying to make up for that.

"There are so many accusations and people covering their tracks," Eli Scarborough said. "It's turned adversarial and it does not need to be this way. I'm sorry it's come down to this."

Scarborough and ASU Main Campus student Nicole Shireman have formed an Arizona Pre-nursing Association to inform other nursing students about possible problems and to be a watchdog for information.

Services

CONTINUED FROM PAGE 1.

advisement.

"Students sometimes get inaccurate information because the advising process varies from college to college," he said.

Denny added that the degree-audit system also will be improved. She said the current system is too cumbersome because advisers have to manually look up the requirements. Under the Reengineering Project, requirements will be entered into the computers.

The Reengineering Project also includes updating the Student Information System, which contains registration, admissions and grades. This system enables advisers to access student information from a computer.

Although it may have been simpler to create a new system without analyzing current problems, Huish said this would not work.

"If you don't look at the fundamental processes, technology may not solve some of the underlying issues," he said.

Christine Wilkinson, vice president for Student Affairs and one of three SPRP executive team sponsors, agreed that technology cannot replace human analysis. Instead, she said it should help make students the central focus.

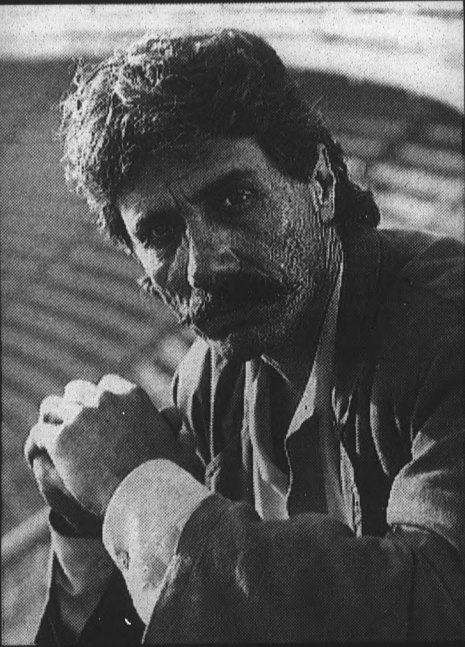
"We definitely don't want the technology to drive the mission," Wilkinson said.

Once completed, Denny said the project will make student life easier.

"It will make the whole experience at ASU much better," she said.

There is more to life than news, weather and sports. Check out the comics.


ASASU Presents:
spoken word by
Edward James Olmos
with special performance by **AKA**



Monday, Jan. 23
at 10:00 AM
in Gammage Auditorium
Subject: Stop the Violence

Sponsored by: ASASU "Your Student Government",
MLK Committee, College Council of Public Programming

ASASU LECTURE SERIES
AND
THE BLACK LAW STUDENT ASSOCIATION
PRESENTS
REVEREND BERNICE KING
ON THE LIFE & DREAM OF HER FATHER,
DR. MARTIN LUTHER KING, JR.



MONDAY, JANUARY 23, 1995
7:00 p.m.

ARIZONA STATE UNIVERSITY COLLEGE OF LAW
GREAT HALL

*FREE TO THE PUBLIC

Russians take Chechen presidential palace

Yeltsin: Military action in Chechnya 'practically over;' rebels vow to continue fight

GROZNY, Russia (AP) — Russian troops drove Chechen fighters from the presidential palace Thursday and hoisted Russia's flag over what remained of the rebels' stronghold and symbol of their defiance.

While the victory in Chechnya's capital was a rare boost for Russian morale in the five-week-old war, rebel fighters said it only signals a new guerrilla phase of their campaign to win independence from Moscow.

They abandoned the charred, smoking skeleton of the palace and also pulled back from the train station, another base of their resistance in the center of Grozny.

Until now, the war had been almost entirely centered on the palace. Now Chechens deny the palace had much military significance and promise to defend their capital inch by inch.

"Our new headquarters is set up and the fighters are in their positions," Chechen Defense Minister Aslan Maskhaev said at a news conference in Nazran, capital of neighboring Ingushetia.

"We're ready to continue our fight for freedom."

The Russians said the loss of the palace signaled the end for the separatists.

"I would like to inform everyone that the military phase of restoring the Russian Constitution in Chechnya is now practically over," President Boris Yeltsin said in a statement.

"The subsequent mission to restore law, order and civil rights will lie with the Interior Ministry," the president said.

If the Chechens carry out their vow to defend Grozny, Russian commanders will face a tough choice.

They can oust the rebels from the rest of Grozny the way they ousted them from the palace — by destroying from a distance with their immense firepower — or they can try to nudge their so-far reluctant ground forces into taking on the Chechens in house-to-house fighting.

If Grozny falls, the Chechens have vowed to take to the surrounding countryside and mountains to defend their home villages.

"Even if they occupy all of Chechnya, even if they destroy all our villages, we'll never give up," said Chechen nurse Zina Labazanova.

Many analysts, however, say it would be difficult for the Chechens to wage a successful guerrilla campaign against the Russian army, much less force its retreat from Chechnya.

Even Maskhaev, the Chechen commander, said, "I know



Associated Press

An elderly Chechen woman weeps as she walks away from the body of a victim of a Russian air raid on central Grozny Thursday. Chechnya's presidential palace fell to Russian troops Thursday, but Chechen forces vowed to keep fighting.

Russia has a great army. We don't want to say we will defeat it."

The Kremlin sent tens of thousands of troops into Chechnya on Dec. 11 in a bid to end its three-year-old drive for independence. The Chechens are believed to have just several hundred fighters in Grozny and perhaps a few thousand nationwide.

An initial, failed Russian ground assault on the palace on New Year's Eve was costly both in lives and prestige for the army. Russian dead and burned-out tanks still litter the city, and green young recruits surrender to the Chechens on an almost daily basis.

Much of the city is in ruins and thousands of people

have been killed.

Prime Minister Viktor Chernomyrdin on Thursday ruled out talks with Chechen leader Dzhokhar Dudayev, who is in hiding. "We do not talk with bandits," Chernomyrdin said, according to the ITAR-Tass news agency.

The Chechen fighters pulled back from the palace about 200 yards and took up positions on the other side of the Sunzha River. They said they saw Russian armored units on all sides of the palace.

"We won't have any particular base. We'll be moving

TURN TO CHECHNYA, PAGE 13.

4,000 dead from Kobe quake; Japan's worst since 1923

KOBE, Japan (AP) — Swiss rescue dogs helped find bodies as the earthquake death toll swelled past 4,000 Thursday, and the bark of a pet led to one old man's salvation after more than two icy days in the wreckage.

New fires burst out around the shattered city, and firefighters' efforts to douse them were stymied by crushed water mains. With government relief efforts falling far short of victims' needs, thousands more gave up hope of finding food and shelter and joined the stream of residents abandoning the city on foot.

By early Friday, confirmed deaths totaled 4,047, making Tuesday's 7.2 magnitude earthquake the worst in Japan in more than 70 years.

Another 727 people were still unaccounted for, and freezing temperatures

made relatives more desperate about finding missing friends or family members alive. But several rescues on Thursday revived hopes.

In one Kobe neighborhood, a barking pet dog led rescuers to his owner, 65-year-old Chiyoko Amakawa, who had been buried for 53 hours. Doctors said she was badly bruised but suffered no broken bones.

"It was pitch dark and my leg hurt so much and I was thirsty, but I called to 'Pochi' and told him I was in pain and needed help," Amakawa told Kyodo News Service. "I just wondered over and over again when I was going to die."

Others rescued in the city included a 9-year-old boy and a 94-year-old man.

The shocking extent of the damage

moved Emperor Akihito, who rarely comments on natural disasters, to offer condolences, appeal for "strong solidarity" and urge more precautions in the future.

More than 21,600 people were injured. More than 30,400 homes and buildings severely damaged or destroyed in and around Kobe, a once-vibrant port of 1.4 million people.

The death toll surpassed the official tally of 3,769 in a 1948 quake in Fukui, but still paled in comparison with a 1923 quake that killed more than 100,000 in and around Tokyo.

Temporary shelters were jammed with 270,000 people, many of whom had fled homes they feared may yet collapse. More than 800 aftershocks have riddled the

Kobe-Osaka region.

Some shelters were so short of food they rationed one fistful of rice per person.

Despite a laggard government response, ordinary Japanese displayed civic pride. There has been virtually no looting. And 3,000 people, including 500 doctors, volunteered their services.

Still, the devastation in western Japan served to remind the nation of its vulnerability to earthquakes. The Tokyo Fire Defense Agency estimated that if a quake of such magnitude occurred in the capital at evening rush-hour, up to 860,000 people could be killed or injured.

GM strike forces factory's closure; 3,100 workers idle

FLINT, Mich. (AP) — A strike at a General Motors Corp. parts plant began to ripple through the No. 1 automaker's assembly operations Thursday, forcing the shutdown of a truck factory.

As negotiators tried to end the contract dispute in Flint that could cripple GM production nationwide, the automaker sent home day-shift workers at its Pontiac East truck plant and canceled later shifts for lack of parts.

Other GM plants could be forced to close by early next week as parts run out, said Joseph Phillippi, an analyst for Lehman Brothers in New York.

The shutdown at Pontiac East added 3,100 workers to 6,800 strikers idled by the walkout that began Wednesday at GM's AC Delco Flint East parts complex, which supplies spark plugs, filters, cruise controls and instrument clusters to dozens of GM

assembly plants.

GM officials refused to discuss the effects of the strike, but automakers' reliance on just-in-time delivery of parts, which saves money by eliminating costly inventories, makes them vulnerable to an interruption in supplies.

Negotiators for the United Auto Workers and GM met for about three hours soon after the walkout and resumed talks early Thursday.

The union has complained that understaffing and overtime to meet booming demand for cars are creating dangerous and unhealthy working conditions. The UAW has also said outside contractors hired by GM threaten union jobs.

Similar complaints led to two strikes last year at GM parts plants. Those walkouts quickly forced other factories to close.

American Legion demands cancellation of A-bomb exhibit

WASHINGTON (AP) — The American Legion demanded Thursday that the Smithsonian Institution cancel an exhibit of the plane that dropped the atomic bomb on Hiroshima, Japan, charging that despite five revisions it still portrayed the United States as the aggressor.

The Smithsonian had no comment. A spokesman declined to say if the first public exhibit of the B-29, the Enola Gay, might be canceled.

Legion Commander William M. Detweiler wrote President Clinton that officials of the Smithsonian's National Air and Space Museum insisted on including "highly debatable information which calls into question the morality and motives of President Truman's decision to end World War II quickly and decisively by using the atomic bomb."

"The hundreds of thousands of

American boys whose lives were thus spared and who lived to celebrate the 50th anniversary of their historic achievement are, by this exhibit, now to be told their lives were purchased at the price of treachery and revenge," Detweiler wrote. He asked Clinton to do what he could to call off the exhibit.

Detweiler pressed his case at a meeting with a few congressmen.

Rep. Peter Blute, R-Mass., later said he understood the House Government Reform and Oversight Committee would conduct a hearing. Rep. Sam Johnson, R-Texas, called for the resignation of Martin Harwit, director of the Air and Space Museum.

The exhibit would commemorate the 50th anniversary of the bombing of Nagasaki and Hiroshima, which claimed

TURN TO ENOLA GAY, PAGE 13.

STATE PRESS Boos & Bravos

BRAVO — To Gov. Fife Symington for the four percent pay increase slated for universities this upcoming fiscal year. But there are a few reservations — after all, this is a great start, but more is still needed.

BRAVO — To the long-heralded opening of ASU East. ASU continues to provide a wealth of educational opportunities throughout the valley, and ASU East (despite minor problems) promises to continue this tradition. Now, we can only hope that the administration can find solutions to the problems of the rapid growth of Main Campus.

BOO — To the constant hype about Newt, Newt, Newt. He's the Speaker for the House, not the Messiah; enough already. Sigh ... one can only long for the days of political heavyweights like Theodore Roosevelt or Thomas Jefferson. And, worse, the presidential elections are already starting up — is our government a political system or an advertising industry? 1996 threatens to be a year filled with the likes of Dole, Quayle, Gingrich and Clinton — yawn.

BRAVO — To our beloved University president, Lattie Coor, for his new marriage. Congratulations, good wishes and the traditional.

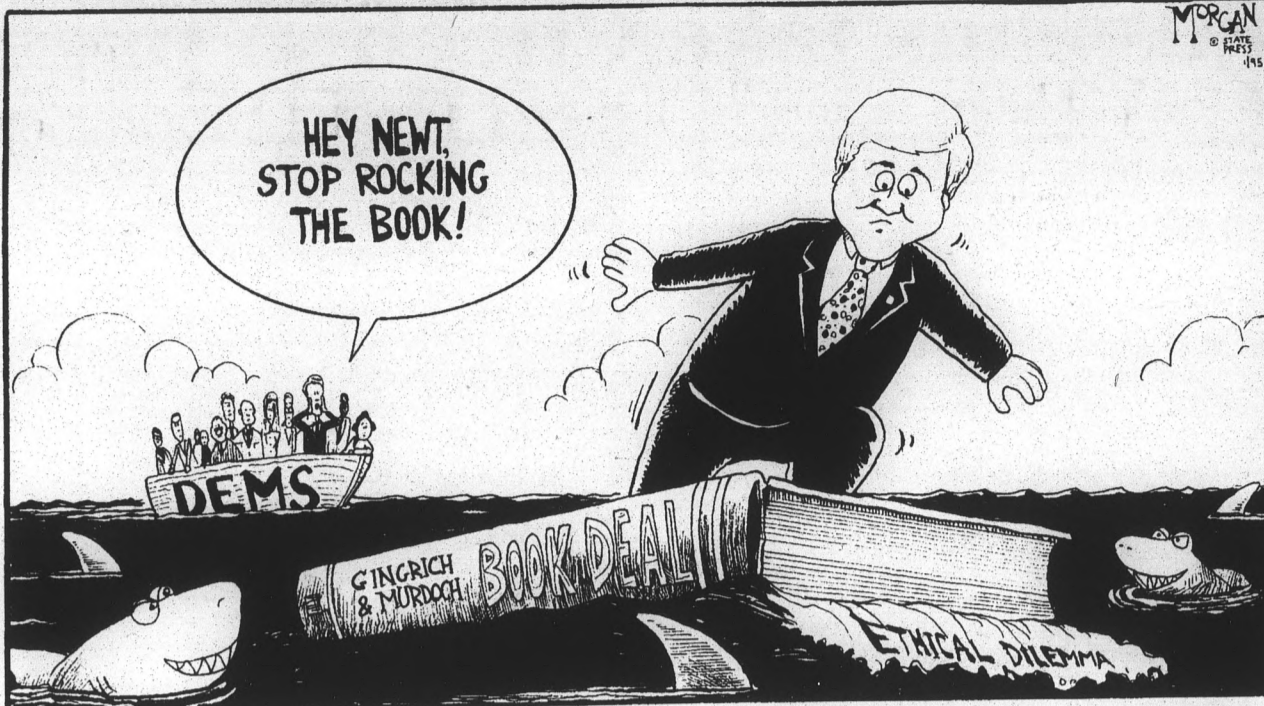
BOO — To Roy McMillian, Christian Action Group head and anti-abortion activist, who has made statements which imply that the assassination of Supreme Court justices and even the president of the United States are "reasonable" to oppose abortion. McMillian provides proof that, yes, there are at least a few reasons for birth control.

BRAVO — To the return of the NHL 1994-95 (well, 1995) season. Although it seems (and is more than a little disappointing) that no inter-conference games will be played, it's still a relief that the great sport of hockey is not stricken with the malaise of America's former pastime, baseball.

BOO — To Amy Fisher, queen of sleaze, who now claims to have been raped and abused while in prison. Granted, abuses do occur in the prison system, but cynicism suggests that Fisher will soon find a way to capitalize on her newest supposed tragedy. Gee, life's rough when you try to murder people, isn't it? Awwwww. ...

BRAVO — To Phoenix citizens who donated over \$883,000 to the needy over the winter holidays. Considering the fact that Phoenix is often regarded as a faceless, cultureless city, perhaps there's more to the city than some people think.

BRAVO — To Dan Majerle, for finally getting hitched. And copious **bravos** to the local media for covering the event as much as possible, to the exclusion of *interesting* news. Well, it's not all bad — hopefully, he won't be hanging around local bars and hitting on college girls anymore.



On metaphysics and the Super Bowl

Every year around this time, occasional cultural critics and a few doomsdayers predict the end of American society as we know it. I can hear them now: "The illiterate, uneducated masses have failed us again! A Super-Bowl! The very idea! Wouldn't the world be a much better place if we all went to a nice museum on January 29th?"

And thus, the advent of Super Bowl XXIX and its attendant hype leads me to ponder the metaphysics of that highly amusing, yet largely unheralded American pastime — the spectator sport.

Why, exactly, will more than 500 million people — this year alone — gaze transfixed at a larger-than-life midwinter football game on millions of tiny, inadequate television screens? Why, exactly, do people enjoy spectator sports?

One theory, propounded by an individual with an extreme dislike of all things physical, goes like this: "The only reason people like spectator sports is because it gives them an excuse to think they're better than other people." Or in other words, the caveman-type mentality of sports fans leads them to band together in meaningless cliques characterized by attitudes of unfounded superiority, based on the random fact that they all happen to favor a certain team.

Well, I disagree. The allure of spectator sports is both powerful and widespread. To dismiss it lightly is to miss an important insight into our culture and what it values.

Of course, the popular appeal of spectator sports can be traced to a variety of sources: the thrill of competition, a particular athlete's celebrity, past personal glories, financial gain and, yes, the superficial lure of group bonding. But at its most elemental level, the reason for the popularity of spectator sports is just this—wonder. Wonder, admiration and reverence.

Let's face it — normal people can't do the things that Steve Young can do. Neither can they match the physical feats of Junior Seau. Or Deion Sanders. Or many others.

Now, having said that, let me go out on a far-fetched and slightly sentimental — though totally serious — limb: when 500 million people watch Superbowl XXIX on the 29th afternoon of January, they will be in the presence of greatness. These individuals — players and coaches — are the

best in the league, bar none.

This judgment has nothing to do with the merits of the individual teams, their win-loss records, or what you think of San Diego's chances against the 49ers. It has to do with one plain and simple fact: both San Diego and San Francisco pulled off their respective divisional championship wins because they were physically and mentally prepared for the challenge.

I know it sounds simple, but think about it — football is an incredibly complicated game. Success depends on so many variables falling into place at exactly the right moment. Grace, skill, athleticism, knowledge, strength, mental flexibility and discipline all play important roles. To manipulate and execute these variables consistently and when the occasion so demands is truly great. I think the public appreciates that, and indeed, it is no small feat.

And at some level, I think the public also appreciates the fact that such greatness is fleeting. Certainly the players know it. After all, several of the 49ers were willing to take significant pay cuts at the beginning of the season because they wanted to be on a championship team — they wanted to go to the Super Bowl. For some of them, this will be their only opportunity. For others, it is their last chance.

It's so easy for us, as spectators, to criticize the choice of plays and/or players at a certain time in a certain game, and yes, the Super Bowl is often a victim of media hype and overblown rhetoric. Underneath it all, however, it is essential for us to recognize that very few people reach the championship pinnacle, in sports or otherwise. Wonder and admiration for such a remarkable accomplishment is not only wise, but just.

To believe anything else is willful blindness to the human condition. We are frail creatures, wondrously impermanent. Overcoming the limitations of one's self, like these football players, is a rare achievement, and worthy of respect.

A scene from a film by Bernardo Bertolucci aptly illustrates my point. In that scene, an elderly traveler ponders the human condition. To paraphrase his words: "Because we don't know when we will die, time seems an eternity. But how many more times will you remember a certain sunset or a particular summer afternoon? How many more times in your life will you watch the moon rise? Maybe four or five times. Maybe not even that. It all seems so limitless."

Diana Lopez is a third-year law student.



DIANA
LOPEZ
Columnist

STATE PRESS STAFF

JASON OWSLEY, Editor
DAVID STROW, Managing Editor

NICHOLAS BACONNight Editor
KRIS FRIDRICHNight Editor
GARIN GROFFCity Editor
GREG ZEMEIDAAsst. City Editor
DAVID LASPALUTONews Editor
A. MARJORY KAMINSKIOpinion Editor
JIM POULINPhoto Editor
MARK KRAMERAsst. Photo Editor
JEREMY STEINSports Editor
DAN MILLERAsst. Sports Editor
KEN COLLINSMagazine Editor
ANNA ULINICHAsst. Magazine Editor
REPORTERS: Mika Akikuni, Christina Bailey, Kennes Bolig, Lisa Cary, Lorrie Cohen, Dane D'Antuono, Dawn DeChristina, Patty King, Todd Kelly, Betty Mihalopoulos, Angela Mull, Dave Proffitt, N. Scott Trimble, Kim Watson.
REPORTING INTERNS: Kathleen Gilbert
SPORTS REPORTERS: Todd Kelly, Lee Newman.

COPY EDITORS: Kim Herman, Elizabeth A. Mantalbano, Lynn Readicker.
PHOTOGRAPHERS: Samantha Feldman, Frederick Medanich, Lance Terry.
EDITORIAL WRITER: James Frusetta.
COLUMNISTS: Brian Anderson, Tim Baxter, Dan Blanco, Tori Evans, James Frusetta, Tina Holder, Barry Kelley, David Luna, Diana Lopez, Jim Mahin, Delia Maldonado, Greg Nigh.
CARTOONISTS: Brian Fairrington, Stacy Holmstedt, Bryce Morgan.
PRODUCTION: Aaron Brucher, Stacey Devlin, Beth French, Adrianna Garcia, Jodi Goldblatt, Jeremy Meyer, Skip Schrader, Dave Weber.
SALES REPRESENTATIVES: Emily Berger, Dan Ellstrom, David Goodwin, Jennifer Hughes, Alisa Jellum, Shane Siren, Bill VanZanten.

Unsigned editorials reflect the views of the editorial board, decided by a majority voted among its members. They do not reflect the opinion of the *State Press* staff as a whole. Board members include:

JASON OWSLEYEditor
DAVID STROWManaging Editor
A. MARJORY KAMINSKIOpinion Editor
DAVID LASPALUTONews Editor

The *State Press* is published Monday through Friday during the academic year, except holidays and exam periods, at Matthews Center, Room 15, Arizona State University, Tempe, Ariz. 85287-1502. We do not answer questions of a general nature.

The *State Press* is the only newspaper exclusively published for and circulated on the ASU campus. The news and views published in this newspaper are not necessarily those

STATE PRESS PHONE NUMBERS

Information.....965-7572
Newsroom.....965-2292
Magazine.....965-1695
Advertising.....965-6555
Classifieds.....965-6735

I have a dream: the flat tax for all

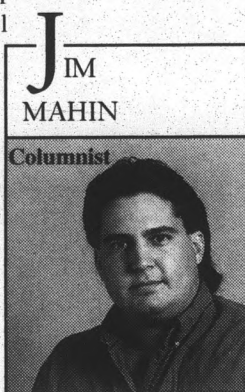
To those of you who read any of my columns last semester, it will probably come as quite a surprise for you to hear that, just a few short years ago, for a few brief weeks in my life, I, like far too many of you out there are now, was registered as a Democrat.

It was not due to a questioning of my Libertarian-dominated political faith nor to the support and embracing of any particular candidate. In fact, the whole experience left me feeling vile, vulgar and dirty for even being associated with the political force that I view as being the primary enemy to the freedom, success and well-being of the American people.

Out of principle, however, it had to be done. In 1992, the night of the Arizona Democratic primary, I switched my party affiliation to vote for a singular idea whose time had come: a relatively low flat tax rate for all, with absolutely no deductions or write-offs for anything except possibly a personal exemption and dependent exemptions similar to those used presently. Thus I found myself punching the ballot in favor of none other than the wackily passionate Governor Moonbeam, Jerry Brown. Shortly after, I switched my affiliation back to regain my pride and intellectual honesty.

Of course, it was all for naught. Brown was defeated heavily in most of the primaries and, eventually, the disgraceful disaster that now occupies the White House was pronounced to be the Democrats' guy. The rest is history, and so too was the flat tax rate. Or so I thought.

Not so, however. As hopefully everyone is aware, the Republicans now control Congress, and to both my surprise and delight, the possibility of a flat tax rate is being seriously considered for replacing the existing quagmire, with all of its lawyers, accountants, codes and bureaucrats. Whether it will actually happen or not, and, if so, what version of whose plan it will be is anyone's guess. One thing is for sure, though. This major reform is definitely an idea worth



JIM MAHIN
Columnist

pursuing.

First, the introduction of a flat tax rate with no deductions would greatly diminish the intrusiveness, size and cost of the Internal Revenue Service and its enforcement of our tax laws because there would be nothing to keep track of except for earned income, virtually all of which is already reported by employers anyway. Thus, there would be no itemized deductions to scrutinize and audit. And speaking of tax laws, wouldn't it be great to have all laws regarding income taxes contained within a single paragraph, thus eliminating the dependence that many have consistently had on expensive tax advisors, preparers, lawyers and accountants? Everyone would always know exactly how much they owe to Uncle Sam. Just a dream? Perhaps, but at long last it's at least a possibility.

Another benefit of a flat tax rate is that it is inherently more fair than the punitive graduated rate scale which currently governs us. The very notion that an individual should have a proportionally greater tax liability on the money that he earns versus that of another individual is absurd and unethical. The truth is that, despite the rhetoric and distortions of the Clintons and other leftists, new Democrats or those who follow whatever Bill portrays himself as now, the rich and upper-middle class already pay more than their fair share of

the national tax burden. After all, they pay the most taxes at the highest rates while using and needing government services less than any other group. If anything, they've overpaid. Yet, due to the left's political motivations, of class envy and class divisiveness, those who succeed and prosper are demonized and insulted as greedy and unfair just because they want to keep more of what they have rightfully earned.

Personally, I'm tired of all this beating up on and punishing of the wealthy and the upper-middle class. It's as if

anyone making over \$100,000 a year is some kind of evil disease or criminal that must be flushed out of our society. Yet these are the people who, through their risk taking, investment, entrepreneurial spirit, hard work and dedication, create the backbone of America's economic might. When was the last time someone making \$10,000 a year gave you a job or started a business? Let's face it, in a country where four of every five jobs is a product of small business, it hardly seems prudent or wise to attack the very class of people who make it all possible.

Ludicrously, though, our policies have been punishing those whose successes lead to the creation of opportunities for others. What people have got to begin to realize is that each time the rich and pseudo-rich are punished with excessive taxation, we all share in the pain. Economic activity slows, growth of employment slows and growth of real income slows, thus slowing the growth of government revenue as well. Besides, in actuality, such increased taxes

merely get passed on to lower economic classes through changes in economic behaviors by those affected. The whole notion of using the tax codes to reward or penalize people is simply not effective. Besides, the idea of government should never be to seek retribution upon the successes of its citizenry anyway. It should be to encourage prosperity. After

all, the successes or failures of a nation's citizens are what makes it flourish or flounder.

But enough moralizing on behalf of the nation's movers and shakers. The bottom line is that a flat tax rate, with no deductions, and personal and dependent exemptions only, would provide a simple, efficient, less costly, less bureaucratic, more humane and certainly fairer tax system for the future.

Jim Mahin is a senior political science major.

In a country where four of every five jobs is a product of small business, it hardly seems prudent or wise to attack the very class of people who make it all possible.

AZT medication is corrupt, HIV test fake

This letter is prompted by an episode of *60 Minutes* shown at the beginning of this year. One part of the program was about a woman who was told that she had HIV. She was put on medication that nearly killed her. Three years later, she was retested by an independent medical doctor and found to be HIV negative. She was taken off the medication and is now in good health.

This story is alarming in several respects. First, why did medication that is given as a treatment for AIDS cause the same diseases that are characteristic of AIDS? Second, how accurate is the test that prompts doctors to poison people with this medication?

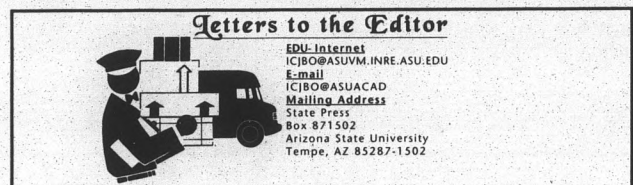
The most common AIDS medication is AZT. This medication supposedly showed benefits in a short term, double blind, placebo controlled study. I specify "supposedly" because there have been several additional analyses of the test data that found no beneficial effects. Among these analyses is the one done by professor Peter Duesberg, a world renowned virologist from UC Berkeley. Duesberg finds that the number of lymphocytes, a class of white blood cells that are part of the immune system, decreased by over half in 34 percent of the AZT recipients. However, only six percent of the group that was not taking AZT had their lymphocyte counts drop by more than half. One of the most important criteria for diagnosing AIDS is a decrease in lymphocytes, which AZT is clearly causing. AZT has also been shown to cause impotence in all of the men tested in one study, neurological diseases including insomnia, headaches, dementia, mania, Wernicke's encephalopathy, ataxia and seizures in other studies. It also causes acute hepatitis, severe nausea, muscle atrophy, anemia and is carcinogenic in mice. From this, Duesberg and others have concluded that AZT is a causal agent in the development of AIDS.

Why is this medication in use? The only answer I can come up with is sheer stupidity.

There are two different tests commonly used to test for HIV: the ELISA and the Western Blot. Since the Western Blot is considered more accurate, the analysis will be constrained to it.

Using the Western Blot, a sample of blood is exposed to proteins that are a part of the HIV virus. If there are antibodies in the patient's blood that react with the HIV proteins, then the patient is told they have HIV.

This test is based on an assumption which, when examined, is found false. This assumption is that the antibodies



that react with HIV are made specifically in response to infection by HIV. A study reported in the reputable journal *BioTechnology* (June 1993) has falsified this assumption. In the article it is found that among Amazonian Indians who haven't had outside sexual contact, haven't used IV drugs and haven't had blood transfusions (for centuries!) positive tests are recorded at 3.3-13.3 percent of the population. It is doubtful that there is an HIV epidemic in a culture that has been self-enclosed for centuries.

The criteria for interpreting the HIV test vary from country to country and within a country from laboratory to laboratory. In this country, when the criteria of the FDA are used to interpret a Western Blot, less than half of AIDS patients test positive. On the other hand, when the criteria of the Consortium for Retrovirus Serology Standardization (CRSS) are used, the percentage of AIDS patients with positive tests increases to 79 percent. Who should you believe? Neither. The accuracy of the test has never been determined appropriately. They have never attempted to isolate the virus from people who test positive and therefore determine the percentage of false results.

A definite infection with HIV is not a death sentence. There is no epidemiological, experimental or logical basis to conclude that HIV can invade the immune response of a healthy individual or cause AIDS in all people who get infected.

HIV supposedly invades the immune response by mutating too fast. However, HIV mutates at the same rate as all other human retroviruses—one in 10,000 nucleotides per replicative cycle—none of which has been shown to escape an existing anti-viral immunity.

To assert that HIV can cause AIDS in all people, even after being effectively suppressed to latency by the immune system for 10 years, is to attribute magical powers to it. If your immune system has the resources to suppress the virus, then maintaining those resources will allow your immune system to continue to suppress the virus.

If you or someone you know tests positive for HIV, do not take AZT, believe the test or believe you're definitely going to die.

Dave Brown
Junior
Biochemistry/Russian

Why do instructors ignore their students' requisites?

Currently I am a senior in good standing in the Fine Arts department with a GPA of 3.72. I am now in the position, along with many graduating seniors, of applying to graduate programs. As most of us know, part of the application process involves obtaining letters of reference. I asked several faculty members in my department to write these letters and they all agreed. That was eight weeks ago. I have now missed four deadlines and four opportunities to attend graduate school, not to mention wasted the expense incurred in both producing and mailing a portfolio. This has happened because of an instructor's apathy.

Is not the point of this institution to help students gain an education? Isn't the reason for our undergraduate experience to prepare us to reach beyond that and achieve more? In essence, isn't the goal of an undergraduate education to help a student prepare for graduate school? Why, then, is apathy toward the students so widespread? Why is it so hard to get a letter of reference from this place? Are people so caught up in their own trip that they fail to see the students who are the very reason their job exists in the first place? Do we, as students, matter or are we just an encumbrance to be endured while awaiting tenure?

I know that this problem is not unique to me. Many other students encounter the same thing; the apathy and lack of respect I have been given seems to be prominent throughout the university. At this point, I can only hope for the best with the programs whose deadlines I have missed and scramble to salvage the rest.

Matthew Neel
Senior
Fine Arts

STATE PRESS Letters to the editor

The *State Press* welcomes and encourages written response from our readers on any topic. All letters must be typed, double-spaced and no longer than two pages to be eligible for publication. Please include your full name, class standing, major (or any other affiliation with the University) and phone number. **Only signed letters will be considered for publication.** Requests for anonymity will be granted only with an appropriate reason. Letters are subject to editing by the opinion page editor for factual errors and print space availability. Letters containing obvious factual errors will be rejected. All letters must either be brought in person with a photo I.D. to the *State Press* front desk in the basement of the Matthews Center, or addressed to *State Press*, Box 871502, Arizona State University, Tempe, Ariz., 85287-1502. No faxes, please.

Experts: Holiday weight must be lost safely

By N. SCOTT TRIMBLE
STATE PRESS

Did Mom cram a lot of good, free, fatty foods down your gullet over the holidays?

Are you now desperately trying to find away to lose those five, 10, maybe 15 pounds you gained?

ASU health officials say that while it is a good idea to lose that extra weight, choosing the wrong method for shedding those pounds could lead to more weight gain and threaten your health.

Diets, including fasting and low calorie ones, almost never work and can cause damage to internal organs and muscles, said Christine Wells, a professor of exercise science.

"People eat more during the holidays because the food's good, they're with friends and probably it's cold outside," she said. "No specialized diets are good; you have to eat healthy foods and exercise right."

Most of the weight initially lost in fad diets comes from lean body mass — the muscles, liver and heart.

The diet industry is responsible for students' improper perceptions of how to lose weight, said Melinda Malore, an associate professor of nutrition. She said health scientists are lobbying Congress to hold the multi-billion dollar diet industry accountable for health problems that arise from poor diet plans.

"The big reason that the diet industry makes so much money is because there are so many repeat customers," Malore said.

A good way to lose weight is to reduce the amount of fat in your diet and increase physical activity, she said.

"It takes a while to change (eating habits) but pretty soon it starts to become a preference," she said. "I grew up on a dairy farm and drank whole milk with cream added and now I can hardly stand the taste of it."

Malore added that it is OK to occasionally indulge in fatty desserts like chocolate or cinnamon buns, but to limit the amount you eat.

Exercising right is also important, but students need to know how to properly do it.

"There is no such thing as spot reducing," said Kerri O'Brien, an exercise and nutrition trainer at the Student Recreation Center. "You can't just do sit ups and make your gut go away. You have to do cardiovascular exercises."

Cardiovascular exercises — such as running, walking and biking — increase the heart rate and speed up metabolism with moderate exertion.

The SRC provides a fitness assessment tailored to the needs of each person who makes an appointment, she said. It also has secluded fitness rooms for people who may be insecure to work out among others.

But don't expect results right away. A good program will take time and dedication.

"If (diet ads) say lose weight fast, don't trust them," O'Brien said. "Just train at your own pace, relax and use a lot of patience."

STATE PRESS Sports -
We write from the field,
the floor
and the locker room.

THE WEDDING PAGES *Arizona Bridal Affair*

Arizona's Oldest and Largest Bridal Show
Sunday, January 22, 1995
10 am to 5 pm
Phoenix Civic Plaza Grand Ballroom



Grand Prize Drawing
\$12,000 plus
Wedding & Honeymoon

Honeymoon in Hawaii
7 Days/7 Nights
Courtesy of
SUNBIRD

Three Fashion Shows
11:30, 1:30, 3:30

Free Engagement Photos

How to Buy Your First Home

Over 150 Wedding Professionals and Exhibitors

There may be other bridal events to attend, but you don't want to miss this one. You will find everything to plan and execute your wedding all in one day in one place!

Thousands of dollars worth of door prizes and gifts.

FOR TICKET INFORMATION OR EXHIBIT SPACE INFORMATION CALL

708-WEDD

\$7.00 per person. Tickets available at the Civic Plaza Box Office

WEDDING AND HONEYMOON GRAND PRIZE CONTRIBUTORS

- A Return To Elegance • Beautycontrol • Balloon Extravaganza
- Flowers By Jim & Deb • Exclusive Cake Creation
- American Express Financial • Absolute Discount Announcements
- Candid Wedding Photo • Y-Knot Party • Sears Ritz Tuxedos
- Bridal Pak Photo • Mountain Preserve • KC's Cassa • Carriage
- Contemporary • Lifestyles • TMM Video

Sponsored by



CAUTION

This Ad May Cause Drowsiness!

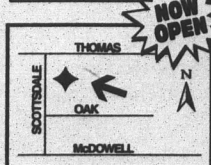


- ✓ FREE Delivery & Set Up
- ✓ FREE 90 Day Financing (on qualified purchases)
- ✓ FACTORY DIRECT SAVINGS!
- ✓ FREE Removal of Old Bedding
- ✓ FREE 60 Day Comfort Guarantee
- ✓ 100% Non-Prorated Written Guarantee
- ✓ FREE Factory Tours (where available)

FREE PILLOWS or MATTRESS PAD or BED FRAME
With any set purchase and this coupon. Limit one coupon per set purchase. Expires 1/31/95

No middlemans mark-up!
Top quality mattresses!

Sleepwell 4 yr. 100% Set Guarantee Twin each piece... \$59 Full each piece... \$79 QUEEN SET... \$198 KING SET... \$298	Magic Nite 6 yr. 100% Set Guarantee Twin each piece... \$69 Full each piece... \$99 QUEEN SET... \$248 KING SET... \$348	Hotel Embassy 8 yr. 100% Set Guarantee Twin each piece... \$89 Full each piece... \$119 QUEEN SET... \$298 KING SET... \$398
Princess Crafted Comfort 10 yr. 100% Set Guarantee Twin each piece... \$99 Full each piece... \$139 QUEEN SET... \$348 KING SET... \$448	Royalty Crafted Comfort 12 yr. 100% Set Guarantee Twin each piece... \$119 Full each piece... \$169 QUEEN SET... \$398 KING SET... \$498	Excellence Crafted Comfort 15 yr. 100% Set Guarantee Twin each piece... \$139 Full each piece... \$189 QUEEN SET... \$448 KING SET... \$568



Scottsdale
2515 N. Scottsdale
(Wilshire Plaza)
941-8116

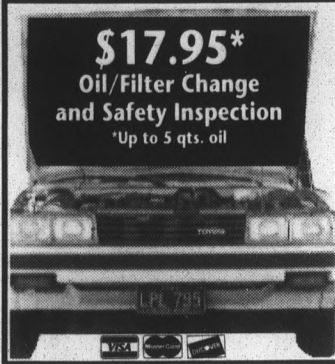
Verlo
MATTRESS FACTORY STORES
NOW WITH NEARLY 60 LOCATIONS NATIONWIDE

CALL YOUR NEAREST VERLO DIRECT 1-800-224-VERLO
Arizona Colorado Florida Georgia Illinois Minnesota Missouri Wisconsin

© Verlo Mattress Co., Inc. 1994

ARIZONA STATE UNIVERSITY
STATE PRESS

You don't have to stand in line to get it.



Star Service
Since 1984

- Foreign And Domestic Repair And Maintenance.
 - Below Dealer Prices.
 - **FREE Shuttle To Campus.**
 - * \$24.95 for Mercedes Benz.
- 1836 E. 6th Street, Tempe
840-STAR (7827)

Hayden Rd. # 1836 E. 6th St.
University Dr. Hacienda

Valvoline
PEOPLE WHO KNOW USE VALVOLINE.

21ST Anniversary

Join Us On Saturday,
January 21st to Celebrate
Our 21st Anniversary
and Receive...

BUY
SELL
TRADE

TEMPE
227 W. University
PHOENIX
724 E. Glendale

20% OFF

All Merchandise



Buffalo EXCHANGE
new & recycled fashions since 1974

Indian avalanche kills 125 people

JAMMU, India (AP) — Soldiers and villagers took food and blankets Thursday to hundreds of motorists who took refuge in a tunnel after an avalanche.

Heavy snow, meanwhile, blocked rescue teams from reaching the Himalayan mountain slope where at least 125 people were killed in Monday's snowslide and hundreds more were missing.

Information from the site has been sketchy because of poor communications.

Initially, police and state officials said the avalanche had blocked the entrance and exit to the Jawahar tunnel in northern Jammu-Kashmir state, trapping about 1,000 motorists inside.

But today, police said they finally managed to make contact with rescue workers on the scene and discovered that there were about 500 motorists inside the tunnel and that they were not trapped but had taken shelter there after the avalanche cut off a main mountain road.

Police speaking on condition of anonymity said the motorists in the tunnel were safe and that soldiers and villagers had brought them food and blankets.

A total of 125 bodies were recovered from public buses knocked by the snow into a deep gorge three miles from the tunnel. Ten buses and five cars were caught in the snowslide.

MUSIC SOUND

stink weeds
1940
602-897-7109

HIGH FIDELITY RECORDINGS
NEW AND USED CDS
SETTES
INDIES
VINYL IMPORTS

You Snooze, You Lose.

(Get In Early For Best Selection)

**21 HOUR - 3 DAYS ONLY
TREK BLOWOUT TENT SALE**
January 20-21-22



TREK USA

	Reg.	Blowout Price	Reg.	Blowout Price
'95 800	\$269.95	\$239.95	'95 850	\$399.95 \$354.95
'95 820	\$299.95	\$264.95	'95 930	\$499.95 \$469.95
'95 830	\$359.95	\$319.95	'95 930SHX 21" Frame Only	\$629.95 \$559.95
			'95 950	\$629.95 \$539.95
			'95 970	\$969.95 \$854.95
			'94 1200 Road Bike	\$649.95 \$514.95

FREE GIFT TO FIRST 100 CUSTOMERS

\$5.00 OFF Any U-Lock

With coupon. Void with other offers. Expires 1/22/95
Bicycle Wheelers • 968-8011

	Reg.	BLOWOUT PRICE		Reg.	BLOWOUT PRICE
TREK BACK PACK (Silver)	\$27.95	\$21.95	TREK CLUB SHORTS	\$29.95	\$19.95
TREK PORTAGE CAR RACK	\$49.95	\$41.95	TREK CRITERIUM SHORTS	\$44.95	\$29.95

Plus other great discounts on TREK helmets, clothing, parts & accessories.

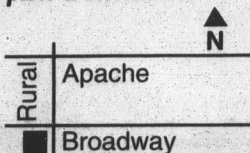


"Your collegiate bike shop"

968-8011

Open 7 days a week
Layaway

2010 S. Rural Rd., Tempe, AZ



CLUB

TRIBECA

presents

50¢ FRIDAYS

50¢ Cocktails

&

\$1.00 Longnecks

'til 10:30p.m.

Free Buffet Starting at 6:30pm

\$2 OFF COVER

By Mentioning This Ad

SW Corner of Scottsdale & McDowell • 423-0650



PI KAPPA PHI FRATERNITY SPRING RUSH 1995



"STRENGTH THROUGH BROTHERHOOD"

- ~SUNDAY JANUARY 22 - BBQ AND VOLLEYBALL BEHIND MANZANITA WITH BROTHERS 12-4
- ~MONDAY JANUARY 23 - BILLARDS AND PIZZA WITH BROTHERS 6-9
- ~TUESDAY JANUARY 24 - PIZZA WITH BROTHERS AT ALEXANDER'S 6-9
- ~WEDNESDAY JANUARY 25 - FORT MCDOWELL CASINO WITH BROS 6-10
- ~THURSDAY JANUARY 26 - INVITE ONLY BID DINNER - SPRING'95 PLEDGE CLASS ANNOUNCED
- ~FRIDAY JANUARY 27 - TO BE ANNOUNCED

BECOME PART OF PI KAPPA PHI "A GROWING TRADITION"

FOR RUSH INFO CALL
PAUL @ 968-5328
MARK @ 804-0348
PETE @ 966-7980

Seniors: Schedule your photo session and get a FREE YEARBOOK!

Seniors, CALL VICKI NOW to set up an appointment for your photo session: 965-6881.



The photographer will be in the Copper Room, 204, in the Memorial Union JAN. 30-FEB. 3, 10 a.m.-3:30 p.m.

Get photos in time for resumes.

One free back issue of *The Sun Devil Spark* yearbook to all who come in for a photo sitting while supplies last! (1987 to 1993 available)

- No sitting fee.
- Photo is printed in the 1995 ASU yearbook free of charge.
- Proofs will be mailed to you for selection. Purchase is optional.
- Photography by Columbia Photographic Service.

HOURS: MON. & TUES.: 10 a.m.-Noon, 12:30-3:30 p.m.
WED., THURS., FRI.: 10 a.m.-12:30 p.m., 1 p.m.-3:30 p.m.

Underclass and upper degree photos will be taken on a walk-in basis (no need for an appointment). Our photographer will also offer photo sessions in the dorms Jan. 30-Feb. 2, 4:30-7:30 p.m. Call for a schedule.

Seniors, Call Vicki at 965-6881

CAMPUS CORNER

- Beer & Soda
- Photo Developing
- Health & Beauty Aids

712 S. College
(College & University)
967-4049

2 LOCATIONS

609 S. Mill
(Across from Coffee Plantation)
858-0567
(beer only at College St. store)

KEGS

\$39.99

plus deposit

Coors Light Icehouse
Genuine Draft Miller Lite

ASASU ELECTIONS 1995-96

INITIAL CANDIDATE MEETING*

All positions open for election

FRIDAY

January 20, 4:00pm
Programming Lounge
Lower Level Memorial Union

CALL 965-3161 IF YOU WOULD LIKE TO ATTEND BUT CANNOT, OR IF YOU HAVE QUESTIONS

**This meeting is mandatory if you plan on running for any elected position at ASASU*

For \$35, we can make your parents think about you every day.

Send them a subscription to the *State Press*.

Subscribe now and send your parents the *State Press* for Spring Semester 1995. They'll receive 68 issues and will be able to keep up with what's going on at ASU instead of relying on you to keep them updated!



GREAT GIFT IDEA FOR FRIENDS, RELATIVES, PARENTS and GRANDPARENTS.

DO IT NOW AND SAVE!

IT'S *YOUR* NEWSPAPER

ARIZONA STATE UNIVERSITY
STATE PRESS

ASU'S Morning Daily Newspaper
Serving ASU since 1890

Fill out this form and mail it with payment to:
State Press Subscriptions, Box 871502, Tempe, AZ 85287-1502, or stop by the *State Press* subscription office in Mathews Center basement.

SUBSCRIPTION

SPRING SEMESTER only \$35 (68 issues)

For first class mail, add \$30 per semester to above prices.

SUBSCRIBER NAME _____
Address _____
City _____ State _____ Zip _____
Phone (____) _____

Check here if you'd like us to send a gift card to acknowledge the gift subscription.

CHECK ENCLOSED
Charge my Visa MasterCard
 American Express
Card Number _____
Expiration Date _____
Signature _____
Your Name _____
Your Phone Number _____



NEED MORE INFO? CALL OUR SUBSCRIPTION DEPT. AT (602) 965-7572

CHRISTIAN SLATER KEVIN BACON GARY OLDMAN

One was condemned.

One was determined.

Two men whose friendship gave them the will to take on the system...

MURDER IN THE FIRST

The trial that brought down Alcatraz.



WARNER BROS. PRESENTS
A LE STUDIO CANAL + PRODUCTION IN ASSOCIATION WITH THE WOLPER ORGANIZATION
A FILM BY MARC ROCCO CHRISTIAN SLATER KEVIN BACON
GARY OLDMAN "MURDER IN THE FIRST" EMBETH DAVIDIZ BRAD DOURIF WILLIAM H. MACY
R. LEE ERMEY MUSIC BY CHRISTOPHER YOUNG COSTUME DESIGNER DEBORAH LEE EXECUTIVE PRODUCERS RUSSELL LIVINGSTONE PRODUCED BY KIRK M. PETRUCELLI
DIRECTED BY FRED MURPHY EXECUTIVE PRODUCERS DAVID L. WOLPER AND MARC ROCCO EXECUTIVE PRODUCERS DAN GORDON PRODUCED BY MARC FRYDMAN AND MARK WOLPER
MARC ROCCO

OPENS JANUARY 20TH EVERYWHERE

Fla. court: Black couple deserve hearing on charges of racist jury

TALLAHASSEE, Fla. (AP) — A black couple who sued over an auto accident deserve a new trial if they can prove jurors made racist jokes during deliberations, Florida's Supreme Court ruled Thursday.

"It is not by chance that the words 'Equal Justice Under Law' have been placed for all to see above the entrance to this nation's highest court," Justice Harry Lee Anstead wrote for the unanimous court.

The justices ordered the trial court to hold a hearing to decide if the alleged statements were indeed made.

Derrick and Eugena Powell had sued their insurance company, Allstate, after their car was broadsided in 1989 by an underinsured driver. Powell, then a 51-

year-old electrician, suffered back injuries.

The Powells sought \$235,000 but were awarded only \$10,500 by the all-white jury. The next day a juror called the Powells' lawyers and said other jurors made racist comments during eight hours of deliberations.

According to the juror, others told "nigger" jokes, speculated the Powells' children were drug dealers, likened blacks to chimpanzees and claimed white workers are better than black ones.

Allstate had argued that the verdict should stand despite "irregularities" in the deliberations. It said that what goes on in the jury room is private and that the alleged comments didn't necessarily affect the outcome.

ATTENTION ASU STUDENTS

Join Tempe Schools Credit Union and Receive:

- No fee checking
 - 13.9% APR VISA
 - Complete Line of Financial Services
 - Full ATM access
 - Student Loans
- AND MUCH MORE!

*Special ASU Student Offer: Open your checking account before February 28, 1995, and receive 30 minutes FREE LONG-DISTANCE SERVICE!

TEMPE SCHOOLS
CREDIT UNION

2800 S. Mill Ave.
(Mill & Alameda) Tempe, AZ 85282
967-9475

We will be on campus from January 17 through 20 for the Commuter Expo!

STATE PRESS Crosswords - For the cruciverbalist in you.

WEISS GUYS CAR WASH



Thursdays

Power 92
Ladies Night
No Cover
& \$2.00 Drinks
For Ladies
All Night

Bump Your Way Into '95'
Free

Fridays

No Cover
Before 9 pm
Guy & Leon
Spinning the Hottest Dance
Mix in town
Hourly Drink Specials
Bud Girls will be in the house with giveaways.

Carwashes Provided by Weiss Guys Car Wash will be given away all night.



\$2 Golden Cadillacs & \$1.50 Purple Yugo

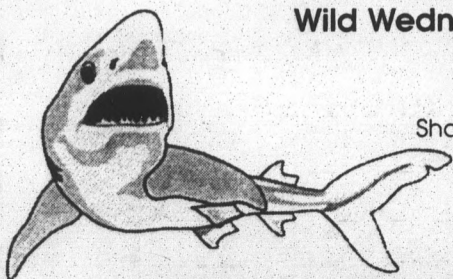
Tuesdays

Live Music with Newton & Poorfish
Ladies No Cover Till 10pm
\$2 Well, Wine & Draft
All Nite - For everybody!

shooters for everyone.

Wild Wednesdays

With The Wild Men of US Male
Showtime 8-10pm
Guys-Free Pool From 8-10pm
Dancing after 10pm



SHARKS
7117 E. 3rd AVE.
SCOTTSDALE
970-4930



S
a
t
u
r
d
a
y
s

FREE

YOUR FIRST GAME IS ON THE HOUSE!
Bring in top portion of this ad and play any game free.
One time only. One coupon per customer.
Expires 1-27-95

CHECK OUT THE LATEST IN VIRTUAL REALITY ENTERTAINMENT



Sweet DADDY'S

VIRTUAL REALITY ARCADE
411 S. Mill Ave. • Below Club 411 • 894-5453

University Drive plan phase one may be done by Super Bowl

By DAVID PROFFITT
STATE PRESS

Planners hope to finish the first phase a redesign of University Drive in time for the Super Bowl in 1996.

The proposal is an effort to make University Drive more pedestrian friendly, and would likely result in bike lanes, slower traffic, longer pedestrian lights and a more attractive street, said Jim Jones, public works director for the City of Tempe. Plans are not yet definite, but the main thrust of the changes will be the appearance of the street and its traffic flow.

The section scheduled for completion by the Super Bowl is between Myrtle and College Avenues. However, utility and irrigation lines underneath the street make this date "questionable," said Rod Keeling, executive director of Downtown Tempe Community, Inc.

Perhaps the most significant change for students is the proposed addition of bike lanes.

"We'd rather see bikes riding in lanes" than on the street or sidewalks, said Ralph Tranter, Tempe Police traffic lieutenant, adding that bike lanes would make the road safer for bicycle riders.

"Bikes are more likely to go with traffic with a bike lane, and people riding the wrong way is a major contributor to bike/car accidents," he said.

To fit the bike lanes, the street may have to be widened or the lanes narrowed.

"Our long-range plan calls for them (bike lanes) to be there, so we'll do something," said Mary O'Connor, transportation planner.

That includes a "radical" change in stoplight patterns, Keeling said.

"That's something nobody will be able to see, but it's really important and I think we're going to do that," he said.

Keeling said that most of the traffic along University Drive is traveling to or from the ASU campus or downtown Tempe.

"The question is, how fast do you have to be going when you're coming or leaving?" he said. "We want to serve the people who are coming here, not driving from Mesa to Phoenix."

He said much of the cross-town traffic will be absorbed by the recent extension of the Red Mountain Freeway.

"We're trying to make a lot more green time for pedestrians and less for the cars," Jones said. "Basically, now it's a heavy-use design for cars and not much else."

SALE

NOW
\$199⁹⁵
reg. \$249.95



SCHWINN
CYCLING AND FITNESS

OR

DIAMOND BACK

SALE

NOW
\$199⁹⁵
reg. \$249.95

ES



KRYPTONITE
-lock special

Now . . . take an additional \$6.00 OFF any of our U-LOCKS which are already on sale.

Expires 2/15/95

BIKE TUNEUP

- Adjust Brakes
- Adjust Gears
- Clean and Lube
- Check Tires
- Minor Wheel Align.

SPECIAL
\$14⁵⁰
reg. \$26.95

Expires 2/15/95

Ehrhardt's Schwinn



111 W. University
967-2137

Fast repairs our speciality!

FREE with bike purchase

- Tempe Bike Route Map
- Water bottle and cage
- 30-day checkup.
- Lifetime warranty



The Party Starts Tonight

at BRANSON'S

Formerly Stetsons

NO COVER CHARGE

FRIDAYS

Shooters Night

\$2⁰⁰ Exotic Branson Shooters

8-10pm
\$1⁰⁰ W, W, & D for Ladies
10-12pm

SATURDAYS

Ladies Night

\$1⁰⁰ W, W, & D

10-12pm
Shooters Specials

SUNDAYS

Reggae SunSplash

\$7⁵⁰ Exotic Rum Punch Pitchers

\$7⁹⁵ Island Brunch
RASTA FARMERS perform 2-6pm

HOUSE BAND - MAGNUM ROAD

BRANSON'S


947-1000

7316 E. Stetson Drive • Scottsdale



YOU'VE GOT YOUR TICKET, NOW GET YOUR GEAR.

BEAT THE BRUINS !!!



ASU SUNDEVILS

ARIZONA STATE

ASU vs. UCLA
SAT. JAN. 21
2:00 P.M.

GO DEVILS

ARIZONA IMAGES

T - S H I R T S & G I F T S

725 S. RURAL RD. CORNERSTONE 829-1743

There is more to life than news, weather and sports.

Check out the comics (on page 14).



Unlimited Tanning

\$14.95*
only per month

* visit the salon for initiation details

one FREE tanning session
for new clients
exp. 1/24/95

20% OFF tanning products
exp. 1/24/95

haircut \$8.95
reg. 9.95

includes shampoo and conditioner exp. 1/24/95

403 W. University (next to Tops) 829-7774 open 7 days a week

we care hair

TANNING • BEAUTY SUPPLIES • HAIR CARE

Chechnya

CONTINUED FROM PAGE 3.

around the city," said rebel fighter Aindi Beksultanov. Maskhaev said the decision to pull out came after a penetration bomb, designed for use against bunkers, smashed through the building and into the basement late Wednesday. He said about 200 Russian prisoners were in the building at the time.

By midnight the Chechens had moved out their prisoners, and then their own dead and wounded. The palace was empty by 3 a.m., fighters said.

They described Chechen losses as heavy — dozens of dead and wounded. They said Russian troops did not enter the palace while they were there.

Russian authorities said their troops hoisted the flag over

the ruined palace Thursday afternoon.

As evening fell, the Russians appeared to be targeting artillery fire on the Minutka neighborhood south of the palace. The sky glowed orange from the burning palace, and pale yellow flares went off periodically, illuminating targets for the artillery gunners.

Most of the shattered city's 400,000 people have fled. At a roadside market on the edge of town, an old woman asked someone to write her name, Abdat Bakhaeva, on a piece of paper she could stick in her shabby gray coat.

She said she was going downtown to see what had become of her apartment. "At least that way they'll know who I am if I'm killed," she said.

Enola Gay

CONTINUED FROM PAGE 3.

210,000 lives. It was to have opened in May at the Air and Space Museum, one of the most popular tourist stops in Washington.

The Smithsonian has been caught in a dispute between the 3.1-million member veterans' group on one side and historians, religious and peace groups on the other.

At issue was whether the exhibit suggested, as the Legion contended, that the bombing was an immoral act, not crucial to bring about Japan's surrender without an enormous loss of American lives.

Over a period of months, the Legion negotiated line-by-line changes in the 500-page script. The anti-bomb groups then charged that the Smithsonian had associated itself "with a transparent attempt at historical cleansing."

The immediate dispute, this week, was a Smithsonian

decision to lower the exhibit's estimate of the number of Americans who would have perished in an invasion of Japan.

Historian Barton Bernstein of Stanford University told the Smithsonian he had restudied a World War II commander's contemporary diary of casualty estimates and concluded the figure should be 63,000, not the 229,000 he originally thought.

The Smithsonian advised the Legion that the text would be changed.

But "that's just the last thing," Detweiler said. "This was a script that was originally written for the purpose of making an anti-atomic war statement, hooked around the Enola Gay. We tried to work to remove the bias. They said no."

He added: "The exhibit still says in essence that we were the aggressors and the Japanese were the victims."

CASH FOR USED LEVI'S!

\$20.00 THE Butterfly BUYER

Perfect Original

USED LEVI'S 501's
MEN'S BLUE
W27-31; L30 & Up

— \$17 Dirty-Washable
— \$12 A Stain, Paint, Glue, Oil, Etc. * NO HOLES
— \$ 8 1 or 2 Holes (size of a quarter - anywhere)
— \$25 For New Jeans W28-W36; L30 & UP
— \$10 For Student 701's
— Up to \$150 for Air Jordans

WE BEAT THE COMPETITION'S PRICES WITH FRIENDLY SERVICE...

WE GUARANTEE IT!!

PRICES LISTED FOR TEMPE LOCATION ONLY

1711 E. APACHE (JUST WEST OF M'CLINTOCK), TEMPE — 858-9436
4620 E. McDowell Rd. 7530 W. Peoria

ASU's NEWSSTAND


New York Times • Boston Globe • Washington Post • Atlanta Constitution • Miami Herald • Chicago Tribune • Detroit Free Press • Minneapolis Star • St. Louis Post-Dispatch • Kansas City Star • New Orleans Times • Los Angeles Times • Mercury News • San Francisco Chronicle • Seattle Times • Miami Herald • Corriere Della Serra • Dallas Morning News • El Mercurio • Excelsior • San Diego Union • Le Monde • San Francisco • Mercury Times • Advertiser • Denver Post • Republic • America • Tribune • News • Seattle Times • Honolulu Morning News • Seattle Times

BOOKS, etc.

Al Hayat • Irish • Honolulu • Journal • Arizona Statesman • Mesa • Mercury • ty Post • Chronicle • Dallas • European • Boston Globe • San Diego Union • Washington Post • Mercury News • Detroit Free Press • Al Hayat • Atlanta Constitution • Miami Herald • USA Today • Sporting News • Mesa Tribune • Las Vegas Review-Journal • Mercury News • Dallas Morning News • Miami Herald • Orange County Post • Kansas City Star • Denver Post • Anchorage News • St. Louis Post

75+ National/Int'l. Newspapers

967-1111



HAROLD'S RED X SALE

Now 'til January 29th, save even more at Harold's by deducting an X-TRA 20% from the markdown price of merchandise already reduced 25% to 50%!

EXAMPLE: Original price \$70, it's on sale for \$39.90...
take an extra 20% off...your price is just \$31.50!

LOOK FOR THE RED X TAGS & SIGNS!

HAROLD'S

Exclusively at Biltmore Fashion Park, Phoenix

Comics

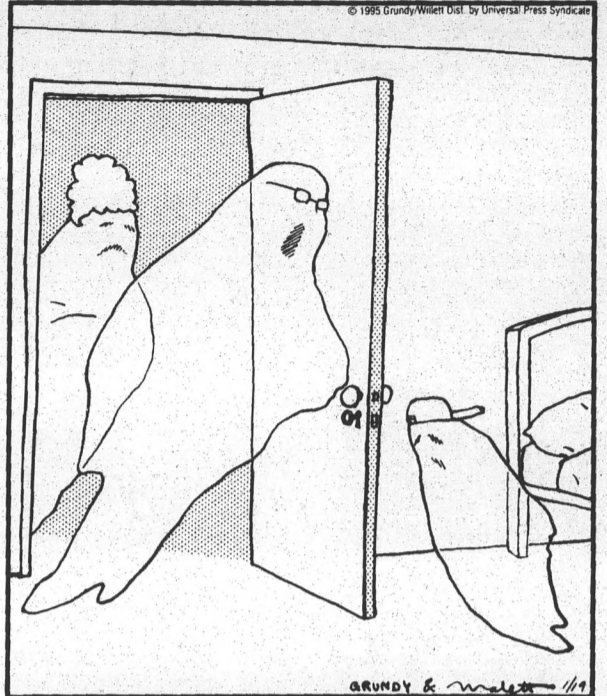
Generation HeXed

by Stacy Holmstedt



TIGHT CORNER

by Ken Grundy and Malcolm Willett



"You're grounded! And don't let me catch you walking through the walls!"

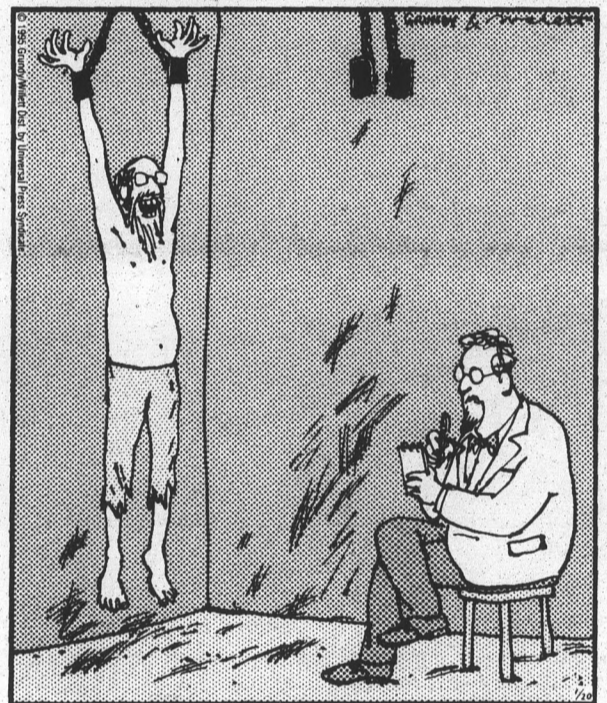
Calvin and Hobbes

by Bill Watterson



TIGHT CORNER

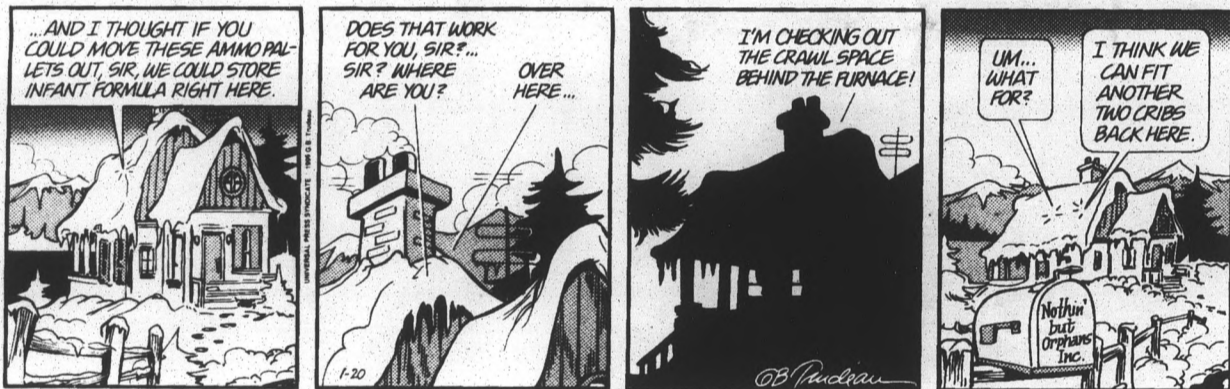
by Ken Grundy and Malcolm Willett



"Call me weird, but I feel good!"

Doonesbury

BY GARRY TRUDEAU



STATE PRESS SPORTS—We cover good sports, bad sports, rich sports and poor sports

NOW SERVING WINGS
WE ACCEPT MASTERCARD & VISA ON DELIVERY!
OPEN DAILY FOR LUNCH! Open 11am-2am Daily!

FAST, FREE DELIVERY DAILY!
829-0064

CARDINAL'S PIZZA

<p>WEEKEND SPECIAL</p> <p>LARGE \$6.99 3-Item PIZZA Sat. & Sun. Only</p>	<p>THE ULTIMATE</p> <p>20" 1 Topping PIZZA \$8.99</p>	<p>CARDINAL'S SPECIAL</p> <p>12" PIZZA with 1 Topping & 12 WINGS \$7.99</p>
---	--	--

829-0064 829-0064 829-0064

ADD 12 of our Biggest - Meatiest - Tastiest WINGS for \$2.50
Limit 4 Doz.

CHART A COURSE FOR SUCCESS AT BOSTON UNIVERSITY

Belgium • England • Israel

Master of Science in Management Degree

Boston University International Graduate Centers combine a tradition of academic excellence with a rich diversity of resources to provide students with an exceptional educational experience.

- Exciting Overseas Degree Program
- Weekend and Evening Classes
- Begin in January, September, or April

Call 617/353-6000

BOSTON UNIVERSITY
International Graduate Centers

Send for **FREE** Information:

NAME _____

ADDRESS _____

CITY _____ STATE _____ ZIP _____

755 Commonwealth Ave., Rm. 203 • Boston, MA, 02215 USA

Sun Devils cruise to 81-71 victory over Trojans

By DAN MILLER
STATE PRESS

USC joined a growing list of casualties Thursday night.

Like many of the 13th-ranked ASU basketball team's opponents, the Trojans were victimized by the Sun Devils' endless parade of full court pressure, which resulted in an 81-71 romp at the University Activity Center.

"The last seven or eight minutes of the first half was just superb," ASU Coach Bill Frieder said. "It set the stage for winning this basketball game."

After a sluggish start put the Sun Devils ahead 19-16 with seven minutes to go in the first half, ASU erupted for a 23-6 run that put them up 42-22 at the 1:38 mark. Junior swingman Ron Riley, who led the Sun Devils with 20 points, poured in nine of his 10 first half points during the explosion.

"We played real good defense," said Riley, who had four dunks on the night. "We came out and we pressed and we got them off their game."

ASU (13-3 overall, 3-1 Pac-10) held Trojan's triggerman Lorenzo Orr to just five points in the first half, while instigating four turnovers. Trojans point guard, Burt Harris, committed five first half turnovers.

"You can't have 18 turnovers in the first half and expect to beat a good team," USC Coach Charlie Parker said. "That was one of our goals—to cut down on the turnovers. To me, that was the key."

Sun Devil center Mario Bennett, who

was suffering from stomach pains and scored only six points in the opening frame, came alive in the second half en route to 18 points and a team-high 11 boards for the game.

"I was acting up during the game," said Bennett, who added three blocks to his Pac-10 leading total (53). "I had a lot of gas. It wouldn't come out."

The Trojans (7-8, 2-3) cut ASU's lead to 50-36 in the first three minutes of the second half, thanks to six points from Orr, who had a game-high 26 to go along with his game-high 15 rebounds.

But the Sun Devils used a pair of technical fouls on USC and some rejuvenated shooting to rebuild a comfortable lead, 63-41, with 10 minutes to play.

"When the game was on the line we were sharp," Frieder said. "Our defense was good and we had some big plays."

ASU senior guard Isaac Burton finished with 14 points and a team-high four steals. Freshman guard Jeremy Veal (11 points) and James Bacon (10 points) also scored in double figures for ASU.

Sun Devil point guard Marcell Capers had a game-high 14 assists.

"They're not the greatest ball handlers in the (Pac-10) so our guards just jumped 'em and showed them what pressure was," Bennett said.

After the game, Frieder announced that Steve Walston, who was scheduled to red-shirt this season, will likely be activated this week and may start against UCLA on Saturday.



Junior Ron Riley puts up two of his team-high 20 points over USC's Jaha Wilson. The Sun Devils won the game 81-71.
Samantha Feldman/State Press

Gymnastics looks to bury Gophers

By JEREMY STEIN
STATE PRESS

When the ninth-ranked ASU women's gymnastics team takes the floor tonight for its home opener against Minnesota, there will be quite a few new faces wearing maroon and gold.

The meet begins at 7 p.m. in the University Activity Center. The Sun Devils will see action from five freshmen, including local newcomer Megean Wright. Wright, a graduate of Westwood High School in Mesa, has only practiced with the team for 1 1/2 days and will compete on vault for the Sun Devils.

"She's powerful like Tina (Brinkman) on vault and bars, and she's good on four events," ASU Coach John Spini said of Wright.

The Sun Devils will also get considerable contributions from fellow freshmen Carrie Courtney and Gina Holleran, who could both compete in all four events, and Kim Keever. Freshman Autumn Horrocks, who did not compete in ASU's first meet with Utah due to a sore shoulder, will do an exhibition performance on bars.

While the team would love a win over the Golden Gophers, it is more important that the Sun Devils perform to their ability.

"We don't want to lose, but it is more important that we get a good score," senior Danna Lister said. "If we can just hit our routines so that we can get a good score we can qualify for regionals."

Spini agrees that a win tonight would be just one step toward the team's ultimate goal of its first-ever national championship.

"We're not just trying to win a meet here, we're trying to look toward the end of the tunnel," Spini said. "We've got to go hard and have confidence when we're out on the floor. We're not gonna give it away at nationals or regionals. We're not. That's our goal this year."

If the team hopes to reach the NCAA Championships in Athens, Ga., it will have to do it short-handed for at least part of the season.

Senior All-American Tina Brinkman, who missed the team's meet against Utah, will again be out for the Sun Devils. Brinkman is recovering from injuries suffered in an automobile accident on Jan. 13.

"Tina may be gone for the season or be back within three weeks. It's going to be a week-to-week status," Spini said.

Although Brinkman's injury hurts the team, the Sun Devils are far from dead. Junior Katie Freeland, an All-American last year on vault, and Lister will both be called upon to come up big for ASU. Freeland will again compete in all four events, while Lister will compete in three events, sitting out the vault competition.



Former Sun Devil baseball coach Jim Brock will be honored prior to the ASU alumni game Saturday. Brock's jersey number will be retired at 11:30 a.m., with the game scheduled to start at noon.
Sundi Kjenstad/State Press

ASU to retire Brock's number

People to pay respects prior to alumni game

By LEE NEWMAN
STATE PRESS

A calm has hovered over Packard Stadium for many months now. Former coach Jim Brock, who was a fixture of Packard Stadium and the ASU baseball program for 23 years, lost his battle with cancer last June — just one week after ASU was eliminated from the 1994 College World Series.

Players, coaches and fans will get to pay their respects to Brock tomorrow afternoon, when his number is retired and placed on the left-field wall during ASU's annual alumni game at 11:30 a.m. The ceremony will be preceded by a home run derby that begins at 10:30 a.m. The alumni game begins at noon.

"Jim always would want to be part of ASU baseball, and this ceremony and the retiring of his number will make sure that he always will be," said Brock's wife, Pat.

Brock lived and breathed ASU baseball, and he was considered by most to be one of the best coaches collegiate baseball has ever seen. His numbers are astounding: 13 College World Series appearances, two national championships, 11 division titles, 1100 career wins and a .714 career-winning

percentage. Dr. Brock also earned three degrees from ASU.

"This is no disrespect for how I felt before, but I have more respect now for Coach Brock than I ever have, because I've realized the demands that come along with this job," said ASU Coach Pat Murphy. "I would like to emulate some of the things he did, as far as his discipline, his caring about the kids' academic prowess, and the way he treated his players with respect."

The alumni game will also be the first opportunity this season to see ASU in action. The Sun Devils will take on ASU alumni, including major leaguers Mike Benjamin from San Francisco and Fernando Vina from Seattle. Other players tentatively scheduled to compete in the game are Scott Shores, Brian Waymouth, Greg Steen, Don Wakamatzu, Eric Helsend, and Antone Williamson.

"It (the alumni game) is going to be a great thing," Murphy said. "We've got Bobby (Winkles) comin' in. I'm going to take a backseat and just take it all in."

Murphy has inherited a Sun Devil team that uncharacteristically does not have much experience. Every position but pitcher will be played by someone who has not played a full season. Then to top it off, 17 of ASU's games will be played against teams ranked sixth in the nation or higher. Eleven of those games will be played against the top three teams in the nation — Stanford, Florida State and the defending National Champion Oklahoma Sooners. However, Murphy insists he

TURN TO BASEBALL, PAGE 16.

Wrestling faces nation's top teams at tournament

BY DAN MILLER
STATE PRESS

In a gathering that includes 12 of the nation's top 22 teams, there is no such thing as an "easy" match.

That's why ASU wrestling coach Lee Roy Smith isn't losing any sleep over his team's first-round encounter with the ninth-ranked Fresno State Bulldogs at the Annual National Duals Saturday in Lincoln, Neb.

"We're going up there to wrestle," Smith said. "These guys are looking forward to it. We've got a real tough quarter bracket, but I think we're capable of doing well."

If the 10th-ranked Sun Devils (2-2) beat the Bulldogs, they will face the winner of second-ranked Oklahoma State and Indiana in the semis at 3:30 p.m. Saturday.

"We match up well with Fresno State and we don't match up badly with OSU," Smith said. "As always, there will be some key matches."

Fresno State won seven of 10 matches against the Sun Devils in their last dual meeting in Tempe to come away

with a 26-10 victory. Smith said the Bulldog's lineup for Saturday will be comparable.

"They're about the same," he said. "They lost some punch in the upper weights and that's where we're a little susceptible. It should make for a real interesting dual."

ASU went back to the drawing board this week after succumbing 29-7 to top-ranked Iowa last Saturday.

The Sun Devils' 118-pound Danny Felix and 134-pound Steve St. John provided ASU's only points.

"Regardless of the score, we went into Iowa and, for the most part, competed well," Smith said. "What I was kind of impressed with is the way we've bounced back from that."

All-American 167-pounder Markus Mollica suffered his first defeat of the season against Hawkeye Matt Nerem last week.

"That was a bad match for me," Mollica said. "I don't think I was as intense as I've been in other matches. I'll get to wrestle him again, though, if not at duals, then probably at nationals."

Men's swimming looks to upset Cal, Stanford

BY LEE NEWMAN
STATE PRESS

The ASU men's swimming team will look for another couple of upsets to go along with last week's big win against Nebraska, when the Sun Devils men and women swimming and divers teams host California today at 1 p.m. and Stanford Saturday at 12:30 p.m. Both meets will take place at the Mona Plummer Aquatic Center.

The 13th-ranked men's team will have to deal with California and Stanford, two teams that are ranked third and fifth in the nation respectively.

"The California meet is one of those meets in which Cal should win, but if they slip anywhere and we're there to take advantage, it could make a difference," Coach Ernie Maglischo said. "Stanford is just too deep."

"We feel we have a really good chance

against Cal," said senior Rich Bera. "The whole team is psyched about it. We're looking for the upset."

Last weekend, the men's team came from 20 points down to beat the Cornhuskers in Nebraska and improve their dual meet record to 2-1.

"Going in they were a stronger team," Maglischo said. "I thought we would lose that meet. It was a big win for us."

The 12th-ranked women's team is coming off two wins last weekend. The Sun Devils defeated NAU and Washington State to improve their dual meet record to 4-2. Junior Joanne Currah won both the 200-yard individual medley and the 200-yard freestyle. 1994 NCAA 100-yard breast stroke champion Beata Kaszuba saw her first action of the season and won the 100-yard breaststroke.

Baseball

CONTINUED FROM PAGE 15.

doesn't feel any pressure.

"Maybe it's my youth or maybe I'm just not smart enough, but I don't feel great pressure," he said. "I feel great excitement about getting the season underway."

ASU players are also looking forward to

a good year.

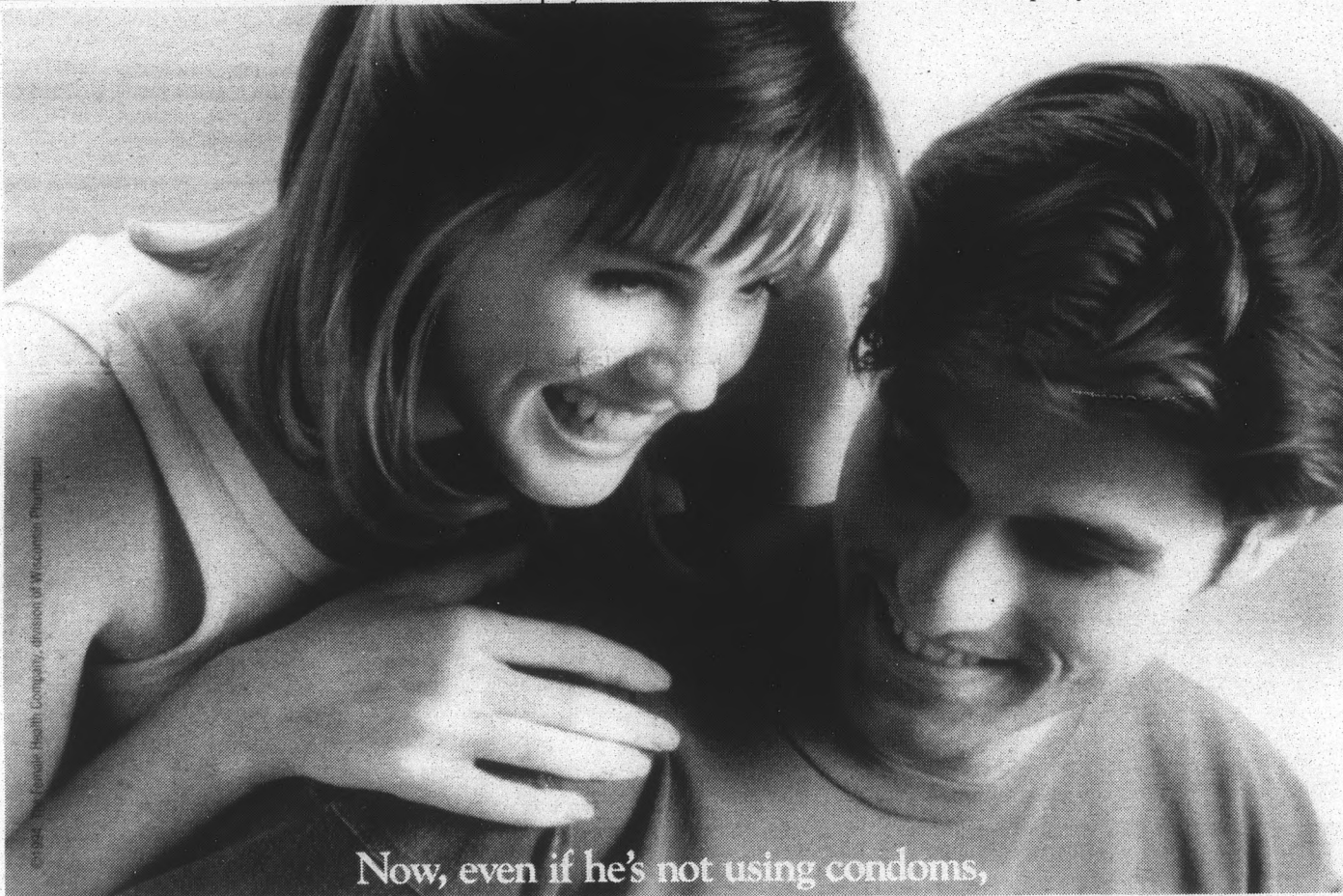
"It's hard to say how good we are yet, because we really haven't seen us play against anyone yet," junior Travis Flowers said. "We've lost a lot from last year, but we're still pretty solid."

NEEDS OF SPRING BREAK? HERE'S
SPRING BREAK
DRIVE YOURSELF & SAVE!
COMPLETE FIVE & SEVEN NIGHT TRIPS

\$58 14TH SELL-OUT YEAR!
PARTY

SOUTH PADRE ISLAND
PANAMA CITY BEACH
DAYTONA BEACH
KEY WEST
STEAMBOAT
VAIL/BEAVER CREEK

* PER PERSON DEPENDING ON DESTINATION / BREAK DATES / LENGTH OF STAY
1-800-SUNCHASE
TOLL FREE INFORMATION & RESERVATIONS



Now, even if he's not using condoms,

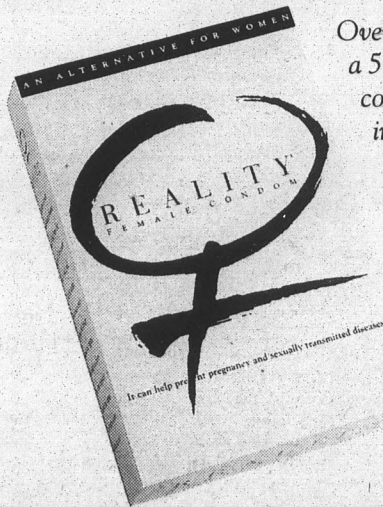
you can.

Finally.

The REALITY® Female Condom is here.

And now, for the first time, you have protection of your own.

REALITY Female Condoms were designed to help protect you and your partner against sexually transmitted diseases, especially AIDS. They also help prevent unwanted pregnancies. When used correctly every time in 6-month clinical trials, REALITY had a 2.6% pregnancy rate.



Over a year's time, this is projected to be a 5.1% pregnancy rate. If not used correctly every time, the pregnancy rate increases to between 19-25%. Find out more about the REALITY condom by calling your doctor, pharmacist or 1-800-274-6601.

If saying "no" to sex is not for you and your partner, and he isn't using male latex condoms—take a closer look at REALITY.

New REALITY Female Condom

Make it your reality.

* LATEX CONDOMS FOR MEN ARE HIGHLY EFFECTIVE AT PREVENTING SEXUALLY TRANSMITTED DISEASES, INCLUDING AIDS (HIV INFECTION), IF USED PROPERLY. • IF YOUR PARTNER IS NOT GOING TO USE A MALE LATEX CONDOM, YOU CAN USE REALITY TO HELP PROTECT YOU AND YOUR PARTNER. • REALITY ONLY WORKS WHEN YOU USE IT. USE IT EVERY TIME YOU HAVE SEX. • BEFORE YOU TRY REALITY, BE SURE TO READ THE DIRECTIONS AND LEARN HOW TO USE IT PROPERLY.

NO CONTRACEPTIVE IS EFFECTIVE IF IT IS NOT USED. AFTER ALL, UNPROTECTED SEX HAS A PREGNANCY (FAILURE) RATE OF 85% OVER A YEAR'S TIME.

"TYPICAL" USE FAILURE RATES	6 MONTHS (%)	1 YEAR (%)
REALITY FEMALE CONDOM	12	25
MALE LATEX CONDOM	8	15
CERVICAL CAP	10	18
DIAPHRAGM	8	15
SPONGE	12	17
UNPROTECTED SEX	61	85

MAKE AN INVESTMENT IN YOUR LIFETIME

Order your copy of *The 1994-95 Sun Devil Spark Yearbook* today!

Matthews Center basement, Rm 50
965-6881

STATE PRESS SPORTS

We cover good sports, bad sports, rich sports and poor sports

STARTS TODAY!

Welcome Back ASU!



Reebok Asics NIKE NB

January Clearance SALE!

ALL Footwear and Apparel REDUCED!

Selected Styles Up To **40% OFF**

- Knowledgeable Staff!
- Great Selection!
- Best Prices!

AT THE CORNERSTONE
RURAL CORNERSTONE MALL UNIVERSITY
829-7473

STARTS TODAY!

"THE EAST VALLEY'S NEWEST AND HOTTEST NIGHT CLUB!!"



GRAND OPENING PARTY BASH SATURDAY

- FRI. WALT RICHARDSON FOR HAPPY HOUR
- SAT. BRUCE KELLY AND POWER 92
- SUN. AZ IZZ 9-1 AM

N.E. CORNER OF SOUTHERN & ALMA SCHOOL • 835-5813

Classifieds

Television is chewing gum for the eyes.
-John Mason Brown

ANNOUNCEMENTS

WANTED: Sports Trivia Buffs

Test your knowledge against our new talking computer. New questions per call.

1-900-562-1900
Ext. 2139 24 hrs.

Phx. Branch. \$2.49/min. Avg. length of call 3 mins. 18 or older. Touch-tone phone required. TeleService, USA. Hagerstown, MD 301-797-2323. Can You Beat It?

ANNOUNCEMENTS

DON'T CALL your parents, call me first! Save on every long distance call. Don't pay the extra charges of the Big 3. No minimum use. Call Joe Yauch, 756-0006.

FREE FINANCIAL aid! Over \$6 billion in private sector grants & scholarships is now available. All students are eligible regardless of grades, income or parent's income. Let us help. Call Student Financial Services: 1-800-263-6495 ext. F59183.

WE BUY & SELL USED LEVI'S!

THE BLUE JEAN BUYER

Call for Details 947-8245

- 1810 Scottsdale Rd (between Curry & McKellips) 5 minutes from ASU!
- 3208 W. Glendale Ave.

ANNOUNCEMENTS

THE MU Gallery Committee is accepting applications and slides for our spring exhibition season. We are interested in both 2-d and 3-d art, that is mounted and would be available between the dates of April 10 through May 6, as our final exhibit of the year. We are looking specifically for student art, whether you are a BFA or BFA student. Please submit your slides and resume to the third floor of the Memorial Union, in the MUAB section of the third floor, attn.: Gallery Committee by March 10. For more info, call Jen Cruz 965-6822

APARTMENTS

ASU AREA- 1 & 2 bedroom apartments from \$325 & up per month not incl. util. 966-8838.

BEAUTIFUL LARGE 2bd apt., walk to ASU, pool, laundry rm, 1 blk so. of University on 8th St. Cape Cod Apts. 968-5238.

TOWNHOMES/ CONDOS FOR RENT

2BD 2BA condo near ASU, pool, a/c, washer/dryer, clean, \$655. 2 bd, 1ba, w/r pd, \$565. 966-0987.

2BD 2BA, 1100 sf condo, 400 yds from ASU. \$525/mo, first, last, deposit. Call 1-509-786-4088.

TOWNHOMES/ CONDOS FOR RENT

HAYDEN SQUARE 1bd, \$700/mo. 2bd \$900/mo. Re/Max Exciliber Realty. Call Gary Greenacre. 483-3333.

RENTAL SHARING

BROADWAY/DORSEY - \$300/mo, util incl xcpt phone. Nice house & yard. 967-9478.

CLOSE TO ASU. Tile floors, beautiful home. \$250/month. 894-0288. Time.

FEMALE ROOMMATE smoker or non. Miller & Roosevelt. \$360 + 1/2 util. Call Lisa, 947-5008.

FUN FEMALE roomy, Tempe t/h. Southern/Price, 2bd, pool/jac. Very cute. \$375/mo. Teresa 820-2592.

M/F NEEDED to share house. Own ba. \$250/mo+1/6 util. 13th/Hardy. Matt 966-8964. Avail 2/1.

M/F RMTE needed. \$295/mo incl. util. Private garage, jacuzzi, full kitchen, w/d, 1 mile from campus. Contact Scott or Brian 967-0672 or 236-8736.

M/F, N/S, in Questa Vida condos (about 2 mi from campus). \$220+1/3 util. 966-9074, Adam/Jenna.

RMTE WANTED to share 3bd TH in Tempe. \$250/mo + 1/3 util. Call Lissa or Iv msg. 969-2655

RENTAL SHARING

ROOMMATE FOR 1g 2 bd house. Hardy/Univ. \$350/mo incl util. Chris 946-7970. Avail 2/1.

ROOMMATE WANTED for 3bd condo. Pool, jacuzzi, 2 mi/ASU. After 5pm. 496-8930.

ROOMS FOR RENT

1 RM for rent in nice 3bd 2ba house. \$325/mo + 1/3 util. 5min/ASU. S. Scotts 946-6968.

FREE FURN. rm traded for baby care & some household work. eves. 15-20 hrs/wk. Great house, Guadalupe/Rural. 345-2969.

TOWNHOMES/ CONDOS FOR SALE

PAPAGO PARK I - Some furn. avail. 2bd. \$65,000. New carpet/paint. Poolside. RE/MAX Anasazi Realty, 838-7772. Peggie Simmons.

PAPAGO PARK - Walk to school 2 bd, 2 ba. Avail 2/1-12/15. Nw cpt. \$950 lse. 602-530-8864.

MISCELLANEOUS FOR SALE

TWIN BED for sale, great condition \$60. Call 968-5758.

FIND IT in the Classifieds!

FURNITURE

CAL KING bed, w/box springs, mattress & wood headboard \$175, couch \$75 neg. 786-0704.

FUTONS

The Futon Fave, 2604 W. 1st. St. #34, Tempe. 804-1554. We deliver.

SOFA SET, \$265, Queen bed \$80, Full \$70, Chest of Drawers \$40, Dinette \$125. 234-5729.

COMPUTERS

386 DX IBM compatible computer w/Windows; Star printer. \$650 complete obo. 834-5396.

386 LAPTOP computer, 4 megabytes ram, 200 megabytes hard-drive, Nec color monitor, Toshiba printer. \$1200 for all. Call 981-3030.

LAPTOP, TANDY 4860HD w/ track ball. Excellent condition. \$850. 921-1207.

TICKETS

3 EAGLES tickets, \$100 ea. Great seats. 784-8377.

EAGLES TICKETS (2) 1-23-95. Sec. 101, Row 26. \$125 each obo. Call 971-6715.

FOR SALE: 2 Eagles tickets, \$50 each, for January 23. Call 813-0441.

SUNS VS. Orlando Sunday. Great seats starting at \$75. Steve. 678-0316.

AUTOMOBILES

88 TOYOTA Camry, exc cond. at, ac. Must sell \$3500/obo. Dennis 784-9767.

NEEDED BADLY, transportation vehicle. Some work OK. Have cash. Please call 265-0551.

TRAVEL

1-WAY AIRLINE ticket. Phx to New York, Feb. 9. A steal at \$100. 438-2530, Ross.

DISCOUNT TRAVEL: Cheap in your name. I specialize in quick departures. Most places worldwide. I also buy transferable coupons/awards. 968-7283.

SPRING BREAK

SOUTH PADRE

Round-trip air fare • lodging • On-location party/act. programs

Discounts Available to groups of 4 plus. Land-Only is also available!!

L.T.I.
LEISURE TOURS INTERNATIONAL

FREE INFO 1-800-838-8390

State Press Classifieds
Matthews Center Basement
965-6735

HELP WANTED-GENERAL

\$6 PER HOUR
Outgoing, energetic appointment setters for Universal Portraits. Call Rachel or James, 496-0255.

*** \$7/HR + CASH! ***
Set free appointments for health services. Nearby Fiesta Mall. Day or evening. 649-9580.

ACTORS! ART LOVERS!
Dramatic? Articulate? Sell ticket pkgs via phone for the Phoenix Symphony! Excellent benefits! P/T 5:30pm-9:30pm. Sun-Thurs. 222-3875.

ASSEMBLY JOBS
Lighting co. needs ft or pt resp. students for day assembly work. Electronics background desirable. \$7/hr. Scottsdale Air Park. Call Dori 10-2, 998-0325.

ASU STUDENTS wanted. Short surveys & sales. Easy. \$6 per hour base + bonus. Start now. 1 block east of ASU. 784-2270 or apply 1000 E. Apache, Suite 212.

ASU STUDENTS wanted. Short surveys & sales. Easy. \$6 per hour base + bonus. Start now. 1 block east of ASU. 784-2270 or apply 1000 E. Apache, Suite 212.

ASU TELEFUND is hiring students for the spring semester. We contact alumni to inform them about current advancements at the University, update information & ask for financial support. This position offers flexible evening & weekend hours. Furthermore, we require you to work only 10 hours a week and you get to choose the shifts you want to work! Call 965-6754.

CAN'T STAND litter bugs? Help us keep our campus tidy. We're hiring students to pick-up after people who let inserts within the State Press fall to the ground. You must be available sometime between 8am-2pm. Work is sporadic. Excellent compensation. Apply at State Press Info Desk, Matthews Center, Basement.

CASHIER & ISLAND attendant p/t afternoons/weekends. Chevron service station Scottsdale. Mr. Martin or Karen, 941-8899.

CAT LOVER/ Housekeeper Wanted. Student needed to clean house, run errands, light cooking, misc. odd jobs for working couple w/cats. Car & refs. req. \$8/hr + mileage. Mon-Fri, 3-6pm. Rural & Southern area. Tempe, Stefanie, (w) 413-3044.

COLLEGE STUDENTS & Teachers! Children's Summer Camp in Oracle, AZ is looking for Program Leaders, Counselors, Lifeguards, Camp Nurse, and Cooks to work June 1-Aug 12. Good salary, job experience, plus room/board. Write YMCA Camp, PO Box 1111, Tucson, AZ 85702 or call 1-602-884-0987.

HELP WANTED-GENERAL

CLUB TRIBECA. Security positions avail. Apply within 1420 N. Scottsdale Rd. 423-8499.

DANCE & Gymnastics instructors wanted. Exp & reliability a must. 15 min/ASU. 940-4041.

DELIV/VALET DRIVERS. \$8-\$10/hr. Flex evening hrs. N Scottsdale. Takeout Express, 820-6401 (leave message).

DISC JOCKEYS
Needed. AZ's #1 mobile DJ service is looking for DJ's (will train). Trans. & wknd avail. a must. \$10-\$40/hr. 966-9900 lv msg.

EXECUTIVE ANS Svc needs reliable, cheerful operators with "You Bet" attitude. F/T days 6am-3pm, full benefits. P/T M/T/W/F 4-7pm & Sun 8am-1pm. \$6 starting. Must type 45wpm, know 10-key, comp exp. have reliable trans. Call 264-4000 for int.

GOURMET COFFEE House located in Old Town Scottsdale needs p/t help on Wed & Fri. 7:30am-5pm. Will train. Call 990-8384.

GREAT P/T jobs. Work Mon-Fri, 4-9pm for \$6/hr. Call Judd 894-9442 between 10 & 5pm.

P/T PARROT care & housework. 2 afternoons weekly. 840-6265.

INTERESTED IN sales, marketing, or management career? Need flexible hours? Want to earn above average income? Tired of phone sales jobs? TMI conducts promotions for local businesses & is hiring exceptional people now. Please call 921-7755 for personal interview.

KYRENE SCHOOL
District hiring Club Leader, 15-19 hrs. college course wrk pref. 1 yr exp. in after school or pre-K program. Some program planning will be involved. Variety of hrs. \$6.34/hr. Enrichment Leader- instruct students after school in areas of Dance, Spanish, Science, Multi-cultural. 1:50 - 5:30pm. \$10/hr. Until filled. Apply in person at Kyrene School District, 8700 S. Kyrene Rd., Tempe, (Mon-Fri, 7:30-5:00pm). Applications require resume and 3 reference letters.

LOOKING FOR reliable assistants to help organize children for sport photography session in your area. No experience necessary. A car is a plus. Flexible hours for seasonal work. Contact Todd, 940-6391.

MALE QUADRIPLÉGIC seeks p/t attendant. Flexible hours. Rural/Univ. David, 731-9113.

MARKETING POSITION available in the Health Care field. ft/pt on weekends. \$2.25 + commission. Communication skills a must. Call 396-4400 from 1pm to 5 pm.

HELP WANTED-GENERAL

MARKETING REP, set appts in our office eves. \$7/hr + bonus. No sales. Call Tom, 956-9555.

MARKETING REPRESENTATIVES to work promotional events for AT&T. Must be outgoing and have a flex. schedule. Reliable transportation a must. \$7/hr + bonuses. Contact JP or Bob at 1-800-592-2121. Ext. 361

MKTNG MAJORS
Get real world practice and make \$\$\$ Sell the product that the Nat'l Giants are using for their promotions. Call Joe, 756-0006.

PERSONAL ASSISTANT for male wheelchair user in Tempe. P/t, \$7/hr, no exp nec. Heavy lifting required. 804-0300.

POSITIONS AVAIL for ushers & concessions. Apply in person. Red River Opry, 730 N. Mill.

RECEPTIONIST / DATA Entry pos. for Scottsdale tax office. Duties include scheduling appts., answering phones & some filing & data entry. Variable hrs based on need. Will train. Feb 1-April 17. \$10/hr. Call 941-3421 for appt. 6847 E. Thomas, Scottsdale.

RECEPTIONIST FOR hair salon. Camelback/24th St. Dependable. Must have some exp. Flex hrs. 381-6565.

SANDWICH BAR attendant f/t; hotel telephone operator f/t; sports & fitness attendant f/t. Apply in person M-F 10am-4pm. No phone calls please. EOE. 7700 E. McCormick Pkwy, Scottsdale.

SILK FLORAL designer at wholesale floral co. Exp preferred. Near campus. 858-9640.

SITE DIRECTOR needed for YMCA After School Program in West Mesa. Must be 21 yrs or older. \$6.22-\$7/hr DOE. Apply at the Mesa Family YMCA, 207 N. Mesa Dr., 969-8166.

SPORTS MINDED
Now hiring 6-8 individuals for immediate emp. \$8 guaranteed to start at 15-30 flexible hrs/wk. Call Mike for int, 921-8282.

STA TRAVEL
Leading Student/Youth travel co. seeks well traveled energetic individual with good communication skills for travel agent position. Join our growing team. Start \$14,000+, seasonal & f/t pos. avail. Fax resume & cover to Robin 922-0793.

STUDENT COURIER: Hours 1-5pm T-Th. Previous driving exp. AZ driver's license required. Call ASU Distance Learning Technology. 965-6738.

WANTED: PACKER/SHIPPER needed for p/t position near ASU. Flexible hours. Call 858-9640.

HELP WANTED-GENERAL

SUBSTITUTE TEACHERS & substitute school nurses needed for Mesa Public Schools. Teacher/nurse and/or substitute certificate required. Participation in a training session to the automated substitute system (SEMS) is necessary for registration and access to the system. If interested, contact Beverly, Substitute Office, Personnel Dept, 546 N. Stapley Dr., Mesa, 898-7723.

SURVEYS NOT sales. Mkt research company located near I-10/Baseline has p/t shift M-Th 5-9pm & Sat 9-3. Office exp desired. \$5/hr. Emily, 443-8883.

TEMPE HOTEL near campus is hiring full & part-time desk clerks, night-auditors, maintenance, groundskeepers, housekeepers & hskp. supervisor. Apply at Travelodge Suites, 3101 N. 32nd Street.

THE BUTTONFLY Buyer needs retail help immed. \$4.50/hr + comm. Cash pd weekly. 1711 E. Apache, 858-9436. We buy & sell Levis.

WANTED: COFFEE Bartenders Scottsdale/Phx locations. Fun atmosphere! PT/FT shifts. \$5/hr + tips! Call Mike, 994-5110.

WANTED: VALET parking attendants p/t evenings. Must be clean cut, polite, good driving record. \$7-15/hr. 955-8125 msg.

WARNING!!
Do not take another computer/data entry p/t job until you consider ours. You must be proficient in creating and maintaining databases. Accounting software helpful. Near Fiesta Mall. Salary commensurate to experience. Call 897-0791 today!

WE NEED people for our accounts payable & accounts receivable department. Flex schedules. More exp. more pay. Autom. 5226 S. 31st Pl. Phoenix 85040. Attention Bev. 253-5200.

WRITERS NEEDED for the Sun Devil Spark Yearbook-A paid position. Pick up app at Rm 15 Matthews Center basement. Questions? Call 965-6881.

ASU Alumni looking for juniors, seniors, or continuing students for p/t security work. Starting wage based on experience. Must have phone and reliable transportation. Hours available 24-hr basis including weekends. One location 2 miles from campus. Call 961-1161 ext. 394, ask for Greg Claus, 7am-5pm, M-F or leave message at 420-1193 anytime.

HELP WANTED-SALES

HINCKLEY & SCHMITT Bottled Water is now hiring door to door sales people. Full time pay, p/t hrs. Great commissions. Flex hrs. For more info call 1-800-729-9283 ask for Dave Thomas.

MARKETING REP, set appts in our office eves. \$7/hr + bonus. No sales. Call Tom, 956-9555.

PRELAW UNDERGRADS, p/t emp. Your own sched, commission based + benefits. 867-6018.

SPORTING GOODS retail sales. P/T. Apply in person 9-5. Warehouse Sports, 3415 S. McClintock, Tempe.

SWIMWEAR SALES
Beach House now hiring all positions. Great sales help. Hot ladies swimwear, Fiesta Mall. Call 890-1904 or 451-5866.

USA TODAY, p/t phone sales. \$6/hr guar. + comm. Mon-Thurs 4:30-8:30. 110/Elliott area. Positive Attitude and good speaking voice needed. Call 345-5814 TODAY!

HELP WANTED-CLERICAL

ADMIN ASST p/t, good phone skills, organized, dep & typing skills. Express Co., 437-1048.

CASHIER, GENERAL office & clerical. Computer exp. 10-key. p/t. Chris, 893-6884.

CLERK TYPIST, pt, drug store in Phx, near ASU, flexible hrs. Call for appt. in a.m., 956-8540.

RECEPTIONIST, SMALL law office, T/Th, full-time, available summer. 990-0140.

RECEPTIONIST: GROWING high tech co. near Univ/Hohokam needs ft/pt help; good phone voice & professional appearance req'd: \$8/hr. 829-8400.

SECRETARY
Or receptionist, \$7/hr. East valley. Xlnt appearance, persuasive phone skills a must. Typing, filing, & computer exp. helpful. 829-8031.

SOLE PRACTITIONER needs p/t clerk typist/file clerk, flex hrs. \$5.25/hr. Tanya, 957-2010.

HELP WANTED-FOOD SERVICE

BARROS PIZZA. Delivery drivers needed, earn \$8-12/hr. eves & wknds. 897-1825 Paul.

CLUCK-U
Join the Cluck-U-Chicken team. Now hiring counter personnel & delivery drivers. Apply in person, 855 S. Rural Rd.

HELP WANTED-FOOD SERVICE

CORK 'N CLEAVER
Acc. apps. for lunch host(ess), lunch food server & evening cocktail. Will train, p/t, concern w/appearance, reliability & personality are important. Apply in person. M-F 2-5pm or by appt. 5101 N. 44th St. 952-0585.

COSMIC PIZZA now hiring exp pizza cooks, delivery drivers, daytime sandwich makers & nighttime flyer distributors. We offer flex hours, competitive wages, a fast track to management & great working conditions. Apply 1523 E. Apache Blvd. (No phone calls please.)

COUNTER HELP, delivery help. Flex hrs, apply Browns on 6th, 570 S. College, 968-4884.

DELIVERY DRIVER wanted nights & weekends. Apply in person, Blimpie, 911 E. Broadway.

DELIVERY DRIVERS
Needed Now! Mr. Goodcents Subs and Pastas, 10-2 and 5-9, 528 W. Broadway, 894-6065.

DOMINO'S PIZZA
Come join the excitement with the #1 food delivery team for the ASU area. With the addition of subs & hot wings, this Domino's is one of the top campus stores in the country. We need more ft & p/t drivers to help us safely deliver all these orders. Drivers make \$7-\$10 per hour including mileage & tips. Safe driving cash bonuses can also be earned. We are very flexible & can work around your school schedule. We support a drug free work environment. Apply in person after 11am at 903 S. Rural, Tempe, or call 968-5555. EOE.

EXPERIENCED COOKS needed. Wages depend on experience. Ozzies Bar & Grille, 966-7788.

HELP WANTED days & weekends, 4-6 hrs/day. Apply in person, Blimpie, 911 E. Broadway.

PAPILLON'S IN Tempe is now hiring for bar/wait staff. Apply in person M-F, 11-4pm.

Learn communication, organization & customer service skills without paying for a single credit hour...we'll pay you!
We offer:
1) Impeccably clean work environment.
2) Enthusiastic work atmosphere.
3) Flexible work schedule.
4) Competitive pay (\$5/hr for day help starting) with room for advancement.
Please call
PARADISE BAKERY
425-9235
Scottsdale Fashion Square, and ask how to become part of our team.

HELP WANTED-FOOD SERVICE

MARILYN'S
Mexican Restaurant now hiring host/hostess positions at \$6/hr. Wait staff, cocktailers, bussers & all kitchen positions. FT/PT. Apps avail at 7001 N. Scottsdale Rd. & PV, 12631 N. Tatum Blvd.

NEIMAN MARCUS
NMCafe waitstaff positions avail. Ft/ day hrs only. Emphasis on cust serv. Only in person Neiman Marcus, 6900 E. Camelback, Scotts. Human Resource Office.

ON CAMPUS!
Part-time, flexible hours! Located right on ASU campus! Start immediately! Cashiers, food servers, stockers, banquet wait staff, dishwashers, janitors. Apply in person: Campus dining, Memorial Union Building, Room 138-1st floor.

STOCKYARDS RESTAURANT now hiring lunch servers & bussers. Apply in person M-F 10am-4pm, 5001 E. Washington.

SUNNY'S PIZZA
Join the Sunny's team! Flexible hrs & great working conditions. Drivers & restaurant positions available. Apply in person. 1301 E. University.

SWENSENS
Immediate openings for sandwich cooks and wait staff. Days & nights, ft/pt. No exp. nec. Apply T-F, 4-5pm. Price/Baseline, Main/Stapley.

WANTED EXP'D line cook, broiler exp nec, Apply 850 S. Ash Ave, Tempe.

HELP WANTED-CHILD CARE

BABYSITTER, P/T near Paradise Valley Mall, own transportation needed. 788-6333.

BABYSITTERS & NANNIES. Set your own schedule. Days, eves &/or wknds. \$4.25-\$6.70/hr. 345-2433

Y ACTIVITY LEADERS
Educational/Recreational opportunity to supervise before & after school program. Req's creative, energetic team player. P/T positions avail M-F. Director, \$6.22-\$7/hr, 4 hrs/day (req 21 yrs age, 2 yrs exp w 2yrs related education); Counselor leader, \$5-\$6/hr, 3.5 hrs a day (req 18 yrs age). Paid training and YMCA membership privilege. Apply with references at:
TEMPE YMCA
7070 S. Rural Rd.

ADVERTISING INTERNSHIPS:
Sell advertising for the State Press and earn while you learn! You'll need a car, a big box of personal motivation and desire for success, and you must be taking 13 credit hours or less. If this sounds good to you, call Jackie El dridge today for an informal interview.
965-6555

OFFICE ASSISTANT
Part-Time
MicroAge, Inc.
MicroAge is a \$2 billion information technology leader that is ranked by Fortune Magazine as one of the largest and fastest growing service companies in the nation. We have an immediate opening in our Investor Relations Department for a part-time clerical assistant with professional office, phone and communication skills. Prefer accounting or finance background; must be experienced with Word Perfect and Excel. Flexible schedule. \$6.50 per hour.
Send resume to: MicroAge, ATTN: HR/VG, PO Box 1920, Tempe, AZ 85280-1920, or FAX to (602) 929-2429. Applications will also be accepted at 1620 W. Fountainhead Parkway, Suite 190, Tempe, AZ, between 9 a.m. and 4 p.m. MicroAge supports a drug-free environment and is an equal opportunity employer.

\$7.00 PER HOUR - FULL BENEFITS
Zales Regional Credit Center is seeking motivated individuals for:
P/T COLLECTORS
HOURS: M-F 5-9 p.m. & 2 Saturdays per month 9-1p.m.
ALL POSITIONS offer excellent paid training and a competitive salary and benefits package through:
ZALE CORPORATION
the world's largest jewelry retailer. If you would like to become part of our success, we invite you to find out more about these opportunities.
Apply in Person
9a.m. - 4 p.m., M-F
2035 W. 4th Street
North of University/West of 52nd Street
Tempe, AZ • 829-5804
Equal Opportunity Employer • Drug-Free Environment

\$ RING IN THE NEW YEAR \$
WITH THE 166th FASTEST GROWING COMPANY IN AMERICA!!

Pro Mark One is currently seeking energetic people to immediately fill full time and part time telemarketing positions in our Tempe office. We offer the following benefits to our employees:

- \$6 per hour guaranteed base plus commission up to an additional \$8 per hour.
- Paid holidays and vacations.
- Medical and dental insurance.
- Professional, yet fun work environment.
- High quality paid training.
- And a dedicated staff to help with your success.
- Current shifts available 7:00-3:30, 10:30-7:00 and part time 3:30-9:00.

ProMark Telemarketing for the Image Conscious
ProMark One Marketing Services, Inc.
1232 E. Broadway, # 205, Tempe • 784-1599

Weather worries?
See the forecast on the bottom of Page 1.



Spring Break '95

Mazatlan

\$339*

Cabo San Lucas

\$389*

Cancun

\$559*

*All fares are per person from Phoenix, and include air and hotel for 4, 5 or 7 nights depending on destinations. Rates do not include taxes based on quad occupancy. Restrictions apply and fares subject to change without notice.

Council Travel

120 E. University, Ste. E
Tempe, AZ 85281

Located at Forest and University
(directly across from ASU.)

966-3544

Eurailpasses

issued on-the-spot!

FREE

WITH PURCHASE OF
NEW BIKE (Reg. Size)

- Water Bottle (Reg. Size) & Cage
- 1-Year Brake & Gear Adjust.
- Installation of All Parts & Accessories
- Bike Clinic
- Bike Route Map
- Lifetime Warranty

FUN IN THE SUN Sale



We will meet or beat any advertised price on items of comparable quality.

Thousands of Bicycles
Discounted to sell NOW
SAVINGS UP TO 50%

\$20⁰⁰ OFF
15-Speed Mountain Bike
List Price \$169.95
NOW \$149⁹⁹

\$30⁰⁰ OFF
GOSHAWK 18-Speed
List Price \$199.95
NOW \$169⁹⁹

\$50⁰⁰ OFF
SCOTT Tampico
Cromoly with Rapid Fire Plus
List Price \$400.00
NOW \$349⁹⁹

CAMPUS CRUISERS **\$40⁰⁰ OFF**
List price \$160.00
NOW \$119⁹⁹

HARO Vo1 **\$30⁰⁰ OFF**
Cromoly with Shimano SIS
List Price \$229.95
NOW \$199⁹⁹

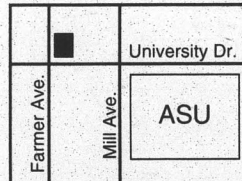
HARO V2C **\$45⁰⁰ OFF**
Cromoly with Rapid Fire
List Price \$295.00
NOW \$249⁹⁹

Ross Mt. Hood **\$150⁰⁰ OFF**
Aluminum Frame with STX
List Price \$550.00
NOW \$399⁹⁹

TEMPE BICYCLE

330 W. University • 966-6896

(Across the railroad track, west of Gentle Strength Co-Op)



Hours: Mon.-Fri. 9:30 a.m.-7:30 p.m.
Sat. 9 a.m.-6 p.m.
Sun. 11 a.m.-5 p.m.



1991, 1992, 1993, 1994 New Times Best Bike Shop

HAPPY HOUR

2 FOR 1 DRINKS

Complimentary Bunt

411 411

ALL DAY LONG

966-6896