

ASU East provost: Air Force delay costly

Indecision on request for 600 acres wasting opportunities, Forsyth says

By ANGELA MULL
 STATE PRESS

The Air Force's delay in making a decision on ASU East's request for 600 acres of land is hindering campus planning and costing money in terms of lost opportunities, an ASU East administrator said Wednesday.

"It's really important that we get the decision so we know what our final timetable is for academic program development and development of the facilities and support services," said ASU East Interim Provost Ben Forsyth. "The number of stu-

dents that need to be served are not going to wait for the Air Force to make a decision."

Air Force representatives met Tuesday and Wednesday with ASU East executive committee members to review the six property applicants for the land. The applicants, which include educational institutions and a homeless coalition, have requested land on the former Williams Air Force base.

Despite the meeting, the Air Force has not decided how to distribute the land, said Terry Isaacson, ASU East administration and facilities officer.

"We do not have a certain date, but we know it's soon," Isaacson said. "They've basically completed their work."

Although he said he thinks the decision will be favorable to ASU East, he added that the one unresolved area is the programmatic agreement, which is delaying a decision from the Air Force.

The programmatic agreement details how historical and archaeological properties such as hangars, World War II buildings and human remains on the base will be handled. Isaacson said the problem lies not in compliance with federal law in using these properties, but in the State Historical Office's reluctance to enforce a federal mandate.

"That office has been identified as the

responsible party for enforcing it," Isaacson said.

The Air Force has asked the State Historical Preservation Office to enforce the programmatic agreement, but Bob Gasser, compliance coordinator with the preservation office, said this is not the office's responsibility.

"We have been told by our attorney general that it is illegal and inappropriate to enforce it because we cannot encumber the state for taking on responsibilities for filing lawsuits," Gasser said.

Gasser said this is not to say that the office does not want to help protect these properties.

"We have some very significant archaeological sites and historic places we want to

TURN TO ASU EAST, PAGE 2.

It's all Greek to me



Gabriel Gambill of Delta Tau Delta fraternity waits to talk to prospective rushées. The fraternity rush began Wednesday and runs through Jan. 26. Frederick Medanich/State Press

SHAPED BY WIND

Discovery of Earthlike dunes on Mars could help land man on Red Planet, scientist says

By N. SCOTT TRIMBLE
 STATE PRESS

Although colonization of Mars is years away, ASU planetary geologists have made discoveries about the Red Planet that could bring the migration a step closer.

ASU geologists have discovered dune formations on Mars that are similar to dunes in Death Valley, Calif., giving scientists clues to how the Martian global climate reacts.

"What we find here could one day help lay the groundwork for us going to Mars," said Kenneth Edgett, the geologist who discovered the dunes. "By looking at Mars we have a data point to compare to Earth and with this, another tiny piece of a big, big puzzle."

This information was provided by the Viking I and II space probes that landed on Mars in 1976.

Edgett, a post-doctoral ASU graduate in planetary geology, found evidence of the rare dune formations while examining pictures from the probes.

"On Mars and Earth, there are sand dunes," Edgett said. "On Earth there are two types of dunes very common that weren't found on Mars until now — these are star dunes and linear dunes."

The star dunes are characterized by multi-directional winds that shape the dunes into "star-like arms" with sharp peaks and avalanche slips. The dunes occur commonly on Earth because of dramatic climate changes, a dense atmosphere and the presence

TURN TO MARS, PAGE 12.

State Legislature considering ASA work-study proposal

Plan would allow students to work in their related fields

By KIM WATSON
 STATE PRESS

Earn as you learn will take on a whole new meaning for many students if the Arizona Legislature passes a bill that would allow them to work in their fields of study while earning money.

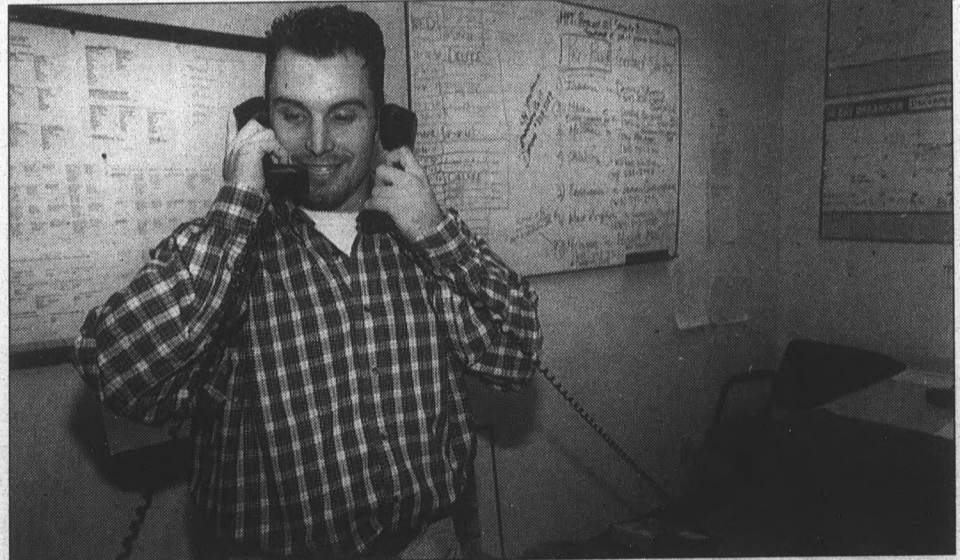
If approved, students could qualify for a work-study program in the private sector or

in campus jobs related to their major. Salaries would be comparable to non-student entry-level rates, with half paid by the employer and half paid by their university.

"This plan will offer financial aid for students along with viable work experience, which is a necessity to get a job after graduation," said Chris Weber, state relations director for the Associated Students of ASU and a delegate of the Arizona Students Association.

"Students also gain valuable contacts and can work for prospective employers."

TURN TO WORK-STUDY, PAGE 2.



ASA delegate Chris Weber kills two birds with one stone Wednesday in his office on the third floor of the MU. Weber says he thinks the ASA work-study proposal will provide students with the contacts that they need to get a job after graduation. Jim Poulin/State Press

INSIDE STATE PRESS

Weather Outlook
 Partly cloudy.
 High 65, low 36.



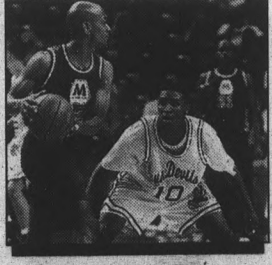
World/Nation

More than 6,800 GM auto workers go on strike in Flint, Mich.
 Page 3



Sports

The 13th-ranked ASU men's basketball team hosts USC tonight in a Pac-10 shootout.
 Page 15



Where To Find It

- Classifieds17
- Comics14
- Crossword6
- Horoscopes19
- Opinion4
- Police Report6
- Sports15
- Today's Activities2
- World/Nation3

TODAY

The Today Section is a daily calendar of events printed as a service to the ASU community. Requests are accepted on a first-come, first-serve basis and are printed on a space-available basis.

Campus clubs and organizations may submit written entries to the State Press in the basement of Matthews Center, Room 15. Requests will not be taken over the phone. Faxed entries will also not be accepted.

Entries must contain the full name of the club or organization, a description of the event, date, time and the full address of the location. All requests are subject to editing for content, space and clarity. Incomplete or illegible entries will be discarded.

Deadline for requests in noon the day before publication and entries will not be accepted more than three working days before publication. Only one entry per organization per day is permitted.

- **BACCHUS** — Jeep/Eagle Collegiate Health and Fitness Tour. Exciting events, giveaways, and educational tables. 10 a.m.-4 p.m., SRC Intramural Fields.
- **Campus Crusade for Christ** — Thursday Night Live. Open meeting, Bible study and fun. 7:30 p.m., 205 E. 15th St.; southeast corner of College and 15th Street.
- **Canterbury-Episcopal Campus Ministry** — Worship, dinner and fellowship. 6:30 p.m., St. Augustine's Church; northeast corner of Broadway and College.
- **Omega Delta Phi** — First Hispanic fraternity on campus; rush tables. 9:30 a.m.-2 p.m., Student Recreation Field.
- **University Toastmasters** — Improve your speaking skills at our weekly sessions. Prospective members welcome. 5:30 p.m., MU Coconino.
- **Public Relations Student Society of America** — First meeting of the semester. All encouraged to attend. 4:30 p.m., Stauffer Hall Reading Room.
- **Ultimate Frisbee at ASU** — Open scrimmage, everyone welcome. For more information, call 966-9013. 6 p.m., Band Fields; Rural and Sixth Street.
- **Snowdevils Ski and Snowboard Club** — First meeting of the spring semester, open to all. For more information, call Jill at 969-8611. 6:30 p.m., Cluck-U; 855 S. Rural Road.
- **Baptist Student Union** — Noonday; free home-cooked meal and a short Bible study. Walk over in between classes and take a break from the day. Noon, 1322 S. Mill Ave.
- **AIDS Awareness Week Steering Committee** — Meeting, all welcome. Bring your ideas. 1 p.m., Student Health Center, Room 195.

ASU East

CONTINUED FROM PAGE 1.

make sure are protected," he said. "Some contain human remains and we want to make sure they are not damaged or vandalized."

Instead, Gasser said he would like to see the Air Force take more responsibility, and that there will be another meeting between the two to further negotiate what the

preservation office's role should be.

"I think it's in the best interest of all of the citizens in Arizona to resolve this right away," Gasser said. "The land should be used for the benefit of the people, but we have to do things that are legal. We can't do things that our lawyer advises us not to do."

Work-study

CONTINUED FROM PAGE 1.

Any resident student who qualifies for need-based financial aid could apply for the proposed program.

Students would go through an application and interview process similar to that of an internship, but they would compete only against other work-study students, not intern students.

"The application process will be competitive and the number of positions limited since funding will be small at first," Weber said.

Phyllis Bannister, the financial aid director at UofA, proposed the plan at an ASA meeting in the fall. She was also a financial aid director at Eastern Washington University, where a similar plan is in place and was used as a basis for ASA's plan.

Any business in the surrounding community of an Arizona college or university can participate in the program.

Employers would not displace students in merit-based internships to make room for need-based work-study positions, and they must provide jobs that provide real experience. The proposed employment cannot be a secretary-type job or involve political activity.

ASA is requesting \$400,000 for the program, which is expected to serve about 350 students statewide beginning in the fall of 1995. Some of this money would be used to cover the overhead and outreach costs of the program.

Money for the program will not be taken from other areas of financial aid. The work-study assistance will be designated to supplement existing aid, not to replace it.

"When students apply for financial aid the government uses a formula to determine how much you need," Weber said. "However, the money the student receives does not always cover that need, and this program would help fill

that gap."

Sen. John Wettaw, R-Flagstaff, a member of the Senate Education Committee, said he thinks work-study is a positive program.

"It will benefit all aspects of society because it gives students the training they need and helps them pay for college," he said.

Wettaw, who is also on the Appropriations Committee, said the program may face some opposition in the Legislature. Cost of the program and who pays for what will be a major issue in getting the bill passed.

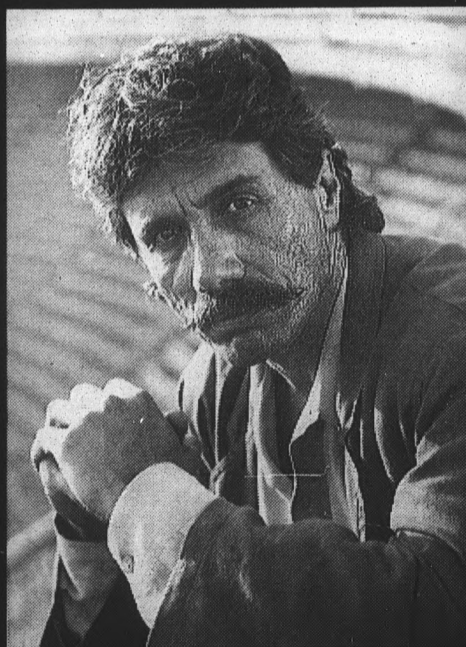
Allan Price, associate vice president of Institutional Advancement, said Arizona traditionally has not had a lot of "gift aid," which is grant money that does not have to be paid back. He said students need more of this type of aid to reduce the amount of money students pay back after graduating.

"There are a lot of students working a lot of hours, and combining education and work experience is very smart idea," he said.

Correction:

Wednesday's page 1 skybox incorrectly stated that ASU President Lattie Coor lowered tuition fees. Coor does not have the authority to decrease tuition. The State Press regrets the error.

ASASU Presents:
spoken word by
Edward James Olmos
with special performance by AKA



Monday, Jan. 23
at 10:00 AM
in Gammage Auditorium
Subject: Stop the Violence

Sponsored by: ASASU "Your Student Government",
MLK Committee, College Council of Public Programming

ASASU LECTURE SERIES
AND
THE BLACK LAW STUDENT ASSOCIATION
PRESENTS

REVEREND BERNICE KING

ON THE LIFE & DREAM OF HER FATHER,
DR. MARTIN LUTHER KING, JR.



MONDAY, JANUARY 23, 1995
7:00 p.m.

ARIZONA STATE UNIVERSITY COLLEGE OF LAW
GREAT HALL

FREE TO THE PUBLIC

'It's like hell here'— Death toll tops 3,000 as Kobe digs out

KOBE, Japan (AP) — Hundreds of thousands of people jammed the main road out of Kobe Wednesday, some limping and in bandages as they picked their way past collapsed buildings and piles of rubble that were homes and stores before a catastrophic earthquake struck. The death toll topped 3,000.

Thousands who stayed behind huddled around campfires and caught water from broken pipes, too terrified to go into their homes.

Many phone lines in the western port city were still down, and friends and family struggled to find each other. People left notes tacked to what was left of their homes, telling each other where they had taken shelter.

The earthquake early Tuesday triggered hundreds of fires, and many of them burned through the day and night. By Wednesday, the wind-whipped fires had burned out.

White smoke rose from the rubble and charred structures poked up along miles of streets that had been reduced to a giant gray-and-brown patch.

Throughout Kobe, leaking gas hissed from ruptured pipes, raising the threat of explosions.

The devastation, hundreds of aftershocks and lack of basic services sent hundreds of thousands of people fleeing, many to the shelter of family and friends.

Makoto Hiroiyama was sending his wife, mother and child out of town to stay with relatives.

"It's dangerous here, and there's no water," he said. "It's no place for my elderly mother and my child."

The death toll from the quake, the worst to strike a Japanese city since 1923, climbed to 3,021, national police said. A teacher from Los Angeles, 24-year-old Voni Lynn Wong, was among the victims.

At least 14,572 people were hurt. A total of 869 people were listed as missing, but hopes faded of finding more victims alive in the rubble.

In the quake zone, life in a high-tech country was suddenly reduced to the most basic and primitive level. Telephone service, power, gas and train service were still largely knocked out.

In Kobe, which had been a thriving, cosmopolitan city of 1.4 million, people crouched around campfires and used water from ruptured pipes.

"It's like hell here," said Satoko Kawase, 26, who lives on the city's outskirts. "It's like World War II again."

Hundreds of aftershocks rattled the region. Many people were too terrified to sleep indoors and spent the night in the open, wrapped in blankets. More than 120,000 people sought shelter Tuesday night.

In Kobe's Suma district, 70,000 people were evacuated after gas leaked from cracked tanks in a nearby industrial area.

At shelters, people blinked in the sooty daylight, waiting for food. A few wandered through the rubble, poking at the smoking ruins of their former homes.

Supplies were short, and only a few stores were open today.

"I've been waiting for more than an hour. I'm trying to get something to drink," one man told Japanese TV as he waited with hundreds of others outside a convenience store.

While the city center was shattered, parts of Kobe suffered far less damage. One hillside district, scene of tourist attractions including historic-landmark homes and some embassies, was almost unaffected.

Rescuers were mainly searching by hand or using light tools, and police were questioning neighbors to find out who was likely to be buried in the wreckage.

Despite Japan's highly regarded earthquake-resistant architecture, some of the nearly 19,800 buildings toppled or badly damaged by the quake were modern structures.



AC Delco workers carry picket signs in front of an entrance into the plant in Flint, Mich. More than 6,800 United Auto Workers union members went on strike Wednesday after talks with General Motors broke down. The plant is a major source of essential parts for American-made cars.

6,800 GM workers go on strike

FLINT, Mich. (AP) — A strike that could cripple much of the U.S. auto industry within days broke out Wednesday at a General Motors Corp. plant that makes spark plugs, filters and other parts.

Some 6,800 workers at the AC Delco East complex walked out when talks broke off shortly before the 10 a.m. deadline set by the United Auto Workers. The plant also supplies parts to Ford Motor Co. and Chrysler Corp.

The union has complained that understaffing and overtime to meet booming demand for cars are creating dangerous and unhealthy working conditions. In addition, the UAW said outside contractors hired by GM threaten workers' jobs.

Similar complaints led to two GM strikes last year that interrupted the flow of parts and quickly forced other factories to close.

"Most of these guys have been working a lot of overtime," said Al Woodham, a GM autoworker for 31 years. "They're tired."

GM officials refused to discuss the dispute or the effects the strike will have. But automakers' reliance on the just-in-time delivery system for parts makes them vulnerable to any interruption in supplies.

The UAW predicted that other plants in Flint and Lansing would be affected within a day. Soon after, GM and other companies' plants around the country could feel the pinch.

"Within a week, it will go nationwide," said Jill Miron, chairwoman of the executive board of UAW Local 651.

Chrysler spokesman Alan Miller said he didn't expect Chrysler to be hurt by the strike. Ford spokesman Mike Vaughn said he wasn't sure.

The Buick City GM plant in Flint produces the Buick LeSabre and Park Avenue, and the Oldsmobile 88 Royale.

Another Flint plant produces vans. The Lansing plant produces the Pontiac Grand Am, Olds Achieva and Buick Skylark.

Talks resumed for three hours Wednesday afternoon, then recessed until Thursday morning. The union claims that terms of the three-year contract signed in February 1994 are being violated.

Union officials contend that GM reneged on an agreement to hire 500 more workers and reduce overtime to relieve the pressure on employees. Hiring new workers, with benefits, is more expensive than using outside contractors.

Products made at the Flint complex include spark plugs, fuel system components, cruise controls, instrument clusters and a variety of air, fuel and oil filters. They go into new GM vehicles and are sold to other manufacturers, repair shops and stores.

The last strike at the plant was in 1970.

"If they're out for a couple of days or the remainder of this week, I'd say no impact," said Chris Cedergren, an industry analyst with Auto Pacific Group Inc. in Thousand Oaks, Calif. "But if it goes into next week and gets prolonged, that will shut down production."

Workers picketed outside the plant, and passing cars honked their horns in support.

"Nobody wants to go on strike," Woodham said. "It sounds crazy, but sometimes it's healthy if it gets things moving. But everyone loses money on the deal."

GM officials hoped for a quick settlement.

"We will continue to work ... to reach agreement with as little disruption as possible to our employees and our customers," said George Albrecht, director of human resources for AC Delco.

Gingrich book deal sparks heated party clash on House floor

WASHINGTON (AP) — In a raw display of partisanship, lawmakers clashed heatedly Wednesday on the House floor as Democrats pressed their attack on Speaker Newt Gingrich's book contract and Republicans sprang to his defense.

On a party-line roll call of 217-178, the House voted to strike from the record comments made by Rep. Carrie Meek, D-Fla. "Now, more than ever, the perception of impropriety, not to mention the potential conflict of interest, still exist(s), and cannot be ignored," she had said.

In an angry, often chaotic debate that followed, Democrats said Republicans were imposing a "gag rule" in their first days in power after 40 years in the minority.

"The other side of the aisle is trying every tactic they can to stop the Contract With America," countered Rep. Tom Delay

of Texas, the third ranking member of the GOP leadership.

The clash erupted moments after Gingrich, joined by Senate Majority Leader Bob Dole, had proudly displayed a bound copy of the first law to pass under the new Republican majority, a measure placing Congress under the same workplace laws as the rest of the country.

"It's only the first step," said Dole, as he and Gingrich pledged to press ahead with the balance of their conservative agenda — including the balanced budget amendment to the Constitution — despite Democratic delaying tactics and opposition.

After a delay Tuesday caused by a Democratic opponent, Sen. Robert C. Byrd of West Virginia, the Senate Judiciary Committee resumed work on the balanced budget amendment, brushing aside several Democratic

amendments designed to weaken it.

Dole said if Byrd persisted in his objections, the panel would meet all night to complete work on the measure.

The scene on the House floor was easily the most chaotic since lawmakers convened two weeks ago under Republican control for the first time in four decades.

The vote to strike Ms. Meek's comments was unusual, particularly since she is one of numerous Democrats to use the floor to question Gingrich's deal with HarperCollins and the subsequent disclosure that he met with Rupert Murdoch, owner of the company, and his chief lobbyist.

But the vote to silence Meek only served to spark further anger, with lawmakers shouting above the din to be heard.

There's nothing in the rules that say Carrie Meek can't speak the truth and that's

what she has done," Meek said. Moments later she added, "I respect my Republican colleagues who have spoken the truth as they saw it."

Democrats noted that in the late 1980s, Gingrich regularly raised questions about former Speaker Jim Wright's publishing ventures — which ultimately led to his downfall.

Gingrich last month first accepted, and then declined, a contract providing for \$4.5 million in royalties for two books. He has said since his meeting with Murdoch was brief, and inconsequential.

As for the balanced budget amendment, Sen. Orrin Hatch, R-Utah, the committee chairman, thanked senators for showing up for the 8:30 a.m. session but made no mention of the move Tuesday by Byrd, D-W.Va., to suspend the rules to vote on the constitutional amendment.

STATE PRESS Editorial Baiting the Bear

There seems to be nary a news service these days which has not spent at least a few minutes to talk about Chechnya.

Which provides a refreshing change from the plain fare of O.J., flooding and Suns games which typically dominates the media. For once, a critical international event of the day is receiving at least a fraction of the coverage it deserves.

That's no little coverage — there's hardly space or time in this column to discuss the history or full implications of what the war in Chechnya represents. Suffice it to say that the latest war in the Caucasus Mountains is a bloody one, indeed. It's become a conflict which is playing an important role in shaping the future of Russia — and of the dozens of minorities which remain within its borders.

Unfortunately, Chechnya is about to get a lot bloodier.

Russian President Boris Yeltsin has refused talks with Dzhokhar Dudayev, his Chechen counterpart. Russian troops continue their difficult task of attempting to pry hardened guerrillas (trained by the same old Soviet military structure that makes up today's Russian army) out of urban and mountain positions. And all the while, the death toll mounts.

It's all part of a grand cosmic irony with a deadly twist: Does the United States favor the desire for liberation on the part of the Chechens (who certainly have their reasons), or does it attempt to preserve the semblance of order within the boundaries of the former Soviet Union?

To date, the latter ideology prevails: That, ultimately, the interests of the United States lie primarily within our own borders. Unless either the Chechens or the Russians go "too far," the United States remains neutral in the conflict. The Chechens remain rebels until the interests of the United States are directly threatened.

But it's not easy to remain emotionally neutral — we are gripped, through television, by the stunning pictures of tanks and armored personnel carriers rumbling down Grozny streets, Russian fighter overflights and body after body.

Which is impressive as all hell, numb as we are to horror after Bosnia, Haiti and Somalia — but do we really understand the conflict?

How many of us can explain the background of the war — indeed, how many of us had even heard of Chechnya before the conflict broke out? For that matter, how many ASU students can find the Caucasus on a map? (Hint: look for the Black Sea — it's blue and labeled).

Though Chechnya may be on our minds, our tongues and our televisions, there's no guarantee that it will stay there. There's no guarantee that we will, as a nation, sit down and think about the events across the world which affect our lives.

Though the horror is abroad, perhaps the tragedy is closer to home than we think.



Re-entry or reluctant entry? Advice for adult students' first time at ASU

Ahhh, I remember it well — my first day on ASU's campus as a re-entry student. It's been suggested by some we should be called "reluctant entry students" given our initial misgivings.

CONNIE SUE SPENCER
Guest Columnist

Those of us on the shady side of 30 will admit to being filled with less-than-Great Expectations (to quote Mr. Dickens) at the overwhelming size of the campus, how remarkably young everyone around us looks and a host of other concerns. If this is your first semester at ASU, let me reassure you — you're not alone. Here are just a few of the questions that might be on your lips this very moment:

Will I ever be able to find my way around and make it to class on time?

Fear not. If our forefathers forged across the desert to settle in the Valley of the Sun, you will surely be able to conquer the campus. It's really quite compact! I suggest you get an up-to-date map (the colored ASU parking maps are great) and learn the landmarks like Hayden Library, Memorial Union, the Bookstore, and the main malls. Finally, map out your classes. Once you just about have the routes mastered, it's a sure bet one of your class locations will be changed and you can begin again!

Will I be able to compete with the younger generation?

Don't compete. Do your best, but remember we're all in this together. As trite as that may sound, you will likely find your younger classmates to be overwhelmingly accepting, helpful and friendly if you approach them as equals. Younger students have a wonderful way of adding perspective to our do-or-die way of thinking and have taught me the quest for a college degree is a journey, not a destination. Whether they'll invite you over to the frat house for next weekend's beer bust is another story.

How can I learn the myriad of ASU acronyms?

If you don't need a FAFSA, check on a TOEFL and double check your GPA and GS requirements. Visit the SRC and CC, then settle in at the MU and learn about ASASU and the MUAB. Right. ... Seriously, relax and keep asking questions. It will become second nature all

too soon. ASU is just like the Army — and you will find long lines everywhere to prove it!

Computers scare me to death. Do I have to use one?

Most instructors require papers be typed — computer, typewriter, word processor all work fine. The Computing Commons offers learn-at-your-own-pace methods of mastering various software programs once you have basic computer skills and also offer one-on-one consulting assistance. If you ask, I bet a computer literate classmate or friend would teach you the necessary basics. Either way, Student Health records attest no one's been eaten alive or even seriously maimed by a keyboard to date.

What about all the out-dated and/or irrelevant skills I have?

Some areas of study are changing rapidly, I grant you, but learn to build on what you have. If a course requires prerequisites, take them. If you have questions about what's being taught in a class you're in, by all means talk to the instructor! Don't hesitate and assume things will get better or assume the instructor will think you're stupid. A good instructor will clear up the gray areas or advise you on what you need to work on.

As for irrelevant skills, you'd be surprised. Chances are your skills aren't as irrelevant as you may think. This is where we re-entry students have a leg up on our younger counterparts; there is something to be said for the experience and the wisdom that comes with age. Many of our younger classmates respect anyone that can keep their white things from turning pink in the laundry!

The long and the short of it is this: Give yourself a pat on the back for having the courage to follow your dreams. Get involved with a few extracurricular activities to meet new people. Volunteer your time to a project. Study with some of the younger students in your classes. Get to know your instructors. ASU has much to offer and you have more to give than you probably realize. I'm no expert, but unless I miss my guess, by this time next semester you'll feel right at home.

Connie Sue Spencer is a junior communications major.

STATE PRESS STAFF

JASON OWSLEY, Editor
DAVID STROW, Managing Editor

NICHOLAS BACONNight Editor
KRIS FRIDRICHNight Editor
GARIN GROFFCity Editor
GREG ZEMEIDAAsst. City Editor
DAVID LASPALUTONews Editor
A. MARJORY KAMINSKIOpinion Editor
JIM POULINPhoto Editor
MARK KRAMERAsst. Photo Editor
JEREMY STEINSports Editor
DAN MILLERAsst. Sports Editor
KEN COLLINSMagazine Editor
ANNA ULINICHAsst. Magazine Editor
REPORTERS: Mika Akikuni, Christina Bailey, Kennes Bolig, Lisa Cary, Lorrie Cohen, Dane D'Antuono, Dawn DeChristina, Patty King, Todd Kelly, Betty Mihalopoulos, Angela Mull, Dave Proffitt, N. Scott Trimble, Kim Watson.
SPORTS REPORTERS: Lee Newman.
COPY EDITORS: Kim Herman, Elizabeth A.

Montalano, Lynn Readerick.
PHOTOGRAPHERS: Samantha Feldman, Frederick Medanich, Lance D. Terry.
EDITORIAL WRITER: James Frusetta.
COLUMNISTS: Brian Anderson, Tim Baxter, Dan Blanco, Tori Evans, James Frusetta, Tina Holder, Barry Kelley, David Luna, Diana Lopez, Jim Mahin, Delia Maldonado, Greg Nigh.
CARTOONISTS: Brian Fairrington, Stacy Holmstedt, Bryce Morgan.
PRODUCTION: Aaron Brucher, Stacey Devlin, Beth French, Adrianna Garcia, Jodi Goldblatt, Jeremy Meyer, Skip Schrader, Dave Weber.
SALES REPRESENTATIVES: Emily Berger, Dan Ellstrom, David Goodwin, Jennifer Hughes, Alisa Jellum, Shane Siren, Bill VanZanten.

decided by a majority voted among its members. They do not reflect the opinion of the State Press staff as a whole. Board members include:

JASON OWSLEYEditor
DAVID STROWManaging Editor
A. MARJORY KAMINSKIOpinion Editor
DAVID LASPALUTONews Editor

The State Press is published Monday through Friday during the academic year, except holidays and exam periods, at Matthews Center, Room 15, Arizona State University, Tempe, Ariz. 85287-1502. We do not answer questions of a general nature.

The State Press is the only newspaper exclusively published for and circulated on the ASU campus. The news and views published in this newspaper are not necessarily those of the ASU administration, faculty, staff or student body.

STATE PRESS PHONE NUMBERS

Information.....965-7572
Newsroom.....965-2292
Magazine.....965-1695
Advertising.....965-6555
Classifieds.....965-6735

Unsigned editorials reflect the views of the editorial board.

If this offends you — get a life!

Prior to last week, I firmly believed that the world's scarcest commodity was courage. I was wrong.

Last Monday, I discovered that the world's rarest commodity is common sense. This came to me about five minutes into a one-hour "cultural sensitivity" lecture by a professor on campus.

The lecture was penance for the *State Press* staff for a cartoon published last semester which depicted two members of the Native American Church approached by a "hippie" who, seeing that peyote was legalized for their ceremonies, asked where he could join the church. Evidently a portion of the student population took offense at the cartoon's treatment of the subject.

Exactly who was offended, I cannot mention, ironically because to do so might be an affront to them. Apparently these individuals cannot agree on what they are to be called.

The professor opened his presentation by distributing copies of cartoons, none of which had been drawn by *State Press* cartoonists. He found these derisive to ancestors of the pre-colonial inhabitants of the Western Hemisphere north of the Rio Grande and south of the Great Lakes, or what most people call American Indians. I usually refer to these Americans according to their tribal names, but according to the professor, sometimes even that is not acceptable.

He began by holding up one sketch with a caricature of Buddy Ryan burned at the stake at the hands of one character labeled "Redskins" and another "Dallas." Asking the question "What's wrong with this cartoon?" the professor claimed that to depict a "Redskin" plays to racial stereotypes and is insulting to certain races. What about the people of Dallas?

Cartoons were not the only thing childish involving this lecture. The professor utilized the cheap tactic of presupposing there is something wrong, not asking if there is something wrong.

The real purpose of his lecture was not to make us more culturally aware, but rather to obtain from the opinion staff a promise of immunity from criticism. Stating that American Indians have historically suffered from religious oppression, he asked us to be "reasonable" when discussing American Indian concerns.

What first appeared to be a sensible request soon developed into nothing but a censorship subrosa. When asked to define "reasonable," the professor just repeated the word without offering a definition. The word became an ambiguous mantra, granting him carte blanche to accuse the news-

BARRY R. KELLEY

Columnist



paper of insensitivity or racism whenever convenient for him.

I reminded the professor that American Indians are not the only minority group to have experienced oppression. Catholics, for instance, have been oppressed, but that did not prevent the *State Press* from running a cartoon critical of the papacy last semester. However, I did not see Bishop O'Brien giving us a required seminar on Catholic sensitivities.

The professor's response was a shabby attempt to link sensitivity with genocide. He admitted that Catholics have been oppressed, but not on the scope of the "genocide" against American Indians. So apparently it is permitted to criticize certain religions that have been oppressed, but not others. I asked the professor to show precisely where the line of demarcation is on the oppression curve, dividing what religions we are allowed to criticize and religions that are off-limits. Needless to say, the professor is the sole arbiter of moral indignation. In the land of equality, apparently some ethnic groups are more equal than others.

The largest source of his critique was reserved for the sports pages. He asked if I was familiar with the Washington Redskins controversy. The legitimacy of the professor's argument can easily be measured when the only current evidence he presents is the nickname for a sports team.

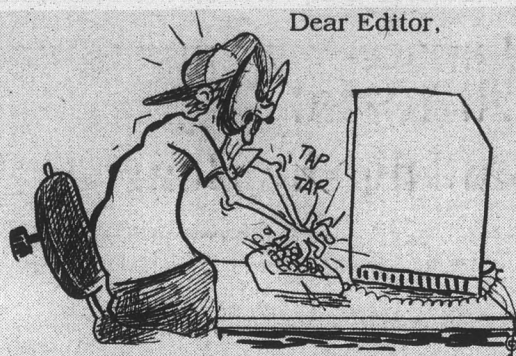
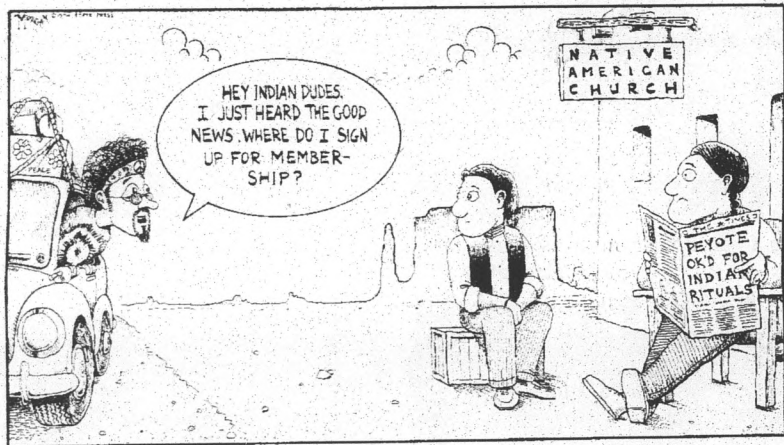
Problem is, the professor requires unanimity on almost every name or label. While he may find the Florida State Seminoles offensive, what about the feelings of Seminoles themselves? If that is degrading, how about Dan Majerle's alma mater, the Central Michigan Chippewas? If Chippewas are not insulted by the term, how about other tribes whose ancestors perished from Chippewa arrows? How should Catholics feel with regard to the Sun Devil mascot?

At the University of Massachusetts, there is a movement to eliminate the Minutemen mascot, by claiming it is degrading to American Indians. Should men of the University of South Carolina be insulted that their mascot is a Gamecock? What about the women? Shouldn't they demand a change to the Gamevaginas? Or at a minimum the Game Unisexual Genitalia?

Somewhere in Houston there are people with acne-free skin insulted at being called the Oilers. I'm sure Jane Fonda finds the Patriots mortifying and that there are people in New Orleans who are not exactly Saints. Do they not have a right for equal representation?

If this professor and his fellow free speech abolitionists have a problem with the Washington Redskins, the proper course of action is to pool their casino earnings make Jack Kent Cooke an offer to buy the team. Until then, get off my back.

Barry R. Kelley is a graduate student studying Asian history.



'No' has many meanings other than the obvious one

I have three comments about the broadened definition of rape that some feminists are trying to push.

Generally when women say "no," it's because they don't want to have sex. However, there are some cases when women say "no" when they really do want to have sex with a man. At times when women say "no," they're saying "no" to something else & not the sex. "No" can also mean "no, she doesn't want anyone to catch her having sex," "no," she doesn't want to catch a disease and not always "no," she doesn't want to have sex. The fact is, people at times say "no," even though they do want to have sex and "yes" when they don't want to.

Is this rape? A woman's naked and is about to have sex and then at the last minute says "no." The man then says "Oh, I'll make it fast then." After saying this, the man proceeds to make his sexual advances, the woman subsequently says nothing, doesn't try to resist him and they have sex. Feminists call this rape because he had sex with her after the last word she said was "no." I disagree, not because of her actions prior to saying "no" but her subsequent actions afterwards. This man didn't threaten her and he didn't physically harm her to obtain sex. All he did was make a statement prior to proceeding. This woman's silence after the man made his statement and not making an effort to resist his advances implies that either she was "no" to something else as stated in the last paragraph or she changed her mind again and decided that she wanted to have sex without saying "yes." You judge whether an encounter is rape, by the material facts as they apply to that sexual encounter only. It seems to me that some of the rapists and sex abusers are those trying to label every sexual encounter as rape and enacting sex abuse policies like that of Antioch College.

Finally, are there ever false accusations of sex crimes? At times false accusations are made for reasons ranging from mental instability to ruining peoples reputations. Sometimes the real rape victims are those accused of it and not the accusers.

Anirban Bhattacharya
Alumnus, 1993
Sociology

STATE PRESS Letters to the editor

The *State Press* welcomes and encourages written response from our readers on any topic. All letters must be typed, double-spaced and no longer than two pages to be eligible for publication. Please include your full name, class standing, major (or any other affiliation with the University) and phone number. Only signed letters will be considered for publication. Requests for anonymity will be granted only with an appropriate reason. Letters are subject to editing by the opinion page editor for factual errors and print space availability. Letters containing obvious factual errors will be rejected. All letters must either be brought in person with a photo I.D. to the *State Press* front desk in the basement of the Matthews Center, or addressed to *State Press*, Box 871502, Arizona State University, Tempe Ariz., 85287-1502. No faxes, please.

Committee's recommendations contain serious flaws that need change

The Faculty/Academic Professional Developmental/Evaluation/Compensation Sub-committee (FADEC) has recently issued its recommendations concerning a performance based salary plan for full-time faculty and academic professionals. Although these recommendations are not without virtue, they are, on balance, also seriously flawed. The most welcome recommendations concern flexible-performance agreements and appellate provisions. Such agreements allow departments to form their evaluation programs in ways that are appropriate to their subjects. They also require that evaluation of performance must be in respect to the elements of the agreement, not in respect to other criteria. The appellate provisions are not significantly different than current arrangements which are little to boast of; it is nonetheless important to codify these provisions in respect to the new plan.

So much for the good news; as is the custom here at "Good Old State," the bad news tends to a weightier proportion. First, the ultimate authority in deciding evaluation and salary adjustment guidelines rests with administrative personnel, just the good folk who have systematically produced the current morass. Differently said, the guidelines are in no meaningful sense negotiated; they are in every meaningful sense imposed. Secondly, the evaluation plans are by unit, not by individual

faculty; i.e., they do not account for very substantial differences in subject within departments. The recommendations explicitly require individual job descriptions within departments for academic professionals, but not for faculty. They ought to require such descriptions in both cases for the same reasons the sub-committee cites in its defense of flexible-performance agreements for departments and for individual academic professionals. We have, quite dutifully, worked our way into the unenviable circumstance of forming our work in terms that are suitable of quantitative forms of evaluative procedure; we've got it bum side up. That is significantly how professors become more devoted to banking than to education.

Thirdly, and here is the main rub and I'd wager also the main objective of the recommendations, a step-system of compensation (together with its "assurances" of equity) will have been defeated by them. The university's ruling authorities are fervently opposed to such a system for the same reason that we ought fervently to endorse it; because it diminishes the discretionary prerogatives of administration in respect to salary funds. The recommendations thus evade, not satisfy, the principal concern in the compensation debate; namely, the provision of equitable salaries for all persons. Little, and perhaps nothing, decent may be achieved in this respect until everyone is fairly

located on a scale of salary steps on the basis of their career records.

The new recommendations reject the only means of correcting the current troubles while nonetheless leaving the impression of correcting these troubles, thereby forestalling an authentic correction. The very best we can apparently do in all of this is to oppose ratification of the recommendations by encouraging our rep representatives in the Academic Senate to turn them back when they are put to the vote on Jan. 30.

Robert G. Osterhoudt
Professor
Exercise Science and Physical Education

Letters to the Editor

EDU-Internet
ICJBO@ASUVM.INRE.ASU.EDU
E-mail
ICJBO@ASUACAD
Mailing Address
State Press
Box 871502
Arizona State University
Tempe, AZ 85287-1502

REPORTERS: Les Newman
EDITORS: Kim Herman, Elizabeth

POLICE REPORT

ASU Police reported the following incidents Wednesday:

- A woman not affiliated with ASU was arrested for domestic violence assault and damage at Physical Sciences D-Wing.
- A man not affiliated with ASU was arrested for public consumption of alcohol at University Drive and Forest Avenue.
- A man not affiliated with ASU was arrested, cited and released for trespass at Hayden Library.
- A male student and a female student each reported that someone stole the spare tires from their vehicles in Parking Lot 59.
- A student reported that someone stole his backpack and contents from the bookstore.
- A student reported that someone stole his license plate, AZ DNT 343, from Lot 37.
- An employee of ASU reported that someone stole her attaché case from Engineering G-Wing.

- A man not affiliated with ASU was arrested, cited and released for public consumption of alcohol.
- A female student was contacted at the Student Health Center, where she was ill and treated at the scene by the Tempe Fire Department. She was then transported to Tempe St. Luke's Hospital.
- Two bikes were reported stolen.

Tempe Police reported the following incidents Wednesday:

- A 52-year-old Chandler resident was arrested for shoplifting after an investigation revealed that he left a Home Depot store at 725 W. Elliot Road without paying for almost \$200 worth of merchandise. He was booked at Tempe jail.
- A Tempe man was arrested at Tempe jail after he was turned over by a DPS officer for having an outstanding warrant. He was booked at the jail and held to see a judge.

Compiled by State Press reporter Todd Kelly

WANT A PARKING SPOT RESERVED JUST FOR YOU? RENT ONE FROM US! \$45/SEMESTER



Permit Time: 6 a.m. - 10 p.m.
Monday through Friday Only
2 blocks South of Student Recreation Complex
University Lutheran Church — 967-3543
340 East 15th Street

Understanding the Bible
A Thursday Night Bible Study


Sponsor: Christian Students Fellowship Subject: Phil. — 2 Thess.
Place: Tempe Woman's Club Time: 7:00 p.m.
1290 S. Mill Ave. Speaker: Bill Freeman
(Across from Gammage Auditorium)

Philippians to 2 Thessalonians

Date	Subject	Book & Chapter
Jan. 19.....	Merging with Christ's Disposition	Phil. 2
26.....	The Real Knowledge of Christ	Phil. 3
Feb. 2.....	The Secret of Experiencing Christ	Phil. 4
9.....	Christ as Our Center	Col. 1

Christian Students Fellowship
For further information call 948-4488


Mill & Broadway, Tempe
Store Phone 921-9002
Pharmacy 921-8013
Store Hours: 8 a.m. - 10 p.m., 7 Days a Week



Hello ASU!

There's a Walgreens right nearby to serve you at Mill & Broadway In Tempe.

Pharmacy Hours: Mon.-Fri. 8 a.m. - 10 p.m.
Sat. 9 a.m. - 6 p.m. • Sun. 10 a.m. - 6 p.m.



Close to ASU — We're The Pharmacy America Trusts. Here's Why:

- ★ **Exclusive Satellite Network**
Links more than 1,900 Walgreens Pharmacies nationwide, making your prescription records available when and where you need them.
- ★ **Convenient Pharmacy Hours**
We've designed our hours to fit your busy lifestyle, and because illness can strike anytime.
- ★ **1-800-WALGREENS (1-800-925-4733)**
Call toll-free to find the Walgreens or 24-hour location nearest you, or to arrange for our express mail prescription delivery service.
- ★ **Savings On Generic Alternatives**
Generic medication alternatives can save you as much as 15 to 50% on your prescription cost. We'll let you know when one is available.
- ★ **Insurance Programs Accepted**
Walgreens accepts most third party payment programs and we are on line with most insurance plans in America to speed service to you.

Walgreens Pharmacy Coupon

FREE
AM/FM CLOCK RADIO
With your next new or transferred prescription purchase except one from another Walgreens store.
A \$9.99 Value.

\$10 Off
YOUR NEW OR TRANSFERRED PRESCRIPTION PURCHASE
Except one from another Walgreens store. Prescription is FREE, if the retail price is \$10 or less. If the retail price is more than \$10, you pay only the difference.

Coupon must accompany purchase. Limit 1. Your nearest Walgreens Pharmacy is located at Mill & Broadway, Tempe. Good thru 2/15/95.

Choose Your Savings

CHECK THE BOX OF YOUR CHOICE AND REDEEM.


AM/FM Compact Clock Radio

\$10 Off Prescription

Coupon good only at Mill & Broadway Store

It's Easy To Transfer Your Prescription

Just give us the information off your prescription container and we do the rest. It's that simple. And when you do purchase a transferred or new prescription, take advantage of the valuable coupon offer at left.



CROSSWORD
by THOMAS JOSEPH

S	P	I	T			W	I	T	S				
P	I	N	U	P		J	A	N	E	T			
L	E	V	E	E		O	S	C	A	R			
I	C	E		P	A	N	P	I	P	E			
T	E	N	T	P	E	G		T	O	W			
				S	T	E	E	R	W	E	T		
					A	R	O	M	A				
				H	I	M		S	O	N	A	R	
S	O	N		L	O	V	E	G	O	D			
P	O	T	H	O	L	E		A	P	E			
A	F	O	O	T		I	N	S	E	T			
T	I	T	O	S		N	O	S	I	R			
S	T	O	P							W	I	N	E

ACROSS

- 1 Bridge
- 5 Without assistance
- 10 Big wheel's wheels
- 11 Sharon Stone film
- 12 Pizzeria fixture
- 13 Party breakable
- 14 Bike type
- 16 "Locksley Hall" poet
- 20 Foreigner's giveaway
- 23 Longevity
- 24 Sows' mates
- 25 They have ears
- 27 Actor Wallach
- 28 Tends to the turkey
- 29 Sawbucks
- 32 Octopus feature
- 36 "Cheers" barkeep
- 39 Not my oaks
- 41 Bungaloes
- 42 Annoying
- 43 Fall tool

DOWN

- 2 Not recorded
- 3 Hymn end
- 4 Horror movie regular
- 5 Sci-fi movie regular
- 6 Jitterbug's kin
- 7 Eggs, to Caesar
- 8 Catch
- 9 Historic time
- 11 Used up
- 15 Corrals
- 17 Pretzel additive
- 18 Gawk
- 19 Famed loch
- 20 Assist
- 21 Song-writer Porter
- 22 Dean of "Lois and Clark"
- 25 Bulb unit
- 26 Gold tester
- 28 McCoy's nickname
- 30 Baby deliverer
- 31 Bit of change
- 33 Mrs. Dithers
- 34 Wait in hiding
- 35 Gaelic
- 36 Driver's aid
- 37 Top flyer
- 38 Rock's — Lobos

Yesterday's Answer

1	2	3	4		5	6	7	8	9		
					11						
10											
12					13						
14					15						
					16			17	18	19	
20	21	22							23		
24							25	26			
27							28				
29				30	31						
					32				33	34	35
36	37	38							39		
40									41		
42									43		

DAILY CRYPTOQUOTES — Here's how to work it:

A X Y D L B A A X R
is L O N G F E L L O W

One letter stands for another. In this sample A is used for the three L's, X for the two O's, etc. Single letters, apostrophes, the length and formation of the words are all hints. Each day the code letters are different.

1-19 CRYPTOQUOTE

P N X N D B Y Z T P A N O K N T M K
R B B X P Z T P U P H T P P B F L — Z N Y
V N O X K T M A P Z U M C I B H N F B
R O M ? — Q T P Z T F U M B C F T Z T H

Yesterday's Cryptoquote: I THINK SUCCESS HAS NO RULES, BUT YOU CAN LEARN A GREAT DEAL FROM FAILURE.—JEAN KERR

© 1995 by King Features Syndicate, Inc.

Malcolm X's daughter pleads innocent in Farrakhan plot

ST. PAUL, Minn. (AP) — Malcolm X's daughter pleaded innocent Wednesday to trying to kill Nation of Islam leader Louis Farrakhan. Her mother, meanwhile, denied she had raised her six daughters to hate her late husband's rival.

"I read in one magazine that I probably had fed her a steady diet to dislike Farrakhan, which is absolutely untrue," Betty Shabazz, a college administrator in New York City, said after the arraignment.

Last week's indictment of Qubilah Shabazz on charges she hired a hit man to kill Farrakhan, a former rival of her slain father, has been criticized

as a set-up by Shabazz's friends and relatives and many other blacks.

Defense lawyers say the 34-year-old Shabazz was lured into the alleged plot by a childhood friend, identified in media reports as Michael Fitzpatrick, who was a longtime government informant.

The Star Tribune of Minneapolis reported that an undercover videotape indicates Shabazz raised objections to Fitzpatrick's plan and was worried others would be hurt.

"He talks at length and she listens. She's not pleased. She's coming up with objections, reasons why he shouldn't do it," the newspaper quot-

ed an unidentified federal official as saying.

With longtime civil rights lawyer William Kunstler standing by her side, Shabazz quietly pleaded innocent. She could get up to 90 years in prison and \$2.25 million in fines.

Shabazz has been free on \$10,000 bail since she surrendered to authorities last week. Trial was set for March 27 in Minneapolis.

Prosecutors have refused to comment on a possible motive for the alleged plot, but Malcolm X's family has long believed Farrakhan had a hand in his 1965 assassination.

Ito OKs wife-beating evidence

LOS ANGELES (AP) — The judge in the O.J. Simpson case ruled today that the jury can hear about several instances of violence in Simpson's marriage to Nicole Brown Simpson, including a 1989 incident in which he pleaded no contest to wife beating.

Superior Court Judge Lance Ito said most of the domestic violence evidence can be presented because it is necessary to prove motive and intent in the June slayings of Ms. Simpson and her friend Ronald Goldman.

Among the evidence he included was a 1989 New Year's Day outburst by Simpson documented by Ms. Simpson's 911

emergency call, which led to criminal charges against Simpson, and a 1985 baseball bat attack on Ms. Simpson's car.

A tape of Ms. Simpson's 1989 call to 911 was widely broadcast after Simpson's arrest.

The decision was a major victory for prosecutors, who hope to use evidence of domestic violence during Simpson's relationship with Ms. Simpson to support their contention that her slaying was the culmination of years of abuse and degradation.

Before it was released, District Attorney Gil Garcetti called the impending decision "the most critical ruling this court will make."

ROTHER'S BOOKSTORE

ALL YOU NEED IN ONE EASY STOP.

625 E. Apache
(Just west of Rural)



Open late this week
967-5445 Plenty of FREE Parking

SPRING FEVER '95 ASASU ORIENTATION

FOOD FUN GAMES MUSIC

Location: SRC Fields
Time: 10am-2pm
Dates 1/18-1/20

Sponsored by:

ASASU

SRC

ICA

ACTIVITIES
FAIR

COMMUTER
EXPO

ART FAIR



INFO DEVILS

Counseling and Consultation PERSONAL COUNSELING GROUPS AND WORKSHOPS Student Services Building B317 * 965-6146

Eating Disorders Groups

Bulimia Group
Leader: Kimberly Wright, Ph.D.
Mondays, 1:00-3:00

Breaking Free Group
Leader: Rita Archambault, M.C.
Allyson Hawkins, M.S.
Mondays, 3:00-5:00

Imagery

Latina Images Group
Leader: Louise Baca, Ph.D.
Trude Cooke, M.C.
Tuesdays, 12:00-1:30

Living Through Loss

Living Through Loss
Leader: Jim Werth, B.A.
Leticia Arellano, B.S.
Wednesdays, 1:00-3:00

Men

Men's Group
Leader: Joel Hutchinson, Ph.D.
Tuesdays, 1:30-3:00

Gay Men's Personal Growth Group
Leader: Greg Shrader, Ph.D.
Tuesdays, 4:30-6:30

Relationships

Interpersonal Relations Group
Leader: Greg Shrader, Ph.D.
Wednesdays, 3:00-5:00

Interpersonal Relations Group
Leader: Kimberly Wright, Ph.D.
Fred Amador, B.A.
Thursdays, 3:00-5:00

Stress Management/Assertiveness, Anger Management

Anger Management Group
Leader: Joel Hutchinson, Ph.D.
Chuck Garon, B.A.
Thursdays, 10:00-11:30

Stress Management/Assertiveness Workshop
Leader: Chris Carr, Ph.D.
Tuesdays, 4:30-6:00*

Women

Women's Experiences Group
Leader: Julie Savage, Ph.D.
Millie Hancock, B.A.
Mondays, 10:00-11:30

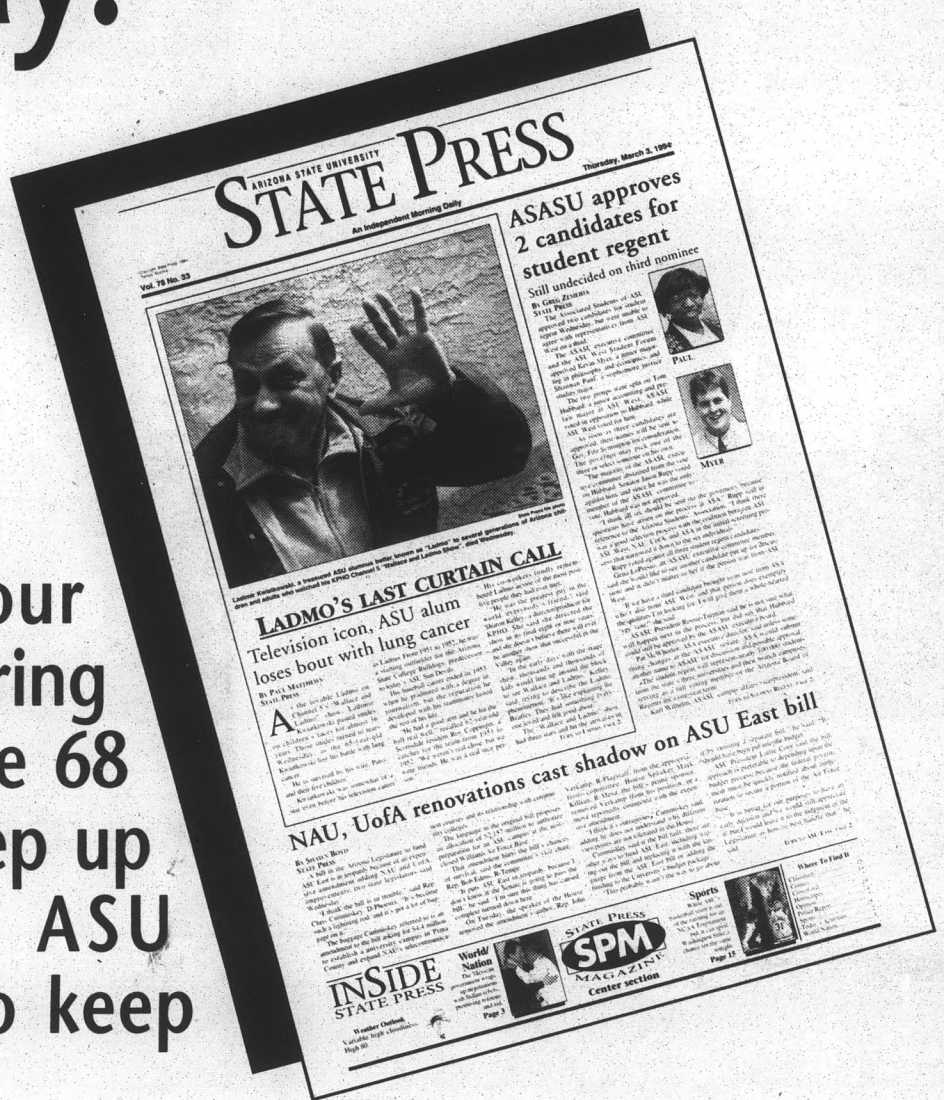
Women Survivors of Childhood Sexual Abuse
Leader: Rita Archambault, M.C.
Allyson Hawkins, M.S.
Wednesdays, 3:00-5:00

*No screening appointment necessary.
Call for a screening appointment or to sign up today!

For \$35, we can make your parents think about you every day.

Send them a subscription to the *State Press*.

Subscribe now and send your parents the *State Press* for Spring Semester 1995. They'll receive 68 issues and will be able to keep up with what's going on at ASU instead of relying on you to keep them updated!



GREAT GIFT IDEA FOR FRIENDS, RELATIVES, PARENTS and GRANDPARENTS.

DO IT NOW AND SAVE!

IT'S *YOUR* NEWSPAPER

ARIZONA STATE UNIVERSITY
STATE PRESS

ASU'S Morning Daily Newspaper
Serving ASU since 1890

Fill out this form and mail it with payment to:
State Press Subscriptions, Box 871502, Tempe, AZ 85287-1502, or stop by the State Press subscription office in Mathews Center basement.

SUBSCRIPTION

SPRING SEMESTER only \$35 (68 issues)

For first class mail, add \$30 per semester to above prices.

SUBSCRIBER NAME _____
Address _____
City _____ State _____ Zip _____
Phone (____) _____

Check here if you'd like us to send a gift card to acknowledge the gift subscription.

CHECK ENCLOSED
Charge my Visa MasterCard
 American Express
Card Number _____
Expiration Date _____
Signature _____
Your Name _____
Your Phone Number _____



NEED MORE INFO? CALL OUR SUBSCRIPTION DEPT. AT (602) 965-7572

Japanese professor to speak on peace

By KATHLEEN GILBERT
SPECIAL TO THE STATE PRESS

This year marks the 50th anniversary of both the end of World War II and the atomic bombings of Hiroshima and Nagasaki, marked in the United States by a Smithsonian exhibition and a commemorative postal stamp.

Controversy and compromise surrounding these events form the basis for a free public discussion today in Tempe led by Mitsuo Okamoto, a Japanese peace studies professor, and his wife Tamayo.

Okamoto, an exchange professor last semester in ASU's Department of Political Science and Center for Asian Studies, will give introductory remarks and answer questions at 7:30 p.m. at the Tempe Friends' Meeting at 318 E. 15th St., two blocks east of College Avenue.

Okamoto's topic — peace — hits close to home for him.

"Because the events refer to Hiroshima, where I come from, they will be the basis of my discussion," he said.

During the fall semester, Okamoto taught a peace studies and Japanese culture class assisted for two weeks by Tamayo, a specialist in the field of medical ethics. Formerly president of the Peace Studies Association of Japan, Okamoto said Peace Studies incorporates all aspects of peace.

The Smithsonian conflict involves the exhibition of the Enola Gay, the B-29 U.S. Air Force bomber used to drop the atomic bomb on Hiroshima, and other artifacts from the resulting destruction. Okamoto said the original script for the exhibit was opposed "based in part

on the U.S. veterans' perception that it shows too much of the destruction and suffering of (Japanese) citizens."

"The U.S. armed forces were perceived as the liberators from the German and Japanese forces, and they are very proud. Anything short of glorifying the bomb is discouraging," he said.

The other source of controversy is the planned future release of a U.S. Post Office stamp commemorating the end of the war. Okamoto said the original stamp depicted the mushroom cloud of the Hiroshima and Nagasaki bombings with the caption, "Hastening the end of the Second World War," implying that the act shortened the duration of the war, which upset not only the Japanese government but also many U.S. citizens.

Okamoto said the stamp has been changed from the cloud to picture former President Harry Truman, but will retain the same or a similar caption.

Jason Browne, a member of the Tempe Friends' Meeting and an organizer of the evening, said the discussion will be flexible and interactive, encouraging audience participation. He said he believes there is an increasing movement at ASU to create a permanent peace studies program along the lines of the Joan Kroc International Peace Studies Institute at Notre Dame University.

Okamoto is also scheduled to speak Jan. 23 at the Pima Room of Memorial Union in an event organized by the Center for Asian Studies.

The Best Top 40 Dance Music in the Valley!

Club Rio's House Party

HAPPY HOUR

FRIDAY

Top 40 Dance Music starts inside at 8pm

4pm - 7pm

COMPLIMENTARY FOOD BUFFET

4pm - 11pm

2 FOR 1 ON EVERYTHING
3.00 PITCHERS OF BEER
6.00 PITCHERS OF LONG ISLANDS

Club Rio's House Party

HAPPY HOUR

FRIDAY

1/2 OFF ADMISSION ALL NIGHT w/ this coupon

exp. 5-31-95

1.00 Kamikazis all night!

After Hours until 2am for 21 & Older



430 N. Scottsdale Rd. 894-0533

The First Annual Bicycle Wheelers

3 DAY-21 HOUR TENT SALE!

JANUARY 20, 21 & 22 ONLY



DON'T MISS THIS EVENT!

\$5.00 OFF ANY U-LOCK
with coupon. Void with other offers. Expires 1-22-95.
BICYCLE WHEELERS 968-8011

1995 Diamond Back Bicycles	Reg. Price	SALE PRICE
Outlook	214.95	184.95
Wildwood	294.95	249.95
Sorrento	319.95	274.95
Sorrento Sport	389.95	329.95
Topanga	429.95	369.95
Ascent	519.95	449.95
Response Sport	679.95	579.95

SHIMANO SHOES	Reg. Price	Sale Price	ACCESSORIES	Reg. Price	Sale Price
M030('94)	56.95	39.95	Rhode Shuttle Car Rack	54.95	39.95
M051	79.95	49.95	Vittoria Telno Twin Road Tire	16.95	12.95
M0110('94)	119.95	74.95	Vittoria Freeclimb 3 Mountain Tire	14.95	8.95
T120	85.95	59.95			

Hurry In For Best Selection!

All items limited to stock on hand. Sorry, no rainchecks.

"Your collegiate bike shop"

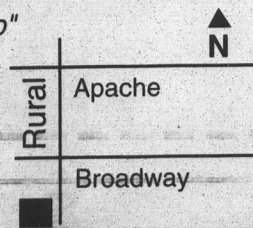
968-8011

Open 7 days a week

Layaway

2010 S. Rural Rd.

Tempe, AZ



Chechen rebels recapture train station, fight for market

GROZNY, Russia (AP) — Chechen fighters recaptured Grozny's train station and were fighting for the central market Wednesday in a push that was close to wiping out all gains made by the Russian army in the last two weeks.

Chances of a cease-fire, scheduled for Wednesday night, appeared slim despite earlier Russian peace overtures. In Moscow, President Boris Yeltsin ruled out talks with Chechen leader Dzhokhar Dudayev. In Grozny, the Chechen capital, defenders said they would never lay down their arms.

Russian artillery and rockets pounded the city center Wednesday to hold back the Chechen forces. Sukhoi fighter jets flying in pairs screamed over the city, rocketing buildings, and a Tupolev heavy bomber was seen flying back from a mission.

The Russian troops had used the central market as a base for attacks on the presidential palace, symbol of Chechnya's independence drive, and had captured the railway station in early January.

A few hundred Chechens have fought one of the world's most powerful armies to a standstill in the winding streets of Grozny. The Russian army's overwhelming superiority in men and weapons has been blunted by the Chechens' courage and skill in a month-long battle that has cost a reported 1,200 Russian lives.

Still, the Russians reported some progress Wednesday, saying its armies had managed to encircle the presidential palace overnight. There was no way to immediately confirm the report.

After meeting Russia's prime minister on Tuesday, Chechen diplomats said both sides agreed to stop using heavy artillery by Wednesday evening as a first step toward a full cease-fire. But the Russian army is heavily dependent on artillery to hold its positions in Grozny and there was no sign of any letup.

At the Kremlin on Wednesday, Yeltsin said talks with Dudayev, the Chechen leader, were out of the question. "We do not want to hold direct talks with Dudayev because

he carried out genocide against his own people," Yeltsin told journalists.

Yeltsin added, however, that his government would talk to Chechen field commanders, clan leaders and local officials.

The Russian president, who has been heavily criticized for sending thousands of troops into Chechnya on Dec. 11, also tried to reassure journalists that he — and not some panel of generals — was still at the helm.

"Don't worry, everything will be settled soon on the Chechen issue. I am in strict control of the Russian security structures and know the situation every day," he said. "Without me, nothing serious goes on in Chechnya."

Thousands of people are believed to have been killed since Moscow sent troops into Chechnya, a mainly Muslim republic of 1.2 million in the Caucasus Mountains that declared independence in 1991.

Chechen fighters said Wednesday they would welcome peace, but would not give up their claim to independence and felt they had the Russians on the defensive.

ARIZONA STATE UNIVERSITY STATE PRESS

Read all you want ...
there's no quiz afterwards.

QUADRANGLE'S VILLAGE APARTMENTS

ONE BEDROOM MOVE-IN SPECIAL

LUXURY APARTMENT FEATURES:

- ◆ Mini blinds
- ◆ Vertical blinds with valances
- ◆ Brass ceiling fans
- ◆ European cabinetry
- ◆ Walk-in closets available
- ◆ Private balcony/patio
- ◆ Security alarm systems available
- ◆ Free hot water
- ◆ Free cable TV-37 stations!
- ◆ 3 pools, 2 spas
- ◆ 7 barbecue areas
- ◆ Covered parking
- ◆ Laundry facilities
- ◆ Large exercise room

If you earn less than \$26,600* per year,
you may qualify to get a monthly rental
discount! CALL NOW!

* Certain Restrictions Apply
IDA PROGRAM

1255 E. University Drive Tempe, Arizona 85281

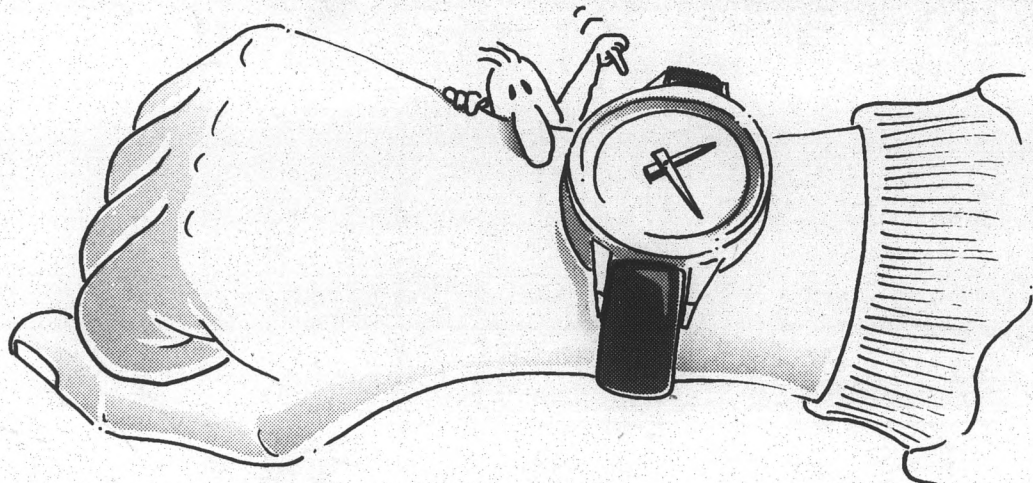
968-8118

S.E. Corner of University & Rural



IT'S TIME.

THE COUNT DOWN'S ON. FOR AFFORDABLE STUDENT HEALTH CARE COVERAGE, THAT IS.




It's simple, smart and easy to do.
Come to ASU Student Health or call (602) 965-2411
to get the information you need.

Save time, money and beat the clock.
You have until January 31, 1995 to sign-up.
So do it now. It's a healthy decision.

It's called Samaritan Campus Care.
It's available through Student Health.
Prepare for the unexpected. You'll feel good all over.

Samaritan Campus Care.
From Samaritan Health Insurance Company.

The health care leaders.

 Samaritan
Health Insurance

Desert Samaritan
Medical Center



STATE PRESS

AIDS AWARENESS ESSAY CONTEST

\$250 FOR WINNING ENTRY

Whether we realize it or not, AIDS is a deadly epidemic that affects everyone and discriminates against no one. It's real and it's there, affecting our lives, often unknowingly, as we motor around this beautiful campus.

In an effort to demonstrate how close to home AIDS really is, the ASU AIDS Awareness Week Steering Committee, the *State Press* and Desert Samaritan Medical Center are sponsoring an AIDS Awareness Essay Contest on "how AIDS has affected my life." The winning essay will be selected by a panel of students and will be published in a special issue of the *State Press* on February 13, 1995, as well as read at the opening ceremony of ASU AIDS Awareness Week where the author will be awarded \$250 from Desert Samaritan Medical Center.

The guidelines are simple. Just tell us your story of how AIDS has affected your life. It could be about a family member, a friend or even your general philosophy regarding AIDS. It could even be about the thoughts you had running through your brain as you waited for the results from your HIV test. Anything. Absolutely anything that will provide another slice of life about AIDS and its role in our lives.

Your essay must be submitted on disk in Mac format accompanied by a hard copy. Please keep the essay to a maximum of three double-spaced pages. You must be an ASU student to enter. Include your name, phone number and ASU ID number. The deadline for entries is noon, February 1. Submit your entry to Jackie Eldridge at the *State Press* in room 47 of Matthews Center basement. Questions? Call Jackie at 965-6555.

Go ahead, dust off that keyboard and make a difference. Who knows, you may just win \$250. And what if yours isn't the winner? Depending on the volume of entries, we plan to publish as many as we can in a special section of the *State Press* on February 13. Thanks for contributing to AIDS education and making a difference.

DEADLINE IS NOON, FEBRUARY 1

Man sentenced to 141 years in Brooklyn Bridge attack on Hasidic youths, gets maximum punishment

NEW YORK (AP) — A man who said his horrifying childhood in Beirut made him kill was sentenced Wednesday to 141 years in prison for spraying bullets at a van full of Hasidic youths on the Brooklyn Bridge, killing one teen-ager.

Rashid Baz got the maximum sentence for the March 1 attack in which he shot up the van carrying 15 students, who were dressed distinctively in the black clothing of ultra-orthodox Lubavitchers.

Justice Harold Rothwax said Baz deserved the harshest punishment: "The court will recommend against release of this defendant on parole — ever."

Outside the courthouse, demonstrators chanted, "Hang Rashid Baz!"

Baz, 28, who came to this country from Lebanon 10 years ago, was convicted on Dec. 1. The jury rejected his

claim that he suffered from post-traumatic stress syndrome because he grew up in war-torn Beirut.

The shooting occurred as the young men were driving over the bridge to the borough of Brooklyn after visiting the Lubavitchers' leader, Rebbe Menachem Schneerson, who died in June.

Defense lawyer Eric Sears said Baz opened fire with an automatic weapon because he thought his life was in danger when the van's occupants mouthed insults, gestured offensively and showed him a gun. Sears said Baz was having a violent flashback.

Some of the young men in the van testified at the trial, saying no one had a gun and no one even noticed Baz until the first bullets from his pistol smashed through the van's windows.

A defense psychiatrist testified that Baz snapped because of the Feb. 25 massacre of 29 Muslim worshippers in a West Bank mosque by Baruch Goldstein, a Brooklyn-born Israeli settler.

Before sentencing Baz, Rothwax listened to Nachum Sosonkin, 19, the most seriously wounded survivor, and Devorah Halberstam, whose 16-year-old son, Aaron, died in the bridge shooting.

"This killer must spend the rest of his life behind bars," said Mrs. Halberstam, who called her son "a prince" and "a gem of a human being."

Sosonkin, crippled and barely able to walk or speak because of a gunshot wound to his head, told the court he wanted to "see justice done."

Baz, who had no previous convictions, declined to speak.



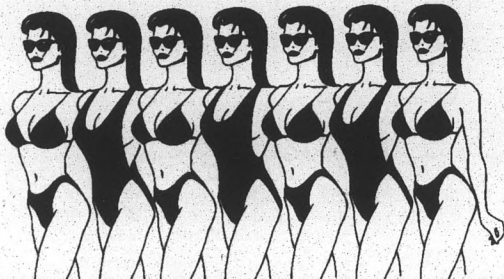
Coming Soon
from California's hottest swimwear stores

Arizona BEACH HOUSE

opening in late January at **FIESTA MALL**
(lower level, next to Guess and Dillards)

opening in April at 5th and Mill in Tempe
phone 890-1904

NOW HIRING ALL POSITIONS AT FIESTA MALL
We Feature Separates!!!



Arizona now facing nuclear energy future

PHOENIX (AP) — Beth Wright's objections to a planned nuclear waste disposal facility in Nevada amount to more than political activism. In her eyes, she is keeping a promise made to her dying father.

Wright, principal of Littlefield Elementary School, believes the leukemia that claimed her father and an uncle was a result of above-ground nuclear-bomb tests in Nevada.

And she doesn't want any of the 160 pupils at the school she says is "a blink and a half" off Interstate 15 to go through what her family went through.

Wright objects to the planned Yucca Mountain disposal facility in Nevada, particularly with her school's proximity to the interstate route by which the wastes would travel through Arizona.

More, she said she fears what would happen if one of the trucks carrying the wastes fell into the water while traveling through the 30-mile stretch of the Virgin River Gorge.

That could contaminate the entire Lower Colorado River, threatening water supplies for millions of people in Las Vegas, southern California, as well as Arizonans who receive river water via the Central Arizona Project, she said.

Wright promised her dying father, Arthur Bruhn, once the president of Dixie College in St. George, Utah, that she would do everything possible to make sure that no one else died from exposure to nuclear radiation.

"I don't want it," she said. "I want them to quit making it. Just quit making it, and find some place else to dispose of it."

But that's part of the problem. The wastes remain dangerous for as long as 10,000 years.

Angie McBrien, a spokeswoman for the Nuclear Energy Institute, an organization representing the nation's 109 operating nuclear plants, said no one has ever died in an accident involving the transportation of high-level nuclear materials.

She also said that by 2010, the current target date for opening Yucca Mountain as a permanent facility, three-fourths of the nation's nuclear reactors will have run out of storage space, including Palo Verde, the nation's largest nuclear complex.

Jim McDonald, a spokesman for Arizona Public Service Co., the utility responsible for operating Palo Verde, said the plant west of Phoenix already has 500 tons of nuclear waste stored on-site. At current rates, Palo Verde's storage capacity of 1,800 tons would be reached by 2004, he said.

"The bottom line is that at some point, we'll be facing the same issue," McDonald said.

And Jane Williams of California Communities Against Toxics said 7,000 containers of high-level nuclear waste could travel Arizona rails and roads.

Williams' group has been joined by the Nuclear Information and Resource Service, the Military Production Network, the U.S. Public Interest Research Group, the Safe Energy Communication Council and Public Citizen in opposing the Yucca Mountain project and the extensive transportation of high-level nuclear waste.

Beginning in 1998, the Energy Department is supposed to start transferring waste from rapidly filling temporary storage facilities at reactor sites.

That Arizona would be on truck and rail routes for transporting the wastes was a determination made by a national coalition opposing the Yucca project.

They said they based their conclusions on the routes from federal Energy Department documents.

U.S. Energy Department and nuclear-industry officials said it was too early to determine exactly what routes would be taken, because Yucca Mountain has not yet been approved as the nation's high-level nuclear-waste repository.

—DELICIOUS AND HEALTHY—

Low and Non-Fat Food

We Deliver
(10% delivery fee)

Buy any regular sandwich and get the 2nd FREE Exp. 5/95

Buy any small yogurt and get the 2nd FREE Exp. 5/95

hogi yogi
Sandwiches & Frozen Yogurt[®]

1309 W. Guadalupe #1
Mesa
491-1919

112 E. University Dr.
(across the street from the Architecture Bldg.)
350-9929

1437 E. Main
Mesa
649-5136

Mars

CONTINUED FROM PAGE 1.

of oceans and continents, Edgett said.

Linear dunes, an even rarer occurrence, are formed when winds from opposite directions move sand into a linear slope facing the direction of the resulting downwind.

Until the recent discoveries, the dune types commonly found on Mars were unidirectional buildups called transverse and barchans, both also common on Earth.

Edgett published his findings along with fellow planetary geologist Dan G. Blumberg, who is also a post-doctoral researcher.

Blumberg concentrated his work in Death Valley in relation to the Space Shuttle Endeavor's space-born lab test of high imaging radar of the area. The tests pinpointed the remote dune areas and provided information on how the dunes formed in the region, Blumberg said.

"I wasn't surprised to hear the (star and linear) dunes were found on Mars, but they are rare," Blumberg said.

Blumberg compared Death Valley to Mars in the way the dunes formed from ground obstacles that redirect the wind that shapes the sand dunes.

He said dune shaping in other parts of the world, such as the desolate areas of Australia and Africa, are the result of seasonal changes that would cause multi-directional wind changes to occur.

"The (star and linear) dunes we've found on Mars so far occur around mountains and in craters," Edgett said. "Places that would change

the direction of the wind."

Edgett said he didn't think that Mars' seasonal changes greatly affected the shape of the dunes.

Fast wind movement and sandstorms on Mars occur during the southern hemisphere's summer while the polar caps grow larger in the north, he said.

The big question the scientists are pondering is whether the dune activities are still occurring or are quiet and frozen like the surface of moon.

Dark streaks on the surface of the dunes found by Blumberg and Edgett suggest that dune activity is still going on.

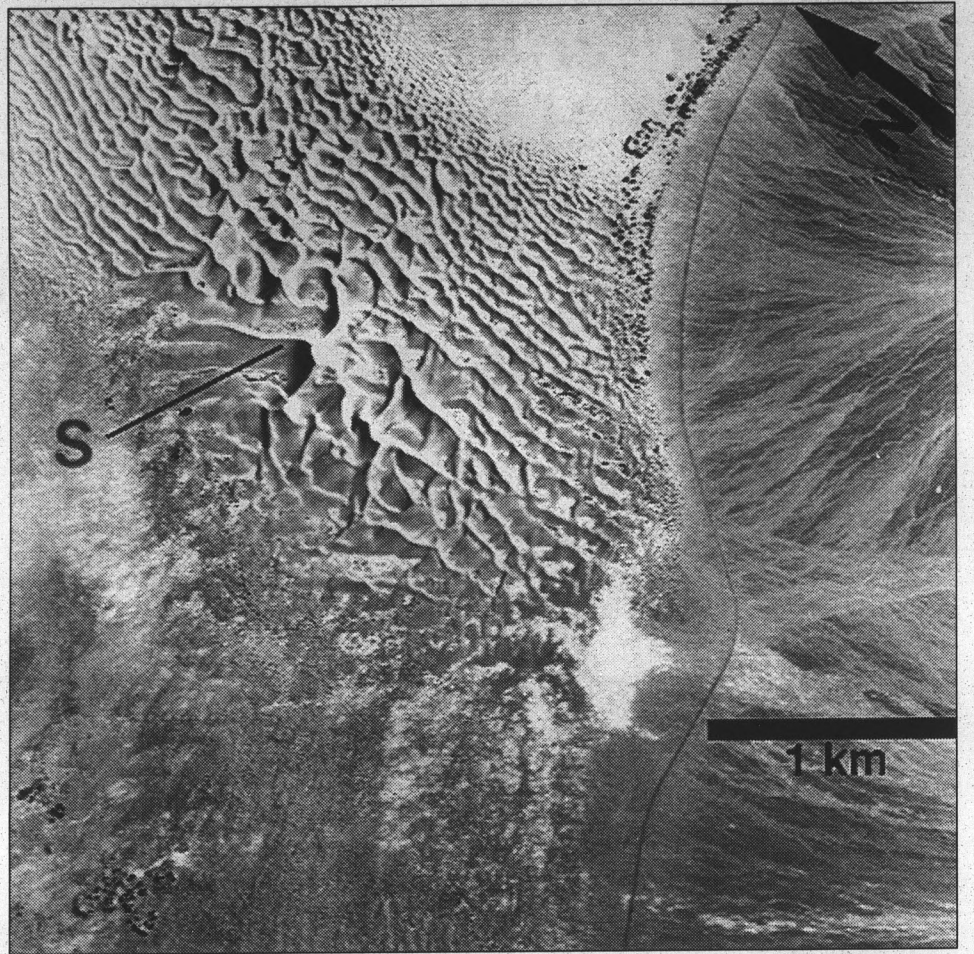
"If they were old, the dust storms would have covered them up," Edgett said.

Two probes are scheduled to go to Mars by the end of this year and arrive at the Red Planet by the middle of 1997. One will orbit the planet and carry instruments similar to the Mars Observer that disappeared in 1993. The other will land and carry, among other equipment, a micro land-rover and a series of sophisticated wind socks designed by ASU scientists Ron Greeley and Rob Sullivan.

The wind socks will measure wind speed and direction, Sullivan said.

"The greatest shaper of the land on Earth is water," he said. "On Mars it's the wind."

The research on dunes will help scientists better understand the difference between the global climates of the Earth and Mars, Edgett said.



ASU geologist discovered dune formations on Mars that were formed in a similar manner as dunes in Death Valley, Calif., giving scientists clues about how the Martian global climate reacts. photo courtesy of NASA

NEED THE SPRING BREAK?

SPRING BREAK

AS SEEN LAST APRIL ON CBS NEWS "48 HOURS"

DRIVE YOURSELF & SAVE!

COMPLETE FIVE & SEVEN NIGHT TRIPS

\$58 14TH SELL-OUT YEAR!

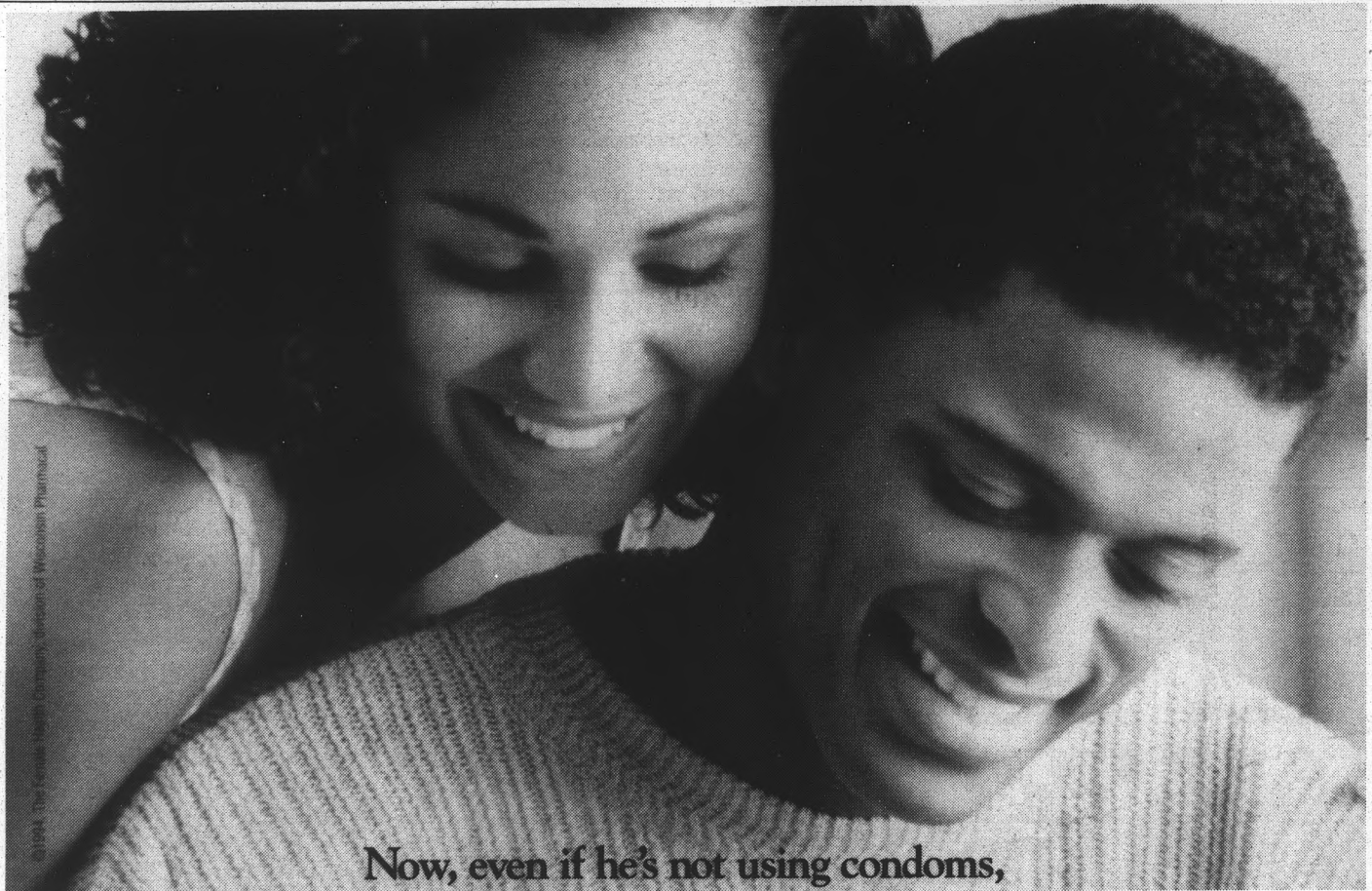
PARTY

- SOUTH PADRE ISLAND
- PANAMA CITY BEACH
- DAYTONA BEACH
- KEY WEST
- STEAMBOAT
- VAIL/BEAVER CREEK

PER PERSON DEPENDING ON DESTINATION / BREAK DATES / LENGTH OF STAY

1-800-SUNCHASE

TOLL FREE INFORMATION & RESERVATIONS



Now, even if he's not using condoms,

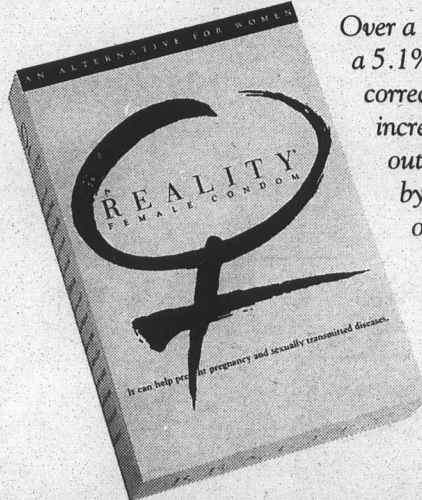
you can.

Finally.

The REALITY® Female Condom is here.

And now, for the first time, you have protection of your own.

REALITY Female Condoms were designed to help protect you and your partner against sexually transmitted diseases, especially AIDS. They also help prevent unwanted pregnancies. When used correctly every time in 6-month clinical trials, REALITY had a 2.6% pregnancy rate.



Over a year's time, this is projected to be a 5.1% pregnancy rate. If not used correctly every time, the pregnancy rate increases to between 19-25%. Find out more about the REALITY condom by calling your doctor, pharmacist or 1-800-274-6601.

If saying "no" to sex is not for you and your partner, and he isn't using male latex condoms—take a closer look at REALITY.

New REALITY Female Condom

Make it your reality.

*LATEX CONDOMS FOR MEN ARE HIGHLY EFFECTIVE AT PREVENTING SEXUALLY TRANSMITTED DISEASES, INCLUDING AIDS (HIV INFECTION), IF USED PROPERLY. *IF YOUR PARTNER IS NOT GOING TO USE A MALE LATEX CONDOM, YOU CAN USE REALITY TO HELP PROTECT YOU AND YOUR PARTNER. *REALITY ONLY WORKS WHEN YOU USE IT. USE IT EVERY TIME YOU HAVE SEX. *BEFORE YOU TRY REALITY, BE SURE TO READ THE DIRECTIONS AND LEARN HOW TO USE IT PROPERLY.

NO CONTRACEPTIVE IS EFFECTIVE IF IT IS NOT USED. AFTER ALL, UNPROTECTED SEX HAS A PREGNANCY (FAILURE) RATE OF 85% OVER A YEAR'S TIME.

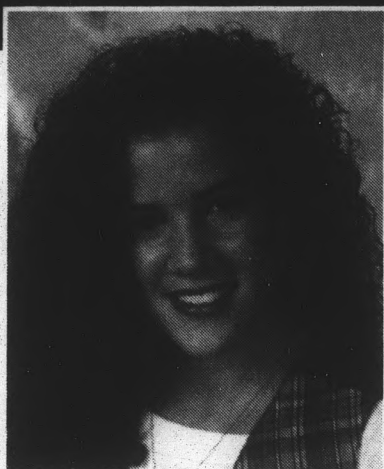
TYPICAL USE FAILURE RATES	6 MONTHS(%)	1 YEAR(%)
REALITY FEMALE CONDOM	12	25
MALE LATEX CONDOM	8	15
CERVICAL CAP	10	18
DIAPHRAGM	8	15
SPONGE	12	17
UNPROTECTED SEX	61	85

Seniors, Schedule your photo session and get a FREE YEARBOOK!

Seniors, CALL VICKI NOW to set up an appointment for your photo session: 965-6881.

The photographer will be in the Copper Room, 204, in the Memorial Union JAN. 30-FEB. 3, 10 a.m.-3:30 p.m.

Get photos in time for resumes.



One free back issue of *The Sun Devil Spark* yearbook to all who come in for a photo sitting while supplies last!
(1987 to 1993 available)

- No sitting fee.
- Photo is printed in the 1995 ASU yearbook free of charge.
- Proofs will be mailed to you for selection. Purchase is optional.
- Photography by Columbia Photographic Service.

HOURS: MON. & TUES.: 10 a.m.-Noon, 12:30-3:30 p.m.
WED., THURS., FRI.: 10 a.m.-12:30 p.m., 1 p.m.-3:30 p.m.

Underclass and upper degree photos will be taken on a walk-in basis (no need for an appointment). Our photographer will also offer photo sessions in the dorms Jan. 30-Feb. 2, 4:30-7:30 p.m. Call for a schedule.

Seniors, Call Vicki at 965-6881

ASASU ELECTIONS 1995-96

INITIAL CANDIDATE MEETING*

All positions open for election

FRIDAY

January 20, 4:00pm

Programming Lounge

Lower Level Memorial Union

**CALL 965-3161 IF YOU WOULD LIKE TO ATTEND
BUT CANNOT, OR IF YOU HAVE QUESTIONS**

**This meeting is mandatory if you plan on running
for any elected position at ASASU*

World news.
State news.
Classified ads.
Sports.
Coupons.
ASU news.
Crossword puzzles.
Weekly magazine.
Theater ads.
Police Report.
Comic strips.
Opinions.
Cryptoquote

STATE PRESS

FREE

WITH PURCHASE OF
NEW BIKE (Reg. Size)

- Water Bottle (Reg. Size) & Cage
- 1-Year Brake & Gear Adjust.
- Installation of All Parts & Accessories
- Bike Clinic
- Bike Route Map
- Lifetime Warranty

\$20⁰⁰ OFF 15-Speed Mountain Bike
List Price \$169.95
NOW \$149⁹⁹

\$30⁰⁰ OFF GOSHAWK 18-Speed
List Price \$199.95
NOW \$169⁹⁹

\$50⁰⁰ OFF SCOTT Tampico
Cromoly with Rapid Fire Plus
List Price \$400.00
NOW \$349⁹⁹



FUN IN THE SUN

Sale



We will meet or beat any advertised price on items of comparable quality.

Thousands of Bicycles
Discounted to sell NOW
SAVINGS UP TO 50%

CAMPUS CRUISERS **\$40⁰⁰ OFF**
List price \$160.00
NOW \$119⁹⁹

HARO Vo1 **\$30⁰⁰ OFF**
Cromoly with Shimano SIS
List Price \$229.95
NOW \$199⁹⁹

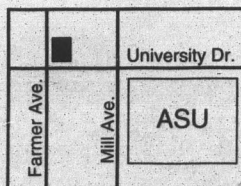
HARO V2C **\$45⁰⁰ OFF**
Cromoly with Rapid Fire
List Price \$295.00
NOW \$249⁹⁹

Ross Mt. Hood **\$150⁰⁰ OFF**
Aluminum Frame with STX
List Price \$550.00
NOW \$399⁹⁹

TEMPE BICYCLE

330 W. University • 966-6896

(Across the railroad track, west of Gentle Strength Co-Op)



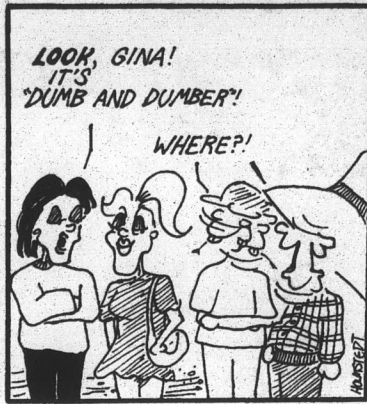
Hours: Mon.-Fri. 9:30 a.m.-7:30 p.m.
Sat. 9 a.m.-6 p.m.
Sun. 11 a.m.-5 p.m.



1991, 1992, 1993, 1994 New Times Best Bike Shop

Features

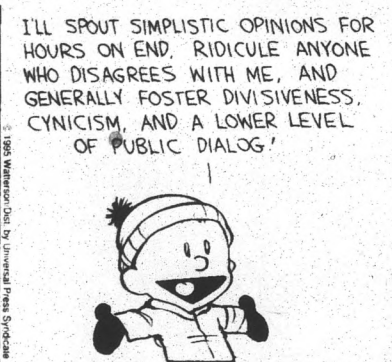
Generation HeXed



Stacy Holmstedt

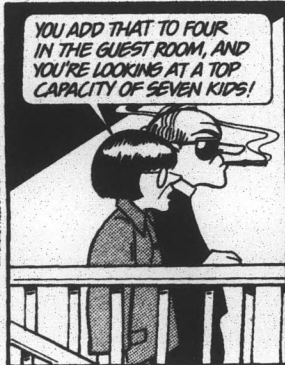
Calvin and Hobbes

by Bill Watterson



Doonesbury

BY GARRY TRUDEAU



THE FAR SIDE

By GARY LARSON

YOUR CHALLENGE. FILL THIS SPACE!

With the end of the Far Side, the State Press finds itself with some space to fill.

The State Press currently is accepting cartooning samples from ASU students. Cartoons must be single panel only.

Applications and samples may be left with Pat in the basement of Matthews Center.

For more information, call 965-2292.

well, it was a private matter.

STATE PRESS

Crosswords

on page 6,

for the cruciverbalist in you.

PEOPLE

NEW YORK (AP) — So, who wins that one again?

Shaquille O'Neal, the NBA's leading scorer, matches muscle with his alter ego when he takes on the ultimate challenge — playing every position — in two TV commercials to introduce Reebok's Shaq Attaq IV basketball shoes.

"Shaq is probably the only athlete today who could pull this off," said Reebok's Dave Ropes. "He has an innate gift of holding a viewer's interest."

In the first ad, which premieres Sunday, the 7-foot-1 center for the Orlando Magic plays tough "D" on himself. At one point, he replaces himself in the lineup and asks, "Who are you guarding?"

The game ends in the second ad when O'Neal, who is notoriously weak on free throws, buries his head in a towel

as a sportscaster is heard saying, "Looks like we're going shoot free throws to settle this one."

JOHANNESBURG, South Africa (AP) — The Boys Choir of Harlem will perform for the first time in South Africa this year.

The choir said Wednesday it will give eight concerts in August and September to raise money for the new Harmony Children's Foundation.

The foundation was created to teach poor youngsters about the arts and provide academic support.

The Boys Choir of Harlem, which has been performing for 25 years, last year canceled a trip to South Africa and Ghana because it couldn't raise the \$200,000 needed.

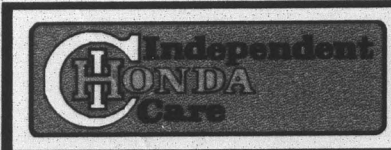
HACKENSACK, N.J. (AP) — Howard Stern's mouth got him into trouble, and now he's turned to an appeals court to get him out of it.

Stern's lawyers Tuesday asked the state Appellate Division to delay his Jan. 30 trial on a lawsuit claiming Stern aired the toll-free number of a rental agency during a skit about suicide doctor Jack Kevorkian.

Stern claims his actions were inadvertent, and besides, he was exercising his right to free speech.

Lori Gedon, who owns the rental agency in Norwood, sued Stern and WWOR-TV of Secaucus for \$60,000 for lost business, telephone bills and punitive damages.

The appeals court can decide to hear the case or wait until the trial is over. A decision is expected in two weeks.



HONDA ACURA
CAR SPECIALISTS
INDEPENDENT SERVICE

- Complete Parts Department
- Factory-Trained Technicians



- FREE Estimates
- Fair Prices
- One Day Service on Most Repairs



\$14.95

OIL CHANGE & OIL FILTER
(Includes up to 4 quarts)



Check Our Low Price on 15,000 & 30,000 Services

968-5989
1820 E. APACHE BLVD.
TEMPE

TWO LOCATIONS TO SERVE YOU
One-way trips to ASU

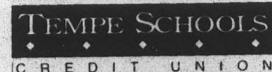
954-7923
3039 E. THOMAS RD.
PHOENIX

ATTENTION ASU STUDENTS

Join Tempe Schools Credit Union and Receive:

- No fee checking
 - 13.9% APR VISA
 - Complete Line of Financial Services
 - Full ATM access
 - Student Loans
- AND MUCH MORE!

*Special ASU Student Offer: Open your checking account before February 28, 1995, and receive 30 minutes FREE LONG-DISTANCE SERVICE!



2800 S. Mill Ave.
(Mill & Alameda) Tempe, AZ 85282
967-9475

We will be on campus from January 17 through 20 for the Commuter Expo!

No. 13 Sun Devil basketball to spar with Trojans



Mark Kramer/State Press

The No. 13 ASU men's basketball team plays host to USC tonight at 7 p.m. at the UAC, before facing No. 4 UCLA Saturday afternoon.

ASU hopes to avoid looking past USC to UCLA match-up

BY DAN MILLER
STATE PRESS

There will be no reprieve for the 13th-ranked ASU men's basketball team.

Fresh off their first conference road trip last week, the Sun Devils will play host to USC tonight at the University Activity Center. Tip-off is slated for 7 p.m.

ASU (12-3, 2-1), which is tied for third place in the Pac-10 with UofA, didn't reach 12 wins last season until Feb. 12.

"We knew if we stayed healthy we'd be in good shape," said senior guard Isaac Burton, who is averaging 15.5 points per game. "The Pac-10 is a tough conference. It's hard playing a game Thursday night and then coming back and playing on Saturdays."

The Trojans, who are under the direction of new coach Charlie Parker, are coming off a sweep of the Washington schools last week, which improved their record to 7-7 overall and 2-2 in the Pac-10. Three of the seven games USC has lost this season have been by a total of five points.

"Southern Cal is better than their record indicates," said ASU Coach Bill Frieder. "They had an impressive two victories last week. If you look at their losses, they've lost some very close games under an unusual situation where they had a coaching change."

Parker, a Trojans' assistant for six years under George Raveling, was suddenly thrust into the head coaching role two days before the season started, after the 8-year veteran stepped down due to health reasons. He said slowing down ASU's up-tempo style will be a top priority.

"They (ASU) have some talented athletes and they're playing with a lot of confidence," Parker said. "If we can eliminate some of the turnovers and get into somewhat of a half-court game, I think we can hang in there and make it a competitive game."

The Trojans well-balanced attack boasts five players averaging double figures in scoring. Six-foot-7 senior forward and 1994 All-Pac-10 first team selection, Lorenzo Orr, leads the team with 18.1 points per game, while sophomore forward Jaha Wilson (14 ppg) is first in rebounding with 10.5 boards per game.

TURN TO MEN, PAGE 16.

Basketball hits road for pair of Pac-10 battles

California foes 'beatable' if ASU can contain teams' inside games

BY LEE NEWMAN
STATE PRESS

The 7-5 ASU women's basketball team will have to tackle something tonight and Saturday that it is without — size.

The Sun Devils are in California to battle UCLA tonight and USC Saturday — two teams that rely on their superior inside game.

"UCLA and USC are both similar as to what they do well," ASU Coach Jacqueline Hullah said. "They're beatable if we can contain their inside game."

"If we play our game and try not to play theirs, we'll be alright," freshman Stephanie Freeman said.

UCLA (6-7 overall, 1-3 Pac-10) is coming off a pair of losses last weekend to Washington State and 14th-ranked Washington. The Bruins are in a rebuilding year after losing five players to graduation a season ago. They are led by junior Kisa Hughes, who averaged 22 points and 10 rebounds in last week's two setbacks.

The 20th-ranked USC Trojans (8-4, 1-3) also fell to the Washington schools last week. The Trojans, coached by former Olympic great Cheryl Miller, have only the sixth best overall record in the conference.

One place both the Bruins and Trojans have a sizable advantage in is height. UCLA's front line measures in at 6-foot-2, 6-4 and 6-5, while the Trojans' frontcourt consists of a 6-foot-5 center and 6-3 and 6-2 forwards. ASU's tallest player is sophomore

Kush selected for Hall of Fame

Former coach joins college football elite

BY JEREMY STEIN
STATE PRESS

Former ASU football coach Frank Kush will be inducted into the College Football Hall of Fame later this year, said the President and CEO of the National Football Foundation's local chapter.

Rudy Miller made the announcement at a press conference at the Intercollegiate Athletics Complex at ASU Wednesday afternoon.

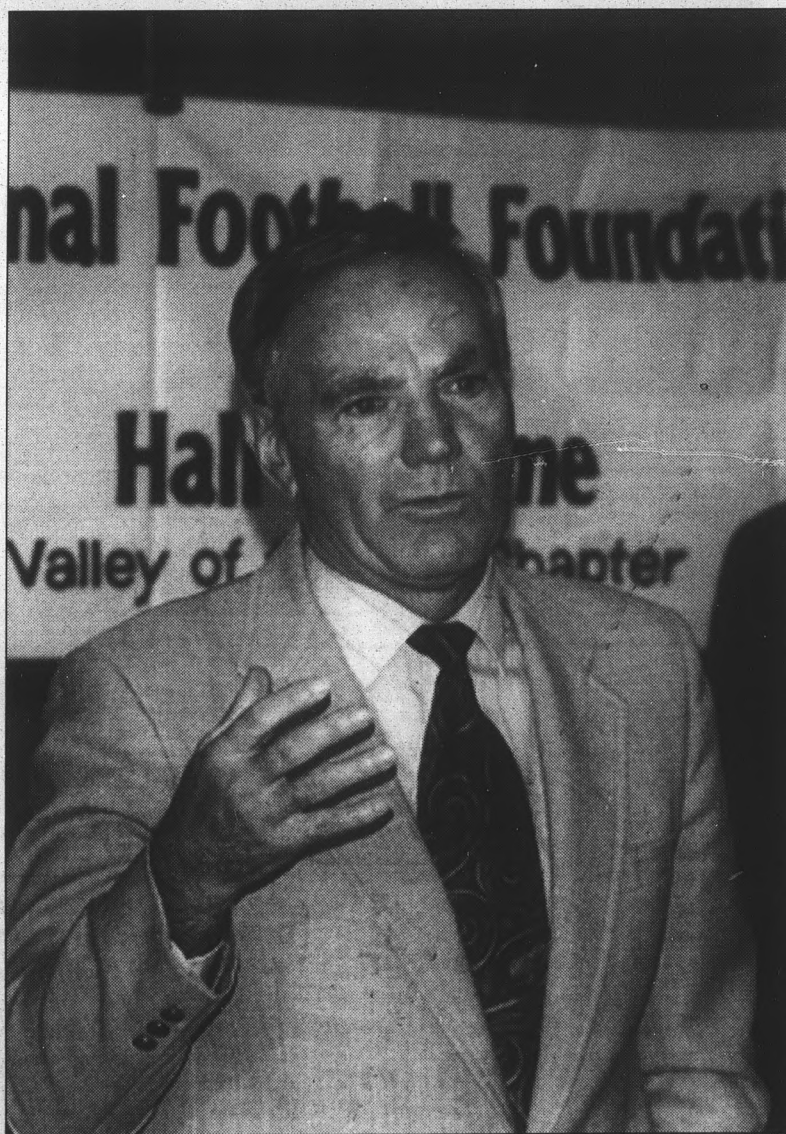
Kush, who led the Sun Devils from 1958 through 1979, will join 12 former All-Americans for induction at the National Football Foundation and College Hall of Fame 38th Annual Awards Dinner on Dec. 12, 1995 at the Waldorf Astoria Hotel in New York.

"It really is a distinct honor to be recognized as the national Coach of the Year, etc. and everything else, but this probably has to be the epitome of all," the 1975 Coach of the Year said of his Hall of Fame selection. "You never dream of it. You think about it and it actually happened."

During Kush's 22 seasons at ASU, the Sun Devils had 21 winning seasons, won nine conference championships and were 6-1 in bowl games. In 1975, ASU went undefeated for the second time under Kush and finished second in the final polls after beating Nebraska in the Fiesta Bowl 17-14. (The Sun Devils were also undefeated in 1970.)

According to former ASU assistant coach Larry Kentera, Kush was not only a good coach, but he was also a great person.

"I worked for Frank Kush from 1967 through 1979," Kentera said. "Besides his great won-loss record, he helped and guided many youngsters in their time of need. His interest was not only in winning, but also consideration for the student athletes in his program."



Mark Kramer/State Press

Former ASU football coach Frank Kush speaks at a press conference Wednesday about his election into the College Football Hall of Fame.

Women's tennis clobbers Pacific in 8-1 victory

BY DAN MILLER
STATE PRESS

The eighth-ranked ASU women's tennis team has a mix of seasoned veterans and unproven rookies this season, but the combination worked just fine Wednesday in the team's first dual match of the regular season.

The Sun Devils (1-0) triumphed in eight of nine matches to derail Pacific, 8-1, at Whiteman Tennis Center.

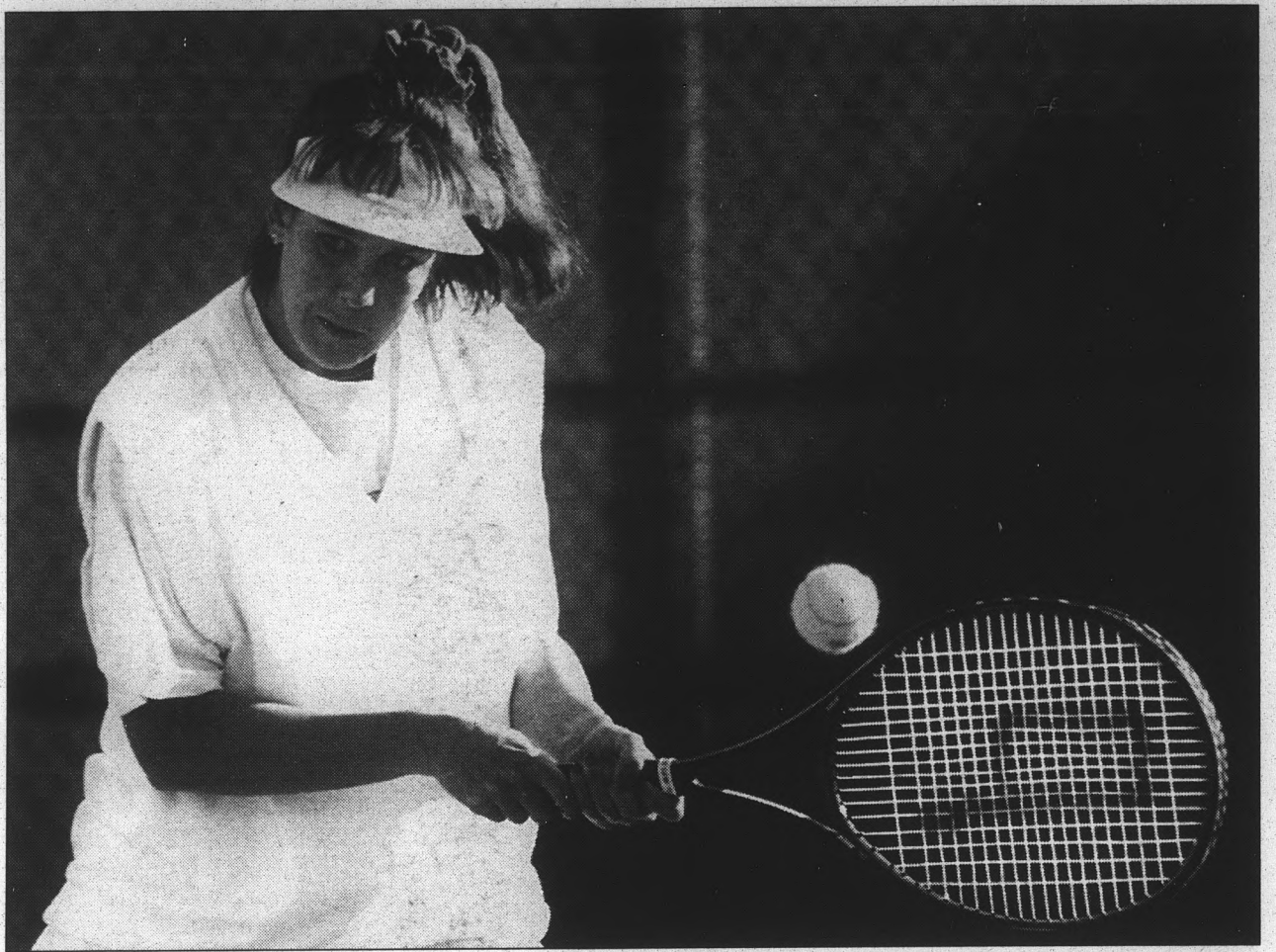
"We had two freshman and a transfer in the lineup today," ASU Coach Sheila McInerney said. "The first match is always a little nervous. It's good that they got a chance to get the butterflies out."

ASU, which cruised to straight-set wins in all six singles contests, was led by senior No. 1 player Kori Davidson, who posted a 6-1, 6-4 victory over Pacific's Tracie Lee.

"I thought Kori played real well," McInerney said. "Tracie Lee is a good player. She's (Davidson) lost to her (Lee) in the past and last year they had a three-setter."

Senior Joelle Schad took care of business at No. 2 singles with a 6-3, 6-1 pounding of Katharina Schlensker. Then highly-touted freshman recruit Reka Cseresnyes clobbered Bente Grina to the tune of 6-0, 6-2 in the third-flight match.

"She's a gem," McInerney said of the Budapest,



Samantha Feldman/State Press

Kara Schertzer knocked off Pacific's Tanya O'Neil 6-3, 6-2 to help lead the No. 8 Sun Devils to an 8-1 triumph.

TURN TO TENNIS, PAGE 17.



Jim Poulin/State Press

Senior point guard Marcell Capers will look to help the Sun Devils raise their Pac-10 record to 4-1 with victories over the Trojans and Bruins.

Men

CONTINUED FROM PAGE 15.

"Southern Cal presents problems to us," Frieder said. "Lorenzo Orr is playing extremely well in the Pac-10. Both Lorenzo Orr and Jaha Wilson are averaging close to double figure rebounds and we — with our size and the way we defend and set up our defense — have some problems keeping people off the boards. That's gonna be a real key — that we don't get crushed on the boards by those two people."

Mario Bennett, ASU's 6-foot-9 power player who is averaging 16.8 points per game and 7.3 rebounds, has drawn the assignment of covering Orr. Teammate Quincy Brewer will shadow Wilson.

"We're gonna stay behind Orr," Frieder said of his defensive scheme. "We're gonna try to eliminate his dunks (and) play positioning on that kid. If he still beats us, then we might come with some help."

USC point guard Burt Harris (12.4 ppg) will join Cameron Murray (10.4 ppg) and Stais Bozeman (9.8 ppg),

who averages 3.2 steals per game, in the starting lineup.

The Sun Devils, who have won seven of their past eight games, are trying not to look past the Trojans to their match-up with No. 4 UCLA on Saturday.

"It's important for us to really keep our minds on USC and take 'em one at a time and do everything we can to get Thursday night's ballgame," Frieder said. "Then, when that's over with, start preparing for Saturday."

Saturday's sold-out contest is scheduled for a 2 p.m. start at the UAC.

"That will be a great game also, because they're a legitimate contender for the No. 1 team in the country," Frieder said. "They're just a victory away from being No. 1."

Junior forward Ron Riley (14.5 ppg) and senior pointman Marcell Capers (5.5 ppg, 6.1 assists) round out the Sun Devils starting five. ASU's Courtney Hargrays and Joe Zalatel will likely see spot action in the absence of Jimmy Kolysko (academics) and Ryan Cuff (quit team).

STATE PRESS Sports

Rain or shine, cheer or whine, we're there!

The Princeton Review is pleased to announce the only GRE course specifically designed for the



Computer Adaptive GRE

- Small Classes
- Personal Attention
- Free extra help
- Computer adaptive practice tests



Class starts Jan. 21st.
Call today for more info!
967-1480

The Princeton Review is not affiliated with ETS or Princeton University.

Your car will run better, longer, safer and *much more economically* through regular preventive maintenance. At TRI-CITY MOBIL we stress preventive maintenance. That's why we're #1 in service for ASU students, faculty, and staff. Our prices will fit your budget too!

Mobil

Tri-City Mobil Just a few minutes from ASU!
Scottsdale Rd. & McKellips (Southeast Corner)
947-9655

We accept:

SHOW YOUR ASU I.D.— EXTRA 10% OFF LABOR!

- Domestic & Foreign Vehicles
- Complete Automotive Repairs
- Trained Technicians
- Full & Self Service Gas

LUBE • OIL • FILTER

\$11⁹⁵
Plus \$1.50 EPA Charge

Most Cars & Light Trucks
Valid with Coupon thru 3/15/95
TRI-CITY MOBIL

- INCLUDES:
- Up to 5 quarts of Mobile Super HP 10W30 Motor Oil
 - New Oil Filter
 - Chassis Lubrication
 - 10 Point Safety Inspection

ENGINE TUNE-UP

\$29⁹⁵ 4 cyl. **\$49⁹⁵** 6 cyl. **\$39⁹⁵** 4 cyl.

- INCLUDES:
- New Spark Plugs
 - Check Starting and Charging Systems
 - Inspect Filters, Belts, Wires
 - Additional Parts Extra
- Most Cars & Light Trucks
Valid with Coupon thru 3/15/95
TRI-CITY MOBIL

BRAKE SERVICE

\$59⁹⁵ Per Axle
FRONT

\$49⁹⁵ Per Axle
REAR

- INCLUDES:
- Replace Brake Pads or Shoes
 - Turn Rotors or Drums
 - Repack Bearings
 - Semi-Metallic Pads Extra

Valid with Coupon thru 3/15/95
TRI-CITY MOBIL

CV BOOT CHANGEOVER

\$84⁹⁵ Per Boot

- INCLUDES:
- CV Boot
 - Labor
 - Check Struts & Springs
 - Check Shocks & Bearings
 - Check Ball Joints & Bushings
 - Additional Parts Extra
- Most Cars & Light Trucks
Valid with Coupon thru 3/15/95
TRI-CITY MOBIL



Samantha Feldman/State Press

Freshman Stephanie Freeman and the ASU women's basketball team travel to California to take on UCLA today and USC Saturday.

Women

CONTINUED FROM PAGE 15.

Melissa Boyle, who is 6-2. "We need to take away their inside play by doubling down on the post or doing a great job of blocking out," Hullah said. "We need to make them force shots."

Most teams in the Pac-10 know that ASU's strength is balanced scoring. The Sun Devils have six players averaging in double figures in points.

"We're a good shooting team," Freeman said. "The hardest part about defending our team is that so many people step up at different times. The other team never knows who to focus on."

"The thing with us is, if someone is off,

there's another person to pick up the slack," senior Tiffany Krahenbuhl said.

Although all three teams own identical records in the Pac-10, ASU is a mere 10-53 all-time versus the two schools.

"There's some games we play well and there's some games we could have played a lot better," said Krahenbuhl. "We can win both games depending on which team comes out to play."

"If we do what we want to do defensively, we can win," Hullah said.

ASU will come home a week from today to take on the Oregon State Beavers at 7 p.m. in the University Activity Center.

Tennis

CONTINUED FROM PAGE 16.

Hungary native. "She's a good student and a good player. We were very lucky to get her."

Senior Kara Schertzer barely broke a sweat en route to a 6-3, 6-2 shellacking of Tanya O'Neil in the four-spot, while sophomore University of Mobile (Ala.) transfer Anna Moll made mincemeat of Sylvia Ta, 6-1, 6-2 in the fifth singles showdown. Not to be outdone, freshman Stephanie Lansdorp pulverized Dana Light, 6-1, 6-2 at sixth-slot action.

In doubles action, Davidson and

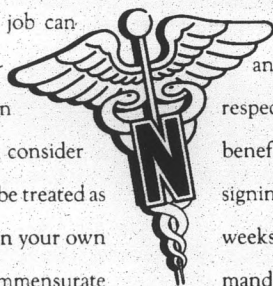
Cseresnyes tag-teamed to rout Lee and Molly White, 6-3, 6-3 at No. 1. Then Moll and Schertzer won their first set, 7-5, but dropped the next two, 6-2 and 6-3, to the Grina and Schlensker tandem at second doubles for Pacific's only point.

At No. 3 doubles, Schad and sophomore Aimee Haas made things interesting for a while before disposing of Ta and O'Neil, 6-4, 5-7, 6-1.

ASU resumes competition on Friday at the Pac-10 Indoor Championships in Seattle.

IN THE ARMY, NURSES AREN'T JUST IN DEMAND. THEY'RE IN COMMAND.

Any nurse who just wants a job can find one. But if you're a nursing student who wants to be in command of your own career, consider the Army Nurse Corps. You'll be treated as a competent professional, given your own patients and responsibilities commensurate with your level of experience. As an Army officer, you'll command the respect you deserve. And with the added benefits only the Army can offer—a \$5000 signing bonus, housing allowances and 4 weeks paid vacation—you'll be well in command of your life. Call 1-800-USA ARMY.



ARMY NURSE CORPS. BE ALL YOU CAN BE.

The Sun Devil Spark Yearbook

An investment in your lifetime

Order yours today for \$36.93, Matthews Center basement, Rm 50, 965-6881

GREAT HAIR'S NO HASSLE WITH THE RIGHT STYLING TOOLS.

You choose the right tools to build something great. We use the right tools to give your hair more style. Like VaVoom styling products from MATRIX ESSENTIALS. There's Shampooing and Conditioning to give hair a fuller, healthier look. And quick-drying, non-sticky Spritzing Spray to hold your style. Come in soon for a hair care and styling consultation.



Matrix
HAIR-SKIN-COSMETICS

Haircuts men & women

\$8.99 (new clients)

NAILS - full set acrylic \$19.99 (new clients)

WIZARDS HAIR STUDIO
903 S. Rural Rd.
967-2360
WE DO "MAGIC" WITH HAIR

Classifieds

Abstinence is the virtue of those too ill or too old to enjoy life.
-Anon

ANNOUNCEMENTS

DON'T CALL your parents, call me first! Save on every long distance call. Don't pay the extra charges of the Big 3; No minimum use. Call Joe Yauch, 756-0006.

THE MU Gallery Committee is accepting applications and slides for our spring exhibition season. We are interested in both 2-d and 3-d art, that is mounted and would be available between the dates of April 10 through May 6, as our final exhibit of the year. We are looking specifically for student art, whether you are a BFA or BFA student. Please submit your slides and resume to the third floor of the Memorial Union, in the MUAB section of the third floor, attn.: Gallery Committee by March 10. For more info, call Jen Cruz 965-6822

CLASSIFIEDS WORK!

ANNOUNCEMENTS

FREE FINANCIAL aid! Over \$6 billion in private sector grants & scholarships is now available. All students are eligible regardless of grades, income or parent's income. Let us help. Call Student Financial Services: 1-800-263-6495 ext. F59183.

APARTMENTS

ASU AREA- 1 & 2 bedroom apartments from \$325 & up per month not incl. util. 966-8838.

WE BUY & SELL USED LEVI'S!
THE BLUE JEAN BUYER
Call for Details 947-8245
• 1810 Scottsdale Rd (between Curry & McKellips) • 5 minutes from ASU!

APARTMENTS

BEAUTIFUL LARGE 2bd apt., walk to ASU, pool, laundry rm, 1 blk so. of University on 8th St. Cape Cod Apts. 968-5238.

TOWNHOMES/ CONDOS FOR RENT

2BD 2BA condo near ASU, pool, a/c, washer/dryer, clean, \$655. 2 bd, 1ba, w/r pd, \$565. 966-0987.

2BD 2BA, 1100 sf condo, 400 yds from ASU, \$525/mo, first, last, deposit. 509-786-4088.

HAYDEN SQUARE 1bd, \$700/mo. 2bd \$900/mo. Re/Max Excaliber Realty. Call Gary Greenacre. 483-3333.

RENTAL SHARING

ATTRACTIVE RESORT condo, mstr bd, adj ba \$300, loft \$240 + util ea. 351-8683.

BROADWAY/DORSEY - \$300/mo, util incl xcpt phone. Nice house & yard. 967-9478.

CLOSE TO ASU. Tile floors, beautiful home. \$250/month. 894-0288, Time.

FEMALE ROOMMATE smoker or non. Miller & Roosevelt. \$360 + 1/2 util. Call Lisa, 947-5008.

FIND IT in the Classifieds

RENTAL SHARING

FUN FEMALE roomy, Tempe t/h, Southern/Price, 2bd, pool/jac. Very cute. \$375/mo. Teresa 820-2592.

M/F NEEDED to share house. Own ba. \$250/mo+1/6 util. 13th/Hardy. Matt 966-8964. Avail 2/1.

M/F RMTE needed. \$295/mo incl. util. Private garage, jacuzzi, full kitchen, w/d, 1 mile from campus. Contact Scott or Brian 967-0672 or 236-8736.

RMTE WANTED to share 3bd TH in Tempe. \$250/mo + 1/3 util. Call Lissa or Iv msg. 969-2655

ROOMMATE FOR 1g 2 bd house. Hardy/Univ. \$350/mo incl util. Chris 946-7970. Avail 2/1.

ROOMMATE WANTED for 3bd condo. Pool, jacuzzi, 2 mi/ASU. After 5pm. 496-8930.

TOWNHOMES/ CONDOS FOR SALE

2 MASTER BD, 2ba condo. \$5K down, Spring Tree Condominium. Broadway/McClintock. Xint loan. WUSA 948-5554. R Layne.

PAPAGO PARK I - Some furn. avail. 2bd. \$65,000. New carpet/paint. Poolside. RE/MAX Anasazi Realty. 838-7772. Peggie Simmons

TOWNHOMES/ CONDOS FOR SALE

ASU/MCC
2035 S. Elm #104. Gorgeous 2BD, 2BA, 1C, 1,000sf. Split flr/pln. Comm pl/spa. Assume 7.5% loan w/qual. 23.5K CTM. List \$63,500. Call Todd, 390-WUSA (9872) West USA Realty.

PAPAGO PARK - Walk to school 2 bd, 2 ba. Avail 2/1-12/15. Nw cpt. \$950 lse. 602-530-8864.

MISCELLANEOUS FOR SALE

ATTN: PHOTOGRAPHY buffs, like new Nikon FA w/Nikkor 35-105 lens, comes w/flash & motor/dr. Ask, \$600. Emil 225-0720.

TWIN BED for sale, great condition \$60. Call 968-5758.

BOOKS

FREE TO good home: Science, Math & Engineering textbooks. Great for supplementing class texts for building professional library. Call 827-0363 for details.

FURNITURE

CAL KING bed, w/box springs, mattress & wood headboard \$175, couch \$75 neg. 786-0704.

BUY IT in the State Press!

FURNITURE

FUTONS

The Futon Fave, 2604 W.1st. St. #34, Tempe. 804-1554. We deliver.

SOFA SET, \$265. Queen bed \$80, Full \$70, Chest of Drawers \$40, Dinette \$125. 234-5729.

COMPUTERS

386 DX IBM compatible computer w/Windows; Star printer. \$650 complete obo. 834-5396.

386 LAPTOP computer, 4 megabytes ram, 200 megabytes hard drive, Nec color monitor, Toshiba printer. \$1200 for all. Call 981-3030.

ACADEMIC SOFTWARE
MS Office Pro\$155
MS Office\$135
Many copies in stock.
Call for other quotes!
FIMS TECHNOLOGY
655-1030 • 618-7190

TICKETS

FOR SALE: 2 Eagles tickets, \$50 each, for January 23. Call 813-0441.

SUNS VS. Orlando Sunday. Great seats starting at \$75. Steve, 678-0316.

State Press Classifieds sells!

AUTOMOBILES

88 TOYOTA Camry, exc cond, at, ac. Must sell \$3500/obo. Dennis 784-9767.

NEEDED BADLY, transportation vehicle. Some work OK. Have cash. Please call 265-0551.

MOTORCYCLES

93 HONDA Elite, red color, 250 miles only. Must sell \$1500 obo. Exc. cond. Call 266-5706.

TRAVEL

DISCOUNT TRAVEL: Cheap in your name. I specialize in quick departures. Most places worldwide. I also buy transferable coupons/awards. 968-7283.

ROCK CLIMBING

Guiding Svcs. 209-4913.

SPRING BREAK

SOUTH PADRE
Round trip air fare • lodging • On location party act. programs

Discounts Available to groups of 4 plus. Land-Only is also available!
L.T.I.
LEISURE TOURS INTERNATIONAL
FREE INFO 1-800-838-8390

HELP WANTED-GENERAL

\$6 PER HOUR
Outgoing, energetic appointment setters for Universal Portraits. Call Rachel or James, 496-0255.

\$7/HR + CASH!
Set free appointments for health services. Nearby Fiesta Mall. Day or evening. 649-9580.

ACTORS! ART LOVERS!
Dramatic? Articulate? Sell ticket pkgs via phone for the Phoenix Symphony! Excellent benefits! P/T 5:30pm-9:30pm. Sun-Thurs. 222-3875.

ADVERTISING INTERNSHIPS:
Sell advertising for the State Press and earn while you learn! You'll need a car, a big box of personal motivation and desire for success, and you must be taking 13 credit hours or less. If this sounds good to you, call Jackie El-dridge today for an informal interview. 965-6555.

ASU STUDENTS wanted. Short surveys & sales. Easy. \$6 per hour base + bonus. Start now. 1 block east of ASU. 784-2270 or apply 1000 E. Apache, Suite 212.

ASU STUDENTS wanted. Short surveys & sales. Easy. \$6 per hour base + bonus. Start now. 1 block east of ASU. 784-2270 or apply 1000 E. Apache, Suite 212.

ASU TELEFUND is hiring students for the spring semester. We contact alumni to inform them about current advancements at the University, update information & ask for financial support. This position offers flexible evening & weekend hours. Furthermore, we require you to work only 10 hours a week and you get to choose the shifts you want to work! Call 965-6754.

ASU Alumni looking for juniors, seniors, or continuing students for p/t security work. Starting wage based on experience. Must have phone and reliable transportation. Hours available 24-hr basis including weekends. One location 2 miles from campus. Call 961-1161 ext. 394, ask for Greg Claus, 7am-5pm, M-F or leave message at 420-1193 anytime.

Learn communication, organization & customer service skills without paying for a single credit hour...we'll pay you!
We offer:
1) Impeccably clean work environment.
2) Enthusiastic work atmosphere.
3) Flexible work schedule.
4) Competitive pay (\$5/hr for day help starting) with room for advancement.
Please call **PARADISE BAKERY** 423-9233
Scottsdale Fashion Square, and ask how to become part of our team.

Care Providers
Part-time flex hrs convenient to class schedule working 1:1 w/individual w/special needs in private family home close to you. Choose convenient assignment/set up convenient schedule. No exp req for some assignments/will train free. For new pay rates/dates to apply call **Job Hotline** 494-1234 M-F 9-4 ONLY. CREATIVE NETWORKS, INC.

HELP WANTED-GENERAL

CANT STAND litter bugs? Help us keep our campus tidy. We're hiring students to pick-up after people who let inserts within the State Press fall to the ground. You must be available sometime between 8am-2pm. Work is sporadic. Excellent compensation. Apply at State Press Info Desk, Matthews Center, Basement.

CASHIER & ISLAND attendant p/t afternoons/weekends. Chevron service station Scottsdale. Mr. Martin or Karen, 941-8899.

CAT LOVER/ Housekeeper Wanted. Student needed to clean house, run errands, light cooking, misc. odd jobs for working couple w/cats. Car & refs. req. \$8/hr + mileage. Mon-Fri, 3-6pm. Rural & Southern area, Tempe. Stefanie, (w) 413-3044.

CLUB TRIBECA. Security positions avail. Apply within 1420 N. Scottsdale Rd. 423-8499.

COLLEGE STUDENTS & Teachers! Children's Summer Camp in Oracle, AZ is looking for Program Leaders, Counselors, Lifeguards, Camp Nurse, and Cooks to work June 1-Aug 12. Good salary, job experience, plus room/board. Write YMCA Camp, PO Box 1111, Tucson, AZ 85702 or call 1-602-884-0987.

DANCE & Gymnastics instructors wanted. Exp & reliability a must. 15 min/ASU. 940-4041.

DELIV/VALET DRIVERS. \$8-\$10/hr. Flex evening hrs. N Scottsdale. Takeout Express. 820-6401 (leave message).

ENTERTEL, INC. Telephone Sales Reps. Fun work environment. Flexible AM & PM schedules. \$\$\$ Hourly base + bonuses \$\$\$ Benefits for FT employees. Advancement opportunities. Call Joe at 941-4240, 8010 E. McDowell/Ste. 218, Hayden & McDowell.

HOUSEWORK 6-8 pm hrs weekly, including misc. care of birds & dogs. 840-6265.

HELP WANTED-GENERAL

DISC JOCKEYS
Needed. AZ's #1 mobile DJ service is looking for DJ's (will train). Trans. & wknd avail. a must. \$10-\$40/hr. 966-9900 lv msg.

EXCELLENT OPPORTUNITIES avail. for students with good writing skills and those who enjoy using computers. If you're a person who works well without supervision, this is an excellent opportunity to earn up to \$8/hr. Call 460-2845 for more info.

EXECUTIVE ANS Svc needs reliable, cheerful operators with "You Bet" attitude. F/T days 6am-3pm, full benefits. P/T M/T/W/F 4-7pm & Sun 8am-1pm. \$6 starting. Must type 45wpm, know 10-key, comp exp, have reliable trans. Call 264-4000 for int.

GREAT PART time jobs available. Looking for hard working, self-motivated people to work 4pm-8pm. 3, 4, or 5 weekdays/your choice. Different positions are open - all are salary + bonus. Call Jud M-F between 11-4 at 894-9442.

INTERESTED in sales, marketing, or management career? Need flexible hours? Want to earn above average income? Tired of phone sales jobs? TMI conducts promotions for local businesses & is hiring exceptional people now. Please call 921-7755 for personal interview.

KYRENE SCHOOL District hiring Club Leader, 15-19 hrs, college course wrk pref. 1 yr exp. in after school or pre-K program. Some program planning will be involved. Variety of hrs. \$6.34/hr. Enrichment Leader- instruct students after school in areas of Dance, Spanish, Science, Multi-cultural. 1:50 - 5:30pm, \$10/hr. Until filled. Apply in person at Kyrene School District, 8700 S. Kyrene Rd., Tempe. (Mon-Fri. 7:30-5:00pm). Applications require resume and 3 reference letters.

HELP WANTED-GENERAL

LAB TECH: R & D at nutritional supplements company. Prepare experiments to improve our products. Call Staci 921-0324.

LOCAL RADIO station hiring for temporary, p/t research positions. Late afternoons, evenings & weekends. No selling involved. Call 731-6505.

MALE QUADRILEGIC seeks p/t attendant. Flexible hours. Rural/Univ. David, 731-9113.

MARKETING POSITION available in the Health Care field, f/tpt on weekends. \$2.25 + commission. Communication skills a must. Call 396-4400 from 1pm to 5 pm.

MARKETING REP. set appts in our office eves. \$7/hr + bonus. No sales. Call Tom, 956-9555.

MARKETING REPRESENTATIVES to work promotional events for AT&T. Must be outgoing and have a flex. schedule. Reliable transportation a must. \$7/hr + bonuses. Contact JP or Bob at 1-800-592-2121. Ext. 361

MKTNG MAJORS
Get real world practice and make \$\$\$ Sell the product that the Nat'l Giants are using for their promotions. Call Joe, 756-0006.

NEED LOGO for new product! \$250 cash for best entry. Buddy 706-6007.

PERM P/T positions, minutes from ASU campus & ideal afternoon hrs for students. Perm p/t telephone reps needed to provide info & instructions to credit card customers w/ office located at Pointe S. Mtn. No collections or sales!! Base rate of \$5.50/hr w/most of our reps earning to \$8/hr. Shift hrs 2-6pm, M-F w/some a.m. shifts avail. Call Personnel at 431-9309.

PERSONAL ASSISTANT for male wheelchair user in Tempe. P/t, \$7/hr, no exp nec. Heavy lifting required. 804-0300.

HELP WANTED-GENERAL

POSITIONS AVAIL for ushers & concessions. Apply in person. Red River Opry, 730 N. Mill.

RECEPTIONIST FOR hair salon. Camelback/24th St. Dependable. Must have some exp. Flex hrs. 381-6565.

SANDWICH BAR attendant f/t; hotel telephone operator f/t; sports & fitness attendant f/t. Apply in person M-F 10am-4pm. No phone calls please. EOE. 7700 E. McCormick Pkwy, Scottsdale.

SITE DIRECTOR needed for YMCA After School Program in West Mesa. Must be 21 yrs or older. \$6.22-\$7/hr DOE. Apply at the Mesa Family YMCA, 207 N. Mesa Dr., 969-8166.

SPORTS MINDED
Now hiring 6-8 individuals for immediate emp. \$8 guaranteed to start at 15-30 flexible hrs/wk. Call Mike for int, 921-8282.

STA TRAVEL
Leading Student/Youth travel co. seeks well traveled energetic individual with good communication skills for travel agent position. Join our growing team. Start \$14,000+, seasonal & f/t pos. avail. Fax resume & cover to Robin 922-0793.

STUDENT COURIER: Hours 1-5pm T-Th. Previous driving exp. AZ driver's license required. Call ASU Distance Learning Technology. 965-6738.

STUDENTS WANTED with good verbal and writing skills for weekly publication staff. P/tft positions available. Pay ranges from \$5.25-\$10.00/hour. Flexible hours around your course schedule available. Call 460-2845 for more info.

TEMPE HOTEL near campus is hiring full & part-time desk clerks, night-auditors, maintenance, groundskeepers, housekeepers & hskp. supervisor. Apply at Travelodge Suites, 3101 N. 32nd Street.

HELP WANTED-GENERAL

SUBSTITUTE TEACHERS & substitute school nurses needed for Mesa Public Schools. Teacher/nurse and/or substitute certificate required. Participation in a training session to the automated substitute system (SEMS) is necessary for registration and access to the system. If interested, contact Beverly, Substitute Office, Personnel Dept, 546 N. Stapley Dr., Mesa. 898-7723.

SURVEYS NOT sales. Mkt research company located near I-10/Baseline has p/t shift M-Th 5-9pm & Sat 9-3. Office exp desired. \$5/hr. Emily, 443-8883.

THE BUTTERFLY Buyer needs retail help immed. \$4.50/hr + comm. Cash pd weekly. 1711 E. Apache. 858-9436. We buy & sell Levis.

WANTED: COFFEE Bartenders Scottsdale/Phx locations. Fun atmosphere! PT/FT shifts. \$5/hr + tips! Call Mike, 994-5110.

WANTED: PACKER/SHIPPER needed for p/t position near ASU. Flexible hours. Call 858-9640.

WARNING!!
Do not take another computer/data entry p/tft job until you consider ours. You must be proficient in creating and maintaining databases. Accounting software helpful. Near Fiesta Mall. Salary commensurate to experience. Call 897-0791 today!

WE NEED a few top counselors for the 1995 summer season beginning May 28th. For an application please stop by the Student Employment Office. We will interview on campus Wed, Feb 15. Friendly Pines Camp. 255-0550.

WE NEED people for our accounts payable & accounts receivable department. Flex schedules. More exp, more pay. Auto. 5226 S. 31st Pl. Phoenix 85040. Attention Bev. 253-5200.

HELP WANTED-SALES

HINCKLEY & SCHMITT Bottled Water is now hiring door to door sales people. Full time pay, p/t hrs. Great commissions. Flex hrs. For more info call 1-800-729-9283 ask for Dave Thomas.

MARKETING REP. set appts in our office eves. \$7/hr + bonus. No sales. Call Tom, 956-9555.

PRELAW UNDERGRADS, p/t emp. Your own sched., commission based + benefits. 867-6018.

SPORTING GOODS retail sales. P/T. Apply in person 9-5. Warehouse Sports, 3415 S. McClintock, Tempe.

SWIMWEAR SALES
Beach House now hiring all positions. Great sales help. Hot ladies swimwear, Fiesta Mall. Call 890-1904 or 451-5866.

USA TODAY, p/t phone sales. \$6/hr guar. + comm. Mon-Thurs 4:30-8:30. 110/Elliott area. Positive Attitude and good speaking voice needed. Call 345-5814 TODAY!

HELP WANTED-CLERICAL

ADMIN ASST p/t, good phone skills, organized, dep & typing skills. Express Co., 437-1048.

CASHIER, GENERAL office & clerical. Computer exp, 10-key, p/t. Chris, 893-6884.

CLERK TYPIST, pt, drug store in Phx, near ASU, flexible hrs. Call for appt. in a.m., 956-8540.

RECEPTIONIST, SMALL law office, T/Th, full-time, available summer. 990-0140.

RECEPTIONIST: GROWING high tech co. near Univ/Hohokam needs f/t/p/t help; good phone voice & professional appearance req'd; \$8/hr. 829-8400.

ASU DOWNTOWN CENTER
has an opening for one early-bird, energetic student to work 6 a.m.-9 a.m. or later, M-F. Days and end time are somewhat flexible, 6 a.m. start time is concrete. Need physically fit student, able to lift 50 pounds, with good customer service skills to assist with meeting room setups. Located in Phoenix across from the Arizona Center. Hotel/Restaurant experience a plus but not required. \$5.50 hr.
Ask for Cheryl • 965-3046

Great New Location
The Valley's BEST plasma donation center just got even better! ABI has moved to a great new facility at 1334 E. Broadway!
We now have MORE MACHINES to serve you better!
This is your perfect opportunity to perform a vitally needed service and earn \$150-\$185 per month at the same time! It couldn't be easier!
New donors earn \$25 CASH their first donation!
Open 7 days a week for your convenience!
Associated Bioscience, Inc.
1334 E. Broadway, Building A, Tempe
Broadway & Dorsey (Across from Native New Yorker)
968-6139

ATTENTION
English, Biology, Sociology, Psychology, Anthropology, History, Communications Majors & Grad Students:
Campus oriented, high paying, non-supervised positions now available. Set your own hours. No sales work involved. Study while you work & earn.
Call our friendly staff for more info.
460-2845

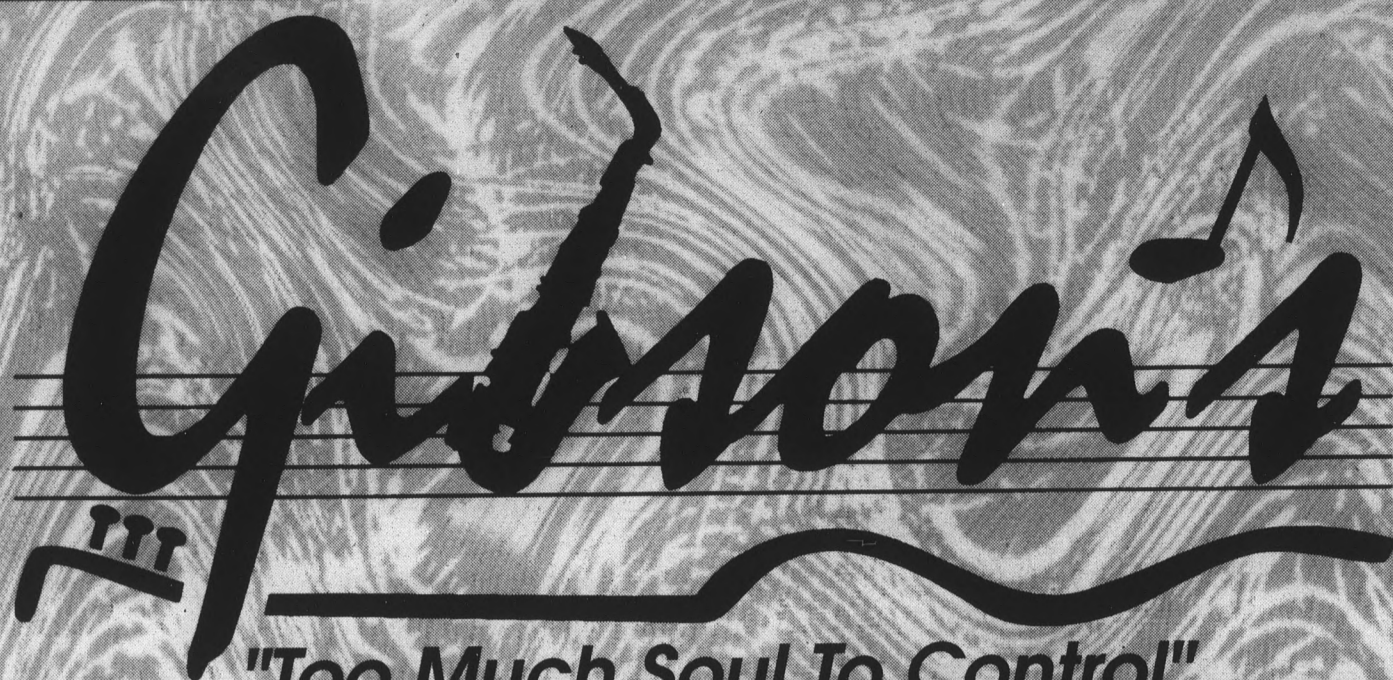
\$ RING IN THE NEW YEAR \$
WITH THE 166th FASTEST GROWING COMPANY IN AMERICA!!

Pro Mark One is currently seeking energetic people to immediately fill full time and part time telemarketing positions in our Tempe office. We offer the following benefits to our employees:

- \$6 per hour guaranteed base plus commission up to an additional \$8 per hour.
- Paid holidays and vacations.
- Medical and dental insurance.
- Professional, yet fun work environment.
- High quality paid training.
- And a dedicated staff to help with your success.
- Current shifts available 7:00-3:30, 10:30-7:00 and part time 3:30-9:00.

ProMark Telemarketing for the Image Conscious
ProMark One Marketing Services, Inc.
1232 E. Broadway, # 2000 • 784-1599

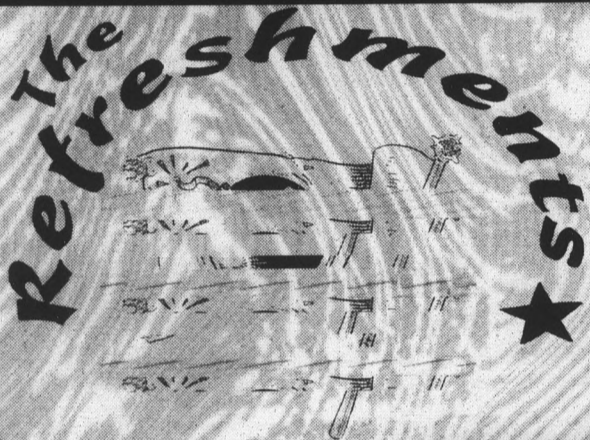
\$7.00 PER HOUR - FULL BENEFITS
Zales Regional Credit Center is seeking motivated individuals for:
P/T COLLECTORS
HOURS: M-F 5-9 p.m. & 2 Saturdays per month 9-1p.m.
ALL POSITIONS offer excellent paid training and a competitive salary and benefits package through:
ZALE CORPORATION
the world's largest jewelry retailer. If you would like to become part of our success, we invite you to find out more about these opportunities.
Apply in Person
9a.m. - 4 p.m., M-F
2035 W. 4th Street
North of University/West of 52nd Street
Tempe, AZ • 829-5804
Equal Opportunity Employer • Drug-Free Environment



Gibson's
"Too Much Soul To Control"

TONIGHT

FRIDAY



**PSYCHEDELIC
ZOMBIES**
with **M U 330**

SATURDAY

DEAD HOT WORKSHOP
with Munkafust and Serene Dominic

SUNDAY

BOOGIE KNIGHTS

UPCOMING SHOWS

JAN. 28-DICK DALE
(Featured on "Pulp Fiction" Soundtrack)

JAN. 30-SOULHAT
Sponsored by KUPD • 98¢ Tickets

FEB. 2-Ecoteur

FEB. 3-TRULIO
DISGRACIOUS*

*FEB. 3-TRULIO DISGRACIOUS • Featuring members from Red Hot Chili Peppers, Fishbone, Suicidal Tendencies, Weapon of Choice, Plum, Spearhead, Brand New Heavies, Parliament, Funkadelic & The Solsonics
BE THERE!!

FEB. 4-SARAH McLACHLAN

FEB. 15-Glove and Special Sauce

FEB. 20-The Cranes with IDAHO

FEB. 21-The Lords of Acid
with Dink

FEB. 22-MERL SAUNDERS

FEB. 24 & 25-ZUBA

401 S. Mill Ave. • In Hayden Square • 967-1234