

# ARIZONA STATE UNIVERSITY STATE PRESS

©Copyright, State Press, 1993  
Tempe, Arizona

Vol. 77 No. 81

An Independent Morning Daily

Wednesday, August 25, 1993

## Fraternity house trashed

### University evicts members; Residents vacate house leaving \$300,000 in damage

By MAXWELL HIGGINS  
STATE PRESS

ASU police are investigating a criminal damage complaint filed Tuesday for severe vandalism inflicted upon the Theta Delta Chi fraternity house over the weekend.

Police estimate the damage at \$300,000, including 40 broken windows, destroyed furniture and toilets, holes in walls and ceilings, missing doors, in addition to feces and urine on the structure's floors.

A *State Press* photographer also witnessed the removal of drug paraphernalia and debris comprised of pornographic magazines scattered throughout the house.

The damage allegedly occurred as members of the fraternity prepared to vacate the house in accordance with an order from Residential Life.

ASU Comptroller Gerald Snyder said the residents were ordered to vacate the house because of a leaking roof and the presence of asbestos in the ceilings. Notice was given to the fraternity on Aug. 3 and members were to vacate the premises by Aug. 23, he said.

Police have not filed charges and have no individual suspects in the case as of yet, said Bill Bess, director of ASU's Department of Public Safety.

However, Dean of Student Development and Residence Life Jim Rund speculated that the vandalism may have been committed by the fraternity members in protest of the order to vacate the premises.

"The damage done to the house suggests to me that the undergraduate (fraternity members) feel they were unjustly treated by the University," Rund said.

Despite the fraternity's five-month rent delinquency with the University, Snyder said the decision to force the residents to vacate the house was based solely on its deteriorated condition.

Snyder said ASU's standard fraternity lease agreements require fraternities to adequately maintain their houses.

Although its members have left the house, Theta Delta Chi is still financially responsible for roof repair costs and monthly rent that accrues until the Arizona Board of Regents approves the ter-



Bob Castle/State Press

The Theta Delta Chi fraternity house has been fenced in and taped off to prevent entry while police and University investigations continue. See related photos, p.11.

mination of the fraternity's lease. Snyder said he expects the regents to approve the lease revocation at their September meeting.

Rund said the University has been aware of the roof problem for at least three years. The recent order to vacate came after Residential Life decided the house was uninhabitable.

"This is an extremely unfortunate circumstance for the undergraduates," Rund said. "Asking them to leave the house had only to do with their health and safety."

Theta Delta Chi Chapter President Mark Bailey could not be reached for comment.

But at least one fraternity member is defending Theta Delta

Chi.

Mike Rossi, a member of the Interfraternity Council and Pi Kappa Alpha, said the University is partly at fault in the situation. The Pi Kappa Alpha house sits adjacent to the Theta Delta Chi house.

"It seems like the University cracks down on the Greek system in more ways than one," Rossi said. "The University knew about (the roof) all along — and not just their house, but quite a few. It just seems weird that they would do it now."

## Mars Observer lost in space

By JAKE BATSELL  
STATE PRESS

A group of ASU scientists watched with sullen faces Tuesday as NASA was unable to restore communication with the Mars Observer — a spacecraft carrying a \$28 million ASU experiment.

On board the spacecraft is the Thermal Emission Spectrometer (TES), an instrument designed by an ASU research team to explore the geological makeup of Mars.

The Observer — which NASA lost communication with late Saturday — was scheduled to begin orbiting the Red Planet at 1:42 p.m. Tuesday. ASU scientists had expected the first signals from the spacecraft at 2:44 p.m.

Tense silence gripped the room as the TES team gazed hopefully at television screens transmitting a live NASA broadcast. But at 2:45 p.m., no signal had been received from the Observer.

Geology professor Philip Christensen, principal investigator for the TES project, illustrated the melancholy sentiment among the group.

"I like to believe in happy endings, and I've seen some miracles pulled off by (NASA) before, but I've never seen so many shocked people in this room," he said.

NASA scientists were still uncertain Tuesday as to whether the spacecraft operated according to pre-programmed commands and entered mapping orbit around Mars.

If NASA is not able to restore communication with the spacecraft — or if a catastrophic accident has occurred — it may never be known what happened, engineers said. Potentially, the Observer could have sailed right past the Red Planet into the outer depths of the solar system.

That scenario spelled dismay for many ASU students, faculty and administrators in attendance for an open house at the Moer



Brian Fitzgerald/State Press

Members of the ASU's Thermal Emission Spectrometer (TES) team react in disappointment Tuesday afternoon as a NASA-televized broadcast reveals that no signals have been received from the Mars Observer spacecraft.

Building.

"Obviously, we had high hopes for this mission succeeding, because we have so much invested in it and there's so much to derive from it," said ASU President Lattie Coor.

The spacecraft was launched on Sept. 25 and has since continued on an 11-month trek to Mars. In all, ASU has spent 10 years and \$7 million on the TES project.

Members of the TES project said their careers could be affected if the mission is doomed to failure.

"It's pretty scary for me," said senior Doug Howard, an under-

TURN TO MARS, PAGE 6.

## Failure won't halt other experiments

By GARIN GROFF  
STATE PRESS

NASA's loss of contact with a spacecraft carrying a \$28-million ASU research experiment could lead to a change in the focus of geological space exploration studies at ASU, a geology professor said Tuesday.

Philip Christensen, who is also principal investigator for ASU's Thermal Emission Spectrometer (TES) project, said the geology department may move its focus to planetary research should the Mars Observer project prove to be a failure.

"What we'll probably do is change some of the emphasis," Christensen said. "Up until now, the full focus has really been on Mars."

Problems with the Mars Observer could leave ASU scientists without vital information they had depended on receiving from the TES, a device designed by an ASU geological research team.

The instrument would have provided the team with data to determine what parts of the Red Planet would be explored by the Mars '94 project.

Christensen said plans are being formulated to launch another project in 1998 focusing on the Earth.

"If all else fails and NASA decides not to (build another Mars Observer), there are other things that we're doing," Christensen added.

TURN TO FOCUS, PAGE 6.

## INSIDE STATE PRESS

### Weather Outlook

Mostly sunny in morning and early afternoon; chance for afternoon monsoon storm. Continued high humidity. High 107, low 82.



➤ ASU President Lattie Coor discussed budget cuts and faculty issues at Tuesday's Faculty Breakfast. **Page 2.**

➤ Arizona Scholastic Achievement Test scores are increasing and, as a result, ASU may eventually stiffen admission requirements. **Page 13.**

### World/ Nation

Mediators went to Nicaragua to try to cut a deal with gunmen holding 9 journalists hostage.

**Page 3**



### Sports

The Sun Devil quarterback corps, led by sophomore Grady Benton, hopes to pick up where it left off last season.

**Page 19**



### Where To Find It

Advertiser Index ..... 21  
Classifieds ..... 21  
Comics ..... 18  
Crossword ..... 13  
Horoscopes ..... 23  
Opinion ..... 4  
Police Report ..... 10  
Sports ..... 19  
Today's Activities ..... 2  
World/Nation ..... 3

# TODAY

The Today section is a daily calendar of events printed as a service to the ASU community. Requests are printed according to the space available each day.

Campus clubs and organizations may submit written entries to the State Press in the basement of Mathews Center, Room 15. Requests will not be taken over the phone. Entries must contain the full name of the group, a description of the event, date, time and the full address of the location. All requests are subject to editing for content, space and clarity.

Deadline for entries is noon the day before publication.

- **Clinical Psychology Center** — Graduate students provide individual, couples and family counseling for students, staff and the community throughout the semester on the second floor of the Psychology Building. The program is supervised by state licensed psychologists and fees are based on a sliding scale. For information, call 965-7296.
- **Singapore Student's Association** — All Singaporeans and interested parties are encouraged to seek verification of status, 9 a.m. to 2 p.m., Cady Mall.
- **All Saints Catholic Newman Center** — Young adult core team is sponsoring a "Personality Test" using the proven Myers-Briggs test, 7:30 p.m., Newman Center Lounge, northwest corner of College Avenue and University Drive. \$1.50 fee.
- **Eckankar Society** — Introductory discussion: "Sharing the HU," noon, MU Graham Room 216.
- **Native American Business Organization** — Welcome meeting, 5 p.m., New American Indian Institute Building, Conference Room.
- **Lesbian/Gay Academic Union** — General meeting, 7:30 p.m., MU Pinal Room.



**10 years ago today ...** University Police reported that they had already written out about 1,000 parking tickets totaling nearly \$18,000 since the beginning of the week.

Tickets, with the cost varying from \$18 to \$50, were issued for violations ranging from parking in red driveways, no parking zones and handicapped spaces.

... Summer monsoon rains caused leaks in 25 structures on campus, according to the then-director of the Physical Plant.

The most severe damage occurred in Krause Hall and Hayden Library, and roofs were being repaired in order of severity.

## Coor addresses enrollment increase, budget during presidential breakfast

By JAMES FRUSETTA  
STATE PRESS

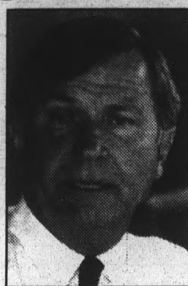
ASU President Lattie Coor emphasized University fiscal issues before assembled faculty members during Tuesday's Fall Presidential Breakfast.

"We must make absolutely sure that we do not start (next year) with a major budget cut," Coor said. "The position of higher education is not to be cut."

Coor added that continued cuts would accompany snowballing enrollment projections, estimating an enrollment boom of 55,000 additional students statewide over the next 17 years — 37,000 located in the Phoenix area.

"We must not let happen what happened in the 1970s when this campus took the brunt of the new students," Coor said.

ASU West, ASU East and a possible rural ASU branch



COOR

campus are estimated to eventually facilitate a combined 30,000 students. Coor suggested expanding telecommunication classes and community college satellites to service the remainder.

Coor also complimented faculty members for their assistance in bringing his undergraduate initiatives to the forefront of campus priorities.

"I marvel and thank the faculty for the work seen to date," Coor said. "There is real evidence of teaching innovation."

Several departmental interdisciplinary programs are planned, and faculty have been enthusiastic in cooperating with the initiatives.

"The dominant reaction has been, 'That's a worthy goal, let's look at it,'" Coor said. "This is an important reaction to note."

Although he did not outline specifics, Coor stressed that in addition to revamping undergraduate education, graduate programs at ASU also need refining.

He tagged an increase in the annual graduating number of doctoral candidates from 225 to 325 as a goal for the University.

## Faculty Senate leader stresses importance of salary issues

By JAMES FRUSETTA  
STATE PRESS

Faculty Senate President Bill Arnold assured an audience comprised of faculty, staff and administrators on Tuesday that salary issues are a critical goal for the University this year.

"We're going to take care of compensation," Arnold vowed at the semi-annual presidential breakfast.

After ongoing lengthy consultation with faculty members, Arnold said three questions were always asked.

• "What has (ASU President) Lattie Coor done to get me my raise?"

• "What has the Academic Senate done to get me my raise?"

• "What has the Legislature done to get me my raise?"

Although a salary increase was requested from lawmakers during last year's lobbying, actual appropriations failed to accommodate any pay hikes other than the remainder of a \$1,000 salary increase approved for all state employees.

Coor responded by acknowledging the need for faculty and staff pay hikes in the upcoming budget battles.

"ASU faculty are on average 15 percent below the midpoint for our peers nationwide," Coor said. "We will ask for one thing in our budget. We will ask this year for salary."

The University has not been able to generate a general salary raise since 1990. ASU Provost Milton Glick attributes low faculty salaries as a key factor in the decision by many employees to seek employment elsewhere.

"I believe it is essential, if we are to maintain quality, that there be an increase," Glick said. "It's so central that it has to be done."

Arnold also stressed that there are important issues facing the faculty beyond pay raises.

"We need to do something about the advisement process," Arnold said. "It needs to be clear, to be concise, and it needs to be correct," to quote (student leader) Rossie Turman."

Arnold also emphasized the need for greater interaction between faculty members and students, administrators and legislators.

"We have a need in all these communities for information," Arnold said. "We have not done a good job getting the word out."

### Correction:

An article about a problem with the registrar's computer system in Tuesday's State Press incorrectly stated that there are 20 In-Touch phone lines available to students. There are 120 In-Touch phone lines. The State Press regrets the error.

SYSTEMS • ADD ONS • INSTALLATIONS • ENGINEERING & SCHOOL SUPPLIES • ACCESSORIES • PARTS • TEST EQUIPMENT

## ELECTRONIC MATERIALS & COMPUTERS

Your Computer **SuperMarket**

"there is a difference!"

**NOW OPEN**

**FREE SOUND CARD!**  
w/ New Computer  
Limited quantities

WE ARE LOCATED ON RURAL RD.  
JUST SOUTH OF UNIVERSITY

N	University
Rural	Exxon
	X E.M.&C.

### STUDENT DISCOUNT

386 Rental Monitors NTE 486 XT Cables  
BUY USED Electronics Service  
Clone Windows software Trade  
SELL Mac NEW Upgrades AT  
DRIVES Printers IBM

**SCOTTSDALE**  
10637 N. 71st Way  
596-8822  
IN THE SUNDOWN PLAZA  
N.W. CORNER OF SCOTTSDALE & SHEA

**TEMPE**  
825 S. RURAL RD.  
929-9440  
S. E. CORNER OF  
UNIVERSITY & RURAL

**PHOENIX**  
3102 W. Thomas Rd.  
272-3200  
ON THE NORTHWEST CORNER  
OF 31ST AVE & THOMAS

ENGINEERING & SCHOOL SUPPLIES • ACCESSORIES • PARTS • TEST EQUIPMENT • SYSTEMS • ADD ONS • PARTS

• SYSTEMS • INSTALLATIONS • ENGINEERING & SCHOOL SUPPLIES •

# SUNNY'S

## PIZZA & PASTA

### Come taste zee hottest new drink!

# ZIMA

ONLY **94¢** Plus tax

What iz it?  
It's not beer.  
It's not wine.  
It's juzt right.

Come taste ZIMA tonight at Sunny's. Only 94¢ 8pm-cloze.

1301 E. UNIVERSITY  
**968-6666**

VISA MasterCard Discover

## Around Arizona

### APS admits mistreatment of whistleblowers at plant

PHOENIX (AP) — Arizona Public Service Co. has conceded to regulators that whistleblowers have been treated improperly at the Palo Verde Nuclear Generating Station and is promising to correct the problem.

In a letter to the Nuclear Regulatory Commission released Monday, APS acknowledges some of the problems that have led to \$130,000 in fines and three rulings against the company by the National Labor Relations board.

The utility said there had been "inappropriate response of some supervisors and managers" to safety complaints made by workers at the plant 50 miles west of Phoenix.

APS manages and co-owns the plant, which supplies power to utilities in Arizona, California, New Mexico and Texas.

The letter is a response to an NRC directive to spell out measures being taken to improve handling of whistleblowers.

### Guidelines set for preschools

PHOENIX (AP) — New standards, including a curriculum promoting active learning, have been set for Arizona's preschool children.

Four-year-olds enrolled in state-funded early childhood programs in 30 Arizona school districts will fall under the new standards released Monday by the Arizona Department of Education and the Children's Action Alliance.

The guidelines, mandated by the Legislature last year, are included in a 50-page report to be distributed statewide.

The executive director of Children's Action Alliance said early childhood programs are important tools in education reform.

"It's not enough to bring 20 children together in a classroom with some blocks in one corner and a sink in another and a teacher," Carol Kamin said.

The state cannot require preschools to follow the guidelines, but they will serve as an evaluation tool for preschool programs, officials said.

About \$2.5 million is spent on the about 1,000 at-risk 4-year-olds in state programs.

### Sears to stop selling contracts for service to Mexican residents

PHOENIX (AP) — Sears, Roebuck and Co. will stop selling in-home service contracts to people who live in Mexico and will give refunds to non-Americans the contracts, Arizona's attorney general announced Tuesday.

"In effect, the service maintenance contracts the Mexicans were buying were worthless because Sears could not cross the border to service the appliances," Grant Woods said.

Woods said Mexican citizens who shopped at U.S. retail stores didn't realize their in-home service contracts weren't valid if their appliances were across the border.

Sears stores in Tucson, Sierra Vista and Yuma sold the agreements, Woods said. He said the company will give refunds to Mexicans who bought the maintenance agreements between January 1, 1992, and June 30, 1993.

Authorities don't know how many Mexican customers bought the service agreements because only American addresses can be entered on Sears computers, said Noreen Matts, an assistant attorney general.

### Storms slam Southeast Arizona

Hail the size of softballs was reported in Green Valley Tuesday as thunderstorms again battered portions of Arizona.

The storms struck primarily in the southeast, though others were reported in Yavapai County and along the central mountains between Payson and Safford.

Storms also hit the southwestern deserts near Salome in La Paz County.

At Green Valley, 2.04 inches of rain fell within 36 minutes, as well as the large hail stones.

# Mediators arrive to solve Nicaraguan hostage crisis



Members of an armed group calling itself the National Sovereignty and Dignity Command hold a news conference Tuesday for members of the media they are holding hostage in the National Opposition Union house in Managua.

QUILALI, Nicaragua (AP) — A Roman Catholic cardinal arrived Tuesday to seek freedom for 16 hostages held by rightist rebels. Leftists holding hostages in Managua freed two politicians and said 12 journalists were also free to leave.

"As of this moment, whoever wants to go can go, whoever doesn't can stay," Donald Mendoza, leader of the Managua gunmen, told reporters inside the building where the captives were being held.

The gunmen had held 18 people, including Vice President Virgilio Godoy and nine journalists, until mid-afternoon. Then they freed two officials of small conservative parties, and three

more journalists entered the building, who Mendoza said were also captives.

Mendoza's comments that the 12 were free to go were broadcast by Radio Ya, which has a reporter inside. There were no signs that any of the journalists tried to leave.

Mendoza also said he was demanding a helicopter to fly his group to the mountains after an eventual hostage release.

In the north, Cardinal Miguel Obando y Bravo met with the kidnappers' leader, Jose Angel "Jackal" Talavera, a rearmed Contra, according to a Radio Ya reporter at the scene.

"We have the good will of everyone, this problem can be solved," Obando y Bravo said

upon arriving earlier in the day in Quilali, a remote village 175 miles north of Managua. The hostages are held outside Quilali.

The stand-off involves rival groups of rearmed fighters from the war between the former leftist Sandinista government and the U.S.-backed Contras. The war ended in 1990, but fighters from both sides are angered by a government failure to deliver promised aid and land.

Rearmed rebels from both sides have repeatedly clashed with the army and with one another since 1990, sometimes closing roads and killing civilians. Last month, a group of former Sandinistas seized the town of Esteli, forcing a

TURN TO HOSTAGE, PAGE 12.

## 900 schools could lose student loan eligibility

WASHINGTON (AP) — The government identified more than 900 colleges and trade schools Tuesday that stand to lose their participation in the federal student loan program because their students too frequently default.

Among states, Alaska had the worst repayment rate. The Department of Education said more than 40 percent of the student loans in that state on which payments came due in 1991 were in default. Vermont, with a 5.1 percent rate, had the best record, followed by North Dakota's 6.9 percent rate.

The national average was 17.5 percent.

Student Loan Finance Corp. of Aberdeen, S.D., had the worst bad loan record of any bank, with 88 percent of the loans it originated in default. More than 68 percent of the loans originated by the Greenwood Trust Co. of New Castle, Del., were in default.

A 1989 law designed to drive down the number of defaults has allowed the Education Department to drop schools with default rates of at least 30 percent for three consecutive years. The current figures represent defaults in 1989, 1990 and 1991.

Those with default rates greater than 40 percent can be cut off from all federal aid programs, including the Pell Grant program.

Under federal law, schools included on the list will automatically be barred from participating in the loan program unless they appeal either to the Department of Education or to the courts. If they do appeal, no action is taken until the appeal is exhausted, but very few schools ultimately win. Last year, 280 schools appealed.

The biggest trouble spots in the

Federal Family Education Loan Program, formerly called the Guaranteed Student Loan program, were by far one- or two-year, profit-making career schools.

The Career College Association, a Washington-based trade group representing proprietary schools, questioned the validity of the figures saying the Department of Education unfairly counts loans that lenders do try hard enough to collect.

"While we continue to believe that default rates should not be the sole indicator of whether a school is educating and training its students well, if default rates are going to be used, at least they should be accurate," a statement released by the association said.

David Longanecker, an assistant education secretary, said while the schools "are disproportionately represented," he did not believe "that the answer is to eliminate all schools that provide some certain kind of training."

However, he said, the government should develop strict performance standards to make sure that students attending those schools are properly trained in fields where they can get jobs.

In 1991, taxpayers lost an estimated \$3.6 billion on bad student loans. Federal education officials estimate that the amount dropped to \$2.9 billion in 1992 and will be about \$2.5 billion this year.

The department announced last month that overall default rates were decreasing because of the tougher collection methods.

The number of defaults declined from 22.4 percent in the 1990 fiscal

TURN TO LOANS, PAGE 12.

## King charged with DUI

LOS ANGELES (AP) — Rodney King was charged with misdemeanor drunken driving Tuesday and ordered to spend at least 60 days at a residential alcohol recovery program.

The charges were the first filed as the result of King's four run-ins with the law since his notorious 1991 beating by police after a freeway chase.

City Attorney James Hahn charged King with one count each of driving under the influence of alcohol and driving with a blood alcohol level above the state's limit of .08 percent.

King had a blood alcohol level of .19 after his arrest early Saturday, police Cmdr. David Gascon said. He was booked after a witness said he was driving the Chevrolet Blazer that crashed into a wall near a downtown nightclub. King and two other people in the vehicle weren't hurt.

King faces a maximum penalty of six months in jail and a \$1,000 fine on each count. Arraignment was set for Sept. 15.

TURN TO RODNEY, PAGE 12.

## Defector cities growing unrest in North Korea

SEOUL, South Korea (AP) — Hundreds of people died in a North Korean nuclear accident while trying to hide a reactor from international inspectors, a defector said Tuesday as part of claims indicating widespread hardship and growing dissent in the Communist nation.

The defector, Im Young-sun, 30, also said underground nuclear tests were being conducted under a thick layer of lead at the Communist state's nuclear complex at Yongbyon, 60 miles north of the capital, Pyongyang.

And in a sign of the growing unrest in the hard-line state, 10 generals have been executed for a coup attempt, food shortages have worsened and a new dissident movement has been crushed, Im told reporters.

None of Im's reports could be confirmed. North Korea is among the world's most closed and isolated nations and informa-

TURN TO KOREA, PAGE 12.

## STATE PRESS Editorial

### A day in the life

For the past few years, members of the Board of Regents, local business leaders and ASU administrators, including President Lattie Coor, have been participating in a program called "A Day in the Life of an ASU Student," designed to help the people holding the universities' check-books better understand the needs and hardships of the average student.

In a nutshell, the program works like this: a prominent community leader "shadows" a student for an entire day, walking from class to class with him or her, listening to the same lectures and even eating lunch with the student.

This program serves as great public relations for the community leaders, but there are many facets of student life the program fails to show Dr. Coor and friends.

It is hard to believe any of those taking part in the program can understand what it is like to stand in registration lines for three hours while workers fumble with the "fluke" in the phone registration system. Did anyone see them standing in line so they could better understand the needs and hardships of the average student?

Nor is it easy to imagine Lattie Coor "shadowing" a student who must hold down one or two jobs while keeping his or her GPA high enough to get the financial aid needed just to pay for rising tuition costs.

Imagine a community leader in a dead run across campus to clear a check he or she wrote at the bookstore (that is, if he or she made it to the front of the bookstore line without giving up or passing out first).

These administrators and regents couldn't possibly understand that students who cannot afford the privilege of parking in Lot 59 probably cannot afford to pay to have the boot removed from their cars, if they even have a car.

If the Regents really cared about the needs and hardships of Arizona's college students, they would appropriate enough funds so the universities can at least put people in the buildings that are popping up all over Arizona's college campuses.

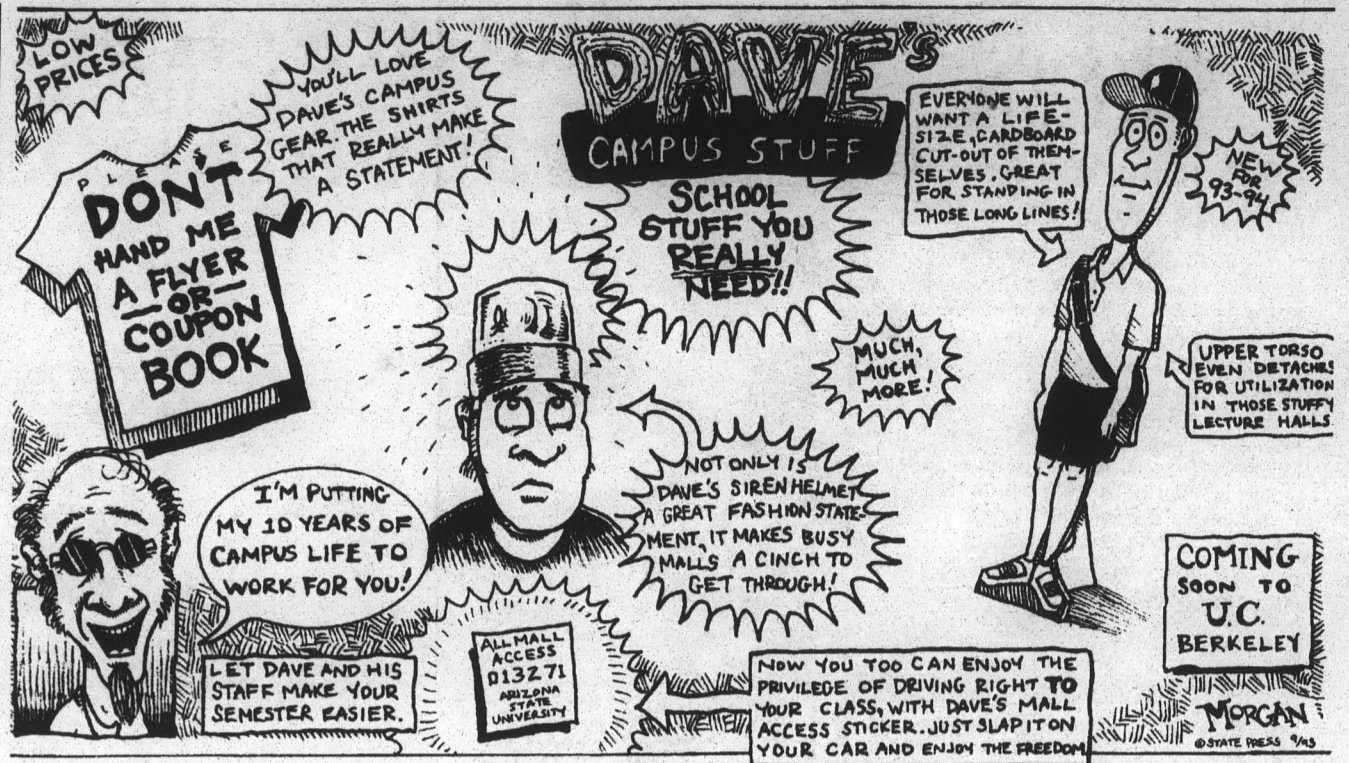
The idea that Lattie Coor or any of the other prominent Valley figures can understand what a student in the '90s must go through to get through school by sitting through a lecture or eating an overpriced Marriott lunch is naive.

The lectures are relatively easy if the teaching assistant's microphone is working, and if the student can see the chalkboard from the back of the auditorium.

It's getting through the endless maroon and gold tape that tries a person's soul.

Unsigned editorials reflect the views of the editorial board, decided by a majority voted among its members. They do not reflect the opinion of the *State Press* staff as a whole. Board members include:

S. Talbott Smith Editor      Jason Owsley Managing Editor      Ken Brown Opinion Editor



### Student club doesn't warrant coverage

Associated Students of ASU Tuesday held its first Senate meeting where a new slate of officials were sworn in ...

By this point in the column, the majority of *State Press* readers have moved on to another article or are disinterested to the point of dropping the paper altogether.

To a newspaper editor, the thought of turning readers away is disheartening. Moreover, it is a sign that the newspaper is not accomplishing its mission: providing readers with news that is important to them.

However, let's say a couple hundred are still reading. They undoubtedly are people involved with student government. They hold offices, volunteer or have friends in the organization.

At best, a tiny minority are unaffiliated and some of them may make up part of the seven-some-odd percent of ASU's population that actually cared enough about ASASU to vote in last semester's elections.

On Monday, the *State Press* ran an unsigned opinion column which basically said coverage of ASASU would cease on its news pages. The reasoning? If ASASU insists on regularly ejecting reporters and photographers from its meetings claiming it is not subject to the state's Open Meetings Law because it is not a public body, then the *State Press* will consider it a campus club.

There is a strong legal argument against ASASU officials' assertion that the group is not a public body. The Arizona Supreme Court determined years ago that senators in university student governments are public officials.

But it is really pointless to go to court — even if the paper did prove its point and forced ASASU to adhere to the Open Meetings Law, students would still flip past ASASU stories. They don't care what goes on with the group. They demonstrate this at each election.

Should the Senate amend the organization's bylaws or constitution, whichever allies, to force all committees to adhere to the Open Meetings Law, the *State Press* will reconsider giving coverage to newsworthy ASASU events.

Given what goes on within the organization, this leaves little worth printing.

Those few who do read articles about ASASU don't warrant a full-time reporter's attention. Even having a part-time reporter on the beat is too much.

I know — my first full-time position with this newspaper gave me the honor of covering daily fiascoes at ASASU. The same goes for the current opinion editor, Ken Brown.

ASASU has a consistent history of making messes, which the *State Press* has willingly, nay, eagerly fed upon.



S. TALBOTT SMITH  
EDITOR

One year, several officials, including then-President Matt Ortega, were arrested for stealing construction barricades from downtown Tempe streets.

A couple of years ago, an executive vice president allegedly took U2 concert tickets from ASASU's offices and scalped them for his own benefit. That same official had some entertaining interludes with stadium security at ASU football games.

A recent elections coordinator charged that a presidential candidate offered bribes in return for a fixed election.

There was last year's controversy over the alleged improper firing of the group's homecoming director. The activities vice president at the time was impeached only five weeks into the semester following the firing. The subsequent impeachment trial turned out to be a laughable six-hour shouting match. Although the Senate found the vice president guilty on all of the charges, they failed to boot her from office.

And these stories' only readers of any great number were the very people who were making the news — students within the organization.

Last semester, the editorial board decided to reduce coverage of the organization.

The board's decision was based on the fact that, because of a marked decrease in advertising revenues, the paper was strapped to find space for stories. Many stories were being held back simply because there was no room for them.

In addition, some important stories were being missed because of a limited reporting staff.

The editorial board decided, based on the previous year's pathetic election turnout, to cut ASASU out of the news mix.

In defense of ASASU, proponents have argued that since the organization has such a large budget, the *State Press* should devote a sizable amount of the paper's space to its coverage.

ASASU costs each student roughly \$6 per semester. If the paper were to use that logic in its selection of news stories, then for every ASASU story we would have to run four stories on the Student Recreation Complex, which costs students \$25 per semester. This is not how news judgments are made.

The work ASASU does will continue — regardless of whether the *State Press* covers it. The Senate will still meet and do some good things and, inevitably, will do some incredibly inane things. The same pointless bickering that has always occurred will likely continue as well.

And those who are truly interested in the organization can attend the meetings and committees — that is unless they are thrown out in defiance of the Open Meetings Law.

The only thing that won't continue with any consistency is coverage of the organization by the *State Press*.

## STATE PRESS STAFF

S. TALBOTT SMITH, Editor  
JASON OWSLEY, Managing Editor

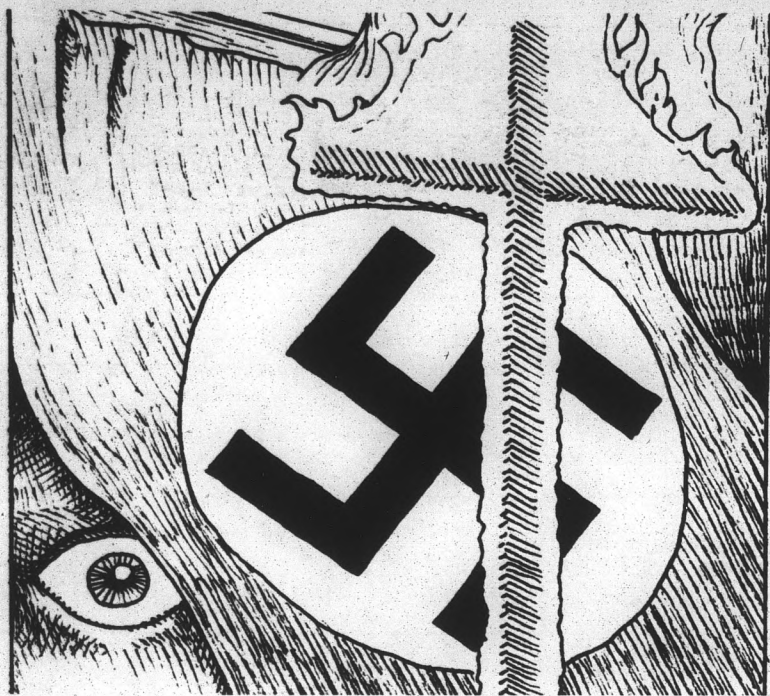
JAKE BATSELL.....City Editor  
TAMMY MESA-SIERRA.....Asst. City Editor  
ANGELA BENOCHÉ.....News Editor  
KEN BROWN.....Opinion Editor  
BOB CASTLE.....Photo Editor  
BRIAN FITZGERALD.....Asst. Photo Editor  
SHAUN RACHAU.....Sports Editor  
MICHAEL BRANOM.....Asst. Sports Editor  
KRIS FRIDRICH.....Copy Chief  
TROY FUSS.....Magazine Editor  
JANE COOK.....Asst. Magazine Editor  
REPORTERS: James Frusetta, Garin Groff, Charlene Goebel, Melanie Selcho, Greg Sexton, John Guzzon, Mark

Macias, Joy Beason, Colby Osborne.  
SPORTS REPORTERS: Scott Davis, Paul Matthews, Julie Reuvers.  
COPY EDITORS: Dave Proffitt, Jeremy Stien, Nick Bacon.  
CARTOONIST: Bryce Morgan.  
PHOTOGRAPHERS: Brian Fitzgerald, Richard Komurek, Craig Magnavighton, Suzanne Kyer.  
COLUMNISTS: Alan Holcomb, Michael Kantor, Jessica Klinger, David Strow, Wade Swanson.  
PRODUCTION: Jodi Goldblatt, Amie Madden, Britton Mauchline, John Tracey, Anna Ulinich, Evonne Vera, David Weber.

SALES REPRESENTATIVES: Kelly Adcock, Mike Alm, Sonia Benson, Joe Borgwardt, Dan Ellstrom, Jennifer Hughes, Kate Martin, Lance Newman, David Thorn.  
The *State Press* is published Monday through Friday during the academic year, except holidays and exam periods, at Matthews Center, Room 15, Arizona State University, Tempe, Ariz. 85287-1502. We do not answer questions of a general nature.  
The *State Press* is the only newspaper exclusively published for and circulated on the ASU campus. The news and views published in this newspaper are not necessarily those of the ASU administration, faculty, staff or student body.

## STATE PRESS PHONE NUMBERS

Information.....965-7572  
Newsroom.....965-2292  
Magazine.....965-1695  
Advertising.....965-6555  
Classifieds.....965-6731



## Hate crime laws can't read minds, prosecute thought

In June the United States Supreme Court unanimously ruled that criminals who choose their victims based on race, religion or other such criteria may be sentenced more harshly than if those personal criteria were not a basis for the attack. Ostensibly the ruling seems to warrant praise, for it appears to be a step in the direction of heavily discouraging hate crimes.



**ALAN HOLCOM**  
Columnist

The case which prompted this ruling comes from Wisconsin. In 1989, a group of nine black men assaulted a 14 year old white male and beat him into unconsciousness. Immediately before the attack, one of the men, Todd Mitchell, yelled "There goes a white boy! Go get him!" Mitchell was convicted and his sentence was doubled from two years to four because the crime was considered to be racially motivated.

The Wisconsin statute that was used to extend Mitchell's sentence applies to defendants who choose their victims based on "race, religion, color, disability, sexual orientation, national origin, or ancestry." The language of this statute, which was upheld by the Supreme Court, is very myopic and will surely cause problems.

For example, suppose that a woman is severely beaten by a known misogynist who yells "There goes a woman! Go get her!" In this situation the perpetrator of the crime will not be sentenced to any additional time in jail, even though his actions were clearly motivated by hatred of a certain group — women.

What about crimes against obese persons, vegetarians, those who ride mountain bikes, or any other group that comes to mind? Where is the additional protection for any other group not specifically mentioned in the statute? It does not exist; the statute itself becomes an obstruction to justice in that it is discriminatory because it affords additional protection only for a very lim-

ited number of groups.

Someone may argue that this is not a problem because each state now may write its own statute and use language that includes more groups. But a state legislature cannot possibly foresee every possible group that may become victim to hate crime.

Furthermore, hate crime statutes are unnecessary because judges are allowed to take a defendant's motives into consideration when it is time for sentencing. This suggests that judges are incapable of performing their duties responsibly, and that they need a statute to tell them what groups warrant special protection against hate crimes.

In addition, it is difficult to determine if a crime was, in fact, motivated by hate. A person may beat another person yet he may not be motivated by hate. Likewise, he may be very much motivated by hate, yet he may not yell any racial, ethnic, or other type of slur. This ruling allows courts to play a dangerous and ineffective game of mind reading.

In a case where a person does commit a crime against someone and clearly yells a racial epithet, he can now be punished not only for his physical actions but for his thought processes. How can anyone be punished for his thoughts? Is this not the country where we all are allowed to think and say what we wish even if others may find our beliefs to be perverse and illogical?

While it seems appropriate to discourage certain patterns of thinking, the problem is that there is no way to reach a public consensus as to what thoughts are or are not acceptable. Unfortunately, this ruling empowers legislatures to become the sole bodies that sets such standards. This is a major step in the direction of a nationwide police on our thoughts and beliefs.

Hate crimes are surely acts that should be punished severely, but these crimes cannot and should not be strictly codified. Judges should be allowed to use their discretion in such cases without being bound by a statute which is very myopic in its language and capacity. Moreover, by codifying such crimes, legislatures will tell their citizens what thoughts and behaviors related to those thoughts are or are not permissible.

## STATE PRESS Letters to the editor

The State Press welcomes and encourages written response from our readers on any topic. All letters must be typed, double-spaced and no longer than two pages to be eligible for publication. Please include your full name, class standing and major (or any other affiliation with the University) and phone number. **Only signed letters will be considered for publication.** Requests for anonymity will be granted only with an appropriate reason. Letters are subject to editing by the opinion page editor for factual errors and print space availability. Letters containing obvious factual errors will be rejected. All letters must either be brought in person with a photo I.D. to the State Press front desk in the basement of the Matthews Center, or addressed to State Press, 15 Matthews Center, Arizona State University, Tempe Ariz., 85287-1502

## State Press ASASU coverage high-schoolish, unethical. . .

Yesterday's *State Press* statement that "ASASU apparently inflated its self-styled sense of importance" does not call into question the *State Press*' lack of duty as I see it. As a member of ASASU I can see two distinct implications from the almighty press' actions. On the one hand I could care less if the press cares to show up to any meetings or cover any actions of the association. If you think for one minute that I religiously cut articles from the paper and place them on my refrigerator like yourself or members of your immediate family because of their Pulitzer Prize-winning ability, you are sadly mistaken.

Our jobs, as I see it, must continue whether or not you like me or I like you. The new members of the association, as I have seen it throughout this summer, have been working collectively to take control of the downhill slide that has taken place in the past, slow it down to a halt and start it rolling in a positive direction again.

President Turman and his "posse" have been working toward that goal with vigilance. On the other hand, I am sad to hear that previous relations with other members of the Associated

Students has tainted your "objective views." Furthermore, I am outraged at your ignorance and dereliction of duty. Is your childlike vision that excluding us from the pages of the *State Press* will infuriate me as a member of the association? It does not.

However, as a student it does. Your job is to report the news as it happens. While this is not technically a high school newspaper it seems to act as such. Petty politics and just plain "I don't like you," should not dictate what news is worthy to print. You only hurt the students through your selected approach to journalism. Perhaps I might suggest that you retake "Ethics in Journalism," because your actions are no better than the worst political scandals you condemn.

The programming by ASASU will continue, and we will work to promote a new direction to as many students as we can reach, except fewer students will be able to access any of our actions due to your petty politics.

**Jason Stuart Rupp**  
Senator, College of Architecture and Environmental Design

## . . . arrogant, self-glorifying and harmful to student body

In response to the decision made by the editors of this paper in the August 23 issue of the *State Press*, to ban all journalism about the ASASU is totally unprofessional and dictatorial to its readers. ASASU was elected by the students of this campus whereas the editors of the *State Press* were not. No newspaper that preaches rights under the first amendment or violations of the Constitution has the right to select who it covers. The *State Press* has become a propaganda paper that is trying to influence its readership into believing ASASU is not for the students. ASASU has established a program called "A Day in the Life of an ASU Student." This program is designed to bring the state government, Board of Regents, Tempe municipal, and the ASU administration to understand what effect their decisions have on us. Coming to participate are around 30 state legislators, four regents,

three Tempe City Council members including the vice-mayor, three ASU administrators, US Representative Sam Coppersmith and former US Senator Barry Goldwater. Out of the Legislature, both chairs of the Appropriations and Education Committees and the Speaker are attending.

These people are the policy makers for our school and they are coming in the next two weeks to understand our side, the first time ever in Arizona and possibly the nation, yet the *State Press* refuses to cover the story for a self-glorifying reason. Let it be known that the professional journalist of the Phoenix metropolitan area and possibly the nation have already begun coverage. The *State Press* is now hurting its readers, not helping them. Be professional!

**Ross Bell**  
Coordinator, Day in the Life at ASU

### Sound Off: 965-4287

The *State Press* would like to hear from you on its Sound Off Line. Each Monday, the opinion page will print a question of University or community interest, taking answers all week, 24 hours a day at 965-4287. When leaving a message, please leave your name, major, class standing (or any other affiliation with the University) and a number where you can be reached. All calls will be verified, and responses will be published every Wednesday, starting September 1. Responses may be edited for length and to eliminate profanity. Sorry, the *State Press* will not grant requests for anonymity on the Sound Off Line.



**This Week's Question: "What was your biggest back-to-school surprise?"**



### QUOTABLES



**"If she wants to run, that's fine. We'll meet her on the field of combat."**

— Gov. Fife Symington, on possible Republican challenger Barbara Barrette, who hinted Monday that she is considering a bid for Governor.

**"My parents think I'm nuts because I believe people don't have to die."**

— Scottsdale resident Joe Bardin, whose parents have accused the immortalist group Flame Foundation of brainwashing their son.

# Mars

CONTINUED FROM PAGE 1.

graduate geology student assisting in the project.

"It's disappointing that I can't actually continue with some of the data that would be coming back (from the spacecraft). That's going to be the worst thing for everybody — the data that this mission would have put out is not going to be available."

Though NASA scientists did not rule out the chance that contact will be restored, Christensen said he isn't confident that will be the case.

"That's a pretty slim possibility," he said. "I'd love for it to

happen, but, realistically, I think it's getting less probable."

The TES is one of seven experiments traveling on the spacecraft, which carries a price tag of \$980 million.

Coor said the mission's failure would not affect future consideration for space exploration projects at ASU.

"It's part of the process of risky ventures like this," Coor said. "We can keep hoping they can kick it in, but, if they can't, we've got to go back and try again."

Gary Krahenbuhl, dean of the College of Liberal Arts and Sciences, echoed Coor's reassurances for space research at ASU.

"This event has brought a lot of attention to (ASU's) planetary geology program," Krahenbuhl said. "I think that anybody that gets involved in science anticipates failure. The Wright brothers didn't fly the first time."

Christensen said NASA has a full set of backup parts for the spacecraft and he would be willing to conduct the TES experiment again.

"The thing that I'm trying to stress for the people who work for me is that the plan has always been, if this one fails, to build another (Mars Observer)," he said.

# Focus

CONTINUED FROM PAGE 1.

The Mars Observer was to provide scientists with information revealing the best landing sites for the Mars '94 project, according to Ronald Greeley, an ASU geology professor who works closely with NASA-funded projects.

He said information from the Mars Observer could have informed scientists more about the areas they were curious about and made the Mars '94 project more beneficial.

"We could not fill the void completely, but it could certainly fill in some of those gaps," Greeley said.

Greeley added, however, that scientists are aware "where there

are interesting places and where there are boring places" on Mars.

Other projects Greeley is currently working on include the Galileo mission, which will study Jupiter and its moons, and the Shuttle Imaging System, which will attempt to provide information on the Earth's desert regions.

ASU administrators said other NASA-funded programs at ASU will not suffer as the result of the problems with the Mars Observer.

"I don't think it will have any (effect), because they're all independently funded endeavors by NASA," said Gary Krahenbuhl, dean of the College of Liberal Arts and Sciences.

"I guess I wouldn't anticipate that the problem with (the Mars observer experiment) would dampen the enthusiasm for being in the field," Krahenbuhl said.

While Greeley said that past space experiments have been surprisingly successful and safe, he added that risks are inherent to space exploration.

"Space is dangerous and space is risky," he said. "There are no guarantees."

State Press City Editor Jake Batsell contributed to this article.

# STATE PRESS Classifieds - the bargains are in the back.

# Jump Start with...



## at the Student Recreation Complex!

The Wellness Center & Adaptive Weight Room have combined to create a fantastic new program encompassing more for you, the member. We will be offering programs in safety education; CPR, first aid and self defense classes, body compositions, fitness assessments, exercise prescriptions, weight management, diet analysis and more!

For more information

on the most exciting new program on campus, call 965-8921

STATE PRESS Crosswords –  
Go ahead...do them in ink.

HAIRCUTS • PERMS • COLOR • NAILS



Arches Plaza  
at  
Forest & University



966-5462

HAIR DESIGN WITH A PERSONAL TOUCH

**RUSH LAMBDA CHI ALPHA**

**LEADERSHIP** is 50% ability and 50% **OPPORTUNITY**.  
**RESPECT** is earned by actions, not by age.  
**EXPERIENCE** friendships that will last a lifetime.  
For more information, call Rob Fritsch at: 370-7541 or 965-6128

WEDNESDAY

THURSDAY

GOLF, GO CARTS  
& BATTING PRACTICE  
AT  
FIDDLESTIX

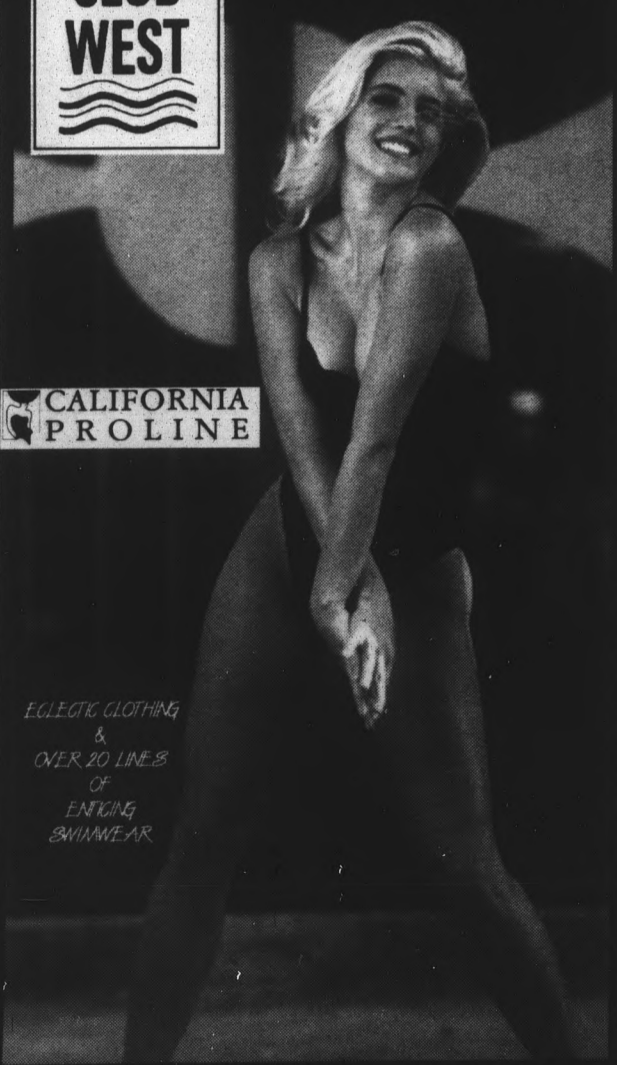
INVITATION ONLY  
BID DINNER  
AT  
THE HOUSE

IT'S WHERE YOU BELONG

**BEACH CLUB WEST**

WELCOME BACK STUDENTS!

20% - 50% OFF ALL SWIMWEAR!



CALIFORNIA PROLINE

ECLECTIC CLOTHING & OVER 20 LINES OF ENTICING SWIMWEAR

TEMPE 839-9600 • SCOTTSDALE 998-7566

ARIZONA STATE UNIVERSITY  
**STATE PRESS**

You'll never know unless you read your horoscope.

In the classified section.

**Computer glitch fixed without added delays**

By GARIN GROFF  
STATE PRESS

The glitch that put ASU's student information computer system out of service and stranded students in registration lines for three hours Monday morning was repaired without causing further delays.

The faulty power pack which caused the outage was replaced by an outside vendor between 9 p.m. Monday and 2 a.m. Tuesday, according to John Babb, manager

of Application Support Services.

"It went successfully as planned. Everything's been great," Babb said.

Registrar Louann Denny said the three registration sites were still busy Tuesday but processed most students within 15 minutes.

Connection with the 120-line In-Touch phone registration system remains intact.

**LOW BOOK PRICES**

Not Only Do We Have Great Prices,  
We Have The **LOWEST PRICES**

**USED**

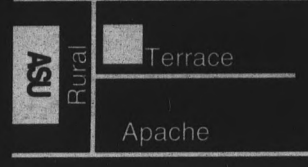
ACC 315, OPM 301, SPA 101, MAT 106, ZOL 201, MAT 119, ENG 101, ECE 210, PHY 101, FAS 332

**20% OFF** CLOTHING, SUPPLIES & GIFTS  
with coupon expires 9/30/93

**DARE TO COMPARE**

**CAMPUS BOOKS**

903 S. Rural Rd.



# Liquor stores move opposed by potential neighbors

## Mitchell Park residents worry about impact

By JOY E. BEASON  
STATE PRESS

An plan announced by Top's Liquor to move to a "small, historical" location has prompted angry opposition by Tempe neighborhood associations.

According to a Top's employee, the establishment now located in the Tempe Center, is attempting to move into a planned 8,000-square-foot building at the southwest corner of Farmer Avenue and University Drive. The building will house other retail outlets in addition to Top's Liquor.

Top's owners are seeking a liquor license in the proposed area. The city council is slated to act on the request in early September.

But the plans have angered many surrounding residents, prompting an onslaught of letters to council members.

A letter sent by the Mitchell Park Neighborhood Association expressed concern that Top's will have a negative impact on their neighborhood.

Among other concerns is the potential traffic increase on Farmer Avenue as well as University Drive because of a drive-thru window. Many others have raised crime and safety concerns.

The residents learned of the store owners' intentions after receiving a letter introducing themselves and illustrating their building plans,

which include a 6-foot security wall.

The letter added that Top's has operated in Mesa at another location for over three years and has had an "excellent working relationship with the Tempe Police Department."

Karen Brittingham, Tempe city deputy clerk, said she has received 28 letters and one phone call, all in opposition to the proposed move. The angry letters went to the City in response to the establishment's request for written public support.

"We have received a lot of letters in opposition," she said. "Some of them said they don't need another liquor store in the neighborhood."

Although Top's planned move and corresponding construction is still a proposal, it has captured the attention of Tempe city council members.

"We approve new businesses and new locations," said Neil Giuliano, Tempe's vice mayor.

Giuliano said since he has been on the council there have not been any disputes similar to this one, adding that "the neighborhoods have been raising legitimate concerns. Some that will have to be addressed."

"I don't want them there," said Molly Kennedy, a psychology major who lives in the Maple Ash neighborhood, which abuts the Mitchell neighborhood. "We have enough of a problem with alcohol-related crime. This is a historical neighborhood and this is a strip mall,



Bob Castle/State Press

Top's Liquor a long-time tenant of Tempe Center, is planning to relocate to the Farmer Avenue and University Drive area, which is being met by opposition from residents.

that is the primary problem. There are very few historical buildings left in Tempe."

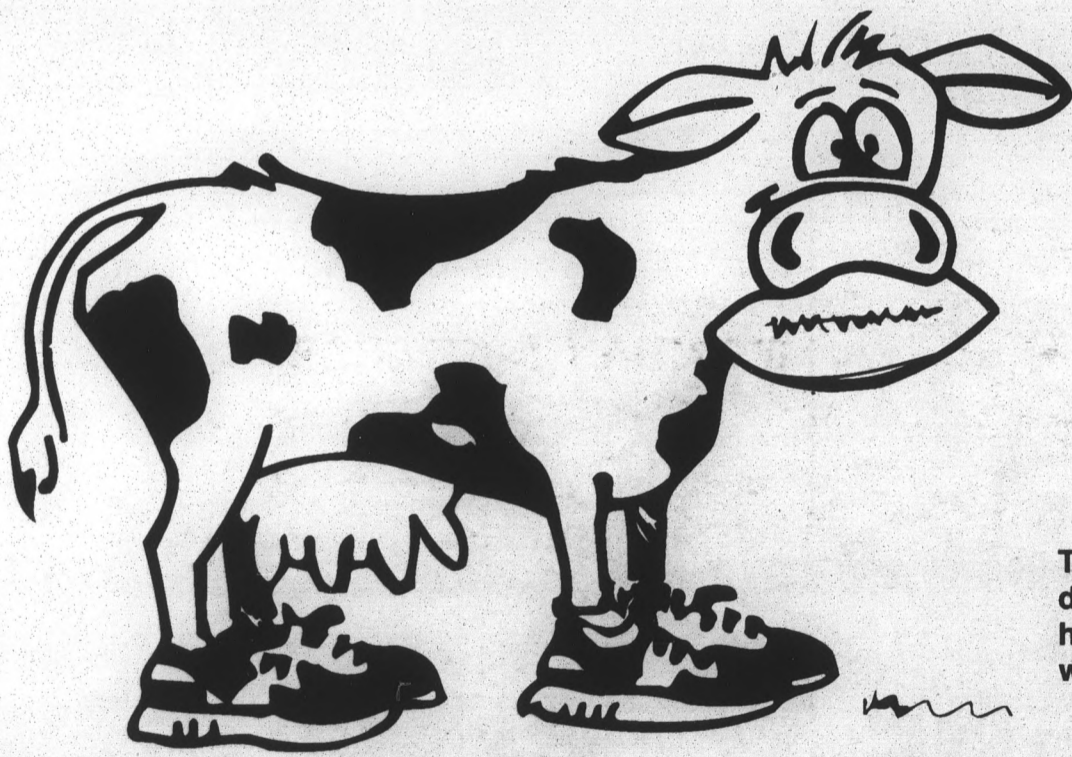
She said her neighborhood is mostly inhabited by graduate students, faculty and young families who are concerned with the effect a liquor store in the neighborhood would have.

"It would be in conflict with the nature of the neighborhood," she said.

Top's and several neighborhood associations are meeting today to discuss their differences. Management at Top's refused to comment until after the meeting.

## ARIZONA STATE UNIVERSITY STATE PRESS

You don't even have to take notes.



## WIN A FIESTA BOWL SCHOLARSHIP

for a college-eligible Arizona Resident\*  
1st Prize - \$3,000 Scholarship  
2nd Prize - \$2,000 Scholarship  
3rd Prize - \$1,000 Scholarship

Three winners will be selected each week by random drawing. They will receive a pair of tickets to the next home game of ASU, U of A or NAU - depending on which post office box the winning entry is mailed to.

Enter weekly contest of school of your choice.



ASU



U of A



NAU

MAIL ENTRIES TO:

"Fiesta Bowl Scholarship Sweepstakes"  
to your choice of the following post office boxes.

ASU - P.O. Box 520, Tempe, AZ 85280

NAU - P.O. Box 1448, Tempe, AZ 85280

U of A - P.O. Box 560, Tempe, AZ 85280

Winners of weekly drawings will also receive a pair of choice seats for the FIESTA BOWL Football Game New Year's Day where 3 of the 33 finalists will win scholarships.

Enter as often as you wish (no purchase necessary). One entry per envelope. Each entry must include the name of an eligible scholarship recipient\* and the nutrition information panel (or facsimile) from any size carton of milk.

PLEASE PRINT NAME, COMPLETE ADDRESS, AND TELEPHONE NUMBER ON PIECE OF PAPER AND INCLUDE WITH NUTRITION INFORMATION PANEL.

\*Scholarship nominee must be an Arizona resident eligible for 1994 term or be currently enrolled at any Arizona College or University. (Employees and family members of Arizona milk producers are not eligible.) Entries must be received by November 9, 1993.

Sponsored by United Dairymen of Arizona

ARIZONA STATE UNIVERSITY  
**STATE PRESS**

Crosswords —  
Go ahead...do them in ink.

**BRAIN STUDY  
VOLUNTEERS NEEDED**

Women 21-30 years old are invited to participate in a study of the brain's control of eye movements. If you are in good health, right-handed, have normal vision without corrective lenses, and would like to participate in this study, please call:

**GOOD SAMARITAN  
REGIONAL MEDICAL CENTER  
239-5251**

**Public Events tries to erase deficit left by former director**

BY GREG SEXTON  
STATE PRESS

An ASU Public Events official said Tuesday she is optimistic that a \$12,000 departmental deficit — resulting from past criminal misuse of funds — will be erased by the end of the upcoming season.

But Colleen Jennings-Roggensack, director of ASU Public Events, denied comment on specifics of the recent sentence ordering former Director James O'Connell to pay more than \$600,000 in restitution back to the University.

O'Connell lost his post in 1991 after it was revealed he had improperly provided funds to Musical Theater of Arizona (MTA) in advance of ticket sales for events in ASU facilities. Eventually, the company suffered low ticket sales and could repay only half of the money.

"It's hard for me to comment on that, since I have come into everything afterwards," said Jennings-Roggensack, who began her duties in June of 1992, nearly a year after the O'Connell incident.

"I can't tell you about the history, since I wasn't here. But I can say the department works within the letter of the law, and the department as a whole works very hard in terms of providing the Valley with a variety of entertainment and arts that are not only aesthetically interesting, but are also financially successful."

On Aug. 13, O'Connell was placed on a three-year probation and ordered to pay ASU \$633,592 in restitution for improperly advancing money to MTA.

The payments are to be made in \$250 monthly installments to the University.

O'Connell was originally indicted on 21 counts of misusing public funds. He pleaded guilty on two lesser misdemeanor charges of "presentation of a false instrument for filing."

Maricopa County Superior Court Judge Stephen Gerst said the case showed O'Connell had "errors in judgment," though he added that there was no evidence indicating O'Connell per-

sonally benefited from the money.

O'Connell's possible punishment ranged from probation to 22 months in prison.

From September 1989 to April 1991, O'Connell advanced \$1.4 million to MTA in an attempt to shore up more diverse musical events for ASU.

Eventually, the Arizona attorney general investigated the case and determined that O'Connell lacked the legal authority to advance MTA the money.

O'Connell currently holds the executive director position for the Wausau (Wis.) Performing Arts Foundation. His attorney, Jeremy Toles, originally told the *State Press* last fall that his client did not act with any criminal intent when making the cash advances.

"My client was a good official who may have lost money on this particular deal, but his department made (a profit) overall," Toles said.

Toles contends that ASU's public events department made annual profits of \$50,000 during O'Connell's tenure.

O'Connell, who served as public events director for seven years, was placed on administrative leave by the University in June 1991, after the outstanding debt was revealed in a performance review of the public events department.

Jennings-Roggensack credited a good year — including successful performances of "Les Miserables" and the recent "My Fair Lady" — for the reduction of the deficit.

"A lot of the credit is due to the department, who took very seriously the need to alleviate that deficit ... but then also very carefully marketing the other sponsored events we have at Gammage, so that they can pay for themselves and therefore avoid any financial problems."

**MINDER BINDER'S**

**SATURDAY AUGUST 28<sup>th</sup>  
8:00 pm to CLOSE**

**OUTBACK CONCERT**  
Featuring



**THE BOWRY BOYZ**

Also: **MR. MIRAINGA**

**MONSTER DRAFTS \$2.00**  
Bud Light reg. \$2.50

**PLUS  
WEEKLY  
SPECIALS**

**DREAD  
ZEPLIN**  
FRI. SEPT. 17  
9:00 PM

**Sundays 8pm-Close BURGER MADNESS**  
\$3.25 1/2 lb. burger & fries  
\$2.00 Pitchers \$1 Malibu Rum

**S**

**MONDAY MADNESS 7pm-Close**  
25¢ Drafts MGD & Miller Lite  
\$2 Pitchers  
\$2 Burger & Fries

**M**

**CRAB RACES 9pm • Weekly Prizes**  
\$2.75 8pm-close Pitchers • Bud Light  
\$1.50 Longnecks • Bud & Bud Light

**T**

**WET & WILD WEDNESDAY 8pm-Close**  
\$2 Pitchers \$1.50 JAGER, RUMPLE & FIREWATER  
WET T-SHIRT CONTEST! \$100 CASH PRIZE

**W**

**LADIES NIGHT 8pm-Close**  
99¢ Zents, Zimas, Bacardi, Tanqueray, Smirnoff, Malibu  
FREE KISSES FOR THE LADIES

**T**

93¢ 8PM TO CLOSE **MARGS**  
93¢ **LONG ISLAND ICED TEAS**

**F**

715 SOUTH McCLINTOCK ROAD TEMPE ARIZONA 85281 966-1911

# POLICE REPORT

A Mesa couple was arrested early Sunday at the Whispering Wind Lodge after they hallucinated while on speed.

Police were called to 1814 E. Apache Blvd. when the woman ran out of the couple's motel room screaming that someone was shooting at her, police said.

After investigating, police said that the couple was in the room doing speed when the man thought he saw someone outside the back window. He then fired two shots from his .380 automatic pistol.

According to police, the man and woman then began throwing furniture around the room. They were subsequently arrested for possession of a dangerous drug and criminal damage charges estimated at \$240.

ASU police reported the following incidents

**for Monday:**

- A female resident of Cholla Apartments was reported missing by her friends. The friends told police and members of Cholla's staff that they began worrying after not seeing the woman since August 19. Cholla staff are continuing the investigation and will notify ASU police of any new developments.

- An ASU student's purse was stolen from the music building Monday after leaving it unattended for five minutes.

- A car owned by an ASU student was vandalized in Parking Lot 42 Monday afternoon. The damage is estimated at \$300.

- A window was broken at Dixie Gammage over the weekend with damages estimated at \$20.

- An ASU student had his locked bike stolen

from the Cholla Apartments Monday. The bike is valued at \$500.

**Tempe police reported the following incidents for Sunday through Monday:**

- A 22-year-old ASU student was arrested for assault Sunday night after throwing a cup of ketchup at a Tempe police officer. The officer was in front of the Whataburger at 1346 S. Rural Road investigating an accident when the ketchup was thrown. A Maricopa County Sheriff's deputy, working off duty at the restaurant as a security guard, witnessed the incident and noted that the ketchup missed by approximately 6 inches.

- An ASU student was arrested Monday night at Kiwanis Park for lying to a police officer and violating park curfew. The man was approached by Tempe police at 1:25 a.m. in the

park where he gave a false name. He later gave police his real name and said he lied because of a prior park curfew arrest.

- Two men were arrested Sunday night after brawling outside of Fat Tuesday's bar on Mill. Ten to 15 people were watching the fight when officers arrived. The men stopped fighting when police arrived.

- An off-duty Tempe police officer working as a Showtime security guard, arrested a Tempe man Sunday at Hayden Center when the man refused to stop preaching to the patrons of the Coffee Plantation. When the man was asked to show his identification, he gave him a Bible.

Compiled by State Press police reporter John Guzzon.

# ARIZONA STATE UNIVERSITY STATE PRESS

You don't need a *decal* to use it!

**Window Tint** Student Discounts Available

- Arizona Legal Tint
- Reduce Sun's Glare up to 80%
- Micro Edge & Defroster Cut Included
- Scratch Resistant

**\$59.95** From

941-9064

1005 N. Scottsdale Rd. 2 miles north of ASU

P.P.D.A. (post-party **DETAILING** available)

**Ziebart TidyCar**

**SPECIAL STUDENT FARES**  
Round trip from Phoenix • Fall Travel

TOKYO.....\$635	FRANKFURT.....\$683
SINGAPORE.....\$861	LONDON.....\$610
HONG KONG.....\$725	PARIS.....\$634
MANILA.....\$873	AMSTERDAM.....\$634
SAO PAULO.....\$869	OSLO.....\$842
GUATEMALA.....\$478	MADRID.....\$671
BELIZE.....\$458	ROME.....\$756
COSTA RICA.....\$503	STOCKHOLM.....\$732

Other Cities Available  
EURAIL PASSES NOW ISSUED IN OUR OFFICE

Youth Flexipass.....\$220	One Month Youthpass.....\$508
Eurail Flexipass.....\$298	15-Day Eurail First Class.....\$460

**MILL AVENUE TRAVEL**  
966-6300

RESTRICTIONS APPLY. SUBJECT TO AVAILABILITY.

**We can help you find MONEY FOR COLLEGE**

**Every Student is Eligible for Financial Aid**

- **Comprehensive Database** - over 200,000 listings represent over \$10 billion in private sector financial aid.
- **Easy To Use** - we match up students to awards based on information provided including career plans, family heritage, and academic interests.
- **Unique Awards** - our research department has located scholarships for golf caddies, left-handed students, cheerleaders, non-smokers, and more.
- **Guarantee** - we will find at least six sources of private sector financial aid, or we will refund your money.

For more information and our **FREE** brochure, please complete and mail the coupon below.

Please send **FREE** scholarship information to:

Name \_\_\_\_\_  
Address \_\_\_\_\_  
City \_\_\_\_\_ State \_\_\_\_\_ Zip \_\_\_\_\_  
Year in School \_\_\_\_\_  
Phone ( ) \_\_\_\_\_

Mail To:  
**ACADEMIC FINANCIAL RESOURCES**  
15240 N. 51ST STREET  
SCOTTSDALE, AZ 85254-2217

# BROADWAY ACE Hardware

SOUTHEAST CORNER OF BROADWAY & RURAL

## BACK-TO-SCHOOL SAVINGS

 <p><b>ACE Hardware</b></p> <p><b>Telephone Cord</b> Coiled extension cord stays neat, fits in to modular handset. Assorted colors and sizes. 30136</p>	<p><b>\$14.99</b></p> <p><b>WINDMERE</b></p>  <p>12 In. Oscillating Fan 3-speed fan features whisper quiet operation, push button controls and adjustable neck angle. White plastic blades and housing. 4099</p>	<p><b>\$7.00</b></p> <p><b>Lighting Bug, Ltd.</b></p> <p><b>White Swingarm Lamp</b> Spring-balanced architect arm lamp attaches to desk or table with vise clamp. 32613, 34210</p> 		
<p><b>\$5.99</b></p>  <p><b>Lighting Bug, Ltd.</b></p> <p><b>Clip-on Light</b> Adaptable, lightweight clip-on light goes anywhere. Perfect for students, hobbyists. 36511, 12</p>	<p><b>\$6.00</b></p>  <p><b>Shower Massager</b> Chrome plated shower massager has 3 easy-to-adjust spray patterns. 41747</p>	<p><b>\$1.99</b></p> <p><b>Tucker</b></p>  <p><b>1 1/2 Bu. Laundry Basket</b> Round plastic basket in assorted colors. 43782</p>		
<p><b>\$1.00</b></p>  <p><b>Face Cup Plunger</b> Heavy-duty all-purpose plunger is great to keep around the house for emergencies. 4099</p>	<p><b>\$1.00</b></p>  <p><b>12 Pack Tubular Hangers</b> 79429</p>	<p><b>\$1.00</b></p>  <p><b>10 Qt. Wastebasket</b> 6003370</p>	<p><b>\$1.00</b></p>  <p><b>Heavy Duty Batteries</b> AA, 9V 30849, 36490</p>	<p><b>\$1.00</b></p>  <p><b>Tall Kitchen Can Bags</b> 13 Gal. 30 ct., 26 Gal. 20 ct. 64054, 55</p>

**BROADWAY ACE Hardware**

968-4544  
M-F 7:30 a.m. - 8 p.m.  
Sat. 8 a.m. - 7 p.m.  
Sun. 10 a.m. - 5 p.m.

929 E. BROADWAY • TEMPE  
(S.E. corner of Rural & Broadway)

**NEED HELP?**  
Ask ACE  
We have Friendly, Knowledgeable People to Assist You!

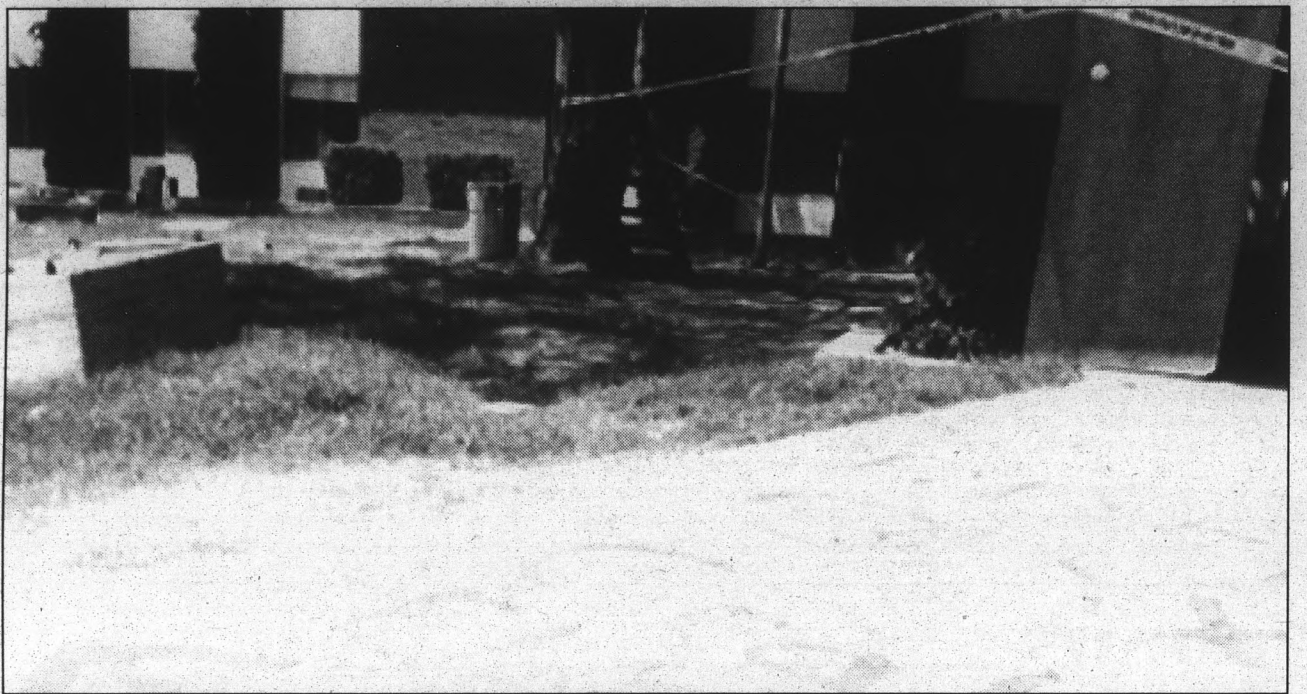
# Fraternity aftermath

**Top right:** A message painted on the front walkway invites potential "rushees" to pick up one of the many Theta Delta Chi flyers strewn about the front lawn.

**Bottom right:** The main gathering place of the house is littered with torn-up adult magazines, broken furniture and smashed typewriters.

**Below:** Many of the members' rooms are littered with the refuse from a party of large proportions.

photos by Bob Castle



## COLLEGE ID WEDNESDAY

# \$1.00

UNTIL 11PM  
WELL • WINE • DRAFT

NO COVER WITH COLLEGE ID 'TILL MIDNIGHT

### DJ JOE TREVINO

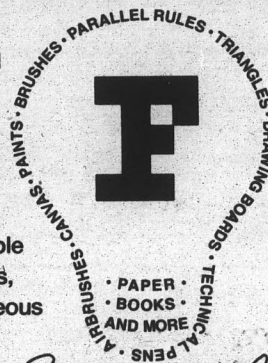
from the CLUB UM Berlin Room  
OPEN 8 PM AFTER HOURS TIL 3AM

# THE WORKS 946-4141

7223 E. 2ND ST. SCOTTSDALE

## Creative Ideas Materialized.

Without the right help and supplies, your brightest creative ideas might never materialize. Flax Company, Inc. understands how important it is for an artist to have a reliable source for quality materials, where the service is courteous

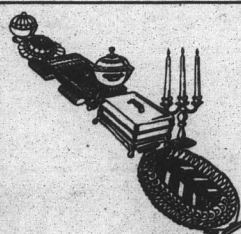


and the staff knowledgeable. Our everyday low prices and our back-to-school discounts\* for students (up to 30%) mean savings everytime you shop at Flax. Let your creative ideas come to life—shop at Flax today.

*Arizona's Finest Selection of Artists Materials.*

**FLAX COMPANY, INC.**  
1001 E. Jefferson St., Phx.  
254-0840  
Mon.-Fri. 8:30-5:30, Sat. 9-5

\*Discounts apply to list prices only. Some restrictions apply.



# SHALIMAR

Indian Cuisine

Lunch • Dinner • Take-out

## GRAND OPENING

Savory LUNCH BUFFET

"All You Can Eat"  
Daily  
11:00 a.m. - 2:30 p.m.  
\$5.95

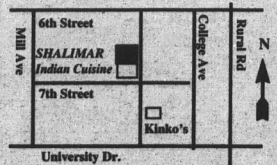
Restaurant Hours:

Mon.- Sun. 11:00 a.m. - 10:00 p.m.

COME EARLY!

Open Aug. 22, 1993

616 S. Forest Ave, Suite #2, Tempe, AZ 85281 Tel: (602) 967-8399



# Korea

CONTINUED FROM PAGE 3.

tion is tightly controlled.

The North has been suspected of developing a nuclear arsenal, despite its denials, however, and there have been previous reports that food and fuel shortages are crippling North Korea's economy and inciting dissent.

The nuclear accident allegedly occurred while workers were moving a nuclear reactor at Yongyon to an undisclosed site. Im did not say when the accident supposedly took place, how many people were at the site at the time or how many people were killed or injured.

Im, who identified himself as a first lieutenant in the North Korean army, said he did not have any firsthand knowledge of the country's nuclear program or activities at Yongbyon, the North's main nuclear complex and a suspected nuclear weapons production site.

But he said military officers he worked with told him about the accident and the nuclear tests at Yongbyon. He offered no further details about the alleged tests.

# Loans

CONTINUED FROM PAGE 3.

year to 17.5 percent in 1991, the latest year for which figures are available.

Last year, about 1,000 schools were handed suspensions, which can last a year or more depending on the school's corrective actions.

The government bases a school's default rate for a particular year on the number of borrowers scheduled to begin paying on their loans who defaulted either in that year or the following year.

Students apply for loans through the schools, which verify the student's eligibility. Banks furnish the money.

# Rodney

CONTINUED FROM PAGE 3.

His attorney Milton Grimes didn't immediately return telephone calls.

King, who is on parole for a 1990 armed robbery conviction, had been free on his own recognizance, but has since been sent to a treatment center, said Jerome Di Maggio, regional administrator of the state Department of Corrections.

He can receive no visitors at the center other than his attorney and is subject to arrest if he leaves before completing the program, Di

# Hostage

CONTINUED FROM PAGE 3.

government counterattack in which some 40 people were killed.

The rightists let 20 of their 38 hostages free on Sunday and freed two more on Monday, but say they won't release the rest until the government fires the head of the police and military, Gen. Humberto Ortega.

Talavera also has said he wants the dismissal of President Violeta Chamorro's chief of staff, Antonio Lacayo, and Lenin Cerna, the govern-

ment intelligence chief and a powerful former Sandinista. But Talavera has indicated at various times that the latter two are negotiable.

President Chamorro left the Sandinistas in charge of security after defeating them at the polls in 1990 at the head of a 14-party coalition.

The move infuriated conservative elements within the coalition, who wanted all traces of the Sandinistas expunged from the new government.

ment intelligence chief and a powerful former Sandinista. But Talavera has indicated at various times that the latter two are negotiable.

President Chamorro left the Sandinistas in charge of security after defeating them at the polls in 1990 at the head of a 14-party coalition.

The move infuriated conservative elements within the coalition, who wanted all traces of the Sandinistas expunged from the new government.

on food shipments also occur, he said.

"That there isn't enough food is common knowledge, but if you complain, you and your family disappear the next day," Im said. "The news spreads and people keep quiet."

Im said he was assigned to an engineering and construction unit in Pyongyang. Soldiers use ox-drawn wagons and wooden carts because of fuel shortages, and factory workers work only three to four hours a day because of lack of parts and material, he said.

Front-line army units have been ordered to use oil lamps to save electricity, he said.

A report by South Korean intelligence officials quoted Im as saying that North Korea grows opium to earn hard currency to buy food and fuel. Processed opium is shipped to Hong Kong, Russia and China, he was quoted as saying.

Im said his unit was involved in the construction of secret underground military facilities, including silos equipped with missiles

capable of reaching Japan.

It was not clear what kind of missiles were at issue.

Im said he left North Korea in July and reached South Korea on Aug. 11 via a third nation, which he refused to identify. He declined to give details, saying he did not want to endanger others who might try to follow his route.

Im said he defected to avoid certain execution because he had twice printed and scattered leaflets calling for a civil uprising against the Kim regime.

He said there are increased reports in the North about anti-Kim movements and in March 1993, "a number of people were arrested for organizing a dissident group."

Security on the North Korean-Chinese border was tightened and 10 units were sent to the border early this year to prevent increasing defections, he said.

# Worth the wait?



Louis A. Porter/State Press

Kathleen Ryan, a 23-year-old English graduate student, makes some last-minute changes to her schedule while waiting in line at the registers site in the Social Sciences Building.

## STATE PRESS

"I told you, you should have stayed in bed." -State Press Horoscopes

In the classified section.

Everyone needs a PAAL.



Stay protected with the PAAL, Quorum's Personal Attack Alarm that blasts 103dB (min.) when you simply pull the pin. Choose either the standard or sports model. Carry it to school, the mall, the park, wherever you go. PAAL lets out a cry for help whenever you need it. And only Quorum gives you that kind of technology and security.

Quorum Securing Life

\*\*\*Contact your Quorum Independent Distributor\*\*\*

ZTAK MARKETING  
839-8645

## Falling Fares

London	\$348*
Paris	\$330*
Guatemala	\$239*
Tokyo	\$299*
Auckland	\$433*

\*Fares are each way based on a roundtrip purchase. Restrictions apply and fares are subject to change without notice. Seats may be limited so book now.

## Council Travel

Located at Forest and University, directly across from A.S.U.

120 E. University, Ste. E  
Tempe, AZ 85281

**966-3544**

Call for a FREE Student Travels Magazine!

# COLLEGE ID NIGHT

## TWO FOR ONE ENTREE

Featuring: Fresh Pasta and Sauce Bar, Salads, Sandwiches, Specialty Pasta Dishes and much, much more

Wednesday Nights 5-10 p.m.



530 W. Broadway, Tempe  
921-9431

Jane Student  
STUDENT

YOUR STUDENT OR FACULTY/STAFF ID GETS YOU 2 FOR 1 ENTREES

\*PIZZA NOT INCLUDED  
\*\*OF EQUAL OR LESSER VALUE



# Rise in state SAT scores shouldn't boost ASU standards

## Regents don't expect changes after recent increase in results

By MARK M. MACIAS  
STATE PRESS

Arizona Board of Regents members said they don't expect Arizona's university standards to be immediately tightened after a recent boost in the state's Scholastic Aptitude Test (SAT) scores, but added that a continuation in the trend could change their position.

Regent President Doug Wall said the higher SAT scores shouldn't disqualify any Arizona students because ASU relies more on the American College Testing (ACT), however the increase of qualified students could hurt ASU's already overcrowded campus.

"I think we're already at the enrollment cap and I think that's going to be a continuing problem," Wall said. "Where can those students go that are university eligible, and where can we place

them?

"The fact (SAT scores) went up may mean that students were more prepared, but I don't think it will have any effect on entrance requirements."

Regent Andrew Hurwitz said the state's higher SAT scores shouldn't raise ASU's admissions standards if the increase is only a "one-year issue."

"If we see a long range upturn in SAT or ACT scores, then it may well lead to questions about what the entering standards are today, but certainly I don't think a one-year number would have any effect," Hurwitz said. "The long range trend has been for (SAT scores) to go down, so that's why my first reaction is, 'This is good news,' but I'm not necessarily sure it's news that tells us anything about a long range trend. If (high scores) persist over a long period of time, we will have to take a look at it."

ASU President Lattie Coor said he doesn't foresee ASU reaching its enrollment cap in the near future because ASU's branch campuses should help alleviate any overcrowding that higher scores could cause.

"The reason for having multiple campuses is so that we can

accommodate the eligible students without overloading the main campus," Coor said. "Even as the demand of qualified students grows, we will accommodate those at the multiple sites rather than expanding this campus."

"While the demand itself for space at a university will mean that stronger and stronger students will be coming here, I don't think it will result in a change in standards."

The regents set enrollment caps for Arizona's three universities last year at 39,000 for ASU, 35,000 for UofA and 16,000 for NAU.

Coor said ASU shouldn't increase its entrance standards because the school's requirements were raised last year. In addition to requiring additional college preparatory classes, ASU previously accepted students who ranked in the upper-half of their graduating class. ASU now tries to limit acceptance to those graduating in the upper quarter.

Arizona's 1993 high school seniors posted an average four-point increase in both verbal and mathematics on the SATs over 1992's seniors. This is the first time Arizona's scores have risen since 1985.

**ALL CRIMINAL • DUI CASES**  
EXPERIENCED, AGGRESSIVE TRIAL ATTORNEYS  
**PAYMENT PLAN AVAILABLE**  
SERVING A.S.U. & EAST VALLEY COURTS

FREE INFORMATION, FREE CONSULTATION  
CALL 24 HOURS **258-8888**  
PHILLIPS & ASSOCIATES, P.C. LAW FIRM  
Phoenix

### CROSSWORD

by THOMAS JOSEPH

**ACROSS**

- 1 Night flyers
- 5 Geometry exercises
- 11 Siamese
- 12 Hardy friend
- 13 Sight-seeing excursion
- 14 Cleopatra's love
- 15 Barge need
- 16 Smyrna products
- 17 Dwelling
- 19 Finger-paint
- 22 Lebanon tree
- 24 Mona Lisa feature
- 26 Store door sign
- 27 Simplicity
- 28 Makes coffee
- 30 Fancy home
- 31 Longing
- 32 Thrill
- 34 Boa or stole
- 35 Big galoot
- 38 Deep cuts
- 41 Rob Reiner's dad
- 42 Play beginning
- 43 Advantage
- 44 Old Faithful, e.g.
- 45 Utopia

**DOWN**

- 1 "Beetle Bailey" dog
- 2 Horseman's command
- 3 "Rambling Rose" actress
- 4 Knight address
- 5 Tartan design
- 6 Kitchen fixtures
- 7 Pitcher's goals
- 8 Gold, to Coronado
- 9 Marsh
- 10 Cunning
- 16 In favor of
- 18 Teller's place
- 19 "Rambling Rose" actress
- 20 In addition
- 21 Saloon order
- 22 Parrot
- 23 Fencing sword
- 25 Abattoir output
- 29 Placid
- 30 Cartographer's
- 33 CD player part
- 34 "— Sorry Now?"
- 36 Goad
- 37 Valley
- 38 Joke
- 39 Blackjack card
- 40 Eyelid problem
- 41 Middling grade

L	I	R	E	D	A	T	E	R		
A	N	I	L	E	I	L	O	N	A	
P	L	A	Y	D	O	C	T	O	R	S
S	A	L	A	B	E	D	O	C		
E	N	T	O	M	B	E	L	L	A	
D	O	W	E	L	T	E	L	L		
I	S	I	A	H						
T	H	A	N	G	L	E	S	S		
H	O	N	G	A	P	R	O	N	S	
I	O	N	A	T	A	N	O	I		
S	P	I	N	D	O	C	T	O	R	S
B	L	E	E	D	A	I	R	E	S	
E	A	S	T	S	E	A	S	Y		

**Yesterday's Answer**

- 19 "Rambling Rose" creation
- 20 In addition
- 21 Saloon
- 22 Parrot
- 23 Fencing sword
- 25 Abattoir output
- 29 Placid
- 30 Cartographer's
- 33 CD player part
- 34 "— Sorry Now?"
- 36 Goad
- 37 Valley
- 38 Joke
- 39 Blackjack card
- 40 Eyelid problem
- 41 Middling grade

1	2	3	4	5	6	7	8	9	10
11									
13									
15									
17									
18									
19									
20									
21									
22									
23									
24									
25									
26									
27									
28									
29									
30									
31									
32									
33									
34									
35									
36									
37									
38									
39									
40									
41									
42									
43									
44									
45									

8-25

**DAILY CRYPTOQUOTES — Here's how to work it:**

A X Y D L B A A X R  
is LONGFELLOW

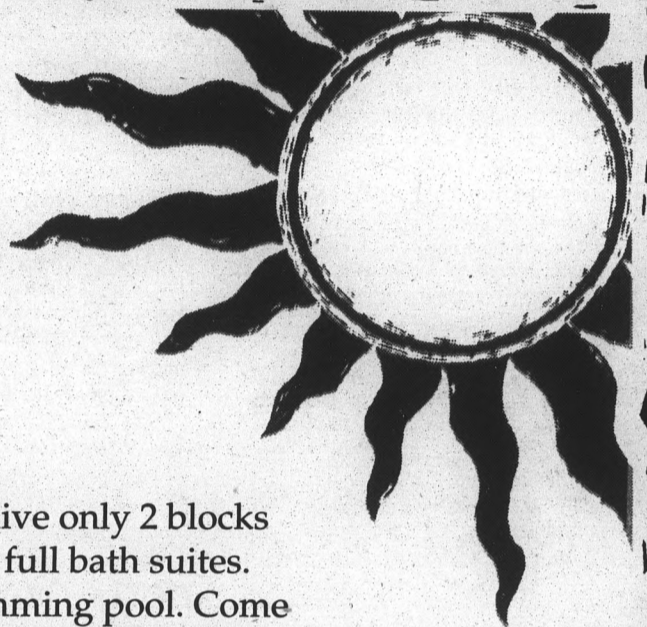
One letter stands for another. In this sample A is used for the three L's, X for the two O's, etc. Single letters, apostrophes, the length and formation of the words are all hints. Each day the code letters are different.

8-25 CRYPTOQUOTE

R H ' J M Z D L P R Q W H Y W Y  
Y N H U R H X E K Z P - U R O Z  
C Z T L N J Z J X Z L D M Z L F K  
A Q Y U J R ' E L Q R F R Y H .

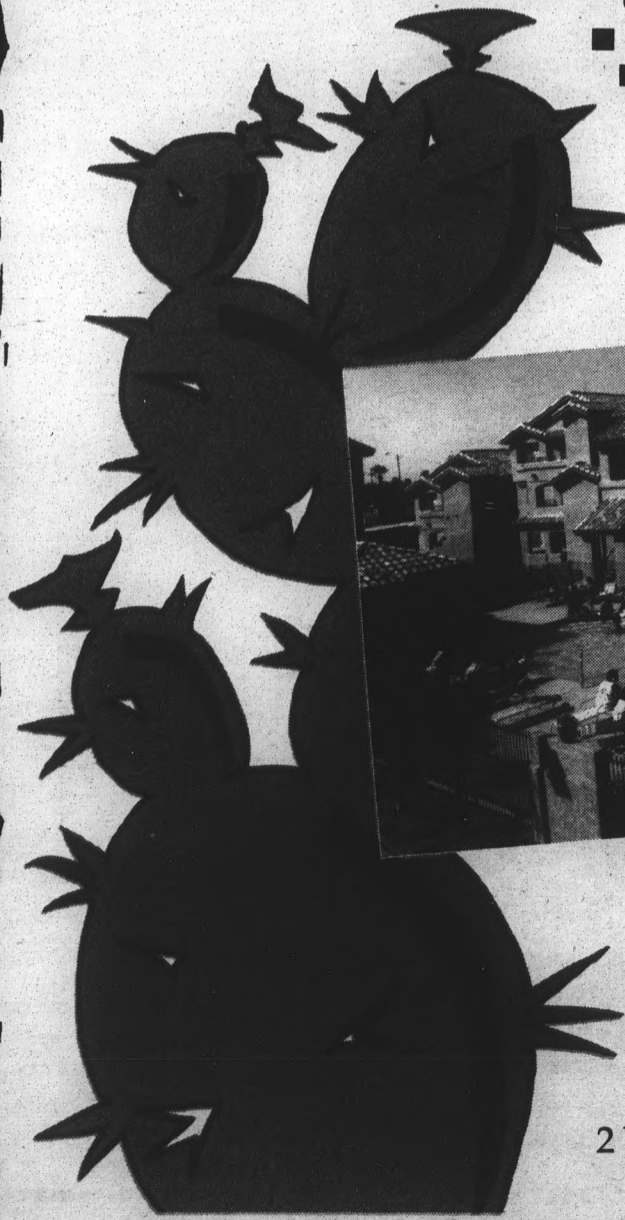
— U L M M Z Q H X Y E L J  
Yesterday's Cryptoquote: THE MORE WE STUDY,  
THE MORE WE DISCOVER OUR IGNORANCE. —  
SHELLEY

Just because school is starting doesn't mean that summer is over.



The Commons is a great place to live only 2 blocks from campus. Great 2 bedroom, 2 full bath suites. Great people and a great big swimming pool. Come by today — we would love to show you our great community where summer never ends.

- spacious 2 bedrooms, 2 full bath suites
- fully furnished
- large kitchen with microwave, dishwasher & disposal
- washer & dryer in each suite
- large heated pool with jacuzzi
- regulation sand volleyball court
- racquetball court, weight room & sauna
- planned social activities
- roommate matching service
- walking distance to campus



829-0933

1111 E. Apache  
Tempe, AZ  
2 blocks from ASU



# Healing the wounds

## 1 year after Andrew: Rebuilding on track, but agonizing memories remain

MIAMI (AP) — Three hundred-sixty five days later, Hurricane Andrew remains a painful wound slow to heal.

Agonizing memories dog Jaime Curet, who huddled with his wife in their crumbling home on Aug. 24, 1992, watching their daughter's trailer fly by their window in murderous 145 mph winds.

"I feel bad," Curet said Tuesday. "I feel real bad remembering it, looking back."

The anniversary Tuesday of the nation's most destructive natural disaster was marked with a dawn prayer service, ground-breakings and block parties. The hurricane left 41 dead and \$30 billion in damages in Florida.

Curet and wife Blanca are putting their lives back together, with help from the American Red Cross and an \$11,500 loan from the Federal Emergency Management Agency. They have moved into a hurricane-damaged house they're fixing up.

But like many of their neighbors, any comfort is tenuous.

Reminders of the devastation are everywhere. Hardly a single tall tree remains. Many businesses have closed forever, their empty hulks lining streets.

An estimated 100,000 people fled the area. Divorce is up 25 percent, domestic violence cases soared, schools reported suicide attempts and increased discipline problems.

Virtually every block has at least one rubble-strewn, abandoned house.

Homestead Air Force Base, where 8,000 people once worked, will stay open, but in a shrunk form, no longer an anchor for thousands of military retirees.

Anniversary events began with a sunrise prayer service in Homestead's shiny, refurbished

athletic complex.

Gov. Lawton Chiles accentuated the positive. Many of the 100,000 destroyed or badly damaged homes have been rebuilt despite numerous hassles with insurance companies and contractors.

Flattened citrus groves have been replanted, and the construction boom has created jobs.

"In the last few months, there is a totally different look," Chiles said. "There's a totally different feel. Homestead is never going to be the same, South Florida is never going to be the same, but we are going to make them better."

In Florida City, symbolizing the healing, a lumber company and volunteers were feverishly working on "Miracle House," to be finished in 24 hours. A block party was planned in the city Tuesday night.

A few blocks away, Lt. Gov. Buddy MacKay and Florida City officials broke ground for a new civic center and police station.

"You can see now the composite effect of all this energy and frustration," MacKay said. "The people didn't let it get to them. They overcame it."

Farther north, the temporary camp at St. Ann's mission in Naranja has vanished, with three-foot weeds growing in fields where tents once housed hurricane refugees.

The nation learned some lessons about disaster preparedness and post-storm relief efforts from Andrew. Many recall Dade County's beleaguered emergency director Kathleen Hale and her famous TV plea for help: "Where the hell is the cavalry?"

On Tuesday, visiting FEMA director James Lee Witt credited her plea, and the agency's subsequent experience in Andrew, with helping



Associated Press

Volunteers in Florida City, Fla., work Tuesday on the "24-Hour Miracle House," which was rebuilt in 24 hours, as part of a rebuilding-effort celebration one year after Hurricane Andrew.

to ease the plight of victims of this summer's Midwest flooding.

In Dade, the cavalry has come and gone, but recovery is far from complete, Hale said.

"It's going to take housing being repaired, it's going to take the economy to come back, it's going to take jobs," said Hale. "It's going to take time for all of this to heal and to be back in place again. But it's never going to be 'normal' unless we're hurricane prepared."

Bob Sheets, director of the National Hurricane Center in Coral Gables, said more

could be done to avoid a repeat of Andrew's carnage.

Mobile homes — death traps in a hurricane — still dot the landscape and continue to be built. And the federal government has spurned the hurricane center's pleas for better equipment.

Sheets said the federal government spends four times more money on earthquake preparation than on hurricane readiness.

"We clearly spend too little on the hurricane problem," he said.

STATE PRESS Sports - We write from the field, the floor, and the locker room.

STATE PRESS

The only free thing at ASU.

USED BOOKS O.P. BOOKS RARE BOOKS

50% OFF MOST BOOKS

CAMPBELL BOOK BOOTH in the ARIZONA ANTIQUE GALLERY  
1126 N. Scottsdale Rd. • Tempe  
N.W. Corner of Scottsdale & Curry Rds., just West of Drug Emporium

Welcome back to lecture halls, all-nighters, pizza breakfasts, and Kinko's!



Kinko's Copy Centers provide everything you need to meet tough deadlines. Kinko's has color copies, computers and much more; and best of all, we're open when you need us, 24 hours a day, 7 days a week.

**FREE COLOR COPIES!**

Buy one, get one free! Increase your impact with color! Receive up to 10 free color copies with this voucher. Not valid with other offers. One voucher per customer. Good through September 30, 1993.

9 Valley locations including:

Tempe: Rural & University/894.1797 • Forest & University/894.9588

Mesa: Southern & Dobson/969.3326 • Main & Stapley/833.0036

Paradise Valley: Tatum & Thunderbird/494.4399

Open 24 hours a day, 7 days a week!

**kinko's**  
the copy center

SPD

FORMULAS FOR SUCCESS

Matrix Essentials is the complete hair care product line formulated for you to have strong, healthy hair. Shampoos, conditioners, treatments, stylers and finishers interact so your hair is revitalized and restored. Problem hair? Not a problem. Just ask us.

WE USE AND RECOMMEND

**Matrix**  
ESSENTIALS

HAIRCUTS \$8.<sup>99</sup>  
(NEW CLIENTS) WALK-INS WELCOME



**WIZZARDS** HAIR STUDIO

903 S. Rural Rd., Tempe  
967-2360



ARIZONA STATE UNIVERSITY  
MONEY SAVING COUPONS

WELCOME TO ASUI  
AUGUST 1993



IT'S FREE

TAKE ONE

Devil Deals is your official coupon book. Pick one up today and save money all over town!



Helmets  
\$29<sup>95</sup>

# Giant Deals on Campus Wheels

ALL MODELS • ALL SIZES • STUDENT DISCOUNTS

**\$219<sup>95</sup>** **GIANT**

'93 Acapulco  
reg. \$249.95

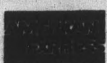
**FREE**  
1 year brake &  
gear adjustments  
Lifetime warranty on  
frame & fork

\$5<sup>00</sup>  
EACH

SLIME  
SHOTS

**\$10.00 OFF ANY U-LOCK**  
w/\$1,000 Guarantee  
with coupon and bike purchase only. Not  
good with any other offer. Exp. 8/28/93.  
Domenics Cycling 967-770

University  
10th Street  
Mill



967-7700  
1004 S. Mill Ave.  
Tempe  
S.W. Corner of Mill & 10th St.

**DOMENICS  
CYCLING**

Layaway • Open 7 days a week

# Millionaire teacher says classroom provides normality

FOND DU LAC, Wis. (AP) — Some students wondered why he didn't quit. And he certainly doesn't need the paycheck. But the winner of half of a record \$111 million lottery jackpot went back to work Tuesday as a junior high teacher.

"In the halls, you hear congratulations, but otherwise I don't think it's too different," said Leslie Robins.

Well, actually there was one big difference. Robins wore a colorful tie bearing the cartoon characters Sylvester the Cat and Tweety Bird.

"I don't wear a tie too often. I wanted them to remember it," he said.

Robins said he felt comfortable returning to Sabish Junior High for his fourth year of teaching, coaching and advising the school newspaper.

However, he expects this to be his last year at the school.

"This will give me a sense of security, of normality until I decide what I would like to do in the future," he said. "If I thought that I was a bad teacher, obviously, I would give the job up

or if I thought it was just a job I would give it up. But ... it is something I enjoy doing tremendously."

Robins is splitting his winnings in the July 7 Powerball lottery with his fiancée, Colleen DeVries, a 24-year-old nurse. They haven't set a wedding date. They are creating a foundation to manage their wealth, which will be paid to them over the next 20 years.

He intends to donate his pay — nearly \$35,000 with his extra duties — back to the school.

"I am not working for the salary, obviously," Robins said.

Deanna Pino, 14, said she expected Robins to quit.

"I would have left the state because people know me and would want my money. I would probably retire for life."

"He's just an ordinary guy with a whole bunch of money," said Aimee Becker, 12. "From what I see, he just still acts the way he did. He doesn't act like a rich snob."

## Mount St. Helens' reforestation may take 165 years

WASHINGTON (AP) — Trees are growing back slowly on Mount St. Helens, just as they did after a volcanic eruption five centuries ago, but complete reforestation may be 165 years away, a study said Tuesday.

The research on tree rings published in *National Geographic Research & Exploration* journal offers a glimpse at the life of the volcano in southwest Washington, from the catastrophic blast in 1480 to the most recent eruption in May 1980.

"Basically we were able to reconstruct everything the volcano did in detail for the last 500 years," said David K. Yamaguchi, the study's author and researcher of catastrophic forest disturbances.

"That kind of detailed picture is rare for volcanoes around the world," he said in a telephone interview from Boulder, Colo., where he works at the University of Colorado's Mountain Research Station.

The wide variance in regrowth on the once-barren moonscape around Mount St. Helens mimics the pattern of trees that began growing after the eruption of 1480, Yamaguchi said.

Yamaguchi, who previously worked for the U.S. Geologic Survey's Volcano Observation Center in Vancouver, Wash., spent three summers "driving around the volcano in my beat up car" taking samples from 600 stumps.

Dozens of studies have been done since the eruption concern-

ing small plants and soil composition, "but none have really looked at the big picture, which is how long does it take the forest to come back?"

"This gives us a broader picture of how the Northwest's old-growth forests work," he said.

Forest stands of Douglas fir that were destroyed within about 1.5 miles of the volcano more than 500 years ago grew back generally within about 40 years, Yamaguchi said.

Likewise, stands killed in 1980 within 2 miles of seed sources should again grow faster than more distant stands, looking much like a Christmas tree farm by 2020 to 2040, he predicted.

But stands farther to the northeast near East Spirit Lake showed irregular growth after the 1480 eruption and are experiencing the same thing now, he said.

"About 180 years elapsed between the establishment of the first and last Douglas-fir at East Spirit Lake. This suggests that the formation of future closed stands in this area will not be complete until 2160," he wrote.

## Man sinks into grave while planting flowers

NEWTOWN, Pa. (AP) — A man planting mums on his mother's grave was trapped for two hours when the ground gave way and he sank knee-high.

Kenneth McLaughlin, 29, said he tried repeatedly to free himself, but the leg that sank into soft ground Saturday became stuck under the base of his mother's headstone.

Help arrived after two hours, said McLaughlin, a security guard.

"I screamed and shouted for help, but nobody came. I was really upset," he said.

McLaughlin was rescued by a bicyclist, who called for help. A police officer used a flower pot near the grave to shovel a two-foot hole and free McLaughlin.

"One thing's for sure," McLaughlin said, "I don't think I'll go back there alone for a while."

STATE PRESS Sports - We're the amoebae reporters—  
We're everywhere !!!!

**Like Any Student, We Enjoy Cool People,  
Endless Activity, And Anything Free.  
(Come In Now And You Will Too.)**

**2 Free  
Months**

Join Before Sept. 30

The Western Club is celebrating ten years as the *Students Choice* for sports, fitness, and recreation clubs. Call or come in for a complete tour, membership information and 2 free months when you join.

Free 2 month offer expires Sept. 30, 1993. New members only.

**2140 East Broadway (west of Price)  
Tempe, Arizona Tel: 968-9231**



**Western Reserve Club  
Award-Winning Sports Center**

# You won't get a job when you graduate

Unless you get experience while you're still in college...the kind of experience that will tell an employer you have more than just a degree.

How do you get this experience? By interning with the *State Press* Advertising department as an advertising sales representative.

This is a paid internship...you'll get paid now and later. Call today to find out more about this program.

Call Jackie Eldridge at 965-6555.

**MIGUEL'S MUSIC CENTER**  
 > METRONOMES • ACCESSORIES • ETC.  
 > ELECTRIC & ACOUSTIC GUITARS  
 > AMPS • ELECTRIC EFFECTS • SHEET MUSIC  
 > LESSONS (Rock • Contemporary • Folk • Classic Guitar)  
 > REPAIRS > On All Instruments!  
 ...and much MORE!  
 Next to Ozzie's Warehouse in The Arches Shopping Center  
 130 E. University Dr. 968-2310

**\$2.00 Off!**  
 20 Point Valvoline Lube, Oil & Filter Service  
 (Reg. \$21.95)  
**LEIGHTON'S**  
 TEMPE 1355 S. McClintock 894-2798  
 MESA 1355 S. Country Club 898-8211  
**GREASE 'n GO**  
 Hours: Mon.-Sat. 8-6, Sunday 10-4  
 Good only with coupon. Not valid with any other offers.  
 Add \$1.00 Environmental Fee.

**Window Tint** Student Discounts Available  
 • Arizona Legal Tint  
 • Reduce Sun's Glare up to 80%  
 • Micro Edge & Defroster Cut Included  
 • Scratch Resistant From **\$59.95**  
 941-9064  
 1005 N. Scottsdale Rd. 2 miles north of ASU  
 P.P.D.A. (post-party **DETAILING** available)  
**Ziebart TidyCar**

## ASU - SCC CONNECTION

A Sample of Fall S.C.C. Courses Equivalent\* to ASU Courses

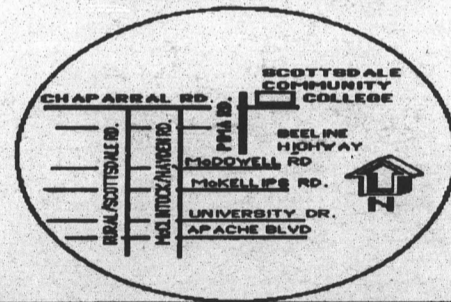
\*For additional information, see 1993-94 Arizona Commission for Postsecondary Education Course Equivalency Guide or an Advisor.

ASU	SCC	COURSE TITLE	ASU	SCC	COURSE TITLE
ACC230*	ACC230	USES OF ACCT INFO I	GPH111*	GPH111	LABO FOR GPH111
ACC240*	ACC240	USES OF ACCT INFO II	GPH212	GPH212	INTRO TO METEOROLOG I & LAB
ARS100*	ARH100	INTRO TO ART	HES100*	HES100	HEALTHFUL LIVING
ARS101*	ARH101	PREHIS- GOTHIC ART	HIS100*	HIS100	HIST OF W- CIV TO MID AGES
ART231*	ART151	SCULPTURE I & II	HIS101*	HIS101	HIST OF W- CIV/MID AGES-1789
ART227	ART165	W-COLOR PAINT I & II	HIS103*	HIS103	US HIS TO
ART223	ART167	PAINTING I	HIS104*	HIS104	US HIS 1870 TO PRESENT
ASB330*	ASB230	PRIN OF ARCHAEOLOGY	HIS428*	HIS105	ARIZONA HISTORY
ASB335*	ASB245	S W ANTHROPOLOGY	Elective*	HIS145	HISTORY OF MEXICO
ASM101*	ASM101	HUMAN ORI. & DEV OF COM	ITA101	ITA101AA	ELEM ITALIAN I
AST111*	AST111	ASTRO I LEC	JPN101	JPN101	ELEM JAPANESE I
AST125*	AST125	ASTRO I LAB	JPN201	JPN201	INTER JAPANESE I
Elective*	BIO105	LAB FOR BIO105	JRN201	JRN201	NEWSWRITING
Elective*	CHM130	FUND'T'L CHM & LAB	MAT106*	MAT124	INTERMED ALGEBRA W/REVIEW
Elective*	CHM151	GEN CHM I & LAB	MAT106	MAT129	INTERMED ALGEBRA
CHM317*	CHM235	GEN CHM I & LAB	MAT117	MAT154	COLLEGE ALGEBRA
CIS235*	CIS158	COBOL PROGRAM	MAT117	MAT155	COLLEGE ALGEBRA/FUNCTIONS
CSE201	CIS162	COBOL PROGRAM I	MAT118	MAT160	PLANE TRIGONOMETRY
COM100*	COM100	INTRO TO HUMAN COM	MAT119	MAT179	FINITE MATHEMATICS
COM110*	COM110	INTERPERSONAL COM	MAT210	MAT210	BRIEF CALCULUS
COM207	COM207	INTRO TO COM INQUIRY	MAT270*	MAT223	CAL W/ANALYTIC GEO I
COM225	COM225	PUBLIC SPEAKING	MAT271*	MAT224	CALC W/ANALYTIC GEO II
COM230	COM230	SMALL GROUP COM	MAT242*	MAT225	ELEMENTARY LINEAR ALGEBRA
COM241*	COM241	INTRO TO ORAL INTERPRETN	MAT272*	MAT235	CAL W/ANALYTIC GEO III
COM259	COM259	COM IN BUS & PROFESSIONS	MCO110*	MCO120	MEDIA & SOCIETY
THP270*	COM271	VOICE & DICTION	MUS107*	MHL141	APPRE & LIT OF MUSIC 1800
ECE105	ECE105AA	INTRO TO LANG OF ENGINEER	MHL341	MHL241	MUSIC HIS & LIT TO 1750
ECE210*	ECE211	ENGINEERING MECH-STATICS	MUP350	MUP150	COMMUNITY CHORUS
ENG101	ENG101	FRESHMAN ENG	MUP379	MUP181	CHAMBER MUSIC ENSEMBLES
ENG102	ENG102	FRESHMAN ENG			ON: PERCUSSION
ENG210	ENG210	CREATIVE WRITING	MUE335	MUP226	CLASS GUITAR II, III, IV
ENG221	ENH221	SURVEY OF ENG LIT BEFORE 1800	PHI101*	PHI101	INTRODUCTION TO PHILOSOPHY
ENG341	ENH241	AM LIT BEFORE 1860	PHI103	PHI103	INTRO TO LOGIC
FRE101	FRE101AA	ELEM FRENCH I	Elective*	PHI105	INTRO TO ETHICS
FRE102	FRE102AA	ELEM FRENCH II	Elective*	PHI243	HIS OF WORLD RELIGIONS
Elective*	FRE115	BEGIN FRENCH CONVER I	PHS110*	PHS110	LAB FOR PHS110
FRE201*	FRE201	INTERMED FRENCH I	PHY101*	PHY101	LAB FOR PHY101
FRE203*	FRE202	INTERMED FRENCH II	PHY111*	PHY111	LAB FOR PHY111
LES305	GBS205	LEGAL, ETHI/REG ISSUES/BUS	PHY112*	PHY112	LAB FOR PHY112
GER101	GER101AA	ELEM GERMAN I	PHY115	PHY 115	LAB FOR PHY115
Elective*	GER115	BEGIN GERMAN CONVER I	POS160*	POS120	WORLD POLITICS
GER201	GER201	INTER GERMAN I	POS311*	POS221	AZ CONSTITUTION
Elective*	GER225	INTER GERMAN CONVER	Elective*	POS222	U.S. CONSTITUTION

## SCOTTSDALE COMMUNITY COLLEGE

9000 E. CHAPARRAL ROAD  
 SCOTTSDALE, AZ 85250

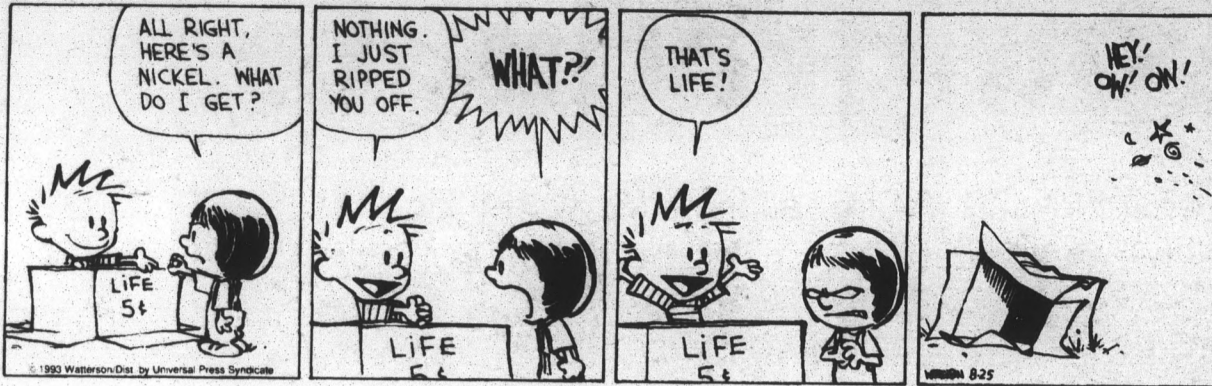
- SMALL CLASSES -
  - SIMPLE REGISTRATION -
  - TUITION \$32.00 / CREDIT HOUR -
  - LATE REGISTRATION AUG. 23, 24, 25 -
- 423-6000 OR 423-6114



ASU	SCC	COURSE TITLE
POS484*	POS281AA	PUBLIC POL/SERV INTERNSHIP
PGS101	PSY101	INTRO TO PSYCHOLOGY
PSY230*	PSY230	INTRO TO STATISTICS
PGS350*	PSY250	SOCIAL PSYCHOLOGY
REA251	REA179	REAL ESTATE PRINCIPLES I
RUS101	RUS101AA	ELEMENTARY RUSSIAN I
RUS201	RUS201	INTERMEDIATE RUSSIAN
SOC101	SOC101	INTRODUCTION TO SOCIOLOGY
Elective*	SOC110	DRUGS & SOCIETY
Elective*	SOC130	HUMAN SEXUALITY
SOC315*	SOC157	SOC OF MARRIAGE & FAM
SOC464*	SOC212	WOMEN/MEN/CHANGING
SOC341	SOC251	SOCIAL PROBLEMS
SPA101	SPA101AA	ELEMEN SPANISH I
SPA102	SPA102AA	ELEMEN SPANISH ISPA201
SPA201	SPA201	INTERMED SPANISH I & II
Elective*	SPA225	INTERMED SPA CONVER
TCM200	TCM101	FUNDA OF RADIO & TV
TCM235*	TCM180	TELEVISION TECHNIQUES
THE100	THE111	INTRO TO THEATRE
THE300*	THE205	INTRO TO CINEMA
THP101	THP112	ACTING I
THP110	THP212	ACTING II
THP213	THP213	INTRO TO TECH THEATRE

## Calvin and Hobbes

by Bill Watterson



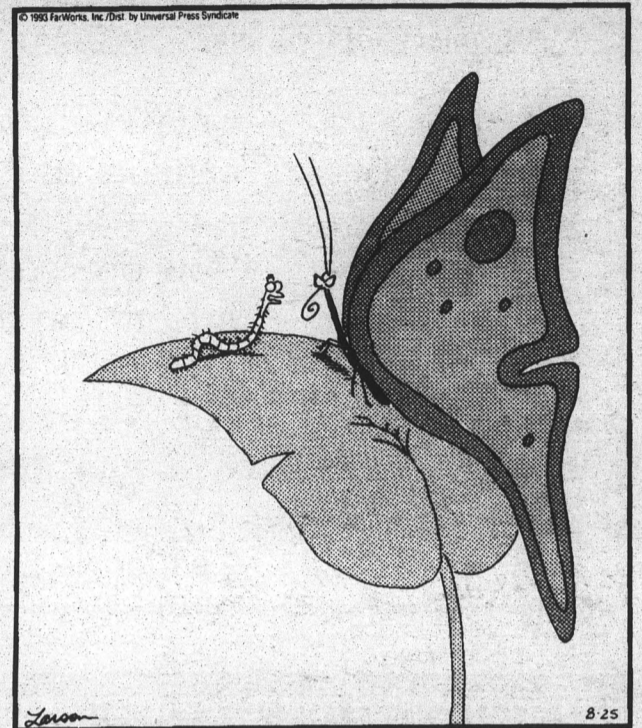
## Calvin and Hobbes

by Bill Watterson



## THE FAR SIDE

By GARY LARSON



"How could you think that?... I've always been attracted by your personality."

## PEOPLE

LOUISVILLE, Ky. (AP) — William Shatner, who flew across the universe in "Star Trek," was thrown from a horse in real life but nobody needed to call "Rescue 911."

After the fall Saturday at the World's Championship Horse Show, the actor was treated for scrapes and bruises at a hospital and released.

The accident occurred as Shatner, the "Rescue 911" host who owns a horse farm in central Kentucky, was exercising his American Saddlebred on the Kentucky State Fair grounds Saturday night.

Shatner was sore from the fall but still planned to ride in competition this week, a stable spokesman told fair officials Monday. Shatner didn't want to discuss the incident with reporters.

KALISPELL, Mont. (AP) — Americans knew Gen. Norman Schwarzkopf as "Stormin' Norman" during the Gulf War. Longtime Army colleagues call him "The Bear."

So it's appropriate that Schwarzkopf will spearhead a national group's grizzly bear recovery efforts.

"The grizzly bear is very, very important to me," Schwarzkopf said. "The bear is the last animal we have in this country that truly represents what the American wilderness was, and we must preserve our American heritage."

Jerry Conley, chairman of the Interagency Grizzly Recovery Committee, said that as national spokesman for the group Schwarzkopf will help promote work to boost grizzly bear numbers and preserve their habitat.

RALEIGH, N.C. (AP) — Children's TV star "Captain Kangaroo" Bob Keeshan came to North Carolina to praise state efforts to reduce spanking in schools.

"I'm opposed to corporal punishment because it doesn't work," said Keeshan, whose morning television show was on the air for 30 years. "It will work temporarily to affect behavior, but it doesn't last."

The state Assembly in 1991 repealed a law that blocked bans on corporal punishment. Since then, schools serving about half the state's students have banned paddling.

At 66, Keeshan now resembles the aging, paternal character that it took makeup to create

when "Captain Kangaroo" started in the 1950s.

LOS ANGELES (AP) — Madonna, who performed at the first MTV Video Music Awards, will sing on the cable network's 10th anniversary awards show.

She leads a group of performers including Pearl Jam, Janet Jackson, the Spin Doctors and Sting.

The Sept. 2 show at the Universal Amphitheatre will be broadcast live on the East Coast, and on tape in the West.

Madonna performed "Like a Virgin" on the MTV awards show in 1984.

IRVING, Texas (AP) — Garth Brooks is adding another Texas concert next month, but he won't be singing — he'll be faking it.

The good news for fans is that it'll be free.

In a fourth appearance, Brooks plans to lip-sync to tapes recorded live during three "real" concerts at Texas Stadium Sept. 23-25. The free appearance will be used to film closeups and other shots for a TV special, promoter Linda Smith said.

NASHVILLE, Tenn. (AP) — Country singer Alan Jackson has a lot to celebrate this month — a No. 1 single and album, seven Country Music Association award nominations and now, a new daughter.

Jackson's wife, Denise, gave birth to 7-pound, 3-ounce Alexandra "Ali" Jane Jackson on Monday, publicist Anita Mandell said.

Jackson's single "Chattahoochee" was No. 1 at the beginning of the month and his double platinum album, "A Lot About Livin' (And A Little 'Bout Love)" also hit No. 1.

LOS ANGELES (AP) — The 1980s pop band Duran Duran cemented its '90s comeback with a star on the Hollywood Walk of Fame.

A screaming throng of about 1,500 fans turned out Monday as the sidewalk star was unveiled. It sits next to John Lennon's.

The band formed a dozen years ago was known for the 1980s hits "Rio" and "Hungry Like a Wolf." Now, they're back with an album featuring the hit songs "Ordinary World" and "Come Undone."

## Teriyaki of Japan

Welcomes back ASU students with a

10% discount

Featuring our campus favorite chicken teriyaki bowl.

Two convenient locations in Tempe:  
1314 East Apache Blvd. Tel. 894-6883  
112 East University Dr. Tel. 968-6708

Fast - Healthy - Reasonable

Expires September 4, 1993

SAVE up to **50%** on your

## HEALTH INSURANCE

NOW YOU CAN HAVE PEACE OF MIND!

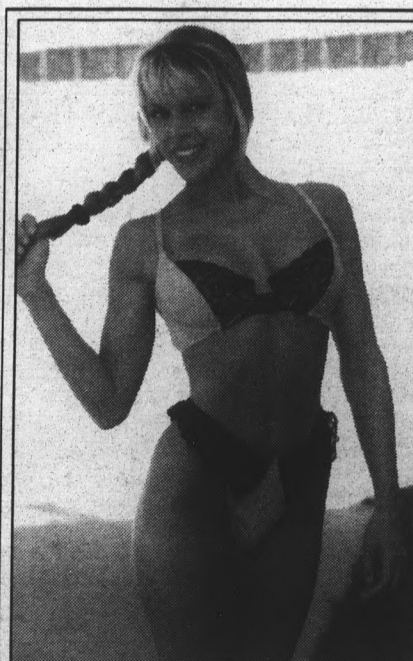
- Designed for Students-Faculty-Staff-Dependents
- One Million in Comprehensive Benefits
- Benefits at Student Health will be reimbursed
- Worldwide Access to any Medical Provider
- Very Affordable
- Your Choice of Doctor and Hospital
- Top Rated "A" Excellent • Since 1938

EXAMPLES:		FALL	SPRING	SUMMER	YEAR
18-24	MALE	\$101	\$144	\$ 79	\$288
	FEMALE	\$142	\$202	\$110	\$404
25-29	MALE	\$106	\$151	\$ 83	\$302
	FEMALE	\$165	\$220	\$121	\$ 44

Call for Quotes on Other Ages and Dependents

Our policy makes the difference!  
**PraterSon**  
INSURANCE

2121 S. Mill Ave. • Ste. 206 • Tempe, AZ  
1-800-769-1699



2-PIECE SWIMSUIT  
REGULAR 39<sup>95</sup>  
SALE PRICE  
**\$19<sup>95</sup>**

THONG CUT  
BRAZILIAN CUT  
BIKINI CUT  
• LINGERIE  
• T-SHIRTS  
• NOVELTIES

15% DISCOUNT  
FOR STUDENTS  
AND FACULTY

*Bridget's Treasures*  
We enhance romance

119 E. Southern Avenue  
Tempe • 929-0469  
S.E. Corner of  
Southern & Mill



\*VALID ON REGULAR PRICED ITEMS

## Sports Briefs

### Montgomery injured, may miss month

ASU running back George Montgomery, who is attempting to return from a torn anterior cruciate ligament suffered last season, will miss three to four weeks, it was announced Tuesday afternoon.

The senior fractured his right foot during preseason workouts at Camp Tontozona. The injury will not require surgery, but Montgomery will have to wear a "boot" to limit the mobility of his foot while it heals. He is expected to make a full recovery.

### Faculty/Staff eligible for discounted tickets to ASU/Utah

ASU Faculty/Staff are invited to purchase up to four tickets to the Sept. 4 ASU/Utah football game at the discounted price of \$8.00 each. Tickets can be purchased at the Athletic Ticket Office. A valid ASU Faculty/Staff I.D. must be presented to purchase the discounted tickets.

For admission to the complimentary pregame picnic at 5 p.m., present Faculty/Staff I.D. along with game tickets. Faculty/Staff members who currently have season tickets are encouraged to attend the picnic.

### Coleman soon to find out fate

Vince Coleman's immediate future with the New York Mets is expected to be determined this week after the outfielder met with club and baseball officials Tuesday.

Mets attorney David Howard said a decision could come "as early as Wednesday, hopefully Thursday at the latest."

"We'll take action that we deem appropriate," he said.

Coleman, who hurled an explosive at a group of fans outside Dodger Stadium on July 24, is to be arraigned in Los Angeles on Oct. 8. He has been on a paid leave from the Mets and is in the third year of a four-year contract.

### John Thompson's son hired at Oregon

Ronny Thompson, son of Georgetown basketball coach John Thompson, has been hired as an assistant coach at Oregon.

The younger Thompson is a 1992 graduate of Georgetown. He worked the past year as a bond trading assistant on the New York Stock Exchange.

Thompson played for Georgetown for four seasons and was captain in 1992, his senior year. He played in four NCAA tournaments.

He will assist Oregon head coach Jerry Green with on-campus recruiting, video, team travel, scouting, as well as practice and game coaching.

"The fact his dad is John Thompson is a good reference," Green said when the school announced the hiring Tuesday. "He's been around basketball all his life and played at Georgetown, as well."

### Baseball Roundup

- Tuesday's Games  
**AMERICAN LEAGUE**  
 Late Game Not Included  
 Milwaukee 9, Oakland 2, 1st game  
 Oakland at Milwaukee, 2nd game, (n)  
 Detroit 4, Seattle 1  
 Toronto 8, Cleveland 6  
 Baltimore 1, California 0  
 Chicago 4, New York 2  
 Texas 4, Boston 3  
 Kansas City 5, Minnesota 3  
**NATIONAL LEAGUE**  
 Atlanta 6, San Francisco 4  
 Houston 4, Florida 0  
 Chicago 6, Montreal 5  
 Philadelphia 4, Colorado 2  
 New York 5, Cincinnati 4  
 San Diego 17, St. Louis 4  
 Los Angeles 3, Pittsburgh 4

Compiled from Associated Press reports.



Craig Macnaughton/State Press

Starting Quarterback Grady Benton is hoping to start this season where he left off last year, after he set a NCAA freshmen record for pass completion percentage.

## GRADY'S TEAM

### Benton more confident in 2nd year

This is the second story in a series previewing the Sun Devil football team.

BY SHAUN RACHAU  
 STATE PRESS

Watching sophomore Grady Benton take charge of the Sun Devils starting offense in practice, it is no secret he is content with his role on the team this season.

Benton returns this season knowing that this is his team.

"He knows he is the leader and he is the guy," Sun Devil coach Bruce Snyder said. "I don't see anybody beating him out."

Because he begins this season as the Sun Devils' No. 1 quarterback, Benton's confidence this season is quite a turnaround from a year ago when the team departed for its 10-day preseason camp at Camp Tontozona.

"Personally, I'm just trying to make sure I know the offense well enough to where I can run

it and be under control in the first game," Benton said.

Going into camp last season, Benton was slapped with a one-game suspension by Coach Bruce Snyder and taken out of the race for the starting quarterback job with Garrick McGee and Brett Powers.

But things changed quite quickly for Benton and the Sun Devils.

Powers transferred to Ohio State after McGee was named the starting quarterback in camp. And then, after a rash of criminal incidents took place involving ASU athletes, McGee was also suspended for the Sun Devils' season opener vs. Washington because of his involvement with a campus shooting, causing then-redshirt freshman Troy Rauer to start at quarterback.

After he served his one-game suspension, Benton battled for the starting job with McGee and solidified his hold on the position against Louisville when he threw for 142 yards.

"He had that hard, exposed hardship that embarrassed him to death," Snyder said about Benton's one-game suspension last season. "But he's grown up because he had to play."

"He's worked harder academically this year than he ever has, even including high school, and I think all of that has matured him. I think he knows that this whole thing ain't going to be easy."

Despite all of the troubles that bothered Benton at the beginning of last season, his first year as the Sun Devils starting quarterback turned out to be quite a remarkable one.

By season's end, Benton played in 10 games, starting eight, and set a NCAA freshman record by completing 149 of 225 passes for a .662 completion percentage. The previous completion percentage record by a freshman was .615, set by Bernie Kosar at the University of Miami in 1983.

TURN TO QUARTERBACK, PAGE 19.

## Defending Women's champ look to retain NCAA golf title

### Vollstedt signs Bowie, Mourgue d'Algue

BY SCOTT DAVIS  
 STATE PRESS

After winning last year's NCAA championship, don't expect the ASU women's golf team to get worse.

Expect the defending NCAA champions only to get better.

The Sun Devils, who claimed last year's championship with a surge in the final round to upend Texas by two strokes, will be returning four of their top five players from the championship squad. In fact, the top four finishers will be returning, and only No. 5 player Ulrika von Heijne will be lost because of graduation.

ASU has also added two timely additions to the team. The Sun Devils landed heavily recruited freshman Heather Bowie and junior All-America Kristel Mourgue d'Algue from Furman University.

"On paper, we should be a better team this year," Sun Devil coach Linda Vollstedt said. "Everyone is looking forward to (the upcoming season)."

Bowie is entering ASU with very impressive junior results. While attending high school in Edmond, Okla., she was a first-team Rolex All-

American for three consecutive years. She had numerous junior victories, including a first place finish at the 1991 ASU Ping Junior Championship, which was played at ASU's Karsten Golf Course.

Mourgue d'Algue was a two-year starter at Furman before transferring to ASU. Last year, she was a consensus first-team All-American for the Paladins.

Vollstedt said that both girls will have an excellent chance of stepping into the lineup.

Expected to lead the way for the Sun Devils will be last season's Pac-10 Player of the Year Wendy Ward, senior Tracy Cone and sophomores Linda Ericsson and Emilee Klein.

Klein had a phenomenal summer, winning the North/South Invitational and Broadmor Invitational and placing second in the Western Amateur.

Rounding out the Sun Devil squad are senior Ashley Adleta and sophomore Vinny Rivello.

Vollstedt said Rivello could become a key factor in her second season, based on her strong performances last year as a freshman.

ASU's season begins September 19-21 at the

TURN TO WOMEN'S GOLF, PAGE 21.

## Cards trim active roster to 60 players

BY MIKE BRANOM  
 STATE PRESS

The Phoenix Cardinals made three player personnel moves Tuesday morning, enabling the team to meet the 1 p.m. deadline for trimming their active roster to 60 players.

Rob Baxley, a second-year offensive tackle from Iowa, and George Searcy, a first-year running back from East Tennessee State, were placed on injured reserve, while the Cardinals reached an injury settlement with Keith Franklin, a rookie linebacker from South Carolina.

Baxley is having season-ending knee surgery this week and Searcy is out with an injured collarbone. Since they have been placed on injured reserve, neither player is eligible to see game action during the 1993 season.

Franklin, who injured his hamstring during the Cardinals' second day of practice,

TURN TO CARDINALS, PAGE 21.

# Forget the knee, I'm on your side

In my brief career as a sports writer, I have interviewed a number of athletes. Some were well known professional athletes, some were marble-mouthed high school kids.

But none of those interviews, whether good or bad, have been more memorable than a recent talk with Sun Devil tailback Mario Bates.

A group of Valley sportswriters and I gathered around Bates at ASU's Football Media Day Aug. 10. We all knew what the first question was going to be, it was just a matter of who was going to ask it. But Bates beat us to it.

"You're not going to ask me any questions about my knee, are you?" Bates stated when he sat down with us to answer questions.

That knee he was referring to was his left knee — the one he injured last season at Nebraska that put an end to what could have been a very memorable season.

Prior to tearing his anterior cruciate ligament, Bates gained 441 yards on 66 carries vs. Washington, Louisville and Louisville. At the time of injury, he was third in the nation in rushing behind San Diego State's Marshal Faulk and California's Russell White, and was second in all-purpose yards to Stanford's Glyn Milburn.

Needless to say, we did ask Bates about his knee and how he felt it would affect him this season. But it was evident that he was serious about not talking about his knee.

Most of the reporters were upset. They were probably thinking, "How could a 20-year-old college football player, who has only been talked about as a superstar, not oblige the media's questions?"

However, Bates stood firm on his decision not to talk about the knee injury.

"There's not much you can say about it," he said. "It's just as good as my right knee."

Although I was displeased when Bates first announced that he wished not to talk about his knee, as I think about it, I can understand his reasons.

You see, not thinking about his injury is the key for Bates to have a successful season and make a run for the Heisman Trophy. There is nothing more he can do to repair it.

The doctor has performed the surgery. He has more strength in his knee after working with UofA's track coach. He ran a 4.83 40-yard dash while pulling a 50-pound sled.

So, the only thing he has to do to complete his rehabilitation is believe that it is repaired.

"I guess why a lot of young athletes can't come back after their ACL is torn is because someone keeps reminding them and putting it in their head," Bates said.

And the road to believing his knee is 100 percent better starts by not talking or thinking about it.

When Bates was at home in Tucson during the summer, he must have enrolled in a psychology class during summer school at UofA. I have not seen anyone more focused on having a big year than he is right now.

However, motivation will only take you so far. Two other athletes, Ron Harper and Danny Manning of the NBA's Los Angeles Clippers, suffered the same injury as Bates, and it took them until their second season after the injury to contribute the same numbers they once did. So it should be safe to say that Bates might have to wait a year before he reaches big dividends on the field and become the first Sun Devil to win the Heisman.

Even if he doesn't win the Heisman, it was a great interview and I will never forget it. Good luck, Mario, and as long as you stay healthy, I'll never ask about you knee again.

SHAUN RACHAU  
Columnist



# NL West race shows signs of life

San Francisco (AP) - Three big home runs, three double plays, seven strong innings by Tom Glavine, and suddenly there's a pennant race in the NL West.

The Atlanta Braves, baseball's best team since the All-Star break, pulled within 5 1/2 games of the first-place San Francisco Giants, the closest they've been since June 8.

The 6-4 victory Tuesday came courtesy of homers by Ron Gant, Terry Pendleton and David Justice. Best of all, the win gave Atlanta the chance to be the first team to sweep the Giants this season.

"We haven't had a whole lot of luck here in the past, so getting the first two in a row is a pretty big feat," Jeff Blauser said.

But the Giants aren't conceding anything.

"It (the pressure) is still on them," Giants manager Dusty Baker said. "We win tomorrow, and we're up 6 1/2 going on the road."

The Braves won for the 13th time in 15 games despite a seventh-inning, two-run shot by Robby Thompson, who homered in his fifth consecutive game to make it 5-3.

But Justice regained the momentum for the Braves when he homered off reliever Dave Righetti in the eighth.

"The Giants are good at coming back," said Justice, who hit his 30th home run. "They're the type of team you have to put the pressure on them for nine innings. They've got too many guys who can do damage."

But it was the Braves hitters who did the most damage while San Francisco's defense made an uncharacteristic three errors.

"I wouldn't say we're frustrated," Baker said. "For some reason, we're a little tight. We're one of the best defensive teams in the league, but we're making errors we don't usually make."

The teams play again Wednesday afternoon, and play three more games in Atlanta Aug. 31-Sept. 2.

STATE PRESS Crosswords - For the cruciverbalist in you.

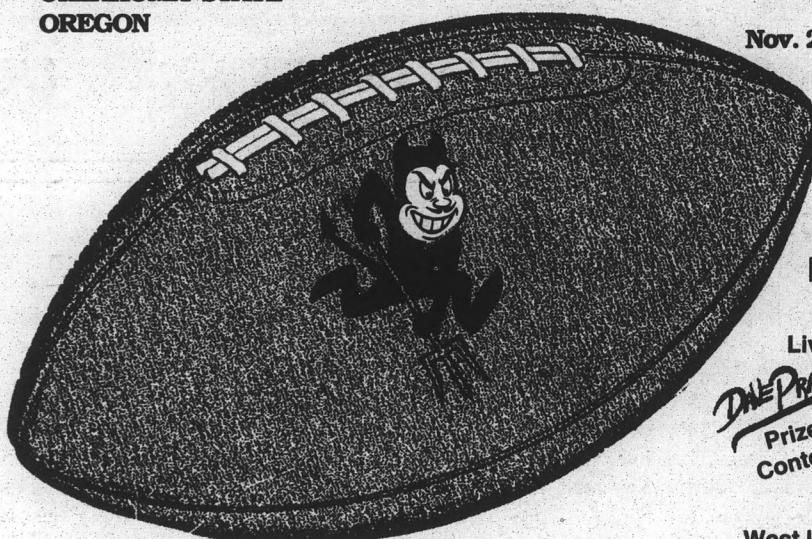
# SUN DEVIL FOOTBALL

### Home Schedule

- Sept. 4 UTAH
- Sept. 25 OKLAHOMA STATE
- Oct. 16 OREGON

### Home Schedule

- Oct. 30 WASHINGTON
- Nov. 6 CAL-BERKELEY
- Nov. 26 HOMECOMING ARIZONA



### FALL CAMPUS 'KICK OFF'

Live radio broadcast with Dave Pratt of 98KUPD

Prizes Contests Ticket Sales Entertainment

Friday, August 27 5:30am-10:00am

West lawn above Hayden Library

# YOUR SEAT IS ON SALE NOW!

Guarantee yourself a great seat all season long by purchasing your student season tickets today!

# ONLY \$28<sup>00</sup>

**Student seating will be assigned when you purchase your tickets, so place your order with friends!**

Tickets are on sale now at the Athletic Ticket Office (South end of Sun-Devil Stadium) from 8:30 a.m.-4:00 p.m. weekdays and in the Memorial Union on August 23-September 3 near the information desk weekdays from 10:00 a.m.-2:00 p.m.

### Fan Photo Day • Saturday August 28

10a.m. Sun Devil Stadium

Meet the players, get autographs and take pictures. Don't miss it! FREE ADMISSION plus free T-shirts for the first 1,000 fans through the gate.

## ARIZONA STATE UNIVERSITY STATE PRESS

You'll never know unless you read your horoscope.

In the classified section.

# Quarterbacks

CONTINUED FROM PAGE 19.

Now, with one year under his belt, Benton is looking to start this season where he left off last year. He has four of the five starting offensive linemen returning from last season and a new group of speedy wide receivers that should be a deep threat for the Sun Devils.

Snyder and quarterback coach Bob Petrino worked with Benton during spring drills to stay in the pocket more to eliminate negative plays.

"He's such a good athlete, he likes to run around backwards sometimes and scramble out of there," Petrino said. "That got us in trouble."

"Now, I think he has to understand what his strengths and weaknesses are and make sure that he plays within himself so he doesn't try to do something he can't do."

With Rauer moving to slotback, the Sun Devils will try to mold freshmen recruits Jake Plummer and Jason Verdugo into backup quarterbacks.

"I think it is a major decision and a rather difficult one," Snyder said. "I don't want Rauer to sit behind Grady and not play, because he's too good of an athlete."

However, Snyder does not seem as concerned as he was before the Sun Devils went to

Camp Tontozona. Both Verdugo and Plummer had an impressive camp.

"I really like them," Snyder said about the freshmen quarterbacks. "And the other thing I like about them is that they kind of became buddies. It is not going to be one of those ugly things where they're really against each other."

Plummer was a *Parade Magazine* and SuperPrep All-America last season at Capital High School in Boise, Idaho. He was rated as the 14th best quarterback in the nation by SuperPrep and passed for 6,097 yards and 68 touchdowns in his two seasons as starter at Capital. He completed nearly 70 percent of his passes and earned Idaho player of the year honors.

Verdugo was a SuperPrep and Blue Chip all-region selection last year at Canyon del Oro High School in Tucson. He completed 145 of 214 passes for 2,400 yards and 20 touchdowns as a senior, while setting school records for passes completed in a game (20), most passing yards in a game (350) and most passes completed in a career (327). Verdugo, who plans to play baseball for ASU in the spring, was named southern Arizona and Tucson player of the year.

# Women's Golf

CONTINUED FROM PAGE 19.

Oregon Fall Preview in Portland, Ore. The following week, the Sun Devils will travel to Fukushima, Japan to compete in the TOPY Cup, a highly competitive tournament involving some of the best golfers from both the United States

and Japan.

Vollstedt said her team is anxious to get the season underway.

"They've all been playing all summer long," she said. "Summer's been very good for them. They've all been playing excellent."

# Cardinals

CONTINUED FROM PAGE 19.

has been waived, but the team will pay his medical costs and give him a monetary settlement. Terms of the settlement were not announced.

"Instead of him putting his life on hold and taking up a (roster) spot we may need, now he can get on with his life and we can go about our business," Cardinals' Media Coordinator Greg Gladysiewski said.

Officially, the Cardinals now have 63 players listed on the active roster, but exemptions are made for holdouts Garrison Hearst, Eric Hill and Rob Massey.

If and when these players are signed to con-

tracts, the Cardinals will then have to clear roster spots for them.

The next roster cut-down is on Aug. 30, when all NFL teams must pare their squads to a maximum of 47 players. On Aug. 31, all teams may establish a six-man inactive list and a five-man practice squad.

If Phoenix chooses to place the maximum amount of players on the inactive list and practice squad, then it must cut two players by the Aug. 30 deadline, barring any developments with Hearst, Hill or Massey.

# ARIZONA STATE UNIVERSITY STATE PRESS

*-We cover good sports, bad sports, rich sports, and poor sports*

## ADVERTISER INDEX

Name	Page	Name	Page	Name	Page	Name	Page
Academic Financial	10	Electronic Materials	2	Mill Avenue Travel	10	Tempe Bicycle	24
Ace Hardware	10	Flax	11	Minder Binders	9	Teriyaki of Japan	18
Beach Club West	7	Glacier Yogurt	24	Old Chicago	12	United Dairymen of Arizona	8
Bridgets Treasures	18	Grease N Go	17	Phillips and Associates	13	Western Reserve Club	16
Campbells Books	14	Grooming Humans	7	Prater and Son Insurance	18	Wizzard's Hair	14
Campus Books	7	Intercollegiate Athletics	20	Samaritan Health System	9	The Works	11
Campus Corner	24	Kaplan	24	Scottsdale Community College	17	Ziebart Tidy Car	10, 17
Commons on Apache	13	Kinko's Copies	14	Shalimar Restaurant	11	Ztak Marketing	12
Council Travel	12	Lambda Chi Alpha	7	Student Recreation Center	6		
Domenics Cycling Imports	15	Miguel's Music Center	17	Sunny's Pizza	2		

State Press  
Display Advertising • 965-6555

# Classifieds

Notice to our readers: Before responding to any advertisement requesting money be sent or invested, you may wish to investigate the company and offer. The *State Press* cannot assume responsibility for the validity of the offers advertised in our classified section. For more information and assistance regarding the investigation of an advertisement, please contact the Better Business Bureau at 264-1721.

### ANNOUNCEMENTS

PRIVATE SOCIAL party for gay student athletes and fraternity men. 929-0129 for information.

### APARTMENTS

\$199 MOVE-IN 2 br. pool, tennis, \$395/mo. Apartment Renters. 649-0077.

\$199 MOVE-IN 1 bd \$395, 2 bd \$455, w/d, fireplace, pool. Apartment Renters 649-0077.

\$199 MOVE-IN, 1br, #325/mo. 2br \$375/month. close to ASU. Apartment Renters 831-5900.

\$299 MOVE-IN 1br, pool, \$299/month. Apartment Renters. 649-0077.

1 BD furnished, pool, walk to ASU \$340/month Apartment Renters. 831-5900.

### APARTMENTS

1 BD in 4-plex near ASU stove, frig, a/c laundry, \$295 + \$250 dep, some free rent. 945-3970.

1 BD pool, tennis \$199 move-in. \$335/month. Apartment Renters. 649-0077.

1 BD pool, w/d hook-ups \$419/month Apartment Renters. 831-5900.

1 BD utilities paid, pool, tennis, etc. \$389/month 966-1847.

1 BD, pool, jacuzzi, cable \$340/month. Apartment Renters. 649-0077.

2 BD 900 square feet, just west of ASU. \$450/month. Apartment Renters. 831-5900.

2 BD, 2 ba, 900 square ft, pool, w/d hook-up \$499/month. Apartment Renters. 649-0077.

2 BD, 2 ba, pool, close to ASU \$475/mo. Apartment Renters. 649-0077.

**GALLEON APT.**  
1920 E. Hayden Lane  
(Near McClintock/University)  
2 bedroom \$390  
Call Norma at  
**968-4967**  
Frank Bennett Realty, 969-1818

### APARTMENTS

2 BEDROOM, all utilities paid, pool, near ASU \$455/month. 966-1847.

2 BR, pool, tennis, walk to ASU. Apartment Renters. 831-5900.

2BD, 1BA 4-plex, refrigerated, from \$249. Laundry facilities. 966-5596.

ASU AREA. Studios, 1 and 2 bedrooms. \$265 up, plus utilities, pool. 967-4908, 966-8838.

ASU. 1BD-\$250, 2bd-\$325, \$149 moves you in, stove, fridge, pool, laundry, 1339 S. Sunset Drive or call Dave 789-6719.

FREE APARTMENT and possible small stipend for female student. Community Housing Partnership, a non-profit, low income housing organization, needs A resident manager for a women's housing facility in Phoenix. For more information call, John at 253-6905.

**DESERT WINDS**  
2220 W. Dora, Mesa  
Main/Dobson area  
Large 2 bd, 2 ba, \$425  
No Pets  
Call Norma at  
**968-4967**  
Frank Bennett Realty, 969-1818

### APARTMENTS

BEAUTIFUL LARGE 1 & 2 bedrooms. Walk to ASU. Pool, laundry room. On East 8th Street between Rural & McClintock. Cape Cod Apartments, 968-5238. Call for move-in special.

**FREE**  
Apartment  
Locating Service  
*Specializing in  
Student Housing*  
**GREAT LOCATIONS**  
**RENTAL SERVICES**  
Don't delay, call today!  
**968-8886**  
Broadway & McClintock  
In the ABCO Plaza

### HOMES FOR RENT

3 BD 2 ba Fireplace 1 block to ASU 1191 S Maple \$750/month Tim 894-0288

4 BR, 2 ba house w/ 2 car garage, complete pool service, w/d, 5 minutes from campus. \$1200. Contact Brian 867-7360

### HOMES FOR RENT

LARGE 4 bedroom house, w/d, dishwasher, 2 car garage, maid service, etc. \$925. 437-1048

MOBILE HOME, 2bd on 5 acre farm. Secluded, large 1/4 acre yard, trees, sahuaro, beautiful mountain view, newly remodeled, a/c, w/d. \$400/mo. Ron, 276-9385.

### TOWNHOMES/ CONDOS FOR RENT

2 STORY townhomes, 2 & 3 bd, w/d, \$600-\$750, call Kim for details at 277-4418.

2BD, 2BA, Univ/McClintock, 828 S. Hacienda, pool, 1-yr lse, \$525/mo, no pets 438-0229

3 BD, 2 ba TH near ASU, a/c, w/d, mjr appl, pool, \$590/mo + deposit 814-8690.

3BD, 2BA condo, a/c, dishwasher, w/d, pool, tennis near ASU, \$800. (714)499-4065, 967-4908.

AA PAPAGO Park Village I, 2 bd 1 1/4 ba, w/d, cov park. \$580 242-1920 or 488-1364.

### TOWNHOMES/ CONDOS FOR RENT

FOR RENT, furnished 3bd, 3 ba Tempe condo. Major appl. incl. 2 pools, sauna, jet spa, etc. \$900/month. Available immediately. Deposit required. 921-7387.

LARGE 1 bedroom w/d, patio, McClintock/Univ, \$525 John Hall Assoc. Call Phylliss 844-5900.

### RENTAL SHARING

2BD 2BA Condo furnished, serious stndt only, smkr ok 2m/s ASU \$250/mo + 1/2 elect. 833-2784

3 BD patio home 2ba pool jacuzzi w/d fp 2-patio 2-car garage \$200 + 1/3 util. Female wanted 970-8483 after 5

FEMALE NONSMOKER for 2bd, 1ba townhome. Near ASU/MCC \$200 mo +1/2 util 948-6086 898-7061

FEMALE SHARE 2br, 2ba, pool, tennis, etc. Southern/Rural. 491-7112, 894-6502, 437-1048.

FEMALE, LARGE 2 bd, 2 ba, pool, jacuzzi, Hayden Place \$240/mo. 831-2938.

State Press Classifieds  
965-6735

### RENTAL SHARING

FEMINIST GRAD student, no smoke/pets, seeks same. Share beautiful Scottsdale 2bd, 2ba apt. \$285/mo plus. 945-0450 eves.

HAYDEN PLACE. Female, nonsmoker for 2bd, 2ba, pool jacuzzi, \$250/mo + 1/2 util. 967-1199.

LARGE 2 bd, 2 ba, pool, dishwasher, etc. Rural/Southern \$250/mo. 894-6502 or 437-1048.

LRG ROOM, share bath in 3bd condo at College/Southern. Animal lover, nonsmoker, female pref. \$230+1/3 util. 731-9487.

FEMALE ROOMMATE Luxury 3 bd 2 ba condo Questa Vida w/d pl \$250/mo Aval nw 714-673-3122

MALE N/S, share 3 bd house w/ pool, garage, 10 min./ASU, \$225 mo. util. incl. Mike, 839-2147.

MASTER BEDROOM w/ba \$235, 1br share ba \$180 + util, furnished, w/d, pool. 921-2835.

MATURE GRAD student, n/s, m/f, to share beautiful 2bd, 2ba, split level south Scottsdale townhouse. 1 block from bus line, \$300 incl. util. 970-1125.

NEED ROOMMATE to share 2 bd 2 ba Condo in Scottsdale. Call for details. 481-0057.

RENTAL SHARING

NEAR ASU-QUESTA Vida own bdr \$275 or loft \$225 or 2 share a bdr \$350 + pt util N/S + all amenities 921-7150.

NONSMOKING FEMALE student, share 4 bd furnished house, S. McClintock area. avail 9/1 or end of August. 491-9484.

ROOMMATE WANTED: 3br 3ba condo, 2 car gar., 3 pools, patio, w/d, cable, sec. sys. 1 1/2 mi from ASU \$246 + util. 966-3785.

ROOMMATE WANTED: own bedroom and bath \$200/month plus utilities, fenced yard, non smoker. Ann 437-8756.

SCOTTSDALE HOUSE -female, 4bd, 3ba, pool w/d, f/p no pets, non-smkr. 946-3669.

TWO FEMALE roommates wanted for a newly redone partially furn. Papago Park I unit \$275 + shared util Call (602) 967-4181.

ROOMS FOR RENT

\$200/MO 2BD, 2ba Apache/Rural no drugs/smoking/pets pls. Mature, respon, outgoing person would be perfect 731-4774

FEMALE TO share 4bd house, must be financially secure. 2200 sq. ft. modern home. 345-0350.

GRAD STUDENT - \$235 + pt util, kit & Indry fac. N/S N/P, 897-1440 leave message.

PRIVATE RM w/full bath in luxury home at "The Cottonwoods". Extremely quiet/private. Kitchen privileges. Prefer faculty or graduate student \$250/mo + 1/2 util. Mac McCormick 345-6789.

PRIVATE RM furn, free w/d, nice carpet, pools, parking, bike ASU 2 mi. 893-2577 965-2814.

SCOTTSDALE ROOM rental, 946-8894, Near Camelback & Hayden. \$200/mo including util.

HOMES FOR SALE

\$\$\$ SAVE \$\$\$

For sale by owner. 3 br, 2 ba, lrg family rm, upgraded kitchen & baths, ceiling fans in every room, mini-blinds on windows, fenced yard, dbl carport, large storage room, screened in patio, above ground pool, sprinkler system w/ timer. Navel orange tree. \$78,900 945-7292 leave message.

BIKE TO ASU

4 br, 2 ba 2350 sq ft home. Bright, open family room with fireplace. Double garage. Covered patio & a basement. 2605 S. Rita \$99,750. Don Bates 820-3333 West USA.

WALK TO ASU 3 bedrooms & 2 bath, AZ room, plus bonus room, new roof & paint. 69 K Mary W 948-5554 WUSA Realty.

TOWNHOMES/ CONDOS FOR SALE

LG TH, 2bd, 2 ba, 1000 sq. ft., 10 min/ASU, pool, spa, \$10,000 down, est \$397/mo. 967-6514

NO DOWN, take over mtg, \$700/mo. 3 BD, 2 BA condo, a/c, dishwasher, w/d, pool, tennis. (714) 499-4065, 967-4908.

MISCELLANEOUS FOR SALE

BODYGUARD 2000 pepper defense spray. 17.95 + Tax. Gold Enterprises 548-1222.

FOR SALE- Perlick double keg bottle box. 921-3933 between 10am and 6pm.

AUTOMOBILES

MISCELLANEOUS FOR SALE

DINO DUNG!

Fossilized, Grade A, 1 oz specimens. Send chk/mo \$14.95 to: The Jurassic Fart, PO Box 5905, Tucson, AZ 85703.

HP485X CALCULATOR \$150 obo, excellent condition Call John at 649-9073

KING SIZE waterbed, 6-drawer Danish design, can deliver, \$180, blk. Bell answer-mach. \$40. Full face motorcycle helmet, red, \$35. 839-1231, ask 4 Brad.

BOOKS

RECYCLE FOR \$\$

Sell your books for cash (no textbooks, please) or get trade credit towards the purchase of anything in the store. Choose from 3 floors of new and used books, posters, music, etc. Call ahead for buying hours. Browsers welcome. Changing Hands Bookstore, 414 Mill Avenue, 966-0203.

FURNITURE

AAA BED sets in factory wrapper: twin \$69, fulls \$79, queen \$99. Free frame, can deliver. 256-7675.

ASH ROLL-TOP desk & chair \$350/obo; kitchen table, 4 chairs, \$80/obo. Marty Griffin, 844-5900 or 940-8366 eves.

HIDE-A-BED \$100, free dresser needs repair, table \$10, console stereo \$15. 966-4918, 894-0487.

NEW TWIN mattress & box \$69 student desk at \$79. 841-0818.

NICE BLACK bed and black dresser. 6 drawers, sm. refig, many other apartment needs for sale cheap. Greg office 231-6666.

OVER 200 offices of furniture to sell, desks, chairs, files, bookcases, computer furniture and more. AZ Office Liquidators 506 S. 40th St. (on 40th St south of Broadway) 437-2224.

SOFA & chair \$275, sofa & love seats starting at \$300. Southwest + contemporary fabrics 997-9568

SOFA & LOVESEAT new still in plastic, southwest fabric \$240. 951-8809.

SOFA SET, dinette, bed, futon, day bed, entertainment center, dresser. Cheap. 352-7249.

SUPER TWIN waterbed, mattress, liner & heater, dark walnut, \$85 obo. 738-8130.

Office Furniture Warehouse

\*Student Desk.....\$59.95 \*Desk Chair.....\$19.95 Files, work tables, book cases, computer stands & much, much more. New and used. Discounts given with current ASU I.D. Call 545-5109

COMPUTERS

286-12, VGA, 2 MB RAM, 40 MB hd, 3 1/2 & 5 1/2 fd, mouse, printer. \$650 obo. 482-9448.

COMPUTER TUTOR/ advisor software/hardware set-up. IBM PC/compatibles, Mac. Call T. Gibbons, 784-0226.

Used 286's \$286 Used 386's \$386 New 386's \$500

Includes monochrome monitor and harddrives. Also includes delivery and set-up. Azlan • 968-1010

AUTOMOBILES

COMPUTERS

LAPTOP ACER 386SX 40 MB IMBcp Dos 5.0 Win 3.1, 2 mos old \$800. Call Mark 921-7037 pg 226-0235.

MACINTOSH LC2 color 4mb/80mb, word, Excel,illustrator, Quicken, +++ \$1700/obo 946-9178

PC ACER IBMcomp 386sx 2 mRam 40 MGspd 80 MGHdrive 14" vga mouse MSdos 5.0 win 3.1 \$700 Still in box. Mark 921-7037.

AUTOMOBILES

1979 VW Convertible white w/white top, like new, runs great 967-2282

1983 OLDS Cutlass 4-dr ps, at, pb, ac, tilt, stereo, exc cond. 60,000K \$3000 968-9872.

1989 HUNDAI Excel GL 5-spd Hatchback, sunroof, ac, tinted, new tires/battery under warranty, excellent cond. 460-2665.

83 DATSUN 280ZX, pampered, still looks great, 1-owner, 5-spd, new tires, PW, cruise, louvers, gold/tan. \$3600/obo. 246-8243.

86 ACURA Integra 5spd, ac, tint, am/fm cass, 104K, all maint rcrds \$4900/obo. 917-0466. Chandler.

87 BMW Convertible auto trans loaded, excell cond BBS wheels must sell \$15,900/obo 821-0492

93 CHEVY S-10 Pickup, must sell, 12K mi., white, \$8900/obo. 731-9460 or 443-4313.

AUTO FINANCING- First time buyers OK. Past credit problems OK. Smith Mesa Scottsdale 481-9891

NEED A CAR?

Tired of hassle in used car buying? We will find, purchase & deliver any car of your choice. \$1,000s below dealer prices. Call now for info: 966-8961, Brian, The Desert Group.

VOLVO - 75, 4 speed, AC, cassette, recent engine overhaul, battery & brakes, runs & drives great, rear body damage, \$800 obo 968-5387

WE'LL BUY your good used vehicle for cash. Smith Mesa Scottsdale Call today 481-9891

MOTORCYCLES

HONDA ELITE 80, 8K new tire/batt, \$550. Schwinn 10 speed \$90 Dave 961-1698 after 6pm.

BICYCLES

1SP CRUISERS mens & ladies \$75 & \$50 Ph 829-8431 (Doug)

92 TREK Mtn bike yellow/blue good cond \$225 obo 966-9020

MOUNTAIN BIKE 20" Schwinn Sierra. Perfect condition. Asking \$225. Call 730-5148.

USED BIKES Large selection of used bikes from \$50 to \$200, all sizes. All in great condition. Come by today Bicycle Wheelers 2010 S Rural 968-8011

TRAVEL

DISCOUNT TRAVEL: Cheap in your name. I specialize in quick departures. Most places worldwide. I also buy transferable coupons/awards. 968-7283.

PHX TO Minneapolis/Madison, 1-way, female, Sept. 11, date may be changed. \$150. 966-6614

HELP WANTED-GENERAL

ATTENTION

Construction Supply Co. Sell tools nationwide. Tempe based company, will train. \$5-\$8 guaranteed PT. Joe, 894-1257 after 2 p.m.

ENGINEERING AIDE

Engineering firm close to ASU seeks student for PT engineering support. Duties include AutoCad drawings, data analysis & spreadsheet usage. Prefer undergraduate with mechanical or electrical engineering major. Knowledge of Excel & MS Word for Windows helpful. Apply to: ESS Attn. Personnel Manager 64 E. Broadway, #230 Tempe, AZ 85282

TRAVEL

PAYING TOO much for travel? Get the Privilege Card & save up to 50%. Discounts on 1000's of hotels, air fares, cruises, attractions, car rentals, & more. \$397 value for only \$49.95. Call (602)820-9720. Featured in USA Today & Consumer Reports.

HELP WANTED-GENERAL

\$287.50 SELL 50 hilarious, outrageous, & often alcohol related, college t-shirts & make \$287.50. All shirt 100% guaranteed: a risk free program. 22 designs avail. Call now for free catalog 1(800) 304-3309.

5 PT professional hair stylists needed for Tempe salon 10-20 hrs/wk. Clientele not nec but preferred. Apply at Super Styles, SE corner Priest/Univ, or 829-7887.

ARE YOU a good communicator? Would you enjoy talking with prospective students about ASU? If so, you may have what it takes to join the Student Tele-counseling Outreach Program in Undergraduate Admissions. Earn \$5/hour working Sunday 3-7pm and Monday through Thursday 5-9pm. Pick up your job referral form today at the Student Employment Office: Job #4623H.

AREV PROGRAMMER p/t hrs flexible schedule, exp. in programming revelation software req. Reply to PO Box 24258 Tempe AZ 85285 Attn. Brian.

ATTENTION STUDENTS: Full or p/t pos avail, flex hrs, exc compensation, good working cond. Please call 264-2332, ask for Riley, April or Patty.

ATTRACTIVE LADIES needed to appear in the 1994 High Caliber Calendar. Athletic build and a great smile could get you national exposure in 1994's best selling calendar. Call 921-1884 for complete details.

BIKE MECHANIC. Full or part time. Good salary. Apply in person. Bicycle wheelers 2010 S Rural No phone calls please

DISC JOCKEY, learn to be a mobile DJ., responsible person, dependable vehicle, weekend work. 820-8220.

EARN \$10-\$40/HR. p/t on wk/ends. Top mobile DJ co. looking for responsible people to DJ ASU & private parties. Exp. preferred, 966-9900, M-F, 3-6pm.

EARN WHILE you learn. Make use of your contacts across campus. We pay you for your knowledge of who's who & who buys. Call for appt., QPR Printing & Copying, 829-7376.

EASY MONEY! Minimum \$8/hour. Flexible hrs. Perfect p/t job for students. Call 946-8728.

EXECUTIVE ANSWERING Service has temporary positions open for operators starting 9/7. Flex hrs. Call Kathleen 264-4000.

FRAME AND arts shop looking for p/t help. Apply at 655 W. Warner, Tempe.

NEWSPAPER ROUTE carriers, Sunday or daily am delivery, must have dependable auto, good pay, Tempe based. Kell Dist/ The New York Times, call 966-2526 for interview.

HELP WANTED-GENERAL

MESSENGERS NEEDED p/t, f/t, M-F 8-5pm good vehicle & knowledge of area req. starts at \$5/hr. 381-1245 leave message.

MUSIC INDUSTRY Fall-Spring Internship. National Concert Promotion/Marketing Company based in L.A. seeks responsible, outgoing Music/ Marketing Intern based in Phoenix. Sophomore or above. Know your market well, be very into music. Call Mary (213) 368-4738.

PT JOBS avail, flex hrs around your class schedule. On/off campus positions, \$6/hr. 921-0968.

PAINT STORE sales help & night/weekend asst mgr. Bus or tech major pref. Drug screening req. will work hrs to accom sch. call for appt Space Age Paints 707 S Country Club Dr, Mesa 835-0971.

PART TIME HELP Nat'l Retail Co. has p/t hrs. for the fall. Very flexible hrs. Eve and wkends. Start at \$8.20. No exp req. 968-1840.

PART TIME student help 25 hr/wk Packaging/shipping Exp. call Packaging Store 990-2552

PART-TIME POSITIONS, work 4-8pm Monday-Friday processing advertising claims. We train. No typing or phones required. Basic math skills needed. Apply at The Advertising Checking Bureau, Inc., 1919 W. Fairmont Dr., Suite 7, Tempe, 7:30am-4pm M-F, 438-2320.

PLANT NURSERY. Full/Part time days. Sat a must. Call for appointment 963-1061 AZ Cactus Sales, Chandler.

PROMOTIONS HELP needed. Energetic/serious inquiries only. \$5/hr. Flex hrs. Greg, 231-6666.

RECEPTIONIST FOR beauty salon, S. Tempe, corner Rural/El-liot. Good people skills, phone & sales, eves, & Sats. 820-7303

SALESMEN & delivery drivers for Bodyguard 2000 pepper spray. Gold Enterprises 548-1222.

STUDENTS NEEDED to assist paralyzed bunjee jumper with personal care. 966-2059.

SUBSTITUTE TEACHERS & substitute school nurses needed for MPS. Teacher/nurse and/or substitute certificate req. Contact Carol/Jamie - Substitute Office Mesa Public Schools 898-7723 or 898-7724.

Notetakers Wanted All graduate students eligible. Undergraduate upperclassmen with a 3.3 GPA or above eligible. All undergraduates with a 3.3 GPA or better registered in a class with an enrollment larger than 100 are eligible for that course. Up to \$12.50/lecture.

Class Quotes Inside Campus Corner at College/University 921-0968

HELP WANTED-GENERAL

SYMPHOMANIA! (NOUN: state of excitement induced by working for The Phoenix Symphony season ticket phone sales team!) We need articulate, dynamic people to help us now! Great pay package & atmosphere. Training provided. Management potential. Sunday-Thursday part time hours. 265-0417, 3-9:30pm Sat 10am-2pm

THERAPEUTIC WORK, excellent pay, flex. hours, will train. Call 844-9000 or page 219-9000.

WALK FROM ASU! No selling, telephone survey research, flex hrs avail Tues-Fri 2-9:30pm & Sat 9am-5pm. Train at \$5. Weekly pay, frequent raise reviews. Higginbotham Asso., 829-3141.

WE ARE looking for fun motivated people. Make great \$ p/t 10-25/hr. Various positions including sales,mgnt, and charity fundraising. Call 331-4122.

HELP WANTED-SALES

APPOINTMENT SETTERS needed. \$5/hr. plus commission. part time. Call 481-9200.

BUSINESS &/OR communications majors needed! Ideal opt for right indiv to join successful promotional advt co. People oriented position that requires outgoing, energetic team player. Prev sales exp a+, flex schedules- exc pay! 921-7755, 1-4pm.

SPORTS MINDED Hiring marketing reps for Tempe office, flexible full or p/t hours available at \$8-\$10/hour. Call Mike for interview 921-8282.

HELP WANTED-GENERAL

HELP WANTED-SALES

GOLFING

Spend your fall semester golfing with Sports Shots Inc. Job entails photography and sales. Hourly wages. Call 952-9171 for interviews, which will be held Aug. 25 from noon to 6pm. No photography experience necessary. Personable and energetic persons should apply.

OPPORTUNITY AWAITS YOU AT PROGRAMMER'S WAREHOUSE

A leading Multi National Distributor of Software, is looking for HIGH ENERGY telemarketers. We think you'll appreciate: •High Pay, \$7 to \$12 hour •Bonuses and Comm. •Paid Vacation •State of the Art Environment •Very Positive Attitude 602-443-0580

HELP WANTED-CLERICAL

P/T 10-20 hrs/week near ASU Knowledge WP51 40 wpm. 829-6611 Anita \$6/hr 2-4 hour blocks

HELP WANTED-FOOD SERVICE

AAAA NOW hiring wait people, hosts, cooks. Apply 1-4 M-F Sage Brush 8111 E McDonald

ACCEPTING APPLICATIONS for drivers & counter help. Earn up to \$8 per hour at Sammy B's Pizza. 945-8850.

State Press Classifieds 965-6735

HELP WANTED-GENERAL

Defusco Industrial Supply needs part-time help, \$6/hour.

A "cool" job, working in our air conditioned office.

Hard workers only need apply.

Jim, 966-5765.

city of scottsdale recreation division



WANTED: YOUTH SPORTS COACHES & OFFICIALS Boys Girls Flag Football Volleyball \$6.36 - \$8.49 per hour

For application information contact the Student Employment Office, Job referral #3861-J Applications will be accepted until Friday, September 17. 994-2408

Excellent Part-time Jobs Across From ASU

DialAmerica Marketing, a 36 year old telephone marketing company, is interviewing and hiring. We would enjoy meeting you and answering any of your questions. DialAmerica will offer students:

- Flexible Schedules, A Short (4.5) Shift Of Choice: Early AM, Mid-AM, Early Aft, Mid-Aft, Early Eve, & Weekends
• Excellent Earning Potential - Average \$8 - \$10/Hr. \$10 - \$20/Hr. For Our Top Producers.
• Paid, Complete Training
• Nice Offices, Fully Automated; Reps Called Prequalified Leads Nationwide From A Computer-Dialed Data Base.
• Invaluable Experience in Sales & Communications
• A Short Walk From ASU Campus

Call for a confidential interview (602) 894-0264



Smith Mesa Budget Used Cars in Scottsdale

Quality Used Cars & Trucks Affordable Prices

Over 25 Years Serving ASU

7520 E. McDowell Rd., Scottsdale 481-9891

**HELP WANTED-FOOD SERVICE**

CAFE SERVERS flex shifts F/T, P/T 6-2:30pm, 4:30-10:00pm hrs avail. \$2.65/hr + tips. Apply in person Wyndham Gardens Hotel 7475 W Chandler Blvd 1-10 exit 160

COUNTRY GLAZE Ham looking for p/t days M-F apply 2501 E Camelback, Camelback Esplanade.

**DOMINO'S PIZZA**  
Come & join the #1 pizza delivery team for the ASU area. We need f/t & p/t drivers & inside help. Drivers make \$7-\$10 per hour including mileage & tips. Safe driving cash bonuses can also be earned. We are very flexible & can work around your school schedule. Apply in person after 11am at 903 S. Rural, Tempe, or call 968-5555. EOE.

HUNAN EXPRESS, part-time lunch & dinner. Apply M-F 4-5 pm, 818 W Broadway, Tempe.

JOHNNY ROCKETS now accepting applications for supervisors, wait staff, cashier & cooks. Apply in person in Fashion Square Mall.

P/T SNACK bar help, \$4.25/hr. Apply in person Thurs., Aug. 26, 11am-4pm, Oceanside Ice Arena, 1520 N. McClintock, Tempe.

STOCKYARDS RESTAURANT now hiring, lunch servers & dinner cooks. Apply in person M-F 10am-3pm, 5001 E Washington

SWENSENS TEMPE has immediate openings for sandwich cooks, counter, & wait staff. Days & nights avail, full/part time. Apply M-F 4-5pm Price & Baseline.

TERIYAKI OF Japan is hiring cashiers and cooks. Apply at 112 E University or call 968-6708.

**HELP WANTED-CHILD CARE**

AFTER SCHOOL child care needed for 2 elem school age students, approx 2:30-5:30pm, Tempe. Add'l hours avail. Call 838-5829.

CHILD CARE: Academic couple living in Ahwatukee needs nanny for girls (11 & 8) wkday afterns, lt. hskping & some driving req. must have dep. trans, nonsmkr. 15-20 hrs/wk rate neg. 496-0866.

**NANNYS WANTED!**  
Full time, part time, live in, live out. Call All Bout Child Care Referral Service 759-6330

**HELP WANTED-CHILD CARE**

NANNY'S P/T days eves or week-end hrs. must have reliable transportation call 345-2433.

P/T sitter needed for 7 yr old, My home Gilbert area, flexible hrs, ref/car req, 813-0829 evenings.

SCOTTSDALE TATUM/Shea area. P/T nanny wanted 4 days/week 2-7pm, light housework, references req. call 442-0885 after 5pm.

**BUSINESS OPPORTUNITIES**

NEED MONEY? Wanted motivated individuals. Be your own boss, set your own hrs, small investment needed.(602) 963-8263.

**MUSIC**

MUSIC INSTRUCTION, voice and keyboard, for handicapped student. Music major preferred. \$8/hr Transportation necessary Call 890-4812

**RESTAURANTS/BARS**

10c WINGS  
\$1 DRAFTS  
Bud, Bud Light  
Mon-Thur 3-7 p.m.  
Sat 11 a.m.-5 p.m.  
Sun 12-9 p.m.  
**BANDERSNATCH**  
5th St. & Forest BREWPUB

**PETS**

**PETS INC.**

"Your Complete Pets Store"  
CATS DOGS  
FISH BIRDS  
Supplies & Feeders

Featuring Exotic Reptiles  
Come see our Reptile Room  
3224 S. Mill  
NW Corner  
Mill & Southern  
966-7910

**PERSONALS**

AAAAAA RUSH Kappa Alpha  
Rush Kappa Alpha Rush Kappa  
Alpha Rush Kappa Alpha.

**PERSONALS**

ALL GØB pledges: Get psyched for an amazing semester. We love you all! Love in PIKE, your actives.

AMY: HERE'S hoping you can use a calculator!

ARE YOU a guy who just doesn't want to commit to one woman? Are the women in your life pressuring you to make a choice? If so, you could be a guest on a brand new national TV talk show. Just call Beth collect at: (212) 889-8283

ARE YOU seeing a man who won't commit to just one woman? Are you tired of competing with other women to get his attention? If so you could be a guest on a brand new national TV talk show. Just call Beth collect at: (212) 889-8283.

ASU DIVERS! Thakx for all of your support. Let's have an awesome unforgettable year together! I love all of you! Shannon

BACK TO school lamp special - Your choice only \$7.99. Choose a desk lamp, clip on, or a swing arm lamp. At ASU Bookstore.

GAMMA PHI'S love our awesome new pledges!!

HEATHER F. and rush staff- Your time and hard work paid off. Just look at our beautiful new pledges!! Y'all did an awesome job! Love in PIKE.

ROSES 99¢ long stem, Carnation boutonniere 99¢. 968-6149, 1711 E. Apache, Tempe, AZ

**SPECIAL PURCHASE**  
Filler paper only \$1.19 & wire-bound for only 69¢ at ASU Bookstore.

TO THE men of Kappa Alpha-Good luck with rush. Love, Michelle. WE LOVE you pledges, oh yes we do...Love, your new GØB sisters!

WELCOME TO ΣK new baby snakes and to our wonderful sisters who were gone for the summer! Congratulations on a great sisterhood "Rush" ΣK Love, Kimberlee

**ADOPTION**

ADOPTION: BEAR hugs await your infant. We promise dedicated care, a loving family and a fine education. All our home needs is a very special baby. Call Amy & Merrill 1-800-959-5219. We're easy to talk to.

**SERVICES**

DAYCARE in my home. Safe, creative environ. Parking available. Walk to ASU. 967-0127. Please leave message.

**SERVICES**

PERMANENT HAIR removal: A Hair Today, Gone Tomorrow Electrolysis, blend method. Package deals available. Southern/Rural (private suite). 921-1146.

PRO - BODYWORKER, skilled bodywork natural therapy. Relieves stress & more. Close to ASU. Student discounts. Dave 351-8698 leave message.

SPANISH TRANSLATIONS Spanish to Eng / Eng to Spanish for term papers, etc. 983-8425.

**IMMIGRATION LAWYER**  
Green cards - business & professional.  
Don Dodge  
Scottsdale • 443-3100

**HEALTH & FITNESS**

CERTIFIED PERSONAL trainer. 5yrs exp. in muscle building, enhancing, aerobic fitness & general fitness counseling. Flex hrs & rates. 967-8425.

CERTIFIED PERSONAL trainer will assist in: Muscle building, toning, aerobic fitness. Individualized programs. Affordable. 966-2745.

**FUNDRAISING**

**GUARANTEED \$150-\$300 IN ONE WEEK**

YOUR CLUB CAN EARN A MINIMUM OF \$150-\$300 PLUS BONUSES UP TO \$500 PER WEEK MANAGING PROMOTIONS FOR THE GM MASTERCARD AND SEARS ON CAMPUS. QUALIFY FOR NEW GMC JIMMY. PLUS RECEIVE A FREE T-SHIRT IF YOU QUALIFY.  
Call 1-800-950-VISA, ext. 45

**TYPING/WORD PROCESSING**

24 HOUR turn around. \$2/page. Professional typing, laser, fax. Walkable/ ASU. Diane 829-1602.

**I WANT IT NOW!**  
Desktop Publishing  
Typing term papers, resumes, charts, thesis, quick service.  
Near ASU  
966-1984

**TYPING/WORD PROCESSING**

AP/MLA EXPERIENCED typing/ word processing. Need it fast? Call Jessie, 945-5744.

**RESUMES \$15**  
High success rate! Reports, laser printing, same day. A Perfect Image, Near ASU 967-0907.

**RESUMES WITH RESULTS!**  
1 Pg. Resumes w/private consultation \$40.  
"We do the writing for you!"  
**The Write Resume**  
Broadway/Mill  
For appointment call  
966-9211

**TUTORS**

**TYPING/WORD PROCESSING**

FAST TURNAROUND. Term papers, theses, resumes. MLA/ APA, laser, fax. Pat, 897-1741.

**TUTORS**

**TUTORS NEEDED**  
Private Scottsdale school needs teachers who are proficient in both high school math & science and will be available Monday & Wednesday, 12:30 to 8:30 p.m., both days a must. \$7-\$10/hour.  
953-3070

**INSTRUCTION**

AEROBIC INSTRUCTORS Certification Workshop in Mesa by Nat'l Aerobics Training Assn w/end of Oct 1. Diane 963-9415.

**TUTORS**

**Outstanding Elementary**  
teacher who can work Monday, Tuesday & Wednesday (all three days), 12:30 to 8:30 p.m. throughout the academic year. Student in elementary master preferred. Spanish & French speaking applicants welcome. \$7-\$10/hour.  
953-3070

**MATRIX EDUCATION CENTER**

**10 GOOD REASONS TO BE TUTORED AT MATRIX**

- Experienced & personalized service
- Convenient location (across from ASU)
- Only tutor to accept VISA/MC
- State of Arizona approved
- Excellent reputation within community
- Reasonable rates
- We care more - try harder
- Members of Better Business Bureau & Tempe Chamber of Commerce
- Established one-of-a-kind tutoring/learning
- Because your friends have already been here!

We offer tutorial for the following classes:  
MAT 106, MAT 117, MAT 118, MAT 119, MAT 210, MAT 270, PHY 111, PHY 112, QBA 221, PSY 230, CHEM 101, CHEM 113, CHEM 115 and many more  
**MATRIX EDUCATION CENTER • "SIMON"**  
Cornerstone Mall, Tempe • 968-4668

**WINNERS OF THE SPIN DOCTORS**

**Concert Tickets are:**  
Heather Fallon • Kris Garcia  
Amy Gilbertie • Paul Johnson • John Lopez

**CONGRATULATIONS!**  
You can pick your tickets up in the State Press  
Classified Advertising office, Matthews Center Basement

**STATE PRESS Classified Ad Order Form**

Name	Home Phone	Business Phone
Address	City, State	Zip

Please print one letter per box, leave a blank box between words.

Please be sure to check your ad. Make sure it reads exactly as you wish it to appear in the State Press, including punctuation. Please check your ad the first day it appears—the liability of the State Press shall not exceed the cost of the ad and credit may be given for the first insertion only. Minor spelling errors do not qualify for make-goods. No refunds will be given, but if you need to cancel your ad a credit will be held on account for future advertising.

**RATES**

Private Party	Commercial
1-4 days, \$1.30 per line, per day	1 day \$2.00 per line
5-9 days, \$1.25 per line, per day	2-4 days, \$1.50 per line, per day
10+ days, \$1.15 per line, per day	5-9 days, \$1.30 per line, per day
	10+ days, \$1.00 per line, per day

3 line minimum. Add a bold headline for the cost of 2 lines.

Please include Driver's license #

Check # \_\_\_\_\_

Bank Card Number \_\_\_\_\_

Name on Card \_\_\_\_\_

Expiration Date \_\_\_\_\_

Date you wish your ad to run: \_\_\_\_\_

Price per Day \$ \_\_\_\_\_ # of Days \_\_\_\_\_ Total \$ \_\_\_\_\_

Classification Name/Number: \_\_\_\_\_

Sorry, we cannot accept personal ads through the mail.

098 Adoption	088 Fundraising	040 Homes for Sale	083 Motorcycles	100 Services
065 Airplanes	052 Furniture	102 Housecleaning	082 Music	081 Sports & Recreation
010 Announcements	049 Garage Sales	107 Instruction	080 Personals	058 Tickets
020 Apartments	101 Health & Fitness	103 Insurance	084 Pets	031 Townhomes/Condos for Rent
061 Automobiles	074 Help Wanted-Child Care	056 Jewelry	110 Photography	041 Townhomes/Condos for Sale
064 Bicycles	072 Help Wanted-Clerical	076 Job Opportunities	097 Pregnancy Counseling	080 Transportation
051 Books	073 Help Wanted-Food Service	015 Legal Notices	047 Real Estate	087 Travel
077 Business Opportunities	070 Help Wanted-General	120 Miscellaneous	035 Rental Sharing	108 Tutors
054 Computers	071 Help Wanted-Sales	050 Miscellaneous for Sale	080 Restaurants/Bars	105 Typing/Word Processing
086 Free Lost/Found	030 Homes for Rent	045 Mobile Homes	037 Rooms for Rent	115 Wanted

Your Individual Horoscope

frances Drake

For Wednesday, August 25, 1993

**ARIES**  
(Mar. 21 to Apr. 19)  
Couples are happily making plans for the future now. Travel together may soon be on your agenda. Good advice about a career concern comes from an unexpected party.

**TAURUS**  
(Apr. 20 to May 20)  
You may be consulting with an investment counselor today. It is a good time for students to apply for financial assistance. At work, you meet with opportunity!

**GEMINI**  
(May 21 to June 20)  
Couples are in agreement about the use of joint assets. You will be in the mood for a special entertainment now. Singles meet with romantic introductions.

**CANCER**  
(June 21 to July 22)  
Some make plans now for an office in the home. Don't be shy about asking for assistance with a work project if you need it. Family interests prosper now.

**LEO**  
(July 23 to Aug. 22)  
You are in a gregarious mood today. A special party invitation comes now. Some fresh air and exercise gives you a new perspective about a career matter.

**VIRGO**  
(Aug. 23 to Sept. 22)  
Buying, selling and property concerns are highlighted now. You may extend a spur-of-the-moment invitation for company to drop by. Money interests prosper.

**LIBRA**  
(Sept. 23 to Oct. 22)  
You are charming and in an upbeat mood today. It is an excellent time for getting your ideas across to others. Make important phone calls. Begin creative work.

**SCORPIO**  
(Oct. 23 to Nov. 21)  
You will receive confidential information today that will be a help to you financially. In business, stay on top of details. Some misinformation is likely now.

**SAGITTARIUS**  
(Nov. 22 to Dec. 21)  
Shopping on impulse leads to some new finery. It is a wonderful day for social visits and group activities. Your company is sought after now. Enjoy your popularity.

**CAPRICORN**  
(Dec. 22 to Jan. 19)  
Roll up your sleeves and get right to work on a new career opportunity that arises now. You are not quite ready to take a new acquaintance into your confidence.

**AQUARIUS**  
(Jan. 20 to Feb. 18)  
A business proposition may have strings attached. You will be hearing from friends at a distance and may make plans to visit. Social life is fun tonight.

**PISCES**  
(Feb. 19 to Mar. 20)  
You will be excited about today's new business possibilities. Be careful that you don't fall behind on a current assignment. Stay on top of what needs to be done.

**YOU BORN TODAY** have an interest in public service and may be drawn to a political career. You work well with groups and are often active in community affairs. You are inclined to specialize in your career. You seem to work better on your own than in partnership. You have an introspective side and may be drawn to philosophical and intellectual pursuits. Birthdate of: Sean Connery, actor; Leonard Bernstein, composer; and Ruby Keeler, dancer.

# CAMPUS CORNER

- Beer & Soda
- Photo Developing
- Health & Beauty Aids
- Compact Discs

712 S. College  
(College & University)  
967-4049

## NOW OPEN! →

609 S. Mill  
(6th & Mill)  
858-0567

## Back To School Film Special

ANY ROLL

# \$3.99

36 exp.  
24 exp.  
disc

(12 exp.  
is  
2.99)

Standard 3X

# DOUBLE PRINTS

(C-41 process 110, 126, disc and 35mm full frame films)  
Hurry, offer good August 23-29 NO LIMIT

# LSAT

The most complete arsenal of test prep tools in the world.

## KAPLAN RULES

Call today for a free diagnostic evaluation  
**967-2967**

# Glacier's

## FROZEN YOGURT & GOURMET ICE CREAM



### 2 FOR 1

ON ALL YOGURT & ICE CREAM

Buy one & receive the second of equal or lesser value . . . **FREE!**

Exp. 9/5/93



AT THE CORNERSTONE, next to Studebaker's

# FUN IN THE SUN

## Sale

**FREE** Water Bottle  
(regular size)  
when you bring in this ad  
\$2<sup>95</sup> value  
one per person

**SAVE \$40** 15 Speed Mountain Bike  
Made in U.S.A.  
Manufacturers list price \$239<sup>95</sup>  
**NOW \$199<sup>99</sup>**

**SAVE \$40** 18 Speed Mountain Bike  
Made in U.S.A.  
Manufacturers list price \$279<sup>95</sup>  
**NOW \$239<sup>99</sup>**

U-Shaped Locks  
Reg. \$29.95 Now \$12.99

100's of accessories AT SALE PRICES



Thousands of Bicycles  
Discounted to sell NOW  
SAVINGS UP TO 50%

### TEMPE BICYCLE VOTED AS BEST

\*BEST BICYCLE SHOP IN PHOENIX AS SELECTED BY THE REPUBLIC-GAZETTE NEWSPAPERS.

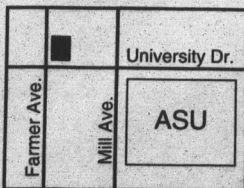
\*BEST BICYCLE SHOP IN PHOENIX EVERY YEAR FOR THE PAST TEN YEARS AS SELECTED BY THE NEW TIMES.

\*ONE OF THE BEST 100 BICYCLE BUSINESSES IN THE UNITED STATES AS SELECTED BY BICYCLE DEALER SHOWCASE.

STOP BY AND DISCOVER THE BEST IN LOW PRICES, SERVICE, SELECTION AND FRIENDLY HELP.

# TEMPE BICYCLE

330 W. University • 966-6896  
(Across the railroad track, west of Gentle Strength Co-Op)



267 E. Bell Rd. • 375-1515  
(North Phoenix, 2 miles east of I-17)