

# State Press

Copyright, State Press, 1989, Tempe, Arizona

Vol. 72 No. 43

Arizona State University's Morning Daily

Friday, October 27, 1989

## ACLU to file suit over Danforth cross

By NICKI CARROLL  
State Press

The Arizona Civil Liberties Union will announce today that it is filing a lawsuit against the Board of Regents and ASU Interim President Richard Peck asking for the removal of the cross from the top of Danforth Chapel, ACLU state director Louis Rhodes said.

The ACLU, along with co-plaintiffs ASU student Monty Gaither and professors Douglas McNeil, Randel Helms and David Kader, claims that the display of the cross on state property is unconstitutional.

"Both the Arizona and U. S. constitutions have statements that say the state can't support religion," Rhodes said. "There is no plausible secular purpose for the display of the cross on Danforth Chapel."

Peck said he isn't surprised by the ACLU's lawsuit.

"It's not unexpected," Peck said. "I had heard of this a few weeks ago."

Peck said he and University General Counsel Bruce Meyerson would review the complaint and take appropriate action.

"We will respond as soon as we see the paper," Peck said.

Controversy over the Danforth Chapel cross began last year when Helms, chairman of the Faculty Senate's Physical Plant Committee, introduced a resolution that called for the administration to remove the cross because it is "an explicitly Christian symbol."

"The issue is one of right and wrong," Helms said. "The chapel should be the chapel for the entire University."

On May 8, the Faculty Senate voted 61-21 to support removal of the cross and change the name to Danforth Interfaith Center. The Associated Students of ASU Senate passed a similar resolution which also asked that the symbol be removed.

The issue was complicated further when a survey of University classified staff, taken

in May, showed that almost 1,000 of the 1,231 surveyed wanted the cross to stay and the name to remain the same.

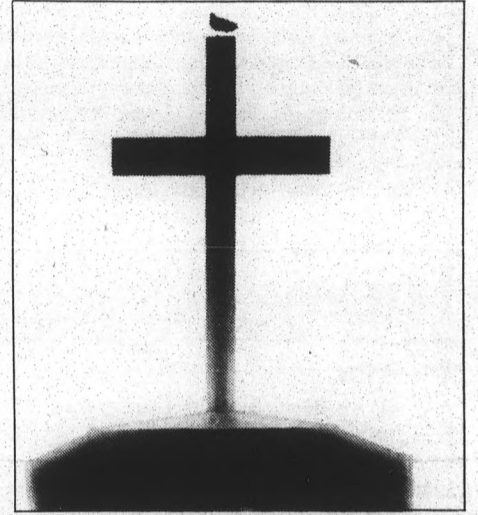
On June 30, in one of his last acts as ASU president, J. Russell Nelson attempted to resolve the controversy by issuing a statement that said the cross would remain on Danforth Chapel.

However on July 23, the cross was removed from its position, where it had stood for the last 44 years, by vandals or heavy winds — no official determination has been made.

On Aug. 11, Peck ordered the cross to be placed back on the chapel. This is where the University went wrong, Rhodes said.

"The money the University used to put the cross back up was an illegal use of University resources," Rhodes said.

"Frankly, I'm going to be unhappy it has to be torn down," Rhodes said. "It would have been much better if it had never been



State Press photo

The cross that sits atop Danforth Chapel is now the target of an ACLU lawsuit.

Turn to Lawsuit, page 7.



Jamie Scott Lytle/State Press

### Sign Here

Mark McGwire, first baseman for the Oakland A's baseball team, signs autographs for eager fans Thursday afternoon at Phoenix Municipal Stadium. The team was in town practicing for today's third World Series game, which will be played in San Francisco's Candlestick Park.

## Board committee hears summary on pay increases

By KELLY PEARCE  
State Press

ASU Interim President Richard Peck said Thursday that the 1.25 percent University salary increase this year is equivalent to assistant professors being able to buy an extra Big Mac each week.

"Sometimes it is fun to illustrate what that's worth," he said during the Arizona Board of Regents Resources Committee meeting. "This has been kind of a dull year (for salary increases)."

During the meeting, held in the College of Business, committee members heard an informational summary about 1989 salary adjustments.

The report showed that 91.3 percent of faculty members received the 1.25 percent salary increase, 2 percent did not and 6.7 percent were not eligible because they were not at the University the entire year.

Those who were eligible for the increase were given a satisfactory rating by their supervisors.

In addition, 96 percent of the administrative staff, 94.9 percent of the professional staff and 95.9 percent of the classified staff received the increase in their salaries.

The state Legislature approved a 1.25 percent increase across the board for state employees effective last July 1.

Regent President Edith Auslander said she has confidence in the University's ability to determine who should receive the increases.

"I'm more disappointed in the small increase," she said. Peck said faculty salaries have been low for the past four years. There was a 2 percent increase in 1986, 0 percent in 1987 and a 3.5 percent in 1988.

"Before that our salaries were good here," Peck said, adding that there used to be 7 to 9 percent increases each year.

Regent Esther Capin said the current salaries are just too low, adding that they cannot go much lower.

"But I like to be optimistic," she said, adding that the state Legislature is in charge of the "whole revenue picture."

Student Regent Peggy Steffens said she is concerned about the lack of adequate salary increases, adding that the



Peck

Turn to Salaries, page 10.

## Regents panel OKs construction bond

The Arizona Board of Regents Resources Committee Thursday approved a \$56.85 million revenue bond to finance seven ASU construction and renovation projects.

Victor Zafra, University vice president for business affairs, said it is essential that the bond pass now so that ASU can take advantage of a favorable bond market and fund construction projects that are currently underway.

The Resources Committee's recommendation for the bond will be forwarded to the regents at the board's monthly meeting on Nov. 17, at which time a vote will be taken.

Six of the seven projects covered by the bond already have been approved by the regents and state Legislature, Zafra said.

The ASU Life Sciences Building, the seventh project, was approved by the Resources Committee Thursday. The total amount of the eight-story building will be \$30.8 million.

The other University projects include the Music Building expansion (\$11.7 million), energy utilities projects (\$4.5 million), asbestos removal (\$3.3 million), Physical Sciences addition (\$2.5 million) and classroom renovations (\$2.1 million).

Zafra said ASU will sell bonds through competitive sales to the lowest bidder.

Regent President Edith Auslander said it is essential to set aside money for the future.

"We have to look ahead five years and plan," she said. "There has to be room for adjustments."

Student Regent Peggy Steffens agreed, adding that it is vital to take advantage of the best deals.

Regent Jack Pfister said the approval of the Life Sciences Building is "quite important" and helps ASU get ahead in its continuing construction.

— KELLY PEARCE



### It's Outta Here:

The ASU baseball team wraps up its fall season today and Saturday with a series against BYU. Page 15



### Risky Business:

Students find out there's more to renting an apartment than signing the lease. State Press Magazine

Today's weather: Mostly sunny, with winds from the west at 5 to 10 miles per hour and highs in the low 80s. Tonight will be clear, with lows in the lower 50s.

Classifieds ..... 22  
Comics ..... 14  
Police Report ..... 12  
Sports ..... 15

## World/Nation

### Gorbachev to reduce Soviet nuclear force in Baltic Sea

HELSINKI, Finland (AP) — Soviet President Mikhail Gorbachev said Thursday that Moscow will cut its nuclear forces in the Baltic Sea and will destroy four aging submarines and the nuclear missiles they carry.

Gorbachev also said the Soviet Union has removed all tactical nuclear missiles that could strike the northern European region and will take certain types of sea-launched nuclear weapons out of the Baltic Sea.

In a 45-minute speech to Finnish business leaders, politicians and other guests on the second day of a three-day visit to Finland, Gorbachev repeated his hope to eliminate nuclear weapons from the 148,600-square-mile Baltic Sea.

Gorbachev said the Soviet Union was taking the steps unilaterally, dropping previous conditions that Western countries first agree to a nuclear-free zone.

In Washington, White House press secretary Marlin Fitzwater said, "We do not believe nuclear-free zones contribute to security in Europe."

"Most of these proposals have been designed to affect NATO deterrence capability while leaving Soviet nuclear

weapons intact," Fitzwater said. "We do not consider this a hopeful sign."

Gorbachev said the steps were a follow-up to a speech he gave two years ago in the Soviet Union's northern port of Murmansk, in which he first proposed a nuclear-free zone in northern Europe.

### Spokesman says martial law to be lifted soon in Beijing

BEIJING (AP) — Martial law, entering its sixth month in Beijing, will be lifted soon, the People's Daily newspaper reported Thursday.

"I cannot offer a timetable," government spokesman Yuan Mu told the newspaper. "(Martial law) is for a limited time and it seems that it will be lifted before very long."

He said the government already had reduced the scope of martial law "and will continue to do so" as the capital becomes more stable.

Premier Li Peng declared martial law in most of Beijing on May 20, when tens of thousands of college students occupied Tiananmen Square in the city center and demanded democratic reform.

### First Iraq-Iran naval incident reported since gulf cease-fire

MANAMA, Bahrain (AP) — An Iraqi was shot to death when Iranian gunboats closed in on a tugboat in the first naval incident during the 14-month-old cease-fire that halted the Persian Gulf conflict, according to a report Thursday by Lloyd's Shipping Intelligence Unit.

The shooting occurred Wednesday off Iraq, about 30 miles from Faw, said Lloyd's, which monitors maritime traffic worldwide.

Lloyd's also said it "understood that Iraq does not regard the attack as hostile action."

Lloyd's said two Iranian gunboats sandwiched the Iraqi tugboat at Mina Baqr, an oil terminal that was heavily damaged during the eight-year Iran-Iraq war. It has been rebuilt but Iraq is not using it for exports.

In Baghdad, government officials would not comment on the report, but foreign diplomats confirmed the incident occurred.

Iraq has said that any shot fired on an Iraqi vessel would be considered a serious violation of the cease-fire.

## Today

### Meetings

•**ASASU Special Events Committee** ASASU's "Friday Fix," from 11:30 a.m. to 1:30 p.m. on Hayden Library's West Lawn. Three classical pianists from ASU's School of Music will perform.

•**Academic Retention Committee (M.E.Ch.A.)** Outreach program will be discussed at 12:30 p.m. in the MU, Room 210. All members please attend.

•**American Marketing Association** will have a booth set up on Cady Mall and will be accepting donations for the American Red Cross to aid victims of the San Francisco earthquake.

•**Devil's Juggling Club** Jugglers are great people! Stop by the Language and Literature Building between 3:30 and 6:30 p.m. and juggle with us.

•**Graduate Alliance of Latino Students** will meet at 3 p.m. in the Psychology Building, Room 205 to discuss activities and subcommittee formation.

•**India Students Association** Halloween Party at 9 p.m. at

the Tempe YMCA, 7070 S. Rural Road. If you need transportation or information contact Hareh at 966-7345 or Kushangi at 820-1417.

•**MUAB Film Committee** will show the films "Rosa Luxemburg" at 7 p.m. and "Betty Blue" at 9:30 p.m. in the MU Cinema. Admission is \$1 per film.

•**MUAB's Farce Side Comedy Hour** — Free comedy show with special guest Carlos Alazraqui at 12:30 p.m. in the MU Cinema.

•**National Student Speech — Language — Hearing Association (NSSLHA)** Monthly Social at 5 p.m. at Minderbinders. Enjoy volleyball and stimulating conversation.

•**Overtime** "The Confessions", a band from Los Angeles, will be performing at 6:30 p.m. at Palo Verde Beach. Free to everyone.

•**Sun Devil Spark** Student yearbook portraits will be taken from 8 a.m. to noon and from 1 to 5 p.m. in the photomobile

near Cady Mall.

### Saturday

•**Beta Alpha Psi** Win, Lose or Draw Tournament at 7:30 p.m. in the MU Arizona Room.

•**Esperanto ASU** continues courses in the "international second language" at noon in the MU, Room 213. For more information call Jay at 894-2846.

### Sunday

•**American Marketing Association** will have a planning meeting at 7:30 p.m. in the MU Yavapai Room. All members welcome to attend.

•**American Criminal Justice Association** will have a business meeting at 7 p.m. in the MU, upstairs lounge.

•**Society for Creative Anachronism** medieval fighter practice will be held at 4 p.m. behind the Agriculture Building, in front of Student Services Building. Rapier, light weapons and full armor fighting will be taught.

# ASASU WITH

# Bud Presents



Concrete & Blender  
Concrete & Blender  
Concrete & Blender

## FREE!! FREE!! FREE!!

Sunday, October 29  
7:00 p.m. PV Beach

Live Broadcast  
by

ASU'S ORIGINAL  
**KASR**  
ALTERNATIVE  
6:00 AM

Sponsored in part by

# Budweiser

# Lecture series director seeks 'timely' issues to draw students

By SCOTT SECKEL  
State Press

Addressing timely issues to attract students is how the director of the Associated Students of ASU Lecture Series describes his mission.

Don Shilliday said he has a range of criteria that he uses in deciding who comes to speak at ASU. This semester has already seen journalist Dale Van Atta, Native American Leonard Haskie, rapper KRS-1 and a debate between Ed Meese and George McGovern.

"I try to address everything that's big," he says. The lecture series has seen comment on current events from figures such as Van Atta on the Iran-contra scandal and Haskie on Peter McDonald, an Arizona Navajo tribal leader recently accused of misappropriation of funds.

With the current focus on the drug war and the attempt to legalize marijuana in Oregon, students will hear a debate between Timothy Leary and Curtis Sliwa on drugs in November.

Shilliday said he tries to schedule events in conjunction with months like Black History Month, which is February. Dumisani Kumalo will possibly speak that

month on his experiences inside South African prisons.

Shilliday went to the International Platform Speaker's Association convention in Washington, D.C. in late July to hear potential speakers talk. He heard roughly 30 to 40 people, including thriller author Tom Clancy, Watergate figure G. Gordon Liddy, columnist Jack Anderson and former Democratic U. S. Senator Jim Wright.

"It was a good opportunity to hear someone with a broad knowledge of (a) subject," Shilliday said.

He said he keeps in touch with the offices of prominent figures, hoping to catch them if they come into the Valley. Shilliday says that there are two different ways of snaring speakers: either dealing with them directly or through an agency.

Privately contacting lecturers is cheaper but getting in touch with them through their agencies is easier, Shilliday says.

He added that a lot of people are not represented by agencies.

The lecture series is funded through a portion of ASASU's budget. This school year the series has \$70,000 to secure lecturers.

Shilliday cites student apathy as the biggest problem he faces. "I'm trying to hit



Journalist Dale Van Atta speaks to students earlier this semester on the lawn in front of the Student Services Building. Van Atta came as part of the ASASU Lecture Series, which brings speakers covering a wide range of issues and interests to campus.

as broad a range of groups as possible," he said.

The most expensive event this year was the debate between Meese and McGovern,

but Shilliday could not give an exact figure because it was part of a package deal with Keppler Associates in Washington that has not been finalized.

# Retreat prepares students for culturally diverse environment

By NICKI CARROLL  
State Press

Preparing students to enter culturally diverse work environments is the purpose of the campus-wide retreat Leadership 2000, which will be held early next year, said Gabriel Vasquez, Student Life Coordinator for Student Development.

"If you look at how the world is changing statistically," Vasquez said, "you'll see that the work force of the future will consist of more women, blacks, Hispanics and Native Americans."

"All we're doing is helping our students get a leg up on the environment they'll be working in."

Leadership 2000 is a free leadership retreat open to all ASU students, and anyone interested can pick up applications in the Associated Students of ASU offices beginning next Wednesday.

The first retreat, which was held last January, was attended by approximately 115 students.

The original idea for the four-day series of workshops was conceived by ASASU Activities Vice President J'Lein Liese.

"I had gone to a similar program in high school and it really helped me understand people," Liese said. "I wanted to give ASU students the same opportunity."

Liese said last year's retreat impacted the campus by the personal improvement gained by the students who attended.

"If you look around you'll see that many student leadership positions are filled by Leadership 2000 graduates," Liese said.

Liese said the agenda for this year's program, which will be held on Jan. 11-14 in Prescott, has not been influenced by any racial tensions on campus.

"It (the retreat) is not related to any of the things that have happened on campus," Liese said. "It's for people to get to

know and understand each other."

Students who attended the conference said the programs they experienced had positive impacts on them.

"Before I went, people would make statements that bothered me inside and I just tolerated it," junior communications major Chris Kieselbach said. "When I came back, I had a new awareness."

"Now I know that not only can I say something, I should say something."

Senior marketing major Dan Cortez was a group facilitator at the retreat. He was responsible for keeping the program running in his group of 10 students.

"They told us what was going to happen," Cortez said. "But when people's emotions came into play, some of that preparation went away."

"I learned that I experienced the same feelings and emotions as people I knew."

**\$5**

**THE U SHOP**

**\$5**

**Area's Largest Selection of Arizona State Clothing and Souvenirs!**

**THE U SHOP**

**\$5<sup>00</sup> OFF\***

with purchase of \$25<sup>00</sup> or more with coupon

\*Void on sale items or other offers Expires 11/4/89

Located in the Cornerstone at Rural & University Tempe

**829-1743**

Open M-S 10-9 PM Sun. 12-6 PM

**\$5**

**\$5**

## Letters

### Choking on our own garbage

Editor:

Wouldn't it be nice if the ASU community (i.e. students, faculty, administrators, employees, etc.) began taking steps to decrease our rate of environmental destruction? I think it would not only be nice but a real necessity. A great majority of waste disposal sites across our nation are approaching or have already exceeded capacity limits. The Valley alone produces in excess of 1.2 million pounds of garbage a year.

Take a trip out to your local landfill and see the vast expanse of land saturated with garbage. Smell the stench. Or, if you can't make it that far, simply get a group together and clean the Sun Devil Stadium after a football game. The amount of waste produced is disgusting and disheartening.

A good analogy to the way we humans have treated the Earth is that of a bird defecating in its own nest. I hope it doesn't have to come to trash piling up in our neighborhoods before we decide to do something about it.

I have a simple proposal that could enable each and every one of us *State Press* readers to help with the environmental problem. It has to do with recycling the *State Press* newspaper. It has come to our understanding (Students for Environmental Awareness) that the *State Press* papers that are left in the dispensing bins are collected every night and sent to be recycled. The papers that are thrown away elsewhere end up at the local landfill. Thus, if we could put a little effort into placing our used *State Presses* back into their dispensing bins, we could reduce, perhaps significantly, the amount of trash produced by ASU.

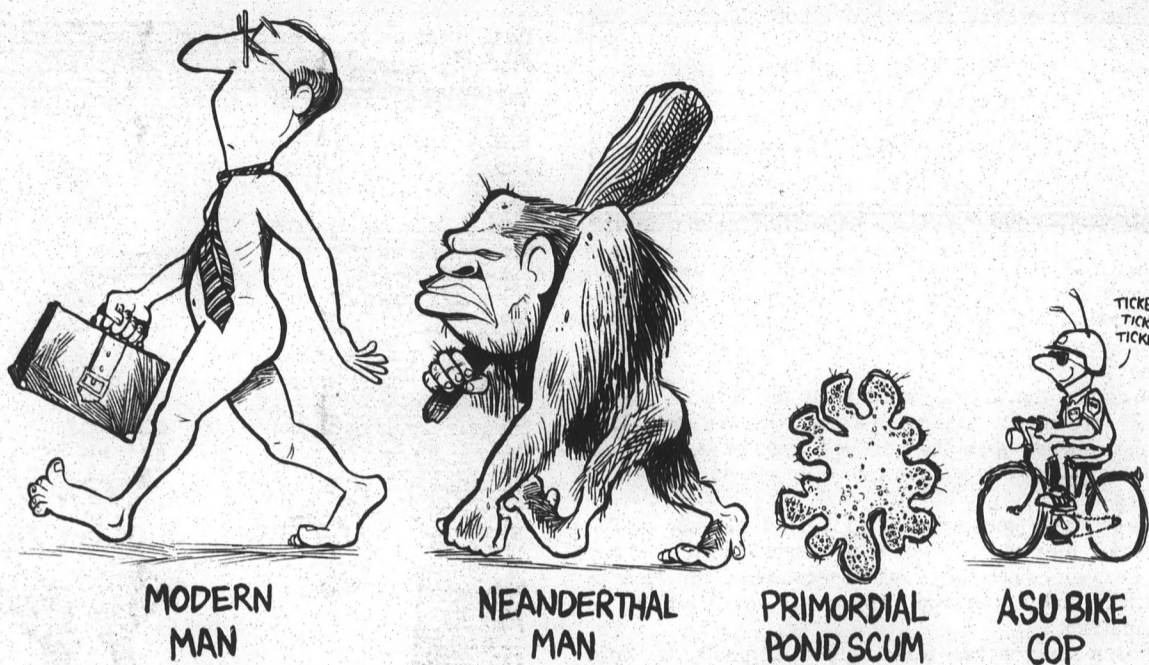
I realize this won't solve the environmental problem altogether, but it's a start and it is something to which we all can contribute. Hopefully, later, as we become more aware and concerned we can each start collecting recyclables in our homes, reusing our grocery bags, putting pressure on local businesses to stop the use and production of styrofoam and other nonbiodegradable plastics and reduce our consumption of resources.

The cities of Tempe and Phoenix have started pilot recycling programs. Let's do our part ASU!

Mike Nalley  
Senior, Mechanical Engineering

RITTER

## THE DESCENT OF MAN



### 'Get a life'

Editor:

I am writing to you on the subject of poor journalism. In the Oct. 26 issue of the *State Press*, Gary Jackson stated that ASU is not giving its team any support. You are full of crap! Sixty thousand or more at our home games, excluding Oregon, is exceptional. Our support is excessive at times; the student section is always wild.

I don't know where you have been, Gary, but you are not even seeing the true picture. Instead of bitching, start cheering like we, the students are. I agree that ASU's football

team is not exactly going to the Rose Bowl, but we are always at every game yelling our lungs out.

What I am most upset about is the fact that you would actually have the nerve to print an ad for a T-shirt that says, "I survived the Grand Slam" earthquake.

Do you have any brains? Two hundred people get killed in a natural catastrophe and you make a joke of it! You are scum! Get a life! What has happened to your sense of good?

Martin Ebel  
Freshman, Aerospace Engineering

## In the midst of grief debate over baseball senseless

Mike Royko  
Tribune Media Services

During the time it takes you to glance at the headline on this column and read this short paragraph — assuming that you read at a normal rate of speed — one person will die in America.

That's because one person dies every 15 seconds. Four deaths a minute. About 245 deaths an hour, 5,881 deaths a day and 2.14 million deaths a year.

Some days are worse than others, but according to census figures, that's the way it averages out.

The most fortunate, in my opinion, are those who die because they have lived full lives, grown very old and just wear out and go quietly and suddenly.

The least fortunate — again, in my opinion — are those who have suffered through long, painful and hopeless diseases and those who are young.

People die of heart attacks, strokes, in car accidents, in job accidents, in fire, by drowning, by their own hands or at the hands of others. There is no limit to the reasons people die. And, as we've seen, they die in earthquakes.

But one thing is certain. It happens to all of us.

I mention this gloomy but obvious fact because of the terrible event in and around San Francisco. Not to minimize the tragedy, but in hopes that the sportswriting world will please stop debating, yammering, blathering and moralizing over the trivial issue of whether the World Series should or should not be played.

One side's view is that going on with the games would be an affront to the dead and grieving. It's summed up by a *New York Times* columnist, who wrote:

"It's no time for fun and games. And the 1989 World Series should be declared over.

"Hail the Oakland Athletics, leading 2-0, as the champions. If the San Francisco Giants object, let them complain to the relatives of those who perished in the earthquake . . ."

The opposite position is taken by a Dallas sports columnist, who said: "At some point, you have to do something to get the tragedy out of people's minds. One possible focus is the success of the Giants and the A's."

My opinion is play or don't play, it doesn't make a damn bit of difference. The dead will be no less dead. And the grief of their loved ones will not be heightened or reduced by the playing of a few professional baseball games.

If anything, it's an insult to the families and other loved ones of the dead to suggest that a few baseball games have any relevance to the pain they are experiencing.

When you bury your dead, and I've had some experience at

it, the world shrinks. What goes on out there doesn't much matter.

So I think the sportswriters are elevating these games — and themselves — to a level of importance that I doubt is recognized by the stricken families.

Baseball is just another form of show business that most of us take too seriously. If playing the rest of the games shows a lack of respect for the dead and their survivors, why not cancel Johnny Carson's show for a period of mourning? His is just another form of entertainment. Will Clark hits balls for our entertainment and is paid for it.

For that matter, shut down the movie houses, the popular restaurants, the bars, the nightclubs and cancel any TV show in which there is laughter.

And not just in California, but all over the country, because in the next 24 hours, more than 5,000 people will die. Not all as shockingly as those in the earthquake, but they will be dead and mourned. There will be weeping husbands, wives, children, brothers and sisters.

But they won't be paying much attention to what the rest of us are doing. Grief, even when it is caused by an earthquake, eventually becomes an intimate emotion, something shared by families and friends.

So play the games or don't play the games. It's irrelevant. And if those who write about the games want to show respect for the dead and their families, just hush up.

Those who mourn don't have to be told how they feel.

## Quotable

"The hardest thing to learn in life is which bridge to cross and which to burn."

— David Russell

## LETTER POLICY

The *State Press* welcomes and encourages written response from our readers on any topic.

All letters must be typed, double-spaced and no longer than three pages in length to be eligible for publication.

Please include your full name, class standing and major (or other affiliation with the university) and phone number. Requests for anonymity will be granted with an appropriate reason.

Letters are subject to editing by the opinion page editor.

All letters must either be brought in person with a photo ID to the *State Press* front desk in the basement of Matthews Center or else addressed to: *State Press*, 15 Matthews Center, Arizona State University, Tempe AZ 85287-1502.

## STATE PRESS

DARRIN HOSTETLER  
Editor

CAROLYN HOFIG  
Managing Editor

City Editor.....MARTY SAUERZOPF  
Asst. City Editor.....TYRONE MEIGHAN  
Opinion Editor.....BRIAN TASSINARI  
Magazine Editor.....BEN MCCONNELL  
Assoc. Magazine Editor.....MATTHEW LINDENBURG  
Asst. Magazine Editor.....MEG HALVERSON  
Listings Editor.....MICHELLE CRUFF  
News Editor.....SUZANNE ROSS  
Sports Editor.....GARY JACKSON  
Asst. Sports Editor.....PAUL CORO  
Copy Chief.....MICHELLE ALLMAN  
Asst. Copy Chief.....WENDY STRODE  
Photo Editor.....JACK BEASLEY

MAGAZINE STAFF: Scott Seckel.

FREELANCE WRITERS: Sharon Kaney, Francine Stahl, Mish Tell, Richard Vigil.

CARTOONIST: Mike Ritter

EDITORIAL ASST.: Lynn Vavreck

PRODUCTION: Daniel Donley, Steve Kricun, Nancy Ness, Mark Nothhaft, Deborah Prewitt, Lynne Senzek, Jason Silver, Eric Zoltcavage.

ADVERTISING REPRESENTATIVES: Frank Culver, Jay Eckhardt, Dan Ellstrom, Lysa Fitzhugh, Lisa Horn, John Leathers, Paul Lee, Karen Lisiewski, Brook Mullen, Terri Smith, Ray Zickel.

REPORTERS: Mike Burgess, Nicki Carroll, Mark Crismon, Elise Elsberry, Kimberly Harris, Michelle Henry, Adriane Hopkins, Kelly Jain, Joie Ann La Polla, Sonja Lewis, Kelly Pearce, Tenny Tatusian.

SPORTS REPORTERS: Vicki Culver, Joel Horn, Tomi McElroy, Larry Newell, Keith Rosenhagen.

PHOTOGRAPHERS: Jamie Lytle, Sundi Kjenstad, Brian O'Mahoney, Scott Troyanos.

COPY EDITORS: Kelly Ettenborough, Nicole Perron.

The *State Press* is published Monday through Friday during the academic year except holidays and exam periods, at Matthews Center, Room 15, Arizona State University, Tempe, Arizona 85287. Newsroom: (602) 965-2292. We do not answer questions of a general nature. Advertising and Production: (602) 965-7572.

The *State Press* is the only newspaper exclusively published for and circulated on the ASU campus. The news and views published in this newspaper are not necessarily those of the ASU administration, faculty, staff or student body.

## Spies like us

### Eavesdropping main pastime of Noriega, CIA

Cody Shearer  
North American Syndicate

WASHINGTON — "Assassination," the late Irish playwright George Bernard Shaw once wrote, "is the worst form of censorship." Killing people is also wrong, even when your target happens to be a swine like Gen. Manuel Noriega of Panama.

Now comes the official word from the director of the Central Intelligence Agency, William H. Webster, that Congress should give his agency greater latitude in supporting potentially violent efforts to overthrow foreign dictators.

Webster states unequivocally in the Oct. 17 issue of *The New York Times* that "... you're not misreading me," if one thinks he favors a relaxation in the longstanding presidential executive order barring American involvement in assassinations.

The assassination ban was inspired originally by lurid revelations in the mid-1970s about CIA plots to eliminate Fidel Castro in Cuba, Salvador Allende in Chile and Patrice Lumumba in the Congo. As reinterpreted by President Reagan in 1981, the directive claims that no one employed by or acting for the U. S. government "shall engage in or conspire to engage in assassination."

But does such an interpretation mean that a coup which might result or lead to an assassination should also be prevented? Apparently it does, which is why Webster wants to modify its ban.

That there are now intense pressures on President Bush on this front raises serious questions about how our president might react during the next coup attempt in Panama. Will Bush want to show some covert muscle? The precise wording of the current assassination ban is known to have been one of the inhibiting factors behind Washington's inaction during the recent coup in Panama. But what about the future?

Clearly, George Bush has every reason to want Noriega to disappear. Since the failed coup attempt, Noriega has had at least 70 of his enemies killed. In one case, Noriega is believed to have done the honors himself and wasted an individual life. Moreover, there is new evidence of his widespread involvement with the Medellin drug folks in Colombia. But there may be more bitterness behind Bush's preference, and the CIA's lobbying in the assassination ban, that some of us don't know enough about.

It turns out that Noriega may have some explicit videos on American officials, dating far back as the late 1970s, that our government is not proud of. For years, Noriega operated a secret resort of sorts, which he converted from a former U. S. military installation, 80 miles west of Panama City, in a place called Playa Faralloh. This beach-side facility, with its ample fishing, golf, tennis and sailing equipment, was a favorite recreation spot for visiting American officials and others. And like any good host, Noriega also supplied his



visitors with a bevy of pretty girls and boys, depending on one's preference.

Surprise, surprise, Noriega also wired the bedrooms in his private resort for sound and equipped them with hidden cameras. As the important guests exercised with gusto, they were captured on film, which the devious Gen. Noriega has stored in an enormous film library as an insurance policy on the future.

Given this background, it's not astonishing that a mood of frustration permeates American public officials who are busy contemplating how to deal with a blackmailing, narcoterrorist like Noriega. Nevertheless, the fact remains that political assassinations are still illegal and imprudent and should remain so. After all, who knows whether political assassinations lead to more confusion and terror? The answer is that we don't.

In a recent edition of the Soviet newspaper, *Trud*, Maj. Gen. Igor Ustinov reveals that our government has spent at least \$18 billion during the last 10 years on "technical intelligence," which means on spying equipment. "The facts show that despite the positive trends that are now appearing in East/West relations, the special services of capitalist countries, particularly the United States, have not relaxed their efforts to obtain military, economic, scientific and technological information about the combat readiness of Soviet armed forces."

Ustinov also speculates that about 95 percent of all covert intelligence is gathered today by satellites and other forms of electronic eavesdropping. In August, he states, the U. S. shuttle Columbia launched an updated version of the KH-11 (Keyhole) spy satellite. This new generation of satellites converts their pictures into digital radio pulses, which are transmitted to a satellite data system spacecraft and then relayed to a ground station.

The Soviet major general admitted a KH-11 satellite revealed that his government was constructing a new super submarine and a new mini-aircraft carrier.

Undoubtedly, our government is not the only one up to its old tricks. Soviet scientists, for example, have been conducting experiments in the Arctic aimed at manipulating the weather for military purposes. According to sources within the CIA, the Soviets have attempted to generate artificial lightning and punched holes in the ozone layer using bromine missile injectors. The Russians also have been working on cloud dispersal and have successfully developed methods to stop hail. So much for detente.

Evidence of increased U. S. involvement in the Cambodia war is mounting. American advisers are reported to have been helping train guerrillas of the non-communist Khmer Rouge resistance and may have been even entered into Cambodia with them. So far there seems to be little concern or outrage evidenced from members of Congress.

## More Letters

### Blacks should assimilate more

Editor:

It has been many years since Martin Luther King Jr. gave his famed "I have a dream" speech, but I feel that if he were alive today he would tell many blacks to stop "whining" about the supposed racism they feel on the ASU campus.

Sure, there are isolated incidents which involve conflict between blacks and whites, tension may always exist, but this is no reason for blacks to keep making a big issue out of it, especially since the media plays a big part in blowing these unfortunate incidents well out of proportion.

Opportunities are open for everyone to achieve success in today's society, and

blacks should not constantly use racism as an excuse for their setbacks. This only impedes further progress on the side of black culture.

I have many white friends, all of whom overlook my color and accept me for the friend that I am. This message should say to blacks that many whites aren't as prejudiced as you think they are. I also feel that blacks should assimilate more into the white majority, and we don't surrender our heritage in doing so. We all could stand a little rest from the constantly nagging problem of perceived racism.

Mike Jensen

### Women need guts not abortions

Editor:

Women do not need abortions; they need guts and internal fortitude. Each person has a right to the control of his or her own body. If a woman cannot say a simple "no" to some male "in heat" and conceives another life, she should not be allowed to make the much more difficult decision to end that life. If more men and women would adhere to an abstinence policy until they were married, there would be fewer of those "few women

who would not find the decision a painful and complicated one," and far more daddy and "mommy to go around." Say "no" to premarital sex and use a contraceptive method if you're married and don't want children. Elaine Daly, the issue is life, period, not the quality of it. For the sake of this nation, if nothing else, learn some morality, ASU!

Jonathan de Jong  
Junior, Humanities



# Minimum wage bill tries again

WASHINGTON (AP) — House Republicans and conservative Democrats who sustained President Bush's veto in June of a minimum wage increase struggled Thursday to find a compromise that would avoid another showdown next week.

But the White House, in a meeting with leaders of the two parties, refused to budge on Bush's demand for a six-month subminimum training wage, and labor leaders balked at accepting anything less than a \$4.25 minimum wage by January 1991.

Whether a compromise is reached or not, Democratic leaders plan to bring to the House floor next Wednesday a scaled-back \$4.25 version of the bill that Bush vetoed, which would have set a \$4.55-an-hour minimum wage with a 60-day subminimum training wage.

Key players in both parties and lobbyists for business and labor groups said the White House has been sending signals since late last week that Bush wanted to avoid a showdown and was open to negotiating a deal.

"There is a lot of nervousness on the part of the White House that they could look like

a mean old ogre here fighting day and night to get a capital gains tax break while also fighting equally hard against raising the minimum wage," said Rep. Timothy J. Penny, D-Minn.

"They want to come in at the last minute and make a deal but there's no firm decision on what they want," said Penny, one of 28 Democrats who voted last summer to sustain Bush's veto.

Despite pleas from Democrats like Penny and several Republicans, White House Chief of Staff John Sununu told House Speaker Thomas S. Foley, D-Wash., and GOP leader Robert H. Michel of Illinois that Bush would not yield.

"We didn't reach agreement on anything," Foley told reporters.

Bush, in what he called a "best and only offer," promised shortly after taking office to veto any bill that would raise the minimum wage above \$4.25 an hour or that reached that level before Jan. 1, 1992.

Coupled with any increase, he said, must be a six-month subminimum training wage that would maintain the current wage floor of \$3.35 an hour for newly hired workers, regardless of their experience.



Traveling's easier with  
**STATE PRESS Classifieds!**



## CHINESE FOOD

DINE IN/TAKE OUT

We are proud to introduce you to the famous authentic Szechuan style of cooking. You will love its uniqueness as it specializes in dishes spiced with hot bean sauce and red hot peppers.

**LUNCH** M-F 11:30-2:30  
**DINNER** M-F 5-10 p.m.  
S & S 4-10 p.m.

**968-2167**  
69 E. Broadway  
(just east of Mill)

**SAVE 15%**

Come try us for dinner  
and save 15% on your total ticket

(With this ad. Expires 11/27/89.)

## FULL SALON SERVICES

Allure College of Beauty offers complete salon services for men, women and children. Services include haircuts, facials, perms, manicures, waxing and more! All services are performed by students under expert supervision of licensed instructors.

**Haircut \$4.50 Perm \$15.00**  
**Manicure \$4.50 Pedicure \$8.00**  
**Matis Facial \$12.00**

CALL TODAY FOR AN APPOINTMENT!

**BRING IN THIS AD AND RECEIVE 10% OFF ANY SERVICE**



**CAREER COLLEGE OF BEAUTY**

7730 E. McDowell, Scottsdale  
Fountain Plaza • Fry's Center

M-F 9:30 a.m.-8 p.m.; Sat 9:30 a.m.-5 p.m.

(exp. 11-30-89)

**949-7557**



FLAMINGO  
HAIRCUTTERS

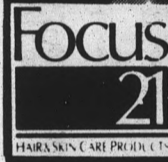


966-1391

**\$10.00 HAIRCUT**  
wash/cut/blow dry

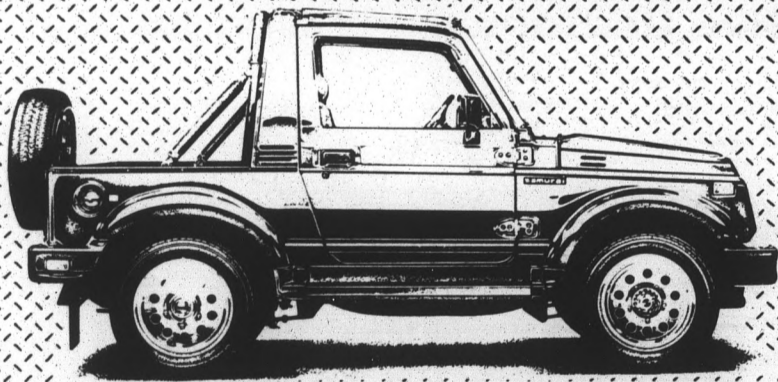
**20% OFF**  
Nail Services

(With ad,  
first time  
clients only)



**905 E. Lemon, Tempe**  
(OFF RURAL, BEHIND CIRCLE K)

# GO TOPLESS...



**SUZUKI SAMURAI**

• 1.3 Litre Fuel Injection • Standard Rear Seat • Locking Hubs

**BRAND NEW 1990 MODELS HAVE ARRIVED!**

All Colors - Including 25 White!

**\$7,999**

plus tax and license  
on approved credit

**EARNHARDT'S**  
NO BULL SINCE 1951

**SUZUKI**

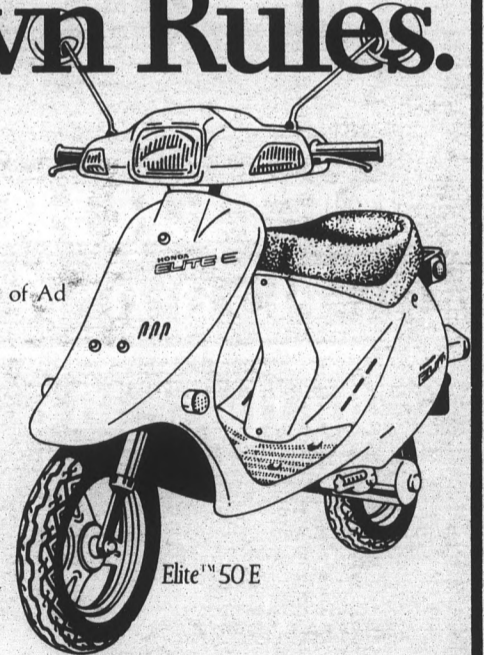
477 E. Baseline Road • Tempe • 345-9666

# Now... Play By Your Own Rules.

Scooters from...

**\$499\***

W/Copy of Ad



Elite™ 50E

- Great on Gas
- Low Insurance
- Easy Maintenance
- Easy Parking
- Bring in Your ASU I.D. for Discounts
- Free Pick-up & Delivery

Elite LX's!  
CH80's!!  
Elite 150!!!  
Helix's!!!!  
**ALL SALE PRICED NOW!!!!**

**Come Ride With Us!**

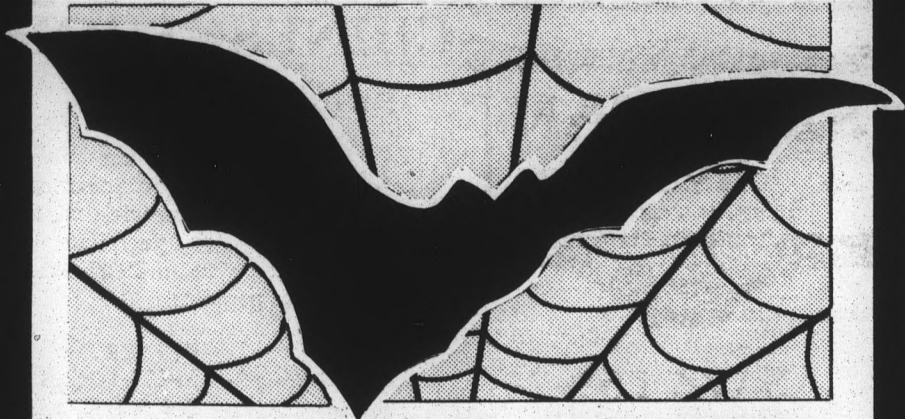
\*Dest. & Prep Add'l

SUPERSTITION HILLS

**TOWN & COUNTRY** - HONDA  
BMW

1701 N. Arizona Ave. (3 miles south of Superstition on Country Club)  
East Valley • 899-9088 Phoenix • 275-3001

# HALLOWEEN



## COSTUME PARTY

1 • 9 • 8 • 9

Saturday • Oct. 28th

*including*

## HALLOWEEN COUNTDOWN

starting at 7pm

for those 21 & Older

### Costume Contest

Over \$500.00 in Cash & Prizes

### AFTER HOURS

1:15 am ~ 4 am

for those 18 & Older



## Sun Devil House

430 N. Scottsdale Rd. • Tempe

## Lawsuit

Continued from page 1.  
put back up."

Frank Mote, attorney for the ACLU, said the plaintiffs' claim is supported by recent Supreme Court decisions which ruled that religious symbols cannot be displayed on government property.

Faculty Senate President Harold White said the ACLU's actions are in accordance with the vote of the Senate.

"The last position the Senate took was to have it removed," White said. "The lawsuit is consistent with how the Senate voted."

Some Christian groups on campus are upset about the ongoing fight for the removal of the cross.

"It (removing the cross) does bother

me," said Bryan Eastin, campus pastor for Chi Alpha Christian Fellowship. "I don't think it needs to be torn down in the name of religious tolerance."

"What else are we going to have to tear down at ASU to keep people from being offended?"

Mary Peters, secretary of Danforth Chapel for the past 12 years, said the removal of the cross will not make any difference to the 150 people who visit the building each week.

"Even if the cross comes down, it won't make a difference," Peters said. "The same people who used it before will still use it."

"They're making an issue of it just because they want to make an issue."

NICK'S KICKS PRODUCTIONS  
JARUG PROMOTIONS  
ASIAN READER THAI NEWSPAPER  
PRESENTS

TICKETS  
ON SALE  
NOW!



DON'T MISS  
ANY OF THE  
ACTION!

INTERNATIONAL MUAY THAI  
KICK BOXING

FIRST TIME IN PHOENIX, AZ  
SAT. NOV. 11, 1989, 7:00 P.M.

PRIDE PAVILION  
5220 W. Indian School Road (51st Ave.)  
Phoenix Tel. (602) 247-8326  
For Ticket Info: 894-6778, Tempe  
866-7042, Phoenix

STATE  
PRESS  
965-7572

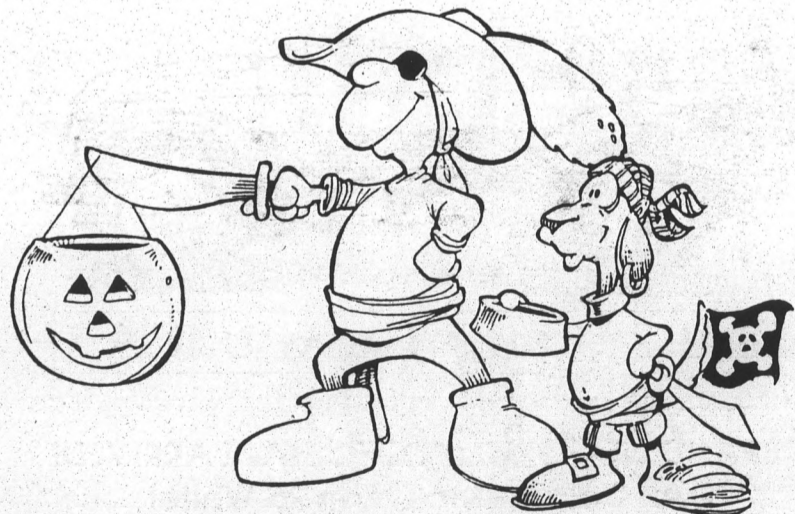


# SUNNY'S

PIZZA & PUB

TEMPE ARIZONA

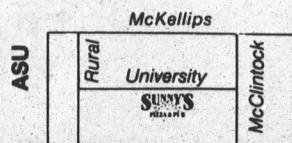
TRICK OR TREAT  
Give Us Something Good to Eat



968-6666

1301 E. University • Tempe

Hours: 11 a.m. - 1 a.m., Sun.-Thurs.  
11 a.m. - 2 a.m., Fri. & Sat.



Come into Sunny's  
& Show Us Your Costume  
& Get \$2 Off Your Pizza

1 coupon per customer

2 FREE DRINKS  
w/any 12" Pizza



4 FREE DRINKS  
w/any 16" Pizza

1 coupon per customer

# Education prof receives award for study on children

By SARAH ROBERTSON  
Contributing Writer

There is a stranger watching children in kindergarten. ASU education professor Mary Lee Smith observes schoolchildren throughout the Southwest. She is not interested if their finger-paint art looks nice or if their shoes are tied correctly.

Smith received this year's College of Education Annual Research Award for her study of children who were held back in school. Since 1984, she has been examining the effect retention has on children throughout their lives.

"Most of the children I have studied and talked with say the effect (of being retained) is not temporary," Smith said. "They believe it to be a considerable matter."

The stigma is an aspect most teachers don't consider when they hold a child back, Smith said.

"Teachers believe retention is a blessing, and if you allow a child to pass when he/she is not ready, then it is only a matter of time before he/she experiences a worse failure. They believe the child's reactions are temporary, but our studies show differently."

Smith found that children who are retained for a second year in kindergarten and first grade are no better off

emotionally, mentally or behaviorally than if they had been allowed to pass to the next grade.

The findings of Smith's study correspond with about 50 other studies on similar subjects.

"It is a popular belief now that kids should be tested before they go to kindergarten," Smith said while sitting at her computer compiling statistics from names and numbers of children.

*'Most of the children I have studied . . . show the effect (of being retained) is not temporary.'*  
— Mary Lee Smith

Testing has been proposed to combat the problem of children at different educational levels entering kindergarten. Smith said she is uncertain why the vast differences in the educational levels exists. She suggested it is most likely because some children are attending preschools, are being exposed to programs like "Sesame Street" and come from homes in which education is important.

Others, meanwhile, are raised in lower-income homes where educational tools are not affordable. When these children enter kindergarten, it is usually the first exposure they have had to organized teaching methods.

"Whatever the reason is, it is a tragedy," she said. "It is the poor, minority (children) that do not have access to these programs and who get excluded from learning."

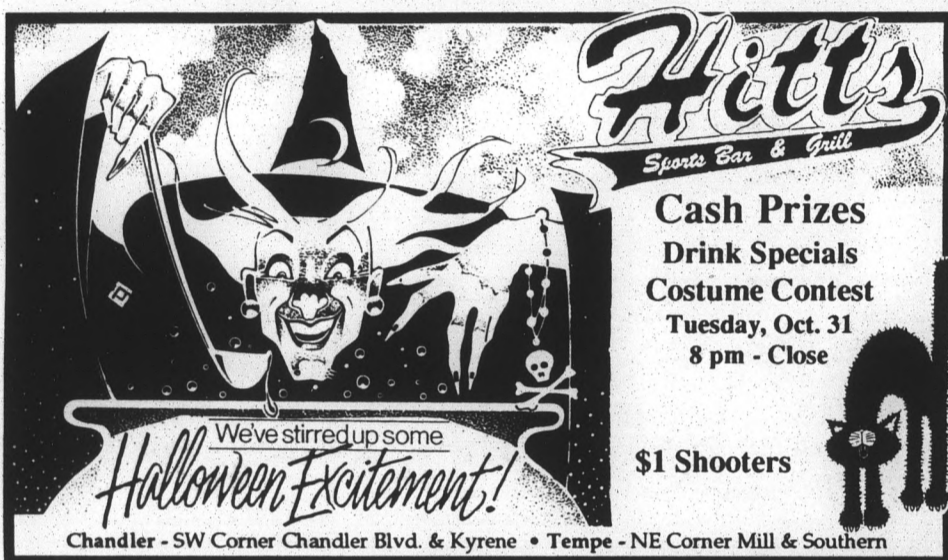
Smith, who was raised in Boulder, Colo., began her study at the University of Colorado, where she received her bachelor's degree in history, her master's degree in personnel and her doctorate in research methodology and psychology.

She completed her award-winning study earlier this year and has since turned it over to graduate students interested in the field.

Smith said she likes to work on research.

"It is what I can best identify with," she said, adding that she is currently working on a study on the role of external tests (tests required by the state or district that are general aptitude tests) in elementary schools. She hopes to finish this two-year project within the next few months.

At the thought of starting a new project, Smith let out a big sigh and said, "I think I might just take a break for a little while."



**Hitt's**  
Sports Bar & Grill

**Cash Prizes  
Drink Specials  
Costume Contest**  
Tuesday, Oct. 31  
8 pm - Close

*We've stirred up some  
Halloween Excitement!*

**\$1 Shooters**

Chandler - SW Corner Chandler Blvd. & Kyrene • Tempe - NE Corner Mill & Southern

Call for daily specials

**MIKE KWAN'S GOLDEN COIN Chinese Buffet**

1125 E. Apache Blvd. Tempe • 968-3322  
941 W. Elliot Chandler • 821-5428  
1042 N. Higley Mesa • 985-8823

**MENU INCLUDES:**

- Sweet & Sour Pork • Lemon Chicken • Egg Roll • Sesame Chicken
- Shrimp with Almond Ding • Teriyaki Beef • BBQ Spare Ribs
- Spicy Chicken • Smoked Fish • Beef with Green Bean
- Vegetarian • Almond Turkey • Moo Goo Gai Pan
- BBQ Pork • Ham Fried Rice • Chow Mein, etc.

WE SERVE BEER ALSO - Winter: Egg Flower Soup and Summer: Fruit Cocktail

**ALL YOU CAN EAT CHINESE BUFFET**  
BUSINESS HOURS

• LUNCH • 11-9 Sun.-Thurs. • DINNER • 11-9:30 Fri.-Sat. • \$4.79  
\$3.94

15 Years Experience



**25¢ DRINKS  
FRIDAY**



25¢ DRINKS 8:00-10:30 P.M.  
AFTER HOURS 1:00-3:00 A.M.  
OPEN 8:00 P.M.

**LADIES NIGHT  
SATURDAY**



25¢ DRINKS 9:00-10:00 P.M.  
\$1 DRINKS FOR LADIES 10:00 P.M.-1 A.M.  
NO COVER FOR LADIES  
OPEN 9:00 P.M.

**415 S. MILL AVE. • TEMPE • 966-8888**  
ACROSS FROM SPAGHETTI CO.  
\*MUST BE 21 YEARS OLD

# Doctor: Pills not best headache remedy

By SONJA LEWIS  
State Press

The everyday anxieties of college life can lead to tension headaches for many ASU students, and campus health officials recommend examining sources of stress instead of just popping an aspirin.

Dr. Joel Saper, a leading headache specialist speaking at a national conference in Phoenix on Thursday, said that taking more than two headache pills a week could actually be contributing to further headaches.

ASU physician Dale Bowen said he has heard pain relievers can add to headaches and often advises that students handle tension (stress) headaches in other ways.

"I often refer them to relaxation techniques or massage because definitely these are very helpful," Bowen said.

ASU Student Health psychiatrist Dudley Weems said tension headaches can commonly be identified by a tenderness in the head, face and eye regions.

"If there is throbbing on one side of the head — that could represent a migraine. And if the headaches get progressively worse or more frequent it could be something more serious and they should see a doctor," Weems said.

Experts from health education and counseling and consultation agreed that although there are different types of headaches, tension headaches are the most common.

Chuck McDuffie, coordinator of health education, said that people who suffer from headaches in his stress management class often have other things going on in their lives that could be helping to cause their headaches.

"Some headaches can be symptoms of other problems and certainly people who are under stress will have headaches more frequently," McDuffie said. "In Health Education we try to figure out where their stress is coming from and then try to alleviate or reduce that source."

Andy Hogg, a psychologist at counseling and consultation, said although a specific type of person is not more apt to get headaches, it is possible that headaches are more prone to affect people who keep things inside and are always rushing.

Counseling and consultation offers free stress management workshops, and the Student Recreation Complex has a relaxation room to help people reduce tension.

Saper offered some guidelines to help people who are troubled by headaches:

- Look at past headaches to see if there is a pattern to when they occur; for instance, after smoking or being near smokers or after eating certain foods.

- For hangover headaches drink sweet fruit juice.

- If headaches become more frequent or painful, check with a doctor. Often headaches can be a sign of other medical problems.

Raise your GRE, LSAT,  
or GMAT.

The LSAT, GRE and GMAT can be tough, but we can make them a whole lot easier.

The Princeton Review has helped thousands of students dramatically raise their scores.

Small classes (8 to 12 students) geared to your strengths and weaknesses and a detailed computer analysis throughout the program make us the most effective, efficient and enjoyable way to *dramatically* improve your scores.

You'll score more when you know how.

And we'll teach you how.

THE  
PRINCETON  
REVIEW

We Score More.

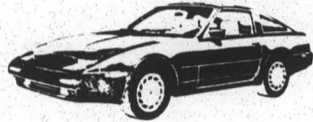
952-8850

## WINDOW TINTING PLUS

FREE

FM Portable Radio with stereo headphones with a complete window tint.

Expires 12/2/89



WINDOW TINT SPECIALISTS

TEMPE  
3414 S. Mill Ave.  
966-0731

MESA/CHANDLER  
3050 S. Country Club  
497-0101

CENT. PHX  
4545 N. 7th St.  
274-2665

N. PHX  
15846 N. Cave Creek Rd.  
493-5000



"Come on you guys,  
a joke's a joke..."

The Farce Side  
COMEDY HOUR

Today & Every Friday  
12:30 p.m., MU Cinema  
It's Free!

This Week's Special Guest:

Carlos Alazraqui

Sponsored by MURE Comedy Committee

# the Vine

tauern & eatery

(7-10 p.m.)

- 99¢ 1/4 POUND BURGERS
- 25¢ DRAFTS
- \$2 PITCHERS
- \$1 SHOOTERS

VINES HAPPY HOUR

•20¢ WINGS •\$1.50 COCKTAILS •50¢ DRAFTS •\$2.50 PITCHERS  
(M-F, 4-7 p.m.)

RURAL & APACHE



## EVERY DAY HAPPY HOURS

5-6:30 p.m.  
\$2.00 Draft Pitcher  
25¢ Chicken Wings (5 pieces)  
\$2.50 Kirin Dry (26 oz.)  
\$2.50 Sapporo Draft (21 oz.)

Sunday-Thursday  
8-9:30 p.m.  
Also Includes:  
\$3.00 Sake Bombers

Friday-Saturday  
9-10:30 p.m.  
Also Includes:  
\$3.00 Sake Bombers

COUPON SPECIAL  
CHICKEN TERIYAKI  
OR  
CHICKEN CURRY  
FOR TWO

Includes Soup, Salad,  
& Rice

Reg. Price:  
~~\$11.90~~ ⇒ \$6.95  
Dinner Only

Expires 11-10-89

Lunch - Mon.-Fri. 11:30 a.m.-2:30 p.m.  
Dinner - Sun.-Thurs. 5-10 p.m. • Fri.-Sat. 5-11 p.m.

1435 E. University • Tempe • 967-6911  
in University Plaza



Arizona Beach  
RESTAURANT

# Salaries

Continued from page 1.

universities are going to lose valuable employees if something is not done to boost faculty income.

"We need to plan to get the best faculty," she said.

The salary adjustment report also outlined the number of women and minorities employed by ASU. Out of a total of 577 administrative staff, 222 were women and 78 were minorities.

There were 307 women and 146 minorities out of a total of 1,263 faculty members. Also, there were 48 women and 14

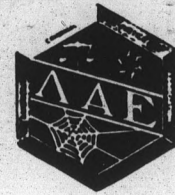
minorities out of a professional staff of 112.

In addition, there were 1,473 women and 494 minorities in the classified staff that totals 2,492.

Robert William, the regents' associate director for capital development and human resources, said Board policy requires the annual submission of salary adjustment reports.

The 1.25 percent increase was granted to employees who received a satisfactory rating and were employed prior to April 1. The current adjustments also include 0.25 percent for equity and market adjustments.

American Criminal Justice Association



Business Meeting  
October 29, 7:00 p.m.  
MU Restaurant Lounge  
(Upstairs)

Funded by ASASU

Looking for a best seller?

STATE PRESS  
Classified Advertising

ASU  ASU  ASU

Wallpapers to go®

Reg. \$8.99 VALUE PRICE ... \$7.99	Reg. \$14.99-\$15.99 VALUE PRICE ... \$11.99
Reg. \$9.99-\$10.99 VALUE PRICE ... \$8.99	Reg. \$16.99 VALUE PRICE ... \$12.99
Reg. \$11.99 VALUE PRICE ... \$9.99	Reg. \$17.99-\$18.99 VALUE PRICE ... \$13.99
Reg. \$12.99-\$13.99 VALUE PRICE ... \$10.99	Reg. \$19.99 or more VALUE PRICE ... \$14.99

NEW! ASU and MOST COLLEGE and NFL LICENSED BORDERS...BE THE FIRST AND SAVE!!

Where Beautiful Rooms Begin™  
1800 N. Scottsdale Rd. (Next to Breuners) 949-7199

MINDER  
BINDER'S



715 S. Hayden, Tempe 966-1911

FRIDAY

PRE-HALLOWEEN PARTY

Jello Shooters \$1.99 8-Close

COSTUME  
CONTEST

SATURDAY

99¢ 8-Close

COCKTAILS

GO  
ASU!



## BioMedical Research

Gull Laboratories, rapidly-growing immunodiagnostics firm with ultra-modern facilities, has immediate openings in the following areas:

Microbiology • Immunology • Peptide Chemistry

Salt Lake City, Utah offers a unique combination of a rich cultural life with immediate access to year-round outdoor activities. Gull Laboratories, Inc., a dynamic young biotech company, provides an opportunity for personal and professional growth in a small-company atmosphere. Positions are available for entry-level personnel as well as experienced applied researchers. Send CV to:

Gull Laboratories, Inc.  
1011 East 4800 South  
Salt Lake City, UT 84117



Sidewalk  
SALE!

THIS SALE  
IS FOR  
THE BEAUTIFUL,  
SOPHISTICATED,  
BRILLIANT AND  
THOUGHTFUL  
PEOPLE LIKE  
YOU AND ME...

DON'T  
MISS IT!


Many  
Halloween  
Items  
50% Off!



Different  
Sale Items  
daily!  
Don't  
miss a  
day!

AT OUR STORE -

Sale runs Tues.-Fri. Sale hours 11 a.m.-4 p.m.

Deann's  Hallmark

923 S. Mill Ave. • Tempe Center  
(Univ. & Mill) • 966-3062

© 1989 Hallmark Cards, Inc.

# ELUVIRA

## COSTUME CONTEST

Saturday, October 28th

- 1st - \$200
- 2nd - \$100
- 3rd - \$50

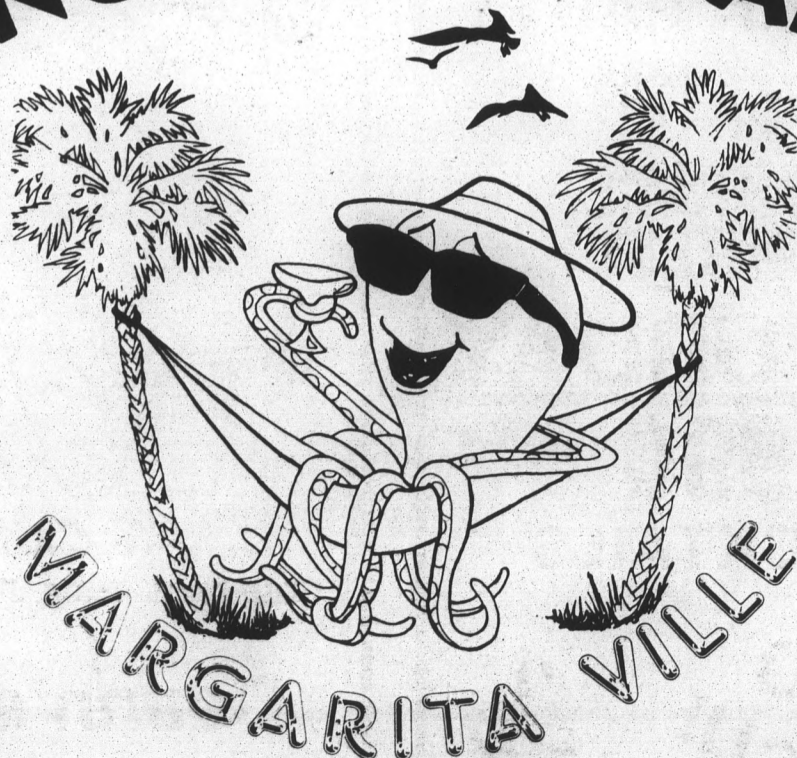
DRINK SPECIALS

**25¢ DRINKS**  
8-10 p.m.  
FOR EVERYBODY

MOST ORIGINAL COSTUME

**\$150**

WASTING AWAY AGAIN IN...



**TERRACE & APACHE • 731-9182**

## ASU Police Report

ASU police reported the following incidents that occurred between 7 a.m. Wednesday and 7 a.m. Thursday:

- A man not affiliated with ASU was arrested and charged with public consumption of alcohol at Tempe Center, University Drive and Mill Avenue.
- A student also was arrested at Tempe Center on an outstanding warrant from the Maricopa County Sheriff's Office for failure to appear on a littering charge from April.
- A thief stole a student's amplifier, radar detector and radio, all valued at \$525, from

his car while it was parked in Parking Structure Four between 12:30 and 3:30 p.m. Wednesday.

- A student was arrested and charged with possession of drug paraphernalia in her room on the 13th floor of Manzanita Residence Hall.
- Two students were warned of trespassing after police found them on the roof of Danforth Chapel. They said they were working on an art project.

Compiled by State Press reporter Tenny Tatusian

## Tempe Police Report

Tempe police reported the following incidents that occurred between 7 a.m. Wednesday and 7 a.m. Thursday:

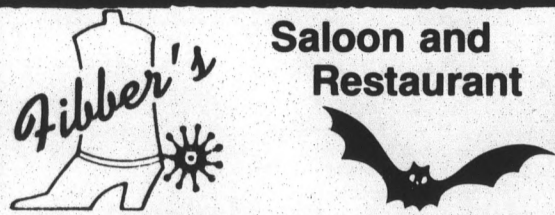
- A 4-month-old boy was taken to Scottsdale Memorial Hospital-Osborn by ambulance after his mother found him unconscious in his crib Wednesday afternoon. The infant was pronounced dead at the hospital at 5:45 p.m.
- A 23-year-old man was arrested and charged with aggravated assault after he stabbed another man in the jaw during a

fight. He claimed that the other man ran into his small knife.

- A 24-year-old man was arrested after he punched a bouncer at Hammerheads bar, 955 E. University Drive.
- A thief stole seven apple muffins from a house in the 6500 block of South Farmer Driver. He entered through an unlocked rear door.

Compiled by State Press reporter Tenny Tatusian.

**Fiber's** Saloon and Restaurant



**HALLOWEEN TRAUMA NITE**  
Sponsored by **Coors**  
**LIVE MUSIC**  
Rojoie and Sapphire along with Roughcut  
October 31, 1989 • 9:00 p.m.  
**Cash Prizes**  
7043 E. McDowell Rd., Scottsdale  
NW Corner of Papago Park Plaza, 481-0415

**\$5 Off Cut & Style**



**Grooming Humans Hair Studio**

**In Arches Plaza • Next to Ozzle's**  
**Forest & University • 966-5462**  
**Expires 11-4-89**

**SCOTTSDALE NISSAN**

**NISSAN #1 IN CUSTOMER SATISFACTION**



**240'S**  
**300Z'S**  
**SENTRAS**  
**MAXIMAS**  
**HARDBODY TRUCKS**

Want a nice new or used car? Scottsdale Nissan always has a large selection of nice sedans, sports cars, convertibles, trucks, vans & wagons.

Call me today about our 'on the spot' financing and 'first time buyer' program.

**Bruce Bernloehr** (602) 994-0301  
Pager #352-4111 1000 N. Scottsdale Rd.  
**Friendly, Courteous Service — Always**

# CONTEMPORARY SWEATERS OFFER CASUAL COMFORT



**YOUNG MEN'S FAVORITES FROM MICHAEL GERALD AND SATURDAYS**

**30.00-44.00**

Sweaters that look as good as they feel. Our Michael Gerald and Saturdays sweaters are masterpieces of color and design. Made of soft, lightweight acrylic, these imported sweaters are available in a rich assortment of jacquard patterns and solid colors. In crewneck and cardigan styles; sizes S-M-L-XL. Young Men's Sportswear

# Dillard's

SHOP FRIDAY 10-9, SATURDAY 10-6 IN PHOENIX AT PARK CENTRAL, METROCENTER, SCOTTSDALE, PARADISE VALLEY, FIESTA MALL, WESTRIDGE, CHRIS-TOWN AND IN FLAGSTAFF MALL. WE WELCOME YOUR DILLARD'S CREDIT CARD, THE AMERICAN EXPRESS® CARD, DINERS CLUB INTERNATIONAL, MASTERCARD® AND VISA®



**RARE LION RESALE**  
 A FINE SELECTION OF QUALITY  
 USED CLOTHING, ANTIQUES,  
 COLLECTIBLES, AND JEWELRY

**RARE DEALS AT  
 ROARING GOOD PRICES**

MON. - SAT 10 A.M. - 6 P.M.

University 921 S. MILL, TEMPE  
 TEMPE CENTER  
 (NEAR PIC-N-SAVE)  
 968-6074

BUYING  
 SELLING  
 TRADING

**GRE  
 PREP  
 COURSES**

For more  
 information  
 please call

**1-800-772-8378**

# Snowbirds back, but study shows no flocking to ASU

By MARK CRISMON  
 State Press

As colder weather approaches, businesses and residents are gearing up for the influx of winter visitors to the Valley.

But winter visitors, often called "snowbirds," tend to stay away from the immediate area surrounding ASU, said Rob Conway, a City of Tempe traffic engineer.

"Obviously we're affected by winter visitors," he said. "The immediate impact is not that great around ASU because the area is set up to provide residence for the student."

This supports a finding by Robert Mings, an ASU geography professor, revealing that winter visitors prefer the open, undeveloped desert.

Each year, approximately 200,000 snowbirds inject an estimated \$400 million into the East Valley economy, said Tim Hogan, an economist and acting director of the ASU Center for Business Research.

The average household of winter visitors will spend about \$1,000 a month on rent, utilities and necessities such as gas, food and clothing, Hogan said.

He added that winter visitors do not spend a lot of money on luxury items or on cultural events and tend to make friends within their communities and organize social events themselves.

"There is unmistakable evidence that high levels of social interaction and camaraderie are prevalent among these snowbirds," Mings said.

The average winter visitor will spend four to five months, typically November and April, living in Mesa or Apache Junction.

About half of the winter visitors will reside in mobile home or recreational vehicle parks. The remaining half live in apartments, homes or with friends and relatives.

Most winter visitors are white, middle- to upper-middle income retired couples.

A separate study done by Mings and Kevin McHugh, another ASU geography professor, found that 75 percent of the winter visitors are ages 60 to 74. About 12 percent are older than 74, and 12 percent are younger than 60.

Although only about 15 percent are likely to move to Phoenix on a permanent basis, Mings' studies show that the likelihood of winter visitors moving to Phoenix increases among those with a six-month seasonal visit. He added that it jumps dramatically among those staying seven months or longer.

"The percentage very likely to move to Phoenix is twice as high among those with children in Arizona," Mings said.

Estab. 1975 966-7788

**WAREHOUSE  
 DELI & PUB**

LONGEST  
**HAPPY HOUR**  
 IN TEMPE

10:30 a.m.-7 p.m.  
 Monday-Friday

Halloween Specials on Halloween Night

60 oz. Pitchers of BUD, BUD LT. LITE & COORS LT. \$2.50

130 E. University Dr. (Forest & University) 966-7788



**STATE PRESS  
 Classifieds. . .unlock  
 the door to new and  
 exciting avenues.**

**965-6731 or 965-6735**

# SUN DEVIL BASKETBALL

## ASU Student Season Ticket Campus Promotions



Each day and night you have the opportunity to purchase your 1989-90 Student Season Basketball Tickets right where you live for only \$16<sup>00</sup>. Check the schedule below to find out where and when you can purchase your season tickets.

DATE	TIME	LOCATION
Mon., Oct. 30	9:30 a.m. to 3 p.m. 5 p.m. to 8 p.m.	Cady Mall, MU Sahuaro
Tue., Oct. 31	9:30 a.m. to 3 p.m. 5 p.m. to 8 p.m.	Student Rec Center, MU P.E. East
Wed., Nov. 1	9:30 a.m. to 3 p.m. 5 p.m. to 8 p.m.	Palm Walk, MU P.E. West
Thurs., Nov. 2	9:30 a.m. to 3 p.m. 5 p.m. to 8 p.m. 9 p.m. to 11:30 p.m.	Cady Mall, MU Manzanita Flakey Jakes Contest, Pop-a-Shot

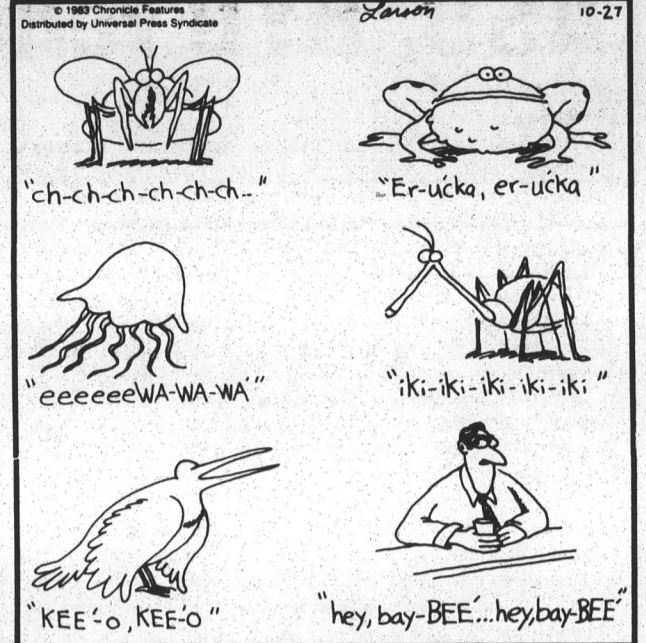
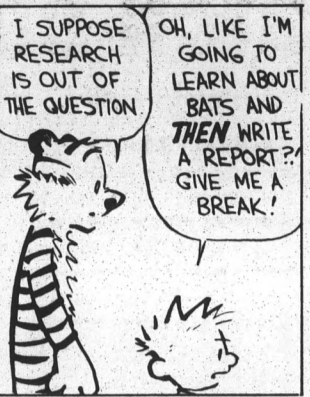
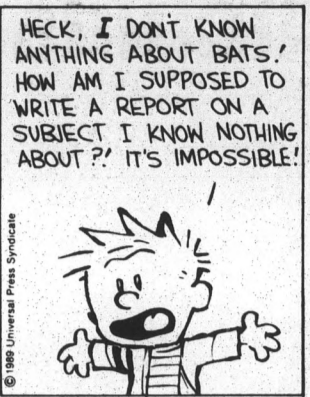
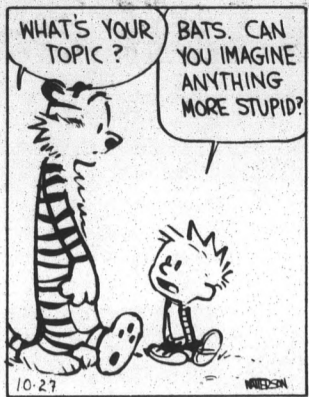
**Hazelwood  
 ENTERPRISES, INC.**

## Calvin and Hobbes

by Bill Watterson

## The Far Side

by Gary Larson



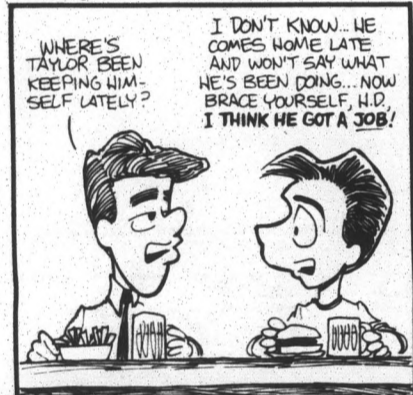
## Doonesbury

by Garry Trudeau



## Ivory Towers

by Mike Ritter



## Meind Mine


ATHENS, Ga. (AP) — The talk will be of butter knives and dessert forks — not slam dunks and full-court presses — when the University of Georgia basketball team goes to etiquette school this weekend.

Sunday's two-hour class will be taught by Debra Lassiter, a Georgia graduate who owns an Athens business called Perfectly Polished. She said she was inspired to teach the Bulldogs some manners after watching a swimming team from another school eat at a local restaurant.

"Their eating skills were atrocious. I thought, 'These people are representing their university. Do we send out athletes like this?'" she said.

Coach Hugh Durham said he is excited about his players and coaches taking the class.

On Nov. 5, the Bulldogs will have a formal dinner at the Georgia Center for Continuing Education to practice their new manners.



COME MINGLE AMONG  
THE SPIRITS OF THE DEX WORLD

AT THE THIRD ANNUAL  
**HALLOWEEN BASH!**


SATURDAY, OCT. 28, 9:30 P.M.  
\*\*MEMBERS ONLY + A GUEST\*\*

\*\*NEW LOCALE AT DESERT PALMS NORTH CLUBHOUSE\*\*  
\*\*COSTUMES REQUIRED!\*\*

\$3 Members  
\$5 Guests

DON'T MISS OUR T-SHIRTS ON SALE  
AT THE TABLE FOR ONLY \$6 EACH!

*Ad funded by ASASU*



DON'T "DUCK OUT" OF GREAT HAPPY HOUR!!

Monday-Friday  
Happy Hour 5-8 p.m.  
Reverse Happy Hour 10 p.m.-Close

**DRAFTS 50¢**  
**WELL DRINKS \$1.75**


• Saturday & Sunday  
\$2.50 PITCHERS  
ALL DAY!!

Holiday Inn  
TEMPE / ASU

**DUCKS**  
Rural at Apache • 966-DUCK

From the director of "A Nightmare on Elm Street" and "The Serpent and the Rainbow."

On October 2nd, at 6:45 a.m.  
mass murderer Horace Pinker was put to death.  
Now, he's really mad.



**WES CRAVEN'S**  
**SHOCKER**  
NO MORE MR. NICE GUY

ALIVE FILMS PRESENTS WES CRAVEN'S "SHOCKER" MICHAEL MURPHY - PETER BERG - CAMI COOPER and MITCH PILEGGI  
Music by WILLIAM GOLDSTEIN Editor ANDY BLUMENTHAL Director of Photography JACQUES HAITKIN Executive Producers SHEP GORDON and WES CRAVEN  
Produced by MARIANNE MADDALENA and BARIN KUMAR Written and Directed by WES CRAVEN A UNIVERSAL RELEASE

**OPENS FRIDAY AT A THEATRE NEAR YOU.**

## ASU, BYU rematch concludes fall baseball

By TOMI McELROY  
State Press

The ASU baseball team plays host to the Brigham Young Cougars at 7:30 tonight and at a noon doubleheader Saturday, ending the Sun Devils' fall baseball season.

ASU defeated the Cougars in their last meeting, 14-12, to capture the championship title of the UC-Riverside Baseball Invitational in March.

The teams battled for three hours and 41 minutes, changing the lead three times and ending three innings in ties. BYU's pop fly with the tying runs on base in the bottom of the ninth gave the Sun Devils the victory.

"There's no revenge factor," said Ralph Zobell, BYU sports information director of baseball. "We felt we had a legitimate chance to win, but (the Sun Devils) were a big challenge."

The Sun Devils leading hitter, freshman Todd Stevenson, will sit out the final series suffering from arm and leg injuries.

"He's been injured a lot," ASU Head Coach Jim Brock said. "He's a very delicate kid, and it's difficult for him to avoid injury."

Steverson was hitting .500 during the fall season with two home runs and seven RBI.

John Halland, a transfer from Mesa Community College, is also hitting at the .500 mark. Halland has seen playing time at second base, and Brock said he will start there the entire weekend.

"He's hit the ball very well and works very hard," Brock said. "He's a hard-nosed player."

Sophomore Jim Austin leads the team in home runs (three) and RBI (10) with a .483 batting average.

"Austin is probably our No. 1 hitter right now," Brock said. "He has been hitting the ball harder and more consistently than anyone else on the ball club."

Junior Rusty Silcox, 3-0, leads the hurlers with 16½ complete innings and a 3.76 earned run average.

Junior Gary Tatterson, 2-0, has completed 16 innings with a 4.50 ERA and southpaw Todd Douma, 1-1, sports a 2.81 ERA after 16 innings.

"They all have different talents," ASU pitching Coach Dub Kilgo said. "Douma has been making the most of his talents; and Silcox and Tatterson have had reasonable

success, but we look for them to improve."

BYU pitchers John DeSilva, Darin Kracl and Ed Zinter all signed professional baseball contracts last season and have left the Cougars with a handful of rookies.

"We have a very inexperienced pitching staff," Zobell said. "We are going to be relying on a lot of freshmen."

Returning pitchers for BYU are senior lefthanders Mike Switzer and Rob Jensen.

Newcomers to the mound for the Cougars will be freshmen righthanders Dave Mauss and Mike Nielsen. Lefty Lance Clark attended BYU last year but was ineligible.

The Cougars' top returning players include first baseman Randy Winstead, a second-team All-American selection, Brent Brown, a third-team Academic All-American choice, outfielder Burt Call and shortstop Jeff Howes.

BYU won its fall debut against the University of Utah, 16-6, and Zobell said ASU will be a good barometer.

"This may not be the biggest game for us," Zobell said. "But it may be the best."

## Cougs surprise conference, receive kudos from Marmie

By JOEL HORN  
State Press

"They have good players, and they're getting the most out of them."

The Sun Devils? No. The Washington State Cougars!

ASU Head Coach Larry Marmie made that comment and several other complimentary statements about the Cougars this week. WSU (3-2 Pac-10, 6-2 overall) will face ASU (0-2-1, 3-3-1) at 7 p.m. Saturday in Sun Devil Stadium.

"They have probably been a surprise team in the conference, based on what some people said about them before the season," Marmie said. "They're a legitimately good football team."

The Cougars finished 9-3 in 1988 but lost quarterback Timm Rosenbach to the Phoenix Cardinals. As a result, a significant drop-off in offensive performance was expected.

However, WSU has not slipped a notch. In fact, the Cougars may have improved. They lead the Pac-10 in passing offense (271.1 yards per game) and scoring offense (34.6 points per game).

Redshirt freshman Aaron Garcia, Rosenbach's replacement, ranks first in the conference in passing efficiency (137.3) and is fourth in total offense (207.1 yards per game).

"I think in Washington State you know exactly what you're going to get," Marmie said. "Although the thing that probably goes unnoticed about them is the effectiveness of their running game, they have one of the top backs, not only in the Pac-10, but in the country in Broussard."

Senior Steve Broussard, who led the Pac-10 in rushing last season, has run the ball 180 times for 800 yards and nine touchdowns. He tops the conference in all-purpose running.

The Cougars' defense, which ranks ninth in the Pac-10 as they did last year, is surrendering about 23 fewer yards per game in 1989.

"Certainly, their defensive team, we thought even last year, was a little bit underrated," Marmie said. "Their front seven is very good. That's probably the strength of their defense."

In their first eight games, the Cougars have created 26 turnovers. WSU picked off 20 passes and recovered six fumbles.

"They're just a very solid football team in all phases of the game," Marmie said. "I think they're

one of the better teams in the conference, even though they've lost two games."

On the other hand, the Sun Devils have struggled. They have not won in three weeks.

"I think the biggest change we have to make right now is in our attitude — and I'm not talking about a bad attitude. I want to make that clear," Marmie said. "We want to bring back a winning attitude. I certainly think we have a job to do to get that done."

After the Oregon game last week, Marmie said the Sun Devils did not play with the kind of heart they have to play with in order to win.

Surprisingly, ASU ranks sixth in the Pac-10 in rushing offense, averaging 125.3 yards per game. But almost a quarter of the Sun Devils' 877 yards rushing came in one game against Missouri.

ASU has scored only six touchdowns rushing this season. Only two conference teams — California and Stanford — have scored fewer.

Senior tailback David Winsley will not play Saturday because of a bruised left ankle. He has been on crutches all week and will have the ankle re-examined to check for a possible fracture.

ASU may utilize a one-back set against WSU to negate the loss of Winsley and the overall ineffectiveness of the running game.

Junior quarterback Paul Justin is fifth in the Pac-10 in passing efficiency with a 119.4 rating, ahead of more heralded rivals Cary Conklin of Washington and Troy Taylor of California. He has thrown seven touchdowns but has had eight passes intercepted.

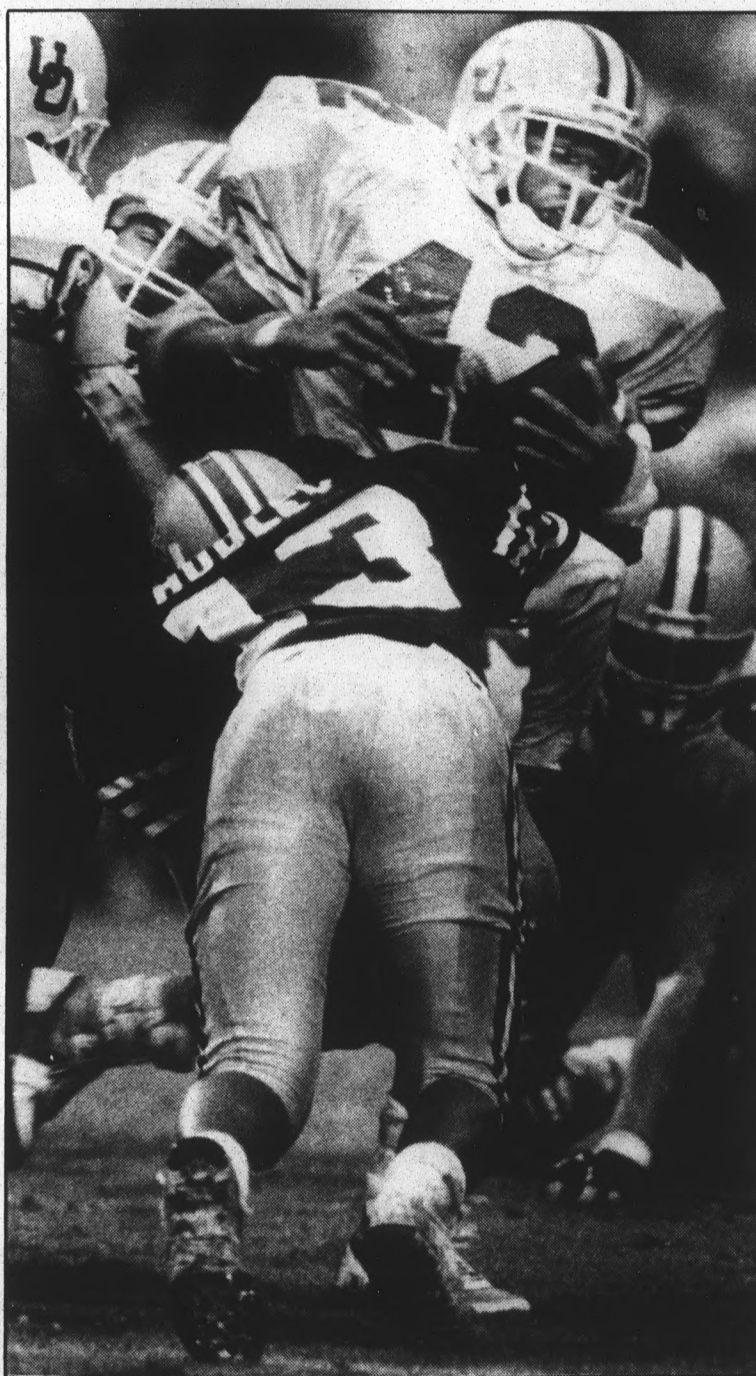
Last season, Justin made his starting debut against the Cougars in Pullman's Martin Stadium. He completed 22 of 34 passes for 321 yards and one touchdown in ASU's 31-28 upset win. Junior free safety Nathan LaDuke intercepted a Rosenbach pass in the end zone, as time expired, to preserve the victory.

ASU leads the 17-game, 30-year-old series with WSU, 10-5-2. The Sun Devils have actually won 11 games but were forced to forfeit a victory in 1979 for using ineligible players. ASU has outscored WSU, 433-364, in the series with the average score being 26-21.

Earlier this week, WSU Head Coach Mike Price said playing college football should be fun.

Marmie agreed, but had a different definition of a good time.

"The most fun comes from winning," he said.



Scott Troyano/State Press

ASU conerback Lawrence Hubley (13) stops Oregon fullback Latin Berry (42) during action last week.

## Unranked Sun Devil doubles team knocks off top seed

By VICKI CULVER  
State Press

It was quite an upset when ASU's doubles team of Jennifer Rojohn and Karen Bergan defeated the No. 1 seed Thursday in the Riviera All-American Tournament in Pacific Palisades, Calif. The tournament continues through Sunday.

The 7-5, 6-2 victory against Stanford's Sanra Birch and Debbie Graham was an upset because Rojohn and Bergan were not even ranked among the top 16 doubles teams.

Head Tennis Coach Sheila McInerney said the match showed great playing on both sides of the net, but she felt the Sun Devils played a perfect game.

"Jen and Karen played super," McInerney said. "Their game was very solid. They both serve well and return well enough to give any team a good match-up."

Last season, Rojohn and Bergan defeated the Stanford NCAA runners-up in regular season play. Rojohn said that thought shed a positive light in her and her partner's minds.

"We knew that we could beat them, but that it would be really tough," Rojohn said. "We felt really good about it, though."

Highlights of the match, Rojohn said, were the high percentage serving, and the agile way the duo moved around the court. McInerney agreed that movement was a major contributor to the win.

Rojohn and Bergan compete in the semi-final match today, and a win would boost them into Sunday's championships.

Also representing ASU in the Riviera tournament is Krista Amend in singles competition, and Kristi Jonkosky and Luann Klimchock in doubles.

Amend lost in the first round of the singles main-draw against California's Emilie Viqueira, 6-0, 6-3, but defeated UofA's Betsy Sumerville, 3-6, 6-3, 7-5, in the first round of the consolation match.

"Krista's win was good, but she didn't play well in the first match," McInerney said. "She realizes (she did not play well) but that's why we have a preseason schedule."

Jonkosky and Klimchock lost to Stanford's Merideth McGrath and Terri Whitlinger, 6-0, 6-0, ending their tournament play because there is no consolation in doubles.

McInerney said although the ASU team played poorly in that match, it dominated in the first three qualifying victories.

This tournament marks the second preseason play for ASU so far. In the previous ITCA Rolex Tournament, Rojohn and Bergan made it to the semifinals, but no other ASU players made it past their first rounds.

"This tournament was certainly better than our first one," McInerney said. "And I feel much more confident about our chances here than I did in Irvine (Calif.)."

# ASU hopes recent success continues at Pac-10s

By LARRY NEWELL  
State Press

The ASU cross country team hopes to build on the success of its previous meet when the Sun Devils compete Sunday at the Pac-10 Conference Championship in Stanford, Calif.

In the Sun Devils' last competition, two weeks ago at their lone home meet of the season, the womens and mens squads placed second and third, respectively.

"This is our biggest meet so far this season and if we go all out we can finish in the top five," ASU cross country Coach Ken Lehman said.

Last season, the Sun Devils went into the championships with high hopes after an impressive outing at the ASU Invitational. But the womens and mens teams could only

muster an eighth- and ninth-place finish, respectively.

"Everyone is psyched for the Pac-10," said sophomore runner Kelly Cordell. "This year there is no dominant team and if everyone runs the way they can we could sneak in and surprise some people."

The battle for the womens crown is wide open, as Washington and Washington State are the only nationally ranked teams, 17th and 19th, respectively. Also competing for top team honors will be three-time defending champion Oregon, with UofA threatening to overtake the favorites, Lehman said.

Cordell, who has led the womens squad in each of ASU's first four meets, will once again be the Sun Devils top threat. "Last year I ran very poorly at the Pac-10

(Championships)," said Cordell, adding that she hopes to fare well this year at the Pac-10 and the Nov. 11 District 8 championships. "I hope to finish in the top 10."

The Sun Devils second finisher at the Pac-10s last season was senior Amy Komitzky, and will be looked upon for another strong showing. She placed sixth two weeks ago at the ASU Invitational.

Senior Teresa Barrios, who garnered a fourth-place overall finish at the Pac-10s last season, returns to the ASU lineup after being sidelined with a viral infection, which has kept her out of competition so far this season. Before her illness, Barrios was a strong candidate to win the Pac-10 individual title.

Turn to Runners, page 21.

Keep up with the action!

state press Sports

## TEMPE'S FIRST ANNUAL ANIMAL HOUSE HALLOWEEN TOGA PARTY!



**This Saturday Stan's 50's Diner presents an Authentic 1950's Toga Party. Tonight is your chance to go back in time with the Greeks and experience the fun and frolic of the 50's with great wild and crazy contests like a Jello Dive, Apple Bobbing, Egg relay and great Costume Contests for hundreds in cash and prizes. Plus from 8-10:00PM all PITCHERS OF DRAFT ARE JUST \$1.00 and Jungle Juice for 50¢ till 10:00PM.**



**BUY TWO MALTS AND 1/4 LB. OF FRIES ARE FREE**

**625 EAST APACHE BLVD. • TEMPE • 967-2922**

Illusions. Our lives are shaped by what we perceive to be true. But take a second look, a closer look through the eyes of a Sun Devil at the people, the events, the trends. Memories of your life at ASU can never be recaptured. Hold on to your perceptions of today, through the pages of The Sun Devil Spark yearbook — for things aren't always as they seem.

The Sun Devil Spark Yearbook

# HOLIDAY AIRFARE SALE!

**LAST 2 DAYS!**

**DEEP DISCOUNTS ON FARES TO OVER 100 DESTINATIONS. CALL FOR YOUR LOWEST FARE TODAY!**



Here's just a sample of the **guaranteed** lowest airfares to get you home -- or anyplace else you want to go -- for the holidays. Seat assignments are available and you get **free parking** at AIT Sky Harbor Parking. Exclusive offer for ASU only from AIT Travel:

Phoenix To/From	Round Trip Sale Fares	Phoenix To/From	Round Trip Sale Fares
Austin	\$138.00	Minneapolis	From \$198.00
Baltimore	From \$198.00	Moline	From \$198.00
Boise	From \$218.00	NY -- JFK	From \$198.00
Calgary	\$199.00	NY -- LaGuardia	From \$198.00
Cedar Rapids	From \$198.00	Oakland	From \$98.00
Chicago	From \$193.00	Omaha	From \$198.00
Colorado Springs	From \$99.00	Portland	From \$148.00
Denver	From \$96.00	Pueblo	From \$98.00
Des Moines	From \$198.00	Reno	From \$98.00
Durango	From \$98.00	Sacramento	From \$98.00
Edmonton	\$219.00	Salt Lake City	From \$98.00
El Paso	\$70.00	San Antonio	From \$148.00
Grand Junction	From \$98.00	San Jose	From \$98.00
Kansas City	From \$148.00	Seattle	From \$148.00
Lincoln	From \$198.00	Sioux City	From \$198.00
Lubbock	\$148.00	Wash. -- National	From \$198.00
Midland -- Odessa	\$130.00	Wichita	From \$198.00

Make your reservations by phone or in person **today!** Payment must accompany reservation and can be made by cash, check or credit card. Limited number of tickets available at these greatly reduced rates.

## INTERNATIONAL HOLIDAY FARES!

International students! Holiday fares available to Europe or Asia. Call AIT Travel for more information.



**AIT Travel**

The Smart Way to Buy Travel  
Memorial Union -- Lower Level  
OPEN SATURDAY!

**921-4301**

Sale ends Saturday, October 28, 1989. All fares subject to availability. Limited number of seats available. All sales final.



## Ice Devils open play tonight

By TOMI McELROY  
State Press

The ASU Ice Devils begin season play against UCLA, the California conference champions, at 7 p.m. today at Tower Plaza.

The Bruins captured the championship title of the Pacific Coast Hockey Association, but many of their seniors have since graduated.

Bob Henry, who is in charge of club sports at UCLA, said the Bruins are entering a rebuilding year in its second decade of existence.

The Ice Devils also are reorganizing during the 1989-90 season under Manager Mike Hoffarth and new Head Coach Jim Manguso.

UCLA lost its season opener to Cal-State Northridge, 0-1, at Culver City Ice Arena. Although Manguso was not coaching the

Ice Devils last season when they split two games with the Bruins in Tempe, he said he remembers the action.

"Both teams seemed pretty evenly matched," Manguso said. "This year we're both in the same boat."

"I would just like to see solid play between everyone, no matter what the outcome is," Manguso said he has been pleased with this year's turnout of ASU players.

"The guys have really gelled together," Manguso said. "Everyone is working hard and willing to listen."

The Ice Devil A and B teams were formed through try-outs at the beginning of October and have been practicing ever since to prepare for today's and Saturday's games.

"We've been going through the basics," Manguso said. "We work on the lines and work a lot with the defense to get them in shape."

GRAND OPENING GRAND OPENING GRAND OPENING

## MAZAR BAZAAR MAZAR FASHIONS



**GRAND OPENING SALE**  
MAZAR BAZAAR 10% off  
MAZAR FASHIONS 10%-25% off

COME SEE OUR SELECTION OF FINE QUALITY IMPORTS FROM AROUND THE WORLD

- CLOTHING
- JEWELRY
- HANDBAGS
- WATCHES
- BELTS
- SCARFS



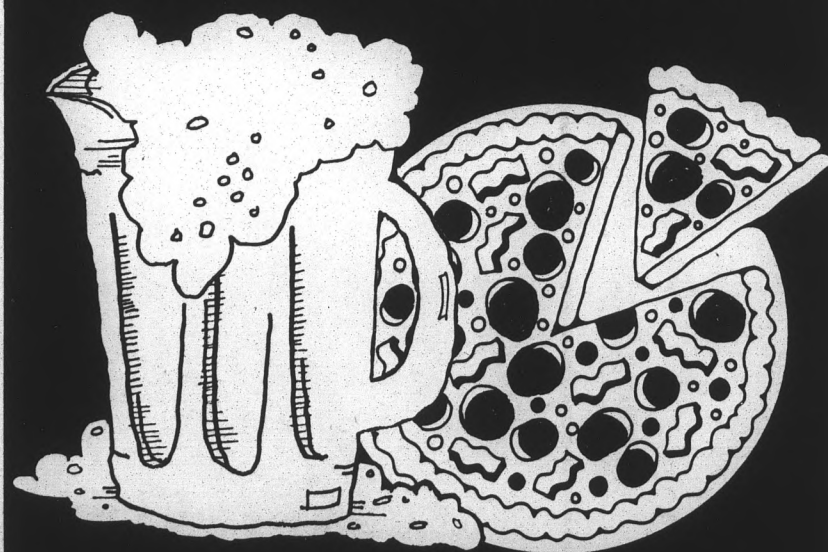
HAYDEN SQUARE  
350 S. MILL

**966-9002**

INTRODUCING THE

## GREAT PEPPERONI PRICE SLICE

ONE MEDIUM PEPPERONI PIZZA AND A PITCHER OF YOUR FAVORITE BEER



ONLY **\$4.99**

EVERY DAY  
8pm-CLOSE  
(SAVE OVER \$5.00)

Budweiser **BUD LIGHT** MICHELOB

**Oregon's PIZZA**

OPEN: SUN-THUR 11am-10pm FRI-SAT 11am-MIDNIGHT  
945 S. MILL AT 10TH **894-1234**

# Coaches urge student support

By JOEL HORN  
State Press

The Bill Frieder era at ASU is about to begin, and the Sun Devil basketball coaching staff is asking for student support.

"We are excited about Arizona State and about building the program and doing the best we can do," Assistant Coach Lynn Archibald said. "We hope the student body will get excited."

The Sun Devils open the season Nov. 30 against the Oregon State Beavers in Corvallis. Prior to that, ASU has exhibition games Nov. 10 against the Australian National team and Nov. 24 against Marathon Oil. Both games will be at the University Activity Center.

ASU's schedule includes 16 home games, including the ASU Tribune Classic Dec. 28-29 and the Pac-10 Tournament March 8-11. Student season tickets, which went on sale Monday, are priced at \$16. In addition to general admission to all home games, each student will receive several ASU promotional items.

Tickets are available at the Sun Devil Stadium ticket office. Students will also have the opportunity next week to purchase tickets in dormitories and at various locations on campus.

Recently, Frieder and his staff have made several local appearances to encourage enthusiasm for Sun Devil basketball.

"We're talking to a lot of student groups," Frieder said, "and we're going to continue to do so. We need their support."

Archibald said student backing is necessary to build a basketball tradition at ASU.

"Student support is so important for a good college atmosphere," he said. "This is their team, not the boosters or anybody else's. If the students support our basketball program, they wouldn't be able to sell any booster tickets."

Archibald said the Pac-10 Tournament will benefit hotels, restaurants and other businesses and will bring a tremendous amount of revenue to the University.

"If our community will come out and support this tournament," he said, "we could keep it in Arizona from here on out."

Frieder and his staff are not promising a 20-win season or a national championship — a winning record is the initial goal.

"We're going to give the students a product that they're proud of," Archibald said. "If the students come out and support the program, it could mean a difference of seven or eight points."

Opposing teams will be intimidated, Archibald said, if ASU students are vocal and enthusiastic.

"We want to be the best," he said, "and we can't do it without student support."

"Coach Frieder is committed to excellence."

## SAVE ON DISTINCTIVE CLOTHING



**4 DAYS ONLY!**

Thursday, Oct. 26-Sunday, Oct. 29  
Buy high style women's new and resale clothing of excellent quality and superb design

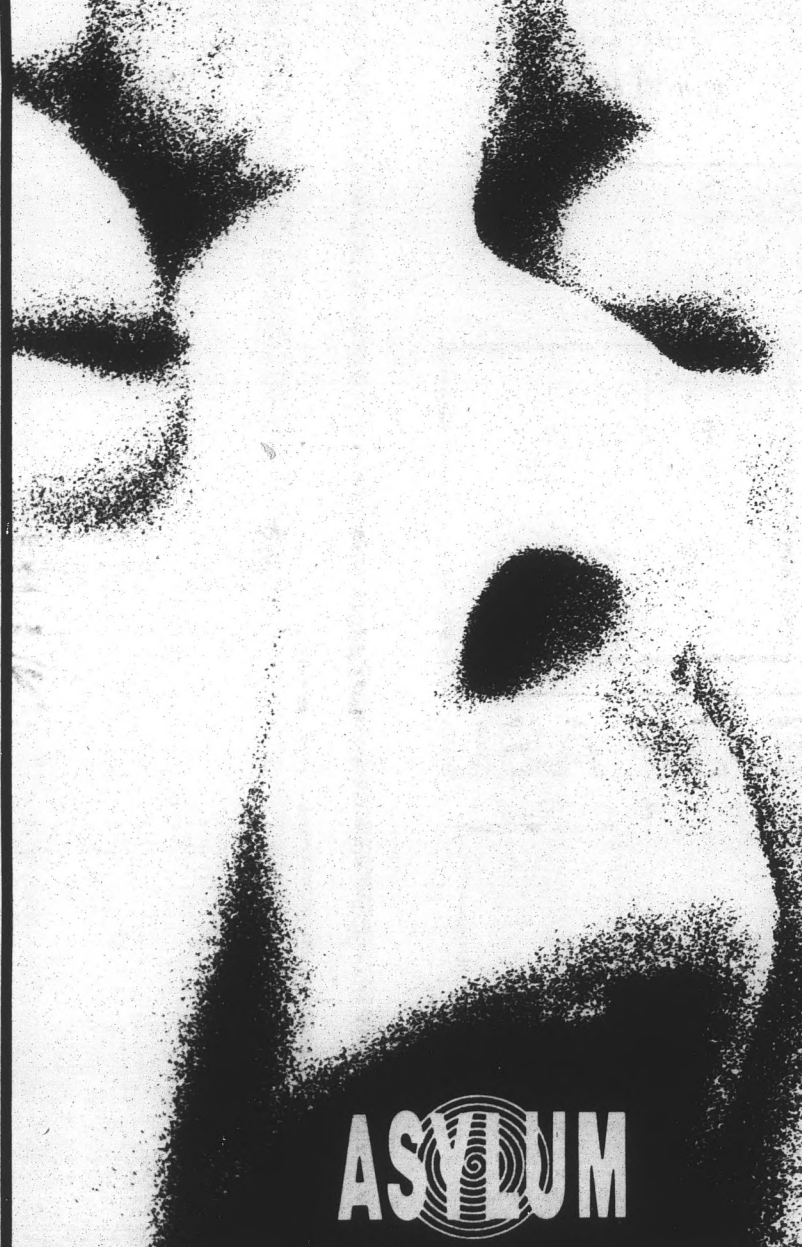
at:



PLACE: SAFARI HOTEL  
(Convention Center, rear of Hotel)  
4611 NORTH SCOTTSDALE ROAD  
North of Camelback on Scottsdale Rd.  
HOURS: Thurs. & Fri. 10-8 p.m.  
Sat. & Sun. 10-6 p.m.



Try  
State Press  
Classified  
Advertising  
before  
you reach  
the end  
of your rope.




**thursday • 25¢ DRINKS (WWD) 8-9PM**  
\$1.75 longnecks • \$3.50 pitchers  
• LIVE MUSIC WITH RITUAL

**friday**  
**DIFFERENT BEATS FOR DIFFERENT FEETS**  
ALTERNATIVE PROGRESSIVE • 25¢ Drinks 9-10 (wwd) • \$1.75 longnecks  
& shooters • \$3.50 pitchers all night long • Two dance floors, two deejays •  
AFTER HOURS to 3am

**saturday • KUKQ NIGHT**  
**HALLOWEEN COSTUME CONTEST**  
\$500 Grand Prize • with MARY McCANN "The Bone Mama" spinning discs  
• Halloween KUKQ drink specials all night long

**sunday**  
**FUNKY REGGAE**  
LIVE BANDS JAMMIN' TO AN IRIE BEAT  
• ABEL & ALLEN  
25¢ Drinks 8-9pm (wwd) • \$2.00 Red  
Stripe Beer Imported from Jamaica 'til  
close • \$1.50 rum drinks all night long



**24-7 SPYZ**  
**WED. NOV. 1st**

1300 N. McClintock Rd. • Tempe, AZ • 966-9810  
Two doors south of Big Surf

STATE PRESS  
Classified Advertising  
Matthews Center  
South Basement  
965-6731

## You've Got What It Takes! BLOOD PLASMA

Your blood plasma goes to accident and burn victims and is used for hemophiliacs who would otherwise suffer from uncontrolled bleeding. You are a life-saving source... it's healthful, safe and easy. Plus you can earn \$115 plus a month. Enjoy watching movies while you donate.

PLEASE  
C'MON IN  
TODAY

AND PICK UP YOUR \$5  
BONUS BY MENTIONING  
THIS AD



(New Donors Only) (May Not Be Used With Other Bonuses)

TEMPE PLASMA

HOURS  
Mon-Thur 8 am-6 pm  
Fri & Sat 8 am-4 pm

933 E. University 894-1338

## THE SPORTS Exchange MALL

49 E. Broadway • 968-5122

SPORTS •  
LEISURE •  
FITNESS •  
NEW •  
USED •  
CONSIGNMENT •



•NEW  
•Lacrosse  
•Hockey  
•Camping  
•Archery  
•Custom Golf  
•Fishing  
•Plus more

JASON GOALIE MASKS  
IN STOCK FOR HALLOWEEN



OFFICIAL EAST VALLEY  
HOCKEY HOT SPOT

## ACCIDENT LAWYERS

If you or a member of your family has had an accident involving serious injury or death, and you believe someone else is at fault — CALL US. We receive a fee ONLY if we win and collect for you. FREE CONSULTATION — CALL

WHISSEN & TIDMORE  
ATTORNEYS  
301 E. Bethany Home Rd.

279-7180



## NEWTON

TRANSMISSION AND AUTO REPAIR

"NOT THE BIGGEST...JUST THE BEST"

**FREE**  
Brake Inspection and  
Oil Change with Regular  
Transmission Service  
Reg. Value \$65  
**NOW \$29.95**

•Clutch & Transmission  
Repair and Build  
•One and Three Year  
Warranties  
•No Mileage Limit

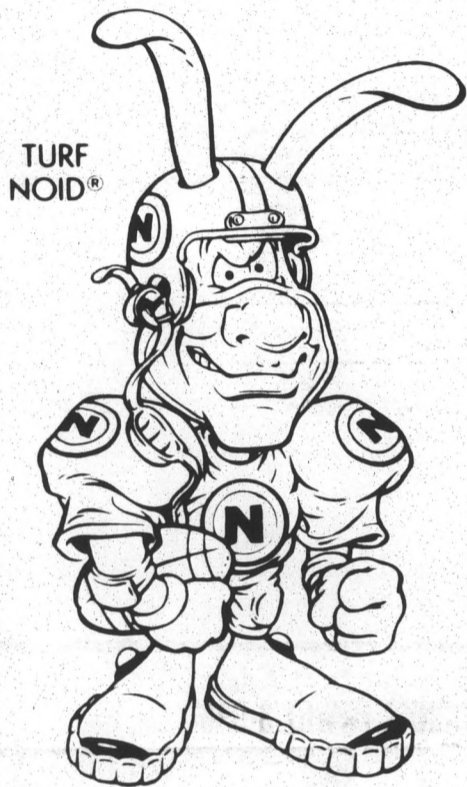
Free Towing • No Limitations

**TUNE-UPS**

\*All Makes and Models  
**\$33.95 up to \$69.95**  
\*Done by Computer

**15% DISCOUNT**  
with ASU I.D.

Hours: M-F 7-5:30; Sat 8-Noon  
**969-9122**  
2221 W. Broadway • Mesa  
(Just West of Dobson,  
5 minutes from ASU)



TURF  
NOID®

## FEED THE DEFENSIVE LINE WITHOUT SACKING YOUR WALLET

Tackle a great deal from Domino's Pizza. In 30 minutes or less we'll deliver an oven-fresh, custom-made pizza to your door. Domino's Pizza guarantees to always make a great play. And we'll do it all at a price that won't call off the game. Domino's Pizza.



*Nobody  
Delivers Better.*

## WEEKEND SPECIALS

VALID AT ASU/TEMPE LOCATION ONLY.

No coupon necessary, just ask for the weekend special.

### FRIDAY

Original  
Extra-large  
one-item pizza  
and 4 Cokes  
ONLY  
**\$9.99**

Valid all day Friday. No coupon necessary.  
Additional items available for \$1.25 each.

### SATURDAY

Original  
Medium  
two-item pizza  
and 2 Cokes  
ONLY  
**\$7.25**

Valid all day Saturday. No coupon necessary.  
Additional items available for 85¢ each.

### SUNDAY

Original  
Extra-large  
two-item pizza  
ONLY  
**\$9.25**

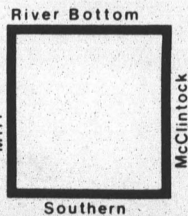
Valid all day Sunday. No coupon necessary.  
Additional items available for \$1.25 each.

## THE PIZZA PEOPLE OF ASU

**968-5555**  
903 S. Rural Rd.

HOURS:  
11:00am-1:30am Sun.-Thurs.  
11:00 am-2:30am Fri.-Sat.

Our drivers carry less than \$20.00.  
Limited delivery area to insure safety.  
1989 Domino's Pizza.



**\$9.99**

ONLY \$9.99 + tax for an Original Extra-large one-item pizza and four Cokes. One coupon per pizza. Not valid with any other offers or specials. Expires: 11-15-89



161 STPR

**\$6.99**

ONLY \$6.99 + tax for an Original Medium two-item pizza and two Cokes. One coupon per pizza. Not valid with any other offers or specials. Expires: 11-15-89



129 STPR

**\$1.25**

\$1.25 OFF any Original Extra-large one or more item pizza. One coupon per pizza. Not valid with any other offers or specials. Expires: 11-15-89



STPR

**\$1.00**

\$1.00 OFF any Medium Pan or Original one or more item pizza. One coupon per pizza. Not valid with any other offers or specials. Expires: 11-15-89



STPR

**NOW HIRING AT 903 S. RURAL - 968-5555**

## PIZZA DOUG OUT

411 South Mill Ave.  
(Next to Club UM)  
921-4277

Sun.-Thurs. 11 a.m.-1 a.m.  
Fri. & Sat. 11 a.m.-2 a.m.

### 2 AT 2 CLUB

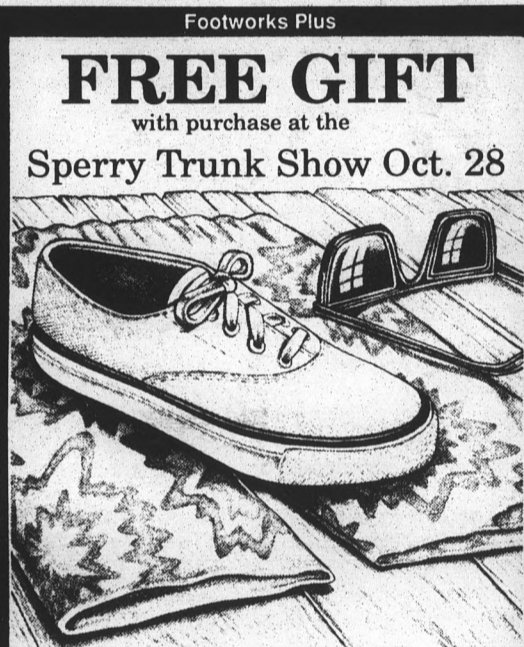
Join us for Happy Hour starting at 2 p.m. and get 60 oz. Pitchers for \$2 until close!

Enjoy Incredible Omelette Pies on Saturday & Sunday mornings accompanied by mimoso or juice and a paper on our patio!

Join us for pre & post game parties! Buy any large pizza & get a 60 oz. pitcher for 1¢

FREE DINNER!! (w/college I.D.) Buy 1 Sunday Special (includes 2 slices of pepperoni or sausage pizza, salad, & drink) and receive another ABSOLUTELY FREE! Drinks can be alcoholic or non-alcoholic.

Footworks Plus



Footworks Plus

## FREE GIFT

with purchase at the

Sperry Trunk Show Oct. 28



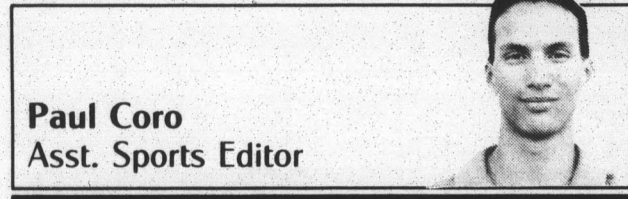
See the complete Sperry line this Saturday, October 28, at the Sperry Trunk Show, where you can special order any color or style of shoe in the line. Receive a free pair of thongs (\$16.00 value) with purchase.

**Footworks Plus**

398 S. Mill • Tempe, AZ • 966-3139

Footworks Plus

# Fun football at ASU fades to foolishness



Wait.  
Stop.  
Hold the phone.

You mean to tell me the only Pac-10 football team with a league record worse than ASU's is the annually futile California Golden Grahams?

Is it time to line up the heads of the ASU coaching staff on the prongs of Sparky's pitchfork?

Not so fast.

Head Coach Larry Marmie has been the first to admit that Sun Devil football has reached new depths. Their few victories, which make ASU look mediocre, have come against non-conference cupcakes.

Offensively, the calls have been for the most part about as predictable as Love Boat endings. Third-and-long draw calls and third-and-short sweeps have what's left of the Sun Devil faithful squirming in the empty seats alongside them.

Defensively, breakdowns on second- and third- and-long have taken ASU right out of games. Still, the only Sun Devil stars lie on the side of the scrimmage that sees the most action.

Special teams have been acceptable. Five consecutive games with some form of a blocked kick have been the highlight of the season. The Sun Devils finally have made threats with their kick-off returns. ASU now boasts a kicker who has yet to miss.

Much of the current problem can be traced back to earlier coaching changes. John Cooper's departure following three bowl-game seasons left Marmie with quite a recruiting chore. That class should now feature many contributing sophomores and redshirt freshman but doesn't.

The lack of talent on this year's squad also can be linked to Darryl Rogers' abrupt resignation in 1985, which put Cooper in an unsalvageable recruiting position. That class could have provided the Sun Devils with more experienced fifth-year seniors than it did.

Put that phone back down. A house cleaning is about the last thing the football program could withstand right now. The foremost reason for the Devils' demise has been a lack of continuity.

Marmie's dismissal would be the most detrimental of any previous coaching change. It would send a message that ASU football is in an uncontrollable tailspin.

On the upside, Marmie brought in one of the best recruiting groups in Sun Devil history following last year's 6-5 team. Only the national champions from Notre Dame posted more signees in The Sporting News' Top 100 blue-chip recruits than ASU. There is next year if the Sun Devils can finish this log ride of a season without getting too wet.

Granted, this season has been an embarrassment. The coaching has been questionable. Marmie has admitted he doesn't have a clue of how a turnaround could come to pass.

Following the Oregon State tie, Marmie said he believed ASU could win the remainder of the games. Following the Oregon loss, Marmie said his morale is down.

"Since I came here in 1985, my feeling is Sun Devil football is at an all-time low," Marmie said.

But while we look forward to the Nov. 11 homecoming match-up with the 1-6 Stanford Cardinal, Marmie continues to keep his job in perspective. He is not worried about losing his job but is concerned with doing his job.

Unless football wants to face adversity like that of the basketball program, which faces an uphill climb, Marmie needs vocal backing from Athletic Director Charles Harris so he can fulfill the hope and expectations of future ASU teams.



### FRIDAY'S SCHEDULE

**Game 3**  
Oakland (Stewart 21-9) at San Francisco (Garretts 14-5) 5:28 p.m.

### SATURDAY'S SCHEDULE

**Game 4**  
Oakland (Moore 20-11) at San Francisco (Reuschel 18-9) 5:28 p.m.

## Football

### Pac-10

#### SATURDAY'S SCHEDULE

Washington State at Arizona State	Washington at UCLA
Oregon State at California	Long Beach State at Oregon
Stanford at Southern Cal	Pacific at Arizona

### NFL

#### SUNDAY'S SCHEDULE

Atlanta at New Orleans, 10 a.m.	Phoenix at Dallas, 10 a.m.
Detroit vs. Green Bay at Milwaukee, 10 a.m.	Tampa Bay at Cincinnati, 10 a.m.
Houston at Cleveland, 10 a.m.	San Francisco at New York Jets, 1 p.m.
Kansas City at Pittsburgh, 10 a.m.	Washington at Los Angeles Raiders, 1 p.m.
Los Angeles Rams at Chicago, 10 a.m.	Philadelphia at Denver, 1 p.m.
Miami at Buffalo, 10 a.m.	San Diego at Seattle, 1 p.m.
New England at Indianapolis, 10 a.m.	

# THE STATE PRESS MAGAZINE

A WEEKLY COLLEGE TOWN JOURNAL

## WINGS FROM HELL!



**FREE TEBA WINGS**  
with purchase of \$5 or more.

\*Offer good Saturday & Sunday at Tempe location only. Expires 11-30-89.



JAPANESE EXPRESS FOOD

Eat In • Take Out • Drive Thru  
112 E. University • 968-6708

*Live!*  
**FRI. NITE**

**MARCONIAS**  
**PLAYS GUITAR**  
NO COVER

**SAT. NITE LIVE!**

VOLLEYBALL JAM w/  
MARCONIAS  
from  
HALF-TIME ON . . .  
*Crawling distance from the stadium*

Arizona's 1st and Only Brew Pub:

**BANDERSNATCH**  
**BREW PUB**

5th St. & Forest  
966-4438

Est. 1988

**am pm** mini market  
Broadway & Rural

Conveniently located at  
the NE Corner of Broadway  
and Rural Roads  
presents our

## Weekend Specials



**\$479**

12 pk cans



Coors  
and  
Coors  
Light

**\$449**

12 pk cans  
(\$8.99 case)

**Matilda Bay**  
Wine Coolers,  
Special Dry • Original Fruit  
2 for \$5.00 4 pk  
(\$2.99 each)

#### Other Domestic Specials

Milwaukee Best  
Milwaukee Best Light . . . \$2.99  
12 pk cans

Old Milwaukee Light . . . \$2.99  
12 pk cans

We gladly accept MasterCard, Visa and  
American Express for all purchases



New Beer  
by Coors

**\$429**

12 pk cans



**\$449**

12 pk cans  
(\$8.99 case)

energy/plus  
am pm

Locally owned and operated

Prices good thru Sun. Oct. 29

Valid only at Broadway and Rural am/pm Mini Market

Open 24  
Hours a day  
7 days a week

# ASU mascot sparks sports crowds



Sparky

By KRISTI HOWELL  
State Press

Every week, thousands of spectators watch the gymnastic feats and count the push-ups of Sparky, the ASU mascot, but most students would not know if they were sitting next to him in class.

ASU's horned mascot received new life this year from an ASU sophomore who must keep his identity as Sparky a secret.

"My family and friends know who I am," the new Sparky said, "but I don't tell everybody."

Sparky, a former member of the ASU mens gymnastics team, said he decided to try out for the mascot position because he enjoys tumbling and working with people.

When Sparky try-outs were held last fall, the potential mascots were required to do sets of 110 push-ups, perform stunts with the cheerleaders, and choreograph and perform a three-minute routine.

After being selected, Sparky spent the spring semester training under Chad Howard, the former ASU mascot.

"He taught me to tumble with the mask on, and he coached me on how to appeal to the crowd," Sparky said. "I really respect Chad. It is hard to follow in his footsteps, but I want to do an even better job."

Howard passed down his pitchfork this football season after a four-year reign as Sparky.

"Sparky is a part of me," Howard said. "I created his character. It is hard to give up."

The new Sparky said his responsibilities as mascot are to motivate and socialize with the crowd.

"Most people think the gymnastics is the hardest part, but I rely on that because it is easy for me," Sparky said. "Creating the character is the hardest part for me."

"I have to remember people are looking at Sparky, not me, and no matter what I do,

they'll love it. I have to think 'be Sparky, not me.'"

He said his personality as Sparky is a combination of his own and the character Howard created.

"Sparky is a tough guy with a stud image of being indestructible," Sparky said. "He can never show pain."

Sparky said he enjoys masquerading around for ASU, but there are ups and downs to the job.

His favorite part of the job, he said, is signing autographs for children. His least favorite aspect is the scorching heat inside the mask, which has reached 120 degrees.

Monet Valdez, an ASU cheerleader, said Sparky must represent every realm of ASU and be an idol to the public.

"He is doing a great job," Valdez said. "I believe in him. I think he has what it takes to be a great asset."

## Runners

Continued from page 16.

"Teresa Barrios is in decent shape, but she is still not where she was before she got sick," Lehman said. "We still look for Teresa to have a good race."

The mens distance race has been shaved down from the standard 10,000 to 8,000 meters, in hopes of decreasing the chances of burnout with the District 8 and NCAA championships still to come.

"The shorter distance should be an advantage for us as in

the past we sometimes would not finish all that strong," junior Jason Kaplan said.

The battle for the mens team title should boil down to No. 3 Arizona and defending champion No. 4 Oregon.

ASU's biggest threat to break into the top 10 lies on the performance of junior standout Todd Lewis, who last year registered a sub-par outing in Stanford. Lewis recorded a 45th place finish, his worst outing of the season.

Last year's top finisher was senior Mike Frick, who placed

39th overall. He said he hopes to improve on his last Pac-10 Championship meet.

"Last season I choked and as a team we choked," Frick said. "The team is looking good in practice and personally I am shooting for a top 15 finish."

Senior Paul Boudreaux, who finished 16th at the ASU Invitational, has been steadily improving all season and may make an impact on Sunday.

"Paul has been running very well and may be a surprise at the Pac-10 Championships," Frick said.

The friendly mini-storage people

**STUFF IT AT**

COMPUTERIZED GATE SYSTEM  
R.V. AND COMMERCIAL VEHICLE SPACES  
SPACE! FROM 25 SQ. FT. TO 400 SQ. FT. OF STORAGE

**967-0210**  
2235 W. FIRST STREET TEMPE

Rocky Mountain Windowtint

**AUTO WINDOW TINTING**

**\$20 OFF!** OFFER ENDS 11-1-89 WITH ANY VEHICLE TINTED

WE DO SEAMLESS WINDOWS!  
• FULL VEHICLE TINTING FROM \$50  
• 5 YEAR AND LIFETIME WARRANTY  
• WINDSHIELD REPAIR  
• DASHMATS AVAILABLE

2033 W. University SW Corner Dobson & University 833-8256  
2855 S. Alma School SE Corner 730-1699

**Go Down in History.**

Get your portrait taken for the yearbook, or 20 years from now you will regret it.

**965-6881**

The Sun Devil Spark Yearbook

**SMILEY'S**  
Food & Spirit

**75¢** Draft Wine Well 4-7 Happy Hour Mon-Sun Full Service Bar

Fri -n- Sat **\$2.50 Pitcher** Bud Coors Lite  
**\$1.99 Jungle Juice** Pitcher

Sun **\$1.29 All Day Import** 10 a.m. to Closed

DON'T FORGET! \$2.50 PITCHER OF BEER AFTER 9 P.M. 7 DAYS A WEEK  
No Cover Charge  
\*Next door to Wendy's

## SUN DEVIL BASKETBALL

**Hazelwood ENTERPRISES, INC.**

### 1989-90 STUDENT SEASON TICKET APPLICATION

The 1989-90 ASU Men's Basketball Season is fast approaching. Come out and support Bill Frieder and the new era of Sun Devil Basketball by purchasing student tickets for only \$16.00. That's \$1.00 per game. Each student receives ASU promotional items by being a season ticket holder. Look for ASU Basketball promotions on campus and at Flakey Jakes.

**1989-90 HOME SCHEDULE**  
NOV. 10 vs. AUSTRALIA NATIONALS (exh.), NOV. 24 vs. MARATHON OIL (exh.), DEC. 5 vs. BRIGHAM YOUNG, DEC. 18 vs. SEATTLE PACIFIC, DEC. 19 vs. DARTMOUTH, DEC. 28-29 ASU TRIBUNE CLASSIC (ASU, GEORGIA, WISCONSIN, MANHATTAN), JAN. 4 vs. WASHINGTON STATE, JAN. 6 vs. WASHINGTON, JAN. 17 vs. ARIZONA, JAN. 25 vs. CALIFORNIA, JAN. 27 vs. STANFORD, FEB. 8 vs. UCLA, FEB. 10 vs. USC, MAR. 1 vs. OREGON STATE, MAR. 3 vs. OREGON, MAR. 8-11 PAC-10 TOURNAMENT

**TICKET INFORMATION**  
Students purchasing discounted season tickets must carry seven or more hours at ASU.

- All student seats are general admission, and saving seats will not be permitted.
- Ticket orders must include completed form (below), valid student I.D. and appropriate payment.
- Guest tickets are available on a space available basis, at general public price (one guest ticket per student per game).
- Valid student I.D. must be presented when purchasing tickets, picking up tickets and entering game on student ticket.
- Student tickets cannot be upgraded.

6. Students must enter game through designated student gates.  
7. No refunds or exchanges.  
8. Lost, stolen or destroyed tickets cannot be replaced.  
9. Spouse Cards available for \$15.00. Must show valid I.D. and proof of marriage.  
10. Ticket Office hours, M-F, 8:30 a.m. to 4:00 p.m. Phone 965-2381.  
11. Tickets available to be picked up on October 30, 1989 at Sun Devil Ticket Office.

**UNIVERSITY ACTIVITY CENTER**

Student Sections: U, V, W, T1, U1, V1, V2, W1

---

### 1989-90 ASU STUDENT BASKETBALL SEASON TICKET APPLICATION

(return with payment to Sun Devil Stadium, M-F, 8:30 a.m. - 4:00 p.m.)

Name _____	Type of Ticket _____	Price _____	Quantity _____	Total _____
Address _____	Student — 16 Games (7 or more hours)	\$16.00		
City & Zip _____	Student Spouse Ticket	\$16.00		
Local Phone No. _____	Spouse Card	\$15.00		
Payment: <input type="checkbox"/> Check <input type="checkbox"/> Visa <input type="checkbox"/> MC <input type="checkbox"/> Amer. Exp. (make checks payable to ASU)	<b>TOTAL</b>			
Card No. _____				
Expiration Date _____ (cannot process without)				
Credit Card Issued To _____				
Student I.D. No. _____				

ASU STUDENTS ONLY

# Classifieds

## ANNOUNCEMENTS

**BUSINESS MAJORS:** Have your one page resumes distributed to Fortune 500. Free! Call Mike, 969-2099.

**CAREER ENHANCEMENT Seminar.** Increase productivity, improve memory and enhance creative problem solving. The Temporary Industry: Creating futures! Call today for reservations, 493-9136.

**DON'T FORGET** your sweetie's birthday. Send a balloon bouquet. 273-9710.

**FASHION MODELS** needed. Call Linda at 968-6618 for more information.

**FIRST TIME** ever in Phoenix! WKA-World Karate Championship- 1989. Saturday, October 28th. West Valley Pavilion. 51st Avenue/Indian School- Maryvale Mall (behind Mervyns). Day- 9:30 am, evening finals, 7:30 pm. Tickets: \$6 general, \$12 reserved. \$2 off ticket with food item for St Vincent de Paul Society. Information, 247-8326.

## ANNOUNCEMENTS

**GET SHOT** for The Sun Devil Spark Yearbook. Student portraits will be taken starting October 2 for a limited time. Call our offices at 965-6881 for more information.

**HANG-GLIDE!** Our gently sloping man-made training hill. Safe and exciting. Fly all day. Windsports 897-7121.

**"I SURVIVED** the Grand Slam" earthquake T-shirts, \$9.95 plus \$2 shipping and handling. 225-8154.

**LOVE TO dance?** Hate the bar scene? You'll love the All Singles Dances, every Friday and Saturday at better valley hotels. Recorded information 946-4086.

**MODEL SEARCH** Magazine---Free screening 389-6618.

**RESERVE YOUR** yearbook today. Call The Sun Devil Spark offices at 965-6881 to place your order.

**SAFARI RESORT.** Scottsdale/Camelback Road, offers \$49 Sundevil Rate for ASU fans. Call, 945-0721.

**SILVER LAKE** Carriage presents Romantic Carriage Rides in Old Town Scottsdale/ Exclusive 5th Avenue. \$25/2, \$30/4. 381-0576.

**SINGLE SCENE** newspaper- Arizona singles, events, advice, personals. Free sample, 990-2669.

**DON'T FORGET** your Sweetie's Birthday. Send a Balloon Bouquet. 273-9710.

**VOLUNTEER ACTORS** needed for child crisis center haunted house. Please call Lynn at 844-9088.

**COSTUME RENTALS**  
Wide selection of exciting costumes.  
Low rental rates!  
11 a.m.-8 p.m. Oct. 20-31  
1155 W. 23rd St. Suite 6A  
Tempe • Phone 968-2669

## AUTOMOBILES

1977 FORD pickup, longbed, air, automatic, new rebuilt engine, very sharp. \$3,750. 926-4617.

1979 MUSTANG, great AM/FM stereo. New battery, must sell. Leaving town. \$1,295. Call Lori, 345-8709.

1980 SUBARU DL, blue, looks great, excellent mileage, runs perfect. Must sell, \$1,450. Call 990-8045.

1981 MUSTANG- air conditioning, good condition. Great student car. Must sell. \$1500/best offer. 784-0004.

1984 PONTIAC Sunbird, turbo, fuel injected, new transmission, new interior, low miles. \$3,600 negotiable. 274-2467.

1986 HYUNDAI Excell, 5-door, hatchback, 4-speed. Air, AM/FM/cassette. Like new, \$4,100. Ed, 965-4455 (day), 948-2278 (evenings).

1987 VOLKSWAGON GTI, red, 5-speed, air, AM/FM, sun roof, custom covers, ground kit. Call 759-8002.

1988 DAIHATSU Charade, like brand new, metallic beige. AM/FM cassette stereo, air conditioned, 50/22 mpg. Priced at balance owed, \$5,500 firm. Sells for \$10,000 new. 839-6644 day, 892-6287 evenings.

1988 RED Chevy mini-blazer, great AM/FM stereo with high quality sound, cool air conditioning, red cloth interior with velveteen seat covers and matching dash mat, top rack with tilt steering. In great shape! Need someone to take over payments with transfer of ownership. Call 966-2449 after 3pm.

'70 BUG, lots of new parts, runs great. \$1,200. Evenings/weekends, 830-7611.

'71 DATSUN 510, \$450/offer. Phone between 6:30 pm and 9 pm only. 968-6701.

## AUTOMOBILES

'76 OLDS Cutlass Supreme, V8, air-conditioning, runs good, needs some work. \$550. Paul, 969-2357.

'83 VW GTI, great shape, must sell, buying new Bronco. Asking \$3,900. Call 894-0674.

**BEAUTIFUL** 1982 tan Cadillac Cimarron. Runs like new! Loaded, one of the few 5-speeds left! Must sell! \$4,150 or best offer! 921-4026.

CHEVY CAPRICE Classic, 1979. Runs great, moving to Japan and need the yen. \$900/offer. 968-1807.

FORD TEMPO GL, 1984. Red, 4-door. Automatic, 48K miles, \$2,400. 921-2624, leave message.

## MOTORCYCLES

1982 HONDA nighthawk 450cc excellent condition. Must see under 10,000 miles. \$1100/best offer. 784-8965 Terry.

1986 YAMAHA Fazer, clean, sporty, very fast. \$1,900. Call 350-0309.

1987 HONDA Elite scooter, CH80, runs well. \$750, must sell! Call 835-0741.

'85 HONDA Elite 250, good condition. \$850. 276-7886.

'85 HONDA Nighthawk 450 good condition. Very dependable must sell \$800 or best offer. Call 897-7395.

'86 YAMAHA Fazer, custom motorcycle, must be seen to be appreciated. Make offer. 946-9692, 921-8364.

## BICYCLES

'88 TREK men's lightweight 12-speed. New, \$350, asking \$250. Index shifting, like new. 968-9903.

## FURNITURE

4 DESKS, \$49 each. 1 IBM typewriter, \$60. 2 2-drawer filing cabinets, \$15 each. 5 desk chairs, \$15 each. 921-2695.

**ESTATE LIQUIDATION** clearance: furniture, kitchen items, bikes, moped, miscellaneous. Cheap. 2200 North Scottsdale Road, No. K.G. 946-9756, Tuesday-Saturday, 10-5.

QUEEN SIZE waterbed with 90% motionless mattress, \$100. Super single waterbed, 99% motionless mattress, \$100. 948-3861 after 6.

TWIN BED, includes boxspring, mattress, and frame, \$150. Call weekend days or weekday evenings, 968-1736.

## TICKETS

1 ROUNDTRIP ticket for Phoenix to Miami, leaving 11/19, returning 11/24. \$100. Jack, 962-0518, message.

**CHRISTMAS BREAK.** One-way, Phoenix to Anchorage, leave December 22. \$200. Call 784-9012, leave message.

ROUND TRIP, Phoenix- Boston, November 8- November 14, \$212. 968-8583.

TICKET EXCHANGE at Cornerstone Mall has 1st 10 rows for REM, Stevie Nicks, Gallagher, Rolling Stones, Phoenix Suns, Cardinals and ASU Football. 829-0196.

## MISCELLANEOUS FOR SALE

2 YAMAHA 3-way acoustic suspension speakers, \$150. Raleigh ladies 10-speed, \$150. 1 Kenmore microwave, \$75. 956-5458.

DESIGNER WATCHES and hand bags, \$50. All styles. Delivery, discounts. Tom, 631-0424.

MARY KAY Consultant. Going out of business sale. All products 30% off. Call now. 967-1875.

MOTOROLA CELLULAR portable phone, 4 months old, assume lease. \$29.95/month, then you own it. Bob, 273-7401 or 997-2182.

NEON LIGHTS, various shapes and colors, \$10-\$30, transformers extra. Stereo, 100 watt per channel. 431-0177.

NINTENDO GAMES, mostly sports, \$20 each. Call and leave message, Pete at 921-3105.

UNBELIEVABLE!! NORMAL looking sunglasses that allow you to see behind. Ideal for riding bicycle. Send \$9.95 to the Juggernaut Company, 1309 East Northern, suite 904, Phoenix, Arizona 85020.

## MISCELLANEOUS FOR SALE

**READ THIS!** Available now in Tempe are surrealist artist Mark Whitcombe's limited edition etchings for a fraction of their current New York City's Madison Avenue gallery prices. Before you buy another gift for your sweetheart, the coming holidays, or your own art collection, first see this intriguing artwork. You will be glad you did. For terrific savings, call Bruce, 921-4232.

ROGER 10/22 with scope in original box, \$100. Also Nishiki mountain bike, \$135/offer. Andres, 994-9535.

**Study Tapes**  
10-minute Super Charger. Memory Super Charger. Study & Learning.  
From: **Tranquility Zone**  
414 S. Mill Ave. #118  
829-0441  
Hours: Wed.-Sat. 11 am-6 pm

## COMPUTERS

PC VAX users: add color graphics to your system. Tektronix 4107; RAMTEK color monitor with 35mm film recorder and light pen; NDS terminal: VT 220/Tektronix compatible; Numonics 30X 36 inch digitizer. 897-6945.

## REAL ESTATE

2 BEDROOM condos, Papago Park Village, \$575 to \$700/month. Bob Bullock, Realty Executives, 998-2992.

3 BEDROOM 2 bath townhouse. Close to ASU. Has everything. \$2,000 down and assume loan. No qualifying. Call 894-6091.

4 BEDROOM, 2 bath fixup. Close to ASU. \$57,900, OWC with low down. VA/no qualifying, assumable. 345-0386.

CHEAPER THAN rent, 2 bedroom, 2 bath. \$5,000 down and takeover payments of \$510/month. Call Nancy, ERA Best, 897-1877.

SHARP 3 bedroom, 2 bath townhouse, University/McClintock. Nothing down to qualified buyer. \$1,000's under market. \$46,500. 345-0388.

VERY LOW down, beautiful 3 bedroom, 2 bath Tempe townhome. Too many extras. No qualifying, must see! 966-6310.

**SELLER DESPERATE**  
2 bedroom condo, Papago Park I. Low down, Take over payments, near pool.  
Bob Bullock  
Realty Executives  
998-2992

## APARTMENTS

**HOWARD THE DOC'S CHALLENGE:**  
If you're looking for an apartment and bright enough to beep my pager, my special offer is for you ASU students and faculty...  
CALL 1-800-SKY-PAGE  
Follow instructions.  
The P.I.N. # is 86014.

**The Fountains**

- Newly redecorated
- Vertical blinds
- Designer carpet
- 4 sparkling pools
- Laundry facilities
- Great for rental sharing
- Walk to ASU
- 1st Months Rent \$99 (plus deposits)

Open Daily 9 to 5  
Utilities Included  
1028 E. Orange  
967-0489

## APARTMENTS

2 BEDROOM 4-plex available now, \$249. Furniture available. 968-5596.

3 BEDROOM, 2 bath apartments, \$325-\$435/month. Chris, 838-2646, Red Carpet-Wear, 968-3414.

ASU AREA 2 bedroom, 2 bath, \$340/month plus electricity. Air-conditioning, jacuzzi, no pets, deposit. 967-4789.

BEAUTIFUL LARGE 1 and 2 bedrooms. Walk to ASU, pool, laundry room. 1 block south of University on 8th street. Cape Cod Apartments. 968-5238 for special.

BEAUTIFUL LARGE 1 and 2 bedrooms. Close to ASU with microwave, ceiling fans, basic cable, pool, club house and much more. Rancho Las Palmas, 1249 East Spence. 829-9607 for special.

I'LL PAY half your deposit and \$200 rent rebate. 926 East Spence. 968-5630.

**ASU Area**  
Studios, 1, 2, & 3 bed  
Apartments for rent  
\$260<sup>00</sup> and up  
**966-8838**

**\$200 OFF**  
**FREE UTILITIES!**  
Walk to ASU. Spacious 2 bedroom apartments, air conditioned, furnished or unfurnished available. From \$380/ month. Beautiful pool area, laundry facilities available.  
**FIESTA PARK APARTMENTS**  
1224 EAST LEMON  
894-2538

## TOWNHOMES/ CONDOS

3 BEDROOM, 2 bath townhouse. Sharp! Near Southern/Dobson. Immediate occupancy. \$540/month, pool. 345-0388.

3 BEDROOM, 2 bath townhouse. Near ASU. \$700/month. Chris, 838-2646, Red Carpet-Wear, 968-3414.

3 BEDROOM, 2 bath townhome, has everything, including pool. 483-7903.

BEAUTIFUL 3 bedroom, 2 bath Townhouse. Refrigerator, microwave, ceiling fans, full-size washer/dryer. Indoor raquetball/weight room, sauna. \$500 for 2 months, \$675 thereafter. 991-5735.

DELUXE 2 bedroom, 2 bath townhouse. Washer/dryer, microwave. Los Prados, \$500/month. 820-8995.

MILL/SOUTHERN, 3 bedroom, 2 1/2 bath, washer/dryer. Many upgrades, \$575. 840-4256.

## HOMES FOR RENT

3 BEDROOM, 2 bath house. \$495/month. Chris, 838-2646, Red Carpet-Wear, 968-3414.

4 BEDROOM, 2 bath, close to ASU. Partially furnished. Near McClintock/ University. \$600/month, immediate occupancy. 345-0388.

SMALL 2 bedroom house, 5 blocks from campus. Graduate couple preferred. No pets. \$400, water paid. 967-4059.

## RENTAL SHARING

2 BEDROOM, furnished, pool, laundry facilities. 2 blocks from university. \$330. No pets. 1339 South Sunset Drive, Apartment 9. 1 block West of Rural, 1 block South of Apache. 967-3658, 968-7012.

2 BEDROOM, 2 bath, very nice apartment, washer/dryer, microwave, many extras. Private room, private bath, \$275/month plus 1/3 utilities. Share bath, \$225/month. Serious, responsible non-smoker. Carl, 820-5799.

2 FEMALE roommates needed. Scottsdale- Chaparral home. For \$200, immediately or Nov 1st. Shannon, 941-5944.

## RENTAL SHARING

AVAILABLE NOVEMBER 1. Own room in nice house with pool. Close to campus. \$220/month. 894-6795.

BEAUTIFULLY FURNISHED 1900 square foot house. Great yard, fun place to live. \$225 plus 1/4 utilities. Corbin, 894-4621.

FEMALE NON-SMOKER to share 3 bedroom, Los Prados townhome. \$265/month plus 1/4 utilities. 894-6091.

FEMALE ROOMMATE to share beautiful 3 bedroom, 2 bath condo. Close to ASU. Fireplace, security, pool, washer/dryer. \$235/month, own room. 966-8051.

FEMALE TO share Laguna Point apartment. 2 bedroom 2 bath, fireplace, washer/dryer, complete facilities. Approximately \$270/month. Call 966-8715.

FURNISHED ROOM, male non-smoker. \$210 including utilities. No pets. Inquire at 1527 East Hudson Drive. 967-3658.

MALE/FEMALE ROOMMATE needed in house. \$250 plus 1/2 utilities. Brand new home, very very clean. Must see! 892-0492.

MALE/FEMALE roommate, 3 bedroom house, washer/dryer, dishwasher, kitchen privileges, cable. 2 minutes from ASU. North Tempe, 947-3158.

MALE ROOMMATE, three bedroom apartment. Two bath, share with two others. Desert Palms, call Doug 894-8678.

MALE ROOMMATE, graduate/professional. South Tempe, large new quiet home. Completely furnished, \$225 plus. 961-0883.

NICE TOWNHOUSE, 3 bedroom, ASU close. \$180 plus 1/3 utilities. Pool, laundry. Available now. 438-1160.

NON-SMOKING ROOMMATE wanted for 2,000 square foot house. Washer/dryer, microwave, etc. \$210/month plus utilities. 838-6743.

ROOMMATE NEEDED. ASU student, clean, responsible, non-smoker. 2 bedroom, 2 bath apartment. Your own room/bath, pool, jacuzzi. Close to ASU. \$270/month plus 1/2 utilities. Dan, 921-2074.

SHARE 2 bedroom condo, furnished, full privileges, available now! \$300/month. Call Scott, 968-4312.

## BUSINESS OPPORTUNITIES

EARN UP to \$500 a week mailing circulars for various businesses. Send SASE to Company Systems, 1428 North Scottsdale Road, No. 199, Tempe, Az. 85281.

## HELP WANTED

AAAA RESEARCH interviewers for Tempe Marketing research firm. Absolutely no sales. Flexible evening/weekend hours. Start at \$4/hour. Rapid raises. O'Neil Associates- Susan. 967-4441.

A FLEXIBLE job, part or full time, to distribute flyers in the Mesa/Tempe area. Must have transportation. Please call weekdays, 9-4, 954-8902.

ATTENTION COLLEGE Students: We are looking for students in our advertisement department. Must be outgoing, enthusiastic, and self motivated. Earn \$75-\$350 per week. Call Charles Turnbow, 423-7012, between 1-3.

CASHIER, FLEXIBLE hours, \$4.50/hour. Apply in person at 1090 West 5th Street, Tempe, Rollin's Supermarket, between Beck and 5th.

CHOIR PIANIST needed- Wednesday evening rehearsal and 2 services Sunday mornings. Paid position. Call 831-0065 or 438-0653.

CLERKS/TYPISTS- urgent! Need 70 people, three shifts available for 1 to 2 month assignment at 24th Street and Camelback, Phoenix. Call for an appointment, Stiver's Temporary, Tempe: 966-1100, Phoenix: 264-4582.


COMPETITIVE SWIMWEAR store needs you part-time, retail sales. Must be available 10-2 Tuesday, Thursday, and Saturday, 10-5. Knowledge of swimming and accessories helpful. Call 264-7774 between 10am- 6pm.

CORK 'n Cleaver accepting applications for lunch waitress and lunch hostess. Will train. Short shifts. Convenient hours. Fun atmosphere. Concern with appearance. Reliability and personality are important. Apply in person Monday-Friday 2-5 pm or by appointment. 5101 North 44th Street. (44/Camelback) 952-0585.

CRUISE SHIPS now hiring all positions. Both skilled and unskilled. For information, call (615) 779-5507 extension H178.

**STUFF IT**  
at  
**Arizona Storage Inns**  
5'x10' to 10'x20'  
From \$12 & up  
Close to ASU  
**20% DISCOUNT NOW**  
Call Helen  
967-0210

**TRICK 'EM**  
or  
**TREAT 'EM**  
with a  
**STATE PRESS**  
Personal!



**Go Down**  
↓  
**in History.**  
Get your portrait taken for the yearbook, or 20 years from now you will regret it.  
**965-6881**

The Sun Devil  
**Spark**  
Yearbook

## BICYCLES

**MOUNTAIN BIKES** from \$129<sup>95</sup>  
Fully assembled with warranty, water bottle & cage and bookrack.  
All Styles and Speeds from \$39<sup>00</sup>  
• Student Discounts • Expert Repairs  
• Fast Friendly Service • All Bikes Warranted  
\*Does not apply to sale priced items

**OAKLEY COPY SUNGLASSES** \$15<sup>95</sup>

**BOB'S BICYCLE BARN**  
1212 E. Apache, Tempe, 894-6852  
—Near ASU at Corner of Apache & Terrace—

## BICYCLES

**HELP WANTED**

**CRAZY!!!** WORK smart, not hard. Part-time work, full-time pay, must have high self-esteem and know the meaning of the word hustle! 1 block from campus. 968-2141.

**DELIVERY DRIVERS** wanted. Apply at Oregano's Pizza, 945 South Mill, at 10th Street. Evenings, flexible hours.

**DELIVERY DRIVERS** wanted. Apply at Oregano's Pizza 945 S. Mill at 10th Street. Evenings, flexible hours.

**MAINTENANCE PERSON**

Part-time maintenance person needed to assist maintenance supervisor in the day-to-day upkeep of several commercial properties. Flexible work hours between 8 a.m. to 5 p.m., weekdays. Please contact the office manager at the following address for more information:

**Reynolds & Shidler**  
2390 E. Camelback Rd.  
Suite 305  
Phoenix, AZ 85016  
Telephone: 955-7900

**DOCKTOR PET** Center, Los Arcos Mall, Scottsdale now hiring for animal care 2 weekday mornings, 2 weekday evenings. Also part-time sales persons needed. Please bring resume. No phone calls please.

**GREAT OPPORTUNITY** for a graduate student to help run a small but growing management consulting firm in Chandler. Hours flexible, 10-20 hours/week. Skills required: Word Perfect, and general office skills. Basic bookkeeping helpful. Duties: seminar preparation, telephone, billings, bookings, typing, travel arrangements, and office organization. Wages commensurate with experience. Call Lenora Billings-Harris, Excel Development Systems, 963-4540 and/or send resume to P.O. Box 1002, Tempe, Arizona 85280.

**GREGARIOUS? FLAMBOYANT?** ...and a bit of a ham? Great! We want you for a Human Sign. All areas of the valley, own transportation. Saturday, Sunday, 12-4, \$6/hour. Linda 994-9962 between 8-5 for interview.

**LIVE-IN FEMALE** housekeeper/assistant for disabled man. Room, board, \$600 salary. Time for class, etc. Tempe, 491-2549.

**NATURAL FOODS** Supermarket seeks the following: Daytime and evening cashiers, stock clerks. Experience preferred. Apply in person at Ray's Ranch Market, 40th and Camelback.

**NURSERY WORKERS** needed Wednesday, 6-9 pm. \$5/hour. Call Diane, 897-6579.

**OVERSEAS JOBS** \$900-\$2,000/month. Summer, year round. All countries. All fields. Free information. Write J.C., PO Box 52-AZ03, Corona Del Mar, California 92625.

**PART-TIME LARGEST** company of its kind in the Southwest. Evening shifts available. Pleasant working conditions. Call Mr. Morgan at 381-0477.

**PART-TIME COOK** Preschool West, Tempe. 894-5338.

**Ambitious**  
Hardworking students, we've got the job for you!  
\$5.50 per hour  
Flexible Evening Hours  
Weekly Pay  
Cornerstone Mall Location  
**968-4457**

**PART-TIME WORKER** needed in plastic fabrication st.op. Flexible hours. Start \$5/hour. 437-1214.

**PART-TIME INVENTORY** clerk needed for a temporary position through mid-December. Must have 10-key by touch, cash handling experience and the ability to count accurately. Candidate must be available 2 days during week and on football game day weekends. Please apply at the Team Shop, ICA building, ASU Stadium. 941-0400.

**PART-TIME RETAIL** sales. Must be available Thanksgiving and Christmas Holidays. 20-25 hours per week, evenings and weekends. Apply in person, The U-Shop, 725 South Rural, Cornerstone Mall.

**PART-TIME, FULL-TIME**, Mill Avenue T-shirt is looking for a few good people. Must work Christmas break, have retail experience and willing to work hard. Apply in person between 10-4, Monday-Friday at 11 East 5th Street. Flexible hours.

**HELP WANTED**

**PART-TIME DELIVERY** person, 25-30 hours per week. Only for the month of November. St. Mary's Food Bank. Call Liz, 254-9762 for an appointment.

**PEOPLE TO sell** Football game, specialty shirts in Frats, dorms, apartments. \$10 to \$30/hour. Dean, 921-0051.

**PRE-SCHOOL TEACHER**, part-time, flexible hours. \$4.25/start. Mature, enthusiastic. McClintock and Elliot. 345-2450.

**RED ROBIN** now hiring experienced line pantry pre positions. Apply at 1539 North Scottsdale Road, Monday-Friday, 9 am-11 am, 2 pm-4 pm.

**RESTAURANT DELIVERY** drivers needed, South Scottsdale location. Flexible hours after 11 am. 423-0095.

**SINGLE PRICE** Store, Arizona's fastest growing ladies clothing stores, is now looking for a manager, full-time, part-time salespeople for our store near ASU. Call 486-3350.

**STOCKYARDS RESTAURANT** seeks night waitress. Apply in person, 5001 East Washington.

**STOCKYARDS RESTAURANT** now hiring dinner waitress and lunch waitresses. Apply in person, 5001 East Washington.

**STUDENT JOBS**. Full-time, \$300/week; part-time, \$150/week. Openings in customer service and retail. Scholarships available. Call 9 am to 5 pm 242-9677.

**STUDENTS, EARN** a substantial part-time income. Set own hours. Call 391-1851.

**★EXTRA MONEY★**

Is nice, but you can help people too.

**Earn \$120 + a month**  
SAFER, FASTER PLASMA DONATION ONLY AT ABI CENTERS DUE TO AUTOMATED PROCEDURE. \$5 bonus to new donors on first donation with this ad. Ask about additional bonuses. (Monday-Saturday).

**University Plasma Center**  
Associated Bioscience, Inc.  
1015 S. Rural Rd.  
Tempe  
**968-6139**

**SUMMER JOBS** outdoors, over 5,000 openings! National parks, forests, fire crews. Send stamp for free details. 113 East Wyoming, Kalispell, MT 59901.

**TIRED OF applying to one employer** at a time? Find out how to get your resume distributed to 500 employers in Phoenix area. Send SASE to Mr. P.A. Frost, 8021 North 43rd Avenue, suite 103-A, Phoenix, Arizona 85051 (please print).

**UNIT CONTROL** 30 hours, nights/weekends. Heavy phone, customer service. Confirming and setting deliveries. Apply in person at Broadway Southwest D.C. 1524 W. 14th Street, Tempe, 85281.

**VALET PARKING** attendants, day shifts 11:00am-3:00pm and 11:00am-5:00pm. Night shifts 5:30pm to close. Full-time and part-time. Must work holiday season and must have clean driving record. Call for appointment 861-9384. American Valet and Limosine Company Incorporated.

**WALKER RESEARCH** Inc., is currently hiring for part-time position in the consumer opinion research. National telephone interviewing. No selling. Evening shift, 3:30-9. Apply in person, Monday-Friday, 10 am to 4 pm, 4515 South McClintock Drive, suite 101, Tempe Corporate Building, 831-2971. Male/Female. EOE.

**JEWELRY**

**CASH FOR** gold, diamonds, sterling, etc. Mill Avenue Jewelers, 414 S. Mill, Suite 101, Tempe. 968-5967.

**CASH PAID**, jewelry of all kinds, including gold, sterling, gems, pearls, antiques, etc. Rare Lion, 921 S. Mill Ave, Tempe Center 968-6074.

**PERSONALS**

**INSTRUCTION**

**AEROBIC INSTRUCTORS** certification workshop by National Aerobics Training Association. Weekend of December 1, Mesa. 963-9415

**LEARN JAPANESE**, Chinese, Spanish, French, German, Russian, English conversation, TOEFL Preparation. Arizona Language Institute, 962-8677.

**FREE LOST/FOUND**

**GREY RUBBERIZED** tote bag missing from alley near College and 14th. Red notebook and books. Needed desperately. Carolyn, 965-5067.

**YOU STOLE** my Fuji, I need my keys! Return to Balboa Cafe, 404 South Mill or call 967-1127.

**PERSONALS**

**ALPHA GAM** Jeannine, that's Jean and the number nine- is this going to be a Birthday for the reed of truth? Have a great B-day! Love, Tina.

**ANN, WELCOME** to Zona, please remember I love you with all my heart. Love, Jeff.

**ATO MIKE G.**, Happy B-Day!! Congrats on your retirement from the hell!! Snow on us sometime!! Love, Leslie & Liana.

**AUDRA LEE**, We met in Havasu last weekend and I would like to meet you again. Call Me! Dale, 921-7437.

**AXO LISA** Palmer, Happy Birthday! I hope it's awesome. Love, Kim.

**CHI-O'S, AGD'S**, get ready! Halloween brings out the devil in the Delts! We can't wait 'till Friday!

**CURT, HAPPY** 21st Birthday. You're the best guy a girl could ask for. I love you!! Stacy.

**DEAR BRYAN N.**, so glad your mine. Pants, on me, maybe! Love ya, Lisa.

**DEAR STEVEN (HOC President)**: you're such a poothead! We always have so much fun- you mean everything to me. Thanks for all your love and support. Remember 5,400 feet! I love you- LAR.

**HOMECOMING '89**- Don't miss this year's salute to Hollywood! Dance to the music by Ritual on November 9th 9pm to 1am at Sheraton Tempe Mission Palms.

**IT'S THE LAST DAY!** Get shot for the Sun Devil Spark Yearbook. Student portraits are taken for FREE on a first-come-first-served basis on cady mall. Walk ins welcome. Call 965-6881 for more information.


**JAKE- HAPPY** 15 month anniversary- I love you more than ever. Your darlink, Leah.

**JAMIE: ROSES** are red, violets are blue, your Birthday is coming and formal too. I'm sending this personal to say I love you. -Keith.

**J.M. TU T'ameliores tous les ans.** Bon anniversaire! Nous nous amuserons bien ce weekend. Je te promis. J'espere que nous partagerons bien des anniversaires ensemble a l'avenir. J'ai de la chance de t'avoir dans ma vie. Je serai toujours ton amie. K.M.

**KAPPA SIGMA**- were ready to rage at suite parties. See you Saturday- Sigma Kappa.

Jay Eckhardt stars in **THE METAMORPHOSIS**  
★★★★  
"I laughed, I cried, I had gas."  
Roger Ebert  
Gene Siskel



**PERSONALS**

**KAPPA SIGMAS**- Get psyched for "revealing"!

**LIGHTS, CAMERAS, action!** Take a role in ASU's 3rd annual Homecoming- premiere '89. November 9th, 9pm to 1am at Sheraton Tempe Mission Palms. Tickets are \$5 a person. You don't want to miss this year's production!

**MINUTE MAN** and Whiskey, hey dates- Happy Anniversary (C-ya Whiskey)! Here's a toast to: "I'll never date one of them!", Bark, toes, Vegas movies, stairs of shame, cotton-seekers, "What's under the bed?" Thanks for the good times!! Love, Stoner and Shower.

**MOCK ROCK** November 8, 8 pm on P.V. Beach! Call 820-5120 to register bands (\$50 fee) or for more information.

**PAMELA "KAE"** Mullet, congratulations on turning twenty, maybe soon you'll be making some money; but not from your pimp who you call honey, but because your a douchebag and your funny! Love Connolly, Pitts, and Smith, your "DB" Buddies.

**PHI SIG Gregory**: Tonight will be haunting, but our road trip will be awesome! Love, Madam X!

**PHI SIG Reidster**: Wow! You're awesome! "Big Bib Bib!" Love, your baby!

**PREMIERE '89**: A Homecoming production! Thursday night, November 9th 9pm to 1am at Sheraton Tempe Mission Palms, featuring the band Ritual, highlighted by the crowning of ASU's Homecoming King and Queen. Tickets only \$5 per person!

**RON FAIR**: Have a very Happy Birthday!!! Love, Miss Innocent.

**SIGMA KAPPA** Stephanie Wall. Today is the day! I can't wait to celebrate love your big sis.

**SIGMA KAPPA**, the men's H2O polo team is training for Barcelona. Would you be interested in some play?

**SIGMA KAPPA** Laura Lucas: I can't wait for today! I hope you are excited to see me! See you this afternoon! Love, your Big Sis.

**SIGMA KAPPA** Barb Stettner: Some say you can even pass for me!!! See you at revealing! Love your Big Sis!

**SIGMA KAPPA** Lisa Price- I'm so happy that you're my little sister! I love ya tons! Love, your Big Sister Kristy.

**SIGMA KAPPA** Michelle Morris- Happy Birthday! You are awesome. Love, Lauren.

**SIGMA KAPPA** Kelly: Not only are you my favorite pledge, you're my best friend too! Love, Your big sis!

**SIGMA KAPPA**- Get ready to show your sk spirit for Sunday's rally!

**SK PLEDGES**- Are you ready for revealing? Hope ya'll are surprised!

**SUSAN PLATT**: I can't get you out of my mind, that's all I know. Well, tonight is SigEp date party and I'd love if you'd go. I miss you. Love, Mark.

**THE LADIES** of Chi Omega are anxiously awaiting a frightfully fantastic evening of partying with the AGD's, Delta Sigs, and Delts tonight!

**THE PHOTOGRAPHER** for student portraits will be on campus for a very limited time! Don't delay. Stop by the photo booth on Cady Mall anytime during the day and have your picture taken. It's free! Don't be left out of ASU's official history book, 20 years from now you will regret it! 965-6881.

**TO PHIL C.**, Farmer Building was great! Have something of yours. Call me. From B. Hind.

**TO PHIL C.** Just kidding! Happy Birthday! Don't party too much. Have a good one! S.S.

**TO THE** ladies of Delta Sigma Theta: the power of success comes from within!

**WILMA: KEEP** an eye out for Fred and Barney! Do you want to come over and play fish? See ya tonite! Love Betty.

**SERVICES**

**ARE YOU** tired of tweezing and shaving? For permanent hair removal, call A Soft Touch Electrolysis. Free initial treatment. Near ASU. 829-7829.

**ELECTROLYSIS-PERMANENT** hair removal. Remove unwanted hair forever. Student discount. Call for more information, 969-6954.

**FREE MOVIE** offer. Sign up for MCI by 11/11/89, save up to 29% long distance and receive free movie pass and munchies. Call 438-1139.

**LOST YOUR** love. Send a balloon bouquet for \$18 including delivery. 273-9710.

**SPIRAL PERMS** regular \$78 now \$39. Long and tinted hair extra. Sundays Special: get additional \$10 off with college ID. New clients only. 230-5259.

**TRANSPORTATION**

**AAA DRIVEAWAY**. Free cars to most major cities. Gas allowances available. 21 or older. Call 279-2000, then 4530.

**TRAVEL**

**COLLEGE TOURS**, spring break 1990. Mazatlan, \$179. Includes Hotel and transportation. Andrew, 784-0649.

**FLY ANYTIME** continental USA \$350 roundtrip. Leave today! NW USA \$250! Alaska-five weeks notice \$450. Other destinations. We also buy transferable coupons! 968-7283.

**FLY FOR** less, discount travel. Domestic and international, package tours to the Holy Land/Israel. 491-0501.

**HALF PRICE!** Buy your Eurail pass and get your international hostels card for half price. Both issued on the spot! Plane flights, student I.D. cards and other travel items available. Call American Youth Hostels 254-9803.

**TYPING/WORD PROCESSING**

**\$1.50 AAA** Word Processing/Laser printer. 34 years experience. Theses, dissertation, APA specialization. Marion 839-4269.

**\$19.95 RESUME** Special, 1 page computer typeset, laser printout with 20 white bond copies or 10 copies on select resume papers. All 8 1/2 x 11". Dr. Copy, 1032 South Terrace. Call 433-4688 for weekly specials.

**\$1/PAGE** double-spaced, \$2 single-spaced. Fast turnaround. ASU student. Word-perfect. Laser. Transcription. Free pick-up/delivery. Training also. Margaret, 833-2133.

**\$2.00/PAGE**. Quick turnaround. Call Bob, 839-3305.

**AAA QUALITY** typing/word processing. \$1.50. Call Linda, 962-8075.

**ACCENTS IN** Typing. Spell-check, proof-read, editing, all included. Quick turnaround. Call 894-6074.

**AFFORDABLE** WORD processing. 34 years experience. Term papers, resumes, letters, books, theses. Editing. Donna, 464-9064.

**A KINKO'S** paper makes the grade. Kinko's typesets papers, resumes, flyers. Self-serve Macintosh also. 933 East University. Call 966-2035, or 960 West University, Call 921-0168.

**APA/MLA** EXPERIENCED typing/word processing. Need it fast? Call Jessie, 945-5744.

**ASU AREA**. Typing, word processing, editing. Fast, accurate. Call anytime. Prices competitive, negotiable. 966-2186.

**FAST, EFFICIENT**, professional typing. \$1.50/page. Call Lisa, 838-2744.

**FLYING FINGERS** offers typeset quality with a Mac II and laser printer. Call Susan, 945-1500.

**NEED PERSONAL** computer to type free? Trade computer time for your typing skills. 967-8369, John.

**PROFESSIONAL TYPING**, \$1.50 page, Baseline/Alma School in Mesa, editing service available. Call 897-1038.

**PROFESSIONAL TYPING** and word processing cheap! Free pick-up and delivery. Shelly, 899-4816.

**TYPING/WORD PROCESSING**

**PROFESSIONAL WORDPROCESSING** of anything you need. Fast, accurate, reasonable. Satisfaction guaranteed. Central Phoenix, 274-5531.

**WORD PROCESSING**, IBM PC, letter quality printing. Fast, low cost. Call Jackie, 831-8635.

**WORD PROCESSING** for your typing needs. Fast turnaround. Close to ASU. \$1.25/up. Transcription available. Roxanne, 966-2825.

**WORD PROCESSING**—\$1.50 per page. Resumes, design, editing, & laser printing available. Call 921-3770 evenings & weekends

**WANTED**

**MAC 512K** in working condition. Call Thru at 968-4882 and quote price.

**WANTED DEDICATED** lady softball players. League play one night weekly (Mesa), tournaments once monthly. AA competition. Contact Ed Sweeney, 963-9419.

**ADOPTION**

**ALOT OF** love and a future full of opportunity await a special baby. Happily married, financially secure, South California Caucasian couple eager to share warmth and love. Strictly legal and confidential. Help with birth related expenses. Willing to relocate you to California for the birth. Charlie and Margo, (213) 390-2141, our lawyer Joan Flam, (818) 986-6840. Call collect.

**LOVING CAUCASION** couple promises warm, caring, secure home and bright future for your very special infant. Legal and confidential. Please call us collect anytime. Mary and Bob, (914) 793-2652.

**LOVING SOUTHERN** California couple (College Professor and Engineer) looking for baby to adopt. Financially secure, active, love children and animals. Friends, laughter, warmth to share with baby. We can help with expenses. Call collect, Joe and Mary, (619) 943-7016.

**WANTED, BABY** to love. Loving couple wish to share their life and love with newborn. Call Karen and Dan at 994-4181.

**MISCELLANEOUS**

**PEARL DRUMSET**, World series new 7 piece kit, Smoky Chrome, 4 zildjans with boom stands including all hardware. \$1150/best offer. 566-8464.

**MITCHELL PRO** 100 tube head with two 4-12 stack, new condition \$550/best offer. 566-8464.

**MUSIC**

**EQUIPMENT SALE**: guitar amps, digital delay, power amp, wireless. Rock bottom prices. Leave message, 784-8073.

**TUTORS**

**ENGLISH TUTOR**, paper editing. Eight years professional writing experience, ASU English degree. Rates negotiable. 829-6712.

**TUTOR NEEDED** for D-base 4. Autocad knowledge helpful but not necessary. Call Jim, 840-9230, after 6 pm.

**WANTED, MAT-242** tutor. Call Lydia, 254-4477.

**PHOTOGRAPHY**

**JASON SILVER/KID-MAN** Photoworks Commercial Photography Models', actors', and artists', portfolios. Professional work. Reasonable rates. 946-2475.

**PORTRAIT PHOTOGRAPHY** is out of fashion. Today, we want fashion photography in our portraits. Custom Fashion Photography by appointment. You keep the negative. Prices start at \$60. Call Pictures Photography in Tempe at 968-8610.

**TYPING/WORD PROCESSING**

**TO THE CAPTAIN TERRI AND HER TEAM OF MISFITS!**  
**TOO BAD YOU ARE LOSING!**

**Fisherman Frank** **Tutu Terri** **Guitar Paul** **Hoseauler Dan**



**Job-Winning Resumes**  
Whether you're starting from scratch or updating an old resumé, *Creatif Strategies* can help you design the perfect resumé.  
We help you with:  
• writing  
• editing • layout • design • typesetting  
• paper & color selection • printing  
**274-8180**

# MAXS

9 • 1 • 9

## \$3000.00

### SALEM SATURDAY NIGHT HALLOWEEN BASH!



This Saturday night join Max on his Second Annual Witch Hunt for over \$3000.00 in cash and prizes. This Saturday over \$2500. will be awarded for the sexiest costume, best costume and best witch's costume. Plus tonight Max will be somewhere in the audience and if you find him he will give you \$500.00 in Cash and Prizes. This Saturday all witch's brew and Green Slime jello shots will be specially priced. This HALLOWEEN we're going on a witch hunt...



### HEAVY METAL SUNDAYS!!!

*This Sunday Kaiser will be live on stage. Plus this Sunday Max will host 25¢ drafts and \$1.75 Miller products till 10:00PM.*

**919 EAST APACHE BLVD. • TEMPE • 921-9776**