

State Press

Copyright, State Press, 1989, Tempe, Arizona

Vol. 72 No. 13

Arizona State University's Morning Daily

Friday, September 15, 1989

Ream to replace Oonk on Tempe City Council

By TYRONE MEIGHAN
State Press

The Tempe City Council voted 5-0 Thursday night to appoint former Councilman Bill Ream to fill the seat vacated by Rowland Oonk.

Oonk, 65, abruptly ended his 7½ year reign on the council last week, citing personal reasons stemming from a divorce from his wife Sonya.

Tempe Harry Mitchell said many residents have contacted him since Oonk's resignation.

"We have had a tremendous amount of input — phone calls, letters and personal contacts regarding this issue," he said.

Ream, who had served on the council for 16 years before he was defeated by Councilwoman Pat Hatton in the 1988 election, will serve in the post from Sept. 21 to June 30. However, the position will be up for re-election in March.

'We were looking for someone who could do a caretaking job.'
— Barbara Sherman

"I have to say that I'm quite pleased and I appreciate the confidence that the council has placed in me," Ream said. "I've kept very much abreast of things going on in the city."

Ream said that although he is eligible to

seek re-election in March, he has "no intention of doing so."

Mitchell said earlier this week he wanted someone to fill the position who would not run for the spot in March. If the person who filled the post also ran in the election, it would create an unfair election, Mitchell said.

But Mitchell said Tempe wanted to fill the position with someone who is aware of city issues and has an understanding of the zoning process.

Councilwoman Barbara Sherman agreed with Mitchell that the council wanted someone who was capable and would allow for a "fair play field" during the election.

"We were looking for someone who could do a caretaking job," she said.

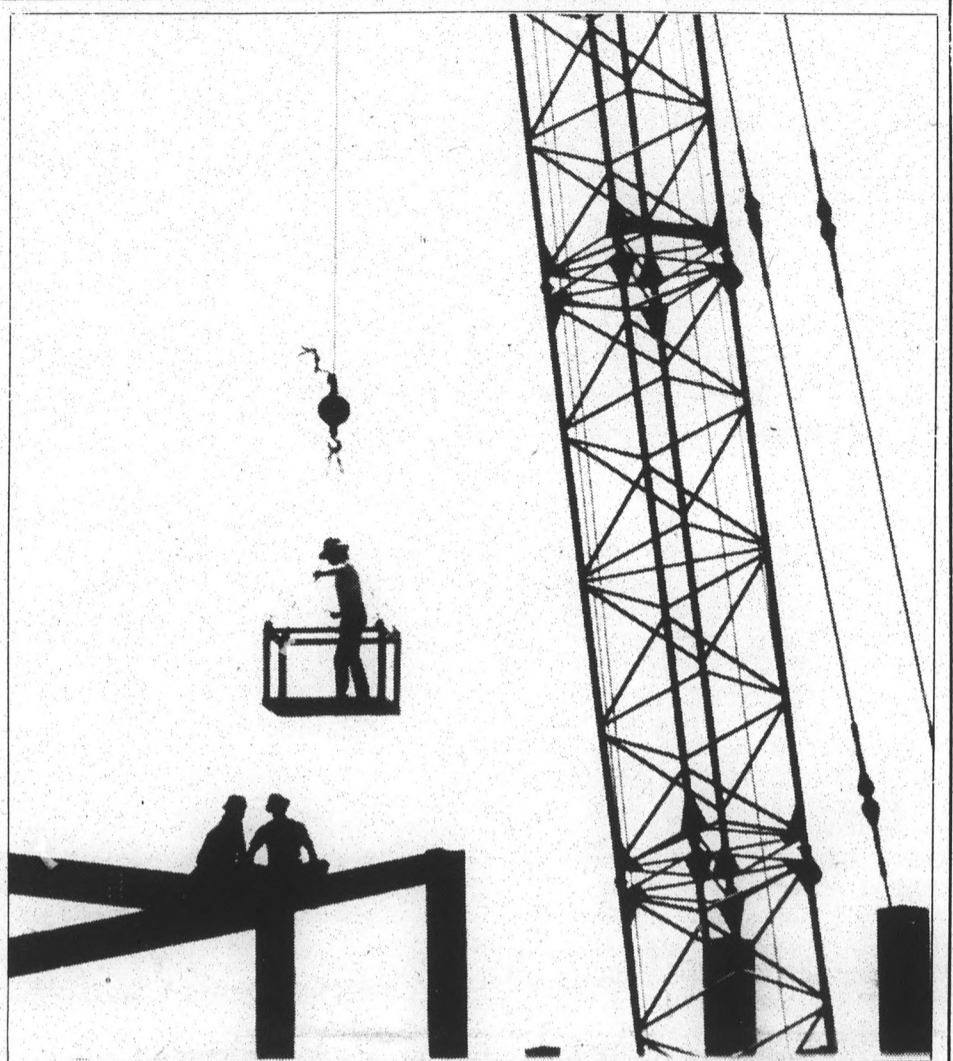
The council met for almost two hours Tuesday to discuss Oonk's replacement. But Arizona Open Meetings Law prohibits council members from taking any formal action in executive sessions. The law also states that members cannot talk about what has taken place in those meetings.

The only other strong contender for Oonk's seat was former Tempe Mayor Bill LoPiano.

Sherman said she could not comment why the council chose Ream because the decision was made in executive session.

"They both had very similar and equal qualifications," she said.

Ream may be known by most ASU students for proposing to remove the "A" from the butte near Sun Devil Stadium. Ream made the proposal in September 1987 and it met strong opposition by students.



Jack W. Beasley Jr./State Press

Let down

Construction workers at the site of the new engineering center, which will be named after former Arizona Sen. Barry Goldwater, are removed from the top girders of the building's superstructure late Thursday afternoon.

3 added to panel on racial incident

By MIKE BURGESS
State Press

Three people have been added to an independent University panel investigating the actions of ASU police during a racial incident on Alpha Drive last April, officials said.

The new panelists, selected by ASU Interim President Richard Peck, were added after the resignation of panel member Jerry Oliver, an assistant Phoenix police chief.

Oliver stepped down last month because of a possible conflict of interest when panel chairman Gerald P. Richard, a former deputy Maricopa County attorney, became a legal adviser for the Phoenix Police Department.

Officials said Peck appointed Steven Scott, Mary Ann Maher and Shenita Wilson to the five-member panel that also includes Richard and the Rev. William O. Smith, senior minister of Shadow Rock Congressional Church.

Scott is a long-time executive director of the Phoenix South Community Mental Health Center.

Maher teaches classes at Phoenix College and Scottsdale Community College and has taught racial and cultural diversity courses. She heads the Phoenix chapter of the World Future Society and is active in the Phoenix Futures Forum.

Wilson, a 1983 ASU graduate, is an IRS revenue agents supervisor. She was a member of the ASU Black Students Union and is an instructor for the University's SOLID program which prepares minority students for the business world.

Turn to Panel, page 10.

Faculty liaison calls firing unfair

Adds to list of gripes at education college

By SONJA LEWIS
State Press

One faculty associate in the ASU College of Education claims she was treated unfairly when she was asked to take another job, and believes the faculty turnover rate in the college is increasing.

Nancy Lisherness, a faculty liaison in the Education College, said she was fired from her job, which she held for five years, without explanation.

Lisherness was in charge of placing education students in teaching observation positions. The liaison position has since been eliminated at the college.

"They tell me I have no rights as a faculty associate," she said. "(Gary) Anderson handed me a paper that said I was no longer needed."

Anderson, the director of professional field experience at the college, said Lisherness was not fired but said he would not elaborate on college personnel matters.

"She wasn't fired but reassigned to prepare a student handbook, and she chose to seek employment elsewhere," he said.

Lisherness, who is currently unemployed, called the reassignment a "joke."

In addition, she said many other faculty associates have gone through similar situations and are upset.

Mary Lou Nivens, a graduate student and former faculty associate, said that when she was hired, she was considered to be on equal footing with other faculty members. But in her last year at ASU, she felt isolated.

"Towards the end, the faculty associates were asked to leave college meetings," Nivens said. "The faculty was always very supportive, and I had a very positive experience with them. I think the problem lies with the administration at the College of Education."

Comments from former associate faculty members in the college add to the charges that have been levied at the Education College in the past year.

Last February, 40 education graduate students presented the Arizona Board of Regents and Gov. Rose Mofford with a letter detailing problems within the college, which included complaints about lack of funding and inadequate instruction.

In January, some graduate students complained about the allocation of \$80,000 for the redecoration of Dean Gladys Johnston's office, adjacent lobbies and other administrative offices while benefits for students were simultaneously being reduced.

Johnston was out of town and unavailable for comment.

Another former faculty associate, who asked to remain anonymous because she does not wish to jeopardize her standing with the college, also criticized how faculty associates are treated.

"It's a terrible position that carries no benefits with it," the former faculty associate said. "The pay is abominable, but then again, you know that when you go into the job."

Faculty associates do full-time work with part-time salaries and are not allowed to speak at many of the faculty meetings, Lisherness said.

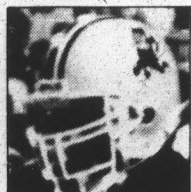


Lisherness

Turn to Education, page 8.



21 yet?:
If you're underage and thinking of trying to get a fake ID, the police say you better think twice.
Page 15



Game Two:
The ASU football team prepares to battle San Jose State.
Page 19



Meat Puppets:
An interview with the Tempe-based group, considered by many to be one of the best underground bands in the world.
State Press Magazine

Today's weather: Increasing high clouds are expected with a high temperatures near 101 degrees. Overnight lows should be in the mid 70s.

Classifieds 21
Comics 18
Police Report 14
Sports 19
State Press Magazine

World/Nation

East Germans step up emigration for fear border might be reclosed

BUDAPEST, Hungary (AP) — East Germans made a last-minute dash for the border Thursday, with more than 100 per hour reported crossing into Austria in fear the Iron Curtain's hole to the West might close again soon.

Hungarian authorities said they had no plans to stop the exodus, which has prompted East Germans in Poland and Czechoslovakia to seek refuge in West German embassies in hopes they too will get to go West.

Poland's Foreign Ministry confirmed that some East Germans were at the West German Embassy in Warsaw. About 150 East Germans were reported in the West German Embassy in Prague, Czechoslovakia.

The Vatican newspaper praised Hungary's move, but a pro-solidarity newspaper in Poland cautioned against Warsaw following Hungary's example.

After a brief letup in the refugee flow Wednesday, Austria's Interior Ministry reported Thursday that 100 East Germans an hour were arriving en route to West Germany.

West German border officials said more than 700 new refugees arrived overnight. Aid workers in Budapest, where would-be emigrants register before going West, said at least

13,000 people had crossed since early Monday.

The East Germans are automatically granted citizenship in West Germany and have been put up in camps and given assistance finding housing and jobs.

The reform-minded Communist government in Hungary opened its border to Austria at midnight Sunday, ending a weeks-long standoff that began when thousands of East Germans flooded the West German Embassy in Budapest seeking legal emigration.

Senate gives tentative OK to ban on in-flight smoking

WASHINGTON (AP) — The Senate tentatively approved a ban on cigarette smoking on all domestic airline flights Thursday as outnumbered tobacco-state lawmakers abandoned their fight against the broadened restrictions.

On a showdown 77-21 vote, senators forced a halt to delaying tactics their pro-smoking colleagues had hoped would wear out advocates of the ban and lead to a compromise. The Senate then formally adopted the restrictions on a unanimous voice vote.

Sen. Frank Lautenberg, D-N. J., who sponsored the ban proposal and who cited health concerns about lingering

cigarette smoke in airline cabins, said, "The issue itself carried the day."

The measure was part of an \$11.9 billion spending bill for next year's transportation programs that was nearing final passage.

8 dead in Kentucky printing plant after former worker goes on spree

LOUISVILLE, Ky. (AP) — A man with an assault rifle mowed down co-workers as he went from floor to floor "looking for bosses" at a printing plant Thursday, killing seven people and wounding 13 before taking his own life.

The gunman, Joseph T. Wesbecker, had been on permanent disability and was described by Police Chief Richard Dotson as a disgruntled employee. One worker called him paranoid and said he had a fixation with guns.

"I told them I'd be back. Get out of my way, John. I told them I'd be back," Wesbecker told fellow Standard-Gravure Co. employee John Tingle, who approached him before the shooting began.

Tingle and other employees nearby then ran into a bathroom and locked the door.

Police searched every floor of the three-story Standard-Gravure building for victims.

Today

Meetings

•**American Criminal Justice Association (ACJA)** First meeting at 7 p.m. on Sunday at Flakey Jake's in the Cornerstone Mall. We will discuss upcoming activities. Anyone welcome.

•**Devil's Juggling Club** We will teach people to juggle between 3:30 and 6:30 p.m. in front of the Language and Literature Building. Everyone welcome. Drop by and learn.

•**ASU Ski Devils** will be signing up new members and accepting deposits for San Diego and Utah trips at 7:30 p.m. at Sunny's Pizza and Pub, 1301 E. University Drive. Everyone welcome.

•**Baptist Student Union** All students are invited to a free weekend retreat (Sept. 15-17) at the Baptist Student Center, 1322 South Mill Ave. A time for fun, fellowship and worship. Begins Friday with a free dinner at 6:30 p.m.

•**Campus Aglow** All faculty, staff and students are invited to a concert of prayer to unite all Christians on campus at

7:30 p.m. on the lawn of the Student Services Building.

•**MUAB Comedy Committee** is presenting the "Farce Side Comedy Show" — a free comedy show at 12:30 p.m. in the MU Cinema. Headlining this week is David Goodman.

•**Kayak Club** Have fun learning how to kayak tonight at 6 in the ASU Aquatics Center. Everyone welcome.

•**MUAB Culture and Arts Committee** presents "Viva Mexico!" to celebrate Mexican Independence Day at noon in the MU Fine Arts Lounge.

•**MUAB Special Events Committee** weekly meeting at 3:15 p.m. in the MU Santa Cruz Room 213. New members welcome.

•**Recreation Majors Student Association** meeting at 1:40 p.m. in the MU Santa Cruz Room.

•**Society of Women Engineers** First general meeting of the year at 12:40 p.m. in ERC Room 593. Come see what SWE has to offer. Everyone is welcome.

•**Esperanto ASU** can teach you to speak the "international

second language". This is the last week for newcomers to join. Classes are this Saturday at noon in the MU Room 213.

•**Pi Sigma Epsilon** General meeting at 6 p.m. on Sunday on the second floor of the MU. All members should attend.

•**MUAB Film Committee** is having a Bette Midler Festival this week featuring "Down and Out in Beverly Hills" at 7 p.m. and "Big Business" at 9:30 p.m. in the MU Cinema.

•**Wesley Foundation** Dinner-Fellowship-Program Sunday at 5:30 p.m. in the Baker Center at the First United Methodist Church of Tempe.

•**KASR Snicker's New Music Search** Now accepting tapes with original song material from all local bands who want to enter the new music search. Winners from the ASU area will play a live show at P.V. Beach while their tape is sent to the national competition with a chance to win an EMI recording contract. Call 965-4163 for more information.

•**ASU Womens Flag Football** Serious/fun athletes call 978-6495 before Sept. 15th.

EVERY DAY HAPPY HOURS

5-6:30 p.m.

2.00 Draft Pitcher
25¢ Chicken Wings (5 pieces)
\$1.50 Cal. Rolls (6 pieces)

Sunday-Thursday

8-9:30 p.m.

Includes \$2.50 Kirin Dry (21 oz.)

Friday-Saturday

9-10:30 p.m.

Includes \$2.50 Kirin Dry (21 oz.)

Friday & Saturday

11 p.m.-1 a.m.

\$2.00 Kirin Dry (21 oz.)

\$2.00 Draft Pitcher

\$2.00 Sake

\$1.25 12 oz. Beer

25¢ Chicken Wing
(5 pieces)

COUPON SPECIAL

CHICKEN TERIYAKI FOR TWO

Includes Soup, Salad, & Rice

Reg. Price:

~~\$11.90~~ = \$6.95

Dinner Only

Expires 9/24/89

Now Open Til 1 a.m. on Friday & Saturday

University
ASU Rural University Plaza AZ Beach
McClintock

Lunch - Mon.-Fri. 11:30-2:30
Dinner - Sun.-Thurs. 5-10 • Fri.-Sat. 5 p.m.-1 a.m.

1435 E. University • Tempe • 967-6911
in University Plaza

Arizona Beach RESTAURANT

Safety takes 'team effort,' says seeker of top DPS post

By MIKE BURGESS
State Press

This is the first in a series of articles about the candidates for ASU's Department of Public Safety directorship.

John R. Schwartz believes tackling campus public safety issues takes a "team effort."

Schwartz, one of five finalists for the ASU Department of Public Safety director's job, said Thursday that the team effort begins with DPS officials taking a "pro-active" role in dealing with students and others in the University community.

"One of the important things public safety must do on campus is communicate procedures and policies and get the community involved," said Schwartz, the director of public safety at the State University of New York at Binghamton.

Schwartz, who was visiting ASU Thursday, spoke to a small group of University officials during the first of five public forums to be held with DPS finalists.

"We have to be pro-active not only in law enforcement, but in the area of safety, environmental health and in the area of



Schwartz

parking," he said. "Problems on college campuses are going to need a team effort."

Schwartz, 42, has been DPS director at SUNY-Binghamton, a school of about 14,000 students, since 1977. He oversees a police department of about 22 uniformed officers in addition to the school's parking and transit, and environmental health and safety departments.

Schwartz, who spent the day touring the campus, said he was unaware that ASU police are the targets of FBI and University probes for possible civil rights violations during a racial incident on Alpha Drive last April.

He also said he did not know about the numerous problems many ASU DPS employees say the department faces, including a termite infested building, low morale, a shortage of on-duty police officers and lack of support from the University. He declined to comment on the issues.

Schwartz said he applied for the ASU job because at the time he heard about the opening, SUNY-Binghamton was searching for a new vice president of administration and he did not want to work for several candidates if they were hired.

Schwartz said he has a good working relationship with the candidate SUNY-Binghamton did hire but he is "looking for new challenges" and "ASU has a good reputation."

If selected, Schwartz would oversee ASU's 40-member police force in addition to the University's parking and transit, and occupational health and safety departments as well as a \$6 million budget. A salary for the DPS post has not been set.

Lee Overmeyer, associate vice president for business affairs, will make the University's recommendation for a new director to the Arizona Board of Regents.

The new DPS director, who will be selected in October, will replace C. Russell Duncan who resigned last January reportedly because of conflicts with the Business Affairs office, which oversees DPS.

Acting DPS Director Doug Bartosh was a finalist for the permanent DPS spot until he withdrew his name earlier this week because of similar reasons, department sources said.

Schwartz, who is married and has two daughters, is a graduate of the FBI National Academy and the University of Rochester, where he earned a bachelor's degree in criminal justice.

Before taking over the SUNY-Binghamton job, Schwartz served two years as the director of security and traffic at the University of Rochester, where he earlier served as a police lieutenant. Prior to his service at the University of Rochester he worked as a fingerprint clerk for the FBI.

Political union: For the student who thinks he's seen everything

By MIKE VAN DYKE
State Press

The director of the Associated Students of ASU Political Union said Thursday that she is striving to expose students to different angles of popular issues.

"I want to schedule a variety of programming that will work to provide new information about issues that students already thought they knew everything about," Lisa Fedler said.

An appearance by Bob Zellner, who participated in the movement to give blacks the right to vote in Mississippi during the early 1960s, will kick off the ASASU Political Union's schedule Sept. 21.

Fedler said that Zellner has a story to tell contrary to the one presented in "Mississippi Burning," a movie detailing notorious civil-rights cases.

Zellner, a leader of the civil-rights

organization Students' Nonviolent Coordinating Committee, traveled to Mississippi during the summer of 1964 to search for two white and one black civil-rights advocates who became the subjects of a massive FBI investigation.

But Zellner said the FBI was not as heroic as the movie has led people to believe.

Fedler said the event will coincide with the MU Activities Board's double showing of "Mississippi Burning" Sept. 21. Zellner will be paid \$3,100 for his appearance.

Fedler said Rep. Patrick Kennedy of Rhode Island is tentatively scheduled to speak Oct. 25.

Kennedy is a 22-year-old politician who beat out a five-time incumbent for a seat in the House.

Fedler said Kennedy usually speaks about motivation

In addition, the ASASU Political Union director is attempting to plan a debate between the different political parties in October.

Fedler said possible debate topics include gun control, capital punishment and prison overcrowding.

She said this would be the first time that ASASU has sponsored a debate between campus political parties.

"We are going to try something new," Fedler said. "This should be a way to get students involved in what is going on in national issues."

Also, Fedler said Stokley Carmichael, a founder of the "Black Panther" citizen security group; and P.J. O'Rourke, a political satirist, are tentatively scheduled for the spring.

Fedler said events programmed by the

ASASU Political Union last spring attracted large audiences because controversial speakers were scheduled.

But Fedler said her focus is a bit different this year.

"Some of the speakers I schedule may have beliefs that are not acceptable to some people," Fedler said. "But I'm not looking to stir up any fights."

She said she will focus on advertising the events and effectively targeting the groups that would be interested.

Because the ASASU Political Union's budget is smaller than the Lecture Series, she said there will not be as many "big names" speaking.

"I would like to work together with Lecture Series to bring in phenomenal speakers that students can enjoy," Fedler said.



25¢ DRINKS FRIDAY



25¢ DRINKS 8:00-10:30 P.M.
AFTER HOURS 1:00-3:00 A.M.
OPEN 8:00 P.M.

LADIES NIGHT SATURDAY



25¢ DRINKS 9:00-10:00 P.M.
\$1 DRINKS FOR LADIES 10:00 P.M.-1 A.M.
NO COVER FOR LADIES
OPEN 9:00 P.M.

415 S. MILL AVE. • TEMPE • 966-8888
ACROSS FROM SPAGHETTI CO.
*MUST BE 21 YEARS OLD

Editorial

Funding

University neglects police

Everyone has a complaint about the ASU police.

Whether it's the overzealous ticketing procedures of the campus bike squad or the speed with which officers shut down weekend parties over on the fraternity rows, most students seem to have at least one gripe about local law enforcement.

But now police have some complaints of their own.

And it's time we started listening to them — because the problems plaguing the ASU Police Department are likely to affect us all.

Many officers, who are understandably reluctant to have their names appear in print because of fear of repercussions at work, say the campus police are not adequately supported by the ASU's Business Affairs Office, the administrative arm of the University that is responsible for the department.

The facts seem to indicate that the officers have a valid argument.

The department is understaffed by 20 percent; the police headquarters (the old Campus Inn on Apache Boulevard) is a termite-infested shack; equipment as basic and essential to police work as radios and patrol cars are out-dated and underserviced; and morale is at ground level.

For years, Business Affairs has treated the police, as one officer put it, like the "bastard child" of the University. Indeed,

the University even declined to purchase essential safety items like bullet-proof vests for its officers until it came to light that ASU cops were the only department in the Pac-10 to face the streets each day without such protection.

We all complain about the police. No one likes getting a bike or parking ticket. But when an emergency occurs or a student needs help, that student immediately reaches for the phone to dial for a police officer. Police are there to serve and protect.

But they can't fulfill their responsibilities if they are constantly hamstrung financially by the University.

Business Affairs Vice President Victor Zafra must immediately react to what can only be described as a 911 emergency at the police department.

He can't wait until the manpower shortages and equipment deficiencies result in a situation where officers cannot respond to an emergency call, or must do so unprepared — a state of affairs that could potentially result in the loss of life.

You can't do a job without the proper tools — especially when the job requires that your life be placed in jeopardy every day.

And it's unfair — not to mention dangerous — for the University to ask officers to work with less than they need to preserve the peace of the ASU community.

Letters

Let custodians collect cans

Editor:

I often find myself shocked at the levels of banality to which the bureaucratic mind set can lead managers to in their search for ever-increasing levels of efficiency at the expense of human beings.

In his decision to ban the collection of aluminum cans by the custodial staff, William Bond, manager of custodians, has allowed an obvious preoccupation with absurd and unimportant details to cloud his humane judgment. He is putting abstract principles of perceived cost effectiveness ahead of common sense, human compassion and an obvious service to the community.

Bond apparently argues that there is something wrong with the collection of aluminum cans by the staff while in uniform. Somehow, he implies, this is a theft from the University because the custodians are putting the money they garner from this activity to personal use. If they want the cans, Bond argues, they need to do it on their "own time" and out of uniform. This is absurd.

Since the custodians are essentially salaried, they are paid by the job, not the hour. If in the course of their job they can perform a beneficial task for the community — costing the University nothing and also making money for themselves — more power to them. Can Mr. Bond, who is salaried at minimally twice the pay of the average custodian, assure the University budget accountants that he does not engage in any personal activities while he is on duty?

The collection of cans and paper for recycling does not in any way interfere with

the job of cleaning the buildings at ASU. And, in recycling the waste these men and women — in their own way — are performing a service to the community by conserving resources (a planetary concern, by the way). Therefore, William Bond's proclamation is putting pointless "I'm-the-boss power gaming" ahead of the community and the ecology and real flesh and blood people.

In the four years I have been a student at ASU, I have come to know the ASU custodial staff as hard working and efficient. More importantly, however, I have found them to be friendly, warm, and a decent bunch of women and men. They care and it shows. Every morning the buildings are ready to go.

That they have been able to render service par excellence to the University at such a bargain price (their not-so-spectacular salary) is to me all the justification needed to allow them to benefit in any small way from recycling. To insist that the activity should not be done as part of the job — the most efficient way to do it for everyone involved — because it is not part of the job description, is to put being a hard-nosed manager ahead of being a compassionate human being and to further dehumanize the work life of those people.

Everyone benefits from this arrangement and no one is hurt — except perhaps William Bond's sense of efficiency, which he seems to place above people and caring response. What could possibly lead a person to be so petty?

Robert J. Brem
Graduate Student, Counseling

RITTER



Steve Allen column inappropriate

Editor:

While perusing the *State Press*, I came across an editorial written by Managing Editor Marty Sauerzopf about Steve Allen and his many accomplishments. I have to admit that I was rather confused after reading it as to what significance it had in the ASU community or the readers of the *State Press*. I reread the article several times, looking for any important facts or hidden clues as to why it appeared where it did and why it took up so much space in doing so.

Now, I don't know all that much about journalism or editing a paper, but I do know that this isn't the kind of thing that should be eating up this much space in any respectable newspaper. I began wondering if there just wasn't anything important happening in the world or around Tempe, or ASU, and that I found extremely hard to believe.

The vague reference to ASU, the fact that Mr. Allen is an alumnus, is about the only thing I can find that is in any way important to the University community. Would this editorial have been published had there been absolutely no connection with ASU? Could I write an editorial which began with the phrase, "ASU's football team is one of the best in the country" and then went on with my experiences at summer camp, or how much I really enjoy listening to Wierd Al Yankovic? Is this all it takes to get printed?

The *State Press* is a highly respectable paper, one worthy of printing something far more important: the news.

Cary Brooks
Freshman, Broadcasting

Quotable

"The greatest lesson in life is to know that even fools are right sometimes."

— Winston Churchill

EDITORIAL BOARD

Unsigned editorials reflect the views of the editorial board. Individual members of the editorial board write editorials and the board decides on their merit. The editorials do not reflect the opinion of the State Press staff as a whole. Board members include:

Darrin Hostetler
EDITOR
Carolyn Höfig
ASST. MANAGING EDITOR

Marty Sauerzopf
MANAGING EDITOR
Brian Tassinari
OPINION EDITOR

STATE PRESS

DARRIN HOSTETLER
Editor

MARTY SAUERZOPF
Managing Editor

Asst. Managing Editor	CAROLYN HOFIG	FREELANCE WRITERS: Meg Halverson, Sharon Kaney, Francine Stahl, Mish Tell, Richard Vigil.
City Editor	KELLY PEARCE	CARTOONIST: Mike Ritter
Asst. City Editor	TYRONE MEIGHAN	GRAPHIC ARTIST: Joan McKenna
Opinion Editor	BRIAN TASSINARI	EDITORIAL ASST.: Lynn Vavreck
Magazine Editor	BEN MCCONNELL	PRODUCTION: Daniel Donley, Steve Kricun, Nancy Ness, Mark Nothhaft, Deborah Prewitt, Lynne Senzek, Jason Silver, Eric Zotcavage.
Assoc. Magazine Editor	MATTHEW LINDENBURG	ADVERTISING REPRESENTATIVES: Frank Culver, Dan Ellstrom, Lysa Fitzhugh, Paul Lee, Karen Lisiewski, Jerry Schinn, Terri Smith, Ray Zickel.
News Editor	SUZANNE ROSS	
Sports Editor	GARY JACKSON	
Asst. Sports Editor	JOEL HORN	
Copy Chief	MICHELLE ALLMAN	
Asst. Copy Chief	WENDY STRODE	
Photo Editor	JACK BEASLEY	
Asst. Photo Editor	SEAN MOHR	

REPORTERS: Mike Burgess, Elise Elsberry, Kimberly Harris, Adriane Hopkins, Kelly Jain, Richard Lamping, Joie Ann La Polla, Sonja Lewis, Laura Schmidt, Tenny Tatusian, Michael Van Dyke.

SPORTS REPORTERS: Vicki Culver, Paul Coro, Dave Hodges, Tomi McElroy, Keith Rosenhagen.

PHOTOGRAPHERS: Jamie Lytle, Brian O'Mahoney, Scott Troyanos.

COPY EDITORS: Kelly Ettenborough, Nicole Perron.
MAGAZINE STAFF: Scott Seckel

The State Press is published Monday through Friday during the academic year except holidays and exam periods, at Matthews Center, Room 15, Arizona State University, Tempe, Arizona 85287. Newsroom: (602) 965-2292. We do not answer questions of a general nature. Advertising and Production: (602) 965-7572.

The State Press is the only newspaper exclusively published for and circulated on the ASU campus. The news and views published in this newspaper are not necessarily those of the ASU administration, faculty, staff or student body.

Dispatch

Policemen giving up on new, improved drug war

Mike Royko
Tribune Media Services

If you visit one of the many tiny battlefields in the New and Improved War on Drugs, the prospects of victory aren't too encouraging.

This battlefield is in one of the most depressing buildings in Chicago, if not the entire country: the big, gray, old Criminal Courts Building on the city's West Side.

Three of the building's many courtrooms are used for preliminary hearings and to set bonds in drug cases.

On a recent day, each of the courts had about 100 cases on the docket. That's about average. So at the end of the week, about 1,500 accused drug users and small-time peddlers are going to stand before one of the three judges.

Obviously, a lot of people aren't saying "no." The easiest way to describe the crowd that gathers there in the morning is to compare it to a chaotic scene from the TV show, "Hill Street Blues," except it is much bigger and much more chaotic.

In the hall outside the court, harried lawyers are prepping their haggard clients on what to say, what will happen.

Some of the clients have trouble focusing on what they're hearing. Several still seem high on whatever they were sniffing and smoking when a cop grabbed them.

Several women are carrying babies. Babies aren't allowed in the court, so friends or relatives — or maybe the dealers — come along to hold the children while druggie-mom is finding out how much her bond will be.

The preliminary process is faster than the checkout counter at the supermarket. The accused's name is called, the defendant and lawyer stand before the judge, the charge is read, prior convictions are announced and the bond is set. Most have some other petty crime to get the price of a high.

Everybody looks tired. The dopers, the judge and the cops who sit in the jury box.

And not many of them are impressed by the New and Improved War on Drugs.

One woman, waiting in the hallway for her boyfriend to post bond, said: "War on drugs, huh? I don't know nothin' 'bout it. I ain't read nothin'."

Haven't you seen anything about it on TV?
"Somebody stole my TV."

A young man who strutted out of the courtroom said: "War? Hey, where I live every day is a war."

Although most of the drug users are represented by public defenders, some use private lawyers.

One of the private lawyers said: "Everybody who works out here does drug cases because of the sheer volume."

His view of the New and Improved Drug War?

"It's ridiculous. There are people who use it and people who sell it. Getting tough on the people who use it isn't going to stop it from getting to the street. The real life criminal is the guy who's making a ton of money selling this stuff. Not the guy who's caught with a few grams.

A cop, his cases having been called, pauses on his way out.

"Sure, it would work if users were put away. But they're not. There's no room for them. I'll make an arrest one day, then the next day I'm driving along and I see the same guy on the street. So what's been accomplished?"

"It's not that we're overworked. We're undermanned. And we don't have the resources to make big busts by setting up big deals."

"It's the dealers. If we could nail the dealers, then we keep it out of the hands of the users. If you don't get the dealers, then forget it because there are always going to be people who want the stuff."

A husky man who was waiting for a friend's hearing to end had a pragmatic view. "The one thing I don't want to see happen is for them to legalize it. I don't like any talk about making it legal."

Because it would increase usage?

"No, that ain't it. If they make it legal, they're going to put taxes on it. And that'll make it cost more than it does now. The prices are low now. If it's legal, and they put taxes, price is gonna go up. I don't want to pay more."

Another policeman was walking out of the building. He pointed toward a young man who was also on his way out.

"He's one of mine. And he's out already. You know what would happen if I followed him? He's probably going to look for a car, and I could grab him for breaking in and popping the radio."

Then the policeman shrugged. "What's the use? I'm going home."

More Letters

Time to tear down walls

Editor:

In a letter Tuesday Eduardo Chavez II said, "I do not think it is time to tear down the wall..." He was referring to Lynn Vavreck's previous comments opposing ASU's minority lounge. To Eduardo, I am constrained to say, "When will it be time?" Will such a sweeping social demolition of institutionalized racism and its symbols elude yet another generation?

Chavez attributed Lynn's ignorance (?) to not being able to "see the view." How can we see through walls? The benefits of cross-cultural interactions afforded by integrated lounges are educational and living experiences that are unrivaled in the classroom. Furthermore, no one would attend a state university with the expectation of ethnic/cultural exclusiveness.

The misunderstood and abused viewpoint

that they would be more comfortable among their own kind seems to be the underlying assumption here. It is neither new nor progressive. Little Rock, Ark., for one, employed it both as tactic and policy for many years. In the historical civil rights movement of the 1960s, valiant, bloodied marchers trampled this "philosophy of brotherhood" under foot. Must we suffer another 1960s before we stop constructing walls and allow individuals to set their own social boundaries?

Yes, indeed let us "recall that it was not too long ago that these places (whites-only establishments) actually existed." Segregating them is another way to exclude them.

Minnie S. French
Social Work

Minority lounge obstructs 'view'

Editor:

Doesn't reverse discrimination to a certain group equal the same negative effect discrimination has to another group?

The dilemma; suppose I have a friend who is a USSR exchange student. She would be a member of a small ethnic group on campus — a minority. Eduardo Chavez II said that the minority lounge was constructed to help alleviate alienation and culture shock. Chavez also stated that a white students lounge actually existed not long ago.

Does this mean that the only guidelines to defining a minority is skin color? If skin color is the only determining factor to who may occupy the lounge, then once again you will have a minority, or are you going to have a quota of X number of blacks to equal X number of browns, pinks, yellows, blues — just no whites? What if someone is

racially mixed but appears white? Are we to issue minority ID cards or badges?

In addition, Chavez continued to state that those who wish to "tear down the walls" cannot see the view unless they climb the mountain.

OK, so I'm a white, English-Polish United States citizen, but I grew up in a mainly minority-occupied area of Detroit. I was a minority being white; without sounding corny, aren't we all part of some minority (female, immigrant, left-handed)? I've always observed that when one group is granted special privileges, only more animosity is created between groups. How can two groups of people understand each others needs if they are separated?

Matthew Berriman
Junior, Broadcasting

Abandon Exxon!

Editor:

Because of Exxon's recent decision to abandon its meager cleanup effort in Prince Williams Sound, it is essential that we take a stand against this environmental devastation.

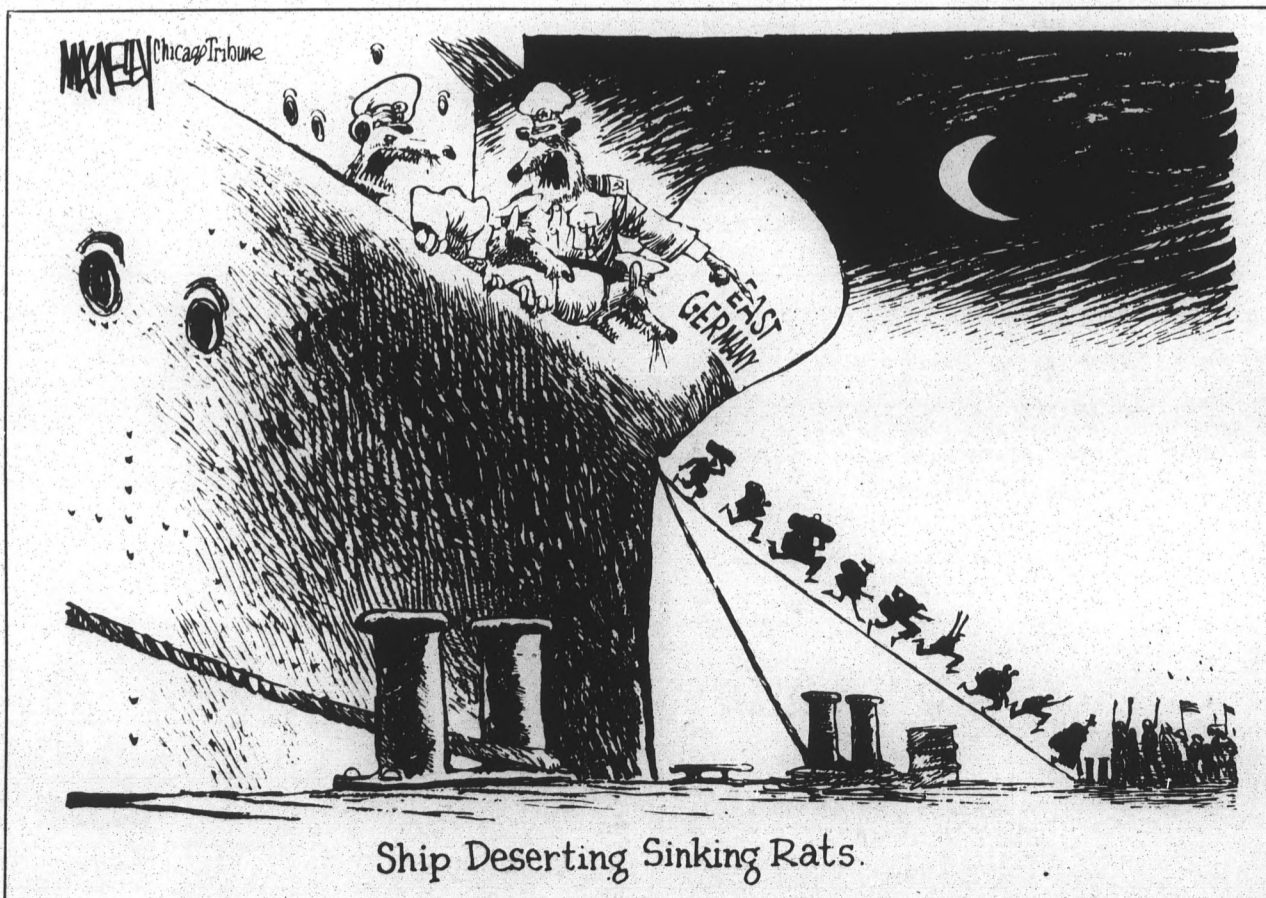
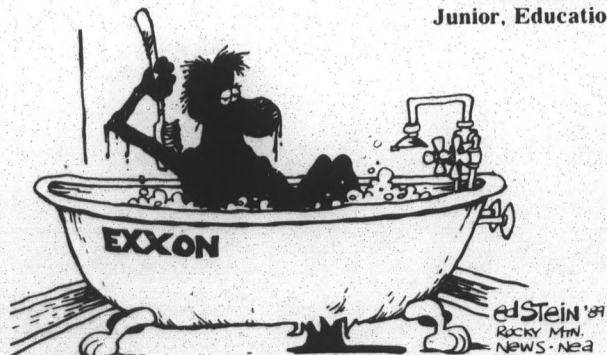
Had Exxon made honest attempts at cleanup or shown any degree of concern, their offense would not be as insulting. But Exxon's total and blatant disregard for the environment, the wildlife, the animals and ultimately the people, is unforgivable.

Don't think that Exxon has any intention of resuming the cleanup effort next spring. They are hoping that America will have forgotten by then.

Since Exxon's total concern is *profit*, I propose that we all abandon our patronage of all Exxon products and services. The market is full of Exxon competitors; give them your business instead. Be creative. Protect your planet!

Stay away from Exxon until they clean up their act!

Denise Kenney
Junior, Education



**NEED A PLACE TO LIVE?
FIND A ROOM THE EASY WAY
WITH**



**STATE PRESS
CLASSIFIED
ADVERTISING!**

**NEW WINDSHIELD
NO COST TO YOU!***

*If your comprehensive is between \$0-\$100, we will waive your deductible and collect the rest from your insurance carrier. — YOU PAY NOTHING! —

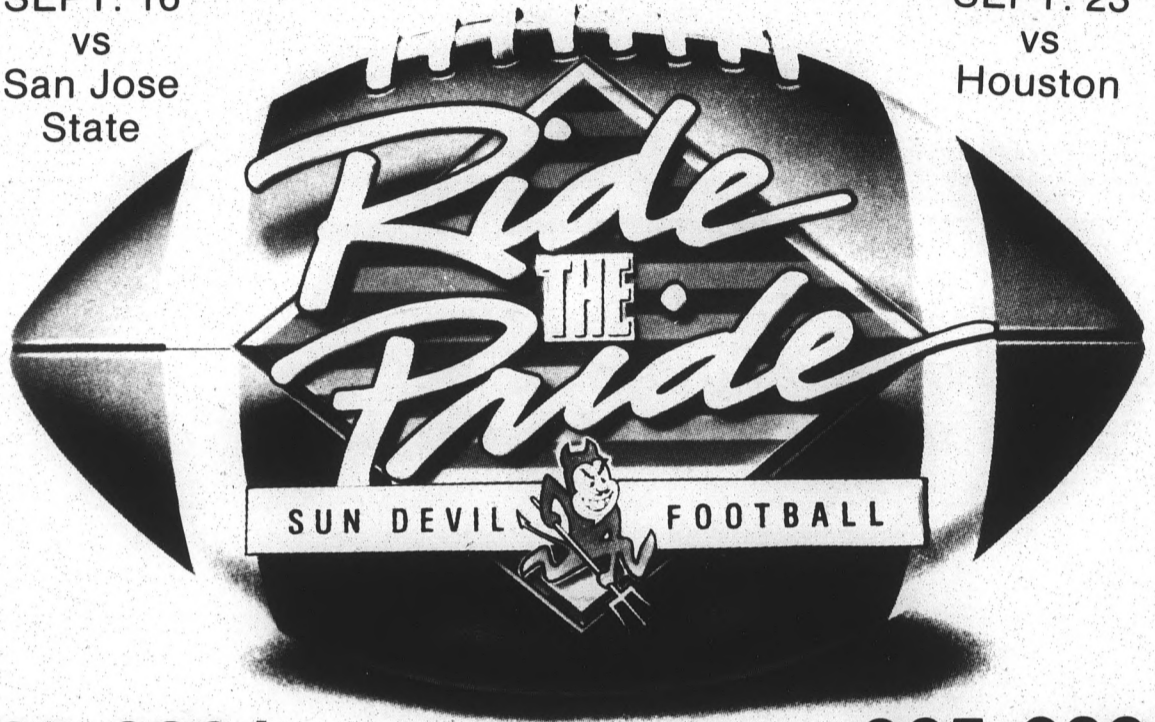
MADE IN THE SHADE

748 W. University, Mesa
(Extension & University)
827-1262

**1,700 STUDENT TICKETS
REMAIN FOR ASU FOOTBALL.
VISIT SUN DEVIL TICKET OFFICE.**

SEPT. 16
VS
San Jose
State

SEPT. 23
VS
Houston



965-2381

965-2381

\$14.00

Haircuts

Reg. \$17.00
SAVE \$5.00
Includes Shampoo
Conditioner & Cut
(With Coupon)

\$45.00 Perms

\$5.00 Off Regular
\$10.00 Off Spiral Wraps
Includes Shampoo, Conditioner & Cut
With Coupon for First Time Customers Only *One Coupon*

Cellophane \$22.00
Highlights \$40.00

With Coupon for First Time Customers Only *One Coupon*

TANNING SESSIONS

\$10 down, \$1.50 each visit
Unlimited for One Month
Not Valid with Other Offers
With Coupon for First Time Customers Only *One Coupon*

PMO Professional Hair Designers
Men & Women Hair Styling

966-6111 Call For Appointment
933 E. University
SE Corner Rural & University

Mon.-Sat. 9:30-8:30
Sun. 11:30-4:00

Aaron's Car Wash

NO SCRATCHING

Touchless Automatic
Includes Under Carriage Wash
(Recommended by all owners manuals)

ONLY \$2 50¢ Self Serve Terrace and Apache
(One block east of Rural)

**You've Got What It Takes!
BLOOD PLASMA**

Your blood plasma goes to accident and burn victims and is used for hemophiliacs who would otherwise suffer from uncontrolled bleeding. You are a life-saving source... it's healthful, safe and easy. Plus you can earn \$115 plus a month. Enjoy watching movies while you donate.

PLEASE C'MON IN TODAY AND PICK UP YOUR \$5 BONUS BY MENTIONING THIS AD

(New Donors Only) (May Not Be Used With Other Bonuses)

TEMPE PLASMA HOURS
933 E. University **894-1338** Mon-Thur 8 am-6 pm
Fri & Sat 8 am-4 pm

ASU'S 50s DINER



DANCE TUNES

DANCE TUNES

PRE-GRAND OPENING CELEBRATION

\$2 Pitchers 99¢

Ritas

FRIDAY & SATURDAY cuts spt 09 15 1 sports 4.4 4.4

NO COVER
W/ASU I.D.

625 E. APA
NEXT TO THE DA

NO COVER
W/ASU I.D.

Exercise addiction 'invisible'

By SONJA LEWIS
State Press

There is an increasing number of men and women being identified as obsessive-exercise pathorexics — people who are addicted to exercise as a way of controlling their weight.

However, ASU health officials said those addicted do not realize what they are doing to themselves.

Pathorexic exercise is characterized as an eating disorder and is often more difficult to detect by the victim and others than eating disorders such as anorexia or bulimia.

There are often visible signs with anorexia and bulimia, such as starvation, vomiting or the use of laxatives.

On the other hand, overexercisers conceal some of the harmful physical effects of their disorder.

Mary Lou Frank, ASU coordinator of eating disorders, said most overexercisers, who think of physical activity as the healthy way to lose weight, deny that they are harming themselves.

"People don't realize they have it because they don't see it as a problem," she said. She

added that exercising becomes both physically and mentally unhealthy when people exercise due to feelings of guilt and remorse after eating.

Dr. Dale Bowen, a physician at the ASU Student Health Center, said "massive amounts of running" often results in bone fractures, muscle pulls and back problems.

Alyne Yates, UofA associate professor of psychiatry, has studied overexercisers and found that some runners resemble anorexics in the following ways:

- Most are self-effacing, hard-working achievers.
- They come from affluent or middle-class families.
- Intense exercise begins after a time of depression and uncertain identity.
- Exercise gives them feelings of self-control.

Karen Moses, ASU Student Health Center nutritionist, said feelings of insecurity and wanting to take control are common among people with eating disorders.

"What you might be seeing in pathogenic exercisers is athletes that like to exercise and don't like to vomit," she said.

Officials: Generic drugs safe

ASU Student Health Center officials said that the recent scare about the safety of generic drugs is unfounded.

The Food and Drug Administration has admitted that some stores had been found substituting the generic drugs for brand-name products, causing some Tempe residents to return their prescriptions to drug stores.

Although generic drugs, like any other type of drug, should be watched, panic is not necessary, said Dr. Pamela Tom, acting director of the health center.

"The generic drug companies need to better check their quality control," Tom said. "Both the patient and the doctor should be aware that there are discrepancies with generic drugs."

Dyzaide, a drug for high blood pressure patients, has been taken off shelves. Bolar Pharmaceuticals, who produces the drug and is the largest generic drug manufacturer in the United States, said it has become "the victim of

irresponsible and unsubstantiated charges."

Because one third of all prescriptions are generic drugs, they have become accepted, and some life and medical insurance companies will only pay for this type of drug.

Most Tempe pharmacists said they will continue to prescribe generic drugs and feel no qualms about doing so.

"I assume that the FDA's testing in the past was correct and until the FDA says otherwise, I'll continue prescribing generic drugs," said a pharmacist with Folgeson Pharmacy, who asked not to be identified.

Michael LeSac, a staff physician at the campus health center, agreed: "I believe there is no reason to be concerned at the health center at all. In the vast majority of generic drugs, there is no difference in them and the brand-name drugs — just the price."

— SONJA LEWIS

McDONALD'S AT THE MU

Get an icy cold soft drink and a 32 oz. McSqueeze bottle for only \$1.25!



ASU McDonald's will donate 10¢ from every McSqueeze bottle sale to The Ronald McDonald House. Ask for an ASU football schedule too! McDONALD'S Lower Level, MU



The FRIDAY Guide



for those 18 & Older



9pm ~ 12:30 am

AFTER HOURS

12:30 am ~ 3 am

Be here for Saturday After Hours 1am ~ 3am

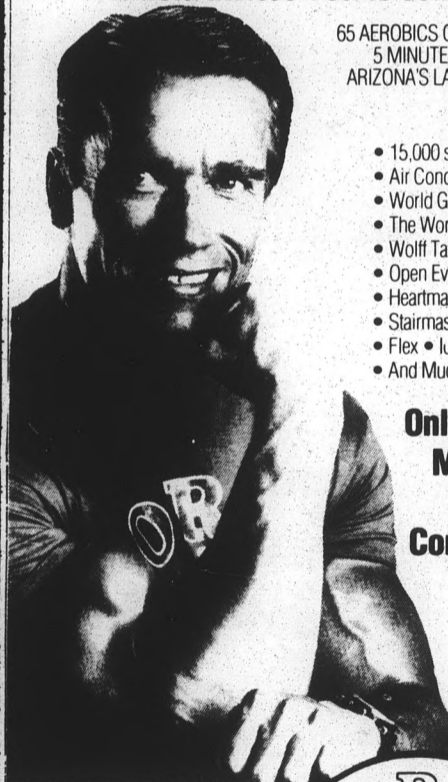


Sun Devil House

430 N. Scottsdale Rd. • Tempe

SAVE \$30 50% OFF

World Gym and Aerobics of Scottsdale for Men & Women
Arnold Invites You to Join Us



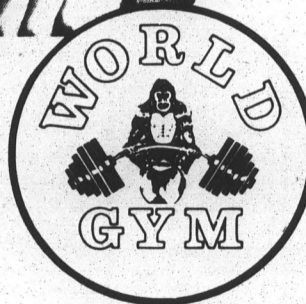
65 AEROBICS CLASSES WEEKLY!
5 MINUTES FROM ASU!
ARIZONA'S LARGEST FACILITY

- 15,000 square feet
- Air Conditioned
- World Gym Pro Shop
- The World Cafe Juice Bar
- Wolff Tanning Beds
- Open Every Day!
- Heartmate • Lifecycle
- Stairmaster • Eagle
- Flex • Larian • Camstar
- And Much More!

Only \$30 A Month
No Contracts

Bring your World Gym \$30 Coupon & with this ad your initiation fee is waived.

New members only. Scottsdale location Expires Oct. 1, 1989



1465 N. HAYDEN ROAD
SE CORNER OF HAYDEN & McDOWELL
SCOTTSDALE, ARIZONA
945-6060

Education

Continued from page 1.

Lillian Webb, associate dean of the College of Education, said there is not a high faculty turnover rate.

"I don't know of any high turnover," Webb said. "We have people that have retired, but only one person in the last several years has left to go to another institution."

Lisherness said she enjoyed her job as faculty liaison, and said "a lot of students said they couldn't have done it (been placed at a school) if it wasn't for me."

Jane Chipman, who graduated from the ASU Education College last May, said Lisherness often went out of her way to help students.

"She seemed real dedicated and that she really did care," she said. "She took that extra step to get a student placed."

Sell It in the
State Press Classifieds

Best Deal in Town!

State Press

965-7572

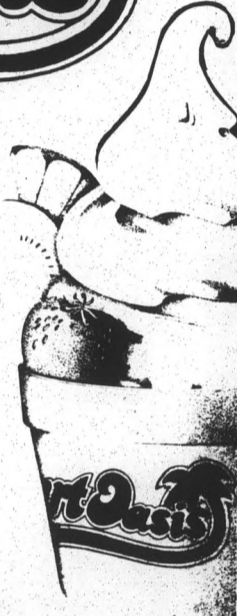
AN ASU TRADITION

Yogurt Oasis

FREE

Buy any Small, Medium or Large
Yogurt and get any smaller size
FREE

Exp. 10-4-89 Toppings Extra



Cornerstone Mall
Corner of
University & Rural

Hours:
11 am-Midnight

Grand Opening Sale!

MOUNTAIN BIKES
from \$129.95
fully assembled
with warranty



FREE
Water Bottle
w/ Cage With
This Ad While
Supplies Last

New Mountain
Bikes with
Water Bottle
and Book Rack.



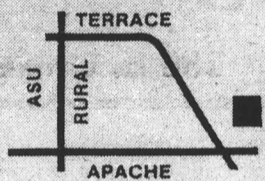
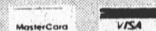
U-Locks
\$9.99

(These specials not valid with any other offer)

NEW • USED • BUY • SELL • TRADE • EXPERT REPAIRS



894-6852



SAY CHEESE

GROUP PHOTO TIMES

SAHUARO	CHOLLA	OCOTILLO	MANZANITA	PV WEST
Mon. Sep. 18	Wed. Sep. 20	Fri. Sep. 22	Tues. Sep. 26	Fri. Sep. 29
A1-2:30	AB 1&2-2:30	AB1 & A2 -2:30	2-2:30	1-2:00
A2-3:00	AB 3&4-3:00	A3 & BC3-3:00	3-3:00	2-2:30
A3-3:30	AB 5&6-3:30	DE1 & DE2-3:30	4-3:30	3-3:00
B1-4:00	AB 7&8-4:00	DE3 & BC2-4:00	5-4:00	4-3:30
B2-4:30	CD 1&2-4:30	BEST	6-4:30	5-4:00
B3-5:00	CD 3&4-5:00	Mon. Sep. 25	7-5:00	6-4:30
Tues. Sep. 19	Thurs. Sep. 21	Mon. Sep. 25	Wed. Sep. 27	7-5:00
C1-2:30	CD 5&6-2:30	A1& -2:30	8-2:30	PV EAST
C2-3:00	CD 7&8-3:00	A3&B1-3:00	9-3:00	Fri. Sep. 29
C3-3:30	FG 1 -3:30	B2&3 -3:30	10-3:30	1&2-2:30
D1-4:00	FG 2 -4:00	C2&3 -4:00	11-4:00	3&4-3:00
D2-4:30	FG 3 -4:30	C4 -4:30	12-4:30	5&6-3:30
D3-5:00	HAYDEN	C5 -5:00	13-5:00	7-4:00
MARIPOSA	Mon. Sep. 18	IRISH	Thurs. Sep. 28	McCLINTOCK
Mon. Sep. 25	1&2-2:30	Mon. Sep. 25	14-2:30	Tues. Sep. 19
1&2-5:00	3-3:00	Irish B&C-2:30	15-3:00	A&B-2:30



For more information about group photos or
the Sun Devil Spark yearbook, call the yearbook office at 965-6881.

TWO MAN VOLLEYBALL



SAT. SEPT. 16TH:

- Novice and B Tournament
- Team Check-in time 7:00 am (sharp)
- Play begins 7:30 am

SUN. SEPT. 17TH:

- A&AA Tournament
- Team Check-in time 7:00 am (sharp)
- Finals Novice /B and A/AA in afternoon
- Play begins 7:30 am

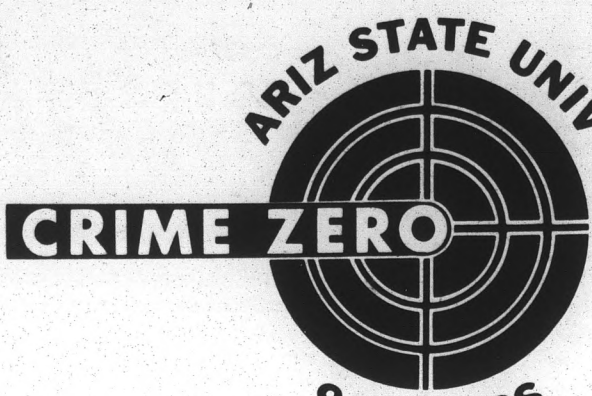
HUNDREDS OF DOLLARS
IN
CASH and PRIZES

Registration Fee \$20 per team • Register in Commons Office, ASAP • Tournament size limited
• For details call Brian at 921-3109 or Commons office at 829-0933.

TOURNAMENT

1111 E. APACHE BLVD.
(East of Rural & Apache in Tempe)

ARIZ STATE UNIV



CRIME ZERO

965-TIPS

FLAMINGO HAIRCUTTERS 

966-1391

\$10⁰⁰ HAIRCUT
wash/cut/blow dry

20% OFF
Nail Services

(With ad, first time clients only)

FOCUS 21
HAIR & SKIN CARE PRODUCTS

905 E. Lemon, Tempe
(OFF RURAL, BEHIND CIRCLE K)

Estab. 1975 966-7788

Ozzie's **WAREHOUSE DELI & PUB**
130 E. University Dr.

\$1.99
BURGER SPECIAL

- 1/3 lb. Burger
- French Fries
- Soft Drink or Draft Beer

Saturday & Sunday
12 Noon to 8 p.m.
Game Day - 12 Noon to 3 p.m.



Breakfast Served Saturdays 9-11:30 a.m.
130 E. University Dr. (Forest & University) 966-7788

The FRIDAY Guide

for those **21 & Older**

4pm ~ 8pm

FAC
Friday Afternoon Club

Drinks ~ doubles for singles
.....
1/2 price pitchers of Long Island Ice Teas or Margaritas
.....
2.00 off all pitchers of Beer

9pm ~ 11pm

Cuervo Gold Tequila & Coors Extra Gold bottles 1.50 ea.

AFTER HOURS
12:30 am ~ 3 am

SPECIAL OFFER!!
GET A FREE BOOKLET
and
ROLL WITH THE BEST!



Thin, light and easy-rolling, exclusive **JOB Silver Cigarette Papers** give you the finest in smooth-burning tobacco smoking pleasure.

CIGARETTE JOB PAPERS
...since 1838

Send us your name and address and we'll send you a FREE booklet of **JOB Silver Cigarette Papers**. Limit one free booklet per person. Check your size choice below of 1.0 single width or 1.25 medium width. (A law allows to be only 18 or 21 years old.)
Please send me 1.0 Size 1.25 Size

Name _____
Address _____
City _____
State _____ Zip _____
Sorority or Fraternity? Y N

Send this coupon to: Republic Tobacco Co.
P.O. Box 8511, Prospect Heights, IL 60070.

Offer Expires 1/31/90. **C201A**

SAVE 35¢ on CIGARETTE PAPERS

MANUFACTURER'S COUPON Expires 1/31/90

RETAILER: You are authorized to act as our agent for redemption of this coupon. We will reimburse you 35¢ plus the handling provided that you and the consumer have complied with the terms of our offer. Void where prohibited, taxed or restricted by law. Good only in the U.S.A. - Cash value 1/20¢. The consumer must pay any sales tax. Any other use constitutes fraud. Mail coupon to Republic Tobacco Co., P.O. Box 8511, Prospect Heights, IL 60070.

C201A

PARTY ON THE PATIO

Let our cocktail waitresses serve you as you relax next to our 18ft. fountain on our 20,000 sq. ft. patio!



& be here for

Saturday COUNTDOWN

5 for 1 drink prices 7pm - 8pm & counting down every hour
Free Admission before 8pm

Sun Devil House

430 N. Scottsdale Rd. • Tempe

Panel

Continued from page 1.

The panel was expected to report its findings to Peck Oct. 13 but Oliver's resignation could cause a month delay, officials said. The panel will meet next week to set a new timetable.

The ASU chapter of the National Association for the Advancement of Colored People has said the University is taking too long to report its findings.

Former ASU president J. Russell Nelson appointed the original panel as part of 13-point plan to combat campus racism after students protested an incident in which two black students were handcuffed and taken into "protective custody" April 15 in front of the Sigma Alpha Epsilon fraternity house.

The students were the only people arrested in a brawl that began when they were attacked by white fraternity members who mistook them for suspects in an earlier assault on a SAE

member. The students said ASU police roughed them up and humiliated them in front of a mob of white fraternity members.

The panel will determine if ASU police broke any department policies, law enforcement standards or state laws during the incident, which has also been investigated by the FBI for possible civil rights violations.

The FBI has forwarded its case to the U. S. Justice Department, which is deciding whether to prosecute.

THE STATE PRESS MAGAZINE

A WEEKLY COLLEGE TOWN JOURNAL

GRAND OPENING GRAND OPENING GRAND OPENING

MAZAR BAZAAR

MAZAR FASHIONS

GRAND OPENING SALE FROM 10%-50% OFF

Come see our selection of fine quality imports from around the world

- Clothing
- Handbags
- Belts
- Jewelry
- Watches
- Scarfs




Hayden Square
350 S. Mill

966-9002

WASTING AWAY AGAIN IN...

EVERYDAY



EVERYDAY

10¢
CHICKEN WINGS


HAPPY HOUR
4-7 pm
2 FOR 1
DRINKS
FREE BUFFET

TERRACE & APACHE

HOW TO HAVE SUCCESSFUL RELATIONSHIPS

ADDRESSING QUESTIONS LIKE: **WHO WINS? WHO LOSES? WHO CARES? DUMPED AGAIN, NOW WHAT? "I WILL NEVER BE HURT AGAIN?" "I WISH I KNEW HOW TO MAKE MY RELATIONSHIPS WORK!"**

COME SHARE WITH US THE NEXT TWO MONTHS AS 200 COLLEGE AGE PEOPLE TRY TO FIND THE ANSWERS TO THESE AND OTHER LIFE CHANGING QUESTIONS, YOU WILL BE GLAD YOU DID.

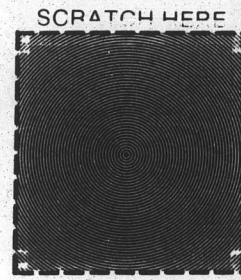


IF YOU NEED A RIDE CALL 894-2201
COLLEGE AGE MINISTRIES
3201 S. TERRACE (ON SOUTHERN, JUST 1/4 MILE EAST OF RURAL)
TEMPE, AZ 85282

894-2201 X219

SUNDAYS: 10:15AM; TUESDAYS: 7:00PM IN THE VINEYARD

It's **FRAGRANCE DAY** at **The Farce Side** COMEDY HOUR



Free admission with scratch patch!

Special Guest: **David Goodman**

Today and Every Friday
12:30 p.m.
MU Cinema

Sponsored by **MURB** Comedy Committee

the **Vine** MALIBU CHICKEN With Fries

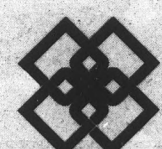
taavern & eatery **\$4.95**

\$1.00 SHOOTERS
LIVE ENTERTAINMENT
RURAL & APACHE

IT'S YOUR MOVE... don't settle for less than the best!

LUXURY APARTMENT FEATURES:

- Choice of 4 color interiors
- Mini blinds
- Vertical blinds with valances
- Brass ceiling fans
- European cabinetry
- Walk-in closets available
- Private balcony/patio
- Security alarm systems available
- Free hot water
- Free cable TV - 30 stations!
- 2 pools, 2 therapy spas
- 7 barbecue areas
- Lighted, covered parking
- Laundry facilities
- Large exercise room with weight machines
- Whitewater fountains



QUADRANGLES VILLAGE APARTMENTS

1255 University Drive
Tempe, Arizona 85281
968-8118

S.E. Corner of University & Rural

Mayor, Bowl officials hold ground-breaking ceremony

By LAURA SCHMIDT
State Press

Officials for the Sunkist Fiesta Bowl and Tempe Mayor Harry Mitchell scooped ground with six shovels Thursday to begin construction on a building that will house the organization's first permanent headquarters and a sports museum.

Bruce Skinner, Fiesta Bowl Executive Director, told about 50 people at the ground-breaking ceremony, "This is something we have worked for in such a long time," he said. "Finally our dream has come true and we are very happy to be here."

Tempe Mayor Harry Mitchell said, "The location demonstrates what Tempe already knows: Tempe is a great sports town."

"We are very excited to be the home of these activities."

The site is located at 20 S. Ash Ave., in downtown Tempe. The completion of the building is scheduled for June 1990.

To keep costs down, the Fiesta Bowl — a non-profit organization — has sought donated office space and relocated its offices several times in the past year. The organization has not had a permanent headquarters in its 19-year history.

The two-story, 15,000 square-foot building will house the Fiesta Bowl's 22-member

staff, as well as a museum for Arizona sports memorabilia and the Phoenix Press Box Association's Hall of Fame. Skinner said the new building will cost about \$750,000.

Carolyn Pendergast, Fiesta Bowl's media relations director, said the cost of construction will be funded by volunteer donations and money from long-term Fiesta Bowl supporters. She said Hunt Co. will manage the construction on that site.

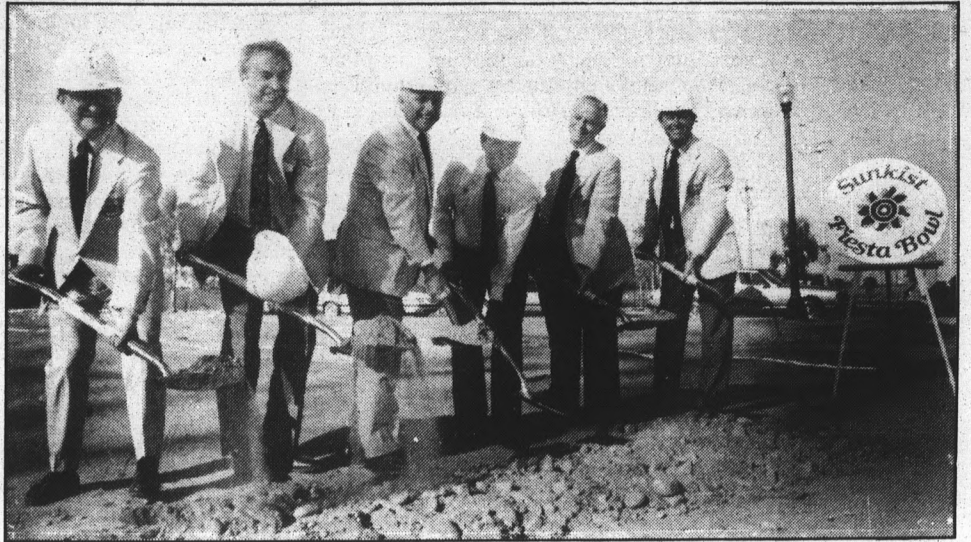
"We are pleased to finally have a permanent place for our headquarters," she added.

Pendergast said in a few months a new board of directors will be appointed to put together special Arizona sports exhibits for the museum. She said there will be a special display on ASU.

Skinner said a chronological display of sports events will create the backbone of the museum, along with exhibits representing UofA and NAU. "It's going to be for the whole state," he added.

Out of the 60 events the Fiesta Bowl presents throughout the year, more than 10 are in Tempe, including its annual namesake Football Classic.

Fiesta Bowl events attracted an estimated 40,000 people to Arizona last year



Scott Troyanos/State Press

Sunkist Fiesta Bowl and Tempe officials, including Tempe Mayor Harry Mitchell, third from right, left shovels Thursday at a ground-breaking ceremony to begin construction of Fiesta Bowl's first permanent headquarters.

and pumped an additional \$45 million into the state's economy.

Sherry Henry, a Fiesta Bowl volunteer, said the Tempe Fiesta Bowl Block Party

attracted 60,000 people last year and was ranked by USA Today as one of the top 10 New Years Eve functions in the United States.

Series coordinator says poor publicity is cause for low turnout

By MISH TELL
State Press

Despite attracting only 14 people to its first two presentations, the Experiencing Life Off Campus Lecture Series will continue to offer commuters advice on surviving at the University.

The 11 lectures, sponsored by the Office of Student Life's Commuter Program, began Sept. 1 to address topics ranging from health to money management.

"Students come to ASU after their parents have taken care of them for all of their life," said Diane Arnot, a case worker at the office for Off Campus Student Services. "Now they are here and have to take care of these things themselves."

Janet Steinkamp, acting area coordinator for Residence Life and creator of the lecture series, said poor publicity is the likely cause of the low turnout at the first two lectures.

"I think we promoted it in a traditional manner," she said.

"I think we need to be more creative."

Steinkamp said the program was an experiment this semester and that it would be promoted in local newspapers and at apartment complexes to boost attendance.

In addition, Nancy Matte, coordinator of LIA 100 — a course in university adjustment and survival — plans to give the lecture information to professors who teach the class and suggest they use the lectures as extra credit for the students.

The lectures, which are free to ASU students and their families, are held from 11:30 a.m. to 1 p.m. on Wednesdays at the Student Services Building amphitheater. The volunteer speakers come from various ASU and community departments.

Arnot said she hopes the lectures will help students cope with college pressures and that more will take advantage of the free program.

"It helps the students who are from out-of-state and who

don't know much about the area," she said. "(It also helps those) who don't understand the transition they have to make to university life."

Upcoming lectures include child care, seeing the sights of Arizona, bicycle maintenance, insurance, nutrition and vehicle safety. The next lecture, "Child Care: Making Educated Choices," will provide information on choosing child care services.

Mary Lamparski, program coordinator for the ASU child development laboratory, said she will discuss child care options and will not know the exact focus of her lecture until she sees the size of the audience.

"It depends on how many students will be there, but (the lecture will reveal) general information on how to select a child care program," she said. "It's important that the University be a means of disseminating all types of information for the students — this being one of them."

ASU'S COMPUTER SOURCE

Avantage 286¹²
\$1195
Includes 40MB

Get the 286 machine that's priced right. Includes 40Mb Hard disk, Monochrome Monitor, 640K, std. keyboard, 1.2mb drive and more.



AvantageXT
\$499

Many ASU Professors own an Avantage. Get one for less! Includes floppy drive, keyboard, and monitor.



DON'T DO YOUR HOMEWORK AT HOME

TOSHIBA T1000
\$659

COMPUTE ON THE GO WITH THIS 7lb WONDER



OR MAYBE...

EPSON Equity LT Laptop
\$100 Rebate

640K, 10mb, battery powered, dual drives, and DOS in a battery powered package! Epson is a trademark of Epson Seiko Corp.



VIDEO SEVEN

We make a clear difference.

GRADUATE TO VGA

CSC HAS THE VGA UPGRADE YOU NEED NOW

\$237



Panasonic Office Automation

Dot Matrix Printer
\$179 NEW!



Perfect for papers and program listings. Includes tractor & friction feeds and front selectable type styles.

KXP1180

Hot NEW Borland Languages

Includes Debugger!

\$89
Your choice

Turbo C 2.0
Turbo Pascal 5.5



CARDINAL

\$49 1200 Baud Internal Modem

Get On-line Instead Of In-line.



2400 Baud \$109

TOSHIBA **\$459**

THE P321SL IS SUPER FAST, SUPER QUIET, SUPER PRICED!!



PHOENIX 16th St. & Camelback 266-7873

TEMPE Southern & McClintock 898-1236

METRO 35th Ave. & Northern 841-0202

COMPUTER SYSTEMS CENTER

DON'T SETTLE FOR WALKIN'!

TAKE A RIDE ON THE WILD SIDE WITH AZ'S #1 VOLUME SCOOTER DEALER

Established Over 25 Years

from \$699.*

- Great on Gas
- Low Insurance
- Easy Maintenance
- Easy Parking
- Bring in Your ASU I.D. for Discounts

"Bring us your best deal & we'll beat it"

SAME DAY FINANCE

Monday-Friday .. 8-9
Saturday 8-6
Sunday 10-6

*Freight & Set-up Additional



"ASU's Closest Dealer" ...Get Quick & Easy Service at

western honda of Scottsdale

Come ride with us!
6717 E. McDowell Rd.
994-8400

"ONLY 5 MIN. AWAY!"

McDowell

68th St.

ASU

Rural

Rubach to seek 2nd term as Mesa mayor

MESA (AP) — Peggy Rubach, Mesa's first female mayor, announced Thursday she'll seek re-election in 1990.

Her two-year first term has been characterized by efforts to expand Mesa's influence beyond city limits through her work with the Regional Public Transportation Authority, Maricopa Association of Governments, National League of Cities and Towns and National Conference of Republican Mayors.

It also was marked by personal problems, including a divorce and several surgeries.

Rubach entered Mesa politics as a citizen activist, serving on the Planning Commission before serving four years on the City Council.

In 1988, Rubach became mayor after defeating former Councilman L. Alton Riggs.

Mesa's primary election is March 27.

Bush expected to sign collider bill

WASHINGTON (AP) — The Senate sent President Bush legislation on Thursday providing \$225 million to start building a city-sized atom smasher in Texas that scientists hope will lead them to the universe's most basic materials.

The money, for construction and research on the superconducting super collider, is just the start of what is expected to ultimately be a federal infusion of up to \$5 billion for the project. The facility could take up to seven years to build.

On a voice vote, lawmakers approved an \$18.6 billion measure financing energy and water programs for next year. It contains the money for the super collider.

Bush, whose official residence is in Texas, is expected to sign the measure.

The legislation was the first of the 13 annual spending bills for fiscal 1990 to receive final congressional approval.

The circular, 53-mile-long super collider is to be built 25 miles south of Dallas. Scientists will use it to hurtle proton beams into each other in a search for the basic building blocks of matter.

The legislation also contains \$1.6 billion for cleaning up the nation's nuclear weapons plants, about 70 percent more than the \$975 million provided this year and 27 percent more than Bush requested. The overall task of removing radioactive waste from the facilities, accumulating for more than 40 years, has been estimated at \$100 billion.

The cleanup money is just part of \$9.7 billion the measure provides for atomic energy defense programs, including weapons construction.

Also tucked into the bill are water projects lawmakers can bring home to their districts. The measure finances 33 new projects by the Senate's count, triple the administration's request.

Overall, it provides \$3.2 billion for Army Corps of Engineers water programs and \$977 million for Bureau of Reclamation projects, both figures representing 2 percent reductions from this year.

The legislation also provides \$2.2 billion for energy research.

Free Graduate Admission Seminar

This week we're conducting our Graduate School Seminar at all of our 135 Centers nationwide

Graduate School/ GRE

Learn how Stanley H. Kaplan can get you a top score on the GRE and help you to select the right graduate school for your field of study.

Wednesday, Sept. 20 6 p.m.

Call Us Today To Reserve A Seat. 967-2967

STANLEY H. KAPLAN Take Kaplan Or Take Your Chances

Authentic Brazilian Bikinis



SPLASH RIO

10% OFF with Student ID 933 E. University #108 968-3086

Tues.-Fri. 1 p.m.-7 p.m. Saturday 10 a.m.-4 p.m.

live! FRI. NITE

MARCONIAS PLAYS GUITAR

NO COVER

SAT. NITE LIVE!

VOLLEYBALL JAM w/ MARCONIAS from HALF-TIME ON... Crawling distance from the stadium

Arizona's 1st and Only Brew Pub

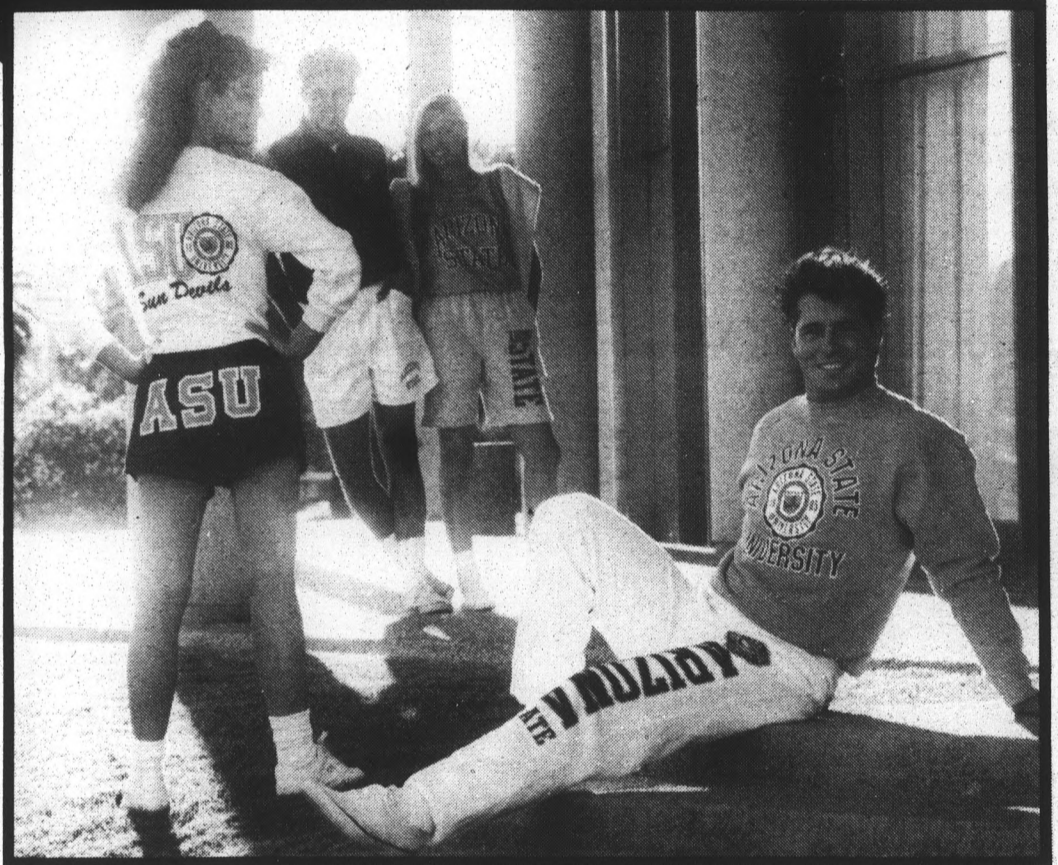
BANDERSNATCH BREWPUB

5th St. & Forest 966-4438

Est. 1988



FOOTBALL SEASON SAVINGS



Assorted ASU T-Shirts Reg. \$14.95-\$19.95 SALE \$9.99-\$15.99

J & M Short Style Boxer Reg. \$9.95 SALE \$6.99

Assorted ASU Tank Tops 20-50% OFF

Selected ASU Golf Shirts Reg. \$21.95 SALE \$15.99

Arizona State Sweat Shorts (white only) Reg. \$23.95 SALE \$14.99

COMING OCTOBER 6TH SPECIAL SAVINGS ON CHAMPION SWEAT SHIRTS

GO SUN DEVILS!



10% Off the purchase of 2 or more sale items

Void w/other offers.

Expires 9-22-89



FREE Pom Pon with any purchase with coupon

Expires 9-22-89

Located in the Cornerstone at Rural & University • Tempe

829-1743 Open: M-S 10 am-9 pm Sun 12 pm-6 pm

The friendly mini-storage people

5'x5'.....\$12
 5'x10'.....\$20
 10'x10'.....\$32
 10'x20'.....\$44

Arizona Storage Inns

Special Discounted Prices
 Limited time offer.

2235 W. First Street Tempe 967-0210

News Sports Entertainment
 Advertising Photography
 Review Client
 Management
 Planning
 Promotion

state press

WINDOW TINTING PLUS

STUDENT SPECIAL \$79.95
 MOST 2 DOOR CARS

INCLUDES: • SCRATCH RESISTANT UPGRADE
 • LIFETIME GUARANTEE

CLASSIC AUTO SHOPS
 WINDOW TINT SPECIALISTS

TEMPE 3414 S. Mill Ave. 966-0731	MESA/CHANDLER 3050 S. Country Club 497-0101	CENT. PHX 4545 N. 7th St. 274-2665	N. PHX 15846 N. Cave Creek Rd. 493-5000
---	--	---	--

HOLLYWOOD Alley™

Thurs Cactus Kidd & The Accoustic Squid
 Fri 40 Years with The Voice
 Sat No Love City
 Sun & Mon Tall Heart accoustic & slide guitar
 Tues Joe Myers intense guitarist
 Wed insane Open Mic bands, accoustics & eccentrics

on Baseline, east of Price
 820-7117
 killer food, hot music, cool time

SUNSET camera

Passport Photos
 2 for \$6.57

Film Processing
 2 for 1
 OR
FREE FILM
 Monday & Wednesday on Develop & Print Orders

ILFORD
 Photo Paper
 25 — 8x10 \$11.08
 100 — 8x10 \$38.48

SUNSET CAMERA
 Tempe Center — Mill & Univ.
 829-0424

2 LARGE CHEESE PIZZAS & 2 LARGE SODAS \$6.95

TOPPINGS \$1.50, COVERS BOTH PIZZAS

FAST FREE 30 MIN. DELIVERY
 (Limited Delivery Area. \$5.00 Min. Delivery)

PAPA JAY'S PIZZA
 804 SOUTH ASH (2 BLOCKS WEST OF MILL)
 966-4292 966-1003
 ASK ABOUT OUR DAILY SPECIAL

FRESH DOUGH MADE DAILY • WE USE 100% REAL MOZZARELLA

OPEN 7 DAYS A WEEK
 CHECKS ACCEPTED WITH I.D.
 Subject to change without notice

Come Get A Tan...As Fast As You Can.
 IT'S HERE AT
U-TAN

SUN YOUR BUNS
 GET THAT DARK TAN NOW!!

FALL SPECIALS
 1 mo. unlimited only 39.99
 2 wk. unlimited 24.99
 30 minute sessions in beds and booths

WE ALSO HAVE
EUROPEAN BODY WRAPS
 SHAPE UP FOR SUMMER

Wolf System

966-6650
 215 East 7th Street

\$1.00 Off Any Package
 offer valid with coupon only

\$800 Shampoo/Cut
 introductory offer Reg. \$13⁰⁰

ASU Students Always \$10 w/I.D.

Closed Sunday & Monday

WIZZARDS
 1041 E. Lemon
 967-2360

DISCOUNT BICYCLE
 QUALITY PRODUCTS
 ALWAYS DISCOUNTED PRICES!!

Your New Center for Quality Cycling
 Products at Factory Outlet Prices
 featuring end of model year closeouts and
 factory overstocks at unbelievably low prices

SAVE

NEW Mountain Bikes
 fully equipped for school. U-Lock, book rack, water bottle and cage

\$145⁰⁰
 assembly included

COMPARE TO OTHERS AT \$300

EXPERT REPAIRS On ALL Makes

DISCOUNT BICYCLE
 next to ASU at Lemon & Rural
 just behind Circle K on Lemon

966-0842

Back to School Hours: Monday-Saturday 8-8, Sunday 11-5

Dry night not the real worry for those caught with fake IDs

By **KIMBERLY HARRIS**
State Press

"Excuse me, may I see some ID?" If you attend any bars in the ASU area and are under 21, you may cringe a little when you hear this question. But if the ID shown is fake, you have a valid reason to worry.

Falsified IDs also pose problems for owners of Valley liquor stores and bars.

Tad Kern, court clerk under Judge Stephen Mirretti, said the maximum charge for unlawful use of a license is six months in jail and a \$2,500 fine.

"If there is a conviction, the license can be revoked for one year," Kern said, adding that it is also a class one misdemeanor.

Sergeant Al Taylor of Tempe police said the use of altered or fake IDs are something to take seriously.

"We deal with the circumstance when it arises, we enforce the rules, and the offender will have to suffer the

consequences," Taylor said.

"We like to think of ourselves as proactive rather than reactive," Taylor said, describing the force's approach.

He said patrol officers will see what the "hot spot" is for the night, and they will keep an eye on it. If, for instance, the police receives a call for a disturbance such as a fight in the parking lot, officers will make their presence known.

Patrolmen will point out suspected underage drinkers and ask them to show ID.

Taylor added that if officers have questions about an ID's validity, they will usually ask the holder to state his date of birth or address.

"If we have to ask 'what do you mean you don't know your birthday?' we'll make the arrest (or citation)," he said.

However, this action is not enough for Tempe bar owner Dick Ryan. The six-year owner of Cannery Row on south Forest

Avenue said the use of fake IDs is a major problem at ASU.

"No one is doing anything about it," he said.

Ryan said the burden has been placed on the bar owners.

"The Liquor Board can fine the owner anywhere from \$500 to \$1,000. If a ticket is issued (by police), then a copy is sent to the Liquor Board and the owner of the establishment has to appear in court," Ryan said. "This doesn't solve anything."

Ryan feels so strongly about the issue of fake IDs at ASU that he has decided to run for Tempe City Council.

"What we should do is have a universal 'drinking ID' that is issued only through the Liquor Board," Ryan said, adding that this form of ID would be the only acceptable proof of age at Valley bars and liquor stores.

"If the state won't get involved, we should

get the University involved by having the date of birth on the ASU ID, and use that as the only form of identification to enter a bar in our area," he said.

Leon Shell, dean of Student Life, said the problem with Ryan's idea is that it poses a consistency dilemma.

"I don't see how a student could be turned away if they have a legal driver's license," Shell said.

Ed Chiongbian, owner of Edcel's Attic in Tempe said Edcel's is the strictest bar in the Valley with carding.

"We check IDs (for validity), and if we feel the ID is fake, we will confiscate it. The problem is not solved if we give the ID back because we will only place the burden upon ourselves," Chiongbian said.

"If the drinking age were lowered, then there would be less fake IDs. Drinking would be more controlled in that drinkers would more responsible if they are in a public situation," he said.

Professor: Harassment results from 'misplaced courtship'

By **KELLY JAIN**
State Press

The traditional belief that sexual harassment in the workplace is a way for men to have power over women is rebuked in a new study by an ASU professor.

According to a study by communications professor Jess Alberts, sexual harassment results from "misplaced courtship."

"We're brought up to see each other first and foremost as mating partners, even from early childhood," Alberts said in her sexual harassment study, which will be published next spring. "However, when this attitude carries over into the workplace, it becomes 'misplaced courtship.'"

Alberts said that if men have not been raised with the attitude that women can be friends, it may be difficult for them to treat women in the workplace solely as friends or co-workers.

For example, the recently released movie, "When Harry Met Sally," challenges the idea that men and women can just be friends.

In her study, Alberts stated that participants may view

sexual teasing as a form of courtship behavior.

Because men and women have interacted throughout most of their lives in the courtship setting, it is no surprise that sexual teasing is transported into the organizational setting, she stated.

"What is surprising are the different attitudes between men and women," Alberts said.

Her study found that men often view sexual teasing as a normal interaction between men and women, but women often argue that it is inappropriate in the workplace.

In the work setting, men are usually in higher positions with more power and therefore can initiate courtship interactions without getting in trouble, Alberts said.

But women are often tied to their jobs for economic and career reasons, and they cannot easily walk away from the interaction, she said.

"In a bar, if a woman is teased she can just walk away," Alberts said, adding that therefore sexual harassment at work is much more threatening than in a relationship outside of work.

A variety of studies concluded that the majority of working

women have, at one time or another, been subject to sexual harassment, Alberts said.

"We need to teach men and women new ways of interacting, besides viewing each other only as courtship partners," Alberts said.

Besides formulating the misplaced courtship theory, Alberts' study also reinforced the "double-bind" theory.

"The theory says that no matter how women reacted to it, the harassment continued and often got worse," Alberts said.

Alberts said she surveyed the reactions of 40 women placed in sexual harassment situations. Almost 70 percent of the women chose to ignore the harassment, which continued or worsened, the study found.


Even for the 20 percent that spoke out against the harassment, the situation did not get better.

Alberts said it is frustrating to note that even if the women complained about the treatment, she was often blamed.

Only 10 percent made any type of formal complaint.

According to the study, the perpetrator often answers the complaint with an attack: "I was only being friendly, you're too sensitive."

Oregon's PIZZA



ALL YOU CAN EAT BUFFET
PIZZA • SALAD • PASTA

LUNCH (11 am-2 pm)..... \$3.39
DINNER (5-8 pm)..... \$3.99
FREE POP REFILLS KIDS UNDER 5 FREE

GREAT PEPPERONI PRICE SLICE
ONE MEDIUM PEPPERONI PIZZA
AND A PITCHER OF
YOUR FAVORITE BEER

ONLY \$4.99
EVERYDAY
8 pm-CLOSE
SAVE OVER \$5.00
BUDWEISER
BUD LIGHT
MICHELOB

ASU/TEMPE
Tempe Center
945 S. Mill at 10th
894-1234

Imported
Bottle Beers: Heikenen—Molson Golden—Kirin Dry

MICHELOB

BUD LIGHT

Budweiser

Oregon's PIZZA

WEEKEND
BUFFET SPECIAL
FREE DRINK
W/Purchase of Buffet
Present this coupon when ordering. One coupon per customer. Not good with any other offer.
Expires 9-25-89

Oregon's PIZZA

BUY A LARGE
PIZZA
At Our Regular Price &
Get a **PITCHER** for a
PENNY
You Must Mention
This Ad
Not good with any other offer or coupon.

FREE DELIVERY 894-1234

Now... Play By Your Own Rules.

Scooters from...

\$499*

W/Copy of Ad



Elite™ 50 E

- Great on Gas
- Low Insurance
- Easy Maintenance
- Easy Parking
- Bring in Your ASU I.D. for Discounts
- Free Pick-up & Delivery

Elite LX's!
CH80's!!
Elite 150!!!
Helix's!!!!
ALL SALE PRICED NOW!!!!

Come Ride With Us!

*Dest. & Prep Add'l

TOWN & COUNTRY — HONDA BMW

1701 N. Arizona Ave. (3 miles south of Superstition on Country Club)
East Valley # 899-9088 Phoenix # 275-3001

Gallup poll: English language spells trouble for Americans

By JOIE ANN LaPOLLA
State Press

Americans are the worst spellers in the English-speaking world, a recent Gallup poll found, and ASU officials said poor spelling is a lifelong affliction.

"(Spelling) instruction after the eighth or ninth grade doesn't do very much good," said David Schwalm, ASU's director of first-year composition. "It seems that there are people who are just good spellers."

J.J. Lamberts, a former ASU professor who currently runs a grammar hotline, said both faculty and students encounter spelling difficulties.

'(Spelling) instruction after the eighth or ninth grade doesn't do very much good.'
—David Schwalm

"The number of people who are good spellers is limited," he said.

The poll utilized the results of a 10-word spelling quiz that was given to more than 4,200 men and women from the United States, the United Kingdom, Canada and Australia. Each person was asked to spell "magazine," "sandwich," "kerosene," "calamity," "penitentiary," "picnicking," "deceive," "accelerator," "cauliflower" and "parallel."

The same test was given to an ASU

journalism class Thursday. Out of the 12 students, two had perfect scores and two missed at least six words. The other scores varied.

"I don't consider myself a good speller," said John Taylor Coe, a senior journalism major who missed the word "penitentiary." "We haven't been given enough practice in spelling."

But now poor spellers can rely on computer technology to correct their errors as spelling checks and proofreaders are parts of word processing programs.

"Spelling as a problem will go the way of the slide rule," said ASU English professor David Brink, who teaches a course on English grammar and usage.

However, spelling problems will probably increase as more people use computer spell checkers, he said.

Coe agreed, "It's sad if people stopped learning how to spell."

Lamberts said that most people do not want to take the time to learn to spell correctly, and English pronunciation often confuses spellers.

"Most Americans figure that (good spelling) isn't worth the trouble," Lamberts said. "And spelling doesn't represent pronunciation at all."

Most people "panic spell" and guess at words, he said.

According to the Gallup results, a majority of the American participants were only able to spell four out of the 10 words and had the most trouble with "penitentiary."

Out of the 12 ASU students who took the same test, nine misspelled "penitentiary."

Sports

MAME Finalist Best Product Design

Single Story Townhomes

Now you can have the privacy and comfort of a SINGLE STORY townhome priced from the \$60's

Lakeside Villas

Call for your FREE information booklet today

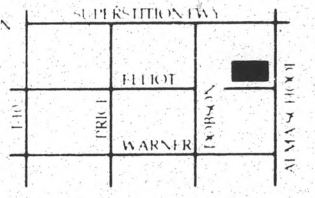
730-1334

Models open 10-6 daily
CO-BROKE WELCOME

Sales by OGAUGHAN REALTY
Another development by Lemon Tree Village, Inc.
*8.875% AZ Revenue Bond



- Standard Features:
- Two and three bedrooms
 - Fireplaces
 - Washer, dryer, refrigerator
 - Fully landscaped
 - FHA/VA financing
 - Mini blinds
 - Pool, spa, ramada
 - Private courtyards



Northwest corner of Alma School & Elliot
Call 730-1334

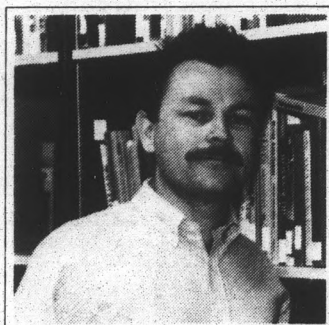
Birthwrite

Growing Up Hispanic

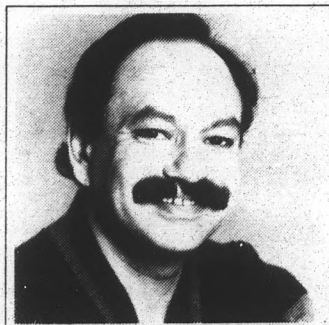
ASU award-winning poet and short story writer Alberto Rios is profiled in this docu-drama about the contemporary Hispanic experience as seen through the writings of Mexican-American and Puerto Rican authors. Hosted by Cheech Marin, the program features interviews with the writers and dramatizations of their works.

This nationally broadcast KAET production also features Edward Rivera, Rolando Hinojosa, Nicholasa Mohr, Lorna Dee Cervantes, Judith Ortiz Cofer, Alejandro Morales and Tato Laviera.

KAET salutes Professor Rios for his national acclaim, and acknowledges the assistance of ASU's Hispanic Research Center in this project.



Alberto Rios



Cheech Marin

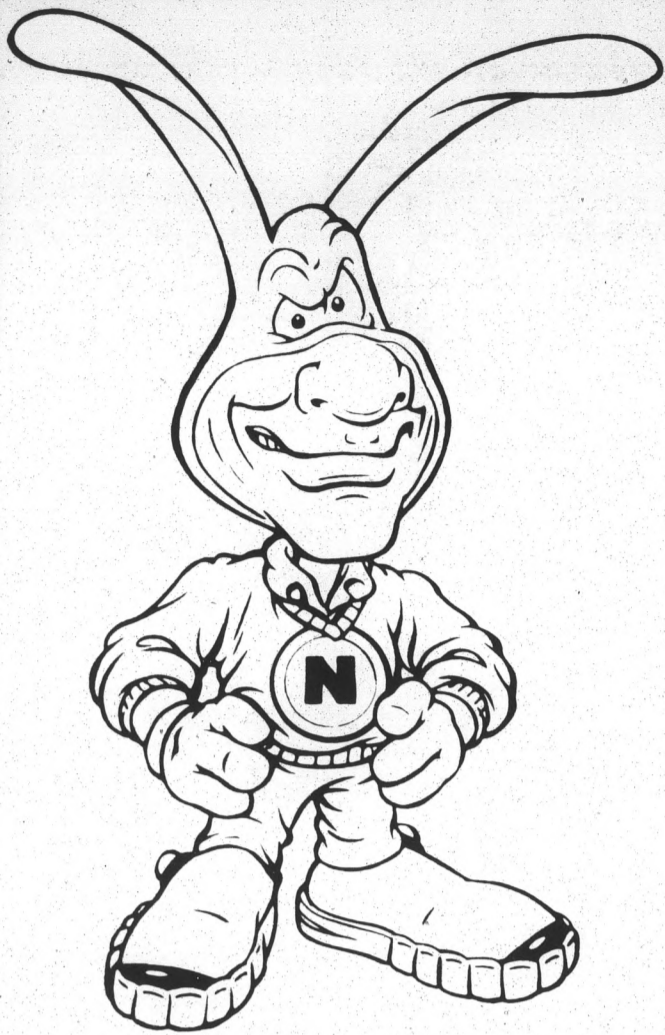


Judith Ortiz Cofer

Saturday at 7pm

Part of Arizona State University





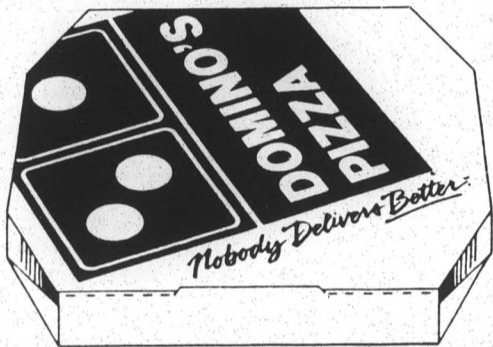
BIG NOID ON CAMPUS.

CUT COUPONS NOT CLASSES

With Domino's Pizza, great pizza is only a call away. Fresh, custom-made pizza, DELIVERED, in 30 minutes or less. Use the coupons below for additional great savings. When it comes to pizza, Domino's Pizza is at the top of the class.



Nobody Delivers Better.



\$4.89 SPECIAL

VALID MONDAY THRU WEDNESDAY ONLY.

Only \$4.89 plus tax for an Original Medium one-item pizza. No other coupons or offers valid with this special. Valid at this Domino's Pizza location only. Limited time only. Please mention this special when ordering.

THE PIZZA PEOPLE OF ASU

968-5555
903 S. Rural Rd.

HOURS:
11:00am-1:30am Sun.-Thurs.
11:00 am-2:30am Fri.-Sat.

Our drivers carry less than \$20.00. Limited delivery area to insure safety. 1989 Domino's Pizza.



<p>\$9.99 ONLY \$9.99 + tax for an Original Extra-large one-item pizza and four Cokes. One coupon per pizza. Not valid with any other offers or specials. Expires: 10/15/89</p> <p> <i>Nobody Delivers Better.</i> 161 STPR Subject to all applicable state & local tax.</p>	<p>\$6.99 ONLY \$6.99 + tax for an Original Medium two-item pizza and two Cokes. One coupon per pizza. Not valid with any other offers or specials. Expires: 10/15/89</p> <p> <i>Nobody Delivers Better.</i> 129 STPR Subject to all applicable state & local tax.</p>	<p>\$1.25 \$1.25 OFF any Original Extra-large one or more item pizza. One coupon per pizza. Not valid with any other offers or specials. Expires: 10/15/89</p> <p> <i>Nobody Delivers Better.</i> STPR Includes all applicable state & local tax.</p>	<p>\$1.00 \$1.00 OFF any Medium Pan or Original one or more item pizza. One coupon per pizza. Not valid with any other offers or specials. Expires: 10/15/89</p> <p> <i>Nobody Delivers Better.</i> STPR Includes all applicable state & local tax.</p>
---	---	--	--

NOW HIRING AT 903 S. RURAL - 968-5555

Calvin and Hobbes

by Bill Watterson The Far Side by Gary Larson

OK, MOE'S GOT HIS BACK TO ME! NOW I'LL ZIP OVER, STEAL MY TRUCK BACK AND RUN LIKE CRAZY!

HE'LL NEVER KNOW WHAT HIT HIM! BY THE TIME HE SEES THE TRUCK IS GONE, I'LL BE A MILE AWAY! IT'S A FAIL-PROOF PLAN! NOTHING CAN GO WRONG! IT'S A SNAP!

THERE'S NO REASON TO HESITATE. IT'LL BE OVER IN A SPLIT SECOND, AND I'LL SURE BE GLAD TO HAVE MY TRUCK BACK! I'LL JUST DO IT AND BE DONE! NOTHING TO IT! IT'S EASY!

OBVIOUSLY MY BODY DOESN'T BELIEVE A WORD MY BRAIN IS SAYING.

9-15

1982 Chronicle Features Distributed by Universal Press Syndicate

"Now this end is called the thagomizer ... after the late Thag Simmons."

Doonesbury

by Garry Trudeau

HEY, EVERYBODY! LOOK WHO'S HERE!

HI, MOM!

HELLO, MRS. RED-FERN!

WHERE'S MY GRAND-DAUGHTER?

I DUNNO. SHE WAS HERE A MOMENT AGO. MIKE, WHERE'S ALEX?

HOW THE HELL SHOULD I KNOW WHERE SHE IS?

SHE IS YOUR DAUGHTER, MICHAEL.

WHAT'S YOUR PROBLEM?

I'M SORRY IT'S JUST I'M ABOUT AT MY LIMIT!

WHAT LIMIT'S THAT, BUBBY?

AIEE!

9-15

©B Trudeau

Ivory Towers

by Mike Ritter

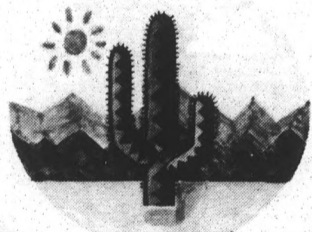
9-15

TIME TO CLEAN THE FRIDGE.

CLICK

state press DON'T MISS IT!

See your world more clearly



AFTER RADIAL KERATOTOMY

Attend our **free radial keratotomy seminar** to find out more! RK is a highly successful outpatient surgical procedure to correct nearsightedness and astigmatism. Seminars include a slide show, discussion with ophthalmologist, Dr. Gary Hall or Dr. Michael Campion and an RK Patient, handouts, refreshments and more. Seminars are held 7:00pm-8:30pm.

Reservations are requested. **Call 957-6799 today.**

Monday, Sept. 18 - Crescent Hotel, West Dunlap & I-17, Phoenix

Tuesday, Sept. 19 - Gary Hall Eye Surgery Institute, 2501 North 32nd Street

Wednesday, Sept. 20 - Mesa Hilton Pavilion, Alma School & Superstition Freeway

Gary Hall Eye Surgery
INSTITUTE P.C.

2501 N. 32ND ST., PHOENIX 957-6799 ■ TOLL FREE (IN AZ.) 1-800-722-6799
CHANDLER 899-1818 ■ GLENDALE 842-1000 ■ CASA GRANDE 836-8773

PACINO

In search of a killer, he found someone who's either the love of his life... or the end of it.

SEA OF LOVE

MARTIN BREGMAN PRODUCED BY
AL PACINO ELLEN BARKIN JOHN GOODMAN
HAROLD BECKER WRITER "SEA OF LOVE" BY TREVOR JONES PRODUCED BY MICHAEL SCOTT BREGMAN
WRITTEN BY RICHARD PRICE PRODUCED BY MARTIN BREGMAN AND LOUIS A. STOLLER
DIRECTED BY HAROLD BECKER

R RESTRICTED
PARENTS STRONGLY CAUTIONED
SOME MATERIAL MAY BE INAPPROPRIATE FOR CHILDREN UNDER 17

OPENS FRIDAY

Spikers battle mighty, unbeaten Beavers

By VICKI CULVER
State Press

Tonight, the ASU volleyball team plays Oregon State in the Sun Devils' second-consecutive home match, starting at 7:30 p.m. in P.E. East.

The Beavers, whose opening record is 9-0, as compared to the Sun Devils' 5-4 record, lost both times to ASU last year, 3-1.

But with Oregon State having a fully returned starting squad, ASU Coach Patti Snyder said it should be a tough Pac-10 competitor.

"Oregon State is a smaller, scrappy team," she said. "They are frustrating to play. I'm expecting a tough battle."

OSU Head Coach Guy Enriquez is new to coaching in the Pac-10. In his first season with the Beavers in 1987, he won only three matches. Last season, he jumped to 13 victories, making his overall Oregon record 16-49.

"Oregon State is a much improved team — Enriquez gets the maximum out of his players," Snyder said. "Offensively, they try a lot of different shots."

Enriquez' most promising players are juniors Tricia Becker and Julie Leamon. Becker led the team last year in digs, with a 3.88 average, while Leamon earned the highest offensive statistics.

Having lost two leading players from last year's Sun Devil squad which finished 20-13 overall, Snyder said her team is being overlooked as a high-ranking Pac-10 contender.

She claims, however, that the underdog ranking will be to the team's advantage in Pac-10 matches.

"We graduated two stars, and we definitely have some gaps to fill," Snyder

said. "Now, we're unknowns, which is good."

Snyder said USC, UCLA, California and both of the Oregon teams did not graduate anyone this year. She also said, however, that a lot of the teams' star players are in their last year of eligibility — leaving the door wide open for younger teams.

This season, Snyder said she will be happy to rank anywhere in the Pac-10.

"Even 10th place in the Pac-10 is tough," she said. "Nothing is a given. There is no one in that conference that is a walk-over."

Sun Devil notes

Before watching Saturday's ASU football matchup with the San Jose State Spartans, spectators should take notice of a few items:

Head Coach Claude Gilbert is no stranger to Sun Devil Stadium.

As a player for San Jose State University in 1958, Gilbert and the Spartans upset the Sun Devils, 21-20, in the third game ever in the facility.

Although Gilbert was a game captain and the Spartans won the game, he does not have many fond memories. He suffered a leg injury in the contest that ended his collegiate career.

The crowd of 29,000 was the largest ever for a sporting event in Arizona at the time.

Gilbert on the Sun Devils:

"It will be very ambitious as well as challenging playing the Sun Devils. They're very strong, very big as well as active. They're a top-quality team.

"Two things concern me. One, the size, strength and quality of their team. Two, so many of our new players are lining up for the first time in a big-time setting with a large audience.

"The question is how our inexperienced players will react to the atmosphere.

ASU leads the 27-game, 54-year-old series with the Spartans 16-11-0. The Sun Devils are 11-5 against SJSU in Sun Devil Stadium and 5-6 at San Jose.

The series began in 1936 with a 33-6 Spartan victory. SJSU won the first four games of the series, but ASU has won 16 of the next 23.

Saturday's game will be the fourth time the two teams have met in the 1980s, the last time in 1984 when ASU won 48-0.

ASU has won 14 of its last 16 non-conference games, dating back to Sept. 1985.



Sun Devil defenders Pat Mason (94), Mark Tingstad (59) and Israel Stanley (9) bury a Kansas State ball carrier last Saturday at Sun Devil Stadium.

SJSU has won six of its last nine season openers. In the decade of the 1980s, the Spartans are ranked second in the nation in passing offense (267.63 yards per game), seventh in total offense (404.87 ypg) and second in rushing defense (112.66 ypg).

ASU gave Head Football Coach Larry Marmie a 2-0 record in season openers last Saturday with a 31-0 shutout win over Kansas State. It was the Sun Devils' first shutout victory since 1986 when ASU clinched the Pac-10 Conference title and Rose Bowl berth with a 49-0 blanking of California.

ASU grapplers seek another national championship title

By JOEL HORN
State Press

Experienced. Hungry. Intense. Talented. These words are often used by coaches to describe athletes, but in the case of one Sun Devil team, they have a ring of truth.

The 1989-90 ASU wrestling team has set a goal of winning its second NCAA national championship title in the past three years.

"We feel that we have a chance to do that," said Head Wrestling Coach Bobby Douglas. "Our people have worked throughout the summer with that goal in mind.

"The attitude is right. The work habits are right."

Douglas, entering his 16th campaign at ASU, said the team will be led by Zeke Jones, Thom Ortiz, Junior Saunders and Dan St. John.

The four wrestlers were among 13 NCAA All-Americans who were selected by the National Wrestling Coaches Association to compete in Palermo, Italy, last summer.

Jones, a senior, recently finished seventh in the World Cup Championship in Martigny, Switzerland. He earned All-America honors in the 114½-pound division at the 1989 NCAA Championship and gained a spot on the World Cup team after winning the gold medal at the U.S. Olympic Festival.

Douglas said Jones, who will wrestle at 118 pounds this season, set two goals when he enrolled at ASU — winning the NCAA

title and a gold medal in the 1992 Olympics in Barcelona, Spain.

"Zeke was on a five-year plan when he came here," he said, "and I'd say he's on schedule."

Ortiz, whose brother Eddie was an All-America at ASU in 1980, finished seventh at the 1989 NCAA Championship and second in the Pac-10.

"He has a good chance to win the national title at 142 (pounds)," Douglas said. "He's experienced and he's very hungry for the title."

Saunders, a senior, finished second in the 1989 NCAA Championship. He claimed the 1987 NCAA Division-II 142-pound title while attending Cal State-Bakersfield and may compete at 150 pounds this year.

Douglas said Saunders, who has the same goals as Jones and Ortiz, was "a blink away from being a national champion" last season.

St. John, a junior, also has aspirations for gold in Spain. He was the 1989 NCAA individual champion in the 158-pound weight class, but will compete in the 167-pound class in 1989-90.

"He has had a Cinderella career here,"

Douglas said. "He should set several team records that will stand for a long time."

St. John who has 107 career victories, including his last 35 matches for fourth-place on the all-time ASU win list. He is 29 wins shy of Mike Davies record.

Sophomore H. LeShawn Charles, a prep All-America from Tucson, will wrestle at 126 pounds this year. Douglas said the winner of three-successive state titles is young and inexperienced, but very talented.

ASU has a logjam at 134 pounds, with three talented wrestlers vying for mat time. Among the competitors is sophomore Marco Sanchez.

"Marco had a great season as a freshman," Douglas said. "He has piled up a lot of experience and he'll definitely be in the thick of the team battle for 134."

Also fighting for the 134-pound spot is sophomore Wayne McMinn and senior Andrew McNaughton, who has been plagued by injuries in the past.

Douglas said McNaughton is experienced and has the potential to have a great year, but he will be pushed hard by the depth in the weight class.

Sophomore Ray Miller, who Douglas labeled "a great prospect," will wrestle at 158 pounds.

"Ray has got the potential to make an impact early," Douglas said. "He has a lot of intensity and has set high goals."

Sophomore G.T. Taylor has moved up to the 177-pound division after being named to

the freshman All-America team at 158 pounds.

"G.T. has the potential for greatness," Douglas said. "He will have to adjust to the weight, but he could have a great year."

Sophomore Rex Holman, who Douglas said has intensity and great work habits, is scheduled to start at 190 pounds.

Mike Anderson (6-foot-8) will be the Sun Devils' heavyweight this season.

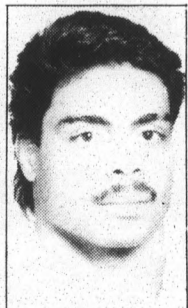
"Mike has the potential to be a great wrestler," Douglas said. "A lot of it depends on his attitude. He's got a lot of work to do."

Douglas, who will coach the U.S. freestyle team in the 1992 Olympics, has brought another excellent freshman class to ASU. Included in that group are Gary Witherspoon, a four-time state champion, and Tim Gressley, a three-time Arizona runner-up.

Douglas said the ASU's primary national competition to come from the University of Oklahoma, Oklahoma State University, the University of Iowa and the University of Minnesota.

The Sun Devils will see their first official competition in the St. Louis Open Nov. 17-18. A prominent home schedule includes matches with Iowa State, Oklahoma, Minnesota, Iowa and Oklahoma State.

"We are entering the season with a lot of optimism," Douglas said. "There's a lot of enthusiasm, not only in the wrestling room, but in the community."



Saunders

Football cherished by ex-ASU star

By JOEL HORN
State Press

After nearly a year away from football, Vernon Maxwell is back in the lineup.

Maxwell, ASU's most valuable player in 1982, will start at right outside linebacker for the Seattle Seahawks when they go to battle with the Phoenix Cardinals Sunday.

"It feels great," he said. "I've been out for a while. The Lord has taken care of me."

"When you're in it, you can win it."

Maxwell, a three-time All-Pac-10 honoree, tore a muscle in his foot early last season while playing for the Detroit Lions and was released.

While in Detroit, Maxwell played for former Sun Devil Head Coach Darryl Rogers. Although he was recruited to play for ASU by former Head Coach Frank Kush, Rogers was head man for three of the former All-Americans four years in Tempe.

"Things didn't go as I expected them to go," the four-year letterman said. "Frank Kush is a hell of a motivator. You might not always like him, but you respect him every day of the week."

Maxwell won the Sun Angel Award in 1982 and played in the Senior and Hula Bowls. He maintains ties to ASU, owns a home in Tempe and spends his off-seasons in the Valley.

This summer, Maxwell said he was treated to a guided tour of the new luxury skyboxes and press box at Sun Devil Stadium. The training facilities and weight room in the ICA Building also were at his disposal.

Maxwell said he is optimistic about the present and future of Sun Devil football.

"It seems like a lot of positive stuff is going on there," he said. "(ASU Head Coach Larry) Marmie seems like a good guy and a great coach."

"If things go according to Marmie's personality, things are on the upswing."

Maxwell, who is originally from Los Angeles, said he is ecstatic to be in Seattle.

"Seattle is great," he said. "It's green, clear and there's no smog. It's like paradise here."

"The greenery adds life and spirit. It's the perfect place to play ball."

Maxwell said he was not additionally motivated to face the Cardinals.

"I'm geared up for every game," he replied. "I guess there is added incentive playing a team from Arizona."

"Just the fact that I'm playing is motivating enough."

Maxwell, who had two solo tackles and one assist in the Seahawks' season-opening loss to the Philadelphia Eagles, said the Seahawks' defense will be well prepared for the Cardinals.

"We'll go out and execute what we have practiced," he said. "We'll do the best of our ability to hit and run to the ball."

Seattle and Phoenix will clash in the Kingdome at 1 p.m. Sunday.

The Seahawks, who won the American Football Conference's Western Division last season and went to the conference final, have high expectations in 1989.

"I think we're going to do great," he said. "It's a step-by-step process, but we're going to bust our tails and make it happen."

Religion has been a motivating factor in Maxwell's life.

"Desire is the key," he said. "You can be as good as you want to be."

"The Lord has put me in the right situations. The glory is all His. I was just a tool."

Originally drafted in the second round by the then-Baltimore Colts in 1982, Maxwell was an instant success. His career went downhill rapidly after that.

"That was so long ago, I forgot," he said. "Let's concentrate on the present."

"It's so precious."




Sports Information photo

Former ASU linebacker Vernon Maxwell, a first-team All-America and a Lombardi Trophy finalist, now plays with the Seattle Seahawks.

TAKE CARE OF THE STUDENT BODY.

Blue Cross and Blue Shield now offers Preferred Care, an affordable supplementary health insurance plan available to all enrolled students who are eligible for care at the Student Health Center. Giving you the best level of benefit when used with Student Health Services. To find out more, stop by the Student Health Center or call 965-2411. Last day to enroll is September 25.

Student Health Services Benefits: (automatically available to all enrolled students)	Preferred Care Benefits: (additional health insurance from Blue Cross & Blue Shield)
<ul style="list-style-type: none"> • Medical care visits • Mental health visits • Referrals to specialists in gynecology, dermatology, surgery, neurology, orthopedics, and ear, nose and throat* • Health education and preventive services • Allergy injections (student must provide extract)* • Orthopedic devices (crutches, canes, casts, etc.)* • Laboratory tests* • X-rays* • Pharmacy* 	<ul style="list-style-type: none"> • Pays lab and X-ray charges incurred at Student Health Center (no deductible or co-pay) • Biodyne Centers Mental health services—No deductible or co-pay • Medical Care with Preferred Providers*—including hospitals. Pays 80% of eligible expenses after \$100 deductible up to \$4,000 \$100 deductible waived if referred by Student Health (following treatment) providing you with the best level of benefit • Medical Care with Preferred Providers pays 100% of eligible expenses after \$4,000 paid for Preferred Providers • Medical Care with Non-Preferred Providers pays 70% of eligible expenses after \$200 deductible • Pays up to a total maximum of \$50,000 for each illness or accident • Coverage for dependents of insured students also available
*Fees may apply	*Preferred Providers include physicians, hospitals, laboratories with a special arrangement with Blue Cross & Blue Shield




NFL

SUNDAY'S SCHEDULE

Dallas at Atlanta, 10 a.m. Los Angeles Raiders at Kansas City, 10 a.m. Miami at New England, 10 a.m. New Orleans at Green Bay, 10 a.m. New York Jets at Cleveland, 10 a.m. Philadelphia at Washington, 10 a.m. Pittsburgh at Cincinnati, 10 a.m.	Phoenix at Seattle, 1 p.m. San Francisco at Tampa Bay, 1 p.m. Detroit at New York Giants, 1 p.m. Minnesota at Chicago, 1 p.m. Houston at San Diego, 1 p.m. Indianapolis at Los Angeles Rams, 1 p.m.
--	--

MONDAY'S SCHEDULE

Denver at Buffalo, 6 p.m.



Baseball

NATIONAL LEAGUE

THURSDAY'S RESULTS

Pittsburgh 4, St. Louis 3 Houston 11, Los Angeles 3	San Francisco 4, Cincinnati 3, 12 innings Atlanta at San Diego, (n)
--	--

FRIDAY'S SCHEDULE

St. Louis (Hill 7-12 and Terry 8-10) at Philadelphia (Combs 1-0 and Mulholland 4-6), 2:35 p.m.
 Chicago (Sutcliffe 14-11) at Pittsburgh (Heaton 4-7), 4:05 p.m.
 New York (Cone 12-7) at Montreal (De Martinez 15-5), 4:35 p.m.
 Cincinnati (Armstrong 2-1) at Houston (Rhoden 1-6), 5:35 p.m.
 Atlanta (Greene 0-0) at Los Angeles (R. Martinez 4-3), 7:35 p.m.
 San Diego (Rasmussen 8-10) at San Francisco (Knepper 7-11), 7:35 p.m.

SATURDAY'S SCHEDULE

Chicago at Pittsburgh, 11:20 a.m. San Diego at San Francisco, 1:05 p.m. St. Louis at Philadelphia, 4:05 p.m.	New York at Montreal, 4:35 p.m. Cincinnati at Houston, 5:35 p.m. Atlanta at Los Angeles, 7:35 p.m.
--	--

AMERICAN LEAGUE

THURSDAY'S RESULTS

Minnesota 2, Toronto 0
 Cleveland 4, Detroit 0
 Texas 10, Kansas City 4

FRIDAY'S SCHEDULE

California (C. Finley 14-8 and Abbott 11-10) at Chicago (Perez 9-13 and Dotson 4-9), 2:30 p.m.
 Seattle (Hanson 6-5) at New York (Hawkins 14-13), 4:30 p.m.
 Oakland (Moore 17-9) at Boston (Clemens 14-10), 4:35 p.m.
 Cleveland (Swindell 13-14) at Toronto (Key 11-13), 4:35 p.m.
 Kansas City (McWilliams 1-0) at Baltimore (Milacki 10-12), 5:05 p.m.
 Detroit (DuBois 0-2) at Minnesota (Aguilera 1-4), 5:05 p.m.
 Texas (Moyer 4-6) at Milwaukee (Navarro 5-7), 5:30 p.m.

SATURDAY'S SCHEDULE

Cleveland at Toronto, 10:35 a.m.
 Oakland at Boston, 11:20 a.m.
 California at Chicago, 4 p.m.
 Seattle at New York, 4:30 p.m.
 Kansas City at Baltimore, 4:35 p.m.
 Detroit at Minnesota, 5:05 p.m.
 Texas at Milwaukee, 5:30 p.m.


Blue Cross & Blue Shield
 of Arizona

You just can't do any better.



Texas trip begins season for cross country runners

By LARRY NEWELL
State Press

As the 1989 Sun Devil cross country team heads to El Paso, Texas, the squad takes with it optimism for its chances at the UTEP Invitational, its first test of the 1989 campaign.

"I expect the team to vie for top honors, as we have had good workouts and are in excellent physical condition," ASU Head Coach Ken Lehman said.

Similar to last season, this year's mens squad will be led by junior standout Todd Lewis. Todd captured a first place finish at the ASU Invitational and recorded a sixth place finish at the 1988 UC-Riverside Invitational.

"I look to win," Lewis said. "I feel that I am fully recovered from the knee injury I suffered last summer and I feel confident that I can go out and win the race."

Battling for the No. 2 spot on the Sun Devil squad will be seniors Mike Frick and Paul Boudreaux.

"Both Paul and Mike are running very well and have an excellent chance of finishing in the top 10 on Saturday," Lewis said.

Rounding out ASU's traveling squad will be senior Rob Dorf, sophomore Troy McKay, and freshmen Chris Guinnip and David Harkins.

Heading the women's squad will be senior Teresa Barrios, who ranks among the top female cross country performers in ASU history. Last season Barrios earned top 10 finishes in four of the Sun Devils' six meets, on her way to qualifying for the 1988 NCAA



Barrios
Championship.



Lewis

"We expect Teresa to be a leader on the team this season," Lehman said. "She should do quite well on Saturday and she definitely has the ability to place in the top 10."

Joining Barrios is senior Amy Komitzky, who last season recorded two top 10 finishes on her way to placing 33rd in the Pac-10 Championship.

"I feel that I've improved over last season, mostly in experience, as now I know how to use more strategy in my races," Komitzky said. "It's hard to tell how good the competition will be on Saturday, but I hope to finish in the top 15."

Also competing for top Sun Devil honors will be sophomore Kelly Cordell, who finished third at the ASU Invitational and 12th at the UC-Riverside Invitational.

"Kelly is running well and we expect her to finish high on Saturday," Lehman said.

Rounding out the women's traveling squad will be juniors Kathy Jarvis and Jill Sienicki and freshmen Shannon McKay and Michele Sosnowski.

Classifieds

LINER AD RATES:

15 words or less
\$3.00 per day for 1-4 days
\$2.75 per day for 5-9 days
\$2.50 per day for 10+ days
15¢ each additional word
The first 2 words are capitalized.
No bold face or centering



965-6731

CLASSIFICATIONS:

- | | |
|----------------------------|----------------------------|
| 1. Announcements | 17. Help Wanted |
| 2. Autos for Sale | 18. Instruction |
| 3. Trucks for Sale | 19. Jewelry |
| 4. Motorcycles for Sale | 20. Free Lost/Found |
| 5. Bicycles for Sale | 21. On-Campus |
| 6. Furniture for Sale | 22. Personals |
| 7. Tickets for Sale | 23. Pets |
| 8. Miscellaneous for Sale | 24. Restaurants/Bars |
| 9. Computers | 25. Services |
| 10. Real Estate for Sale | 26. Transportation |
| 11. Apartments for Rent | 27. Travel |
| 12. Townhomes/Condos | 28. Typing/Word Processing |
| 13. Homes for Rent | 29. Wanted |
| 14. Rental Sharing | 30. Adoptions |
| 15. Roommate Services | 31. Miscellaneous |
| 16. Business Opportunities | 32. Music |
| | 33. Photography |

HOW TO PLACE A CLASSIFIED AD:

In Person:
Cash, Check (with guarantee card), VISA or MasterCard. We're located in the lower level of Matthews Center, room 46H. Office hours are 8 a.m.-5 p.m. Mon.-Fri. You can also place your ad at the North MU Information Desk (fall and spring semesters only), between the hours of 9 a.m.-2:30 p.m. Mon.-Fri.

By Mail:
Send your ad (with payment) to State Press Classifieds, Matthews Center, Rm 15, Tempe, AZ 85287-1502

By Phone:
965-6731
Payment with VISA/MC only. \$6 minimum on all phone orders.

HOW TO CORRECT OR CANCEL YOUR AD:

Liner ads must be canceled before noon, 1 day prior to publication. No refunds will be given.

State Press Errors:
Check your ad the FIRST day it runs. Call 965-6731 with any corrections before noon. The State Press is only responsible for the first day the ad runs incorrectly. Corrected ads will be extended one day. Changes called in after the first day will not qualify for a make-good.

Customer Errors:
Corrections must be made before noon. Compensation will not be given for customer error.

Advertising Policy:
The State Press reserves the right to edit or reject any advertising copy submitted.

BUY IT. SELL IT. FIND IT.
CLASSIFIED.

ANNOUNCEMENTS

AMAZON ART house 1990! Struggling Lesbian Artists support group. Let's meet-get motivated, and do big art! Letter of intent to: TM, PO Box 26426, Tempe, Arizona 85285.

ASU SERIOUS! fun women athletes interested in playing intramural flag football. Call Courtney, 978-6495.

FREE GAME! Video game room now open. 903 South Rural, 105. Cinnamon Tree Center.

HANG-GLIDE! Our gently sloping man-made training hill. Safe and exciting. Fly all day. Windsports 897-7121.

ANNOUNCEMENTS

LOVE TO dance? Hate the bar scene? You'll love the All Singles Dances, every Friday and Saturday at better valley hotels. Recorded information 946-4086.

MARKET RESEARCH needs female, 18-24, who smokes full-flavor or low-tar cigarettes. Call Quick Test Opinion Center, 946-9972.

MARRIAGE OF the Sun and Moon: Resurrecting the masculine through working with the feminine. Lecture/discussion for men and women. Gentle Strength Co-op, Friday night series. 234 W. University, 7:30 pm, \$1, tonight.

ANNOUNCEMENTS

MODEL SEARCH Magazine---Free screening 389-6618.

MODEL SEARCH-Women 18 plus needed by Arizona Photographic Association. Call for details, 979-6711, message.

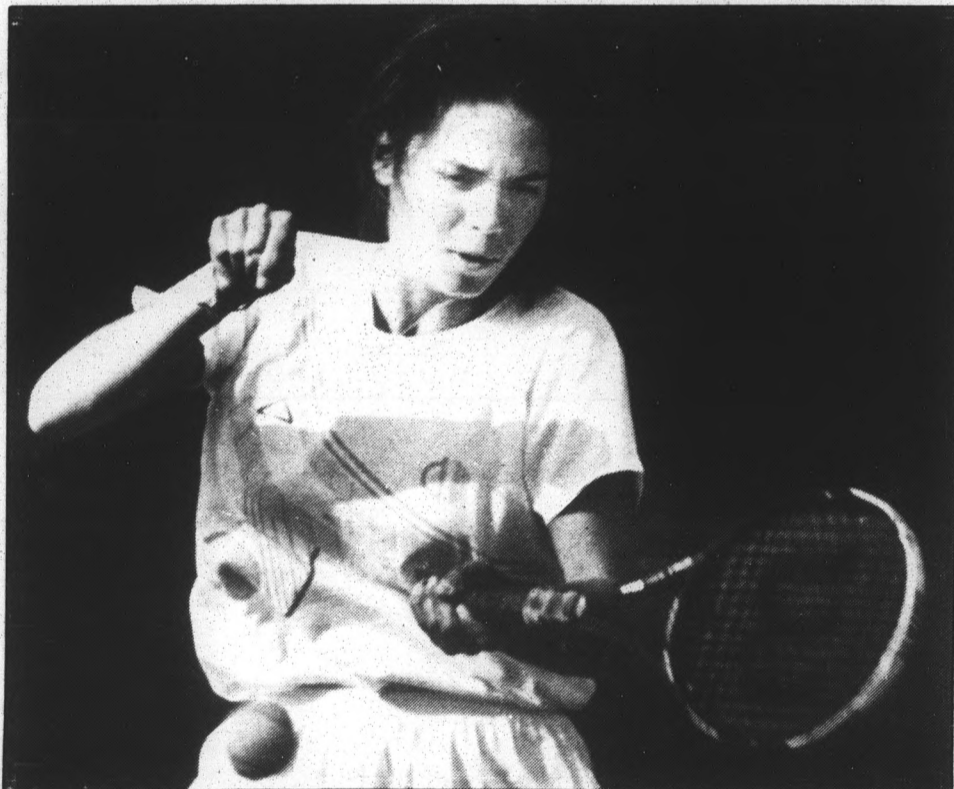
MOVIE EXTRAS needed for films, television, commercials, and videos. Strictly extras. 225-0242.

NEED CREDIT? Can an ASU student get a credit card? You betcha! 98% who call do! You can establish your credit now by calling Continental Credit. At 433-0887 or 433-0730.

SILVER LAKE Carriage presents Romantic Carriage Rides in Old Town Scottsdale/ Exclusive 5th Avenue. \$25/2, \$35/4. 381-0576.

SINGLE SCENE newspaper - Arizona singles, events, advice, personals. Free sample, 990-2669.

Devil contracts Olympic fever



Klimchock

State Press photo

By VICKI CULVER
State Press

Luann Klimchock got a small taste of Olympic fever this summer when she competed in the Olympic Festival in Norman, Okla.

The ASU tennis player, who is in her second semester of collegiate play, was chosen as a result of her No. 2 junior national ranking to represent the Southwestern section of the United States (Arizona, Texas, New Mexico).

Klimchock said that the best aspect of the experience was the opening ceremonies, in which former President Ronald Reagan and Bob Hope each spoke.

"There were 75,000 people there," she said. "It was incredible."

Klimchock, who is a 1989 graduate of Corona Del Sol High School, also said she enjoyed the first-class treatment the athletes received from the Festival officials.

"We were spoiled the whole week," she said. "It was nice."

The actual Olympic tournament lasted only four days, but the athletes were flown in a few days early to prepare for competition and take part in the opening ceremonies.

Klimchock played her singles match mid-week, and lost in the first round. She and partner Merideth Geiger took the bronze, however, in doubles play.

"They put the medals around our heads — it felt really neat," Klimchock said.

Klimchock picked her partner out of four people in the Southwestern region because she felt the duo were comparable in talent.

"We played together, and seemed to have the best chemistry," she said.

In an event such as the Olympic Festival, athletes of all kinds come to compete. Klimchock said she enjoyed talking to experts from all areas of athletics.

"The experience was very valuable," she said, adding that the tips she picked up from coaches of the tournament were helpful as well.

Because Klimchock is still a young player, she has not yet decided on whether to attempt competing in the 1992 Olympics.

"It was an experience seeing what a big event was all about," she said. "It gets you ready for the next step — whatever that may be."

But Klimchock said she is interested in trying the pro-circuit when she graduates.

"I'd like to see how my game develops, and then I might try it."

NEED CLOTHES? CASH?
Buy Sell Trade
The Hottest Wears
•Benetton •Jimmy Z •Guess •Levi
C.C.'s Closet Classics
491-2029
Fry's Plaza Southern & McClintock

BUY IT.
SELL IT.
FIND IT.
CLASSIFIED.

STUFF IT
at
Arizona Storage Inns
5'x10' to 10'x20'
From \$12 & up
Close to ASU
20% DISCOUNT NOW
Call Randy or Sharon
967-0210

AUTOMOBILES

SELL IT.

for sale specials

auto truck motorcycle classifieds special

10 days for only \$15⁰⁰
You save \$10⁰⁰!

•ads must be 15 words or less
•all ads must be prepaid, no refunds

Come in person
Send it in
Phone it in
(with Visa or Mastercard)

State Press
Matthews Center
Room 15
Tempe, Arizona
85287-1502
965-6711

OFFER EXPIRES SEPTEMBER 29, 1989

1970 BUG Convertible. Great condition. New top. Creme color. Shawn, 541-0663. \$3,800.

1978 TOYOTA Station wagon, air, AM/FM. Arizona-car, 2 new tires, new battery. \$1,200. Luke, 784-2271.

1979 JEEP CJ5, V8 305, black, custom wheels, excellent condition. \$3,500/offer. Call Kevin, 894-3426.

1981 BUICK Skylark, power steering, power brakes, \$2,000 or best offer. Call Doug, 894-8678.

1981 CHEVETTE 4-door, 4-speed, air-conditioning, but compressors gone. \$575. Looks bad, runs good. 968-3820, 827-0325.

1981 VW, 4-door, sun roof, stick, air-conditioning, great transportation, squeaky clean. Diesel. \$1,995. 998-4857.

1982 HONDA Civic hatchback. Good condition, low mileage, air-conditioning, nice wheels (Enkey). 979-5957 (Cornel). \$2,700.

1983 NISSAN Stanza, 5-speed, air-conditioning, AM/FM Cassette, all power. Excellent condition. \$2,850. Call 921-0938.

1984 CAMERO, one owner, low mileage. Runs great, must sell, \$4,300. 893-8719 after 6.

1985 FIERO, excellent condition, loaded, low miles. \$4950 or better offer. 345-7321, 979-9372.

AUTOMOBILES

1985 MUSTANG Hatchback, power steering, windows, cruise, cassette player. Don't miss this exceptionally well-cared for one owner car. A-1 condition, under low book for quick sale. 968-7733, 839-9110.

1986 SUBARU GL-Hatch, air, 5-speed, AM/FM cassette, low miles, great condition. \$5,995 or offer. 985-1631

1986 VOLKSWAGON Cabriolet, Wolfsburg addition. New top, low miles, loaded. Must sell, asking \$10,200. 375-2199.

1988 JEEP Comanche pickup, 34,000 miles, excellent condition, 2.5 Litre, 4 cylinder, AM-FM, \$5,600. Call Steve, 964-0029.

1988 RED Chevy mini-blazer, great AM/FM stereo with high quality sound, cool air conditioning, red cloth interior with velveteen seat covers and matching dash mat, top rack with tilt steering, well cared for, low miles. In great shape! Need someone to take over payments! Call 966-2449 after 3pm.

1988 1/2 SUZUKI Samurai, hard top, 4X4 beauty 10K miles, AM/FM cassette, tinted windows, rear seat. \$6495/offer. 893-3457

'85 JEEP CJ7, V6, 5-speed, 47,000 miles, Wrangler radial tires, \$6800/offer. Jay, 784-0558.

A '75 Volkswagon Bug, newly rebuilt engine plus transmission. Lowered front end, spoked wheels, body in excellent condition. First \$2,300 takes. 391-2237.

CLASSIC 1965 Cadillac Hearse people have died to ride in it and you could own it! Chad, 967-8746.

MOTORCYCLES

1981 HONDA CB750K, only 4,000 miles. Trunk, helmet, luggage rack. \$999. Call 829-0612 or 759-5342.

1984 HONDA Aero 80 scooter. New engine, battery, brakes. \$700. 899-6594.

1985 SUZUKI GS550E. Blue and white, one helmet. Runs good. 19K miles. \$1,200/offer. 921-1734.

1986 HONDA Elite 150 Scooter, red, 1400 miles, helmet, cover, excellent condition. \$1200. 968-6351.

87 HONDA elite, medium blue, brand new, 293 miles, \$900. 890-9238 after 6.

'88 600 Hurricane, black and grey, flawless condition. 2,000 miles, \$3,700 miles. Call Ron, 838-6977.

HONDA ELITE 150. Like new, 1,200 miles, excellent condition. Call 969-5025.

HONDA ELITE Delux 250, factory installed AM/FM Stereo. Runs like new. \$800. Contact Steve, 966-3901.

HONDA SPREE Scooter, 1986, white. Under 1,000 miles, good condition, \$400. 991-2531, evenings.

BICYCLES

EXCELLENT CONDITION, man's Nishiki, Olympic 12, \$139.95. Man's Raleigh 10-speed, chrome finish, \$129.95. 948-6385.

NEARLY NEW Trek-460 racer bike, 19", less than 10 miles ridden. Excellent condition. New, \$389, sell for \$200. 840-0815.

PUEGOT RACING bike, Campagnolo components, Modolo brakes, Mavic wheels, \$679 new, asking \$350. 985-1631.

RACING BIKE, 53 centimeters, Miyata with Shimano 600 components. Mavic wheels, low miles. \$300. 921-1290.

SPECIALIZED ROCKHOPPER Comp, 1989 model, 19 1/2". Excellent condition, extras. Over \$700 new, asking \$475. 352-0035, Jeff.

FURNITURE

Futon Factory
254-5943
Discount prices,
open 7 days

FURNITURE

LARGE METAL desk for computer, etc. 3 drawers, must sell, \$35. 345-7512.

SOFA BED, rust color, good condition, \$100. Call Penny, 894-2051.

USED FURNITURE Store, 7620 East McKellips Road, Scottsdale. 949-0380. 2 miles from campus.

WHEREHOUSE SALE on office furniture. Desks from \$49, Chairs from \$14, computer tables from \$39, files, bookcases and more. AZ Office Liquidators 4010 S. 43rd. Place (North of Broadway West of 48th Street) Mon-Fri 9-5, Saturday 10-2. 437-2224.

WHEREHOUSE SALE on office furniture. Desks from \$49, Chairs from \$14, computer tables from \$39, files, bookcases and more. AZ Office Liquidators, 5064 S. 40th Street, (1/2 mile south of Broadway), Mon-Fri 9-5, Saturday 10-2. 437-2224.

MISCELLANEOUS FOR SALE

19" COLOR T.V. \$75, 25" floor model Console T.V., walnut cabinet, excellent condition, \$100. 254-1412.

DESIGNER WATCHES and hand bags, \$50. All styles. Delivery, discounts. Tom, 631-0424.

HEY DORMIES! Sick of cafeteria food and renting a fridge? Buy mine. \$75 or best offer. 921-7248.

NAGEL COMMEMORATIVE Serigraphs 8, 10, or 11. Framed/double matted. Custom mat cuts. Scott, 829-0400.

PIONEER HOME Stereo, Turntable, tuner, amplifier, equalizer with Spectre analyzer, dual cassette deck, and CD player, with large speakers, (remote control included). Call Ajay, 491-0419.

REFRIGERATOR, 5.5 cubic, \$75. 10'x10' carpet, \$60 for sale. Call 921-2371.



COMPUTERS

IBM-COMPATIBLE COMPUTERS from \$489. 512K monitor, keyboard, 360K floppy. Professional Image Computers, 1,000 East Apache, 119, Tempe. 921-1129.

REAL ESTATE

3 BEDROOM 2 bath townhouse. Close to ASU. Has everything. \$3,000 down and assume loan. No qualifying. Call 894-6091.

ASSUME FHA Government 235 loan-2 bedroom, 2 bath Townhouse-Dependent a must to qualify. Payments low as \$247/month-close to Elementary School. Great Mesa area. Vaulted Ceilings, patio, pool, perfect for single parent. Low down-homeowner. Evenings. 898-8717.

CONDO. SAVE money! Buy don't rent. ASU 1 mile. 2 bedroom, fireplace, pool, covered parking. Easy terms. 966-7319 or 893-0249.

DON'T RENT! Buy 2 bedroom mobile home near ASU! Excellent condition! \$5800. 968-1408 (local), 368-8023 (message).

INVESTMENT OPPORTUNITY, spacious Condo located minutes from ASU, 3 bedroom, split floor plan, beautiful grounds with pool and tennis courts. Super sharp, move-in condition. \$52,000. Call Karen Quinn, Merrill Lynch 951-1010.

LIKE NEW, 3 bedroom patio home in Marlborough Estates, 3 miles north of ASU. Upgraded carpeting and ceramic tiles, vaulted ceilings, intercoms, fireplace, 2 car garage, tile roof. Mountain and desert views. Call Evelyn, 831-1152. Wyman Real Estates.

FURNITURE

REAL ESTATE

LAKESIDE CONDO. Huge, low maintenance home in resort-like community at the Lakes of Tempe. Beautiful water views. Spacious contemporary interior. Call 820-8022. Sales and marketing by Developers Marketing Services.

LARGE 2 bedroom patio home, 2 car garage. Many extras, must sell. Perfect for 2 students. 945-6332 after 5.

MOBILE HOME for sale, 12x68, 3 bedroom, 1 1/2 bath. 1 1/2 miles east of ASU. Private fenced yard, storage shed, dogs ok. Excellent condition, immediate occupancy. \$5,500. Call 961-0444, 965-7679, or 833-8175.

CASH SALES
Year round
Inexpensive Co-Ops.
2 or 3 bedroom
Townhouses or Apts.
\$13,000 to \$27,500
Bill Spina
John Hall & Associates
948-0550, 941-8300

NO QUALIFYING, great Tempe townhouse. 3 bedroom, 2 bath, custom blinds, tile, ceiling fans, new paint, and pool. \$63,900. 966-6310.

POINT SOUTH Mountain, beautiful 2 bedroom, 1 1/2 bath courtyard, common area with pools, jacuzzi's, barbecues, low maintenance yard. \$75,000. 431-0295.

WALK/BIKE to ASU, 3 bedroom, 2 bath house. Large family room, ceiling fans, green year round. No-maintenance front yard. Sprinkle system, largest lot on street. Goldfish pond and mature citrus in back. 1/2 block to park. Call soon, this beauty won't last. \$76,000/negotiable. 966-3785.

WHY RENT? It's cheaper to own, model sharp, 2 bedroom condo is within walking distance to ASU. Beautiful pool, spa, waterfall area, quiet complex, appliances included. \$49,900 call Karen Quinn, Merrell Lynch 951-1010.

APARTMENTS

1 MONTH FREE with 9 mo. lease or 1st & LAST MONTHS FREE with 13 mo. lease on 1 bed/1 bath apts.

Apache Terrace Apartments
1123 E. Apache Blvd., Tempe
(1 block east of Rural) 968-6383
Monday-Friday 10-6

Ideal for Students
Move-In Special
•Affordable-studios & 1 bedrooms from \$295, utilities included
•Great location-close to ASU
•Privacy-1-level apartments mature landscaping
Marianna Apartments
1214 E. Orange
966-8597

ASU Area
Studios, 1, 2, & 3 bed
Apartments for rent
\$260⁰⁰ and up
Also
4 Bedroom Home
\$595⁰⁰/month
966-8838

The Fountains
•Newly redecorated
•Vertical blinds
•Designer carpet
•4 sparkling pools
•Laundry facilities
•Great for rental sharing
•Walk to ASU
•1st Months Rent \$199 plus deposits
Open Daily 9 to 6
Utilities Included
1028 E. Orange
967-0489

APARTMENTS

1 BEDROOM furnished and 1 small efficiency. Very nice, all utilities paid. \$295 and \$260. 956-4453.

ABSOLUTELY THE best place to live. Weight room, jacuzzi, 2 pools. Upgraded apartments close to ASU. Call to reserve your apartment. 968-5444.

ASU AREA 2 bedroom, 2 bath, \$325/month plus electricity. Air-conditioning, jacuzzi, no pets, deposit. 893-0416.

ASU AREA: \$50 off 1st month, 1 or 2 bedroom, evap/air-conditioning, pool, covered parking. \$275-\$345 monthly. 829-7059.

BEAUTIFUL NEW large 1 and 2 bedrooms. Walk to ASU, pool, laundry room. 1 block south of University on 8th street. Cape Cod Apartments. 968-5238 for special.

COUNTRY CLUB and University 2 bedroom, 1 bath apartment/tri-plex. Dishwasher, refrigerator, Kenmore stove, common washer/dryer. \$400/month, security deposit. 464-2896.

DESERT PALM Apartments. Take over my lease. Keep my deposit. Large 1 bedroom. 731-9677, 276-2050.

FURNISHED 1-2 bedrooms. Walk to ASU, pool, laundry. Move in special. 968-2679.

FURNISHED APARTMENTS: 1 bed, \$240/month; 2 bedroom, \$340/month. Deposit \$150. No pets. Pool, laundry, air-conditioning. 1339 South Sunset Drive, apt 9. 2 blocks from ASU. 968-7012.

LARGE APARTMENT available, 1 bedroom, close to ASU. Call Suzanne at 967-6000.

\$200 OFF FREE UTILITIES!
Walk to ASU. Spacious 2 bedroom apartments, air conditioned, furnished or unfurnished available. From \$380/month. Beautiful pool area, laundry facilities available.
FIESTA PARK APARTMENTS
1224 EAST LEMON
894-2538

TOWNHOMES/ CONDOS

1 BEDROOM Condo. Walk to ASU. Washer/dryer, dishwasher, refrigerator. Completely new inside. \$365/month. No pets. 948-1593.

2 BEDROOM, 2 bath condo, near ASU. Air-conditioned, pool, washer/dryer, patio, yard, appliances, blinds, covered park. \$495. 966-0962.

BEAUTIFUL TOWNHOUSE, 3 bedroom, 2 bath, all appliances including washer/dryer. \$700/month plus utilities. 5 minutes from ASU. 991-5735.

DELUXE 2 bedroom, 1 bath condo. All appliances, washer/dryer. \$475. 967-1044, 965-4971.

ONE BEDROOM, one bath condos. Walk to ASU. Washer/dryer/refrigerator. 345-1919.

HOMES FOR RENT

5 BEDROOM, pool, close to ASU, approximately 3,000 square feet, \$1,200/month. Owner agent. 966-7979.

RENTAL SHARING

\$210. UTILITIES included, 4 bedroom, 1 bath furnished house. Washer/dryer, cable, pets ok. Female preferred. 968-1295.

3 BEDROOM, 3 bath, 2 story house. Great decor with 2 great roommates. \$250, everything included. 898-1488.

A CONDO. \$200/month plus \$75 deposit includes utilities and use of facilities. 877-2048.

COOL ROOMMATE wanted for luxurious pool-side condo. \$270/month, 1/2 utilities. 967-6515.

DELUXE LARGE bedroom in quality home. Furnished, private pool, cable T.V., full kitchen facilities, washer/dryer. Walk to ASU. \$250/month. 967-1787.

FEMALE, NON-SMOKER, 2 bedroom/1 bath home, Chandler. \$200/month, 1/2 utilities, unfurnished. Alma School/Warner 786-4934, 971-4975.

FEMALE ROOMMATE large bedroom and entrance in new model home. Fully furnished, garage, and pool. \$275/month plus 1/2 utilities. 10 minutes from ASU. Call Marjorie. 437-2023.

RENTAL SHARING

FEMALE WANTED to share 2 bedroom, fully furnished, luxury condo. Call Bonnie, 391-1878.

HAYDEN SQUARE, downtown Tempe. Two people to share large bedroom. \$250/month. Single room, \$315/month. Must see, Mill and 5th Street. Call John, 829-8160.

LOOKING FOR 1 more girl to share 2 bedroom, 2 bath condo near ASU. 892-3497.

MALE/FEMALE non-smoker, fully furnished condo, full amenities, \$250/month (negotiable) plus 1/2 utilities. 921-0098.

MALE/FEMALE to share townhouse. Neat, responsible. \$250/month includes utilities. Household appliances available. Close to MCC/ASU. Nonsmoking. Leave message. 644-0371.

ROOMMATE NEEDED, male student, non-smoker, clean, responsible. Own room/bath, pool/jacuzzi, semi-furnished, close to ASU. \$270/month, 1/2 utilities. Dan 921-2074.

ROOMMATE WANTED. Deposit already paid plus 1st months rent. Close to ASU. Girl or guy. \$227/month. 984-1686.

ROOMMATE NEEDED. Female student, non-smoker, clean, responsible. Own room/bath. \$200/month, 1/2 utilities. Mesa Pam, 396-6002.

ROOMMATES NEEDED, Scottsdale home. Pool, available immediately. Call Roberta, 945-3658.

ROOMMATE SERVICES

TAKE THE GUESSWORK OUT OF ROOMMATE SEARCHING
Save money. Save time.
ROOMMATE EXPRESS
968-7574 437-1048

BUSINESS OPPORTUNITIES

AMERICAN LOTTERIES. Subscription sale. Finally play those other states, network multi-level mania-ground floor (July, 1989). Repts also needed. Call American Lottery Association of Arizona, 257-9231. Biggest and Hottest Business of Decade.

EXECUTIVE (Office) SUITES
Rent \$45.00 per month
Rent Includes:
Receptionist
Answering Services
Utilities
Use of Conference Room
Secretary Service Available
998-4040
Open Weekends
2121 South Mill Ave.
Tempe, Arizona 85282
(1 mile one block south of Baseline)
Executive Suites
Superstition Free

Phx (new loc.)
3625 N. 16th St.
1/2 blks s/o Indian School/Eastside.
Near Squaw Peak Expressway

HELP WANTED

Cork 'N Cleaver
Accepting applications for:
•Lunch Waitress
•Lunch Hostess
•Night Busboy
Apply in person Monday-Friday, 2-5 p.m., or by appointment:
5101 N. 44th St.
(44th St. & Camelback)
952-0585

HELP WANTED

\$350 A day! Processing phone orders. People call you! No experience necessary. Call (refundable) 518-459-8697, ext. K203.

A-1 ACTORS, haunted ghost town at Los Arcos Mall, evenings/weekends. Information meeting 9/18, 6 pm. Call 423-0999 for details.

ACCEPTING APPLICATIONS for drivers and counter help. Flexible hours available. Full and part-time. Earn up to \$8/hour. Sammy B's Pizza, 945-8850.

APPOINTMENT SETTERS, start today. Guaranteed \$7.50/hour. Experience preferred. ASU area. 8 am-12 pm, 1-5 pm, Monday-Friday. Call Trace, 967-2212.

ARIZONA COUNTRY Club accepting applications for evening food servers and busboys. Apply after 4 pm Tuesday-Sunday at 5668 East Orange Blossom Lane, Phoenix.

P.T. WORK FULL-TIME PAY
Sell construction supplies to contractors via WATS lines.
Training provided.
Earn while you learn.
966-5765

ATTENTION COLLEGE Students: We are looking for students in our advertisement department. Must be outgoing, enthusiastic, and self-motivated. Earn \$75-\$350 per week. Call Charles Turnbow, 423-7012, between 1-3.

BABYSITTERS NEEDED. South Scottsdale, weekends/evenings, active twin boys, 2 years old, must love children. Susan 941-4325.

BUFFALO EXCHANGE. Growing young company seeks full-time, energetic, people-oriented, fashion enthusiasts to train as a buyer in our recycled clothing store. \$4.25/hour to start plus benefits and bonus plan. A fun place to work with growth potential. Apply 227 West University Monday-Saturday, 10-5. Sunday, 12-4.

CERTIFIED AROBICS instructors needed at Cactus Park with the City of Scottsdale. Call 994-7967, ask for Kim.

HINKLEY & SCHMITT is now hiring direct sales people to sell bottled water and drinking water systems in the East Valley. Full training and uniforms provided. We will work around your school schedules and exams.
Part-time M-Th, 4-8 p.m.
Commissions and bonuses paid weekly.
Call Debbie at 233-0991 to schedule interview.

CERTIFIED AROBICS instructors needed at Cactus Park with the City of Scottsdale. Call 994-7967, ask for Kim.

CINE 'CAPRI Theater now hiring part-time cashiers/concession attendants for matinee/evening shifts. Flexible hours, perfect job for students. Please apply in person. 2323 East Camelback Road.

COSMETIC SALES. New European line of skin care and cosmetics. Seeking enthusiastic, mature persons to launch product in Phoenix Metro area. Will train. Contact Paula at 829-7410.

CREDIT OPPORTUNITIES
Zales Regional Credit Center is seeking individuals for the following part-time position:
Telephone Collectors
Seeking self-assured individuals with effective communication skills. CRT and telephone experience preferred, but we will train motivated candidates.
Jewelers Financial Services
1221 N. College (College/Curry)
Tempe, AZ 85282
Equal Opportunity Employer

HELP WANTED

COUNSELOR, FEMALE, full-time, private boarding school. Ideal for graduate student. Hourly wage plus room and board. Pat Lacorge, 948-7731.

DANCE TEACHER needed. Ballet/Jazz/ Tap and tots. Westside location, 30 minutes from ASU. \$7/hour to start. 932-1342.

EXPERIENCED SALES help needed, nights and weekends. Apply, Toy Jungle, 7142 East 5th Avenue, Scottsdale.

HELP WANTED

PART-TIME COOK. Pre-school West. 2152 East Broadway, Tempe. 894-5338.

PART-TIME ADMINISTRATIVE Assistant. Excellent phone personality, accurate typing, computer literate. Apply 2001 East Campbell, suite 203. Hours needed: Monday, 12-5; Tuesdays and Thursdays, 9-5. Call 468-1881, ask for Carol.

PART-TIME CLERICAL, mornings, Monday-Friday. Mailing, filing, and CRT work. Central Phoenix area. 258-9187.

PART-TIME DELIVERY, afternoons, Monday-Friday. Own transportation necessary. Central Phoenix area. 258-9187.

PART-TIME WORK. 3 hours a day. Must have excellent phone personality. Average \$10/hour. Call 947-4822.

PERSONABLE HONEST female for massage technician, will train. Full-time evenings. Excellent employment opportunities. 840-4646.

PERSON TO work in sheet music department. Must have music background. Piano knowledge a plus. Part-time, evenings and Saturday. Apply in person, Garber Music Company, 2630 West Baseline, Mesa.

HELP WANTED

PART-TIME. LARGEST company of its kind in the Southwest. Afternoon and evening shifts available. Pleasant working conditions. Call Mr. Wellington at 381-0477.

TELEMARKETER/PHONE solicitor, Monday, Wednesday: 6 pm to 8 pm; Tuesday, Thursday: 8 am to 11 am. Hiring now! (Flexible on hours). 835-1963.

HELP WANTED
Photo lab has openings for photo printers and packagers.
Times available:
5 a.m.- 12 noon
12 noon-7 p.m.
Call for appointment:
253-2212

THE LOOP, a new fast food concept in a totally authentic setting of yesteryear Chicago. Full-time, part-time day and evening positions available, with management potential. Apply Monday, Friday, Saturday: 2 pm-5 pm; Tuesday, Wednesday, Thursday: 4-8 pm. Southwest corner of Lemon and Terrace, Tempe.

VALET PARKING attendants, day shifts 11:00am-3:00pm and 11:00am-5:00pm. Night shifts 5:30pm to close. Full-time and part-time. Must work holiday season and must have clean driving record. Call for appointment 861-9384. American Valet and Limosine Company Incorporated.

WAITER/WAITRESS, Mesa area. Fine dining experience preferred. Also bus-help. Apply in person, Arizona Golf Resort, 425 South Power Road. 1 mile north of Superstition Freeway.

WANTED: APARTMENT Manager, married graduate student, to manage and maintain a 16 unit apartment complex. 2 miles from ASU, 2 bedroom apartment plus small salary. 955-6326.

CLOSEST TO CAMPUS
Join our telemarketing staff and enjoy these great benefits: \$5.50-\$10 per hour, weekly pay, flexible part-time hours, Cornerstone Mall location, referral bonus program.
Call now!
Mr. White,
968-4457

INSTRUCTION
AEROBIC INSTRUCTORS certification workshop weekend, September 22nd in Phoenix by National Aerobics Training Association. 963-9415.

JEWELRY
CASH FOR gold, diamonds, sterling, etc. Mill Avenue Jewelers, 414 S. Mill, Suite 101, Tempe. 968-5967.
CASH PAID, jewelry of all kinds, including gold, sterling, gems, pearls, antiques, etc. Rare Lion, 921 S. Mill Ave, Tempe Center. 968-6074.

DIAMOND SOLITAIRE, one-fifth carat. Never worn. Will accept appraisal value. 966-3093. Leave message.

FREE LOST/FOUND
FOUND, ISUZU car key in Manzanita parking lot. Call after 5 at 966-2093, Dave.

PERSONALS
ADG JENN W. You're the best dot! I'm looking forward to a great semester with you. Love, mom.
ADPI SHANNON: Congrats on being the new pledge prez! I love you. David.

ADP'S-TOMORROW is the big day, you've done awesome all week, top it off by taking it all tomorrow! Good luck. Love, your coaches.

AGD AMY- You are fantastic and I'm so proud to be your mom! Have an excellent weekend...but I wish we were back on Catalina! Love mom.

AGD BECKY Ewig: Patience is a virtue!! Relays will be a blast!! And so will this year!! Get psyched. Luv, Randi.

AGD DINA- we've been kinda busy lately but hey, don't fret! We'll party yet- and we'll find the most awesome formal dates two girls can get! (Why? Because we're the coolest people we know!) Love, Steph.

PERSONALS

AGD DAWN. Get psyched because you're the greatest dot ever. Love your pledge mom Lynda.

AGD DERRIE Nauta: You are an awesome pledge daughter and together I am sure we will rage! Love your mom Heidi.

AGD DOT Adina-get psyched for an awesome semester. You're the greatest! Alpha Gam Love, Mom.

AGD-ERICA-I hope you are excited for the semester 'cuz it's gonna be a great one. I am so excited that you are my dot! Love, Mom.

AGD FRAN, keep up the good work. Congrats on your pledge office. Love your Mom, Donna.

AGD GAIL H.: boy oh boy, you finally did it. I'm so happy! We'll have the best formal ever.

AGD GINA: you are doing the greatest job ever. Get psyched for the best Christmas break.

AGD HEIDI Sexton, get ready for an exciting year! I'm so glad you're my dot! Luv, Cameron.

AGD JANELLE I am so happy you are my dot! Get psyched for Sigma nu relays! Love your mommy Megan.

AGD KRISTI-You hot thang! You're the coolest pledge Dot. This year we rage! Love, Colleen.

AGD MARNEE. Get excited for a fantastic semester. You are the greatest dot. Luv mom.

AGD PLEDGE Gina G. Looking forward to an awesome semester with the world's greatest daughter! Love, DaNeil.

AGD PLEDGES show your red buff and green spirit at Sigma Nu relays. Love Panama.

AGD PLEDGE Melodi: look forward to a great time at Sigma-Nu relays. Your mom love ya.

AGD PLEDGE Sheri-Congratulations on your leadership and presidency! Mom loves you!

ALPHA GAM JESSICA-for relays? I am! Let's find some hot dates for formal this weekend, aya!?! You're the best. Love mom Christy.

ALPHA GAM Dot Renee-you are an awesome dot! Keep up the good work-see you tomorrow-love, mom.

ALPHA GAM Brenda: Get ready to rage at relays. You're the best dot. Love, mom.

ALPHA GAMS Jennifer P. and Jennifer S., Get excited to dive into Sigma Nu relays! We luv ya! Lauren and Darcy.

ALPHA GAM Meghan, I am so happy to have you for my pledge daughter. We're going to have lots of fun. Love your pledge mom Steph.

ALPHA GAM Kari, congrats on your pledge office! Get psyched for relays!! Love Mom.

ALPHA PHI has the spirit-watch out Sigma Nu! Alpha Phi is going to Rage at Relays.

ALPHA PHI is looking for a few good men...Bordeaux Beau 89-90.

ALPHA PHI love their sigma nu coaches Rick and Tom! You guys are so awesome!

ALPHA PHI ASU, thank you all, especially Tammy and Christine, for everything last weekend. It's really a nice feeling to know your sisters are there for you no matter what state you are in. Hope we can return the favor-Vail? At Aspen? Winter Park? A-phi loves from CSU-Sheri and Jenn.

ALPHA PHI. Thanks for the music. Looking forward to a great semester. A. E. Pi.

AX HEIDI Ho- your mom is so proud of you. Congratulations you're almost there!

AXO HEATHER Kennedy. I hope you're having a great week. It's sooner than you think. Expect the unexpected. AX love Mom.

AXO KRISTIN Ruffalo! It's time! Congrats! Beta Lamda! Love mom.

AXO TORI Matthews. Always be prepared! AX/love Mom.

BROTHERS OF Ep Mu...Our time has come. Hands Down our Rictor Scale Rager will be the bash of bashes. No offroaders.

State Press
Personals
are only
\$140
for up to 15 words!
Place yours today!

PERSONALS

CAMERON TATE-It's your birthday. Yahoo Yeepee Yoo! We hope it's a great one. We love u-MVN and Mich.

CLAUDETTE, MY little babootchka: Crucis are fine and diamonds are nice, but could dinner with me suffice? Tonight, 8 pm. Your Jungle Love Stud.

DEBBIE STAGGERS, how could you do me the way you did? I love you, Robert.

DEBBIE STAGGERS, how could you do me the way you did? I love you, Robert.

DELTA SIG Kevin, "want some dip?" Kelly-thanks for having such big ears lately. Your the best! Love Kimber.

DID THE Mingus Class of '85 drop off the planet or what? Where is everybody? Contact Jennifer E. at 634-8213 or Paula H. at 282-2186, or write 435 Windsong Drive, Sedona, AZ 86336.

G.O. M.A.D. ASU! October 7...Details to follow!

HAPPY BIRTHDAY "Little One". Crucial "21". Your pal, Willie.

KELLY M. Thanks for a great year. I love you. Love Joel.

LAMBDA CHRIS-We're psyched to return to the '60's with you! Sigma love, the Tri-Sigmans.

MAZ, YOU'VE gone from rookie 07 the year to M.V.P. in just 6 short months. Thanks for everything!

MICHELLE DANIELS is Hot in AGD! Love Mom.

SIGMA NU-Rick and Tom the Alpha Phi's are really psyched that you're our coaches!

SIGMA NUS the TriDeltas are ready to win relays!!!

SIGMA NU. We're psyched to win relays. Pi love ADP's.

TKE CHRISTOPHER H. Happy 17 months!! They have been too good to be true!! I love you!! C.D.

TRI DELTAS-We're gonna Rage at Sigma Nu relays. Delta Pledges Kori and Beth.

TRI DELTA Pledge Chris C. Grab that SAE and run. Delta Love Kori.

TRIDELTS GET ready to win at relays!! We're the best!!!

SIGMA NUS Jay, Troy, Christian, and Bob, Tri-Deltas love their coaches!!!

TRI-SIGMA LIZ-Tonight's the night! Do you know who I am! Sigma Love, Mom.

TRI-SIGMA CHERYL-Your grandma loves you! Get psyched for tonight!

TRI-SIGMA JOANNA-Hi, beautiful dot! You know what happens tonight! I'm so happy! Love, Mom.

TRI-SIGMA JEN Monnier-you philly girl! I miss you! Your a-baby forever, Amy.

Happy Birthday
Kristin Cerwin!
Look out Hawaii!
Love, Corey

PETS
FREE!! KITTENS, black and white. Going fast! Call 829-6872 for more information.

SERVICES
ARE YOU tired of tweezing and shaving? For permanent hair removal, call A Soft Touch Electrolysis. Free initial treatment. Near ASU. 829-7829.
BUY A Cheesecake for \$6 so I can finish school. My cheesecakes are so rich they should be stored in a safe deposit box. Call 921-8229 for prompt campus delivery.

ELECTROLYSIS-PERMANENT hair removal. Remove unwanted hair forever. Student discount. Call for more information, 969-6954.

PROFESSIONAL RACQUET Stringing, tennis or racquetball, \$12/racquet. Pickup and delivery service available. Call 952-0082.

SPIRAL PERMS regular \$78 now \$39. Long and tinted hair extra. Sundays Special: get additional \$10 off with college ID. New clients only. 230-5259.

VOICE PACKAGE for female singers, includes coaching, songs, recorded demo. Excellent compliment for model/actress seeking more visibility. 265-0624.

SERVICES

TIRED OF being ripped off on Auto repairs? Guaranteed work and savings, all makes and models repaired. ASU area. Call Dennis, 892-7813 after 5. Please leave message if no answer.

TRANSPORTATION

AAA DRIVEAWAY. Free cars to most major cities. Gas allowances available. 21 or older. Call 279-2000, then 4530.

TRAVEL

HALF PRICE! Buy your Eurail pass and get your international hostels card for half price. Both issued on the spot! Plane flights, student I.D. cards, and other travel items available. Call American Youth Hostels 254-9803.

PLANE TICKET, round trip to New York, Chicago, more...only \$200. 894-6355, Matt.

TYPING/WORD PROCESSING

\$1.50 AAA Word Processing/Laser printer. 34 years experience. Theses, dissertation, APA specialization. Marion 839-4269.

ACCENTS IN Typing. Spell-check, proof-read, editing, all included. Quick turnaround. Call 894-6074.

APA/MLA EXPERIENCED typing/word processing. Need it fast? Call Jessie, 945-5744.

ASU AREA. Typing, word processing, editing. Fast, accurate. Call anytime. Prices competitive, negotiable. 966-2186.

FLYING FINGERS offers typeset quality with a Mac II and laser printer. Call Susan, 945-1500.

KINKO'S PAPERS make to grade. Kinko's typesets papers, resumes, fliers. Self-service Macintosh also. 933 East University, Tempe. Call 966-2035 for details.

NEAR ASU West. Typing of papers etc. Professional secretarial services. Reasonable rates. Satisfaction guaranteed. 878-3355.

WORD PROCESSING, IBM PC, letter quality printing. Fast, low cost. Call Jackie, 831-8685.

WORD PROCESSING \$1.25 and up. Fast turnaround. 10 minutes from ASU. Transcription and disc storage available. Saurini Typing Service, 966-2825.

WORD PROCESSING-\$1.50 per page. Resumes, design, editing, & laser printing available. Call 921-3770 evenings & weekends.

WANTED

NEED HAND crafted items for Consignment Store on Mill Avenue, 967-4645.

WANTED: HONDA Prelude SI, '86 or newer. Private Party, 966-3735.

MISCELLANEOUS

DISCOVER THE power within yourself to conquer fears and solve daily problems. Learn to hear and understand messages from your true self, Soul, through dreams and everyday experiences. Eckankar, the New Age Religion, could change your life! Sept. 17, 1-3:30 pm, IBEW Hall, 3232 N. 20th St., Phoenix. \$3.50 donation. 371-0830 for information.

DON'T MISS John Lyons, Scottsdale, 1-800-8-COWBOY.

UNIVEGA 12-SPEED bike (originally \$247). Asking \$175. 10-speed bike, \$100. Pioneer stereo components, ski equipment. 614 East Bishop Drive-near ASU. 966-7635.

MUSIC

MOVING SALE: Sharp stereo system, 100 watts per channel, like new. \$300. 921-2624.

TUTORS

ACC-321 Tutor needed-one on one instruction only! About eight hours a week. The fee is negotiable. Please call Jennifer at 829-1338.

TUTOR NEEDED, Accounting-351: 4 hours/week. Fee is negotiable. Please call Lily, 840-3181, weeknights.

PHOTOGRAPHY

JASON SILVER/Kid-Man Photoworks Commercial Photography. Models, actors, musicians', and artists' portfolios and composites. Professional work. Reasonable rates. Studio and location, 946-2475.

ASASU ELECTIONS COORDINATOR
To administer student election process. Good organization/leadership skills: Must communicate effectively, be able to work under pressure and promote student involvement. Apply at **Student Employment, Student Services Building.**

FULLTIME/PART-TIME working with developmentally disabled children and adults \$5.00/hour 224-5052.

IMMEDIATE OPENINGS for graduate students for note-taking service. Call 966-4225 for more details.

LADIES. SET your own hours. Outstanding income opportunity selling a revolutionary new product to your friends and classmates. There is not competition for this untapped market. Call 860-0427 or interview.

LOOKING FOR reliable person to fill telemarketing position. Work according to your schedule, flexible hours. 3-5 days/week. Please call 946-0524.

MARKETING COORDINATOR needed part-time for fast growing flight school company. Marketing or economics major or person with sales experience preferred. Call Doug at 897-7121.

MARKET RESEARCH. Expanding Research-Consulting Company needs people interested in becoming Market Research phone interviewers. Steady full and part-time, evenings, weekend shifts available to conduct studies at Scottsdale headquarters. Will train in research techniques but good verbal skills are needed. Starting at \$4.75/hour with regular salary reviews. Bonus and paid vacation. Call 483-8214 or 483-7544 or come to: Market Solutions Group 8687 E. Via De Ventura, Scottsdale between 9 and 6.

NANNY/HOUSEKEEPER, live in or out. South Tempe, children ages 2 and 5. References required. Call 897-8577 Monday-Friday, 9-5.

NEED CASH? Be your own boss and set your own hours selling silk plants. Buy from us at wholesale, you sell at retail. You keep the profits. For information, call Jim at L. and J.'s Trading Company, 243-8568.

MISS ELLIE'S BBQ CHICKEN & RIBS
NOW HIRING
Bartenders Bussers
Cooks Hostess
Cashiers Prep Cook
1212 E. Apache
Apply between 2 & 5 pm

TMI, a national marketing firm, is looking for articulate, aggressive and motivated individuals.

- \$8.75 per hour (avg. earnings)
- Flexible part-time & full-time positions
- Supplement your income or work your way through college
- Credit union membership
- Paid vacations
- Convenient Tempe location

Call Sarah 967-0066 (after 11:00 a.m.)

T.C. Eggington's
An exciting breakfast and lunch restaurant is accepting applications for waitress positions (with Monday Wednesday and Friday's available).
Apply in person after 2 pm
1660 S. Alma School Rd. Mesa

QUALITY INN, Elliot Road and I-10, restaurant hiring all positions. Also needed, assistant housekeeper. Apply in person, no phone calls please.

RESTAURANT DELIVERY driver, flexible hours. South Scottsdale location. Own car, insurance. Call after 11 a.m., 423-0095.

ROSE GIRLS, part-time, to sell roses in valleys hottest night clubs. Call Arizona Rose 990-7611.

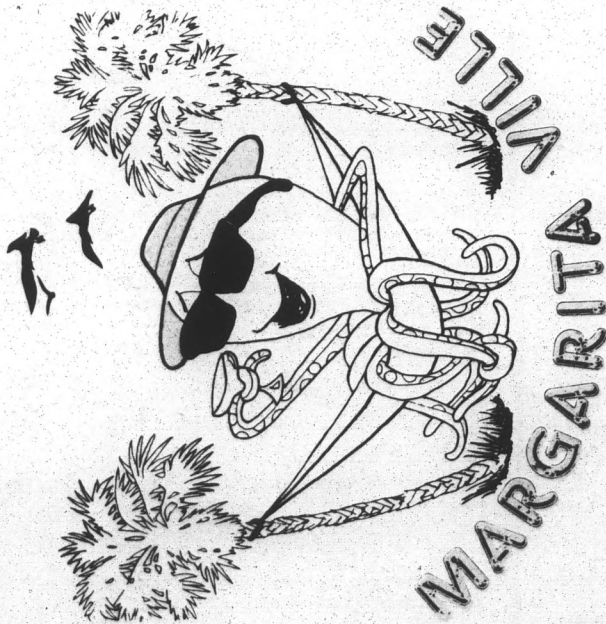
SELL INDUSTRIAL tools via wats line full or part-time 4:30-8:30 a.m., 3-7 p.m. Up to \$250/week salary. Ask for Hank Edwards 254-8665.

STOCKYARDS RESTAURANT now hiring hostesses, lunch waitresses, and waiters. Apply in person, 5001 E. Washington.

STUDENT JOBS. Start at \$9.25. Several full and part-time openings in customer service and retail. Scholarships available. Call 9 am to 5 pm. 242-9677.

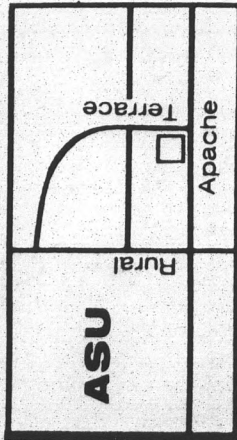
SWAMPED! NEED cheesecake baker's helper. Call Cheesecake hotline, 921-8229.

WASTING AWAY AGAIN
IN...



731-9182

1120 E. APACHE
TEMPE, ARIZONA
(APACHE & TERRACE)



Oh dear, what am I going to do? I wouldn't want to ruin it for everyone. I guess I'm just going to have to hold it.

by CAN U STAND THE PRESSURE

MARGARITAVILLE'S "LOCK OUT PARTY"

25¢ DRINKS

ALL NIGHT LONG...

Starting at 7 p.m. till someone goes to the restroom or leaves!

GRAND OPENING TONIGHT