

Todd Green/State Press

Former ASU secretary Carol Buffone pushes an empty baby carriage Thursday in front of the Maricopa County Superior Courthouse to protest for stricter sentencing in child abuse cases. Buffone's baby daughter, Christine, died July 12 from repeated blows from the head, according to an autopsy. Babysitter Ricky Mellem, convicted in December of negligent homicide, was to be sentenced Thursday, but the court awarded a continuance at the request of Mellem's defense. Sentencing will take place at a later date.

## Committee supports increasing dorm fees

By MICHAEL VAN DYKE  
State Press

A recommendation to increase room and board rates at some ASU residence halls by 7.35 percent next year was backed by an Arizona Board of Regents committee Thursday.

The increases, which University administrators say are necessary to pay for higher operating expenses, new staff members and the financing of a new residence hall, will be voted on by the full board in February.

The 7.35 percent increase would be for residence halls where a meal plan is required. Rates for halls where no meal plans are required would increase by 5.5 percent, according to the proposal.

Student Regent Patrick McWhortor said that increasing the rates are necessary.

"I never like to see costs go up for the student, but we are faced with increasing operation costs for the dormitories and the money must come from somewhere," McWhortor said.

For example, a double room at Sahuaro, Palo Verde East and West, Manzanita and Mariposa Halls with a 10-meal plan would increase \$112 next year. Currently, students pay \$2,784 each academic year.

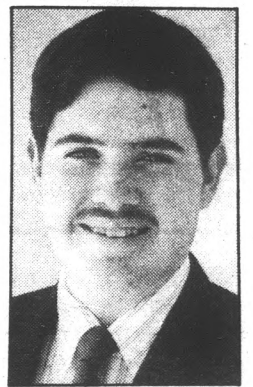
The yearly rate for a two bedroom apartment at Cholla Apartments, where meal plans are not required, would increase \$102 to \$1,956. A studio apartment at the same complex would increase \$167 to \$3,195.

ASU Vice President for Student Affairs

Betty Turner Asher said she is supportive of the rate increases.

"I think this is the most reasonable proposal we could come up with," she said, adding that any increase for students on tight budgets would be "bothersome."

According to an executive summary of the rate proposal, ASU needs an additional \$186,000 next year to cover increasing general operating costs. The University also needs \$394,000 to pay the yearly installment on construction of a new residence hall on the south side of the Tempe campus.



Pat McWhortor

An additional \$89,000 is needed to hire staff members, the document said.

The rate increase will make off-campus accommodations more attractive to students, University officials admit. But officials said if the board does not approve the increases now, there will be double-digit increases in the future.

The increase also will allow the office of residence life to continue negotiations for an expanded meal service for students living in halls that require a meal plan, the summary said.

Turn to Rates, page 7.

## ValTrans proposal could improve accessibility to ASU

By CAROLYN HOFIG  
State Press

Forget the ritual stampedes for Lot 59 trams; by 1995, commuting students will glide onto campus in elevated trains if Maricopa County residents approve a multibillion-dollar mass-transit system.

Proposition 300, which will go before the voters on March 28, provides for the \$8.4 billion ValTrans plan, a county-wide transit system which includes expanded bus service and freeways and automated light-rail transit.

Also at issue in the proposition is a half-cent sales tax increase would partially fund the project.

By the year 2020, ValTrans would phase in a mass-transit network that could accommodate the 5 million people who are projected to be living in the Phoenix area.

The first four stages would be completed by 1995, when project designers will regroup and decide how best to expand the system then.

But those first four steps would bring about significant changes in the way students get to class, according to supporters of the transit system, including seven-day-per-week bus service to the University and an ASU stop along the

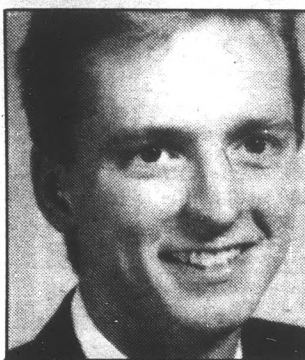
elevated-train route.

"It will allow students who live far from campus to reach ASU," said Sharad Mistry, manager of rapid transit corridor planning for the Regional Public Transit Authority. "Also, it will enable students to get to the West Campus easily" with bus connections.

Buses promptly will begin greatly expanded service should Proposition 300 be approved, Mistry said.

Eventually, the RPTA would like to expand its fleet from the 348 buses currently in operation to approximately 1,500 by 2020, RPTA officials have said.

Pat Schweiss, director of Off-Campus Student Services, said some 38,000 ASU students commute to the University, with the great majority of them depending on their cars for transportation.



Pat Schweiss

According to the ValTrans proposal, the train's route will cross the Salt River bed near Mill Avenue and follow the railroad tracks behind the Tempe Mission Palms Hotel toward Sun Devil Stadium.

A stop near the stadium will serve downtown Tempe and ASU. The train then will turn south along McAllister Avenue on its way south and east to Mesa. Another stop is planned at McAllister Avenue and Orange Street.

Should ValTrans be approved by voters, the exact details of the elevated rail system will be worked out. But the trains certainly will be electric-powered and will be shorter and narrower than its heavy-rail counterparts in New York or Chicago, Mistry said.

Mistry said the elevated train will be a state-of-the-art design. He said the train will not be a monorail.

"This (system) cuts above anything that was done before," said Mistry, who also instructs a transportation class at ASU. "It's an aesthetic exercise."

The trains will ride on a guideway about 22 feet high, supported by twin sets of concrete columns every 75 to 100 feet.

Turn to ValTrans, page 7.

### WEATHER

Sunny skies and light winds are forecast for today with a high temperature in the mid 70s.

### INSIDE

ASU head volleyball coach Debbie Brown resigns Wednesday to become assistant coach for the U.S. Women's National team.

Page 17.



Classified.....	21
Comics.....	16
Entertainment.....	11
Opinion.....	4
Police Report.....	6
Sports.....	17
Today.....	2

## Bush to be sworn in as 41st U.S. president

By The Associated Press

WASHINGTON (AP) — George Herbert Walker Bush will be sworn in as the nation's 41st president this morning in a ceremony that will mark the end of the Reagan Revolution and the beginning of Bush's vision for a "kindler, gentler nation."

Thursday, Bush spent his last day as vice president rehearsing the presidential inaugural address he will deliver at noon Washington time (10 a.m. MST) and saluting the mentor whose shoes, he said, would be "pretty darn hard to fill."

On the eve of his installation into the heavy responsibilities of office, he was upbeat. "I really feel this," he said. "Our best days are yet to come."

Bush spent much of the day out of the public eye, preparing for one sentimental last visit to the Oval Office as a loyal subordinate, giving interviews and

rehearsing the 15-minute address which will set the tone of his administration.

For this state occasion, Washington's weather was glorious.

Visitors and Washingtonians alike strolled with topcoats unbuttoned in the balmy-for-January sunshine. A mixture of sunshine and clouds, with an afternoon chill, was predicted for Friday, when Bush takes the oath.

Four years ago, the weather was so harsh that President Reagan had to be sworn in indoors and his inauguration parade was cancelled.

Reagan spent his last full day in office saying goodbyes. Meeting reporters, he discussed a somber aspect of his presidency — his failure to win the release of nine Americans held hostage in Lebanon, some for nearly four years.

"We don't know where they are," the

outgoing president admitted, saying any rescue attempt would have been foolhardy.

"There hasn't been a moment that this hasn't been on my mind," Reagan told news service reporters.

Bush, appearing before an audience of top high school students from around the country, promised to do "all in my power" to let them take advantage of life's opportunities and talked about Americans' characteristic optimism.

"No one better personifies that than a president named Ronald Reagan, whose shoes are going to be pretty darn hard to fill," he said.

Vice President-elect Dan Quayle, appearing separately before the same students, made a confession: "As one looks back at life, I'll be the first to admit I wish I had taken education more seriously."

# world/nation in brief

## Today 2-year anniversary of Waite kidnapping in Lebanon

BEIRUT, Lebanon (AP) — It was two years ago today that Anglican Church emissary Terry Waite left his Beirut hotel to negotiate the release of American hostages and disappeared, presumably becoming a hostage himself.

What happened on his fifth mercy mission remains a mystery, but other Western hostages freed since he vanished have reported seeing a man in an underground prison they believed was the 6-foot-7 Waite.

New rumors crop up almost every week: He was killed trying to escape Shiite Moslem extremists who held him; he was smuggled to Iran in a coffin to stand trial as an American spy; he will be ransomed for \$7 million.

No group has claimed to hold Waite. The British government, which refuses to negotiate with terrorists, says no demands have been made. No photographs or videotapes have been released to prove he is alive.

A British official said recently: "We believe Waite is alive simply because we've had no evidence to the contrary."

Fifteen foreigners are missing in Lebanon, including nine Americans, most of them believed held by Shiites loyal to Iran.

One of the Americans, on whose behalf Waite had intended to negotiate, has been held longest: Terry A. Anderson, 41, chief Middle East correspondent of The Associated Press. He was kidnapped March 16, 1985.

The 49-year-old personal envoy of the archbishop of Canterbury is one of four Britons among the missing. Two seen grabbed by gunmen in Beirut — journalist John McCarthy and teacher Brian Keenan, who has British and Irish nationality — also disappeared with no claims of abduction.

## Soviet troops will take weapons with them during withdrawal

VIENNA, Austria (AP) — The 50,000 Soviet troops being pulled out of Eastern Europe will take the nuclear missiles and other arms under their control with them, the Soviet foreign minister said Thursday.

A NATO spokesman welcomed the announcement by Foreign Minister Eduard Shevardnadze as "encouraging." U.S. arms negotiator Stephen Ledogar said the speech was "very upbeat, very positive," but warned against reading more into the statement than the Kremlin intended.

Shevardnadze's speech came on the final day of a gathering that produced a 35-nation human rights accord. Shevardnadze said the agreement was the product of a changing relationship between East and West.

Soviet President Mikhail S. Gorbachev, in a unilateral move, announced in December that Soviet forces would be cut by 500,000 soldiers, including 50,000 stationed in Eastern Europe.

The Soviet Union and the United States signed an accord more than a year ago to eliminate all intermediate-range nuclear forces and are negotiating deep cuts in strategic arms.

## Marcos hearing on whether he should stand trial is interrupted

NEW YORK (AP) — A hearing on whether Ferdinand Marcos is too sick to stand trial on racketeering charges was interrupted Thursday with word that the deposed Philippine president had suffered a collapsed left lung.

In Honolulu, Marcos was in guarded condition but apparently was out of danger, said Dr. Calvin Wong.

Prosecutors in New York were cross-examining a doctor who had testified that Marcos was a "dying man," too ill to be brought to trial, when a FBI agent entered with a note on the 71-year-old former president.

After conferring with lawyers in his chambers, U.S. District Judge John Keenan announced that Marcos' left lung collapsed that morning and that he was returned to the intensive care unit at St. Francis Medical Center in Honolulu, where he has been since Sunday with pneumonia and bronchial asthma.

Keenan said doctors had been able to reinflate Marcos' lung and added, "I also understand there was an additional cardiological problem."

"He's doing much better now," Wong said. Asked if Marcos was out of danger, the doctor said, "I think so. If he weren't, I'd still be in there."

Wong said he could not say how long Marcos would remain in intensive care. Marcos' wife, Imelda, was at his bedside, hospital officials said.

# today

### Meetings

- All Saints Catholic Newman Center Student Association ice cream social and game night at 7:30 p.m. at the Newman Center Lounge (corner of University and College). All students welcome.
- Hillel Jewish Student Center tree planting honoring President J. Russell Nelson and celebrating Tu b'Shevat at 11:30 a.m. near the fountain area, just north of the Business Building. Also, "Coffeehouse" — enjoy a Friday evening of live musical entertainment, food and great company at 9 p.m. at the Hillel Jewish Student Center, 1012 S. Mill Ave., Tempe.
- Devil's Juggling Club Learn to juggle or develop your

skills every Friday from 2:40 p.m. to 6 p.m. in front of Language and Literature Building.

- The Whitefield Society an open forum question and answer session on the Bible and Christianity Friday at 7:30 p.m. in the MU Coconino Room 217.
- AIESEC general meeting for old and new members at 4 p.m. in the MU Mohave Room.
- Baptist Student Union encourages you to attend the "Welcome Back to ASU" party Friday at 7 p.m. The BSU is located at 1322 S. Mill Ave., Tempe.
- Women's Studies and Department of Communication bittersweet commentary on the mother/daughter relationship on Friday and Saturday. Performed by local

professional actresses at 8 p.m. at Danforth Chapel. Cost \$3.

- Esperanto - ASU will have an information table about the "world's easiest language" from 11:30 a.m. to 1 p.m. by the Language and Literature Building. Free Esperanto classes start Saturday at 12:30 p.m. in MU Room 213. Call Jay at 963-8860 for more information.
- Native American Students Association potluck picnic, volleyball on Saturday at 1 p.m. at Daley Park (off College Avenue). Contact Dwight Witherspoon or Ed Norton at 894-9158 for more information.
- InterVarsity gutter party and volleyball at 2:30 p.m. Saturday at Daley Park (off College Avenue).

## ASU'S COMPUTER SOURCE

**Avantage XT**  
\$549  
Many ASU Professors own an Avantage. Get one for less! Includes floppy drive, keyboard, and monitor.

**Avantage 286**  
\$899 includes Monitor  
Get the 286 machine that's priced right. Includes 512K, std. keyboard, 1.2mb floppy drive and more.

**Apple IIgs**  
\$749  
The most powerful Apple II made. Its sophisticated graphics & sound make it ideal for school or home use alike.

**Hot NEW Borland Languages**  
Includes Debugger!  
\$89 Your choice  
Turbo C 2.0  
Turbo Pascal 5.0

**First Choice**  
-Word Processing  
-Database  
-Spreadsheet  
-Communications  
-Graphics  
\$89  
All in one!

**EPSON EQUITY I+**  
10 mhz  
\$899 Complete  
\$125 EPSON REBATE  
Wow! Epson Power and Quality for this low price. Includes monitor, 640K, Dos, and more. Net Cost is \$774

**Panasonic**  
Office Automation  
Dot Matrix Printer  
\$167  
Perfect for papers and program listings. Includes tractor & friction feeds and front selectable type styles.

**EPSON Equity LT Laptop**  
\$899  
640K, 10mhz, battery powered, dual drives, and DOS in a battery powered package!

**USRobotics**  
\$79  
1200 Baud Internal Modem  
Get On-line Instead Of In-line.  
2400 Baud \$139 Mac External Version add \$20

COMPUTER SYSTEMS CENTER

**Phoenix**  
1632 E. Camelback Rd.  
266-7873

**Tempe**  
Southern & McClintock  
838-1236

**West Valley**  
35th Ave. & Northern  
841-0202

AND

With Ron Parker

PRESENT

# SUPERBOWL SUNDAY

HAPPY HOUR  
DRAFT AND WELL  
SHOT SPECIALS DURING GAME

WIN A Trip for 2 to ACAPULCO  
Compliments of Paradise Premiums  
PHOENIX CARDINALS CHEERLEADERS!  
Will Be There

6 VIDEO SCREENS

**BUY TICKETS NOW!  
ONLY \$2**

INCLUDES SUPERBOWL BUFFET  
LIMITED SEATING AVAILABLE

345-2660

**909 E. MINTON**

DOORS OPEN AT 2:30



Jack W. Beasley Jr./State Press

This 6-foot snowman in front of P.V. Main, built by the Delta Chi fraternity, required two truckloads of snow brought down from Flagstaff. The fraternity hopes to continue the practice as part of their yearly pre-initiation activities.

## Parking lot lights replaced following safety complaints

By TYRONE MEIGHAN  
State Press

After days of student complaints about safety and a written complaint from a student government official, lights in a parking lot located behind an ASU dormitory have been restored.

"It shouldn't take this long when it's a matter of student safety," said Associated Students' President John Fees. "They (Parking Services) have known about it since Saturday."

Lights in Lot 53, located directly behind Palo Verde Main, were removed to allow for construction of a parking structure, prompting complaints from students who must walk through the lot at night.

Jerry Grence, assistant director of Physical Plant, said it was necessary to remove the lights.

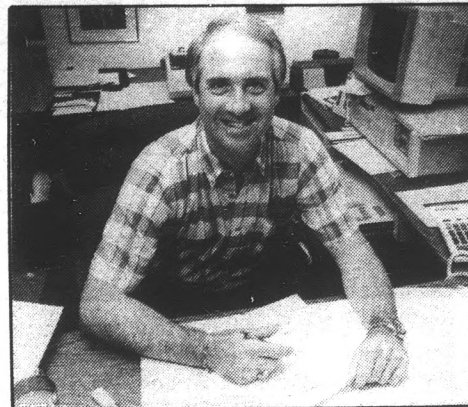
"Because of the new structure, we had to pull down some lighting," he said. "People have to realize we have construction going on."

Lynn Vavreck, an ASU political science major and resident of Palo Verde, said the lack of lighting in the lot has created problems for students.

"It's an inconvenience and safety hazard for the students," she said. "They (Parking Services) are aware of the problem but they don't seem to be treating it like a real safety hazard." Vavreck, who also is a Lot 53 decal holder, said she discovered in October, after she purchased a decal for the lot in August, that it would be under construction.

"They didn't tell me they were going to do construction," she said.

Students who purchased Lot 53 decals



Richard Landreth

have been forced to park in Lots 55 and 59. Lot 59 has further been congested by Lot 42 decal holders who have been displaced because of the construction of a parking structure there.

"Lot 59 is so crowded," said Vavreck, adding that the lack of spaces has frustrated motorists.

But Richard Landreth, director of Parking and Transit Services, said there is plenty of room in Lot 59.

"Lot 59 has over 4,300 spaces," he said, adding that most students don't know they can park in the spaces with yellow parking curbs.

"Students with a Lot 59 decal can park there," he said. He added that the curbs are marked yellow for Sun Devil and Cardinal football games.

Landreth said to help the students moved to Lot 59, the operation hours for trams have been extended to 2 a.m. beginning Thursday night.

STATE PRESS Classifieds.  
take them personally!



# THERE USED TO BE AN EXCUSE FOR THE WAY YOU DRESSED...



... your mom and dad chose your clothes! Now there are no more excuses. Because at Millers Outpost, you can dress the way YOU want to dress. All your favorite looks in denim and casual clothing - and no parents!

**Save 30%! Levi's Preshrunk 501 jeans**

Young men's sizes 28-38. Juniors' sizes 3-13. Reg. \$32, with ad 21.99 each pair

**Save 25%! ASU College Shop Separates**

Maroon, gold and white T-shirts, sweatshirts, sweatpants and shorts. S-M-L-XL. Reg. \$10-20, with ad 7.50-14.99

Bring in this ad to the Millers Outpost in Tempe, Broadway Rd. & Rural Rd.

Ad redeemable 1/20-1/29/89. Limit 12 pairs of sale-priced Levi's jeans per customer.

M I L L E R S O U T P O S T

## Arts building achieves new heights in prison design

**Marty Sauerzopf**  
Editor



We all make mistakes, and I made a beauty one night over Christmas break.

On one particular Wednesday night shortly after the beginning of the new year, I was on campus preparing for the impending semester. At about midnight, I was overcome with a sudden hunger pain. Realizing that the local Sub Stop was already shut down, I decided to hike to the 24-hour supermarket in Tempe Center.

As I walked through Parking Structure Three and emerged on the east side of the shopping center, I glanced over at the newly completed Fine Arts Complex. I was surprised that I could actually see the building at night, since it wasn't lit very well and it was designed perfectly for evening camouflage.

On this night, however, I noticed the gleam of a small flashlight and the silhouettes of two individuals standing next to the building, waving their arms wildly like they were trying to attract the structure's attention.

Being inherently curious, I decided to take a closer look. When I was near enough to the building to see what the night-stalkers were doing, I noticed that they were both clothed in black, and were not waving at the building, but were using cans of spray paint to decorate the outside of the drab-colored walls.

They were writing such phrases as "Prison," "Welcome to Florence," "Kilroy wouldn't even come here" and "Paint me please." I had to suppress a smile at the message they were trying to convey, but

being a conscientious citizen, I realized that there were other ways of making a statement like this. I was going to call the police from the supermarket, but as soon as I began to steal away, I heard police sirens and saw flashing blue and red lights approaching.

About six police cars came roaring up 10th Street with their headlights blaring into the darkness. The two painters were caught in the array of lights and dropped to the ground in a futile attempt to avoid being seen.

Four police officers got out of their cars and looked at the painting handiwork from a distance and eyed the pair lying on the ground. Then, surprisingly, they walked away and started scanning the rest of the building. More officers joined them, guns at the ready, and shone their flashlights all around the exterior of the building searching for some unknown person or thing.

The painters, realizing that they were apparently unwanted by the armed posse, got to their feet and resumed their work, uninterrupted by the police search which had now moved to the far end of the building.

More officers appeared and began stringing yellow police line tape around the area of the search. More squad cars arrived, bathing the entire area in a flashing red and blue glow.

By this time, curiosity had me by the throat, and I had to find out what the emergency was. I approached a nearby uniformed policeman holding a gun in one hand and a walkie-talkie in the other.

"What's going on?" I asked inquisitively. "Well, when we got the garbled radio message about the prison break, we decided to get here as soon as we could," he told me. "I gotta admit, though, we had a helluva time finding this place. I never realized that Florence was in such a densely populated

area. Hell, that looks like ASU right over there."

"Prison break? Here?"

"Yeah, amazing isn't it? A well-constructed maximum security facility like this, and some scum decide to rappel the wall. I don't know what society is coming to."

"But this isn't Florence."

"What are you talkin' about, son? It says 'Welcome to Florence' right over on that wall."

"There's two vandals over there painting that stuff. This is the new ASU Fine Arts Complex."

"Now look, son, we're handling this situation. Maybe you should just run along or I'll take you in for obstructing justice."

"I'm not obstructing anything. Don't you see those two guys over there?"

"Yeah."

"Don't you see what they're doing?"

"They're paintin'."

"Don't you find that unusual?"

"I figured they were just a part of some beautification project. Hell, this exaggerated cinder block here could sure use it."

*"But this isn't Florence . . . This is the new ASU Fine Arts Complex."*

After about 30 minutes of discussion, I managed to convince the officer that he was in the wrong location, so he called his sergeant over.

"Sarge," he said, "I do believe we're in the wrong location."

"What are you talking about, Officer Pyle?!" the tall, skinny man shouted back.

"This isn't Florence, it's ASU, and this is one of their new buildings."

"Are you trying to insinuate that someone at ASU would actually have the guts to authorize construction of a monstrous above-ground fallout shelter like this to teach in? Is that what you're saying, Pyle? Are you from Minnesota or something?!"

"I'm sorry, Sarge, but I'm afraid it's true. But it shouldn't be a complete waste of time. There's a couple of vandals defacing this here concrete land fill with all types of graffiti. Maybe we oughta take 'em in."

"Pyle, I do believe that for once in your life you're right about something. I was hoping those boys were part of some beautification project. This rock pile could sure use one. Jeeez."

The search was called off and the two artists were bodily removed from the scene under the watchful eye of 37 gun barrels. After the squad cars all left the scene, I continued on to the grocery store then headed back past the new building.

I looked over at the drab walls again and saw something unusual at the top of the building on the north side. I stopped to see if I could figure out what was happening, and I was able to make out about 10 or 11 people, all dressed in black leather jackets with "Design-Review Board" embroidered in gold on the back, rappelling down the wall.

They reached the ground and I overheard one of them saying, "OK, boys, I think the coast is finally clear. I figure you can all slip away without being seen. Don't worry, I'll stick it out here until May, then I'll just retire and let someone else worry about this concrete slab collection. Boy, we sure pulled one over on this place, didn't we?"

"Say, before you guys leave, let's try to get this paint off the wall over here. I can't stand beautification."

Oh, well, maybe I was in Florence. Maybe I just dreamed it.

Who knows . . . maybe it was Utah.

## letters

### Families of victims, killer both suffering

Editor:

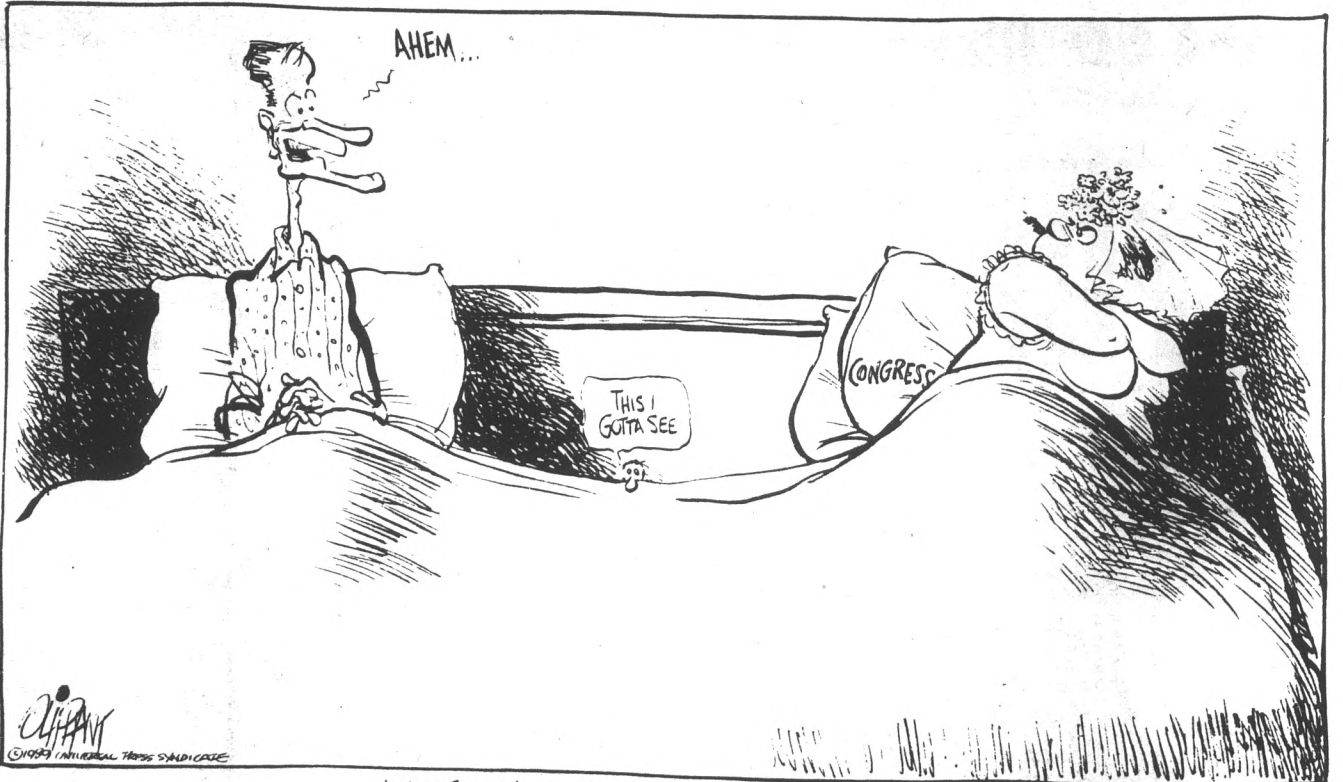
I have watched the war over Christine Buffone take place in your newspaper for many months. It has had special significance to me because I worked with both Carol Buffone and Sharon Mellem in the office of Aeronautical Technology.

I also continue to work in the same office and witnessed the turmoil and grief of the Mellem family. At times, I heard both Carol and Sharon comment on the plight of the other family and express their regret for the suffering this catastrophe has caused all parties involved.

What Ed Schubert's column (Jan. 19) neglected to mention was that Richard Mellem Jr. was not convicted by the attorney that Mr. Schubert denegated. A jury convicted Ricky. Nine men and women trying their best to achieve justice based on the facts, not on stirring courtroom dramatics. If Mr. Schubert wishes to question the "triviality" of the conviction he should question the jury, or review the trial transcripts. Without that kind of input the only basis for judgment is emotional. There has been enough sad, tormenting emotion displayed in the newspapers. I, for one, pray that both families achieve some small measure of peace.

Cindy Wyckoff

Secretary II, Office of Aeronautical Technology



LET THE HONEYMOON COMMENCE

## quotable

*"Genius, in one respect is like gold — numbers of persons are constantly writing about both, who have neither."*

— Charles Caleb Colton

## LETTER POLICY

The State Press welcomes and encourages written response from our readers on any topic.

All letters must be typed, double-spaced and no longer than three pages in length to be eligible for publication.

Please include your full name, class standing and major (or other affiliation with the university) and phone number. Requests for anonymity will be granted with an appropriate reason.

Letters are subject to editing by the opinion page editor.

All letters must either be brought in person with a photo ID to the State Press front desk in the basement of Matthews Center or else addressed to: State Press, 15 Matthews Center, Arizona State University, Tempe AZ 85287-1502.

## STATE PRESS

MARTY SAUERZOPF

Editor

JOAN MCKENNA

Managing Editor

City Editor..... VICKIE CHACHERE  
Asst. City Editor..... SHERI JOHNSON  
Opinion Editor..... MIKE RITTER  
Asst. Opinion Editor..... BRIAN TASSINARI  
Wire Editor..... ADRIANE HOPKINS  
News Editor..... PATRICIA VAN COURT  
Arts Editor..... LISA HORBLIT  
Asst. Arts Editor..... TOD MCCOY  
Sports Editor..... GARY JACKSON  
Asst. Sports Editor..... CHRIS DORSEY  
Copy Chief..... MICHELLE ALLMAN  
Photo Editor..... JACK BEASLEY  
Asst. Photo Editor..... TODD GREEN

PHOTOGRAPHERS: Irwin Daugherty, Carol LeMaster, Jamie Lytle.

COPY EDITORS: Troy Bausinger, Susan Cleere, Wendy Strode.

PRODUCTION: Victoria Culver, Janice Hill, Nancy Ness, Mark Nothoff, Lynn Senzek, Jason Silver, Eric Zotcavage.

ADVERTISING REPRESENTATIVES: Virginia Boss, Don Cardona, Dan Cincera, Omar Foster, Chad Frazee, Mike Hayes, Paul Lee, Brian Newman, Shannon McCue, Renee Popick, Rich Toltzman, Laurie Zeleny, Ray Zickel, Peter Ziebron.

The State Press is published Monday through Friday during the academic year except holidays and exam periods, at Matthews Center, Room 15, Arizona State University, Tempe, Arizona 85287. Newsroom: (602) 965-2292. We do not answer questions of a general nature. Advertising and Production: (602) 965-7572.

The State Press is the only newspaper exclusively published for and circulated on the ASU campus. The news and views published in this newspaper are not necessarily those of the ASU administration, faculty, staff or student body.

REPORTERS: Joanne Asquith, Mike Burgess, Kristi Ellis, Stacy Haymes, Carolyn Hofig, Robie Kakonge, Michele McDonald, Tyrone Meighan, Melissa Michael, Michael Van Dyke, Richard Vigil, Kathleen Winstead, Lori Zubalik.

ARTS REPORTERS: David Berberick, Jill Herbranson, Jennifer Lynn Johnson, Matthew Lindenburgh, Mish Tell.

COLUMNISTS: Darrin Hostetter, David Jordon, Ed Schubert.  
SPORTS REPORTERS: Dean Gyorgy, Bob Heiler, Dave Hodges, Kyle Eng, Chris Nacking, Kelly Pearce, Chris Pirkey.

# To err is human

## In wake of political blunders, frank confessions work wonders

**Jeff Greenfield**  
Universal Press Syndicate

When 800 New Yorkers of overwhelmingly liberal bent listen receptively for more than an hour and a half to the wit and wisdom of George Bush's media adviser, he must be offering them tasty food for thought.

In this case, the reflections of Roger Ailes offered badly needed nutrition for politicians and citizens alike.

The audience had come primed to regard Ailes as the Darth Vader of the 1988 campaign: the man who unleashed savagely negative attacks on Michael Dukakis as a soft-on-defense, soft-on-crime, soft-on-patriotism elitist, and thus poisoned the political atmosphere.

Ailes had no apologies to make — how come, he challenged his audience, you had no problem with the attacks on George Bush as a wimpish pal of drug-dealing dictators — but the most important lesson he offered came in response to a question I asked him about the infamous Willie Horton furlough issue.

Suppose, I said, Michael Dukakis had begun airing commercials and speeches in the spring of 1988, when the Bush campaign was already signaling its intention to make the furlough issue a centerpiece of its campaign. Suppose Dukakis had said something like this:

"Candidates like to talk about the good things they've done, and I'm no exception. But now I have to talk about a major mistake I made as governor; and what I learned from it.

"We had a furlough program in Massachusetts — started by my Republican predecessor, but one which I supported — that was designed to ease overcrowding in prisons, and to get convicts ready to go back into society as law-abiding citizens.

"But it was flawed; and in one horrible instance, we let out someone who should never have been set free. He brutalized a couple in Maryland before he was caught and sent back to prison.

"I didn't let Willie Horton out of prison. But it happened on my watch, and I am fully accountable. While the furlough program has been changed — a Willie Horton cannot get out now — that doesn't change my responsibility.

"What did I learn? That you can't make assumptions when

responsibility at all.

"It's nice to point out things that you did right. But part of leadership is to own up to what you did wrong — and to change it."

What, I asked Ailes, would have happened if Dukakis had said something like that?

"The issue would have been dead — we would have had to stop raising it," Ailes replied bluntly. "How could we ask people to understand mistakes like Iran-Contra, and then beat Dukakis over the head with the furlough issue if he said he had been wrong?"

Then Ailes smiled. "Of course," he added, "that assumes that Dukakis was capable of admitting that he'd made a mistake. And everything we'd learned about him as governor told us he was so arrogant that he just couldn't credibly make that kind of admission."

What lessons can we draw from this observation by a master media strategist? I suggest two:

First, media manipulation can only go so far. The saviest Democratic consultant alive could not get Michael Dukakis to be what he was not.

Second, the instinctively defensive reaction of most politicians to criticism is almost certainly wrongheaded. As it turns out, a candid admission of error is probably one of the most effective, neglected tools a politician has.

Constituents forgive mistakes. They know that politicians are human, and they resent as much as anything else a politician's apparent conviction that he is incapable of error.

So as George Bush and a new Congress prepare to govern, they might keep in mind three little words that can work wonders: Not "Read my lips," but "I was wrong."

*... the instinctively defensive reaction of most politicians to criticism is almost certainly wrongheaded. As it turns out, a candid admission of error is probably one of the most effective, neglected tools a politician has.*

it comes to the safety of citizens; that it's a lot better to err on the side of safety than on the side of rehabilitation; and that if I'm elected president, I'm going to take a hard look at the federal furlough program, under which released convicts have committed murders, and for which neither President Reagan nor Vice President Bush has acknowledged any

# Best Deal in Town!

state press

## MINDER BINDER'S

BOGGLES THE MIND, GRATIFIES THE SENSES

WELCOME BACK STUDENTS!

JAN 20

8 PM  
12 MID  
Friday



SPECIAL PRICE

99¢  
REG. 1.69

Never ever  
a cover

**Lite**  
GENUINE DRAFT

715 SOUTH HAYDEN ROAD, TEMPE, AZ 85281 • 966-1911

## Oregon's PIZZA

HOME OF THE ALL YOU CAN EAT  
PIZZA, PASTA  
SALAD BAR

**FREE DELIVERY**

Limited Area 4:30-Close

Large, Comfortable Dining Room  
BIG SCREEN CABLE TV

894-1234  
**ASU/TEMPE**  
945 S. MILL AT 10TH

**SAVE \$2.00!**  
\$2 Off Any Large Pizza  
\$1 Off Any Medium Pizza

Present this coupon when ordering.  
Not valid with any other offer.  
Expires 1-31-89.

**SAVE \$5.50!**  
2 Large 2-Topping Pizzas  
only \$12.99  
2 Medium 2-Topping Pizzas  
only \$10.99

Present this coupon when ordering.  
Not valid with any other offer.  
Expires 1-31-89.

10th Street X

Mill



# police report

ASU police reported the following incidents ending 7 a.m. Thursday:

- A woman unaffiliated with the University was arrested Wednesday morning in connection with a hit-and-run accident on campus Jan. 10. She was cited and released.
- Someone broke the drivers' side window of a student's blue Suzuki Samurai that was parked in Lot 63 on Tuesday. Damage is \$150.
- A student who made a sharp turn in Lot 59 Wednesday hit another car that was illegally parked. Damage to both vehicles is \$550 and the illegally parked car was ticketed.
- Someone stole two students' backpacks and their contents from the ASU bookstore. Total loss is \$895.

- Someone stole \$150 worth of parts from a motorcycle parked in Lot 15 sometime between Tuesday and Wednesday.
- Someone stole a \$100 men's red 26-inch Huffy 12-speed bicycle Wednesday from the bicycle racks on the northwest side of the Student Services Building.
- Someone stole a \$250 VCR from a room at the University Athletic Center. The theft occurred sometime between Jan. 3 and Tuesday.
- Someone stole a Sony telephone/answering machine and two compact stereo speakers Wednesday from a room in the A-wing of the Cholla Apartment Complex. Loss is \$235.
- Someone stole an Arizona license plate from a car parked in Lot 59 on Wednesday. Loss is \$5.

•Someone stole a \$300 ASU flag from the second floor of the Administration Building. The theft occurred sometime between last Saturday and Tuesday.

•A man unaffiliated with the University tore ligaments in his right ankle Wednesday after he fell in the lobby of the Student Services Building. He was treated at the scene by Tempe fire paramedics and taken to Tempe St. Luke's Hospital.

•Someone stole a \$100 26-inch Murray 10-speed bicycle from the east side of Palo Verde West residence hall. The theft occurred sometime between Monday and Wednesday.

—MIKE BURGESS



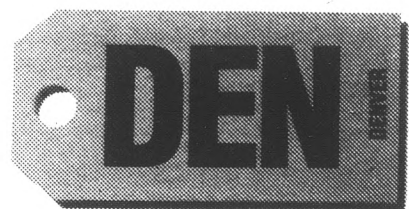
New York City  
\$99 roundtrip



Seattle  
\$99 roundtrip



Phoenix  
\$99 roundtrip



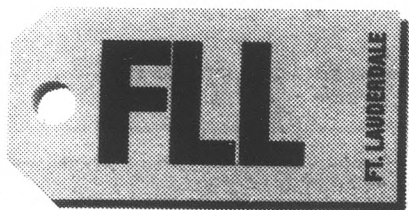
Denver  
\$99 roundtrip



Chicago  
\$99 roundtrip



Boston  
\$99 roundtrip



Fort Lauderdale  
\$99 roundtrip



San Francisco  
\$99 roundtrip



Los Angeles  
\$99 roundtrip

## \$99 roundtrip airfares on Northwest Airlines. A special offer for students, only for American Express Cardmembers.

If you want to go places, it's time for the American Express® Card.

Because now you can take advantage of new travel privileges on Northwest Airlines *only for full-time students who carry the American Express Card.*

Travel privileges that offer:



Two \$99 roundtrip tickets—fly to any of the more than 180 cities served by Northwest in the contiguous 48 United States. Only one ticket may be used per six-month period.

Special Quarterly Northwest Destination Discounts throughout 1989—up to 25% off the lowest available fare. 5,000 bonus miles in Northwest's WORLDPERKS® free travel program—where only 20,000 miles gets you a free roundtrip ticket to anywhere Northwest flies in the contiguous 48 United States or Canada.

And, of course, you'll enjoy all the exceptional benefits and personal service you would expect from American Express.

The only requirements for privileged travel: you must be a Cardmember, you must be a full-time student, and you must charge your Northwest Airlines tickets with the Card.\*

Getting the Card is easier than ever because now you can apply by phone. Just call 1-800-942-AMEX. We'll take your application and begin to process it right away. What's more, with our Automatic Approval offers, you can qualify now while you're still in school.

Apply now. Fly later—for less.



Apply Now: 1-800-942-AMEX



\*Some restrictions may apply. For complete offer details, call 1-800-942-AMEX. Current student Cardmembers automatically receive two \$99 vouchers in the mail.  
© 1989 American Express Travel Related Services Company, Inc.



**RUNDLE'S**  
LIQUORS & MKT.  
New Location  
1324 W.  
University  
(just east of Priest)

- Volksa Vodka, 750ml.....\$4.98
- Meister Brau, 6 pk.....1.88
- RC-Crush, 2 lr......99
- Used Playboy Magazines......94
- Haagen Dazs Natural Ice Cream, Adult Magazines, Groceries, Ice, Wines, over 40 imported Beers.

967-9079

### BUY • SELL • TRADE

Your books at Changing Hands. For quality cloth and paperbacks (no textbooks, please) we pay 30% of our resale price in cash or 50% in trade-in credit which may be used to purchase anything in the store. (Sorry, no trades-ins on Sat. or Sun.)

- Browse through our three floors of:
  - New & Used Books
  - Art Prints & Posters
  - Calendars & Cards
  - Handbound Journals

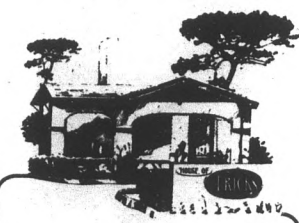
M-F 10-9 SAT 10-6 SUN 12-5

**CHANGING HANDS**  
414 Mill Avenue 966-0203  
Old Town Tempe

### LAZY LIQUORS East Apache Blvd. 894-5312

- Coors 12 pak cans.....\$5.49
- Old Style 12 pak cans.....\$3.79
- Milwaukee's Best 6 pak.....\$1.79
- Skol Vodka liter.....\$5.49
- Kahlua 750ml.....\$10.99
- Tanqueray Gin 750ml.....\$10.99
- Bacardi Rum 750ml.....\$6.99
- R.C. Hires Root Beer 2 liter...89¢
- Orange Crush
- Mateus Wines 750ml.....\$3.99
- Bolla Soave 750ml.....\$4.99

Free Bag of Ice  
with \$10 Purchase



for the  
perfect way  
to start  
your day...  
**BREAKFAST  
AT  
TRICKS**  
Delicious, healthy  
food at  
reasonable prices.

6:30-9:30 a.m.  
Tuesday-Friday



114 E. 7th St.  
968-1114

# Rates

Continued from page 1.

In another action, the committee also backed a recommendation to increase the construction budget for an addition to the Physical Science building by more than \$2.5 million.

The proposed increase will be funded by shifting \$2.5 million in bonding authority from lower priority projects.

The Physical Science addition will create a total of 118,300 square feet for classrooms, labs and offices for the science faculty.

The building is expected to be completed in May 1990.

# ValTrans

Continued from page 1.

Mistry said the system would be computer-controlled, allowing more trains to run faster than in systems with human drivers.

Associated Students of ASU President John Fees, who also serves as co-chairman of ASU RSET '89, agreed with Mistry.

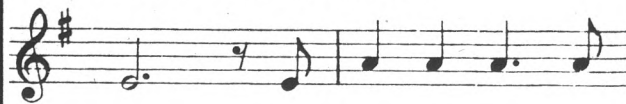
"It's a quality-of-life issue," Fees said. "We need that kind of service for our commuter students."

ASU RSET is a division of the Valley-wide Residents for Safe and Efficient Transportation '89, which supports Proposition 300.

## JEWISH STUDENT ACTIVITIES

Listen to the music....

Hillel is having a **Coffeehouse**.  
Enjoy live music, food, and fun.



Friday, January 20, 9 p.m.  
Hillel, 1012 S. Mill Ave., Tempe  
*Free Admission!*

**New Year of the Trees**  
Join us as we plant a tree  
on campus and in Israel  
Honoring President J. Russell Nelson  
and to celebrate Tu b'Shevat



Friday, January 20, 11:30 a.m.  
Meet us at the fountain just north of  
the Business building.  
Bring lunch and enjoy fruit and beverages on Hillel.

### SUPERBOWL PARTY

Come see the big game on two screens!



Sunday, January 22, 2:30 p.m.  
\$3 includes admission, sandwiches, & beverages

Hillel Jewish Student Center  
1012 S. Mill Ave., Tempe, 967-7563

## STATE PRESS FOR YOUR MORNING NEWS!

### Affordable Phone Answering!

- No Equipment to Buy or Rent
- No Service Calls
- No Lost Messages
- No Putting Callers on HOLD
- No Big Bills

AMVOX Telephone  
Answering  
and Messaging  
Service.  
The Right Answer.

Call: 866-1984

# SKYDIVE

WITH PAIR-A-CHUTE INC. at DESERT SKY RANCH

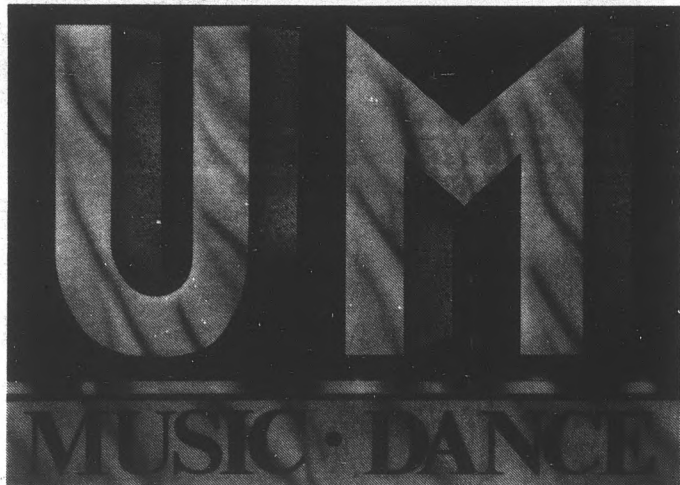
- ★ Freefall on your First Skydive
- ★ Static line, accelerated freefall & tandem courses available
- ★ USPA licensed instructors

# 431-9279

weekends call: 271-0440

# MAKE YOUR FIRST SKYDIVE

## STARTING AS LOW AS \$89



## FRIDAYS

8 p.m.-10:30 p.m.

# 25¢ DRINKS

415 S. Mill • Across from Spaghetti Co.  
UM HOTLINE 966-8888

COMING SOON!  
January 26th

Watch for the All New...

# X-STREAM

# College of Education looks to gain respect

By **ROBIE KAKONGE**  
State Press



**Dr. James Guthrie**

ASU's College of Education is not alone in its attempt to improve teacher training and regain University and community respect, an education professor from the University of California at Berkeley said Thursday.

James Guthrie, the author of several books on educational policy, told more than 30 College of Education faculty and staff members at the MU that education college quality is a national problem that does not occur solely in "elite" schools or large colleges.

"Education schools must abandon the undergraduate education majors, concentrate on graduate professional preparation, and reject the Ph.D in education in favor of the Ed.D.," Guthrie said.

Guthrie said unless colleges become less driven to increase enrollment and reduce the amount of research conducted by professors, he does not see easy solutions to the colleges' problems.

"Let's call a spade a spade, law students go to school to become lawyers, med(ical) school students go there for a purpose, and therefore teachers should go to school to become educators," he said.

Guthrie's most recent book, "Ed School," covers problems in education colleges across the country, including Harvard, Stanford University, Michigan State University and Berkeley.

He said the key to reform is strong leadership. "Whoever is in the leadership position needs to have a clear vision of direct goals," he said.

Guthrie explained that goals should include limiting the amount of research to projects that deal with social issues.

"There are better ways to spend the time and money on research telling you where the fire extinguisher should go, or where the school buses belong," he said.

**state press DON'T MISS IT!**

## College Cycle 909 E. Lemon St. Tempe

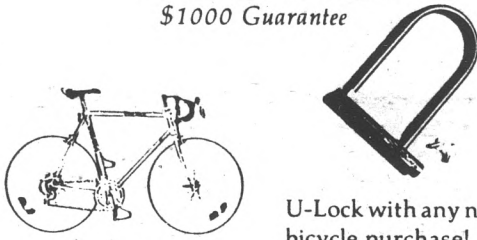
**TUNE UP SPECIAL**  
Plus Parts



Expires February 29, 1989

**FREE!**

\$1000 Guarantee



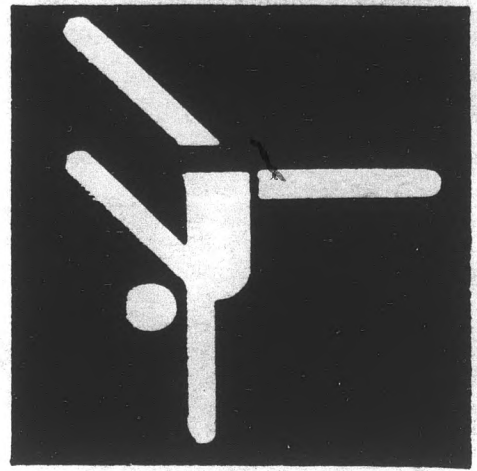
U-Lock with any new bicycle purchase!

Expires February 14, 1989

Monday-Friday 8-6; Saturday 8-5

**966-0842**

## A-STATE OF PRIDE



### SUN DEVIL GYMNASTICS

ASU Women vs. Boise St.  
ASU Men vs. Cal-Berkeley

Saturday, January 21, 7:30 p.m.  
Activity Center

Free Admission with Valid Student I.D.  
Free Gymnastics Posters for First 1000 Fans!

Sponsored by:

**LJ Hooker Homes**



Your Lucky Number  
State Press Classifieds  
**965-6731**

# TEMPE TEA PARTY

3pm-8pm

**EVERY FRIDAY**

**60 oz. Pitchers of Beer & Long Island Teas**

**\$2.95**

plus these Happy Hour specials:

50¢ 1/4 lb. Burgers • 25¢ Pizza Slices

25¢ Chili Rellenos • 25¢ Tacos • 25¢ Corndogs

8pm-12:30

Dancing for those 18 & older  
Now serving alcohol for those 21 & older

12:30-3:30

**AFTER HOURS 18 & older**

Don't forget **SATURDAY COUNTDOWN**  
starting at 8pm



**Sun Devil House**



...Paris...to Julliard...to Baltimore...to St. Louis...to Symphony Hall!

## COMET CONDUCTS.

Catherine Comet (Koh-may), Guest Conductor  
January 19 & 20—Phoenix Symphony Hall—8:00 pm  
January 21—Gammage Center—8:00 pm

BERLIOZ: *Roman Carnival Overture*

DEBUSSY: *La Mer*

FRANCK: *Symphony in D Minor*

Tickets \$8, \$16 & \$23. Call **264-4754** or Dillard's.  
Senior/Student rush tickets—\$5.



The Phoenix Symphony



## CLUB FIFTH AVENUE

(formerly McGuire's)  
Scottsdale's Newest R & B Club  
**ENTERTAINMENT NIGHTLY**

**NIGHTLY \$1 DRINK SPECIALS**

**LATE NIGHT MENU**

**HAPPY HOUR 4-7 p.m.**

**MENS LINGERIE SHOW**  
Tuesday, January 24th, 6-7 p.m.

6830 Fifth Avenue • Scottsdale  
481-9112 • Serving Lunch Daily

# Law professor remembered in memorial service

By MELISSA MICHAEL  
State Press

Richard W. Effland, one of the founding faculty members of the ASU College of Law, will be remembered in a memorial service at 10 a.m. Saturday in the college's Great Hall.

Effland, born in 1916, died of a heart attack Oct. 17 after 21 years as an ASU professor.

"His presence on the faculty gave ASU instant credibility as a unit," said Alan Matheson, a professor in the College of Law.

Kathleen Neitzel, development officer for the law school, said the college is holding the service to enable former students, colleagues and friends to recognize Effland's contributions to law and ASU.

Neitzel said that although a memorial service was held immediately after Effland's death, the college waited to pay him tribute because they wanted to honor him in a "professional manner . . . without the grieving."

Effland is the only person to have received both the Distinguished Teaching Award and the Distinguished Faculty

Achievement Award from the ASU Alumni Association.

"Richard Effland was a superb teacher," Matheson said. "(He was) prepared, up to date, conscientious, caring and challenging. He was a favorite of students at Arizona State."

Effland received his undergraduate and bachelor's of law degrees from the University of Wisconsin and a master's of law degree from Columbia University.

He was first in his class at Wisconsin and editor-in-chief of the school's Law Review.

After graduation, he practiced law in Milwaukee and later served with the State Department and as Counsel and Secretary of the Export-Import Bank.

Effland returned to his alma mater in 1946 where he taught for 20 years.

He was also a visiting professor at seven colleges including, Stanford, Berkeley, Hastings, and New York universities.

Effland was a research assistant for the Arizona Legislative Council from 1970-71. His research resulted in the 1973 adoption of The Code in Arizona, a measure which simplifies estate law procedures and

reduces costs of dealing with less complicated estates.

Matheson said Effland's casebook on "Decedents' Estates and Trusts" has been the leading textbook in the field for decades.

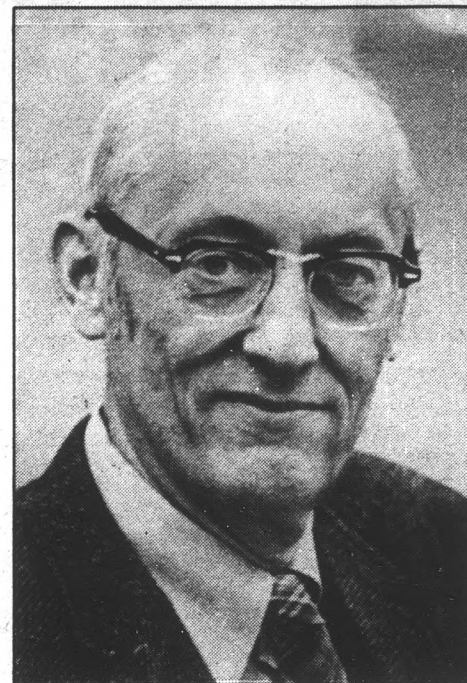
"In my opinion it's the best," he said, adding that Effland also wrote articles that appeared in the country's leading law reviews.

"A significant force in the success of the ASU College of Law, Richard Effland will be remembered as a master teacher, productive scholar, legislative craftsman, wise and generous colleague and friend," Matheson said.

The Richard F. Effland Memorial Scholarship Fund has been established at the College of Law, and the school's Alumni Association plans to donate \$5,000 to the fund, Neitzel said.

Effland will be honored at the service by friends and colleagues, including Willard H. Pedrick, professor and founding dean of the college; and alumna Martha Taylor Thomas.

Neitzel said everyone is invited to attend.



Richard Effland

# 'Dramatic action' predicted for protests

By MIKE BURGESS  
State Press

Pro-life groups likely will continue picketing a Tempe abortion clinic despite the city's OK for Tempe police to arrest demonstrators on trespassing charges, an Arizona Right to Life official said Thursday.

John Jakubczyk, vice president of Arizona Right to Life, said the policy change likely will spur protestors to take more dramatic actions during their demonstrations.

"I don't think they are going to stop acting simply because the city attorney is going to change the policy," Jakubczyk said. "They are probably going to continue acting in ways that are consistent with their First Amendment rights."

Tempe police have not enforced the trespassing laws in the past because they feared infringing on protester's constitutional rights, said Sgt. Al Taylor, a police spokesman.

The city of Tempe reversed its arrest policy this week at the request of Family Planning Institute, 424 W. Broadway Road, said Dennis O'Neill, assistant city attorney.

O'Neill said the city based its policy change on recent court cases, including an Arizona court decision that kept opponents of former Arizona Gov. Evan Mecham from collecting recall signatures at Fiesta Mall in Mesa.

Police will enforce the trespass laws if demonstrators do not leave clinic grounds when asked, Taylor said.

Taylor said there have been "flare ups" in the past at Family Planning Institute but police do not plan to assign any extra officers to the area of the institute.

"If there is a problem or situation that dictates it, then we are prepared to use man power," Taylor said. "We're not taking sides."

"Our job is to maintain peace and to make sure both sides get equal treatment, he said."

Susan de Mars, attorney for the institute, said she spent four months supplying the city with recent court opinions relating to picketing on private property, and is pleased with the city's decision.

De Mars said ongoing problems with demonstrators prompted the request to the city.

She said demonstrators have harassed patients by surrounding their cars, following them and by blocking them from enter the clinic.

In addition to harrassment, de Mars said vandals have super-glued door locks, spray painted the building and once cut off the water supply to the clinic by breaking about 100 feet of pipe.

De Mars said the Family Planning Institute wanted the policy changed in time for the weekend because Operation Rescue, a national group that has been demonstrating outside abortion clinics is gearing up for nationwide protest that may include the Valley.

## Obstetrics unit closing at city's only hospital

TEMPE (AP) — Tempe-St. Luke's, the city's only hospital, has decided to close its obstetrics department Feb. 1.

Tempe-St. Luke's President Kathleen Kearney said the hospital had been unable to increase the number of deliveries in the 16-bed unit and could not afford to operate on low volume.

The hospital delivered about 30 to 35 babies monthly during 1988, Kearney said.

The closing will occur less than three weeks after St. Luke's Health System, which runs the hospital here and three others, announced plans to eliminate 48 positions as an expense-cutting measure aimed at saving \$3.2 million a year.

However, health system marketing director Terry Johnson said no layoffs would take place because of the closing. Nurses will be transferred to other departments or hospitals within the health care network, he said.

Arrangements have been made for scheduled deliveries to take place at other hospitals in Phoenix's eastern suburbs, including Desert Samaritan and Valley Lutheran hospitals in Mesa and Chandler Regional Hospital.

*Get them while they are in season!*

# Mango

FAMOUS CRUISERS

SALE PRICES

Macaw - \$245<sup>00</sup>  
 Toucan - \$179<sup>95</sup>  
 Kea - \$139<sup>95</sup>

SAVE 50<sup>00</sup> clams

WORLD CYCLE		SPOKE SHOP	
903 S. Rural #108 Tempe 894-8644	1660 W. Southern #A1 Mesa 461-1875	937 E. Broadway #5 Tempe 921-3466	
1945 W. Dunlap #2 Phoenix 870-3662	12635 N. Tatum Blvd. (Tatum & Cactus) 996-4457	3711 E. Indian School Phoenix 224-0307	

Traveling's easier with  
**STATE PRESS Classifieds!**

**Imagine the Fun...  
A New Phoenix Daihatsu  
and  
A Trip to Hawaii  
for Two  
(retail value \$1500)**

Just buy a new 1988 Daihatsu and Phoenix Daihatsu will give you a Trip to Hawaii for 5 days and 4 nights...  
A Holiday Bonus of Your Lifetime

**DAIHATSU**  
the Biggest Small Car in the World

**PHOENIX DAIHATSU at Coulter Cadillac**  
12th St. & Camelback, Phoenix  
279-0585 • Toll-free 1-800-942-1189  
Monday-Friday 8-8, Saturday 8-6, Sunday 11-5  
\*Limited to in-stock units.  
see dealership representative for full details.

**LOWER PRICE - SMART ADVICE**  
Your  
**PHOTO NEEDS**

**Kodak or Ilford Photo Paper \$999**  
i.e. Kodak Polycontrast II RC (E, F or N); Ilford Multigrade III RC Rapid (any surface).  
Sorry, 1/customer; Valid w/coupon, expires 1-31-89.

**WILSON CAMERA**  
**Wilson**  
ASU TEMPE 204 E. University 894-8337  
(Behind the Chuckbox)

# SPRING 1989

# CLOSED OUT?

**GET IN  
AT RIO SALADO  
COMMUNITY  
COLLEGE &  
TRANSFER  
CREDITS TO  
YOUR ASU  
PROGRAM**

## REGISTER BY PHONE 223-4001 CLASS LOCATIONS CLOSE TO ASU



**RIO SALADO  
COMMUNITY COLLEGE**

*Evening classes at Tempe High - Right Next Door to ASU*

BPC 110	1330	Microcomputer Usage	W	6:00-10:00 p.m.	2/1-5/10
ENG 101	1349	Freshman English	T	6:30-9:30 p.m.	1/31-5/9
ENG 102	1348	Freshman English	R	6:30-9:30 p.m.	2/2-5/11
GBS 221	1328	Business Statistics	W	6:30-9:30 p.m.	2/1-5/10
GPH 112	1346	Physical Geography	T	6:00-9:00 p.m.	1/31-5/9
GPH 113	1345	Physical Geo. Lab	R	6:00-9:00 p.m.	2/2-5/11
MAT 077	1344	Intro Algebra	M	6:00-9:00 p.m.	1/30-5/15
MAT 129	1502	Intermed Algebra	R	6:15-9:15 p.m.	2/2-5/11
MAT 154	1343	College Algebra	R	3:00-6:00 p.m.	2/2-5/11
MAT 154	1342	College Algebra	R	6:10-9:10 p.m.	2/2-5/11
MAT 179	1329	Finite Math	R	6:30-9:30 p.m.	2/2-5/11
MAT 210	1341	Brief Calculus	W	6:30-9:30 p.m.	2/1-5/10
MAT 223	1340	Calcu w/Analytic GEO	MW	7:00-9:05 p.m.	1/30-5/10
MAT 224	1339	Calcu w/Analytic GEO	TR	7:00-9:00 p.m.	1/31-5/11
OAS 101	1338	Typing I	MW	6:30-9:05 p.m.	1/30-5/10
PHY 111	1390	Gen. Physics Lec	M	6:00-9:00 p.m.	1/30-5/15
PHY 111	1391	Gen. Physics Lab	W	6:00-9:00 p.m.	2/1-5/17
PSY 101	1335	Intro to Psychology	T	6:00-9:00 p.m.	1/31-5/9
SOC 101	1385	Intro to Sociology	M	6:30-9:30 p.m.	1/30-5/15

<b>MAT 055 Arithmetic Review</b>					
1581 Westwood High	W	6:00-9:00 p.m.	2/1-5/10/89		
1856 Area East Center	TR	7:45-9:55 p.m.	1/31-4/13/89		
1889 Area East Center	MW	8:45-10:55 a.m.	1/30-4/12/89		
<b>MAT 077 Introduction to Algebra</b>					
1344 Tempe High School	M	6:00-9:00 p.m.	1/30-5/15/89		
1580 Westwood High	M	6:30-9:30 p.m.	1/30-5/15/89		
1857 Area East Center	TR	7:45-9:55 p.m.	1/31-4/13/89		
1858 Area East Center	TR	7:45-9:55 p.m.	4/25-6/29/89		
1890 Area East Center	MW	8:45-10:55 a.m.	1/30-4/12/89		
<b>MAT 124 Intermediate Algebra/w/ith review</b>					
1670 Dobson High	TR	6:30-9:05 p.m.	1/31-5/11/89		
1859 Area East Center	MW	5:10-7:35 p.m.	1/30-5/10/89		
1891 Area East Center	MWF	8:30-11:00 a.m.	1/30-4/14/89		
<b>MAT 129 Intermediate Algebra</b>					
1669 Dobson High	R	6:30-9:30 p.m.	2/2-5/11/89		
1861 Area East Center	TR	7:45-9:55 p.m.	1/31-4/13/89		
1860 Area East Center	TR	7:45-9:45 p.m.	4/25-6/29/89		
1502 Tempe High	R	6:15-9:15 p.m.	2/2-5/11/89		
<b>MAT 154 College Algebra</b>					
1668 Dobson High	T	6:30-9:30 p.m.	1/31-5/9/89		
1343 Tempe High	R	3:00-6:00 p.m.	2/2-5/11/89		
1342 Tempe High	R	6:10-9:10 p.m.	2/2-5/11/89		
1862 Area East Center	M	7:05-10:00 p.m.	2/1-5/10/89		
<b>MAT 179 Finite Math</b>					
1329 Tempe	R	6:30-9:30 p.m.	2/2-5/11/89		
<b>MAT 210 Brief Calculus</b>					
1341 Tempe High	W	6:30-9:30 p.m.	2/1-5/10/89		
1667 Dobson High	T	6:30-9:30 p.m.	1/31-5/9/89		
<b>MAT 223 Calculus with Analytic Geometry I</b>					
1340 Tempe High	MW	7:00-9:05 p.m.	1/30-5/10/89		

<b>MAT 224 Calculus with Analytic Geometry II</b>					
1339 Tempe High	TR	7:00-9:00 p.m.	1/31-5/11/89		
<b>ENG 071 Rev of Eng Fund</b>					
1585 Westwood	M	6:30-9:30 p.m.	1/30-5/15/89		
1845 Area East Center	TR	5:30-7:40 p.m.	1/31-4/13/89		
1895 Area East Center	TR	8:45-10:55 a.m.	1/31-4/13/89		
<b>ENG 101 Freshman English</b>					
1189 Mt. View High	W	6:00-9:00 p.m.	2/1-5/10/89		
1349 Tempe High	T	6:30-9:30 p.m.	1/31-5/09/89		
1584 Westwood	M	6:30-9:30 p.m.	1/30-5/15/89		
1847 Area East Center	TR	5:30-7:40 p.m.	1/31-4/13/89		
1846 Area East Center	TR	5:30-7:40 p.m.	4/25-6/29/89		
1896 Area East Center	TR	8:45-10:55 a.m.	1/31-4/13/89		
1681 Dobson High	R	6:30-9:30 p.m.	2/2-5/11/89		
<b>ENG 102 Freshman English</b>					
1348 Tempe High	R	6:30-9:30 p.m.	2/2-5/11/89		
1680 Dobson High	T	6:30-9:30 p.m.	1/31-5/9/89		
1583 Westwood	W	6:30-9:30 p.m.	2/1-5/10/89		
1849 Area East Center	TR	5:30-7:40 p.m.	1/31-4/13/89		
1848 Area East Center	TR	5:30-7:40 p.m.	4/25-6/29/89		
<b>RDG 091 College Reading Skills</b>					
1649 Dobson High	M	6:30-9:30 p.m.	1/30-5/15/89		
1870 Area East Center	M	7:05-10:00 p.m.	1/30-5/15/89		
<b>RDG 101 Critical &amp; Evaluative Reading</b>					
1648 Dobson High	M	6:30-9:30 p.m.	1/30-5/15/89		
1925 Area East Center	M	7:05-10:00 p.m.	1/30-5/15/89		
<b>BIO 100 Biology Concepts</b>					
(Lab)1595 Westwood	W	6:30-9:30 p.m.	2/1-5/10/89		
(Lab)1596 Westwood	M	6:30-9:30 p.m.	1/30-5/15/89		
<b>COM 100 Elements of Speech Communication</b>					
1659 Dobson	T	6:30-9:30 p.m.	1/31-5/9/89		

**Alternative Delivery**

Classes offered by television, audiocassette, modem, conference call and correspondence. The classes are EQUIVALENT to on-campus classes in content, assignments and credit earned.

Call 223-4206 to register or to request information on these or other classes

ENG 071 Rev of Eng Fund  
ENG 101 Freshman English  
ENG 102 Freshman English  
MAT 154 College Algebra

**Learn and Shop**

Rio Salado Community College has teamed up with Broadway Southwest stores to offer you **LEARN & SHOP** - a program of accredited, transferable, lower division college courses scheduled on the weekends. Classes are held in the Training Room at Broadway Southwest in Fiesta Mall. Call 996-9917 for more information on classes at other Valley malls.

ASM 101	3203	Human Origin & Development	Sat	10 a.m.-2 p.m.	1/21-4/8
ENG 101	3205	Freshman English	Sun	1 p.m.-5 p.m.	1/22-4/9
HUM 108	3204	Contemporary Humanities	Sat	3 p.m.-7 p.m.	1/21-4/8
MAT 077	3206	Introductory Algebra	Sat	10 a.m.-2 p.m.	4/15-6/24
PSY 101	3207	Introduction to Psychology	Sat	3 p.m.-7 p.m.	4/15-6/24
RDG 101	3208	Critical & Evaluative Reading	Sun	1 p.m.-5 p.m.	4/16-6/25



**MARICOPA  
COMMUNITY  
COLLEGES**

**Tuition and Fees: \$22.50 per credit hour for county residents.  
Call 981-1700 for further information**

Refunds for drops are not automatic. A written request must be made through the Registration Office, 640 N. 1st Ave., Phoenix, AZ 85003, whether a student attends class or not. There will be NO REFUNDS after the refund period.

All tuition and fees are subject to change. Payment may be made by check, cash, MasterCard, or Visa or students may be billed and payment is due ten (10) days after registration.

## Racism kindles tempers in 'Burning'

By DAVID BERBERICK  
State Press

Do you hate racism? Do you like watching good guys beat up bad guys? Then you'll enjoy Mississippi Burning, a new movie about the FBI investigation of the deaths of three civil rights activists in Mississippi during the Freedom Summer of 1964.

This movie is a fictionalized account of that investigation. Although nameless in the movie, in real life the three activists were James Chaney, Michael Schwerner and Andrew Goodman, northerners who had come to Mississippi that summer to help register black voters. Their subsequent disappearance attracted a great deal of media publicity, primarily because Schwerner and Goodman were white. J. Edgar Hoover, then Bureau chief, was publicly pressured to send in agents and find out what happened.

Although this movie is based largely upon this incident, its heroes are not the murdered activists. The main protagonists are two FBI agents who direct the search into their disappearance: Alan Ward (Willem Dafoe) and Rupert Anderson (Gene Hackman).

Agent Ward is a young, arrogant (yet likable) idealist whose "standard Bureau procedures" don't work well in the sordid realities of a segregated Mississippi. Anderson, his partner, is an older, more pragmatic man, born and raised in Mississippi. He understands the people who live there, both white and black. Ward does not.

The two men clash over how to run the investigation. Ward's by-the-book methods fail to break through the conspiratorial silence of the whites and the terrified reticence of the blacks. After weeks of frustration, he turns to Anderson, whose "unofficial" but effective approach eventually gets results.

He dislikes his partner's tactics, however. In one of their many confrontations, Ward protests Anderson's strong-arm tactics.

"Don't drag me down to your gutter, Anderson," he screams in exasperation.

"These people (the Ku Klux Klan) crawled out of the sewers, Mr. Ward," Anderson fires back. "Maybe the gutter is the place we have to be."

This conflict between the two central figures is crucial to the plot. The movie asks this question: Should the extreme, racist violence of the Klan and its allies in the local sheriff department be fought within the limits of the law, or through illegal, and sometimes violent, methods?

The answer is straight forward: fight brutality with brutality, the movie seems to say; violence is wrong when racially motivated but good when its victims are racists.

But the racists in this movie evoke no sympathy. They are ignorant and hateful bigots, who burn and beat and kill in the name of "Anglo-Saxon democracy." After watching an hour



Gene Hackman (l) and Willem Dafoe are FBI agents investigating Ku Klux Klan activity in Orion Pictures' "Mississippi Burning."

of firebombings and lynchings, the viewer wants to see KKK scum brought to justice. And if justice isn't available, vengeance will suffice.

In this movie, a violent problem can only be solved with a violent solution. This is not what Martin Luther King Jr. and thousands of other civil rights activists believed, however.

They met violence and hatred with non-violence and love. They believed this to be the only true solution to racism — indeed the only solution to all forms of violence, both institutional and personal.

It probably is a mistake to expect this movie to be a tribute to the civil rights movement and the memory of Dr. King, because it is an account of FBI, not civil rights, heroism.

There is another big flaw in the movie. It concentrates upon stereotypes too often. With the exception of Mrs. Pell (Frances McDormand), the wife of the slimy Deputy Pell (Brad Dourif), all of the whites portrayed are depicted as ignorant racists. Even worse, with only a few exceptions, all of the blacks are shown as helpless, terrified sheep.

Again, this may be an unjust criticism. Perhaps these are

historically accurate depictions of the people living in that small county in Mississippi. At any rate, the movie does not do justice to those blacks and whites who opposed segregation and worked to change it from within.

If this movie has so many faults, why did I give it three stars? Because it has its strengths as well.

First of all, the acting is superb. Gene Hackman is completely convincing as a southerner sympathetic to the people trapped by centuries of hatred and violence, but one who has turned his back upon their racism. Willem Dafoe is also good as the Kennedy-idealist, disgusted with the racism he confronts and committed to fighting it.

In addition, the re-creation of a small, Mississippi town smothering in racism is appallingly believable. And the condemnation of the oppression and violence of racism is clear enough to deserve praise. Everyone should see this movie, despite its ambivalent treatment of violence.

Although it isn't another Platoon, in this decade you take what you can get.

### "Mississippi Burning"

★★★  
(out of four stars)

Orion Pictures presents a Frederick Zollo Production, starring Gene Hackman and Willem DaFoe. Screenplay by Chris Gerolmo. Directed by Alan Parker. Original music by Trevor Jones.

Rated R



## Friendships aren't marooned in 'Beaches'

By JILL HERBRANSON  
State Press

What do you get when you cross a prissy, well-bred, poor-little-rich girl with an audacious, obnoxious, cigarette-smoking, cabaret-garbed, 11-going-on-29-year-old Bronx lass?

Best friends.

In a flashback, we see actress Mayim Bialik, a pint-sized Bette Midler clone, playing the young C C Bloom, a precocious child wonder whose ambitions lie with the stars on Broadway. She happens upon helpless, sugar-and-spice Hillary Whitney, who, at the time of their meeting, is sobbing in distress when she finds herself lost on a beach in Atlantic City (thus the title).

C C offers her aid to the poor kid, but is sidetracked by an audition call, to which Hillary accompanies her.

In all her brash charm, C C belts out her "Glory of Love" number, with an exclamatory "Oh yeah!" at the end —

winning her the infinite admiration of her new-found friend — if not the part.

Hillary and C C soon go their separate ways — Hillary to San Francisco, C C to the Bronx. But their friendship endures the years through the letters they faithfully write to each other.

The movie really begins when Hillary and C C are adults. C C (Bette Midler), a singing sensation, tears out of an auditorium in the middle of a rehearsal upon receiving a message whose actual contents are never revealed. Yet through the instantaneous commencement of flashback memories, you just know something is wrong with Hillary.

Practically the entire movie from then on is C C remembering the evolution of her relationship with her unlikely best friend.

And a strange evolution it is. After over 10 years of letters, Hillary shows up one night in a club where C C is performing. She has left her law practice, left her overprotective and

overbearing father — and left her money.

Hillary moves in with C C, and they become closer than ever.

But things change, and the friendship undergoes great strain as the two grow apart.

"Beaches" is one of the more true-to-life films depicting human relationships; no romanticism of the characters, no modified or dulled emotions, no *deus ex machina*-type endings. What is dealt with are the very realistic joys and pains known to all: the aspirations and shattered dreams, the love, the lack of love, the jealousy and the loneliness which are all integral parts of the human experience.

The storyline, direction and interaction of the characters are all no less than excellent — Barbara Hershey's Hillary and the Divine Miss M's C C bring forth true meaning to the lines of the script.

One ironic disappointment: Mayim Bialik was so fantastic as Bette's younger self that you find yourself expecting much more of the older C C. Midler is still outrageous, but Bialik is Bette at her brash, making the softened C C senior somewhat less spectacular.

Based on the novel by Iris Rainer Dart, the screen version effectively brings her pages to life, creating an intelligent and emotional film which guarantees both laughter and tears.



Bette Midler (l) and Barbara Hershey soak up a few rays in Touchstone Pictures' "Beaches."

### "Beaches"

★★★  
(out of four stars)

Touchstone Pictures presents a Bruckheimer/South production, starring Bette Midler and Barbara Hershey. Directed by Garry Marshall. Screenplay by Mary Agnes Donoghue.

Rated PG-13



Here are the top movies for the weekend as tallied by Exhibitor Relations.

1. "Rain Man," MGM-UA.
2. "Twins," Universal.
3. "Beaches," Disney.
4. "Accidental Tourist," Warner Bros.
5. "Working Girl," 20th Century Fox.
6. "Naked Gun: From the Files of Police Squad," Paramount.
7. "Mississippi Burning," Orion.
8. "Deep Star Six," TriStar.
9. "Dirty Rotten Scoundrels," Orion.
10. "Oliver and Co.," Disney.

# Play focuses on maternal relationships

By LISA HORBLIT  
State Press

Local actresses making up the stage group Assemblage will be performing the play "Two of Me" at 8 p.m. Jan. 20 and 21 in Danforth Chapel.

According to the director and writer, Michell Miller-Rassulo, the production is actually a commentary focused on mother/daughter relationships.

"You are your mother. That is the main point," Miller-Rassulo said. "We always turn out in every size, shape and form like our mothers."

Miller-Rassulo interviewed various women around the valley asking questions about their own mother/daughter

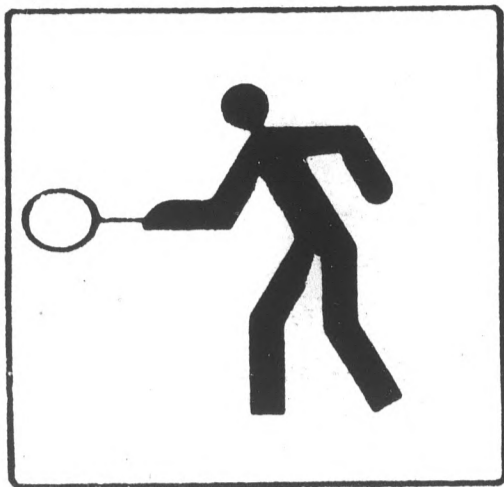
relationships. The script was based on these experiences, which include subjects dealing with sexuality and pregnancy.

"A couple of us (actresses) just started talking about our daughters, and I thought, 'wouldn't it be great if we could focus on this?' We turned on the tape recorder and just started talking," Miller-Rassulo said.

Assemblage acquired local professional actresses as part of the stage group, including Wanda Dittman, Artistic Director for Phoenix Little Theater and New York actress Lorraine Spritzer.

Tickets for "Two of Me," which is being sponsored by the Department of Communication and Women's Studies, will cost \$3 and can be purchased at the door.

## A-STATE OF PRIDE



### SUN DEVIL TENNIS

ASU Men vs. New Mexico St.  
Saturday, January 21, 1 p.m.

ASU Women vs. New Mexico St.  
Sunday, January 22, 10 a.m.

ASU Men vs. Utah  
Sunday, January 22, 1 p.m.

Whiteman Tennis Stadium

Free Admission with Valid Student I.D.

The Harris Trust Bank of Arizona  
Co-Presents

## A real class act!

National  
Symphony  
Orchestra

Conducted by Mstislav Rostropovich  
with Alexander Toradze,  
piano soloist

Wednesday, January 25 • 8 pm  
Tickets: \$30, \$28



Ticket discounts for ASU faculty, staff & students! 1/2 price tickets for students, \$3 discount for faculty & staff and ASU alumni. Call for details, 965-3434.

## GAMMAGE

CENTER FOR THE PERFORMING ARTS

## state press



## BLACK & WHITE & READ ALL OVER

# STUDENTS ...Don't miss our 20-20 offer!

### Art, architecture, engineering & design students:

Shop for your art supplies from The Valley's most complete selection by FEBRUARY 1, and save a big 20%.

Shop any other time and you'll receive our standard 10% STUDENT DISCOUNT.

### Fine arts materials

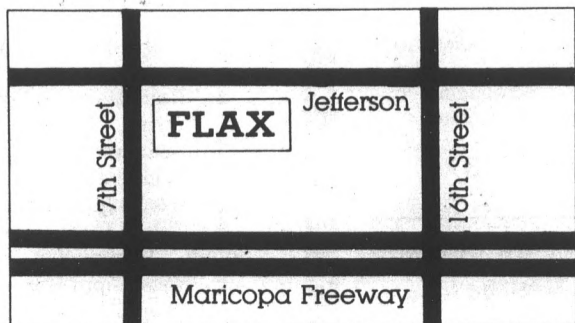
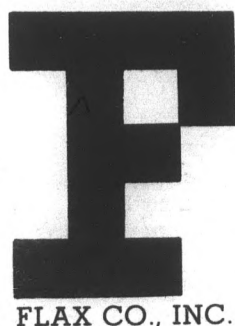
Canvas, paints, stretcher bars, brushes, frames, paper, etc.

### Drafting supplies

Parallel rules, triangles, templates, leads, drawing boards, technical pens (all brands) and more.

### ALSO

Airbrush equipment & supplies, graphic arts materials and books.



10th Street & Jefferson • 254-0840 • Lots of free parking  
Hours: Mon.-Fri. 8:30-5:30 Sat. 9-5

## ΛΧΑ

## SPRING '89 RUSH

### SEE THE DIFFERENCE...

All fraternities are not the same. Our fraternity is the first on campus to adopt a new Associate Member program in place of the obsolete pledge system. Experience the difference Lambda Chi Alpha has made for over 75 years.

...at Lambda Chi Alpha.

- Experience the Excellence!**
- Associate members - NOT pledges
  - Absolutely no hazing
  - Leadership opportunities
  - Excellent social calendar
  - Top philanthropic house on campus

## LAMBDA CHI ALPHA

Invites you to join us:

- Get acquainted - 4 p.m.
- Events start at 6 p.m.

- Tours**
- 4-7 p.m. Pig Roast and Volleyball
  - 6 p.m. Greyhound Dog Racing
  - 6 p.m. Comedy Night
  - 6 p.m. Oriental Buffet
  - 7 p.m. Polynesian Fire Show
  - 8 p.m. Martial Arts Demo
  - 9 p.m. Rush Blowout Party

- Sat., Jan. 21
- Mon., Jan. 23
- Tues., Jan. 24
- Wed., Jan. 25
- Thurs., Jan. 26
- Fri., Jan. 27

414 Adelphi Drive  
Phone: 965-6128



Comedy Night  
Sponsored by



# Award-winning conductor to lead Phoenix Symphony

By JENNIFER LYNN JOHNSON  
State Press

This Saturday at 8 p.m., the Grady Gammage Memorial Auditorium will play host to the Phoenix Symphony Orchestra, led by guest conductor Catherine Comet of the Grand Rapids Symphony.

Comet (pronounced Koh-MAY) will conduct a program of all-orchestral music by French composers, including Franck's once-controversial 'Symphony in D Minor.'

"I always wanted to conduct," Comet remembers. "When I was three or four, I saw the orchestra for the first time, and it was . . . magic. I decided right then that it was what I wanted to do."

"I saw one person . . . in the middle, and I knew that that person had something to do with all that sound. I wanted to be that person."

Comet studied at the Conservatoire National Superieure de Musique in her native Paris, and later at the Julliard School of Music in New York City. Some of her principal teachers included Igor Markevitch, Pierre Boulez and Jean Fournet.

"What really helped me most in the world was studying with Jean Fournet," Comet said. "He had a conducting class in Switzerland, and I went to that. It took me to the top of my form. After that I auditioned for (and got) a job as assistant with the BBC Symphony in London. He (Fournet) showed confidence in me."

Even with a solid background, Comet found that work was difficult to come by for a recent graduate.

"It's almost like a vicious circle," Comet observed. "Orchestra rehearsals are very expensive . . . you can almost cut a rehearsal down to dollars per minute. It costs money to put an inexperienced conductor in front of an orchestra, so no one wants to do it . . . but how can you get experience if no one will put you there?"

All the hard work paid off in 1988, when Comet became a co-recipient of the prestigious Seaver/N.E.A. Conductor's Award, which included a cash grant of \$50,000. Comet plans to use the money to buy orchestral scores and further her study at clinics and workshops.

"The hardest part about conducting is getting lonely," she explains. "I'm alone with my orchestra, or I'm alone guest conducting somewhere. I don't get many chances to meet other conductors, outside of clinics."

This Saturday's program features the work of French composers Berlioz, Franck, and Debussy. The program was



NEA/Seaver award winner Catherine Comet will conduct the Phoenix Symphony at Gammage Auditorium this Saturday.

designed in part to honor the 200th anniversary of the French Revolution.

The concert begins at 8 p.m. Tickets for the show are \$8, \$16 and \$23. Student and senior tickets are \$5 if purchased within an hour before the show.

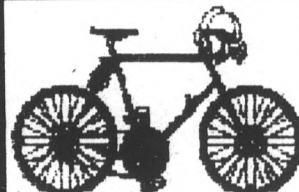
## FREE SCHOLARSHIP INFORMATION FOR STUDENTS WHO NEED MONEY FOR COLLEGE

Every Student is Eligible for Some Type of

Financial Aid Regardless of Grades or Parental Income.

- We have a data bank of over 200,000 listings of scholarships, fellowships, grants, and loans, representing over \$10 billion in private sector funding.
- Many scholarships are given to students based on their academic interests, career plans, family heritage and place of residence.
- There's money available for students who have been newspaper carriers, grocery clerks, cheerleaders, non-smokers . . . etc.
- Results GUARANTEED.

CALL For A Free Brochure  
ANYTIME (800) 346-6401



BOB'S BICYCLE BARN

### SALE!

**USED BIKES:**

Trek 12 Spd	\$169
Gitane 12 Spd	\$139
2 Nishiki 12 Spds	\$129 ea.
Centurion 12 Spd	\$ 99

Good Used Bikes from \$39

All Bikes Warranted

While Supplies Last!

**NEW BIKES**

	Orig. Price	NOW
Takara 12 Spd	\$329	\$249
Shogun Katana 12 Spd	\$329	\$229
Shogun Sport	\$289	\$229
Ladies Roadway	\$179	\$139

Bob's Bicycle Barn  
1908 E. Apache, Tempe

Near ASU  
894-6852

# PRANKSTER'S GAR & BRILL

1024 E. Broadway • 967-8875

**SATURDAY**  
ANY TRIPLE DRINK  
in a  
24 oz. Snifter  
Only \$5.00  
"Snifter Saturday"

**SUNDAY**  
2 FOR 1 PIZZA  
Buy One Pizza, Get an  
Identical One FREE.  
11 a.m.-1 a.m.  
All Day—All Night

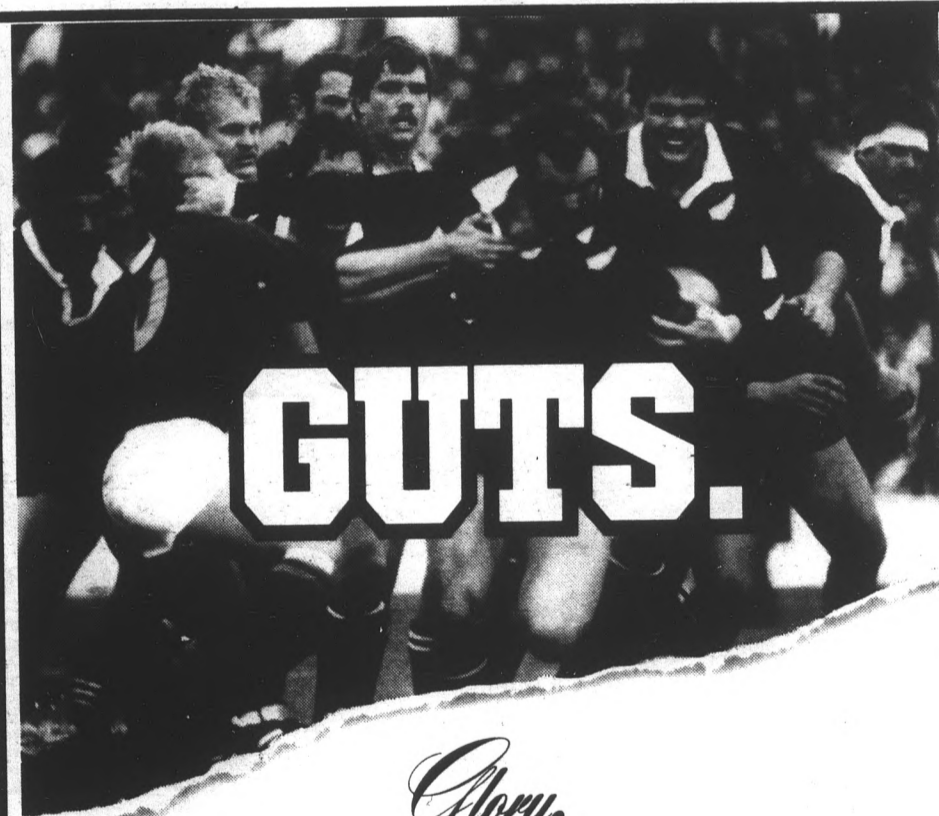


**THIS SUNDAY  
SUPERBOWL  
SPECIALS  
\$1.50**

Bloody Mary's  
Screwdrivers

2 FOR 1  
Pizza

10 Ft. Big  
Screen Color TV



*Glory.*

Actions. it is commonly  
believed. speak louder  
than words.

And when you're in  
the midst of the action.  
your edge might very  
well be gear of such  
remarkable quality  
that it indeed speaks  
for itself.

Canterbury of New  
Zealand has been creating



activewear of the high-  
est quality and dur-  
ability for over 80  
years. Fads, trends  
and fashion for  
fashion's sake will  
never compromise  
our designs.  
In rugby, as in sail-  
ing, Canterbury of  
New Zealand is a tra-  
dition. Wear it proudly.

30-50% Off  
entire stock  
thru January 31



CANTERBURY  
OF NEW ZEALAND  
Biltmore Fashion Park  
Upper Level  
957-2161

Get your hand in the cookie jar!



Sell It in the State Press Classifieds 965-6731

**Aaron's**  
**Car Wash**

**NO SCRATCHING**

Touchless Automatic  
Includes Under Carriage Wash  
(Recommended by all owners manuals)

ONLY \$2 50° Self Serve  
Terrace and Apache  
(One block east of Rural)

**LOWEST PRICES!!**  
**IBM COMPATIBLES**  
**COMPLETE SYSTEMS**

**AT TURBO \$999**  
6.12 MHZ 101 Keyboard  
Monitor, HD Controller  
512K Memory Floppy Drive

**XT TURBO \$45**  
4.77/10 MHZ  
Monitor Keyboard  
256K Memory Floppy Drive

1200 B Internal Modem **\$45**

Upgrades:  
•Color \$189 •EGA \$449 •Multisync \$550

CALL FOR AST. COMPAQ TELEVIDEO

**COMPUWORLD**  
3116 N. Scottsdale Rd. Scottsdale 945-6353

**WALK IN DANCE OUT.**



**OUT OF WATER**

Let Me Get Right To The Point . . .

**STUDIOS TO 3 BEDROOMS**  
**3 MILES FROM ASU**

**Coral Point** APARTMENTS 844-4000

**LAGUNA** APARTMENTS 894-0002

**BOTH CORAL POINT AND LAGUNA OFFER:**

Furnished & Unfurnished Units  
Cable T.V. Available  
Custom Mini Blinds Throughout  
Washers / Dryers in select units  
Woodburning Fireplaces in select units  
Large Sparkling Heated Pools And Jacuzzi  
Sand Volleyball Court  
Private Patios / Balconies  
• SRP Service  
• Mountain Bell Telephone Service

2343 West Main Street, Mesa

**Rich with Amenities and Activities**  
**Laguna & Coral Point offer**

- Club Rooms
- Tennis Courts
- Indoor raquetball
- Exercise Facilities
- Ramadas & Barbeque areas
- Covered Parking
- Public Transit to ASU

150 S. Roosevelt, Mesa

**MAKE IT A POINT TO SEE THEM BOTH!**

**LIQUID LOBOTOMY**

FrDayS & sAtuRDayS  
OPEN 9pm-4am  
HAPPY HOUR 9-10  
**10° DRINKS**  
1am-4am AFTER HOURS  
18 OK after 1am  
TWO DANCE FLOORS  
TWO DJS  
**FUNKY REGGAE**

**FUNKY REGGAE**



SUNDAYS featuring  
★ • AZZ IZZ ★ •  
9 - 1 am  
**10° DRINKS**  
from 8 - 9 pm  
**THE PROGRESSIVE ALTERNATIVE**  
42nd St. and Baseline  
INFO 437-8882

COME JOIN US AND WIN PRIZES!

**GRAND OPENING**  
**C•E•L•E•B•R•A•T•I•O•N**

**rock-n-roll**

Blue Plate Specials Daily!



Located in the Memorial Union (formerly The Grill) 2nd Level

**GRAND PRIZE:** A Trip for 2 to London!  
**1ST PRIZE:** Beach Cruiser Bike  
**DAILY PRIZE:** Coca-Cola T-Shirts (Just look for the Star ★ on your Register Receipt!)

Drawing for the Beach Cruiser will be 3 p.m., January 27 in the Rock-n-Roll Diner

# Professor expresses 'birthwrite' in PBS film

By MISH TELL  
State Press

Alberto Rios, an associate professor of English at ASU and director of the graduate creative writing program, will be featured in a documentary on contemporary Hispanic writers on PBS stations nationwide some time in 1989.

A sneak preview of the program, "Birthwrite — Growing Up Hispanic," will be given at 6:30 p.m. tomorrow in the MU.

"Birthwrite" is a film being done on several writers who grew up Hispanic — I'm one of them," Rios said. "What I think is that it's the first time anyone has done this — taking a Hispanic point of view on something. It's the coming of age . . . that's

the angle they're after."

Hosted by Cheech Marin (of Cheech and Chong fame) the program will depict the lives and writings of eight Hispanic writers from across America. Rios, who was chosen because of his previously published books of poetry and also his award-winning collection of short stories entitled "The Iguana Killer," is enthusiastic about this chance to express his creativity and origin in this fashion.

"I think it's a great opportunity for people to get a sense of what we are, or in my case, what I write about," Rios said.

Rios himself is documented in the show, part of which was filmed in his hometown of Nogales.

"We did filming back where I grew up . . . as well as around campus, so there will be some ASU footage," Rios added.

The program will re-enact different poems and short stories by the writers in pseudo-dream sequences, giving the viewer an opportunity to visualize the writers' creativity.

"They are going to dramatize one of my short stories ("The Secret Lion") which is also going to be wonderful," Rios said. "It's one of the short stories out of "The Iguana Killer."

But bringing lights, camera and action back to one's old home can be a little uncomfortable, said Rios.

"The way I felt about it (the filming) was actually embarrassing, because you can imagine going back to your home town and walking down the street with a camera crew filming you, and you're trying to look as though nothing is happening," Rios said, "especially when these people are people I have known. Cars would drive by yelling at me and people would stop . . . so, it was really very funny."

But behind the smiles and laughter, Hispanic American literature is a strong denominator in the writing field and deserves serious attention. "Birthwrite — Growing Up Hispanic" hopes to provide a visual medium to explore Hispanic literature.

UNCOMMON



STYLE

TO INTRODUCE YOU TO OUR STYLE YOU AND A FRIEND FOR THE PRICE OF ONE HAIR CUT AND NAILS.

**CRIMPERS LTD.**  
5th and College, Tempe  
000-5102 Expires 1-31-89

WITH PARTICIPATING STYLIST


## A STATE OF PRIDE

### Sun Devil Basketball


#### Arizona Wildcats vs. ASU Sun Devils

Thursday, January 26, 7 p.m., Activity Center  
*Only a few student tickets remain!*

Zonies can pick up their **KZZP/ASU Thumb Devils** at this game.




**Free Sun Devil basketball cups to the first 3,000 fans through the gates.**  
Sponsored by:



**state press**

Kick Back,  
Relax,



and enjoy the  
State Press

# Catch a Peak

## University of Colorado at Boulder

*Treat yourself to these peak experiences this summer:*

- Over 450 courses taught by a dynamic faculty on everything from the French Revolution to field ecology, from music theory to intensive Russian
- Artsfest '89: A Boulder Celebration arts festival with Shakespeare playing under the stars, full-scale productions of Gilbert and Sullivan, the Colorado Dance Festival, painting and photography exhibits, symphony concerts, a foreign film festival, and cool jazz on clear nights
- Summer in Colorado with brilliant sunshine, crystal waterfalls, high peaks, and meadows filled with bright wildflowers

**Catch a Peak. Catch CU-Boulder this Summer.**

Classes begin June 5, 1989  
Mail the coupon or call (303) 492-2456


Affirmative Action Equal Opportunity Institution

Yes, send me the free 1989 CU-Boulder Summer Session Catalog.

Name \_\_\_\_\_  
Address \_\_\_\_\_ State \_\_\_\_\_ Zip \_\_\_\_\_  
City \_\_\_\_\_  
Date of Birth \_\_\_\_\_  
Social Security Number\* \_\_\_\_\_

Mail To:  
Office of Admissions  
Regent Administrative Center 125  
Campus Box 7  
University of Colorado at Boulder  
Boulder, Colorado 80309-0007

\*For record keeping and identification of students only

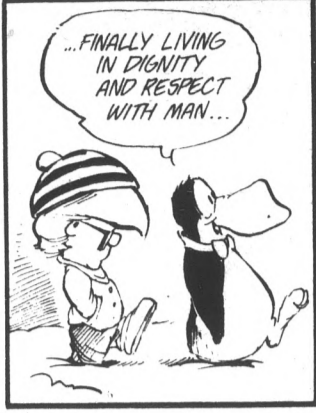


## BLOOM COUNTY

by Berke Breathed

## THE FAR SIDE

By GARY LARSON



"Well, it looks like Sylvia has latched on to another fly-by-night boyfriend."

## Calvin and Hobbes

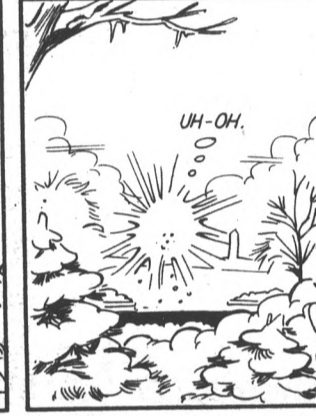
by Bill Watterson



BY GARRY TRUDEAU

## Doonesbury

## HERMAN®



"Have a cup of coffee while I'm getting ready."

## Shoe

by Jeff MacNelly



READ IT  
and  
REAP  
THE BENEFITS

with  
STATE PRESS  
CLASSIFIEDS  
965-6731

BUY YOUR  
SPRING TEXTS!

We also stock:

- ASU Clothing
- Phoenix Cardinal Clothing
- Back Packs
- All School Supplies
- Greek Gift Items
- Reference and Study Aids

Student Book Center  
704 S. College Ave.  
1 Block North of ASU  
966-6226

C.C.'s Lingerie

Bra \$13.50  
Pant \$7.50  
100% OFF

3168 E. Indian School Rd.

5 Piece Oak Finish Bedroom Set \$168 (Bed Not Included)

4 CHAIR DINETTE \$99<sup>00</sup>  
Many other specials!!

Sofa & Love Seat \$169

4-Drawer Chest \$29

BIG BED \*SALE\*

Twin Set \$69  
Full Set 79  
Queen Set 119

FURNITURE PLUS  
Clearance Center in Tempe  
2077 E. University  
966-6252

the Vine  
taavern & eatery  
at Rural & Apache

FRIDAYS  
Free Happy Hour Buffet 5-7 p.m.  
Starting at 7 p.m.  
\$1.00

- BOYSENBERRY
- KAMAKAZIS
- SEX-ON-THE-BEACH
- SCHNAPPS

BEST LUNCH IN THE PAC 10

## Debbie Brown resigns to accept USA position

By JOAN McKENNA  
State Press

A volleyball meeting seemed like business as usual Wednesday afternoon until head coach Debbie Brown silenced the Sun Devils with one final announcement, according to outside hitter Tracie Kisro.

"She (Debbie) said the next thing she had to say was the hardest thing she had ever had to say," Kisro said.

Brown informed her players that she had resigned from ASU to become one of two full-time assistant coaches to the U.S. Women's National team headquartered in San Diego.

"It was kind of like a bomb," Kisro said. "We didn't really see it coming. We thought she was just joking at first. Then it was like, 'She's serious.' No one could say anything. It was just heavy silence, you know what I mean."

Not that Brown is new to the national scene. She took a leave-of-absence from ASU in January 1988 to help train the Olympic team which competed in Seoul, South Korea.

She returned to ASU in late September, coaching the Sun Devils to a 20-13 finish, 14th-place national rank and trip to the NCAA playoffs for the fifth time in her career.

But prior to coming home, U.S. head coach Terry Liskevych had made a general comment about rehiring her, she said.

"Terry mentioned to me before I left that he would like to have me back as a second assistant," Brown said. "At the time, the USVBA (United States Volleyball Association) did not have a position allocated for that. It wasn't until fairly recently that that has changed."

The USVBA offered Brown the job Jan. 11, and she informed ASU administrators of her resignation Wednesday. An official statement was released Thursday morning.

Brown's new role with the U.S. team will be as defensive coordinator. Shelton Collier, former head coach of University of Pittsburgh, has signed on as offensive coordinator — ironically also depleting ASU's staff.

Pittsburgh hired former ASU part-time assistant Sue Woodstra (1985-1988) to take his place over the Christmas break, leaving full-time assistant Steve Schlick in sole possession of the Sun Devils.

Schlick said he has been asked to stay on as assistant coach through the 1989 season and run this spring's conditioning program.

Meanwhile, ASU Director of Athletics Charles Harris said, "We will immediately

begin a national search for the best possible coach to continue the strides that are being made in our women's volleyball program."

ASU Associate Director Herman Frazier defined some of the University's criteria.

"We are looking for someone hopefully who is a Division 1 head coach," he said. "I wish I had one today," he joked.

"We will miss Debbie Brown and her leadership. However, we will go out and try to seek someone just as qualified as Debbie to lead the team."

Schlick said Brown's influence should remain despite her move.

"What I would hope for is that we can maintain the values and the goals that Debbie has instilled," he said. "She's set some really good standards."

He pointed to Brown's strong work ethic in the classroom and the gym.

The results show in both areas: the team's current cumulative grade point average is 3.09, and Brown has produced four All-Americans, including 1987 senior captain Christy Nore.

Schlick seemed upbeat about the shakeup considering his reason for coming to ASU in 1986 was to work with Brown and Woodstra. Both are former Olympians. Brown captained the 1980 Olympic team and Woodstra the squad in 1984.

But beyond their experience, he was impressed with their attitudes and said, "They both had hearts of gold. My time here has been extremely enjoyable, advantageous and beneficial."

"But I guess I don't look at it (ASU volleyball) as over," he added. "Definitely the program is changing."

Brown agreed with his optimism. "The girls on the team are great," she said. "I think they have something special. If they stick together, and the administration looks for the best possible coach, I think the program can be as good and even better as when I've been here."

"Everyone is definitely replaceable." But Kisro, voted to the Pac-10's All-Academic team with a 4.0 GPA, seemed less sure as she listed Brown's history as player and coach.

"I can't imagine anyone more qualified to coach," she said. "I think, 'Can you find me anyone better.' But you know there are a lot of good coaches out there. It'll work out."

And Kisro said the team wishes Brown all the best.

"We're all really excited for her," she said. "It's great."

"Right now we can't help feeling a little selfish, but we could never be mad at her."



Jamie Lytle/State Press

ASU volleyball coach Debbie Brown recollects her six-year stint with the Sun Devils. She resigned Wednesday to accept a job as assistant coach of the United States National volleyball team. Brown compiled a 117-83 (.585) during her helm at ASU.

She had to do what's good for her."

Brown said it not only will be good for her, but for husband Dennis Brown, a former ASU journalism instructor, who also resigned from his job at the *Phoenix Gazette* to work for the San Diego bureau of *The Los Angeles Times*.

"It definitely was a joint decision," she said. Both moved to Tempe from Colorado Springs in 1980 and the coach said she "has loved every minute."

"A change like this is pretty scary," she added. But nonetheless, "San Diego — that's where we'd like to call home."

## ASU falls to UCLA, USC next foe

By CHRIS NACKINO  
State Press

Despite a second half rally that brought the ASU men's basketball team within five points of UCLA, the Bruins held on to win 94-84 Thursday in Los Angeles.

Trailing 59-47, the Sun Devils (8-7, 2-5 Pac-10) scored seven straight points and pulled to 59-54 with 11:45 to play on a 3-point jumper by Alex Austin.

But UCLA (10-4, 5-1) outscored the Sun Devils 24-8 during the next 6:30 to take an 83-62 lead on a 3-point play by Darrick Martin with 5:16 remaining.

Trent Edwards scored 19 points while Matt Anderson and Mark Becker had 18 apiece for the Sun Devils.

The Sun Devils led by as many as four points twice during a sloppy first half. UCLA had 11 turnovers and shot 4-of-8 from the foul line while ASU committed seven turnovers and was 5-of-11 from the foul line.

ASU basketball will look to avenge its last road trip to California when they take on the USC Trojans Saturday at the Sports Arena in Los Angeles.

The Sun Devils, who suffered back-to-back losses to California and Stanford in early January, will be led by senior forward Trent Edwards, who is averaging 17.8 points per game.

"The front line of players has been very productive," head coach Steve Patterson said. "I think that Trent is getting better in all phases of the game and is beginning to explore the depths of his abilities."

Edwards, who will rotate both at forward and center, will team up with forwards Alex Austin and Mark Becker for inside scoring strength.

The backcourt will be led by junior Mike Redhair at point guard, who is joined by the young but talented freshman Adrian Brown. Brown is replacing the injured Tarence Wheeler.

Reserve center Torin Williams, who missed yesterday's contest against UCLA after recovering from strep throat, remains questionable for today's match-up against the Trojans.

Although USC (7-9, 0-5 Pac 10) is ranked last in the conference, five of the Trojans' eight losses have been by four points or less.

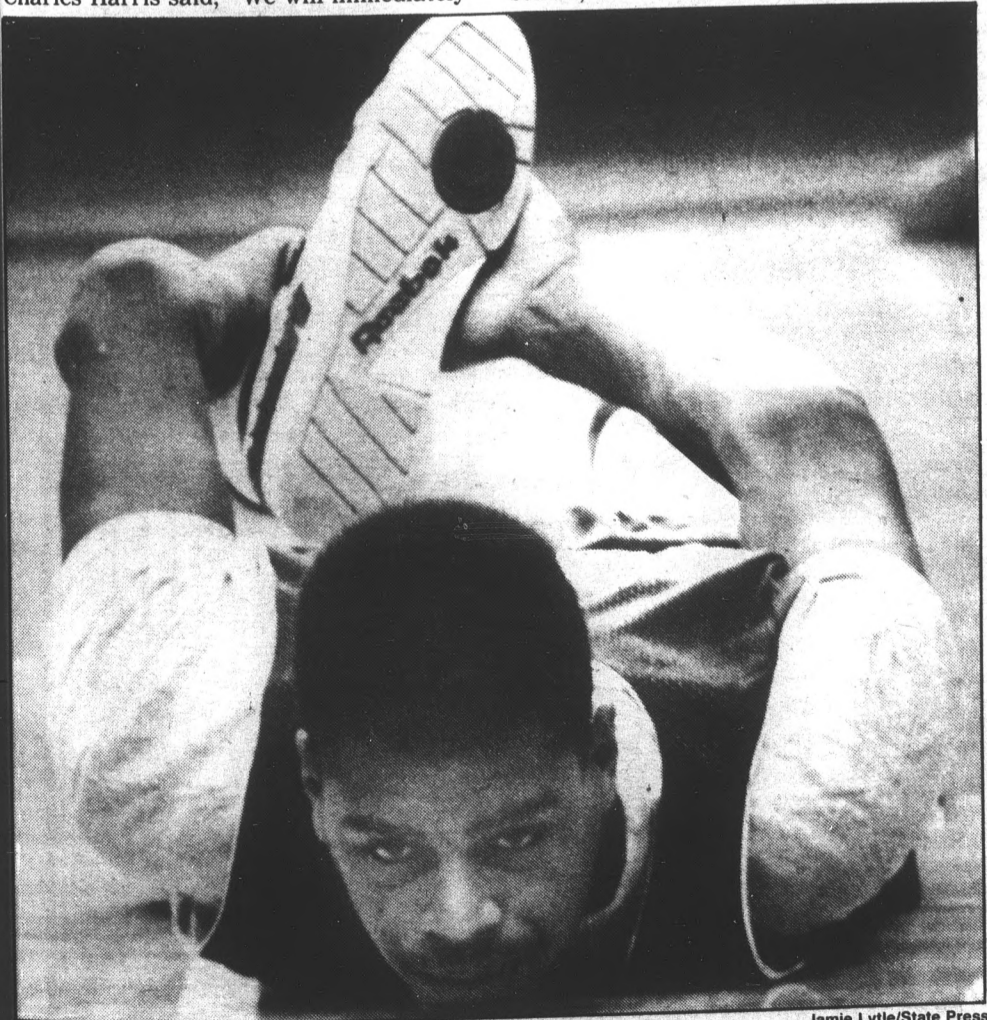
Junior center Chris Munk and sophomore forward Ronnie Coleman lead the Pac-10 in rebounding and will challenge the Sun Devils inside scoring game, which is damaged by the loss of both Emory Lewis and Williams.

Junior guard Anthony Pendleton is USC's leading scorer with 16.9 points per game.

Also returning for the Trojans will be senior guard Andy Olivarez, who had his career-best game last year against ASU with 18 points and 6 rebounds.

Despite the Sun Devils injury-plagued season, Patterson said the team remains optimistic for the remaining games.

"Our spirits and attitudes are still holding," Patterson said. "The kids have a lot of pride in the game and we'll get a lot of effort this weekend."



Jamie Lytle/State Press

Senior Trent Edwards stretches out during a Sun Devil basketball practice while preparing for the contest with the USC Trojans in Los Angeles Saturday.

**asu basketball**

**UCLA 94, ARIZONA STATE 84**

Arizona State 36 48 -- 84  
UCLA 35 59 -- 94

**ARIZONA STATE (84)**

Edwards 9-13 1-4 19, Austin 6-15 0-0 14, Becker 8-13 2-3 18, Brown 2-7 1-3 6, Redhair 0-2 1-2 1, Goldberg 0-0 1-2 1, Anderson 6-11 3-6 18, Waller 3-5 0-1 7. Totals 34-66 9-21 84.

**UCLA (94)**

Wilson 8-16 2-5 18, MacLean 7-10 7-8 21, Walker 3-9 0-0 6, Martin 6-7 2-3 16, Richardson 9-17 1-2 19, Rochelin 2-4 0-0 5, Owens 2-4 0-1 4, Williams 1-4 1-3 3, Dafney 1-1 0-0 2, Bronner 0-1 0-0 0, Brumbach 0-0 0-0 0. Totals 39-73 13-22 94.

Halftime—UCLA 36, Arizona St. 35. 3-point goals—Arizona St. 7-13 (Austin 2-3, Brown 1-2, Redhair Anderson 3-4, Waller 1-2), UCLA 3-7 (Walker 0-2, Martin 2-2, Richardson 0-2, Rochelin 1-1). Fouled Out—Martin. Rebounds—Arizona St. 31 (Edwards 8), UCLA 45 (Wilson, MacLean, Owens 8). Assists—Arizona St. 19 (Brown 7), UCLA 23 (Richardson 6). Technical Fouls—Edwards 2. Total fouls—Arizona St. 18, UCLA 22. A—5,896.

**phoenix suns**

**SUNS 126, HORNETS 112**

Phoenix 32 31 33 30 -- 126  
Charlotte 26 30 31 25 -- 112

**PHOENIX (126)**

Chambers 10-22 11-12 31, Gilliam 2-7 0-0 4, Perry 5-9 1-2 11, K.Johnson 4-10 2-2 10, Hornacek 11-15 6-6 28, West 5-6 3-4 13, E.Johnson 10-22 4-5 24, Corbin 0-2 0-0 0, Dunn 1-1 1-1 3. Totals 46-94 30-34 126.

**CHARLOTTE (112)**

Tripacka 12-26 2-2 27, Rambis 7-13 5-6 19, Cureton 5-11 2-4 12, Holton 6-15 3-4 15, Reid 5-10 3-3 14, Chapman 5-19 6-6 16, Kempton 1-3 3-6 5, Bogues 1-4 0-0 2, Hoppen 1-3 0-0 2, Green 0-1 0-0 0. Totals 43-105 24-31 112.

3-Point goals—Tripacka, Reid. Fouled out—None. Rebounds—Phoenix 61 (Chambers 13), Charlotte 58 (Rambis 16). Assists—Phoenix 24 (K.Johnson 12), Charlotte 24 (Bogues 5). Total fouls—Phoenix 22, Charlotte 26.

Attendance - 23,388.

**sports briefs**

**Thursdays Results  
College Basketball**

**Top 20**

- No. 2 Illinois beat Northwestern 75-70
- No. 7 Iowa lost to No. 16 Ohio State 102-91
- No. 9 Arizona beat Southern Cal 97-69
- No. 10 Nevada-Las Vegas beat Utah State 102-80
- No. 19 Indiana beat Wisconsin 61-58, OT
- No. 20 Stanford lost to California 75-64

**Pac 10**

- Arizona State lost to UCLA 94-84
- Oregon beat Washington State 67-49
- Oregon State beat Washington 71-70

**national basketball association**

- Phoenix 126, at Charlotte 112
- Washington 115, San Antonio 112
- Chicago 112, Miami 108
- Cleveland 113, Indiana 106
- Seattle 124, Houston 108
- Sacramento 112, New York 106

**national hockey league**

- Calgary 7, Boston 2
- Minnesota 3, Toronto 3, tie
- Hartford 6, Montreal 4
- Quebec 5, New Jersey 4
- New York Islanders 4, Los Angeles 2
- New York Rangers 5, St. Louis 0

**965-4200 . . .**

Call the Sun Devil Sports Hotline for additional information on Arizona State University intercollegiate athletics. The hotline features interviews with ASU coaches and student-athletes, as well as scheduling and ticket information on ASU events. The hotline is changed daily and updated each night with that day's results.



**WATCH FOR  
STATE PRESS**



**SPORTS NEWS**

**SCOPE OUT THE DEALS  
in the STATE PRESS**

**Buy it, Try it, Sell it, Say it  
with a Classified ad!**



**LOST DUTCHMAN STABLES**  
Horses & Pack Trips  
Apache Jct. Az.  
CALL  
**397-1605**  
And Leave Message  
★ All New Facilities  
★ Live Entertainment

We offer a different **PARTY EXPERIENCE**  
All rides into picturesque Superstition wilderness!  
★ 2-8 Hour Rides  
★ Hay Rides  
★ Steak Rides  
★ Breakfast Rides  
★ Pack Trips

**amc** **TODAY'S TIMES**  
STEREO SURROUND SOUND  
REDUCED PRICES FOR TWI-LITE SHOWS  
**LAKES 6** BASELINE RD. E. OF RURAL RD. **838-0606**

Tequila Sunrise (R) 5:10, 7:50, 10:20, 12:30	January Man (R) 2:50, 5:40, 8, 10:40, 12:35	Working Girl (R) 2:40, (5:30), 8, 10:30, 12:20
Oliver & Company (G) 3:00	Gleaming the Cube (PG) 2:30, (5:20), 7:40, 10:20, 12	Deep Star 6 (R) 2:20, (4:50), 7:20, 9:40, 12
Dirty Rotten Scoundrels (PG) 12:10, (5), 7:30, 10:10, 12:30		

*There is a Difference*

**THE U SHOP**

**WELCOME BACK  
ASU STUDENTS & FACULTY**

Shop the Area's Largest Selection of Arizona State University Clothing and Souvenirs

- Sweatshirts • Shorts • T-Shirts • Tank Tops • Sweat Pants

**BACK TO SCHOOL SALE**  
20% to 50% off Selected ASU Merchandise

Open: Monday-Saturday 10 a.m.-9 p.m.  
Sunday 12 p.m.-6 p.m.

**829-1743**

In the Cornerstone at Rural & University, Tempe, Arizona

**WHERE THE CHAMPIONS TRAIN!**

**\$25 Initiation Fee, only \$25 a month  
• NO CONTRACTS!! •**

- 15,000 Square Feet
- Air Conditioned
- World Gym Pro Shop
- Wolfe Tanning Beds
- New, Spacious Facility
- Hourly Aerobics
- The World Cafe Juice Bar
- Open Every Day!!

65 Aerobic Classes Weekly!  
**5 Minutes from ASU!**  
Arizona's Largest Facility  
150 Other Locations Throughout the USA, Canada and Europe!

**1465 North Hayden Road**  
(SE Corner of Hayden & McDowell)  
**Scottsdale, Arizona**  
**945-6060**

**WORLD GYM**

**and Aerobics  
of Scottsdale**

**TEN DOLLARS OFF YOUR INITIATION FEE!**  
With proof of student I.D.

Bring your world gym Ten Dollar Coupon and receive **\$10 off** your initiation fee!! With this ad, **\$15 to join • \$25 a month • No contracts!!**


# Sport Shorts

**Alumni game brings in big names**  
The ASU baseball team begins its stateside schedule on Saturday with the annual AT & T Alumni game. Former Sun Devils and current major leaguers Oddibe McDowell, Barry Bonds, and Ken Phelps are expected to appear. Game time is 1 p.m. at Packard Stadium. Tickets are \$4 for reserved seats, and \$3 for bleachers. Admission is free to ASU students with a validated student ID.

**Robinson calls for fan support**  
Performances not words best describe the men's gymnastics team, who play host to UC-Berkeley at 7:30 p.m. Saturday in the University Activity Center.

Coach Don Robinson said whoever can execute the maneuvers designed for each routine will emerge victorious.  
"The team that hits is going to win," Robinson said. "The one with the lowest percentage of misses will finish on top."  
"We have high expectations for the meet — We expect to win."  
ASU finished 10th in the nation last year, and Robinson said the team has the potential to better that mark this season. The Sun Devils are hot, he said, and he is hoping people will see them in action on Saturday.  
"I would like to enlist a few students to help us win this meet," he said. "They may not be on the apparatus, but their support is important to us."  
ASU will be armed with a triple threat going into the contest: Senior Paul Linne, who has led the team in past years, sophomore Jody Newman, who battled with

Turn to Shorts, page 20.



**Thurs., Fri., Sat.**  
Jan. 19, 20, 21

**RocLochner**

The Rudest Bar in Tempe  
**Presents**  
**Super Bowl Sunday**  
**Blow-Out**  
with **BLEET-ZILLER**  
Live Music  
★ \$1.00 Pitchers ★ 2 for 1 Drinks

**Sun., Mon., Tues.**  
Jan. 22, 23, 24

**Bleet-Ziller**

Free Food  
★ 25¢ Drinks



## Chopsticks

**Oriental Buffet**

**ALL YOU CAN EAT!**

• Sweet & Sour Pork	• Fresh Green Salad
• Chicken Chow Mein	• Potato Salad
• Egg Rolls	• Fried Rice
• Fried Won Ton	• Onion Rings
• Garden Vegetables	• Fried Zucchini
• Fresh Fruit Salad	• Beef & Chicken

• Menu Changes Daily

**967-1133**

1324 S. Rural Rd.  
Tempe, AZ 85281  
(Next to Wendy's)

11-3:30 Lunch  
3:30-9 Dinner

# BEGGARS BANQUET SUPER BOWL SUNDAY

1 p.m. till 6 p.m.

## FREE CHILI!!

And Other Assorted Foods

plus

**\$1.50 JAGER SHOTS**  
2-for-1 Kamis & Watermelons

# BANDERSNATCH

5th Street & Forest  
966-4438



## BREW PUB

# BACK TO SCHOOL SPECIALS

Thousands of 1988 Bicycles Discounted to SELL NOW!!

## SAVE!



**Cruiser Bicycles**  
List \$199.95  
**\$139.95**



**Mountain Bikes**  
List \$220.00  
**\$149.95**



**U-Locks**  
List \$24.95  
**\$16.95**



• Cycle Pro Nylon Rear Rack Bookbag  
List \$49.95  
**NOW \$19.95**



**10-Speeds**  
List \$159.95  
**\$99.95**



• Cycle Pro Cycling Gloves  
List \$12.95  
**NOW \$6.95**



**Triathlon Bicycles**  
List \$289.95  
**\$269.95**



**Lightweight 12-Speeds**  
List \$220.00  
**\$169.95**



• Chain Lube  
List \$3.95  
**NOW \$1.95**

**10% Student Discount**  
on Regular Prices

• Trek Be Bop Cycling Shorts  
List \$37.95  
**NOW \$19.95**

**TEMPE BICYCLE SHOP**

• Specialized Cycling Shorts  
List \$59.95  
**NOW \$29.95**

**BIG DISCOUNTS ON CLOTHING,  
PARTS & ACCESSORIES**

**330 W. University 966-6896**  
(Across the railroad tracks, west of Gentle Strength Co-Op)  
Hours: 8-8 Monday-Thursday; 8-6 Friday & Saturday; 11-5 Sunday

1986-1987 BEST BIKE SHOP  
New Times Critics Choice

# O'Conner asset to Sun Devil basketball team

By KYLE ENG  
State Press

"On the road again . . ."

That must be the theme song of the ASU women's basketball team. The Sun Devils (7-7 overall, 1-3 in conference play) are right in the middle of a seven game road trip in which they have dropped the first two contests to Oregon State and Oregon, 79-60 and 89-75, respectively.

ASU is currently ranked eighth in the Pac-10, and will look to move up in the standings with games against fifth place UCLA on Friday and ninth place USC on Saturday.

The Devils are led by sophomore Karen O'Conner, who is averaging 25.5 points a game in conference play, placing her second in the Pac-10 in scoring. O'Conner also leads the conference in steals (12), is second in free-throw percentage (84.6), and is among the top ten in both assists (19) and field-goal percentage (47.6).

"We look to her for leadership," said Assistant Coach

Debra Stevens. "She's a great ball-handler and she is a very consistent shooter from long range. She is our leader on the court."

It is easy to see why the Sun Devils look to O'Conner in pressure situations. She has led ASU in scoring in 12 of the their 14 games, while leading the team in assists six times this season.

The Sun Devils, who do not have a senior on this year's team, have had big wins this season including a win at the St. John's tournament in New York versus Morgan State, 91-52, and a big home win against powerhouse Cornell by a score of 79-51.

However, by no means is this team one-dimensional. Although O'Conner may lead the team in nearly every offensive statistical category, players such as 6-foot-5 center Fran Ciak and junior guard Rosalind Senior provide the team with deep talent.

Ciak, a junior, leads the conference in rebounds, grabbing

eleven a game, and is second in the conference in blocked shots, swatting away nearly two shots a game.

Senior, 5-foot-7, is one of the most experienced players on the team, starting 21 games last year and starting all but one of this year's contests. Senior is second on the team in scoring averaging 12.7 points a game.

After returning from Los Angeles this weekend, ASU will travel to Arizona on the 27th and will conclude their road trip with contests in northern California against Stanford and California.

The Sun Devils who are 2-4 on the road and 5-3 at home, will then open up a seven game home stand starting out with Oregon State on Feb. 9 and Oregon on the 10th.

"It's going to be tough to win on the road," commented Stevens. "When you play on the road you hope to at least split and when you play at home you hope to win them all. Of course, we wouldn't mind winning both games on the road."

"On the road again . . . Just can't wait to get home again."

## Shorts

Continued from page 19.

Linne for top honors toward the end of last season, and sophomore Licurgo Diaz-Sandi, who has been the most consistent of the three.

Robinson said another Sun Devil to watch for is senior Pat Kalani Pa who specializes

on the rings and is beginning to reach his potential.

Pa said a big crowd is essential for psyching up the gymnasts.

**Coach optimistic about upcoming meet**  
Women's gymnastics coach John Spini is excited about the upcoming meet with Boise

State, but two regulars will be out of the lineup.

Juniors Heather Carter and Marika LeSieur are out with injuries, and are not expected back until next week.

Carter strained ligaments in her left knee

during warmups, but an early return to competition could lead to a more severe injury. LeSieur sprained an ankle during Christmas break in a freak accident.

Karli Urban returns for the Devils as the top performer. The senior placed third in the all-around with a score 37.70.

## Players speak out at the Super Bowl

MIAMI (AP) — The Super Bowl's two cocky cornerbacks took off the gloves Thursday, launching a war of words with lofty predictions and choice insults.

Cincinnati cornerback Lewis Billups predicted a 28-13 Bengals victory Sunday over San Francisco, then unloaded on his 49ers counterpart, cornerback Tim McKyer, for making brash statements.

McKyer predicted Wednesday that the 49ers would win 28-10, and suggested that Billups was a "big talker" who was being quiet this week because he was feeling Super Bowl pressure.

When Billups read that in a newspaper Thursday, he let loose a volley of his own. Billups suggested McKyer, who like Billups is a third-year cornerback, had to brag to get attention because he is not very good. Billups also said McKyer was not good enough to make the Bengals passing defense as an extra defensive back.

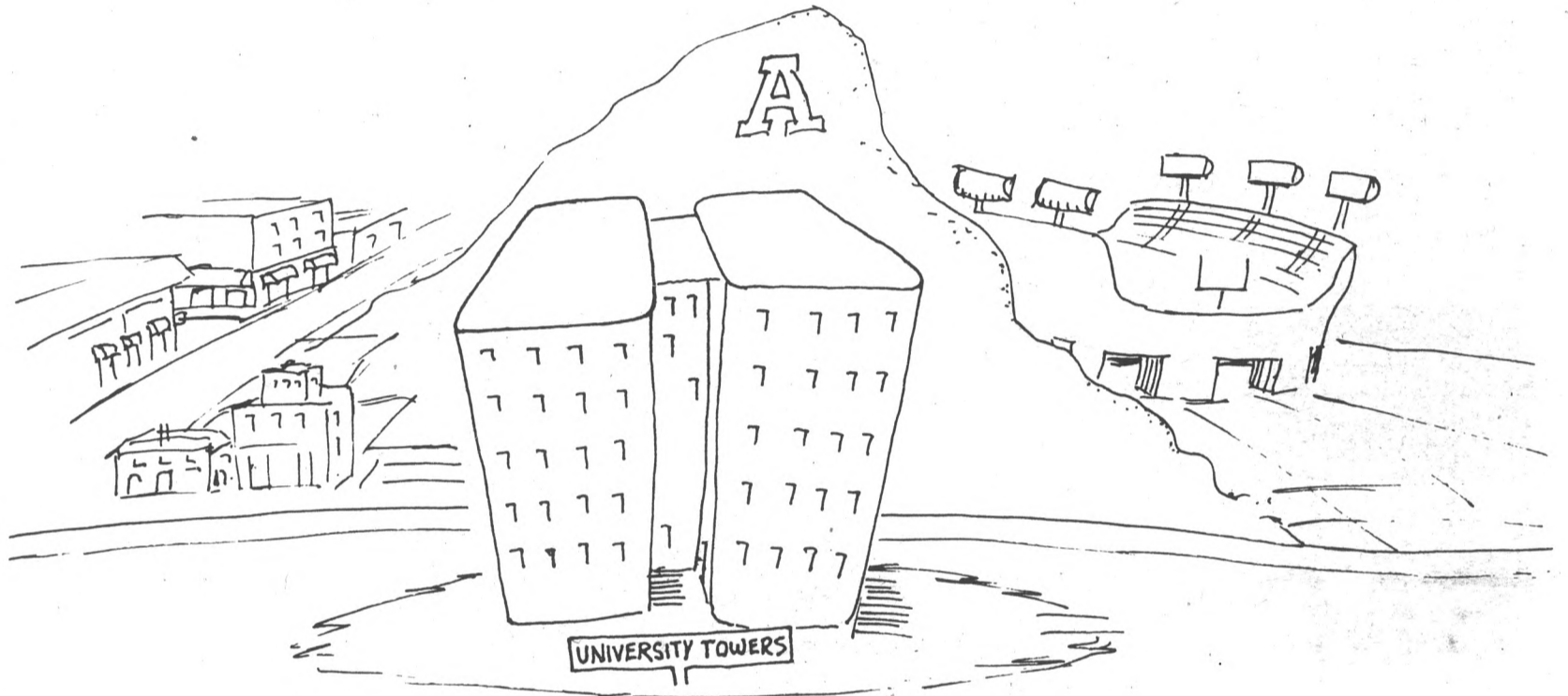
"He has no class, that's all," Billups said. "I think he's just more immature than probably anybody over here. If he came over here and played, I don't think he'd play on nickel (defense) here, so he's got to use that mouth."

McKyer did not disappoint when reporters surrounded him for a response later Thursday morning. He laughed off suggestions that the Bengals will use his earlier comments as motivation.

"These guys, if they need any kind of artificial reason to get them motivated to play the Super Bowl, we won it anyway," McKyer said. "If they have to get mad by what guys are saying about them just to go out and perform, that goes and says something about their professionalism."

"So it doesn't matter to me."

The barbs were the first cross-Miami shots between the teams this week. Both teams had generally been on their best behavior, using flowery compliments when talking about their opponents.



## We're right in the middle of things.

You'll be right in the middle of things at University Towers. Because we're close to school, shopping, Sun Devil Stadium and the Activity Center. We're also under new management, which means new, lower rates for you.

### University Towers features:

- Utilities included
- 2 blocks from campus
- Covered parking available
- Swimming pool and spa
- Laundry facilities
- Study room
- Volleyball and basketball
- Weight area
- Retail shops
- Resident Advisors and Director of Student Life

Visit University Towers today. And live right in the middle of things.

525 S. Forest  
Tempe, AZ 85281  
(602) 894-2320  
1-800-888-2303



PROPERTY SERVICES, INC.

# classifieds



### LINER RATES

15 words or less is \$3.00 per day for 1-4 days  
 \$2.75 per day for 5-9 days  
 \$2.50 per day for 10 days & up  
 (15¢ each additional word)  
 The first 2 words are capitalized. No bold face or centering.

FOR CLASSIFIED DISPLAY RATES  
 AND FURTHER INFORMATION,  
 PLEASE CALL:

**965-6731**  
 and ask for  
**PEGGY MCGINN**  
 Classified Advertising Manager  
 OR  
**STERLENE MORRIS**  
 Classified Adviser

### CLASSIFIED ATTRACTIONS

**Free Birthday Ads:** Limit 20 words; must show proof of birthday.  
**\$1 Valentine Lovelines:** Make an everlasting impression. Deadline 2-9-89 at 4:30 p.m..  
**Rental/Sale Special:** Apartments, townhouses, condos, homes; 10 days for \$10, 15 words or less.

### CLASSIFICATIONS:

- 1 Announcements
- 2 Autos
- 3 Trucks
- 4 Motorcycles
- 5 Bicycles
- 6 Furniture
- 7 Tickets For Sale
- 8 Miscellaneous For Sale
- 9 Real Estate For Sale
- 10 Apartments For Rent
- 11 Townhomes/Condos For Rent
- 12 Homes For Sale
- 13 Rental Sharing
- 14 Business Opportunities
- 15 Help Wanted
- 16 Instruction
- 17 Jewelry
- 18 Free Lost/Found
- 19 On-Campus
- 20 Personals
- 21 Pets
- 22 Services
- 23 Transportation
- 24 Travel
- 25 Typing/Word Processing
- 26 Wanted
- 27 Adoptions
- 28 Miscellaneous

### HOW TO PLACE A CLASSIFIED AD:

**In Person:** Cash. Check with guarantee card. MC, or VISA. Matthews Center, Basement (South End) M-F, 8 a.m. - 5 p.m. North MU Information Desk M-F, 9 a.m. - 2:30 p.m.  
**By Mail:** State Press Classifieds, Matthews Center, Rm 15, Tempe, AZ 85287-1502. Please enclose payment with ad.  
**By Phone:** 965-6731. Payment with VISA/MC only. \$6 minimum on all phone orders. The State Press reserves the right to reject any advertising copy submitted.

### HOW TO CORRECT OR CANCEL YOUR AD:

**Cancellations:** Liner ads must be canceled before noon, 1 day prior to publication. No refunds will be given.  
**State Press Errors:** Check your ad the FIRST day it runs. Call 965-6731 with any corrections, before noon. The State Press is only responsible for the first day the ad runs incorrectly. Corrected ads will be extended one day. Changes called in after the first day will not qualify for a make-good.  
**Customer Errors:** Corrections must be made before noon. Compensation will not be given for customer error.

### WHEN WILL YOUR AD RUN?

Classified liner ads can begin 1 DAY after they are placed (if placed before noon).  
 Classified display ads can begin 2 DAYS after they are placed (if placed before 10 a.m.).  
 Ads may run for any length of time. Canceled ads will be credited to your account. Sorry, no refunds.

### ANNOUNCEMENTS

**ARIZONA FOOTBALL League**, full pad football. Final draft day Saturday, January 21st at 10 a.m. at either Mesa or Glendale Community College. Information, 242-7879.

DO YOU know Jesus? Would you like to know Jesus? Call First Christian Church, 838-2424.

**SPRING RUSH '89**, 12 noon, University Activity Center south entrance. For more information contact Steve Dark, 784-0514; Kelly Farland, 784-8645. Go Greek!

**VOLUNTEERS NEEDED** for metabolism study. Need females 18-25, non-exerciser, non-dieter, no oral contraceptives. You will receive free dietary analysis, blood analysis and body fat estimation. Call Jill, 894-9448.

### INTERVARSITY CHRISTIAN FELLOWSHIP

invites you to the **gutter party** and to play **volleyball**. Saturday, January 21st at 2:30 p.m., Daley Park (on College Ave. just south of campus).

### AUTOMOBILES

1978 280Z. Looks and runs good. Needs some work. Air-conditioning, AM/FM cassette, sunroof. \$2900/offer. 968-4532 evenings.

1982 CHEVY Citation. 4-door, hatchback, air-conditioning, AM/FM, automatic, excellent condition, \$2200. Call 964-0029.

1985 PONTIAC Fiero. 5-speed, silver with blue stripes, excellent condition; \$5500. Call Chuck, 275-0291 or 841-2188.

1986 TOYOTA MR2 loaded, grey, 5-speed, sun roof. \$8750. Call 993-4343 p.m.

82 HONDA Prelude. Power-steering, power brakes, air-conditioning, AM/FM cassette, sunroof. Excellent condition, only 49,000 miles. \$4900/offer. 926-7045.

84 MUSTANG GT Convertible. 31,000 miles, 5 liter V8, air-conditioning, charcoal gray, power windows. \$8000. Jeff, 921-3540.

**GREAT BUY!** 1986 Plymouth Reliant. 2 door, immaculate condition. \$4200/offer. 965-2809 or 985-4853 (after 6).

**REMOTE AUTO alarm system**- key chain remote control, with flashing red LED indicator, chirp, interior microphone sensor, exterior shock sensor, and override switch, lifetime warranty, new in box, U.S. made, cost \$410, must sell \$159. 893-8774.

### BICYCLES

### MOTORCYCLES

1987 HONDA Elite \$599. Need to pay tuition. Must sell! 829-7604.

84 YAMAHA FJ600. Very clean, fast, dependable. New tires, brakes, battery. With cover, helmet, and more. Call 897-0040.

**FASTEST 700CC** in the valley!! 1986 Yamaha Fazer. Kerker pipes, K&N air-flow, wicked response. No beginners, please! \$2450. Call David, 967-9905 or 784-0668.

### BICYCLES

12-SPEED TOURING bike, dark blue, all Shimano parts, toeclips, Kryptonite lock, \$150. 968-3637.

'88 TREK 330 touring 12-speed. Pump, lock, bottle cage, 23" frame. Like new. Make offer. Tim, 829-8287.

**BACK INJURY**, must sell! Bianchi 20" racing bike. New, barely used. Must see. 921-7923. \$350/offer.

**DIAMOND BACK** Apex Mountain bike. Fully hand rebuilt, all new Shimano componentry, SIS compatible, new tires, good thrasher. \$300/offer. Must sell!! 784-4081, Chris.

**MOUNTAIN BIKE**. Schwinn Maximizer, only ridden once. Paid \$200 for, best offer. 966-7721.

**RED TEN** Speed. 2 years old, good condition, \$60. Call Becky at 784-8033.

**USED BIKES** from \$35, repairs, all makes, trade-ins. Ask for student discounts. Bicycle Store, 966-6070.

**STATE PRESS Classified Advertising... Good News!**

### FURNITURE

**DINETTE SET**- Butcher block style table, 4 light blue swivel chairs, \$100. 968-3637.

**FUTON BED** with 12 drawer pedestal. Queen, 4 months old. Excellent condition. \$350/offer. Oak kitchen table and 4 chairs. Excellent condition. \$175/offer. 897-6769.

**GREEN LIVINGROOM** sofa, \$95. Walnut formica table, \$35. 967-4441.

**SOFA AND chair**, off-white color, great condition. \$145. 894-6010.

**SOFA AND matching love seat**, cream/tan color. Clean, comfy, good condition. \$185/offer. 839-4882.

**SOFA SALE**. 6 foot earth-tone, rustic brown, soft upholstery. \$50/offer. 6 foot sofa-sleeper, soft blue upholstery. \$95/offer. 967-4549.

**WAREHOUSE SALE:** Desks from \$49; typing tables from \$15; chairs from \$5; computer tables, files, office supplies, plus lots more. Arizona Office Liquidators, 4010 S. 43rd Pl., between 40th and 48th St., north of Broadway. 437-2224.

### BICYCLES

### TICKETS

**AIRLINE TICKETS** to Denver. Must be used before February 14th. Continental. Mark, 784-0668. \$100/offer.

### COMPUTERS

**COMPLETE COMPUTER** system including printer and software for \$995. \$200 or best offer. For \$995. Test drive one today! Computer Multi Systems, Tempe (next to Buffalo Exchange), 225 W. University. 966-1388.

### MISCELLANEOUS FOR SALE

**ARTLEY FLUTE**, excellent condition. \$200 or best offer. Call Denise at 944-8606, leave message.

**BOOKS FOR sale**, no marks or writing: GNB233 \$16, MAT119 and MAT210 \$27; POS160, "Taking Sides" \$5 and "Logic of International Relations" \$9; MAT or STP326 \$19 (some writing). Gabe, 968-8805.

**MESA AUDIO DEMO - CLEARANCE SAVE 20 - 40%**  
**\$500 CD Player - \$319.95**  
 456 West Main  
 649-1738

**HIDE-A-BED** \$150, blue couch/chairs \$200, wooden desk \$35, skis with poles \$30. 966-7979.

**MAGNAVOX STEREO**, record player. Call 832-1899.

**NEON LIGHTS**. Decorate your rooms with various shapes and colors. \$10-\$35/tube, transformer extra. 431-0177.

**MOTOROLA** Transportable Cellular Telephones  
**NO CREDIT HASSLES NO DEPOSITS**  
 242-9563

**OLYMPIC MEMORY** typewriter, ES110. \$150. Call between 2-8 p.m. Ask for Karen. 820-7141.

**ROCK MUSIC** newsletter, \$12 per year. Sample issue \$1. Howling Wind, 6202 N. 16th St., suite 43, Phoenix 85016.

**STP 420 book** for sale. "Introduction to Statistical Methods and Data Analysis," 3rd Edition by Lyman Ott, \$25/offer. 829-8780, leave message.

**STUDENT VIOLINS**, all sizes, complete with case and bow. Most reasonable. 997-0024 (Phoenix).

### REAL ESTATE

**\$100 DOWN** for townhomes near campus. Save thousands -Y rent? Greg, Realty Executives, 423-3805.

**2 MASTER bedrooms**, 2 bath condo, Questa Vida. Bike to ASU. All appliances included. \$66,500. Patty, Century 21 Plaza. 831-1300.

**3 BEDROOM**, Broadway and Rural area. Always immaculate, must see to appreciate. Original owners. \$79,900. David Campbell, Tradewinds, 820-3333 or 961-3190.

**BEAUTIFUL CONDOS**, townhouses, starting at \$30,000. ERA Carew is working for you, 897-9000.

**BIGGEST HOME**, best price. 2 bedroom, 2 bath, 2 story. James Murray ERA Carew, 897-9000, 921-2482.

**CONGRATULATIONS JAMES** Murray. Multi-million dollar producer in Tempe area for ERA Carew.

**COUNTRY CLUB** living at its best. Gorgeous 2 bedroom condos. 4 blocks to ASU. Start \$49,500. Realty Executives, Pat/Kathy. 893-2888, 730-0130, 893-1722.

**EXECUTIVE HOME**, Northeast Mesa on 4.2 acres. ERA Carew, Frank Richardson, 897-0222, 831-3106.

**HAYDEN SQUARE**. Brand new 2 bedroom, 2 bath luxury condo. Motivated seller! Call 967-1984.

**LOW, LOW Down**. Hud homes are selling fast. We specialize. James Murray ERA Carew, 897-9000.

**PAPAGO PARK**, 2 bedroom, 2 bath townhouse. Upstairs unit, many upgrades. Coldwell Banker. Dana, 839-8200.

**TOWNHOUSE**. MCKELLIPS and Miller. 3 bedroom, 2 bath, fireplace, wet bar, vaulted ceiling, double garage. No qualifying, 10 1/2% FHA, \$5000 CTM. 947-5797.

### TOWNHOUSE

Deluxe 3 br., 2 bath, ceiling fans, washer/dryer, small backyards, covered parking, 2 miles from ASU. Loan assumable.  
**921-1229**

### MISCELLANEOUS FOR SALE

**BIKES!** Why pay more?  
 •Shogun TBI (18-Spd, Sts) Retail \$350.....Sale \$275  
 •Puch Park Ave. (18-Spd) Retail \$325.....Sale \$245  
 •Shasta Saddle Back Retail \$225.....Sale \$179  
 Used Bikes From \$35 Sale ends 1-27-89 Student Discount  
**BICYCLE STORE**  
 966-6070 at Lemon & Terrace

Get **"THE EDGE"** with a **LEADING EDGE MODEL D COMPUTER FOR ONLY \$995!**  
**PACKAGE INCLUDES:**  
 •Dual floppy disc  
 •Near letter quality printer  
 •High resolution monochrome monitor  
 •Word processing w/Spell Check, Spreadsheet, DOS & Basic software  
 •20 month national warranty  
 •Color monitor, add \$175  
**COMPUTER MULTI SYSTEMS 966-1388**  
 225 W. University, Tempe next to Buffalo Exchange

### APARTMENTS

**1 BEDROOM**, free utilities and redecorating. Safe, very quiet. \$375/unfurnished, \$400/furnished. Specials. 967-6620. Landmark.

**1 BLOCK ASU**. 1 bedroom, 1 bath, pool, no pets. \$300/month, including utilities. 1339 S. Sunset Drive, Apartment 9. 921-1084, 967-3658.

**2 BEDROOM**, 2 bath, washer/dryer, walk to ASU. \$400. January 1/2 off. 496-0562.

**2 BEDROOM**, 2 bath, Broadway/College. Over 1000 square feet, patio, vaulted ceilings, pool, covered parking. \$500/month. 844-5900, Ken K.

**ASU AREA:** Studios, 1 and 2 bedrooms, \$260 and up. Pool, no dogs. 966-8838.

**ASU STUDENTS** welcome. 1/2 mile, 2 bedroom, appliances, near new, water paid. RSVP Realty, 838-3898.

**BEAUTIFUL NEW** large 1 and 2 bedroom. Walk to ASU. Pool, laundry room. One block South of University on 8th Street, Cape Cod Apartments. Phone 968-5238 for special.

**CHARMING OLD** town Tempe 1 bedroom apartment in a fourplex. Fireplace, trees, fenced yard. Pets okay. 1/4 mile ASU. Call 248-0000 or 967-6000.

**CLEAN, QUIET** 1 bedroom apartment close to ASU. Lots of amenities. Hidden Glen Apartments, 968-8183.

**CLOSE TO ASU**. Beautiful Southbank Apartments. Private balcony and patio. Lovely pool. 2 bedroom apartments. Call 894-1041.

**FURNISHED** 2 bedroom apartment, 1 block from ASU. \$440/month includes most utilities. 894-8708.

**LARGE** 2 bedroom, 2 bath, upstairs unit in Mesa. \$400. After 7 p.m., 890-0241.

**MALE NON-SMOKER**, Desert Palms Apartments. Share a bedroom. \$125/month plus utilities. Steve or Chuck, 921-7115.

### APARTMENTS

**NICE FURNISHED** condo, 1 bedroom, washer/dryer. 1 block from campus. \$375. To see call 966-3730 or 947-7646.

**SPACIOUS** 2 bedroom, 2 bath \$475 (includes utilities). One/tenth mile to ASU. 910 E. Lemon. 966-8704.

### Ideal for Students

- Affordable-studios from \$295 utilities included
  - Great location-close to ASU
  - Privacy-1-level apartments mature landscaping
- MARIANNA APARTMENTS**  
 1214 E. Orange  
 966-8597

### MOVE IN FOR \$150

(\$100 security deposit, \$50 1st month's rent). Only 1/2 mile from ASU. Has just been redecorated. Vertical blinds, ceiling fans, choice of new carpet, 3 pools, laundry facilities. 2 bd flats & 2 bd townhouses.  
**The Fountains**  
 1028 E. Orange  
 967-0409

**YOU CAN HAVE IT ALL AT RIVER RUN APARTMENTS**  
 All the amenities in a small and quiet community PLUS the personal attention that YOU deserve.  
 •Heated Pool •Individual Security System  
 •Fireplaces •Cable Ready  
 •Laundry Facilities •Covered Assigned Parking  
 •Gas Grill •Close to ASU and Hayden Square  
**Don't wait...Stop looking... Start living...Call today, 967-6568**  
 1065 W. 1st St. (between Beck & Hardy)

### REAL ESTATE

### REAL ESTATE

**U.S. GOVERNMENT SALE**  
 All Areas—Anyone Can Buy... Special Terms—No Escrow Fees  
 CALL PAUL...For A Free List!

BR/BA	DOWN	PRICE
2/1	\$1,400	\$38,000
3/2	\$1,700	\$44,600
2/2	\$2,300	\$56,250
3/2	\$3,100	\$62,000
4/2	\$2,900	\$61,900
4/2	\$3,400	\$77,700

Financing: 10% APR, 30 year, must qualify.  
 PAUL PASTORE, 831-0322  
 REALTY EXECUTIVES

TOWNHOMES/ CONDOS

LUXURY 2 bedroom condo. Security system, attached garage, fireplace, pool, jacuzzi, weightroom. Available 2/1. 831-5628.

MOVE-IN SPECIAL! \$99 first month's rent. Beautiful 1 bedroom condo with your own washer/dryer plus swimming pool and covered parking. Close to ASU. Located at 700 W. University. Call Casey Properties, 998-2994.

TAKE OVER our lease. Worthington Place condo. Fully furnished, washer/dryer. Poolside. No deposit. Call 837-9132.

1/2 MILE ASU. 2 and 3 bedroom townhomes. Washer/dryer and much more. 967-4908, Pat.

Beautiful Condominiums For Rent From \$575

Lavishing furnished. ALL 2 bedroom, 2 bath condos conveniently located within minutes of ASU. This student-oriented community features:

- Scandinavian Furniture
Pool/Jacuzzi/Sauna
Weight Room/Volleyball
Rec Room w/Big Screen TV
Extra Lush Landscaping

Perfect for Roommate

Worthington Place 968-9923 616 S. Hardy, Tempe 1 block north of University

HOMES FOR RENT

3 BEDROOM house, close to ASU, remodeled, big back yard. Bring your pet. \$550/month. Norbert Ben Schwartz Realty, 966-7979.

3 BEDROOM, crawl to ASU. 9th and Maple. \$625/month. Mike, 968-6866.

4 BEDROOM, 1 block South of ASU. \$695/month. Mike, 968-6866.

BEAUTIFUL HOME, ideal administrators, faculty and staff at new ASU Northwest Graduate. (Walking distance). 4 bedroom, 2 bath, family room, fireplace, pool, corner lot. Assumable mortgage. Rent \$785/month or lease/option or sale. Owner 581-2304.

FREE CABLE. Furnished 2 bedroom, 2 bath, garage, spacious, quiet, clean. ASU close. \$700/month. 581-0541.

WINTER VISITORS. Lovely furnished, equipped Chandler home on monthly basis at low rent. 839-1446.

RENTAL SHARING

1 OR 2 females needed for roommates. 2 bedroom, 2 bath condo in Papago Park by Devil House. Quiet, clean and spacious. \$250/month plus utilities. Already furnished. Call 829-9437.

AAAAAA ROOMMATE needed. 3 bedroom, fireplace, guards, tennis, pool, the works. The place, Rancho, near Desert Palm, but better. Affordable rent. Call Michael, 921-3690.

ASSUME LEASE. Own bedroom, furnished, 1/2 block from ASU. \$220 month plus 1/2 utilities. 967-2437.

BEDROOM IN a lovely home near McClintock/Southern. Conclusive to practicing. \$225/month, including utilities. Suzie, 839-9373.

FEMALE FOR 3 bedroom, fully furnished condo near campus. Washer/dryer, pool, tennis courts. 953-1159.

FEMALE: OWN room in 3 bedroom. \$225/month plus 1/2 utilities. Close to campus. Desert Palms. Jennie, 921-1427.

FEMALE ROOMMATE wanted. 2 bedroom, 1 1/2 bath, pool, laundry, furnished. \$230/month, 1/2 utilities. Must be clean, quiet and responsible. Call 921-3225.

APARTMENTS

(602) 968-2555

RENTAL SHARING

FEMALE ROOMMATE needed for furnished 2 bedroom apartment, 1 block from ASU. \$220/month. 894-8708.

FEMALE ROOMMATES needed to share 4 bedroom house with pool by campus. Own room, \$200/month plus utilities. 947-7565.

HOUSE ON Arizona country club golf course. 10 minutes to ASU. \$300 plus utilities. 947-7229. Call after 5:30 p.m.

LOOKING FOR roommate. One room in two bedroom apartment 10 minutes to walk from ASU. Rent \$185 plus 1/2 utilities. Michael, 966-3004.

MALE/FEMALE non-smoker. McClintock/Baseline area. Clean, quiet, 3 bedroom home. \$250/month plus 1/2 utilities. Kevin, 897-6447.

MALE/FEMALE nonsmoker for own room in 2 bedroom apartment. \$225/month plus 1/2 utilities. Pool and laundry, near campus. 921-1764, leave message.

MALE/FEMALE share quiet, clean home. Own bath, big walk-in closet. Washer/dryer, fireplace, cable, storage. Must be clean, responsible. Near Dobson/Guadalupe. \$235/month plus 1/2 utilities. 897-6769.

MOVE INTO University Towers right now for only \$250!! Sub-lease! Call Frank, 644-1155.

NEED ROOMMATE. 3 bedroom, 2 bath, near ASU. \$265 including utilities. Stacy, 990-9545 after 5.

NEED ROOMMATE. 3 bedroom, 2 bath home, Hardy and 13th Street. Own room, private pool and jacuzzi in backyard. \$225/month plus 1/2 utilities. Call 966-0825.

OWN ROOM, spacious, furnished condo. Complete with laundry, dishwasher, pool. 1 1/2 miles to ASU. 253-1210.

ROOM FOR rent, furnished, great location, Hayden/Roosevelt. Grad student, female, non-smoker wanted. 946-7505.

ROOM FOR rent, new 3 bedroom Tempe house. Pool, garage, yard. Kevin, 838-2689, Brian, 730-3433.

ROOMMATE NEEDED. 2 bedroom, 2 bath, share room, \$150-\$175 utilities included. Call 921-1352.

ROOMMATE WANTED for new 2 bedroom, 2 1/2 bath townhouse. Washer/dryer. \$225/month. 844-7509.

SHARE HOME, South Scottsdale. \$250 includes utilities. 947-2884.

TO SHARE a room, Condo, close to ASU. 2 bedroom, 2 bath, pool, jacuzzi, cable, furnished very nice. Including utilities, \$200/month. 966-8989, Jason.

TOWNHOUSE. COZY private loft. Share spacious kitchen, living, and dining room plus utilities with 2 ASU students. 1 mile North ASU. \$275/month. 957-8271.

TWO BEDROOM apartment. Pool, block from campus. Rent \$220, 1/2 phone and electric. 967-2437, Amy.

UNIVERSITY TOWERS. Immediate move in. Sublease and save. Call 644-1155, Sean.

BUSINESS OPPORTUNITIES

GYM FOR sale, well equipped for boxing and weight training. Ideal for Physical Education major for part-time work. Owner retiring. Phone 279-1314.

HELP WANTED

AAA RESEARCH assistant for Arizona's premier opinion research firm. Preference to under class person interested in multi-year training/internship program, with career commitment. O'Neil Associates, 967-4441.

D.J.'s WANTED

Train to be a part-time mobile D.J. Must be dependable. Enjoy music and people. Dependable vehicle. Call M-F.

820-8220

APARTMENTS

HELP WANTED

\$350 A Day! At home! Process phone orders for our company. People call you. Nationwide. For details call (refundable) 1-518-459-9697, ext. K203.

AAAA TELEPHONE interviewers for Tempe marketing research firm. Flexible evening/weekend hours. Start at \$4/hour. Rapid raises for good people. O'Neil Associates, Susan, 967-4441.

EXTRA MONEY

Is nice, but you can help people too.

Earn \$120 + a month

SAFER, FASTER PLASMA DONATION ONLY AT ABI CENTERS DUE TO AUTOMATED PROCEDURE. \$5 bonus to new donors on first donation with this ad. Ask about additional bonuses. (Monday-Saturday).

University Plasma Center Associated Bioscience, Inc. 1015 S. Rural Rd. Tempe 968-6139

ADVERTISING SALESPERSON for new Valley bridal publication. Straight commission. Leads provided. Temporary. Call 838-7274.

AN INTERESTING part-time endeavor, become an entertainer! D.J. for private parties. We train and provide equipment and music. Professional appearance and personality a must! Make great part-time \$\$.

ARTIST WANTED to do t-shirt/poster design for Old Town Tempe Spring Festival of the Arts, to be held March 31, April 1 and 2 1989. If you're interested in submitting a design, please stop by the MAMA office at 520 S. Mill Ave, number 201, Tempe, between 9 a.m.-6 p.m. or call 967-4877. Deadline for submission is Friday, February 3.

ASU IS calling on you... to become a member of the ASU Telefund team! Hiring now for spring semester, on-campus location, can work 8-16 hours per week, Sunday-Thursday evenings, 5:30-9:30. Earn \$4.10/hour plus bonus plus commission. Great nightly incentives, gain valuable telemarketing experience speaking with alumni nation-wide. If you have sales ability, call us at 965-6754.

TELEVISION NEWS REPORTER ON-CAMERA PERFORMANCE WORKSHOP February 4

Call the Media Training Center in Phoenix at 285-1143

ATTENTION SWIMMERS. Retail swim store needs part-time help, between 20 and 30 hours/week. Swimming background helpful. Please call for an appointment between 10 and 6, 264-7774.

ATTENTION ALL students! Learn to sell and earn \$6-\$8/hour. 23 hours weekly, near campus. Have fun while you learn professional sales techniques. Call 966-8788 for January openings.

BABYSITTER NEEDED for 3 kids, 1 or 2 nights a week. One block South of ASU. 894-5281.

HELP WANTED

ATTENTION BUSINESS and marketing majors. Earn \$1599/month in summer sales and business management. Receive college credit and gain valuable resume experience. For interview times leave message at 222-8114.

BANQUET SERVERS needed immediately for days, nights and weekends. All valley locations. Must have black and whites. Call Executemps at 234-1600.

BITS, N Pizzas now hiring cooks and bus. Full or part-time. Apply in person, 3030 N. 68th St., Scottsdale.

BROADWAY SOUTHWEST Distribution Center has one part-time opening as a China stock clerk. Phone skills and clerical work, nights and weekends. Apply at 1524 W. 14th Street, Tempe, Monday-Friday, 9 to 3.

CLERICAL/SALES, minimum 25 hours. Apply Candid Wedding Photographers, 609 N. Scottsdale Road, 941-5225. Close to ASU.

COMPUTER SYSTEMS operator, part-time to full-time employment. Job involves heavy computer usage and meeting public. Applicant needs to be familiar with PC systems, knowledge of DOS and D base. We will train on our equipment, operating system and program. Job also includes work with telephone switching equipment. Silveridge RV resort, Morris Farnsworth, 373-7000.

ADJUNCT FACULTY

Nationally known university with satellite campuses seeks adjunct faculty to teach evening and weekend courses in Arizona. Master's degree required, with substantial portion of doctoral coursework completed in business, public administration, or related field. Reply with curriculum vitae to Dr. Richard Thompson, 10640 North 28th Drive, Suite C-205, Phoenix, AZ 85029. EOE/MF.

CORK 'N CLEVER accepting applications for lunch waitresses, lunch hostesses and evening cocktails. Will train. Short shifts. Convenient hours. Fun atmosphere. Concern with appearance, personality, and reliability are important. Apply in person, Monday-Friday, 2-5 p.m. or by appointment, 5101 N. 44th St. (44th and Camelback), 952-0585.

COUNSELORS- GIRLS camp in Maine. Good salary, room and board, travel allowance, beautiful modern facility, must love children and be able to teach one of the following: tennis, W.S.I., sailing, waterski, softball, basketball, soccer, lacrosse, arts and crafts, photography, horseback, dance, piano, drama, ropes, camp craft, gymnastics. Call or write: Camp Vega, Box 1771, Duxbury, Massachusetts 02332. (617)934-6536.

COUNSELORS- BOYS camp in Berkshire Mountains, Western Massachusetts. Good salary, room and board, travel allowance, beautiful modern facility, must love children and be able to teach one of the following: tennis, W.S.I., sailing, waterski, baseball, basketball, soccer, lacrosse, wood, arts and crafts, rocketry, photography, archery, pioneering, ropes, piano, drama. Call or write: Camp Winadu, 5 Glen La., Mamaroneck, NY 10543. (914)381-5983.

COUNTER HELP, lunch and weekends. Double Rainbow Ice Cream, 491-0117, ask for Mrs. Carlson.

COURTYARD by the Marriott Hotel now accepting applications for the following positions: servers, desk clerks, cooks. Apply in person only. 2621 S. 47th St., (where University Drive meets Hohokam Expressway). 966-4300. EOE, M/F/V.

CUSTOMER SERVICES representative. Must enjoy communicating with people. Evening hours, fun environment. Excellent part-time job for students. \$5-\$6/hour. 966-8788.

HELP WANTED

DANCE INSTRUCTOR: Ballet, Jazz, and Tap. Must be available Saturday mornings. 932-1342.

DELIVERY DRIVERS wanted. Call Mike, John or Pat at 829-0064 or 345-2343.

DISABLED MALE needs assistance. Easy \$\$\$ 784-8271.

DRIVERS WANTED. Phoenix location. Flexible hours. Call 256-7767.

EARN \$\$\$ while going to college. Become a VAXA distributor. VAXA amino acids aid in relief of chronic pain, PMS, allergy sinus, depression. Also weight loss, body building and basic health maintenance. All natural. No inventory or distributors. Fee. 948-7799.

ENGINEER TECHNICIAN (mechanical), 2nd or 3rd year. Mechanical engineering or technology. Some related experience desired. Must be available 12 months at a minimum of 20 hours per week between the hours of 8 a.m.-5 p.m. Call 956-8200. \$5/hour and up.

EXCEPTING APPLICATIONS for counter help and drivers, full/part-time, day or night. Earn up to \$8/hour at Sammy B's Pizza, 945-8850.

EXPERIENCED DATA base programmer, C Language, part-time for 1 to 2 years. 230-4345 for Frank.

GAME ROOM attendant. No experience necessary. \$3.75/hour. Must be dependable and honest and able to work 11 a.m.-6 p.m. part-time flexible hours. Apply in person at Player's Choice at the Cornerstone Mall (Rural/University).

HAAGEN-DAZS Ice Cream Shop, scoopers. Scottsdale shop needs personable, dependable, hard-working individuals. Day and night positions available. Call Monday-Friday, 8:30-5, 941-0400.

HELP WANTED, games workers for the Arizona Renaissance Festival. Weekends, starting February 15. If you like hamming it up, this is for you. Call 1-800-328-4827, ext. 1331.

HELP WANTED. We need banquet servers, bartenders, cashiers, waiters/waitresses. Work around your schedule. Must have phone and transportation. Call immediately, 831-0145. Same week pay.

HOUSE CLEANING in Scottsdale. Two 1/2 days/week. Own transportation. \$5.50/hour. 945-2003 evenings.

INTERNSHIP AVAILABLE in busy medical practice. College level, pre-med, public health, dietician students. Must be motivated. Research and administrative skills a must. Word processing important. Stipend available. Call Dr Bruce Sobel, 996-6668.

MARRIOTS MOUNTAIN Shadows needs pool attendants. Advanced lifesaving required. Great school job. 5641 E. Lincoln. 948-7111.

MEDICAL OFFICE needs full and part-time help. Must type. Apply in person, 7701 E. Indian School Road, Suite E.

MIS GRAD or undergrad needed to develop oracle system with big 8 consulting firm. Minimum 15-20 hours/week. Send resume to D. Feld, 717 W. Jefferson, Phoenix 85007. 258-6425.

MODEL IN Japan. Diana Baines Workshop presents the opportunity to meet with a representative from S.O.S. Agency of Tokyo, Japan. Women, are you 5'7" to 5'11" between 15 and 25 years old. If interested call Diana Baines Workshop, 956-4588.

IMMEDIATE OPENINGS Southeast Phoenix

Sell exciting new concepts to small businesses full-time, 3 days paid training, weekly paycheck, promotional opportunities, great benefits. Must be articulate and well-groomed.

\$5/HOUR BASE UP TO \$15 WITH COMMISSIONS

Call Jill or Sherri at

224-5625 ADDTEMPS No Fee EOE

HELP WANTED

NEED CASH? Need smart sales people to work on commission sales up to 30% commission. Make own hours, sell only two products, part of full time positions. For information or interview call Fawzya, 482-3276, 4-9 p.m.

OVERSEAS JOBS. \$900-2000 monthly. Summer, year round, all countries, all fields. Free information. Write IJC, PO box 52-AZ03, Corona Del Mar, CA 92625.

PART-TIME WORK, full-time pay. Great summer and school year opportunity for those who qualify. \$5/hour plus bonuses. Must have neat personal appearance and be able to work 4-9 p.m. Monday-Friday. For personal interview call Mr Forman at 921-2897.

PART-TIME HELP wanted, flexible hours. Apply at Sandwich Indulgences, 406 S. Rockford, 2 blocks east of Hayden and north of University.

PART-TIME WAREHOUSE person. Some heavy lifting. Must have good driving record. \$4/hour. Apply in person at Metro Furniture, 517 E. Camelback Road.

PART-TIME JOB, full-time pay. Flexible hours, great for students. One block from campus. Contact Mike, 894-2049 or 968-7013.

PHONERS WANTED, top line, no experience necessary. Part-time, 2 shifts. Flexible and willing to work with you. \$5/hour plus bonuses. 437-0066.

PREPARING FOR 1989 tourist season. We need reliable girls/guys to work at valley resort, attending the pool area, selling Panama Jack clothing and accessories. Excellent working conditions and great money. Must have own transportation and be available 4 days a week. Call 941-2751, Five Star Resort Pool Management Inc.

PROGRAMMING ASSISTANT/Gopher wanted to work in MIS department. Computer science major preferred. Knowledge of VAX VMS and/or C required. 20 hours/week during business hours. Send resume to Daniel Cardenas, Motorola Inc. MD E110, 5005 E. McDowell Road, Phoenix, AZ 85008.

RED ROBIN is hiring dependable, self-motivated cooks, servers, diningroom assistants and hospitality staff. Good training and incentive programs. Some weekday lunch availability preferred. Apply in person, Los Arcos Mall, Scottsdale, 9-10:30 a.m. or 2:30-4 p.m.

SITTER NEEDED Monday-Friday, 5 p.m. to 8 p.m. for 5 and 8 year old in North Scottsdale. Must have reliable transportation. Starting salary \$5/hour. Ask for Robin or Lynn, 391-1580.

STUDENTS: DISTRIBUTE Health Trek Products. No front money, no MLM, nice income. Contact: America's Choice, P.O. Box 527, Chester, MD 21619.

STUDENTS TO offer program in travel. Program offers 50% off regular fare for over 2000 hotels and motels, such as Holiday Inn, Hilton, Travel Lodge, Ramada Inn and many others. Rooms available 365 days/year USA. \$100/week income is not unusual. Call January 20, 7:30 a.m.-9 p.m., 962-5892 at ITM for further information.

SUMMER JOBS outdoors. Over 5000 openings! National parks, forests, fire crews. Send stamp for free details. 113 E. Wyoming, Kalispell, MT 59901.

TECHNICAL REPRESENTATIVE for steel pipe manufacturer. Technical degree/strong communication skills. Resume to: P.O. Box 19040, Phoenix, AZ 85005.

WAITER/WAITRESS, hostess, prep-cook and bus people needed for immediate employment. Apply in person at Chopandaz, corner of Scottsdale Road and McKellips, Tuesday-Friday, 10-6 p.m.

WANTED: ACC321 tutor. Will pay top dollar. Must have received an 'A' and prove it. 894-5374.

WESTERN RESERVE Club Course Cafe. AM shift available for counter person. Free membership with employment. Apply in person, no calls, 2140 E. Broadway, Tempe, 85282. EOE.

WRITE YOUR own paycheck. Part-time work, full time pay. ASU walking distance. 829-0133 or 966-5765.

INSTRUCTION

PRIVATE PILOT ground school. Course starting 1/26. Corporate Jets- Flight School, Scottsdale, 948-2400.

JEWELRY

CASH FOR gold and diamonds. Mill Avenue Jewelers, 414 S. Mill, Suite 101, Tempe. 968-5967.

Ad Phone Name Cls Sort Start Stop cl HS CASH PAID. Jewelry of all kinds, including gold, sterling, gems, pearls, antiques, etc. Rare Lion, 921 S. Mill Ave., Tempe Center, 968-6074.

SUNDEVIL LOGWATCH, high-quality, super-thin, quartz movement. Excellent timekeeper. Free delivery, satisfaction guaranteed, color brochure. 800-441-LOGO.

LEMON TERRACE CLUB apartments. GWEN Assistant Office Manager, JUDY MILES Resident Manager. 1115 E. Lemon Tempe, Arizona 85281.

Making Fun is Serious Business. WATERWORLD USA, the Valley's newest entertainment complex will employ over 300 young people this season. Several great supervisory positions are open for individuals who want invaluable experience. The candidates must: Be enthusiastic, Truly care about people, Have good communication skills, Be organized. Positions may qualify for intern/co-op type credit. Good money, great work! Please call for information and/or send resume by February 3, 1989 to: WATERWORLD USA 4243 W. Pinnacle Peak Rd. Phoenix, AZ 85310 Phone: (602)266-5299

IMMEDIATE OPENINGS Southeast Phoenix. Sell exciting new concepts to small businesses full-time, 3 days paid training, weekly paycheck, promotional opportunities, great benefits. Must be articulate and well-groomed. \$5/HOUR BASE UP TO \$15 WITH COMMISSIONS. Call Jill or Sherri at 224-5625 ADDTEMPS No Fee EOE

PERSONALS

ALPHA PHI Lara: We are going to have a rager of a semester. Hang loose dude! AOE love, Kristen.

ANDY BOOHER: Happy five years! I love you! Becky.

BILL V.Z. How about another hummer? Fudge love, the guy with the tight jeans.

BRENDA CHARLES: Laura from LA visiting Tempe. Contact 784-8337.

HIS 100 9:15 TTh. If you want to add it call 945-0000, ask for Bill.

RUSHEES: THE Men of Lambda Chi Alpha strongly encourage you to stop by and see what we're all about. Rush info, 965-6128.

RUSHEES: TRY rushing an off campus house and you will find out how strong we really are. Rush Beta Theta Pi.

SCOOP BABY: We should 282 it and go skiing with the clothes moolah! Spritz! Pinky.

SIGMA ALPHA Mu Spring Rush '89. Meet the men of the fastest growing house on campus. For more information call 829-SAMM or visit our table by the fountain.

SIGMA PI: "You gotta fight, for your right, to par-ty!"

PERSONALS

SPRING RUSH '89, 12 noon, University Activity Center south entrance. For more info contact Steve Dark, 784-0514; Kelly Farland, 784-8645. Go Greek!

T.F. SWEETHEART: Seeds, socks and caramels for a wonderful new year! All my kisses, Bug.

YFMR- THE answer to your important question is yes, it sounds like fun. Give me a call.

SERVICES

A SOFT Touch Electrolysis. Student discounts. Remove unwanted hair, permanently. 12 years experience, near ASU. Call 829-7829.

ELECTROLYSIS- PERMANENT hair removal. Remove unwanted hair forever. Student discount. Call for more information, 969-6954.

LA MANCHA athletic and racquet clubs are looking for enthusiastic, well trained aerobic instructors. Successful applicants will be strong, dependable, highly skilled, knowledgeable and paid top wages. Call 995-1234.

RESEARCH ASSISTANCE. Largest library of information in U.S. Toll-free hotline: 800-351-0222.

SERVICES

SOMETHING NEW!!! Spin art T-shirts! Create your own! Sun Tees, McClintock and Warner (by Basha's). 897-0544.

TEACHING STUDENT in PV East needs someone to help with paper work. Approximately 10 hours/week. Fee negotiable. Hours flexible. Call 784-8078.

TRANSPORTATION

ALL STATES Driveaway- Cars available- 21 or older. 992-5200.

TYPING/WORD PROCESSING

\$1.50 AND Up. AAA Quality work and laser printer. 33 years experience. Call Marian, 839-4269.

\$1.50/PAGE FOR quality word processing; accommodating hours and quick turnaround. Sesame Street Word Processing, 839-3626.

ACCENTS In Typing. Typing service near ASU. Quick turnaround. Over 30 years secretarial experience. 946-9982.

ASU AREA. Typing, word processing, editing. Fast, accurate. Call anytime. Prices competitive, negotiable. 966-2186.

CEREUS WORD Processing, quality guaranteed. Fast, experienced. Term papers, resumes, form letters, dictaphones, editing. 947-7796.

FAST RETURN, experienced academic typist. Will edit spelling, punctuation, grammar. Dependable, accurate. Joan, 839-0772.

FLYING FINGERS offers typeset quality with a Mac II and laser printer. Call Susan, 945-1500.

MESA SECRETARIAL Service. Term papers, theses, dissertations, resumes. Quality work on laser printer. 844-1876.

PROFESSIONAL TYPING services, \$1.50/page. Resumes \$30. Pickup/delivery available. 10 years experience. Theresa, 971-1493.

PROFESSIONAL WORD processing. Guaranteed next day service. \$2/page. Call 892-2793.

SHORT OF TIME? I can help. Reasonable. Professional. Guaranteed. Experienced in academic. Call Jessie 945-5744.

TYPING/WORD PROCESSING

WORD PROCESSING- \$1.50 per page. Resumes, design, editing, & laser printing available. Call 921-3770 evenings & weekends.

WORD PROCESSING/Typing. Resumes, term papers. Pick-up, delivery, laser. Additional services available. Write Solutions, 946-7880.

WORD PROCESSING, secretarial services. 23 years experience. Student discount. SW corner, Miller and Chaparral. 994-8145.

"Z" TOUCH Word Processing- fast, dependable. Pick-up/delivery. Discount for students. Law students welcome. 833-5559.

WANTED

WANTED BEST original pranks/practical jokes for national publication. If published worth \$20 to \$200. Send to R. Nilsen, 160 St. Botolph St., suite 5, Boston, MA 02115.



SURROGATE MOTHERS needed. Very special, very loving women needed as surrogate mothers to help give the gift of a child to long waiting, loving, but infertile and childless couples. Must be age 21-34 and have child bearing experience. Living expenses, allowances, life insurance, medical, legal and counseling services paid. Make written request for application.

New Conceptions 4625 S. Wendler Dr. #111 Tempe, AZ 85282 or call (602) 438-9331 or 1-800-777-9331

ADOPTION

HAPPILY MARRIED couple want healthy infant to adopt. Will provide warm, secure loving home. Call our attorney collect 24 hours 408-288-7100 ext.A165.

ADOPTION

ADOPTION. WARM, loving home ready to welcome newborn. Can provide good education, security. Please call attorneys Ravel and Lach collect 24 hours at 408-288-7100. (A-169).

ADOPTIONS. LOVING couple promise warm, caring, happy home and secure future for white newborn. Confidential and legal. Please call Sharon and Les collect, 718-575-5498.

MISCELLANEOUS

I WILL take your unwanted hamster, guinea pig, bird or old English sheepdog puppy. 966-7979.

state press News Sports Police Report S insight Special Letters ANALYSIS entertainment Reviews Ads Art coupons Classifieds science opinions

READ ALL ABOUT IT! Bloom County Police Report Letters to the Editor Album/Movie/Concert Reviews ONLY IN THE STATE PRESS DAILY

IFC Spring Rush '89 12 Noon University Activity Center (South Entrance) More Info: Steve Dark 784-0514 Kelly Farland 784-8645 "GO GREEK"

AFTER HOLIDAYS INVENTORY REDUCTION SALE AUTOBAHN MOTORSPORT



- 721 Chrome 14x6 \$299/00/set\* 781 Chrome 15x7 \$269/00/set\* Nugget Gold, Black or Chrome 13x5.5 \$199/00/set\* White Spoke 14x6 \$99/00/set\* CP 200 14x6 \$349/00/set\* Stingray Directional 13x6 \$349/00/set\* Aries 13x6 \$349/00/set\* Magnum Plus 13x6 \$349/00/set\* Magnum II 13x6 \$349/00/set\* Type 26 Directional 14x6 \$369/00/set\* Outlaw I 14x6 \$299/00/set\* Outlaw II 14x6 \$299/00/set\* Astro I 14x6 \$349/00/set\* Type 229 15x7 \$599/00/set\* Type 192 Gold, Black or Gray 14x6 \$419/00/set\* Type 226 14x6 \$419/00/set\*

Financing Available or 90 Days Same as \*Cash! (O.A.C.)



Hella Fog Lamps and Accessories from \$24.95

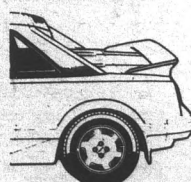
Ask about our ASU discounts!

Hella grill w/lights for Jetta, Rabbit and Golf \$149.00 installed



Recaro Seats from \$399.00

Spoilers from \$39.95



Hella Plugwires 3-yr. Warranty, from \$9.00 Genuine Sheepskins from \$149.00

Die-cast Models \$9.00 Car Mats \$24.95 (set of 4 with logo) Brass License Plate Frames from \$9.95 O.E. Chrome from \$399.00 (set of 4) Come in and enter for FREE Wheel Giveaway. You can win one set of American Racing Pro 31 Wheels. No purchase necessary. Drawing to be held February 26, 1989.

Panther 14.4/365MM Gray, Red, Blue, Black \$266.99

Astra Wood Zebrano Wood \$249.99

Monte Carlo 13.8/350MM (Pad Optional) Brown, Burgundy, Gray, Palomino or White Leather, \$185.95

Veloce Wood \$225.95

Motor Sport Wheels

Type 1 13x5.5 \$477.00/set\*

Type 5 14x6 \$559.00/set\*

Type 7 15x6 \$699.00/set\*

Type 8 15x8 \$1,299.00/set\*

Star 15x7 \$999.00/set\*

Aries 15x7 \$999.00/set\*

Pulsar 14x6 \$699.00/set\*

Dino Type

22a 14x6 \$549.00/set\*

22b 13x6 \$499.00/set\*

27 15x7 \$699.00/set\*

73 14x6 \$629.00/set\*

63 15x7 \$759.00/set\*

33 13x5.5 \$548.00/set\*

57 13x5.5 \$548.00/set\*

21 14x6 \$699.00/set\*

\*All wheels include valves, lug nuts and caps.

\*All wheels include valves, lug nuts and caps.

Table with 2 columns: curry, university and X autobahn motorsport, rural.

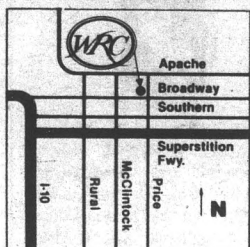
1207 N. Scottsdale Road (Just North of Curry) • Tempe Autobahn Carries Everything Auto Enthusiasts Would Want at Unbeatable Prices - GUARANTEED!! Call 967-4600.

# FITNESS & FUN FOR STUDENTS

Resolving to tone up or trim down in 1989? For a **limited** time you can enjoy our **STUDENT MEMBERSHIP DISCOUNT** at the award-winning Western Reserve Club. Mention this ad to receive a membership of fun and fitness at **30% OFF** the current initiation fee **plus two months FREE dues**. A great student membership opportunity at great savings!



- Tennis
- Racquetball/Wallyball
- Basketball
- Olympic Swimming Pool
- Sand Volleyball
- Indoor Volleyball
- Nautilus/CAM II
- Free Weights
- Lifecycles
- Steam/Sauna
- Co-ed Spa
- Suntan Beds
- Locker Rooms
- Aerobics



**Call Now! 968-9231**

Open 7 Days a Week

Spend your free time toning up in the weight room or burning calories in Aerobic Exercise classes. Don't wait! Call or visit before January 31, 1989 and you can save more than \$120.



**WESTERN RESERVE CLUB**  
AWARD-WINNING SPORTS CENTER  
BY DAVE BROWN

Broadway West of Price • Tempe, AZ • 968-9231

## Every Item on Sale Prices Slashed 10-75% THE "GREAT" WALL TO WALL SALE

**Clay Art Masks**  
20% Off

Gourmet Coffee Beans  
10% Off

Sky's the Limit! Hot Air Helium Balloons  
1/3 off!  
Ask about our Free Delivery

**BONUS PRIZE CONTEST**

\*\*TEN FABULOUS PRIZES\*\*  
All Prizes to be Awarded at Noon, 2/25/89

1st Prize: Pro Spirit Tandem Bike

2nd Prize: Emerson 5 1/2" Color TV with AM/FM

3rd Prize: Vivitar PS 135 Autofocus Camera

4th Prize: Panasonic Walkman

5th Prize: D.P. Pacer 1000 Fitness Bike

6th Prize: Black Triad 40-piece Service for 8

7th Prize: Emerson Cordless Phone TEC 3000

8th Prize: Proctor Silex Toaster Oven

9th Prize: Black & Decker Dust Buster

10th Prize: Braun Multipractic Hand Blender

Voodoo Dolls

No purchase necessary  
Must be 18 to enter

Gourmet Chocolates  
10% Off

Adult Games  
1/3 off

Kachina Dolls  
1/3 off

Dear Friends:  
I would like to thank you for all your years of patronage and in doing so, I am having a "great" wall to wall sale. I invite you to come in and save big on everything in the store. Don't forget to sign up for our contest going on now! Thank you. *Jan Landon*

Bring in this ad for 20,000 extra bonus points

### The Great Place

"Arizona's Most Gifted Store"

5158 S. Rural Rd. • Tempe (ABCO Center)

Don't miss the Man in a Cage Illusion Saturday 12-4. See if you can figure it out!

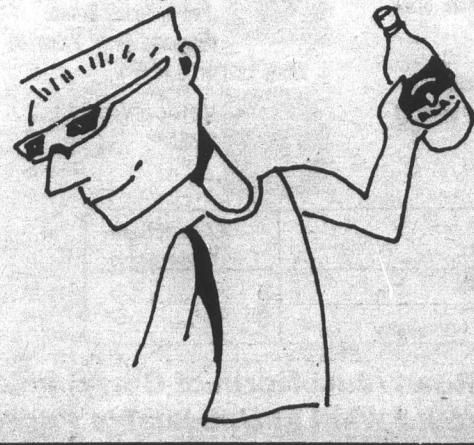
Store Hours: M-TH 10-9, Fri 10-9, Sat 10-6, Sun 11-5

# SUB FACTORY

## Gourmet Subs

**PITCHER THIS:**

**Budweiser**  
\$1.99 PITCHER  
.99 LONGNECK  
Every Saturday,  
All Day  
Never A Cover!



**STORE HOURS:**  
10 AM-10 PM Mon.-Thurs.  
10 AM-1 AM Fri. & Sat.  
10 AM-8 PM Sun.

**968-6369**

**East Tempe**  
Univ. & Price  
2155 E. Univ.

McClintock	University	X	
	Price		N

**BUY 1 GET 1 FREE\***

Buy One Sub or Croissant Sandwich with a Medium Drink and Receive any Sub or Croissant Sandwich of Equal or Lesser Value FREE.

Expires 3-31-89.

**10" ITALIAN COMBO SUB FREE\***

Buy Any Sub or Croissant Sandwich with a Medium Drink and Receive a 10" Italian Combo FREE (Mother Sub.)

Expires 3-31-89.

**MEAL DEAL**

Buy any Sub or Croissant Sandwich, Medium Drink and a Bag of Chips

only \$2.99

Expires 3-31-89.