

Report: Nelson ruling in Stacy Harvey case decided prematurely

By SCOTT LUCK
State Press

A decision by ASU President J. Russell Nelson that allowed football star Stacy Harvey to play this season was "premature" and made without sufficient information for a "one-time" exception to University policy, an investigative report released Thursday said.

The report, presented to the public at an afternoon press conference by Chicago attorney Mike Slive, cited several factual errors in a Nelson statement as evidence that the president was not aware of all pertinent information when he made his decision.

Errors included the number of hours Harvey needed for athletic eligibility and the assumption that Harvey was misadvised, which Slive's report demonstrates was not the case.

Nelson said Thursday he made an "appropriate" decision "based on the circumstances as I saw them" at the time.

He refused to say whether he would have made a different decision with the information now available.

Former Faculty Athletic Representative Marianne Jennings resigned Aug. 31 after Nelson overruled her decision to declare inside linebacker Harvey ineligible because of his shortage of class credits.

Jennings, associate dean in the College of Business, made her eligibility decision because Harvey fell two units short of the minimum 24 hours required per year to remain athletically eligible at ASU.

Harvey asked for credit for a summer correspondence course, but University policy dictates such courses only can apply toward academic and not athletic eligibility.

Nelson made his exception for Harvey because he said the player received poor advice from the Intercollegiate Athletic Department.

Slive's report concludes the president should not be the ultimate decision-maker in athletic eligibility affairs. It suggests only the Intercollegiate Athletic Board, consisting of 13 members, should rule on such matters.

"The Office of the President of the University should not be the forum where athletic eligibility disputes are resolved," states the 47-page report distributed to reporters in Gammage Center.

Nelson agreed that eligibility disputes should be resolved by a fact-finding "decision-making body comprised of and

representing both academic and athletic interests."

"I think it's a wise recommendation," Nelson said of the suggestion to remove his current jurisdiction on sports eligibility cases. But he added he would like to see "substantial participation by faculty members" in eligibility decisions.

Harvey's case was the only faculty athletic decision appealed to Nelson, who said in a prepared statement, "I am comfortable with all of the conclusions and recommendations" of the report.

The report said there is evidence to support Jennings' decision to declare Harvey ineligible for the 1987 season. "I appreciate the support the report gave me," Jennings said. "I appreciate the fact it was done."

Slive, an attorney for Coffield, Ungaretti, Harris and Slavin, was hired to investigate the athletic department's role in advising Harvey after Nelson said there was a "breakdown in the system."

The law firm is being paid \$125 an hour to work on the case, which began Aug. 31. Slive said he could not guess ASU's final bill but that his staff has worked "a lot of hours" on the case, conducting numerous campus interviews.

Slive was an assistant executive director of the Pacific-10 Conference in 1979 when ASU was investigated for giving credit to football players for Rocky Mountain College of Billings, Mont., courses the players never completed.

The report confirms Nelson's belief that the University's advisement and grade-reporting systems were responsible for Harvey's failure to make "satisfactory progress" toward a degree.

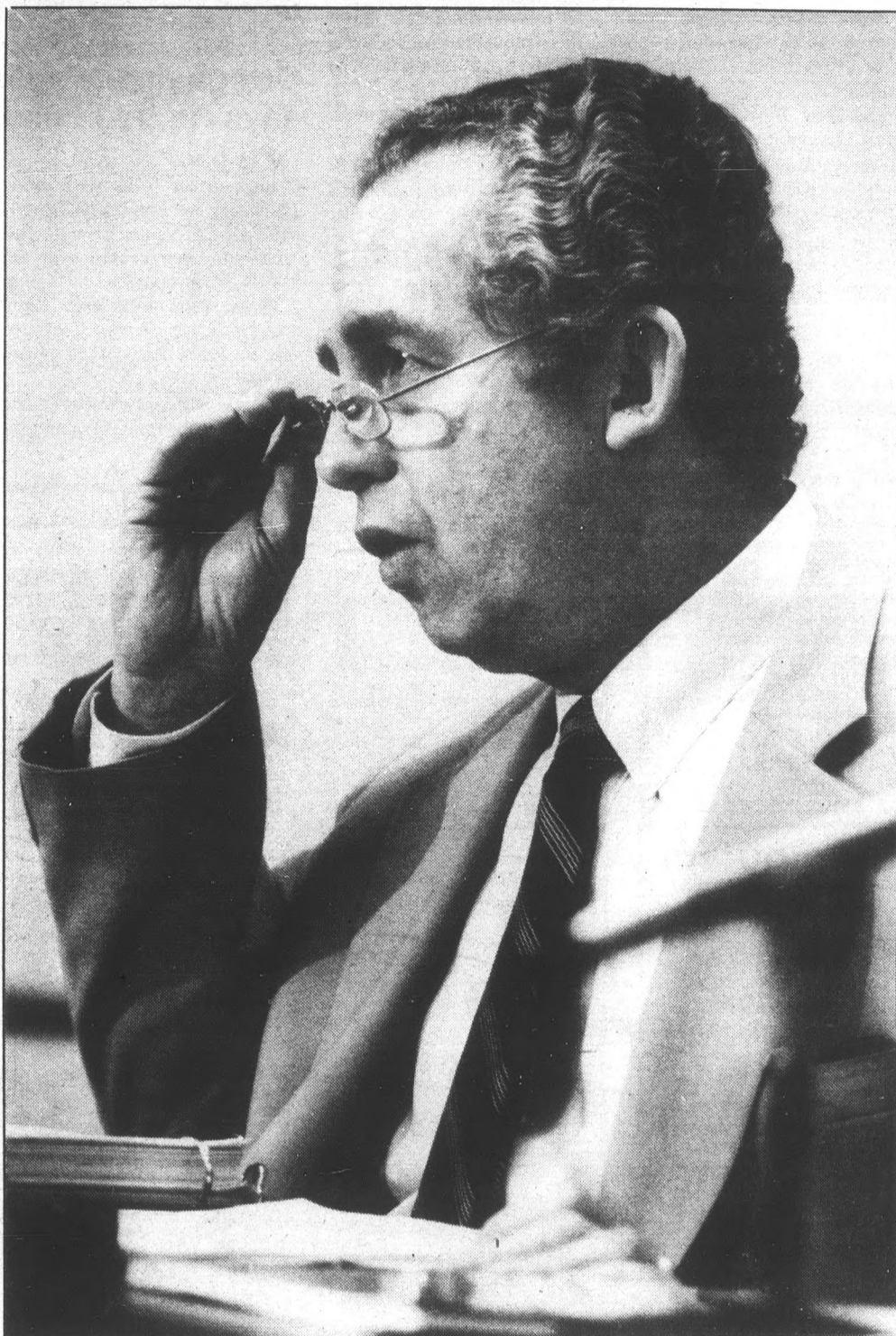
But Jennings disagreed, saying, "I'm not sure that happened."

Jennings earlier said the "system" was sound and that everyone involved knew Harvey's academic requirements. Harvey simply failed to fulfill his obligations, she said.

Slive said no one individual or organization was to blame for the affair. "It (the report) is not designed to find who the culprit is because there is no culprit," Slive said.

The report exonerates Charlotte Kim, one of two academic advisers to football players, for her role in advising Harvey. "Charlotte certainly did everything she should have done," Slive said.

The report did cite a lack of



Jack Beasley/State Press

Attorney Mike Slive explains his position and recommendations concerning ASU linebacker Stacy Harvey to the press at a conference Thursday.

communication and "misunderstanding" between Kim and her supervisor, Jill DeMichele, assistant director of athletics for Academic and Student Services.

Contrary to an earlier statement by Nelson, Slive found that Kim advised Harvey to take an appropriate number of summer classes rather than accept a summer job.

Slive cited three circumstances leading to the straits Harvey found himself in last summer.

The first contributing factor was Stacy's own negligence in finding out what he needed to do to remain eligible. Second was the registrar's failure to file for a grade change in a statistics class in which Harvey received an incomplete. Finally, Slive cited a communication breakdown in the athletic department.

The report also reprimands the football coaching staff for not insisting that Harvey follow Kim's advice.

Turn to SLIVE, page 9.

Tempe may be home of new Improv theater

By TRACY SCOTT
State Press

The nation's most famous comedy club, which has been the starting point for such comedians as David Letterman, Jay Leno and Louie Anderson, may be coming to the Cornerstone Shopping Center.

This week Tempe's Planning and Zoning Commission approved a use permit for the Improvisation comedy dinner theater, and if approved by the Tempe City Council within the next two months, the night club will open next spring at University Drive and Rural Road.

Although they support the idea of a club at the Cornerstone, Commissioner Gary Bird and several merchants are concerned about the limited number of parking spaces available for the shops, movie theater and restaurants at the center.

Cornerstone's parking facility includes 769 spaces, and the lot reaches capacity on weekend nights. Parking for the Improv alone would require 172 spaces.

But Bird said the lack of parking could be

remedied with a parking garage on Cornerstone property. "It would be the only feasible method of taking care of the problem," he said.

Mark Anderson, chief executive officer of MWA Arizona Inc., which runs the comedy clubs, said, "The parking concerns are still there, and we are trying to reach an agreement."

Still, the Cornerstone Mall Merchant Association endorses bringing the comedy club to the center, and Bird said Thursday: "The Improv belongs in Tempe, and Tempe would be improved by it. We ought to support it."

If approved, the Tempe Improv would be the nation's eighth Improv location, joining Los Angeles, San Diego, Irvine, Calif., Las Vegas and Dallas.

Anderson said he has spent more than two years looking for a suitable location for the club — to be one of only 10 in the nation.

"We see (Tempe) as an exciting community," he said. "We believe there is only enough comedy talent to justify 10 clubs."

Anderson said the Tempe site is similar to the Irvine, Calif., location, where the Improv sits next

to the University of California at Irvine.

But Anderson said, "We don't look to the University as a major source of business, but as a contributing source."

He added that patrons of the comedy club must be 21 years old.

"(Tempe) is growing similar to Irvine," he said. "It is a community that is wanting to grow but wanting to plan that growth."

The first Improv was founded 21 years ago by Budd Friedman and was a hangout for the late night-theater crowd in New York. The club provides an opportunity for would-be comedians to break into the business or established comedians to test new material.

Bird said the comedy club would bring national attention to Tempe. "The Improv would bring recognition and a lot of good talent to Tempe," he said. "It is apparent that the Improv is a quality operation and well-managed."

The commission's approval includes a stipulation limiting the club's use permit to 20 years, with a review of the parking situation every five years by the city council.

inside today

ASU WEATHER

Mostly sunny today, with a high temperature in the lower 80s. Sunny through Sunday with highs from 75-85.

Classified.....	22
Comics.....	18
Entertainment.....	11
Opinion.....	4
Sports.....	19

world/nation in brief

U.S. trade deficit drops off, touches off market rallies

WASHINGTON (AP) — The nation's trade deficit eased to \$14.1 billion in September, the government reported Thursday in statistics that suggested the U.S. import-export picture was brightening even before the stock market crash.

The report, marking the lowest trade shortfall in four months, touched off a rally in the financial markets.

The Commerce Department said the merchandise trade deficit, the gap between imports and exports, decreased by a strong \$1.6 billion in September from the \$15.7 billion level of August.

The Dow Jones industrial average closed up 61.01 points while the dollar, which had sunk to new 40-year lows earlier in the week, also rallied in New York, rising nearly 1 yen in value to 135.83 yen. It also was sharply higher against European currencies.

U.S. budget negotiators haggle over tax increase, spending cuts

WASHINGTON (AP) — Budget negotiators haggled Thursday over the specifics of tax increases and spending cuts as a compromise deficit-reduction blueprint that seemed close only a day earlier began slipping from their grasp.

"I don't expect any early resolution of the talks . . . it may take us into next week," said House Majority Leader Thomas S. Foley, D-Wash., chairman of the working group, which had hoped to finish by Friday.

Asked what the snag was, he replied: "Everything." "Maybe it just gets darkest before the dawn," said House Republican Leader Bob Michel of Illinois, with a sigh, as the closed-door talks dragged on for their 14th day.

The group had been zeroing in Wednesday on the outlines of a plan to reduce the deficit for fiscal 1988, the budget year which opened Oct. 1, by about \$30 billion and the deficit for fiscal 1989 by \$45 billion or more.

Ortega meets with House speaker, says he has cease-fire proposal

WASHINGTON (AP) — Nicaraguan President Daniel Ortega, after talks with House speaker Jim Wright, said Thursday he has come up with a "concrete proposal" for achieving a cease-fire with the Contra rebels.

Ortega, here for a meeting of the Organization of American States, told reporters he will announce his plan on Friday.

There were strong hints that the proposal would include a role for Wright in the efforts to reach a cease-fire, but Ortega said he could not provide details because "we're still refining all of this."

At a news conference Thursday morning, Ortega accused President Reagan of renegeing on a promise Reagan was

alleged to have made last August to hold direct talks with Sandinista authorities.

Ortega renewed his call for direct talks with Reagan, even though he described the president in scathing terms, at one point calling him an "executioner."

Helms says Kennedy would be fine justice

WASHINGTON (AP) — Supreme Court nominee Anthony M. Kennedy won words of support from former opponent Jesse Helms Thursday in a day of White House peacemaking sessions free of the bitterness that followed President Reagan's previous two nominations.

"I think he'll make a fine member of the Supreme Court," Helms, R-N.C., an outspoken member of the Senate's conservative wing, told reporters after meeting separately with Reagan and with the federal appellate judge. However, a spokeswoman said Helms wouldn't make a decision until after confirmation hearings.

Late last month, after the Senate voted down Reagan nominee Robert H. Bork, Kennedy was considered the front-runner for the court vacancy until Helms said there was no way he would support a Kennedy nomination and other conservatives also indicated displeasure. Reagan then nominated Douglas H. Ginsburg, who withdrew last weekend after admitting past marijuana use.

BUY • SELL • TRADE
Your books at Changing Hands. For quality cloth and paperbacks (no textbooks, please) we pay 30% of our re-sale price in cash or 50% in trade-in credit which may be used to purchase anything in the store. (Sorry, no trade-ins on Sat. or Sun.)
Browse through our three floors of:
• New & Used Books
• Art Prints & Posters
• Calendars & Cards
• Handbound Journals
M-F 10-9 SAT 10-6 SUN 12-5
CHANGING HANDS
414 Mill Avenue 966-0203
Old Town Tempe

Computers for Rent
Now at The Arches
122 E. University
Come and visit us
921-0980

RUNDLE'S LIQUORS & MKT.
730 S. MILL
Corner Mill & University Ave.
CORDOBA BEER 6 pk. \$1.88
WHITE MT. WINE COOLER 4 pk. \$1.17
NATURAL LIGHT BEER 12 pk. \$4.46
SAUZA EX. TEQUILA 3 75ml. \$3.52
Devil Beer, 51 Imported Beers, Haagen Dazs Natural Ice Cream, Adult Magazines, Ice, Cold Wines, Party Items, Candy, Cold Drinks.
967-9079

If you were disabled, could you navigate our "under construction" campus by yourself? Probably not.
We need your support to help keep the ASU carts for the disabled running.
We've had several donations, but need to raise at least \$50,000 to continue this invaluable service to ASU.
Please help us keep these carts running by making a donation today. Mail or bring in your check made payable to DISABLED STUDENTS RESOURCES to: STATE PRESS, Tempe, Az. 85287-1502
15 Matthews Center, ASU
Thank you for making someone's day.

NOW LEASING FOR SPRING SEMESTER

at

UNIVERSITY TOWERS

privately owned coeducational residence suites

- laundry facilities
- pool
- jacuzzi
- weight area
- covered parking optional
- private balconies
- contemporary decor



UNIVERSITY TOWERS

525 S. Forest Tempe, Arizona 85281

894-2300

- 24 hour security
- video surveillance
- monthly activities
- live-in residence advisors
- roommate selection process
- free utilities, local phone

—YOU'RE INVITED—

DAILY TOURS
MON.-FRI. 10 AM-5 PM
SAT., SUN. NOON-4 PM
OR BY APPOINTMENT

NEED MORE SPACE?
Ask about our "Suite" deal or single solution!
Just 2 blocks from campus

NOW LEASING FOR SPRING SEMESTER
Priority By Deposit

Meetings to try to gauge support for NFL franchise

By HARVEY RICE
State Press

Movers and shakers from across the Valley Thursday were asked to attend two separate meetings today to gauge their support for efforts to attract a National Football League team to Sun Devil Stadium.

"What we're talking about here is trying to resolve or confirm how much support there is in the Valley, not just for NFL football, but particularly the St. Louis Cardinals," Tempe Assistant City Manager Jerry Geiger said. "The quicker we have a pulse or reading on that, the better we are."

The meetings in Phoenix and Tempe for business and political leaders were arranged hastily Thursday by the mayors' offices in both cities.

"The response was good, considering the short notice," said Pat Manion, assistant to Phoenix Mayor Terry Goddard.

About 40 business and political leaders from Phoenix and Glendale were invited to attend a morning meeting arranged by Goddard's office at the Arizona Club in the First Interstate Bank Building in downtown Phoenix, Manion said.

Geiger said the office of Tempe Mayor Harry Mitchell would continue to make phone calls this morning to East Valley leaders to increase attendance at a similar noon meeting at Monti's La Casa Vieja Restaurant in Tempe.

From 25 to 50 business and political leaders were expected to attend the Tempe meeting, Geiger said.

Jim O'Connell, ASU public events executive director, said a key question was, "Are we as a community enthusiastic, united behind the idea of going for an NFL team now rather than waiting on a chancy expansion?"

The meeting is partly in response to a front-page editorial in *The Phoenix Gazette* last week urging a halt to negotiations with the Cardinals in favor of trying to attract an NFL expansion team.

Geiger said, "If we find that 85 percent of prominent leaders in the Valley agree" that it's better to wait for an NFL expansion, expected in 1988, the advice would be heeded.

The two cities and the University informally agreed to cooperate last week in efforts to draw an NFL team to the Valley.

O'Connell said the University also wanted to know if the business community was willing to match a Jacksonville, Fla., business community offer to guarantee the Cardinals profits from 55,000 to 58,000 tickets.

A third reason for an opinion survey, O'Connell said, was to determine the demand for 60 skyboxes ASU wants to build at Sun Devil Stadium to boost its profit potential.

The skyboxes, which would cost about \$6.4 million to build,

would earn an estimated \$1.6 million per year if customers can be found to pay the high rental costs.

ASU decided to test the waters of public opinion after making a pitch to Cardinals' owner Bidwill in St. Louis during meetings Sunday and Monday, O'Connell said.

Brent Brown, vice president for University relations, gave Bidwill a menu of possibilities that could add up to about \$10 million a year, O'Connell said.

He said the \$10-million figure was the yearly total of expected income from proposals already made public. He said the figure included the amount that could be earned from \$20 NFL admission tickets with 50,000 attendance per game at the 71,000-seat stadium.

"He has never given us a number," O'Connell said about the amount Bidwill wants. "But we have heard from other sources that \$7 million was his threshold." He said \$7 million was the average income for NFL stadiums.

Also in the equation are potential profits from the skyboxes, 5,000 loge seats the Board of Regents wants built by the end of next year and the revenue from concessions and parking.

O'Connell said the NFL team would get 90 percent and ASU 10 percent of the revenue. ASU would earn an estimated \$150,000-\$200,000 per game.

today

Meetings

•The Hillel Union of Jewish Students meets today at 8:30 p.m. at Hillel, 1012 S. Mill Ave. Howard Kaplan, adjunct professor of mideast studies at UCLA, will present

"The Land of Sad Oranges: Fiction of Conflict," a look at the mideast conflict as seen through Israeli and Arab fiction.

•AIESEC will hold a photo session today at 4 p.m. by the Business School Fountain.

•Esperanto-ASU will have a practice meeting Saturday at 12:30 p.m. in the MU Santa Cruz Room. Beginners interested in learning the international language are welcome.

•The Dynamic Exchange Club will hold an international picnic Saturday from 11 a.m. to 5 p.m. at Kiwanis Park, Baseline Road and Mill Avenue. Food, music and fun.

"YOUR SORE FEET SOLUTION"
BIRKENSTOCK SANDAL



REGISTER TO WIN A
FREE PAIR OF
Birkenstock SANDALS
Drawing to be held monthly.

FREE GIFT WITH AD.
LIMIT ONE PER CUSTOMER.

Birkenstock OF TEMPE
Now at 398 S. Mill, Tempe
966-3139

Other famous store brands available.

幸福 布斐
FORTUNE COOKIE

Buy 1 Get 2nd
Meal 1/2 Price
Lunch \$3.28 Dinner \$4.26
11 a.m.-4 p.m. 4 p.m.-9 p.m.
(Take-out orders not included)

Menu Changes Daily *Ala carte and take-out available*
Take Out Orders 10% OFF

625 E. Apache, Tempe
(West of Rural on Apache)
894-1110
Open 7 Days
Coupon expires 11-20-87.

PC + PLUS TURBO XT \$588



- IBM PC/XT COMPATIBLE
- 4.77/8 MHz
- 640K RAM
- TWO 360K FLOPPY DRIVES
- HI-RES. TTL MONITOR
- GRAPHICS CARD W/PRINTER PORT
- AT KEYBOARD

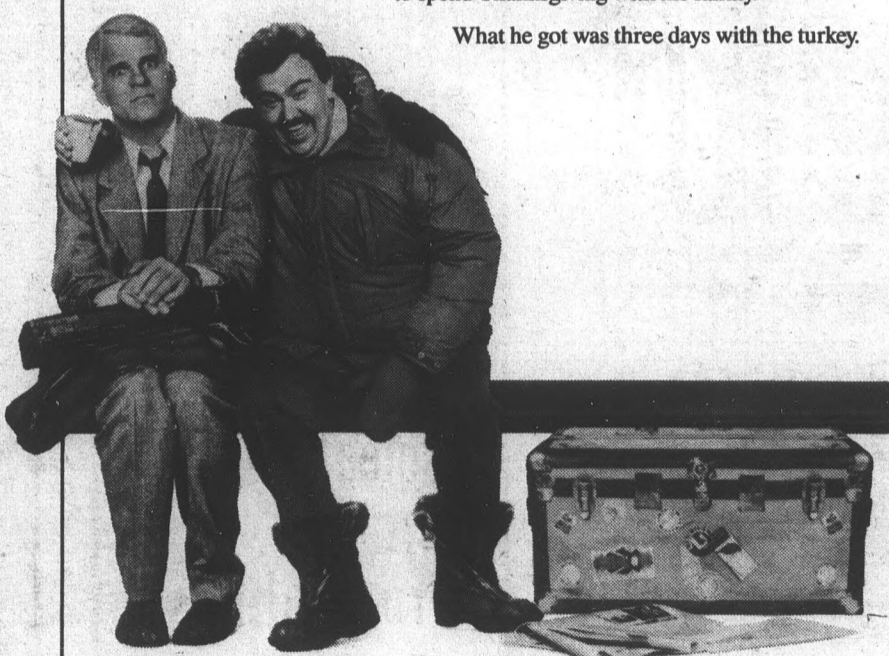
CS&S Computer Systems & Solutions
5800 E. Thomas Scottsdale
990-9478

20 Meg Hard Drive..... Add \$239
Panasonic Printer..... \$189

TURBO AT COMPATIBLE \$988

STEVE MARTIN JOHN CANDY
PLANES, TRAINS AND AUTOMOBILES

What he really wanted was to spend Thanksgiving with his family.
What he got was three days with the turkey.



PARAMOUNT PICTURES PRESENTS
A JOHN HUGHES FILM
PLANES, TRAINS AND AUTOMOBILES

Music Score by IRA NEWBORN Executive Producers MICHAEL CHINICH and NEIL MACHLIS
Written, Produced and Directed by JOHN HUGHES A PARAMOUNT PICTURE

HUGHES
Soundtrack Album Available on Hughes Music/MCA Records. Cassettes and Compact Discs.

RESTRICTED
UNDER 17 REQUIRES ACCOMPANYING PARENT OR ADULT GUARDIAN

TM & Copyright ©1987 by Paramount Pictures Corporation. All Rights Reserved.

75th Anniversary

ARRIVING NOVEMBER 25TH AT THEATRES EVERYWHERE.

"A TOTAL DELIGHT!"
Martin Short is hilarious and Annette O'Toole is irresistible.
— Michael Medved, SNEAK PREVIEWS

Martin Short · Annette O'Toole



A comedy you can still respect in the morning.

Cross My Heart

LAWRENCE KASDAN Presents An AARON SPELLING/ALAN GREISMAN Production
"CROSS MY HEART" Music by ARMYAN BERNSTEIN & GAIL PARENT
Directed by BRUCE BROUGHTON Produced by LAWRENCE G. PAULL Edited by MIA GOLDMAN
Executive Producer THOMAS DEL RUTH
Producers CHARLES OKUN and MICHAEL GRILLO Executive Producers AARON SPELLING and ALAN GREISMAN
Produced by LAWRENCE KASDAN Directed by ARMYAN BERNSTEIN A UNIVERSAL PICTURE

RESTRICTED
UNDER 17 REQUIRES ACCOMPANYING PARENT OR ADULT GUARDIAN

Opens November 13th in select theatres

M-m-my Generation: Building common ground at ASU

Darrin Hostetler
Opinion Editor



The Me Generation. The Lost Generation. The Yuppie Generation. The Big Chill Generation.

Sociologists and other keepers of the public pulse are always gleefully attempting to label and neatly file away waves of Americans by the use of catch-alls like those above.

Now it's our turn to get filed.

As college-age Americans, we qualify as the "next big thing" for the media to over-analyze and label, and indeed, they have already begun doing so. The questioning process, directed at young adults born in 1960s, has begun: What is important to us, what have we learned from our education, where do we want to take the world and how are we going to go about getting there?

But the problem is that we are lacking a snappy title for our generation, something that posterity can use to summarize our values, philosophies and actions.

In other words, we need a name.

I don't know about you, but I'm less than comfortable with the current *de facto* winner:

The Pepsi Generation?

I think not.

But never fear, someone has come up with a title that perfectly embodies the situation faced by those aged 18 to 25:

The Then Generation.

I cannot take credit for this brilliant description, for it is the product of one of the finest political minds of a previous generation — Sen. Eugene McCarthy.

The man who motivated young anti-war voters to action — and very nearly rode the wave of their activism to the Democratic nomination for president in 1968 — knows quite a bit about the new generation of apathetic young voters. And he was on campus Tuesday sounding an alarm for all

of the Then Generation — in an attempt to motivate us to the same kind of action that was needed and useful in the '60s. The kind of action that is vital for our survival now.

McCarthy, 71, spoke in the MU on the prospects for the Democratic Party in 1988. In sum, he was pessimistic about the party's chances for success. It was an interesting, insightful lecture.

But the real message from McCarthy, one which he conveys with a definite sense of urgency, came in a conversation myself and two others were fortunate enough to have with the former senator after the formal speech.

For over an hour, McCarthy and three ASU students talked politics. What was said is worth summarizing.

McCarthy calls this current crop of collegiates the Then Generation because we are going to have to bear the burden thrust

of Affirmative Action, etc.) — are not black and white. The young today face a world of gray.

We have emerged from the turmoil of the 1960s with certain conclusions, but we are at odds about how to proceed toward those goals. The issues have been opened by the trailblazers — like McCarthy — who preceded us. But where do we go from here? How do we motivate people to participate and deal with these difficult issues?

One way, as McCarthy points out, is to stop and take stock.

What have the Republican administrations of the last two decades brought us?

Three principle underpinnings of our republic laid in place by the founding fathers — a responsibility to defend the nation, equal financial responsibility through taxation for state and federal

for president he decreased potential for participation. And the disgust many Americans feel for government following the Watergate and Irangate debacles has led to frustration and decreased turnout at the polls.

We have a crisis of character, inequality and apathy.

Perhaps it is time to take a look at where we've been and come to the conclusion that the program advanced by the New Right and the Republican Party — a program we have been paying into steadily for seven years under Ronald Reagan — is a multi-trillion dollar rat hole.

For the benefits of a short-term economic revival (and as the recent stock market fiasco indicates, a very short revival) our government is sacrificing the future. Our future.

McCarthy travels to college campuses to spread the word that if constructive change is going to come about, it must spring from academia. From places like ASU.

If it's going to get done, we've got to do it. McCarthy urged us earnestly: "It is up to your generation to change things. You have got to rise up and make a difference.

"You're all in it together."

Perhaps the best place to start is with a group of people at ASU that care about what is going on: Republicans and Democrats, conservatives and liberals, who not only care about the environment, nuclear test-ban treaties and budget deficits, but about campus issues like tuition and the preservation of architectural heritage.

A group of very different people who share some common ground.

A group like that could meet and discuss the issues of the day and build more common ground. This would be a group that wouldn't save the world, but would provide an opportunity to work toward small goals and iron out differences between diverse interests in our campus microcosm. A group that would enable us all to talk.

Then, at least, we could be known as the Generation That Gave It Their Best Shot.

Beats the hell out of The Pepsi Generation, doesn't it?

'Perhaps the best place to start is with a group of people at ASU that care about what is going on.'

upon us by those who are currently running the country, i.e., the Now Generation.

The Now people are running up huge budget deficits, causing irreparable environmental damage and pushing the nation and the rest of the world nearer to the nuclear brink.

And they are doing it on the assumption that "we can worry about it later, when it becomes a real problem."

"THEN we'll handle it."

But they won't. They will be gone. We will carry the responsibility.

Thus: the Then Generation.

McCarthy rose to political fame in an era that revolved around a central, easily defined issue — The Vietnam War.

It was easy to organize resistance to such an event. Today it is not that simple. At ASU, a campus known for the apathy of the student body, we know this to be true.

The issues we face — the environment, the budget, civil rights expansion (the wisdom

monetary burdens, and heavy participation by citizens in the democratic process — have all been weakened by Presidents Nixon, Ford and Reagan.

The Jeffersonian idea of mandatory military service for all male citizens was designed to provide and instill a sense of pride and respect for the country. Jefferson himself fought against Alexander Hamilton's desire for a mercenary army because he felt it was unhealthy and would "weaken" the nation.

Today we have a volunteer, professional mercenary army.

President Reagan points proudly to the fact that fewer people pay taxes than ever before. In fact, 50 million taxable entities, primarily corporate leaders and the wealthy, do not pay taxes. Is that equitably sharing the burden?

When President Ford signed various pieces of election legislation that hinders third party candidates in their efforts to run

letters

Ignorance on parade

Editor:

Since Anthony LoBaido is passing out shame (Nov. 9), he might put himself and the *State Press* on the list for a few helpings. Shame on LoBaido for parading his ignorance in public places, and shame on the *State Press* for letting him do it.

If Evan Mecham is prejudiced against blacks, he can't find any basis for it in his religion. There is no "black question" in the Mormon church because the "privilege of priesthood and the fullness of the blessings of the gospel" have been, for years now, extended to all races.

Before that, when there was a "black question," the exclusion of blacks from the priesthood was a matter of great concern to many faithful members of the church.

It was, coincidentally, another white Arizona Mormon, Spencer Kimball — who as President of the Church — changed the policy that barred blacks from the priesthood.

There are bigots in all religions, and certainly there are Mormon bigots. Unfortunately, it seems LoBaido got one to tutor him in Mormon doctrine. Valley journalists, whose professional duty it is to do thorough research, have not shed any light on the religious basis of Mecham's attitude toward blacks because there is nothing to shed light on.

This is a question of personal prejudice, not religion.

Catherine Udall
Graduate, History



LETTER POLICY

The State Press welcomes and encourages written response from our readers on any topic.

All letters must be typed, double-spaced and no longer than three pages in length to be eligible for publication.

Please include your full name, class standing and major (or other affiliation with the University) and phone number. Requests for anonymity will be granted with an appropriate reason.

All letters are subject to editing at the discretion of the opinion page editor. Bring letters to the State Press front desk in the basement of Matthews Center. Photo I.D. is required.

Letters may also be addressed to: State Press, 15 Matthews Center, Arizona State University, Tempe, AZ 85287-1502.

quotable

"The real lost souls don't wear their hair long and play guitars. They have crew cuts, trained minds, sign on for research in biological warfare, and don't give their parents a moment's worry."

— J.B. Priestley



965-7572
TO
PLACE
YOUR
CLASSIFIED
AD.

That's right! Now you can place your STATE PRESS classified ad over the phone if you have a VISA or MASTERCARD. Just call 965-7572 and ask for classified advertising. 8am to 5 pm DAILY.

STATE PRESS
15 MATTHEWS CENTER
NORTH BASEMENT
ASU

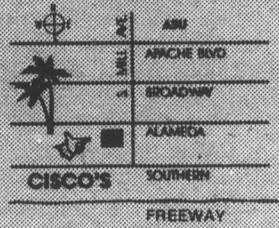
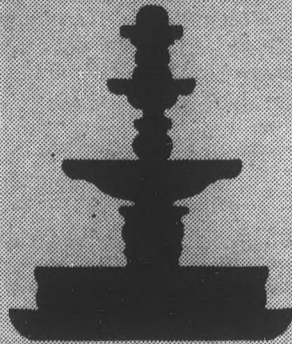
CISCO'S

MEXICAN RESTAURANT

CISCO'S
2 FOR 1 w/coupon
ON ALL COMBINATION
PLATES AND CHIMIS.
BUY ONE AND RECEIVE ONE OF
EQUAL OR LESSER VALUE FREE.
2700 S. Mill Ave. 967-0305

9 OZ. MARGARITAS
\$1.25 ALL DAY
EVERYDAY

2700 S. MILL AVE.



CISCO'S
HAPPY HOUR
MON.-FRI. 4-7 PM
FREE HORS D'OEUVRES
\$1.00 MARGS/BEERS
(IMPORTS INCLUDED)
SAT. NIGHT DANCE/PARTY
TROPICAL LATIN MUSIC 9:30-1:30
\$1.00 MARGS/BEERS
(IMPORTS INCLUDED)

LUNCH SPECIALS
\$2.95 MON-FRI

TEMPE 967-0305

THE ART OF
WALT DISNEY



A SPECIAL COLLECTION

\$10 OFF All Framed Posters \$19.99-\$79.99
20% OFF All Framing Artwork Size 5x7, 8x10, 11x14



2021 E. Apache Blvd.
Between McClintock & Price, Tempe
829-7101 M-F 10-6, Sat. 10-5

Oregon's PIZZA

Tempe • 894-1234 • 945 S. Mill Ave. (at 10th St.)

Try Our New Sandwiches
Enjoy Our Big Screen TV

Checks accepted with guarantee card.

<p>SAVE \$3.00 \$3.00 OFF Any Large Pizza \$2.00 OFF Any Medium Pizza \$1.00 OFF Any Small Pizza Carry-out 25¢</p> <p>Oregon's PIZZA</p> <p><small>Present this coupon when ordering. One coupon per customer. Not good with any other offer.</small></p>	<p>TWO 'FERS 2 Medium Pizzas \$9.99 (with 3 toppings) 2 Large Pizzas \$11.99 (with 3 toppings) Carryout 50¢</p> <p>Oregon's PIZZA</p> <p><small>Present this coupon when ordering. One coupon per customer. Not good with any other offer.</small></p>	<p>LUNCH SPECIAL Mini Pizza (one topping) And All You Can Drink Soda Only \$1.99 Each additional topping 25¢ Carryout 25¢</p> <p>Oregon's PIZZA</p> <p><small>Present this coupon when ordering. One coupon per customer. Not good with any other offer.</small></p>
--	--	---

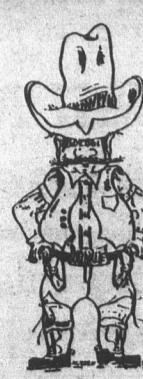
CHILI CHARLIES

\$1.50 SPECIALS

- MON. 3 TACITOS
- TUES. JUMBO DOG
- WED. SM. GREEN OR RED CHILI
- THURS. BURGER DAZED 1/4 LB. W/FRIES
- FRI. BBQ SANDWICH W/CHIPS
- SAT. JUMBO DOG
- SUN. SM. GREEN OR RED CHILI

ALL DAY EVERY DAY

SAT. & SUN.
60 oz. PITCHERS
ONLY **\$2.50**



SOUTHERN DOBSON

898-3887
1840 W. SOUTHERN

ACA JOE

GRAND OPENING

Sat., Nov. 14 in our new Hayden Square location. Register for free gifts, and our grand prize Acapulco trip for two. Register at both Aca Joe locations and at Universal Travel (425 S. Mill Ave., Tempe). 30% off on all wool ski sweaters! Store hours: Mon.-Fri. 10-9, Sat. 10-5, Sun. 12-5



Business Hall of Fame inducts Daniel Noble

By BEN McCONNELL
State Press

Daniel Noble, who helped transform ASU into a major university with the formation of the College of Engineering, has been posthumously inducted into the Arizona Business Hall of Fame.

Noble was honored Oct. 29 along with Valley developer John F. Long; Circle K Chairman Karl Eller; Frank L. Snell of lawfirm Snell and Wilmer; Walter Bimson, late president of Valley National Bank; and James Douglas, late chairman of Phelps Dodge Corp.

The hall of fame is sponsored by the Phoenix Chamber of Commerce and Junior Achievement of Arizona.

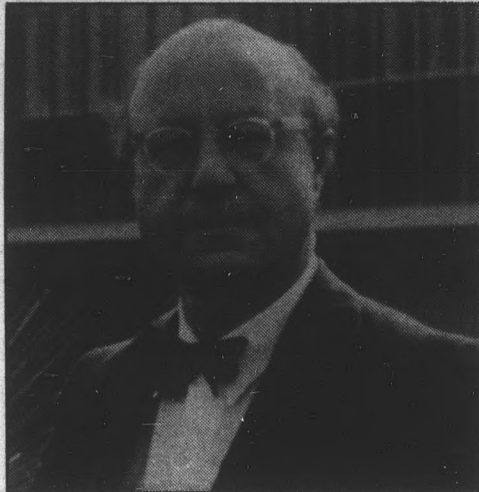
William Welch, an ASU electrical engineering professor emeritus, said Noble, for whom ASU's Noble Science Library is named, was a Renaissance man who conducted business, researched, invented, painted and wrote extensively.

"He wasn't an idle chatter," Welch said. "He was always talking on a fairly deep level. He was an engineer trying to make all the pieces fit together."

Among Noble's notable accomplishments was his design and construction of several pioneer FM broadcast systems, including the first two-way radio system. He also developed a powerful walkie-talkie for the military.

He helped establish the College of Engineering in 1957 with a local consortium of budding high-tech companies. ASU then was not a major university, with most research concentrated at rival UofA. It was unheard of for firms to move to a city without a strong university, Welch said.

The consortium, led by Noble, established the College of Engineering because "the Valley needed a major university," Welch said.



Dr. Daniel E. Noble, circa 1962

Noble's dabbles in art placed his work on several magazine covers. This Renaissance man, who also served as a vice chairman of Motorola, Inc., didn't take art seriously at first, but actually lampooned modern artists and their work.

"But he started taking it seriously," Welch said. "He painted so many things but he was trying to illustrate the complex system man lives in and figure out the system."

Noble's writings earned him accolades from peers around the country who were impressed with his dry wit. Welch said Noble, who also liked to track mountain lions as if his other interests were not diverse enough, was on the same writing level of science and science fiction writer Isaac Asimov.

"He had a reputation for being a thinker out of or in the mainstream — depending on your point of view."

Noble died in 1980, leaving Motorola, ASU and the world of technology impressed.

2 men listed in critical condition following Tempe stabbing incident

By MIKE BURGESS
State Press

Two men are in critical condition following a stabbing-shooting incident at a Tempe home Wednesday night, police said.

Jim Long, 35, of 219 E. Papago Drive, was stabbed three times and 38-year-old Reginald O'Leary of Scottsdale was shot three times. Both men were taken to Scottsdale Memorial Hospital.

Police said the incident occurred at Long's home about 10:30 p.m. where they were apparently arguing about a woman.

O'Leary, wielding a six-inch fixed blade knife, allegedly stabbed Long in the leg, arm and abdomen.

Long's friend, 23-year-old Richard Stafford, was questioned in connection with the shooting then released, police said.

Police said O'Leary was shot in the abdomen, leg and buttocks with a .380-millimeter handgun. He fled the scene in his car, which had three bullet holes in it.

O'Leary was hospitalized after crashing the car in the 7400 block of East McDowell Road, where he was found by Scottsdale police.

In other incidents:

•An ASU student who also works as a VIP

Security guard was charged Tuesday with assault in connection with a scuffle at a Halloween party at the Alpha Epsilon Pi fraternity house, ASU police said.

police report

Police said sophomore Public Programs major Clark Mordici Hernandez, 717 Alpha Drive, is charged with pushing three female students, grabbing one of them by the hair and dragging her along the ground after responding to a fight.

•Three ASU students have been arrested in connection with the theft of an AT & T phone card from Manzanita Residence Hall and \$450 in calls made with it, police said.

Police charged David Alan Parker, 18; Eric D. Bartell, 17; and Douglas M. Klemme with theft.

•A Tempe Radio Shack lost \$1,900 in electronic merchandise during a "smash-n-grab" robbery early Thursday, police said.

Police said an unknown person threw a concrete stepping stone through a glass window of the store at 917 S. Mill Ave. about 3:26 a.m., then fled with a VCR and a stereo television.

Banders is happy to announce its **13th YEAR ANNIVERSARY PARTY**

SATURDAY, NOVEMBER 14, beginning at 7 p.m.
Enjoy 89¢ Ice Cold Coronas and HAPPY HOUR
Prices all night long, as well as FREE SUBMARINE SANDWICHES — as long as they last.

5th Street & Forest • 1 block from Sun Devil Stadium
966-4438

HOURS
Mon.-Thurs. 4-12
Friday 4-1
Saturday 12-1
Sunday 12-12

Papa Jay's Pizza

FAST FREE DELIVERY (Limited Free Delivery Area) \$4.95 Minimum Food Order
804 South Ash, Tempe (2 blocks West of Mill Avenue, south of University)

966-1003 or 966-4292

SAVE!	COUPON	SAVE!						
<p>SUN DEVIL COMBOS <small>(Includes choice of up to 4 toppings)</small></p> <table style="width: 100%; font-size: small;"> <tr> <td>SMALL</td> <td>MEDIUM</td> <td>LARGE</td> </tr> <tr> <td>\$5.95</td> <td>\$6.95</td> <td>\$7.95</td> </tr> </table> <p><small>PLUS TAX All Prices Subject to Change Without Notice</small></p>	SMALL	MEDIUM	LARGE	\$5.95	\$6.95	\$7.95	<p>2 FREE 2 2 litres of Pepsi <small>with purchase of LARGE Sun Devil Combo</small></p> <p><small>(with this coupon) All Prices Subject to Change Without Notice</small></p>	<p>DINNER SPECIAL* <small>(Mon.-Fri. between 6 p.m. & 8 p.m.)</small></p> <p>2-LASAGNA DINNERS 2-SALADS • 2-24 OZ. PEPSIS</p> <p>ONLY \$9.95 <small>(with this coupon) Plus Tax</small> <small>(Meatballs Additional) All Prices Subject to Change Without Notice</small></p>
SMALL	MEDIUM	LARGE						
\$5.95	\$6.95	\$7.95						
<p>LATE NIGHT SNACK <small>(Mon.-Fri. between 10 p.m. & 12 p.m.)</small></p> <p>2-MEATBALL OR SAUSAGE SUBS w/Cheese 2-24 OZ. PEPSIS</p> <p>ONLY \$7.50 <small>Plus Tax All Prices Subject to Change Without Notice</small></p>	<p>2 LARGE ONE ITEM PIZZAS</p> <p>ONLY \$11.00* <small>Plus Tax (with this coupon) *On Regular, not Sicilian Style All Prices Subject to Change Without Notice</small></p>	<p>\$1.50 OFF ANY LARGE Sicilian Style Pizza* <small>with two or more toppings *Xtra Thick Crust Not on Sicilian Chef (with this coupon) All Prices Subject to Change Without Notice</small></p>						

NEED A NEW CAR?

College Grads or First Time Buyers

You can own a new car or truck with no cosigner!!

Guaranteed Rates and Acceptance With No Previous Credit

Students	Grads
Job letter/Pay stubs	No payments for 90 days or 400 rebate
A place to live	Transcripts
No bad credit	Job letter
Down payment	No down payments in most cases

Call Now
Craig Darling 838-1234

Bring this ad to
Craig Darling **CHAPMAN**
for free lube and oil maintenance
for the life of your new car.

CUSTOM POSTERS

MAKE IMAGINATIVE GIFTS!
HAND DRAWN AND AIRBRUSHED
IN THE MEMORIAL UNION
by THE REALLY VERY FAMOUS
JOANN FAHLGREN

8AM-6PM
SPONSORED BY MUAB ENTERTAINMENT COMMITTEE

UofA blamed for recent vandalism of ASU's 'A'

Red, blue colors of rival university incriminate Cats

By VICTOR BARAJAS
State Press

Even before a Valley disc jockey could protect the "A" on Tempe Butte from suspected UofA paintbrush-wielding gnomes, the giant concrete letter now sports the colors red and blue.

Those sneaky Wildcats from Tucson are being blamed for crawling on the butte Tuesday and paw-painting the "A" during the wee hours of the night.

Although it may be the work of patriotic artists who were celebrating Veteran's Day Wednesday, most Tempeans are pointing the finger at our neighbors to the south, whose school colors are ironically the same

as the ones now defacing the butte.

"I'm sure someone with UofA at heart did it," said Tempe councilman Bill Ream, who has threatened to lobby to remove the symbol if it does not stay its designated gold color. "But these kinds of things happen. You can't guard the 'A' 24 hours a day."

But Ream said he doesn't expect ASU students to rush and restore the butte with buckets of gold paint. "I'm not sure (ASU students) have enough pride in their own school to paint it back to University colors very quickly," he said.

"I hope they don't wait until after the football game like they did against Oregon, and let their colors be on the butte while they played football."

Previously, the "A" was part green after some Oregon University Duck fans allegedly got "quacking" to do some repainting of their own.

Public Programs junior Kiffie Spangler, president of the ASU Student Athletic Board in charge of protecting the "A," said she

and a group of volunteers will probably give the symbol its designated golden look today.

"The week of the game, I doubt if anyone will go up there and paint it," she said.

Spangler also said she thinks it was them darn fur balls from Tucson who gave the "A" its new garish colors.

"It's red and blue — of course it was UofA," she said. "Obviously, if it was UofA, they are really scared to go up the week before the game."

Spangler was referring to KZZP's John O'Rourke's scheduled camp-out on the butte that begins Nov. 21 to protect the "A" from what O'Rourke calls the "wimp cats."

"The UofA people probably heard all of the press on the "A" and came down early," Ream said.

Not to be out-done, UofA students are planning their own camp-out to begin the same day ASU begins protection, to protect a similar "A" on Sentinel Peak near their campus.

"I know we'll be camping out and

protecting (our) 'A,'" said Ruben Carranca, UofA student body president. "Our student government hasn't formally arranged it, but a lot of supporters are doing the same thing."

Carranca laughed at the mention of the red and blue paint job on ASU's "A," saying, "That's funny, I didn't know it was already painted."

He claimed he was not aware of any plots to paint the "A" before the KZZP camp-out, but said the Tucson "A" also has "chameleon-like tendencies."

John Fees, activities vice-president for Associated Students of ASU, said he points his finger at UofA for the new butte colors.

"If I were the UofA, I'd come up and paint it the day before it was being protected," he said.

Spokesmen from both Tempe and Tucson police said a person caught painting the symbols will not be arrested, but may be cited for curfew violation if the painting takes place after midnight.



2 for the price of 1 Any of 12 Combination Dinners
(Dine-in Only)
Every Wednesday & Sunday 4 p.m.-11 p.m.

1120 E. Apache Blvd. • 967-1129 • We Deliver Too!
ALL NEW MENU

\$2.00 OFF
any one item
large pizza 
968-8575
(one coupon per customer)
Expires 11-25-87.

ALL DAY DELIVERY



\$1.00 OFF
any one item
medium pizza 
968-8575
(one coupon per customer)
Expires 11-25-87.

We Deliver Beer!!

968-8575

849 W. UNIVERSITY AT HARDY

968-8575

HOURS:
Mon.-Thurs. 11 a.m.-11 p.m.
Fri.-Sat. 11 a.m.-Midnight
Sun. Noon-10 p.m.



SPECIAL
40% OFF*

- PERMS
- FROSTING
- HIGHLIGHTS

*WITH ASU I.D.

AUGUSTO

For appointment call:
7329 E. STETSON DR., SUITE 10
SCOTTSDALE **941-0206**

Estab 1975 966-7788

WAREHOUSE

DELI & PUB
130 E. University Dr.

1/3 lb. BURGERS
99¢ plus tax

Every SUNDAY, Noon-Midnight

Your Oasis
in the Desert
**Classifieds
Sell**



State Press
965-6731

Complete Line of Atari Hardware



Plus software for Apple, IBM, C64, Amiga & Atari ST

We Also Carry A Wide Selection of Video Games

Fiesta Mall, Mesa
(near Sears, lower level)
969-2553

Smith MESA NISSAN

Your Nissan and Datsun Service Specialists are offering



- Nissan-trained technicians
- Genuine Nissan parts
- Quality maintenance and repair work
- Reasonable prices

10% discount on all service work and counter parts to all ASU student, faculty & staff with ASU I.D. card.

SMITH MESA NISSAN PARTS & SERVICE HOURS
Monday 7:30 a.m.-8:30 p.m.
Tues.-Fri. 7:30 a.m.-5:30 p.m.
PARTS OPEN SAT.
8:30 a.m.-12:30 p.m.

***To be present at time of purchase.**

1701 W. Broadway, Mesa
Service **834-3366** Parts **834-0255**

Good through Dec. 31, 1987.

NISSAN

Ban on sidewalk skating receives mixed reviews

By DANA LEONARD
State Press

The recent campus ban of skateboarders and roller skaters has prompted more response for the ban than against it, a student leader said, but a local business owner plans to gather signatures to protest the decision.

Associated Students President Karrin Kunasek said she has received numerous comments in favor of the ban, and only one student has contacted her with a complaint.

But Adrienne Felicioni, owner of The Cheap skate, 130 E. University Drive, said the Oct. 15 decision by the Arizona Board of Regents is "unconstitutional" and students and community members who skate on campus never had the opportunity to voice their opinions before the regents voted.

Felicioni brought petitions with 300 signatures to the Flagstaff regents meeting

Local business owner plans protest; numerous comments favor new law

last month and told the board many people opposed the ban but were unable to attend the meeting because of school and work.

She said she plans to gather 200 more signatures and bring them to the Jan. 15 meeting at ASU.

Meanwhile, ASASU plans to host an open meeting between student leaders and the Department of Public Safety to discuss the history of skateboarding at ASU.

"(The ban) has been a long process with the student government," Kunasek said. "(Former ASASU President) Dave Varnell brought up the problem to DPS two years ago, and (former ASASU President) Chris

(Cummiskey) lobbied for it in the Legislature last year."

After being approved by the Legislature, the bill gave the regents the power to prohibit skating and skateboarding from ASU, UofA and NAU if each university requested it. ASU was the first to request permission for the ban.

"It wasn't something (the regents) just pushed through the process," Kunasek said.

"If I had been at the meeting, though, I would have asked that the vote be held at ASU."

A date for the meeting with DPS has not yet been set, but Kunasek said she expects it

to take place before the regents' Dec. 4 meeting in Tucson.

She said support for the ban has been voiced by disabled students, who can get around campus more easily without skateboarders.

Jay Taska, program coordinator for the visually impaired at Disabled Students Resources, said the ban could "go both ways" for disabled students.

"For most of the severely visually impaired students, I would think it would cut down on some of the chaos on narrow walkways," he said. "But some of the other disabled students may not be affected."

"Some of our (disabled) students may use skateboards. Some of our students may feel that their rights are being taken away, while others may be able to get around more easily."

Sunset Pizza

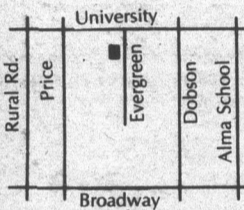
967-1032

\$5 or more
for free
delivery

Buy any lg 1-item
pizza, get a
second lg 1-item
pizza for 1/2 price.

Offer good after 8 p.m.

Includes
ASU campus



2535 E. University

Expires 11-16-87.



- Cuts \$11⁰⁰ Reg. \$15.00
- Perms \$40⁰⁰ and up Reg. \$50.00
- Cellophanes \$22⁰⁰
- Highlighting \$30⁰⁰ and up Reg. \$40.00

Silver Solarium High Tech Tanning
Single \$4.50 5 Session \$14.00
12 Session \$40.00



966-6111 Call For Appointment

933 E. University
SE Corner Rural & University

Mon.-Sat. 9:30-8:30
Sun. 11:30-4:00

"Your One Stop Aerobic Shop"

FEVER
"FASHION IN ACTION"

MA
MAGNETIC FOOTWEAR

Public Shoes
20% off

Dance Exercise
Activewear
Weights

*Come and ask about
our Discount Program
Now 2 Locations

Fiesta Mall
Lower Level near Sears
969-1667

Cornerstone Mall
914 E. University, Tempe
967-0774

The Cornerstone
ESTABLISHED 1984

Pre Holiday Fiesta

Register Here
Drawing Held November 21
(Noon-3 p.m.)
At The Cornerstone

***GRAND PRIZE**
A Car From The KKFR Fleet Of Cars

- 1st Prize..... \$1,000.00
- 2nd Prize..... \$500.00
- 3rd Prize..... \$500.00
- 4th Prize..... \$500.00
- 5th Prize..... \$500.00
- 6th Prize..... 25" Color TV
- 7th Prize..... Trip to San Francisco
(via United Airlines)
plus 2 Nights Lodging
- 8th Prize..... Trip to Mazatlan
plus 3 Nights Lodging
- 9th Prize..... Bicycle
- 10th Prize..... Several Gift Certificates
and Prizes from
Cornerstone Merchants

Enter at any participating Cornerstone merchant.
No purchase necessary. Need not be present to win.

*Register at the participating Frys grocery stores to win a KKFR Fleet Car, or obtain official entry form from any participating Pepsi Cola retailer.

ASU accuses Devil Beer of trademark infringement

By VICTOR BARAJAS
State Press

Devil Beer will change its image after being threatened with a lawsuit by ASU officials who are unhappy with the beer's affiliation with the University.

ASU officials have charged Campus Beers Inc., the makers of Devil Beer, with infringement on the University trademark and unfair competition. The University is demanding the firm change its labeling and promotional materials.

"We just don't want them to reflect that we're sponsoring (the beer) or suggest to the public that we are affiliated or sponsoring the beer," said Mary Stevens, ASU's associate legal counsel.

"We have certain policies on alcohol consumption here, and it just isn't consistent with the image of an educational institution to be connected with an alcoholic beverage."

Jeff Smith, the company's general manager, refused comment until next week,

when the company plans to issue future plans.

The label on Devil Beer, which is brewed and bottled in Texas, includes depictions of the "A" on Tempe Butte, Sun Devil Stadium and ASU dormitories.

Last December, Devil Beer representatives asked ASU to approve promotion of the beer, but were turned down. Still, the company went ahead with ASU images on the label.

"They wanted to have a license to use

logos and trademarks," Stevens said. "At that time it was discussed and we decided that we would not license them to use our logos for Devil Beer."

Stevens said Campus Beers Inc. representatives agreed last week to print a disclaimer on Devil Beer labels that states ASU is not affiliated with the beer. By Feb. 28, Devil Beer will have new labels.

"They're cooperating, and at least right now it doesn't look as if it is going to court," Stevens said.

Slive

Continued from page 1.

Harvey was allowed to enroll in a correspondence course with Kim's help, the report says, because "the Correspondence Study Office was not aware of the rule requiring student-athletes to obtain prior approval of both the dean's designee and the faculty athletic representative."

Harvey ultimately enrolled in the course in order to take a comprehensive examination for course credit, although he did not meet the requirements for such a test.

Harvey's transcripts were deleted from Slive's report because of the Buckley amendment, which protects students' academic records from public dissemination.

"Without the grade background, I think it pretty much whitewashes the report," Jennings said.

Slive's report supports the present University policy against accepting correspondence courses for athletic eligibility, and Jennings termed the policy "a wise rule."

Jennings said other players from sports of less stature than football had "more meritorious" eligibility cases than Harvey's that were not appealed to Nelson by Athletic Director Charles Harris, who appealed Harvey's case.

Harris supported Slive's investigation from the outset, saying that if problems were discovered in the athletic department, they would be dealt with.

He reiterated his support Thursday, saying, "I fully support the recommendations of the report to the extent that the athletic department will take measures to enact them."

Slive's recommendations also include:

- Locating the office of the football academic advisers in the Academic and Student Services office, rather than the football coaches' office.

- Requiring academic advisers to notify DeMichele in writing every time a student-athlete or coach disregards an adviser's academic counsel.

- Adopting a system to monitor incompletes received by student-athletes.

- Clarifying the University policy on incompletes in the general catalog.

- Maintaining the correspondence course rule, while the Faculty Senate reviews registration requirements established by the Correspondence Study Office.

- Amending the student handbook to include information relating to the correspondence course rule for student-athletes.

THIS BEER'S FOR THE BIRDS.

When you play as hard as The Fabulous Thunderbirds, grab hold of a Gold. Coors Extra Gold.

For a color copy of this poster, send \$2.50, in check or money order to: This Beer's For The Birds Poster Offer, P.O. Box 1146, Grand Rapids, MN 55745. Valid only in the United States. Void where prohibited by law. Allow 4-6 weeks for delivery. Offer good while supplies last.

© 1987 Anheuser-Busch Company, Golden, Colorado 80401 • Brewer of Fine Quality Beers Since 1873 • L910382195

DRINK SAFELY

Mecham vows to vindicate Wolfson loan

PHOENIX (AP) — Gov. Evan Mecham again promised Thursday to produce "every piece of paper" to show that his \$350,000 campaign loan was properly reported to the state.

The governor, appearing on a live call-in show on KTAR radio, also said that if enough petition signatures are validated to force him to face a recall vote, "then we're going to go ahead and perhaps it will be a good cleansing situation for Arizona to have another election."

However, Mecham Recall Committee founder Ed Buck said, "A recall election will be a cleansing process. We are going to cleanse ourselves of Evan Mecham."

Secretary of State Rose Mofford reported Wednesday that her office had counted 386,648 signatures that will be sent next week to county recorders who will determine how many are valid. The Mecham Recall Committee needs 216,746 valid signatures of registered voters to force a recall election.

Mecham told a KTAR caller he "will come forth in the next few days in a very public way" to demonstrate how his loan from Tempe developer Barry Wolfson was reported to the state.

Mecham said he wants to "hold every chart, every graph, every piece of paper up to public inspection, which is what we are working to do right now."

No loan is reported in connection with Wolfson's name on

any of Mecham's personal or campaign financial records filed with the secretary of state. Mecham still owes Wolfson about \$150,000 of the loan.

A state grand jury is expected on Monday to resume its probe of the loan, Mecham's financial reporting, and whether the loan was tied to any gubernatorial appointments. The grand jury's investigation was to begin on Nov. 3 but was temporarily halted by a court stay while Mecham unsuccessfully sought to have Attorney General Bob Corbin removed from the case.

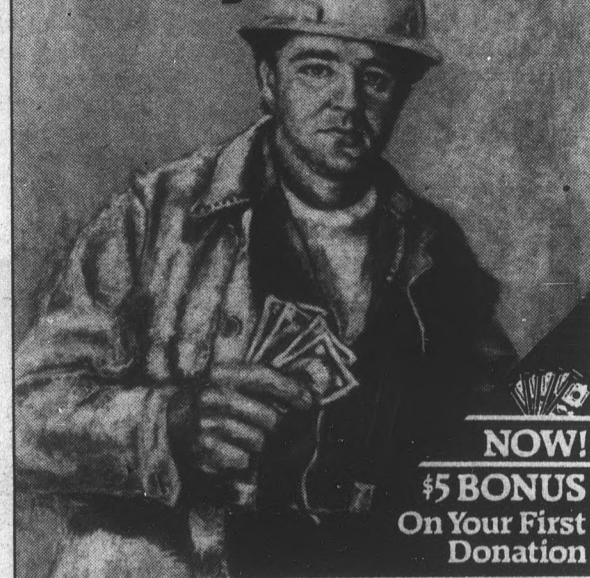
House Republicans also have hired a special counsel who will recommend whether Mecham should be impeached in connection with the loan.

Mecham complained that "this so-called secret (grand jury) system has been so public that I have been tried and almost convicted in public . . . I'm not too pleased with the grand jury system."

"That's why I do plan very, in the very near future to go public with every item that will be really presented to the grand jury so that . . . at least the public will have all the information because I have nothing to hide," Mecham said.

"I have told the world there is no secret loan and that the loan was reported," the governor said.

"Sure The Extra Money's Nice, But That's Not Why I Do It."



NOW!
\$5 BONUS
On Your First Donation

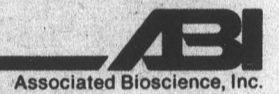
I do it because I know that it saves lives. That's why I donate plasma. Millions of people all over America rely on plasma products to stay healthy—or to stay alive! That's a good enough reason for me. But I sure can use the extra cash, too.

Up to \$140 a month!
That's how much you can earn donating plasma in safe, easy visits to University Plasma Center. Call today to find out just how easy it is, and to set up an appointment.

REFER A FRIEND
GET AN EXTRA \$5 BONUS!

WEEK	1	2	3	4
1st visit in a calendar week	\$10	\$10	\$10	\$10
2nd visit in a calendar week	\$20	\$20	\$20	\$20
Donor Referral	\$5	\$5	\$5	\$5
Weekly Totals	\$35	\$35	\$35	\$35
Example amount you can earn in each calendar month	\$140			

University Plasma Center
Associated Bioscience of Tempe, Inc.
1015 South Rural Rd.
Tempe, AZ 85281
Phone 968-6139



THE ROCKY HORROR PICTURE SHOW

a different set of jaws.

Showing every Fri. & Sat. at **Midnight**

AMC 838-0606
LAKES 6
BASELINE RD. E. OF RURAL RD.

YOUR NEIGHBORHOOD SPORTS BAR

SUN DEVIL
SPORTS LOUNGE

BUFFALO NICKEL WINGS

ONLY 5¢ EACH

- SEVEN SCREENS • MUG CLUB
- INTERACTIVE SATELLITE GAMES

Holiday Inn RURAL AT APACHE
TEMPE/ASU 968-3451

STATE PRESS Newsroom Staff Openings

Applications for positions on the News Staff of the STATE PRESS for the Spring Semester 1988 are now being accepted at #15, North Basement, Matthews Center.

There will be openings at most levels — reporter, photographer, copy editor, assistant sports editor, assistant city editor, arts & entertainment writer, sports reporter, city editor, news editor, managing editor, sports editor, copy chief, photo editor, opinion page editor and wire editor.

Applicants must pick up job referral forms from Student Employment in Matthews Center and an application blank at #15, North Basement, Matthews Center.

Deadline for applications: Friday, Nov. 20, 1987.

Applicants must be full-time (at least seven hours) students at ASU; but major in any department is acceptable, as is class standing of freshman through graduate.

Newspaper experience is desirable but not mandatory. These are part-time, salaried positions open to any student in good standing.

Cash in a flash—right in the Union.

And your card will work.
We've got automatic tellers all over the place, and one of them happens to be right in your Student Union. And almost every banking card from almost every bank, savings & loan and credit union will work here...and at more than a hundred other ATMs across the state. So remember...when you need dough...it's not far to go. Give your card a try.

VISA Master Teller INSTANT TELLER CIRRUS STAR SYSTEM ATM SYSTEM

ATM SYSTEM™

Participating institutions...MeraBank; First Interstate Bank; Valley National Bank; Great American Savings Bank; Arizona State Employees Savings & Credit Union; Associated Federal Credit Union; SunWest Federal Credit Union; Motorola Employees Credit Union; Arizona Central Credit Union; Arizona Federal Credit Union, just to name a few.



Fiesta Bowl Queen court are, from left, Renee Scatena, Susan Radke, Fiesta Queen Sandra Chaney, Tracey Nicks and Bethany Bassler.

Susan Schuman/State Press

ASU's Sandra Chaney grabs the Fiesta Bowl tiara

By TOD MCOY
State Press

She's brunette, 5' 11". She models; her favorite color is blue, she enjoys softball and knitting, 60's rock n' roll and new wave.

She's not Miss America, but pretty darn close.

She's 21-year-old Sandra Chaney, the 1987-88 Fiesta Bowl Queen. Chaney, a corporate finance major at ASU, is definitely excited about earning the title.

"You can never really think that you've got it, because you're with too many girls that have the same qualities," she said after Monday night's pageant at Tempe's Westcourt in the Buttes. "You can't prepare yourself to think that you've won it, so you just hope for the best."

Following the dinner at the Westcourt, Chaney and her court of princesses — who appeared dazzling in their evening gowns — were chased by photographers, flashing smiles faster than flashbulbs.

But sitting at home on the telephone over a medium, which this Arizona native — by her own admission — finds relaxing, she is able to speak more candidly about herself.

"(The modeling industry) is very low scale here (in Phoenix)," she said. "Compared to all the work available in New York, there's a lot less work here. But I really like it."

"It was really tough (in New York), so I came home. I missed school, and I wasn't getting anywhere."

Chaney began a modeling career six years ago. She discovered the Fiesta Bowl Queen contest through her sorority (Kappa Alpha Theta), and just like 180 other girls around the state, she applied, hoping for a shot at winning.

was 'Who, outside of your family?' so unfortunately I had to think of someone else.

"Basically, I wanted to say that I admired my grandparents for what they've shown me, the way they live . . ."

The remainder of the princess court includes Tracey Nicks, Renee Scatena, Bethaney Bassler and runner-up for the queen, Susan Radke.

One of the hardest jobs for the finalists to prepare for was the personality segment of the show, where contestants were given run of Bullock's in order to select an outfit they felt was fitting to their personality.

"It was hard to pick out my personality outfit," Chaney said. "It took me about an hour-and-a-half to find it. We could go anywhere in the store, so I started at one end and went to the other."

But has the sweet smell of success tainted this new Fiesta Bowl Queen?

Hardly.

"All of my goals and pursuits are challenges and this just happens to be one of them," she said. "This (title) goes right along with them."

"I get nervous about being able to represent the Fiesta Bowl in the best way. I want to make sure its done right. I've never done anything like this before, it's kind of new to me."

Chaney will reign over a long list of festivities during the upcoming year — 54 to be exact. The most important, though, is the Fiesta Bowl on New Year's Day.

But will she run for Miss America?

"That might be something to think about in the future," she said and laughed. "But not during school. School is too important to me."

'I get nervous about being able to represent the Fiesta Bowl in the best way. I want to make sure its done right.'

— Sandra Chaney

She was selected, along with nine others, as a finalist. The dinner/presentation on Monday at Westcourt was the final step in the selection process as the 10 finalists modeled and answered questions for the judges and audience.

"Before the first (interview), I was just trying to think of what questions they would ask — I thought they would ask me the dreaded question, 'Who do you most admire?'" she said with a scowl. "So I prepared for that question. I did get asked that, but the only change (in the question)

Nicks, a broadcast major, and Bassler, a purchasing management/business student, both attend ASU. Scatena and Radke attend UofA.

Contributing to the queen's wardrobe were Bullock's and Esprit clothing stores, who supplied Chaney with gifts of sportswear and a ball gown. Chaney also received a \$1,000 scholarship, a Plaza 3 modeling scholarship and the use of a car for one month.

The princesses each received \$500 scholarships and "several other gifts."

total of its nearest competitor in winning last weekend's top spot, according to last week's Hollywood Reporter. In 45 days of release, "Fatal Attraction" has grossed a very impressive \$75.9 million. The thriller, which centers around the fatal results of a one-night stand, is has been the talk of the film industry since its early fall release. Time Magazine is also getting in on the hype — "Fatal Attraction" is featured on this week's cover, and ever so attractively too.

some of our own superstitions in tribute to this auspicious day.

It's bad luck to:

1. Sing a Tom Jones tune in the shower; in fact, the whole Tom Jones/shower catalogue is generally to be avoided.
2. Have your remains purchased by Michael Jackson.
3. Ride a unicycle naked under Ed McMahon.
4. Wear your undergarments backward on your head in church.
5. Be a FIJI.
6. Fly a Cessna into the middle of Red Square.
7. Try to buy a copy of Sports Illustrated at Rundle's.
8. Ask a Democratic presidential hopeful (or Supreme Court nominee) if he ever attempted to redeem a coupon at a non-participating Carl's Jr.
9. Sing the Danish National Anthem while out drinking with Sylvester Stallone.
10. Accept political contributions from guys named Guido or Sal.

•Love's Not Thicker Than Water for Andy Anymore:

Pop singer Andy Gibb is in trouble. The defunct heartthrob, who won the hearts of a million plus girls in the late 70s, only earned \$7,775 last year and now lives rent-free. He also plays guitars lent to him by his brothers, court papers indicate. Gibb, who is the younger brother of the Bee Gees (Barry, Maurice and Robin), filed bankruptcy early this year after having accumulated \$187,041 in personal and business debts. In exchange for his rent-free arrangement, Gibb must make four appearances a year to promote the company which owns the condo complex he lives in. Perhaps rent-with-an-option-to-buy would have sufficed Andrew.

KMM's Corner



KRZOS • MILLER • MALHAM

Hits, hoots and hollers from the folks at KMM's Corner.

Now That's Fatally Attracting!

"Fatal" seems to be the magic word at the box office these days. Paramount Pictures' "Fatal Attraction" has been topping box office grosses for the past eight weeks, and it looks like there's no end in sight. The film, which stars Michael Douglas and Glenn Close, more than doubled the

•You're Such a Popular Bloke, Michael!

Poor Michael Jackson! Upon arrival in Sydney, Australia Wednesday, Pop's ebony idol was hounded by unenlightened screaming fans — yes, he still has some. The 200 plus awestruck Aussie debs were so taken by this thriller, that police had to knock them to the ground at the Sydney Airport. Poor Mikey was so flustered and eventually relied on the chain of bodyguards surrounding him for support. Jackson, who begins a five-concert tour in Melbourne Friday, had to be hand-carried out of the airport. Unfortunately, he was not singing "These dog-gone girls are mine" — now that's BAD, BAD, really really too BAD.

•Friday the 13th:

Don't have a black cat for lunch and don't eat dinner under a ladder. A fair warning for all who pay heed to superstitions for today is the day of really bad luck.

No one really buys this day of havoc. Lord knows the folks at KMM's Corner don't. However, we would like to substitute

Exposed

Oly, Oly Oxen Free: 'Hiding Out' uncovers fun film

By JESSIE SIMON
State Press

Max isn't a high school student, but he plays one during the day.

Yes, it has happened. At long last the De Laurentiis Entertainment Group has produced an enjoyable, sellable film.

Jon Cryer ("Duckie" from "Pretty in Pink") stars in "Hiding Out," a subtly humorous film that handles two diverse subjects adeptly.

The main theme and motivating force of the film deals with the fast-paced life of a stockbroker named Andrew Morenski (Cryer). The 27-year-old is given FBI protection so he may testify against a fellow broker involved in a mob-bonds scandal. After a bit of blood and a chase scene, Morenski ends up enrolling in his cousin Patrick's (Keith Coogan) Delaware high school under the pseudonym Maxwell Hauser — a name borrowed from every adult's favorite energizer: coffee.

In order to keep his identity a secret, Max decides against telling his aunt (played by Cryer's real-life mom, Gretchen) he is in town. After it is no longer safe to hide out at his relatives' house, Max takes to sleeping in the principal's office at school.

It is here he meets Ezzard — current janitor and former boxer. After all, everyone needs someone to confide in, and Ezzard and Max find comfort in one another.

Now that Max is reliving his youth, he is able to relive high school love. He finds his sweetheart in Ryan (Annabeth Gish): very beautiful, very intelligent, very attached to



Jon Cryer stars in "Hiding Out."

"Hiding Out"

★★★
(out of four)

The De Laurentiis Entertainment Group presents a Bob Giraldi film, starring Jon Cryer. Written by Joe Menosky and Jeff Rothberg. Produced by Jeff Rothberg. Directed by Bob Giraldi. Playing at Sun Devil Six Theaters.

Rated PG-13

a "buff" dude and very young.

And while he frets over how to talk to her,

what to do with her and how to tell her who he really is, his cousin Patrick frets over

getting his driver's license and a date.

Both their problems are handled with the sincerity and feeling of being lost in youth that every 15- to 17-year-old has at some point. Director Bob Giraldi does not in any way trivialize either character's problems.

The change from hip yuppie with a Maserati to 17-year-old bumbling boy helps Andrew/Max gain perspective on his life. Through being nominated for senior class president, helping Patrick change from nerd-dom to coolness and falling in love, Max realizes he must accept responsibility and testify against the bad guy.

And all the while, hit-men are tracking

cinema

him down. Getting closer. Finding clues. And honing in on their prey.

"Hiding Out" doesn't fall into slapstick comedy. The funny parts are sometimes so subtle, the viewer has to pay special attention. Over the P.A. system on Max's first day, an announcement goes over proclaiming, "The first bell is not a warning. The first bell means it is time for class. The second bell means YOU'RE LATE."

Other humorous scenes include a presidential campaign rap, Patrick's driver's-education lessons and Max roller skating through school in the wee hours of the morning.

Cryer amazingly does an effective job as a 27-year-old business man and a 17-year-old. His performance in both roles is convincing — and that in itself is unbelievable. It's amazing what a little facial hair can do.

Although the film's end is predictable, the audience walks away feeling both overdosed on sweetness and good that some movies still have happy, fairy-tale endings.

SHOW US YOUR STUDENT I.D. YOU'LL GET A DINNER

FREE!

(Compliments of Mike Pulos)

This year we're doing it again! Every Sunday (but ONLY on Sunday), Mike Pulos of the Spaghetti Company will give you one FREE dinner* for each dinner you order! It's our 2 for 1 SUNDAY STUDENT SPECIAL. And it's good for the whole school year at both our Tempe and Phoenix locations.

Any day of the week, for lunch or dinner, The Spaghetti Company is known for a great meal at an affordable price. But the SUNDAY STUDENT SPECIAL

makes our already terrific prices **even better!** Our dinners include a full course meal with all the trimmings—from salad to dessert. So, dollar for dollar, when you're hungry and you need a break, you can't beat The Spaghetti Company! **ESPECIALLY ON SUNDAYS!** With 2 dinners for the price of 1! But you **MUST** have your student I.D. card with you to take advantage of this offer.



Open at 11:30 a.m. to 11 p.m. Sundays

The Spaghetti Company

RESTAURANT in Old Town

PHOENIX
South on Central
Just Pasta McDowell
257-0380

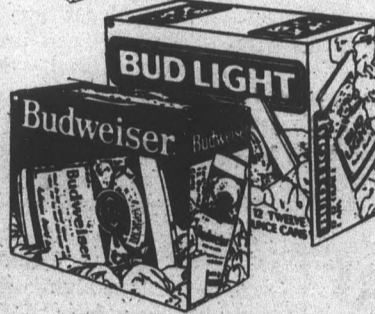
Chicken Cordon Blue, Steak Di Jon, Stuffed Filet of Sole, Tenderloin, Chicken Picatta, Veal Marsala **ARE NOT INCLUDED** in the 2-for-1 special.

4th Street and Mill
966-3848

Liquor Barn

This week's super special ...

\$439
12 pk. cans



Bud & Bud Lt. 6 pack

\$499 **\$399**
12 pack cans bottles

Cooks Champagne Brut — X-Dry
2/\$700
750 ml

Sutter Home White Zinfandel
\$387

\$250
4 pk.

Seagram's COOLERS

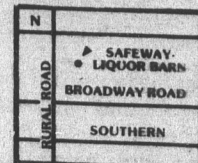
Over 1,000 square feet of ICE COLD walk-in beer cooler!

Expires 11-15-87.

— in Tempe —
930 E. Broadway
894-1067



Gladly accepted.



OPEN: Mon.-Thurs. 9-9
Fri. 9-10
Sat. 8-10
Sun. 12-8

in the news

Gabba Gabba Hey! Finnell features fads and flops

By DAVE MILLER
State Press

Hollywood filmmaker Michael Finnell's last project, the semi-successful "Innerspace," cemented his reputation as a producer to be reckoned with. But he still can't forget the *avalanche*.

As an up-and-comer in the movie industry, he was involved with the film of the same name. "It was kind of my baptism of fire," he said "but it's a movie I'd rather forget. It starred Rock Hudson and Mia Farrow, and it was just, well . . ."

But although "Avalanche" was buried under mountains of critical poop, that didn't stop Finnell from rising to the top of the movie industry. And now he'd like to talk about it.

In conjunction with an American Film Institute seminar on film pre-production being given Saturday in the MU, Finnell will speak about producing to students at 7 tonight in the

Channel 8 studios. The film "Innerspace" will also be shown.

And Finnell will give any future Woody Allens the inside scoop on the business.

Although he'd probably rather be doing lunch with Meryl Streep or Pat Sajak at the Brown Derby, Finnell doesn't mind speaking to students. "I'll do this kind of thing anytime I'm asked," he said. "It's almost one of the best parts of the job, really, and part of what I enjoy. It's dealing with different things."

Those things also include the tasks of movie pre-production.

That's will be the focus of Finnell's lecture. "I'll be speaking on the importance of pre-production, casting, hiring the crew, budgeting, legal work.

"But it'll be more of a question-and-answer thing, after the movie. The seminar is on Saturday."

But nevertheless, Finnell doubtlessly will be asked that all-important question: *How does one make it in the movies?* You have to know someone, right?

Not necessarily.

Finnell instructs listeners to go in only if they're extremely dedicated. "They have to be willing to work hard, and to not make a lot of money for a few years — maybe longer. It's difficult to break in, I think more so than other (fields)."

In his own case Finnell had to start at the bottom, right out of a college on the opposite end of the country. "I went to film school at (New York University)," he said, "and I came out here (L.A.). I got a job working as an assistant prop man and worked my way up.

"I worked up the ranks, up to the Associate Producer position on 'Avalanche.'"

That film didn't land him a reserved table at Spago, but it did show him where to go next. "A friend and I pitched 'Rock 'N Roll High School' (a teen rebel-fest featuring The Ramones and P.J. Soles of 'Stripes') to (filmmaker) Roger Corman, and we made it."

Although the film ended up a cult hit, it put fizz in Finnell's career. "As a producer," he said, "it officially made me somewhat credible. I was hired as producer on 'The Howling' (starring Dee Wallace-Stone (E.T.) and Gregory Hines). I knew Joe Dante (director of 'The Howling,' 'Gremlins' and a 'Twilight Zone' segment) well, and we've worked together ever since. That was in '84."

Since then Finnell has worked on the films "Explorers" (as executive producer) and "Gremlins" (as producer), and has "Innerspace" to show as his latest effort. He feels experienced for it all, and a little opinionated.

"There's a lot of re-hashing, but not a lot of imagination, going on right now," he said. "Sequels get made now, because it's economical. And people are less likely to take a chance, like with a \$25 million dollar picture as opposed to a \$5 million dollar one."

But that doesn't faze him, and it won't stop him from fighting for his own ideas.

"That's why I like it," he said. "For one thing, it never gets boring."

Friday's showing of "Innerspace" and following lecture is free. Saturday's in-depth "Nuts and Bolts of Pre-Production" seminar is from 9:30 a.m. to 4:30 p.m. in the MU's Cochise Room, with its emphasis being on presenting the film industry as a viable investment market. Tickets are \$100 dollars for non-AFI members. For more information call 946-9200.



Dennis Quaid stars in the hilarious "InnerSpace," produced by Michael Finnell.

F R I D A Y
25¢
DRINKS 9-11

Happy Hour Buffet 5-8
1/2 Price Drinks 5-9
Don't wait in a line on Friday night!

Utopia

S A T U R D A Y
25¢
DRINKS 8-10

THE HOT SPOT IN TEMPE!
JOIN THE PARTY EARLY!

AFTER HOURS TILL 3 A.M. BOTH NIGHTS
18 AND OVER ALLOWED AFTER 1 A.M.
919 E. APACHE BLVD. • 921-9775

BARBRA STREISAND
RICHARD DREYFUSS

MAD AS IN ANGRY
OR JUST PLAIN...

NUTS

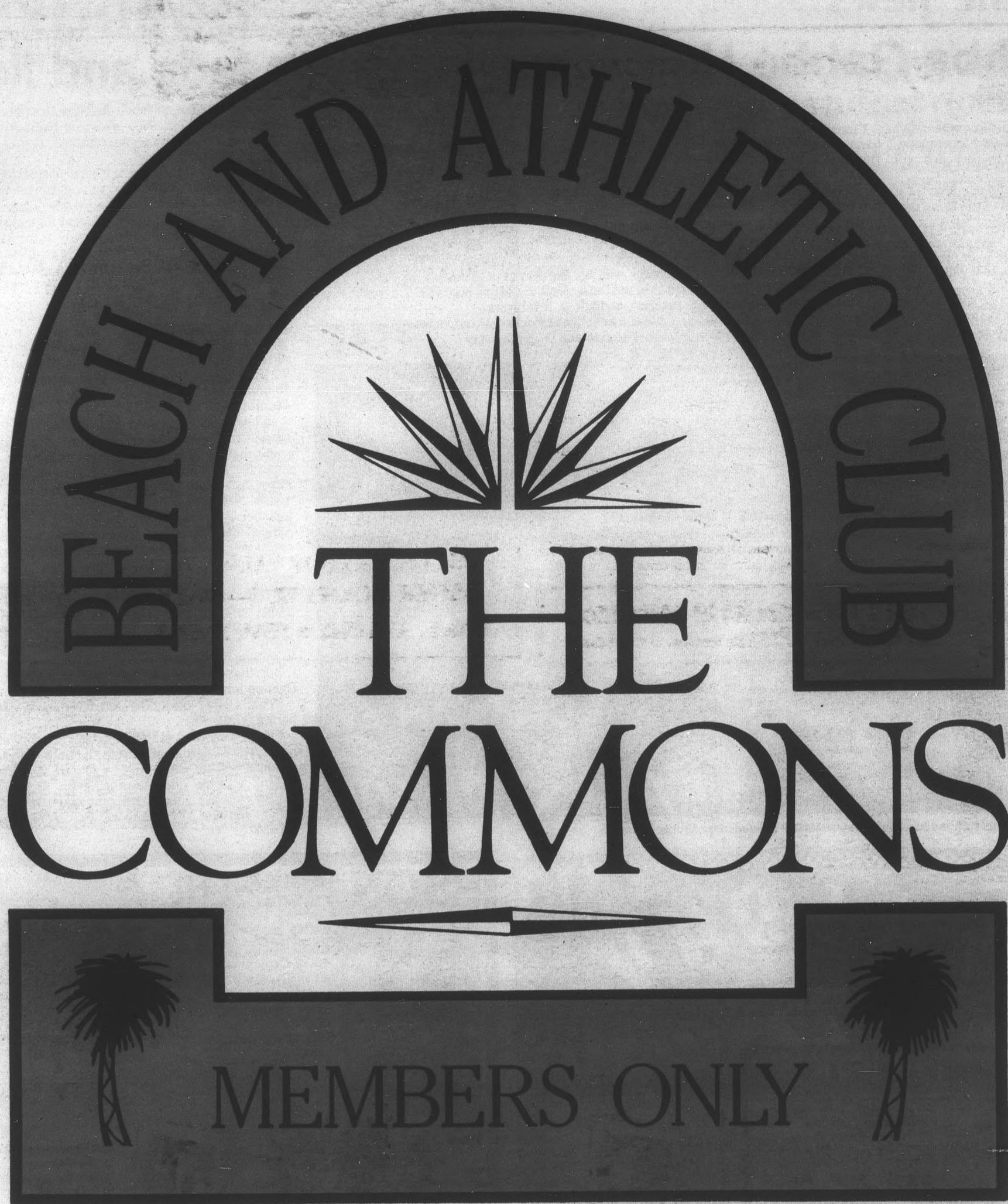
WARNER BROS. BARWOOD FILMS/MARTIN RITT BARBRA STREISAND RICHARD DREYFUSS "NUTS"
MAUREEN STAPLETON ELI WALLACH ROBERT WEBBER JAMES WHITMORE KARL MALDEN
BARBRA STREISAND SIDNEY LEVIN ANDRZEJ BARTKOWIAK TERI SCHWARTZ CIS CORMAN TOM TOPOR
TOM TOPOR DARRYL PONISAN ALVIN SARGENT BARBRA STREISAND MARTIN RITT

R RESTRICTED UNDER 17 REQUIRES ACCOMPANYING PARENT OR ADULT GUARDIAN

FREE SNEAK PREVIEW
MONDAY, NOVEMBER 16, 1987 8:00 PM

MANN SUN DEVIL 6
960 E. University-Tempe
829-0344

Pick up your FREE PASS
at M.U. Activities Center (in the M.U. Basement)
Yogurt Oasis (Cornerstone) Fajita Prima (Cornerstone)



Student living...

- *-Washer and Dryer
- *-Color coordinated furnishings
- *-All Cookware, Tableware, Silverware
- *-Microwave
- *-Dishwasher
- *-Double rack closets
- Sand/Water Volleyball
- Barbeques
- Jacuzzi (103°F)
- Lounge Kitchenette
- Walking Distance to Campus, downtown and Shopping
- 900 - 1146 sq. ft.

...An ASU way of life!

- Covered Parking Available
- Walk in closets (L)
- Ice Makers (L)
- Ceiling Fans (L)
- Town House Plan Available (L)
- Redwood Sauna (A)
- Study Loft (A)
- Large Interior Storage Room (A)
- Weight room/exercise bike/row machine/ free aerobic classes (A)

() included in each suite
Exclusively Lemon (L)
Exclusively Apache (A)*

2nd semester 9 or even 12 month lease
(expires 4/30/88)

Outside AZ

1111 E. Apache
\$265.00/month

829-0933

1-800-247-6141

1215 E. Lemon
\$245.00/month

968-6427

art

'Clay today,' ceramics tomorrow: Exhibition features new, old art

By CHUCK HADD
State Press

This month art aficionados and fans of traditional clay sculpture can discover that ceramics are much more than pots and urns.

Avant-garde and traditional styles from the ASU Art Museum's permanent collection are on display in an exhibition titled "Clay Today" on the second floor of Matthews Center until Nov. 29.

"This show gives the viewer an idea of the range and diversity of the museum's ceramics collection," said Rudy Turk, director of the art museum. "Over the years most of the pieces have become the standard for new trends."

Turk, who has guided acquisitions for the museum's permanent collection for the past 20 years, looks for pieces that represent the "cutting edge" of production and experimentation.

The museum's ceramics collection ranges from the utilitarian to the purely aesthetic.

The current ceramics exhibit includes avant-garde works by master ceramicists Peter Voukos and Rudy Autio.

Examples of the collection's more

traditional styles on display include the whimsical animals of Betty Davenport Ford, blackware by Native American potter Maria Martinez, and pots, cups and plates by California artist Beatrice Wood.

Wood, 94, was born in San Francisco and educated in New York and Paris. She traveled in the avant-garde circle that included Dada artist Marcel Duchamp and author Henri-Pierre Roche.

She settled in Los Angeles in 1928.

At age 40, Wood took her first pottery class and eventually became renowned for her mastery of glaze techniques. Her ceramics have been collected and exhibited by museums worldwide.

In 1987 Wood received life-time achievement awards from the Woman's Caucus for Art and from the National Council on Education for the Ceramic Arts.

She is also one of 12 American craftsmen inducted into the College of Fellows of the American Craft Council.

In addition, Wood received this year's ASU College of Fine Arts Outstanding Achievement Award in recognition of her lifelong contribution to craft art.




FRIDAY
HAPPY HOUR 6-9
\$1.00 DRINKS
FREE BUFFET
WEEKLY SPECIALS
NO COVER
AFTER HOURS TIL 3—ONLY \$2.00

SATURDAY
75¢ DRINKS FOR LADIES TIL 11:00
AFTER HOURS TIL 3—ONLY \$2.00

1216 E. APACHE • TEMPE 968-3446



Start your day RIGHT Send a Personal Ad to someone Special. State Press N. Basement, Matthews Center



DIVER DAN'S TANNING
UNLIMITED TANNING
29.95
A MONTH WITH ASU ID

WOLFF SYSTEM
RURAL UNIV. N. McCLINE TUCK
967-6962

1415 E. UNIV. TEMPE

HOWARD KAPLAN
"THE LAND OF SAD ORANGES: FICTION OF CONFLICT"
A look at the Mid-East conflict as seen through Israeli and Arab fiction.
Presentation by Howard Kaplan — professor of Mid-East studies at UCLA — follows services at 7:30 pm on FRIDAY, NOV. 13.
AT Hillel Union of Jewish Students
1012 S. Mill 967-7563

RESUMES

- SAME DAY SERVICE
- WRITING & CONSULTING
- CLOSEST TO ASU
- LAYOUT & DESIGN
- LASER PRINTING



"CORPORATE RESUME"
KOLLS WELLS BUSINESS COMPLEX
N.E. CORNER UNIVERSITY & 48th ST.
SUITE 108, BUILDING 455
TEL: 966-0451

Computer Systems Center
Presents
FALL COMPUTER EXPO '87
Featuring
EPSON AMERICA

FREE SUN DEVIL BEER MUGS!

EQUITY I+

- * 8 mHz Clock Speed
- * 640Kb Memory
- * Dual Floppy Disk Drives
- * EPSON Monitor
- * MS-DOS
- * PFS: First Choice

\$ 787

NEXT DAY DELIVERY!

EQUITY III+

- * 80286 processor/12 mHz
- * 640Kb Memory
- * 1.2Mb Floppy Disk Drive
- * EPSON Monitor
- * MS-DOS
- * Enhanced Keyboard

\$ 1699

Financing Available! (OAC)

LX-800

- * 10 mHz Clock Speed
- * 640Kb Memory
- * Floppy Disk Drive
- * 20Mb Hard Disk
- * MS-DOS
- * Enhanced Keyboard

\$ 999

180 CPS
2 NLQ Fonts
Tractor Included

\$ 189

INCREDIBLE SOFTWARE SAVINGS!

LQ-1000

- * 136 column, 24 pin Dot Matrix
- * 7Kb Buffer

\$ 599

GREAT BUYS ON ALL EPSON PRINTERS!

NOVEMBER 11, 12, 13

WEDNESDAY Memorial Union ROOM 207 9AM - 5PM	THURSDAY Memorial Union ROOM 207 9AM - 3PM	FRIDAY Memorial Union ROOM 222 9AM - 5PM
---	--	--

*Free Beer Mugs to the First 1000 Attending

Spotlights

Hints, delectables and other tangy tidbits from the cluttered files of the entertainment desk.

Rawl:

•Veteran comic **Eddie Murphy** will rub Phoenix raw with his delicious humor at 8 p.m. tonight in Veteran's Memorial Coliseum. Tickets are available at the Coliseum Box Office and all Dillard's ticket outlets. For more information, call 258-6711.

Children:

•Incredible acrobatic feats, musicians and dancers from the Far East highlight the internationally acclaimed **Chinese Children's Palace of Hangzhou** at 7 p.m. in the Sundome and at 8 p.m. tomorrow in Gamange Center. Tickets for tomorrow night's performance are \$10 and \$8, and are available at the Sundome, Gammage and all Dillard's ticket outlets. For more information, call 965-3434.



HOT & COLD SUBS

	6"	10"
SPARKY — roast beef, turkey & ham	\$2.13	\$3.99
ROAST BEEF — prime, lean roast beef	\$1.86	\$3.73
PORKY — ham, spiced ham, salami	\$1.70	\$3.46
HAM — succulent Dantib ham	\$1.70	\$3.46
TURKEY — white turkey breast	\$1.70	\$3.46
CHICKEN SALAD — white chunk chicken	\$1.70	\$3.46
TUNA SALAD — white chunk tuna	\$1.70	\$3.46
POORBOY — top grade bologna	\$1.28	\$2.13
VEGETARIAN — provolone, muenster and swiss cheeses, fresh cucumbers, mushrooms, sprouts, bell peppers, lettuce, tomatoes, onions and Italian dressing	\$1.70	\$3.46

6" subs include a spear of kosher pickle.
10" subs include a spear of kosher pickle and a bag of Laura Scudder's natural potato chips.
(Served on wheat or white sub roll)

SNO FLAVORS

- STRAWBERRY •PINEAPPLE
- BLUE RASPBERRY •CHERRY •LEMON

11-12 FRI. & SAT. • 11-10 SUN.-THURS.
CORNER OF LEMON & RURAL • 967-1114



FREE LARGE SODA & CHIPS
WITH PURCHASE OF ANY 6" SUB

COUPON GOOD THROUGH 11-22-87.
NOT GOOD WITH ANY OTHER OFFER.
CORNER OF LEMON & RURAL • 967-1114



\$1.00 OFF

10" HAM SUB

COUPON GOOD THROUGH 11-22-87.
NOT GOOD WITH ANY OTHER OFFER.
CORNER OF LEMON & RURAL • 967-1114

JOHN'S SHOE & LUGGAGE REPAIR



- Resoling Tennis Shoes
- Orthopedic Work
- Complete Line of Shoe Care Products
- Birkenstock Repair

718 S. Mill Avenue
Tempe • 967-9101

Hours: M-F 9 a.m.-5:30 p.m.
Sat. 9 a.m.-5 p.m. • Closed Sunday

If The Shoe Fits,
Repair It At John's! **10% Off With This Ad**

Buy any size yogurt and get a
homemade chocolate chip cookie FREE.

Expires 12-13-87.



ANNIE'S YOGURT & COOKIES

Smoothies, Shakes, Banana Splits,
Hawaiian Snow, Non-fat Frozen Yogurt
as low as 17 calories per ounce.

S.E. corner Broadway & McClintock
Next to El Pollo Asado **966-1531**
Open Mon.-Sat. 10:30-10:00, Sun. 12:00-9:00

Invitation to apply for

STATE PRESS EDITORSHIP

The ASU Student Publications Advisory Board is now soliciting applications for the State Press editorship for the Spring Semester 1988.

Applicants for the position of editor:

- must be a full-time student at ASU in good standing (not on academic or disciplinary probation);
- Must have a cumulative grade index of 2.50 or better;
- must have served two semesters on the staff of the **State Press**;
- must have completed a minimum of 15 hours of journalism courses, including news writing, reporting, editing and journalism law;
- must not graduate prior to the completion of the term of appointment.

Applicants must also:

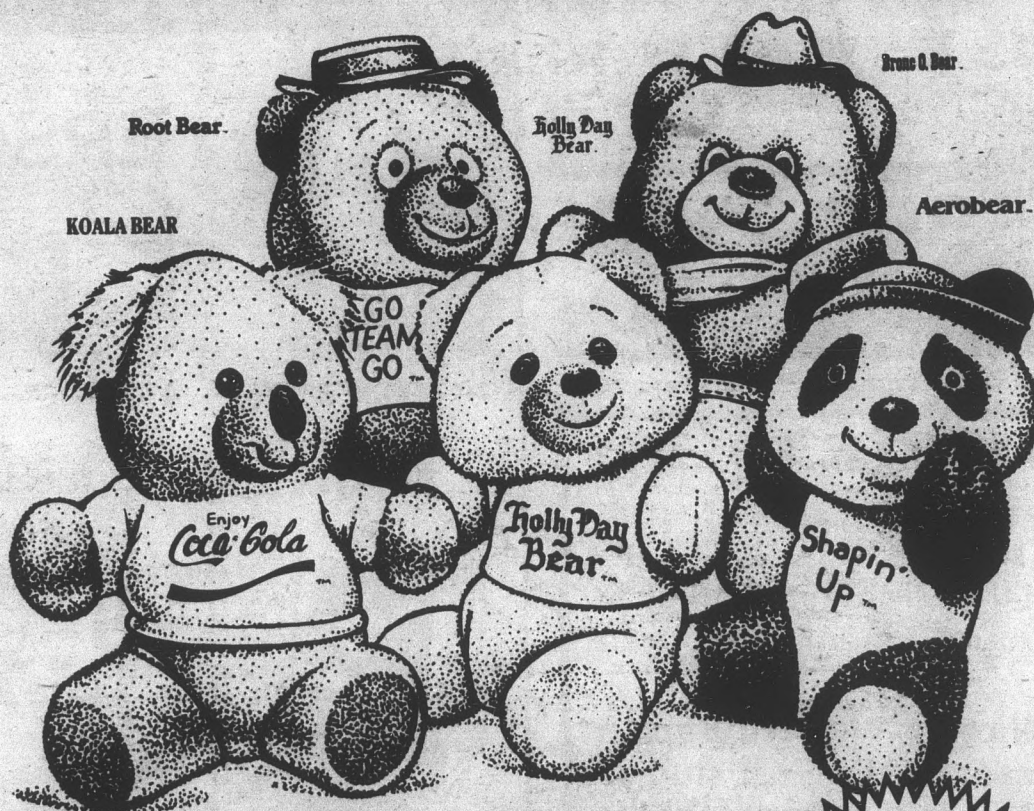
- submit at least two letters of recommendation from university faculty members and/or professional journalists;
- list on the application form the titles of all journalism courses completed and the grades earned in those courses;
- submit at least two examples of a news story, feature story or editorial written for the **State Press** or another newspaper; and describe on the application form the functions and responsibilities of previous positions held on the staff of the **State Press** or other newspapers.

Applicants must pick up application forms at the **State Press** office, Matthews Center North Basement. The completed forms must be typewritten.

The deadline for receipt of applications will be noon, Tuesday, Nov. 17, 1987.

Bruce D. Itule
Director, Student Publications
Matthews Center, Room 133
Phone 965-5937

A Huggable Gift. At A Lovable Price.



**WHATABEAR...GRRRS.
FROM WHATABURGER.**

Only \$2.99*

Whatburger® proudly brings you the Whatabear...grrrs™. Five cute, cuddly, collectable bears, with a new bear featured each week, beginning November 9. Besides being adorable, these bears are also quite *affordable*, at only \$2.99 each!

But supplies are limited. So hurry each week to

Whatburger to get yours, before our cupboards are bare.

This holiday season, give someone you love a Whatabear...grrr™.

They're a very huggable gift. At a very lovable price.

Available at participating Whatburger restaurants. Limit four per customer. While supplies last. *Tax not included.

Oh Geraldo!

Rivera's show means forum for martian mentality

Howie Malham Jr.
Arts Reporter



Space aliens are abducting women and raping them. Creatures from beyond are coming to earth and forcing men to ride in their spaceships and won't let them off until they swear allegiance to the martian creed. One-eyed pregnant women are giving birth to baby bulls. All this is happening and only one man seems to care. This man is not concerned with the Persian Gulf, but with a bunch of renegade extra-terrestrials coming down to earth in search of a few laughs at the expense of some honest taxpayers. The man is Geraldo Rivera, and he wants some answers. Frankly, I'm not surprised. Geraldo has always been on the cutting edge of journalism. Ever since his live, dramatic presentation of the opening of Al Capone's empty safe, Geraldo has managed to reaffirm his ethical professionalism by appearing on such profound and edifying programs as "Entertainment Tonight." But now, he has surfaced again. Just when everyone thought he was banished to cleaning Mary Hart's dressing

room between segments forever, Geraldo has managed to convince someone, somewhere, that he is still a marketable journalistic commodity.

He now has his own show, called "Geraldo" (showing at 9 p.m. weeknights on Channel 45). Having him harass crooked carnival workers on "20/20" was bad enough, now he interviews fat women who believe they have been sexually violated by Yoda and friends.

The sad part is that he believes them. Hasn't he learned his lesson? More importantly, hasn't the entertainment business learned its lesson? Why Geraldo Rivera is still getting a paycheck for exercising his social exploitation and journalistic stupidity, I'll never know.

Maybe if he sensationalized with some class, like the network news does, he might be tolerated. But he is far from unobtrusive in his style.

He is blatantly offensive and insulting to all with a brain — one that functions of course. In the '50s, the affable and unbalanced Joe McCarthy introduced a black list of all Hollywood actors.

The list included names of personalities suspected of having Communist affiliations. Even people who were left handed had a good chance of making the list.

These people did not work in Hollywood for a while. Real fair, huh?

I bring this up to propose a similar black list. This list will include only one entry — Geraldo Rivera, who should be

black listed for making a disgrace of fat women, Yoda and himself.

There are so many career alternatives that Geraldo could explore — postal work for instance.

However, he might get too inquisitive about why the uniforms are blue and eventually find himself out of a job.

There's always a musical career.

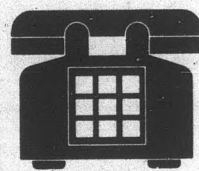
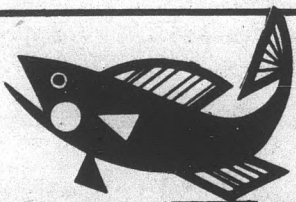
The Village People are thinking about a reunion. Perhaps Geraldo, with his sporty handle bar moustache and infinitely pale wardrobe, may be just what the band needs to make it in 1987.

'Geraldo has always been on the cutting edge of journalism. Ever since his live, dramatic presentation of the opening of Al Capone's empty safe ...'

If this sounds a bit extreme, that's because it is. But then again, so is Geraldo's television presence.

I wish no financial or physical hardship on Geraldo, I just wish he would get the hell off of television.

Don't Flounder Around
Place a Classified Ad
State Press 965-6731
N. Basement Matthews Center



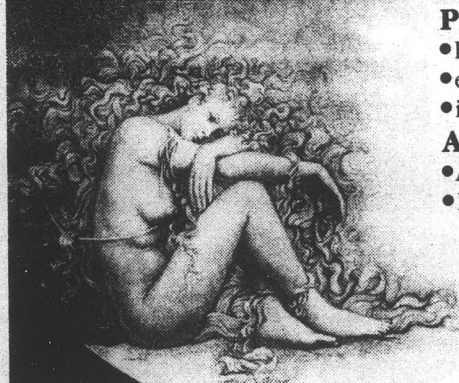
STATE PRESS Classifieds
By Phone • **965-6731**
Visa • MasterCard • Sorry, no billing

INJURED IN AN ACCIDENT?
TO FIND OUT WHAT YOUR CASE
MAY BE WORTH CALL:

BAKER AND MARCUS
CORPORATE FOUNTAINS
4625 S. WENDLER DR., SUITE 111
TEMPE, ARIZONA 85282
438-1212

(PRACTICE LIMITED TO PERSONAL INJURY LAW)

**DREAMS CAN COME TRUE—
WHEN YOU ARE READY.**



Pregnancy testing

- FREE
- early detection 5 days before a missed period.
- immediate results

Affordable

- Abortion, Birth control and complete gyn care.
- Evening appointments

FAMILY PLANNING INSTITUTE

PHOENIX
9100 N. 2nd St.
997-7493

TEMPE
424 Broadway
968-7471

Sammy's
PIZZA & CALZONE

2 LARGE

CHEESE PIZZAS ONLY \$6.49

1420 N. SCOTTSDALE RD., TEMPE TOPPINGS ONLY 80¢ EXTRA
South of McKellips (1 mile North of University)
945-8850 COUPON EXPIRES 11-20-87.

WE DELIVER

- WE ALSO OFFER
- CALZONES
 - SALADS
 - SOUPS
 - LUNCH SPECIALS
 - SUBS
 - PASTA
 - BEER & WINE
- OPEN 7 DAYS A WEEK**



mann **\$3.00 BARGAIN PRICE**
SHOWS BEFORE 9 P.M. MON.-FRI. (EXCEPT HOLIDAYS)
SATURDAY, SUNDAY & HOLIDAYS FIRST SHOW ONLY

<p>CHRIS-TOWN 5 249-2843 5707 NO. 18TH AVE.</p> <p>FATAL ATTRACTION (R) 1:45, 4:30, 7:30, 10:15</p> <p>THE HIDDEN (R) 12:30, 3:00, 5:15, 8:00, 10:15</p> <p>MADE IN HEAVEN (PG13) 2:30, 7:15 FATAL BEAUTY (R) 12:15, 4:45, 9:30</p> <p>CROSS MY HEART (R) 12:30, 3:00, 5:15, 7:45, 10:00</p> <p>HIDING OUT (PG13) 12:15, 2:45, 5:00, 7:15, 9:30</p>	<p>SUN DEVIL 6 829-0344 The Commons Rm. & University</p> <p>PRINCESS BRIDE (PG13) 12:00, 2:30, 5:00, 7:30, 9:45</p> <p>FATAL ATTRACTION (R) 1:30, 4:30, 7:30, 10:15</p> <p>HIDING OUT (PG13) 12:00, 2:15, 4:45, 7:15, 9:30</p> <p>PROM NIGHT II (R) 12:30, 2:45, 5:15, 7:45, 10:00</p> <p>FATAL BEAUTY (R) 12:15, 5:00, 9:45 RUSSKIES (PG13) 2:45, 7:30</p> <p>DEATH WISH IV (R) 3:30, 7:45 DEATH ROW (R) 1:30, 5:45, 10:00</p>	<p>BELL TOWER 8 843-4593 1st AVE. and BELL ROAD</p> <p>SURRENDER (PG) 12:45, 4:20, 8:00 LIKE FATHER LIKE SON (PG13) 2:30, 6:15, 9:45</p> <p>BABY BOOM (PG) 12:00, 2:30, 5:00, 7:45, 10:15</p> <p>HIDING OUT (PG13) 1:00, 3:00, 5:00, 7:15, 9:45</p> <p>THE SICILIAN (R) 11:45, 2:00, 4:15, 7:00, 9:45</p> <p>MADE IN HEAVEN (PG) 12:30, 2:30, 4:30, 7:15, 9:45</p> <p>SUSPECT (R) 11:45, 2:15, 4:45, 7:30, 10:15</p> <p>DIRTY DANCING (PG13) 1:15, 3:30, 5:30, 7:30, 9:45</p> <p>FATAL ATTRACTION (R) 12:00, 2:30, 5:00, 8:00, 10:30</p>
<p>TRI-CITY DOLLAR THEATRES \$1.00 ALL SEATS-ALL SHOWS 461-1070 MAIN ST. & DOBSON RD. IN MESA</p> <p>CATCH THE HEAT (R) 1:30, 3:30, 5:30, 7:30, 9:45</p> <p>NO WAY OUT (R) 1:00, 5:15, 9:30 DANCERS (PG) 3:15, 7:30</p> <p>THE LIVING DAYLIGHTS (PG) 12:30, 5:15, 10:00</p> <p>SOMEONE ONE TO WATCH OVER ME (R) 3:00, 7:45</p> <p>ADVENTURES IN BABYSITTING (PG13) 1:00, 5:15, 9:30</p> <p>LA BAMBA (PG13) 3:30, 7:15</p>	<p>SUPERSTITION 5 834-5767 MESA AT SA LONGMORE & SUPERSTITION</p> <p>MADE IN HEAVEN (PG13) 12:00, 2:15, 4:30, 7:00, 9:15</p> <p>HELLO AGAIN (PG) 12:45, 3:00, 5:15, 7:30, 9:45</p> <p>FATAL ATTRACTION (R) 11:45, 2:15, 4:45, 7:15, 9:45</p> <p>CROSS MY HEART (R) 12:15, 2:30, 4:45, 7:15, 9:30</p> <p>DEATH WISH IV (R) 1:00, 5:00, 9:00 PRINCE OF DARKNESS (R) 2:50, 7:00</p>	<p>POCA FIESTA 4 835-0404 MESA AT 103rd WEST SOUTHERN</p> <p>THE HIDDEN (R) 1:00, 3:00, 5:00, 7:15, 9:30</p> <p>DIRTY DANCING (PG13) 3:30, 7:30 STAKEOUT (R) 1:30, 5:30, 9:30</p> <p>BABY BOOM (PG) 12:45, 3:00, 5:15, 7:30, 9:45</p> <p>PROM NIGHT II (R) 1:15, 3:15, 5:15, 7:30, 9:45</p>

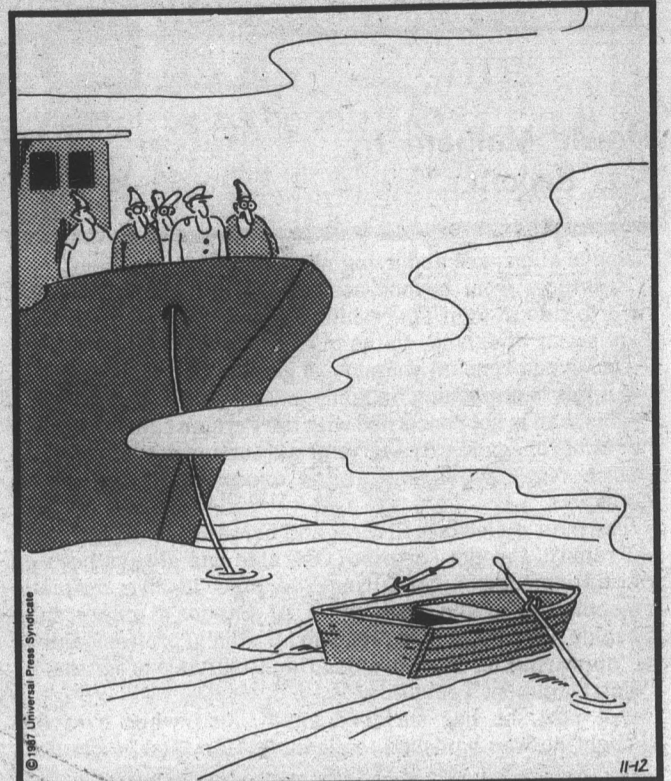
comics

Doonesbury

BY GARRY TRUDEAU

THE FAR SIDE

By GARY LARSON



BLOOM COUNTY

by Berke Breathed



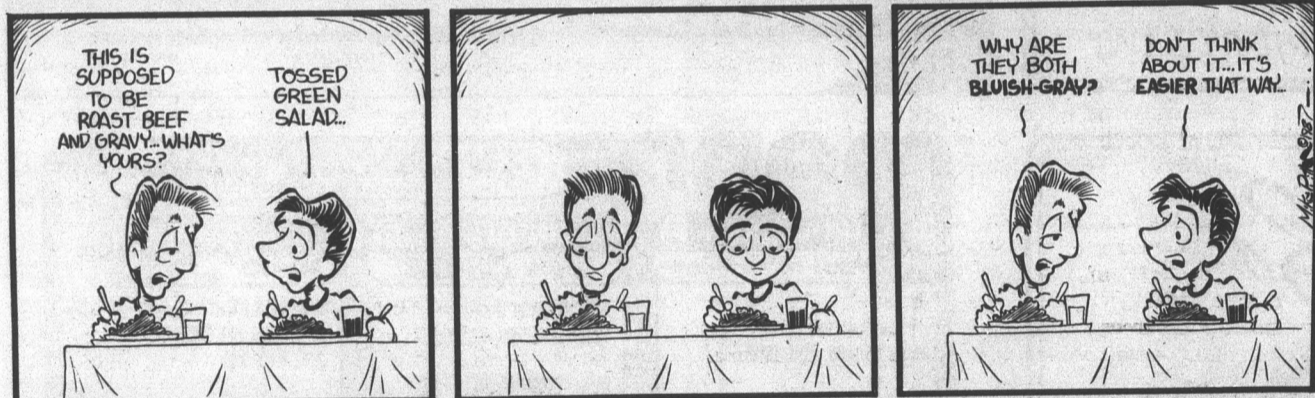
Shoe

by Jeff MacNelly

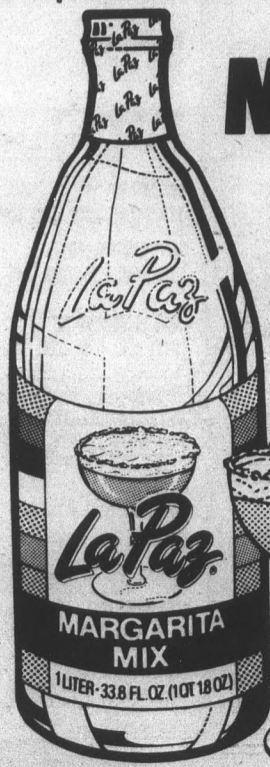


Ivory Towers

by Mike Ritter



Bernie's sense of humor was seldom appreciated among the other bears.



Make a great margarita with La Paz Margarita Mix.

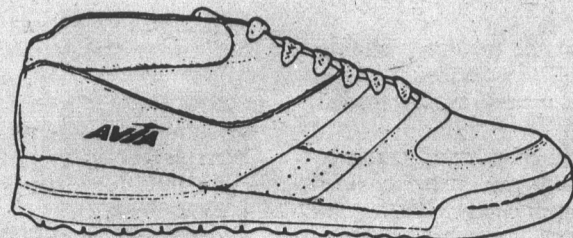
Running Wild

Your Running & Aerobic Center
Cornerstone Plaza
Rural & University, Tempe
966-7575

Ladies'

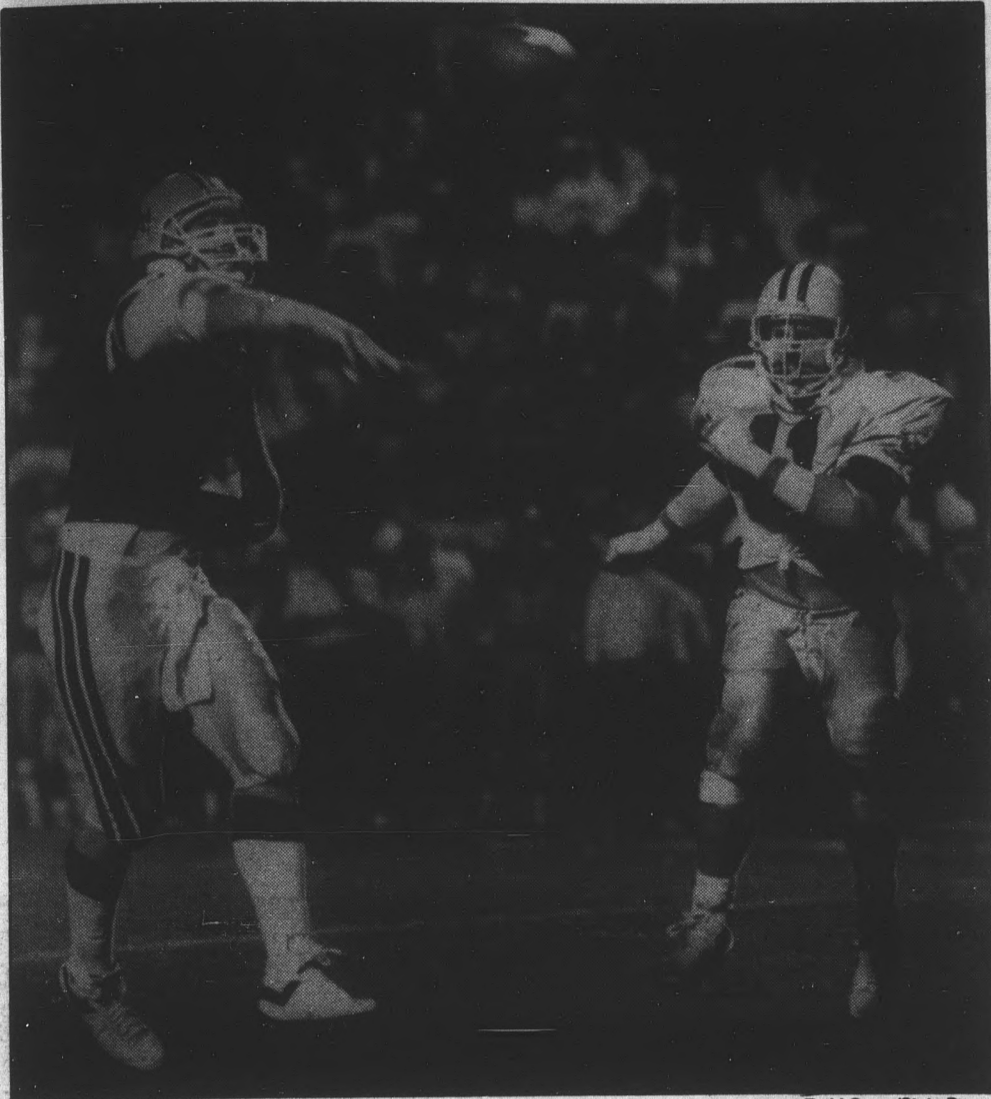


500 Instructor Mid-Cut



\$44.95
(suggested retail \$60)

AVIA IS AEROBICS



ASU quarterback Daniel Ford throws a pass despite pressure from Oregon's Mike Blakey, No. 41, during the Sun Devils' win over the Ducks last weekend. ASU will take on the California Bears Saturday in Berkeley, Calif., at 2 p.m. Arizona time.

Sun Devils to battle Cal; bowl bid hinges on win

By CAROL BOOS
State Press

The Sun Devils take on the California Golden Bears Saturday, the same team the defending Pac-10 Champions shut out 49-0 last year to capture a Rose Bowl berth.

In a repeat performance, this year the Sun Devils (6-3 overall, 3-2 in the Pac-10) again hope to capture a bowl berth with a win over the Golden Bears (2-5, 1-2).

The struggling Golden Bears, under the leadership of new head coach Bruce Snyder, will be fighting to finish the season with a winning record. If the Bears can win their last three games, they would reach that goal and finish in the top five among Pac-10 teams for the first time since 1979.

With two wins, Snyder would be the first California coach since Pappy Waldorf in 1947 to finish with a winning conference record.

As part of this meeting, a smaller-scale battle will take place when ASU punter Mike Schuh and Cal's Scott Tabor meet for the first time. The two punters are both ranked among the league's top three.

Tabor is averaging 46.33 yards per punt, ranking him first in the conference, and has kicked 15 balls inside the opponent's 20-yard line. Schuh, a junior from Mesa, has a 43.4 average, ranking him third in the league behind Doug Robison of Stanford and Tabor. He has placed 21 punts inside the opponents 20-yard line.

Daniel Ford will start for the Devils after having his best game as a Sun Devil last

week, when ASU beat Oregon, 37-13.

Ford completed 15 of 22 passes for 229 yards and one touchdown against the Ducks, and for only the second time this season did not throw an interception. His performance moved him up three spots to seventh place in Pac-10 standings.

Junior John Walker will not make the California trip after missing three days of practice this week, after objecting to the coach's decision to put freshman Paul Justin in during the last minutes of the Oregon matchup.

Flanker Chris Garrett, who saw limited action as quarterback in high school, will be listed as the No. 3 quarterback behind Justin and Ford.

The Golden Bears are lead by sophomore Troy Taylor, who has completed 140 of 251 passes (59 percent) for 1,800 yards and 15 touchdowns. He has had 11 intercepted.

"I'm impressed with their quarterback who has thrown a touchdown pass in every game this year," ASU coach John Cooper said. "He can really throw the football and he doesn't get rattled."

Taylor's favorite targets are senior Brian Bedford and sophomore Mike Ford.

Bedford, who leads the team with 32 receptions for 384 yards and three Touchdowns, spent most of his college career as a quarterback for the Golden Bears before being moved permanently to wide receiver last season.

Ford has 24 receptions for 379 yards and

Turn to FOOTBALL, page 21.

Elite group to run at District 8 cross country championship

By CHARLIE DIAZ
State Press

ASU's women's cross country team competes in the NCAA District VIII Championships at Fresno State University Saturday, but only two members of the men's team will run as individuals.

ASU will not compete as a team in the men's division, coach Ken Lehman said. Jeff Smith and Chris Webb will run as individuals for ASU.

"To be realistic, the men are very young and their chances of qualifying are slim," Lehman said. "I think Chris has earned this."

The district championships qualify teams and individuals for the NCAA Championships at Charlottesville, Va., Nov. 23. The top men's and women's teams from the district automatically advance to the NCAA Championships, but a second team should also qualify as an at-large selection, Lehman said.

The top three individuals (not from the same team) also qualify.

Twenty-eight men's and 26 women's teams are expected for this year's district championship meet.

The Sun Devils placed sixth in the women's race and

seventh in the men's competition last year.

The Sun Devil women's team has consistently progressed this season, but the men's team has had its ups and downs.

Bad luck is one factor in the men's inconsistency.

The Sun Devil men were last in the Nov. 2 Pacific-10 Cross Country Championships after several members of the men's team came down with upset stomachs.

The ASU men were fifth in last year's Pac-10s.

Experience and strength are also factors in Sun Devil problems.

Of the top men's runners, only Jeff Smith is a senior. He is also the Sun Devils' top runner. Many are underclassmen with little or no previous collegiate competition.

Also, the younger runners must adjust to the longer college courses. High schools run 5,000 meters for both boys and girls. College races range from 8,000 to 10,000 meters.

Lehman said that all things considered, however, the season was ended in what he considered a positive way. The members of the men's team that will not go to Fresno ran in the Homecoming 8K and ran well, he said.

"I felt we had a pretty good year," he said. "The Pac-10s were pretty disastrous but we think we have a good base and if we can build on that we should have a pretty good future."

But while the men's team has had its troubles, the women's team steadily has made strides.

As Oregon ran away with the top three individual places and the team title, the Sun Devil women's team improved on last season's fifth-place finish.

Like they have all season, Laura LaMena, Dawn Arrigoni and Kim Mathews paced the ASU women's team to a fourth-place tie with host Stanford.

Donna Jean Pierantozzi and Kathy Jarvis have solidified the Nos. 4 and 5 scoring positions, while Monica Marquez and Kim McKay rounded out a capable top seven.

Lehman said only LaMena, Arrigoni, Mathews, Pierantozzi and Jarvis will travel to Fresno due to injuries, but the Sun Devils will meet the minimum team requirement of five runners.

ASU must contend with Oregon, UCLA and Cal-Irvine. But Lehman is confident that his five runners can compete with the seven runners other teams will use.

"Those five have been running pretty good," he said. "It's going to be tough."

"We're going to have to run very well as a team to qualify. You just have to try to convince them they're as good as anyone else and on any given day they can beat anybody."

Spikers to play host to Bay Area schools, fight for playoffs

By JOAN MCKENNA
State Press

Procrastination plagues all phases of campus life. Its latest victim is the ASU volleyball team, which has seven matches left in the season to secure an NCAA playoff berth.

"Enough of this average stuff," setter Regina Stahl said. The Sun Devils could remove the suspense with victories over 20th-ranked California at 7:30 p.m. today and third-ranked Stanford at 7:30 p.m. Saturday in the University Activity Center.

The Sun Devils (13-10, 7-7 in the Pac-10) lost 3-0 matches to both conference rivals earlier this season on the West Coast. But ASU has proven to be a different team at home, beating UofA, USC and UCLA in consecutive Pac-10 home matches.

No one seems to be able to explain the schizophrenia. Freshman Mindy Gowell, injured since mid-September, has watched her teammates from the bench and said the poorer matches follow a progression.

"It's usually caused by a few mistakes in a row," she said. "At that point it looks like everybody freezes up."

"They'll make another mistake instead of aggressively playing to make a point."

But Gowell said the same thing happens to all teams and winning is often a matter of getting the jump on the opponent. The Sun Devils seem to agree that intensity is the key. But ASU coach Debbie Brown said her role to fire up the players is limited.

"I think I can fire them up by preparing them and having their confidence up," she said. "But it's up to them to play with emotion and intensity."

ASU has defeated Stanford only twice in 14 matches. The last time the Sun Devils beat the Cardinal was in 1985, when the Cardinal was No. 1 in the nation.

Brown said Stanford (21-4, 13-1) has good leadership from its seniors and ASU hopes to neutralize them while keying on the younger players.

Middle blocker Dawn Meidinger, leading ASU with 84 total blocks, said the Sun Devils should have two advantages.

"We play at home," she said. "And Stanford may overlook us."

ASU will start its regular lineup, including injured offensive leader Sue Nord (.323).

Nord said the swelling has gone down in her sprained ankle. But she said beating California in three games would save it wear and tear.

Brown said California (16-11, 10-4) is the team's only concern right now.

"We need to take it a game at a time," she said. ASU carries a two-win streak into the weekend after a 3-0 victory over Mesa Community College Tuesday night.

ASU's matches with junior colleges are supposed to be for practice, but ASU hitter Christy Nore found Tuesday's match to be a mental challenge.

Nore played against sister Tracy, the Thunderbirds' setter, in the first time the two have faced each other on the collegiate level.

Christy said she played with mixed emotions. "Somebody stuffed the ball on her (Tracy), and I felt like, 'Guys, don't do that.'"

The rotation accidentally worked out so that the Nores were blocking each other at the net. Christy said her sister made

some good plays.

"She's a right front hitter, but she's also their setter, so she knows how to dump (the ball)," she said. "She dumped some on me."

The Sun Devil said the two get along well and she was glad neither played poorly.

No statistics are kept on unrecorded matches with junior colleges, so the Nores will be spared performance comparison.

weekend ASU sports

TENNIS — The women's tennis team continues competition in the Ed Doty Invitational today through Sunday at Santa Barbara, Calif.

VOLLEYBALL — The ASU volleyball team continues its quest for a playoff berth as it plays host to California at 7:30 p.m. today and Stanford at 7:30 p.m. Saturday at the Activity Center.

SWIMMING — The women's swim team travels to Flagstaff to compete against Northern Arizona at 3 p.m. today.

WRESTLING — The Sun Devil wrestlers participate in the annual intrasquad wrestle-off at 10 a.m. Saturday in the Sun Devil Gym.

RUGBY — The ASU rugby club plays a league match against the Tempe Old Devils B squad at 1 p.m. Saturday at Saguro Field.

FOOTBALL — The Sun Devils will attempt to gain a bowl berth as the team travels to Berkeley, Calif., to battle the California Golden Bears at 2 p.m. Arizona time Saturday.

CROSS COUNTRY — The ASU cross country teams compete in the District VIII championships Saturday at Fresno, Calif.

ARIZONA STATE vs. CALIFORNIA

Date and Time: Saturday, November 14 at 1 p.m. (2 p.m. Arizona time)
 Site: Memorial Stadium, Berkeley, Calif.
 Coaches: John Cooper (81-39-1 overall, 24-8-1 ASU) Bruce Snyder (41-42-2 overall, 2-5-1 Cal)
 Weather: Fair skies, temperatures in the mid-60s.
 Attendance: Crowd of 40,000 expected.
 Television: KTVK-TV (Channel 3) will televise on tape delay at 5 p.m.
 Radio: KTAR (620 AM) and KASR (580 AM) will broadcast live.

ASU Offense

- 84 Aaron Cox — Split End
- 64 Fedel Underwood — Quick Tackle
- 62 Randall McDaniel — Quick Guard
- 53 Steve Spurling — Center
- 65 Todd Kalis — Strong Guard
- 66 Scott Kirby — Strong Tackle
- 86 Scott Veach OR
- 91 Gary Knudson — Tight End
- 7 Daniel Ford — Quarterback
- 44 Channing Williams — Fullback
- 12 Darryl Harris — Tailback
- 17 Tony Johnson — Flanker

ASU Defense

- 93 Trace Armstrong — Defensive End
- 96 Saute Sapolu — Nose Guard
- 97 Shawn Patterson — Defensive Tackle
- 51 Pat Taylor — Defensive End
- 21 Rodney Dillard — Devil Back
- 36 Greg Clark — Inside Linebacker
- 57 Stacy Harvey — Inside Linebacker
- 26 Robby Boyd — Strong Safety
- 25 Eric Allen — Cornerback
- 39 Eric Crawford — Cornerback
- 48 Jeff Mahlstedt — Free Safety

ASU Specialists

- 6 Mike Schuh — Punter
- 8 Alan Zendejas — Kicker

California Offense

- 83 Michael Smith — Wide Receiver
- 78 Stu McElderry — Left Tackle
- 50 Kam King — Left Guard
- 59 Robert Dos Remedios — Center
- 69 Tony Smith — Right Guard
- 75 Dave Zawatson — Right Tackle
- 88 Darryl Ingram — Tight End
- 82 Brian Bedford — Slotback
- 2 Michael Ford — Wide Receiver
- 11 Troy Taylor — Quarterback
- 48 Todd Powers — Fullback
- 28 Chris Richards — Halfback

California Defense

- 49 Ken Harvey — Outside Linebacker
- 99 Joel Dickson — Right Tackle
- 77 Majett Whiteside — Nose Guard
- 90 Joe Nelms — Left Tackle
- 95 DeWayne Odom — Outside Linebacker
- 40 David Ortega — Inside Linebacker
- 30 Steve Hendrickson — Inside Linebacker
- 1 John Hardy — Cornerback
- 21 Travis Oliver — Cornerback
- 5 Darryl Stallworth — Strong Safety
- 26 Jeff Ebert — Free Safety

California Specialists

- 8 Scott Tabor — Punter
- 10 Robbie Keen — Kicker

Hermosa Place

CONDOMINIUMS

The intelligent approach . . .

Tired of renting, commuting or student housing? Come home to Hermosa Place Condominiums. These 2 or 3 bedroom condos feature all the convenience of walking to campus and the fun of campus living with quality features.

For what you pay in rent, move up and improve your lifestyle! We can show you how—you can't afford not to profit!

From the 60's

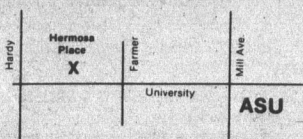
Sales By:



Merrill Lynch
Realty



510 West University, Tempe
Model Phone: 968-7173



PAYMENTS LESS THAN RENT!
See our sales associates for details!

MOUTH-WATERING BARGAINS.

Big Mac® sandwich, large order of fries and medium size Coca-Cola®. Why, it's enough to make your mouth water. So if today's prices make you lose your appetite, come in and find it again.

IT'S A GOOD TIME FOR THE GREAT TASTE.



\$2.69



1031 E. Apache Blvd.
Tempe
(Just east of Rural)

Football

Continued from page 19.

three touchdowns.

But the receivers will be facing two veterans in the Sun Devil defensive backfield after strong safety Robby Boyd's return last week.

Senior cornerback Eric Allen continues to hold second place in the conference for most interceptions (6). UA's Chuck Cecil is first with eight interceptions.

In the Cal backfield is Chris Richards, who has carried the football 116 times for 507

yards (4.4 yards per carry) and five touchdowns.

Snyder said without the junior tailback the team is really one-dimensional.

"Chris Richards is one of the best running backs in the league," Cooper said. Richards is ranked fourth in the league behind ASU's Darryl Harris, who has carried 162 times for 735 yards (4.5) and seven touchdowns.

Defensively, the Golden Bears are lead by David Ortega. The sophomore inside linebacker leads the Golden Bears with 95 tackles (52 unassisted).

"On defense I'm concerned about being able to keep their outside linebacker Ken Harvey (senior) out of our offensive backfield," Cooper said. "He's a good ballplayer."

If California's defense is able to hold the Sun Devils, Alan Zendejas will be ready. The sophomore placekicker has successfully kicked eight straight field goals for the Sun Devils and 22 of 22 extra-point conversions.

The injury-plagued Sun Devils lost back-up linebacker freshman Jeff Johnson for the remainder of the season with a knee injury

and junior quick guard Doug Larson will miss this week due to a bruised foot.

In addition, defensive tackle Andre Lacey and cornerback Jimmy Watkins were both suspended from playing by Cooper for academic deficiency.

ASU leads the 12-year-old series, 6-4. The Sun Devils are 4-3 in games at Sun Devil Stadium and 2-1 at Memorial Stadium. The two teams will not meet again until the 1990 season in Tempe.

The game will be televised on KTVK (Channel 3) with kickoff at 2 p.m. Arizona time.

BEAT THE RUSH! State Press Classified Happy Hour 7-9 a.m.
Liner ads brought to Matthews Center 1/2 PRICE

Don't miss the boat
Use State Press
Classifieds
965-6731

Pearl of the Orient
CHINESE RESTAURANT

Fine dining in a delightful atmosphere. Featuring Cantonese, Mandarin, and Szechuan Cuisine. Cocktails & Carry Out.

Both **BUFFET & GOURMET** Available
ALL YOU CAN EAT BUFFET
Lunch \$3²⁵ Dinner \$3⁹⁵
ORDERS TO GO

Bring in this ad and receive one complimentary soft drink with any purchase.
Expires December 1987.

1112 E. APACHE BLVD. • 829-7939
(Next to Tempe Bowl) • TEMPE

OPEN DAILY
11 a.m.-10 p.m.

the **Vine** tavern
at Rural & Apache

\$1 SHOT SPECIAL
ON BOYSENBERRY
KAMAKAZIS

\$1.50
BBQ BEEF

STUDENT DESIGN COMPETITION

NEW CAMPUS ENTRY SIGN

Information available at
Physical Plant Desk
and MU Information.

Submissions due
December 3, 1987.

We're conducting examinations next week. And you can score big with our discounts.

The new IBM[®] Personal System/2[™] Model 25

For once, you're not the one being grilled. During IBM Exam Days, a special demonstration on campus, you can put the new IBM Personal System/2[™] to the test. You'll find the new Model 25 Collegiate is fully prepared for any examination. It comes with a generous 640KB memory, two 3.5" diskette drives and a financial aid package every student can appreciate—a big discount. Plus, you get a mouse and lots of software.

And once the test is over, you can order your Personal System/2 from the on-campus IBM Education Product Coordinator at COMPASS (Computing Assistance Center).

IBM Exam Days
Tues., Nov. 17th thru Fri., Nov. 20th
On the ASU Campus
(9am-4pm)

Win a free Model 25 Collegiate!

Qualified ASU students who attend IBM Exam Days can enter to win a free Model 25 Collegiate. So stop by, check out the PS/2 and the great discounts available through COMPASS. You'll find the graphics are spectacular. So is the value.

*Drawing eligibility limited to qualified ASU students. Personal System/2 is a trademark of IBM Corp.

HARKINS Stereo Theatres 4 Channel Sound
TWILIGHT SHOW \$2.50
SHOW TIME: 6:30 & 9:30

SHE CAME TO AMERICA AND FOUND THE THREE R'S: ROMANCE, REJECTION, AND ROCK 'N ROLL

"A DELICATE COMIC ODDITY. QUIRKY AND CHEERFUL." Bill Roetz, TV 5

"A FUNNY, SURPRISING, ENCHANTING PICTURE, BURSTING WITH HUMANITY." G. Kirgo, CBS-TV

"A MOST CHARMING MOVIE." J. Tallmer, NY POST

LIVING ON TOKYO TIME EXCLUSIVE SHOWING
SPECIAL LIMITED ENGAGEMENT

PHOENIX CRITICS RAVE! FROM THE CREATORS OF "A ROOM WITH A VIEW"

Maurice HURRY ENDS SOON!

LOS ARCOS FIRE THE MADE IN SKI HEAVEN & ICE FILM HEART

KACHINA FATAL ATTRACTION Michael Douglas Glenn Close

Baby Boom! DIANE KEATON **RUSSKIES**

SHELLEY LONG **HELLO AGAIN** **INDING OUT** **DEATH WISH 4**

THOMAS MALL **HELLO AGAIN** **FATAL ATTRACTION** Michael Douglas

TUESDAY IS \$2.50 DAY! EXCEPT FATAL ATTRACTION

STATE PRESS CLASSIFIEDS

965-6731
Matthews Center
Basement

Liner Ad Rates:
15 words or less,
\$2.75/day, 1-4 days
\$2.50/day, 5-9 days
\$2.40/day, 10 or more days
15¢ each additional word
Deadline:
Noon, one day prior to
publication

**Cash • Check
Visa • Mastercard
(Sorry, no billing)**

The State Press reserves the right to edit or reject any ad deemed objectionable.

Check your ad! The State Press will only be responsible for one incorrect insertion. Errors must be reported before noon the first day your ad appears.

The State Press disclaims all responsibility for quality and prices of goods and services offered in both classified and display advertising by its advertisers.

The STATE PRESS never knowingly accepts deceptive or misleading advertising. Any offer requiring an investment should be thoroughly investigated. If you have a complaint regarding a particular ad, it should be reported in writing to: The Better Business Bureau, 4428 N. 12th St., Phoenix, AZ 85014

tickets for sale

3 STUDENT ASU/U of A tickets. \$20 each or best offer. Call 921-3053.

ASU FOOTBALL tickets, Eddie Murphy, James Taylor, Fleetwood Mac, Atlantic Star, Tina Turner, Kenny G., R.E.M., Kenny Rogers, and others. Great seats; buy, sell, trade. "The Ticket Exchange," 829-0196.

ASU/UofA game. 2 student tickets. Best offer. Call Tobie, 894-0599 (leave message).

EDDIE MURPHY, R.E.M., James Taylor, Def Leppard, Fleetwood Mac, Tina Turner, U2, and Pink Floyd in Los Angeles. ASU football, Phoenix Suns. Best seats and prices. Buy/sell/trade. 277-0077, Murray's Tickets.

miscellaneous for sale

WITH COUPON ONLY
SET OF 5"x7" ENLARGEMENTS OR 2 FOR 1 4"x6" PRINTS
12 exp. \$5
24 exp. \$7 36 exp. \$9
COLORBURST PHOTO
933 E. University No. 108
Next to Kinko's 10 a.m.-6 p.m.

1982 WHITTIER 14x70. 2 bedroom, 1 bath, carport, covered patio, AC/cool. Moving, must sell- \$17,500/offer. 966-8418.

AUCTION- CRAFTS, services, business donations Friday, November 13, 7 p.m. Tempe Co-Op Preschool, College/Alameda, Tempe.

BLACK RUNNING boards for small truck, 4'3/4" long. Almost new. \$50 or best offer. Call Kris or Bob, 482-9287.

CONDOMS BY Mailorder- Guard against AIDS. Top quality German made. FDA approved. Complete confidentiality. 1 dozen, \$8; 3 dozen, \$20. Mail to Pro-Tech, PO box 13376, Denver, CO 80201.

LEATHER: MINI-skirts, \$67; bomber jackets, \$195; back packs, \$59.95; etc. The Leather Works, 844-8422.

NEON LIGHTS, various shapes and colors. \$10-50 each, transformers extra. Leave message, 966-5740.

TRAFFIC LIGHTS, authentic, rewired, reconditioned. Great for room or frat. \$100. 991-5106 after 5.

Shorts make great Arizona Gifts!
ARIZONA SHORTS & SPORTS
Old Town • Tempe

PACHE PAWN
Cash Loans for Guns, Gold Jewelry, VCRs, Stereos, Cameras, etc.
Or Will Buy For Cash
1368 N. Arizona Ave. No. 104
(Across from U-Haul in Chandler)
963-8707

real estate for sale

ASU STUDENTS: Look! Low priced 2 bedroom, 2 bath condo near campus. All appliances. Like new. 10% FHA assumable. Call owner, 962-3210 days; 839-2608 evenings, weekends.

ASU STUDENTS: 2 bedroom, 2 bath condo, all appliances included. Ceiling fans, custom buffet with wine rack, and small yard. Assume FHA loan, no qualify, approximately \$2500 down. Contact Sharon Swift at John Hall Associates, 948-0550, or owner at 967-4457.

real estate for sale

POPULAR FACULTY area, quiet Tempe location. 13 years old, semi-custom, Patterson walled villa in excellent condition. 4 bedroom, 2 bath, 2100-plus square feet. Pool, garage, many upgrades. By owner. 921-7791, (714) 494-8749.

RED SLUMP block, shake roof, 4 bedroom house with pool. Southwest Price/Southern. Great family home. Neighbors want \$156,900 for similar house. This one only \$120,000. Call Mike, Redbird Realty, 345-9400, 839-0146.

REPOS- GOVERNMENT homes for sale. Buy near ASU 40% below market value. Contact Rick Weiner, ERA Carew, 897-9000, 967-7788.

STUDENT, RENTERS, investors: Condo for sale, \$1300 down, \$460 monthly. 2 bedroom, 1 1/2 bath. 967-4001.

apartments for rent

2 BEDROOM, 2 bath condo, unfurnished, carpet, appliances, pool, covered parking. Lease, \$535 month. 510 W. University. Kathy/Jan, 968-7173, 968-6292.

2 OR 3 bedroom apartment, air/heat paid, ASU 1/4 mile, \$300 off with ad. 968-8945.

3 BEDROOM, 2 bath condo. Close to ASU. Pool, covered parking, clean. No pets. \$475 monthly. Marti, 966-0376, 8 a.m.-4:30 p.m.

\$455 PER month, two bedroom, two bath townhouse. Covered parking, washer/dryer. Easy walk to ASU. Call 967-8566, 5 p.m.-9 p.m.

APACHE TERRACE Apartments- 1 and 2 bedroom apartments from \$375. Pool, security, walk to ASU. 968-6383.

BEAUTIFUL NEW large two bedrooms, walk to ASU, pool, laundry, one block south of University on 8th Street and Gary. Ask about move-in specials. 968-5238.

LARGE 1 and 2 bedrooms. \$315-365. Includes heat, hot water, pool, laundry. \$200 off. ASU 3/4 mile. 966-4818, 967-1737. 2108 Rural.

LARGE ONE and two bedrooms. 3/4 mile to ASU. Pool, laundry, bar-b-que. \$310/\$365. \$200 off special. 2108 Rural, 966-4818, 967-1737.

LIVE IN THE LAKES! Rent a two bedroom furnished townhouse for only \$500. Includes washer/dryer, dishwasher, and garage parking. Access to country club with heated pool, racquetball, tennis, etc. Call Karen or Kris, 820-6565. Available January 1st.

RANCHO LAS Palmas Apartments has one and two bedrooms from \$360. Club house, weight room, pool, 2 jacuzzis. 1249 E. Spence, Monday through Saturday, 829-9607.

SPACIOUS 2 bedroom, 2 bath apartments. \$450 month, all utilities included. Walk to ASU, pool, laundry. 910 E. Lemon. Call today, 966-8704.

STUDIO OR 1 bedroom apartment. Pool, tennis courts, covered parking. \$300 off with ad. 833-8332.

STUDIO OR 1 bedroom apartment. Utilities paid. Pool, saunas, weight, recreation, game rooms. 962-6222.

TWO MASTER suites with loft, Papago Park Village. No pets. 1 year lease plus deposit. \$750 month. C-21 All Star Realtors, 831-2221.

UNIVERSITY TOWERS- Sublease and save \$400. Call Valerie immediately, 829-3649.

WALK TO ASU, junior one bedroom, \$265; two bedroom, \$400. Adults, no pets. 1031 E. Lemon. Bel Air Apartments, 968-2679, 933-4364.

WALK TO ASU. Available immediately. 3 bedroom, 2 bath townhouse, 2 years old. Covered parking, 2 covered patios, sundeck. All appliances included. Community pool, tennis. \$750 per month. Call Scott at 949-7253.

THE BEST IN STUDENT LIVING at UNIVERSITY TOWERS
•24-hr security
•video surveillance
•laundry facilities
•pool, jacuzzi
•contemporary decor
•weight area
•private balconies
•covered parking optional
•free utilities, local phone
•monthly activities
•live-in resident advisors
•roommate selection process
Tours Daily
CALL TODAY 894-2300
Need more space?
Ask about our "suite" deal or single solution.
2 blocks from campus
525 S. FOREST TEMPE 85281

homes for rent

2 BEDROOM condo near Thomas and Scottsdale Rd. Appliances included: washer and dryer, etc. No pets. \$490/month. 839-9293.

PAPAGO I, 2 bedroom, 1 1/4 bath, \$650 plus deposit. Available immediately. 303-934-2276 a.m.; 921-1574 p.m.

WALK TO Campus. 2 bedroom house for lease. \$400 per month. 967-4392.

CLASSIFIED ADS do the trick! rental sharing

ASU: SPACIOUS room with large private bath. Reduced to \$195. Call Kevin or Katy, 921-1773.

BEAUTIFUL TEMPE home to share 4 miles south of ASU. Private bedroom, bath, parking, washer, dryer, pool. No pets. Deposit required, \$250 monthly covers all. Call 897-8781.

FEMALE, EXCHANGE p.m. child care for private room with low rent, \$100/monthly. Nadine, 225-9401.

FEMALE ROOMMATE needed- Worthington Place. \$185 per month. Move in immediately. November rent paid. Call Jill, 829-8973.

FEMALE TO share two bedroom, two bath, furnished condo at Worthington Place. Available January 1st. Call Elizabeth, 966-6259.

FEMALE TO share 2 bedroom, 2 bath apartment. Fireplace, covered parking, private patio, pool, jacuzzi. \$245 per month plus 1/2 utilities. 921-7735.

FEMALE TO share home with female. Nonsmoker. Near ASU. \$190 plus 1/2 utilities. 968-3167, 253-1210.

FEMALE to share apartment close to ASU. Discount on first month. Alyson, 966-8933.

HAVE YOUR own bedroom in a condo. Swimming pool, laundry room. \$280/month. Bob, 921-3476.

LARGE, NEW room in house. Close to campus; \$250 plus share of utilities. Also room to share for female; \$150 plus share of utilities. Call Phil at 921-7813.

NONSMOKER ROOMMATE wanted by December 1st. \$175/month and 1/2 utilities. Call after 5 p.m., 820-7810.

QUESTA VIDA condo, 2 bedroom, 2 bath, fireplace, micro, washer, dryer. \$275, 1/2 utilities. Call Chris, 966-4347.

ROOMMATE, NONSMOKER to share 2 bedroom, 2 bath apartment located at Hardy and Baseline, \$240 a month plus utilities. Call Bob days, 971-1041; weekends and nights, 730-1257.

ROOMMATE NEEDED, male or female, to share 3 bedroom, 2 bath condo close to campus, Questa Vida, \$235 plus 1/2 utilities. Call Mike, 966-3674.

YOUR OWN bedroom, bath! Male nonsmoker. \$225, 1/2 utilities. Quiet, pool, cable, more. Chris, 890-2212.

business opportunities

MAKE MONEY with your body. Not that! Selling fitness and aerobic wear. Call Kim at 921-3182.

NEED CASH? Creative advertising concepts presents Fast-Cash, a multi-level-marketing program designed to help you make money faster and easier than thought possible. Call Tim or John at 966-5571.

help wanted

ARBY'S IS looking for day or night help. Flexible hours. Apply 2-5 p.m. 525 W. Broadway.

ARIZONA ROSE is hiring attractive, energetic rose girls, 21 years and older for part-time position. Please call 898-8548.

ATTENTION GREEKS!! National Greek Week vacation promoters wanted. Earn high commission, free Caribbean vacations, airline tickets! Meet people and gain recognition on your campus as a National Greek Week Promoter. Call, toll free, 1-800-525-1638. Ask for Entertainment Tours.

AFTER CLASS HOURS AFTERNOON EXPANSION \$5.50 per hour guaranteed
Dialamerica Marketing, the nation's finest telemarketing firm, is now accepting applications for the following shifts:
2-6 p.m. 6-10:30 p.m. 7-10:30 p.m.
Weekends Also Available
Our salespeople work in a modern, comfortable business environment contacting established customers on long distance lines. Guaranteed salary or commission, whichever is greater, and averages \$5-\$7 an hour.
Our Tempe office is located approximately 5 minutes from campus. Please call Dialamerica Marketing for details.
829-1140

help wanted

ATTENTION ALL students: Ragtime Shoeshine now has openings at the valley's hottest nightclubs and most prestigious hotels. If you're mature and don't need a boss looking over your shoulder while you work, then I have the job for you! Call 947-7022 between 9 a.m.-2 p.m. Monday-Friday.

BABYSITTER WANTED in my home for an infant, Tuesday and Thursday, 8:30-4. 831-6344.

BUFFALO EXCHANGE seeks part-time person with eye for fashion. Will train. Work is with new and recycled clothing. Self motivation a must. Saturdays and Sundays essential. Apply 227 W. University, Tempe, Monday through Saturday, 10-6, Sunday 12-5.

CHILD CARE- light housekeeping. Approximately 2 to 7 p.m., Monday through Friday, at home 1 mile ASU. \$5 per hour. Call 965-4376 (days) or 968-0659 (evenings) to arrange interview.

\$CHRISTMAS MONEY\$ Less than 45 earning days till Christmas. Days and evenings available. \$4-\$8 hourly. Call today, start today! 968-1749.

CLERK MESSENGER, Geotechnical Library, some library research ASU. Car preferred. \$5/hour, 20 hours. 272-6848.

COLLEGE STUDENT, part-time. We need 6 enthusiastic college students to work 4-9 p.m. shift, Monday through Friday, \$5 per hour plus bonus. Call Mr. Rod, 921-2897.

CORAL BAY Main Street Restaurant's exciting new seafood concept is now accepting applications for all positions. Qualified, experienced personnel preferred. Apply in person, 8380 Via de Ventura, Scottsdale.

PARADISE BAR & GRILL NEEDS HOSTESSES AND A.M. PREP COOKS. Come in and apply, 401 S. Mill 829-0606

COSMETIC SALES help wanted part-time, evenings and weekends. Make-up Market, Tower Plaza Mall, 3813 E. Thomas Rd. 225-0095, Deborah.

CRUISE SHIPS now hiring all positions. Both skilled and unskilled. For information call 615-292-6900 ext. H178.

DEVIL BEER is looking for outgoing females to aid in promotions. Evenings, part-time. Minimum age 19. Apply at 415 S. Hayden Rd., Suite 4, 9-5.

EXPERTS NEEDED to present lectures, seminars and training in all business areas. Communications, marketing, sales, budgets, delegation, etc.: All business related subjects. We will market your skills. Call Educational Resources, 230-8337. All inquiries will be answered.

CLASSIFIEDS WORK

EXTRA MONEY is nice, but you can help people too! Donate plasma for up to \$120 per month. First donation in a calendar week \$10, second donation in same calendar week \$20 (Monday-Saturday). New donors receive \$5 bonus on first donation. University Plasma Center, Associated Bioscience of Tempe Inc., 1015 S. Rural Rd., Tempe, AZ. 968-6139. Effective until further notice.

FEMALE MASSEUSE part-time for Tempe private individual. \$15/hour. Reliability more important than experience. Serious calls only. John, 897-7121.

FEMALE/MALE part-time help wanted, evenings and weekends. Minimum wage. University Sporting Goods, 968-7725.

FULL OR part-time delivery/sales driver needed for new beer company. Flexible hours. Apply at 415 S. Hayden Rd., Tempe.

GREAT PART-TIME opportunity! Gain experience, earn money while working on Fortune 500 companies marketing programs on campus! Flexible hours. 1-800-821-1543.

HAB TECH I, 2 positions, work with MR adults. Monday-Friday, 8:30-3 p.m. \$4.50 per hour. 275-7821 ext. 480.

MAKE EXTRA Holiday money in the theatre. Arizona Theatre Company needs fun, energetic, part-time sales representatives. Hourly wage plus commission. Call 234-2892.

help wanted

MODELS/TALENT: Our search never ends! Call the talent scouts at Tondou Studios, 264-3530.

NANNY AND mother's helper permanent full-time and part-time live-out positions. Experience, references, car. Call Kathy, 978-2306 for appointment.

OVERSEAS JOBS, summer, year around. Europe, South America, Australia, Asia. All fields. \$900-2000 month. Sightseeing. Free information. Write IJC, PO Box 52-AZ03, Corona Del Mar, CA 92625.

STUDENTS PART-TIME NEEDED IMMEDIATELY
I am looking for 10 people to assist us with our advertising program
483-2662

PART-TIME DISHWASHER, small kitchen help, weekends. Small Italian restaurant, northeast Phoenix location. Call 952-9188 after 11 a.m.

PART-TIME CASHIER, gas station. Weekends, graveyard. Fill applications at Mobil, Broadway and Mill.

PHOENIX BRANCH of Host, a Marriott company, is looking for qualified individual to fill the position of Office Clerk I. The applicant we hire will be able to work from 8:30 a.m. to 5:30 p.m. daily with Friday and Saturday off and will have PC, 10-key and general clerical experience. Host offers competitive wages and an outstanding benefits package which includes a tuition reimbursement program and a generous meal allowance. Some scheduling flexibility will be considered. If interested, visit our administrative offices located in Terminal 3, west end of level 3, Sky Harbor International Airport, or call Mark at 275-1721.

SALESPERSON: PART-TIME/full-time. Flexible hours! Sell baby and children's furniture in a happy and fun atmosphere. Apply in person, Higgins 4 Babys Only, 817 E. Indian School Road in Phoenix. Call 286-1422 with any questions.

SANDWICH COOKS needed- Days, nights; full, part-time. Immediate openings. Apply in person, Monday through Friday, 3-5 p.m., Swenson's, Price and Baseline, Tempe.

SPARE TIME income; electronics, no experience. Others. For more info, dial 504-641-0091 ext. 1060. Open 7 days.

STARTING \$3.65 hour, all positions, part-time and full-time. Any hours available. Apply in person, Dick's Hamburgers, 855 S. Rural.

TELEMARKETERS NEEDED for commodities firm. No selling. Must be hard worker. Hours flexible. John, 468-0595.

TEMPE MARKET research firm needs telephone interviewers evenings and weekends. Absolutely no sales. \$4 per hour to start. Susan 894-6728.

WALKER RESEARCH. Immediate openings for part-time positions in consumer opinion research. National telephone interviewing, no selling. Evening shift, 3:30 to 9:00; day shift, 8:00 to 2:30. Minimum requirements- 3 weekdays and one weekend shift per week. Apply in person, Monday through Friday, 8:30 to 4 p.m., Personnel office, 4657 S. Lakeshore Drive, Tempe, 831-2971. Male/female, EOE.

BURGER HAVEN
Needs contemporary high energy jazz musicians for HAPPY HOUR entertainment.
APPLY IN PERSON
112 University or
Call Joe at
829-0711

instruction

ENGLISH TUTOR and typist available for composition writing skills, term papers, research papers, reports, resumes. Four years experience. Call 834-1367.

FLIGHT INSTRUCTION. Private and commercial instruction in taildragger airplane. Ted Burson, CFI, 461-1468, 838-3993.

HANG GLIDE! Gently sloping hill just South of Tempe. Safe and exciting. Lessons all day, only \$75. Windsports, 897-7121.

KENPO CHINESE Karate: Self-defense, strength and agility, confidence and control; your first lesson always free. 1733 E. McKellips Road (between Scottsdale Road and Hayden). 1 1/2 mile from ASU. Phone today, 945-1733.

announcements

ACT NOW! Financial aid for college is available. Millions go unclaimed yearly. For details call 1-800-USA-1221, ext. 7523.

FRIENDS- (QUAKER) Meeting- Silent Worship- Sundays, 10-11 a.m. Danforth Chapel Fellowship, 968-3966.

NEWMAN CENTER 3rd Annual Winter Rummage Sale: Saturday, November 14, 8 a.m.-4 p.m. All Saints Catholic Newman Center, 230 E. University, Tempe (corner College and University). Clothing all ages, sweaters galore, household items, toys and books.

autos for sale

1971 CHEVELLE Malibu, 49,000, air, AM-FM cassette. Runs great. Cheap, \$600. Call Jeff, 833-1009.

1979 DATSUN 210, brown, good tires, reliable. Must sell, \$700. 829-0823.

1981 TOYOTA Corolla hatchback. 76,000 miles, auto, air, radio, new tune-up, tires, brakes. \$2750, 835-7233.

1984 BERTONE Fiat X-19, convertible, targa top. 27,500 miles, air, 5-speed, leather interior, white/grey, power windows, California emissions. Must sell, \$4750/offer. 965-4475, 835-7233.

motorcycles for sale

1979 KAWASAKI 750, 22,000 miles. \$500. Peggy, 966-5289 or 1-582-3388.

1980 HONDA Spree, clean, dependable, 100 MPG, \$185. 921-2803.

1985 RIVA 125cc scooter, excellent, very low mileage, dependable, near ASU. Best offer over \$550. Leave message, 921-2803.

1986 HONDA Elite 80, like new. Recently tuned-up and tags expire August, 1988. \$800/offer. Call 967-6243.

1986 HONDA Rebel 250- Excellent condition; only 9300 miles; still under manufacturer's warranty. Black with backrest. \$1000, firm. 952-9319.

RISE SUN Cycles- Better than adequate scooter/cycle parts and service; 1900 N. Hayden Rd., Tempe. 945-6912. Monday- Friday: 9-6, Saturday: 9-4.

furniture for sale

AQUA COUCH and matching chair, \$50 or best offer. 838-4810.

NEW FULL or twin size bed. Stored but never used. \$99. Can deliver. Phone orders accepted. 841-6929.

NEW QUEEN size Ortho box and mattress. Stored, never used. \$149. Can deliver. Phone orders accepted. 841-6929.

USED FURNITURE and antiques. Affordable prices. Top quality. 1310 W. University, Mesa. 890-0776.

tickets for sale

2 ASU/UofA football tickets reserved near UofA fans. Call Scott, 461-3155 night, 220-3323 day.

jewelry

CASH FOR gold and diamonds. Mill Avenue Jewelers, 414 S. Mill, Suite 104, Tempe. 968-5967.

CUSTOM DESIGN and re-mounting. Mill Avenue Jewelers, 414 S. Mill, Suite 104, Tempe. 968-5967.

ROLEX, GUCCI replicas. We have the perpetual movements. High quality. Great Christmas gifts. Brad, 967-2667.

free lost/found

FOUND LADY'S watch. Call and describe. Chuck, 961-7503.

FOUND SMALL German Shepard male, red collar and flea collar in Lot 59. 277-7976.

LOST: BICYCLE lamp outside ECA219. Finders contact Sajjad, phone 967-1646.

LOST! SET of keys with a music note key ring. Lost near Business building on 11/10/87. Needed desperately. Call 967-3964.

LOST! SIBERIAN Husky. White, grey, and black with blue eyes. Named Spirit. Call 967-6282.

miscellaneous

PREGNANT-ADOPTION? If considering adoption, confidential counseling available with caring staff. We may be able to help with housing and medical arrangements. Families available who wish to provide a loving home for a child. Call Southwest Adoption Center, 234-BABY.

on-campus

On-Campus 1908

The Tempe Normal Student, November 13, 1908: Ad- "The J.W. Parry Cash Store just received a complete line of chocolates and marshmallow candies."

ATTENTION UNIVERSITY departments, organizations, and clubs: Need to place a display ad in the State Press? Your campus representative is Jackie Eldridge. Call 965-7572 8 a.m. to 5 p.m. daily.

personals

001 ACK! Thptl Don't forget! Next year is an election year! Vote Bill and Opus or they'll shave your cats!

001 THE previous message was funded by the Bloom County for a Better America Organization.

38015 PHILIP: Love your eyes, your bike, your thighs, your attitude! We really should kiss more often. 36003 Princess.

AEPI ROBERT Kacer! Some may not have lasted through all that we have, but here we are- two days from one whole year together! Scary... I'm glad we're so great together because there's no place I'd rather be that with you. Delta affection-KMH.

AEPI'S: GET psyched for the softball tournament. Your Delta Delta Delta Coaches wish you lots of luck!

AGD ABBY C.: Blue eyes and Chardonnay are the key. You're so special. Hot tub's waiting!

ALPHA PHI Pledge Lauren B.- Clue number one: Your buddy is a 5'6" brunette with brown eyes.

ANDRES, THE time we've spent together has been incredible! Tonight is going to be awesome! Dallas.

APE TIM: Can't wait until tonight! We're gonna have a blast! Love, Suz.

A-PHI'S SUSIE and Lori: Pink elephants, we had none, but awesome float chairman, we had two! Good job!

A-PHI STACEY: Hope your 20th was one you'll never forget cuz I still need you to tell me what happened!! I love ya stacks! Dara.

ATO BIG and Lil Bro's Scott H. and Milo K.- Let's all do something together! Soon! Luv, Your big/lil sis Suzanne.

ATO BIG Bro Bear and Little Bro Kevin: It's time for another family reunion. Let's get together soon. ATO love, Sunny.

ATO CHRIS B.- Thanks. If your thoughts ever change, you know where to find me.

ATO ERRONEOUS Zone: Thanks for that extra boost! Your grateful sister loves ya lots!

ATO GEOFF: We're gonna have one memorable time tonight! Come over starved cause dinner's cooking. Love, Just me Joe.

ATO HEARTS of Omega: You gals are the greatest! I luv ya all! Hearts of Omega hugs, your prez (with the million telephone numbers), Suzanne.

ATO LITTLE Sister Melissa- Git down witch yo bad self! I helped you with a blender. Are you gonna help me with limp? Love, Lynette.

ATO MISSING: About 5'8", brown hair, cast on right foot. Answers to Rob. Reward, call Danielle.

personals

ATO JSP: Ready for Eddie? Dinner is on me, I owe you! AGD love, A.

ATO STEVE Keller: Revenge is sweet with a.m. phone calls! Watch out! Little Sister love.

ATO ZONER "Dude", have fun at the Eddie Murphy concert tonight! Happy Friday the 13th! Love ya! -Lil sis, Luka.

BARTENDER: LUCKY for you I came along. You definitely needed assistance. Anytime you need a partner, let me know. Bartentertoo.

BEAUCH- YOU need a vacation like nobody's business! C'mon! Kills, relaxation, wedding? No V-ball! Sku.

BETA PLEDGES: Good luck to all of you. You guys are awesome! I'll be back in time. Evan A. Porges.

ROBBY BAIN: You made H.C. music bearable! Everything is set, I like you and so do my aunt and uncle. Now all we have to do is keep others out of our business! Kim N.

BRETT AND Aaron: Thanks again for driving me home from Lot 42 last week! Michelle.

BRIAN, I finally did it! I love you so much. Paula.

BUCK: LET me find 100 ways to wish you Happy Birthday! Take off your halo cuz it's gonna be a red hot weekend. Celebration starts immediately (if not sooner). You mean the world to me! Love, Teela.

CADY AND Luka: Who loves you more than Sunny? No one.

CATHY: Friday the 13th Part VII "AEPI at Mountain Shadows." Formal will be great. Let's party all night. Jacuzziing at Tamaron? Ken.

CHRISTINE WILSON: Can't wait to finally have fun! Thanks for being so understanding. You're the best dot ever. WKL, Beth.

CONGRATS MARK Clemen! For surviving mid semester finals week! (This ad is for all those he didn't have time to complain to.) You loved it Mark, we know. Your supporters, Sally and Stephanie.

DAN FORD: Good luck Saturday against Call! Happy belated birthday. Sherry.

D-CHI ROOSTER: What's the meaning of scrambled eggs? Who cares! Get psyched for Alumni day! Initiation is around the corner and down the block past the fruit stand. So chew your food properly! La! La! La!! Big bro Zippy.

DEAR SUSAN, I see your face and sense the grace and feel the magic in your touch. Darwin.

DELTA GAM Kelly H.- The Greek review was wrong, there are just under 30 days left. Noctue.

DELTA SIG Jimbo: Here's to rainy nites! DDS

DENNY- ALMOND Tequila, Pimp and hooker, Halloween Bash, surgeon, bobby pin, friday night, strawberry schnapps, orange gator aid... Who knows, maybe even boondocker? KD Kim. P.S.- Call me on the floor.

FIJI ALUM Steve- "You snooze, you lose." He snoozed... and I lost! KD Kim.

GEORGIA, FORMERLY of Olympic Haircutters, joins Sun Devil Haircutters, located at Forest and University, next to the Warehouse. 966-5462. Hairstyle special, \$10. Good with Georgia or Bob.

H.B.: TONIGHT no trip to C.V. is in store, but you get this little lore. Luckily those sheets were around; heah, what's that sound?! "Is somebody in the shower?" Later I asked you with a flower. "That choice" was easy, you'd nothing to fear. And now, at last, the formal is here. Finally, just a reminder for you, bring your sunglasses, bathing suit too!!!

HEARTS OF Omega "Lavender": Have a great weekend and don't forget to stop at Scotty T's room to get your lil gift! Luv, Lavender"ette" 2!!

HEARTS OF Omega and Moonlighters: We're psyched and ready to rage tonight! Pike little sisters.

JEFF BROWN: Are you still so excited about formal? Hope so! Talk to you soon. Love, Jennifer.

JENNIFER- HAPPY Birthday to you, will you ever get the clue? You're 22 and I'm still crazy over you. Looking forward to Saturday! Love you- Dave.

JESSIE SIMON: I love your articles. Your writing's not bad either. Now I think I know why you read the Personals. Watch out for deza vu. Sign me, Buffalo Beau.

JOHN JAMESON: You were buying a decal Monday and lent me your pen. Thanks. It was a small favor, but I'd like to return it. If interested, answer in the personals.

JON: IT'S been 9 fantastic months, and I love you more and more every day. Can't wait till winter break in my town! I love you, Pam.

JP- TOO bad you have no potential! 1987 Crosswalk Olympic Gold Medal winners. -El.

personals

KAPPA SIG Booze- Wake up! It's over! Congratulations! Thanks for working so hard! Love, Dara.

KAPPA SIGS: Thanks for letting us be part of the 12 year tradition. It was quite an adventure! Love, Alpha Phi's.

KAPPA SIGMA: What are you doing the 14th of November? We were supposed to party, don't you remember? We're feeling second best but we still want your sex! We better get together soon or you'll lose us forever! Hugs and Kisses, Dusti and Sissi.

KAREN GILL! Hope your 21st Birthday was your best one yet!! Love, Michelle.

KAY DEE Sue: You're an awesome big sis! Could we possibly get into anything else together? Happy 22nd, old woman! Love, your lil.

KD CARYN, you're a great little mama and I love you tons and bunches. KD love, Jen.

KD MARY Ondre- You're the number one big sis of the world. I missed you last weekend. Don't leave me again! KD love, Jen.

KD PLEDGES: Have a super sphinx weekend! Get psyched for informall! KD love, Kim F.

KD SUE- Happy Birthday sweetie! I hope you have a great one! Your big sis loves you!

LAMBDA CHI: The sheep are ready for you, my friends, because we all know I week never ends. From P.W.

LAMBDA CHI Mark- Mr. Gopher sends his love even though you smashed the poor little bird with the yellow bill. Relax, will ya? Luv, Jen.

LANCE (WEREWOLF): Danced with you at D.H. on Halloween, would like to dance with you again. Waiting for your reply, Lisa (Vampire in pearls).

LAURA: I want you, I need you, I must have you! A.H.

MARK BRNOVICH: Three months is almost half a year, six months is half a year, nine months is three quarters of the way. Let's celebrate tonight. Love always, Dina.

MARLA KESSLER: February 14th is out 6 month anniversary! Love, Brian.

MEGAN CARPENTER: Why are you so paranoid? No one is going to kill you! Your roomie.

MICHELLE PIKE, you're no longer a teenager, finally hit 20, hope you had a great one. Happy Belated Birthday. Love ya, Barb.

MY THANKS to everyone at Sahuarro Hall, especially the C-2 outing club (Al, Rikk, Rob, Todd) for making my 18th unforgettable! You guys are the greatest! Still love ya, Diann! Ty.

PAM AND Carolyn- Have a wonderful tim in CA! I'm going to miss you! KD love, Lisa. P.S. Bring me home a treat!

PI-PHI CONGRATULATIONS to new execs: Katy Jansen, President; Cathy Zafer, Rush Chairman; Amy Anspach, V.P. Moral; Deborah Primrose, Membership; Marge Ellis, V.P. Mental; LeeAnne Johnson, Housemanager; Karen Koerper, V.P. Social; Sheridan Boone, Panhell; Miki Clark, Social Chairman; Jennifer Stern, Philanthropy; Jill Mozer, Treasurer; Sarah Steffan, Asst. Treasurer; Jane Aulozzi, Corresponding Secretary; Maggie Applebe, Recording Secretary.

PI PHI Thanks to old exec. You did a great job! Love, Susan.

PI-PHI Thanks seniors for a great new tradition! Senior walk-out was a blast! Love, Pi-Phis.

PRECIOUS: THE days have grown longer and the nights lonelier since we've been apart. I miss you so much. Angel.

PSE NEW Actives: I'm so proud of you guys! Congrats!! Thanks again for the beautiful bracelet! You definitely are people I will want to remember. Fraternal-ly, "Mom."

PUNK'N: Just wanted to say "I love you and look for clues next week." Ur-Hun-E.

personals

SAMMY DUDES: Get ready to roll- and ready to rock. We're having a formal, the D-Chi's are not! Love, the pink chick.

SCENE ONE- Take One- "Killer scene party" with the lil sisters and men of Sigma Chi, Pikes, Phi Sigs, and ATO's with their lil sisters: Hearts of Omega. Tonight's the night!! This production is going to be an Academy Award winner!!

SCRAPPY-DOO: It's only a weekend! "Ladies Legit" must be reunited! I'll be back Sunday, so be ready! Grr! All my love, Tiger.

SHEILA DAWN: Thanks for a wonderful birthday! I did enjoy dinner and all. Thanks for a special time, you're a special girl. I'm looking forward to returning the favor. Love, Steve.

SIG CHI Scott: Friday was interesting, to say the least. Thanks again, Casey.

SIG EP 825- What a heartbreaker tonight is going to be. Tonight's our night. Ph-ph forever- Your G.

SIG EP Dr. Livingston- Give up the safari and come ride the open range. Do you want to be a cowboy? How about a barndance Nov. 21? Let me know... E.

SIGMA ALPHA Mu: Yo dudes! Dance tomorrow, be there or else!

SIGMA CHI Adrian Panther: Kelly Johnson wants her t-shirt from last semester. Call Jennifer at 965-6731.

SIGMA CHIS, Pikes and PhiSigs: We're gonna rage at Lil Sis Movie night! ATO little sisters.

SIGMA CHI John Engstrom: Have a great birthday weekend in California! Your son.

SIGMA NU'S: Blackfoot-Whitefoot, it's the news on campus. Thanks for a great week. The ATO's.

SIGMA NU Tom Dorn: Congratulations on your coronation as Homecoming King. The brothers of ATO.

SIGMA PI Andy: Get ready to warm some biscuits! We're going to have a groovy time Friday night! Love, your bud B.V.D.

SIGMA PI and Tri Deltis: Fantastic float guys and gals. Congratulations and thanks from Walked-out Deltis. Jim.

SIGMA PI Beatnik: Glad to have you as my big bro. Rock on! Your lil bro.

SIGMA PI John McGinley: You're the best, and I just wanted you to know. I love you! Kathy.

SIGMA PI: The time is drawing near! DDD softball is almost here! Delta love, your coaches.

SKY BLUE I: Who are you? Can't wait to find out. Sky Blue II.

SNOOZE: SINCE we're practically twins (a matched set), would he give me a ring, too?

SNUGGLY BUGGLY: You're the best and I love you Honey! Love, Giggly Wiggly and stuff!

SPARKER BETH: Now are we sad? What a fantastic section and editor. Greeks were awesome!

SPEEDIE, HEY Les! Hope you are hangin in there. Always on my mind! Love, you know who!

THETA CHI pledges: Congratulations on your social! Keep up the good work! The brothers of Theta Chi.

THETA SANDY Chaney: Your dot is so proud of you. Congratulations Fiesta Bowl Queen! I luv U! Lisa.

THETA SANDY Chaney- Congratulations on winning Fiesta Bowl Queen!! We are so proud of you!!!

TKE AJ: Congratulations on being the fastest runner in intramural cross-country B-division. You did great!!!

TKE A.M.S': We're proud to carry their baskets this week. One week to activation.

TODD- HEY sweetie! I can't wait for tonight! Let's hope we don't get lost on the way. KD love, Lisa.

TO EVERYONE (Tbear and Reckless): The key? It's either b-flat or your friendship. Muchos gracias. Happy B-day Big Guy! L.

TO MY ATO Bros- John, J.R., and Brian: I love you guys! Sheri.

TRACI: CAN'T wait to "Rock around the clock" with you at the Sammy SockHop. Luv, Sam.

TRI DELTA Laura Kaye: I wish I were there to help you celebrate your birthday! Have a super day!! Delta love, Kim.

TRI DELT Dinner Crew: You're no Colonel Sanders, but you can undercook our veggies anytime. Thanx for dinner. DTD Mark and Jim.

TRI-DELT ELLEN Ingman: Congrats on Panhellenic Treasurer. I'm sooo proud! Delta luv, your lil sis.

TRI SIGMA Tina: I'm so happy you're my mom. You are so awesome! I love you bunches! Your dot.

personals

TRI DELT, who was helping me serve beer Saturday night at the Lambda Chi Alpha Homecoming party: What happened??? The Bartender.

TRIXY: I have 2 E.M. tickets that are on fire! Interested? Let me know, Hollywood.

VICKI: SOON we'll take our frustrations out on cows! Hang in there. Love, Lummy.

WAKA MARTENS: Sorry about the excuses. Are you free this weekend? Your little brother.

services

HAVE UNWANTED facial or body hair removed permanently by electrolysis. Free consultation, located in Tempe. Call Sharon at Desert Electrolysis Center, 829-7829.

I'LL CALCULATE your personal horoscope and provide a detailed written report of what your stars say about your love life, your career, and much more. Each page is about your unique horoscope. The charts are computer accurate with interpretations based on years of astrological consultation- Just \$9.95. Send date, place of birth, and time (if known) to: Celestial Helpers, 8485 E. McDonald Dr., Suite 344, Scottsdale, 85253.

LIBRARY RESEARCH! I research class papers, hard to find information, and other projects. Call Steve, 967-3230, leave message.

PERSONAL COMPUTER tutoring in Lotus 1,2,3, D-base III, etc. Resume writing assistance. Reasonable student rates. Diane, 971-0536.



2 1/2¢ COPIES EVERY SUNDAY NOON-6 PM 2 LOCATIONS
215 E. 7th St.
(Next to Barb's Darkroom)
968-0799
1035 E. Lemon (at Terrace)
967-1651
Your full service printer

transportation

ATTENTION: FREE cars to all major cities. 21 or older. Call AAA Driveaway, 277-9979.

CARS AVAILABLE - 21 or older. All States Drive-away, 992-5200.

travel

AIRLINE AWARDS buying coupons, miles, bump tickets. Top prices. Also selling, savings worldwide. Arthur, 968-7283.

AIRLINE COUPONS wanted: United Bonus tickets; Western Extra; others. Up to \$350 each. 800-255-4060.

AIRLINE TICKET for sale. Reduced rate. Phoenix to Minneapolis, December 19, 11:40 departure. Call Elizabeth, 784-0818.

ATLANTA/AUGUSTA, November 24-30. Roundtrip air, coach class, \$288. Call Fred, 941-5701.

CHEAP ROUND-TRIP ticket to Chicago over Thanksgiving. Leave November 25, return November 29. Call 784-8076.

ROUND-TRIP ticket to Minneapolis: depart November 25, return November 29. \$138. 827-9565, 833-5555 ext. 7102.

THANKSGIVING WEEKEND- Roundtrip ticket to Oakland available. Call weekdays after 6 p.m., anytime weekends, 966-2352.

typing/word processing

\$1.25 DOUBLE spaced page. A-1 letter quality word processing. 32 years experience. Marian, 839-4269.

typing/word processing

\$1.50 DOUBLE-SPACED page. Spelling, grammar, punctuation, bibliographies corrected. Professional editing. APA, MLA styles. Fast, accurate. Evenings/weekends 966-5217.

\$1.50 PAGE for prompt, quality work. Term papers. Call now! Sesame Street Word Processing, 839-3626.

\$1.50 PER page. Any Type Word Processing. Spelling and grammar corrected. Some graphics available. Call Debbie, 961-1495.

\$1 PER page. Will correct grammar and spelling. 4-color printing and graphics. 838-1150.

AAA TYPING/word processing. \$1.50/page. 10 years experience. Fast turnaround. Call Linda, 962-8075.

A-ONE Proficient typing. IBM Selectric. Loraine, 833-8365, at University and Dobson in Mesa.

CALL ME for fast, accurate, quality service at competitive prices. Close to ASU. 966-2186.

DEGREED PHD information specialist. Faculty, advanced student projects professionally guided to completion. Word processing, 256-2830.

EXPERIENCED TYPIST. IBM Selectric. Theses, dissertations, term papers. Style and spelling corrected. Kathy, 830-8783.

FLYING FINGERS Word Processing and Resume Service. McDowell/Scottsdale Road area. 945-1500.

FORMER ASU staffers- Word Perfect and Xerox memory writers. Experienced with APA, MLA, graduate school, etc.- graduate students and faculty work welcome. 945-6302, Donna and Joan.

ON CALL- Letter quality documents by professional legal word processor. Guaranteed typo free. Lisa, 990-2958.

PROFESSIONAL WORD processing, evenings/weekends. Near ASU. Student discount. 24-hour turnaround. Call Carol, 967-8342.

QUALITY, QUICK Typing. Papers, reports, resumes. Pick-up/delivery available. One day service available. Ginny, 956-5163.

RESUMES, TERM papers, reports, legal and business documents, editing, general secretary, and notary service. 990-9341.

SHORT OF TIME? I can help. Reasonable. Professional. Guaranteed. Experienced in academic. Call Jessie 945-5744.

THE PAPERWORKS- Thesis, report and resume typing. IBM compatible word processing. Near ASU. 921-9575.

THESIS, TERM papers, resumes, etc. \$1.50 per page. Pickup and delivery free with 30 pages or more. Call Cathy, 962-5825.

TYPING, \$1 per page. Pickup/delivery Monday and Friday. 732-9385.

TYPING: ALL kinds. Electric typewriter, reasonable rates, pickup and delivery available. Please call 844-2367.

WORD PROCESSING, resumes, and typing. Call Uni-Print, 967-1651.

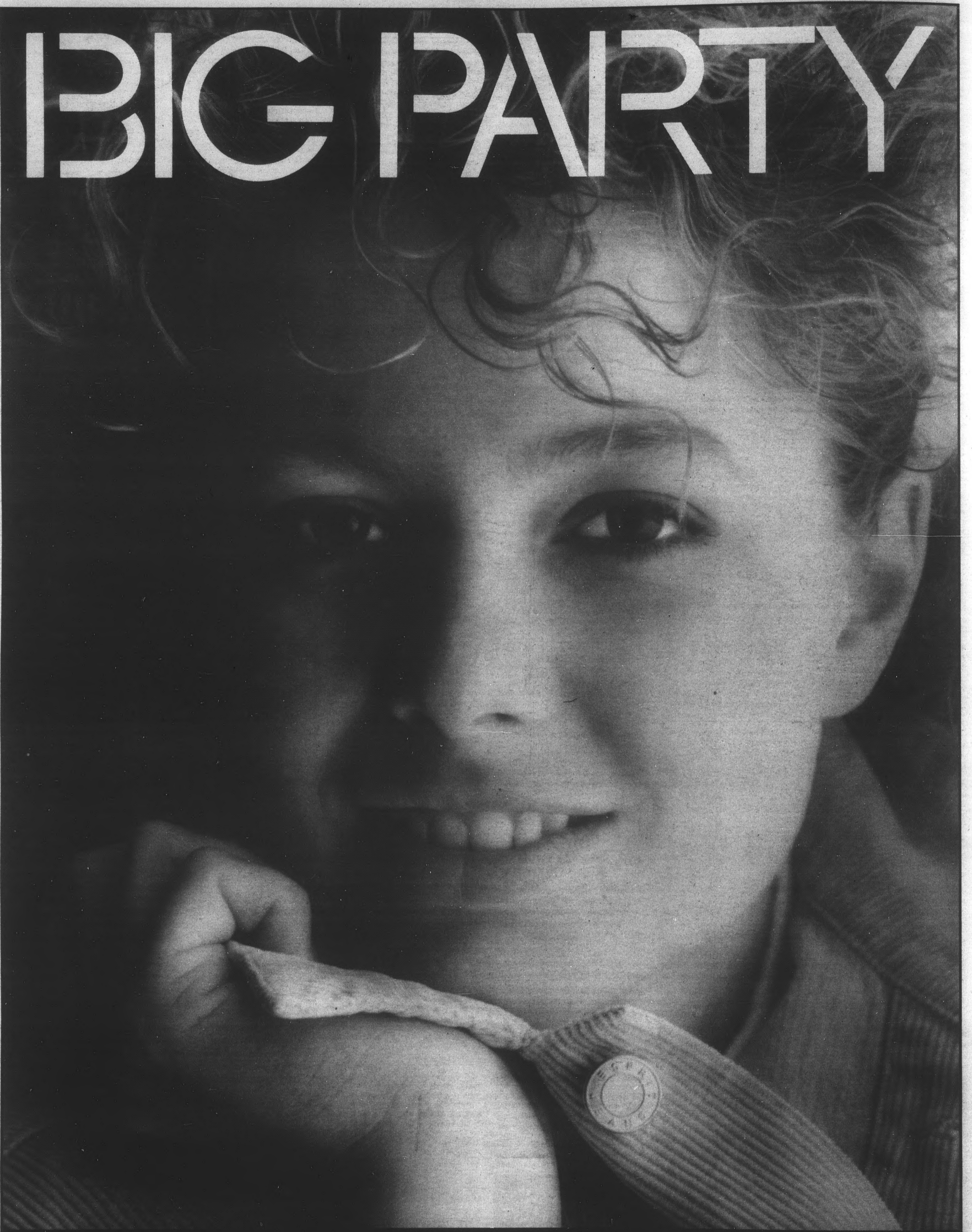
WORD PROCESSING, secretarial services. 23 years experience. Student discount. SW corner, Miller and Chaparral. 994-8145.

WORD PROCESSING- Thesis, dissertations, manuscripts, resumes, and term papers. Will do graphs and charts. 24 hour turnaround. Pick-up/delivery available. Barb, 759-0636.

TYPING SERVICE/WORD PROCESSING STUDENT DISCOUNT
•RESUMES
•MKT RESEARCH PAPERS
•TERM PAPERS, ETC.
967-3918
1600 W. BROADWAY, SUITE 100

wanted

BIG PARTY



ESPRIT

An Esprit Celebration! In honor of our one year anniversary, please join us for hors d'oeuvres and a prize drawing November 13th-15th. The Esprit Store, Hayden Square, Tempe. Also visit Esprit at: Biltmore Fashion Park, Phoenix.