

FIJIs issue statement to contest 2-year ban

By SCOTT LUCK
State Press

A Phi Gamma Delta statement contesting the University's two-year FIJI ban, cites a lack of opportunity for FIJI response to specific written allegations that were "embellished, distorted and in some cases, false."

"We were only aware of general infractions until our sentence was announced," the statement, released Friday from the FIJI graduate chapter, says. "At that time we were first able to see the specific allegations in writing. Current members were never given the opportunity to answer any specific written allegations."

The Office of Student Life, which mandated that the FIJIs be expelled from campus for two years beginning Dec. 19, will make no further comment on the case before it is heard by the University Hearing Board, Assistant Dean Art Carter said.

"There's been poor communication with the University concerning the whole incident," said a graduate spokesman, who is a member of the FIJI Board of Control and who asked not to be identified by name.

The spokesman, in a Phoenix meeting Friday, said the chapter has "suffered enough" from "turmoil" that has surrounded the fraternity during the past year.

"I really think the chapter's suffered enough," he said. "These guys have been brutalized and oppressed."

ASU Police have investigated reports of harassing phone calls at the FIJI house.

"Severe restrictions" were implemented in spring 1987 by the graduate FIJI supervising board to regulate the ASU FIJI chapter, the spokesman, who also is an alumni adviser, said.

The formal FIJI statement says the restrictions were issued, under the supervision of the national fraternity,

because, "It was evident to the local alumnae (sic) and the national headquarters there were severe violations of both fraternity and University policy."

The measures restricted the number of parties and pledges, immediately expelled members engaged in physical altercations or vandalizing fraternity or University property and required a minimum amount of time spent on social service projects.

Other measures prohibited spending chapter money on alcohol and using controlled substances (drugs). All members were required to sign a document stating they would not break any of the regulations, the spokesman said.

There were 13 allegations listed on Dean of Student Life Leon Shell's report of FIJI hazing violations, including instances of physical and mental abuse.

Specific allegations involved instances of forced vomiting, restricted food and sleep and paddling, which one former member called the "most pain I've ever gone through." Jewish pledges were allegedly forced to yell "six million" — the number of Jews killed in Nazi Germany — and "I should have been one of them, sir."

The spokesman said the fraternity is "innocent until proven guilty." He and Shell would not confirm which of "several" allegations the FIJIs admitted to in a closed conference.

The FIJI spokesman, a former house president, said the fraternity traditionally has not made pledges "do anything they found objectionable." He said the "pledge program process is for pledges to learn the

The *State Press* obtained official ASU FIJI house minutes that mentioned "Hell Week" and "line-up" activity as early as 1965.

Oct. 5, 1970, minutes state: "There will be no harassing of pledges, physically or

Turn to FIJI, page 5.



AP laser photo/courtesy of the Mesa Tribune

Memorial

President Reagan and wife Nancy leave a memorial service in held in Phoenix Saturday for Nancy's mother, Edith Davis, who died Monday at age 91. The president addressed about 220 mourners at St. Thomas the Apostle Roman Catholic Church, eulogizing his mother-in-law as one who "gave wit and charm and kindness throughout all her life." The Reagans returned to the White House Sunday.

Education college to address student complaints

By KELLY PEARCE
State Press

A high-level meeting likely will be held today to address the concerns of College of Education students that culminated in an angry confrontation Friday between students and a college representative.

Mark Reeves, a senior education major, spearheaded a gripe session with 30 undergraduate education students in Payne Hall to air complaints of poor advisement and an overload of classwork. Acting Associate Dean Lyndon Searfoss represented the College of Education administration.

Dean Gladys Johnston was in Los Angeles on business. Reeves said education classes are "trivial and repetitive, the grades are overly subjective and the material being taught is superfluous."

"In essence, we are not being taught anything practical that we may use in our field," he said.

Searfoss said the confrontation was "music to my ears." "I am pleased there are people who care. There was not a single person in that room that doesn't care," Searfoss said,

adding he will call a meeting of administrators and faculty to work out the complaints. "There was not a single thing they talked about that can't be dealt with."

Searfoss agreed with the irate students that communication is lacking in the college's advisement center and in the classrooms.

"Communication between students, faculty and administration is not there," he said.

As students nodded their heads, Searfoss told the group he will begin a bi-weekly newsletter starting in 10 days informing students of what is going on with the college.

Searfoss said students "walk around frustrated" and do not let the administration know of their complaints. "I don't get enough letters."

Reeves countered, "You've got some now." Later in the discussion, Reeves presented Searfoss with a list of 150 student signatures and comments.

Searfoss said the size of the freshman education class, which exceeds 400, is one reason why advisers and counselors in the college are having problems accommodating students and answering questions.

"Our staff (advising) is grossly understaffed and their salaries are atrocious," he said.

Searfoss said the college is setting up an over-the-counter system of answering student questions and scheduling advising appointments.

"This will relieve us of some of our problems, but it won't help the small staff," he said.

He said the college has hired an adviser and is looking for two more.

Reeves said the advisement problem was "the straw that broke the camel's back."

More practical and hands-on experience in the college is needed, Reeves said.

Junior Kris Vrentas, an elementary education major, said with demanding classes and outside work, students are losing sight of their perspectives.

"We're not seeing the whole picture, but only seeing piece by piece," she said. "We're not learning anything."

Next year, the college will hire six additional teachers, the largest number hired in the college's history, Searfoss said.

Turn to EDUCATION, page 6.

Regents recommend \$82 in-state tuition hike

By DANA LEONARD
State Press

The state Board of Regents finance committee has rejected a lower tuition proposal by the Arizona Students Association and opted to recommend an \$82 tuition hike for in-state students in 1988-89, almost a 7 percent jump from this year's level.

ASA members, meeting with regents and administrators in Tucson Friday, said students should keep paying 20 percent of their cost of education, which is estimated to become about \$6,238 per student next year. But the committee voted 2-1 in favor of the university presidents' idea to charge 20.5 percent of the cost.

If the full tuition plan is approved by the board at its Dec. 4 meeting in Tucson, in-state tuition at

ASU, UofA and NAU will rise to \$1,278. Out-of-state tuition at ASU and UofA would increase about 5 percent to \$4,866, \$238 more than this year.

The Council of Presidents — made up of the three state university presidents and the regents' executive director — recommended in-state students start paying 20.5 percent of their educational costs next year, 21 percent in 1989-90, 21.5 percent in 1990-91 and so on, up .5 percent a year. The goal is for tuition to match 25 percent of educational costs in five years.

Twenty-five percent of this year's cost of education would mean in-state fees set at \$1,560 a year. But the cost of education rises with inflation about 4 percent every year, and ASA members said they fear the double increase will make university education unaffordable for many.

But the regents' executive director, Molly Broad, said the board is retaining its goal to keep fees at Arizona universities in the lower one-third of national tuition figures for resident students and the lower two-thirds for non-residents.

In adopting the presidents' idea, the regents' committee also is recommending out-of-state students at ASU and UofA, who now pick up 77 percent of the tab for their education, pay 78 percent. The plan is to increase the percentage 1 percent a year for the next five years.

Because NAU's "marketability" would be decreased if its out-of-state tuition matched the other universities', its students would pay 69.5 percent of the cost of education, Jennus Burton, ASU assistant vice president for business affairs, said.

inside
today

ASU WEATHER
Partly cloudy today
with an expected high
in the low 80s.

Classified.....14
Comics.....10
Entertainment.....7
Opinion.....4
Sports.....11

world/nation in brief

Court nominee had cable holdings while working on related case

WASHINGTON (AP) — Supreme Court nominee Douglas H. Ginsburg had almost \$140,000 invested in a cable television corporation when he "personally handled" a Justice Department effort to have the court extend First Amendment protection to cable operators.

An administration source close to Ginsburg said Sunday that Ginsburg apparently did not raise the possibility of staying out of the case with Justice Department superiors or with agency ethics officers. He said Ginsburg discussed the situation with a subordinate.

The Supreme Court, on June 2, 1986, adopted Ginsburg's arguments in a decision that will reduce government regulation of cable operators.

"It is a First Amendment rights case that had economic consequences to it. . .," said a former federal ethics official familiar with the cable case but not with Ginsburg's role in it. "If I'm holding cable stock, that is a good thing for me."

Ginsburg, nominated by President Reagan to succeed retired Justice Lewis Powell on the court, apparently did not violate criminal conflict of interest laws because the company in which he invested was not a direct party to the case even though it could benefit from the ruling.

Top Chinese leader Deng resigns, takes aging opponents with him

BEIJING (AP) — Top leader Deng Xiaoping resigned in triumph Sunday from the Communist Party's governing body, leaving younger officials to carry on his drive to shake

up the stagnant bureaucracy and replace dogma with production.

The 83-year-old Deng left, as he had promised, at the end of a party congress that affirmed his policies and forced into retirement all the leading conservatives who had sought to slow his reforms.

The congress appointed a younger, streamlined party Central Committee that is expected Monday to confirm Deng's protege, premier Zhao Ziyang, as party general secretary.

Radiation poisoning in Brazil raises nuclear safety questions

ANGRA DOS REIS, Brazil (AP) — The radiation poisoning of more than 200 people has raised serious questions about the government's ability to control its ambitious nuclear program, which includes the technology for atomic weapons.

This vast nation of 138 million people has one atomic power plant on line — in the quiet fishing community of Angra dos Reis — and two more planned. But it has no site for safely disposing of nuclear waste.

Last month's poisoning of 243 people in the central city of Goiania occurred just one month after President Jose Sarney proudly announced that Brazil had mastered the technique of enriching uranium, a necessary step in building an atomic bomb.

A scavenger took a capsule of the isotope cesium-137 from a partly demolished cancer treatment clinic. A junk dealer broke open the 500-pound lead casing and found about 3 ounces of a phosphorescent powder which he and others confused with carnival glitter.

Babbitt escapes injury in Phoenix car wreck

PHOENIX (AP) — Democratic presidential hopeful Bruce Babbitt and his son escaped serious injury but their car was destroyed when a motorist rear-ended the auto and it hit a car in front.

Babbitt, 49, suffered possible whiplash, said campaign spokesman Vada Manager. No one else in Saturday's three-car accident reported any injuries.

The former Arizona governor and his son Christopher, 12, were heading to play basketball at a hotel health club when a van with rain-soaked brakes collided with the rear of Babbitt's 1977 Buick LeSabre, Manager said.

Babbitt's car then hit a vehicle in front of it that contained an acquaintance, Phil Weeks, who also was going to the health club, Manager said.

Babbitt, a lawyer himself, called the "best lawyer in Phoenix," his wife, Hattie, after the accident, Manager said.

Both Babbitt and his son were wearing seatbelts, the spokesman said.

The former governor made several television and photo appearances later in the day and then boarded a flight for New Hampshire, Manager said.

Babbitt said he was stopped for a red light when the mini-van driven by Donna Mae Lampinen, who had just dropped off a group of Boy Scouts, slid into the back of his car, Manager said.

Babbitt's car was considered a total loss because damage to it would probably cost more to repair than the \$1,500 to \$2,000 the car was worth, he said.

today

Meetings

- The Coalition for World Peace meets today at noon in the MU Santa Cruz Room.
- The ASU student chapter of the Associated General Contractors of America meets today at 3:30 p.m. in Classroom Office Building Room 228. Gary Linthicum will speak on Construction Communications.
- The Biomedical Engineering Society meets today at 3:30 p.m. in MU Room 218. A film on stress management will be

- shown. All persons with an interest in engineering and medicine are welcome.
- The Creative Writing Students Association meets today at 4:30 p.m. at Sub Stop. Everyone is welcome.

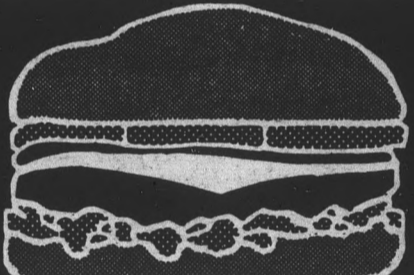
Announcements

- Philosopher and historian Richard H. Popkin will discuss "Newton's Biblical Theology and his Theology of Physics" today at 3:30 p.m. in the MU Coconino Room.

- The Spring Schedule of Classes is now available at on-line registration sites. Early registration will be conducted through Tuesday, Nov. 10; the next opportunity to register begins Dec. 2. Course request forms can be picked up at college departmental offices.
- Homecoming Ball tickets will be on sale today from 9 a.m. to 1 p.m. in front of the MU.
- There will be a Hispanic Student Protest today at noon in front of the Administration



Building.

- The Society of Women Engineers will be distributing pre-purchased T-shirts through Friday from 8:30 a.m. to 3:30 p.m. in the ECG lobby.
- The 1988 Course Source is now available at all registrar sites and residence halls. The book provides information on course prerequisites, teacher styles, test procedures, grading scales and other categories.



BURGER MONDAY

MONDAY NIGHT FOOTBALL





coupon

11am-11pm
Build-your-own-
Burger for lunch
or dinner

5pm - 11pm
1.98 Monster Beers
1.98 Teas

FREE ORDER
OF FRIES
w/ purchase
of burger



exp. 11-2-87

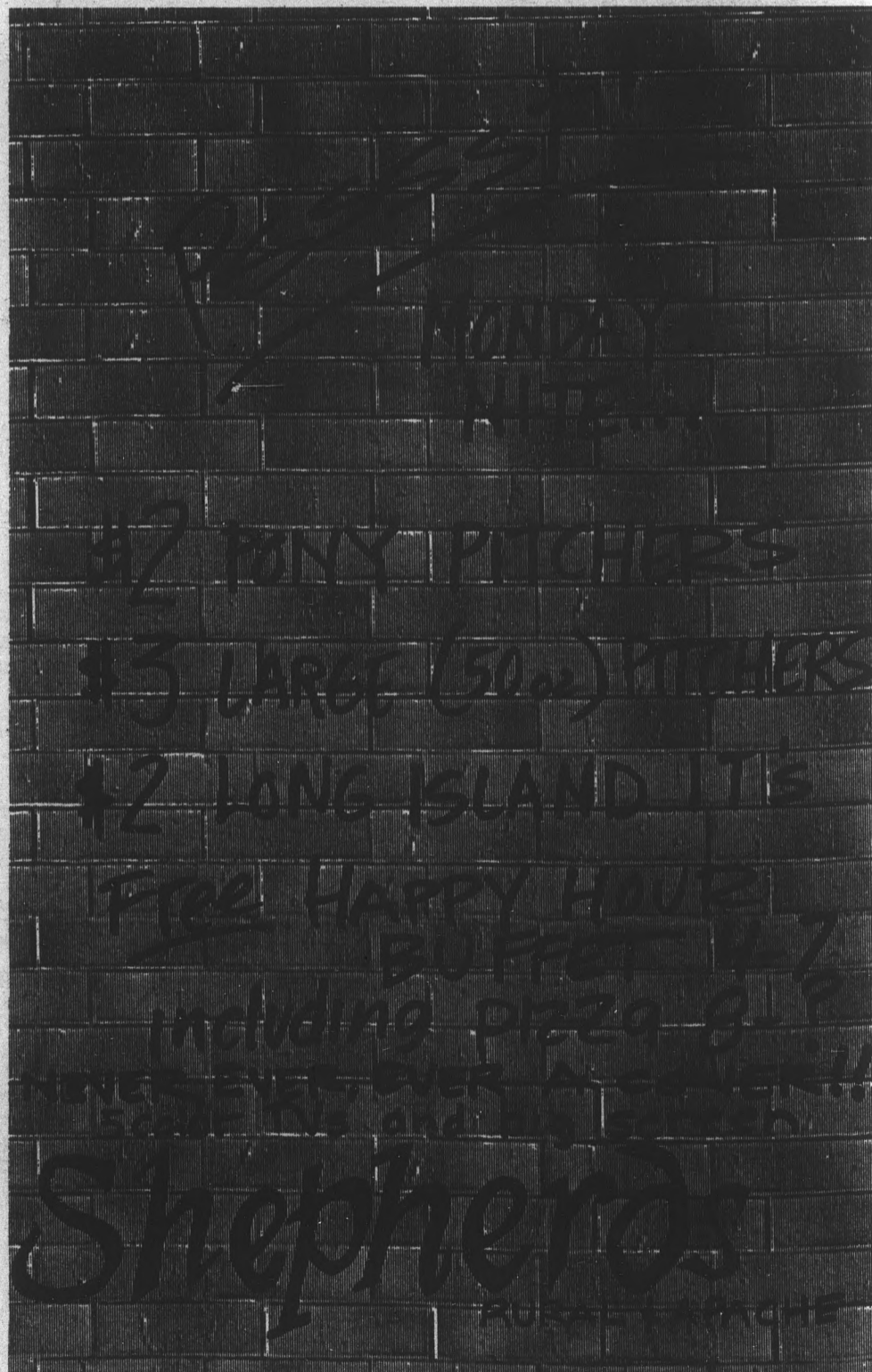
coupon

NY GIANTS vs DALLAS

ON FOUR GIANT VIDEO SCREENS

COORS hats and cups given away!

Sun Devil House



Recall Committee to submit petitions for validation

J. MICHAEL HOEHN
State Press

PHOENIX — The movement to recall Gov. Evan Mecham will submit the first group of recall petitions to the Secretary of State's office today.

The Mecham Recall Committee will hold a press conference at 2 p.m. today at the Wesley Bolin Plaza across from the State

Capitol. After the conference committee members will carry the petitions to Secretary of State Rose Mofford's office, where the validating process will begin.

Garry Smith, president of the recall committee, said he could not estimate the number of signatures the committee will hand in, but the committee announced last week they had 343,913 names. That figure is

greater than the number of votes Mecham received in the general election to become governor.

"(The petitions) are coming in fast and furious," Smith said, adding that the group probably will meet or pass their goal of 350,000 signatures.

Legally, the committee needs 216,746 signatures to justify a recall election, but

the group set a goal of 350,000 as a safety margin.

Smith said he is not worried about the verification process. "At this point we have so many more signatures than are legally needed," he said.

Smith said a another batch of petitions will be submitted on Tuesday.

Hispanic students at reception upset over Nelson's tardiness threaten to walk out on speech

By VICTOR BARAJAS
State Press

"Is the president here, yet?"

That was the question asked by about 200 Hispanics Friday during a reception honoring Hispanic students, faculty, staff and administrators in the MU Alumni Lounge.

Some angry Hispanic students, acting on the possibility that President J. Russell Nelson would send a representative in his place, plotted a walkout during the representative's speech. But when the reception was nearing its end, the real question was if Nelson would show up at all.

Nelson, who was unaware of the walkout, said he rearranged his busy schedule so that he could attend the reception.

"I left my last meeting early so that I could come to the reception, and I'm late to

another meeting," Nelson said.

Senior Steve Escobedo said the Minority Assistance Program, who sponsored the reception, was told early Friday that Nelson had other meetings and may not be able to attend the reception.

He and other Hispanic students decided to "spread the word" of a walkout to other students who planned to attend the reception.

"A lot of students left before Nelson arrived," Escobedo said.

Nelson, who apologized for his tardiness, talked about minority retainment at ASU. "Minority students are not going to college as much as they should," he said.

He said there are only 1,714 Hispanic students at ASU, making up less than 6 percent of the University's enrollment. But Nelson said the Hispanic percentage of

the state's population is twice that figure.

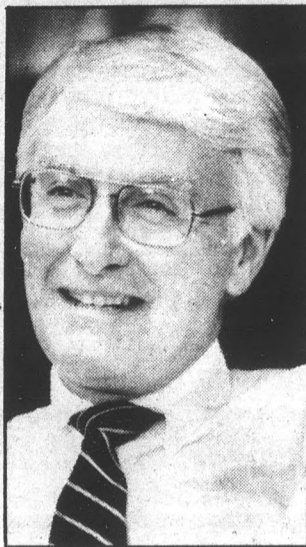
"We're doing better than the national norm, but we're not doing as well as we should or as well as we need to," he said.

Nelson added that in 25 years the minority population in Arizona will make up the majority, so educational percentages should concur with population percentages.

"We're not there folks, and we've got to find a way of working together to make that happen," he said.

"One of the things we'd like to achieve at the University is a friendly, supportive feeling for all students, but especially minority students who have, in many cases, more problems of entry into the University than other students."

Terra Masias, a senior



J. Russell Nelson

social work major, said although Nelson attended the reception, his "priorities are not in order."

"The reception was all planned. I think the crowd was getting kind of anxious (because Nelson was late)," Masias said.

Escobedo, who was satisfied with the outcome, said: "We're going to make sure the president follows through on what he promised."

ASU counselor says lawsuit lacks 'merit'

ASU's legal representative says a political science professor's \$2 million lawsuit against the University does not have merit.

"We don't think there is merit to the allegations and the complaint," said legal counsel Bruce Meyerson.

Meyerson said ASU must decide by Nov. 11 whether to file an answer to a suit filed by associate professor Donald Dagleish or determine if some provisions should be dismissed.

Dagleish declined comment on the suit, saying, "I'm not embarrassed (that I filed the suit)."

Jeffrey F. Arbetman, Dagleish's attorney, also declined comment.

The suit, which focuses on former department chairman and current professor Patrick McGowan, was filed Oct. 22 in Maricopa County Superior Court.

The suit claims McGowan, who was chairman from July 1979 to June 1985, broke an agreement that barred him from participating in Dagleish's promotion evaluation.

But Dagleish, who has been an associate professor since 1973, was denied full professorship by 11 full professors in a 1985 meeting, at which McGowan allegedly made negative comments about Dagleish for more than an hour before the 6-5 vote, according to the suit.

Former Vice President of Academic Affairs Jack Kinsinger followed the recommendation and denied Dagleish the promotion.

McGowan said, "All the allegations are false," adding the amount of the suit is "too high."

The suit asks for \$2 million in damages and Dagleish's full professorship.

—TRACY SCOTT

SHORT & SEXY

LONG & LOVELY

CONTEST

at



25C Drinks 8-11

Preliminaries Nov. 2, 9, 16
 Finals Nov. 23
 Categories: Short Skirt, Evening Apparel (dress to impress)

919 E. APACHE BLVD. • 921-9775

WIN WEEKENDS FOR TWO • \$100 CASH

Other prizes courtesy of: Martin Kenneth Salon • Kenneth Dion of Scottsdale • Ganem Jewelers • Arlington Limousines

Nice Legs

We've got the shorts to fit them!

ARIZONA SHORTS & SPORTS

- Largest Selection.
- Best prices in town.

425 S. Mill, Tempe • 966-9199

FREE NICE LEGS T-SHIRT
 WITH ANY \$10 PURCHASE AND THIS COUPON.
 OFFER EXPIRES 11-30-87.
 Hurry while quantities last!
 ONE PER CUSTOMER PLEASE.

Taboo

AIDS dictates homosexuality is not beyond moral judgement

Ed Schubert
Columnist



From antiquity, through the England of the Bloomsbury group (whose members practiced what Lytton Strachy referred to as "the higher sodomy"), to the Rocky Horror Picture Show, homosexuality has been lionized in some quarters as a superior sexual preference favored by society's most sophisticated members.

Through Hitler's campaign of extermination against homosexuals, to the xenophobic ravings against the gay community which were standard fare in the *State Press* under the editorship of Len Munsil, homosexuality has also been viewed as: despicable, perverse, sick.

In more recent times, a consensus has emerged which regards homosexuality in non-judgmental terms, perceiving no ethical distinctions among hetero, homo or bisexual preferences.

While infinitely saner than the two prior attitudes, this liberal consensus, battered by the AIDS epidemic, needs reconsideration. And while it would be about as fair to blame the AIDS epidemic on the gay community as to blame the 1905 earthquake on San Francisco, nevertheless it is necessary to

note the approximate vicinity of a catastrophe in order to react to it.

One must wonder how thoroughly this new consensus has been taken to heart, even by its advocates. Have you noticed how very quickly heterosexual defenders of gay rights are to mention that, of course, they're not gay themselves? It's as if, while asserting that alternative sexual preferences are not at all wrong, at the

intimately for extended periods of time. Under such circumstances, it would be devastating for morale if these men could not be reasonably certain that they will not be subject to homosexual advances.

Similarly educators, in general one of the more liberal elements in society, will not tolerate an avowedly homosexual teacher in the elementary or high school classroom. Though a gay man or woman may be a

or marijuana, for that matter. All of these begin on a plane of ethical neutrality, becoming unethical only to the degree that they are engaged in recklessly or to excess.

Everyone has a right to engage in gay or straight sex, but not promiscuously in disregard to safe sex practices in the face of a killing epidemic. We all have the right to smoke, but not in the non-smoking areas of restaurants in disregard of the health of others. We all have the right to drink, but not to simultaneously drive an automobile.

Most of us, I dare say, are not Boy Scouts, and at least occasionally indulge in one or more of these and other peccadilloes. That one's "poison" is the traditionally acceptable vice of booze or heterosexual licentiousness is not grounds for feigning a morally superior stance *vis a vis* those who practice homosexual licentiousness.

At the same time, we need not view variant sexuality as permanently beyond the realm of moral judgment.

There is — or was — a taboo against homosexuality, among other practices. Taboos become such for good reasons — reasons which, because it is forbidden even to talk about a taboo, are forgotten in the passing of time. Then, in an age of triumphant enlightenment which neither sees nor remembers any reason for the taboo, the taboo is abandoned and promiscuity feted.

And then: AIDS.

'That the gay lifestyle will never be accepted as wholly normal can be demonstrated by examining two niches in our society where, even in the pre-AIDS high water mark of the gay rights movement, homosexuality never gained legitimacy: the barracks and the classroom.'

same time they are, well . . . not exactly right, either.

That the gay lifestyle will never be accepted as wholly normal can be demonstrated by examining two niches in our society where, even in the pre-AIDS high water mark of the gay rights movement, homosexuality never gained legitimacy: the barracks and the classroom.

Homosexuals are very carefully screened out of the military. An aircraft carrier, for example, is manned by a closely knit group of men who must live and work together

teacher, there is a powerful taboo against letting that preference become known to students. There is an urgent sense that the children must be protected.

Protected? From what? Well, if you look around to find what else is not permitted in schools — alcohol, weapons, cigarettes, drugs, pornography — you find that they are all things which can prove to be unhealthy to the point of being dangerous, either physically or psychologically or both.

There is nothing inherently immoral in same-sex preferences — or in using alcohol

letters

Take the first step

Editor:

I don't normally spend my time writing letters to the campus newspaper because I have a lot of other important things to do. However, as a psychologist who has spent many years of my professional career dealing with gay and lesbian concerns on college campuses, I feel compelled to set the record "straight," as it were, on the "Pink Triangles" controversy currently raging at ASU.

First of all, the film is not *only* about the persecution of gays during the Holocaust. There is a small segment of the film which depicts historical (and hysterical) responses to homosexuality, and the title of the film is derived from the Nazi practice of identifying gays by pink triangles on their shirts.

Most of the film, however, is devoted to the examination of current stereotypes, prejudices and oppression. In fact, the film contains several "person-on-the-street" brief interviews and the intolerant, homophobic responses captured in these segments sound dangerously like some of the comments I've heard and read lately at ASU.

I also want to comment briefly on the issue of using this (or any other) film in mandatory staff training in the residence halls. RAs (and student services staff throughout any university system) are in the business of student development. Our mission is to help each and every student adjust to the university environment and engage in a growth process that is personal as well as academic.

One of the ways we do this is by training our paraprofessional staff in content and skills that enrich their interactions with students. We teach RAs basic counseling skills, how to negotiate conflict, how to enforce university rules and regulations and how to meet diverse student needs. Sensitivity to lifestyle as well as racial, ethnic, age, physical and religious differences is part of this training. It is the responsibility of any conscientious administration to ensure that their staff members have all of the tools they can possibly be given to feel knowledgeable, competent and secure in carrying out the tasks their positions demand.

The way in which this training occurs is no one's business except those doing the planning. Whether a student government chooses to fund a film for public viewing is a separate issue from what professional administrators decide is important and relevant for their staff to know. As one who has shown this film many times in RA (and other staff) training, I can assure you that it is important and relevant and I have never yet encountered an RA anywhere who did not get something useful out of such training.

As a professional who is new to this particular campus, I can't help observing that the attitudes toward any kind of diversity at ASU are alarmingly negative. A university should be a place where people grow and stretch their own boundaries a bit, not a place where bigotry and intolerance fuel the machinery of student government, administration or academic education.

I would encourage all students to view "Pink Triangles" on Tuesday and take this first step toward understanding.

Ruth E. Fassinger, Ph.D.
Counseling and Consultation

Square one

Editor:

Wally Noll's remarkable understanding of Rio Salado (Oct. 21) gets us back to square one! The implementation of Rio Salado in Tempe began with the proposition that the Salt River bed is part of the town, and should not be a weedy dump. Rather, low-cost measures could convert it into a desert park that would enhance the city.

Mayor Mitchell acted. Millions of dollars of quality/private construction has been placed on the adjacent area since the formation of the Tempe Rio Salado Commission. Plans have been made for the addition of organized recreation spaces, where river flows can interrupt activities. All features built there are consistent with the flood plain zoning. Only Tempe money is spent here.

There are a number of well-intended people (some paid with public funds) pushing the Rio Salado tax upon the entire county. There is no need for "outside" money for the Rio Salado projects of the various towns. Wally Noll, a student in the Construction Division, clearly presents many of the reasons why this proposed tax is more than just another little bit on your tax bill.

R.J. Becker
School of Public Affairs

Why Rio Salado?

Editor:

Why would anyone vote to tax their property 25 cents per \$100 valuation for the next 25 years to encourage development in a flood-prone, airport-noisy area at the Salt River? There are plenty of areas to develop away from the river.

Richard Stahl
Phoenix, Arizona

quotable

*"Nothing in life is to be feared.
It is only to be understood."*

—Marie Curie

*"I am free of all prejudices.
I hate everyone equally."*

—W.C. Fields



FIJI

Continued from page 1.

mentally past 11:30 at night, unless for a line-up voted on by the active chapter. This will not be made known to the pledges."

Minutes from a meeting when the spokesman was a member say, "The house is looking for Hell Week chairmen." Minutes from a meeting when he was president say the house had a "need for a unifying activity" and a brother "is organizing a mental line-up to accomplish this objective."

Hazing was not explicitly prohibited by ASU until the University adopted a policy in January 1986. The policy prohibits activities which "harass, intimidate, physically exhaust, impart pain, humiliate, cause undue mental fatigue or distress, or which cause mutilation or laceration of the body."

The former house president said hazing is strictly opposed by the national and local chapters, and current pledges have been encouraged to report any hazing instances.

"If any incidents were to reoccur, a pledge in the fraternity has open communications to the alumni or chapter administration to voice any complaints," he said.

He said he did not know if pledges would abstain from reporting hazing incidents because of fear of possible revenge from house actives.

"We made every effort to make sure the pledges treat this (hazing) as not a tolerated part of the program," he said.

The spokesman added, "to the best of my knowledge" no hazing has occurred at the house this semester.

However, five of the allegations reportedly occurred September and October this year.

The FIJI's statement says, "The frustrating factor regarding the current allegations is that we were very open with the University last year, told them we had problems and made every effort to communicate with them on every level."

The statement said by the end of the spring 1987 semester, the graduates decided the house either needed to be closed or "eliminate what we felt was the cause of the problem, namely a core of members who refused to follow" ASU and fraternity rules.

Twenty-six members were kicked out of the house, including former ASU student Scott Dinin, who filed the hazing complaint with Student Life. Shell said the FIJIs will be the first ASU fraternity to be kicked off campus because of conduct violations.

"We started the fall semester on a positive note, feeling we had a positive relationship with the University, and had been commended by several members of the administration for taking positive steps," the FIJI statement says.

It also says the fraternity was open with the University about problems and that the fraternity was making efforts to rectify the situation.

The spokesman said the FIJIs initiated several meetings with administrators.

Shell confirmed that the FIJIs had taken positive steps and made attempts at eliminating negative elements.

Once the control board began supervising the fraternity, the FIJIs raised \$10,000 to remodel their house, according to the statement.

Part of the FIJI sanctions require that they lose their house for at least two years, beginning Dec. 19.

The FIJIs have not officially appealed the decision, but spokesmen have confirmed they are planning to appeal this week.

"We do not want to try our case in the media, and are looking forward to, and hope we get a fair hearing by the University," the FIJI statement says.

Although the Hearing Board will make a recommendation at the conclusion of the FIJI hearings, ASU President J. Russell Nelson has the final say and can alter the board's ruling.

The FIJIs have the option of an open or closed hearing but

Turn to FIJI, page 6.

Police seize drugs, search for suspects

Tempe police still are searching for suspects in connection with the more than 100 pounds of marijuana found in several large freezers at a mini-storage complex last week, police said.

A police cruiser responded to a call about several missing padlocks at Mini-Storage, 1606 E. Curry Road, about 5:30 p.m. Thursday when an officer found marijuana in one of the lockers.

Narcotics officers were called to the scene and found over 100 pounds of marijuana but were unable to estimate a street price.

police report

In other incidents:

•When Craig Raggio returned to his dormitory room early Saturday he found somebody sleeping in his bed — and it wasn't Goldilocks.

Raggio returned to Best Residence Hall-C 338 at 5:05 a.m. and called police when he found someone he did not know sleeping in his bed, police said.

Police said the intruder, who lives at Best C-448, apparently was intoxicated, thought he was in his own room and went to sleep.

•ASU police still are searching for suspects in two assaults this weekend.

Early Sunday two unknown men assaulted two others at Tempe Center, and early Saturday a woman was assaulted in a parking lot behind 601 Alpha Drive, police said.

•A man was escorted out of Sun Devil Stadium Saturday after he attempted to steal two pairs of shorts from an east-side stadium concession stand, police said.

—MIKE BURGESS

Signature PHOTOGRAPHY
820-5671
in Mill Towne Center
S.E. Corner Mill & Baseline
123 E. Baseline, Suite 103
Tempe, AZ 85285

INCREDIBLE!
A fashion and makeup session that will create a whole new feeling! Bring out the true beauty within yourself and surprise the one you love.
Fashion Portraiture
Boudoir & Glamour
Model Portfolios

BEFORE AFTER

JOHN'S SHOE & LUGGAGE REPAIR

- Resoling Tennis Shoes
- Orthopedic Work
- Complete Line of Shoe Care Products
- Birkenstock Repair

718 S. Mill Avenue
Tempe • 967-9101
Hours: M-F 9 a.m.-5:30 p.m.
Sat. 9 a.m.-5 p.m. • Closed Sunday

If The Shoe Fits,
Repair It At John's!

10% Off With This Ad

BUY • SELL • TRADE

Your books at Changing Hands. For quality cloth and paperbacks (no textbooks, please) we pay 30% of our re-sale price in cash or 50% in trade-in credit which may be used to purchase anything in the store. (Sorry, no trade-ins on Sat. or Sun.)

Browse through our three floors of:

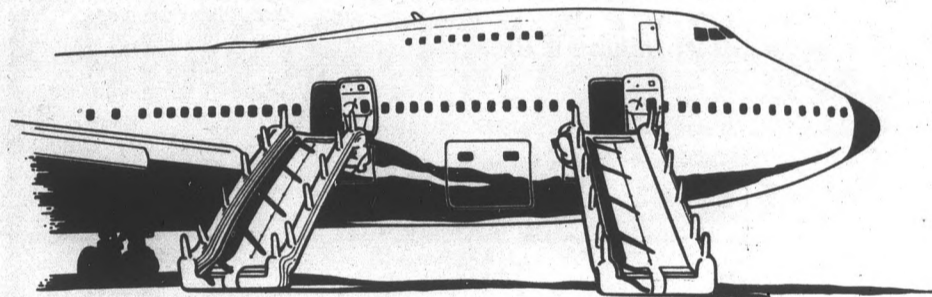
- New & Used Books
- Art Prints & Posters
- Calendars & Cards
- Handbound Journals

M-F 10-9 SAT 10-6 SUN 12-5
CHANGING HANDS
414 Mill Avenue 966-0203
Old Town Tempe

Computers for Rent

Now at The Arches
122 E. University
Come and visit us
921-0980

Make Money By SLIDING OUT OF A PLANE



B. F. GOODRICH'S AEROSPACE: DEFENSE DIVISION needs students in good physical condition to test their emergency evacuation slides.

\$\$ PAID IN CASH / \$4.50 PER HOUR \$\$

Need to wear jeans, long sleeve shirts and soft shoes.

Length of tests vary between a few hours to all day.

Welcomes individuals, groups, fraternities, sororities, etc.

Must be available periodically.

CALL DIANE AT 243-2200

**B. F. GOODRICH
AEROSPACE & DEFENSE DIVISION
3414 SOUTH 5TH STREET
PHOENIX, AZ 85040**

FIJI

Continued from page 1.

have not yet made the choice.

Several former FIJI members have pointed the finger at current house president David Martin as the instigator of most of the hazing incidents. However, Martin was not elected president by his fraternity brothers until this semester.

Martin said he would like to talk about the accusations against him and his fraternity, but he has been instructed by

counsel to remain silent.

He did confirm allegations that he flunked out of the University two years ago and that he was arrested in connection with the assault of an ASU professor in November 1985.

Martin openly admitted, "I did flunk out, but I came back and kicked ass." He said he obtained a 3.5 grade point average one semester and has raised his overall GPA to more than 2.5.

Martin said the charges of his arrest were dropped when he made an out-of-court settlement with associate business professor Ethan Lock. Martin said he paid Lock \$1,000 in the

settlement in which neither side admitted guilt.

The spokesman said, "Hell Week has been forbidden by the local chapter." But Martin reported to ASU Police Sept. 29 that "Hell Week" journals were stolen from the house in July.

He said in the police report he waited almost two months to report the theft because he "didn't know how incriminating and damaging the information could be."

Martin listed Dinin as a suspect in the case, but Dinin denies he took the journals or has them in his possession.

Shell said he has some journals that Dinin and other former members turned in to him.

Education

Continued from page 1.

But time and money to search for the teachers will be tremendous, he added.

He said the College of Education has been neglected by the University, the Legislature and the Arizona Board of Regents.

Eighteen months ago, 65 percent of teachers in the college were part-time. That has been reduced to 45 percent but accreditation mandates the college only can have 25 percent part-time teachers.

The students also said the college is holding them responsible for the college's problems.

Searfoss said this was not true and blamed the problems on "10 years of neglect."

DAILY SPECIAL

5:00 p.m.-7:00 p.m.

BUY ONE SANDWICH AND 2nd IS 1/2 PRICE

SPECIAL ENDS NOV. 15, 1987.

"WE FEATURE MIDDLE EASTERN AND VEGETARIAN DISHES"

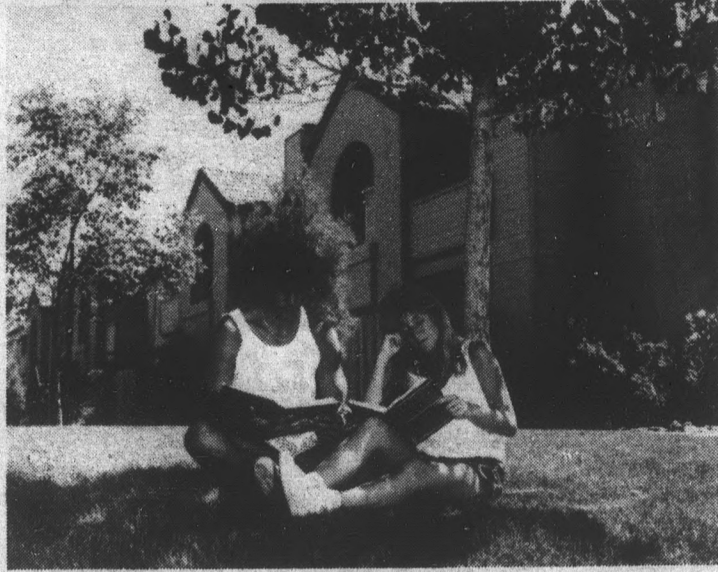


MEDITERRANEAN KITCHEN

616 S. Forest Ave., Tempe

JUST ONE BLOCK FROM CAMPUS 966-2326

ONE MONTH RENT FREE*



LARGE ONE BEDROOM
\$405

TWO BEDROOM
\$470

*FREE BASIC CABLE

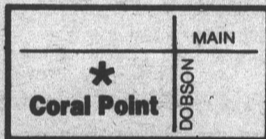
- Woodburning fireplaces
- Instant Phone access
- Sand Volleyball courts
- Assigned covered parking
- Custom mini-blinds through-out
- Ramadas & Barbecue Areas
- Large sparkling heated pools and jacuzzi
- Cable TV available
- Single parent discounts
- Two racquetball courts
- Exercise facilities
- Club Room
- *With 12 month lease
- Designer arched windows
- Private patios and balconies



CORAL POINT
2343 W. Main, Mesa
844-4000



Opening In November
896-0002



ELEPHANT ROMP FREE CONCERT

with

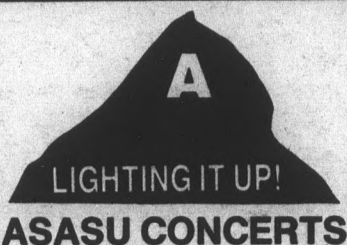


Azz lzz Band

and

comedy by **JEFF VALDEZ**

**NOVEMBER 4 • 7-9:30 P.M.
P.V. BEACH**



ASASU CONCERTS

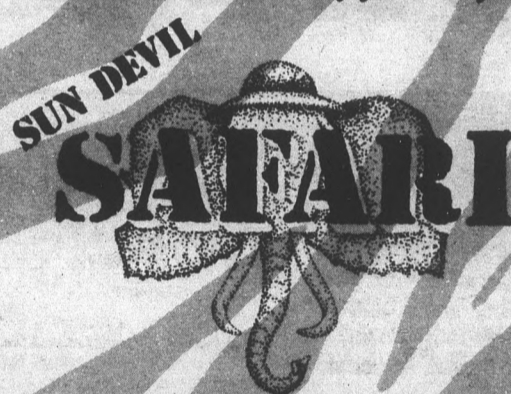
**Sheraton Tempe
Mission Palms Hotel**

ASASU

HOMECOMING 1987

Homecoming 1987

"The Adventure of your Life"



Schedule of Events

Sunday, November 1st

Tennis Tournament — Apache Courts, 8:00 a.m.

Wednesday, November 4th

Kick-off Ceremony — by Old Main, 11:30-12:30 p.m.
Concert "A" Lighting Ceremony at P.V. Beach, 7:00-10:00 p.m.

Thursday, November 5th

Competition Day — by Old Main, 11:30-1:30 p.m.
Safari Games, Food, Music

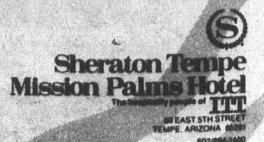
Friday, November 6th

Athletic Day — by Old Main, 11:30-1:30 p.m.
Bonfire at Riverbottom, 6:00 p.m.
(sponsored by SAB & MUAB)
Homecoming Ball at Tempe Mission Palms — 9:00 p.m.
with crowning of King and Queen at 10:00 p.m.
(sponsored by Student Alumni Association)

Saturday, November 7th

8k Race and 1 Mile Race/Walk, 8:00 a.m.
Homecoming Parade — University and Mill, 10:00 a.m.
Pre-game Party — Aquatic Center, 3:00-4:30 p.m.
(\$5.00 admission charge)
Homecoming Football Game, 5:00 p.m.
ASU vs. Oregon

Also sponsored by:



For more information
Call 965-1248
ASASU

Spotlights

Hints, delectables and other tangy tidbits from the cluttered files of the entertainment desk.

Where's Joe Hardy When You Really Need Him:

•Former Hardy-Boy **Parker Stevenson** has outgrown his previous role and taken on a new one. Stevenson is in the Valley to film "Asimov's Probe," a soon-to-be-released TV show currently being filmed in Scottsdale. Mr. Stevenson plays "the world's smartest man" in the telefilm, but playing such a character has its challenges, Stevenson told reporters, because "I'm really a walking idiot."

It's A Small World:

•Talent scouts from **Disney World** will be on campus Thursday, Nov. 12 at Gammage to hold auditions for professional dancers, singers and musical-theater performers. The group will be seeking a variety of entertainers for live shows in the Magic Kingdom, Epcot Center and in the Walt Disney resorts located in Florida. Auditionees must be 18 years old and should bring dance attire, current resume and a photograph. For more information, call (305) 345-5701.



Charles Bronson is back in "Death Wish IV."

Be Afraid, It's Another Death Wish:

•Vigilante-killer **Charles Bronson** is back in "Death Wish IV," the sequel to the previous three "Death Wishes" . . . only this time it's different. Bronson's not avenging his daughter's death, or his wife's, or his good friend's, or the neighborhood — it's the death of the beautiful young attractive reporter's little girl. The film opens Friday at local theaters.

Concerts:

•The **University Brass Ensembles** will give a concert of old and new brass works tonight at 7:30 p.m. in the ASU Recital Hall, located on the fifth floor of the Music Building. The performance is free and open to the public.

•Rhythmic complexities will be showcased by the **ASU Percussion Ensemble** tonight at 7:30 p.m. in the ASU Music Theater. This performance is also free and open to the public.

etc . . .

The following tidbits are compiled from the Harper's Index Book:

•Combined net worth of the 400 richest Americans — \$156 trillion.

•According to Harper's, the average length of sexual intercourse for humans (in minutes) — two.

•Industry estimate of the average life span of an umbrella (in years) — 1.5.

Little Rascals

Superpowers get heart-yanking in movie

By **DAVE MILLER**
State Press

"Russkies" ★★

The Russians are coming. And they're bringing their blow dryers.

At least one of them is. His name is Mischa and he's the focus of New Century Films' release "Russkies," a syrupy, overly tear-stained kiddie commando raid on the heartstrings. It's sort of like Arnold Schwarzenegger dating "The Facts of Life's" Blair and taking her out for ice cream and a visit to the grave of Joseph Stalin.

Only it's not that complicated.

It is, however, that sappy. The story centers around a Russian submarine and its five-year mission to scoot around the American seaboard and spy on Sunday afternoon schooner skippers and other leisure activists. It seems the Russians are interested in *everything* we do here.

But they're also interested in acquiring some sort of secret American device.

Aren't they always.

Only none of their landing crew has done much navigating, at least in the middle of a vicious storm, and the sneaky Russians end up getting wet and sloppy all over the coastline. All National Rifle Association members laugh at this point.

Fortunately Mischa's (Whip Hubley, last seen in "Top Gun") swimming skills are superior to his rafting, and he washes ashore in a heap. He discovers the secret cave of a group of kids whose dads are NRA members. They read "Sergeant Slammer" comics and think they know *all* about the Russians.

But now it's time to go to school.

Adam (Peter Billingsley), Danny (Leaf Phoenix) and Jason (Stefan DeSalle) slowly learn the Russians really aren't so bad. And they can actually be fun in a pinch.

Rule No. 1: Vodka is for Russians, not for kids. And it's not for breakfast anymore.

Rule No. 2: Some Russians, Mischa in particular, are nice guys. And they don't want to shower us with missiles. At least not while we're looking.

Rule No. 3: "Jean miniskirts" are a universal concept.

Some folks, though, don't display the same eager acceptance as the kids, and, in fact, find the idea of a Russian among us (with Mischa as the mongus) rather distasteful. When it's discovered that there's a bunch of "them" running around town corrupting youth and dressing like preppies, they form a kind of misguided social alliance, not unlike the Elks.

And now only Peter Billingsley can save him.



Whip Hubley, rear, joins Stefan DeSalle, from left, Leaf Phoenix and Peter Billingsley in "Russkies."

What a horrible concept. What a horrible premise. What a horrible . . .

Well, it's not *all* that bad.

Actually, the film rises above its Cracker-Jack trappings and manages to be somewhat entertaining. The kids are alright and the picture makes a mild emotional

windfall towards the end, what with everyone supposedly stronger and wiser with the knowledge that people over there are as interested in working hard and looking sharp and doing a Friday night lip-lock as we are.

Pretty darn scary, isn't it?

Pots is pots

Museums hosting wide spectrum of artwork

By **CHUCK HADD**
State Press

A pot is a pot is a pot.

Unless it's a painting.

ASU's Art Museum, the ASU art school and the Phoenix Art Museum are sponsoring a craft symposium and series of craft workshops designed to draw artists, gallery owners, collectors, critics and museum professionals nationwide, according to Dianne Cripe, spokeswoman for the ASU Art Museum.

And if all goes well, the symposium will help break the traditional barriers between art forms.

Rudy Turk, director of the ASU Art Museum, said of the craft exhibit, "The high level of visual sophistication that is manifested in this presentation makes all distinctions between craft and sculpture insignificant, if not meaningless.

"For example, a pot may be acclaimed as a painting because of its wonderful surface and as a sculpture because of the sensitive balance of its positive and negative spaces."

"At the same time, a sculpture might dazzle because of the obvious technical virtuosity required in its production."

Joan Mondale, art historian and author of "Politics In Art," will open the symposium with a keynote address Thursday, Nov. 5, in Neeb Hall at 5 p.m.

Craft workshops in wood, fiber, metal and glass will be held in the ASU art school Thursday and Friday from 8 a.m. to 3 p.m. The workshops and lectures will be conducted by nationally recognized artists including Nance O'Banion, Eleanor Moty, Marvin Lipofsky, Wendy Maruyama and Andrea Gill.

Saturday, a four-panel symposium will discuss issues related to contemporary crafts at Neeb Hall from 9 a.m. to 4:45 p.m.

Scheduled panelists include artists Peter Voulkos and Wendell Castle, and Seattle art critic Matthew Kangas. Participating panelists include ASU art professors Jeanne Otis-Fronske, Donald Schaumburg, Randy Schmidt, David Pimentel and Ray Fink.

The faculty exhibit will be on display in the MU Gallery from Nov. 2 to Dec. 4. There will be an open reception for this show Nov. 5 from 12:30 p.m. to 2 p.m.

The faculty craft show, symposium and workshops are being held in conjunction with the nationally syndicated exhibition "Craft Today: Poetry of the Physical," which will be on display at the Phoenix Art Museum, 1625 N. Central Ave., from Nov. 7 to Jan. 10. Representing 286 craft artists, the exhibition is the largest American craft exhibit in 20 years according to Margaret Fries, spokeswoman for the Phoenix Art Museum.

According to Lucinda Gedeon, ASU Art Museum curator, the ASU symposium is the first of its kind to be held in conjunction with the national craft exhibition.

For more information and registration materials for the symposium and workshops, contact Lucinda Gedeon at the ASU Art Museum on the second floor of Matthews Center at 965-2874.

Long John . . .

Artist's silver works offer new perspective

By **CHUCK HADD**
State Press

Canadian artist and ASU graduate John Granzow has raised more than a few eyebrows in his time.

Using metalworking techniques dating from the 18th to 20th centuries, Granzow creates contemporary silverwork objects and "re-designs" of accessories such as a joint-holder, which caused double-takes when customs officials saw it listed among the items the artist was bringing into the United States.

"They really wanted to see it," Granzow said.

The joint-holder is a re-creation of an 18th century kitchen device used to grip a "joint" of meat for carving. It resembles something that looks like it could be used as a thumbscrew by unscrupulous narcotics officers seeking information from recalcitrant suspects.

"Granzow uses his extensive knowledge of philosophy, history and literature to expand the viewer's perception beyond the utilitarian nature of these objects," said Rudy Turk, director of ASU's Art Museum.

"His craftsmanship is impeccable."

Granzow received a Masters of Art Education from ASU in 1969 and teaches in Vancouver, British Columbia. His exhibition will be on display at the ASU Art Museum until

Nov. 15.

One of the objects on display is a working sundial calibrated to the 49th parallel. Made of gold, it is the size of a modern wristwatch and has a leather strap.

Another piece, titled "Silver-Gilt Egg in a Carton" and subtitled "Soviet Excesses," consists of a gilded silver egg in a paper egg carton with the word "excess" stenciled in Russian across the front.

"It was created with humor to contrast the Faberge eggs made for the Russian Court," Turk said.

Each object on display "illuminates one or more dimension of temporal reality," Granzow said at the reception for the exhibition Sunday. "Most of them provide an alternate view of an ordinary object."

Silver is "rich in history and decorative metaphor," he said, "and it's adaptable to a wide variety of fabrication technique and surface treatment, with surprising economy."

"But interestingly, it is the so-called 'democratic metal,' iron, in the form of ferric oxide, which puts the final polish on the 'noble metals' gold and silver."


The ASU Art Museum is located on the second floor of Matthews Center and is open from 8 a.m. to 5 p.m. weekdays and 1 to 5 p.m. Sundays.

AIM HIGH

CLINICAL PSYCHOLOGIST
PHYSICAL THERAPIST
PHARMACIST

The Air Force can make you an attractive offer — outstanding compensation plus opportunities for professional development. You can have a challenging practice and time to spend with your family while you serve your country. Find out what the Air Force offers. Call

(602)921-9582 Collect



powerful, clear and professional

MUSIC EXPRESS DJ's

weddings, parties, dances
... anything **998-6689**

the
Vine
tauern

at Rural & Apache

\$1.50
BURGER & FRIES

25¢
DRAFTS

FAST 1-HOUR FOTO.

12/15^{exp} 24 exposure 36 exposure

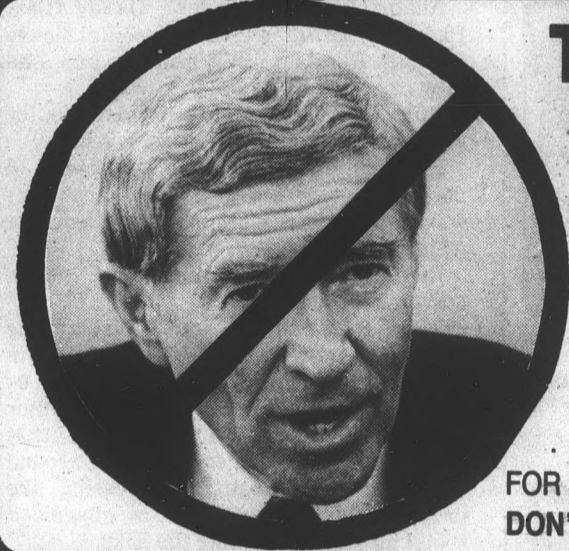
2.99 5.49 7.99

NO LIMIT. COUPON MUST ACCOMPANY ORDER.

110, 126, 35mm Disc Color Print Film Photofinishing (C-41). Not good with any other coupon/offer/discount.

3228 S. Mill Ave.....966-6836 1739 E. Broadway.....967-7590 5110 S. Rural Rd.....839-6834
930 W. Broadway.....968-8593 1709 E. Guadalupe.....897-7679 1840 E. Warner.....820-7154

Coupon good through 12-1-87.



TOMORROW
Tues., Nov. 4
is your
LAST CHANCE
TO SIGN A RECALL
PETITION AND TO
TURN IN YOUR PETITIONS
... COMPLETED OR NOT!
FOR MORE INFO CALL 968-3447.
DON'T GET MAD ... GET EVAN!

Start your day RIGHT Send a Personal Ad to someone Special. State Press N. Basement, Matthews Center

SUNSET camera



Passport Photos
2 for \$6.49

Film Processing
2 for 1
or
FREE FILM
Monday & Wednesday on
Develop & Print orders

ILFORD
Photo Paper
25 — 8x10 \$10.47
100 — 8x10 \$35.47

SUNSET CAMERA
Tempe Center — Mill & Univ.
829-0424

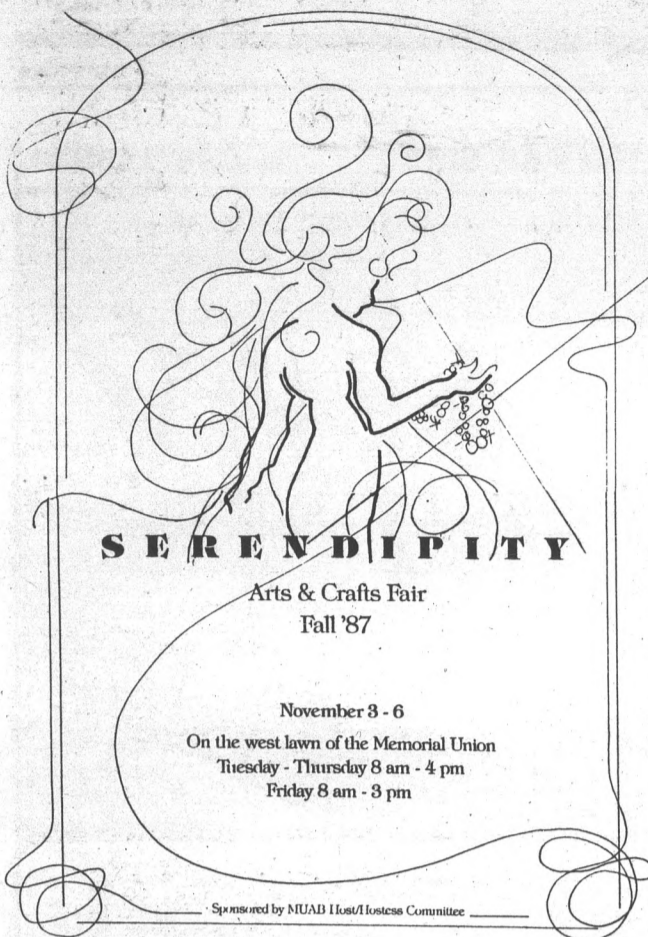
BIRDS etc.
Discount Pet Center



10 Gallon Aquarium.....	\$6.88
Nanday Conure.....	\$29.88
Golden Hamsters.....	\$2.88
Goldfish.....	15 for 99¢

898-8822

2331 W. Broadway, Mesa • East of Price Rd.



SERENDIPITY
Arts & Crafts Fair
Fall '87

November 3 - 6
On the west lawn of the Memorial Union
Tuesday - Thursday 8 am - 4 pm
Friday 8 am - 3 pm

Sponsored by NUAD Host/Hostess Committee

LSAT GMAT GRE

WHAT IF YOU DON'T GET INTO THE GRAD SCHOOL OF YOUR CHOICE?
Sure, there are other schools. But why settle? Kaplan prep courses help students raise their scores and their chances of being admitted into their first-choice schools. Fact is, no one has helped students score higher!

KAPLAN
STANLEY H. KAPLAN EDUCATIONAL CENTER LTD.

OTHER COURSES: MCAT, DAT, NCLEX, NTE, CPA, BAR REVIEW, & OTHERS

Enroll in December test and get the next two test dates **FREE**.

967-2967

JONATHAN'S PIZZA

OUR LARGE PIZZA IS 16". WHAT'S THEIRS?

Open 11 a.m.-1 a.m. Mon.-Thurs. **FREE DELIVERY**
11 a.m.-2 a.m. Fri.-Sat.

EVERYDAY SPECIALS:
(No coupon needed)

2 LARGE \$10.99 plus tax
w/one topping

2 MEDIUM \$8.50 plus tax
w/one topping

32-oz. Soft Drink JUST \$1.00

LARGE PIZZA w/one topping \$5.95 plus tax (limit one per coupon)
ASU location only. Expires 11-16-87.

MEDIUM PIZZA w/one topping \$4.95 plus tax (limit one per coupon)
ASU location only. Expires 11-16-87.

Tempe	829-1717	N. Mesa	827-1999
935 E. University	838-2227	635 N. Country Club	926-1100

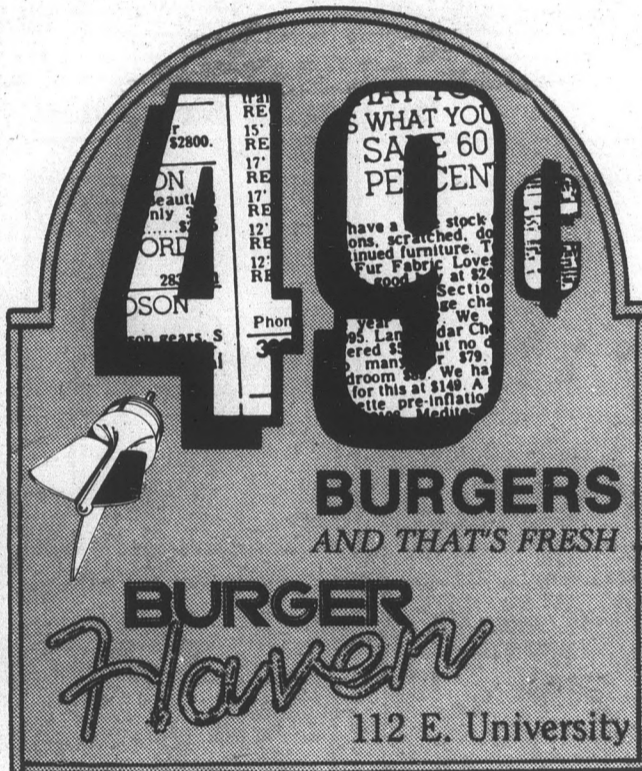
SPECIAL OF THE WEEK

GYROS ONLY \$1.99



WITH THIS AD (up to 4 sandwiches) OFFER GOOD THROUGH NOV. 7, 1987.
Hours: Mon.-Fri. 10-9 • Sat. 10-6

BOJO 829 S. Rural Rd. 966-5543



BURGERS AND THAT'S FRESH

BURGER Haven

112 E. University

Raise your GRE, LSAT or GMAT.

The LSAT, GRE and GMAT can be tough, but we can make them a whole lot easier. The Princeton Review has helped thousands of students dramatically raise their scores. Small classes (8 to 12 students) geared to your strengths and weaknesses and a detailed computer analysis throughout the program make us the most effective, efficient and enjoyable way to *dramatically* improve your scores. You'll score more when you know how. And we'll teach you how.

952-8850

THE PRINCETON REVIEW

We Score More.

RUNDLE'S LIQUORS & MKT.
730 S. MILL
Corner Mill & University Ave.

White Mt. Wine Cooler 4 pk. \$1.17
Meister Brau Beer 6 pk. \$1.88
Natural Light Beer 12 pk. \$4.46
Yago Sant Gria Wine 187 ml. 3 pk. \$.94
Devil Beer, 51 Imported Beers, Haagen Dazs Natural Ice Cream, Adult Magazines, Ice, Cold Wines, Party Items, Candy, Cold Drinks.

967-9079



STATE PRESS

Classified Happy Hour 7-9 a.m.
Walk-in liner ads 1/2 PRICE
Matthews Center (north basement)

(Some restrictions apply)

DID YOU KNOW?

YOUR ASU INSURANCE COVERS CHIROPRACTIC CARE!!!

- Whiplash
- Neck Pain
- Headaches
- Back Pain
- Shoulder Pain
- Accidental Injuries

We will accept your insurance, provide a student discount, with little or no out-of-pocket expense to you.

TEMPE
966-1635
Dr. Donald Nelson
3910 S. Rural Rd. #E

SCOTTSDALE
941-2909
Dr. Stephen Nielson
7333 E. Thomas Rd.



Whiplash!



Stiff Neck & Back!

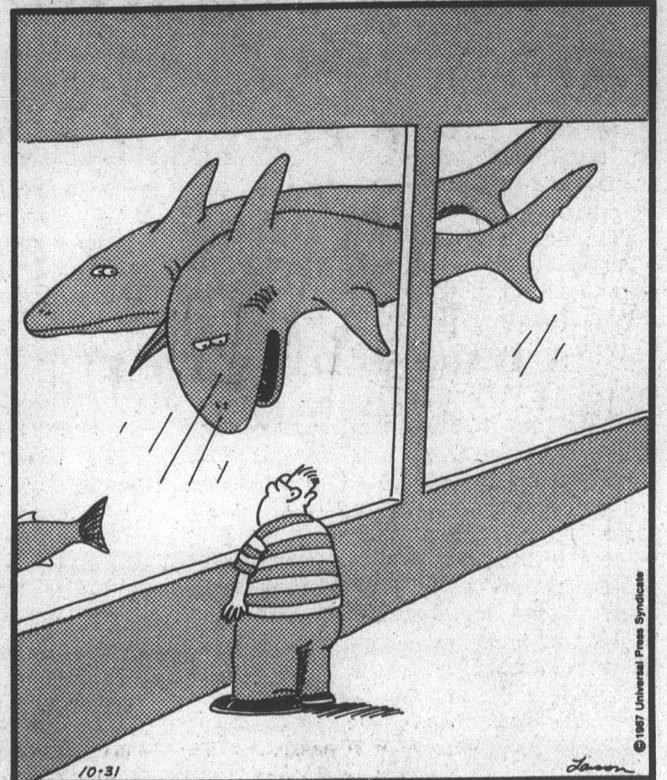
Doonesbury

BY GARRY TRUDEAU



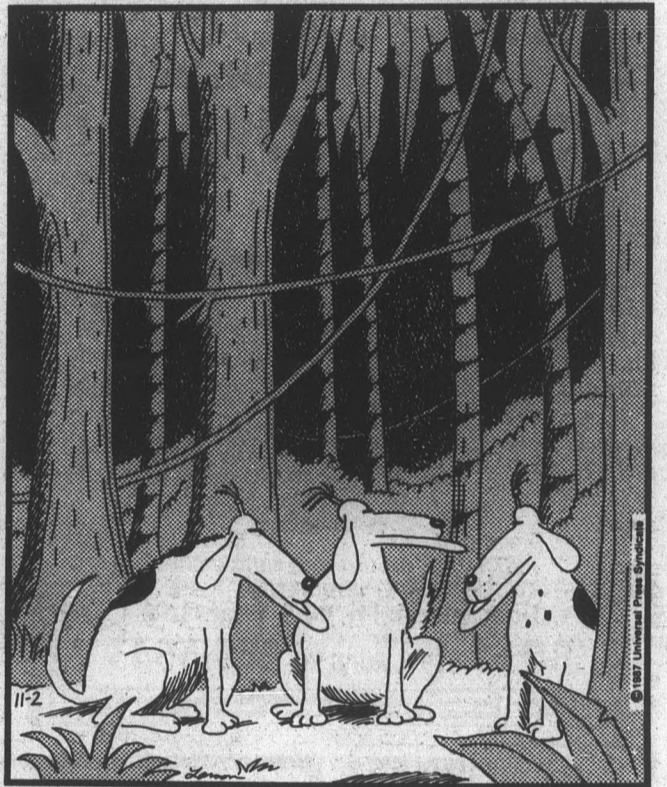
THE FAR SIDE

By GARY LARSON



BLOOM COUNTY

by Berke Breathed

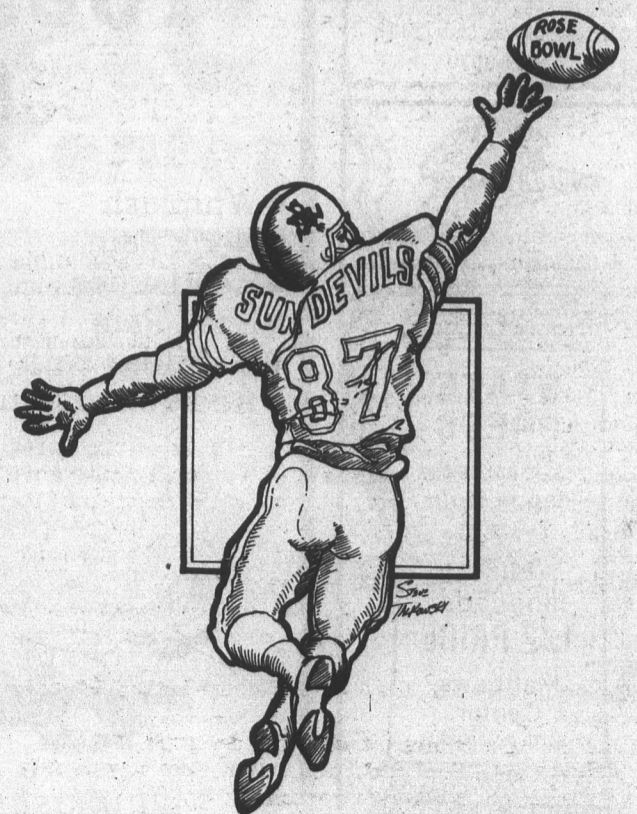


QUIPS

by Steve Talkowski

Shoe

by Jeff MacNelly



Bruins wash out Devil Rose Bowl chances

By STEVE BRENNAN
State Press

When the sun finally lifted the gloom over Sun Devil Stadium Saturday, the UCLA Bruins made apparent to all why they are the Pac-10 conference leaders.

The Bruins (7-1, 6-0 Pac-10), took advantage of a break in an unusually rainy Arizona afternoon and unleashed the most efficient passer in the nation, Troy Aikman, as they defeated Arizona State, 31-23, effectively eliminating any Sun Devil Rose Bowl hopes.

After a first half that was dominated by rain and a swarming Sun Devil defense which gave ASU a 9-0 lead, Aikman opened the third quarter by marching the Bruins 84 yards in eight plays before throwing a 35-yard touchdown pass to Paco Craig, making the score 9-7.

The Bruins then capitalized on a John Walker interception to add an Alfredo Velasco field goal to take a 10-9 lead with 5:13 remaining, and the Sun Devils were never able to catch up.

Aikman completed 22 of 31 passes for 328 yards and two touchdowns on the day.

"They made the big plays and we didn't," ASU coach John Cooper said. "They made a run on us in the third quarter and that was the difference."

"We played hard, but they made some big plays on us and that really hurt us. "We had a chance to win the game — I thought we did, but we didn't get it done."

In the first half, the Sun Devils took advantage of difficult playing conditions, an inspired defensive performance and UCLA mistakes to take the lead with three Alan Zendejas field goals.

The Sun Devils (5-3, 2-2) also injured the Bruins' primary offensive threat, tailback Gaston Green, in the first quarter. Green, a Heisman Trophy candidate, rushed only six times for negative five yards before suffering a neck injury.

"Everyone did a real good job," ASU cornerback Eric Allen said. "They came in and did their assignments."

"I think they got some breaks in the second half — (there were) some things we

didn't do and they connected on some good passes," he said. "UCLA came out ahead because they executed better."

ASU linebacker Greg Clark, who led his team in tackles with nine, said the Bruin passing success was the key.

"Our game plan was working in the first half and even in the middle of the second half," Clark said. "They started throwing the ball a lot more in the second half; getting five here, 10 there, 15 here — it added up."

UCLA coach Terry Donahue said his team was unprepared in the first half.

"We didn't have great concentration coming into the game," Donahue said. "They are a good team and hard to play with. We were a passing team because they shut down the run."

"ASU did an awfully nice job against Green," he said. "They were the only team to stop him all year."

Offensively, the Sun Devils' quarterback problems continued unsolved. John Walker, who started the game after replacing Daniel Ford a week earlier against Oregon State, completed only one pass of nine for 30 yards, including an interception which led to a Bruin lead in the third quarter.

Following the interception, Ford was placed in the relief role. But despite a respectable 13 of 26 for 129 yards and one touchdown, Ford could not salvage the game for the Sun Devils.

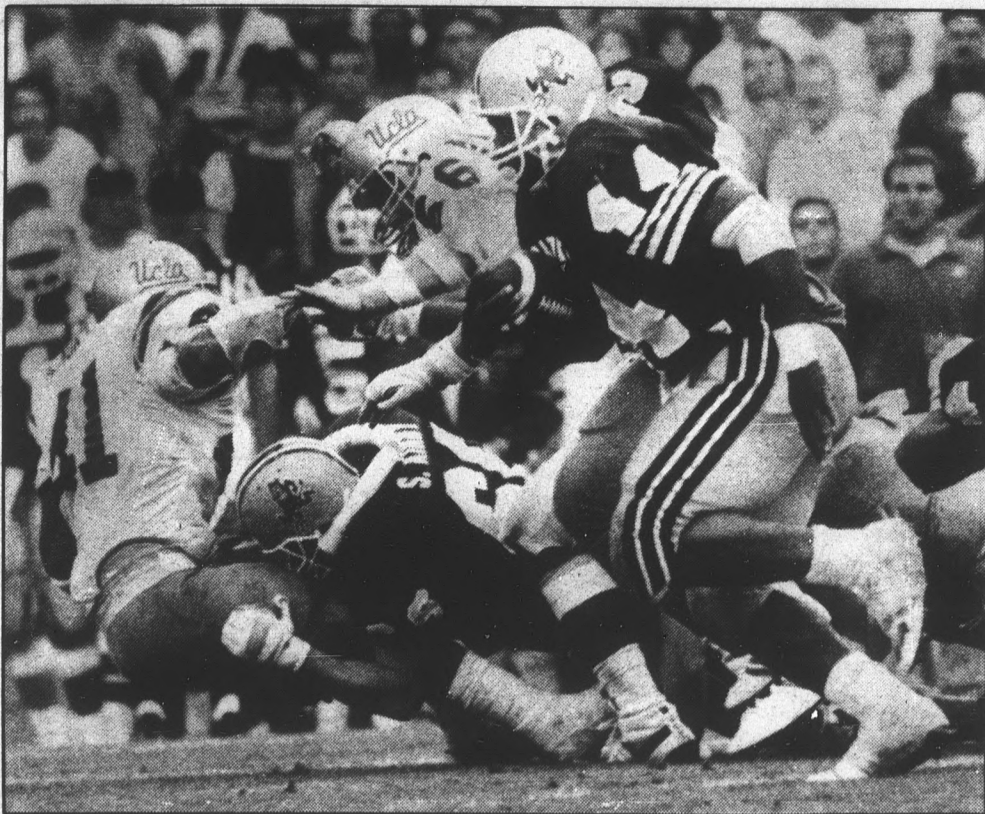
"We're not getting great plays out of our quarterback," Cooper said. "I thought Walker played OK. Then we threw Danny (Ford) in and he played well."

"I don't blame either quarterback for losing the game," he said. "They're not great quarterbacks like Aikman, but they played hard."

The Sun Devils received the opening kickoff after a slight break in the rain, but Walker and the offense were unable to produce a first down during their first possession.

The Bruins then took over after a 51-yard punt by Mike Schuh at their own 14-yard line.

After four unsuccessful runs by Green and



Todd Green/StatePress

ASU fullback Channing Williams, No. 44, breaks into the open field against UCLA Saturday. The Sun Devils were virtually eliminated from the Rose Bowl race when the Bruins defeated them, 31-23, in Sun Devil Stadium.

a completed pass, Aikman threw a pass which bounced out of split end Mike Farr's hands and into those of ASU free safety Jeff Mahlstedt, who returned the ball to the Bruin 22-yard line.

But the ASU offense was able to manage only two yards in three plays, and Zendejas connected on his first field goal of the game, making the score 3-0.

Neither team was able to score throughout the rest of the first quarter, although the Bruins were able to complete passes of 16, 18, 13 and eight yards.

In the second quarter, the Sun Devils took advantage of another Bruin turnover and a short flurry of offense to add two more Zendejas field goals, making the score 9-0 at

the half.

UCLA backup tailback Eric Ball, who had missed much of the season due to an injury, fumbled the ball after being tackled by ASU noseguard Saute Sapolu, who also recovered the ball at the Sun Devil 46-yard line.

ASU then drove to the UCLA 12, but was forced to kick a field goal after Walker was sacked.

The Sun Devils then took advantage of some tight defense and forced the Bruins to punt on their next possession.

With the help of a 40-yard burst by fullback Channing Williams, the Sun Devils added another field goal at the end of the half.

Turn to FOOTBALL, page 13.

Bruin quarterback Aikman has his day in the sun

By CHRIS DORSEY
State Press

The Sun Devils' hopes of beating UCLA were running wild Saturday when they knocked Heisman Trophy candidate Gaston Green out of the game in the first quarter with a neck injury.

But a good team like UCLA has more than one weapon to hurt its opponents.

The nation's most efficient passer, Troy Aikman, took charge and led the Bruins to a 31-23 victory over ASU at a soggy Sun Devil Stadium.

Aikman answered the call with a fine performance on a miserable afternoon. He brought his team back from a 9-0 halftime deficit, and showed the sellout crowd of 70,754 why he is the nation's top-ranked passer.

But during the first half, the Bruins' offense was plagued by mistakes and clouded by rain and a slippery field.

"In the first half nothing went right," Aikman said. "In the second half we came out and started going and that's what made the difference."

The UCLA quarterback came into the game with only one interception all season. But on his second attempt of the afternoon, ASU free safety Jeff Mahlstedt intercepted Aikman's pass and returned it to the Bruin 20-yard line, setting up the Devils' first score of the day.

But the junior would recover, completing 22 of 31 passes for 328 yards and two touchdowns.

"Aikman had a fabulous game," UCLA head coach Terry Donahue said. "(Oklahoma coach) Barry Switzer said he was a good player, but he didn't say he was this good."

It was the short passes that hurt the ASU defense. The longest pass Aikman tossed was a 35-yard touchdown pass to Paco Craig during the third quarter.

Aikman said the Sun Devil secondary had the primary and secondary receivers covered well, making him resort to the third man on many occasions.

"When Troy gets hot he is like a basketball player — you got to keep going to him," Bruin split end Willie Anderson said. "The balls are always on the money."

Anderson had seven receptions for 130 yards. Aikman said the Bruins knew that with the loss of Green and the inability to move the ball on the ground, the game plan would have to shift in order to put points on the board.

And it is an efficient quarterback that carries teams to the Rose Bowl.

Sun Devil volleyball team rolls over rival Bruins, Trojans

By JOAN MCKENNA
State Press

Disney was right. Dreams really can come true.

Walt would have enjoyed the drama that unfolded at the Activity Center Saturday night, as the ASU volleyball team defeated fifth-ranked UCLA, 3-1.

The cast included the Cinderella Sun Devils, downtrodden after Thursday's 3-1 loss to NAU (9-13) and anxious to show that Friday's 3-0 win over 10th-ranked USC was no pre-midnight fluke.

The Bruins (20-6, 10-3 Pac-10) played the part of the wicked stepsisters, repeatedly taunting the Sun Devils through the net (or kicking them under it), with no intervention by the officials.

But the glass slipper went to ASU coach Debbie Brown, who got her first-ever UCLA victory.

The fifth-year coach struggled to explain how she felt.

"There's not a word adequate to describe it right now," she said.

Senior co-captain Regina Stahl found that word — "awesome."

Stahl said the Bruins got what they deserved.

"They're so cocky," Stahl said. "They were playing dirty."

That's how Sue (Nord) hurt her ankle."

Middle blocker Sue Nord was coming down from a block when a front-row Bruin planted her foot beneath Nord's.

Nord's foot rolled over it, resulting in a sprain.

Stahl said the UCLA player was screaming "yeah" in Nord's face as she went down. No call was made.

Nord left the match halfway through game two with 11 kills, for a .556 hitting percentage. But according to trainer Joanne Dunnock, she should be back in action this weekend. But the Bruins plot failed as freshman Tina Berg stepped in, scoring 6 kills and 5 blocks.

Co-captain Tracey Barberie said she has wanted to put the UCLA players in their place for a long time.

"We were fired up," she said. "I really wanted them."

"I think this is the best I've ever played."

Setter Stahl and outside hitter Barberie have played together since high school and are ASU's only two starting seniors.

Brown said their leadership had a lot to do with the young team's winning performance.

Brown said UCLA's antics showed little class.

"I don't think it's very good sportsmanship," she said. "I'm very proud of my team for not doing it back."

The Sun Devils (12-9, 6-6) took the first two games in a little over one hour. Barberie said despite the Bruins' third-game win, she knew ASU had the match.

Game four took over 40 minutes to play with 52 sideouts. The Devils were down 10-12 before climbing to 13-12. UCLA tied it at 13 but never scored again.

The Bruins buried themselves on three late critical serving errors.

ASU swept 10th-ranked USC Friday night, 16-14, 15-11, 18-16.

The Trojans (13-8, 9-4) appeared intimidated by the Sun Devils, except for 6-2 hitter Lonise Norfleet, who scored 23 of USC's 64 kills.

ASU's entire team hit well, collecting a .300 hitting percentage to USC's .277.

Sophomore Noelle Fridrich said the team felt like it was ASU's turn for the spotlight.

"We had a lot to prove," she said.

ASU had lost earlier road matches to both USC and UCLA, 3-0.

Thursday was another story as ASU let one slip away to NAU 15-7, 15-11, 9-15, 19-17.

Brown said she would like to have that one back, but said it could have been the key to the conference wins.

"My guess would be, if you look back to the loss to NAU, that was the last straw," she said.

"We played with a lot more guts (afterwards)."

The Sun Devils travel to the Pacific Northwest this weekend for matches against Washington and Washington State, and play host to Cal-Berkeley and Stanford the following weekend.

ASU scoreboard

ASU FOOTBALL

UCLA 31, ARIZONA STATE 23

UCLA	0	0	17	14	-	31
Arizona State	3	6	6	8	-	23

ASU — FG Zendejas 37
 ASU — FG Zendejas 29
 ASU — FG Zendejas 37
 UCLA — Craig 35 pass from Aikman (Velasco kick)
 UCLA — FG Velasco 32
 UCLA — Craig 7 pass from Aikman (Velasco kick)
 ASU — Williams 1 run (run failed)
 UCLA — Brown 8 run (Velasco kick)
 UCLA — Brown 74 run (Velasco kick)
 ASU — Johnson 3 pass from Ford (Wendorf pass from Ford)
 Attendance — 70,754

GAME STATISTICS

	UCLA	ASU
First downs	20	14
Rushes-yards	40-130	39-115
Passing	328	159
Return yards	28	63
Comp-att-int	22-31-1	14-35-2
Punts	7-43	7-48
Fumbles-lost	2-1	3-0
Penalties-yards	7-44	0-0
Time of possession	29:58	30:02

INDIVIDUAL STATS

Rushing — UCLA: Brown 19-134, Primus 4-11, Ball 2-4, Green 6-(minus-5), Aikman 9-(minus-14). Arizona State: Williams 13-64, Harris 16-40, Ford 3-11, Winsley 4-9, Wendorf 1-3, Walker 2-(minus-12).

Passing — UCLA: Aikman 22-31-1 — 328 yards. Arizona State: Walker 1-9-1 — 30 yards, Ford 13-26-1 — 129 yards.
 Receiving — UCLA: Anderson 7-130, Craig 5-102, Farr 7-69, Anthony 3-27. Arizona State: Cox 3-88, Knudson 3-23, Harris 3-17, Johnson 2-14, Williams 2-12, Winsley 1-54.
 Punting — UCLA: Barkate 3-47.7 yards, Naggio 3-34.0. Arizona State: Schuh 7-48.3 yards.
 Kickoff returns — UCLA: Brown 3-66, Austin 1-16. Arizona State: Winsley 2-37, Cahoon 2-39, McDaniel 1-9.
 Punt returns — UCLA: Henley 4-18, Keating 1-39. Arizona State: James 1-46.

PAC-10 STANDINGS

PAC-10 GAMES		ALL GAMES		
W	L T Pct.	Pts	Opp W L T Pct. Pts Opp	
UCLA	5 0 0	1.000	197 75 7 1 0 .875	294 131
USC	4 1 0	.800	185 92 5 3 0 .825	236 162
Washington	3 2 0	.600	131 113 5 3 0 .825	202 155
Arizona State	2 2 0	.500	105 86 5 3 0 .625	220 156
Arizona	2 2 1	.500	129 132 4 3 1 .563	208 163
Oregon	2 3 0	.400	89 123 4 4 0 .500	138 174
Stanford	2 3 0	.400	91 120 3 5 0 .375	189 215
California	1 2 1	.375	75 102 2 5 1 .313	177 199
Washington St.	1 3 0	.250	66 152 3 5 0 .375	185 274
Oregon State	0 4 0	.000	64 137 2 6 0 .250	165 299

SATURDAY'S RESULTS

UCLA 31, ARIZONA STATE 23
 ARIZONA STATE 23, STANFORD 13
 CALIFORNIA 20, OREGON 6
 WASHINGTON 28, OREGON STATE 12
 SOUTHERN CAL 42, WASHINGTON STATE 7

NEXT WEEK'S GAMES

OREGON at ARIZONA STATE
 WASHINGTON at ARIZONA

ASU VOLLEYBALL

ARIZONA STATE 3 SOUTHERN CAL 0

Southern Cal	14	11	16	-	0
Arizona State	16	15	18	-	3

GAME STATISTICS

	USC	ASU
Kills	64	59
Errors	20	14
Total Attempts	159	150
Percentage	.277	.300
Service Aces	8	6
Service Errors	17	8
Digs	48	47

ARIZONA STATE 3 UCLA 1

UCLA	13	9	15	13	-	1
Arizona State	15	15	9	15	-	3

GAME STATISTICS

	UCLA	ASU
Kills	68	70
Errors	17	21
Total Attempts	180	201
Percentage	.283	.294
Service Aces	8	7
Service Errors	12	14
Digs	61	52
Time — 2:16		
Attendance — 1,321		

OTHER PAC-10 SCORES

Friday	16-14	15-11	18-16
Arizona State def. Southern Cal	12-15	16-14	15-10 16-14
Washington def. Oregon State	14-16	15-13	15-6 15-10
UCLA def. Arizona	15-6	15-9	15-8
Oregon def. Washington State	11-15	15-8	15-11 15-11
Stanford def. California			

Saturday	15-13	15-9	9-15	15-13
Arizona State def. UCLA	15-10	15-11	8-15	15-8
Southern Cal def. Arizona	15-6	15-10	15-10	
Oregon def. Washington				
Washington State def. Oregon State				

PAC-10 VOLLEYBALL STANDINGS

Through Saturday's games	PAC-10 GAMES		ALL GAMES				
W	L	Pct.	GB	W	L	Pct.	
Stanford	11	1	.917	-	19	3	.864
UCLA	10	3	.769	1.5	20	6	.769
California	8	4	.667	3	14	10	.583
USC	9	4	.692	2.5	13	8	.632
Oregon	9	4	.692	2.5	13	7	.650
Arizona State	6	6	.500	5	12	9	.571
Arizona	4	8	.333	7	13	10	.565
Washington	4	9	.308	7.5	17	9	.607
Washington St.	2	11	.154	9.5	14	16	.467
Oregon State	0	13	.000	10.5	3	18	.143

ASU CLUBS

CONTINENTAL RUGBY CLASSIC

Friday's games
 Arizona State 26 University of San Diego 3
 Arizona State 13 Air Force 7
 San Diego State 15 Arizona State 6
 Saturday's consolation game
 Arizona State 9 New Mexico State 4

SCUBA LESSONS

Now Only **\$49⁹⁵** with ASU I.D.

3 WEEK COURSE — CLASSES START:
 NOV. 9 — Mon./Tues. Nights
 NOV. 15 — Sundays
 DEC. 1 — Mon./Tues. Nights

PADI OPEN WATER TRAINING MUST BE COMPLETED WITH US

DIVER DAN'S

967-6962

LSAT
GMAT

barbri

PROFESSIONAL CENTERS

COLUMBIA UNIVERSITY SURVEY RANKS BAR/BRI BEST PROGRAM

#1 over Kaplan

LSAT

LSAT classes at ASU begin Nov. 9, 1987. For reservations call Valerie, 969-8953.

BAR
CPA

brazier

SINGLE BURGER FULL MEAL DEAL

Look what you get! An all-beef burger, a regular order of crispy, golden fries, your favorite medium soft drink and to top it off, a cool and creamy 5-oz. DAIRY QUEEN soft serve sundae. Head for your participating DAIRY QUEEN brazier store to get the Burger Full Meal Deal — the best bargain in town. WE TREAT YOU RIGHT.

\$1.89

ONLY AT:
1389 E. APACHE
(Between Rural & McClintock)

COUPON

MONDAY NIGHT FOOTBALL!

Chicken Wings 1/2 YOUR ORDER **FREE!**

College & NFL

6 TVs Each Location

Wings — 15 Wings **\$2.50**
 Wings — 30 Wings **\$4.75**
 Wings — 45 Wings **\$6.85**
 Wings — 60 Wings **\$8.95**
(Offer good Sundays too)

Woodshed II
 Woodshed II
 Woodshed II

Northeast corner of Dobson & University
844-SHED

Southwest corner of Baseline & Mill
831-WOOD

Pearl of the Orient

CHINESE RESTAURANT

Fine dining in a delightful atmosphere. Featuring Cantonese, Mandarin, and Szechuan Cuisine. Cocktails & Carry Out.

Both BUFFET & GOURMET Available

ALL YOU CAN EAT BUFFET

Lunch **\$3²⁵** Dinner **\$3⁹⁵**

ORDERS TO GO

Bring in this ad and receive one complimentary soft drink with any purchase.

Expires December 1987.

1112 E. APACHE BLVD. • 829-7939
(Next to Tempe Bowl) • TEMPE

OPEN DAILY 11 a.m.-10 p.m.

Papa Jay's Pizza

FAST FREE DELIVERY (Limited Free Delivery Area) \$4.95 Minimum Food Order
 804 South Ash, Tempe (2 blocks West of Mill Avenue, south of University)

966-1003 or 966-4292

SAVE!	COUPON	SAVE!						
<p style="font-weight: bold; margin: 0;">SUN DEVIL COMBOS</p> <p style="font-size: 0.7em; margin: 0;">(includes choice of up to 4 toppings)</p> <table style="width: 100%; text-align: center; font-size: 0.7em;"> <tr> <td>SMALL</td> <td>MEDIUM</td> <td>LARGE</td> </tr> <tr> <td>\$5.95</td> <td>\$6.95</td> <td>\$7.95</td> </tr> </table> <p style="font-size: 0.6em; margin: 0;">PLUS TAX</p> <p style="font-size: 0.6em; margin: 0;">All Prices Subject to Change Without Notice</p>	SMALL	MEDIUM	LARGE	\$5.95	\$6.95	\$7.95	<p style="font-size: 1.5em; font-weight: bold; margin: 0;">2 FREE 2</p> <p style="margin: 0;">2 litres of Pepsi</p> <p style="font-size: 0.7em; margin: 0;">with purchase of LARGE Sun Devil Combo</p> <p style="font-size: 0.6em; margin: 0;">All Prices Subject to Change Without Notice</p>	<p style="font-weight: bold; margin: 0;">DINNER SPECIAL</p> <p style="font-size: 0.7em; margin: 0;">(Mon.-Fri. between 6 p.m. & 9 p.m.)</p> <p style="font-size: 0.7em; margin: 0;">2-LASAGNA DINNERS</p> <p style="font-size: 0.7em; margin: 0;">2-SALADS • 2-24 OZ. PEPSIS</p> <p style="font-weight: bold; margin: 0;">ONLY \$9.95</p> <p style="font-size: 0.6em; margin: 0;">(with this coupon) Plus Tax (Meatballs Additional)</p> <p style="font-size: 0.6em; margin: 0;">All Prices Subject to Change Without Notice</p>
SMALL	MEDIUM	LARGE						
\$5.95	\$6.95	\$7.95						
<p style="font-weight: bold; margin: 0;">LATE NIGHT SNACK</p> <p style="font-size: 0.7em; margin: 0;">(Mon.-Fri. between 10 p.m. & 12 p.m.)</p> <p style="font-size: 0.7em; margin: 0;">2-MEATBALL OR SAUSAGE SUBS w/Cheese</p> <p style="font-size: 0.7em; margin: 0;">2-24 OZ. PEPSIS</p> <p style="font-weight: bold; margin: 0;">ONLY \$7.50</p> <p style="font-size: 0.6em; margin: 0;">Plus Tax</p> <p style="font-size: 0.6em; margin: 0;">All Prices Subject to Change Without Notice</p>	<p style="font-size: 1.5em; font-weight: bold; margin: 0;">2 LARGE ONE ITEM PIZZAS</p> <p style="font-weight: bold; margin: 0;">ONLY \$11.00*</p> <p style="font-size: 0.6em; margin: 0;">(with this coupon) *On Regular, not Sicilian Style</p> <p style="font-size: 0.6em; margin: 0;">All Prices Subject to Change Without Notice</p>	<p style="font-weight: bold; margin: 0;">\$1.50 OFF</p> <p style="font-size: 0.7em; margin: 0;">ANY LARGE Sicilian Style Pizza*</p> <p style="font-size: 0.6em; margin: 0;">with two or more toppings</p> <p style="font-size: 0.6em; margin: 0;">*Extra Thick Crust Not on Sicilian Chef</p> <p style="font-size: 0.6em; margin: 0;">(with this coupon)</p> <p style="font-size: 0.6em; margin: 0;">All Prices Subject to Change Without Notice</p>						

AUDITIONS!

Auditions are being held on **Saturday, NOVEMBER 7, at 9:00 A.M.** in Music 094 (2nd level of the basement)

ASU's Lyric Opera Theatre will present this classic American musical in the Gammage Center on February 5 & 6 and in the Sundome on March 3 & 4.

Leads will begin rehearsals on January 4th. Smaller featured roles will begin on January 9th, with songs rehearsed before Christmas break. Chorus staging begins on January 15.

More information is available by checking the bulletin boards in the Music Building or the Theatre Department or by calling 965-2856.

Football

Continued from page 11.

But both the sun and the Bruins shone in the third quarter, as the Bruins outscored the Sun Devils, 17-6, and effectively took control of the game.

With a 10-9 lead, the Bruins regained possession of the ball after ASU was forced to punt. A reverse on the punt return brought the ball 39 yards down to the ASU 28-yard line.

The Bruins then drove to the ASU seven before Aikman found Craig again for a touchdown pass, making the score 17-9.

But the Sun Devils, after a four-play possession by the Bruins, ran a reverse punt

return of their own, with defensive back Lynn James taking the ball from Nathan LaDuke and running 46 yards to the Bruin 35-yard line.

ASU then drove the ball to the one-yard line before Williams carried the ball over the goal line, bringing the Devils within two points at 17-15. Ford was sacked on the two-point conversion attempt, leaving the score as it was.

In the fourth quarter, Aikman and the Bruins continued to move the ball in the air.

Aikman completed passes of 27, 20, 17, and 17 yards in two touchdown drives (one which included a 74-yard run by tailback Bryan

Brown for a touchdown) which gave them 31 points on the day and the win.

The Sun Devils were also able to move the ball in the air, however, as Ford connected on passes of 11, 10, 17, and 41 yards, including a three-yard pass to Tony Johnson for a touchdown.

But the Devils were unable to catch the Bruins, and after Ford threw the ball behind Williams on a fourth-and-10 play on the UCLA 26-yard line, the UCLA victory was secured.

Donahue said the win was a difficult one for the Bruins.

"It was an all-out brawl," he said. "This was a very difficult and hostile environment to play in. This game was as tough as any game that I have been involved in."

Cooper said the Sun Devils must win the remainder of their games in order to secure a bowl berth.

"What we have to do is win eight games," he said. "If we are 8-3 it will be a pretty successful season."

"But it is not automatic — we have Oregon, Cal, and the big showdown with the UofA coming up. We have to bounce back," he said.

National Screenprint Imprinted Sportswear

CAMPUS REP:
KATHY FEE

2121 S. PRIEST #119
TEMPE
966-7237

SID'S WAREHOUSE DELI & PUB

"GOOD FOOD AND DRINK"

Live Entertainment

— Nightly —

(No Cover, No Min.)



Our Monday Evening Special

Well Drinks

(single shot drinks only)

99¢

plus tax

(Must be 21 with valid I.D.)

Every Monday Night

8:30 p.m.-11:30 p.m.

130 E. University Dr. (at Forest)

(In The Arches)

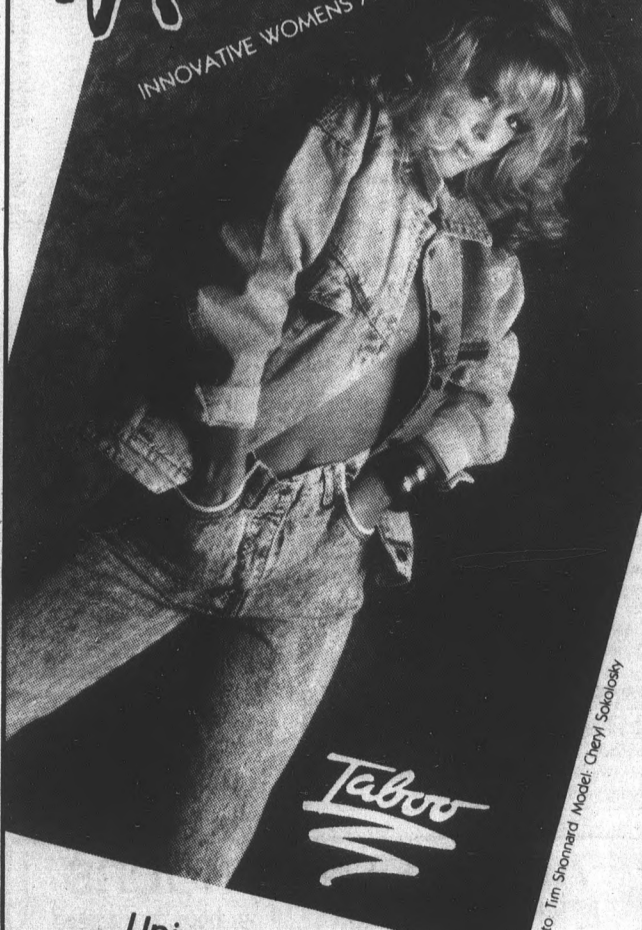
966-7788 • Tempe, AZ

Your Hosts "The Family"

— Estab. 1975 —

WYVA

INNOVATIVE WOMENS APPAREL



Taboo

University Towers Center
580 S. College • Suite 101
Tempe, Arizona 968-4940
(Across from Sun Devil Stadium)

Mon - Fri — 9:00 - 8:00
Saturday 10:00 - 6:00
Sunday 12:00 - 6:00



Things Mother Never Told You...

"Don't get sick — or hurt in an accident. Because if you do — you have to pay the bills!"

But wait — don't panic

The ASU Student Health Insurance Plan is better than ever... and easier to understand!

It pays you...

- For preadmission hospital tests
- For Major Medical expenses up to \$25,000.00 — for each covered accident or sickness — including services, supplies and ambulance service
- For Student Health Center X-ray and lab services with no deductible
- For mental health care

Stop in at the Student Health Center and ENROLL TODAY.

Or call 965-2411 during regular business hours, Monday through Friday for details.

Don't wait — enrollment ends 45 days after the first day of classes for this semester!

See your Student Insurance Brochure for full details of coverage and benefits.

The ASU Plan is underwritten by:



People you can count on...

Mutual of Omaha Insurance Company
Home Office: Omaha, Nebraska

Approved and recommended by the Arizona Board of Regents and the Student Health Advisory Committee.

announcements

MAY THE sacred heart of Jesus be adored, glorified, loved, and preserved throughout the world, now and forever.

QUESTIONS ABOUT your long distance telephone service? Interested in learning about calling plans and special products that may save you money?

WORLD COMMUNITY Day (CWU) Friday, November 6, 11:00, St. Augustine's Church.

autos for sale

1981 FORD Thunderbird, Town Landau. Air, automatic, cruise, power windows, electric seats.

1981 TOYOTA Corolla hatchback. 76,000 miles, auto, air, radio, new tune-up, tires, brakes.

1984 BERTONE Fiat X-19, convertible, targa top. 27,500 miles, air, 5-speed, leather interior, white/grey, power windows.

1988 MAZDA 323. Must sell, \$9000/take over payments. Leave message, 968-5544.

DESPERATE! I have to pay bills: 1981 Datsun 210 5-speed, air, stereo, 36-MPG, \$2000. 981-6360.

autos for sale

MERIT AUTO SALES CONVERTIBLES SPORTS CARS

711 N. Scottsdale Rd. Tempe • 966-1161

We take consignments. Financing available. Open 7 days a week.

motorcycles for sale

1979 KZ1000, super clean, low miles. Must sell, \$1300/offer. Call Marty, 894-0804 (page, 259-6086).

1979 VESPA P200E. 4000 miles, strong engine. Includes rack, windshield, cover, and spare tank. \$600, call Dan, 968-7935.

1980 550 GS. Excellent condition, low miles. \$600/offer. \$25 discount with student ID. 391-1340.

1983 YAMAHA 180cc Scooter. Very low miles, excellent condition, \$700. 947-0401 after 4 p.m.

1984 HONDA scooter 125, excellent condition, new tire, low miles, \$560/offer. Call Pete, 921-0203.

HONDA XL-600R, about 2000 miles, in excellent condition. \$1150. Must see to appreciate. 831-7626.

MOTHER SELLING son's 1986 Honda Rebel 250. One owner. Sissy bar, engine guard. Call 964-6138. Offer.

motorcycles for sale

1987 SUZUKI 650- 3 months old, must sell, \$2000/offer. Call Don, 968-8642, or leave message.

BRAND NEW 1986 Honda Elite 150. Low miles. \$1750 or best offer. Michael, 966-0158.

RISING SUN Cycles- Better than adequate scooter/cycle sales and service; 1900 N. Hayden Rd., Tempe, 945-8912. Monday- Friday: 9-6, Saturday: 9-4.

bicycles for sale

TEMPE BICYCLE Shop. Largest selection new, used bikes, clothing, parts, accessories. Rentals. Student discounts. Close to ASU. 330 W. University. 966-6896.

tickets for sale

TICKETS: ASU/UofA! Don't miss out! 2 student seats. \$60/offer. 784-8394, Debbie (leave message).

EDDIE MURPHY, R.E.M., James Taylor, Def Leppard, Fleetwood Mac, Tina Turner, U2, and Pink Floyd in Los Angeles. ASU football, Phoenix Suns. Best seats and prices. Buy/sell/trade. 277-0077, Murray's Tickets.

furniture for sale

BRAND NEW Lazy Boy recliner. New, \$700. Must sell, \$200 or best offer. 844-4039.

NEW FULL or twin size bed. Stored but never used. \$99. Can deliver. Phone orders accepted. 841-6929.

NEW QUEEN size Ortho box and mattress. Stored, never used. \$149. Can deliver. Phone orders accepted. 841-6929.

USED FULL size bed- mattress, box, and frame. \$50/offer. Call after 5 p.m., 892-6336.

USED FURNITURE and antiques. Affordable prices. Top quality. 1310 W. University, Mesa. 890-0776.

miscellaneous for sale

200 ROLLS of film for only \$20. For more information call 481-0425.

LEATHER: MINI-skirts, \$67; bomber jackets, \$195; back packs, \$59.95; etc. The Leather Works, 844-8422.

NEON BUDWEISER sign, \$90. 956-9041, leave message.

RADAR DETECTOR (The Original Fuzz Buster): Brand new, in box, \$199 new- must sell, only \$99. Call Richard, 840-7432.

CASH IMMEDIATELY

Name brands, current styles and accessories. Plus fabulous finds for your wardrobe. It's like trading closets with a friend.

CLOTHES PEDDLER 1126 N. Scottsdale Rd. 966-2300

apartments for rent

2 OR 3 bedroom apartment, air/heat paid, ASU 1/4 mile, \$300 off with ad. 968-8945.

BEAUTIFUL NEW large two bedrooms, walk to ASU, pool, laundry, one block south of University on 8th Street and Gary. Ask about move-in specials. 968-5238.

LARGE ONE and two bedrooms. 1/4 mile to ASU. Pool, laundry, bar-b-que. \$310/\$365. \$200 off special. 2108 Rural, 966-4818, 967-1737.

RANCHO LAS Palmas Apartments has one and two bedrooms from \$360. Club house, weight room, pool, 2 jacuzzis. 1249 E. Spence, Monday through Saturday, 829-9607.

UNIVERSITY TOWERS- Sublease, premium unit parking included, \$899, academic year. Call Angie, 968-7492.

WALK TO ASU, junior one bedroom, \$265; two bedroom, \$400. Adults, no pets. 1031 E. Lemon. Bel Air Apartments, 968-2679, 933-4364.

THE BEST in STUDENT LIVING at UNIVERSITY TOWERS

- *24-hr. security
*video surveillance
*laundry facilities
*pool, jacuzzi
*contemporary decor
*weight area
*private balconies
*covered parking optional
*free utilities, local phone
*monthly activities
*live-in resident advisors
*roommate selection process

Tours Daily CALL TODAY 894-2300 UNIVERSITY 525 S. FOREST TOWERS TEMPE 85281

real estate for sale

\$00 DOWN, 8 1/2% 30-year, Papago Park Village. Own a condo for less than rent. Bob Bullock, Realty Executives, 998-2992, 860-0460.

ASU STUDENTS: Look! Low priced 2 bedroom, 2 bath condo near campus. All appliances. Like new. 10% FHA assumable. Call owner, 962-3210 days; 839-2608 evenings, weekends.

MUST SELL 3 bedroom, 2 bath Tempe condo. Fireplace, microwave, ceiling fans, washer/dryer. 967-4285.

POPULAR FACULTY area, quiet Tempe location. 13 years old, semi-custom, Patterson walled villa in excellent condition. 4 bedroom, 2 bath, 2100-plus square feet. Pool, garage, many upgrades. By owner. 921-7791, (714)-494-8749.

STUDENTS/INVESTORS!! Condo, \$1300 down. 2 bedroom, 1 1/2 bath, near ASU. Payments \$480. 967-4001.

homes for rent

4 BEDROOM, 2 bath, Arizona room, updated kitchen, pool, 2 car. \$750/month. Margo, 991-0212 or 949-5888.

FOR RENT, Townhouse, 2 bedroom, 2 bath. Near ASU. \$650 a month! Call evenings, 949-1419.

rental sharing

2 MALE roommates needed- Christian, nonsmoking. \$210/\$230 month, utilities included. Close to campus. Richard, 877-2048 or 870-5328.

BEAUTIFUL TEMPE home to share 4 miles south of ASU. Private bedroom, bath; parking, washer, dryer, pool. No pets. Deposit required, \$250 monthly covers all. Call 897-8781.

BEDROOM AND bathroom available in furnished condo at Worthington Place. One or two students, male or female. Available January 1st. Kim, 968-8959.

CLASSIFIEDS WORK. Use one today!!

FEMALE NONSMOKER to share 1 bedroom. Close to ASU. \$200, including utilities. Alyson, 966-8933.

FEMALE TO share 2 bedroom, 2 bath, 10 minutes from ASU. Pool. \$245, 1/2 utilities. 946-6174.

MALE STUDENT to share awesome two bedroom, two story apartment with same. 5 to 10 minutes to campus. \$265/month. 945-5903.

ROOMMATE TO share beautiful 3 bedroom, 3 bathroom townhouse. Furnished, washer, dryer, yard. Great complex, 3 pools, jacuzzi. Call 921-2223.

ROOMMATE NEEDED- Male, female. Worthington Place. Own bedroom plus bath. \$275 monthly. Washer, dryer in unit. Call Alicia, 968-2621.

business opportunities

MAKE MONEY with your body. Not that! Selling fitness and aerobic wear. Call Kim at 921-3182.

OFFICE FOR Rent: 10'x13', Mill and Southern. Modestly furnished. \$175/month includes utilities and janitorial. Robert Busch, 967-4420, evenings 893-8778. Nonsmokers only.

BIG PROFIT

You earn \$12.00 for each photo-express gold card sold. This card is good for 200 rolls of film and costs only \$20.00.

Details - C. F. Christansen 951-6756 Pager No.

help wanted

ACCEPTING APPLICATIONS for cashiers and drivers at Sammy B's Pizza and Calzone, 945-8850.

ADVERTISING REPRESENTATIVES: No experience necessary, will train. Above hourly wage plus incentives. 483-2682.

ALASKA SUMMER employment- Fisheries. Earn \$600-plus weekly in cannery, \$8,000-\$12,000-plus for two months on fishing vessel. over 8000 openings. No experience necessary. Male, female. Get the early start that is necessary. For 52-page employment booklet, send \$5.95 to: M&L Research, Box 84008, Seattle, WA 98124.

ATTRACTIVE, COOL crew needed for counter help. Burger Haven, apply in person, 112 E. University.

CAMPUS REPS for cosmetic company. Enthusiastic, motivated, people-oriented. Great experience! Please call Lynne, 279-9176.

SCHRISTMAS MONEYS Less than 45 earning days till Christmas. Days and evenings available. \$4-\$8 hourly. Call today, start today! 968-1749.

help wanted

BABY SITTER wanted. \$3.50 per hour. Fran, 966-0088.

CLEANING HELP needed for bar in Tempe, 3 to 4 hours in morning. 966-1495, leave message.

COLLEGE STUDENT, part-time. We need 6 enthusiastic college students to work 4-9 p.m. shift, Monday through Friday. \$5 per hour plus bonus. Call Mr. Rod, 921-2897.

COMMUNICATION/JOURNALISM intern: Flexible 20 hour workweek at \$6 per hour beginning mid-December to mid-March. On the job training by assisting with internal and external communications. Require strong writing skills, some clerical. Contact Pat Claire, Kitchell Corporation (near airport), 275-7541.

COOKS NEEDED- Apply at Frankster's Gar and Brill, 1024 E. Broadway.

COORAL BAY Main Street Restaurant's exciting new seafood concept is now accepting applications for all positions. Qualified, experienced personnel preferred. Apply in person, 8380 Via de Ventura, Scottsdale.

DANCERS NEEDED. Apply at The Fox Den. No experience necessary. Excellent tips, hours flexible. 1137 N. Scottsdale Road. Apply in person.

DISABLED STUDENT needs help part-time. \$5 hour. No experience necessary, will train. 829-0927, leave message.

EARN EXTRA money for Christmas selling beautiful gift items from our full color catalogue. 20% commission on all sales. 838-1150.

EXTRA MONEY is nice, but you can help people too! Donate plasma for up to \$120 per month. First donation in a calendar week \$10, second donation in same calendar week \$20 (Monday-Saturday). New donors receive \$2 bonus on first donation. University Plasma Center Associated Bioscience Inc., 1015 S. Rural Rd., Tempe, AZ. 968-6139. Effective until further notice.

HELP WANTED: Responsible people wanted for counter help and delivery. Must have own car. The Smart Cookie, 921-9988.

PART-TIME COMPUTER Clerk- Local computer retail store needs a person with good working knowledge of MS-DOS and micros, neat appearance, and professional attitude. Call Mr. Christoff, 838-1236, 10-5.

PERSON TO provide beginner piano lessons to adult. Call after 5 p.m., 944-9103.

PHONE WORKERS needed to conduct a volunteer recruitment campaign for a national health agency: Monday-Thursday, 6 p.m.-9 p.m. and Saturday, 10 a.m.-1 p.m. Call Terri at 277-4846.

We NEED: Creative Dedicated Motivated Outgoing Organized Persuasive Advertising Sales Reps IMMEDIATELY!

The rewards are many...you'll gain valuable experience in sales, layout, design, production and communications

This job is not for everyone, however. It's highly demanding and requires every spare moment of your time...25 to 35 hours per week. And you must be an advertising/marketing/business major with an incredibly strong desire to learn about advertising and the insight to understand the benefits of this pre-professional opportunity.

If you have a demanding class schedule or lots of extra-curriculars, this job's not for you.

BUT...if you have a sense of pride in doing a good job; are creatively inclined; feel you can handle 30-40 local accounts, as well as your classes and a not too wild social life; don't need anyone to get you going every morning and above all, operate well under the pressure of a deadline...WE NEED YOU!!!

MIKE BENNING 965-6881

Between 9 a.m. and 4 p.m. today!

AMERICAN PRESIDENT COMPANIES Management Training Program

There's No Better Way To Go. Our six-month management training program will provide you with a first-hand look at inter-modal transportation. One of the fastest growing businesses in the world.



Please see the placement office for more information. Campus interviews will be conducted:

November 2

AMERICAN PRESIDENT COMPANIES

All You Can Eat

Chinese Japanese Mandarin

* 1/2 PRICE * LUNCH OR DINNER Buy One Buffet at Regular Price and Get Second for 1/2 Price. Offer expires 11/8/87. Offer does not apply to take-out orders!



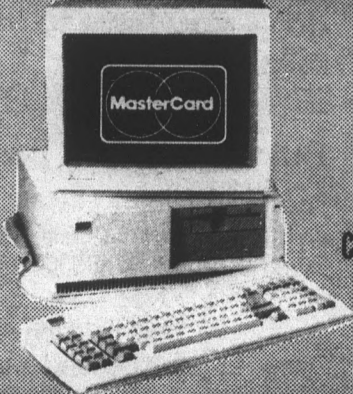
Yum's ORIENTAL BUFFET

S.E. Corner Baseline & McClintock We're open all day! 11 a.m.-9:30 p.m. 345-9867



LEARN HOW TO BUY THIS PC For As Little As \$39 A Month

NO DOWN PAYMENT



NO COSIGNER

Introducing COLLEGE CARD T.M. from SMI Only SMI offers the CollegeCard Program to permit responsible students to buy a PC on their very own credit with low monthly payments.

This system will run all IBM PC-compatible programs such as: Wordstar, WordPerfect, Lotus 1-2-3, and dBase III. Call Kelly Brown today at (602) 488-8800 for our CollegeCard Easy Application Packet or to arrange an on-campus demonstration. Faculty and staff demonstrations at MIFP.

Watch for us on CODY MALL. Financing by VALLEY NATIONAL BANK Personal Computer by Systems Marketing, Inc. IBM is a Registered Trademark of International Business Machines Corporation.

AFTER CLASS HOURS AFTERNOON EXPANSION \$5.50 per hour guaranteed

Dialamerica Marketing, the nation's finest telemarketing firm, is now accepting applications for the following shifts: 2-6 p.m. 6-10:30 p.m. 7-10:30 p.m. Weekends Also Available

Our salespeople work in a modern, comfortable business environment contacting established customers on long distance lines. Guaranteed salary or commission, whichever is greater, and averages \$5-\$7 an hour.

Our Tempe office is located approximately 5 minutes from campus. Please call Dialamerica Marketing for details.

829-1140

help wanted

PART-TIME EVENINGS, Monday-Friday only. Warehouse and shipping. Abbey Office Products, 1555 W. University, Suite 101. 894-6141.

RETAIL SALES clerks, days or evenings, full or part-time. Must have own transportation. Salary is open. Call between 9-12 for appointment, 945-6182.

SALESPERSON: PART-TIME/full-time. Flexible hours! Sell baby and children's furniture in a happy and fun atmosphere. Apply in person, Higgins 4 Babys Only, 817 E. Indian School Road in Phoenix. Call 266-1422 with any questions.

SHOESHINE GIRLS to work at hotels, nightclubs, and resorts. Must be young, aggressive, and outgoing. Hourly wage or lease option. Hiring now for Scottsdale and Central Phoenix. Phone today, 246-3653.

WEEKEND JOBS

If you are in need of extra money, Physical Plant wants 16 students who are concerned about the looks of our campus. Hard working, interested students

CALL 965-1800.

SPARE TIME income; electronics, no experience. Others. For more info, dial 504-641-0091 ext. 1060. Open 7 days.

STARTING \$3.65 hour, all positions, part-time and full-time. Any hours available. Apply in person, Dick's Hamburgers, 855 S. Rural.

STOCKYARDS NOW hiring lunch waitresses and evening dishwashers, busboys, and waiters. Apply Monday-Friday, 10-11:30 and 1:30-5, 5001 E. Washington.

TELEMARKETING POSITION: Work from your own home calling small business owners to set appointments for our consultants. Great commission. 838-1150.

help wanted

WALKER RESEARCH: Immediate openings for part-time positions in consumer opinion research. National telephone interviewing. No selling. Part-time openings: 3:30-9 p.m. and 5:30-9:30 p.m. shifts available. Minimum requirement: 3 weekdays and 1 weekend shift per week. Apply in person Monday through Friday, 8:30 a.m.-4:30 p.m., Personnel Office, 4657 S. Lakeshire Drive, Tempe. 831-2971. Male, female. Equal opportunity employer.

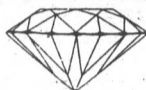
WEDDING PHOTOGRAPHER for established studio. Must be reliable, with Saturdays free. Must have reliable, insured transportation. Background in photography necessary. 945-2550 ask for Theresa.

WORK PART-TIME and earn \$200-\$500 weekly. Technical school needs 5 surveyors. Call Steve, 955-2288.

jewelry

CASH FOR gold and diamonds. Mill Avenue Jewelers, 414 S. Mill, Suite 104, Tempe. 968-5967.

CUSTOM DESIGN and re-mounting. Mill Avenue Jewelers, 414 S. Mill, Suite 104, Tempe. 968-5967.



Diamonds Engagement Sets

We will beat any price! Over 50 styles to choose from. All diamonds loose for grading and your inspection.

Call for hours: 835-9149

The Diamond Consortium
20 E. Main, No. 608
Mesa

instruction

AEROBIC INSTRUCTORS Certification Workshop, weekend of November 7th at ASU by National Aerobics Training Association. Call 963-9415 or 899-9289.

FLIGHT INSTRUCTION: Private through commercial. \$10/hour. Call Chuck, 345-6417.

HANG GLIDE! Gently sloping hill just South of Tempe. Safe and exciting. Lessons all day, only \$75. Windsports, 897-7121.

free lost/found

ATTENTION ALLEN Stein: Your wallet was found in front of Palo Verde West. Please pick-up at M.U. lost and found.

on-campus

On-Campus 1908

The Tempe Normal Student, November 6, 1908: "The order Hallowe'en was pretty decent and Mr. Matthews commended the boys for their self restraint."

SOUTH PADRE Island, spring break. Deluxe condo, parties, and many activities. From \$159. Call for details- Scott, 835-8887.

personals

ATTENTION BUSINESS Students: Meet your professors at the Faculty/Student reception Tuesday, November 3, 3-5 in the Turquoise Room in the M.U.

GREEK WEEK committee members: 1988 Greek Week meeting Wednesday, November 4th at 9:45 in PV Main.

PLEDGE NICK: I believe you should know I'd like you to go to South Mountain with me and celebrate our Little Sis Jubilee! I promise not to plead, if you give the answer I need! Luv, (retired) "you-bet."

personals

FRATERNITY AND sorority presidents: Don't forget about the Greek Steering and house presidents meeting! Tonight at 9:45 in PV Main.

REACH: STUDENTS helping students! Accepting applications for an exciting spring semester! Come to the Student Life office in the Memorial Union or call 965-2255 for more information!

ROBBY "SCHUARTZA Herman" Bain: Happy 21st Birthday. It's time to put away your fake ID and "whip" out your real one. Love ya, Laurie Hetfield and Michelle.

TO THE Women of Delta Sigma Theta Sorority Incorporated: Knowing others is wisdom; knowing the self is enlightenment. The Pyramids.

TRISH, NURSING: I don't even know your last name! Saw you at the Vine last Wed. Was he your boyfriend? Like to see you again. Andres, 994-9535. Your move!

WAYNE L. - What do I look like? What is my name? We have to end this, I'm sick of this game. We'll meet tonight, here's where and when: At the Econ fountain, promptly at ten! XOXOXO

pets

3 1/2 YEAR old lilac crowned Amazon parrot. Extremely tame. \$400 or best offer. Must see. 844-4039.

services

ANOREXIA, BULIMIA, compulsive over-eating. Private and confidential counseling. Ginnie Grant Monroe, ACSW, recovered Bulimic, 437-9420, 468-3850. Health insurance welcome.

COMPUTER CONFUSED?? Consulting and tutoring in IBM/Macintosh operating systems and software. Call ME Consultants, 966-8779.

services

HAPPY HOUR
MON.-WED.
4:00-6:00
MOVIES
2 FOR 1
VHS Movie Rentals

Free Membership
Free Reservation
Great Selection

Rental Network
829-1966

COOKIE BOUQUETS: Delicious home-baked chocolate chip cookies. Gift boxed, delivered, \$18 dozen. 829-7544.

HAVE UNWANTED facial or body hair removed permanently by electrolysis. Free consultation, located in Tempe. Call Sharon at Desert Electrolysis Center, 829-7829.

PERSONAL COMPUTER tutoring in Lotus 1,2,3, D-base III, etc. Resume writing assistance. Reasonable student rates. Diane, 971-0536.



BANK THE SAVINGS
AT



Your full service printer

215 E. 7th St.
(Next to Barb's Darkroom)
968-0799
1035 E. Lemon (at Terrace)
967-1651
1605 W. University
829-1834

transportation

ATTENTION: FREE cars to all major cities. 21 or older. Call AAA Driveaway, 277-9979.

CARS AVAILABLE - 21 or older. All States Drive-away, 992-5200.

I NEED a ride to Tucson every weekend. Will share cost. Days, 255-1541/265-5801.

travel

2 TICKETS, Phoenix to Washington D.C. Leaving 11/21, returning 11/24. \$208 per ticket or best offer. 965-6300, 496-0866.

AIRLINE AWARDS buying coupons, miles, bump tickets. Top prices. Also selling, savings worldwide. Arthur, 968-7283.

AIRLINE COUPONS wanted: United Bonus tickets; Western Extra; others. Up to \$350 each. 800-255-4060.

CARIBBEAN VACATION \$179 for 2. Includes 4 nights hotel and airfare. Call 274-9626, Tim.

TWO TICKETS: Phoenix-Chicago O'Hare-Moline, Illinois; one for November 25-30 and one for December 19-30. Can be used for Chicago only. Round-trip. \$200/each. Call 894-1178.

typing/ word processing

TYPING +
438-9202

Sure we type, but we do much more. Need help with grammar, spelling, or punctuation? What about writing, editing, and proofreading? Complete computer analysis of your work available. Final copy: Laser typeset and bound.

\$1.25 DOUBLE spaced page. A-1 letter quality word processing. 32 years experience. Marian, 839-4269.

\$1.50 PER page. Any Type Word Processing. Spelling and grammar corrected. Some graphics available. Call Debbie, 961-1495.

\$1 PER page. Will correct grammar and spelling. 4-color printing and graphics. 838-1150.

AAA TYPING, fast and accurate, word processor, Tempe location. Call Melissa's Secretarial Service, 820-4283.

AAA TYPING/word processing. \$1.50/page. 10 years experience. Fast turnaround. Call Linda, 962-8075.

CALL CAROLINE for your typing needs. Quality work, reasonable rates. Near Rural/Southern. 829-7544.

CALL ME for fast, accurate, quality service at competitive prices. Close to ASU. 966-2186.

DISC STORAGE. Quality printing. Spelling and grammar corrected. Nina, 730-9517.

FAST, ACCURATE word processing. Research papers, grant proposals, manuscripts, statistical, medical, legal. Call Kasey, 947-9611.

FLYING FINGERS Word Processing and Resume Service. McDowell/Scottsdale Road area. 945-1500.

FORMER ASU staffers- Word Perfect and Xerox memory writers. Experienced with APA, MLA, graduate school, etc.- graduate students and faculty work welcome. 945-6302, Donna and Joan.

JACQUI'S WORD Processing Service. Pickup and delivery available. Reasonable rates. A computerized service for all your typing needs. College papers, resumes, reports, etc. Jacqui Kissell, 14809 N. 73rd St., Suite 205, Scottsdale, 948-7181.

ON CALL- Letter quality documents by professional legal word processor. Guaranteed typo free. Lisa, 990-2958.

PROFESSIONAL TYPING at low prices. Call after 6 p.m. or weekends, 994-3302.

SHORT OF TIME? I can help. Reasonable. Professional. Guaranteed. Experienced in academic. Call Jessie 945-5744.

THE PAPERWORKS- Thesis, report and resume typing. IBM compatible word processing. Near ASU. 921-9575.

WORD PROCESSING, resumes, and typing. Call Uni-Print, 967-1851.

WORD PROCESSING- Thesis, dissertations, manuscripts, resumes, and term papers. Will do graphs and charts. 24 hour turnaround. Pick-up/delivery available. Barb, 759-0636.

Cereus Letter Processing
Complete Word Processing Services
Fast
Efficient
Reliable
947-7796

wanted

BASEBALL CARDS, yearbooks, world series programs, autographed baseballs, and any other sports items wanted. 784-8846.

WANTED: BASEBALL cards and other sports items. Just started collecting. Mike, 493-8941.

What Do People See In Us?
Possibilities.

Apple Computer has shown people they can do just about anything, and have fun doing it.

Our innovative products are now used for everything from grade school education to advanced CAE modelling.

See for yourself. We're hosting an on-campus presentation to discuss the possibilities we offer after you graduate; opportunities in Business, Engineering and Operations. We'll be on campus soon:

Monday, November 2nd
in 211 Yuma at 4p.m.

An equal opportunity employer



Apple, a whole new school of thought.

©1987 Apple Computer, Inc. Apple and the Apple logo are registered trademarks of Apple Computer, Inc.



WHY ARE THESE GRANNIES TICKED OFF?

Because you haven't had your picture taken for the Yearbook yet! We want every ASU student to get their photo taken THIS WEEK in the Lower Level of the MU. **IT'S YOUR LAST CHANCE!** No cost - no obligation except a beautiful smile.

WOMEN IN COMMUNICATIONS INC. WELCOMES DAVE PATTERSON
 From Channel 10 News
 Tuesday, Nov. 3 7 p.m. • MU Coconino Room
 All students invited to attend

EMPLOYMENT OPPORTUNITIES IN JAPAN

Bi-lingual? Interested in learning about career opportunities in Japan? Shushoku Joho, the employment journal of Japan, provides information on opportunities with prestigious Japanese and foreign capital companies operating in Japan.



To receive the latest news in career opportunities in Japan, free of charge, please dial (800) 423-3387 in California; (800) 325-9759 outside California. A service of Recruit U.S.A., Inc. "We Communicate Opportunity" Note: This publication is written in Japanese.

MANN **\$3.00 BARGAIN PRICE**
SHOWS BEFORE 8 P.M. MON.-FRI. (EXCEPT HOLIDAYS) SATURDAY, SUNDAY & HOLIDAYS FIRST SHOW ONLY

<p>CHRIS TOWN 5 249-2843 5707 NO. 19TH AVE.</p> <p>FATAL ATTRACTION (R) 1:45, 4:30, 7:30, 10:15</p> <p>FATAL BEAUTY (R) 12:15, 2:30, 4:45, 7:15, 9:45</p> <p>BABY BOOM (PG) 12:15, 2:30, 4:45, 7:00, 9:15</p> <p>THE HIDDEN (R) 12:30, 3:00, 5:15, 7:45, 10:00</p> <p>PRINCE OF DARKNESS (R) 12:45, 3:00, 5:15, 8:00, 10:15</p>	<p>SUN DEVIL 6 829-0344 The Coronado Plaza & University</p> <p>PRINCE OF DARKNESS (R) 12:15, 2:45, 5:15, 7:45, 10:00</p> <p>KILLING TIME (R) 12:00, 4:00, 8:00</p> <p>NIGHT FLYERS (R) 2:00, 6:00, 10:00</p> <p>DANCERS (PG) 12:00, 2:15, 4:45, 7:15, 9:30</p> <p>FATAL BEAUTY (R) 12:30, 2:45, 5:15, 7:45, 10:00</p> <p>NO MAN'S LAND (R) 12:00, 2:30, 5:00, 7:30, 9:45</p> <p>FATAL ATTRACTION (R) 1:30, 4:30, 7:30, 10:15</p>	<p>BELL TOWER 8 843-4583 81ST AVE and BELL ROAD</p> <p>SURRENDER (PG) 12:45, 3:00, 5:00, 7:15, 9:30</p> <p>BABY BOOM (PG) 12:00, 2:30, 5:00, 7:45, 10:15</p> <p>NIGHT FLYERS (R) 11:45, 2:00, 4:00, 6:00, 8:00, 10:00</p> <p>SOMEONE TO WATCH OVER ME (R) 12:15, 4:15, 8:15</p> <p>BEST SELLER (R) 2:15, 6:15, 10:15</p> <p>NO MAN'S LAND (R) 12:30, 3:00, 5:15, 7:45, 10:00</p> <p>SUSPECT (R) 11:45, 2:15, 4:45, 7:30, 10:15</p> <p>DIRTY DANCING (PG13) 1:15, 3:30, 5:30, 7:30, 9:45</p> <p>FATAL ATTRACTION (R) 12:00, 2:30, 5:00, 8:00, 10:30</p>
<p>TRI-CITY DOLLAR THEATRES \$1.00 ALL SEATS-ALL SHOWS 461-1070 MAIN ST. & DOBSON RD. IN MESA</p> <p>THE ONE EAST (R) 1:15, 5:30, 9:45</p> <p>BEST SELLER (R) 3:30, 7:45</p> <p>NO WAY OUT (R) 1:00, 5:15, 9:30</p> <p>IN THE MOOD (PG13) 3:15, 7:30</p> <p>THE LIVING DAYLIGHTS (PG) 2:30, 7:30</p> <p>LA RAMBA (PG13) 12:30, 5:15, 10:00</p> <p>ADVENTURES IN BABYSITTING (PG13) 1:30, 5:15, 9:00</p> <p>SPACEBALLS (PG) 3:30, 7:15</p>	<p>SUPERSTITION 5 834-5767 MESA AT SA TONSONORE & SUPERSTITION</p> <p>NIGHT FLYER (R) 1:30, 5:15, 9:00</p> <p>NEAR DARK (R) 3:20, 7:05</p> <p>STAKE OUT (R) 11:45, 2:15, 4:45, 7:15, 9:45</p> <p>SOMEONE TO WATCH OVER ME (R) 12:15, 2:45, 5:15, 7:45, 10:15</p> <p>PRINCE OF DARKNESS (R) 12:30, 2:40, 5:00, 7:30, 9:45</p> <p>FATAL ATTRACTION (R) 12:00, 2:25, 4:50, 7:25, 10:00</p>	<p>POCA FIESTA 4 835-0404 MESA AT 1020 WEST SOUTHERN</p> <p>THE HIDDEN (R) 1:00, 3:00, 5:00, 7:15, 9:30</p> <p>DIRTY DANCING (PG13) 12:30, 2:45, 5:00, 7:15, 9:30</p> <p>BABY BOOM (PG) 12:45, 3:00, 5:15, 7:30, 9:45</p> <p>SURRENDER (R) 12:45, 3:00, 5:15, 7:30, 9:45</p>

Ask Mr. Foster
 Travel Service Since 1888

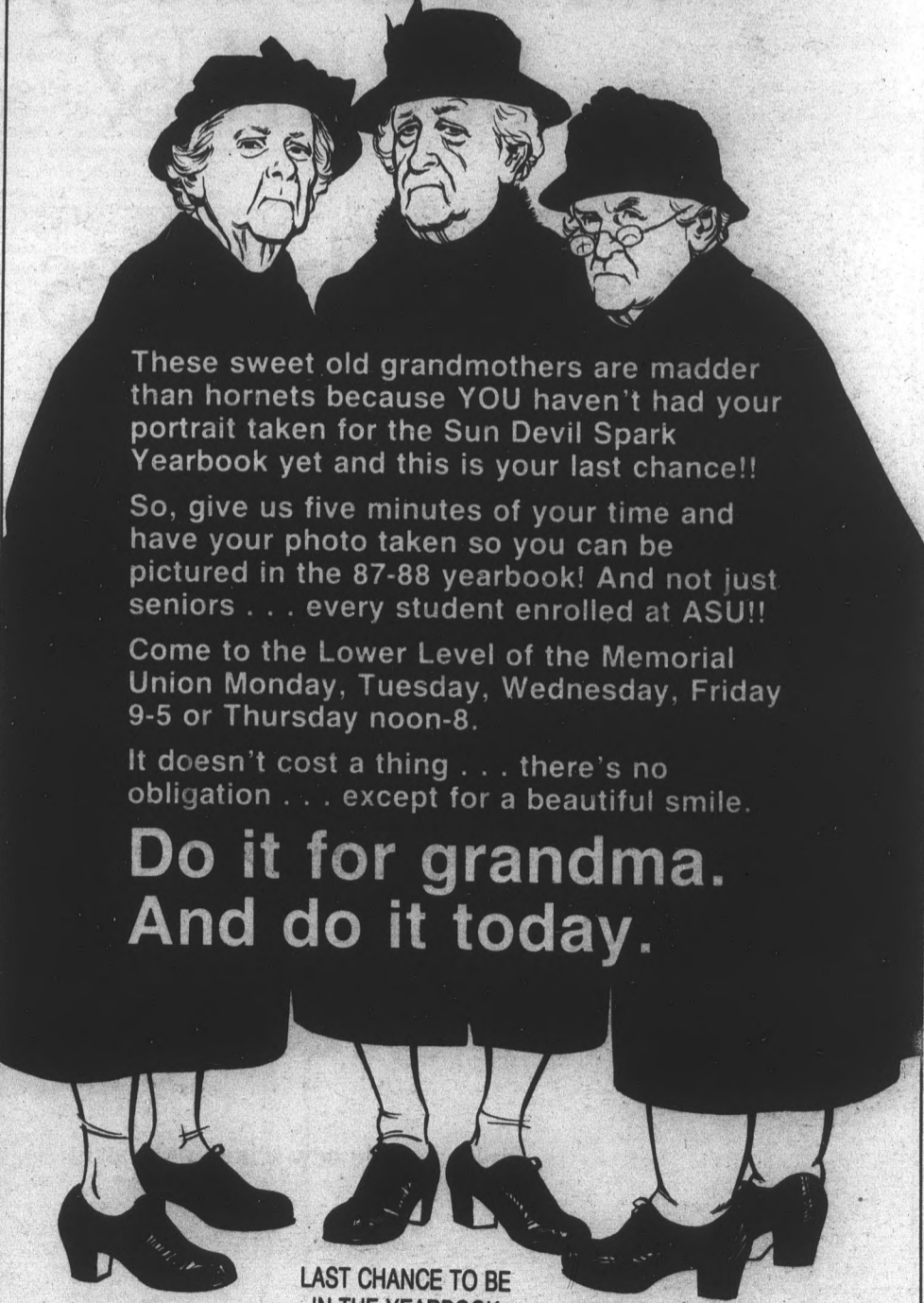
We Give The World To You ...



ASK US ABOUT OUR FREE PARKING

707 S. Forest • Tempe, AZ 85281 • 967-9403
 M - F 8:30 - 5:30 SAT 10:00 - 4:00
 Evenings and Saturdays by Appointment

Why are these grandmothers ticked off?



These sweet old grandmothers are madder than hornets because YOU haven't had your portrait taken for the Sun Devil Spark Yearbook yet and this is your last chance!!

So, give us five minutes of your time and have your photo taken so you can be pictured in the 87-88 yearbook! And not just seniors . . . every student enrolled at ASU!!

Come to the Lower Level of the Memorial Union Monday, Tuesday, Wednesday, Friday 9-5 or Thursday noon-8.

It doesn't cost a thing . . . there's no obligation . . . except for a beautiful smile.

Do it for grandma. And do it today.

LAST CHANCE TO BE IN THE YEARBOOK