

Stock market takes worst 1-day dive in history

By BEN MCCONNELL
State Press

The stock market crashed Monday, in an eerie drama that not only mirrored, but surpassed the "Black Monday" crash of Oct. 28, 1929.

Meanwhile, an ASU official could not assess how much the University lost in the record drop, which some called "Armageddon."

The market was gripped with "financial panic" as the Dow Jones industrial average plummeted 508 points.

To date, the worst single-day percentage drop in the Dow

occurred on Oct. 28, 1929, when the Dow lost 12.8 percent of its value. At a drop of 508 points, the Dow today lost 22.62 percent of its value. In the past three weeks, the market has lost nearly 40 percent of its value.

"What we have here is full-scale financial panic," said Hugh Johnson at First Albany Corp. in New York.

John Phelan, chairman of the New York Stock Exchange, said, "Whether today was a financial meltdown or not . . . I wouldn't want to be around for one worse than this."

Panic selling gripped stock exchanges in London, Tokyo, Hong Kong, Frankfurt, Amsterdam and other financial

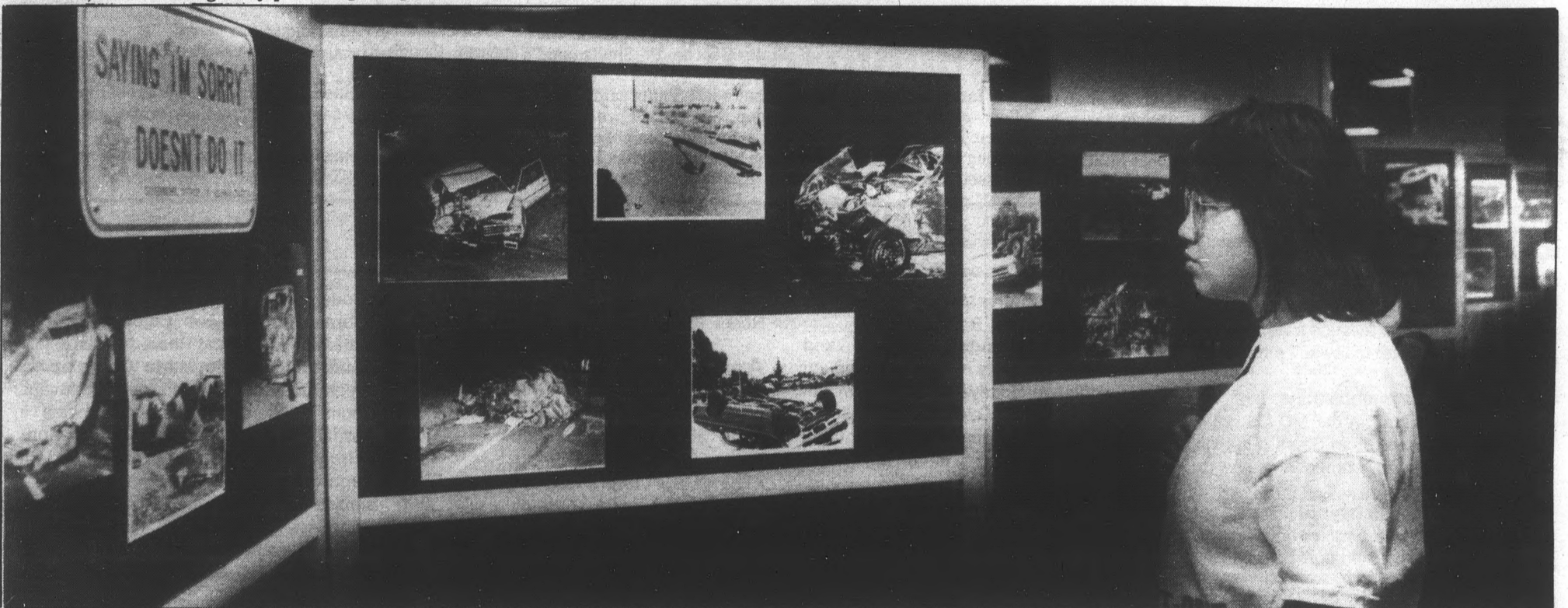
centers, with records set for one-day losses.

"We're having extreme panic in the marketplace. It's like Armageddon," said Alfred E. Goldman, director of market analysis for A.G. Edwards & Sons in St. Louis.

Lonnie Ostrom, ASU's development director, said he could not assess how much the University lost on its \$24 million portfolio, but added, "We make sure we invest in really good, blue-chip stocks."

"Right now, it's a paper loss," Ostrom said. "We'll find out

Turn to CRASH, page 7



Todd Green/State Press

SADD facts

Clara Cheng, senior chemical engineering major, looks at photographs of cars involved in drunk driving accidents. The MU display was part of Alcohol Awareness Week, which started Monday with a Students Against Drunk Driving conference and will continue through Friday.

Constitutionality of ASU skateboard policy debated

By DANA LEONARD
State Press

Students, administrators, local businesses and citizens are clashing on the merits of a new ASU policy prohibiting skateboarding on campus — a rule deemed necessary by its advocates and unconstitutional by its opponents.

The Arizona Board of Regents approved the University Non-Pedestrian Transportation Code, an amendment to the University Bicycle Code, at its meeting in Flagstaff last week.

But an ASU student and a Tempe businesswoman at the meeting were armed with more than 300 petitions signed by students and community members opposed to the ban, asking the board not to vote until students could voice their opinions.

"I asked them to delay the vote until there was a meeting at ASU," said Adrienne Felicioni, owner of Cheapskate, 130 E. University Drive in Tempe.

"It's going to affect ASU the most . . . I think it's completely unfair, unconstitutional, and the Board of Regents is totally out of line. I think it's real sneaky how they had to vote on it (in Flagstaff)."

But ASU President J. Russell Nelson said at the meeting that "roving bands of skateboarders . . . are beating the hell out of the concrete" in addition to being hazardous to pedestrians.

And Don Dickerman, Physical Plant assistant director, said skateboards cause irreparable damage to ramps, benches and buildings.

"Nearly all the benches around the MU and campus are damaged," he said. "The benches cannot be repaired. If you try to touch them up, they chip off again. A lot of the benches are being thrown away, and they cost about \$220 apiece."

But Dalton McCombs, an ASU electrical engineering sophomore who rides a skateboard, said he does not believe skateboarders are damaging benches and other concrete objects used for skateboard tricks.

"Maybe these skateboarders are carrying around sledgehammers," he said. "But I don't see how damage could have been done to the concrete without destroying the board. I would like to see his (Nelson's) proof."

McCombs, who presented his arguments to the regents during their meeting last week, also said few students were aware of the proposed skating ban and what it meant.

"I was going to set up a booth on the mall, but they won't let me unless I belong to a club or organization," he said. "I just wanted to let people know what the Non-Pedestrian Transportation Code meant. Nobody knew what it meant."

"I got the code myself, read it and

understood it, and I thought if the students knew, they'd be really upset."

McCombs said he tried to go door-to-door in residence halls to explain the code to residents but was not allowed.

Cliff Osborne, director of Residence Life, said door-to-door solicitation is prohibited for residents' privacy.

Associated Students of ASU President Karrin Kunasek said there should have been a hearing at ASU for students to voice their opinions before the regents voted.

But Victor Zafra, ASU vice president for business affairs, said: "There are some things that require the public hearing route, and there are some that don't. This is one that didn't."

Even without a public hearing, Kunasek said Regent Herman Chanen, the only regent to oppose the policy, told her "not all the doors are closed to us."

"Depending on the reaction of students, we're probably going to put together a committee of students to sit down and work (the problem) out with the Department of Public Safety," she said. "(DPS) Chief (Russell) Duncan is very willing to discuss this with us."

Duncan could not be reached for comment Monday.

Kunasek said the regents should consider alternatives to the ban, such as restricting areas for skateboarding.

"If they tell bicyclists when they can and can't ride on campus, they should be able to do the same with skateboards," she said. "That way we protect students using (skateboards) as transportation."

Doug Bartosh, associate director of public safety, said overcrowded malls make skateboarding hazardous to pedestrians.

"I think there's been a lot of discussion about students not being responsible (for the new policy), but there are students riding down crowded malls," he said. "And students are doing skateboard tricks, too."

But Bartosh said he could not say if students were damaging any property.

"We've been actively communicating with the skateboarders," he said. "We told them this was the upcoming alternative if they didn't start being more protective of ASU property; they were going to be kicked off campus. They didn't listen."

McCombs said a compromise could have been reached between students, DPS and the regents, "if they tried."

"But they just voted for it because they didn't want to do any extra work," he said. "It's just outrageous. I want to see if (the board, students and DPS) can come to a happy medium."

The next regents meeting is in January at ASU.

Non-pedestrian code starts Nov. 1

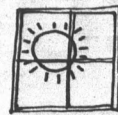
If all goes as planned, ASU police will begin Nov. 1 to enforce a new non-pedestrian transportation code adopted by the Arizona Board of Regents last week.

Doug Bartosh, associate director of public safety, said signs prohibiting skateboarding and rollerskating will be in place around campus by November.

Failure to comply with the new rules will result in an \$18 citation. Upon the third citation, the offender's skateboard, rollerskates or bicycle will be impounded.

Bartosh said there will be a one-week warning period after the signs are in place when offenders will receive verbal warnings and told of the new policy.

inside
today



ASU WEATHER
Sunny with an expected high near 90.

Classified..... 14
Comics..... 10
Opinion..... 4
Sports..... 11

world/nation in brief

U.S. attacks 2 Iran oil platforms in Persian Gulf, raids third

MANAMA, Bahrain (AP) — U.S. warships destroyed two Iranian oil platforms in the Persian Gulf on Monday and Navy commandos raided a third.

Iran said the Americans had begun a "full-fledged war" to which it promised "a crushing response."

President Reagan called the 85-minute attack "a prudent yet restrained response" to Friday's missile strike on U.S.-flagged tanker off Kuwait. The missile was believed to have been launched from the nearby Faw Peninsula, which Iran has conquered in its 7-year-old war with Iraq.

The Pentagon said no Americans were injured in Monday's operations. Tehran said the attack wounded some Iranian "civilian crewmen" but did not mention fatalities.

The White House said gunfire wiped out two platforms at one location and U.S. Defense Secretary Caspar Weinberger said the battle area was the Rostam oil platforms.

After some initial confusion, Tehran said the two platforms hit were at the Reshadat, or Rakhsh, field 75 miles east of Qatar and 60 miles from the Iranian coast. Rakhsh and Rostam are about 20 miles apart.

The discrepancy between the Iranian and U.S. reports could not be immediately resolved. On all except very detailed maps of the gulf, the two fields appear to be very close.

The oil platforms, which have an underwater pipeline running to Iran's coastal Lavan island, are among many permanent drilling rigs in the central gulf. Iran is known to have used some for helicopter and armed speedboat attacks on commercial shipping.

Before darkness fell, salvage tugs and other craft reported columns of smoke rising from the offshore rigs. U.S. warships were warning other craft away from the area, shipping executives in the gulf said.

At 1:30 p.m., the four destroyers moved to within about 6,000 yards of the two platforms, said Fred S. Hoffman, the Pentagon's chief spokesman.

Ten minutes later they broadcast a warning: "Reshadat, Reshadat. This is the U.S. Navy. We will commence firing on your position at 1400 hours. You have 20 minutes to evacuate the platform."

Iranians on the platforms were then seen scrambling into a small boat and sailing away from the area, Weinberger said.

An 85-minute barrage of 1,000 rounds of 5-inch gunfire destroyed the platforms.

Gulf radio monitors said they overheard an Iranian voice saying, "U.S. warship, U.S. warship, let me evacuate the injured before you shoot again."

Shultz: No escalation planned in retaliation against Iran

LONDON (AP) — The United States does not plan to escalate retaliation for the missile attack on a U.S.-flagged tanker beyond destroying Iranian oil platforms in the Persian Gulf, Secretary of State George P. Shultz said Monday.

"So far as we are concerned, that's it," Shultz said.

Soon after his arrival in London, Shultz met with King Hussein of Jordan to try to find a formula for peace talks between Hussein and Israeli Prime Minister Yitzhak Shamir. Hussein has proposed Middle East peace talks be held

within the framework of an international conference, but Shamir objects to Soviet participation.

"We are looking for ways that will meet everyone's objections to get into the direct negotiations," Shultz said. "But so far we haven't found that answer."

Shultz helped coordinate Monday's military operation against Iran and the U.S. diplomatic follow-through, while holding talks in the Middle East with Israeli, Saudi and Egyptian leaders.

He said the U.S. attack on three Iranian oil platforms was "irrelevant" to his mission to Moscow later this week to arrange a U.S.-Soviet superpower summit meeting.

Subway gunman Bernhard Goetz receives 6 months in jail, fine

NEW YORK (AP) — Subway gunman Bernhard Goetz was sentenced Monday to six months in jail, ordered to undergo psychiatric treatment and fined \$5,000 by a judge who rejected recommendations that he be allowed to go free.

Goetz, who shot four youths on a subway nearly three years ago, stood impassively as acting state Supreme Court Justice Stephen G. Crane sentenced him on the single gun possession count on which he was convicted.

The crime carries a maximum penalty of seven years in prison, though first-time offenders like Goetz rarely go to jail.

Goetz also was sentenced to five years of probation and 280 hours of community service at New York University Medical Center.

"A non-jail sentence for Mr. Goetz would invite others to violate the gun law," Crane said.

today

Meetings

•Alpha Eta Rho, the aviation fraternity, will have a guest speaker today at 7 p.m. in MU Room 219.

•Women in Communications Inc. will meet today at 7 p.m. in the MU Coconino Room. Steve Larson from Safety First will speak on safety for women and how to protect yourself.

•The American Society of Personnel Administrators will hold a planning meeting today at 5:15 p.m. in BAC 311.

•Campus Alcoholics Anonymous meets today at noon in MU Room 209.

•The American Indian Science and Engineering Society will be holding an IBM workshop today at 5:30 p.m. in Engineering Center G, Room 324.

•The Public Programs College Council meets today at 4:30 p.m. in MU Room 215N.

•The Powder Hounds meet today at 6 p.m. at the Devil House.

•College of Architecture Pre-Studies

meets today at 5:30 p.m. in Architecture Room 13.

Announcements

•A free lecture on Time Management is being offered by the Peer Advisors Office today at 4:30 p.m. in Matthews Center Room 59.

•The MUAB Culture and Arts Committee presents the guitar duo of Waller and Maxwell today at noon in the MU Rendezvous Lounge.

•College Republicans present Arizona Attorney General Bob Corbin today at 2 p.m. in the MU Pinal Room.

•Guatemalan exile Marta Gonzalez will speak today at 2 p.m. in the MU Yavapai Room. Presented by the Committee in Solidarity with the People of El Salvador.

•The Women's Studies Program and the Department of Public Safety present a seminar on "Women, Alcohol and Date Rape: Are We Safe Now?" today at noon in the MU Navaho Room.

MEXICAN MADNESS

7 p.m.-close
at

Shepherds

Ice Cold
Beer.



CERVEZA
PACIFICO
CLARA

Corona party tonight
T-shirts, hats, other giveaways.

Free
Tacos
8-?

49¢

Corona
Pacifco
Margs
Shots of Gold
8 p.m. till 10 p.m.
10 till close only \$1.50

NO COVER

Watch World Series on Big Screen TV
Complimentary Food Buffet 4-7 p.m.

DJ & Dancing Every Night
NEVER, EVER A COVER

30% OFF ASU SHIRTS



SAVE ON EVERY
ARIZONA STATE TANK,
T-SHIRT AND SWEAT IN STOCK!

- NOW From \$7.00
- Four official great designs
- Choose from white, burgundy and heather grey

(With this coupon only thru 10/25/87)
THE WORLD'S FINEST SUNGLASS STORE



Pacific Eyes & T's

Tower Plaza
38th Street & Thomas
244-9119

Westridge Mall
75th Avenue & Thomas
873-2607

Christown Mall
19th Ave. & Bethany
Home
433-2949

Tempe Cornerstone
Ctr.
725 S. Rural Rd.
966-5560

Arizona considered as future Sematech location

By MIKE ROWELL
State Press

The industry liaison for the ASU Office of Research and Development said Monday he thought representatives from Sematech, a semiconductor research consortium, were "favorably impressed" with the University and two potential plant sites they visited last week.

Gary Argue added that the seven representatives were "pleasantly surprised" by how far ASU's engineering program has come since the Engineering Excellence Program was initiated eight years ago.

Sematech, a group of major semiconductor producers from around the United States, was formed in March to address the competitiveness of U.S. semiconductor manufacturers in the international market. The 17-member organization is inspecting possible sites for a joint research facility intended to help regain U.S. dominance in the world semiconductor market.

Arizona is one of eight states the selection committee will be considering in the next two weeks. Thirty-six states and Puerto Rico have submitted 58 proposals to Sematech, and Arizona is one of 13 states which made pitches for the site at the organization's Santa Clara, Calif., headquarters.

University officials are hoping the research center will bring more jobs and research opportunities to the state.

Visiting representatives 'impressed' by ASU, sites

In a press conference Friday, Sematech site selection chairman Sanford Kane, who is also vice president of industry operations for International Business Machines, said he was impressed with the level of statewide support in Arizona for Sematech.

Kane would not discuss specific impressions of the visit. He said he hoped a site would be selected by the end of November.

Kane said the selection committee is looking for a site near a good university system, where Sematech could begin its research soon. The committee also will consider the cost and availability of utilities, quality of life and the amount of support from state and local government, he said.

"Arizona is competitive in most if not all of these categories," Kane said.

The selection committee inspection follows the technical evaluation team's September visit, which Kane said "we tried to do as quietly as possible."

Friday's tour began with a visit to two possible plant sites,

the SGS Semiconductor plant at Bell Road and Seventh Street in Phoenix and the GTE Corp. facility at 2010 W. 14th St. in Tempe.

The representatives spent the afternoon at ASU, where they were given a review of the Engineering Excellence Program and presentations from the computer science, solid-state Electronics and computer-integrated manufacturing departments.

They then met in a closed-door session with President J. Russell Nelson, Gov. Evan Mecham, Vice President for Research Henry Reeves, Vice President for Academic Affairs C. Roland Haden and representatives from the Arizona Department of Commerce and the Phoenix Chamber of Commerce.

The representatives also viewed a videotape promoting ASU that was filmed last week specifically for the Sematech visit. College of Engineering Development Officer Pat Burkhart said the 15-minute, 25-second tape was made at a cost of \$10,000.

The video featured the Engineering Excellence programs, an offer to accommodate Sematech with such things as reduced computer time, and a conclusion from Nelson.

"We pitched our strengths — what (Sematech) would naturally be interested in," Burkhart said.

Conference held to discuss improving solar energy industry

By STEVE NOLEN
State Press

Members of Arizona government, universities, utilities and industry came together in Phoenix Monday to plot strategies for boosting the faltering solar energy industry back onto its feet.

The Arizona Solar Energy Strategy Conference, sponsored by the Arizona Department of Commerce Solar Energy Office, was held to plot strategies for creating partnerships between cities, towns, counties, states, private industry and public utilities, said Solar Energy Office Manager Ray Williamson.

The three-day conference at the Phoenix Hyatt Regency is focusing on development of solar energy by utilities and making solar heating more cost-effective.

Some participants said they hoped the meeting would lay the groundwork for putting the solar energy industry back on

track, but others were less optimistic.

What had been a booming industry in 1985 now has been reduced to a few diehards that are unwilling to abandon an enterprise that is struggling at best, said Scottsdale solar consultant Phillip Reinhardt.

Reinhardt represented the solar industry in a series of presentations on barriers to cost-effective solar thermal systems.

Although Arizona has the largest number of active solar heating systems in the country, the solar energy boom of the early 1980s has turned into a bust, said industry representatives.

Expiration of a 40 percent federal solar tax credit at the end of 1985, and the gradual phase-out of state tax credits caused sales of solar-heating equipment to dry up.

"In 1984 I had 34 employees," Reinhardt said of his 9-year-old solar business. "In 1986 I had seven. In 1987, I have none."

He estimates that "95 percent of the

others (solar contractors) have gone out of business and lost their homes" in the last two years.

Representatives of electric utilities focused on the need to lower the cost and remove institutional barriers to the development of large-scale solar power generation.

"The bottom line is cost and efficiency," said Dave Ellis of the Arizona Public Service company.

He said energy conservation and cheap oil and natural gas will continue to be barriers to the development of solar electricity generation.

But the director of research and development at Pacific Gas and Electric predicted that large-scale solar power generation will become a reality in the near future.

Merwin Brown said solar electricity generation must be cost-effective by the

mid-1990s if it is to achieve widespread commercial use. Utilities now have excess capacity, but in the 1990s a new round of power-plant construction will begin, he said.

Michael Siavelis of Star Power Solar Electric Company said the future of solar electricity is not in large utility power generation but on the rooftops of today's homes.

He is critical of a state law that requires the utilities to buy excess electricity from owners of photovoltaic generating systems.

"Right now, people are getting 3 cents per kilowatt hour for generating during peak sunlight hour," he said. "The power company charges between 9 and 12 cents per kilowatt hour. They are making between 6 and 9 cents."

"It takes (homeowners) between 12 to 16 years to get their money back. If we were to change the law we are looking at five to six years for them to have a payback."

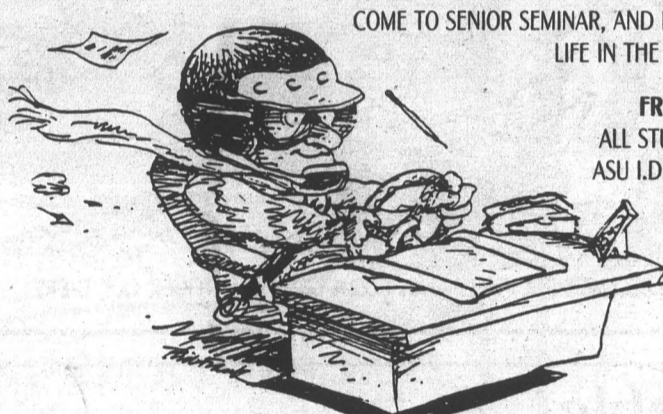
s
e
m
i
n
a
r

senior

DON'T GET BLOWN AWAY BY LIFE AFTER COLLEGE!!!!

COME TO SENIOR SEMINAR, AND FIND OUT ABOUT LIFE IN THE "REAL" WORLD!!

FREE ADMISSION!!!
ALL STUDENTS WITH AN ASU I.D. ARE WELCOME!!



PRESENTATIONS TO INCLUDE:

- ESTABLISHING CREDIT, TAKING OUT A LOAN, AND LEARNING HOW TO SAVE.
Presented by: The Arizona Bank
- FINDING THE RIGHT KIND OF INSURANCE FOR GRADUATES.
Presented by: McClellan, Johnson & Associates, Inc.
- INVESTMENTS, AND BUILDING A PORTFOLIO.
Presented by: Waters, Tan & Company
- SECRETS OF MOTIVATION AND SUCCESS ON YOUR FIRST JOB.
Presented by: Mr. Bill Suedmeyer

WHERE:

- TEMPE HOLIDAY INN, Apache Room
Corner of Apache and Rural Roads

WHEN:

- 5:00 p.m.-5:30 p.m.: Registration and Reception
Complimentary Food and Beverages
- 5:40 p.m.-9:30 p.m.: Presentations By Speakers

CALL:


- The STUDENT ALUMNI ASSOCIATION at 965-5276 for more information or to RSVP!!

wed, oct. 21

CHECK IT OUT ✓

OCT

1 9 8 7



Monday 19	<p>"STUDENTS AGAINST DRIVING DRUNK (SADD) CONFERENCE" 8:00 a.m. - 3:30 p.m., Second Floor, Memorial Union Advanced registration required *keynote address: Robert Anastas, National Founder, SADD</p>
Tuesday 20	<p>"INDICATORS OF ALCOHOL AND SUBSTANCE ABUSE IN THE WORK PLACE" 10:00 a.m. - 12:00 noon, Yuma Room, Memorial Union "WOMEN, ALCOHOL AND DATE RAPE" 12:00 noon - 1:00 p.m., Navajo Room, Memorial Union</p>
Wednesday 21	<p>"COMMUNITY AGENCY FAIR" 10:00 a.m. - 2:00 p.m., South Cady Mall</p>
Thursday 22	<p>"PROFESSIONAL ATHLETES AND THE DRUG SCENE" 10:00 a.m. - 11:30 a.m., Pinal Room, Memorial Union "ALCOHOL IMPAIRMENT DEMONSTRATION" 12:00 noon - 1:00 p.m., Rendezvous Lounge, Memorial Union "CODEPENDENCY: BACK TO BOUNDARIES" 12:00 noon - 1:00 p.m., Santa Cruz Room, Memorial Union</p>
Friday 23	<p>MOCK ROCK '87 "THE ULTIMATE IN AIR BAND CONCERTS" 8:00 p.m. - 11:00 p.m., Palo Verde Beach - University Drive</p>

An Alcohol Awareness table will be near the fountain, outside the Memorial Union, from 9:00 a.m. - 3:00 p.m. for more information.

ASU Student Health Center
HEALTH DIMENSIONS, 965-4721
WHOLESALE ADVOCATING MODERATION
W.A.M.

Hensley and Company
Anheuser-Busch

Shamrock Distributing
Miller

Zeb Pearce & Sons
Coors

Recall Committee should refrain from endorsements

Darrin Hostetler
Opinion Editor



Damn. And it had been such a good weekend, too. First came the news Friday that longtime Evan Mecham confidant Sam Steiger had been indicted on a charge of felony extortion for trying to strong-arm a state parole board member. Steiger — possibly the most abrasive political figure in the state — disappeared into the void following the indictment, leaving only another smoking bullet hole in the Mecham administration. The entire incident points up once again what kind of timber "all the governor's men" are made of.

Then, Sunday night, Mecham received a thorough lashing from *60 Minutes* correspondent Morley Safer in front of a nationwide audience. The broadcast featured an encore performance of the classic Mecham line, "Don't you ever ask me for a true statement again," and no doubt will provide a surge in recall contributions and signatures.

But the disturbing news out of Mecham Recall headquarters Monday threatens to offset — in the long range — the latest wave of recall enthusiasm built up over the weekend.

Recall movement founder Ed Buck announced that his organization might not "fold up the tent" and disband, as he has previously said it would, after the signatures necessary to force a recall are gathered and filed.

Buck raised the possibility that the Mecham Recall Committee might mutate into something dubbed the Mecham Recall Campaign Committee that would support a "strong candidate" for governor.

Well, that certainly changes things, doesn't it? The possibility of continued political involvement by Buck and the recall group is more than enough to give Arizona Republican Party Chairman Burt Kruglick and Democratic Party Chairman Sam Goddard migraines, because further

involvement by the committee in the gubernatorial race could lead to an event neither one of them — especially Goddard — wants to see come to pass.

If the Recall Committee could find a way to keep its approximately 10,000 statewide volunteers — albeit mostly Democrats, but overall from diverse financial, social and political backgrounds — united behind a single candidate for governor, the possibility exists that they could be bound together for the pursuit of other issues and candidates in the future as well.

Hmmm. What do you call the creation of a group of people who work together to advance their interests and candidates?

A political party. Specifically, the birth of a third Arizona political party.

The idea of the Recall Committee building off the political experience and the goodwill created by the recall drive to form a sort of non-partisan grouping of citizens that works together toward common goals and for the advancement of specific political objectives is a very appealing one.

Regardless of how one stands on the recall itself, it must be admitted that the endeavor stands as a monument to the best instincts of man as a political beast — voters from all walks of life have congregated to work, and so far successfully — toward a common matter of concern. Win, lose or draw against Mecham, continuing this kind of activity on an organized basis would be healthy for the state and in the true spirit of democracy.

But it's not likely to happen, because the very strength of the recall also points up its major weakness. And if it does, it is liable to endanger the success of the recall itself.

There is a wide variety of political leanings and personalities involved in the recall simply because the governor of our state offends so many different kinds of people. And the amalgamation is working, partially due to the fact that this diverse group has so much knowledge and ability to draw upon.

But underneath their shared exterior, they are still very different people. And once the recall becomes a moot issue, they are guaranteed to splinter and go back from whence they came.

The major danger in the recall leadership officially endorsing or engaging in fund raising for a gubernatorial candidate is that as surely as the membership is united in the belief that they don't want Evan Mecham as governor, they are almost as surely going to be divided when it comes to backing his replacement.

Further strife and anxiety over candidate selection, with candidates warring for the endorsement of the Recall Committee, could result in a multi-candidate split election — possibly leading to the re-election of Mecham. And that is exactly what the committee claims they want to avoid.

That is the danger we all must avoid. It is far better that they simply continue to use their resources to continue to campaign against Mecham, urging voters to cast their ballot for the candidate of their choice. If they do otherwise, they face destroying the goal they have worked for over the last six months.

But Buck and company have tasted the fruits of political power, and they aren't likely to be anxious to simply disband a machine that is the most powerful voter base from which to build in the state.

Being a pragmatic bunch, it is more probable that the recall leadership will attempt to make strategic inroads into the state Democratic Party — building from the popular base in the East Valley with an eye toward establishing a beachhead from which to work within the existing party structure — than actually attempt the risky venture of developing a legitimate third party.

But whether the Recall Committee actually maintains its present form or is absorbed into existing party machinery, one thing is certain.

Thousands of voters have awakened to the reality that they can make a difference; they can have an impact. There is a new power structure and a new hierarchy that has proven it can operate independently of the formal parties, and while they may want to proceed in their old political directions, they aren't going to hang up their activist hats right after the recall.

That fact is enough to change the face of Arizona politics. And the state Democratic and GOP bosses had best take notice.

letters

Sunshine on the election code

Editor:
In the Oct. 14 edition of the *State Press* there was a letter to the editor from Will Murphy concerning ASASU Senate Bill 5. SB 5 was a bill that addressed the ASASU election code. It proposed several preliminary changes to the code that would add both sunshine and clarity to the current election code.

Mr. Murphy had one central opposition to the bill that he concentrated on in his letter. He stated his flat opposition to any form of spending limit in the election code. Mr. Murphy has expressed this feeling before while running for the president of ASASU last year, and I can understand his unhappiness with any raise in the spending limits because he simply does not believe any should exist.

Nonetheless, allow me to clarify why I proposed the changes to the election code which included a raise in the spending limit for executive candidates from \$500 to \$600. At the present time there is not enough information available to the ASASU senate that would allow for a beneficial overhaul of the election code. There has been no opportunity for student body input nor any other form of discussion. If we are going to overhaul the election code, let's do it right.

First off, we must consider several things, one of them being the fact that any proposal to overhaul the election code (which may include the removal of the spending limits) may fail. And if it does we will still have the same election code that has plagued ASASU for too long. Therefore, I saw a need to do some preliminary work on the code which would not require a great amount of research but at the same time would add some "sunshine" to the election code.

Let me list some of the proposed changes of SB 5. Most importantly, I proposed amendments to the code that would require additional written financial reports from all candidates. Currently, only two are required. One is due the Friday before the general election and one is due within five days after the general election. This does not provide sufficient time for the *State Press* to print spending amounts for candidates before the elections; furthermore, it causes great delays after the elections if any complaints are

registered against a candidate concerning spending.

The proposal I made would require four written financial statements. One would be due on the Tuesday two weeks before the general election. Another would be due one week later, and yet another would be due on the Tuesday of the week of the general election. The final written financial statement would be due on the Friday of the week of the general election.

This set up is much more efficient. By requiring financial statements earlier in the campaigning, the *State Press* has ample time to print the spending of candidates which could affect the decisions of students. Furthermore, it gives the election coordinator more time to make sure that the spending limits are being adhered to properly.

The other proposal was raising the spending limit for executive candidates from \$500 to \$600. I did this because I do not think \$500 is enough. If we are going to limit spending by candidates, at least we can make the limit reasonable.

Now that the intention and content of SB 5 has been clarified, we must discuss what has happened to the bill. It was my hope that SB 5 would pass so that we could continue work on a more encompassing overhaul of the election code, knowing that if the overhaul was not successful we would have a little more clarity in the code. However, the ASASU senate opted to not discuss SB 5 at this time by tabling the bill on Oct. 6. Instead, the ASASU senate has chosen to hold an open hearing on Nov. 10 at 5:30 p.m. The hearing will be open to anybody who has input on the issue of the ASASU election code. We hope to hear from many of you.

After the hearing, some time will be taken to research the pros and cons of any proposed changes in the election code. Then, when a concrete proposal has been completed, the ASASU senate will address the issue once again. I suggest those interested should keep an eye open.

Nobody ever said change was easy, but we are trying, and we need your help. Thank you for your time.

Yousef Hashimi
Senator, College of Engineering



quotable

"Politics is perhaps the only profession for which no preparation is thought necessary."

— Robert Louis Stevenson

"The people are not the origin of all just power."

— David Hume

STATE PRESS

KHALI CRAWFORD
Editor
BOB E. HEILER
Managing Editor

City Editor..... KIM MATTINGLY
Asst. City Editor..... BEN MCCONNELL
Wire Editor..... MIKE ROWELL
Opinion Editor..... DARRIN HOSTETLER
News Editor..... SHELLY SCHAFFER
Arts Editor..... GREGORY R. KRZOS
Asst. Arts Editor..... DAVE MILLER
Sports Editor..... STEVE BRENNAN
Asst. Sports Editor..... DAVE HODGES
Copy Chief..... MARTY SAUERZOPF

COPY EDITORS: Jill Herbranson, Maureen Keenan, Rob McMahon

ARTISTS: Mike Ritter, Steve Talkowski
ADVERTISING REPRESENTATIVES: Veronica Alfaro, Jennifer Asquith, Danielle Carbone, Judy Crane, Joe Cuff, Jerome Fonteneau, Ola Hasadinratana, Tom Hutchison, manager of Mesa, Emad Mugharbel, Mark Peterson, Kevin Reap, Rich Toltzman, Laura White.

PRODUCTION: Phil Delmont, Leighayn Green, Mark McKinney, Bruce Peterson, Michael Quinn, Denver Sasser, Lynne Senzak.

The *State Press* is published Monday through Friday during the academic year, except holidays and exam periods, at Matthews Center, Room 15, Arizona State University, Tempe AZ 85287. Newsroom: 965-2292. Advertising & Production: 965-7572

The *State Press* is the only newspaper exclusively published for and circulated on the ASU campus. The news and views published in this newspaper are not necessarily those of the ASU administration, faculty, staff or student body.

REPORTERS: Victor Barajas, Mike Burgess, Vickie Chachere, Marissa Hallare, Mike Hoehn, Michelle Hoffman, Aaryn Kemp, Robie Kakonge, Dana Leonard, Scott Luck, Steve Nolen, Kelly Pearce, Terri Seabert, Tracy Scott.
ARTS REPORTERS: Chuck Hadd, Howell J. Malham Jr., Tod McCoy, Scott Seckel, Cerise Wilson.
SPORTS REPORTERS: Carol Boos, Chris Dorsey, Joan McKenna.
PHOTOGRAPHERS: Todd Green, Sean L. Mohr, Steve Mounieer, Susan Schuman.

'Have you heard the one about the wide receiver ...?'

Mike Royko
Tribune Media Services



A woman of Polish ancestry called me a few days ago, ranting about a terrible insult that had been directed at Poles by one of the broadcasters who handled last Sunday's Bears football game.

"He implied that Poles are stupid," the lady said.

Were you watching the Bears' scab game? I asked.

"Sure, how do you think I heard him say it?"

Then if you were spending a fine afternoon watching that game, there might be something in what the announcer said about Poles.

"Why, you're just as bad. . ." she began to sputter.

I assured her I was just joking, and I promised to look into the alleged insult.

And, as I discovered, broadcaster Dick

Vermeil had indeed made a couple of remarks that offended Poles.

About 15 Chicagoans were so indignant that they complained to their congressman, William Lipinski, who called the CBS network to look into the matter. He received an apology from Vermeil.

I'm sure that all incorrigible ethnic joke tellers are eagerly awaiting details of what Vermeil said. OK, I will satisfy your disgusting curiosity.

At one point, a player was a little slow in getting on the field for a punt formation, and Vermeil said something to the effect that it is OK for him to be late because he's Polish.

And later, taking note that the Bears had two wide receivers who were Polish-Americans, Vermeil said they were probably eager for the game to end so they could go drink beer and eat some kielbasa, which is sausage.

As he explained in a phone interview, he chatted with the two wide receivers before the game, and they merrily noted how unusual it is for two Polish-Americans to be playing that position on the same team. And they joked with him about going out after the game to have cold beer and kielbasa.

And it is unusual. Most wide receivers are black. But I assume that they are not eager to finish a game so that they can go drink whiskey and eat chitlins and black-eyed peas, although it doesn't sound like a bad idea.

As for his remark about one of the polish players being slow in getting out on the field, he said: "I was just joking, but I wish I hadn't said it, because that comment could have been taken wrong."

"In coaching (he's an ex-coach), you joke about everything, including ethnic backgrounds, because people, the coaches, the players, are so secure in their relationship that people aren't that concerned. I should have been concerned because obviously it offended someone."

To be honest, I am disappointed. The only reason I bothered to check out the complaints of the Polish-American readers is because I was curious and thought Vermeil had told a couple of really terrible, offensive, cruel jokes. Which would have probably had me splitting my sides.

But Vermeil's remarks were not nearly as gross as the Polish jokes my Irish friends tell me, although I sometimes have

difficulty understanding them, since they often talk with two or three potatoes in their mouths.

What Vermeil has learned, to his discomfort, is that ethnic, racial or religious humor is no longer acceptable on the public airwaves or in the print medium.

That is both good and unfortunate. It's good because many of the jokes perpetuate inaccurate and unfair stereotypes. It is unfortunate because so many of the jokes are funny.

Anyway, Vermeil says he is sorry and he apologizes to any Poles he may have offended. Since I am half Polish, from my mother's side, I accept half of his apology. But since I am half Ukranian, I really don't require his apology because Ukranians like to tell Polish jokes.

Incidentally, Vermeil says his name is French. So if he really wants to make amends, during the next game he should single out some player with French ancestry and say something like:

"He's a little slow in getting out on the field, but that's OK — he's waiting for the American Army to show up."

Now I've done it. All the snail-eaters are going to be calling my boss.

THE HAIR CUTTERS

Your Campus Hair Care Center
709 S. Forest Ave., Tempe
North of University • Behind the Chuck Box • In Oxford Square
968-5946
With This Ad
\$4.00 OFF
With Participating Stylists

REGULAR PRICES

- Shampoo
- Precision Cut
- Condition
- Blow Dry

MEN \$13 • WOMEN \$15

OPEN MONDAY THROUGH SATURDAY.
TUES., WED. & THURS. TILL 9 P.M.

1/2 PRICE TUESDAY!

Escape-The-Dorm Special!

Escape to Round Table for the freshest, best-tasting pizza in the kingdom! We make it from fine natural cheeses, fresh garden vegetables and good lean meats all baked on a fresh-rolled crust. Then toast your freedom with a cold frosty pitcher of your favorite beverage. It sure beats another night in the cafeteria!

Present your ASU I.D. and receive a 50% discount on any large pizza.

—Dine-in only— **Round Table** Pizza Restaurants

TEMPE 1849 N. Scottsdale Rd.
947-4396 (at the corner of McKellips)

Here's everything you need to love your lenses.

OPTI-PURE® Saline—No preservatives means no irritation.

Alcon Lens Case—For safe storage of your soft lenses.

OPTI-ZYME® Enzymatic Cleaner—The only enzymatic cleaner that removes deposits other cleaners miss.

OPTI-TEARS® Soothing Drops—Moistens eyes like natural tears.

FLEX-CARE® Rinsing and Storage Solution for Cold Disinfection—Safe for sensitive eyes and more economical than hydrogen peroxide.

OPTI-CLEAN® II Daily Cleaner—Keeps lenses comfortable. It removes irritating deposits better than other leading daily cleaners.

Just send \$3.00 to Alcon
with proof of purchase* from Opti-Zyme® 24s or 36s and get this \$16.00 value kit for only \$3.00.

Mail to: **ALCON OPTI-FLEX® KIT**
Vision Care Consumer Division
P.O. Box 6600
Ft. Worth, TX 76115

OFFER EXPIRES DEC. 31, 1987. Good in U.S.A. only. This certificate may not be reproduced mechanically and must accompany your request. Limit one offer per name or address. Offer will be made to any club or organization. Void where prohibited, taxed or otherwise restricted by law. Allow 6 to 8 weeks for delivery.

Name _____ (Please Print)
Address _____
City _____
State _____ Zip _____

Mail-in offer only. Not for store redemption.
*UPC Code on bottom flap of box.

Alcon
We can help you love your lenses.™

© 1987 ALCON LABORATORIES, INC.

Nelson gives endorsement to Rio Salado Project

By SCOTT LUCK
State Press

ASU President J. Russell Nelson endorsed the Rio Salado Project Monday because he said the University is one of the "largest riverfront property owners" of the proposed development.

The Rio Salado Project is a proposition to develop parks and housing on a 23-mile stretch of the Salt River. Nelson said the University owns a mile and a half of proposed project property, and he thinks the University would benefit from the "attractive" development of land that "is not now attractive."

"I believe the University should support the Rio Salado development," Nelson said during a Faculty Senate meeting in Armstrong Hall. "We are one of the largest riverfront property owners."

Nelson said the riverfront development idea was originated by an ASU architecture professor and his class, and the University has "conceptually" supported the idea from the beginning.

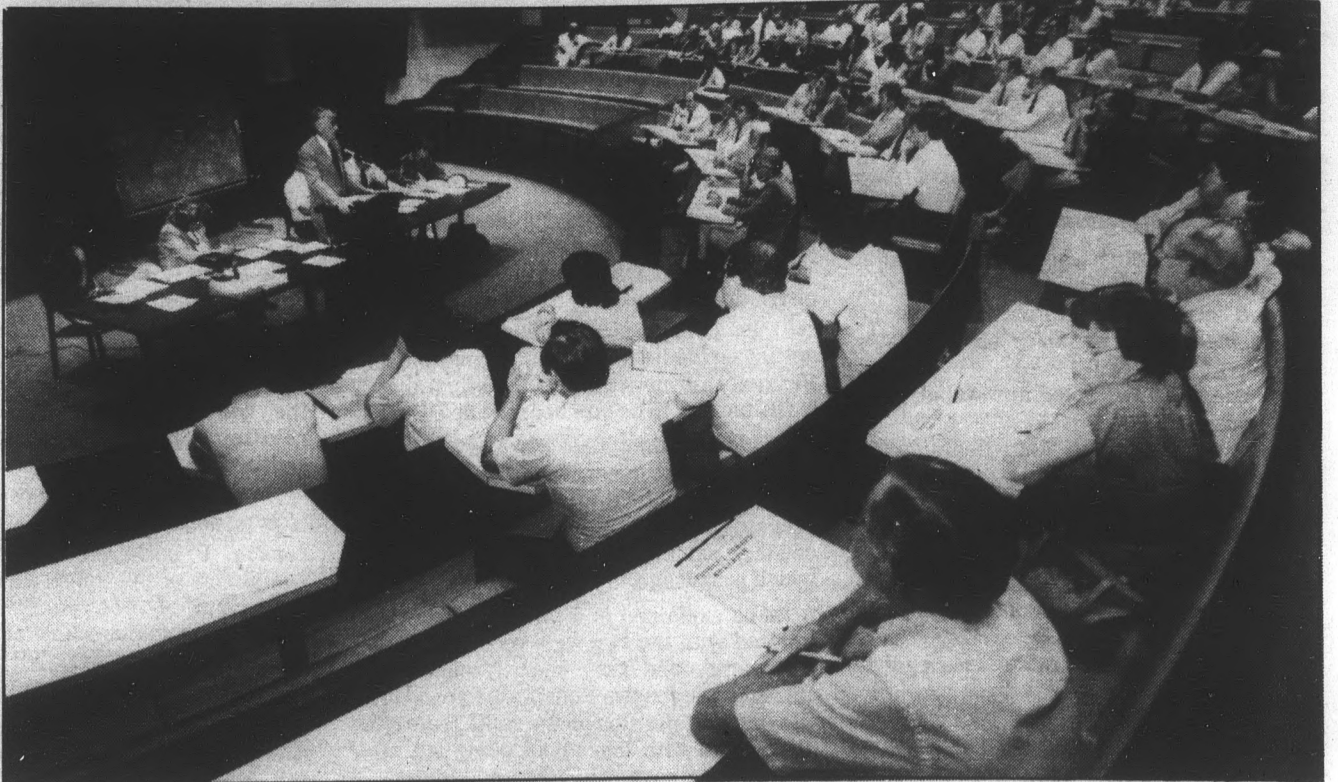
In other action, former faculty athletic representative Marianne Jennings responded to last month's senate commendation.

The unanimous motion commended Jennings for her "vigorous support of academic standards during her tenure as faculty representative" and "express regret at the circumstances leading to her resignation."

Jennings, associate dean of the College of Business, resigned her representative position after President Nelson overruled her decision to declare football player Stacy Harvey ineligible for the 1987 season.

In a letter to the senate, Jennings said: "The unfortunate circumstances leading to my resignation have resulted in a very trying period in my life.

"The support of my colleagues . . . has served to bolster me



Todd Green/StatePress

ASU President J.R. Nelson endorsed the Rio Salado Project at Monday's senate meeting.

in a troubled time. Perhaps most reassuring to me is the fact that I'm not alone in my beliefs and actions."

Nelson said a report about the Harvey affair from investigator Mike Slive is expected at the end of the month. On the west side of town, Nelson said ASU West received

Board of Regent approval to name its library "Fletcher Library" for the Valley family's "seven-figure endowment" to the campus.

Nelson said he hopes the naming will encourage other individuals to contribute to the development of ASU West.

Hair Cuts \$11.00
Reg. \$15
Includes shampoo, conditioner & cut.
With coupon, Expires 11-10-87

\$5.00 Off Perm
Reg. \$40
Includes shampoo, conditioner.
With coupon, Expires 11-10-87

Cellophane \$22.00
Highlight \$30.00
Includes conditioner.
With coupon, Expires 11-10-87

Silver Solarium High Tech Tanning **FREE TANNING SESSION**
w/purchase of any tanning session package
Single \$4.50
5 session \$19.00
12 session ... \$40.00 With coupon, Expires 11-10-87

 **966-6111** Call For Appointment
933 E. University
SE Corner Rural & University
Mon.-Sat. 9:30-8:30
Sun. 11:30-4:00

Now that you've gotten into ASU, IBM can help you get more out of it.

The road to graduation is paved with term papers, lab reports, cramming, all-nighters and, of course, exams.

To ease that journey and awaken your professors to your exceptional abilities, we suggest the newest member of the IBM® Personal System/2™ family: the Model 25 Collegiate.

It's a high-powered personal computer with advanced graphics capabilities, designed to fit on your desk without adding to the clutter. And it comes with a generous 640 KB memory, two 3.5" diskette drives and an aid package every student can appreciate—a big discount,

plus Microsoft® Windows 1.04, Write, Paint, Cardfile, IBM DOS 3.3 and a mouse.

Pop in the load-and-go diskette and your Model 25 Collegiate is set to help you write and revise long papers and illustrate your points by combining words and graphics. So your professors will draw favorable conclusions about your work.

For more information on the Model 25 Collegiate, visit the IBM Education Product Coordinator on campus.

You'll quickly learn how to get the most out of the IBM Personal System/2.



Microsoft is a registered trademark of the Microsoft Corporation. IBM is a registered trademark and Personal System/2 is a trademark of the International Business Machines Corporation. © IBM 1987.

LSAT
GMAT
GRE

WHAT IF YOU DON'T GET INTO THE GRAD SCHOOL OF YOUR CHOICE?
Sure, there are other schools. But why settle? Kaplan prep courses help students raise their scores and their chances of being admitted into their first-choice schools. Fact is, no one has helped students score higher!

IKAPLAN
STANLEY H. KAPLAN EDUCATIONAL CENTER LTD.
OTHER COURSES: MCAT, DAT, NCLEX, NTE, CPA, BAR REVIEW, & OTHERS

Enroll in December test and get the next two test dates **FREE.**
967-2967



Loss of confidence in market causes more selling

NEW YORK (AP) — As traders joined the stampede to unload stocks, experts said Monday that a profound loss of confidence in the market was generating even more selling.

And while Wall Street professionals are said to have tough skins, psychologists warn that record drops in the Dow Jones industrial average are giving dealers real live "shock" symptoms.

The stampede phenomenon began taking shape when the Dow Jones average of 30 industrial stocks plummeted a record 108 points on Friday. On Monday, the bloodbath

continued, with the Dow plunging more than 500 points, eroding billions of dollars from the value of stocks.

"There's a certain attitude which feeds on itself, and selling tends to create additional selling," said Lawrence Kudlow, chief financial economist at Bear Stearns & Co.

Even if fundamental factors are not as terrible as trading activity would seem, one economist said it just doesn't make any sense to go against the market.

"An emotional frenzy has pushed reason to the background," he said.

But on a deeper level, as dealing continues

amid intense turbulence, psychologists warn that traders are likely to be suffering from serious symptoms of shock and stress, impeding their ability to make quick, strategic decisions.

"Either (traders) are having anxiety problems — like heart palpitations and headaches — or they're preoccupied with pessimistic thoughts of overwhelming doom," said Harold Berson, a Brooklyn-based psychiatrist.

Whatever their ailments, "this is not the time to be making decisions," he said. Berson noted that traders are likely to lose

their objectivity. "They will overlook some companies that are strong and let their emotions override reason."

Trading and making money in a bear market is always difficult, and experts admit that even the pros who know the ropes have a difficult time dealing with wave after wave of selling.

"People are asking me if there've been any suicides," said Los Angeles psychologist Robert Butterworth. "They're asking me if the next stage is jumping out windows."

Crash

Continued from page 1.

sometime late this month" how the University and the ASU Foundation fared.

"I'm not worried about the future of the endowment," he said. "Think about Harvard or Yale, which have billions of dollars tied up in endowments. They probably lost millions today."

Officials at both schools could not be reached for comment.

Financial experts said the drop, spurred by predictions of inflation jumps and interest rate increases, could spell trouble for the economy and consumers if interest rates rise.

Tom Rex, director of ASU's Center for Business Research, said the stock market is in "panic, but it's not always known to be rational."

"We could really see some economic repercussions," Rex said. "If interest rates go up substantially, it could really put brakes on the economy."

"But nothing is really different in the (stability of the)

dollar and the economy. So this makes it hard to predict. I don't think we're really in a crash. But who knows?"

John Kraft, dean of ASU's College of Business, said the market likely will bounce back at the turn of the year as inflation fears subside.

Recent predictions by Federal Reserve Chairman Alan Greenspan that a jump in inflation was imminent sent sellers to the market in a frenzy, Kraft said. But, he added, inflation is not likely to increase, so the stock market "will probably recover to the (record-setting 2700) level," he said.

But Michael Melvin, an ASU associate professor of economics, said what happens on the stock market "has always been a good indicator of the future of the economy."

"Some people said at the close of the market Friday (when it dropped 108 points) that 'that's it, it's not going to go down anymore.'"

John Lucking, an economist with Valley National Bank, said the market drop is not "like the sky is falling, but we do

need to be concerned about it. It's not a disaster at this point."

Former Gov. Bruce Babbitt, campaigning in Chicago for the democratic presidential nomination, said the crash puts U.S. economics and politics in a "grave" condition.

"The Chinese have a character for the word crisis, which is made up of two characters — one which means danger and the other means chickens. We are now in the midst of a grave economic and political crisis. The political chickens are coming home to roost."

Not long after the market's close, the White House issued a statement saying President Reagan watched the market decline "with concern," and asserting that "the underlying economy remains sound."

International Business Machines was among the biggest losers of the day, down 31 at 1284; Ford Motor, down 36 at 804; and Dow Chemical, down 32 at 846.

The Associated Press contributed to this report.

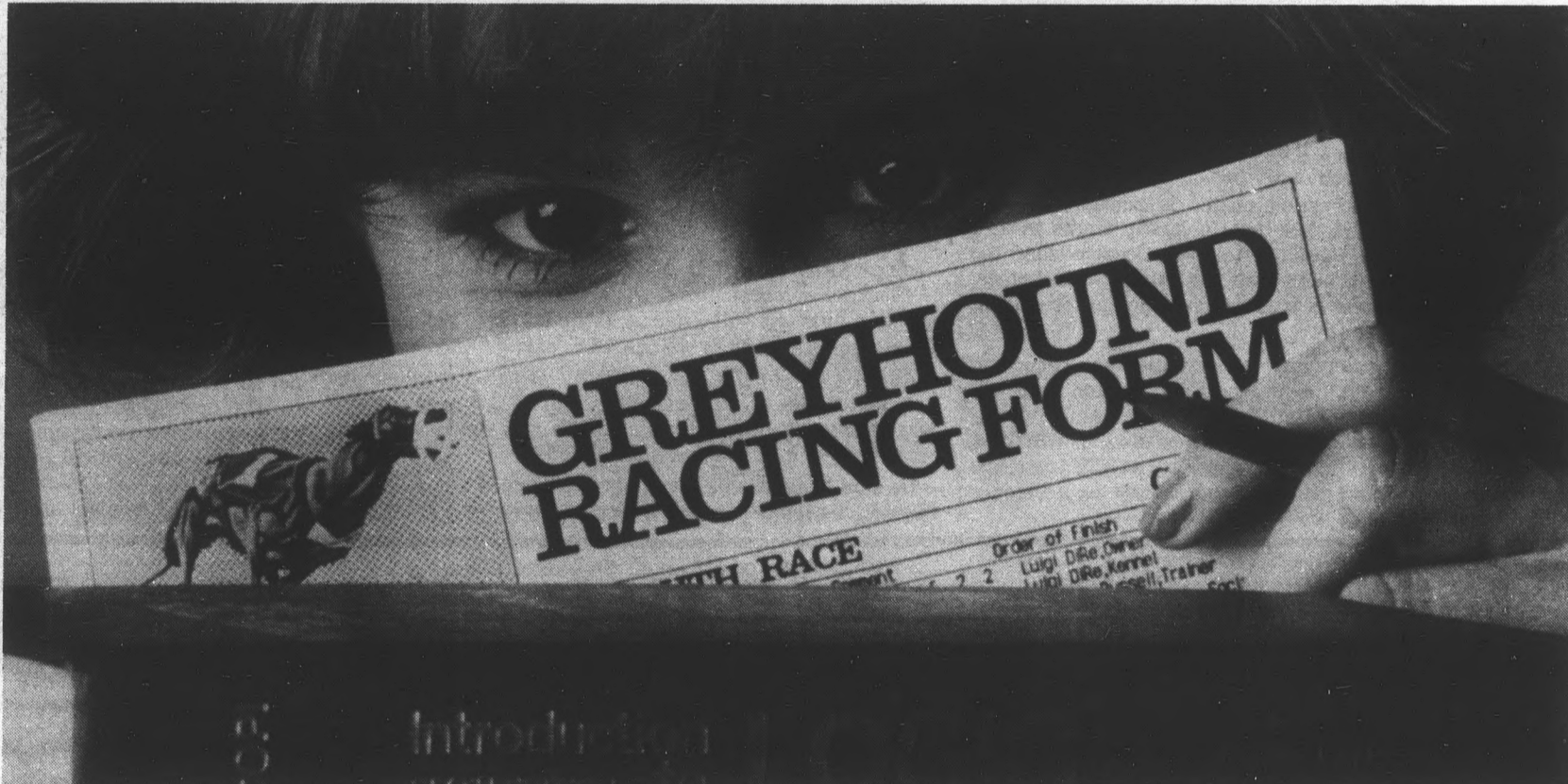
BUY • SELL • TRADE
 Your books at Changing Hands. For quality cloth and paperbacks (no textbooks, please) we pay 30% of our re-sale price in cash or 50% in trade-in credit which may be used to purchase anything in the store. (Sorry, no trade-ins on Sat. or Sun.)
 Browse through our three floors of:
 •New & Used Books
 •Art Prints & Posters
 •Calendars & Cards
 •Handbound Journals
 M-F 10-9 SAT 10-6 SUN 12-5
CHANGING HANDS
 414 Mill Avenue 968-0203
 Old Town Tempe

Computers for Rent
 Now at The Arches
 122 E. University
 Come and visit us
921-0980

THORBECKE'S GYM
 Special Low Rates

 Body Building Power Lifting
 Weight Training Nutritional & Diet Consulting
 For All Sports
966-6621
\$1200 per month
 *plus \$50 one-time membership fee
 Only one mile on the bike path off Scottsdale Bridge.
THORBECKE'S GYM
 On the south side of Curry Road between Miller & Hayden

State Press
 965-6731
 Balloon Your Savings
 Sell in the Classifieds
 Matthews Center
 N. Basement



PUP QUIZ.

Should you go with the favorite or buck the odds? Win, place or show?
 Bet the quiniela? Or trifecta? Study the book on each race and for every right answer you'll take home a bundle.

2FOR1
 Present this coupon any Wednesday night for 2-for-1 fun, frivolity and grandstand admission.
 Offer expires 11/2/87

PHOENIX GREYHOUND PARK
 First race 7:30 pm, Tuesday thru Sunday, East Washington & 40th Street.

Decision expected on Liberal Arts Council constitution

ASU high court to offer ruling to solve disputes

By AARYN KEMP
State Press

In the wake of controversy surrounding the College of Liberal Arts Council, ASU's Supreme Court will hand down an advisory decision today to interpret the council's constitution.

The council submitted its request for a legal interpretation Wednesday after disputes between council members and Council President Jerry Ellison Jr. could not be resolved.

The president's constitutional interpretations that have been disputed by the council include: the election process of a new senator, the definition of a voting member of the council and the dismissal of other council business while a move for Ellison's impeachment is in order.

ASASU Executive Vice President Will Daly, a junior liberal arts major, moved to

impeach Ellison at the council's Oct. 6 meeting.

Richard Grossman, a justice on the six-member student court, said the council's request is for an advisory opinion only. The decision, to be based on U.S. constitutional law, will not be binding but is made to help direct the council in interpreting its constitution, he said.

According to the court's rules, the advisory opinion must be submitted by the court five school days after the request. Grossman said the court's decision will be issued late today.

"The interpretation will definitely help the differences of opinion in the council," Daly said, adding he will continue to move for the removal of Ellison after the court's decision.

Grossman said any other legal action by the council will have to be submitted for another advisory court hearing and a rule.

The first question over the intent of the liberal arts constitution arose at the Oct. 6 meeting when Ellison refused the council's request to nominate and elect a new college senator. He said he would rather announce the opening and wait for the council's meeting today to appoint a nominee for consideration.

During a debate as to why the president was allowed to nominate the person he chose to be senator, instead of the council, Ellison responded, "It is my privilege as president to interpret the constitution as I see fit."

Meanwhile, the college has gone without a second senator to the Associated Students senate for two weeks. Council members said they hope the court interpretation will clear up disputes so a new senator can be elected at its meeting today.

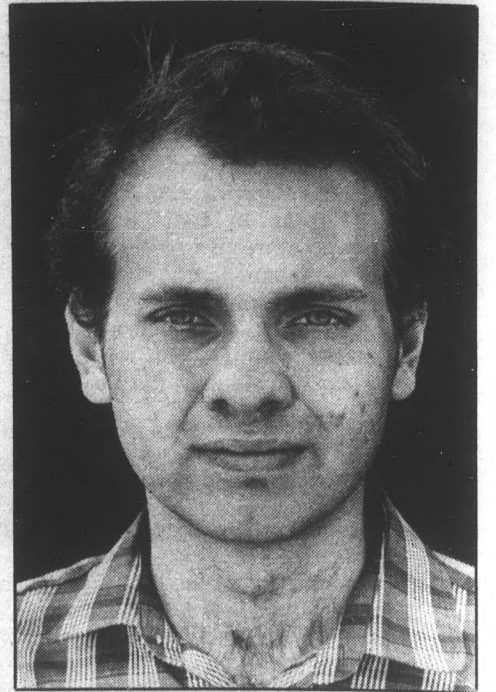
Daly's move to impeach Ellison requires him to obtain signatures from two-thirds of the current membership of the council, verifying their support for impeachment.

But according to Ellison's interpretation of the council's constitution, any liberal arts major is a member of the council, making Daly's task nearly impossible.

Daly and other council members dispute Ellison's claim. "I find it odd that anyone else but a voting member would have to sign the petition," Daly said.

To be a voting member on the council, a student is required to attend three council meetings in a row.

Ellison's interpretation of the definition of a voting council member, and his decision



Jerry Ellison Jr.
that all other council business must stop pending a resolution of the impeachment movement, encouraged the group to approach the court for a legal interpretation.

Student Affairs office plans to hire activities director

By AARYN KEMP
State Press

The ASU Office of Student Affairs plans to hire a director of student activity and recreation for the new Student Recreation Center.

The new director, who will be hired this semester, also will coordinate various student activities on campus.

The \$20 million recreation center is scheduled to be completed in June 1989, but the University wants to hire someone as soon as possible to begin centralizing the coordination of student activities, said Marvalene Hughes, associate vice president of student development for student affairs.

"Overlapping in calendars and activities has become a programming problem," said John Fees, a member of the 22-member Student Activity Committee and ASASU activities vice president. He said the new director will work on programming with such groups as ASASU, the MU Activities Board, Greek Life, Intramurals and the Residence Hall Association.

New recreation center set for June 1989 completion

Hughes said the Student Activities Committee was formed in May to review campus activities and student organizations and identify problems associated with these services.

The committee, made up of faculty, staff, administration and students, concluded that a director of student activity and recreation is needed.

"The idea of a centralized programming director is good," but the director will have a difficult task because the University is so slow to change, Fees said.

ASASU will be the most greatly affected because its activities probably will be merged with MUAB to create one large activities board, Fees said. No one knows what the result will be if this happens, he added.

He said budgets will have to be rearranged and there has been discussion that not all student organizations are willing

to merge their activities.

Fees said a programming activities board also is planned, and some organizations, such as Greek Life, might not want to become a part of the board.

"If all campus programming boards are not involved with the new board, I don't think it would work," he said. "It's going to be interesting to see what happens."

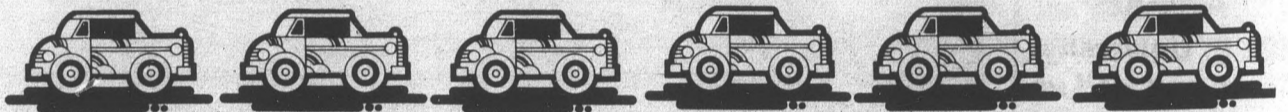
The new director's position will be funded through the transfer of funds from a revenue line in the University recreation budget. "There still needs to be some re-examining of the budget," Hughes said. "The particular revenue line has not been identified yet."

Hughes said she currently is developing criteria for the position. She said the opening will be posted nationally for a person with experience in student recreation and activities.

"The new recreation facility will open up a much more comprehensive recreation program on campus," Hughes said. "The most critical conclusion the committee made was the decision that there must be leadership for the combination of student activity and recreation."

BEST BUY AROUND TOWN!

State Press Classifieds
965-6731



State Press Classifieds Sell
965-6731

SUNSET camera



Passport Photos
2 for \$6.49

Film Processing
2 for 1

or
FREE FILM
Monday & Wednesday on
Develop & Print orders

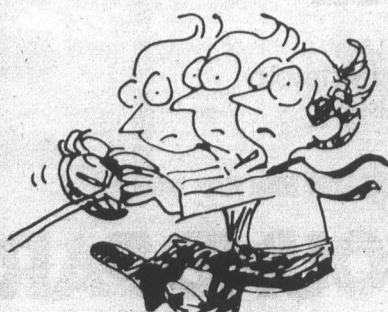
ILFORD
Photo Paper
25 — 8x10 \$10.47
100 — 8x10 \$35.47

SUNSET CAMERA
Tempe Center — Mill & Univ.
829-0424

DID YOU KNOW? YOUR ASU INSURANCE COVERS CHIROPRACTIC CARE!!!

- Whiplash
- Neck Pain
- Headaches
- Back Pain
- Shoulder Pain
- Accidental Injuries

*We will accept your insurance,
provide a student discount,
with little or no
out-of-pocket expense to you.*



Whiplash!

TEMPE
966-1635
Dr. Donald Nelson
3910 S. Rural Rd. #E

SCOTTSDALE
941-2909
Dr. Stephen Nielson
7333 E. Thomas Rd.



*Stiff Neck
& Back!*

Officials advocate hand-washing to prevent colds

By KELLY PEARCE
State Press

With 42,000 students on campus and more than 200 viruses that cause the common cold, health officials say students should practice better health hygiene to prevent the spread of disease.

To coincide with National Infection Control Week, ASU health officials are advocating hand-washing as the best way to prevent the spread of colds, flu and other common ailments.

Colds and other respiratory infections are the fourth-leading cause of death in the United States, according to a report from Lien Infection Control Systems. But studies have shown that one-third of average colds can be prevented through effective hand-washing.

And with the onslaught of cooler temperatures this fall, these airborne diseases will spread easily, said Dr. Monty Roth, director of student health services.

Roth said students living in residence halls are especially

susceptible to flus and colds because of their close living arrangements.

Dr. Dale Bowen, medical section chief of staff at the Student Health Center, said there are more than 200 viruses that cause the common cold. The most common one is the rhino virus that consists of 111 types and is responsible for 40 percent of colds, he said.

People experiencing a cold will have a stuffy nose, a slight temperature, scratchy throat and cough, Bowen said.

While the average cold lasts three to five days, 85 percent of sufferers are better in a week, and 98 percent are cured within three weeks, he said.

He said cold viruses are passed primarily through the hands.

"If you don't want to spread colds, wash your hands often, and don't pick your nose," Bowen said.

He said a new drug named Alpha Interferon, not yet on the market, is a possible cure for the common cold. It is a genetically-based substance that stimulates the immune system to fight off viruses.

Bowen said the drug, being tested in the United States and Australia, is sprayed into the nose and is 70 to 80 percent effective in preventing the common cold. But 15 percent of users experience nose bleeds.

Students also can turn to vaccinations as another preventive method in curbing infectious diseases, health officials say.

The flu vaccine, offered at the Student Health Center for \$4.95, prevents flus and influenza types of colds, Bowen said.

Influenza is an upper-respiratory infection that usually begins with chills and a fever and persists with a cough, he said. People usually experience symptoms for five to seven days, but Bowen said other complications such as pneumonia may result from the infection.

He said individuals allergic to eggs should not receive the flu immunization because the drug is grown in an egg base.

If students do contract cold or flu viruses, they should get plenty of sleep, drink fluids, take some type of headache and muscle relief medicine other than aspirin, and wash their hands regularly, Bowen said.

Fraternities band together to clean up campus

By SCOTT LUCK
State Press

Three ASU fraternities banded together and pitched in their time Monday in answer to an administrative call to clean the campus, and they challenged other University organizations to match their efforts.

Members of Sigma Chi, Sigma Nu and Sigma Alpha Epsilon canvassed the malls at 3 p.m. to dispose of litter that has collected on campus this semester.

ASU grounds manager David Webb initiated "Project Pitch In" two weeks ago when he said the campus was becoming excessively cluttered with litter. Webb said his grounds crew had to neglect its landscaping duties to keep the campus clean.

Sigma Chi member Quinn DeAngelis, who

helped coordinate the project, said his house responded to Webb's plea for help and challenged other fraternities to join its effort. Participants said they set aside time Monday to "show the ASU community fraternities do care."

Webb said, "It is quite exciting we're getting this kind of response."

DeAngelis said the clean-up effort is just one of several projects the ASU Greek system hopes to conduct to help the administration. "When the administration defines a need, we would like to solve it," he said.

He added that other organizations should get involved in programs such as Project Pitch In because, "It's not that big of a deal for a club to take one day to help out the campus."



Steve Mounteer/State Press

Members of Sigma Chi, Sigma Nu and Sigma Alpha Epsilon fraternities join the physical plant staff in an effort to clean up ASU.

Fire destroys house; damages total \$90,000

By MIKE BURGESS
State Press

A fire swept through a Tempe home Monday, gutting the structure and causing \$90,000 in damage, a fire spokesman said.

"It's a total loss. It was completely gutted," Tempe fire battalion chief Jim Gaintner said. "It was just moving so fast that when we got to the scene, it was completely engulfed in fire."

police report

Firefighters received the call at 9:42 a.m. and arrived at 1426 W. Huntington Ave. three minutes later. They had the

blaze under control 15 minutes later.

Gaintner said the owners of the home, Keith and Mary Alger, were reportedly in Mexico during the fire.

In other incidents:

• A construction worker who was seriously injured Friday when a wall fell and pinned him to the ground is slowly recovering, a St. Joseph's Hospital official said.

Steve Moran of Phoenix was attempting to raise a 12-foot by 30-foot wood frame wall on a house under construction at 8400 South Hazelton when it fell on him, police said.

Moren suffered several broken ribs and a severe back injury.

• A burglar entered a restaurant through a roof vent, ransacked the place then knocked a hole through an adjoining business and stole \$200, police said.

Special note to bicyclists

ASU police will be concentrating enforcement of University biking rules today on Hayden Mall. Nighttime enforcement of Arizona traffic laws requiring bikes to be equipped with a white headlight and a red rear reflector begins today.

Police said the burglar broke into the Kelloway Katch, 825 W. Baseline Road, No. 9, then entered Barrow's Pizza, next door, through the hole.

The burglaries occurred between 11:00 p.m. Thursday and 8 a.m. Friday, police said.

MANN **\$3.00 BARGAIN PRICE** (SHOWS BEFORE 6 P.M. MON-FRI EXCEPT HOLIDAYS. SATURDAY, SUNDAY & HOLIDAYS FIRST SHOW ONLY)

<p>CHRIS-TOWN 5 249-2843 5707 NO. 19TH AVE.</p> <p>BABY BOOM (PG) 12:15, 2:45, 5:15, 7:45, 10:00</p> <p>SURRENDER (PG) 12:15, 2:30, 5:00, 7:15, 9:30</p> <p>FATAL ATTRACTION (R) 1:45, 4:45, 7:30, 10:15</p> <p>SOMEONE TO WATCH OVER ME (R) 12:30, 3:00, 5:30, 8:00, 10:30</p> <p>NEAR DARK (R) 1:30, 3:30, 5:30, 8:00, 10:00</p> <p>FRIDAY ONLY SOMEONE TO WATCH OVER ME (R) 12:30, 3:00, 5:30, 10:30</p> <p>THE HIDDEN (R) 8:00</p>	<p>SUN DEVIL 6 829-0344 THE CORNERSTON RURAL & UNIVERSITY</p> <p>THREE O'CLOCK HIGH (PG13) 3:00, 7:30</p> <p>MAN ON FIRE (R) 12:45, 5:15, 9:45</p> <p>BEST SELLER (R) 12:30, 2:45, 5:15, 7:45, 10:00</p> <p>IN THE MOOD (PG13) 12:00, 2:30, 4:45, 7:15, 9:15</p> <p>NEAR DARK (R) 12:45, 3:00, 5:30, 8:00, 10:15</p> <p>PRINCIPAL (R) 12:00, 4:45, 9:30</p> <p>HELLRAISER (R) 2:30, 7:15</p> <p>FATAL ATTRACTION (R) 11:45, 2:30, 5:00, 7:30, 10:15</p> <p>SATURDAY ONLY BEST SELLER (R) 12:30, 2:45, 5:15, 10:00</p> <p>NO MANS LAND (R) 8:00</p>	<p>BELL TOWER 8 843-4593 5151 AVE. and BELL ROAD</p> <p>SOMEONE TO WATCH OVER ME (R) 12:00, 2:30, 5:00, 7:45, 10:15</p> <p>SURRENDER (PG) 12:45, 3:00, 5:00, 7:15, 9:30</p> <p>THREE O'CLOCK HIGH (PG13) 1:00, 3:15, 5:15, 7:15, 9:15</p> <p>MAN ON FIRE (R) 1:45, 4:00, 6:00, 8:00, 10:00</p> <p>BIG SHOT (PG13) 1:30, 3:30, 5:30, 7:30, 9:30</p> <p>DIRTY DANCING (PG) 1:15, 3:30, 5:30, 7:30, 9:45</p> <p>FATAL ATTRACTION (R) 12:00, 2:30, 5:00, 7:45, 10:30</p> <p>BEST SELLER (R) 12:30, 4:30, 8:30</p> <p>WITCHES OF EASTWICH (R) 2:15, 6:15, 10:15</p>
<p>TRI-CITY DOLLAR THEATRES \$1.00 ALL SEATS-ALL SHOWS 461-1070 MAIN ST. & DOBSON RD. IN MESA</p> <p>BIG EAST (R) 3:00, 7:45</p> <p>THE UNTOUCHABLES (R) 12:30, 5:15, 10:00</p> <p>INNERSPACE (PG) 3:00, 7:30</p> <p>SUPERMAN 4 (PG) 1:00, 5:30, 9:45</p> <p>LIVING DAYLIGHTS (PG) 2:30, 7:30</p> <p>SUMMER SCHOOL (PG13) 12:30, 5:15, 10:00</p> <p>ADVENTURES IN BABYSITTING (PG13) 12:45, 5:00, 9:15</p> <p>SPACEBALLS (PG) 3:00, 7:15</p>	<p>SUPERSTITION 5 834-5767 MESA AT 50' DANGERRR SUPERSTITION</p> <p>BEST SELLER (R) 12:30, 2:45, 5:00, 7:20, 9:40</p> <p>FATAL ATTRACTION (R) 12:00, 2:25, 4:50, 7:25, 10:00</p> <p>HELLRAISER (R) 3:35, 7:30</p> <p>LA BAMBA (PG) 1:25, 5:15, 9:15</p> <p>STAKE OUT (R) 11:45, 2:15, 4:45, 7:15, 9:45</p> <p>SOMEONE TO WATCH OVER ME (R) 12:15, 2:45, 5:15, 7:45, 10:15</p> <p>SATURDAY ONLY BEST SELLER (R) 12:30, 2:45, 5:00</p> <p>HELLRAISER (R) NOT SHOWING</p> <p>LA BAMBA (PG) NOT SHOWING</p>	<p>POCA FIESTA 4 835-0404 MESA AT 1020 WEST SOUTHER HW.</p> <p>HAMBURGER HILL (R) 12:45, 3:00, 5:15, 7:30, 9:45</p> <p>DIRTY DANCING (PG) 12:30, 2:45, 5:00, 7:15, 9:30</p> <p>BABY BOOM (PG) 1:00, 3:15, 5:30, 7:45, 10:00</p> <p>SURRENDER (PG) 12:45, 3:00, 5:15, 7:30, 9:45</p> <p>FRIDAY ONLY HAMBURGER HILL (R) 12:45, 3:00, 5:15, 9:45</p> <p>THE HIDDEN (R) 8:00</p>

EMPLOYMENT OPPORTUNITIES IN JAPAN

Bi-lingual? Interested in learning about career opportunities in Japan? Shushoku Joho, the employment journal of Japan, provides information on opportunities with prestigious Japanese and foreign capital companies operating in Japan.

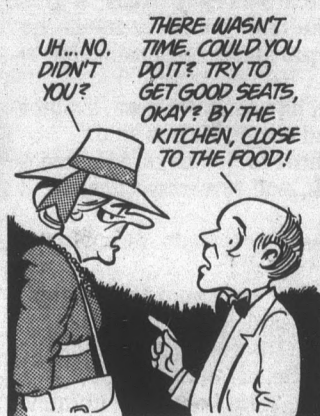
To receive the latest news in career opportunities in Japan, free of charge, please dial (800) 423-3387 in California; (800) 325-9759 outside California. A service of Recruit U.S.A., Inc. "We Communicate Opportunity"

Doonesbury

BY GARRY TRUDEAU

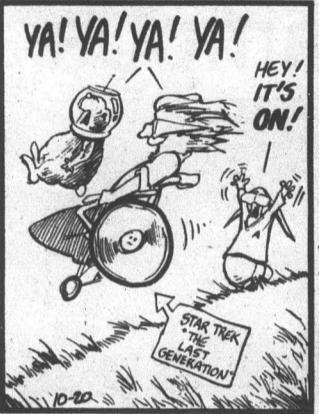
THE FAR SIDE

By GARY LARSON



BLOOM COUNTY

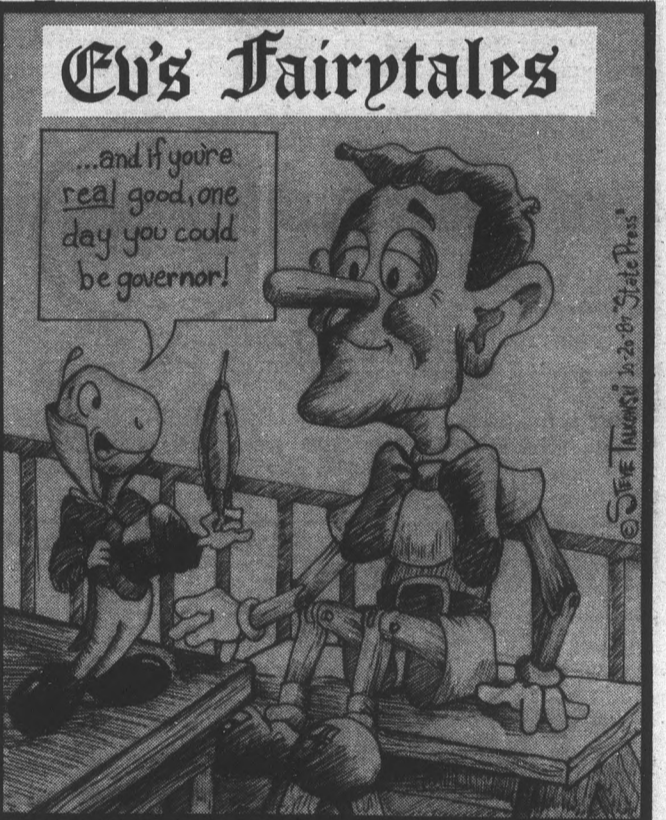
by Berke Breathed



Shoe

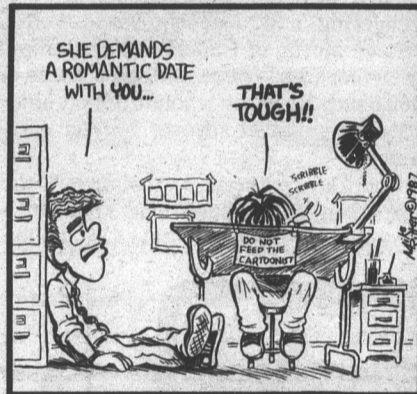
by Jeff MacNelly

QUIPS by Steve Talkowski



Ivory Towers

by Mike Ritter



Signature PHOTOGRAPHY 820-5671

BEFORE AFTER

INCREDIBLE!
A fashion and makeup session that will create a whole new feeling! Bring out the true beauty within yourself and surprise the one you love.

Fashion Portraiture
Boudoir & Glamour
Model Portfolios

in Mill Towne Center
S.E. Corner Mill & Baseline
123 E. Baseline, Suite 103
Tempe, AZ 85283

HALLOWEEN

WIG SPECIAL

SUSIES WIGS

535 E. Southern Ave., Mesa
15% DISCOUNT W/THIS AD • 969-9262

UFO Health Foods Restaurant

Fresh Juice Bar & Store

Sandwiches, Customize Health Foods
Cooking & Catering To Parties
"A Heaven For Vegetarians & Fresh Juice Lovers. The Variety Is Unlimited."

SW Corner University & Price Rd.
894-5515

Free Soft Drink With Any Cutlets Ordered
(Introductory Offer)

barbri

PROFESSIONAL CENTERS

FREE LSAT SEMINAR

"How To Get Into The Law School Of Your Choice"
and improve your LSAT score by 10 points

Wednesday, Oct. 28, 1987 • 6 p.m.
Pinal North ASU Memorial Union

\$100 discount to all who enroll at seminar.

For LSAT classes beginning Nov. 9, 1987
For reservations call Valerie at 969-8953.

LSAT GMAT GRE MCAT

Wacky WILLY'S

FINE MEXICAN FOOD

2 for the price of 1 Any of 12 Combination Dinners
(Dine-in Only)
Every Wednesday & Sunday 4 p.m.-11 p.m.

1120 E. Apache Blvd. • 967-1129 • We Deliver Too!

ALL NEW MENU
BRING IN THIS AD FOR YOUR 2 FOR 1 DINNER.

Wacky WILLY'S
FINE MEXICAN FOOD AND SPIRITS

Badminton star dies in freak car accident

By MIKE BURGESS
State Press

Tracy Hudson was supposed to serve up birdies for ASU at the semifinals of the Arizona State Invitational Badminton tournament Sunday afternoon.

But ASU's No. 2 badminton player never made it to the matches.

She was killed in a car accident that morning on Interstate 10 near Warner Road as she headed home from her boyfriend's Glendale home at about 1 a.m.

Hudson, alone in her boyfriend's 1981 Datsun 280Z, drove off the road and ran over a mile marker that pierced the bottom of her car, striking her foot.

The impact of the steel pole caused her to lose control of the sports car, which flipped and pinned her. She died of multiple trauma a half hour later at St. Joseph's Hospital in Phoenix.

"I miss her and loved her so much," said Hudson's mother, Nancy Davis. "She was a very special gift."

Hudson, an 18-year-old freshman finance major, was an only child.

"She had everything going for her," said Slade Sweet, her boyfriend of two years.

In May, Hudson won the 1987 junior national badminton championships in singles, doubles and mixed doubles.

She came to ASU this fall from Santa Ana, Calif., where she was the state's high school athlete-of-the-year and badminton champion.

"She was the top prep recruited," ASU badminton coach Carol Fisher said. "She was the best young player in the U.S."

"There's no doubt she had a bright future."

Hudson had planned to try out for the U.S. badminton team this weekend and had dreams of playing in the 1992 Olympics.

"One of her goals was to be in the Olympics in five years," Liz Aronsohn, Hudson's doubles partner said. "She was working hard."

"We had a meeting at the gym and we just sat their quiet for a long time," teammate and friend Tom Carmichael said.

"We are all taking this really hard."

"She really was a sweetheart."

Hudson's death has also come as a big loss for her roommates, who shared an apartment with her at University Towers.

"She offered everthing she had," said Nicole Lange. "When Jennifer's (one of Hudson's other roommates) phone card ran out she said 'here use mine.'"

"She always went out of her way for us," roommate Gretchen Nix said.

The roommates spoke as workmen moved their possessions into a different apartment.

"We just don't want to stay," Nix said. "We just feel uncomfortable seeing that empty mattress. We don't want to replace her and forget about her."

"She was always so positive and upbeat."



Tracy Hudson

Rout over Cougars does not impress AP; Devils not in poll



Steve Mounter/State Press

ASU tailback Darryl Harris finds himself in a lot of traffic during the Sun Devils' 38-7 victory over Washington State Saturday. Harris gained 105 yards on the night.

By CAROL BOOS
State Press

ASU's victory over Washington State has lifted the spirits of the Sun Devils, but it didn't lift them back into the polls.

UCLA was the only Pac-10 team to stay in the Associated Press Top 20 poll this week. The Bruins moved up one spot to eighth place after they stomped Oregon Saturday.

ASU was 22nd as an "other team receiving votes," with 68. Southern Cal followed with 19, and Arizona earned 10 points.

Cornerback Eric Allen has been named the Pac-10 defensive player of the week after his record-breaking performance Saturday against the Cougars.

He is now tied for the No. 2 spot nationally in interceptions with five. Allen, who returned one of his two interceptions for a 92-yard touchdown Saturday, broke two Sun Devil records and tied one.

He set the record for most yards in interception-return yards in a single game (129), breaking Jeff Joesph and Wes Plummer's 93-yard record, and for best average per interception return (minimum two interceptions) with 64.5, breaking Wilford White's 45.5 record set in 1948.

He tied the school mark for most touchdowns on interception returns (1).

ASU coach John Cooper could use three more Eric Allens in the defensive backfield after losing the rest of his starters to injuries. But he said the younger players are filling the veterans' cleats.

Cooper singled out freshman Eric Crawford in particular. "Crawford is going to be a real good player," he said. "He has real good instincts, you can't teach that. He's a natural at corner (cornerback)."

Crawford played the entire game after Anthony Parker suffered an ASU career-ending injury when he tore

Turn to FOOTBALL, page 12.

Praise missing from punter's performances

By CHRIS DORSEY
State Press

ASU punter Mike Schuh has not received much recognition in the last two weeks — all eyes have fixed on the quarterback controversy and the injury-riddled secondary.

But the junior's average is 41.8 yards, which ranks him currently 18 in the country.

"I'm kicking the ball really well this season compared to a year ago," he said.

Last season Schuh's average dropped to 39 yards per kick.

In the second quarter of the Washington game Schuh launched a 57-yard punt, his longest kick this season. Last week against Washington State, the junior had five boots for a 42.8-yard average.

He feels the Washington State contest has been his best game to date.

"I had a good average and put the ball inside the 20 (yard line) a couple times," he said.

"The last two games have been his best," said Rick Sang, ASU kicking coach. "I see Mike Schuh kicking some 60-yard punts."

Schuh placed the pigskin inside the 20-yard line three times against the Cougars, bringing his total this season to 15. Last season, he planted 18 punts inside the 20.

"We ask quite a bit from him, we directional punt quite a bit," Sang said. "We try to put the ball inside the 20. That can definitely take away from his average. Mike is an unselfish player; he gets just as much of a thrill putting the ball inside the 20 as he does hitting a 50-yarder."

For Schuh, this is something he enjoys.

"I try to help the team win and do whatever the team needs," he said. "I don't really think about averages. If it has to be a 30-yard punt inside the 20, I would rather have it go out of bounds than in the endzone and a 40-yard punt."

He earned first-team all-Pac 10 honors as a freshman in 1985, when he recorded a 41.7 yard average.

Schuh also gets rid of the ball quickly: He has not had a punt blocked in 127 attempts.

To improve his kicking, Schuh has been working with Sang and head strength coach Tim McClellan. The program consists of running, weight lifting and practice punting. The coaches put the kickers on a more individualized program to enhance their abilities.

"Mike is a hard worker," Sang said. "He puts a lot of emphasis in his practice. Coach McClellan has taken a part in the weight training of the kickers."

The exercises Schuh does is called

plyometrics. These exercises gives the muscles more explosiveness.

"I'm very pleased," Sang said. "I think very highly of his skills. His mechanics are very good for a punter. One of the guys you would want your son to follow on how to kick the football."

The longest punt of his collegiate career has been a 70-yarder his freshman season against USC.

"I kicked it regular, he said. "It went over the guy's head and rolled."

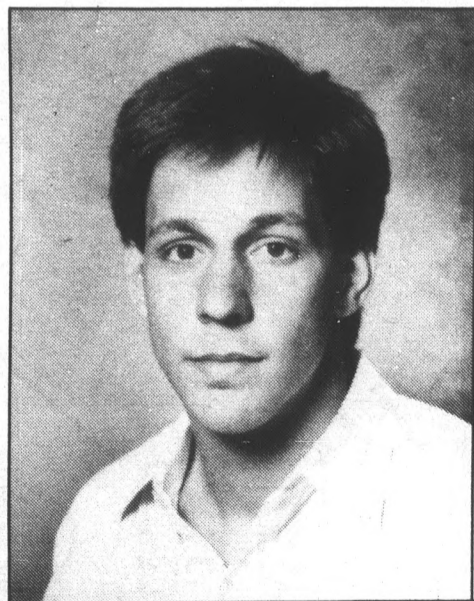
The goal of playing professional football is a realistic one for Schuh, an economics major.

"I feel if it comes I'll go," Schuh said.

"He has got a ways to go," Sang said. "He has improved his hang-time, which will attract some people after graduation. This is a reflection of strength and conditioning we have worked with him on."

"He does things now that professional kickers do, like directional kicking. We ask him to place the ball in certain spots and he does it."

"For Mike to have a career after college he has to improve his consistency and hang-time, and the rest will take care of itself."



Mike Schuh

today's ASU sports

BASEBALL — ASU's baseball team concludes a two-game series with Brigham Young at 7:30 p.m. today at Packard Stadium.

Golfers on a roll after 2nd tournament title

By GARY JACKSON
State Press

The ASU men's golf team learned an important lesson when the team won the Stanford/Pepsi Invitational at Palo Alto, Calif. Sunday: They can win a tournament without Billy Mayfair winning individual honors.

ASU won the 17-team tournament with an 873 score, beating fifth-ranked Southern Cal by eight strokes.

"It's encouraging to see our team win without forcing Billy (Mayfair) or Tom (Stankowski) to win the tournament," coach Steve Loy said. "I'm very pleased with the overall team effort — three of the golfers finished in the top seven."

Sophomore Jim Strickland tied for second individually with a 216, three-over-par score to lead the team.

"Jim did what he was capable of doing," Loy said. He said Strickland was determined to get back on track after a poor finish in the Southwestern Intercollegiate Tournament in Los Angeles.

"Jim came out with an eye-of-the-tiger approach," Loy said about Strickland going from a career-low to a high.

Pre-season all-America Stankowski finished fourth at 217, and all-America Mayfair finished seventh at 219, six-over par.

Freshmen Scott Frisch and John Bizik, who tied for fifth in the LSU Intercollegiate Tournament last week, again finished closely at 224 and 225.

"Frisch and Bizik are playing exceptionally well, especially since it is so early in the season," Loy said, saying

the freshmen are important for depth and team results.

"I was very pleased with total team performance especially in the third round," Loy said. "As a team we did not shoot over a 74, which makes it easier to win a team title."

Loy said he expects ASU to be the ranked No. 1 or 2 in the nation when the ratings come out today. USC was ranked fifth and ASU was sixth in the pre-season poll.

"ASU has won two of their three tournaments this year," Loy said.

Loy said the team will practice for the Hilton Head Golf Classic Tournament Nov. 19-21 at Hilton Head, S.C.

Mayfair left Tempe yesterday to compete in the Professional Golf Association's Tucson Open as an amateur.

Golf team rallies after injury, places 3rd at Tulsa tournament

By GARY JACKSON
State Press

ASU's women's golf team overcame an injury to senior Pam Wright and finished in third place among tough competition and last weekend's Tour Tulsa Invitational at Tulsa, Okla.

The Sun Devils, without one of their best golfers, still managed to place two golfers in the top 10 against a field consisting of the top teams in the country.

"Pearl (Sinn) could have easily won the tournament, but had some putting problems," coach Linda Vollstedt said.

Sinn shot a 72, 77 and 76 on a 76.3-rated course to finish third in the tournament at 12 over par.

"Pearl is going to win some tournaments

this year," Vollstedt said.

Sinn led late in the final round, but missed a few short putts, dropping her to third place. But Vollstedt said the tournament helped Sinn realize her talent and potential of being one of the top collegiate players in the country.

Amy Fruhwirth shot a 76, 77 and 79, and finished in a tie for ninth-place for ASU.

The Devils had to compete without team-leader Wright, who withdrew from the tournament on the second day because of a sore shoulder.

Wright's injury has been reoccurring throughout the year, but after a long rest and therapy last week, she and Vollstedt felt it would be all right for her to play.

"I felt all right as long as I didn't have to

carry my clubs," Wright said.

After a dispute in regulations about using a cart, Wright said her arm was too sore to carry the clubs in the second round.

"Everyone's score had to count," Vollstedt said, explaining a team normally consists of five players, and uses the best four scores for team results.

Although ASU was already facing tough competition, Vollstedt said the team faced extreme pressure performing without Wright.

"Missy Farr started poorly, but came back and shot a consistent 75, with no birdies in the final round," Vollstedt said. Farr shot an 82 and a 77 in the first two rounds.

Although the teams played on a difficult

course, Fruhwirth felt that the ASU golfers could have shot more consistently.

"We can't expect to win when most of our scores were in the mid-70s, and have a couple scores in the 80s," she said.

At practice this week, each player has to work on what they did wrong, and concentrate on not making the same mental mistakes, Fruhwirth said.

Vollstedt said she also wanted to focus on the short game and work on chipping and putting at practice.

She said the golfers will get a couple of days of rest to get caught up in school, before practicing for the Stanford Tournament Oct. 30 to Nov. 1.

ASU will face 18 strong teams in the tournament.

Football

Continued from page 11.

ligaments in his left knee on a punt return. Freshman Nathan LaDuke started his second game at strong safety.

If Robby Boyd is able to return next week, Cooper said things could get interesting in the secondary.

"In the secondary, we expect Robby Boyd might be back at safety," he said. "If he starts, LaDuke would move to nickel, where he would play often this week against Oregon State's passing offense."

Junior quarterback Erik Wilhelm holds 30 Oregon State records, virtually every major passing mark in the school's

book. He passed for 318 yards Saturday against Arizona, and now has seven 300-yards-plus games in his career. He has thrown for 5,647 yards as a Beaver.

Lynn James was moved to corner from tailback, with the possibility of moving LaDuke to corner.

LaDuke is also returning punts now for the Sun Devils.

"We're getting better on special teams . . . we didn't block real well for Nathan LaDuke's punt returns," Cooper said.

Floyd Fields is listed as the back up left corner, right corner and free safety position. "We're throwing a lot at them for a freshman," Cooper said.

Despite the defensive musical chairs, ASU is still ranked No. 1 against the pass in the Pac-10, allowing only 147.5 yards per game.

Overall, Cooper said he was pleased with the performance of his team Saturday.

"The effort was excellent, particularly on defense," he said. "We played a lot of zones and didn't give up any big plays."

Injuries continue to plague the Devils, but except for Parker's injury, none were too serious Saturday.

BORED WITH BURGERS? STICK TO SHISH KABOBS!

*"The Newest and Most Unique . . .
Inexpensive . . . Surprisingly Good . . .
East Indian Food . . .
To break the monotony of
burgers, 9 Spice may be
just the ticket."*

—New Times

Quick-Stick Free Kabob Deal



Shish Kabob Meal
Includes: 2 skewers, rice pilaf,
lentils, salad, papad etc.
Retail value \$5.95

**BUY 1 SHISH KABOB MEAL
& GET ONE FREE**

© Nine Spice Inc.

**Spice
Broiled T.M.**

CLAY-OVEN
(TANDOORI)
COOKING

Vegetarian Meals Served

BEST KABOBS (Lamb, Chicken & Beef) IN THE VALLEY!

tandoori

9
SPICE

kabobs T.M.

1/2 block south of Baseline at
2111 S. Alma School Rd. in Mesa
Hours: 11-9 seven days a week
Call 820-8852 — ask about Party Catering

GOOD YEAR

Western States

TIRES AND AUTO SERVICE

SPECIAL DISCOUNTS FOR STUDENTS, STAFF & FACULTY

<p style="text-align: center;">COUPON</p> <h4 style="text-align: center;">Computerized Vehicle Alignment</h4> <ul style="list-style-type: none"> •Check only \$14⁹⁵ •Front wheel alignment \$29⁰⁰ •Referencing thrust line \$39⁰⁰ •Four wheel align. with mechanical rear wheel adj. \$39⁰⁰ •Road test <p style="text-align: center; font-size: small;">MOST CARS AND LIGHT TRUCKS Call for appt. Expires 11-3-87</p>	<p style="text-align: center;">COUPON</p> <h4 style="text-align: center;">Oil-Lube-Filter</h4> <p style="text-align: center;">INCLUDES:</p> <ul style="list-style-type: none"> •Up to 5 qts. oil •Chassis lube •Oil filter •30 weight oil •Labor <h2 style="text-align: center; margin: 0;">\$10⁹⁹</h2> <p style="text-align: center; font-size: small;">ADD \$2 FOR 15/40 OIL</p> <p style="text-align: center; font-size: small;">MOST CARS AND LIGHT TRUCKS Call for appt. Expires 11-3-87</p>
<p style="text-align: center;">COUPON</p> <h4 style="text-align: center;">Computerized Spin Balance & Rotation</h4> <ul style="list-style-type: none"> •Computerized spin balance all four wheels •Rotate four tires •check air pressure for proper inflation •Free safety check <h2 style="text-align: center; margin: 0;">\$22⁰⁰</h2> <p style="text-align: center; font-size: small;">MOST CARS AND LIGHT TRUCKS Call for appt. Expires 11-3-87</p>	<p style="text-align: center;">COUPON</p> <h4 style="text-align: center;">5-Point Complete Brake Inspection</h4> <p style="text-align: center; font-size: small;">Our Skilled Mechanics Will:</p> <ul style="list-style-type: none"> •Pull all 4 wheels and inspect entire brake system •Check master cylinder and brake lines •Check front wheel bearings and seals •Check brake drums •Add brake fluid and adjust brakes if necessary •If brake repairs are needed, the \$5.00 charge will be applied to repair charges •Most domestic and foreign cars & light trucks <p style="text-align: right; font-size: small;">Please Call For An Appointment</p> <h2 style="text-align: center; margin: 0;">\$5⁰⁰</h2> <p style="text-align: center; font-size: small;">Call for appt. Expires 11-3-87</p>

New Bridge Scottsdale

101 S. Hayden

829-7400

101 S. Hayden at 1st

Herman's Restaurant
Gas Station Southern

Smitty's
Superation Fry

894-0799

42 E. Southern at Mill

Start your day RIGHT

Send a Personal Ad to someone Special. State Press N. Basement, Matthews Center

Start your day RIGHT Send a Personal Ad to someone Special. State Press N. Basement, Matthews Center

the Wine tavern at Rural & Apache 11:30-8:00

\$1.50 3 TACOS
\$1 WELLS MARGS WINE LONGNECKS
\$2.50 PITCHERS

Smith MESA NISSAN
 Your Nissan and Datsun Service Specialists are offering

- Nissan-trained technicians
- Genuine Nissan parts
- Quality maintenance and repair work
- Reasonable prices

10% discount on all service work and counter parts to all ASU student, faculty & staff with ASU I.D. card.

SMITH MESA NISSAN PARTS & SERVICE HOURS
 Monday 7:30 a.m.-8:30 p.m.
 Tues.-Fri. 7:30 a.m.-5:30 p.m.
PARTS OPEN SAT.
 8:30 a.m.-12:30 p.m.

**To be present at time of purchase.* 1701 W. Broadway, Mesa
 Service Parts
 834-3366 834-0255

Good through Dec. 31, 1987.

NISSAN

If you were disabled, could you navigate our "under construction" campus by yourself? Probably not.

We need your support to help keep the ASU carts for the disabled running.

We've had several donations, but need to raise at least \$50,000 to continue this invaluable service to ASU. Please help us keep these carts running by making a donation today. Mail or bring in your check made payable to **DISABLED STUDENTS RESOURCES** to: STATE PRESS, Tempe, Az. 85287-1502
 15 Matthews Center, ASU
 Thank you for making someone's day.

REWARD
 yourself to a delicious pizza delivered right to your door. This is a limited time offer so — HURRY AND CALL

Papa Jay's Pizza HOURS
 Mon.-Thurs... 4-12
 Friday..... 4-1
 Saturday..... 12-1
 Sunday..... 12-12

*FAST FREE DELIVERY (Limited Free Delivery Area) \$4.95 Minimum Food Order
 804 South Ash, Tempe (2 blocks West of Mill Avenue, south of University)*

966-1003 or 966-4292

2 HAM & CHEESE SUBS ONLY \$5.25 & tax <i>All prices subject to change without notice.</i>	LARGE 2-ITEM PIZZA ONLY \$5.00 & tax <i>All prices subject to change without notice.</i>
---	--

The GREAT thing about advertising in the **state press** is that **IT WORKS.**

No matter the size of your budget or the message you want to tell, the STATE PRESS should be your only source to reach ASU students, faculty, staff and Tempe residents... it's a multimillion dollar market that wise businesspeople use to help make their business grow.

We can provide you with excellent service, creative ideas, vibrant colors, budgeting strategy and campaigns to make your business soar! When you advertise in the STATE PRESS, you're reaching 45,000 readers daily... the type of readers who make buying decisions every day. Each dollar you spend in the STATE PRESS is a wise investment that will give you more return than any other medium available in the area.

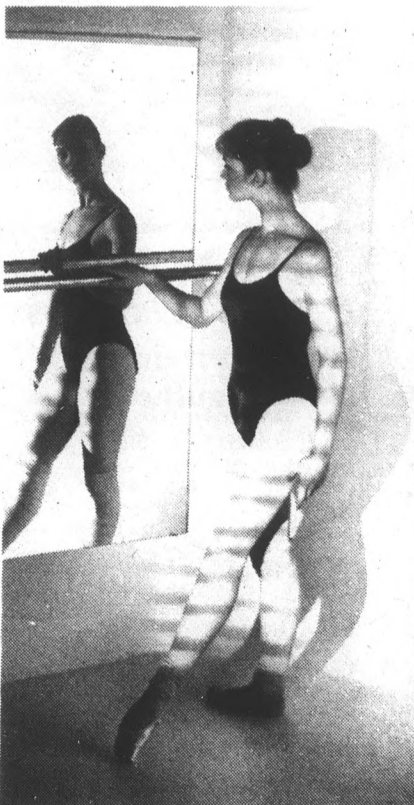
state press ... working for you daily

Do you see yourself?

Eating disorders show up in many ways, and are not always obvious. This checklist can help determine if an eating disorder is controlling your life, or the life of someone you love.

- Is dieting the most important area of your life?
- Has food become a power struggle between you and your family or friends?
- Are you unable to eat in a normal social setting with other people?
- If you have lost or gained a great deal of weight, do you feel powerful because of it?
- Do you feel depressed about your body image?
- Have you felt isolated from your family and friends?
- Do others try to get you to eat more, even though you think you look "fine"?

If you answered "Yes" to one or more of these questions, call to set up an appointment for an evaluation. 941-8002. If you have questions for us, please call. We'll help you get control of your eating so you can get control of your life.




The Institute for Eating Disorders
 Baptist Medical Center—Scottsdale

Don't let it rain on your parade.
It sells in State Press Classifieds. **965-6731**



Protect Your dreams . . .
FREE Pregnancy Testing
•No appointment needed •immediate results
•early detection 5 days before missed period
Abortion Services
•affordable abortion in a few short hours.
Contraceptive Care
•complete birth control counseling •exams
•gyn services
Evening hours for all services
Family Planning Institute
Phoenix 9100 W. 2nd St. • 997-7493
Tempe 424 W. Broadway • 968-7471



DROP IN Before 9 am!
liner ads 1/2 price!
(Some restrictions apply)
Matthews Center (basement)

CLASSIFIEDS START HERE

STATE PRESS Matthews Center Basement
Newsroom.....965-2292
Display Adv.....965-7572
Classified Adv. 965-6731

Liner Ad Rates:
15 words or less
\$2.75/day, 1-4 days
\$2.50/day, 5-9 days
\$2.40/day, 10 or more days
15¢ each additional word
Deadline:
Noon, one day prior to publication
Cash • Check Visa • Mastercard (Sorry, no billing)

The State Press will not accept employment ads based on race, religion or sex unless such qualifying factors are essential to a given position.

The State Press reserves the right to edit or reject any ad deemed objectionable.

Check your ad! The State Press will only be responsible for one incorrect insertion. Errors must be reported before noon the first day your ad appears.

The State Press disclaims all responsibility for quality and prices of goods and services offered in both classified and display advertising by its advertisers.

The State Press never knowingly accepts deceptive or misleading advertising. Any offer requiring an investment should be thoroughly investigated. If you have a complaint regarding a particular ad, it should be reported in writing to: The Better Business Bureau, 4428 N. 12th St., Phoenix, AZ 85014.

We're looking for advertising majors who want to graduate with more than a degree.

The STATE PRESS is looking for a few salespeople who are seriously pursuing a career in advertising and would like to gain professional experience selling advertising.

You must be energetic, creative, gregarious, conscientious, dependable as a Rolex, flexible, and have a car in good working condition.

If you can juggle an academic load and a high pressure job in advertising sales ... we want to talk to you today.

Call Jackie Eldridge for details, 965-7572, 8 a.m.-5 p.m. daily.

COUPON

\$\$ FREE \$\$
(with this coupon)
ONE SALE BOOK
-Value \$3 or less.

NO PURCHASE NECESSARY. THOUSANDS TO CHOOSE FROM.
(Limit one per customer.)

October 19-25

BOOKS, ETC.
901 S. Mill Ave. **967-1111**
(Tempe Center)

HOURS:
Mon.-Sat. 9-8
Sun. 12-6

COUPON

the Nailery

Melaina Engels
NAIL TECHNICIAN
specializing in nail care

31 E. 9th St.
Tempe, AZ 85283
602-894-0573

COUPON

The Nailery
special offer
A regularly priced \$40.00 full set of sculptured nails at a special price of **\$25** with coupon.

Located in **Headlines Hair Salon**
Tempe Center
By appointment only.
Inquire about our full range of services.

894-0573
Coupon expires 11-7-87.

SID'S WAREHOUSE DELI & PUB
"GOOD FOOD AND DRINK"

Live Entertainment
— Nightly —
(No Cover, No Min.)

Tuesday Night is
WING NIGHT
(Hot and spicy chicken wings)

9 for 99¢
plus tax

(In-house only)
Every Tuesday, 7-10 p.m.

130 E. University Dr. (at Forest)
(In The Arches)
966-7788 • Tempe, AZ
Your Hosts "The Family"
— Estab. 1975 —

DIALING 4 MEN

Recorded Gay Introductions
INTER-ACTIVE DIALING!

Browse by Touch-Tone or leave your own message.
1-976-4MEN
First Min. 55¢/Each
Add'l. Min. 45¢



1-976-4MEN

90 minutes of hilarious clay animated fun!
WILL VINTON'S FESTIVAL OF
Claymation

Now Through Sunday
7:30 p.m.-9:30 p.m.
Lower Level MU
\$1.00 Admission

Presented by MUAB

announcements

AUNT BRUNHILDA and Uncle Horace from Graveyard Lane gave all their stuff to Hob Nob to sell for Halloween costumes. Mention ad and get 10% off. 414 South Mill, Tempe.

autos for sale

1976 CORVETTE L-48. Financial emergency forces sale of this super sharp car. All options plus! \$6200. 921-3225.

1978 4-DOOR Ford Granada, air, radio, dependable transportation. \$998/offer. Call after 6 p.m. 973-2275.

1981 PONTIAC T/A turbo, t-tops, power windows, low miles, \$4500/offer. Leave message, 468-9790.

1984 RENAULT Encore 3-door. Runs beautifully. Perfect for students. Assume low payments. \$3495. 784-9063.

NU CAR Corporation- A NU concept in buying a NU car or truck. Any make or model. Save up to \$1500. Call 947-4910.

motorcycles for sale

1979 VESPA P200. New tires, rack, helmet, other extras. After 3 p.m., Ed, 992-7258.

1984 HONDA Aero 125, red, excellent condition, 4500 miles, new tire. Must sell. Call 921-0203.

1985 HONDA Elite 150, well cared for, \$950/offer. Leave message, 468-9790.

1985 HONDA Elite 150 Deluxe, excellent condition, low miles, never wrecked. \$950/offer. Terri, 966-7310.



PUT THE BITE ON SOMEONE
in a
STATE PRESS PERSONAL!

motorcycles for sale

1986 HONDA Elite 250. Excellent condition. 1700 miles. Registration good until 8-88. \$1300. Call 841-7433.

NEW BLUE scooter, one month old, low miles, \$1950 or best offer. Call Michael anytime, 966-0158 (leave message).

NINJA 600R 1985 for sale. Yoshimura pipe, 3 weeks old. Many extras. Call Matt, 829-7564, leave message.

YAMAHA SCOOTER, 50cc- Brand new, won in contest. Light blue and gray. Asking \$650. 839-2525.

furniture for sale

NEW RUST Lane recliner. \$200. Call Denise, 834-7811.

USED FURNITURE and antiques. Affordable prices. Top quality. 1310 W. University, Mesa, 890-0776.

Don't stay in hiding.....



Do something exciting! Say it with a STATE PRESS Personal!

miscellaneous for sale

COLORED TV, portable, \$65. Colored console, 25", \$85. Call Bob at 254-1412.

EPSON FX letter quality printer. Perfect for term papers. \$300 or best offer. 481-0330.

HOT AIR balloon ride for two, \$75/person or best offer. Call 838-4214.

MAKE A Maytag repairman unhappy, buy this dryer! Excellent condition. Only \$100. Call 345-8101 evenings.

NEON LIGHTS, various shapes and colors. \$10-50 each. Transformers extra. Leave message, 966-5740.

SPEAKERS, SPICA TC-50's, excellent quality and design, great sound, 100 WPC max. \$250. Dave, 829-3513.

real estate for sale

\$00 DOWN, 8 1/4% 30-year, Papago Park Village. Own a condo for less than rent. Bob Bullock, Tencor Realty, 951-5800, 860-0460.

apartments for rent

2 BEDROOM, ASU 1 mile, 2 excellent locations, \$395. Covered parking. \$200 off with ad. 967-8431, 966-2750.

BEAUTIFUL NEW large two bedrooms, walk to ASU, pool, laundry, one block south of University on 8th Street and Gary. Ask about move-in specials. 968-5238.

LARGE ONE bedroom, lots of closets, microwave, gas grills, close to campus. Call Sharon, 921-0899.

ONE BEDROOM, one bath, all appliances. University and Mill. \$325 per month. 899-3958.

SUNRISE APARTMENTS is now leasing 1 and 2 bedrooms from \$335. Clean laundry room, pool, plenty of parking. 1014 E. Spence. Monday through Friday 1-4 p.m., or call Karen, 926-1218.

WALK TO ASU, junior one bedroom, \$265; two bedroom, \$400. Adults, no pets. 1031 E. Lemon. Bel Air Apartments, 968-2679, 933-4364.

THE BEST IN STUDENT LIVING at UNIVERSITY TOWERS

- 24-hr. security
- video surveillance
- laundry facilities
- pool, jacuzzi
- contemporary decor
- weight area
- private balconies
- covered parking garage
- free utilities, local phone
- monthly activities
- live-in resident advisors
- roommate selection process

CALL TODAY 894-2300
OUT-OF-STATE CALL 1-800-227-6630
UNIVERSITY TOWERS 525 S. FOREST TEMPE 85281

apartments for rent

RANCHO LAS Palmas Apartments has 1 and 2 bedrooms from \$360. Clubhouse, weight room, 2 pools, 2 jacuzzis, large clean laundry room. 1249 E. Spence. Monday through Friday, 9-6; Saturday, 10-4. 829-9607.

rental sharing

\$210 PLUS 1/2 utilities. Female nonsmoker wanted to have own room and share bath. Available November 1 or spring semester. Close to campus. Leave message, 967-6874.

BEAUTIFUL TEMPE home to share 4 miles south of ASU. Private bedroom, bath, parking, washer, dryer, pool. No pets. Deposit required, \$250 monthly covers all. Call 897-8781.

FEMALE ROOMMATE needed immediately. Brand new apartments, close to campus. \$167 plus 1/2 utilities. Lisa or Angie, 966-6152.

I NEED a roommate. Male nonsmoker. \$225 per month, 1/2 utilities. Call Chris, 890-2212.

MALE/FEMALE, South Scottsdale, \$225 a month, utilities included. 990-7507.

NEED IMMEDIATELY, female to share new 3 bedroom, 2 bath townhouse. All new appliances, microwave, washer and dryer, and pool. \$275 plus 1/2 utilities. Call Denise, 834-7811. 4 miles from ASU.

business opportunities

MAKE MONEY with your body. Not that! Selling fitness and aerobic wear. Call Kim at 921-3182.

help wanted

CAMELVIEW CINEMA is now hiring a part-time assistant manager to work 3 shifts a week. We will train for the position. Apply in person, 7001 E. Highland Ave., Scottsdale, between 1-6 daily.

\$CHRISTMAS MONIES Less than 50 earning days till Christmas. Day and evening shifts available. \$4-\$8 hourly. Call today, start today. 968-1749.

COLLEGE STUDENT, part-time. We need 6 enthusiastic college students to work 4-9 p.m. shift, Monday through Friday, \$5 per hour plus bonus. Call Mr. Rod, 921-2897.

DEVIL BEER is looking for outgoing females to aid in promotions. Evenings, part-time. Minimum age 19. Apply at 415 S. Hayden Rd., Suite 4, 9-5.

EDUCATION MAJOR to tutor bright high school sophomore, mostly study methods. 5 days a week, 4 to 6 p.m. Northern and Central Avenues, Phoenix. Call 861-3353. Prefer applicant with 3 point grade average or above. Pay \$7 per hour plus cost of transportation.

FOOD/BEVERAGE help needed: deli help, banquet help, and counter positions open. Apply in person only at Scottsdale Camelback Resort, 6302 E. Camelback. No phone calls.

HAIR MODELS wanted. Please call 277-1001 for more info. Ask for MaryLou or Nicholas. \$5 charge.

MANN THEATRES now accepting applications for floor staff positions. Apply at Sun Devil 6, 970 E. University, Tempe.

MARKETING FIRM seeking highly motivated individuals. Potential earnings of \$750 per month. Work own hours. Call Bearnox, 820-7660.

NEED MOTIVATED persons to work pool-side at area resorts selling sun care and sun wear. Own transportation. Hours 9-5. Call 941-2751.

Skip The Coffee 7 a.m.-9 a.m. 1/2 OFF Classified Ads

North Basement Matthews Center (Some restrictions apply)



help wanted

ENGINEERING TECHNICIAN (Mechanical), 2nd or 3rd year mechanical engineering or technology. Some related experience desired. Must be available minimum of 20 hours between 8-5. \$5 and up. 956-8200.

JOIN THE ASU telefund team!!!! On-campus location, \$4/hour plus bonus plus commission, nightly incentives, convenient work schedule, gain valuable telemarketing experience. If you have sales ability, call 965-6754 after 1 p.m. Last training will be this Thursday.

REPRESENTATIVES WANTED

We are looking for aggressive people to represent our quality product lines on campus. Our pricing structure makes this a highly attractive means of supplementing your income in your spare time. All of our products are shipped COD, and carry a 100% refund guarantee. If selected, you will be the exclusive campus rep for one or more of our lines. For additional information and application, write:

ADINA BOUTIQUES, LTD
122 East 42nd St.
New York, NY 10168

OVERSEAS JOBS... Summer, year 'round. Europe, South America, Australia, Asia. All fields. \$900-2000 monthly. Sight-seeing. Free info, write IJC, PO Box 52-AZ3, Corona Del Mar, CA 92625.

PERFECT JOBS for ambitious students. Evening hours, Monday-Friday. Good pay, pleasant work conditions. Public relations work. Call CBS Supply, ask for Mr. Salinger, 921-9495.

PERFECT PART-TIME job, 4:30-9. Qualified leads make our telemarketing easier. \$4/hour plus commission plus bonuses equals \$6-10/hour. Our south Scottsdale office is close to campus. 941-9394.

RESTAURANT DELIVERY driver: Scottsdale, near ASU. Own reliable transportation. Flexible hours. Good pay. Full or part-time. Call 8-3, 423-0095, 482-8268.

TECHNICAL JOB with managerial potential. Will train. Please call 941-2690 or 941-3443 for appointment.

WANTED: ASU students with some knowledge of dinosaurs! Assist in public touring and security of major museum exhibit. \$5 hourly, hours flexible Monday-Friday between 10 a.m.-5 p.m.; Sunday 1 p.m.-5 p.m., through January 15. Call Mesa Southwest Museum at 890-3071.

WANTED: PART-TIME assistant manager for ice cream operation. Hourly wage plus bonus. Call 829-7561.

WEEKEND JOBS

If you are in need of extra money, Physical Plant wants 16 students who are concerned about the looks of our campus. Hard working, interested students

CALL 965-1800.

WORK IN Japan and Taiwan - undergrads and grads eligible for English conversation instructor positions. Long and short-term possibilities, including summers. Teaching experience not required; classes instructed in English. Good pay. Opportunity to study Chinese or Japanese. Plan now! Write: China-Japan Services, 2505 I Street NW, Washington, DC 20037.

Instruction

FRENCH LESSONS- Teaching or tutoring available. Call Martine, phone number 962-6332.

HANG GLIDE! Gently sloping hill just South of Tempe. Safe and exciting. Lessons all day, only \$75. Windsports, 897-7121.

THE TEMPE Russian School is now offering individualized instruction- Russian language, literature, and culture. Classes are conducted exclusively in Russian. For admissions information, please call 921-1367.

free lost/found

FOUND: I found a calculator. If you think it's yours, call me: Farouq, 966-1913 after 21:00.

LOST! GOLD and diamond wedding ring in 2nd floor women's restroom, Art building, 10-9-87. Large reward! 423-0350.

LOST: The hassle and cramped feeling of the dorms. FOUND: THE COMMONS 968-6437

on-campus

On-Campus 1907
The Tempe Normal Student, November 15, 1907: Ad- "The Tempe National Bank. General Banking Business. We want yours, large or small."

ATTENTION ASU Foreign Exchange Students: Help out two communication majors with their international term project. Stop by the fountain this Tuesday and Thursday between 12:15 and 2 p.m. to fill out a brief questionnaire. Thanks for your support.

ATTENTION UNIVERSITY departments, organizations, and clubs: Need to place a display ad in the State Press? Your campus representative is Jackie Eldridge. Call 965-7572 8 a.m. to 5 p.m. daily.

WE WANT every student enrolled in ASU to have their picture taken for the 87-88 Sun Devil Spark Yearbook. There's no cost, no obligation... you'll just be immortalized in the Yearbook! We need you to do it as soon as possible. Just come to the lower level of the MU and spend two minutes of your time to make an impression that will last forever. 9-5 Monday, Tuesday, Wednesday, Friday; 12-8 Thursday.

personals

Phoenix Singles

Inter-Active Phone Introductions

Ads selectable by touchtone. New ads updated daily.

1-976-4000

First minute 55¢
Each additional minute 45¢

AGD CYNTHA: Happy 20th Birthday, Sweetie! We're so happy things are going your way! Now it's only one more year until we're all able to meet the real me! We love you! Carol, Kim, Vicki, and Becky.

ASHLEY HAND- "Beauty School" told us it's your birthday. "Stepping Stone" said 19 will be a great year. We say that Rocky Point will jam!! Love and copasetic kisses, Lara and Allison.

BEAR!! DON'T worry, you'll get through this and next semester just fine. Really!! You're just a bear!!

CATHY, A man normally doesn't ask a woman to marry him in a school newspaper, but who ever said I was normal. Will you marry me? P.S. Is it seven already? Love now and forever, Scott.

CHI OMEGA number 1 roommate Gina Rivas: No more nerdy study sessions. It's time for raging at the Dash. Have a super fantastic 19th birthday. Here's to a new way of life. Expect a miracle! Love, K.C.



DSZ RPB

est. 1986

DELTA SIG Bob: Who's bed was it last night? You scammer! Who else could make ACC fun?! Love, Karen.

DELTA SIG Pookie: You're my favorite little bunny. Where to this winter? Je t'aime tourjours. Love, Snuggle Bunny.

DKE PLEDGES get psyched to meet your AXO coaches for Frisbee Fling!!

DTD KATZ: Looking real sharp Stevie, good luck. Meet ya in the alley at noon.

ENGAGEMENT ANNOUNCEMENT: Jeffrey William Moss and Becki Lanning Wright will be married April 2, 1988.

HAPPY BIRTHDAY NICKI!

IF YOU are struggling with homosexuality or know somebody who is, there is a way out. We understand your pain. Call Homosexuals Anonymous, 271-XGAY (271-9429).

personals

DIALING 4 MEN

RECORDED GAY INTRODUCTIONS

Inter-Active Dialing!
Browse by Touch-Tone or Leave Your Own Message

1-976-4MEN

First minute 55¢
Each additional minute 45¢

JULIE: HAPPY Birthday!! I love you, Lee.

KAPPA SIG Craig: Siberia is getting hot-but there are just too many tourists??

KD THERESE or is it Jerise? Hi-Walker.

KEITH, BEST buds for over a year! I had a great time on Sunday. -Meagen.

KKG ANDREA Head: How could I ever forget my first dot?! WKL, Lisa.

KKG ERIKA Anderson and Kerry Milano: We love you two! WKL, your "moms."

KRISTINA RUBISH: Happy Birthday Sweetie! Have an outrageous day!! Love ya, your roomie, Shannon.

LANDON: HAPPY 23rd Birthday, Sweetie! Hope this one is one of your best!! Love you lots! Carol.

MARGARET: WE have decided to give 1st permanently. You Rager, you!! Love, Nance and Karen.

PHIL, THANKS for adding so much to my life this year. You're still a peach! Love, Kelli.

PHI-SIG SNATCH: Thank you for all your help. Love, your little bro. P.S.- We need to party now.

SIG EP'S Greg and Judd: Hey! I need to talk to you... You have two minutes... Sedona was awesome! Theta love, Lisa and Lauren.

Sun Devil House Daily Special

TUESDAY

All You Can Eat **BBQ BEEF RIBS**

w/ Ranch Beans, Corn, Rolls and choice of Salad or Baked Potato

5.95

Free soda or ice tea w/ this ad exp. 10-20-87

SIGMA PI little sister football: Be there, 4:10, with ID, field 5. Don't be a disgrace.

SIGMA SUZIE: Smile, we love you! Just because. Sarge and Kim.

THETA CARRIE Wright: Congratulations Mita Pom Pon on making NCA Rookie of the year. You are too awesome!! Theta love, Lisa.

THE SIGMA ARE unique!

TO THE new Sigma actives, congratulations! You look marvelous! Good luck with the rest of the semester. From your Beautiful Sigma men Scott and Bob. P.S. You are sooo right!

TRI SIGMAS- Congratulations on the recent initiation of your fall pledge class. The best is yet to come. The men of Delta Chi.

TRI SIGMA active Val! Congratulations schweetie! I love you so much! I'm so psyched you're my sister. Get ready for lots of special memories- your Sigma mom adores you. Love, Ellen.

services

ANOREXIA, BULIMIA, compulsive over-eating. Private and confidential counseling. Ginnie Grant Monroe, ACSW, recovered Bulimic, 437-9420, 468-3850. Health insurance welcome.

HAVE UNWANTED facial or body hair removed permanently by electrolysis. Free consultation, located in Tempe. Call Sharon at Desert Electrolysis Center, 829-7829.

I'LL CALCULATE your personal horoscope and provide a detailed written report of what your stars say about your love life, your career, and much more. Each page is about your unique horoscope. The charts are computer accurate with interpretations based on years of astrological consultation- Just \$9.95. Send date, place of birth, and time (if known) to: Celestial Helpers, 8485 E. McDonald Dr., Suite 344, Scottsdale, 85253.

NEED MONEY undergrads and grads? Access to 4000 plus sources of aid nationwide. Call 832-3434.

transportation

ATTENTION: FREE cars to all major cities. 21 or older. Call AAA Driveaway, 277-9979.

CARS AVAILABLE - 21 or older. All States Drive-away, 992-5200.

Some day your kids will want to see your college yearbook. Make sure you have one...and that you're in it! 965-6881.

travel

AIRLINE AWARDS buying coupons, miles, bump tickets. Top prices. Also selling, savings worldwide. Arthur, 968-7283.

AIRLINE COUPONS wanted: United Bonus tickets; Western Extra; others. Up to \$350 each. 892-255-4060.

LAST CHANCE! Limited space remains on ASU winter ski breaks to Steamboat, Vail, Winter Park, and Breckenridge for five or seven nights deluxe lodging, lift tickets, mountain barbecue, ski race and more from only \$154. Optional air and charter bus transportation available. Hurry, call Sunchase Tours toll-free for full details and color brochure- 1-800-321-5911 today!

ROUND TRIP ticket to San Diego. Leave Thursday evening, return Monday morning. Best offer. Kurt, 967-0283.

typing/ word processing

\$1.25 DOUBLE spaced page. A-1 letter quality word processing. 32 years experience. Marian, 839-4269.

\$1.50 PER page. Any Type Word Processing. Spelling and grammar corrected. Some graphics available. Call Debbie, 961-1495.

\$1 OFF every page of text word processed at Kinko's Laserprinting, 933 E. University, 966-2035.

A-1 RESUMES that work! Professionally written and printed. Word processing also available. 968-4670.

A-ACCURATE WORD Processing, professional quality papers, resumes, etc. Editing, fast turn around, reasonable. Terri, 438-9019.

CALL ME for fast, accurate, quality service at competitive prices. Close to ASU. 968-2186.

COMPUTER WORD processing. Papers, resumes and theses my specialty. Quality guaranteed. Call Julie, 820-4663.

DEGREED PHD information specialist. Faculty, advanced student projects professionally guided to completion. Word processing, 256-2830.

FLYING FINGERS Word Processing and Resume Service. McDowell/Scottsdale Road area. 945-1500.

FORMER ASU staffers- Word Perfect and Xerox memory writers. Experienced with APA, MLA, graduate school, etc.- graduate students and faculty work welcome. 945-6302, Donna and Joan.

\$\$\$NO OBJECT? Need help with spelling, punctuation or grammar? What about research, writing, editing and proofreading? APA and MLA member. B.A. in English, M.B.A. from ASU. Complete computer analysis of your work available. Final copy: Laser typeset and bound. 438-9202.

QUALITY, QUICK Typing. Papers, reports, resumes. Pick-up/delivery available. Call today, delivered tomorrow. Ginny, 956-5163.

QUALITY TYPING, cheap! Will pick-up and deliver. Shelley, 860-6950.

SESAME STREET WORD PROCESSING

"We spell it right!"

\$1.50/Page

329 E. Sesame St. Tempe 839-3626

SHORT OF TIME? I can help. Reasonable. Professional. Guaranteed. Experienced in academic. Call Jessie 945-5744.

THE PAPERWORKS- Thesis, report and resume typing. IBM compatible word processing. Near ASU. 921-9575.

WORD PROCESSING, resumes, and typing. Call Uni-Print, 967-1651.

WORD PROCESSING, secretarial services. 23 years experience. Student discount. SW corner, Miller and Chaparral. 994-8145.

wanted

ASU FOOTBALL Tickets, Eddie Murphy, James Taylor, Miami Sound Machine, Fleetwood Mac, Atlantic Star, and others. Great seats; buy, sell, trade. "The Ticket Exchange," 829-0196.

WANTED: OLD exams from ECN 112-Roberts. \$ negotiable. 279-5905.

WILL PAY top dollar for adult ASU football tickets, season or per game. Desperate. 423-0892.

ASU scoreboard

PAC-10 FOOTBALL

	PAC-10 GAMES					ALL GAMES						
	W	L	T	Pct.	Pts	Opp	W	L	T	Pct.	Pts	Opp
UCLA	3	0	0	1.000	124	34	5	1	0	.833	221	90
USC	3	1	0	.750	143	85	4	2	0	.667	179	129
Oregon	2	1	0	.667	73	90	4	2	0	.667	122	141
Arizona State	1	1	0	.500	52	34	4	2	0	.667	167	104
Arizona	1	1	1	.500	78	74	3	2	1	.600	157	105
Washington	2	2	0	.500	103	101	4	3	0	.571	174	143
Stanford	1	2	0	.333	65	87	2	4	0	.333	143	182
California	0	1	1	.000	37	54	1	4	1	.200	139	151
Washington St.	0	2	0	.000	14	82	2	4	0	.333	133	204
Oregon State	0	2	0	.000	31	79	2	4	0	.333	132	241

NEXT WEEK'S GAMES

Arizona State at Oregon State
 Arizona at Washington State
 California at UCLA
 Oregon at Stanford
 Southern Cal at Notre Dame

PAC-10 VOLLEYBALL

	PAC-10 GAMES					ALL GAMES				
	W	L	Pct.	GB	W	L	Pct.			
Stanford	8	1	.889	1.5	15	13	.538			
UCLA	7	1	.875	-	16	4	.800			
Oregon	7	2	.778	0.5	11	5	.688			
California	6	3	.667	1.5	10	9	.526			
USC	5	3	.625	2	9	7	.563			
Arizona	4	5	.444	4	12	7	.632			
Washington	3	6	.333	5	16	7	.696			
Arizona State	3	6	.333	5	8	8	.500			
Washington St.	1	8	.111	7	11	13	.458			
Oregon State	0	9	.000	8	3	13	.188			

WEEKEND RESULTS

Day	W	L	Pct.	GB	W	L	Pct.
Friday	15-13	15-4	13-15	13-15	15-11		
UCLA def. Washington State							
Washington def. Southern Cal	11-15	12-15	15-7	17-15	15-7		
Oregon def. Oregon State	15-8	8-15	15-11	15-11			
California def. Arizona	16-14	13-15	15-8	15-8			

Day	W	L	Pct.
Saturday	15-13	15-4	15-11
UCLA def. Washington			
Southern Cal def. Washington State	15-7	15-12	15-6
Stanford def. Arizona	15-9	15-9	15-8

COLLEGE FOOTBALL

ASSOCIATED PRESS COLLEGE FOOTBALL POLL

	RECORD	PTS.	PREV
1. Oklahoma (42)	6-0-0	1,179	1
2. Nebraska (12)	6-0-0	1,134	2
3. Miami, Fla. (6)	4-0-0	1,106	3
4. Florida State	6-1-0	977	4
5. LSU	6-0-1	923	5
6. Auburn	5-0-1	893	6
7. Clemson	6-0-0	846	7
8. UCLA	5-1-0	802	8
9. Syracuse	6-0-0	722	9
10. Notre Dame	4-1-0	676	10
11. Florida	5-2-0	579	11
12. Georgia	5-2-0	436	12
13. Tennessee	4-1-1	370	13
14. Michigan State	4-2-0	362	14
15. Indiana	5-1-0	333	15
16. Ohio State	4-1-1	294	16
17. Alabama	5-2-0	171	17

18. Penn State	5-2-0	170	10
19. Oklahoma State	5-1-0	154	12
20. Michigan	4-2-0	142	-

Others receiving votes: South Carolina 69, Arizona State 68, Arkansas 44, Pitt 30, Texas A & M 28, Oregon 23, Southern Cal 19, Minnesota 16, Arizona 10, Wyoming 9, Texas 5, Wake Forest 5, Missouri 3, San Jose State 2.

ASU GOLF

STANFORD/PEPSI INVITATIONAL at Palo Alto, Calif.
TEAMS — Arizona State, 873; Southern Cal, 881; Pacific, 892; Weber State and Mississippi, 894; UC-Santa Barbara, 888; San Jose State, 898; Stanford, 902.
INDIVIDUALS — Tie: Dave Miley, Miss., Aaron Benonaca, Pacific, and Jim Strickland, ASU, 216; Tie: Tom Stankowski, ASU, and Mike Blewett, USC, 217.
TOUR TULSA INVITATIONAL at Tulsa, Okla.
TEAMS — Texas, 905; Southern Cal, 917; Arizona State, 926; San Jose State, 947; Tulsa, 951; Oklahoma State, 953; Oklahoma 966; New Mexico, 973.
INDIVIDUALS — Ginger Brown, Texas, 221; Michiko Hattori, Texas, 224; Peari Sinn, ASU, 225; Tracy Nakamura, USC, 228.

If you were disabled, could you navigate our "under construction" campus by yourself? Probably not.

We need your support to help keep the ASU carts for the disabled running.

We've had several donations, but need to raise at least \$50,000 to continue this invaluable service to ASU.

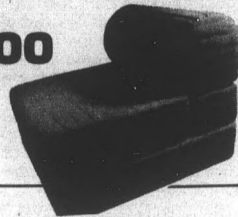
Please help us keep these carts running by making a donation today. Mail or bring in your check made payable to DISABLED STUDENTS RESOURCES to: STATE PRESS, Tempe, Az. 85287-1502

15 Matthews Center, ASU

Thank you for making someone's day.

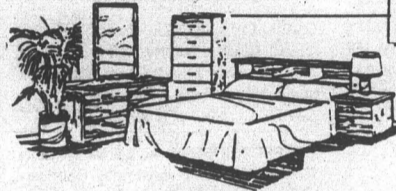
Flip Chair **\$38⁰⁰**

Opens into Twin size bed



Other Specials!

- *4 drawer chest \$ 28
- * Bed Sale
- Twin set \$ 69
- Full set \$ 79
- Queen set \$119
- Bean Bags \$ 28

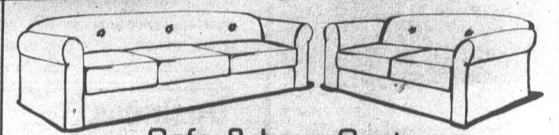


5 Piece Oak Finish Bedroom Set **\$158**

Flip Sofa **\$168**



OPENS INTO FULL BED



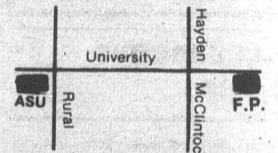
Sofa & Love Seat **\$168**



Clearance Center **966-6252**

In Tempe

2077 E. University



Bonus Sale 2 pair of Daily Wear Soft Contacts plus one pair of Eyeglasses (single vision only)

***\$59⁹⁹**

nationwide vision center

SIX CONVENIENT VALLEY LOCATIONS



PHOENIX
 5130 N. 19th Ave.
 One block north of Camelback Rd.
242-5292

MESA
 437 S. Gilbert Rd.
 Southeast corner of Broadway & Gilbert Rd.
844-7096

GLENDALE
 5030 W. Peoria #103
 One block east of 51st
937-1047

PARADISE VALLEY/SCOTTSDALE
 3241 E. Shea Blvd.
 Across from Weiss Guys Car Wash
996-3629

PHX/SCOTTSDALE
 3620 E. Thomas Rd.
 Across from Target in Sunshine Square
956-2012

eyeglasses/contacts

2 for 1

\$39⁹⁹ * TWO PAIR

EYEGLASSES*

EYEGLASSES Two Pair **\$39.99**

Single vision only.

BIFOCALS Two Pair **\$79.99**

(FT 28.)

DAILY WEAR CONTACTS & GLASSES Both Pair **\$39.99**

EXTENDED WEAR CONTACTS & GLASSES Both Pairs **\$59.99**

EYE EXAM Includes Glaucoma Test **\$18.00**

Contact lens fitting and follow-up care additional.

Outside Eyeglass Prescriptions Welcome
 Options available at additional cost

"NEW"

Make Your Brown Eyes Blue

\$159.99 one pair

PLUS your choice one pair clear contacts or eyeglasses

FREE*

FREE

Sunglasses with Contact Lens Purchase

Dr. Mark A. Hechtman — Dr. Neal A. Weinstein & Assoc. Licensed Doctors of Optometry

100% Refund on contact lenses if not completely satisfied within 30 days.* Specialty lenses excluded.

Open Mon.-Sat.

Most Contact Prescriptions Available The Same Day

*Some restrictions apply.

SOFT CONTACTS*

DAILY WEAR Two Pair **\$39.99**

Softmate B, CQ4

EXTENDED WEAR Two Pair **\$59.99**

Softmate M, Softcon EW

DAILY WEAR COLORED . Two Pair **\$79.99**

One colored, one clear.

DAILY CONTACTS FOR

ASTIGMATISM (TORIC) . . . Two Pair **\$199.99**

Hydrocurve.

COLORED EXTENDED

WEAR CONTACTS Two Pair **\$99.99**

One colored, one clear.

Outside contact lens prescriptions welcome with correct measurements (K-Readings). Other brands available at an additional charge.