

President claims right to regulate off-campus acts

By SCOTT LUCK
State Press

Before exiting for China this month, ASU President J. Russell Nelson implemented an "emergency measure" that will allow campus officials to discipline students for off-campus activity.

Nelson's edict provides University officials with the power to suspend or expel students who are "found to be engaged in the use, sale or distribution of controlled substances."

In a prepared statement, Nelson, who is scheduled to return from China Oct. 5, said, "Because illegal drug use and sale may occur off campus, I have concluded that it is necessary to adopt a rule which proscribes such behavior."

ASU Legal Counsel Bruce Meyerson said the measure is legal because it is a step to protect the campus community. "Cases around the country have been unanimous for disciplining off-campus conduct that poses a threat to health, safety and welfare," he said.

Related editorial, page 4.

Meyerson said the U.S. Supreme Court has not heard a case concerning the right of university officials to discipline students for off-campus behavior, but he said lower court cases have been "open and shut" in favor of the universities.

Associated Students Activities Vice President John Fees expressed concern about the policy's infringement on students' individual rights.

"I seriously doubt if the president will find the results (of the policy) beneficial," he said. "It will probably backfire."

"The safety and well-being of the campus community are already protected by state laws. ASU is not a court system."

However, Fees said if a person actually is convicted of a crime, ASU should have the ability to discipline students.

But Nelson's statement does not specify that a student must be convicted of a crime or even arrested. It states that "disciplinary measures" may be taken against those students "whose behavior off campus indicates that they pose a danger to others."

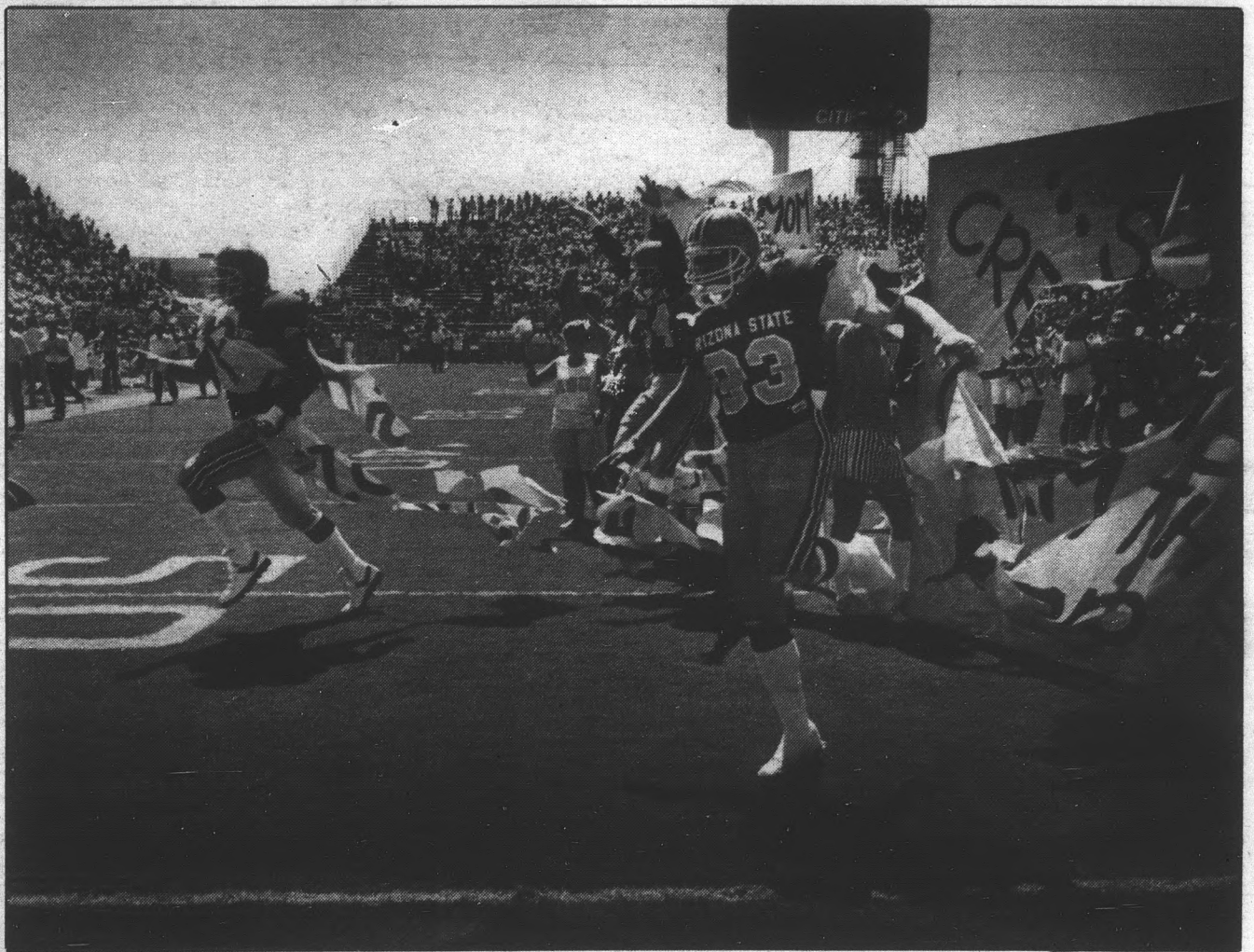
"What's a threat?" Fees asked. "I think that needs to be defined."

ASASU President Karrin Kunasek, who endorses the ruling, said students living off campus should be reprimanded the same as students on campus.

ASU Dean of Student Life Leon Shell said the president's ruling could affect a student who is found to be in possession of "a large quantity of drugs" in any apartment complex frequented by students. The circumstances and severity of students' crimes will determine their punishments, he added.

Shell said although Nelson's statement concentrated on drug misuse, other student cases near campus, such as those involving sexual or physical assault, also could fall under the interpretation.

Meyerson said Nelson was able to pass the measure
Turn to NELSON, page 5.



Andy Mrozinski/State Press

Scorcher

ASU defensive end Trace Armstrong busts through the pre-game banner at Sun Devil Stadium Saturday. The Devils fell to the No. 2 Nebraska Cornhuskers, 35-28, in a game played at a field temperature of 121 degrees. Related story, page 15.

Universities seek 16% budget hike

By DANA LEONARD
State Press

PHOENIX — Arizona university officials will ask the state Legislature for more than a 16 percent increase in their operating budgets next year, despite Gov. Evan Mecham's warning about scarce state funds.

The budget requests were reviewed Friday by the Arizona Board of Regents' finance committee. They will be scrutinized further at a special finance meeting Oct. 7 before being submitted to the regents for final approval at their Oct. 15 meeting in Flagstaff.

A 16.31 percent increase, if approved by the Legislature, would give the university system \$86.8 million more funding in academic year 1988-89 than it had this year.

Gay Murphy, senior budget analyst for the governor's office, said it is too soon to know how much of the requested budgets actually will be awarded.

"Given that the governor will receive requests from over 100 state agencies, the amount requested exceeds the amount available," she said. "The governor will have to make

choices in allocating scarce dollars."

Murphy said the governor's office will begin reviewing the budgets when they are submitted to her office in October, but the plan will not be final until the governor submits it to the Legislature with his approval in January.

ASU officials requested a 14.2 percent increase for their main campus operating budget, which includes salaries, libraries, equipment and other employee-related expenses, while UofA asked for 15.87 percent, and NAU requested 17.3 percent.

A 79.8 percent hike over last year's funding was requested for ASU West to raise its budget of \$8.5 million to \$15.2 million.

Victor Zafra, ASU vice president for business affairs, said the ASU West campus may request more than the other campuses as it is "not bound by regents' guidelines because they're a developing institution."

"They're supposed to request what they need because of the state of development they're in," he said.

Turn to BUDGETS, page 5.

inside today



ASU WEATHER

Sunny with an expected high in the upper 90s.

CHICKEN OUT

Kappa Sigma president cited for cruelty to animals in connection with a featherless biped incident.
Page 6.

Classified.....	18
Comics.....	8
Opinion.....	4
Entertainment.....	9
Sports.....	15

Schroeder expected to declare candidacy

By VICKIE CHACHERE
State Press

Colorado Rep. Pat Schroeder, who once appeared at China's Great Wall in a bunny costume, is expected to announce her candidacy for the Democratic presidential nomination in a Denver press conference today.

Schroeder, an eight-term congresswoman from Denver, will reveal if she is joining the field of six Democrats, which includes former Arizona Gov. Bruce Babbitt, at 11 a.m. Arizona time. She has raised close to \$1 million to launch her campaign.

Schroeder's entrance to the race could cause some problems for Babbitt, political experts say, because Babbitt and some of the other lesser-known candidates will be competing against Schroeder for the political spotlight.

Bob Beckel, former campaign manager for Walter Mondale, said Schroeder has the advantage of the "unknown woman factor," meaning voters could decide it is time to regard a woman as a serious presidential candidate.

"That's what got the other campaigns nervous," Beckel said. "She will get a lot of attention because of her unique position,

and that's going to hurt all of them."

But Beckel said he doubts that Schroeder will be successful in her bid for the presidency.

"The country is not going to elect a woman president," he said. "That's regrettable, but true."

Karl Gentles, a Babbitt press aide, said Babbitt welcomes Schroeder to the race and doesn't think her candidacy will detract from his campaign.

"The water's warm and anybody is welcome to come on in," Gentles said. "It's a wide open race, and we'll welcome anyone into it who has a positive contribution to the Democratic party."

Schroeder, a 47-year-old graduate of Harvard Law School, serves on the House Armed Services Committee, the Judiciary Committee, the Post Office and Civil Service Committee and the Select Committee on Children, Youth and Families. She also co-chairs the Congressional Caucus for Women's Issues.

Schroeder formerly was a college professor for the University of Colorado's Denver campus and Denver Community College, and she has worked as a field attorney for the National Labor Relations

Board. She also served as counsel for Rocky Mountain Planned Parenthood.

Alex Evans, executive vice president of Cambridge Survey Research, a Washington-based polling firm that worked for Delaware Sen. Joseph Biden before he dropped out of the presidential race Wednesday, said voters need to concentrate less on Schroeder's gender and more on her plans for the presidency.

"I think the real question we have to ask is what's her message, and how is that going to affect the race," said Evans, who has done polling for Massachusetts Gov. Michael Dukakis and Illinois Sen. Paul Simon, both Democratic presidential hopefuls.

In a Gallup Poll, conducted between Aug. 24 and Sept. 2, Schroeder was favored by 6 percent of those polled. That's 4 percentage points higher than Babbitt, but 13 points behind current frontrunner Jesse Jackson.

Nancy Russo, an ASU professor of psychology and director of Women's Studies, said Schroeder is the only candidate with extensive experience in defense and foreign policy.

"She would make a president that would really know the Congressional process," said Russo, an ardent Schroeder supporter.

world/nation in brief

Iraqi warplanes attack tankers in 3 separate incidents in Gulf

MANAMA, BAHRAIN (AP) — Iraqi warplanes fired heat-seeking Exocet missiles at three shuttle tankers off Iran's Kharg oil-loading platforms in separate raids within 12 hours ending Sunday, marine salvage officers said.

The strikes coincided with the arrival in Tehran of 26 Iranians and the bodies of 3 others who had been aboard an Iranian ship that the U.S. captured Monday and blew up Sunday.

The Navy said it had caught the *Iran Ajr* in the act of laying mines. Iran denies the claim.

The salvage officers, who spoke on condition of anonymity, said one of the three damaged tankers was hit twice, once before midnight and again Sunday while it was being towed to an Iranian port.

They said the Iraqi raids prompted other commercial vessels in the waterway to stay close to shore, fearing Iranian retaliation.

There were no reports of injuries or deaths.

Gore, Dukakis clash in arms debate; 6 hopefuls call for arms control

DES MOINES, Iowa (AP) — Massachusetts Gov. Michael Dukakis lectured Tennessee Sen. Albert Gore to "get your facts straight," but six Democratic presidential hopefuls generally were in harmony Sunday in supporting sweeping arms control agreements and an end to military aid to Nicaraguan rebels.

The sharp exchange between Gore and Dukakis came during a two-hour debate before an arms control group that featured mainly sharp attacks on President Reagan and gentle jabs among the Democrats who said they were struggling "for the

direction of the Democratic Party."

Gore and Dukakis began their feud at a similar debate last month, with Gore demanding more specifics about Dukakis' economic policies. On Sunday, Gore accused Dukakis of advocating the withdrawal of American troops from South Korea.

"I never made that proposal," Dukakis retorted. "I never suggested that."

White-collar crime convictions rise 18 percent in 5 years

WASHINGTON (AP) — The number of federal convictions for white-collar crime rose 18 percent in the first five years of the Reagan administration while convictions for other types of crime went up more than twice as fast, the government said in a report released Sunday.

The study, the first national survey of its kind issued by the Justice Department's Bureau of Justice Statistics, also found that white-collar criminals were less likely than other types of criminals to be sentenced to prison.

The bureau reported that 10,733 defendants were convicted of federal white-collar crimes in 1985, up about 1,600 from 1980. Meanwhile, federal convictions of non-white-collar crimes rose 43 percent from 1980 to 1985, to about 30,000.

The average length of a prison sentence for a white-collar criminal rose 20 percent to 29 months in 1985, compared with two years in 1980, the report concluded.

Florida gets lenient gun law Oct. 1; police fear surge in shootouts

MIAMI (AP) — Boosters hail it as a triumph of the right to bear arms, but police here fear that when Florida's new gun law goes into effect, routine fender-benders could turn into Dodge

City-style shootouts.

As of Oct. 1, all Floridians can strap on a sidearm in plain view without any kind of permit. If they prefer to conceal the weapon, they can join up to 60,000 residents expected to apply for new streamlined state permits.

"This could set us back 100 years to the time of the Wild West," a gloomy Broward County Sheriff Nick Navarro said last week. Fort Lauderdale Police Chief Joe Gerwens has told his officers to disarm anyone carrying a gun near the scene of an incident.

Gun ranges in the Miami area, meanwhile, are jammed.

Since June, the Tamiami Range & Gun Shop has graduated 3,000 people from the concealed weapon permit course required by the state. The American Indoor Gun Range in Pembroke Park is processing 400 to 500 people a month.

Purge of party dissidents defended by Chinese premier

BEIJING (AP) — Premier Zhao Ziyang defended the Communist Party's purge of dissident members, but said in an interview broadcast Sunday that intellectuals are free to voice their opinions outside the party.

"I don't think this is a crackdown," Zhao told NBC's Tom Brokaw in a rare interview. It was taped last week and broadcast in the United States on the Sunday morning program "Meet the Press."

Zhao has also been the party's acting general secretary since Hu Yaobang was ousted last winter. He said he does not want the job permanently.

"I think I'm not that fit to be the general secretary," Zhao said. "I'm more fit to look after economic affairs."

Zhao has made similar statements in the past, but nonetheless is widely expected to be given the top party post at the 13th party congress, which begins Oct. 25.

today

Meetings

- The Public Relations Student Society of America will be holding a general meeting today at 5:30 p.m. in the MU. Check events listing for room number.
- Campus Ambassadors meet today at 7 p.m. in Danforth Chapel. Drama presentation by Bob Siegal.
- The Peace Corps will be having an

informational meeting, film presentation and panel discussion today from 7 to 9 p.m. in the MU Alumni Room South.

•The Arizona Outing Club will be discussing upcoming events today at 7:30 p.m. in the MU Pima Room.

•The Whitefield Society will be discussing the book of Hebrews today at 2:40 p.m. in Danforth Chapel

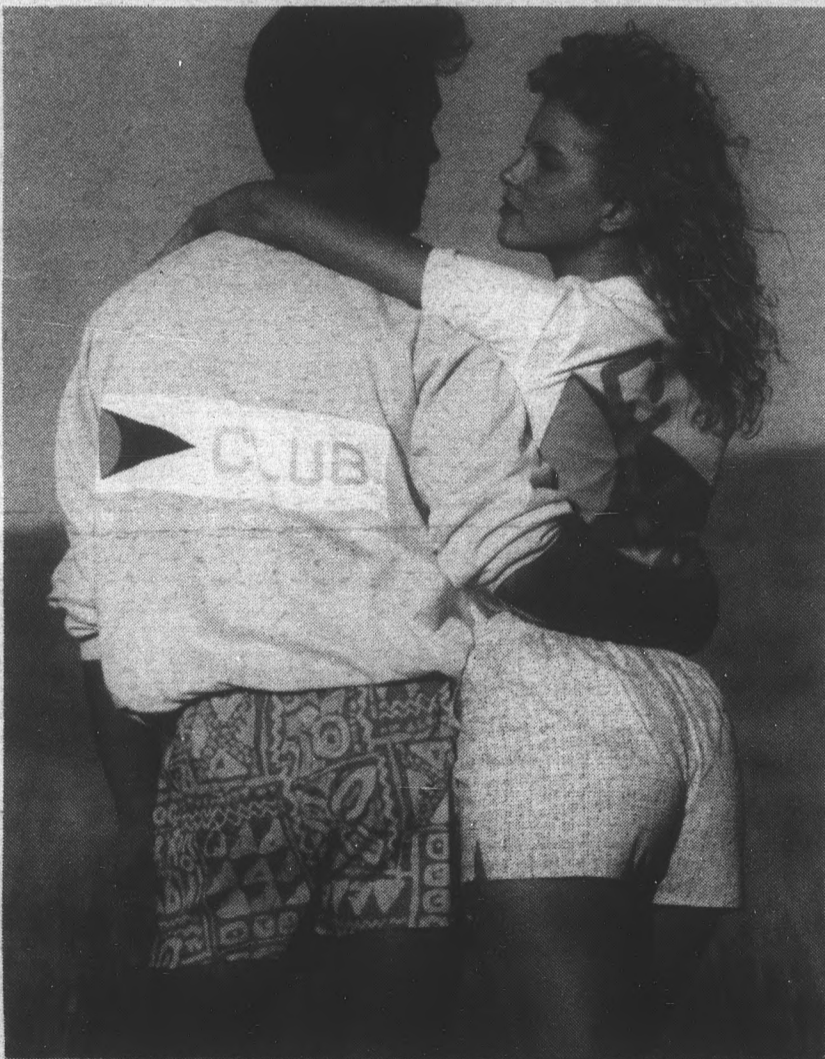
•The Coalition for World Peace meets today at noon in the MU Pima Room. Col. James Buckholder will be discussing U.S. policy in Central America.

Announcements

•The Women's Studies Program will be awarding \$50 book scholarships for the fall semester. These scholarships are open to

Women's Studies students who have completed at least two Women's Studies courses. Applicants must submit their grade point average, references and a one-page essay.

Application forms are available in the Women's Studies Program Office, Social Science 104, and must be submitted by Oct. 1.



"ALL VOLLEY SHORTS 25% OFF"
3 days only • Sept. 28-Sept. 30 • both locations

Sporting Club

Cornerstone Mall
894-2254

TEMPE

Hayden Square
966-7904

Sophomores, Juniors, Seniors and Grads

GIVE YOURSELF SOME CREDIT!

APPLY NOW FOR YOUR VERY OWN...



- Bring a photocopy of your School I.D.
 - No cosigner required
- APPLY NOW ON CAMPUS!**

Date: September 28, 29, 30

Time: 9:00 a.m. to 3:00 p.m.

Place: Business Buildings Patio

Tempe City Council drafting plans to remove 'A'

By TRACY SCOTT
State Press

After years of repainting by spirited University and rival groups, ASU's most visible symbol, the "A" on Tempe Butte, could be wiped out just before its 50th birthday.

The Tempe City Council is drafting plans to remove the "A" emblem, which was put in place in 1938, from the mountain north of Sun Devil Stadium.

And ASU student organizations are preparing to fight a battle to keep it.

Repainting the 36-by-36-foot "A" has been a tradition since 1948, when the freshman class first was commissioned to whitewash the emblem after some U of A students allegedly painted it red and blue for the annual football game.

But last week, Tempe City Councilman William Ream asked the city staff to initiate a plan to remove the "A," following a soon-to-be-scheduled public hearing to test student reaction.

Tempe Mayor Harry Mitchell said the council is seeking signs of support for the emblem from the ASU student body.

"Councilman Ream probably is looking for some kind of reaction, and if there is no reaction from the University one way or the other, then I'm sure that something will be done (to remove the 'A')," Mitchell said.

Ream said ASU students lack school spirit, and "if the students don't care, then I don't think the city should let (the 'A') stay up there."

But Associated Students of ASU President Karrin Kunasek said students will rally to save the school's symbol.

"Ream is underestimating the support of the 'A' by students," she said, adding that the emblem is part of the University's heritage and should remain on the butte.

"The effort to remove the 'A' is not in the best interest of the University or Tempe."

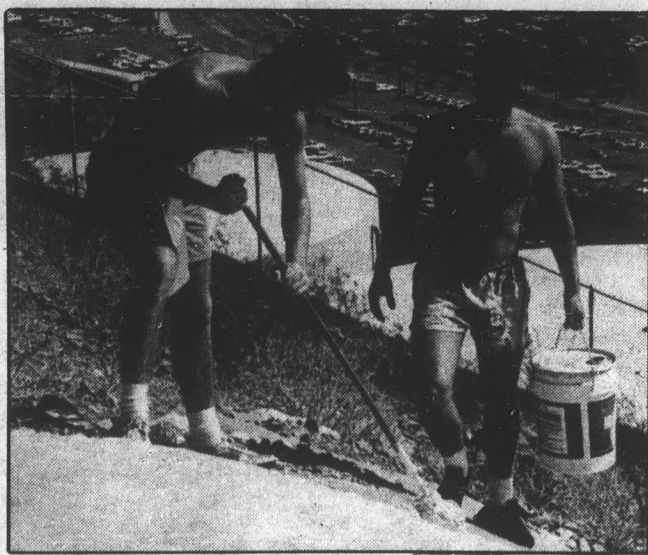
Kunasek said she will lobby the Tempe City Council and the mayor's office in support of the emblem, and ASASU will address the issue in a meeting Tuesday night.

The Sigma Nu fraternity attempted to show its support for the emblem last Friday by painting it with 10 gallons of gold paint, costing the fraternity \$200, said president Rob Hathaway. "We don't want to lose our 'A,'" he said.

Ream said Tempe officials are in the middle of a downtown redevelopment project and want the city to be aesthetically appealing to residents.

"It is not a good reflection on the City of Tempe as a whole to see multi-colored trashy things on the butte," he said.

ASU Dean of Student Life Leon Shell said the council wants a more positive image for the city because ASU and Tempe have become nationally more visible this year with the Rose Bowl win and Pope John Paul II's Mass in the stadium.



Susan Schuman/State Press

Mark Knight and Kent Nuzem, brothers of Sigma Nu Fraternity, painted the "A" gold Friday afternoon.

He said a change in University policy is needed to prevent unauthorized groups from painting the "A."

"We've got it in the system for it to get repainted, but we don't have it in the system to stop it from getting all these other colors to begin with," he said.

The Student Athletic Board receives the "ASU Gold" paint from the Physical Plant. Repainting the "A" requires about 10 gallons and costs the University about \$70.

Councilman Pat Hatton said she opposes Ream's proposal because painting the emblem is a University tradition.

But Councilman Carol Smith said removing it would be a "drastic method" to get the University's attention.

"(The 'A') does not add to the aesthetic appearance of the city or the University the way that it is being handled now," she said.

ASASU Activities Vice President John Fees said the school's symbol must be saved.

"It reflects campus life with all of its diversity," he said.

Fees said he would like the Student Programming Advisory Network — a group of student leaders who support University causes — to draft a resolution to commission student organizations, such as the Interfraternity Council or the Panhellenic Council, to take responsibility for their painting.

Ream said he is willing to listen to students if they propose a viable solution. "If students want to keep the 'A' up there, they will have to come up with support from the student

body," he said.

Ream said the multi-colored paint jobs are largely the handiwork of "students living on campus."

ASU Vice President for Student Affairs Betty Asher said it is difficult to keep students from defacing the "A" because it is a visible symbol of the University.

"We can't control it, but we can encourage students to be responsible," she said. "Anytime you have a symbol or a mascot, as our 'A,' you can expect things to happen to it when it is easy to get to."

Asher said she does not think students intend to hurt the University's reputation, but they should cooperate with the council's wishes to keep it gold.

"The painting of the 'A' by students does affect the University's relationship with the Tempe community," she said.

The butte and the "A" belong to Tempe, but on campus it is the Student Athletic Board's responsibility to paint it.

Students must obtain the board's permission to paint the University symbol, but board President Kiffie Spangler said: "I don't see it as just a one-organization project. The more unity you get between student organizations, the longer it's going to stay gold."

Spangler suggested "stiffer penalties to those who are caught up there," but she did not outline definite action. Defacing city property is punishable by a fine.

Although Ream is the initiator of the drive to remove the "A" if the color is not maintained, he said: "As an alumnus, as a Tempe-an, it's been a tradition there for a great number of years. I would certainly hate to see it go away."

Spangler said if plans to remove the emblem were successful, student outrage eventually would turn to apathy.

"The majority of the student population would be outraged by hearing that it's going to be taken away," she said. "But if it was taken away, after a few weeks all the hype and hysteria would die down."

Ream's latest proposal does not mark the first time the council has attempted to remove the "A" because of its defacement.

In 1985, Ream threatened the emblem's existence unless it remained white. The council has since agreed that gold is acceptable.

The color issue was put before the student body in the April 1986 ASASU elections when the question appeared on the ballot: "Which of the following colors would you prefer to see the 'A' on the mountain north of campus painted: white, gold, maroon, or maroon and gold?"

Former ASASU President Chris Cumiskey said "gold" received the most votes, although ultimately it is the city's decision.

IT'S COMING! OCTOBER 23 . . .

SIGMA PI Sponsored by Miller and Budweiser!
presents

MOCK

ROCK

The Ultimate

Airband **STRUT YOUR STUFF!**

Competition

Applications available Sept. 29 at Palo Verde Main Desk, due October 9.
(in conjunction with Alcohol Education Week)

Σ Π

Something brewing at mid field

To Be Continued October 2
SPONSORED BY ASU WATERPOLO TEAM

Nelson ruling is dangerous, infringes on student rights

President J. Russell Nelson has declared war on drugs.

But Nelson — armed for battle with a new "emergency" measure that gives him near-dictatorial power over student behavior — has gone on the offensive against far more than substance abuse.

He has gone to war with the student body. The publication of Nelson's new addendum to the Code of Conduct, the "Rule pertaining to off-campus conduct by students," in last week's edition of the *ASU Insight*, should give all students ample reason to reflect on a University administration that has made a dangerous and potentially devastating intrusion into the rights of enrollees.

According to Nelson, the rule is targeted at drug users and dealers, and is designed to give administration officials the power to remove such elements from campus. But the rule itself does not mention drugs, and is so vaguely worded that it could be used as a powerful weapon against any students labeled as "undesirable" by Nelson or a future president for any reason that seems expedient.

The rule states: "The University reserves the right to take necessary and appropriate action to protect the safety and welfare of the campus community. Such action may include taking disciplinary measures under the Code of Conduct against those students whose behavior off campus indicates that they pose a danger to others."

Nelson, in an effort to clear up what he calls "ambiguity" in the code, has issued an edict afloat in a sea of uncertainty.

The questions it raises are many and varied:

What is behavior that is dangerous to others?

If a student receives a ticket off-campus for reckless driving, is he a danger to others when he drives at ASU? Does barroom brawling indicate that a student is excessively violent, and thus represents a danger to campus? If so, will students who are party to such activities be dismissed from school?

Does a student who occasionally smokes marijuana threaten the well-being of other students? What about students who consume alcohol off-campus while under the legal age of 21?

At what point does political protest or dissent become harmful to the ASU community?

The rule does not state that the dangerous "behavior" must be illegal to fall under review by Nelson. Are there any legal activities students engage in that Nelson might consider to be worthy of disciplinary action?

In fact, the code does not even specify if a student apprehended for a drug offense must be convicted or merely accused of a crime before he or she could be placed on probation or expelled from the University.

Literally interpreted, Nelson's rule allows the dismissal of any student in the nebulous

interest of protecting the "safety and welfare of the campus community" — without consideration for due process or the concept of "innocent until proven guilty."

Indeed, no administrative policy established in recent memory is so open to abuses as is Nelson's blanket statement subjecting students to absolute, arbitrary and fluctuating authority.

Undoubtedly the courts will be called upon to provide further clarification on the matter, but it seems apparent that a state institution, receiving public funds, has few of the rights to interfere in students' private lives in the manner that, for example, a private school might.

Before Nelson's tampering, there was no ambiguity in the Code of Conduct. It was clear and quite simple to grasp: The behavior of students on-campus is Nelson's to regulate, and their activities are within his domain to control.

But what happens off-campus is off-limits. Any intrusion into the private lives of students is unwarranted and should not be tolerated. Especially when the intrusion comes in the form of an Orwellian dictate that could be used for purposes far beyond its original intent.

If the University wishes to expell drug users or dealers, then it should issue a clear policy on the matter that can be debated on its own merits. It should not rely on a vaguely-worded statement of authority that is a loaded gun pointed at the broad base of the student community.

Nelson is revealing either great irresponsibility or a great capacity for political pandering in succumbing to the current wave of anti-drug paranoia by establishing this rule. The former is most likely, as Nelson did not court publicity for his ruling — failing to announce it through a press release and slipping off to China before the storm of protest over the decision began to break.

Nelson is correct in saying that a state of emergency exists on campus, in much the same way that a fox would be correct in saying that there was something amiss in the chicken coop. The crisis is of his own making. By taking too much arbitrary power into his own hands, Nelson is forcing a confrontation with students.

If the words of Associated Students President Karrin Kunasek, who called the rule "a good idea," are any indication, student government will not lead the charge against this repressive new provision, but are instead going to sanction it.

The burden therefore falls upon every member of the student body to reject the rule, in no uncertain terms, as a threat to his rights as a citizen and as a willing participant in an academic environment.

The idea that this rule is only a danger to those who may deserve punishment under law — drug dealers and users — is empty rhetoric.

The danger is to all of us.

Bad Intentions

Dangerous image revealed as only a desire to commit 'evil acts'

Mike Royko
Tribune Media
Services



I've always been hooked by the self-analysis tests that frequently appear in the features pages of newspapers and magazines.

The questions have multiple-choice answers, and each answer has a different value in points. You add up the points and determine the kind of shape you are in.

For instance, the questions in a test on drinking might go:

- Q. Do you usually drink:
- (a) only at parties? (1 point)
- (b) only a nip after work? (2 points)
- (c) a pint before breakfast? (3 points)

The various tests tell you if you are likely to have a heart attack, if you have a drab personality, if you are on the verge of a marital breakup, and just anything else that might be of interest.

The idea is that a bad score should warn

Then I added up the total points. And I couldn't believe the results. I had scored 19. Nineteen? Even Jack Armstrong or Andy Hardy would have had higher scores than that.

I figured something was wrong with the test, so I asked a friend of mine, who is about my age, to take it. He is a rather straight sort, who came from a decent neighborhood, and spent much of his youth reading books, playing Ping-Pong, and working on a Junior Achievement project.

He got 35 points, putting him on the edge of dissipation. He smiled and said: "Someday, I'll tell you about the girl next door."

It made no sense and left me feeling depressed. Me a goody-goody? It was impossible. In every neighborhood, there is a youth who is so dangerous an influence that all the parents tell their kids that they can't associate with him.

Well, I was so dangerous an influence that my own brother wasn't permitted to associate with me. Respectable girls blushed in my presence. In a survey taken by adult reprobrates in the neighborhood, I was voted Rookie of the Year.

I've had that test in my wallet for days now. Every so often, I take it out, take the

'In brushing away the webs of time, I now realize that I sincerely wanted to do all of those things. Me and Slats Grobnik used to spend hours planning, anticipating, slobbering.'

you to change some of your habits.

I've taken them all. And, on the basis of the results, I have discovered I died sometime in 1968, that I'm confined to a padded cell, that everybody I know hates me — or should — and that I'm very happy.

But I haven't changed any of my habits. Why push my luck?

Not long ago, a new test appeared in a column by Ann Landers. It consisted of questions about boozing and drugs and sex, and getting drunk and arrested, and getting young girls in trouble and all sorts of fascinating stuff.

The trouble was it was designed for teenagers, to determine whether they were goody-goodies (0 to 21 points), normal (22 to 35 points), or depraved and dissipated (36 points and up).

Although I am no longer a teen-ager, at least most of the time, I decided to take the test anyway.

Answering the questions was a real nostalgia trip. Several times, I had to sit back and chuckle at memories of what it was like when I was fondly known in my neighborhood as "the wolfman," the "creep," and "stay away from my sister, you!"

test again, and the results are always the same.

So I have to face it and be honest with myself. I just wasn't the young man I thought I was. Just as that youthful home run wasn't as long as we remember, that touchdown run as spectacular, that winning basket from as far out — my evil acts weren't as loathsome as I prided myself upon.

In brushing away the webs of time, I now realize that I sincerely wanted to do all of those things. Me and Slats Grobnik used to spend hours planning, anticipating, slobbering.

But nobody would co-operate. Bartenders said: "Take off the false moustache, punk, you ain't no midget." And girls said: "Try it again, goof, and my brother will maim you."

I've since taken the test one more time. And my answers were based on what I would have done if I had been given any cooperation. Boy, oh boy, oh boy!

My score was 92. Even Mr. Hyde couldn't have done any better in London fog.

I feel good again. Maybe I didn't do anything terrible. But at least my intentions were bad.

quotable

"(Students should) scream and say off-campus behavior is none of the university's business."

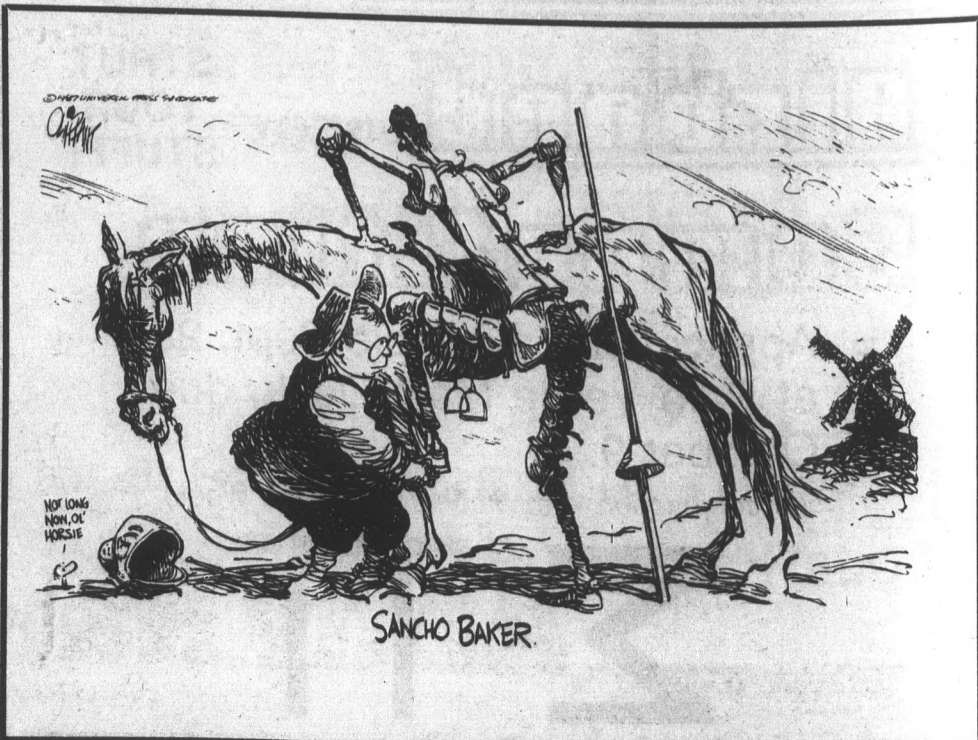
— Arizona Civil Liberties Union Director Louis Rhodes

EDITORIAL BOARD

Unsigned editorials reflect the views of the editorial board. Individual members of the board write editorials and the board decides on their merit. The editorials do not reflect the opinion of the State Press staff as a whole. Board members include:

Khali Crawford
EDITOR
Darrin Hostetler
OPINION EDITOR

Bob E. Heiler
MANAGING EDITOR
Mike Rowell
WIRE EDITOR



Nelson

Continued from page 1.

without formal procedure because the Arizona Board of Regents has authorized Arizona universities with special rule-making guidelines.

Regents' spokesman Allan Price confirmed that Nelson has the power to adopt a rule without board approval.

The regents' authorization grants the president of ASU, in an emergency situation, to bypass normal procedure to enact a rule for up to 90 days, Meyerson said.

But he said, to formalize the rule, the item must be placed on the Vice Presidents Council agenda and published in the *ASU Insight*. Both measures already have been taken for the off-campus ruling.

A notice encouraging public comment on the issue now must be published in the *ASU Insight*, and Nelson then must wait at least 20 days before making it a formal rule, Meyerson said.

Nelson signed the ruling into existence on Sept. 9, 12 days before its Sept. 21 publication in *ASU Insight*.

Meyerson said formalizing a rule in a non-emergency situation normally takes about six months. A proposal must be approved by the Student Affairs Committee, the regents and the attorney general's office.

In his ruling, Nelson interprets the University Code of Conduct as extending to off-campus student activity.

But the University Hearing Board, which receives student

complaints through the Office of Student Life, has disagreed with the president's move.

Board Chairman Richard Nash said, "We read the Code of Conduct so that it applied to conduct that occurred on campus or during University-sponsored activities."

The board, made up of two students, two faculty members and one non-faculty employee, based its decision on a Code of Conduct clause under "Prohibited Conduct."

The clause states: "Intentionally or recklessly causing physical harm to any person on the *University campus* or at a *University-sponsored activity*, or intentionally or recklessly causing reasonable apprehension of such harm," is prohibited.

Shell said Nelson interpreted the code on a broader basis as outlined under "Miscellaneous Provisions."

A clause there states: "The list of prohibited misconduct . . . shall be *interpreted broadly* and is not designed to define misconduct in exhaustive terms."

Betty Asher, ASU vice president for Student Affairs, said: "The benefit (the policy) provides is the opportunity to have some impact on our environment."

"None of us want to have people who are selling drugs on campus. This is the way we can go about that."

Asher also has advocated campus drug information and prevention programs.

Budgets

Continued from page 1.

In addition to state appropriations, operating budgets also are funded by student tuition and fees.

Of the total amount requested, regents' policy dictates not more than 10 percent may be applied toward university program changes — additions of new programs or modifications of current ones.

ASU listed 27 program changes, totaling \$19,914,500, or 10 percent of its proposed operating budget.

At the top of a priority list of ASU requests is \$312,300 to compensate for unfunded 1987-88 projects of the Engineering Excellence program. An additional \$1.4 million for the program is requested fourth on the list.

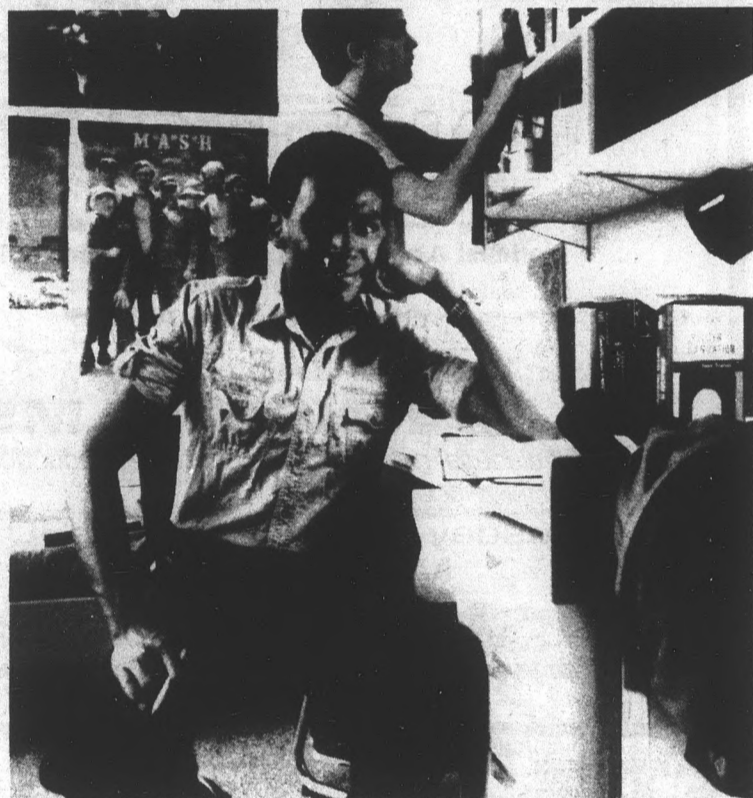
Other program requests include \$1.3 million for new facilities support, \$1.1 million for science and engineering materials, \$2.9 million for undergraduate education improvements, \$1.1 million for resource deficiencies in student services and \$243,200 for the Disabled Students' Access Learning Lab and Testing Center.

ASU's 1987-88 operating budget was \$199,144,800; the requested budget for 1988-89 is \$227,432,500.

Regent Esther Capin said she thinks the proposed budgets will be approved by the full board with few changes.

"They won't need much more work," she said. "(The universities) followed all of the guidelines. They prioritized their needs; they showed a stringent internal process."

"HOW I MADE \$18,000 FOR COLLEGE BY WORKING WEEKENDS."



When my friends and I graduated from high school, we all took part-time jobs to pay for college.

They ended up in car washes and hamburger joints, putting in long hours for little pay.

Not me. My job takes just one weekend a month and two weeks a year. Yet, I'm earning \$18,000 for college.

Because I joined my local Army National Guard.

They're the people who help our state during emergencies like hurricanes and floods. They're also an important part of our country's military defense.

So, since I'm helping them do such an important job, they're helping me make it through school.

As soon as I finished Advanced Training, the Guard gave me a cash bonus of \$2,000. I'm also getting another \$5,000 for tuition and books, thanks to the New GI Bill.

Not to mention my monthly Army Guard paychecks. They'll add up to more than \$11,000 over the six years I'm in the Guard.

And if I take out a college loan, the Guard will help me pay it back — up to \$1,500 a year, plus interest.

It all adds up to \$18,000 — or more — for college for just a little of my time. And that's a heck of a better deal than any car wash will give you.

THE GUARD CAN HELP PUT YOU THROUGH COLLEGE, TOO. SEE YOUR LOCAL RECRUITER FOR DETAILS, CALL TOLL-FREE 800-638-7600,* OR MAIL THIS COUPON.

*In Hawaii: 737-5255; Puerto Rico: 721-4550; Guam: 477-9957; Virgin Islands (St. Croix): 773-6438; New Jersey: 800-452-5794. In Alaska, consult your local phone directory.
© 1985 United States Government as represented by the Secretary of Defense. All rights reserved.

MAIL TO: Army National Guard, P.O. Box 6000, Clifton, NJ 07015

NAME _____ M F

ADDRESS _____

CITY/STATE/ZIP _____

AREA CODE PHONE _____ US CITIZEN YES NO

SOCIAL SECURITY NUMBER _____ BIRTH DATE _____

OCCUPATION _____

STUDENT HIGH SCHOOL COLLEGE
PRIOR MILITARY SERVICE YES NO

BRANCH RANK AFM/MOS _____

THE INFORMATION YOU VOLUNTARILY PROVIDE, INCLUDING YOUR SOCIAL SECURITY NUMBER, WILL BE USED FOR RECRUITING PURPOSES ONLY. YOUR SOCIAL SECURITY NUMBER WILL BE USED TO ANALYZE RESPONSE TO THIS AD AUTHORITY: 40 USC 3033

ARMY
National Guard
A1CAJC28097NP

Army National Guard

Americans At Their Best.

police report

Kappa Sig charged with fowl play

By MIKE BURGESS
State Press

The president of the Kappa Sigma fraternity was arrested Friday after fraternity members on Alpha Drive allegedly were seen chasing featherless chickens, attempting to cut their heads off, ASU police said.

Allyn Francis Povilaitis, 21, of 402 Adelphi Drive, was arrested and charged with cruelty to animals after police found nine "badly beaten" chickens at the Sigma Phi Epsilon house; 615 Alpha Drive. He later was released.

Police said the chickens were purchased for 95 cents each from Hickman's Egg Ranch, 7403 N. 91st Ave., in Phoenix. The chickens were captured by police and taken to the Rabies Control Center in Phoenix.

A member of the Delta Gamma sorority said she saw the incident and called the police.

"I was walking in the back yard (of the Sigma Phi Epsilon house), and I saw these chickens without feathers," said the sorority member who requested anonymity. "Apparently (fraternity members) were trying to cut their heads off with lawn clippers."

"They had already taken baby chickens and painted them pink and blue; one died. It was really upsetting; it was uncalled for."

Povilaitis, a junior engineering major, was unavailable for comment Sunday, but Kappa Sigma member Doug Rouse denied reports that fraternity members were abusing the chickens.

He said the chickens were part of a fraternity function called "South of the Border Disorder."

"These chickens looked like they were from south of the border, and they added to the atmosphere," Rouse said. "They were old chickens and in pretty bad shape when we got them. They couldn't even lay eggs."

"Nobody was kicking them around or nothing," he added. "One of the chickens was dying so we were trying to put it out of its misery."

Glen Hickman of Hickman's Egg Ranch denied that the chickens were purchased in bad condition.

"As far as I'm concerned, they were sold in good condition," he said, adding that buyers can "do anything they want" with the chickens after purchase.

ASU prof lands dean position at U of A

TUCSON (AP) — An ASU professor who specializes in desert architecture will be the new dean of the U of A's 625-student College of Architecture, school officials say.

Robert G. Hershberger will take over as dean on Jan. 1 and earn \$82,000 per year, Nils Hasselmo, U of A vice president

for academic affairs, said last week.

Hershberger, who formerly taught at Idaho State and Drexel universities, is associate dean of the ASU College of Architecture and Environmental Design.

He received a Ph.D. in architecture from the University of Pennsylvania in 1961.

DESPERADOS

BAR & GRILL

524 West Broadway • 894-6423
Corner of Broadway & Roosevelt

Every Monday

10¢ CHICKEN WINGS

69¢ HOT DOGS
3-11 p.m.
(Sorry, no carryout)

99¢ STRAWBERRY MARGARITAS
6 p.m.-1 a.m.

BIG SCREEN TV

3 TV's

LIVE ENTERTAINMENT
Tonight — Dave Hawthorn

Celebrity

THEATRE
presents




LEVEL 42

with special guest **RABID RABBIT**

SAT., OCT. 3 • 8 P.M. • TICKETS \$16.50

Tickets available at Dillard's Box Office and Celebrity Box Office. For info call 244-0404.



NATAS

National Academy of Television Arts and Sciences
ASU Chapter
co-sponsored by ASASU

NATAS presents
CANNON FILMS

Come and discuss major motion picture production with Cannon Films from Hollywood.

Tuesday, Sept. 29 at 7:30 p.m.
MU Mohave Room

Everyone Welcome!

CAPS

COLLEGE OF ARCHITECTURE
PRE-STUDIES

is having a presentation for design students by

COMMERCIAL BLUEPRINT

TUESDAY, SEPT. 29
5:30 P.M.

College of Architecture
Bldg., Rm. 13

*FREE valuable coupons for participants from Commercial Blueprint

DIRTY DEVIL LAUNDRY

SAME DAY DRY CLEANING
Wash & Fold 50¢/lb.

TV • Video Games

HAPPY HOUR

2 P.M.-6 P.M.
2 for 1 Wash
MON.-FRI.

827 S. RURAL
Just South of Univ.
968-1435

DID YOU KNOW?

YOUR ASU INSURANCE COVERS CHIROPRACTIC CARE!!!

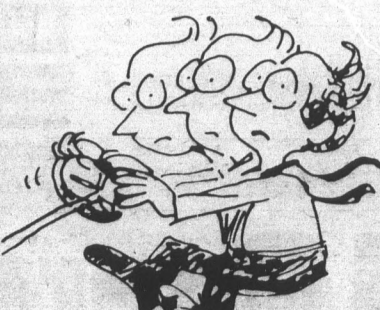
- Whiplash
- Neck Pain
- Headaches
- Back Pain
- Shoulder Pain
- Accidental Injuries

We will accept your insurance, provide a student discount, with little or no out-of-pocket expense to you.

TEMPE

966-1635

Dr. Donald Nelson
3910 S. Rural Rd. #E




Whiplash!

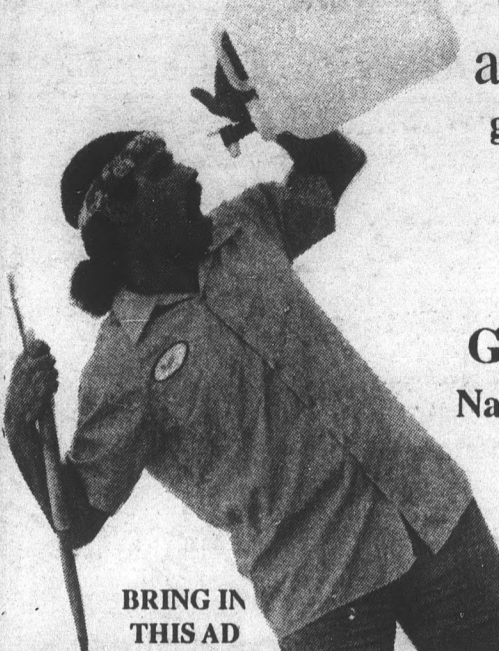
SCOTTSDALE

941-2909

Dr. Stephen Nielson
7333 E. Thomas Rd.



Stiff Neck & Back!



THIRSTY?
how about
all you can drink!
get free refills all semester
of pure, filtered water
when you buy our
five gallon water jugs
at
Gentle Strength Co-op
Natural Foods Grocery & Deli
234 W. University in Tempe
natural soft drinks
fresh juice daily
imported bottled waters
exotic imported coffees
nutritious soy drinks

BRING IN
THIS AD

State
Press
965-
6731

Balloon
Your Savings
Sell in the
Classifieds
Matthews Center
N. Basement

\$1.00 SAVE \$2.00

ON YOUR NEXT CAR WASH ON ANY SPECIAL WASH

NOT VALID WITH ANY OTHER COUPON

VOID AFTER **Sept. 21, 1987**

Positively No Exceptions—Limit One Per Car Wash

BROADWAY CAR WASH

Telephone 968-6730
1016 E. Broadway
(East of Rural)
Tempe, Arizona



ARE YOU LOOKING FOR AN EXCITING CHALLENGE?
A chance to meet new friends?
Wendy's on 1314 S. Rural is now hiring people for all shifts.

Starting pay \$3.65 per hour and up (based on experience). That's at the corner of Rural and Apache!

WENDY'S
an equal opportunity employer

Get a **BIG CLASSIC**, regular fries and a medium drink for only **\$1.99**

Tax, cheese and bacon extra. Not valid with any other offer. Please present coupon when ordering. One coupon per customer per visit.
Expires January 1, 1988.

mann **\$3.00 BARGAIN PRICE**
SHOWS BEFORE 6 P.M. MON. - FRI. EXCEPT HOL. DAYS
SATURDAY, SUNDAY & HOLIDAYS FIRST SHOW ONLY

<p>CHRIS-TOWN 5 249-2843 5707 N. 19TH AVE.</p> <p>FATAL ATTRACTION (R) 11:45, 2:15, 4:45, 7:30, 10:15</p> <p>BLUE MONKEY (R) 12:15, 2:30, 4:45, 7:00, 9:15</p> <p>CHINA GIRL (R) 12:45, 3:00, 5:15, 7:45, 10:00</p> <p>LA BAMBA (PG13) 12:00, 4:45, 9:00</p> <p>CAN'T BUY ME LOVE (PG13) 2:45, 7:00</p> <p>HELLRAISER (R) 1:00, 3:15, 5:30, 8:00, 10:15</p>	<p>SUN DEVIL 6 829-0344 THE CORNERSTONE RURAL & UNIVERSITY</p> <p>CHINA GIRL (R) 1:00, 3:00, 5:00, 7:15, 9:15</p> <p>BIG TOWN (R) 12:15, 2:45, 5:15, 7:45, 10:15</p> <p>NO WAY OUT (R) 12:00, 2:30, 5:00, 7:30, 10:00</p> <p>PRINCIPAL (R) 12:00, 2:30, 4:45, 7:15, 9:30</p> <p>FATAL ATTRACTION (R) 1:30, 4:30, 7:30, 10:15</p> <p>FATAL ATTRACTION (R) 1:30, 4:30, 7:30, 10:15</p>	<p>BELL TOWER 8 843-4593 51ST AVE. and BELL ROAD</p> <p>SNOW WHITE (G) 1:00, 3:00 NO WAY OUT (R) 5:30, 8:00, 10:30</p> <p>HELLRAISER (R) 12:45, 3:00, 5:30, 7:30, 9:30</p> <p>DIRTY DANCING (PG13) 1:15, 3:30, 5:30, 7:30, 9:30</p> <p>FOURTH PROTOCOL (R) 11:45, 4:00, 8:15 BIG EASY (R) 2:00, 6:15, 10:30</p> <p>CHINA GIRL (R) 12:15, 2:30, 4:45, 7:15, 9:45</p> <p>CAN'T BUY ME LOVE (PG13) 12:00, 2:30, 5:00, 7:30, 10:00</p> <p>PICK-UP ARTIST (PG13) 1:15, 3:15, 5:15, 7:15, 9:30</p> <p>PRINCIPAL (R) 12:00, 2:30, 5:00, 7:30, 10:00</p> <p>Sat. only sneak preview SOMEONE TO WATCH OVER ME 8:00 DIRTY DANCING 1:15, 3:30, 5:30, 10:15</p>
<p>TRI-CITY DOLLAR THEATRES \$1.00 ALL SEATS-ALL SHOWS 461-1070 MAIN ST. & DOBSON RD. IN MESA</p> <p>DRAGNET (R) 12:30, 5:15, 10:00 UNTOUCHABLES (R) 2:45, 7:30</p> <p>INNERSPACE (PG13) 3:00, 7:30 SUPERMAN (PG13) 1:00, 5:30, 10:00</p> <p>SUMMER SCHOOL (PG13) 1:15, 5:45, 10:15 FOURTH PROTOCOL (R) 3:15, 7:45</p> <p>ADVENTURES IN BABYSITTING (PG13) 12:45, 5:00, 9:15</p> <p>SPACEBALLS (PG13) 3:00, 7:15</p>	<p>SUPERSTITION 5 834-5767 MESA AT 1000 W. SUPERSTITION</p> <p>FATAL ATTRACTION (R) 12:15, 2:45, 5:15, 7:45, 10:15</p> <p>HELLRAISER (R) 1:30, 3:30, 5:30, 7:30, 9:30</p> <p>STAKE OUT (R) 11:45, 2:15, 4:45, 7:15, 9:45</p> <p>BLUE MONKEY (R) 1:15, 3:30, 5:45, 8:00, 10:15</p> <p>LA BAMBA (PG13) 12:00, 2:30, 5:00, 7:30, 10:00</p>	<p>POCA FIESTA 4 835-0404 MESA AT 1000 WEST SOUTHERN</p> <p>DIRTY DANCING (PG13) 12:30, 2:45, 5:00, 7:15, 9:30</p> <p>HAMBURGER HILL (R) 12:45, 3:00, 5:15, 7:30, 9:45</p> <p>LIVING DANGERS (PG13) 3:00, 7:20 ROBO COP (R) 1:00, 5:20, 9:40</p> <p>BIG EASY (R) 12:30, 2:45, 5:00, 7:15, 9:30</p> <p>Sat. only sneak preview SOMEONE TO WATCH OVER ME 8:00 HAMBURGER HILL 12:45, 3:00, 5:15, 10:00</p>

CAREER FIESTA

Take time to think about your career choice. Speak to professionals.

Reach the information you need to set up your education for success.

Just south of the fountain on Cady Mall.

Wednesday, September 30
Thursday, October 1

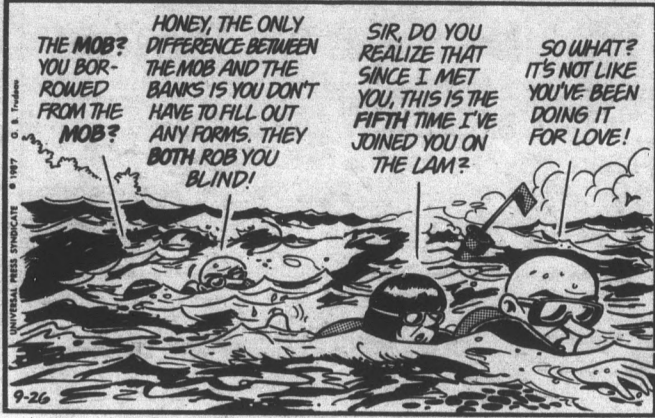
ITS EASIER WITH A COMPUTER!
Your Professor Owns One-You Should Too!

<p>ZENITH data systems</p> <p>Complete System \$799</p> <p>Includes Zenith Amber Monitor</p>	<p>AvantageXT</p> <p>Free First Choice with ad. \$149 Retail</p> <p>\$597 Includes Monitor!</p> <p>640K Memory, Monochrome Monitor, Graphics Card, Turbo, 360K Drive, Keyboard, Tutor Program, and CSC Exceptional Care Service.</p> <p>Total IBM Compatibility</p>	
<p>Avantage286</p> <p>\$1288</p> <p>-80286@10mhz -Amber Monitor -640K Ram -1.2MB Drive -Total IBM Compatible</p>	<p>PFS:Professional Write</p> <p>\$99</p> <p>-Speller -Thesaurus -Easy to Use -List \$199</p>	<p>Don't Drive-Call Instead</p> <p>1200B Modem</p> <p>-Hayes Compat. -Auto Answer & Auto Dial -W/ Software</p> <p>\$109</p>
<p>CITIZEN</p> <p>Dot Matrix Printer</p> <p>\$169</p> <p>Does Tractor, Friction, Draft, & NLQ</p> <p>Open Monday-Friday 10-7 Saturday 10-5</p>	<p>Do CAD Work at Home</p> <p>Use AutoSketch!</p> <p>\$69</p> <p>Works With AutoCAD Files</p>	<p>Panasonic Daisy Wheel</p> <p>\$279</p> <p>For that typed look</p> <p>Departmental Pricing Available!</p>

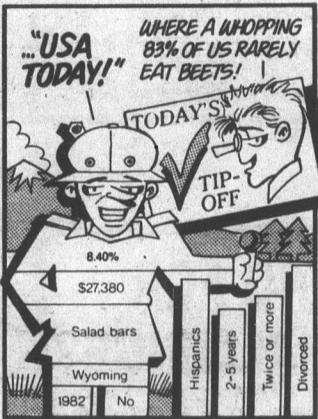
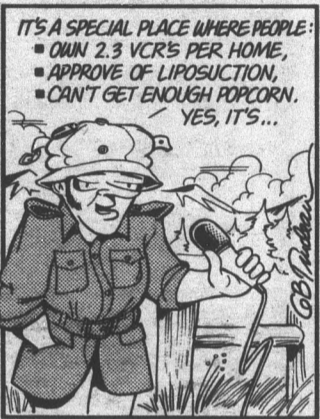
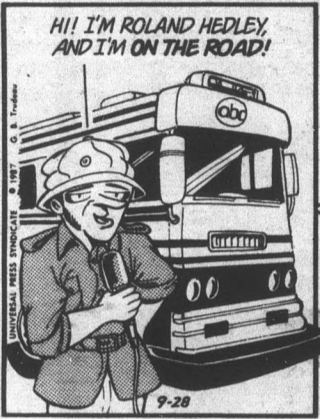
Computer Systems Center

TEMPE SE Corner Southern & McCiltock 838-1236
WEST SIDE NE Corner 35 Ave. & Northern 841-0202
PHOENIX 1632 E. Camelback Rd. Near 16th St. 266-7873
N. PHOENIX 14644 N. Cave Creek Near Greenway 867-8932

Doonesbury



BY GARRY TRUDEAU



THE FAR SIDE

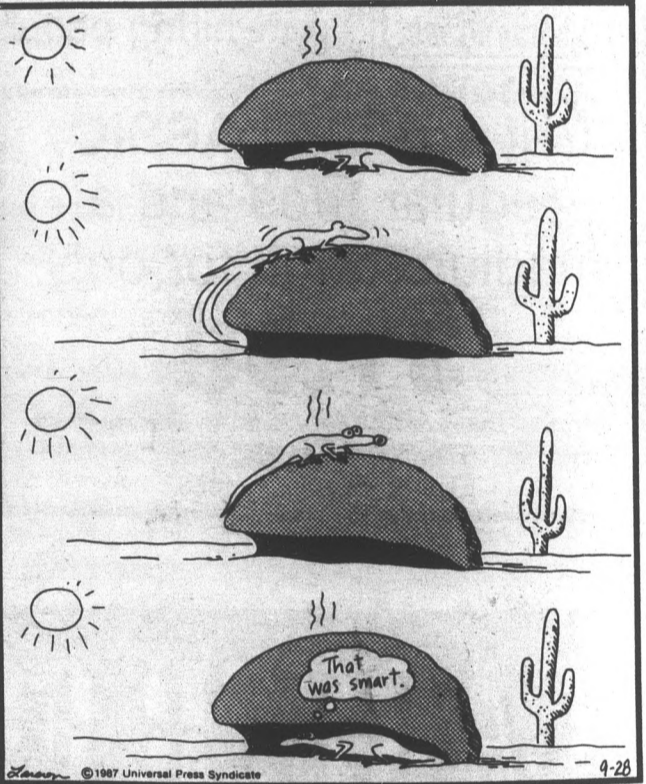
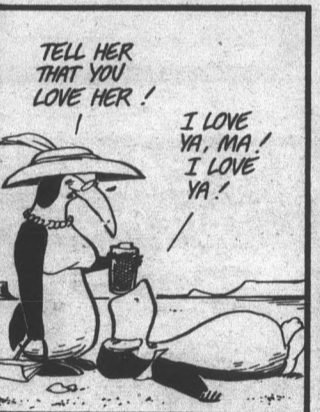
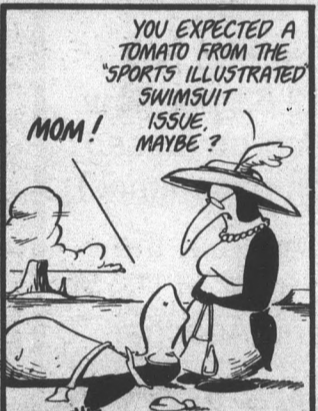
By GARY LARSON



If the Cleavers had been Eskimos

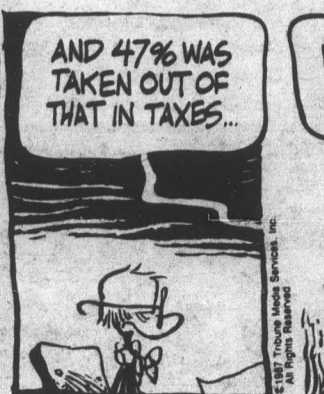
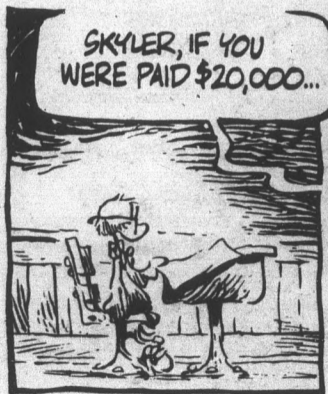
BLOOM COUNTY

by Berke Breathed



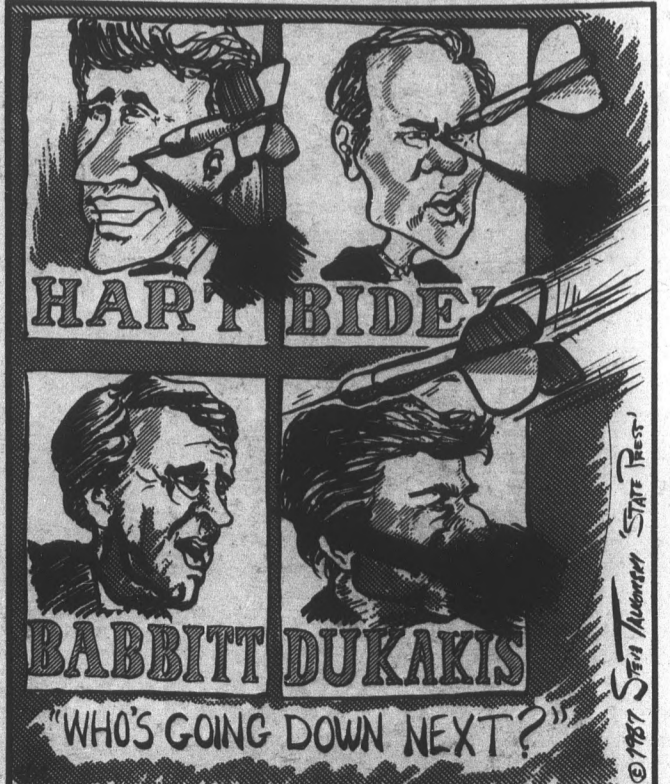
Shoe

by Jeff MacNelly



QUIPS

by Steve Talkowski



Spotlights

Hints, delectables and other tangy tidbits from the cluttered files of the entertainment desk.

Theater:

•“**The Secret Affairs of Mildred Wild**” will run through Sunday in the Lyceum Theatre. Tickets are \$4, \$5 and \$6 for students. For more information call 965-3434.

•“**A Little Night Music**,” the Stephen Sondheim musical, will be presented as Lyric Opera Theater’s first fall offering. The show opens at 8 p.m. Friday in the Music Theater. There will be a \$2 student preview at 8 p.m. Wednesday. The show runs through Oct. 11. Tickets are \$9.50 for adults and \$5 for students. For more information call 965-3434.

Box Office Bingo:

•“**The Princess Bride**,” William Goldman’s whimsical fairy tale of love and monsters opens Friday. The movie stars Cary Elwes and Robin Wright, who plays the Princess. Special appearances by Peter Falk and Billy Crystal.



Cary Elwes, right, and Robin Wright star in Rob Reiner’s “The Princess Bride.”

Concerts:

•**Motley Crue** will make not one, but two return appearances to the Valley at 7:30 p.m. Saturday and Sunday at the Veteran’s Memorial Coliseum. The first show has been sold out, but tickets are still available for the second show at all Dillard’s ticket outlets. For more information, call 258-6711.

•And for something completely different, the ASU jazz/rock ensemble **Patches**, directed by ASU jazz faculty member Chuck Marohnic, will perform an electric mix of jazz and contemporary synthesized sounds at 7:30 p.m. Monday, Oct. 5 in the ASU Music Theater. The concert is free and open to the public.

•ASU’s **Dan Perantoni** will host the annual **Octubafest**, a five-concert tuba celebration featuring tubists and ASU tuba students at 7:30 p.m. Friday in the ASU Recital Hall (5th floor in the Music Building). The show will also run at 7:30 p.m. The concerts are free and open to the public.

Quote file

“To go over and play Sun City would be like going over to do a concert in Nazi Germany at the height of the Holocaust. But what I did was go over essentially and play to the Jews. That distinction was never made.”

— Paul Simon

Something borrowed, something new, is ‘thirtysomething’

By DAVE MILLER

State Press

Actor Peter Horton’s character, a classics professor named “Gary,” is now “thirtysomething” but for the life of him he just won’t grow up. He just can’t seem to do it.

Oh, he acts grown up: He’ll wear a tie when he has to and he’ll try not to get drunk and take his pants off at faculty wing-dings, but there’s still something missing, something preventing him from really being “thirtysomething.”

“He just doesn’t know how to love anyone,” Horton says of his alter ego. “He’s so afraid.”

How afraid is he? Tomorrow night TV audiences will get a first glimpse, as “thirtysomething” premieres at 9 p.m. on ABC-TV (Channel 3). The show is a character study of a group of close friends faced with responsibility, diapers and life after 30.

For television, and for his own wishes of playing “real-life” characters, Horton says the show is a breakthrough to the highest power.

“It’s the best writing on TV I’ve ever seen,” he said. “Originally I didn’t even want to do it, but I’d known Ed (Zwick, an executive producer of the show) for years and he asked me to come read for it, so I did and I was floored. It was a great script.”

“I hadn’t really planned on doing much acting anymore, (Horton, who has played small roles in television and feature films, had decided to make directing his career of choice) but when I got a look at what they were doing with this show I decided I had to do it.”

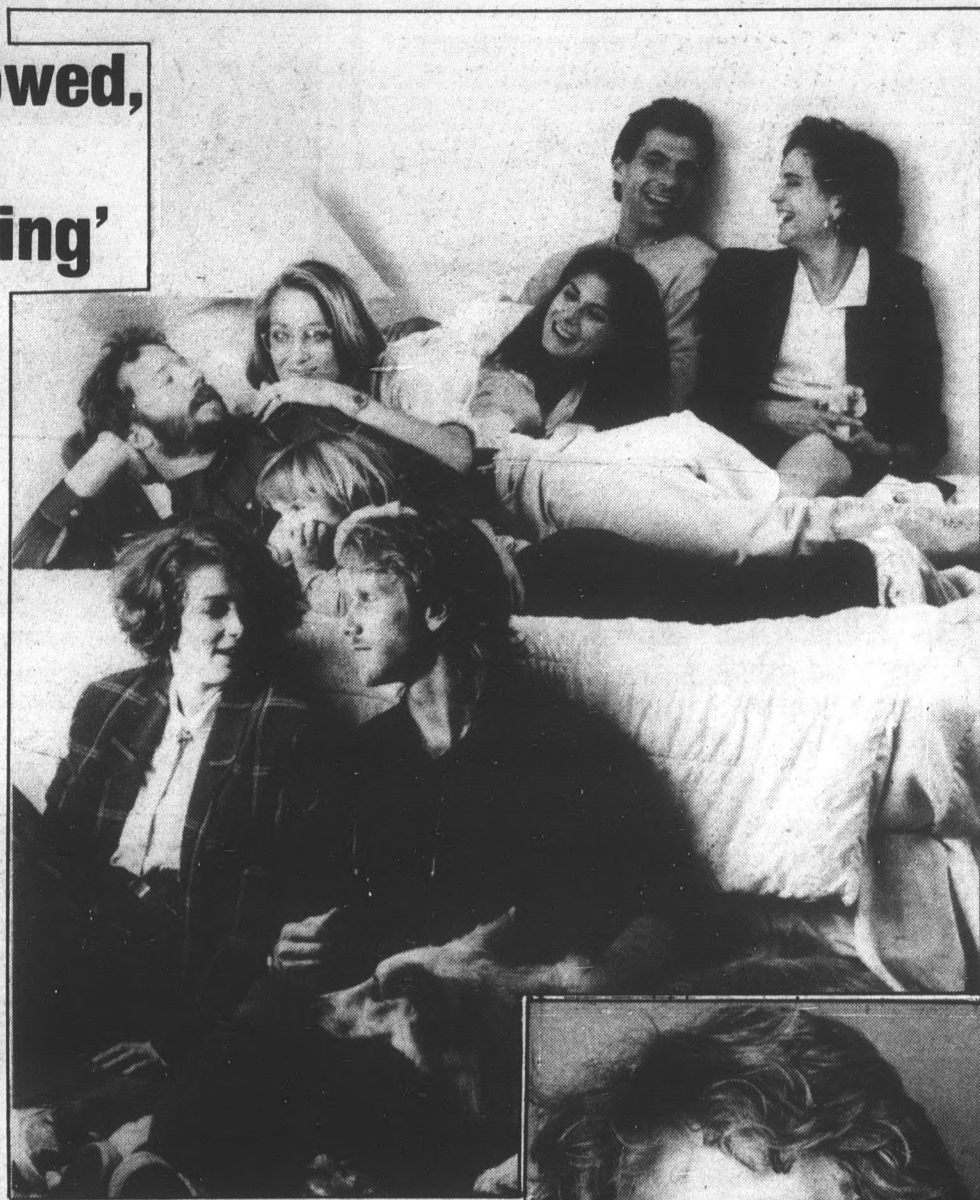
“‘thirtysomething’ really stretches,” he said.

So does Horton’s character. “In the first episodes he’s established as a friend who screws around all the time. By episode four we see what that means,” Horton said.

“By episode six he comes to term with the fact that he can’t really love. As the show goes on he’ll try to love someone. A couple of shows from now is one where he’s falling in love and he’s just freaked out by it. And he destroys the relationship because of it.”

What’s his problem?

“Gary’s a lovable and a sort of pitiful character,” he said. “He’s single, he’s a college professor, he teaches the classics and he’s a romantic in that way. He’s a character who’s afraid to admit his arrival



Peter Horton, bottom right, stars in “thirtysomething” with, clockwise from top left, Timothy Busfield, Patricia Wettig, Mel Harris, Ken Olin, Polly Draper and Melanie Mayron.

into adulthood. He’s just not willing to face that.

“He wants to be free and to live, but in the same way he’s scared to death to live. He’s so afraid of loving and caring for someone, because he’s afraid of what that means.

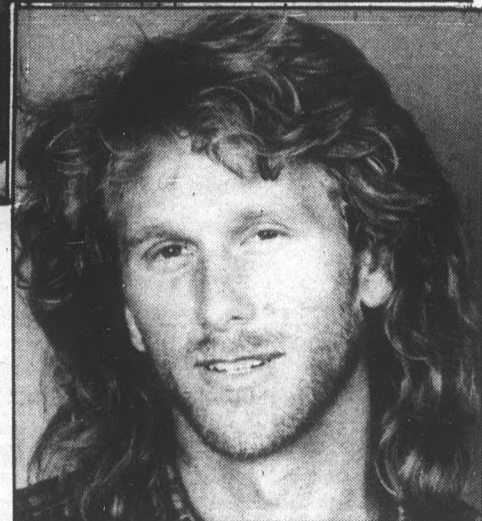
“His evolution is sad in a way.”

By about episode 10 Horton will have even more of a personal say in what direction his character takes: he’ll be directing the episode.

“The being-able-to-direct part was a big chunk of why I did it,” he said. “Hopefully, I can do this one episode, and then one more after that. Hopefully I’m gonna be really busy.”

It sounds like he will. And for all the right reasons.

“You know,” he said, “I’ve done over 50



Peter Horton

shows and movies and I’ve never been this excited.

“A lot of TV is sophomoric, but shows like ‘Hill Street Blues’ and ‘St. Elsewhere,’ and hopefully ‘thirtysomething’ will fall into that category, have lifted up the quality. It’s becoming more interesting.

“We seem to be getting away from the old days when TV was regarded as the garbage bin. It’s a big step.”

And it’s about time.

Dollywood

Different faces, same stories hold TV season at ground level

By HOWIE J. MALHAM

State Press

As the wind becomes brisk and the leaves turn to auburn, one cannot help but notice that fall has arrived.

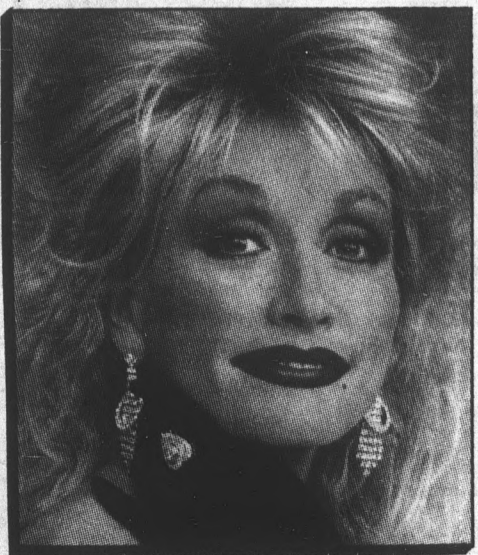
Well, that’s what happens everywhere else. Here in Arizona, it takes a football team to start playing again to indicate a season change.

Aside from signaling us that winter is around the corner, this seasonal transition warns us that another fall television lineup is upon us.

What’s the public going to be subjected to this time? Maybe a sitcom about the life of an elementary school custodian and his love for the fourth grade class president. Or perhaps a drama about a female rabbi and her husband who, after temple services, trade their prayer shawls in for police badges and fight crime in Tel Aviv.

Unfortunately, neither one of these shows will be appearing on any of the networks. At least not this year. But not to worry. The rehashing minds at all three major networks have done their best to induce the odds that six out of 10 shows appearing this month won’t be around by late October.

The “new” fall lineup is really quite



Courtesy of ABC-TV

Dolly Parton

banal. No new surprises. Different faces are dealing with different situations but following the same guidelines: sitcom, drama, police, action and variety. It has once again become apparent the concept of TV remains stuck in the rut it was placed in

when “All in the Family” was cancelled.

However, TV still exists as a medium of entertainment, no matter how trivial it may be. It is in this spirit that we should become familiar with who’s doing what on the box in our living room.

“**Hooperman**” — John Ritter, the man who played Jack Tripper on “Three’s Company” for what seemed like an eternity (thanks to re-runs) is back. This time he’s serious, or so ABC claims. This time, Ritter is a San Francisco cop who wants to abolish apartheid and all those other trendy social causes. He’ll take his civil rights stand and insert them into the law and will make life a living hell for all the bad guys in the city. “Hooperman” will attempt to bring “The Streets of San Francisco” back, only this time with a touch of humor and realism — but with Ritter?

“**My Two Dads**” — Actually, this cheap attempt at trying to remain in tune with the ever-changing mores of society should be named “My Two Irresponsible Horny Reprobates.” The premise of the show seems weak. NBC thinks we are still susceptible to thinking “I Dream of Jeannie” was based on a true story.

Turn to Tube, page 10.

Discounts with I.D.'s

- CARS & TRUCKS PRICED FROM \$500 TO \$5,000
- BANK FINANCING AVAILABLE
- DRIVE TRAIN WARRANTIES ON ALL VEHICLES

MESA BROADWAY MOTORS
A DIVISION OF OCEAN ENTERPRISES INC.

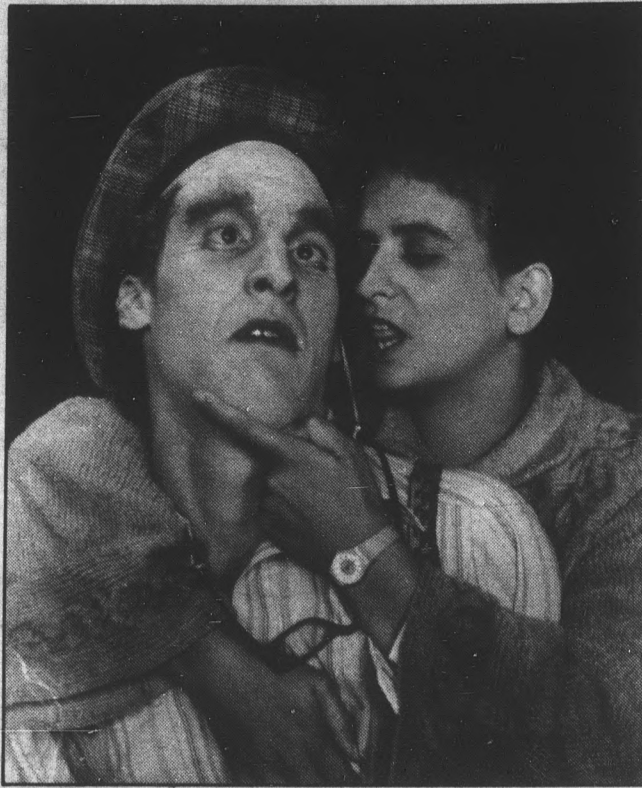


Quality Used Cars & Trucks

ASU Students Welcome

1244 W. BROADWAY • MESA, AZ 85202 • (602) 962-3700
(100 yds. W. of Alma School)

MON.-FRI. 8:30-8:00
SAT. 8:30-6:00
SUN. 11:00-4:00



Bertha (Julia Fordtner) and Roy (Jim Brown) get past the preliminaries in "The Secret Affairs of Mildred Wild."

review

Time to stir the gray m

By SCOTT C. SECKEL
State Press

For various reasons — all good — the ASU Theater Department's "Secret Affairs of Mildred Wild" is a must-see. Perhaps it's the production's humorous and upbeat tone which make it such a gem, but whatever the case, anyone who likes to laugh will want to see the production which is currently playing at the Lyceum Theater through Oct. 4.

Part of the Mainstage Series produced by the theater department, "Mildred Wild" is the story of a woman (played by Julie Brinker) — and her fantasies — who lives for and through the movies.

Mildred is the wife of a diabetic candy store owner (James Brown) living in Greenwich Village, Manhattan. The Wilds are poor, little people, with nothing to look forward to except Roy's affair with the landlady (Julia Fordtner) and Mildred's obsession with everything celluloid.

The action begins when the Wilds learn that their building will be demolished.

Mildred retreats from her problems through fantasies related to films. If she is threatened by jibes or unpleasant facts, anyone from the Invisible Man to Rhett Butler to King Kong

might appear Pickford.

Like most key to success Jeffrey R. T.

Lurid pink hide the strong movie mag Chinese screw tick.

Great light designer M.

Brinker sherry with M. snipe at her and a hard walk around character o.

Kudos are does not like character w.

FREE DRINK

RECEIVE ONE FREE 16-oz. SODA OR ICE TEA WITH ANY SANDWICH OR DINNER

- GYRO
- FALAFEL
- KUFTA
- CHICKEN
- LAMB STEW
- SAMBOUSA
- GRAPE LEAVES
- SHISHKABOB
- SPINACH PIE
- HOMMAS/TABOULI

COUPON EXPIRES 10-12-87.



MEDITERRANEAN KITCHEN

616 S. Forest Ave., Tempe
JUST ONE BLOCK FROM CAMPUS 966-2326

Sun Devil HAIRCUTTERS

"Stylists who care enough to listen"

\$500 OFF NEXXUS

Regular Price
MEN..... \$13
WOMEN... \$15

- Shampoo
- Conditioning
- Precision Cut
- Blow Dry

Hours:
M-F 9-6
Sat. 9-5

130 E. University Dr.
(at Forest & Univ. in The Arches)

Limited offer! Call now! 966-5462

Tube

Continued from page 9.

We are supposed to believe that two men (played by Paul Reiser from "Diner" and Greg Evigan from the touching "B.J. and the Bear") cannot scientifically find out if the girl they were jointly awarded custody of is their daughter. After all, the woman they were both in love with 13 years ago died and never told either of them that her E.P.T. tests were positive.

"Jake and the Fatman" — Yes, William Conrad is still alive and yes, he's on the plump side. Bill (as we call him in the business) stars in this non-dietary "Hardcastle and McCormick" clone and, for diversity, they threw a bulldog into the cast. Conrad plays just what the title suggests: a fat man. He is also a district attorney who pals around with a petite investigator. These two, along with the mutt, cruise around looking for murders and hot women. Conrad, needless to say, gets stuck with the murders.

"Beauty" joking star heroine from attorney. the sewer

"Dolly" commercial spending Parton at format, (including Herman) effort to n "Dolly" a

15% OFF

DRY CLEANING FOR STUDENTS WITH ASU I.D.

McKellips and Scottsdale in the ABCO Shopping Center

drycleaning

CHURCH'S FRIED CHICKEN

FEED THE GANG for only \$7.99 Plus 49¢ for 2 LITRE COKE

Receive 8 big pieces of chicken (mixed), large cole slaw, large mashed potatoes and gravy, and 4 rolls.

The CHICKEN MEAL PLUS for only \$1.99

Receive 2 pieces of chicken (dark or mixed), a regular order of french fries or mashed potatoes and gravy, and a 16-ounce drink. All for just \$1.99! Add 30¢ for all-white orders.

VALID AT CHURCH'S
1135 E. Apache Blvd., Tempe
One coupon per customer per visit. Not valid with any other offer.

幸福 布 雙

FORTUNE COOKIE

All You Can Eat Chinese Buffet

Buy 1 Get 2nd Meal 1/2 Price

Lunch \$3.25 11 a.m.-4 p.m.
Dinner \$4.25 4 p.m.-9 p.m.
(Take-out orders not included)

Menu Changes Daily

625 E. Apache, Tempe (West of Rural on Apache)
894-1110
Open 7 Days
Coupon expires 10-12-87.

Ala carte and take-out available

Take Out Orders 10% OFF

REWARD

yourself to a delicious pizza delivered right to your door. This is a limited time offer so — HURRY AND CALL

Papa Jay's Pizza

HOURS
Mon.-Thurs.... 4-12
Friday..... 4-1
Saturday..... 12-1
Sunday..... 12-12

FAST FREE DELIVERY (Limited Free Delivery Area) \$4.95 Minimum Food Order
804 South Ash, tempe (2 blocks West of Mill Avenue, south of University)

966-1003 or 966-4292

2 HAM & CHEESE SUBS	LARGE 2-ITEM PIZZA
ONLY \$5.25 & tax	ONLY \$5.00 & tax
<small>All prices subject to change without notice.</small>	<small>All prices subject to change without notice.</small>

CONOCO INC.

PETROLEUM PRODUCTS, NORTH AMERICA MANAGEMENT DEVELOPMENT PROGRAM

All December and May Graduates of the **COLLEGE OF BUSINESS** are invited to attend a presentation/reception on career opportunities with PP, NA.

DATE: SEPTEMBER 29, 1987
TIME: 4:00-6:00 P.M.
PLACE: PIMA 218

*Degrees Sought
BS/BA/BBA — Finance, Economics, Management
MBA

Gray matter: 'Wild' is smart concoction

might appear — the woman even has a parakeet named Miss Pickford.

Like most everything else in the show, the set is amazing. The key to success here is the attention to detail that set designer Jeffrey R. Thomson created.

Lurid pink and green paint covers the apartment yet fails to hide the streaked, grimy stove and worn floor. Row upon row of movie magazines line the shelves, promo posters and cheap Chinese screens are present and illuminate what makes Mildred tick.

Great lighting and special effects are attributed to lighting designer Marc Riske.

Brinker shines here also, making the audience both laugh and cry with Mildred's predicaments. It becomes sad when people snipe at her movie-madness because it is all she has between her and a hard world. Mildred's high keening voice and shuffling walk around the little apartment provide much depth to her character on the stage.

Kudos are in store for James Brown's Roy Wild, a man who does not like being bald. Brown increases the dimension of the character with small things like spooning extra sugar in his

coffee when no one is looking just before he leaves the set in Act 1.

Roy's sister Helen is played by Louisa Beilan.

Beilan is excellent here playing a woman who pries apart the carapace of dreams that forms the protective shell against the outside world, and then viciously drives a dagger into the soft flesh that lies beneath.

Another highlight is James Wilson. The actor should receive the audience popularity award. Each moment he walked on stage, the audience roared — a hilarious performance. Take a bow.

And as far as bows, the "Wild" entourage should take one for providing such a professionally run and highly entertaining production.

The play manages quite well to get the gray matter stirring. Bravo!

"The Secret Affairs of Mildred Wild" is playing at the Lyceum Theatre through Oct. 4th.

Curtain times are 8 p.m., except Sunday, when the show plays at 2 p.m.

The theater is dark Mondays. Tickets are \$4 for students and senior citizens, \$6 otherwise.

"Beauty and the Beast" — How this one ever made it past the joking stages, we'll never know. Linda Hamilton, the pouty-faced heroine from "The Terminator" is now a delectable New York City attorney. She is befriended by a mutant muppet, while frolicking in the sewers of the Big Apple.

"Dolly" — That buxom, bouncy, bodacious blonde matriarch of commercial-country is back — this time 40 pounds lighter. ABC is spending millions on reviving the variety show and has placed Ms. Parton at the helm. Following an updated "Carol Burnett Show" format, "Dolly" promises us a variety of impetuous guests (including Jane Fonda, Tom Petty, Lily Tomlin and Pee-Wee Herman) and a new breed of comedic relief. ABC, in its valiant effort to make Sunday night fun again, is sparing nothing to make "Dolly" a hit.

Mill Ave.
T-Shirt Co

CUSTOM
SCREEN PRINTING

Complete Design & Art Services
Multi-Color Work Our Specialty!

- BEEFY T'S • TANKS • SWEATS
- SEWN-ON LETTERS • SHORTS

7 E. 5th St. • 968-4208

Miguel's Music Center
IN THE LITTLE ARCHES SHOPPING CENTER
TEMPE

SALES • RENTALS • REPAIRS
BAND INSTRUMENTS & ACCESSORIES
DRUMS • RECORDERS • BANJOS
SHEET MUSIC ETC.

AUTHORIZED DEALER FOR:
ALVAREZ — GUILD — KHONO
YAMAHA — OVATION
MARTIN GUITARS

SPANISH CLASSICAL GUITARS
• RAMIREZ • CONTRERAS
• BARNABE • CESAR VERA
• SANTOS HERNANDEZ

GUITAR LESSONS IN FOLK
& CLASSICAL BY MIGUEL

ELECTRONICS
• AMPS • PHASE SHIFTERS
• RHYTHM BOXES • POLY PHASE
• DISTORTION BOXES • ELECTRONIC
• MINI MIXERS • METRONOMES

BY ROLAND-IBANEZ &
ELECTROHARMONIX & OTHERS
122 E. UNIVERSITY DR., TEMPE
Corner of Forest and University
OPEN 10 A.M. TO 6 P.M. SIX DAYS
968-2310

*Hillel invites you to
Yom Kippur services*

Free student admission cards must be obtained in person at the Hillel office or on the mall.

PRE-FAST DINNER
Friday, October 2
4:30 p.m. at Hillel
RSVP by 9-29-87

Friday, October 2
7:00 p.m. Arizona Room
Memorial Union
Kol Nidre Service

Saturday, October 3
10:00 a.m. Arizona Room

Concluding at sunset
Saturday, Oct. 3
followed by "Break the
at Hillel

Hillel — Union of Jewish Students
1012 S. Mill • 967-7563

the
Wine
taavern

at Rural & Apache

\$1.50
BURGER & FRIES

25¢
DRAFTS

11:30-8:00

Chi Omega Actives Love Their Pledges:

Dameron Allen	Nancy Grant	Marcia Pahl
Kathy Beauchemin	Aimee Gealer	Stephanie Pollack
Amy Bevis	Beth Gayette	Joey Pruitt
Leslie Bottorff	Karen Gazzola	Tara Rhodes
Teresa Boynton	Tricia Gregory	Michelle Romick
Tricia Buzard	Kristin Harrell	Kathy Reidenbach
Arden Boisen	Jennifer Hightower	Jonna Schur
Cynthia Collins	Heather Hale	Heidi Schultz
Jill Demarte	Lisa Handley	Layla Sayegh
Tiffany Dobson	Christy Langford	Christine Smith
Kori DeNiro	Laura Larwin	Kim Stakis
Lisa Drum	Mona Maupin	Michelle Seery
Susan Daily	Michelle Monge	Kourtney Troyer
Kathleen Dault	Crissi Moore	Marissa Taylor
Julie Elliot	Kathy Morgan	Lori Ukasick
Lisa Egloff	Monica Marnoefer	Caterina Vasi
Katy Englehorn	Debra Montgomery	Chris Wood
Janeen Foreakre	Stephanie Piper	Michelle Warren

Call 966-2150

eclipse
sun tan center
YOUR COMPLETE TANNING CENTER

**OKTOBER
"TAN" FEST**

7 visits \$25⁰⁰
OR
30-DAY SPECIAL
\$38⁵⁰
(Expires 10-31-87.)

**WOLFF
SYSTEM
SCA**
U.S.A.

MasterCard
VISA

55 E. Broadway (at Mill), Tempe

Announcing a New Church in Tempe

Pastor Steve Schell, his family and ministry team would like to welcome you to the NEW Foursquare Church of Tempe,

Southwest Christian Center

Join with us Sunday, October 4, at 9:30am for praise, worship and ministry in the Word.

Fuller Elementary School
1975 East Cornell Dr., Tempe

- Loving nursery care
- Children's Church K-6
- Junior High Sunday School class
- Spirit-led worship
- Practical Bible teaching

Southwest Christian Center
Mailing address: 1227 East Del Rio Drive Tempe, Arizona 85282

For information call: 894-6085

Presenting Jesus Christ as Savior, Healer, Baptizer in the Holy Spirit and Coming King

I'D RATHER BE EATING AT YUM'S

All You Can Eat

Chinese
Japanese
Mandarin

*** 1/2 PRICE ***
LUNCH OR DINNER
Buy One Buffet at Regular Price and Get Second for 1/2 Price.
Offer expires 10-5-87. Offer does not apply to take-out orders!

Yum's
ORIENTAL BUFFET

N ↑ Superstition
Smitty's ← Baseline
McClintock ↓
X

S.E. Corner Baseline & McClintock
We're open all day! 11 a.m.-9:30 p.m.
345-9867

review

The Call: twisting and shouting

By DAVE HODGES
State Press

Imagine a group that sounds like a cross between U2 and Bruce Springsteen and you have a quartet that's been touted by some as the best new group of the '80s.

There were some flashes of brilliance at the Call's Friday concert at Chuy's, located at 310 S. Mill Ave., and they were well received by the sellout crowd.

But for a group that has received as much praise as the Call, it is somewhat surprising that they have not received more recognition. The Call has only two legitimate hit singles, with the rest of the songs possessing potential, but just missing the mark.

The group first made headlines with "I Still Believe (Great Design)" off their "Reconciled" album. Lead vocalist Michael Been, who writes most of the songs for the Call, teamed up with keyboardist Jim Goodwin to write this song, which seems to imply a fleeting hope in a troubled world, full of tears and fears.

The song was clean and very tight at the concert, and was probably the most well-played tune of the evening.

The Call's other hit, "I Don't Wanna," is off their newest album, "Into the Woods." Reminiscent of U2's "With or Without You," the song begins slowly as a ballad and builds to an unmistakable climax, highlighting Goodwin's keyboard playing and Tom Ferrier's smooth guitar playing.

Been's vocals also seem to remind of Bruce Springsteen's husky voice, but a little less raspy.

Many of the Call's songs seem to sound the same — beginning very slowly with keyboards and building to a fast, upbeat pace. But the lyrics are very foreboding, almost suggesting the futility of "I Still Believe" — again, a la U2.

Overall, the Call definitely has the potential to become a major group. But it is surprising to see the group playing in such a small place as Chuy's (it only holds about 250 people) when they just completed a stint in California playing before several thousand people.

The concert was a success, and the crowd was responsive. But whether the Call can live up to the high expectations that have been placed on the band remains to be seen.

powerful, clear and professional

MUSIC EXPRESS DJ's

weddings, parties, dances 998-6689
... anything

THE CBS EVENING NEWS
WITH **DAN RATHER**
WEEKNIGHTS
AT **5:30 PM**
ON
KTSP-TV, CHANNEL 10

SPORTS FANS
WALK TO
SATELLITE RECEPTION
& BIG SCREEN TV
CATCH THE PENNANT RACE

MON. NIGHT SPECIAL:
10¢ Chicken Wings • \$1.25 Coronas
and \$3.50 Pitchers of Beer

966-2508
933 E. UNIVERSITY
TEMPE



NOTHING BUT THE BEST!



\$2.00

\$2.00 OFF a 16" extra large 2 or more item pizza.
One coupon per pizza.
Expires: 10-15-87.
Fast, Free Delivery™
968-5555
903 S. Rural Rd.

\$1.00

\$1.00 OFF any size pizza.
One coupon per pizza.
Expires: 10-15-87.
Fast, Free Delivery™
968-5555
903 S. Rural Rd.

Domino's Pizza Delivers® quality pizza, hot and delicious, the way it should be. We use only the finest ingredients like 100% Real cheese and our specially blended sauce, and we deliver in less than 30 minutes. We use only the best so we can deliver the best. Just call.

THE PIZZA PEOPLE OF A.S.U.

968-5555
903 S. Rural Rd.


HOURS:
11:00am-1:30am Sun.-Thurs.
11:00am-2:30am Fri. & Sat.

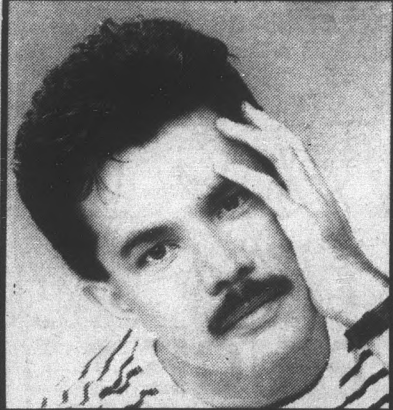
Our drivers carry less than \$20.00 Limited delivery area ©1987 Domino's Pizza, Inc.

DOMINO'S PIZZA DELIVERS® FREE.

We want you to love your hair!

Great looks begin with great hair ...





Great hair begins with Rumors.

HAIR DESIGN & MAKE-UP

RUMORS

NEW LOCATION: 350 S. Mill Tempe Hayden Sq. 894-1888

Scottsdale 6204 N. Scottsdale Rd. 998-1888

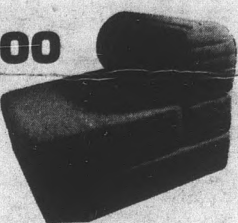
\$5.00 OFF ANY SERVICE
1/3 OFF MAKE-UP
Free Make-up Application
Tempe only
1st time clients only With this coupon

1/3 OFF MAKE-UP
Free Make-up Application
Scottsdale store
1st time clients only With this coupon

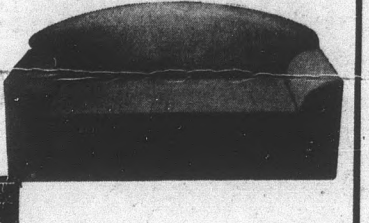
BUY • SELL • TRADE
 Your books at Changing Hands. For quality cloth and paperbacks (no textbooks, please) we pay 30% of our re-sale price in cash or 50% in trade-in credit which may be used to purchase anything in the store. (Sorry, no trade-ins on Sat. or Sun.)
 Browse through our three floors of:
 •New & Used Books
 •Art Prints & Posters
 •Calendars & Cards
 •Handbound Journals
 M-F 10-9 SAT 10-6 SUN 12-5
CHANGING HANDS
 414 Mill Avenue 968-0203
 Old Town Tempe

Computers for Rent
 Now at The Arches
 122 E. University
 Come and visit us
921-0980

Flip Chair \$38⁰⁰
 Opens into Twin size bed



Flip Sofa \$168



Other Specials!
 *4 drawer chest **\$28**
 *Bed Sale
 Twin set **\$69**
 Full set **\$79**
 Bean Bags **\$28**

5 Piece Oak Finish Bedroom Set \$158



Sofa & Love Seat \$168





BEST OFFER EVER FOR YOU!
JONATHAN'S PIZZA
 Fast, Free Delivery **829-1717**
 Open Sun-Thurs. 11 a.m.-1 a.m.
 Fri.-Sat. 11 a.m.-2 a.m.
2 LARGE CHEESE & 1 TOPPING PIZZAS (16") \$10.99 & tax
 No coupon needed. Call anytime.
2 Medium Cheese & 1 Topping Pizza (12") \$8.50
 No coupon needed. Call anytime.
 Medium 12" 1 Topping **\$4.95 & tax**
 Large 16" 1 Topping **\$5.95 & tax**
One coupon per pizza. Good at ASU location only. Expires 10-12-87.
 N. Tempe 829-1717 Now our 32-oz. drink only \$1.00
 933 E. University 838-2227
 N. Mesa 827-1999
 635 N. Country Club 926-1100

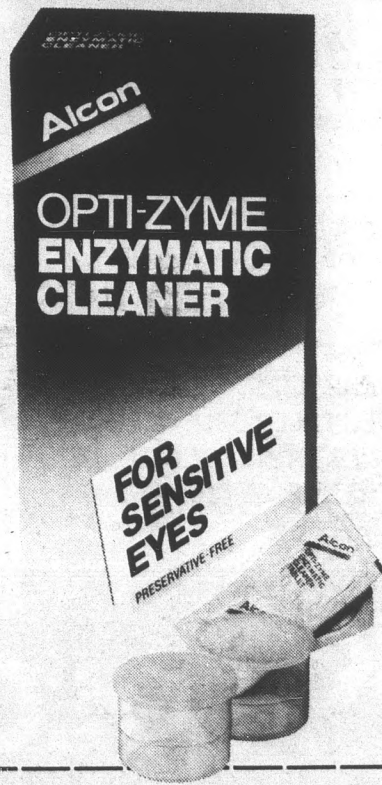
FURNITURE PLUS
Oak Entertainment Center Your Choice \$168⁰⁰
Oak Wall Unit
 Clearance Center In Tempe
 2077 E. University
966-6252
 60x72
 ASU Rural Hayden McClintock F.P.
 MasterCard VISA

ALPHA III STYLIST

 •Professional •Quality •Convenient
 •Cuts •Perms •Styling
For Specials Check Free Student Coupon Book
 Mondays, Tuesdays and Thursdays
 818 W. Broadway #107
 Tempe, AZ
 829-9694

CONOCO
 NORTH AMERICAN PRODUCTION
 WILL BE AT 
ARIZONA STATE
 ON
OCTOBER 5 & 6
 TO INTERVIEW GRADUATING BUSINESS MAJORS (BBA):
FINANCE
ACCOUNTING
MANAGEMENT
GENERAL BUSINESS
 FOR MORE INFORMATION, SEE THE NORTH AMERICAN PRODUCTION SECTION OF CONOCO'S RECRUITING BINDER IN YOUR CAMPUS PLACEMENT OFFICE.
 M/F EMPLOYER

LENS WEARERS:
CLEAN UP YOUR ACT FREE!
Opti-Zyme® Enzymatic Cleaner
 used weekly cleans away irritating lens deposits that daily cleaners leave behind.



PLEASE SEND ME A FREE SAMPLE OF OPTI-ZYME® ENZYMATIC CLEANER.
 Mail to: "ALCON FREE OPTI-ZYME" Vision Care Consumer Division,
 P.O. Box 6600, Ft. Worth, Texas 76115

NAME _____
 ADDRESS _____
 CITY _____
 STATE _____ ZIP _____

OFFER EXPIRES NOV. 30, 1987. Good only in USA. This certificate may not be reproduced mechanically and must accompany your request. Limit one offer per name or address. Limit one offer per envelope. No offer will be made to any club or organization. Void where prohibited, taxed, or otherwise restricted by law. Allow 6 to 8 weeks for delivery.
 Mail-in offer only. Not for store redemption.

Alcon
 We can help you love your lenses™

"AN EVENING OF PROPHECY"
 WITH
KEVIN RYERSON
 Thursday, October 8 • 7-10 p.m.
 at the SCOTTSDALE HILTON
 PLEASE MAIL \$35 PRE-PAYMENT TO:
 THE UNIVERSAL LIFE ALLIANCE
 P.O. BOX 27611, TEMPE, AZ 85282
 TO CHARGE, CALL: (602) 894-6175/279-5230

IRVINE PARK
 8521 E. McDowell Rd.
 One & two bedroom apartments,
 ideal roommate situation, pool,
 spa, tennis, washer/dryer hookup.
\$425 and \$525
 10 a.m.-6 p.m.
 Seven days per week

CALL FOR
 MOVE-IN SPECIAL
946-5315

JOHN'S SHOE & LUGGAGE REPAIR



- Resoling Tennis Shoes
- Orthopedic Work
- Complete Line of Shoe Care Products
- Birkenstock Repair

718 S. Mill Avenue
 Tempe • **967-9101**
 Hours: M-F 9 a.m.-5:30 p.m.
 Sat. 9 a.m.-5 p.m. • Closed Sunday

*If The Shoe Fits,
 Repair It At John's!* **10% Off With This Ad**

CONOCO INC.
**PETROLEUM PRODUCTS, NORTH AMERICA
 MANAGEMENT DEVELOPMENT PROGRAM**

All December and May Graduates of the
COLLEGE OF ENGINEERING
 are invited to attend a presentation/reception
 on career opportunities with PP, NA.

DATE: SEPTEMBER 29, 1987
 TIME: 5:00-6:30 P.M.
 PLACE: YUMA 211

**Degrees Sought*
 BS or MS in Chemical, Civil, Industrial, Mechanical,
 or Petroleum Engineering
 MBA's with an Undergraduate Engineering Degree

Sculptured Nail Class
Learn How On Yourself!



Step by step application
 Save hundreds of \$ \$ \$

Register now!
 Oct. 10 class

Call Now For Information
561-0622


the SAVINGS NETWORK
MAZATLAN

JAN. 7-11
 ●5 DAYS-4 NIGHTS
 ●PLAYA MAZATLAN HOTEL
 ●ROUND TRIP AIRFARE INCLUDED

\$275 MEMBER
\$325 NON-MEMBER
 PRICE BASED ON DOUBLE OCCUPANCY
 RESERVATIONS by OCT. 12
971-5886




SKI COLORADO



3 days, 2 nights at Cascade Village
 Condominiums. Each 3 bedroom condominium
 has 3 full baths, full kitchen, fireplace, color T.V.
 and stereo. Trip includes RT bus fare, 2 full days
 of skiing, free ski shuttle bus. After skiing enjoy
 indoor pool, jacuzzi, outdoor hot tubs,
 snowmobile and sleigh rentals, restaurant and
 lounge.

Feb. 13, 14, 15 **member \$159**
 (Holiday weekend) **non-member \$189**

Other dates also available
 RESERVATIONS by DEC. 1
971-5886



OFFICE WITH A VIEW

The Peace Corps is an exhilarating two-year experience
 that will last a lifetime.
 Working at a professional level that ordinarily might
 take years of apprenticeship back home, volunteers find the
 career growth they're looking for and enjoy a unique experi-
 ence in the developing world.
 International firms and government agencies value the
 skills and knowledge mastered during Peace Corps service.

ON CAMPUS TODAY THROUGH WEDNESDAY

INFO BOOTH: September 28-30
 9 a.m.-3 p.m.
 Cady Mall

FILM SEMINAR AND DISCUSSION:
THE TOUGHEST JOB YOU'LL EVER LOVE
 Meet Returned Peace Corps Volunteers
 Monday & Tuesday, September 28 & 29, 7 p.m.-9 p.m.
 Memorial Union Building Coconino Rm. 217
Refreshments Included

APPLY EARLY IN YOUR SENIOR YEAR!
 For applications or more information contact your Peace Corps
 Campus Representative in the Agriculture Building Room 144,
 (602) 965-7994, or call Peace Corps at (213) 209-7444.

PEACE CORPS
 The toughest job you'll ever love

Huskers beat Devils in display of offense

By STEVE BRENNAN
State Press

It was hot enough in Sun Devil Stadium Saturday afternoon to fry an egg in the stands, and the two red-hot offenses on the field only made it worse.

But it took a crucial defensive play to give the No. 2-ranked Nebraska Cornhuskers a 35-28 victory over the Arizona State Sun Devils.

The Cornhuskers set out to dominate ASU, despite 121-degree heat on the field and a noisy partisan crowd in the seats. But ASU head coach John Cooper and the Sun Devils would have nothing of it.

Nebraska quarterback Steve Taylor, who rushed for 122 yards on 19 carries and two touchdowns, scored the winning touchdown with a 3-yard keeper with 3:37 remaining, but an interception by linebacker Steve Forch of a Daniel Ford pass preserved the win.

The Sun Devils had begun a last-chance drive in hopes of tying the game at 35 when Ford threw a pass to tailback Darryl Harris at the Nebraska 30-yard line.

Forch stepped in front of Harris and found both the ball and the Sun Devils' hopes in his hands.

"A split second more and I would have had Darryl down the sideline," Ford said.

ASU came from behind on three different occasions to tie the Cornhuskers; at 14-14, 21-21 and 28-28.

"ASU is a fine football team," Nebraska head coach Tom Osborne said. "I was surprised in the way they moved the ball. I am pleased to get out alive."

The Cornhusker offense was literally unstoppable, as it generated 459 total yards. But 364 of those yards came on the ground, in the form of a scrambling Taylor and a 62-yard burst by I-back Keith Jones to set up the winning score.

"They beat us on the trick plays and with big plays," ASU linebacker Stacy Harvey said. "We had a few breakdowns."

Harvey said he was impressed by Taylor's ability.

"Taylor is a very good athlete," he said. "Everybody has to react to him."

"He's very quick," ASU defensive tackle Shawn Patterson said. "He was a double threat. If he doesn't like what he sees, he rolls out and throws."

Cooper said he was disappointed with the Sun Devil defense.

"The most disappointing thing about this game is the way we tackled on defense," he

said. "It's got to get better."

"I'm proud of our team but certainly not happy with the outcome of this ball game. We've got to search deep inside now and find out what kind of team we really have," Cooper said.

The Sun Devil offense, on the other hand, was not intimidated by the highly touted Nebraska defense, racking up 377 total yards, its exact average for the first two games.

Neither team was able to score in the first quarter, and it looked as though defense would be the word of the day.

But Nebraska capitalized on Ford's first interception of the afternoon, hauled down in the end zone by safety Mark Blazek with 3:26 left in the quarter. The Huskers then drove 80 yards to score on a one-yard dive by Taylor early in the second period.

The Sun Devils responded by driving 62 yards behind the rushing of Harris and Channing Williams, but an incomplete pass forced them to settle for a 36-yard field goal from sophomore Alan Zendejas, making the score 7-3.

Harris rushed for 111 yards on 26 carries for the Sun Devils. Williams ran nine times for 42 yards.

Nebraska then quelled any possible Sun Devil momentum by driving 85 yards, including a 24-yard pass from Taylor to tight end Todd Milikan. This set up a one-yard run by fullback Micah Heibel to place the Cornhuskers in the lead by 10 with 2:19 remaining.

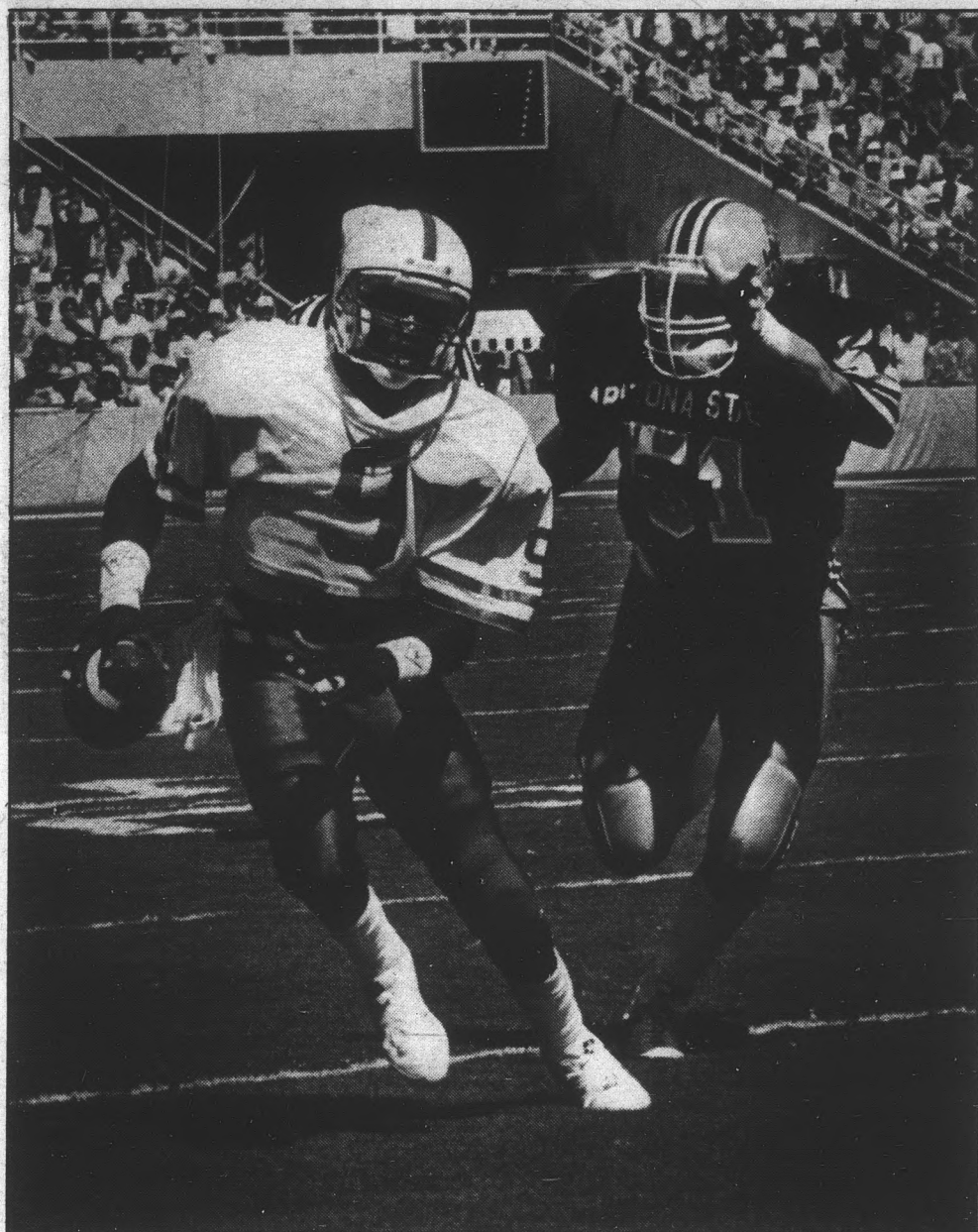
But the Sun Devils took advantage of the short time left in the half to add another three points, after an interception by Bernard Jones on the ASU 33-yard line. Jones returned the ball to the Nebraska 49-yard line, setting up a 38-yard drive and a 28-yard field goal by Zendejas at the end of the half.

"Our guys got in there and fought them pretty good," ASU offensive coordinator Jim Colletto said. "I'm real pleased with their toughness and courage."

ASU received the second-half kickoff and proceeded to drive down the field, aided by a 32-yard pass from Ford to Aaron Cox over the middle which put the Sun Devils on the Nebraska 45-yard line.

After a 12-yard carry by Harris and a defensive pass interference penalty on the Cornhuskers, Ford hit flanker Chris Garrett for a 2-yard touchdown, making the score 14-12.

Cooper decided to go for a two-point



Sean L. Mohr/State Press

Nebraska quarterback Steve Taylor, No. 9, scrambles away from ASU linebacker Pat Taylor, No. 51, during the Sun Devils' 35-28 loss to the Cornhuskers. Taylor rushed for 122 yards on 19 carries during the game, and scored two touchdowns

conversion, which was successful twice — Ford hit Cox in the end zone the first time, but a penalty for backfield motion nullified the possible tie.

ASU was forced to try again from 8 yards out and Ford found Williams, who broke a tackle and slid over the goal line to tie the game, 14-14.

Nebraska, undaunted, took advantage of the next possession and drove to the ASU 27-yard line, but the Sun Devils held.

Osborne then called a fake field goal attempt which worked to the dismay of most of the 71,264 fans in attendance, as backup quarterback Clete Blakeman completed a pass to Milikan on the ASU one-yard line.

Jones then carried the ball over to give the

Cornhuskers a seven-point lead.

The Sun Devils then capitalized on a fumble by Taylor at the Nebraska 16, forced and recovered by noseguard Saute Sapolu, to tie the game for the second time, 21-21, after a four-yard touchdown run by Harris at the end of the third quarter.

The Cornhuskers again responded with a touchdown-scoring drive, putting them ahead, 28-21.

After driving 58 yards, Taylor reacted on a bootleg play at the ASU 12 by throwing to split end Rod Smith, who was wide open in the end zone.

Turn to CORNHUSKERS, page 18.

Awesome quarterback key to Huskers' offensive attack

By CHRIS DORSEY
State Press

Words cannot begin to describe what Nebraska quarterback Steve Taylor means to his team. But the performance he turned in Saturday against the Sun Devils left everyone talking about "Steve Taylor" for the rest of the evening.

He marched his team up and down the field for four quarters and 459 yards total offense en route to a 35-28 victory.

The cat-quick quarterback eluded ASU all afternoon. He scrambled through Sun Devil defenders to tally up 122 yards rushing.

In the opening quarter, ASU kept the Cornhuskers scoreless but had trouble containing Taylor. In front of a sellout crowd of 72,264 and a national television audience, Taylor gained 19 yards on his first carry.

When the clock expired in the first half, Taylor had gained 96 yards on only 10 carries. He also scored two touchdowns on the afternoon, Nebraska's first and the last scores.

Taylor did not break the 100-yard plain until the fourth quarter. In fact, ASU held him to negative five yards in the third period.

His passing statistics were not as impressive, though. He completed 6 of 16 passes for 69 yards. But a 66 yard touchdown

pass to wingback Dana Brinson was called back due to a penalty.

However, Taylor did record a touchdown pass in the fourth quarter, as he spotted Rod Smith in the end zone and completed the 12-yard scoring pass. This was a reaction play. Taylor was bootlegging when he saw Smith slip past a Sun Devil defender in the end zone.

He then completed the pass to put Nebraska on top 28-21. He did throw five touchdown passes against another Pac-10 school, UCLA.

But Taylor did show he was human; fumbling twice to set up ASU scoring drives.

"I'm a player, I'm human, like everyone else," Taylor said. "I thought I played a pretty good ballgame."

Nebraska coach Tom Osborne looked to the junior, from Fresno, Calif., for some offensive production when ASU tied the game three times.

"Taylor is a great player," Osborne said. "He made some big plays and had a heck of a game. He makes us go."

A legitimate Heisman Trophy candidate, Taylor was instant offense for the third game in a row, and his season total in rushing yards is now 306 yards. At the rate he is going he could be one of few college quarterbacks to rush for a 1,000 yards in a season.



Sean L. Mohr/State Press

Nebraska quarterback Steve Taylor launches a pass during Saturday's game in Sun Devil stadium. Taylor completed 6 of 16 passes for 69 yards against the Sun Devils.



Nebraska quarterback Steve Taylor, No. 9, gets a pass off despite pressure from ASU linebacker Pat Taylor, No. 51.

ASU scoreboard

ASU FOOTBALL

NEBRASKA 35, ARIZONA STATE 28

Nebraska	0	14	7	14	-	35
Arizona State	0	6	15	7	-	28

NEB - Taylor 1 run (Drennan kick)
 ASU - FG Zendejas 36
 NEB - Heibel 1 run (Drennan kick)
 ASU - FG Zendejas 28
 ASU - Garrett 2 pass from Ford (Williams pass from Ford)
 NEB - Jones 1 run (Drennan kick)
 ASU - Harris 4 run (Zendejas kick)
 NEB - Smith 12 pass from Taylor (Drennan kick)
 ASU - Harris 1 run (Zendejas kick)
 NEB - Taylor 3 run (Drennan kick)
 Attendance - 70,091

GAME STATISTICS

	Nebraska	ASU
First downs	22	23
Rushes-yards	54-364	44-177
Passing	95	200
Return yards	11	28
Comp-att-int	7-17-1	15-34-3
Punts	4-42	5-39
Fumbles-lost	3-2	2-0
Penalties-yards	9-66	5-40
Time of possession	29:22	30:38

INDIVIDUAL STATS

Rushing - Nebraska: Jones 17-145, Taylor 19-122, Heibel 7-27, Clark 3-27, Knox 3-19, Carpenter 2-9, Brinson 2-8, Hawkins 1-7. Arizona State: Harris 26-110, Williams 9-42, Wendorf 2-15, Ford 6-7, Cahoon 1-3.
 Passing - Nebraska: Taylor 6-16-1 - 69 yards, Blakeman 1-1-0 - 26. ASU: Ford 15-34-3 - 200 yards.
 Receiving - Nebraska: Millikan 3-62, Brinson 2-14, Smith 1-12, Hawkins 1-7. ASU: Cox 5-109, Johnson 3-58, Garrett 3-16, Harris 2-6, Knudson 1-7, Wendorf 1-4.
 Punting - Nebraska: Kroeker 4-41.5 yards. ASU: Schuh 5-39.2 yards.
 Kickoff returns - Nebraska: Brinson 4-90. ASU: Parker 2-49.
 Punt returns - Nebraska: Smith 1-10. ASU: Parker 2-10.

PAC-10 STANDINGS

	PAC-10 GAMES				ALL GAMES								
	W	L	T	Pct.	Pts	Opp	W	L	T	Pct.	Pts	Opp	
Washington	1	0	0	1.000	31	21	3	1	0	0	.750	102	63
UCLA	1	0	0	1.000	34	24	3	1	0	0	.750	131	80
USC	1	0	0	1.000	31	14	2	1	0	0	.667	67	58
Arizona State	0	0	0	---	---	---	2	1	0	0	.667	80	54
Oregon	0	0	0	---	---	---	2	1	0	0	.667	49	51
Washington St.	0	0	0	---	---	---	2	2	0	0	.500	119	122
Oregon State	0	0	0	---	---	---	1	2	0	0	.333	59	136
Arizona	0	1	0	.000	24	34	1	2	0	0	.333	58	58
California	0	1	0	.000	14	31	1	3	0	0	.250	104	90
Stanford	0	1	0	.000	21	31	0	3	0	0	.000	55	86

OTHER PAC-10 GAMES

WASHINGTON 31, PACIFIC 3
 UCLA 34, ARIZONA 24
 SOUTHERN CAL 31, CALIFORNIA 14
 SAN JOSE STATE 24, STANFORD 17
 OREGON 25, SAN DIEGO STATE 20
 COLORADO 26, WASHINGTON STATE 17
 TEXAS 61, OREGON STATE 16

ASU VOLLEYBALL

ASU was idle this weekend.

OTHER PAC-10 SCORES

Friday
 UCLA def. Oregon State 15-2 15-3 15-1
 California def. Washington 15-11 15-10 5-15 9-15 15-10
 Stanford def. Washington State 15-2 15-13 15-3
 Arizona def. Western Michigan 15-11 15-6 16-14
 Saturday
 Oregon def. UCLA 15-11 12-15 15-4 15-6
 USC def. Oregon State 15-10 15-8 15-13
 Stanford def. Washington 15-8 15-1 14-16 15-10
 California def. Washington State 15-9 15-5 18-16
 Arizona def. Southern Illinois 15-4 15-7 15-6
 Arizona def. Penn State 15-8 15-8 15-10
 Sunday
 USC at Oregon, late



FRENCH CASUAL WEAR
 for
MEN, WOMEN, AND CHILDREN

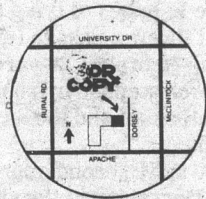
NOW open
Hayden Square: 3rd and Mill, Tempe

PARIS NEW YORK BOSTON SAN FRANCISCO



CALL 968-7771

1250 E. Apache, Suite 112, Tempe, Arizona 85281
 (One building east of After The Gold Rush)



HOURS
 MON.-THURS. 8:30-8:30
 FRIDAY 8:30-6:00
 SATURDAY 10:00-3:00

Use Our Priority Discount Coupons & Save

World Famous Offer
20% OFF
 ANYTHING
 On Your 1st Visit Special
 New - Come-Get-Acquainted-Offer
 This is our way of showing you why we're so popular!
 Offer Expires 10-15-87

15% OFF
 School & Office
 Supplies
 Includes pens, pencils, paper, tape, glue, liquid paper, paper clips, notebooks, envelopes
 Offer Expires 10-15-87

2 1/2¢
 Self-Serve
 Copies
 8 1/2 x 11 20 lb. White
 Bond
 Any Quantity
 Offer Expires 10-15-87

1¢ OFF EACH
 COPY
 or
50¢ OFF
 BINDING
 Not valid with any other offer
 Offer expires 10-15-87

Oregon's PIZZA

"THE PIZZA LOVER'S PIZZA"
 (formerly Godfather's Pizza)

INTRODUCTORY OFFERS

<p>LARGE DELUXE CHEESE PIZZA Only \$5.09 Additional toppings 80¢ each. MEDIUM - Only \$4.09</p> <p>Oregon's PIZZA Carryout charge 25¢ Present this coupon when ordering. One coupon per customer. Not good with any other offer. COUPON EXPIRES 10-10-87.</p>	<p>FAMILY FEAST LARGE 1 ITEM PIZZA 2 SIDE SALADS 1 PITCHER (or quart) OF COKE All For Only \$8.49</p> <p>Oregon's PIZZA Carryout charge 25¢ Present this coupon when ordering. One coupon per customer. Not good with any other offer. COUPON EXPIRES 10-10-87.</p>
<p>LUNCH SPECIAL 11:30-3:00 HAM 'N' CHEDDAR SANDWICH LARGE DRINK \$1.99</p> <p>Oregon's PIZZA Present this coupon when ordering. One coupon per customer. Not good with any other offer. COUPON EXPIRES 10-10-87.</p>	<p>SUN DEVIL SPECIAL SMALL 2 ITEM PIZZA PITCHER OF BEER \$4.99</p> <p>Oregon's PIZZA Carryout charge 25¢ Present this coupon when ordering. One coupon per customer. Not good with any other offer. COUPON EXPIRES 10-10-87.</p>

945 S. MILL (Corner 10th & Mill) • 894-1234

BICYCLE CLEARANCE

1986-1987
Best Bike Shop
 New Times critics choice

Nishiki Prestige
 Regular \$375.00
 Now Only **\$289.99**

Cycle Pro Optima
 List Price \$280.00
 Now **\$229.99**

Cycle Pro Carlsbad Mountain Bike
 List Price \$250.00
 Now **\$199.95**

Marquis 12-speeds
 All Alloy Components
 Chromoly Frame
 Reg. \$249.95
 Now **\$149.99**

THE TEMPE BIKE SHOP

Store Hours: 8-8 Mon.-Thurs.
 8-6 Fri.-Sat. • 11-5 Sun.

Across the Railroad Tracks, West of Gentle Strength Co-op

330 W. University • Phone 966-6896

VISA MasterCard

HAIR AMERICA

10% OFF
ANY SERVICE FOR THE YEAR
WITH ASU I.D.

WE OFFER:
•PRECISION LONG & SHORT CUTS
•PERMS •HENNAS •HIGHLIGHTS & FROSTING
FRAMES! COLORING •HAIR CARE
CBN PROFESSIONAL FORMULA

TEMPE
968-7421
SMITTY'S SHOPPING CENTER
3136 S. MILL
CORNER MILL & SOUTHERN

TUESDAY 9:30-7:00 • WED. & THURS. NOON-8:00
FRI. 9:30-7:00 • SAT. 8:30-6:00



COUPON

KEEP THAT GREAT TAN!

5 sessions.... \$19⁹⁵
6 sessions.... \$23⁹⁵
10 sessions.. \$33⁹⁵
20 sessions.. \$62⁹⁵
Good through Oct. 3, 1987.

30-DAY PACKAGE.. \$38⁹⁵

Tanning Products By
Kenneth Dion
eclipse images

We Use The WOLFF SYSTEM

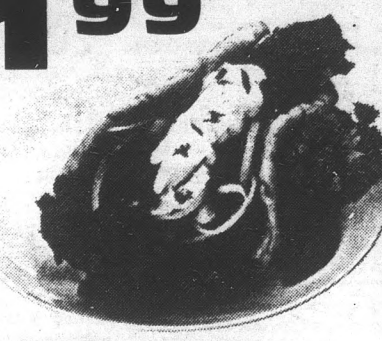
2602 W. Baseline, Mesa TANNING & NAILS **820-4727**
N.E. corner Don Carlos & Baseline (Now Open Sundays)
Additional 10% off with this coupon

COUPON



SPECIAL OF THE WEEK

GYROS ONLY \$1.99



WITH THIS AD (up to 4 sandwiches)
OFFER GOOD THROUGH OCT. 3, 1987.
Hours: Mon.-Fri. 10-9 • Sat. 10-6
BOJO 829 S. Rural Rd. 966-5543

White Glove AUTO DETAILING

A Clean Car Is A Happy Car

966-7006

Specializing In:
•Polishing and Waxing
•Pin Striping
•Interiors
•Engines



15% OFF ANY SERVICE WITH ASU I.D.

THE WHITE GLOVE TOUCH OF CLASS
1835 E. 6th St., Suite 11, Tempe

MONDAY NIGHT FOOTBALL!

Chicken Wings 1/2 YOUR ORDER FREE!

Wings - 15 Wings \$2.50
Wings - 30 Wings \$4.75
Wings - 45 Wings \$6.85
Wings - 60 Wings \$8.95
(Offer good Sundays too)

College & NFL

Satellite TV Sports

Woodshed I Woodshed II
Southwest corner of Baseline & Mill
831-WOOD

6 TVs Each Location

Woodshed II Woodshed II
Northeast corner of Dobson & University
844-SHED

FOR A NEW ATTITUDE... MAKE THE RIGHT CHOICE!

Sculptured Nails..... \$25 Reg. \$35
Tip Acrylic Overlay... \$30 Reg. \$40
Fill-ins..... \$19 Reg. \$21
Pedicure..... \$17 Reg. \$20

HAIR

\$3 OFF All Haircuts w/this ad
Women Reg. \$18
Men Reg. \$15
Perms \$50 (Reg. \$60)
Foil Weaves \$55 Reg. \$65 includes cut & style

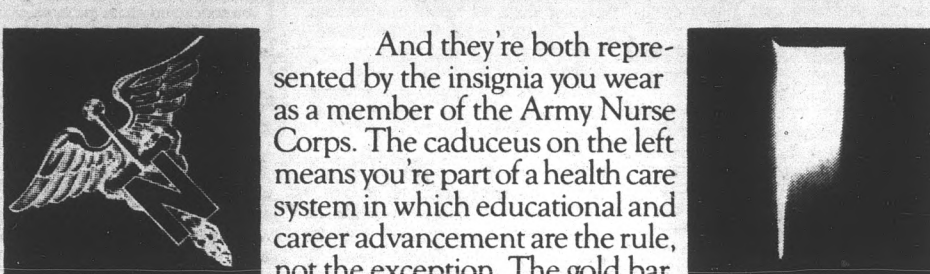
Walk-ins Welcome!
Open Tues.-Fri. 9-8
Sat. 9-5

Scandals
SCULPTURED NAILS & HAIR STYLING

966-5848
3135 S. Mill
(NE corner Southern & Mill)
Next to Super X



THERE ARE TWO SIDES TO BECOMING A NURSE IN THE ARMY.



And they're both represented by the insignia you wear as a member of the Army Nurse Corps. The caduceus on the left means you're part of a health care system in which educational and career advancement are the rule, not the exception. The gold bar on the right means you command respect as an Army officer. If you're earning a BSN, write: Army Nurse Opportunities, P.O. Box 7713, Clifton, NJ 07015. Or call toll free 1-800-USA-ARMY.

ARMY NURSE CORPS. BE ALL YOU CAN BE.

SID'S WAREHOUSE DELI & PUB
"GOOD FOOD AND DRINK"

Live Entertainment - Nightly -
(No Cover, No Min.)



LUNCH SPECIALS
Mon.-Fri.
10:30 a.m.-2:00 p.m.
Sandwich of the Day and Curly Fries
only **\$2.35** +tax

HAPPY HOUR
Mon.-Fri.
10:30 a.m.-7:00 p.m.
Half Gallon Pitchers
(Bud, Bud Light, Coors)
\$1.99 +tax
Molson, Michelob Classic Dark Draft
80¢ +tax

BREAKFAST
Served 7:00 a.m.-10:30 a.m. Mon.-Fri.
Featuring our "Super Special"
 Scrambled Eggs
 Homemade Potatoes
 Toast, Butter, Jam
only **99¢** +tax

130 E. University Dr. (at Forest)
(In The Arches)
966-7788 • Tempe, AZ
Your Hosts "The Family"
- Estab. 1975 -

Smith MESA NISSAN

Your Nissan and Datsun Service Specialists are offering



- Nissan-trained technicians
- Genuine Nissan parts
- Quality maintenance and repair work
- Reasonable prices

AND!
10% discount on all service work and counter parts to all ASU student, faculty & staff with ASU I.D. card.

SMITH MESA NISSAN PARTS & SERVICE HOURS
Monday 7:30 a.m.-8:30 p.m.
Tues.-Fri. 7:30 a.m.-5:30 p.m.
PARTS OPEN SAT.
8:30 a.m.-12:30 p.m.

*To be present at time of purchase.
1701 W. Broadway, Mesa
Service Parts
834-3366 834-0255

Good through Dec. 31, 1987.



real estate for sale

LOVELY SCOTTSDALE home, 4 bedroom, pool, air and evaporative, near schools, ASU, shopping. Call 831-1152. ERA Karstetter.

NO DOWN! Near ASU. 2 bedroom, 2 bath, furnished townhouse. \$55,800, assume loan. Must qualify. Rosser, 991-5327; Realty Executives, 947-5451.

STEAL IT! 3 bedroom, 2 bath, 1536' townhome. Papago Park- never rented! \$20,000 under market... \$86,900. Desperate!! 948-6419.

TOWNHOUSE IN Scottsdale, 4 miles from ASU. 3 bedroom, 2 bath, single level, pool, move-in condition, handicapped accessible. Was \$84,000, now \$58,000. Great buy! No qualifying. 941-4822.

apartments for rent

1 BEDROOM- den. Large apartment, \$389. Quiet, small complex. Short drive-ASU, 244-8307.

2 BEDROOM, ASU 1 mile, 2 excellent locations, \$395. Covered parking. \$200 off with ad. 967-8431, 968-2750.

\$455/MONTH. Townhouse, 10 minutes from ASU. 2 bedroom, 2 bath, washer, dryer. 967-8586 days, 968-3541 evenings.

820 W. UNIVERSITY, number 18: 3 bedroom, 2 1/2 bath, fireplace, garage, \$650 per month. Call 968-9625 or 968-3340.

BEAUTIFUL NEW large two bedrooms, walk to ASU, pool, laundry, one block south of University on 8th Street and Gary. Ask about move-in specials. 968-5238.

CHEAP! ONE bedroom apartment, 2 minutes and 2 seconds from campus. Brand new complex. Call Doug and Hugh day or night for more information, 968-8113.

CO-OP LIVING: After \$7500 investment, enjoy spacious studio for low \$155 monthly. Pool, laundry, close to ASU. 481-0822.

FOR RENT, 2 bedroom, 2 bath townhouse, bicycle to ASU. Washer, dryer, refrigerator. \$650 per month. 949-1419.

IDEAL FOR the serious student. Large, spacious apartments in small, quiet community. Bike or bus to ASU. Unfurnished. Ask about our great specials. Call 949-0481.

NEW APARTMENTS, walk to ASU. 9 month lease. Roommates ideal. 1123 E. Apache Blvd. 968-8383.

RANCHO LAS Palmas, one and two bedroom apartments. Less than a hand full. Please call John or Elizabeth immediately! 829-9607.

WALK TO ASU! A beautifully furnished huge 1 bedroom, 1 bath, walk-in closet, cable TV, all utilities paid. Heated pool, spacious laundry facilities. Only 1/2 block from campus. Friendly, courteous management! Terrace Road Apartments, 950 S. Terrace Rd., 966-8540.

WALK TO ASU, junior one bedroom, \$305; two bedroom, \$425. Adults, no pets. 1031 E. Lemon. Bef Air Apartments, 968-2679, 933-4364.

homes for rent

GRAD COUPLE, nonsmokers. Terrific deal! \$399. Short drive- ASU, 244-8307.

rental sharing

BEAUTIFUL TEMPE home to share 4 miles south of ASU. Private bedroom, bath, parking, washer, dryer, pool. No pets. Deposit required, \$250 monthly covers all. Call 897-8781.

FELLOW STUDENT wants male/female for room with private bath. \$150 month plus 1/2 utilities. Call 945-8556.

FEMALE NONSMOKER to share new 3 bedroom, 2 bath cocondominium. All major appliances, including washer and dryer. All common areas furnished. \$280 plus 1/2 utilities for own room. \$250 plus 1/6 utilities to share masterbedroom and bath. 1/2 mile from ASU. Pool, lighted parking lot. Call Terriann, 921-3476.

FEMALE ROOMMATE wanted. Own bedroom and bath, partially furnished in La Mirage. Contact Lisa, 921-4065 after 4 p.m. or 966-3201.

FEMALE STUDENT, nonsmoker, 3 bedroom, 2 bath, washer, dryer. \$175 monthly plus 1/2 utilities. Call 894-0479.

LARGE PRIVATE room. Furnished townhouse. Washer, dryer in unit. Pool. Bike ASU. \$185. 965-2814 afternoons.

MALE, FEMALE roommates to share house in Scottsdale. ASU 10 minutes. \$250, utilities included. 990-1373.

RESPONSIBLE FEMALE roommate to share 2 bedroom, 2 bath, oversized, furnished apartment. Lots of amenities. Ideal location, 45th Street and McDowell. \$260 plus 1/2 utilities. 275-3353.

SHARE VERY nice house: Pool, fireplace, washer, dryer and more. \$230 plus 1/2 utilities. Bob, 820-8963 (leave message).

help wanted

ACCEPTING APPLICATIONS for the prestigious Sammy B's Pizza Restaurant. Day and evening shifts available, 945-8850.

APPLY NOW for fall schedule. House wares/sporting goods. \$10.25 to start, part-time/full-time available. 820-7803, 8 a.m. to 4 p.m.

ATTRACTIVE, COOL crew needed for counter help, Burger Haven. Apply in person, 112 E. University.

CASHIER WANTED, flexible hours, \$4/hour. Call 967-7350 or apply at 1090 W. 5th St.

CHRISTIAN CHILD care workers needed immediately for local church. Call Marsha Lincoln, 967-3786 or 967-0569.

CLINICIAN I- Provides behavioral health services to chronically ill adults in a residential treatment setting. College level courses plus 1 year related residential working experience or equivalent. 40 hours/week evenings, nights and weekends. \$9900-11,000. Open until filled. Apply at 1424 S. 7th Avenue, Phoenix. Excellent benefits.

CLINICIAN II- Provide individual and/or group counseling and community life skills training to chronically mentally ill adults in a residential treatment setting. Courses in human services, counseling and psychology plus 2 years related experience or equivalent. \$12,700-14,000. 40 hours/week evenings and weekends. Open until filled. Apply at 1424 S. 7th Avenue, Phoenix. Excellent benefits.

COLLEGE STUDENT, part-time. We need 6 enthusiastic college students to work 4-9 p.m. shift, Monday through Friday. \$5 per hour plus bonus. Call Mr. Rod, 921-2897.

CUSTOMER SERVICE reps. Scholarships available. 27 openings. \$9.25/hour. Training provided. Call 10 a.m.-2 p.m. 829-6754.

DANCERS WANTED, \$35 per hour. Call 224-0960.

DICK'S DRIVE-IN, college action area, hiring all positions, full and part, starting at \$3.65/hour. Open 9 a.m. to 3 a.m. 855 S. Rural.

EASY WORK! Excellent pay! Assemble products at home. Call for information, 504-841-8003 ext. A-7836.

ENGINEERING TECHNICIAN (mechanical): 2nd or 3rd year mechanical engineering or technology. Some related experience desired. Must be available, minimum, 20 hours per week. \$5 and up, phone 956-8200.

EXCITING YOUNG company. Day and evening shifts. \$4 hourly plus bonuses. Near College and Southern. 921-7785.

EXPERIENCED BANQUET servers needed. We work around your schedule. Same week pay. Call today, 831-0145, Snelling Temporaries.

EXTRA MONEY is nice, but you can help people too! Donate plasma for up to \$120 per month. First donation in a calendar week \$10, second donation in same calendar week \$20 (Monday-Saturday). New donors receive \$2 bonus on first donation. University Plasma Center Associated Bioscience Inc., 1015 S. Rural Rd., Tempe, AZ. 968-6139. Effective until further notice.

URGENT! NEED dynamic secretary/office manager for national entertainment organization. Great career potential for the right person. Call Entertainment USA, 730-1888.

help wanted

FIESTA PROMOTIONS is interviewing for part or full-time, \$250 to \$350 a week. Call for appointment, 966-4639.

ASU MARRIOTT Catering has opportunities for full and part-time on campus banquet servers. Experience helpful. Apply in person at Memorial Union Catering office, Monday through Friday, 9-5 p.m., or call 965-1086 for an interview.

GUYS, GIRLS, part-timers. Hob-Nob Thrift Shop. No phoners. 11-1 daily, 414 S. Mill.

HARKINS LOS Arcos Mall Cinema is now hiring a part-time assistant manager to work 3 or 4 evening shifts a week. Flexible scheduling. No experience necessary, will train. Should have good math and people skills. Apply in person, 1383 N. Scottsdale Road.

HARKINS THEATRES in Scottsdale are now hiring concession attendants/cashiers. Perfect job for students. Flexible scheduling. Choose working 10 to 20 hours per week. Fun and exciting job. Free movie benefits. Apply in person, Harkins Los Arcos Mall or Camelview Plaza Cinemas.

LAB TECHNICIAN- Flexible hours. Position near 35th Avenue and Buckeye. Requires 2 years college level chemistry. Must know HPLC, GC, IR, atomic absorption, VV/VIS, micro-bio testing, spectroscopy. Long term employment assignment. Call Colleen, 242-1826. Banner Temporary Services.

NEED ENERGETIC person to care for 4 children of working moms in our Tempe medical office. \$3.35/hour. Must be free Tuesday and Thursday mornings. Call 829-8741 or Cindy, 820-2280 evenings.

PART-TIME HELP Monday, Wednesday, Friday, Saturday, or any combination. Flexible hours. Work with trees in nursery and field. Apply Evergreen Lawn Sprinklers, 3329 E. Southern Ave., Phoenix.

COOKS NEEDED, part-time, full-time short order. Flexible hours. Apply in person, Vine Tavern, 801 E. Apache.

PART-TIME CLERK over 21 to work nights and weekends. Own transportation. Apply at 2321 W. Broadway, Mesa.

PART-TIME OFFICE cleaners needed 2-3 hours per night, evenings, Monday-Friday. Bonuses and advancement opportunities. Scottsdale location. Call 945-4994.

ROUTE DRIVERS- Flexible hours, travel expenses, commission available. Good pay. Have own vehicle with Arizona license. Call 966-2166.

SALESPERSONS, \$3.50 to \$4.00 hour plus commission. Call for details- Higgins for Babies Only, 266-1422.

WEEKEND JOBS If you are in need of extra money, Physical Plant wants 16 students who are concerned about the looks of our campus. Hard working, interested students CALL 965-1800.

STUDENT HELP wanted to work in the Memorial Union cleaning the building afternoons, evenings and weekends. Can arrange hours around schedule, \$3.80 to \$4.30 hourly depending on experience. Apply Memorial Union Administration.

URGENT! NEED dynamic secretary/office manager for national entertainment organization. Great career potential for the right person. Call Entertainment USA, 730-1888.

help wanted

SENIOR INVESTMENT brokers seek FIN or CIS majors with 2 to 3 semesters to graduation; reasonable pay, possible intern credits, 20 hours a week. Submit resume to Donald Morrow, or Richard Lund, Grubb and Ellis Commercial Brokerage, 2390 E. Camelback Rd., Suite 100, Phoenix 85016.

O'Malley's Tempe store needs lumber yard workers, receiving clerks for hardware and clerical personnel who can use a calculator and are good at detail. Apply at store: O'Malley's 1840 E. Broadway Tempe Equal Opportunity Employer, M/F

instruction

AEROBIC INSTRUCTORS Certification Workshop, weekend of November 7th at ASU by National Aerobics Training Association. Call 963-9415 or 899-9289.

HANG GLIDE! Gently sloping hill just South of Tempe. Safe and exciting. Lessons all day, only \$75. Windsports, 897-7121.

SELF-ESTEEM GROUP begins September 28th. Learn to build confidence and feel better about yourself. Call Cheryl, 966-8810.

SPIRITUAL EXPLORATION group begins October 1st. Expand your spiritual awareness through meditation and group discussions. Call Cheryl, 966-8810.

Jewelry

CASH FOR gold and diamonds. Mill Avenue Jewelers, 414 S. Mill, Suite 104, Tempe. 968-5967.

CUSTOM DESIGN and re-mounting. Mill Avenue Jewelers, 414 S. Mill, Suite 104, Tempe. 968-5967.

FOR SALE: Half-carat diamond. Asking \$750- a real bargain. Call Beth 5-9 p.m. only, 840-4140.

free lost/found

FOUND: ROOSEVELT High School ring, 1986, at Salt River. Call Roy, 838-5590.

FOUND SAINT Christopher charm outside Murdock. Call 921-7916, ask for Elise.

LOST: A yellow, cotton, button down sweater on University Drive between campus and Quadrangles Apartments. Please call 967-7189.

LOST BROWN leather wallet. Many credit cards, little money. If found, reward given. Contact Irving Jorgenson, 966-4562 or 966-8404.

LOST LARGE, grey, hooded Brown University sweatshirt between Language and Literature and Lot 59. Please return, sentimental value. 894-6138.

on-campus

On-Campus 1907 The Tempe Normal Student, October 18, 1907: About a party- "Out on the lawn were collected many gay groups, left to their own devices. Everyone laid aside his party manners and talked all at the same time."

C.A.P.S. MEETING: Tuesday, September 29, Architecture Building Room 13. All design students interested in materials available, new presentation ideas and saving money on materials are urged to attend. Meeting held at 5:30. Watch for October meetings and "Know Your Major".

HELP SIGMA Chi little sisters help abused children, buy a car wash ticket for Sunday, October 4th, 10-3 at the Chevron station (Rural and Apache).

PRACTICE LSAT OCT. 3 • 10 A.M. COB ROOM 252 CALL CHRIS 968-0175 OR LIONEL 954-8666 FOR RESERVATIONS \$10 FEE PRE-LAW CLUB

SOCCER PLAYERS wanted for Mesa league, first division team. Call 391-1549.

ATTENTION UNIVERSITY departments, organizations, and clubs: Need to place a display ad in the State Press? Your campus representative is Jackie Eldridge. Call 965-7572 8 a.m. to 5 p.m. daily.

on-campus

WHAT IS the meaning of life?? If you're ready for an honest answer, drop by Danforth Chapel at 7 p.m. to watch a drama by Bob Siegal.

personals

AAA "IS this seat taken?" Wednesday, 9:40 a.m., MU McDonald's. You had a white skirt and a nice smile; I had orange juice. I didn't get your name. Leave message, 839-8215, Jeff.

ATO NEAL Catalano- Hey Big Bro, We're gonna have a blast this year! Love, your little sister.

ATO STEVE Keller- We're gonna have a fabulous year, and I'm looking forward to a lot of fun! Love, Your little sis.

BRAD- DON'T you just love surprises? Your PSE Big Sis does! See you very soon!

JANENE WONG, You're great as a PMI Only 5 more weeks! Yeah! Keep it up! Love, Big Sis.

JEFF CAYTON- Diego was fine, but you were on my mind! Even though you are a dink, I still don't think you stink! Still lovin ya Pooder

KEVIN CONNOLLY, Happy 20th Birthday! Love always, Tiff. P.S. 10 months!!!

LENA S. L. Can we talk? Please call, 968-1151, Y.R.D.

LOVE SCENE, ladies new date line beginning next week. Leave your own message free today through Tuesday. Use your phone number or ours for assured privacy. Call 956-3320.

MAMA MIA! Crackers and baked potatoes are more important than boys! However, we can't draw potatoes in the raw! Stephanie Love. (What's Sigma Love anyway?)

MICHAEL PERRY, The report is that you are doing great as a PSE PMI Keep it up! Love, Big Sis.

MIKE, YOU may be a Diamond in the rough, but you sure shine for me. Jennifer

PHISIG HOLLYWOOD: I've regained "that lovin feeling." Love, Dear.

PHI SIG Rich P. I'm ready for a ragin' year. Hope you are too. Love ya Big Bro-Lil' sis, Valerie.

PSE PM Shawn: Heath welcome to the world of Pi Sigma Epsilon! "To be or not to be" is the question? If you can answer that you are well on your way! Big brother.

STEPHANIE, YOU'RE a cool chick! Hope you had fun over the weekend. I wanna hear about Chris! Smiley Face! Mia

TOMI, REMEMBER the AGD's at the Vine last Wednesday? We lost your number, please call Dawn and Cami at 784-8954.

services

\$135 MILLION in unclaimed scholarships and grants available last year! Claim your portion! Call The Class Act, 832-3434.

COPIES 3 1/2¢ BANK THE SAVINGS AT UNI-PRINT Your full service printer 215 E. 7th St. (Next to Barb's Darkroom) 968-0799 1035 E. Lemon (at Terrace) 967-1651 1605 W. University 829-1834

HAPPY HOUR MON.-WED. 4:00-6:00 MOVIES 2 FOR 1 VHS Movie Rentals Free Membership Free Reservation Great Selection Rental Network 829-1966

PRACTICE LSAT OCT. 3 • 10 A.M. COB ROOM 252 CALL CHRIS 968-0175 OR LIONEL 954-8666 FOR RESERVATIONS \$10 FEE PRE-LAW CLUB

HAPPY HOUR MON.-WED. 4:00-6:00 MOVIES 2 FOR 1 VHS Movie Rentals Free Membership Free Reservation Great Selection Rental Network 829-1966

services

ANOREXIA, BULIMIA, compulsive over-eating. Private and confidential counseling. Ginnie Grant Monroe, ACSW, recovered bulimic, 437-9420, 468-3850. Health insurance welcome.

HAVE UNWANTED facial or body hair removed permanently by electrolysis. Free consultation, located in Tempe. Call Sharon at Desert Electrolysis Center, 829-7829.

IBM CORRECTING Selectric, reconditioned, guaranteed, \$375; Regular Selectric, \$135. Repairs, \$35 including parts. Will pickup and deliver. 266-8248.

PERSONAL COMPUTER tutoring in Lotus 1,2,3, D-base III, etc. Resume writing assistance. Reasonable student rates. Diane, 971-0536.

RESUMES THAT work! Professionally written and printed. Call 968-4670.

SURPRISE HIM with a candy bar bucket balloon bouquet, \$16. 951-6493.

transportation

ATTENTION: FREE cars to all major cities. 21 or older. Call AAA Driveaway, 277-9979.

CARS AVAILABLE - 21 or older. All States Drive-away, 992-5200.

travel

AIRLINE AWARDS buying coupons, miles, bump tickets. Top prices. Also selling, savings worldwide. Arthur, 968-7283.

AIRLINE COUPONS wanted: United Bonus tickets; Western Extra; others. Up to \$350 each. 800-255-4060.

AIRLINE TICKETS: Book now for Christmas, Thanksgiving. Free delivery, all destinations. Eric or Marc, 968-0729.

CARIBBEAN VACATION: Round-trip air fare and hotel accommodations for 2 adults only \$149. Call Tim for more information, 274-9626.

COUNCIL TRAVEL / CIEE offers students discount airfares to Europe, Asia, South America and the South Pacific. Call for prices, 818-905-5777.

typing/word processing

\$1.50 DOUBLE-SPACED page. Spelling, grammar, punctuation, sentence structure, bibliographies corrected. Professional, fast, accurate. Call afternoons after 4 p.m. 968-5217.

\$1.50 PER page. Any Type Word Processing. Spelling and grammar corrected. Some graphics available. Call Debbie, 961-1495.

AAA WORD Processing Service. Quick, professional services. Rush ok. Graphics available. Ron, 833-5532, or message.

ACCURACY PLUS Typing and Word Processing. Call 968-4670.

CALL ME for fast, accurate, quality service at competitive prices. Close to ASU. 966-2186.

DEGREEED PHD information specialist. Faculty, advanced student projects professionally guided to completion. Word processing, 256-2830.

FLYING FINGERS Typing, Word Processing and Resume Service. McDowell/Scottsdale Road Area. Call Susan, 945-1500.

FORMER ASU staffers- Word Perfect and Xerox memory writers. Experienced with APA, MLA, graduate school, etc. graduate students and faculty work welcome. 945-6302, Donna and Joan.

I WILL do your typing cheap. Will pick up and deliver. Call Shelley, 860-6950.

\$\$\$NO OBJECT? Need help with spelling, punctuation or grammar? What about research, writing, editing and proofreading? APA and MLA member. B.A. in English, M.B.A. from ASU. Complete computer analysis of your work available. Final copy: Laser typeset and bound. 438-9202.

PROFESSIONAL WORD processing. Evenings, weekends. Student discount. 24-hour turnaround. Near ASU. Business Express, 967-8342.

SHORT OF TIME? I can help. Reasonable. Professional. Guaranteed. Experienced in academic. Call Jessie 945-5744.

TYPING, REASONABLE and professional. Term papers, reports, resumes and essays. We correct spelling at no extra charge. Editing, proofreading, pickup and delivery available. Call today, 831-0978.

WORD PROCESSING, resumes, and typing. Call Uni-Print, 967-1651.

wanted

RECENT BUSINESS Graduate. Accounting/Economics, to tutor busy adult student. Evenings, 877-3429.

Step Into Carl's Jr. and Walk Away with a Great Job! Lead Persons Counter Personnel Assistant Managers If you're looking for a great job and an easy way to earn extra money, then you owe it to yourself to take a closer look at the advantages Carl's Jr. has to offer: Flexible hours to meet your demanding schedule! A convenient location; we're just around the corner from you! Competitive wages! A fun place to work! We're looking for a few smiling faces to fill FULL and PART-TIME openings on ALL SHIFTS. If this kind of opportunity appeals to you, then stop by anyway, at anytime for an on-the-spot interview! CARL'S JR. 960 E. University Tempe, AZ EQUAL OPPORTUNITY EMPLOYER M/F/H

Sapolu upset with his, squad's performance in loss to Huskers

By CAROL BOOS
State Press

Saute Sapolu's mother didn't want her son to play football. She wanted him to stay in California. After Saturday's loss to Nebraska, he might be asking himself why didn't he listen to her.

Despite forcing and recovering a fumble, breaking up a pass and 2 unassisted tackles, the day just wasn't a good day, and football wasn't so fun.

"We made a lot of mistakes. We didn't control the quarterback the way we want. We made mistakes which really killed us."

The 6-foot-3-inch, 245-pound junior's forced fumble and recovery late in the third quarter helped the Devils come from behind to tie the game for the second time at 21-21.

He said he was in the right place at the right time. "I thought I didn't have the ball and I fell down. I just saw the ball right in front of me and grabbed it."

"Saute made a great play on our part," head coach John Cooper said. "(Nebraska head coach Tom) Osborne probably thought it was a bad play."

Sapolu missed the first two games due to an eye injury. Physically he said he was OK, mentally he said wasn't so OK. "I think we beat ourselves before the game," the noseguard from Long Beach, Calif., said. "A game like this you have to keep your head to win. It's all in your head."

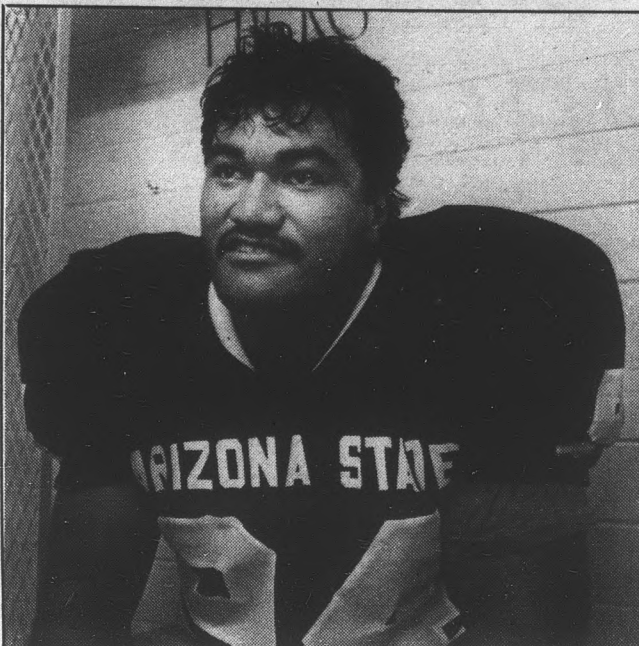
Although the Cornhuskers were heavy favorites, the Sun Devils were looking for an upset.

"This was the game we wanted to win to keep our confidence up and our rank higher," Sapolu said.

"I feel good about the game," he said. "I think Nebraska is ranked too high, but hey, they won the game."

"I really think if we did what we were supposed to do we would have won."

One mark in the loss column doesn't mean the season is



Saute Sapolu

lost, Sapolu said. "That's the big thing, we still need to loosen up and say 'you're a good football player' and show what you got."

Sapolu registered 31 tackles (23 solo) and three tackles for losses in 12 games last season.

"My mother never wanted me to play football," Sapolu said. "I just wanted to go to college and this is the only way to pay for it."

Archery teams prepare to defend titles

By GARY JACKSON
State Press

In this pre-Olympic year, few people ever think of archery as an intercollegiate sport. Even fewer people realize that ASU has swept the national championships every year since 1980.

But the Sun Devil archers have dominated this sport more than any other school in the country.

"Nobody can beat them," Jay Barrs, an all-American from the 1984 squad, said. "They've been the best for so long."

Last season the Devils swept the national titles in men's, women's and mixed competition.

Since it is an off-year for the Olympics, this season provides dual ambitions for Sheri Rhodes, the head coach of this dynasty and the 1988 U.S. Olympic team.

First, Rhodes believes the team has the ability to retain the national titles. Also, some of the archers have aspirations to compete for a spot on the Olympic team, and she wants to help them obtain their goals.

With five men returning who competed in nationals last year, another title is almost inevitable for ASU.

"Cope Bailey, Robert Nicholson, and Mike Bergenheier finished third, fourth, and fifth in the nation last year," Rhodes said.

Returning to the women's squad are Becky Liggett and Erin Leach, who finished second and thirteenth in the nation last year.

"Erin is much better than what her finish shows," Rhodes said.

Liggett has finished second in the nation for the past three years, only losing out to other ASU archers.

Liggett jokingly said that she "let them all win before they left." Now it's her turn to finish on top.

Liggett should be a strong contender for the Olympic team. "I would like to go to the Olympics," she said. "I'm going to work as hard as I can, and if I'm shooting well by the end of college nationals I'll go for it."

One of three new male collegiate archers, Danny Stinnett, said he hopes "to make a couple of the teams this year."

Stinnett, who has competed nationally for 10 years, has won four national tournaments and five state tournaments in Ohio.

Three new archers have also joined the women's team this year. Even with eight men and five women, Rhodes said that six men and six women represent the ASU team in most competitions.

Rhodes said the newcomers are good and, along with the experienced returners, would be able to fill the depth for the team.

"We lost Mark McKinney and Mickey Dye, the top male and female archers from last year," Rhodes said.

Rhodes, entering her 11th season as head coach at ASU, inherited a successful program.

"Women's archery won consistently," she said. "The men were good, but not at the level they are today."

"I had good opportunities to recruit men and bring them up through the program."

Her efforts have created the empire that the ASU archery team is today, and has been for years. Since Rhodes took over the coaching duties, ASU has won 24 of a possible 30 national team titles.

Cornhuskers

Continued from page 15.

The Sun Devils were forced to punt on the ensuing possession, but a second fumble by Taylor, recovered in the air by freshman strong safety Nathan LaDuke, gave them the ball back at the Nebraska 13.

ASU then drove to the one-yard line after three plays, and Harris punched the ball in to tie the game for a third time, 28-28.

"I thought we had them after we tied the game at 28," Cooper said. "I thought we would hold them on three plays and then come right back and score ourselves."

Unfortunately for Cooper and the Devils, a 62-yard run by Jones changed everything.

Aided by a textbook block from Heibel on Patterson, Jones broke down the sideline but was run down by ASU cornerback Anthony Parker at the 8-yard line.

Taylor then broke through the ASU defense from one yard out to put the Huskers in the lead for good, 35-28.

ASU had its following drive cut short by Forch's interception, coming on a pass play intended for Cox, who was wide open in the middle of the field.

"The ball should have gone to Cox all along," Colletto said. "Those are things he's (Ford) got to get better at."

Colletto had few kind words for Ford's performance. "He's got to keep us from losing," he said. "He's not good enough to win games for us by himself."

Ford completed 15 of 34 passes for 200 yards and one touchdown. He also threw three interceptions.

In spite of the loss, Cooper said there is a positive side. "If Nebraska is the number two team, then we've got a chance to improve and become a really good football team," he said.

classifieds

STATE PRESS CLASSIFIEDS
965-6731
Matthews Center
Basement

Liner Ad Rates:
15 words or less, \$2.75/day, 1-4 days
\$2.50/day, 5-9 days
\$2.40/day, 10 or more days
15¢ each additional word
Deadline:
Noon, one day prior to publication
**Cash • Check
Visa • Mastercard
(Sorry, no billing)**

The State Press reserves the right to edit or reject any ad deemed objectionable.

Check your ad! The State Press will only be responsible for one incorrect insertion. Errors must be reported before noon the first day your ad appears.

The State Press disclaims all responsibility for quality and prices of goods and services offered in both classified and display advertising by its advertisers.

The STATE PRESS never knowingly accepts deceptive or misleading advertising. Any offer requiring an investment should be thoroughly investigated. If you have a complaint regarding a particular ad, it should be reported in writing to: The Better Business Bureau, 4428 N. 12th St., Phoenix, AZ 85014

announcements

ACT NOW! University and college funds available. \$140,000,000 in funds unused last year. National Academic and Financial Sources Unlimited will assist you in securing loans, grants and scholarships. Money-back guarantee. College, athletic and graduate student matching award services available. Need analysis program for family available. Free information. Call Tucson, 297-0644, or write: National Academic and Financial Sources Unltd., Suite 239, PO Box 36883, Tucson, AZ 85704.

WIN A 60 SECOND SHOPPING SPREE AT THE U-SHOP
Register Now!
Rural and University

BY APPOINTMENT only. Sell, trade, buy-American coins; antique jewelry. Layaways available. Personalized orders. 898-8102.

COLLEGE MONEY available. C.C.S. Scholarship Locator Service can help you finance your college education. We specialize in locating scholarships, grants, and loans. Money-back guarantee. Free brochure. Call Tucson, 296-0965 or write C.C.S., P.O. Box 17150, Tucson, AZ 85731.

RESEARCH GRANT applications now available through the Graduate Student Association of ASASU, Memorial Union, 208T.

autos for sale

1977 DATSUN F-10, low miles, stereo, new tires. Immaculate condition, never hit. Sporty. 784-9768, 996-3393.

1978 CELICA ST, air, auto, good tires, runs excellent, some body work. \$1850. 968-4854, message.

1978 VOLKSWAGON Bus, 2.0L, 4 speed, air, stereo, tinted windows. Must see. \$2500, 966-3485.

1979 DODGE Diplomat, air, auto, power brakes/steering, AM-FM, tilt wheel. Excellent condition. \$1500. 961-1615.

1985 MITSUBISHI Galant- Topline, mauve, low mileage, one owner. Excellent buy. 838-6774.

1986 TOYOTA Camry LE- topline, light blue, only 12,400 miles, one owner. Outstanding bargain, 838-6774.

1987 YUGO GV, excellent condition, runs great, economical transportation. Call, evenings or weekends, 860-6878.

RAD RED '69 MGB with roll bar/black top. \$1500/offer, runs good! To see, 860-9313.

TOYOTA CELICA Supra, fully loaded! Low mileage, 78K. Year '79, \$2400. Moped, motorcycle style, 380 miles, \$170. 820-5459.

motorcycles for sale

1984 HONDA Spree, excellent running condition, \$200 or best offer. Call David at 968-3233.

1986 ELITE 150, red, injury free scooter. Rides well. \$1500. Contact Siemen, 941-4418, 968-6101.

1986 HONDA Rebel 250, one owner, sissy bar and engine guard. \$1200. Call 964-6138.

FOR SALE: 1986 Honda Spree. Asking \$400, including helmet. Call 5-9 p.m. only, 840-4140, ask for Beth.

USED BIKE sale- 1985 Honda 450 Night-hawk, \$595; 1979 Suzuki GS 1000L, \$695. More great buys. 10% off new parts. Arizona Motorcycle, 1812 E. 1st St. 966-0101.

YAMAHA 650 Heritage Special 1983 model. Purchased new in 1986, less than 1000 miles. Asking \$1200. Call Les, 890-1697.

bicycles for sale

EXCELLENT VALUE! 25" Austro-Daimler, Reynolds 531 frame, new wheels. \$200. Tim, 381-1950 evenings.

FOR SALE: 26" Nishiki Sport bicycle (men's). Burgundy. Excellent condition. 1986. Price negotiable. Call Cris: days, 731-8879; evenings, 894-2569.

STUDENT DISCOUNTS welcome! Largest pro shop in valley. Expert service on all makes and models. Full selection of clothing, bicycles, parts, and accessories. Financing and layaway available. Domenic's Cycling, 1004 South Mill, 967-7700.

TEMPE BICYCLE Shop. Largest selection new, used bikes, clothing, parts, accessories. Rentals. Student discounts. Close to ASU. 330 W. University. 966-8696.

tickets for sale

ASU FOOTBALL Students tickets for sale- All games, from \$8. Call Jeff, 967-2147.

SEASON STUDENT ticket, \$100 or best offer. Kimberly, 827-9422.

STUDENT FOOTBALL season tickets, last 5 games, including UCLA and Arizona, \$50. Steve, 990-3190.

TICKETS AVAILABLE for all home football games, starting at \$15. Call David at 968-3233 or Scott at 957-4400.

furniture for sale

FULL SIZE bed. Still in factory package. \$99. Can deliver. Phone orders accepted. 272-8286.

NEW QUEEN size Ortho box and mattress. Stored, never used. \$149. Can deliver. Phone orders accepted. 272-8286.

USED FURNITURE and antiques. Affordable prices. Top quality. 1310 W. University, Mesa. 890-0776.

WAREHOUSE SALE: Desks from \$44, chairs from \$4, bookshelves from \$19, end tables, typing tables, computer tables, file cabinets, storage cabinets, dining tables, plus lots more. Arizona Office Liquidators, 4010 S. 43rd Place, between 40th Street and 48th Street, north of Broadway. 437-2224.

miscellaneous for sale

A COLOR TV, portable, \$65; 25" console TV, \$85. Call 254-1412.

CANON TYPSTAR 6II electronic typewriter, display screen, carrying case, battery operated or AC adapter. Brand new, will sell for \$175. 860-0989.

CASH IMMEDIATELY. *** Name brands, current styles, career clothing, better dresses, sportswear, and accessories. Plus fabulous finds for your wardrobe. It's like changing closets with a friend. Clothes Peddler, 1126 N. Scottsdale Rd., 966-2300.

DRESS FOR success! Rolex, Gucci, Cartier imitation watches. New. As low as \$70. 784-9768, 996-3393.

HP-12C Business calculator. Almost new, \$50, 829-7410.

WET SUIT, Sea Ray, 1/4 inch Farmer John suit. Double stitch. Excellent condition. 921-1708.

real estate for sale

AFFORDABLE HOUSES, townhouses, foreclosures. Why Rent? Invest! Information, call Gloria 948-2825, John Hall Associates, 948-0550.

1987 Fall Semester PRODUCTION DEPT. STUDENT HOURLY JOBS

PASTE-UP TECHNICIAN II

(News Page Paste-Up) Ask for job #828H at Student Employment

You must have class or job experience in paste-up techniques. You will assemble and paste-up all of the news page elements: text, headlines, cutlines and photos. Must be accurate and have the ability to follow written directions and be extremely reliable.

DAYS & HOURS
Sun. 2:30 to 6:30 p.m.
Mon.-Thurs. 5 p.m. to approx. 10 p.m.

TYPESETTER II

Ask for job #788H at Student Employment

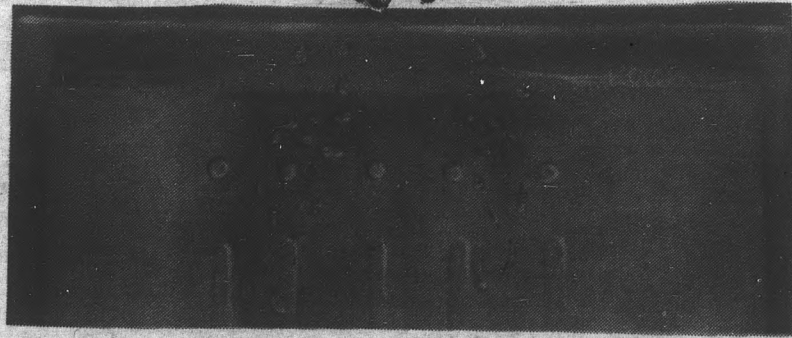
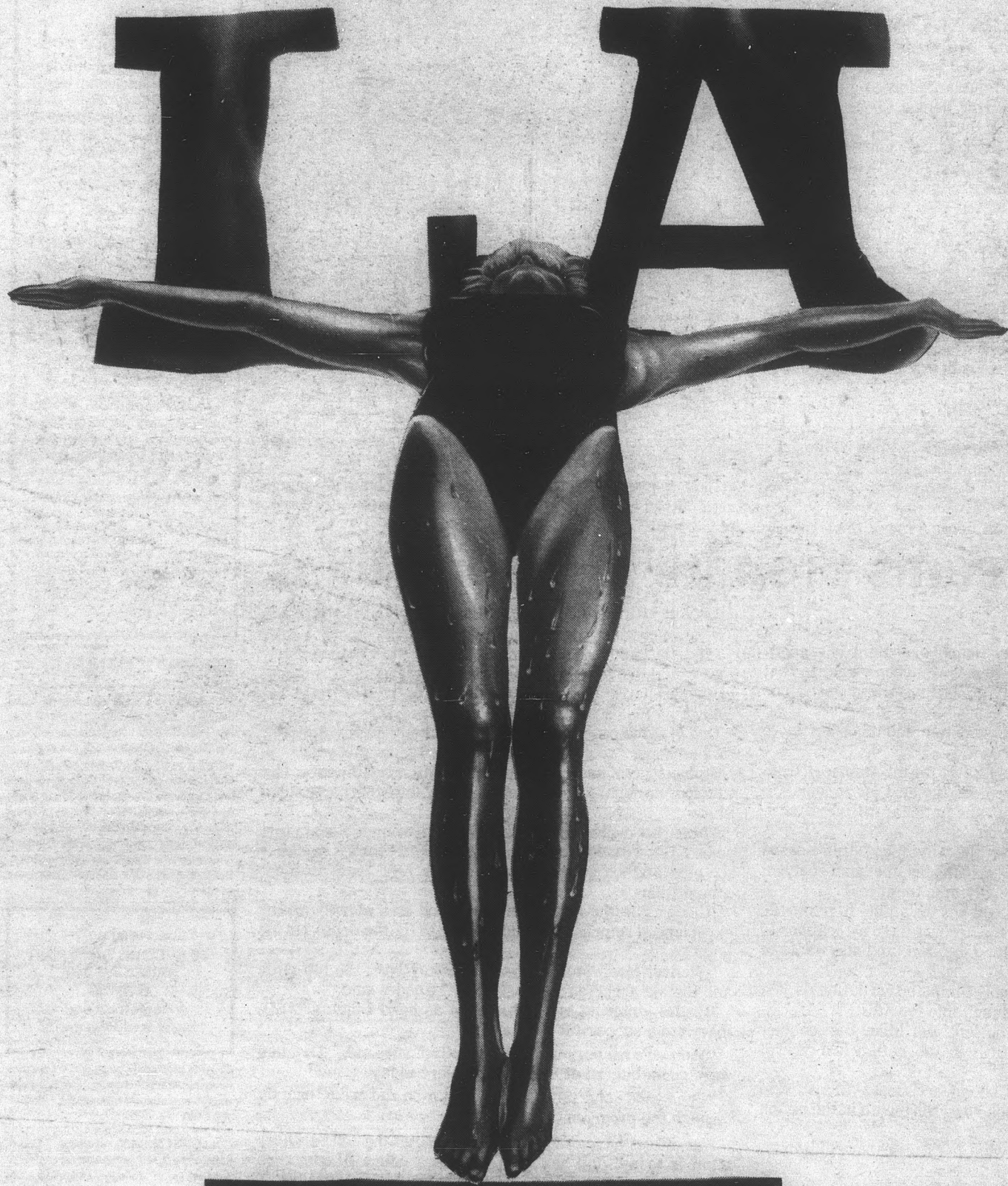
You should have class or job experience operating a phototypesetter. You will monitor and process type from two systems concurrently. Some proofreading involved. Must be attentive to detail, be reliable and precise.

DAYS & HOURS
Sunday 2 to 7 p.m.
Mon.-Thurs. 5 p.m. to approx. 8:30 p.m.

**PLEASE DO NOT APPLY IF
YOU CANNOT WORK THESE
PUBLISHED HOURS.**

Applicants must pick up a referral form from Student Employment in Matthews Center, and a State Press production job application from the reception desk at the State Press office, basement of Matthews Center. Persons selected for interview will be called for interview.

SIGMA NU PRESENTS



LA BEER RELAYS

OCTOBER 3, 1987

To Benefit St. Mary's Food Bank



Hensley's Co.
WHOLESALE SALES