

New engineering dean reassigns department head

By KIM MATTINGLY
State Press

In his first day as dean of the College of Engineering and Applied Sciences, George C. Beakley removed Darryl Metzger as chairman of the Mechanical and Aerospace Engineering department.

Beakley said Metzger will be replaced as acting chairman by his assistant, Donovan Evans, until a national search for a permanent replacement is conducted.

Metzger, who faculty members said has been striving to improve the aerospace engineering program since it was denied accreditation in 1985-86, refused Wednesday to comment on his replacement.

But MAE Professor Helen Reed said Metzger announced in a last-minute faculty meeting Tuesday that he was "no longer department chair since George Beakley was dean."

"He said it had to do with the aerospace accreditation," Reed said.

The Accreditation Board for Engineering and Technology denied ASU's aerospace program accreditation two years ago for several program deficiencies, including the "lack of a cohesive, identifiable faculty" and an "apparent lack of focus and direction."

Charles Backus, the assistant dean for research in the engineering college, said: "The accreditation situation is very important to Beakley. One could surmise that it wasn't getting the proper attention."

But Beakley did not relate accreditation problems to Metzger's replacement. He said he merely reassigned the former chairman to lead an ASU effort to compete for one of eight university-based Space Engineering Research Centers to be sponsored by the National Aeronautics and Space Administration.

Metzger served as one of five external advisers for the formulation of the NASA program, which a Washington announcement said will foster creative and innovative concepts for future space systems and expand the nation's engineering talent base for research and development.

Any U.S. university with a strong undergraduate and graduate engineering program can submit a proposal, due Nov. 6, for obtaining one of the possible eight centers to be built in the program's first year.

As each center develops, NASA expects to increase its annual funding from approximately \$500,000 to more than \$1 million.

The funds can be applied to engineering research projects, center development,

support for graduate and undergraduate students who are U.S. citizens and training in advanced space engineering.

"We're making a major effort in the college to go after large funding," Backus said, adding that he expects more than 100 universities to vie for the centers.

Although Backus said replacing a department chair to work on a proposal is not "normal procedure," he said it is "certainly acceptable."

"The rule is that you serve at the pleasure of your boss," he said. "We all know the situation."

Meanwhile, Beakley said he is happy with improvements in the aerospace program, and he said the department will assess this year whether it will reapply for accreditation in fall 1988.

Committee named to plan distribution of football tickets

By AARYN KEMP
State Press

A committee named Wednesday to formulate an improved plan to distribute student Sun Devil football season tickets has its work cut out for it.

ASASU President Karrin Kunasek said six students will be part of the 12-member committee that was requested by ASU President J. Russell Nelson to avoid 15-hour lines for tickets that plagued students last week.

Brent Brown, vice president for University Relations, will chair the committee with administration representatives Athletic Director Charles Harris and Bob Ellis, associate vice president for University Relations.

Other University representatives include Dianne Yeager, manager of university ticket sales; Leon Shell, dean of Student Life; Karen Fry, administrative assistant of the registrar's office; and Betty Turner Asher, vice president for Student Affairs.

Kunasek said Wednesday's preliminary meeting went well, adding she is pleased there will be student input. Vince Micone, ASASU campus affairs vice president; Kevin Fuller, intercollegiate council on athletics, and Kunasek will also sit on the committee.

A representative from Greek Life, the Residence Hall Association and a student-at-large will also be included, she said.

"I received a long letter from a commuter student about the previous ticket plan," Kunasek said. "There has never been a commuter representative. I'm going to call him to see if he is interested."

Ellis said he does not know of any concrete ideas for a plan, but the purpose of the committee is to decide upon an agreeable design for ticket sales.

Lou Ann Denny, Associate Registrar, said she and Yeager are pursuing plans for placing a box on student registration forms as a way to reserve season tickets.

The committee will take approximately two to three months to decide upon a plan, Kunasek said.

The first committee meeting is scheduled for 3 p.m. Tuesday.



Susan Schuman/State Press

Rhodes rejects recall

Arizona congressman John J. Rhodes (R) told the Young Republicans that the Mecham Recall movement is 'hurting the political fabric of the state' in a meeting Wednesday in the MU Arizona Room. Story page 8.

Correspondence courses target of probe

Harvey case spurs investigation of athletes' academic advisement

By SCOTT LUCK
State Press

An investigation of academic advisement in the athletic department will "most likely" focus on a policy against correspondence courses that President J. Russell Nelson overrode in the Stacy Harvey case, a University official said Wednesday.

Jill DeMichele, assistant athletic director for academic and student services, said investigator Mike Slive will review the faculty athletic representatives' policy prohibiting athletes from counting correspondence courses toward player eligibility.

Nelson overruled the policy this week because he said Harvey was ill-advised by the athletic department and was forced to rely on credits from a correspondence course for eligibility in the 1987 season.

Slive, now a private Chicago lawyer, was a Pacific-10 Conference executive director in 1979.

Frank Sackton, an ASU public affairs professor and former

deputy athletic director, said Nelson designated Slive to find out "why students are not treated better, why students are not being served (in athletic academic advisement)."

Sackton said Slive, who also was consulted by ASU in 1984 about NCAA violations, should arrive from Chicago within 10 days to begin his one-man investigation. He estimated it will take three weeks.

Slive could not be reached for comment Wednesday. Former faculty athletic representative Milton Schroeder initiated the policy against correspondence courses in 1981, before Athletic Director Charles Harris was hired by ASU in spring 1985.

Schroeder preceded Marianne Jennings, who resigned the position Monday after Harris successfully appealed to Nelson for the reinstatement of Harvey's athletic eligibility.

Schroeder, a College of Law professor, said he devised the policy in conjunction with a group of associate deans.

In 1979, it was discovered that several ASU football players received phony credit for correspondence courses at Rocky Mountain College in Billings, Mont.

But Schroeder said the Rocky Mountain College incident

inside today

ASU WEATHER

Sunny today with an expected high of 105.

PAPAL VISIT

An update on the logistics of having an expected 250,000 people in Tempe during the pope's visit to Sun Devil Stadium on Sept. 14.

Page 15.

Classified.....	21
Comics.....	6
Opinion.....	4
Analysis.....	5
Sports.....	17

today

•The Today section is a daily calendar of events happening at ASU. Any campus club or organization can submit entries to the calendar for publication to the *State Press*, located in the basement of Matthews Center, Room 15. Entries will not be taken over the phone. Deadline for the entries will be 1 p.m. the previous business day.

Entries may be edited due to content or space.

Meetings

- Phi Alpha Delta**, the pre-law fraternity, will meet at 3 p.m. today in the MU Graham Room.
- The Mechem Recall Committee at ASU** will hold an open volunteer meeting and discuss upcoming events today at 1:40 p.m. in the MU Graham Room.
- The National International Students Association** will hold a reception and general meeting today at 6 p.m. in the MU Apache Room.
- The Lesbian and Gay Academic Union** will be having a social half-hour followed by a business meeting at 7 p.m. in the MU, Room 217. "The New Awareness" and mental health issues will be discussed.
- The Hispanic Business Students Association** will have a "beginning of the semester" reception today at 3:30 p.m. in the MU Alumni Lounge. New members of all majors are welcome.
- University Toastmasters**, a public-speaking group, will be meeting today at

5:15 p.m. in the Physical Education Building West, Room 156. Visitors welcome.

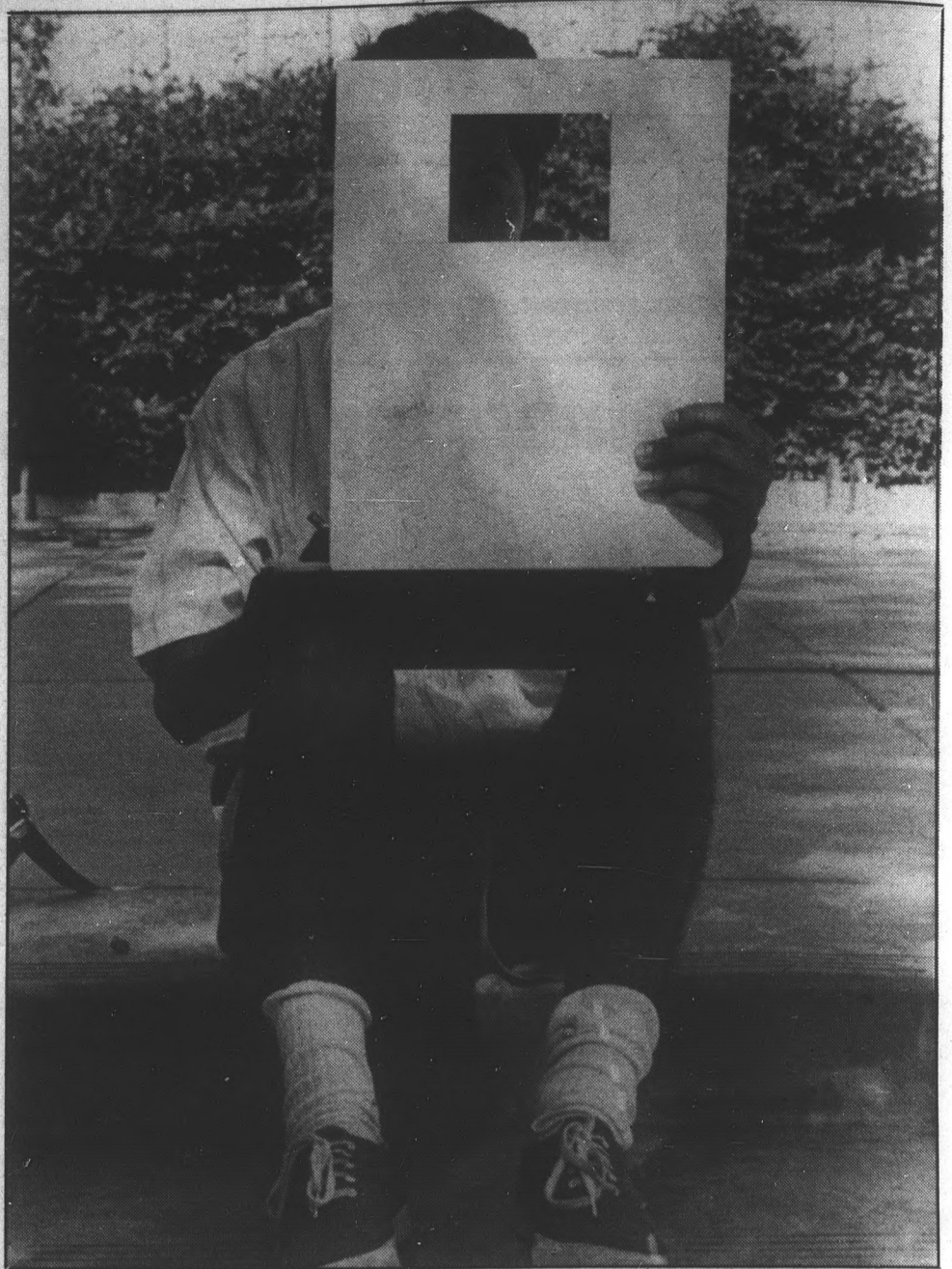
- The Rugby Club** will have a team meeting at 8 p.m. today in the MU Santa Cruz Room. New players are welcome.
- The Alpha Kappa Alpha Sorority** will hold a Fall Rush Tea for anyone interested in pledging or receiving more information at 6 p.m. today in the MU Turquoise Room.
- The ASU Ice Devil Hockey Club** will have an organizational meeting at 10 p.m. tonight in the MU Cochise Room.

Lectures

- The ASU Women's Studies Brown Bag Lecture Series** presents a lecture by Pat Kerstner titled "Women, Food, Body Image; Why Do So Many Women Suffer with Eating Disorders?" at 12:30 p.m. today in the Social Science Building, Room 104.

Announcements

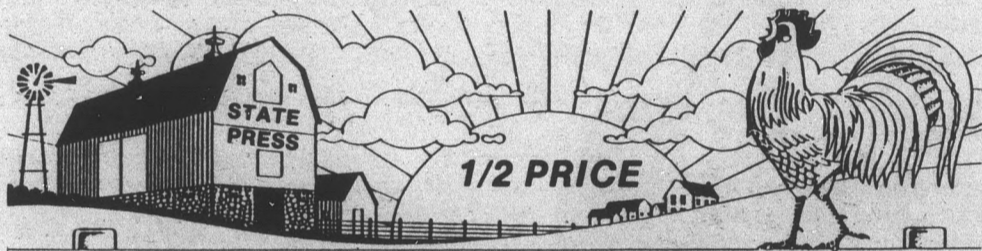
- The Shotokan Karate Club** will be accepting new members and conducting regular training Mondays, Tuesdays and Thursdays at 5:30 p.m. in the Physical Education Building West, Room 101. Students who wish to become permanent club members are charged a \$20 membership fee.
- Alpha Kappa Psi**, a business fraternity, will be having an orientation in the MU tonight. Stop by their table at the business dean's patio for more information.



Susan Schuman/State Press

It's hip to be square

Miguel Arias, 22, looks through a frame while sketching the sculpture in front of the College of Architecture. Arias is a junior technical art major from Los Alamitos, Calif.



**LADIES
"PENNY DRINK"
NIGHT!!**

1 CENT DRINKS FOR LADIES
ALL NIGHT LONG!!

\$1.00 DRINKS FOR GUYS!!
8-11PM

Tonight!
DANCE, DANCE, DANCE

919 E. APACHE BLVD. 921-9775

Liquor Barn

This week's super special ...

\$439

12 pk. cans

<p>750 ML SPECIAL</p> <p>Andre \$2.29 Jack Daniels \$9.97 Jose Cuervo Gold \$9.49 Everclear \$11.89 Kahlua \$9.99 Bacardi 151 \$10.49</p>	<p>Seagram's Wine Coolers</p> <p>\$259</p> <p>4 pk.</p>
--	---

SUTTER HOME
WT ZINFANDEL

2 for \$700

TEPUSQUET
RESERVE
CHARDONNAY

\$499

750 ml.

Over 1,000 square feet of ICE COLD
walk-in beer cooler!

— in Tempe —
930 E. Broadway
894-1067

Expires
9-9-87.

**YOUR CHOICE
REG. OR LIGHT**

BUD OR STROHS
\$39⁹⁵

**MILLER
OR COORS**
\$34⁹⁵

Gladly accepted.

OPEN: Mon.-Thurs. 9-9
Fri. 9-10
Sat. 8-10
Sun. 12-8

world/nation in brief

Iran, Iraq shell ships in Persian Gulf; U.S. to escort more Kuwaiti tankers

MANAMA, Bahrain (AP) — Iranian speedboats and Iraqi warplanes attacked at least seven ships in the Persian Gulf within 24 hours and U.S. warships prepared on Wednesday to escort more tankers through the war zone.

The Iraqis reported a fifth day of air raids on Iranian shipping, oil fields and other industrial targets. Iran said its artillery shelled military and industrial installations in southern Iraq and Iranian planes struck in the northern area of the 730-mile border warfront.

Eighteen attacks on ships have been reported and 13 confirmed since Iran and Iraq, which have been at war since September 1980, resumed their "tanker war" last weekend after a six-week lull.

The latest confirmed Iraqi raid was on the small offshore supply ship Big Orange 14. It was reported sunk by an air-fired missile late Tuesday near Kharg Island, Iran's main oil export terminal in the northern gulf.

West German teenager apologizes for landing plane in Red Square

MOSCOW (AP) — West German teen-ager Mathias Rust apologized to a Soviet court Wednesday for flying a single-engine plane into Red Square. He said it started as a mission of peace but ended as the greatest mistake of his life.

"My flight was not the best action to bring this about. I'm very sorry," Rust, a 19-year-old resident of suburban Hamburg, said during nearly five hours of testimony on the first day of trial at the Soviet Supreme Court.

It was his first public appearance since he piloted a Cessna 172b across the Soviet border on May 28 and set it down amid hundreds of astonished pedestrians on Red Square near the Kremlin, the seat of Soviet power. The flight led to a shake-up of the Soviet military establishment.

Rust faces charges of hooliganism, illegally crossing the Soviet border and violating international flight rules, and he could get 10 years in prison. The trial is expected to last three days.

Arms shipment protesters return to site of munitions train accident

CONCORD, Calif. (AP) — Angry demonstrators returned Wednesday to the Concord Naval Weapons Station where a veteran protesting U.S. arms shipments to Central America lost both legs when he knelt in front of an oncoming munitions train.

The protesters, in a news conference held at the site of the incident, denounced the Navy for failing to stop the train that hit S. Brian Willson on Tuesday.

"That train that ran into us . . . was a death train. It was quite obvious that there was no intent to stop," said Duncan Murphy, who was standing beside Willson while the train approached.

Capt. Lonnie Cagle, commander of the base 45 miles east of San Francisco, said the train engineer "was under no orders" to proceed through the demonstrators without stopping. Public affairs officer Dan Tikalsky said the train crew had been instructed to stop if anyone was on the tracks.

National Guardsmen summoned to battle blazes in 4 western states

(AP) — National Guardsmen were called out Wednesday and firefighters flew in from around the nation to help weary crews battling fires in four Western states that blackened 137,000 acres and forced some people to flee their homes.

Lightning-spawned fires since Sunday had charred 89,115 acres of brush and timber in northern California, swelling by 20,000 acres in less than 24 hours.

Oregon had more than 600 fires, charring at least 31,000 acres.

The biggest single fire, in the central Idaho mountains, was a 32-day-old, 15,000-acre blaze being allowed to burn in extremely rugged terrain inside a wilderness area. Firefighters at Pocatello, Idaho, were close to containing a fire that destroyed one house and threatened others on the outskirts of the city.

Southern California has had more than 30 fires, and arson was suspected in at least three cases. One fire in Washington forced evacuation of campers in a nearby state park.

Korean government, opposition leaders agree on direct presidential election

SEOUL, South Korea (AP) — Government and opposition leaders agreed Wednesday to hold the first direct presidential election in a generation by Dec. 20.

They also agreed that the government should not intervene in labor disputes and promised legislation to increase the rights of workers. But labor turmoil continued as striking shipyard workers went on a rampage and autoworkers fought riot police.

"It was quite significant that we held the first official talks," Roh Tae-woo, president of the governing Democratic Justice Party, said after his first meeting with Kim Young-sam of the main opposition Democratic Reunification Party.

Roh is his party's candidate to succeed President Chun Doo-hwan, whose term ends in December.

Chun declared June 30, after weeks of anti-government protest, that he would accept opposition demands for such democratic changes as replacing the electoral college with direct presidential elections.

Donations to Flight 255's sole survivor Cecilia Cichan surpass \$100,000 mark

ANN ARBOR, Mich. (AP) — More than \$106,000 has been sent to the University of Michigan Medical Center for Cecilia Cichan, the only surviving passenger on an airplane that crashed, killing her parents, her brother and 153 other people, a hospital official said Wednesday.

Spokesman Mike Harrison said that according to Wednesday's count, \$106,573.03 had been sent to the 4-year-old girl from Tempe who was badly burned in the crash of Northwest Airlines Flight 255 at Detroit Metropolitan Airport on Aug. 16. She remained in fair condition.

He also said 970 gifts and tens of thousands of cards had been sent to the hospital for the little girl.

Harrison said Cecilia's family hadn't decided how to use the money or where it should be placed. In the meantime, he added, the checks and cash are being held in a safe place.

Harrison also said that Lawrence Favio, a motorist who was burned when the plane crashed, was in fair condition Wednesday.

Airlines told to provide consumers with month flight-delay information

WASHINGTON (AP) — The Transportation Department, trying to spur the airlines into improving service, directed major air carriers Wednesday to provide consumers with monthly information on flight delays and lost baggage.

The airlines will have to provide its on-time performance record to the department for public distribution and include each flight's on-time record in the computerized reservation systems used by most travel agents, officials said.

The airlines agreed to cooperate. But William Bolger, president of the Air Transport Association, which represents the major carriers, accused the department of being "preoccupied with reporting on problems rather than solving problems."

The airlines have argued that many of the industry's problems stem from shortcomings in the government's air traffic control system and overburdened airports.

Airlines will begin providing the monthly performance information to the department next month.

Nice Legs

We've got the shorts to fit them!

✓ Largest Selection.

✓ Best prices in town.

ARIZONA SHORTS & SPORTS

\$2 ARIZONA SHORTS BUCK GOOD FOR \$2 OFF ANY PAIR OF SHORTS.

ARIZONA SHORTS & SPORTS

425 S. Mill • Tempe
966-9199

Coupon expires 10-1-87 - one per customer.

Campus Women:

we want you and your friends to talk about sex on a television talk show

We're searching for college women to participate in the studio audience, as hosts and guests explore changing sexual attitudes on campus.

The popular talk show produced by women for the Playboy Cable Network will be videotaped before a live audience Friday, September 11 at 7:30 p.m. at the Scottsdale Center for the Arts. We'll be picking a college student to be part of the panel on campus sex the night of the show.

FREE TICKETS CAN BE PICKED UP AT DILLARDS TICKET OUTLETS

Don't forget to bring a friend.

We'll be discussing "Campus Sex," "Acquaintance Rape" and "Surviving an Addictive Relationship."

Join us and share your feelings on sexual attitudes.

Listen to KSLX-FM 100.7 for more detail.

ASASU

Responsible spending should be priority for officers

Darrin Hostetler
Opinion Editor



It's time for an early semester progress report on your headline-grabbing, litigation-loving student government: Associated Students of Arizona State University.

While most of the student population has been away from campus, the four new ASASU executive officers have been tucked away in their offices on the second floor of the MU all summer, and they have not been idle.

There are two things that ASASU is always doing: arguing and spending money. And while things are currently remarkably calm and running smoothly at ASASU, student government is, of course, liberally indulging in the latter.

But let's look at the good news first.

We can all be assured that the officers — President Karrin Kunasek, Executive Vice President Will Daly, Activities Vice President John Fees and Campus Affairs Vice President Vince Micone — are unified and busy working on "projects" of benefit to the student body.

The backbiting and internal conflict of the previous year's administration is, at least for the time being, gone. Kunasek is coming off of an ambitious schedule of several hundred meetings with administrators and students this summer, and seems to be settling comfortably into her job. Daly is diving into a pet project — improving the foundation of ASU student government: the college councils — and showed last week during the first ASASU senate meeting that he will be a firm, capable leader of the legislative body.

Fees and Micone are involved in organizing their various departments, from Lecture Series to the Safety Escort Service.

The atmosphere is one of cooperation, as the officers appear to be sincere in their desire to de-emphasize such issues as the LGAU funding battle and concentrate on service and programming for students.

So much for the good news. Here's the not so good.

The officers went on a little shopping spree this summer, in between working on "projects." And one of those escapades cost students \$10,000.

Back in June, Kunasek presented a bill to the ASASU Executive Committee (consisting of the four officers and three student senate representatives) that provided funds for the purchase of two

Taiwanese IBM replica computer terminals and a hookup to the ASU computer system, which would enable herself and Daly to communicate to professors and administrators through an electronic mail system. The computers would also facilitate, to use ASASU lingo, the complicated budgeting process that student government struggles through every year.

But these are just weak excuses to rationalize what really happened — the officers, at least Micone and Fees, felt the need for desktop status symbols.

The simple truth is that ASASU did not have to buy individual computers for each officer. They could easily have shared two terminals, placed in a communal work space like the adjacent senate work room,

computer) in anybody else's office if they don't have one in their own."

That's childish. And it's an infuriating reason to spend student funds.

Micone did some solo shopping this summer, too, purchasing a \$50 calendar/appointment book which he charged to ASASU.

He claims that this book will help him be the best organized officer he can be, and will thus, in the long run, save students \$500 through his improved performance.

Well gee, Vince. Does that mean that the other three officers, who are using more modest calendars (ones they purchased privately), will be costing the students \$500 because of their disorganization? If so, we better run out and get them the deluxe model, too.

Daly, with the consent of the other officers, also paid \$150 to an architecture student in July to rearrange the ASASU offices, to "break down some of the barriers" and make the office more usable and less intimidating to students.

The result has been a more open and functional workspace, and is probably the most justifiable of all the summer expenditures. But still, moving desk dividers and tables around will not tear away the long standing sense of alienation, intimidation and contempt the student body feels toward ASASU.

In the final analysis, the above mentioned expenditures are questionable because they were all matters of "want," rather than "need." The ASASU officers are elected student servants, caretakers of funds given to them by ASU enrollees, and are charged with providing campus programming. The officers should be given the tools they need to function properly, but should at all times keep in mind that they are spending student funds and should never pull out the checkbook without careful consideration and with solely the students in mind.

In any case, the officers have their computers, their new appointment books and office layout. They're ready to work and they've got what they think they need to meet the many challenges of the upcoming year.

And if the officers really want to "break down the barriers" with apathetic students and draw them into involvement with ASASU, they can begin by spending the funds of those same students more responsibly.



The only catch to this was that Micone figured if the president and executive vice president were going to have computers in their offices, then he should have one too.

Fees, feeling no doubt like the odd officer out, then proceeded to climb on board and ask for a terminal of his own.

The bottom line is that once the officers got done amending Kunasek's bill, it provided for terminals and hookups for the desks of all four officers. The cost to you: \$10,000.

The officers advance several reasons that attempt to legitimate this purchase, made, curiously enough, during the summer when most students were not on campus. They say the budgetary aid is essential, that communication between ASASU and the administration is improved and takes up less time, and that the students are thus being better served.

I've seen the budget program. It's good, and I'm sure it helps when dealing with complicated financial matters. I'm also sure that electronic mail makes communications faster and easier.

and avoided the unnecessary expense. Daly, to his credit, initially suggested this, and went so far as to place his terminal in the senate room for the benefit and easy access of all staffers.

The officers claim that they need four computers so that they don't have to wait for on-line time and so that their staffs can have easy access. Well, sure, it would be nice if each officer had a terminal. But during an age when many students are dropping out of school because they can't pay their tuition and are scrounging for rent money, how can a purchase be justified to the average student on the basis of saving ASASU personnel a few minutes?

ASASU needs to be further computerized. But in this case, the need for computers became linked to the four officers' individual feelings of worth and importance. And the bottom line was unnecessary expense.

As College of Engineering Sen. Kevin Anderson argued during the executive committee meeting in June, "this boils down to the point that nobody wants (the

STATE PRESS

KHALI CRAWFORD
Editor
JUDIE GAILLARD
Managing Editor

City Editor..... KIM MATTINGLY
Asst. City Editor..... BEN MCCONNELL
Wire Editor..... MIKE ROWELL
Opinion Editor..... DARRIN HOSTETLER
News Editor..... SHELLY SCHAFFER
Arts Editor..... GREGORY R. KRZOS
Asst. Arts Editor..... DAVE MILLER
Sports Editor..... STEVE BRENNAN
Asst. Sports Editor..... DAVE HODGES
Copy Chief..... BOB E. HEILER
Photo Editor..... ANDY MROZINSKI

REPORTERS: Victor Barajas, Mike Burgess, Vickie Chachere, Marissa Hallare, Mike Hoehn, Michelle Hoffman, Aaryn Kemp, Robie Kakonge, Dana Leonard, Scott Luck, Steve Nolen, Kelly Pearce, Twyla Pumroy, Terri Seabert, Tracy Scott.

ARTS REPORTERS: Chuck Hadd, Howell J. Malham Jr., Tod McCoy, Scott Seckel, Cerise Wilson.

SPORTS REPORTERS: Carol Boos, Chris Dorsey, Joan McKenna, Larry Gast.

PHOTOGRAPHERS: Todd Green, Sean L. Mohr, Steve Munteer, Susan Schuman.

COPY EDITORS: Kerry Fehr, Jill Herbranson, Marty Sauerzopf.

ARTIST: Mike Ritter, Steve Talkowski

ADVERTISING REPRESENTATIVES: Veronica Alfaro, Danielle Carbone, Judy Crane, Joe Cuff, Ola Hasadinratana, Tom Hutchison, manager of Mesa, Emad Mugharbel, Mark Peterson, Kevin Reap, Rich Toltzman, Laura White.

PRODUCTION: Tom Blackwood, Leighayn Green, Mark McKinney, Bruce Peterson, Alice Pittman, Michael Quinn, Lynne Senzek.

The State Press is published Monday through Friday during the academic year, except holidays and exam periods, at Matthews Center, Room 15, Arizona State University, Tempe AZ 85287. Newsroom: 965-2292. Advertising & Production: 965-7572

The State Press is the only newspaper exclusively published for and circulated on the ASU campus. The news and views published in this newspaper are not necessarily those of the ASU administration, faculty, staff or student body.

quotable

"Public office is the last refuge of the incompetent."

— Boies Penrose

LETTER POLICY

The State Press welcomes and encourages written response from our readers on any topic.

All letters must be typed, double-spaced and no longer than three pages in length to be eligible for publication.

Please include your full name, class standing and major (or other affiliation with the University) and phone number. Requests for anonymity will be granted with an appropriate reason.

All letters are subject to editing at the discretion of the opinion page editor. Bring letters to the State Press front desk in the basement of Matthews Center. Photo I.D. is required.

Letters may also be addressed to: State Press, 15 Matthews Center, Arizona State University, Tempe, AZ 85287-1502.

Strip-tease

Mecham considering suit against Gary Trudeau

J. MICHAEL HOEHN
State Press

Gov. Evan Mecham is consulting with his attorneys about possible legal action resulting from the publication of several "Doonesbury" cartoon strips in which he is featured.

Cartoonist Gary Trudeau has drawn six installments of his nationally syndicated cartoon strip "Doonesbury" that feature Mecham as the central character.

One strip ends with Mecham patting a black child on the head and saying "My! What a cute little pickaninny!"

Another one comments on the state's loss of revenue due to conventions that have cancelled in protest to Mecham's policies. In the strip Mecham is pictured as saying that the loss will be "offset by groups who may have conventions here because they admire my stand."

When asked who these groups may be the Mecham caricature replies: "Well, I can't reveal the details but we're very close to signing a major motorcycle gang!"

Although the strips are not scheduled to begin publication until next Monday, the *Mesa Tribune* ran all six installments this Monday. The appearance of the strips has resulted in an uproar in the governor's office.

Mecham has said the cartoons are not based on truth and he is consulting his lawyers about some sort of legal action.

"They are determining if there is anything worth going on and then if there are any grounds for action," Mecham press aide Ron Bellus said.

Bellus has also said if the strips are proven to be libelous, newspapers that publish them could also be named in a lawsuit.

"If a newspaper knowingly publishes something and it's libelous, then the newspaper is responsible," Bellus. *Mesa Tribune*, the *Phoenix Gazette*, the *Scottsdale Daily Progress*, the *Arizona Daily Star* in Tucson, and the *Arizona Daily Sun* in Flagstaff.

The *Progress* had been debating on Monday whether or not to run the strips, but assistant city editor Ron Moser said the paper had decided to go ahead with publication of the strip.

Moser said he also had no fear of being sued and believes that Bellus' statements are erroneous.

"It just shows what Ron Bellus knows about libel law is very little," Moser said.

He also said that the strips are "not even close to being libelous."

"Labeling the governor is very difficult, at best," he said. *Phoenix Gazette* managing editor Lynn Holt said that the paper will begin publication of the strip on Monday and while



Gov. Evan Mecham, shown here surrounded by reporters, is now embroiled in a controversy over the comic strip 'Doonesbury,' which features him as the main character this week. State Press photo

it would be up to the courts to decide if the strips are libelous, he is not afraid of a lawsuit.

Dr. Winer said that none of the papers should fear legal action since Trudeau's strips may not even fall under the libel doctrine of "actual malice."

"If 'Doonesbury' is stating an opinion, rather than a matter of fact, then this (the legal argument) breaks down," Winer said.

"The old legal quote is, 'there is no such thing as a false idea,'" he said.

Winer believes that Mecham's threat to initiate a lawsuit is a political move, not a legal one.

"He (Mecham) could be acting simply out of ignorance of

defamation law, but I assume it is quite unlikely that there will be any merit to a legal suit. That leads one to believe that his motives are political," he said.

"If you want my own opinion, he is playing this for a bit of sympathy against the recall movement," Winer continued.

"If he had any sense, he'd just laugh it off."

A spokesman for Brown and Bain, one of the most respected law firms on libel law in Arizona, summed it up best when asked what makes these strips different from any other editorial cartoon.

"What makes them special/ I don't know. I guess you'd have to ask Gov. Mecham."



Cartoonist-public figure battle: oldest fight in American politics

By KHALI CRAWFORD
State Press

"I don't care what they print about me, most of my constituents can't read anyway — but them damn pictures!"

These were the words of Tammany Hall "boss" William Marcy Tweed before his arrest and subsequent conviction as a direct result of Thomas Nast's cartoon campaign against him.

This 1850s example of the adversarial relationship between the political figure and the editorial cartoonist may be the most remembered, but it is certainly not the first nor the last.

Political art dates back long before the advent of newspapers and magazines. In America, cartooning has filled an important part in the political process ever since Ben Franklin drew his famous "Join or Die" cartoon of the dissected snake at the onset of the French and Indian War. America experienced a golden age of social and political art in the latter 1800s with Judge, Life, Puck and Harper's Weekly competing with each other, and the emergence of Thomas Nast.

Today the battle continues with Gov. Evan Mecham vs. Gary Trudeau — perhaps not only in the newspapers but in the libel courts, if Mecham has his way.

Trudeau, the editorial cartoonist who draws the syndicated strip, "Doonesbury," will begin publishing Monday a series of comic strips about Mecham and the recall movement.

What seems to exist is a love-hate

relationship between the two powers: the cartoonist loves the politician because he inspires the drawings and hates him for what he's done to inspire them; the politician's love for the cartoonist's ability to slam his opponents quickly turns to hate when he becomes the butt of the joke.

"Editorial cartoons by their very nature lend themselves to being inflammatory and insulting," said Michael Ritter, political cartoonist for the *State Press*. "A cartoon isn't effective if it's congratulating someone."

What makes this battle so much more fierce than the war that might exist between the editorial writer and the politician is the inherent emotional appeal of "those damn pictures."

Ritter explains, "(Thomas Nast's) cartoons were a driving force in bringing down Tammany Hall. Of all the editorials that were written none were as effective as the cartoons of Thomas Nast."

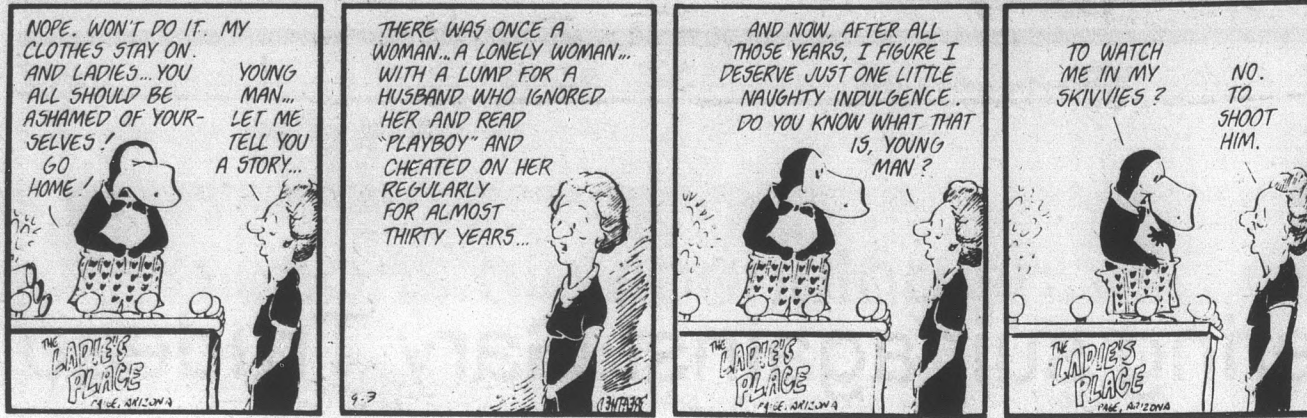
The power of Thomas Nast is the same as the power of Gary Trudeau — to appeal to the emotions of his audience to incite agreement to his position. It is the power that will always belong to those that make political points through the creation of visual images.

If after more than 100 years, a political cartoonist's job is still to incite emotion and effect change in the face intolerable situations, then Gary Trudeau is merely doing his job.

Why then, doesn't Mecham do his?

BLOOM COUNTY

by Berke Breathed



Shoe

by Jeff MacNelly



Ivory Towers

by Mike Ritter



Syndicate may sue over pre-printing of cartoons

MESA (AP) — A newspaper's early publication of a week's block of a nationally syndicated comic strip satirizing Arizona Gov. Evan Mecham drew complaints from readers and the syndicate but racked up heavy street sales, the newspaper's officials said Wednesday.

The Mesa Tribune, which runs the daily "Doonesbury" strip by Gary Trudeau, published a story Tuesday on the series and illustrated it with all six panels intended for next week.

The Mecham administration, meanwhile, said the governor's personal attorneys were considering legal action against Trudeau and newspapers that carry the strip.

And Trudeau's distributor, Universal Press Syndicate, said it was considering whether to take action against the Tribune for publishing ahead of schedule.

"To my knowledge, this is the first time in the history of the strip that someone has pre-released a whole week," said UPS editorial director Lee Salem.

Other newspapers "are very upset" about the early use, Salem added, saying the syndicate could cancel the Tribune's contract.

The strips show Mecham, the target of a recall movement, characterizing his opponents as "queers and pickaninnies." Mecham has said the recall leaders include homosexuals, a fact acknowledged by the movement, and he has defended use of the word "pickaninnies" in a history book. However, he has never called anyone a "queer" or "pickaninny" in public and has said he will refer to people only by the terms they prefer.

Max Jennings, Tribune executive editor, said circulation staff had to refill some Phoenix-area vending machines twice to keep up with demand for Tuesday's paper.

Seven callers cancelled subscriptions in protest, and calls to the newspaper ran about 2-1 against the strip, he added.

"People were polarized," Jennings said, adding that his favorite caller was the one who called him a "spineless, homosexual coward."

Jennings said the strips "distort and exaggerate the governor's position" but that "those are the accepted tools of the cartoonist + exaggerations and satire."

Officials at other Arizona newspapers which run "Doonesbury" said they intended to run the strips despite the Mecham's threat of legal action but split over whether the Tribune should have published early.

"We're contacting other newspapers around the state to have them put pressure on Universal Press to have them cancel" the Tribune contract, assistant city editor Ric Moser of The Scottsdale Progress said. "I think it was grabbing an easy buck."

MOVE UP TO THE COMMONS

Maintain the right image at ASU!
The Commons provides an alternative to the dorm lifestyle with an on-campus atmosphere.

- Totally-Furnished (dishes, towels, etc.)
- Washer/Dryer In each suite
- Microwave
- Study Areas
- Spa
- Pool
- Sand Volleyball Court
- Organized Events
- Social Activities
- Priced Like The Dorms

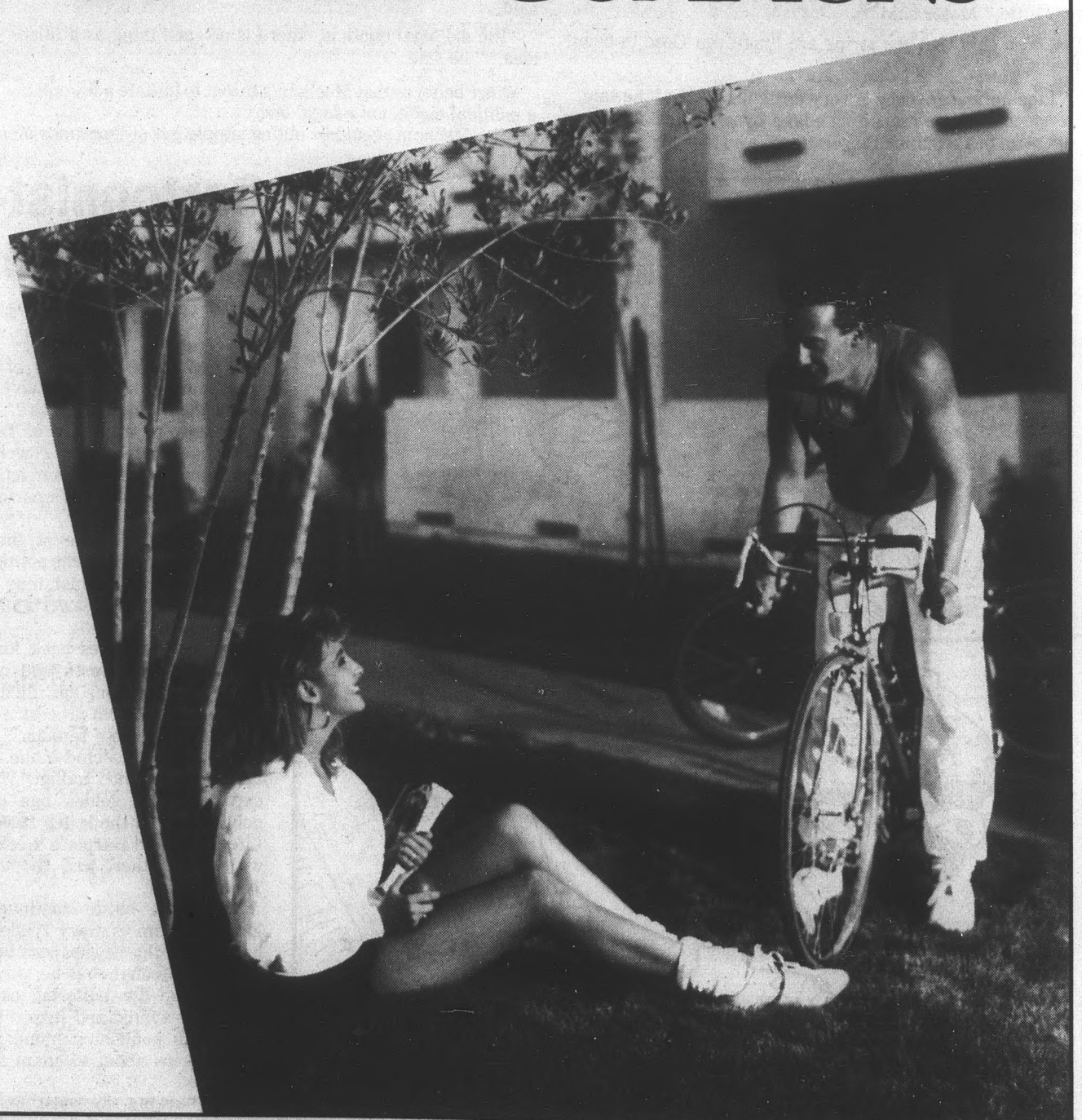
Deposits are now being accepted on a first come first serve basis. Come alone or bring a couple of friends. Our unique leasing program enables you to select from a pool of outstanding ASU students, just like yourself. Hurry and reserve your space now!

THE COMMONSTM

1215 E. Lemon St.
1111 E. Apache Blvd.

CALL
(602) 968-6437

OR
OUT OF ARIZONA
(800) 247-6141



ASASU bill passes committee amid argument over its clarity

By AARYN KEMP
State Press

Associated Students' controversial campus funding bill passed through the senate government operations committee Tuesday with some debate over its clarity.

The bill's author, College of Engineering Sen. Kevin Anderson, defended the bill before the committee.

"I have made every attempt to accommodate those who have contacted me about the bill," he said. "I can't see how anyone can feel this bill is discriminatory.

"I have met with legal counsel and the bill is constitutionally sound. I'm not trying to push anything under anyone's nose."

But Denise Heap, co-chairwoman of the Lesbian and Gay Academic Union, which has been denied funding by ASASU in the past, said she does not agree.

"I am concerned with the bill not because it specifically states anything discriminatory," she said. "But because it seems to take away certain actions.

"ASASU has had a history for using bills to discriminate. I'm afraid this bill will do the same. We believe this bill is an obvious attempt to create a special class of organizations."

The bill encourages clubs and organizations to first request funding from the appropriate ASASU department before

seeking funds from the senate. If the department feels the program is "of potential interest to a broad segment of the student population," they may fund it if they have adequate funds.

But if the department does not have sufficient resources, they can request funds from the senate for the group.

David Jordan, director of the political union, said he supports the bill because groups can now receive funding in a balanced program. He said groups previously were funded only when they asked the senate themselves for help.

"This way, groups are encouraged to seek out programs of interest to students in an honest effort to work with other areas of ASASU," he said.

Heap said there are a number of groups, including hers, that do not fall under any ASASU department.

"ASASU is not equipped to deal with the demands that will be placed on their time" when these groups come forward for funding, she said.

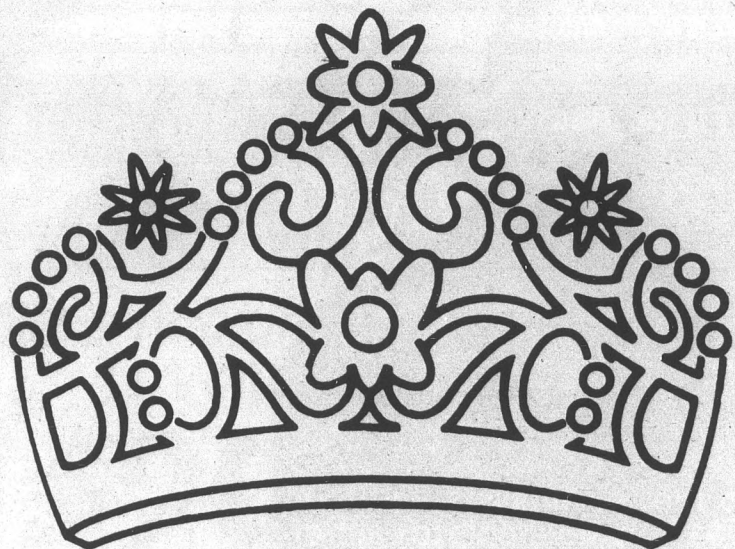
The senate appropriations committee will decide if a program or activity can receive funding.

Anderson said the bill funds programs, services and activities, not groups.

The senate will vote Tuesday on the bill.



**AWARD WINNING
NEWS**
every morning
STATE PRESS



THE 1988 MISS ARIZONA PETITE BEAUTY PAGEANT

IT COULD BE YOU.

The lights, the camera, the thrill as hundreds of spectators, friends and family celebrate your victory in the 1988 Miss Arizona Petite Beauty Pageant. But you can't win unless you try . . . and you can't try unless you apply. So hurry in to any one of our Dillard's Petite departments and pick up an application today. It must be completed and mailed no later than September 18, 1987. The pageant will be held at 6:00 p.m., Saturday, October 11, 1987 at the beautiful Paradise Valley Resort. Don't miss the festivities or your chance to walk the winning runway to an all new exciting future. Candidates for this pageant will be chosen and notified by Petite Productions, Inc. The winner will then be off to the 1988 Miss American Petite Beauty Pageant in Orlando, Florida — an exciting all expense paid, fully chaperoned 4-day pageant at the Hilton Hotel in Walt Disney World Village. It's the opportunity of a lifetime . . . apply today.

Dillard's

FALL REGISTRATION

**IT'S NOT
TOO LATE
TO REGISTER
FOR FALL
COLLEGE CLASSES**



**RIO SALADO
COMMUNITY COLLEGE**

Accredited by North Central Association

- offers courses which enable students to transfer earned academic credit to four-year universities or colleges
- provides Open Computer Labs, Weekend Courses, Television Courses, Business/Management, Humanities, Math, Science, English and Liberal Arts Classes
- makes it possible for working adults to attend college
- enables students to earn degrees and certificates (day and night)

- VETERANS ASSISTANCE IS PROVIDED
- CLASS SCHEDULES MAY BE PICKED UP AT ANY CIRCLE K STORE
- FINANCIAL AID IS AVAILABLE
- TRANSFER COURSES IN ALL SUBJECT AREAS
- CLASSES BEGIN SEPT. 8, 1987
- LATE REGISTRATION: SEPT. 9-18
- CLASSES COST ONLY \$20.50 PER CREDIT HOUR
- REGISTER BY PHONE — CALL 223-4001 OR 223-4200 OR 223-4000
- PAY BY MAIL OR CREDIT CARD

**HOURS TO REGISTER BY PHONE:
MONDAY THROUGH THURSDAY
8:15 A.M. TO 8:45 P.M.
FRIDAY 8:15 A.M. TO 4:45 P.M.**



**MARICOPA
COMMUNITY
COLLEGES**

Rhodes lambastes recall drive for shaming state

By KELLY PEARCE
State Press

"The Recall Mechem campaign is hurting the political fabric of the state," Arizona Republican Congressman John J. Rhodes told 40 ASU students Wednesday in the MU.

Rhodes, a Mesa resident, was at ASU for the first in a series of lectures sponsored by ASU College Republicans, said the group's chairman Stuart Goodman.

Rhodes said he is opposed to the recall because it is making Arizona look bad in the United States.

The freshman Congressman otherwise devoted most of his speech to issues facing Congress and the nation.

The budget is "looming" before Congress as the 1988 fiscal year begins Oct. 1., Rhodes said. And Congress is far from adopting a new budget, he added.

"We are miles, miles away from having a budget prepared."

The Congress has \$1 trillion to work with, Rhodes said.

"There will always be a contingency for every entitlement program that exists," the Republican said.

The first thing to be cut from the budget will be

discretionary spending, including student loans, Rhodes said.

He did not elaborate on possible cuts in student loans.

A survey by Congress showed 65 percent of those polled say the deficit is the biggest problem facing the nation today, he said.

"Nobody wants us to go any further into debt. It is a difficult and confusing fight."

He said students should put themselves in Congress' shoes and see how hard it is to cut programs from the budget.

"The American people have to give Congress the courage to tackle the budget," Rhodes said. "We need the moral backbone to take on these programs."

For the upcoming presidential primaries, Rhodes said he has never been involved in a presidential campaign. But Congress acts as a "sounding board" for many presidential hopefuls.

Vice president George Bush, the acknowledged Republican forerunner, "has had a few things thrown at him lately and he has handled them well," he said.

"Why people think George is a wimp is beyond me," he

said. "His loyalty to the president is unmatched."

Rhodes said Senator Robert Dole, R-Kan. is his second choice for president because of his intelligence and courage.

He said New York Republican presidential candidate Jack Kemp's campaign has hit too many dead ends.

"(Kemp's) campaign has gone nowhere. It simply has not caught any fire at all."

The Iran-contra "show" is over, Rhodes said. Reports still need to be written and he said conspiracy indictments will be made.

He said the Persian Gulf will continue to make headlines.

"I don't know what will happen next, but I know something will," he said.

Rhodes said the United States has a "full plate to deal with" when it comes to Central America.

In October, Congress will have to decide if the *contras* will continue to receive aid. He said the last \$100 million sent to Nicaragua had an impact.

Nicaragua needs free elections, speech and press, Rhodes said.

COMPUTER WAREHOUSE

BACK TO SCHOOL SPECIAL

MIT XT System

640k, 2dr..... \$699.00
 640k, 1dr, 20meg Hard Drive..... \$985.00

This Includes: High Resolution Mono Monitor
 Monographics Card w/printer port
 Serial Clock Calendar
 Surge Protector

MIT AT System

1024k, 1.2dr..... \$1279.00
 1024k, 1.2dr, 30meg Hard Drive..... \$1879.00

This Includes: High Resolution Mono Monitor
 Monographics Card w/printer port
 Multi I/O
 Surge Protector

Panasonic Printer

1080I / 120 CPS / Build-in Tractor..... \$149.00

Microsoft Word..... \$175.00
 Turbo Pascal..... \$57.00
 MS Basic..... \$57.00
 Turbo C..... \$57.00

2222 E. Indian School Rd., Phoenix, AZ 85016
 602-954-6109

N·E·W

La Cuisine BREAKFAST

featuring

pan style skillet breakfasts,
 eggs benedict, belgian waffles,
 fresh squeezed orange juice,
 gourmet coffee, omelets

all served in the
 quiet surroundings of
 La Cuisine

an excellent way
 to start your day

Daily 7:00 a.m.-10:00 a.m.

**Reservations
recommended, but
not required**

965-3464

"A Formal Invitation"

1987 Fiesta Bowl Queen Contest

The Fiesta Bowl wishes to extend an invitation to all single females between the ages of 19 and 24 currently enrolled in an Arizona University or Junior College to participate in our 1987 Fiesta Bowl Queen Contest. Every contestant must carry at least 12 credit hours, must never have been married, and have no children.

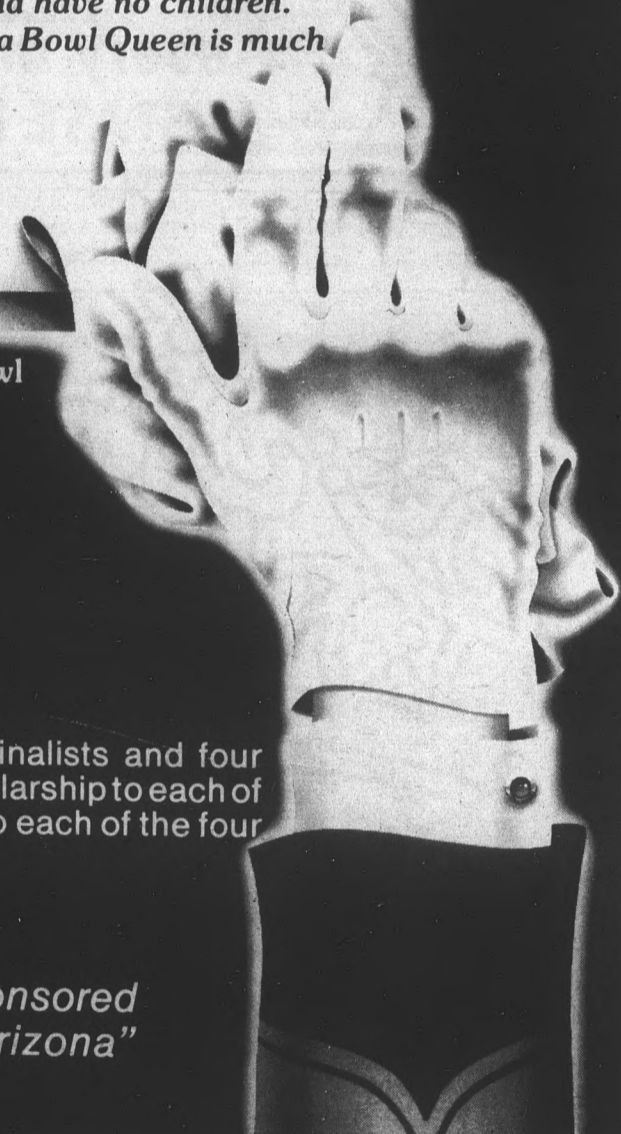
To be chosen as the 1987 Fiesta Bowl Queen is much more than being Queen for a day. The Queen will reign over nearly 50 Fiesta Bowl events including the 17th Annual Football Classic.

If you are selected as the Fiesta Bowl Queen you will receive:

- ★ A \$1,000 SCHOLARSHIP, PROVIDED BY FIRST INTERSTATE BANK OF ARIZONA
- ★ BULLOCK'S WARDROBE, BALL GOWN AND ACCESSORIES
- ★ PUMA USA SPORTSWEAR WARDROBE
- ★ PLAZA THREE MODELING SCHOLARSHIP
- ★ HAIR AND MAKE-UP BY SALON 41
- ★ BUICK COURTESY CAR DURING THE MONTH OF DECEMBER
- ★ TICKETS TO ALL FIESTA BOWL EVENTS
- ★ FIESTA BOWL WATCH AND NECKLACE
- ★ TRIP TO PORTLAND ROSE FESTIVAL IN JUNE, 1988

Prizes are also awarded to the ten finalists and four princesses, which will include a \$100 scholarship to each of the ten finalists and a \$500 scholarship to each of the four princesses.

"1987-88 Queen Court is sponsored by First Interstate Bank of Arizona"



1987 FIESTA BOWL QUEEN CONTEST

Official Entry Application

(please print or type)

Name _____ Birthdate _____

Present Mailing Address _____ Street _____ City _____ State _____ Zip _____

Home Mailing Address _____ Street _____ City _____ State _____ Zip _____

Phone (home) _____ (work) _____

Univ./College _____ Class (Circle 1) Fr So Jr Sr

of Credits Carried this Semester _____ Major _____

School Activities _____

Other Activities _____

I certify that all above information is true and correct and agree to allow the Fiesta Bowl use of my photograph and application. I understand that decisions by judges or representatives is final in all matters.

Applicant Signature _____

All applications must include a recent photograph (non-returnable)!

ALL ENTRIES MUST BE POSTMARKED NO LATER THAN FRIDAY, SEPTEMBER 25.

Mail entries to: Fiesta Bowl Queen Contest, 5144 E. Camelback Rd., Phoenix, AZ 85018


SEPTEMBER 25 - All applications must be postmarked by this date

OCTOBER 3 - Initial interviews in Tucson

OCTOBER 10 - Initial interviews in Phoenix

OCTOBER 24 - Interviews for semifinalists

NOVEMBER 9 - Queen selection dinner - final judging



Bike tickets dismissed upon class completion

By VICTOR BARAJAS
State Press

Bike traffic offenders sulking about their \$18 citation now can opt to take a two-hour class and an exam instead of paying the fine.

The cost-free "Bicycle Safety Course," taught by five members of the ASU Police Department, allows first-time offenders exemption from a University bike traffic citation.

But Sgt. William Wright, head and teacher of the course, said instead of students happy to save money, "We see people coming in with a grumbling attitude or a real joke attitude.

"But everyone goes out with a more serious attitude, and that's all we're looking for."

The month-old course includes two hours of lecture, slides, and a 20-question, open-book test.

"It's pretty hard not to pass the test," said teacher Cpl. Alfred Campoy. He said all 56 students who have taken the class passed the exam.

Students either can register for the class with ASU police or simply walk into it, Campoy said.

"It's quite a bit of fun," Wright said. "It winds up being rather entertaining."

Cpl. Christopher Moore and Cpl. Mike Schlittenhardt, who currently ride horses ticketing bike-offenders, also plan to teach the class this semester.

Moore said he thinks the regular fine is a "heavy sanction" for students who are working their way through school.

"I think the violator will benefit the most (from the course)," he said.

Officer Al Phillips said the course "is a good deal for the students because it lets them know what they have to do to be safe on campus and in the streets."

Students are asked to comment on their citations during the course. Wright said the most common complaint is the lack of campus bike paths.

"We've gotten a good response from the students," Campoy said.

Wright estimates the department issues between 20 to 50 bike traffic citations each day, usually near a construction site.

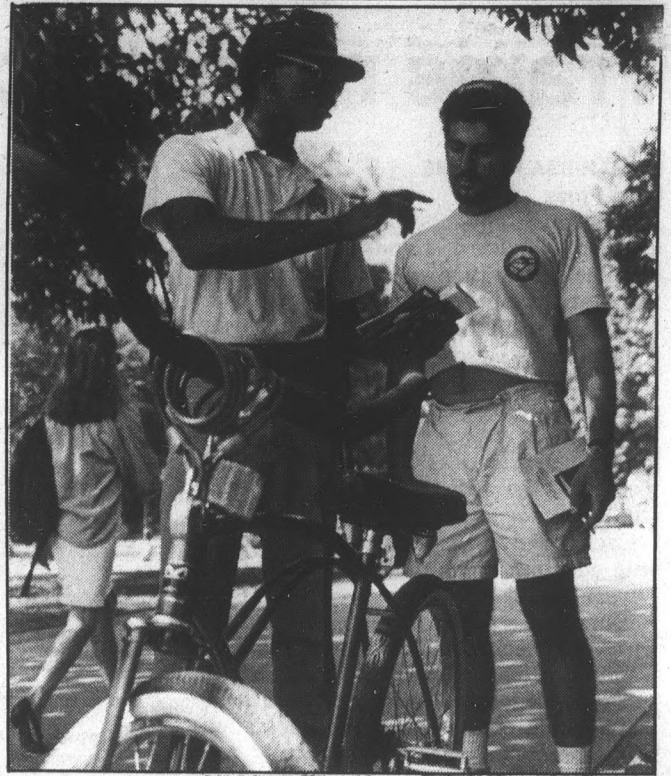
"It's just a matter of having enough officers out there to pay attention to the problem," he said.

The bike class meets every Friday at 2 p.m. and the first Saturday of each month at 8 a.m. The class can facilitate up to 90 students, although the largest of five classes so far was 25 students.

"It's been growing steadily," Wright said. "As the semester goes on, we might fill (the classes) because of the amount of citations we've been giving."

The most common bike traffic-related offenses include riding a bike on the wrong side of the road or through a prohibited zone and failing to have a headlight or reflector at night.

Wright said if a student continues to violate University biking rules, "there's nothing we can do but write the citation."



ASU police officer Al Phillips issues a citation to Joseph Abukhader Wednesday. Abukhader was illegally riding his bike.

Aaron's
Car Wash

NO SCRATCHING

BRUSHLESS AUTOMATIC
INCLUDES
UNDER CARRIAGE WASH
(recommended by all owners manuals)

CHECK!
US OUT!

TERRACE & APACHE
(One block east of Rural)

CHURCH'S FRIED CHICKEN

FEED THE GANG
for only **\$7.99**
Plus **49¢** for
2 LITRE COKE

Receive 8 big pieces of chicken (mixed), large cole slaw, large mashed potatoes and gravy, and 4 rolls.

CHICKEN MEAL PLUS
for only **\$1.99**

Receive 2 pieces of chicken (dark or mixed), a regular order of french fries or mashed potatoes and gravy, and a 16-ounce drink. All for just \$1.99! Add 30¢ for all-white orders.

VALID AT CHURCH'S
1135 E. Apache Blvd., Tempe
One coupon per customer per visit. Not valid with any other offer.

Contact for Adult Re-Entry
presents

ACADEMIC SKILLS DEVELOPMENT SERIES
\$3 per workshop • \$10 for entire series

A JOURNAL WRITING WORKSHOP
MIKE HELLER, Graduate Associate, English Department
IVAN LACORE, Writer/Community College Instructor

Overcome writing anxiety through the discovery process. Explore journal writing as a means to personal growth and academic success. (If you keep a journal, bring it.) Saturday, September 5, 9:00 a.m.-12:00 noon, Yuma Room, MU.

Call 965-6547 for information and reservations.

DON'T SETTLE FOR WALKIN!

Take a ride on the wild side with
AZ's #1 Volume Scooter Dealer.

\$295*

from

- GREAT ON GAS
- LOW INSURANCE
- EASY MAINTENANCE
- EASY PARKING
- BRING IN YOUR ASU I.D. FOR DISCOUNTS

"Bring us your best deal & we'll beat it"

SAME DAY FINANCE

MON.-FRI. 8-9
SAT. 8-6
SUN. 10-6

"YOUR AUTHORIZED HONDA DEALER"
Established over 25 years.

western honda OF SCOTTSDALE
6717 E. McDowell Rd.
994-8400
*freight & set-up addl.

HONDA

MCDOWELL
68th ST.
RURAL
ASU

"ONLY 5 MIN. AWAY!"

STUDENTS ... Don't miss our 20-20 offer!

Art, architecture, engineering & design students:
Shop for your art supplies from The Valley's most complete selection by **SEPTEMBER 20**, and save a big 20%.
Shop any other time and you'll receive our standard 10% **STUDENT DISCOUNT**.

Fine arts materials
Canvas, paints, stretcher bars, brushes, frames, paper, etc.

Drafting supplies
Parallel rules, triangles, templates, leads, drawing boards, technical pens (all brands) and more.

ALSO
Airbrush equipment & supplies, graphic arts materials and books.

FLAX

7th Street
Jefferson
16th Street
Maricopa Freeway

FLAX CO., INC.
10th Street & Jefferson • 254-0840 • Lots of free parking
Hours: Mon.-Fri. 8:30-5:30 Sat. 9-5

Trams running on time despite some complaints

By MARISSA HALLARE
State Press

Although complaints about the ASU trams are up, Richard Landreth, assistant director of parking and transit, said the trams are running on time, better than ever.

Landreth said the only change in the tram route is the fixed schedule for lots 40 and 42. He said the biggest complaint by students is not knowing tram arrival times.

"With this new schedule, students can know when a tram is coming and going by looking at the sign (located by each tram stop)."

Each round trip to lot 40 or 42 is 15 minutes with only one to two minutes waiting time, Landreth said.

"Now you can be able to look at your watch and decide when to expect a tram."

But he said it is difficult to execute a fixed schedule for trams traveling to lot 59 due to unavoidable traffic lights and fluctuations and unpredictable passenger loads.

"If the tram gets full, why stop at all six stops and waste gas and cause a five-to-six minute delay in travel time," Landreth said.

ASU has seven trams, with one tram as a backup. Six full-time tram drivers carry an Arizona chauffeur's license, he said.

When lot gate arms open at 3 p.m., there is less demand for trams since people park closer to campus.

ASU trams have transported over 700,000



Todd Green/StatePress

ASU students crowd the trams daily en route to surrounding parking lots.

people from July 1, 1986 to June 30, 1987, Landreth said. Parking and Transit services has sold over 12,400 student decals for lot 59, residence halls and motorcycle parking.

"The demand for decal sales has been so high because people are becoming more aware that you need a decal to park on campus," Landreth said.

New trams are apparently pleasing students.

Christie Spangler, a management major, said she likes the larger trams because "there's more room and it's easier to get a seat."

But Tom Zerbest, a sophomore broadcasting major, said: "The larger trams unload slower. It takes longer to get on and stops more frequently. I prefer the smaller ones because it seems like a shorter ride."

Sylvia Rubalcava, who has driven an ASU

tram for two years, said more tram routes are needed to "pick up more students and provide better service."

"Considering the size of campus that we are, I think that we need a few more drivers so we can have more breaks and lunches," she said, adding more drivers are needed especially during the summer due to the extreme heat.

Nonetheless, Rubalcava said she enjoys her job.

"I haven't had any problems with the students. They're all real nice. But it's not a very easy job and lots of people think it is. I make sure it's safe and that they enjoy the ride."

Sophomore business major and frequent tram rider Nilou Farshchi said: "The first two days were unbelievable. You had to wait at least a half hour for a tram. The one that goes to lot 42 is a drag."

Teri O'Hara, a communications major, said: "I think it's pretty good except in the morning when people are trying to get to class. It's a competitive little game to get on one."

Rubalcava said she wants students to realize what tram drivers have to go through.

"Students don't need to get upset when they see an 'out of service' sign because we have to go to the bathroom. We don't have built-in potty chairs."

BEAT THE RUSH! State Press Classified Happy Hour 7-9 a.m.
Liner ads brought to Matthews Center 1/2 PRICE

Get a Slice of the Pie
State Press Classifieds
965-6731

**The verdict is in!
You be the judge ...**

Discover what could be the most promising career move of your life.

**PHI ALPHA DELTA
PRE-LAW ORGANIZATION**
invites you to our first meeting
TODAY, SEPT. 3 at 3 P.M.
in the Graham Room 216, Memorial Union
GUEST SPEAKER: Dr. Charles Fmean, pre-law adviser

WELCOME BACK ASU! **JONATHAN'S PIZZA** **BEST OFFER EVER FOR YOU!**

Fast, Free Delivery
829-1717
Open Sun.-Thurs 11 a.m.-1 a.m.
Fri.-Sat. 11 a.m.-2 a.m.

2 LARGE CHEESE & 1 TOPPING PIZZAS (16")
\$9.99 *tax no coupon needed. Call anytime.

2 Medium Cheese & Topping Pizza (12")
\$8.50 No coupon needed. Call anytime

Medium 12" 1 Topping **\$4.95** *tax One coupon per pizza. Good at ASU location only. Expires 9-15-87.

Large 16" 1 Topping **\$5.95** *tax One coupon per pizza. Good at ASU location only. Expires 9-15-87.

N. Tempe 829-1717
933 E. University 838-2227

Now our 32-oz. drink only \$1.00

N. Mesa 829-1999
635 N. Country Club 926-1100

CIRCLE K INTERNATIONAL

Do it for YOURS E L F
E D E R
R U A I
V C D E
I A E N
C T R D
E I S S
O H H
N I I
P P

NOT JUST A CONVENIENCE

Introductory Social:
Gold Room, 2nd floor Memorial Union
Thursday, Sept. 3, 1987 at 7:00 p.m.

SKI DEER VALLEY PARK WEST PARK CITY NOV. 26-30 (THANKSGIVING BREAK)

POWDER HANDS

The Elite SKI CLUB

TRIP INCLUDES:
LODGING: CONDOS \$215 limited space HOTEL \$199
TRANSPORTATION: Arrow Stage Lines
PARTY: 10 Keg Hawaiian Luau and DJ on slopes

4 DAYS OF SKIING
Meeting times: Every other Tues. starting Sept. 8 6:00 P.m. at the Devil House

**CALL RANDY 921-9632
CALL JEFF 730-9593
CALL BRIAN 921-0824**

NELC student loans 894 0692
SKI PRO "The Ski Professionals" 962-6910 (2 blocks west of Fiesta Mall) 1710 W. Southern Ave., Mesa
PEPSI-COLA

Stat
F
g
By D
State
Pa
that
asse
today
intra
In
photo
the l
of PL
injur
As
from
holdi
parti
frate
Sti
effec
there
again
funch
Carte
Bu
Theta
an A
Alph
Leo
organ
camp
Gree
ASU
Bill
said
viola
"W
1987
Jim
said
Stude
rush
Car
but s
moni
"W
on fr
Dre

If you
profe
envir
expar
not li
shoul
caree
Intelli

We s
who a
affair
histor
mank
who v
in a v
positi

An er
yours
tuniti
own i
your
caree
intelle
excell
need
profes
a CIA

C

Fraternity on probation given partial revocation

By DANA LEONARD
State Press

Part of the punishment for the fraternity that dangled a pledge in a chaise lounge off a second-story balcony will be revoked today so the group can participate in intramural athletics.

In March, a *State Press* reporter photographed Anthony Palmeri strapped in the lounge and being dangled off the balcony of Phi Delta Theta house. Palmeri was not injured.

As a result, the fraternity was prohibited from participating in intramural sports, holding social functions at its house and participating in events sponsored by other fraternities.

Stipulations of the social probation, in effect through spring semester, demand there not be any "valid conduct complaints" against the fraternity or any social functions at the house, according to Art Carter, assistant dean of Student Life.

But ASU Police records indicate Phi Delta Theta notified police of its intention to host an Aug. 21 eight-keg, 400-guest party at 701 Alpha Drive, the fraternity's house.

Leon Shell, dean of Student Life, said organizations who wish to hold parties on campus must notify Residence Life, the Greek Activities Review Panel (GARP) and ASU Police.

Bill McKenzie, Phi Delta Theta president, said the party occurred but said it was not a violation of the fraternity's probation.

"We were allowed to participate in Fall 1987 Rush Week," he said.

Jim Rund, Residence Life coordinator, said there was "an understanding . . . that Student Life had approved pre-imposed rush parties" for the fraternity.

Carter refused to comment on the party but said fraternities on probation are not monitored to ensure compliance.

"We get some feedback on what's going on from other fraternities," he said.

Drew Jenson, co-chairman of GARP, said

his panel works as a "police unit" to check for houses hosting unapproved parties.

Jenson said members of the panel walk down the fraternity rows to see which houses have not applied for the necessary checklists.

Phi Delta Theta will have served five months of its year-long athletic probation and must fulfill the remainder of the social probation, Carter said.

He said members of the fraternity came to him repeatedly asking to have the ban lifted, and had letters sent from the fraternity's national chapter.

"But that's not what influenced my decision," Carter said.

He said he was "most influenced" by a letter from Assistant Director for Intramurals Bob Gildersleeve, who said the fraternity had participated heavily in the intramural program and had showed "outstanding sportsmanship, leadership and cooperation."

In 1986, the Phi Deltas represented ASU in the national collegiate flag football championships in New Orleans.

"It meant that sports activities meant enough for them to sacrifice a little (to pay their way to New Orleans)," Carter said. "And sports is one of the few activities that has true leadership."

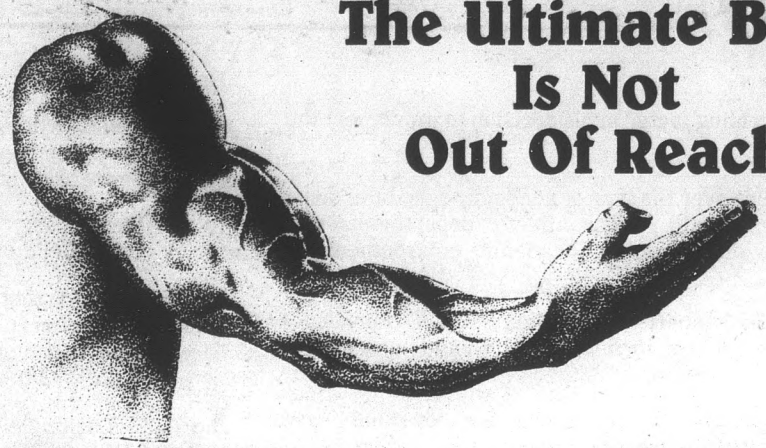
"They've acknowledged that (the hazing incident) was wrong," he added.

Gildersleeve said throughout the 14 years he has worked in intramurals, the Phi Deltas have "done an outstanding job. I think you have to consider their track record over the years."

Gildersleeve said he forwarded his recommendation for revocation to Student Life.

"Working with students is part of the job here at the University," he said. "That's why we're here."

"I hope they will be on their best behavior," Carter said.



The Ultimate Body Is Not Out Of Reach!

•No contracts •No salesman •Low monthly payments

JP'S BODY SHOP

"The Gym For Men & Women"

TEMPE

1835 East 6th Street

894-1331

New Location In Gilbert

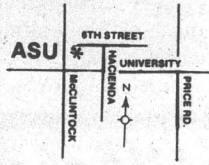
75 W. Baseline

892-9042

Hours:

6 a.m.-11 p.m. Mon.-Fri.
8 a.m.-8 p.m. Sat.
9 a.m.-6 p.m. Sun.

Open Every Day
Of The Year



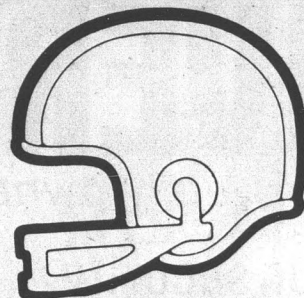
3 Months For \$50 (No Enrollment Fee) New Members Only (Exp. Oct. 1, 1987) With This Ad

Beamers

RESTAURANT AND LOUNGE

801 S. MILL, TEMPE CENTER • 966-4040

MONDAY NIGHT FOOTBALL



GIANT 50" SCREEN

OYSTER SHOOTERS 99¢

BEER HOT DOGS 25¢

20 ROOSTER WINGS \$3.50

TUESDAY • LADIES NIGHT

WELL \$1.00

WINE 75¢

WED. • STRAIGHT SHOT NIGHT

WELL
DRINKS
ALL NIGHT



THURSDAY • MOVIE NIGHT

GIANT 50" SCREEN

HAPPY HOUR • 4-7 P.M. MON.-SAT.

WELL \$1.00

DRAFT 50¢

Beamers

801 S. Mill

Corner of Mill & University

Tempe Center • 966-4040



Don't let it rain on your parade.
It sells in State Press Classifieds.

965-6731

CIA . . . where your OPTIONS

If you're looking for a professional environment that will expand your options, not limit them, you should consider a career with the Central Intelligence Agency.

are as
diverse as
your interests

Bachelor's or Master's degree or a PhD, be a U.S. citizen (both self and spouse), and successfully meet our strict medical and security requirements.

We seek enthusiastic liberal arts majors who are interested in international affairs as well as the interplay of politics, history and economics in the affairs of mankind and nations . . . individuals who will make the most of their talents in a wide variety of challenging CIA positions.

The CIA offers highly competitive compensation, liberal benefits, and the consistent challenges inherent in a diverse environment. In addition, our location just outside the Washington, D.C. area provides you with an abundance of leisure-time options such as cultural events, athletic bouts, and historic attractions.

An entire spectrum of opportunities is yours to explore . . . opportunities as diverse as your own interests, as exciting as your curiosity. And all our career options come with the intellectual stimulation and excellent growth potential you need for a rewarding professional life. To qualify for a CIA career, you must have a

Literature is available for review at your Career Placement Office.



To explore your options with the CIA send your resume to:
Personnel Representative CO4
P.O. Box 3127
South El Monte, CA 91733

Resumes must be received by Sept. 11, 1987 for Fall interviews.

Central Intelligence Agency

The CIA is an Equal Opportunity Employer

Policy

Continued from page 1.

was not an overriding factor in his decision to implement the policy.

"It was concern over the type of academic schedules some athletes had," he said. "(The athletic department) was really not providing a decent academic environment for them."

He said he still supports his decision that correspondence courses from any school, including ASU, should "absolutely" not count toward athletes' athletic eligibility.

But DeMichele said, "I think student-athletes should have the same opportunities students have."

Joytpaul Chaudhuri, who once monitored and approved academic programs for ASU athletes, said, "Normally all students (athletes and non-athletes), who are already enrolled for six hours or more need the Dean's permission before enrollment" in correspondence courses.

Schroeder said correspondence courses were not intended to be used toward athletic eligibility, but rather for students who are not full-time and cannot come to campus.

"Athletes are full-time students," he said. "They have resources available to them to be able to attend (regular) summer sessions."

He identified resources as grants and scholarships.

Jennings and Schroeder also said they were concerned about the courses because there is no guarantee that a correspondence student actually does the lesson work.

In an athlete's case, "There's a great deal of pressure and urgency because eligibility is on the line," Schroeder said.

Dan Phippen, acting director for off-campus study, the organization in charge of correspondence courses, said all ASU correspondence students must attend proctored final exams and students must show proper identification.

Bradford Luckingham, an ASU history professor who instructed Harvey's summer correspondence American History course, said his summer students had to attend both the "essay-type" final and midterm exams.

Students must turn in several lessons for correspondence courses, but Luckingham said the two tests "determined the students' " grades.

Luckingham said students' lesson grades only were considered in "borderline" cases.

"I'm pretty sure (Harvey) worked very hard and, in fact, spent most of his waking hours working on his lessons," Luckingham said.

Jennings won't return, hopes her resignation 'shakes things up a bit'

Former faculty athletic representative Marianne Jennings said Wednesday she will not consider returning to the post, but she hopes her resignation will serve to draw attention to academics in athletics.

"The greatest thing I could accomplish is for people to say, 'Let's not let this happen again,'" she said.

Jennings resigned after ASU President J. Russell Nelson overruled her decision to declare Sun Devil inside linebacker Stacy Harvey academically ineligible to play in the 1987 football season.

Jennings based her decision on a University policy of not accepting correspondence courses for athletic credit.

"In a small way, if the resignation helped shake things up a little bit, maybe it helped," she said.

"I took the job because I thought I could help the young people see there's more to life than a football and a basketball and a bow and arrow."

Nelson, ASU Athletic Director Charles Harris and Faculty Senate Chairman Michael Nielsen expressed regret at Jennings' resignation and praised her for her efforts and accomplishments as faculty athletic representative.

— SCOTT LUCK

Need extra cash? Sell your old camera with a State Press classified ad!

LAZY LIQUORS
1336 E. Apache
894-5312

- Bacardi 750 ml..... \$6.99
- Fleishmann's Vodka 1 lit..... \$5.99
- DeKyper Peachtree Schnapps 750 ml..... \$5.99
- Skol Vodka 750 ml..... \$4.99
- Kahlua 750 ml..... \$10.99
- Tanqueray 750 ml..... \$10.99
- Foster Cans 25 oz..... \$1.49
- Budweiser 12-pk. cans..... \$5.69
- Stroh's 15-pk. cans..... \$5.89
- Andre Champagne..... \$2.89
- Freixenet Cordon Negroe..... \$6.99
- Seagram's Wine Coolers..... \$3.49

Many more specials plus a variety of imported beer & wine



If every student, staff and faculty member donated one dollar, we could keep ASU's carts for the disabled running.

A funding shortage has left the future of Disabled Student Resources cart system in question.

Disabled Student Resources needs to raise at least \$50,000 to continue transporting disabled and temporarily disabled students, faculty and staff around campus.

Please help us continue an invaluable service to ASU. You'll never know when you'll be temporarily disabled with a sprained ankle and need to be transported around campus!

Please help us keep ASU's carts for the disabled running by making a donation today. Mail or bring in your check made payable to Disabled Student Resources to:

State Press, ASU
Matthews Center
Tempe, AZ 85287-1502

Thank you for your support

Space is still available at University Towers!

Student living at its best.

1987-88

at

UNIVERSITY TOWERS

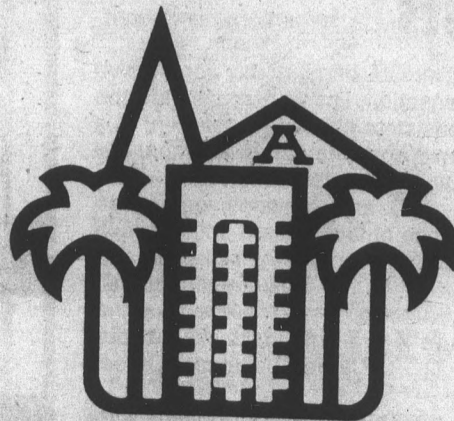
privately owned coeducational residence suites

- 24 hour security
- video surveillance
- monthly activities
- live-in resident advisors
- roommate selection process
- free utilities, local phone
- laundry facilities
- pool, jacuzzi
- contemporary decor
- weight area
- covered parking garage
- private balconies

limited space available

call

894-2300



UNIVERSITY TOWERS

out of arizona,

call

1-800-227-6630

525 S. Forest, Tempe, AZ 85281

police report

Man arrested on sexual abuse charge

A man who has been staying with a Tempe family for the last two weeks was arrested Tuesday in connection with sexual abuse against the family's 13-year-old daughter, police said.

Kenneth Walter Yanz, 30, of the 1500 block of West 5th St., was arrested after the girl told her parents about the alleged abuse, Tempe police spokesman Roger Clay said.

Clay said the girl did not tell her parents until Tuesday because she was embarrassed. She also told police the man

had threatened her, he said.

During his stay with the family, Yanz allegedly dragged the girl from the house's living room into a bedroom where he reached under her clothes and allegedly sexually abused her, Clay said.

Yanz was booked into Tempe City Jail and charged with kidnapping and sexual abuse.

— MIKE BURGESS



STATE PRESS
PERSONALS
\$1.25

15 words or less
Matthews Center
(basement)
8am to 5 pm

BUY • SELL • TRADE

Your books at Changing Hands. For quality cloth and paperbacks (no textbooks, please) we pay 30% of our re-sale price in cash or 50% in trade-in credit which may be used to purchase anything in the store. (Sorry, no trade-ins on Sat. or Sun.)

Browse through our three floors of:

- New & Used Books
- Art Prints & Posters
- Calendars & Cards
- Handbound Journals

M-F 10-9 SAT 10-6 SUN 12-5

CHANGING HANDS
414 Mill Avenue 966-0203
Old Town Tempe

Computers for Rent

Now at The Arches

122 E. University
Come and visit us

921-0980

Bob's Bicycle Barn

Cruiser Headquarters
Sun Devil Cruisers

Best prices in town. Check us out, new and used. All types, repairs and service.

Major credit car trades welcome

1908 E. Apache, Tempe
2 blocks east of McClintock
894-8852



RUNDLE'S LIQUORS & MKT.

730 S. MILL
Corner Mill & University Ave.

- Meister Brau Beer 6 pk..... \$1.88
- Andre Champagne 750 ml..... \$2.97
- Long Island Wine Cooler 4 pk... \$1.64
- Playboy Used Magazines..... \$.94

Haagen Dazs Natural Ice Cream,
Adult Magazines, Groceries, Ice,
Wines, over 40 Imported Beers.

967-9079

THORBECKE'S GYM

Special Low Rates



Body Building
Weight Training
For All Sports

Power Lifting
Nutritional & Diet Consulting

966-6621

\$12⁰⁰ per month

*plus \$50 one-time membership fee

Only one mile on the bike path off Scottsdale Bridge.

THORBECKE'S GYM

On the south side of Curry Road between Miller & Hayden

Selling in the classifieds.

A Piece of Cake

State Press
965-6731



COLLEGE COUNTDOWN

The Tradition Continues EVERY THURSDAY



\$1.50 off admission for men & women w/ ASU picture ID



Sun Devil House

Condom-mints?

U of A beats ASU in banning campus cigarette machines

By KELLY PEARCE
State Press

ASU has no plans to ban cigarette vending machines from campus, a University official says, although U of A removed its machines this summer.

U of A officials removed their campus' cigarette vending machines to coincide with health awareness programs, according to Robert Ernstein, U of A Student Union Director.

Eight machines were removed and the last one located in the Student Union will be removed when its supplies are depleted, he said.

Dr. Monty Roth, ASU Director of Student Health Services, said U of A's action is an "excellent idea" in promoting health and wellness.

He said ASU does not have similar plans, he said, adding, he hopes to see actions taken in the future.

Will Daly, Associated Students executive vice president, said he was not aware of the U of A action, but said he would like to see the ASU cigarette machines removed.

Other universities have taken similar actions, with positive results, Roth said.

Ernstein said U of A's "only feedback so far has been positive."

He said vending-machine cigarettes are more expensive than store-bought ones, and students only used the machines if they ran out of their own cigarettes.

On the average, the machines made \$63,000 annually and \$6,700 of that revenue went to U of A's Student Union, Ernstein said.

ASU has 20 cigarette vending machines scattered across the campus, according to Assistant Director of Purchasing Ted Brown.

He said 5,680 packages of cigarettes were sold at \$1.35 from April 14 to May 15. A total of \$7,668 was collected and \$1,192.37 went to ASU.

Canteen Co., ASU's vending machine distributor, gives the University a 15.55 percent commission, the lowest commission the University receives from vending machines, Brown said.

He said ASU would not suffer from the removal of cigarette machines, adding students would find other places to buy cigarettes.

"Personally, I detest cigarettes, and feel there is no place for them," Brown said.

Dr. Lee Fairbanks, Chairman of the Public Health Committee of the Maricopa County Medical Society, said cigarette vending machines have no place on college campuses.

"I think we should definitely make them a thing of the past."

The general attitude toward smoking is becoming "why should we smoke?" Fairbanks said.

Statistics show 18 percent of high school seniors are regular smokers in the United States, he said. College student figures are similar and the number of Arizona adult smokers is slightly below the national averages.

"There is less smoking going on than people might think," Fairbanks said.

In other health news, U of A, like ASU, will host an AIDS Awareness Week scheduled for Sept. 25 through Oct. 2. ASU has not announced dates for its awareness week.

Leann Hamilton, a U of A health educator, said the university has scheduled lectures, debates and opportunities for testing. AIDS victims will speak, along with family and friends affected by the disease.

U of A's plans include an AIDS awareness fair with experts delivering lectures on "AIDS in the Workplace and the Home" and "Someone I Love Has AIDS," Hamilton said.

U of A also is considering putting condoms in candy machines, Ernstein said, adding the request has not encountered feedback yet.

"We are going about this in an honest and forthright manner," he said. "We don't want to hide it in the closet."

Roth said vending condoms in candy machines is not a bad idea.

"Candy machines make condoms readily available and make buying them relatively private," he said.

The University of Rochester in New York has been dispensing condoms this way and has found it very successful, Roth added.

ASU health officials are considering putting in condom machines in the Student Health Center if administrative approval is given, he said.

Condom vending machines would include other health aids like cough drops, Roth said.



Steve Munteer/State Press
Pre-med sophomore Joanna Rodopoulos takes time out to buy a package of cigarettes from an MU vending machine.

\$10
Introductory Offer
With this ad
For shampoo,
cut & style

Complete Style
for Men & Women with
mastey
Paris

1 FIRST PLACE HAIRCUTTERS
905 E. Lemon
966-1391

Hair Care Products

An ASU Tradition
at
Yogurt Oasis

Hours:
11:00-12:00
Daily

Corner of Rural
& University

- 8 Delicious Flavors Daily • 30 Toppings
- Homemade Waffle Cones • Fresh Fruit Smoothies
- 1 Non-Fat Gourmet Flavor Offered Daily

Introducing the Gourmet "Lite"
All Natural, Only 16 Calories Per Ounce

25% off any "Lite" flavor

One per customer. Expires 9-10-87.

100% Natural.
No refined sugars.

WORLD
XT Computer

Presented by MicroNet Paul Renden: Tech. Sales
1208 E. Broadway Rd. #110, Tempe, 967-4999

\$569 COMPLETE BASE SYSTEM!

Includes:

- 640K Memory
- Dual Disk Drives
- 8 Slot Turbo Main Board
- AT Style Keyboard
- Baby AT Case w/Keylock
- 150W Power Supply
- Monochrome Monitor
- Graphics/Printer Card

100% IBM Compatible

Students mention this ad and receive 2 boxes of disks FREE with system purchase!

219 E. Baseline
Tempe
Between
College & Mill
839-9600

Beach Club West

CALIFORNIA BEACHWEAR
AND SWIMWEAR
LATEST SENSATIONS

Unique Fall Casual Wear
Radical to Regular

Welcome Back!
We missed you!!!
new shipments have arrived!!!

Papal mass requires metal detectors

By TRACY SCOTT
State Press

Ticket holders for the ASU papal Mass must pass through metal detectors at a rate of 20,000 people per hour if all viewers are to get in Sun Devil Stadium within four hours, a University official said.

Jim O'Connell, ASU director of public events, said, "The Secret Service requires all ticket holders to pass through airport-style metal detectors."

There will be 28 magnetometers, metal detectors, placed at the north gates, and only 20,000 people per hour will be able to enter the stadium. Expected attendance is 73,000.

University officials are encouraging people to arrive early for the event, and the stadium will open at 2 p.m. Campus parking is expected to reach capacity by 3 p.m.

But O'Connell predicts only 5,000 people will arrive the first hour.

That could leave more than 68,000 people to pass through the detectors in three hours, or more than 22,000 people per hour.

Bobbie Hixon, a spokeswoman for the Diocese of Phoenix, said, "We want everyone in the stadium by 6 p.m."

Ticket holders will not be allowed to enter the stadium while the "popemobile" circles the football field from 6:30 p.m. to 6:40 p.m.

The Secret Service does not want movement in the stadium while the pope is on the field, Hixon said.

Entertainment in the stadium begins at 3:15 p.m.

According to the National Weather Service in Phoenix, the normal high

temperature on Sept. 14 is 99 degrees and the normal low is 72 degrees. The record high temperature was 109 in September 1971.

Most ticket holders will enter through the north gates, while handicapped individuals will enter through the northeast side gates. Approximately 1,000 handicapped are expected to attend.

Worshippers can bring cameras, binoculars, personal umbrellas, seat cushions and sack lunches into the stadium, O'Connell said. But he said, "Anything brought into the stadium will be subject to search."

No beverages will be allowed into the stadium to comply with University policy, O'Connell said.



Papal Visit 1987

Free water will be distributed beginning at 2 p.m. and throughout the service. The concessions will be open 2-6:30 p.m.

Security concerns cited for early closure of MU during ASU papal visit

By TRACY SCOTT
State Press

University officials will close the MU at 3 p.m. on Sept. 14, the day Pope John Paul II will deliver Mass in Sun Devil Stadium.

Betty Turner Asher, ASU vice president for Student Affairs, said campus security and safety were among reasons for closing the MU early.

Normal Monday operating hours are 6:30 a.m. to midnight, including holidays such as Labor Day, Sept. 7.

Donna Keller, supervisor of Follett's Hallmark in the MU, said, "Security may have been a problem."

But Keller said the decision to close early will not hurt business when more than 250,000 people are expected to come to ASU for the Mass.

"It sounds like a good idea to me," she said. "I think after 2 p.m. the campus is going to die." Mass ticket

holders can enter the stadium at 2 p.m.

But Connie Talamantez, owner of the MU McDonald's, had planned to remain open 6:30 a.m. to 10 p.m.

"I thought it would be a day that I would be open," she said. "I would have liked to have been open."

"Mondays are one of our best days. They are exceptionally good for business."

Sgt. Larry Angel, of ASU special events and the Department of Public Safety, said, "We have adequately staffed and made contingent plans for anything that happens that day."

Campus security south of University Drive will run "like normal" since people coming to ASU will be coming to see the pope, Angel said.

"They are not here to look at buildings and wander through buildings," he said. "They are here to go to the stadium."

the **Wine** tavern

at Rural & Apache

\$1.50

SOUP & SALAD

\$1

WELLS
MARGS
WINE
LONGNECKS

\$2.50

PITCHERS

11:30-8:00

Dollar\$ has more than just the most interesting earrings in the Valley. It has the lowest prices.

BELTS \$1.00 EA. OR BUY 5 GET ONE FREE

EARRINGS \$1.00 PR. OR 3 PAIR FOR \$2.50

STERLING SILVER RINGS \$3.00-\$5.00

SUNGLASSES \$3.00

Everything we sell looks like it cost lots more, but you pay a lot less.

414 S. Mill #207 Tempe (above Spaghetti Co) 829-1127

DOLLARS FASHION ACCESSORIES

Dollar\$. It's not just our name, it's our prices!



TUBING DOWN THE SALT RIVER

Fun in the Sun

Ride a Tube Down the Salt River
TUBE RENTAL AND SHUTTLE BUS SERVICE
ALL-DAY RATES
\$6.00 per day per person
group rates available
Or Shuttle Bus ticket only \$3 all day
• 2,000 tubes for rent
• open 7 days a week, 9am-7pm
Located 9 miles north of MESA at the junction of Bush and Usery Highways. For more information, phone (602) 984-3305 or write for your free brochure and river map. Authorized by U.S. Forest Service.

Bring this ad with you for
\$1.00 OFF TUBE RENTAL
Monday thru Friday

The only way to the River is thru Mesa. Saguaro Lake Entrance is now closed.

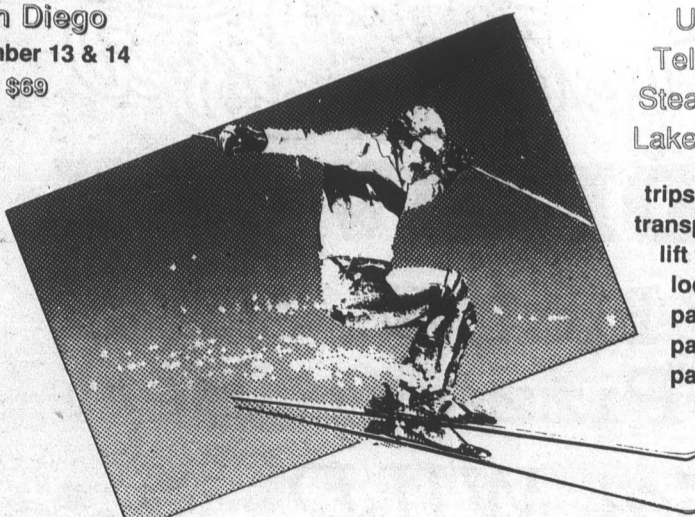


Salt River Recreation Inc.
P.O. Box 6568
Mesa, AZ 85206

SNOWDEVIL SKI CLUB AT A.S.U.

San Diego
September 13 & 14
\$89

Utah!
Telluride
Steamboat
Lake Tahoe

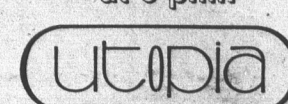



trips include transportation
lift tickets
lodging
parties!
parties!
parties!

FREE T-SHIRT WITH MEMBERSHIP
All ages welcome

FIRST MEETING--
THURSDAY,
September 3
at 6 p.m.

sponsored by,
Alpine Ski Keller
BEAUVAIS

919 E. APACHE
SANDIEGO TRIP GIVEAWAY!

CALL 967 8284 OR 966 2304

Amtrak's new Tempe station to open Sept. 19

By ROBIE KAKONGE
State Press

Amtrak will no longer be just passing through town.

Starting Sept. 8., the Amtrak's Sunset Limited run will pick up and drop off passengers in Tempe rather than just whizz through town.

The train has not stopped in Tempe for nearly a decade because officials feared there was not enough business, according to an Arizona Railroad Association official.

Plus, there was no platform.

The Arizona Railroad Association, City of Tempe redevelopment officials and Mayor Harry Mitchell began working with Amtrak five years ago for a Tempe stop.

City of Tempe Redevelopment Supervisor Ernie Vega has been overseeing the platform construction, which will cost the city \$55,000, he said.

"It has taken us a long time trying to build this platform and I am glad it is all almost completed," Vega said. "This will help take some of those cars off the freeway."

He said novelty may play a big part in the station's success.

"I have never ridden on a passenger train before, and since the novelty of all this

excites me, I am sure other people will be excited also."

Arizona Railroad Association Director George Loulan said, "The stop in Tempe improves service to the Tempe community because for one thing, if they want to take a train to Tucson, they don't have to go all the way to Phoenix."

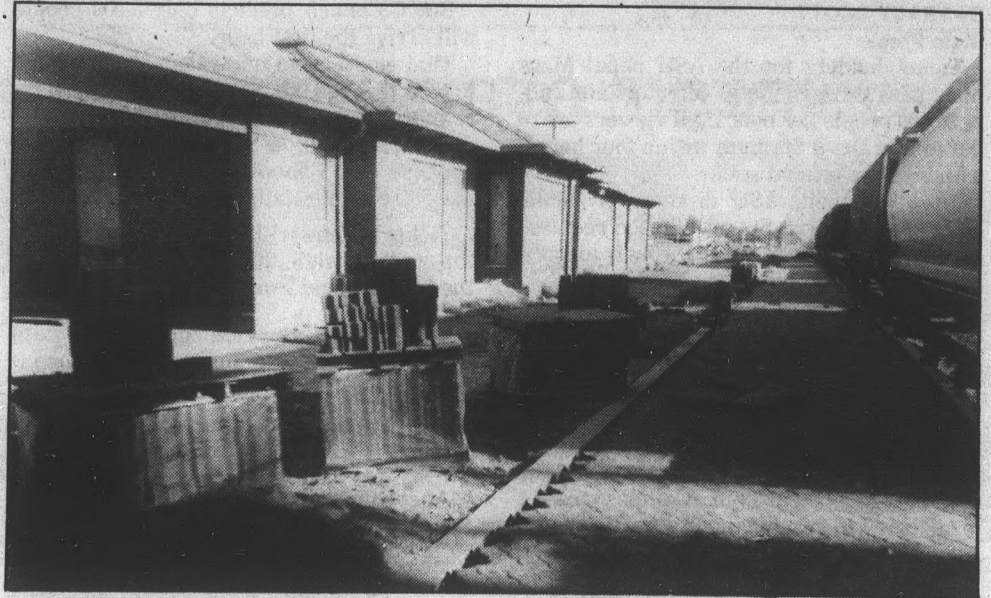
Loulan, who said he plans to form an ASU student railroad association, added, "This new stop will give students a chance to use other means of transportation, since not everybody likes taking planes or driving."

The tri-weekly train will travel between Los Angeles and New Orleans. A one-way ticket for the eight-hour trip to Los Angeles will cost \$75 and \$105 round trip, according to Amtrak spokesperson Debbie Marcinika.

Marcinika was not able to provide further details about the Tempe stop.

Loulan said Amtrak has not stopped in Tempe for several years because of cheaper, faster airline travel.

"Anyone who looks at the price of the train ticket compared to an airplane ticket will ask 'why should I take a train that costs more and takes longer to go to California?'"



A freight train zips past the soon to be completed Amtrak Station located near Third Street and Ash Avenue.

But Loulan said he and organizers are counting on the novelty of train travel to make the Tempe stop successful.

The student club will offer discount tickets

to students, he said.

The platform's grand opening is planned for 7:20 a.m. on Sept. 19.

COUPON

INTRODUCING ...



THE
SMART
COOKIE

Cookies for all occasions

Come spin "The Wheel of Fortune Cookie" every Monday for discounts

- **FREE YOGURT**
BUY ONE YOGURT
GET ONE FREE (EQUAL VALUE)
- **FREE COOKIES**
BUY ONE DOZEN GET
ONE-HALF DOZEN FREE
- **50 CENTS OFF**
ANY 12-INCH COOKIE

FREE DELIVERY!
(within delivery area)

THE SMART COOKIE

University & McClintock (behind May West)
921-9988
Expires 9-5-87. Not valid with any other coupon.

COUPON

SALE!
PEANUT
BUSTER
PARFAIT

\$1.19



Dairy Queen

Expires 9/9/87

We're having a real sale on a real treat. Three thick layers of real hot fudge and crisp, crunchy peanuts. With cool and creamy DAIRY QUEEN® soft serve in between. The Peanut Buster Parfait. Now only \$1.19 at your participating DAIRY QUEEN® store.

WE TREAT YOU RIGHT™

950 S. MILL (Across from Gammage)
966-1957

BIG STUDENT DISCOUNTS
at Wilson Camera



Within Walking Distance From Campus (at Forest)

- All darkroom supplies, paper
- Film developing
- Full service camera store
- Faculty discounts too!



LENSES • VIDEO • TELESCOPES • BINOCULARS

ASU TEMPE

204 E. University
(Behind The Chuckbox)
894-8337
7 valley locations

ASU's Very Own

Wild Pizza™

DELIVERY

Hot & Wild
Pizza in Bed

Get WILD
at home
TONIGHT!!



5 p.m. to midnight
7 days

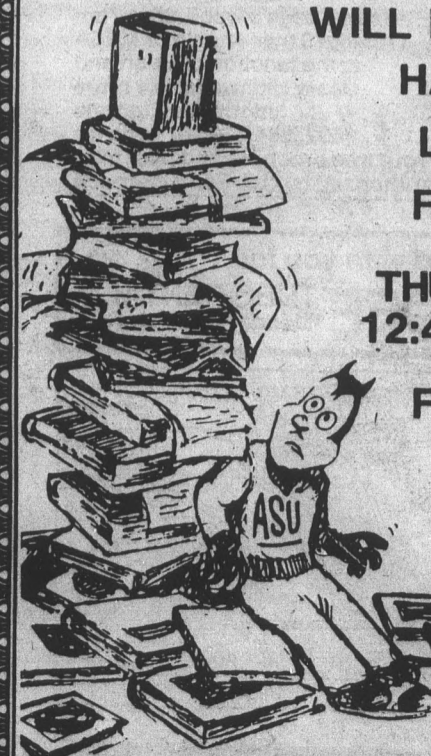
FREE DELIVERY

965-4444

You can even use your cash value card

BE-DEVEILED
BY THE LIBRARIES?
LIBRARY TOURS

WILL BE GIVEN IN BOTH THE
HAYDEN AND NOBLE
LIBRARIES ON THE
FOLLOWING DATES.



THURSDAY, SEPTEMBER 3
12:40-1:30 AND 3:40-4:30

FRIDAY, SEPTEMBER 4
11:40-12:30

LIBRARY TOURS BEGIN
IN THE LOBBY AND TAKE
50 MINUTES TO COMPLETE.

Spikers complete final preparations for tourney

By JOAN McKENNA
State Press

The last week before the season-opener is a time for consolidation for any team in any sport, and for the ASU volleyball team it is no different.

The Sun Devils are putting the final touches on their game before their Thursday afternoon departure for the Illini Classic in Champaign, Ill. Enthusiasm has never been higher than it is now, but head coach Debbie Brown explained the upswing.

"On Saturday, I talked to the girls for a couple of minutes and told them we had to play with emotion," she said. "Starting today, we had to become a team."

Brown said she is pleased with the change.

"We were slower getting together than I would have liked," she said. "But now we're on the right track."

"In preseason practices, everyone is competing for a starting position, but now it's important for the second team to support the first and everyone to pull together."

The fourth annual tournament is a rough way to open the season as ASU faces Illinois at 8 p.m. Friday, Brigham Young at 10 a.m. Saturday and Texas A & M at 6 p.m.

Volleyball Monthly magazine ranks BYU fourth and Illinois sixth in the nation in its preseason poll. ASU is ranked 13th.

A victory over the Cougars would be most satisfying for the Sun Devils because BYU defeated ASU twice last year in Utah: 3-0 in October and 3-1 in the NCAA West Regional semifinals.

Eleven players return from a Cougar team that finished 40-3 overall and lost to Stanford in the West finals including senior starting setter Marki Salmi, last season's Reebok Player of the Year, junior 6-3 middle blocker Dylann Duncan and junior 6-1 outside hitter Jill Sanders.

"We are as strong as last year," BYU assistant coach Jim Brinton said. "We have good recruits. We'll give them (ASU) as good of a run as we gave them last year."

Brinton said the Cougars are comfortable with their fourth-place rank.

"It gives us something to feel good about, but something to work for as well."

The Fighting Illini are equally

formidable. The 1986 Big-10 Champions had a 36-6 record overall, 18-0 in conference play last season before losing to Nebraska in the NCAA Mideast Regional Final.

Back from the 1986 team is junior 5-11 middle blocker Mary Eggers, a first team All-America selection who led the nation in hitting efficiency with a .455 percentage.

Eggers, a teammate to Sun Devil Christy Nore at the 1987 World University Games in Zagreb, Yugoslavia, has been an all-tournament selection in every collegiate tournament in which she has competed.

Texas A & M's team will have an uphill battle this season with predominantly freshmen and sophomores. They have lost four starters and five seniors from last year's team, which finished 23-14 in 1986.

ASU has four starters returning from the 1986 team which finished third in the Pacific-10 Conference, 27-7 overall.

Senior 5-10 outside hitter Tracey Barberie comes off a consistent spring season and gives the Sun Devils versatility, being able to play from the left and right side.

All-America Regina Stahl will start as setter for her fourth year. She recorded 1,062 assists last season as well as a team-high 50 service aces.

Junior outside hitter Christy Nore enters the tournament with a 1986 record of 436 kills and 414 digs. Known for her all-round athletic ability, Nore could be a key to ASU's hitting squad with four-year veteran Valentina Vega gone.

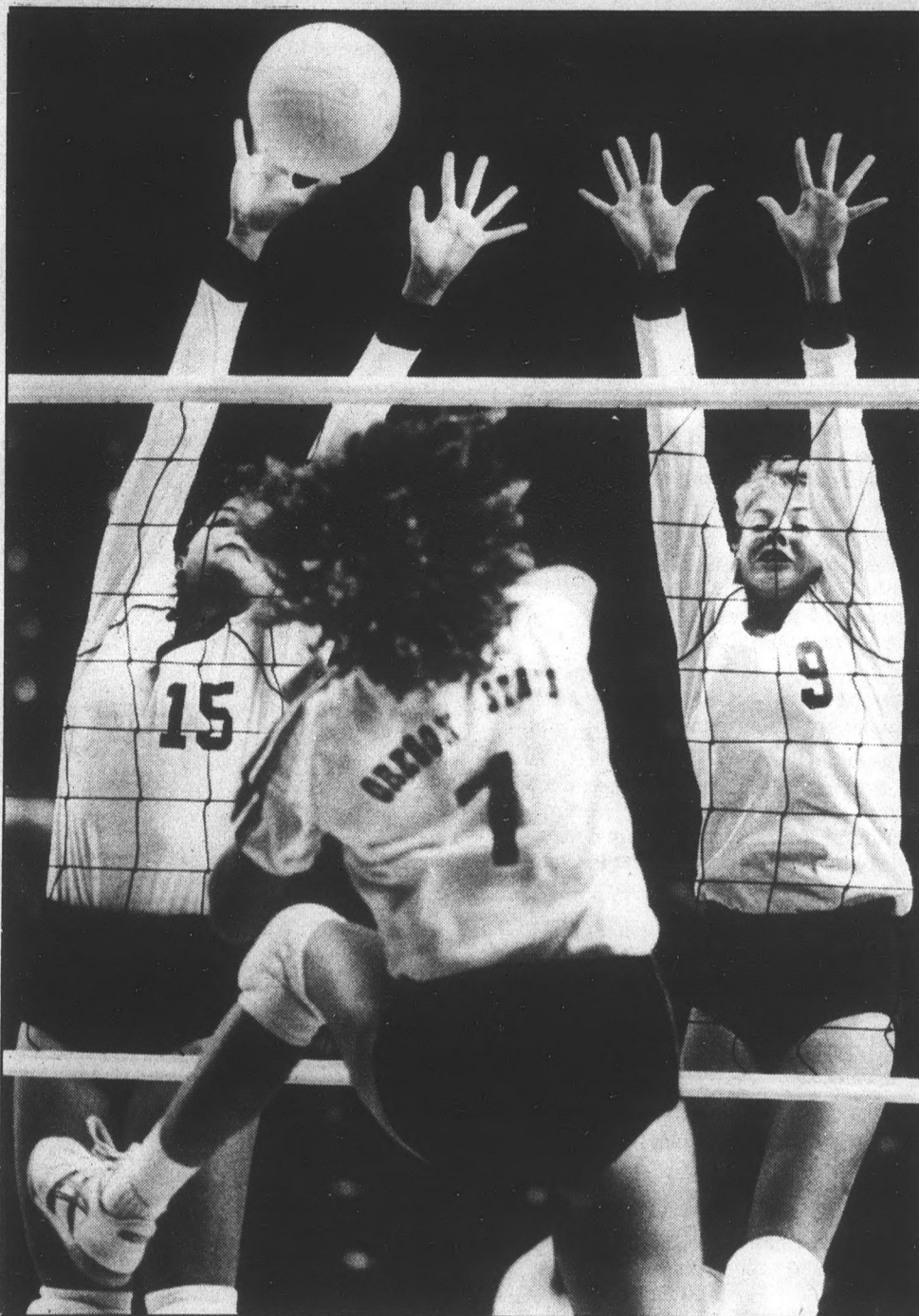
The surprise of the year may be sophomore middle blocker Sue Nord, who Brown said "has shown the most improvement on the team."

"Sue is moving and serving well and hitting aggressively," Brown said.

Nord said she feels a lot stronger and quicker. She attributes it to the work regimen she followed during the off season in June.

"I worked really hard that month. I was weightlifting six days a week, and with that, running every day," she said. "I think that's the main reason for the improvement, especially in my jumping ability."

Brown said Nord is playing with a new level of confidence, which may have developed from playing in the Olympic Festival this summer.



ASU volleyball players Christy Nore (9) and Sue Nord (15) block an Oregon State spike last season. The Sun Devils travel to Champaign, Ill. this weekend for the Illini Classic.

Huskies lose many to graduation; quarterback holds key



Washington tailback Vince Weathersby puts a move on ASU roverback Robby Boyd last season. The Huskies are looking to rebuild their squad into a Rose Bowl contender this year.

PREVIEW



Today: Washington (1986 8-3-1)

Editors note: This is the fourth in a nine-part series previewing each football team in the Pac-10 Conference.

By STEVE BRENNAN
State Press

At the beginning of the 1986 season, the Washington Huskies came out with their guns ablaze.

The Huskies, known for their near-invincibility at home (57-17-1 since 1975), demolished Ohio State 40-7 in their opener.

The next weekend they trounced BYU, 52-21, and it looked as though the Huskies might be on their way to the national championship.

But coach Don James' team could not manage to win key conference games, a problem that has troubled the Huskies for years. Losses to ASU, USC and a tie with UCLA put them out of the Rose Bowl race.

In addition to a dismal performance in the Sun Bowl (a 28-6 thumping by Alabama), James lost several key players at the end of the season to graduation.

All-American defensive tackle Reggie Rogers, NCAA record-setting placekicker Jeff Jaeger, fullback Rick Fenney, All-Pac-10 receiver Lonzell Hill, and All-American safety Tim Peoples graduated, leaving gaping holes in the

Turn to HUSKIES, page 20.

All-America golfer vows to uphold winning ways

By GARY JACKSON
State Press

The ASU women's golf team has always had a reputation of being among the top teams in the country, and one of the best golfers on the team said the tradition will continue this season.

Pam Wright, a first-team All-America, said the close-knit team is concentrating on improving last season's 11th-place finish in the NCAA tournament.

"We have a great squad," Wright said. "Everyone on the team is experienced — which is priceless."

The team is currently competing to see who will accompany the squad on the first trip to New Mexico. While many of the team members will be sweating it out in the intense heat, Wright will not have to worry much.

Head coach Linda Vollstedt said Wright, a junior in her last season of athletic eligibility, and junior Pearl Sinn will lead a mature and experienced team back to the NCAA championships.

Wright, from Scotland, said she always dreamed of playing in Arizona, let alone the national championships.

She came to America in 1984 to compete in an amateur tournament. There she met former ASU golfers Libby Akers and Heather Farr, who put her in touch with Vollstedt. Wright said she had wanted to play here since she was 16.

Wright's mother, also a golfer, had given her daughter a name and address for

scholarship information, but Wright did not realize until after she signed at ASU that she was supposed to contact Vollstedt.

"I was lucky because Linda hadn't seen me play, although I had a lot of experience," Wright said.

Vollstedt said it was an unusual situation to have a foreigner ask to play, but after checking Wright's credentials, she discovered Wright was highly qualified for both golf and academics.

"Golfers miss more school — more than any other sport — because we leave two days before a match, and a tournament lasts for another three days," Wright said.

But she said she has not had any problems working with teachers, although some members of the team have.

The team has a mandatory weight-training program and Wright said she enjoys keeping fit.

"Keeping fit and maintaining leg strength is very important when you're on the course for four hours and the temperature is 100 degrees," she said.

Wright said she went back to Scotland over the summer to visit friends and take a long-needed break. While there she played golf with her father, Innes Wright, who is a professional golfer.

But now it is time for the team to get back to "number one, where it should be," Wright said.

"Everyone is always laughing and joking, and we have great team spirit," she said. "But it's back to business when we're on the course."



ASU golfer Pam Wright swings last season. The All-American is expected to lead the Sun Devils to another top-10 season. State Press photo

Connors handed birthday present

NEW YORK (AP) — Sixth-seeded Jimmy Connors celebrated his 35th birthday Wednesday with a 6-1, 6-4, 6-4 victory over fellow American Joey Rive in an opening-round match at the U.S. Open tennis championships.

"This is no different than the last 18 years," said Connors, the highest-seeded American male at the Open. "I've celebrated my birthday here every year. I'm looking forward to the day when I don't."

Other first-round winners included second-seeded Stefan Edberg of Sweden, No. 3 Mats Wilander of Sweden and No. 5 Miloslav Mecir of Czechoslovakia.

In women's play, top-seeded Steffi Graf downed Bettina Fulco of Argentina 6-0, 6-3.

Connors served extremely well against Rive, ranked 101st in the world. The five-time Open winner got 89 percent of his first serves in during the match, including 96 percent in the final set.

"I played quite well," he said. "I just wanted to keep my mind on my business."

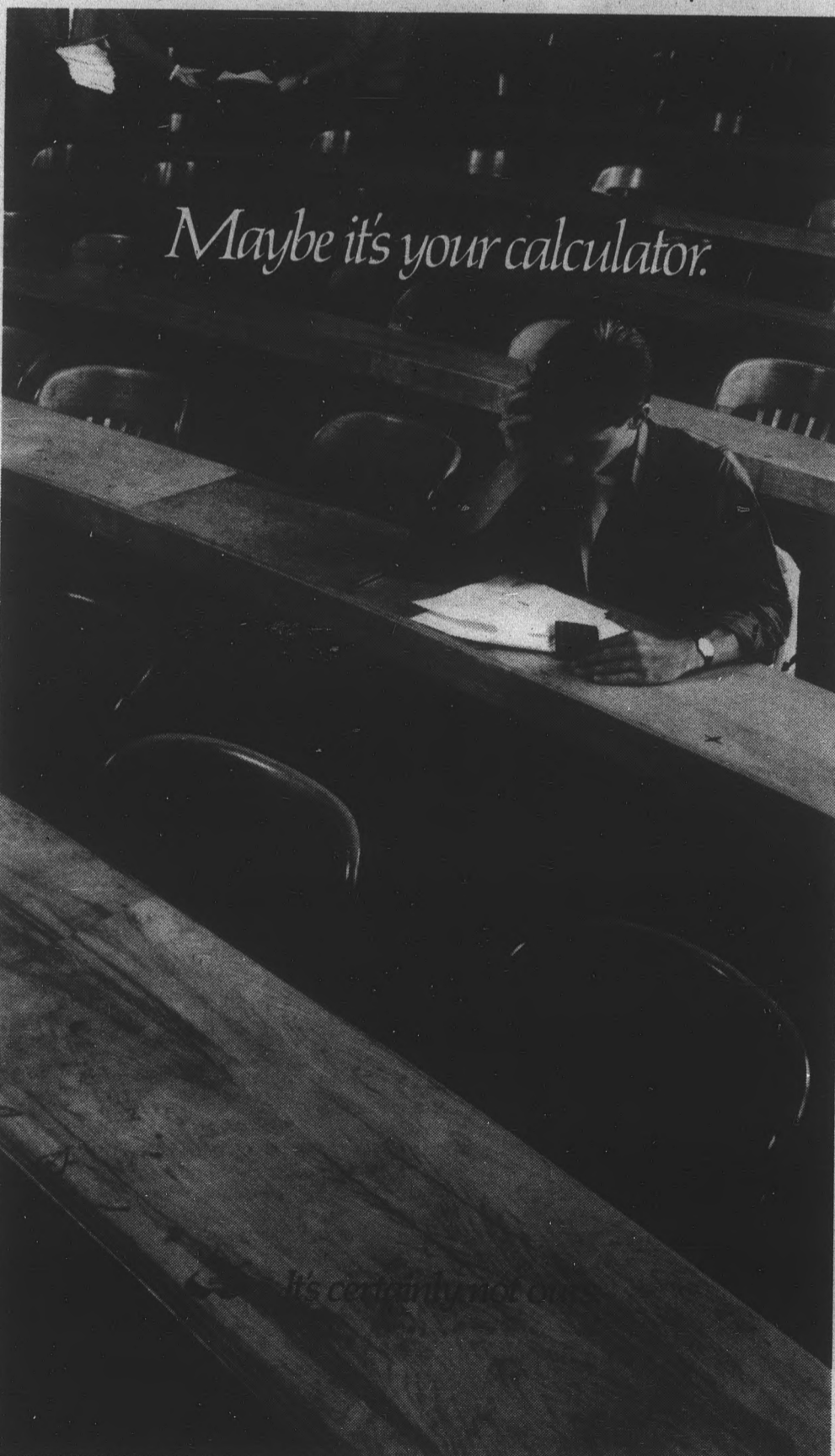
Connors said his blistered right foot didn't bother him during the 1-hour, 43-minute match.

"It's a day-to-day situation," he said. "Today it was OK."

Graf lost only six points in the first set against Fulco, the 55th-ranked women's player. It was Graf's first match since gaining the No. 1 ranking in women's tennis last month.

"The last couple of days I wasn't really nervous, but I was anxious to play," she said.

The West German teenager had dental surgery last month after winning the Virginia Slims tournament in Los Angeles.



We know that a cheap calculator can cost you blood, sweat and time.

Investing in a Hewlett-Packard calculator, on the other hand, can save you time and again.

HP calculators not only have better functions. They function better. Without sticking keys and bad connections.

Through October 31, you can get the cream of the calculators at a non-fat price.

We're cutting \$10 off the HP-12C. That buys you more built-in functions than any one else's financial calculator.

And we're giving away a free Advantage Module, a \$49 value, with every HP-41 Advanced Scientific calculator you buy. This 12K-byte plug-in, menu-driven ROM was designed specially for students.

So drop by your campus bookstore and compare HP calculators with the rest. By midterm, you'll see what a deal this is.

FREE \$49 HP-41 ADVANTAGE MODULE

with purchase of HP-41. Purchase must be made between August 15, 1987, and October 31, 1987. See your local HP dealer for details and official redemption form. Rebate or free Module will be sent in 6-8 weeks.

OR \$10 OFF AN HP-12C.

we never stop asking

What if...

hp HEWLETT PACKARD

Gondrezick pleads guilty to interfering with investigation

PHOENIX (AP) — Phoenix Suns guard Grant Gondrezick, one of more than a dozen defendants in the Suns' drug-conspiracy case, pleaded guilty to a reduced charge Wednesday and was sentenced to probation.

The attorney for Suns' center James Edwards, meanwhile, denied a report that Edwards was offered a plea agreement by prosecutors but turned it down.

Gondrezick, 24, pleaded guilty to interfering with an investigation, admitting he asked a witness not to testify against him, said his attorney, Ken Fields.

Maricopa County Superior Court Judge

Michael Ryan's office confirmed Wednesday that Gondrezick had entered into a plea agreement and had been sentenced to three years' probation.

Gondrezick, 24, is a reserve guard for the Suns and a second-year player for the National Basketball Association team. He was a fourth-round draft pick in 1986 after playing for Pepperdine.

Suns spokesman Tom Ambrose did not immediately return a call seeking comment on Gondrezick's status with the team in the wake of his guilty plea to the interference charge.

Under the NBA's anti-drug agreement, a player who is convicted of a drug charge or pleads guilty to one faces a minimum two-year suspension from the league.

Gondrezick also is required to pay \$100 in court costs and perform community service, Fields said.

The defense lawyer said Gondrezick also agreed to testify "if the state wants it."

Fields declined to say whether he believed it was likely that his client would be called to testify. He said he could not comment beyond the facts of what had transpired because he, like other participants in the

case, remained under a gag order imposed earlier by Ryan.

The Scottsdale Progress said in a copyright story Wednesday that Edwards had rejected a plea agreement, but his attorney denied the report.

"That's not true," said Larry Debus. "He's not been offered" a plea agreement.

Edwards, 31, was indicted on three conspiracy counts.

He, Gondrezick and guard Jay Humphries were among 13 people indicted on drug-related charges earlier this year.

Rozelle offers to arbitrate in possible strike

NEW YORK (AP) — As contract negotiations between players and owners resumed for the first time since Aug. 14, NFL Commissioner Pete Rozelle said Wednesday he would be willing to get involved "at the right time" to help avoid a strike.

But Rozelle noted: "To do it, I would have to be accepted by both sides."

Spokesmen for both the NFL Players Association and Management Council confirmed that talks had resumed at an undisclosed site in the Washington area. In an effort to avoid prolonged wrangling over minor issues, they were limited to small delegations for each side.

Negotiations on the new contract began April 20, but little progress has been made since on either minor issues or the players' principal demand—for free agency without compensation.

The union's executive board voted Monday to set a strike date to be recommended to the board of player representatives Sept. 8. The date was undisclosed, but the *Baltimore Sun* and *Washington Times* reported Wednesday that it is after the second or third week of the season, which begins Sept. 13 with the fourth week as the alternative date.

The contract between the players association and club owners expired Aug. 31.

Rozelle has been largely uninvolved in past labor disputes, including the 1982 strike, which lasted 57 days and reduced the 16-game season to nine.

Bowie Kuhn, when he was baseball commissioner, did not intervene in the 1981 baseball strike. But Peter Ueberroth, Kuhn's successor, was largely credited with ending the 1985 baseball strike after two days.

Rozelle said in an interview Wednesday that his relationship with Gene Upshaw, the union's executive director, is much better than it was with Ed Garvey, who held that position during the '82 strike. He said he hoped to be able to stay in contact with both Upshaw and Jack Donlan, the executive director of the NFL Management Council and the chief negotiator for the owners.

Rozelle also said he could see disadvantages for both sides if the owners were to go ahead with the season in the event of a strike. Some teams have been offering players they cut \$1,000 to return in the event the union players walkout.

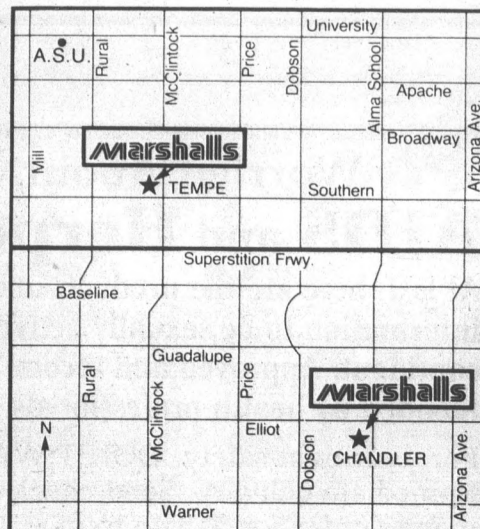


Marshalls
BRAND NAMES FOR LESS.

You're a study in cool

So-so is not for you - you want looks that get you noticed. Like sweaters with embossed buttons and crested pocket emblems in cotton/ramie knits. Match it to pure cottons...neatly tailored shirts with hidden buttons and pleated canvas slacks, all pigment-dyed for today's color news. Just your size, S-M-L-XL, pants 30 to 38, from a very fine maker. Find them in Men's Collections.

- pullover sweaters
regular price elsewhere \$45 **22⁹⁹**
- cardigan sweaters
regular price elsewhere \$65 **34⁹⁹**
- long sleeve shirts
regular price elsewhere \$30 **16⁹⁹**
- canvas pants
regular price elsewhere 32.50 **16⁹⁹**



TEMPE
Southern Ave. and
McClintock Dr.

CHANDLER
Mervyn's Plaza,
Alma School Rd.



Open Monday thru Saturday 10 to 9 • Sunday 11 to 6

Clubs, intramurals to begin soon

By CHRIS DORSEY
State Press

Intercollegiate athletic matches begin this weekend with the volleyball team, but the season for ASU clubs and intramurals is not far behind.

The soccer club is looking for newcomers to help in the upcoming season, with practices already taking place every Tuesday and Thursday at Sahuaro Field.

ASU defeated the University of Arizona in its finale last season, 2-1. The team, which finished 8-6-1 last year, does not play at the intramural level, but competes against other college and club teams.

"Everyone is welcome to come out and tryout," coach Memo Melik said.

Anyone interested in playing Sun Devil soccer may call Melik at 966-8776.

Other club sports that begin play this fall are: badminton, bowling, water polo, rugby, volleyball and lacrosse.

The deadline for students interested in playing intramural volleyball is at 3:30 p.m. today at the managers meeting at P.E. West. Further information may be obtained by calling the intramural office at 965-5638.

The intramural badminton tournament has been completed and the results have been posted.



State Press photo

The ASU soccer club in action against UA. The Sun Devils are planning to beat the Wildcats for the second straight year, and are practicing for the next two weeks at Sahuaro field.

The winner in the women's singles division was Christine Nagle, and the women's double champions were Mary Wilke and Marci Sturges.

In the men's A division the individual winners were Shailesh Patel and in the B

division S. Bacazaridran claimed the top honors.

"I was really happy with the turnout in the men's division," said Juliette Moore, assistant director of intramurals. "I would have liked to see a better turnout

for the women. Hopefully, for golf we can get more women involved."

The next deadline for an intramural event will be Sept. 17 for all divisions of golf. Further information contact the intramural office at 965-5638.

classifieds

announcements

JESUS CHRIST SUPERSTAR
Mesa Amphitheatre
Sept. 11, 12, 18, 19 & 20
SPECIAL ASU DISCOUNT
\$8 for \$12.50 ticket
Must be purchased at
Mesa Community Center
Box Office before Sept. 4.
Info: 834-2560

COLLEGE MONEY available. C.C.S. Scholarship Locator Service can help you finance your college education. We specialize in locating scholarships, grants, and loans. Money-back guarantee. Free brochure. Call Tucson, 296-0965 or write C.C.S., P.O. Box 17150, Tucson, AZ 85731.

autos for sale

1979 DATSUN 280ZX 5-speed. Fully equipped, 77,000 miles, excellent condition, must see, \$5000. Mike, 829-0846, evenings.

VOLKSWAGON THING, \$1500/offer. Eric, 966-0729.

GOTTA SELL 1984 Mitsubishi Cordia, 5-speed, hatchback. Great stereo. \$3995, firm. 496-0505, leave message.

1981 RENAULT 18i, air, stereo, runs great, 30 miles per gallon, clean. A steal, \$1250! 833-8819.

1982 HONDA Accord LX- 2 door, clean, looks sharp. AM/FM cassette, power steering, power brakes, new tires, automatic transmission, air. 59,200 miles, must sell, \$4500. Days, 840-2405, evenings, 971-4675.

autos for sale

1985 TRANS-AM V-8HO with performance package, loaded, all white, 24,000 miles, Alpine stereo, amp, and alarm system. \$10,900/offer. 829-8660.

1980 MAZDA GLC. 5-speed, 4-door hatchback. Well maintained. Runs good. Dependable transportation. 244-9641 evenings, 840-7897.

motorcycles for sale

1978 HONDA Hawk 400, 18,000 miles-must sell. Good condition, \$500/offer. Call Bill, 967-5442.

1978 SUZUKI GS750, excellent condition, many extras, very reliable. Asking \$750, 894-0871. Fun bike!

1980 YAMAHA 400 Special. Runs well, very dependable. Must sell, \$500. Call John at 894-1590.

1981 GOLDWING, 28,000 miles. Custom seat, new battery. \$1650/offer. Call between 6-9 pm. John, 867-0529.

1981 HONDA CB125S, 4,000 miles, very clean. \$390. 967-6186, 252-8734.

1981 KAWASAKI 750 LTD. 4500 miles, just tuned with new battery, excellent condition. Days, 377-0685 or 431-0830 evenings, and weekends, 835-0078. \$1600.

1983 YAMAHA Virago 500. Warranty, 26,000 miles, very good condition, stereo. \$800, 894-6489 after 7.

1985 HONDA Elite 80, excellent running condition. Only has 840 miles, \$700. 829-1040, Pat.

1985 RED Honda Elite 80 scooter. Excellent condition. Runs like new. Only 3800 miles. \$619. Chris Chipain, 921-3392.

1986 HONDA 500 Shadow. Low mileage, excellent condition. Make an offer. Joe, 820-2623.

KAWASAKI 1000 LTD. Very clean. Low miles. Close to campus. \$1950. 839-1924.



YOU CAN SELL YOUR CAMERA with a classified ad!

STATE PRESS CLASSIFIED DEPT.

15 Matthews Center Basement
8 a.m.-5 p.m. daily

965-7572
VISA • MASTERCARD
CASH • CHECK



SCREEN PRINTING

TEAMS, Clubs, Social AND GREEK FUNCTIONS

20% Discount
894-2290 w/COUPON

FINAL OPPORTUNITY GRADUATE STUDENT ORIENTATION

Thursday, Sept. 3 • 3:30-5:30 p.m.
Arizona Room, Memorial Union
All new degree and non-degree students invited.



2nd Print
99¢

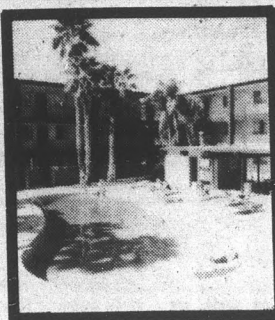
24Exp or 36Exp
(at time of developing)

Offer valid 9-1/9-15

The Picture Place®

Memorial Union - Lower Level

If your pictures aren't becoming to you, you should be coming to us.



Terrace Road Apartments WALK TO SCHOOL!

1/2 block from Campus. Huge well-furnished 1-bedroom 1-bath, and 2-bedroom 2-baths, all utilities included, plus large heated pool, spacious laundry facilities and cable TV.

950 S. Terrace Rd. 966-8540



Papa Jay's Pizza

FAST FREE DELIVERY (Limited Free Delivery Area) \$4.95, Minimum Food Order
804 South Ash, Tempe (2 blocks West of Mill Avenue, south of University)

HOURS
Mon.-Thurs. 4-12
Friday 4-11
Saturday 12-11
Sunday 12-12

966-1003 or 966-4292

SAVE!

SUN DEVIL COMBOS
(includes choice of up to 4 toppings)
SMALL MEDIUM LARGE
\$5.95 \$6.95 \$7.95
PLUS TAX

All Prices Subject to Change Without Notice

LATE NIGHT SNACK
(Mon.-Fri. between 10 p.m. & 12 p.m.)
2-MEATBALL OR SAUSAGE SUBS w/Cheese
2-24 OZ. PEPSIS
ONLY \$7.50 Plus Tax

All Prices Subject to Change Without Notice

COUPON

2 FREE 2
2 litres of Pepsi
with purchase of
LARGE Sun Devil Combo

All Prices Subject to Change Without Notice

2 LARGE ONE ITEM PIZZAS
ONLY \$11.00* Plus Tax
(with this coupon) *On Regular, not Sicilian Style

All Prices Subject to Change Without Notice

SAVE!

DINNER SPECIAL
(Mon.-Fri. between 6 p.m. & 8 p.m.)
2-LASAGNA DINNERS
2-SALADS • 2-24 OZ. PEPSIS
ONLY \$9.95 (with this coupon) Plus Tax
(Meatballs Additional)

All Prices Subject to Change Without Notice

\$1.50 OFF
ANY LARGE Sicilian Style Pizza*
with two or more toppings
*Extra Thick Crust Not on Sicilian Chat

All Prices Subject to Change Without Notice

motorcycles for sale

1986 HONDA Rebel 250cc, excellent condition, low miles, helmet included, \$995 or best offer. 898-0212.

1986 HONDA 150 Deluxe Scooter. Excellent condition, ice blue, 1988 registered, \$1500. Kelly, 834-4531.

AERO 50 Scooter, less than 1 year old, black, mint condition. Will show anytime, asking \$650. Jennifer, 991-1219, please leave message.

FOR SALE Riva 80 scooter. Runs great! Must sell! \$700, 437-2294 or 897-8462.

trucks for sale

1985 TOYOTA 4x4. Mint condition. Have to see to appreciate. Make an offer. Joe, 820-2623.

bicycles for sale

SCHWINN SUPERSPORT, 22". Excellent for touring. Very low mileage, Shimano 600 components, cateye odometer, \$250. 956-6281, evenings or message.

TANDEN- EXCELLENT condition, white on white, must sell. Asking \$185, call Mark, 921-2747.

TEMPE BICYCLE Shop. Largest selection new, used bikes, clothing, parts, accessories. Rentals. Student discounts. Close to ASU. 330 W. University. 966-6896.

furniture for sale

2 FLIP chairs, \$20 each. Love seat, \$125/offer. Robyn, 965-6563 or 962-4033.

FULL SIZE bed. Still in factory package. \$99. Can deliver. Phone orders accepted. 272-8286.

BIG FURNITURE SALE

MATTRESS SETS
Twin Sets.....\$49.95
Full Sets.....\$59.95
Queen Sets.....\$79.95
Sofa & Love Seats.....from \$169
Sleeper Sofa.....from \$249
3 pc. Cocktail Sets.....from \$69
Bunk Beds.....from \$139
7 pc. Bedroom Sets.....\$195
7 pc. Living Room Sets.....\$264
Large 5-drawer Chests.....\$39.95
PLUS MUCH MORE

MAIN STREET FURNITURE
137 W. MAIN ST., MESA
898-1456

3332 FURNITURE
3332 W. McDOWELL RD.
PHOENIX • 233-2336

furniture for sale

Mesa Auction & Furniture
157 E. Broadway
Mesa, AZ
964-3942

Furniture & Household Items at Bargain Prices
New Furniture Sold Anytime
Auction Every Friday 6:30 p.m.

FUTON CHAIR, \$40; blue Door Store chair, \$30; 2 shelf bookcase with doors, \$20; 30" table lamp, \$25. 966-9598.

MOVING. MUST sell beds, refrigerator, bookcase, table, chairs, antique stove, etc. Call Jim, 231-9345 a.m./p.m.

NEW QUEEN size Ortho box and mattress. Stored, never used. \$149. Can deliver. Phone orders accepted. 272-8286.

RENT FURNITURE
STUDIO PKG: \$36/month
3 ROOM PKG: \$49/month
6 Month Lease plus Tax & Delivery
CROWN FURNITURE LEASING
Warehouse Show Room
25 S. 40th St., Phoenix
244-0424

WAREHOUSE SALE: Desks from \$44, chairs from \$4, bookshelves from \$19, end tables, typing tables, computer tables, file cabinets, storage cabinets, dining tables, plus lots more. Arizona Office Liquidators, 4010 S. 43rd Place, between 40th Street and 48th Street, north of Broadway. 437-2224.

miscellaneous for sale

Tired of schoolwork already ???
Mesa Computer Mart is a dealer for Apple Computer Higher Education Purchase Program.
Authorized Dealer

Item	Your Price
Macintosh Plus w/keyboard	\$ 1349.00
Macintosh SE w/keyboard	\$ 1786.00
Macintosh II CPU w/keyboard	\$ 2391.00
Apple® Mac II Monochrome Monitor	\$ 289.00



For prices on these and many more go to the Compass Center on plan walk. Or call Todd at 833-1155

furniture for sale

QUEEN SIZE sleeper sofa, good condition, \$95; large coffee table, \$35. \$115 for both. 438-1087.

tickets for sale

CONCERT TICKETS: Heart, Air Supply, Molly Hatchet, Steppenwolf, Starship, Roger Waters. Best seats and prices. 998-3773, The Ticket Connection.

JACK'S TICKET AGENCY

Concerts
Sports Events
Theatre
560 S. College
Suite 102, Tempe
968-3939
968-3976

miscellaneous for sale

ATARI 2600, \$10; coffee and end table, handcrafted contemporary set, \$125. Call evenings, 966-9173.

COMPUTER SYSTEM: Apple IIc, monitor with stand, second drive, mouse, Okidata 92 printer with interface. Passport MIDI interface with software. Supercalc, Appleworks, Apple Access II, Mousepaint, games, utilities, much more. Complete package, like new, including all manuals and accessories, \$1000/offer. 820-3449.

VEMCO DRAFTING machine, 37"x60", Mark XII, new, still in carton, \$265. 345-2770.

miscellaneous for sale

COMMODORE 64, 1541 with flash, printer interface, Pascal compiler assembler, advance basic, games, and books. \$295, 926-1041.

DRAFTING BOARD, 30"x36", wood, metal, adjustable. Metal outdoor easel, adjustable, rolls on 4 coasters, canvases up to 72". brushes, oil paints, many other art supplies. For more information call 946-5673.

ELECTRONIC FUN: Casio CZ-101 digital synthesizer keyboard, \$200. Korg DDM-110 digital drum machine, \$125. Atari 2600 home video arcade system including controllers and over 30 game cartridges, \$50. Call Ric at 820-3449.

KODAK FILM sale, black and white, 24 exposure- \$2.15, 36 exposures- \$2.95, minimum 5 rolls. Call order, 965-4322, The Picture Place, ASU Memorial Union.

MACKINTOSH 512K, Imagewriter, external drive, carry case. \$1200. 956-6281, evenings or leave message.

SKATE CHEAP: Tennis shoe skates, sizes 1-8, \$5 a pair. Tempe. 967-5636.

STATE OF the art, portable door and window alarm. A must for every apartment. 100% money-back guarantee, 5 year warranty. \$49.95, 844-4064.

real estate for sale

10'x43' ARTCRAFT mobile home located in park across street from campus, \$3000/offer. 995-3828, 966-4282.

2015 E. Southern: Patio home/condo, 3 bedroom, 2 bath, fireplace, dining room, pool, and laundry facilities. Quiet complex. Immediate availability. Priced at \$64,000. Call Nino, 996-9910, Realty Executives.

3 BEDROOM, 10X65 mobile home close to ASU. \$2500/offer. Call 244-1108 after 6 p.m.

BIKE TO ASU, University/McClintock. 3 bedroom, 2 bath, Questa Vida Condo. \$3000 cash to mortgage, assume 10% FHA loan. 921-9904.

CUSTOM BUILT block home, 1550' living area, 3 bedroom, 2 bath, double carport, 4 miles to ASU, Tri-City Mall area. 969-5795 for appointment.

GREAT ASU property- 4 huge bedrooms, pool, 2 1/2 baths. Call Dorothy, 838-8677, Hanna Properties, 838-8800.

INDIAN BEND Gardens townhomes, low 70's, 2 and 3 bedrooms, double garages, next to beautiful park, Miller and McKellips. Delisa Realty, 990-9501.

NEAR ASU, two bedroom townhouse, new carpet, refrigerator, washer, dryer, \$34,900. Call Glen, 840-4310, 861-2400.

NO QUALIFYING, 2 bedroom, Papago Park. Low down, only \$631 per month. Bob Bullock, Trencor Realty, 951-5800, 860-4060.

PROFESSIONAL PERFECT, bright, open 3 bedroom patio home. 2 1/2 baths, 2 car garage, spa, community pool. Private small complex near campus. \$105,000, call Scott Cowan, 955-8455, Terra Marketing, 955-0505.

TOWNHOUSE, 2 bedroom, 2 bath, on pool, sundeck, ceiling fans, laundry hook-up. \$53,900. 122 S. Hardy, 63. Call 894-1942.

U.S. GOVERNMENT SALE WHY RENT?

Anyone can buy ... special terms, no escrow fees ... call Paul for a FREE LIST!

BR/BA DOWN	PRICE
2/1	\$1,400 \$38,000
3/2	\$1,700 \$44,600
2/2	\$2,300 \$56,250
3/2	\$3,100 \$62,000
4/2	\$2,900 \$61,900
4/2	\$3,400 \$77,700

PAUL PASTORE 831-0322
REALTY EXECUTIVES
6197 S. Rural Rd., Tempe

apartments for rent

1 BEDROOM apartment with pool, \$305. Build-ins, quiet, air-conditioning, close to campus. 954-8115.

2 BEDROOM, Papago Park, \$675 per month. Bob Bullock, Trencor Realty, 951-5800, 860-4060.

\$425: 2 bedrooms, 2 baths, washer, dryer, refrigerator, dishwasher. 1077 W. 1st St. (at Hardy). Apartment 101. 497-0450.

BEAUTIFUL NEW large one and two bedroom apartments, walk to ASU, pool, laundry, one block south of University on 8th Street and Gary. Ask about move-in specials. 968-5238.

SPACIOUS 2 bedroom, 2 bath apartments. \$450 month, all utilities included. Walk to ASU, pool, laundry. 910 E. Lemon. Call today, 966-8704.

apartments for rent

CONDO, ONE bedroom, washer, dryer, dishwasher, jacuzzi, pool, 1/2 mile, \$325. Call now. 895-6556.

DON'T MISS out! At Terrace Road Apartments we have two openings: a large two bedroom, two bath, and a spacious one bedroom, one bath. Laundry facilities, beautiful pool, courteous management, 1/2 block from campus, 950 S. Terrace Road. 966-8540.

NEW APARTMENTS, walk to ASU. 9 month lease. Roommates ideal. 1123 E. Apache Blvd. 968-6383.

NEW ONE bedroom apartment, furnished. Waterbed, pool, 2 miles from ASU. \$380 including utilities. 968-1309.

PAPAGO PARK condo, College and Curry - 2 bedroom, 2 bath, washer, dryer, patio. \$640/month. 966-0874.

QUESTA VIDA 2 bedroom plus loft. Includes washer, dryer, refrigerator, pool, spa, racquetball, and more. Near University and Hayden. \$700/month plus utilities. Call 991-5735.

HERE'S STUDENT LIVING AT ITS BEST!

Now you can live within walking distance of campus, have 24-hour security, video surveillance, a pool and jacuzzi, weight area, private balcony, covered parking, garage, laundry facilities, free utilities and local phone, monthly activities, contemporary decor, roommate selection process, and the comfort of having live-in resident advisors! All of these luxuries are a part of living at

UNIVERSITY TOWERS
525 S. Forest, Tempe

Stop by or call today, 894-2300, while space is still available... and enjoy living at its best.

TEMPE/ASU condo, near new, 1 bedroom, poolside, all appliances including washer, dryer. \$375. 396-9877, 965-5589.

UNIVERSITY TOWERS- Standard room, parking permit for 1 academic year included, total cost \$2700. 269-2788.

WALK TO ASU, junior one bedroom, \$305; two bedroom, \$425. Adults, no pets. 1031 E. Lemon. Bel Air Apartments, 968-2679, 933-4364.

WHY RENT! Own your studio co-op! Separate kitchen and bathroom, covered patio facing green area, \$5000 total price. Renda Realty, 954-6993.

homes for rent

2 BEDROOM. 5 blocks from campus. No pets. Prefer graduate couple. \$400, water paid. 967-4059.

CONDO FOR rent. Papago Park Village, near campus. 2 bedroom, 2 bath. Call Phil, 982-9449.

NICE THREE bedroom home on Orange. Walk to campus. \$550. Call Dan Murphy at 968-9331.

ROOMS IN good house with good people. Roomy and private. Near Los Arcos Mall. Jay, 946-5220.

rental sharing

BEST DEAL possible! Female: Live in the Lakes! \$250 plus 1/2 utilities, free phone! Access to all recreational facilities, private garage parking. Washer, dryer, microwave, and more! Call Karen, 820-6565.

CENTRAL SCOTTSDALE, 10 minutes from campus. Luxurious condo. Everything new. Includes all utilities, nice pool, lots of extras. \$275, 941-4550/message.

FEMALE GRAD student needs roommate. Share apartment, private bedroom, bath. \$300 includes utilities, Pool, laundry. Near Southern, McClintock. Call Sandy, 820-1590.

FEMALE GRADUATE student seeks responsible roommate: Share 2 bedroom condo, 2 miles east ASU. \$225, 1/2 utilities. Contact Amy, 969-0124; (business) 991-4910.

FEMALE, NONSMOKER, one block from campus; need sublet at Commons on Apache. 2 bedrooms, 2 baths, washer, dryer, refrigerator, dishwasher, microwave, furnished, 1/2 utilities. 921-3802.

FEMALE ROOMMATE- very clean, quiet, responsible. Own room in a three bedroom home. \$175 per month plus 1/2 utilities and \$75 deposit. Call Kristine or Jeff, 829-1347.

FEMALE ROOMMATE needed for 2 bedroom, 2 bath at Quadrangle Apartments. Poolside view. Call 967-9223.

FEMALE WANTED to share deluxe furnished condo. Own bedroom/bath. Microwave, washer, dryer, pool, tennis. 921-1476.

HAYDEN SQUARE: Need female roommates, share bedroom in brand new condo. Living room, den, furnished, washer, dryer, pool, jacuzzi. Call Michelle, 921-0887.

rental sharing

HOUSE ONE mile from campus. Grad student on leave needs one or two nonsmoking roommates. \$235 plus 1/2 utilities and \$235 deposit. Call Kevin at 941-4646 afternoons or evenings.

LOOKING FOR a place to live? How about Los Prados! Close to school, lots of fun. Tennis, volleyball, 3 pools and jacuzzis. Must be neat and organized, please. \$250/month plus 1/2 utilities. Call 966-8440.

MALE/FEMALE Graduate student, Are you interested in large 2 bedroom apartment overlooking Scottsdale golf course? I'm 35, hard working, writer, who would like to share. Looking for someone to cook a few dinners a week in return for low rent, \$125/month, all included. I'm quiet, not a party animal, looking for a nice, honest, straight, male/female. Call Matt, 990-0660.

MALE OR female roommate wanted. Needed immediately. Prefer nonsmoker to share 2 bedroom, 2 bath apartment. \$200 plus 1/2 utilities. Call Stephanie, 967-4549.

MASTER BEDROOM with atrium studio, furnished, bedroom furnished. Near Los Arcos Mall. Jay, 946-5220.

NEED ONE or two roommates to share two bedroom, two bath condo. New, fully furnished. Close to campus. Julio Lowenzstein, 921-3726 or 894-1400 ext. 3010, leave message.

NEED ROOMMATE, male/female, 3 bedroom house, washer, dryer, furnished, \$200 plus 1/2 utilities. Mesa, Broadway/Gilbert. Mike, 964-6725.

ONE BEDROOM available in beautiful 2-story condo/townhouse for female. Close to campus. Call 921-1601.

ONE MALE roommate needed. Condo near Price and University. \$195/month plus 1/2 utilities. 835-5196, 838-5270.

QUIET MALE roommate wanted. New 2 bedroom near ASU. Furnished, free utilities, own room. Deposit free, \$275/month, 921-2715.

RESPONSIBLE FEMALE. Furnished, private room. Nice house, good neighborhood. Laundry, cable, extra goodies. 4 miles ASU and MCC. \$250, free utilities. Nonsmoker. Mardell, 831-5599.

ROOMMATE NEEDED immediately, Los Prados Townhomes, \$365 per month, includes utilities, phone, cable television and all other amenities. 1/2 mile ASU, please call Dee at 894-6091.

STUDENT WITH children needs female to share home. Pool, garage, 15 minutes from ASU. Nonsmoker. \$200, 963-1890.

TENSE? LOOKING for a quiet, clean place to live? Female? Share 2 bedroom/ bath deluxe condo with everything. 921-1476.

business opportunities

AUTO DETAIL business for sale. Make \$200 a week easily. \$500 worth of equipment for only \$150. Call 966-9621.

GOOD MONEY working with mail from home. Details, self addressed stamped envelope, P.O. box 24574SP, Tempe, AZ 85282.

STUDENTS, WOULD you like to earn an additional \$28 to \$56 per week minimum to offset your expenses? If so, call Randolph at 269-9332, message.

help wanted

100 PEOPLE needed for fast clean-up crew at ASU stadium on September 15. Early morning start. Students, clubs, sororities, and fraternities welcome. Interview Wednesday, September 9 or Saturday, September 12, 966-0361.

ACCEPTING APPLICATIONS for the prestigious Sammy B's Pizza Restaurant. Day and evening shifts available. 945-8850.

A GREAT part-time job: Fit! Personalized Training Studio. Fun, non-macho environment. Call 730-0721. 4930 S. Ash, Tempe (just north of Kiwanis Park).

ASU IS calling on you! ... On-campus location, convenient work schedule, \$4/hour plus bonus, nightly incentives, gain valuable telemarketing experience. If you have sales ability, call the ASU Telefund at 965-6754.

ATTENTION STUDENTS: Largest company of its kind in Southwest now hiring. Public relations, no selling. Contact Mr. Houston, 220-9540.

BICYCLE SALES, part-time or full-time distributor of bicycles. Looking for aggressive sales person with good phone manners. Close to ASU. 3702 Roeser, suite 19. Apply 10-3.

CASHIER WANTED, all shifts. Apply anytime at 2225 E. Buckeye.

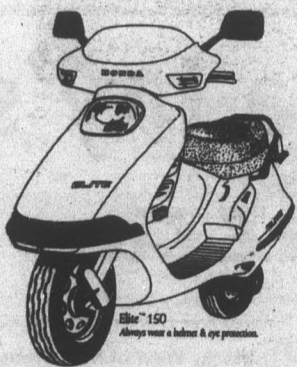
motorcycles for sale motorcycles for sale motorcycles for sale

ONLY AT:

HONDA IN CHANDLER

BACK TO SCHOOL SPECIALS

Scooters from only \$299⁰⁰



WHY BUY FROM US??

1. Best prices in town!
2. First service FREE!
3. 15% Discount on accessories at time of purchase.
4. Free maintenance clinic—learn the proper care and feeding of your new scooter.
5. Top dollar for your trade in!

HONDA
7 MODELS TO CHOOSE FROM

ELITE 80 ONLY 9.99 PER WEEK
O.A.C. total payments \$1558.44, 19% APR
\$355.08 total down payment, 36 months.

ELITE 150 ONLY 14.99 PER WEEK
O.A.C. total payments \$2338.56, 19% APR
\$403.11 total down payment, 36 months.

TOWN & COUNTRY HONDA

1701 N. Arizona Avenue Chandler — E. Valley #899-9088
3 miles off Superstition on Country Club — Phoenix #275-3001

MON.-FRI. 9-6 SAT. 9-5

help wanted

DEPENDABLE PEOPLE to hand out sample notes for Notes-N-Quotes. Pays \$2.50 per class and takes no more than fifteen minutes. Apply now in person in basement of Campus Drugs on College Street. 966-4225.

DICK'S HAMBURGERS now hiring all hours, all positions available. Apply in person, 855 S. Rural.

DISABLED FEMALE student living in Palo Verde East looking for attendant. Will train. Responsibility, flexibility a must. Interested? Call 794-8065.

DISCOVER AN excellent way to make additional spending money. Participate in pharmaceutical evaluations. You can receive from \$100-\$400 for completing evaluations. Qualifications would be: male, 19-55 years old, in good health. Free physical exam if you qualify. Call 473-0116 between 8:30 a.m.-4 p.m., Monday through Friday. Harris Laboratories, Inc. (Providing medical research since 1933.)

DRIVERS WANTED: Earn \$6-\$8 per hour as a delivery person with Domino's Pizza. We are number one in delivery nationwide with over 3500 stores. Drivers earn excellent hourly wage plus tips and mileage. Full or part-time, flexible day or evening hours. A fun and rewarding job. Many delivery people advance to our management training program. Must be 18 or older, with a good driving record, car, and insurance. We want dependable, clean-cut people willing to hustle. Applications will be accepted at 903 S. Rural Road, Tempe, 968-5555. And other valley locations after 11 a.m. daily. Equal opportunity employer.

TELEMARKETING Representatives

\$607 per hour after training

Mon.-Thurs. 5-9 p.m. and weekend hours available

New Tempe office seeks eight bright, enthusiastic persons. Paid training, salary plus bonuses and rapid advance opportunity.

For Interview Call Mr. Bill, 829-3016

ENGINEERING TECHNICIAN (mechanical), second or third year mechanical engineering or technology, some related experience desired. Must be available minimum of 20 hours per week. \$5 and up. 956-8200.

ENTHUSIASTIC SALESPERSON needed for silk screening company. Great opportunity/commission. Call 894-2290.

EXPERIENCED BANQUET servers needed. We work around your schedule. Same week pay. Call today, 831-0145, Snelling Temporaries.

FAST PHOTO Processor operator. Experience required, full or part-time, near ASU. Call Gordon, 831-0575.

FEMALE LIVE-IN for lady in wheelchair. Nonsmoker preferred. Must have car. Paradise Valley area, 996-2075.

FINANCIAL SERVICES organization needs secretary 3 days a week. Good appearance. Must type. 483-8875.

FRATERNITY RESIDENT advisor wanted. Must be responsible grad student. Free room and board. Contact Jim Harris, 839-4727 after 6.

GOVERNMENT JOBS! Now hiring in your area, both skilled and unskilled. For list of jobs and application, 615-383-2627 ext. J321.

GUYS AND GALS interested in a new style, possibly color and/or perm, we need to see your hair on September 12th between 6-7 p.m. at Haircutting Company, northwest corner of Baseline and Rural, next to the Pizza Hut. You are needed for a hair show on September 13th. You will receive a gift of hair products.

HIRING PART-TIME, Friday night cocktail waitress and part-time evening short-order cook. Rework Lounge, 5064 E. McDowell.

HOLIDAY INN Tempe now hiring for the following positions: Part-time weekend mini-bar attendants; part-time weekend house person/driver (must be at least 25 years old with clean driving record); dining room host/cashier; all kitchen positions. Apply in person, 915 E. Apache Blvd.

KITCHEN HELP needed, will train. Part-time, will accommodate school hours. Call Pizzafarro's Inc., 952-9188.

LIVE-IN BABYSITTER/housekeeper wanted. Hours 1-6 p.m. weekdays, some evenings. Private room with bath. \$250 per month including room and board. Two blocks south of ASU. Must have references and experience. Call for interview after August 26. 967-5682.

help wanted

INTERNATIONAL MODELING Agency looking for female models to tour Korea, Taiwan, and Singapore on an advertising campaign. Call Rex, 497-9185.

MODELS NEEDED for hair and make-up. Ask for Steven, Scottsdale location, 991-6999.

NATIONAL T-SHIRT Company needs part-time artist. Production and design skills a must! Call 894-2290.

NEED EXTRA cash? Broadway Car Wash hiring cashier, sales, and car wash personnel. Flexible hours. Apply at 1016 E. Broadway, Tempe.

UNIVERSITY TOWERS needs a responsible individual to assist in office duties 10 a.m.-2 p.m. daily and a Saturday or Sunday once a month. Apply in person.

UNIVERSITY TOWERS 525 S. Forest No phone calls please.

NEW MCDONALD'S now hiring friendly, enthusiastic people. Flexible hours to fit school schedules. No experience needed. Uniform provided. Meal policy. Also hiring experienced McDonald's swing managers. Maintenance position available. Apply at McDonald's, lower level of the Memorial Union. Equal opportunity employer.

NOW HIRING telephone order clerks, Tempe area. For more information contact Bill at 966-0098.

OUTGOING, DEPENDABLE person to deliver gift baskets in full costume sizes 3-12. Car needed. Call for interview, Monday through Friday, 9 to 3. Stork Express, 820-3329.

PART-TIME POSITIONS available. Deliveries, hostesses, and waitress. Salads Plus, 68th Street and Thomas. 994-9849.

PART-TIME WAREHOUSE person. 8 a.m. to noon. \$4 an hour. Call Charlie, 437-2878.

WAREHOUSE WORKER: Good organizational and number skills. Inventory and stocking experience preferred. Some heavy lifting. Pre-screening poligraph and good driving record required. Must be self motivated. Apply in person at The U Shop, 725 S. Rural Rd. (University and Rural.)

help wanted

PART-TIME OR full-time office help needed. Contact ASU. Apply 10-3, E. Roesser, suite 19.

PART-TIME: 2 assistants needed. Travel business. Call Rick for appointment, 829-7300.

PERFECT PART-TIME job, 4:30-9. Qualified leads make our telemarketing easier. \$4/hour plus commission plus bonuses equals \$6-10/hour. Our south Scottsdale office is close to campus. 947-0508.

PHOENIX JEWISH Community Center has the following positions available in early childhood education departments: Morning assistant teachers 8-1 (possibly 7 a.m.); Head infant caregiver 12-1; 2 year old teacher; Preschool physical ed specialist, Monday through Thursday 9-12 (flexible). Call Jenni, 249-1832.

RESEARCH ASSISTANT: Today's Research Army needs you to do phone work, no selling involved. Join up now, it is not just an adventure, it's a job. Evenings, weekends, call 967-4441.

SALES, PARK and Swap, Greyhound Park, Saturday and Sunday. Bilingual, must be aggressive, dependable, and outgoing. Good pay. Call Bud, 942-2859.

SENIOR INVESTMENT brokers seek FIN or CIS majors with 2 to 3 semesters to graduation; reasonable pay, possible intern credits, 20 hours a week. Submit resume to Donald Morrow, or Richard Lund, Grubb and Ellis Commercial Brokerage, 2390 E. Camelback Rd., Suite 100, Phoenix 85016.

SOUTH PHOENIX engineering firm needs part-time receptionist. Answer phones, typing, Macintosh experience very helpful. Close to ASU. Will be flexible with hours. \$4/hour. Equal opportunity employer. Reply with letter or resume to Elizabeth at 4100 E. Broadway, 130, Phoenix, 85040.

PART-TIME WORK AVAILABLE

Set-up and display of electrical maintenance equipment. Must have neat appearance and be a hard worker.

\$700/month for those who qualify. Call Mr. Pearce for interview. **433-1452 CDC**

STOCKYARDS RESTAURANT now hiring lunch hostess, lunch waitress, dinner hostess and dinner waiters. Apply in person Monday through Friday, 10:30-11:30 a.m. or 2:30-5:30 p.m. 5001 E. Washington.

help wanted

STEWART'S ICE Cream and Sandwiches, 414 South Mill, needs lunch shift workers. 829-7561, ask for Debbie or Janice.

WEEKEND EMPLOYMENT: Frito-Lay in Casa Grande currently has part-time employment opportunity available in sanitation department. \$7/hour. Please call Dave McKeon, 836-2363 for interview.

instruction

AEROBIC INSTRUCTORS Certification Workshop, weekend of September 12th at ASU by National Aerobics Training Association. Call 963-9415 or 899-9289.

GRE-GMAT-LSAT COACHING Crack The System The Princeton Review 952-8850

UNIQUE WORKOUT environment: Humorous, cozy, non-macho, intellectual. Personalized or supervised workout at modest rates (from \$1/visit) Fill for the exercise gourmet. 4930 S. Ash, Tempe (just north of Kiwanis Park). Call 730-0721 for ASU special.

Jewelry

CUSTOM DESIGN and re-mounting. Mill Avenue Jewelers, 414 S. Mill, Suite 104, Tempe. 968-5967.



Diamond Engagement Sets

We will beat any price! Over 50 styles to choose from. All diamonds loose for grading and your inspection.

Call for hours: 835-9149
The Diamond Consortium
20 E. Main, No. 608
Mesa

free lost/found

FOUND EYE glasses near College Street Deli. Call 438-1856 or 829-7509, ask for Greg. Must identify.

FOUND LADIES watch. Give description, day lost, and vicinity. Call 965-2519, ask for Rosetta.

STUDENT ID: Joey Wiedmann- found near Physical Science building- can pick up in same building, room PSC346, 3rd floor.

miscellaneous

HAPPILY MARRIED, financially secure couple wishes to adopt a newborn and give it a lifetime of love, happiness, and security. Birth expenses paid by us. Strictly legal and confidential. Let us make this difficult time easier for you. Call Barbara, collect, 968-8196.

PREGNANT-ADOPTION? If considering adoption, confidential counseling available with caring staff. We may be able to help with housing and medical arrangements. Families available who wish to provide a loving home for a child. Call Southwest Adoption Center, 234-BABY.

CLASSIFIEDS WORK. Use one today!!

on-campus

ACADEMIC EXCELLENCE, corporate contacts, professionalism. HBSA has something for you. New member welcome!

ALPHA KAPPA Psi rush: "Meet AKPsi." Function. More information business patio.

ANNOUNCING the chance of a lifetime. Ladies of ASU, Phi Kappa Psi Little Sister Rush is Thursday, September 3, at 8 p.m. Don't miss your chance!

CAMPUS ORGANIZATIONS: Be a part of the 87-88 Sun Devil Spark Yearbook! If your organization is interested in being represented in the book, contact Elizabeth Larson, organizations editor, this week at 965-6881 or 784-9717 for information.

HBSA WELCOMES everyone to our "beginning-of-the-semester" reception, today at 3:30 in the Memorial Union Alumni Lounge.

HEY ALL ASU Greeks, Applications are out for a Greek Week Steering Committee. Pick one up in the Greek Life Office.

On-Campus 1890

The Normal Echo, December 13, 1890: "Ever since the school commenced, there has been a steady increase of all things pertaining to its property. The library has been growing very rapidly and now consists of many books on various topics."

on-campus

PSYCHOLOGY MAJORS, Psi Chi National Honor Society in Psychology is now accepting applications. Must have a 3.0 GPA - membership has great benefits. Applications at Psychology office or R.E.A.C.H. desk. Due 9/4/87.

WE REGRET to inform you that the State Press will no longer be able to take classified ads in the Memorial Union. Our office in the basement of Matthews Center is open from 7 a.m. to 5 p.m., or call 965-6731 and use your Visa or Mastercard.

ATTENTION UNIVERSITY departments, organizations, and clubs: Need to place a display ad in the State Press? Your campus representative is Jackie Eldridge. Call 965-7572 8 a.m. to 5 p.m. daily.

personals

ADPI PLEDGES- You make me so proud! Keep up the great work. Pata, Karen.

AMB- LEAVE all your "troubles" behind, you've got bigger and better things going for you. Good work! I'm proud of you! Love, Dasc.

DG MM You are way hot! Stunned an understatement! Maybe this weekend we could the other MM.

GREG, WELCOME back to ASU. I missed you on campus. Karen

So You Like FERRARIS

I was driving the red one on Univ. & Rural Sunday afternoon. Are you as exciting as you looked?

CALL EVENINGS 829-3049 (Bill)

HEY TREE: You're nothin' but a city slicker! XO Tina.

IF YOU are interested in playing (or Dming) Dungeons and Dragons call 894-9433.

MARILYN GORTON- just wanted to wish you a great day. Alpha Phi love, your secret sister.

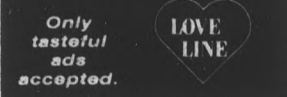
PIKE POOKIE/Juan- Happy 22nd! Are you now wearing the Yuppie Spandex (moveable but not breathable) polyester line? We could always eat dinner at my house and play Scruples! Always, Luana.

CALL 1-976-LOVE

Telephone dating that's quick, easy and fun.

Listen to exciting personal ads, then leave your own.

Only 80 cents per minute.



SCOTT M. How could I forget you, of all people, and our "stimulating" conversation. Meet me Friday at U-Tan, I'll make appointments for two. Robin T.

TRI SIGMA DeeDee: You're the ultimate best roomie, thanks! XO Tina.

TRI SIGMA-pledge Trish, You're one of the best! Look forward to an incredible semester. Sigma love, your mom.

pets

FREE CALICO kitten with litter box, food and extras. 431-1585.

services

FLIGHT INSTRUCTION: Private through commercial. \$10/hour. Call Chuck, 345-6417.

JOHNNY B's DISC JOCKEY

Largest DJ company in the state. Over 20,000 songs. Entertaining DJs. Contest games and prizes! Reserve your date now.

968-9898

services

Find it in the Classifieds

EXPRESS AUTO Service. We come to you. Oil change, air condition charge, radiator service, from \$12.95. All services done. In our no-mess self-contained vans. 433-9023.

FORMER ASU staffers- word perfect and xerox memory writers experienced with APA, MLA, graduate school, etc.- graduate students and faculty work welcome. 945-6302, Donna and Joan.

HAVE UNWANTED facial or body hair removed permanently by electrolysis. Free consultation, located in Tempe. Call Sharon at Desert Electrolysis Center, 829-7829.

NEED MONEY for school? Information on scholarships, grants, loans available. Results are guaranteed. Call now! 894-9665. National Scholarship Resource Institute, 1000 E. Apache Blvd., Suite 115-116, Tempe.

ACE SCREENPRINT custom imprinted sportswear

GREEK WEEK
1920 E. 3rd St. Tempe, AZ
966-9425

ROCKIN' RHYTHM. Live forever! Call the Bandaloop Doctors for your next party. 967-3102 or 820-1956.

TIRE OF big phone bills? Save with MCI, 5-40% over AT&T. 844-4064.

WATER SKIING: Mastercraft ski boat. Equipment, gas, and instructions provided. 1/2 and full days. 897-1982.

transportation

ATTENTION: FREE cars to all major cities. 21 or older. Call AAA Driveaway, 277-9979.

CARS AVAILABLE - 21 or older. All States Drive-away, 992-5200.

travel

AIRLINE AWARDS buying coupons, miles, bump tickets. Top prices. Also selling, savings worldwide. Arthur, 968-7283.

AIRLINE COUPONS wanted: United Bonus tickets; Western Extra; others. Up to \$350 each. 800-255-4060.

AIRLINE TICKETS: Free delivery, all destinations, all airlines, lowest prices possible, no service charges, licensed agency, Visa/Mastercard, American Express. Call Eric, 966-0729 or Scott, 894-9607.

AIRLINE TICKETS for sale anywhere Continental files. \$99 one way. Call 894-5178.

typing/ word processing

\$1.25 DOUBLE spaced page. A-1 letter quality word processing. 32 years experience. Marian, 839-4269.

ALWAYS AVAILABLE for typing. Call Susan at 833-0373.

CALL ME for fast, accurate, quality service at competitive prices. Close to ASU. 968-2186.

PROFESSIONAL TYPING service- Term papers, theses, etc. Low rates, quick turnaround. Pat Mottet, 897-1832.

SAVE TIME, call me first. Word processing- theses, dissertations, resumes. Professional typist. Mesa Secretarial. 844-1876.

SHORT OF TIME? I can help. Reasonable. Professional. Guaranteed. Experienced in academic. Call Jessie 945-5744.

TYPING, REASONABLE and professional. Term papers, reports, resumes and essays. We correct spelling at no extra charge. Editing, proofreading, pickup and delivery available. Call today, 831-0978.

wanted

ASU/NEBRASKA tickets. Paying top dollar. Also purchasing faculty/staff tickets. Call 968-3939, Jack's Ticket Agency, 560 S. College.

NEED ASU season tickets. Desperate, price is no issue. 829-0196.

WANTED: ASU student season football tickets. I'll pay top dollar. Mike, 921-0165.

AFTER CLASS HOURS AFTERNOON EXPANSION \$5.00 per hour guaranteed

Dialamerica Marketing, the nation's finest telemarketing firm, is now accepting applications for the following shifts: 1-5 p.m. 5-9:30 p.m. 6-9:30 p.m. Weekends
Our salespeople work in a modern, comfortable business environment contacting established customers on long distance lines. Guaranteed salary or commission, whichever is greater, and averages \$5-\$7 an hour.
Our Tempe office is located approximately 5 minutes from campus. Please call Dialamerica Marketing for details.

829-1140

Step Into Carl's Jr. and Walk Away with a Great Job!

Lead Persons Counter Personnel Assistant Managers

If you're looking for a great job and an easy way to earn extra money, then you owe it to yourself to take a closer look at the advantages Carl's Jr. has to offer:

- Flexible hours to meet your demanding schedule!
- A convenient location; we're just around the corner from you!
- Competitive wages!
- A fun place to work!

We're looking for a few smiling faces to fill FULL and PART-TIME openings on ALL SHIFTS.

If this kind of opportunity appeals to you, then stop by anyway, at anytime for an on-the-spot interview!

CARL'S JR. 960 E. University Tempe, AZ



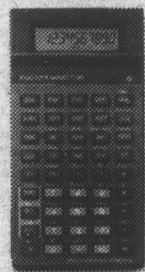
Carl's Jr.

EQUAL OPPORTUNITY EMPLOYER M/F/H

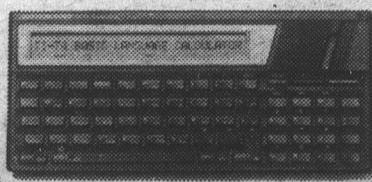
Connect your courses to the TI calculator you need.

COURSES	GENERAL BUSINESS CALCULATORS		ADVANCED BUSINESS CALCULATORS		SCIENTIFIC CALCULATORS			INTERMEDIATE SCIENTIFIC CALCULATORS			ADVANCED SCIENTIFIC CALCULATORS		BASIC LANGUAGE PROGRAMMABLE CALCULATORS	KEYSTROKE PROGRAMMABLE CALCULATORS
	BA-35 • 1 Variable Statistics • Time-Value-of-Money	BA-II • 2 Variable Statistics • Time-Value-of-Money	BA-III • 2 Variable Statistics • Cash Flow (5 Variable, 3 Digit Frequency)	BA Solar • 2 Variable Statistics • Time-Value-of-Money • ANYLITE™ Solar Powered	TI-30 STAT • 1 Variable Statistics • Trigonometric Functions	TI-30 SLR+ • 1 Variable Statistics • Trigonometric Functions • ANYLITE™ Solar Powered	TI-32 • 1 Variable Statistics • 3 Memories	TI-34 KIT • Hex, Octal, and Binary • Added-Value Computer Math Book • ANYLITE™ Solar Powered	TI-35 PLUS • 1 Variable Statistics • Computer Conversions	TI-36 SOLAR • 1 Variable Statistics • Computer Conversions	TI-60 • 2 Variable Statistics • 84 Programming Steps	TI-65 • 2 Variable Statistics • 100 Programming Steps • 8 Physical Constants	TI-74 • Basic Language Programmable • 8K Internal RAM • Additional Software and Accessories	TI-95 • Keystroke Programmable • 5 Redefinable Function Keys with Display Windows • Additional Software and Accessories
Calculus											•	•	•	
Mechanical Drawing								•	•	•	•			
Trigonometry					•			•	•	•				
Banking	•	•		•										•
Economics					•	•	•			•	•			
Finance			•	•										•
Financial Accounting	•	•		•										
Investments			•	•										
Math					•	•	•			•	•			•
Merchandising	•													
Statistics				•										•
Tax Accounting			•								•	•	•	•
General Math					•	•	•			•	•			
Advanced Language											•			•
Basic Language													•	
Introductory							•							
Pascal													•	
Aerospace											•	•	•	•
Agricultural Engineering											•	•	•	•
Architecture											•	•	•	•
Chemical Engineering											•	•	•	•
Civil Engineering											•	•	•	•
Electrical Engineering											•	•	•	•
Energy											•	•	•	•
Industrial Engineering											•	•	•	•
Mechanical Engineering											•	•	•	•
Metallurgy											•	•	•	•
Advanced Math											•	•	•	•
Algebra					•	•		•	•	•				•
Geometry					•	•		•	•	•				•
Trigonometry					•	•		•	•	•				•
Anatomy					•	•		•	•	•			•	
Astronomy					•	•		•	•	•			•	
Biology					•	•		•	•	•			•	
Botany					•	•		•	•	•			•	
Genetics					•	•		•	•	•			•	
Geology					•	•		•	•	•			•	
Industrial Chemistry					•	•		•	•	•			•	
Inorganic Chemistry					•	•		•	•	•			•	
Microbiology					•	•		•	•	•			•	
Physical Chemistry					•	•		•	•	•			•	
Physics					•	•		•	•	•			•	
Physiology					•	•		•	•	•			•	
Oceanology					•	•		•	•	•			•	
Organic Chemistry					•	•		•	•	•			•	

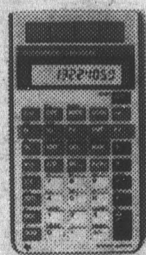
Our hottest selling models on campus.



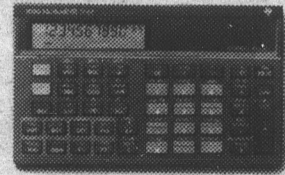
TI-60
Advanced Scientific



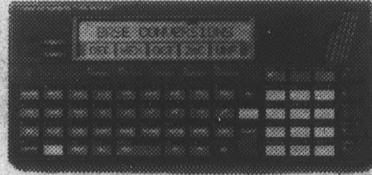
TI-74 BASICALC™
Programmable Advanced Scientific



TI Business Analyst Solar



TI-65
Advanced Scientific



TI-95
PROCALC™

Whether you're into business, science, or engineering, TI has all the right calculators with all the right functions for you.

TEXAS INSTRUMENTS