

## Tambs says U.S. faces 3 Soviet challenges

By MICHAEL ROWELL  
State Press

Former U.S. Ambassador to Costa Rica Lewis Tambs said Monday the United States and the Western Hemisphere face three major Soviet challenges.

Tambs, an ASU history professor, said Soviet efforts to encircle China, deprive the United States and its allies of oil and other essential materials, and alienate the United States from its southern neighbors in Central America and the Caribbean.

Taking an adversarial approach to Soviet strategy, Tambs lectured from a series of slides in the MU, "looking at the chess board from the opponent's point of view."

Several of the slides were of upside-down maps, which Tambs referred to as "the world as seen from Moscow."

Of Central America, Tambs said: "There is insurgency ... The whole area is in turmoil."

Tambs pointed out to the crowd of about 100 that the United States is heavily dependent on Central America for raw minerals. As an example, he cited that 99 percent of the nation's Strontium, a steel hardener, is imported from Latin America.

"We really have not been obliged to send money and support southward," he said.

Tambs called Nicaragua "the new Soviet satellite" and called the buildup of arms in Nicaragua a threat to the U.S. interests in Latin America.

He then showed slides of an air base, Punta Huete, which he said was capable of receiving Soviet bombers.

"The buildup of Punta Huete is worrisome to the United States," Tambs said. "The Caribbean and Central America are important to you and I because we like to live."

He said this is why the United States is supporting the Contras, whom he called "freedom fighters."

"I'm still for the original goals of the Sandinista revolution," he said.

While discussing the Soviet effort to box in mainland China, Tambs obliquely defended U.S. involvement in Vietnam.



Professor Lewis Tambs talks with students about Soviet expansionism in the MU Pima Room Monday afternoon.

"The key to the semicircle around mainland China was of course, Indochina or Vietnam," he said.

Tambs said a key question is whether the Soviets will be able to take over Iran, which lies on the Persian Gulf.

"I don't want to get into Irangate," he said. "But that's what it's all about."

"I hope to God that Iran stays independent and out of the Soviet order."

## Dean almost certain college will lose accreditation

By TINA DAUNT  
State Press

The dean of the College of Business said he almost is certain the college will lose its accreditation due to a lack of funding, but Gov. Evan Mecham said Monday the college will get enough money to prevent the loss.

Dean John Kraft said the college cannot meet the standards of the American Assembly of Collegiate Schools of Business because it is underfunded, and previous comments from the governor's office have given AACSB the impression the lack of funding will continue.

But Ron Bellus, a Mecham spokesman, said the governor will suggest that part of the additional \$18 million allocated to the universities under his revised budget be given to the

business college.

"It will be enough to make sure it is accredited," he said.

Previously, Jim Cooper, Mecham's education adviser, said he thinks the college misallocated its funds, and Kraft is using the accreditation problems to lobby for more money.

But the dean contends that is not the case.

"We don't have enough money," Kraft said. "The chances don't look good for us to be reaccredited. I'd give it about a 50-50 shot."

Although the faculty/student ratio in the College of Business now complies with AACSB standards, Kraft said the college still does not comply in the areas of support staff, distribution of full-time faculty and overall

funding from the University.

"We only met one crummy standard," he said. "To be reaccredited we have to meet all the standards."

Last spring, the accreditation of the college was deferred because there were too many students per full-time faculty member, too few resources to support the faculty and too many non-business majors enrolled in business classes.

The college faces a probation hearing in New Orleans, La., Friday to determine the status of the college. The accreditation agency will announce April 14 whether or not the college will be reaccredited, placed on probation or suspended.

Kraft said he will try to convince the assembly that the business college will cut

enrollment further to meet the standards.

"We have to convince them we will do what we say we were going to do," he said. "If we can't convince them, we'll lose our accreditation."

Even with the additional money from the governor, Kraft said the college might need to cut the number of student credit hours taught each year to 60,000, instead of the current 83,000.

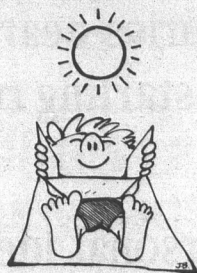
Under the current \$12,805,913 budget, the college has 218 full-time equivalency (FTE) professors, which exceeds the AACSB requirement for ASU of 210.

Kraft said 192 of the total FTE professors are full-time professors. AACSB requires 75 percent of the total FTE, or 157 professors, be full-time.

### inside today

#### ASU WEATHER

Fair skies today with an expected high of 81 degrees. The expected low is 55.



Classified .....	18
Comics .....	3
Opinion .....	4
Police report .....	3
Sports .....	15
Today .....	2

## University building could halt due to Mecham's opposition to funding plan

By VICKIE CHACHERE  
State Press

PHOENIX — Gov. Evan Mecham's stand against financing university construction with bonds could halt building at Arizona's three universities for several years, a legislative liaison for the Arizona Board of Regents said Monday.

Allan Price, assistant director for public relations, said lawmakers will be less willing to approve university bond sales now that Mecham has spoken out against the alternative form of financing.

"(Mecham) has staked out his ground and now it's up to the Legislature," Price said. "It could ruin (funding) chances for the future; it's certainly hurt them."

The universities have relied on bonding — borrowing money from the public and paying it back with interest over several years — after lawmakers said the state could not afford to pay for the

buildings at the time of construction.

The lack of bonding also could slow development at ASU West, the University's Glendale branch campus that is relying on lease-purchase agreements to finance a \$71.6 million construction project.

While unveiling his revised 1987-88 budget Friday, Mecham said the state should refrain from financing construction projects through bonding or lease-purchase agreements, saying it only creates future debt.

Price said Mecham's stand could endanger a \$200 million request in bonding authority now in the Senate.

"We are at a point right now where we need some additional capacity to bond," Price said. "The governor made it fairly clear he's not interested in bonding, and he's the one who signs the bill."

Mecham's revised budget allocates an additional \$18 million to ASU, NAU and

UA, bringing the governor's budget request for the three universities to \$405.8 million.

Ron Bellus, a spokesman for the governor, said Mecham thinks part of the extra \$18 million should be used to build ASU West rather than finance the project through other means.

Bellus said Mecham plans to recommend that regents spend the money on the Glendale campus, undergraduate education improvements and the College of Business at the April 24-25 regents meeting at ASU.

He said the governor has other suggestions for using the money, but he is not ready to reveal them.

Gaye Murphy, an analyst in Mecham's budget office, said Mecham has taken a stand against bonding because he thinks bonding violates the state's \$300,000 debt limit set by the constitution.

## today

### Meetings

- **American Indian and Science Engineering Society-AISES** will meet at 6 p.m. on the second floor of the MU for a banquet and officer elections.
- **Public Programs College Council** will meet at 4:30 p.m. on the second floor of the MU for a very important meeting. All club representatives should be present for information on Battle of the Clubs.
- **Campus Alcoholics Anonymous** will meet at noon in the MU Santa Cruz Room.
- **Alpha Eta Rho-Aviation Business Fraternity** will meet at 7 p.m. in the MU Cochise Room East. Guest speakers will be Ed and Patty Pardi on the topic "Aircraft Sales

and Leasing."

- **Student Purchasing Management** will meet at 3:30 p.m. in the Business Administration Building, Room 353 for an election meeting. John Conway, president of PMAA will speak on "CPM Certification."

### Lectures

- **Women's Studies** will host a candidate's rally at noon on West Lawn for the election of Liberal Arts Senatorial candidate Denise Heap. Other ASU candidates will speak.
- **Judy Schriemer**, free-lance writer, will speak at 7 p.m. in the MU South Pinal Room.

- **Brian Murphy** will speak at 6 p.m. in Armstrong Hall, Room 155 on "How Can You Get into the Law School of Your Choice?"

- **Brother Andrew**, co-founder of Missionaries of Charity Brothers with Mother Theresa, will speak at Mass at the Newman Center at 7 p.m. There will be a group discussion following at 9 p.m.

### Announcement

- **MUAB and "Campus Man"** present **The Dating Game** at 9 p.m. at Surprizes, located at 919 E. Apache Blvd. Contestants will win a free screening to "Campus Man" on Wednesday, April 10 at Camelback Mall.

## Flower child

Paul Mosure, junior painting major, carves a wax flower in preparation for a bronze casting. Mosure covers the wax mold in plaster before vaporizing it with 1000 degree bronze which, when dry, leaves a cast of the flower. Mosure was completing the project for his intermediate sculpture class.

Todd Green/State Press



# PERSONAL CHALLENGE DAY

## April 8, 1987 • West Hall Lawn

11:00 a.m.: Balloon Release

11:15 a.m.: Pep Rally — Master of Ceremonies Dewey Hopper of KTVK, Channel 3 helps ASU celebrate Personal Challenge Day with Coach John Cooper and members of the ASU Rose Bowl champion football team. Also speaking will be coach John Spini of the ASU women's gymnastic team.

12:30 p.m.: Rocky Bleier, a former Pittsburgh Steeler and Vietnam veteran, will speak in the Arizona Room of the Memorial Union on the challenge he faced in fighting back from his combat injuries. These injuries nearly crippled him permanently; however, he went on to become the starting running back for the two-time Super Bowl Champion Steelers.

12:30 p.m.: "New Games" Come have fun while getting a personal idea of how great even everyday challenges are by participating in games that seem easy but maybe are a little (lot?) harder than you thought.

*Sponsored by Associated Students Special Events*

# ASU police

University police reported the following incidents in the 24-hour period ending 7 a.m. Monday:

- ASU police received calls from Noble Library complaining that three men wearing ski masks were bothering students.
- The men were ASU students, who police told to leave the library and "stop engaging in high school pranks."
- ASU students Michael H. Harader and Christopher M. Kirsldown were arrested and charged with trespassing in the University Activity Center, after they were warned to leave the area three times, police said.
- ASU police arrested ASU student Matthew W. Jundt for an outstanding warrant issued by Phoenix police for driving with a suspended license.
- Jundt was stopped at University Drive and College Street and turned over to Phoenix police.
- An ASU student was turned over to Tempe police after he left the scene of a hit-and-run accident, police said.
- Police said the suspect hit a car, injuring the driver. An officer who witnessed the accident said he followed the suspect to Apache Boulevard and McAllister Avenue, where he pulled him over.
- Someone kicked in a glass door at the south entrance of the UAC, police said. Estimated damage is \$75.

—LAUREN MILLETTE

# Tempe police

Tempe police reported the following incidents ending noon Monday:

- A 26-year-old Tempe woman was arrested and charged with indecent exposure after she allegedly ran across the parking lot of her apartment naked, police said.
- Police said a woman called police after she saw the naked woman in the parking lot. Police approached the suspect, who then was clad in shorts and a shirt, and asked her name.
- Police said the woman stood up, leaned forward and grabbed one officer's crotch with her right hand. The officer pushed the woman away, and she then exposed her breasts, police said.
- Police said the woman was intoxicated.
- A 23-year-old Mesa woman was sexually assaulted by two men in Kiwanis Park late Friday night, police said.
- Police said the woman was walking northbound from a batting cage toward the ball fields when two men grabbed her — one held the woman while the other assaulted her.

—MIKE BURGESS

## BLOOM COUNTY



by Berke Breathed

## Ivory Towers



by Michael Ritter

## Shoe



by Jeff MacNelly

# RAYBAN® SUNGLASS SALE — SAVE TO 50%



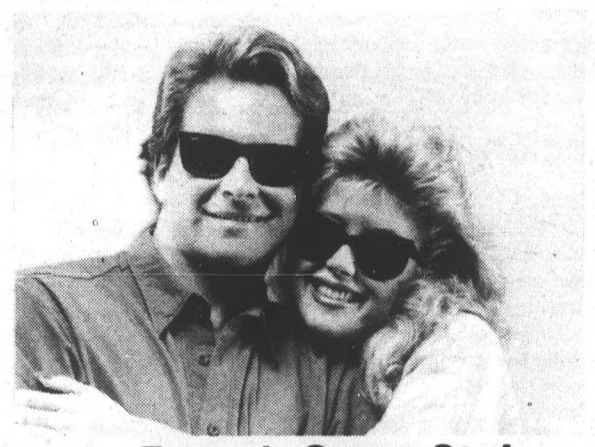
Olympia

(Sug. ret. \$94) NOW \$65<sup>80</sup>



Wayfarer

(Sug. ret. \$59) NOW \$29<sup>50</sup>



Classic Metals

(Sug. ret. \$64) NOW \$44<sup>80</sup>

French Sport Styles

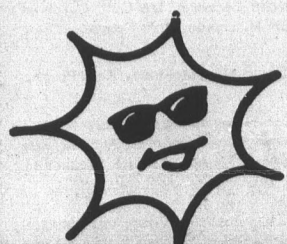
(Sug. ret. \$59) NOW \$41<sup>30</sup>

## SAVE ON OUR HUGE STOCK OF RAYBAN SUNGLASSES by Bausch & Lomb!

- Arizona's most complete selection of Wayfarers, Metals, Olympias & more.
- Optical quality glass lenses
- Newest colors and styles
- Excellent protection from ultraviolet rays
- Perfect for skiing, driving, general use
- Great for men & women

**The world's finest sunglasses are at the world's finest sunglass store!**  
**WE WILL MATCH ANY PUBLISHED SUNGLASS DISCOUNT OR SPECIAL — WE WILL NOT BE UNDERSOLD!**

WITH THIS AD ONLY THROUGH 4-12-87.



# Pacific Eyes & T's

Christown Mall  
 (By Dillard's)  
 433-2949  
 Tower Plaza  
 (38th St. & Thomas)  
 244-9119

Westridge Mall  
 (By Dillard's)  
 873-2607  
 Tempe: 725 S. Rural Rd.  
 (Cornerstone)  
 966-5560

## Vote: a student responsibility

On April 8 and 9, the students of ASU will have the chance to make their voices heard. Student elections are upon us and it is the responsibility of every student to find a polling booth and vote.

Over the years, an overwhelming minority of students have lined up to cast a ballot and elect representatives that they feel are the most qualified and the most sympathetic to student wishes.

Unfortunately, the remaining majority of students seem to be the ones who complain about how awful Associated Students of ASU is; about how representation is lacking and about never seeing the officers once they are elected. However, one must wonder how many students (who never voted) tried to improve ASASU, by any means other than by complaining. Or how many students have ever sought out an officer to discuss their views?

The problem of fulfilling one's civic duty is not something that happens only in the vacuum of ASU, but is a national trend growing every year. If a good portion of ASU's student body would vote, maybe we

could get more individuals to participate in this precious democratic right called voting.

Still, after the voting is over and the results are tabulated, those who did not vote will be the first to criticize the new officers and demand action. They will also be the first to initiate complaints against ASASU. Yet, those who complain will not take five minutes out of one day in April to punch a card in a voting booth.

We can only observe that such an action (or lack thereof) is the height of hypocrisy. They won't vote, but they will complain about whoever was elected by the majority of students who did vote.

But April 8 and 9 is a chance for all students to make a difference in the way ASASU governs this campus and free themselves from the label of "apathetic." It doesn't matter if you support the front-running candidate or the dark horse. What does matter is that you vote.

We encourage you to exercise this important right. Otherwise, when the officers do something you dislike, you have no one to blame but yourself.



## Letters

### Communism, fascism radically different

Editor:

Bob Heiler's article "Fascism, communism not essentially different" is woefully misinformed with respect to both Marx and Nietzsche and fails to identify the most important differences and similarities between fascism and communism.

Heiler claims that Marx "planted the seeds of Utopianism" in Stalin by promising a perfect government. Yet even a casual reading of the Communist Manifesto reveals that Marx dismissed Utopianism as dreams of "castles in the air." Instead, Marx hoped that what he saw as his scientific study of society would allow workers to end the barbarous working conditions and child labor of his time.

Although he espoused revolution and a temporary benevolent dictatorship, he saw these anti-democratic tools as temporary evils needed to achieve not perfection but democracy. Ironically, Marx's extreme enthusiasm for democracy strongly resembles that of modern right-wingers.

Thus, recognizing Czarist Russia's goal of world domination and oppression (much like modern Russia), Marx, according to biographer Isaiah Berlin, suggested that Germany declare war on Russia in order to pre-empt the

certainty of Russian intervention aimed at preventing democracy in Germany. Stalin maintained an aura of Marxism for the same reason he included civil rights in the Soviet Constitution: It was politically convenient to do so.

As soon as Stalin was firmly in power both civil rights and the Marxist hope of democracy were cast aside. Thus, biographers of Stalin such as H. Hyde are certain he never had any affinity with Marx.

Nietzsche was also the victim of political intrigue. Heiler claims that Nietzsche's idea of "superman" led to Hitler's murder of Jews and desire for a master race of Aryans. According to Nietzsche, however, "the Jews are beyond any doubt the strongest, toughest and purest race now living in Europe... it might be useful and fair to expel the anti-Semitic screamers from the country" ("Beyond Good and Evil, 251).

Nonetheless, because of Nietzsche's popularity in Germany, quotes from this very section were cut from context by the Nazis and used as anti-Semitic propaganda. As for Nietzsche's effect on Hitler, in the opinion of Percy Schramm, Hitler's War Diarist, "Without the philosopher's ideas, Hitler would have been the person he was. Nietzsche

was never more than an abused and exploited witness used to support the Third Reich."

Anyone who Freud described as knowing himself better than anyone ever has or is likely to deserve more thoughtful consideration, for Nietzsche was not a fascist, racist or utopian.

What fascism and communism share historically is a following of authoritarian persons in search of power. The two doctrines are thus similar in their usefulness to some but they remain distinct as political philosophies. Fascism is characterized by nationalism extreme to the point of inhumanity and exists only as a dictatorship. Marxist communism favors a democratized economy and society implemented through anti-democratic means.

Thus, while a fascist capitalist would require the individual to meet the needs of the economy, the Marxist community would insist that the economy serve the need of those that create and maintain it, and the practical problems of the latter are certainly preferable to the ethical problems of the former.

Keith Korcz  
Senior, Philosophy

### Lacking in substance

Editor:

In response to the article titled "U2 rises from ashes of past success, launches tour at ASU" by Carolyn Nelson, I submit to you the following rebuttal.

I find this review to be substantially lacking in substance as well as insight. The review begins with a title which implies that "The Joshua Tree" album is a successful rebirth and/or "comeback" of U2's creative energy which — according to Ms. Nelson, and obviously unbeknownst to the rest of us — has fallen by the wayside. Assuredly, this cannot be meant as "across the boards" as it sounds.

Next, "With or Without You" is labeled as "closely resembling" anything off the "The Unforgettable Fire" album. I do not think that a more ludicrous or pitifully wrong statement could have been made. If, in fact, Ms. Nelson has ever listened to the album in question and has made a comparison of "With or Without You" to such songs as "Elvis Presley and America" or "Pride," she would find this particular assertion as empty as I found the rest of the review to be.

Comatose attention is then turned to the "Poignant lyrics... amid the desert of head-banging refrains." Surely Ms. Nelson

cannot be suggesting that "head-banging refrains" are to be found anywhere on "The Joshua Tree." But then again, seldom ever is it the case that I listen to any U2 album without the unwavering intent to bludgeon my head, endlessly, against the nearest, immalleable object I can lay my hands on.

Seemingly unsatisfied with the attempts thus far to prove the lack of intelligent thought implemented in this review, Ms. Nelson proceeds to print the most blatant contradiction of all: on the one hand, Ms. Nelson seems to be praising the band's decision for "unbroken mood" rather than commerciality. But not even two sentences prior to this, she criticizes the album for not having something that she can snap her fingers to. This lack of a "pop" hit is the surest sign that the band has not sold its creative integrity for commerciality.

Now, as I look back over this review, I see how such a fantasy could have been written. Someone decided to double-up the usefulness of Ms. Nelson's brainstorm as not only an album review, but also a creative writing assignment for an English 101 class.

Raymond Hille  
Sophomore, Psychology

### Luke 6:37

Editor:

I am writing in reference to Patrick J. Kucera's opinion of Jim and Tammy Bakker (Mar. 27). Generally, I find Mr. Kucera to be a sensitive and empathetic individual who realistically applies Christian standards to the 20th Century. This attitude is not at all evident in his Bakker column. I am sorry to see that he too, has been bitten by the judgment bug.

The Bible pointedly reminds us that there is not one of us who is sinless (or mistake-proof). The Bible does not discriminate against non-Christians in this

uncomfortable notion. Since Christians are so compelled to proselytize, they have made their lives the business of non-Christians.

Our job on this earth, whether we are Christians or not, is the same. We are all responsible for each other. We are all the same under the skin. There is a cute little diddy called the Golden Rule which simply says, "Do unto others as you would have them do unto you." Period. Not frills, no conditions. Let us learn to love one another.

Susan A. Sager  
Senior, Psychology

### Budget considerations

Editor:

In response to the letter of graduate student Thomas Spille, there is much attention currently being given to the design and placement of bicycle racks for student use.

As is always the case, budget considerations are paramount.

Perhaps consideration should be given to the policy that those who use should pay.

A bicycle registration program would assist in enforcement of bike rules on campus. Recovered bicycles could be returned to their owners more quickly.

The modest revenue from this program could be used to purchase appropriate racks for the 20,000-plus bicycles thus affected.

John C. McGuire  
ARCOR Enterprises

## STATE PRESS

TOM BLODGETT  
Editor

ANDREA HAN  
Managing Editor

City Editor KARI BLAND  
Asst. City Editor KIM MATTINGLY  
News Editor TRACY SCOTT  
Asst. Managing Editor AMY FRISCHKNECHT  
Photo Editor ANDY MROZINSKI  
Asst. Photo Editor RON KUCZEK JR.  
Analysis Editor ED SCHUBERT

Sports Editor BOB HEILER  
Asst. Sports Editor STEVE BRENNAN  
Copy Chief CATHY CZAGANY  
Arts Editor KHALI CRAWFORD  
Asst. Arts Editor GREGORY R. KRZOS  
Opinion Editor PATRICK J. KUCERA  
Sports Analysis Editor DEAN OBENAUER

STAFF ARTISTS: Jon Basalone, Michael Ritter.

EDITORIAL ASSISTANT: Charles Hadd.

INTERNS: John Blanchard, Christine Gow, Keith Olbricht, Alisa Wabnik.

ADVERTISING REPRESENTATIVES: Danielle Carbone, Joe Cuff, Carolyn Delany, John Gaffney, Jennifer Hughes, Tom Hutchison, Mark Peterson, Craig Wacaser, Brooks Welter.

PRODUCTION: Tom Blackwood, Leighayn Green, Mark McKinney, Kelly Pearce, Michael Quinn, Lynne Senzek.

The State Press is published Monday through Friday during the academic year, except holidays and exam periods, at Matthews Center, Room 15, Arizona State University, Tempe, AZ 85287. Newsroom: 965-2292. Advertising & Production: 965-7572.

The State Press is the only newspaper exclusively published for and circulated on the ASU campus. The news and views published in this newspaper are not necessarily those of the ASU administration, faculty, staff or student body.

REPORTERS: Michael Burgess, Vickie Chachere, Tina Daunt, Kerry Fehr, Judie Gaillard, Darrin Hostetter, Aaryn Kemp, Benny McConnell, Kim Mattingly, Lauren Millette, Michael Rowell, Shelly Schaffer.

ENTERTAINMENT REPORTER: Carolyn Nelson.

SPORTS REPORTERS: Steve Adams, Carol Boos, Chris Dorsey, David Hodges, Doug McManus.

PHOTOGRAPHERS: Todd Green, Stephen Munteer.

COPY EDITORS: Rob Coombs, Marty Sauerzopf, Jessie Simon.

# Tokyo Rose helping Japanese wage new trade war

I did not know how serious the Japanese trade war was until I turned on the shortwave radio and heard Tokyo Rose. For those of you who missed World War II, Tokyo Rose was an outstanding enemy disc jockey who broadcast propaganda for the Japanese. Many believe that World War II would not have been as much fun without her.

Rose's voice had hardly changed over the years. She said, "Hello, Mr. and Mrs. American Consumer. Your brainless leaders have started a trade war with Nippon that they cannot win. Before it's over they will rue the day they thought they could challenge the productive might of the sacred Imperial Empire."

"Your leaders started this war, Americans, but it is you who must suffer. Just let me tell you what the Japanese Joint

**Art Buchwald**  
Los Angeles Times  
Syndicate



Chiefs of Hitachi plan to do to defend their exports. We are going to fire our 25-inch TV sets across the bow of every American living room.

"Our super VCRs are now programmed to intercept and scramble all NFL football games. No one will be safe from our high-speed laser CDs. How does that grab you, American dogs? If you want war, we'll give you war. For every tariff you lay on Japanese goods we will retaliate with a duty of our own.

"To show we mean business, Japan will no longer honor its green warranty cards. Yes, you will be stuck with billions of dollars of Japanese products and your warranties will be useless. We are also talking about the 90-day, no-questions-asked, money-back guarantees. The Geneva Convention says all green warranty cards are void in time of a trade war.

"American consumers, you cannot dump on the Japanese without facing the consequences. What if I were to tell you a fleet of our ships is now headed for San Francisco, and our salesmen will sweep across the Silicon Valley with hundreds of thousands of semiconductor chips? In one week there won't be an intelligible American chip left on the West Coast. Tell your mad leaders to give up their futile war against the Japanese nation before we

unleash our elite Seiko brigades and bring Timex to its knees.

"American fools, we possess many billions of yen. If you continue your trade policy, there is nothing to prevent a Japan Air Lines 747 from dropping them out of the sky down Paul Volcker's chimney in the Federal Reserve Bank building.

"Americans, your situation is helpless. If you want to know how helpless, check it out on our new hand-held Sony calculators.

"One more thing. I'd like to address myself to those U.S. citizens who bought Japanese microwave ovens for their kitchens. I could warn you about those ovens — but in trade war, everything is secret. So instead I'm going to sign off. As we say in the land of the Rising Sun, 'Have a nice Day of Infamy.'"

state press

**You can stay on top of the news because we do.**

15 MATTHEWS CENTER

**XEROX® COPIES**

2¢\*

(Self Service)

Bring in this coupon for a chance to win a free lunch.  
Valid ASU I.D. required.

CALL 968-7771

1250 E. Apache, Suite 112, Tempe, Arizona 85281  
(One building east of After The Gold Rush)

8 1/2"x11" 20# Bond White Paper

*Chef Jean Marie*

Picture Perfect Cuisine!

Covered Outdoor Patio with New Micro-Cooling System

**Restaurant Now Open For**  
Breakfast 9 a.m. • Lunch 11 a.m. • Dinner 5:30 p.m.  
Closed Mondays

Featuring seasonal menus of Country French Cuisine

**marche Gourmet**

4121 N. Marshall Way  
Scottsdale • 994-4568  
Full Service Catering • 994-4615

TUESDAYS

1/3 lb. BURGER-FRIES  
DRAFT \$2.99

*Total NBA & College on Satellite TV*

**University & Dobson  
844-SHED**

the

Wine

taavern

at Rural & Apache

\$2 Pitchers

\$1 BBQ Beef Sandwich

11:30-8:00

It's You, Only Better!

- Unwanted Hair Removed Permanently by Electrolysis

Free Confidential Consultation  
829-7829

Sharon Vaught  
Desert Electrolysis Center  
1050 E. Southern Avenue, C-1,  
Tempe

FREE SEMINAR  
ON LAW SCHOOL ADMISSIONS

"How you can get into the Law School of your choice."

Guest Speaker: BRIAN MURPHY  
(Director of Admissions, ASU Law School)

April 7, 1987 6:00 PM  
ARMSTRONG HALL RM. 155

For more information call  
967-2967

ESCAPE-THE-DORM SPECIAL!

1/2 Price Tuesday!

Present your ASU I.D. and receive a 50% discount on any large pizza. (with purchase of beverage) — Dine-in only — (Country Style Included)

ONLY AT TEMPE  
1849 N. Scottsdale Rd.  
(at the corner of McKellips)  
947-4396

SCOTTSDALE  
7901 E. Thomas Rd.  
(at Hayden)  
994-3360

Not valid on delivery. Expires 5-6-87.

Round Table Pizza.

# asasu elections

## President

### Mark Wade

ASASU presidential candidate Mark Wade views the presidency as an organizational position, one without a great deal of inherent power.

"The president is only one student. He can't do anything by himself," he said. "He is the voice of the students."

The philosophical basis behind Wade's campaign is found in the presidential job description in the ASASU bylaws, which calls for the association's chief executive to "provide cooperative coordination and communication ... and voice the concerns of the students at ASU."

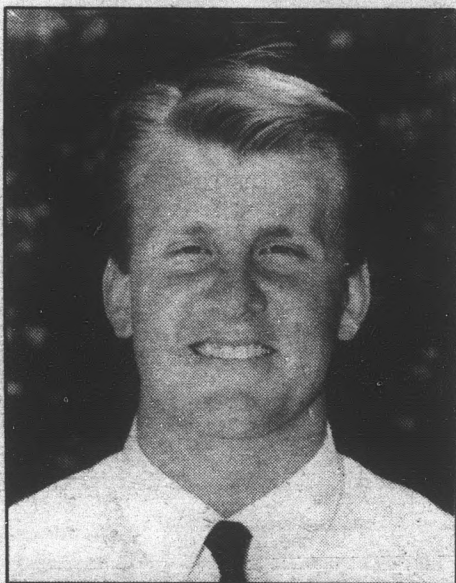
"My bottom line is reflected in the simplicity of my platform — student services," Wade said.

Wade, a 22-year-old senior political science major, is the assistant to ASASU's executive vice president.

"I've seen too much of this 'Let's form a committee to talk to the students' stuff up at ASASU," he said. "No! Let's form a table on the mall and get out there ourselves and talk with students and find out what we need to work on."

"It's the only acceptable way."

Wade drew a hard line on tuition increases, calling for a freeze or an



actual reduction in education costs.

"The only way to get things done is to increase lobbying efforts, and by that I mean we need to get 70 or so students down to the Legislature and the Board of Regents," he said.

Turn to WADE, page 13.

### Steve Escobedo

ASASU presidential candidate Steve Escobedo said the main problem facing students is rooted in money — or rather, the lack of it.

"All our problems eventually go back to the fact that the state Legislature is not getting enough funding to the university system," he said.

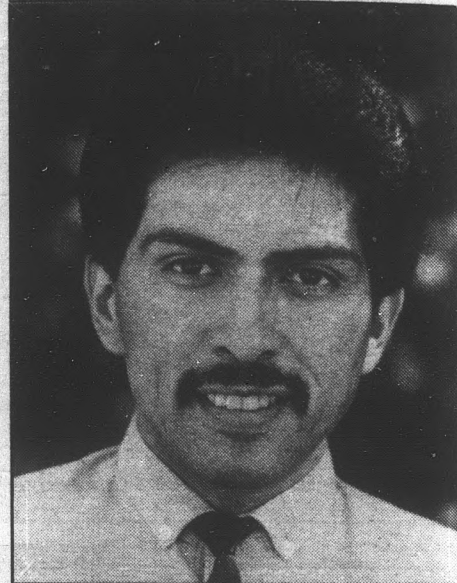
Escobedo's solution calls for a massive voter-registration drive on campus so that student opinion is expressed through the power of the vote.

"They will pay attention to us if we can create a political force that can't be ignored," he said.

The soft-spoken president of the hispanic organization MEChA, who recently was chosen ASU's Outstanding Minority Leader of the Year, stressed "equitable representation" in ASASU.

"We need to recruit students who aren't being represented in the association and increase the diversity," he said. "It's my duty to try and include minority and international students as much as possible."

Escobedo's platform also calls for a more visible student government, unity among the three state universities and the



formation of a "united front" to handle local student problems like high rent costs and the low minimum wage.

"First of all, people want to talk to people, not suggestion boxes," Escobedo said.

Turn to ESCOBEDO, page 13.

### Ed Sullivan

Ed Sullivan believes the important question in this year's ASASU presidential race is not what the president should do, but what he can do.

A product of the ASASU state relations department, Sullivan has formulated a realistic agenda drawn from his experience lobbying legislators and Arizona Board of Regent members about student issues.

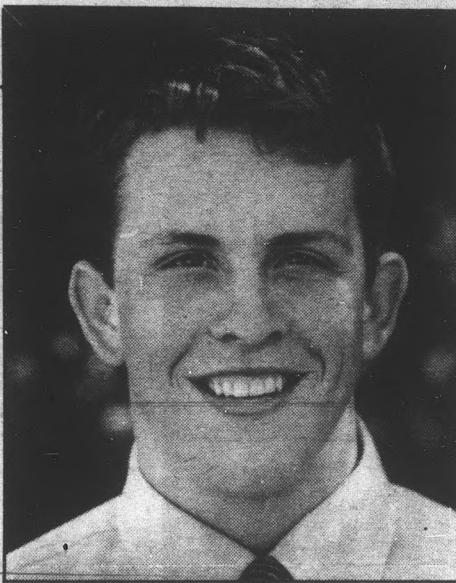
"As regent coordinator, I have come to an understanding of the president's job, and I know what needs to be accomplished," he said.

Sullivan cites tuition increases as the No. 1 issue facing students, but takes a dim view of campaign promises aimed at remedying the situation.

"I have seen that there are certain things the president can have an effect on, and there are areas where his influence is limited," he said.

"Of course we will continue to aggressively lobby against tuition hikes, but there are other terrible problems that involve a lot of students — things we can change."

Sullivan said one such problem is parking.



Calling the parking situation "incredible," Sullivan said over 90,000 tickets were distributed last year as evidence that "the whole philosophy of parking services is wrong."

Turn to SULLIVAN, page 13.

### Karrin Kunasek

ASASU presidential hopeful Karrin Kunasek said knowing the issues is the best weapon students can use when fighting for campus causes.

"Without a good understanding of the complexities of the problems, we never are going to get the respect of the (Arizona) Board of Regents and the Legislature," she said.

"There is a lot students can do, but without (the lawmakers') respect, there is no way they are going to come to us for input."

Kunasek proudly points to student efforts to make the \$20 million Student Recreation Center a reality as an example of what can be accomplished.

"That bill was sitting in committee at the Legislature, but we went down and talked to people and got it moving again," she said.

Kunasek, 22, said she has learned the issues "inside and out" during her year as assistant to ASASU President Chris Cummiskey.

"I'm the only one of the candidates who has been closely involved and spent a year getting an understanding of the president's office," she said.



Kunasek advocates funneling student funds from tuition increases to areas that benefit them.

"If the price is going to go up, then the dollars must go to meet student needs, like

Turn to KUNASEK, page 13.

### Chuck Hopkins

The promotion of student awareness at ASU is the cornerstone of Chuck Hopkins' ASASU presidential campaign.

"The problems that we all face go back to one major problem among the average ASU student, and that is a lack of student awareness," he said.

Hopkins, 20, said increasing the flow of information about University events and issues will help address other problems.

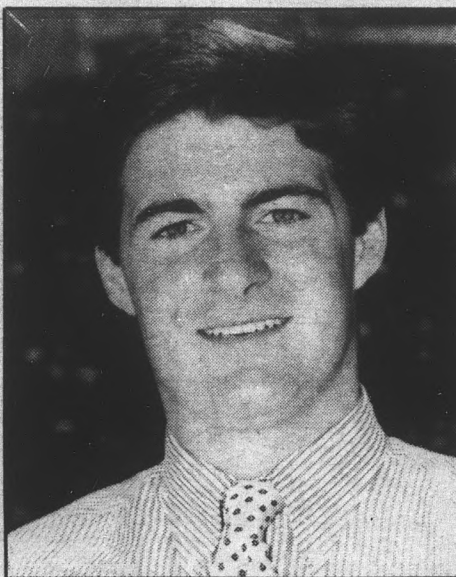
The sophomore economics major plans to negotiate with the State Press to develop coverage of upcoming events so that students can plan to attend.

"Instead of giving students just one day's notice, as the paper does with the Today section, we need to work to develop a weekly section that is more comprehensive," Hopkins said.

Hopkins also aims to shuttle more information to graduate students.

"I'd like to put together a weekly grad section in the State Press, covering everything from job programs to financial aid," he said.

Commuter students could benefit from a monthly marquee, placed in Lot 59, where information on forums and events would be posted, Hopkins said.



"If we get the information out to students, then we can organize rallies to protest tuition increases or whatever needs to be addressed," he said.

"If we can get students together it will help show the (Arizona) Board of Regents

Turn to HOPKINS, page 13.

### Will Murphy

Will Murphy has been called a troublemaker, a threat to the survival of Associated Students and several unprintable expletives.

And now he can be called a presidential candidate.

Murphy has achieved notoriety for attacking sections of the ASASU election code that limit campaign spending and prohibit active campaigning before a date set by the ASASU elections director.

He has ignored both rules, claiming they are unconstitutional and violate his right to free speech.

"What spending limits?" Murphy asked. "The court ruled them to be unconstitutional, and therefore, they don't exist."

The court ordered ASASU to delete the campaign spending limits from the bylaws last year, but the ASASU Senate refused because it said the court has no authority to interpret or cite the U.S. Constitution.

"Setting a limit on the amount I can spend to express myself is like the freedom to drive a car as far as you want but on only one tank of gas," he said. "ASASU is an agent of the state, and as such they

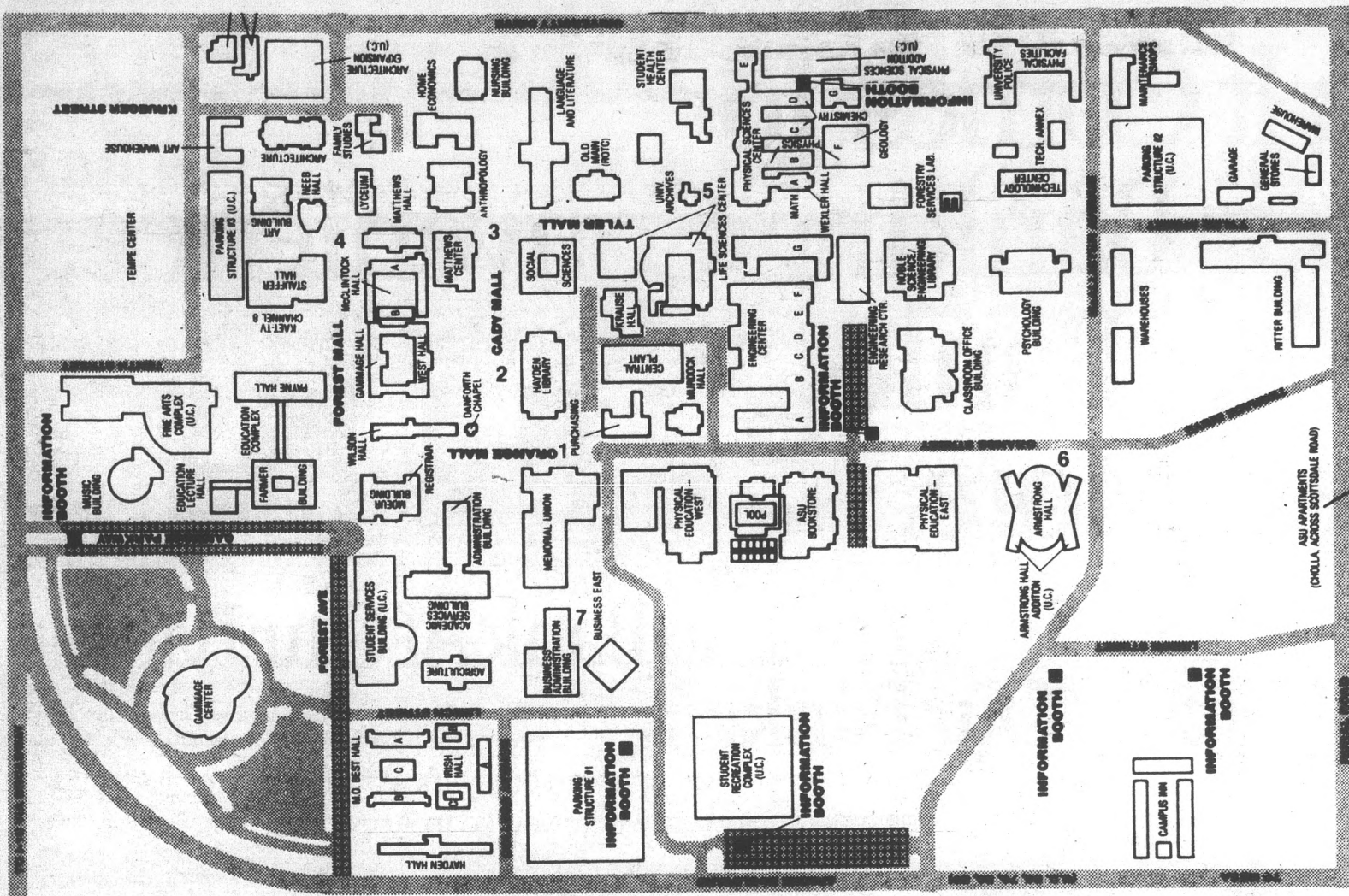


are bound to uphold my rights as guaranteed through the First and 14th Amendments.

"The limits are unconstitutional on their face."

But Murphy insists that he is not a one-

Turn to MURPHY, page 13.



## ASASU Polls

1. Memorial Union (9 a.m. to 9 p.m.)
2. Hayden Library (9 a.m. to 4 p.m.)
3. Matthews Center (9 a.m. to 4 p.m.)
4. Forest Mall (9 a.m. to 4 p.m.)
5. Tyler Mall (9 a.m. to 9 p.m.)
6. College of Law (9 a.m. to 2 p.m.)
7. College of Business (9 a.m. to 2 p.m.)

Today's profiles of Associated Students executive office candidates were compiled and written by Darrin Hostetler. On Wednesday, the State Press previews the senate races.

### QUESTION #2.

# HOW CAN THE BUDGET-CONSCIOUS COLLEGE STUDENT SAVE MONEY?

- a) Save over 50% off AT&T's weekday rates on out-of-state calls during nights and weekends.
- b) Don't buy textbooks when "Monarch Notes" will do just fine.
- c) Save 38% off AT&T's weekday rate on out-of-state calls during evenings.
- d) Count on AT&T for exceptional value and high quality service.
- e) Hang around with the richest kids in school; let them pick up the tab whenever possible.

If you're like most college students in the western hemisphere, you try to make your money go a long way. That's why you should know that AT&T Long Distance Service is the right choice for you.

\*AT&T offers so many terrific values. For example, you can save over 50% off AT&T's day rate on calls during weekends until 5 pm Sunday, and from 11 pm Sunday through Friday.

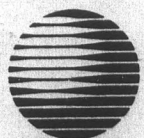
Call between 5 pm and 11 pm, Sunday through Friday, and you'll save 38% off our day rate.

Ever dial a wrong number? AT&T gives you immediate credit if you do. And of course, you can count on AT&T for clear long distance connections any place you call.

To find out more about how AT&T can help save you money, give us a call. With a little luck, you won't have to hang around with the rich kids. Call toll-free today, at **1-800-222-0300**

*GREAT DEAL!*

*CALL TODAY*



**AT&T**  
The right choice.

**"COUPON"**

**Dairy Queen**  
*brazier*

**SINGLE BURGER  
FULL MEAL DEAL**

**CHAR-BROILED**

Look what you get! An all-beef burger. A regular order of crispy, golden fries. Your favorite medium soft drink, and, to top it off, a cool and creamy 5oz. DAIRY QUEEN® Soft Serve Sundae. Head for your participating DAIRY QUEEN® BRAZIER® store, to get the Burger Full Meal Deal™ - The best bargain in town.

**WE TREAT YOU RIGHT**

**\$1.89**

ONLY AT:  
**1389 E. APACHE**  
(Between Rural & McClintock)  
Limit 2 per coupon.

**COUPON**

**THE HAIR CUTTERS**

*Your Campus Hair Care Center*

**709 S. Forest Ave., Tempe**  
North of University • Behind the Chuck Box • In Oxford Square  
**968-5946**

**\$4.00 OFF**  
With Participating Stylists  
Expires 5-30-87.

**REGULAR PRICES**

• Shampoo	• Condition
• Precision Cut	• Blow Dry

**MEN \$13 • WOMEN \$15**

**OPEN MONDAY THROUGH SATURDAY.  
TUES., WED. & THURS. TILL 9 P.M.**

# When It Comes To 24-Hour Banking Convenience, No Other Bank Delivers More.



## You Don't Even Have To Bank At Our Bank To Bank At Our Bank.

Because now, customers of all the banks you see here can enjoy the convenience of over 180 Valley National Banking Machines everywhere you go in Arizona:

- |                               |                                     |                                   |                               |
|-------------------------------|-------------------------------------|-----------------------------------|-------------------------------|
| American National Bank        | Desert Schools Federal Credit Union | Founders Bank                     | Ranch National Bank           |
| The Arizona Bank              | DM Federal Credit Union             | Grand Canyon State Bank           | Rio Salado Bank               |
| Arizona Commerce Bank         | Eastern Arizona Bank                | Great American First Savings Bank | Scottscom Bank                |
| Biltmore National Bank        | Fidelity Bank                       | Guardian Bank                     | Sentinel Savings              |
| Camel Bank                    | First American Savings & Loan       | Liberty Bank                      | Southern Arizona Bank of Yuma |
| Capital Savings & Loan        | First Business Bank of Arizona      | MeraBank                          | Sun National Bank             |
| Century Bank                  | First Commercial Savings & Loan     | Mesa Bank                         | Tucson Savings & Loan         |
| Chase Bank of Arizona         | First National Bank of Arizona      | Metropolitan Bank                 | United Bank of Arizona        |
| Coconino Federal Credit Union | First West Bank                     | National Bank of Tucson           | Western Savings & Loan        |
| Columbia Bank                 |                                     | Pima Savings & Loan               |                               |
| Commercial State Bank         |                                     |                                   |                               |



## And You Don't Even Have To Visit A Valley Bank Branch.

Because we put our Banking Machines where you need them most. So that means you'll also find them at places where you start and stop, study and shop, or just go to have fun:

<p><b>Start and Stop</b> Sky Harbor Airport Tucson Airport</p>	<p><b>Shop</b> Bashas' (Tempe) Fiesta Mall (Mesa) Foothills Mall (Tucson) Price Club (Mesa) Target (Maryvale) Godfrey's (Tempe)</p>	<p><b>Just Have Fun</b> Wahweap Lodge (Lake Powell) Phoenix Greyhound Park Turf Paradise</p>
<p><b>Study</b> Arizona State University Northern Arizona University University of Arizona</p>		

From now on, keep in mind the bank that delivers more convenience to more Arizonans. So even when you're not close to your bank, you'll never be far from your money.

Go where Arizona goes for value.

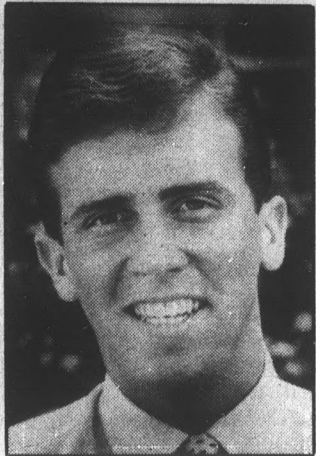
### VALLEY NATIONAL BANK

Equal Opportunity Lender • Member FDIC



# Executive vice president

## Karl Karg



College of Liberal Arts Sen. Karl Karg claimed his greatest accomplishment this year has been maintaining his positive attitude toward ASU and said he wants to bring that "heads-up" outlook to the office of the ASASU executive vice president.

During a year that has seen the ASASU Senate under siege from students, campus organizations and the courts, Karg said it sometimes was difficult to remain optimistic about the association.

"Some senators seem to have given up, and that's sad," he said. "I've always tried to stand up for what I believe in."

Karg, 19, the youngest student in the senate, is preaching the value of experience in his campaign.

"We will have an almost entirely new senate next year," he said. "We can't afford to use the office as a training ground."

A member of both the ASASU Executive and Finance committees, Karg said he is "clearly the candidate with the most experience."

He said one of his chief goals is to combat campus apathy and raise student involvement to the level of other major western universities.

"The fact that many students don't know how to get involved has bothered me from the beginning," Karg said.

"The executive office is the most directly applicable for dealing with that problem because it works directly with student groups and the college councils."

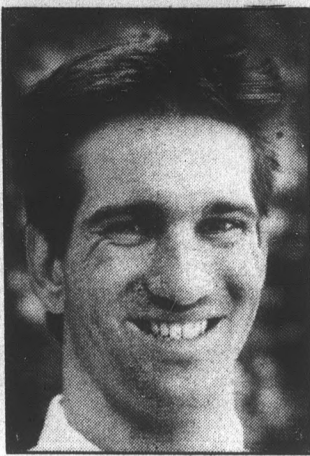
The Chicago native said he would be an active lobbyist and senate leader and would work for a fair club funding system.

"You should never look at just the group, but at the programming and its potential interest to students," he said.

Saying, "Education should be number one," Karg vowed to battle tuition hikes.

Turn to KARG, page 14.

## Will Daly



ASASU executive vice president candidate Will Daly describes himself as an enthusiastic ASU student.

"I really look at this place through rose-colored glasses," Daly said.

"When you don't go to school on a full-time basis for a couple of years, you learn to appreciate it."

Daly, 22, said the skills he developed managing three office buildings and a shopping center during his years away from school will be

indispensable aids in managing the nearly \$1 million AS-ASU budget.

The sophomore English major said he will preside over a "fair" administration and will serve primarily as a guide for the ASASU Senate.

"I don't think it's necessary to exert my will over the senate," he said. "They don't need another lobbyist in there. It is much better to be a moderator."

Although Daly "doesn't think there are a lot of problems at ASU," his love affair with the University has not blinded him to some of the major issues facing students.

Daly, currently the senate's parliamentary adviser, bemoaned the "behind the scenes bickering" that he said is the No. 1 problem facing ASASU.

"We have two extremes (in the association) that fight almost automatically over issues," he said. "We have a lot of money, and we could get a lot of things done, and I hope to break down some of the barriers (at ASASU) and restabilize things so we can get on with the services and programs."

Daly defended this year's executive officers for ignoring an ASASU Supreme Court ruling based on the U.S. Constitution.

"College students don't have the knowledge or experience to make interpretations in that area," he said. "The court is limited to ruling on the ASASU bylaws and constitution."

Strengthening the college councils is a major Daly objective, and if elected, he said he plans to emphasize the councils' growth and development as an integral part of ASASU.

Turn to DALY, page 14.

## Todd A. Stevens



Todd Stevens said he will be more than just a moderator of senate meetings if he is elected Associated Students executive vice president.

"I will be an active vice president and will do much more than just run the senate," he said. "You've got to know what you believe in to be in the executive position and be willing to listen as well."

Stevens is a political unknown on campus, but he views his status as an ASASU "outsider" as more

of a help than a hindrance.

"I don't have as many preconceived notions as some people there now," he said. "Maybe the association needs a little infusion of fresh ideas."

Stevens, 20, said students should be the No. 1 priority of ASU administration and ASASU.

"ASASU does an excellent job of representing student needs to the (Arizona) Board of Regents, Legislature and governor, but not quite as good an effort is made with student services," he said.

Stevens cited ASASU use of football and concert tickets as an area where the officers could "put students first."

"For the UofA football game at Sun Devil Stadium, the executive officers kept 40 tickets for ASASU," he said. "The volunteers in the association should be rewarded, but I didn't feel it was right to hold that many back when there were a limited amount available."

"Why not give students a chance at the front row?"

Stevens applauded the deletion of ASASU funding guidelines by this year's senate although he said he favors some criteria.

"As long as a group has a program with educational merit, they should be funded," he said.

Stevens praised ASASU for fighting to keep tuition costs down. He said he will continue the battle.

Turn to STEVENS, page 14.

nationwide vision center

"At Nationwide Vision Centers The Cost of Quality Eyecare Isn't Out of Sight..."



**EYEGLASSES\***

EYEGLASSES ..... Two Pair **\$39.99**  
Free tint on second pair — any combination of regular or sunglasses, same or different styles. Single vision only.

BIFOCALS ..... Two Pair **\$79.99**  
Free tint on second pair (FT 28.)

DAILY WEAR CONTACTS & GLASSES ..... Both Pair **\$39.99**

EXTENDED WEAR CONTACTS & GLASSES ..... Both Pairs **\$59.99**

EYE EXAM Includes Glaucoma Test ..... **\$18.00**  
Contact lens fitting and follow-up care additional.

Outside Eyeglass Prescriptions Welcome

**FIVE CONVENIENT VALLEY LOCATIONS**

**PHOENIX**  
5130 N. 19th Ave.  
One block north of Camelback Rd.  
**242-5292**

**MESA**  
437 S. Gilbert Rd.  
Southeast corner of Broadway & Gilbert Rd.  
**844-7096**

**GLENDALE**  
5030 W. Peoria #103  
One block east of 51st  
**937-1047**

**TEMPE**  
933 E. University  
Across from Cornerstone Mall  
near ASU in Tempe Towne Plaza  
**966-4991**

**PHX/SCOTTSDALE**  
3620 E. Thomas Rd.  
Across from Target in Sunshine Square  
**956-2012**

eyeglasses/contacts

**2 for 1**

**\$39.99**

**TWO PAIR**

**"NEW"**  
Make Your Brown Eyes Blue **\$159.99 one pair**

**FREE**  
Contact Lens Consultation

**FREE**  
Tint on 2nd Pair of Glasses

**FREE**  
Sunglasses with Contact Lens Purchase

**Dr. Mark A. Hechtman — Dr. Neal A. Weinstein & Assoc. Licensed Doctors of Optometry**

100% Refund on contact lenses if not completely satisfied within 30 days.\* Specialty lenses excluded.

Open Mon.-Sat.  
Most Contact Prescriptions Available The Same Day  
\*Some restrictions apply.



**SOFT CONTACTS\***

DAILY WEAR ..... Two Pair **\$39.99**

EXTENDED WEAR ..... Two Pair **\$59.99**

DAILY WEAR COLORED SOFT ..... Two Pair **\$79.99**  
One colored, one clear.

DAILY SOFT CONTACTS FOR ASTIGMATISM (TORIC) .. Two Pair **\$199.99**  
Hydrocurve.

COLORED SOFT EXTENDED WEAR CONTACTS ..... Two Pair **\$99.99**  
One colored, one clear.

Outside contact lens prescriptions welcome with corneal measurements (K-Readings)

# MAMA GELARDI'S 894-MAMA

**CALZONE CRAZY  
99¢ CALZONE**

Buy one at regular price, get one of equal or lesser value for just 99¢.

**VALID ON DELIVERY**

Not valid with other offers.

106 E. University, Tempe Expires 4-15-87  
**COUPON**

**2 GREAT PIZZAS  
only \$9.49 & tax**

Large size pizzas with cheese and one item. Extra items and extra cheese available at additional cost. One coupon per customer. Not valid with other offers. Not valid on Sicilian pizza.

**VALID ON DELIVERY**

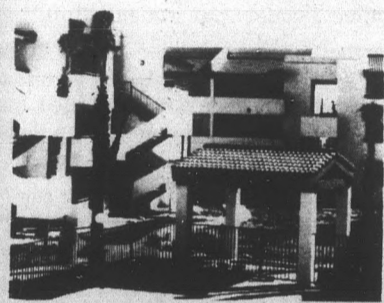
Expires 4-15-87.

## The Place To Live Off Campus!

**A P A C H E**

**GRAND OPENING SPECIAL!!**

**STARTING AT \$350**  
\*WITH 6 MONTH LEASE (LIMITED OFFER)



1/2 blk. E. of Rural Road

POOL  
DISHWASHERS  
WASHER/DRYER  
FACILITIES  
EXTRA STORAGE  
COVERED PARKING  
BUSLINE

**968-6383**  
1123 E. Apache



**T E R R A C E**

# Campus affairs vice p

## Vince Micone

Vince Micone said he is running for ASASU campus affairs vice president because he has "a vision."

"I have an idea how the nine campus affairs departments should be working and reaching out to draw in students," he said.

Involving students in ASASU is a top priority for Micone, who currently is president of the Residence Hall Association.

"We need to establish a Student Needs Committee, that will not only go out and let students know what is going on, but will find out what is needed as well," he said.

Micone said the campus affairs vice president should market existing ASASU services because many students don't know what is available.

"My focus is to determine what is working well in campus affairs and enhance what exists," he said.

Micone said he would investigate the possibility of reducing the Faculty Course Evaluation Program (Course Source) to one published booklet per year.

"Do the classes really change that much from semester to semester to warrant publishing twice a year?" he asked.

The 20-year-old organizational communications major called the Tenant and Commuter Association "one of the strongest areas in campus affairs" but said it could accomplish more.

"They should work more closely with parking services and should develop ways to expand the tram service," he said.

Micone proposes to change the name of the Minority Affairs Board to the Cultural Awareness Board.

"Minority Affairs can have a very negative



## David Schwartz

David Schwartz does not like the acronym "ASASU."

"You know, ASASU seems to mean politics to most students, while Associated Students means services," he said. "Some people don't even know they are the same thing. Services is what the association and I are all about."

Schwartz, a candidate for campus affairs vice president, said he was drawn into the association two years ago because he "hated school when I wasn't involved."

The 20-year-old marketing major, who has since served in ASASU's Public Relations Office and as commuter coordinator, said many students are intimidated by the association.

Schwartz stressed the value of public relations in disseminating information and activating students.

"There is that ivory tower thing (at ASASU), and it is really too bad because I see many commuter students just sacked out on the couches in the MU without anything to do between classes," he said. "We've got to get those students involved."

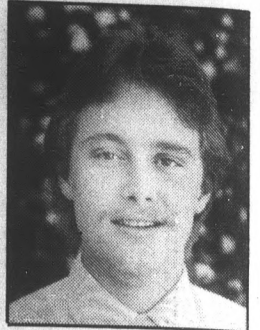
The Bike Co-Op is a pet project for Schwartz.

"Most students don't know they can go there and get help with their bikes," he said. "There is so much room for growth and expansion in that area."

But to expand programs in a time of budgetary crisis means volunteers must be found.

"Volunteers are out there," Schwartz said. "We just have to tap into commuter students, campus clubs and especially incoming students."

"Freshmen are such a good source of fire and energy. They just don't know how to get involved, and again, that's where (public rela-



Kecia campaign... ated Stud... affairs v... promises... presenta... students.

Beasley... "We have... gate stu... and hel... them, r...

The so... use her v... worthwh... against a...

Beasley... and Gay... are not... turn gay...

Develo... system is...

"The p... be leadi...

for the b... all the ad...

Beasley... marked, must be... gulations...

"If stu... be expect... pate in a...

Distrib... students... priorities...

"If we... and try... ASASU... talking t... have the... happenin...

She s... ASASU...

Associated Students

# Lecture Series

# 1987

presents

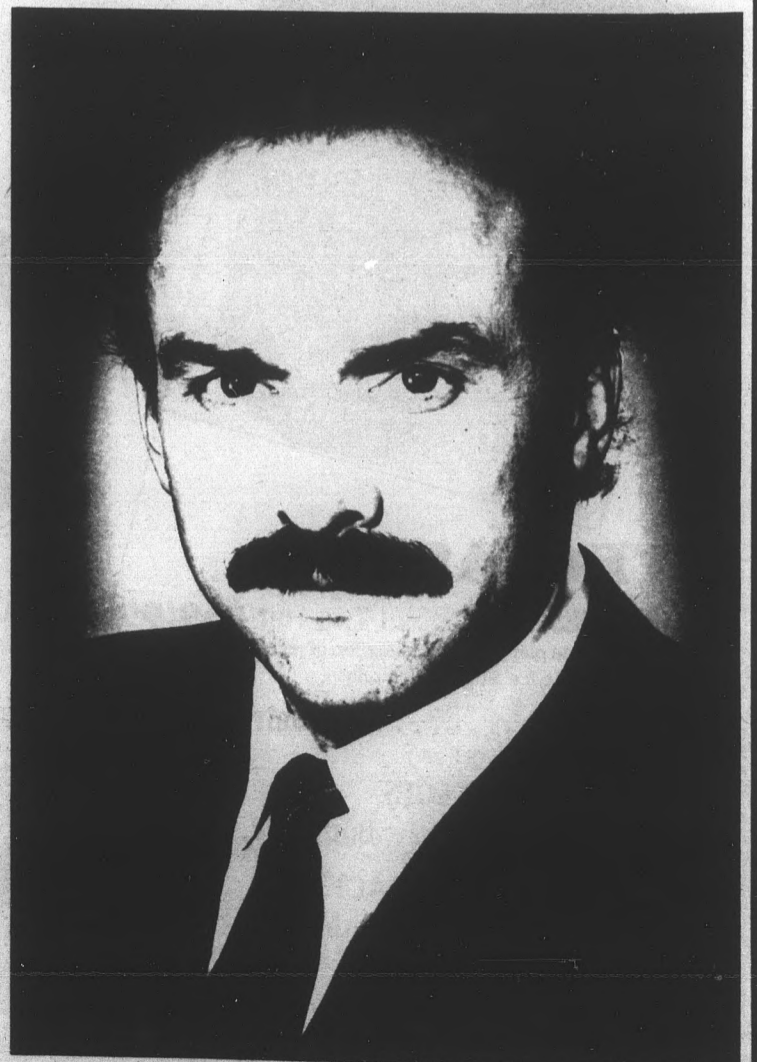
## ROCKY BLEIER

*The inspiring story of a man who refused to quit; his experiences will motivate all of us.*

**Wednesday,  
April 8, 1987  
12:30 p.m.**

**Arizona Room - Memorial Union**  
**Questions, Call 965-3161**

Free with ASU I.D.  
\$2.00 General Public



# ce president

## rtz Kecia Beasley

Kecia Beasley's campaign for Associated Students campus affairs vice president promises "equal representation for all students."

Beasley, 20, said, "We have to investigate student needs and help service them, not judge them."



The sophomore Spanish major pledged to use her vote in the ASASU senate to "fund all worthwhile programs and not discriminate against a group because of their name."

Beasley said she favors funding the Lesbian and Gay Academic Union as long as members are not "out on the mall telling the students to turn gay."

Development of a comprehensive bike path system is a major part of Beasley's platform.

"The paths we have on campus don't seem to be leading anywhere," she said. "I really feel for the bikers and people walking because of all the accidents."

Beasley said the paths need to be clearly marked, exclusively for bikes, and students must be informed about bike rules and regulations.

"If students aren't informed, then they can't be expected to understand the rules or participate in activities," she said.

Distributing campus affairs information to students also ranks high on Beasley's list of priorities.

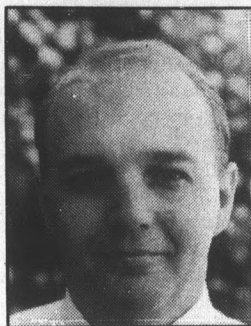
"If we're going to be working for students and trying to fulfill student needs, then (the ASASU officers) need to be out on the mall talking to students," she said. "We personally have the responsibility to let them know what's happening."

She said many students are unaware of ASASU services.

Turn to BEASLEY, page 14.

## Mark Isenberg

College of Liberal Arts Sen. Mark Isenberg is running for ASASU campus affairs vice president to combat what he calls the "No. 1 problem facing ASU students."



"Every time we turn around we are getting hit up for more money," he said. "If it's not through tuition increases, then it's something else."

"I say you can't get blood from a turnip." Isenberg becomes animated when speaking about the rising cost of education, and he pledges to battle for cost reductions.

"I'm not worried about having good relations with administrators," he said. "I'm worried about having good relations with the students."

"I want to work with the administration, but I'm not afraid to fight them either."

As an ASASU senator, Isenberg researched and wrote a report on the quality of education and rising costs which he submitted to the Arizona Board of Regents during tuition hearings last fall.

"I'd like to think it had some effect," he said. Isenberg hopes to revitalize the Book Exchange Program as part of his plan to reduce student costs.

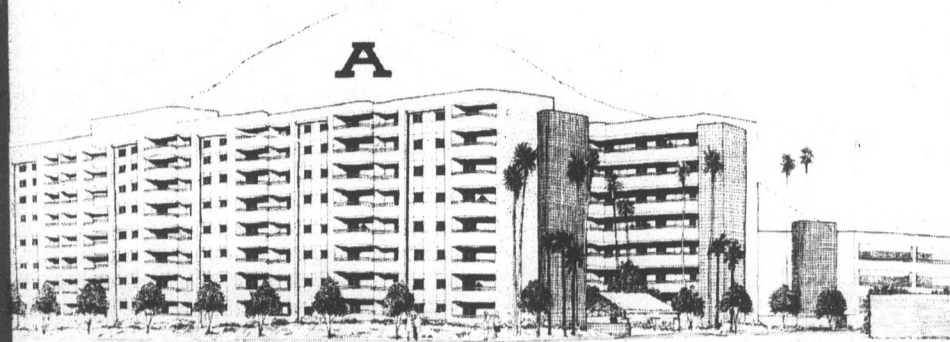
"Students will be able to buy books cheaper than at the bookstore and sell them for a higher return than at the bookstore," he said. "That keeps the profit in the student's pocket."

The 23-year-old economics major pointed out that he has worked hard for disabled students as a senator, and said he will continue to do so as campus affairs vice president.

Isenberg lobbied for the purchase of another golf cart to transport temporarily disabled students around campus and now has a plan to develop a small fleet of such carts sponsored

Turn to ISENBERG, page 14.

# University Towers



## NOW TAKING FALL RESERVATIONS

*We're Filling Up Fast!*

Until the luxury and convenience of University Towers. These unique and exciting co-educational student residence suites combine the best of apartment and dormitory living.

Ideally located within 2 blocks of Arizona State University academic facilities, and across from Sun Devil Stadium.

University Towers offers furnished 2 bedroom residence suites including utilities, full kitchen and many extras.

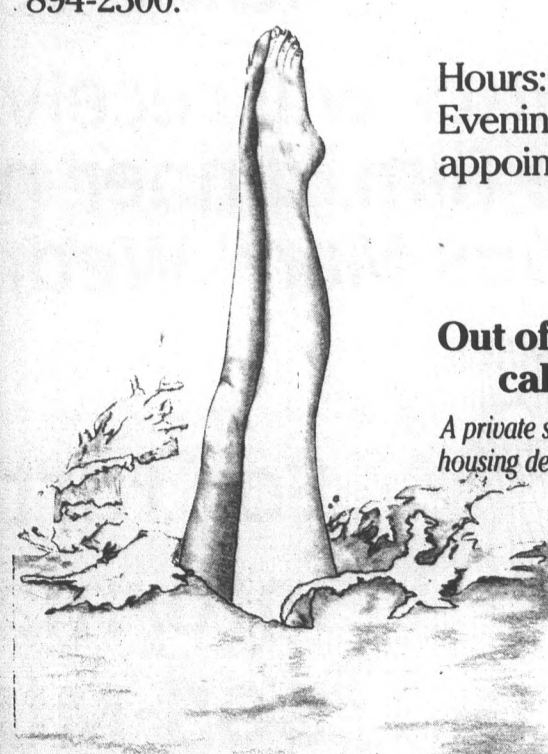
- 24-hour security
- Escorts if requested
- 24-hour emergency maintenance
- Garage parking
- Pool, jacuzzi, volleyball, elevated sundeck
- Satellite cable television

Stop by our leasing office today, located on 5th Street between College and Forest in Tempe, or call (602) 894-2300.

Hours: 9:00 a.m. to 6:00 p.m.  
Evenings and weekends by appointment

Out of Phoenix area, call collect

A private student housing development



"The Best Salad Bar in Town!"

## ASU Special Coupons

D'Lites possibly has the best food in the known universe, or even Tempe. We want you to give us a try, so we have three super secret coupons somewhere in this ad. If you can find them you can use them. D'Lites is in University Towers, but don't despair we deliver day and night clear up till 1 a.m. So stop over and give us a try, or if you're lazy, call - we'll deliver your food fast.

Phone 967-6707  
525 S. Forest • Inside University Towers

### FREE FRENCH FRIES



With the purchase of any sandwich we will give you absolutely free a regular order of french fries - No foolin'!

525 S. Forest • 967-6707 • Inside University Towers

Plus tax. Not valid with any other offer or coupon. One coupon per person per visit. Offer expires 5-30-87.

### FREE SOFT DRINK



With the purchase of any sandwich, salad bar or baked potato we will give you a regular soft drink free - Now drink that deal in!

525 S. Forest • 967-6707 • Inside University Towers

Plus tax. Not valid with any other offer or coupon. One coupon per person per visit. Offer expires 5-30-87.

### OUR FAMOUS SKIN SALE



For a limited time our famous potato skins are on sale. Crisp skins lavishly covered with aged cheddar cheese sauce and "bacon bit" topping.

Regular \$2.29 All for only 99¢ You save \$1.30

525 S. Forest • 967-6707 • Inside University Towers

Plus tax. Not valid with any other offer or coupon. One coupon per person per visit. Offer expires 5-30-87.

# Activities vice president



## Jerry E. Ellison Jr.

Jerry Ellison knows he is not the "average" ASASU candidate, but he said he likes it that way.

The 22-year-old libertarian hopes to become activities vice president and along with friend and presidential candidate Will Murphy, he has set his sights on changing the face of student government at ASU.

"Associated Students is not a body that is reflective of those it is supposed to represent, but is subject to the whim of those in it," he said.

Ellison's platform proposes that membership in ASASU be voluntary, all ASASU club funding be ended and promises an "accountable" activities administration.

Perhaps the most controversial idea of this election season is the proposal that students should no longer be charged a mandatory ASASU fee as part of tuition, but should forfeit the money only if they choose to become a part of the association.

"It's a matter of simple fairness," Ellison said. "If people want to belong, fine. But if they don't, we won't be taking the money out of their pockets. Besides, this will lower tuition."

Ellison said each student pays about \$30 to ASASU each year.

"Involuntary membership is unfair to the commuter student with five kids at home who just doesn't have time or desire to use the services," he said.

Ellison advocates programming events students really want to see and charging admission to non-ASASU members.

He said there are many major rock music acts now touring, and they should be brought to ASU to please students and raise revenues that would be pumped back into the association to benefit students.

Ellison claims if ASASU stopped funding clubs, the "eclectic little click that decides what deserves your money" would not be

involved in biased situations anymore.

Ellison, a former stand-up comic, is deadly serious about his ideas and being accessible to students.

"I am a basic 'Joe' student, and I really promise to listen to whoever wants to stop by the office," he said. "I will try to assimilate suggestions into my programming."

Ellison scoffs at charges that his ideas are destructive of the established order of ASASU.

"The established order has not been responsible to students on this campus. They have been too busy promoting their own interests," he said.

Ellison is not worried that only a few students may voluntarily join ASASU, thus crippling the association.

"I don't think that will happen," he said. "But if it does, then not enough people care about ASASU for it to exist anyway. The students will have spoken."

## John Fees

John Fees admits that he could speak indefinitely about his goals for the activities vice presidency.

The Tempe High School graduate can rattle off information about ASASU departments and about the "ins and outs" of the association in detail and with pronounced enthusiasm, for hours.

And, quite possibly, for days. "All this isn't rhetoric. It's just me; it's the way I am," he said. "A lot of positive things have been accomplished this year, and I hope to improve on that."

Fees, who is the assistant to current Activities Vice President Christine Roth, claims he has "difficulty dealing with the politics of ASASU."

Fees stressed he would emphasize "programming over politics." He said he is inter-

ested in "people working in a united way, not politics."

His administration aims to increase awareness of activities, provide for a large diversity in programming and rid students of "the sense of isolation on campus."

The sophomore history major said he hopes to develop a program that will get students involved from their first day at ASU.

"The reason students are apathetic is because they are never expected to do anything," Fees said.

"From the time freshmen attend orientation, 'homecoming' should become the buzzword. Getting new students involved is important because they will be the ones who carry on the involvement and activities we begin."

Fees, 20, said homecoming celebrations

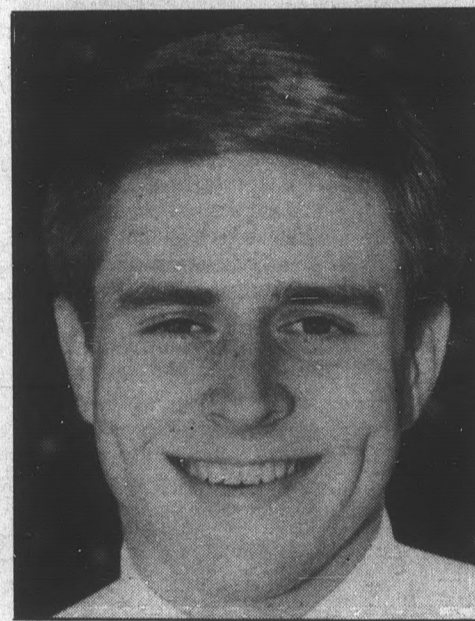
should be a "miniature Fiesta Bowl" and include representatives from Valley high schools and organizations.

The Leadership Institute, an organization that aims to improve campus clubs and organizations and the quality of leadership and communication on campus, is one of Fee's pet projects.

Fees said the Institute would conduct workshops and leadership forums to improve relations between clubs, ASASU and the administration.

Fees views this year's election in broad terms.

"This campaign is not just for an election, but for the future of programming on campus," he said. "It's the actualization of a dream and the realization of a vision."



# GET READY —

# THE SEARCH FOR YOUR IDEAL CAMPUS MAN/WOMAN IS ON!

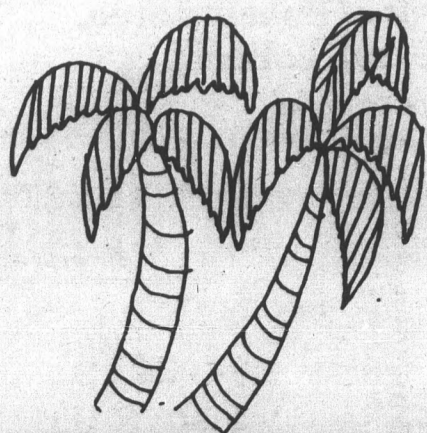
In celebration of "Campus Man," premiering next week, MUAB is presenting "The Dating Game"

Tuesday, April 7 at 9 p.m. at 919 E. Apache in Tempe.

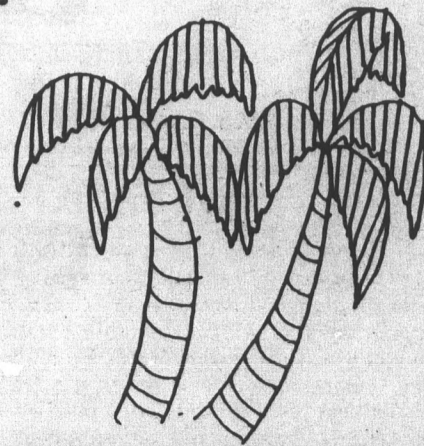
*Surprises*

## COME JOIN THE FUN

Contestants will receive promotional items from the film, dinner passes and a free screening to "Campus Man" Wednesday, April 8.



For further information, call **965-MUAB.**



# Wade

Continued from page 6.

Wade admits prior ASASU administrations have tried and failed to lower or fix tuition, but he proclaims it can be done.

"Again, I can't do it by myself, but if I, as the voice of the students, can get their support behind the effort, we can do it," he said. "Some people call that naive. I call it positive thinking."

Most of Wade's programming is aimed at improving student involvement, especially by increasing communication between ASASU senators and students.

He also plans to question University expansion plans because "it's hard to think about expansion when we're experiencing

budget cuts and our College of Business is in danger of losing its accreditation."

Wade said he would veto any legislation sent to him by the senate that funded the Lesbian and Gay Academic Union based on his personal beliefs and student opinion.

"I don't believe they have programming that is in any way positive for ASU, and the great preponderance of the students I talk to are against funding them," he said.

Wade said he is running for president because he wants to "see if it is possible to affect change without playing petty politics."

"I want to get the president out of lobbying senators and get him working on student concerns," he said. "That's the bottom line."

# Escobedo

Continued from page 6.

"That's why we've got to be out on the mall."

Escobedo, 22, said he already has contacted UA and NAU student leaders about cooperating in the voter-registration campaign.

"Rivalry at football games is one thing, and it's healthy, but we've got to work together in other areas," he said.

A senior political science major from Ogden, Utah, Escobedo said he will work to better the student community in Tempe.

"We need to negotiate rent agreements with local landlords who are taking advantage of students," he said. "Right now we're all paying way too much in rent."

"A parking agreement with the Tempe City Council also needs to be worked on."

Escobedo insists the local economy would "fall apart" without the student dollar, and Tempe authorities should be willing to negotiate and work with ASASU.

"We're all in the same boat," he said.

He pledged to fight rising tuition, improve access to campus buildings for the "physically challenged" and investigate establishing an ASU medical school within five years.

"Most of all, it's important that the administration, Legislature and (Arizona) Board of Regents work with us and realize that we are not children," he said.

# Sullivan

Continued from page 6.

"The students are paying huge fines that are used to build parking structures, but then only 200 out of 1,567 spaces are reserved for them," he said.

Sullivan, 21, also objects to the ticket appeal procedure because students must pay their fines before filing for a hearing. He advocates appointing a student to work with parking services in the student interest.

Sullivan said he would be an active president and called some ASASU Senate actions "overzealous."

"I find it appalling that the ASASU Supreme Court is not being allowed to issue

decisions based on the U.S. Constitution," he said.

Sullivan stressed the need to lobby for more money for instruction at ASU.

"We need not be interested in how research is going to make our diplomas worth more in the future," he said.

Sullivan aims to break down "the intimidation factor" at ASASU.

"It is our specific job to be friendly and to make students know they are welcome in the association," he said. "We need to get students in the office and on committees where they can have an effect."

"I know the interest is out there. We just have to tap into it."

# Kunasek

Continued from page 6.

financial aid," she said. "Not building construction."

Kunasek promised to fight for quality education at ASU.

"The enrollment projection at this University is 65,000 students by the year 2000," she said. "We have limited resources, and there has to be a concern about quality versus quantity."

Kunasek said she favors tightening admission standards and limiting enrollment.

The senior history major is the daughter of Arizona Senate President Carl J. Kunasek. "Maybe I do have easier access to some legislators," she said. "But many students

can develop beneficial relationships with those people — if they know the issues."

Kunasek said she is committed to strengthening ASASU's public relations department, increasing student participation and interaction with the administration, and aims to eliminate the dissension that has plagued the association.

"There has been too much conflict within ASASU because of a breakdown in communication," she said. "There must be discussion and interaction for any progress to be made."

"That's one thing I learned from my dad. There has got to be give and take. There has got to be discussion, or nothing will get done."

# Hopkins

Continued from page 6.

that a lot of students are concerned about issues on this campus."

Hopkins, who bills himself as "ready, responsible and reliable," has served as president of the MU Activities Board and public relations director for the ASASU Campus Affairs department. He is currently a member of the Student Programming Advisory Network (SPAN) — a group of student leaders from residence halls, the greek system and student government.

SPAN would be a major vehicle for change in Hopkins' administration.

"I think there is a great potential there for

student leaders, representing all sections of students, to make progress on issues," he said.

Hopkins stressed the importance of "putting money toward teaching" and said he wants the University to redefine its goals and direction.

"We've got to work together with the Board of Regents to change the philosophy from an emphasis on research to an emphasis on teaching," he said.

"I've always been a people person. I'm open-minded, and I want others to be. We can accomplish great things through communication."

# Murphy

Continued from page 6.

issue candidate and has developed a detailed student government philosophy.

"I understand government, and I have a great respect for people's rights," he said.

The 22-year-old political science major, who has been accepted into the ASU College of Law, has formulated what many ASASU members consider a "radical" platform.

Murphy calls for voluntary ASASU membership, an equal senate representation plan for all colleges, termination of ASASU club funding, extension of the office terms for Supreme Court justices, and giving the vote to the Arizona Board of Regents' student representative.

ASASU services they may not be using," he said. "Voluntary membership is the only equitable solution."

Murphy said students contribute about \$30 per year to ASASU through their tuition fees.

"We want to leave that money in the hands of students where it belongs," he said.

Murphy said any student interested in fairness and student freedoms should approve of his programs and ideas.

"I would think a plan like voluntary membership, that lets students decide if they want to join the association and where or what club they want to individually give their funds to, would be popular," he said. "We'll find out election day if I'm right."

## MANN

\$3.00 BARGAIN PRICE ALL DAY TUESDAY

<p><b>BELL TOWER 8</b> 843-4593 51ST AVE and BELL ROAD</p> <p>OUTRAGEOUS FORTUNE (R) 1:15, 3:15, 5:15, 7:15, 9:15</p> <p>PLATOON (R) 12:00, 2:15, 4:30, 7:15, 9:45</p> <p>LETHAL WEAPON (R) 12:00, 2:15, 4:30, 7:15, 9:45</p> <p>BLIND DATE (PG13) 12:15, 2:30, 4:45, 7:00, 9:15</p> <p>POLICE ACADEMY 4 (PG) 12:00, 2:00, 4:00, 6:00, 8:00, 10:00</p> <p>NIGHTMARE ON ELM STREET 3 (R) 1:00, 5:30, 10:00 RETURN TO HORROR HIGH (R) 3:15, 7:45</p> <p>SOMETHING SPECIAL (PG13) 12:15, 2:15, 4:15, 6:15, 8:15, 10:15</p> <p>BURGLAR (R) 12:30, 2:45, 5:00, 7:30, 9:45</p>	<p><b>SUN DEVIL 6</b> 829-0344 The Cornerstone Rural &amp; University</p> <p>POLICE ACADEMY 4 (PG) 1:00, 3:00, 5:00, 7:15, 9:15</p> <p>NIGHTMARE ON ELM STREET 3 (R) 12:30, 2:45, 5:00, 7:15, 9:30</p> <p>LETHAL WEAPON (R) 12:45, 3:00, 5:15, 7:30, 10:00</p> <p>OUTRAGEOUS FORTUNE (R) 1:00, 3:00, 5:00, 7:00, 9:15</p> <p>PLATOON (R) 11:45, 2:15, 4:45, 7:30, 10:00</p> <p>TIN MEN (R) 11:45, 2:15, 4:45, 7:15, 9:45</p>	<p><b>SUPERSTITION 5</b> 834-5767 MESA AT SO LONGMORE &amp; SUPERSTITION</p> <p>CROCODILE DUNDEE (PG13) 12:45, 3:00, 5:15, 7:30, 9:45</p> <p>CHILDREN OF THE LESSER GOD (R) 12:00, 2:30, 5:00, 7:30, 10:00</p> <p>STREET SMART (R) 12:30, 2:45, 5:00, 7:15, 9:30</p> <p>SOMETHING SPECIAL (PG13) 1:15, 3:15, 5:15, 7:15, 9:15</p> <p>SOME KIND OF WONDERFUL (PG13) 12:15, 2:30, 4:45, 7:00, 9:45</p>
<p><b>SUN DEVIL 6</b> \$3.00 MIDNIGHT SHOWS FRIDAY &amp; SATURDAY</p>	<p><b>POCA FIESTA 4</b> 835-0404 MESA AT 1020 WEST SOUTHERN</p> <p>WITCHBOARD (R) 2:15, 5:55, 9:35 RETURN TO HORROR HIGH (R) 12:30, 4:10, 7:50</p> <p>HOOSIERS (PG) 12:00, 2:20, 4:40, 7:00, 9:30</p> <p>ANGEL HEART (R) 12:15, 2:30, 4:45, 7:00, 9:15</p> <p>BURGLAR (R) 12:45, 3:00, 5:15, 7:30, 9:45</p>	<p><b>CHRIS-TOWN 5</b> 249-2843 5767 NO 19TH AVE</p> <p>BURGLAR (R) 12:30, 2:45, 5:00, 7:15, 9:30</p> <p>POLICE ACADEMY 4 (PG) 12:45, 3:00, 5:15, 7:30, 9:45</p> <p>NIGHTMARE ON ELM STREET 3 (R) 12:15, 2:30, 4:45, 7:15, 9:30</p> <p>OUTRAGEOUS FORTUNE (R) 12:00, 2:15, 4:45, 7:45, 10:00</p> <p>LETHAL WEAPON (R) 12:00, 2:30, 5:00, 7:30, 10:00</p>

## UNBELIEVABLE

Store and lock your items for the

## SUMMER

Reserve your space while they last.

Prepay for three months and get the fourth

## FREE

**the STORAGE SAFE** self storage

(Formerly Tempe Self Storage)

**242 W. Southern**  
**Tempe, AZ 85282**  
**966-9665**

## GOODYEAR Western States

TIRES AND AUTO SERVICE

Special Discounts to Students, Staff & Faculty

### GET YOUR CAR READY FOR THE WARM MONTHS AHEAD!

<p style="text-align: center; border-bottom: 1px dashed black;">COUPON</p> <p style="text-align: center; font-weight: bold; margin: 0;">Front End Alignment</p> <p style="font-size: small;">INCLUDES •Set Camber &amp; Caster •Adjust Toe-In •Adjust Steering Wheel •Road Test</p> <p style="text-align: center; font-size: 2em; font-weight: bold; color: red;">\$14<sup>88</sup></p> <p style="font-size: x-small; text-align: center;">MOST CARS Expires 4-30-87.</p>	<p style="text-align: center; border-bottom: 1px dashed black;">COUPON</p> <p style="text-align: center; font-weight: bold; margin: 0;">Oil-Lube-Filter</p> <p style="font-size: small;">INCLUDES: •Up to 5 Qts. Oil •Chassis Lube •Oil Filter •30 Weight Oil •Labor</p> <p style="text-align: center; font-size: 2em; font-weight: bold; color: red;">\$10<sup>00</sup></p> <p style="font-size: x-small; text-align: center;">ADD \$2 FOR 15/40 OIL MOST CARS AND LIGHT TRUCKS Expires 4-30-87.</p>								
<p style="text-align: center; border-bottom: 1px dashed black;">Computerized Spin Balance &amp; Rotation</p> <p style="font-size: small;">•Computerized spin balance all four wheels •Rotate four tires •Check air pressure for proper inflation •Free safety check</p> <p style="text-align: center; font-size: 2em; font-weight: bold; color: red;">\$16<sup>00</sup></p> <p style="font-size: x-small; text-align: center;">MOST CARS AND LIGHT TRUCKS Expires 4-30-87.</p>	<p style="text-align: center; border-bottom: 1px dashed black;">Fan Belt Change</p> <p style="font-size: small;">ENGINE BELTS SHOULD BE INSPECTED TWICE A YEAR</p> <table style="width: 100%; font-size: x-small;"> <tr><td>1 Belt Replacement .....</td><td style="text-align: right;">\$16.00</td></tr> <tr><td>2 Belts Replacement .....</td><td style="text-align: right;">\$25.00</td></tr> <tr><td>3 Belts Replacement .....</td><td style="text-align: right;">\$39.00</td></tr> <tr><td>4 Belts Replacement .....</td><td style="text-align: right;">\$45.00</td></tr> </table> <p style="font-size: x-small;">•Quality Goodyear belts and hoses •Free inspection of all hoses and belts. For your convenience please call for appointment. •Includes installation •Add \$15.00 for transverse engine •Serpentine belts extra</p> <p style="text-align: right; font-size: x-small;">Expires 4-30-87.</p>	1 Belt Replacement .....	\$16.00	2 Belts Replacement .....	\$25.00	3 Belts Replacement .....	\$39.00	4 Belts Replacement .....	\$45.00
1 Belt Replacement .....	\$16.00								
2 Belts Replacement .....	\$25.00								
3 Belts Replacement .....	\$39.00								
4 Belts Replacement .....	\$45.00								

**101 S. Hayden**  
**829-7400**  
**Hayden & 1st**

**894-0799**  
**Southern & Mill**

It's not fair to take people's money for election day if I'm right.

# Karg

Continued from page 9.

"One of the things that attracted me to ASU was the low rates," he said. "Granted, we are going to have to operate under budget cuts, but the cuts must come from other areas."

Karg said he would obey rulings of the ASASU Supreme Court based on interpretations of the U.S. Constitution, unlike this year's executive officers who deny the court's power to make such decisions.

"I would also consult an outside legal opinion," he said.

Karg pledged to work to preserve student-usable "green space" at ASU in spite of an extensive campus expansion program.

"We've got a better chance to improve things at ASASU than we've had in a long time. We've got so much potential — all we need is some direction."

# Daly

Continued from page 9.

Daly speaks enthusiastically of the "mini-international city" that he hopes to promote at ASU.

"We have a huge population of Asian students, Hispanic students, etc., that we should be promoting more and encouraging to express themselves and share their cultures," he said.

Daly said he pondered the worth of allocating ASASU funds to the Lesbian and Gay Academic Union and decided "it is not right."

"You know, I try to be objective, and I thought for a while that we might be discriminating against them like past generations did blacks," he said.

"But this is different, because funding them would be promoting a personal, private lifestyle and set of beliefs."

# Stevens

Continued from page 9.

Stevens stressed that available monies, from tuition and other sources, should go to education and improving the quality and number of faculty.

"I'm against money going to a faculty club, a banquet or some frill," he said.

Stevens blasted haphazard campus expansion when "we can't fill the classrooms with enough professors as it is."

"I'm graduating from this University, and I want that degree to be respected and worth something," he said.

"We at ASASU have got to work as a whole, for the good of the University."

# Micone

Continued from page 10

connotation," he said. "We want to invite the whole campus to communicate and feel different cultural environments."

Since the campus affairs vice president is a voting member of the ASASU Senate, if elected, Micone would participate in the club-funding process.

"Clubs should not be discriminated against on the basis of their name," he said.

Instilling school spirit is another Micone goal.

"Spirit is rising to a high because we won the Rose Bowl," he said. "We've got to build that pride into incoming students and get them involved."

# Schwartz

Continued from page 10

Schwartz said he hopes to continue progress on establishing a trolley service for students who live in the Vista Del Cerro Drive area southeast of campus.

"I was in on the development of the concept, and I think it is in the best interests of the University to get the program going," he said.

"This is the kind of thing I'm talking about when I say put service back into student government."

Other goals include establishing a crisis hotline, improving attendance at campus cultural events and increasing awareness of commuter services.

Schwartz admits that politics are inevitable in ASASU but said he would try to "move on with programming."

"All I want to do is focus on services through the nine campus affairs departments," he said.

# Beasley

Continued from page 11.

"There are so many things, but we have to pass out literature about them," Beasley said.

Currently secretary of the Black Student Union, Beasley said she is the best candidate because she has "met the students through my activities on campus."

"I've gotten to know them, and they've gotten to know me, face-to-face," she said.

Beasley hopes to expand tram service for students in the Sun Devil Village area.

"There are a lot of students over there who I think would really like trams running in the area," she said.

She also aims to "further the distribution of the faculty evaluation sheets," or Course Source booklets.

"Incoming students especially should have that information about classes," she said. "They need the guidance and help more than anybody."

# Isenberg

Continued from page 11.

"It's a really good program because everyone may find themselves temporarily disabled at some time," he said.

Isenberg voted against funding the Lesbian and Gay Academic Union. He said he still feels they do not deserve student money.

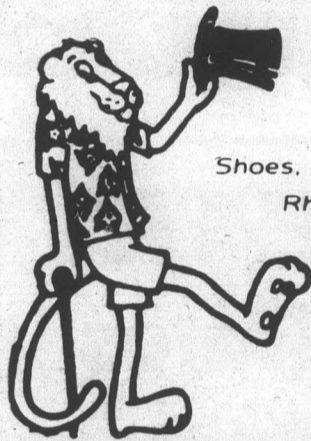
"My constituents and my personal beliefs still say 'no' to funding the LGAU, even though the bylaws may permit it," he said.

Isenberg urged students to become involved and vote for candidates who will work on the issues and fight for their interests while not "playing politics."

"I hope students vote for me, but most of all I want them to vote from the heart for people they think will do a good job," he said.

## RARE LION RESALE

Buying • Selling • Trading



- Clothing •
- Vintage & Contemporary
- Accessories •
- Shoes, Hats, Gloves • Jewelry •
- Rhinestones, Glass Beads •
- Collectibles • Antiques •

10-6 Mon.-Fri. • 10-6 Sat.  
722 S. Mill Ave., Tempe  
968-6074

## MEXICAN MADNESS

at  
*Shepherds*

Rural & Apache



**\$1 Corona**, Margaritas,  
Strawberry Margaritas, Shots of Gold

Happy Hour prices 7 days a week • Free hot & cold hors d'oeuvres 4-7 M-F

*Never, ever a cover charge*

**R**esearch  
**E**ducate  
**A**dvice  
**C**ounsel  
**H**elp

Accepting applications

- We are looking for:
- Enthusiastic, Motivated People
  - With good leadership skills
  - And a 2.25 G.P.A.

Reach is an information, resource and outreach program in Student Life to assist students.

Applications available at:  
Reach Desk  
Student Life Office  
Memorial Union L.L. Rm 48  
965-2255 or 965-6547

Deadline: 5:00 p.m. April 15, 1987

# VOTE

Wednesday and Thursday, April 8-9  
Your VOTE Really Counts!

Poll Locations

Hayden Library

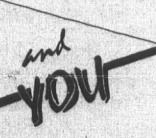
Tyler Mall

Memorial Union

Forest Mall

Business

ASASU  
ELECTIONS



Matthews Center

College of Law

\*Bring Photo I.D. with S.S. #

## Sun Devil archers shooting for recognition

By STEVE ADAMS  
State Press

The national title long has been a tradition for a team at ASU.

In fact, 23 titles have graced the campus in the past 10 years.

The Sun Devil archery team is looking for another national title, as well as deserved recognition for an invisible sport.

ASU has been showing again this year that all those past titles were not flukes, and that they are the team to beat in the nationals.

Since January, the Sun Devils have only had two tournaments, but have shown some impressive performances, according to coach Sheri Rhodes.

"We are starting out at a real good point and are making great strides," Rhodes said.

In ASU's first tournament, the Intermountain Invitational, both the men's and women's teams took first place.

The men ran away from the pack with 2,439 points, followed by Pima College with 2,124 points.

The story was much the same for the women, as the Sun Devils compiled 2,312 points with the next closest competitor, Phoenix College, mustering only 2,133.

"We played very well at this tournament," Rhodes said. "It also helped us to work out some kinks and get up some confidence."

The men and women didn't lack confidence in this competition, as the men swept the top seven spots and the women cleaned up the top three spots.

The Sun Devils' Jim Swanson was in the spotlight for the men, as he captured first place, while ASU's Becky Liggett captured the same honor for the women.

"These two players, as well as the whole team, have been playing very consistent," Rhodes said.

In the Sun Devils' second invitational at Phoenix College, the men again repeated as the champions, taking the top three spots.

Swanson took home his second consecutive first-place finish.

"Jim has done a good job for us all year and he showed it in these past two tournaments," Rhodes said.



Andy Mrozinski/State Press

ASU archery coach Sheri Rhodes, who was recently chosen as head coach for the U.S. Olympic team, supervises practice. The team has won two indoor tournaments and is preparing for outdoor action.

On the women's side, the scores were not known because the tournament ran long and the Sun Devil women had to leave before all the scores were compiled.

"I still don't have the results and the competition was two weeks ago," Rhodes said.

Despite not knowing the results, Rhodes is very confident about the team's capabilities.

"We have done extremely well, considering that we have been practicing indoors thus far," she said.

ASU took it to the outdoor fields last week, and Rhodes hopes that the team can continue to do as well considering all the variables they now need to take into account.

"We will improve much more by being outside," Rhodes said. "We will now get more shooting at long distances and we will have to adjust to more factors that you don't encounter indoors, like the wind," she said.

Rhodes is also hoping that individuals will make strong showings in the regionals.

"Our players normally do very well in that competition and hopefully that will continue," Rhodes said.

The next step for the players after this is making it to the Olympics.

"It would be real nice to have some of my players on the Olympic team I will be coaching," Rhodes said.

ASU was competing in the Regionals in Colorado Springs at the time this edition of the State Press went to print.

## ASU archery coach to run Olympic team

The National Archery Association has selected ASU archery coach Sheri Rhodes as the head coach of the 1988 U.S. Olympic team.

"I was very pleased and excited to be selected," Rhodes said. "The selection process is very tough."

Rhodes had applied for the position some months ago and had been waiting to hear what the final outcome would be.

It was worth the wait, according to Rhodes, as she learned that she had beaten out another top coach from Pennsylvania.

Being selected is a top honor, but not every coach is even eligible to apply for the highest distinction in sports.

Rhodes had to demonstrate more than her coaching abilities at ASU. The selection committee requires past

participation in NAA activities, as well as participation in training camps at the instructional level.

"I also had to have coached at past World Championships," Rhodes said.

In her 11th year at ASU, Rhodes has coached Sun Devil teams that have brought home 23 of 30 national titles in the past 10 years.

"We have had very successful years at ASU," Rhodes said.

Though Rhodes will have a lot more work to do due to her selection, she said it will by no means interfere with her coaching duties for the Sun Devils.

"I'll have to go observe in training camps, but it will not interfere," Rhodes said.

—STEVE ADAMS

## NBA playoffs draw near; does anybody care?

NBA playoff time is once again just around the corner. Does anybody care?

After a season of more than 80 games for 23 teams, seven squads have been eliminated and the other 16 are about to begin the only part of the season that matters.

There are 12 men on a team; multiplied by 23 teams, then multiplied by 80 games apiece, that adds up to 22,080 man-games. If the average game lasts 2½ hours, that's 55,200 man-hours (not even counting coaches) devoted to the elimination of seven teams, just 30.4 percent of the original field of 23.

So what do all those numbers mean? It's really pretty simple.

All those numbers mean that any single regular-season game is the nearest thing to meaningless that a sporting event could possibly be. If each team is to play more than 80 games, any given game is so small a percentage of the season as to lose its importance.

Now some may find this an unimportant fact, or even a favorable one. The longer season allows fans more games to enjoy, permits teams to have off nights without destroying their chances at the playoffs and gives an accurate estimation of the relative talents of each team.

But mostly what it does is generate incredible numbers of gate receipts and television contracts, allowing team owners to make unheard-of sums of money so that they might be able

**Bob Heiler**  
Sports Editor



to pay unheard-of salaries.

Meanwhile, the fan — from whom all this revenue emanates — winds up watching a game that has exceedingly little bearing in the large picture of the season. Rather than a pressure situation, a game where a win or a loss could make the difference between making the playoffs or heading to Bermuda for the off-season, the fan watches a contest that has so little influence on the whole season as to be insignificant.

Not that games like that can't be fun to watch. They can and are — especially when they contain athletes like Michael Jordan or Larry Bird. But watching the NBA season is like strolling through PV Main — a lot of cosmetic beauty and not much substance.

In fact, were it not for the sheer athletic talent and grace of the players, the NBA would be a completely useless institu-

tion. Through the expansion of the season and playoff schedule — as well as through the addition of rules against zone defenses and the 24-second clock — the sport's governing body has done everything in its power to castrate the game of basketball.

What remains is a mere shell of the true sport — a showcase that is far more suited to the generation of highlight films than to the entertainment of the true student of the game.

And the most disturbing part of this syndrome is only beginning. People have begun to talk about shortening the NCAA's 45-second clock, and the college game has already suffered the addition of a three-point line so short as to discourage teams from developing a stronger inside game.

All of the NBA's damaging rule changes have the effect of moving the game to the perimeter, of eradicating the strong inside game, where the game of basketball ought to be played.

This is not to say that the sport holds no place for the perimeter shooter. The history of basketball has proven otherwise. But getting the ball inside has always been the major strategic challenge facing coaches and players.

Any rule that makes that challenge a less important part of the game is damaging to the sport, and the NCAA should think long and hard before following the NBA's lead and abolishing the game of basketball as the world knows it.

# Devils to face Antelopes; hopeful about playoffs

By DAVE HODGES  
State Press

With the Pacific-10 Conference Southern Division season halfway finished, the ASU baseball team finds itself with a good opportunity to make it to the NCAA playoffs in May.

ASU continues its cross-town rivalry with NAIA defending national champion Grand Canyon College at 7 tonight at GCC (35th Avenue and Camelback Road) in Phoenix.

Coming off a weekend series sweep over the California Bears at Packard Stadium, the Sun Devils are tied for third place in the Six-Pac with Southern California. Each team sports identical 7-8 conference records, four games out of first place.

Stanford (10-3) and UCLA (11-4) are tied for the conference lead, and Arizona (6-9) and Cal (2-11) round out fifth and sixth place.

In other Six-Pac action over the weekend, Stanford beat

USC, two games to one, and Loyola Marymount's nine-run ninth inning Sunday helped the Lions to a 16-11 come-from-behind defeat of Arizona, and a 2-1 series victory.

ASU (21-18) plays host to USC this weekend in a crucial three-game Six-Pac series. The winner of the series could have an inside track in the dash for a tournament berth.

"We've put ourselves back in the race," ASU head coach Jim Brock said. "But it may not be the race for first (in the Six-Pac)."

"We'll get in the playoffs any way we can. I don't care how we do it."

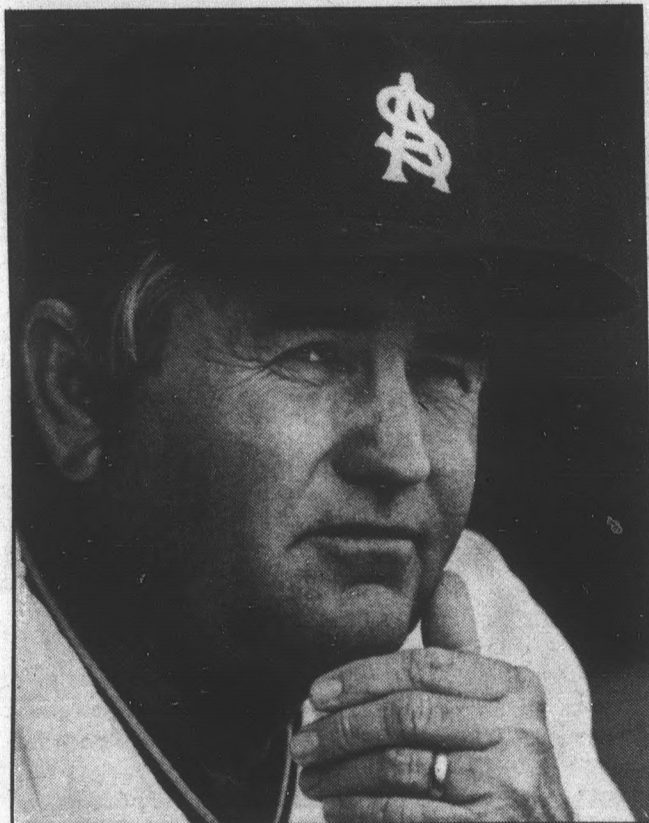
Southern Cal swept ASU in an early-season Six-Pac series

in Los Angeles.

For the 17 ASU fans who brought the traditional brooms (to indicate a series sweep) to Packard Stadium Sunday, the Devils did not disappoint. In fact, it has been a rarity for ASU not to be involved in a Six-Pac sweep this season.

In ASU's series with the five Six-Pac opponents, the Devils were swept by USC and Stanford and completed a sweep of Arizona and California. The only team the Devils did not sweep or get swept by was UCLA. The Bruins defeated ASU two games to one at Packard Stadium.

Turn to BASEBALL, page 18.



Jim Brock



Andy Mrozinski/State Press

First baseman Ted Dyson is recovered from a hand injury and hitting "about as well as anyone could," according to Jim Brock.

## Terrace Road Apartments

**GREAT SUMMER RATES  
RESERVE NOW FOR FALL**

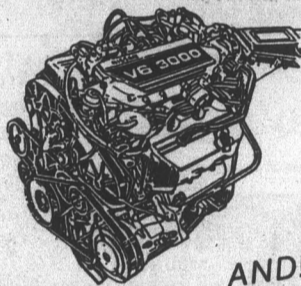


1/2 block from Campus. Huge well-furnished 1-bedroom 1-bath, and 2-bedroom 2-baths, all utilities included, plus large heated pool, spacious laundry facilities, brand new barbeques, and cable TV.

**950 S. Terrace Rd. 966-8540**

## Smith MESA NISSAN

**Your Nissan and Datsun Service Specialists** are offering



- Nissan-trained technicians
- Genuine Nissan parts
- Quality maintenance and repair work
- Reasonable prices

**AND! 10% discount** on all service work and counter parts to all ASU student, faculty & staff with ASU I.D. card.

**SMITH MESA NISSAN PARTS & SERVICE HOURS**  
Monday 7:30 a.m.-8:30 p.m.  
Tues.-Fri. 7:30 a.m.-5:30 p.m.

**PARTS OPEN SAT.**  
8:30 a.m.-12:30 p.m.

\*To be present at time of purchase.

Good through May 31, 1987.

**1701 W. Broadway, Mesa**  
Service Parts  
**834-3366 834-0255**



## Introducing

**IBC Printing Company & International Business Cores**

**Copies & Printing**  
Self service copies only 6¢. Color Copies. Two Color Printing

Cut your overhead in **HALF!** Office Space with Support Services part or full time.



Rent a Mac Computer for only \$12/hour. Laser prints from \$1.00

**10% Discount** off our full range of Business Services with any 12 month contract

Conveniently located near ASU in Hayden Square

51 West 3rd Street at Mill, Tempe, Arizona 85281  
**International Business Cores IBC Printing Company**  
602 921-4100 602 921-4200

## JONATHAN'S PIZZA

FAST, FREE DELIVERY • FOR ASU LOCATION CALL

**829-1717**

**2 Large 16" Pizzas w/one topping**

**\$10.00** plus tax

One coupon per pizza. Good at ASU location only. Expires 4/15/87

**16" 1 Topping \$6.99** plus tax

One coupon per pizza. Good at ASU location only. Expires 4/15/87

**12" 1 Topping \$5.35** plus tax

One coupon per pizza. Good at ASU location only. Expires 4/15/87

**12" 2 Toppings \$6.15** plus tax

One coupon per pizza. Good at ASU location only. Expires 4/15/87

**16" 2 Toppings \$7.99** plus tax

One coupon per pizza. Good at ASU location only. Expires 4/15/87

**N. TEMPE 829-1717**  
933 E. University 838-2227

NOW OUR 32-oz. DRINK ONLY \$1.00

**N. MESA 827-1999**  
635 N. Country Club 926-1100

# Strike back

## Umpires reach bargain with American, National leagues

By The Associated Press

NEW YORK — Major league umpires went to work on opening day Monday after their union reached a last-minute labor agreement with the American and National Leagues.

The four-year contract was finalized about 10 a.m. EDT, less than three hours before the opening pitch of the 1987 baseball season was thrown at Toronto.

Both sides praised the deal, which must be ratified by the Major League Umpires Association.

"It's a good and reasonable and fair contract," said A. Bartlett Giamatti, president of the National League.

"We feel this agreement recognizes the great contributions umpires have made to the game of baseball," said Richie Phillips, lawyer for the umpires' union.

The agreement was reached after a 22-

hour bargaining session. Participating in the talks were Giamatti, Phillips, American League President Bobby Brown and Robert Kheel, negotiator for both leagues.

Salary was the major sticking point in the negotiations.

Under the old contract, which expired at the end of last season, umpires earned from \$30,000 in their first year to \$80,000 in their 25th year.

Over the next three years, according to a source close to the negotiations, umpires will make from \$40,000 in their first year to \$100,000 in their 20th year. The final year of the contract calls for salaries ranging from \$41,000 to \$105,000.

The source said umpires also will receive an increase in annual pension benefits (from \$1,100 to \$2,000); life insurance (from \$250,000 to \$450,000), and per diem payments

(from \$103 to \$148).

The new contract also provides umpires with severance pay of from \$30,000 to \$100,000, depending on their experience. The previous contract did not include severance pay, the source said.

The money pool for umpires who work postseason games was increased from \$641,000 to \$800,000, the source said.

"For the first time in history, umpires' compensation will be nearly commensurate with their contributions to the game," Phillips said. He said umpires will vote next Monday on whether to accept the agreement.

Paul Runge, head of the umpires' union, said the negotiations went smoothly.

"There's nothing but harmony to begin

the season," he said. "There are no battle scars like in the past, which is really terrific for both sides."

Earlier in the day, Phillips had advised umpires to report to work even if a new contract was not settled.

Richard Levin, a spokesman for baseball Commissioner Peter Ueberroth, said the commissioner was glad the agreement was reached before the opening games.

"We were confident all along that things would work out," Levin said.

Major league umpires have gone on strike three times in the past nine years. Substitute umpires worked a total of seven playoff games in 1984 during the last strike. Ueberroth helped resolve that strike, but was not involved in the latest negotiations.

By The Associated Press

## Karl says patience key to getting into playoffs

OAKLAND, Calif. — When Coach George Karl says it took a lot of patience to get the Golden State Warriors into the National Basketball Association playoffs for the first time in 10 years, believe him.

Consider that in Karl's first season with the Warriors his leading scorer, forward Purvis Short, has missed much of the season because of injuries. His top draft choice, Chris

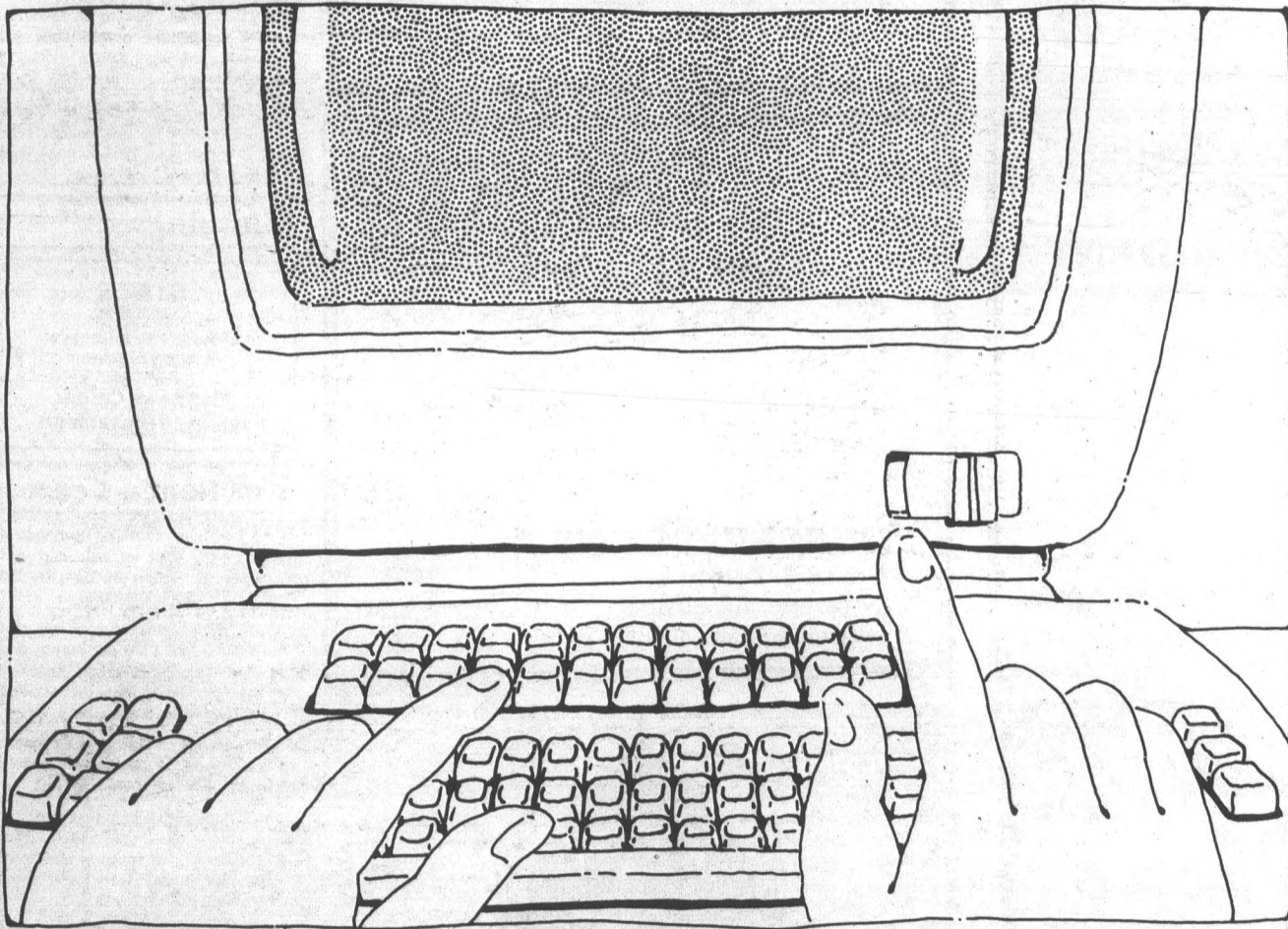
Washburn, was a washout, played poorly, showed up late for practices and finally went to a drug rehabilitation clinic.

Karl wasn't sure he wanted to keep center Joe Barry Carroll at the start of the season and he had doubts about guard Chris Mullin.

But through it all, the volatile Karl got the most out of his players.

Turn to NBA, page 18.

# Make Money Hand Over Fist.



If you know your way around a keyboard—typewriter, word processor or computer—we know a way to make your knowledge pay off this summer.

Just register with us at Kelly Services.<sup>®</sup>

We've got the kind of summer jobs you'll love to get your hands on.

Choose your own assignments. Work as much as you want. Or as little as you need.

And if you're not a keyboard wizard, there's still plenty of work to go around.

Receptionist. File Clerk. Accounting Clerk. Product Demonstrator. Stock Handler.

Check the white pages for your nearest Kelly office. It doesn't cost you a thing to register. And chances are we can help you make the coming summer months everything you want them to be.

Richly rewarding.

**KELLY** The Kelly Girl<sup>®</sup> People  
SERVICES

An equal opportunity employer  
© 1987 Kelly Services, Inc.

### SOFT CONTACT LENSES FOR ASTIGMATISM

Daily Wear (tinted & clear)  
Extended Wear

Newest Gas Permeable Lenses

Call for FREE Consultation — and Special Low Fees  
Complete Contact Lens Care • Fashion Eyewear

Dr. W. G. Ames

505 W. Ray Rd., Suite 3  
Chandler, AZ 85224

821-2020 For Appointment

### ATTENTION ASU

Special rates w/ASU I.D.

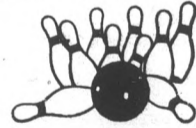
Daytime rates M,T,Th,F **75¢ per game**  
plus tax

Nighttime rates **\$1.40 per game**  
plus tax

Join us for HAPPY HOUR Sun.-Fri. 4-6

### TEMPE BOWL

1100 E. Apache Blvd. • 967-1656



### Dialing 4 Men!

The Most Popular, Fast and Fun Way for Gay Men and Women to Meet Someone New...

Dial **1-976-4 MEN**

That is, 1-976-4636

First Minute 55¢, Ea Add'l Minute 45¢

Recorded Personal Gay Ads

- \* NO 'CODED' ADS
- \* ALL PHONE NUMBERS
- \* FREE - RECORD YOUR OWN AD AFTER LISTENING TO OTHERS!



CALL 24 HRS!

HEAR ALL NEW ADS EACH TIME YOU CALL BACK!

# Baseball

Continued from page 16.

ASU plays three of its five remaining Six-Pac series at Packard Stadium — USC, Stanford and Arizona. The Devils play UCLA and Cal on the road.

Since this year's NCAA tournament has been expanded to 48 teams, ASU head coach Jim Brock said the quality and reputation of the Six-Pac may mean that four or possibly five teams could be invited to the tournament.

Brock takes things one step higher. He said he wants ASU to play host to an NCAA regional tournament.

"In the past, the tournament selection committee has liked the idea of having lights at the tourney sights," Brock said at the beginning of the season. "The expanded 48-team format only enhances that idea because it would be difficult to play a four-team regional at a site without lights."

"There aren't many fields on the west coast with lights. That puts Packard Stadium in a good position."

Packard Stadium may also be advantageous because of its seating capacity. Only Arizona's Sancet Field has a

*'We've put ourselves back in the race. We'll get in the playoffs any way we can.'*

— Jim Brock

larger seating capacity than Packard.

Packard Stadium has a listed capacity of 8,000, but 9,387 crowded the stadium on February 28, 1982 to see ASU defeat Arizona in a regular-season Six-Pac game.

Packard also brimmed with 9,224 people who watched ASU pound Gonzaga, 11-4, in a playoff game on May 29, 1978.

The Sun Devils have been absent from the tournament since 1984, when they finished fourth. ASU has not won the national championship since 1981.

But if history repeats itself, the Devils should win it this year.

In 1980 and 1976, Arizona won the national championship. Each time, ASU has come back to win the title in 1977 and 1981. Arizona won the national championship last year.

# NBA

Continued from page 17.

And with the taste of victory champagne on his lips at San Antonio Sunday night after a playoff-clinching 120-119 overtime victory over the Spurs, Karl said he felt gratitude to owner Jim Fitzgerald and director of player personnel Jack McMahon.

"One of the smart things that Fitz and Jack McMahon pounded into my mind over the summer was, don't make change for the sake of change," Karl said. "Our patience — and I'm not saying I was the No. 1 leader — has really paid dividends."

Short has had patience, too. Until now, he and center Jerome Whitehead had been in the league longer than any other players who had not made the playoffs, missing out for eight straight years.

"When the buzzer went off, it was like the previous eight years just flashed before my eyes," said Short, who sat out Sunday's game with an injury. "All the disappointments, the couple of years we came close to it and weren't able to get over the hump, all those things just flashed before my eyes."

"When that buzzer sounded, the reality was we're going to the playoffs, no matter what happens."

## ARIZONA SCHOOL OF PROFESSIONAL BARTENDERS



TEACHING BARTENDERS SINCE 1979

- FULL OR PART TIME JOBS
- FLEXIBLE HOURS & PERSONALIZED TRAINING
- START ANY DAY OR EVENING
- TERMS COED COURSES
- CALL FOR COURSE DESCRIPTION

VALLEYWIDE JOB PLACEMENT ASSISTANCE NATIONWIDE

AS SEEN ON TELEVISION  
EARN EXTRA MONEY  
**921-9292**  
1523 East Apache, Tempe

## An Invitation to ASU Students LUNCH WITH THE PRESIDENT

Tuesday, April 14, 1987  
11:45 a.m. - 1:00 p.m.

President Nelson is hosting a luncheon meeting to provide an opportunity for students to discuss matters of interest to them.

To facilitate discussion the number of participants is limited to nineteen, so interested students should RSVP early.

(No cost to participants.)

To RSVP: Call Lin Phillips 965-5606  
President's Office

### LOSE YOUR PET?

Find it with a **FREE** classified

Call 965-7572

### New Bible Study Near ASU

Tuesday nights at 7:30. Beginning April 7.

Call 966-2958 or 926-2161 for the location and additional information.

Christ's East Valley Church  
a ministry of Christ's East Valley Church  
1818 E. Southern Ave., Suite 1A  
Mesa, Arizona 85204

worship at 10:30 a.m. Sundays

### Financial Aid For Higher Education

Over 4 Billion Dollars in Scholarships, Loans, Awards and Part-time Jobs is Available.

The Secret is Knowing Where and For What to Apply.

Let our computer assisted Financial Aid Matching Program help your Family in the Search for Quality Education.

For Details, Write  
**JANUS Academic Services**  
1705 14th St., #191  
Boulder, CO 80302

## Special CHICKEN

Whole \$3.95  
Half \$2.25  
Exp. 4-30-87.

Large chicken marinated overnight and grilled daily. Receive fresh and hot from the grill to go.

**MEDITERRANEAN KITCHEN**  
616 S. Forest Ave.  
Tempe, AZ 85281  
(602) 966-2326

Univ. Ave. Mill Ave.  
Forest Rd. E. 7th St.  
Rural Rd. Med. Kitchen

Only a 5 minute walk from the ASU Student Union.

## CLASSIFIEDS START HERE

The STATE PRESS disclaims all responsibility for quality and prices of goods and services offered

### state press

#### classified advertising deadlines

AD RUN DATE	DEADLINE
monday	thursday 3 p.m.
tuesday	friday 3 p.m.
wednesday	monday 3 p.m.
thursday	tuesday 3 p.m.
friday	wednesday p.m.

CASH • CHECK • VISA • MC

### Automobiles

1966 DODGE Polara. Great condition, rebuilt 383 engine, 20 year classic. \$900 OBO. Evenings, 966-3734.

1980 PONTIAC Sunbird, very good condition, low mileage, AM-FM, sunroof, new tires. \$1800 OBO. 461-8326, 965-7152.

1983 RENAULT LeCar. Excellent engine. Excellent interior and exterior. Low mileage. Silver. \$2500 OBO. 894-6505.

1984 SUBARU 4WD wagon, 61K miles, gold in color, sunroof, PW, PS, PM, AM-FM stereo cassette, 4-speed, luggage rack, full digital dash, loaded. \$6850 OBO. Call Eric, 829-3539.

70 VW Bug. Good interior and exterior. Great running condition! Excellent stereo! Red. \$1400 OBO. 921-0852, Lynette. Keep trying!

79 OLDS diesel. 56K miles, sun-roof, AM-FM cassette, comfortable, dependable. Asking \$2000. 921-0809 (leave message).

VW GOLF for sale: 1986 white 4-door with beige interior. AC, stereo cassette, low mileage, 1987 license paid. Call Tom, 894-6422 evenings.

### Clothing

**STATE PRESS**  
T-Shirts \$5 • Sweatshirts \$10  
A variety of colors!  
S-M-L-XL  
**Mathews Center**  
Room 15 (Basement)

### For Rent or Lease

2+3/4 bedroom condos, townhouses, houses, near ASU for sale and rent. Call Alumnus Robert Bullock, Tencor Realty, 951-5800, 860-0460.

2 BEDROOM, 1 bath duplex one mile from ASU. Nice. \$370 per month plus gas and electric. Deposit required. Possible rent discount for management. 829-1548 evenings.

ASU-2 miles. Nice Spring Tree condo. 2 bedroom, 1 bath, washer, dryer. \$550 per month. 963-5598 before 8 p.m.

BEAUTIFUL NEW large two bedroom apartments, walk to ASU, pool, laundry, one block south of University on 8th Street and Gary. Ask about move-in specials. 968-5238.

DON'T MISS OUT! At Terrace Road Apartments we have two openings: a large two bedroom, two bath, and a spacious one bedroom, one bath. Laundry facilities, beautiful pool, courteous management, 1/2 block from campus, 950 S. Terrace Road. 966-8540.

### BUY • SELL • TRADE

Your books at Changing Hands. For quality cloth and paperbacks (no textbooks, please) we pay 30% of our re-sale price in cash or 50% in trade-in credit which may be used to purchase anything in the store. (Sorry, no trade-ins on Sat. or Sun.)

Browse through our three floors of:

- New & Used Books
- Art Prints & Posters
- Calendars & Cards
- Handbound Journals

M-F 10-9 SAT 10-6 SUN 12-5  
**CHANGING HANDS**  
414 Mill Avenue 966-0203  
Old Town Tempe

### COMPUTERS FOR RENT

IBM Compatibles  
Lowest Prices  
CALL 371-8857

### A LITTLE ROMANCE...?

## ClassiPhone

Personal Telephone Ads for Singles

PHOENIX • MESA • TEMPE • SCOTTSDALE

'EASIEST AND MOST FUN WAY TO MEET SOMEONE NEW'

- NO MEMBERSHIP FEES
- NO 'CODED' ADS
- ALL PHONE NUMBERS!
- CALL ANYTIME 24 HOURS!
- HEAR ALL NEW ADS EACH TIME YOU CALL BACK!
- FREE ANSWERING SERVICE FOR LADIES

**1-976-4000**  
First Minute 55¢  
Ea Additional Minute 45¢

## India Palace

### Cuisine of India

Experience Authentic Indian Food baked in our special clay oven imported from India.

**20% OFF** Dinner Entrees w/ coupon  
All you can eat luncheon buffet  
**\$4.50**

Hours: M-F 11:30-2:30 & 5-10 • Sat., Sun. 11:30-3 & 5-10  
1724 W. Main St., Mesa • 844-1787

### GET A HEAD START!

with morning news daily

## The STATE PRESS

**For Rent or Lease**

SUNRISE VILLA (Regency) Apartments, 1617 E. Apache Blvd. Studios and one bedrooms. Furnished units, free utilities. Call 968-2616.

SUNSET VILLA Apartments, 1415 E. Apache Blvd. Studios, one and two bedrooms. Furnished units. Free utilities. Clean, quiet atmosphere. Call 894-0932.

WALK TO ASU, junior one bedroom, two bedroom. Adults, no pets. 1931 E. Lemon. Bel Air Apartments, 968-2679, 933-4364.

**For Sale**

1973 MERCURY Montego Brougham, PS, PB, AC, AM-FM, good engine, new brakes, \$575 OBO. 968-6462.

DISKS, 3.5 inches, DS/DD, Fuji pack of 10 for \$12.50. Call Nick at 966-4291 after 2 p.m.

FOREIGN STUDENT: Get a job before you graduate and stay in US under new law. Send \$19.95 for this step-by-step guide. Young & Co., PO Box 241090, Memphis, TN 38124-1090.

FOR SALE: Super twin waterbed, new mattress, \$50; Peugeot 10-speed, \$75. 962-3856.

OMEGA ENLARGER complete with eisel and contact sheet equipment for \$95. Call Nina, 829-7876.

PIONEER SPEAKERS, 100 watts, brand new, never used. Must sell this week, moving to East Coast. Will take \$75 for the pair. 954-0627, home all day.

WATERBED WITH drawers, \$125; twin bed, \$30; manual typewriter, \$15. All like new! 345-0604.

**Furniture**

MOVING SALE - All furniture must be sold (bed, kitchen, living room). Call 954-6400.

OATMEAL BEIGE couch, good condition, just cleaned. \$100 OBO. 894-6815.

**Help Wanted**

10 OPENINGS working with public. Full and part-time available. \$8.50 to start. Must be 17 and have car. Call between 11 to 2, 829-6754.

**CLASSIFIEDS WORK. Use one today!!**

\$7.50 HOUR. Southwest Carpet Care needs part-time help cleaning commercial carpets. No experience necessary. Matt, 961-4175.

AIRLINES CRUISELINES hiring! Summer. Career! Good pay. Travel. Call for guide, cassette, newsservice! (916)944-4444 ext. 3.

BUFFALO EXCHANGE seeks FIT and PRT persons with eye for fashion. Will train. Work is with new and recycled clothing. Self-motivation a must. Saturday and Sunday essential. Apply 227 W. University, Tempe. M-F, 10 to 6 and Sunday, 12 to 5.

CAMP STAFF: male/female, 8 weeks in Prescott, summer salary \$640-\$720 plus room and board. Camp Fire, 1515 E. Osborn Rd., Phoenix, AZ 85014; 263-7725.

**Help Wanted**

CORNER CAFE, new opening, counter positions and short order cook position open for breakfast and lunch. Now taking applications Monday through Wednesday, 8 a.m. to noon. 1725 W. University Dr., Suite 1, Tempe. 921-0784.

DANCERS, PHOENIX'S classiest wanted for strip-o-gram service. Short hours, excellent pay. Randy/Sheryl, 997-6698.

DANCERS WANTED: Good money in newly remodeled club, 815 N. Scottsdale Rd., after 6 p.m.

DO YOU know 5 people who would like to drive a 1987 Grand Am for \$25 a month? If you are aggressive, ambitious and interested in this same opportunity for yourself, call 966-3756 after 2 p.m. M-F.

EASY MONEY collecting water samples door-to-door. No selling! 2 coeds needed for East Valley areas. Call Waterpro, 957-1806, M-F, 9-6. Hourly plus bonuses.

FUN PART-TIME student job. Largest company of its kind in Southwest. Pleasant working conditions. Call, ask for Mr. Strickland, 921-9495.

JACQUE BO-TWAS Productions is seeking 8 exceptional and talented male and female models with modern dance/jazz and/or acting. We are not an agency. \$20 per hour. Call Wayne, 846-3189.

MARKET RESEARCH interviewers wanted. Call 966-7816 between 9-noon or 5-7 p.m.

MOBILE DISC jockeys: Part-time positions, male/female. We train. 968-9898.

MODELS FOR hair stylist needed. Jaye's at The Hilton, 827-1691.

NOW HIRING in our East Valley location: Hard working, neat appearing individuals. \$8.95 starting. For interview call 8 a.m.-12 p.m., 969-5979.

PHOTOGRAPHERS - ARE you interested in doing freelance work for corporations? Earn \$50+ per hour. Part or full time. Free details. Send SASE, J&B Photo, PO Box 1991, Elyria, Ohio 44036.

SECURITY GUARDS: Immediate openings weekends and part-time nights. Must be 21, high school education, transportation and no arrest record. 991-1972. Apply at Guardsmark Security, 8687 E. Via de Ventura, Scottsdale.

STUDENTS EARN \$6 to \$10 per hour. Leads make our telemarketing easier. 4:30-9:00, M-F. South Scottsdale office is close to campus. 947-0508.

SUMMER AND fall employment as KAET-TV production assistant. Must be available weekday afternoons and evenings. Applications available in KAET-TV lobby. 965-5810.

THE DEVIL House is now accepting applications for bar backs. No experience necessary. Must be 21 years of age. Apply in person at 430 N. Scottsdale Rd. between 11 and 5, Tuesday-Friday.

THE LOOP, a new fast food concept in a totally authentic setting of yesteryear Chicago. Full, part-time, male or female positions. Apply 2-9 p.m. daily. SW corner of Lemon and Terrace, Tempe.

**Help Wanted**

TYPISTS WANTED immediately. Must be fast and accurate. Contact Student Employment Job #8629J.

WANTED: PART-TIME and overnight babysitters. Must have own transportation. Over 19. Call 438-1099.

YMCA SUMMER camp in Oracle (outside of Tucson) is looking for summer staff. Salary plus room and board are provided. Available positions include specialist director, unit directors, counselors, horseback riding director and instructors, nurse, kitchen staff, maintenance staff, WSIs, business manager and nature director. Call 1-884-0987 for information and applications or write: YMCA Triangle Y Ranch Camp, 516 N. 5th Ave, Tucson, AZ 85705. Director will be interviewing students on campus April 24. Contact Career Services office.

**Instruction**

AEROBICS CERTIFICATION workshop by National Aerobics Training Association weekend of April 11 at ASU. 963-9415.

**Lost & Found**

ADS ARE FREE EVERYDAY! We limit them to 20 words and run them for two days. Just call the STATE PRESS classified department, 965-7572

REWARD FOR info on lost 3 month Golden Lab puppy. Answers to "Mickey", with black collar. Please call 967-0023.

WENDY M. Wiley: Looking for your ID card? You can pick it up at the State Press, Matthews Center basement.

**Miscellaneous**

"STOP FLEEING God's Flock" bumper sticker, \$3: Cope, PO Box 562, Mesa, AZ 85204.

**Motorcycles**

85 HONDA Elite, brand new condition, \$900 OBO. Call Mark, 968-6539. (Under warranty.)

HONDA SPREE scooter. Black, very sharp '85. 400 miles, perfect condition. 837-1905, ask for Dawn.

SCOOTER FOR sale. Aero 80, 1984. Great transportation. Call 968-9503. \$400.

**On Campus**

**Public Program College Council "Battle of the Clubs"**  
 April 11, 1987  
 Daley Park  
 3/men 3/women  
 \$6 per team  
 For team reservation, call 784-8527/921-9884

**Personal**

ADOPTION: WARM, sensitive academic couple wishes to welcome infant to our loving home. Expenses paid. Legal and confidential. Call collect, 607-277-6262.

ATTENTION: YOU were at Duds-n-Suds Thursday night (4-2); a phenomenally cute blonde with a ribbon in your hair. I wore a maroon t-shirt and caught your eye several times while you folded your clothes. Let's rendezvous at the fountain tomorrow at 12:30 to explore possibility of a night on the town.

BALLOON BOUQUETS... with champagne, Corona, cookies, bunnies... and more! Call Balloon Express for details... 951-6493.

GAY MEN, meet the valley's best conversation line (up to five callers at a time), 1-976-6253. One on one conference line, 1-976-4297. Gay Exchange, the ultimate in gay introduction services, 1-976-1100.

INTRODUCTION LINE where women meet women, dial 1-976-WYMN. Gay date line where men meet men, 1-976-3800.

**Call 24 Hours Dialing 4 Men!**  
 Recorded Gay Personal Ads  
 ● New Ads Daily  
 ● No 'Coded' Ads  
 ● All Phone Numbers  
 ● No Membership Fees  
**1-976-4 MEN**  
 Dial 1-976-4636  
 First Min 55¢/Ea Add'l Min 45¢  
 Free! - After listening to today's ads you'll be able to place your own!

**Personal**

**1-976-TALK**  
 ARIZONA'S HOTTEST LIVE PARTY LINE  
 \$.95, first minute  
 \$.45, each additional minute

A-PHI HEIDI, thanks for being such a great roommate, and best of all, my friend! Christine.

APPLICATIONS FOR R.E.A.C.H. staff now available. Looking for enthusiastic, motivated people with good leadership skills.

**TELEPHONE BULLETIN BOARD**  
 •Adult Messages  
 •Introductions  
 •Personals  
 •Rendezvous  
 •Fantasy  
 UNCENSORED INSTANTLY UPDATED  
**1-976-6600**  
 95¢ per minute

IT'S ON the mall, it's in the dorms, you can't escape it, Greek Week 1987.

MARGO, SENOR Frogs is awaiting a purple appearance? Could it be on April 14?

NANCY, OH happy day! Two months with you and healthy too! Let's celebrate! Mike.

NEW CREDIT card! No one refused Visa/Mastercard. Call 1-619-565-1522 ext. C23AZ. 24 hours.

**A Little Romance? THE LOVE LINE**  
  
 Most exciting way to meet someone new.  
**1-976-6000**  
 55¢ per minute  
 •All phone numbers  
 No membership fees  
 Free - after listening to today's ads you will be able to place your own  
 Call 24 hours

NEWLY FORMED company seeks beautiful models and photographer for calendar project. Guaranteed exposure. Call 947-0980, Monday-Wednesday, 9 a.m.-noon. Take a chance!

PREGNANT? CONSIDER adoption. We may be able to help with housing and medical expenses. For pressure-free counseling at no charge, call Southwest Adoption Center, Inc., 602-234-2229 or 1-800-423-2229.

**Give the bars a break! ClassiPhone**  
 Recorded Personal Dating Ads  
  
 Easiest and Most Fun Way to Meet Someone New...  
 ★ No Membership Fees  
 ★ No 'Coded' Ads  
 ★ All Phone Numbers!  
**1-976-4000**  
 First Min 55¢/Ea Add'l Min 45¢  
 Free! - After listening to today's ads you'll be able to place your own!  
 Call 24 Hours!

R.E.A.C.H., students helping students. Accepting applications for spring semester. Deadline April 15. Student Life, MU, 965-2255.

SAL, MAZ was great! Where are you? Let's share another taxi. I'm at work. Cathy.

SANTA: HAPPY late B-day. Thanx for being a great mom! Your beautiful slave, Eli.

TIFF. SOME roses are red, my rose is white. I want you to share it with me on a warm April night. Love Beep-Beep.

THE PAT, Marc, Anthony, James and Frank: Your nerves are shot, but you made it through! With "Himie" as hegemon and one hell of a prank, the AM status is over for you! Congratulations! Vered.

**Personal**

SINGLE? CALL Cupid's Heartline at \$.60 per minute. Listen to personal ads, then leave your own. We don't code ads. 1-976-1000.

THETAS: JACUZZI-A-THON starts in a week! Study now, because we won't study then! APEs.

**BALLOON BOUQUETS \$10**  
 One Dozen Delivered Any Occasion  
**Accent With Balloons 954-5152**

VISA CARD. Unbelievable: Everyone accepted regardless of credit history. Establish credit limit \$500-\$5000. Also opportunity to earn extra income through our marketing plan. 948-0938, 832-0086.

**Real Estate**

1979 14x64 Country Squire. 2 bedroom, 1 1/2 bath, split floor plan. Too many upgrades to list. \$19,500. Call after 3 p.m. 844-2507.

GOVERNMENT HOMES from \$1 (U repair). Delinquent tax property. Call 1-619-565-1657 Ext. H23AZ for current repo list.

LOW, LOW CTM. Less than \$4000 to assumable FHA loan. No qualifying. Ideal for ASU student. Extra sharp 2 bedroom, 2 bath townhouse. Owner transferring. Ned Kircher, 831-1010, Realty Executives.

NICE 1984 3 bedroom, 1 bath home. Many extras. Near ASU Research Park, McClintock and Chandler Blvd. Prefer FHA financing. \$61,800. 899-7054.

PAPAGO PARK - College/Curry. Bike to ASU. Two level condo, vaulted ceilings. Approximately 1135 square feet. Two bedroom, two bath, appliances included, tile entry, pastel colors. \$78,500. assume or refinance low down FHA loan. By owner/Realty Executives. Principles only. Call 948-8871.

**Roommate Wanted**

FEMALE NONSMOKER: Share 3 bedroom, 2 bath townhouse 1 mile to ASU. \$200 + 1/2 utilities. Debbie, 966-4362.

FREE UTILITIES- Private room in huge house with washer, dryer, dishwasher, microwave, VCR, much more. \$225/month. Al or Sheri, 829-7166.

MALE, FEMALE nonsmoker to share new 2 level condo. 2 bedroom, 2 1/2 bath, fireplace, vaulted ceilings, washer, dryer, micro. \$375 month plus 1/2 utilities. Available June 1st. Call 968-1074.

ONE OR two nonsmoking females to live in Papago I apartment second session summer school. Call Karrie, 968-5340.

OWN BEDROOM, own bathroom, pool, washer, dryer, carport, 15 minutes from campus. \$250, 1/2 utilities. 921-1879.

RESPONSIBLE FEMALE roommate wanted for 2 bedroom, 2 bath furnished apartment 1 mile west of campus. Jacuzzi, laundry. \$250 month plus 1/2 utilities. Call Jackie, 967-1825 or Tammy, 921-9090.

ROOMMATE WANTED: Nice house, spa, cable TV, approximately 4 miles from ASU. \$180 month. 431-0602.

SHARE PRIVATE Gilbert home. Prefer quiet nonsmoker. Negotiable rent. Catherine, 892-9074.


**Services**

BUYER BEWARE! Many private companies charge a fee for computer assisted searches for scholarship and grant programs. ASU does not endorse any product or service. These services are not connected to any University (including federal or state) financial aid programs.

FINANCIAL AID is available. Nationwide computer matching program guarantees results. For details, write JAS, 1705 14th St., #191, Boulder, CO 80302.

HAVE UNWANTED facial or body hair removed permanently by electrolysis. Free consultation, located in Tempe. Call Sharon at Desert Electrolysis Center, 829-7829.

INCOME TAX - accounting. Over 9 years prior experience working for IRS. Bob Soper, CPA. Phone 946-9192.

**THE WRITE TYPE**  
 You write it, we type it!  
 •Term Papers  
 •Resumes  
 •Spelling/Grammar Checked  
 •Disk Storage  
 •Typeset Quality  
**THREE CONVENIENT LOCATIONS CALL NOW 893-0738**  


**Services**

RESEARCH ASSISTANCE. Largest library of information in U.S. - all areas. Toll-free hot-line: 1-800-351-0222.

**CLASSIFIEDS DO IT.**

THE MARGARITAVILLE Duo plays Jimmy Buffett's music for your party. Rick Wheeler, 867-0259 or 867-9317.

TIRED OF the ASU financial aid office and government red tape? Call a counselor at Academic Financial Services, 967-6611.

WRITING HELP. Will edit papers, write resumes. \$10/hour negotiable. B.A. in English. Jane, 967-3202.

**Transportation**

ATTENTION: FREE cars to all major cities. 21 or older. Call AAA Driveaway, 277-9979.

CARS AVAILABLE - 21 or older. All States Drive-away, 992-5200.

**Travel**

2 ROUND-TRIP TWA tickets from Phoenix to Cleveland April 18-27. \$396. Call 899-9583 after 4 p.m.

ROUND-TRIP TO Denver: Friday, 8 p.m. Return Monday. \$128 OBO. Contact Andy, 966-8252 (leave message).

**Typing**

438-9202. OUR computer checks your spelling, punctuation and grammar. Editing help available. Costs a little more, but your grade is worth it. APA, MLA member.

A-1 PROFICIENT typing. IBM Selectric. Loraine, 833-8365. At University and Dobson in Mesa.

A-1 RESUMES professionally written and printed. Your resume is their first impression. Word processing also available. 968-4670.

AAA WORD Processing Service. Quick, guaranteed, professional services. Reasonable fees. Rush jobs ok. Color graphic services available. Ron, 833-5532, or leave message.

ALWAYS AVAILABLE for typing. Call Susan at 833-0373.

CALL ME for fast, accurate, quality service at competitive prices. Close to ASU. 966-2186.

**WORD PROCESSING LASER QUALITY**  
 CAMPUS LOCATION Across from Cannery Row  
**829-7473**  
**WORD-LINK**

CEREUS WORD Processing. Quality guaranteed. Term papers, dissertations, theses, form letters, resumes, Dictaphone, weekends. 947-7796.

FORMER ASU staffers! Word Processing. Experience with APA, MLA and other formats for dissertations, theses, term, and research papers. Rates quoted. Members NASS. Call Donna or Joan, 945-6302 or 947-0402.

LETTER PERFECT Word Processing. Rush jobs no problem. Dissertations, term papers, resumes, theses. Quality! 839-9103.

NORTHWEST PHOENIX. Typing, word processing, term, theses, resumes, cover letters. Professional, fast, and accurate. 439-1434.

PROFESSIONAL WORD processing-reports, theses, resumes, etc. Business, legal, engineering experience. Rush jobs okay. 945-0058.

PROFESSIONAL TYPING service- Term papers, theses, etc. Low rates, quick turnaround. Pat Mottet, 897-1832.

THE PAPERWORKS- Theses, report and resume typing. IBM compatible word processing. Near ASU. 921-9575.

TYPING, EXPERIENCED secretary with own word processor. 6 years legal experience for term papers; legal memorandum; theses; dissertations. Phone dictation and scientific notation available, rush jobs welcome. Call Susan, 279-6897.

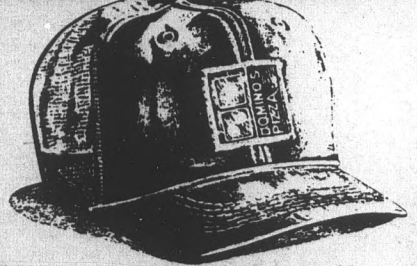
WORD CENTER: Secretarial service. 507 E. University, Mesa, 964-7034. 20% off first time customers.

WORD PROCESSING, secretarial services. 23 years experience. Student discount. SW corner, Miller and Chaparral. 994-8145.

WORD PROCESSING- Theses, term papers, theses, etc. 32 years experience. \$1.25 double spaced page. Marian, 839-4269.

WORD PROCESSING- Manuscripts, legal documents, resumes, term papers, and theses. Close to ASU. 838-8864.

**HEAD IN THE RIGHT DIRECTION.**



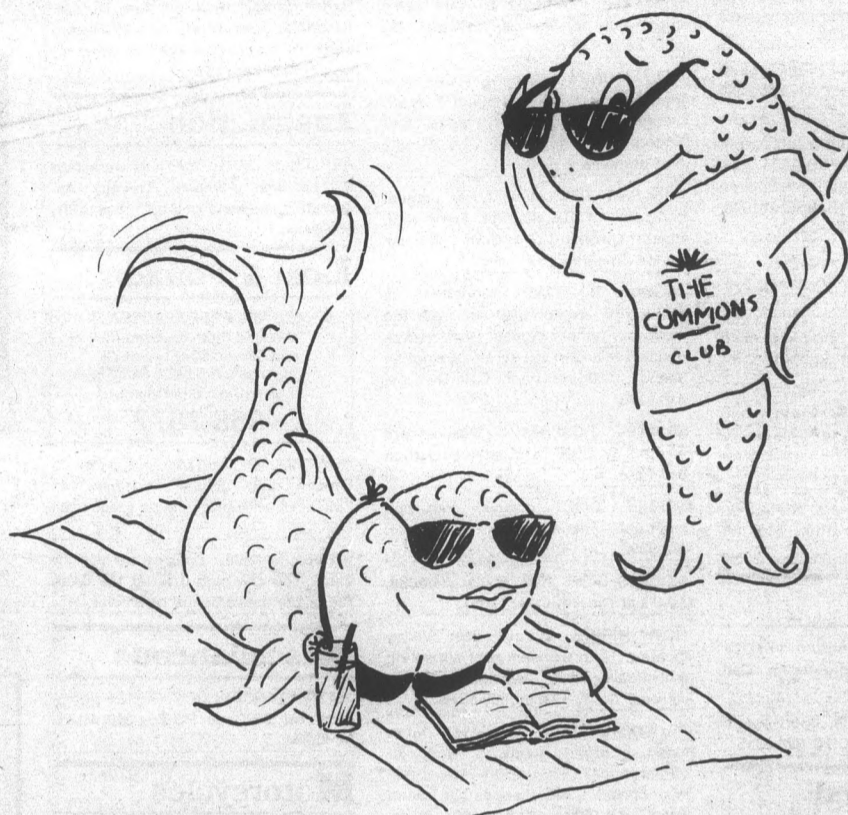
Domino's Pizza, the world's largest pizza delivery company, is now hiring delivery drivers. If you are 18 years old, have a valid driver's license, automobile insurance, a good driving record, and access to a car, you can:

- Make an average of \$6-\$8 an hour.
- Enjoy the freedom of being on the road.
- Work flexible hours.
- Be part of the excitement of the world's fastest-growing pizza delivery company.

APPLY AT: 903 S. Rural Road 930 W. Broadway After 11:00 a.m. daily

©1987 Domino's Pizza, Inc.  
**Catch the Spirit**  


# "CANNED" LIVING OR "COMMONS" LIVING?



**W**e all know the problems of on-campus living: cramped quarters, no privacy, high costs and strange aromas drifting up from the carpet. Yuck!

For those fortunate few who won't procrastinate, we offer just the opposite and a little bit more. Create the right image at ASU! The Commons On Lemon and The Commons On Apache provide an alternative to the dorm and apartment lifestyle with an on-campus environment.

- ◇ Washer and Dryer in Each Suite
- ◇ Fully Furnished
- ◇ Complete Housewares Package
- ◇ Microwave ◇ Refrigerator with Automatic Ice-Maker
- ◇ Extra Large Walk-In Closets
- ◇ Heated Pool
- ◇ Spa ◇ Sauna ◇ Private Study Lofts
- ◇ Racquetball Court
- ◇ Recreation Center/Lounge

- ◇ Exercise Facility
- ◇ Aerobic Classes
- ◇ Sand Volleyball Court
- ◇ Gazebo
- ◇ Barbeques
- ◇ Covered Storage
- ◇ Free Private Off-Street Parking
- ◇ Walking Distance to Campus, Downtown and Shopping
- ◇ Organized Events
- ◇ Social Activities
- ◇ Priced Like the Dorms

Deposits are now being accepted for the summer and fall of 1987 on a first come, first serve basis. Come alone or bring a couple of friends. Our unique leasing program enables you to select from a pool of outstanding ASU students, just like yourself. This is truly a limited opportunity. If you don't act quickly, you may have to live at... well, we don't want to think about that!

The Commons, the ultimate collegiate lifestyle!

  
**THE  
COMMONS™**

1215 East Lemon St.  
(Leasing Office)

1111 East Apache Blvd.

CALL  
(602) 968-6437

or

OUT OF ARIZONA  
(800) 247-6141