

state press

Arizona State University
Tempe, Arizona

Vol. 69 No. 77

© Copyright, State Press, 1987

Thursday, January 29, 1987

Students bear brunt of new budget cuts

By VICKIE CHACHERE
State Press

PHOENIX — ASU students are suffering a "double whammy" under Gov. Evan Mecham's proposed 1987-88 budget, which calls for tuition increases and financial aid reductions, the House Education Committee chairman said Wednesday.

Rep. Jim Green, R-Tucson, said lawmakers, along with the Joint Legislative Budget Committee, will spend the next several months revising the budget before a final version emerges.

Mecham's budget calls for a \$185,127,100 ASU budget, which is about \$42.6 million less than University officials requested. More than \$283.6 million was slashed from the \$1.8 billion requested to fund public education.

"I am very concerned with the higher education aspect of the budget," Green said. "It's a double whammy for the least-able-to-pay student."

Green said he is upset at Mecham's decision to retain a higher percentage of money generated from tuition

payments. He said the money that Mecham suggests should be kept for the state has provided financial aid.

Mecham said Tuesday the money was not being used for financial aid.

"He is not as familiar with the budget as he ought to be," Green said.

Sen. Peter Kay, R-Phoenix and a member of the Senate Appropriations Committee, said Republicans in the Legislature have had mixed reactions to Mecham's budget.

"I think it is a step in the right direction to have a fiscally sound budget," Kay said. "It's the first budget I've seen that is less than the previous year."

Under the governor's budget, the state agencies would be given \$3.060 billion for the 1987-88 fiscal year. Last year, \$3.8 billion was needed to fund operations.

The budget includes adjustments made after the elimination of a 1-cent sales tax in July. The tax had generated about \$250 million each year since it was approved as a temporary tax in 1983.

Mecham proposes covering the lost revenues through

special user fees — such as tuition payments and hunting licenses — and through reductions in state spending.

Tuition payments, which include Mecham's proposed \$60 additional increase, will account for 8.1 percent of the funds used to cover the revenue shortfall.

"I think people always like to do away with taxes," Kay said. "You are never going to get me to oppose eliminating taxes."

"People are always more than willing to cut taxes, but when services are reduced they complain. It depends whose ox is being gored."

Rep. Art Hamilton, House minority leader and a Phoenix Democrat, said, "I think the Mecham budget was DOA."

Hamilton said he is concerned with Mecham's elimination of 167 positions in the Department of Corrections and salary freezes for all state employees.

The measure also calls for a delay in the opening of a 250-bed prison in Yuma and a 650-bed prison in Winslow.

Hamilton called the budget a "dismantling of state government."

Mecham's new budget would 'devastate' ASU

Kinsinger says not enough time to deal with cuts

By TINA DAUNT
State Press

The University would be "devastated" under Gov. Evan Mecham's proposed 1987-88 state budget, which cuts ASU's budget more than \$42.6 million, the academic affairs vice president said.

Jack Kinsinger said ASU had requested a \$214,857,100 budget, including money for West campus, but Mecham's plan reduced the amount to \$185,127,100.

More than \$16 million in decision packages — money used to develop new programs — was eliminated under Mecham's budget.

The packages would have included \$2 million needed for the College of Business accreditation, \$7.3 million for hiring clerical staff and \$1.4 million for phase II of the Engineering Excellence program.

"There's no way to deal with such large cuts in such a short period of time," Kinsinger said. "The magnitude will be of scale proportions."

John Kraft, business college dean, said the college might lose its accreditation unless additional funding can be found or enrollment can be cut.

"Under the current budget we'll have to cut student credit hours from 8,400 to 6,600 to be in compliance with AACSB (American Assembly of Collegiate Schools of Business) standards," he said. "We'll have no choice but to limit enrollment."

Kraft said the additional \$2 million would have allowed the college to add enough full-time faculty for 7,500 credit hours.

"The University has to make a choice," he said. "We only can teach to the capacity of our full-time faculty, or we won't be accredited in the spring."

Kinsinger said without the money from the Legislature, non-business majors might be banned from taking business electives.

"If we cut courses, we have to cut in areas that will cause the least amount of harm," he said.

Patrick Burkhart, College of Engineering development officer, said his college is having difficulty keeping pace with the high-technology industry.

"Currently, we're in a growth mode, which makes the cut even more painful," Burkhart said. "We don't have the money to supply graduates to meet the needs of the state's high-technology industry."

Kinsinger said that over the last six years the University has absorbed more than \$26 million in budget cuts — with Mecham's proposed cut accounting for \$14 million.

He said the ASU West budget was cut in half to \$6,460,300.

"The picture for ASU West is equally as bleak as it is for ASU," he said. "The difference is the cut at ASU West will be a crippling blow to a growing institution."

'There's no way to deal with such large cuts in such a short period of time. The magnitude will be of scale proportions.'

— Jack Kinsinger

"It's clear we're now in the hands of the Legislature. Hopefully, they'll take another look."

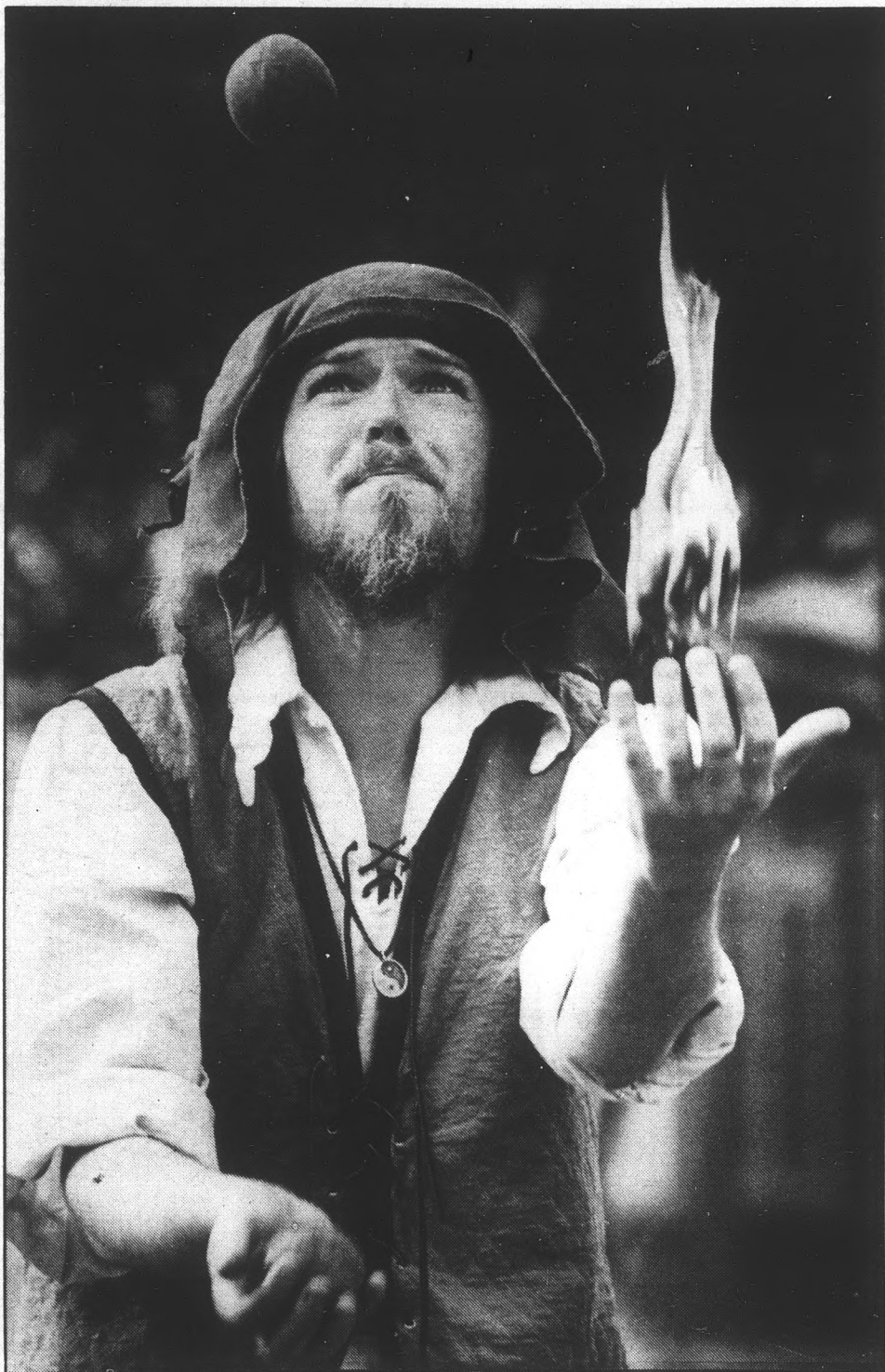
ASU President J. Russell Nelson said he also is hoping the Legislature to "take another look."

"We are going to try to express our needs to the Legislature and the governor and hope they can be persuaded," he said. "Many things can still occur."

"The budget is not finalized until it goes through the last committee."

Regent President Jack Pfister said he is concerned about Mecham's budget.

"First, we're going to give Mecham a chance to give his rationale for the cut," he said. "Then we'll evaluate the effect the cut will have on the University and take appropriate action."



Andy Mrozinski/State Press

Hot potato

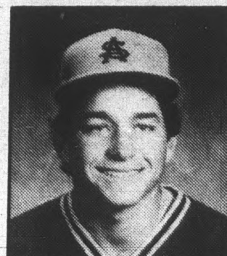
Freepence the Fool, alias Miles Eddy, 26, performs his version of the hot potato during Wednesday's Activities Fair on the West Lawn. Eddy, who juggles three balls, one of which is burning, is part of a group of individual artists who will be performing Saturday and Sunday and Feb. 7 and 8 at the Renaissance Fantasy Fair at Big Surf.

inside today

ASU WEATHER
Clear skies with an expected high of 69 degrees. The expected low is 45.



TIM ESMAY
Last year's catcher is this year's second baseman. Jim Brock comments on the infield. Page 12.



Analysis	5
Classified	14
Comics	10
Opinion	4
Police report	8
Sports	11
Today	2

today

Meetings

- Alpha Kappa Psi Professional Business Fraternity will be at the Dean's Patio, at the College of Business all day for their rush. Visit the table for more information.
- MEChA-Movimiento Estudiantil Chicano de Aztlan will meet at 6:30 p.m. in the MU Pima Room for the first general meeting of the semester. They will show Cesar Chavez's video "The Wrath of Grapes."
- Campus Crusade for Christ will meet at 7 p.m. in the Physical Science Building, Room B-100 for a lecture, "Who Am I and Why Am I Here?"
- AK Psi will meet from 7:30 to 9:30 p.m. in the MU West Cochise Room.
- Amnesty International Organizational-Information will meet at 3:30 p.m. in the MU, Room 217. It is a meeting for new

members. Everyone is welcome to attend.

- Celtic Students Association will meet at 6 p.m. in the Graham Room for an organizational meeting.
- University Toastmasters will meet at 5 p.m. in the MU Mohave Room. Visitors are always welcome.
- Circle K International will meet at 6:45 p.m. in the MU Turquoise Room for an introductory social. There will be a film, a guest speaker and refreshments.
- PRSSA-Public Relations will meet at 5:15 p.m. in Stauffer Hall for a general meeting about the upcoming semester.

Sports

- ASU men's basketball plays Arizona at 7:30 p.m. in the University Activity Center.

1987 version of Who's Who will include 28 ASU students

By ROBERT KOSCHEKA
State Press

The 1987 edition of Who's Who Among Students in American Universities and Colleges has been announced and 28 of the winners are ASU students.

Karrin Kunasek, director of the contest at ASU, said the students were selected because of academic excellence and outstanding campus leadership.

Who's Who Among Students honors students from over 1,400 colleges and universities across the nation for academic achievement, community service, leadership in extracurricular activities and potential for continued success.

Biographies of the winners will be published in the 1987 edition of Who's Who Among Students and will receive a certificate of merit at an awards banquet

dinner, Kunasek said.

Kunasek said the nominating committee, made up of several Associated Students members, received 66 applications last summer.

But she said more than half were rejected due to insufficient GPAs. A minimum GPA of 2.5 was required.

The committee was interested, not only in grades, but in people who served their community, Kunasek said.

Included in the list of ASU winners are students who are involved in fraternities and sororities, Devil's Advocate members and ASASU members.

The contest began in 1934 to honor students who are outstanding in many facets of college life, Kunasek said. The 54th edition of Who's Who should be available for purchase in March.



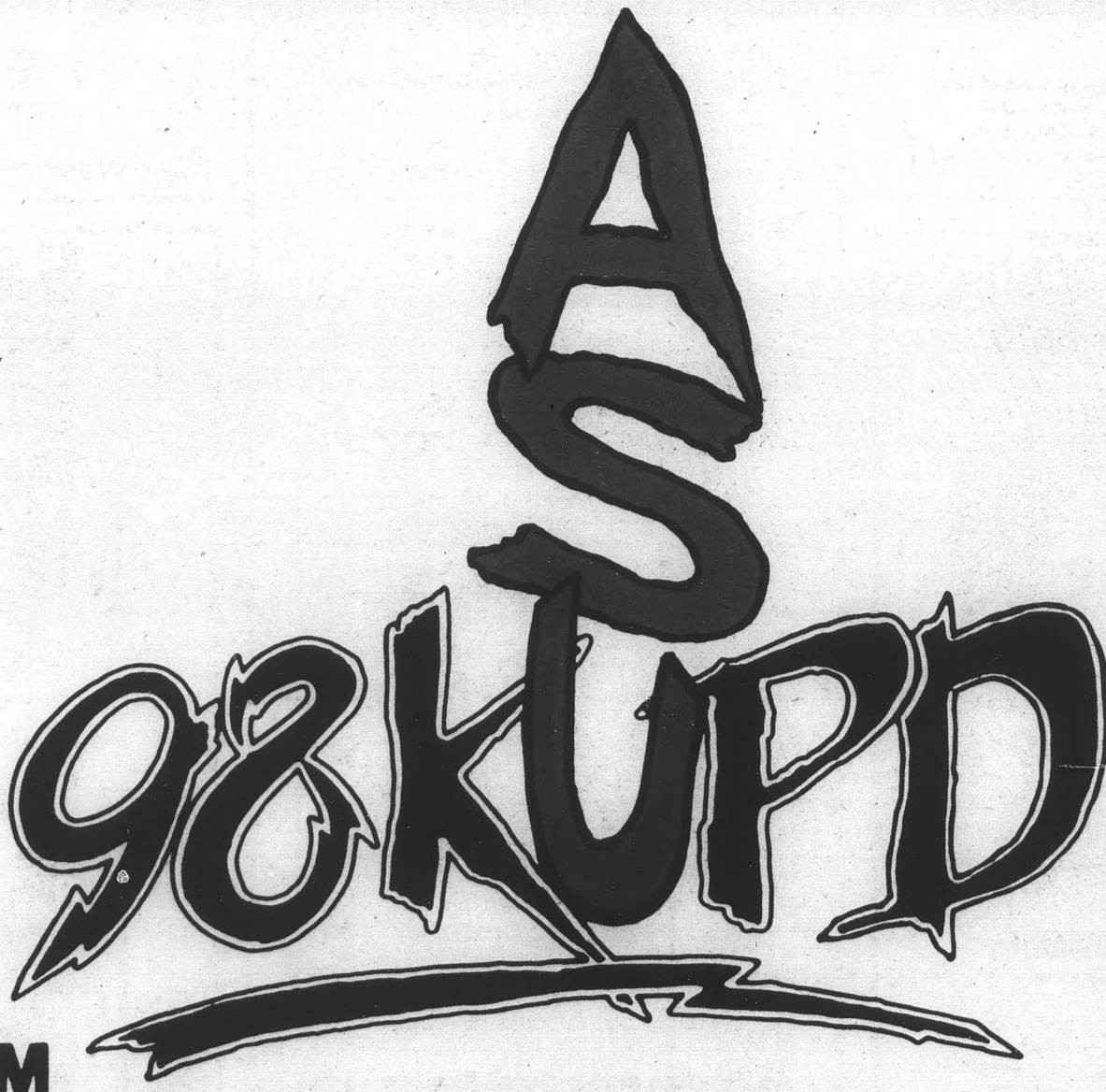
Ron Kuczek Jr./State Press

Woof

Jacques Olivier, the lead guitarist for "The Mutts," mixed expression with his music Wednesday on the West Lawn. "The Mutts," a pop band from Los Angeles, performed as a part of the ASU Activities Fair, sponsored by ASASU.

state press ADVERTISING

We Give You A Bigger Slice Of The Pie At The Lowest Cost Per Bite.



FM

LGAU funding denial based on group's purpose

When I first read about the Lesbian and Gay Academic Union dance this Friday, I had to laugh. The thought of seeing men dancing with each other was very amusing.

Instead of being a joke, this is the LGAU's way of raising funds for their illegitimate cause.

It seems to me that the organization might be running into a little problem, as the only people willing to attend the dance would be their own members. In other words, if the LGAU is trying to raise funds, it ought to raise their dues instead of putting on this charade of a dance.

Of course, this would be counter-productive, since its real goal is to attract sympathy for the cause and to milk funds from Associated Students of ASU.

ASASU has an operating budget of nearly \$1 million. Of this amount, only \$27,700 is allocated for student organizations. With about 300 clubs and groups on campus, ASASU has to be very selective when appropriating funds.

Funds must be carefully spent for services which will directly benefit students, such as the Bike Co-op and the Safety Escort Service. This job is left to the student-elected senators from each college. Beyond this, there are specific

A. Marcus Brnovich
Columnist

rules and guidelines in the ASASU bylaws to govern the funding process (Title 9, Article 16).

According to these bylaws, the senate shall not fund any controversial student organization. Fine. OK, so the group is damned controversial, but there's another reason not to fund the LGAU that is mentioned in the same section.

Article 16.1 states that, "An organization . . . may request funds subject to the following conditions:

A. The activity is of broad interest . . . and is consistent with the education goals of the University."

The LGAU is obviously not representative of ASU's sexual mores or cultural goals.

When you fund a group, you are funding their program.

The two cannot be separated. Indeed, why form a group unless you wish to further your own purpose.

I just don't think that a majority of the students at ASU are ready or willing to become homosexuals.

While the LGAU would claim to be an academic union of students, I don't know of many non-gays who would want to join.

In fact, it's inherent in the title that it is not an academic union, but in reality is advocating a sexual preference, i.e. "lesbian" and "gay."

The LGAU wants to be endorsed as a legitimate group which promotes an alternative lifestyle, but its goals are inconsistent with those of this University.

No one is trying to pick on the LGAU; other groups have been denied funding, too.

I guess the group figures that if it wails and moans loud enough, it will get what it wants.

It's too bad life doesn't work that way.

But, the LGAU can go ahead and have its dance; I know I'm not going to be there this Friday.

I'm going to be too busy rearranging my sock drawer.

A. Marcus Brnovich is a junior majoring in political science.

Letters

Offensive portrayal

Editor:

I am writing in response to the editorial cartoon in the Jan. 27 issue of the *State Press*.

I am not a part of the so-called overzealous religious group that is trying to do away with Sparky. I am not offended by such an innocent display of school loyalty and spirit. I do however, confess to a personal faith in Jesus Christ and found the cartoon to be very offensive in its portrayal of Christ. The person responsible would appear to have little journalistic character

in attacking the foundation of all Christianity to get back at a small minority that does not represent even a small portion of fundamental Christians. By doing so, they have fallen to a level at or below the group they are protesting.

I do not condone or support the actions of the group attacking Sparky, but I do condemn the actions of a group that attacks my Savior.

Steven Reed
Graduate Student, Business

Rally for disinformation

Editor:

Tuesday's rally on the West Lawn by United Campuses to Prevent Nuclear War revealed a shameless ignorance by its sponsor of both U.S. and Soviet defense policy. The speakers were not only uninformed and misinformed, but they are disinformed. The rally was designed to manipulate those more ignorant than its organizers, and asked students to sacrifice themselves to serve the organizer's interests, not the public interest.

No discussion of nuclear weapons is complete or meaningful without referring to the fundamental geopolitical reality of the Soviet-American strategic imbalance. In 1969, the Soviet Union achieved nuclear parity with the United States. In the ensuing years, we not only allowed Moscow nuclear parity but demonstrated unilateral constraint with our self-denying ordinance against counter-force capability known as the Mutual Assured Destruction doctrine. American strategic planning focused on nuclear war avoidance, assuming the Soviets also accepted the notion that a capacity to retaliate against a civilian population of either side would be sufficient to deter a first strike and, hence, general war.

However, the Soviets did not choose to accept U.S. theories of deterrence. Soviet defense literature explicitly rejects the MAD doctrine and Soviet forces are structured to fight, survive and win nuclear war. As the United States unilaterally limited its nuclear programs over the last 20 years, the Soviets forged ahead with theirs. They believe, contrary to MAD, that there is

indeed a point of absolute nuclear superiority that can overwhelm the opponent politically, and if necessary, militarily.

Since Soviet acquisition of nuclear parity in 1969, the strategic balance shifted in a manner which supported rather than restrained Soviet adventurism. The Soviets use their now overwhelming nuclear superiority to move more aggressively at the geopolitical level, using conventional arms as the means, knowing we cannot hope to match their conventional capability. Since 1980, Soviet missile strength has reached the point where a surprise attack could eliminate a large part of our missile force and cripple our power to retaliate.

The real nuclear issue — deliberately obscured by the incantations of anti-nuclear protestors — is that the United States still has not redressed the military imbalance. We need to restore our retaliatory capability as the irreducible minimum for a credible foreign policy. We cannot promote any national security policy or coherent foreign policy unless we do so.

These are not pro-Reagan sentiments, for his administration has failed to act adequately upon the premises by which he was elected. Meanwhile, anti-nuclear demonstrators, such as those at Tuesday's rally, unwittingly perform a useful function for the Soviets: creating public confusion and apprehension about the goals of U.S. national security policy and successfully masking Soviet realities and intention.

Mark P. Barry
President, CAUSA

'Twas the hairpiece

Editor:

What I want to know is how the hell I was duped into voting for such an idiot as Evan Mecham. Was it Tuesday's hairpiece or perhaps it was the mud pie throwing party with special guest Bill Schulz. I really don't remember. What I do know is that in my book, Ev, you're fired! Perhaps Mecham should be commended for taking such an active role as governor. But as quite a large number knows, every one of his actions has brought great criticism from the press.

The greatest concern to us is his proposed \$60 increase in tuition on top of the one that

was already approved last year. Then there are his very suspicious appointments. To top it all is his rescinding of the Martin Luther King Jr. holiday. He hides behind the legalistic connotations of his predecessor's decision and accuses him of "pandering" the black voters of this state. He also replies to Jesse Jackson that there are no racial problems in this state.

I, for one, support the Mecham Watchdog Committee's decision to change its name to the Mecham Recall Committee.

Shawn Cyr
Sophomore, Computer Information Systems



MECHAM ANTOINETTE

LETTER POLICY

Letters should be typed, double-spaced and no longer than two pages. Any submissions not in adherence with letter policy will not be published.

Letters are subject to editing on the basis of clarity, length or conformance to newspaper style.

Include your full name, class standing and major, or other affiliation with the University, along with your phone number. Requests for anonymity are granted if a reason is given.

Send letters to: Letters, *State Press*, Matthews Center, Arizona State University, Tempe, AZ 85287. Or bring them to the newspaper's front desk in the basement of Matthews Center.

EDITORIAL BOARD

Unsigned editorials reflect the views of the editorial board. Individual members of the board write editorials and the board decides on their merit. The editorials do not reflect the opinion of the *State Press* staff as a whole. Board members include:

Tom Blodgett
EDITOR
Patrick J. Kucera
OPINION EDITOR

Andrea Han
MANAGING EDITOR
Amy Frischknecht
ASST. MANAGING EDITOR

College of Engineering

Dollars roll in for scholarships, equipment and research

By BEN MCCONNELL
State Press

The most striking success of the seven-year-old Engineering Excellence program in the College of Engineering is the Pied-Piper ability of the school's fund-raising department to attract hordes of money and equipment.

The school's development program has whistled in at least five times the donations it did from 10 years ago.

Patrick J. Burkhart, the college's development officer, said the College of Engineering a decade ago averaged \$1 million per year in corporate, public and private donations.

Today, the college averages \$5 million per year in corporate donations alone.

Burkhart said the Engineering Excellence program hopes to "shoot right up there with the top people — like Stanford and MIT (Massachusetts Institute of Technology)."

To match Stanford's fund-raising levels, ASU's College of Engineering would have to triple its yearly average to match Stanford's \$16.5 million per year.

The Engineering Excellence program, which has merrily led this dance of fund-raising, is mapped out in two phases with a future third phase.

During the first phase, ASU raised \$54 million and opened a five-story, 120,000 square-foot Engineering Research Center.

In the current second phase, the University will spend \$20 million, the state and federal government will contribute \$22.5 million, and \$20 million will come from corporations.

This phase is geared toward undergraduates and building a \$13.5 million companion center to the Engineering Research Center.

Although the second phase is at the halfway point, Burkhart said the school will exceed the \$20 million corporate donation goal this year.

How do undergraduate students see the jig of this dance?

In equipment: over \$7 million in equipment has been donated to the college in the past two years. The biggest chunk has been micro-computers and computer systems for student labs.

Another benefit, but not available for all students, is scholarships. Burkhart said a \$47,000 kitty exists for minority student scholarships and a \$77,000 pot for all other undergraduate students in the program.

But for fall 1986, there were 3,016 undergraduate students enrolled in the College of Engineering. If all non-minority undergraduates were to receive scholarships, it would be \$25.53 per person.

Burkhart said a long-range goal of the Engineering Excellence Program is to provide enough graduate students for the local corporate market. This, in turn, satisfies corporations, who then are generous in monetary and equipment support.

"We started from a base that was primarily undergraduate. Now we don't graduate enough people to satisfy the high-tech industry in Phoenix," Burkhart said.

Charles Backus, associate dean of the College of Engineering, said the school currently satisfies 10 percent of the local demand for engineers.

"I don't see us satisfying that need yet," Backus said.

ASU Vice President for Research Henry Reeves said the College of Engineering is recognized in the top-10 colleges in the country.

For the college to maintain national ranking, it must have researchers who make important discoveries.

Reeves said David Ferry, who developed the world's smallest transistor and is director of the center for solid state electronics, has put the college in the limelight.

Reeves said Gunter Schwuttke, an electrical engineering professor, is outstanding with his development of gallium arsenide, a semi-conductor material for high-speed computers.

But with the push for research has come the difficulty of balancing research and teaching.

ASU President J. Russell Nelson said ASU "may be groping for that balance" because of the emphasis on research.

Nelson said maintaining the balance "is hard work (but) it's also very fulfilling work. It's partly having a sense of what is important and then be organized to do it."

College divided over meaning of 'excellence'

By KIM MATTINGLY
State Press

Excellence in Engineering is a phrase well-recognized in the College of Engineering and Applied Sciences, but few people will give a similar definition of the excellence program, and even fewer will agree as to its effects on the college.

Patrick Burkhart, development officer for the College of Engineering, said the Excellence in Engineering program defined its goals in 1979.

Burkhart said ASU wants to grant degrees to top quality students, publish research in recognized journals, provide state-of-the-art research facilities, obtain substantial outside funding, participate in national and international technical conferences and offer courses to Valley industry.

Unfortunately, many students and some professors believe ASU administrators in charge of the excellence program have forgotten one important goal: to provide students with quality instruction for a quality education.

Since 1980, ASU has received more than \$72 million in support of its excellence program, created 65 faculty positions and opened the five-story Engineering Research Center.

Burkhart said ASU anticipates ranking among the nation's best engineering universities.

But recognized engineering programs have been developing for decades, and one former ASU engineering professor said ASU's programs will not rank among the reputable unless administrators change their current definition of excellence.

Mike Golio is a senior engineer for microwave research and development at Motorola, Inc. He was hired by ASU's College of Engineering in 1984 to enhance one of its targeted areas for excellence, telecommunications.

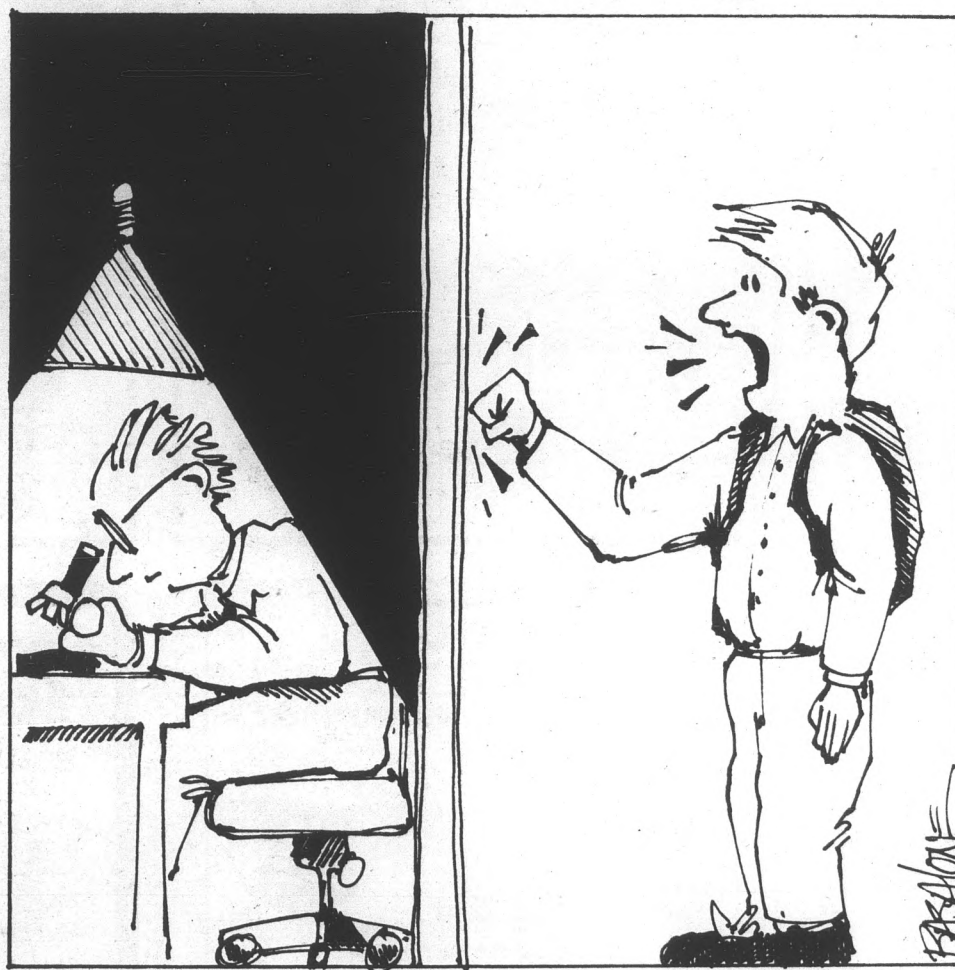
But Golio and another telecommunications specialist left ASU after only two years of service.

Speaking about the effects of the excellence program, Golio said it has brought ASU "a large influx of new people — each one trying to build his own program and not yet working together in a cohesive fashion."

But Burkhart said ASU has recruited its new engineering faculty carefully for specific programs, and "there really isn't that kind of confusion."

Golio said that during his brief stay at ASU, he did not see a lot of research actually being done.

"There was a lot of equipment being



accumulated faster than good students to run it," he said. "There was a tendency to congratulate money brought in, rather than research brought out."

Golio said to develop a reputable name, "you produce high quality technical results and publish those, and eventually people begin to recognize you."

A tenured professor in ASU's mechanical/aerospace engineering department, who asked not to be identified for fear of repercussions, agreed with Golio.

"We have the resources (to become an excellent university), but we are going about it the wrong way," he said.

"Excellence in engineering takes a long time to arise. We should gently push in that direction. We have established so many research centers, we do not have room for teaching."

He attributed what he perceived to be ASU's engineering problems to the "channel of command" — from the University president's office to the college dean.

"The administrators are so anxious to

make a big name for themselves that they divert almost all the resources to research," the professor said. "They specifically build buildings for research, not benefitting the education end of it."

But Charles O'Bannon, ASU's chairman of civil engineering, said the excellence program does improve instruction because "it brings experts in to teach the classes, increases the quality of lab equipment and cuts down the sizes of the courses."

The unidentified professor said improving education is important so ASU graduates can establish the University's reputation through their own success.

Instead, he said, "We are turning ASU into some sort of subcontractor for industry and defense. We seem to have foregone our mission to conduct good teaching."

"Twelve years ago, ASU was known as a good teaching university. But now the emphasis is shifting (to research), and we no longer can say that."

Golio said the potential at ASU is "huge," but a lack of direction from the administration is defeating ASU's goals.

"Within a few areas there are people there who are nationally recognized," he said. "The problem is that bringing in two or three nationally recognized people doesn't make you a nationally recognized university."

Golio and the unidentified ASU professor said undergraduate education is not faring well under the excellence program.

"If there is an effect of the excellence program in undergraduate education then it's more pressure on the professors to do research than to teach," Golio said.

The professor agreed, adding, "Young professors are under a great amount of pressure. They are evaluated on their research, publication and ability to bring in dollars."

"A lot of my colleagues close the door, turn off the lights and don't want students to bother them so they can research."

He said some colleagues unofficially tell others not to spend so much time teaching because "it's not going to get you anywhere."

Such pressure for research is curbing the college's ability to grant students a solid education, he said.

But Darryl Metzger, chairman of mechanical/aerospace engineering, disagreed.

Metzger said engineering excellence brings in new faculty and lab equipment that improve undergraduate classes.

O'Bannon added: "The bottom line is we're turning out a product — a student. Engineering excellence is helping us to conduct the best research and turn out the very best product."

Both Metzger and O'Bannon said there is a balance between research and instruction within their departments.

Several students randomly surveyed throughout the College of Engineering did not agree.

Fourteen students agreed to fill out a survey about the excellence program on the condition of identification only through their engineering degrees and years in school.

A fifth-year, electrical engineering student wrote: "The University has made research the primary concern of faculty. I feel many professors would prefer to allot more time and concern to students but are pressured away from it."

"(The excellence program) has hindered the undergraduate program. Nationally recognized professors have been recruited and major research is being funded but at the expense of an adequate amount of 'good'

Turn to EXCELLENCE, page 6.

Excellence

Continued from page 5.

teachers and of time for good teaching."

Another senior electrical engineering student wrote, "I feel the faculty is forced into the 'publish or perish' syndrome."

Most students surveyed felt the same about research, but one fourth-year chemical engineering student wrote, "I am a firm believer that the faculty's main focus is still on the student, even though more technological research is being done at ASU."

Five of the 14 students surveyed said the excellence program has improved undergraduate education; seven said it has not, and two were unsure.

"I have been here for five years, and I have not seen any improvement," one mechanical engineering student wrote. "All I hear is that the school of engineering is getting lots of money."

On the other hand, a fifth-year electrical engineering student said funding from the excellence program has expanded the facilities and increased the faculty.

That same student added, "Hopefully the growing pains will be resolved and the great

potential of this engineering program will be realized."

On the sarcastic end was a senior bio-engineering major who wrote: "I believe that the program has improved, but it does not live up to its 'Excellence in Engineering' slogan. I believe it's more 'Adequate in Engineering.'"

All but one of those surveyed said undergraduate engineering is not a four-year program.

A mechanical engineering student in his ninth semester wrote: "The stress of 18 or more credits per semester is too much to endure for four years. Five years is more realistic."

The most frequently mentioned complaints were regarding out-dated lab equipment, the extended use of TAs, and what students perceived to be poor teaching methods.

"The first and foremost improvement ASU needs is a faculty that is interested in the students' education — not research," a fifth-year electrical engineering student wrote. "If this problem was corrected the other problems would correct themselves."

"From the way the faculty teaches,

makes tests, labs and treats students it seems obvious that students are considered a negative aspect of their job."

Another electrical engineering student wrote: "Students? This is a research institution that happens to teach on the side."

Could it be that ASU administrators in charge of engineering excellence indeed have lost sight of education's original goal to teach?

Will ASU graduates possess the skills to conduct research similar to the "nationally recognized" professors from which they supposedly received their education?

Certainly graduates, unhappy with their undergraduate education, will not help to establish the University's reputation through their words of praise.

As one electrical engineering senior put it: "Had I known what to expect before I came to ASU I would have gone elsewhere. Luckily companies only hear the administrative propaganda which has really helped promote ASU graduates."

But if this "administrative propaganda" is not backed with quality ASU graduates,

employers are bound to become disillusioned.

The anonymous professor predicted: "In another three to five years some sort of scandal will come out. I don't believe we can continue fooling people."

O'Bannon is more optimistic: "If we continue to bring in the best known professors and allow them to teach and do research, it keeps us on the leading edge of technology. We bring in the very best professors so we can transfer it back to students."

Most will agree the goal described by O'Bannon is worth pursuing, as long as the "transfer back to students" is not forgotten.

And even "growing pains" can be expected and tolerated in a changing program if the pain is carefully monitored to prevent terminal disease.

Golio described ASU's position: "ASU is well-funded both by the state and industry. I think the potential there is tremendous."

"But if only a very small group of researchers recognize the school, that's not ultimately what's good for the University. Ultimately, it's the students who must succeed; that's where your national recognition comes from."

Hair Cuts \$11.00
Reg. \$15
Includes shampoo, conditioner & cut.
With coupon. Expires 2-28-87.

\$5.00 Off Perm
Reg. \$40
Includes shampoo, conditioner & cut.
With coupon. Expires 2-28-87.

Cellophane \$22.00
Highlight \$30.00
Includes conditioner.
With coupon. Expires 2-28-87.

Silver Solarium High Tech Tanning
Single \$4.50
5 session \$19.00
12 session ... \$40.00

FREE TANNING SESSION
w/purchase of any tanning session package
With coupon. Expires 2-28-87.

PHD Professional Hair Designers
Men's & Women's Hair Styling

966-6111 Call For Appointment
933 E. University
SE Corner Rural & University

Mon.-Sat. 9:30-8:30
Sun. 11:30-4:00

WITH THIS AD OR ASU I.D.

Sofa, love seat, coffee table, two end tables, lamp and **\$249**

4-Drawer Chest \$29

-BED SALE-
Twin Set \$69
Full Set \$79
Queen Set \$119

FURNITURE PLUS

2077 E. University
Tempe • 966-6252

Financing Available

**Need a New Car?
No Credit?**

Just a job and a place to live to qualify —

CALL NOW
Chapman Chevrolet
Craig Darling 838-1234

with this ad
FREE Lube Oil & Filter for Life!

LSAT GMAT

The Difference Between A "No name" MBA and a MBA From the school of your choice

barbri
PROFESSIONAL CENTERS

GMAT Preparation

OUR GUARANTEE:
SCORE IN THE TOP 20%
OR TAKE OUR NEXT COURSE FREE

Call for information and **FREE CASSETTE** on Business School Admission

Call Valerie at **969-8953**

BAR CPA

CONOCO

NORTH AMERICAN PRODUCTION

WILL BE AT
ARIZONA STATE UNIVERSITY
ON
FEBRUARY 12

TO INTERVIEW FOR SUMMER INTERN POSITIONS:

FINANCE
ACCOUNTING
MANAGEMENT
GENERAL BUSINESS

QUALIFIED STUDENTS MUST BE ON SCHEDULE TO GRADUATE IN DECEMBER THIS YEAR, OR MAY NEXT YEAR.

FOR MORE INFORMATION, SEE THE NORTH AMERICAN PRODUCTION SECTION OF CONOCO'S RECRUITING BINDER IN YOUR CAMPUS PLACEMENT OFFICE. M/F EMPLOYER

ENGINEERING GRADUATES
Make An Entrance

The curtain is opening on your career in electrical engineering. Make your debut a success by considering a professional opportunity with a proven leader in custom microelectronics. Micro-Rel, a Phoenix based division of Medtronic, Inc., supplies the industry with IC's and Hybrids that are utilized in medical, industrial and governmental applications.

ELECTRICAL ENGINEERS are currently being considered for entry level rotational positions. A complete range of exciting specialties are available in our development and manufacturing facility. Enter the forefront of the electronics field with a company committed to excellence.

For further information or to schedule an interview contact the Placement Office. Micro-Rel/Medtronic, Inc., 2343 W. 10th Place, Tempe, AZ 85281.

■ **On-Campus Interviews** ■
■ **February 17, 1987** ■
See your Placement Office today

An Equal Opportunity Employer

Medtronic **Micro-Rel**

ASASU continues despite resignations

By DARRIN HOSTETLER
State Press

Mid-year resignations have resulted in changes in the Associated Students Senate, while the Campus Affairs Vice President is hoping to start a new program and improve an existing one.

Already on board from the College of Architecture and Environmental Design is a new senator, Cynthia Stone.

Stone, 23, was sworn in by Executive Vice President Bridget Shelton Jan. 20. She will replace Scott Hodges, who resigned over winter break.

Hodges said he had "a time commitment problem" that prevented him from continuing as a senator.

"I had a class scheduled the same time as senate meetings. There just wasn't time to do everything," he said.

Stone, a senior interior architecture major, was asked to assume Hodges' post by the College of Architecture College Council President Pam Keniston.

"I have been involved in the college council and had the necessary time available, so when Pam and Scott talked to me about it I was willing," Stone said.

"I am looking forward to working in the senate, but I have a lot to learn."

Stone will serve on the senate's Government Operations Committee.

Two other senate members, College of Fine Arts Sen. Todd Green and College of Education Sen. Mary Johnson also have resigned from their posts.

Executive Vice President Bridget Shelton said Johnson quit because she was offered a teaching position in England.

Green resigned to take a job as a photographer with the State Press.

Shelton said no one has been chosen to replace the two senators.

Other ASASU notes:

•The new Faculty Course Evaluation Program staff hopes to expand next semester's Course Source guide, Campus Affairs Vice President Lee Anne Seall said.

FCEP sends out forms to professors, asking them to describe their courses and their teaching procedures. The information is combined to produce fall and spring versions of the Course Source.

"We hope to get professors to at least provide certain pieces of information on a campus-wide basis," Seall said.

"We're going to have meetings with the various department chairs and try to get all the members of the departments to turn in information."

Seall said an ASASU survey showed the Course Source is helpful to students, but she feels it needs to be more comprehensive.

•Seall said ASASU is investigating the possibility of establishing a trolley service to campus from Coco's Restaurant, 1717 S. Rural Road.

She said the idea is to provide transportation for students living in apartment complexes in the vicinity of Rural Road and Vista del Cerro Drive.

"We have heard the federal government will pay for 80 percent of the cost of establishing the service," Seall said.

"The other 20 percent, which would probably run about \$14,000, is the part we would have to come up with. We're trying to figure out the best way to go about this."

Seall said the trolley has the potential to pay for itself after the first year of operation.

Liquor Barn



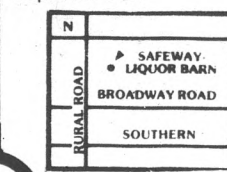
CORONA
or
BECKS
Your Choice

\$3.99 6-pk.

White Zinfandel specials

SEBASTIANI
ROBERT MONDAVI
BERINGER
GLEN ELLEN

Your Choice **\$3.97**
750 ml.



TEMPE
930 E. Broadway
894-1067



XEROX® COPIES

DR. COPY **2¢*** (Self Service)

Bring in this coupon for a chance to win a free lunch.
Offer good through 2-27-87.
Valid ASU I.D. required.

CALL 968-7771
1250 E. Apache, Suite 112, Tempe, Arizona 85281
(One building east of After The Gold Rush)
8 1/2" x 11" 20# Bond White Paper

the **Vine** tavern

\$2 Pitchers

\$1 BBQ Beef Sandwich

at Rural & Apache 11:30-8:00

HARKINS Stereo Theatres 4 Channel Sound TWILIGHT SHOW \$2.50
SHOWTIMES BETWEEN 4:30 & 8:30

WINNER—BEST FOREIGN FILM NEW YORK FILM CRITICS

"FASCINATING FOR ITS HONESTY AND INTELLIGENCE."
Bill Jones, PHOENIX GAZETTE

"THE BIG CHILL ACCORDING TO DR. RUTH...IT'S HOT. MAY BE THE FIRST MOVIE WITH A FEVER."
Bill Roetz, TV5

"A TRIUMPH."
Michael Wilmington, L.A. TIMES

The Decline of the American Empire

CAMELVIEW 945-6178 HARKINS CINEMA
70th St North of Camelback Road **EXCLUSIVE ENGAGEMENT**

"ONE OF THE YEAR'S TEN BEST."
Roger Ebert, N.Y. POST & CHICAGO SUN TIMES
Michael Dare, L.A. WEEKLY
John H. Richardson, DAILY NEWS
Roger Osborne, KTTV LOS ANGELES

SID & NANCY

Los Arcos 949-8851 HARKINS CINEMA
Scottsdale Road and McDowell Rd. (DOLBY STEREO)

"OUTRAGEOUS AND WILDLY COMICAL"
Nick Salerno, SCOTTSDALE PROGRESS

menage

Los Arcos 949-8851 HARKINS CINEMA
Scottsdale Road and McDowell Rd. (L.A.)

THOMAS MALL 840-6611 HARKINS CINEMA
44th Street and Thomas Road **OUTRAGEOUS FORTUNE** Richard Pryor **Critical Condition** Bette Midler

KACHINA 947-5195 HARKINS CINEMA
4305 North Scottsdale Road **THE MISSION** (L.A.) (DOLBY STEREO)
EAST VALLEY'S BIGGEST SCREEN ROBERT DeNIRO JEREMY IRONS

Los Arcos 949-8851 HARKINS CINEMA
Scottsdale Road and McDowell Rd. **STAR TREK IV** THE VOYAGE HOME

CAMELVIEW 945-6178 HARKINS CINEMA
70th St North of Camelback Road **OUTRAGEOUS FORTUNE** (L.A.) **BEDROOM WINDOW**

CAMELBACK 949-5425 HARKINS CINEMA
Camelback Rd. west of Scotts Rd. **Critical Condition** MOSQUITO COAST PG **Condolee** **DUNDEE**

COMING SOON "MALCOM" Good Seats Available for All Performances!

CONGRATULATIONS ASU ROSE BOWL CHAMPS!

The First
Residence Hall Association
Council Meeting will be
Thursday, January 29, 1987
at 5:00 p.m. in the
Memorial Union Apache Room 221

The **RHA-ASU** offices are
located in PALO VERDE EAST
Room 118-A
965-5809

ATTENTION FOREIGN STUDENTS

English as a Second Language and T.O.E.F.L. Programs are now offered at Arizona Career College.

- Small Classes •No Cost Evaluation
- Financial Aid Available For Eligible Students

Arizona Career College

Register Now For Feb. 2, 1987 Classes • Day or Evenings
Nationally Accredited



834-3931

1620 W. University, Mesa, AZ 85201 • Since 1970

CONOCO

PURCHASING DEPT.

RECRUITING PRESENTATION

BUSINESS UNDERGRADUATES AND M.B.A.s

DATE: MONDAY FEB. 2 6-8 P.M. CASUAL DRESS REFRESHMENTS
In the Memorial Union, MU 211

ON CAMPUS

CONOCO
Equal Opportunity Employer (M/F)

At the Center for Body Awareness, you'll get a great work-out while your wallet takes a break.

The new Center for Body Awareness has over 80 classes to offer in such diverse areas as dance, martial arts and yoga. Our extensive exercise/movement classes include aerobics, stretch and tone, body sculpture and a buns and tummy class. All at popular times, seven days a week. We also offer a complete weight training program featuring the CYBEX EAGLE™ weight system.

As you can see, we offer alot more than the others. But what may surprise you is that we offer all of this for less.



Alot less.

For example, \$17.00* a month gets you all the exercise/movement classes your heart desires. And for an additional \$8.00*, you can build your biceps as big as you like on our new EAGLE™ circuit weight training equipment.

So stop by the new Center for Body Awareness today and give your body a work-out and your wallet a break.

Within walking distance
350 Mill Ave. Hayden Square
Tempe, AZ 85281 ph. 894-8347

CENTER FOR BODY AWARENESS

*\$200.00 a year for all the exercise/movement classes available.
*\$300.00 a year for all the exercise/movement classes available and total access to all weight training equipment.

ASU police report

University police reported the following incidents in the 24-hour period ending 7 a.m. Wednesday:

•Police said someone broke into three lockers in a room at the University Activity Center and stole \$1,010 worth of jewelry.

A 20-inch 14-karat gold chain; a Gucci wristwatch with gold trim and a black strap, a diamond and 14-karat gold earring, and a 14-karat gold chain and cross were taken.

Police said all three lockers were padlocked and showed no signs of forced entry.

•A \$593 portable computer was stolen from Matthews Center Room 15, police said. There were no signs of forced entry.

•A 1985 Honda Accord sustained \$500 in damage when someone scratched it with a sharp object, police said.

•Police issued 18 citations to students for illegally riding their bikes through Cady and Tyler malls.

•Two people not affiliated with the University were sleeping inside an abandoned house on the corner of Sixth Street and Forest Avenue, police said. They

were warned of trespassing and advised to leave.

•A Saga Foods employee sliced his middle right finger while cleaning a meat cutter in the cafeteria at Manzanita Residence Hall, police said. He was taken to Tempe St. Luke's Hospital, treated and released.

•A \$500 Rock Hopper mountain bicycle reported stolen two weeks ago was found by its owner locked to a tree in front of Manzanita Residence Hall, police said.

Police broke the lock, impounded the bike and left a note on the tree, suggesting that the person who left it there call police.

•An ASU employee told police she left her purse under her desk for 10 minutes to deliver mail and discovered it missing when she returned, police said.

The purse contained a wallet, credit cards, a check guarantee card, a driver's license, student and staff IDs, sunglasses and keys, police said.

Other employees told police they did not see anything unusual during the time the purse and its contents, valued at \$70, were taken, police said.

—LAUREN MILLETTE

Tempe police report

Tempe police reported the following incidents ending noon Wednesday:

•An unknown man entered a Tempe residence, stole \$2 and "tickled" the buttocks of a 47-year-old woman, police said.

Police said the man entered the house, 1749 S. Sierra Vista Drive, through an unlocked door, and took the money from a wallet in the woman's purse.

Police said the man laid on the floor next to the woman's bed, reached under the covers and fondled her.

The suspect is described as a black man in his mid-20s, about 6 feet 2 inches tall and 200 pounds.

•Police said an unknown person entered a Tempe residence through a dog door and stole \$1,000.

The person took ten \$100 bills from 2322 Gary Drive, police said.

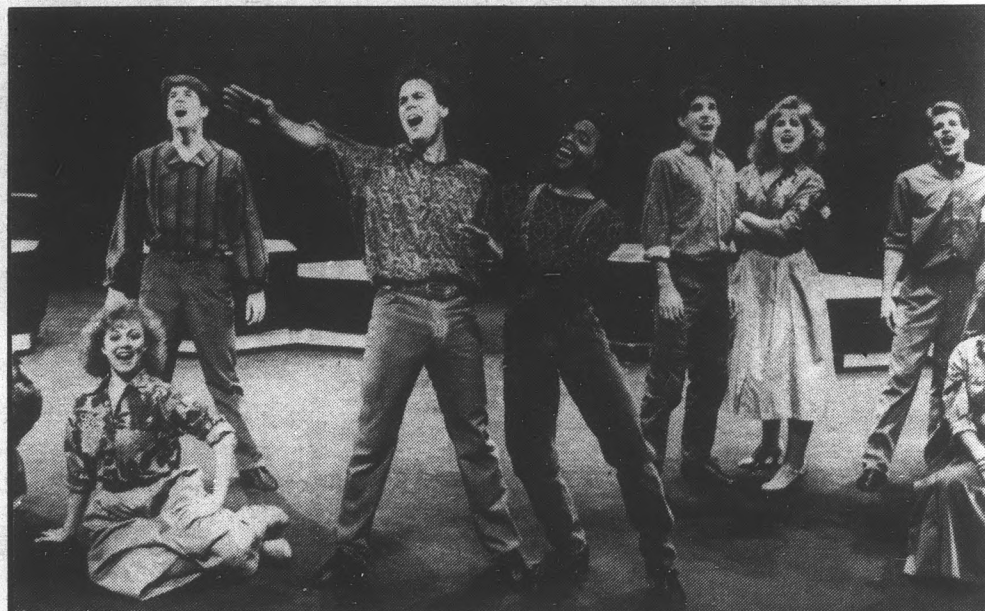
•A Tempe man allegedly was assaulted by his female landlord when she sprayed mace in his face, police said.

Police said the man and woman were discussing a lawsuit, and she warned him to stay off her property. She then sprayed him with the mace.

•A Tempe woman, who was released from Tempe City Jail where she was held for allegedly assaulting her boyfriend, returned home to find her \$12,000 car missing, police said.

Police said when the woman returned to her home at 1856 E. Apache Road, she could not find her 1985 Chevrolet Monte Carlo.

—MIKE BURGESS



THE BYU YOUNG AMBASSADORS!

Feb. 2, 3 and 4 at
ASU's Gammage Center
Performances at 7:30 each evening

Tickets \$5 and \$7 at
Gammage Box Office or
Dillard's Ticket Outlets

Buy your tickets now for this exciting appearance of the Young Ambassadors from Brigham Young University. This 30-member variety show has toured the world sharing their talent and energy.

From New York's Broadway shows and Nashville's country music to Hollywood movies and the magic of Disney, the Young Ambassadors create a masterful showcase of talent and exuberance. Don't miss them!

Sponsored by the LDS Area Public Communications Council
Feb. 2, 3 and 4 at Gammage Center!
Tickets at Gammage Box Office or Dillard's!

A BRIGHAM YOUNG UNIVERSITY PRODUCTION

The Puzzle

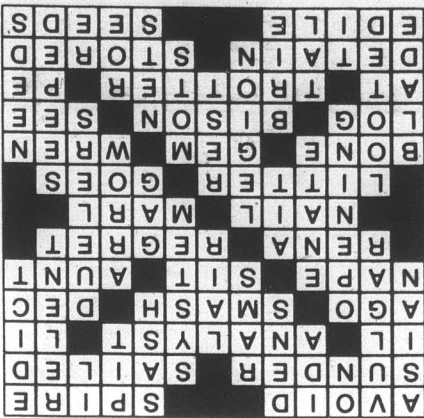
ACROSS

- 1 Abstain from
- 6 Steeple
- 11 Sever
- 13 Went by water
- 14 Negative prefix
- 15 One skilled in dissection
- 17 Chinese distance measure
- 18 Time gone by
- 20 Shatter
- 21 A month: abbr.
- 22 Back of neck
- 24 Pose for portrait
- 25 Female relative
- 26 Rockfish
- 28 Rue
- 30 Metal fastener
- 32 Clayey earth
- 33 Stretcher

- 35 Proceeds
- 37 Part of skeleton
- 38 Precious stone
- 40 Singing bird
- 42 Piece of cut timber
- 43 Buffalo
- 45 Diocese
- 46 During the period of
- 47 Kind of race horse
- 49 Hebrew letter
- 50 Hold back
- 52 Put away for safekeeping
- 54 Roman official
- 55 Sows

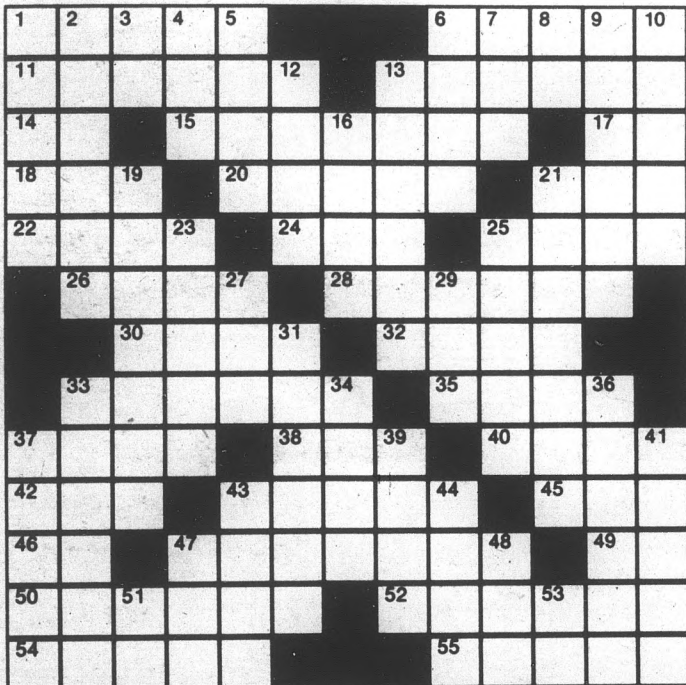
DOWN

- 1 Chinese or Japanese



- 2 Coarse
- 3 Running
- 4 Mountain on Crete
- 5 Lairs

- 6 Band worn around waist
- 7 Hole
- 8 Negative prefix
- 9 Soften in temper
- 10 Decree
- 12 Male sheep: pl.
- 13 Method
- 16 Den
- 19 Unlocking
- 21 Swordsmen
- 23 Growing out of
- 25 Dart
- 27 River island
- 29 Prevent from free speech
- 31 Vast throng
- 33 Pillaged
- 34 Remainder
- 36 Leaked through
- 37 Cutting edge
- 39 Witty remarks
- 41 Wants
- 43 Kind of cheese
- 44 Seines
- 47 Hindu cymbals
- 48 Fish eggs
- 51 Agave plant
- 53 Concerning



COLLEGE PRESS SERVICE

© 1984 United Feature Syndicate

ASU TOASTMASTER

An organization devoted to developing public speaking skills.

First Meeting 5 p.m.
Thursday, 1-29-87

Visitors Always Welcome

ASU TOASTMASTER



FREE POOL 11 a.m.-2 p.m.
Mon.-Fri.

Beer - Booze - Pool
Food - Games

3129 S. Mill, Tempe
(N.E. Corner of Mill & Southern)
967-9781



The Arizona State University Chapter of THE HONOR SOCIETY OF PHI KAPPA PHI

will nominate an outstanding ASU senior to receive a Phi Kappa Phi Graduate Fellowship of up to \$6,000 for first-year graduate or professional study. Fifty fellows will be chosen from the nominees of the individual chapters. A recipient must be an active member of Phi Kappa Phi on the date the awards are made.

Please contact Professor Murray D. Sirkis at 965-6133 for additional information. The deadline for receipt of applications is **Friday, January 30, 1987.**



SHOW US YOUR STUDENT I.D. YOU'LL GET A DINNER

FREE hors d'oeuvres

FREE!
(Compliments of Mike Pulos)

This year we're doing it again! Every Sunday (but ONLY on Sunday), Mike Pulos of the Spaghetti Company will give you one FREE dinner* for each dinner you order! It's our 2 for 1 SUNDAY STUDENT SPECIAL. And it's good for the whole school year at both our Tempe and Phoenix locations.

Any day of the week, for lunch or dinner, The Spaghetti Company is known for a great meal at an affordable price. But the SUNDAY STUDENT SPECIAL

makes our already terrific prices **even better!** Our dinners include a full course meal with all the trimmings—from salad to dessert. So, dollar for dollar, when you're hungry and you need a break, you can't beat The Spaghetti Company! **ESPECIALLY ON SUNDAYS!** With 2 dinners for the price of 1! But you **MUST** have your student I.D. card with you to take advantage of this offer.



Open at 11:30 a.m. to 11:45 p.m. Sundays

The Spaghetti Company
RESTAURANT in Old Town
TEMPE

PHOENIX
South on Central
Just Pasta McDowell
257-0380

Chicken Cordon Blue, Steak Di Jon, Stuffed Filet of Sole, Tenderloin, Chicken Picatta, Veal Marsala **ARE NOT INCLUDED** in the 2-for-1 special.

4th Street and Mill
966-3848

MOVIE POSTER SALE!

Feb. 2-6 • 8 a.m.-5 p.m.
Main Level MU

- Lobby Cards
- Still Photos
- Rare Classics
- Contemporary Releases
- Student Prices
- Visa, Mastercard, American Express Accepted

Sponsored by the
MUAB Film Committee

Abuse of drugs, alcohol treated by free program

By JUDIE GAILLARD
State Press

ASU's Health Dimensions offers a free alcohol and substance abuse education and assistance program to University students needing help.

The goal of the program is to promote responsible decision-making about drugs and to assist students whose dependency on the substance is causing problems.

Annette Starrantino, a substance abuse counselor for Health Dimensions (formerly P.I.E.S.), said the most abused drug on campus is alcohol.

But she said marijuana and cocaine also are prevalent among students.

Starrantino estimated that 70 percent to 80 percent of students have tried drugs at one point in their college lives.

"I am seeing a lot of kids using drugs or alcohol as experiments or as the result of peer pressure," she said.

"It hasn't been difficult at all to see people, students will just call and want to talk," she said. "As my calendar gets filled, I can see limiting the number of one-on-one sessions and referring them out into the community."

Starrantino, who has a master's degree in social work, said the programs are not just for those with problems. She said Health Dimensions is starting a group in February for friends or family of people with substance abuse problems.

"People don't have to wait until they have a serious disfunction to come in and talk to us," she said. "We'd like to get to people before their lives get out of control."

The leading cause of death among people 16 to 24 years of age is alcohol-related traffic deaths.

"The real problem isn't how much a person drinks, it's what happens when a person drinks," Starrantino said.

She said the problem with alcoholism is the inability to be a controlled drinker.

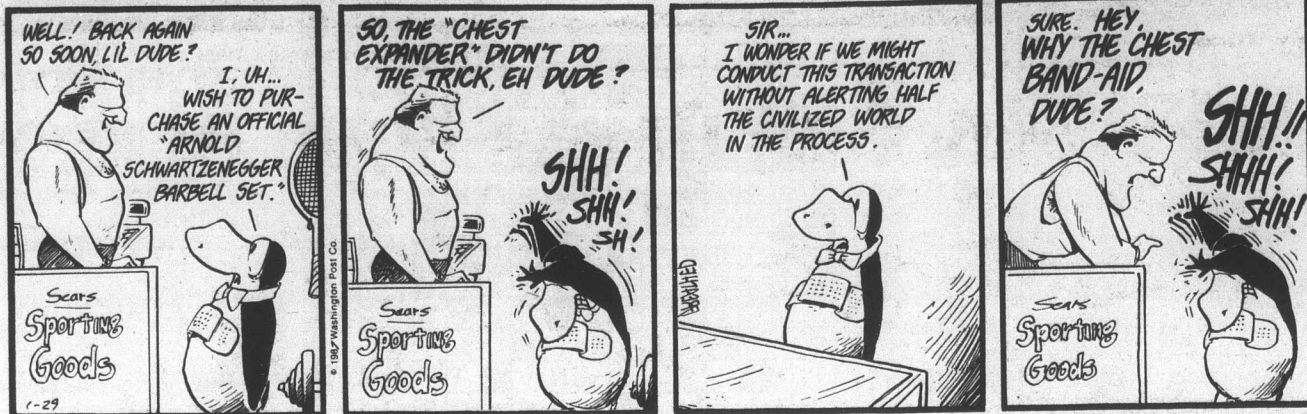
Health Dimensions offers students one-on-one counseling, long-term treatment, detoxification, awareness groups and presentations around campus.

Starrantino said if a student needs formal treatment for chemical dependency, a referral to a community agency is made.

Health Dimensions provides free presentations on substance and alcohol abuse to residence halls and classrooms.

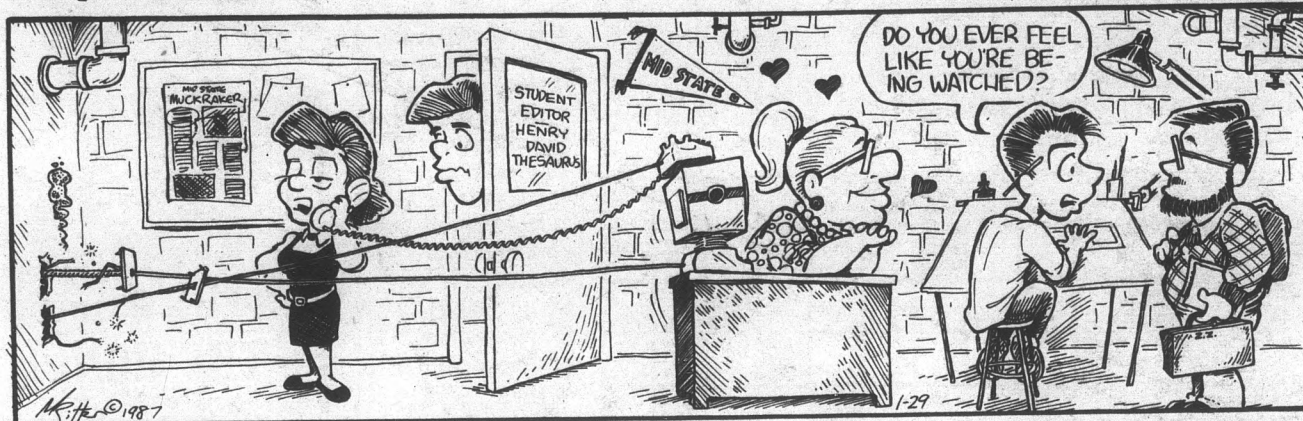
BLOOM COUNTY

by Berke Breathed



Ivory Towers

by Michael Ritter



Shoe

by Jeff MacNelly



state press

CLASSIFIED ADS
REACH 45,000 READERS DAILY
15 Matthews Center North Basement 965-7572

It's eleven p.m. Do you know where your paper is?



Yes.



Let's be real. Compare the equipment she's using to yours. If you were both trying to tunnel through a mountain, she'd have a bulldozer and you'd have a shrimp fork.

Don't despair. Your problem is already half-solved. For a limited time, you can buy an Apple® Macintosh™ Plus or a Macintosh 512K Enhanced computer with Microsoft Works—for less money.

Which is wonderful.

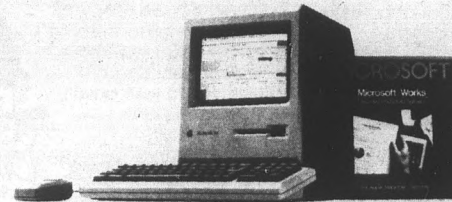
You get a Macintosh, with its speed, ease of use, and graphics capability. Plus, you get a software program that lets you use all this Macintosh power in all your subjects.

Microsoft Works is not just one program, it's four integrated programs: word processing, data-base management, spreadsheet with charting, and communications.

Meaning you can put charts in your history essays. Spreadsheets in your economics papers. Call Dow Jones News/Retrieval at 2:00 A.M. to get the facts for your journalism story due at 8:00 A.M.

So if you're taking more than one subject this semester, you should check out Macintosh and Microsoft Works.

But don't wait till the eleventh hour. This offer will end soon. And your paper might stay out all night.



Macintosh and Microsoft Works

Apple and the Apple logo are registered trademarks of Apple Computer, Inc. Macintosh is a trademark of Apple Computer, Inc. Dow Jones News/Retrieval is a registered trademark of Dow Jones & Company, Inc. Microsoft is a registered trademark of Microsoft Corporation.



COMPASS TRAILER #2

West of Engineering
C-wing

— or —

COMPUSHARE

1110 W. Southern Ave.
Mesa, Arizona

Patterson, Sun Devils hope to spoil Wildcats again

By STEVE BRENNAN
State Press

They may do it to the Sun Devils in football, but the role of the spoiler is in the hands of the Sun Devils when it comes to basketball.

Last year ASU put a bitter taste in the Arizona Wildcats' journey to the NCAA tournament with a 70-63 end of the

season victory in the University Activity Center.

The Sun Devils will get another chance to do so tonight as they take on Arizona at 7:30 p.m. in the UAC.

Neither team this year has shown the promise it had at the end of last season, with the Wildcats holding the third-place position in the Pac-10 (5-3, 10-7 overall), and the Sun Devils entrenched at the bottom (2-6, 6-10 overall).



Ron Kuczek Jr./State Press

ASU guard Arthur Thomas drives against a Stanford opponent. The Sun Devils take on UA tonight at 7:30 in the University Activity Center.

"On paper it looks difficult for us," ASU coach Steve Patterson said. "But when we play them, we forget about records, the past and the future."

But like last year, the Sun Devils appear to be coming out of an early-season slump. ASU posted an impressive victory over conference leader California Saturday, 61-53, and according to Patterson, things are looking brighter, especially in the backcourt.

"Our guards are passing off more and that is what we've been preaching," Patterson said. "It helps everyone when everyone gets to handle the ball. Against Cal we worked the ball well and as a result shot well from the floor."

"Confidence breeds confidence. Against Cal we had four guys in double figures and that helps."

The Sun Devils continue to lead the conference in free-throw percentage this season with .765.

Patterson said that improved play on the defensive end has enabled ASU to turn things around. The Sun Devils held the Golden Bears to a season-low 16 points in the first half of Saturday's game.

"We have had some success with our full-court pressure," he said. "I think it has helped our shooting because it gets us in the flow of the game."

ASU guard Arthur Thomas, who has been a component in both of the team's victories since returning from an injury, was the key to the Cal win, Patterson said.

"Arthur did a great job on (Kevin) Johnson, and (Cal guard) Chris Washington handled (ASU guard) Steve Beck," he said. "The game was determined by Thomas and Washington's defense. Art tightened on him and I think the pressure hurt him."

The Sun Devils this week will face the Wildcats for an unprecedented two times in one week, as they travel to Tucson for the second game of the series Saturday night. Patterson said he likes this system of playing Arizona.

"We're looking at a two-game season this week," he said. "Usually, we spend two full weeks preparing for Arizona. This way, we spend as much time on them as we do on everyone else. I like the idea of playing them back-to-back."

Patterson said the key word for the Wildcats is height.

"I look at their size and just shake my head," he said. "They can really give us problems with their size."

Patterson said he is pleased with the way his forwards are playing, though.

"Mark Becker and Alex Austin are playing very well," he said. "They've both been instrumental in our two victories."

"Alex is our leading rebounder and is shooting well, but he's got a big assignment this week. Against Washington and Washington State, Mark realized that he could play with the best of centers, and he has continued to improve all season."

The Wildcats will be led by 6-foot-8 sophomore Sean Elliott, who has averaged 18.4 points per game this season, and by 6-foot-9 Anthony Cook, who has averaged 7.3 rebounds per game this year.

But, Patterson said, they are beatable.

"They're struggling a little bit and they've lost some games at home," he said. "They've shown they are beatable. This is a good test for us at a point where we need to make a move to get within the middle of the Pac-10."

"We've had adversity, but there's no quit in these guys. They have battled hard and I'm encouraged."

The Wildcats lead the series 101-69, but since both teams joined the Pac-10, ASU leads 10-6.

Steve Beck continues to shoot for Byron Scott's all-time ASU scoring record, as he scored 32 points in last week's games and needs 238 more to tie.

Regents, booster group say proposed legislation saps universities' power

By VICKIE CHACHERE
State Press

PHOENIX — Legislation calling for a statewide commission to oversee the hiring of athletic administrators and coaches is drawing criticism from members of the Arizona Board of Regents and a University booster club.

Rep. Mark Killian, R-Mesa, said he filed the bill Tuesday because he believes the Legislature should have some control over promises the regents or university officials may make when hiring coaches.

"When we hire our coaches sometimes the state gets left on the hook for the booster club promises," Killian said.

But Regent Tio Tachias, chairman of the board's legislative committee, said Wednesday he opposes the bill because it infringes on the regents' and university presidents' power to select coaches.

Killian said lawmakers have been concerned with promises made to coaches and athletic administrators after former ASU basketball coach Bob Weinbauer revealed that he had been promised a five-year contract more than a year ago and that ASU officials had offered him \$300,000 to resign.

The regents eventually agreed to pay Weinbauer the \$300,000 to avoid a lawsuit.

"We just need to look at the hiring practices and make sure they are in the best interests of the state," Killian said.

"It's a legislative responsibility to look at all aspects of state government," he said. "We may be of help to the regents."

Under the bill's provisions, the membership of the committee would be divided between the House, Senate and community residents.

Tachias predicts failure for the bill because he says it saps power from university officials.

"There are several bills introduced each year to take authority away from the presidents and the regents," Tachias said. "Those bills don't succeed."

Tachias said neither the board nor university officials have been pressured by members of the Sun Angels to hire a particular coach or athletics administrator.

Dan Devine, executive director for the Sun Angel Foundation, said he is angry with Killian's bill.

"My reaction (to the bill) is violent," Devine said. "In the five years I have been here there has been absolutely no interference from the Sun Angel foundation."

Devine, who is a former college and professional football coach, said ASU President J. Russell Nelson occasionally has asked him to talk to coaches the University may want to hire. But he added he has only contacted prospective coaches at the University's request.

Nelson declined comment on the bill, saying he has not seen the legislation. ASU Athletic Director Charles Harris also declined comment for the same reason.

Improved ASU infield to miss Dyson for 2-4 weeks

By DAVE HODGES
State Press

Although ASU's infield is an improved defensive group this year, the Sun Devil baseball team will be without one of its all-Pac-10 players for a few weeks.

Ted Dyson, ASU's all-Pac-10 first baseman, is expected to miss two to four weeks with a stress fracture in his right hand, Coach Jim Brock said Tuesday.

Brock, whose Sun Devils open the regular season at 2:30 p.m. Friday against the University of San Francisco at Packard Stadium, said that Dyson's injury was not baseball related.

Both Brock and Dyson declined any further comment about the injury.

Dyson, a preseason All-America selection, led the Devils last year with a .379 average. The senior from Tucson, who turned down a professional contract with the Los Angeles Dodgers last summer, hit 15 home runs and had 56 runs batted in in 46 games.

Brock said junior Martin Peralta, twice an all-conference selection at Mesa Community College, will replace Dyson at first base until he is able to return.

Peralta also plays catcher and designated hitter. The primary designated hitter is Tony Mattia. Mattia, a 6-foot-2, 234-pounder from Scottsdale, transferred from Grand Canyon College in Phoenix. In three seasons at GCC, Mattia hit .325 with 26 home runs and 80 RBIs in 1985.

Brock said Dyson and Mattia are the Devils' leading power hitters.

"Last season we thought we would hit between 50 and 55 home runs and we hit 84," Brock said. "We should be slightly improved (this year)."

"Dyson should be the leader in this department with Mattia right behind. We're not expecting a school-record 110, but realistically 70 to 80."

Starting at second base for the Devils will be Tim Esmay, but the 5-foot-6, 140-pound senior from Scottsdale is one of the question marks for Brock.

Last year, Esmay played catcher, third base and outfield for the Devils with a .323 batting average and 31 RBIs. Brock said it is just a matter of Esmay making the transition from those other positions to playing second base.

At shortstop is Mike Benjamin. The 5-foot-10, 159-pound senior from Norwalk, California is drawing attention from the pro scouts.

Benjamin, an excellent defensive player, improved his offense during the fall as he hit .465 with five home runs and an amazing 38 runs batted in on 71 at-bats.

The all-Pacific-10 candidate made just 19 errors in 383 chances in 1986.

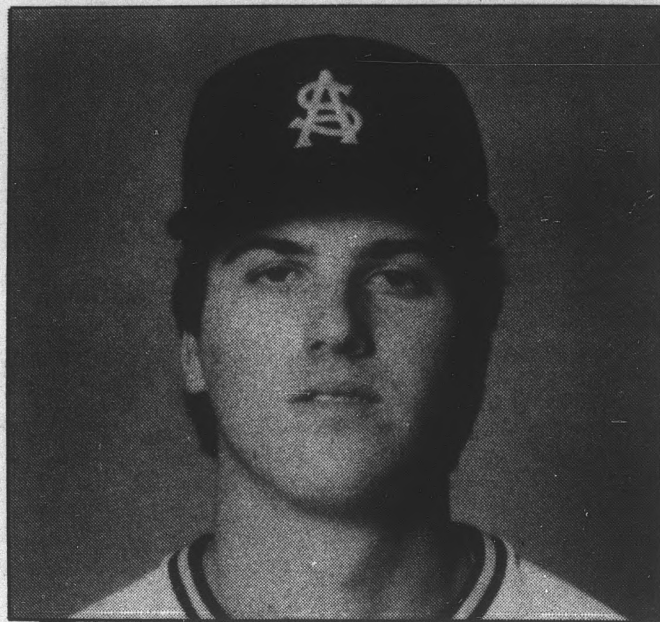
"Benjamin is the best defensive shortstop in the league," Brock said.

Bob Dombrowski will be starting for the Sun Devils at third base. The 5-foot-10, 159-pound junior is Brock's other question mark as he is playing his third position in as many years.

Dombrowski came to ASU in 1985 as a middle infielder, was moved behind the plate last year, and now has been moved permanently to third base.

Although he has a good arm and is solid defensively, Dombrowski hopes to improve his batting this season. He hit .241 last year, but raised that average to .266 with 17 runs batted in during fall ball.

The catching position is "another area of marked improvement," Brock said.



Ted Dyson

Brock said there are three transfers who will be practically interchangeable in the infield: juniors Bill Schorr (Cochise Community College in Douglas, Arizona), Tim Spehr (McLennan C.C. in Waco, Texas), and Peralta (Mesa Community College in Mesa).

"Schorr is very good defensively and has the best arm of the trio," Brock said.



In the "good old days," women has class . . . but they *didn't* have choice.

Today, women can choose when, and if, they want children. If you're facing this choice, see the caring, supportive staff at FPI for information on:

- BIRTH CONTROL (exams, supplies and counseling)
- PREGNANCY TESTING (FREE urine test or low-cost early detection test)
- ABORTION SERVICES (one-day procedure, no long waits for appointments)

FAMILY PLANNING INSTITUTE

TEMPE: 2525 S. Rural #4 968-7471 PHOENIX: 9100 N. 2nd St. 997-7493

Completely Confidential

AT CORNERSTONE

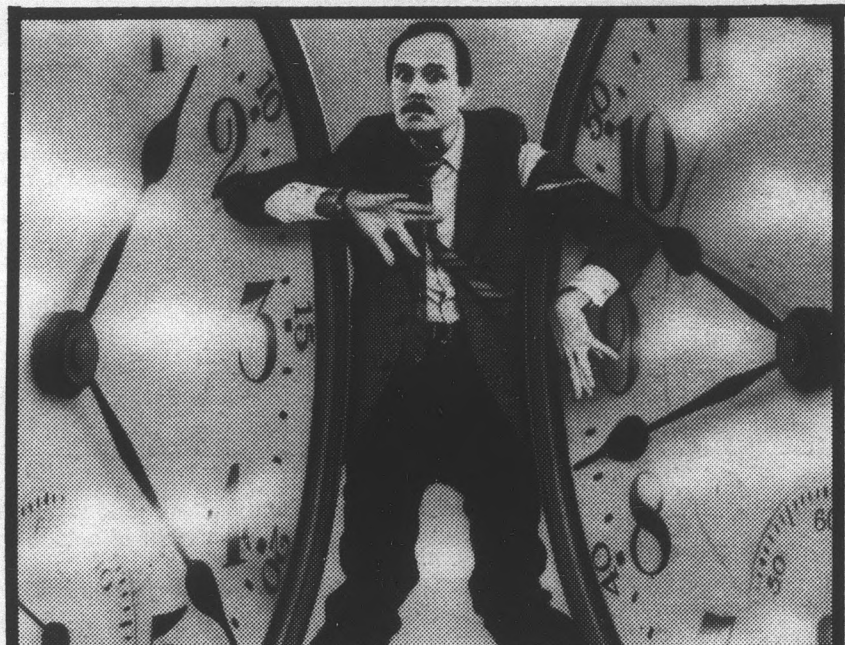


829-1743

THE U SHOP

HOURS:
M-F 10-9
Sat. 10-8
Sun. 12-6

The largest selection of Arizona State clothing and souvenirs

MONTY PYTHON'S JOHN CLEESE IN

CLOCKWISE

PG PARENTAL GUIDANCE SUGGESTED
SOME MATERIAL MAY NOT BE SUITABLE FOR CHILDREN

Read The METHUEN Book
A UNIVERSAL Release

SNEAK PREVIEW TONIGHT

8 PM AT *the Bijou* AT FIESTA VILLAGE

Show Your School I.D. And Admission Is FREE!


AMC *the BIJOU* at FIESTA VILLAGE 6
SOUTHERN AND ALMA SCHOOL 962-0666

Limited To Seating

REMEMBER ALL YOUR VALENTINES!

Ease, Elegance, Economy!

...when you buy pre-wrapped gifts from Hallmark. This clear glass teddy bear is sure to earn you a hug. Under \$10.



NOW OPEN in the A.S.U. Memorial Union

A.S.U. Memorial Union Lower Level, 966-9188

Follett's GiftShop
YOUR HALLMARK HEADQUARTERS

Crowning Touch COLLECTION

Runners-up

Cheerleaders 2nd in nation, will present trophy to Harris

By AARYN KEMP
State Press

With hot moves and cool nerves, the ASU cheerleading team placed second at the U.S. Collegiate Cheerleading Championships and will present its three-foot trophy to the ASU athletic director tonight.

Charles Harris will receive the trophy at the ASU-UA basketball game in the University Activity Center. The squad won its award in competition with five other teams from around the country Jan. 17 at the Seaquarium, an aquatic-show arena in Miami, Fla.

Team captain Wally Caddow said the squad began choreographing its three-minute competition routine in August and practiced throughout the semester.

"We perfected our routine at the Rose Bowl," Caddow said. "We practiced three to four hours every day for eight days at our hotel. The week before the championship we practiced six hours a day to prepare for the competition."

Wichita State University won the competition, "narrowly beating ASU by one mistake," he said.

Caddow said ASU made mistakes on a pyramid and a partner stunt, and Wichita only fouled on one pyramid.

But ASU is the No. 1 cheering squad in the nation with a football team to cheer for,

since the Wheatshockers disbanded their football program at the end of last season.

The University of Louisville was the returning champion and placed third in this year's contest, he said.

"Competition was really tight," Caddow said. "Winning comes down to major mistakes. Wichita only had one mistake, we had two and Louisville had three."

"I talked to the judges after the competition and they said that it was a really hard decision to choose the winner."

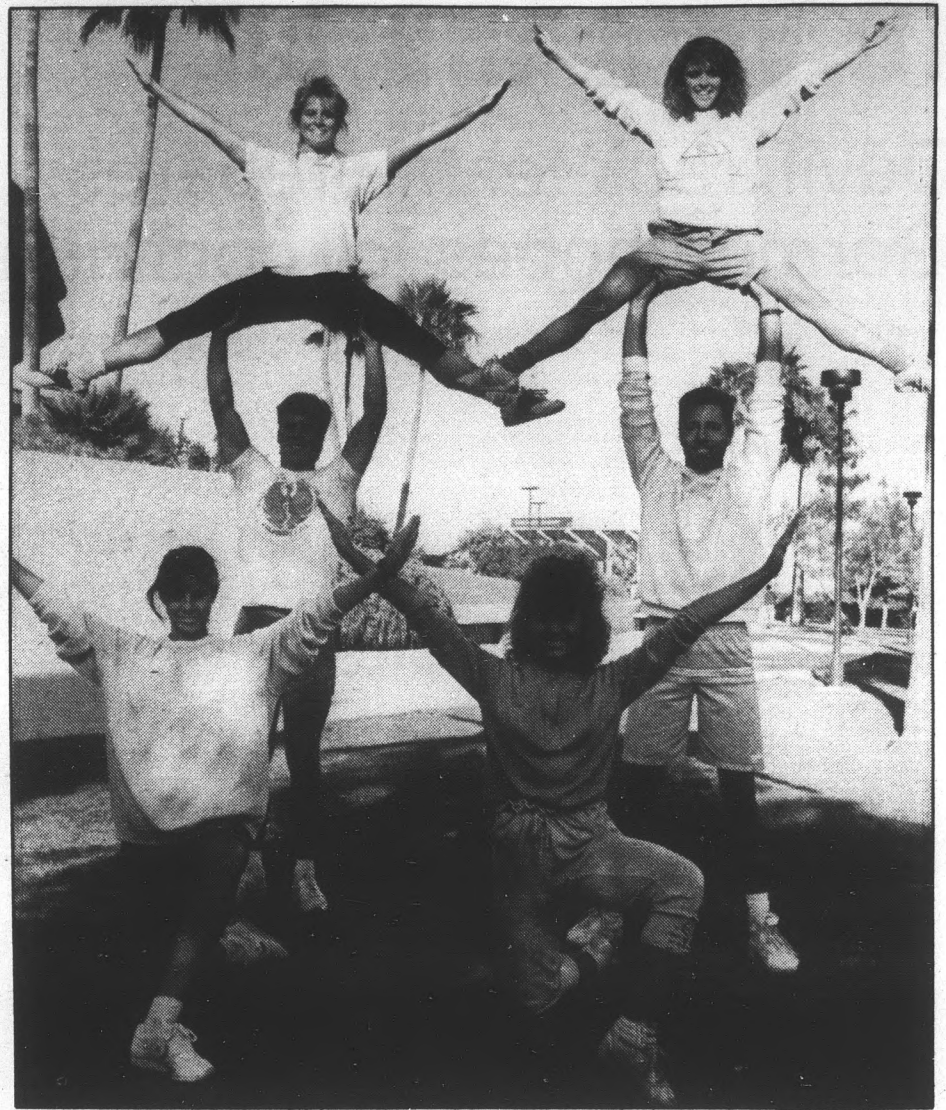
Caddow said the squad was judged on pyramids, partner stunts, gymnastics, jumps, a safety factor, overall effect and their routine, which had to include a cheer and a chant.

In last year's competition, Caddow said the ASU squad placed ninth out of 20 teams. The squad also won the Western Regional Championships in summer 1985.

He said there is not a cheerleading team in the Pacific 10 conference that can touch the ASU squad, adding, "The only team even close is the U of A."

Caddow said this semester's cheerleading squad has the potential to win first in next January's competition.

"They have picked up where we left off," he said. "They are 10 times farther along than we were when we began."



Todd Green/State Press

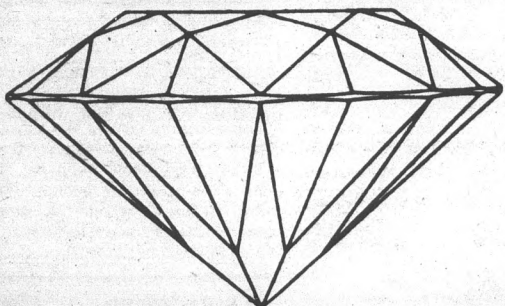
Part of the ASU cheerleading squad forms a pyramid at practice. Top, L-R: Angela Bonachi, Crista Odell. Middle, L-R: Duane Drake, John Hasselman. Front, L-R: Michelle Corley, Jamie Floromanti.

Due to the inconvenience of the construction, we will take an additional 10% off.

LONDON GOLD

FINE JEWELRY

DIAMONDS DIAMONDS DIAMONDS



- ◆ MOST SIZES!
- ◆ MOST SHAPES!
- ◆ VARIETY OF QUALITIES!

- ◆ MORE THAN 1,000 DIAMONDS FROM .01 CT. TO 5.00 CT!
- ◆ STUNNING DIAMOND STUD EARRINGS 1 CT TOTAL WEIGHT FROM \$499!
- ◆ "OUR ULTIMATE GUARANTEE" OF LOWEST PRICES FOR COMPARABLE QUALITY AND VALUE ON EVERY PURCHASE!
- ◆ THE LONDON GOLD SPY SAYS: "IF YOU DIDN'T BUY FROM US, YOU PAID TOO MUCH!"

PHOENIX	936 W. Camelback West of McDonald's Camelback Village Square	277-7080
N.W. PHOENIX	4925 W. Bell Rd. 51st Ave. & Bell Bell Tower Village	843-2293
TEMPE	1814 E. Southern Southern at McClintock Behind Jewelry Exchange	820-3909
SCOTTSDALE	8320 N. Hayden Rd. Mercado Del Lago Shopping Center	991-4814

drycleaning

McKELLIPS & SCOTTSDALE RDS. (ALPHA BETA SHOPPING CTR.)

STUDENT DISCOUNT 20% OFF DRY CLEANING

SHOW I.D. CARD WITH INCOMING ORDER

BUY • SELL • TRADE

Your books at Changing Hands. For quality cloth and paperbacks (no textbooks, please) we pay 30% of our re-sale price in cash or 50% in trade-in credit which may be used to purchase anything in the store. (Sorry, no trade-ins on Sat. or Sun.)

Browse through our three floors of:

- New & Used Books
- Art Prints & Posters
- Calendars & Cards
- Handbound Journals

M-F 10-9 SAT 10-6 SUN 12-5

CHANGING HANDS
414 Mill Avenue 966-0203
Old Town Tempe

Mann

\$3.00 BARGAIN PRICE
ALL SHOWS BEFORE 6 P.M. MON. THRU FRI.
SAT. SUN. & HOLIDAYS FIRST SHOW ONLY

BELL TOWER 8

843-4593 51st Ave and Bell Road
HOOSIERS (PG) 11:45, 2:00, 4:30, 7:15, 9:45
STEPPATHER (R) 11:45, 2:00, 4:00, 6:00, 8:00, 10:00
WANTED DEAD OR ALIVE (R) 12:15, 2:45, 5:15, 7:45, 10:15
HOT SHOT (R) 12:15, 2:30, 4:45, 7:00, 9:15
LITTLE SHOP OF HORRORS (PG-13) 12:15, 2:15, 4:15, 6:15, 8:15, 10:15
BEDROOM WINDOW (R) 12:00, 2:30, 5:00, 7:30, 10:00
STAR TREK IV (PG) 12:00, 2:15, 4:30, 7:00, 9:30
GOLDEN CHILD (PG-13) 12:30, 2:45, 5:00, 7:30, 9:45

SUN DEVIL 6

\$3.00 MIDNIGHT SHOWS
FRIDAY & SATURDAY

SUN DEVIL 6

829-0344 The Cornerstone, Rural & University
STEP FATHER (R) 1:15, 3:15, 5:15, 7:15, 9:15
CRITICAL CONDITION (R) 1:30, 3:30, 5:30, 7:30, 9:30
STAR TREK IV (PG) 12:00, 2:30, 5:00, 7:30, 10:00
WANTED DEAD OR ALIVE (R) 12:30, 2:45, 5:00, 7:15, 9:30
CROCODILE DUNDEE (PG-13) 1:00, 3:00, 5:00, 7:00, 9:00
BEDROOM WINDOW (R) 12:00, 2:30, 5:00, 7:30, 10:00

POCA FIESTA 4

835-0404 MESA AT 1020 WEST SOUTHERN
HOOSIERS (PG) 12:00, 2:20, 4:40, 7:00, 9:30
LITTLE SHOP OF HORRORS (PG-13) 12:30, 2:45, 5:00, 7:00, 9:15
THE GOLDEN CHILD (PG-13) 12:45, 3:00, 5:15, 7:30, 9:45
CRITICAL CONDITION (R) 1:00, 3:10, 5:20, 7:30, 9:45

SUPERSTITION 5

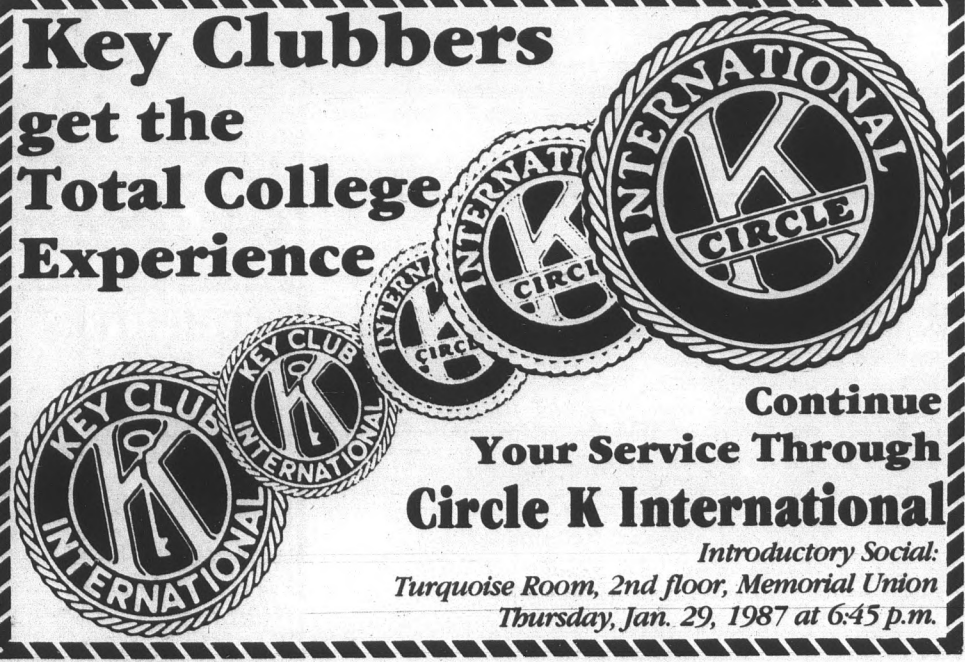
834-5767 MESA AT 501 LONGMORE & SUPERSTITION
AN AMERICAN TAIL (G) 12:00, 2:00
CRIMES OF THE HEART (PG-13) 4:45, 7:15, 9:45
MOSQUITO COAST (PG-13) 12:00, 2:30, 5:00, 7:30, 10:00
CROCODILE DUNDEE (PG-13) 12:45, 3:00, 5:15, 7:30, 9:45
STAR TREK IV (PG) 11:45, 2:15, 4:45, 7:15, 10:00
THE MISSION (R) 1:00, 4:00, 7:00, 10:00

CHRIS-TOWN 5

249-2843 5767 NO 19TH AVE
LITTLE SHOP OF HORRORS (PG-13) 2:00, 4:15, 7:00, 9:30
WANTED DEAD OR ALIVE (R) 12:00, 5:00, 7:30, 10:00
THE MISSION (R) 11:30, 2:15, 5:00, 7:45, 10:15
THE GOLDEN CHILD (PG-13) 11:45, 2:15, 4:15, 6:15, 10:30
STAR TREK IV (PG) 11:45, 2:15, 7:30, 10:00
BEDROOM WINDOW (R) 11:45, 2:30, 4:45, 8:15

Key Clubbers

get the
Total College Experience



Continue Your Service Through Circle K International
 Introductory Social:
 Turquoise Room, 2nd floor, Memorial Union
 Thursday, Jan. 29, 1987 at 6:45 p.m.

To your marks

Devil track team prepares for season; Gorman hopes for continued success

By STEVE ADAMS
State Press

A strong corp of returning athletes is the key to continued success, according to assistant Coach Ed Gorman, as the ASU track and field team gears up for the Skydome Invitational in Flagstaff Saturday.

The Sun Devils, 3-3 in individual team competition last season, are returning some of their top runners and field specialists from last year, although ASU lost a lot of strength in the throw competitions.

"Last year we were very strong in the throw events but this year we are just the opposite," Gorman said.

The Sun Devils lost the services of All-America Jim Camp in the shot-put, Dave Ryer in the hammer throw and Terry Payne in the hammer throw and discus.

"They were all outstanding for our team and with the loss of them meant the weakening of this area of the program," Gorman said.

All-America hurdler Andrew Parker returns to the Sun Devils having finished second overall last season in the NCAA indoor championships.

In ASU's first indoor meet last weekend in Baton Rouge, La., Parker qualified for the second straight year for the NCAA championships by placing fourth in the 60-yard hurdles with a time of 7.26.

"Parker is an outstanding athlete and we are very glad to be able to have him back again," Gorman said.

"He did surprise the coaches by qualifying so early in the season. We weren't expecting anybody to qualify in our first meet," he said.

The men's team also returns Mark Senior, who qualified for the NCAA championships last year in the 400-meter and Clyde Duncan who returns in the 100-meter and the long jump position.

Senior finished third in the 440-yard run at the Louisiana State relays last weekend with a time of 47.80.

"The running game is very strong again this year and we look forward to remaining at the top of the field in this area," Gorman said.

ASU has also added transfer Gordon Bugg to its roster this year. He is expected to give the Sun Devils more speed in their running game, specifically the 400-meter.

The ASU women also hope to continue to be a dominant force this season as they return All-America Lynda Tolbert, who, as only a freshman, won the NCAA championships in the high hurdles last year.

"She will be one of the backbones of the women's team," Gorman said.

For the second straight year Tolbert qualified for the NCAA Indoor Championships in the 60-yard hurdles by placing second at the LSU relays with a time of 7.87.

"She is an outstanding athlete and adds a different dimension to the team," Gorman said.

The Sun Devils also return distance runner Laura LaMena, who finished second in the 2-mile run at the LSU relays with a time of 10:42.73.

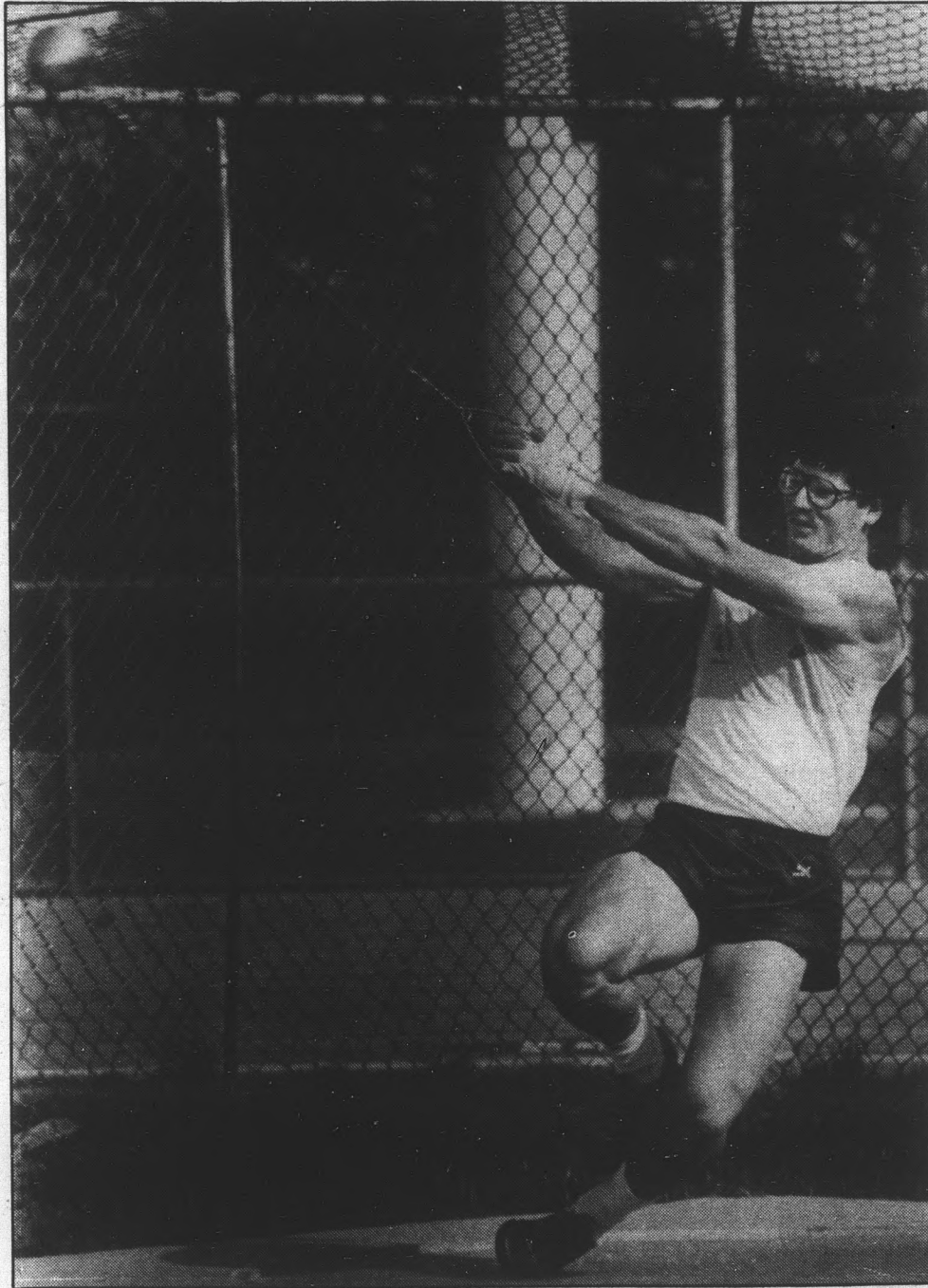
Jackie Belzner adds strength to the team in the high jump, having just placed second last weekend with a height of 5-feet-8.

"She is going to be a real strong contender in this area," Gorman said.

Michelle Harper also returns and is expected to continue her strength in the 500-meter run and transfer Jacinta Bartholomew, the defending Division 2 long jump champ, will also be an asset to the team.

"With such a strong group of returning athletes, we should do very well this season in the indoor competition, but we really key up for the outdoor season," Gorman said.

Gorman and the rest of the coaching staff was very pleased with the team's performance last weekend in the LSU relays, considering that it was their first meet of the season. Most of the other teams have been competing since December.



Terry Payne

classifieds

Announcements

The STATE PRESS disclaims all responsibility for quality and prices of goods and services offered in both classified and display advertising by its advertisers.

FRESHMEN, SOPHOMORES: Millions of dollars are available for your schooling, get your share! Call SRG toll-free, 1-800-USA-1221, ext. 6071.

HANG GLIDE! Gently sloping hill. Safe and exciting. Lessons all day only \$75. Group rates and gift certificates available. Windsports, 897-7121.

Automobiles

1972 VOLKSWAGON Beetle. New paint, tires, battery, distributor and brakes. AM-FM, tinted windows. \$1500. 220-9145.

1973 CHEVY Impala SW, rebuilt transmission, new seals, alternator, and battery. Good tires, AC, radio, cruise control. \$850 OBO. Udo, 967-4890.

1976 TOYOTA Corona, AT, AC, excellent condition, 52,000 miles, \$1500. Joleen, 965-3496, 967-1075.

1977 MALIBU, PS, PB, AT, AC, four new tires. Body rough, excellent transportation, \$450 OBO. 844-2633.

1979 MG Midget convertible, burgundy, new tires, new battery, nice shape inside, out. Gretchen, 438-0942.

1979 PLYMOUTH Horizon. Dependable, good condition. \$900. 966-7838.

1985 VW Golf. Sun-roof, air, AM-FM cassette, 5-speed, under warranty. \$6500. 831-2525.

FUN, RELIABLE VW Rabbit convertible, AM-FM cassette, AC, alloys, many extras. \$7900 OBO. 971-1310.

Babysitting wanted

WILL CARE for your child to age 7, your home. Monday-Friday. Mature, experienced, own transportation, reference. Love kids. Salary negotiable. Near ASU. 967-7930. Leave message.

Business Opp.

LEASE 1987 luxury cars for \$100/month and put big bucks in your pocket. New network marketing program. Call Steve, 820-3664; Glen or Bonnie, 948-4685; Tom or Monika, 934-0844.

MAKE HUNDREDS weekly mailing circulars! No quotas! Limits! Rush self addressed stamped envelope: Am-Mar, 256 Robertson, Dept. G5, Beverly Hills, CA 90211.

For Rent or Lease

2+3+4 bedroom condos, townhouses, houses, near ASU for sale and rent. Call Alumnus Robert Bullock, Trencor Realty, 951-5800, 860-0460.

2 BEDROOM, 1 1/2 bath townhouse. Pool, sundeck, fans, covered parking, cable, dishwasher. One mile ASU. 894-1942.

3 BEDROOM, 2 bath townhouse, furnished, washer, dryer, all other appliances, brick patio with fire pit, 2 pools, cathedral ceiling, nice carpet. 893-2577, 965-2814.

APARTMENT FOR rent. Moving, lease ends May 31. One mile from ASU. \$325/month, negotiable. 968-2198.

DON'T MISS out! At Terrace Road Apartments we have two openings: a large two bedroom, two bath, and a spacious one bedroom, one bath. Laundry facilities, beautiful pool, courteous management, 1/2 block from campus, 950 S. Terrace Road. 966-8540.

FOR SALE: Bicycle to ASU. 3 bedroom condo. \$52,900. Furniture available. Consider lease-purchase. Call Wanda at Red Carpet - Lowe, 833-8871. Evenings, 964-9460.

LA CRESENTA Apartments. Spacious one and two bedrooms from \$350. Special: first month free plus 19" TV with a year lease. 1050 S. Stanley Place. 967-8203.

LARGE FLAT, furnished room, private entrance, kitchenette, private bath. Available for quiet, serious graduate student. ASU 3 miles. 831-7264.

RESERVED PARKING adjacent to ASU at local church. \$100 per semester. Call 967-2275 to reserve for Spring 1987.

ROOM in home with mother and teenage girl. Kitchen privileges. Female only. South Tempe. \$225 per month includes utilities. 838-6224.

TWO BEDROOM, one bath condo. Free maid service. All appliances including dishwasher, disposal, washer and dryer. Many extras... covered parking, private balcony, pool, and tennis courts. No pets. Tempe-Mesa area. \$255. 967-1044.

For Rent or Lease

TWO BEDROOM, two bath, washer-dryer hook-up, covered parking, pool, bike lock-up. Close to ASU. \$450 monthly with \$25 off first 3 month's rent. Call 968-0422 M-F, 12-6; 821-0324 Saturday and Sunday, 9-6.

SHARE 2 bedroom condo 1/2 mile to ASU. Nonsmoker, female. Furnished, pools, tennis. 921-1476.

For Sale

1973 FORD LTD station wagon. Cassette, good engine. New alternator, battery. Leaving country. \$550. 921-1456.

1975 VOLVO 4-door. Sun-roof, AC, power windows, good mechanical condition. \$700 OBO. Jerry, 967-6914.

1981 HONDA XL125 with helmet. Excellent condition. Street legal. \$450. 945-7986, 256-2505. Ask for Tim.

1982 KAWASAKI 305CSR, 5100 miles, good condition, with helmets and cover. \$550 OBO. 968-2432.

1984 HONDA Aero 80. New engine, excellent condition. \$600 or best offer. Call Jim, 967-4563.

77 DATSUN F10 5-speed. Runs great, good body. New clutch, battery, muffler. \$650. 969-0039.

AVANTI 1.8 cubic foot refrigerator (dorm size). Excellent condition. And, earthtone geometric design couch. Good condition. Must sell both! Best offers. 967-5634, Jennifer.

BIANCHI RACING bike, Columbus tubing, Campagnola parts, 56, red, \$425. Call David evenings, 967-7459.

BROWN AND gold couch, good condition, \$85. Phone 391-1802 after 4 p.m.

EXCELLENT PAIR Acoustic Research speakers. 125 watt, 3-way liquid cooled, one hour of play. Must sell now, \$225. Todd, 963-8313, 892-0174.

FOR SALE: Ajay Octa Gym, \$75; a 50mm camera lens for Canon, \$25. Both items in excellent condition. Call Amy, 965-2292 or 968-0326.

FOR SALE: Yamaha CV 80, red, 1983, \$500 OBO. 838-9047. (Must sell ASAP.)

MAG WHEELS, set of five, sell for 50% of new cost, 13-inch, four lug pattern, VW made. Call Gretchen, 438-0942 or Greg, 244-9442.

MOBILE HOME, 12x60, excellent condition. Nice quiet park for studying. Bike to ASU. \$8175. 968-8771.

SLEEPING BAG- Blue, small, Polarguard in excellent condition. Very warm. James, 968-5023, leave message.

VACUUM CLEANERS. New and used, as low as \$39.95. Also rent and repair. Baseline Sew-Vac, 831-9238.

WHO IS John Galt? Bumper stickers, \$2; Tee-shirts, \$5. Kagarise Enterprises, 329 E. Elvira, Tucson, AZ 85706.

XT-TYPE PERSONAL computer, \$825 with 256K memory, monitor, floppy drive, keyboard, one year full warranty, and loads of free software. The Computer People, 234-6850.

Furniture

WAREHOUSE SALE- Desks from \$44, chairs from \$5, end tables and coffee tables from \$24, typing tables, computer tables, bookshelves and more. 437-2224.

Help Wanted

AIRLINES CRUISELINES hiring! Summer. Career! Good pay. Travel. Call for guide, cassette, newsservice! (916)944-4444 ext. 3.

A PART-TIME liquor clerk, delivery person, days and nights, 7 days. Call 834-7728.

BANQUET SERVERS needed. Work between classes. Evenings and weekends also available. Past waitress or waitressing experience a plus. Call today. Snelling Temporaries, 831-0145.

MCI TELECOMMUNICATIONS
-NOW HIRING-
PT telemarketing positions available. Perfect hours for students, 5 p.m.-9:30 p.m. M-F, \$5/hr. + bonuses!
CALL NOW FOR DETAILS 246-1143
EOE
no fee **ADIA**
The Employment People

DON'T FORGET!
STATE PRESS CLASSIFIED AD DEADLINES ARE 3 P.M. 2 DAYS PRIOR TO INSERTION

HOT VALLARTA SPRING BREAK
University Beach Club
1-800-521-BEACH
Sheraton & Air 7 days \$475
SPRING BREAK HOT-LINE
1-800-521-BEACH

COMPUTERS FOR RENT
IBM Compatibles
Lowest Prices
CALL 371-8857

RUNDLE'S LIQUORS & MKT.
730 S. MILL
Corner Mill & University Ave.
PEARL BEER case \$5.99
DIAMOND WINE COOLER 2 liter \$2.35
ANDRE CHAMPAGNES \$2.97
PLAYBOY Used Magazines \$.94
Haagen Dazs Natural Ice Cream, Adult Magazines, Groceries, Ice, Wines, over 40 Imported Beers.
967-9079

CARPET REMNANT Sale
●Thousands in stock -30%-70% off
●Hundreds of room-size remnants -\$29-\$69
●We Deliver
●Buy Direct from our Factory
MESA
1825 W. Broadway
At Debono/Int. K-mart and Price Club
890-1152
NORTHEAST
15881 N. Cave Creek
867-2703
WESTSIDE
3161 N. 35th Ave.
Bet. Thomas & Osborn
289-3261

Help Wanted

BARTENDER: PLUSH sports bar and restaurant, 16-32 hours per week, \$8-\$10 per hour. Experienced only. Sports knowledge needed. Apply evenings, The Woodshed II, Dobson and University.

BUSINESS MAJORS: Sharp, dependable, motivated? Excellent money and experience opportunity in soft sales of energy conservation products. Flexible, part-time hours. Need car, some sales experience, desire to make good money. Jim, 941-3375.

DANCERS - Full or part-time. Must be attractive and dependable. Excellent tips. Call 990-0533.

DELIVERY PERSON: \$3.75 hour plus tips. Must have car. Apply in person, 201 W. Southern, Tempe. 967-0843 after 4 p.m.

EARN \$120-\$180 working evenings and weekends, 20 hours per week. Call 829-8955 for interview.

EARN MONEY between classes distributing frat and hall jerseys. Contact Lundeen's, 813-623-1433, 7004 Robin-dale, Tampa, FL 33619.

ENGINEERING TECHNICIAN mechanical. Second or third year mechanical engineering or technology. Some related experience desired. Must be available minimum 20 hours per week. \$4.50 and up. 956-8200.

Help Wanted

SECRETARY/RECEPTIONIST for real estate company. Hours 12-5, Monday-Friday. Applications at 7204 N. 16th St., Suite 2400. Call Stuart, 944-1500.

SECRETARY FOR Tempe research firm. Must be facile with Wordstar. Mornings. O'Neil Associates. 967-4441.

SECURITIES ASSISTANT, evenings, part-time, phone and filing. Prudential-Bache Securities, Mesa. Call 827-9700, ask for Jim Mitchell.

SWENSON'S IS looking for energetic and hard working individuals for the following positions: cooks, waitresses, bus/dish, and counter help. Day and night shifts available. Full or part-time. Apply in person, Monday through Friday, 3-5 p.m. Price at Baseline and Main at Stapley.

TEMPE MAGAZINE is presently looking for a fashion and editorial photographer. 966-6025.

TECHNICAL JOB

WITH MANAGERIAL POTENTIAL. WILL TRAIN. FOR APPOINTMENT PLEASE CALL 941-2690

TRAVEL PROMOTERS wanted! Earn high commission and free trips! Destination Travel is looking for individuals or organizations to market Spring Break trips to South Padre Island. Call Steve at 1-800-525-1638.

WAITSTAFF- DAY hours only! Apply at The Raintree, 933 E. University. Apply only if you can work 10:15 to 5.

WANTED: PART-TIME help for elderly Tempe couple. Phone 431-9226.

Instruction

AEROBICS, WEIGHT training, dance, martial arts. Center for Body Awareness. Walk from ASU. 350 Mill. 894-8347.

EXPERIENCED ENGLISH tutor: Composition writing skills, term papers, research papers. Four years experience. Call 834-1367.

HYPNOSIS. LEARN self hypnosis easily. Improve memory and concentration. Remove stress, tension, test anxieties. Develop social self confidence. Stop smoking. Lose weight. Free telephone consultation, all questions answered. Lindsey A. Brady, certified hypnotist, over 14 years experience. Office near campus. Arizona Hypnosis Institute. Special rate for students. 966-8571.

NATIONAL AEROBICS- Certified aerobics instructors workshop by National Aerobics Training Association. Weekend of February 27 at ASU. Call 963-9415.

Jewelry

FAMOUS REPLICA watches. Best prices, \$70-\$200. 7 a.m.-10 p.m., 7 days. 251-2269.

Lost & Found

FOUND: GOLD watch, Thursday, January 23 in Language and Literature. Please call 829-3552 to identify. Ask for Heather.

LOST 1-26-87 in LL C157, a blue bicycle handlebar bag and a grey make-up bag. Please contact Cathy, 967-5720.

LOST: MALE blonde golden retriever, red collar. Last seen Friday night, Alpha Drive. Needs medical attention 784-0722.

Miscellaneous

PLAY IT AGAIN CINEMA

Bette Davis & Marilyn Monroe ALL ABOUT EVE

Ruth Gordon w/Cat Stevens' music HAROLD AND MAUDE

Admission Only \$2.00 Call For Showtimes

ON SCOTTSDALE RD. Just Across The River One Block North of McKellips

2240 N. Scottsdale Rd. • 994-1190

Motorcycles

1984 HONDA Aero 50. Good condition. Must sell. Call 827-8938.

1985 HONDA Aero 80. Must sell. \$700 or best offer. 827-7498.

1985 HONDA Elite 250. Mint condition. \$1500 OBO. 896-9630, Wendy, 264-4568.

1986 HONDA 150 Deluxe Elite. Great condition, practically new. \$1750. Leave message at 921-1058.

1986 SPREE scooter. Brand new. Won in raffle before X-mas. \$500 OBO. 829-3590.

Motorcycles

HONDA AERO 125, red, 1600 miles, warranty. \$900 OBO. 829-8551.

HONDA CB750K '78, low miles, strong, dependable. Good bike. \$600. Call now. 921-1601.

MUST SELL, 1984 Honda V-40 Magna 700CC, good condition, includes accessories, will sacrifice for \$1200. Doug, 829-6741(home), 238-9837(work).

On Campus

CAREER SERVICES

means never having to be UNEMPLOYED! Find out what we can do for you. Academic Svcs Bldg, 1st Floor 965-2350

Personal

AEPI LITTLE sisters! Get ready for lots of fun during little sister rush next week! Good luck this semester. Kirsty.

AEPI TWISTER! Memories of Pippy and Don Johnson rustling, melting down the drain, football, wine, passion fruit, denimed out, being domesticated, six/20-20, feeling daring, Christmas, Spaghetti-O's, our three roses, and all of my love.

ALPHA 'CHI pledges, get ready! Love, the actives.

ANOREXIA, BULIMIA, compulsive over-eating. Private and confidential counseling. Gennie Monroe, ACSW (recovered bulimic). 437-9420 or 248-8204.

AXO - C.H.O.R.D.S.

AX PLEDGES love their actives. When do we go active?

BOB- HAPPY birthday you big stud... #@?!*!! The last months have been great, not as many hives, uh-oh!! Hope I can make your b-day even happier. Love, KMH.

Call 24 Hours Dialing 4 Men! Recorded Gay Personal Ads

- New Ads Daily
• No 'Coded' Ads
• All Phone Numbers
• No Membership Fees

1-976-4 MEN

Dial 1-976-4636

First Min 55¢/Ea Add'l Min 45¢

Free! - After listening to today's ads you'll be able to place your own!

1/30

DAN CAMPION, congrats you Sigma Chi you! Have a great semester! Jane.

DANCERS, PHOENIX'S classiest females wanted for Strip-O-Gram service. Short hours, excellent pay. Ask for Randy or Cheryl, 939-5591.

DG PLEDGE Heather White- Good luck this semester. I'm always here for you! DG love, Shari.

DON'T MISS PRSSA'S 1st meeting of the spring semester in Sauffer Hall, Room A15 at 5:15 p.m. Thursday, January 29th. Public Relations Society of America, PRSSA!

DON'T BE LONELY! Phone dating is fun and easy. ROMANTIC WEEKENDS, SANDY MOONLIT BEACHES Free Mexican Cruise Call for details FUN DATES Falling in love... just a phone call away. 1-976-6666 (90¢ per minute) Call 24-hours 1/30

GREEKS, CAN you make people laugh? Can you dance, sing, or light yourself on fire? Tryouts in between acts at Greek Sing are being held February 2nd and 3rd, 2:30-4:30, Pima Room at the MU, 5-7 minutes. Call Dawn for more information. 784-9008.

HAPPY BIRTHDAY Jeff from hell. What would you do if Generra when out of business? Porky.

HERPES SUPPORT group for singles, Tempe area. East Valley Group, PO Box 2710, Scottsdale, 85252.

JEFF LOWE - Happy birthday to the greatest brother in the world - because you're the faavrit!

JULIA, HAPPY birthday for the fifth time. Love, Jim.

Personal

JULIE, AWESOME Chi-O mom! Happy birthday! You're the best! I love you to pieces. Have a great day! Love, Julie.

KAPPA DELTA'S: WHERE there's a will, there's an "A". Aim high this semester!

MR. TIM Nichols, whatever is happening... I'm very glad it's happening! Love, Traci.

NEW CREDIT card! No one refused Visa/Mastercard. Call 1-619-565-1522 ext. C23AZ. 24 hours.

P.F.: THANKS for the sweet card! Have a great semester. Love, J.K.

Give the bars a break! ClassPhone Recorded Personal Dating Ads. Easiest and Most Fun Way to Meet Someone New... No Membership Fees No 'Coded' Ads All Phone Numbers 1-976-4000 First Min 55¢/Ea Add'l Min 45¢ Free! - After listening to today's ads you'll be able to place your own! Call 24 Hours 1/30

POOKIE, LOVE you snookums, huggles, and kisses. Love, Boom-Boom.

PREGNANT? CONSIDER adoption. We may be able to help with housing and medical expenses. For pressure-free counseling at no charge, call Southwest Adoption Center, Inc., 602-234-2229 or 1-800-423-2229.

PREGNANT? NEED help? Call Birthright, 257-0958. Someone cares! Free. Confidential.

R.E.: 6 months ago 1st date Ruthless People; 6 months later true love! Love, C.F.

ROSES ARE red, violets are blue, for Valentine's Day give pictures of you! Cheap! 968-2977.

RUSHIES: SAE is what fraternity is all about. Looking forward to seeing you tonight.

STATE PRESS T-shirts and sweatshirts make great gifts! Available in navy, maroon, and green, S=M=L=XL. T-shirts \$7, sweatshirts \$13. On sale at STATE PRESS, Matthews Center basement, 8 a.m.-5 p.m. daily. VISA, Mastercard, cash, check.

THANKS TO St. Jude for past favors.

THE LITTLE sisters of Sigma Chi are looking forward to a great rush. Come join us.

RUSH ATQ 967-4962

Real Estate

BY OWNER: Vaulted ceiling condo, two bedroom, two bathroom, 7 1/2 foot arched window, dramatic stair entry, \$78,800 cash to mortgage or 9% new financing. 966-0063.

QUESTA VIDA condo near ASU. Two bedroom, two bath, 9 1/2% assumable, \$1000 CTM. All appliances, fireplace, indoor racquetball, weight room, sauna. 967-6906.

WALK TO ASU, \$4000 down, assume no qualifying loan for 1985 model, sharp Los Prados townhome, 13th St./Hardy. Way below new models, a steal at \$68,000. Trade Winds Realty, 820-3333; Melinda, 838-7428.

CALL YOUR PARENTS Townhome Reduced! 819 N. College #1-121 3 bedroom, 2 bath \$99,000. Becky Hale Merrill Lynch 954-6888 or 265-7894 1/29

Roommate Wanted

\$225 OR \$130 includes utilities in two bed, two bath apartment with pool. 967-6163 evenings; 820-3612 days. Ask for Mark.

BRAND NEW 2 bedroom condo, 1/2 mile to ASU. Want female nonsmoker to share furnished, w/d, pools, tennis. 921-1476.

FEMALE NONSMOKER: Large, furnished bedroom. Six blocks ASU. 1/4 utilities. Many extras! Pool, satelliteTV, washer, dryer, fireplace, etc. Arthur, 968-7283.

FEMALE NONSMOKER: Fully furnished townhouse close to campus. 3 bedroom, 2 1/2 bath, garage, washer, dryer, private patio, pool. Rent \$230 to \$280 + 1/2 utilities. Call Christy, 894-1873.

FEMALE ROOMMATE to share three bedroom house. Two miles from ASU. Complete with dishwasher, microwave, fireplace, and golden retriever. \$175 plus 1/2 utilities. Tina, 894-1375.

FEMALE ROOMMATE needed. 3 bedroom, 2 bath house. 1 1/2 miles to ASU. WD, furnished. \$200, 1/2 utilities. Available middle of February. Call Ann, 966-1790.

FEMALE ROOMMATE wanted. Own room in two bedroom condo; fully furnished; \$250 + 1/2 utilities. Call Laura, 967-7446; 700 W. University, #245.

FEMALE TO share new luxury townhouse, 2 bedroom, 2 1/2 bath, close to ASU. \$275 plus 1/2 utilities. 969-8851, Ann.

FEMALE- TWO bedroom, two bath, new, luxurious condo. All appliances, pool, spa. Day, 759-1081; p.m., 926-7849, 921-0541.

Buy it. Sell it. Find it. In The Classifieds.

MALE OR female to share 2 bedroom, 2 bath apartment, Palm Tree Village. 1/2 mile from campus. \$240 + 1/2 utilities. Available now. Jim, 968-3651.

MALE TO share room in 2 bedroom, 2 bath. Nonsmoker. \$185 a month plus 1/2 utilities at Worthington Place. Call 921-9420.

NEED TWO nonsmoking male roommates to share one of two bed, bath condo at Worthington Place. \$200 + 1/2 utilities/person/month. Half off first month with signed semester lease. Contact Jeff: 968-1892.

ROOMMATE WANTED: One bedroom apartment. Walking distance to ASU. Call 921-9538.

SEEKING RESPONSIBLE female to share furnished 2 bedroom, 2 bath poolside apartment. Great location. Microwave, jacuzzi, and other amenities. \$313 per month plus half phone. 345-0310.

SPRINGTREE CONDOS- Male to share a completely furnished condo. Washer, dryer, vaulted ceilings, your own room and bath. Only \$300 month + 1/2 utilities. 966-8208.

TWO BLOCKS from campus, fully furnished, 2 bedroom, 2 bath condo. Washer, dryer, microwave, pool, and volleyball. \$250/month plus utilities at The Commons. Eric B., 968-7055.

TWO ROOMMATES wanted to share 4 bedroom fully furnished home with pool near campus. \$225 per month plus 1/2 utilities. Call Bill at 840-3864 days, 990-0531 evenings.

TWO ROOMMATES needed to share master bedroom in awesome 2 bedroom, 2 bath apartment with ceiling fans, washer, dryer, dishwasher, micro, TV. Springtree Condos, \$180 + 1/2 utilities. Ross, 968-5948.

Services

AUTO UPHOLSTERY or complete interiors. 15% off with ASU ID till March 31. Free estimates. 968-2392.

COMPUTER TERMINALS for rent or sale with modem. \$35 per month. Also PC/XT or AT complete. 246-6172.

HAVE UNWANTED facial or body hair removed permanently by electrolysis. Free consultation, located in Tempe. Call Sharon at Desert Electrolysis Center, 829-7829.

HELP IN speaking from qualified speech teacher. Organization, presentation, voice production. Call Lenore, 820-6383.

HELP IN writing from top M.A. graduate. Organizing, style, grammar. Call Lenore, 820-6383.

HELP. WILL edit papers, write resumes. \$10/hour negotiable. B.A. in English. Jane, 967-3202.

IBM PC training. MS/DOS, word processing, spreadsheets. Student discount. Third Wave Services, 990-8767 or 990-0421.

I'LL IRON for you. Call Kathie, 820-1556.

INCOME TAX - accounting. Over 9 years prior experience working for IRS. Bob Soper, CPA. Phone 946-9192.

Services

MATH TUTORING- Beginning to advanced. NW Phoenix and Tempe. Call Rick, 938-2901.

RESEARCHING SOURCES for project takes time from study. Call on American Information Center for help. Write specifics AIC for opportunity to assist. AIC, Box 7657, Phoenix, AZ 85011.

RESEARCH ASSISTANCE. Largest library of information in U.S. - all areas. Toll-free hot-line: 1-800-351-0222.

SUBSCRIBE TODAY to the Arizona Republic. ASU student subscriptions \$20/semester. Dave 894-2985 or 839-0561.

Transportation

ATTENTION: FREE cars to all major cities. 21 or older. Call AAA Driveaway, 277-9979.

CARS AVAILABLE - 21 or older. All States Drive-away, 992-5200.

Travel

JOIN CENTER for Body Awareness March 7-12 for a relaxing vacation at spa, Rocaliente, Mexico. Call for details. 894-8347.

CASH PAID! Buying United and Western "bumped", bonus/extra airline tickets. David, 584-6575.

Typing

A-1 LASER word processing. Get your papers, etc. typed at Kinko's, 933 E. University, 966-2035.

ALL PAPERS typed to your complete satisfaction. Convenient. Reasonable. Mrs. Oakley, 967-0802.

ALL WORD processing projects done accurately, promptly, and reliably. Experience with research papers, theses, and dissertation styles. Satisfaction guaranteed. Linda Brewer, 839-7905.

CLOSE TO ASU. Overnight typing! Reports, term papers, resumes, proof-reading. Accurate service. 966-4523 before 4:00.

FAST RETURN. Professional typist will edit spelling, punctuation and grammar. Accuracy guaranteed. Joan, 839-0772.

FORMER ASU staffers! Word Processing. Experience with APA, MLA and other formats for dissertations, theses, term, and research papers. Rates quoted. Members NASS and MAPSS. Call Donna or Joan, 945-6302 or 947-0402.

GLENDALE- NEED it typed? Call Sherri at 938-3037. High quality typing at a low, reasonable price.

GUARANTEED- ACCURATE, quality typing. Resumes, cover letters, theses, prefer 100 page papers. Reasonable prices. 839-3305.

LETTER PERFECT Word Processing. Rush jobs no problem. Dissertations, term papers, resumes, theses. Quality! 839-9103.

LOVE TO type!! Quality service, low rates, edit grammar and spelling. Jill Clarke, 966-7734, 965-3236.

NORTHWEST PHOENIX. Typing/word processing. Term papers, theses, cover letters, resumes. 938-3397.

PHOENIX AND Glendale. Fast, reasonable rates. Resumes starting at \$5. Diane, 937-2068.

SHORT OF TIME? I can help. Reasonable. Professional. Guaranteed. Experienced in academic. Call Jessie 945-5744.

THE PAPERWORKS- Thesis, report, and letter typing service. IBM compatible word processing. Near ASU. 921-9575.

TYPING, 10% discount with this ad! Professional, accurate, same-day. Call Gwen's Office Services, 897-7859.

WILL DO typing/word processing. Quality work. 15 years experience. 897-9013.

WORD PROCESSING, secretarial services. 23 years experience. Student discount. SW corner, Miller and Chaparral. 994-8145.

WORD PROCESSING- Manuscripts, legal documents, resumes, term papers, and theses. Close to ASU. 438-8864.

WORD PROCESSING- Theses, term papers, etc. 32 years experience. \$1.25 double spaced page. Marian, 431-0618.

Wanted

EXPERT KNITTER wanted to knit five sweaters from the Glorious Knits book. Phone 279-3363.

MASSAGES BY a nurturing, caring person with a spiritual focus. One to two hours per week. Phone 279-3363.

WANTED: 1 female 18-25, 1 male 18-30, 1 female adult any age for avant-garde movie. Screen test: Friday, January 30, 3-5 p.m. in Dixie Gammage room 241. Monologue available January 28 at same location. You too can be a star!

P/T POSITIONS PERFECT FOR STUDENTS AND TEACHERS EARN EXTRA MONEY! \$50 CASH BONUS! We need your winning successful sales ability. Self starters to work long term, interesting tele-marketing positions. Kelly Services 264-0717 Not An Agency - Never A Fee 1/30

المطعم المغربي
The Moroccan Restaurant
... the only one in Arizona
 ... let your fingers walk you through an exotic 5 course feast fit for a sheik ...

Live Music
 Belly Dancing

Open 11:30 a.m.-10:30 p.m.
 Seven Days A Week

947-9590
 4228 N. Scottsdale Rd.
 (300 ft. south of 5th Ave.)
15% OFF w/this ad.

فرقة موسيقية ورقص شرقي

The
hair performers
50% OFF Perm Sale
 (Reg. \$40-\$80) Longer hair slightly higher. Does not include hair shaping and styling. First time clients only. Expires 3/15/87.
 Haircut & style \$12.50
 Open 10-9 • Sat. 10-5
 903 S. Rural • Cinnamon Tree • 894-0184

SUN DEVIL HAIRCUTTERS
 "Stylists who care enough to listen"

Shampoo
 Conditioning
 Precision Cut
 Blow Dry

\$5.00 OFF

Regular Price
 Men \$13
 Women \$15
 Hrs.: Mon-Fri. 9-8
 Sat. 9-5

Special

Next to the Warehouse Dell in the Arches Plaza • 130 E. University Dr.
 Limited Offer. Call Now! 966-5462

NEXUS



Terrace Road Apartments
WALK TO SCHOOL!

1/2 block from Campus. Huge well-furnished 1-bedroom 1-bath, and 2-bedroom 2-baths, all utilities included, plus large heated pool, spacious laundry facilities and cable TV.

950 S. Terrace Rd. 966-8540

Dollar\$ has more than just the most interesting earrings in the Valley. It has the lowest prices.

BELTS \$1.00 EA. OR BUY 5 GET ONE FREE
EARRINGS \$1.00 PR. OR 3 PAIR FOR \$2.50
LARGE BOW BARRETTES \$2.00-\$4.00
FERRIS BUELLER SUNGLASSES \$7.00

Dollar\$ has more than just the most interesting earrings in the Valley. It has the lowest prices.

414 S. Mill #207 Tempe (above Spaghetti Co) 829-1127

DOLLARS FASHION ACCESSORIES
 Dollar\$. It's not just our name, it's our prices!



WHY "HELGA" PISCOPO EX-EAST GERMAN SWIMMER DRINKS MILLER LITE



© 1986 Miller Brewing Co., Milwaukee, WI

"TO KEEP THE GIRLISH FIGURE"

THERE'S ONLY ONE LITE BEER

