

Student senator plans to introduce proposal for 2 graduate seats

By KERRY FEHR
State Press

An Associated Students senator said Sunday she will introduce a bill to the senate to add two seats for graduate student representation, although a similar proposal was voted down by the executive committee.

Sen. Kate Lehman, College of Public Programs, said she was hoping to get the full backing of the executive committee before bringing the proposal to the senate on Oct. 7.

The committee defeated the resolution, 3-2, in its meeting Thursday.

"It shouldn't hurt the vote in front of the full senate," Lehman said.

Activities Vice President Christine Roth was expected to vote in favor of the resolution but voted against it during the committee meeting.

Amy Abraham, Graduate Student Association director, said Roth told her last week she was in favor of the resolution.

Abraham said the Graduate College has met both criteria for senate representation, as stated in the ASASU constitution.

She said each college must have a council and be recognized by the University.

"I don't understand why (it was voted down) because it's stated right there in the constitution what the criteria are,"

Abraham said.

"It's not like we're trying to create a new thing," she said.

Abraham said graduate students have special needs and should be represented in the senate.

She said ASU has the largest graduate student population in the country, approximately 10,000 to 12,000 students.

Opponents of the proposal say graduate students have the same opportunity as undergraduates to serve on the senate.

But Abraham said nothing guarantees graduate student representation on the senate.

Opponents also argue that creating two more seats specifically for graduates constitutes double representation.

Sen. Ed Rubacha, College of Law, said he abstained from the executive committee vote because he did not want to block the way for graduate representation.

But Rubacha said he does not know of any special needs for graduate students.

Rubacha said he would back the bill if Lehman and her supporters can prove that graduate students have special needs and, therefore, need separate representation.

But Abraham said representation is needed because she does not have enough resources to communicate with the graduate population and find out what its special needs are.



Andy Mrozinski/State Press

Painted vision

Aran Fontaine, 18, stretches his spirit to the limits in the ASU student section. Fontaine, a business major, joined many of his friends from Palo Verde West dormitory in cheering the Sun Devils to victory over Southern Methodist on Saturday night. Story, page 15.

Tuition hike 'inevitable'; state officials explore aid

By KIM MATTINGLY
State Press

Although a tuition hike is "inevitable" this year, the Arizona Students Association and state officials are exploring additional financial aid possibilities, an ASA member said Friday.

Terri Hoffman, who is also Associated Students of ASU State Relations director, said: "Due to tremendous increases in tuition, financial aid has fallen way behind in the past few years. It needs to catch up."

Hoffman said ASA's goal is to show "students are paying more than they should because (Arizona's) financial-aid base does not match tuition."

"We realize there's going to be some sort of increase. Tuition has to go up with the cost of living, but we want to keep it as low as possible."

Last year's \$146 tuition increase was the largest in ASU's history, but Hoffman said, "So far, information sources show there should be no reason for that type of increase again."

She said "University sources" tentatively show a 7 to 10 percent tuition increase for the 1987-88 academic year would be reasonable.

ASA Director Diane Ziple said ASA is compiling the second part of its tuition report, which will be presented to the Arizona Board of Regents at its October meeting at NAU.

She said the report will include information on educational costs, inflation rates, enrollment patterns, student access to higher education and a comparison of Arizona's tuition and student aid in relation to other universities.

Ziple said the association will propose a "range of tuition" for the 1987-88 academic year that recommends "more reasonable increases than last year."



'Tuition has got to go up with cost of living, but we want to keep it as low as possible.'

— Terri Hoffman

ASA members and ASU officials met with a regents' student-aid task force, comprised of various officials from Arizona's three universities, late last week.

Paul Barberini, director of ASU student financial assistance, said the goal of the task force is to educate the Arizona Legislature on changing trends in federal funding and student financial needs.

"I think right now many people do not have the perception that there is a need, or that it is as great as it is," Barberini said.

"We need to educate the state Legislature about those changing trends, and the major trend is federal government reducing its role."

During the five-hour meeting, Hoffman said the task force reviewed financial aid research to be presented at the October regents meeting.

A rough draft of the report said, "There is not sufficient financial aid or a significant unmet need exists" in Arizona.

For example, Pell Grants are being reduced for 1986-87 for about 600 students at ASU, and about 500 other students are being eliminated from the program due to reduced federal funding.

The report also said working students and their parents provide 60 percent of education costs, and student loans are alarmingly popular.

ASU's research showed "default rates are rising and the aggregate average loan debt for resident student borrowers is \$10,000; nonresident student averages approach \$16,000."

The report continued: "If one assumes that students are economizing; parental contributions are not going to increase; students cannot increase their part-time work hours without threatening academic performance; and after graduation students do not have the ability to repay larger loan amounts, then increasing (state) grant support is the only remaining possibility to consider that can promote access and permit retention of students."

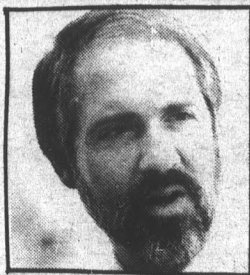
UA task force members proposed several options for state-supported grant programs, including a centralized state-aid program in which funding would be appropriated by the Legislature and administered by a central agency.

Other options included campus-based programs and expansions of existing programs, such as tuition waivers.

Barberini said he cannot predict how the task force's report will affect tuition increases.

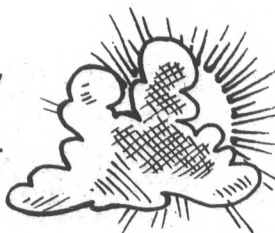
"We have asked the board to consider increasing state grant resources," he said. "Whether that translates into lower increases or more financial aid dollars is something the board has to wrestle with."

inside today



RICHARD LANDRETH
Parking official says the number of tram riders has unexpectedly doubled in the past year. Page 7.

ASU WEATHER
Cloudy skies today with an expected high of 90 degrees. The expected low is 70.



| | |
|-------------------------|----|
| A second look | 2 |
| Bloom County | 7 |
| Classified | 18 |
| Entertainment | 9 |
| Opinion | 4 |
| Police report | 8 |
| Sports | 15 |
| Today | 2 |

today

Today is a daily calendar of events happening on the ASU campus. Submissions to the calendar should not be confused with Collage, which was a weekly calendar of meeting announcements. We no longer print Collage.

Today entries are subject to editing due to space limitations or content.

Meetings

•Give a Damn Art Teachers will meet at 4:30 p.m. in Art Building Room 226. Speaker Sally Derney will speak about Celebrate Youth. It is a general meeting and everyone is welcome.

Lectures

•Professor Henri Menudier from Paris will lecture on "German-French Relations: Brake or Motor in Europe," in the MU Cochise Room at 1:30 p.m. The lecture is one of the series on "Western Europe and the United States" and is sponsored by the vice president of

Research and German Studies Review.

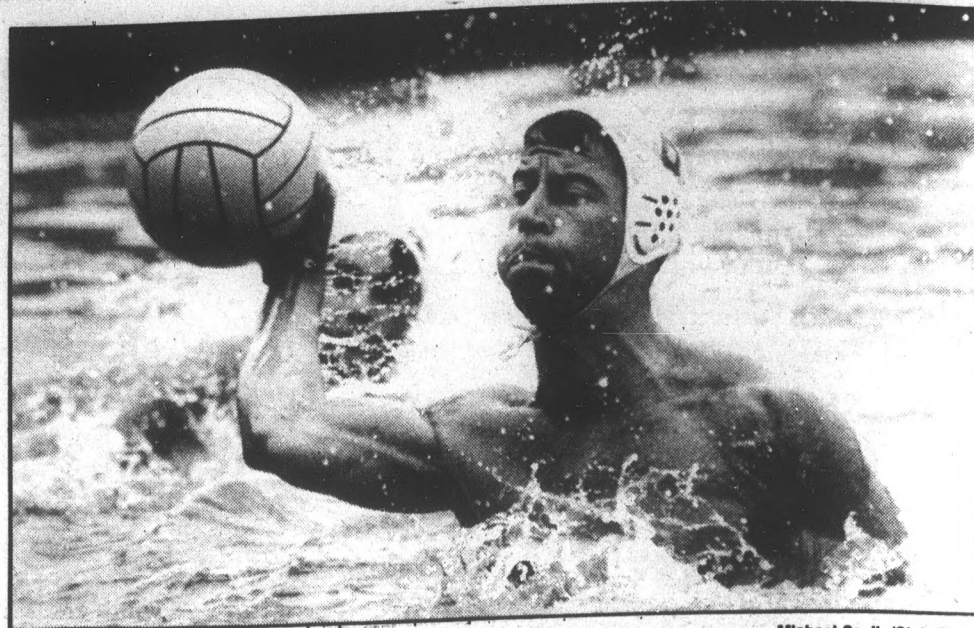
•Roger W. Axford, ASU Division on Curriculum and Instruction, and president of the Arizona Adult Education Association, discusses International Adult Peace Education. The lecture will begin at noon in the MU Santa Cruz Room. It is sponsored by the Coalition for World Peace.

Entertainment

•George Thorogood and the Delaware Destroyers will perform at the Mesa Amphitheater at 8 p.m. Tickets are \$14 available at Dillard's box office.

Correction

The State Press incorrectly printed on Friday the ABLE-Association of Bilingual Eduactors meeting was to be held Friday, Sept. 19, at 9:30 a.m. The meeting will actually take place Friday, Sept. 26 at the same time. The State Press regrets any inconvenience caused.



Michael Scully/State Press

Where are the horses?

Tom Grady, 6, of the Sun Devil Water Polo A team shoots on goal during the Sunday match in the Aquatic Center. Grady along with Gary Ahern, led the Devils to a 12-10 victory over the U of A Wildcats, with three goals each.

pac-10

Luxury boxes installed for Raider, Trojan fans

LOS ANGELES — Raider and Trojan football fans will soon be offered alternative seating at the Coliseum. Beginning next season, spectators will be able to enjoy their favorite teams from the luxury of private boxes located in the upper tiers of the stadium, stretching from end zone to end zone.

Each of the 100 new boxes will be leased for a five-year period for \$50,000 a year, said Irv Kaze, Raider senior administrator.

Completion of the project will cost the Raider organization an estimated \$15 million. If all the boxes are leased, the

project will pay for itself in a little over two years, he said.

"It's a great way to watch a football game," Kaze said.

The facilities will be completely self-contained, and equipped with 12 seats, two color televisions, a refrigerator, a wet bar, and an ice maker, Kaze added.

The boxes have "things that you and I have in our own homes," Kaze said. In addition, box holders will be taken to their seats in a private elevator and given access to VIP parking.

Aside from the luxurious surroundings, those who lease boxes will receive 12 tickets for all pre-season and regular season Raider and Trojan games.

-Daily Trojan

Jets cause excessive noise level for U of A

TUCSON — The two General Electric TF34-GE-100 high bypass ratio turbofan engines that are slung on the A-10's backside, are loud enough to shake the windows and rattle the blinds in University of Arizona classrooms. That tends to upset professors.

"It's a real annoyance," said Thomas J. Volgy, an associate professor of political science at the U of A. "I have to interrupt my classes way too often."

At least once during every class, Mark Spencer, a tennis instructor, has to either stop his class or scream over the roar of a low-flying military aircraft.

"It really interrupts the flow of the class, for about 15 to 30 seconds," he said. "It's especially bad when you're trying to give a lecture."

The number of flights over campus was reduced after the 1978 crash of an A-7D Corsair II near campus that killed two U of A students, but professors are still calling them bothersome.

U of A music professor Howard S. Conant said the noise could cost the university money.

"It's especially annoying when we're on the phone long distance; it gets very expensive when we have to wait for a jet to pass over," he said.

-Daily Wildcat

MONDAY NIGHT FOOTBALL

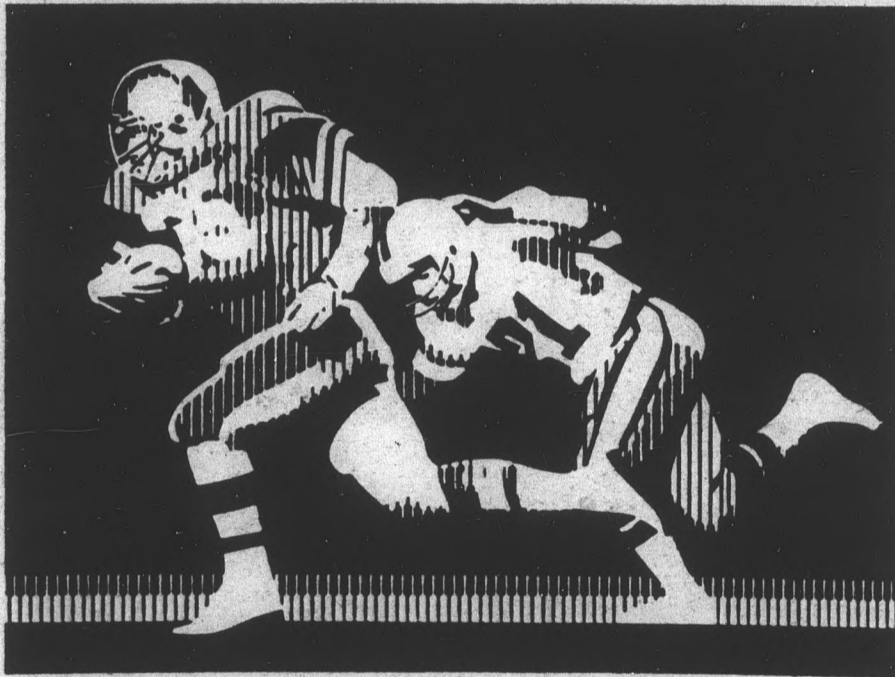
FREE Tacos & Tostadas

\$1 Well, Wine & Draft

\$1.50 Pitchers

\$1 Miller Lite

NO COVER



ON The
BIG SCREEN

Register to WIN
one of two
Yamaha Scooters
courtesy of

YAMAHA
DISCOUNT
CYCLE CENTER

Ladies Night on Wednesday

First 200 ladies receive a rose from Desert Rose

NO COVER FOR THE LADIES

7:30-8:30 p.m. **1¢ DRINKS**

8:30 to Close **40¢ DRINKS**

GUYS

75¢ Domestic Bottle Beer

\$1 Imports

AFTER THE GOLD RUSH



1216 E. Apache Blvd.
Tempe • 968-2446

2 ASU engineers work to light streets by tapping energy of desert sunshine

By DAVE HODGES
State Press

Arizona's abundant sunshine is good for more than just terrific tans.

Two ASU engineers want to tap the sunshine as a power source to illuminate freeway signs, roadway lights and flashing warning lights.

Paul Russell, professor of engineering, and Jonathon Upchurch, associate professor in civil engineering, are conducting a 24-month study on the use of solar energy to power highway lights.

The \$130,000 project is sponsored by the Arizona Department of Transportation and funded by the Federal Highway Administration.

Upchurch said he, Russell and a graduate student have completed a feasibility study which showed that overhead signs, roadway lighting and flashing warning lights could be run from solar power.

But the researchers ruled out the possibility of producing solar energy for traffic signals.

"The power requirements are much too large for traffic signals," Upchurch said.

"Our project will manufacture and install a few (solar-powered) systems and test them. It is up to the Department of Transportation to decide on whether or not there will be a widespread use of them."

He said the lights will use a system called "photovoltaics," that would directly convert sunshine into electricity.

"The energy is stored in a battery similar to the one in your car," Upchurch said. "But I should point out that the solar batteries are much, much bigger. Some of the larger ones

can weigh as much as 1,000 pounds."

Upchurch said the battery would be able to store enough energy to cover days of inclement weather.

"We do want to have a factor of safety to cover cloudy days," he said. "There are capabilities to furnish a battery that could cover 10 cloudy days in a row. But for Arizona, we are producing a system that could handle three consecutive cloudy days."

Upchurch said only four signs presently use solar power in the country: two in San Diego and two in New Mexico. He said a parking lot is also being solar-powered in San Diego.

The highest economical savings would be in rural areas, Upchurch said.

"In an urban area where it's fairly easy to plug a light into a power source, I don't think it (solar-powered lights) would save too much money," he said.

"But in a rural area where power lines can cost up to \$20,000 per mile to install, the savings could be very substantial."

Besides saving money the solar-powered lights could also save lives, Upchurch said.

"Some parts of the state have a nighttime accident problem. Since there is no power supply in these areas, there is no lighting for the roads," he said. "In this case, it is practical to bring in solar lighting. It may just help to reduce the accident rate."

Arizona is a prime target for solar power, according to the National Weather Service.

Phoenix and the southwest deserts average 212 days of sunshine per year.

drycleaning

McKELLIPS & SCOTTSDALE RDS. (ALPHA BETA SHOPPING CTR.)

STUDENT DISCOUNT 20% OFF DRY CLEANING

SHOW I.D. CARD WITH INCOMING ORDER

| | |
|--|---|
| Silver Solarium High Tech Tanning | FREE TANNING SESSION |
| Single \$4.50 | w/purchase of any tanning session package |
| 5 session \$19.50 | |
| 12 session . . . \$59.50 | With coupon. Expires 9-30-86. |

\$5.00 Off Perm

Reg. \$40
Includes shampoo, conditioner & cut.
With coupon. Expires 9-30-86.

Cellophane \$22.00 Highlight \$30.00

Includes conditioner.
With coupon. Expires 9-30-86.

Hair Cuts \$11.00

Reg. \$15
Includes shampoo, conditioner & cut.
With coupon. Expires 9-30-86.



Mon.-Sat. 9:30-8:30
Sun. 11:30-4:00

966-6111 Call For Appointment
933 E. University
SE Corner Rural & University



GRUMPY JOHN'S BAR-B-Q

ASU FALL SPECIAL

Buy one regular dinner, get 2nd one 1/2 PRICE

With coupon only. Not good with other specials. Limit two per coupon. Expires 12-31-86.

1811 N. Scottsdale Rd., Tempe • 946-8892
Scottsdale Rd. & McKellips

JOHN'S SHOE & LUGGAGE REPAIR



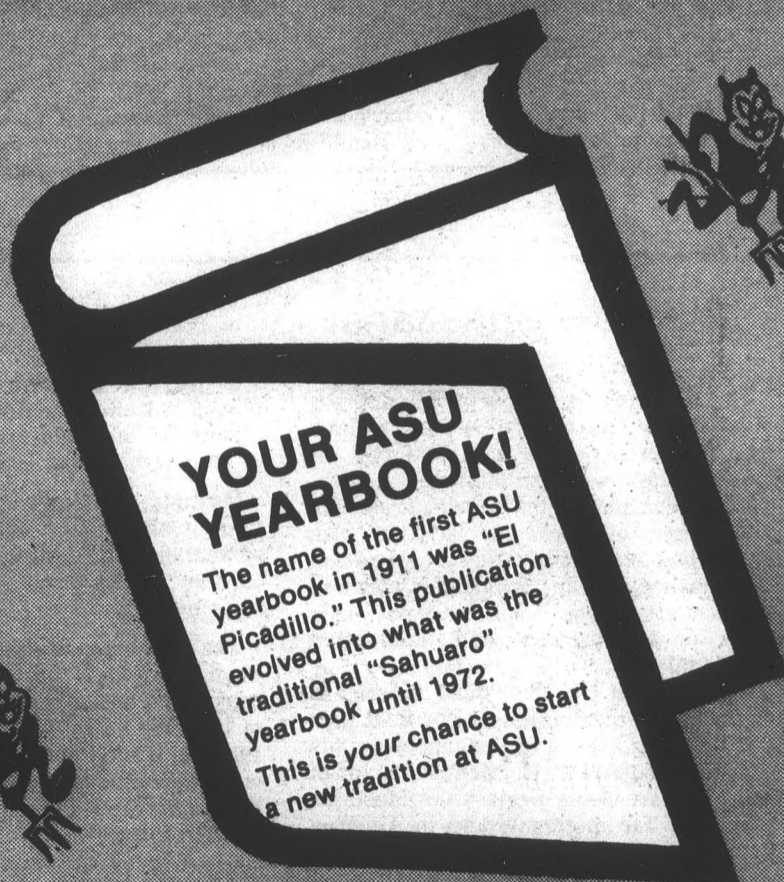
- Resoling Tennis Shoes
- Orthopedic Work
- Complete Line of Shoe Care Products
- Birkenstock Repair

718 S. Mill Avenue
Tempe • 967-9101

Hours: M-F 9 a.m.-5:30 p.m.
Sat. 9 a.m.-5 p.m. • Closed Sunday

If The Shoe Fits,
Repair It At John's! **10% With This Ad**

NAME the YEARBOOK!



It's easy!

Just fill out the entry form below and bring it or mail it to ASU BOOKSTORE or MUAB (lower level, Memorial Union). Deadline for receiving entries is 10 a.m. Monday, Sept. 29, 1986.

Winner will be notified by phone.

ENTRY FORM

YOUR NAME _____

ADDRESS _____

PHONE _____ ASU ID# _____

YEARBOOK NAME _____

WHY YOU SUBMITTED THIS NAME _____

The person whose entry is selected will be the focus of a special feature story in the yearbook!

YES! I want to purchase my 1986-87 YEARBOOK \$20.00

AVAILABILITY CANNOT BE GUARANTEED AFTER NOV. 15, 1986. LIMITED SUPPLY.

MAKE CHECK PAYABLE TO: ASU YEARBOOK

MAIL TO:
Student Life Office, ASU
Memorial Union Room 48
Box 59
Tempe, AZ 85287

NAME _____

PERMANENT ADDRESS _____

PHONE _____ ASU ID# _____ (OPTIONAL)

965-6649

ORDER YOUR 1986-87 YEARBOOK NOW!

Look out, U.S. Supreme Court

The Associated Students Supreme Court may be right in throwing out spending out limits in ASASU election campaigns, but it is entirely for the wrong reason.

The court was rather presumptuous in using the U.S. Constitution to undermine the ASASU bylaws. While Chief Justice John Matelski and his associates may indeed be intelligent people, they are hardly qualified to interpret the nuances of Constitutional law.

The whole mess started in April 1981, when the court ruled in *Clark v. Cosgrove* that spending limits in ASASU election campaigns were unconstitutional, not according to ASASU's constitution, but rather the U.S. Constitution.

In support of their position, the court cited the U.S. Supreme Court case *Buckley v. Valeo*, in which spending limits were ruled an unconstitutional denial of First Amendment right to free speech. The

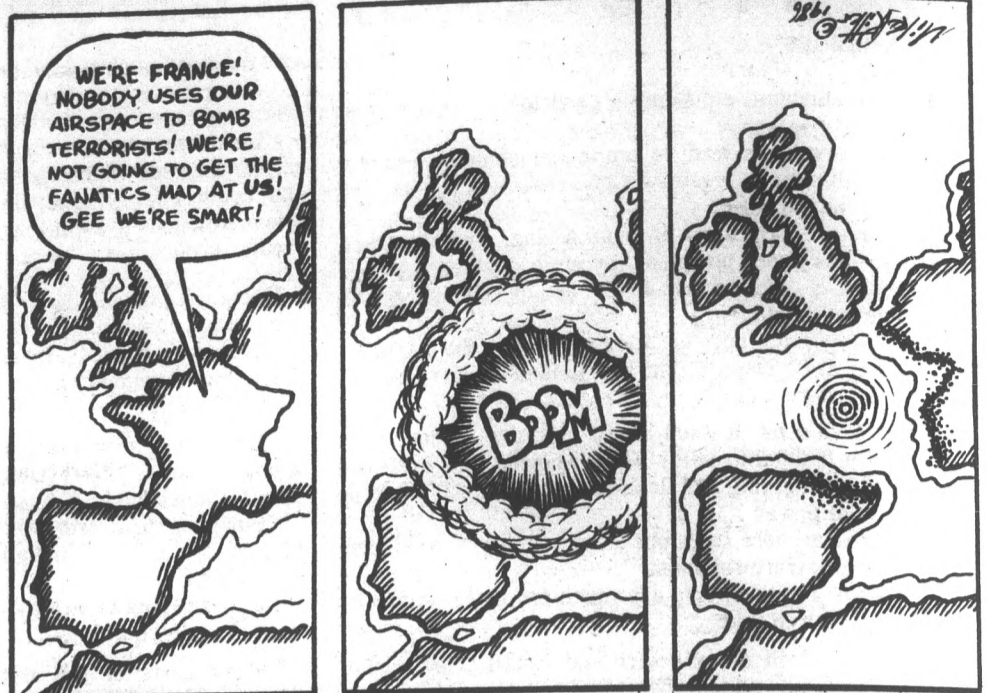
justices further supported their argument with a 1979 Arizona law in which the state abolished such limits in state elections.

The court reasoned that ASASU, as an arm of a state agency — ASU — was subject to the requirements of state law. All of which is fine and dandy, but ASASU may not be subject to such law, any more than campus clubs are subject to it.

Certainly ASASU is more than a campus club. And the fact of the matter is, the statutory and case laws about spending limits may indeed apply to ASASU.

But that is for another court to decide — one that derives its authority from the state or federal constitutions.

The student court has been set up to interpret ASASU constitutional law. For the court to decide the current case based on the U.S. Constitution is simply a pompous act.



Surrogate mother has right to keep infant

The question has been debated for a few years now, but most people can see both sides all too clearly.

A woman agrees to carry a baby for a childless couple who assume legal custody once the child is born. Sometimes the surrogate mother receives a fee for this service; sometimes just her medical fees are taken care of. But what it comes down to — in legal circles — is the woman's agreement to relinquish the baby. She signed a contract, the lawyers say, and she must live up to her end of the bargain.

In March of this year, a woman named Mary Beth Whitehead gave birth to a baby girl. While she is the biological mother, she had been artificially inseminated for the purpose of providing a child for the biological father, William Stern, and his wife, Elizabeth. The Sterns agreed to pay Mrs. Whitehead \$10,000 for the service.

After the birth, Mrs. Whitehead realized that the bond she felt with the baby would be too difficult to break. She had allowed the Sterns to take the baby initially, but in a matter of days, unable to live with the situation, she took the baby back. After 4½ months with Mrs. Whitehead and her family, the baby was forcibly retrieved by the Sterns, who have had the baby now for nearly two months. Mrs. Whitehead filed suit to regain custody, but was only granted visitation rights of two hours per week. She has never received the \$10,000.

So, as the talk shows and attorneys are now asking, whose baby is this? In a biological sense, it belongs to both Mrs. Whitehead and Mr. Stern. But who deserves the right to raise the child? New York ethics attorney Susan Wolf feels that all states should have statutes allowing a so-called "cooling off" period similar to those concerning adoption. She feels that

Ellen Young
Columnist



biological mothers should have time — say, one or two months — to examine their own feelings before custody is finalized.

I agree with this. Contract or no contract, I don't feel that a baby should be forcibly taken from its birth mother, provided that she is a capable parent. In the above case, it is Mr. Stern who should receive visitation rights, not the other way around. And in any case of this type, a mother who decides to keep the child should repay any fees or medical bills previously assumed by the adopting parents.

For me, this position is largely a spiritual one.

For many of us who believe in reincarnation, pregnancy is not considered a biological accident. Either it is something which the mother is meant to go through for her own personal development, or there is a disincarnate entity — or entities — waiting to be born to this particular woman. "Disincarnate entity" refers to a soul not currently living a life on earth. In addition, the mother — by her thoughts and actions in life — can influence which entity is born to her. To paraphrase the 20th century psychic Edgar Cayce, if you want a child who will be largely concerned with the business world, you should immerse yourself in that world during pregnancy. Consequently, the child born to a surrogate mother will likely

reflect her lifestyle and emotions, not those of the adoptive parents (unless that future child is aware of the impending adoption before birth, which is possible).

Most women are not aware of these possibilities — or at least reject them — but they do recognize a special type of bond between mother and child. It is this bond which some surrogate mothers begin to feel once the baby is born, particularly if they are allowed to see and hold it before it is taken from them. For this reason, I don't feel that contracts or lawyers have any place in this area of life.

Despite all of this, I don't think the program should be abolished. If a well-intentioned woman wishes to help a childless couple, and is emotionally capable of doing so, it is a marvelous gift of compassion. But the adopting couple should realize that they are taking a risk in this situation. If they cannot handle such a risk, they should perhaps look at their lives spiritually or philosophically. They may speculate that they were not meant to produce children. Perhaps they were intended to give a home to unwanted children who have already been born, such as those in orphanages. But if they decide to try adopting a newborn baby — whether by surrogate or otherwise — they must consider the feelings of the biological mother and should not threaten her with lawsuits or custody battles.

Representatives of agencies which arrange surrogate births tell us that fewer than one percent of the surrogates have insisted upon keeping the child. These women also take part in extensive screening and counseling before they are chosen for the surrogate program.

It is not a bad program either. But it is not foolproof. It should not be.

letters

If Muslims are murderers . . .

Editor:

Why do I get the feeling that the stuff Greg Korfus wrote (Sept. 16) is *deja vu*? Perhaps it is because it reminded me so much of the filthy literature Czarist Russia and Nazi Germany employed to evoke nasty sparks of hatred against the Jews.

I wonder, however, whether Korfus' piece of rubbish is the product of his deep hatred and bigotry, as was the case with the Nazis, or simply of sheer ignorance and stupidity. My guess is that it is the product of both!

Besides other torturous and flimsy arguments, Korfus uses the Palestine Liberation Organization to illustrate his "reason" for hating Muslims. He obviously is unaware of the fact that a good number of non-Muslims make up the top leadership of the PLO. In his utter ignorance of Muslim contributions to the wealth of knowledge enjoyed currently by the West, he lumps the entire Muslim world (only one quarter of which is Arab, and a small fraction is Palestinian) under one label, thereby drawing a sad caricature at best and mounting a crude, though not particularly damaging, attack on millions of Muslims around the world at worst.

Korfus further demonstrates his stupidity by telling us that "they (Muslims) are all murderers." He obviously does not know that the greatest murderers in history (e.g. Hitler, Stalin and P.W. Botha) were not Muslims.

Then we learn from Greg Korfus that "these people (Muslims) cannot live

without violence." Your answer to that, Mr. Korfus, is on the streets and inside the crowded prisons of America.

Korfus fears a third world war started by "these Muslims." Alas, nothing I say can alleviate his fears. I know, however, that, thanks to the likes of Korfus and his most boasted non-Muslim civilization, humanity has witnessed two major world wars and might soon end the way "patriots" like Korfus desire.

Korfus strove to show how "uncivilized" a religion different from his own, a world evidently alien to him, is. Instead, he exposed his uncivilized, bigoted little mind, revealed his lack of intelligence and, indeed, expressed, in violent language, a typically crude and uncultured mentality shared, unfortunately, by many of his fellow Americans.

My guides in life are morals, not politics or religion. I, therefore, refuse to stoop to Korfus' level and argue that my religion, or any religion or culture, is better than another. I find it necessary to end this note with a quote from the Koran, the sacred book of those "barbaric Muslims":

"And the servants of the God of Mercy are they who walk upon the Earth softly; and when the ignorant address them, they reply, 'Peace!'"

To Mr. Korfus and the like, I say, "Peace!"

Bassam H. Fawaz
Graduate student

. . . so are Christians

Editor:

This letter is in reply to a recent letter by Mr. Greg Korfus. He claims that Muslims are murderers, that the majority of Muslims approve of killing innocent men, women and children, that Muslims refuse to allow others to believe the way they wish and that the Palestine Liberation Organization is an exclusively Muslim terrorist group. These claims are obviously those of a frustrated and uninformed individual.

Greg, isn't it true that most Americans claim to be of the Christian faith? If so, then Christians are murderers. Sounds ridiculous, doesn't it? But that is the kind of logic you are using against the Muslims. There are far more murders in America than in Arab countries and the number of multiple killings is steadily rising. And if most Americans are Christians, then Catholics are probably killing Catholics and Baptists are probably killing Protestants.

Let us face the facts. Most Americans, although claiming to be of the Christian faith, do not practice their faith. If they did there wouldn't be so many killings. Yet when frustrated Arab fanatics kill someone, people like you are ready to condemn every person who is of the faith the killer claims, totally disregarding the fact that the killers have acted in as manner which is forbidden by the religion they claim to belong to.

Muslims are forbidden from killing innocent people regardless of who they are and cannot approve of any such acts of

violence as we have recently witnessed. Any person who kills an innocent victim and claims to be a Muslim is obviously not practicing his faith.

Muslims are taught by the Koran that there is no compulsion in religion, so any person who refuses to allow others to believe as they wish is not following Islamic teachings.

The PLO hopes to obtain rights that were promised in the Husain-McMahon Agreement of 1915, the Balfour Declaration of 1917, the Faizal-Weizman Agreement of 1919, the White Paper of 1939 and the many other agreements which granted land and the right to self-rule for the Arabs of Palestine. In 1917, only eight percent of the Palestinians were Jewish, 92 percent were Arab, and many of the Arabs were Christian. Today, one of the leaders of the PLO claims to be a Christian. His name is George Habish.

When an Arab who claims to be part of the PLO commits a violent act, it is unfair to condemn the entire organization. And do not confuse the PLO with the Muslim majority. The PLO fights for land and rights they believe are theirs, not for the propagation of Islam.

Search for the truth, Greg. Things are not as simple as you think.

David L. Hadley
American Muslim
U.S. Veteran

more letters

Diary of a copy chief

Editor:
For the most part, Judie Gaillard's article appearing in the Sept. 17 issue of the *State Press* was moderately amusing (assuming that was her intent). But when she makes a comment about U of A people "actually are allowed to escape from the stadium alive," these are not the words of a responsible journalist. She then goes on to say that they come to our game, root for the Sun Devils to lose and "live to tell about it," and that "we are much too soft" for allowing this to happen.
I am just as much a Sun Devil fan as anyone and I agree that a good rivalry between two teams is healthy for the spirit

of both teams, but for a "responsible journalist" to advocate bodily harm or worse to the other team's fans is below the standards of "an intelligent establishment."
Page one of the *State Press* had an article pertaining to a student murder. I feel as though it is the responsibility of all members of the school newspaper (including the copy chief) to "think" about what it is they are writing in the articles that are printed in "our" newspaper. I personally would rather not see any more articles on the front page about students being harmed by other students.

Dan Gossett
Marketing

Kick the bums out

Editor:
Having ASU contribute to the enforcement of drug laws by kicking out students caught using drugs is a fine idea and fits right in with the current trend of children turning in their parents for drug use.
But why stop there?
There are other laws which ASU could help enforce as well. Cohabitation is still a felony in Arizona, so let's kick students out

for that, too. The U.S. Supreme Court sodomy decision means Arizona's laws on that subject are still constitutional — which means students should be kicked out for engaging in oral or anal sex, whether it be heterosexual or homosexual. Then there is purchasing alcohol for minors, renting obscene videotapes, speeding, parking illegally, jaywalking...

Jim Lippard
Senior, Philosophy

DON'T FORGET!
STATE PRESS CLASSIFIED AD DEADLINES ARE 3 P.M. 2 DAYS PRIOR TO INSERTION

Dillon Folder

HIGH QUALITY EXPERTLY ENGINEERED FOLDING BIKES



3 speed • 28 lbs. • Folds down to 9x18x28
Ideal for campus travel, apartment dwellers, RVs, car trunks, boats, airplanes
\$185⁰⁰ plus tax CALL 898-3270

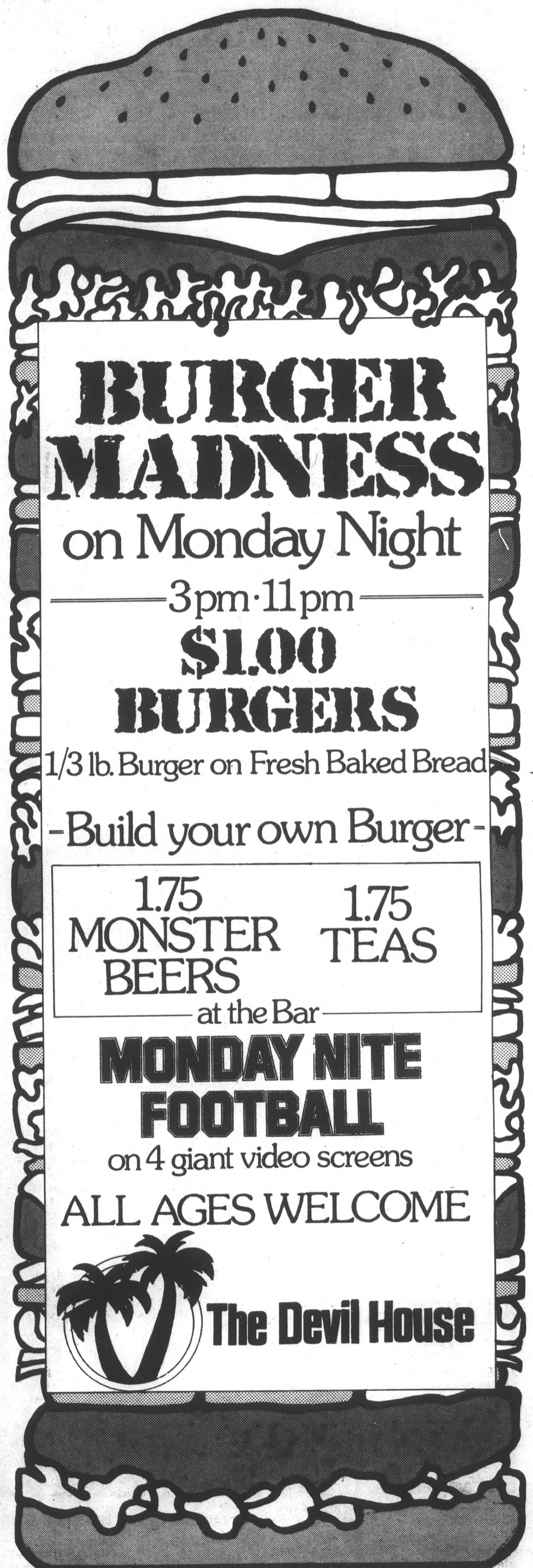
JONATHAN'S PIZZA

FAST, FREE DELIVERY FOR ASU LOCATION CALL 829-1717

ATTENTION ASU!!

| | |
|--|---|
| <p>2 LARGE 16" PIZZAS with one topping 1 FREE 32-oz. COKE</p> <p>\$10.00 tax included</p> | <p>2 MEDIUM 12" PIZZAS with one topping 1 FREE 32-oz. COKE</p> <p>\$9.00 tax included</p> |
| <p>16" 2 Toppings</p> <p>\$7.75 includes tax</p> <p>One coupon per pizza. Expires 9-30-86. Open 11 a.m.-1 a.m. Sun.-Thurs. 11 a.m.-2 a.m. Fri.-Sat.</p> | <p>16" 1 Topping</p> <p>\$6.50 includes tax</p> <p>One coupon per pizza. Expires 9-30-86. Open 11 a.m.-1 a.m. Sun.-Thurs. 11 a.m.-2 a.m. Fri.-Sat.</p> |
| <p>12" 2 Toppings</p> <p>\$5.85</p> <p>One coupon per pizza. Expires 9-30-86. Open 11 a.m.-1 a.m. Sun.-Thurs. 11 a.m.-2 a.m. Fri.-Sat.</p> | <p>12" 1 Topping</p> <p>\$4.95</p> <p>One coupon per pizza. Expires 9-30-86. Open 11 a.m.-1 a.m. Sun.-Thurs. 11 a.m.-2 a.m. Fri.-Sat.</p> |

| | | | | |
|---|---|--|--|---|
| <p>N. TEMPE 933 E. University 829-1717</p> | <p>S. TEMPE 4415 S. Rural 838-2227</p> | <p>N. MESA 635 N. Country Club 827-1999</p> | <p>S. MESA 745 W. Baseline 926-1100</p> | <p>N. CHANDLER 1018 N. Arizona Ave. 899-4922</p> |
|---|---|--|--|---|



BURGER MADNESS

on Monday Night

3pm-11pm

\$1.00 BURGERS

1/3 lb. Burger on Fresh Baked Bread

-Build your own Burger-


| | |
|--------------------------|--------------|
| 1.75 MONSTER BEERS | 1.75 TEAS |
|--------------------------|--------------|

at the Bar

MONDAY NITE FOOTBALL

on 4 giant video screens

ALL AGES WELCOME



The Devil House

Official advises flu shots for chronically ill students

By MICHAEL BURGESS
State Press

ASU's head health official is urging students with chronic health problems to receive flu immunization shots early this year.

Dr. Monty Roth, Student Health Center director, said students with chronic medical ailments should receive their flu shots before Nov. 1. The shot costs \$4.60.

"Students with respiratory problems, such as asthma and emphysema, or chronic disorders of the cardiovascular system should receive shots to prevent any complications," he said.

Roth said he also urges students with diabetes, kidney disease and anemia to get shots.

"We like to get those groups to receive flu vaccines a month or a month and a half before others to cut down on complications," he said.

Roth said there is a significant number of deaths that occur from influenza complications.

He said there have been more than 40,000 deaths during recent epidemics, according to the Center for Disease Control in Atlanta.

Roth said several hundred ASU students had influenza last year.

NORM'S Food & Drink

BUY TWO GET ONE **FREE**

Vienna Beef
HOT DOGS

With this ad.
Expires 9-30-86.

620 S. College Ave.
Corner of 7th St.
968-1940

MONDAY NIGHT FOOTBALL SPECIAL!

3 25" TVs
1 40" Big Screen TV

Chicken Wings:

1/2 YOUR ORDER FREE!

Offer good 3 p.m. - 11 p.m.

| | | | |
|----------|---|----------|--------|
| 10 Wings | — | 15 Wings | \$2.50 |
| 20 Wings | — | 30 Wings | \$4.75 |
| 30 Wings | — | 45 Wings | \$6.85 |
| 40 Wings | — | 60 Wings | \$8.95 |

Woodshed II
Northwest Corner of Dobson & University
844-SHED

Graduate Student Association

ATTENTION COLLEGES, DEPARTMENTS AND STUDY CENTERS

"MONEY-FOR-GRAD-RESEARCH-AVAILABLE"

The Graduate Student Research Program encourages graduate students to submit proposals between \$200 and \$2,000 for research study monies. Fall semester applications are available September 15 through October 17, 1986 in the Graduate Student Association Office, Memorial Union, Room 208-B. Fall semester applications must be submitted no later than 12 noon on October 17, 1986. The application must be submitted to: Office, Dean of Graduate College, Wilson Hall 112.

A committee composed of graduate students and faculty members will review proposals using the following criteria:

- 1) Is the research meritorious within its own field?
- 2) Is the research methodology sound?
- 3) Are the objectives of the project feasible to attain within the grant period and the proposed budget?
- 4) Are other sources of funding available to the student?

The program provides university support, as well as financial support, and provides graduate students experience in writing and submitting grant proposals. The program attracts graduate students and is helping promote ASU's national recognition as a major research university. For further information contact Amy Abraham, Director, Graduate Student Association, Associated Students, Memorial Union 208.

DOMENIC PIZZA & ITALIAN FOOD

Buy any medium, large or extra large and receive a FREE liter of Pepsi.

Carry Out or FREE Delivery

829-7341
2535 E. University
WITH THIS COUPON

SAVE 40%-50%
- Reconditioned bikes -
all styles and types

NEW BIKES at BIG SAVINGS

All styles
Beautiful new colors
Repairs / Accessories
TRADES WELCOME
Mastercharge / Visa

BOB'S BICYCLE BARN
1908 E. Apache, Tempe
894-6852
2 blocks east of McClintock



965-7572
TO PLACE YOUR CLASSIFIED AD.

That's right! Now you can place your STATE PRESS classified ad over the phone if you have a VISA or MASTERCARD. Just call 965-7572 and ask for classified advertising. 8am to 5 pm DAILY

STATE PRESS
15 MATTHEWS CENTER
NORTH BASEMENT
ASU
965-7572

Then get in on the ground floor in our Platoon Leaders Class program for college freshmen, sophomores and juniors. You could start planning on a career like the men in this ad have. And also have some great advantages like:


- Earning \$100 a month during the school year
- As a freshman or sophomore, you could complete your basic training during two six-week summer sessions and earn more than \$1200 during each session
- Juniors earn more than \$2100 during one ten-week summer session

■ Seniors and graduates can be commissioned through the Officer Candidate Class Program

■ You can take free civilian flying lessons


■ You're commissioned upon graduation

If you're looking to move up quickly, look into the Marine Corps' commissioning programs. You could start off making more than \$18,000 a year.



We're looking for a few good men.

Want to move up quickly?



Marines

See the Officer Selection team on the Campus Mall near the Memorial Union Fountain
September 22-24.

Part-time drivers hired to battle tram overload

By TINA DAUNT
State Press

The number of students riding ASU trams has doubled since last year causing the University to hire two temporary drivers, the assistant director of parking said.

Richard Landreth said, "Since school started, the ridership of the trams has been around 73,261. At this time last year, it was only 36,949.

"These numbers are unbelievable, we didn't anticipate the increase."

He said parking and transit services "are at a loss" as to why the numbers have increased so drastically.

"The numbers have doubled, and we just don't understand why," he said. "We did add 1,100 new spaces to Lot 59, but that would not account for everything."

Landreth said although two temporary drivers were hired last week to alleviate the pressure, he does not plan to add another tram.

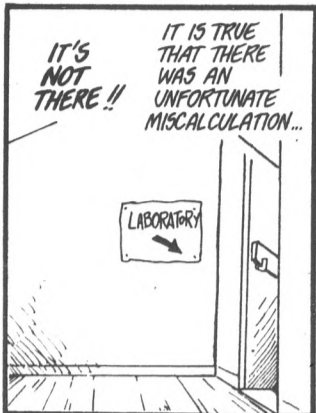
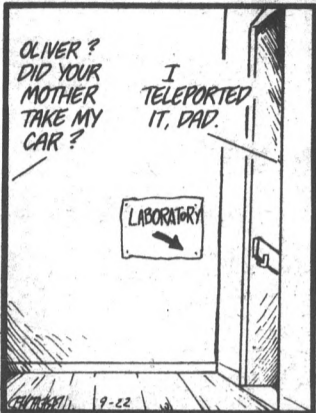
"We have six trams running from 7 a.m. to 6 p.m. To meet this schedule, we hired the Agan drivers," he said. "We have not yet decided whether or not to add another full-time driver."

Riders can expect to wait between 15-18 minutes during the busiest times of the day, Landreth said.

"Everything has been running smoothly, however, there is a bit of a wait at certain times," he said. "We're asking the drivers to be very careful not to overload the trams."

BLOOM COUNTY

by Berke Breathed



GOOD NEWS!

EVERY WEEKDAY MORNING

STATE PRESS

Insurance Available For **ALL DRIVERS**

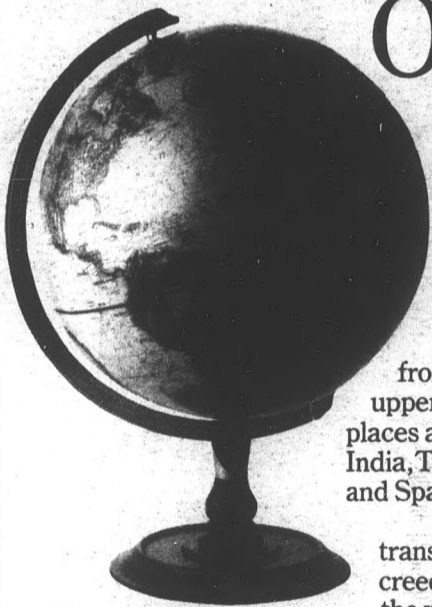
Open till 7 p.m. Evenings and 2 p.m. Saturdays

ASPEN INSURANCE SERVICES 899-3950

AUTO RATES AS LOW AS \$27 A MONTH

797 N. Alma School Rd. Ste. 8 Alma Gardens Center, Chandler, AZ

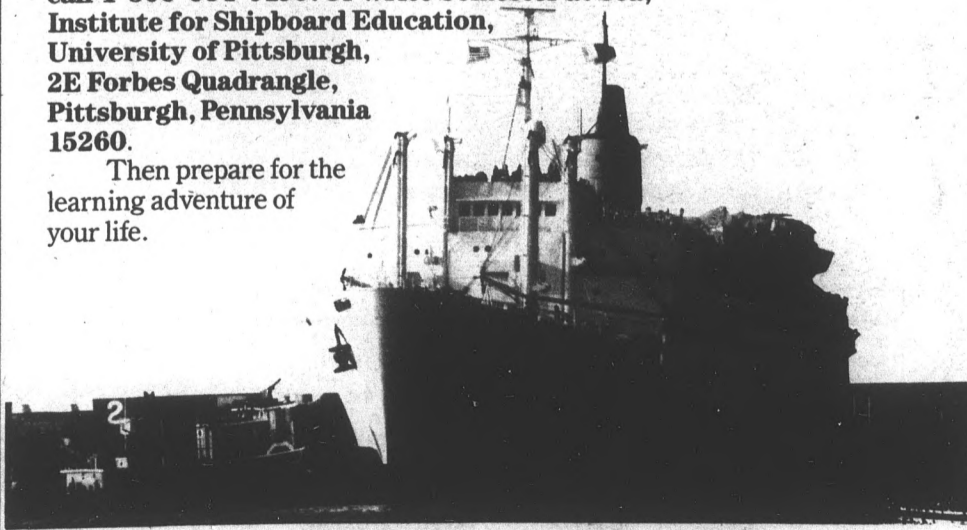
The World Is Still The Greatest Classroom Of All.



Applications are now being accepted for the University of Pittsburgh-sponsored Semester at Sea. Each fall or spring 100-day odyssey aboard the American-built S.S. Universe literally offers you the world. You can earn 12-15 transferable units from your choice of more than 50 lower and upper division courses, while calling upon places as culturally diverse as Japan, Hong Kong, India, Turkey, the Soviet Union, Yugoslavia and Spain. It is a learning adventure designed to transform students of every color, race and creed into true citizens and scholars of the world.

For full information, including a catalog and application, call 1-800-854-0195. Or write Semester at Sea, Institute for Shipboard Education, University of Pittsburgh, 2E Forbes Quadrangle, Pittsburgh, Pennsylvania 15260.

Then prepare for the learning adventure of your life.



SLIDE PRESENTATIONS

Monday, September 22, 1986
4:00 p.m. and 6:30 p.m. • MU 213
Tuesday, September 23, 1986
3:30 p.m. • MU 221

Representative on Cady Mall:

9/22 — 11 a.m.-3 p.m. • 9/23 — 9 a.m.-3 p.m.

graffitti's
KICKS OFF MONDAY NIGHT

Starting at 6 p.m.

Bears vs. Packers

TWO BIG SCREEN TVs
6-ft. Sub

FOLLOWED BY

R.E.M. PRE-CONCERT PARTY

W/ **KSTU 107.1 FM 107**

Prize Giveaway

- Concert Tickets
- Albums
- Videos
- T-shirts

INTRODUCING **DOLLAR DAZE**
WINE, WELL, DRAFT 14-oz. CUPS

only **\$1.00**

ALL NIGHT LONG!

TUNE IN TOMORROW
For Moonlighting's Premiere at

graffitti's 415 S. Mill Ave.
Downtown Tempe
968-3866

ASU police report

University police reported the following incidents in the 54-hour period ending 6:30 a.m. Sunday:

•An unknown person took a MasterCard, Goldwaters charge card and two First Interstate checks from a wallet in an unlocked room at 600 Alpha Drive, police said.

When the owner contacted the bank to report the loss, a bank teller told him his account was missing \$400, police said.

•Police said two "exit" light fixtures, a breezeway light and an elevator control light were removed from the Cholla Apartments C and D-wings on Friday night. Estimated value of the loss is \$200.

The following night, damage to the wiring in an apartment ceiling and a torn-down fire alarm were reported to police. Estimated value of the loss is \$50.

•Two subjects were questioned in the Ritter Building parking area for engaging in sexual activity in a public place, police said. They were warned of trespassing and advised to leave.

•Police said they observed a white male transient living out of his vehicle in Lot 53. He left the area after police warned him of trespassing.

•University police were called to assist

Tempe police in stopping allegedly intoxicated persons from jumping in front of cars at 500 E. Apache Blvd.

Police said when an officer arrived to the scene the subjects fled.

No injuries or accidents resulted, and there are no suspects, police said.

•A student was arrested at Orange Street and Terrace Drive for driving while intoxicated and charged after his intoxication test proved positive, police said.

•Three students were arrested and charged with "minor in possession of alcoholic beverages," police said.

•Police and the Tempe Fire Department rescued a student who was stuck in the elevator between the first and second floors of the Art Building.

Police said they could not free the student and had to call the fire department to pry the elevator doors open.

•Police and the Tempe Fire Department rushed to Hayden Hall after receiving a call to put out a "structural fire", only to find the entire area filled with dust that resulted after someone had discharged a fire extinguisher throughout the area, police said.

—LAUREN MILLETTE

Tempe police report

The following incidents were reported by Tempe Police for the period ending midnight Thursday:

•Someone phoned in a bomb threat to the Cook Christian School, 708 S. Lindon, Sept. 17, police said.

Police said a soft-spoken male voice, possibly Oriental or Indian, threatened to destroy the school "before anyone could escape."

The caller said he had planted dynamite on the property, but a search by police and school officials revealed nothing.

•A Tempe woman observed a man peering into a window at her residence, police said.

On Sept. 9 and 16, the victim reported that a man about 30 years old, 6 feet, 180 pounds, with brown hair and a mustache, was alternating between lying on a grassy area in front of her home and looking in her window.

The man wore wire-rim glasses, a dark shirt and a baseball cap. When sighted by the victim, the man drove away in a Camaro Z-28 on both occasions.

Police have a suspect in the case.

—DARRIN HOSTETLER

MANN

\$3.00 BARGAIN PRICE

ALL SHOWS BEFORE 8 P.M. MON. THRU FRI.
SAT., SUN. & HOLIDAYS FIRST SHOW ONLY

| | | |
|--|---|--|
| <p>BELL TOWER 8</p> <p>843-4593 EAST AVE and BELL ROAD</p> <p>TOP GUN (PG) 11:45, 2:15, 4:45, 7:15, 9:45</p> <p>KARATE KID II (PG) 11:30, 2:00, 4:30, 7:00, 9:30</p> <p>RUTHLESS PEOPLE (R) 11:00, 1:15, 3:15, 5:15, 7:30, 9:45</p> <p>FEMME FATALE (PG-13) 1:00, 5:00, 9:15</p> <p>RUNNING SCARED (R) 11:00, 3:00, 7:15</p> <p>STAND BY ME (R) 11:30, 1:30, 3:30, 5:30, 7:30, 9:30</p> <p>EXTREMITIES (R) 11:45, 1:45, 3:45, 5:45, 7:45, 9:45</p> <p>SHANGHAI SURPRISE (PG-13) 11:00, 1:15, 3:30, 5:45, 8:00, 10:15</p> <p>MENS CLUB (R) 11:15, 1:15, 3:15, 5:15, 7:15, 9:15</p> | <p>SUN DEVIL 6</p> <p>829-0344 The Cornerstone Rural & University</p> <p>AVENGING FORCE (R) 12:45, 5:00, 9:15</p> <p>PATRIOTS (R) 3:00, 7:15</p> <p>EXTREMITIES (R) 1:15, 3:15, 5:15, 7:15, 9:15</p> <p>SHANGHAI SURPRISE (PG-13) 1:30, 3:30, 5:30, 7:30, 9:30</p> <p>TOP GUN (PG) 12:30, 2:45, 5:00, 7:15, 9:30</p> <p>HEARTBURN (R) 12:45, 5:15, 9:45</p> <p>RUNNING SCARED (R) 3:00, 7:30</p> <p>RUTHLESS PEOPLE (R) 1:00, 5:00, 9:00</p> <p>ARMED & DANGEROUS (PG-13) 3:00, 7:30</p> | <p>SUPERSTITION 5</p> <p>834-5767 MESA AT 50 LONGMORE & SUPERSTITION</p> <p>ARMED & DANGEROUS (PG-13) 1:15, 3:15, 5:15, 7:15, 9:15</p> <p>STAND BY ME (R) 1:00, 3:00, 5:00, 7:00, 9:00</p> <p>KARATE KID II (PG) 12:00, 2:30, 5:00, 7:30, 10:00</p> <p>BORN AMERICAN (R) 1:00, 5:15, 9:30</p> <p>BACK TO SCHOOL (PG-13) 3:00, 7:15</p> <p>TOP GUN (PG) 12:00, 2:30, 5:00, 7:30, 10:00</p> |
| <p>SUN DEVIL 6</p> <p>Friday & Saturday Midnight Shows</p> <p>Bell Tower 8 • Christown 5 • Sun Devil 6</p> | <p>POCA FIESTA 4</p> <p>835-0404 MESA AT 1020 WEST SOUTHERN</p> <p>PATRIOT (R) 1:15, 3:15, 5:15, 7:15, 9:15</p> <p>RUNNING SCARED (R) 12:45, 3:00, 5:15, 7:30, 9:45</p> <p>FEMME FATALE (PG-13) 1:30, 5:25, 9:20</p> <p>PRETTY IN PINK (PG-13) 3:35, 7:30</p> <p>MENS CLUB (R) 12:30, 2:45, 5:00, 7:15, 9:30</p> | <p>CHRIS-TOWN 5</p> <p>249-2843 5707 NO. 19TH AVE.</p> <p>STAND BY ME (R) 1:45, 3:45, 5:45, 7:45, 9:45</p> <p>KARATE KID II (PG) 12:00, 2:15, 4:45, 7:15, 9:45</p> <p>TOP GUN (PG) 12:00, 2:30, 5:00, 7:30, 10:00</p> <p>SHANGHAI SURPRISE (PG-13) 12:30, 2:45, 4:45, 7:00, 9:15</p> <p>EXTREMITIES (R) 12:30, 2:30, 4:30, 7:00, 9:15</p> |

National Screenprint

- HANES BEEFY T'S - RUSSELL SWEATS & TANK TOPS -
100% COTTON POLO SHIRTS - GLASSES - MUGS - CHAIRS -
BEACH TOWELS AND MUCH MORE!!

Discount to all Greeks!



2121 S. PRIEST DR. TEMPE, AZ.
CAMPUS REP. KATHY FEE 966-7237

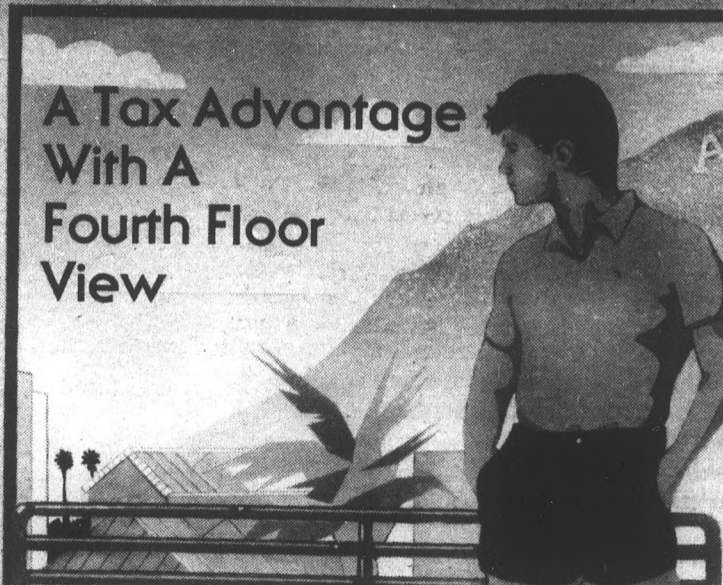
Sheraton Plaza Tempe



Where Are Your Parents Staying This Weekend

- Weekend rates for A.S.U. parents
- 224 two room suites
- Orenda Restaurant and Firefly Lounge
- Free airport transportation
- Complimentary Continental breakfast
- Hosted cocktail party nightly
- 2 miles from A.S.U.

Call (602) 897-7444 for reservations



A Tax Advantage With A Fourth Floor View

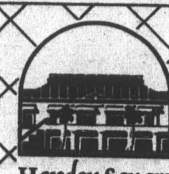
Whether you're attending ASU, or putting someone through it, now is the time to look into a practical alternative to rising dorm costs. One that gives you both a tax advantage and a more advantageous way of life. Look into Hayden Square.

These elegant, one and two-bedroom condominiums are the perfect places to live while going to school. You're just a five minute walk from the ASU campus. And you're literally in the middle of the convenience and excitement of Old Town Tempe — with its many shops, entertainment centers and more.

Hayden Square even has covered parking — a real plus over trying to find parking around ASU's dorms.

Of course, the tax advantages to owning a Hayden Square Condominium, as opposed to living in a dorm or apartment, are quite obvious. And very beneficial. What's more, by the time you're ready to sell, the resale value may have appreciated significantly.

So take advantage of Hayden Square. Condominiums that give both ASU students and their parents a clear advantage.




Hayden Square

From \$64,500 to \$106,500

829-7146

967-6420

Sales Office:
Mill & 3rd St.



HAYDEN SQUARE CONDOMINIUMS

Twist 'n' shout

Windy City mellow fellow strums with magical blue notes

By GREGORY ROBERT KRZOS
State Press

Pete Special, bandleader and lead guitarist for Chicago's own Big Twist and The Mellow Fellows, isn't quite satisfied with the band's success.

"Success is a relative term," he said. "It's a mistake to be satisfied with what you have — there's a lot more to accomplish yet."

But Special, whose band will be at the Mason Jar in Phoenix tonight at 9, obviously

hasn't been looking at his own track record.

He's only been blowing enough steam into one of the snappiest big city blues bands for more than 14 years.

He's only experienced a taste at the top after the group pumped out a few smash LPs when they hit the recording circuit six years ago.

Daily Variety said the band "sparkles throughout, largely because of" this first-rate guitarist. Guitar Player magazine

'We're making our own sound; that's why you make music — you touch a special place . . .'

— Pete Special



Big Twist, center, and The Mellow Fellows bring their brassy Chicago-sounding blues music to the Mason Jar tonight at 8. Pete Special, lower right, is the group's lead guitarist.

adds, "This blues band smokes with guitarist Pete Special's searing solos."

One European Reviews reporter boasted, "I felt that funny kind of buzz that one gets when the disc hits just the right spot."

Newspapers like Dallas Times Herald and the Toronto Sun practically went "ga ga" when they described the group's magic.

In fact, John Peterson, a Chicago advertising executive, will fly all the fellows from their concert tour in Colorado to Norfolk, Va., and back, for the christening of the USS Chicago nuclear submarine on Sept. 27.

Now that's nothing to be blue over. Nevertheless, the modesty seems to be an essential part of their success.

"I think we have a strong commitment to the kind of music we're making," Special said. "Big Twist (Larry Nolan) is the focal point, he's the front man and I enjoy being identified with this fun image. He's got that charismatic quality."

Special said the blues market, like many other fast-paced businesses, is hectic but very rewarding.

"It's a 24-hour, 365-day-a-year lifestyle," he said. "You have to make sacrifices. It's funny, but when we're not out on the road, and we do have some free time, it's hard to acclimate yourself to get out of a schedule. Most of us don't know what it's like to have a 'normal life'."

"You're living out of a suitcase 75 percent of the time, but it bears good results."

The results have been, to say the least, very good.

Special joined Big Twist in the early '70s after fellow saxophonist Terry Ogolini took him to see Nolan, a 300-and-some-odd-pound

blues singer, in a hick bar called Lyin' Sam's in Buckner, Ill. Special remembers his first glimpse of Big Twist behind a chicken wire cage, guarded from the rowdy crowd.

"It was worth the admission!" Special said.

At 6 feet 4 inches, wearing his trademark wide-brimmed hat and three-piece suit, Nolan certainly caught Special's eye long before blasting his theme song "Hoy hoy, baby I'm your boy/300 pounds of heavenly joy."

Special was quickly transfixed and soon became a fellow twister. The group has since been riding the success train with their blues touring show and popular albums, "Big Twist and the Mellow Fellows" and "One Track Mind."

In 1983 they released "Playing For Keeps," which Special produced with R & B saxophone legend Gene "Daddy G" Barge, and shortly after, songs like "Turn Back the Hands of Time," "(It Would Be) You & Me" and "The Sweet Sound of Rhythm & Blues" became radio highlights in Chicago and other cities.

Special himself has a lot to say about the Windy City and the music he's been playing.

"The Chicago blues scene is thriving," he said. "You don't find that common predatory attitude (there). Everybody supports each other — it's a unified situation."

"Chicago is where it is. It's definitely a musical city, and I'd like to show other people what the blues (there) are about."

On the subject of the group's magic, Special said: "It's gratifying to know that we're doing good work. Mind you, we're not lining our pockets with gold and silver, but we're trying to better what we do."

"We're not a revival band from the '50s or '60s, we're more realistic, I mean I didn't come straight from Mississippi with a guitar swinging on my back."

"We're making our own sound; that's why you make music — you touch a special place, you convey to people a magical, special feeling. I'm short of words to describe it."

Tickets for tonight's show at the Mason Jar, 2303 E. Indian School Road, are \$5.

Guadalcanal Diary walks away from its rock 'n' roll cradle

By KHALI CRAWFORD
State Press

"Here Comes The Bride" could be a favorite sentimental tune for the four-member band Guadalcanal Diary, who made their debut at a friend's wedding reception in 1981.

Since then the Georgia-based band (yet another from Athens, Ga. — a small town turned rock-band cradle) has propelled itself from being an unknown entity to an up-and-coming international band with two LPs and an overseas tour.

Lead singer/guitarist Murray Attaway, bassist Rhete Crowe, drummer/singer John Poe and singer/guitarist Jeff Walls combine to create Diary's distinct mix of country ballads and an African beat.

The group will open for Athens' band R.E.M. at the Mesa Amphitheater Tuesday night at 7:30.

The band's formation was instigated in the summer of 1981 in Maretta, Ga., when Attaway and Walls were pursuing a mutual interest in Civil War/murder ballads and Johnny Horton-style sagas.

Diary's climb to popularity began in the fall of 1983 with the release of "Watusi Rodeo" with E.O.D. records.

The success of the small-label EP's pseudo-tribal/western sound spurred the recording of the band's vibrant folk-rock LP "Walking in the Shadow of The Big Man" on DB records in 1984.

After a stepped up national tour in 1985, the band signed to Elektra Records in May 1985 and released a refurbished version of their 1984 album.

After a month-long tour in Europe, the group recorded their newest album, "Jamboree," and released it this summer.

Even though the single "Lonely Street" has been streamlined for AOR play, for the band, the LP as a whole is a collection of songs with new spirit and energy.

"The playing and song-writing are more adventurous on this album," Poe said. "The songs are arranged as a group effort with Guadalcanal Diary as a whole in mind."

The band credits the remastered sound to top-flight button pushers Rodney Mills (Atlanta Rhythm Section and .38 Special) at Studio One in Georgia and Steve Nye (XTC and



Guadalcanal Diary are Rhete Crowe, Jeff Walls, Murray Attaway (kneeling) and John Poe.

the Cure), who remastered "Lonely Street" and "Jamboree" at RPM studios in New York.

Two of the cuts, "Michael Rockefeller" and "Dead Eyes" which were originally recorded on the group's first EP have taken on a new, more powerful expression.

The folk guitars have taken a back seat to the drums and vocal for an eerie sound that is more in line with their enchanting live performances.

"The new LP offered us a chance to grow and change," Crowe said. "I think it would be difficult for people to classify us."

The band also has recorded "Ghost On The Road" from their first LP for the drive-in debut of a summertime flick titled "Rockin' Road Trip."

Tickets for tomorrow night's show are \$14.50 in advance and \$15.50 at the door.

Spotlights

Theater:
ASU faculty members David Barker and David Vining star in "Through the Leaves," opening Wednesday, Sept. 24 at 8 p.m. at Drama City. The play, directed by William Akins, illustrates a tale of vulgar peasants who cope in a loveless world. Extremely mature subject matter! The play runs through Sunday.

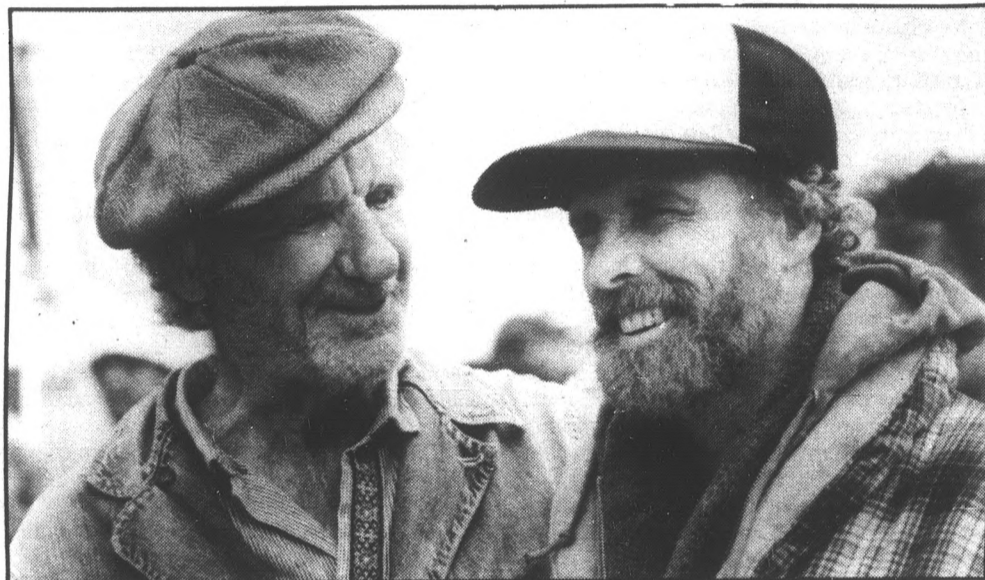
Box Office Bingo:
•Sad news for big screen fans. The Kachina Theatre, will soon join former cinema brothers (El Camino et. al) in old movie house heaven. The showcase, which is one of the only two big screen establishments remaining in the Valley (the other being Cine Capri), will close its curtains in the near future.

The good news is it has decided to go out with a bang. Last week it featured "Gone With the Wind"; this week 1955's classic "Oklahoma" is showing. The Kachina is located on 4305 N. Scottsdale Road. For more information call 947-5495.

•Bruce Dern stars in a tale of a runner struggling against the odds in "On the Edge." The film opens Friday, Sept. 26.

Music:
•Phoenix Symphony's Northern Trust Beethoven Festival continues this week. The captivating music of one of the greatest composers in history can be heard Tuesday, Sept. 23 and Friday, Sept. 26 at 8 p.m. The event takes place in Symphony Hall, 225 E. Adams. Single tickets for the concerts run from \$9 to \$30 and can be purchased at Dillard's box office. For more information call 264-4654.

Arizona State Fair:
•The Arizona State Fair runs Oct. 24 through Nov. 9. Performing this year are Willie Nelson, George Strait, Charlie Daniels and Kenny Loggins. Read the Spotlights for further updates.



Bill Bailey and Bruce Dern star as father and son in "On the Edge."

PRETTY SURE YOU'RE NOT PREGNANT, RIGHT?



If there is even the slightest doubt, find out for sure. Drop in for a free pregnancy test. While you're here, learn about birth control. "Pretty sure" just isn't good enough.

—Completely Confidential—

FAMILY PLANNING INSTITUTE

PHOENIX TEMPE
9100 N. 2nd St. 2525 S. Rural Rd.
997-7493 968-7471

TACO BELL. welcomes back
ASU STUDENTS

ASU Meal Deal

- Regular Taco
- Bean Burrito
- Medium Pepsi

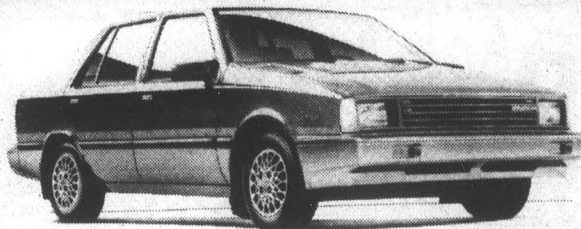
All For \$1.59

Good only at 936 E. Apache Limit 2/customer.
Expires 9-30-86.

NEW FALL HOURS

Sunday-Thursday 10 a.m.-2 a.m. **LATE-NITE**
Friday-Saturday 10 a.m.-3 a.m. **Drive-Thru**

SCOTTSDALE HYUNDAI



TIRE BALANCE & ROTATION
Regularly \$24.95
ONLY \$9.90*
*Includes spin balancing & weights

LUBE OIL FILTER **ONLY \$10.75*** & tax
Regularly \$22.95
Includes: oil, filter & lubrication

FRONT END ALIGNMENT
\$9.90
2-wheel drive only

68th St. & McDowell

Call 990-1110

WAKE UP ASU!

with

Awake Inc.

A wake-up service for the ASU community to get you up in the morning!

5:00 a.m.-9:00 a.m.

See our representatives on Cady Mall Sept. 22, 23, 24 or call



Awake Inc.

967-7322

ARTCARVED.
FOR EDUCATED
TASTES.



SAVE UP TO \$50.
EVERY COLLEGE RING ON SALE NOW.

Now's the best time to buy a quality ArtCarved college ring because you can save up to \$50. Let your ArtCarved Representative show you our distinguished selection of styles—every one is backed by a Full Lifetime Warranty.

ARTCARVED
CLASS RINGS

Sept. 22-26 9:00-4:00 ASU Bookstore

DATE TIME PLACE

R.E.M. concert to ponder rockin' beat

By CARRI L. MITCHELL
State Press

It seems a glut of new groups are appearing on the music horizon, and with them are many underground groups coming above ground, giving the music scene a more controversial edge.

One of the groups leading the way is Georgia's R.E.M., appearing at Mesa Amphitheater Tuesday night at 7:30.

Some confusion exists on just what R.E.M. is trying to say and do on their new LP "Life's Rich Pageant," the group's fourth recording effort since their vinyl debut in 1982.

Rolling Stone gave a detailed explanation of the album's



R.E.M. will be at the Mesa Amphitheater Tuesday at 7:30 p.m.

analogies and social commentaries. But delving into the depths of composition is not fun to do while kicking back and listening to few tunes.

R.E.M. bassist Mike Mills said, "With every record Michael (Stripe, R.E.M.'s lead vocalist) comes more and more to grips with his ability to convey very subtle impressions without stating them blatantly, and I think he's done that best here. "You could also say this is our most topical record, although you'd be hard pressed to find many specific topics. But it is certainly a record with a little more concern on it.

"If the album has a message, it's just be aware, don't be ignorant, be concerned about something."

Taken purely for its musical value, "Life's Rich Pageant" is a good album. Some of its unusual contents include an old pump organ, glasses being filled with water, and backwards guitar music.

The group's sound is strong, with a good beat. Its nice rock sound is not overwhelming, but not played down too much, either.

"Life's Rich Pageant," probably will generate a huge following of people sitting and pondering the inner messages of this album.

But it also will be popular among people who just want to listen to good rock 'n' roll.

Tickets for Tuesday's show are \$14.50 in advance and \$15.50 at the door.

THIN IS IN

At Diet Center you can lose 10 pounds in two weeks... be two sizes trimmer in three weeks. It's quick. It's safe. And perhaps best of all, you won't see the weight you lost come back. Don't face weight loss alone. You can work with a Diet Center counselor everyday of your diet. Call for your first consultation. It's free!



YOU'RE GOING TO MAKE IT THIS TIME

Diet DIET CENTER Center

TEMPE • 967-1371
911 E. Broadway Rd.
Lucky Shopping Center
Open daily 7 a.m.-6 p.m.

WEEKEND SPECIAL

1 or 2 persons **\$35**

HOWARD JOHNSON HOTELS

225 E. Apache Blvd.
Tempe AZ

967-9431

Room Type Subject to Availability

We care about the things that count most.

GRAND OPENING SPECIAL!

For A Limited Time Only — Now From \$67,000

**WHY RENT?
When You
Can Own!!**



HERMOSA PLACE CONDOMINIUMS

510 W. UNIVERSITY DR.
TEMPE, AZ 85281

1/2 Mile to ASU
All Kitchen Appliances
FHA & VA Financing
Priced From \$69,950
Low Down Payment
\$30. p.m. Assoc. Fee

2 & 3 Bedrooms
2 Baths
Mini Blinds
Upgraded Carpet
Energy Efficient
Tile Roof & Double
Glazed Windows

MODELS OPEN 10am - 6pm
602-968-5798

Claire Thomas Rich Pasich Tripp Bartlett

COLDWELL BANKER
RESIDENTIAL REAL ESTATE SERVICES

Tempe Office
1212 E. Baseline

602-968-5798
Audrey C. Mascall
602-839-8200

America's largest full service real estate company.



ANNOUNCES

INTRAMURAL FLAG FOOTBALL MEN'S AND WOMEN'S

MEN'S LEAGUES

A & B & C (160 lb. & under)

WOMEN'S LEAGUES

A & B

ENTRY DEADLINE

Entries will only be accepted at the Manager's Meeting on Wed., Oct. 1, 1986 in the LIFE SCIENCE BLDG., Room 191, at 3:30 p.m. Entries should include all team members' names and corresponding ASU I.D. numbers, along with the \$10 entry fee. We encourage you to pick up an entry form now at the Intramural Office, P.E. West Lobby. Please complete it before attending the meeting. Only complete entries will be accepted at the meeting. Premier of the National Collegiate Flag Football Rules videotape.



INDIVIDUALS MEETING

TUESDAY, SEPT. 30, 1986 in P.E. West 157. Bring \$1.50 for the entry fee. Individuals wanting to join a team should attend this meeting.

WANTED: OFFICIALS

Flag Football officials are needed. If you are interested, please call Eric Fitzgerald today, 965-5638!

INTRAMURALS SPORTS OFFICE P.E. WEST LOBBY

965-5638

PROGRAM OF
ASSOCIATED STUDENTS
OF ARIZONA STATE UNIVERSITY
MEMORIAL UNION 208 • TEMPE ARIZONA 85287

Fairy tale's fame sleeps well with renowned ballet troupe

Choreographer Ben Stevenson had given up on ballet in the '60s, but "The Sleeping Beauty" brought him back in 1967. His meticulous adherence to the original work by Marius Petipa revived his career and secured his reputation as a top choreographer.

Stevenson's Houston Ballet will bring this classic work to Gammage Center for two performances, Sept. 23 and 24 at 8 p.m.

The Houston company is featuring its fourth production of Stevenson's version of "Beauty" on its 1986-87 tour. The ballet has become one of Houston's standards under Stevenson's artistic direction since 1976.

The story of the dance is the familiar fairy tale of the beautiful Princess Aurora.

Cursed to die of a pricked finger by the evil fairy Carabosse, the kindly Lilac fairy puts her to sleep until she can be awakened by the kiss of a prince.

A century passes before Prince Florimund arrives in a hunting party. The Lilac Fairy enchants him with a vision of Aurora and leads him to her castle.

He must first overpower Carabosse, who has turned into a monster guarding the castle, but soon he enters and awakens the princess with his kiss.

The ballet closes with a court celebration and the grand pas de deux of Aurora and Florimund.

Peter Ilyich Tchaikovsky composed the ballet's brilliant score.

In the 10 years since Stevenson became artistic director, the Houston Ballet's repertoire has grown to include most major classical ballets, a number of significant 20th century works and new works by

Stevenson and other contemporary choreographers.

Stevenson's own works have won three gold medals in international ballet competition, most recently in 1984 in Japan.

Two Houston dancers were the first Americans to win medals at the Tokyo International Ballet Competition.

Tickets for the Tempe performance of "Sleeping Beauty" are \$18 and \$16, available at Gammage and all Dillard's ticket outlets.

Tickets are half price for ASU students. For more information call 965-3434.



Houston Ballet will perform "Sleeping Beauty" at Gammage tomorrow at 8 p.m.



health dimensions

fall wellness series wednesdays at noon, STUDENT HEALTH

**Good health
wellness & lifestyle**
Sept. 24

An introduction to the wellness philosophy and developing a lifestyle that will make you feel great. Includes a personal health assessment and an excellent film on stress, nutrition, exercise, and habits.

Choices & change
Oct. 1

Making actual lifestyle changes can be difficult, but there are techniques which will facilitate your success. This film and discussion focuses on breaking old habits and making new ones.

Managing stress
Oct. 8

Hans Selye wrote "Who would enjoy a life of no runs, no hits, no errors?" However, coping with life in the fast lane takes planning and skill. Join us for a film and discussion on stress management strategies.

Fitting in fitness
Oct. 15

Planning and beginning physical activity is the focus of this program. If you're ready, we'll help you get started.

**Here's to good
friends...**
Oct. 22

A special Alcohol Awareness Week presentation, providing information on how to say you're concerned, you care, and resources to help.

Eating on the run
Nov. 5

Early classes! Skipping lunch! We'll share ideas for giving you energy throughout the day.

Diet dangers
Nov. 12

The diet business is a billion dollar industry, and most diets are ineffective over the long run and unhealthy in the short. This slide program and discussion focuses on diets to avoid, reputable programs, and the keys to long-term, healthy weight loss.

**Nutrition & cancer:
new research**
Nov. 19

Practical changes in our diet could reduce our death rate from all cancers in this country by a third. Join us for the latest research findings.

Come by the Student Health Center or call us at 965-4721. You'll be glad you did!



ClassiPhone

Personal Telephone Ads for Singles

Phoenix's Easiest and Most Exciting Way to Meet Someone New!

- ★ No Membership Fees
- ★ All Phone Numbers
- ★ New Ads Daily
- ★ Call Anytime

1-976-4000

First Minute 55¢
Ea Additional Minute 45¢

'Call Today and Enjoy Your Tomorrows...'



GRAND OPENING FEVER

"FASHION IN ACTION"
HOTTEST IN WESTCOAST
Aerobic, Dance, Exercise
& Activewear

Designer Fashion without
Designer Prices

IN THE CORNERSTONE
(Rural & University)
967-0774

Hours: 10-9 Mon.-Fri.
10-8 Sat.
12-6 Sun.

COUPON

FEVER

"Fashion In Action"

10% DISCOUNT on all Fever fashions
(with this coupon)
In The Cornerstone

Studebaker's

DIMES
FOR
DAMES

EVERY
TUESDAY
NIGHT

LADIES
RECEIVE

10¢

WELL
DRINKS,
WINE &
DRAFT

8 p.m. to
close

25¢
Nachos



MINIMUM AGE IS NOW 21

In The Cornerstone 829-8495

Ex-Mr. Mom snaps child-raising prints

For photographer Vance Gellert, a few "frustrating" years as "Mr. Mom" turned into CarlVision, a surreal color photography exhibition depicting the emotional upheaval of raising a child.

"(CarlVision) revealed a lot to me about myself," Gellert said in a phone interview from his San Francisco home. "It nailed down the emotions I was feeling."

CarlVision will open at the Northlight Gallery in Matthews Hall today.

In one on the series untitled pictures, Gellert said the broken mirror represents "fragmented feelings about being a father — in one respect as protector and in one respect competitor."

When his wife went back to medical school after the birth of their son, Carl, three years ago, Gellert found himself spending a lot of time trapped at home with his son and the television.

"I discovered for myself there was a lot that required attention and time which I could have used to start something productive for myself," he said. "It was a frustrating experience."

With time on his hands, Gellert then began to do darkroom

art

work at home and decided to turn the camera on himself and his son.

"I allowed the camera freedom to photograph what was happening," he said. "I relinquished control and jumped into it, becoming part of it."

He said the results were often surprising and at times disturbing.

"I had trouble sleeping," he said. "I wondered what I was thinking."

Gellert said the pictures are "getting at the primal thing that's going on between father and son."

"I didn't plan it. The photos told me it in retrospect."

For him, the pictures became a guide to fathering and becoming better at it. In a sense, he said, photographing the series was therapeutic.

"There was an amazing release of tension," Gellert said.

The Northlight Gallery is open 10:30 a.m. to 4:30 p.m., Sunday through Thursday. For more information call 965-6517.

—KHALI CRAWFORD



"I was faster on the bulb, and my hand got caught in the picture," said photographer Vance Gellert of this untitled print from CarlVision. "Those accidents I cherish."

Our three-year and two-year scholarships won't make college easier.

Just easier to pay for.

Even if you didn't start college on a scholarship, you could finish on one. Army ROTC Scholarships pay for full tuition and allowances for educational fees and textbooks. Along with up to \$1,000 a year. Get all the facts. BE ALL YOU CAN BE.

CALL CPT. LINDA STAGGS AT 965-3318, RM. 228, OLD MAIN

ARMY RESERVE OFFICERS' TRAINING CORPS

If you're not getting the proper **AUTO INSURANCE** coverage, call **ALL ARIZONA FIDELITY CORP.** today for a **FREE** quote.

Corner of ANY ^{Car} _{Driver} _{Age} University & Country Club 5233 W. Glendale Ave. Glendale 835-0222 934-3993

REMEMBER: In Arizona it's the law! You must carry auto insurance!

A NEW ADVENTURE AWAITS YOU!

WEEKLY EVENTS INCLUDE: HIKING • CLIMBING • SKIING SKYDIVING • WATER SPORTS • SOCIALS

JOIN THE **ARIZONA Outing club**

WEEKLY MEETINGS—THIS WEEK MONDAY 7:30 P.M. • M.U. PIMA RM.

MAKE THIS YOUR YEAR

MAMA GELARDI'S
894-MAMA

106 E. UNIVERSITY TEMPE, ARIZONA

PIZZA PICKS

| | | |
|-----------------------------------|-----|-------------------------------------|
| <input type="checkbox"/> Chiefs | vs. | <input type="checkbox"/> Bills |
| <input type="checkbox"/> Jets | vs. | <input type="checkbox"/> Colts |
| <input type="checkbox"/> 49ers | vs. | <input type="checkbox"/> Dolphins |
| <input type="checkbox"/> Patriots | vs. | <input type="checkbox"/> Broncos |
| <input type="checkbox"/> Bears | vs. | <input type="checkbox"/> Bengals |
| <input type="checkbox"/> Lions | vs. | <input type="checkbox"/> Browns |
| <input type="checkbox"/> Steelers | vs. | <input type="checkbox"/> Oilers |
| <input type="checkbox"/> Chargers | vs. | <input type="checkbox"/> Raiders |
| <input type="checkbox"/> Seahawks | vs. | <input type="checkbox"/> Redskins |
| <input type="checkbox"/> Saints | vs. | <input type="checkbox"/> Giants |
| <input type="checkbox"/> Rams | vs. | <input type="checkbox"/> Eagles |
| <input type="checkbox"/> Packers | vs. | <input type="checkbox"/> Vikings |
| <input type="checkbox"/> Falcons | vs. | <input type="checkbox"/> Buccaneers |

SEMESTER COUPON:
Buy a 14" cheese pizza for \$4.95 and get two FREE Liters of Coke. We Deliver. 894-MAMA. Then fill out Mama's Pizza Pick Coupon. Give it to your driver. Best picks drawn Tuesday following Sunday's games. 1st Prize: Dinner for two at Mama Gelardi's. 2nd Prize: Appetizers & Stage Seating, Bombay Bicycle Club Evening Show. 3rd Prize: Lunch for two at Mama Gelardi's. Good luck and go for it.

Offer good Mon.-Wed. Deadlines for picks Wed., 12 midnight before game. Not valid with any other coupon. One coupon per delivery. Ties settled by draw.

Name _____
Address _____
Phone No. _____

FRITO LAY, INC.

INVITES
FALL/SPRING GRADUATES
IN THE FOLLOWING DISCIPLINES
TO ATTEND OUR
SALES CAREER ORIENTATION

- General Business Administration
- Marketing
- Management
- Communication
- Quantitative Business Analysis
- Electronic Engineering Technology
- Mechanical Engineering Technology
- Manufacturing Engineering Technology

WEDNESDAY, SEPTEMBER 24, 1986 • 3 P.M.
MEMORIAL UNION 212 EAST

*INTERVIEWS WILL BE CONDUCTED ON WEDNESDAY, OCTOBER 1, 1986, AT THE CAREER PLACEMENT CENTER

All interested candidates should attend the orientation.

EQUAL OPPORTUNITY EMPLOYER M/F/V/H

Richie fills premiere concert of tour with splashy effects

By CARRI L. MITCHELL
State Press

Some acts in today's music industry can hold their own. They have a great sound, excellent material and a huge following.

These acts are good in concert because the music can stand alone. But when you take a good act and add a great stage show, it becomes one of the best concerts of the year.

Specifically, Lionel Richie's tour-premiere concert at the Coliseum Thursday night.

Richie is an excellent composer, singer, and performer — a true entertainer. He is not the kind who receives the Entertainer of the Year award without touring, doing any network or cable TV specials, or having not been in front of an audience in a whole year. (How can they be the top entertainer for that year?)

Rarely does a big singer like Richie begin his tour in Phoenix, but Thursday's concert was the first of two dates in the Valley.

Richie also played Friday night at the Coliseum.

It is even rarer for a premiere to have special effects as original as this one did.

Usually when a really good stage show comes our way, the audience knows what to expect because everyone else in the country has already seen it.

Richie's show had lively special effects. The stage's platforms moved forward, up and down throughout the performance.

In the opening number, a piano slowly rose out of the stage, rotated until the keys faced the audience and began playing by itself.

Richie then began to play the introduction to "Hello." With the exception of a few misprogrammed notes, the effect was great.

Small mistakes are to be expected on the opening of a new tour, especially with such an extremely sophisticated mechanical setup.

After a few tunes, Richie told the packed-in crowd that "anything goes" with the premiere of a tour. Well, the concert went pretty smoothly.

Richie sang a wide variety of songs in the concert: his great love ballads, old and new, like "Still"; his version of "Lady"; and "Say You Say Me," one of the best songs in the concert.

He also did his upbeat pop songs such as "All Night Long" and "Running with the Night."

He performed some of his new songs from the "Dancing on the Ceiling" album. These songs, unlike the title cut, were surprisingly rocky and not the old worn-in style of most of his upbeat material.

Timewise the concert ran a little more than an hour and a half, but when it was all over it seemed a lot more material could have been covered.

Sheila E. opened the concert with a surprisingly good performance with lots of excitement and personality.

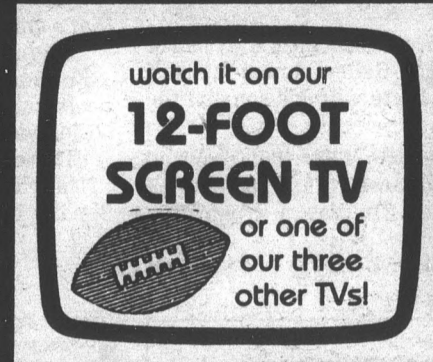
She performed longer, more instrumental, dance-type versions of many of her popular tunes.

Unfortunately, at times her voice got lost in the accompaniment, but she has good stage presence, and gave the already psyched-up crowd a good show.

MONDAY NIGHT FOOTBALL HEADQUARTERS!!

PITCHERS \$3.50

Happy Hour and Free Hors D'oeuvres 4-7 p.m.



TAP BEER 75¢

Miller or Miller Lite

Never A Cover!

FREE PIZZA from halftime to end of game!

SHEPHERD'S

1123 S. Rural • Rural & Apache • 968-0243

TAN IS BEAUTIFUL
5 visits for \$19.50
(With this ad. Expires 9-26-86.)

eclipse
Sun Tan Center

We will honor any other area tanning salons ad specials.

Call 966-2150
TEMPE
55 E. Broadway (at Mill)
M-F 8-9, Sat. 8-6, Sun. 12-5

SUN DEVIL HAIRCUTTERS
"Stylists who care enough to listen"

Back to School Special

Shampoo
Conditioning
Precision Cut
Blow Dry

\$400 OFF

Regular Price
Men \$13
Women \$15
Hrs.: Mon.-Fri. 9-6
Sat. 9-5

NEXUS

Next to the Warehouse Dell
In the Arches Plaza
130 E. University Dr.
Limited Offer. Call Now! 966-5462

All New Chippendales Show
Tonight! New Cast, New Dates

Tickets \$12.50

\$2.50 discount with student I.D.

Celebrity THEATRE

NATIONAL NATIONAL MUFFLER SHOPPE
1900 N. HAYDEN
(Corner of McKellips)

SPECIALIZING IN
SHOCKS, STRUTS, MUFFLERS, BRAKES, TIRES
Minor Automotive Repair

Get A 10% Discount for ASU Students
(With picture I.D.)

Check our prices
994-1965
Hours: Mon.-Fri. 7:30 a.m.-6 p.m.; Sat. 7:30 a.m.-3 p.m.

Design Your Own Personal Charm
14K Solid Gold License Plate Charms

| | | |
|---------------------|--------------------|-----------------|
| NEW YORK 100% ME | ARIZONA '87GRAD | USA I ♡ \$\$ |
|---------------------|--------------------|-----------------|

Let Your Imagination Run Wild!!
Student Priced at \$49.95
Instant Attention Getters

Simply Charming
897-1126
We also carry SUN DEVIL CHARMS

Make it with us and the sky's the limit.

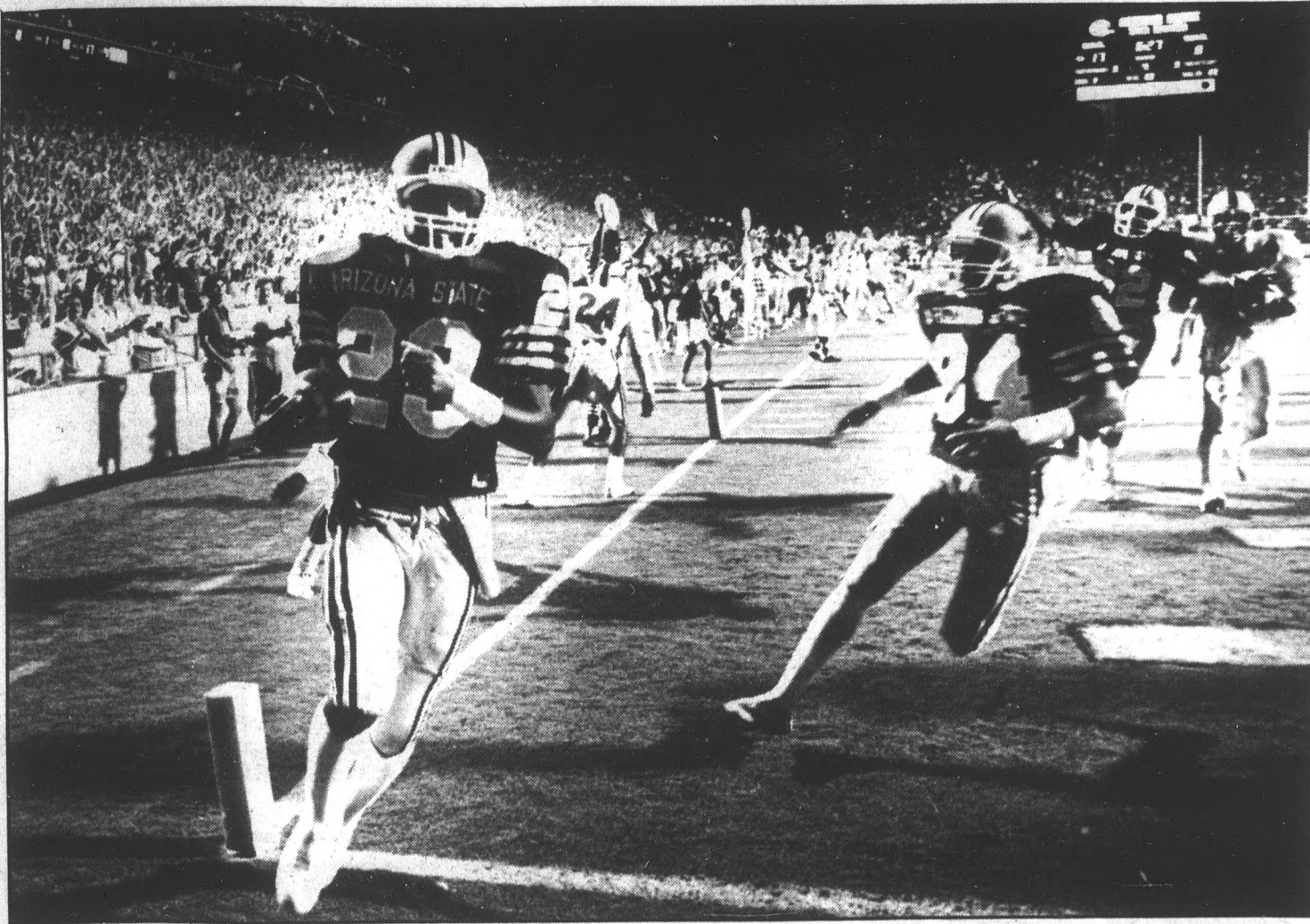
Marines

Looking for a chance to move in the fast lane? Then check out Marine Corps Aviation. The training is superb. The challenges are unique. Your ticket to fly is your college diploma and your drive to succeed. If you've got what it takes, you could be at the controls of anything from a Cobra to a Harrier to the hottest thing flying, the F-18 Hornet. See your Marine Corps Officer Selection Officer when he visits your campus or call him at the number listed below, today.

See the MARINES at the mall in front of Hayden Library from 10 a.m. to 2 p.m. TODAY through Sept. 24 or call 1-800-543-7427.

MAYBE YOU CAN BE ONE OF US. The few. The proud. The Marines.

SMU rout chalked up to kicking, bad breaks



Flanker Bruce Hill runs into the end zone after a 17 yard run during the 4th quarter, making the score 24-0.

Rick Wiley/State Press

By CAROL BOOS
State Press

The kicking games were in the spotlight — or in the hotseat, depending on whether they were Devils or Mustangs.

"It's the old kicking game, we won that battle," ASU coach John Cooper said.

"Our kicking game broke down tonight, and we were our own worst enemy," SMU coach Bobby Collins said.

The Sun Devils shut out the SMU Mustangs Saturday, 30-0.

The Devils took the lead in the first quarter on a 2-yard Darin Tupper reception from Jeff Van Raaphorst, and they never gave it back.

The Mustangs had bad breaks, and ASU took advantage of them.

The Mustangs fumbled five times and threw two interceptions. One interception by Scott Stephen in second quarter set up a Darryl Harris 4-yard touchdown run, giving the Devils a comfortable 14-0 lead.

"The turnovers gave them a big boost and put us on hold," Collins said. "We thought we played well enough to get some points; but again, the turnovers killed us."

Harris carried 28 times for 119 yards, allowing the junior tailback from Los Angeles to get the other foot into the shoes of former All-American Darryl Clack. It wasn't quite clear if Harris could fill them.

Harris was expected to carry only 10 to 15 times before the season began. Now he is averaging 26 carries a game.

And he's averaging more than 100 yards a game. Harris said he believes he has shown he is ready to step in and lead the ASU running attack.

Turn to FOOTBALL, page 17.

ASU pass rush inspires fear in top-rated passer

Bob Heiler
Sports Editor



Take a look at the picture to the right. Bobby Watters, the SMU quarterback, is not a happy man. Look at his eyes; the man is a scared rabbit.

And he had reason to be. Watters was coming off a 45-3 pasting of Rice, the perennial SWC whipping boy, in which he threw 15 completions in 17 attempts. Obviously, the man was unaccustomed to being pressured out of the pocket.

Saturday, he spent less time in the pocket than money does in mine. The poor guy was chased around so much, he must have felt like a virgin at a fraternity party.

He was sacked twice. He had six passes deflected. He had two interceptions, and he completed just 15 of 31 attempts.

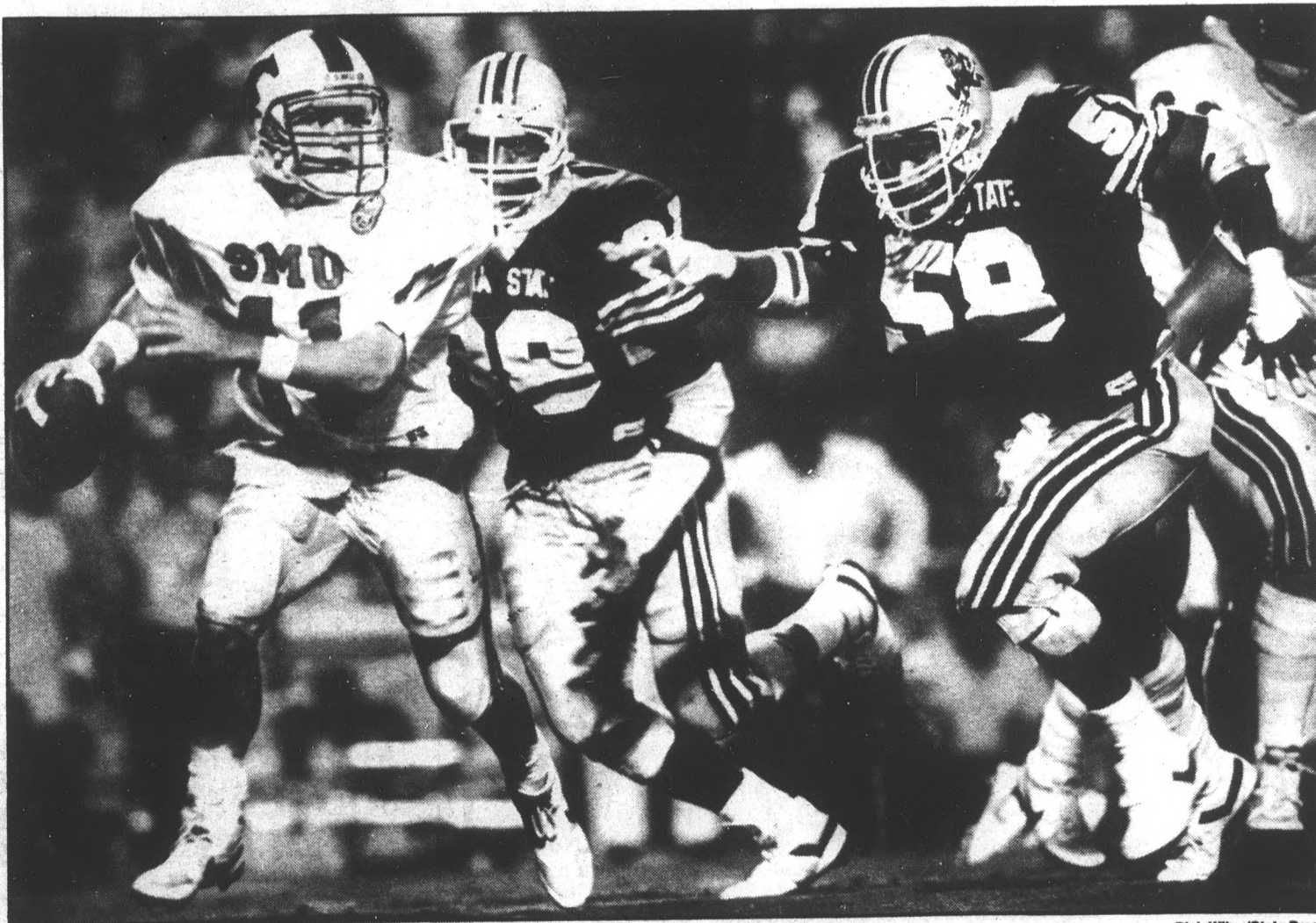
Not much of a performance coming from the No. 1 passer in collegiate football, which is exactly what Watters was before the ASU game.

But the man simply can't be blamed for his problems. He was just up against forces entirely beyond his control.

The defense that took the field last night was a credit to the tradition of defensive football at ASU. The key plays all went in ASU's favor. Every time you turned around, ASU was getting another "good break."

But those "good breaks" don't spontaneously generate. Holding penalties occur when the line is trying to give the quarterback a few extra seconds because the secondary isn't letting anybody get open. Fumbles are caused by hard hits. Interceptions are caused by a good pass rush and quick cornerbacks.

Speaking of interceptions, how 'bout that Darren Willis? Does he always seem to be in the right place or what? Last week he blocked the field goal; this week he came down with a phenomenal one-handed interception. He certainly has come a long way since Cooper was hacked off at him for laughing on the way home from the



SMU quarterback Bobby Waters is chased out of the pocket by ASU defensive end Skip McClendon, 88, and nose guard Larry McGlothen, 58.

Rick Wiley/State Press

Michigan State game last year. Anyway, defense was the key to sending the 'Stangs to the glue factory. Offensively, the Devils also were impressive; but I think it's quite safe to say, as one friend remarked during the game, that "John Cooper is truly dedicated to the run." Now there's nothing wrong with a good running game; it's essential to a winning football team. But Jeff Van Raaphorst can throw the ball with anybody in the Pac-10.

And he's got some targets, like Jeff Gallimore and Stein Koss, with some great paws.

We need to see a little more balanced offense to beat people like UCLA — even if they did get creamed by Oklahoma, which, by the way, is still putting a smile on my face. Go Sooners.

But soon, ASU will be facing UCLA, and they won't be in the friendly confines of Sun Devil Stadium. Beating UCLA in Pasadena is no mean task.

As nice as it is to see the Devils beat SMU, 30-0, and as nice as it will be to watch our corresponding rise in the national polls, it's important to remember that nothing really matters until the conference schedule starts.

Next week it starts, when the Devils play host to Washington State. The Devils will begin their quest for the Rose Bowl, which we have all heard so much about from every team member.

Undefeated Devils drop Trojans 3-1

The Sun Devil volleyball team, on a road trip this weekend to Southern California, defeated the USC Trojans on Saturday, 3-1.
The USC team, usually a force to be reckoned with, has been decimated by injuries this season. With six players on the injured list, the Trojans have been forced to use freshmen and sophomores with little experience. USC is still winless.

The eighth-ranked Devils are undefeated thus far this season, having chalked up wins against LSU, Oregon, Oregon State and USC.

The Devils' perfect record went on the line last night against the perennially strong UCLA Bruins. The game was to begin at 5:00 p.m. Los Angeles time, after State Press deadlines.

AND THAT'S WHAT YOU GET EVERY MONDAY & WEDNESDAY
2 for 1 — Double Prints
on develop and print orders

829-0424 **SUNSET camera** Tempe Center Mill & Univ.

kinko's

COPIES:
5¢ FULL SERVICE
4¢ SELF SERVICE
white, one side, 8 1/2 x 11, 20 lb.

OPEN 24 HOURS

- Binding
- Passport Photos
- Word Processing
- Enlargements
- Reductions
- Cassette Duplicating

MESA — 1840 W. Southern — 966-3326
Tempe I — 715 S. Forest — 894-9588
Tempe II — 933 E. University — 894-1797

Also Available:
Kinko's Laser Word Processing Plus
933 E. University Ste. 108 — 966-2035

Back To School Special
Every \$10 you spend at Kinko's get a free quiche dinner at the Raintree Restaurant 933 E. University
(With this coupon. Good through Oct. 30, 1986.)

WITH THIS AD OR ASU I.D.

5-pc. Oak, Brass & Glass Dinette (Assembly Required)
\$149

4-Drawer Chest **\$29**

-BED SALE-
Twin Set \$69
Full Set \$79
Queen Set \$119

FURNITURE PLUS 2077 E. University Tempe • 966-6252

Financing Available

WAREHOUSE DELI & PUB

Estab. 1975 "GOOD FOOD & DRINK"

LUNCH SPECIAL!!
MON.-FRI.
10:30 a.m.-2 p.m.
Hot or Cold Sandwich of the Day with Homemade Fries or 1/2 Veggie Freak Sandwich and Soup
ONLY \$2.35

MOLSON GOLDEN 61¢
on tap
Mon.-Thurs. 2-4 p.m.

HAPPY HOUR
MON.-FRI.
10:30 a.m.-7 p.m.
IMPORTS — \$1.17
DRAFT BEER
Pitcher \$2.58 Glass 56¢
WINE
1/2 liter Glass \$2.82 70¢
WINE COOLER
Pitcher \$3.29 Glass 80¢

BREAKFAST
SERVED MON.-FRI. 7 A.M.-10:30 A.M.
99¢
3 EGGS, HOMESTYLE POTATOES, TOAST, BUTTER & JAM
CHECK OUT OUR OTHER BREAKFAST ITEMS

LIVE ENTERTAINMENT NIGHTLY
(No Cover, No Min.)
130 E. UNIVERSITY DR. AT FOREST
966-7788 • TEMPE, AZ
Your Hosts: "The Family"

NOW SERVING MIXED DRINKS

WITH THIS AD
3 MONTHS
MEMBERSHIP ONLY
\$5999*
Hurry! Offer ends soon!

829-0099 **PHYSIQUE SOUTHWEST**

"One of the Largest Free Weight Facilities in Arizona (18,000 lbs. of Free Weight & Complete Line of Selectorized Equipment)"

- Fully Equipped Men's & Women's Locker Rooms
- The Finest Bodybuilding Equipment
- Complete Aerobics Facility
- Specialized Training for Athletes
- Bodybuilding • Powerlifting
- 8,000 sq. ft. Total Area
- Nutritional Counseling
- Weight Loss/Gain (according to personal goals)
- Wolfe Systems Tanning Beds

Hours: M-F 5 a.m. to 11 p.m.
Sat. 7 a.m. to 8 p.m.
Sun. 10 a.m. to 8 p.m.

*This offer may expire without notice. Other regular charges still apply.

510 South 52nd Street, Tempe Arizona

Attention Professors & Students
UNI-PRINT RUNS THE COMPETITION RAGGED!

FREE Pick-up & Delivery!

3 1/2¢ A Copy!
For ASU faculty & staff. No minimum req.

We Can Handle All Your Printing Needs At Prices You Can Afford.

- Business cards
- Letterheads
- Carbonless forms
- Brochures
- Flyers
- Xerox® high speed duplicating
- Newsletters
- Wedding invitations
- Computer printouts boot your own disks!
- And of course all school related materials

UNI-PRINT
829-1834
1605 W. UNIVERSITY, TEMPE

Powder Hounds Ski Club

UTAH FOR \$179⁰⁰

(No Membership Fees)

SKI: SNOWBIRD ALTA SOLITUDE PARK CITY

TRIP INCLUDES: Transportation Lodging Lift Tickets Beverages Social Activities

MEETING EVERY TUES. AT THE VINE
7 p.m. (Rural & Apache)

For more info call Randy 921-9632 or Brian 966-0810

5070 N. Central 264-4381

Football

Continued from page 15.

"I think I should definitely be compared to Lorenzo White and Jeff Atkins," Harris said.

Southwest Conference leading returning runner Atkins was held to 73 yards by the Sun Devils defense Saturday.

Holding Atkins to 59 yards less than his previous week against Rice, and White to 61 yards in the season opener, the ASU defense is becoming the dominating force of the team.

"I expected a much closer game, but the defense played great," Harris said.

But looking at halftime statistics, it appeared as if maybe SMU's defense was the one playing great.

SMU had 24 more yards passing than ASU, and two more yards rushing. SMU lead in total yards and time of possession, but ASU lead, 14-0.

Anthony Parker also showed his stuff Saturday. Parker had five punt returns for 148 yards, three unassisted tackles and one touchdown.

'I think I should definitely be compared to Lorenzo White and Jeff Atkins.'

— Darryl Harris

In the third quarter, Kent Bostrom kicked a field goal from the 33-yard line. The score seemed to capture the game for ASU.

"I feel like they gave up after we got 17," Harris said. "They looked real tired and out of shape."

SMU was a team expected to throw, and ASU worked all week to try and stop the No. 1 quarterback in the conference.

"I never really relaxed until we went up 17-0," Cooper said.

But the players never relaxed. Bruce Hill scored in the fourth quarter on a 17-yard run, pushing the score to 24-0.

Parker put the icing on the cake with a 65-yard touchdown return. Bostrom's missed extra point left the score at 30-0.

LaserType

- Flyers
- Resumes
- Announcements
- Newsletters
- Theses
- Dissertations
- Self Serve MAC

kinko's

966-2035

933 E. University, Ste. 108

Mon-Thurs. . . . 6 a.m.-Mid
Fri. 6 a.m.-8 p.m.
Sat. 10 a.m.-8 p.m.
Sun. 10 a.m.-Mid

ONE STOP TANNING CENTER

"We're Taking the Tanning Industry Off Its Back"



Entire (Aug. through May)
School Year Special

\$99⁰⁰ (with ASU I.D.)
Unlimited Tanning
(no extra fees)

Introductory Special
12 sessions **\$30** (Reg. \$45)

Faster & Safer Than Bed or Booth
15 min. vs. 30 minutes
Tanning Bed Sessions

3312 S. McClintock
(SW corner Southern/McClintock)
Inside One Stop Beauty Supply



839-9430

CURRICULUM

ASSOCIATE OF APPLIED SCIENCE IN DRINKING

FIRST SEMESTER:

HAP-176 HAPPY HOUR MONDAY THRU FRIDAY 3:30PM-7:00 PM 24
BS-101 YOU'VE TRIED THE REST NOW TRY THE BEST 11

PREREQUISITES: FOR **ASU** STUDENTS

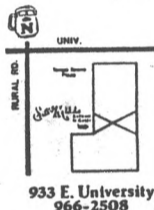
| | | |
|-----------|--|----|
| MON 101 | MONDAY NIGHT FOOTBALL - 6 FOOT BIG SCREEN | 2 |
| | 10¢ CHICKEN WINGS ... HAPPY HOUR PITCHER PRICE DURING GAME!! | |
| | CORONAS \$1.25 ALL NIGHT - MARGARITAS \$1.25 ALL NIGHT | 4U |
| TUE 202 | HUMAN ANATOMY AND PHYSIOLOGY 'LADIES NIGHT' | 3 |
| | BARTLES & JAYMES or CALIFORNIA COOLER \$1.25 | 1 |
| WED 303 | HAMBURGER DAY ... CHEESEBURGER 95¢ | 7 |
| | OLDIES ROCK NIGHT! LIVE BAND! \$1.25 CORONAS | 6 |
| THUR 404 | CORONA NIGHT \$1.25 ALL NIGHT - MUSIC THEORY IV | 69 |
| FRI & SAT | LIVE ENTERTAINMENT - SOCIAL & BEHAVIORAL SCIENCES | |
| SUN 707 | 50¢ BRUNCH 12:00 TO 2:00 P.M. - FREE POOL ON SUNDAY | |
| | SUNDAY - JAM NIGHT * ALL WELCOME TO PLAY OR SING WITH BAND!! | |

CLASSES EVERY DAY AT THE

933 E. UNIVERSITY
TEMPE

(Across from Cornerstone)

966-2508



THORBECKE'S GYM
Special Low Rates

Body Building
Power Lifting
Nutritional & Diet Consulting

966-6621

\$12⁰⁰ per month
*plus \$50 one-time membership fee

Only one mile on the bike path off Scottsdale Bridge.

THORBECKE'S GYM
On the south side of Curry Road between Miller & Hayden

STYLE CUT
Reg. 14
Save \$4
NOW \$10

PRECISION PERM
Reg. \$36
Save \$12
NOW \$24

THE HAIR CO.
1126 N. Scottsdale Rd., Tempe
Drug Emporium Center (Scottsdale Rd. & Curry)
No appointment necessary, or call
966-6777

LONG, TINTED, PERMED HAIR EXTRA
PARTICIPATING STYLISTS
PRESENT COUPON BEFORE SERVICE
FIRST VISIT WITH COUPON ONLY
LIMITED TIME

Lite INTRAMURAL

October 3 — Diving
October 4 — Swimming



ELIGIBILITY

All entrants must be current full-time students at Arizona State University. All entrants must meet eligibility requirements as outlined on the entry form and must show their current ASU photo I.D. to enter the Aquatic Center and before each event.

EVENTS

COREC:

- 200 Medley Relay
- 200 Free Relay
- 100 Variety Relay

MEN'S & WOMEN'S:

- 200 Medley Relay
- 200 Freestyle
- 200 Individual Medley
- 50 Freestyle
- 50 Butterfly
- 100 Freestyle
- 50 Breaststroke
- 50 Backstroke
- 200 Freestyle Relay
- 1 Meter Diving

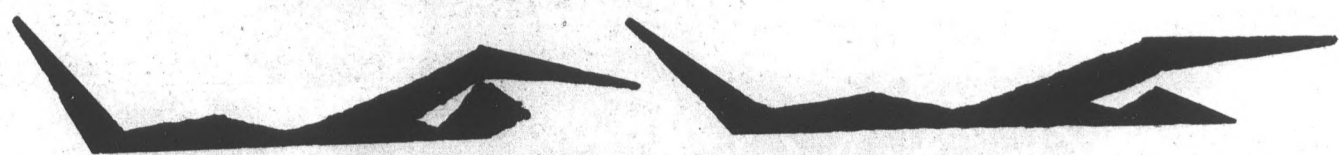


ENTRY DEADLINE

All entries must be turned in to the Intramural Office by 4 p.m. Thursday, September 5, 1986. To be accepted, each team entry must have a minimum of four names and ASU I.D. numbers.

D
I
V
I
N
G

INTRAMURAL SPORTS OFFICE
Physical Education
West Bldg. Lobby
965-5638



SWIMMIN



ASSOCIATED STUDENTS
OF ARIZONA STATE UNIVERSITY
MEMORIAL UNION 208 TEMPE ARIZONA 85287

Phi Delts beat Pikes, win softball title

By STEVE ADAMS
State Press

In a dramatic come-from-behind victory, Phi Delta Theta defeated Pi Kappa Alpha, two games to one, for the World Series Championship in the Intramural Softball Tournament Saturday.

The Pikes started out strong in the first game by mowing over the Phi Delts, 7-0.

All the runs the Pikes needed came in the top of the first when Tom Somenek, the Pikes' first baseman, smashed a double that knocked in two runs.

Dave Hayes pitched the scoreless game for the Pikes.

"Dave is the heart and soul of the team," Somenek said.

The second game in the best-of-three series turned out to be a defensive battle as the Phi Delts slid by the Pikes, 4-1, in extra innings.

Neither team scored any runs in the first seven innings of play, although the Phi Delts had some opportunities.

Then in the top of the eighth, the Phi Delts scored what proved to be the game winner on a heavily disputed call.

The Phi Delts had men on first and second with only one out when Scott Wherle smashed a fair ball that went off the glove of Pike third baseman John Connor into foul territory.

As the Phi Delts celebrated their coveted championship, the general consensus among the players for MVP was Phi Delts pitcher Dave Shipp, who pitched 17 scoreless innings.

"He was amazing," screamed one elated player.

In the semifinal games played earlier in the day, the Pikes defeated Sigma Nu, 4-3, to capture the National League championship while the Phi Delts defeated the Beer Runs, 11-6, to win the American League championship.

CARPET REMNANT Sale

- Thousands in stock — 30%-70% off
- Hundreds of room-size remnants — \$29-\$69
- We Deliver
- Buy Direct from our Factory

Direct Carpet Outlet

MESA: 1820 W. Broadway, At DeLano/Int. H-wart and Price Club, 890-1152

NORTHEAST: 15091 N. Cere Creek, 867-2703

WESTSIDE: 3191 N. 35th Ave., bet. Thomas & Colson, 289-3261

C. C. Cutters & Co.
Specializing in Hair Design for Young Adults

INTRODUCTORY OFFER

| | | | |
|------------------------|--------------|----------|--------------------|
| Perms | Highlighting | Haircuts | Cellophanes |
| \$22 ⁵⁰ | \$20 | \$6 | \$12 ⁵⁰ |
| (transfer perms extra) | | | (all colors) |

WITH THIS AD

DON'T FORGET — Fraternity & Sorority Day Every Wednesday — Haircuts \$7

968-6685
Corner of Lemon & Terrace • Terrace Square

CLASSIFIEDS START HERE

Announcements

HANG GLIDE! On a gently sloping hill just south of Tempe. Fly all day only \$50. Gifts/groups. Windsports, 897-7121.

Automobiles

1968 CORVETTE convertible, 2 tops, 327, 4-speed, wonderbar, radio, white with red interior, excellent condition, \$11,000. 262-0875 days, 952-8842 evenings.

1970 MUSTANG, new paint, red black top, new tires, brakes, alternator, radiator, dead cylinder, \$1000 OBO. 827-1330, Chris.

1975 B210, 3,500 on rebuilt engine. New paint job, oversized tires, interior. Sacrifice \$1500. 833-4561.

1976 PLYMOUTH Valiant, 126,000 miles, \$900 OBO. Excellent engine, great for student. 838-6431.

1978 DATSUN B210, air, stereo, auto, mag wheels, 61K, \$1350 OBO. Call 961-3653.

1978 DATSUN 810 station wagon, 6-cylinder, automatic, air conditioning, \$950. Call Dennis, 833-1411.

1980 TOYOTA Corolla Tercel SR5, 5-speed, AC, tinted windows, and much more. \$2850 OBO. 966-4308.

1982 CHEVY Cavalier, hatchback, PS, PB, AC, AT, AM-FM stereo cassette, tinted windows, \$2500. 820-7888 after 5:30.

1983 FORD LTD, PS, PB, tilt wheel, p-seats, cruise control, am-fm radio cassette, \$4595. 831-5914.

Automobiles

1983 MAZDA wagon GLC, 5-speed, roof rack, 33 MPG, runs great, \$3295. 831-5914.

Babysitters Wanted

CHILDCARE WANTED: Location flexible but my home preferred. Price and Guadalupe, SW Mesa. 3 children, afternoons, 2 days a week. 831-7665.

FOR TODDLER in my home. Two mornings, 10-1. Own transportation. Cynthia, 968-3627.

Bicycles

SCHWINN CRUISER, 26", almost new, driven approximately 25 miles. \$100. Call Sunday through Wednesday after 8:00 p.m. 893-9263.

Business Opp.

BE YOUR OWN BOSS. Graduating accounting major must sell established part-time business. Flexible hours, earn \$500 per week. No sales. For appointment call Frank, 964-3026.

For Rent or Lease

2, 3, 4 bedroom condos, townhouses, houses, near ASU for rent and sale. Call Alumnus Robert Bullock, Trencor Realty, 998-0919 941-7041.

A CONDO for rent, 2 bedroom, furnished, walk to ASU, \$400 deposit, \$530 monthly. Call 945-6995 6-9 p.m. weekdays; 9:00 a.m.-9:00 p.m. weekends.

FREE CABLE, microwave, with 1-year lease. 2 bedroom, 1 1/2 bath, \$430 month. Call 829-1660. Close to campus.

BEAUTIFUL NEW large two bedroom, walk to ASU, pool, laundry, one block south of University on 8th Street and Gary. Ask about move-in specials. 968-5238.

NEAR ASU, Papago One, 2 bedroom, 2 bath condo, all appliances. 947-8189 after 6:00 p.m.

NEW, LARGE one and two bedroom apts. Great complex, many amenities, 3 miles from campus. Pelican Bay Apartments, 2121 W. Main/Apache 968-3380.

STUDIO for \$290 utilities included. Walk to ASU. 966-3905.

TWO, THREE, and four bedroom houses, duplex for rent, all areas, \$300's on up. Kids, pets ok in most. Call 1-976-MART, 24 hours, 75 cents/min.

UNFURNISHED CONDO for rent, Southern and Price. 2-bedroom, 1 adjoining bath, washer, dryer, and microwave, garage, pool area. \$600 a month. Call 838-3497.

WALK TO ASU Studios, one bedroom apartments, utilities included. Pool, laundry facilities, furnished or unfurnished, from \$300-375. Marianna Apartments, 1214 E. Orange, Tempe. 966-8597.

For Sale

80-200MM FUJINON zoom lens for Fujica camera, \$115 OBO. 967-5718.

A BEAUTIFUL color television, 25" \$100; 19" color TV, \$80; console stereo \$80. Cash. Call 253-5016.

AMIGA SOFTWARE, must sell for \$5 to \$15 each. Most new titles including Leader Board Golf. Call Nick after 2:00 p.m. 966-4291.

ART/DRAFTING tables, metal frame with adjustable 23x26 slant top. \$85 or both for \$100. 264-1552.

EGYPTIAN PAINTINGS: Beautiful hand-painted drawings on authentic papyrus. Great gifts. Prices vary. Mark, 966-3541.

IBM AT, XT 100% compatibles. FCC approved, 120 day full warranty. Design your own system to suit your needs and your finances. Also, 5 1/4" DS/DD diskettes. 100% guarantee, one or more \$89. Hacko's, 933 E. University Dr., 968-2118.

LUDWIG 5-PIECE drum set. Oak tubs, aluminum covered outside, like new. Zildjian hi-hats and Ride cymbals with stand crash stand minus crash. \$1100. Call 5-9 p.m., 834-6342, Greg.

MOBILE HOME, one bedroom, covered patio, storage building, across street from ASU. \$2500. 968-5874.

MODEM, AVATEX 1200. One year warranty. Access ASU mainframes and do computer work at dorm, home. No more waiting to get on a terminal! \$109. Hacko's, 933 E. University Dr., 968-2118.

NEED A guide on how to study for exams, write a resume, or research paper? It's all here and it works. Study for exams - \$2.75 (plus .25 handling). Resume & Research - \$3 (plus .25 handling). Send to: C.M. Studies, 925 E. Greenway, Mesa, AZ 85203.

OSBORNE 1 computer, 64K, 2 disk drives, monitor, portable. CPM, Basic, Wordstar, Mathstar, Supercalc, and Turbo-pascal, \$450 OBO. 967-5718.

BUY • SELL • TRADE

Your books at Changing Hands. For quality cloth and paperbacks (no textbooks, please) we pay 30% of our re-sale price in cash or 50% in trade-in credit which may be used to purchase anything in the store. (Sorry, no trade-ins on Sat. or Sun.)

Browse through our three floors of:

- New & Used Books
- Art Prints & Posters
- Calendars & Cards
- Handbound Journals

M-F 10-9 SAT 10-6 SUN 12-5

CHANGING HANDS
414 Mill Avenue 966-0203
Old Town Tempe

RUNDLE'S LIQUORS & MKT.
730 S. MILL
Corner Mill & University Ave.

| | |
|-------------------------|--------|
| MEISTER BRAU BEER Case | \$6.57 |
| ANDRE CHAMPAGNES 750 ml | \$2.97 |
| BEAMERO TEQUILA 750 ml | \$4.72 |
| PLAYBOY Used Magazines | \$.94 |

Haagen Dazs Natural Ice Cream, Adult Magazines, Groceries, Ice, Wines, over 40 Imported Beers.

967-9079

ROSH HASHANA
OCTOBER 3-5, 1986

Dinner: Friday, Oct. 3, 5 p.m. at Hillel
Students \$4 / Non-students \$7
Pay by Wed., Oct. 1
After Oct 1, \$6 & \$10

ENTRANCE TO ROSH HASHANA & YOM KIPPUR SERVICES ARE BY ADMISSION CARD ONLY!

Cards are FREE for students, staff and faculty of ASU and the community colleges.

Hillel Jewish Student Center
1012 S. Mill Ave.

Services: Friday, Oct. 3, 8 p.m., Arizona Room
Saturday, Oct. 4, 9:30 a.m., Arizona Room
Sunday, Oct. 5, 9:30 a.m. at Hillel

KEEP THIN AND LIGHT...

SAVE 50¢ ON ANY JOB Silver Lights CIGARETTE PAPERS

MANUFACTURER COUPON EXPIRES SEPTEMBER 30, 1987

RETAILER: You are authorized to act as our agent for redemption of this coupon. We will reimburse you 50¢ plus 8¢ handling providing that you and the consumer have complied with the terms of our offer. Void where prohibited, taxed or restricted by law. Good only in U.S.A. Cash value 1/20¢. The consumer must pay any sales tax. Any other use constitutes fraud. Mail coupon to: Republic Tobacco Co., P.O. Box 730335, El Paso, TX 79973. Limit one coupon per purchase.

79083 100093

classifieds

For Sale

PIONEER SPEAKERS, 100 watt, brand new, never been used. Cost \$600, will take \$100 for the pair. Moving, must sell. 954-0627.

ROLEX-PIAGET-Cartier-Gucci: Collection quality replicas. 234-9810.

WATERBED, GREAT for small room, double, six drawers, mirror, headboard, and more! \$125 OBO. 483-7286, Candace.

Furniture

ALL NEW sofa, love seats, assorted colors, fabrics, \$199.95. Can deliver. B&Z, 520 E. Roosevelt, 254-4144.

BED'S BED'S. All sizes: Twin \$49.95; Full \$59.95; Queen \$89.95; King \$129.95. Never used. Can deliver. Phone orders accepted. B&Z, 254-4144.

COMPLETE 7-piece bedroom set \$199. Price includes complete full size bed, 6-drawer dresser, 2-drawer night stand, mirror, and headboard. Can deliver. B&Z, 254-4144.

FUTON WITH convertible sofa frame. 2 months old. New \$300, will sacrifice for \$200. 973-0782.

MATTRESS SALE. Twin sets from \$49.95. Full sets from \$59.95. Queen sets from \$89.95. Kings \$139. 7 piece bedroom set complete \$195. 7 piece living room set \$259. 5 drawer chest \$39.95, sleeper sofas from \$249 plus much more. 3332 Furniture, 30 W. Main, Mesa, 844-1891; 3332 W. McDowell, 233-2236.

MOVING, SELLING new loveseat and couch, natural beige on beige "nubby" fabric, \$175; wicker furniture, two sitting chairs, one large fan chair, \$25; washer, \$75. Call 968-3816, leave message.

STUDENT SPECIAL: Student desks \$49.95, bookcases \$29.95, entertainment centers \$99.95, computer desks \$59.95, chests \$39.95. Much, much more. Can deliver. B&Z, 254-4144.

WE NEED to sell our couch! Very large, clean, comfortable sofa bed. Only \$70! Call 898-7273.

ARCHITECTURAL STUDENT needed to make up existing floor plan and then redesign interior of 1200 sq. ft. house. Changes are creating entry, storage, redesigning of kitchen, master bedroom, and bath. Creativity a must. 992-2841.

Help Wanted

ARCHITECTURAL STUDENT needed to make up existing floor plan and then redesign interior of 1200 sq. ft. house. Changes are creating entry, storage, redesigning of kitchen, master bedroom, and bath. Creativity a must. 992-2841.

ARCHITECTURAL STUDENT needed to make up existing floor plan and then redesign interior of 1200 sq. ft. house. Changes are creating entry, storage, redesigning of kitchen, master bedroom, and bath. Creativity a must. 992-2841.

ARCHITECTURAL STUDENT needed to make up existing floor plan and then redesign interior of 1200 sq. ft. house. Changes are creating entry, storage, redesigning of kitchen, master bedroom, and bath. Creativity a must. 992-2841.

Help Wanted

ASU STUDENTS, earn big bucks in your spare time, full or part-time available. If you have a valid driver's license, call 968-2357 or 839-8478.

BOYS AND Girls Club of East Valley, 715 W. 5th St., Tempe, and 300 E. Chandler Blvd., Chandler, is seeking arts and crafts instructor and games room supervisor to work at Chandler facility. Hours: Tuesday through Friday, 3:00 p.m.-8:00 p.m. Saturdays, 9:00 a.m.-4:00 p.m. Hours flexible. Also, seeking in Tempe, gym supervisor, must have PE teaching experience. Hours: Monday through Friday, 2:30 p.m.-7:30 p.m. Call Stephanie at 968-8022.

BREAKFAST AND lunch waitresses needed, part-time bartender. Apply at: Warehouse Cafe, 5444 E. Washington, Phoenix (one mile over Mill Ave. bridge).

COCKTAIL WAITRESS. Very nice north Tempe lounge. Part-time nights, age 21 or over. Melody Lounge, Curry Rd. and Scottsdale Rd. 967-9065.

ENGINEERING TECHNICIAN (mechanical). Second or third year mechanical engineering or technology. Some related experience desired. Must be available minimum of 20 hours per week fall and spring semester. Flexible schedule, \$4.50 and up. 956-8200.

FLUTE TEACHER, Suzuki background preferred for 5 year old with music experience. 962-9534.

HARKINS THEATERS are now hiring part-time assistant managers for their Scottsdale locations. No experience necessary. Perfect job for college students. Gain management experience. Apply in person, Camelback Mall Cinema, 7033 E. Camelback Rd.

HOMESPACE LTD. needs a personable, hard-working sales person for 15-20 hours a week. Must have retail sales experience. Apply in person, Tuesday, September 23rd, noon-3 p.m. or Wednesday, September 24th, noon-4 p.m. 522 S. Mill Ave. in Old Town Tempe.

JUNIOR/SENIOR real estate student. Work part-time with commercial real estate broker in property analysis and presentation packages. Call 279-3363 for interview.

LOOKING FOR a job with a future? Part-time retail sales, hours to work around your schedule. \$5/hour vs commission, unlimited earnings, male/female, no sales experience necessary. Call Rick, 248-8732.

MAKE HUNDREDS weekly mailing circulars! No quotas, limits! Rush self-addressed, stamped envelope: Am-Mar, 256 Robertson Blvd., Dept. G2, Beverly Hills, CA 90211.

HOUSE CLEANING service: Reliable part-time help, make top money, will train, opportunity to advance. 231-0333.

NATIVE SPEAKING person who loves to be with children. Spanish, French, German, or Japanese. 962-9534.

NOW HIRING full-time and part-time typists at Kinko's Word Processing. \$4 per hour to start. 966-2035.

OFFICE CLEANERS needed 15-20 hours per week. Evenings. Must have car. \$4 per hour after training. Bonuses, pay raises, and advancement opportunities. Leave message. 274-0999.

PART-TIME COOK, 3 days per week, healthy foods. Please call for interview, 279-3363.

PART-TIME MOBILE D.J.- male/female, will train. 968-9898.

REAL ESTATE development firm needs part-time sales representative. Strict commission, \$40,000 potential, educational credit opportunity. 990-4450.

REAL ESTATE investor needs owner-occupied cosigner to help finance. Will pay \$500. 990-4450.

RETAIL SALES, weekends, western hats and belts. Salary plus commission, Greyhound Park and Swap. Call Bud, 942-2859.

SHOE SHINE girls wanted for busy valley locations. Call Bennie at 947-2742 for interviews and training.

TEACHING POSITION available, private school, part-time. Fine arts grad student preferred. Send resumes and inquiries to: PO Box 31831, Phoenix, 85046.

WANTED: CRAZY artistic drama student, sense of humor, business car; wish to start business with singing grams. Call 784-0007.

WANTED: DELIVERY drivers for Long Wong's Famous Wings, 701 S. Mill, Tempe.

Hair Dressing

HOUSE CLEANING service: Reliable part-time help, make top money, will train, opportunity to advance. 231-0333.

NATIVE SPEAKING person who loves to be with children. Spanish, French, German, or Japanese. 962-9534.

NOW HIRING full-time and part-time typists at Kinko's Word Processing. \$4 per hour to start. 966-2035.

OFFICE CLEANERS needed 15-20 hours per week. Evenings. Must have car. \$4 per hour after training. Bonuses, pay raises, and advancement opportunities. Leave message. 274-0999.

PART-TIME COOK, 3 days per week, healthy foods. Please call for interview, 279-3363.

PART-TIME MOBILE D.J.- male/female, will train. 968-9898.

REAL ESTATE development firm needs part-time sales representative. Strict commission, \$40,000 potential, educational credit opportunity. 990-4450.

REAL ESTATE investor needs owner-occupied cosigner to help finance. Will pay \$500. 990-4450.

RETAIL SALES, weekends, western hats and belts. Salary plus commission, Greyhound Park and Swap. Call Bud, 942-2859.

SHOE SHINE girls wanted for busy valley locations. Call Bennie at 947-2742 for interviews and training.

TEACHING POSITION available, private school, part-time. Fine arts grad student preferred. Send resumes and inquiries to: PO Box 31831, Phoenix, 85046.

WANTED: CRAZY artistic drama student, sense of humor, business car; wish to start business with singing grams. Call 784-0007.

WANTED: DELIVERY drivers for Long Wong's Famous Wings, 701 S. Mill, Tempe.

Instruction

20 HOURS A week or more, can accommodate most class schedules. Mature person to aid in financial analysis of commercial income producing property and overall activity related to Real Estate brokerage. Computer skills helpful, prefer business majors. Class credit available to Real Estate or finance majors. Contact Kathleen Hall or Tracy Ng at 241-9000. Grubb and Ellis Commercial Brokerage. Resume preferred.

MASTER SELF-HYPNOSIS and change your life. Small groups or individual sessions available. Call Jim Lane, Ph.D., 966-8810.

Jewelry

CASH FOR gold and diamonds. Mill Avenue Jewelers, 414 S. Mill Ave., Suite 104, Tempe, 968-5967.

Lost & Found

LOST AND Found ads are free everyday! We limit them to 20 words and run them for 2 days. Just call the STATE PRESS classified department, 965-7572, Monday through Friday, 8:00 a.m.-5:00 p.m.

LOST: UNITED States passport. Reward. No questions asked. Palo Verde West, #47.

Miscellaneous

PLAY IT AGAIN CINEMA
Showing through Sunday!

BEN HUR
THE GREAT ESCAPE
SINGING IN THE RAIN

Admission Only
\$1.50-\$2.00

ON SCOTTSDALE RD.
One Block North of McKellips
Just Across The River 9/26
On Scottsdale Rd. just north of McKellips
2240 N. Scottsdale Rd. • 994-1190

Motorcycles

1984 HONDA Aero 125 scooter, red, runs well. Only \$850. Greg at 968-5698 or 868-0496.

1984 HONDA Aero scooter 125. 3700 miles. Excellent condition. \$850 or best offer. Call Todd, 973-0782 after 2:30.

Motorcycles

1980 550 Suzuki. Low mileage. Excellent condition. Best offer. 839-1013.

1985 HONDA 250 Elite scooter, top of the line, 2100 miles, \$1500. 831-2052, 966-7829.

HONDA AERO 80, blue, 1985, great condition, 2158 miles. 946-4273.

NIGHTHAWK 1982 650 4-cyl, black metallic, 11K miles, exceptional condition, \$1200 OBO includes cover, fast!! 834-8865.

YAMAHA 550 Maxim, 6K miles, black, 6-speed, new battery, excellent condition, 87 tags, \$1100. 840-8999.

On Campus

LIKE ART? Enjoy children? Come to the "Give a Damn Art Teachers" meeting today at 4:30 in Art 226. Find out what the ASU chapter of the National Art Educators Association is up to!

Personal

\$30,000 in three weeks guaranteed. Send self address stamped envelope, C.S. Robinson, PO Box 626, Tempe, AZ 85281.

ALL ALPHA Lambda Delta members welcome! Picnic, September 24th at Kiwanis Park. Further info call Holly: 784-8719.

ANYONE WILLING to fill out questionnaire for dissertation research on emotions in coping after relationship breakup, call Mary at 829-0117.

BABY PHYLIS! I'm so glad you're mine- your pledge mom loves you!! ITB, Kendall.

BULIMIA: TROUBLED by uncontrollable binge eating? Doctoral psychology student will treat you for free if you will participate in research. 921-1441.

CARRIE COLEMAN! First cotillion, now sorority life. What next? Thanks for everything, I couldn't have done it without you. Love, Kimmy.

CONGRATULATIONS to our new Pi Phi actives- Molly, Julie, Kim, Nicole, Amy, and Shari.

DEAR BULLTWISTER: I love you without question and miss you considerably. Your Canchaser "Can".

DENISE K., alot has happened since Peace Corp. Morocco and Grad 1982. Remember San Diego. Dawny, 921-1808.

DG PLEDGE Kelly Herlund- Wow, whatta dot!!! I'm so proud of you- ITB, Kendall.

DIALING 4-MEN! Recorded gay personal ads. No "coded" ads. All phone numbers! Dial 1-976-4MEN (1-976-4636). Call 24 hours. First minute \$.55, each additional minute \$.45.

D.I.P.S.A.! It's your turn to beware! Buckle up! You're on the "Highway to Hell"! Hang in there! Luv, Angus.

DON'T MISS your opportunity for books with meaning. Quo Vadis Books, 122-B University, Tempe. 968-3663.

EARLY MORNING running partner needed. Female or male. Moderate pace. Call Eric. 784-9316 anytime.

FREE USE of video tape, regarding super business opportunity, no obligation, no high pressure. 968-8944.

JEFF MCEARCHERN: Have your cake and eat it too! Happy 20th birthday.

JIM P.: To the coolest engneerd I know. G-Phi Presents was great! Cris.

KATHY BACH: Today is your Birthday! Make it a great one! Happy Birthday Doll! Ab.

KELLY BAIRD, Sheri Schroeder, Marcel- Welcome to the family! Your grandma loves you- Kendall.

KIO: WE want your blanky. Love, Barb and Michelle.

LOOKING FOR the finance major who was in Reno, Nevada for the air races. I'm the aeronautical engineering student who rolled out the red carpet when you arrived at Butler Aviation. Had hopes to see you again. Monika, 879 Daniel Drive, Reno, Nevada 89509.

Personal

NEW CHI-OMEGAN, you left without telling me your name on Tuesday in Hayden. -Mr.

NEW CREDIT card! No one refused Visa/Mastercard. Call 1-619-565-1522 ext. C23AZ. 24 hours.

PREGNANT? CONSIDER adoption. We may be able to help with housing and medical expenses. For pressure free counseling at no charge, call Southwest Adoption Center, Inc. (602) 234-2229 or 1-800-423-2229.

SCHLONG, "MAD about you, you and I!" Who's your pal? Belinda.

SUZI GOULD: You "take my breath away". Get psyched for Sedona. Love, C.

TROY- THE Wonder Boy, feliz cumpleaños! Hope your 19th birthday is wuudebar. La! Love, Lisa.

UNLIMITED LONG distance phone calls, \$100 per month, plus earn \$25 monthly each person you sponsor. 968-8944.

WEEKEND GESTALT therapy group for women. No charge. Learn more about yourself/ increase personal growth/ help your problem areas. 820-3823.

24 Hour SINGLES CLASSPHONE
Telephone Dating Introductions
Easiest and Most Fun
Way to Meet Someone New!

- We Don't "Code" Our Ads
- No Membership Fee
- All Ads with Phone Numbers

To Place Your Ad or Listen to Others
Dial 1-976-4000
First Minute 55¢
Each Additional Minute 45¢

Call Today and Enjoy Your Tomorrow... 10/1

Pets

FREE. MUST find home for pet rabbit. Friendly! 1 year old. Call Kelly, 967-6371.

Real Estate

CONDO FOR sale by owner, \$500 plus transfer fees to assume mortgage and it's yours. 1 bedroom, second floor, 3 years old, immaculate condition, clothes washer/dryer, refrigerator, dishwasher, disposal, community pool/jacuzzi. 700 W. University, biking distance to school. Call A. Benora, M.D., 251-3112 days.

ONE BEDROOM condo for sale, two miles from campus. \$38,000, or loaned \$42,000. Washer, dryer, stove, refrigerator, pools, tennis courts. Call 833-0206 after 7 p.m.

OUTSTANDING TWO bedroom, two bath, two garage, two story, Mill and Broadway area. Fireplace, walk-in closets, microwave, genie, ceiling fan, bar. \$115,000. Available now. Robert Crouch, Realtor, 945-0701.

Roommate wanted

CHRISTIAN FEMALE, nonsmoker, share two bedroom duplex near ASU. \$150 + 1/2 utilities. 894-1794, Renee.

FEMALE ROOMMATE wanted to share two bedroom, two bath condo one mile to campus. \$300 per month, furnished, utilities included. 966-1729.

FEMALE ROOMMATE needed, \$175/month plus utilities. Own room, beautiful house with pool, jacuzzi, washer/dryer, furnished. Lisa, 967-7443.

FEMALE ROOMMATE wanted, University Towers. 894-1793.

FEMALE, share townhouse, 3bedroom, 2bath, 1/2 utilities, pool, w/d, own room, share bath, \$160/month, \$160 deposit. Southern/Hardy. 921-9477. Partly furnished.

LOOKING FOR female roommate, nonsmoker, to share 2 bedroom, 2 bath condo. \$275 month includes utilities. Washer/dryer. 966-7161. 850 S. River Dr. #2119, Tempe.

MALE ROOMMATE wanted, University Towers. 894-1793.

RESPONSIBLE FEMALE, nonsmoker, share furnished three bedroom, two bath home near Dobson/University. Must like animals. \$250 plus 1/2 utilities. Call Paula, days 269-4450, evenings 827-0087.

SHARE CONCEPTS shared housing. We have numerous tenant and landlord placements and are open for more. Valley wide service. References required, Mon-Sat, 9 a.m.-7 p.m. 980-8488, 948-0198.

Roommate Wanted

FEMALE STUDENT room in a lovely private home, \$185 includes electricity, everything furnished. 947-4912.

TWO FEMALES to share house with grad student, private bedrooms, bath, living room, phone, large kitchen, fireplace, pool, patio, no deposits, utilities paid, \$225 each. Call Michael early a.m. or late p.m. 956-8096. 32nd St./Camelback. 15 minutes to ASU.

Services

COMPUTER TERMINALS for rent or sale with modem. Do your homework from home. \$35 per month. 246-6172.

EDITING, ACADEMIC and technical. If your graduate or professional writing needs editing or proofreading, call Mary, 967-6397 a.m.'s or after 9:30 p.m. Reasonable rates.

FOR PRODUCTS you need or if you would like a free facial, call Judy Holdsworth, beauty consultant, Mary Kay Cosmetics. 994-8271.

Transportation

CARS AVAILABLE - 21 or older. All States Drive-away, 992-5200.

Typing

\$1.50/PAGE, word processor, mailmerge, professional typist, same day service. Call Marge Willis 834-4583.

A-1. GET your papers laser typeset at Kinko's. 966-2035.

AAA WORD processing service. Term papers, graphics, resumes, etc. Call Ron 835-7822 or 833-5532.

AAKURIT TYPING/ Members of TTA/ call Brenda 897-0505/ Carolyn 831-2434/ Linda 831-0349/ Good rates/ prompt service.

AA TYPING - word processing, \$1.50 per double spaced page. Call Cathy, 898-8191.

ACCURATE. CONVENIENT. Reasonable. Mrs. Oakley. 967-0802.

CALL ME for fast, accurate, quality service at competitive prices. Close to ASU. 966-2186.

CEREUS WORD processing. Quality guaranteed. Term papers, marketing/technical, dissertations, theses, form letters, resumes. 947-7796.

FORMER ASU staffers- experience with APA, MLA and other formats for dissertations, theses, term, and research papers. Word processing, or let us take your entered disks and print them out on our IBM compatible, letter quality printer. Rates quoted. Members NASS and MAPSS. Call Donna or Joan, 945-6302. Open Saturdays.

JB'S WORDPROCESSING, typing. Can type anything. Located in Tempe 839-3412 after 3:00 pm weekdays.

LET ME do your typing! Day's Typing/Wordprocessing Service. Competitive rates. Call Barbara at 892-1715.

PROFESSIONAL QUALITY word processing. Carolyn, 838-0959.

PROFESSIONAL ACADEMIC word-processing, books, theses, dissertations, disc storage, letter quality. Reasonable rates. Taylor, 964-6689.

RUSH JOBS no problem! Term papers, theses, etc., \$1.50 per page. Sharp, clear type. 839-9103.

SAVE TIME, call me first. Wordprocessing- theses, dissertations, resumes. Professional typist. Mesa Secretarial. 962-6694.

SHORT OF TIME? I can help. Reasonable. Professional. Guaranteed. Experienced in academic. Call Jessie 945-5744.

THESES, TERM papers, reports etc. \$1.00 page, typed at home, 30 years experience. Marian 431-0618.

WORD PROCESSING and storage for dissertations, theses and term papers. Nancy 830-5572.

WORD PROCESSING, data entry, fast turn-around, reasonable rates. Close to campus. 831-9054.

Wanted

MAKE EXTRA money. Buying used mags. Penthouse, Playboy, etc. Call now, 967-5216.

**NEED CASH?
WE DELIVER.**

Domino's Pizza, the world's largest pizza delivery company, is now hiring delivery drivers. If you are 18 years old, have a valid driver's license, automobile insurance, a good driving record, and access to a car, you can:

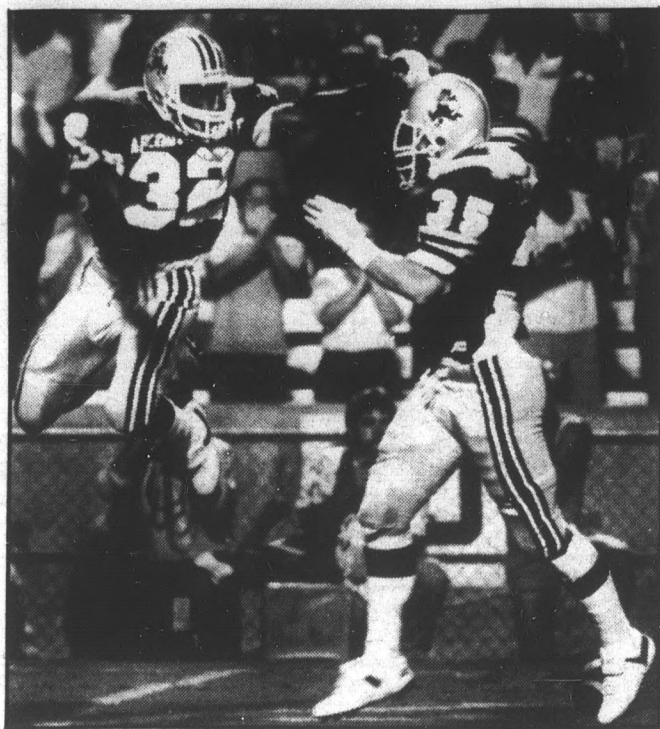
- Make an average of \$6-\$8 an hour.
- Enjoy the freedom of being on the road.
- Work flexible hours.
- Be part of the excitement of the world's fastest-growing pizza delivery company.

Apply at:
903 S. Rural Rd.
930 W. Broadway
after 11 a.m. daily

© 1986 Domino's Pizza, Inc.

Catch the Spirit

DOMINO'S PIZZA



Rick Wiley/State Press

Cornerback Anthony Parker gives a high five to devilback Rich Zumwalt after ASU's defense came up with an interception.

Parker plays key role in Sun Devils' win

By STEVE BRENNAN
State Press

Every football coach says special teams can make the difference in the game, but that point is seldom made as clear as it was in the Devils' 30-0 victory over Southern Methodist University Saturday.

ASU football coach John Cooper has placed a lot of attention on special teams this season, part of which paid off Saturday in the form of two key punt returns by cornerback Anthony Parker.

Parker, who returned two punts for 31 yards against Michigan State last weekend, played a key role in the Sun Devils' SMU victory with two long returns. His 54-yarder set up the first ASU score, and his 65-yard touchdown return put the Mustangs away for good.

"Anthony Parker played a great game," Cooper said. "Those returns weren't flukes. (Defensive coordinator) Larry Marmie drilled us on them every day in practice. He needed it for his confidence."

Parker said: "We knew from the films that we could return on them. They were relaxed coming down the field."

Parker's first return came in the first two minutes, after the Mustangs stalled on their first possession of the game. Parker caught SMU punter Dodge Carter's 53-yard punt on his own 19 and brought the ball 54 yards up the right sideline before he was tackled at the SMU 26-yard line, setting up the first Devil touchdown.

"A hole opened up on the sideline," Parker said. "They didn't get down the field in time. I thought I had it but they caught me."

The second big return for Parker came with 5:28 left in the game and a 24-0 ASU lead. Carter kicked the ball from the SMU 16 to Parker, who took the ball down the sideline again, this time for 65 yards and a touchdown.

"Coach Marmie gave me the go," Parker said. "I got some great blocks and just took it up the field."

Despite his punt returns, he said he did not play a great game all around.

"I liked the punt returns," he said. "But I wasn't concentrating very well on defense, and they had good receivers. I felt relaxed tonight."

Parker said he was pleased with the performance of the defense as a whole, though.

"The team played really well," he said. "We put more pressure on the quarterback and the linebackers helped out with their drops which helped us out a lot, so we were able to come up with big plays."

Parker returned five punts for 148 yards on the evening, bringing his total to seven returns for 179 yards and one touchdown this season. He also added three unassisted tackles and one quarterback sack on Saturday night.

ASU PUBLIC EVENTS NOW HIRING

for after-event clean-up crews at Gammage Center and the University Activity Center. Pick up job referral form at Matthews Center. Interview hours are Sept. 22 and 23, 1986, from 3:30 to 5:30 p.m.

YOU'RE INVITED!

Christian Science Organization at ASU

Welcomes all students, faculty and staff to our testimonial meetings.

Each Monday at 12:40 p.m.
DANFORTH CHAPEL

FRAMED PRINTS

16x20..... \$12.00
22x28..... \$15.00

Custom Framing & Gifts

FRONTIER FRAME & GIFTS INC.
219 E. Baseline, Tempe • 897-8934

TUNE-IN TODAY! M-TV HAPPY HOUR

Featuring

- Your favorite soap operas
- \$1.99 Pitchers — Draft
- \$1.00 Wine Coolers & Domestic Beer

1:00-3:00 M-F

Jeopardy Happy Hour 4-5 M-F

NORMS Food & Drink

620 S. College Ave.
Corner of 7th St.
968-1940

GRAND OPENING

Good for
Monday, Sept. 22 and
Tuesday, Sept. 23 only

HANSON'S QUALITY FOODS

1845 E. Broadway
Broadway & McClintock

Store Hours
8 a.m.-10 p.m.

| | | | | |
|--|--|---|---|---|
| Hanson's Bulk Roasted & Salted PISTACHIO NUTS \$1.99 lb. | O' Bob Millers SAS'PARILLA, KIWI FRUIT, or ASST. NATURAL SODAS 99¢ 6 Pack 12 Oz. Cans | Hanson's Bulk Cut Colby Longhorn CHEESE \$1.69 | Large Grade AA EGGS 59¢ Dozen | A.D.L. VITAMIN C-500 99¢ 100 Ct. |
| Golden Delicious APPLES 4.99¢ | Thompson Seedless GRAPES 4.99¢ | Roma TOMATOES 4.99¢ | Sweet Ripe CANTALOUPE 4.99¢ | |
| Golden Ripe BANANAS or Red Flame Seedless GRAPES 3.99¢ | KIWI FRUIT 3.99¢ | Garden Fresh CAULIFLOWER 3.99¢ | Garden Fresh ITALIAN SQUASH 3.99¢ | |
| Medium Brown ONIONS 6.99¢ | White Rose or Russet POTATOES \$1.39 10 Lb. Bag | Ready To Eat PEACHES 49¢ Lb. | POMEGRANATES 6.99¢ | |
| Bulk Cut American Yellow or White Sliced CHEESE \$1.99 lb. | Bulk Cut Swiss or Munster CHEESE \$2.39 lb. | Bulk Cut Low Salt Swiss CHEESE \$2.69 lb. | Bulk Cut Mild Cheddar or Monterey Jack CHEESE \$1.99 lb. | |
| Boiled Ham (Sliced to Order) \$1.99 lb. | Foster Farm's TURKEY BREAST \$3.69 lb. (Sliced to Order) | Foster Farm's TURKEY BOLOGNA \$1.39 lb. (Sliced to Order) | Foster Farm's TURKEY PASTRAMI \$1.99 lb. (Sliced to Order) | |
| Normal GENOA or Hard SALAMI \$3.99 lb. | Dairy Fresh STRING CHEESE 3.99¢ 1 Oz. | Goldmar Bulk Cut BRAUNSCHWEIGER 89¢ lb. | Alax Bulk POTATO, COLESLAW or MACARONI SALADS 99¢ lb. | |
| Hanson's Bulk Assorted GRANOLA 99¢ lb. | Hanson's Bulk Famous (Asst.) TRAIL MIXES \$1.99 lb. | Hanson's Bulk Freshly Shelled WALNUTS \$2.39 lb. | Hanson's Bulk Roasted & Salted, Roasted or Raw Shelled SUNFLOWER SEEDS 99¢ lb. | |
| Hanson's Bulk Roasted & Salted WHOLE CASHEWS or PECAN HALVES \$4.99 lb. | Hanson's Freshly Shelled RAW ALMONDS \$2.69 12 Oz. | Thompson Seedless RAISINS \$1.99 New 24 Oz. | Honey Daze Gardens Variety DATES \$2.99 32 Oz. | |
| Chico-Son (All Natural) RICE CAKES 5 1/4 Oz. 99¢ | San Benedetto Natural SPRING WATER \$1.39 From Italy 2 Ltr | Knudsen Natural APPLE JUICE \$1.39 32 oz. | Scottie All Natural DOG BISCUITS \$1.99 32 Oz. | |
| Kettle (Asst.) GOURMET POTATO CHIPS 5.5 oz. \$1.39 | Natural Food Store Creamy or Crunchy PEANUT BUTTER 16 Oz. \$1.99 | Nature's Choice (Asst.) GRANOLA BARS 4.5 oz. \$1.69 | Fruitease Flavored CHEWABLE TABLETS \$1.49 225 Calories | |

HANSON'S QUALITY FOODS

Northeast: Paradise Valley 32nd & Greenway 482-3110
El Mirage — Sun City Area 12109 N.W. Grand Ave. 583-0301
Southwest: Tempe Priest & Southern 967-4885
East: Tempe Broadway & McClintock 921-9676
Prices Good At All Four Locations. Ad Effective Tuesday, Sept. 16 thru Tuesday, Sept. 23, 1986.

COUPON Dairy Queen brazier SINGLE BURGER FULL MEAL DEAL



Look what you get! An all-beef burger. A regular order of crispy, golden fries. Your favorite medium soft drink, and, to top it off, a cool and creamy 5oz. DAIRY QUEEN® Soft Serve Sundae. Head for your participating DAIRY QUEEN® BRAZIER® store, to get the Burger Full Meal Deal!™ — The best bargain in town.

\$1.89

ONLY AT:
1389 E. APACHE
(Between Rural & McClintock)
Limit 2 per coupon.

COUPON