

Council recommends licensing liquor store

By ED SCHUBERT
State Press

Is there too much alcohol available in Sun Devil Village?

The question came before the Tempe City Council last Thursday night when a local businessman asked the council to recommend that the State Liquor Board grant him a liquor license.

The council approved the recommendation, six to one.

Louis Olivieri owns Barney's, a liquor store at 142 E. Terrace Drive. Barney's has been closed for about a year.

Olivieri told the council he plans to sell beer, wine, cigarettes and various convenience goods at his store, which would be open from 2 p.m. to midnight.

But two local residents urged the council not to recommend approval of the license.

They argued that their neighborhood is being saturated with alcohol because there are six convenience stores already selling beer and wine in the immediate area.

Warren Steffey, owner of the Park Terrace apartments across the street from Barney's, said the rowdiness of the store's customers created a problem.

"Life in our neighborhood is not what it once was because of a great increase in the amount of alcohol available," he said.

Steffey said the council should "limit the sale of alcohol and get a handle on the alcohol and drug problem in our area."

He said there has been an increase in alcohol-related crimes on Terrace Drive.

But councilman William Ream said he reviewed a report from the Tempe Police, and "the police department did not have any real problem with this area."

Park Terrace manager Lu Fournier said drunken students shouting obscenities often woke her up at night and that in the morning, she had to go out and pick up their

litter.

She also said customers from the stores often parked in her tenants parking spaces, and a new store would only make matters worse.

Council member Patricia Hatton told Fournier, "We are not responsible for the behavior of students. They are responsible for their own behavior."

She told Fournier to "call the police department on a regular basis."

Steve Easterland, a Park Terrace resident, told the council keeping Barney's closed wouldn't help the situation because "all of the things sold in this store are just around the corner."

But he complained that students don't realize the area is a residential neighborhood.

"There are a lot of children that live in these apartment houses — they're not all students," he said.

Easterland said he was unhappy with the broken beer bottles he was constantly finding on the street, sidewalk and the apartment's lawn.

But Olivieri said he would be providing a service to the community by offering his goods at lower prices than other stores in the area, and that his business' presence would not be a source of trouble.

"I'm a family man and understand the concern for quiet," he said. "There will be no change in the neighborhood atmosphere."

After the vote to approve recommendation of the license to the State Liquor Board, Tempe Mayor Harry Mitchell said the recommendation only meant that Olivieri had met all the requirements to obtain a license.

"We do not grant or police liquor licenses," he said.



Michael Scully/State Press

Head over heels

Mona Plummer Aquatic Center lifeguard Bob Kline watches Mike Lee, a junior liberal arts major, do a double flip off the high dive. Kline, a graduate student, says working as a lifeguard is "a tough job, but somebody has to do it."

Tram added to service Lot 59, relieve congestion



State Press photo

Tram riders will be relieved to hear of the addition of a second tram to the afternoon Lot 59 fleet.

By MICHAEL BURGESS
State Press

A second tram has been added to service Lot 59 in the afternoon and alleviate congestion, the assistant director of parking said.

Richard Landreth said an additional tram will run between Hayden Library and Lot 59 after 1 p.m., to accommodate an increase number of afternoon riders.

A third tram is running to Lot 40 in the afternoon.

The decision to add another afternoon tram comes after last Thursday's tram backups and reports that tram drivers were crowding passengers into the vehicles.

"When you see reports of 45 minute waits, it alerts us to the quality of service," Landreth said.

"We had two trams running in the afternoon before this week, but there was no back up due to a tram accident, he said.

"What happened is a tram got a (2-inch-by-4-inch piece of wood) through its windshield, but the driver was finished for the afternoon and was gassing up the tram for next day."

Landreth said more people are riding the trams this year because 1,100 parking spaces were added to Lot 59.

Landreth said 1,900 to 2,000 people ride the trams regularly each day. Last year, a total of 500,000 people rode the trams.

Manny Figueroa, program coordinator for the tram service, said: "Tram service is adequate when it's running between a 10 to 15 minute waiting period.

"Our big crunch for trams is from 7 a.m. to 9:15 a.m."

Four trams run to Lot 59 during that time. Figueroa said the trams are checked for timeliness and safety regularly.

"We were out the other day, and trams were arriving at stops every 9 to 11 minutes," he said. "That's pretty doggone good."

Figueroa said seating more than four passengers on each tram bench is against University policy and added that if drivers continue to allow crowding, there "will be a hell of a lot of trouble."

"If there are problems people should let us know," he said. "We can't help if we're not informed."

inside
today



BYRON MOORE
The special education professor is back teaching classes after a brush with death last November. Page 5.



ASU WEATHER
Sunny and hot with a high of 104 degrees. Expected low is 83.

Bloom County.....	14
Classified	30
Ivory Towers	15
Nation/world	2
Opinion	4
Police report	3
Sports	25

nation/world

Ballooning record set; 3 Dutch fly 51 hours

ALMERE, Netherlands (AP) — Three Dutch balloonists set a new transatlantic crossing record today when their helium-filled Dutch Viking plunged into a wheat field 51 hours and 14 minutes after liftoff from Newfoundland.

The hard but accurate landing by professional balloonists Henk Brink, 44, his 31-year-old wife Evelien, and Dutch fighter pilot Willem Hageman, 39, about 12 miles east of Amsterdam marked the first successful Atlantic balloon crossing by Europeans.

It was also the first balloon journey across the Atlantic by a woman.

The two previous transatlantic balloon flights were made by Americans.

Because of high winds, the gondola hit the ground shortly after 8 a.m. at a speed of about 30 mph, according to police estimates, and the gondola overturned on impact.

As the Dutch Viking headed for its stormy landing, the crew dropped 14 canvas ballast bags of lead pellets in an attempt to gain altitude, and some of the 22-pound bags smashed through roofs in the coastal town of Velsen, about 27 miles from the landing site.

Ballast bags fell through the roofs of two fish processing plants and a metal working firm, but no one was injured, according to Velsen police.

Dutch Television reported a motorist drove into a utility pole while watching the landing near Almere, and demolished his car. He was reportedly not injured.

Smith receives 3 years for Belushi injection

LOS ANGELES (AP) — Cathy Evelyn Smith, a former rock backup singer who injected comic John Belushi with drugs

before he died, was sentenced to three years in prison Tuesday by a judge who called her "the source of the poison."

Ms. Smith had pleaded no contest to a charge of involuntary manslaughter and three counts of furnishing and administering dangerous drugs in Belushi's heroin and cocaine overdose death on March 5, 1982.

Judge David Horowitz rejected an impassioned plea from Ms. Smith's attorney, Howard Weitzman, who urged that she be placed on probation and be allowed to enter a drug rehabilitation program.

He told Ms. Smith this did not absolve her and, declaring "you were the source of the poison," said that only prison time could teach her a lesson.

Ms. Smith had faced a maximum possible sentence of eight years and eight months in prison.

Belushi's widow, a younger brother and his sister-in-law sat in the front row of the courtroom as the sentence was pronounced. They had appealed to the judge to put Ms. Smith behind bars as a lesson to youngsters who might be tempted to try drugs.

Weitzman repeatedly summoned the ghost of Belushi, saying the comic surely would speak in favor of Ms. Smith's probation if he was present.

"I believe if John Belushi were standing right here today and looked at your honor, he would say, 'Wait a minute judge. I lived my life as I wanted to live it. Don't blame her. She did what I wanted to do,'" Weitzman said.

The prosecutor, Deputy District Attorney Elden Fox, said he agreed that drug addiction is a disease but in Ms. Smith's case it became a crime, and he recommended the three-year sentence ultimately imposed by Horowitz.

He said that in reality, she would serve about a year and a half before she could be paroled.

arizona

Phoenix teens donate time for suicide hotline

PHOENIX (AP) — A group of Central High School students will spend some of their evenings answering calls to a 24-hour telephone hotline for teens considering suicide.

The hotline, Teen Lifeline, began operating Friday.

Besides the 15 students, counselors from the Phoenix South Community Mental Health Center will answer calls.

Violet Lopez, Phoenix South's director, said teen suicides in Arizona have been at epidemic proportions since 1970, and

the state's adolescents are now committing suicide at twice the rate as their counterparts in other states.

Lopez said Teen Lifeline is designed to slow the number of teen suicides by providing young people with someone to talk to who might be going through many of the same problems.

"Teenagers are more prone, when in trouble, to talk to another teenager than go to a parent, or a counselor or any other adult," Lopez said.

Lifeline is funded through March with a \$20,000 grant from McKesson Corp., whose subsidiaries produce products ranging from pharmaceuticals to next colofice supplies, Lopez said.

pac-10

Tuition funds sought; assistants non-fluent

TUCSON — The acting head of the UA Spanish and Portuguese department has asked leaders of a Hispanic activist group to help provide funds to support two graduate teaching assistants left unemployed after failing English proficiency tests.

J. Douglas Canfield said he met privately on the morning of August 27, with representatives of La Nueva Alianza, a local Hispanic group concerned with what members perceive as insensitive treatment of the Mexican-American community by the UA.

Canfield said he asked the LNA representatives for help in getting financial support for two GTA's who did not pass the Speaking Proficiency English Assessment Kit (SPEAK) test.

The proficiency test was mandated by the Arizona Board of Regents earlier this year, after the board was prompted by student complaints about foreign GTA's who could not communicate effectively in English.

Canfield said he asked the LNA to assist in providing \$360 in tuition for each of the GTA's, plus an undetermined amount for living expenses.

Tucson Councilman Rodolfo C. Bejarano said he supported the idea of La Nueva Alianza and the UA cooperating, but was "a little bit concerned" about what he considered to be an unfair cost to citizens.

Bejarano said he was disturbed at the thought of asking taxpayers, who "pay the salaries of every individual" in the Spanish and Portuguese department, to pay more money to the university.

JONATHAN'S PIZZA

FAST, FREE DELIVERY

FOR ASU LOCATION CALL

829-1717

HOURS:

11 a.m.-1 a.m. Sun.-Thurs. • 11 a.m.-2 a.m. Fri.-Sat.

16" 2 Toppings

\$7.75

Includes Tax

One coupon per pizza.
Good through 9-10-86.

16" 1 Topping

\$6.50

Includes Tax

One coupon per pizza.
Good through 9-10-86.

12" 2 Toppings

\$5.85

Includes Tax

One coupon per pizza.
Good through 9-10-86.

12" 1 Topping

\$4.95

Includes Tax

One coupon per pizza.
Good through 9-10-86.

N. TEMPE
933 E. University
829-1717

S. TEMPE
4415 S. Rural
838-2227

N. MESA
635 N. Country Club
827-1999

S. MESA
745 W. Baseline
926-1100

N. CHANDLER
1018 N. Arizona Ave.
899-4922

Tubing Down The Salt River
THE SALT RIVER IS THE THRILL THIS YEAR.

Fun in the Sun

Ride a Tube Down the Salt River

TUBE RENTAL AND SHUTTLE BUS SERVICE

ALL-DAY RATES

\$5 plus sales tax per day per person

Or Shuttle Bus Ticket

Only \$2 all day

2,000 tubes for rent

open 7 days a week 9 a.m.-7 p.m.

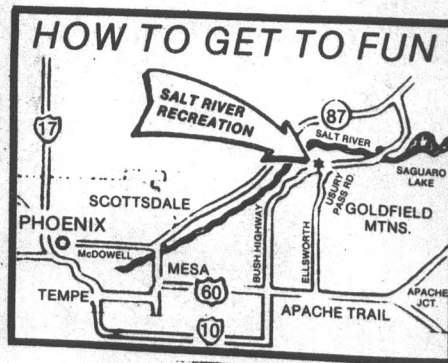
Located 9 miles north of MESA at the junction of Bush and Usery Highways.

For more information, phone (602) 984-3305 or write for your free brochure and river map.

Under permit from Tonto National Forest

Salt River Recreation Inc.

P.O. Box 6568 Mesa, AZ 85206



NO BOTTLES PLEASE



Bring this ad with you for
\$1.00 OFF

TUBE RENTAL
Monday thru Friday

police report

University police reported the following incidents during the 96-hour period ending at 10 a.m. Tuesday:

•Police reported approximately 40 naked men running down Alpha Drive.

Although no arrests were made, the pursuing officer said he saw the subjects run into the fraternity house at 620 Alpha Drive when they realized they were being followed.

•Two Manzanita Hall residents were arrested, booked and released on aggravated assault charges after terrorizing Manzanita Hall residents on four floors.

Police said David Klimas and Kurt Davis were arrested near the elevator on the 10th floor after slashing telephone cables, furniture and wall fixtures.

The two men stormed through Manzanita Hall, wearing commando camouflage outfits and wielding buck knives.

Although no injuries were reported, police said the two men attacked students.

They were taken to Maricopa County Jail. •A student was thrown to the ground and kicked in the head five times by four large men with dark complexions on the sidewalk between Palo Verde Main and Palo Verde East Residence Halls.

The student's front tooth was knocked out during the assault, but he did not receive any broken bones, a Tempe St. Lukes Hospital spokeswoman said.

Witnesses saw suspects fleeing on foot to a compact car parked near Manzanita Residence Hall.

Witnesses contacted Tempe and University police, and the suspects were stopped at the corner of Rural Road and Tyler Street.

Tempe police said the suspects were released.

•Student Richard Gene Mauzy was stopped at 525 W. Forest Ave. after University police

saw him traveling at a high speed in a 25 mph zone.

When police tried to stop him, he fled but was apprehended by two other officers about a block away.

He was arrested and booked on charges of driving while intoxicated, criminal speeding, unlawful flight, resisting arrest, false information and outstanding warrants.

His 1979 blue Corvette was impounded by Dana Brothers Towing and will not be released until University police have finished their investigation.

— LAUREN MILLETTE

today

The deadline for Today entries will be 10 a.m., the day before desired publication at the State Press in the basement of Matthews Center. One item per event will be accepted.

•Society of Professional Journalists, Sigma Delta Chi will meet at Stauffer Hall, Room A15 at 4 p.m. It is a general organizational meeting discussing

conventions, meeting times and topics.

•ASU Precision Flight Team will meet on the second floor of the MU at 7 p.m. It is the first meeting to discuss this year's events. All aviation enthusiasts welcome.

•Justices Studies Student Organization will meet in the MU Navajo Room at 2:30 p.m. It is the first general meeting of the fall semester.

•College Democrats and ASU Political Union will meet on Cady Mall next to Danforth Chapel at 11:30 p.m. Carolyn Warner will speak.

•AWARE + The Association of Women's Active Return to Education will meet in the MU Gila Room at noon.

•The Whitefield Society will meet at Danforth Chapel in the Upper Room at 12:40 p.m. The meeting will be an examination of the Atonement.

WELCOME ASU STUDENTS

FREE T-SHIRT

With this ad and the purchase of 5 or more tanning sessions at the regular price. Not good with any other offer. Expires 9-30-86.



TEMPE
55 E. Broadway
(at Mill)
M-F 8-9
Sat. 8-6
Sun. 12-5



Call
966-2150



Terrace Road Apartments

WALK TO SCHOOL!

1/2 block from Campus, Huge, well-furnished 1-bedroom, 1-bath, and 2-bedroom, 2-baths, all utilities included, cable TV, plus many amenities.

950 S. Terrace Rd.

966-8540

nationwide vision center

933 E. University #105 in Tempe Towne Plaza
Across from Cornerstone Mall • 966-4991

5130 N. 19th Avenue (One block north of Camelback)
Phoenix • 242-5292

437 S. Gilbert, Mesa • 844-7096

5030 W. Peoria, Glendale • 937-1047

contacts



*CONTACTS

DAILY WEAR Two Pairs \$39.50

EXTENDED WEAR Two Pairs \$69.50

COLORED SOFT Two Pairs \$79.50

One colored, one clear

ALL NEW COLORED
EXTENDED WEAR

SOFT CONTACTS Two Pairs \$99.50

One colored, one clear.

2 for 1

\$39.50

eyeglasses



*EYEGLASSES

Free tint on second pair — any combination of regular or sunglasses, same or different styles.

EYEGLASSES Two Pair \$39.50

BIFOCALS Two Pair \$79.50

DAILY WEAR CONTACTS

& GLASSES Both Pairs \$39.50

EXTENDED WEAR CONTACTS

& GLASSES Both Pairs \$69.50

EYE EXAM \$18.00

Includes Glaucoma test. Contact lens fitting and follow-up care are additional.

FREE sunglasses when purchased with contact lenses

FREE CONTACT LENS CONSULTATION

Outside Prescriptions Welcome

Most contact prescriptions available the same day.

MARK A. HECHTMAN, O.D.

NEAL A. WEINSTEIN, O.D.

*Some restrictions apply.

Licensed Doctors of Optometry.

100% Refund within 30 days if not completely satisfied with your contact lenses.

Highwater marks for parking

ASU employee Judy Belanger found out about two kinds of high water in ASU parking last week.

The first was the literal kind — flood water in the new parking garage's basement, which had a few people wading up to their ankles to get to their cars, damaged Belanger's Honda Prelude to the tune of \$350.

But she also has found out about the Office of Parking and Transit's highwater mark in response to problems.

ASU has agreed to pay for the damages to her car. This is a singular example of parking's willingness and ability this semester to respond to problems.

In general, the parking office should get good marks for dealing with a problem that can never fully be solved. Some more cases in point:

•Though the new garage does have some leaks, it is the best sign of real progress being toward solving the parking problem on campus. It has been too long in coming — parking up instead of out should have been the logical solution 10 years ago — but let's count our blessings now that it has arrived. And it isn't even an eyesore.

Parking garage No. 2 is under construction and a third one is on the drawing board. Amen.

•Originally unaware of afternoon delays in tram service, the parking office has another tram running now to alleviate the problem. Furthermore, parking officials have made it expressly clear to the *State Press* that they want students to come forward and report incidents of unsafe overcrowding, so that the parking office can deal with such problems.

•Who would believe that Lot 59 could look so darn good. In the past, the lot resembled a tin jungle in the morning and a vast wasteland at night. Now it is a lot more pleasant because of the multitude of palm trees that have been planted in the lot. And beyond aesthetics, it is a whole lot safer because of additional lighting. But wait, you get more. The legendary potholes also are a thing of the past, much to the relief of shock absorbers everywhere.

We commend parking services on these improvements and encourage them to keep making progress on the parking problem.



Mayberry 'state of mind' found in today's society

You will find that many of us who currently reside among the cactus were once natives elsewhere. Illinois, it seems, has been a particularly popular state to abandon. (Take my word for it — we're everywhere.)

A cynic might say we've left the cornfields, silos or what-have-you behind. Some of us emigrants, however, have been, in a sense, crop dusting as we go — carrying the culture with us and infecting many an unsuspecting victim.

But we're hardly alone in this habit. Television has done it far more effectively. When I grew up, watching pre-cable WGN from Chicago, I knew nothing about "the South," as it is collectively known. As far as I was concerned, the rural areas around Joliet, Ill., could just as easily have compromised the fictional North Carolina town called Mayberry. My father, raised on the farm where I was to be born, long exhibited the Mayberry state of mind. He, like the folks of Mayberry, cared about those around him, sometimes even granting them more trust than they deserved. And caring was the essence of "The Andy Griffith Show."

We all remember Deputy Barney Fife, barber Floyd Lawson and county clerk Howard Sprague as though they were neighbors down the block. Likewise, we are all adopted relations of the Taylor family — Sheriff Andy Taylor, his son Opie and his Aunt Bee. These characters often went out of their way to help one another or to spare the feelings of someone who might otherwise be hurt.

Remember when Aunt Bee made pickles that tasted like kerosene? Andy and Barney never would have considered telling her. Instead, they bought eight quarts of store pickles, placed them in Aunt Bee's jars and ate to her heart's content. They knew she was a proud homemaker. Once, when she was about to come home from a trip, Andy and Opie rushed around the house to clean up the mess they had made, but suddenly realized that she might feel she hadn't been needed. So after all that cleaning, they promptly messed the place up again. Andy and Barney had similar concern for one another. When Andy was invited to join an exclusive club without Barney, he turned down the offer, knowing how much Barney had wanted to join. Likewise, when Barney thought the invitation was meant for him, he angrily refused to join a club that would exclude Andy.

In Richard Kelly's book, "The Andy Griffith Show," the relationship between Andy and Barney is explained by Andy Griffith himself: "The characters were very fond of each other. Whenever there was any little joke between them, it

Ellen M. Young
Columnist

was always based on that fondness. And Andy was always very protective of Barney. He might laugh, have a lot of fun, and know Barney would get madder than Hell, but you knew that in a little while it would be worked out. He was always by his side just in case." Don Knotts described Barney as "a childlike man who was funny mainly because he was never able to hide anything in his face. If he was angry, he acted angry. Children do that — pout, get overjoyed, or whatever. Barney never hid anything. He wasn't able to. In my mind, that was really the key to Barney's character."

Knotts also pointed out that real life backgrounds contributed to the atmosphere of Mayberry, which had been based on Griffith's hometown of Mt. Airy, N.C. Regarding the rural characters, Knotts said, "All of my family in West Virginia were rural people. And Andy's people were all very country, as we would call them. So, we had experienced all these years in our childhood sitting around on a farm..."

America first became acquainted with the Mayberry state of mind on Oct. 3, 1960. The acquaintance lasted for eight years, all of which found the series among the top 10 in ratings.

After 249 episodes, Andy Griffith passed along his role as leading citizen of Mayberry to Ken Berry, who played farmer Sam Jones for the three-year run of Mayberry R.F.D. Little did they know that eight years after the latter's demise, the Mayberry state of mind would be resurrected.

In the fall of 1979, four students at Vanderbilt University's Phi Kappa Sigma fraternity house founded the Andy Griffith Show Rerun Watchers Club. Organizer Jim Clark, long since graduated, continues to run the club after eight years of increasing publicity. Now, more than 10,000 members strong, with over 250 local chapters, the organization boasts such celebrated members as broadcaster Ted Turner, commentator Paul Harvey, Alabama Governor George

Wallace, U.S. Senators Sam Nunn (D-Ga.) and Al Gore Jr. (D-Tenn.) and musical performers Merle Haggard, the Oak Ridge Boys and Amy Grant as well as numerous cast members from the show.

The Andy Griffith Show Rerun Watchers Club attests to the fact that the Mayberry state of mind can be transplanted. Among the hundreds of local chapters is "Howard Sprague Goes to Paris." Yes, that's in Paris, France. There are also chapters in Canada and Saudia Arabia. But most are located in the United States, especially in "the South" — some with hundreds of members apiece. My own newly formed chapter has so far received more than 90 calls from Valley viewers.

Phoenix television station KPHO-Channel 5, began running "The Andy Griffith Show" in 1974. According to Assistant Promotion Manager Steve Livingston, the entire series has aired approximately 18 times in those twelve years. He admits, however, that the 159 black and white episodes have received favored treatment by Channel 5, especially during ratings sweeps. It is Livingston's opinion that the black and white episodes, produced before Don Knotts left the show, are more popular with the viewers. In conversations I've had with fans, I have also found this to be true, although many of the color episodes are personal favorites of mine. (I guess Howard Sprague just can't appeal to everyone.)

I asked KPHO's Programming Director Greg Brannan why the station has been so loyal to the show over the years. At first, he said, "We've been running it for as many years as we have because it's been so successful from a ratings standpoint." But he quickly added that "The Andy Griffith Show" was "one of the truly well-written programs" and that it has been the "socially redeeming qualities" of the show that have motivated people to watch episodes over and over again.

In his book, Richard Kelly describes Mayberry as a model of family unity where the simple innocence of childhood "reassures us that human problems can be solved and that moral codes of behavior are important in shaping the lives of the young and the life of the entire community." But the "moral codes" of Mayberry are hardly the tyrannical sort of rules imposed on others by zealots. Life in Mayberry is just common sense: Find it in yourself to care about others, and treat them kindly, as you would have them treat you.

So why are there so many "rerun watchers" after so many years? Perhaps we continue to visit the people of Mayberry because they remind us of what we could be.

LETTER POLICY

Letters should be typed, double-spaced and no longer than two pages. Any submissions not in adherence with letter policy will not be published.

Letters are subject to editing on the basis of clarity, length or conformance to newspaper style.

Include your full name, class standing and major, or other affiliation with the University, along with your phone number. Requests for anonymity are granted if a reason is given.

Send letters to: Letters, *State Press*, Matthews Center, Arizona State University, Tempe, AZ 85287. Or bring them to the newspaper's front desk in the basement of Matthews Center.

EDITORIAL BOARD

Unsigned editorials reflect the views of the editorial board. Individual members of the board write editorials and the board decides on their merit. The editorials do not reflect the opinion of the *State Press* staff as a whole. Board members include:

Tom Blodgett
EDITOR

Patrick J. Kucera
OPINION EDITOR

Andrea Han
MANAGING EDITOR

Amy Frischknecht
ASST. MANAGING EDITOR

letters

Wild driving habits

Editor:

Just a few comments on the wild driving habits of those motoring on campus and adjacent to it.

Individuals seem to have only one thought on their mind — get there and it sure better be "me first."

Case in point: At a campus bookstore parking lot on Aug. 28 at 4:45 p.m., a truck operated by a young man came speeding at me, cut directly in front of me into a parking space. He is "Hell bent" on capturing that precious spot. I stopped my car or he would

have plowed right into me. And that is just a "minor" incident.

Also, bicyclers are at the mercy of drivers. My husband's foot was brushed by a moving car's tire while he was waiting at an intersection — and he was in the proper place for bikes. The driver, who was at fault, merely laughed!

I'm just glad I won't be around when this bunch is at the helm of our nation, states, cities, etc. Let them hang each other over such issues at "treasured parking spaces!"
Name withheld by request

Prof's 'miraculous recovery' proves doctors wrong

By TINA DAUNT
State Press

ASU Professor Byron Moore is a fighter, but when he talks about the accident, he can't help but cry.

Moore, a 61-year-old special education professor, was struck by a car eight months ago while walking across Mill Avenue at 11th Street.

He was in the crosswalk, but the 16-year-old driver of the Trans-Am didn't see him.

The boy's car smashed into Moore twice, throwing him across the street into a gutter and injuring him critically.

Moore's doctors said he would not live. But somehow, through what Moore calls a "miraculous recovery," he did, and though he's frail, he's teaching his classes again.

"I consider myself a lucky man," Moore said. "I was given a 1-in-10 chance of living, and somehow I made it through. I guess I'm a stubborn Irishman."

The accident happened on Nov. 15. Moore left his office in the Farmer Building and was walking to his car, parked on 11th Street west of Mill. He started to walk across Mill in the crosswalk.

The car in the first lane stopped. The car in the second lane did not.

"I saw the car was going to hit me, and I tried to jump to miss it," Moore said. "I knew I didn't have a chance in the world."

As he spoke, tears rolled down his face. He wiped them away, saying, "I'm sorry, it's so hard for me to talk about the accident."

"The car hit me, threw me into the air and then hit me again when I came down. Naturally, I don't remember, but they tell me I ended up in the gutter."

Moore suffered extensive injuries, including multiple fractures, a ruptured liver and two collapsed lungs. He also broke 14 bones, including a leg, both arms, his hip bone, collar bone and nose.

He was first taken to Tempe St. Luke's Hospital. But because of the extent of his injuries, he was airlifted to Good Samaritan Hospital in Phoenix.

Many of Moore's students gave blood to save his life. He received hundreds of cards.

"A lot of people underestimate the young people today," he said. "They think young people are all into drugs. It's not true. They really do care."

Moore spent two months in the hospital even though "my doctors told my family that if I lived I'd be in the hospital from six months to a year."

"They also said I'd never teach again. I guess I proved them all wrong."

The boy who hit Moore was lucky, too. Moore refused to press charges against him.

"He's just a kid," he said. "I told the county attorney it would make me very happy not to press charges."

Moore was able to return to teach first session summer school.



Byron Moore

therapy. I even had to learn how to print again. Small vocabulary words such as 'doorknob' and 'flower pot' also slipped my mind."

When Moore was first released from the hospital, he was in a wheelchair. Now he's able to walk, but his right leg is in a brace.

"I've learned a lot from this experience," he said. "I realized how many people I care about and who care about me."

"I might be crippled, but not bad. I guess a limp is interesting — sorta like a French accent."

Moore, who has been at ASU for 18 years, specializes in the education of mentally retarded students.

He received a \$51,387 grant in 1979 to work with the developmentally disabled from the Arizona Department of Economic Security.

In 1981, he received a \$2,000 grant to study genetic links to mental retardation.

Moore is the author of two books on the subject of mental retardation and one on special education.

He is also the father of five. Jessica, 16, describes her father's accident as "unexpected and uncalled for."

"One day everything could be great, and the next day everything could be gone," she said. "I'm so glad my father is OK. I feel like we've been given a second chance."

May Moore Centre
FULL SERVICE SALON
& Barber. Specializing in all types of hair. For men & women. Evenings by appt.
Huntington Square Plaza
3119 S. Mill Suite A-8
829-8192

RUNDLE'S LIQUORS & MKT.
730 S. MILL
Corner Mill & University Ave.
BEAMERO TEQUILA 750 ml \$4.72
ANDRE CHAMPAGNES 750 ml \$2.97
MEISTER BRAU BEER 6-pt \$1.88
PLAYBOY Used Magazines \$.94
Haagen Dazs Natural Ice Cream, Adult Magazines, Groceries, Ice, Wines, over 40 Imported Beers.
967-9079

El Canario MEXICAN FOODS
1250 E. Apache
967-9283
\$1.00 OFF any complete dinner
With this coupon, expires 10-30-86.
Always 10% discount for student with I.D. "WE HAVE BEER"

ONE MONTH FREE
Aerobics, Stretch & Tone, Non-Impact Aerobics with purchase of two months \$40 Value
414 S. Mill Ave.
Tempe • 894-8347
New CBA students only. Offer expires 9-30-86. Walking distance from ASU

Center for Body Awareness

UNION STATION
(Downstairs in the MU)
NOW SPONSORING
"The Union Station Transit Authority CONTEST"
featuring
prizes designed to ease the hustle, bustle and hassle of commuting around ASU each day
WEEKLY DRAWINGS FOR:
★FOOD PRIZES ★SONY WALKMANS AND A GRAND PRIZE DRAWING
★10-SPEED BIKE & ★SONY WALKMAN

RULES:
1. All entries must be on official entry form. Reproductions will not be eligible.
2. One entry form per visit to UNION STATION.
3. Three weekly drawings will be held on Sept. 8, 15 and 22, 1986. Grand Prize drawing will be held Sept. 29, 1986. Only those entries received during the period of Sept. 22-28 will be eligible for Grand Prize drawing.
4. Contest will begin on Sept. 2, 1986 and run through Sept. 26, 1986.
5. Employees of Saga Corporation are not eligible.

CORONA-HUSSONG'S-DOS EQUIS

SAVE 20% ON T-SHIRTS AND TANKS FROM \$8.00
With this ad only through 9-7-86.

We carry Rayban, Vuarnet, Suncloud, Porsche, Laura Biagiotti and more. SUNGLASS PRICES GUARANTEED — WE WILL NOT BE UNDERSOLD!
We honor any valid sunglass coupon — anytime!

We are the Sunglass Leader.
Pacific Eyes & T's
PROTECT YOUR PRECIOUS PACIFIC EYES

Christown Mall (By Diamonds) 433-2949
Westridge Mall (By Diamonds) 873-2607
Tower Plaza (38th St. & Thomas) 244-9119
Tempe: 725 S. Rural Rd. (Cornerstone) 966-5560

Cannibalism evidence unsupported, ASU prof says

By ED SCHUBERT
State Press

Forget everything you think you know about cannibalism. If an ASU anthropology professor is right, the practice doesn't exist.

Lyle Steadman said, "I don't want to say that there is no cannibalism, but it is extremely rare" and often the result of desperate situations, such as the Andes plane crash survivors.

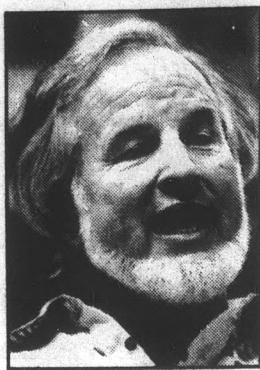
"There is no cultural tradition of cannibalism," he said. "There are no societies of cannibals. There are no populations of cannibals."

Steadman said reports of cannibalism are "always second hand" and not supported by evidence. "No one ever sees it," he said.

For 22 months between 1966 and 1970, Steadman lived with the allegedly cannibalistic Hawa tribe of central New Guinea, which is accessible after a four-day trek from a mountain airstrip.

He said the Hawa are culturally similar to the neighboring Fore tribe, whose cannibalistic practices have supposedly been established "beyond doubt" by anthropologist D. Carleton Gajdusek.

Steadman said Gajdusek won a Nobel Prize in 1976 for his theory linking kuru, a widespread neurological disease in



'I don't want to say that there is no cannibalism but it is extremely rare.'

— Lyle Steadman

New Guinea, to the cannibalistic practices of the Hawa, Fore and other tribes.

As kuru is a disease of the brain, Gajdusek and others believe it is transmitted when the Hawa and Fore eat the brains of dead relatives, Steadman said.

Because the disease affects women and children, but rarely adult males, it is believed that "only the women ate people and fed little tidbits to their kids," he said.

Steadman said he considers the theory an unsupported assertion, but offers an alternate theory.

"When a person dies (in many New Guinea tribes), they bury him in a garden for a month or two, then dig him up to

pull his head off — I've got slides of that," Steadman said. He said the skulls are polished and put in small household shrines.

"It's a mark of respect, like keeping grandfather's watch," Steadman said. But it is during the process of removing and preparing the skull that the transmission of kuru can occur.

Steadman said if the brain is infected, those who touch the brain can transmit the disease to their own brains by touching their eyes and noses.

"The eyes are part of the brain, and the mucus membranes are very sensitive to disease," he said.

As the task of removing and preparing skulls are relegated to the women in New Guinea, this explains why kuru affects women and children, he said.

"The women contaminate their hands in this mortuary activity, and then they contaminate their kids," Steadman said.

Steadman said the professional objectivity of Gajdusek and other anthropologists is compromised by their fascination with cannibalism and a willingness to assume its existence without hard evidence.

He cites a letter written by Gajdusek: "(Cannibalism) is so unique a concept, and such a romantic one, that I almost wish cannibalism was more prevalent than it is."

Carpet House
DORMS, APTS., VANS
ALL SIZES
USED ROOM SIZES
\$10 & UP
NEW CARPET TOO!
1516 E. Van Buren
Phoenix

KROY Copy Center
3¢
copies*
thru the month of September
411 S. Mill Avenue
966-9353
*8 1/2 x 11 single-sided self-serve with ASU I.D.

BUY • SELL • TRADE
Your books at Changing Hands. For quality cloth and paperbacks (no textbooks, please) we pay 30% of our re-sale price in cash or 50% in trade-in credit which may be used to purchase anything in the store. (Sorry, no trade-ins on Sat. or Sun.)
Browse through our three floors of:
•New & Used Books
•Art Prints & Posters
•Calendars & Cards
•Handbound Journals
M-F 10-9 SAT 10-6 SUN 12-5
CHANGING HANDS
414 Mill Avenue 966-0203
Old Town Tempe

BALLOON EXPRESS
We specialize in
Balloon Bouquets
available with:
•Bears & Rabbits
•Wine & Champagne
•Much much more!
We can customize
a Bouquet for you!
Call 968-4446

Even today, there are still a few students who don't have an HP calculator.

Burning the midnight oil may be necessary. Burning the 2:00 or 3:00 or 4:00 AM oil is absurd. Especially when an HP calculator can get the answers you want — in time to get a good night's sleep.

For instance, our HP-15C Professional Scientific Calculator has more built-in advanced math and statistical power than any other calculator. Our HP-41 Advanced Scientific Calculators have even more potential.

That's because there are better than 2500 software packages available for them — more than for any other calculator. There's even a special plug-in software package (we call it the Advantage Module) that's designed to handle the specific problems an engineering student has to solve in his, or her, course work. No wonder professionals in engineering and the physical sciences widely regard HP calculators as the best you can get. So check one out. Then, when your mother calls to ask if you're getting enough sleep, you won't have to lie. By the way, if you want more information, just give us a call at 800-FOR-HPPC. Ask for Dept. 658C.

PG12602

HEWLETT PACKARD

Education post candidates share views on state schools

By J.B. SINNOTT
State Press

The five Arizona Superintendent for Public Instruction candidates share an optimistic view for the future of the three state universities.

But that is all they have in common.

The three Republican and two Democratic candidates were invited to campus Thursday by the State Relations Department of Associated Students.

Alexander Bozeman, the department's legislative affairs coordinator, said the candidates came to meet the students and see "how ASU operates on a daily basis."

The candidates and their assorted delegations gathered in the MU Alumni Lounge to meet ASU officials and the press over coffee and pastries.

After moving to their assigned corners of the room, they took on the media and shared their views on education in Arizona.

C. Diane Bishop, a Democratic hopeful, serves on the State Board of Education and has master's degrees in mathematics and secondary education from UA.



'I am somewhat concerned about the status of the business college here.'

— Ann Herzer

"We need adequate funding to make sure that all three facilities have the teaching staff they need," she said.

She said she wants to see the universities emphasize instruction as well as research, and she would probably be in favor of giving the student regent a vote on the board.

Bishop said that she hoped the board of regents, which controls the three universities, and the State Board of Education, which oversees primary and secondary education, will do most of the work on education and that the Legislature would keep hands off.

"I would hope the legislative people would take less of a role in education," she said.

Ann Herzer, who was a public school teacher for 13 years and has a master's degree in reading education from ASU, is running with the Republican party.

"I am somewhat concerned about the status of the business college here," Herzer said, adding that she thought the college was starting to show signs of improvement.

She criticized the amount of standardized testing that students in the lower grades must take, and said she had no

objection to the student regent receiving a vote.

"I don't like to hear that the universities are doing so much research that we can't deal with the students properly," she said.

Herzer also spoke about large class sizes.

"I have attended some of the larger lectures in (the college of education), and I don't think that's the way to go," she said.

Anne Lindeman, Republican, is serving her fifth term in the Arizona Senate.

From 1979 to 1984, she was chair of the Senate education committee. She lists her profession as registered nurse.

She anticipates the "growing cycle," which the universities are experiencing, will continue for the next 15 years, and is concerned about the size of the student body.

"There's a limit as to how many students you can jam on a campus," Lindeman said.

She predicted an effort to set a maximum student body population and another branch campus in the Chandler-Gilbert area if ASU continues to grow as expected.



'I would hope the legislative people would take less of a role in education.'

— C. Diane Bishop



'There's a limit as to how many students you can jam on a campus.'

— Anne Lindeman

FOR THE BEST IN AEROBICS AND A WHOLE LOT MORE

jazzercise

ONE FREE WEEK

(NEW STUDENTS ONLY WITH AD)

- No contracts ever
- Start program anytime
- Morning, noon, evening classes
- Lighter side available
- Low affordable rates

Baseline Business Park • 4930 S. Ash
1 blk. west of Mill just north of Baseline

For class times call Cathy 839-4312 or Ronnette 829-9686
Offer expires 10-31-86.

Experience the unique atmosphere at

the Vine Tavern

at RURAL and APACHE

25¢ DRAFT

HAPPY HOURS
2-7 p.m. six days a week

50¢ Draw • \$1.00 Margaritas
\$2.25 Pitchers • \$1.25 Longnecks

FREE POPCORN

STUDENT SPECIAL!

ENTENMANN'S

1 Free 6-pac of French Rolls and 1 Free Box just for visiting our store

WITH THIS COUPON

- Cookies
- Donuts
- Cakes
- Pies
- Danish

Expires Sept. 9, 1986.

1115 W. Broadway
Tempe
967-8705

Priest	Beck	Hardy	Mill
	X	Broadway	

CHINA TOWN

open from
10:30 a.m.-2:00 p.m.

located right next to Cafe Ole in the Memorial Union

Take a trip to Hong Kong for lunch today!

Featuring: Sweet-n-Sour Pork
Chicken Chow Mein
Egg Rolls
Wonton Soup
plus other favorites!

DISABLED AMERICAN VETERANS THRIFT STORE

9 am.-9 p.m. Monday-Saturday
2131 E. Apache Blvd., Tempe

Packed With Top Quality Used
CLOTHING • HOUSEWARES • FURNITURE
APPLIANCES • KNICK-KNACKS

50% OFF SALE (Wednesday)

- Men's dress-up & leisure from 95¢
- Durable kids clothing from 65¢
- Women's fashions from 95¢

Something for EVERYONE!
2131 E. Apache Blvd., Tempe

Senior Citizens 30% OFF
60 yrs or older
Every Monday

McClintock	Apache	Price
	DAV	

No Checks • Open To Public

FREE GOURMET HAMBURGER

The Basic Beautiful Burger

BUY ANY 1/2lb. HAMBURGER and GET ONE FREE
SAVE UP TO \$4.25

Offer expires Oct. 1, 1986.
Equal or lesser value.
One coupon per purchase.
Offer good after 5 p.m.

Fresh is the Best!

* Appetizers FRESH GROUND * Children's Menu

fat patties

* Saled Bar GOURMET HAMBURGERS * Beer/Wine

THE MILL TOWNE CENTER
201 E. BASELINE & MILL AVE.
TEMPE, AZ 85283
897-1197

Continued from page 7.

Lindeman said she is a long-time advocate of the student regent, and that education will continue to be an area of interest for the Legislature.

She said education accounts for 65 to 70 percent of the state budget "and obviously it gains a lot of attention because of the amount of money that it spends."

George Smith, a Republican, is a current vice president at NAU and has a doctorate degree in education from ASU.

He said he thinks the most important goal for the universities is good fiscal management.

The first step, Smith said, is "balancing the budget, getting the most out of a dollar, and to do that, you've got to take a look at overall personnel practices."

He said that although he personally sees no problem with giving the student regent a vote, it is a "two-edged sword."

"One school says you shouldn't have a vote unless you have total responsibility for the outcome," he said, but then added that his personal knowledge of the people who have been student regent has convinced him of their ability to perform the job well.

Smith said as the ratio of retired persons to working ones decreases over the next few decades, "it is absolutely



'One school says you shouldn't have a vote unless you have total responsibility.'
— George Smith

necessary that we invest in education and a literate, productive workforce."

Patrick Walsh, a Democratic nominee, owns and operates a typesetting company in Tempe.

His campaign literature says he has a master's degree in education from Leeds University and that he is working on his doctorate at ASU.

Turn to CANDIDATES, page 9.

ASU PUBLIC EVENTS — now hiring —

for the following student positions: forklift operators, truck loaders and general stagehands.
PICK UP STAGEHAND JOB REFERRAL FORM AT MATTHEWS CENTER.
Interview hours are August 25-27 and Sept. 2-5, 9 am.-1 p.m. and 2 p.m.-6 p.m.

- Resident manager on site
- Inside Outside Self Storage
- Keys made
- Easy access, variety of sizes

SPECIAL RATES
Campus Mini Storage
1020 W. 1st Street, Tempe
Corner of First & Hardy
968-3133

RENT TWO MONTHS, GET THE THIRD MONTH **FREE!**

BEING A STUDENT CAN BE STRESSFUL

Treat yourself to soothing and relaxing New Age records and tapes at the

TRANQUILITY ZONE

414 S. Mill Ave. #114C
Tempe • 829-0441

FOREIGN CAR PARTS

DISCOUNT at **import parts**

ASU Branch

(10% Discount for ASU students with I.D.)

1324 W. UNIVERSITY
Just West of Campus • 899-9677

mann \$3.00 BARGAIN PRICE ALL SHOWS BEFORE 6 P.M. MON. THRU FRI. SAT. SUN. & HOLIDAYS FIRST SHOW ONLY

BELL TOWER 8 843-4593 51st Ave and Bell Road BORN AMERICAN (R) 2:00, 4:00, 6:00, 8:00, 10:00 RUTHLESS PEOPLE (R) 2:00, 5:00, 7:30, 9:45 FLIGHT OF THE NAVIGATOR (PG) 1:15, 3:15, FERRIS BUELLER (PG-13) 5:30, 7:45, 10:00 EXTREMITIES (R) 1:45, 3:45, 5:45, 7:45, 9:45 STAND BY ME (R) 1:30, 3:30, 5:30, 7:30, 9:30 THRASHIN (PG-13) 1:45, 3:45, 5:45, 7:45, 9:45 TEXAS CHAINSAW PART 2 (NR) 10:00 KARATE KID II (PG) 2:00, 4:30, 7:15, 9:45 TOP GUN (PG) 2:30, 5:00, 7:30, 10:00	SUN DEVIL 6 829-0344 The Cornerstone Rural & University THRASHIN (PG-13) 11:30, 3:30, 7:30 REFORM SCHOOL GIRLS (R) 1:30, 5:30, 9:30 EXTREMITIES (R) 1:15, 3:15, 5:15, 7:15, 9:15 RUTHLESS PEOPLE (R) 1:00, 3:00, 5:00, 7:00, 9:00 TOP GUN (PG) 12:30, 2:45, 5:00, 7:15, 9:30 BORN AMERICAN (R) 1:30, 3:30, 5:30, 7:30, 9:30 TEXAS CHAINSAW PART 2 (NR) 12:45, 5:15, 9:45 ARMED (PG-13) 3:00, 7:30	SUPERSTITION 5 834-5767 MESA AT 50 LONGMORE & SUPERSTITION TOP GUN (PG) 12:00, 2:30, 5:00, 7:30, 10:00 BACK TO SCHOOL (PG-13) 12:30, 2:45, 5:00, 7:15, 9:30 KARATE KID II (PG) 11:45, 2:15, 4:45, 7:15, 9:45 BORN AMERICAN (R) 5:30, 7:30, 10:00 FLIGHT OF THE NAVIGATOR (PG) 11:30, 1:30, 3:30 STAND BY ME (R) 11:45, 1:45, 3:45, 5:45, 7:45, 9:45
SUN DEVIL 6 \$3.00 Friday & Saturday Midnight Shows Belltower 8 • Christown 5 • Sun Devil 6	POCA FIESTA 4 835-0404 MESA AT 1020 WEST SOUTHERN BULLIES (R) 1:15, 3:15, 5:15, 7:15, 9:30 GREAT MOUSE DETECTIVE (R) 12:30, 2:15, 4:00, 5:45 RUNNING SCARER (R) 7:30, 9:45 FERRIS BUELLER (PG-13) 12:00, 2:15, 4:30, 7:00, 9:20 TEXAS CHAINSAW PART 2 (NR) 1:00, 3:15, 5:30, 7:45, 10:00	CHRIS-TOWN 5 249-2843 5767 NO 19TH AVE STAND BY ME (R) 11:45, 1:45, 3:45, 5:45, 7:45, 9:45 KARATE KID II (PG) 11:45, 2:15, 4:45, 7:15, 9:45 TOP GUN (PG) 12:30, 2:30, 5:00, 7:30, 10:00 EXTREMITIES (R) 12:30, 2:30, 4:30, 7:00, 9:15 THRASHIN (PG-13) 1:15, 5:15, 9:15 REFORM SCHOOL GIRLS (R) 3:15, 7:15

Key Clubbers get the Total College Experience

Continue Your Service Through **Circle K International**
Introductory Social:
Turquoise Room, 2nd floor, Memorial Union
Thursday, Sept. 4 at 6:30 p.m.

SOMETHING OLD, SOMETHING NEW

In the midst of Tempe's classic Old Town, there is an entirely new way to live. Homes of true convenience. Luxury. And style. Homes that put you within easy reach of work as well as play. And homes that reflect that unforgettable Old Town design.

Hayden Square offers spacious, one and two-bedroom condominiums with elegant features. Just footsteps away from some of the finest shops, restaurants and activities anywhere.

HAYDEN SQUARE CONDOMINIUMS
The perfect combination of something old and something new.

829-7146
967-6420
Sales Office: Mill & 3rd St.

health dimensions

the asu wellness program

we can help you:

- manage stress
- control weight
- improve nutrition
- begin an exercise program
- avoid alcohol/drug problems
- stop smoking
- prevent disease
- understand sexuality issues

Come by the Student Health Center or call us at 965-5721. Yo'll be glad you did!

Continued from page 8.

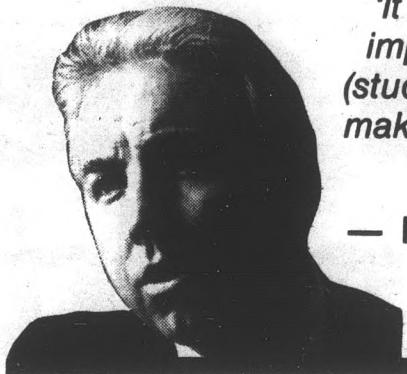
He said a particular area of interest is the College of Education.

"I see the role of superintendent is to see that the colleges dovetail with the school districts in terms of preparing teachers for the classroom," Walsh said.

On the subject of a student regent vote, he said that he can understand the students' position although "it is far more important that they make their views heard."

Walsh said he intends to make education a legislative priority if he is elected.

"My own resolve is to educate the Legislature about the importance of education in this state," he said.



'It is far more important that (student regents) make their views heard.'

— Patrick Walsh

GOOD NEWS!

EVERY WEEKDAY MORNING

STATE PRESS

Silver Solarium High Tech Tanning **FREE TANNING SESSION**
w/purchase of any tanning session package
Single \$4.50
5 session \$19.50
12 session ... \$59.50
With coupon. Expires 9-30-86.

\$5.00 Off Perm
Reg. \$40
Includes shampoo, conditioner & cut.
With coupon. Expires 9-30-86.

Cellophane \$22.00
Highlight \$30.00
Includes conditioner.
With coupon. Expires 9-30-86.

Hair Cuts \$11.00
Reg. \$15
Includes shampoo, conditioner & cut.
With coupon. Expires 9-30-86.

PHD Professional Hair Designers
Men's & Women's Hair Styling
966-6111 Call For Appointment
933 E. University
SE Corner Rural & University
Mon.-Sat. 9:30-8:30
Sun. 11:30-4:00

Miguel's Music Center
IN THE LITTLE ARCHES SHOPPING CENTER

TEMPE
Sales • Rentals • Repairs
Band Instruments & Accessories
Drums ★ Recorders ★ Banjos
★ Sheet Music Etc.

MIGUEL
A student of Andres Segovia
Guitar Lessons in Folk & Classical by Miguel

★ **ELECTRONICS** ★
• Amps
• Rhythm Boxes
• Distortion Boxes
• Mini Mixers
• Phase Shifters
• Poly Phase
• Electronic Metronomes

Authorized Dealer for:
ALVAREZ ... GUILD ...
KHONO ... YAMAHA ...
OVATION ... MARTIN
GUITARS

★ **SPANISH CLASSICAL GUITARS** ★

• RAMIREZ • CONTRERAS
• BARNABE • CESAR VERA
• SANTOS HERNANDEZ

BY ROLAND-IBANEZ & ELECTROHARMONIX & OTHERS

122 E. University Dr., Tempe
Open 10 a.m. to 6 p.m. — 6 Days

968-2310

TWO ARE BETTER THAN ONE

ASU

AND THAT'S WHAT YOU GET
EVERY MONDAY & WEDNESDAY
2 for 1 — Double Prints
on develop and print orders

829-0424 SUNSET camera Tempe Center Mill & Univ.

Bicycles You Would Be Proud To Be Seen On!

Schwinn Cruiser Supreme \$179⁹⁵

Sekai Mountain Bike \$189⁹⁵

Schwinn Ten Speed \$139⁹⁵

All Bikes
• Fully Assembled
• Free Adjustments
• Full Warantees

Sale Price On ALL Locks & Cable

LANDIS
ESTABLISHED IN 1912
2180 E. Southern, Tempe
(Price & Southern)
839-9389

Landis has Full Range of Cycling & Accessories

LOS PRADOS townhomes Investigate the Tax Benefits

Parents of ASU Students
Why pay rent when you can own?

Luxurious and Affordable
2 BEDROOM 2½ BATH
IN TEMPE, ½ MILE FROM ASU

Los Prados Townhomes has a financing package tailored to students and parents. Inquire about the benefits of home ownership.

Live a half-mile from campus in a luxury townhome with five separate floor plans available, 2 or 3 bedrooms, as well as pools, tennis courts, spas and sundecks.

Call Los Prados or send the coupon below for information on Los Prados ownership. We've made them affordable.

UNIVERSITY
13th ST.
PRIEST
HARDY
★ LOS PRADOS
Open Daily
MILL
BROADWAY
MARICOPA FWY

Please send me financing and sales information on Los Prados Townhomes.
Name _____
Street Address _____
City, State, Zip _____
Phone _____

Mail to or call collect for information: (602) 966-1800.
Los Prados Townhomes, 724 W. Fourteenth Street,
Tempe, Arizona 85281

(602) 966-1800
Hours: 10-6

Continued from page 7.

Lindeman said she is a long-time advocate of the student regent, and that education will continue to be an area of interest for the Legislature.

She said education accounts for 65 to 70 percent of the state budget "and obviously it gains a lot of attention because of the amount of money that it spends."

George Smith, a Republican, is a current vice president at NAU and has a doctorate degree in education from ASU.

He said he thinks the most important goal for the universities is good fiscal management.

The first step, Smith said, is "balancing the budget, getting the most out of a dollar, and to do that, you've got to take a look at overall personnel practices."

He said that although he personally sees no problem with giving the student regent a vote, it is a "two-edged sword."

"One school says you shouldn't have a vote unless you have total responsibility for the outcome," he said, but then added that his personal knowledge of the people who have been student regent has convinced him of their ability to perform the job well.

Smith said as the ratio of retired persons to working ones decreases over the next few decades, "it is absolutely



'One school says you shouldn't have a vote unless you have total responsibility.'
— George Smith

necessary that we invest in education and a literate, productive workforce."

Patrick Walsh, a Democratic nominee, owns and operates a typesetting company in Tempe.

His campaign literature says he has a master's degree in education from Leeds University and that he is working on his doctorate at ASU.

Turn to CANDIDATES, page 9.

ASU PUBLIC EVENTS — now hiring —

for the following student positions: forklift operators, truck loaders and general stagehands.

PICK UP STAGEHAND JOB REFERRAL FORM AT MATTHEWS CENTER.

Interview hours are August 25-27 and Sept. 2-5, 9 am.-1 p.m. and 2 p.m.-6 p.m.

- Resident manager on site
- Inside Outside Self Storage
- Keys made
- Easy access, variety of sizes

SPECIAL RATES
Campus Mini Storage
1020 W. 1st Street, Tempe
Corner of First & Hardy
968-3133

RENT
TWO MONTHS,
GET THE THIRD
MONTH **FREE!**

BEING A STUDENT CAN BE STRESSFUL

Treat yourself to soothing and relaxing New Age records and tapes at the

TRANQUILITY ZONE

414 S. Mill Ave. #114C
Tempe • 829-0441

FOREIGN CAR PARTS

DISCOUNT
at **import parts**

ASU Branch

(10% Discount for ASU students with I.D.)

1324 W. UNIVERSITY
Just West of Campus • 899-9677

mann \$3.00 BARGAIN PRICE
ALL SHOWS BEFORE 6 P.M. MON. THRU FRI.
SAT., SUN. & HOLIDAYS FIRST SHOW ONLY

BELL TOWER 8 843-4593 5451 AVE. and BELL ROAD BORN AMERICAN (R) 2:00, 4:00, 6:00, 8:00, 10:00 RUTHLESS PEOPLE (R) 2:00, 5:00, 7:30, 9:45 FLIGHT OF THE NAVIGATOR (PG) 1:15, 3:15, FERRIS WHEELER (PG-13) 5:30, 7:45, 10:00 EXTREMITIES (R) 1:45, 3:45, 5:45, 7:45, 9:45 STAND BY ME (R) 1:30, 3:30, 5:30, 7:30, 9:30 THRASHIN (PG-13) 1:45, 3:45, 5:45, 7:45, 9:45 TEXAS CHAINSAW PART 2 (NR) 10:00 KARATE KID II (PG) 2:00, 4:30, 7:15, 9:45 TOP GUN (PG) 2:30, 5:00, 7:30, 10:00	SUN DEVIL 6 829-0344 The Cornerstone Rural & University THRASHIN (PG-13) 11:30, 3:30, 7:30 REFORM SCHOOL GIRLS (R) 1:30, 5:30, 9:30 EXTREMITIES (R) 1:15, 3:15, 5:15, 7:15, 9:15 RUTHLESS PEOPLE (R) 1:00, 3:00, 5:00, 7:00, 9:00 TOP GUN (PG) 12:30, 2:45, 5:00, 7:15, 9:30 BORN AMERICAN (R) 1:30, 3:30, 5:30, 7:30, 9:30 TEXAS CHAINSAW PART 2 (NR) 12:45, 5:15, 9:45 ARMED (PG-13) 3:30, 7:30	SUPERSTITION 5 834-5767 MESA AT SO LONGMORE & SUPERSTITION TOP GUN (PG) 12:00, 2:30, 5:00, 7:30, 10:00 BACK TO SCHOOL (PG-13) 12:30, 2:45, 5:00, 7:15, 9:30 KARATE KID II (PG) 11:45, 2:15, 4:45, 7:15, 9:45 BORN AMERICAN (R) 5:30, 7:30, 10:00 FLIGHT OF THE NAVIGATOR (PG) 11:30, 1:30, 3:30 STAND BY ME (R) 11:45, 1:45, 3:45, 5:45, 7:45, 9:45
SUN DEVIL 6 \$3.00 Friday & Saturday Midnight Shows Belltower 8 • Christown 5 • Sun Devil 6	POCA FIESTA 4 835-0404 MESA AT 1020 WEST SOUTHERN BULLIES (R) 1:15, 3:15, 5:15, 7:15, 9:30 GREAT MOVIE EXTRAS (R) 12:30, 2:15, 4:00, 5:45 RUNNING SCARER (R) 7:30, 9:45 FERRIS WHEELER (PG-13) 12:00, 2:15, 4:30, 7:00, 9:20 TEXAS CHAINSAW PART 2 (NR) 1:00, 3:15, 5:30, 7:45, 10:00	CHRIS-TOWN 5 249-2843 5767 NO 19TH AVE STAND BY ME (R) 11:45, 1:45, 3:45, 5:45, 7:45, 9:45 KARATE KID II (PG) 11:45, 2:15, 4:45, 7:15, 9:45 TOP GUN (PG) 12:30, 2:30, 5:00, 7:30, 10:00 EXTREMITIES (R) 12:30, 2:30, 4:30, 7:00, 9:15 THRASHIN (PG-13) 1:15, 5:15, 9:15 REFORM SCHOOL GIRLS (R) 3:15, 7:15

Key Clubbers get the Total College Experience

**Continue
Your Service Through
Circle K International**

Introductory Social:
Turquoise Room, 2nd floor, Memorial Union
Thursday, Sept. 4 at 6:30 p.m.

SOMETHING OLD, SOMETHING NEW

In the midst of Tempe's classic Old Town, there is an entirely new way to live. Homes of true convenience. Luxury. And style. Homes that put you within easy reach of work as well as play. And homes that reflect that unforgettable Old Town design.

Hayden Square offers spacious, one and two-bedroom condominiums with elegant features. Just footsteps away from some of the finest shops, restaurants and activities anywhere.

**HAYDEN SQUARE
CONDOMINIUMS**
The perfect combination of something old and something new.

829-7146
967-6420
Sales Office: Mill & 3rd St.

health dimensions

the asu wellness program

we can help you:

- manage stress
- control weight
- improve nutrition
- begin an exercise program
- avoid alcohol/drug problems
- stop smoking
- prevent disease
- understand sexuality issues

Come by the Student Health Center or call us at 965-5721. Yo'll be glad you did!

Continued from page 8.

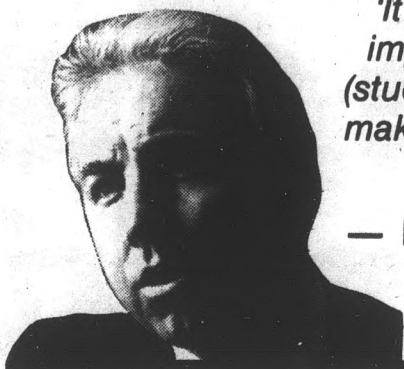
He said a particular area of interest is the College of Education.

"I see the role of superintendent is to see that the colleges dovetail with the school districts in terms of preparing teachers for the classroom," Walsh said.

On the subject of a student regent vote, he said that he can understand the students' position although "it is far more important that they make their views heard."

Walsh said he intends to make education a legislative priority if he is elected.

"My own resolve is to educate the Legislature about the importance of education in this state," he said.



'It is far more important that (student regents) make their views heard.'

— Patrick Walsh

GOOD NEWS!

EVERY
WEEKDAY
MORNING

STATE PRESS

Silver Solarium High Tech Tanning

Single \$4.50
5 session \$19.50
12 session ... \$59.50

FREE TANNING SESSION
w/purchase of any tanning session package
With coupon. Expires 9-30-86.

\$5.00 Off Perm
Reg. \$40
Includes shampoo, conditioner & cut.
With coupon. Expires 9-30-86.

Cellophane \$22.00
Highlight \$30.00
Includes conditioner.
With coupon. Expires 9-30-86.

Hair Cuts \$11.00
Reg. \$15
Includes shampoo, conditioner & cut.
With coupon. Expires 9-30-86.

Professional Hair Designers
Men & Women Hair Styling

966-6111 Call For Appointment
933 E. University
SE Corner Rural & University

Mon.-Sat. 9:30-8:30
Sun. 11:30-4:00

Miguel's Music Center

IN THE LITTLE ARCHES SHOPPING CENTER

TEMPE
Sales • Rentals • Repairs
Band Instruments & Accessories
Drums ★ Recorders ★ Banjos
★ Sheet Music Etc.

MIGUEL
A student of Andres Segovia
Guitar Lessons in Folk & Classical by Miguel

★ ELECTRONICS ★
• Amps
• Rhythm Boxes
• Distortion Boxes
• Mini Mixers
• Phase Shifters
• Poly Phase
• Electronic Metronomes

Authorized Dealer for:
ALVAREZ ... GUILD ...
KHONO ... YAMAHA ...
OVATION ... MARTIN
GUITARS

★ SPANISH CLASSICAL GUITARS ★

• RAMIREZ • CONTRERAS
• BARNABE • CESAR VERA
• SANTOS HERNANDEZ

BY ROLAND-IBANEZ & ELECTROHARMONIX & OTHERS

122 E. University Dr., Tempe
Open 10 a.m. to 6 p.m. — 6 Days

968-2310

TWO ARE BETTER THAN ONE

ASU

AND THAT'S WHAT YOU GET
EVERY MONDAY & WEDNESDAY
2 for 1 — Double Prints
on develop and print orders

829-0424 **SUNSET camera** Tempe Center Mill & Univ.

Bicycles You Would Be Proud To Be Seen On!

Schwinn Cruiser Supreme \$179⁹⁵

Sekai Mountain Bike \$189⁹⁵

Schwinn Ten Speed \$139⁹⁵

All Bikes
• Fully Assembled
• Free Adjustments
• Full Warranties

Sale Price On ALL Locks & Cable

Landis
ESTABLISHED IN 1912
2180 E. Southern, Tempe
(Price & Southern)
839-9389

Landis has Full Range of Cycling & Accessories

LOS PRADOS townhomes

Investigate the Tax Benefits

Parents of ASU Students
Why pay rent when you can own?

Luxurious and Affordable
2 BEDROOM 2½ BATH
IN TEMPE, ½ MILE FROM ASU

Los Prados Townhomes has a financing package tailored to students and parents. Inquire about the benefits of home ownership.

Live a half-mile from campus in a luxury townhome with five separate floor plans available, 2 or 3 bedrooms, as well as pools, tennis courts, spas and sun decks.

Call Los Prados or send the coupon below for information on Los Prados ownership. We've made them affordable.

UNIVERSITY
13th ST.

PRIEST
HARDY
MILL

BROADWAY
MARICOPA FWY

★ **LOS PRADOS**
Open Daily

Please send me financing and sales information on Los Prados Townhomes.

Name _____
Street Address _____
City, State, Zip _____
Phone _____

Mail to or call collect for information: (602) 966-1800.
Los Prados Townhomes, 724 W. Fourteenth Street,
Tempe, Arizona 85281

(602) 966-1800
Hours: 10-6

Three cheers for banking convenience!



What with classes, studying, and the occasional extracurricular activity, a little convenience in the finance department would certainly be welcome. And Valley Bank gives you convenience three ways.

Start with a choice of checking accounts aimed at limiting your hassles and your expenses. There's ValueChecking™—the account that gives you more value for your money. Or you might prefer a checking account designed expressly for students. We call it the Student Express Account. You'll call it terrific. Because it's an account that has no minimum balance requirement and a low annual fee that makes it about half the cost of most regular checking accounts.

Best of all, every Valley Bank checking account gives you access to 150 Valley National Banking Machines all over Arizona, for self-service banking around the state and around the clock.

Need more convenience? How about two Banking Machines right on campus, just outside the Bookstore, for quick cash between classes or after dark.

And there's a full-service Valley Bank branch (with two more Banking Machines) located right around the corner, at 826 E. Apache Boulevard, where you can open your checking account and take care of all your other financial needs.

Saving you time and saving you money. That's the value of convenience. And only Valley Bank gives you convenience worth cheering about.

VALLEY NATIONAL BANK



Member FDIC

Democratic candidate withdraws from gubernatorial race

Staff and wire reports

Gubernatorial candidate David Moss dropped out of the three-way Democratic primary race Tuesday, just one week before the primary election.

A Democratic Party of Arizona spokeswoman could not confirm Moss' withdrawal from the race Tuesday afternoon, saying "this is news to us."

Melody Jackson said Moss made no indication he was planning on withdrawing from the race at a fundraiser Sunday.

Moss said he would drop out and endorse Phoenix lawyer Tony Mason, a fellow Democrat, at a news conference today.

Jackson said their organization had not received any news releases or heard anything about the withdrawal.

She said Moss's campaign office phone has been

disconnected, and the State Press could not reach Moss for comment.

Moss's telephones were disconnected last month when he did not pay a \$4,000 deposit on his telephone service, but he said voters would understand because "if they haven't had their phones cut off, they really aren't Democrats."

Moss, 62, ran a low-budget campaign compared with the roughly \$1 million apiece that rival candidates Carolyn Warner and Mason have spent.

He raised \$166,475; all but \$400 came from Charles Hamilton, his business partner and campaign manager.

Moss blamed his staff, many of whom have not been paid for weeks, for his troubles.

He said the staff should have let him run the campaign himself.

Steve Rabinowitz, press secretary for Warner, said Tuesday, "Dave Moss has brought a lot of color to this campaign."

He said Moss' supporters are independent and will use their own judgment in deciding who to support.

Warner will speak today on the West Lawn at 11:30 a.m. Arizona's governor is a voting member of the Arizona Board of Regents and appoints members to the board also. The state's next governor will have the opportunity to appoint four members to the 10-member board.

Moss has lagged consistently in the polls, never finishing higher than second. He had campaigned twice before for governor and lost in the primary each time.

ASU agrees to foot flood bill

By BENNY MCCONNELL

State Press

ASU has agreed to pay a University employee more than \$350 for damages sustained to her 1986 Honda Prelude after the vehicle was flooded while parked in ASU's new parking garage.

Judy Belanger, assistant director for student financial assistance, said her car was damaged in the basement of the \$4 million structure when rain and street water

from Thursday's storms flooded the garage.

Richard Landreth, assistant director of parking, said the storms dumped about 12 inches of water into the basement where eight cars were parked, but only Belanger's was damaged.

"Her (Belanger's) car just happened to be the lowest car in the lowest part of the garage at the time of the storm," Landreth said.

Turn to FLOOD, page 13.

Wednesday get contemporary with RICKY D. New Place and New Action. Modern give aways with ZIA RECORDS. \$1.50 on all single shot Drinks.

THursday SHOWTIME. FREE MOVIE PASSES, FREE CORONA Shirts and FREE ICE TEA SHIRTS. All LADIES DRINKS \$1.00 and \$1.00 CORONAS FOR ALL. See you favorite movies at all valley HARKINS THEATRES.

Rockin' **FREDDY'S** 222. S. Mill Ave. Tempe • 968-0527

URBAN.



1986 Fiesta Bowl Queen Contest

Extra, Extra Read all about it!

The Fiesta Bowl is in search of its 1986 Queen. All single females* between 19 and 24 who are currently enrolled in an Arizona university or junior college and carrying at least 12 hours of credit are eligible to enter the 1986 Fiesta Bowl Queen Contest.

*Eligible females must never have been married, and have no children.

It's much more than being a queen for a day. Reign over nearly 50 Fiesta Bowl events, including the 16th annual Football Classic.

PRIZES FOR THE FIESTA BOWL QUEEN INCLUDE:

- ☆ a \$1,000 scholarship, provided by First Interstate Bank of Arizona
- ☆ Plaza Three modeling scholarship
- ☆ Bullock's wardrobe and ball gown
- ☆ Buick courtesy car during the month of December
- ☆ Tickets to all Fiesta Bowl events
- ☆ Fiesta Bowl watch and necklace
- ☆ Trip to Portland Rose Festival in June, 1987

Cash prizes will also be awarded to the 10 finalists and four princesses.

1986 FIESTA BOWL QUEEN CONTEST

(please print or type) Official Entry Application

Name _____ Birthdate _____

Present Mailing Address _____ Street _____ City _____ State _____ Zip _____

Home Mailing Address _____ Street _____ City _____ State _____ Zip _____

Phone (home) _____ (work) _____

Univ./College _____ Class (Circle 1) Fr So Jr Sr

of Credits Carried this Semester _____ Major _____

School Activities _____

Other Activities _____

I certify that all above information is true and correct and agree to allow the Fiesta Bowl use of my photograph and application. I understand that decisions by judges or representatives is final in all matters.

Applicant Signature

All applications must include a recent photograph (non-returnable)!

ALL ENTRIES MUST BE POSTMARKED NO LATER THAN TUESDAY, SEPTEMBER 23. (University of Arizona applicants must be postmarked no later than September 18 for interview in Tucson.)

Mail entries to: Fiesta Bowl Queen Contest, 5144 E. Camelback Rd., Phoenix, AZ 85018

CUT HERE

- SEPTEMBER 18 - Applications for those who will interview in Tucson must be postmarked
- SEPTEMBER 23 - All other applications must be postmarked by this date
- SEPTEMBER 27 - Initial interviews in Tucson
- OCTOBER 4 - Initial interviews in Phoenix
- OCTOBER 11 - Interviews for semifinalists
- OCTOBER 27 - Queen selection dinner - final judging



Heat dome may lessen summer rains, researchers say

By DAVE HODGES
State Press

The effects of Phoenix's "urban heat island" may be putting a damper on summer thunderstorms in the Valley, according to a report by two University researchers.

Robert Balling, assistant professor of geography, and Sandra Brazel, faculty associate in the Laboratory of Climatology, said a nocturnal heat dome shields the Valley from the summer thunderstorms that traditionally invade late at night and during the early morning.

Balling reported that the heat dome is causing an increase in nighttime temperatures, small decreases in dew points, sizeable drops in local relative

humidity levels and dangerous increases in summer weather stress among Phoenix residents.

Recently, Balling and other climatologists have been examining precipitation records to determine whether the heat island influences monsoon rains.

"We suspect that the heat island does have an effect on Phoenix's weather, but we can't say for sure," Brazel said. "There's a lack of upper-atmosphere research."

The climatologists said there are four major causes of the heat island effect.

These include the ability of paved streets and sidewalks to absorb and store more heat than natural vegetation and soil, artificial heat sources, low winds and the blanket effect of pollutants.

Balling reported that most of Phoenix's summer rain occurs at night, with 75 percent of the rain falling between 8 p.m. and 8 a.m.

The predominance of nocturnal rain in Phoenix is caused by significant nighttime cooling that allows storms to invade from the surrounding high country.

"As each subdivision and suburb goes up, the heat island also grows and intensifies," Brazel said. "Exactly how it will affect the weather in the future remains to be seen. We just can't tell yet."

According to the National Weather Service, Phoenix has experienced above-normal temperatures this year, especially at night. Rainfall, although .88 of an inch above normal for the year, has come in

short downpours.

The Valley has experienced few thunderstorms this year with measurable rain. But, as evidenced in last week's "frogstrangler" (a weather colloquialism used by Channel 10 meteorologist Ed Phillips), the few that have hit have been rather severe.

At ASU, 2 inches of rain fell Wednesday and Thursday, and parts of the Valley were flooded by 5.5 inches of rain on Thursday night.

The average annual rainfall for Phoenix is about 7.5 inches.

Brazel said the storms were caused by a weather disturbance that originated in the Midwest.



SUN DEVIL HAIRCUTTERS
"Stylists who care enough to listen"

Back to School Special

Shampoo
Conditioning
Precision Cut
Blow Dry

\$4.00 OFF

Regular Price
Men \$13
Women \$15
Hrs.: Mon.-Fri. 9-6
Sat. 9-5

NEXUS

Next to the Warehouse Deli
In the Arches Plaza
130 E. University Dr.
Limited Offer. Call Now! 966-5462

WOW
HAVE
WE GOT A
RUMOR
FOR YOU



GRAND OPENING

•prints
•posters
•great prices
•fast turnaround

Specializing in commercial framing for photographers, artists & architects.

NO PURCHASE NECESSARY

2021 E. APACHE
TEMPE, AZ 85281
829-7101

(Between McClintock and Price)

NOW OPEN

THE COMMONS
on Lemon



STUDENT CONDOMINIUMS
Privacy • Walking Distance

- Two blocks from campus
- Spacious ... comfortable ... like home
- Completely furnished
- All appliances (washer/dryer, microwave, dishwasher, refrigerator with icemaker)
- Full houseware package
- Walk-in closets, storage
- Pool, spa, sand volleyball court

FOR SALE TO PARENTS: The income and tax advantages can pay for much or even all of your student's educational costs

(602) 968-6427
1215 E. Lemon Realty Executives, Realtors

"But there are only 13 left"

McLINGUS & Co.
A FINE DRINKING ESTABLISHMENT

Hot Starborn Recording Artist
From Chicago



TWO WEEKS ONLY
ROCK • JAZZ • FUSION • POP
Appearing Sept. 4, 5, 6, 11, 12, 13
8:30 p.m.-12:30 a.m.

"Don't Miss It"

1954 E. University, Tempe • **894-8993**
(Fort Knox Plaza)

OFFICE PRODUCTS WAREHOUSE
"OPEN TO THE PUBLIC"

Where you get name brands at warehouse prices!

brother



SMITH CORONA



HP HEWLETT PACKARD



VICTOR


TEXAS INSTRUMENTS

We'll match any advertised price. Just bring in the ad.

SHARP

1755 W. University Dr.
1 1/2 miles west of campus
968-1198

United Campus Christian Ministry
Wednesday Evening Communion Service



8:00 p.m.
in Danforth Chapel

"Sing, Share, Break Bread Together"

What is UCCM all about?

The purpose of UCCM is to provide a caring, supportive atmosphere where people can raise the important issues of life and living, and of God and Jesus Christ. We invite those who are still searching, as well as those who seek to grow in their faith. We also offer fellowship through retreats, picnics, and other fun events. UCCM is sponsored by the Presbyterian Church USA, United Church of Christ, and the Disciples of Christ, however EVERYONE IS WELCOME.

Local gas stations predict increase in petroleum prices

By BENNY McCONNELL
State Press

Gas prices around ASU's campus are at their lowest in eight years, but local station operators said Tuesday they think University students have seen the last of moderate gas prices.

An informal tour of local gas stations by a *State Press* reporter Tuesday afternoon concluded that the Mobil station on Rural Road and Apache Boulevard and the Circle K at 1101 S. Rural Road, had the lowest price per gallon — 70.9 cents a gallon for regular gas and 77.9 cents a gallon for unleaded.

Milton Sullivan, owner of the Mobil station, said he makes one or two survey trips per day to check competing prices.

"Most of the other markets in the country have already started raising prices, so it shouldn't be long before we see prices go up here, too," he said.

Sullivan has been in the gas business 12 years. Abed Mogharbel, a clerk at Circle K said the convenience store's district manager sets gas prices according to the prices Sullivan sets at his Mobil station.

The highest gas prices were at the Chevron station on the southwest corner of Apache Boulevard and Rural Road. The

prices were set Tuesday afternoon at 73.9 cents for regular gas and 87.9 cents for unleaded.

"We know we're the highest but we have a high volume of credit card sales and we have to pay 3 percent for all credit card sales," station manager Ken Hosely said.

"In fact, our prices just went up 2 cents a gallon," he said, adding the increase could be an indication that prices are already rising.

The Mobil station at the corner of University Drive and Mill Avenue and the Exxon station at University Drive and Rural Road had set their prices at 71.9 cents for regular and 79.9 as of presstime Tuesday.

Weekend accidents kill 16

PHOENIX (AP) — At least 13 lives have been lost on state roads over the Labor Day weekend, and three more victims died in water accidents, authorities said.

The holiday traffic toll rose to 13 Monday when Flagstaff and Phoenix teen-agers were killed in separate accidents, Phoenix police and the state Department of Public Safety said.

Beth Larsen, 16, of Phoenix, was fatally injured when a car she was riding in collided with another car at an intersection, police said.

DPS said Sanford Namingha, 18, of Flagstaff was a passenger in a northbound auto that ran off U.S. Highway 180 about 46 miles northwest of Flagstaff and rolled over him when he was ejected, officials said.

Flood

Continued from page 11.

He said University insurance will cover the cost of the water damage done to the car's interior.


"I was angry at first that a new structure would do this then disappointed because these things do happen," Belanger said.

The carpet in the car has to be replaced, she said.

Landreth said the structure has some

minor leaks because the contractor, Joe E. Woods Inc., ran out of caulking to seal cracks in the roof of the garage.

He said to prevent future flooding, sandbags will be available for the gate attendant to put in place in the southwest corner of the structure where the runoff flowed. A water pump will also be stored near the garage should the flooding occur again.



GREASY TONY'S
Don't let the name scare you. I'm not insane!! or Greasy!! My food is absolutely fantastic!! Ask anyone throughout the East and now the West. Just purchase any whole sub and receive 50c OFF or any steak or sausage sub and receive 25c OFF (with coupon).

Tuesday Special
Large 20-in. pizza \$6.00
WE DELIVER

921 E. UNIVERSITY (Rural & University)
894-8868
OFFER GOOD THROUGH 9-10-86.

OPEN 7 DAYS A WEEK
10 a.m.-2 a.m.
Friday & Saturday
10 a.m.-3 a.m.

NATIONAL
NATIONAL MUFFLER SHOPPE
1900 N. HAYDEN (Corner of McKellips)

SPECIALIZING IN
SHOCKS, STRUTS, MUFFLERS, BRAKES, TIRES
Minor Automotive Repair

Get A 10% Discount for ASU Students (With picture I.D.)
Check our prices

994-1965
Hours: Mon.-Fri. 7:30 a.m.-6 p.m.; Sat. 7:30 a.m.-3 p.m.

UNLIMITED LONG DISTANCE CALLS

All the long distance calls you can make for as long as you want to talk. Anytime, anywhere in the U.S.A. Flat fee of \$100 per month. Call for application!

945-6225 or 956-5201 eve.

THE LAW OFFICES OF
RANDY C. ROGERS, P.C.

NO RECOVERY, NO FEE ON PERSONAL INJURY CASES
INITIAL CONFERENCE AND EVALUATION FREE ON PERSONAL INJURY CASES

- PERSONAL INJURY
- AUTOMOBILE ACCIDENTS
- WRONGFUL DEATH
- MEDICAL MALPRACTICE

345-8311
1811 S. ALMA SCHOOL RD., MESA, ARIZONA 85202 (Just South of the Superstition Freeway)

#'s 34, 35 and 36 in a continuing series of questions most frequently asked about Christianity.

- #34. "Did all the people in the Bible have beards?"
- #35. "Is there really a puppy heaven? What's wrong with cats?"
- #36. "If evolution is not true, how do Christians explain the '62 Mets?!"

We answer these and other more important questions about a relationship with Jesus Christ.
SUNDAYS 7:30

UNIVERSITY FELLOWSHIP



TACO BELL. welcomes back
ASU STUDENTS

ASU Meal Deal

- Regular Taco
- Bean Burrito
- Medium Pepsi

All For \$1.59

Good only at 936 E. Apache Limit 2/customer. Expires 9-30-86.

NEW FALL HOURS
Sunday-Thursday 10 a.m.-2 a.m. **LATE-NITE**
Friday-Saturday 10 a.m.-3 a.m. **Drive-Thru**

EARN \$134 PER MONTH

Welcome Back, Students

\$2 BONUS
ON YOUR FIRST VISIT (WITH COUPON)

university plasma center

Associated Bioscience of Tempe, Inc.
1015 South Rural Road
Tempe, Arizona 85281
Phone 968-6139



Experts: drug tests 'far from foolproof'

By the College Press Service

Testing students for the presence of drugs in their systems may not do much to stop students from using illicit drugs, some experts said.

The system, various experts said, is far from foolproof. The University of Maryland's athletic department made athletes submit to urinalysis tests to catch drug abusers, but testimony taken by the grand jury investigating the cocaine-related death of Maryland basketball star Len Bias allegedly turned up evidence that "dirty" players simply switched urine samples with people who did not use drugs.

Whether such tests actually deter people from taking drugs remains an open question.

"We have very little research available on that issue," said Dr. Steve Gust, a research psychologist at the National Institute on Drug Abuse.

But Gust adds, when the Pentagon started giving military personnel drug tests in 1981, as many as 40 percent of those tested showed traces of illicit drugs in their systems.

After testing four years, though, the Department of Defense said only 4 percent of the tests are "positive."

"False negative" and "false positive" readings are possible, experts said, but not probable.

BLOOM COUNTY



by Berke Breathed

state press ADVERTISING

We Give You A Bigger Slice Of The Pie At The Lowest Cost Per Bite.

ONE STOP TANNING CENTER



"We're Taking the Tanning Industry Off Its Back"

Entire (Aug. through May) School Year Special

\$9900 (with ASU I.D.) Unlimited Tanning (no extra fees)

Introductory Special 12 sessions **\$30** (Reg. \$45)

Faster & Safer Than Bed or Booth 15 min. vs. 30 minutes Tanning Bed Sessions



FOR PEOPLE ON THE GO

3312 S. McClintock (SW corner Southern/McClintock) Inside One Stop Beauty Supply

839-9430

Notes-n-Quotes PROFESSOR PUBLISHING

IT'S THAT TIME OF THE YEAR AGAIN, TIME TO COMPILE YOUR SUPPLEMENTARY CLASS MATERIAL. LET Notes-n-Quotes, A STUDENT OWNED BUSINESS, TAKE SOME OF THE BURDEN.

Notes-n-Quotes IS STUDENTS WORKING FOR STUDENTS.

- HIGH QUALITY, FAST, DEPENDABLE PRINTING OF LAB AND COURSE MANUALS, SUPPLEMENTARY MATERIALS, AND WORKS-IN-PROGRESS
- WE PRINT THE NUMBER OF COPIES YOU REQUEST, NO WAITING FOR THE STUDENTS
- FREE PICK-UP AND DELIVERY FOR ALL YOUR PRINTING NEEDS, ALONG WITH AS MANY COMPLEMENTARY COPIES OF YOUR SUPPLEMENTAL MATERIAL AS YOU NEED
- DOUBLE SIDED COPIES ARE NO EXTRA CHARGE, THREE HOLED PUNCH PAPER AVAILABLE
- LOWEST BINDING AND PRINTING PRICES IN THE UNIVERSITY AREA
- NO COST TO PROFESSORS OR DEPARTMENTS

712 SOUTH COLLEGE UNIVERSITY & COLLEGE INSIDE CAMPUS DRUGS CALL 966-4225

Notes-n-Quotes IS A STUDENT OWNED BUSINESS COMPETING WITH MAJOR CORPORATIONS. WE GREATLY APPRECIATE YOUR PATRONAGE. THANK YOU.

LOW AIR FARES TRAVEL "18"

7155 E. Thomas, Suite 5 Scottsdale, AZ 85251 949-8888

•Credit cards accepted •Free ticket delivery

WELCOME BACK!

Remember to purchase your holiday tickets early to get the lowest fares!

The Guaymas Weekend — Club Med 3 nights (Thurs.-Sat.) includes airfare from Tucson & transfers. **\$329***

Now until Nov. 13, 1986. *Excludes membership fee.

Domestic: Round trip airfare

Minneapolis/St. Paul .. \$218	New York	\$198
Chicago	Miami	\$238
Los Angeles \$38	San Francisco ..	\$118

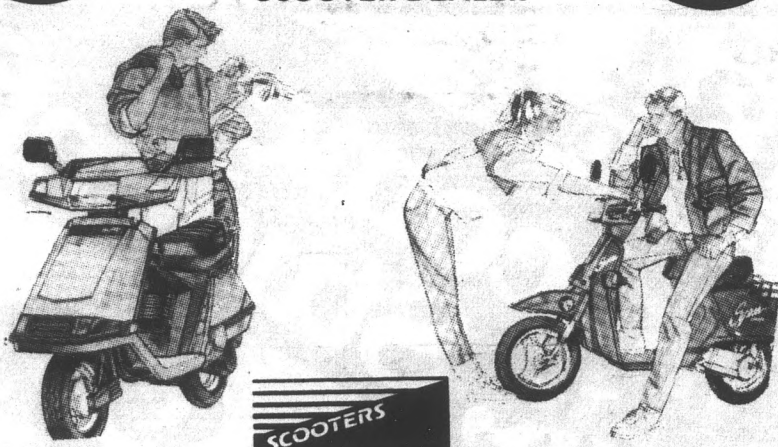
Certain restrictions do apply. All fares subject to change without notice.

BACK TO SCHOOL SALE!

SAVE NOW! Get Student I.D. Discounts!

SCOOTERS! SCOOTERS! SCOOTERS! FROM AZ'S #1 SCOOTER DEALER

All Models! Huge Selection!



- Great on gas!
- Easy parking!
- First service free!
- High quality!

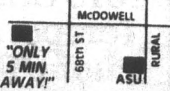
LOWEST PRICES THIS YEAR. DON'T MISS IT!

WE SELL FOR LESS! "FASTEST FINANCING IN THE VALLEY"

western honda OF SCOTTSDALE

6717 E. McDowell Rd. • 994-8400

MON.-FRI. 8-9 SAT. 8-6 SUN. 10-6



STUDENTS ...Don't miss our 20-20 offer!

Art, architecture, engineering & design students:

Shop for your art supplies from The Valley's most complete selection by SEPTEMBER 20, and save a big 20%.

Shop any other time and you'll receive our standard 10% STUDENT DISCOUNT.

Fine arts materials

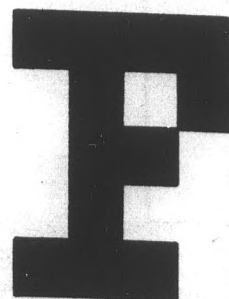
Canvas, paints, stretcher bars, brushes, frames, paper, etc.

Drafting supplies

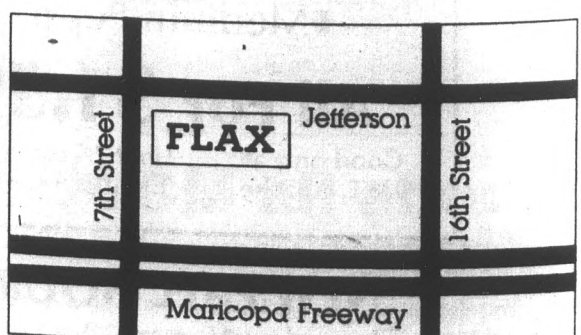
Parallel rules, triangles, templates, leads, drawing boards, technical pens (all brands) and more.

ALSO

Airbrush equipment & supplies, graphic arts materials and books.



FLAX CO., INC.



10th Street & Jefferson • 254-0840 • Lots of free parking Hours: Mon.-Fri. 8:30-5:30 Sat. 9-5

Psychology clinic offers group help

By BENNY McCONNELL
State Press

ASU's Clinical Psychology Center will begin offering group sessions on topics ranging from divorce to bulimia this month for University students, staff and the community.

Tim Ayers, a graduate student for the program, said the clinic is an arm of ASU's Department of Psychology that offers individual therapy for depression, relationships, family and child behavioral problems.

Ayers said new programs this fall will focus on child behavioral problems in addition to the new group therapy sessions.

He said some of the groups are already forming and most of the therapists require six to 10 individuals for a group to get started.

The clinic is staffed by advanced psychology graduate students pursuing doctoral degrees and ASU faculty who are state-certified psychologists.

Ivory Towers

by Michael Ritter



You can stay on top of the news because we do.

STATE PRESS . . . your morning daily at ASU.

Welcome Students

We offer

HIGH STYLE

&

low prices

Spacious New

Pelican Bay Apts.

Move-in Allowance

ASK ABOUT OUR 1-BR SPECIALS

- 1 & 2 Bedrooms
- Lush Landscaping, Ponds & Beautiful Courtyard
- Racquetball Courts, Weight Room & Sauna

- Wet Bar, Washer/Dryer Hook-up & Walk-in Pantry
- Enclosed Patios/Balconies, Exterior Storage

FROM \$395 (1BR)
\$480 (2BR)

Which includes a \$20 discount for a 12-month lease and also the Bay's timely rental payment plan and move-in allowance.

Call 969-3380

2121 W. Main Street, Mesa

ATTENTION SENIORS: EMPLOYMENT INSIGHTS VIDEO INNERVIEW®

Can help you tell the story behind the words on your printed resume! Put a face and personality behind your qualifications and demonstrate that you have what it takes to influence every hiring decision.

Call us today to schedule an appointment or to get more details of our full line of employment services.

EMPLOYMENT INSIGHTS INC.

2411 W. 14th St., Suite 208
Tempe, AZ 85281
(602) 894-1152

(E.I.I. is not an employment agency)

SKI BINDER

20% TO 50% OFF

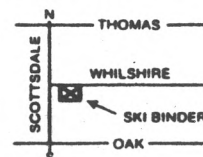
Everything In Store!



Check out our prices before buying.
We always have lower prices!

BRING THIS COUPON FOR A
1/2 PRICE TUNE-UP

Reg. \$15.00 NOW \$7.50



**FREE HOT WAX
ALL SKI YEAR!**

All Sales Final
Limited to stock on hand.

2515 N. Scottsdale Rd. • 994-8415

Hours for sale: 10-9 Thurs. & Fri., 10-6 Sat., 1-5 Sun.

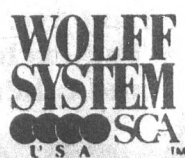
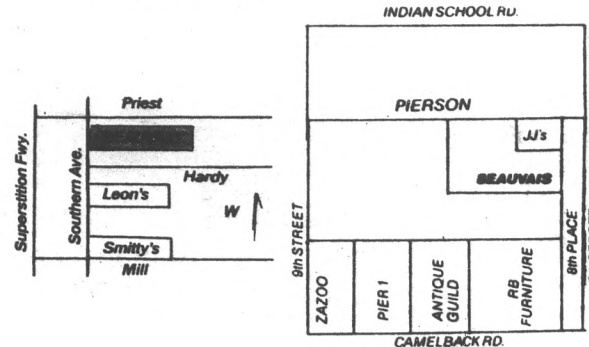


Join the Winning Team!

- 18 aerobics classes per day!
- 90 new weight machines
- 15,000 lbs. of free weights
- 14 Heartmate computer bikes
- 2 Wolff system suntan beds
- Juice bar with nutritional counseling
- Professional trainers for rent
- Free instruction for new members
- Air conditioning
- We have no salesmen!

- Your first visit is free
 - \$30 registration card fee
 - \$30 per month
 - or
 - \$4 per workout
- Nonmembers:**
\$10 per workout
\$20 per week
\$40 per month

OPEN
5am-1am Monday-Friday
8am-1am Saturday-Sunday
for information call:



Beauvais'

FITNESS & AEROBIC CENTER

TEMPE LOCATION • 1102 W. SOUTHERN AVE. • 829-6969
PHOENIX LOCATION • 4843 N. 8th PLACE • 230-0055

Body Masters • Nautilus • HEARTMATE COMPUTERIZED BICYCLES

Universal • PARAMOUNT

Campus organizations drive to enlist eligible ASU voters

By KERRY FEHR
State Press

Associated Students' Political Union and the College Democrats and Republicans are sponsoring a voter registration drive from 9:30 a.m. to 1:30 p.m. this week on Cady Mall.

A Maricopa County Department of Elections official said the idea for the drive came from the county elections office, which estimates that approximately 62.5 percent of Arizonans are not registered to vote.

Statistics of ASU student registration are not available.

Arizona is ranked 46th of 50 states for voter turnout based on the number of eligible voters in the state, an elections department official said.

But the official said voter turnout of registered voters is somewhat better — 36th out of 50.

Only deputy registrars, who have

attended a training session given by the elections department, are qualified to register potential voters.

College Democrats President Roy Petty said the Democratic and Republican clubs will be registering voters.

"Our main concern is getting everyone registered and active," he said.

Petty said the county is seeking to register approximately 500,000 eligible voters as part of its voter awareness campaign.

Petty said he hopes to register at least 200 ASU students this week.

Registrants must be 18 years old prior to the regular general election on Nov. 4, a resident of the state for at least 50 days preceding the election and a citizen of the United States.

In addition, qualified voters must be able to write their names, not have been convicted for treason or a felony or be diagnosed as insane.

Regents to cover land deals, UA research bids at meeting

By The Associated Press

TUCSON — The Arizona Board of Regents is scheduled Friday to consider proposals to buy, sell and lease more than \$13.3 million in property, including a \$12.2 million deal involving farmland in Mesa.

Main Street Mesa Associates was the only bidder for the 95.6 acres of the Mesa Experimental Farm of UA.

The group has agreed to put up \$610,000 in earnest money for the property while it determines whether the parcel can be rezoned for commercial and industrial use, said Sarah Blake, UA associate vice president for finance.

The regents, who are scheduled to hold

their regular monthly meeting Friday afternoon at UA following a late-morning executive session, also will consider:

•Several UA research agreements, including one with Carnegie Institution of Washington and Johns Hopkins University to build a \$25 million 8-meter telescope in Chile.

Among \$19.7 million in research contracts is a \$7 million agreement with the National Aeronautics and Space Administration involving development of a camera for viewing objects in space in infrared wavelengths.

A TEMPE TRADITION

Lunt Ave. Lines Up

AN ACTION-PACKED FALL SCHEDULE



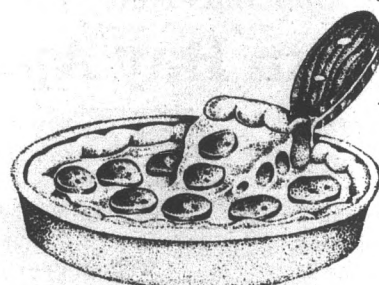
MONDAY NIGHT Wild World Of Sports

Lunt Ave. introduces a new Big Screen with a satellite dish and over 110 channels. Digest all the sports with:

- Ice cold draft beer - 75¢
- Ball Park Hot Dogs - 25¢
- Sports Stadium Nachos - 50¢
- Hot, Fresh Popcorn - FREE!

All well drinks \$1.00

A TUESDAY TRADITION 1/2 Price Pizza



ALL DAY! Experience a Tempe tradition and indulge in our world-famous deep dish pizza at an amazing 1/2 price. (Not good on take-out.) Drink specials, too!

WEDNESDAY Spend A Night At Mazatlunt



You'll think you're on vacation!

- Mucho Margaritas 44oz. pitcher - \$4.75
- Pub Nachos - 95¢
- Complimentary chips and salsa
- "Blue Light" Mexican Beer Specials
- Chef Pablo Mexican Dinners - \$3.95
- Big screen music videos
- Prizes and giveaways

THURSDAY NIGHT Late Night With Lunt



The David Letterman Late Night Show begins at 9:30 p.m.—thanks to the magic of our satellite dish hook-up. Between chuckles and guffaws enjoy:

- The Larry Bud Melman Ballshooter - \$1.00
- Lunt Ave. Sliders, Coney Dogs, Buffalo Wings
- The exclusive Late Night with Lunt T-shirt and other prizes 95¢ Long Island Ice Teas

Lunt Ave. Marble Club

1212 E. Apache
967-9192

95¢ Long Islands
Two weeks only!

Every Monday & Thursday Is Ladies Night!

with **89¢ MOVIES!**

and **FREE POPCORN!**



- Come to our superstore and enjoy
- VCR RENTALS \$5/DAY
 - Rent 3 movies and get a FREE MinderBinder hamburger
 - 10% discount with valid ASU student or faculty I.D. (not good w/ coupons)

OMNI CENTER
2165 E. UNIVERSITY DR.
Corner of Price & University **967-6565**

THE HAIR CUTTERS

\$4.00 OFF
WITH THIS AD

- SHAMPOO
- CONDITION
- PRECISION CUT
- BLOW DRY

REGULAR PRICES
Women \$15
Men \$13

709 S. Forest Ave., Tempe

North of University • Behind the
Chuck Box • In Oxford Square

Call **968-5946**

Open Tuesday, Wednesday & Thursday evenings till 9 p.m.

also introduces
Nails by Sue

- Full Set \$25
Regular \$45
- Acrylic Overlays \$35
Regular \$55
- Fill-Ins \$18

SMITHEREENS

Eastern band plays dangerously close to fame

By KHALI CRAWFORD
State Press

"What month is this now?" asked Pat DiNizio, of the New Jersey-based band the Smithereens.

The lead singer/guitarist seems to have lost track of time since his band began touring the East coast in June, prior to the release of their debut LP, "Especially For You."

The band (guitarist Jim Babjak, drummer Dennis Diken, bassist Mike Mesaros and DiNizio) has been headlining and opening for groups such as ZZ Top and the Hooters.

Who are the Smithereens?

"We're just a bunch of guys — that's all," DiNizio said.

DiNizio said the group started in 1978 when he and Diken were introduced by a mutual friend. "I started writing songs in 1980 and I called him (Diken) to play drums on a demo tape," he said.

The other two members were childhood friends of Diken.

"They grew up together (in New Jersey) listening to the same music," DiNizio said. "They learned how to play instruments together by playing in garages and basements."

The Smithereens, as they are today, were born in 1980.

How did they get to be called the Smithereens?

"Dennis said he had a notebook with names of rock groups in it," DiNizio explained. "Most of them were ridiculous like Shag Rug and the Love Contact Lenses. Then there was the Smithereens. It sounded upbeat and interesting."

After years of playing small East Coast clubs, the group released the 1980 EP "Girls About Town." "Beauty And Sadness" was their 1983 EP. This critically acclaimed record sold only a few thousand copies in the United States but was the No. 1 selling import in parts of Europe.

Everything changed when Enigma records picked them up last year, paired them with guitar-pop producer Don Dixon, and slid their single "Blood and Roses" into the movie "Dangerously Close."

Now the Smithereens are on their first national tour. Last weekend they brought their AOR sound to the West with three California dates.

Now DiNizio is in Los Angeles taking a



The Smithereens are Michael Mesaros, Jim Babjak, Dennis Diken and Pat DiNizio.

breather while the rest of the band is scattered around California and Arizona.

"I'm trapped in Hollywood without any money and without a car," DiNizio said, yawning.

He said he's been walking around L.A., watching movies ("Alien" and "The Fly" come to mind) and meeting people.

"I love meeting people," he said. "Usually the recognition factor comes from television."

DiNizio is referring to the music video of "Blood and Roses," a cut from the "Dangerously Close" soundtrack, which has spent 21 weeks in "active" rotation on MTV.

He said the band is pleased with the video. "In our case, we were very happy with the video because it didn't compromise the sound and image of the band," he said.

MTV has helped the band "tremendously" to increase their live draw

on the concert circuit and to push their album to 97 on Billboard's Top 200, he said.

"Especially For You" is a collection of tunes that adopts mid-'60s melodies and sets them over an '80s pop framework.

As a songwriter, DiNizio admits he has been influenced by "good pop songs" of the Beatles, Rolling Stones and Buddy Holly.

"I can't say I've listened to that type of music for years," he said, "but those songs set me in the right direction in my songwriting."

His current "traveling music" is Marshall Crenshaw and Suzanne Vega who are also featured in a duet on the Smithereens' album released under the Enigma label.

"I don't really listen to '60s music and that's the handle that people have given us," he said.

DiNizio said he doesn't think the group's sound is caught up in the '60s revival.

"Anyone who gives the album a careful listen will hear that it's not a retro ('60s retread) album," he said. "I don't think 'Blood and Roses' has anything to do with the '60s."

"When you write in that song style the comparisons are inevitable."

DiNizio prefers to categorize the band's music as "3-minute pop rock." The lyrics are about love, not politics, he said.

"I got a fan letter from some girls in Upstate New York saying, 'Dear Pat, We like your music, but we know you can write better. Please write songs about toxic waste, war, pollution,'" DiNizio said.

"I'm not planning on doing anything," he said. "If it moves me, I'll write about it."

"It seems popular to write about social decadence, farmers, Vietnam. A lot of artists are exploiting it to sell records. I personally believe it's bullshit. The music should stand on its own."

It seems the Smithereens' tunes are standing quite tall on their own as the band has taken seven years to get national recognition.

"We believe in the idea of the band and the type of music we play," DiNizio said.

The Smithereens will be performing with the Extremes today at 9:30 p.m. at Impulse. Tickets are \$5 at the door.

Spotlights

Tidbits from the entertainment file.

At the Box Office:

•"Extremities," starring Farrah Fawcett in a stunning performance as a rape victim who strikes back at her attacker, is showing at Mann Sun Devil 6 Theatres in the Cornerstone Mall.

•"Three Men in A Cradle", winner of three French Oscars, depicts the escapades of three bachelors who find an abandoned baby on their doorstep. It's a hilarious and touching film. Watch the subtitles! "Three Men in A Cradle" is showing in an exclusive engagement at Harkins Los Arcos Mall Cinemas, 1383 N. Scottsdale Road, in Scottsdale.

Casting Call:

•Arizona Opera wants you! But only if you're male and have a tenor, bass or baritone voice. The opera company is seeking men for their 1986-87 season chorus. Auditions will be held on Monday, Sept. 8, from 5-7 p.m. at the Center for the Performing Arts on Third Street and Moreland in Phoenix. For more information call 840-0841.

Dance:

•The Ludwig co. dance troupe will perform in concert in the ASU Dance Studio Theater on Thursday and Friday, Sept. 4 and 5, at 8 p.m. Admission is \$6 and \$4 for ASU students. The Dance studio is located in the Physical Education Building East.

Music:

•ASU tenor Warren Hoffer and his wife, pianist Mary Pendleton, will present "A Dog of a Recital: A Sirius Recital" in the Recital Hall of the Music Building, Thursday, Sept. 4, at 7:30 p.m. The recital is a "celebration of the end of the dog days," and includes such works as a spoken version of "Hound Dog." The Recital Hall is located on the fifth floor of the Music Building. Admission is free.

Concerts:

•Guadalcanal Diary will appear at the Mason Jar tonight at 11:30. The Athens, Ga., based band will be singing some of the tunes from their new album "Jamboree." The Mason Jar is located at 2303 E. Indian School Road in Phoenix.

•The Monkees, one of the most popular groups of the '60s will appear in concert at the ASU Activity Center at 8 p.m. Monday, Sept. 15. Appearing with them are Herman's Hermits, The Grass Roots and Gary Puckett and the Union Gap. Tickets, for \$15, are available at Gammage and Diamond's ticket outlets.



Guadalcanal Diary

•R.E.M. will bring their Pagentry tour to the stage of The Mesa Amphitheatre on Tuesday, Sept. 23, at 7:30 p.m. Opening for the hit group are 10,000 Maniacs. Tickets, for \$14.50 in advance and \$15.50 the day of the show, can be purchased at Diamond's ticket offices or at The Mesa Amphitheatre box office, 201 N. Center, in Mesa. For more information call 834-2178.

Art:

•Prints by artist Joseph Pennell are on display in the University Art Museum, located on the second floor of Matthews Center. Various selections of urban scenes, mostly New York during the early half of the century, include prints of Union Square and the East River. Pennell's work will be shown through Sept. 7.

THERE'S MORE FUN UNDER OUR HAT.



EL TORO[®]
TEQUILA



Goldberg stars in "Jumpin' Jack Flash."

flicks

Newman, Goldberg brighten fall box office

By GREGORY ROBERT KRZOS
State Press

Whoopi Goldberg, Paul Newman and William Hurt head back to the silver screen this fall, along with a list of other notable performers in a highly touted fall season at the movies.

Let's face it, every season sparks a bundle of publicity from the movie industry. Everyone's always hearing which movie will strike box office gold. It's a shame most of them deteriorate faster each year.

When the leftover films of the summer begin descending down the box office ladder and into the video stores, a large gap is left

at the box office.

Autumn marks a transition period for the industry, a time when audiences can see a noticeable difference in the type of movies coming out. It's also a nice break between the blockbuster films released during the summer months and the slew of holiday pictures that are seen around Christmas.

Although every movie season introduces a new trend (i.e. remember "Rambo"?), few features generate real noteworthy acclaim.

Here's a brief list of what you'll be seeing at the movies this fall.

September:

"Children of a Lesser God," based on the

popular Broadway play of the same name, stars Academy Award winner William Hurt ("Kiss of the Spiderwoman") as a speech therapist who falls for one of his deaf students. Newcomer Marlee Matlin, who is deaf in real life, makes her screen debut as the hearing-impaired woman.

Sean Connery dons a hood and becomes a monk in "The Name of the Rose." The film was directed by Jean-Jacques Annaud, whose last project, "Quest for Fire," burned out at the box office. Connery plays Brother William of Bakersfield and investigates a series of monastic murders.

Turn to FALL, page 20.

Insurance Available For **ALL DRIVERS**

Open till 7 p.m. Evenings
and 2 p.m. Saturdays

ASPEN INSURANCE SERVICES
899-3950

AUTO RATES AS LOW AS \$27 A MONTH
797 N. Alma School Rd. Ste. 8
Alma Gardens Center, Chandler, AZ

THE GAME DEPOT

for the games people play
(formerly Flying Buffalo Games)

- Family Games
- Strategy Games
- Magazines
- Playing Cards
- Role Playing Games
- Miniatures
- Dice
- Plus much more



Just north of ASU
708 S. Forest Ave.
966-4727



SIGMA CHI

606 alpha drive

Little Sister RUSH

Sept. 3 All girls welcome, casual dress, 8 p.m.
Sept. 4 Semi-formal dress preferred, 7 p.m.

AUTO INSURANCE

LET ALL ARIZONA FIDELITY CORP.

SAVE YOU A
BUNDLE ON
AUTO INSURANCE



ANY: Driver
Age
Auto

Low Down
Payment

Call for a free quote.

Corner of University & Country Club 5233 W. Glendale Ave.
Glendale
835-0222 934-3993

REMEMBER: In Arizona it's the law! You must carry auto insurance!

THE DELICATESSEN

open til 6:30 p.m.

Especially
great for
the late lunch
or the early
dinner: we will
even wrap it
up for you to
take home!!!!

located in
Memorial Union

IF YOUR BOOKSTORE DOESN'T CARRY SHARP CALCULATORS, CALL AND COMPLAIN.

Sharp calculators are designed to be first in their class.

Our EL-533 financial calculator for example, has twenty memories compared to just five for the competition. So it lets you do complex calculations like discounted cash flow analysis.



For those who prefer lab coats to pinstripes, there's our EL-506A scientific calculator. With its 10-digit display, direct formula entry and 93 scientific functions, it makes performing even the most difficult calculations easy as pi.

And because it's sleek, slim and stylish, you'll never look out of step as science marches on.

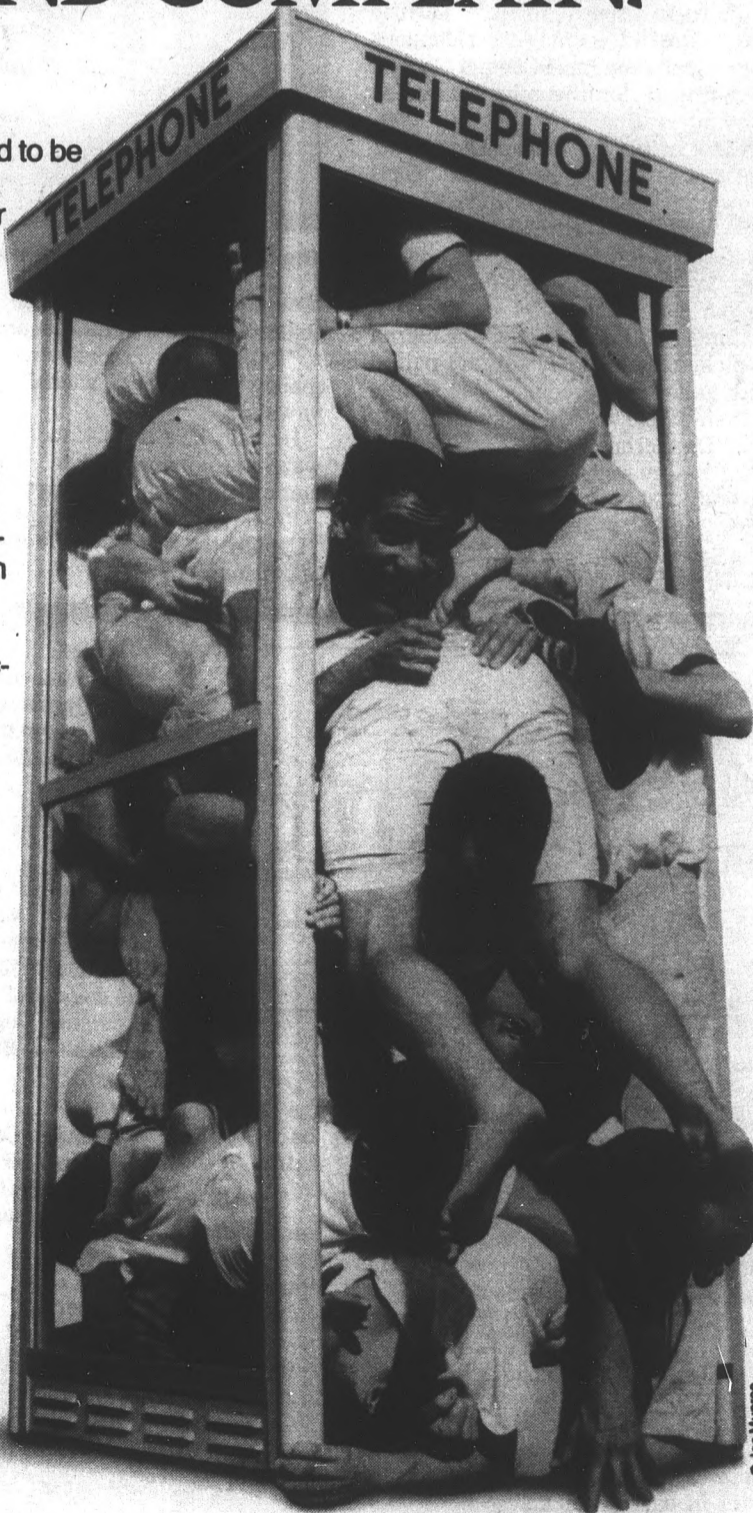
The fact is, Sharp makes all kinds of ingenious little calculators that can help get you through college. And help you pay for it.

Because unlike college... they're surprisingly affordable.

Calculators, Audio, A/V Equipment, Banking Systems, Broadcast Cameras, Cash Registers, Computers and Peripherals, Copiers, Electronic Components, Electronic Typewriters, Facsimile, Medical Products, Microwave Ovens, Televisions, Vacuum Cleaners, Video Recorders. © 1986 Sharp Electronics Corporation, Sharp Plaza, Mahwah, New Jersey 07430.

SHARP

FROM SHARP MINDS
COME SHARP PRODUCTS™



© Joe Muntz

Clicks



Mike Norris makes his debut in "Born American."

Plot dies in 'Born American'

By DAVID MILLER
State Press

If nothing else, the film "Born American" shows that actor Mike Norris has what it takes to fill dad's cinema footsteps, dad being current master of thwack-fu Chuck Norris.

And if you're a big fan of Chuck's stuff, then you're really going to like this stomp-'em, hang-'em, electrocute-'em and then rough-'em-up saga of three friends daring (dumb?) enough to invite themselves to the Kremlin for snacks.

But if you're going to see a realistic portrayal of what can happen behind the Iron Curtain, well . . .

Norris plays Savoy Brown, a man with a tough name, a tough attitude, and a tough-looking partial beard. Together with Mitch (Steve Durham) and K.C. (David Coburn), he helps turn their harmless vacation in Lapland (a vacation in Lapland?) into a foaming beer-bust, leaving three polluted Americans, one border (crossed), and many less-than-courteous Russians carrying weapons (Uzi does it.) It's so hard to have fun anymore.

Things quickly go from worse to much worse for our heroes, as they're framed for a murder, and Rambo an entire village in response. Ask a stupid question . . .

But for a film that wants to make a seemingly serious statement about Soviet mistreatment, brutality and political chess, "Born American" can't seem to locate its luggage.

One plus is Mike Norris. His periodic vulnerability (Gee, you want me to thwomp this Russkie all over his face and neck? Well, alright..) adds a little realism. And while he's not quite ready for "Cats," his acting is at least on par with dad's (he gets points for using about seven or eight more expressions than Chuck, but no one does a better flying lip-lock than the old man).

The plot turns from savage and silly to stupid as we near the end of Savoy's stay in the Kremlin's crossbar hotel. Here we're introduced to the Admiral, a soldier-of-fortune with a decent set-up, and a human chess game involving winning and losing, and losing and death (Vince Lombardi would be proud). And lastly, an escape (you knew it was coming) plan which had me wondering what they were waiting for (Oh wow, you haven't had a rad Christmas 'till you've had one in the U.S.S.R., dude).

So, for its efforts, "Born American" doesn't do much. It's not a bad idea, and it even has a few moments, but a lack of plot dooms it to exile in Siberia.

100% IBM PC & XT COMPATIBLE!

1200B MODEMS \$137

\$499

AvantageXT

Includes: 640K ram, 360K drive, keyboard, 135w power supply, word processor w/ speller, tutor program, & spreadsheet

PRINTERS FROM \$177

ASU buys from us—you should too!

Computer Systems Center

Tempe Hours
3415 South McClintock M - F 10 - 7
At Southern 838-1236 Sat. 10 - 5

CAFE OLE™

A taste of Mexico, right here on the ASU campus. Located in the Memorial Union building.

Home of the CHICKEN FIESTA SALAD

fast, friendly, efficient service

open from 10 a.m. to 6:30 p.m.

QUESTION #2.

HOW CAN THE BUDGET-CONSCIOUS COLLEGE STUDENT SAVE MONEY?

- Save over 50% off AT&T's weekday rates on out-of-state calls during nights and weekends.
- Don't buy textbooks when "Monarch Notes" will do just fine.
- Save 40% off AT&T's weekday rate on out-of-state calls during evenings.
- Count on AT&T for exceptional value and high quality service.
- Hang around with the richest kids in school; let them pick up the tab whenever possible.

If you're like most college students in the western hemisphere, you try to make your money go a long way. That's why you should know that **AT&T Long Distance Service** is the right choice for you.

* AT&T offers so many terrific values. For example, you can save over 50% off AT&T's day rate on calls during weekends to 8 am, until 5 pm Sunday, and from 11 pm Sunday through Friday. Call between 5 pm and 11 pm, Sunday through Friday, and you'll save 40% off our day rate.

Ever dial a wrong number? AT&T gives you **immediate credit** if you do. And of course, you can count on AT&T for clear long distance connections any place you call. To find out more about how AT&T can help save you money, give us a call. With a little luck, you won't have to hang around with the rich kids. Call toll-free today, at **1 800 222-0300**

GREAT DEAL!

CALL TODAY!

AT&T
The right choice.

© 1986 AT&T

Fall

Continued from page 18.

It's hard to believe camera-shy Sean Penn actually allowed somebody to film him. Everyone can see pop princess Madonna and hubby Penn together in their first film, "Shanghai Surprise," at the end of the month.

October:
"Alien"-addict, Sigourney Weaver stars in "Half Moon Street", a story about a successful businesswoman who becomes romantically involved with a high ranking diplomat played by Michael Caine.

Whoopi Goldberg, who got nixed by the Oscars last spring, flirts her funny side as a computer technician in "Jumpin' Jack Flash." Goldberg gets involved in international intrigue when she receives an SOS from an agent trapped in Russia.

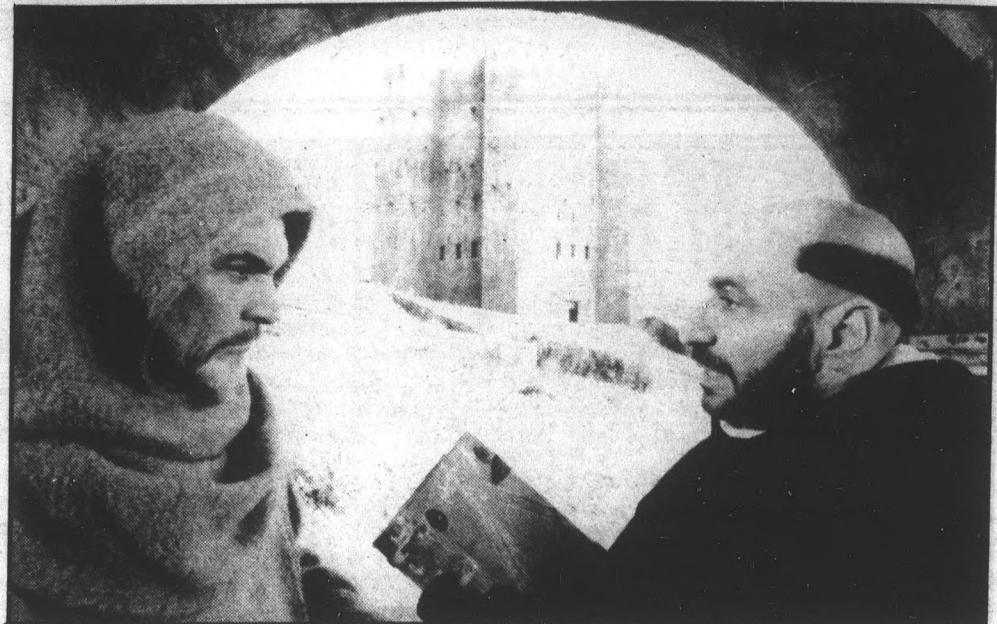
Paul Newman is back as Fast Eddie

Felson in "The Color of Money." The sequel to 1961's "The Hustler" also stars "top gunner" Tom Cruise as Newman's student to corruption. Martin Scorsese directs.

C. Thomas Howell returns in "Soul Man." Howell plays a white man posing as a black student in order to get a scholarship at Harvard.

Burt Lancaster and Kirk Douglas star in the Disney/Touchstone film "Tough Guys." Lancaster and Douglas are two convicted criminals, who after years of being locked up in the slammer, get released only to find the outside world a big surprise.

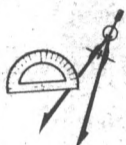
November:
Warren Beatty and Dustin Hoffman star in what looks like a ridiculous movie. In "Ishtar" they play a singing group who can only find work in a fictional Mideast country.



Sean Connery (left) and F. Murray Abraham star in "The Name of The Rose."

STOCK UP FOR FALL CLASSES NOW
with 15% off all Drafting, Engineering
and Art Supplies*

- Blueprinting
- Xerox Copies
- Large scale reductions and enlargements.
- Open Saturdays 8-12
- Open Evenings



Phoenix & Tempe stores open

M-F 8:00 am - 8:30 pm

Mesa store

M-F 8:00 am - 5:00 pm



COMMERCIAL BLUEPRINT CO., INC.

Phoenix - 4700 North 12th Street

264-4568

Tempe - 114 East 7th Street

967-1400

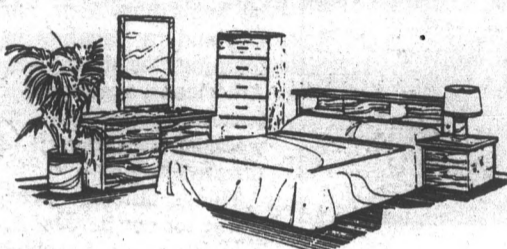
Mesa - 100 West Hoover, Suite 10

890-8300

*Student I.D. Required

Sale ends September 30, 1986

FREE STEREO with your FURNITURE PURCHASE



Dresser, mirror, chest, night stand,
headboard and a free stereo

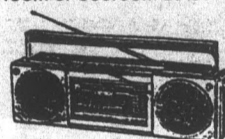
\$199

4-drawer chest

\$29⁹⁵



FREE portable AM/FM
stereo with cassette
with purchase of living
room or bedroom sets



(while supplies last)

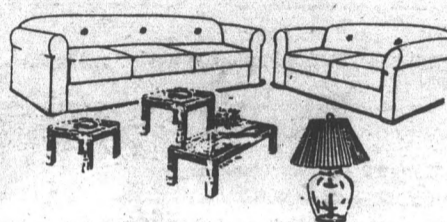
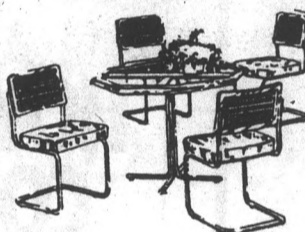
FREE

personal
headphone
stereo with
purchase of



5-pc. brass & glass dinette

\$169



Sofa, love seat, coffee
table, two end tables,
lamp and free stereo

\$279

BED SALE

Twin Set

\$69

Full Set

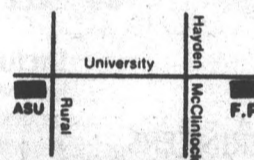
\$79

Queen Set

\$119

**FURNITURE
PLUS**

2077 E. University
Tempe • 966-6252



SPEED READING COURSES SEPT. 15 THROUGH OCT. 15, 1986

A special five-week course, based on the Sack-Yourman Speed Reading Program, will be offered to graduates, undergraduates, faculty, staff and the community. This special program requires pre- and post-reading rate testing, reading of timed passages, and development of college level vocabulary.

REGISTRATION: Sept. 9-12, 1986
Mon.-Thurs. — 10 a.m.-2:30 p.m.
Payne Hall — Reading Education —
Room B-112

SECTIONS:
A. Tuesday..... 6:00 p.m.-8:30 p.m.
B. Wednesday..... 6:00 p.m.-8:30 p.m.
C. Thursday..... 6:00 p.m.-8:30 p.m.

FEE: \$30

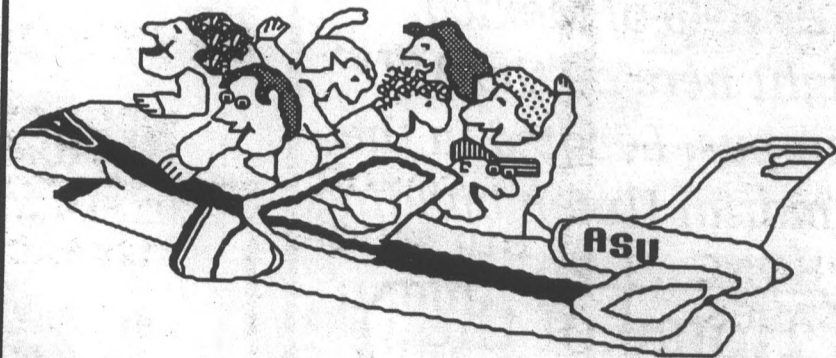
LOCATION: CLASSES HELD IN FARMER BUILDING,
ROOM 101 ON THE ASU CAMPUS

FOR MORE INFORMATION: CALL **965-7766**

Ask Mr. Foster

Travel Service Since 1888

ASK US ABOUT OUR
FREE SEVEN DAY PARKING



Honeymoons

Cruise Specials

International Travel

707 S. Forest • Tempe, AZ 85281 • 967-9403
M - F 8:30 - 5:30 SAT 10:00 - 4:00

records

SMITHEREENS



ESPECIALLY

Smithereens glued to 60's style

By CARRI L. MITCHELL
State Press

THE SMITHEREENS "Especially for You"
The album picture of the four-man band pegs them as a group straight out of the early '60s. With leather jackets and rolled-up Levi's, they are looking "tough" for the camera.

The Smithereens are a classic example of the old phrase "what goes around, comes around." Their sound fits in perfectly with the new big hoop earrings, big belts and blue jeans.

The first impression of The Smithereens debut album, "Especially for You," is one of familiarity and comfort.

The Smithereens sound is basic and, despite their claims otherwise, very '60s sounding. (One of their songs is even titled, "Groovy Tuesday." What do the new '60s sounding groups have about days of the week, first it was "Manic Monday," what will Wednesday be?)

Their sound is a true rock sound: heavy percussion and guitars, very few frills and good strong rhythms and vocals.

Perhaps the lack of synthesizers, electronic drums and over-used horns is exactly why The Smithereens' old style of

music sounds good and fresh.

Their video of "Blood and Roses," from the movie "Dangerously Close," is currently in active rotation on MTV. One of the best cuts on the album is a song called

"Cigarette." The vocals are the primary feature with a very modern usage of the accordian in the background and a basic guitar rhythm. The lyrics are of love, as are most of the songs on the album, but the ideas are expressed in an original analogy:

"Cigarette, cigarette, burning up time/ Cigarette, cigarette, watch the smoke climb/ Cigarette, cigarette, wasting away/ Just like this cigarette our time is running down, only one hour 'til you're leaving this town."

The heavy rhythms and solid guitars lend this kind of music to dancing, and this album is definitely good for a party or nightclub spin. The music is strong, not overpowering, and is easy to listen to.

If The Smithereens have any kind of publicity or exposure and if their concerts show any stage presence, their music should take off.

The Smithereens' LP is a smash on the charts.

WE'RE LOWER
Rt. Air Fare • Best prices on cruises and tours

Atlanta • Boston • Chicago
Newark • Philadelphia \$198
Cleveland • Detroit • Miami \$238
Minneapolis \$218 • Hartford \$278
Washington \$258
London \$649 • Frankfurt \$689
Hawaii \$238 • Sydney \$996
Hawaii (6 nites & air) \$299
Bahamas (7 nites & air) \$359
FREE domestic ticket w/overseas travel

PANDA TRAVEL
Free Ticket Delivery
M-F 9-6 • Sat-Sun 11-3
943-3383
Restrictions may apply.
Prices subject to change.

COUPON

\$2.99 Lunch Special

- 2 pcs. charbroiled chicken
- Tortillas & salsa
- Small side dish
- Corn on the cob
- 20-oz. soft drink

Good only at Broadway & McClintock and Baseline & Mill locations. Expires 9-21-86.

COUPON

FEED 4 FOR \$9.99 PARTY SPECIAL

- 8 pieces of charbroiled chicken
- Tortillas & salsa
- 2 half pints side dishes
- Four 20-oz. soft drinks

Good only at Broadway & McClintock and Baseline & Mill locations. Expires 9-21-86.

COUPON

\$3.59 Dinner Special

- 2 pcs. charbroiled chicken
- Tortillas & salsa
- Small side dish
- 20-oz. soft drink

Good only at Broadway & McClintock and Baseline & Mill locations. Expires 9-21-86.

CARPET REMNANT Sale

- Thousands in stock —30%-70% off
- Hundreds of room-size remnants —\$29-\$69
- We Deliver
- Buy Direct from our Factory

Direct Carpet Outlet

MESA 1825 W. Broadway
All Orders/Ret. E-mail and Print Club
890-1152

NORTHEAST 15001 N. Cave Creek
867-2703

WESTSIDE 3101 N. 30th Ave.
Del. Thomas & Debra
289-3261

COUPON

BEST CHICKEN
New Times Readers Poll
SPECIALLY MARINATED CHICKEN
FLAME BROILED TO PERFECTION
115 E. BASELINE
345-2121

El Pollo Asado
CHARBROILED CHICKEN

WE FEATURE

- Stuffed Baked Potatoes
- Beans
- Rice
- Fiesta Slaw
- Potato Salad
- Macaroni Salad
- Corn on the Cob
- Chicken Tacos
- Chicken Burros
- Chicken Taco Salad
- Cheese Crisps

1845 E. BROADWAY
894-2220

MCI PHONE SALES

Openings for dependable, assertive and competitive individuals for both full-time days and part-time evenings (4:30-9 p.m.)

- Gift Catalogue Program
- \$5/hr Plus Incentives
- Friday Pay Check Delivery
- Paid Vacation
- Paid Training
- Win Instant Cash
- Kelly Travel Club

Work for an industry leader. CALL US NOW!
Not An Agency
Never A Fee

KELLY SERVICES
264-0717

PRANKSTER'S GAR & BRILL
1024 EAST BROADWAY
967-8875

—orders to go— **BEST BOOD & FEVERAGE IN TEMPE!** —orders to go—

Serving our whole menu until 12:10 EVERY NIGHT!	WEDNESDAY CHICKEN WINGS 12¢ EACH ALL DAY & ALL NIGHT HOT, BBQ, MIXED OR PLAIN DIP EM YOURSELF	FRIDAY Happy Hour! Free BBQ Ribs Free Corn on the Cob, Free Potato Salad 4-7 p.m. BE HERE!	SUNDAY Every Sunday 2 for 1 PIZZAS Buy A Large Get A Large FREE Buy A Small Get A Small FREE From 11 a.m.-1 a.m. All Day, All Night HAPPY HOUR 10 p.m.-1 a.m.
	<p>FREE LUNCH Prankster's Gar & Brill, 1024 E. Broadway • 967-8875</p> <p>BUY ONE GET THE NEXT ONE OF EQUAL OR LESSER VALUE FREE EVERY DAY 11-4 GOOD THROUGH SEPT. 12, 1986.</p>		

Bananarama LP slides toward elevator stardom

By KELLY LIPTON
State Press

BANANARAMA "True Confessions" Bananarama has come out with a new LP titled, "True Confessions." I'd like to be able to say the entire album is as good as its theme song, "Venus," but I cannot.

I was sitting in a local nightclub when the popular song "Venus" broke through the speakers. Guys jump to their feet and run to the girls. . . "Wanna dance?"

The dance floor becomes one giant mesh of gyrating bodies. Everyone is sweating bullets, but they're happy dancing to Bananarama's new electric hit tune.

If one song could get people so stirred up, the album should send anyone into a private frenzy. So I went out and bought the tape. I dropped the tape into my boom box as soon as I walked into the room. "Sit down, Tiff!" I said to my roommate. "You're gonna hear a tape that will give you more vigor than a bean burrito!"

The tape played, and played, and played . . . I sat in my favorite chair holding my

records

face in my hands. Much of the music sounded the same. I looked over at my roommate and said, "It's doomed for elevator stardom."

Sad but true, this misfortune strikes hundreds of music makers every year. A group or singer produces a song that rockets

its way up Dick Clark's Top 40 chart while their album struggles to keep hold of Dick's shoelaces.

Side one of "True Confessions" lacks the vitality that side two starts off with. Songs like "A Trick of The Night," "Dance With A Stranger" and "A Perfect World" have a slow beat that lulls one to sleep.

It's hard to tell when one song ends and the next begins.

However, side two does have some redeeming qualities.

"Venus," "Do Not Disturb" and "A Cut



Bananarama's True Confessions album needs to repent.

Above The Rest" are three of the best songs on the new LP. They are fast paced songs that have individuality. In fact, these three songs are what save "True Confessions" from a lot of repenting.

The songs on this somewhat sleepy LP might make it big on those easy listening stations. (You know the ones your

grandmother out in Sun City listens to? The kind of radio stations that took hold of all the Michael Jackson songs this year.)

"True Confessions" isn't a credit to Bananarama. However, the group is young, and if given another chance, their next album will not end up as background noise in a dentist's office.

TUNE-IN TODAY! SOAP OPERA HAPPY HOUR

Featuring

- Your favorite soap operas
- \$1.99 Pitchers — Draft
- \$1.00 Wine Coolers & Domestic Beer

1:00-3:00 M-F

Jeopardy Happy Hour 4-5 M-F

NORMS Food & Drink

620 S. College Ave.
Corner of 7th St.
968-1940

\$ the price is right

so . . .

**"COME ON
DOWN"**

to

**UNION
STATION**

(downstairs Memorial Union)

good food, competitively priced,
convenient, fast service

HOME OF ASU'S ONLY FLAME
BROILED HAMBURGER!!



GET MUGGED AT THE ARIZONA BANK

... When you open our low cost checking plan designed with students in mind.

That's right! Getting mugged at The Arizona Bank can actually be fun! Merely open a new Student Discount Checking Account, and you'll receive a beautiful Kachina Mug, absolutely FREE!

With Student Discount Checking, your monthly service charge is just \$2. There's no minimum deposit required to open your account and no minimum monthly balance to maintain.

Write up to 8 checks at no extra charge and make 24HR Teller withdrawals with no transaction fees. In addition, you can get a package of 50 personalized checks at a special discount price and receive our Check



up your free mug. But don't delay. This is a limited offer!

Getting mugged at The Arizona Bank can't be all that bad! It's offering you so much for so little! You'll see why there's no Arizona bank like The Arizona Bank.

(Sorry, offer limited to one mug per customer. Good through September 30, 1986.)
Rural & Baseline Road Office
906 East Baseline Road

Tempe Main Office
619 Mill Avenue

There's no Arizona bank
like The Arizona Bank.



Member FDIC

dance

Show to highlight ASU profs

By CARRI L. MITCHELL
State Press

After touring for nine months, the members of the a. ludwig co. dance ensemble will be returning home to ASU for two performances.

Beth Lessard, chairman of the ASU dance department, and Ann Ludwig, ASU associate professor of dance, are returning from their European tour, and year long sabbatical, to present their tour show Thursday and Friday.

"It is exciting to come home. To show all our friends what we did in Europe," Lessard said.

The show, which will be held in the Dance Studio Theater, in the Physical Education Building East, is a production of four dance theater pieces, choreographed by the two professors.

"Modern dance is a very generic title. It is a type of modern dance but we use theatrical elements, like props and vintage clothing," Lessard said.

Lessard said each of the four parts is a complete dance program. The dances are performed by Lessard, Ludwig and ASU graduate Tom Thayer, who also toured with them in Europe.

During their sabbatical, the company

spent last fall working on their program, followed by a tour of the East Coast, performing in North Carolina, South Carolina, Massachusetts, and New York City.

After their East Coast tour, they traveled to Portugal, where they performed eight times and taught classes on dance. Afterward they traveled to West Germany to perform.

Lessard said the style of dance performed in the program is a slightly unique dance method.

"All choreographers feel their work is exciting and original, but I think Ann's work is (truly) innovative," Lessard said.

The concert will open with a performance of Lessard's "Anima Mundi," accompanied by music of James De Mars, an ASU assistant professor.

The follow-up piece is Ludwig's "Sum Game," which features the music of ASU professor Robert Kaplan, and a solo by Thayer.

In the third piece, "Dialogue with Isabel," the dancers will be joined by a sculpture named Isabel. The final piece is Ludwig's "Ain't Over 'til the Fat Lady Sings."

Tickets are available for the two performances.



Beth Lessard and Ann Ludwig make up the "a ludwig co.," which performs Thursday night at 8.

FRAMED PRINTS

16x20 \$12.00
22x28 \$15.00

Custom Framing & Gifts

FRONTIER FRAME & GIFTS INC.

219 E. Baseline, Tempe • 897-8934

SKYDIVE!

ASU SKYDIVING CLUB and Coolidge Parachute Center offer

- ACCELERATED FREE FALL ● STATIC LINE
- TANDEM JUMPING IN COOLIDGE

- one hour from ASU ● state of the art student gear
- overnight camping facilities ● observation rides
- demonstrations ● United States Parachute Ass'n. approved drop zone
- two Beechcraft and one Cessna aircraft

FOR MORE INFO CALL: SCOTT 968-0160 or leave message JEFF 967-0372

LEARN and JUMP the SAME DAY! It's easier than you think to go SKYDIVING!

Exclusively for college students, faculty and staff: save up to 75% off the cover price of Time Inc.'s award-winning titles. Mail subscription coupon (below) today!



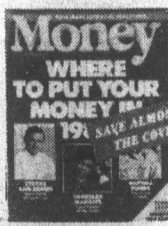
TIME - The world's #1 Newsmagazine and Winner of the National Magazine Award for General Excellence. Just 55¢ an issue - that's 50% off the regular \$1.12 subscription rate.



SPORTS ILLUSTRATED - Get the feeling with the best sports coverage in America and 100% full-color photography. Just 55¢ an issue - that's almost 50% off the regular \$1.09 subscription rate.



PEOPLE - Find out what's really going on in the lives of the rich, the famous - people you want to know. Just 55¢ an issue - that's almost 50% off the regular \$1.09 subscription rate.



MONEY - How to make it and how to keep more of it. A valuable tool to put you on the road to riches. Just \$14.99 for 12 monthly issues - a savings of 50% off the regular \$29.95 subscription rate.



FORTUNE - An insider's guide to the fascinating world of Big Business. Get 26 issues for just \$22.25 - a savings of 50% off the regular \$44.50 subscription rate.



DISCOVER - Today's most important science issues in jargon-free language and full color photography. Just \$14.95 for 12 monthly issues - a savings of 37% off the regular \$24 subscription rate.

Send me:

TIME at just 55¢ an issue for _____ * issues. **Money** 12 monthly issues for just \$14.95.

Sports Illustrated at just 55¢ an issue for _____ * issues. **DISCOVER** 12 monthly issues for just \$14.95.

People at just 55¢ an issue for _____ * issues. **IF** 10 monthly issues for just \$12.50.

FORTUNE 26 biweekly issues for just \$22.25. *Minimum order 26 issues, maximum 104 issues.

Name _____

Address _____

City _____ State _____ Zip _____

Name of School _____ Year Studies End _____

Signature _____

Payment enclosed Bill me later

Mail entire order coupon to: Discount Magazines P.O. Box 3103 Tempe, AZ 85281

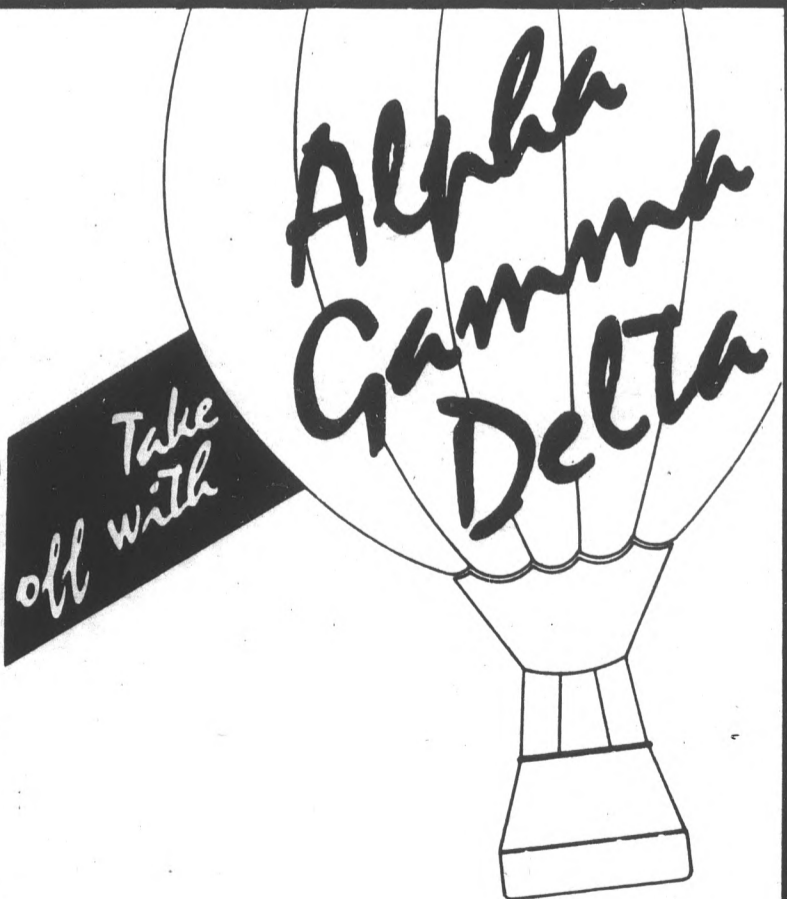
WOMEN STUDENTS

Freshmen through seniors, Alpha Gamma Delta Sorority wants to meet YOU!

We are starting a brand new chapter of Alpha Gamma Delta at Arizona State. We want to meet college women with a sense of adventure, loyalty and commitment.

Our special rush starts Thursday, September 4, 1986 with an open house. We want to invite you to stop by the Gold Room of the Memorial Union anytime from 9 a.m. to 5 p.m.

You will receive information about our organization, meet International Officers, and find out how you can "Take Off With Alpha Gamma Delta!"



NEW SORORITY!

theater

LOT offers individual tickets to new 1986-87 productions

ASU's Lyric Opera Theater began selling tickets to individual events for the 1986-87 schedule last Friday. Only season tickets had been available before.

Tickets at \$9.50, \$5 for students, for the LOT productions of "Little Johnny Jones," "Tartuffe," "Iolanthe" and "Carmen" can be ordered by calling 965-3434.

The LOT fall season will open Oct. 3, with "Little Johnny Jones," George M. Cohan's first successful play, which opened in 1904 and previewed the rousing, patriotic career of the great Yankee Doodle Dandy. Brian Hall will direct the show. Show dates are Oct. 3-5, 8 and 10-12.

Sylvia Debenport will direct the second fall show, Kirke Mechem's 1980 "Tartuffe," a spirited musical take-off on the Moliere

masterpiece.

Mechem will be on hand for the final performances. "Tartuffe" will open Nov. 14, with additional shows on Nov. 15, 19, 21 and 22.

The spring season will begin with John Stone Porter's direction of the Gilbert and Sullivan "political" satire "Iolanthe." Show dates are Feb. 20-22, 25 and 27-March 1.

Debenport will cap off the season when she directs Bizet's immortal tragedy of love and death, "Carmen," opening April 24. "Carmen" will also be performed April 25 and 29 and May 1 and 2.

All shows are at 8 p.m. except Sundays, when curtain is 3 p.m. The Sunday, March 1, performance of "Iolanthe" will be at 7 p.m.

GOOD NEWS!

EVERY WEEKDAY MORNING

STATE PRESS

KGS AUTOMOTIVE SERVICE and REPAIRS

Air Conditioning
Brakes & Tune-up
Carburetors
Electrical

American & Foreign
Cadillac
Corvette

910 S. Hohokam Drive, Suite #122
Tempe, AZ 85281

GREG CRITSER
968-2294

Between 48th & 52nd Street south of University

Bar-B-Que and Shabbat in the Park

at

South Mtn. Park Ramada 1

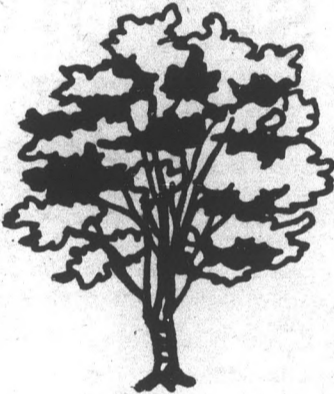
Friday, Sept. 5, 1986

Meet at Hillel 5:30 p.m./Park 6:00 p.m.

Cost: \$4.00

Additional \$3.00 for reservations made after WEDNESDAY, SEPT. 3.

HILLEL JEWISH STUDENT CENTER
1012 S. Mill • 967-7563



TONIGHT IS WICKED WEDNESDAY



AT

SHEPHERD'S

\$1.00
SINGLE DRINKS
ALL NIGHT!
Happy Hour Buffet from 4-7 p.m.
music • dancing • videos
on the big screen & more!

NEVER A
COVER
CHARGE!

Now college students can afford to have fun all weekend long!

Thursday — Ladies Night; \$1.00 Wine, Well & Draft
Friday — ALL DAY FISH FRY ONLY \$3.95
SATURDAY & SUNDAY — Giant Screen Satellite TV featuring Music Videos & Sports
EVERYDAY \$1.00 HAWAIIAN & HAPPY HOUR PRICES ALL DAY!

SHEPHERD'S
1123 S. Rural Rd.
Rural & Apache
968-0243

MAMA GELARDI'S 894-MAMA

106 E. UNIVERSITY TEMPE, ARIZONA



- N.Y. STYLE PIZZA
- CALZONE
- DEEP DISH PIZZA
- MANICOTTI
- LASAGNA
- SPAGHETTI
- RAVIOLI
- PARMIGIANO DISHES
- ITALIAN ICES
- SALADS
- CHICKEN
- STEAK 'N CHEESE

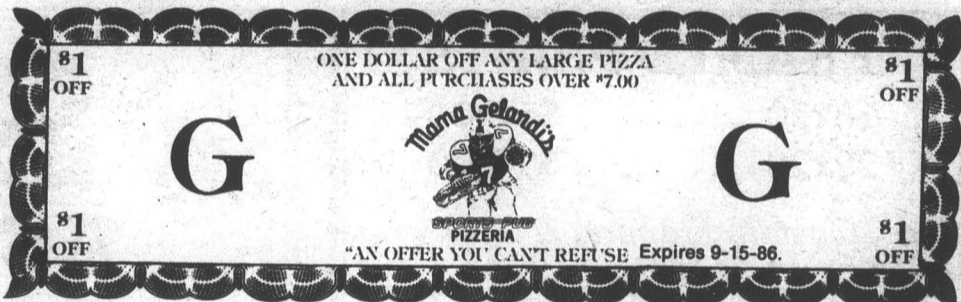
WIDE SCREEN T.V.
N.F.L. SPECTACULARS
SUN DEVIL HIGHLIGHTS
"BLOCK BUSTER" MOVIES
REVERSE HAPPY HOURS
"ALL U CAN EAT NIGHTS"
CAR WASHES

BLOCK PARTIES WITH:
FRANCINE & MARGO REED
WALT RICHARDSON
HANS OLSON
SMALL PAUL

We Deliver

HEY ASU, COMING SOON!

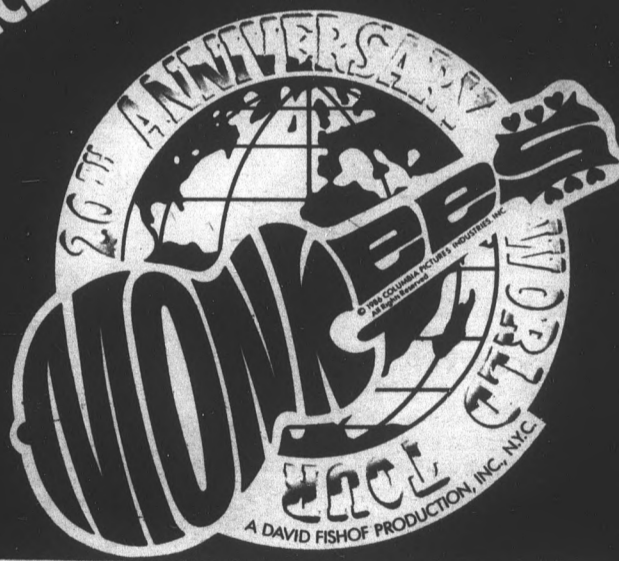
55¢ DRAFT **\$1.99 PITCHERS** **99¢ IMPORTS**



94.5 KOOL FM and KNXV-TV
ASASU/ASU PUBLIC EVENTS

IN CONCERT!

Chunky PRESENTS



WITH SPECIAL GUEST STARS

Gary Puckett & The Union Gap

HERMAN'S HERMITS

The Grass Roots

MONDAY, SEPTEMBER 15 • 8 P.M.
at the ASU Activity Center
Tickets are available at the Gammage Box Office and all Diamonds outlets. For information call 965-3434.

AN IMPOSSIBLE MISSIONS PRODUCTION

WATCH THE MONKEES ON CHANNEL 15 AT 5 P.M.

ASU prof studies legal end of sports

Drugs, unions major issues analysis

By JAY TAYLOR
State Press

A long time ago in a land far, far away, there existed a world where sports and law really didn't have much to do with one another. The players would show up and

play the game, the fans would buy their tickets and watch, and everyone seemed generally happy with the arrangement.

Welcome to 1986 and the land of litigation, anti-trust, labor laws and collective bargaining agreements.

Stories dealing with the connection between sports and the law are virtually

everyday items, and for those who are not well versed in the fundamentals of law, they can be confusing.

Luckily for us at ASU, we have an authority on sports law in our midst, professor Ethan Lock, who teaches GNB 394, business and legal issues in professional sports.

The course deals with current issues in sports that are affected by law, such as anti-trust actions, constitutional questions and the like, that are constantly in the news. Lock talked to the *State Press* about some pressing issues facing sports today.

Lock has some strong feelings about drugs in sports. He vehemently opposes the use of drugs by athletes, as do most sports fans. But that does not mean he favors testing professional athletes for drug use.

In fact, from a legal point of view, he opposes drug testing.

"People have to understand that when the players union (the NFL Players Association, for example) challenges a team or management in general, on drug testing, that they are not advocating the use of drugs," Lock said.

"They are challenging them on two points: any testing program put into effect now is a violation of the current collective bargaining agreement between the NFLPA and the owners, and the fact that Pete Rozelle can't unilaterally go against the current agreement and put a program in place without first sitting down with the players and negotiating it.

"Even if the current agreement expires, it still must be negotiated. It is a mandatory subject of discussion. Either something is in the agreement, and a violation is a breach of the agreement, or the agreement has expired, and it must be negotiated."

Earlier this year Rozelle tried to implement a league-wide policy for drug testing, complete with a schedule of disciplinary actions ranging from treatment in a drug rehabilitation center, to suspensions to banishment from the league.

Lock said Rozelle can't legally do that for two reasons.

"You can't let management do something that will affect players whose average

'People need to know how bad drugs are for you, and that it doesn't necessarily take an overdose to kill you. Look at Len Bias.'

— Ethan Lock

career span is only 4½ years. You can't just make decisions like that that could take him out of the game and possibly end his career, especially based on tests that are not 100 percent reliable. If someone takes aspirin and a cold medicine it will show up as a positive test in some cases. In addition, you can't just supercede the collective bargaining agreement.

"The players just want to have a role in determining what the policy will be. They realize drugs are a problem. You can't tell me Gene Upshaw (president of the NFLPA) is in favor of drugs. But he also doesn't want to have management just tell him what the drug policy governing the players he represents is going to be, either."

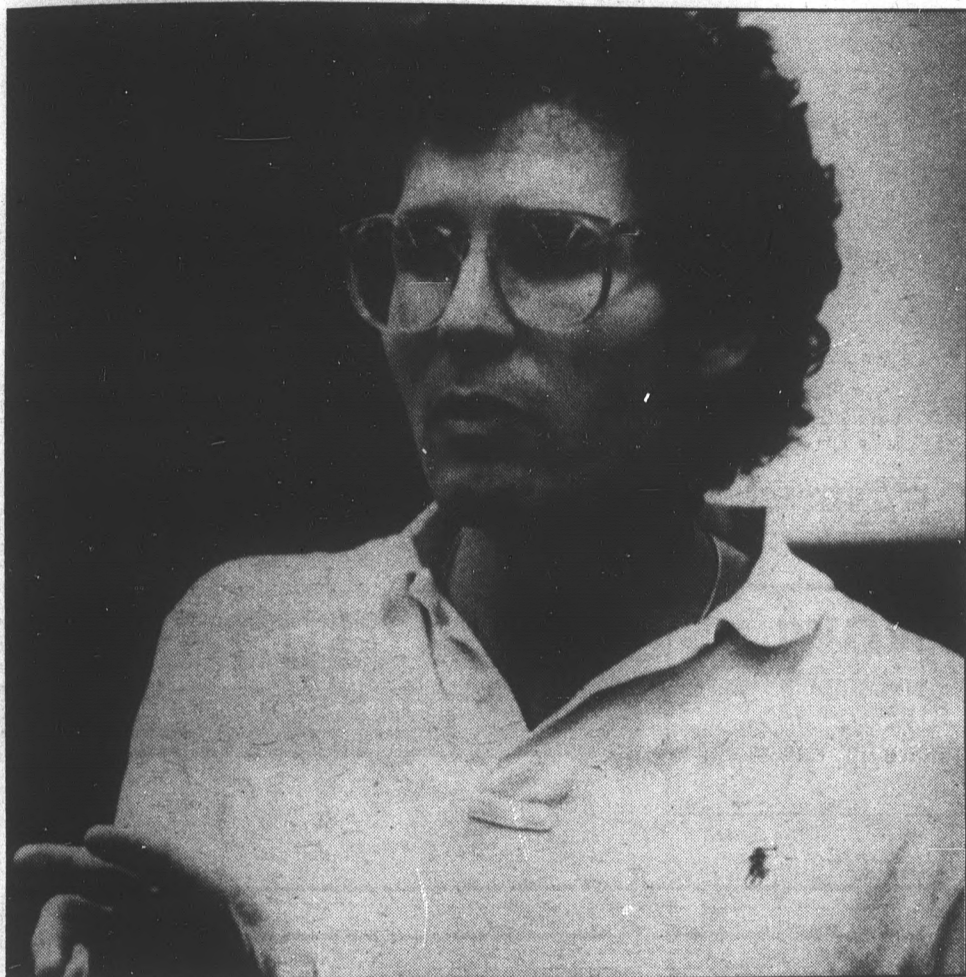
Lock said although he is sure Rozelle had the integrity of the game at heart when he made his blanket policy, he failed to address the entire issue.

Rozelle's plan dealt basically with cocaine and marijuana use but failed to deal with the use of steroids, amphetamines or the common practice of teams shooting players with painkillers, so they can continue to perform when injured.

Lock said he believes college athletes could be subject to testing legally since they are not represented by a union.

"The NCAA could probably legally get away with testing as an administrative search," he said. "But I don't think testing is the answer at any level. No drug program will be complete without an education component. That is the most important part. People need to know how bad drugs are for you and that it doesn't necessarily take an overdose to kill you. Look at Len Bias. He

Please turn to SPORTS LAW, page 30



Andy Mrozinski/State Press

ASU professor Ethan Lock lectures to his sports law class Tuesday. The class deals with legal issues that affect professional athletics, such as anti-trust and labor laws.

Grounded

Frontier flies like a Cats' screen pass: not at all

NEXT TIME CALL AERO MEXICO

It never fails — UA never ceases to amaze me.

Of all the airlines that UA could have picked to charter for their away games, they of course picked Frontier Airlines.

Frontier filed for Chapter 11 reorganization Thursday in U.S. Bankruptcy Court in Denver.

According to an AP story, the university has made deposits totaling \$12,000 for charter flights to football games Sept. 19 at Oregon and Nov. 7 at Washington State. The flights were arranged by Frontier, said Bob Bockrath, assistant athletic director at UA.

"There would be some concern on our part, if Frontier went into bankruptcy, that we might not recover our deposit," Bockrath said last Thursday.

I would hope that there would be more than just "some concern." I mean I'm not sure how easy it is nowadays to charter a plane, but last time I checked it took a little more than the right credit card. And I know \$12,000 is still a lot of money.

I wonder how easy it is to charter a bus.

It doesn't really surprise me that this would happen to UA, and it wasn't really their fault. But maybe the situation is something like "good things come to those who wait." UA had their Rose Bowl chance last year. ASU waited.

Maybe this is just the beginning of a streak of bad luck for our archenemies.

Bockrath said other travel arrangements have been made for the two football games. I wonder if other arrangements have been made for a losing season — let's hope not; they just might win.

I hope this incident is a sign of how their whole season will go.

COWBOYS NOT GUSHING OVER OILERS LOSS

As far as seasons go, the 1986 preseason is officially over for the NFL. (The whole season is over for the USFL.)

The season ended with the Oilers beating the Cowboys — not a pretty sight. The Cowboys are winless in preseason, the

Carol Boos Asst. Sports Editor



first time since 1962.

Nothing seemed to matter to the crowd except Herschel Walker. (I would be mad too, Tony.)

Add to that the fact that in front of a sold-out home crowd in Dallas, Walker carried 10 times for 40 yards. Hardly anything to cheer about.

JIMMY HOFFA WOULD BE PROUD

Let's hear it for Arizona football officials who appear to be ready to strike.

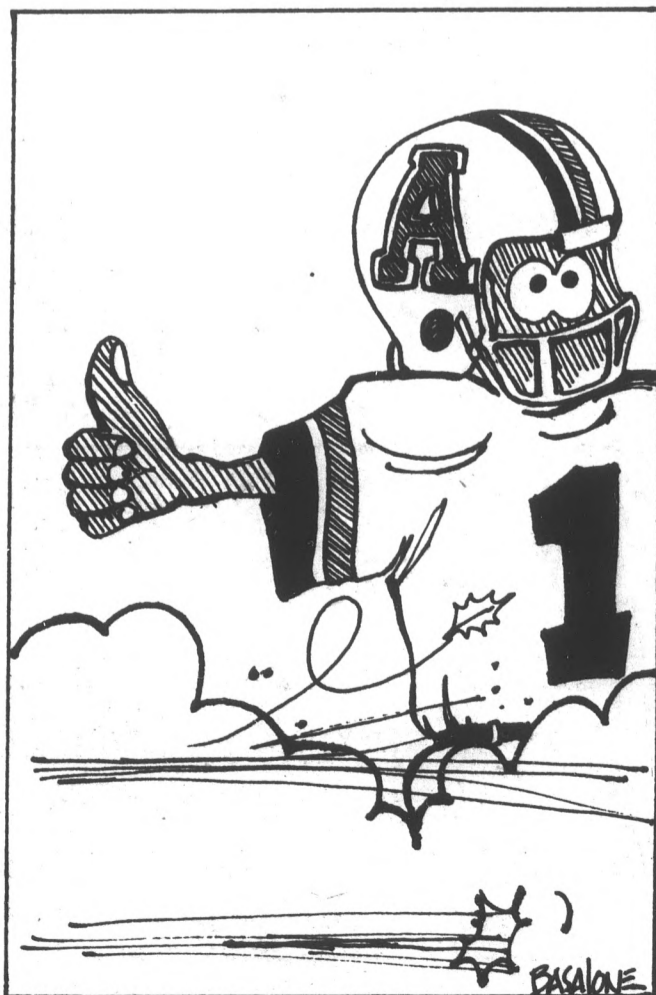
Unable to reach a compromise with the Arizona Interscholastic Association, the officials say they deserve more money.

And why shouldn't they? Currently a varsity official makes \$31 a game, and junior varsity official makes \$18 a game. The officials are asking for a \$3 increase per game for this season.

I think that the AIA could manage to give up two ticket sales to cover the increase. Or maybe they could just push a little more popcorn. After all, these are the guys who keep the game in control, the guys who make the game of football safe.

I say let's pay the guys what they want; it's not as if they are asking for \$1.69 billion.

Then again, the last folks that asked for \$1.69 billion wound up with \$3. If the officials get the same percentage the USFL got, they will come away with a whopping 0.00000531 cents per game increase.



Becker, Navratilova win Open matches

NEW YORK (AP) — Two-time champion Martina Navratilova moved another step closer to her fourth straight appearance in the women's singles final Tuesday by defeating her doubles partner, Pam Shriver, in the U.S. Open Tennis Championships.

The 6-2, 6-4 quarterfinal victory sends Navratilova, the No. 1 seed at the National Tennis Center, against the winner of

Tuesday night's quarterfinal pairing between third-seeded Steffi Graf of West Germany and No. 8 Bonnie Gadusek.

In the men's singles Tuesday, Wimbledon champion Boris Becker of West Germany and Joakim Nystrom of Sweden advanced into the quarterfinals. Becker, the No. 3 seed, ousted qualifier Gary Donnelly 6-4, 6-3, 6-7, 6-4, while

Please turn to TENNIS, page 28

The Picture Place®



Enlargement Sale

MEMORIAL UNION — LOWER LEVEL

From Your Negative		From Your Slides
\$.20	3 x 5	\$.50
\$ 1.00	5 x 7	\$ 1.50
\$ 1.75	8 x 10	\$ 2.00
\$ 5.75	11 x 14	\$ 6.25

* NO QUANTITY LIMITATION *
Coupon Must Accompany Order
No Other Discounts Apply
Offer Expires 9/31/86

Design Your Own Personal Charm


14K Solid Gold License Plate Charms

NEW YORK 100% ME	ARIZONA '87 GRAD	USA I ♥ \$\$\$
---------------------	---------------------	-------------------

Let Your Imagination Run Wild!!
Student Priced at **\$49.95**
Instant Attention Getters

Simply Charming
897-1126
We also carry
SUN DEVIL CHARMS





HAYDEN'S FERRY
R E V I E W

ON SALE NOW!

At the following locations on campus:

- Cady Mall, 11 a.m.-1 p.m.
- Student Publications, Matthews Ctr. Basement
- English Dept., LLC-324

Starting Sept. 6th & 7th

THE WAREHOUSE CAFE

Invites ASU students to join us for our Sat. & Sun. specials

— Includes —

- Steak (5-oz. top sirloin) & Eggs (any style)
- Hashbrowns •Toast
- Banana Bread •Slice of Orange

ONLY \$3.59

Look for other weekend specials starting at \$2.75

Sunday Football Drink Specials Include:

- 21-oz. Draft Beer \$1.50
- 21-oz. Bloody Marys \$2.00
- 21-oz. Screwdrivers \$2.00
- All Well Drinks \$1.50
- CORONAS \$1.50**

Located at **5444 E. Washington St.**
(One mile west of the Mill Ave. bridge, on the right hand side)
244-9966

Hours: M-Th. 6 a.m.-10 p.m., Fri. 6 a.m.-1 a.m., Sat. 7 a.m.-4 p.m., Sunday 8 a.m.-5 p.m.

STUDENT PARKING DECALS

STUDENT PICK-UP FOR PRE-PAID PARKING DECALS

Students who have already applied and paid for a 1986-87 parking decal may pick up their decals on:

AUGUST 25 through SEPTEMBER 5	Memorial Union Cashier Facility (across from Office of Residence Life) 8:00 a.m.-4:40 p.m. Monday-Friday
AFTER SEPT. 6	PARKING SERVICES OFFICE Campus Inn, 628 E. Apache Blvd., Tempe, AZ • 7:30 a.m.-5:00 p.m.

STUDENT DECAL SALES

STUDENTS who wish to purchase a 1986-87 decal may do so on:

AUGUST 25-29	Social Sciences Atrium	8:00 a.m.-4:30 p.m. Monday-Friday (27th and 28th, open until 7:00 p.m.)
SEPTEMBER 2-5	Memorial Union, Room 215	8:00 a.m.-4:30 p.m. Monday-Friday
AFTER SEPT. 5	PARKING SERVICES OFFICE	Campus Inn, 628 E. Apache, Tempe, AZ 7:30 a.m.-5:00 p.m.

- All decal lot assignments are subject to availability.
- Payment may be made via cash, check, VISA or MasterCard.
- Students purchasing residence hall decals (includes fraternities) must show proof of housing assignment.

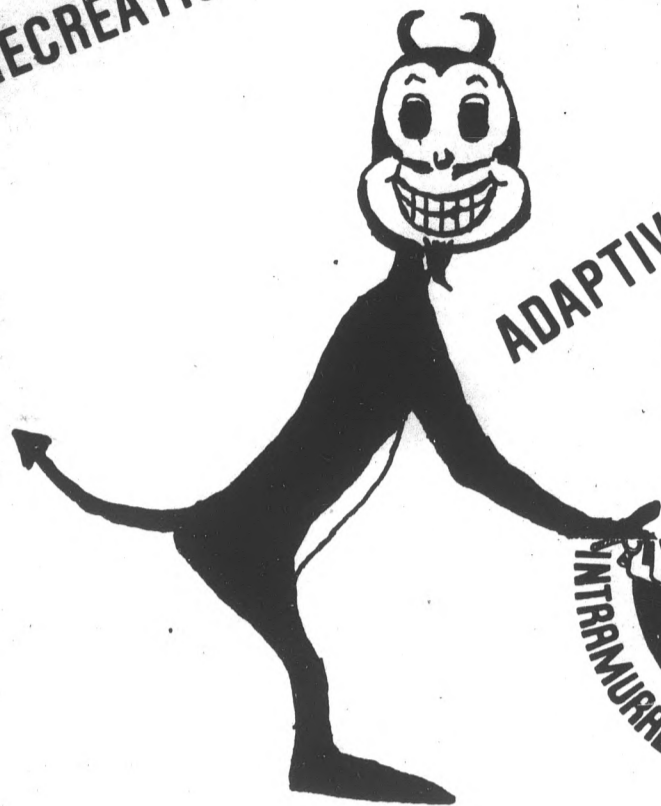


RECREATION FACILITIES

FITNESS ACTIVITIES

INTRAMURAL SPORT
HOTLINE: 965-2626

DISCOUNT TICKETS



ADAPTIVE INTRAMURALS
CLUB SPORTS



COME BY TODAY!

WANTED:
SPORTS OFFICIALS
CONTACT ERIC 965-5638

LET'S TAKE A PEEK INSIDE INTRAMURALS, CLUB SPORTS AND RECREATION

The Intramurals, Club Sports and Recreation Department offer a wide variety of recreational and sports opportunities for students, faculty and staff at Arizona State University. Intramural Sports are separated into four divisions: Men's, Women's, Corecreational and Adaptive (Disabled). Organized competitions are held in a wide variety of intramural sports activities throughout the year. Club Sports are student organizations interested in a specific sport or recreational activity. Available recreation opportunities include open recreation time in ASU facilities, discount tickets to movie theatres or amusement attractions and special recreation activities.

The Intramural Sports/Recreation Office is located in the Physical Education West Building Lobby. Phone 965-5638 for more information, or feel free to stop by the office during regular business hours, Monday through Friday, 8:00 a.m. to 4:30 p.m.

MEN'S DIVISION

	Entries Due	Play Begins
Volleyball*	Sept. 4	Sept. 15
Badminton	Sept. 4	Sept. 6 & 7
Softball Tourney*	Sept. 4	Sept. 10-14 Sept. 19&20
Golf	Sept. 11	Class A: Sept. 21 Class B: Sept. 28
Swimming and Diving	Sept. 25	Oct. 3 & 4
Flag Football*	Oct. 1	Oct. 13
Pool	Oct. 2	Oct. 11&12
3-Man Basketball	Oct. 9	Oct. 20
Racquetball	Oct. 9	Class A: Oct. 17-19 Class B: Oct. 24-26
Flag Football Tourney	Oct. 23	Nov. 5-9
Cross Country	Oct. 30	Nov. 12
Powerlifting	Nov. 13	Nov. 19
Wrestling	Nov. 20	Nov. 24&25

WOMEN'S DIVISION

	Entries Due	Play Begins
Volleyball*	Sept. 4	Sept. 15
Badminton Doubles	Sept. 4	Sept. 5 & 6
Badminton Singles	Sept. 4	Sept. 6 & 7
Golf	Sept. 11	Sept. 21
Swimming and Diving	Sept. 25	Oct. 3 & 4
Flag Football*	Oct. 1	Oct. 13
Racquetball Singles	Oct. 9	Oct. 17-19
Racquetball Doubles	Oct. 16	Oct. 24-26
Flag Football Tournament	Oct. 23	Nov. 5-9
Cross Country Run	Oct. 30	Nov. 12
Powerlifting Meet	Nov. 13	Nov. 19

COREC DIVISION

	Entries Due	Play Begins
Volleyball*	Sept. 4	Sept. 14
Swimming Relays	Sept. 25	Oct. 4
Team Superstars*	Oct. 23	Nov. 1 & 2
Flag Football Tourney*	Oct. 23	Nov. 5-9
Racquetball	Dec. 4	Dec. 6 & 7
Volleyball Doubles Tourney	Nov. 6	Nov. 14-16
Turkey Trot	Nov. 20	Nov. 21

CLUB SPORTS

- | | |
|-------------|-----------------|
| ICE HOCKEY | SOCCER |
| JUJITSU | OUTING CLUB |
| FENCING | TABLE TENNIS |
| KARATE | VOLLEYBALL |
| CANOE/KAYAK | WHEELCHAIR |
| LACROSSE | ATHLETIC CLUB |
| RUGBY | WATER POLO CLUB |

BURGER KING®

NOW ACCEPTING APPLICATIONS AT 740 E. APACHE, TEMPE.

Come in to Burger King® for breakfast, and bite into a light 'n flaky croissant stuffed with lean, juicy ham, lightly spiced sausage or bacon. Add a freshly scrambled egg smothered with cheddar cheese, and you've got the new Croissan'wich at Burger King. It's a whole new twist on breakfast. Limit one coupon per customer.

99¢

(Breakfast hours only)
CROISSAN'WICH
GOOD ONLY AT
740 E. APACHE
OFFER EXPIRES 10-1-86.



THIS IS A BURGER KING TOWN AND WE KNOW HOW A BURGER SHOULD BE.

99¢

2 LIMIT

With this coupon, One coupon per person. WHOPPER® sandwich GOOD ONLY AT 740 E. APACHE OFFER EXPIRES 10-1-86.



Tennis

Continued from page 26

Nystrom, seeded seventh, stopped Matt Anger 7-6, 6-2, 6-2.

Other fourth-round matches Tuesday saw No. 2 Mats Wilander of Sweden against No. 16 Miloslav Mecir of Czechoslovakia, and Todd Witsken against Czechoslovakia's Milan Srejber.

Navratilova said her victory over Shriver was bittersweet.

"I seem to feel the strain more against her because we're such good friends," the world's top-ranked women's player said. "It's not a pleasurable victory."

Although Navratilova holds a 26-3 career edge over

Shriver, two of Shriver's victories have come on the hard courts in the U.S. Open — the last time in the quarterfinals in 1982.

"I've lost to her a few times, and that gets me up more than for an opponent I've never lost to," Navratilova said.

Shriver was impressed with Navratilova.

"I think she's pretty much on a par with what she wants to be playing," Shriver said. "She covers the court and reaches better than anybody. She goes back for a lob better than anybody.

"She's just better."

Shriver described the match perfectly as Navratilova dominated, whether ripping a cross-court passing shot or deftly dropping a touch volley. For most of the match, Navratilova held her serve easily while Shriver struggled to deuce almost every time.

Becker, the 18-year-old who is ranked third in the world, already has two Wimbledon titles. Now he wants to prove his powerful, diving style is as effective here as it is on Wimbledon's grass courts.

Against Donnelly, better known for his doubles play, Becker said his game was "almost perfect."

Attention Students!

We'll Give You 25% Off the KAYPRO PC. How You Get the Rest is Up to You.

25% OFF THE KAYPRO PC

Kaypro is offering students and faculty 25% off the KAYPRO PC - the computer that has it all.

- IBM Compatibility - Guaranteed
- 768KB RAM
- AT-Style Keyboard
- Monochrome Monitor
- Built-in Color Capability
- Dual Speed Processing
- 1A, 7718, DM-113) • Dual Disk Drives • 8 FREE Software Packages, including WordStar and CorrectStar
- 12 Month Parts and Labor Warranty

KAYPRO CORPORATION

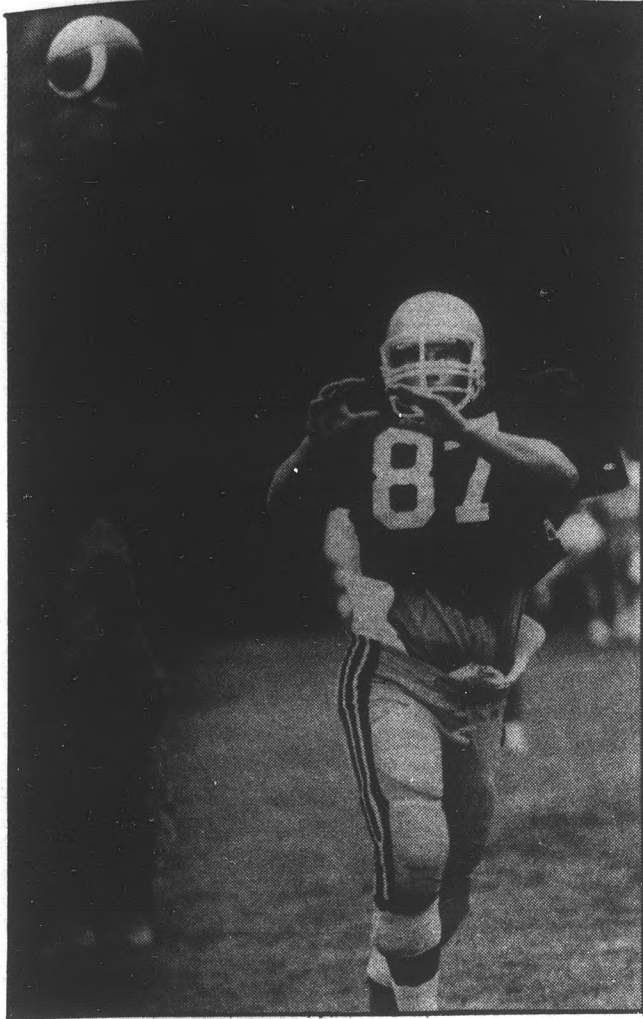
AK data systems, Inc.
13829 North 19th Avenue
Phoenix, AZ 85023
(602) 863-1433

~~Department of Student Loans,
I am writing to ask you for a small loan to buy a great computer. With a PC, I could get my work done in half the time, leaving me more time for~~

~~Dear Skippy,
I guess now that you're a hotshot corporate exec, you'd prefer to be called Charles, right? Well, I'll get right to the point, Charlie. Remember the time you set off that cherry bomb in old Mrs. Abbott's vacant lot? I'm sure you—and the Fire Departments of three counties—remember it well. How many acres went up? No matter. If you want this to remain our little secret...~~

~~My dearest Grandmother,
How very nice it was to see you at the family gathering. It's hard to believe that you're old enough to be a grandmother. You look so youthful—and that mini-skirt you wore says it all. Several years ago, you were so generous with cousin Sidney that I was hoping you could help me. You see, there's a great deal on the KAYPRO PC: 25% off for students. It would help me get my schoolwork done quickly, leaving me more time to spend at your house playing Gin Rummy and sipping your homemade lemonade—now wouldn't that be great!~~

For more information, call Kaypro Corporation
1-800-233-8990. In California, 1-800-322-7890.



Catching up

Kevin J. Larkin/State Press

Senior tight end Jeff Gallimore concentrates on a Van Raaphorst pass at Camp Tontozona. Gallimore earned all-Pac-10 honorable mention last year, while pulling down 17 catches for 178 yards.

Suns' Glouchkov signs to play in Italian league

PHOENIX (AP) — Phoenix Suns reserve forward Georgi Glouchkov has signed a contract to play with an Italian pro basketball team next season, Suns officials announced Tuesday.

Suns spokesman Tom Ambrose said the 6-foot-8 Glouchkov signed with the Mobilgiri team in Caserta, Italy. Terms of the contract were not announced.

Glouchkov, 26, was Phoenix's eighth-round draft pick in June 1985. He played in 49 games in the 1985-86 National Basketball Association season and averaged 4.9 points and 3.3 rebounds per game.

But last month, Glouchkov made only seven of 24 shots from the field during a six-session camp for rookies and free agents.

The native of Varna, Bulgaria, weighed 240 pounds when he won a roster spot last season yet weighed 218 during the recent camp and appeared listless at times.

"He did not appear to be making the strong moves to the basket that he made last season," said Suns General Manager Jerry Colangelo. "We felt if Georgi had a strong summer, he might be ready to move up to another level with us, but it hasn't happened that way."

Colangelo said the Italian team offered Glouchkov a contract on Aug. 18, and he advised the second-year pro to take it.

According to Colangelo, the Suns still retain Glouchkov's NBA rights.

Glouchkov is the second Phoenix player to sign with an Italian team in the past month. Fourth-year forward Charles Pittman signed with Verace on Aug. 14, after playing out his option with the Suns last season.



ONE DOLLAR
will buy you a
15-WORD AD
in the
STATE PRESS
PERSONAL
SECTION!

It's a great way to say hello to someone you'd like to meet, or say happy birthday to a close friend, or congratulate someone ...

IT'S A GREAT WAY TO COMMUNICATE!

This offer is good through the month of September.

JUST STOP BY the STATE PRESS Classified Counter in the basement of MATTHEWS CENTER, 8-5 DAILY or the Classified Ad Booth at the MU 11:30-1:00 daily.

VISA • MC • CASH • CHECK

STATE PRESS

Then get in on the ground floor in our Platoon Leaders Class program for college freshmen, sophomores and juniors. You could start planning on a career like the men in this ad have. And also have some great advantages like:

- Earning \$100 a month during the school year
- As a freshman or sophomore, you could complete your basic training during two six-week summer sessions and earn more than \$1200 during each session
- Juniors earn more than \$2100 during one ten-week summer session

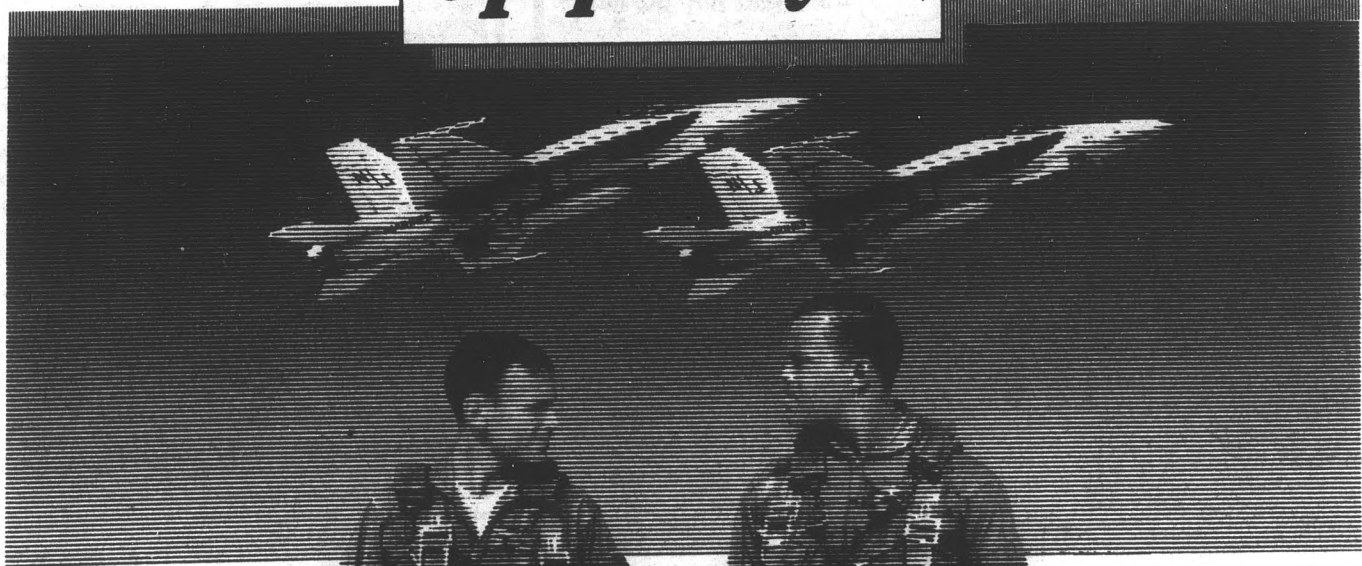
- Seniors and graduates can be commissioned through the Officer Candidate Class Program
- You can take free civilian flying lessons
- You're commissioned upon graduation

If you're looking to move up quickly, look into the Marine Corps' commissioning programs. You could start off making more than \$18,000 a year.



We're looking for a few good men.

Want to move up quickly?



Marines

See the Officer Selection team on the Campus Mall near the Memorial Union Fountain
September 4 & 5.

Sports law

Continued from page 25

didn't actually have an overdose, but the cocaine was just too much of a shock to his system.

"The athletes also need to know about the legal dangers. And this education shouldn't come from someone in a three-piece suit, but from someone from a rehabilitation center, who really knows the dangers first hand."

Lock is right. Testing is not the answer. Bias had just been tested by the Boston Celtics before his death. Cleveland Browns defensive back Don Rogers had been tested at a mini-camp in the spring. Both tested negative. Both are dead.

The drug issue is certain to come up at the bargaining table when the NFL's collective bargaining agreement expires at the end of this year. Another issue that will come up is free agency, a concession the players want badly.

Can there be any give and take on those issues? For instance can the players agree to testing in exchange for free agency?

"Management wouldn't go for a trade like that," Lock said. "They will go to the wall to keep free agency out. It all comes down to economics. The owners are more concerned about the money they will lose on salary increases if free agency is granted than they are about someone taking drugs, simply because there are no economic repercussions from a player taking drugs."

And that is what it all comes down to in the world of professional sports. When all the games are finished and the court battles have been settled, professional sports means money, plain and simple. And as long as the owners have the kind of money at stake that they do, legal battles will continue to be a part of the sports pages.

classifieds

Automobiles

1973 MUSTANG 351 Cleveland, at, ac, ps, pb, am-fm cassette, \$1000, runs great. Flynn, 941-4959.

1978 HONDA ~~1000~~ **CANCELLED** d, good engine, low mileage, \$4,500. 951-3072 or 951-0294.

1978 TOYOTA Celica, second owner, 55,000 miles. \$1500 or best offer. Contact Jamie, 968-3899 (after 6), 256-8824 (9-5).

1979 SUBARU wagon, at, ac, Sony, cloth seats, good condition, paint faded, one small dent. \$1350 OBO. 839-2136.

1983 PULSAR. Must sell! Excellent condition, red, ps, pb, ac, sun-roof, \$5950. 820-3237.

1985 FIERO, silver, sun-roof, ac, stereo, much more! Under warranty, 9,000 miles! \$8300. 968-7430 evenings, weekends.

IS IT true you can buy jeeps for \$44 through the U.S. government? Get the facts today! 1-312-742-1142 ext.9162-A.

Babysitters wanted

CHILD CARE wanted for two girls ages 9 and 10, 3:30-9:00 p.m. daily. Call 829-9626.

Bicycles

BIKE, FUJI Gran Tourer, 25-inch frame, 10-speed, good condition, \$120. Peter, 820-3491 evenings.

CUSTOM BICYCLE clothing made of lycra spandex. Shorts, shirts, and suits made to order. Bright colors and fancy prints. Terry, 838-8017.

GOOD USED bikes, from \$35 to \$125. Don, 829-9618 (keep trying).

SCHWINN WORLD Sport, men's 10-speed, two years old, good condition, \$130. Evenings, Fred, 820-2704.

Business Opp.

DO YOU want your own ladies or childrens fashion store, but don't know where to start? Start with a call to "The Source". We offer inventory, fixtures, professional training. \$14,100 to \$24,900. High success rate. First quality, popular name brands only. Ed Brandt, (404)238-9358. (AZ-CAN)

INTERESTING PART-TIME business for ambitious students. On or off campus, flexible hours. Call for details, 924-2937.

MAKE MONEY while in school. No selling required. 996-8633.

SUPER OPPORTUNITY. Growing business in growing community. Retail/wholesale. Highly profitable. \$225,000. Excellent terms. Call Angela or Don at (602)885-3524. Sentinel Realty and Investments. 8544 E. Broadway, Tucson, AZ 85710. (AZ-CAN)

UNLIMITED. ALL the long distance calls you can make, you talk for as long as you want, anytime, anyplace in USA, \$100 per month. Call (802)820-1886. (AZ-CAN)

A PART-TIME BUSINESS

If you like to read, check this out. No investment, no inventory. New Family Book Club. Call 265-7948 after 6 p.m. for details. 9/5

For Rent or Lease

2, 3, 4 bedroom condos, townhouses, houses, near ASU for rent and sale. Call Alumnus Robert Bullock, Trencor Realty, 988-0919 941-7041.

2 BLOCKS ASU, one bedroom house, \$350, unfurnished, lease only. 839-2961, 967-2457.

ATTRACTIVE TWO bedroom apartments. Beginning at \$430 mo. No deposits. Right off Scottsdale Road in Scottsdale. Call 941-8530.

BEAUTIFUL NEW large two bedroom, walk to ASU, pool, laundry, 8th street and Gary one block south of University on 8th St. between Rural and McClintock 968-5238.

CONDOS: SALE-lease by the unit or by the room. Art MacLaren, ERA Valley Metro, 834-7653.

For Rent or Lease

DUPLEX- ONE bedroom-6 blocks ASU. Secluded location, large yard, carport, \$290. 248-0000, 965-6355.

NEW, LARGE one and two bedroom apts. Great complex, many amenities, 3 miles from campus. Pelican Bay Apartments, 2121 W. Main/Apache 969-3380.

ONE BEDROOM, one bath, \$275/month, upstairs; two bedroom, one bath, \$350. 1136 E. Spence. American ERA. 966-9030.

PAPAGO ONE, two bedroom, two bath condo for rent. All appliances, \$600. 947-8189 after 6:00p.m.

QUAINT ONE bedroom apartment- 1.5 miles ASU, large separate fenced yard, hard wood floors, knotty pine paneling, \$260. 248-0000, 965-6355.

ROOM AVAILABLE for serious student in exchange for house and yard work. 966-0801, evenings.

SHARP TWO bedroom, two bath. Washer and dryer included. Mini blinds, dishwasher, pool. Walk to ASU. \$595 per month. Thomas Allan Properties. Athena, 994-0906.

THREE BEDROOM, two bath house, close to ASU, appliances included, pet ok, nice house. 894-8302.

TWO 3 bedroom homes near ASU, unfurnished, lease only. \$650. 839-2961, 967-2457.

TWO BLOCKS ASU, 2 one bedroom unfurnished efficiency apartments, lease only, \$350/month. 839-2961, 967-2457.

For Sale

100 SUNBEDS, Sunal-Wolff Systems. Buy the best, direct from manufacturer. Save thousands. While they last. Commercial and residential. Sunquest lamps and Trevor Island lotions. 1-800-835-3826. (AZ-CAN)

'80 MOBILE home, two bedroom, two bath, near ASU, only \$8500. Low down, low monthly. Terry, 834-5627, 831-6111.

ASU COMPUTER systems compatible, Adds-Regent 25 terminal, Vental modem, with Wybur and JCL user guides. 945-7211.

CHICAGO BEARS official Super Bowl team picture plaques. Top quality. Great for dorm or apartment. \$35. 968-1736 after 5:00.

E&J QUICK Silver Premier wheel chair with swing-away foot rest, removable arms, used three months. 839-7766.

HALF PRICE! Flashing arrow signs \$329! Lighted, non-arrow \$319! Unlighted \$249! Free letters! Fully guaranteed factory warranty. Limited quantity. See locally. Call today! 1-800-423-0163, anytime. (AZ-CAN)

IBM-KT COMPATIBLES, 640K memory 2-DSDD drives, AT-style keyboard, monochrome monitor, +software, F.C.C. approved, \$725. 968-5128, 945-5652. Quantity discounts.

INTERNATIONAL STUDENTS: Guide to green card from student visas. For details, send \$1 (P&H); Immigration Publications, PO Box 515991, Dallas, TX 75251.

KING SIZE futon with frame; queen size futon with pillows; collapsible inversion back-swing; inversion boots. 963-8227.

MOBILE HOME, two bedroom in Tempe. Furnished, all appliances, barbecue, patio, recreational facilities, \$8500. 839-7529.

PIONEER SPEAKERS, 100 watt, brand new, never been used. Cost \$800, will take \$100 for the pair. Moving, must sell. 954-0627.

QUEEN SIZE waterbed. Double pedestal, twelve drawers, heater, semi-motionless mattress, two sheet sets, padded rails, will deliver. \$200 OBO. John, Maria, 968-1948.

TYPEWRITER: SMITH Corona, electric portable, hardly been used, \$50. 951-3882.

USED CARPETS \$10, for dorms, vans, cars, apartments, and etc. New remnants too! Carpet House, 1516 E. Van Buren, Phoenix.

Furniture

BED'S BED'S. All sizes: Twin \$49.95; Full \$59.95; Queen \$89.95; King \$129.95. Never used. B&Z, 254-4144.

COMPLETE 7-piece bedroom with full size bed, \$199.95. Price includes 6dr dresser, framed mirror, 2dr nightstand, headboard. B&Z, 520 E. Roosevelt. Can deliver. 254-4144.

FORMICA TABLE, round 54" with 4 chairs, sturdy, good condition, \$180. Wooden framed wall mirror, 2 1/2 x 3', \$25. Evenings, Barb, 820-2704.

ASU PUBLIC EVENTS Now Hiring

Ushers for concerts at the University Activity Center. Pick up a job referral form at Matthews Center. Interviews will be conducted Wednesday, 9-3-86, and Thursday, 9-4-86, from 1-5 p.m. at Gammage Center. You do not need to make an appointment - just stop by. MUST PICK UP JOB REFERRAL FORM FOR PATRON SERVICES ATTENDANT I.

state press classified advertising deadlines

AD RUN DATE	DEADLINE
monday	thursday 3 p.m.
tuesday	friday 3 p.m.
wednesday	monday 3 p.m.
thursday	tuesday 3 p.m.
friday	wednesday 3 p.m.

CLIP AND SAVE

All Saints Catholic Newman Center



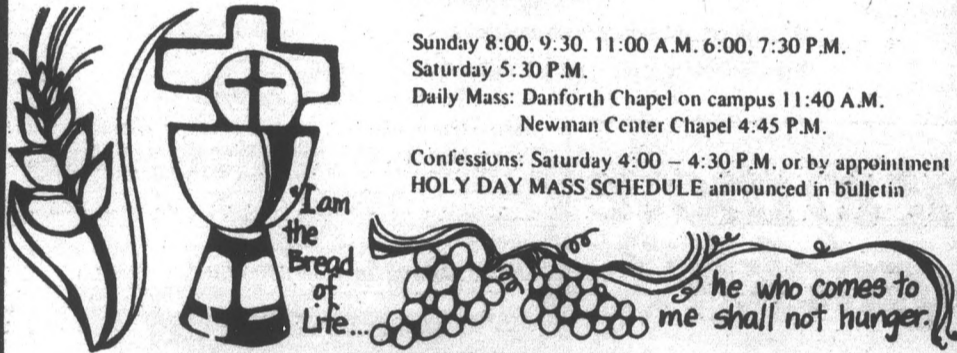
230 East University
Tempe, Arizona 85281
967-7823

MASS SCHEDULE

Sunday 8:00, 9:30, 11:00 A.M. 6:00, 7:30 P.M.
Saturday 5:30 P.M.

Daily Mass: Danforth Chapel on campus 11:40 A.M.
Newman Center Chapel 4:45 P.M.

Confessions: Saturday 4:00 - 4:30 P.M. or by appointment
HOLY DAY MASS SCHEDULE announced in bulletin



BLUEGRASS MASS ON THE GRASS

Greet old friends *** Meet new friends
Friday, September 5, at 7:00 p.m.
Social, with more music, will follow.
Everyone welcome!!!

FIRST STUDENT RETREAT - for the Fall Semester will be held in the COOL pines of Prescott on October 3rd - 5th, 1986.....EVERYONE WELCOME !!!!!

REGISTRATION IN THE NEWMAN CENTER OFFICE

The Newman Center Community is a diverse population made up of students, faculty and staff, young adults, married couples and families. To meet their needs the NEWMAN CENTER offers:

SPIRITUAL ACTIVITIES

- ... Celebration of the Liturgy
- ... Retreats
- ... Days of Recollection
- ... Charismatic Prayer Group
- ... Evening Prayer
- ... Counseling

EDUCATIONAL PROGRAMS

- ... Bible Studies
- ... Convert Instruction (RCIA)
- ... Baptismal Preparation
- ... First Communion Classes
- ... Reconciliation Preparation
- ... Confirmation Classes
- ... Marriage Preparation
- ... Preschool/Family Fun Days
- ... Teen Program (NCYO)
- ... Social Justice Issues.

SUNRISE CAFE

Open 7:00 am to 1:30 pm, Mon.-Fri. during classes.

BOOKRACK

Located in the lounge, offers a selection of books for sale covering such topics as theology, scripture, spirituality and many others.

MINISTRIES

Every member of the community is encouraged to be involved in the Liturgy of the Newman Center. You may choose to be a LECTOR, EUCHARISTIC MINISTER, MUSIC MINISTER, MASS COORDINATOR or USHER. If you are interested, please sign-up at the Church office.

COMMUNITY OUTREACH

- ... Ministry to Children
- ... Ministry to the Elderly
- ... Ministry to Farmworkers
- ... Sanctuary Committee
- ... St. Vincent de Paul
- ... Hunger Projects

SOCIAL EVENTS

- ... Concerts
- ... Dances
- ... Student Council
- ... Hikes
- ... Special liturgy & Dinners
- ... University Reception

LIBRARY & CLASSROOMS

Located upstairs for students who want a quiet place to study.

SMALL CHAPEL

For private prayer, the Blessed Sacrament Chapel is open from 8:00 am to 10:00 pm on weekdays.



Come, follow me, says the Lord

state press classified advertising deadlines

CLASSIFIEDS START HERE

AD RUN DATE	DEADLINE
monday	thursday 3 p.m.
tuesday	friday 3 p.m.
wednesday	monday 3 p.m.
thursday	tuesday 3 p.m.
friday	wednesday 3 p.m.

CASH • CHECK • VISA • MC

Announcements

KRISHNAMURTI TALKS on love, death, and true meditation. Videotapes shown on Sundays at 11:00a.m. 345-7484.

OUR FIRST hayride will be this Friday at 8:00p.m. \$5 members, \$7 non-members. Everyone welcome! Call 990-0699 for more information. The Arizona Outing Club.

Ahhh Naturale

Frozen Yogurt
Healthy • Natural
Everyday
8 Flavors • 27 Toppings

35¢ OFF
Any yogurt cup
Valid through 10-31-86.
One per customer.

130 E. University
In The Arches

Automobiles

1986 MUSTANG. Restored. Photos and bills to prove. Over \$8000 invested. \$6800 obo. 895-8303.

classifieds

Furniture

ALL NEW sofa, love seats, assorted colors, fabrics, \$199.95. Can deliver. B&Z, 520 E. Roosevelt, 254-4144.

FULL SIZE bed, never used, still in factory wrapping, \$59.95. Can deliver, B&Z, 520 E. Roosevelt, 254-4144.

MATTRESS SALE. Twin sets from \$49.95. Full sets from \$59.95. Queen sets from \$89.95. Kings \$139. 7 piece bedroom set complete \$195. 7 piece living room set \$259. 5 drawer chest \$39.95, sleeper sofas from \$249 plus much more. 444-1891; 3332 W. McDowell, 233-2236.

WAREHOUSE SALE- desks from \$44, chairs from \$5, end tables and coffee tables from \$10, typing tables, computer tables, bookshelves and more. 437-2224.

WHITE HIDE-A-BED couch with cover, good mattress, \$75 OBO. Shannon, 968-8659.

Help Wanted

\$700 FINDERS fee paid to locate \$7700 investor for Bible audiotape recording project. 829-2233.

A GREAT part-time job with great pay could really help pay for your education. If you or someone you know has the brains for school but not the bucks, call the Arizona Army National Guard and see if you qualify, at 225-5574. (AZ-CAN)

AMERICAN INTERNATIONAL Rent A Car needs rental agents. Good pay plus incentives. Flexible hours. Call Harvey Johnson, 244-8288.

APPOINTMENT SETTERS: part-time, close to campus, flexible hours, salary plus bonus, no selling, great student job. Call Matt, 894-0030.

ASU TELEFUND Drive - We're hiring! Come see us! Great pay and incentives + valuable telemarketing experience. Call us at 965-6754 after 1 p.m.

CONSTRUCTION, DRIVERS, mechanics, welders, electricians, machinists, carpenter, needed immediately. Also airline jobs. Will train some positions. (Up to \$6000/month) TransContinental Job Search, (308)382-3700. Fee. (AZ-CAN)

DISABLED INDIVIDUAL needs assistance with personal care and/or domestic chores. To apply and for more information contact: Jim Hemauear at 965-1234.

ENGINEERING TECHNICIAN (mechanical). Second or third year mechanical engineering or technology. Some related experience desired. Must be available minimum of 20 hours per week fall and spring semester. Flexible schedule, \$4.50 and up. 956-8200.

ENTREPRENEURS WANTED. We won't make you a millionaire, but you can triple your investment with less than \$100. Set your own hours. Call 820-3912.

ENTRY LEVEL part-time positions with Associated Bioscience. Applications will be accepted between 9:00 a.m.-5 p.m. Monday through Friday in the following areas: (4) phlebotomist; (1) receptionist/screening. Previous experience not required. Applicants must be able to work all Saturdays. 1015 S. Rural, 968-8139. EOE.

FAJITA PRIMA, a new restaurant at The Cornerstone, is now hiring full and part-time employees for all positions. Please apply at 930 E. University between 1:00 p.m. and 3:00 p.m. Monday through Friday. 921-1230.

FEMALE MODELS wanted for casual wear, sports wear, and swim wear. Send portfolios or pictures to: Chasin' Rainbows, 6925 Fifth Avenue, Suite D437, Scottsdale, AZ 85251.

FULL AND part-time counter help needed for new BBQ take-out restaurant. Please apply at: Apache Liquor and Deli, 1858 E. Apache Blvd., Tempe.

HOUSE CLEANER to work bi-weekly. Must be honest, reliable, have own transportation, \$4/hour, local references a must. Call Bonnie, 345-7558.

HOUSEKEEPER WANTED. M-F 3hrs afternoon. Light housecleaning, cooking, some errands. Must have car, references. Rural/Southern area. \$60 week plus errand mileage plus supper. Cat-lover preferred. Call Stefanie, days 244-7613, evenings 838-1643, after Aug 27.

JOBS. FLEXIBLE hours, part-time, full-time. \$8.95 per hour. Must have neat appearance, basic math skills. Tempe, Mesa: 967-5670. Phoenix, Glendale: 241-1083. 8 to noon.

LOCAL RADIO station has part-time openings for telephone marketing research positions. No selling involved, close to campus. Call Denise between 1:00-5:00 p.m. 966-6236.

Help Wanted

CREOLE CHEF Inc., help wanted, 1725 W. University, 967-1288. All hours available.

MAINTENANCE AND errand male needed in Old Town Tempe. Apply at Mill Avenue Merchants Association, 520 S. Mill, Suite 201, Tempe. No car needed. \$4.50/hour. Ask for Denise.

MAKE HUNDREDS weekly mailing circulars! No quotas, limits! Rush self-addressed, stamped envelope: Am-Mar, 256 Robertson Blvd., Dept. G, Beverly Hills, CA 90211.

MALE MODELS: Versatile male models needed by photographer who will be in Phoenix in October. Those selected will earn top dollars. Send recent photos, etc., to J.G., 5509 Crosscreek Lane, Suite 1075, Fort Worth, Texas 76109.

MCDONALD'S NOW hiring, flexible hours to fit school schedule, uniform and meal provided, vacation bonus, activities. Interviews Tuesday through Friday, 3:30-4:00 p.m., 1325 W. Broadway, EOE.

MEDICAL OFFICE in Scottsdale needs part-time help. Experience helpful, but will train. Apply in person, 7701 E. Indian School Rd., Suite E.

OFFICE CLEANERS needed 15-20 hours per week. Evenings. Must have car. \$4 per hour after training. Bonuses, pay raises, and advancement opportunities. Leave message. 274-0999.

PART-TIME clean up person for animal hospital in Chandler, 6 days a week. Call 963-2340.

PART-TIME WATERBED sales, work around your schedule, walking distance from campus. Apply in person at The Bedroom, 825 N. Scottsdale Rd., M-F, 10:00 a.m.-5 p.m.

PART-TIME CLERICAL sales, minutes from ASU. Work week nights till 8:30 p.m. Candid Wedding Photographers, 609 N. Scottsdale Rd., 945-2550.

PART-TIME DEPENDABLE people needed to assist mini-storage manager and leasing involving maintenance, etc. Must be able to work daytime hours including weekends. PC experience helpful, must have own transportation. Send resumes to PO Box 124, 410 S. 2nd St., Phoenix 85004.

PART-TIME CASHIER. Parts and service cashier, 25-30 hours per week, afternoons. Ten-key, math aptitude, pleasant personality and appearance required. Apply in person. Scottsdale Hyundai, 68th St. & McDowell.

PART-TIME AD sales positions available. Good pay. Scottsdale area. Contact the Arizona Republic between 9:00 a.m.-6 p.m. 271-8688.

PERFECT STUDENT job, flexible hours. Car Wash, 838-9455.

RESEARCH FIRM needs part-time field/phone surveyors for September. \$4.50 per hour plus \$15 per mile. Call Mountain West Research, 273-1088.

SECURITY OFFICERS full or part time, car and phone required. Fit hours to your needs. Internal Security Agency 820-1919.

SKIERS! NEED five reps to sell Ski Card International. Part-time, full-time. Call Scott, 245-5338.

STUDENT NEEDED to provide care for 11 year old girl. Responsible for housekeeping, errands, etc. Live-in or live-out, some evenings required. Own transportation a plus. 345-7207.

STUDENTS EARN \$6 to \$10 per hour. Leads make our telemarketing easier. Part-time evening hours available immediately. South Scottsdale office is close to campus 947-0508.

T.C. EGGINGTONS. An exciting breakfast and lunch restaurant has waitress, and cook/ prep cook positions available with great hours, 6:30 to 2:30 daily. Apply in person after 2:30 daily. 1660 S. Alma School, Suite 129, Mesa, 1 block south of Superstition Freeway.

Instruction

EARN EXTRA MONEY
Arizona School of
BARTENDING
 Job Placement Assistance
 Start Any Day
 Terms Available
275-MIXX
4035 E. McDOWELL
Minutes From Campus

Instruction

TAEKWONDO. TRADITIONAL instruction in the art of self defense. Build confidence, control and a healthier mental attitude. Two free lessons. 894-5389.

WATER SKI instruction and outings. Competition Master Craft ski boat and equipment provided. Half days, full days available. 966-4185.

Jewelry

CASH FOR gold and diamonds. Mill Avenue Jewelers, 414 S. Mill Ave., Suite 104, Tempe, 968-5967.

Lost & Found

\$100 REWARD: Woman's ring lost, Psychology Building, first floor womens restroom. Very sentimental. 820-2371, ask for Paul or leave message.

\$25 REWARD for return of orange backpack lost Monday, August 25th near Bandersnatch. Contains two textbooks, two portfolios. Dave, 894-6305.

FOUND A box of Memorex computer discs on 10th St. behind Tempe Center. Phone 784-8001.

FOUND: LARGE black dog on campus Friday, August 29. City of Boulder tag. 277-7976.

LOST AND Found ads are free everyday! We limit them to 20 words and run them for 2 days. Just call the STATE PRESS classified department, 965-7572, Monday through Friday, 8:00 a.m.-5:00 p.m.

LOST: BAC, third floor, a large, heart shaped ring. Very sentimental. Large reward. Please, please call 892-6829 evenings.

LOST: BLACK wallet, vicinity of Rural, between University and Apache on Tuesday, August 26th. If found, please call John, 784-9648.

Miscellaneous

A BEAUTIFUL color television, 25" 100"; 19" color TV, \$85; console stereo \$75. Cash. Call 253-5016.

PLAY IT AGAIN CINEMA
 Showing through Sunday!
Swiss Family Robinson
 Fred Astaire in
Daddy Long Legs
ONLY \$1.50
 -and-
Young Frankenstein
 William Holden in
Stalag 17
ONLY \$2.00
 Call for times! 9/5
 On Scottsdale Rd. just north of McKellips
2240 N. Scottsdale Rd. • 994-1190

Motorcycles

1978 KAWASAKI KZ1000, 8,000 miles on rebuilt top end. Many new parts including rear tire. Runs very good. Glenn 255-4845 (wk), 820-8518 (hm). \$1000 OBO.

1980 YAMAHA 850SX Special, 11,000 miles, garage kept, helmets and extras, \$900 OBO. 963-3356.

1981 YAMAHA 250 Exciter street, low miles, excellent condition, \$600 OBO. Jackie, 967-0173.

1982 KAWASAKI 305, mint condition, only 4,000 miles. Moving, must sacrifice. \$675 OBO. Call 820-4802.

1983 NIGHTHAWK 650, almost new condition (garage stored). Only 7,500 miles, shaft drive, etc., good tires, two nearly new full face helmets included, \$1250. 991-5620.

1984 HONDA Nighthawk S, blue, black, 14,000 miles, excellent shape, maintained regularly, \$2000 (firm). Phone 838-1351.

DON'T PAY dealers prices. 1985 Honda Rebel 250. Bought November '85. Only 900 miles, garage kept, hardly used, sharp looking, very ideal transportation. Only \$970. Call Magnum at 833-5434, evenings.

HONDA 125CS, 550 actual miles, street licensed, perfect condition, 2 helmets, \$425. 964-7258, Mesa.

HONDA AERO 80, blue, 1985, great condition, \$1000. Contact 968-4546.

HONDA SCOOTER, brand new, Elite 80, white, 1st \$800 takes. Scott at 244-1440 days.

YAMAHA CV180 Scooter, red with custom seat, windshield, \$500 OBO. Call Beth, 921-0393, 968-3659.

Personal

ATO ATO ATO Homecoming. 3 days away! Get ready ASU as our house officially opens!

ALPHA DELTA PI is excited about the awesome Fall Pledge Class!!

A MESSAGE for John Rawlings. He who is not impatient is not in love. Please visit soon!

ANOREXIA, BULIMIA, compulsive over eating, private and confidential counseling. Gennie Monroe, ACSW, recovered bulimic 437-9420 or 248-8204.

ARE YOU interested in Public Relations? Don't miss PRSSA's 1st meeting, September 4th at 5 p.m., Rm.A15, Stauffer Hall.

ASTROLOGERS DO it with heavenly bodies. Barry, 968-2098.

ATO LITTLE Sister Rush tonight at 6 p.m. at the ATO House, 8th and Gary.

ATTENTION KENDALL Jones of north Phoenix: It's me, Daniel Soto ("Chuck" to you my Gorgeous Blondie). I still love you lots and want to meet your mom and dad in person. Call me at 784-8469, room B-211, Sahuaro Hall, ASU.

CHI OMEGA Pledges: Get psyched for a great semester. We love you and thank you're the best. Love, the Actives, Rho Beta.

COUPLE UNABLE to have children wishes to adopt newborn. Let's help each other. Expenses paid. If no answer, please keep trying. Call collect, 718-253-7204. (AZ-CAN)

GAMMA PHI actives are sooo awesome! Your pledges full on love you.

HE DID! You can! My husband lost 28 pounds in 5 weeks! Feels better than he has ever felt in his entire life! Guaranteed! Bonnie, (602)820-1167. (AZ-CAN)

HELEN- YOU thought I was teasing, huh! Sorry I'm late. Happy Birthday. Vivian.

J.R.B.III- Happy "21st" Birthday! Thanks for the best two years of my life. Live it up! Tonight... I love you! Ann.

KAPPA DELTA loves our new pledges!!

LOVE LINE for \$6.00 a minute. Call 1-976-LOVE and meet someone special or add to your friendship list. Give Love Line a try.

MARK ANDERSON, glad you're back!!! From all us women of ASU.

MATTHEW PERRIN: Hope you get your year off to a great start. By the way, you're incredible. Love, your SQ.

MONEY FOR college! No gimmicks. Free details. SASE: NENALEX-AS, 3453 NW Thurman, Portland, OR 97210.

PRESENT SIGMA Nu Little Sisters are invited to attend the Fall Little Sister rush parties on September 2, 3, and 4, 7:00, 10:00.

ROB, WELCOME back! Lots of luck in school this semester. "I love you." Love, Linda.

SEAN BEGGS: I'd like to get to know you better, but can't figure out how. G.

SIGMA PHI Epsilon's Golden Heart Rush - September 2, 3, and 4 - come join in the fun!

SPRING 86 Sigma Nu Little Sisters go active at 6:00 on Friday, September 5, semi-formal. Any questions, call 829-3813.

Personal

STEPHANIE (FATS), I'm glad I met you - hope our friendship shines like your eyes! Michael.

YOU'VE MET the person of your dreams. Don't be a gutless coward! Balloon Express can help! Call 968-4446 now!

Real Estate

ASU STUDENTS, two bedroom, two bath ASU townhome, all appliances included, tennis courts, swimming pool, only \$58,000. Call Dave at Coldwell Banker, 839-8200.

CLOSE TO ASU, 12x65 mobile home, 3 bedroom, 1 1/2 bath, family park, pools, jacuzzi, etc. 966-4950 or 966-8532 (message).

FOR SALE: Three bedroom, two bath, pool, ac, patio, family room, 720 E. Broadway, near ASU. 946-3507.

LARGE STUDIO apartment for sale. Pool, extras, Scottsdale area. \$9000 or best offer. 837-2297 or 947-3065.

LOVELY 3 BEDROOM TOWNHOUSE. Many amenities. Close to ASU. Great investment for faculty or parents of students. \$105,950. Marilyn Stone, eves, 840-7091 days 994-1458. Real Estate Professionals.

LUXURY CONDO near ASU, two bedroom, two bath, indoor racquetball, two pools, sauna, jacuzzi, weight room, fireplace, all appliances, ceiling fans, washer, dryer, much more. 9 1/2% assumable. 967-8906, 839-8219.

REDUCED \$7000. Luxury townhouse, 3 bedroom, 2 1/2 bath, community pool, double garage, 4 blocks to ASU. Closing cost down, \$83,000. Call Pat, 831-1555, 820-6985. Realty Executives.

SCOTTSDALE CONDO, one bedroom, one bath adult complex. For sale or lease purchase. Asking \$46,900. Call Mary, ERA Valley Metro, 948-0900 or 991-6536.

TWO STORY, three-bedroom townhouse, very clean, minutes from ASU, \$32,000. Co-op fee, \$211/month. 991-6666, Erwin or Charlotte.

Roommate Wanted

BUSCO UNA Amiga. Artist seeks female, non-smoker, to share three bedroom, two bath house. Three miles from ASU. Nice area. Pets? \$200 plus 1/2 utilities. 945-6515.

FEMALE ROOMMATES wanted to share two bedroom, two bath condo at Questa Vida. Furnished, w/d, microwave, two pools, jacuzzi, racquetball courts, many extras. Kelly, 967-5346.

FEMALE ROOMMATE wanted, non-smoker, \$147 plus 1/4 utilities. Available now, own room, close to ASU. 839-2549.

FEMALE ROOMMATE(S) needed. Available immediately! Pool, jacuzzi, two bath, spacious, partially furnished. Beautiful apartment and complex. Must see! Sue, 966-1512.

FEMALE TO share three bedroom, two bath home with pool. Full kitchen privileges. Baseline/Hardy. \$250/month plus 1/2 utilities. Ask for Christy, 831-8763.

M/F NON-SMOKER, share nice three bedroom, two bath house, w/d, pool, micro, \$250/month plus 1/2 utilities. Call Jeff, 265-0680 after 7, 867-1168.

SHARE 4 bedroom home, 15 minutes from ASU. Non-smokers preferred. 224-5878, 996-6633.

SHARE CONCEPTS shared housing. We have numerous tenant and landlord placements and are open for more. Valley wide service. References required, Mon-Sat, 9 a.m.-7 p.m. 990-8488, 946-0198.

SHARE NEW townhouse, two bedroom, two bath, fireplace, pool, \$265, half utilities. Brian, 963-0211, 839-9271, 893-3226.

THREE BEDROOM townhouse. Furnished, pool, washer, dryer, minutes from ASU, \$220/month + 1/2 utilities. Marc, 941-1801; Renate, 996-1078. Students preferred.

Services

A.W.P. APPLIANCE Parts. With our 1-800-233-9974 and U.P.S. delivery, it's like being next door. Make, model #, description of part needed for ordering. Phoenix-Mesa. (AZ-CAN)

PRIVATE SWIM lessons, WSI certified and 5 years experience. Call 996-4736, Chris.

TERRIFIC BARGAIN! Unlimited long distance phone calls, \$100 per month, plus cash for sponsoring others. 968-8944.

Roommate Wanted

VISITING CALIFORNIA? Stay with many other people from Arizona. Rates \$32-\$37. Los Angeles area: El Dorado Motor Inn, 140 N. Azusa Ave., West Covina, CA 91791 (818)331-6371. San Francisco area: Hillside Inn, 477 E. Hillside Blvd., San Mateo, CA 94403 (415)341-3461. Reservations can call collect. (AZ-CAN)

LAUNDRY SERVICE
 Have your dirty clothes cleaned all year for only
\$16.00 per month
 (\$65 per semester)
 If you don't know how to do laundry, don't have time or just don't care to ...
 Call: **THE LAUNDRY SERVICE**
921-0148
 9/4

Transportation

CARS AVAILABLE - 21 or older. All States Drive-away, 992-5200.

Typing

ACCURATE. CONVENIENT. Reasonable. Mrs. Oakley, 967-8082.

CALL ME for fast, accurate, quality service at competitive prices. Close to ASU. 966-2186.

CEREUS WORD PROCESSING. Quality guaranteed. Term papers, marketing/technical, dissertations, theses, form letters, resumes. 947-7796.

PROFESSIONAL, ACADEMIC, word-processing, book, theses, dissertations, disc storage, letter quality. Reasonable rates. Taylor-Lyndsay 964-6689.

RUSH JOBS no problem! Term papers, theses, etc., \$1.50 per page. Sharp, clear type. 839-9103.

SAVE TIME, call me first. Wordprocessing-theses, dissertations, resumes. Professional typist. Mesa Secretarial. 844-1876.

SHORT OF TIME? I can help. Reasonable. Professional. Guaranteed. Experienced in academic. Call Jessie 945-5744.

THESES, TERM papers, reports etc. \$1.00 page, typed at home, 30 years experience. Marian 431-0618.

WORD PROCESSING and storage for dissertations, theses and term papers. Nancy 830-5572.

WORD PROCESSING, data entry, fast turn-around, reasonable rates. Close to campus. 831-9054.

WORD PROCESSING, manuscripts, legal documents, resumes, term papers, and theses. Close to ASU. 438-8864.

TYPING SPECIAL!!!
 Show ASU I.D. and receive a
10% Discount
 ON
 •Typesetting
 •Term Papers
 •Resumes
 •Word Processing
 laser jet printing
 •Professional •Fast •Accurate
 •Same Day Service Available
 No job too large or too small
ASU Typing Center
122 E. University
Tempe • 967-0900
 Just a 5 min. walk from Hayden Library
 In The Arches • Corner of Forest & University
 Offer expires 9-22-86. 9/4

Wanted

BONUS TRAVEL coupon for any major airline. Call 967-3584, ask for Dave. Reasonable offers.

NEED NOTE-TAKER for EEE-302 LN# 28746 at 9:40 and EEE-303 LN# 28759 at 8:40. Fee negotiable. Call Sam, 844-1697.

NEED TO purchase lot 18 parking decal. Please call Aziz, 829-1271.

WELCOME BACK ASU!

Spuds Mackenzie



**BUD LIGHT
MASCOT**

THE ORIGINAL PARTY ANIMAL

FOR MORE DOGGON' INFO ON SPUDS, CALL HENSLEY & CO. 968-2471