

ASU candidate for defense research center

By KIM MATTINGLY
State Press

ASU is a top candidate for a \$60 million U.S. Department of Defense research center that will produce materials for national defense systems, a University scientist said Thursday.

Gunter Schwuttke, the director of ASU's Semiconductor Materials Research Laboratory, said the proposed center is one of four centers to be located throughout the country. The facilities are expected to begin operations in 1988.

"There's no competition," Schwuttke said. "ASU has become a world leader and has the largest semiconductor lab in the world. I think our chances are very good for getting the center."

He said ASU has become the world leader in the production of gallium arsenide crystals. Gallium arsenide is a semiconductor material with electrons that move 100 times faster than in silicon.

It makes "supercomputers" 10 times more efficient and would suffer little radiation damage in a nuclear attack, he said.

Schwuttke said an 8.8-pound quality crystal with a three-inch diameter is worth at least \$40,000.

Schwuttke said ASU became first in gallium arsenide production last spring when his team of ASU scientists were the first to use artificial intelligence to produce the crystals.

Artificial intelligence is a computer system that duplicates human intelligence and intuition and has reduced human supervision of the crystal growth process from 32 hours to 10 minutes.

Based on his success, the Defense Advanced Research Project Agency awarded Schwuttke and ASU \$3.8 million over a three-year period to continue gallium arsenide production.

Schwuttke said this makes ASU's research program the largest semiconductor materials program in the world.

Schwuttke, 63, was one of 20 experts in electronic materials that met in Washington D.C. in April 1985 to discuss options for increasing U.S. defense capabilities.

Each person presented his ideas for a "center for excellence," a place for concentrated research and development on specific facets of electronic materials and processing.

Each of the four proposed centers will receive approximately \$12 million per year for a minimum of five years for the development of semiconducting electronic materials like gallium arsenide.

To become a target for one of these centers, ASU will relocate its semiconductor laboratory at the ASU Research Park, at Price and Elliot roads, "to demonstrate that we are the best in the field and we have all the best facilities," Schwuttke said.

He said ASU has "overtaken the Ivy League universities in semiconductor materials."

ASU engineering graduates will "find jobs like crazy," he said. "I'm already getting calls from people that want to hire my students."

Schwuttke, a former IBM researcher, said he wants to reverse what he calls "the erosion of America's predominance in the development and manufacture of strategic man-made materials such as silicon and gallium arsenide crystals" — materials he calls the "backbone of our electronics industry."

A native-born German, Schwuttke has worked in semiconductor research for 30 years.

He holds more than 80 U.S. patents and has received seven IBM achievement awards. He is the recipient of six NASA awards and three awards from the U.S. Department of Energy for his work in crystal science and technology.

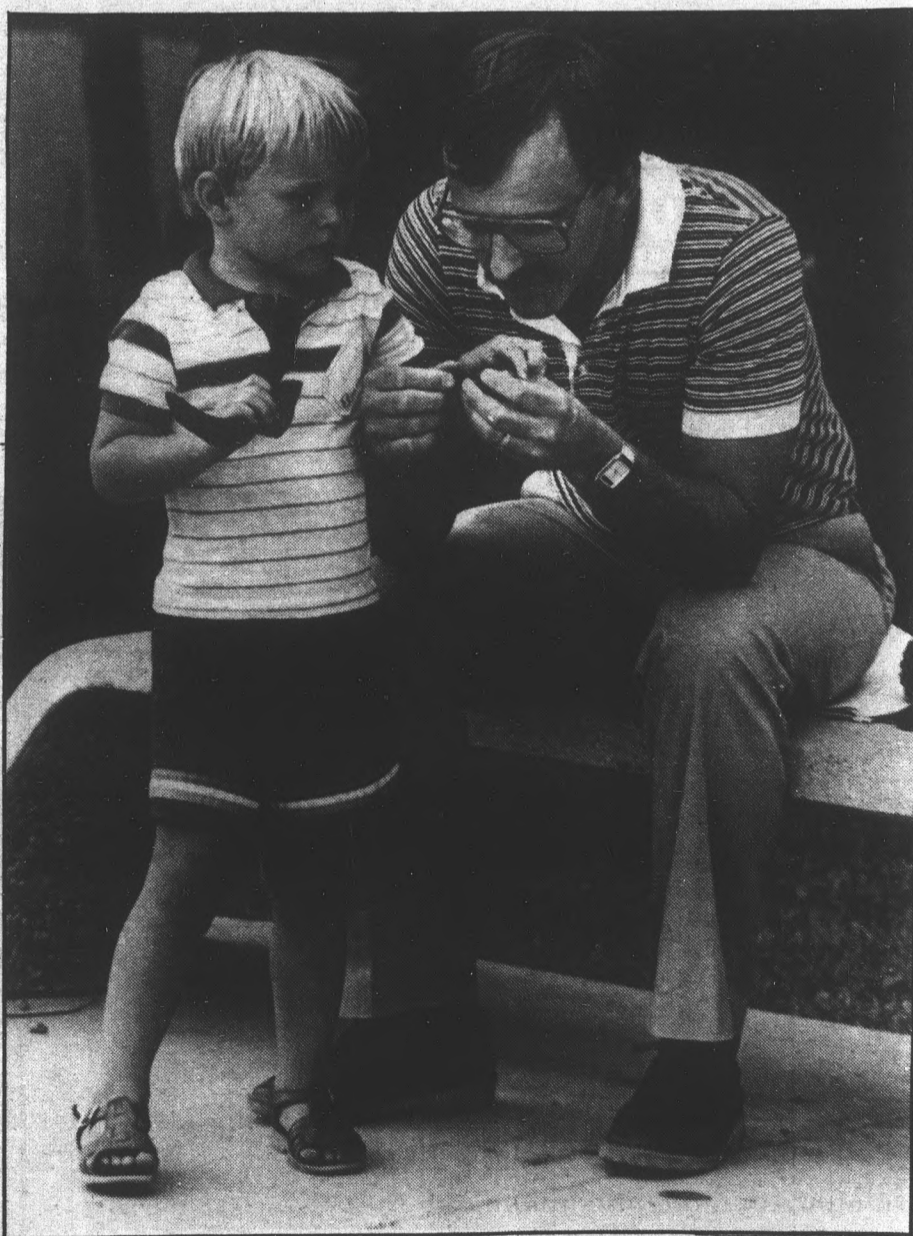
"All this I have worked for to make the United States the best in the field," Schwuttke said. "I was about to retire, and I heard Japan was the best; this I cannot tolerate."

"I came back, and we are going to make ASU the biggest place in our field."

He added with a chuckle, "It's some kind of obsession, I'd say."



Gunter Schwuttke, the director of ASU's Semiconductor Materials Research Laboratory, shows off an 8.8-pound gallium arsenide crystal, worth more than \$40,000.



Andy Mrozinski/State Press

Seedling

Granger Cumberford shows his 4-year-old son, Brent, a seed pod Thursday afternoon in front of the Matthews Center. Brent was passing time while his mother, Sandy, was trying to register for some Spanish courses.

Student tempers heat up as tram service lapses

Staff reports

Mechanical failures, accidents and too few drivers brought ASU's tram service to a halt Thursday afternoon, stranding students in 100-degree temperatures.

About 120 people were stranded behind Hayden Library for almost an hour Thursday afternoon, and morning tram service was slowed by malfunctions and a collision.

Richard Landreth, assistant director of parking and transit services, said the tram services slowed after a tram collided with a truck near the motorpool.

He said the windshield was shattered, but the driver was not injured.

A tram driver, who asked not to be identified, said a shortage of drivers shut down all but two trams during the afternoon.

Sarah Doughtrier, a senior communications major, said, "In this weather, it's too hot to stand and wait 45 minutes for a ride."

"There wasn't a whole lot of trouble before, but it seems the crowding is getting worse everywhere."

Doughtrier, a regular tram rider, said tram drivers were crowding five people onto benches designed for four passengers.

She said some commuters had people sitting on their laps.

"One driver drove by and yelled 'All you kids call and complain because nothing will

Editorial, page 4

get done if you don't,' then everyone riding the tram yelled out the number we were supposed to call," Doughtrier said.

Lauren Oznick, a junior communications major, said overcrowding was creating a dangerous situation.

"People can't get on or off the trams," she said. "Someone is going to get trampled, and they're going to sue the University."

Doughtrier said: "There are people running on and off. I would hate for someone to get hurt in order for people to start listening."

Landreth said additional tram problems were caused when vandals disconnected the air hoses and brake lines between the two tram cars.

He said someone had been jumping on the air hoses and vandalizing the trams since the vehicles were moved to outside storage in Lot 40 two nights ago.

The trams were moved to a new storage place after the covered storage shed was dismantled to allow construction for ASU's second parking structure.

Landreth said the brake lines are being replaced.

inside
today

HUMAN
INSTRUMENT
Eurythmics are the
subject of a new
class at ASU West.
Page 7.



nation/world

Judge gives Whitworth 365 years for spying

SAN FRANCISCO (AP) — Jerry Whitworth was sentenced to 365 years in prison and fined \$410,000 Thursday by a judge who said his role in selling Navy communications secrets to the Soviet Union made him "one of the most spectacular spies of this century."

"I just want to say I'm very, very sorry," was the only comment from the 47-year-old former Navy radioman as he appeared before U.S. District Judge John Vukasin.

Convicted on seven counts of espionage as part of the Walker family spy ring, Whitworth must serve at least 60 years before he will be eligible for parole.

Vukasin had the option of sentencing Whitworth to the maximum term of life in prison or following a prosecution recommendation of imposing a lengthy period of years that would delay his parole eligibility.

The government called him the central figure in the most damaging spy ring in U.S. military history, and Vukasin said he had given the Soviet Union "the very blueprint of our most coveted and guarded communications."

Whitworth, of Davis, Calif., was convicted July 24 of selling to the Walkers the secrets of Navy decoding equipment, code keys and communications systems he gathered and photographed for nearly a decade as a trusted radio operator at ship and shore stations.

He also was convicted of tax evasion on the \$332,000 that he was paid by John Walker Jr., his longtime friend, former fellow radio instructor and confessed leader of the spy ring.

Walker testified he recruited Whitworth to his ring in 1974 after "probing for the larceny in his heart." He said he used Whitworth as his main

source of documents from the time Walker left the Navy in 1976 until Whitworth retired in 1983.

Walker said the Soviets, satisfied with Whitworth's work, gradually raised his pay from \$1,000 to \$4,000 a month.

Walker said he never told Whitworth of the Soviets' role, but instead suggested the secrets were being bought by Israel, the Mafia or a private intelligence organization.

Tragedy could cause more cancerous deaths

VIENNA, Austria (AP) — A Los Angeles bone marrow surgeon who treated some Chernobyl victims said Thursday the accident could cause as many as 75,000 cancer deaths worldwide over the next 70 years.

Dr. Robert Gale told reporters that most delegates to an international conference in Vienna agreed that as many as 25,000 cancer deaths linked to the Soviet nuclear plant disaster could occur in the European part of the Soviet Union alone.

He said the number of cancer deaths worldwide as a result of the accident could range from 1,000 to 75,000.

Gale told The Associated Press earlier Thursday that estimates of the death toll from Chernobyl are "very broad," but health experts believe "the truth will lie between the extremes."

Gale is attending a week-long conference under the auspices of the International Atomic Energy Agency called to consider ways to improve international cooperation in fighting nuclear accidents.

Speaking at a news conference on the fourth day of the conference, Soviet and Western delegates suggested establishing an international agency, composed of civil defense and military personnel, to pool efforts against any future atomic accident.

arizona

Nuclear reactor fails; generator shuts down

WINTERSBURG (AP) — The Unit 2 reactor at the Palo Verde nuclear plant shut down automatically at 11 a.m. Thursday, a plant spokesman said.

The reactor went down when the unit's electrical generator shut off, according to Don Andrews, a spokesman for the Arizona Nuclear Power Project, operators of the plant.

There was a similar occurrence earlier in the week, but Andrews said it doesn't appear to be the same problem. He said no estimate had been made as to when the unit would be restarted.

Permits obtainable to cut own X-mas tree

PHOENIX (AP) — Beginning Sept. 12,

the public can take out applications to cut Christmas trees on four national forests in Arizona, a Forest Service spokeswoman said.

Completed applications must be returned, with a \$5 permit fee and in the return envelope provided, by Oct. 10, said Joyce Magidson, Tonto National Forest public information officer.

Trees can be cut on Kaibab, Coconino, Prescott and Apache-Sitgreaves national forests, but applications will be available through all national forests in the state, she said.

Selection of permits will be made through a drawing system beginning in mid-October, and permits will be mailed to successful applicants by Nov. 21, she said.

pac-10

New dining hall plan sparks dispute at WSU

PULLMAN — The transition to a point system by Washington State University dining halls has sparked some controversy among students who feel they are being overcharged for food.

"The new system is still in the development stage," said Murry Stopherd, Regents Dining Hall Manager. "It's not a perfect system and I don't know how well it's going to work," he said.

Under the new format, students are allotted 20,000 points at the beginning of the semester for \$650. Food is purchased by the point in an effort to eliminate waste.

However, most students feel they are

not receiving enough points, since the points issued are based on an average analysis of a "light eater."

The \$650 paid by the students is one hundred dollars less than the food cost last year. So the average eater can purchase more points when the original is gone, he said.

Last year, an extensive plate-waste study showed that ten percent of dining hall food was thrown out. Students who ate more will pay more — and dining hall managers say that should discourage waste.

The food cost is calculated at one penny per point marking the 20,000 points a student begins the semester with worth \$200. The remaining \$450 goes toward dining hall expenses such as labor.

— Daily Evergreen

STUDENT PARKING DECALS

STUDENT PICK-UP FOR PRE-PAID PARKING DECALS

Students who have already applied and paid for a 1986-87 parking decal may pick up their decals on:

**AUGUST 25
through
SEPTEMBER 5
AFTER SEPT. 6**

**Memorial Union Cashier Facility
(across from Office of Residence Life)
8:00 a.m.-4:40 p.m. Monday-Friday**

**PARKING SERVICES OFFICE
Campus Inn, 628 E. Apache Blvd., Tempe, AZ • 7:30 a.m.-5:00 p.m.**

STUDENT DECAL SALES

STUDENTS who wish to purchase a 1986-87 decal may do so on:

**AUGUST 25-29
SEPTEMBER 2-5
AFTER SEPT. 5**

Social Sciences Atrium

**8:00 a.m.-4:30 p.m. Monday-Friday
(27th and 28th, open until 7:00 p.m.)**

Memorial Union, Room 215

8:00 a.m.-4:30 p.m. Monday-Friday

PARKING SERVICES OFFICE

**Campus Inn, 628 E. Apache, Tempe, AZ
7:30 a.m.-5:00 p.m.**

- All decal lot assignments are subject to availability.
- Payment may be made via cash, check, VISA or MasterCard.

- Students purchasing residence hall decals (includes fraternities) must show proof of housing assignment.

State P
po
Univ
inciden
7:30 a.m.
• A stole
over to
There
the car
• A brow
in dama
the wal
parking
Avenue
• An ala
the Col
baseme
Custo
from be
WE
• The C
meet
Room
"Surviv
• Allelu
times
at Alle
1034 S
Chape
founta
• ASU
Tuesda
3:30
interpr
debate
411 S. Mill Ave.
077 0250

police report

University police reported the following incidents during the 24-hour period ending 7:30 a.m. Thursday:

•A stolen yellow 1974 Datsun truck, valued at \$2,500, was found in Lot 63 and turned over to Phoenix police Tuesday.

There were no witnesses or suspects, and the car was returned to its owner.

•A brown 1985 Honda Prelude received \$200 in damages from water that leaked through the walls of the basement level of the new parking garage on the corner of College Avenue and Rural Road.

•An alarm went off when custodians entered the College of Business Building to repair basement ceiling leaks.

Custodians heard water sounds coming from behind the east wall, and a carpenter

and plumber were called to aid in the repair.

Jim Savenick, director of Computer Services Academic Systems, was called and informed of possible danger to the computers.

•A Chandler runaway female juvenile was found in Sahuaro Residence Hall. Chandler police were notified, and she was picked up by her parents.

•A Huffy Cruiser, valued at \$100, was stolen from the east side of the Classroom Office Building.

•Tempe residents Joel Tempel and Tony Wenger were warned against trespassing and asked to leave Palo Verde East Residence Hall, where they were loitering and "checking out the scenery."

—LAUREN MILLETTE

weekend

•The Contact for Adult Re-Entry will meet Saturday in the MU Coconino Room at 9 a.m. The topic will be "Survival Skills for College Writing."

•Alleluia Lutheran Church worship times Sunday are 9:15 a.m and 4:45 p.m. at Alleluia Lutheran Church, located at 1034 S. Mill Ave.; and 11 a.m. at Danforth Chapel, located on Cady Mall next to the fountain.

•ASU Forensics Team will meet Tuesday at Stauffer Hall Room 335, at 3:30 p.m. Students interested in interpretation, public speaking and/or debate are invited to attend. For more

information contact Clark Olson, director of forensics, 965-3825.

•Fellowship of Christian Athletes will hold a Bible study session on Tuesday at the Salvation Army Building, located one block east of Mill Avenue and University Drive. The session will begin at 7:30 p.m.

•Women in Communications, Inc. will meet on Tuesday in MU Pinal Room, at 7 p.m. Arizona Professional President Laurie Fagen will speak on the advantages and benefits of being a member of Women in Communications.

Labor Day Weekend
BEACH BASH
Sunday & Monday
from 7:00 to 1:00

25¢ hot dogs
drink specials
electric lemonades
&
watermelons
for
99¢

HOT
rockin' with
RANSOM

contests
watermelon
eating
sexiest shorts & shades
hula hooping

LIFE'S A BEACH

Tally's
the nite club
1123 WEST BROADWAY
TEMPE
INFORMER LINE
968-6224

wear
your
best
beach
stuff

The GMAT Course

A New Software Product that will Launch You on the Road to Success!

- Comprehensive—covers every type of exam question
- Screens with hints, review material and fully explained solutions for hundreds of problems
- Timed tests simulating actual exam conditions
- Instant feedback and personalized score analysis

• Quick reference manual with review sections, memorization tables and glossaries

• These techniques, designed by MBA's, have helped improve students' scores by as much as 250 points!!

IBM-PC version in 5 diskettes. Apple IIe version also available.
Price: \$99.95 (Includes postage). See your local dealer or contact:

CSI Comwell Systems, Inc. Phoenix, AZ 85080
P.O. Box 41852 (602) 869-0412

Bill's
sight & sound
967-3301

BACK TO SCHOOL SALE!

SANYO
COMPONENT STEREO SYSTEM

- 25 watt per channel amp with 5 band equalizer
- AM/FM stereo tuner
- Dual dubbing cassette deck with Dolby N.R.*
- Turntable with magnetic cartridge
- 2-way floor standing speaker system
- Glass front, glass top stereo cabinet w/casters

*Includes all necessary hook-up wires

SPECIALY PRICED \$349⁷⁷
List \$400

Dolby Noise Reduction is a trademark of Dolby Laboratories

FISHER
PORTABLE STEREO SYSTEM

- Built-in AM/FM stereo tuner
- Detachable speakers
- Built-in cassette recorder/player
- Soft touch controls
- 3 band graphic equalizer
- AC/DC power use!

\$79⁷⁷ GREAT FOR DORMS!

TDK CASSETTE TAPES

While quantity lasts. Limit 5 per person.

99¢

913 S. MILL AVE.
in the TEMPE CENTER • 967-3301

Now In Our 36th Year

KROY Copy Center

Present this ad and
SAVE 10%
on all our services!!

Reports • Resumes • Flyers
Posters • Signs • Typing
Overheads • Newsletters

• Kroy® Lettering •

"Say it right . . . say it with Kroy"

411 S. Mill Ave.
966-9353

Headache #7: tram service

With an increase in the population of ASU and the beginning of a new semester, everyone knew services should be fully staffed and ready for the "student crush."

Well, almost everybody. Someone forgot to tell parking services that additional trams needed to circle the campus. Trams were especially needed in Lot 59.

Now, if you are waiting for a tram, take Tolstoy's "War and Peace" with you to pass the time. The unlucky ones will finish the book before the next tram arrives.

We understand that the student population will diminish as the weeks go on and students begin to blow off classes. But this first week is rather different from any other time during the semester.

Wednesday's freak thunderstorm and the unbearably humid weather only have forced more students, faculty, staff and visitors to utilize the trams in lieu of walking from the stadium to the MU.

And who can blame them. However, the trams seem non-existent. One hundred twenty people waited behind Hayden Library for tram service only to find out that two (count 'em two) trams

were available for the entire campus. If the problem is a shortage of tram drivers, ASU should have hired more before the semester began. Arizona's unemployment rate is not the best in the nation.

If the problem is a shortage of trams, why aren't the old and new ones fixed and ready for action?

Then there are reports that some tram drivers are forcing more than four or five people per seat on the tram. This is undoubtedly dangerous and uncalled for.

Countering the lack of trams with endangering people's lives is a foolish attempt at preventing a problem. One must wonder what type of liability ASU would assume if a student were hurt exiting off the tram.

Complaints about this problem should be directed to parking services. That is the only way for them to fully understand the importance of this service.

Maybe hindsight from this semester's problem will give good insight to parking services in the spring.

Well, let's keep our fingers crossed.



Roommates: catastrophic events mar college life

I was recently reminded of how catastrophic it can be sharing an apartment with another person.

This week, a former roommate of mine popped in from California and gave me a horrid update of her life on the West Coast. Over coffee she told me her roommate blues. Somehow, while trying to get her life in order, she wound up living with a transsexual.

So I listened to her ramble on about how she met this nice man, who ironically enough, had undergone a sex change operation. I found out how interesting it was for her to live with a woman who had to shave her face. I guess the lady still had difficulty with the hormone injections, on top of some psychological problems that, well, don't need to be mentioned.

Anyway, all this talk about fighting over nylons and Lady Schick razors (I imagine her roommate bought the regular kind too) made me realize just how bright and cheery my first roommate situation was.

When I arrived at Camp ASU two years ago, I was fortunate enough to live in Cholla Apartments, sharing (and I mean that in all sense of the word) an attractive two bedroom flat with two petrified freshmen and a "sophisticated" sophomore, who, like me, had no idea what they were getting themselves into.

The sophomore, who I will call Milton, was a full-fledged Mod. I'm talking ankle bracelets and Marshall Field smoking jackets.

The other two — a California Valley boy from Minnesota, who could easily be called Chip, and an Evel Knievel-type dirt biker who had a fetish for Twinkies and Ho-Ho's — occupied the other bedroom.

So, there I was with Milt in a dinner jacket, Chip guzzling Corona beer (probably for the first time) and Evel chowing down on Hostess cupcakes.

Greg Krzos
Asst. Arts Editor



Milton was a joy getting to know. A regular fondue connoisseur, he had a flare for piling up his clothes to the exact centimeter so the big toe on my right foot would always catch onto his dirty underwear, dragging it across the apartment to another undecorated corner.

Milt would smoke cloves, that left a sharp, biting stench of fried puppy chow all over the apartment. He made me smoke the cigarette once and it was like smoking bark. But hey, you gotta be trendy, right?

Milt's sophistication didn't help him in the common sense department. After three months, everything he did became a gross annoyance. Oh, just little things like leaving a half-eaten bowl of Grape Nuts in the sink for three weeks and splattering mousse all over the vanity mirror.

Evel Knievel was somewhat more civilized. When he wasn't out dirt racing, he was home. And he was home and home and home. He became a permanent fixture. I'm sure if I looked, he'd still be sitting there watching my TV, scarfing down Scooter Pies in his pathetic state.

Evel wasn't a bad person, he just wasn't very social, and when you come home from school and work (a word these three people could not understand) to find the image of an 80-year-old grandmother laughing hysterically at Banana Splits re-runs, you know it's time for some privacy.

I went crazy trying to live with these guys. It's painful to

know there are mothers out there who never taught their kids what Formula 409 and soap meant. Better yet, I imagine these same mothers are out celebrating right now because they don't have to clean up after their sloppy sons (mine included).

Nevertheless, when you live with someone, you quickly learn what's yours soon becomes theirs.

This is especially true when dealing with food. I can't remember how many times I thought a magician lived with me. Every time I opened that refrigerator door, the edibles seemed to disappear.

I can't remember how many times I asked Milton if he ate my food. He'd always look at me, in his dinner jacket and cloves in hand, and dribbled, "Oh sorry, I'll make some fondue next week!" I found it quite hard to really believe someone who smokes fried puppy chow.

Or the classic line from Chip after he ate three pepperoni pizzas, a loaf of bread and a jar of peanut butter in one week: "Hey, that's cool, I'll buy ya a Corona, Dude!"

One incident I'll never forget was during the second semester when I unfortunately agreed to share rooms with Chip.

Three weeks later, Chip strolled into the bedroom at 5 a.m. with his drunk girlfriend. At first I thought she was just going to tuck him in, I mean couples can get real cute. That night, they got too cute.

As I lay there, I began hearing these strange noises coming from the other bed. Before I knew what was happening, Chip was showing "Dip" what he learned skimming through the pages of "The Joy of Sex."

I tried ignoring them, but it was no use. For two long minutes it became very embarrassing. What's a nice, sharing roommate supposed to do?

Write about it.



EDITORIAL BOARD

Unsigned editorials reflect the views of the editorial board. Individual members of the board write editorials and the board decides on their merit. The editorials do not reflect the opinion of the State Press staff as a whole. Board members include:

- | | |
|-------------------------------------|---|
| Tom Blodgett EDITOR | Andrea Han MANAGING EDITOR |
| Patrick J. Kucera OPINION EDITOR | Amy Frischknecht ASST. MANAGING EDITOR |

STATE PRESS

TOM BLODGETT
Editor
ANDREA HAN
Managing Editor

- | | |
|------------------------|-------------------|
| City Editor | KARI BLAND |
| Asst. City Editor | VICKIE CHACHERE |
| News Editor | TRACY SCOTT |
| Opinion Editor | PATRICK J. KUCERA |
| Asst. Managing Editor | AMY FRISCHKNECHT |
| Photo Editor | RICK WILEY |
| Sports Editor | BOB HEILER |
| Asst. Sports Editor | CAROL BOOS |
| Copy Chief | JUDIE GAILLARD |
| Arts Editor | KHALI CRAWFORD |
| Asst. Arts Editor | GREGORY R. KRZOS |
| Analysis Editor | ED SCHUBERT |
| Sports Analysis Editor | JAY TAYLOR |

- COPY EDITORS: Scott Luck, Carolyn Nelson, Bob Wilson.
STAFF ARTISTS: Jon Basalone, Michael Ritter.
EDITORIAL ASSISTANT: Robbie Matloff.
INTERNS: Mary Mickle
ADVERTISING REPRESENTATIVES: Danielle Carbone, Tod Christensen, Amy Fellner, Jennifer Hughes, Tom Hutchinson, Mark Peterson, Craig Wecster, Julie Weiss, Tracy Witt.
PRODUCTION: Michael Booth, Mark McKinney, Marisa Ogg, Kelly Pearce.

REPORTERS: Michael Burgess, Tina Daunt, Kerry Fehr, Dave Hodges, Darrin Hostetter, Robie Kakonge, Kim Mattingly, Lauren Millette, David Rook, Michael Rowell, J.B. Sinnott.

PHOTOGRAPHERS: Kevin J. Larkin, Andy Mrozinski, Michael Scully.

SPORTS REPORTERS: Steve Brennan, Annette De La Cruz, Marc Kelly, Dean Obenauer.

The State Press is published Monday through Friday during the academic year, except holidays and exam periods, at Matthews Center, Room 15, Arizona State University, Tempe, AZ 85287. Newsroom: 965-2292. Advertising & Production: 965-7572.

The State Press is the only newspaper exclusively published for and circulated on the ASU campus. The news and views published in this newspaper are not necessarily those of the ASU administration, faculty, staff or student body.

Freshmen

Task force examines University's friendliness

By ED SCHUBERT
State Press

This is a difficult time of year for most of us. While the start of an academic year always is exciting, it brings with it a measure of uncertainty. We have not quite settled into the reassuring habit of routine; there are a lot of changes to attend to, a lot of juggling to be done. To the freshman entering ASU for the first time, the experience can be overwhelming. He or she faces for the first time the University's sense of immensity (sixth largest in the nation), feelings of anonymity amid the 40,000 other human beings coursing through the malls and hallways. Often they are away from home for the first time and are feeling the first pangs of homesickness as they adjust to the subtropical heat.

And there are the lines, the interminable lines. And at the end of the line, the answer to the question: Is a vitally needed class open or not? Has a Pell Grant been approved or not?

Leonard Gordon, chairman of the sociology department, feels students should not be given a too-rosy picture of what to expect during the first year of college.

"Too often students are told 'Everything is going to be fine,'" Gordon said. "But sometimes they get bumped from classes they feel they absolutely have to have, or they have a professor who's having a bad year.

"When I advise students, I tell them, 'You're going to be lost for awhile. Your going to be frustrated for awhile. Expect it.

"But if you stick with it, work at your courses and try not to get behind, you'll be amazed at how well it will go."

And there is an important payoff. Gordon said ASU ranks about equal with UCLA in terms of the quality of instruction offered.

And that's an important point to make. ASU has been the victim of much superficial journalism in the past, which emphasizes the University's pleasant campus and sun-tanned students.

"Our sunny weather has given us a bad reputation as a 'party school,'" Gordon said — an image as pervasive as it is misleading.

The logic of this stereotype seems to be: ASU has a beautiful campus. ASU students dress casually to enjoy the warm weather. Therefore, ASU cannot be taking academics too seriously.

It is the entering freshman who is most likely to be cut by the jagged teeth of this non-sequitur. ASU is not an "easy" place to go to school, and a "party animal" social life is not compatible with academic success — and that is a painful lesson to have to learn from experience. Those who would shirk responsibility, rationalizing that "ASU is just a big party school," are likely to drown in their own beer.

But granting that certain stresses are inherent in being a freshman at a major university, are there some particulars in the freshman experience at ASU that are needlessly harsh?

ASU President J. Russell Nelson, in his annual address to the faculty last January, said the University needs to address that question:

"I think we need to examine the freshman experience. Are



we a friendly experience? I have a hunch... we may err to the side of being an unfriendly experience."

Nelson's "hunch" came as a result of a series of breakfast and luncheon meetings with students. (About once a month, Nelson meets with students who wish to talk to him directly. The meetings are announced in the *State Press*, and the spaces are filled on a first-come, first-serve basis.)

In the course of talking to students, Nelson noticed that while they expressed generally positive attitudes toward the University, there were nonetheless undercurrents of concern about not being able to get classes they needed, uncertainty about advisement and other University services, class sizes being too large, etc.

The result was the formation of a task force on the freshman experience, composed of 17 professors, administrators, students and one resident assistant. On April 25 Nelson charged the task force to determine:

"Are we friendly to freshmen? Or, are we not friendly to freshmen? What kinds of services do we offer which are helpful to freshmen, and what kinds of services are not offered but should be considered? What is the institutional attitude toward first-year students?"

The study is designed to be comprehensive or "institutional in scope." Among other things, the task force will look at the

experience of minority students, recognizing that they often have to make cultural adjustments that others don't. It will try to look at ASU as it appears to the handicapped student. The attitudes and impressions of freshmen will be studied by the sociology department's survey research lab, which will interview students. The task force chair, William Davey, has just completed a tour of universities in North America that are reputed to have exceptional freshmen programs.

The task force will make its recommendations during the current academic year, leaving time for its proposals to be evaluated and implemented the following year. It is a process ASU students should survey with interest.

Task forces tend to be rather vague, distant things to most students. They make their reports, and their proposals are implemented without students really noticing the causal impact that such proposals have on their lives.

But the task force on the freshman experience should be an exception. It is about the quality of life at ASU, and its impact will affect more than just freshmen. Nelson has said the task force "should not be constrained by existing practices or procedures," which suggests that some major innovations may be in the offering. Four members of the task force are students — John Fees, Kathleen Justice, Vincent Micone and Daryl Kinney — and freshmen should not be shy about communicating an observation or concern.

First year of college just one more of life's transitions

By KARI BLAND
State Press

They struggle to class after a late night on the town, and for most of them, it is the first time they do their own laundry.

College freshmen trudge through their first year adjusting to new-found freedoms and greater responsibilities. ASU psychologist Andy Hogg describes a student's freshman year as "one big transition process."

"Transitions are inherently stressful," he said. "The college experience is full of developmental transitions, and every one of those transitions are tough."

But Hogg said the "freshman experience" is a part of life for everyone.

"We're all freshman at one time or another," he said. "And part of being a freshman is trying to figure out how to conveniently ask where the bathrooms are on the dorm floor."

Hogg said the most common freshman problem is a "sort of identity crisis."

"No one knows you, so there's no past to haunt you," he said. "You don't belong to anyone. There's no identity so the freshman needs to develop a new one, and that's a scary process. It's also an exciting process."

Some freshman try to hold on to their old identity. One of Hogg's freshman clients

plastered the wall of her dorm room with posters of Montana to preserve her old identity.

"This kind of thing gives you a sense of support, and gradually the freshman will let go of that and reach out for something new," Hogg said.

The official term for this phenomenon is "separation/individuation," or the process of letting go of one identity and grasping out for another.

"During the freshman year, students go through this process of letting go of an identity created by their families and gaining one that is their own," Hogg said.

"By living in a dorm, students learn that the bathroom is never free, and no one can cook any better than you, but it also provides the opportunity to cooperate, to collaborate, some independence and some belonging.

"Your roommate is usually your first friend or your first enemy. Freshmen usually begin belonging by reaching out to other students on their dorm floor, and then to the entire dorm."

Hogg said students usually get involved in fraternities and sororities during their freshman year.

"The Greek system is a massive social network that gives a degree of support that almost nothing else can equal," he said.

"We all need to belong to something or someone."

Hogg said students who are "too independent" have the most problems adjusting to college life.

"Some kids sit home on Friday nights studying chemistry, and that's sad," he said. "This type of autonomy can lead to loneliness.

"It may be more difficult to be alone with 40,000 people than it is to be alone on a mountain top."

Hogg said loneliness often results in "suicidal ideation," or thinking about committing suicide.

"Thinking about committing suicide is really pretty common," he said. "Students think about suicide when they feel a deep sense of loss — loss of identity, loss of friendship, loss of lover, loss due to death — and feel like the situation is not going to get better.

"Helplessness and hopelessness equals depression."

Hogg said suicide is the third-leading cause of death among 15- to 24-year-olds.

The freshman year also is a time for experiments — with drugs, alcohol, friendships and love relationships.

Hogg said freshmen often experiment heavily with alcohol because of the emphasis on "partying."

They also experiment with a series of short-term relationships.

"It is not a time to fall in love," he said. "It's a time to flirt and ask 'What kind of sexual-value system do I have?'"

Hogg feels freshmen also are forced to make academic decisions that they are not prepared to make, such as choosing a major.

"Too many freshmen think you should have these decisions squared away when they begin," he said. "How are they supposed to know what they want to be?"

Hogg said students that transfer to the University from junior colleges have several advantages over entering freshmen, but there also are drawbacks.

"The advantage is that they already have academic time management down and are maturer, but the disadvantage is that they lose institutional support, such as dorm life," he said.

Hogg said transfer students can have difficulty adjusting because they do not receive "all the hoopla and welcoming."

But any new experience — beginning college, a new job, getting married, having children — entails a period of adjustment.

Most freshmen eventually learn that you can't wash your red sweatshirt with your white underwear.

ASASU bill may abolish women's services program

By KERRY FEHR
State Press

An Associated Students Senate bill that could eliminate ASASU's women's services program has angered the chairwoman of the Women's Studies Student Association.

Denise Heap said ASASU is not representing women's concerns, such as sexual harassment in the classroom and rapes on campus.

"We should at least be considered as important as homecoming and football," she said.

Senate Bill 4, if passed, would eliminate women's services, campus services and the film series, in addition to revising objectives of other ASASU departments.

The bill was introduced Wednesday by Campus Affairs Vice President Leeanne Seall and Activities Vice President

Christine Roth.

Seall said she wants to eliminate the women's services department because there has been poor attendance at the program's activities.

But she said some activities' attendance records are missing.

"It was not doing as well as other departments," she said. Heap said she learned that women's services probably would be eliminated when she applied for the director's position.

She was told ASASU would not be hiring a director. Heap said ASASU representatives told her the program was being eliminated because of a lack of student support, and because many of its services are being provided by other organizations on campus.

But Heap said there is no umbrella organization to serve the needs of all women on campus.

"ASASU is neglecting its responsibility," she said. "We pay student fees, and we should be represented."

Heap said the program may need to be restructured but not eliminated.

She said if the program was not supported last year, it was because ASASU failed find out what women students wanted from the program.

She also said ASASU did not adequately publicize the program.

Seall said too much money is spent on advertising for ASASU events and could not justify spending more on publicity for a department that did not have much student support.

Downpour delays buses, leaves students high and dry

By LAUREN MILLETTE
State Press

Wednesday's rains not only left Tempe flooded and a few degrees cooler, but dampened the spirits of 30 students, stranded at the University and College avenues bus stop.

Freshman psychology major Mila Makal was almost three hours late to work because Bus 44 was late.

"I have been standing here for almost two hours waiting for the bus to take me to work," he said. "I am so late now that I might as well not even go because there is a good chance I'll be fired."

Makal looked toward Fifth Street to see if

the bus was coming, then down at his watch and shook his head.

Junior psychology major Donna Meigs said she expected to be an hour late to work because of the floods.

"By the time I get home, change my clothes for work and am back on the bus to work, I will be an hour late," she said.

Senior biochemistry major Liz Reeves said being stranded in the rain, waiting for a bus is not unusual.

"I hate the bus system," she said. "Last year the same thing happened a couple of times."

Last semester, she said she waited an hour for the bus and when it finally came,

the driver drove past the group of students, who hollered and tried to flag him down.

Tempe police officer Steve Crooks said 15 car accidents were reported in Tempe during the two-hour downpour.

"It is not unusual to have that many car accidents during the first heavy rains of the season," he said. "Usually there are at least twice as many accidents that are not reported to us as the number that are."

The streets are extremely slick during the first rains because chemicals build up on the road, mix with water, and the road ends up "slippery as ice," Crooks said.

Carbon monoxide, hydrocarbons and sulfuric oxide build up on the pavement

during the dry season, he said.

In addition to the chemicals, oil and transmission fluid spewed from automobiles also builds up and floats on top of the water left in the streets after floods, Crooks said.

The following intersections were closed Wednesday night as a result of flooding and accidents:

- Interstate Highway 10 and Southern Avenue;
- Mill Avenue and the Salt River bottom;
- Rural Road and Broadway Road;
- Southern Avenue and 14th Street;
- and Broadway Road and the Hohokam Freeway.

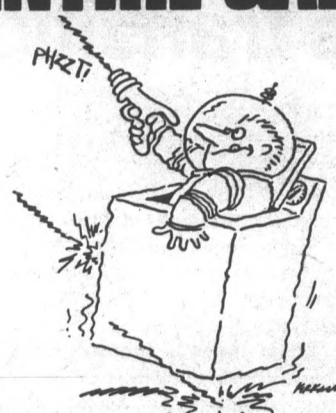
 **arc THRIFT SHOPPE**
Association Retarded Citizens
ALL CLOTHING 30% OFF
Through 9-3-86.

Students, we have everything to furnish your apt. or dorm from toasters to beds.

LOW, LOW, LOW PRICES

In Danelle Plaza
Mill & Southern
Tempe, AZ
967-0303

WIPE OUT DIRT, GRIME AND AN ENTIRE GALAXY.



Anytime. 24 hours a day. While you wash your clothes, blast asteroids or kill aliens on our video games. Washers are 50¢ and dryers only a dime. Cheapest laundry on Earth.



Across from ASU on Lemon and Rural behind Circle K.

IF YOUR BOOKSTORE DOESN'T CARRY SHARP CALCULATORS, CALL AND COMPLAIN.

Sharp calculators are designed to be first in their class.

Our EL-533 financial calculator for example, has twenty memories compared to just five for the competition. So it lets you do complex calculations like discounted cash flow analysis.

For those who prefer lab coats to pinstripes, there's our EL-506A scientific calculator. With its 10-digit display, direct formula entry and 93 scientific functions, it makes performing even the most difficult calculations easy as pi. And because it's sleek, slim and stylish, you'll never look out of step as science marches on.


The fact is, Sharp makes all kinds of ingenious little calculators that can help get you through college. And help you pay for it.

Because unlike college... they're surprisingly affordable.

Calculators, Audio, AV Equipment, Banking Systems, Broadcast Cameras, Cash Registers, Computers and Peripherals, Copiers, Electronic Components, Electronic Typewriters, Facsimile, Medical Products, Microwave Ovens, Televisions, Vacuum Cleaners, Video Recorders. © 1986 Sharp Electronics Corporation, Sharp Plaza, Mahwah, New Jersey 07430.

SHARP

FROM SHARP MINDS COME SHARP PRODUCTS™



© Joe Munroe

ASU West course strives to develop musical 6th sense

By DARRIN HOSTETLER
State Press

Eurythmics are coming to ASU West, but to experience them students need to wait in line for drop/add slips instead of tickets.

Courses will be offered this fall on the eurythmic method of musical education, developed by Emile Jaques-Dalcroze (1865-1950), at the ASU West campus, 2636 W. Montebello in Phoenix.

The eurythmic method, from which a popular British rock duo has taken its name, has been used to teach rhythm and self-expression for 75 years.

Dalcroze, while teaching music at the Geneva Conservatory at the turn of the century, found young musicians needed a greater understanding of music than just placing their fingers on a keyboard.

He discovered the most appealing

element of music to children is rhythm, and the natural response to rhythm is movement.

Dalcroze used the Greek word eurythmics (good rhythm) to describe his technique, which uses the human body as an instrument to reflect and interpret music.

But the method is not just for children. Instructor Elayne Metz said the course will consist entirely of adults.

"Anyone of any age can learn, from beginners to the most advanced music students," she said.

The method is based on the idea that movement is the bridge between hearing and feeling music.

The purpose is to gain a "sixth sense" for rhythm, often present in professional musicians, by developing their muscular responses to music, she said.

ADVERTISERS!

REACH 45,000 READERS
DAILY
IN THE STATE PRESS!



**WHO
SAYS
MONEY
CAN'T
BUY
YOU
LOVE?**

**\$1.00
CAN!**

That's right! For one thin, green dollar bill, you can buy 15 words in the Classified "PERSONAL" section. You can tell someone hello, how are you, or remember someone's birthday ... If that doesn't buy love ... I don't know what will!

THIS OFFER IS GOOD THROUGH SEPTEMBER.

Stop by the STATE PRESS CLASSIFIED COUNTER, Matthews Center Basement, daily 8 a.m.-5 p.m. or the CLASSIFIED BOOTH at the MU 11 a.m.-1 p.m. daily.

STATE PRESS

VISA • MC • CASH • CHECK

End the week off right.



HAPPY HOUR

2pm-7pm • 35¢ Munchies
• 1.75 Teas • 1.75 Monster Beers

S.O.B. HAPPY HOUR

7pm-9pm • 1.00 Coronas • 1.00 Teas

KEEPSAKES

9pm-Close • 1.95 keepsake 1/2 litre Teas
• 1.75 keepsake Mugs
• plus our keepsake 1/2 litre specials

AFTER HOURS

1am-3am • for those 18 & over 3.75 admission

DEVIL HOUSE

3 ASU faculty members seek state House seats

By MICHAEL ROWELL
State Press

Three ASU faculty members are running for seats in the Arizona House of Representatives.

The candidates are political science professors Heinz Hink and Bruce Mason and ASU West Social Work Program Coordinator Clay Dix.

The primary for Arizona legislators, gubernatorial candidates and congressional hopefuls is Sept. 9.



Heinz R. Hink

Mason, a Democrat, is unopposed in the District 27 primary, and will run against two Republican candidates, who will be chosen during the primary, in the November election.

District 27 covers the majority of Tempe, including ASU.

Mason said he feels he has a good chance of winning because he has support in Tempe from both Democrats and Republicans.

Mason said he plans to support ASU in any "reasonable, rational" way he can.

Mason, 62, has been a professor at ASU since 1960.

"I've put 26 years of my life into ASU, so I am obviously prejudiced for ASU," he said.

Mason said a persistent complaint over the last 20 years is that Tempe legislators have not supported the University as much as they could, and lawmakers did not have enough power in the Legislature to make changes.

Mason said he also will support legislation to give a vote to the student member of the Arizona Board of Regents.

Student regents are "very nice, bright people" who do not get the kind of acceptance and credibility they deserve because they've been

denied the power of a vote, he said.

Hink, a one-term Republican incumbent in District 28, faces no opposition in the primary or the general election.

District 28 covers areas east of Scottsdale Road, parts of Paradise Valley, Carefree and Fountain Hills.

An ASU professor since 1958, Hink said running for public office is "a natural progression" in the career of a political science professor.



Clay Dix

Hink said students benefit tremendously from a professor who has seen "the system" in operation.

Hink, 59, said he is the first ASU professor to ever serve in the Legislature.

Dix, a Democrat from South Phoenix's District 23, said he feels the race for the district seat is even, although all of his competition comes from his own party.

Dix is up against four other Democrats for one seat in the Democratic primary.

Since District 23 is "about 75 percent Democratic," Dix said the Republican party has already conceded a Democratic win there, and the two Democratic nominees will "probably" win in November.

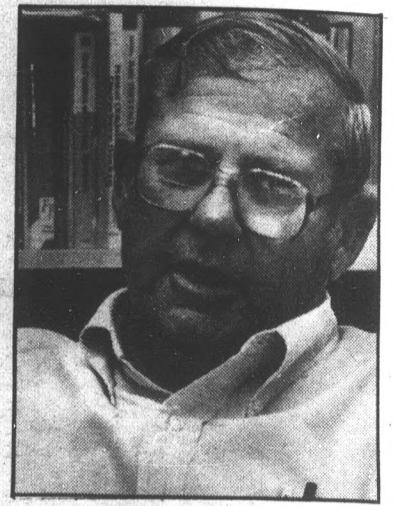
Dix, 39, has been at ASU for seven years.

Although his campaign is "going quite well," Dix said July and August have been "very difficult" for campaigning.

In the absence of community forums and mass meeting opportunities, Dix said his campaign has relied on catching voters either at home or out and about, in addition to mailings and signs.

Because District 23 is "at the heart of the action in terms of economic development," Dix said the challenge for leadership is to make the people as attractive as the land and location.

Although he said he has an appreciation for economic development and what he can do for South Phoenix, Dix said his experience in social work has given him a "balanced perspective."



Bruce Mason

Welcome Students
We offer
HIGH STYLE
&
low prices

Spacious New
Pelican Bay Apts.

Move-in Allowance

ASK ABOUT OUR
1-BR SPECIALS

- 1 & 2 Bedrooms
- Lush Landscaping, Ponds & Beautiful Courtyard
- Racquetball Courts, Weight Room & Sauna
- Wet Bar, Washer/Dryer Hook-up & Walk-in Pantry
- Enclosed Patios/Balconies, Exterior Storage

**FROM \$425 (1BR)
\$480 (2BR)**

Which includes a \$20 discount for a 12-month lease and also the Bay's timely rental payment plan and move-in allowance.

Call 969-3380
2121 W. Main Street, Mesa

The men of
SIGMA PHI EPSILON
cordially invite you to

GOLDEN HEART RUSH

SEPTEMBER 2, 3 AND 4, 1986

First Party: An elegant evening at the Sig Ep house from 7-10 p.m. Semi-formal attire.

Come be a part of the BEST LITTLE SISTER program at the #1 fraternity on campus.

College Tours and Ski America
present
SKI VAIL and ASPEN

Over Thanksgiving Weekend ski two days at Aspen and two days at Vail in the same weekend!

TRIP INCLUDES

- Round trip transportation from ASU
- Lodging (4 to a room)
- Daily lift tickets (2 days Vail, 2 Aspen)
- All shuttles

THE BEST TRIP OF THE YEAR!
THE ULTIMATE SKI TRIP!

Send your \$50 deposit accom., with your name, address, phone no. to:

SKI AMERICA
648 N. Linden Circle
Mesa, AZ 85203

For Further Info
Call 890-2616

FREE STEREO with your FURNITURE PURCHASE

FREE portable AM/FM stereo with cassette with purchase of living room or bedroom sets

(while supplies last)

FREE personal headphone stereo with purchase of

5-pc. brass & glass dinette \$169

4-drawer chest \$299⁹⁵

Dresser, mirror, chest, night stand, headboard and a free stereo \$199

Sofa, love seat, coffee table, two end tables, lamp and free stereo \$279

BED SALE

Twin Set \$69
Full Set \$79
Queen Set \$119

FURNITURE PLUS

2077 E. University Tempe • 966-6252

COUPON

SERVING ASU SINCE 1972

Papa Jay's Pizza

FAST FREE DELIVERY

*Limited Delivery Area

HOURS: Sun.-Thurs. 4:00-Midnight
Friday 4:00-1:00 a.m.
Saturday Noon-1:00 a.m.

804 S. Ash (2 blks. W. of Mill on Univ.) **966-4292 or 966-1003**
Right Next to ASU



2 FREE 2
2 litres of Pepsi
with purchase of **LARGE Sun Devil Combo**
FREE 2
Expires 9-15-86

SUN DEVIL COMBOS
(includes choice of up to 4 toppings)
Large **\$7.50**
Medium **\$6.50**
Small **\$5.50**
Expires 9-15-86

2 LARGE CHEESE PIZZAS
for only **\$7.75***
plus tax
(with this coupon)
*On Regular, Not Sicilian Pizza
Expires 9-15-86

BEING A STUDENT CAN BE STRESSFUL

Treat yourself to soothing and relaxing New Age records and tapes at the

TRANQUILITY ZONE

414 S. Mill Ave. #114C
Tempe • 829-0441

Carpet House

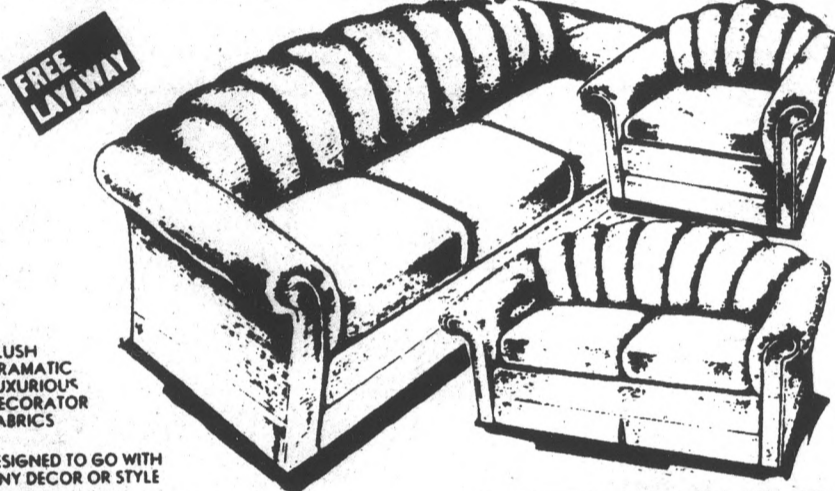
DORMS, APTS., VANS
ALL SIZES
USED ROOM SIZES
10' & UP
NEW CARPET TOO!
1516 E. Van Buren
Phoenix

PUBLIC NOTICE OPEN TO THE PUBLIC

CONDUCTED BY HOTEL-MOTEL FURNITURE LIQUIDATORS

36 HOUR FURNITURE SALE

BRAND NEW IN ORIGINAL SEALED FACTORY CONTAINERS SURPLUS FROM RECENT SALE AT HOLIDAY INNS HOWARD JOHNSONS, RAMADA & SHERATON INNS IN ARIZONA, CALIFORNIA, TEXAS, NEW MEXICO, ETC.



FREE LAYAWAY

PLUSH DRAMATIC LUXURIOUS DECORATOR FABRICS

DESIGNED TO GO WITH ANY DECOR OR STYLE

INCLUDES ALL 3 PIECES • SOFA • LOVESEAT • CHAIR COMPLETE

BRAND NEW **\$268**

MANY OTHER 3-PC. LIVING ROOM SUITES, FAMILY ROOM GROUPS, MODERN AND TRADITIONAL SUITES

\$197

Luxurious fabrics — Arrange in many different ways — Sofa — Love Seat — Ottoman Club chair Also available as shown in 10 pc. sets. Dramatic decorator fabrics.

CONVERSATIONAL SECTIONAL PIT GROUP

FREE LAYAWAY



Be here early for the best selection.

You Get **5 Pieces \$238** for only...

Includes two corner units, two armless chairs & ottoman

ORIG. VALUES TO \$1000.00 REDUCED FOR TOTAL SELLOUT | MANY OTHER STYLES, PATTERNS AND FABRICS TO CHOOSE FROM.

FREE LAYAWAY UNTIL INCOME TAX REFUND!

FAMOUS POSTURE SERIES

| | |
|--|---|
| <p>WED FRAMES</p> <p>TWIN \$14.95 REG. \$19.95 FULL \$19.95 REG. \$29.95 QUEEN \$24.95 REG. \$39.95 KING \$29.95 REG. \$49.95</p> | <p>CONTRACT FIRM 5-YR LTD WARRANTY</p> <p>\$29 FULL \$29 ea. pc. QUEEN \$49 ea. pc. TWIN EA PC KING \$49 ea. pc.</p> |
| <p>IMPERIAL EXTRA FIRM 10-YEAR LTD WARRANTY</p> <p>\$54 TWIN \$54 ea. pc., retail value \$240.95 FULL \$80 ea. pc., retail value \$390.95 QUEEN \$90 ea. pc., retail value \$390.95 KING \$70 ea. pc., retail value \$400.95</p> | <p>POSTURE-CLASSIC—FIRM 5-YR LTD WARRANTY</p> <p>\$39 TWIN \$39 ea. pc. FULL \$49 ea. pc. QUEEN \$49 ea. pc. KING \$59 ea. pc.</p> |
| <p>MEDICO-PEDIC—SUPER FIRM 15-YEAR LTD WARRANTY</p> <p>\$59 TWIN \$59 ea. pc., retail value \$270.95 FULL \$70 ea. pc., retail value \$340.95 QUEEN \$90 ea. pc., retail value \$470.95 KING \$80 ea. pc., retail value \$500.95</p> | <p>POSTURE-PROFILE—LUXURY FIRM 5-YR LTD WARRANTY</p> <p>\$49 TWIN \$49 ea. pc., retail value \$100.95 FULL \$50 ea. pc., retail value \$240.95 QUEEN \$70 ea. pc., retail value \$290.95 KING \$80 ea. pc., retail value \$300.95</p> |
| <p>POSTURAMIC ANNIVERSARY EDITION 20-YEAR LTD WARRANTY</p> <p>\$69 TWIN \$69 ea. pc., retail value \$290.95 FULL \$80 ea. pc., retail value \$390.95 QUEEN \$100 ea. pc., retail value \$530.95 KING \$90 ea. pc., retail value \$600.95</p> | |

ONLY MINUTES AWAY FROM ANYWHERE IN THE VALLEY VIA SUPERSTITION FRWY. EXIT DOBSON RD.

NORTH AMERICAN WAREHOUSE

MESA LOCATION

PH 844 0288

HOURS: FRI 10-8 SAT 10-6 SUN NOON-6 MON 10-8

TERMS: CASH • CHECK • MASTERCARD • VISA • AE

EASY DIRECTIONS: From Superstition Frwy. exit Dobson. Go North to Broadway. Come to rear building of Broadway Center between K-Mart & Price Club.

All Saints Catholic Newman Center

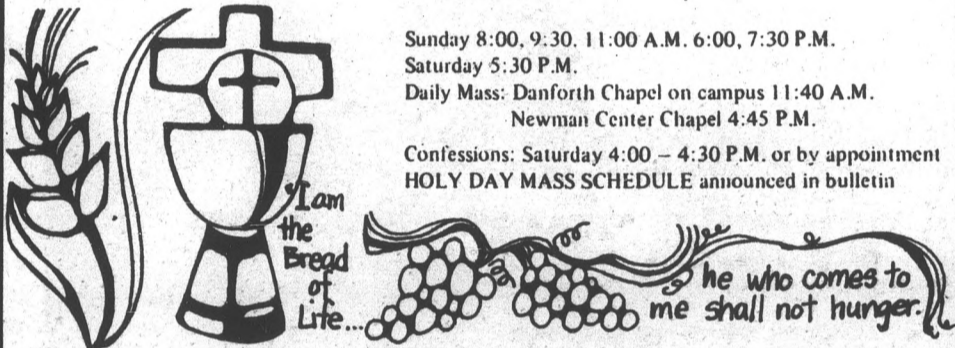
230 East University
Tempe, Arizona 85281
967-7823

MASS SCHEDULE

Sunday 8:00, 9:30, 11:00 A.M. 6:00, 7:30 P.M.
Saturday 5:30 P.M.

Daily Mass: Danforth Chapel on campus 11:40 A.M.
Newman Center Chapel 4:45 P.M.

Confessions: Saturday 4:00 — 4:30 P.M. or by appointment
HOLY DAY MASS SCHEDULE announced in bulletin



BLUEGRASS MASS ON THE GRASS

Greet old friends *** Meet new friends
Friday, September 5, at 7:00 p.m.
Social, with more music, will follow.
Everyone welcome!!!

FIRST STUDENT RETREAT - for the Fall Semester will be held in the COOL pines of Prescott on October 3rd - 5th, 1986.....EVERYONE WELCOME !!!!!

REGISTRATION IN THE NEWMAN CENTER OFFICE

The Newman Center Community is a diverse population made up of students, faculty and staff, young adults, married couples and families. To meet their needs the NEWMAN CENTER offers:

SPIRITUAL ACTIVITIES

- ... Celebration of the Liturgy
- ... Retreats
- ... Days of Recollection
- ... Charismatic Prayer Group
- ... Evening Prayer
- ... Counseling

COMMUNITY OUTREACH

- ... Ministry to Children
- ... Ministry to the Elderly
- ... Ministry to Farmworkers
- ... Sanctuary Committee
- ... St. Vincent de Paul
- ... Hunger Projects

EDUCATIONAL PROGRAMS

- ... Bible Studies
- ... Convert Instruction (RCIA)
- ... Baptismal Preparation
- ... First Communion Classes
- ... Reconciliation Preparation
- ... Confirmation Classes
- ... Marriage Preparation
- ... Preschool/Family Fun Days
- ... Teen Program (NCYO)
- ... Social Justice Issues.

SOCIAL EVENTS

- ... Concerts
- ... Dances
- ... Student Council
- ... Hikes
- ... Special liturgy & Dinners
- ... University Reception

SUNRISE CAFE

Open 7:00 am to 1:30 pm, Mon.-Fri. during classes.

LIBRARY & CLASSROOMS

Located upstairs for students who want a quiet place to study.

BOOKRACK

Located in the lounge, offers a selection of books for sale covering such topics as theology, scripture, spirituality and many others.

SMALL CHAPEL

For private prayer, the Blessed Sacrament Chapel is open from 8:00 am to 10:00 pm on weekdays.

MINISTRIES

Every member of the community is encouraged to be involved in the Liturgy of the Newman Center. You may choose to be a LECTOR, EUCHARISTIC MINISTER, MUSIC MINISTER, MASS COORDINATOR or USHER. If you are interested, please sign-up at the Church office.



Come, follow me, says the Lord

Center offers info, advice to students

By DAVE HODGES
State Press

The new University Academic Advising Center catered to 600 students when it opened its doors for the first time last week.

Director Sandra Branyon said she believes the center may be an important source of information for all ASU students.

"We're just getting started, but we're trying to make everyone feel as comfortable as possible," she said.

The center, located in Social Sciences Building Room 101, is a campuswide advising, referral and information facility.

The center provides information concerning program standards, general studies and graduation requirements, tutoring, support services, probation, disqualification and retention procedures and general testing.

The department will provide advising manuals and help college advisers with information concerning University requirements and procedures.

At the center, students can receive academic information and counseling not otherwise available in their individual colleges.

But Branyon said the center does not replace the advising systems in the University's 10 colleges.

"We're here to cooperate with the other advisers, not compete with them," she said.

Six undergraduate and three graduate peer advisers are the first contacts for students.

If the peer adviser cannot provide the needed information, the student can make an appointment with one of the three full-time advisers.

BLOOM COUNTY

by Berke Breathed



Ivory Towers

by Michael Ritte



STATE PRESS
CLASSIFIED ADS
REACH 45,000 READERS DAILY



ONE DOLLAR
will buy you a
15-WORD AD
in the
STATE PRESS
PERSONAL
SECTION!

It's a great way to say hello to someone you'd like to meet, or say happy birthday to a close friend, or congratulate someone ...

IT'S A GREAT WAY TO COMMUNICATE!

This offer is good through the month of September.

JUST STOP BY the STATE PRESS Classified Counter in the basement of MATTHEWS CENTER, 8-5 DAILY or the Classified Ad Booth at the MU 11:30-1:00 daily.

VISA • MC • CASH • CHECK

STATE PRESS



THERE'S MORE FUN UNDER OUR HAT.



EL TORO TEQUILA

State
E
F
By KH
State
Inte
one
"Extr
winni
"Ex
violence
woma
positi
sadist
attach
Som
fright
nonet
Alth
comm
many
victim
with s
Far
impre
Hugh
featur
Major
Fav
play i
woma
As I
realis
woma
and fe
Jan
Joe, t
New
clear
At
chisle
as a
ability
attra
The
Creat
to a
night
film
feelin
Aft
crean
that a
has a
Fru
return
girlfr

Extreme

Fawcett turns table on sadistic attacker in sobering film

By KHALI CRAWFORD
State Press

Intense — a vague word perhaps, but the one that comes to mind to describe "Extremities," a film based on the award-winning play by William Mastrosimone.

"Extremities" is a film about random violence and the moral dilemma faced by a woman who finds herself in an unexpected position of power. She manages to entrap a sadistic young man who has viciously attacked her.

Some viewers may find the movie less frightening than the stage play, but it is nonetheless sobering.

Although not touted as a social commentary, the film invariably raises many questions about the rights of the victim and the judicial system's leniency with sex offenders.

Farrah Fawcett has gone beyond her impressive performance as Francine Hughes, an abused wife, in the 1984 NBC feature "The Burning Bed," to play Majorie, another victim.

Fawcett, who starred Off-Broadway in the play in 1983, is compelling in the role of a woman who avenges her would-be attacker.

As Majorie she captures with remarkable realism the emotions and psyche of a woman torn between fear of her attacker and fear that he won't be punished.

James Russo is equally impressive as Joe, the crazed attacker. The young actor's New York up-bringing comes in loud and clear as a husband/father-turned-rapist.

At first, Russo's well-toned body and chisled jaw make him less than believable as a "stereotype" rapist, but his acting ability quickly makes this otherwise attractive man loathsome.

The story itself has quite an unusual twist. Created by Mastrosimone partly in reaction to a girlfriend's and an acquaintance's nightmarish experiences of being raped, the film intends to show a victim's intense feeling for revenge.

After the first attempted attack in an ice cream store parking lot, Majorie discovers that authorities cannot help her unless she has actually been raped.

Frustrated and angry, a paranoid Majorie returns to the home she shares with her girlfriends Terry (Diana Scarwid) and



Farrah Fawcett stars as Majorie, the victim who strikes back.

Patricia (Alfre Woodard).

Because Joe has her wallet, the confident, middle-aged woman is reduced to a skittish, paranoid girl who can't sleep or work. At

When her attacker finally locates her, a grueling hour-and-a-half of tension and violence ensues. It is not, however, simply violent; the screenplay masterfully includes mental torment and perversion.

The torture begins with Joe's almost playful taunting, role playing and assertion of power over Majorie, a woman half his size. When the resourceful Majorie manages to incapacitate her attacker, this movie takes off.

One can argue that this turn of the tables should put Majorie at police headquarters in a flash, but a warped psyche keeps her from

such refuge.

Because Majorie knows Joe will not be punished since there wasn't a rape and there are no witnesses, what ensues is a graphic eye-for-an-eye scene.

Enter the roommates who come home to find Majorie digging a grave and Joe beaten, tied and caged in the fireplace.

Terry is a weak-kneed flirt who just happens to have been raped as a teen. Admittedly hokey, this fact explains her apparent breakdown and ensuing drinking binge. Again on the hokey side is that Patricia just happens to be a social worker experienced in family crisis.

Even so the whole uniqueness of the situation leaves even a professional in a dilemma.

The violence continues until the knife-wielding Majorie gets what she's after — a confession.

Viewers can only applaud Majorie's bravery and Mastrosimone's compassion for the victim. It is true that the victim's rage is more than realized in this film, but one can only speculate as to its authenticity.

How many women could come through a shattering experience and have enough physical or mental faculty so as to single-handedly subdue and punish an armed, 180-pound man?

Not many. Although not an example many other women will follow, perhaps it will inspire future victims to remember they are the victim and to seek punishment for their offenders.

Spotlights

Tidbits from the entertainment file.

Concerts:

•Here they come, **The Monkees**, one of the most popular groups of the '60s will appear in concert at the ASU Activity Center at 8 p.m. Monday, Sept. 15. **The Monkees**, have come back into the limelight for a 20th anniversary tour. This also marks the last reunion of the group, minus Mike Nesmith. Appearing with them are **Herman's Hermit's**, **The Grass Roots** and **Gary Puckett and the Union Gap**. Tickets for \$15, are available at Gammage and Diamonds ticket outlets.

•**R.E.M.** will bring their Pageantry tour to the stage of The Mesa Amphitheatre on Tuesday, Sept. 23 at 7:30 p.m. Opening for the hit group are the **10,000 Maniacs**. Tickets, for \$14.50 in advance and \$15.50 the day of the show, can be purchased at Diamonds ticket offices or at The Mesa Amphitheatre box office, 201 N. Center in Mesa. For more information call 834-2178.

At the Box Office:

•"Three Men in a Cradle", a popular French film, depicts the escapades of three bachelors who find an abandoned baby on their doorstep. It's hilarious and touching. Watch the subtitles! "Three Men in a Cradle" starts an exclusive engagement today at Harkins Los Arcos Mall Cinemas, 1383

N. Scottsdale Rd.

•"Born American," starring Mike Norris, Steve Durham and David Coburn opens today. The movie explores the relationship of three friends who are thrust into some bizarre circumstances while vacationing in Northern Finland.

Plays:

•"Camelot," the hit Broadway musical starring acting legend Richard Harris will run at Gammage Center Wednesday, Sept. 10 through Sunday, Sept. 14. Curtain is 8 nightly, with matinees at 2:30 p.m. on Saturday and Sunday. Tickets are \$30 and \$28 at Gammage and Diamonds ticket outlets.

Dance:

•The Houston Ballet will perform "Sleeping Beauty" in two shows at 8 p.m., Tuesday and Wednesday, Sept. 23-24 at Gammage. Tickets are \$18 and \$16.

•The a Ludwig Dance Co. troupe will perform in the ASU Dance Studio Theater at 8 p.m. Thursday and Friday, Sept. 4-5. Performances of faculty members Beth Lessard and Ann Ludwig, and ASU graduate Tom Thayer is based on the work Lessard and Ludwig have done while on sabbatical leave in Europe and New York. Admission is \$6, \$4 for students, faculty/staff and senior citizens. The dance studio is located in Physical Education Building East.

Music:

•Gammage Center opens its fall season on Friday, Sept. 5 with a concert by the Philharmonia Orchestra of London, conducted by Giuseppe Sinopoli at 8 p.m. Tickets are \$18 and \$16 at Gammage and Diamonds ticket outlets.

•An ASU jazz combo will have a free public concert in the ASU Recital Hall, located on the 5th floor of the Music Building, at 7:30 p.m. Wednesday, Sept. 17.

Art:

•The MU Gallery is storage space to hundreds of innovative paintings and artwork. Linda Levin of Wayland, Mass., and



Born American

Yukako Okudaira of San Jose, Calif., will display their creative artwork in a two-person exhibition in the gallery, Aug. 25-Sept. 19.

Weekend highlights:

•Major Lingo, a popular local reggae band, will perform at Edcels Attic, Fourth Street and Mill Avenue, tonight and tomorrow night at 9.

•INXS, the Australian pop group and the Del Fuegos will take the stage Labor Day at Mesa Amphitheatre, 201 E. Center. For more information call 834-2567.

ASU PUBLIC EVENTS

— now hiring —

for the following student positions: forklift operators, truck loaders and general stagehands.

PICK UP STAGEHAND JOB REFERRAL FORM AT MATTHEWS CENTER.

Interview hours are August 25-27 and Sept. 2-5, 9 am.-1 p.m. and 2 p.m.-6 p.m.

STOCK UP FOR FALL CLASSES NOW

with **15% off** all Drafting, Engineering and Art Supplies*

- Blueprinting
- Xerox Copies
- Large scale reductions and enlargements.
- Open Saturdays 8-12
- Open Evenings



Phoenix & Tempe stores open
M-F 8:00 am - 8:30 pm

Mesa store
M-F 8:00 am - 5:00 pm



COMMERCIAL BLUEPRINT CO., INC.

Phoenix - 4700 North 12th Street 264-4568
Tempe - 114 East 7th Street 967-1400
Mesa - 100 West Hoover, Suite 10 890-8300

*Student I.D. Required
Sale ends September 30, 1986

“Jeanwashed Stone” gives denim



By CARRI MITCHELL
State Press
The beginning of a big trend seems to be new fads that

are here and gone before the beginning of semesters. Along with these fads come the latest fads in the sense of looking vogue. This fall's latest denim: faded, worn and comfortable. Fortunately, the price of new washed jeans is as high as \$60. However, the price of the new washed jeans is coming out of the new which makes washing at home an expensive proposition. The company produces the “A Jeanwashed Stone,” a fabric which can give denim the stone-washed appearance the president of the company said. Marshall Bank said the process on about 15 to 30 minutes and can be used to



WE NOW DELIVER FINE MEXICAN FOOD

11 A.M.-11 P.M.

LIVE ENTERTAINMENT

Monday-Saturday

On Our Outdoor Garden Patio

WEDNESDAY & SUNDAY

After 4 p.m.

BUY ONE GET ONE 1/2 PRICE
Combination Dinners
(Deliveries & To Go Not Included)

HAPPY HOUR

Monday-Sunday

4-8 p.m.

Well Drinks \$1.00 Draft 65¢
\$1 shots every night

1120 E. APACHE, TEMPE

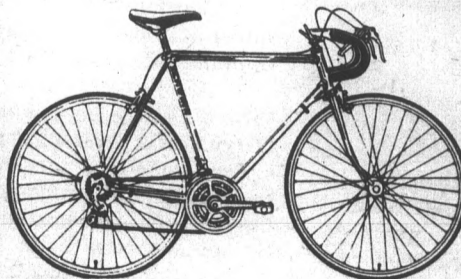
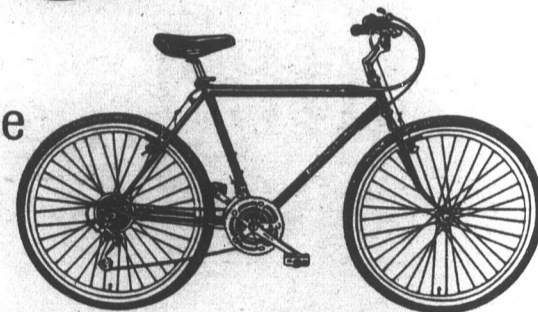
967-1129

Bicycles You Would Be Proud To Be Seen On!



Schwinn
Cruiser Supreme
\$179⁹⁵

Sekai
Mountain Bike
\$189⁹⁵



Schwinn
Ten Speed
\$139⁹⁵

- All Bikes
- Fully Assembled
 - Free Adjustments
 - Full Warranties

Sale Price On ALL Locks & Cable

Landis has Full Range of Cycling & Accessories



ESTABLISHED IN 1912
2180 E. Southern, Tempe
(Price & Southern)
839-9389

Denim fashionable weathered look

By CARRIE MITCHELL
 State Press
 The beginning of school
 seems to be a big time for
 new fads
 that

jeans a personal look. Bank said the fading of each pair of jeans will be different.

"What's unique about 'the Authentic Stone's' effect is that you may continue to achieve an increase in the stone-washed look or personalize the garment by repeating the procedure again and again," Bank said.

He said the process also allows the consumer to write or draw designs on the jeans, by rubbing only one area of the garment.

"In the area where we tried out the idea, the sorority girls wrote their Greek letters on the rear of their jeans," he said. "It's like the tie-dyeing craze of the '60; it allows kids to do their own look."

Bank said the idea came about after his wife found a small stone in the pocket of a new pair of jeans. Bank said his teen-age children played around with the stone and faded a pair of jeans at home.

"I was amazed," he said. "My son wore the jeans to school and all the other kids loved it. So my wife created the packaging and we hired an artist, and started trying to distribute it."

The industrial process washes the clothing in a giant washing machines with pounds of special volcanic stones. Bank said "the process gives the jeans the faded, thrashed look."

Bank said the stones used in the process are not the kind you could find in your back yard. The stones come from the volcanic regions of the High Sierra mountains in California.

The process of stonewashing at home is relatively simple, Bank said. The garment must be soaked for about an hour in hot water. Then all excess water should be wrung out and the garment should be laid out flat on a dark towel.

The jeans should then be rubbed with the stone starting at the waistband, belt loops and side seams and edges of pockets first. When the entire front has been rubbed with the stone, the

jeans should then be turned over and the back rubbed with the the stone, starting again at the waistband.

"Place more emphasis in the areas where you want it to be lighter," Bank said.

The more one area is rubbed, the lighter it will look, he said. Bank also warns that the coloring will not be uniform and that if the stone is rubbed in one area too long, a hole can be rubbed in the garment.

Bank said the product only works on denim products made entirely of cotton and that have been soaked in the hot water. People should not put the rock in their washing machines in order to try and achieve the look.

Bank said the suggested retail of the stone is \$6. "It is really inexpensive and cost efficient when compared to the price of denim items that are purchased stonewashed," he said.

In local department stores, purchasing a pair of stonewashed jeans can be very expensive. Guess? jeans are retail priced starting at \$38, and even good ol' Levi's have produced a stonewashed jean that retails for \$30. Calvin Klein has created a pair of jeans that have chamois material inside so that when the jeans are washed inside-out the chamois becomes soft and the jeans are more comfortable.

The thrifty stone has a life expectancy of six to 12 uses. Bank said the stone can be used on the same pair of jeans more than once if the original effect is not light enough.

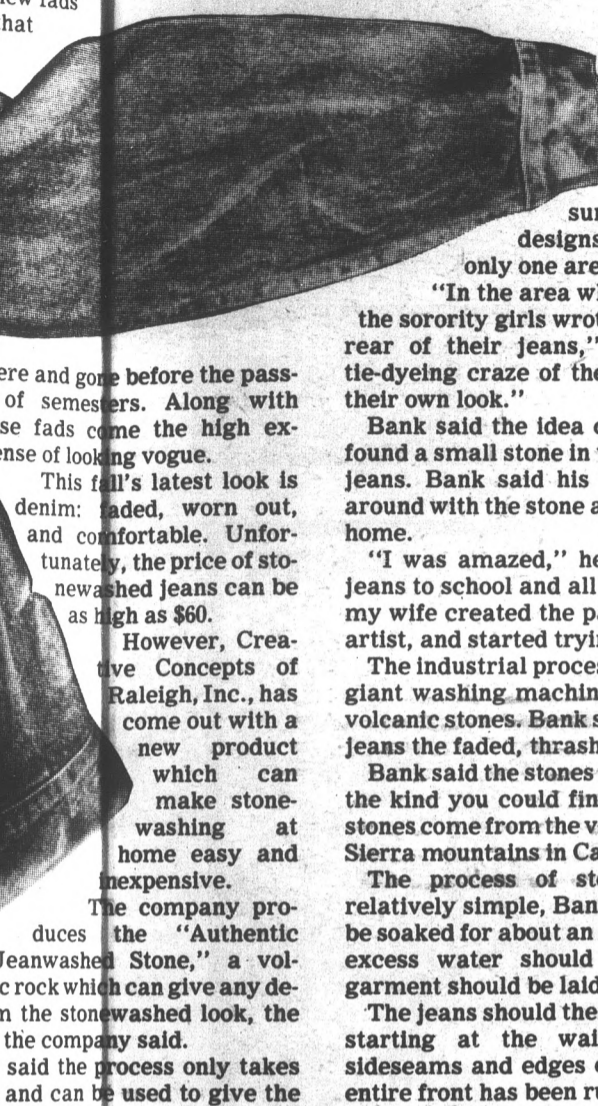
The "Authentic Jeanwashed Stone" comes in its own "marblezed" 5-inch washing machine box. The mini-washing machine houses an eight-page "Authentic Stonewashed Manual" with instructions and creative tips for using the stone.

Inside the box, the stone is nestled in a bed of soft denim, Bank said.

Bank said the response to the product has been overwhelming and he has shipped over 100,000 "Authentic Stone's" to major department stores.

The stone currently is available in the Phoenix area at J. C. Penney's stores and also will be available at Mervyn's store next week.

He also has started contacting college bookstores to try to distribute the stones on campuses across the country.



SHABBAT SERVICES

Friday
 August 29, 1986
 7:30 p.m.

Followed by

PARTY

(at Rabbi Lee's)

Hillel Jewish Student Center

1012 S. Mill

*Rides Available



A NEW ADVENTURE AWAITS YOU!

WEEKLY EVENTS INCLUDE:
 HIKING • CLIMBING • SKIING
 SKYDIVING • WATER SPORTS • SOCIALS

JOIN THE
ARIZONA Outing club

WEEKLY MEETINGS—THIS WEEK
 TUESDAY 7:30 P.M. • M.U. PIMA RM.

—MAKE THIS YOUR YEAR—



Investigate the Tax Benefits

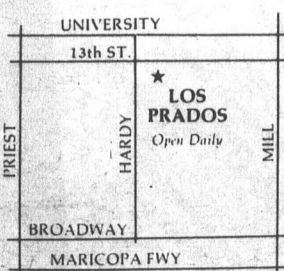
Parents of ASU Students
Why pay rent when you can own?

Luxurious and Affordable
 2 BEDROOM 2½ BATH
 IN TEMPE, ½ MILE FROM ASU

Los Prados Townhomes has a financing package tailored to students and parents. Inquire about the benefits of home ownership.

Live a half-mile from campus in a luxury townhome with five separate floor plans available, 2 or 3 bedrooms, as well as pools, tennis courts, spas and sundecks.

Call Los Prados or send the coupon below for information on Los Prados ownership. We've made them affordable.



(602) 966-1800

Hours: 10-6

Please send me financing and sales information on Los Prados Townhomes.

Name _____
 Street Address _____
 City, State, Zip _____
 Phone _____

Mail to or call collect for information: (602) 966-1800.
 Los Prados Townhomes, 724 W. Fourteenth Street,
 Tempe, Arizona 85281

Welcome Back Sale

Sun Devil 5-speed beach cruiser
 Regularly \$189.95
NOW \$149.95

Takara Horizon 10-speed recreational bike
 Fully Assembled
 Lifetime Warranty
 Regularly \$149.95
NOW \$129.95

Raleigh Capri 10-speed
Specially priced at \$139.95
 Compare with others priced higher



High Security U-shaped Locks with a \$1,000 (ONE THOUSAND DOLLAR) theft guarantee
 Was \$24.95
NOW ONLY \$16.95

Large selection of bicycles, locks and accessories at special sale prices

TEMPE BICYCLE SHOP

Critics choice for best bike shop
 1985 New Times

330 W. University
966-6896

OPEN:
 8-8 Mon.-Fri.
 8-6 Sat.
 11-5 Sun.

Butterflies, band fit ASU profs fiddle

By RODERICK HARRINGTON
State Press

On a typical night, fiddler Ronald Rutowski might play a mixture of George Strait, Steve Wariner or even Huey Lewis and the News.

This is not the typical song list of a country fiddler, but this is no typical country fiddler.

At night he plays fiddle and banjo with the Jeff Dayton Band, and during the day Dr. Rutowski lectures on animal behavior at ASU.

A 10-year veteran of the ASU zoology department, Rutowski, a trained classical violinist and pianist, found folk and bluegrass music during his undergraduate studies in California.

Known simply as "Dr. Ron" while on stage with JDB, recently named top country band in the Valley, Rutowski's music goes beyond simple melodies and standard licks.

His is a blend of jazz, folk, bluegrass and classical in the tradition of Mark O'Connor, Dave Grisman and Ricky Skaggs, musicians widely hailed for the mastery of various instruments.

"I try to adjust my style to whatever music I'm playing," Rutowski said. "My background makes me more sensitive to all types of music."

This is not your twang-twang country played by pot-bellied older men. You won't hear any Johnny Cash, Kenny Rogers

or Lee Greenwood here.

"His musical sense of humor is great," band leader Jeff Dayton said. "He is not repetitive and has a limitless source of ideas of what to play."

Some musicians might warm up by playing a traditional bluegrass or swing melody. It's common to hear Rutowski warm up by playing Paganini or Joe Pass.

Although he takes his time on stage seriously, Rutowski has another priority.

"I only play music if it doesn't conflict with or effect my job at ASU," he said. "ASU is my primary responsibility."

When JDB performs every Sunday at Mr. Lucky's in Phoenix, Rutowski is well-complemented on stage.

Members of the group have been affiliated with acts such as George Strait, Three Dog Night, Dr. Hook and Goosecreek Symphony.

Rutowski, a vital member of this talented band, is a butterfly specialist.

Apparently, some people in the Valley find that hard to believe.

"A lot of people still don't believe us when we say he is a doctor of zoology at ASU," Dayton said.

The tall, quiet professor has gained the attention of other music people in the state as well. He has recorded with The Two Week Notice Band and Tucson's Ned Sutton among others.

100% IBM PC & XT COMPATIBLE!

\$499

1200B MODEMS \$137



AvantageXT

PRINTERS FROM \$177

ASU buys from us—you should too!

Computer Systems Center

Tempe
3415 South McClintock
At Southern 838-1236

Hours
M - F 10 - 7
Sat. 10 - 5

The Picture Place®



Enlargement Sale

MEMORIAL UNION — LOWER LEVEL

| From Your Negative | | From Your Slides | |
|--------------------|---------|------------------|---|
| \$.20 | 3 x 5 | \$.50 | N |
| \$ 1.00 | 5 x 7 | \$ 1.50 | P |
| \$ 1.75 | 8 x 10 | \$ 2.00 | R |
| \$ 5.75 | 11 x 14 | \$ 6.25 | S |

• NO QUANTITY LIMITATION •
Coupon Must Accompany Order
No Other Discounts Apply

Offer expires 9-30-86.

PARK TERRACE APARTMENTS

"WHERE YOUR FRIENDS ALREADY LIVE"

Move-In Special For Students

\$200 Off on One-Bedroom

\$250 Off on Two-bedroom *First Month's Rent

1 Bedrooms from \$320/m and 2 Bedroom for a limited time, \$100 totally refundable security deposit

Come Join Us!

1033 S. Longmore Mesa
(Across from Fiesta Mall)
969-1313



BALLOON EXPRESS

We specialize in Balloon Bouquets available with:

- Bears & Rabbits
- Wine & Champagne
- Much much more!

We can customize a Bouquet for you!

Call 968-4446

homespace has fun-damentals



Drafting

Adjustable drafting table, 30"x48" top, steel legs, in black, grey, white, red.

Special Purchase Only **\$69⁹⁵**



Hightech Lights **\$20⁰⁰**



Caddy Sale **\$19⁹⁵**



Flex Phone **Only \$79.95**



Modern Time Clocks **\$30⁰⁰**



Grand Prix **Only \$69⁹⁵**

Labor Day Sale

Lots of on advertised special Furniture & accessories for progressive lifestyles

homespace ltd

522 South Mill Avenue, Tempe

966-0736

Sun. 9:30-9:00 p.m., Sat. 9:30-6:00 p.m., open weekdays until 9:00 p.m. come see our unadvertised specials!

Hours: Mon.-Fri. 9:30-9:00 p.m., Sat. 9:30-6:00 p.m.

CARPET REMNANT Sale

- Thousands in stock —30%-70% off
- Hundreds of room-size remnants —\$29-\$69
- We Deliver
- Buy Direct from our Factory

Direct Carpet Outlet

MESA
1825 W. Broadway
At Bobson/Art. K-mart
and Price Club
890-1152

NORTHEAST
15801 N. Cave Creek
887-2703

WESTSIDE
3181 N. 25th Ave.
Det. Thomas & Colson
269-3261

PLAY IT AGAIN CINEMA

Now Showing!

Mickey "Mousetalgia"
Dustin Hoffman in
The Graduate
ONLY \$1.50

-and-

Grant & Hepburn in
Bringing Up Baby
The Graduate
ONLY \$2.00

Call for times!

On Scottsdale Rd. just north of McKellips
2240 N. Scottsdale Rd. • 994-1190

BUY • SELL • TRADE

Your books at Changing Hands. For quality cloth and paperbacks (no textbooks, please) we pay 30% of our re-sale price in cash or 50% in trade-in credit which may be used to purchase anything in the store. (Sorry, no trade-ins on Sat. or Sun.)

Browse through our three floors of:
•New & Used Books
•Art Prints & Posters
•Calendars & Cards
•Handbound Journals

M-F 10-9 SAT 10-6 SUN 12-5

CHANGING HANDS
414 Mill Avenue 966-0203
Old Town Tempe

Design Your Own Personal Charm

14K Solid Gold License Plate Charms

NEW YORK
100% ME

ARIZONA
'87 GRAD

USA
I ♥ \$\$\$

Let Your Imagination Run Wild!!

Student Priced at **\$49.95**

Instant Attention Getters



Simply Charming

897-1126

We also carry
SUN DEVIL CHARMS



STUDENTS!

ALLELUIA LUTHERAN STUDENT MINISTRY

West Side of Campus

SUNDAYS

- 8:00 a.m. Bible Study
- 9:15 a.m. Worship
- 11:00 a.m. Worship (at Danforth)
- 4:45 p.m. Worship
- 6:00 p.m. Supper
- 7:00 p.m. Activity

Open Weekdays 11:00 a.m.-10:00 p.m.

1034 S. Mill • 894-2610

DISABLED AMERICAN VETERANS

THRIFT STORE

9 am.-9 p.m. Monday-Saturday

2131 E. Apache Blvd., Tempe

Packed With Top Quality Used
CLOTHING • HOUSEWARES • FURNITURE
APPLIANCES • KNICK-KNACKS

- Men's dress-up & leisure from 95¢
- Durable kids clothing from 65¢
- Women's fashions from 95¢

Something for EVERYONE!

2131 E. Apache Blvd., Tempe

Senior Citizens
30% OFF
60 yrs or older
Every Monday

| | | |
|------------|------------|-------|
| McClintock | Apache | Price |
| | DAV | |

No Checks • Open To Public

WOMEN STUDENTS

Freshmen through seniors,
Alpha Gamma Delta Sorority
wants to meet YOU!

We are starting a brand new chapter of Alpha Gamma Delta at Arizona State. We want to meet college women with a sense of adventure, loyalty and commitment.

Our special rush starts Thursday, September 4, 1986 with an open house. We want to invite you to stop by the Gold Room of the Memorial Union anytime from 9 a.m. to 5 p.m.

You will receive information about our organization, meet International Officers, and find out how you can "Take Off With Alpha Gamma Delta!"

Take off with

Alpha Gamma Delta

NEW SORORITY!

Celebrity Theatre presents

JAZZ EXPLOSION POP SERIES

featuring PHILIP BAILEY,
PATTI AUSTIN, GEORGE DUKE



Friday, September 19
\$15.00 • 8 p.m.

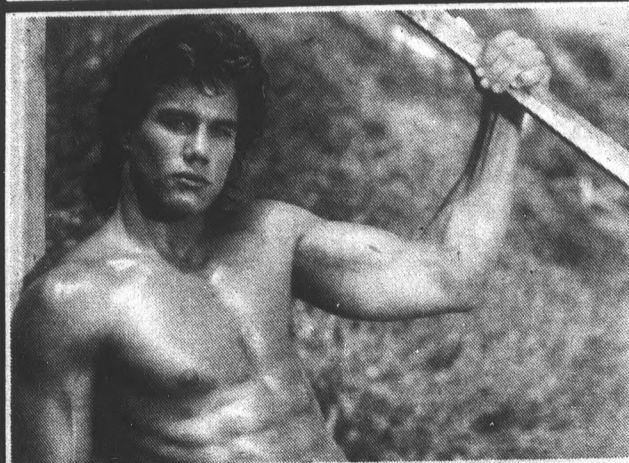
Jermaine Jackson



\$5.00 OFF
with student I.D.

with special guests
The SOS Band

Wed., Sept. 10 • 7:30 p.m. • \$15.00



All new Chippendales show
New cast, new dates

Sun. & Mon., Sept. 28 & 29

\$12.50

\$2.50 discount with student I.D.

cuisine

Norm's stirs up specialties: authentic homemade food

By GREGORY ROBERT KRZOS
State Press

When Norm and Pat Cohen wanted to try their luck in the restaurant business, Tempe wasn't prepared for the miracle they were about to create.

The Cohens have managed to breathe some life into an old College Avenue joint that has previously shriveled up under the mismanagement of five different owners. Where Takee-Outee, Lacey's and Pasta Plus-Two failed, the new "Norm's" tends to progress.

Gone are the tacky colored fixtures and dark atmosphere that once made the place look like a fast food funeral parlor. One thing's for sure, the change seems to be paying off. What Norm's is aiming for is a taste of home.

The Cohens specialize in some of the best homemade food I've ever tasted in a small restaurant.

An MTV hookup in the corner and hanging plants add a nice touch around the work counter. In fact, those looking for a great place to eat or chat with friends can stop hunting.

On the menu are a variety of specialty items, most of which fall under \$3. For lunch, one can purchase the delicious Chicken Gyro and cheese fries. The meal was more than filling and cost under \$4 with a drink. (try the cherry-flavored mineral water!)

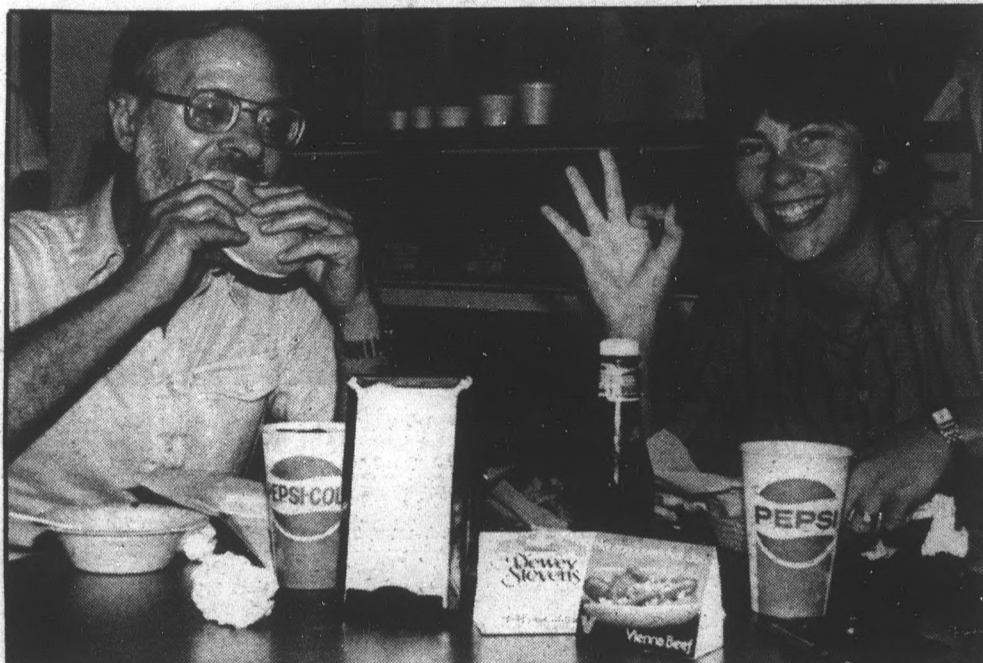
Other items, like the Cohen's homemade chili, cream of asparagus soup (a wonderful treat), sauces and the salad bar add a nice touch of home to the place.

Bagel dogs and real Italian sausage, along with tuna subs, burgers and an onslaught of homemade food creations spice up the menu.

Norm's also specializes in 15 different flavors of ice cream and two yogurt flavors, which are changed everyday.

Norm's sways away from cooking your regular processed frozen foods. If cutting through 400 pounds of potatoes a week for french fries is any indication of the integrity of the new owners, they should be around a long time.

Norm's is located at 620 S. College Ave.



Staff photo by Michael Scully

Dr. Egal Feldman, an American History professor visiting from the Univ. of Wisconsin and his daughter, Auora Goldfine a senior communications major, are having lunch at Norm's Food & Spirits.

BROADWAY TERRACE

CONDOMINIUMS

FOR SALE

prices in the 50's & 60's

151 East Broadway

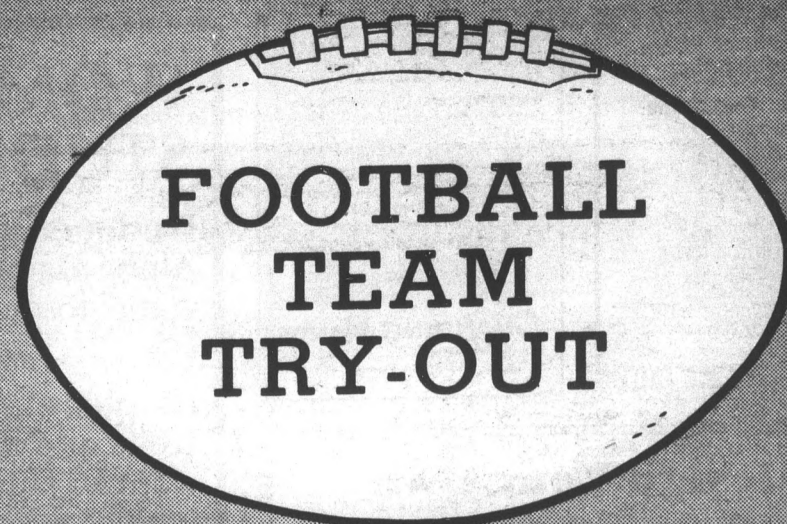
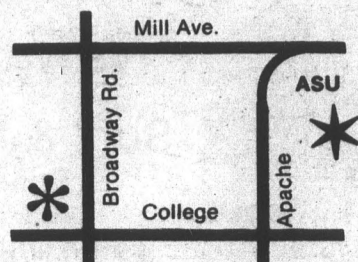
- 2 covered parking spots
- pool
- immediate availability

FHA/VA Financing

Call:

968-7656

967-6420



Any full-time student who would like to try out for the position of Kick-Off Specialist for the Arizona State Football Team should meet Saturday, August 30, 1986 at 11 a.m. in Sun Devil Stadium. Your contact will be Coach Ligashesky. You must be in good academic standing and will be required to pass a physical examination.

Open 24 hours daily for phone bill payments.

Now as always, mailing your phone bill is the easiest way to pay for phone service. That's because there's usually a mailbox near you. You won't have to wait in line once you get there. And best of all, mailboxes never close. So you can make your payment at an hour that's convenient to you.

When mailing your bill include a check or money order, with your phone number on it, payable to Mountain Bell. Place it along with your monthly statement in the envelope provided and drop it in the nearest mailbox.

No matter what time of the day or night, it's open just for you.

For the way you live.



Mountain Bell
A US WEST COMPANY

state press

ADVERTISING

We Give You A Bigger Slice Of The Pie At The Lowest Cost Per Bite.

SOMETHING OLD, SOMETHING NEW



In the midst of Tempe's classic Old Town, there is an entirely new way to live. Homes of true convenience. Luxury. And style. Homes that put you within easy reach of work as well as play. And homes that reflect that unforgettable Old Town design.

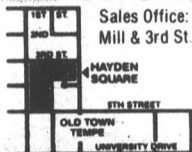
Hayden Square offers spacious, one and two-bedroom condominiums with elegant features. Just footsteps away from some of the finest shops, restaurants and activities anywhere.



HAYDEN SQUARE CONDOMINIUMS

The perfect combination of something old and something new.

829-7146
967-6420



Andrea Mane & Nail Co.



Special
Perm & Cut
\$25⁰⁰

Quality — Affordable — Service
ASK FOR PEGGY

Century Square • 430 N. Dobson #102

(Corner of University & Dobson)
8:30 a.m.-9 p.m. seven days a week

844-8031 • 844-8032

Nails Sculptured
Full Sets **\$22⁰⁰**
Fill **\$10⁰⁰**

Hair Design
Men **\$16⁰⁰**
Women **\$20⁰⁰**

WAREHOUSE DELI & PUB

"GOOD FOOD & DRINK"

Estab. 1975

NOW SERVING MIXED DRINKS

LUNCH SPECIAL!!

MON.-FRI.
10:30 a.m.-2 p.m.
Hot or Cold Sandwich
of the Day
with Homemade Fries
or 1/2 Veggie Freak
Sandwich and Soup
ONLY \$2.35



HAPPY HOUR

MON.-FRI.
10:30 a.m.-7 p.m.
IMPORTS — **\$1.17**
DRAFT BEER
Pitcher **\$2.58** Glass **56¢**
WINE
1/2 liter **\$2.82** Glass **70¢**
WINE COOLER
Pitcher **\$3.29** Glass **80¢**

NOW SERVING MIXED DRINKS

BREAKFAST

SERVED MON.-FRI. 7 A.M.-10:30 A.M.

99¢

3 EGGS, HOMESTYLE POTATOES,
TOAST, BUTTER & JAM
CHECK OUT OUR OTHER BREAKFAST ITEMS

LIVE ENTERTAINMENT NIGHTLY

(No Cover, No Min.)

130 E. UNIVERSITY DR.
AT FOREST
966-7788 • TEMPE, AZ

Your Hosts: "The Family"

Notes-n-Quotes PROFESSOR PUBLISHING

IT'S THAT TIME OF THE YEAR AGAIN, TIME TO COMPILE YOUR SUPPLEMENTARY CLASS MATERIAL. LET Notes-n-Quotes, A STUDENT OWNED BUSINESS, TAKE SOME OF THE BURDEN.

Notes-n-Quotes IS STUDENTS WORKING FOR STUDENTS.

- HIGH QUALITY, FAST, DEPENDABLE PRINTING OF LAB AND COURSE MANUALS, SUPPLEMENTARY MATERIALS, AND WORKS-IN-PROGRESS
- WE PRINT THE NUMBER OF COPIES YOU REQUEST, NO WAITING FOR THE STUDENTS
- FREE PICK-UP AND DELIVERY FOR ALL YOUR PRINTING NEEDS, ALONG WITH AS MANY SUPPLEMENTARY COPIES OF YOUR SUPPLEMENTAL MATERIAL AS YOU NEED
- DOUBLE SIDED COPIES ARE NO EXTRA CHARGE, THREE HOLED PUNCH PAPER AVAILABLE
- LOWEST BINDING AND PRINTING PRICES IN THE UNIVERSITY AREA
- NO COST TO PROFESSORS OR DEPARTMENTS

712 SOUTH COLLEGE
UNIVERSITY & COLLEGE
INSIDE CAMPUS DRUGS
CALL 966-4225

Notes-n-Quotes IS A STUDENT OWNED BUSINESS COMPETING WITH MAJOR CORPORATIONS. WE GREATLY APPRECIATE YOUR PATRONAGE. THANK YOU.

ROCK

DESPERADOS BAR & GRILL

524 West Broadway • 894-6423
Corner of Broadway & Roosevelt

-N-

ROLL

2 Big Screens!
Watch your
home team!



Despoutrageous Times!

FRI.: Every Friday

\$2.99 "All You Can Eat" Fish-n- Chips 3-10
10¢ Wings, Hot or BBQ
Live: Hawthorn-Hill Band through Saturday!

SAT.: Every Saturday

99¢ Longnecks till 3
\$1.99 Burgers till 6
\$1.65 Coronas 7-1

*Open this Saturday at
5 p.m. due to wedding

SUN.: Every Sunday! (Closed this Sunday, but open next Sunday)

Ladies Night — 99¢ Wine, Well, Draft
99¢ Bloody Marys & Screwdrivers
Live — Justin' Tyme

MON.: Every Monday!

10¢ Wings, Hot or BBQ 3-10
Sports Night — 2 Big Screens
Live Entertainment

TUES.: Every Tuesday!

\$1.99 Tacos (3) — you add toppings! 3-10
Live Entertainment

WED.: Every Wednesday!

\$1.99 Pizza 3-10
Special: \$1.65 Heineken
Live — Hawthorn-Hill Band

LIVE ENTERTAINMENT
EVERY NIGHT!

99¢ SCHNAPPS
EVERY NIGHT

DAILY LUNCH SPECIALS!

HAPPY HOURS:
3-6 DAILY
7-9 SATS.

REGULAR HOURS:
MON.-SAT. 11 P.M.-1 A.M.
SUNDAY 5 P.M.-1 A.M.

COUPON Expires 9-3-86.

1¢ Premium Wine,
Well & Draft
or

\$1.99 PITCHER
Limit one per customer.

We Deliver Beer!!

\$2.00 OFF ANY
LARGE 16"
PIZZA

Expires 11-15-86.



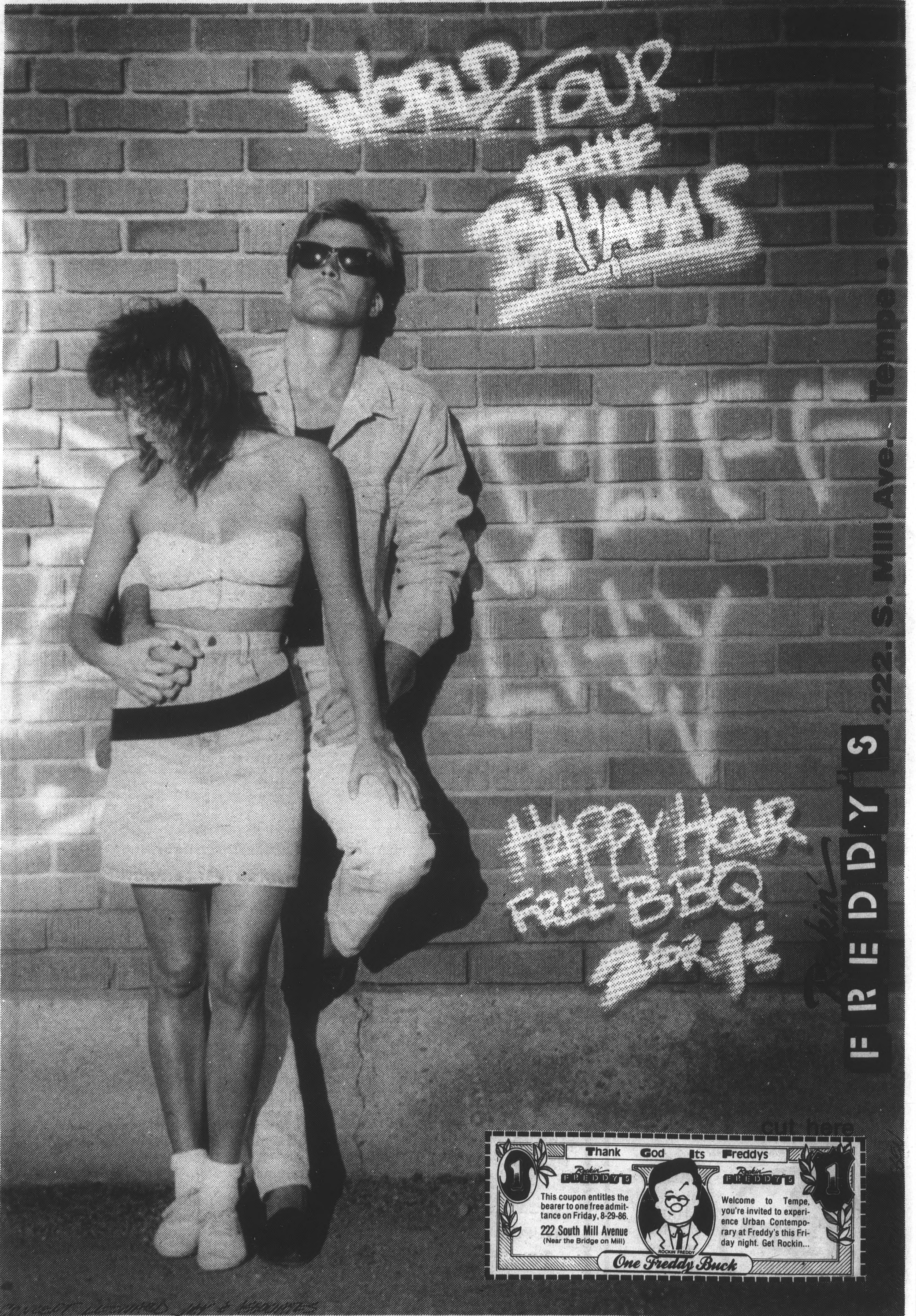
968-8575

UNIVERSITY
& HARDY
TEMPE

HOURS:

Mon.-Thurs.
11 a.m.-10 p.m.
Fri. & Sat.
11 a.m.-12 midnight
Sunday
4 p.m.-10 p.m.





SUNDAYS the PARTY HAS MOVED to Freddy's. 2 for 1's on everything. Never a cover. Special giveaways and a very SPECIAL GUEST D.J.

Thank God Its Freddy's

1 **FREDDY'S** **1**

This coupon entitles the bearer to one free admittance on Friday, 8-29-86.

222 South Mill Avenue
(Near the Bridge on Mill)

ROCKIN' FREDDY

Welcome to Tempe, you're invited to experience Urban Contemporary at Freddy's this Friday night. Get Rockin...

One Freddy Buck

Spiker Webb smiles while she improves

By STEVE BRENNAN
State Press

Although Tammy Webb may take the floor smiling, she spent hours of practice with the stern look of concentration on her face to become one of the best volleyball players in the nation.

"She is a real motivator," said ASU teammate Regina Stahl. "She's never quite satisfied with herself, and she works very hard."

Webb, one of coach Debbie Brown's first recruits at ASU, has intense dedication that brought her All-America honors last season and a tryout for the U.S. national team this summer.

"She smiles a lot on the court," Brown said.

But her bright personality doesn't stop her from taking her sport very seriously, according to Brown.

"Sometimes she puts so much pressure on herself that she gets too frustrated," Brown said. "But that has improved over time. It's been fun to see her improve as a player."

"I've really enjoyed watching her progress," Brown said. "She has a lot of dedication, along with being an explosive athlete."

Webb, who suffered a broken hand during the national team tryouts for the Goodwill Games this summer, plans to return to San Diego in January and make the team. She then hopes to make the Olympic team in 1988.

"I was disappointed about being injured before the Goodwill Games," Webb said. "I'm going to have to start over in January, and it's not a sure thing, but I plan to make the team."

"The Olympics are my goal," she said. "I think it looks pretty good right now."

Brown also shares her optimism. "I think she is the best collegiate middle blocker in the nation," she said. "She is quick, strong, adaptable to different situations and has a lot of ability. It will depend on how the other top players progress, but I really think she can do it."

In addition to her long-term goals, Webb has set her first priority on this season with the Sun Devils.

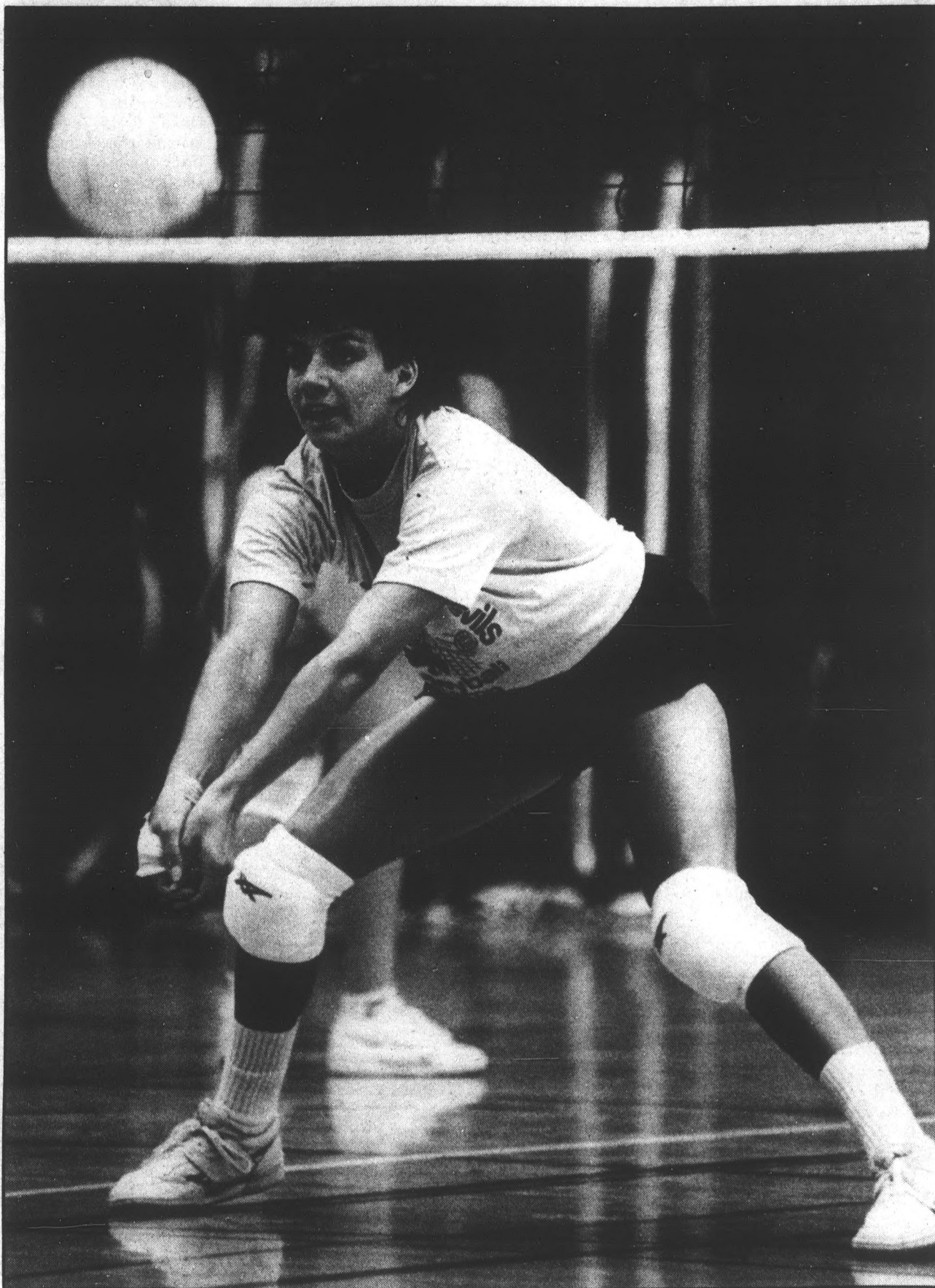
"I'm concentrating on this season right now," she said. "I would like to be All-America again, and improve my hitting percentage."

Webb holds ASU records in career digs with 713, and with most digs in a season with 327. She is also currently second in career kills with 1,190.

Despite her intensity and competitiveness, both Brown and Stahl have enjoyed her presence in the gym for the last four years.

"I get along with Tammy very well," Stahl said. "I think we have a certain chemistry on the court. She is a caring person and doesn't expect any different treatment from anyone."

Webb is currently working on a degree in social work, but has no direct plans in that field after graduation. "I think I'll stay in San Diego for a while, after that I'm not sure," she said.



Tammy Webb returns a volley during the Sun Devils pre-season practice. Head coach Debbie Brown said the 5'11" senior is "definitely an Olympic hopeful for '88." Michael Scully/State Press

End of NCAA season came too soon for ASU swimmers

By JAY TAYLOR
State Press

Although the men's swimming season ended at ASU with a ninth-place finish at the NCAA championships last June, several members of the team were obviously just getting warmed up.

The Sun Devils made quite a splash on the swimming circuit this summer in three major international meets: the World Swimming Championships, the Commonwealth Games and the Goodwill Games.

Probably the most successful of the bunch was Andy Jameson, who narrowly missed winning a world championship.

Jameson, from Edinburgh, Scotland, was third in the World Championships in the 100-meter butterfly, finishing only two-tenths of a second behind winner Matt Biondi and

second place Pablo Morales. In the same race he defeated Mikael Gross of West Germany.

Prior to the World Championships, which just concluded last week in Madrid, Spain, Jameson had another major success, winning the 100-meter butterfly at the Commonwealth Games, a major accomplishment according to coach Ron Johnson.

"For an Englishman to win an event in the Commonwealth Games is a very big deal," Johnson said. "They take them very seriously, and consider them just a little bit below the Olympics."

"That, combined with the fact that they were held in Andy's hometown, made it very nice for him. He got a lot of notoriety over there."

Another Sun Devil who performed well over the summer was Scott Brackett, who finished second in the 1,500-meter freestyle and third in the 400-meter freestyle at the Goodwill Games in Moscow. Both were won by Vladimir Salnikov of the Soviet Union, the world's top distance freestyler.

"Scott did extremely well at the Goodwill Games," Johnson said. "He was only three-tenths of a second behind Salnikov in the 400-meter, and had the fourth fastest time in the world this year in the 1,500-meter."

Another ASU swimmer who had a good summer was Neil Cochran, who made it to the finals of the 200-meter individual medley in the World Championships and was a bronze medalist in the same event at the Commonwealth Games.

In addition to the three who swam for ASU

last year, two incoming freshmen also made quite an impression over the summer.

Gary Watson was fifth at the Commonwealth Games in the 100-meter breaststroke. Paul Howe, who was a member of Great Britain's bronze medal team in the 1984 Olympics in the 800-meter freestyle relay, medaled in the same event in the Commonwealth Games.

All four members of the Olympic relay team — Howe, Cochran, Andy Astbury and Paul Easter currently attend or have graduated from ASU.

"We have some exceptional freshmen coming in this year," Johnson said. "This year's class has the potential to be the best class we have ever had here, although you would probably get an argument from the current senior class."

Saleaumua suited up for Thursday practice

Sun Devil nose guard Dan Saleaumua was suited up for practice Thursday, after attending Wednesday's practice late and in street clothes.

Saleaumua was recently restored to the team after having missed Camp Tontozona and being uncertain about whether he wanted to play football this season.

Saleaumua had missed practice Wednesday because he was ineligible to practice with the team. He needed to be signed up for 12 hours of classes in order to be eligible, and had not gone through drop/add to raise his schedule from the nine hours he had been carrying.

Saleaumua was allowed back on the team after he

decided he wanted to play and asked coach John Cooper if he could return. Cooper consulted the senior members of the team, who voted to let Saleaumua return.

Saleaumua missed 22 practices during the time he sat out, according to Cooper. Saying that allowing Saleaumua back on the team without any punishment would not be fair to the other players, Cooper set some guidelines that he must follow in order to return.

The conditions of Saleaumua's return include making up the conditioning drills he missed and sitting out the first two games against Michigan State and Southern Methodist University.

Dino anxious to return to work

Names 5 new residents of sweltering doghouse

Just when you thought it was safe to go back to the State Press sports pages, Dino is back — and he's got a lot on his mind.

It has been a long hot summer (just ask the USFL) and there are a ton of people deserving of some bad pub. Likewise, there are a lot of people deserving of an all-expense paid one week vacation to Dino's Doghouse (no AC of course).

Dino sure hopes the men responsible for the NCAA's 15-yard-penalty-for-pass-interference-rule watched Wednesday night's Kick Off Classic between overrated Alabama and where-is-the-end-zone Ohio State.

With the final seconds of the game ticking off the clock, Bama linebacker Derrick Thomas was called

for pass interference within the Tide's 20-yard line. Instead of the Buckeyes getting the ball at the place of infraction (in scoring position), they merely got 15 steps marched off by the referee.

What ever happened to the punishment fitting the crime?

As far as the fight scene is concerned, Sugar Ray Leonard is in the Doghouse for even thinking of fighting Marvin Hagler.

Likewise, Hagler is in the Doghouse for thinking of fighting Leonard (a sportscaster now).

There is no doubt that money is the motivation in this potential matchup. Leonard hasn't fought since 1984, and more importantly, Hagler promised Thomas



Hearns a rematch.

The California Angel organization (which knows the term choke very well at this time in the baseball season) has hit an all-time low.

Bottom line: Jackson is an attraction. And who else serves up so many souvenir home run balls in Anaheim stadium?

Dino thinks they should think over not renewing Reggie Jackson's contract while sweating a few pounds off in the Doghouse.

What goes around comes around, and it is time that

Philadelphia Eagle coach Buddy Ryan pay for having the biggest and most obnoxious mouth in the NFL.

Ryan has criticized everyone from his ex-boss, Chicago Bear coach Mike Ditka, to his most recent lashing concerning All-Pro defensive end Mark Gastineau.

What Ryan needs more than an appearance in the doghouse is a Mark Gastineau body slam. Dino doesn't think any referee in the NFL would flag him for his patented sack dance after that.

The Stanford Sports Information Department earns Dino's last room for their more-than-slanted Stanford Football Media Guide.

According to the guide, senior quarterback John Payne is "a potential Heisman Trophy winner." Dino rests his case.

—DEAN A. OBENAUER



Feeling Overwhelmed Already?

Join us for Sunday Worship — 10:15 a.m.

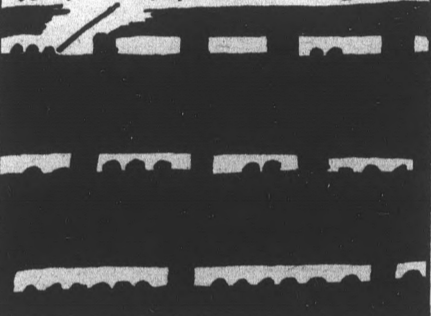
Good Shepherd Lutheran Church and Campus Center

1414 S. McAllister Ave. (Across from Sahuaro Hall)

Y'KNOW BUTCH, THESE CHEAPSEATS AREN'T THAT BAD FOR \$1.50.



THE BEERS COLD, THE FANS ARE KNOWLEDGEABLE, EVEN PRE-SEASON IS EXCITING.



I JUST CAN'T SEE THE PLAYER FIGHTS TOO WELL.



FIGHT! WHERE? I THOUGHT IT WAS HALFTIME!



ALPHA III STYLIST



Back-To-School Specials

Shampoo, Haircut & Style

\$9.00

Reg. \$15

Perm Special

\$30.00

Reg. \$45

Includes haircut & style

829-9694

Mon.-Sat. 9 a.m. till late night appt.

818 W. Broadway #107

Broadway & Hardy

MINDER BINDER'S

BOGGLES THE MIND, GRATIFIES THE SENSES

Back to School Party

8-22-86 and weekly specials

MON MOVIE NIGHT Pitchers **\$2.69** REG 3.69

TUES CRAB RACES WIN BIG PRIZES **BUD BUD LIGHT 95¢** REG 1.69

WED WHITE WEDNESDAY QUALITY SPIRITS **79¢** REG 99¢

THUR MOOSE IS LOOSE! **99¢** never ever a cover

FRI TOGA PARTY LONG ISLAND Iced Tea **\$1.69** REG 2.29

SAT BUD BUD LIGHT only **95¢** SPUD MACKENZIE

PLUS! YOUR 12 QUALITY SPIRITS FOR WHEN YOU PRESENT YOUR ID FROM 8-12 MID **50¢** REG 75¢

715 SOUTH HAYDEN ROAD, TEMPE, AZ 85281 • 966-1911

STUDENTS

...Don't miss our 20-20 offer!

Art, architecture, engineering & design students:

Shop for your art supplies from The Valley's most complete selection by SEPTEMBER 20, and save a big 20%.

Shop any other time and you'll receive our standard 10% STUDENT DISCOUNT.

Fine arts materials

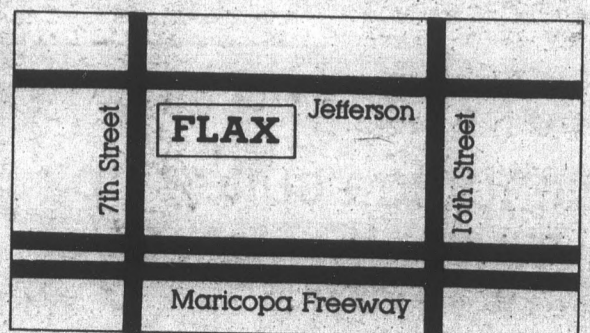
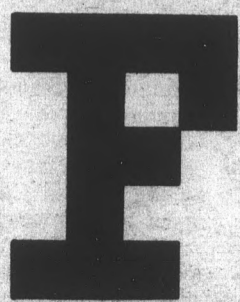
Canvas, paints, stretcher bars, brushes, frames, paper, etc.

Drafting supplies

Parallel rules, triangles, templates, leads, drawing boards, technical pens (all brands) and more.

ALSO

Airbrush equipment & supplies, graphic arts materials and books.



FLAX CO., INC.

10th Street & Jefferson • 254-0840 • Lots of free parking
Hours: Mon.-Fri. 8:30-5:30 Sat. 9-5



Terrace Road Apartments

WALK TO SCHOOL!

1/2 block from Campus, Huge, well-furnished 1-bedroom, 1-bath, and 2-bedroom, 2-baths, all utilities included, cable TV, plus many amenities.

950 S. Terrace Rd.

966-8540

barbri
Professional Centers

**COLUMBIA UNIVERSITY SURVEY
RANKS BAR/BRI BEST PROGRAM**

#1 OVER KAPLAN

LSAT CLASSES BEGIN AUGUST 28, 1986

To enroll call Felice, 969-8953,
for price and location

DON'T FORGET!
STATE PRESS
CLASSIFIED AD
DEADLINES
ARE 3 P.M.
2 DAYS PRIOR
TO INSERTION

RUNDLE'S
LIQUORS & MKT.
730 S. MILL
Corner Mill &
University Ave.

| | |
|-------------------------|--------|
| BEAMERO TEQUILA 750 ml | \$4.72 |
| ANDRE CHAMPAGNES 750 ml | \$2.97 |
| MEISTER BRAU BEER 6-pk | \$1.88 |
| PLAYBOY Used Magazines | \$.94 |

Haagen Dazs Natural Ice Cream,
Adult Magazines, Groceries, Ice,
Wines, over 40 Imported Beers.

967-9079

**MCI
PHONE
SALES**

Openings for dependable, assertive and competitive individuals for both full-time days and part-time evenings (4:30-9 p.m.)

- Gift Catalogue Program
- \$5/hr Plus Incentives
- Friday Pay Check Delivery
- Paid Vacation
- Paid Training
- Win Instant Cash
- Kelly Travel Club

Work for an industry leader. CALL US NOW!

*Not An Agency
Never A Fee*

KELLY SERVICES
264-0717

EOE MFH



**Looking
for a house
to rent?**
*Find it in The
Classifieds.*


state press

NORTH BASEMENT
15 MATTHEWS CENTER
965-7572
OPEN DAILY 8 A.M.-5 P.M.
VISA*MASTERCARD*CHECK*CASH

Only

Only Löwenbräu is brewed in the world's great beer drinking countries. Brewed in Munich, in England, Sweden, Canada, Japan, and here in America. Only Löwenbräu, by license and authority, must use Bavarian Hallertau hops and be checked for flavor and quality by the brewmasters of Löwenbräu, Munich. Only Löwenbräu gives you 600 years of Bavarian heritage in one smooth American beer.

THIS WORLD CALLS FOR LOWENBRAU.



LOWENBRÄU

Special Beer

© 1986 Miller Brewing Co. Milwaukee, WI

CLASSIFIEDS START HERE

Announcements

Announcements

FRIENDS (QUAKER) meeting Sundays, 9:30-10:30 a.m., Danforth Chapel. Silent worship, friendship, fellowship, welcome! 965-7536.

GRANTS, LOANS, scholarships! \$500 - \$50,000, non-federal funds. 39c stamps for details. Wunsh, POB 200212, San Antonio, TX 78220.

NOW THERE are 3 ways to place your STATE PRESS classified ads! 1) stop by the MU classified booth 11:00 a.m.-1:00 p.m. daily, 2) stop by the STATE PRESS, basement Matthews Center 8:00 a.m.-5:00 p.m. daily, or 3) call 965-7572 and place your ad over the phone and charge it to your VISA or Mastercard between 8:00 a.m.-5:00 p.m. daily.

PHOENIX GAY Youth Group, a support and social group for ages 22 and younger. 897-8989.

Automobiles

1961 PONTIAC, 90,000 miles, PS, AT, AM-FM, original owner, good condition. \$1900. 996-4729 evenings.

1978 VW Rabbit with 1982 engine, 2-door sedan, AC, AM-FM cassette, good body, light color, excellent gas mileage, current plates, runs great, must sell. \$2295 OBO. 998-5153.

1979 BONNEVILLE, new tires, auto, ac, loaded, 82,000 miles, excellent condition. \$1800. 838-5063.

1979 FIAT Brava 4-door sedan, automatic, AC, AM-FM cassette, PB, PS, current plates, runs good, must sell, \$1495 OBO. 998-5153.

1979-LTD LANDOU white, PS, PB, power seats, automatic, air, cruise, AM-FM, 8 track, \$1795. 899-2052.

1979 SUBARU wagon, at, ac, Sony, cloth seats, good condition, paint faded, one small dent. \$1350 OBO. 839-2136.

1981 CAMARO, ac, at, ps, pb. John, 991-2646 evenings.

1981 VW Scirocco S, AC, 5-speed, AM-FM cassette, alloy wheels, tinted windows, new radio, good body, nice interior, excellent gas mileage, current plates, runs great, ready to go, must sell, \$4795 OBO. 995-5153.

1983 280ZX Turbo 2+2, rice red color, AT, PW, PS, PB, CC, AC, AM-FM cassette, equalizer, alarm, t-tops, sporty wheels, special tires, tinted windows, good body, nice interior, excellent gas mileage, current plates, runs great, ready to go. Must sell, \$13,995 OBO. 998-5153.

1983 HONDA Civic 1500 4-door sedan, AT, AM-FM cassette, AC, good body, nice interior, light color, 37,000 original miles, two owners, current plates, excellent gas mileage, must see, asking \$4995 OBO. 998-5153.

1983 PULSAR. Must sell! Excellent condition, red, ps, pb, ac, sun-roof, \$5950. 820-3237.

1985 FIERO, silver, sun-roof, ac, stereo, much more! Under warranty, 9,000 miles! \$8300. 968-7430 evenings, weekends.

TRADE ONE of a kind, European Specification, 7-series BMW, towards real estate, preferably land. 866-7298.

Business Opp.

INTERESTING PART-TIME business for ambitious students. On or off campus, flexible hours. Call for details, 924-2937.

A PART-TIME BUSINESS

If you like to read, check this out. No investment, no inventory.

New Family Book Club

Call 265-7948 after 6 p.m. for details.

For Sale

MOVIE POSTERS \$5 and up. Breakfast Club, Commando, Mad Max films, and more. Joel, 784-8970.

PIONEER SPEAKERS, 100 watt, brand new, never been used. Cost \$600, will take \$100 for the pair. Moving, must sell. 954-0627.

USED CARPETS \$10, for dorms, vans, cars, apartments, and etc. New remnants too! Carpet House, 1516 E. Van Buren, Phoenix.

Furniture

ALL NEW sofa, love seats, assorted colors, fabrics, \$199.95. Can deliver. B&Z, 520 E. Roosevelt, 254-4144.

BED'S BED'S. All sizes: Twin \$49.95; Full \$59.95; Queen \$89.95; King \$129.95. Never used. B&Z, 254-4144.

COMPLETE 7-piece bedroom with full size bed, \$199.95. Price includes 6dr dresser, framed mirror, 2dr nightstand, headboard. B&Z, 520 E. Roosevelt. Can deliver. 254-4144.

FULL SIZE bed, never used, still in factory wrapping, \$59.95. Can deliver. B&Z, 520 E. Roosevelt, 254-4144.

FUTON FACTORY. Tel: 254-5943, 415 S. First St., Downtown Phoenix. Quilted 6" Futons, \$49 and up.

MATTRESS SALE. Twin sets from \$49.95, Full sets from \$59.95, Queen sets from \$89.95, Kings \$139. 7 piece bedroom set complete \$195. 7 piece living room set \$259. 5 drawer chest \$39.95, sleeper sofas from \$249 plus much more. 3332 Furniture, 30 W. Main, Mesa, 844-1891; 3332 W. McDowell, 233-2236.

QUEEN SIZE beds, excellent condition, only \$125/set. Call 968-3728.

SOFA, WOOD trim with red plaid print, good condition, sturdy frame, durable fabric, \$100. Call 893-8356 after 6 p.m.

THREE PIECE plaid living room set. 968-2648 or 968-3702.

WAREHOUSE SALE- desks from \$44, chairs from \$5, end tables and coffee tables from \$10, typing tables, computer tables, bookshelves and more. 437-2224.

Help Wanted

ENGINEERING TECHNICIAN (mechanical). Second or third year mechanical engineering or technology. Some related experience desired. Must be available minimum of 20 hours per week fall and spring semester. Flexible schedule, \$4.50 and up. 956-8200.

ENGINEERING/COMPUTER Science majors interested in working your field during the Fall 1986 semester. Flexible hours throughout the day. All graduate students eligible, undergrads 3.5 GPA or better. Call 966-4225.

EVENING AND weekend switchboard/receptionist. 10-key, typing, and filing. Apply in person, Scottsdale Hyundai, 6825 E. McDowell, Scottsdale.

EXPERIENCED WAITRESS needed at Bandersnatch Pub, Tuesday and Thursday lunch shift, 11:00 to 3:00. Apply in person, 125 E. 5th St.

\$\$\$... Earn Big Bucks working for the ASU Telefund. Great bonuses and incentives plus valuable tele-marketing experience. Call Telefund Office at 965-6754 after 1 p.m.

GRADUATE STUDENT notetakers needed. Must type. Excellent opportunity for TA's. Notes-n-Quotes, University and College (inside Campus Drugs), 966-4225.

GREAT PART-TIME job, earn \$6 to \$8 per hour as a delivery person with Domino's Pizza. Full or part-time, flexible day or night hours. Drivers earn excellent hourly wage plus tips and mileage. Many delivery people advance to our management training program. Must be 18 or older with a good driving record, car, and insurance. We want dependable, clean-cut people willing to hustle. Applications will be accepted at 903 S. Rural and 930 W. Broadway in Tempe and all valley locations after 11:00 a.m. daily. EOE.

HOUSE CLEANER to work bi-weekly. Must be honest, reliable, have own transportation, \$4/hour, local references a must. Call Bonnie, 345-7558.

HOUSEKEEPER WANTED. M-F 3hrs afternoon. Light housecleaning, cooking, some errands. Must have car, references. Rural/Southern area. \$60 week plus errand mileage plus supper. Cat-lover preferred. Call Stefanie, days 244-7613, evenings 838-1643, after Aug 27.

INTERN FOR credit in the office on Senator Deconcini 261-6756. Ask for Mimi or Ruthanna.

JOBS. FLEXIBLE hours, part-time, full-time. \$8.95 per hour. Must have neat appearance, basic math skills. Tempe, Mesa: 967-5670. Phoenix, Glendale: 241-1083. 8 to noon.

LANDSCAPE HELPER, install plant and rock material. Experience helpful, full or part-time, \$4.25 to start. Scottsdale area. Call Chuck Kelly, 945-1015.

LEAFLETTERS NEEDED for first three weeks of classes. Undergraduate students only. Notes-n-Quotes, University and College, 966-4225.

LIQUOR CLERK, part time nights Friday and Saturday. Over 21. Neat, honest, reliable, Tempe Liquors 1810 N. Scottsdale Rd, south of McKellips 990-2374.

LOCAL RADIO station has part-time openings for telephone marketing research positions. No selling involved, close to campus. Call Denise between 1:00-5:00 p.m. 966-6236.

MAINTENANCE AND errand male needed in Old Town Tempe. Apply at Mill Avenue Merchants Association, 520 S. Mill, Suite 201, Tempe. No car needed. \$4.50/hour. Ask for Denise.

MAKE HUNDREDS weekly mailing circulars! No quotas, limits! Rush self-addressed, stamped envelope: Am-Mar, 256 Robertson Blvd., Dept. G, Beverly Hills, CA 90211.

MALE MODELS: Versatile male models needed by photographer who will be in Phoenix in October. Those selected will earn top dollars. Send recent photos, etc., to J.G., 5509 Crosscreek Lane, Suite 1075, Fort Worth, Texas 76109.

MARKETING MAJOR- part-time phone work morning or afternoon, hourly plus commission. Call 968-6600 appointment. Close to ASU. Ask for Steve or Mark.

MARKETING FIRM seeks individual to work 1-2 days/ week on campus soliciting credit cards. Call 1-800-932-0528.

MCDONALD'S NOW hiring, flexible hours to fit school schedule, uniform and meal provided, vacation bonus, activities. Interviews Tuesday through Friday, 3:30-4:00 p.m., 1325 W. Broadway, EOE.

MEDICAL OFFICE in Scottsdale needs part-time help. Experience helpful, but will train. Apply in person, 7701 E. Indian School Rd., Suite E.

PART-TIME clean up person for animal hospital in Chandler, 6 days a week. Call 963-2340.

**WOW
HAVE
WE GOT A
RUMOR
FOR YOU**

The
**Delta Chi
Fraternity**

is looking for men who are interested in personal development while enjoying the benefits of fraternity life.

If you would like more information call:
**SCOTT 829-3785
COCO 784-0912**

For Rent or Lease

2, 3, 4 bedroom condos, townhouses, houses, near ASU for rent and sale. Call Alumnus Robert Bullock, Trencor Realty, 998-0919 941-7041.

ATTRACTIVE TWO bedroom apartments. Beginning at \$430/month. No deposits. Right off Scottsdale Road in Scottsdale. Call 941-8530.

AVAILABLE TWO bedroom, two bath, pool, one mile ASU, \$450. Jerry C21a.m., 968-5703, 831-1114.

BEAUTIFUL NEW large two bedroom, walk to ASU, pool, laundry, 8th street and Gary one block south of University on 8th St. between Rural and McClintock 968-5238.

CONDOS: SALE- lease- by the unit or by the room. Art MacLaren, ERA Valley Metro, 834-7653.

DUPLEX, 2 bedroom, 2 bath, near ASU, \$475/month. Eric Paddie, 493-8599 or 867-8999.

DUPLEX- ONE bedroom- 6 blocks ASU. Secluded location, large yard, carport, \$290. 248-0000, 965-6355.

FOR RENT. Quiet room in private home. Laundry, pool, and shower privileges. Female only, \$50 per week. 949-9324.

GREAT LOCATION, 2bd 2bath condo, fireplace and washer/dryer. \$525. 5146 E. Oak. Call Bea Watson, 840-4720.

GUEST HOUSE, 1 1/2 miles from ASU, \$275 plus 1/2 utilities, Eric Paddie, 493-8599 or 867-8999.

NEW, LARGE one and two bedroom apts. Great complex, many amenities, 3 miles from campus. Pelican Bay Apartments, 2121 W. Main/Apache 969-3380.

PAPAGO ONE, two bedroom, two bath condo for rent. All appliances, \$600. 947-8189 after 6:00p.m.

QUAINT ONE bedroom apartment- 1.5 miles ASU, large separate fenced yard, hard wood floors, knotty pine paneling, \$260. 248-0000, 965-6355.

THREE BEDROOM, two bath house, close to ASU, appliances included, pet ok, nice house. 894-8302.

TWO BEDROOM house includes washer, dryer, fenced yard, carpet, drapes, yard service, irrigation, 1/4 mile east of campus. Adorable home, \$550/month, one year lease. 820-4674.

TWO BEDROOM unfurnished apartment close to ASU, completely remodeled, \$328 per month. 964-1660.

TWO BEDROOM, two bath condo, pool, spa, tennis, weight room, fully furnished, \$565/month. 840-6053.

Babysitters wanted

CHILD CARE wanted for two girls ages 9 and 10, 3:30-9:00 p.m. daily. Call 829-9626.

Bicycles

DIAMONDBACK SAND Streak, 5-speed, excellent, with rack, \$150. 965-4000, 947-2389.

GOOD USED bikes, from \$35 to \$125. Don, 829-9618 (keep trying).

PEUGEOT MOUNTAIN bike, \$180. Brand new, heavy duty inner-tubes. Scott, 946-9669.

Help Wanted

AFTER SCHOOL program staff needed for Tempe YMCA child care program. Must be 18 or over, child care and/or teaching experience required. 2 p.m.-6 p.m., M-F, work-study. Apply at Tempe YMCA, 2201 S. McClintock, 968-9286.

AMERICAN INTERNATIONAL Rent A Car needs rental agents. Good pay plus incentives. Flexible hours. Call Harvey Johnson, 244-8288.

APPOINTMENT SETTERS: part-time, close to campus, flexible hours, salary plus bonus, no selling, great student job. Call Matt, 894-0030.

ATTENTION MARKETING students, local firm seeks individual to deliver information to area business owners. Auto required, part-time hours, flexible, salary plus bonus. Call JoAnn, 834-0922, 8:30 a.m. to 12:00.

ATTENTION SENIOR Marketing students- Wanted: seminar marketing rep. Mesa marketing firm is introducing an exciting new seminar series. We seek career oriented individual to contact business owners. Flexible hours, auto required. Call 834-0922, Jay Fleming.

BROADWAY SOUTHWEST merchandise processor, on-call positions, responsible for checking, marking, and handling of merchandise, 3:30 to 9:00, evenings and weekend days. Apply 9:00 to 12:30 or 1:30 to 2:30 Monday through Friday. Distribution Center, 1524 W. 14th St., Tempe, EOE.

CHILD CARE Monday through Friday, 3:00 to 6:30 p.m., \$4/hour north Scottsdale. Homemaker/light housekeeper, cook, errand runner. Monday through Friday, 3:00 to 7:00 p.m., \$5/hour, 45th St./Cameback. Domestic Consultants, 941-5150.

COMPUTER STORE needs part-time stock clerk in Tempe. Computer knowledge a plus. 838-1236.

CREOLE CHEF Inc., help wanted, 1725 W. University, 967-1288. All hours available.

DELIVERY PERSON 10 a.m.-4 p.m., M-F, need car. 241-1957, ext. 56.

DISABLED STUDENT needs part-time help. No experience necessary, \$5 per hour. 921-1876.

DISABLED INDIVIDUAL needs assistance with personal care and/or domestic chores. To apply and for more information contact: Jim Hemauer at 965-1234.

DUNKIN DONUTS, help wanted. Mature individual preferred. Apply in person, all shifts available. Will train all smiling faces that want to work. 2009 N. Scottsdale Rd.

For Sale

'80 MOBILE home, two bedroom, two bath, near ASU, only \$8500. Low down, low monthly. Terry, 834-5627, 831-8111.

CHICAGO BEARS official Super Bowl team picture plaques. Top quality. Great for dorm or apartment. \$35. 968-1736 after 5:00.

E&J QUICK Silver Premier wheel chair with swing-away foot rest, removable arms, used three months. 839-7766.

FLUTE- ARMSTRONG '78, sterling silver, b-flat foot, seldom used. Ricki, 254-2404.

HOUSE SALE: Everything must go, furniture, personal items, etc. Sunday and Monday, 337 E. Fillmore, Tempe, 945-7275.


IBM-XT COMPATIBLES, 640K memory 2-DSDD drives, AT-style keyboard, monochrome monitor, + software, F.C.C. approved, \$725. 968-5128, 945-5652. Quantity discounts.

INTERNATIONAL STUDENTS: Guide to greencard from student visas. For details, send \$1 (P&H): Immigration Publications, PO Box 515991, Dallas, TX 75251.

KING SIZE futon with frame; queen size futon with pillows; collapsible inversion back-swing; inversion boots. 963-8227.

Razz YOURSELF

50cc Engine
Automatic Drive
More power than Honda Spree
Modern Luxury Styling
NOW \$499⁰⁰
Ex F/P TT&L
Limited to stock on hand.



**YAMAHA
DISCOUNT
CYCLE CENTER**

6828 E. Thomas • 941-5321
5720 N.W. Grand • 931-3753

classifieds

Help Wanted

OFFICE CLEANERS needed 15-20 hours per week. Evenings. Must have car. \$4 per hour after training. Bonuses, pay raises, and advancement opportunities. Leave message. 274-0999.

PART-TIME WATERBED sales, work around your schedule, walking distance from campus. Apply in person at The Bedroom, 825 N. Scottsdale Rd., M-F, 10:00 a.m.-5 p.m.

PART-TIME CLERICAL sales, minutes from ASU. Work week nights til 8:30 p.m. Candid Wedding Photographers, 609 N. Scottsdale Rd., 945-2550.

PART-TIME COPY editor for news letters on Asian business and technology. Technical background not necessary. Superior writing skills and academic credentials required. Call C. Mead at 840-8277 (office) or 840-5500 (home).

PART-TIME DEPENDABLE people needed to assist mini-storage manager and leasing involving maintenance, etc. Must be able to work daytime hours including weekends. PC experience helpful, must have own transportation. Send resumes to PO Box 124, 410 S. 2nd St., Phoenix 85004.

PERFECT STUDENT job, flexible hours. Car Wash, 838-9455.

PHONE SALES: Guaranteed salary plus bonus. Earn up to \$7 per hour. Morning and evening shifts available. Young office, great working conditions. 1 1/2 miles from campus. Call Dave, 968-5795.

SECURITY OFFICERS full or part time, car and phone required. Fit hours to your needs. Internal Security Agency 820-1919.

ARMY-NAVY Surplus Store ... staff wanted ... opening soon across from ASU. Retail experience preferred but not necessary. Positions available ... management - sales staff - general help - full and part-time positions. Apply by application and/or resume to Mesa Tribune, Box C37, 120 W. First Ave., Mesa 85201.

STOCKYARDS RESTAURANT now hiring lunch food servers and lunch hostess. Apply in person M-F 2 to 4 pm. 5001 E. Washington.

STUDENT NEEDED to provide care for 11 year old girl. Responsible for housekeeping, errands, etc. Live-in or live-out, some evenings required. Own transportation a plus. 345-7207.

TEMPE MAGAZINE is now seeking the following positions for employment. Ad salesman and photographer. 968-6025.

WORK STUDY positions available in School of Accountancy within the College of Business. Duties include typing, phones, front office work and computer knowledge preferred. Approximately 15 hours/week. Pick-up application at Matthews Center, Job No. 0037A or call Monica at 5-3631.

Instruction

EARN EXTRA MONEY
Arizona School of
BARTENDING
Job Placement Assistance
Start Any Day
Terms Available
275-MIXX
4035 E. McDOWELL
Minutes From Campus
9/5

Help-Wanted

 **DRIVERS**
Earnings \$6 to \$8/hour
Flexible Hours
Contact: 968-2357
1340 E. Broadway, Suite 105
Tempe, Arizona
8/29

Instruction

TAEKWONDO. TRADITIONAL instruction in the art of self defense. Build confidence, control and a healthier mental attitude. Two free lessons. 894-5389.

Jewelry

CASH FOR gold and diamonds. Mill Avenue Jewelers, 414 S. Mill Ave., Suite 104, Tempe, 968-5967.

Lost & Found

\$25 REWARD for return of orange backpack lost Monday, August 25th near Banderanatch. Contains two textbooks, two portfolios. Dave, 894-6305.

LOST AND Found ads are free everyday! We limit them to 20 words and run them for 2 days. Just call the STATE PRESS classified department, 965-7572, Monday through Friday, 8:00 a.m.-5:00 p.m.

LOST: BROWN U.S. Army folder, contains military records. If found, please call Kevin, 967-1146 or return to nearest military installation.

Miscellaneous

A BEAUTIFUL color television, 25" \$100; 19" color TV, \$85; console stereo \$75. Cash. Call 253-5016.

Experience the unique atmosphere of
the Vine Tavern
at
FRIDAY & SATURDAY
Live: Earthwood
BRONZE
\$1.50 TNT's
8/29

Motorcycles

1973 HONDA CL350, less than 10,000 miles, excellent condition, \$500, includes helmets and extra tire. 893-9613.

1978 KAWASAKI KZ1000, 8,000 miles on rebuilt top end. Many new parts including rear tire. Runs very good. Glenn 255-4845 (wk), 820-8518 (hm). \$1000 OBO.

1980 YAMAHA 850SX Special, 11,000 miles, garage kept, helmets and extras, \$900 OBO. 963-3356.

1981 YAMAHA 250 Exciter street, low miles, excellent condition, \$600 OBO. Jackie, 967-0173.

1983 KAWASAKI GPZ550, 10,000 miles, excellent condition, Metzler tires, \$1200 or best offer. Peter, 830-6208.

1983 NIGHTHAWK 650, almost new condition (garage stored). Only 7,500 miles, shaft drive, etc., good tires, two nearly new full face helmets included, \$1250. 991-5620.

1984 HONDA Nighthawk S, blue, black, 14,000 miles, excellent shape, maintained regularly, \$2000 (firm). Phone 838-1351.

DON'T PAY dealers prices. 1985 Honda Rebel 250. Bought November '85. Only 900 miles, garage kept, hardly used, sharp looking, very ideal transportation. Only \$970. Call Magnum at 833-5434, evenings.

Help Wanted

Motorcycles

HONDA 125CS, 550 actual miles, street licensed, perfect condition, 2 helmets, \$425. 964-7258, Mesa.

HONDA AERO 125, red, perfect condition, radio, must sell, \$850. 921-1347.

On Campus

LOOK WHAT'S new in STATE PRESS classifieds...ON CAMPUS. This is a great way to have your club, group or organization reach 45,000 readers each day. You can advertise meetings, announce officers, welcome new members, etc. Stop by the STATE PRESS classified office 8-5 daily or the MU classified booth 11:30-1:00 daily.

Personal

8 DAYS and coming soon - "ATO Homecoming". Brace yourselves ASU!

ANOREXIA, BULIMIA, compulsive over eating, private and confidential counseling. Gennie Monroe, ACSW, re-covered bulimic 437-9420 or 248-8204.

ANYONE AT McDowell and Scottsdale Road July 30th at 4:50 who was a witness of a car accident please call 946-9722 or 965-3529.

ATTENTION LADIES of ASU: the men of Phi Kappa Psi (418 Adelphi Dr.) would proudly like to announce "Little Sister Rush" at the "Back to Basics Party", Friday, August 29 at 9 p.m.

CONGRATULATIONS MICHELLE and Jennifer on pledging Alpha Phi!! Hope you both have a great semester! Steve.

DON'T PANIC - Welcome back, we are still open til 3:00 a.m. Monday through Saturday. Deliveries til 2:00 a.m. Good food. Fun food. Fast food. Call 968-6977, 9 E. 5th St.

FOR A good time, call 820-6124.

LAMBDA CHI Alpha would like to invite the women of ASU to our annual Little Sister Rush Weekend, August 29, 8:00 p.m. Party with the men of Lambda Chi August 30, 8:00 p.m. Party with the men of Lambda Chi August 31, 7:00 p.m. Little Sister orientation meeting September 1, 10:00 a.m., seventh annual Little Sister river trip.

LOVE LINE for \$.60 a minute. Call 1-976-LOVE and meet someone special or add to your friendship list. Give Love Line a try.

MONEY FOR college! No gimmicks. Free details. SASE: NENALEX-AS, 3453 NW Thurman, Portland, OR 97210.

NETTERS: YOU are one of the best! Wishing you good luck and fun this school year. I'm going to miss you very much. Love, Your Big Sis.

PANIC CITY - try us for lunch. Wow! A new concept. 11:30-3:00 a.m. Monday through Saturday, 9 E. 5th St., 968-6977.

REBELS WITHOUT A Cause theme party!! Rush Grand Finale!! Tonight at the TEKE house, 8p.m.

SIGMA PHI Epsilon's Golden Heart Rush - September 2, 3, and 4 - come join in the fun!

CLASSIFIED DEADLINE is 3:00 p.m., two days prior to ad run date.

LET'S TALK about something very personal! For only \$1, you can place a 15 word classified PERSONAL ad in the STATE PRESS. It's a great way to communicate! This offer good through September.

GET PERSONAL! For only \$1! That's right. Now through September you can place a PERSONAL classified in the STATE PRESS for only \$1. That's 15 words for \$1 per day, .10 each additional word...so, get personal!

SURE, YOU can charge your STATE PRESS classified ad on your VISA or Mastercard! Just call 965-7572 and ask for classified advertising.

TAU KAPPA Epsilon Informal Rush, Rebels Without A Cause party tonight at 8p.m. For more information call 968-2662.

TRI DELTA would like to congratulate their new Delta men! Marc Wolfe, Rob Bowman, and Jeff Stewart! Get ready for a great year!

TRIXI AND Sam, the steaks were OK, but the company was awesome! Love, Harry and Ernie.

Rv's & Trucks

16' HOBIE Cat sailboat, full race, extra set of sails with trailer. \$1000. 967-3568.

Real Estate

AFFORDABLE HOUSES, townhouses, foreclosures. Why rent? Invest! Information, Mrs. Topper, 948-2825, John Hall Associates, 948-0550.

Real Estate

ASU STUDENTS, two bedroom, two bath ASU townhome, all appliances included, tennis courts, swimming pool, only \$58,000. Call Dave at Coldwell Banker, 839-8200.

CLOSE TO ASU, great location for students, cute two bedroom, two bath townhouse with family room and lots of storage area. Just \$55,000. Call David, Realty Executives, 831-0322.

CLOSE TO ASU, 12x65 mobile home, 3 bedroom, 1 1/2 bath, family park, pools, jacuzzi, etc. 966-4950 or 968-8532 (message).

CONDO FOR sale by owner, 1 bedroom with pool and jacuzzi, refrigerator, washer dryer, disposal. 700 W. University (biking distance ASU). Anxious to sell, assume mtg, pay closing costs and it's yours. A. Benora 251-3112.

CUSTOM HOME in Corona Del Sol Estates, over 2800 square feet, four bedrooms, pool, spa. \$219,500. Realty Advisors, 838-1800, Barbara Grant, 839-7786.

FOR SALE! 2 bedroom, 2 bath condominium. 3 miles from campus, move in immediately! Perfect for students! Only \$59,900. Call Bob Turner, Realty Executives, 831-0322.

LOVELY 3 BEDROOM TOWNHOUSE. Many amenities. Close to ASU. Great investment for faculty or parents of students. \$105,950. Marilyn Stone, eves, 840-7091 days 994-1458. Real Estate Professionals.

LUXURY CONDO near ASU, two bedroom, two bath, indoor racquetball, two pools, sauna, jacuzzi, weight room, fireplace, all appliances, ceiling fans, washer, dryer, much more. 9 1/2% assumable. 967-6906, 839-6219.

ONE BEDROOM condo for sale, two miles from campus. \$38,000, or loaned \$42,000. Washer, dryer, stove, refrigerator, pools, tennis courts. Call 833-0206 after 7 p.m.

PRICE REDUCTION, lowest priced home on the water. Unique 3 bedroom 1 1/4 baths, great room with wooden and beam ceiling, 1775 square feet, antique paneled window frames. Great water view overlooking Clubhouse, only \$154,900. Call Jackie Holland, Bradley Realty 838-1500 or 897-8121.

REDUCED \$7000. Luxury townhouse, 3 bedroom, 2 1/2 bath, community pool, double garage, 4 blocks to ASU. Closing cost down, \$83,000. Call Pat, 831-1555, 820-6985. Realty Executives.

SCOTTSDALE CONDO, one bedroom, one bath adult complex. For sale or lease purchase. Asking \$46,900. Call Mary, ERA Valley Metro, 948-0900 or 991-6536.

SPACIOUS TOWNHOME, four bedroom, highly upgraded, near pool and tennis. No qualifying loan, owner may carry. \$69,900. Realty Advisors, 838-1800, Barbara Grant, 839-7786.

TWO BEDROOM, two bath condo at 70th St. and Thomas. Complex has pool, spa, and gas grills. Condo has fireplace and all appliances including washer and dryer. 990-8117 or 251-2527.

TWO STORY, three bedroom townhouse, very clean, minutes from ASU, \$32,000. Co-op fee, \$211/month. 991-6666, Erwin or Charlotte.

Ride Needed

NEED A ride somewhere? Place an ad under RIDE NEEDED in the STATE PRESS classifieds and get where you want to go!

Riders Wanted

ARE YOU driving somewhere this weekend and need someone to go with you to help share expenses and the driving? Place an ad under RIDERS WANTED in the STATE PRESS classifieds...and happy traveling.

Roommate wanted

AAAAA Move in today, own room, completely furnished including bed, all utilities included, \$240, 3/4 mile ASU. 829-6910, 241-8218.

FEMALE ROOMMATE wanted to share completely furnished 2 bedroom 2 bath townhouse, own phone, backyard, half utilities, nonsmoker, no pets, \$275 a month. Debi 438-1099.

FEMALE ROOMMATE wanted for new 2-story townhouse. Washer/dryer, microwave, pool, large bedroom, \$220 + 1/2 utilities. 962-6337.

FEMALE ROOMMATE wanted, own room and bath in two bedroom condo, furnished, washer/dryer, pool, jacuzzi, tennis courts, only 1/2 mile to ASU, non-smoker, 894-5284, after 5p.m. weekdays, anytime weekends, available now!

Roommate Wanted

FEMALE TO share three bedroom, two bath home with pool. Full kitchen privileges. Baseline/Hardy. \$250/month plus 1/2 utilities. Ask for Christy, 831-8763.

FEMALE UPPER classman looking for same to share a great new comfortable 3 bedroom condo, 2 miles from ASU. Would like someone who is cooperative, has a good sense of humor and is a good student. \$225 to \$250 per month. Call Karin, 967-8466 or 951-0413.

GRAD STUDENT, professor or faculty member to share three bedroom home with garage, storage, washer, dryer, fireplace, nice yard. Elliot and McClintock, \$325. 898-7637 or 844-1655 evenings.

MALE ROOMMATE (non-smoker) to share large house, 1 block ASU, \$250 + 1/4 utilities. 968-6449.

M/F NONSMOKER. Share nice 4 bedroom home. Pool, WD, pool table. Bike to ASU. \$210 - \$225 month 1/4 utilities. 949-0943.

NON-SMOKING FEMALE roommate wanted. Share one bedroom, bath apartment. Walking distance to ASU. \$189.38/month plus electricity and phone. 967-7299. Desert Palm.

NON-SMOKING CHRISTIAN female to share furnished two bedroom apartment, \$214/month. Kay, 965-4135, 964-5248.

OWN ROOM, non-smoker, prefer health conscious, furnished, school two miles, \$125 and half utilities. 968-8944.

QUESTA VIDA condo, share master suite, with own bath, \$175 + 1/4. Two pools, jacuzzi, sauna, weight room. All extras. Chris, Cheryl, 968-1483.

RESPONSIBLE FEMALE, furnished private room, nice house, good neighborhood, 4 miles ASU, \$250 month, free utilities, non-smoker. Mardell, 831-5599.

ROOM IN three bedroom house with pool, washer. Prefer mature, considerate non-smoker. Near Broadway and Hardy. \$135 plus 1/2 utilities. 967-5004.

ROOMMATE WANTED to share house in Scottsdale at 68th St. and Indian School. Own bedroom and bathroom, \$275 per month plus 1/2 utilities. Day, 991-2997; night 941-1636.

WE NEED ROOMMATES
to share our luxury furnished condos.
Two Bedroom/Two Bath

- Bicycle to campus (8 blks.)
- Pool & Jacuzzi
- Sand Volleyball
- Clubhouse w/Media Room, Weight Room & Sauna
- Large Patios
- Free Parking
- Mini Blinds

894-5516

These units have been purchased by parents of students at ASU.

Worthington Place
616 S. Hardy, Tempe
Hardy Just North Of University

Roommate Wanted

SHARE CONCEPTS shared housing. We have numerous tenant and landlord placements and are open for more. Valley wide service. References required, Mon-Sat, 9 a.m.-7 p.m. 990-8488, 946-0198.

SHARE FOUR bedroom home near ASU, 6 or 12 month leases, available immediately, 941-0672.

SHARE NEW townhouse, two bedroom, two bath, fireplace, pool, \$265, half utilities. 963-0211, 839-9271, 893-3226.

THREE BEDROOM townhouse. Furnished, pool, washer, dryer, minutes from ASU, \$220/month + 1/2 utilities. Marc, 941-1601; Renate, 996-1078. Students preferred.

TWO NON-SMOKING females needed for condo. \$240 month plus 1/2 utilities. Call Julie, 948-5902(wk), 921-1145(hm).

Services

DON'T PANIC - Panic City still delivers until 2:00 a.m. Good food. Fun food. Fast food. 968-6977.

PRIVATE SWIM lessons, WSI certified and 5 years experience. Call 996-4736, Chris.

TERRIFIC BARGAIN! Unlimited long distance phone calls, \$100 per month, plus cash for sponsoring others. 968-8944.

UNLIMITED LONG distance calls. All the long distance calls you can make, talk as long as you want. Anytime, anywhere in the USA. Flat fee of \$100 per month. Uses AT&T lines. Call for application. 945-6225 or 956-5201.

LAUNDRY SERVICE
Have your dirty clothes cleaned all year for only
\$16⁰⁰ per month
(\$65 per semester)
If you don't know how to do laundry, don't have time or just don't care to ...
Call: **THE LAUNDRY SERVICE**
921-0148
8/29

Transportation

CARS AVAILABLE - 21 or older. All States Drive-away, 992-5200.

Typing

\$1.50/PAGE, word processor, mailmerge, professional typist, same day service. Call Marge Willis 834-4583.

CALL ME for fast, accurate, quality service at competitive prices. Close to ASU. 966-2186.

CEHUS WORD PROCESSING. Quality guaranteed. Term papers, marketing/technical, dissertations, theses, form letters, resumes. 947-7796.

PROFESSIONAL, ACADEMIC, word processing, book, thesis, dissertations, disc storage, letter quality. Reasonable rates. Taylor-Lyndsey 964-6689.

RUSH JOBS no problem! Term papers, theses, etc., \$1.50 per page. Sharp, clear type. 839-9103.

SAVE TIME, call me first. Wordprocessing-theses, dissertations, resumes. Professional typist. Mesa Secretarial. 844-1878.

SHORT OF TIME? I can help. Reasonable. Professional. Guaranteed. Experienced in academic. Call Jessie 945-5744.

THESES, TERM papers, reports etc. \$1.00 page, typed at home, 30 years experience. Marlan 431-0618.

WORD PROCESSING and storage for dissertations, theses and term papers. Nancy 830-5572.

WORD PROCESSING, data entry, fast turn-around, reasonable rates. Close to campus. 831-9054.

Wanted

BONUS TRAVEL coupon for any major airline. Call 967-3584, ask for Dave. Reasonable offers.

Lite

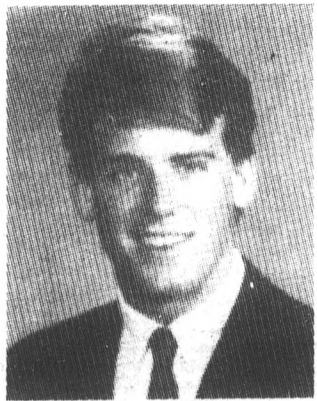


Welcome Back ...

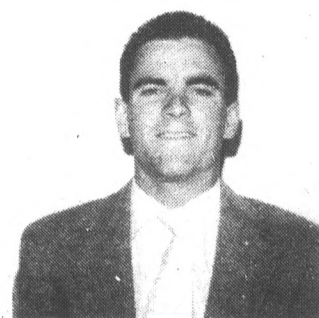
Lite



*you've finished the first week,
... only 15 more to go!*



JOHN HALSEY



SCOTT BOSTICK

Welcome

BACK TO SCHOOL

ASU

Attention Campus Clubs and Organizations:

Contact one of the above campus representatives
for information concerning promotional support:

SCOTT BOSTICK
968-8686



Miller Brewing Company

JOHN HALSEY
968-8686

Lite



MILLER BREWING COMPANY
*continues to promote responsible drinking
this semester and every semester at*
ARIZONA STATE UNIVERSITY.

Lite



Shamrock Distributing Co. 

"Friends don't let friends drive drunk"