

tuesday

February 25, 1986

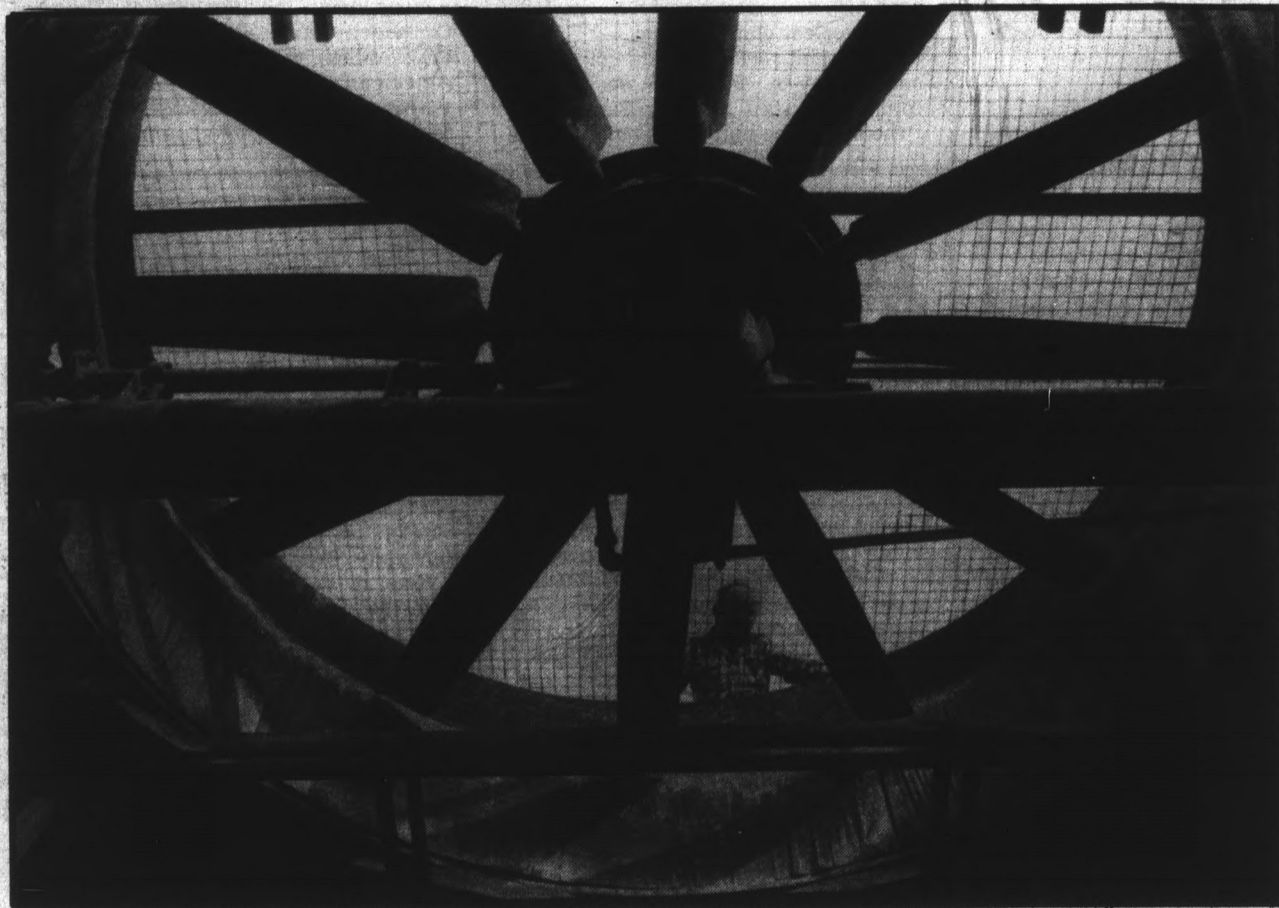
state press

Tempe, Arizona

Vol. 68 No. 93

Arizona State University

© Copyright, State Press, 1986



Staff photo by Todd Green

My biggest fan

John Maamin, an ASU engineer for 20 years, inspects the giant turbo of a water cooling tower in Physical Plant.

Students might fund new faculty club by buying at bookstore

By VICKIE CHACHERE
State Press

Student purchases at the ASU bookstore might be used to fund construction of a faculty club, ASU President J. Russell Nelson said Monday.

Nelson said money generated from textbook sales to students, along with local funds and financial support from faculty members, are among several possible funding sources for the facility.

Nelson, who is reviewing a report completed by a faculty committee, declined further comment on details of the club or financing sources.

"I don't want to speculate," Nelson said, adding that he will release further information when the planning process is "further down the road."

But Associated Students of ASU President Dave Varnell said he is opposing the use of student revenues for construction of the club and that student-generated funds should go toward projects that directly benefit students.

"Any money generated from students, whether it is from book revenues or computer revenues, should go directly back to students," he said.

Varnell said using book revenues for the construction would indicate that students are "being raked for a profit in other ways than tuition."

Varnell said the book revenues could be used to construct additional space in the MU, purchase additional library books or guarantee bonding for the Student Recreation Center.

Nelson said he had received a report on plans for the club, which includes financing sources, but will not release the report or further information until ASU officials can determine if the proposed location for the club is safe.

Nelson said ASU's Fine Arts Complex is being considered as a possible site for the club, although ASU Fire Marshal Andy Anderson recommended the building be torn down more than a year ago.

Nelson said the building is a historic landmark, and that "it has an important place in the history of this University."

The 77-year-old facility has been closed because termite infestation has weakened the structure of the building, he said.

Richard Jacobs, an ASU physics professor and chairman of the committee charged with developing a plan for the club, said he has turned the report over to Nelson and would not release any information on the committee's recommendations.

"None of that information is official," Jacobs said. "It all belongs to the president."

Varnell said he believes the decision process is "at the tail end and the decision has already been made."

Ex-lawman: cults 'rape' recruits

Students victimized financially, mentally

By DAVE ROOK
State Press

Cult members visit ASU several times a year to find recruits whom they abduct, then financially and mentally "rape," a former Pima County attorney said.

Mike Trauscht spoke Thursday in the MU on religious cults and the effects of brainwashing.

Trauscht started dealing with religious cults in 1975 while serving as a deputy county attorney under U.S. Sen. Dennis DeConcini, who was Pima County attorney at the time.

He said that during that time he spent three years rescuing teenagers and college students who had been kidnapped by cults.

"I've probably been sued more than anyone in this state," he said. "I've had over \$50 million in lawsuits brought against me by various cults."

Trauscht, who eventually became county attorney, said he never lost a lawsuit, but spent \$300,000 to defend himself.

"Their main concern is money," he said. "They travel from city to city looking for recruits that they can financially and mentally rape."

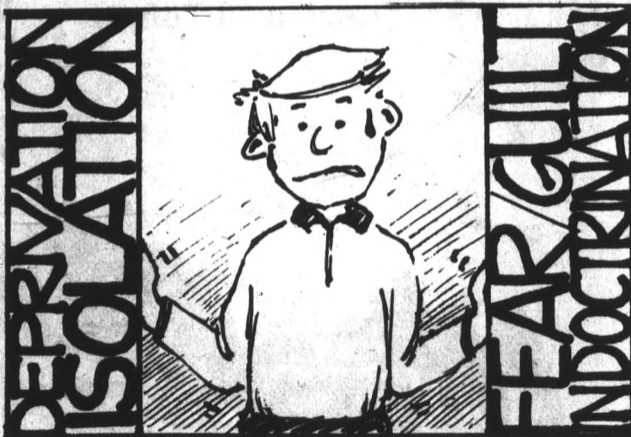
"They come through ASU in vans three or four times a year and use over 50 different front names to solicit young recruits."

"They won't call themselves Moonies but rather CARP (Collegiate Association of Refined Principles), Project Unity or Christian Crusade."

John Crawford, an ASU communications professor and authority on cults, said he also believes that ASU is frequently used as a recruitment center by many of the organizations.

"The University does not require that kind of a group to register on campus but many are clearly visible on the mall," Crawford said Monday.

"They are trained to view college students as targets of opportunity," he said. "We lose about 10,000 students from college campuses around the nation every year."



Sonia Wilczewski, a senior English major, said she was confronted by a cult member last week while on campus.

"I was approached by a Moonie last week, and he gave me a card that said 'Unification Church' on it, but I didn't make the association at the time," she said.

Trauscht described the typical new recruit as being between 18 and 24 years old, usually more intelligent than the average person and having just experienced a personal problem.

"If they see you sitting under a tree studying world history, they may approach you and say 'Oh, world history. How interesting.'"

Trauscht described this practice as "love bombing." He said that if it is effective a cult recruiter usually invites the person out to dinner and then to a retreat.

"Once the person accepts the invitation to dinner, the cults usually have them," Trauscht said. "From what I've seen, most recruits are zapped within three to seven days after that."

He said cults brainwash a victim by controlling the environment.

Trauscht said the cults use food and sleep deprivation, isolation from the outside world, fear and guilt tactics and indoctrinations in order to brainwash.

"They become debilitated. And the more physically tired you become, the easier it is for them to mold your mind," he said. "This is one of the most controversial subjects that I've ever been involved in."

Inside Today

The Student Health Center treats as many as 450 patients on a busy day. And it's cheap. First of a four-part series. Page 5.

An ASU yearbook might be all that is needed to put the universe in balance, says a computer science senior with proposals for running the project. Page 7.

Two ASU students forgot to do a little namedropping. And it cost them a fortune in Whoppers. Page 10.

ASU weather — Sunny and warm today. The expected high is 89 degrees. The expected low is in the mid-50s

Bloom County	6
Classified	15
Collage	12
College Dopesheet	11
Nation/world	2
Opinion	4
Police report	6
Sports	13
Today	3

nation/world

Entrepreneur takes over ailing Eastern Airlines

MIAMI (AP) — Racing strike deadlines from unions and default threats from creditors, Eastern Airlines announced Monday that it would be taken over by aggressive, cost-slashing entrepreneur Frank Lorenzo and his Houston-based Texas Air Corp.

No details were disclosed immediately, but union officials said they understood that Lorenzo, whose company also operates Continental Airlines and New York Air, would continue Eastern, the nation's third-largest carrier, as a separate airline.

Charles Bryan, president of the International Association of Machinists local that represents 12,000 Eastern workers, sent Lorenzo a telegram offering cooperation.

Major creditors had given Eastern management a Feb. 28 deadline to present a long-term plan to turn around the airline, which is \$2.5 billion in debt. Ken Mills, spokesman for Chase Manhattan, one of the largest creditors, said he had no comment on the takeover.

13 wounded fleeing gunfire near palace

MANILA, Philippines (AP) — Soldiers fired on a jeering crowd early Tuesday near the palace of Ferdinand E. Marcos, who struggled desperately to preserve a 20-year hold on power that the United States said is no longer rightfully his.

Eight people were wounded in the shooting and five were injured while trying to flee the gunfire, hospital officials said.

Hundreds of thousands of civilians defied a dusk-to-dawn curfew to form

human shields around the suburban camp of military rebels, who proclaimed Corazon Aquino president, and around the rebel-held government television station, Channel 4.

Marcos appealed to civilian loyalists Monday to bring their guns to the capital and protect him. In a broadcast on private Channel 9 television, owned by an associate, he said: "We will defend the republic to the last breath of our life, the last drop of our blood."

Both Marcos, 68, and Aquino, 53, scheduled inauguration ceremonies for Tuesday.

Women leave hospital with wrong babies

GREENBRAE, Calif. (AP) — Linda Boggeri loves her baby, and Ilse Amzallag loves hers, but for about a day each loved the other's child because a hospital did the unthinkable: it gave two mothers the wrong babies.

"This is something that you would see on a soap opera, but not in real life," Boggeri said Monday. "I never dreamed that they could have given us the wrong baby."

The two families might still have the wrong babies if Boggeri hadn't taken another look at the infant's ID bracelet before she put it away in a scrap book.

On Saturday, she snipped off the baby's name tag, gave the baby a bath and was about to put the tag away with other mementoes when she noticed it said Amzallag, not Boggeri.

"I just thought, 'What!' They put the wrong name tag on my baby!" Boggeri said. "I had my husband call the hospital and they told us the tag was right, the baby was wrong."

arizona

Arizona Public Service ordered to cut rates

PHOENIX (AP) — The state Corporation Commission staff Monday recommended that Arizona Public Service Co. be ordered to take a temporary \$30 million rate reduction instead of the \$78 million increase it seeks.

The recommendation, one of four proposals outlined by the staff, would base APS revenue on how well the Palo Verde nuclear plant operates.

"If the unit runs poorly the company's not going to fare so well," said commission staff attorney Tim Hogan. "The better the unit runs the more the

company makes." All four of the options would be temporary, pending results of a massive audit to determine if the Palo Verde costs were prudently incurred. Any imprudent costs could be excluded.

A public hearing on the rate portion of the APS begins on March 27. The commission currently is hearing testimony on whether to revise a temporary fuel adjustment surcharge now being paid by APS customers.

Meanwhile, the Residential Utility Consumer Office Monday proposed a \$20.5 million rate increase, while the American Association of Retired Persons suggested a \$34 million hike in testimony filed with the commission.

pac-10

UCLA protesters fight for right to fair trial

LOS ANGELES — Denying that they violated University of California at Los Angeles regulations, four anti-apartheid protesters arrested last spring in a sleep-in presented their arguments last month at the final phase of hearings before the Student Conduct Committee.

The defendants — Carolyn Fershtman, Matthew Kogan, Ingrid Landes and Diego Maldonado — were arrested April 26 after a three-day demonstration.

Trespassing charges against them were dropped by the city attorney's office, but the university chose to bring them before the conduct committee after

they refused to sign a letter promising not to repeat their actions.

They are charged with unauthorized use of university property, obstruction of university activities and failure to comply with the directions of a university official.

"One of the fundamental tenets of American law is that you are innocent until proven guilty," said Fershtman, acting as attorney for herself and Matthew Kogan. Fershtman made a motion for mistrial on the grounds that "Chancellor (Charles) Young has already made his decision. Our right to a fair and impartial trial has been violated."

— The Daily Bruin

TIME OUT LOUNGE

NORTHEAST CORNER OF MILL & SOUTHERN

FREE POOL!
Sun-Fri. 11 a.m.-2 p.m.

HAPPY HOUR
4:30-6:30 M-F
(11 to 6:30 Tues.)



BIG SCREEN SPORTS • VIDEOS • DARTS

TIME OUT LOUNGE (Northeast Corner of Mill & Southern, Tempe)



LOSE WEIGHT FOR LIFE

The Weight Loss Professionals

At Diet Center you can lose 10 pounds in two weeks... be two sizes trimmer in three weeks. It's quick. It's safe. And perhaps best of all, you won't see the weight you lost come back. We can show you how, right now. Your first personal consultation is free. Call today.



TEMPE • 967-1371
911 E. Broadway
LUCKY SHOPPING CENTER
Open Daily 7 a.m.-6 p.m.

graffitti's 2nd Annual MAZATLAN NIGHT
415 S. Mill Ave. Downtown Tempe
MEXICAN HAPPY HOUR BUFFET 4:30-7:00 P.M.



Win a Spring Break trip for you and a friend to sunny Mazatlan.

Includes airfare and accommodations

PACIFICO BEER on special during Happy Hour and all night long

WEDNESDAY, FEBRUARY 26, 1986

Senator supports Indians' use of eagle feathers

By JOHN CONWAY
State Press

Certain tribal rites of 440 ASU Native American students require the use of sacred American bald eagle feathers, a practice that a state legislator does not want curbed.

Sen. James Henderson Jr., D-Window Rock, said a congressional bill introduced last year that would restrict the use of bald eagle feathers in tribal rites prompted him to oppose further attempts at limitation.

Henderson, a Navajo, said the sponsor of the congressional bill, which was defeated, thought some Indian tribes were abusing their privileges under the Endangered Species Act by buying and selling feathers.

The act provides that eagles may be used for Indian religious ceremonies with permission from the Secretary of the Interior.

Henderson said he does not care how the feathers are obtained, as long as they are used only for religious purposes. Henderson outlined his request for restricting the use of feathers in Senate Concurrent Memorial 1001.

SCM 1001 is not a bill but a request asking for legislative support in encouraging Arizona national legislators to oppose limitations on the use of American bald eagles by Native Americans in medicinal and religious practices.

The Arizona Senate Natural Resources and Agriculture committee passed SCM 1001 Feb. 13 by a vote of 5 to 3, with one abstention.

Sen. Bill Davis, R-Glendale, decided to vote against SCM 1001 because of evidence presented by Stanley Honanie, vice chairman of the Hopi Tribe, who supports the request.

Honanie told the committee he estimated four eagles would be killed for each Hopi clan and each village has 12 clans. In Arizona, Honanie said there were 12 villages.



"That seems like an awful lot of birds," said Davis, who said he voted against the bill because of its impracticality.

Davis said he thought allowing some Indians to kill the eagles was inconsistent with the protection against construction given to their nests.

"I have a friend up in Payson who can't get the land (rezoned) on the Verde River because there are a couple of

eagle nests in that area," he said.

"I see a real inconsistency there if we allow production to be stopped for endangered species."

Henderson said the Navajos do not kill eagles. Instead, they will coax an eagle into landing through prayer and song and then pluck a feather. This practice is repeated until enough feathers are collected.

Henderson said a bill restricting eagle feathers may be reintroduced this year, but he said he did not know how it would be written.

Vickie Baldwin, the president of the ASU Native American Student Association, said she favored SCM 1001 because "it's bad enough that some of the traditions are being done away with."

NASA, which represents all ASU Native American students, helps Indian students adjust to University life.

Baldwin, a Navajo, said that while she was not raised with many tribal traditions, students in the Association have realized rituals must be preserved.

"What we have left, the younger people should have the opportunity to learn that before it's all forgotten," said Baldwin, a liberal arts junior.

Laura Williams, a secretary for the Center for ASU Indian Education and a descendent of the Winnebago tribe in Nebraska, said: "People should know that not all tribes use feathers. It's a real special thing. As far as I'm concerned, Indians are natural conservationists."

today

The movie "Tommy" will play in the MU Cinema at 7 and 9:30 p.m. Admission is \$1.
 Surviving the midterm crunch? A survival workshop will be held at 12:15 p.m. in the MU Santa

Cruz Room.
 Contemplating a career change? The adult re-entry student program will hold a seminar on career changing at noon in the MU Santa Cruz Room.

BARB'S DARK ROOM

**2 PRINTS
for the
PRICE OF 1**

12 exp. \$3.19
15 exp. \$3.99
24 exp. \$5.79
36 exp. \$7.99

**Custom 4x6
from 35mm only**

12 exp. ... \$4.99
24 exp. ... \$8.99
36 exp. . \$12.99
2nd Print FREE

217 E. 7th St., Tempe • 968-5667

DATSUN • HONDA • TOYOTA • VOLKSWAGEN

**DISCOUNT
import parts**

Will Beat Any Others' Prices
On Same Part by 5%

1 mile
College University Post

HOURS:
Mon.-Fri. 8 a.m.-8 p.m.
Sat. 9 a.m.-5 p.m.
Sun. 9 a.m.-3 p.m.

ASU LOCATION
322 E. Dunlap 861-3736
1324 W. University 894-9677
301 E. Broadway 833-8934

DATSUN • HONDA • TOYOTA • VOLKSWAGEN

SPECIAL STUDENT/YOUTH FARES

**LONDON
AMSTERDAM
COPENHAGEN
ATHENS
ROME**

from as low as
\$270 oneway, \$515 roundtrip

STUDENT TRAVEL NETWORK
2500 Wilshire Blvd., #507, Los Angeles, CA 90057
(213) 380-2184

Terrace Road Apartments



WALK TO SCHOOL!

1/2 block from Campus, Huge, well-furnished 1-bedroom, 1-bath, and 2-bedroom, 2-baths, all utilities included, cable TV, plus many amenities.

950 S. Terrace Rd.

966-8540

WAREHOUSE DELI & PUB

Estab. 1975
"GOOD FOOD & DRINK"

NOW SERVING MIXED DRINKS

SPECIALS

LUNCH & DINNER

MON.-FRI.

10:30-2 p.m.

Sandwich of the Day with Homemade Fries

ONLY

\$2.35

MOLSON GOLDEN
61¢
on tap
Mon.-Thurs.
2-4 p.m.

HAPPY HOUR

MON.-FRI.

10:30 a.m.-7 p.m.

IMPORTS — 94¢

DRAFT BEER

Pitcher \$2.35 Glass 52¢

WINE

1/2 liter \$2.35 Glass 52¢

WINE COOLER

Pitcher \$2.82 Glass 66¢

NOW SERVING MIXED DRINKS

BREAKFAST

SERVED MON.-FRI. 6 a.m.-10:30 a.m.

99¢

3 EGGS, HOMESTYLE POTATOES, TOAST, BUTTER & JAM

CHECK OUT OUR OTHER BREAKFAST ITEMS

LIVE ENTERTAINMENT NIGHTLY

(No Cover, No Min.)

130 E. UNIVERSITY DR.

AT FOREST

966-7788 • TEMPE, AZ

Your Hosts: "The Family"

The decision to end your pregnancy is never easy. But the choice is yours.

Alone.

For more than 18 years, we have given women emotional support, and experienced professional medical care. Free pregnancy testing and counseling are provided with the two-day procedure. Two weeks later, your follow-up visit includes a lab test, birth control counseling and caring support for your rights — all without additional cost to you.

- Free pregnancy testing
- Menstrual extraction
- Minors treated
- Twilight sleep-anesthesia
- Board certified ob-gyn M.D.s
- Ultrasound testing
- Se habla espanol
- Full lab facility
- Quality medical care in a hospital-like environment

Specializing in first and second trimester abortions

Caring, Understanding and Confidential

Central and Westside Location
Appointments: Monday-Saturday
8:30-5:30

Limited Evening Appointments
24-Hour Hotline 279-2214
Robert H. Tamis, M.D. FACOG Director

Abortion Services of Phoenix
Doctors Medical Plaza South, Suite 220
2720 N. 20th Street, Phoenix

state press

Love is like the measles; we can't have it but once, and the later in life we have it the tougher it goes with us. —Henry Wheeler Shaw

opinion

editorial

Administration makes final stand on measles?

The administration once again says that the measles immunity policy will be "rigidly" enforced for fall registration, which begins April 3.

Dr. Monty Roth, director of the Student Health Center, said this policy was introduced because the detection of just a few measles cases on campus could result in a shutdown of the university.

This sounds a lot like what was said last semester before the policy was rescinded after 4,000 students did not comply.

Why the get-tough attitude this semester?

Perhaps it has something to do with the fact that two weeks ago 300 students were quarantined in their dorm rooms at Florida State University when health officials discovered they may have been exposed to the measles virus.

Is the administration running scared?

It is unfortunate that such a sound policy needs to be motivated by fear instead of good sense. But all's well that ends well, right?

So now approximately 12,000 students supposedly will be queuing up to get vaccinated unless they can prove they

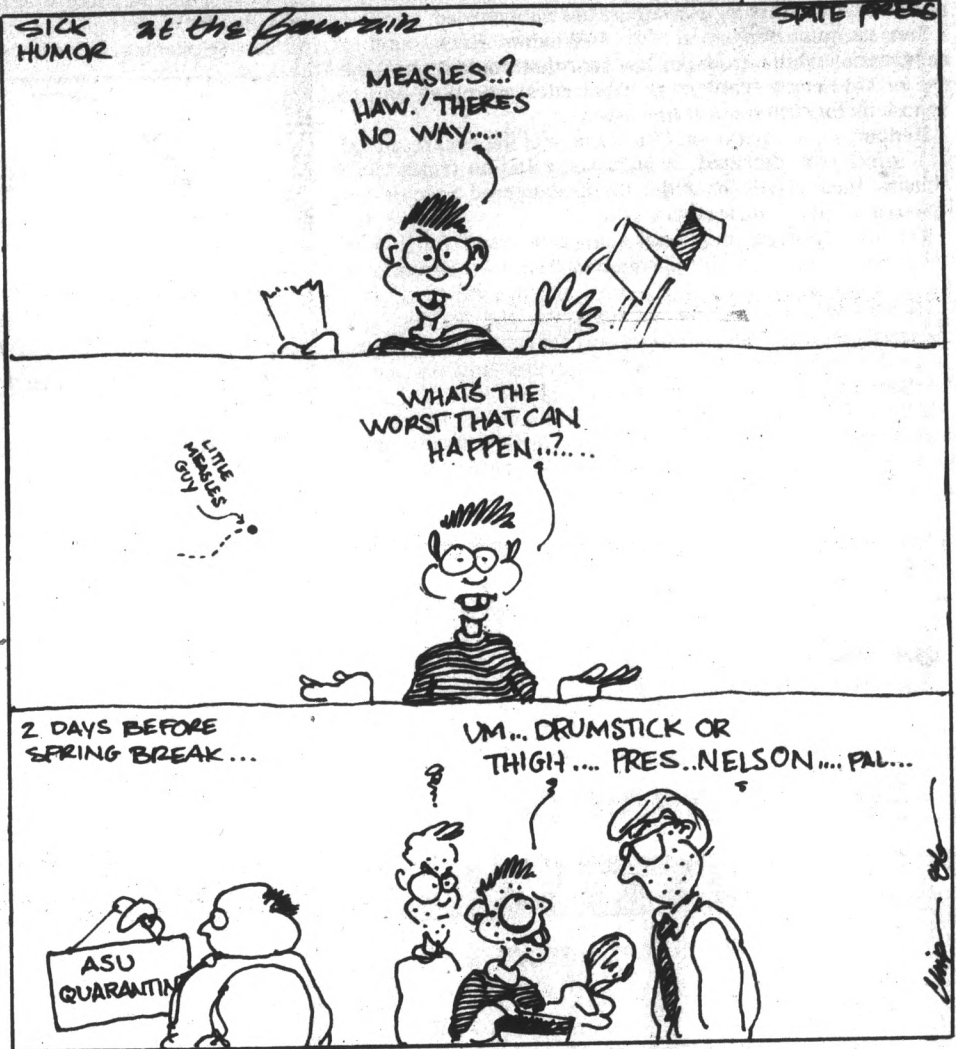
already are immune to the disease.

If the students don't comply, it will be interesting to see if the administration backs up its words with actions this time around, or engages in the same bureaucratic wavering?

For the students who do comply, what about the ones who lie on the form stating that they are immune to the disease when in fact they are not? The University does not presently have a policy requiring punitive damages for a student caught lying on the forms, instead relying on the disease to be punishment enough.

Of all the inconsistencies that have gutted this policy, this has to be among the most mindless. Once the student catches the disease, isn't it too late? Why be so passive about such an urgent matter? Any person caught lying on a form should automatically be expelled from the University for endangering others on campus.

Policies that cannot be enforced are better withdrawn. But this is a policy that can be enforced, and it should be to guarantee the health of the ASU community.



letters

Disparity of funds between ASU, UA discriminatory, not historical; return to parity needed

Editor:

In your Feb. 20 story detailing the disparity of appropriated state funds per student at ASU and UA, Regent Tio Tachias is quoted as saying that the disparity is 'historical' and not discriminatory against ASU.

From a perspective of more than 30 years, it is clear that the disparity is, on the contrary, historically discriminatory against ASU.

Using the appropriation figures of your story and current tuition, one finds that a total of \$7282 is spent to educate each UA student per year while only \$5932 is spent for each ASU student.

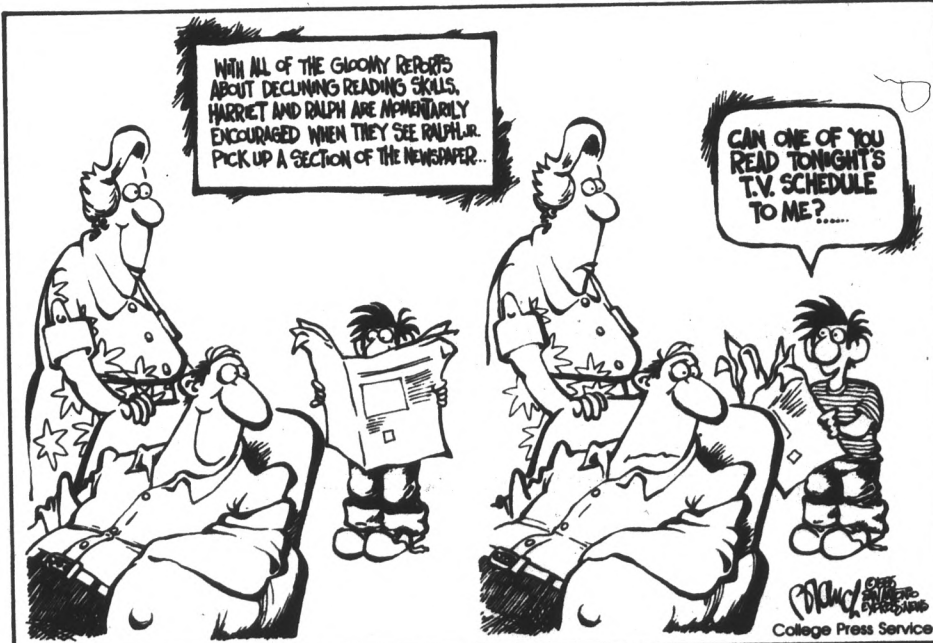
Also, because tuitions are the same, one concludes that a resident student pays 19.8 percent of the total cost at ASU and only 15.6 percent at UA. A non-resident student pays 64.6 percent of the total cost at ASU and 52.8 percent at UA. The Regents have announced a policy requiring that non-resident students pay a greater proportion of costs than do resident students. They also appear to have an unannounced policy requiring ASU students to pay a greater share than those at UA.

What is needed is an explicit schedule for bringing the expenditure per student to parity at ASU and UA. In the interim, the fraction of the total cost paid by a student should

be made the same. Using your figures, that would mean an immediate tuition reduction of \$210 per year for resident ASU students and one of \$614 for non-residents.

It is difficult to understand why ASU faculty, students and their families, as well as local legislators, have put up with this inequity for so long. Perhaps along with sending the football and basketball teams out to be trounced by UA teams, ASU students each enjoy sending \$210 per student (or \$614 for non-residents) to the UA campus where it becomes a subsidy of \$260 (or \$760) for each student there.

Clement Kevane Physics Department



more letters

Implications hearsay, not substantiated claim

Editor:

It has come to my attention that in your Feb. 21 article concerning security problems at ASASU, I may have implicated that James Norton or another past executive officer personally stole an ASASU phone system. There is no evidence to

substantiate this claim, and statements made were based only on hearsay. I apologize for any negative effects this may have created for anyone.

James Emmelkamp Activities Vice President, ASASU

Whiteman policy outrage to legitimate users

Editor:

Students and faculty can no longer play at Whiteman Tennis Center? This is an outrage. Closing these courts to a very large group of legitimate users in order to control a few vandals is a response typical of putting bureaucrats, not competent administrators. The answer to the problem is direct control of potential vandals in cooperation with campus security.

The cracking on the courts (especially six, seven and eight) is likely due to poor performance by the resurfacing contractor, either in subsurface preparation or materials application. The courts do get much play by legitimate users, including teams, classes and open players. Assuring adequate levels of maintenance, including funding, is why ASU has administrators. Letting the courts stand idle most of the time to reduce maintenance problems is just plain wierd.

The Apache courts cannot carry the full

load on this tennis-oriented campus. Those courts have more than two-thirds of the PE class instruction. Washing the courts leaves them wet and unplayable at times. Several weekend days soon they will be restricted with a fund-raising intramural tournament. The non-tournament students will have no place to play while Whiteman sits empty.

The Whiteman Center is often either given for use or rented to groups who have no direct affiliation with ASU. These include Senior Olympics, high school clinics, cold country college tennis teams and outside tournaments. I suspect this to be the true reason why the Public Events Director eagerly removed ASU faculty and students from the courts. I urge the women's and men's tennis coaches to support play at Whiteman for the faculty and students when the teams are not using the courts.

Bob Dare Justice Studies Department

STATE PRESS

STEVE WATERSTRAT Editor

TOM BLODGETT Managing Editor

- City Editor W. TIM AHL
Asst. City Editor MICHAEL KONZ
News Editor PATRICK J. KUCERA
Opinion Editor MICHAEL ADAMSON
Asst. Managing Editor LINDA COULSON
Photo Editor KEVIN J. LARKIN
Sports Editor DEAN OBENAUER
Asst. Sports Editor BOB HEILER
Copy Chief JACQUE CIROU
Arts Editor CINDY PEARLMAN
Asst. Arts Editor KHALI CRAWFORD
Editorial Assistant ROBBIE MATLOFF

The State Press is published Monday through Friday during the academic year, except holidays and exam periods, at Matthews Center, Room 15, Arizona State University, Tempe, AZ 85287. Newsroom: 965-2292. Advertising & Production: 965-7572.

The State Press is the only newspaper exclusively published for and circulated on the ASU campus. The news and views published in this newspaper are not necessarily those of the ASU administration, faculty, staff or student body.

Health Center spells relief for various student ills

By BOB WILSON

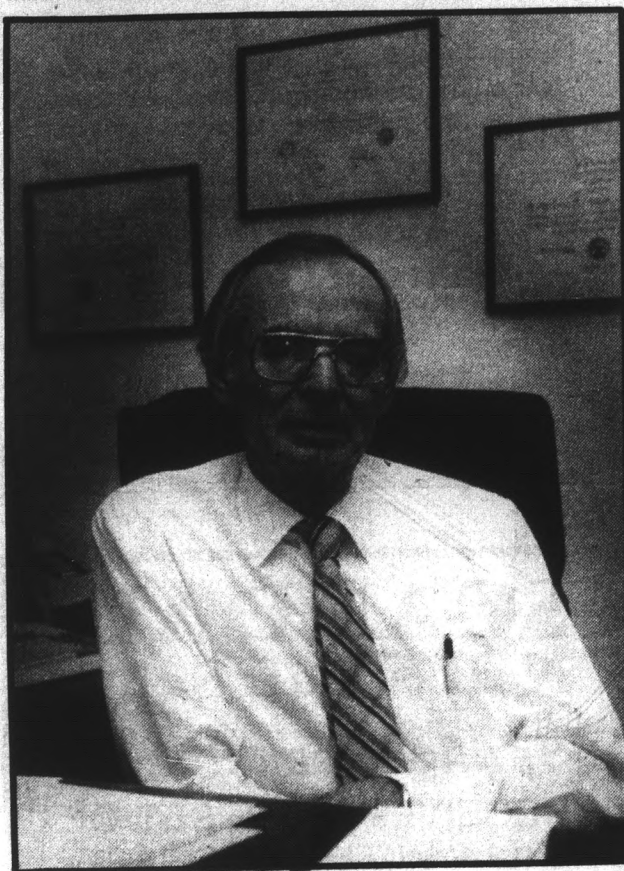
State Press

This is the first installment of a State Press four-part series on the Student Health Center. Today: what the SHC provides for University students.

Got a cold? Twisted ankle? Is a rash driving you nuts? Cramps that won't quit? Having problems coping with classes, friends or family?

If you are an ASU student, relief can be found at the Student Health Center, located at the foot of the Palm Walk Bridge.

Before 1946, a student could only be seen by a lone campus nurse in a first aid station.



Monty Roth

Staff photo by Kevin J. Larkin

Today a student can be treated by one of nine general medicine physicians, a psychiatrist, a sports medicine physician, two nurse-practitioners, eight nurses or numerous specialists.

The SHC is open 8 a.m. to 5 p.m. weekdays, and after-hour problems usually are referred to local hospitals. One SHC doctor is always on call for consultation or information.

"We have an outstanding staff with solid experience," said Dr. Monty Roth, director of Student Health since 1982.

Roth said ASU's "fairly large outpatient health care resource" can handle general medical problems and has services in psychiatry, orthopedics, dermatology, gynecology, urology, neurology, minor surgery and allergies.

The SHC treats around 275 students each day. On extremely busy days up to 450 patients are seen, Roth said.

The problems SHC doctors most often treat include colds, pneumonia, sexually transmitted diseases, eating disorders and other stress-related illnesses. Sprained ankles and banged-up knees also are frequently treated.

A visit to the SHC is free for full-time students, although small fees are charged for lab work, X-rays and prescriptions. Part-time students can pay a \$3 fee each visit or pay \$20 for a semester.

Chuck Hoel, an SHC pharmacist, said medicine prices are about 40 to 60 percent of those charged at an outside pharmacy. But the SHC pharmacy only fills prescriptions written by the center's doctors.

But what would attract a doctor to a relatively low-paying job at ASU?

SHC doctors tend to agree that one of the benefits of practicing medicine on campus is treating and teaching students.

Dr. Dale Bowen, the clinic care coordinator, said, "Students are extremely motivated. They don't want to be sick. They're very intelligent or they wouldn't be in college."

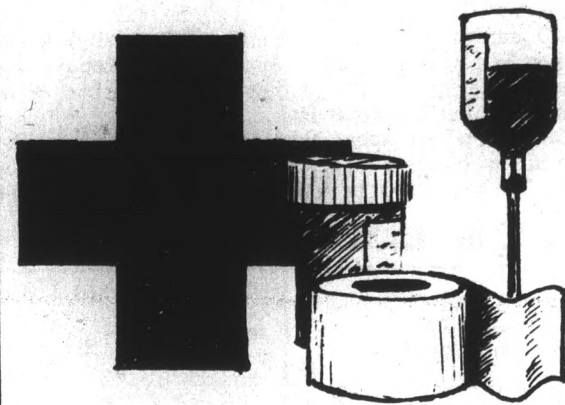
"They're very interested in learning about their health. If I talk about preventive medicine, they want to listen. I'm glad I can make some effect on their lives."

Dr. Bruce Ruekberg said he enjoys working at ASU because treating medical problems early and encouraging students to change bad habits now often helps them avoid worse problems later, such as reducing cholesterol intake to avoid hardening of the arteries.

"Another advantage to working with younger patients is they're enjoyable to be around," Ruekberg said. "They make you feel younger."

Dr. Marion Weems, the SHC's only full-time psychiatrist, said, "Working here provides me the opportunity to provide

Student Health Series: Part I



service to people who can't afford to pay \$80 to \$120 an hour for a psychiatrist."

As could be expected, SHC doctors do not earn the high salaries their peers do, but, "There are other things more important than money," Bowen said.

Bowen said during his 19 years of private practice, long hours at the hospital and frequent night-call duty often prevented him from seeing his family.

But doctors at the Center enjoy more normal working hours and get weekends off.

However, during those working hours, Bowen said, "We're all busy. We're lucky to find time to go to the bathroom or eat lunch most days."

"Some people think doctors work at university health centers to take it easy. This is not so."

SHC nurses share many of the same reasons for working on campus.

Nurse Deon Rasmussen said working at the SHC also gives nurses the chance to treat a wider variety of patients, unlike a hospital ward where the nursing staff treats the same patients each day.

She said working at ASU has other benefits, such as the chance to take classes at lower tuition rates, buying discount tickets for campus events and use of the University's libraries.

DIRECT DIAMOND IMPORTERS

LONDON GOLD

FINE JEWELRY

LEADERS IN FASHION, STYLE, QUALITY, SELECTION, CRAFTSMANSHIP AND PRICE

Diamond Earrings

10 pt. t.w.	\$45.00
1/5 ct. t.w.	\$98.00
1/2 ct. t.w.	\$245.00
2/3 ct. t.w.	\$310.00
1 ct. t.w.	\$499.00



Diamond Solitaires

1/4 ct.	\$249
1/2 ct.	\$398
1 ct.	\$699
2 ct.	\$1,998
1 ct. nice quality	\$2,100
2 ct. nice quality	\$4,500



THE ULTIMATE GUARANTEE

We guarantee our prices to be the lowest in the valley. Bring us any quote of comparable quality and value and we'll discount it by at least 5%!

This guarantee includes all so-called "% off" sales, wholesale centers, factories, factories, malls, exchanges and any other place that springs up overnight!

PHOENIX

936 W. Camelback
West of McDonald's
Camelback Village Square

Mon-Fri 10-6
Sat 10-5
277-7080

TEMPE

1814 E. Southern
Southern at McClintock
Behind Jewelry Exchange

Mon-Fri 10-6
Sat 10-5
820-3909

SCOTTSDALE

8320 N. Hayden Rd.
Mercado Del Lago
Center

Mon-Sat 11-6
Thurs 11-7
991-4814



Investigate the Tax Benefits

Parents of ASU Students

Why pay rent when you can own?

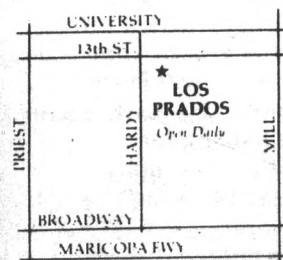
Luxurious and Affordable
2 BEDROOM 2½ BATH
IN TEMPE, ½ MILE FROM ASU

Los Prados Townhomes has a financing package tailored to students and parents. Inquire about the benefits of home ownership.

Live a half-mile from campus in a luxury townhome with five separate floor plans available, 2 or 3 bedrooms, as well as pools, tennis courts, spas and sundecks.

Call Los Prados or send the coupon below for information on Los Prados ownership. We've made them affordable.

BELOW MARKET INTEREST RATES



Please send me financing and sales information on Los Prados Townhomes.

Name _____
Street Address _____
City, State, Zip _____
Phone _____

Mail to or call collect for information: (602) 966-1800.
Los Prados Townhomes, 724 W. Fourteenth Street,
Tempe, Arizona 85281

(602) 966-1800

Hours: 10-6

police report

University police reported the following incidents in the 24-hour period ending at 6:30 a.m. Monday:

•An ASU student was arrested Sunday evening at his house along with another man in connection with bicycle theft, police said.

ASU student Christopher Mataio Avii, and Granville Bennett Saleaumua, of 1342 S. Sunset, No. 13, Tempe, were arrested after an officer saw them standing in front of the Palo Verde Main Residence Hall.

When the officer approached Avii and Saleaumua, they rode off on bicycles in opposite directions on University Drive. The officer said he noticed a shiny object on the stem

of one of the bicycles.

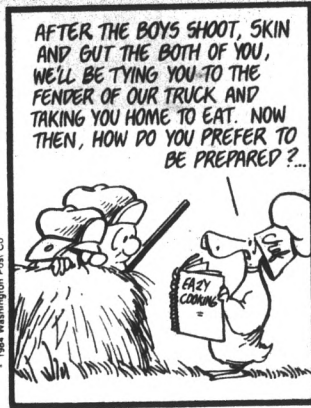
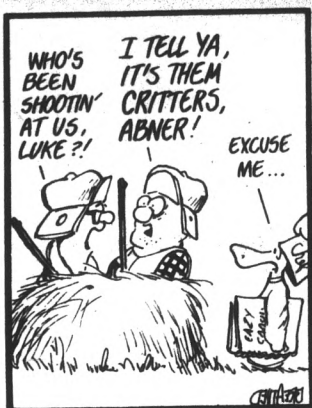
He followed Saleaumua to the Mona Plummer Aquatic Center. Saleaumua gave the officer the pair of vice grips he had attached to the stem of the bicycle seat. He told the officer he was riding a bicycle that Avii had stolen from ASU and given to him.

Saleaumua said he did not like the bicycle and had come to exchange it for a different one.

Saleaumua accompanied the officer to Avii's house. Avii admitted stealing the bicycle and produced two more that were stolen.

— THERESA WILLEFORD

by Berke Breathed




MAKE YOUR SPRING BREAK PLANS NOW!!

SKI PACKAGES FROM \$149⁰⁰

MAZATLAN TRIPS FROM \$199⁰⁰

travelmore
The Cornerstone Rural & University
967-7545

WITH THIS AD OR ASU I.D.



5-pc. Oak, Brass & Glass Dinette (Assembly Required)
\$159⁹⁵

4-Drawer Chest **\$29⁹⁵**

-BED SALE-

Twin Set	\$69
Full Set	\$79
Queen Set	\$119

2077 E. University
Tempe • 966-6252








THE BEST THINGS IN LIFE ARE FREE.

Staplers, paper cutters, hole punches, tape, white-out, glue sticks, paper clips and a large, well organized workspace are yours for the asking. And copies are a steal, too.

kinko's

Open early. Open late. Open weekends.

MESA 1840 W. Southern 969-3326	TEMPE I 715 St. Forest 894-9588	TEMPE II 933 E. University 894-1797 OPEN 24 HRS.
---	--	--

SCANDALS Nail & Hair Salon

Spring Break Special

RECEIVE A FREE SET OF FILLS WITH PURCHASE OF A FULL SET (With This Coupon)

Also a **15% discount** with STUDENT I.D.

Reg. Value	\$61
NOW	\$34.
YOU SAVE	\$27

966-1667
3135 S. MILL AVE., TEMPE
IN HUNTINGTON SQUARE

\$5 PER HOUR GUARANTEED EARNING POTENTIAL UP TO \$10



We're Overwhelming them in Omaha!
We're Dazzling them in Dallas!
WE'RE HERE TO TEMPT YOU IN TEMPE!

TMI is one of the fastest growing telemarketing firms in the industry today, and we are looking for representatives to market products and services for such clients in the financial institutions, cable companies, long distance services, tax programs, children's programs and more.

If you want a challenge, can handle responsibility, are enthusiastic, articulate and have an outgoing personality and are looking for:

- Flexible self determined hours
- No layoffs or cutbacks
- No cold calling
- Fully paid training and more!
- Brand new facilities
- CLOSE TO ASU
- Paid vacations
- Advancement potential

Interested in **PERMANENT PART-TIME HOURS** as part of a winning team?

CALL 9 a.m.-7 p.m. In the United Bank of Arizona Bldg.
967-0066 TELECOMMUNICATIONS MARKETING, INC.
Broadway & Mill

COUPON

SERVING ASU SINCE 1972

Papa Jay's Pizza

FAST FREE DELIVERY. *Limited Delivery Area

804 S. Ash (2 blks. W. of Mill on Univ.) **966-4292 or 966-1003**
Right Next to ASU

ANY 2 LARGE CHEESE PIZZA FOR only \$8.50 plus tax (With This Coupon)

*On Regular, Not Sicilian Pizza. Good on delivery, take-out or dine-in. Expires 3-10-86.

<p>Save \$2.00</p> <p>#1 Sun Devil Combo Any large pizza with your choice of up to 4 toppings. ONLY \$7.50 plus tax Good on delivery, take-out, or dine-in. Expires 3-10-86.</p>	<p>Save \$1.65</p> <p>#2 Sun Devil Combo Any medium size pizza with your choice of up to 4 toppings. ONLY \$6.50 plus tax Good on delivery, take-out, or dine-in. Expires 3-10-86.</p>	<p>Save \$1.50</p> <p>#3 Sun Devil Combo Any small size pizza with your choice of up to 4 toppings. ONLY \$5.50 plus tax Good on delivery, take-out, or dine-in. Expires 3-10-86.</p>
--	--	---

Tradition

ASU yearbook may make return after 14-year absence

By **ROBIE KAKONGE**
State Press

Death without taxes.
Johnny Carson without a vacation.
Jerry Lewis without his kids.
Ronald Reagan without Grecian Formula.
But after 14 years, ASU may not be without a yearbook.

The return of a campus yearbook is the idea of Frank Fender, a senior computer science major.

"The idea of having a yearbook has crossed my mind since my freshman year, and I felt that now was the time to do it," he said.

Fender said his proposed budget is \$75,000, and the price of each yearbook would be \$12.50.

The yearbook would be 400 pages long, and it would consist chiefly of candid shots, he said.

"We are going to deal with more candid shots," he said. "This will help give the feeling of ASU by eliminating rows upon rows of names and faces."

Fender said he hopes the University institutes a yearbook course and an optional yearbook registration fee to help with production.

Fender said he has three phases planned for implementing the yearbook.

He described the phases as conducting a survey, organizing personnel and producing

the yearbook.

The survey was conducted last semester by the ASU Student Affairs Office as part of the recreation center survey.

Of the 829 students surveyed, 10.3 percent approved a yearbook and said they would purchase one every year. More than 32 percent said they would purchase a yearbook if it were available. Only 2.1 percent said it was not a good idea.

Fender said another survey will be conducted by the end of the semester to find out what students would like in the yearbook.

The yearbook will be staffed by "creative" ASU students, Fender said.

"Since this yearbook is going to be for students, we are looking for students who are willing to work and who have a lot of enthusiasm," he said. "There are a lot of editorship and staff positions available to those students who are really willing to work hard."

Fender said the yearbook will need a staff of more than 20 people, including 13 editorial positions.

"If we had more people, it would not be a distraction as long as they would be well managed," Fender said.

"What happens is that a lot of people will sign up but not go through. We don't need those types of students. What we need are creative students with a lot of energy."



Frank Fender

Publishing a yearbook takes more work than money, Fender said.

"I have had a lot of support from different people on campus, but as of now we have zero funding," he said. "We hope to get some funding from the Greeks, businesses around the campus and also individual sponsorships."

Fender said the last yearbook on campus was "The Sahuaro" in 1972.

"They started out with a staff of 10 to 15 and ended up with three," he said. "People

lose interest after a while, but we have planned several activities that will keep the students interested."

Gary Kleemann, Associated Students of ASU coordinator, said the yearbook may not be feasible.

"Traditionally it is a neat idea, and I support it. However, the financial realities and whether the students are willing to pay for it or not is another issue."

Dave Varnell, ASASU president, said the yearbook would bring back tradition.

"It seems that we are doing a disservice to some students because we are depriving them of an educational experience," Varnell said. "There are a lot of students who worked on their yearbooks in high school, and when they come to ASU, they are unable to continue."

ASU students who were interviewed liked the idea of a yearbook but questioned if it could be produced.

"It will bring the school closer together," said Steve Weintraub, a junior political science major. "It will help some of us to start relating the names with the faces and is a good way for clubs to get people interested. A good name for the yearbook would be 'Devil's Log.'"

Jeff Northrup, a freshman media communications major, said: "It wouldn't be functional. There are just too many people."

FREE MOVIE

with this coupon and a recorder rental at only \$5.95



3118 S. Mill • Tempe
966-6722

No membership fee • No deposit

Expires 5-8-86.

MONTI'S LA CASA VIEJA

Finest Dining in an Authentic Frontier Landmark

DINNER SPECIALS

AFTER 4 P.M.

Monday Filet
Tuesday Prime Rib **\$5.45**
Wednesday Sirloin

Dinners include Baked Potato, Salad, Rolls & Butter

LUNCH MENU
SERVED 11 A.M. TO 4 P.M.

1/2 lb. Casa Burger with choice of side order \$2.85

3 West First Street Sun.-Thurs. 11-11
Tempe • 967-7594 Fri.-Sat. 11-Midnight

ARIZONA WOMEN

BODY-SCULPTURING

We've got what you want

STUDENT RATES

One-on-one personalized training

Specializing in:

- Shaping
- Nutrition counseling
- Toning
- Sports injury
- Building
- Cardiovascular upgrade
- Reducing

Now is the time to achieve your goal!

Feel Good! Look Great!

Learn the proper use of weight training

Call now! 968-1105 or 893-7788
1400 S. McClintock, Tempe 85281

STUDENT DISCOUNT AT WILSON'S



- FILM DEVELOPING, CUSTOM ENLARGING
- DARKROOM SUPPLIES
- RENTALS, REPAIRS
- CAMERAS, LENSES, GADGET BAGS
- FILM, FRAMES, PHOTO ALBUMS
- BINOCULARS, TELESCOPES
- VIDEO TRANSFER
- PUT YOUR MOVIES AND SLIDES ON VIDEO TAPE!



ASU TEMPE
204 E. University
(Behind The Chuckbox)
894-8337
7 valley locations

ASASU Women's Services

and

Student Counseling and Consultation Advocacy Committee
present

"COMMUNICATION BARRIERS BETWEEN THE SEXES"

A presentation and discussion exploring gender differences in terms of verbal, non-verbal and vocal messages

By

Dr. Carol Ann Valentine, Ph.D.
Asst. Professor, Communication, ASU

WEDNESDAY, FEBRUARY 26, 1986 • 12:45 P.M.
Memorial Union, East Cochise Room 212

2 movies* & a recorder \$5.99

MON. THROUGH THURS. EXCEPT HOLIDAYS (with this coupon) (PROPER I.D. REQUIRED) *Some restrictions apply

Video Scope 968-2800

3121 S. MILL AVE., TEMPE N.E. Corner of Southern & Mill Expires 5-31-86.

Tokyo firm donates bikes to ASU

Institute site of 1st study of anaerobic exercising

By LAUREN MILLETTE State Press

ASU's Exercise and Sport Research Institute has received two computerized bicycles worth \$5,300 that are the first to be used for research in the country, the institute's director said. James Skinner said the computerized anaerobic bicycles

were donated in January by Combi Company, a Tokyo-based firm.

"There is nothing like these bikes in the United States," Skinner said.

The donation was made in exchange for research information on the effects of the bicycles on Americans.

The donation was the result of negotiations between Skinner and Tokyo University doctoral student Yoshio Nakamura.

The anaerobic bicycles appear to be sophisticated versions of stationary bicycles, but Skinner said they have advanced testing and training features that will restrict them to research centers in the near future.

Nakamura has used the bicycles in Japan to gather aerobic and anaerobic information on Japanese athletes.

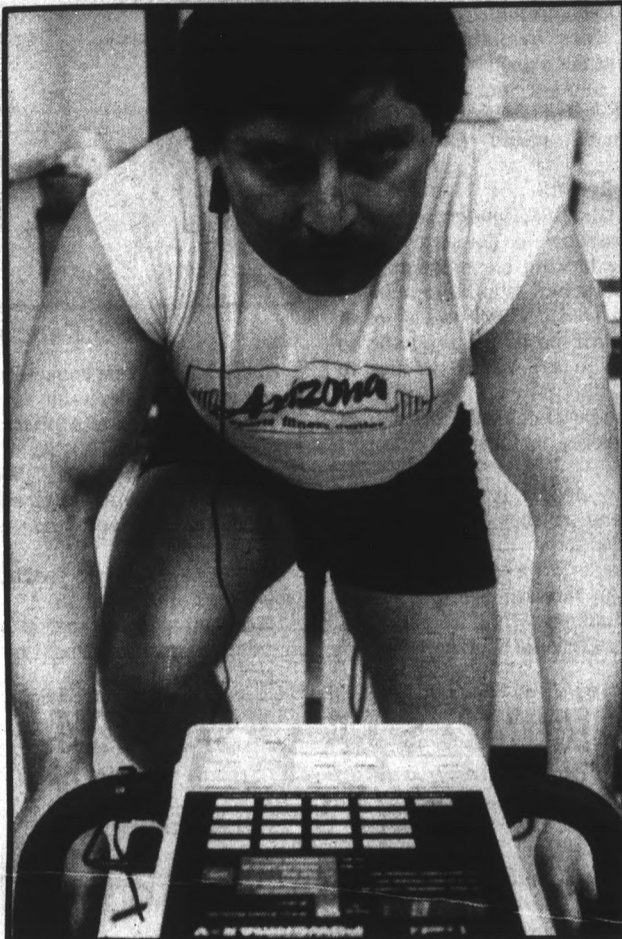
Aerobic tests measure the energy required to do a specific amount of work.

"The amount of energy exerted during the test does not change," Skinner said. "The exact amount of energy used to perform a task and its effect on the person tested is what we are after in aerobic testing."

In anaerobic testing, the energy stored in the athletes' muscles and how quickly it can be released are studied.

The test results of athletes at the ASU Institute will be sent to Nakamura at the University of Tokyo's Laboratory of Exercise Physiology and Biomechanics.

Nakamura will then compare the results from athletes competing in various sports and different countries.



Marty Einstein, a sophomore physical education major wears a sensor unit on his earlobe, above, while exercising on a computerized Japanese cycle, left.

Miguel's Music Center

IN THE LITTLE ARCHES SHOPPING CENTER

TEMPE

Sales • Rentals • Repairs
Band Instruments & Accessories
Drums ★ Recorders ★ Banjos
★ Sheet Music Etc.

Authorized Dealer for:

ALVAREZ ... GUILD ...
KHONO ... YAMAHA ...
OVATION ... MARTIN
GUITARS

★ SPANISH CLASSICAL
GUITARS ★

•RAMIREZ •CONTRERAS
•BARNABE •CESAR VERA
•SANTOS HERNANDEZ

MIGUEL

A student of Andres Segovia
Guitar Lessons in Folk
& Classical by Miguel

★ ELECTRONICS ★

•Amps
•Rhythm Boxes
•Distortion Boxes
•Mini Mixers
•Phase Shifters
•Poly Phase
•Electronic Metronomes

BY ROLAND-IBANEZ &
ELECTROHARMONIX &
OTHERS

122 E. University Dr., Tempe
Open 10 a.m. to 6 p.m. — 6 Days

968-2310

RUN FOR ASSOCIATED STUDENTS EXECUTIVE OFFICE

Petitions for the four executive offices:

- President
- Executive Vice President
- Campus Affairs Vice President
- Activities Vice President

will be available beginning Feb. 26, 1986 in the Associated Students Offices — 208 Memorial Union.

THERE WILL BE A MANDATORY MEETING FOR ALL PROSPECTIVE CANDIDATES

TUESDAY, FEB. 25, 1986
3:30 P.M. IN THE M.U.
RM. 206 CHRYSOCOLLA

RUN FOR ASSOCIATED STUDENTS EXECUTIVE OFFICE

- Architecture & Environmental Design
- Law ●Nursing
- Business Administration
- Liberal Arts & Sciences
- Education ●Public Programs
- Engineering & Applied Sciences
- Fine Arts ●Social Work

Two Senator positions available in each college.

Watch for information within your college and/or call

965-3161

Parking

Nelson announces ground breaking of garage

By ED SCHUBERT
State Press

Ground-breaking ceremonies for a new \$4.5 million parking structure will take place Friday in Lot 18, ASU President J. Russell Nelson said Monday.

Nelson told members of ASU's Faculty Senate that the new structure, which is expected to be completed in August, will greatly help ASU's cramped parking situation.

However, he said that "all of the cars in Lot 18, and there are quite a few of them, would have to be relocated elsewhere" until the project is completed.

Associated Students of ASU President Dave Varnell told the faculty that a task force has been established to look into problems relating to ticket writing and appeals.

Varnell said parking policies should be designed to serve students, and that he had encountered evidence of "a profit-seeking attitude" on the part of parking officials.

Another subject of controversy, ASU's new telephone system, was addressed by Nelson and Kenneth Pollock, associate vice president of information resources management.

Nelson said ASU's phone grid was comparable in size to that of the ones serving Prescott or Yuma, and the "cutover" from the old system has been "average or better than average."

Joseph Palais, an engineering professor, raised questions relating to problems he had encountered with the new system, such as losing connections after being put on hold.

"When will service be back up to the

level before the cutover?" Palais asked.

Pollock, responding to the question, said, "By the end of next week, generally," adding that he would attend to any individual complaints after the meeting. He said anyone having problems could contact the telephone service at 965-2011.

Also during the meeting, Nelson spoke on the potential impact of the Gramm-Rudman-Hollings Bill at ASU. The bill requires a balanced federal budget to be obtained through across-the-board funding cuts.

Nelson said although there were "sighs of relief" when it was learned there would only be a 4.3 percent reduction in federal funds during the first round of Gramm-Rudman, ASU should "be mindful that this is only the first round."

Former CBS anchorman visits journalism school

Former CBS anchorman Walter Cronkite will be on campus today to meet with students and faculty of ASU's Walter Cronkite School of Journalism and Telecommunication.

Eldean Bennett, chairman of the school, said Cronkite will spend today and part of Wednesday meeting informally with students and faculty.

Cronkite's appearances are not open to other University students, Bennett said.

Cronkite will also meet with members of the Walter Cronkite Endowment for Journalism and Telecommunication Committee to discuss progress in the \$4 million fund-raising effort, Bennett said.

The funds will go toward sponsoring media professionals who wish to teach and study at ASU for a semester through fellowships, provide scholarships for students and give funds for students to attend national media gatherings.

Survey on collegiate dining says variety key to success

By National On-Campus Report

Boredom is the curse of residence hall dining, and variety is the key to keeping students happy with college food, said Mike Chandler, DePauw University's campus food service coordinator. In a recent poll, 75 percent of DePauw's hall residents rated their meals as good or excellent.

"The most difficult thing (about feeding students) is making it personal," says Chandler, who's department serves more than 2,000 meals a day. "Every college's food is compared to 'mother's' cooking... then, along about the spring semester, boredom sets in and students become tired of the same presentations."

One of the most popular features, according to the survey, is the Wednesday night special: a Candlelight Italian Dinner, Gourmet Hamburger Night, the Mexican Fiesta Special and the Hoosier Harvest Special.



SUN DEVIL HAIRCUTTERS

"Stylists who care enough to listen"

Special Shampoo Conditioning Precision Cut Blow Dry	\$4.00	OFF Regular Price Men \$13 Women \$15 Hrs. Mon-Fri 9-6 Sat 9-5
---	--------	---

130 E. University Dr. "In The Arches"
Limited Offer. Call Now! 966-5462

CASS'S CORRAL

Fine Grub & Whiskey

GRAND OPENING

2 for 1 Dinners

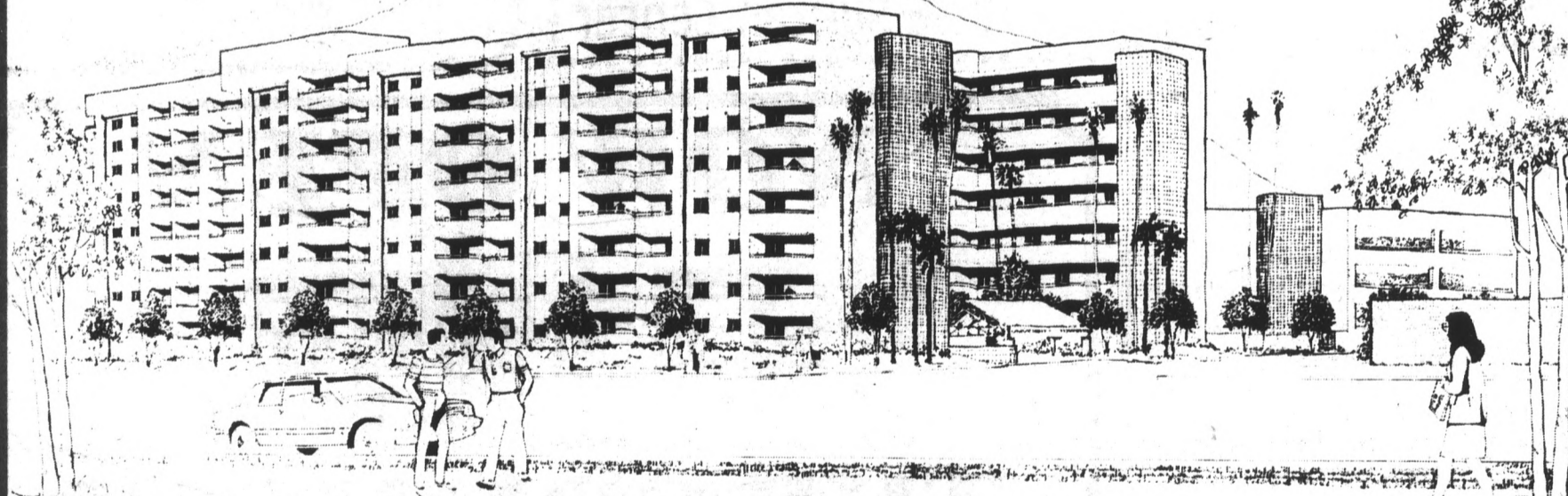
This Sunday *(with this ad)*

Always 99¢ margaritas
and try our Chalupa Bar

120 W. University
1 blk. west of Mill on University Open 11:30
every day
966-3442

Students never had it so good!

A




Until the luxury and convenience of **UNIVERSITY TOWERS**. These unique and exciting co-educational student residence suites combine the best of apartment and dormitory living.

Ideally located within 2 blocks of Arizona State University academic facilities, and across from Sun Devil Stadium.

U.T. offers furnished 2 bedroom residence suites including utilities, full kitchen and many extras.

- 24 hour security
- Escorts if requested
- 24 hour emergency maintenance
- Garage parking
- Pool, jacuzzi, volleyball, elevated sundeck
- Satellite Cable Television

Stop by our leasing office today or call 894-2300 located on 5th Street between College and Forest 525 S. Forest Tempe, AZ 85281



UNIVERSITY TOWERS
SOMETHING NEW IS COMING TO A.S.U.

A private student housing development.

ASU students narrowly miss grabbing Herb, \$5,000

By ROB KELTON
State Press

Ben Arthachinta and Sean Bueter sat in the Burger King at 740 E. Apache Blvd. for the second time Monday, and both were sick to their stomachs.

The feeling didn't come from uncooked hamburgers or greasy french fries — it came from not being the first people in Arizona to identify Herb.

They were remembering Feb. 15, when they failed to utter his name — and lost out on a \$5,000 reward.

The two ASU students failed to identify the new Burger King marketing representative who dresses up in "nerdy" clothes and visits restaurants across the country, giving people the chance to win \$5,000 if they are the first to mention his name.

"We weren't sure it was him so we didn't want to call out his name and make fools of ourselves," said Arthachinta, a 23-year-old architecture major.

Len Frank, a 42-year-old substitute science teacher for Tempe and Mesa high schools, was not quite as conscious of his image.

Frank was the winner of a \$5,000 check when he called the 34-year-old former cheese factory worker by his newly acquired name.

Herb's tour began in January and is scheduled to conclude in early April.

Terri Johnson, a Burger King manager, said the store was the only one Herb will visit out of 44 Burger Kings in Arizona.

"Ours was one of the three in Arizona that got a message from the Burger King headquarters telling us to expect Herb to come in Saturday night," she said.

Bueter, a 21-year-old finance major, said the two stopped to eat before they attended a George Winston concert at Gammage Center.

As the two walked into the restaurant, Arthachinta jokingly called a Burger King worker "Herb" as he was taking out the garbage.

"We walked right by the Herb display poster but didn't read it or anything," Arthachinta said.

The two said they were familiar with the Burger King commercial, but not with the \$5,000 campaign that went with it.

Johnson said at about 7:30 p.m. three men with suits walked in the restaurant and gave a card to the manager to verify that it was indeed Herb who would be entering the restaurant.

Arthachinta said to Bueter, "Hey, doesn't that look like Herb?"

Herb then proceeded to walk around the restaurant telling people to "stick around if you want to win \$1 million."

Bueter said Herb shook their hands and talked to them before Frank won the prize.

"All we had to do was to say Herb,"



Staff photo by Kevin J. Larkin
Ben Arthachinta, right, and Sean Bueter lean against the door to the Burger King on Apache Blvd., where they missed their chance at \$5,000.

Bueter said as he rubbed ketchup on a picture of Herb's face on a tray cover.

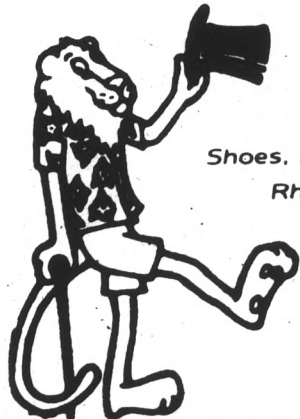
"I sort of got sick to my stomach when I realized we could have been that teacher with that nice check," Bueter said. "It didn't put us in the mood for the concert."

According to Burger King rules, every person in the restaurant Herb visits gets to put his name in a \$1 million jackpot that will be announced after Herb's tour ends.

"At least we've got that going for us," Arthachinta said.

RARE LION RESALE

Buying • Selling • Trading



- Clothing •
- Vintage & Contemporary
- Accessories •
- Shoes, Hats, Gloves • Jewelry •
- Rhinestones, Glass Beads •
- Collectibles • Antiques •

10-6 Mon.-Fri. • 10-6 Sat.
722 S. Mill Ave., Tempe
968-6074

TAN is BEAUTIFUL!

We're not the largest, just the BEST!



2 Visits for
\$7.50
Expires 3-7-86.

55 E. Broadway
(Corner of Mill & Broadway)

966-2150

ECLIPSE Suntan Center

Smart Styling with PHD

Perm \$30⁰⁰ & Up
Cuts \$9⁰⁰

Student Appointment Special
(After 4th cut get 5th cut FREE)

Eyelash & Brow
Tinting \$8⁹⁵

Private
Booths
Call Today



Mon.-Sat
9:30-9
Sunday
11-4

966-6111 Please Call for Appointment



Across from the Cornerstone
933 E. UNIVERSITY
Tempe Towne Plaza
(S.E. Corner Rural & University)

M.B.A.

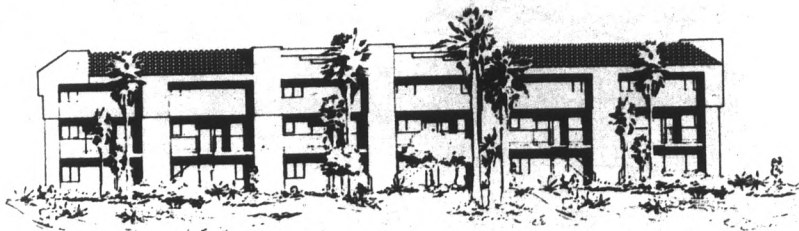
A REPRESENTATIVE OF THE MASTER OF BUSINESS ADMINISTRATION PROGRAM AT NORTHERN ARIZONA UNIVERSITY WILL BE ON CAMPUS ON WEDNESDAY, FEBRUARY 26, 1986 FROM 9 A.M. TO 3 P.M. AT THE CAREER SERVICES OFFICE. CALL THE OFFICE AT 965-2350 OR COME BY A.S.B. 109 TO RESERVE AN APPOINTMENT.

THE M.B.A. AT N.A.U. IS A 33-UNIT, 11-MONTH PROGRAM FOR STUDENTS WHO HAVE COMPLETED ALL PREREQUISITES. IT IS OPEN TO MAJORS FROM ALL UNDERGRADUATE AREAS. GRADUATE ASSISTANTSHIPS ARE AVAILABLE. HIGHLY PERSONALIZED EDUCATION IN SMALL, INFORMAL CLASSES ARE DISTINGUISHING CHARACTERISTICS OF THE N.A.U. PROGRAM.



NORTHERN
ARIZONA
UNIVERSITY

NOW OPEN



THE COMMONS

New Luxury Residence Suites

\$250 per person
per month

NEAR CAMPUS
FULLY FURNISHED
HOUSEWARES
WASHER/DRYER
MICROWAVE
POOL/SAND VOLLEYBALL
SPACIOUS

Reserve Now For Summer & Fall
Only A Few Left For This Semester

968-6427 • 1215 E. LEMON #101 • Open Every Day

college dopesheet

My laundry is on 'spin'; I, however, am on 'slosh'

There are two kinds of suds at a laundromat near the University of Georgia-Athens. Ringers is a combination laundromat/restaurant/bar where students can mingle, watch MTV, eat hot sandwiches, drink beer and still keep an eye on their laundry through the glass windows behind the bar. To attract UGA students, Ringers cashes personal checks, pipes rock music into the laundry room and manages wash and dry cycles for students returning late from class.

The nerve of some students; studying before 8 a.m. — ha!

The University of Winnipeg administration is being accused of intimidating four students who complained that a university security guard yelled racist insults at them and threatened them with physical violence. According to the Canadian University Press, the incident occurred when the guard found the students

studying in a seminar room an hour before the university officially opened for the day. The students say the school told them they would be charged with trespassing if they lodged a formal complaint against the guard.

It could only happen in the great state of Texas

Black students are "either leaving or getting fed up," according to counselors at the University of Texas at Austin.

The students are upset with the administration's silence on a minority recruiting proposal, recent charges of discrimination against campus police, and police refusal to discuss the incidents with the Black Student Association.

Also, the Austin campus has "four or five buildings named after Ku Klux Klan members, a statue of Jefferson Davis, and another building named for a former UT president who said he would never admit a "black" to the school.

Atheists, agnostics are people, too even in Wisconsin

A list of non-religious students is a subject of controversy at the University of Wisconsin.

When students register each semester, they can indicate religious preference by checking one of 32 categories on their registration forms.

Local churches can obtain the list of the students professing their particular faith.

But when leaders of the local Freedom From Religion Foundation paid a fee for the list of students who marked the "Agnostic/Atheism" box, they found the list had been destroyed by the registrar's office.

ASU PUBLIC EVENTS and the Dept. of Intercollegiate Athletics

wish to notify all parties of a change in hours at Whiteman Tennis Center. Due to severe court damage, Whiteman Tennis Center will be closed except for Physical Education instruction and for use by the ASU tennis teams, effective March 1, 1986.

We would like to remind you that the Apache Boulevard courts are available for your use on a daily basis.

Also, please remember that Sun Angel Stadium is open 6 a.m.-1 p.m. and 6-10 p.m. daily. The facility is closed from 1-6 p.m. for the ASU track team's practice and the times of their meets.

Thank you for your cooperation.

Tom Cornwall, Director of Operations, ASU Public Events
Tom Collins, Asst. Athletic Director — Operations, Intercollegiate Athletics

Can't find a place to park? Solve your problem! Call 967-3543.

Limited spaces for rent in church parking lot south of Apache between College and Rural Road (across from Sahuaro and frats).

Cost: Rest of Spring Semester \$35

PEOPLE ALWAYS SWITCH TO THE BEST SUPER DESIGNERS

•a full service salon•

The Latest of Hair Designs

- Haircuts \$10
- Highlighting . \$25 & up
- Waxing \$5
- Sculptured Nails \$30



- Perms \$32 & up
- Cellophanes \$15
- Color \$20
- Tips and Product . . . \$40

Valid with ad until 3-23-86.

N.W. Corner of Forest & University • Call 966-9061

The boys think women flirt; girls say they're just friendly

Some campus sexual harassment can be attributed to a male tendency to misperceive female behavior, rather than to power plays aimed at holding women down, according to a Kansas State University researcher.

Dr. Frank Saal showed college students two "totally business oriented" videotapes:

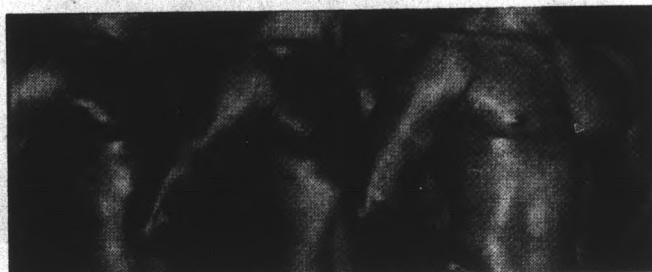
one of an assistant store manager briefing a new female cashier and one of a female student asking her male professor for a deadline extension. After viewing the tapes, most of the males said the cashier and the student were both trying to be "flirtatious, seductive, promiscuous, attractive and sexy."

Females said both situations were "completely asexual," and the cashier and student were "outgoing and friendly."

Feel the Rush

Tuesday Nights obsession

"Obsession," the Valley's most exciting Male Dance Review, 8:30-10 p.m. \$1 drinks all night, wine, well, draft & domestic beer. Men admitted at 9:30.



Wednesday Nights

- Ladies Night, 40¢ drinks for ladies all night
- \$1 Moosehead, Heineken & Corona
- 75¢ domestic beer
- First 200 women receive complimentary rose from Desert Rose

Thursday Nights

- Thirsty Thursday, 50¢ drinks all night long. Well, wine, call & domestic beer.

Friday & Saturday Nights

In the Tavern 9 p.m.-1 a.m.

- Feb. 7 & Feb. 8 The Hannay Brothers
- Feb. 14 & Feb. 15 The Hannay Brothers
- Feb. 21 & Feb. 22 Bermuda Schwartz
- Feb. 28 & March 1 Bermuda Schwartz



1216 E. Apache Blvd.
Tempe • 968-2446
Open 6 days a week

The finest mix of popular dance music in town and the best live concerts too!

\$3.00 BARGAIN PRICE
ALL SHOWS BEFORE 8 P.M. MON. THRU FRI.
SAT. SUN. & HOLIDAYS FIRST SHOW ONLY

<p>BELL TOWER 8 843-4593 5151 AVE. and BELL ROAD</p> <p>OUT OF AFRICA (PG-13) 12:45, 3:45, 7:00, 10:00</p> <p>DOWN AND OUT IN BEVERLY HILLS (R) 12:20, 2:50, 5:10, 7:30, 9:50</p> <p>WILDCATS (R) 12:00, 2:25, 4:50, 7:15, 9:40</p> <p>MURPHY'S ROMANCE (PG-13) 12:00, 2:25, 4:50, 7:15, 9:40</p> <p>DREAMLOVER (R) 12:15, 2:30, 5:00, 7:30, 9:45</p> <p>QUICKSILVER (R) 1:00, 5:00, 9:00 F/X (R) 3:00, 7:00</p> <p>COLOR PURPLE (PG-13) 12:40, 3:45, 7:00, 10:00</p> <p>DELTA FORCE (R) 11:30, 2:15, 4:45, 7:30, 10:15</p>	<p>SUN DEVIL 6 829-0344 The Cornerstone Rural & University</p> <p>F/X (R) 12:30, 3:00, 5:30, 7:45, 10:00</p> <p>DOWN AND OUT IN BEVERLY HILLS (R) 1:00, 3:00, 5:00, 7:15, 9:30</p> <p>OUT OF AFRICA (PG-13) 12:15, 3:15, 6:15, 9:10</p> <p>ROCKY IV (PG) 1:00, 5:00, 9:00 BEST OF TIMES (R) 3:00, 7:00</p> <p>QUICKSILVER (R) 1:15, 3:15, 5:15, 7:15, 9:30</p> <p>DELTA FORCE (R) 12:15, 2:45, 5:00, 7:30, 9:45</p>	<p>SUPERSTITION 5 834-5767 MESA AT 50 LONGMORE & SUPERSTITION</p> <p>BRAZIL (R) 12:15, 2:50, 5:30, 8:30</p> <p>MURPHY'S ROMANCE (R) 12:15, 2:30, 4:45, 7:15, 9:30</p> <p>OUT OF AFRICA (PG-13) 12:00, 3:10, 6:15, 9:30</p> <p>WILDCATS (R) 12:00, 2:15, 4:30, 7:00, 9:20</p> <p>CRY FROM THE MOUNTAIN (PG) 12:30, 2:30, 4:30, 7:00, 9:00</p>
<p>SUN DEVIL 6 \$3.00 MIDNIGHT SHOWS FRIDAY & SATURDAY</p>	<p>POCA FIESTA 4 835-0404 MESA AT 1020 WEST SOUTHERN</p> <p>COLOR PURPLE (PG-13) 12:15, 3:15, 6:15, 9:15</p> <p>ROCKY IV (PG) 1:15, 4:40, 8:05 NIGHTMARE (R) 3:05, 6:30, 9:55</p> <p>YOUNGBLOOD 12:30, 2:45, 5:00, 7:15, 9:30</p> <p>DREAMLOVER (R) 12:45, 3:00, 5:15, 7:30, 9:45</p>	<p>CHRIS-TOWN 5 249-2843 5707 NO. 19TH AVE</p> <p>WILDCATS (R) 12:15, 2:30, 4:45, 7:15, 9:45</p> <p>MURPHY'S ROMANCE (PG-13) 12:00, 2:30, 4:45, 7:00, 9:15</p> <p>DOWN AND OUT IN BEVERLY HILLS (R) 12:30, 2:45, 5:00, 7:30, 10:00</p> <p>COLOR PURPLE (PG-13) 12:00, 3:15, 6:30, 9:30</p> <p>DREAMLOVER (R) 12:40, 5:00, 9:20 QUICKSILVER (PG) 2:50, 7:10</p>

collage

Collage, a free public service provided by the State Press to announce meetings of legitimate campus organizations and clubs, is published every Tuesday and Thursday. To be included, please obtain a form at the State Press reception desk in the basement of Matthews Center. For Tuesday's paper, the insert must be filed by 10 a.m. Monday and for Thursday's paper the deadline is 10 a.m. Wednesday.

TODAY

Episcopal Canterbury Fellowship will meet for celebration of Holy Communion at 8 a.m. in Danforth Chapel.

Lambda Sigma Tau will hold an open house rush for the co-ed fraternity at noon in the MU Pinal Room North.

Contact for Adult Re-Entry will sponsor a "Surviving the Midterm Crunch" workshop at 12:15 p.m. in the MU Santa Cruz Room.

Beta Alpha Psi, the accounting fraternity, will make office visits to Freeman and Lewis, 2111 E. Highland, Suite 148, at 3:30 p.m.

Native American Students Association will meet at 3:30 p.m. in the MU Pinal Room South for a showing of a video tape on the Navajo-Hopi relocation.

ASU Investors Club will meet at 4:30 p.m. in MU.

Organization to Prevent Nuclear Annihilation will sponsor the showing of "Against Nuclear War" at 4:30 p.m. in the MU Mohave Room.

Women in Communications will meet at 4:30 p.m. in the MU Coconino Room when Janet Jacobsen, editor of Singles Scene magazine, will speak.

Women's Studies Student Association and Feminists United for Action will meet at 5 p.m. in the

MU Cochise Room East to show the film "Rape Culture" and have a discussion on rape.

Arizona Council of Black Engineers and Scientists will meet in Technology Center room 317 at 5:30 p.m.

All Saints Catholic Newman Center Student Council will have a volunteer party at 7 p.m. at the Newman Center.

Students Against Apartheid will meet at 7 p.m. in the MU Pinal Room North.

Real Life Fellowship will meet at 7:30 p.m. in the MU Graham Room.

WEDNESDAY

ASU American Federation of Teachers and University Employees will sponsor a speech by John Anderson, executive director of Common Cause, at 12:30 p.m. in the MU Yuma Room.

MUAB Entertainment Committee will meet to discuss upcoming projects at 2:40 p.m. in the MU Activity Center.

Liberal Arts College Council will meet at 3 p.m. in the MU Pima Room to recruit new members.

Financial Management Association will meet at 3:30 p.m. in Business Administration Building room 323.

Psi Chi will meet in Psychology Building room 205 at 7 p.m. for a general meeting.

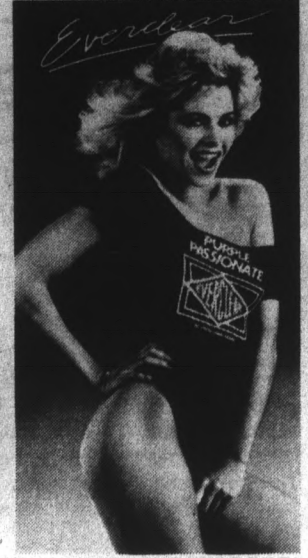
Students of Sign Language Club will meet at 7 p.m. in Stauffer Hall room 417.

Mobilization Against AIDS will appear on campus at 7:30 p.m. in the MU Yavapai Room for a discussion on safe sex and how to avoid contracting Acquired Immune Deficiency Syndrome.

United Campus Christian Ministry will meet at 8 p.m. in Danforth Chapel for an ecumenical Communion service.

PURPLE PASSIONATE

Add passion to your punch with Everclear 190 proof grain alcohol.



EVERCLEAR ALCOHOL

EVERCLEAR POSTER

Just like it's pictured above. It's full-color, measuring 15" x 22". Only \$3.00!

EVERCLEAR T-SHIRT

As shown in poster above. It's purple with red and white EVERCLEAR logo in 100% cotton. It comes with a full crew neck—creative alterations are up to you! Only \$4.95!

Send a check, money order or use MasterCard or Visa

Account # _____ Expires _____

Please send me S M L XL "Purple Passionate" T-shirt(s)

and/or _____ Everclear poster(s) for a total of \$ _____

Mo. state residents add 4% sales tax.

Name _____

Address _____

City _____ State _____ Zip _____

Signature _____

Mail to: "Purple Passionate" 800 Third Avenue West Seattle, WA 98119 868

Posters shipped within 48 hours, allow 4 to 6 weeks delivery for T-shirts. Offer good in U.S. only. Offer void where prohibited by law. No product purchase necessary. Everclear bottled by World Wide Distilled Products Company, St. Louis, MO 63138. Everclear, the ultimate mixer, use in moderation, not intended for consumption unless mixed with non-alcoholic beverages.

APPETITO'S

\$4.00

for a

16" Cheese Pizza

(4 p.m.-9 p.m.)

Add'l. items extra

Tempe Center
University & Mill

967-8091

LIBERAL ARTS COLLEGE COUNCIL MEMBERSHIP MEETING

TOMORROW

COME LEARN ABOUT:

- BECOMING A NEW MEMBER
- REQUIREMENTS FOR BECOMING A SENATOR
- HOW YOU CAN GET INVOLVED IN YOUR COLLEGE

REFRESHMENTS WILL BE SERVED

WEDNESDAY, FEBRUARY 26, 1986

3:00 P.M. • MU PIMA ROOM

LAST CHANCE ON UNLIMITED MONTHLY
INTRODUCTORY PRICES!!

SUN DEVIL TANNING SALON

SPECIAL SPRING RATES:



15 WEEK UNLIMITED	\$150
15 WEEK UNLIMITED (with ASU I.D.)	\$125
MONTHLY UNLIMITED until March 1	\$50
MONTHLY UNLIMITED (with ASU I.D.) until March 1 ...	\$40
10 Session Membership	\$32
5 Session Membership	\$17
Single Session	\$4

(Prices are based on 30 min. sessions)

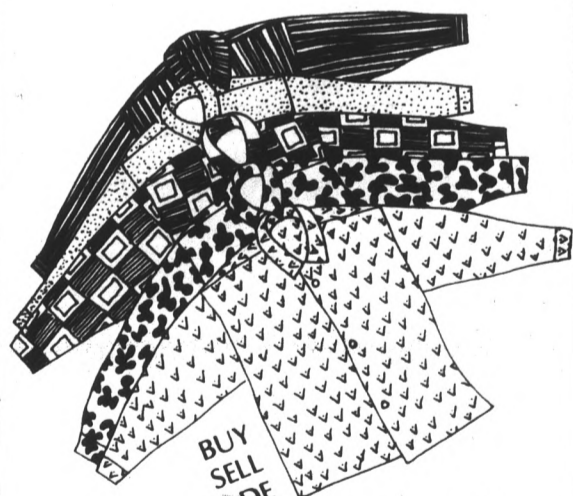
CALL NOW AND GET THAT HEALTHY LOOK

968-4611

LOCATED IN THE ARCHES MALL
CORNER OF FOREST & UNIVERSITY
NEXT TO THE WAREHOUSE DELI

- BUILT-IN HIGH SPEED FACE TANNERS
- PIONEER AM/FM CASSETTE STEREO
- AIR CONDITIONED COMFORT

NOW FEATURING:
New State-of-the-Art: RUVA System
the Reflector tubes give you
40% more tanning!!



BUY
SELL
TRADE

**BUFFALO
EXCHANGE**
Clothing to Suit Your Style

Cash for Clothes

3 East 5th Street • Tempe

968-2557



sports

Some days you eat the bear and some days the bear eats you.

—Unknown

state
press

Olé!

Devils bully Cal State Matadors in 19-2 victory

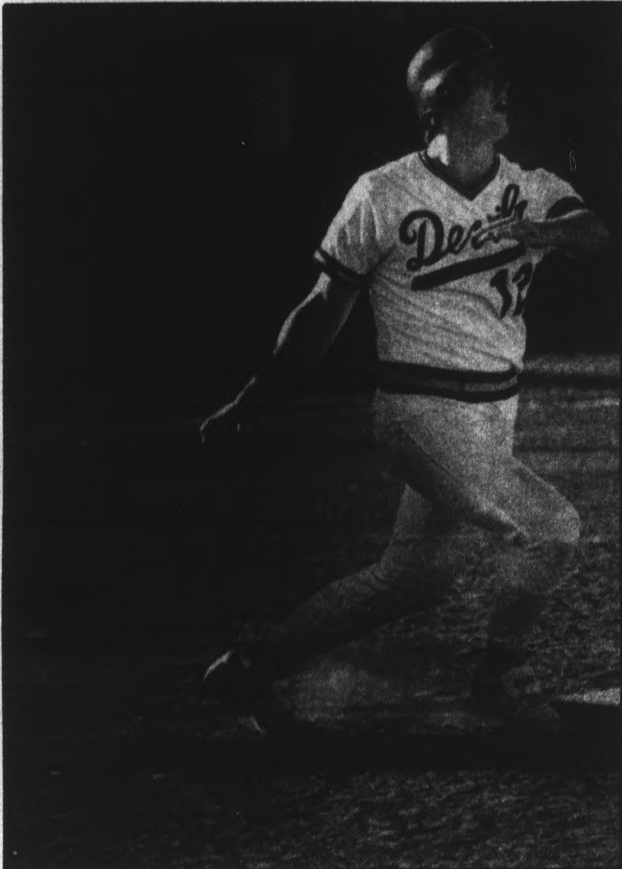
By BOB HEILER
State Press

There is no joy in Northridge.

Cal-State Northridge, unable to get anything going against Devil pitcher Royal Clayton, suffered a resounding 19-2 defeat Monday against ASU in Packard Stadium.

The Devils jumped out to a five-run lead in the first inning against losing Matador pitcher Jeremy Hernandez. Devil Ted Dyson singled in the first, but he would go on to much bigger hits later in the game.

Dyson hit three consecutive dingers in the fifth, seventh and eighth innings. Coach Jim Brock explained the



First baseman Ted Dyson watches the last of his three consecutive home runs sail out of Packard Stadium Monday.

importance of Dyson's return to the lineup after sitting out 16 games to preserve his eligibility for next year.

"With (center fielder Rick) Morris being perhaps the premiere hitter anywhere, it's good to have a good hitter behind him," Brock said. "It gives Morris a chance to see some better pitches and do as well as he can. If there's not a good hitter behind him, teams will just pitch around him and not give him anything to hit."

Dyson had to sit out a quarter of the season because he was a hardship redshirt last year after playing part of the season. To stay eligible for next year, he had to skip the first 16 games of this season.

"Teddy has looked good in practice all week," Brock said. "When you have 16 games when you don't get to play, it's hard. But he's certainly coming back well."

Brock was also pleased with getting a complete game out of winning pitcher Clayton.

"Royal has always been a middle-man," he said. "Someone to come in and give you a couple of innings in the middle."

"Now that may change. We're still short a starting pitcher, and we still have a heavy schedule of games to play. We'll just have to see."

**We're concerned about 2 things:
having fun and getting better. We've
done both of those today.' — Jim Brock**

Brock was pleased with more than just Clayton's pitching. "He helped himself out there," Brock said. "He got two guys to hit into double plays and picked two more of first base. He played with confidence."

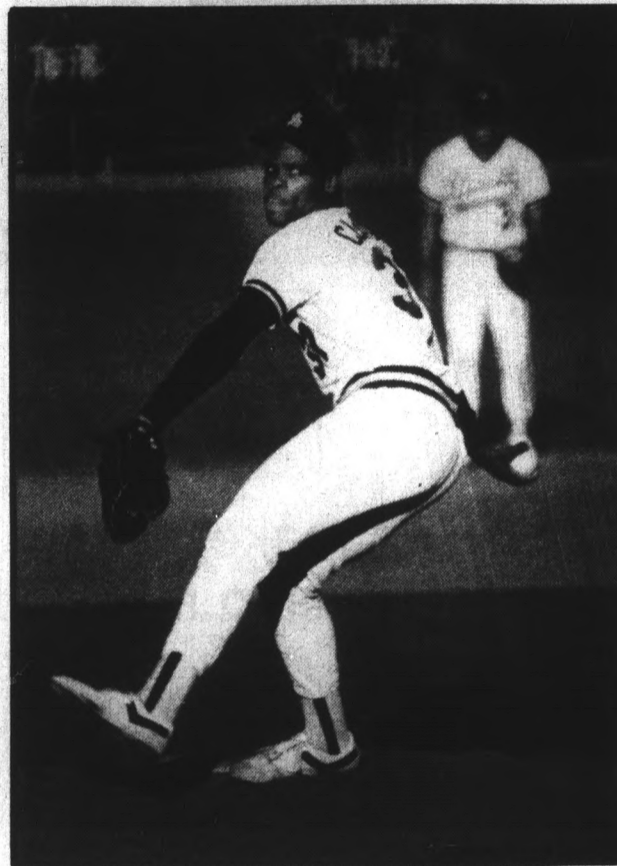
"Before, he's pitched well sometimes and not-so-well others. He's usually given us a couple of good innings and then gotten into trouble. But once we got the five-run lead in the first, I guess it made it a little easier on him."

There was plenty of scoring to go around for the ASU squad. Dyson had seven runs batted in, followed by Morris with five, Roger Smith and Dwight Thomas with two apiece, and Bryan Beals, Mike Benjamin and Steve Mariucci with one each.

Brock's impression of the game was the same as that of the Devils' whole season.

"We're concerned about two things," he said. "Having fun and getting better. We've done both of those today and so far this season, so I'm pretty happy."

After Hernandez was shelled in the first inning and touched for two more in the second, Cal State coach Terry Craven



Staff photos by T.A. Keegan

Winning pitcher Royal Clayton pitched his first complete game, holding the Cal State-Northridge squad to just two runs.

brought in reliever Cheeky Palomarez. He didn't fare much better, allowing six runs on five hits in three innings.

Brock said the starting pitcher in today's game, the last in a three-game series with Cal State-Northridge, would be left-hander David Cassidy.

ASU begins its Six-Pac schedule Feb. 28 against UCLA in Packard Stadium. Brock commented on the competition in the Six-Pac.

"It's an awfully good conference," he said. "The fifth-place team in the Six-Pac is often a darn good ball club. We'll just have to see what we can do."

Swimmers' relay team pulls out close UA victory

By CHRIS MCKAY
State Press

ASU's men's swimming team tasted the sweetness of victory in a close 86-82 triumph over UA in Tucson Saturday.

In the last race of the meet the Sun Devils' freestyle relay team swam away with a 3:02.63 time to secure the defeat of the Wildcats.

In the relay Andy Jameson opened up a lead for the Sun Devils in the first leg but the race was even after John Keppeler and the second leg. Jeff Sheehan gave ASU a slight advantage after three legs and anchor John Laderer held on.

Coach Ron Johnson said the meet could not have been tighter.

"We had a real exciting meet," he said. "It couldn't have been closer."

An outstanding performance from Neil Cochran in the 200-yard individual medley earned him a qualifying time for the NCAA Championships next month. Cochran swam a 1:49.54, which is the fastest time in the nation so far this season. Cochran also pulled off an upset victory over UA's Charley Siroky in the 200-yard backstroke.

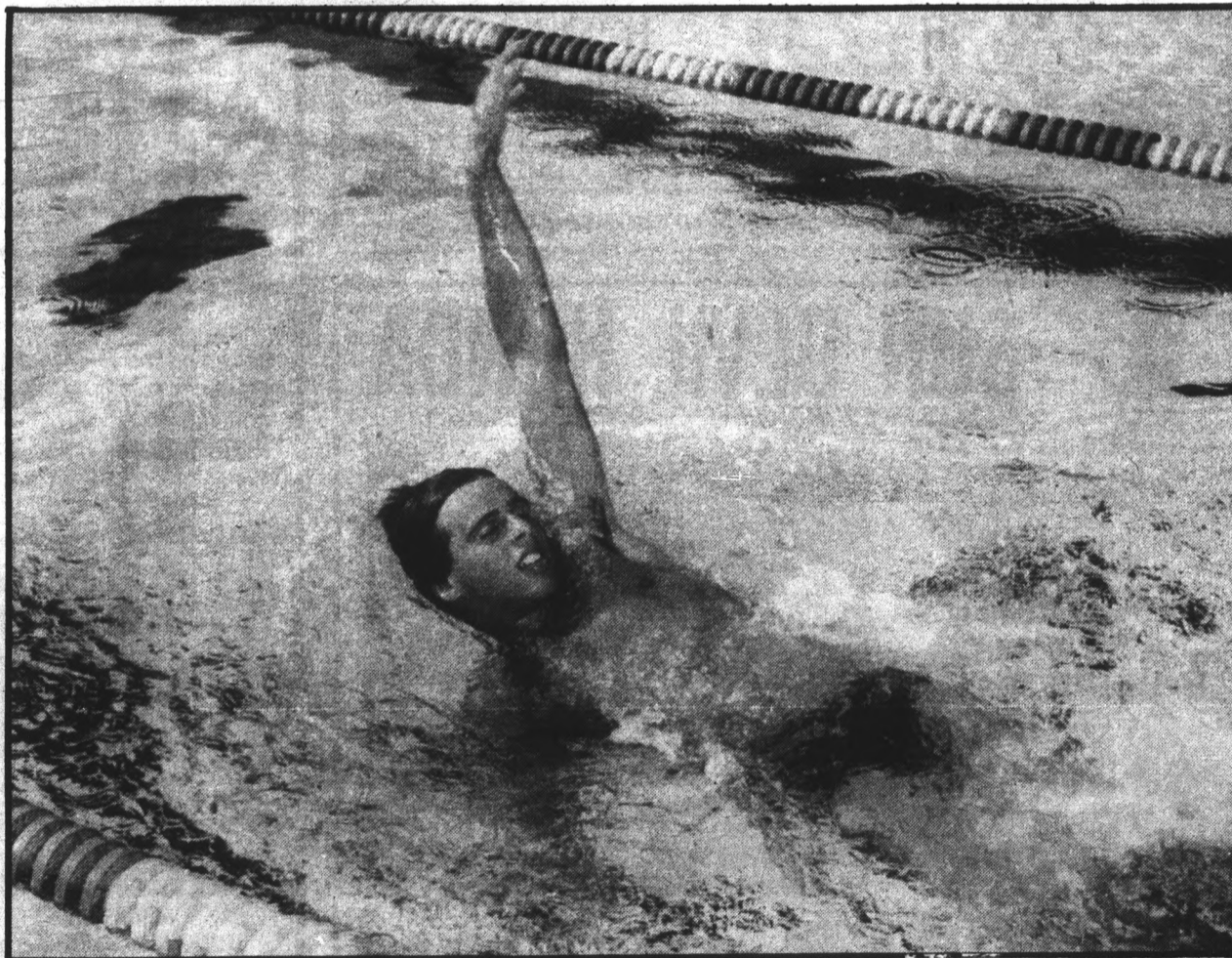
Scott Brackett won the 500-yard freestyle with a time of 4:25.30 and Brett Rose took the 400-yard individual medley at 4:00.64 with a strong performance.

The Wildcats' No. 1 400-yard individual medley swimmer, Matt Rankin, who swam a 4:02.03, lost not only to Rose but to ASU's Bill Powers who finished at 4:01.55. Chip Martoccia finished with a strong fourth place at 4:02.68.

The Sun Devils also captured first and second in both breaststroke events behind Peter Boden and Scott Lathrop.

Johnson said he was pleased to win at "their pool." "It's a long two-hour drive if you come back a loser," he said. "We had a fun drive home."

The victory should lift Sun Devils as they approach the Pac-10 Championships coming up this March. Both the men's and women's team will have a three-week wait for the Pac-10's.



State Press photo

Bret Rose cruised to a 400-yard individual medley win Saturday against UA.

Cornwall in Doghouse for Whiteman Center ban



Dino is not in a good mood today. While all of you Sun Devils are out bagging some Arizona rays, Dino is stuck in the *State Press* newsroom trying to decide who to put in his doghouse.

What Dino finds even more distressing is that as of March 1, he cannot play tennis on his day off in the Whiteman Tennis Center.

Yes, it is true. A superior being from the department of public events has declared that the tennis courts in the Whiteman Center will be off limits to the public indefinitely as of March 1.

Even worse is the fact that "the public" means "ASU full-time students," as well.

According to a recent press release, Tom Cornwall, the director of operations for ASU public events, is the man responsible for the decision.

Welcome to Dino's Doghouse, Mr. Cornwall. In rationalizing the decision, Cornwall cited vandalism and unconstructive use of the courts as the main problems with letting the public play.

Dino, an avid tennis player, wishes Cornwall would have given him a call before going and closing the facility.

"If vandalism is a problem, then hire someone to watch the facility," Dino said.

For the sake of clarity let me translate the rest of Dino's opinion.

If there was a problem with vandalism, then other measures should have been taken to make sure that such vandalism did not occur.

It is hardly fair to take the finest tennis courts on campus and make them exclusively for the use of two dozen tennis players that represent the men's and women's teams.

Don't get Dino wrong; he is not saying that the teams should not get first priority — as they have been getting. There are, however, over 40,000 students who attend ASU who should be able to use the Universities facilities.

Dino agrees that it is unfortunate vandalism and abuse of the courts is a problem, but he does not feel the solution should be a ban of student use, especially when all options have not been tried.

It is true that there are 21 courts open to student use on Apache Boulevard. The problem is that those 21 lighted tennis courts are used by the Tempe community as well as ASU students.

Dino said he is going to take up jogging. That is, unless someone closes down the ASU track.

— DEAN OBENAUER

By JON WILEY
State Press

In their last regular season meet, the ASU wrestling team rolled over the University of New Mexico Lobos 39-7, making their record 8-7 as they go into the Pac-10 Championships on March 2, and the NCAA Championships March 13-15.

A total of 18 of the 39 ASU points came from New Mexico forfeits in the 118-pound, 158-pound, and 177-pound divisions.

ASU head coach Bobby Douglas said matches indicate talent better than forfeits do.

"At New Mexico, we wrestled hard and aggressive in the individual matches, and I'm not disappointed with anyone's performances," he said. "We would rather have those matches because forfeits don't tell you anything."

Aside from the Biola meet on Feb. 8, the meet represented only the second time this season that the Devils have wrestled with a full roster.

"We're as strong as we are ever going to get," he said. "We have been doing a lot of work with films and

we've been scouting opponents.

At UNM in the 118-pound division, ASU's Jim Lefebvre won by a forfeit. Gary Bairos, in the 126-pound division, defeated UNM's Luis Loya, 3-0.

ASU's Glenn McMinn lost the 136-pound division, 19-11, to Lobo Chris Luttrell. Wayne Sharpe won the 142-pound division, 15-5, defeating UNM's TeDon Fleischman.

Sun Devil Adam Cohen took the 150-pound division by a score of 10-1 over Ralph Harrison. ASU's Jim Gressley won the 158-pound division on UNM's second forfeit.

In the 167-pound division, Lobo Jon Head defeated Sun Devil Don Frye 5-4. In UNM's third forfeit of the meet, ASU's John Ginther took the 177-pound division.

Dennis Roberts won ASU's 190-pound division by defeating Vince Morcozzi 12-4. And in the heavyweight division, Sun Devil Rocco Liace won 25-9 against UNM's Jamie Martinez.

Douglas said the full roster will help the team in the championships.

Grapplers make ready for post-season meets

TRY OUR DRIVE THRU WINDOW

**GRAND
OPENING
SPECIAL**

Tootsie's

PATIO & GRILL

TEMPE, ARIZONA

"Formerly St. Michael's Alley" • 894-1321 • Est. 1985

112 E. University Dr. • Tempe, AZ

THE COMPLETE "BURGER MADNESS"

1/4 lb. BURGER
(Pick Your Own Fixins, Lots to Choose)

FRIES, 12-oz. SOFT DRINK

\$1.99 + tax

2:00-9:00 M-F

1¢

Draft Beer or Soft Drink
With Purchase of Any Sandwich

Anytime With Coupon
Excluding Specials

SOUP-N-1/2 SANDWICH

Choice of Tuna, Veggie Freak,
or Roast Beef Sandwiches

\$1.99 + tax

10:30-2:00 M-F

Located 100 ft. West of Warehouse Deli

1986 THE FOREIGN CONNECTION

INTERNATIONAL BUSINESS SEMINARS

GAIN AN INTERNATIONAL PERSPECTIVE THROUGH INTERACTION WITH TOP-LEVEL EXECUTIVES PLACING SPECIAL EMPHASIS ON MANAGEMENT, MARKETING, AND FINANCE ISSUES.

VISIT SOME OF EUROPE'S GREATEST CITIES.

INFORMATION MEETING:
Wednesday, February 26, 1986
BA 353 • Old Business Bldg.
12:45 p.m.

DR. JEFF BRACKER, BA-397-L
DR. BOB GWINNER, BAC-461
College of Business, ASU
965-3431 or 965-3621

SUN DEVIL HONDA

ARIZONA'S FINEST MOTORCYCLE & SCOOTER DEALERSHIP

Insurance

Full Line of Parts and Accessories

Lowest Monthly Payments

Free First Service (on scooters)

SUN DEVIL HONDA
2620 W. Broadway
Mesa 921-0199
(Between Price & Dobson)

HONDA (Your Parking Worries Are Over)

Gino's delivers.

We're open for lunch!

FREE 12" CHEESE PIZZA

Get a free 12" cheese pizza valued at \$3.60 with purchase of a large pizza with this coupon. Not valid with any other coupon.

Expires March 4, 1986.

FREE QUART OF COKE

Free quart of Coke with the purchase of a large or medium pizza with this coupon. Not valid with any other coupon.

Expires March 4, 1986.

GINO'S PIZZA 966-4666

822 S. Mill Avenue
We've been delivering in Tempe since 1970.

Open Monday 3:30 p.m.-Midnight
Tuesday-Thursday 11 a.m.-Midnight
Friday & Saturday 11 a.m.-2 a.m.
Sunday Noon-Midnight

St...

Cle...
the...
lic...
pla...
thru...
C...
15...
wor...
For...
965...

CHAM...
passp...

1972...
tion...
Movin...

'79 MA...
power...
excell...
Am, go...
thing...
negoti...

85' Ch...
loaded...
paymen...

JEEPS...
now a...
1-619-5...

WEEKE...
\$69.95...
by 10c...
age, fu...
Cash o...

Bu...

CRUISE...
\$16-\$30...
Informa...
Road Su...

For...

CONDO...
condo...
Near po...
828-655...

NEW C...
Many...
monthly...
Bay Apr...
2121 W...

ONE B...
blocks...
\$390 per...

TOWNH...
bath, fur...
from ASI...

TWO B...
dryer, tw...
years ol...
per mont...

For...

1982 HO...
months...
Phil 965-4...

DESPER...
CP708. E...
custom...
2397.

MINOLTA...
210 zoom...
ble back...
943-5782.

MOBILE...
Tempe. F...
four star...

MOVIE P...
Nights...
anca. M...
965-6014

CLASSIFIEDS START HERE

NOW!

You can place your

STATE PRESS WANT ADS
at the
MEMORIAL UNION

Inside the North Entrance
... Across from the
Residence Life office.

11 a.m. to 2 p.m. **DAILY MONDAY-FRIDAY**

STATE PRESS CLASSIFIED

The deadline for State Press Classified Ads placed at Matthews Center or over the phone is 10 a.m. two days prior to publication. The deadline for Ads placed at the Memorial Union is three days prior to publication.

Classified rates are \$1.90 for 15 words and 10 cents for every word thereafter for each day. For further information, call 965-7572.

Announcements

CHANG WAN-LAN lost R.O.C. passport hereby declare invalid.

Automobiles

1972 VOLVO 142, clean, good condition, \$1,200. Call Bob 926-2397. Note: Moving, must sell.

'79 MALIBU, BROWN, mint condition, power everything, new tires, runs excellent, \$3,000, negotiable. '79 Trans Am, gold, mint condition, power everything, runs excellent, new tires, \$3,500, negotiable. 894-9567.

85' CHEVY SILVERADO, SWB, fully loaded, 8kmiles, \$8,800 or take over payments GMAC 8.8% 966-9596.

JEEPS, CARS, and trucks under \$300 now available at total sales. Call 1-619-565-1522 for info. 24 hrs.

WEEKEND SPECIAL! Jiffy Auto Rental. \$89.95 pick up anytime Friday. Return by 10:00am Monday. Unlimited mileage, full coverage insurance included. Cash or credit card. 890-9455.

Business Opp.

CRUISESHIP HIRING: Earn up to \$18-\$30,000. Travel the world. \$4.00 information guide 2515 E. Thomas Road Suite 16-545A Phx Ariz 85016.

For Rent or Lease

CONDO FOR rent. One bedroom condo. Walk to ASU. Washer, dryer. Near pool and jacuzzi. Very nice. Jeff, 829-8557.

NEW ONE and two bedroom apts. Many amenities. Free month or monthly discount with lease. Pelican Bay Apts. Three miles from campus. 2121 W. Main, Mesa 969-3380.

ONE BEDROOM furnished condo, 2 blocks ASU, washer, dryer, no pets, \$390 per month. Call 832-5606.

TOWNHOUSE, two bedroom one bath, furnished, pool, approx two miles from ASU. 834-6376.

TWO BEDROOM, two baths, washer dryer, two car garage. Large yard two years old, fireplace, cul-de-sac lot \$25 per month. 860-0195.

For Sale

1982 HONDA FT 500, runs great, 18 months service contract, \$900. Call Phil 965-9783 or 867-8962.

DESPERATE, MUST sell! Yamaha CP70B. Electric Baby Grand Piano with custom cases. \$2,500. Call Bob 926-2397.

MINOLTA X-700 SLR, autowind, 70-210 zoom, 50mm, 28mm, programmable back, flash attachment, \$575. firm 943-5762.

MOBILE HOME, two bedroom in Tempe. Furnished, washer and dryer, four star park. \$8,900, 839-7529.

MOVIE POSTERS \$10 and up. White Nights, Terminator, Murphy's Romance, Mad Max and more. Joel 965-9914 nights.

Furniture

KING SIZE book shelf waterbed, dark wood, padded rails, heater. Call 829-0684.

Help Wanted

\$75 AN HOUR. We need enthusiastic energetic goal oriented people. Can you be dependable? We will train. We need you, PV area, two shifts available 6 to 6 and 12 to 6, call us M-F 2 to 4pm. 992-6518 ask for Matt, Hurry \$\$.

AIRLINE HIRING Boom! \$14-\$39,000! Stewardesses, reservationist! Call for Guide, Cassette, Newservice. (916) 944-4444 X

AIRLINES NOW hiring. Reservations stewardesses and ground crew positions available. Call 1-619-965-1657 for details.

"ARE YOU in need of extra money? If so, call Sherry McIntosh at 5-6754 after 1 pm. ASU Telefund offers good pay, incentives, and telemarketing experience."

ARTIST POSITION available for part time paste-up, layout design, Irene or Barry 2-5pm at 965-2516.

"ASU IS calling on you.... to join the ASU Telefund Drive! Gain valuable work experience in P.R. and telemarketing; nightly bonuses and incentives. Call Sherry McIntosh at 5-6754 after 1:30 p.m. for more info."

ATTENTION STUDENTS! Need part time work? Here's your best opportunity to make \$100 to \$400 weekly. Must have car. Be neat and personable. For immediate interview call: VIA Arizona, 997-0808.

ATTENTION FRESHMEN and sophomore business and prelaw students, we are now interviewing for summer work, gain valuable business experience, college credit, and \$4,138. Must be dependable and independent. Call 240-2118.

BUSINESS STUDENT needed to assist with hiring seniors. Preferably a jock or active fraternity member. Position will lead to a very exciting long term career with unlimited high income potential for the right person. Must be energetic, popular, well liked and a permanent Phoenix area resident. Call Tony at 234-9786.

CARNABYS CUSTARD. Need friendly, energetic people to work Mesa store. Good conditions, plenty of opportunity. Flexible hours. Call Mark 965-0915.

EARN \$300 - \$400 a month marketing water treatment systems. Call Cathi at 990-1804.

ENGINEERING TECHNICIAN. 2nd or 3rd year mechanical engineer or technology. Some related experience desired. Min. 20 hrs. per week, flexible schedule, \$4.50 and up. 956-8200.

FEDERATED MAILING Systems needs light word processing, secretarial, mornings, 9-noon. Call John, 968-2955.

MARKETING MAJOR needed to implement marketing program for insurance brokerage firm near the Paradise valley Mall. Prefer permanent Phoenix resident with positive attitude, energy and strong desire to be successful. Payment will be \$4.00 to \$5.00 per hour, depending upon experience and ability. Part time hours with potential for career growth. Call Tony at 257-4525.

GRADUATING SENIORS in Finance, Marketing, or Insurance. Opportunity for early start on career. Permanent Phoenix area resident, professional, energetic and in need of high income potential, call for apt. L&A 234-9786.

GROUNDS KEEPER. Print shop needs reliable part time person. Must have references and be a common sense person, \$4 per hour, 20 plus hours week, afternoons and Saturday. Call Mark 835-0995.

HOUSEKEEPER WANTED: 2:30 to 5:30 weekdays in Dobson Ranch. Basic housekeeping plus supervision of two 5th graders. Reliable car a must, call after 6:00 Christine 820-6349.

MODELS NEEDED for hair show Sunday March 2nd, free cuts and perms by international hair stylists. Call Molly 277-5481 days or 957-3480 evenings for interview appointments.

Need a fundraising idea? Here it is! Your group can earn thousands of dollars helping us collect signatures for a good cause. Call Julia 944-1969 or Reid 255-5829.

PANIC CITY is looking for delivery persons. Make between \$8 and \$10 per hour. Apply in person at 0 E. 5th St., 968-6977.

PART TIME, computer knowledge (AT x T, Dos, Lotus), filing, and related office work. 990-3711.

PART TIME day and night waitress, bus, cook. Apply in person 3310 N. Hayden Rd. Scottsdale, corner of Osborn and Hayden.

PART TIME 11:00 to 1:00, M-F, \$3.75 per hour. Call the Sub Machine 437-9237.

POCKET HUNDREDS weekly mailing commission circulars! Incredible offer! Details free! T.A. 4125 N. 71st Drive Phx., Az 85033.

Help Wanted

SALES HELP. Space Age Auto Paint Store, even weekends. Female preferred \$3.35 plus commission to start, 20 to 30 hours a week. Must have neat appearance and have references. Call Joe 835-0971. 707 S. Country Club Dr. Mesa.

SINGERS NEEDED! Are you a ham? Male or female, good voice and showmanship a must. Good pay, lots of fun. Immediate FT, PT employment. Call 966-6200. 9am to 5pm, M - F. Eastern Onion Singing Telegram.

STUDENTS EARN \$5.32 pr hour for part time work, mornings and weekends, Scottsdale area. Call the Arizona Republic 271-8687 between 9 am and 6 pm.

STUDENTS: START earning that extra cash for spring break now. Full time pay at part time hours. Earn \$150 to \$300 weekly, daily cash bonuses. Call Marketing: Horizons at 829-1873 between 2:00pm and 6:00pm. We work with your schedule.

SUMMER CAMP jobs, Northern Minnesota. Seeking qualified teachers and college students. Directors for water-front, program, CIT. Department heads and assistants for archery, crafts, drama, riflery, horseback riding, sailing, tennis, swimming, canoeing, dance, boardsailing, secretary driver. Mid June to mid August. Apply to Sherwood Forest Camp, 805 2nd Ave. N.W., Grand Rapids, Minn. 55744.

SUMMER JOBS in Alaska. Good money. Many opportunities! Employer listings, 1986 summer employment guide. \$5.95 Alasco, Box 30752, Seattle, WA 98103.

TYPIST, FAST, accurate, good spelling and grammar. Computer course helpful. Part time mornings. 967-0900.

Instruction

TUTOR BSChE, magna cum laude. Chemistry, fortran, math, physics, general engineering core. Proven results, reasonable rates. Tom 268-2663, 562-9621.

Jewelry

CASH FOR gold, diamonds and silver. Mill Ave Jewlers, 414 S. Mill Ave Suite 104.

Miscellaneous

COMPUTER FOR rent, IBM and compatibles. Call 841-9754.

Motorcycles

1984 GOLD HONDA Aero 125cc, new battery, new brakes, \$750, 834-3370.

1984 HONDA AERO 125 scooter, red, good cond, \$600 obo, must sell! Call Kim 965-9487.

1985 WHITE HONDA Elite 80 scooter for \$800. Call Signe at 967-1235.

Help Wanted

Motorcycles

'77 HONDA CB125 with helmet \$300 call after 5:00 829-8455.

GOLD HONDA Arrow 125 scooter, perfect condition, only 550 miles, almost 2 1/2 years left on warranty. Best offer, 945-4491.

Personal

ANDY, RON: Purgatory was fun, Snowbird? D and L 941-1007.

BOB BARKER- give me a call sometime! Pam's friend (remember me?)

CYNDI, THANKS for all the love and support. Love, Anna Marie.

DAVE: I love you, Shannon.

DEE GEES, sincerest apologies on a Valentine joke gone sour. Please forgive and forget.

DID ANYONE tape the final episode of 'The Prisoner' (Fallout)? I missed it! Call Dennis, 947-6710.

EEE-WE'RE the best! Let's Jam this week. EEE love Julie.

FOR A good time, call 820-6124.

**CARLA CARLA CARLA
CALL ME PLEASE
I NEED TO
TALK TO YOU
I LOVE YOU
PAUL PAUL PAUL**
2/25

At last...
BEACH CLUB WEST
A new store concept specializing in the "latest & hottest" California Beach SWIMWEAR styles for women!
Open 2-26-86.
219 E. Baseline Ste. 5
Corner Baseline/Mill • 839-9600
2/27

Help Wanted

Personal

HEY H2O! Look here! Have a great day. Love, Frog smile.

LOSE WEIGHT now. Ask me how! Convenient on campus location. Call Fritz at 965-0675.

PREGNANT? CONSIDER adoption. We may be able to help with housing and medical expenses. For pressure free counseling at no charge, call Southwest Adoption Center, Inc. (602) 234-2229 or 1-800-423-2229.

Real Estate

PAPAGO PARK beautiful, 2nd floor condo, two bed two bath, vaulted ceilings, decorator touches, appliances included, asking \$84,500. No qualify loan, owner agent. Call Mrs. Pascale, Realty Exec. 996-9910 or 948-8871.

THREE BEDROOM house, diving pool, excellent location for ASU. See it. Whyte Realty 968-9338.

Roommate Wanted

FEMALE ROOMMATE to share 2 bedroom, 1 1/2 bath townhouse. Pool, laundry, microwave, \$200 per month includes utilities. Jean 945-0086.

FEMALE ROOMMATE to share four bedroom house. \$200 a month, utilities included, 3 miles from ASU. Furnished, nonsmoker, call 839-1021.

FEMALE TO share three bedroom two bath townhouse, two miles from ASU. Washer, dryer, covered parking, pool. \$183.33 plus deposit, plus third utilities. Leave Message 960-7229.

MALE, FEMALE, nonsmoker, two bedroom two bath apt, furnished, \$200 per month including utilities. A.S.A.P. 831-8213.

MALE NONSMOKER to share three bedroom townhouse, 3 1/2 miles from ASU. \$160 month plus 1/2 utilities. Joe or Dave 897-7671.

M,F ROOMMATE wanted for master bedroom in three bedroom townhouse. Unfurnished. \$210 month plus 1/2 utilities. Near McClintock University 966-4956.

NO DEPOSIT. Female nonsmoker, own room, nice townhouse, washer dryer, pool, needed immediately! 966-4858 829-1508. You'll love it!

OWN BEDROOM, small but nice. Queen size waterbed, fully furnished, four bedroom, three bath condo with washer dryer and all extras. In Questa Vida only 2 1/2 miles from ASU. Nonsmoker \$170, 1/4 utilities 894-5245.

UNIVERSITY TOWERS! Female nonsmoker needs three cheerful medium studying roommates, two bedroom premium. SW view. Get residency! Leave message 965-0164.

Services

CARS AVAILABLE - 21 or older. All States Drive-away, 992-5200.

Help Wanted

Services

HAVE UNWANTED facial or body hair removed permanently by electrolysis. Free consultation, located in Tempe. Call Sharon at Desert Electrolysis Center 829-7829.

HOT TUB spa suites, by hour or overnight. Fill your own fresh water. King water bed, ceiling mirror, refrigerator, bathroom, TV, music. VCR's and movies for rent. Tempe Hot Tub Spa, 2144 E. Apache Blvd (behind Guerrero's Mexican Rest.) 967-5636.

HOUSESITTING SERVICE offered. Short or long term. Four years excellent references. Linda 829-1548.

PHOTOGRAPHER AVAILABLE. Portraits, portfolios, weddings, etc. Good work. Call Gary 966-0938 or leave message.

TUTOR NEEDED! B10-181 Econ III B plus student needs reinforcement once weekly each. \$5-6 hourly. Leave message 965-0164.

Travel

MEXICO STUDY vacations, intensive Spanish or arts, crafts. Escorted groups, 30 days. Cuernavaca, June, or San Miguel Allende, July. \$1,395 all inclusive. Free brochures. (602)242-9231.

YOUNG TRAVELERS Newsletter! Includes: 800 no.; travel partner service; features on exotic overseas budget travel, work, study! Send check (\$12 yr.) to: Y.T.N., P.O. Box 3887, New Haven, Ct. 06525.

Typing

A-1 PROFESSIONAL word processing. Resumes, papers, at Kinko's Word Processing, 933 E. University, 966-2035.

ALL PAPERS typed to your complete satisfaction. Convenient. Reasonable. Mrs. Oakley 967-0802.

ALWAYS AVAILABLE for typing. Call Susan at 833-0373.

ANYTHING TYPED. Fast, accurate, reliable. Mesa area. Call Linda 827-9942.

DOLLAR A PAGE resumes land dollar a day jobs. Dress your resume for success. 968-3627.

EXPERT WORD processing/typing, \$1.25 double spaced page. Rough draft available. Rural/Southern. Fran 838-8027.

FAST ACCURATE and dependable typing and word processing. Reasonable rates. Candy 966-7898.

FORMER ASU staffers, term papers, theses, dissertations, professionally, done on word processing equipment, fast turn around, spelling punctuation checked, reasonable rates. Donna or Joan 945-8302.

PROFESSIONAL TYPING of term papers, reports, resumes, letters, discount for students and faculty. Professional Secretarial Services, N.W. Phoenix Az 843-3413.

PROFESSIONAL WORD processing and typing. Term papers, dissertations, Barbara 964-6689.

PROFESSIONAL TYPING service, term papers, theses, etc., low rates, quick turnaround, Pat Mottet 897-1832.

PROFESSIONAL TYPING and word processing, low rates, quick turn around, resumes, term papers, walking distance, 968-4668.

PROFESSIONAL TYPING, fast, reasonable. Excellent spelling and grammar. Call Jaline 948-4647.

QUALITY WORDPROCESSING, graphics, computerized typesetting. Fast service, campus pick up, delivery. 961-1979.

RESUME'S, TERM papers, dictation, presentations. \$8 and up. Call anytime. Pick up, delivery available. Sherry 938-5262.

SHORT OF TIME? I can help. Reasonable. Professional. Guaranteed. Experienced in academic. call Jessie 945-5744.

TYPING AT home, fast, accurate, call Marian 968-3687.

TYPING ON word processor. Term papers, dissertations, resumes, etc. Fast, accurate, reasonable. Doris 345-0286 evenings, weekends.

WORD PROCESSING. Fast, accurate, confidential, \$1.75 per page. 838-3425 after 5.

ACCURATE WORD PROCESSING. Books, term papers, dissertations. Downtown Mesa. Quick turnaround. Donna, 844-1876, Peggy 844-1884.

WORD PROCESSING, papers and resumes. Call 894-6052.

WORD PROCESSING, storage for dissertations, theses and term papers. Rush jobs welcome. Nancy, 830-5572.

Wanted

DRIVER WANTED to drive pickup truck to Long Island New York immediately. Will pay part expenses. Phone 1-757-3530 (Kingman).

The Making Of A Successful Executive.

You're a talented and aggressive risk-taker, and you're not afraid to put yourself -- and your ideas -- into the line of fire. If you're looking for a company that shares your sense of adventure and can provide the resources and experience to support your creative energy, consider MACY'S.

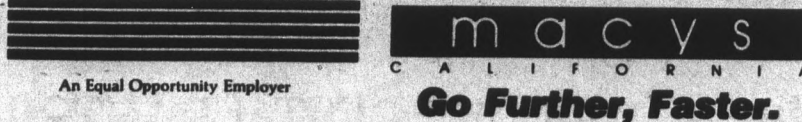
MACY'S California invites you to participate in what is widely regarded as one of the best executive development programs in the nation, a program termed the "Harvard of Retailing" by a renowned national business journal.

Your career path will provide for both store management and buying. You'll learn how to take risks, and how to gain the cooperation of other people.

Plus, a retail career with Macy's involves marketing, economics, forecasting, and finance. We prepare you for success in all of retail's disciplines so you can have the confidence to set strategy and maximize opportunities.

Opportunity for rapid advancement is unlimited. Your Macy's career will move further and faster, often reaching the senior executive level in three to five years.

Our recruiters will be on your campus Wednesday, Feb. 26 from 3:00-5:00 pm in the Room 211 in the Memorial Union (Information meeting) and Feb. 27 & 28 for interviews. To find out how you can participate in our success at MACY'S California, sign up with your placement office or contact our College Relations Manager at: MACY'S CALIFORNIA, College Relations Manager, 170 O'Farrell Street, P.O. Box 7888, San Francisco, CA 94120.



An Equal Opportunity Employer



WHAT ARE YOU DOING TONIGHT?

Lunt Ave. Marble Club Has The Answer...
With Big Plans To Carry You Through The Week!

- ➔ **ON TUESDAY, IT'S TEMPE!** Pizza reigns in Tempe! Indulge in our world-famous pizza at an amazing 1/2 price from 11:30 a.m. until closing. Take-out orders excluded.
- ➔ **ON WEDNESDAY, IT'S CHANDLER!** Hilarious happenings at the Chandler Lunt Ave. Marble Club. Stop by for dinner... then enjoy the compelling, non-stop comedy, beginning at 8:30 p.m. **Bring in this ad for free admission.** Happy hour drink prices all night long, too!
- ➔ **ON THURSDAY, IT'S SCOTTSDALE!** Ladies get top billing with \$1.00 cocktails between 9 p.m. and closing. And remember, Scottsdale Lunt Ave. Marble Club is the hottest lounge in town with 2—count 'em—2 happy hours a day, 3 days a week.

Plan Your Fun-Filled Week With...

Lunt Ave. Marble Club[®]

SCOTTSDALE
6202 N. Scottsdale Rd.
998-3505
(Behind El Torito)

TEMPE
1212 E. Apache
967-9192

CHANDLER
1371 N. Alma School Rd.
899-6735

BIG 4 RESTAURANTS, INC.