

tuesday

January 28, 1986

# state press

Tempe, Arizona

Vol. 68 No. 75

Arizona State University

© Copyright, State Press, 1986

## Blaze

### Marshal suspects arson as cause of Sunday's fire in Matthews Hall

By BOB WILSON  
State Press

A fire that caused \$3,000 worth of damage to Matthews Hall Sunday probably was caused by an arsonist, the ASU fire marshal said Monday.

Sylvester Anderson said, "It looks like someone in the restroom tossed a match over the divider into the cleaning supply area."

Although people were in the building when the fire ignited, no one was injured in the incident.

The Tempe Fire Department had the fire under control at 5:10 p.m., less than 17 minutes after an unidentified man called campus police to report smoke coming from the building, Anderson said.

"They were fast," he said. "If it had broken out of that room, we would have lost the building."

Anderson said nothing was found in the charred supply closet that could cause spontaneous ignition, such as oily rags or flammable liquids. There were also no signs of an electrical malfunction.

Jim Gaintner, assistant chief for the Tempe Fire Department, estimated the damages to the walls, shelves and ceiling at \$3,000.

"There was a lot of heavy smoke, but nobody was in the building when we got there," he said.

The top half of the walls in the restroom are black with soot from the blaze. The shelves in the adjacent supply room are charred, and the paint on the ceiling is bubbled and blackened.

Northlight Gallery, a photography exhibition about 60 feet down the hall from the restroom, was open at the time but was not damaged by the smoke.

"It just smells funny now," said William Jenkins, the faculty director of the gallery.

Matthews Hall, which is listed in the National Historic Register, was built in 1918 of mostly plaster blocks and wood. The building, which was formerly a women's dormitory, currently holds a word-processing center, audio-visual rooms and photography labs.



Staff photo by Rick Wiley

Sunday's fire in Matthews Hall damaged a janitor's closet in the ground floor men's room.



Staff photo by T.A. Keegan

### Sparkling personality

Miles McCann smooths out a metallic solder connection with an electric sander. When completed, the sculpture on which the senior art major is working will be displayed permanently in Chandler.

## Civil suit naming pilot held up pending criminal trial verdict

By VICKIE CHACHERÉ  
State Press

A \$24 million lawsuit filed against a pilot involved in a crash that killed two ASU students has been delayed because of Yavapai County court system postponements, the plaintiff's attorney said Monday.

Charles Brewer, the attorney representing the parents of Samantha Fraser and Timothy Streit, said he has delayed requesting a court date for the lawsuit because the criminal case has not been tried in Yavapai Superior Court.

Fraser and Streit were killed in the April 14 collision of two single-engine planes near Camp Verde.

Robin Thompson, pilot of one of the planes involved in the mid-air collision, had been indicted by a Yavapai County grand jury on two counts of manslaughter and two counts of reckless endangerment, but his case was returned to the grand jury in December.

Thompson's case was returned to the grand jury after a judge determined that a witness misrepresented information to the grand jury in his testimony.

According to a Yavapai County Sheriff's investigation, the two were killed when the Piper Cherokee 140, piloted by Thompson, struck the Cessna 172 in which Fraser and Streit were flying.

ASU students Paul Bjornstadt and Kim Marble were injured in the collision.

Brewer, who filed the lawsuit in the Maricopa County Superior Court in August, has until May to request a court date before the case is thrown out.

Thomas Toone, who is representing Thompson, said the results of the Yavapai County criminal case will have no bearing on the decision in the lawsuit.

Toone said that if there is a conviction in the criminal case, the jury's findings would make the plaintiff's lawsuit "look better," but the decision would not be used as evidence against Thompson.

"The civil suit is strictly for money, and the criminal suit is strictly for (Thompson's) personal freedom," he said.

Toone said he doubts that a victory in the lawsuit would mean that Streit and Fraser's parents could collect \$24 million.

He said a review of Thompson's property and financial holdings will be completed to determine if he has enough assets to cover the lawsuit.

"That's the joke about asking for an enormous amount," Toone said. "It may get you the headlines in the paper, but it doesn't mean anything when you get to trial."

Ethan Wolfinger, Yavapai County deputy attorney, said Thompson should go before the grand jury within the next three weeks and may face a second set of manslaughter charges.

Actual dates for grand jury hearings are kept secret until the jury meets and makes a decision on the case.

### Today

Students celebrated Dr. Martin Luther King Jr.'s birthday last week by creating shorter financial-aid lines. Page 3.

ASU weather — Sunny today with an expected high of 78 degrees. The expected low is 51.

Bloom County .....	3
Classified .....	11
Collage .....	8
Nation/world .....	2
Opinion .....	4
Police report .....	3
Sports .....	9

# nation/world

state  
press

## World combat pilots play Soviet 'war games' in fighting simulation

LAS VEGAS, Nev. (AP) — In what is considered the ultimate computerized war game, combat pilots from around the world attack airfields that resemble Soviet-bloc targets and engage supersonic jets that replicate Soviet MiGs.

Operation Red Flag, a six-week-long operation held four times a year, teaches pilots in its classroom — the airspace over the Nevada desert — how to survive and prevail in modern warfare.

The current exercise, which runs through Feb. 15, features 27 types of aircraft from all four U.S. military branches, in addition to the Canadian Air Force. More than 300 aircraft are expected to fly some 5,000 missions.

Forty-one pilots have died in Red Flag operations, testimony to the intensity of the simulated combat operations.

"Red Flag is the highest rung, next to combat," said Col. John Madden, a former combat pilot who directs the \$19 million annual program. "It's the closest thing to combat I've ever seen."

## Tutu's U.S. tour raises \$1 million; media critics question success

JOHANNESBURG, South Africa (AP) — Bishop Desmond Tutu said Monday his just-completed tour of the United States raised nearly \$1 million to aid political prisoners, refugees and his Anglican Church diocese. He blasted "servile" segments of the South African news media for playing down the tour's success.

The black bishop of Johannesburg also accused South African media of distorting his remarks during the three-week tour to suggest that he supports violent revolution rather than peaceful protest.

A Monday evening police report said meanwhile that

authorities found the bodies of six men who had been burned to death in Amahlongwa township, near Port Shepstone on the Indian Ocean.

## Thatcher accused of cover-up; opposition calls for resignation

LONDON (AP) — Prime Minister Margaret Thatcher battled shouts of derision and calls for her resignation Monday in what the news media called a life-or-death Parliament speech to rally her Conservative Party from the embarrassment of two major Cabinet resignations.

Thatcher won solid backing from her Conservatives, including former Defense Secretary Michael Heseltine, whom she had blamed for sparking the political crisis.

During the debate, opposition legislators accused her of a cover-up involving a leaked letter, critical of Heseltine, that subsequently led to the resignation of the second Cabinet member, Trade and Industry Secretary Leon Brittan. He took responsibility for the news leak.

# arizona

## Different guns used in police officer shootings

PHOENIX (AP) — A weapon confiscated in the shooting of a Glendale police sergeant was not the same gun used in the slaying of a Phoenix police officer earlier this month, authorities said Monday.

Sgt. Brad Thiss of the Phoenix Police Department said investigators doubt that the shooting of Sgt. Larry Apodaca Saturday in west Phoenix was linked to the Jan. 8 death of officer Robert Fike in central Phoenix.

"The gun from Saturday was not the gun used to kill officer Fike," Thiss said.

"It doesn't look like he's a suspect."

Apodaca, 48, was shot in the thigh, abdomen and chest while investigating convenience store armed robberies, said Marshall Downen, a Glendale Police Department spokesman.

Apodaca was listed in good and stable condition at Good Samaritan Medical Center Monday, and had been transferred out of intensive care into a private room, a hospital spokesman said.

Anthony Obregon, 41, was shot and wounded by police in an ensuing chase that ended when his car crashed into a fence four miles from the spot Apodaca was shot, Downen said.

# pac-10

## OSU professor receives hate mail from Order

CORVALLIS, Ore. — The waning months of 1985 saw the demise of a criminal group known as the Order. An acknowledged neo-Nazi organization, the Order crumbled with the convictions of several members for murder, armed robbery and other offenses.

But simultaneous to the group's exposure and subsequent indictment, the Corvallis community was reminded that racial and religious intolerance did not end with the Order's Washington trial.

Early last November, about ten Jewish residents of Corvallis received hate mail

from a group claiming to be "Christian Patriots of the Aryan Nations."

The mailings, blatantly anti-Semitic, are illegal under state law because of the direct threat they included.

Paul Kopperman, Oregon State University history professor, also was the recipient of a mailing, although the material he received was of a different form.

"You could practically teach a mini-course in anti-Semitic stereotypes just from this cartoon," Kopperman said of the drawing he received. The cartoon presented a caricature of three Jews, labeled with stereotyped Jewish qualities.

— The Daily Barometer



Terrace Road Apartments

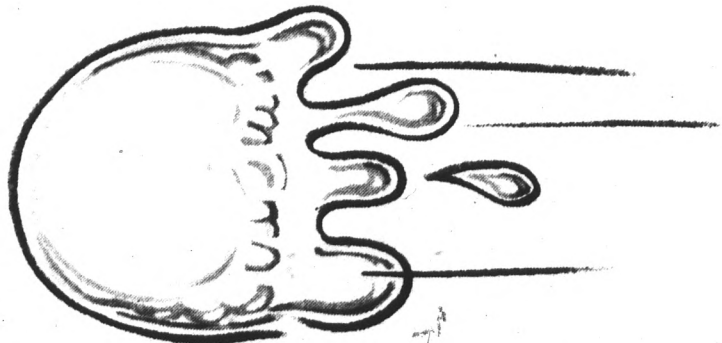
## WALK TO SCHOOL!

1/2 block from Campus, Huge, well-furnished 1-bedroom, 1-bath, and 2-bedroom, 2-baths, all utilities included, cable TV, plus many amenities.

950 S. Terrace Rd.

966-8540

# IT'S COMING!



Steve's

# TAKE ACTION

On The Quality Of Your Education

## MAKE A POSITIVE IMPACT

On Arizona State University's Academic Future

Two Ways You Can Make A Difference:

1. Seek a position in Associated Students' State Relations Office. This office is responsible for ensuring that students' concerns on educational issues are articulated to, and heard by the University Administration, Board of Regents, and Arizona State Legislature.

POSITIONS AVAILABLE: (Non-Salaried)

- Director, State Relations
- Asst. Director for University Affairs
- Asst. Director for Regent Affairs
- Asst. Director for Legislative Affairs

\*Applications are available in the ASASU office, MU 208-J. Deadline is February 4, 1986.

2. Follow the 1986 ARIZONA LEGISLATIVE SESSION and the issues that directly influence your education by subscribing to a free legislative information service that will:

- Send you pending Senate and House bills on higher education.
- Provide you with information on session times and locations, and update you on the actions each legislator is taking.
- Equip you with the information you need to influence educational issues, BEFORE they influence you.

\*For further information, please call David Varnell, ASASU President, 965-1151.

# National holiday, better planning shorten financial aid lines

By LAUREN MILLETTE  
State Press

A celebration of the Rev. Martin Luther King Jr.'s birthday and stronger organization helped to shorten lines for students who were trying to receive financial aid checks, an ASU official said.

Doris Dycus, the supervisor of student aid dispersement, said, "I think we did it smoother this semester because of the way we were able to break down the list of students receiving checks and evenly divide the load."

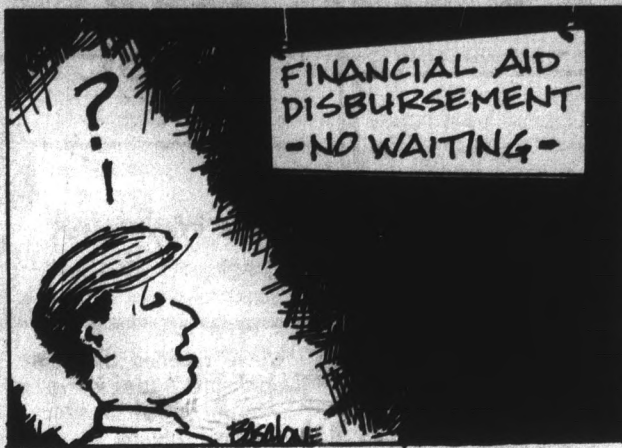
Jeanne Mataalii, an assistant supervisor of aid dispersement, said, "Dr. Martin Luther King's birthday played a big part in the short lines this semester."

"Because all the banks were closed, there were hardly any students in line the first day."

More than 300 students usually wait in lines for checks on the first day of each semester.

But because of the national holiday, no more than four or five students were waiting in line at a time, she said.

Dycus said that more students waited for the first two days of school to pass this semester before picking up their checks,



which helped to eliminate long lines. "I tell students if they don't really need their grants or loans the first couple of days of school, to hold off until the

lines slow down," she said. "Apparently it works."

Carol Balk, manager of Student Fiscal Services, said, "The first few days are usually by far the busiest and a lot of time and effort has been spent to make things run as smoothly as possible, especially during those days."

More than 5,150 students received checks this semester, Balk said.

"When you compare that to the 8,000 checks handed out last semester and take into consideration that there was the same amount of help, it is no wonder things ran as smooth as they did," Balk said.

Dycus said three years ago, student aid dispersement changed to the "state-of-the-art computer equipment" that is currently used.

"Although it was rough at first for the staff to understand procedures, we have worked very hard to have things run smoothly and have come a long way towards having better organized procedures," Dycus said.

Dycus said students not wishing to wait in any lines for checks could notify the dispersement office to send their checks directly to their home address.

## police report

University police reported the following activity in the 24-hour period ending at 6:30 a.m. Sunday:

•A man was arrested Sunday evening in connection with burglary and criminal damage after being chased by police and crashing through a glass door in the lobby of Palo Verde West Residence Hall, police said.

Robert Wayne Forward of 333 W. Bethany Home Road, Phoenix, allegedly stole a watch, two white sweaters, a blue

Hawaiian shirt and two pairs of sunglasses from a room in the Sigma Nu fraternity house.

A fraternity member called police and said he and another man were burglarized. They also gave a description of a man they saw leaving the house with the property.

Police saw Forward, who fit the description, in the Palo Verde West lobby.

When Forward saw the officers walking toward him, he ran through a glass lobby door, smashing the glass and breaking the crash bar.

Forward suffered a severed tendon in his right wrist and multiple cuts on his right wrist, right hand and back.

He was booked and released on his own recognizance.

•A student was shot in the face by a pellet in Palo Verde West Residence Hall early Saturday morning, police said.

The victim told police he was in his room and heard noises across the hall.

He stuck his head out a window to see what the noises were and suddenly felt a sharp pain near his chin.

Police removed the pellet and treated the minor wound.

A student in a room across the hall was found with a pellet gun. The gun was owned by another student in the room.

Police are investigating the incident.

•A palm tree on the west side of Best Residence Hall C-Wing was ignited

Sunday evening by flaming toilet paper, police said.

A resident assistant called police and told them the tree was on fire. Police extinguished a small fire they found on the dry top of the tree.

The assistant told police she saw two hall residents sitting on the window ledge and tossing paper at the tree.

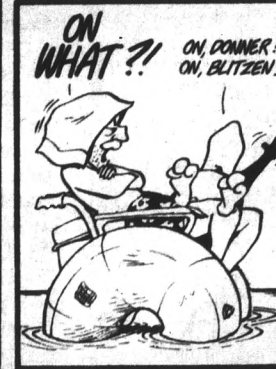
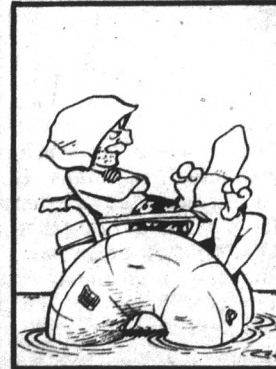
A witness said she saw two white males who were sitting on the ledge ignite a roll of toilet paper and toss it on the tree.

Police said they have suspects and are investigating the case.

— THERESA WILLEFORD

## BLOOM COUNTY

by Berke Breathed



## Order now and get a free wire whisk

By National On-Campus Report  
STUDENTS ARE BEING DUPED by people selling phony magazine subscriptions on the campus of Indiana University of Pennsylvania. The "salespeople" pose as students, and claim they are selling subscriptions as part of a contest to win a trip to Europe. The company behind the scam is the Aristocrat Company of Spring, Texas — which did the same thing under the name of Summit Publishers Service, according to a local attorney.

WORKING FOR ENERGY INDEPENDENCE, NATIONAL SECURITY, AND A QUALITY ENVIRONMENT.

**ON CAMPUS TUESDAY FEBRUARY 11**

Ask your Placement office for details on our upcoming campus visit, or see our ad in this paper next Tuesday, February 4 for additional information. LLNL is an equal opportunity employer, m/f/h. U.S. citizenship is required.

University of California  
**Lawrence Livermore National Laboratory**  
P.O. Box 5510, Dept. JCR, Livermore, CA 94550

## The decision to end your pregnancy is never easy. But the choice is yours.

### Alone.

For more than 18 years, we have given women emotional support, and experienced professional medical care. Free pregnancy testing and counseling are provided with the two-day procedure. Two weeks later, your follow-up visit includes a lab test, birth control counseling and caring support for your rights — all without additional cost to you.

- Free pregnancy testing
- Menstrual extraction
- Minors treated
- Twilight sleep-anesthesia
- Board certified ob-gyn M.D.s
- Ultrasound testing
- Se habla español
- Full lab facility
- Quality medical care in a hospital-like environment

Specializing in first and second trimester abortions

### Caring, Understanding and Confidential

Central and Westside Location  
Appointments: Monday-Saturday  
8:30-5:30

Limited Evening Appointments  
24-Hour Hotline 279-2214  
Robert H. Tamis, M.D. FACOG Director

**Abortion Services of Phoenix**  
Doctors Medical Plaza South, Suite 220  
2720 N. 20th Street, Phoenix

# opinion

Great actions are not always true sons  
Of great and mighty resolutions.  
—Samuel Butler

state  
press



## letters

### Administration spineless on measles policy

Editor:

Upon submitting my spring course request sheet, I was informed that ASU required proof of a measles vaccination before any processing could take place. Knowing that a measles outbreak could ruin a semester and endanger my health, I thought it a good idea for ASU to implement this policy (besides, how else could I register?).

Well, ASU administration has shown its spineless side again. Because too many

students did not comply with the policy, a measles vaccination for enrollment was put off.

This brings us to square one. What will happen if there is an outbreak of measles? The answer is that too many students will be affected. ASU administration cannot be blamed if there is an outbreak, but will certainly be responsible for those who get sick.

Ken Stockero  
Junior, Communications

### Profits from deception require regulation

Editor:

The issue of profits being essential to prosperity and its relation to the envious behavior of those who propose regulation of corporations seems to be confused. "The Ralph Naders of the world" don't necessarily believe that profit itself is wrong, but the way businesses go about obtaining profit. Specifically through the use of deception and the production of products that can endanger the "common man" and woman. A recent example is the case of GM and its products that have engines which crack, leak, and malfunction. Is GM only obligated to inform dealers about defective products rather than to inform customers about potentially dangerous problems in order to maintain their profit margin and benefit society?

What if businesses are meeting customer demands and gaining profits through deception, does that justify profit? Is it socially responsible to obtain profits deceptively by providing defective products and help further the erosion of the industrial production base of this country by giving U.S. automaker competitors additional benefits (i.e. no defective engines) to be gained from their products? "Ralph Naders of the world" are correct in believing that we need to regulate industries that violate the life and spirit of the common man and woman. The engine which drives a common man and woman's life is Honesty, not Profit through deception.

Craig Fromm  
Senior, Economics

# Staying on the road to self-improvement

Steve Waterstrat  
Editor



We've reached the point in 1986 where people start letting things go a little in the self-improvement category. The beginning-of-the-year feeling of obligation to make sudden and sweeping changes in our lifestyles starts to fade, and we become the same slob we were the year before.

The official manifesto of the New You, your New Year's Resolutions, goes out the window as a mere list of stupid ideas made in an overly optimistic frame of mind.

I think I've managed to kick this problem. I didn't break one resolution in '85, and don't intend to stray from the standards I have set for the upcoming year.

The key to successful resolution-keeping is simply a matter of discipline, maturity and, most of all, making the right list of resolutions in the first place. It's the actual list-making part that I now have down pat. The resolutions I set for '86, while extensive, make up a plan that I know I can keep.

If you have any trouble keeping resolutions or sticking to any kind of goal-setting program, it probably doesn't mean that you aren't a strong person. You just need to take a careful look at how you go about setting up goals to reach. I hope the following, my personal 1986 agenda for self-improvement, will serve as a helpful example.

#### IN 1986, I HEREBY RESOLVE

- 1.) To eat more chocolate bars. A worldwide sugar-market glut has dropped the price of sugar, which has been hazardous to the economies of many third-world countries. An increase in consumption is the most effective way to bring that price back up, and I'm willing to do my part.
- 2.) To announce immediately that I am not seeking the presidency in '88. I don't want to leave the voters hanging.

3.) Not to get ridiculously high scores on mid-term exams, which tends to bust the curve for everyone else in the class.

4.) Not to graduate at the head of the Class of '86. I just hate the attention.

5.) Not to show off by driving a different flashy sports car every month.

6.) Not to eat deep-fried seaweed cakes.

7.) Not to train for iron man triathlons. There's only so much available oxygen in the Valley, and I don't want to use more than my share.

8.) Not to spend too much time studying in Hayden Library. There aren't enough booths for all ASU students, so I want to leave room for some of the underclassmen who need the study time.

9.) Not to get mixed up in violent terrorist organizations.

10.) Not to accept any guest appearances on Miami Vice. I'm too busy getting my degree, and I don't care for the wardrobe.

11.) Not to become the Sun Devil baseball team's ace pitcher this spring. With all the recruiters calling me at the end of the semester, I'd never get a chance to study for finals.

12.) Not to launch any pre-emptive nuclear strikes against sovereign nations. I was brought up to believe that violence doesn't solve anything.

13.) Not to buy large apartment complexes as a tax shelter. I don't want to undermine the deficit-cutting movement in Washington, so I'll pay whatever taxes I owe.

14.) Not to attend any all-expenses-paid journalism seminars in Paris, London or Vienna. It is impossible to learn anything with all those distractions, so I won't even bother.

15.) Not to teach any business classes with the aid of videotaped lectures. I like the personal touch.

There it is. The Big 15. I realize it is a pretty noble collection of aspirations, but I believe I can stick to it.



## LETTER POLICY

Letters should be typed, double-spaced and no longer than two pages. Letters are subject to editing on the basis of clarity, length or conformance to newspaper style. Include your full name, class standing and major, or other affiliation with the University, along with your phone number. Requests for anonymity are granted if a reason is given. Send letters to: Letters, State Press, Matthews Center, Arizona State University, Tempe, AZ 85287. Or bring them to the newspaper's front desk in the basement of Matthews Center.

## STATE PRESS

STEVE WATERSTRAT  
Editor  
TOM BLODGETT  
Managing Editor

City Editor W. TIM AHL  
Asst. City Editor MICHAEL KONZ  
News Editor PATRICK J. KUCERA  
Opinion Editor MICHAEL ADAMSON  
Asst. Managing Editor LINDA COULSON  
Photo Editor KEVIN J. LARKIN

Sports Editor DEAN OBENAUER  
Asst. Sports Editor BOB HEILER  
Copy Chief JACQUIE CIROU  
Arts Editor CINDY PEARLMAN  
Asst. Arts Editor KHALI CRAWFORD  
Editorial Assistant ROBBIE MATLOFF

The State Press is published Monday through Friday during the academic year, except holidays and exam periods, at Matthews Center, Room 15, Arizona State University, Tempe, AZ 85287. Newroom: 965-2292. Advertising & Production: 965-7572.

The State Press is the only newspaper exclusively published for and circulated on the ASU campus. The news and views published in this newspaper are not necessarily those of the ASU administration, faculty, staff or student body.

# Renowned clydesdales visit campus



If Santa Claus ever saw the Budweiser Clydesdales, you have to wonder why he selected reindeer instead of these two-ton horses to pull his tiny sleigh.

Oh well, it's Santa's loss. Instead, Huey, Clay, Pete, Newton, Bud, Captain, Busch and Rocky have a different occupation: they are the living trademark for Budweiser Beer. These huge beasts travel across the country, inspiring awe in all who see them.

A crowd of about 1,000 who viewed them on campus Thursday watched in wonder as the horses trotted down Orange Circle and made their way toward Gammage Center.

A clydesdale weighs between 1,800 and 2,200 pounds and stands 18 to 19 hands high. The largest horse on the team stands 18.2 hands or approximately six feet tall at the shoulder, said Todd Matthews, a trainer and handler of the horses.

They eat 30 to 40 pounds of hay four times a day, and six to eight gallons of oats two times a day, Matthews said.

"We constantly keep food in front of them," he said. "It keeps them satisfied and out of trouble."

The clydesdales, who travel more than 40,000 miles across the United States each year, stopped at ASU as part of their nationwide promotional tour, said Doug Yonko, contemporary market coordinator for Hensly and Company.

Three shiny, red, white and blue 18-wheel trucks hauled the eight horses, the Budweiser wagon, two Dalmatian dogs and six clydesdale trainers onto campus.

Trained in St. Louis, Mo., the horses receive nothing less than first-class accommodations.

The horses travel across the country in air suspension tractor trailers and are cared for and watched 24 hours a day,

Yonko said.

"Those horses have a better ride than the cab drivers," he said.

The horses are staying at the Pointe Resort, 7677 N. 16th St., and will appear in Phoenix until Feb. 4, he said.

Budweiser owns over 300 clydesdales, and three teams tour the U.S.

There is a team in California, New Hampshire and Missouri. The team that visited ASU last Thursday came from Romoland, Calif., and travels across the Midwest, Yonko said.

Matthews, who has been working with the clydesdales for four years, said this particular team is on the road 11 months a year and travels to 13 Western states.

Although only eight horses pull the wagon, the company takes 10 horses on the road, alternating two horses for each appearance, Matthews said.

"The horses get burned out after traveling 40,000 miles, making 250 appearances a year," Matthews said. "Mentally they can only handle so much traveling."

By alternating two horses, Matthews said it gives each horse a day off.

Handling 10 clydesdales is not an easy job, said Matthews, who lives and works with the horses.

"One man is always with them," he said. "It is an endless job because they are always getting into trouble, tearing things apart."

Budweiser handlers start training a clydesdale when it is two years old and do not put it on the road until it is at least four years old, Matthews said.

The horses work on a team for about eight to ten years, or as long as they stay healthy.



Text by  
Andrea Han

Photos by  
Ron Kuczek Jr.

Top left, clydesdale handler Todd Matthews puts blinders on one of the lead horses. The harness and blinders are made of brass and leather. Each set weighs 130 lbs. and is worth \$5000. Above, the clydesdales trot down Orange Street. Right, a view of the bottom of the wagon looking forward shows the clydesdales' socks, which are an important feature in determining a showable clydesdale.



**SUN DEVIL HAIRCUTTERS**  
 "Stylists who care enough to listen"

Special Shampoo Conditioning Precision Cut Blow Dry \$4.00 OFF

Regular Price Men \$13 Women \$15  
 Hrs. Mon-Fri 9-5 Sat 9-5

130 E. University Dr. "In The Arches"  
 Limited Offer. Call Now! 966-5462

# 'Big help'

## \$3,000 from union eases burden on leukemia

By ED SCHUBERT  
 State Press

A gift of \$3,000 is going to be a "big help" for a family whose life has been turned upside down by its daughter's illness.

Mike Delk, an ASU physical plant employee whose daughter suffers from terminal leukemia, received the check Monday at a meeting of the American Federation of Teachers and University Employees.

The check was presented by AFTUE President Joe Golgano.

The money had been raised through the Delk Family Survival Fund, which was established last semester after the family's plight became known to AFTUE.

In December, the State Press reported the family had been thrown into turmoil when they were told their 7-year-old daughter Kelly was diagnosed as having a rare form of leukemia.

In addition to the constant emotional stress, the family began to suffer serious financial strains when Delk's wife, Ricci, had to quit her full-time job to care for Kelly.

"We were just barely squeaking by as it was," Mike Delk said at that time. "I don't make much money working here, and what you get gets eaten up fast . . . with bills hounding you left and right and your income cut in half."

However, "things are looking a lot better," Delk said Monday. "The union's been a big



AFTUE President Joe Golgano presents Mike Delk, an ASU employee, with a check to help Delk family pay medical bills for his daughter.

help. They've been tremendous in raising this money.

"(AFTUE Secretary-treasurer) Amy Rosenhaus has been a real hard worker. She's been bustin' her buns helping us."

Rosenhaus said the survival fund account is still open, and anyone wishing to contribute

may call 965-6241. Checks should be made out to Delk Family Survival Fund.

Ricci Delk said Kelly's cancer has been in remission since November, which means the cancer is not spreading, and some doctors "couldn't believe that she's still alive."

Ricci said she believes a possible cause of her

**STANLEY H. KAPLAN**  
 For Over 40 Years The Standard of Excellence In Test Preparation.

PREPARE FOR

**MCAT • DAT • LSAT**  
 GRE • GRE PSYCH • GRE BIO • GMAT  
 PCAT • OCAT • VAT • MAT  
 SSAT • PSAT • SAT • ACHIEVEMENTS • ACT  
 TOEFL • MSKP • NAT'L MED BOARDS • VOE  
 ECFMG • FLEX • NAT'L DENTAL BOARDS  
 PODIATRY BOARDS • NURSING BOARDS  
 CPA • SPEED READING

Flexible Programs and Hours

Visit Any Center And See For Yourself Why We Make The Difference  
 TEST PREPARATION SPECIALISTS SINCE 1938  
 Centers in Major US Cities  
 Puerto Rico and Toronto, Canada

**2 HRS. FREE TUTORING**  
 967-2967

# Fraternity returns to campus after 15-

By DAVE ROOK  
 State Press

After a 15-year absence, the Zeta Alpha chapter of the Alpha Tau Omega fraternity has returned to ASU.

The event was marked by a celebration Saturday at the Arizona Country Club, as well as Arizona Gov. Bruce Babbitt declaring Sunday, Jan. 25, 1986, "ATO Day."

Jim Harris, a Zeta Alpha active in 1959, said the previous ASU charter was pulled in 1971 because members ran into financial problems and were unable to support the house.

"After the ASU charter was pulled in 1971, I, like a lot of ATO alumni, felt a personal death,"

Harris said.

But an effort to reinstate the local chapter began two years ago when Harris asked Mike Roper, a transfer active from UA, to form another Zeta Alpha chapter at ASU.

"It was the first time I ever met a full collegiate ATO at ASU where I could get something started," Harris said.

"With the support of our national fraternity, various local alumni and hard-working friends, we were able to get the ball rolling," said Chris Vickers, ASU chapter president.

Vickers said the group was granted a colony (pre-chapter status) in October 1984 and has been working toward chartership ever since.

"Our petition for chartership was accepted by our National Headquarters this November and this Saturday our efforts all paid off," said.

The ASU chapter becomes the 154th active ATO chapter in the world with over 106 living members, including 2,500 Arizona alumni.

"When we were asked to grant a charter to Zeta Alpha, I had two questions," said David Thomas, national president of ATO. "Could we build a good chapter in the ASU campus climate, and would we have the alumni support to pull it off?"

"The Jim Harris' and peers were v

**FREE Reebok T-Shirt**  
 (Value at \$9.95)

with the purchase of any reg. priced Reebok shoe

**Reebok** at **University sporting goods**

968-7725 1038 S. Mill  
 (Across from Gammage)

Applies to stock on hand. Offer good through 2-4-86.

**A QUALITY TAN AT A COMPETITIVE PRICE**

**2 Visits for \$7.50**  
 (Bring in this ad.)  
 Expires 2-15-86.

**966-2150**

**eclipse** Sun Tan Center  
 55 E. Broadway  
 (Corner of Mill & Broadway)  
 Tempe

We will honor any other area tanning salons ad specials.

**LAZY LIQUORS**

BACARADI 750 ml . . . \$5.99  
 JACK DANIELS 750 ml . . . \$8.99  
 FLEISCHMANN'S VODKA  
 liter . . . . . \$5.49  
 HEINEKEN . . . . . \$3.99  
 HENRY WEINHARD . . . \$2.95  
 ANDRE . . . . . \$2.99  
 TOSTI ASTI . . . . . \$7.29

LIQUOR W/AD ONLY.  
 LIMIT 1 BOTTLE EACH.  
 GOOD SELECTION ON IMPORTED BEER & WINES.  
 MANY MORE SPECIALS!  
 VIDEO/VCR RENTALS  
 1336 E. APACHE  
 NEXT TO A. J. BAYLESS

**ATTENTION**

any student interested in applying for

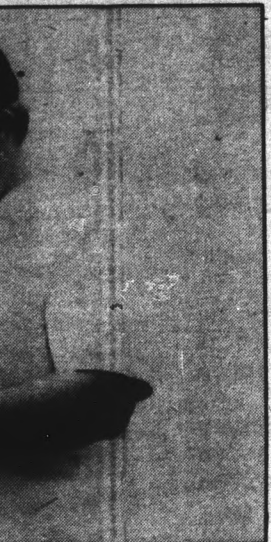
**THE NATIONAL HONORARY WHO'S WHO**

among students in American Colleges and Universities, may pick up their application in room 208-J of the Memorial Union or the Office of Student Life.

Those students applying must have a minimum of a 2.2 GPA and no less than 60 hours.

**The deadline for applications is 5 p.m., Jan. 30, 1986.**

# Leukemia victim's family



Staff photo by T.A. Keegan with a check to help Deik's

daughter's stable condition is a visit to an Assembly of God faith healer. (The Assembly of God is a pentacostal, Protestant denomination).

"She's gotten nothing but well" since seeing the faith healer, she said.

At the meeting a motion was passed to recommend that the Arizona Federation of Teachers adapt a 5-cent dues increase to finance a state-wide survival fund for union families who are in distress and "fall between the red tape."

In other business, AFTUE voted to endorse the candidacy of Dem. Richard Kimball in the race for the Arizona Senate seat being vacated in 1986 by Barry Goldwater.

Golgano also announced a number of speakers and programs to be presented by AFTUE over the spring semester.

The first will be a panel discussion on academic freedom Thursday that will feature political science Professor Mark Reader, home economics Professor Owen Morgan and sociology Professor Ronald Hardert.

Morgan and Reader have been attacked by Accuracy in Academia, a conservative "watchdog" group, while Reader and Hardert have been named in threatening phone calls from someone identifying himself as a member of the neo-Nazi organization, The Order.

# 15-year absence

chaptership was accepted headquarters this November, our efforts all paid off," he

becomes the 154th active the world with over 106,000 including 2,500 Arizona

asked to grant a charter to two questions," said David R. president of ATO. "Could we chapter in the ASU campus we have the alumni support

is' and peers were very

aggressive, dedicated and interested, with their bucks and cards on the table, and that was what we were looking for," Thomas said.

John Potts, a regional leader for ATO, said, "I feel that ATO is a significant addition to ASU because we offer young men something that they can't get anywhere else."

Vickers said the chapter will file a petition for recognition with the IFC by March. They are currently recognized only as a colony with no voting power.

ATO alumni include Tempe Mayor Harry Mitchell and Jack LaSota, chairman of First Interstate Bank.

# Student aid funds: budget-cut targets

By the College Press Service  
Washington, D.C. — Congress' new budget-balancing bill, passed in December, could mean student aid soon may be cut by as much as 60 percent, some college lobbyists here warn.

The first round of cuts is due March 1. Various sources estimate the first round could mean decreases of anywhere from 2 to 40 to 60 percent in all student-aid programs.

The new law, named the Gramm-Rudman law after senators Philip Gramm, R-Texas, and Warren Rudman, R-NH, who co-sponsored it, forces the federal government to balance its budget by 1991.

In doing so, Congress is not allowed to cut spending for Social Security, some welfare programs, many defense programs or to pay off the federal debt.

So, unless the government tries to help balance the budget by raising taxes, education programs will be tempting fiscal targets, lobbyists say.

Just how deep the first round of cuts will be is open to debate.

By calculating current Gramm-Rudman targets and the escalating deficit, Susan Frost of the Committee for Education Funding figures the U.S. Department of Education will have to shave all its college-program funding by 4.6 percent in March and another 30 percent in October.

Educators are reluctant to specify just how many students would be forced out of school by the cuts, or to estimate how much schools would raise tuition to compensate for them.

They do, however, think the cuts will hurt badly. "Consequences of Gramm-Rudman's possible 40 to 60 percent cuts in higher education (by next fall) will be absolutely disastrous to millions of current and future students," said Kathy Ozer, legislative director of the U.S. Student Association (USSA).

The same pressure to reduce spending could also force Congress to reduce college-program funding in the upcoming Higher Education Act of 1985, which sets spending levels through 1990, adds Pat Smith, legislative analyst for the American Council on Education (ACE).

Under the new law, Ozer estimates Congress will have to trim about \$11.7 billion from the 1986 fiscal-year budget by March.

If it doesn't, President Reagan would "sequester" funds, deciding by himself which programs not to fund in order to save money.

Based on what he's done before, the president would seem likely to cut education programs to do it.

**C.C. Cutters & Co.**  
Experienced Stylists Who Care About Your Hair

**BACK TO SCHOOL SPECIALS**

**FREE HAIRCUT** w/Perm or Body Wave  
(at regular prices)

Ask about our transfer technique for longer lasting perms.  
Expires 4-1-86.

**\$10 OFF WEAVES** w/MATRIX SOCOLOR  
Perfect for after-summer regrowth.  
Expires 4-1-86.

**FRATERNITY & SORORITY DAY**  
EVERY WED. \$7 HAIRCUTS

Corner Lemon & Terrace **968-6685**

**1986 NEW YEAR'S SPECIAL**

REDUCED RENTS ON SPACIOUS APARTMENTS:

**1BR'S FROM \$335**  
**2BR'S FROM \$435**  
**3BR'S FROM \$675**

**PLUS**  
LAST MONTH FREE  
ON 9 OR 12-MONTH LEASES

FAMILY APARTMENTS AVAILABLE  
SMALL PETS WELCOMED!

**PALM TREE VILLAGE**  
1216 E. VISTA DEL CERRO  
(1/4 MILE FROM A.S.U.)  
**966-6729**  
NEW RESIDENTS ONLY.

Home At Last. *Fot & Casakadon*

**DISTINGUISHED TEACHING AWARD NOMINATIONS**

*College of Liberal Arts & Sciences*

Nominate your **MOST DISTINGUISHED TEACHER**

**Eligibility:** Any College of Liberal Arts Faculty Member and a Teaching Assistant/Associate

**Deadline:** February 14, 1986

Nomination forms can be picked up at the Memorial Union Information Desk, in the Office of the College of Liberal Arts (SS 107), and in each department office in the College.

FROM L.A. TO PHOENIX  
**SUPER DESIGNERS**  
introduces  
**RICK**

The experience of high fashion European trends and the latest **CREATIVE PROGRESSIVE** styles

Appointment required  
**966-9061**  
120 E. UNIVERSITY, TEMPE

**NOW \$400 OFF**  
all hair services

**The next frontier:**

**Peace**

This booklet challenges the inevitability of conflict. It shows how peace can be waged and won in individual lives. In your life.

Read **Waging peace: the spiritual basis**. It asks you to consider peace and your role in it from a new perspective. A perspective that includes all mankind.

Six selected articles on the naturalness of peace. Introduction by Earl Foell, Editor-in-Chief of The Christian Science Monitor.

Explore the next frontier. Peace. This booklet is available for sale at your local Christian Science Reading Room.

2060 E. SOUTHERN, TEMPE  
820-3675  
Mon.-Fri. 9-4, Thurs. eve. 7-9, Sat. 9-1

**SOMETHING NEW IS COMING TO ASU**  
**BE A PART OF UNIVERSITY TOWERS**

**WE ARE ACCEPTING APPLICATION FOR RESIDENT ADVISORS**

To qualify you must have 1 year residence in a dormitory, minimum 2.5 GPA. More info. and applications available in person or by mail at UT Leasing Office on 5th Street between College and Forest. Hours of Application 9 AM - 12PM. Interviews will be scheduled 1st week of February. "No phone calls, Please."

A private student housing development.

# collage

**Collage**, a free public service provided by the State Press to announce meetings of legitimate campus organizations and clubs, is published every Tuesday and Thursday. To be included, please obtain a form at the State Press reception desk in the basement of Matthews Center. For Tuesday's paper the insert must be filed by 10 a.m. Monday and for Thursday's paper the deadline is 10 a.m. Wednesday.

### TODAY

Alpha Kappa Psi is holding its rush week beginning today through Jan. 31.

M.E.Ch.A. will hold its first meeting of the semester for officers at 3 p.m. in the MU Navajo Room.

Native American Students Association will meet at 3:30 p.m. in the MU Pinal Room South to plan events for the new semester.

Organization to Prevent Nuclear Annihilation will sponsor a showing of the movie "What Children Think About the Bomb" at 4:30 p.m. in the MU Apache Room.

Student Life will offer general information and referral services of all students in the lower level of the MU from 5 to 6:30 p.m.

Arizona Council of Black Engineers and Scientists will meet at 5:30 p.m. in Technology Center room 317 for a general meeting. New members are welcome.

Shotokan Karate Club will be practicing and accepting new members at 5:30 p.m. in Physical Education Building West room 101. All students and faculty are welcome.

Alpha Kappa Psi will hold a 6 p.m. rush at Peter Piper Pizza, 19 E. Broadway Road.

Chi Alpha Christian Fellowship will meet at 7 p.m. in Danforth Chapel.

Students Against Apartheid will hold a general meeting at 7 p.m. in the MU Yavapai Room. New members are welcome.

Fellowship of Christian Athletes will sponsor a lecture on "God's Perspective of a Winner and Loser" at 7:30 p.m. in the Salvation Army Building on University Drive, one block west of Mill Avenue.

### WEDNESDAY

Arizona Department of Economic Security Job Services announces that it has changed its hours. New hours are 8 a.m. to noon and 1:30 to 5 p.m. on Monday, Wednesday and Friday at Irish Hall; 8 to 10:30 a.m. and 3 to 5 p.m. on Tuesday and Thursday at Upward Bound.

Contact for Adult Re-entry will sponsor a "Create a Successful Semester" seminar at 11:40 a.m. in the MU Santa Cruz Room.

Alpha Phi Omega will meet at 12:40 p.m. in the MU

Coconino Room for a general meeting and welcome of new members.

Hayden and Noble Libraries, as well as the Music and Architecture Libraries, will hold tours at 1:40 p.m.

Pre-Law Club will sponsor a lecture by Dennis Kavanaugh, chief legal counsel for Arizona Industrial Commission, at 2:30 p.m. in MU room 212 East.

Anthropology Club will hold an organizational meeting at 3:30 p.m. in Anthropology Building room B204. New members are welcome.

Hispanic Business Students Association will meet in the MU Alumni Lounge at 3:30 p.m.

Advertising Club will hold a lecture by Tom Jordan, formerly of Leo Burnett of Chicago, who will discuss copywriting at 4:30 p.m. in Business Administration room 211.

American Humanics will offer a seminar on "Getting Your Foot in the Door: Resume and Interview Processes" beginning at 5:40 p.m. in the MU Coconino Room.

Pi Sigma Epsilon will host a wine and cheese party for interested prospectives at 7 p.m. at the Shadow Creek Apartments Clubhouse, 2354 W. University Drive.

Students of Sign Language will meet at 7 p.m. in Stauffer Hall room 417 for their first session of 1986.

## Booze ban: Florida rule to dry up spring break

**By National On-Campus Report**  
A ban on public drinking along Fort Lauderdale's famed "Strip" is now in effect, and police hope voluntary cooperation becomes the rule before college students arrive for spring break.

Officers are giving the new law a test-run before the influx of college students in March and April, according to Fort Lauderdale Police Chief Ron Cochran.

Police will ask anyone drinking in public

—including in cars — to empty their drinks into the street. Drinkers who refuse to cooperate will be arrested.

The city is posting signs publicizing the ban at Intracoastal Waterway bridges and the north and south entrances to the city.

Not everyone agrees, however, that the ban will work. Managers of bars along the Strip say they will try to prevent customers from leaving their establishments with drinks, but that it won't be easy.



Invites you to attend

an

## Informative Tea

WEDNESDAY, JANUARY 29, 1986  
MEMORIAL UNION • PINAL ROOM N & S  
3:30 P.M.

Promoting Leadership at ASU

*Surprises*  
Just for the fun of it!

TEA TUESDAYS AND THE KOPA  
HOT FROM PHOENIX  
CALENDAR CONTEST!!!

Beginning at 8 p.m. all Long Island "Ice Teas" are just \$2 all night!

AND

Tonight could be YOUR chance to be in Surprises'  
HOT FROM PHX. CALENDAR CONTEST!

919 E. Apache



966-7770

COUPON

SERVING ASU SINCE 1972

## Papa Jay's Pizza

We Also Deliver Ice Cold Beer  
FAST FREE DELIVERY

\*Limited Delivery Area

804 S. Ash (2 blks. W. of Mill on Univ.) 966-4292 or  
Right Next to ASU 966-1003

ANY 2 LARGE CHEESE PIZZA  
FOR

only \$8.50 plus tax Good on delivery, take-out or dine-in.  
(With This Coupon) Expires 2-17-86.

Save \$2.00

#1 Sun Devil Combo

Any large pizza with your choice of up to 4 toppings.

ONLY \$7.50 plus tax

Good on delivery, take-out or dine-in. Expires 2-28-86.

Save \$1.65

#2 Sun Devil Combo

Any medium size pizza with your choice of up to 4 toppings.

ONLY \$6.50 plus tax

Good on delivery, take-out or dine-in. Expires 2-28-86.

Save \$1.50

#3 Sun Devil Combo

Any small size pizza with your choice of up to 4 toppings.

ONLY \$5.50 plus tax

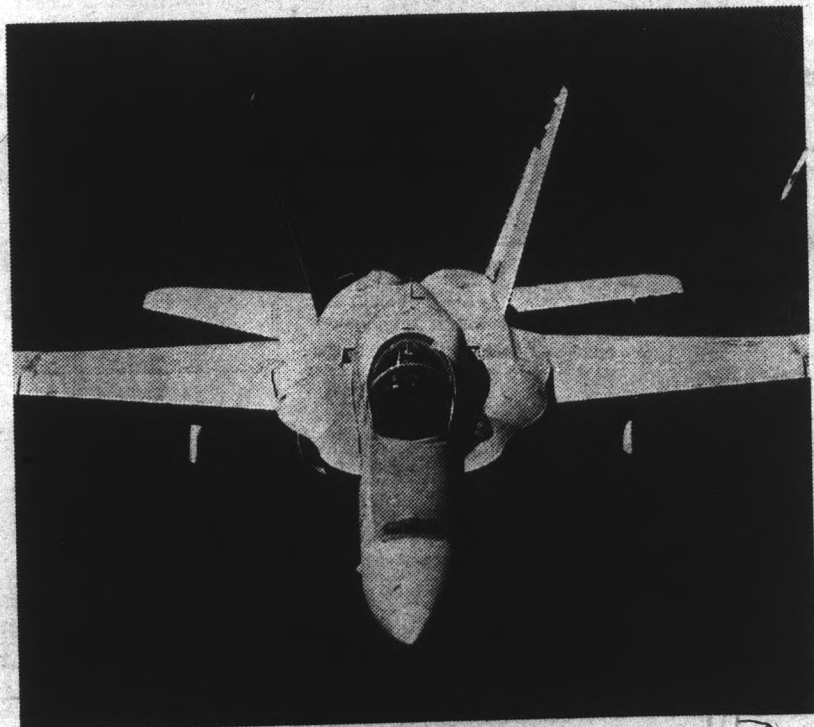
Good on delivery, take-out or dine-in. Expires 2-28-86.

# Own the sky

To fly is one thing. To fly with the Marine Corps is something else. They'll show you the meaning of wings. From the wings of the F-18 Hornet to the wings you wear as a Marine aviator, this is flying at its best. And your ticket to fly is your college diploma. If you'd like to be up there, contact your local Marine Officer Selection Officer. 261-3880.



Jan. 30 & 31, 1986 • Cady Mall



**Marines**  
We're looking for a few good men.

# sports

It is a newspaper's duty to print the news and raise hell.

—The Chicago Times

state  
press

## Gymnastic teams win close meets at Ohio State

### Robinson peeved with OSU judges

By JON WILEY  
State Press

"It seemed like (the officials) didn't want anyone with a tan to do good," said men's gymnastics coach Don Robinson, referring to ASU's close victory over Ohio State, 274.00-273.10.

"The judges struggled because of the new rules this year," Robinson said. "They didn't intentionally cheat, but they weren't comfortable with the routines."

"The home court advantage was also important. The crowd has a lot of control and when they get going, everyone gets excited for the home team — unless they see something spectacular that we did."

Aside from his view of the officiating, Robinson said he was still pleased with the meet.

"I was very pleased with the great team effort," he said. "We made our mistakes but bounced right back and made it a good meet."

ASU gymnast John Sweeney turned in an outstanding performance at the meet with an overall score of 55.95.

"He did a super job and had a lot of strength," Robinson said.

Sweeney took second on the floor with a score of 9.55 and came in fourth on the pommel horse.

He won the vault with a score of 9.65 and came in second on the parallel bars scoring 9.55. He also won on the horizontal bar with a 9.55.

ASU gymnast Kevin McCole also turned in a good performance.

"He started us on the pommel horse," said Robinson, "and I was very pleased with his performance."

Other top ASU performances included a first place finish from Dennis Hayden on the pommel horse, scoring 9.45. His brother, Dan Hayden, took third on the horse, scoring 9.35.

Robinson was asked how he thinks ASU will perform against the other teams at the UCLA Invitational on Feb. 1.

"We're going to beat them all," he said.



Staff photo by Ron Kuczek Jr.  
All-American Lisa Zeis, shown here in competition against Brigham Young, took second Saturday in the floor exercise against Ohio State, helping the Devils to a 182.9-182.4 victory.

### Women overcome lack of Kim Neal

By BOB HEILER  
State Press

Gymnastics is one of the few sports where the home court advantage is a verifiable concept.

ASU women's gymnastics coach John Spini was reminded of that in Columbus, Ohio, Saturday, when his team squeaked out a 182.9-182.4 victory over seventh-ranked Ohio State.

After All-American Lisa Zeis received a 9.30 in the uneven bars, Spini complained to the head floor judge about unfair scoring.

"After the uneven bars, I was upset with Lisa's score," Spini said. "She had done a good job, and one of the OSU girls hit her heel on the bar and almost landed on her nose on the dismount, and she scored within a tenth of what Lisa did."

"But after I complained to the judges about that, things got a little better."

Zeis took second place in the floor exercise and first in the balance beam en route to a second place all-around finish behind fellow Sun Devil Jackie Brummer. Brummer and Zeis scored 37.40 and 37.25 respectively.

Brummer also tied Buckeye Nina Dziem for first-place honors in the uneven bars, with a score of 9.40.

Spini was uncertain going into the match because of the home gym advantage and because the Devils were without all-American Kim Neal because of an injury.

"I thought this one could go either way," he said, "especially with Kim not competing."

"Kim is working to get back into the rotation, but she could stand to work a littler harder."

Spini said the team held together and faced the pressure when it came to the balance beam competition.

"The whole match came down to the balance beam competition," Spini said. "We had five no-falls out of six girls. That really shows maturity for the girls to hold up like that."

"I was very pleased with everyone's performance."

## ASU's basketball program: not even Harris can save it

Dean A. Obenauer  
Sports Editor



Here are a few trivia questions for you Sun Devil fans in the year 2000.

Question: What do J. Russell Nelson, Dick Tamburo and Bob Weinbauer have in common?

Answer: They all are responsible for the downfall of the ASU basketball program.

Q: Who were Charles Harris and Steve Patterson?

A: Two men too late to save a dying basketball program. ASU's basketball program is almost dead. Either that or it's dormant.

Attendance is at an all-time low. A low that can't get much lower. The Sun Devils are averaging less than 4,000 fans a game despite their near-perfect record at home.

The downfall started when ASU Basketball Hall of Famer Ned Wulk, 406-272 at this school, was fired in 1982.

Wulk had been with ASU for 25 years before the school's administration stooped so low as to give him the axe.

The firing was an injustice that will never be forgiven and never should be.

Weinhauer was hired as the Sun Devils new coach. He enthusiastically left the snow of Pennsylvania and headed to sunny ASU. He had five years to turn around the program, or so he was told by then-Athletic Director Dick Tamburo. He was ready to take on the challenge of a program that hit an all-time low in attendance the season before.

His first season he led the team to the National Invitation Tournament, with most of Wulk's players. Attendance improved. There were signs of a program comeback.

Two seasons later with little improvement, Weinbauer's contract was not renewed by ASU President J. Russell Nelson.

The University eventually settled out of court paying

Weinhauer a substantial amount of money rather than to be sued by an irate Weinbauer.

By firing a coach who had a verbal commitment with the University, Nelson slit ASU's throat.

What big name coach in the country is going to leave a secure job to coach the Sun Devils on a yearly basis?

Better yet. What big name coach that just got fired is going to come to another unstable job? A job that is going to be up for review yearly.

Apparently no one would. Weinbauer assistant Steve Patterson was named interim coach.

Never before has there been a Sun Devil basketball season filled with more adversity than this year's team. Patterson has not even had chance to breathe.

A UTEP-bound Chris Sandle failed out of ASU with Ron Singleton. Jon Taylor was kicked off the team for disciplinary reasons.

Last Friday, Harris named Patterson as next season's head coach.

I like Patterson. He has a nice wife and family.

I'm glad he got a job as head coach.

Too bad it had to be here.

### Sandle enrolls at UTEP

Former ASU forward Chris Sandle enrolled at the University of Texas-El Paso Monday, after having been dismissed from ASU two weeks ago for academic deficiency.

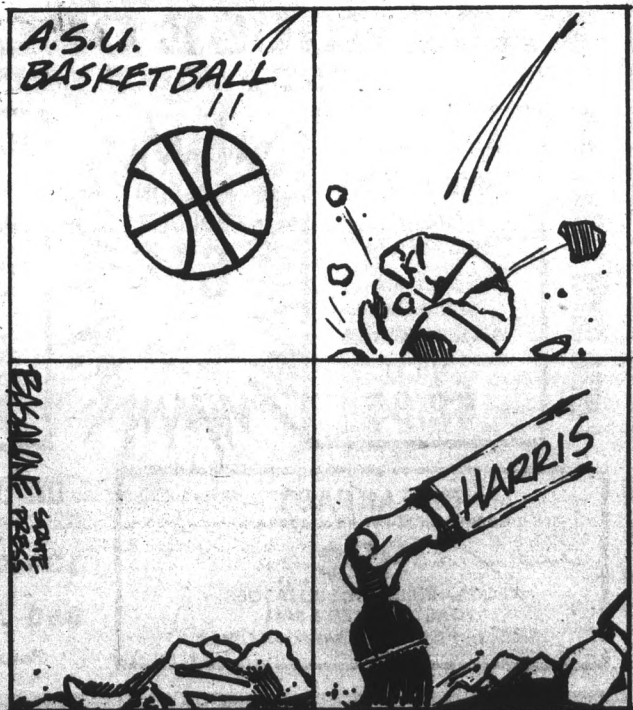
Sandle was the leading scorer for the Sun Devils before his dismissal, averaging 15.2 points and 4.5 rebounds per game. His troubles began when he was suspended for academic deficiency Jan. 12; he was subsequently dismissed for the same reason.

Sandle had considered quitting and going to play for the University of Nevada-Las Vegas when former ASU coach Bob Weinbauer was dismissed, but eventually decided to remain a Sun Devil.

Sandle will have to sit out one calendar year of competition at UTEP but will be eligible for financial aid provided he is not on academic probation there.

Sandle was not the only Sun Devil with academic and disciplinary problems. Guard Ron Singleton had been dismissed earlier in the year and center Jon Taylor was also dismissed from the team for "disciplinary reasons."

Singleton enrolled at Grand Canyon College, a four-year private school in Phoenix, to play in Division II competition next year.



# Ditka denies claims to 'dynasty' despite Super Bowl rout

NEW ORLEANS (AP) — His players talked dynasty but Mike Ditka didn't, suggesting Monday that his Chicago Bears would have to repeat this year's romp through the NFL before they could be compared with teams like Green Bay and Pittsburgh of seasons past.

"I don't believe in the word 'dynasty,'" Ditka said at a news conference the day after the Bears had swamped the New England Patriots 46-10 in Super Bowl XX to complete an 18-1 season.

"You don't judge a team on one year or one playoff series or one game. The great Green Bay teams and the great Pittsburgh teams did it year after year. We're an awfully good football team. We proved that this year, but we're not a dynasty yet."

In fact, the Bears will be entering the 1986 season bearing the championship burden that has brought down every NFL

champion this decade.

Since the Steelers won their second straight Super Bowl and fourth overall in 1980, no NFL champion has repeated. In fact, only the 1982 and 1983 Washington Redskins have gone to two straight Super Bowls during the 1980s.

That fact didn't stop some of the Bears from venting their exuberance after Sunday's game.

"It goes on for the next five years," wide receiver Willie Gault said. "We want to be the team of the decade. We want to go to the Super Bowl four or five times and win it like the Steelers did in the '70s."

The Bears earned their title this season by dominating the NFL's strongest teams.

Excluding their 38-24 loss at Miami, they won eight games by an aggregate score of 255-40 against teams that won 10 games or more. Three of these were shutouts, and against

New England and Washington, the Bears scored more than 40 points.

And the Bears have the advantage of one of the NFL's easiest schedules, effectively giving them a free pass into the 1986 playoffs.

Nobody in their own NFC Central Division seems ready to challenge them; they play the four teams from the AFC Central, won by Cleveland at 8-8, and overall, they face only two teams — the Rams and Cowboys — that finished above .500 this season.

But Ditka remained cautious Monday.

"It's tough to repeat," he said. "You work very hard to get to the top. Then you look down and ask, 'Was the price you paid to get here worth the reward?' If it was, you can get there again. I don't think at this point you can say you can or you can't. We'll look at it next year and know."

By CHRIS MCKAY  
State Press

An injury- and illness-plagued women's swimming team returned from the three-day Rebel Classic in Las Vegas Sunday after a difficult and somewhat frustrating meet.

The Sun Devils, without the help of their top five swimmers, placed third in a field of 11 schools despite losing 70 points in disqualifications. Southern Methodist University and UA took first and second, respectively.

Coach Tim Hill said the presence of those five swimmers would definitely have made a difference.

"It would have made us more competitive," he said. "It's not a lot of fun going to meets and getting kicked around because we're without some of our top swimmers."

Among those disqualified were two relay teams. Hill said he was not sure the relays should have been penalized.

"They were questionable calls," he said. "(But) it wouldn't have made any difference in the meet score."

Illness added sophomores Amy Reed and Myra Shaw to the Sun Devils inactive list, which already included freshman freestyler Brandi Suttle, sophomore Dale Etnyre and junior Kristin Brown.

All-American junior Terri Baxter won the 100- and 200-yard

breaststroke and the 200-yard individual medley, while Beda Leirvaag took third in the 200-yard individual race. ASU's freestyle relay team, consisting of sophomore Carolyn Mills, Baxter, Leirvaag and sophomore Julie Heiberger finished second.

Sophomore diver Tracy Cox won the three-meter dive for the Devils and was second in the one-meter, while sophomore Robyn Benincasa was named the meet's most improved diver.

The men's team crushed the competition with 757 points to win the meet. UA finished second, 111½ points behind the Devils and BYU took third.

Two Sun Devils, juniors Andy Jameson and Jeff Sheehan broke meet records. Jameson placed first in both the 100- and 200-yard butterfly events with a meet record time of 49.23 in the 100-yarder. Sheehan won the 200-yard individual medley with a meet record time of 1:53.07. Senior Scott Brackett was first in the 500-yard freestyle with a 4:26.45 time.

The Sun Devils also won the medley relay and the 400-yard freestyle relay.

The men's and women's teams return to action Friday as they take on the nation's No. 1 swimming teams in dual competition against Stanford in Palo Alto, Calif.

## Lady swimmers take 3rd; men win at Rebel Classic



**THE HAIR CUTTERS**

Your Campus Hair Care Center  
709 S. Forest Ave., Tempe  
North of University • Behind the Chuck Box • In Oxford Square  
968-5946

**\$4.00 OFF**  
With This Ad  
Expires March 15, 1986.

REGULAR PRICES  
• Shampoo • Condition  
• Precision Cut • Blow Dry

**MEN \$13 • WOMEN \$15**

OPEN MONDAY THROUGH SATURDAY.  
TUES., WED. & THURS. TILL 9 P.M.



**MAKE YOUR SPRING BREAK PLANS NOW!!**

SKI PACKAGES FROM \$149<sup>00</sup>

MAZATLAN TRIPS FROM \$199<sup>00</sup>

 **travelmore**  
The Cornerstone Rural & University  
967-7545

*Miguel's Music Center*  
**IN THE LITTLE ARCHES SHOPPING CENTER**

<p><b>TEMPE</b></p> <p>Sales • Rentals • Repairs Band Instruments &amp; Accessories Drums ★ Recorders ★ Banjos ★ Sheet Music Etc.</p> <p>Authorized Dealer for: ALVAREZ ... GUILD ... KHONO ... YAMAHA ... OVATION ... MARTIN GUITARS</p> <p>★ SPANISH CLASSICAL GUITARS ★</p> <p>• RAMIREZ • CONTRERAS • BARNABE • CESAR VERA • SANTOS HERNANDEZ</p>	<p><b>MIGUEL</b></p> <p>A student of Andres Segovia Guitar Lessons in Folk &amp; Classical by Miguel</p> <p>★ ELECTRONICS ★</p> <p>• Amps • Rhythm Boxes • Distortion Boxes • Mini Mixers • Phase Shifters • Poly Phase • Electronic Metronomes</p> <p><b>BY ROLAND-IBANEZ &amp; ELECTROHARMONIX &amp; OTHERS</b></p> <p>122 E. University Dr., Tempe Open 10 a.m. to 6 p.m. — 6 Days</p>
---	---

**968-2310**

**WAREHOUSE DELI & PUB**  
"GOOD FOOD & DRINK"

**SPECIALS**  
LUNCH & DINNER  
MON.-FRI.  
10:30-2 p.m.  
Sandwich of the Day with Homemade Fries  
**ONLY \$2.35**

**MOLSON GOLDEN**  
**61¢**  
on tap  
Mon.-Thurs.  
2-4 p.m.

**HAPPY HOUR**  
MON.-FRI.  
10:30 a.m.-7 p.m.  
IMPORTS — 94¢  
DRAFT BEER  
Pitcher \$2.35 Glass 52¢  
WINE  
½ liter \$2.35 Glass 52¢  
WINE COOLER  
Pitcher \$2.82 Glass 66¢

**BREAKFAST**  
SERVED MON.-FRI. 8 a.m.-10:30 a.m.  
**99¢**  
3 EGGS, HOMESTYLE POTATOES, TOAST, BUTTER & JAM  
CHECK OUT OUR OTHER BREAKFAST ITEMS

**LIVE ENTERTAINMENT NIGHTLY**  
(No Cover, No Min.)  
**130 E. UNIVERSITY DR. AT FOREST**  
**968-7788 • TEMPE, AZ**  
Your Hosts: "The Family"

TRY OUR DRIVE THRU WINDOW

**GRAND OPENING SPECIAL**

PLUS OTHER GREAT FOODS, BEER & WINE

**Tootsie's PATIO & GRILL**  
TEMPE, ARIZONA

"Formerly St. Michael's Alley" • 894-1321 • Est. 1985

112 E. University Dr. • Tempe, AZ

**THE COMPLETE "BURGER MADNESS"**  
¼ lb. BURGER (Pick Your Own Fixins, Lots to Choose)  
FRIES, 12-oz. SOFT DRINK  
**\$1.99 + tax**  
2:00-9:00 M-F

**1¢**  
Draft Beer or Soft Drink  
With Purchase of Any Sandwich  
Anytime With Coupon  
Excluding Specials

**SOUP-N-½ SANDWICH**  
Choice of Tuna, Veggie Freak, or Roast Beef Sandwiches  
**\$1.99 + tax**  
10:30-2:00 M-F

Located 100 ft. West of Warehouse Deli

**NEW LOCATION  
THORBECKE'S GYM**  
Special Low Rates



966-8621

**\$12.00 per month**  
\*plus \$50 one-time membership fee

Only one mile on the bike path off Scottsdale Bridge.

**THORBECKE'S GYM**  
On the south side of Curry Road between Miller & Hayden

Rates, 15 words or less:  
**\$1.90/day** — 1 to 4 insertions  
**\$1.81/day** — 5 to 9 insertions  
**\$1.72/day** — 10 or more

10¢ for each additional word

**965-7572**

**Automobiles**

1973 BMW 2002 IVORY, much restored and new. Excellent engine, rebuilt transmission, sunroof, bilsteins, beautiful! \$5,200 1-585-4086.

**Automobiles**

1976 131 FIAT, RUNS good, excellent body \$1,000 964-6727.

1977 TOYOTA COROLLA, AT, runs very well, good tires, dependable transportation. \$1,000 obo 968-5695, morning, even, weekends.

1978 TOYOTA CELICA liftback, am fm, ac, 5sp, new upholstery, nice car \$2,500 obo 894-2630.

'69 COUGAR (CLASSIC) conv. AC, PS, PB, stereo cass. Very good mech., burgundy leather int., Windsor 351. \$5,500 OBO, serious only please. 939-8337.

MY ITALIAN sweetheart has got to go! Must sell 1980 Fiat Spyder 2000. Good history, AC, chrome spoke wheels, silver ext, blue int. 48,000 miles, needs some exterior work \$2,900 or best offer. 830-2514.

VW WOLFSBURG, limited edition rabbit convertible, 1983, 34K miles, excellent condition, \$8,900, OBO. 894-1027.

**Bicycles**

FUJI 12 speed bicycle, excellent condition, great student bicycle, \$175, call 838-3528.

USED BIKES for sale, \$40 to \$350. They all work. Call Don 829-9618, keep trying.

**Business Opp.**

RENTING MAKES you rich! Apartment renter? Ten minutes makes you up to \$150 monthly. Easy-money renter's secret. Only \$4.95. Guaranteed. Order now! Brooks Company Suite 355-D 3104 E. Camelback Phoenix, AZ 85016.

**For Rent or Lease**

ASU TWO bedroom Cape Cod apartment, close to campus. Laundry room, common pool \$395 Desert Wide Properties 838-6631.

ATTENTION FACULTY and graduate students! Luxury condos for lease with fireplace, washer and dryer. Unique designs, Dobson, University. Rates from \$398. 969-6311.

CLOSE TO ASU, one and two bedroom apt's, furnished and unfurnished, pool, jacuzzi. 966-1053.

COMPUTER TERMINALS with modem for rent. \$35 per month 248-6172.

ROOM FOR rent in home with mother and teenage girl, female only, South Tempe, \$200 includes utilities 838-8224.

ROOM FOR rent, male or female. Non smoker, non drinker, no pets, must. Deposit and excellent references required. Very reasonable rate. Near ASU. Call Mr. Shally 967-4648 evening or weekend.

SCENE ONE, one and two bedroom units. Washer, dryer included, \$325 up. Realty Executives, Joanne 831-1010, 831-1031.

TOTAL VACANCY, take over lease from Feb. 1st, two bedroom apartment, half mile from ASU. Rates, \$454. Call Jack, 894-8193.

TWO BEDROOM one bath ASU condo, 700 West University. Quiet, clean, pool spa, washer and dryer \$425 month 935-3658.

TWO MALES to share large master bedroom and private bath in luxurious custom home. Furnished or unfurnished, 40 foot pool, Washer, dryer, all appliances, under \$200 880-2577.

**For Sale**

1981 HONDA PASSPORT (C70) must sell. Moving. Well maintained. Economical. New tires. \$375 call 897-2842 Mon thru Thurs 4:00pm to 10:00pm ask for Todd.

GOOD TRANSPORTATION, 77 Fiat 131 sedan, 5 speed, original owner, \$1,200 obo 965-8680 or 967-2242.

MOBILE HOME, two bedroom in Tempe. Furnished, washer and dryer. Four star park \$8,900 839-7529.

NEW TRS90 microcomputer. Includes basic, word processing etc. \$250 or best offer call David at 968-5162 or 965-2488.

PIONEER SPEAKERS 150 watts, brand new, never been used. Cost \$600 will take \$125 for the pair 957-7810.

THREE BLOCKS from campus, pool side, deluxe condominiums, fully appliances, \$43,900. Joanne, owner, agent, 831-1010 or 831-1031.

TWO ROYAL Alpha 2001 electronic typewriters with correction tape. Almost new, \$200 each. 286-4744.

**Furniture**

FULL SIZE mattress and foundation, (new) never used, firm, Sears cost \$899, first \$125 takes 286-1107.

SEVEN FOOT sofa, oak arms, good condition. \$125. Shelf unit, like new, \$100. 892-5538.

The STATE PRESS disclaims all responsibility for quality and prices of goods and services offered in both classified and display advertising by its advertisers.

**Help Wanted**

ADMINISTRATIVE CLERK, requires typing and good organizational skills, professional appearance. Part time, 8:00 am to 2:30 pm, five days per week, and some Saturdays, starting Feb. 1st thru April 15th. Salary: \$5.00 per hour, contact Etea, 257-5000.

ADVERTISING SALES. Dynamic, community weekly newspaper seeks energetic, motivated salesperson. Call Pam 870-9470.

"ASU IS calling on you.... to join the ASU Telefund Drive! Gain valuable work experience in P.R. and telemarketing; nightly bonuses and incentives. Call Sherry McIntosh at 5-6754 after 1:30 p.m. for more info."

BROADWAY SOUTHWEST. On call merchandise processor's position. Responsible for checking, marking, and handling merchandise. Clerical, customer service position. Responsible for paper work, phones, and customer relations. 4 to 9, even, and weekend day schedules. Apply 9 to 12:30 or 1:30 to 2:30, Mon, Fri. Distribution Center, 1524 W. 14th St, Tempe Az. EOE.

BUSINESS STUDENT needed to assist with hiring seniors. Preferably a jock or active fraternity member. Position will lead to a very exciting long term career with unlimited high income potential for the right person. Must be energetic, popular, well liked and a permanent Phoenix Area resident. Call Tony at 257-4525.

CASHIER FULL and part time positions available at mens retail store, would like someone well groomed, dependable and personable. Call for more info 438-9535.

CRUISESHIPS HIRING! \$16-\$30,000 Caribbean, Hawaii, World! Call for Guide, Cassette, Newservice! (916) 944-4444 X. Arizona State Cruise.

DISABLED STUDENT needs part time clerical assistant. Experience not required. 968-5017, or 894-9369.

EARN MONEY. Advertising sales for ASU "Missing Children" placemats. Contact Cherry, 247-6163.

EDUCATION MAJOR wanted, temporary and full time nanny's to take care of children overnight, evenings and mothers day out in clients home. Call Friends Forever 438-1099.

ENGINEERING TECHNICIAN. 2nd or 3rd year mechanical engineer or technology. Some related experience desired, Min. 20 hrs. per week, flexible schedule, \$4.50 and up. 956-8200.

EXCELLENT EXTRA income mailing circulars. \$10-360 up weekly. Send stamped reply envelope. A-1 Mailers: 11020 Ventura Blvd. Suite 268, Dept AE2, Studio City, Ca 91604.

FEDERAL OVERSEAS. Nationwide Jobs! \$17,101-\$81,104! Summer. Career! Call: Guidedirectory, Applications, Listings, Newservice! (916)944-4444 Ext. G.S.3.

FLETCHERS (STATE Fair) Corny Dogs, all shifts, all positions, we pay better than min. Apply 1270 E. Apache.

FORMAN/SUPERVISOR needed for quality oriented janitorial oo. Part time evenings and weekends, Scottsdale area. Good work experience for student. \$3.75 to \$5.00 per hour plus bonuses, call David 274-0979.

FULL AND part time, hours flexible, four service writers. If you're energetic and people oriented you can earn \$10 per hour and up, commission sales. Broadway Car Wash 1016 E. Broadway, apply in person 10:00am to 4:00pm see Eric or Ken.

HARRY AND Steve's Chicago Grill looking for kitchen help. Experienced preferred, not necessary. Work with professional team, enthusiastic only need apply, three shifts available 844-8448 8am 10pm.

IMMEDIATE OPENINGS for students interested in earning up to \$7 per hour; gain valuable experience in PR and fund raising; looks great on your resume. Campaign for St. Luke's Poison Management Center call 251-8618.

LANDSCAPE HELPER, opportunity for college student to work with landscape contractor. Scottsdale area. Call Chuck Kelly 945-1015.

LOOKING FOR energetic young women willing to work pool side at resorts managing pool area, selling lotion and conducting activities. Must be athletic and assertive, call 941-2751 and leave message. 5 Star Resort Pool Management Inc.

MAKE MONEY and help in a good cause. Arizona residents only. Beat if politically aware. Call Julia 944-1988.

MINDER BINDERS needs a few ambitious outgoing and enthusiastic doormen. If you're not afraid to work hard please apply within. 715 S. Hayden, contact Jody. Also cashier, waitresses needed twice a week approx 25 hours, contact Jean.

**Help Wanted**

FREE HAIRCUTS. model call, ultra modern Scottsdale salon. Please call for appts. Rumors Hair Design 6204 N. Scottsdale Rd. 998-1888.

MORNING DELIVERY between 8 am till 11 am. Must have car and enjoy making people smile. Baked products. White clothing preferred. Paid daily, good extra \$, and fun! Call 275-2567.

NEW OWNERS now hiring part time students to work fast food business near ASU 967-1049.

KITCHEN HELP wanted, full and part time, apply in person at The Devil House 430 N. Scottsdale Road.

ORDER TAKERS. Commercial computers, no selling. Salary based on experience. Established accounts only. 946-9942. Bonuses. No experience.

PANHANDLERS PIZZA is now hiring people for morning shifts (8:00 am to 2:00 pm), and part time help for lunch shifts (11:00 am to 2:00 pm). Apply in person at 106 E University.

PART TIME or full time 11:00 to 1:00 necessary. \$3.75 hour. Call Sub Machine 437-9237.

STOCKBROKER LOOKING for aggressive intelligent student to cold call. Must be outgoing and energetic, pay \$5.00 per hour plus bonus. Call 839-8602.

STOCKYARDS RESTAURANT now hiring lunch food servers, day and night bus help, apply in person 10 to 11:00 and 1:30 to 3:30. 5001 E. Washington.

TELEMARKETING STUDENTS needed for morning shift work 10 to 2. Now you can talk on the phone and get paid for it, outgoing personality, will train qualified applicant. Call Ann 968-5795.

WANTED: ENERGETIC self motivated students interested in full or part time work without hurting grades. Call 829-8957 afternoons or evenings to set up an interview.

**Instruction**

SELF ESTEEM group begins Wed. Jan. 29. Call Cheryl, Associated Tempe Counseling Service, 966-8810.

SELF HYPNOSIS. Four sessions, small group instruction, \$60. Call Jim Lane, PhD, 966-8810.

**Jewelry**

CASH FOR gold, diamonds and silver. Mill Ave Jewlers 414 S. Mill Ave Suite 104.

**Miscellaneous**

COMPUTERS FOR rent. IBM compatible. \$40-\$65 per month. Call 841-9754.

**Personal**

KLINGMAN, S.I.M.H. Do you like Kenny Loggins? Love Diedra.

SCOTT, HAPPY 20th birthday. I love you "a lot!" Paula.

THE NEOPHYTES will soar high, when we wave pledgeship good bye. Here's to activation! Love, the Theta pledges.

**Rv's & Trucks**

1976 FORD COURIER with shell, runs and looks good. \$1650. Call Don, 829-9818. Keep trying.

**Real Estate**

AFFORDABLE VALUE: Three bedroom, two bath home, close to ASU and downtown, pool, covered patio, \$85,900, assumable 9 7/8%, 276-1312 255-3402.

CLOSE TO campus, two bedroom townhouse, super neat, invest now, sell after graduation. Bud Melcher and Associates, Sandy 968-0100 or 585-0413.

**Roommate Wanted**

FEMALE, CLEAN and tidy nonsmoker, share master bedroom and bath, one mile from school, \$123 per mo plus utilities. Pool, washer/dryer. Three bedroom townhouse 966-8185.

FEMALE ROOMMATE, responsible considerate to share house located approx. 48th and Southern. \$175 per month, 1/2 utilities, \$75 deposit call 437-2002.

FEMALE ROOMMATE to share four bedroom house, Scottsdale, excellent for student, close to ASU, \$210 mo includes utilities. 994-4998.

MALE CHRISTIAN roommate wanted, includes washer dryer, pool, jacuzzi, microwave etc. \$250 plus 1/2 utilities, 966-0168.

NEED FEMALE roommate to share three bedroom house, grad student, nonsmoker, quiet and likes cats, \$295 after 8:00 pm.

NONSMOKING ROOMMATE needed for fully furnished townhouse, close to campus. \$175 per month plus utilities. 829-8479.

**Roommate wanted**

FEMALE, THREE bedroom 1 1/2 bath, washer, dryer, \$130, 1/2 utilities. Five minutes to ASU 966-7342.

PROGRESSIVE MINDED female for new townhouse. Pool, washer, dryer, microwave, fireplace. \$200 plus utilities. 962-6337.

ROOMMATE WANTED for modern three bedroom condo, furnished, washer, dryer, pool, jacuzzi, utilities included, near ASU. \$300, negotiable. 968-4788.

ROOMMATE WANTED. Female preferred, quiet place to study. Must be very neat, clean, nonsmoking, full time ASU Student. Call Otto 948-8911.

SHARE 4BDM house. 15 minutes to ASU. Washer, dryer, microwave, extras. No smokers 945-5401 966-8633.

THIRD ROOMMATE needed to share three bedroom townhouse. Pool plus clubhouse facilities available, corner of McClintock and Baseline, \$155 plus utilities. Contact Tim or leave message at 820-8633.

TWO BEDROOM, two bath, mature, responsible, one block from ASU \$20 1/2 utilities. 968-6108, Kristine.

WANT RESPONSIBLE female, \$150 per month plus 1/2 utilities, furnished room, walk to ASU. 967-4583.

**Services**

CARS AVAILABLE - 21 or older. All States Drive-away, 992-5200.

FAST TANNING, very reasonable rates, close to ASU, call for an appointment 968-5548.

HAVE UNWANTED facial or body hair removed permanently by electrolysis. Free consultation, located in Tempe. Call Sharon at Desert Electrolysis Center 829-7829.

LAZY BONES Wake Up Service. Wake up to a pleasant voice to get you to class on time. More information, 835-8518.

SIX YEARS photography experience, opening own studio, need wedding samples, super deals now, call 946-8442. Mention this ad.

STUDENT FINANCIAL aid. Private funds available for scholarships now. Call 241-3318 Scholarships Research Co.

**Transportation**

AAA DRIVEAWAY. Cars to most major cities. U drive. First tank free 277-9979.

**Travel**

THREE WEEK Japan Holiday sponsored by World Youth Visit Exchange Assoc. July 6th thru 27th 1986. \$1,800 all inclusive. Information call Arlene Cane 969-1605. Deadline March 1st.

**Typing**

A+ PROFESSIONAL WORD processing. Resumes, letters, term papers, manuscripts, dissertations. Accurate, fast service. Cheryl, 892-5279.

ALWAYS AVAILABLE for typing. Call Susan at 833-0373.

CEREUS WORD Processing. Quality guaranteed. Term papers, engineering, scientific, dissertations, theses, letters, resumes, 947-7796, 990-8136.

PROFESSIONAL ADMN. Scy will type reports, thesis, manuscripts etc. \$15 per hour \$8 minimum, Ellie 957-5829, 274-8225.

PROFESSIONAL TYPING of term papers, reports, resumes, letters, discount for students and faculty. Professional Secretarial Services, N.W. Phoenix Az 843-3413.

SHORT OF TIME? I can help. Reasonable. Professional. Guaranteed. Experienced in academic. call Jessie 945-5744.

TYPING DONE, reasonable rates. Experienced in resume's and programs of study. Call Jacqueline 829-1171. Close to ASU.

TYPING ON word processor. Term papers, dissertations, resumes, etc. Fast, accurate, reasonable. Doris 345-0286 evenings, weekends.

TYPING, WORD processing, \$1.25 per double spaced page. Call Cathy 835-5591.

ACCURATE WORD PROCESSING. Books, term papers, dissertations. Downtown Mesa. Quick turnaround. Donna, 844-1876.

WORD PROCESSING. Fast, accurate, confidential, \$1.75 per page. 838-3425 after 5.

WORD PROCESSING, storage for dissertations, thesis and term papers. Rush jobs welcome. Nancy, 830-5572.

**Wanted**

ROCK ALBUMS for taping. Interested in music from 1965 to present. Will pay \$2 per album to tape. Mike, after 7pm, 838-2588.

**younglife**  
AT  
MEMORIAL UNION ROOM 215 PINAL ROOM ASU TUESDAY JAN. 28 7:30 P.M.

1. Have you heard of Young Life?
2. Did you go to Young Life in high school?
3. Are you interested in involvement as a Young Life leader?
4. Would you like to find out more about YL's work with high school kids?

If you answered yes to any of the above questions, you are invited to attend Young Life's leadership orientation night at ASU.  
We'll take a close look at the ministry of Young Life in Tempe and you'll be able to see how you might fit in.

**CARPET REMNANTS**

WE MANUFACTURE OUR OWN CARPET AND SELL IT DIRECT TO THE PUBLIC, NO MIDDLE MAN.

- Thousands in stock — 30%-70% off
- Hundreds of room-size remnants — \$29-\$69
- We Deliver

**Direct Carpet Outlet**

MESA 1826 W. Broadway At Dobson/bet. K-mart and Price Club 890-1152

NORTHEAST 15681 N. Cave Creek 867-2703

WESTSIDE 3161 N. 25th Ave. bet. Thomas & Osborn 269-3261

**The state press**

is looking for a part-time Clerk Typist. He or she must be able to handle busy phones, take ads accurately in person and over the phone, have good organizational skills, file and run errands. He or she also must be prompt, hard working and reliable.

Hours are: 8 a.m. to 12 p.m. Monday-Friday

For more information, please call Student Publications, 965-7572, Ask for JoAnna or Susan.

# Ditka denies claims to 'dynasty' despite Super Bowl rout

NEW ORLEANS (AP) — His players talked dynasty but Mike Ditka didn't, suggesting Monday that his Chicago Bears would have to repeat this year's romp through the NFL before they could be compared with teams like Green Bay and Pittsburgh of seasons past.

"I don't believe in the word 'dynasty,'" Ditka said at a news conference the day after the Bears had swamped the New England Patriots 46-10 in Super Bowl XX to complete an 18-1 season.

"You don't judge a team on one year or one playoff series or one game. The great Green Bay teams and the great Pittsburgh teams did it year after year. We're an awfully good football team. We proved that this year, but we're not a dynasty yet."

In fact, the Bears will be entering the 1986 season bearing the championship burden that has brought down every NFL

champion this decade.

Since the Steelers won their second straight Super Bowl and fourth overall in 1980, no NFL champion has repeated. In fact, only the 1982 and 1983 Washington Redskins have gone to two straight Super Bowls during the 1980s.

That fact didn't stop some of the Bears from venting their exuberance after Sunday's game.

"It goes on for the next five years," wide receiver Willie Gault said. "We want to be the team of the decade. We want to go to the Super Bowl four or five times and win it like the Steelers did in the '70s."

The Bears earned their title this season by dominating the NFL's strongest teams.

Excluding their 38-24 loss at Miami, they won eight games by an aggregate score of 255-40 against teams that won 10 games or more. Three of these were shutouts, and against

New England and Washington, the Bears scored more than 40 points.

And the Bears have the advantage of one of the NFL's easiest schedules, effectively giving them a free pass into the 1986 playoffs.

Nobody in their own NFC Central Division seems ready to challenge them; they play the four teams from the AFC Central, won by Cleveland at 8-8, and overall, they face only two teams — the Rams and Cowboys — that finished above .500 this season.

But Ditka remained cautious Monday.

"It's tough to repeat," he said. "You work very hard to get to the top. Then you look down and ask, 'Was the price you paid to get here worth the reward?' If it was, you can get there again. I don't think at this point you can say you can or you can't. We'll look at it next year and know."

By CHRIS MCKAY  
State Press

An injury- and illness-plagued women's swimming team returned from the three-day Rebel Classic in Las Vegas Sunday after a difficult and somewhat frustrating meet.

The Sun Devils, without the help of their top five swimmers, placed third in a field of 11 schools despite losing 70 points in disqualifications. Southern Methodist University and UA took first and second, respectively.

Coach Tim Hill said the presence of those five swimmers would definitely have made a difference.

"It would have made us more competitive," he said. "It's not a lot of fun going to meets and getting kicked around because we're without some of our top swimmers."

Among those disqualified were two relay teams. Hill said he was not sure the relays should have been penalized.

"They were questionable calls," he said. "(But) it wouldn't have made any difference in the meet score."

Illness added sophomores Amy Reed and Myra Shaw to the Sun Devils inactive list, which already included freshman freestyler Brandi Suttle, sophomore Dale Etnyre and junior Kristin Brown.

All-American junior Terri Baxter won the 100- and 200-yard

breaststroke and the 200-yard individual medley, while Beda Leirvaag took third in the 200-yard individual race. ASU's freestyle relay team, consisting of sophomore Carolyn Mills, Baxter, Leirvaag and sophomore Julie Heiberger finished second.

Sophomore diver Tracy Cox won the three-meter dive for the Devils and was second in the one-meter, while sophomore Robyn Benincasa was named the meet's most improved diver.

The men's team crushed the competition with 757 points to win the meet. UA finished second, 111½ points behind the Devils and BYU took third.

Two Sun Devils, juniors Andy Jameson and Jeff Sheehan broke meet records. Jameson placed first in both the 100- and 200-yard butterfly events with a meet record time of 49.23 in the 100-yarder. Sheehan won the 200-yard individual medley with a meet record time of 1:53.07. Senior Scott Brackett was first in the 500-yard freestyle with a 4:26.45 time.

The Sun Devils also won the medley relay and the 400-yard freestyle relay.

The men's and women's teams return to action Friday as they take on the nation's No. 1 swimming teams in dual competition against Stanford in Palo Alto, Calif.

## Lady swimmers take 3rd; men win at Rebel Classic



**THE HAIR CUTTERS**

Your Campus Hair Care Center  
709 S. Forest Ave., Tempe  
North of University • Behind the Chuck Box • In Oxford Square  
968-5946

**\$4.00 OFF**

With This Ad  
Expires March 15, 1986.

REGULAR PRICES

- Shampoo
- Condition
- Precision Cut
- Blow Dry

**MEN \$13 • WOMEN \$15**

OPEN MONDAY THROUGH SATURDAY.  
TUES., WED. & THURS. TILL 9 P.M.



**MAKE YOUR SPRING BREAK PLANS NOW!!**

SKI PACKAGES FROM \$149<sup>00</sup>

MAZATLAN TRIPS FROM \$199<sup>00</sup>



**travelmore**  
The Cornerstone  
Rural & University  
967-7545

*Miguel's Music Center*  
**IN THE LITTLE ARCHES SHOPPING CENTER**

<p><b>TEMPE</b></p> <p>Sales • Rentals • Repairs Band Instruments &amp; Accessories Drums ★ Recorders ★ Banjos ★ Sheet Music Etc.</p> <p>Authorized Dealer for: ALVAREZ ... GUILD ... KHONO ... YAMAHA ... OVATION ... MARTIN GUITARS</p> <p>★ SPANISH CLASSICAL GUITARS ★</p> <p>• RAMIREZ • CONTRERAS • BARNABE • CESAR VERA • SANTOS HERNANDEZ</p>	<p><b>MIGUEL</b></p> <p>A student of Andres Segovia Guitar Lessons in Folk &amp; Classical by Miguel</p> <p>★ ELECTRONICS ★</p> <ul style="list-style-type: none"> <li>• Amps</li> <li>• Rhythm Boxes</li> <li>• Distortion Boxes</li> <li>• Mini Mixers</li> <li>• Phase Shifters</li> <li>• Poly Phase</li> <li>• Electronic Metronomes</li> </ul> <p><b>BY ROLAND-IBANEZ &amp; ELECTROHARMONIX &amp; OTHERS</b></p> <p>122 E. University Dr., Tempe Open 10 a.m. to 6 p.m. — 6 Days</p>
---	--

**968-2310**

**WAREHOUSE DELI & PUB**  
"GOOD FOOD & DRINK"

Estab. 1975

NOW SERVING MIXED DRINKS

**SPECIALS LUNCH & DINNER**  
MON.-FRI.  
10:30-2 p.m.  
Sandwich of the Day with Homemade Fries  
**ONLY \$2.35**

**MOLSON GOLDEN 61¢**  
on tap  
Mon.-Thurs. 2-4 p.m.

NOW SERVING MIXED DRINKS

**HAPPY HOUR MON.-FRI.**  
10:30 a.m.-7 p.m.  
IMPORTS — 94¢  
DRAFT BEER  
Pitcher \$2.35 Glass 52¢  
WINE  
½ liter \$2.35 Glass 52¢  
WINE COOLER  
Pitcher \$2.82 Glass 66¢

**BREAKFAST**  
SERVED MON.-FRI. 9 a.m.-10:30 a.m.  
**99¢**  
3 EGGS, HOMESTYLE POTATOES, TOAST, BUTTER & JAM  
CHECK OUT OUR OTHER BREAKFAST ITEMS

**LIVE ENTERTAINMENT NIGHTLY.**  
(No Cover, No Min.)  
**130 E. UNIVERSITY DR. AT FOREST**  
**966-7788 • TEMPE, AZ**  
Your Hosts: "The Family"

TRY OUR DRIVE THRU WINDOW

**GRAND OPENING SPECIAL**

**Tootsie's PATIO & GRILL**  
TEMPE, ARIZONA

"Formerly St. Michael's Alley" • 894-1321 • Est. 1985

112 E. University Dr. • Tempe, AZ

THE COMPLETE "BURGER MADNESS"

¼ lb. BURGER (Pick Your Own Fixins, Lots to Choose)  
FRIES, 12-oz. SOFT DRINK  
**\$1.99 + tax**  
2:00-9:00 M-F

1¢ Draft Beer or Soft Drink With Purchase of Any Sandwich Anytime With Coupon Excluding Specials

SOUP-N-½ SANDWICH  
Choice of Tuna, Veggie Freak, or Roast Beef Sandwiches  
**\$1.99 + tax**  
10:30-2:00 M-F

Located 100 ft. West of Warehouse Deli

**NEW LOCATION**  
**THORBECKE'S GYM**  
Special Low Rates



**966-8621**

**\$12<sup>00</sup> per month**  
\*plus \$50 one-time membership fee

Only one mile on the bike path off Scottsdale Bridge.

**THORBECKE'S GYM**  
On the south side of Curry Road between Miller & Hayden

**Rates, 15 words or less:**  
\$1.90/day — 1 to 4 insertions  
\$1.81/day — 5 to 9 insertions  
\$1.72/day — 10 or more

10¢ for each additional word

**965-7572**

**Automobiles**

1973 BMW 2002 IVORY, much restored and new. Excellent engine, rebuilt transmission, sunroof, bilsteins, beautiful! \$5,200 1-685-4088.

**Automobiles**

1976 131 FIAT, RUNS good, excellent body \$1,000 964-6727.

1977 TOYOTA COROLLA, AT, runs very well, good tires, dependable transportation. \$1,000 obo 968-5695, morning, eves, weekends.

1978 TOYOTA CELICA liftback, am fm, ac, 5sp, new upholstery, nice car \$2,500 obo 894-2630.

'89 COUGAR (CLASSIC) conv. AC, PS, PB, stereo cass. Very good mech., burgundy leather int., Windsor 351. \$5,500 OBO, serious only please. 939-9337.

MY ITALIAN sweetheart has got to go! Must sell 1980 Fiat Spyder 2000. Good history, AC, chrome spoke wheels, silver ext, blue int. 48,000 miles, needs some exterior work. \$2,900 or best offer. 830-2514.

VW WOLFSBURG, limited edition rabbit convertible, 1983, 34K miles, excellent condition, \$8,900, OBO. 894-1027.

**Bicycles**

FUJI 12 speed bicycle, excellent condition, great student bicycle. \$175, call 838-3528.

USED-BIKES for sale, \$40 to \$350. They all work. Call Don 829-9618, keep trying.

**Business Opp.**

RENTING MAKES you rich! Apartment renter? Ten minutes makes you up to \$150 monthly. Easy-money renter's secret. Only \$4.95. Guaranteed. Order now! Brooks Company Suite 355-D 3104 E. Camelback Phoenix, AZ 85016.

**For Rent or Lease**

ASU TWO bedroom Cape Cod apartment, close to campus. Laundry room, common pool \$395 Desert Wide Properties 838-8631.

ATTENTION FACULTY and graduate students! Luxury condos for lease with fireplace, washer and dryer. Unique designs, Dobson, University. Rates from \$388. 968-6311.

CLOSE TO ASU, one and two bedroom apt's, furnished and unfurnished, pool, jacuzzi. 966-1053.

COMPUTER TERMINALS with modem for rent. \$35 per month 248-6172.

ROOM FOR rent in home with mother and teenage girl, female only, South Tempe, \$200 includes utilities 838-6224.

ROOM FOR rent, male or female. Non smoker, non drinker, no pets, must. Deposit and excellent references required. Very reasonable rate. Near ASU. Call Mr. Shally 967-4648 evening or weekend.

SCENE ONE, one and two bedroom units. Washer, dryer included, \$325 up. Realty Executives, Joanne 831-1010, 831-1031.

TOTAL VACANCY, take over lease from Feb. 1st, two bedroom apartment, half mile from ASU. Rates, \$454. Call Jack, 894-6183.

TWO BEDROOM one bath ASU condo, 700 West University. Quiet, clean, pool spa, washer and dryer \$425 month 935-3658.

TWO MALES to share large master bedroom and private bath in luxurious custom home. Furnished or unfurnished, 40 foot pool, Washer, dryer, all appliances, under \$200 880-2577.

**For Sale**

1981 HONDA PASSPORT (C70) must sell. Moving. Well maintained. Economical. New tires. \$375 call 897-2842 Mon thru Thurs 4:00pm to 10:00pm ask for Todd.

GOOD TRANSPORTATION, 77 Fiat 131 sedan, 5 speed, original owner, \$1,200 obo 965-8680 or 967-2242.

MOBILE HOME, two bedroom in Tempe. Furnished, washer and dryer. Four star park \$8,900 839-7529.

NEW TRS80 microcomputer. Includes basic, word processing etc. \$250 or best offer call David at 968-5162 or 965-2488.

PIONEER SPEAKERS 150 watts, brand new, never been used. Cost \$600 will take \$125 for the pair 957-7810.

THREE BLOCKS from campus, pool side, deluxe condominiums, fully appointed, \$43,900. Japanese owner, agent, 831-1010 or 831-1031.

TWO ROYAL Alpha 2001 electronic typewriters with correction tape. Almost new, \$200 each. 286-4744.

**Furniture**

FULL SIZE mattress and foundation, (new) never used, firm, Sears cost \$899, first \$125 takes 286-1107.

SEVEN FOOT sofa, oak arms, good condition. \$125. Shelf unit, like new, \$100. 982-5538.

The STATE PRESS disclaims all responsibility for quality and prices of goods and services offered in both classified and display advertising by its advertisers.

**Help Wanted**

ADMINISTRATIVE CLERK, requires typing and good organizational skills, professional appearance. Part time, 8:00 am to 2:30 pm, five days per week, and some Saturdays, starting Feb. 1st thru April 15th. Salary: \$5.00 per hour, contact Elsa, 257-5000.

ADVERTISING SALES. Dynamic, community weekly newspaper seeks energetic, motivated salesperson. Call Pam 870-9470.

"ASU IS calling on you... to join the ASU Telefund Drive! Gain valuable work experience in P.R. and telemarketing; nightly bonuses and incentives. Call Sherry McIntosh at 5-8754 after 1:30 p.m. for more info."

BROADWAY SOUTHWEST. On call merchandise processor's position. Responsible for checking, marking, and handling merchandise. Clerical, customer service position. Responsible for paper work, phones, and customer relations. 4 to 9, eves, and weekend day schedules. Apply 9 to 12:30 or 1:30 to 2:30, Mon, Fri. Distribution Center, 1524 W. 14th St, Tempe Az. EOE.

BUSINESS STUDENT needed to assist with hiring seniors. Preferably a jock or active fraternity member. Position will lead to a very exciting long term career with unlimited high income potential for the right person. Must be energetic, popular, well liked and a permanent Phoenix Area resident. Call Tony at 257-4525.

CASHIER FULL and part time positions available at mens retail store, would like someone well groomed, dependable and personable. Call for more info 438-9535.

CRUISESHIPS HIRING! \$16-\$30,000 Caribbean, Hawaii, World! Call for Guide, Cassette, Newservice! (916) 944-4444 X. Arizona State Cruise.

DISABLED STUDENT needs part time clerical assistant. Experience not required. 968-5017, or 894-9369.

EARN MONEY. Advertising sales for ASU "Missing Children" placemats. Contact Cherry, 247-6163.

EDUCATION MAJOR wanted, temporary and full time nanny's to take care of children overnight, evenings and mothers day out in clients home. Call Friends Forever 438-1099.

ENGINEERING TECHNICIAN. 2nd or 3rd year mechanical engineer or technology. Some related experience desired. Min. 20 hrs. per week, flexible schedule, \$4.50 and up. 956-8200.

EXCELLENT EXTRA income mailing circulars. \$10-380 up weekly. Send stamped reply envelope. A-1 Mailers: 11020 Ventura Blvd. Suite 268, Dept AE2, Studio City, Ca 91604.

FEDERAL OVERSEAS, Nationwide Job! \$17,101-\$61,104! Summer. Career! Call: Guidedirectory, Applications, Listings, Newservice! (916)944-4444 Ext. G.S.3.

FLETCHERS (STATE Fair) Corny Dogs, all shifts, all positions, we pay better than min. Apply 1270 E. Apache.

FORMAN/SUPERVISOR needed for quality oriented janitorial co. Part time evenings and weekends, Scottsdale area. Good work experience for student. \$3.75 to \$5.00 per hour plus bonuses, call David 274-0879.

FULL AND part time, hours flexible, four service writers. If you're energetic and people oriented you can earn \$10 per hour and up, commission sales. Broadway Car Wash 1016 E. Broadway, apply in person 10:00am to 4:00pm see Eric or Ken.

HARRY AND Steve's Chicago Grill looking for kitchen help. Experienced preferred, not necessary. Work with professional team, enthusiastic only need apply, three shifts available 844-8448 8am 10pm.

IMMEDIATE OPENINGS for students interested in earning up to \$7 per hour; gain valuable experience in PR and fund raising; looks great on your resume. Campaign for St. Lukes Poison Management Center call 251-8618.

LANDSCAPE HELPER, opportunity for college student to work with landscape contractor. Scottsdale area. Call Chuck Kelly 945-1015.

LOOKING FOR energetic young women willing to work pool side at resorts managing pool area, selling lotion and conducting activities. Must be athletic and assertive, call 941-2751 and leave message. 5 Star Resort Pool Management Inc.

MAKE MONEY and help in a good cause. Arizona residents only. Best if politically aware. Call Julia 844-1868.

MINDER BINDERS needs a few ambitious outgoing and enthusiastic doormen. If you're not afraid to work hard please apply within. 715 S. Hayden, contact Jody. Also cashier, waitresses needed twice a week approx 25 hours, contact Jean.

**Help Wanted**

FREE HAIRCUTS. model call, ultra modern Scottsdale salon. Please call for appts. Rumors Hair Design 6204 N. Scottsdale Rd. 998-1888.

MORNING DELIVERY between 8 am till 11 am. Must have car and enjoy making people smile. Baked products. White clothing preferred. Paid daily, good extra \$, and fun! Call 275-2587.

NEW OWNERS now hiring part time students to work fast food business near ASU 967-1048.

KITCHEN HELP wanted, full and part time, apply in person at The Devil House 430 N. Scottsdale Road.

ORDER TAKERS. Commercial computers, no selling. Salary based on experience. Established accounts only. 948-9942. Bonuses. No experience.

PANHANDLERS PIZZA is now hiring people for morning shifts (8:00 am to 2:00 pm), and part time help for lunch shifts (11:00 am to 2:00 pm). Apply in person at 106 E University.

PART TIME or full time 11:00 to 1:00 necessary. \$3.75 hour. Call Sub Machine 437-9237.

STOCKBROKER LOOKING for aggressive intelligent student to cold call. Must be outgoing and energetic, pay \$5.00 per hour plus bonus. Call 838-8602.

STOCKYARDS RESTAURANT now hiring lunch food servers, day and night bus help, apply in person 10 to 11:00 and 1:30 to 3:30. 5001 E. Washington.

TELEMARKETING STUDENTS needed for morning shift work 10 to 2. Now you can talk on the phone and get paid for it. outgoing personality, will train qualified applicant. Call Ann 968-5795.

WANTED: ENERGETIC self motivated students interested in full or part time work without hurting grades. Call 829-8957 afternoons or evenings to set up an interview.

**Instruction**

SELF ESTEEM group begins Wed. Jan. 29. Call Cheryl, Associated Tempe Counseling Service, 966-8810.

SELF HYPNOSIS. Four sessions, small group instruction, \$60. Call Jim Lane, Ph.D. 966-8810.

**Jewelry**

CASH FOR gold, diamonds and silver. Mill Ave Jewlers 414 S. Mill Ave Scott 104.

**Miscellaneous**

COMPUTERS FOR rent. IBM compatible. 640 865 per month. Call 841-9754.

**Personal**

KLINGMAN, S.I.M.H. Do you like Kenny Loggins? Love Dieder.

SCOTT, HAPPY 20th birthday. I love you "a lot!" Paula.

THE NEOPHYTES will soar high, when we wave pledgeship good bye. Here's to activation! Love, the Theta pledges.

**Rv's & Trucks**

1976 FORD COURIER with shell, runs and looks good. \$1650. Call Don, 829-9618. Keep trying.

**Real Estate**

AFFORDABLE VALUE: Three bedroom, two bath home, close to ASU and downtown, pool, covered patio, \$85,900, assumable 9 7/8%, 276-1312 255-3402.

CLOSE TO campus, two bedroom townhouse, super neat, invest now, sell after graduation. Bud Melcher and Associates. Sandy 998-0100 or 585-0413.

**Roommate Wanted**

FEMALE, CLEAN and tidy nonsmoker, share master bedroom and bath, one mile from school, \$123 per mo plus utilities. Pool, washer, dryer. Three bedroom townhouse 966-8185.

FEMALE ROOMMATE, responsible considerate to share house located approx. 48th and Southern. \$175 per month, 1/2 utilities, \$75 deposit call 437-2002.

FEMALE ROOMMATE to share four bedroom house, Scottsdale, excellent for student, close to ASU, \$210 mo includes utilities. 994-4998.

MALE CHRISTIAN roommate wanted, includes washer dryer, pool, jacuzzi, microwave etc. \$250 plus 1/2 utilities, 966-0168.

NEED FEMALE roommate to share three bedroom house, grad student, nonsmoker, quiet and likes cats, \$295 after 8:00 pm.

NONSMOKING ROOMMATE needed for fully furnished townhouse, close to campus. \$175 per month plus utilities. 829-8478.

**Roommate Wanted**

FEMALE, THREE bedroom 1 1/2 bath, washer, dryer, \$130, 1/2 utilities. Five minutes to ASU 966-7342.

PROGRESSIVE MINDED female for new townhouse. Pool, washer, dryer, microwave, fireplace. \$200 plus utilities. 982-6337.

ROOMMATE WANTED for modern three bedroom condo, furnished, washer, dryer, pool, jacuzzi, utilities included, near ASU. \$300, negotiable. 968-4788.

ROOMMATE WANTED. Female preferred, quiet place to study. Must be very neat, clean, nonsmoking, full time ASU Student. Call Otto 948-8911.

SHARE 4BDM house. 15 minutes to ASU. Washer, dryer, microwave, extras. No smokers 945-5401 986-8633.

THIRD ROOMMATE needed to share three bedroom townhouse. Pool plus clubhouse facilities available, corner of McClintock and Baseline, \$155 plus utilities. Contact Tim or leave message at 820-8633.

TWO BEDROOM, two bath, mature, responsible, one block from ASU \$20 1/2 utilities. 968-6108, Kristine.

WANT RESPONSIBLE female, \$150 per month plus 1/2 utilities, furnished room, walk to ASU. 967-4583.

**Services**

CARS AVAILABLE - 21 or older. All States Drive-away, 992-5200.

FAST TANNING, very reasonable rates, close to ASU, call for an appointment 968-5548.

HAVE UNWANTED facial or body hair removed permanently by electrolysis. Free consultation, located in Tempe. Call Sharon at Desert Electrolysis Center 829-7829.

LAZY BONES Wake Up Service. Wake up to a pleasant voice to get you to class on time. More information, 835-6518.

SIX YEARS photography experience, opening own studio, need wedding samples, super deals now, call 946-8442. Mention this ad.

STUDENT FINANCIAL aid. Private funds available for scholarships now. Call 241-3318 Scholarship Research Co.

**Transportation**

AAA DRIVEAWAY. Cars to most major cities. U drive. First tank free 277-9979.

**Travel**

THREE WEEK Japan Holiday sponsored by World Youth Visit Exchange Assoc. July 6th thru 27th 1986. \$1,800 all inclusive. Information call Ariene Cane 969-1605. Deadline March 1st.

**Typing**

A + PROFESSIONAL WORD processing. Resumes, letters, term papers, manuscripts, dissertations. Accurate, fast service. Cheryl, 892-5279.

ALWAYS AVAILABLE for typing. Call Susan at 833-0373.

CEREUS WORD Processing. Quality guaranteed. Term papers, engineering, scientific, dissertations, theses, letters, resumes, 947-7796, 980-6138.

PROFESSIONAL ADMN. Scy will type reports, theses, manuscripts etc. \$15 per hour \$8 minimum, Ellie 957-5629, 274-8225.

PROFESSIONAL TYPING of term papers, reports, resumes, letters, discount for students and faculty. Professional Secretarial Services, N.W. Phoenix Az 843-3413.

SHORT OF TIME? I can help. Reasonable. Professional. Guaranteed. Experienced in academic. call Jessie 945-5744.

TYPING DONE, reasonable rates. Experienced in resume's and programs of study. Call Jacqueline 829-1171. Close to ASU.

TYPING ON word processor. Term papers, dissertations, resumes, etc. Fast, accurate, reasonable. Doris 345-0266 evenings, weekends.

TYPING, WORD processing. \$1.25 per double spaced page. Call Cathy 835-5591.

ACCURATE WORD PROCESSING. Books, term papers, dissertations. Downtown Mesa. Quick turnaround. Donna, 844-1876.

WORD PROCESSING. Fast, accurate, confidential, \$1.75 per page. 838-3425 after 5.

WORD PROCESSING, storage for dissertations, theses and term papers. Rush jobs welcome. Nancy, 830-5572.

**Wanted**

ROCK ALBUMS for taping. Interested in music from 1965 to present. Will pay \$2 per album to tape. Mike, after 7pm, 838-2598.

**younglife**  
AT  
**ASU**  
MEMORIAL UNION ROOM 215 PINAL ROOM TUESDAY JAN. 28 7:30 P.M.

1. Have you heard of Young Life?
2. Did you go to Young Life in high school?
3. Are you interested in involvement as a Young Life leader?
4. Would you like to find out more about YL's work with high school kids?

If you answered yes to any of the above questions, you are invited to attend Young Life's leadership orientation night at ASU.  
We'll take a close look at the ministry of Young Life in Tempe and you'll be able to see how you might fit in.

**CARPET REMNANTS**

WE MANUFACTURE OUR OWN CARPET AND SELL IT DIRECT TO THE PUBLIC, NO MIDDLE MAN.

- Thousands in stock — 30%-70% off
- Hundreds of room-size remnants — \$29-\$69
- We Deliver

**Direct Carpet Outlet**

MESA 1825 W. Broadway At Dobson/bet. K-mart and Price Club 890-1152

NORTHEAST 15801 N. Cave Creek 867-2703

WESTSIDE 3161 N. 35th Ave. bet. Thomas & Osborn 269-3261


Owned and operated by E'Con Carpet Mills with warehouses throughout the U.S.A.

**The state press**

is looking for a part-time Clerk Typist. He or she must be able to handle busy phones, take ads accurately in person and over the phone, have good organizational skills, file and run errands. He or she also must be prompt, hard working and reliable.

Hours are: 8 a.m. to 12 p.m. Monday-Friday

For more information, please call Student Publications, 965-7572. Ask for JoAnna or Susan.



**WHAT ARE YA' DOING SUNDAY AT 4:00?**

**WE'RE LOOKING FOR A PLACE WHERE WE CAN LEARN HOW JESUS CHRIST CAN CHANGE OUR LIVES.**

**YEA, A PLACE THAT HAS A COUPLE OF GUYS WITH BEARDS WHO COULD...**

**HEY! LOOK AT THIS!!!**

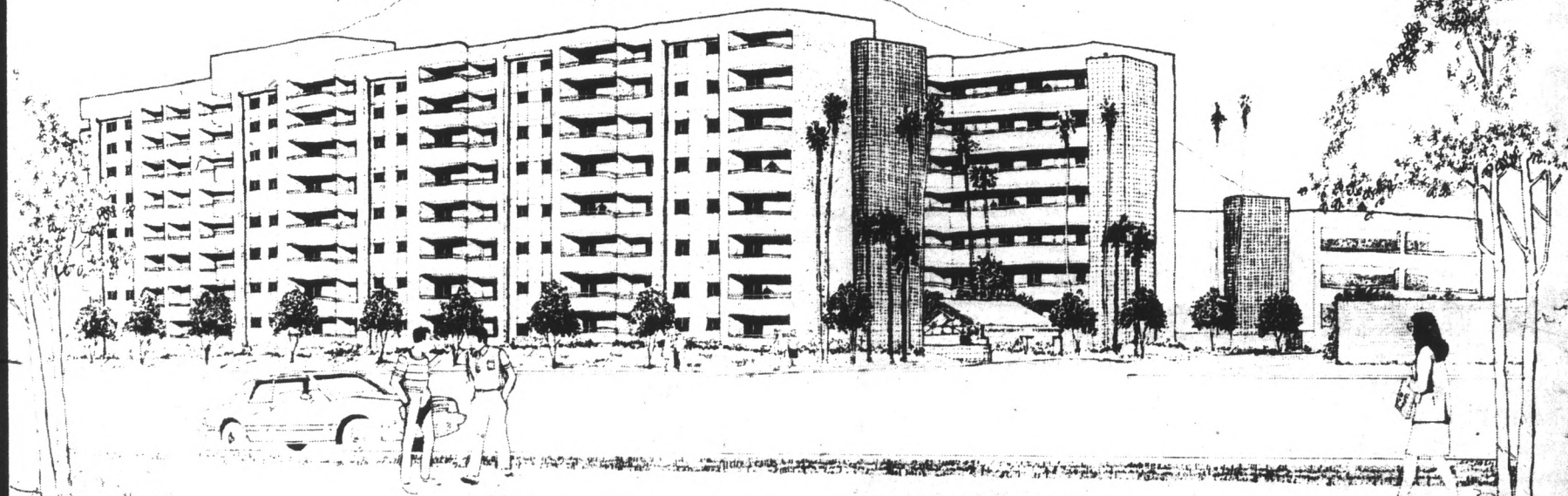
**Feb. 2 - Special Guest JERRY COLLANGELO**  
(G. M. of the Phoenix Suns)

University Fellowship  
Every Sunday 4p.m.-6p.m.  
Feb. 2nd-May 4th  
Tempe Womens Club  
13th St. & Mill  
across from Grady Gammage

For more info call Jim at 253-6670

# Students never had it so good!

## A



Until the luxury and convenience of **UNIVERSITY TOWERS**. These unique and exciting co-educational student residence suites combine the best of apartment and dormitory living.

Ideally located within 2 blocks of Arizona State University academic facilities, and across from Sun Devil Stadium.

U.T. offers furnished 2 bedroom residence suites including utilities, full kitchen and many extras.

- 24 hour security
- Escorts if requested
- 24 hour emergency maintenance
- Garage parking
- Pool, jacuzzi, volleyball, elevated sundeck
- Satellite Cable Television

Stop by our leasing office today or call 894-2300 located on 5th Street between College and Forest 525 S. Forest Tempe, AZ 85281



**UNIVERSITY TOWERS**

SOMETHING NEW IS COMING TO A.S.U.

A private student housing development.