

# Park officials cut lawn size in half

By VICKIE CHACHERE  
State Press

The ASU Research Park spent an extra \$1 million on landscaping because Arizona Gov. Bruce Babbitt ordered officials to reduce lawn space by more than 50 percent, the park's director said Wednesday.

Reginald Owens said a request by Babbitt and the Arizona Department of Water Resources last year to eliminate 22 acres of lawn space has cost the park an additional \$1 million to install gravel materials and "vertical elements," or trees.

Owens said the park directors had planned for 42 acres of lawn at the facility.

"We have lost what we feel is very usable recreation space," Owens said. "Grass is the cheapest thing you can put in the project."

The park is a private, non-profit organization created by the Arizona Board of Regents in 1963. It is located at Price and Elliot Roads and covers a 323-acre area.

In a report presented to the Arizona Board of Regents Friday in Tucson, park officials listed the demand for a cut as the "biggest disappointment" during the park's first year of construction.

In the year-end report, park officials said the reduction required a "concentrated effort to reduce the lawn and add trees and landscape to keep a 'people-friendly' atmosphere."

Owens said the project has been completed for several months now, but added that he believes research park officials were singled out to replace the lawns by the governor's office.

"We as a project were somewhat singled out," Owens said. "We recognize that is not unusual because we are linked with ASU."

But Dick Wells, chief deputy director of the Department of Water Resources, said the park was not being singled out when state officials insisted on the lawn reduction.

"At the time the original plan was made, it was discovered that (the park) had rather lush landscaping," Wells said.

He said park officials agreed to reduce the size of the three lakes at the park and to construct a landscape that would use water efficiently.

Wells said the department originally had requested that no more than 10 acres of land be used as lawn space, but later compromised with park directors for a 20-acre lawn.

"As a (state-related) agency they should be setting the way for water conservation, not water wasting," Wells said.

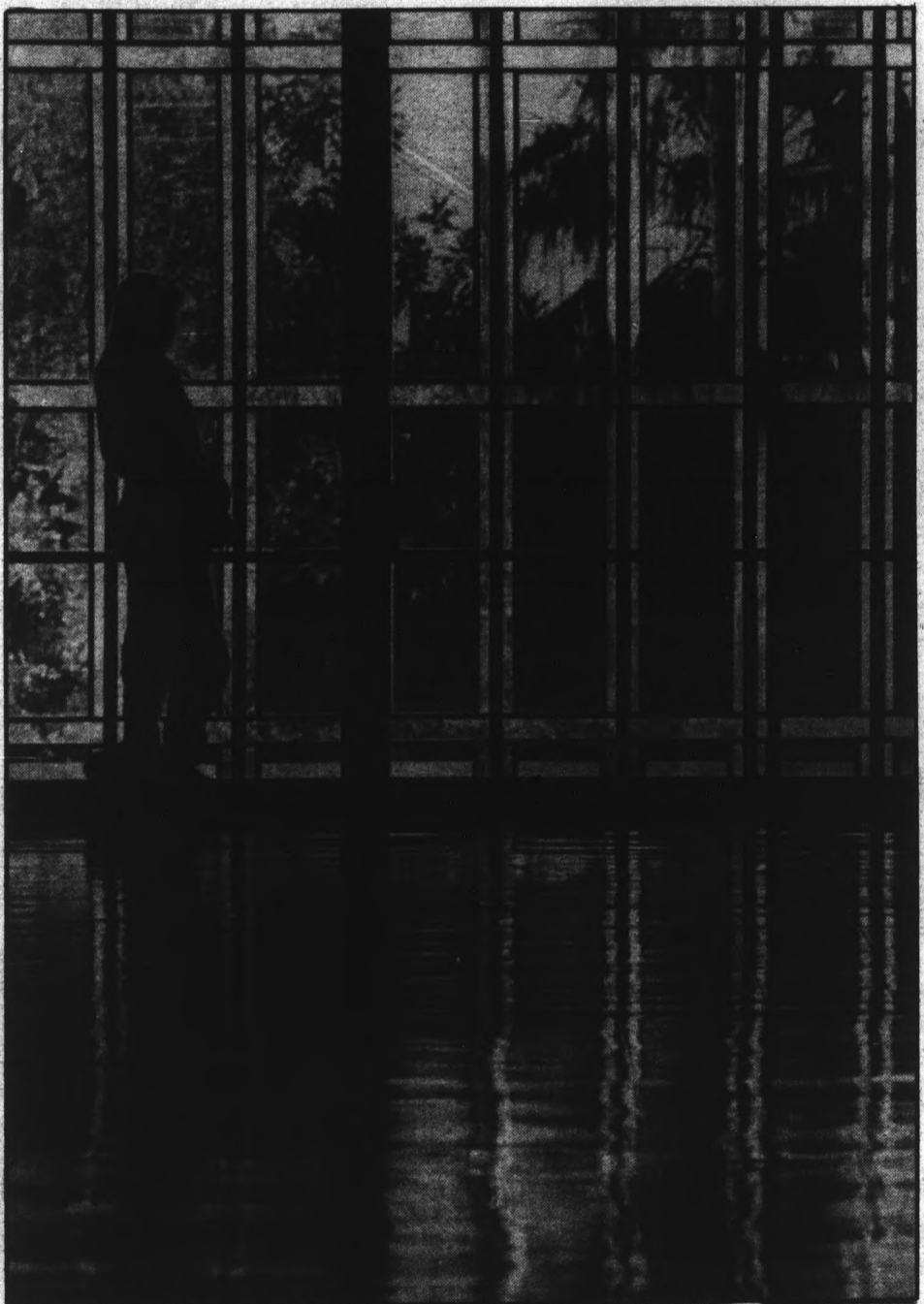
thursday  
January 23, 1986

# state press

Tempe, Arizona

Arizona State University  
Vol. 68 No. 72

© Copyright, State Press, 1985



**Reflections**

Staff photo by Todd Green

Graduate interdisciplinary studies student Susan Brantley enjoys a quiet moment away from the crowd while gazing out the window upstairs on the west side of the MU.

# Legislation that would nab prof's book profits rejected

By JOHN CONWAY  
State Press

A bill that would have retained professors' local textbook profits for their universities was bypassed by an Arizona House of Representatives committee Wednesday, but several legislators called for action by the Arizona Board of Regents.

The House Education Committee will ask the regents, who had voted to oppose House Bill 2058, to formulate a policy governing textbook profits.

Since the committee did not vote to transfer the bill to the House Rules Committee, it remains active and could be reconsidered at a future time.

Sponsored by Rep. Jim Cooper, R-Mesa, the bill requires any state or community college professor to submit to his institution royalties earned from their books and sold on the campus at which they teach.

A spokeswoman for Cooper said no further action probably would be taken on the bill.

Jane Hull, R-Phoenix, said a "strong" message should be sent to the regents and universities to look into the student concern.

Henry Evans, D-Tolleson, promised to submit the bill next year if no corrective steps are taken by the regents.

Jack Kinsinger, ASU vice president for academic affairs, said neither UA nor ASU has a policy regarding this issue, but NAU does.

Kinsinger informed the committee that the NAU faculty voted to direct all university royalties back to the campus and into a scholarship fund.

An ASU professor who wants to use his book in a class he is teaching must receive the approval of the dean.

Kinsinger, Odus Elliot, the regents' associate director for academic programs, and students from the UA presented their position on the bill to the committee.

Cooper encouraged the students present at the hearing to pressure the regents into establishing a state-wide policy implementing the requirements of the bill.

Cooper, said during the meeting that he was "appalled" to learn that the UA Faculty Senate had pigeonholed a UA student senate request written last year that would have disallowed university professors to profit from book sales to their students.

Rep. Jim Skelly, R-Scottsdale, who said the students were being "ripped off" by some textbooks prices, opposed the bill because it would penalize "good professors writing good texts."

"I sympathize with students, but I don't think this is the way to handle this problem," he said.

Pat Wright, R-Glendale, said she agreed with Skelly and that the universities should resolve this problem rather than the state.

The three UA students who spoke to the 14 committee members present included a junior electrical engineering student, a senior management information systems student, and Associated Student of UA president John Heigl, a chemical engineering senior.

Junior Michael Dalrymple said, "I don't know if the professors are after the money or not, but from a student's point of view it seems like a money making scheme."

One of the three books Dalrymple had brought with him to show the committee members sold for \$35 and included the same typographical errors found in the unbound volume from which the book was reprinted.

This example reflects an "attitude to not correct errors," he said.

Dalrymple, who discovered that professors do not profit from unbound instructional materials said, "The normal student, who would not go to these lengths to find out these things, thinks they are getting ripped off."

Kinsinger defended the professors' right to sell his students a textbook he has authored.

Kinsinger said he opposed the bill because it infringed on a professor's individual freedom and a bureaucracy would be needed to track and collect in-class book royalties.

# Foreign TA prospects improve English

Prospective foreign teaching assistants who took an English proficiency test last semester made a 29 percent improvement over students who took the test last summer, an ASU official said Wednesday.

Albert Karnig, assistant vice president for academic programs and services, said 34 percent of foreign students who took the test between October and December are failing the mandatory test.

Karnig said 32 percent of those taking the test demonstrated enough English speaking proficiency to work as instructors in University classrooms.

Another 34 percent of last semester's

prospective teaching assistants qualified for non-classroom positions but did not demonstrate enough speaking ability to instruct other students.

The exam, which measures a student's proficiency to speak English, was ordered by ASU President J. Russell Nelson in May and later required at NAU and UA by the Arizona Board of Regents.

The first test results indicated that 63 percent of ASU's prospective teaching assistants, who might have been allowed to instruct students a year ago, could not speak English well enough to

pass the test. Those students will be placed as laboratory assistants or in jobs that do not require contact with students.

The number of students failing the test is not having a negative impact on departments with large numbers of teaching assistants, the chairman of ASU's math department said.

Philip Leonard said his department has not suffered from the reduction of teaching assistants.

Leonard said that about 10 percent of the teaching assistants in his department were affected by the exam.

- VICKIE CHACHERE

## Today

"Ivory Towers," a new weekly campus comic strip, makes its debut today. Page 7.

The men's basketball team hosts Oregon tonight in the University Activity Center. Page 13.

ASU weather — Variable high clouds with an expected high of 75 degrees. The expected low is 50.

Bloom County .....	10
Classified .....	19
Collage .....	9
Nation/world .....	2
Opinion .....	4
Police report .....	10
Sports .....	13

# nation/world

state press

## Weight determined by genes, not eating habits, study says

BOSTON (AP) — Whether people grow up to be fat or skinny depends in large part on their genes and seems to have nothing to do with the eating habits they learn as children, a new study concludes.

The research helps explain why some people remain chubby even when they diet constantly, while others stay trim no matter what they eat: Fatness and thinness are in their genes.

The findings were based on a study of adopted children. They often grew up to have the body builds of their biological parents. Slim offspring frequently had slender natural parents and overweight children had fat ones. There was no evidence that they mirrored the shape of the adoptive parents who raised them.

Many experts believe that heredity plays at least some role in obesity. But they also often theorize that fat people get that way because they learn bad eating practices early in life.

## Legislators reluctant to comment on soldiers' presence in Vietnam

WASHINGTON (AP) — Members of Congress who visited Vietnam and Laos "did not receive anything" to encourage the belief that American servicemen are still being held prisoner there, the head of the delegation said Wednesday.

"I don't want to raise any false hopes," Sen. Frank Murkowski, R-Alaska, told a news conference.

Murkowski, chairman of the Senate Veterans Affairs Committee, said the panel will hold hearings next week on the possibility American prisoners remain in captivity in Southeast Asia more than a decade after the end of the war.

Sen. Dennis DeConcini, D-Ariz., another member of the delegation who returned last week from the nine-day overseas tour, said Wednesday: "It is my belief that it is very, very likely that there are some Americans there."

But DeConcini refused to say whether he believes these Americans actually are prisoners.

## Three Sikhs sentenced to death for 1984 murder of India's Gandhi

NEW DELHI, India (AP) — A judge seated behind bulletproof glass convicted three Sikhs on Wednesday and sentenced them to death for the murder of Prime Minister Indira Gandhi in 1984.

More than 200 riot police guarded the jail to prevent a possible attack by Sikh militants and to enforce a 48-hour ban on public assembly that authorities imposed Tuesday in surrounding neighborhoods.

One of those convicted, a member of Gandhi's personal guard, was accused of firing the shots in the garden of the prime minister's residential compound, along with another guard who was killed at the scene. The other two defendants were found guilty of conspiracy.

No date was set for the executions, which in India usually are by hanging.

Gandhi was assassinated Oct. 31, 1984, four months after she sent the army into the holiest Sikh temple to route out Sikh terrorists who were using it as a refuge.

## arizona

### Rally marks anniversary of abortion legalization

PHOENIX (AP) — A state lawmaker led the Arizona House of Representatives in prayer for the "millions of babies" aborted, and pro-choice spectators responded with boos from the gallery Wednesday as Arizona marked the 13th anniversary of a Supreme Court decision making abortion legal.

Earlier in the day, a pro-choice street-theater group chanted "one step forward, three steps back" and "uppity women repent" as it satirized abortion

opponents.

"Push us back, push us back, way back," the women chanted as they circled between the House and Senate buildings, dressed in styles from the 1950s. "Mommies, mommies, don't be commies: stay at home and fold pajamies."

The group, part of the Plutonium Players, a San Francisco repertory company, paraded under the name Ladies Against Women and announced that they would hold "consciousness-lowering sessions."

## pac-10

### OSU students receive precautionary vaccines

CORVALLIS, Ore. — An estimated 50 Oregon State University students have received shots for hepatitis A after fearing contraction of the disease from eating at a local restaurant.

As many as 6,000 people who ate at the restaurant between Dec. 31 and Jan. 8 may have been exposed to the disease, according to the Oregon State Health Division.

Officials said eight of the restaurant

employees already have contracted the disease.

"Quite a few students called in ... asking what to do if they had eaten at the restaurant," said Cheryl Graham, OSU Health Educator.

The shot, called immune globulin, has antibodies that fight against the hepatitis virus.

"Once the shot is given, it is highly unusual for a person to contract hepatitis after a period of two weeks," according to Susan Spangler, communicable disease nurse for Benton County.

— The Daily Barometer

MC PRODUCTIONS presents

# SPYRO GYRA

Live in Concert

8:30 p.m. Sunday

JANUARY 26, 1986

CELEBRITY THEATER

Phoenix, Arizona

RESERVED SEATING

All Seats \$12.75

Tickets Available at all DIAMONDS OUTLETS

Phone Orders 499-5151  
254-5464

MasterCard and Visa accepted



## UNIVERSITY OF SOUTHERN CALIFORNIA GRADUATE PROGRAMS IN ADMINISTRATION:

COURTS • LEGISLATURE  
FEDERAL, STATE, LOCAL GOVERNMENT

The University of Southern California School of Public Administration offers a program leading to a Master in Public Administration degree including such specializations as Judicial Administration, Public Financial Management, Health Services Administration, Applied Behavioral Science and Intergovernmental Management.

Dr. Donald Fuller, of the USC Judicial Administration Program, will be on campus January 28, 1986 to speak with interested students. Call Career Services at 965-2355 for more information.

COUPON

# \$200 OFF ANY LARGE PIZZA

With 3 Toppings

Expires 1-30-86.

BEER & WINE NOW SERVED

FAST DELIVERY  
Anytime During Store Hours  
3 mile radius



968-8575  
UNIVERSITY & HARDY TEMPE

HOURS: Mon.-Thurs. 11 a.m.-10 p.m.  
Fri. & Sat. 11 a.m.-12 midnight  
Sun. 4 p.m.-10 p.m.

COUPON

# ATTENTION

any student interested in applying for  
THE NATIONAL HONORARY  
WHO'S WHO

among students in American Colleges and Universities, may pick up their application in room 208-J of the Memorial Union or the Office of Student Life.

Those students applying must have a minimum of a 2.2 GPA and no less than 60 hours.

**The deadline for applications is 5 p.m., Jan. 30, 1986.**

# Kahane: violent fanatic or heroic prophet

By THERESA WILLEFORD  
State Press

To an ASU professor and two students who were thrown out of his speech, the man is a fascist demagogue.

To others who attended the speech, he is a prophet and a symbol of hope for Israel.

When Rabbi Meir Kahane, an Israeli Knesset member who has called for the removal of Arabs from Israel, spoke at the Hyatt Regency Tuesday evening, the controversy that surrounds him was also present.

"I think he's a prophet in his own time and only a few people recognize it," ASU graduate Sara Kreimer said. "He holds the solution for the Jewish people and for the Arabs as well."

"(His ideas) hopefully will be heeded so we will be spared the bloodshed."

For Bob Shuch, ASU junior and the chairman of the Israeli Action Committee, Kahane is more of a threat than a hero.

"I think he is using the Arab/Israeli conflict to promote his own form of fascism," Shuch said.

Prior to his appearance, members of the American-Arab Anti-Discrimination Committee picketed outside the Regency in protest of Kahane's appearance.

Eric Niman, an ASU graduate student and member of AADC, carried a sign saying "Meir Kahane is a latent human being."

"I'm here to exercise my rights as an American citizen and to make the point that I disagree with everything Meir Kahane stands for," Niman said.

Other protesters carried signs that read "Meir Kahane for Fuhrer," and "Hell is empty, Kahane is here."

Kahane spoke for two hours to a mostly Jewish audience of more than 150.

During his speech, he said the high Arab birthrate represents a threat to Israel, and if elected prime minister, he would remove all Arabs from Israel.

"There are two kinds of Arabs — clever Arabs and stupid Arabs," he said. "The stupid ones come right out and say what



Rabbi Meir Kahane is restrained by a member of the Hyatt Regency Hotel security staff after the rabbi attempted to attack ASU student Danny Ben-Gigi during a speech given by Kahane. Kahane, a member of the Israeli Knesset and running for election for prime minister, tried to attack Ben-Gigi after the student repeatedly interrupted Kahane's speech.

they want (the destruction of Israel).  
"The clever ones know if they say nice things to Jews, the Jews will throw money at them — even the Sinai."

The Sinai Peninsula was captured by Israel in the 1967 Six Day War, and returned to Egypt under the terms of the Camp David Accords.

Kahane said there are no moderate Jews, only "Jewish fools" who are "guilt-ridden and cowardly."

Kahane said Israel caters to the Arab population.

"We're a psychotic people," he said. "We need a national couch."

He also said Israeli women tend to be liberals who do not produce babies at a sufficient rate to compete with the expanding Arab population.

"Arabs multiply at a higher rate (than Israelis), and we pay them for each baby," he said.

Danny Ben-Gigi, an Israeli exchange student visiting ASU from Haifa University, attempted to question Kahane several times during his speech.

Kahane told Ben-Gigi to wait until the speech was over. When interrupted for the third time, Kahane, red in the face, dashed from his podium and attempted to grab Ben-Gigi.

Cries of support, both for Kahane and the student, arose from the crowd as security men led Ben-Gigi out of the room.

Ben-Gigi later filed a report with the police saying Kahane came at him in a threatening manner and a Kahane supporter had struck him.

Also during the scuffle Ed Schubert, an ASU graduate student and a State Press reporter, shouted "Let him speak" in support of Ben-Gigi.

Schubert was hit on the back of the head by a Kahane supporter and asked to leave the lecture by a Hyatt Regency employee.

Schubert said he came to the rally as a member of Peace Now, and not on assignment for the State Press.

Peace Now is a movement in Israel which favors moderation, including territorial compromise with the Arabs and recognition of Palestinian rights, he said.

When Malka Ben-Pechat, an ASU professor of modern and biblical Hebrew, voiced her objections to the removal of Schubert and Ben-Gigi, she too was forced from the room.

Ben-Pechat said she did not come as a representative of ASU, but as an interested Israeli citizen.

"I'm concerned with (Kahane's) danger and I think he's a very important element to be concerned with," Ben-Pechat said. "Every Israeli citizen has to be alarmed by him and his growing popularity."

"I think he has to be protested everywhere he goes."

Hussein Mukaled, a Lebanese student at ASU, sat through the speech and came away with some definite opinions of Kahane.

"I wanted to listen to him and get a better idea of the controversy," Mukaled said. "This confirms what I thought of him."

"He is a fanatic, he has no manners, he's violent — you name it."

Kahane denied any prejudice against Arabs or moderate Jews.

"I don't hate Arabs," Kahane said. "I love Jews, and that's not easy."

AT CORNERSTONE



829-1743

THE **U** SHOP

HOURS:

Mon.-Fri. 10-9

Saturday 10-8

Sunday 12-6

# SALE, SALE, SALE

Assorted College T-shirts

Michigan • Notre Dame

Ohio • Oklahoma

Texas • ASU (select items)

<b>Reg.</b>	<b>Sale</b>
\$8.95	<b>\$4.99</b>

Phoenix Suns Shirts

\$8.95	<b>\$3.99</b>
--------	---------------

ASU Country Club Half Shirts

\$6.95	<b>\$2.99</b>
--------	---------------

Pastel Women's Shorts

\$7.95	<b>\$4.99</b>
--------	---------------

ASU Knit Shorts

\$6.95	<b>\$3.99</b>
--------	---------------

Coaches Shorts

\$15.95	<b>\$5.99</b>
---------	---------------

Plus many more assorted items

## 20% to 50% OFF

state press

I would sooner fall than not be among the greatest. —John Keats

opinion

editorial

Residents' interests are students' hassle

The indigenous population has risen with justification against the ASU off-campus parking situation.

The streets south of campus are indeed cluttered with masses of cars. This makes for quite a mess. Not one-tenth as bad as Boston or New York, but pretty bad for the Valley. Tempe has tolerated these conditions reasonably well.

That is, until now. Beginning either in February or March, only residents with decals will be allowed to park on certain streets around campus. One can understand Tempe's interest in protecting its neighborhoods.

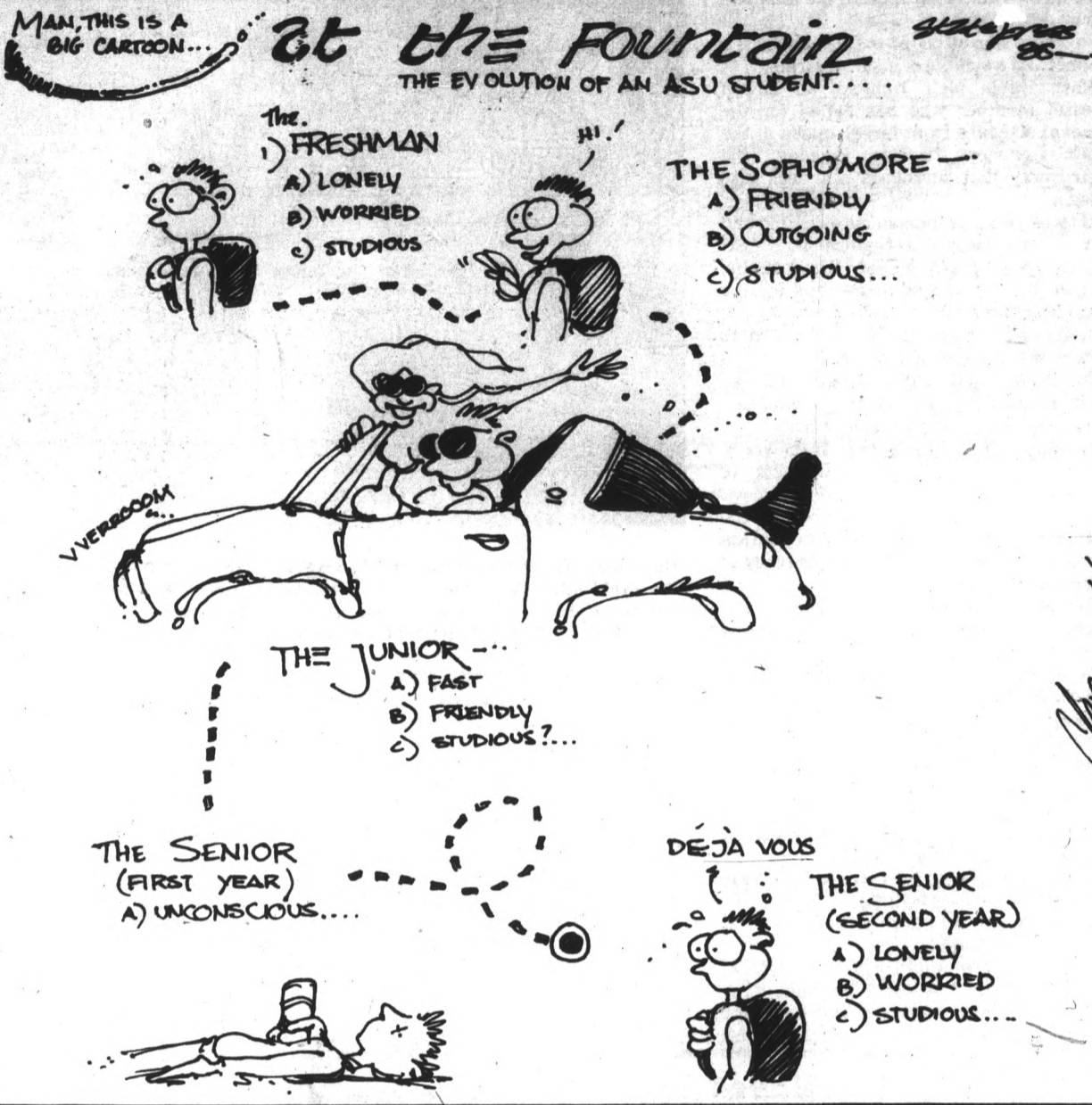
Those who scramble to 14th and 15th streets each day will be incensed. But this is an ASU problem and it should be solved on campus. Tempe is hardly a college town in the spirit of Berkeley, Madison or Ann Arbor. People actually drive to school here. Tempe is Tempe and ASU is ASU. Far be it that ever the twain should meet.

How then should the administration approach the problem? There are a fixed number of on-campus parking spaces that are allocated by price. The observation can be made that, on average, the prices for parking decals are too high. Some of the core lots rarely approach being full. Those cars that occupy these lots are more likely to be 1984 BMWs than 1976 Pintos.

Someone could make the rash insinuation that only a few well-financed students can afford to purchase the exclusive University parking decals. Of course, we won't even imply that here. The fact remains, however, that the currently poor parking situation at ASU will become acute when Tempe begins requiring the decals to park on residential streets. The quality of education surely will suffer if students can't even reasonably get to campus.

Can students expect that emergency measures will be taken to remedy this situation? Probably not. But perhaps something will be started that will resemble an effort to find a long-term solution to the problem.

Given the red-tape at ASU, it likely will take even longer to fix this problem than it will for the City of Tempe to fix the railroad crossings between Mill and Farmer.



Chasing dreams: Don't forget to have a Plan 2

Steve Waterstrat Editor



"What an embarrassing exercise," a girl behind me giggled as our professor scampered barefoot about the room rapidly muttering whatever popped into her head. She was demonstrating our next in-class assignment.

The class was called "Stretch and Strength." Formerly titled "Dance for Athletes," the original purpose of the class was to improve burly ASU athletes' flexibility, speed, and coordination. Women took an interest in the class, and now dominated this class of about 40.

The particular exercise for that day in fall of 1984 was designed to teach spontaneity, with the verbal part adding the challenge of using your mind while swinging limbs recklessly about.

At times the class was, as my female colleague pointed out, downright embarrassing. It's not easy for young people of normal awkwardness to express themselves through the performing arts in mixed company.

The athletes in the class, mostly football players, didn't take the class too seriously. They enjoyed it, but it didn't seem to carry

quite the same relevance as, say, pumping iron or doing wind sprints. So the class was a good time to clown around for most of them. When it came time for us to take turns practicing dance steps across the floor, they spent more time laughing at each other than trying to learn the routine.

But one player was different. A tall, muscular man, he worked at the steps as demonstrated by the teacher, not overly worried about what everyone else thought.

It was only later that this difference in

This certainly seemed the case with Fulcher.

As I saw No. 7 on the last Bob Hope Christmas Special with all the other all-Americans, repeating the honor for the second time, I was proud to have been in the same class him.

Then came this week's story. Fulcher evidently hadn't been such a winner in the classroom and got the boot from the University for low grades, along with nose guard Dan Saleaumua.

It may seem ironic that the athlete least in need of improvement worked the hardest at these funny little dance steps, taught by a lady built like a bean sprout.

attitude and effort made sense. I eventually found out that the player was David Fulcher, the all-American safety on the football team.

It may seem ironic that the athlete least in need of improvement worked the hardest at these funny little dance steps, taught by a lady built like a bean sprout. But then, the willingness to learn and test yourself, whatever the task, is the mark of most great achievers.

Coaches, athletes and teachers have expressions like "To be a winner on the field you have to be a winner off the field."

We've all heard of athletes being used by the system, then thrown away. For every case like that, there's a simple case of lack of academic discipline on the part of the player. Anyone can blow off classes, collect failing grades and be kicked out of school. Throw in the burden of playing big-time collegiate athletics, and it isn't too hard to catch the attention of the folks who keep track of our academic standing.

Considering the small percentage of college football players who actually ever make a living at that trade, it's a wise move for them to take full advantage of their

tenure in higher education. But when you're chasing a dream, like making it to the NFL, it's easy to push aside less crucial things like preparation for a backup career. We're taught by leaders, movies and slogans to go all out for what is important to us, so it's not surprising that athletes, like the rest of us, don't always set up an adequate Plan 2.

Indeed it can be a sad story. But in Fulcher's case, I'm not too worried. Without too much trouble he can get back into good standing with the University and finish his degree while helping the Sun Devils beat the heck out of the U of A next year. After that, playing in the pro ranks is a very likely part of his future. Fulcher doesn't even have to come back to ASU and play out his last year of eligibility in a maroon jersey.

Those are only Fulcher's on-the-field possibilities. If football doesn't work out as profession for him, I'm still not worried about him. Reporters who have interviewed him know Fulcher as an intelligent person. He just isn't the kind of guy who doesn't make it out there.

But unfortunately we aren't all cut from the same mold as David Fulcher. Not all of us have as many options to fall back on.

For the other dozens of football players who aren't all-Americans, planning an alternate career isn't planning for failure, it's showing good sense.

Coach John Cooper had a meeting with the players on Tuesday to stress the importance of academics and the help available.

I hope the coach was successful. A few dozen futures are on the line.

STATE PRESS

STEVE WATERSTRAT Editor

TOM BLODGETT Managing Editor

City Editor W. TIM AHL
Asst. City Editor MICHAEL KONZ
News Editor PATRICK J. KUCERA
Opinion Editor MICHAEL ADAMSON
Asst. Managing Editor LINDA COULSON
Photo Editor KEVIN J. LARKIN

Sports Editor DEAN OBENAUER
Asst. Sports Editor BOB HEILER
Copy Chief JACQUE CIROU
Arts Editor CINDY PEARLMAN
Asst. Arts Editor KHALI CRAWFORD
Editorial Assistant ROBBIE MATLOFF

REPORTERS: Vickie Chachere, John Conway, Ed Schubert, Robie Kakonga, Karl Bland, Dave Rook, Theresa Willetford, Andrea Han, Rob Kelton, Tippy Scott, Bob Wilson, Lauren Millette

PHOTOGRAPHERS: Ron Kuczek Jr., Rick Wiley, Theresa Keegan, Todd Green

SPORTS REPORTERS: Brad Halvorsen, Chris McKay, Jon Wiley, Andrew DeLorenzo
COPY EDITORS: Judie Galliard, Kerry Fehr, Carolyn Nelson
STAFF ARTISTS: Jon Bessione, Chip Sheehan

The State Press is published Monday through Friday during the academic year, except holidays and exam periods, at Matthews Center, Room 15, Arizona State University, Tempe, AZ 85287. Newsroom: 985-2292. Advertising & Production: 985-7572.

The State Press is the only newspaper exclusively published for and circulated on the ASU campus. The news and views published in this newspaper are not necessarily those of the ASU administration, faculty, staff or student body.

# New budget law may lower college enrollments

By DAVE ROOK  
State Press

A new federal balanced budget law may cost ASU nearly 50 percent of its student population over the next five years, a University official said.

Paul Barberini, ASU's financial aid director, said: "According to the Gramm-Rudman legislation, within the next five years, one-third to one-half of the students who are here won't be."

"It's a Cadillac without wheels. The Gramm-Rudman legislation has the greatest of intentions about doing something that is needed, but it won't work."

According to the Gramm-Rudman bill, introduced by Senators Phil Gramm, R-Texas, and Warren B. Rudman, R-N.H., \$11.7 billion will be trimmed from federal spending for the 1986 fiscal year.

The law, which becomes effective on March 1, will cut a variety of government appropriations in an attempt to wipe out the deficit by 1991.

The amendment also makes significant cuts in education appropriations for the 1986 fiscal year.

"It's probably the most complex political and economical piece of legislation I've ever seen," said Barberini. "The best estimate from what we can understand for next year will be about a \$260 million reduction overall (in education)."

According to the bill, the government will charge an additional .5 percent to every student who receives a Guaranteed Student Loan after March 1.

"In addition, it's likely that Pell Grants will be reduced and undergraduates will be the only eligible applicants," Barberini said.

According to a linear-reduction plan, only those students who qualify for a maximum grant would have their Pell Grants fully funded next year.

Other students will face significant reductions.

"When you combine these cuts with rising tuition costs, it will only become more difficult for students to afford an education," Barberini said. "Under what

we know about Gramm-Rudman, the 1986-87 fiscal years' cuts would be in the area of 30 percent."

Barberini said the cuts for 1986 are significantly smaller than those for 1987 because of the upcoming election year.

In addition, the smaller cuts will serve as a "trial balloon" for public reaction.

"Political reaction will be forthcoming from state groups, and I think Congress will react to public sentiment," Barberini said.

Congressman Mike Synar, D-Okla., has already filed suit in a district court against the Gramm-Rudman law.

Synar argues that the automatic budget cutting provisions of the legislation, which can only be enacted if Congress delegates its legislative authority to the president, is unconstitutional.

According to legal processes outlined in the bill, the three-panel district court in Washington is expected to rule very quickly.

In addition, an immediate appeal may go directly to the U.S. Supreme Court for a decision before March 1.



Paul Barberini

# Computerized exchange lets students bypass bookstores

By KARI BLAND  
State Press

A new ASU book exchange is allowing students to buy or sell used books without waiting in long lines or being told the books are "too used" to be resold.

Bill Brown, student director of the exchange, said students can look up titles on a computer printout, which lists books being sold by students.

He said the list, which provides the book's price and the seller's phone number, will be posted outside the MU Information Desk. The books are listed by college, class and book title.

To have a book listed in the printout, students should either call 965-1248 or go to the Associated Students of ASU offices on the second floor of the MU.

There is no charge for the service.

Campus Affairs Vice President Amy Young, who initiated the project, said the process was designed entirely "to save the students money."

Brown said a student exchange not only saves students

**'There are people willing to buy the books. Our biggest need is to get books into the computer for them to buy.'**  
— George Pisaruk

money, but the student selling the book also will be able to provide another student with information about the class.

George Pisaruk, student assistant director of the exchange, said the new program also will help students when

a book is not available in the campus bookstore.

Brown said that although the exchange is providing "an option to the bookstore," the bookstore is very supportive of their endeavor.

He said the computerized system is best for a university of this size because it eliminates inventory and only students exchange money.

Pisaruk said the response to the book exchange has been good, but there are more buyers than sellers.

"There are people willing to buy the books," he said. "Our biggest need is to get books into the computer for them to buy."

The exchange information is stored on an IBM PC in the ASASU Senate office. The computer program was written by a friend of Brown's at Columbia University.

**RUNDLE'S LIQUORS & MKT.**  
730 S. MILL  
Corner Mill & University Ave.

ANDRE CHAMPAGNES 750 ml \$2.97  
TROPICO WINE COOLERS 4 pk \$1.89  
MEISTER BRAU BEER 6-pack \$1.89  
PLAYBOY Used Magazines \$.94

Haagen Daza Natural Ice Cream, Adult Magazines, Groceries, Ice, Wines, over 40 Imported Beers.

967-9079

**SUN DEVIL HAIRCUTTERS**  
"Stylists who care enough to listen"

Special Shampoo, Conditioning, Precision Cut, Blow Dry \$4.00 OFF

Regular Price Men \$13, Women \$15, Hrs. Mon-Fri 9-5, Sat 9-5

130 E. University Dr. "In The Arches"  
Limited Offer. Call Now! 966-5462

**BUMPER BLUES?  
TURN THEM INTO  
YESTERDAY'S NEWS ...**

**SHARE THE RIDE  
TO ASU**

The ASASU Tenants/Commuter Students Association in cooperation with the Phoenix Transit System offers a free rideshare program.

Come by our office today and fill out an application. We're located in the Memorial Union in Room 210-A.

**Call 965-6246**

**CAREER FIESTA**

**Thursday, Jan. 23**  
**Morning - Non-Technical Manufacturing, Health Services**

Vestal Labs, Frito Lay, Kraft, Inc., Conoco, Phoenix Baptist Hospital & Medical Center, American Pharmaceutical Co. - A Div. of Amer. Hosp. Supply

**Afternoon - Merchandising, Distribution, Public Service Utilities, Transportation**

America West Airlines, Armstrong World Industries, Inc., Broadway Dept. Stores, Broadway Southwest, Bullock's Dept. Stores, Atlantic Richfield Co., Martin Marrieta, May D & F, Dow Chemical USA, First Investors Corp., H.E.B. Foods/Drugs, Vestal Labs, Mountain Bell, Arizona Public Service, Conoco, AT&T (Western Electric Products - Phoenix Works), J.W. Robinson's, K Mart Corp., Kraft, Inc., Sav-on Drugs, Inc., Macy's of Calif., Pacific Gas & Electric Co., Southwestern Telecommunications, Inc.

Also: "Dress For Success" Fashion Show, 1 p.m. MU Pima Room  
Courtesy of Peppercorn, Pomeroy's & Plaza Three  
"Translating Your Educational Experience Into A Job" MU Rm. 213 Santa Cruz, 2-3 p.m.  
Representatives will be participating in informal round table discussions in the Arizona Room of the MU.  
Members of Baseline Rotary club will be available each day representing various employment areas.

**Tomorrow, Friday, Jan. 24**  
**Morning - Cultural Entertainment Organizations, Arts**  
**Afternoon - Government Agencies, Military**

Also: "How To Plan For The Future," 12:30 p.m. MU Room 211 Yuma  
"Discrimination In The Job Market," 12:30 p.m. MU Room 213 Santa Cruz

Sponsored by: Career Services, ASASU Graduate Student Association, Minority Affairs Board, Special Events, Women's Services

**For More Information Call 965-2350**

### Smart Styling with PHD

Perm ..... \$30<sup>00</sup> & Up  
 Cuts ..... \$9<sup>00</sup>  
 Student Appointment Special  
 (After 4th cut get 5th cut FREE)

Eyelash & Brow Tinting ..... \$8<sup>95</sup>

Private Booths  
**Call Today**



Mon.-Sat 9:30-9  
 Sunday 11-4

966-6111 Please Call for Appointment

Across from the Cornerstone  
 933 E. UNIVERSITY  
 Tempe Towne Plaza  
 (S.E. Corner Rural & University)

**PHD Professional Hair Designers**  
 Men & Women Hair Styling

WITH THIS AD OR ASU I.D.



5-pc. Brass & Glass Dinette  
 (Assembly Required)  
**\$149<sup>95</sup>**

4-Drawer Chest **\$29.95**

**-BED SALE-**

Twin Set \$69  
 Full Set \$79  
 Queen Set \$119

2077 E. University  
 Tempe • 966-6252

**FURNITURE PLUS**



## DOUBLE RANCH

Have you Heard?  
 is having a "super"  
**Super Bowl Sunday!**  
 (NO COVER)

Coors Specials  
 Pitchers ..... \$2.50  
 Longnecks ..... 90¢  
 Mugs ..... 60¢

**Super Bowl XX** FREE PRIZE DRAWINGS  
 GIVE AWAY  
 (Hat, Shirts, Mirror)

PLUS ... Look at the deals the  
 Double C Ranch has every week

Happy Hour — Every day 4-7 p.m.  
 Mon. — Pitchers just \$1.50  
 Tues. & Thurs. — Ladies Night,  
 well drinks 50¢ for the ladies  
 Wed. — Well drinks 50¢ with your  
 business card  
 Fri. & Sat. — Live music from  
 Concorde

So Let's Party

**1420 E. APACHE BLVD. • 968-9375**

# ★ TODAY ★

Public Relations  
 1st meeting  
 6 p.m.  
 MU Gila Rm. 214

*Be There!*

**PRSSA** Public Relations  
 Student Society  
 of America

Domino's Pizza Brings Back

# SUPER SUNDAY

Our Most Popular Special  
 Ever Returns to ASU

**ONLY \$4.49**  
 For any 12" medium 1-item pizza.  
**COKES ONLY 25¢**  
 (Limit 3 per pizza)

Additional items only 75¢. Just ask for the  
 Special. Good 11:00am-12:00mid. on Sunday  
 only for a limited time.  
 No coupon necessary — no other offer accepted  
 with this special. Price subject to tax.

**HOURS:**  
 11:00am-1:30am Sun.-Thurs.  
 11:00am-2:30am Fri. & Sat.

©1985 Domino's Pizza, Inc.  
 Limited delivery area.

*One call does it all!*

**DOMINO'S PIZZA DELIVERS FREE.**

The Pizza People of ASU  
**968-5555**  
 903 S. Rural

# SUPER BOWL SUNDAY

at



the **Bandersnatch** 1983

All day! Hot Dogs Chili All night!

2 for 1 SHOTS  
 \$2.95 PITCHERS

125 E. 5th St. • 966-4438

**GREAT FOR LUNCH**

\$1.00 OFF any 12" medium 2 or more item pizza ordered from 11:00am - 3:00pm only. One coupon per pizza. Expires: 2/14/86

Fast, Free Delivery™  
**968-5555**  
 903 S. Rural Rd.

SP11-1

**\$1.25**

\$1.25 OFF a 16" extra large Sun Devil Special or 3 or more item pizza. One coupon per pizza. Expires: 2/14/86

Fast, Free Delivery™  
**968-5555**  
 903 S. Rural

SP11-3

**3 FREE COKES**

3 Free Cokes with any 16" extra large 2 or more item pizza. One coupon per pizza. Expires: 2/14/86

Fast, Free Delivery™  
**968-5555**  
 903 S. Rural

SP11-2

**DINNER SPECIAL**

\$1.00 OFF any size pizza ordered from 5:00pm — 8:00pm only. One coupon per pizza. Expires: 2/14/86

Fast, Free Delivery™  
**968-5555**  
 903 S. Rural

SP11-4

# 2 deans to solve transitional problems

By LINDA COULSON  
State Press

The ASU College of Education is recovering from a negative reputation, and professors are anxiously awaiting the arrival of a new dean in July, the college's acting dean said.

"We have a healthy college, and morale is on the rise," said Raymond Kulhavy, who temporarily took over the college in July until a permanent dean could be appointed.

Gladys Styles Johnson, an education professor at Rutgers University, was named to the position in November after a nine-month nationwide search.

She will join the ASU faculty on July 1.

Until then, Kulhavy said he will be working closely with Johnson to build new programs and continue positive growth in the college.

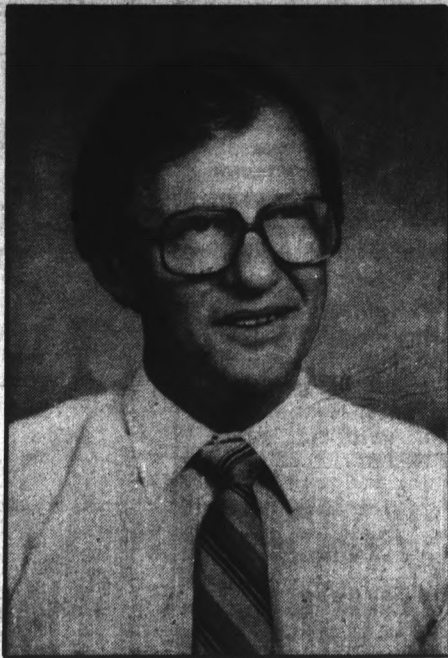
"People are looking forward to the future and Johnson's arrival," he said.

Kulhavy agreed to replace former dean Robert Stout, who resigned in February, for one year.

Kulhavy, the former chairman of ASU's educational psychology department, said he is still baffled by the education college's negative reputation.

"Sure we have problems like everybody else, but I don't feel any need for this pessimism," he said. "ASU is the sixth largest education college in the United States and the largest this side of the Mississippi."

"The claim that the college is falling apart is just not true — it never was true."



Raymond W. Kulhavy

I'm mystified as to why we have that reputation."

In a phone interview from New Jersey, Johnson agreed with Kulhavy and said, "ASU's College of Education is at a point of transition, but it has a group of top-notch faculty and programs that are on par with the rest of the nation."

She said there will be a "total

reorganization" of the college when she arrives but declined to name specific changes.

"It's a little premature and fragile to discuss the changes I plan to make before I have addressed the faculty about them," Johnson said. "I want to work with the faculty, and I can't do that until I'm there."

Kulhavy said he is looking forward to Johnson's arrival and hopes to make the transition smoother through communication.

Johnson's frequent trips to ASU and constant phone conversations are a major part of the transition process, Kulhavy said.

Kulhavy said he and Johnson will be working together to formulate next semester's budget and develop the post-baccalaureate training program, the college's latest project.

The post-baccalaureate training program allows people who have a bachelor's degree in any area to spend a year taking basic education courses.

After Johnson takes over as dean, Kulhavy said he plans to take his wife and three daughters to Italy for a year.

"I just found out today that I'm a finalist for a Fulbright scholarship at the University of Rome in Italy," he said.

The Fulbright scholarship is a government scholarship given for research.

"I'd like to see what students are like in other places," Kulhavy said. "Even if I don't get the scholarship, we'll probably go anyway."

## Duke gives honorary degree to Iacocca despite controversy

By the College Press Service  
WASHINGTON, D.C. — Somewhat motivated by the specter of Richard Nixon, Duke University says it will grant Chrysler chairman and business superstar Lee Iacocca an honorary degree after all.

Officials say there was never a question about giving Iacocca a degree, despite a nationally syndicated column that claimed they were going to refuse to grant him one.

The school's Academic Council recently approved giving a degree to Iacocca, with "only a few negative votes."

In November, nationally syndicated columnist Robert Novak claimed some members of Duke's Academic Council wanted to prevent Iacocca from getting a degree when he delivers the commencement address next spring.

Novak likened the alleged dissatisfaction with Iacocca to Duke's 1983 decision not to host the Richard Nixon Presidential Library.

Nixon himself dropped Duke from his list of locales when Duke wanted to insure public access to the Nixon records and to scale down the size of the museum attached to the library. The library is now being built in San Clemente, Calif., with help from a foundation associated with Chapman College.

by Michael Ritter



**JONATHAN'S PIZZA**  
FAST, FREE DELIVERY  
FREE LITER OF SOFT DRINK WITH ANY PIZZA PURCHASE. COKE, DIETCOKE, SPRITE, DR. PEPPER.

ASU LOCATION  
829-1717

933 E. University  
Tempe Towne Plaza  
(Across from The Cornerstone)

HOURS: MON.-FRI. 4 P.M. • SAT. & SUN. AT 11 A.M.

<b>JONATHAN'S PIZZA</b> 829-1717 <b>\$7.25</b> any two topping 16" pizza One coupon per pizza. Good through 2-9-86.	<b>JONATHAN'S PIZZA</b> 829-1717 <b>\$5.50</b> any two topping 12" pizza One coupon per pizza. Good through 2-9-86.
---	---

**Aaron's Car Wash**  
INTRODUCING THE BRUSHLESS AUTOMATIC

**Advantages:**

- No brushes to scratch paint
- Spot free rinse with every wash
- Washes undercarriage
- Always open
- Only \$2 per wash

**CHECK US OUT**

**Aaron's Car Wash**  
"Home of the 25¢ power vac"  
1201 E. Apache  
SE Corner of Terrace & Apache  
(1 blk. East of Rural)

**Coupon**  
The Brushless Automatic  
**FREE WAX**  
with every wash  
Expires 1-26-86.

**1986 NEW YEAR'S SPECIAL**  
 REDUCED RENTS ON SPACIOUS APARTMENTS:  
**1BR'S FROM \$335**  
**2BR'S FROM \$435**  
**3BR'S FROM \$675**  
**PLUS—LAST MONTH FREE**  
 ON 9 OR 12-MONTH LEASES  
 FAMILY APARTMENTS AVAILABLE  
 SMALL PETS WELCOMED!  
**PALM TREE VILLAGE**  
 1216 E. VISTA DEL CERRO  
 (1/2 MILE FROM A.S.U.)  
**966-6729**  
 NEW RESIDENTS ONLY.

Home At Last. *Fot & Carakadon*

**THE MICRO-REL COMBINATION ENGINEERS...**

...if you're ready for a challenging position accompanied by high visibility, you owe it to yourself to consider the engineering opportunities with Micro-Rel. As a major division of a Fortune 500 Company, we supply the micro-electronics industry with custom IC's and Hybrids for many specialty applications. Our complete semiconductor facility allows us to control products from development through production, contributing to continued company growth and broad technical assignments.

*Electrical & Manufacturing Engineers* are currently being considered for entry level professional openings. Make your move to the forefront of the electronics field with a company committed to excellence. Discover the winning combination for yourself. *Micro-Rel/Medtronic, Inc., 2343 W. 10th Place, Tempe, AZ 85281.*

- On-Campus Interviews ■
- February 5, 1986 ■

See your Placement Office today

An Equal Opportunity Employer  
 US Citizenship Required



**MAKE YOUR SPRING BREAK PLANS NOW!!**

SKI PACKAGES  
**FROM \$149<sup>00</sup>**

MAZATLAN TRIPS  
**FROM \$199<sup>00</sup>**

**travelmore**  
 The Cornerstone  
 Rural & University  
**967-7545**

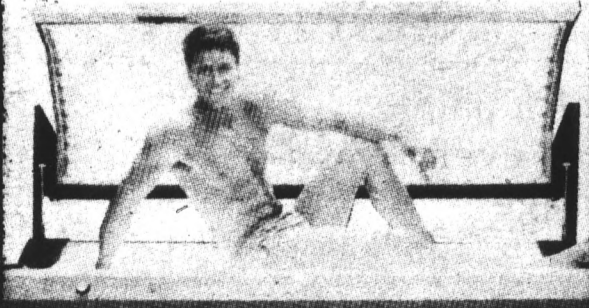
**HAVE DONNA STAY IN YOUR ROOM FOR 3 BUCKS**



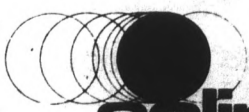
and for an additional .50¢ our model will sign a *very personal* message to anyone (even you!) and for any occasion (birthday, graduation, etc.) you specify — great for gifts! This high quality 16x20" black and white poster is suitable for framing and will be delivered right to your mailbox. Please specify poster #69 and send your name and address along with \$3.00 + .50¢ P&H (+.50¢ for personal message) AZ residents add 6.5% sales tax—check or money order to:

**BIG LOUIE PRODUCTIONS**  
 Suite 123-260 - 3370 N. Hayden Rd.  
 Scottsdale, AZ 85251

**WELCOME BACK TAN NOW ASK US HOW**



**2 VISITS FOR \$7.50**  
 (Bring in this ad.)



**966-2150**  
 suntan center

**eclipse**

55 E. Broadway (Corner of Broadway & Mill)  
 Mon-Fri 8 a.m.-10 p.m. Sat 8 a.m.-6 p.m. Sun 12 noon-5 p.m.

**Surprizes**  
*Just for the fun of it!*



**Pacific Eyes & T's**



presents  
**Club Med Tropical Thursdays**  
**Thursday, January 22, 1986**

*This Thursday put on your Tropical prints, grab your shades and head over to Surprizes for The CLUB MED Tropical Thursday! Be one of the first 500 thru the doors at 8:00 pm and get leid and the first 100 will also receive a pair of Pacific Eyes & T's "Wayfarer" style sunglasses. This week play our tropical games and you could have a chance to win Malibu Tee Shirts, Malibu Signs, Beach Wardrobes and European Style Sunglasses from Pacific Eyes & T's "Phoenixs sunglass leader." Plus you could enter a drawing for a windsurfer to be drawn at every four weeks! This week win a trip for two to CLUB MED in Guaymas, Mexico. All night Malibu Rum drinks are \$1 and all Tropical drinks are just \$1.75. So this Thursday everyone go tropical at the CLUB MED Tropical Thursday! Be there, Aloha!!!*

**919 E. APACHE  
 TEMPE, AZ**



# New, expanded bus routes ease ASU commuting

By ANDREA HAN  
State Press

A new Phoenix Transit grid system will make it easier for ASU students commuting by bus, an agency representative said.

Helen Keating, a public relations representative, said the Phoenix Transit System has simplified the bus numbering system, changed existing routes and added new routes.

Bob Hancock, Associated Students of ASU commuter student coordinator, said about 15 percent of the ASU population that commutes to the University uses the Phoenix bus system.

Keating said Phoenix is restructuring the number system because routes will be designed on a new grid system.

Bus routes will be numbered according to the streets they run on, she said.

For example, the bus that runs on Seventh Street will be called "Seven."

Buses running east-west on streets like Camelback Road will be numbered according to the block. Camelback is on the 5000 block north and will be numbered 50, she said.

Among the changes, Phoenix canceled Route 22, which ran from 67th Avenue and Camelback Road to ASU, because of the new Scottsdale bus system, Keating said.

Route 22 has been renumbered Route 50 and will run along Camelback Road to Arcadia Road. The route will no longer extend to ASU, she said.

Students will now have the option between two Phoenix routes and a Scottsdale route, Keating said.

Route One will run every half-hour from Phoenix to ASU and will run east on Washington Street, south on Mill Avenue, and east to Fifth Street and College Avenue.

"Route One will give residents in south Phoenix easier access to ASU and give them more direct service," she said.

The current Phoenix system does not have a route running

to ASU from South Phoenix.

Keating said the new Route One will eliminate residents from "backtracking" to downtown Phoenix and taking the Route 22 bus back to Tempe.

Route 44 will run every half hour, traveling south on 44th Street, east on Broadway Road, north on Mill and east on Fifth to College.

Route 44 will take students who are currently using Route 22 to Tempe and Mesa, she said.

The new Scottsdale Connection will run every hour on Scottsdale Road south to ASU.

The bus system will charge 75 cents and run Monday through Saturday from 6 a.m. to 7 p.m.

Keating said some commuters have accepted the changes and think the new route system is easier, but added that many people are confused.

"We simplified the number and route system to make it easier to get around the Valley, especially to the other cities," she said.

"It is just going to take awhile for people to know and get used to the system."

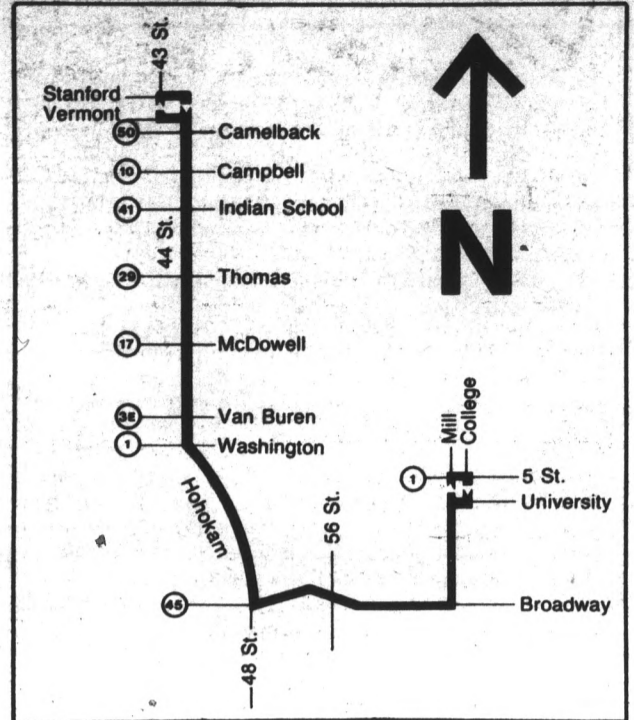
In order to handle all questions about the changes, the Phoenix Transit system has advertised the changes on the radio and printed 200,000 bus route booklets, she said.

The booklets contain route and bus information to all routes in Phoenix, Tempe and Mesa, Keating said.

Hancock said the booklets and other route timetables are available at the ASASU Tenants Commuter Association, which is located in the MU room 210A.

The commuter association has been working closely with the Phoenix Transit System and Scottsdale Connection to inform students about the changes, Hancock said.

Phoenix Transit had a booth on Cady Mall on Tuesday and Wednesday answering questions and handing out route schedules, he said.



Phoenix Transit will begin operation of Route 44 on Monday. The route will service 44th Street and provide shuttles to ASU. The circled numbers indicate intersecting routes.

"The booth was a tremendous help," Hancock said. "We figured we reached about 500 people each day."

## collage

Collage, a free public service provided by the State Press to announce meetings of legitimate campus organizations and clubs, is published every Tuesday and Thursday. To be included, please obtain a form at the State Press reception desk in the basement of Matthews Center. For Tuesday's paper the insert must be filed by 10 a.m. Monday and for Thursday's paper the deadline is 10 a.m. Wednesday.

### TODAY

Child Share will hold a discussion, support and networking group for parenting students at 11:30 a.m. in the Student Life Conference Room (lower

level of the MU).

Feminists United for Action and the Women's Studies Student Association will sponsor "Ladies Against Women," a street theater group, which will appear on Cady Mall at noon.

Students Against Apartheid will hold a general meeting in the MU Apache Room at 7 p.m.

### FRIDAY

Hillel Jewish Student Center will hold Shabbat services followed by the showing of "Yentl," "Zelig and the Astronauts" and "American Comedies of Religious Quest." The services will be held at 7:30 p.m. at the Hillel Center, 1012 S. Mill Ave.

### SATURDAY

The Biofeedback Society of Arizona will have its annual meeting from 8:30 a.m. to 5 p.m. in the Phillips Auditorium of Phoenix St. Luke's Hospital, 525 N. 18th St. The meeting will cover "Updating Your Biofeedback Skills."

### SUNDAY

Good Shepherd Lutheran Church will hold a worship service at 10:15 a.m. at 1430 S. McAllister Ave.

Hillel Jewish Student Center will sponsor the free United Jewish Appeal Campaign Brunch at 11 a.m. at the center, 1012 S. Mill Ave. Those attending will be asked to make a pledge.

### MONDAY

Coalition for World Peace will sponsor a lecture by Mazda, an ASU student from Iran, who will speak on "Building Peace in the Middle East." The lecture begins at noon in the MU Santa Cruz Room.

ASU American Federation of Teachers and University Employees Local #2050 will hold the first meeting of the spring semester at 12:30 p.m. in the MU Apache Room. All University faculty and staff are welcome.

Arizona Outing Club will meet in the MU Pima Room at 7:30 p.m. and show the climbing / skiing film "Fall Line."

## Bugs Bunny easy favorite of collegians

By the National On-Campus Report

It is tough to reach the collegiate market, advertisers say, because college students don't watch television. The problem, however, may be in the timing of the ads, according to a study by a Radford University business professor.

Albert C. Smith surveyed the television viewing habits of students at Radford, Emory and Henry Colleges, New River Community College and Virginia Intermont, and found that 82 percent watch Saturday morning cartoons. More than a third watch at least every other Saturday.

"Prime time hours are spent dating, at club meetings, intramurals or sporting events... (but) Saturday is more relaxed, and cartoons serve as an escape from the reality of the past school week."

The "classics" such as Bugs Bunny, are heavily favored by students over the newer "high-tech" cartoons, according to Smith.

# PRANKSTER'S GAR & BRILL

1024 EAST BROADWAY  
967-8875

—orders to go— **BEST BOOD & FEVERAGE IN TEMPE!** —orders to go—

<p style="text-align: center;"><b>WEDNESDAY</b></p> <p style="text-align: center;">CHICKEN WINGS 12¢ EACH</p> <p style="text-align: center;">ALL DAY &amp; ALL NIGHT</p> <p style="text-align: center;">HOT, BBQ, MIXED OR PLAIN DIP EM YOURSELF</p>	<p style="text-align: center;"><b>SUPER BOWL SUNDAY</b></p> <p style="text-align: center;">TWO GIANT BIG SCREEN TV'S</p> <p style="text-align: center;">ALSO our unbelievable 2-for-1 Pizzas on Sunday →</p>	<p style="text-align: center;"><b>SUNDAY</b></p> <p style="text-align: center;">Every Sunday 2 for 1 <b>PIZZAS</b></p> <p style="text-align: center;">Buy A Large Get A Large FREE Buy A Small Get A Small FREE</p> <p style="text-align: center;">From 11 a.m.-1 a.m. All Day, All Night</p> <p style="text-align: center;">HAPPY HOUR 10 p.m.-1 a.m.</p>
--	--	--

**FREE LUNCH** BUY ONE GET THE NEXT ONE OF EQUAL OR LESSER VALUE FREE EVERY DAY 11-4

GOOD THROUGH JAN. 31, 1986.

**Prankster's Gar & Brill, 1024 E. Broadway • 967-8875**

# police report

A man who allegedly exposed himself to a woman in Lot 1 escaped capture Tuesday evening after leading University police in a high-speed chase through Tempe, police said.

A woman who refused to be identified told an ASU officer she saw a man wearing a T-shirt and nothing else standing by a gold truck in Lot 1, located south of Tempe Center.

The officer went to the lot and saw a man who fit the woman's description sitting in a gold truck. When the man noticed the policeman, he drove from the

area and headed west on 13th Street at high speed. The officer turned on his lights and sirens and pursued the truck, which stopped in the Tempe Center parking lot. Police said the officer walked up to the driver's side of the car, at which point the man drove rapidly out of the area.

The policeman pursued the man, who sped through two stop signs and one red light before heading into a suburban area.

The man allegedly drove onto the lawn of a residence on Farmer Avenue and crashed into an orange tree.

When the officer arrived at the residence, the man had disappeared and left the keys in the ignition.

The officer knocked on the door of the house. The woman who answered said she was unaware of the incident. The officer said she seemed unconcerned.

Police said they are investigating the incident. The man faces charges of felony fleeing and possibly charges of

criminal damage.

In other activity, University police reported the following incidents in the 24-hour period ending at 6:30 a.m. Wednesday:

•A woman's class ring valued at \$225 and a man's class ring valued at \$250 were stolen from a display table in front of the ASU Bookstore Tuesday afternoon, police said.

An employee of the Art Carved Company, who makes the rings, told police she did not notice anything unusual before discovering the loss.

•A VCR valued at \$550 was stolen from the lecture hall in the Farmer Education Building between Monday, Dec. 16, and Tuesday, police said.

An employee told police the room was secured during the time period. There were no signs of forced entry.

— THERESA WILLEFORD

# Job prospects considered 'flat' for college grads

By the College Press Service  
EVANS'ION, Ill. — Spring grads' job prospects may not be quite as positive as previous reports predicted, the latest testing of American businesses' hiring plans indicates.

The previous reports, moreover, suggested only slightly better job prospects than students had last year, when the job market was at a nadir.

"I expect it to be flat, maybe plus or minus 1 percent compared to last year," said Victor Lindquist, supervisor of Northwestern University's Endicott Report, the most recent of the three major surveys on job prospects for graduating seniors.

And previously "hot" engineering, computer and chemistry grads are going to have a much harder time finding jobs than counterparts of the last few years.

"Students are going to have to commit to a longer job search and be satisfied with fewer choices," Lindquist said.

In late November, the College Placement Council (CPC) projected firms will make 2 percent more job offers than they did last spring, while in December, Michigan State's national survey of business hiring plans predicted a 1.4 percent rise in job offers for '86 grads.

The three surveys asked companies throughout the country how many first-time job seekers they plan to hire from the next graduating class.

Lindquist said his report was less optimistic because it polled firms three months after the CPC did and because it does not sample government agencies' plans like the CPC does.

"Our report is pretty close to (John)

Shingleton's at Michigan (State)," he said. "All three surveys sample different populations," said Rhea Nagle of the CPC.

For only the third time in 20 years, Lindquist's "population" had a declining interest in hiring engineering majors. There will be 6 percent fewer job offers for them this year, the report said.

The Endicott Report also predicts a 9-percent decrease in offers to chemistry majors. The other reports anticipated a "slight" increase.

The Northwestern survey does agree that computer majors will suffer a 5-percent decrease in employment opportunities.

Not all the news is gloomy, however.

There is, Lindquist found, a continuing employer interest in business and marketing degrees.

And liberal arts grads have better job

prospects this year, the Endicott Report found.

Firms planned to make 12 percent more job offers to liberal arts grads than they did last year, Lindquist said.

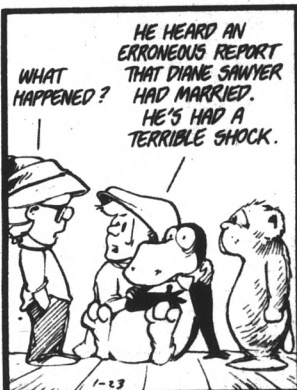
Companies think liberal arts majors are "more able to deal with disparate thoughts and ideas. Their thinking is more holistic," Lindquist said.

"We need people who can translate computers into usable terms," said Steve Bennett, author of "Playing Hardball with Soft Skills," a soon-to-be-released book about how liberal arts majors can break into the job market.

Lindquist said American Telephone and Telegraph (AT&T) recruits liberal arts majors as managers because they perform better than recipients of any other degree.

## BLOOM COUNTY

by Berke Breathed



## From the creator of 'Love Connection'

SO MANY STUDENTS CHEAT — often by paying proxies to take their exams — that in large classes, an Oklahoma State University professor is using a video camera during his tests. After the exam, students file by the lens, state their names and drop off their papers. Although no cheaters have been caught, the professor says the camera provides a "high bluff factor." Students are complaining that the camera invades their privacy, makes them anxious and even slows down the test.



**Today thru Saturday**

**SALE**



# Serious Sidewalk Sale!

We're phasing out Winter to make room for Spring!  
Serious savings on the following examples plus much, much more!

20%-30%  
**SAVINGS**



Shetland wool, lambswool, cotton and cashmere sweaters.



Long sleeve cotton flannel, corduroy & madras sport shirts.

**SAVE 25%**

**SAVE 25%**



Winter slacks in wool flannel, brushed cotton drill cloth & corduroy.



Leather, wool & cotton shell outerwear jackets.

20%-30%  
**SAVINGS**

Similar discounts on fine cotton dress shirts, all-silk neckwear, seasonal suits & sport coats.

706 South Forest • 967-8747 • Tempe  
One block north of University  
Monday thru Saturday • 10-6  
Thursdays until 8:30  
Mastercard • Visa • American Express

# Students to get hands dirty; 10,000 plants given to ASU

By LAUREN MILLETTE  
State Press

A donation from the Paradise Valley Water Company will bring new life to campus, ASU's acting supervisor of grounds and maintenance said.

Keith Warner said, "Around the first of the year we were given a donation of 10,000 potted trees, shrubs and flowers."

The plant life comes from a company-owned Scottsdale nursery which is located off of Miller Road.

Everything from eucalyptus, pine, palm and palo verde trees to spring flowers and desert cacti will be transported to a six-acre lot on the northeast end of campus within the next 30 days, Warner said.

The plants will be stored in a new nursery area near the animal research center that previously had been used for property salvage, he said.

Although most of the plants will be

transplanted in the new nursery, "some will probably find their way to the west side (of campus) and some will be used for replacing dead plants around campus," Warner said.

"Curtis Schultz is in charge of the operation and will care for the plants while we find places for them."

A team of five students has been temporarily hired to survey the campus grounds, and map and measure areas that need landscaping work, he said.

"This is part of a recent program that utilizes students with majors like architecture, business or graphic arts, or other majors that relate to the work that needs to be done around here," he said.

The money to support the student workers comes from a fund called salary savings, or money the University saves on wages when a long-time ASU employee leaves and a new employee comes in on starting salary.



Staff photo by T.A. Keegan

Don Dickerman, acting assistant director of the building and grounds section of the Physical Plant, looks over some of the shrubs donated to ASU by Paradise Valley Water Company.

## 2 ASU scholarships available from education alumni group

By ED SCHUBERT  
State Press

An alumni organization is offering two scholarships of at least \$250 for qualified undergraduates in the College of Education.

Pam Gomez, program chairwoman for the College of Education Alumni Association, said two scholarships of \$250 or more will be available each semester.

"We would like to let people know there are scholarships available to education students through the alumni association," she said.

Lisa Wright, the alumni association's secretary, said the scholarship money comes from the interest of the College of Education Alumni Association's trust fund.

Wright said one scholarship will be awarded strictly according to academic merit and requires a minimum grade point average of 3.0.

Another scholarship would take the student's financial need into account and requires a minimum GPA of 2.5, Wright said.

Students interested in the scholarships should contact the Development Office at the Alumni Center.

## College enrollment falling among blacks

By the College Press Service

ATLANTA, Ga. — There will be fewer black students in college in 1990 than today if the present trends continue, says a new study by the Southern Regional Education Board (SREB).

Since 1976, while a greater percentage of college-aged students have been registering for classes, black students' rate of increase for college attendance has trailed the total enrollment growth by a larger and larger margin.

And since 1982, growth "has been at a standstill," says Joseph Marks, author of the SREB study, "The Enrollment of Black Students in Higher Education: Can Declines Be Prevented?"

Marks found that while more black students are going to college each year, their enrollment growth rate actually declined by over 8 percent from 1976 to 1982.

At the same time, white students' college-going rates increased, even though whites' high school enrollment and graduation rates suffered a greater decline than blacks'.

Moreover, the number of black students completing college increased only 9 percent from 1976 to 1982.

But from the mid-1960s through 1970, black students' graduation rates grew a whopping 60 percent, thanks to "successful integration" and "people realizing the door to education was open."

Mark blames black students' inability to obtain financial aid and better job prospects for making "the college-going rate plummet."

Financial aid also played a major role on black students' dropout rates, the SREB found. It is also said a scarcity of minority professors and administrators made black students feel more isolated and less comfortable

staying in school.

The SREB's report said that it hoped to improve high school retention levels and to "give students a better college prep education while in high school."

Secondary schools should also provide better college advice earlier in high school, Mark recommends.

The SREB's concern, Mark says, is "educating students well enough so they can handle college academics once they've been recruited."

The SREB feared the school reform movement, begun in the mid-1970s, slowed the growth of black enrollment. Marks found higher admissions standards did indeed keep some black students out of college.

In a paper published separately last week, Stanford professor Harry Levin found many of the school reform measures adopted in recent years ignore the needs of as many as 30 percent of the nation's students.

### リクルート就職セミナーのお知らせ

留学生の皆さん、いかがお過ごしですか。

また、こちらに来られたばかりの方、そろそろ卒業をひかえた方、卒業後の進路についてどのようにお考えでしょうか。

最近、日本では、留学生を積極的に採用したいという企業が、着実に増えています。

そこで株式会社リクルートは、昨年2月、現地法人 RECRUIT U.S.A., INC. を設立し、留学生に対する就職情報の提供を始めています。

とく米国では入手しづらい就職の情報を、たくさんの方々にお届けしたいと考えています。そこで、このたび以下のように、就職に関する情報交換の場をもちたいと考えました。当日は、日本の企業の採用状況や近々募集する企業の情報も提供しますので、この機会に是非おさそい合わせの上、ご参加下さるようお願いいたします。

1. DATE Jan. 29\*

2. PLACE Memorial Union, Rm 214

3. 内 容

\*If unable to attend, please call our toll free number.

4. 連絡先 RECRUIT U.S.A., INC.  
700 S. Flower St., Suite 3210  
Los Angeles, CA 90017  
☎1-800-325-9759  
☎1-800-423-3387 (In California)  
担当 神田

RECRUIT U.S.A., INC.



## SPEED READING COURSES FEBRUARY 3 THROUGH MARCH 6, 1986

A special five-week course, based on the Sack-Yourman Speed Reading Program, will be offered to graduates, undergraduates, faculty, staff and the community. This special program requires pre- and post-reading rate testing, reading of timed passages, and development of college level vocabulary.

**REGISTRATION:** January 27-January 31, 1986  
Monday-Friday — 10 a.m.-2:30 p.m.  
Payne Hall — Reading Education — Room B-112


**SECTIONS:**  
A. Monday ..... 6:30 p.m.-9:00 p.m.  
B. Tuesday ..... 6:30 p.m.-9:00 p.m.  
C. Thursday ..... 6:30 p.m.-9:00 p.m.

**FEE:** \$30

**LOCATION:** CLASSES HELD IN FARMER BUILDING, ROOM 101 ON THE ASU CAMPUS

FOR MORE INFORMATION: CALL 965-7766

**An ounce of prevention can protect your unborn child**



Support **March of Dimes**  
DEFECTS FOUNDATION

**SUNRISE COFFEE SHOP**  
at the ALL SAINTS CATHOLIC NEWMAN CENTER  
230 E. University (corner of Univ & College)

**SUNRISE SPECIAL MINI-SUB and 12 oz. DRINK** ONLY \$1.00

OPEN: 7 a.m. - 1:30 p.m.

BREAKFAST SPECIAL .99  
EXP. 1/31/86

**1000's of EARRINGS**

Direct from New York City

50¢ to \$1.00  
Sunglasses \$3.00

**Dollars Fashion Accessories**

Now at two Tempe locations:  
414 S. Mill (above Spaghetti Co.)  
120 E. University (at The Arches) 829-1127

We just don't sell any earrings. Our jewelry is carefully selected for quality and style. Comparison shop and you'll see, the Educated Consumer is our best customer!



**COUPON**

SERVING ASU SINCE 1972

**Papa Jay's Pizza**  
We Also Deliver Ice Cold Beer  
**FAST FREE DELIVERY**  
\*Limited Delivery Area

804 S. Ash (2 blks. W. of Mill on Univ.) **966-4292 or 966-1003**  
Right Next to ASU

**ANY 2 LARGE CHEESE PIZZA FOR ONLY \$8.50 plus tax** Good on delivery, take-out or dine-in. Expires 2-17-86.  
(With This Coupon)

<p><b>Save \$2.00</b> <b>#1 Sun Devil Combo</b> Any large pizza with your choice of up to 4 toppings. <b>ONLY \$7.50 plus tax</b> Good on delivery, take-out or dine-in. Expires 2-28-86.</p>	<p><b>Save \$1.65</b> <b>#2 Sun Devil Combo</b> Any medium size pizza with your choice of up to 4 toppings. <b>ONLY \$6.50 plus tax</b> Good on delivery, take-out or dine-in. Expires 2-28-86.</p>	<p><b>Save \$1.50</b> <b>#3 Sun Devil Combo</b> Any small size pizza with your choice of up to 4 toppings. <b>ONLY \$5.50 plus tax</b> Good on delivery, take-out or dine-in. Expires 2-28-86.</p>
---	---	--

**All Saint's Catholic Newman Center**  
Serving Arizona State University since 1932

230 E. University • Tempe, AZ  
**967-7823**

**STAFF:**  
Fr. Albert Felice Pace, O.P., S.T.L., M.A. — Director  
Fr. Gregory Garcia, O.P., B.A., M.Div.  
Fr. Denis Reilly, O.P., S.T.B., M.A.  
Dr. Maura Rooney, Ph.D.  
Sr. Jovanna Stein, O.P., M.A., M.S.  
Br. Gregory Tatum, O.P., B.A.  
Rose Marie Gilb, B.A., M.A.(cand.) — Director of Religious Education  
Robert Leone — Deacon  
Nancy Bond — Administrative Assistant  
Adelaide Smith — Secretary

**MASS SCHEDULE:**  
Saturday — 5:30 p.m.  
Sunday — 8:00, 9:30 and 11:00 a.m.; 6:00 and 7:30 p.m.  
Daily — 11:40 at Danforth Chapel & 4:45 at the Newman Center  
Confessions — Saturdays 4:00 to 4:30 p.m. or by appointment  
CHARISMATIC PRAYER GROUP — Every Thursday at 7:30 p.m.  
EVENING PRAYERS (VESPERS) — Monday-Friday at 4:15 p.m.

**CLASSES:**  
**RITE OF CHRISTIAN INITIATION FOR ADULTS** — Monday, January 27 at 7:30 p.m. for all those who are interested in becoming Catholic Christians. Classes conducted by Fr. Albert.  
**CHRISTIAN MARRIAGE PREPARATION** — Wednesday, January 29 at 7:00 p.m. A six-week course conducted by Sr. Jovanna and Guest Speakers.  
**CATHOLIC UPDATE** — Tuesday, January 28 at 7:30 p.m. for all Baptized Catholics who are to be confirmed and open to all who would like to know more about their Catholic beliefs and practices.

**BIBLE STUDY:**  
Every Sunday after the 6:00 p.m. Mass.  
Letters of St. Paul — Wednesday, January 22 at 7:30 p.m. conducted by Br. Gregory.

**RETREATS:**  
Students' Retreat at Lake Pleasant on January 31, February 1 & 2. Cost \$25. Take time out to rest, reflect and pray.  
Young Adult Retreat at Pine Summit Bible Camp, Prescott on April 4-6. Cost \$25.  
**LIFE IN THE SPIRIT SEMINAR** — Time and date to be announced.  
Twilight Retreat at the Newman Center on Friday, March 21 at 5:30 p.m.

**LENTEN SCHEDULE:**  
**ASH WEDNESDAY, February 12:** Masses are at 7:00 a.m., 12:00 noon, 4:45 and 7:30 p.m.  
Stations of the Cross every Friday at 4:15 p.m.  
Two Special Lenten series presented by Fr. Denis and Fr. Gregory.  
Holy Week: Palm Sunday, March 23 to Easter Sunday, March 30. (Special services will be announced later.)

**SPECIAL EVENTS:**  
Discussion about women's concerns for the Bishop's Pastoral Letter, Tuesday, January 21, 7:00 p.m.  
Annual Blood Drive on Sunday, January 26 from 9:00 a.m. to 1:00 p.m.  
Contemporary Christian Concert by Reach Out Singers on Friday, January 31 at 7:30 p.m. Free admission. Everyone welcome.  
**MARDI GRAS INTERNATIONAL FESTIVAL** starting with a Polka Mass on Sunday, February 9 at 11:00 to 5:00 p.m.  
Second Statewide Young Adult/University-College Student Assembly on Friday, February 28 and March 1. More info at the Newman Center.

**THE STUDENT COUNCIL PLANS VARIOUS ACTIVITIES. CHECK SUNDAY BULLETIN FOR INFO.**

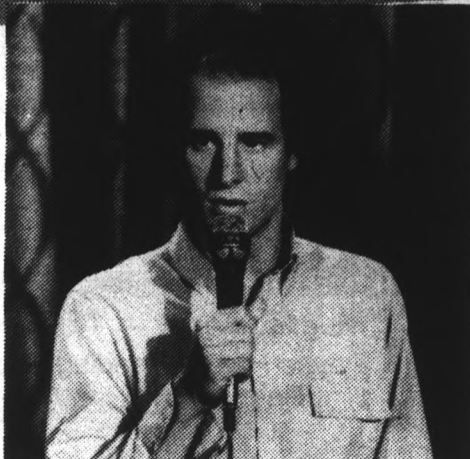
**AA MEETINGS** — Wednesday evenings at 8:00 p.m.  
**ALANON MEETINGS** — Fridays at Noon.  
**SUNRISE COFFEE SHOP AT THE NEWMAN CENTER** — Open class days from 7:00 a.m. to 1:30 p.m. Breakfast and lunch served. Reasonable prices that you can afford. TRY OUR HOME COOKING.

**NEWMAN CENTER OFFICE HOURS:**  
Monday through Thursday — 8:30 a.m. to 9:00 p.m.  
Friday — 8:30 a.m. to 5:00 p.m.  
Sunday — 9:00 a.m. to 12 noon and 5:30 p.m. to 8:30 p.m.

The Newman Center is open daily for prayer, study and relaxation.  
The Newman Center is wheelchair accessible.  
*The Newman Center is the Catholic Parish serving ASU since 1932.*  
**CHECK THE WEEKLY SUNDAY BULLETIN FOR SPECIFIC DETAILS ON HAPPENINGS AT THE NEWMAN CENTER.**

The very funny...

**STEVEN WRIGHT**  
In Concert



**Gammage Center**  
**Friday, January 24, 1986 • 7 p.m.**

You've seen him on "The Tonight Show," guesting with David Letterman, and on "Saturday Night Live" ... now see and hear America's newest and most brilliant young comedian, Steven Wright, in a special Gammage appearance.

Tickets are \$11.50 and \$10 and are on sale at the Gammage and Diamonds Box Offices.  
For information call 965-3434.

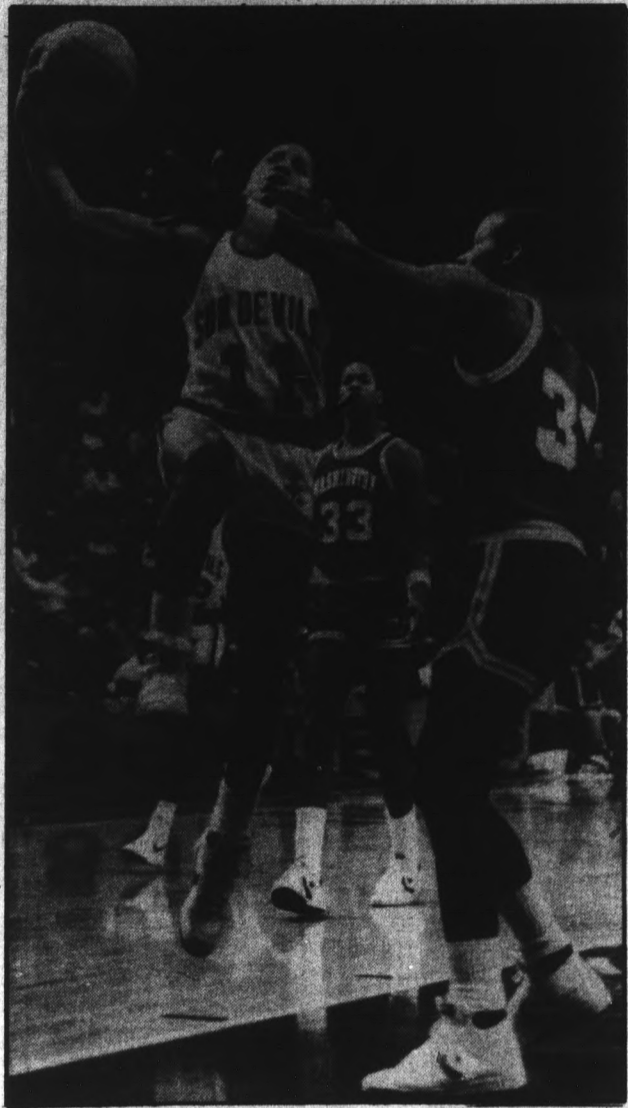
# sports

That's the way the cookie crumbles. —Anonymous

state press

## Comeback

### Basketball team could even its record with win



Staff photo by Kip Williams  
Spark plug guard Arthur Thomas has been having back trouble, but he will play tonight against Oregon.

By JON WILEY  
State Press

The ASU men's basketball team will try to better its 7-8 record tonight at the Activity Center as they go up against Oregon.

Head Coach Steve Patterson said he is concerned with Oregon guard Anthony Taylor and forward Jerry Adams.

"Anthony Taylor is one of the more gifted players in the conference," he said. "He's a great athlete and his size and quickness will present a problem."

"Jerry Adams is their leading rebounder, so we will try to keep him away from the boards."

Patterson said he will stick primarily to the team's man-to-man defense.

"We believe in man-to-man and we're good at it," he said. "We take pride in that sort of defense and when you become good at it, you stick with it."

"We're going to keep it simple."

The team recently suffered the loss of 6-foot-6 forward Chris Sandle, the leading scorer who was dismissed from ASU because of academic deficiency. Patterson said guard Steve Beck might help make up for this.

"We're a little shorthanded at the front line right now with the loss of Sandle, so I might put Beck at forward," Patterson said.

Patterson said he is not sure whether he will start Arthur Thomas or Bobby Thompson at guard.

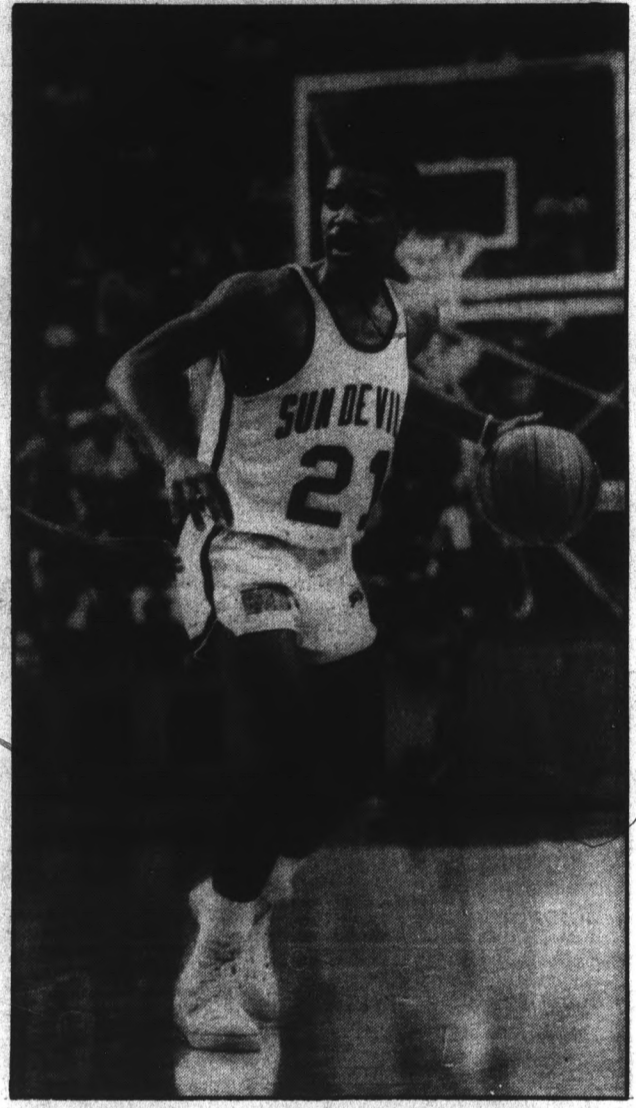
"Bobby has been playing very well lately," he said. "Arthur has had a little back trouble lately, but both of them are going to see a considerable amount of action."

Patterson said the Sun Devils hope they will not have to use the full court press against Oregon, a tool they employed in the recent USC game.

"We only like to use it if we're down late in the game and we need to pick up the tempo a little. I hope it won't be necessary," Patterson said.

ASU also might have to compensate for the possible temporary loss of forward Eric Holloway, who has been sick with a bad cold lately and also suffered a groin pull last Saturday against USC.

A source close to Holloway told the State Press that Holloway had missed several practices this week because of conflict with Patterson, but Patterson explained his absence was due to the injury.



Staff photo by Ron Kuczek Jr.  
Guard Bobby Thompson is expected to see plenty of action against Oregon tonight.

## Just some more Super hype to make your day

Dean A. Obenauer  
Sports Editor



The Super Bowl is big. In fact, it's bigger than big. You can't go anywhere, read anything or talk to anyone without getting caught up in all the media hype. And you're going to get more of it right here. First off, I've got a few predictions for this Sunday's Super Bowl game. •If Chicago wins, Bear fans will never let non-Bear fans hear the end of it. They will say: "We knew the Bears would do it. They truly represent the qualities of the people of Chicago. They didn't do it because they're greedy, they just did it to feed the needy."

signal will come across the television screen. The purpose is for viewers to have the opportunity to get up and use the restroom without missing any of the pre-game show. With millions of people running to the bathroom and relieving themselves all at once, I wouldn't be surprised if... I'll leave it up to your imagination. •Bear quarterback Jim McMahon will wear a headband and it won't have NFL Commissioner Pete Rozelle's name on it. The headband will instead read Shirashi, which is the last name of McMahon's acupuncturist. This week, to the dismay of Bear management, McMahon and other Bears were treated by Tokyo's famous acupuncturist Hiroshi Shirashi to relieve stress. •Some Super Bowl-crazed person will buy a 50 yard line Super Bowl ticket for \$375,000.

•The New England Patriots will be called a "Cinderella" team several hundred times during Sunday's telecast. Everyone, including young children, will be tired of the term. •Patriot coach Raymond Berry will be called a "miracle worker." •Bear coach Mike Ditka will be referred to as a "slow tight end in his day." \*\*\* •Headbands with Rozelle printed on them are being sold as souvenirs for five dollars a piece in New Orleans.

McMahon has reason to believe that The Super Bowl Shuffle was somewhat of a shady deal. There is no telling yet whether or not revenues from the record have gone to the needy of Chicago. The record is making money for somebody and is expected to sell over 3 million copies. It has been 68 years since teams from Boston and Chicago have met for a championship. In 1918, the Red Sox and Bears faced each other. Let's hope after the Super Bowl, it's another 68.

### There will be a national disaster attributed to the minute of dead air prior to the official start of the Super Bowl.

I'll say: "I couldn't help but pick them. The Bears are a great football team, but let's not get too carried away. I hope this doesn't mean that Walter Payton will be elected as the next mayor of Chicago." •If New England wins, people will say: "I knew the Bears would choke. Chicago teams always choke. It knew that darn Super Bowl Shuffle video would jinx them." I'll say: "That's too bad. That will teach people to doubt the caliber of a team making it to the Super Bowl. That will teach Las Vegas to create a 10-point underdog." •There will be a national disaster attributed to the minute of dead air prior to the official start of the Super Bowl. NBC has planned a minute in which no

The \$75 Super Bowl tickets are being scalped for some major money. Reports out of New Orleans say tickets are going for anywhere between \$750 and \$1,500. Reports go on to say people are even scalping hotel room packages for up to three times their face value. I'll settle for a beer and a comfortable living room seat any day. New Orleans is a dump. •NBC will use its amazing technology and show viewers the insides of local bars in Chicago and Boston. How exciting. •NBC commentator Dick Enberg will say, "Oh my!" every other play.



# Former Bears manager still influences football

NEW ORLEANS (AP) — Underlying the tactful denials is an unavoidable theme this Super Bowl week: There, but for a failure to compromise, would be Jim Finks.

All but two of the Bears' 22 starters for Sunday's NFL championship game against New England were acquired during Finks' decade as general manager at Chicago.

Last week, Finks was hired as general manager of the New Orleans Saints, given the task of duplicating the job he did in Chicago.

He left the Bears in 1983, after team founder George Halas hired Mike Ditka as coach without consulting him.

"It was time to move on," Finks said Tuesday at the Saints' Superdome offices, high above the field where hundreds of reporters clustered around Bears players he signed. "I gritted my teeth quite a bit, but I have never regretted leaving."

"Sure, I'm proud. And I'm envious. I think everyone in the business is envious of the

success they've had. That's what you're in the business for.

"But it was time to leave. I felt I had done everything I'd been there to do."

The hiring of Ditka was just the culmination of a series of events that convinced Finks it was time to go. Jim Dooley was rehired as an assistant coach without Finks being consulted.

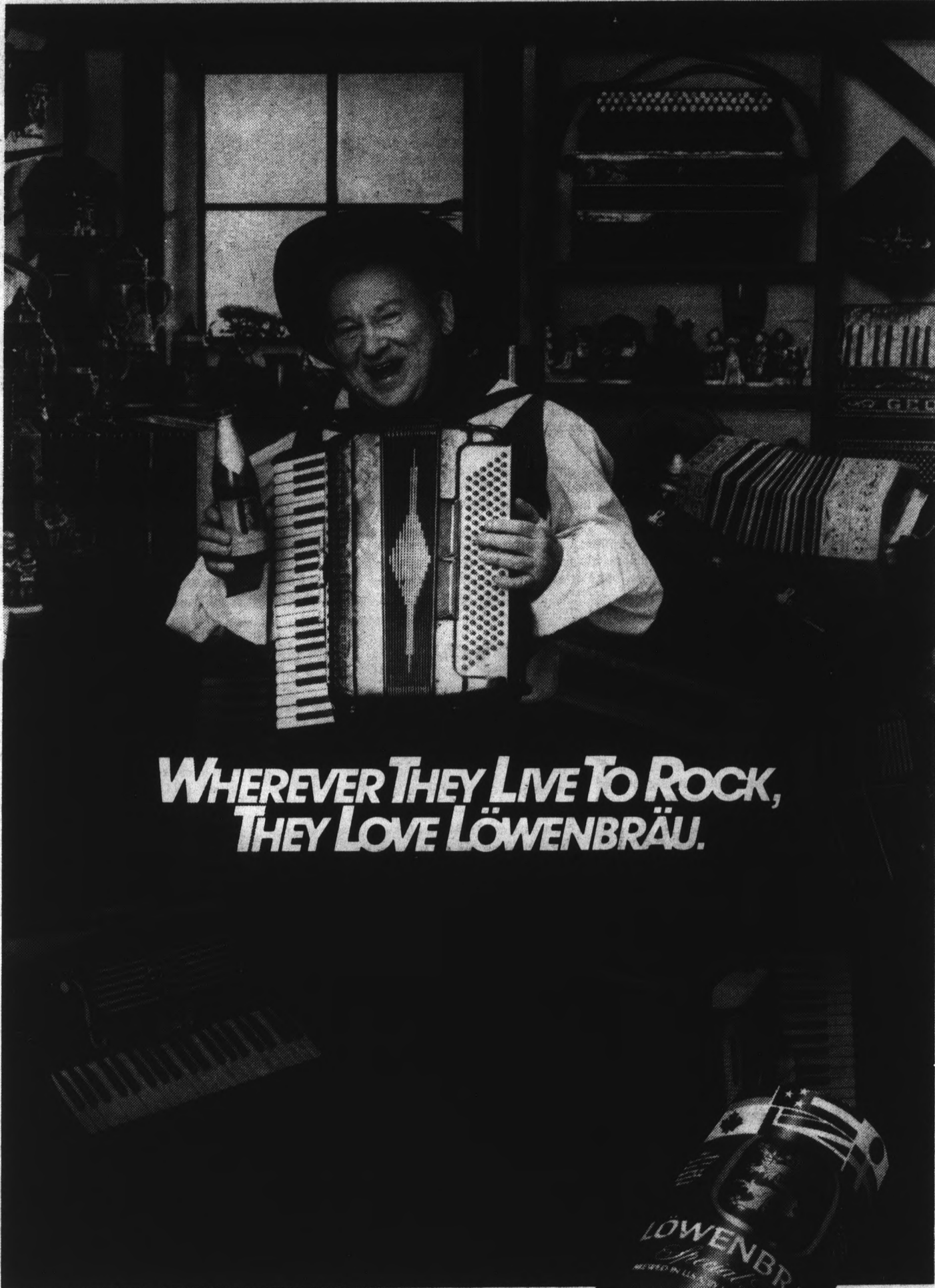
"That was the first action," he said.

Then came the death of George "Mugs" Halas, president of the team and son of the founder.

"That interrupted an established chain of command," Finks said.

Then came the hiring of Ditka, opposed by Finks because of Ditka's lack of experience. Finks admits now he was wrong about that one.

"The proof of the pudding is in whether the head coach can bring the team together, and he's done that," he said.



## WHEREVER THEY LIVE TO ROCK, THEY LOVE LÖWENBRÄU.

The great beers of the world go by one name: Löwenbräu. Brewed in Munich, in England, Sweden, Canada, Japan and here in America for a distinctive world class taste.

# THIS WORLD CALLS FOR LÖWENBRÄU



### SAVE 35% TO 65% ON REPLACEMENT SOFT CONTACT LENSES

Replace Lost, Damaged, or Discolored Lenses at a Fraction of their Original Cost!

#### \*Daily Wear Lenses

- Amsoft
- American Hydron
- Aosoft
- Bausch & Lomb
- Cibasoft
- Durasoft

\$41.93 pair

#### \*Tinted Lenses

- Bausch & Lomb Natural Tints
- Cibasoft Colors

\$63.97 pair

#### \*Extended Wear Lenses

- AO Softcon \$57/pr.
- Bausch & Lomb \$45/pr.
- CooperVision Permalens \$67/pr.
- CSIT \$97/pr.
- Durasoft 3 \$57/pr.
- Genesis 4 \$55/pr.
- Hydrocurve \$87/pr.

IF YOUR BRAND IS NOT LISTED HERE, SEND A COPY OF YOUR PRESCRIPTION AND WE WILL SEND YOU A QUOTE.

Date \_\_\_\_\_

Dear Doctor:  
Please send me a copy of my latest soft contact lens prescription. Please complete this and mail it as soon as possible. Thank you very much.

Patient Signature \_\_\_\_\_

Brand \_\_\_\_\_ Base Curve \_\_\_\_\_ Power \_\_\_\_\_

Type \_\_\_\_\_

Diameter \_\_\_\_\_ In \_\_\_\_\_ Oz \_\_\_\_\_ Color \_\_\_\_\_

Daily Wear  
 Extended Wear

Fitter's Signature \_\_\_\_\_

All lenses guaranteed first quality, and are supplied in the original factory sealed vials.

#### FOLLOW THESE 5 EASY STEPS

1. Acquire your complete contact lens prescription.
2. Complete the order below.
3. Make check, money order, or complete credit card information payable to CLS, Inc.
4. Enclose name, address & phone number with order.
5. Mail all information to:

**Contact Lens Supply, Inc.**  
30650 Carter Rd.  
Cleveland, Ohio 44139  
216/248-2416  
\*Contact Lens Suppliers for 25 years.\*

Please send \_\_\_\_\_ pairs at only \_\_\_\_\_ a pair. ASUSL

\* Total for lenses \_\_\_\_\_  
\* Shipping & Handling 2.00 \_\_\_\_\_  
\* Total \_\_\_\_\_

I have enclosed total payment in the following manner:  
\_\_\_\_\_ check \_\_\_\_\_ money order  
\_\_\_\_\_ VISA \_\_\_\_\_ MasterCard

(Personal Checks must be cleared prior to shipment)

Charge Acct. No. \_\_\_\_\_  
Expire date \_\_\_\_\_  
Signature \_\_\_\_\_

- For single lens orders, divide pair price in half and add \$ 2.00.
- We will keep all prescriptions on file for reorders.
- 90% of the lenses ordered are in our inventory and ready to be shipped in 24 hours.

# Transfer

## Singleton bound for Division II; Taylor's plans fall through



Staff photo by Ron Kuczek Jr.

John Taylor was going to Grand Canyon College, but he was informed that his eligibility was used up because he played 63 minutes for ASU this year.

By BOB HEILER  
State Press

Former ASU basketball players Ron Singleton and Jon Taylor announced plans Tuesday to transfer to Grand Canyon College in Phoenix, but Taylor was informed late Wednesday afternoon that his four years of eligibility had been used up.

Singleton had been dismissed from the ASU squad for academic reasons last semester, while Taylor was dismissed more recently for disciplinary reasons.

Singleton's acceptance in the school will most likely be on academic probation, according to Grand Canyon basketball coach John Shumate. But Singleton was not worried.

"There shouldn't be any problem with the transfer," Singleton said.

Taylor informed the *State Press* he would not transfer to the four-year college since he could not play on the basketball team.

Before Taylor knew of the eligibility problem, he said he thought he would be happier at Grand Canyon than he was at ASU.

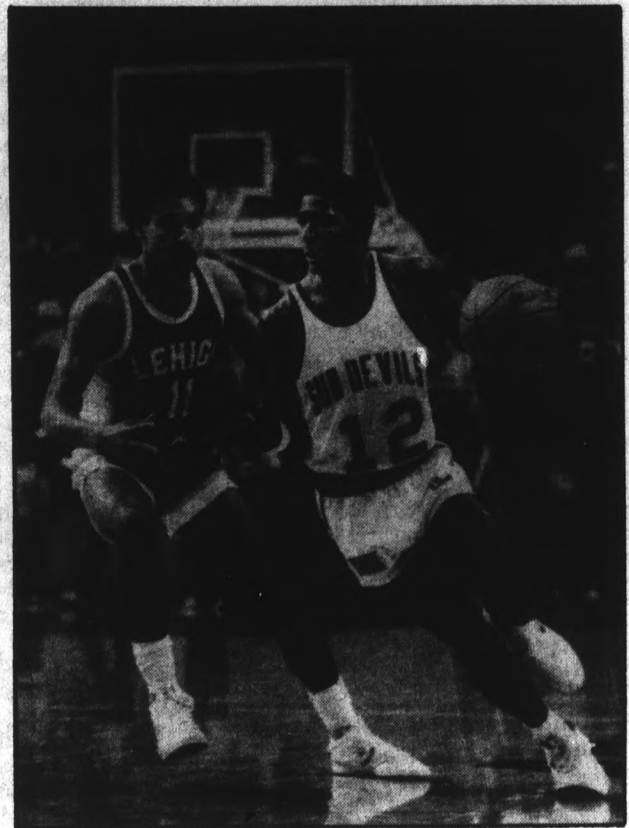
"A lot of people might consider it a step down, going from a major college to Division II," Taylor said. "But I figure I'll be a lot happier playing at Grand Canyon than riding the bench at ASU."

Shumate was happy with the prospect of Singleton becoming part of his squad.

"I believe in this young man," Shumate said. "I think he can contribute quite a lot to our program. How much (he) contributes is up to (him)."

Singleton has one year of eligibility left, which he will use at Grand Canyon next season. Because of the transfer, he must sit out 16 weeks of action, so he will be unable to play for Grand Canyon this season.

"I think young people deserve a second chance," Shumate said.



Staff photo by Ron Kuczek Jr.

Senior Ron Singleton is doing paperwork to transfer to Grand Canyon College, a Phoenix Division II school.

**THE MENAGERIE**

Earrings  
50¢ a pair  
Over 5,000 pair in stock

Affordable Jewelry,  
Cosmetics, Flags and  
Unbelievable Discounts  
on Avon Products

215 E. 7th St.  
Tempe AZ  
NEAR ASU  
829-7565

**THE DISGUISED JEW IN AMERICAN FILM:  
FROM CHAPLIN TO WOODY ALLEN**  
Thursday, January 23, 1986 • 8 p.m.

**YENTL, ZELIG, AND THE ASTRONAUTS:  
AMERICAN COMEDIES OF RELIGIOUS QUEST**  
Friday, January 24, 1986 • 8:30 p.m.  
Following 7:30 Shabbat Services

Both lectures by Professor Ira Jaffe  
At Hillel: 1012 S. Mill Ave.

**NOW SUPER DESIGNERS**

**\$4.00 OFF**  
all hair services

Hair Cut **NOW \$8.00**  
Shampoo, Cut, Dry *Reg. \$12.00*

Perms **Starting at \$28.00**  
Cond., Cut, Style *Reg. \$32.00*

Frosting, Color, Nail

Valid with ad until Feb. 20, 1986.

120 E. UNIVERSITY, TEMPE • CALL 966-9061

**Terrace Road Apartments**

**WALK TO SCHOOL!**

1/2 block from Campus, Huge, well-furnished 1-bedroom, 1-bath, and 2-bedroom, 2-baths, all utilities included, cable TV, plus many amenities.

**950 S. Terrace Rd. 966-8540**

**ARBOUD INDUSTRIES, PHOENIX**

**ULTIMATE PROTECTIVE DEVICE**

Now you and your loved ones can defend yourself against muggers, drunks, animals, or any kind of offenders without deadly force.

**How the stun gun works.**

One short burst from the units delivers a high voltage-low amperage charge through an assailant's body. This charge keys into the nervous system causing the neuromuscular system to short circuit. The effect is a temporary loss of voluntary muscle control resulting in instantaneous disorientation and loss of balance lasting for several minutes, that can't be resisted.

**Absolutely safe.**

The stun gun units will not cause any permanent damage or side effects. The total amount of power available is the power produced from a nine-volt battery. The unit simply modifies the nine-volt battery power through solid state micro circuitry. This high voltage doesn't cause permanent damage due to the low amperage.

**ATTENTION: DEALERS & DISTRIBUTORS**

Mail this coupon and save an incredible \$40 per unit with this limited offer.  
For additional information call: (602) 829-1292.

**COUPON**

Send Check or Money Order to: Abboud Industries, Inc. P.O. Box 25201 Tempe, AZ 85281

Coupon: Value \$40  
Name: \_\_\_\_\_  
City: \_\_\_\_\_  
State, Zip: \_\_\_\_\_

Mini Sparkle \_\_\_\_\_ at \$79.95 - \$40.00 = **\$39.95 ea.**  
Maxi Sparkle \_\_\_\_\_ at \$89.95 - \$40.00 = **\$49.95 ea.**  
Lightning Zapper \_\_\_\_\_ at \$89.95 - \$40.00 = **\$49.95 ea.**  
(Add \$3 shipping)  
Next Day Delivery

**TOTAL COST: \$ \_\_\_\_\_**

If not completely satisfied return within 90 days for a full refund!

**COUPON**

**MEXICO**

Spring Break March 10-14, 1986  
Air, Hotel, Transfers, Welcome Cocktail

Mazatlan **\$301** per person  
Puerto Vallarta **\$368** per person

CALL FOR MORE INFO

**967-7855**

Broadway & Mill  
United Bank Building

# Clack impresses pro scouts looks forward to NFL career

By CHRIS MCKAY  
State Press

Darryl Clack, former ASU standout, got his first real chance to display his talents last Saturday in the Senior Bowl at Mobile, Ala.

After passing up the opportunity to play a fifth season with the Sun Devils, Clack went into the game with the notion of impressing pro scouts and possibly earning a higher draft position. Clack admitted scouts were on his mind and said he had hoped to perform well.

"I just wanted to do what I was capable of doing," he said. "I think I did."

Clack's career as an ASU tailback had very bright spots, but he was plagued all four years with injuries.

Clack was the ninth Sun Devil in history to gain 2,000 yards rushing in his career. He was also selected to the first-team all-Pac-10 as a junior after rushing for 1,052 yards on 208 carries.

Clack rushed for 41 yards on 12 carries and scored a second quarter touchdown in the Senior Bowl to help the North defeat the South 31-17.

Clack was surprised by the mere appearance of his name on the team roster. After being sidelined for nine weeks with a broken fibula, received in the home opener against Pacific, Clack did not expect to be chosen to play for any all-star team.

"I was really surprised," he said. "I had heard before the season that I had a good chance."

To secure his eligibility and play another season at ASU, Clack had to sit out the Holiday Bowl in San Diego last December. Clack said he knew what he was doing when he entered the game.

"I had made up my mind prior to that," he said. "All I had to do was step on the field and I would lose my eligibility."

Deciding to play in the NFL was not difficult for Clack. He said it was an opportune time to leave school.

"I felt it was time to move on," he said. "I've been here for a while and thought I'd take my chance in the NFL."

Clack is expected to be drafted in the first or second round, and hopes to follow the example of former Sun Devil Gerald Riggs, who led the NFC in rushing for the Atlanta Falcons.

Clack said he was not sure where he would like to play but mentioned he has met with pro scouts from San Francisco, Buffalo, Dallas, Pittsburgh, Seattle and the Jets.

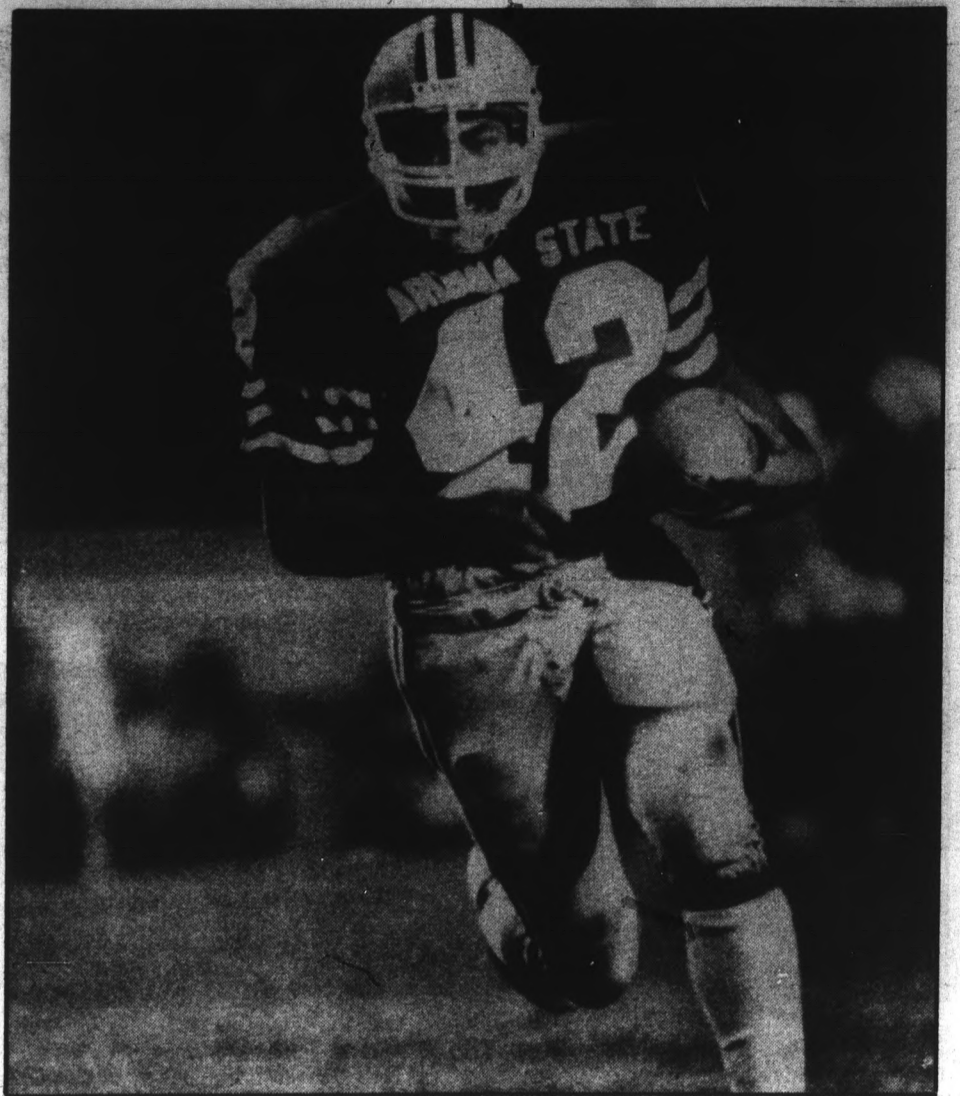
Clack not only met with pro scouts in Alabama but talked with Hiesman Trophy winner Bo Jackson.

"He's a pretty cool guy," Clack said.

Clack's accomplishments at ASU will not go unnoticed despite his senior year.

Clack was considered to have an excellent chance at surpassing Woody Green's all-time ASU rushing record of 3,754 yards in a career.

He had rolled up 2,561 yards prior to the start of last season, leaving him just 1,193 yards to gain, but his injury prevented his bid.



Former ASU tailback Darryl Clack hopes to run into a NFL contract with big numbers.

**HARKINS** Stereo Theatres 4 Channel Sound **TWILIGHT SHOW \$2.50**  
SHOWTIMES BETWEEN 4:30 & 6:30

"A marvelous movie"  
David Denby, *New York Magazine*  
"A poignant, exuberant story..."  
Richard Corliss, *Time Magazine*  
"I love this movie." Joseph Gelmin, *Newsday*  
"A rare and unexpected delight!"  
Rex Reed, *New York Post*  
"A warmly appealing film..."  
Janet Maslin, *The New York Times*  
"A tender-hearted,  
wonderfully engaging movie!"  
Kathleen Carroll,  
*New York Daily News*  
"A film of undaunted honesty  
and unwavering  
intelligence, borne aloft  
by humor."  
John Simon,  
*National Review*  
"A sparkling and  
original comedy..."  
William Wolf,  
*Gannett Newspapers*  
\*\*\* 1/2  
"The warmest,  
most human comedy  
of the year."  
Richard Freedman,  
*Newhouse  
Newspapers*

**WINNER 1985 CANNES INTERNATIONAL FILM FESTIVAL**

**WHEN FATHER WAS AWAY ON BUSINESS**  
THE CANNON GROUP INC.  
EMIR KUSTURICA WHEN FATHER WAS AWAY ON BUSINESS  
MORENO DE BARTOLI • MIKI MANDUJLOVIC • MIRJANA KARANDVIC  
VILKO FILAC • ZORAN SIMJANOVIC • MIRZA PASIC

**CAMELVIEW 945-6178** EXCLUSIVE PHOENIX ENGAGEMENT  
70th St. North of Camelback Road

**PHOENIX CRITICS RAVE!**  
"The best science fiction film of the '80s."  
—Kirk Honeycutt, Los Angeles Daily News

**QUIET EARTH**  
LOS ARCOS 949-8851  
Scottsdale Road and McDowell Road

"A DELICATE, CHARMING FILM."  
—David Denby, NEW YORK MAGAZINE

**DIM SUM**  
a little bit of heart  
LOS ARCOS 949-8851  
Scottsdale Road and McDowell Road

**68th Record Breaking Week!** **THE GODS MUST BE CRAZY**  
CAMELBACK 949-5425 PHOENIX CRITICS RAVE!  
Camelback Rd west of Scott. Rd

**CAMELVIEW 945-6178** EXCLUSIVE ENGAGEMENT!  
70th St. North of Camelback Road

**ROCKY IV** **CHAUFFEUR**  
CAMELBACK 949-5425  
Camelback Rd west of Scott. Rd

**THOMAS MALL 840-6611**  
4th Street and Thomas Road

COMING SOON - COLONEL REDL **THE GODS MUST BE CRAZY** Tuesday is KDKB \$1.50 Day!

**ALLELUIA LUTHERAN CHURCH**  
1034 S. Mill  
(Across the street from the Music Bldg.)

**Worship Times**  
8:15 a.m. Bible Study at Alleluia  
9:30 a.m. Worship at Alleluia  
11:00 a.m. Worship at Danforth  
(NE corner by the fountain)

Modern/Traditional Worship  
Midweek Bible Study

**Coming in Feb. —**  
Alleluia Lutheran Church  
Dedication & Dance, Snow Retreat

**CARPET REMNANTS**

WE MANUFACTURE OUR OWN CARPET AND SELL IT DIRECT TO THE PUBLIC, NO MIDDLE MAN.

- Thousands in stock — 30%-70% off
- Hundreds of room-size remnants — \$29-\$69
- We Deliver

**Direct Carpet Outlet**

MESA  
1826 W. Broadway  
At Dobson/Int. K-mart  
and Price Club  
890-1152

NORTHEAST  
15801 N. Cave Creek  
867-2703

WESTSIDE  
3161 N. 35th Ave.  
Det. Thomas & Osborn  
260-3261

Owned and operated by E'Con Carpet Mills with warehouses throughout the U.S.A.

**JANUARY CLEARANCE SALE**

Sun Devil Cruiser  
Reg. \$140 Now only \$119.95

U-shaped locks with carrying bracket and \$350 guarantee  
Was \$18.95 On sale for only \$14.95

New 10-speeds Fully assembled and warranted  
Reg. \$150 Now only \$119.95

VOTED AS BEST BIKE SHOP IN PHOENIX AREA 1985 Critic's Choice

Many Makes and Models at Special Clearance Prices.  
PLUS A Reputation for Service and Value

**TEMPE BICYCLE SHOP**  
The old gas station on the corner  
6th Street and Mill, Tempe 966-6896

# Women netters face schedule stacked with top 20 teams

By BRAD HALVORSEN  
State Press

The ASU women's tennis team finds itself caught in a familiar dilemma heading into the spring season: it will most likely remain one of the nation's best teams with a mediocre win-loss record.

The reason? The Sun Devils, ranked No. 15 in the pre-season polls, once again face a schedule loaded with top-20 teams. Plus, they play Southern California and Stanford — easily the best teams in the NCAA — twice each.

But coach Sheila McInerney likes it that way. "We could make up an easy schedule and win 20 or so matches this year," McInerney said, "but I'd rather be competitive against the best teams and not worry about the wins and losses."

"We have a good group of competitive kids, and as a coach, that's all you can ask for. Winning and losing will take care of itself."

After a successful fall season, the Devils open the regular season Saturday with a 10 a.m. match against New Mexico State at Whiteman Tennis Center.

Last year, the Devils' 17-14 record was misleading. ASU qualified for nationals and ranked in the top 20 throughout the year.

The Devils won 13 of 17 non-conference matches, many by the score of 9-0. But they held only a 4-10 mark against teams in the Women's Collegiate Athletic Association, the nation's most powerful conference.

This year, ASU will play in the newly-formed Pac-West conference, but the old WCAA powerhouses are still there.

All five teams are ranked, including Stanford and USC tied at No. 1, UCLA at No. 4 and Arizona at No. 15.

ASU went 0-8 versus these teams last year. McInerney said all four teams are even better now, thanks to a successful recruiting year.

"This year is going to be the most competitive ever in college tennis," McInerney said. "The depth is unbelievable. All the coaches agree, there is more world-class talent now than ever."

To give an example, four of USC's players rank in the top 200 in the world. Freshman Ginny Purdy already ranks in the NCAA top 10.

McInerney said ASU's talent and depth has also improved this year, with the addition of two new players.

Allyson Ingram, a senior transfer from Oklahoma, is one of four candidates to start at No. 1 singles, McInerney said. Ingram played No. 1 during her 2½ years as a Sooner.

Another candidate is Laura Glitz, a freshman from York, Penn. McInerney called Glitz one of the top doubles players in the country, but said she will start her slow due to an injury.

Glitz has been suffering from a type of tendinitis of the foot for the last six weeks, and has yet to fully recuperate.

"The real key for her is to be patient," McInerney said. "The injury set her back, no question about it. She's not in her peak form yet."

Also vying for the first spot are the No. 1 and 2 players from last year, senior Sheri Norris and junior Carol Coparanis.

Norris ranks 24th in the pre-season individual poll.

McInerney said four other players, all returning from last year, are battling for the No. 5 and 6 spots. All are juniors: Therese Arildsen, Kristi McCormick, Elise Richman and Beth Smigel.

The other player is walk-on Pam Mirrasou, who will be seeing much action in doubles play, McInerney said.

The team recently lost one of its former regulars when senior Vanessa Miller quit following winter break. She missed the majority of the 1984-85 season and last fall with a number of illnesses.

"I think she realized she wasn't happy with playing tennis anymore," McInerney said. "She gave up on competitive tennis completely."

"Once you stay out of it for a year it's difficult to get back into it. We had some new kids coming in, and I think she lost some of her confidence, and the pressure may have gotten to her."



Staff photo by Ron Kuczek Jr.

Allyson Ingram, a senior transfer from Oklahoma knew she would head back to her native Arizona Sooner or later.

## THE SAFETY ESCORT SERVICE

Is Available For You

Sunday-Thursday 6 p.m.-12 a.m.

Friday 6 p.m.-10 p.m.

**965-1515**

DON'T LEAVE HOME WITHOUT US!

Volunteers Needed

## GIVE IT A SHOT!

Planning to be here next semester?  
Under 29 years of age?

The University now requires that each of you have proof of immunization against measles in order to enroll in classes.

FALL SEMESTER

Measle immunizations are available at Student Health  
**FREE OF CHARGE**

Quality Care, We Care

**STUDENT HEALTH • 965-3346**

### YOUR FREE VUARNET GIFT

T-shirt, Hat, Leash, or Case  
with purchase of Vuarnet Sunglasses\*



**VUARNET SUNGLASSES** — Choose from Phoenix's finest selection of these quality sunglasses. We stock several lens types in many men's and women's styles and colors. **PICK YOUR FREE GIFT** — a Vuarnet s/s shirt, a Vuarnet hat, a Vuarnet leash or a Vuarnet case.

\*With this coupon through 1-26-86.

**SUNGLASS PRICES GUARANTEED — WE WILL NOT BE UNDERSOLD.**  
Pacific Eyes & T's will match any retail price, coupon or advertised special.

Thousands Of  
Sunglasses To  
Choose From



**Pacific Eyes & T's**

Largest & Best  
Selection Anywhere  
\$3-\$300

Phoenix's Sunglass Leader • 83-8300  
Let The Experts Protect Your Eyes

Christown Mall (By Diamonds) • 433-2949  
Westridge Mall (By Diamonds) • 873-2607  
Tower Plaza (38th St. & Thomas) • 244-9119

TRY OUR DRIVE THRU WINDOW



**Tootsie's**  
PATIO & GRILL  
TEMPE, ARIZONA

"Formerly St. Michael's Alley" • 894-1321 • Est. 1985

112 E. University Dr. • Tempe, AZ

THE COMPLETE "BURGER MADNESS"

¼ lb. BURGER  
(Pick Your Own Fixins, Lots to Choose)  
FRIES, 12-oz. SOFT DRINK  
**\$1.99 + tax**  
2:00-9:00 M-F

**1¢**

Draft Beer or Soft Drink  
With Purchase of Any Sandwich  
Anytime With Coupon  
Excluding Specials

SOUP-N-½ SANDWICH

Choice of Tuna, Veggie Freak,  
or Roast Beef Sandwiches  
**\$1.99 + tax**  
10:30-2:00 M-F

Located 100 ft. West of Warehouse Deli

# Possible transfer of ex-Sun Devil Sandle heads state news

TEMPE (AP) — Former Arizona State basketball player Chris Sandle, who was declared academically ineligible last week, reportedly is interested in transferring to the University of Texas-El Paso.

However, Sun Devil Coach Steve Patterson said Arrizona State will not permit UTEP or any other schools to approach Sandle "until we talk to his family and find out what's in the best interests for him."

Sandle, a 6-foot-6 sophomore forward, had a team-leading 15.2 point average before becoming ineligible.

UTEP assistant coach Tom Floyd said he tried Monday to obtain permission to talk to Sandle through Arizona State assistant athletic director Jim Ferguson, but the request was denied because "as far as we're concerned, he (Sandle) is still an ASU student-athlete, although not officially."

TEMPE (AP) — Arizona State intends to upgrade its future non-conference football schedule with opponents like Brigham Young, Army, Michigan State, Indiana and Penn State possibly being added, school officials say.

The Pacific-10 Conference is expected to adopt an eight-

game schedule soon and Arizona State Athletic Director said he would like to fill the Sun Devils' non-conference slate through the year 2002 with quality opponents — even if it means buying out of agreements with weaker foes already scheduled.

Arizona State has never played Army or Indiana before and last faced Penn State in the 1977 Fiesta Bowl here — losing 42-30. The Sun Devils lost to Michigan State 12-3 in last year's season-opener which was the school's first-ever meeting.

Arizona State is 18-5 in games against BYU. That series started in 1935 but hasn't been resumed since 1978.

TUCSON (AP) — The University of Arizona's athletic department should be able to cut more than \$100,000 from its budget deficit this fiscal year, says athletic director Cedric Dempsey.

In a report submitted Monday to the school's Faculty Senate, Dempsey said the athletic department had a \$304,082 deficit after fiscal 1984-85 and early indications show the deficit at approximately \$195,000 after fiscal 1985-86.

"We feel pretty positive we will end up better off than we expected," Dempsey said. "We're in a two-year program to get back into the black."

He said the Wildcat football program made about \$111,000 more than expected this season and the school should net some \$100,000 from the team's appearance in the Dec. 28 Sun Bowl.

COOLIDGE (AP) — Central Arizona College has become one of the first community colleges in Arizona to require its student athletes to undergo drug screening before competing in interscholastic sports.

The policy was approved by governing board of the college at a regular public meeting Tuesday night.

The drug testing is to begin with the coming fall semester and will be a routine part of all student athlete physical examinations.

George Young, the school's athletic director, said the program should be viewed as a deterrent to drug use rather than as a form of punishment.

## Pats' lineman celebrating for his teammates

NEW ORLEANS (AP) — As the New England Patriots flew back to Boston after the victory over Miami that put them in the Super Bowl, John Hannah finally decided he had something to celebrate.

"He went to the back of the plane with everybody and was dancing and singing, which is not the John Hannah we know," recalls Ron Wooten, the other guard on New England's offensive line. "He had to be the most satisfied Patriot."

Hannah, considered by some to be the best offensive lineman ever to play football, will be making the first Super Bowl appearance of his 13 National Football League seasons on Sunday.

So will Walter Payton, who has the statistics to prove he's the greatest running back — his 14,860 career rushing yards in 11 years with the Chicago Bears are the NFL's all-time best.

Hannah and Payton profess to be treating the Super Bowl as one more game in a long career, Payton more so than Hannah.

"My idea of playing is to go out and play as hard as I can whether it's the Super Bowl or anything else," Payton said.

But if they're playing down the significance of the game, their teammates aren't. Neither are some of their opponents.

At a recent award presentation in Miami, Howie Long of the Los Angeles Raiders said he hopes the Patriots win the Super Bowl because he'd like to see Hannah cap a distinguished career. Long's teammate, Marcus Allen, said he was rooting for the Bears because of Payton, adding: "We running backs stick together."

Start with Payton.

"To do all that he's done and not go all the way is like going to the end of the rainbow and not getting the pot of gold," said Matt Suhey, who plays next to Payton in Chicago's backfield and is one of his closest friends on the team. "No matter how much he says it's just another game, I think he really wants it."

"I get special satisfaction in Walter's case," said Bears Coach Mike Ditka, who played in the 1971 and 1972 Super Bowls with the Dallas Cowboys in the 10th and 11th seasons of a 12-year career.



YAKOV SMIRNOFF  
FAMOUS RUSSIAN COMEDIAN

**"I LOVE AMERICA BECAUSE THERE'S PLENTY OF LITE BEER, AND YOU CAN ALWAYS FIND A PARTY. IN RUSSIA, PARTY ALWAYS FINDS YOU."**



**EVERYTHING YOU ALWAYS WANTED IN A BEER. AND LESS.**

© 1985 Miller Brewing Co., Milwaukee, WI

Friends don't let friends drive drunk

## McMahon not to sit down on sore backside

NEW ORLEANS (AP) — Chicago quarterback Jim McMahon got his acupuncture Wednesday and vowed to be ready, sore buttocks or not, to play in Sunday's Super Bowl.

"I'll play because of the treatments I'll be getting. I'll play because once you get on the field the adrenaline starts pumping and you put the pain out of your mind."

The bruise on McMahon's rear end, incurred when he was struck by the helmet of the Rams' Jim Collins in the NFC title game, has been the major topic of discussion in this pre-Super Bowl week when hard news is rare.

It became more so Monday after McMahon complained that team officials wouldn't allow Hiroshi Shiriashi, the acupuncturist whose treatments he said had helped ease the pain, to fly to New Orleans. But the Bears relented Wednesday and said Shiriashi was flying here from Chicago to treat McMahon and four of his teammates prior to Sunday's NFL championship game against the New England Patriots.

Moreover, the Bears appeared seriously concerned.

"With all the hype, people assume the injury is a put-on," said Coach Mike Ditka. "It's no put-on. He's hurting right now. He's recovered some from what he was last week, but he still hasn't recovered enough to play football. It's not serious, it's just a bruise, but it's very deep."

McMahon, who depends on his scrambling ability to keep defenses from mounting an all-out pass rush and who ran 16 yards for a touchdown in the 24-0 win over the Rams, conceded that he was still having problems. At Tuesday's practice, he didn't work out with the offense but did practice passing.

"I can't run, I can't move around," McMahon said. "I can drop back, but that's about it."

# classifieds

The STATE PRESS disclaims all responsibility for quality and prices of goods and services offered in both classified and display advertising by its advertisers.

**Rates, 15 words or less:**  
**\$1.90/day** — 1 to 4 insertions  
**\$1.81/day** — 5 to 9 insertions  
**\$1.72/day** — 10 or more  
**10¢ for each additional word**  
**965-7572**

## Automobiles

1977 TOYOTA COROLLA, AT, runs very well, good tires, dependable transportation. \$1,000 obo 968-5695, morning, even, weekends.

76 MUSTANG, EXCELLENT condition, new heads, clutch, am fm cassette, runs great. \$850 obo. 963-2915 eve, 965-3054 day.

'83 2-28 crossfire, black and gold, all available options, excellent condition. Take over payments. Rich 969-1616.

'82 TOYOTA 4 wheel drive. Custom accessories, lift kit, shell, new tires and rims, many options included. Rich 969-1616.

## Bicycles

BICYCLE. MENS Schwinn Le Tour with kryptonite lock, excellent condition 946-4234 after 6:00 pm weekdays.

FUJI 12 speed bicycle, excellent condition, great student bicycle, \$175, call 838-3528.

USED BIKES for sale, \$40 to \$350. They all work. Call Don 829-9618, keep trying.

## Business Opp.

BUILD YOUR own business, earn good money PT, no selling, no door to door, small initial investment. 892-2433, if no answer call 898-1873.

LOSE WEIGHT, feel great. Increase mental alertness, physical stamina through balanced nutrition, no drugs, extra money opportunity, Call Jerry 968-7548.

RENTING MAKES you rich! Apartment renter? Ten minutes makes you up to \$150 monthly. Easy-money renter's secret. Only \$4.95. Guaranteed. Order now! Brooks Company Suite 355-D 3104 E. Camelback Phoenix, AZ 85016.

## Day Care

EXP. DAYCARE, my home. Loving, educational environment. References available. Price and University 968-2031.

## Day Care

WANTED: GOOD day care for two year old, three days per week. 965-3971, 967-5412.

## For Rent or Lease

ATTENTION FACULTY and graduate students! Luxury condos for lease with fireplace, washer and dryer. Unique designs, Dobson, University. Rates from \$398. 969-6311.

CLOSE TO ASU, one and two bedroom apt's, furnished and unfurnished, pool, jacuzzi. 968-1053.

COMPUTER TERMINALS with modem for rent. \$35 per month 246-6172.

DELUXE CONDO, ¼ mile to ASU, two bedroom two bath, washer, dryer, pool, \$900 per month. 967-6092 weekdays after 5 pm, weekends after 10 am.

ENJOY LUXURY living close to University. Two bedroom, two bath, condo three-years old. Community pool, spa and tennis courts. Sky lights that invite natural light throughout. Security gate. \$59,000. Gerson Realty Co. 831-9535.

FOR SALE. Mobile home, Tempe area, two bedroom, new roof and cooler. \$8,000 OBO 897-8280.

GRANDES CORTES, Prime Tempe location, utilities included, studios and one bedrooms, swimming, tennis, volleyball, basketball 966-4117.

IDEAL FOR lazy student. One room, fully furnished studio with compact kitchen. Easy to keep neat, \$215 per month, includes utilities. Gerson Realty Co. 831-9535.

LARGE EXECUTIVE home, close in, ideal for four students \$1,200 per month. Call 839-2320 or 345-8555.

ONE AND two bedroom, two bath apts. near ASU. Pool, parking, Tempe West Apts. 285-1839.

SCENE ONE, one and two bedroom units. Washer, dryer included, \$325 up. Realty Executives, Joanne 831-1010, 831-1031.

SHARE RENT. Three bedroom house. \$250 per month, all utilities paid. Call Marcel, 898-1488.

TWO MALES to share large master bedroom and private bath in luxurious custom home. Furnished or unfurnished, 40 foot pool, Washer, dryer, all appliances, under \$200 893-2577.

## For Sale

COMPUTER TERMINAL, Dec Writterll, good condition, can dial up ASU system, \$500 with modem, 839-8772, 9 to 9.

CONVERTIBLE 1972 CHEVY Malibu. PS, PB, AT, AC, CC, 305 V8, Arizona car. 95,000 miles \$3,500 OBO 438-2855.

MOBILE HOME. Triple wide, two bedroom two bath with large study, close to ASU in secure adult mobile home park. \$35,000 438-2855.

ELECTRIC TYPEWRITER, Smith Corona, with case. \$85 excellent running condition. 968-4549 days 966-5744 evenings.

FIREBIRD 78 AT, AC, PS, PB. Very clean in and out. Call 966-9595 after 5:00 pm.

FOR SALE or lease, best buy in Landings, \$59,990. Two bedroom, 2½ baths, lease \$500 per month. Call Bea or Bill Harris, Century 21, Biles Realty, 949-7177 or 945-7027.

FRANKLIN ACE 1000 computer, Apple compatible, two disc drives, Zenith monitor, \$999 ono. Gemini Star Printer, \$3000. Total package, \$1199. 968-4549, 966-5744.

NEW BROTHER electronic typewriter \$150 call 968-5182 or 965-2488 ask for David.

NEW TRS80 microcomputer. Includes basic, word processing etc. \$250 or best offer call David at 968-5182 or 965-2488.

PEAVEY T-80 electric guitar, dual pick ups, hard shell case, excellent cond. \$225 call 945-9186 evenings.

PIONEER SPEAKERS 150 watts, brand new, never been used. Cost \$900 will take \$125 for the pair 957-7810.

RECONDITIONED VACUUMS and other appliances, reasonable prices, all sold with warranty. Ace Fix It n'Hardware Store, Four west 7th street, Tempe. 866-4548.

THREE BLOCKS from campus, pool side, deluxe condominiums, fully appointed, \$43,900. Joanne, owner, agent, 831-1010 or 831-1031.

TWO BEDROOM trailer with walking ASU. University Trailer Park 1010 E. Lemon, Space 19 Tempe 968-0003, 835-9792.

## For Sale

YAMAHA GUITAR with case G33. Excellent condition. One owner. \$195.00. 968-4549 (days) 966-5744 (evenings).

## Help Wanted

ADMINISTRATIVE CLERK, requires typing and good organizational skills, professional appearance. Part time, 8:00 am to 2:30 pm, five days per week, and some Saturdays, starting Feb. 1st thru April 15th. Salary: \$5.00 per hour, contact Elsa, 257-5000.

ADVERTISING SALES. Dynamic, community weekly newspaper seeks energetic, motivated salesperson. Call Pam 870-9470.

ART STUDENTS, call for interview for part time jobs doing graphics, fine arts, and lettering painting. 867-3395.

"ASU IS calling on you... to join the ASU Telefund Drive! Gain valuable work experience in P.R. and telemarketing; nightly bonuses and incentives. Call Sherry McIntosh at 5-6754 after 1:30 p.m. for more info."

BUSINESS STUDENT needed to assist with hiring seniors. Preferably a jock or active fraternity member. Position will lead to a very exciting long term career with unlimited high income potential for the right person. Must be energetic, popular, well liked and a permanent Phoenix Area resident. Call Tony at 257-4525.

CRUISESHIPS HIRING! \$16-\$30,000 Caribbean, Hawaii, World! Call for Guide, Cassette, News Service! (918) 944-4444 X. Arizona State Cruise.

DANICA FURNITURE now seeking part time sales person. Design background helpful, Call 834-1976.

DOORMAN NEEDED, \$5 an hour, must be 6'2" and 200 lbs, apply at The Woodshed 19 W. Baseline in Tempe.

EARN MONEY. Advertising sales for ASU "Missing Children" placemats. Contact Cheryl, 247-6163.

ENGINEERING TECHNICIAN. 2nd or 3rd year mechanical engineer or technology. Some related experience desired, Min. 20 hrs. per week, flexible schedule, \$4.50 and up. 956-8200.

EXCELLENT EXTRA income mailing circulars. \$10-360 up weekly. Send stamped reply envelope. A-1 Mailers: 11020 Ventura Blvd. Suite 268, Dept AE2, Studio City, Ca 91604.

FEDERAL, STATE, and Civil jobs now available. Call 1-619-565-1630 for info. 24 hrs.

FEMALE DISABLED student, Palo Verde East, needs assistance. Personal care daily am, pm. Flexible hours, part or full time, pay negotiable. Experience not required, Ellen 966-8078 evenings.

FLETCHERS (STATE Fair) Corny Dogs, all shifts, all positions, we pay better than min. Apply 1270 E. Apache.

HELP WANTED, waitresses, full time and part time. Bartenders, full time and part time. Night and day cooks, full time and part time. Applications will be taken on Mon Jan 27th from 12:00 until 5:00 at 1024 E. Broadway, Franksters Gar and Brill, Tempe.

JAY'S ORIGINAL Dog needs day shift, 11:00 to 3:00, \$4 per hour. Apply at 3306 N. Scottsdale Road, Scottsdale.

MAKE MONEY and help in a good cause. Arizona residents only. Best if politically aware. Call Julia 944-1968.

MINDER BINDERS needs a few ambitious outgoing and enthusiastic door-men. If you're not afraid to work hard please apply within. 715 S. Hayden, contact Jody. Also cashier, waitresses needed twice a week approx 25 hours, contact Jean.

FREE HAIRCUTS. model call, ultra modern Scottsdale salon. Please call for appts. Rumors Hair Design 6204 N. Scottsdale Rd. 968-1888.

MORNING DELIVERY between 6 am till 11 am. Must have car and enjoy making people smile. Baked products. White clothing preferred. Paid daily, good extra \$, and fun! Call 275-2887.

NEW OWNERS now hiring part time students to work fast food business near ASU 967-1049.

ORDER TAKERS. Commercial companies, no selling. Salary based on experience. Established accounts only. 946-8942. Bonuses. No experience.

PANHANDLERS PIZZA is now hiring people for morning shifts (8:30 am to 2:00 pm), and part time help for lunch shifts (11:00 am to 2:00 pm). Apply in person at 106 E University.

PART TIME UPS shipper, light warehouse duties. 12-4 M-F \$4.00 an hour. Call Charlie 437-2876.

## Help Wanted

PHONERS TO fight high utility bills, evenings \$6 per hour plus commission. Call 253-1297, 9 to 11 am.

SALES HELP - Space Age Auto Paint Store, evenings and weekend, 20 - 30 hours a week. Must have neat appearance and have references. Call Joe, 835-0971, 707 So. Country Club Dr., Mesa.

STUDENT WANTED: Room, board stipend. For child care and light chores on a ranch in Cave Creek 488-9221.

SUMMER AND CAREER jobs available! Resort Hotels, Cruise Liners and amusement Parks are now accepting applications for employment! To receive an application and information, Write: Tourism Information Services P.O. Box 7411 Hilton Head Island, SC 29928.

WANTED: ENERGETIC self motivated students interested in full or part time work without hurting grades. Call 829-8957 afternoons or evenings to set up an interview.

WORK STUDY. Students wanted, now hiring for clerical positions in the dept. of accounting. College of Business, \$3.80 per hour. Please call 965-3631 EOE.

"ABSOLUTE BEST" Part time hours, full time pay. Monday thru Friday 5 pm to 9 pm, Sat 9:30 am to 1:30 pm. No selling! Set appointments only, 968-7165 call after 3:00 pm Monday thru Friday.

## Instruction

ASSERTIVE TRAINING classes will begin Monday February 3rd. call Cheryl at 968-8810.

DISCOVERING THE goddess within. A workshop exploring and celebrating the female spirit. Sat., January, 25th call Cheryl at Associated Tempe Counseling Service at 968-8810.

SELF ESTEEM group begins Wed. Jan. 29. Call Cheryl, Associated Tempe Counseling Service, 968-8810.

SELF HYPNOSIS. Four sessions, small group instruction, \$60. Call Jim Lane, PhD, 968-8810.

**EARN EXTRA MONEY**  
**Arizona School of**  
**\*BARTENDING\***  
 Job Placement Assistance  
 Start Any Day  
 Terms Available  
**275-MIXX**  
**4035 E. McDOWELL**  
 Minutes From Campus

## Jewelry

CASH FOR gold, diamonds and silver. Mill Ave Jewlers 414 S. Mill Ave Suite 104.

## Miscellaneous

COMPUTERS FOR rent. IBM compatible. \$40 \$65 per month. Call 841-9754.

## Motorcycles

1985 YAMAHA 125 scooter must sell ASAP. Still under warranty. Asking \$900.00 call 964-2467.

'84 HONDA ARROW 125. Excellent condition. Moving, must sell, \$750 834-3370.

## Personal

PRE, PRE, PRE Spring break Daytona Beach Party, Wednesday Feb. 27th at The MU Gallery, 2-4, wear swimsuits and bring a beach ball. Exotic birds welcome, refreshments will be served.

SCOTTY, HAPPY Anniversary! It's been four years and it still feels like new. Thank you for the pinning. What a great surprise!! I love you TNT Buffy.

## Rv's & Trucks

1976 FORD COURIER with shell, runs and looks good. \$1850. Call Don, 829-9616. Keep trying.

## Real Estate

BY OWNER. Walk to ASU. Three Bedroom, family, living, two fireplaces. 1640 sq. ft. \$82,200. 968-6340, Chris.

LARGE ONE bedroom co-op \$13,500, close to ASU, heated pool. Contact Valarie at 945-0523 after 5 pm.

## Roommate Wanted

FEMALE to share two bedroom two bath in Meridian Corners. \$235 plus utilities. Call Sue 894-2247.

MALE CHRISTIAN roommate wanted, includes washer dryer, pool, jacuzzi, microwave etc. \$250 plus ½ utilities, 966-0166.

ROOM FOR female student, private home, pool, AC, phone, TV, every thing furnished including electric. \$175 a month 947-4912.

ROOM FOR female student, private home, pool, AC, phone, TV, every thing furnished including electric. \$175 a month 947-4912.

NONSMOKING FEMALE roommate wanted. Quiet home near Hardy, Univ. \$170 plus ½, call 829-0720.

ONE BLOCK from ASU, guest quarters, only \$200 per month. Immediate. 894-2685.

PROGRESSIVE MINDED female for new townhouse. Pool, washer, dryer, microwave, fireplace. \$200 plus utilities. 962-6337.

ROOMMATE WANTED for modern three bedroom condo, furnished, washer, dryer, pool, jacuzzi, utilities included, near ASU. \$300, negotiable. 968-4788.

ROOMMATE WANTED \$190 per month plus utilities. Pool, jacuzzi, tennis courts. \$150 deposit call 829-1420.

SHARE 4BDM house. 15 minutes to ASU. Washer, dryer, microwave, extras. No smokers 945-5401 966-8633.

THIRD ROOMMATE needed to share three bedroom townhouse. Pool plus clubhouse facilities available, corner of McClintock and Baseline, \$155 plus utilities. Contact Tim or leave message at 820-9833.

WANT RESPONSIBLE female, \$150 per month plus ½ utilities, furnished room, walk to ASU. 967-4583.

## Services

CARS AVAILABLE - 21 or older. All States Drive-away, 992-5200.

HAVE UNWANTED facial or body hair removed permanently by electrolysis. Free consultation, located in Tempe. Call Sharon at Desert Electrolysis Center 829-7829.

SIX YEARS photography experience, opening own studio, need wedding samples, super deals now, call 946-8442. Mention this ad.

## Transportation

AAA DRIVEAWAY. Cars to most major cities. U drive. First tank free 277-9979.

AIR TICKET, Phoenix, Chicago, Buffalo, \$75 Jan. 25, 9:00 am 965-9078 Palo Verde East room 127.

## Typing

CEREUS WORD Processing. Quality guaranteed. Term papers, engineering, scientific, dissertations, theses, letters, resumes, 947-7796, 960-8136.

EDITING TERMPAPERS, dissertations. Will perfect your English, grammar, sentence clarity and flow, paragraphing, organization, format, plus. Professional, inexpensive. Susan, M.A., 834-6038.

PROFESSIONAL ADMN. Scty will type reports, theses, manuscripts etc. \$15 per hour \$8 minimum. Ellie 957-5629, 274-8225.

SHORT OF TIME? I can help. Reasonable. Professional. Guaranteed. Experienced in academic. call Jessie 945-5744.

TYPING AT home, fast, accurate, call Marian 968-3887.

TYPING DONE, reasonable rates. Experienced in resume's and programs of study. Call Jacqueline 829-1171. Close to ASU.

TYPING, WORD processing. \$1.25 per double spaced page. Call Cathy 835-5591.

WILL DO typing in my home. Debbie 244-5826 price negotiable

ACCURATE WORD PROCESSING. Books, term papers, dissertations. Downtown Mesa. Quick turnaround. Donna, 844-1578.

WORD PROCESSING. Fast, accurate, confidential, \$1.75 per page. 838-3885 after 5.

WORD PROCESSING, storage for dissertations, theses and term papers. Rush jobs welcome. Nancy, 830-8572.

## Wanted

FASHION MERCHANDISING. Need fashionable young women for new apparel business. 954-8103.

## STATE PRESS PRODUCTION DEPT. STUDENT HOURLY JOBS Spring Semester 1986

### TYPESETTER II

You should have class or job experience operating a phototypesetter. You will monitor and process type from two systems concurrently. Some proofreading involved. Must be attentive to detail, be reliable and precise.

### DAYS & HOURS

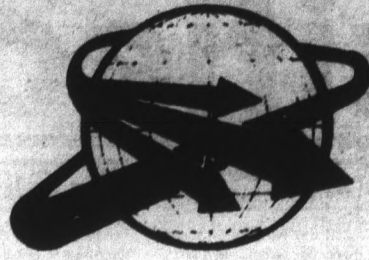
Sunday 2:00-6:30 p.m.

Mon., Tues., Wed., Thurs.

5 p.m. till approx. 8:30 p.m.

**PLEASE DO NOT APPLY IF  
YOU CANNOT WORK THESE  
PUBLISHED HOURS.**

Applicants must pick up a referral form from Student Employment in Matthews Center, and a State Press production job application from the reception desk at the State Press office, basement of Matthews Center. Persons selected for interview will be called.



**GROUP TRAVEL  
SPECIALISTS  
INCORPORATED**

presents

# Spring Break Travel Programs

## MAZATLAN EXPRESS DURING SPRING BREAK

**\$199.00 March 8-15**

**7 DAYS  
7 NIGHTS**

This year, spend spring break on the beautiful beaches of Mazatlan with thousands of other college students from all over the Southwest.

You'll have the time of your life parasailing, swimming, participating in coed beach activities or just tanning on the beach! As the sun sets, you'll find yourself at some of Mazatlan's finest discos like, El Cid, Senor Frogs or Valentino's dancing and partying with old and new friends.

Spring Break '86 promises to be one of the most fun-filled times of your college career on the beaches of Mazatlan.

### TRIP INCLUDES:

- Round-trip train transportation from Nogales-Mazatlan.
- Five nights hotel (4 to a room) at beach front hotels or near beach front.
- Party at Mazatlan's newest and best disco, the El Cid Country Club and Resort.
- Discounts at local liquor stores throughout Mazatlan.
- Choice of roommates now guaranteed if all deposits are made before January 31, 1986.
- GUARANTEED, NO INCREASE IN RATES.
- Mazatlan Express T-shirt.
- Beer and Sandwich parties at two of Mazatlan's finest hotels.
- Party at Joe's Oyster Bar.

## SPRING BREAK

# HAWAII

### TRIP INCLUDES:

- Round-trip airfare from departure cities.
- Six nights hotel accommodations.
- Flower lei greeting upon arrival.
- Round-trip airport/hotel transfers.
- All applicable taxes.

**MARCH 8-16 \$599.00**

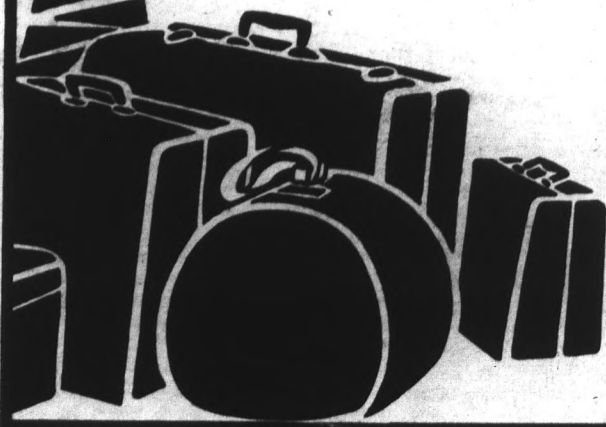
**NOTE:** Credit card users must make payment in full



If you have any further questions on any of these packages, or have any other individual or group travel needs, contact your Group Travel Specialists — Campus Representative or our office at 957-4400 or 241-1000.

### CAMPUS REPRESENTATIVES:

- |                     |          |                        |          |
|---------------------|----------|------------------------|----------|
| Karen Berry .....   | 285-9830 | Brad Golich .....      | 967-2369 |
| Steve Brennan ..... | 965-0907 | Debbie Olshefsky ..... | 965-8564 |
| Anna Burke .....    | 968-4786 | David Usem .....       | 890-2523 |



Virgini  
dange

M

ASU  
textbo  
chang  
Studen  
Fran  
honest  
Kelle  
said p  
are rec  
edition  
Once  
virtual  
compe  
"The  
they te  
Kelle

La

A bi  
author  
be intr  
early  
being  
Thurs  
Sen.  
in legi  
week t  
"The  
optimi  
suppor  
The  
author  
Molly  
Arizon  
In a  
center

inside