

ASU accounting major to provide class notes to help students study

By CARRI L. MITCHELL
State Press

Class seemed too early Monday morning. Wednesday you were at the lake. And Friday it was time to plan for the party.

In most cases, this would mean a three-day loss of notes, but an ASU student may provide a way out next spring — Notes-n-Quotes.

For \$17 a class, Mark Werner will provide students with current lecture notes taken by carefully screened graduate students, available past exams and class announcements.

"It's not to help people skip class," Werner said. "It's an extra study aid."

Werner, a junior accounting major, said students receive the same books and the same lecture material, so they should be able to have the same notes.

Students will be able to pick up weekly packets of notes at a location near campus, he said.

John McDowell, associate professor of economics, said he has no adverse reaction against a program like Notes-n-Quotes, but he said it probably would encourage students to skip classes.

Werner said currently 1,500 applications are being accepted for the 12 classes that will be covered by the program.

Some of the classes included by Werner are Elementary Accounting, Management and Organizational Behavior, Principles of Marketing and Statistical Analysis.

Werner said he got the idea for Notes-n-Quotes from a similar program offered at the University of Missouri.

"I saw a need for it out here," he said.

Beverly Wilson, a visiting UA accounting professor, said students do not learn class material by studying old exams and should be discouraged from the practice.

"I don't know that you can stop that kind of thing," she said.

Programs resembling Notes-n-Quotes are offered at UCLA, University of Texas at Austin, Ohio State University and the University of Colorado at Boulder, Werner said.

The program at UC-Boulder is the largest, covering 80 classes, he said.

"In the next five to seven years a program like this will be on every campus," Werner said.

He said all the notes will contain a disclaimer informing students that the notes are not a replacement for attending classes.

"It's another form of tutoring," he said.

Werner said additional classes will be added to the program each semester.

Werner said he plans on informing University professors about his program and intends to speak to the dean of the College of Business.

"I hope they would make no judgments about the program until they have seen how it works," Werner said.

wednesday
December 4, 1985

state
press

Vol. 68 No. 66

Arizona State University

Tempe, Arizona

© Copyright, State Press, 1985



Welcome to ASU

Staff photo by Kevin J. Larkin

David Collinge, who is unaffiliated with ASU, said he was checking his car for damage after it was booted in the Tempe Center parking lot. Collinge said this was his first visit to ASU and that he had to see a counselor. In regard to the booting, he said, "This is b.s. I'm not paying anything."

Inside Today

The Soviets are failing in their Attempt to Gag America through Saga Food, according to our campus cuisine critic. Page 7.

ASU weather — Partly cloudy and slightly warmer today. The expected high is 72 degrees. The expected low is 48.

Bloom County	3
Classified	15
Entertainment	7
Nation/world	2
Opinion	4
Sports	11

Proposed policy to cover mental, nervous disorders

By VICKIE CHACHERE
State Press

A new University insurance policy will cover mental health and nervous disorders for the first time if the Arizona Board of Regents accepts a committee recommendation.

Arthur Ashton, an assistant to the regents' executive director, said Tuesday that the recommendation will be presented to the board for final approval during its Dec. 13 meeting at ASU.

The policy would cover costs for in-patient mental and nervous disorders up to \$1,500. Out-patient care would not be covered.

Ashton, chairman of the Advisory Committee on Student Health Insurance, said the proposal is an "entirely new benefit," and is one of several revisions the committee would like to see added to the

Mutual of Omaha policy now utilized by ASU, NAU and UA.

The committee is comprised of Ashton, the directors of the universities' student health centers, students and Nora Colton, the student regent.

Other proposals include revising the amount Mutual of Omaha pays to students with high medical bills.

Under the new policy, Mutual of Omaha would pay 80 percent of a student medical fees less than \$5,000. Hospital stays and treatment totaling more than \$5,000, but less than \$25,000, would be fully covered.

This year's policy holds students responsible for 20 percent of their health costs between \$2,000 and \$25,000.

"To the person who has large, significant bills this is a better arrangement," Ashton said.

Ashton said the policy will continue to cover pregnancies like "any other sickness," and Mutual of Omaha will pay 80 percent of the medical costs, except in abortion cases.

"We are trying to get away from some of these little provisions," Ashton said, adding that he believes the proposals will make the policies easier for students to understand.

Monty Roth, director of ASU's student health services, said the revisions may eliminate problems students are experiencing with their policies because they do not understand what is covered.

"The majority of the people really don't understand what they have bought," Roth said. "What we are planning in 1986-87 is a much more simplified policy, so it will be easier for students to understand it."

Ashton said the regents also are working

with Mutual of Omaha to lessen the time it takes to settle student claims.

Ashton said the regents never have received any formal complaints from students but said the board needs to be attentive to the time involved.

"Whenever we have had any problem with Mutual of Omaha we would joining with them right away and work it out very quickly," he said.

Roth said he has received some complaints in the past several years from students who said the company was taking too much time to settle claims.

Roth said in most instances delays are caused when the company does background checks into the patient's illness. Certain claims, especially those involving serious illnesses and surgeries, take more time to settle than routine doctor bills, he said.

ASU graduate student battles cancer, insurance company

Gwen Calluso did not think the most difficult part of her bout with cancer would be the insurance claims battle that ensued with Mutual of Omaha.

But when the 38-year-old ASU graduate student was diagnosed as having breast cancer in October, what followed was more than six weeks of problems with ASU's insurance company, even though Mutual of Omaha was following normal procedures.

Calluso still is recovering from a mastectomy and also faces a possible diagnosis of bone cancer. She also faces at least six months of chemotherapy for the breast cancer.

"I am 38 years old, and suddenly I am having to face up to something no one wants to look at," Calluso said. "This is something that a lot of us are going to have to face."

Following Calluso's diagnosis and mastectomy, she filed a

claim with Mutual of Omaha. But company policies require additional checking into Calluso's medical file.

According to letters sent to Calluso by the company, Mutual of Omaha wanted to determine if Calluso knew about her condition before she purchased the ASU insurance policy.

Mutual of Omaha officials handling Calluso's case would not comment on the matter.

Calluso, who is working for her master's degree in international agriculture management, has dropped to five credit hours of classes and has no outside income to pay her doctor bills.

Mutual of Omaha started payment Nov. 25 on the first of Calluso's bills, which totaled more than \$7,000 after the first surgery. But Calluso said the payments are being made now because of her insistence.

"They don't make anything easy," she said. "Everything is a problem."

The lengthy procedure has caused Calluso to worry that her credit rating has been hurt by the delays, especially when her doctors began sending requests for immediate payment within the first few weeks after her surgery.

"When you are sick you don't need it," she said. "It's traumatic enough as it is. It's not like it's a bloody nose."

Monty Roth, director of ASU's student health services, said Calluso's experience is not unusual and that insurance companies are slow to settle the claims.

He said it takes time to verify the claims, and the company has improved its response time.

— VICKIE CHACHERE

nation/world

state
press

U.S. military officers not involved in jet-storming, Weinberger says

BRUSSELS, Belgium (AP) — Defense Secretary Caspar W. Weinberger said today three U.S. military officers accompanied Egyptian commandos who stormed the hijacked Egyptair jet in Malta but said the officers were on standby "for liaison purposes."

Weinberger, in a live interview from Brussels with NBC's "Today" show, also said the U.S. officers could not have prevented the loss of 60 lives that occurred during the hijacking and storming of the plane.

Egyptian commandos stormed the plane Nov. 24 and fire swept through the cabin. Maltese sources, said the commandos apparently used too many explosives to blast their way into the cabin, and that this "very likely" started the fire.

Late last week, a senior Maltese official claimed the U.S. officers had helped coordinate the assault by the Egyptian commandos on the airliner.

South African president lifts state of emergency in 8 cities

JOHANNESBURG, South Africa (AP) — President P.W. Botha today lifted the 19-week-old state of emergency in eight of 38 cities and towns and said the revolutionary climate in black areas was "fast losing momentum."

Botha's action came after tens of thousands of mourners packed a soccer stadium today for the funeral for 12 blacks, including a two-month-old baby, killed in a day of fierce clashes between protesters and police in Mamelodi, a township north of Pretoria.

The funeral turned into a huge anti-apartheid demonstration. Eulogies became calls to end the state of emergency and free jailed black leaders.

An estimated 30,000 to 50,000 people attended the two-hour

funeral and then joined a procession to the cemetery for the burial.

Federal informer says he acted on sanctuary defendants' orders

TUCSON (AP) — A federal informer testified today that he acted under instructions from sanctuary movement defendants when he drove five undocumented aliens to Phoenix and Los Angeles.

Informer Jesus Cruz, who posed as a voluntary sanctuary worker during 1984, said he drove two teen-aged aliens, Ana Trinidad Martel Benavidez and her brother, Julio Cesar Martel Benavidez, from Nogales, Ariz., to their mother's home in Phoenix in May 1984.

Cruz said he later drove Miguel Angel Mejia and his nephews, Melvin and Edwin Chavez, to Los Angeles where the boys' father lived.

Cruz testified he acted under directions from defendant Mary K. Doan Espinoza, and that he picked up the aliens at churches in Nogales and Tucson. He said he met two other defendants, the Rev. John Fife and the Rev. Anthony Clark, for the first time in the two churches on that day.

The defendants are charged with conspiring to smuggle Salvadoran and Guatemalan refugees into the country. The defendants claim the aliens were refugees fleeing political oppression, but the prosecution has said they were merely seeking better jobs.

CORRECTION

The State Press incorrectly reported in Tuesday's Collage section that Students for Cooperative Alternatives will meet on Thursday. They actually are meeting today at 11 a.m. in West Hall room 169.

IN ARMY NURSING, YOUR BSN GETS SPECIAL ATTENTION.

The Army would like to salute all the men and women who work so hard for their degrees in nursing.

But the truth is, we can salute only the ones who join the Army.

They're the ones who get a commission—along with the respect and responsibility that come with being an officer. In addition to a salary equal to civilian nursing pay, Army Nurses get cash allowances for food and housing and their medical expenses paid. They also have an opportunity to work in some of the nation's finest hospitals. To continue their education. And to grow.

If you think your BSN rates special attention, there is someone you ought to talk to—the local Army Recruiter.

SFC Paul Novak
249-0124

**ARMY NURSE CORPS.
BE ALL YOU CAN BE.**



Barloga's

"Chicago's Beef and Pizza Connection"

\$2 OFF 14" or 16" Pizza
Plus a FREE Liter of Pepsi.

Offer good through 12-7-85.

1934 E. University • Fort Knox Plaza • Tempe

Super Savings from Carl's Jr.

Two Famous Star
Hamburgers for \$2.29

Offer good through:
January 15, 1986.

Offer good only at:
960 East University
In the Cornerstone Shopping Mall
Tempe, Arizona

Not valid with any other offer or discount.
One coupon per customer visit, please.

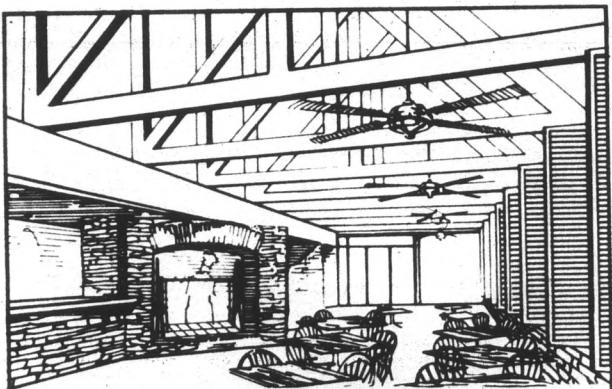


\$1.99 buys you an Old
Time Star, Reg. Fries
& A Reg. Soft Drink

Offer good through:
January 15, 1986.

Offer good only at:
960 East University
In the Cornerstone Shopping Mall
Tempe, Arizona

Not valid with any other offer or discount.
One coupon per customer visit, please.
Limit 3 per coupon.



BILL AUSTIN'S OPEN PIT BAR-B-Q

JOIN OUR TEAM AS A
FULL TIME OR PART TIME
TEAM MEMBER

ALL SHIFTS AVAILABLE

- BEST WAGES
- FLEXIBLE SCHEDULING
- FREE MEALS
- BENEFITS

Positions Include:

- DINING ROOM SUPERVISOR
- COOKS
- HOSTS/HOSTESSES
- PREP COOKS
- CASHIERS
- DISHWASHERS
- WAITERS/WAITRESSES
- BUSPERSONS
- KITCHEN HELP

For more information, call 345-2306, Monday through Saturday, from 9AM-5PM or visit the restaurant at: 2015 S. Alma School Rd., in Mesa. Equal Opportunity Employer M/F/H.



SEASONS GREETINGS

to all A.S.U. students, faculty, employees, and Tempe residents!!

SUN DEVIL TANNING SALON

Built-in High Speed Face Tanners Pioneer AM/FM Cassette Stereo System

Tan in Air Conditioned Comfort!

SPECIAL HOLIDAY RATES

15 WEEK UNLIMITED Membership.....	\$149.95
Monthly Unlimited Membership.....	\$49.95
Monthly Unlimited Membership (with A.S.U. i.d.).....	\$39.95
5 session membership.....	\$18.95
single session.....	\$3.95

CALL NOW AND GET THAT HEALTHY LOOK!!

968-4611

LOCATED IN THE ARCHES MALL

120 E. University

corner of Forest and University
next to the Warehouse Deli



Now Featuring:

A Full Service Nail Salon

Full Sets and Manicures

Complimentary Nail Artistry

Inquire about our

"Lo Nail Club" Specials!!

Clergy observe anniversary of Bhopal accident

By ED SCHUBERT
State Press

Muslim, Hindu and Christian clergymen prayed Monday night for the 2,000 victims of the Union Carbide chemical leak in Bhopal, India, on the eve of the first anniversary of the disaster.

The clergymen, representing the three major religious faiths of the Bhopal, lit candles in the Great Hall of the ASU College of Law in a ceremony organized by the Indian Students Association.

In addition, William E. Lewis, assistant dean and professor of engineering computer sciences, briefly elaborated on an ASU-sponsored project to establish a vocational/technical training facility in the

Bhopal area over the next two years. ASU is negotiating rental leases and permits with the Indian government, and "things do look very promising at this point," Lewis said.

Fred Jaeger, an advisor for the project, said Union Carbide granted \$2 million to the project, irrespective of any damages the company may have to pay.

"From our viewpoint, (Union Carbide) has been very forthright in trying to do something humane" in response to the tragedy, Jaeger said.

Project sponsors hope that initially 2,000 students a year will be trained once the program gets underway sometime in 1986, he said.

The program will have an "evolutionary curriculum," starting with basic skills such as carpentry and masonry.

Promising students could go on to study refrigeration, TV repair and computer programming, he said.

Jaeger said he hopes initial success for the training program will attract new contributors, a task that is easier when "you have something good that's working."

According to Indian government sources, at least 17,000 people were killed and 300,000 were injured when toxic gas from the pesticide plant escaped and spread over a 15-square-mile area on Dec. 3, 1984.

Residents of a slum area on the outskirts of Bhopal suffered the worst effects of gas

leak, ISA President Anish Shah said.

"I knew lots of people from the area," Shah said. "It hurt to learn 2,000 Indians had died."

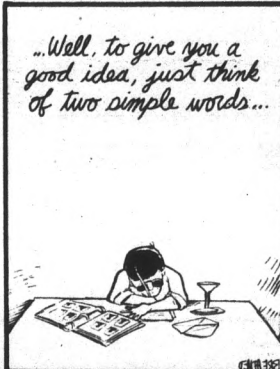
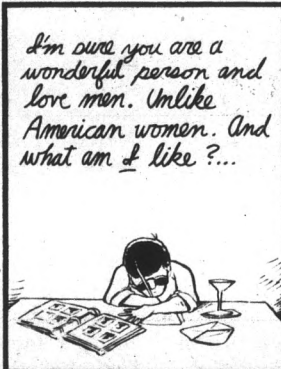
Indian student Raj Bhat said he had arrived in India two days after the tragedy and found an atmosphere of dismay and "screaming headlines."

"Everybody was in a state of shock. We couldn't believe it," he said. "It was the biggest industrial disaster the world has ever seen."

Bhat said the sense of shock was heightened, coming as it did shortly after the assassination of Indian Prime Minister Indira Gandhi on Oct. 31, 1984.

BLOOM COUNTY

by Berke Breathed



Grab special arts issue Friday

Just when you thought vacation was going to be one drab, boring type of thing with nothing to do but study...

The State Press brings you "Your Guide to Holiday Entertainment" on our last publication date.

Check the newsstands on Friday for a special pull-out entertainment section that will include:

- Movie reviews;
- The year's top picks;
- An interview with "Breakfast Club's" Judd Nelson;
- The best eating establishments in the area;
- What makes "Late Night With David Letterman" work? An interview with show's writers.

TRY OUR DRIVE THRU WINDOW

GRAND OPENING SPECIAL

Tootsie's

PATIO & GRILL

TEMPE, ARIZONA

"Formerly St. Michael's Alley" • 894-1321 • Est. 1985

112 E. University Dr. • Tempe, AZ

<p>SOUP-N-1/2 SANDWICH</p> <p>Choice of Tuna, Veggie Freak, or Roast Beef Sandwiches</p> <p>\$1.99 + tax</p> <p>10:30-2:00 M-F</p>	<p>THE COMPLETE "BURGER MADNESS"</p> <p>1/4 lb. BURGER</p> <p>(Pick Your Own Fixins, Lots to Choose)</p> <p>FRIES, 12-oz. SOFT DRINK</p> <p>\$1.99 + tax</p> <p>2:00-9:00 M-F</p>	<p>SOUP-N-(SM) SALAD</p> <p>BUILD YOUR OWN</p> <p>\$2.49 + tax</p> <p>10:30-2:00 M-F</p>
--	---	---

Located 100 ft. West of The Warehouse Deli & Pub

THE MOOSE IS LOOSE IN TEMPE! NOV. 29

SONY BLAUPUNKT EPI

GRAND OPENING

PROTON LINEAR SANYO

•CAR STEREO
•MOBILE PHONES
•CAR ALARMS
•RADAR DETECTORS

10% DISCOUNT WITH THIS COUPON

105 W. UNIVERSITY
1 BLK. W. OF MILL

966-7745

Traffic Jams Car Stereos

\$22 EYE EXAM
including contact lens professional fee

From Arizona's Leading Contact Lens, Eyeglass & Hearing Aid Centers

HIGH FASHION GLASSES
FRAME & GLASS LENSES COMPLETE

\$21.95

RED TAG FRAMES
Standard bifocals complete \$39.95
No other discounts apply
Red tag frames only.
+3.75 to -3.75

PLASTIC LENSES AT ADDITIONAL COST

<p>SOFT CONTACT DAILY WEAR PACKAGE</p> <p>\$69.95</p> <p>Package includes: 1 pr. soft contact lenses . . . 0 Start-up kit 0 Wearing instructions 0 Service agreement 0 *Complete package . . . \$69.95</p>	<p>Extended Wear Tinted Lenses by Bausch & Lomb</p> <p>\$99.95</p> <p>per pair</p> <p>Soft contact lenses in four natural colors: blue, green, aqua and sable. One pair per customer.</p> <p>Ciba dailywear available \$49.95</p>	<p>SOFT CONTACT EXTENDED WEAR PACKAGE</p> <p>\$99.95</p> <p>Package includes: 1 pr. extended wear soft lenses . 0 Start-up kit 0 Wearing instructions 0 Service agreement 0 *Complete package . . . \$99.95</p>
--	--	---

Certain Power Restrictions apply. One pair per customer.
No other discounts apply.

LICENSED DOCTORS OF OPTOMETRY AVAILABLE

NATIONAL EYE & EAR

3133 S. Mill (Mill & Southern) Huntington Square Plaza, Tempe
CALL OR COME IN. PHONE 967-3197

SUN WEAVING

A unique way to lighten your hair

WALKING DISTANCE FROM ASU

215 E. 7th Street, Tempe, Arizona
966-5192

CRIMPERS LTD

state press

If all the year were playing holidays, To sport would be as tedious as to work. —William Shakespeare

opinion

Recreation center financially unsound

Michael Blake Guest Columnist

The proposed Student Recreation Center referendum has now been formally placed before the student body. A 30 to 40 percent voter turnout is expected. Unfortunately, most students will base their decisions on the scant information in the brochure offered by the Recreation Center Committee, which staffs the voting tables. The referendum form itself is merely an outline of the committee's brochure.

I write as a working, off-campus resident. My concern with the referendum is not whether it will pass or fail, but which students will participate, for what reasons, and how they can arrive at a sound decision based on the information provided.

•Commuter students comprise approximately 85 percent of our student body. They will carry 85 percent of this \$16 million bond for the next 30 years.

Many are self-supporting and already have other obligations that limit the time they spend on campus. Furthermore, with the widening interest in health and fitness outside the University, most commuters now have access to a variety of recreational

facilities close to home.

Few can keep pace with tuition hikes, without an extra \$50 per academic year.

The rec center committee claims commuter students would be more likely to benefit from this proposal than any other group. If indeed this is the case, its members should even further commit their efforts to the publicity of realistic, undiluted information geared toward the commuter sector.

remainder?

It is unrealistic to expect contributions from outside of ASU; there are too many other worthwhile charities on this campus.

•Existing facilities should be renovated in order to accommodate a better weight room and other student recreational needs.

institution. Healthy minds and bodies are important, but this is waste.

•It's a matter of information — too little, too fast.

My concern is with which students will participate, for what reasons and how they can arrive at a sound decision.

•Operation costs are estimated at \$1 million per year. These costs are hoped to be met through gifts and contributions from off-campus organizations and through revenues collected from participating faculty and staff.

To meet these costs, every one of the nearly 3,000 campus employees would have to pay almost \$300 per year. We would be lucky to see half of them actually participate in this subsidy.

If only half participated, who would pay the remaining \$400,000 to \$500,000 per year for operation costs? Would the fee double for staff members who opt to use the facility, or would the University pick up the

Time constraints placed on the ASASU Public Relations department and rec center

Who built the existing facilities? Who paid for them? Those responsible for the poor maintenance of these facilities should renovate them for another 20 years of use. If we continue to allow such deterioration, what would happen to a new recreation center in 20 years?

Where do our priorities lie? What signals will we send to the Arizona Board of Regents, our legislators and our competitors in the academic community if we give such an ill-conceived proposal our approval? The quality of our student body is no different than that of any other

committee by the regents have seriously impaired their ability to produce an acceptable information package. The PR department has done well to produce anything at all within this time frame.

The rec center has been poorly announced. Three of its scheduled four "open" information meetings had already taken place by the time the first brochure to announce them was inserted into the State Press.

This is poor planning, and it comes from the top. The proposal has already been scaled down from \$23 million to \$16 million. Supporters claim construction cost overruns could cause further trimming of the facility to meet the budget.

If the referendum passes and reflects the actual views of a well-informed student population, then build it, by all means.

But build a good one. Don't build something so scaled down that it becomes obsolete not long after its construction. Build a facility that will remain useful throughout the life of the 30-year bond.

This is neither the time, manner nor condition for such an important decision. Gather meaningful statistics on the entire student body, make any relevant information on the proposal widely available, and then hold a referendum.

Michael Blake, a junior architecture major, is the director of Association Graphics and Advertising for ASASU.

letters

Inaccurate editorial disliked

Editor:

Regarding the Dec. 3 editorial about how to vote on the Student Recreation Center referendum, I wanted to point out some information that was left out of the editorial.

The \$25 fee would not be assessed until 1990 and would not change for the term of the bond. The issue is not what we could spend the \$16 million for. The issue is, would students spend the \$25 for a facility that has basketball courts, a weight room, racquetball and squash courts, volleyball courts, multi-purpose rooms (for aerobics, dance, martial arts, wrestling), and tennis courts?

The facility would be placed in a location that is accessible to commuter and on-campus students.

The Board of Regents has given ASU the task of asking the students if there is support for a student rec center, which would be built from student fees.

If the students don't want it, it won't be built.

To vote on an issue that affects students in the future gives us a chance to increase the value of their education. Shouldn't a complete education include intellectual as well as physical development?

An issue of this great importance and potential impact should be covered by the media in a manner that presents the issue objectively and without bias.

Let the readers decide.

I hope the inaccurate and incomplete statements made in yesterday's editorial will not affect people's decisions.

James Emmelkamp Student Recreation Center Committee, Chair

STATE PRESS

STEVE WATERSTRAT Editor

TOM BLODGETT Managing Editor

City Editor W. TIM AHL Asst. City Editor JOHN CONWAY Asst. City Editor MELISSA SMYTH News Editor MEAD SUMMER Asst. Managing Ed. LINDA COULSON Editorial Assistant LAURA WILSON Opinion Editors GRAY T. ECHOLS, WHITNEY PETERSON Sports Editor MICHAEL KONZ Asst. Sports Editor JERRY BROWN Copy Chief JACQUIE CIRROU Arts Editor CINDY PEARLMAN Asst. Arts Ed. PATRICK J. KUCERA Photo Editor KIP WILLIAMS

REPORTERS: Vickie Chachere, Andrea Han, Rob Kelton, Carri L. Mitchell, Kari Bland, Ed Schubert, Theresa Willeford

PHOTOGRAPHERS: Ron Kuczek Jr., Kevin Larkin, Rick Wiley

SPORTS REPORTERS: Brad Halvorsen, Bob Heiler, Chris McKay

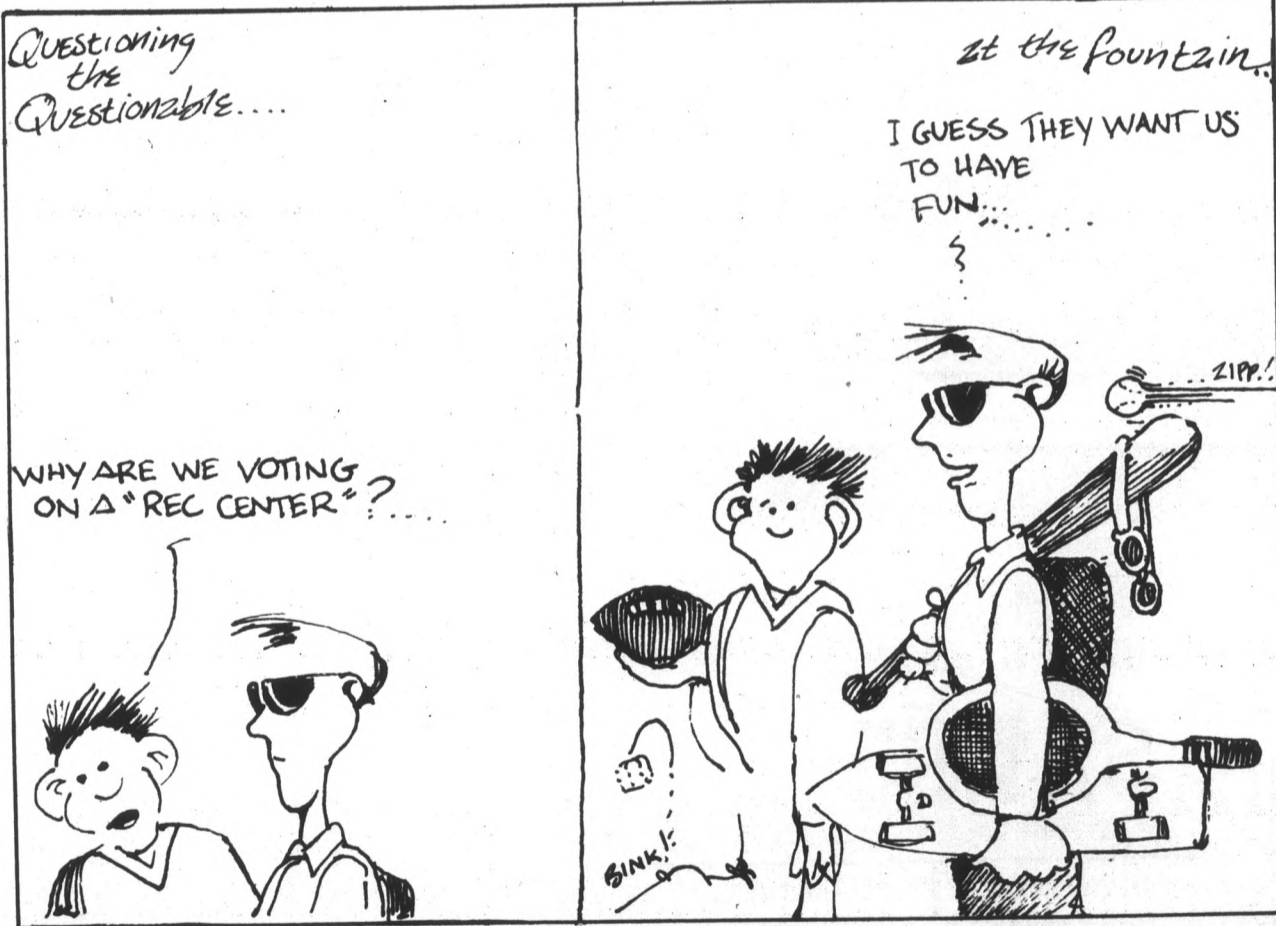
COPIY EDITORS: Judie Gaillard, Khali Crawford

STAFF ARTIST: Jon Basalone

CARTOONIST: Chip Sheehan

The State Press is published Monday through Friday during the academic year except holidays and exam periods, at Matthews Center, Room 15, Arizona State University, Tempe, AZ 85287. Newsroom: 965-2292. Advertising & Production: 965-7572.

The State Press is the only newspaper exclusively published for and circulated on the ASU campus. The news and views published in this newspaper are not necessarily those of the ASU administration, faculty, staff or student body.



Recreation center not needed at academically deficient ASU

Editor:

ASU — synonymous with "dedication to academic excellence." Without pondering, one can clearly see this as a false statement.

ASU is renowned for its athletics department, boasting one of the biggest intramural programs in the country. An asset, of course, but is sports the rock upon which a university is built? Again without pondering, one may answer correctly — no!

Sports and exercise are an integral part of life, especially at the university level, but they are not the definition of a university.

As stated in "Webster's Ninth New Collegiate Dictionary," a university is "an institution of higher learning providing facilities for teaching and research and authorized to grant academic degrees." I deduce, from this statement, that a university is based on academics.

As a student of the ASU business school — some say an excellent business school — I have advanced through three semesters of core classes. One of these classes was an

introductory business class taught by Professor Bruce Childers, who, on the last day of class, said that though he does not approve of the size of the classes in the school of business presently, they will grow bigger, and some will move on to instruction with television monitors. (This can already be seen by those students blessed enough to choose the right QBA 222 class.) Professor Childers then went on to explain that students cannot benefit from classes of this size, and neither can he, as an instructor, feel good about the monstrous size of some classes. Is academic excellence a priority at ASU?

With the proposition of a \$15 million to \$20 million recreation center, during pervasive and evidently low academic standards, is there justification for this enormous amount of money to be spent on "recreation" when our university is suffering from academic inadequacy? I forsee the acceptance of the recreation center, at this time, as an unwise choice for anyone affiliated with ASU.

Frank Chauvin Sophomore, Marketing

Prof says cults may harbor many missing students

By ANDREA HAN
State Press

The growing number of cults in the United States is responsible for the disappearance of more than 10,000 college students each year, an ASU professor who has studied cults for six years said Tuesday.

Communications professor John Crawford said, "These kids just disappear, no one knows where they've gone until you find out years later that they are Moonies or Hare Krishna."

Crawford and sociology professor Leonard Gordon spoke to about 30 faculty members and students at the lecture sponsored by the Liberal Arts College Council.

"It is very scary that cults are becoming very powerful and a serious involvement in our society," Crawford said.

He said cults can be distinguished from "mainline," organized religions by their methods of isolating members.

Gordon said cult members are often unhappy with society and the existing social order, and are looking for a new way of looking at life.

Crawford agreed but also said cults are dangerous because they manipulate their messages and put members in crisis situations where they must make crisis decisions.

Jim Jones, former leader of the Unification Church, believed that

everybody shared in the mistakes of another, he said.

"One woman flirted with a man and Jones would spank her and the rest of the congregation, before you knew it, church members were constantly being beaten."

Jones, leader of The People's Temple originally based in San Francisco, instructed his followers to drink Kool-Aid laced with cyanide. About 780 people died at the cult's Jonestown, Guyana headquarters in 1978.

Two familiar faces, Brother Jed and Sister Cindy, who preach on the campus each year, shout and yell at listeners while cult recruiters scan the audience, he said.

"They stand out there shouting that you're all whores, prostitutes and evil scum, but it is a front," he said. "They have people scanning the crowd looking for recruitments."

Gordon said the number of cults has grown from 300 in the 1960s to 3,000 in the 1970s.

Although somewhat stabilized now, the growth in the number of cults increases during times of trouble and uncertainty, Gordon said.

"Think of the assassinations, the trauma of Vietnam, Watergate, nuclear issue and the baseball drug scandal," he said. "Who can you believe in, if you can't believe in a centerfielder for the Pittsburgh Pirates?"

"Cults pull you away from family,

friends, school and job to come to a cult where they are true believers," Crawford said. "They want you to retreat into a world of perfect bliss."

Patty Hearst, daughter of publishing magnate William Randolph Hearst, was a college student with an IQ of 130 before she was kidnapped by the Symbionese

Liberation Army, he said.

"After her kidnapping by a group of wierdos who successfully introduced her into their cult, her IQ dropped down to a 102 and 110," he said.

"I find cults inherently dangerous because they wage a war on reason," Crawford said.



Staff photo by Rick Wiley
Leonard Gordon, sociology department chair at ASU, right, and John Crawford, an associate professor at the Center for Urban Studies spoke about the increase in cults in the US.

FILM DEVELOPING SPECIAL

Get a second set of prints **FREE** with each roll of color develop & print. Check our everyday low prices.

	Standard 3x	Custom 4x
12 exposures	\$2.49	\$3.49
15 exposures	\$3.09	\$4.29
24 exposures	\$4.29	\$6.49
36 exposures	\$6.09	\$8.99

(C-41 process 110, 126, 135 & disc films)

COLOR ENLARGEMENTS

5x7 79¢ 8x10 \$1.99
(From negatives only.)
Offer good through month of December, 1985.

CAMPUS DRUG

712 S. College (Across the street from ASU)

50¢ FASHION EARRINGS 50¢ FASHION EARRINGS

Jewelry and Accessories

High Quality
Fashion at Park-n-Swap Prices



The Menagerie

215 E. 7th St. Between College & Forest

Our prices are so low, you don't need 10% off.
Upstairs in the University Commons

50¢ FASHION EARRINGS 50¢ FASHION EARRINGS

Christmas Grab Bag Ideas!
• Posters
• Rayban Sunglasses
• Bandannas

Law Offices of RANDY C. ROGERS, P.C.

1811 S. Alma School #260
Mesa, AZ 85202
345-8311

Same Day Appointments
Generally Available
Evenings & Weekends

FREE INITIAL 1/2 HOUR CONSULTATION
(WITH THIS COUPON)
Offer expires 4-30-86.

Accidents
Personal Injury
Domestic Relations
Child Custody & Support
Spousal Maintenance
Property Settlement
General Civil Matters

**Personal Injury
No Recovery: No Fee**

RUNDLE'S LIQUORS & MKT.
730 S. MILL
Corner Mill & University Ave.
967-9079

ANDRE CHAMPAGNES 750 ml \$2.97
TROPICO WINE COOLERS 4 pk \$1.89
MEISTER BRAU BEER 6-pack \$1.89
PLAYBOY Used Magazines \$.94

Haagen Dazs Natural Ice Cream, Adult Magazines, Groceries, Ice, Wines, over 40 Imported Beers.

BUY • SELL • TRADE
Your books at Changing Hands. For quality cloth and paperbacks (no textbooks, please) we pay 30% of our re-sale price in cash or 50% in trade-in credit which may be used to purchase anything in the store. (Sorry, no trade-ins on Sat. or Sun.)
Browse through our three floors of:
• New & Used Books
• Art Prints & Posters
• Calendars & Cards
• Handbound Journals
• New Age Tapes
M-F 10-9 SAT 10-6 SUN 12-5
CHANGING HANDS
414 Mill Avenue 966-0203
Old Town Tempe

NOW!
You can place your
STATE PRESS WANT ADS
at the
MEMORIAL UNION
Inside the North Entrance
... Across from the
Residence Life office.
11 a.m. to 2 p.m. DAILY
MONDAY-FRIDAY

NO appointment
FAMILY HAIR CUTTERS™
FREE SHAMPOO WITH THE CUT
with this coupon

\$6

A Perfect Cut Every Time
No appointment necessary ever! Bring the whole family

Designer Perm \$26.00

Includes:
• Shampoo and Designer Perm
• Perfect Cut
• Styling
Long hair slightly higher
1981 No Appointments Family Hair Cutters

NO appointment
FAMILY HAIR CUTTERS
University & Rural Rd.
CORNERSTONE SHOPPING CENTER
968-8008
Hours: Mon.-Fri. 9-9 • Sat. 9-7 • Sun. 12-5

Competition, family pressure may cause student cheating

By COLLEEN MOORE
State Press

The following is the last article of a two-part series on academic cheating at ASU.

A 20-year-old senior majoring in political science who refused to give his name said Wednesday that he was surprised to hear students regularly are dismissed from ASU for cheating. He has cheated in "two or three" of his classes at ASU, he said.

When he cheated, he used crib notes during exams, he said. "I think of them as memory joggers."

"I thought that (possibly being dismissed for cheating) was just some idle threat. I knew I was risking flunking the class, but I didn't think you really would be kicked out of the department or the University."

"Competition for good grades is a catalyst for cheating," Assistant Dean of Student Life Arthur Carter said, "If you're looking for any one indices of cheating, it's where there is a lot of competition for grades."

Dean of Student Life Leon Shell said competition for jobs also causes some people to cheat. "Students are becoming more serious-minded about their grades. They want a good job when they graduate, and they know they need good academic records."

Carter said some students cheat because of family pressure. "I've seen four or five cases where people were receiving pressure from home to be high scholastic achievers," he said.

A 19-year-old broadcasting major who refused to give her name said Monday she has never cheated in any of her classes at ASU.

"When you pay \$495 to come and not learn anything, it's kind of stupid," she said.

The anonymous student who admitted cheating said, "In retrospect it gives me the chills. I would like to forget that I ever did something that dumb."

He said he does not worry about graduating without knowing about his field

of study because he cheated.

"After the classes were over I went back and read the course material again," he said. "For the classes I cheated in, I kept the notes and books for future reference."

"There are a lot of people out there who cheated through college. I'm not advocating it or anything, but it's not like I'm the only one," he said.

When asked if he will cheat again before he graduates in May, he said "absolutely not."

"I'm not really proud of what I did. I felt guilty. I won't ever do it again."

Dick Kelly, professor and assistant dean of the College of Engineering and Applied Sciences, said he thinks upper-division and graduate students are less likely to cheat than lowerclassmen. "I wouldn't have any numbers to back that up," he said.

Kelly said the pressure that accompanies engineering courses might make a student more likely to cheat. "A student may be a very good student, but their abilities may not be in that area (engineering). They might get into trouble with their classes."

"They should talk to their advisor about this for help," he said. "I've seen students who have good grades outside their major and bad grades inside their major."

Roger N. Murray, an associate professor of English, said four to five students in every class will cheat on exams if the instructor does not take precautions.

Philip Leonard, professor of mathematics and acting chairman of the mathematics department, said upon being caught cheating, the typical student reaction is "denial."

The anonymous senior said, if caught, he probably would have denied he was cheating.

"I guess I would have said something like, 'well, I wrote down these notes just after the exam started, in case I would forget them,'" he said.

Only 20 calories per cup!



THE POPPER
Gourmet Popcorn Shoppe

REGISTER TO WIN
\$1,360⁰⁰
1st Place Winner


Over 1,300 Prizes Given Away
ALL FREE!!

It's our way of saying Happy Holidays!
"NOT ONLY GOOD — but Good for you"

903 S. Rural Rd.
UNIVERSITY
CINNAMON TREE CENTER
APACHE

- We sell party bags of all white popcorn; volume discounts
- Delivery anywhere on campus


967-4344



Just for the fun of it!

No Cover with College I.D.!
50¢ Well & Draft
7-10 p.m.

Beginning Next Wednesday and Every Wednesday following is
MUG NIGHT
Featuring our 40-oz. Mug!

919 E. Apache  **966-7770**

health spots
LECTURE SERIES

PMS
premenstrual syndrome

Wednesday, December 4
7:30 p.m.
Memorial Union
Arizona Room

SPONSORED BY:
STUDENT HEALTH ADVISORY COMMITTEE
WOMENS SERVICES
ASASU

COUPON

SERVING ASU SINCE 1972



Papa Jay's Pizza
We Also Deliver Ice Cold Beer
FAST FREE DELIVERY.
*Limited Delivery Area

804 S. Ash (Univ. & Mill) **966-4292 or**
Right Next to ASU **966-1003**

ANY 2 LARGE ONE ITEM PIZZA
FOR
only \$9.95
(With This Coupon)

*On Regular, Not Sicilian Pizza Good on delivery, take-out or dine-in. Expires 1-31-86.

<p>Save \$2.30</p> <p>#1 Sun Devil Combo Any large pizza with your choice of up to 4 toppings. ONLY \$6.95 plus tax <small>Good on delivery, take-out or dine-in. Expires 1-31-86.</small></p>	<p>Save \$1.95</p> <p>#2 Sun Devil Combo Any medium size pizza with your choice of up to 4 toppings. ONLY \$5.95 plus tax <small>Good on delivery, take-out or dine-in. Expires 1-31-86.</small></p>	<p>Save \$1.80</p> <p>#3 Sun Devil Combo Any small size pizza with your choice of up to 4 toppings. ONLY \$4.95 plus tax <small>Good on delivery, take-out or dine-in. Expires 1-31-86.</small></p>
--	--	---

entertainment & the arts

state press

Continuing SAGA

MU vittles prove not to be fatal as some critics maintain

By PATRICK J. KUCERA
State Press

I prepared myself. After making reservations at Tempe St. Luke's Hospital and attending numerous religious services, I was ready. "Remember, you are doing this for the benefit of the ASU student body," one co-worker remarked. "No sneaking to Sub Stop for lunch," said another. The walk to the MU seemed like a walk to the electric chair or gas chamber. I arrived at the entrance, pulled open the doors and knew the time had come . . . to review SAGA food! As the campus cuisine critic I found myself dreading this entire event. I had heard the horror stories about SAGA food,

cuisine

and most of the students on campus complained about the food, even though most of them eat it anyway. I had eaten there before, usually for a snack or ice cream during the working day. This was the first time I was there to critique the food. My first stop was . . . Pasta Express. This little spot in the Grand Marketplace is one of the newer entries and I was hungry for Italian food. The line was long but moved quickly. When I got to the front, I saw what I wanted — the stuffed shells, pasta salad and drink special for \$2.99. The server dished up the food on one of those horrible styrofoam plates. Luckily, the pasta salad was off to the side in a small container of its own. I found a seat next to the entrance to La Cuisine and dove into my lunch. The stuffed shells were hot and had a good sauce on them. The ricotta cheese within was very good also.



Sweet Stuff pulls in the students at noon time.



Staff photo by Kip Williams

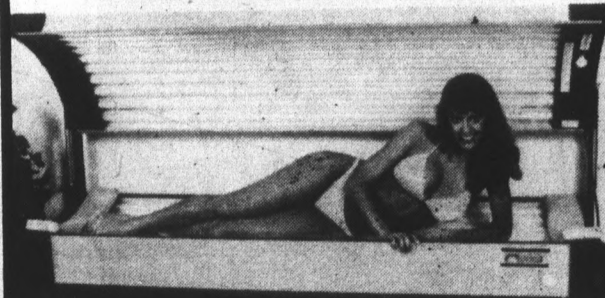
From left, Eric Wagner, Terry Chynoweth, Dean Sheppard and Julie Weaver sit at a picnic table outside the MU during lunch. Wagner, Chynoweth and Weaver thought the food was OK. Sheppard brings his lunch from home.

However, the shells had not been properly drained after being cooked and the meat sauce became watery toward the end of the meal. When I had finished the shells, a red, thin liquid covered the bottom of the plate. The garlic toast served with the shells fell short of the expectations I had. A rich garlicky taste would have been nice for the bread, but what I got was buttered toast. The main drawback of the meal was the weak excuse for pasta salad. Instead of various pastas served with finely chopped vegetables and a vinaigrette dressing, I got a cup of noodles with cucumber, cucumber and more cucumber with a weak Italian dressing. Another two days in the cup and the MU could be having a pickle sale. To say the least, I was disappointed with the salad, although the entree was pretty good. Cafe Ole was the next stop on my journey. I, being a native of Arizona, am a fiend of Mexican food and I figured I could kill two birds with one stone. Again, I waited in line and ordered the No. 6 which includes a taco, a tostada, an enchilada and your choice of rice or beans. I chose the rice. My order with a drink was \$3.96 and I started that endless search for an empty table or someone who was kind enough to share a spot with me.

I found one and began the critique. The rice was very tasty, but seemed to have an oily texture. The taco was good, but shredded beef or chicken should be used for filling instead of ground round. The tostada had severe problems. The beans placed on the tortilla were overly watery and the shell absorbed a large portion of that making it impossible to eat with my hands. The enchilada lacked character. It had neither spice nor a distinctive taste. The saving grace of the entire meal was undoubtedly the salsa that was served in little cups. It was chunky with onions, tomatoes and peppers. The best thing about it was that it was spicy hot. I retreated to the counter for an additional Coke. To see what the California crowd might be doing, I stopped at Summerfields, the salad and healthy sandwich stop. After grabbing my sandwich from the array of salads and sandwiches, I passed by the quiche and soup. Both looked appealing, but the sandwich with its side salad were enough for me. The cost of the turkey-on-egg-bagel sandwich and a Coke was approximately \$2.80. As you exit Summerfields, a small island containing salad dressings awaits customers. After putting a little ranch

continued page 8

DON'T LOSE THAT SUMMER TAN!



Sun-Tans 4415 S. Rural #10
Tempe
831-2884



SPECIAL STUDENT RATES

TANNING BED

5 visits **\$20**
10 visits **\$35**
20 visits **\$65**

With coupon. Expires 12-20-85.

FULL SET SCULPTURED NAILS
\$25

With coupon. Expires 12-20-85.

Chopsticks Restaurant



OVER 12 CHOICES

MENU CHANGES TWICE DAILY

ORIENTAL BUFFET

1324 S. RURAL RD.
TEMPE, AZ 85281
968-2525 • 968-2636

Mon.-Thurs. 11-9
Fri., Sat., Sun. 11-9:30

Special order & take-out available
Chinese Dim Sum
every Sat. & Sun. 11-4

YOU'LL LEARN THINGS IN O.C.S. THEY NEVER HEARD OF IN ENGINEERING SCHOOL.

Army Officer Candidate School (O.C.S.) It's a 14-week challenge to your mental and physical toughness.

It isn't easy. But you'll learn what's deep inside you. That you have what it takes. You'll come out strong, sure in your ability to lead, and in great shape. You'll be a commissioned officer in the Army, ready to exercise leadership skills civilian companies put a premium on.

If you're about to get your degree in engineering, the O.C.S. challenge could be just what you're seeking.

Call your local Army Recruiter.

SFC CHARLES HYSSELL
2020 S. MILL AVE., STE. 102
967-1611

ARMY. BE ALL YOU CAN BE.

CHANUKAH DINNER



featuring
THE GREAT DEBATE
"WHICH IS BETTER
THE LATKE or THE HAMANTASCHEN?"
SUNDAY, DECEMBER 8th @ 6:00pm

at HILLEL 1012 S. MILL AVE

Reservations by Dec. 4th
students \$3.00 non-students \$5.00
After Dec. 4th
students \$5.00 non-students \$7.00

NEW IN TEMPE

SUPER DESIGNERS

Beauty Salon

"Excellent treatment for less charge"

CUT

(Shampoo, Cut, Dry)

Only **\$12**

PERM

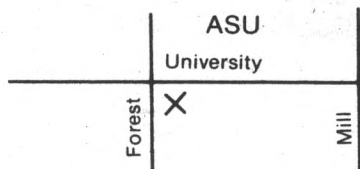
Starting at **\$28**

120 E. University

(In The Arches)

966-9061

Hours: 9 a.m.-6 p.m.
Mon.-Sat.



JONATHAN'S PIZZA

FAST, FREE DELIVERY

FREE LITER OF SOFT DRINK WITH ANY PIZZA PURCHASE. COKE, DIETCOKE, SPRITE, DR. PEPPER.

ASU LOCATION
829-1717

933 E. University
Tempe Towne Plaza
(Across from The Cornerstone)

OPEN: Mon - Fri at 4 p.m. Sat. & Sun. at 11 a.m.

JONATHAN'S PIZZA
829-1717

\$7.25
any two topping.
16" pizza
(Save \$2.00)
One coupon per pizza.
Good through Jan. 1, 1986.

JONATHAN'S PIZZA
829-1717

\$5.50
any two topping
12" pizza
One coupon per pizza.
Good through Jan. 1, 1986.

SAGA

continued from 7

dressing on the greens I sampled the sandwich.

The turkey was white meat (a plus) but the condiment on the bagel was cream cheese. I like cream cheese. However, there was enough cheese for three bagels. It was overpowering and tended to make the sandwich less appetizing.

China Town is the new kid on the block and from the taste of things, it needs to put the house up for sale and move to another city. My experience was terrible and I cannot recommend China Town in any way.

I decided to have a light lunch and went there for an egg roll, rice and a fortune cookie or two. I should have skipped lunch.

The egg roll was nothing short of bad. I bit into one end and grease poured out the other. The rice also had an extreme greasy taste which made it nearly inedible. The soy sauce I used on the rice barely covered up the bad taste.

Only once have I had the thought of asking for my money back after a meal — a small cafe in Austin, Texas. China Town almost was the second.

The Pizza Place was crowded as usual the day I ate there. Pizzas were being shoveled into the oven and taken out as quickly as they could be.

I ordered a few slices of the pepperoni pizza and, of course, a Coke. A few minutes and \$3.50 later I was eating.

I said to myself, "OK, start your review with the cheese and work your way down." I did.

The cheese was pretty good, but I prefer a lot of cheese on my pizza. The sauce was good and had a strong spicy base to it.

The crust? Well, that is where things fell through. The crust seemed to be on the verge of going through a metamorphosis and changing into cardboard. It was tough, probably from the fact that it had been sitting too long.

I, for the life of me, could not figure out what the little black specs were on the bottom of my crust. They made the crust lose its appeal.

On the whole, the pizza was mediocre.

La Cuisine could easily be my home away from home. It is a nice change of pace from the pushing and shoving of the other MU/SAGA places.

Linen table clothes, real silverware and china, rolls in a basket and a maitre d' all enhanced this place where I had to make reservations to get a table.



I ordered the cashew chicken salad and was impressed with the service and quality of food.

Stuart Anderson, owner of SAGA Restaurants, must be pulling my leg. Could La Cuisine be made by the same company that made the dreaded "Peach Burger"? Yes.

I enjoyed every minute of my lunch in La Cuisine. Still, a wine list could be in order. Perhaps Johannesburg Reisling should be made available.

On the other side of the coin, The Grill pack day for lunch and breakfast, and I cannot figure out why.

THE BEST PRICE & SELECTION IN THE VALLEY

"THE MENAGERIE"

50¢ Earrings (over 5,000 pairs)

NOT ONLY HIGHER QUALITY
BETTER PRICE & SELECTION TOO

ASU
T-shirts
& Hats

215 E. 7th Street, Suite 202
Tempe, Arizona 85281
829-7565.

Between College & Forest

Clothes Peddler

New & Recycled

Cash For Clothes
Guys — Gals

If you love to find — and wear — unique things, then Clothes Peddler is for you.

10% off with this ad.

WE BUY - SELL - TRADE
Natural Fabric - Current Styles - Good Condition
Jewelry - Shoes - Accessories
We buy only what we can sell, the best.

Tempe Center
915 S. Mill • 966-2300

BEFORE A LIFETIME OF ADVENTURE,
THEY LIVED THE ADVENTURE OF A LIFETIME.



STEVEN SPIELBERG PRESENTS YOUNG SHERLOCK HOLMES

A PARAMOUNT PICTURES PRESENTATION - STEVEN SPIELBERG PRESENTS YOUNG SHERLOCK HOLMES
AN AMBLIN ENTERTAINMENT PRODUCTION IN ASSOCIATION WITH HENRY WINKLER / ROGER BIRNBAUM
EXECUTIVE PRODUCERS STEVEN SPIELBERG - KATHLEEN KENNEDY - FRANK MARSHALL

WRITTEN BY CHRIS COLUMBUS - PRODUCED BY MARK JOHNSON - DIRECTED BY BARRY LEVINSON
AMBLIN ENTERTAINMENT
PG-13 PARENTS STRONGLY CAUTIONED
DOLBY DIGITAL
A PARAMOUNT PICTURE
ALL RIGHTS RESERVED

Opens Wednesday, December 4th
At A Theatre Near You.



Puvanart Keoplang prepares pizza at the Pizza Place.

Staff photo by Kip Williams

new chicken salad and was surprised at the food. The owner of SAGA and Black Angus is pulling my leg. Could this food served in by the same company that gave us China and "Peach Burger"? Yes, it was. A minute of my lunch in La Cuisine and the \$5.27 cost could be in order. Perhaps a glass of 1946 wine should be made available, for a nominal price. The coin, The Grill packs them in day after day, and I cannot figure out why.

I stopped by there for the special which was a mushroom burger, fries and — in unison now — a Coke. The cost was only \$2.49 and I thought it was reasonable. Nevertheless, the mushrooms were canned, the burger was cold, the bread was underbaked, the fries were soggy and I had to battle four of those little catsup packets. The Coke was good, though. While I did not review every aspect of SAGA, the overall rating I would give our beloved food service is fair. It does have its high spots, but it misses the mark on taste. And I did not have to go to Tempe St. Luke's either. Bon appetit!

'tis better to give and to receive.

Lots of good things happen when you make a plasma donation. You help over 40 million people each year who rely on plasma industry products to sustain or improve their lives. Also, unlike many donating processes, you are actually paid for your time while donating plasma. In fact, you can earn as much as \$120 per month!

to know about the completely safe plasma-pheresis process and all the life-saving uses for your plasma donation. Just call 968-6139.

university plasma center

Associated Bioscience of Tempe, Inc.
1015 South Rural Road
Tempe, Arizona 85281

We'll be glad to explain anything you would like



NOW!
You can place your
STATE PRESS WANT ADS
at the
MEMORIAL UNION
Inside the North Entrance
... Across from the
Residence Life office.
11 a.m. to 2 p.m. DAILY
MONDAY-FRIDAY

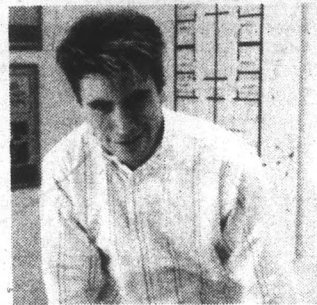
For All Your Party Needs
Y-KNOT PARTY 967-4495
Cinnamon Tree Center
903 S. Rural Rd.

20% OFF
Graduation Announcements

FREE ASU MUG
with purchase of
Holiday Balloon Bouquet

Free Delivery to ASU

WHAT'S UP AT "THE COMMONS"?



Mark Stark, Soph.
Culinary Chef

"Very, very fashionable."

- Brand new — Spring '86 occupancy
- Huge luxury condominium units, 1,165 square feet
- Walking distance to campus, ample parking included
- Washer/dryer, dishwasher, microwave in every unit
- Mini-blinds, ceiling fans, walk-in closets
- Fully furnished
- High quality accessories — towels, linens, dishes, toaster, coffee maker, etc. — all color coordinated and brand new!
- Pool, jacuzzi, sand volleyball court
- Priced for students

The Commons On Lemon are going fast!

FOR RENT • FOR SALE

To reserve your unit call now! (602) 968-6427
or stop into the office • 425 S. Mill (5th & Mill)

(997-7324)



No offer to sell or lease may be made and no offer to purchase or lease may be accepted prior to issuance of the Final Arizona Subdivision Public Report.

Was it In the room with the clue?

MRS. WHITE
MRS. PEACOCK
MR. GREEN
PROFESSOR PLUM
MISS SCARLET
THE BUTLER
THE CONSERVATORY
THE BALLROOM
THE KITCHEN
THE DINING ROOM
THE LOUNGE
THE LIBRARY
THE HALL
THE REVOLVER
THE KNIFE
THE WRENCH
THE LEAD PIPE
THE CANDLESTICK
THE ROPE

IT'S NOT JUST A GAME ANYMORE

PARAMOUNT PICTURES PRESENTS A TWENTIETH CENTURY FOX PRODUCTION IN ASSOCIATION WITH PICTURES AND PERMA FILM PRODUCTIONS "CLUE" CASTING BY BRUNO BELLINI COSTUME DESIGNER LINDA HENNINGSON EXECUTIVE PRODUCERS JIM PETERS PETER LEONARD PRODUCED BY JONATHAN THOMSON SCREENPLAY BY JONATHAN THOMSON STORY BY JOHN LANCE AND JONATHAN THOMSON DIRECTED BY JONATHAN THOMSON

Opens Friday, December 13th
At A Theatre Near You.

BAYLESS FOOD MARKETS

1338 E. Apache, Tempe

Prices Effective
Dec. 4 thru Dec. 10
Limit Rights Reserved
No Sales To Dealers

Super Savings

- BAYLESS Large "AA" Eggs 29¢
- BAYLESS 2% Milk \$1.19
- Mrs. Smith's Pies 99¢
- Bird's Eye Cool Whip 39¢
- Hormel Pepperoni 89¢
- Lake To Lake Colby Longhorn \$1.39



Gold Medal Flour
Bleached, Unbleached or Self Rise
5-Lb. Bag
With Coupon

49¢

Without Coupon.....\$1.19



Russet Potatoes
20-Lb. Bag
With Coupon

99¢

Without Coupon...\$1.39

Gold Medal Flour
Bleached, Unbleached or Self Rise
5-Lb. Bag
LIMIT ONE
With Purchase of \$5.00 or More, Excluding Purchase of Liquor or Tobacco and Price of Coupon, Limit One Coupon Per Family, Effective Dec. 4 thru Dec. 10, 1985.
BAYLESS SUPER COUPON BAYLESS

Duncan Hines Cake Mixes
Layer Cakes, 18 Oz. Pkg. Assorted Layers
LIMIT ONE
With Purchase of \$5.00 or More, Excluding Purchase of Liquor or Tobacco and Price of Coupon, Limit One Coupon Per Family, Effective Dec. 4 thru Dec. 10, 1985.
BAYLESS SUPER COUPON BAYLESS

Russet Potatoes
20-LB. Bag
LIMIT ONE
With Purchase of \$5.00 or More, Excluding Purchase of Liquor or Tobacco and Price of Coupon, Limit One Coupon Per Family, Effective Dec. 4 thru Dec. 10, 1985.
BAYLESS SUPER COUPON BAYLESS

- Jell-O Gelatin Assorted Flavors 6 Oz. Pkg. 69¢
- Birdseye Vegetables Assorted, With Cheese Sauce 10 Oz. Pkg. 99¢
- Schilling Vanilla 2 Oz. Bottle \$1.99

- Pet Canned Milk Evaporated 12 Oz. Can 2 For 99¢
- Snow Crop Five Alive Frozen Concentrate, Assorted Flavors 12 Oz. Can 89¢
- Citrus Hill Orange Juice Chilled Select 64 Oz. Carton \$1.79

Old Spice Stick Deodorant
Original, Fresh or Musk 2.5 Oz. Stick \$1.69

Folger's Coffee Save 40¢
Brick Bag Automatic Drip Regular or Electric Perk 16 Oz. Bag \$2.29

- Vicks Throat Drops Assorted Varieties 40 Ct. Pkg. 89¢
- Lilt Shampoo Or Conditioner 11 Oz. Bottle \$2.59
- Valvoline Motor Oil 10-40 Weight Quart Can \$1.09

- Van Camp Pork & Beans 31 Oz. Can 69¢
- Pretty Baby Diapers With Elastic, 48 Ct. Med. or 32 Ct. Large Pkg. \$6.99
- Smuckers Strawberry Jam 12 Oz. Jar \$1.29

- Northern Toilet Tissue Assorted Colors 6 Roll Package \$1.89
- Glad Kitchen Bags Large Size, Handi Tie 10 Ct. Package 89¢
- Treesweet Grapefruit Juice White or Pink 46 Oz. Can \$1.19

New York Steaks
\$2.99

Pepsi Save 68¢
Regular or Diet, Pepsi Light, Pepsi Free Regular or Diet, Slice Regular or Diet, Mt. Dew, A&W Root Beer Regular or Sugar Free, or Orange Slice Regular or Diet 12 Oz. Cans 6 Pack \$1.39

Van de Kamp's Cinnamon Rolls Save 1.00
11 Oz. Package
BUY ONE PKG. GET ONE FREE

Duncan Hines Cake Mixes
Layer Cakes, 18 Oz. Pkg. Assorted Layers
With Coupon **55¢**
Without Coupon.....\$1.23

- Boneless Pot Roast Country Style Beef Chuck Lb. \$1.89
- Boneless Chuck Steaks Beef Chuck Lb. \$1.99
- Boneless Stew Meat Bayless Supreme Beef Lb. \$1.89

- Chicken Breast With Ribs Attached, Family Pack Lb. \$1.39
- Chicken Drumsticks or Thighs Family Pack Lb. 89¢
- Party Time Pizza Pepperoni or Sausage 5 Pack, 24 Oz. Pkg. \$2.79

- Jumbo Walnuts Lb. 69¢
- Cucumbers Super Select 4 For \$1
- Green Bell Peppers Large Fancy Lb. 69¢

- Beer Nuts 12 Oz. Can \$1.79
- Nature Valley Granola Bars Honey Oat or Almond 10 Oz. Pkg. \$1.69
- Nabisco Snack Crackers Assorted \$1.29

Pork Chops
Family Pack Rib & End Cuts Lb. \$1.29

Chicken Legs
Quarters Frozen and Deboned 5-Lb. Bagged Under 5-Lbs...Lb. 59¢ Lb. 49¢

Bananas
Golden Ripe Lb. 19¢

Stroh's Beer
Regular or Light 12 Oz. Cans 12 Pack Save \$1.10 \$4.19

- Rib Chops Center Cut Pork Loin Lb. \$1.99
- Loin Chops Center Cut Pork Loin Lb. \$2.09
- Thin Cut Chops Center Cut Pork Loin Lb. \$2.69

- Bar-s Boneless Ham Whole or Half Lb. \$2.09
- Country Brand Sausage Links Lb. \$1.99
- Bar-S Bacon Regular or Thick Sliced 1-Lb. Package \$1.69

- Golden Delicious Apples Extra Fancy 3 Lb. Bag 99¢
- Yellow Onions Cooking 3 Lb. Bag 49¢
- Green Onions California Fancy Bunch 4 For \$1

- St. Pauli Girl Beer Light or Dark, 12 Oz. Bottle 6 Pack \$3.99
- Gallo Wine Assorted Varieties 1.5 Liter Bottle \$2.99
- E & J Brandy 750 ML Bottle \$5.99
- Bartles & Jaymes Wine Cooler 12 Oz. Bottle, 4 Pack \$2.79
- Baron Wilhelm Liebfraumilch 750 ML Bottle 3 For \$5

Lobster Tails
Honduran Variety Frozen Defrosted 3 to 4 Oz. Size Lb. \$8.99

Longhorn Cheese
Cache Valley Bulk Style Lb. \$1.69

Large Sunkist Navel Oranges 3 Lb. \$1

Scoresby Scotch
Or Black Velvet Canadian Whiskey 1.75 Liter Bottle \$10.99

- Delmar Bagged Shrimp Cocktail Size Lb. \$2.99
- Pacific Flounder Nautilus Frozen Lb. \$2.49
- Fresh Swordfish Fillets Lb. \$5.79
- Fresh Perch Skin On Lb. \$2.99
- Fresh Butterfish Fillets Lb. \$2.99

- Argas Tortillas Flour or Corn 20 Oz. Pkg. 79¢
- Tasty Dogs Bar-S 16 Oz. Pkg. 89¢
- Rondele Cheese Assorted Flavors 4 Oz. Pkg. \$1.39
- Jimmy Dean Party Links Assorted 12 Oz. Pkg. \$2.19
- Viva La Salsa Hot or Mild 16 Oz. Carton \$1.19

- Acorn, Butternut or Spaghetti Squash Lb. 29¢
- Red Emperor Grapes Fancy Lb. 79¢
- Green Cabbage Firm Fresh Lb. 19¢
- Rod's Dressing Thousand Island or Buttermilk 16 Oz. Jar \$1.39
- Italian Squash Fancy Lb. 59¢

- Gordon Vodka 1.75 Liter Bottle \$8.99
- Canadian V.O. 750 ML Bottle \$7.99
- Seven Crown 750 ML Bottle \$6.99
- Hiram Walker Schnapps Assorted 750 ML Bottle \$5.99
- Gordon's Gin 750 ML Bottle \$5.99

sports

To do just the opposite is also a form of imitation.
—Georg Christoph Lichtenberg

state
press

Sun Devils down Denver, 83-65

By JERRY BROWN
State Press

Chris Sandle scored 21 points and Bobby Thompson added 14 in the first half as the ASU men's basketball team cruised to an easy 83-65 win over the University of Denver Tuesday night in the Activity Center.

The Sun Devils ran their season record to 3-0 and the outclassed Pioneers out of the gym with a 15-0 spurt late in the first half.

Thompson, playing in a reserve role this season for the first time since his freshman year, provided the spark early with 14 points, the last two coming as time expired in the first half to give ASU a 47-30 lead.

"It's kind of hard not starting, but you have to adjust to it — you can't just run out on the court," Thompson said. "I still try to play the same way. They gave me the shot at the top of the key tonight, and I like that area."

ASU coach Steve Patterson was pleased with what he called "a workman-like effort" from his club.

"I thought we played very well in spots, and everybody got a chance to contribute," Patterson said. "We still had some lapses on defense, but we are starting to be aware on the court and there is some improvement."

Sandle hit nine of his 12 shots from the field, many of them coming from the outside against Denver's zone defense.

"Sandle really ripped their zone tonight," Patterson said. "He shot well and his shot selection was much better than it has been."

Sandle credited his touch to off-season work on his shooting.

"It was something I really wanted to improve on," he said. "Against teams like this, Coach Patterson says I can look to take those kinds of shots. When we get into Pac-10 play, I won't be out there as much."

Sandle, who is averaging 19.3 points after the first three games, said the team realizes the caliber of ASU's opponents has not been high so far.

"I would rather play better teams right now. But this is the schedule we have, so that's who we play," he said. "I think we will rise to the occasion when the competition gets tougher."

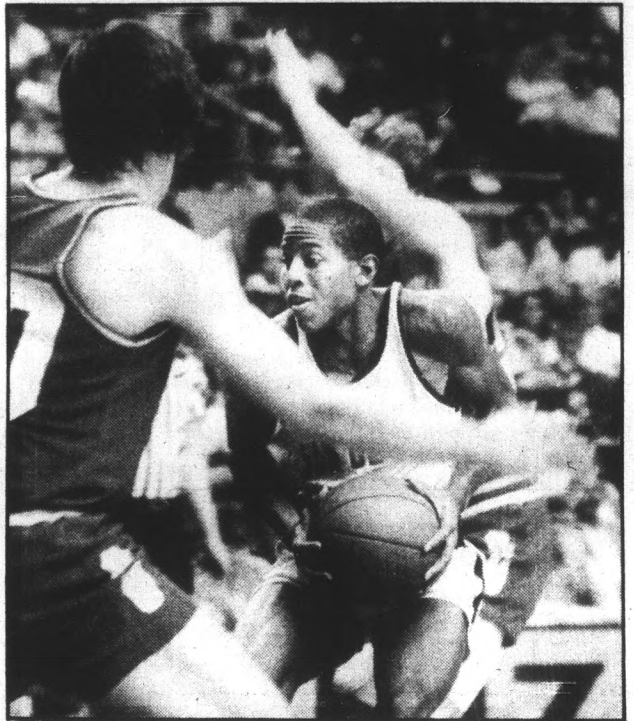
The Pioneers staged a brief rally early in the second half, closing the gap to 58-48 on two free throws by center Adam Murphy with 13:16 to play.

But ASU scored the next eight points, six coming from Sandle, who ended the run with a thundering slam to give the Devils a 66-48 advantage.

Murphy led the Pioneers in scoring with 15 points. Forward Stan Adams had 12 and Ty Sherbert added 11.

Steve Beck was the only other Sun Devil in double figures, finishing with 12 points.

ASU now takes a few days off and prepares for the Kactus Klassic, which begins Friday night. The Devils face Fordam in the first round, while Texas Christian will battle Brigham Young.



Staff photo by Ron Kuczek Jr.
Guard Arthur Thomas was hurt by early foul trouble and finished with six points against Denver.

ASU borrows ideas for rec center from Pac-10 schools

By MICHAEL KONZ
State Press

Editor's Note: This is the second installment of a four-part series examining the ASU recreational facility proposal. Today the State Press looks at one of the top rec centers among Pac-10 schools.

When you're the last one on the block to try something new, it's nice to learn from everybody else's successes — and mistakes. In formulating its recreation center proposal, ASU has been able to look at the facilities of other Pac-10 schools and incorporate the best, and the worst, features of each.

Three members of the Associated Students of ASU Recreation Center Committee — Amy Young, James Emmelkamp and Henry Presseller — took

trips to Pacific Northwest campuses in October and examined other Pac-10 recreation facilities.

Young and Emmelkamp traveled to the University of California at Berkeley and UCLA, while Presseller went to Washington and Oregon State.

"The trips were of great value because we could learn a lot of information in a short period of time," said Emmelkamp, the ASASU activities vice president and chairman of the Recreation Center Committee.

"With the time constraints, it was the only way to see what there was," he said. "We benefited from talking with the people involved."

Executive Vice President Chris Cummiskey did not go on either trip because, "I felt it was for me personally inappropriate to take the trips. I did not want to expend collection money, although the University was paying for it."

Cummiskey said he did take a trip to Cal-Berkeley on his own expense in November.

"I didn't miss out on anything," he said. "It was nice to see the facility, but it didn't give me a lot of insight for working here because we have to decide what is right for ASU."

ASASU President David Varnell said he did not go because he wanted to delegate the chance to someone else.

"I get enough opportunity for trips," he said. "I considered it a privilege. I felt I would be able to compile the information other people brought back."

Looking back, Varnell said his insight into the proposal did not suffer.

"I think the people brought back enough



John Pariseau

information that I could visualize it," he said. "It turned out for the best."

During the trip to the University of Washington, ASASU visitors found one of the best facilities in the Pac-10.

John Pariseau, the UW recreation sports director, said the original intent of its rec center was to "channel student energy" during the unrest of the 1960s.

"After using it for a while, the students were pleased with it," Pariseau said. "We always try to be responsible to student needs."

Washington's two-story facility, which was completed in 1968 using student fees, covers 104,984 square feet.

The building includes four multipurpose buildings that can support eight badminton, three volleyball, two tennis or two basketball courts. It also includes six handball and four squash courts.

Students are also provided with a weight room, an archery/fencing room and two sauna rooms.

Emmelkamp said UW's facility is indicative of how rec centers are being constructed to combat the sweatbox image.

"They're almost like a country club," he said. "In recent years, they've been making them more aesthetically pleasing."

Pariseau said UW has tried to accommodate its handicapped students by mainstreaming them into regular recreation classes.

"We try to modify what we have," Pariseau said. "My philosophy is to get every student on campus involved."

"We deal with each case individually. We're open to doing anything we can."

UW employs 200 part-time students monthly to work in the rec facility, along with 26 full-time employees.

"That is an effective way to run it," Pariseau said. "We don't have to pay large benefits. That's also how we get student input."

"That's better than some committee that meets once in a while and doesn't have a broad spectrum."

A chief problem UW faced in the beginning of its rec center was locker theft.

The problem reached a critical point two years ago when there were 20 thefts in two weeks.

The solution? Facility administrators and policemen climbed into the ventilation system to observe and help apprehend thieves in the lockerroom area.

"Theft is not a problem now," Pariseau said. "Word gets around. We've had one theft in the last six months."

Rec Center Part II

\$ FIVE DOLLARS \$

For one hour of your time!

INTERESTED?

If you are

RIGHT-HANDED

Stop by Room 134 in the Psychology Building between 9:30 a.m. and 1 p.m., Wednesday, December 4, 1985.

\$ SEE IF YOU QUALIFY! Ask for Beth. \$

Gino's delivers.

We're open for lunch!

<p>FREE 12" CHEESE PIZZA</p> <p>Get a free 12" cheese pizza valued at \$3.45 with purchase of a large pizza with this coupon. Not valid with any other coupon.</p> <p style="font-size: small;">Expires Jan. 20, 1986.</p>	<p>FREE QUART OF COKE</p> <p>Free quart of Coke with the purchase of a large or medium pizza with this coupon. Not valid with any other coupon.</p> <p style="font-size: small;">Expires Jan. 20, 1986.</p>
---	--

GINO'S PIZZA 966-4666

822 S. Mill Avenue
We've been delivering in Tempe since 1970.

Open Monday 3:30 p.m. -Midnight
Tuesday-Thursday 11 a.m. -Midnight
Friday & Saturday 11 a.m. -2 a.m.
Sunday Noon-Midnight

Devil wrestlers ready for battle with Oklahoma

By JON WILEY
State Press

The undefeated ASU wrestling team will undergo a test by fire when it competes against the second-ranked Oklahoma Sooners tonight in the University Activity Center.

ASU coach Bobby Douglas said the Sooners will be the toughest opponent the Sun Devils will face this year.

"We plan on winning, and we'll do everything that we can to do just that," he said. "Oklahoma is a very elite wrestling team, and if we lose, we won't feel like losers because we will be concentrating on individual performances."

Douglas said ASU will benefit from having met some of the Sooner wrestlers in the Minnesota Quad meet Nov. 14.

"We've seen how some of them wrestle, and the more we see of them, the better we will do the next time," he said.

ASU has been concentrating on one technique to prepare for the meet, Douglas said.

"We've been working on getting off the floor and scoring more," he said.

Douglas said he hopes to fill the spot in the 118-pound division soon with either "potential national champions" Jim Lefebvre or Chip Park.

In the 126-pound division, ASU's Glenn McMinn will wrestle Chief Walton.

"McMinn is making giant strides towards improvement," Douglas said. "He is a possible All American, and he's going to set some records around here."

In the 134-pound division, team co-captain Gary Bairos will attempt to extend his undefeated record against Nick Neville.

"Bairos is coming off of an ankle injury, and he's in excellent condition," Douglas said. "He'll have a good match against Neville, who is also an excellent wrestler."

Wayne Sharp and Mark Terrill will alternate at the 142-pound division this season, but Sharp will probably start against Oklahoma because of an elbow injury to Terrill.

"Sharp is wrestling better," Douglas said. "He's making great progress and is just starting to work into the system."

"Terrill is . . . still wrestling well and making great progress. He might wrestle tonight, but I'm not sure about that."

Co-captain Adam Cohen will wrestle in the 150-pound division against either Darrin Higgins or Baron Blakeley.

"Cohen is in great shape and has a great attitude," Douglas said. "He is having a lot of fun and is looking forward to the rest of the season."

Jim Gressley will compete against All-American Johnny Johnson in the 158-pound division.

"Gressley is wrestling better and making

great progress, also," Douglas said. "He'll be tested when he goes against Johnson."

ASU's Dennis Roberts, who is coming off a recent knee injury, will wrestle against All-American John LaViolette in the 167-pound division.

In the 177-pound division, John Ginther will take on David Palmer, who was a high-school All American.

"Ginther is a great athlete and is going to make a big name for himself," Douglas said.

Sun Devil Don Frye will take on national champion Dan Chaid in the 190-pound division.

"Frye's progress is a little slower, but he is making progress and is doing a good job," Douglas said.

In the heavyweight division, Rocco Liace will go up against Mark Tatum.

"Liace is working hard and making progress," Douglas said.

ATTENTION JEWISH STUDENTS
(recorded message)
PLEASE CALL 941-9268

NOW!
You can place your
STATE PRESS WANT ADS
at the
MEMORIAL UNION
Inside the North Entrance
Across from the
Residence Life office.
11 a.m. to 2 p.m. DAILY
MONDAY-FRIDAY

March of Dimes SAVES BABIES
HELP FIGHT BIRTH DEFECTS

STATE PRESS PRODUCTION DEPT. STUDENT HOURLY JOBS
Spring Semester 1986

TYPESETTER II
You should have class or job experience operating a phototypesetter. You will monitor and process type from two systems concurrently. Some proofreading involved. Must be attentive to detail, be reliable and precise.

DAYS & HOURS
Sunday 2:00-6:30 p.m.
Mon., Tues., Wed., Thurs.
5 p.m. till approx. 8:30 p.m.

PLEASE DO NOT APPLY IF YOU CANNOT WORK THESE PUBLISHED HOURS.

Applicants must pick up a referral form from Student Employment in Matthews Center, and a State Press production job application from the reception desk at the State Press office, basement of Matthews Center. Persons selected for interview will be called.

for a look that stands out

Precision Haircuts and Perms styled to let you be who you want to be

<p>The Designer Perm only \$19.50 (reg. \$39.00)</p> <p>Your choice</p> <ul style="list-style-type: none"> •Curly •Wash & wear •Firm Curl •Body Wave <p><small>Coupon not valid with any other offer. Offer expires Dec. 15, 1985.</small></p>	<p>Precision Haircut only \$7.00</p> <p>Complete with Shampoo (reg. \$9.95)</p> <p><small>Coupon not valid with any other offer. Offer expires Dec. 15, 1985.</small></p>
--	---

OPEN 7 DAYS A WEEK
No Appointment Necessary

Fiesta Mall 964-6661
Town & Country Mall 955-7563
Westridge Mall 849-0406
Colonnade Mall 274-2765
Flagstaff Mall (Flagstaff) 526-0446

GREAT EXPECTATIONS.
PRECISION HAIRCUTTERS

The **ADVERTISING DEPARTMENT** of the **STATE PRESS**

is interviewing for an opening in the advertising department sales staff.

Freshmen, sophomores and juniors are preferred, in that successful sales representatives can continue for several semesters.

A State Press advertising sales position is also open to and can provide valuable experience for graduate students.

The rewards include training and experience in a professional newspaper operation and realistic compensation.

Applicants must pick up referral form from Student Employment in Matthews Center and an application blank at the State Press office, Matthews Center.

HAVING A ROUGH SEMESTER??
CONSIDER Your COMMUNITY COLLEGE



- *DUAL REGISTRATION (ASU plus Maricopa)
- *TRANSFERRABLE GENERAL STUDIES
- *10 MINUTES FROM ASU
- *SMALL CLASSES
- *FULL FINANCIAL AID OPTIONS
- *\$16 PER CREDIT FOR MARICOPA RESIDENTS
- *CONVENIENT PARKING
- *CLASSES AVAILABLE DAY & NIGHT

REGISTER BEFORE OR AFTER CHRISTMAS BREAK
***CALL 275-8500 FOR CLASS SCHEDULE**

Computer Operations and Programming; Business Management; Data Processing; Secretarial Science; Health Unit Management; Radiography; Respiratory Therapy; Advertising Art; Electrical & Electronic Technology; Refrigeration and Air Conditioning; Automotive; Welding; Nursing; Pharmacy Technician; Electro-Mechanical Drafting

Maricopa Technical Community College

108 NORTH 40TH STREET, PHOENIX, ARIZONA 85034 • 275-8500
40th Street & Washington (Across from Greyhound Racing Park)

NATIONAL
NATIONAL MUFFLER SHOPPE
 1900 N. HAYDEN
 (Corner of McKellips)

SPECIALIZING IN
SHOCKS, STRUTS, MUFFLERS & BRAKES
 Minor Automotive Repair
RYDER TRUCK RENTAL
 GET A
10% Discount For ASU Student
 (With picture I.D. Expires Jan. 1, 1986.)

994-1965
 Hours: Monday-Saturday 7:30 a.m.-6 p.m.

TIME OUT LOUNGE
 NORTHEAST CORNER OF MILL & SOUTHERN

FREE POOL!
 Sun.-Fri. 11 a.m.-2 p.m.
HAPPY HOUR
 4:30-6:30 M-F
 (11 to 6:30 Tues.)

BIG SCREEN SPORTS • VIDEOS • DARTS

TIME OUT LOUNGE (Northeast Corner of Mill & Southern, Tempe)

Images
 Designer resale
 Guys', Gals' and Kids' Clothing

- Natural Fabrics
- Contemporary Styles
- Trendy thru Classic Fashions

Student Discount **20% OFF** non-sale items with this coupon only. Expires 12-26-85.

2930 N. Hayden Rd. Hours Mon.-Sat. 10-5:30 p.m.
 (NW Corner of Hayden & Thomas)

YOUR LOCAL **NISSAN** DEALER
SERVICE SPECIAL

15% DISCOUNT
 On Service Work and Counter Parts
 (except new air conditioning unit)

FOR ANY DATSUN **NISSAN** SERVICE TO ALL ASU STUDENTS, FACULTY, STAFF WITH ASU I.D. CARD
 * TO BE PRESENTED AT TIME OF PURCHASE. *

NISSAN QUALITY Good through Dec. 31, 1985
CIRCLE

We use genuine Nissan Parts & Factory Trained Technicians

Smith **MESA**
NISSAN

1701 W. BROADWAY, MESA • 834-3366
 Service Hours: Mon. 7:30 a.m.-8:30 p.m.; Tues. Fri. 7:30 a.m.-5:30 p.m.
 Parts Open Sat. 8:30 a.m.-12:30 p.m.

Make the crash of '29 look good.

With a Macintosh™, you can make anything look good. Whether it be term papers, thesis papers or presentations.

Because with programs like Microsoft® Chart, whether you're drawing charts or drawing conclusions, you can combine text and graphics to illustrate your ideas like they've never been illustrated before.

That's just one example of how Macintosh helps students work smarter, quicker and more creatively. And the beauty of Macintosh is, you don't have to know diddley about computers to use one.

The point being, a Macintosh can make a lot of things look good. Including you.



© 1985 Apple Computer, Inc. Apple and the Apple logo are registered trademarks of Apple Computer, Inc. Macintosh is a trademark of McIntosh Laboratory, Inc. and is being used with its express permission. Microsoft is a registered trademark of Microsoft Corporation.



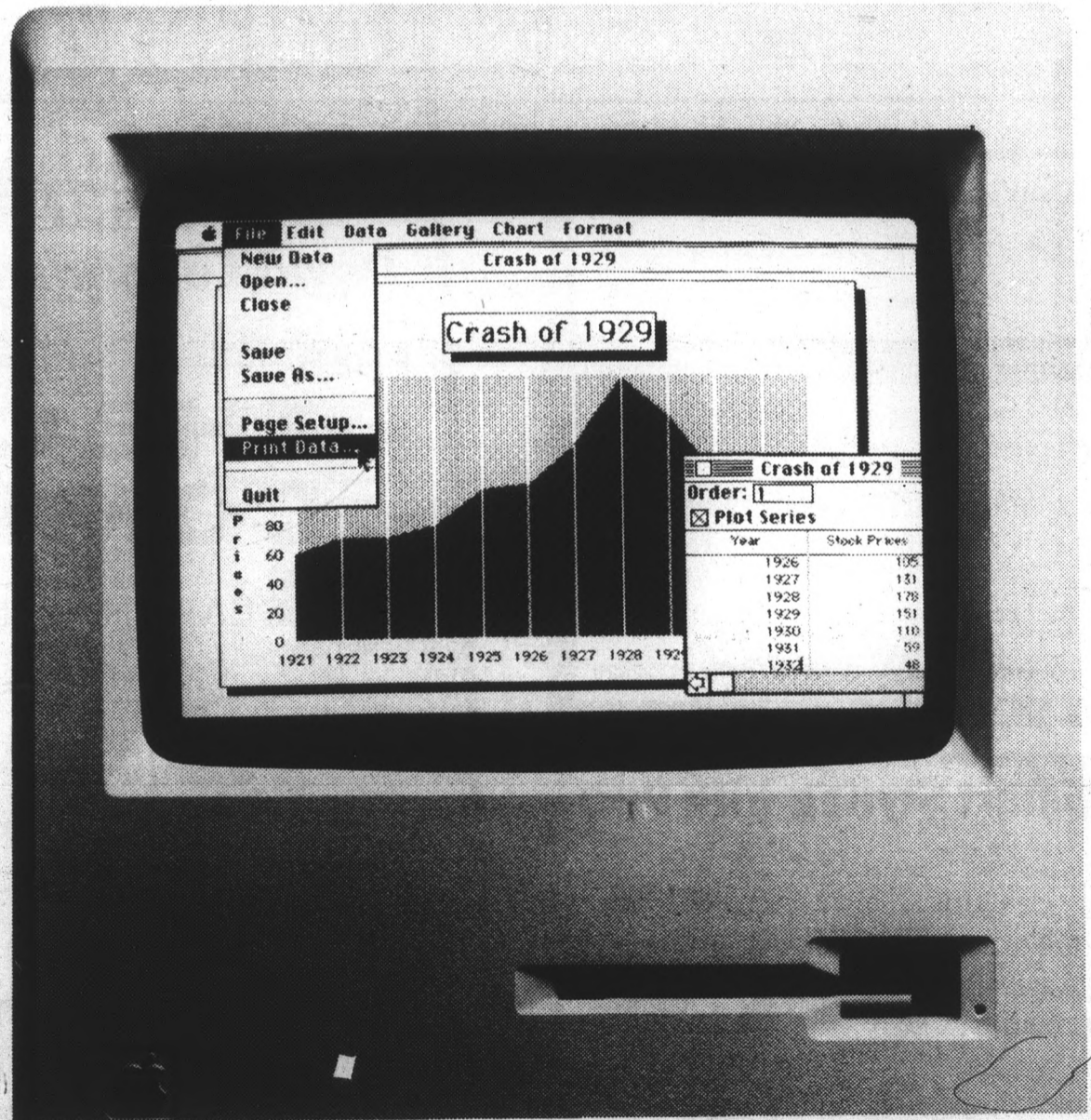
The state press

is looking for two part-time Clerk Typists. They must be able to handle busy phones, take ads accurately in person and over the phone, have good organizational skills, file and run errands. They also must be prompt, hard working and reliable.

Hours are: 8 a.m. to 12 p.m.
 Monday-Friday

or: 1 p.m. to 5 p.m.
 Monday-Friday

For more information, please call the **State Press, 965-7572.** Ask for JoAnna or Susan.



Information Packet at Computing Reference Library, Trailer 3 (West of Engineering C Wing), which describes SPECIAL CHRISTMAS BUNDLE at Prices too LOW to print here.

Cagers 'plow' opponents on trip

Bad weather proves no problem for Lady Devils

By BRAD HALVORSEN
State Press

What could have been a disastrous road trip turned out to be a resounding success for the ASU women's basketball team.

Fighting snow, closed airports and lost luggage, the Sun Devils returned Tuesday with two impressive non-conference victories in the Midwest.

The Sun Devils (3-2) dealt Illinois State an 80-59 mauling in Normal, Ill., Saturday and completed the sweep Monday with an 86-83 victory over Drake in Des Moines, Iowa.

For a while, however, the trip looked like a lost cause. After landing Friday morning in Bloomington, Ill., the players learned that their luggage had been lost. Uniforms arrived, but extra clothes and other necessities were nowhere to be found.

The luggage finally arrived at the team hotel late Saturday afternoon, less than three hours before game time.

The situation worsened after the Sun Devils flew to Chicago on Sunday. Their next destination, the Des Moines airport, was shut down because of a severe blizzard that pummeled the Midwest. To top that, their luggage was lost again.

After spending an unexpected Sunday in Chicago, the team got its luggage back and caught a Monday afternoon flight to Des Moines, which was 1 1/2 hours behind schedule.

"We continued, as coaches and players, to think positively throughout the whole trip," ASU coach Juliene Simpson said.

"We just thought about how happy we were to be in stuck in Chicago instead of Bloomington."

The fatigue actually paid off. The Devils came from a first-half deficit against Illinois State to dominate the Redbirds, then got revenge against Drake, which won the 1984 Converse Classic on ASU's homecourt.

Five Devils scored in double figures against Illinois State, led by center Tanya Morris with 17 points. Guard Patti Peppler tallied a career-high 14 points and dished out seven assists.

"Illinois State did a great job defensively," Simpson said. "We were down in the first half by eight or 10 points, and we could not get our passing game going."

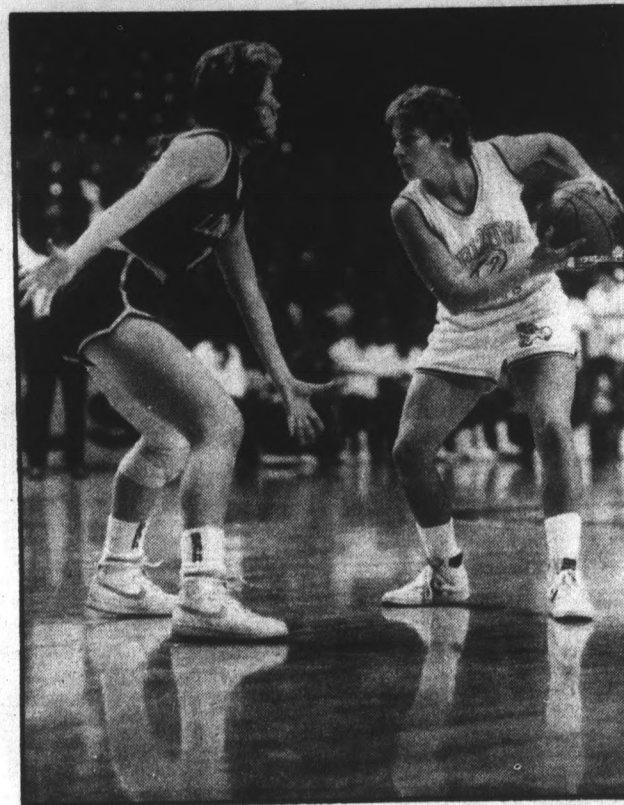
"Then we started putting pressure on them, and that was the key. We regained tempo and control, which is one thing we were never able to do last year."

Guard Jodi Rathbun led the ASU attack against Drake with 27 points, 10 rebounds and six assists. The Devils overcame 31 turnovers by hitting 60 percent of their second-half field goals while holding Drake to 42-percent shooting.

"We did something that only three teams have done in the last three years — we beat Drake on their homecourt," Simpson said.

The Devils play again tonight at 7:30 against New Orleans (3-0) in the Physical Education Building West.

This is the only home game ASU will play outside of the University Activity Center. A wrestling match against Oklahoma will be held in the UAC instead.



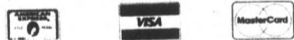
ASU guard Patti Peppler, shown with the ball earlier this season, had seven assists and a career-high 14 points in the Sun Devils' victory over Illinois State. ASU then defeated Drake, 86-83.

Gotta problem?
Gotta complaint?
Gotta phone?
Call us.
The State Press
965-2292

Don't Live With Unwanted Hair!
Le Panache Electrolysis

permanent hair removal

- Student Discounts up to 20% off
- FREE Consultations
- 1/2 OFF when you bring a friend



4130 N. Marshall Way #4
Scottsdale, AZ 85251
(Located in Flamingo Skin Care Centre)

For Appointments, Contact Barbara Manley
between 10 a.m. and 5 p.m.
Thursday, Friday & Saturday only! 947-2828

Smart Styling with PHD

Perm \$30⁰⁰ & Up
Cuts \$9⁰⁰

Student Appointment Special
(After 4th cut get 5th cut FREE)

Eyelash & Brow
Tinting \$8⁹⁵

Private
Booths
Call Today

Mon.-Sat
9:30-9
Sunday
11-4

966-6111 Please Call for Appointment



Across from the Cornerstone
933 E. UNIVERSITY
Tempe Towne Plaza
(S.E. Corner Rural & University)

MUAB



Memorial Union
Activities Board

David Letterman says, "Gotta love it!"

PRESENT:

THE COMEDY CONNECTION

STAR SEARCH WINNERS ... Steve Oedekirk
* Mark Pitta

\$2.00
\$2.50 at door

Tickets available
on Cady Mall

THURSDAY, DECEMBER 5, 1985

UNION
CINEMA

Lite

NEEB
HALL

Noon

FREE

7 p.m.

Preview
Show

9 p.m.



Bowl tickets to go on sale

Student tickets for the ASU-Arkansas Holiday Bowl matchup go on sale today at 8:30 a.m. at the Sun Devil ticket office, located at the South entrance of Sun Devil Stadium.

Each student presenting student identification and an activity card will be allowed to purchase four tickets to the Dec. 22 game at Jack Murphy Stadium in San Diego.

Tickets are \$20 each and will be available from 8:30 a.m. through 4 p.m. until the tickets are sold out.

ASU's Miller named Aztec athletic director

SAN DIEGO (AP) — Doug Scovil is out as San Diego State's football coach and former ASU administrator Fred Miller is in as the school's athletic director, campus officials announced Tuesday.

Scovil was fired after the Aztecs finished with a losing record for the third-straight year.

"I take this step with deep regret. Doug is a good coach and a fine person," university president Thomas Day said. "He has brought our football team through a difficult transition."

A former professional football player, Miller was fired as ASU's athletic director in January 1980, shortly after he suspended and then fired Sun Devil coach Frank Kush for slapping one of his players. Kush, an Arizona institution, had coached the Sun Devils for 22 years and his removal on Oct. 13, 1979, generated harsh criticism that led to Miller's ouster.

During his nearly 10 years as ASU's athletic director, Miller helped raise funds for a new stadium and laid the groundwork for what is now a 23-sport program that made \$4.5 million last year.

During the past five years, Miller has worked as a consultant for ESPN, the cable television sports network, and as a professor in ASU's physical education department.

classifieds

Automobiles

1980 RX7, 5 speed, AC, cassette, white with stripes, excellent condition. 894-9410.

1984 TRANS AM. Dark metallic blue, T Top, 5 speed, fully loaded, must sell, best offer. 991-0466.

OLDSMOBILE CUTLASS Salon 1979 new AT, new tires, AM FM stereo, good shape, have to sell to go back to Germany 965-2745.

Bicycles

STUDENT DISCOUNT on hundreds of new and used bikes. Low prices on parts and repairs. The Bicycle Discount Center. Tempe Bike Shop. 6th and Mill, Tempe. 966-6896.

Day Care

LIVE IN child care needed. Female student to care for my nine year old daughter from 3:00 to midnight Sunday thru Thursday. Evening meal preparation and light housekeeping, room and board plus \$200 per month. Ahwatukee, 15 minutes from campus, beginning January 9th. Bruce Kaehler 893-1150 or 269-4447.

For Rent or Lease

BEAUTIFUL NEW large two bedroom, walk to ASU, pool, laundry, 8th street and Gary 968-5238.

CONDO FOR rent, University shadow, two bedroom two bath, refrigerator, range, washer, dryer, \$525 mo. 966-3161.

FOR LEASE, custom four bedroom home, furnished, pool, walk to ASU \$1,200 per month. No first and last or deposit required, kids and pets OK 839-9198 evenings 949-2534 days ask for Buddy. Available 12-1-85.

LIVE IN child care needed. Female student to care for my nine year old daughter from 3:00 to midnight Sunday thru Thursday. Evening meal preparation and light housekeeping, room and board plus \$200 per month. Ahwatukee, 15 minutes from campus, beginning January 6th. Bruce Kaehler 893-1150 or 269-4447.

TWO BEDROOM two bath, two blocks from campus, utilities included, furnished, pool, sauna, May rent paid 829-7736.

For Sale

BEAUTIFUL 6' ARTIFICIAL scotch pine Christmas tree from Sears. Two years old, like new! \$100.00. Call Anita 978-9149.

BUY, LEASE to own complete professional word processing system. Reduced! Call 252-4504 ext 211, 893-8768.

PIONEER SPEAKERS 100 watts. Brand new, never used. Paid \$600 will take \$100 for the pair, moving must sell 954-0827.

Help Wanted

"ASU IS calling on you... to join the ASU Telefund Drive! Gain valuable work experience in P.R. and tele-marketing; nightly bonuses and incentives. Call Sherry McIntosh at 5-6754 after 1:30 pm for more info."

Help Wanted

AVIATION CAREERS, professional pilot aircraft mechanic, Cochise Community College Admissions Director. 1-800-537-7564.

CASHIER, AFTERNOONS only 10 to 15 hours 967-6524.

CASHIER, IMMEDIATE opening part time, apply in person 7577 E. Camelback. 10 to 12 Monday and Tuesday.

CHRISTMAS HELP needed. Work outside sidewalk sales in front of major drugstores, own transportation necessary. Flexible hours, work around your schedule. Full and part time positions available. Call Tony 835-6729. Possible work for Spring semester also.

CREDIT CARD services, a division of the Firestone Tire and Rubber Co., has an immediate full time opening for a senior collector at the Mesa office. Applicants should be business and finance majors. For more information contact Mr. Brady at 962-1234.

CRUISESHIP HIRING information phone 707-778-1066 for details.

GOOD SUMMER JOBS near Estes Park, Colorado, as a camp counselor, cook, nurse, typist, photographer, barn wrangler, trans driver, or assistant unit director. Applicants must be at least 19. Interviews on campus March 17. Cheley Colorado Camps, Dept. C. Box 6525, Denver, Colorado 80206. 303-377-3616.

\$\$\$HELPS\$ can you use an extra \$2000 a month working part time? Exciting, extremely lucrative, very unique marketing company looking for self starters. He who hesitates loses! Call Shante's 951-2203.

IMMEDIATE OPENINGS for students interested in earning up to \$7 per hour; gain valuable experience in PR and fund raising; looks great on your resume. Campaign for St. Lukes Poison Management Center call 251-8618.

IMMEDIATE OPENING. A responsible hard working student wanted to do telephone survey work. Position for weekend evenings. Call 962-0665 between 6 and 9 pm.

LOOKING FOR house cleaners, transportation required, given own clientele 231-0333.

(20 JOB OPENINGS)

WANTED

PART-TIME SERVICE AND PRODUCTION WORKERS FOR STEVE'S ICE CREAM

WE ARE LOOKING FOR ENERGETIC, OUTGOING INDIVIDUALS TO CREATE ICE CREAM CONCOCTIONS FOR CONFECTION-STARVED CUSTOMERS

ACCEPTING APPLICATIONS MILL AVENUE SHOPS 4th ST. & MILL AVE. FOR FURTHER INFO CONTACT STU OR CRAIG AT 829-7561.

EQUAL OPPORTUNITY EMPLOYER M/F

12/4

CHRISTMAS CASH ANYTIME / PART-TIME

\$5 to \$7 Per Hour • We Fully Train

The nation's finest telemarketing firm is now accepting applications for the following shifts:

5:00-10:30 p.m. • 6:30-10:30 p.m.

Our sales people work in a modern, comfortable business environment contacting established customers on long distance WATS lines. Guaranteed salary or commission, whichever is greater, and averages \$5 to \$7 an hour. Our Tempe office is located approximately five minutes from campus.

PLEASE CALL DIALAMERICA FOR DETAILS.

829-1140

12/4

STATE PRESS

HAS OPENINGS FOR TWO PART-TIME CLERK TYPISTS. MUST BE ABLE TO HANDLE BUSY PHONES, TAKE ADS ACCURATELY OVER THE PHONE AND IN PERSON, HAVE GOOD ORGANIZATIONAL SKILLS, FILE AND RUN ERRANDS. MUST BE PROMPT, HARD-WORKING AND RELIABLE. HOURS ARE: 8 to 12 M-F OR 1-5 M-F. FOR MORE INFORMATION PLEASE CALL THE STATE PRESS, 965-7572. ASK FOR JOANNA OR SUSAN.

12/10

Help Wanted

MODELS/TALENT, start your new career today. We can assist you, call the talent scouts at Tondou Studios 264-3530 11 a.m. to 6 p.m.

OVERSEAS JOBS. Summer, yr. round. Europe, S. Amer., Australia, Asia. All fields. \$900-2000 mo. Sightseeing. Free info. Write IFC, PO Box 52-AZ3 Corona Del Mar, Ca 92625.

FANHANDLERS PIZZA is now hiring morning and evening part time help. Apply in person at 106 E. University.

PARADISE CREAM. Needs ice cream servers. Must have car and work both Tempe and Phoenix stores. Part time, flexible hours. Apply 1044 South Terrace 967-2414.

PART TIME schedules to fit your needs. We are looking for housecleaners, transportation required. Excellent job for housewife, students etc., 231-0333.

PART TIME cooks, waitresses for Tempe sports bar, energetic, personable, must be able to work over holidays. The Stadium Bar 1123 S. Rural Rd. 968-0243.

PRINT SHOP part time delivery, bindery and general help. Hours flexible, own vehicle a must. Hourly wage plus mileage. 966-1808 9 to 5.

PROFESSIONAL CAREER opportunity available for seniors of finance, marketing or insurance majors with a desire to begin career development program. Flexible schedule if needed. Call Bernie 257-4525.

PT RECEPTIONIST needed. Must type 50 wpm. Call John 951-4407.

RECEPTIONIST FOR travel agency, full or part time; light typing. Must be neat in appearance 894-0666.

RED ROBIN restaurant is hiring cooks, bussers, hostesses, wait staff and cocktailers. Apply in person 1539 N. Scottsdale Rd. Los Arcos Mall.

SECURE JOB now for next term. Earn \$40 to \$75 per day assisting students applying for credit cards. Call 1-800-932-0528.

SHIPPER-receiver-warehouseman. \$4.50 per hour. Contact Patty at 252-7681.

TRAVEL AGENT, must be experienced. New branch in Tempe. 894-0666.

YMCA TRIANGLE Y Ranch Camp in Oracle is now looking for staff to work camp Dec 28 through Jan 3, 1986. Salary plus room and board. 36 positions available. For information, job listings, and applications, write camp office, 516 N. 5th Avenue, Tucson, Arizona 85705 or Call 884-0987 M-F 1-4 pm.

Instruction

EARN EXTRA MONEY

Arizona School of *BARTENDING*

Job Placement Assistance

Start Any Day

Terms Available

275-MIXX

4035 E. McDOWELL

Minutes From Campus

12/5

AMERICAN BARTENDERS SCHOOL

Earn \$10-\$20 per hour

1 or 2 week classes

(as seen on TV)

Job Placement Assistance

Call Now

957-3770

12/10

Lost & Found

LOST GOLD wedding band in library. Sentimental value. Reward. Call 951-3876.

Motorcycles

1971 HONDA CB 175, runs great, not wrecked, electric start. \$275. Scott 965-7116.

Motorcycles

1978 YAMAHA XS500, good condition, quick bike, 60mpg, \$500 OBO, parts warranty extra 969-4230.

1981 HONDA PASSPORT, perfect condition, in storage for three years, low miles, with helmet 965-0097.

1982 YAMAHA MAXIM 550, incredible condition and miles, 4 year everything covered warranty, \$1,300. Howard 966-3948.

1983 HONDA. RED AERO 80, good condition, great for getting to class, parking decal, \$425. 965-0983.

Personal

HOMOSEXUALS ANONYMOUS. A Christian Fellowship for those who wish to be free from homosexuality. 266-3733.

RETURN FROM L.A., need van to bring load back to Phoenix. 996-3393.

THETA CHI congratulates their new brothers on activation. Way to go guys, were proud of you.

Real Estate

MOBILE HOME, two bedroom, air, evap., gas heat, fenced yard, small pets O.K. \$7,000 829-0488.

TEMPE TOWN house for sale by owner. Save real estate commission. Motivated seller. Best value in area. See this one, have your terms, three bedroom 2 1/2 bath new carpeting, newly decorated \$62,800 948-1843, 948-3603.

Roommate Wanted

FOREIGN GRADUATE female student wanted to share apartment 1-1-86. Approx \$185 plus utilities. 949-7938.

FEMALE GRADUATE student needs roommate. Very nice house, extremely close to school, \$210 per month includes utilities. No rowdies 894-1699.

FEMALE NONSMOKER, clean, reliable. One mile from campus. Two bedroom condo. \$190 a month plus utilities. Furnished is needed. 935-3263.

FEMALE ROOMMATE needed January to share furnished two bedroom two bath apartment at McKellips and Scottsdale Road. \$310 month includes utilities. Call Margaret at work 264-7441 x 3504 or home 994-9452.

FEMALE ROOMMATE needed. Room in four bedroom two bath house with three other ASU female students. \$150 mo plus 1/4 utilities. Ten minute bike ride to ASU, Pet OK. Available January 1st, call 894-0132.

FEMALE ROOMMATE to share large bedroom, \$147, furnished, washer, dryer, pool, jacuzzi, Butterfield 829-9222.

MALE NONSMOKER to share spacious two bedroom apartment. \$250 including utilities. Security access, exercise room, pool, sauna. Mark, 965-4550 days.

NEED A new roommate? Room and meal in private home for female or male student. AC, pool, TV, phone, everything furnished. \$295 a month 947-4912.

OWN FURNISHED room, non smoker, washer and dryer, 1/4 mile from campus, \$190 per month 921-0124 Tracy.

ROOM FOR rent, females only. Non smoker, non drinker, no pets, must. Deposit and excellent references required. Very reasonable rate. Near ASU. Call Mr. Shally 967-4648 evening or weekend.

SHARE FURNISHED three bedroom home 1 1/2 miles from ASU. \$200 includes utilities 967-4669.

WANTED, TWO female roommates to share room in new condo, five miles from ASU, microwave, washer, dryer, fireplace, pool, included. Available 12-15-85 nonsmokers only \$175 month plus 1/2 utilities or single \$270 plus 1/2 utilities 838-5244 after 4:30 pm.

Services

CARS AVAILABLE - 21 or older. All States Drive-away, 992-5200.

RC VIDEO Productions slide, 8mm transfers to VHS, living Christmas cards, and weddings. Call Rob 244-8298.

RESUME WRITING, paper editing, American History tutoring by experienced college teacher. Call 938-7928 after 5 pm.

SINGLE? HERPES? Confidential Connections-a unique, affordable dating service for singles with herpes 241-9874.

Services

ILLUSTRATOR, TECHNICAL drafts person available. Quality work at reasonable prices. Contact: Julie Longhill 966-5009 or room C33 Anthropology.

Transportation

AAA DRIVEAWAY. Cars to most major cities. U drive. First tank free 277-9979.

Travel

AA 6 ROUND trip tickets and reservations for Christmas break to Chicago \$239. Most other mid west cities available. 966-4694.

AIRLINE TICKETS: round trip to Chicago, St. Louis K.C., and N.O. \$225 921-0205.

CAN TAKE one or two riders to Aspen. Leaving Dec 20th, returning Dec 30th. Have ski rack, call evenings 861-2436.

HOME FOR Christmas! Airfare still available for Chicago, St. Louis, KC, Oklahoma R.T. \$230 833-8819 evenings.

Typing

A-1 PROFFICIENT typing. IBM selectric. Loraine 833-8365 at University and Dobson in Mesa.

AAKURIT TYPING. Short papers, 1-15 pages, overnight service. Long papers, prompt service. Good rates. Linda 831-0349.

ACCURATE FAST experienced typist, APA, marketing and legal briefs \$1.50 per page call Sharon 833-5687 or Janet 834-0893.

ACCURATE CUSTOM typing, spelling corrected, rush jobs welcome, reasonable. Linda 838-8830.

ALL TYPING needs met by my word processing service. East Mesa, \$2.00 page, Linda 898-3031.

CALL ME for fast, accurate, quality service at competitive prices. Close to ASU 966-2186.

ELITE OFFICE services for word processing needs. Efficient, accurate, free pickup and delivery 996-9911.

EXPERIENCED TYPIST. IBM Correcting Selectric. Theses, dissertations, term papers. Style and spelling corrected. Kathy, 830-8783.

PROFESSIONAL WORD processing - reports, theses, papers, letters, etc. Fast, accurate. Rush jobs okay. 945-0058.

PROFESSIONAL TYPING - Fast, reasonable. Excellent spelling and grammar. Call Jaline, 948-4647.

PROFESSIONAL TYPING - One-day turnover, term papers, resumes, reports, etc. Call Esther, 968-2672.

QUALITY WORD processing, reasonable rates, spelling and grammar assistance 839-7905.

SHORT OF TIME? I can help. Reasonable. Professional. Guaranteed. Experienced in academic. call Jessie 945-5744.

TYPING, IBM selectric \$1.20 per page. Cheryl 967-3747 evenings.

TYPING THESES, dissertations, term papers, etc. Ten years experience. Accurate fast service, spelling corrected. 949-9207.

TYPING, WORDPROCESSING, starts at \$1.00 per double spaced page. Call Cathy 835-5591.

WORD PROCESSING-Fast, Accurate (Editor, Writer). Books, letters, resumes, theses. Downtown Mesa. Donna, 844-1876, 962-8694.

WORD PROCESSING, storage for dissertations, thesis and term papers. Rush jobs welcome. Nancy, 830-5572.

WORD PROCESSING, typing. Can type anything! Guaranteed word perfect. Located in Tempe 839-3412 after 5:00 pm weekdays.

FAST REASONABLE typing, word processor, 831-8218.

YOUR TYPE. A unique typing service. \$1.25 per double spaced page. Call 249-2285.

Wanted

INTERN FOR credit in Senator DeConcini's Phoenix or Mesa offices. Spring and summer internships available. 261-6756.

PERSONAL CARE attendant for disabled person. Close to ASU, room and board, call after 5:00 968-9116.

WANTED, STUDENT architect to draw plans for a commercial building, will pay a reasonable amount, please call Lenny Brand at 252-2299 9-5.

CLASSIFIEDS START HERE

Rates, 15 words or less:
\$1.90/day — 1 to 4 insertions
\$1.81/day — 5 to 9 insertions
\$1.72/day — 10 or more

10¢ for each additional word

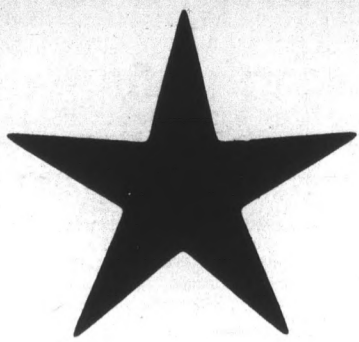
965-7572

Automobiles

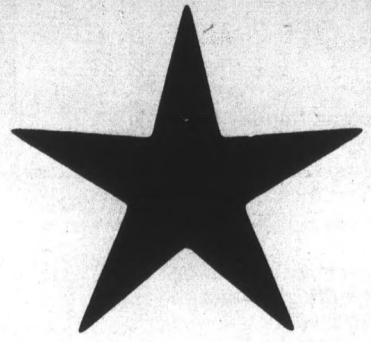
1967 MUSTANG CONVERTIBLE. Fully restored, all extras. \$11,000 invested, asking \$8,500. 895-1801.

1971 OPEL. 1900 four door, four speed, AM FM cassette, new radio 25mpg regular gas, emissions exempt, good condition, fun \$850 OBO 966-8098.

1980 PORSCHE 924 TURBO. Sunroof, AM FM cassette, alloy wheels, AC, new tires, low miles. \$9,000 OBO 252-3471 or 838-8641.

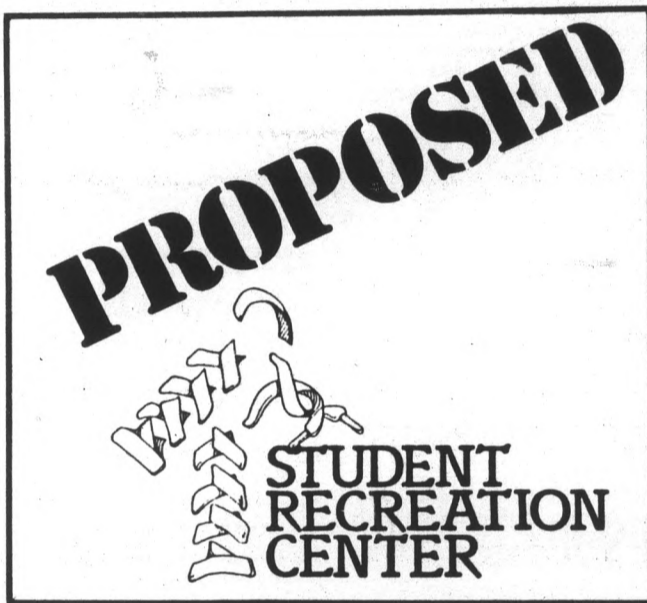


VOTE TODAY



8:30 a.m.-4:00 p.m. • Pinal Room • 2nd Floor - MU

REFERENDUM
FOR



YES
OR
 NO

PROPOSED STUDENT RECREATION CENTER

How will it be operated?

The Center will be operated for the purpose of providing a variety of opportunities for exercise, recreation, and leisure for the general student body and university community. Additional fees for faculty, staff, administration and rental of special equipment will be collected. A committee with student majority representation is planned. The primary objective of this committee will be to ensure adherence to the basic operational tenets outlined above. It is also proposed that the facility be staffed primarily by student maintenance, instructional and some managerial positions. This alone will greatly reduce day-to-day operational maintenance and payroll costs.

What is the proposed Student Recreation Center Design?

The Center will be designed with student input. The tentative plans include: multi-purpose rooms (for aerobics, dance, martial arts, wrestling), weight room, gymnasium, racquetball and squash courts, pool, basketball courts, volleyball courts, and tennis courts. Several means for gathering student input are being developed.

How much will it cost?

The Student Recreation Center will be funded by a 30 year, \$16 million dollar bond supported by student fees. Each student will pay \$25 per semester beginning on the center's first scheduled day of operation, tentatively 1990. Each part-time and summer session student will be assessed a proportionate mandatory fee. Student fees used for bond repayment will be non-increasing and not subject to inflationary measures for the life of the 30 year bond. Gifts, donations and contributions will be sought.

What about accessibility?

The Center will be accessible to on and off campus students, faculty and university personnel.

Don't we need classrooms more than a recreation center?

It isn't a question of one or the other.

The Arizona Board of Regents recently gave the U of A and ASU approval to seek authority from the State Legislature to sell bonds backed up by student fees for the purpose of building student recreation centers on the two campuses. These facilities will be run for the purpose of serving students, staffed largely by students, and paid for by students. No tax dollars will be involved.

Academic facilities are generally paid for by State appropriations. The construction of badly needed academic facilities and the student recreation facility are essentially two separate issues. Approval of the proposed student recreation center will not in anyway prohibit the State from constructing academic facilities.

How will student opinion be assessed?

Referendum . . . An all-campus referendum regarding the proposed facility will be held December 2 - 4, 1985, on the second floor of the Memorial Union. All students are urged to VOTE.

Survey . . . Two surveys of student opinion are being conducted along with the referendum. Since the proposed student recreation center will greatly effect the entire student body and its many sectors to varying degrees, the importance of wide participation in the forthcoming referendum cannot be underestimated. Please VOTE.

A Matter of Choice

It's up to you. The proposal will have a great impact on future students at ASU, so it is very important that you express your views on this issue. This is YOUR CHOICE.

This proposal *does* represent a \$25 per semester increase in fees for ASU students from 1990 until the year 2020. It represents great responsibilities to the future of our university.

For More Information on the proposed student recreation center, please stop by ASASU, Memorial Union, second floor, or call: 965-3161.

**It's your choice . . .
It's your building . . .
It's your money!**