

friday

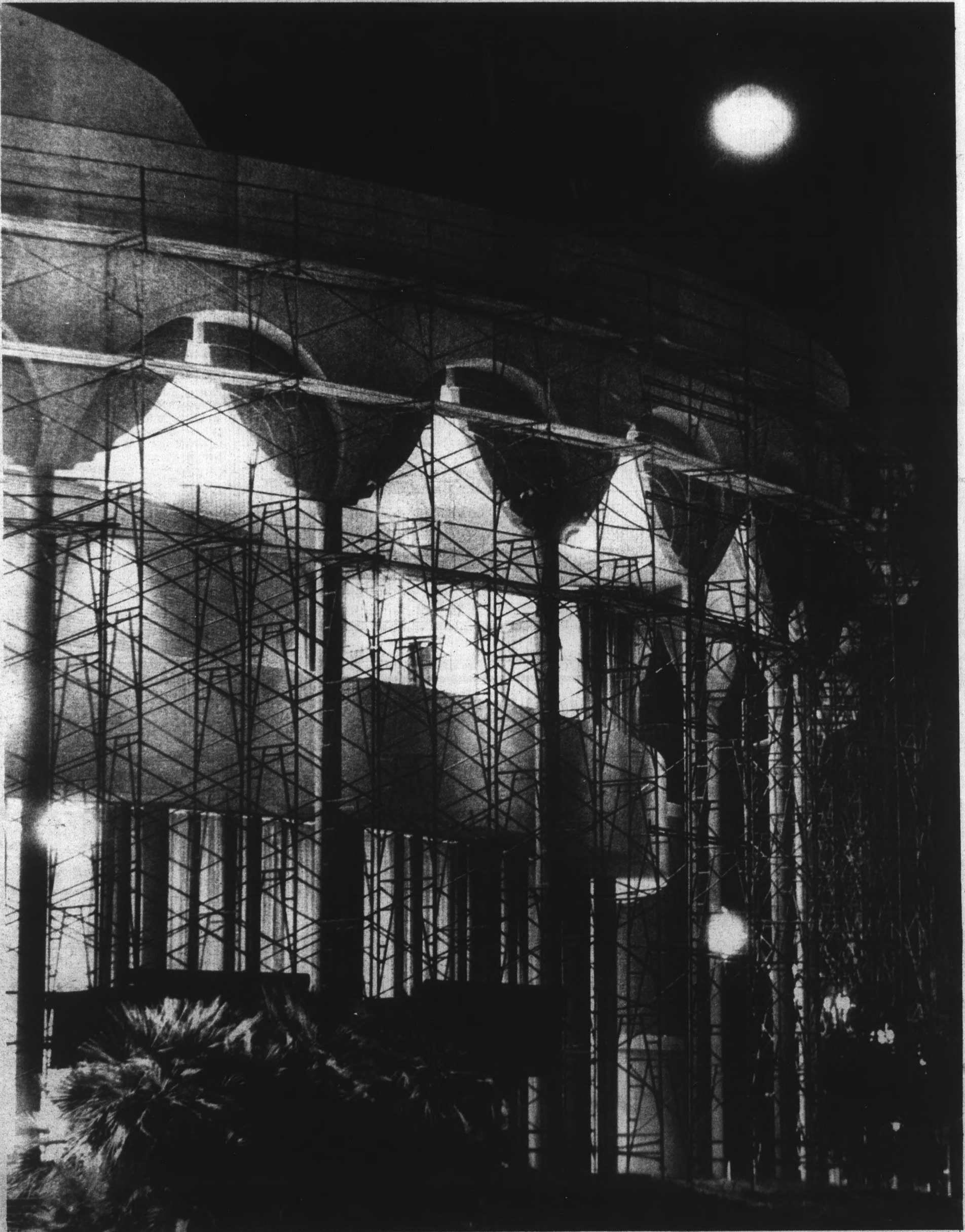
November 22, 1985  
Vol. 68 No. 61

Arizona State University

Copyright, State Press, 1985

state  
press  
Tempe, Arizona

A Day in  
the Life of U



# Reconnoitering the campus that never sleeps . . .

If you enjoy planning and organization, it was a logistical orgasm.

There we sat, at the Round Table in the corner of the newsroom. It's a big table that really takes up too much space in our dreary dungeon at the bottom of Matthews Center, but the manager of student publications didn't like the way it clashed with his Persian rug, so we're stuck with it.

Anyway, we're sitting there, the four photographers and I, several ASU maps in front of us, drawing the campus into four quadrants, dividing the day into eight three-hour increments, deciding which photographer would be in each quadrant, using which mode of transportation and crucial times to be at certain places.

All of a sudden it was like a bad clip out of "The Sands of Iwo Jima." "OK, Rick, you'll be in Sector 4 on foot from 3-6 a.m., and Ron will be in Sector 3 on his bike. Now don't cross sectors."

"Wait a dadblamed minute," I thought. "What the heck are we doing? How did we get into this mess?"

It all started in a staff meeting in late October, when a photographer suggested we do a special photographic issue on everyday happenings at this University — "A day in the life of ASU." The idea raised a few eyebrows and we started talking details.

We wanted to cover a Friday for various reasons, but most of all so that we could collapse for a number of hours after combing the campus area from midnight to midnight.

The most average Friday left in the semester was Nov. 8. So our mission was laid out: simply capture everything that happens between midnight and midnight on Nov. 8, 1985.

The staff was really motivated. "Good God!" the managing editor growled, teeth gritted into his trademark sideways scowl. "This is like planning a fiasco."

After hosing him down, we plotted the task of focusing a limited number of camera lenses on the entire campus.

So we left the Round Table with D-day

strategies set. It was Thursday, Nov. 7. We put the regular paper to bed that night then met back at the newsroom, HQ, an hour later at 11. We reviewed plans of attack. The editors and reporters first on the schedule for operating HQ during the 24 hours arrived. The least cluttered desk in the Dungeon was bulldozed of newspapers, notebooks, pencils, a typographic manual and assorted papers, and a nourishment table was set up with nuts, apples, bananas, gum, chips and salsa and a coffee pot. Unfortunately, the people who were supposed to bring doughnuts never showed.

As the critical hour drew near, photographers stuffed their packs with rolls of film, grabbed various hardware like flashlights and tripods and still managed to carry their cameras. We hit the streets. And malls. And lawns. And bushes, buildings and rooftops.

The clock on the MU wall struck midnight. Friday, Nov. 8 was upon us. The excitement in the air was too thick to slice with a brand-new Ginsu.

The 24-hour clock had started. Once it struck midnight again, there would be no second chance to document the experience — equally among the time periods, not favoring the peak periods of human activity.

By noon people were starting to drag. One photographer, who took a 50-minute break from scouting the malls, complained that he had actually fallen asleep during his exam.

When the sun took a dive somewhere to the west of Tempe Center, everyone started getting their second wind. As darkness claimed Devil country once again, some staffers donned roller skates to get about campus.

The final quarter of Nov. 8, 1985, went by quickly. When the clock struck midnight, nothing stopped except our shutters. No, the air of activity did not halt abruptly. Another day, and weekend, in the life of ASU had begun.

People shuffled back to the newsroom. The coffee pot barely had been used. Caffeine never could match interesting



State Press Photo Editor Kip Williams, seated, directed the photo staff in its 24-hour assault on campus. The photographers from left to right, are Ron Kuczek Jr., Rick Wiley and Kevin Larkin.

work as a stimulant. Photographers dumped their gear in their corner of the Dungeon, not looking at it again until the football game later that day against the University of Washington. Rolls and rolls of film were stacked neatly, if you consider a mound neat, in the entrance to the darkroom. These small cylinders, black-and-white documentation of the Longest Day, seemed to beg to be developed. But they would have to wait for a more urgent need — sleep.

If nothing else, we learned that this

campus never really sleeps. The most interesting time period to watch the campus was the early morning hours, when we aren't usually around digging up stories.

We got to know the campus a little better during those 24 hours, and hope to impart a little of that. The following pages aren't a perfect representation of a day's activity around here. But they do provide slices of a 24-hour period at this University. The following pages provide one of a million possible looks at a day in the life of ASU.

—STEVE WATERSTRAT

## STATE PRESS

FIELD GENERAL — Steve Waterstrat  
FIELD MARSHALLS — Tom Blodgett, Patrick J. Kucera, W. Tim Ahl, Michael Konz, Cindy Pearlman, Mead Summer, Whitney Peterson, Gray T. Echols, Jerry Brown.

DEMOLITION EXPERTS — Jon Basalone, Chip Sheean.  
MEDICS — Jacquie Cirou, Judie Gaillard, Khali Crawford.  
COUNTER-INTELLIGENCE — Ed Schubert, Kari Bland, Vickie Chachere, John Conway, Linda Coulson, Brad Halvorsen, Andrea Han, Bob Heiler, Rob Kelton, Carri L. Mitchell, Colleen Moore, Dave Rook, Melissa Smyth, Theresa Willeford, Laura Wilson, Jon Wiley.  
SNIPERS — Kip Williams, Ron Kuczek Jr., Kevin Larkin, Rick Wiley.

Cover shot of Gammage Center at 2:30 a.m. by Ron Kuczek Jr.

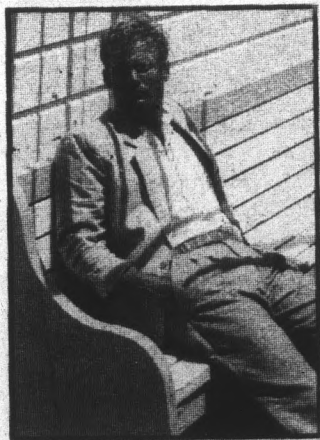
Special thanks to Brian O'Mahoney for photo, page 5, bottom left Leah Jo Patti for photo, page 13, bottom left ASU Police for cooperation and courtesy

### Webster Men's Shop of Los Arcos Mall

Famous for High Quality at Moderate Prices

- Jordache •Calvin Klein
- Sergio Valente <sup>sale</sup> ~~price~~ **ONLY \$29<sup>95</sup>**  
Hemmed free while you wait!

- Largest selection of leather coats



- Miami Vice jackets **\$24<sup>50</sup>**

**2 for \$45**  
Large selection of colors.

- Sports jackets
- Suits
- Shirts
- Shoes

We Accept:  
American Express  
Visa  
Master Card

**10% OFF** non-sale items with this ad only  
(Expires 11-27-85.)

Browsers Welcome! **994-3780**

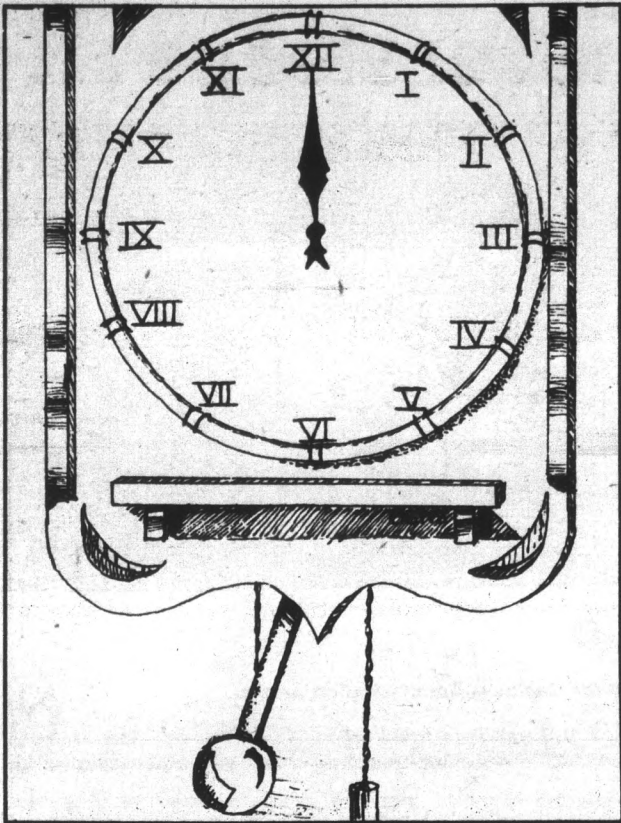
- \*AM/FM Cassette Walkmans . . . . . **\$34.95!**
- \*Audio Technica Headphones . . . . . **\$19.95!**
- \*Home Cassette Decks . . . . . **From \$79.95!**
- \*JVC Receivers . . . . . **As Low As \$99.95!**
- \*19" Color Televisions . . . . . **Less Than \$300!**
- \*Pioneer Car Stereos . . . . . **Less Than \$100!**



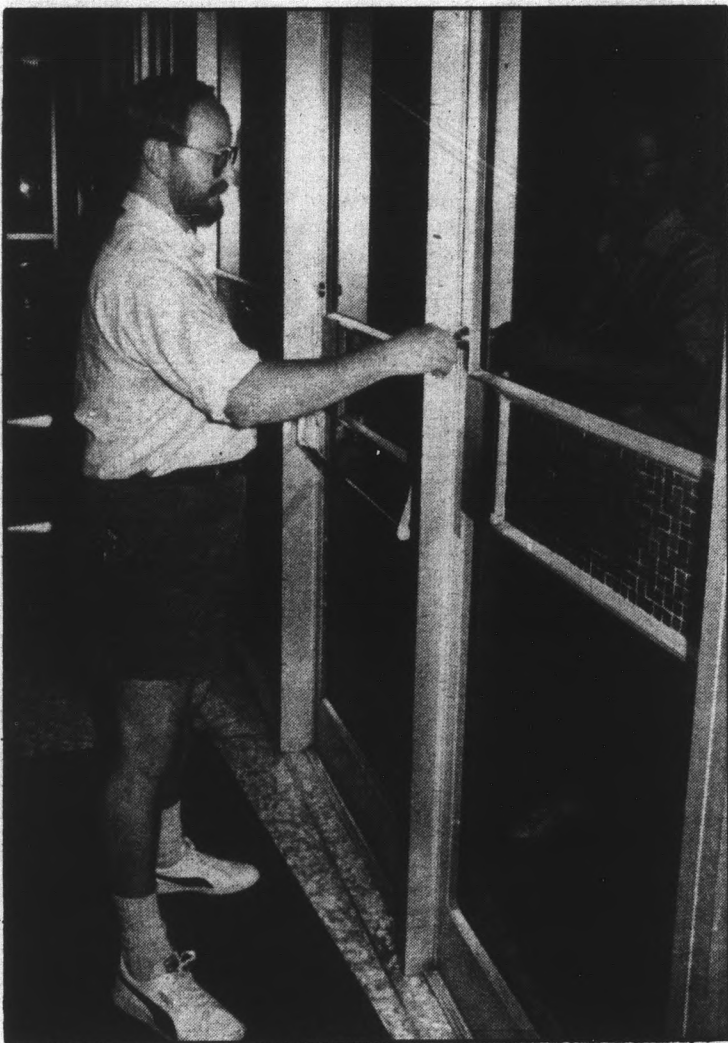
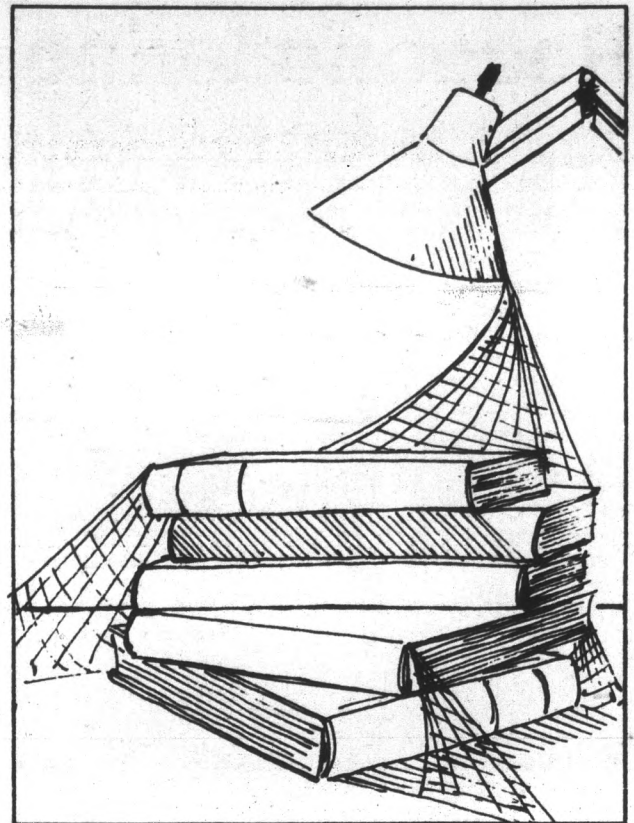
**967-3301**

## AFTER SIGHT & SOUND SUPERSALE!

**913 S. MILL AVENUE**



# Midnight to 3 a.m.



12:04 a.m. — Librarian assistant Henry Stevens locks the front door of Hayden Library after making sure everyone is out.

It is midnight, and the tumblers clunk into place on the doors of the MU as it closes for another night.

There is a sudden flurry of activity, compared to the relative peace of 11:59 p.m. A well-dressed young man has noisily closed the doors on the last stragglers leaving the MU.

Safety Escort Service representatives depart from Hayden and Noble libraries with a few late studiers. Couples and groups also leave; some are quiet, some are laughing and gesturing.

The Safety Escort Service typically has two or three calls at midnight, when both the libraries and the MU close.

Karl Konrad, coordinator of the service, said from 6 p.m. to midnight, the escorts may receive 30 to 40 calls. He added that the service's busiest night is Wednesday.

Forty-one students volunteer their time as escorts, and four or five escorts work each night.

The average caller is "a female, who wants an escort to her dorm or car," Konrad said.

"We have had calls from males, usually in wheelchairs."

Typically, there are 20 to 30 students left inside Hayden at closing time, said Henry Stevens.

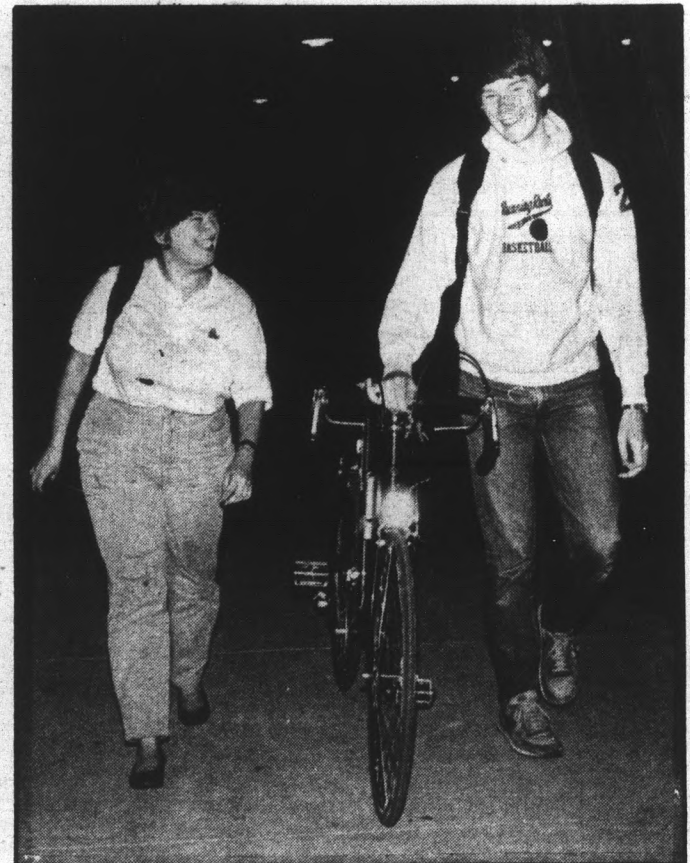
He's the man who locks the doors after them, a librarian assistant and evening supervisor of the circulation desk.

"Mondays and Tuesdays are our busiest nights . . . although Sundays are becoming so," he said.

From 6 p.m. to midnight on an average night, Stevens says the circulation clerks are checking out 400-500 books, and receiving about 300. There are about 2 million books total in all the ASU libraries.

"(People) start coming in en masse post-evening classes," Stevens said.

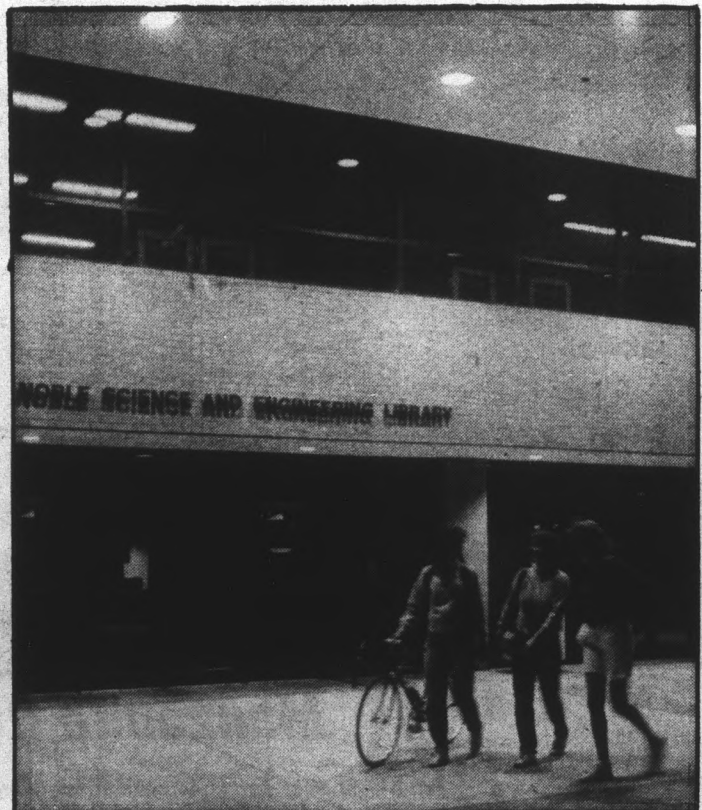
"When I start flipping the lights at about



12:05 a.m. — Safety escort Cole Baker walks Dawn Martineau to her car on his last call of the day.



12:18 a.m. — Couples enjoy themselves and each other at a party at Sigma Nu fraternity house on new row.



12:05 a.m. — From left, Nutrition seniors Mary Lyons and Kathleen Woolf and exercise physiology graduate student Debbie Conner pass by Noble Library, where they had just been studying for a test.



### Clean up

12:50 a.m. — left — Thomas Tampa sprays down the sidewalk at the Business Administration Annex.

12:38 a.m. — above — Tempe police officers investigate a mishap at Rural Road and Lemon Street. The car's driver, Ross Anthony Hardy, 19, was charged with driving while intoxicated, reckless driving, resisting arrest and other civic traffic violations.

continued from 3

11:30 or quarter to twelve, they start wending their way out."

In the Physical Sciences Building, Wilder Carrillo, a Peruvian, monitors his test results. He's trying to change the electrical properties of nickel oxide for some research on solid state chemistry. In a lab that would be a "C"-chemistry-student's nightmare, a black-and-white television set playing an old war movie acts as a momentary diversion.

Silence falls around the still waters of the fountain. The darkness is pierced by a few lights, and crickets' rusty chirpings pervade the night.

The microcosm of campus seems separate from the rest of the world, but the sudden screech of tires in the distance is a reminder of the larger setting of Tempe.

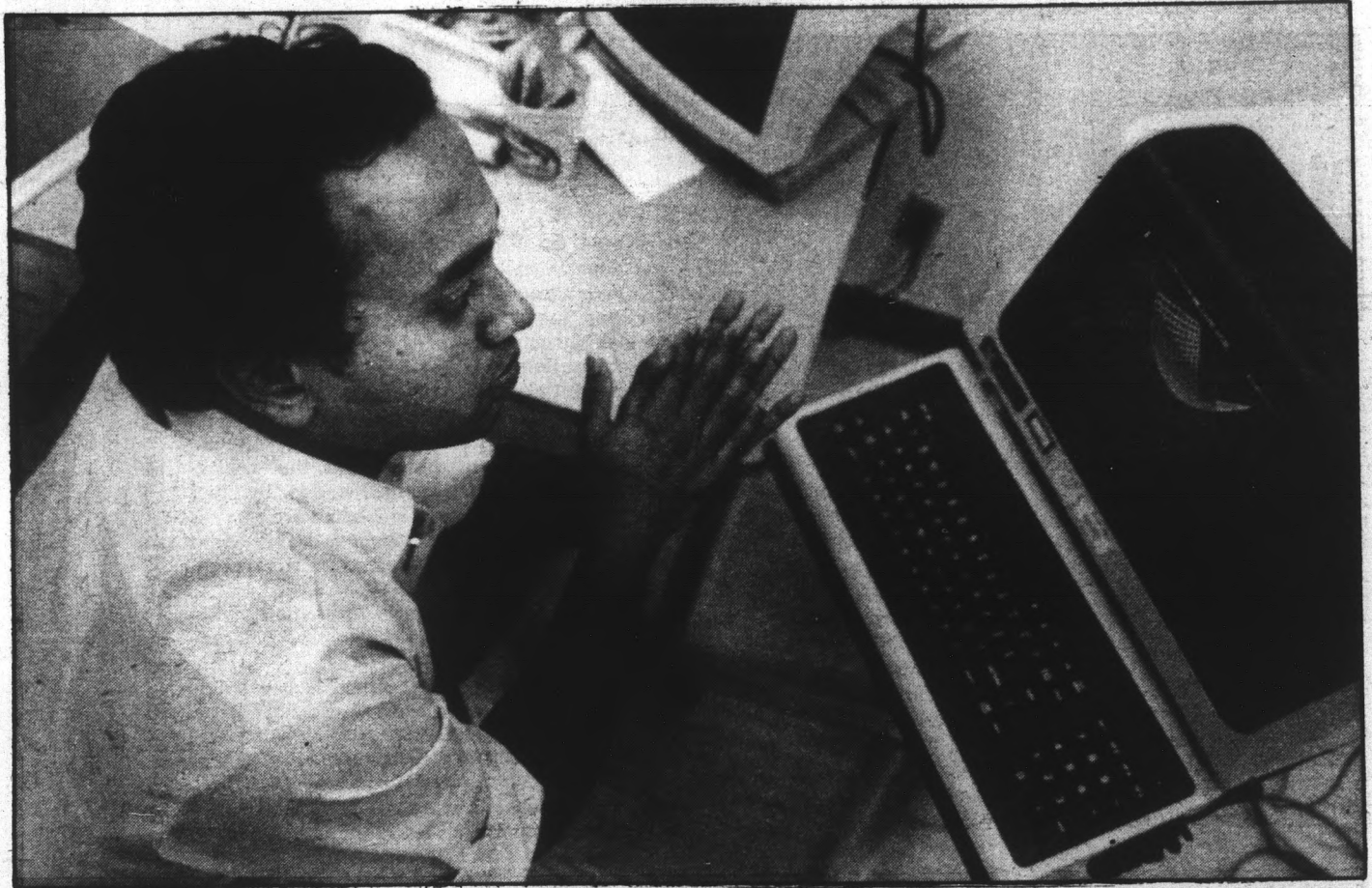
A bicycle whizzes by; it is ridden by an oriental woman wearing a dress and a yellow safety helmet.

Three or four bikes lean crazily in the MU racks. A kryptonite lock holds up the scraps of a cruiser; the wheel is all that remains, an image of destruction that seems out of place in the calm of the night.

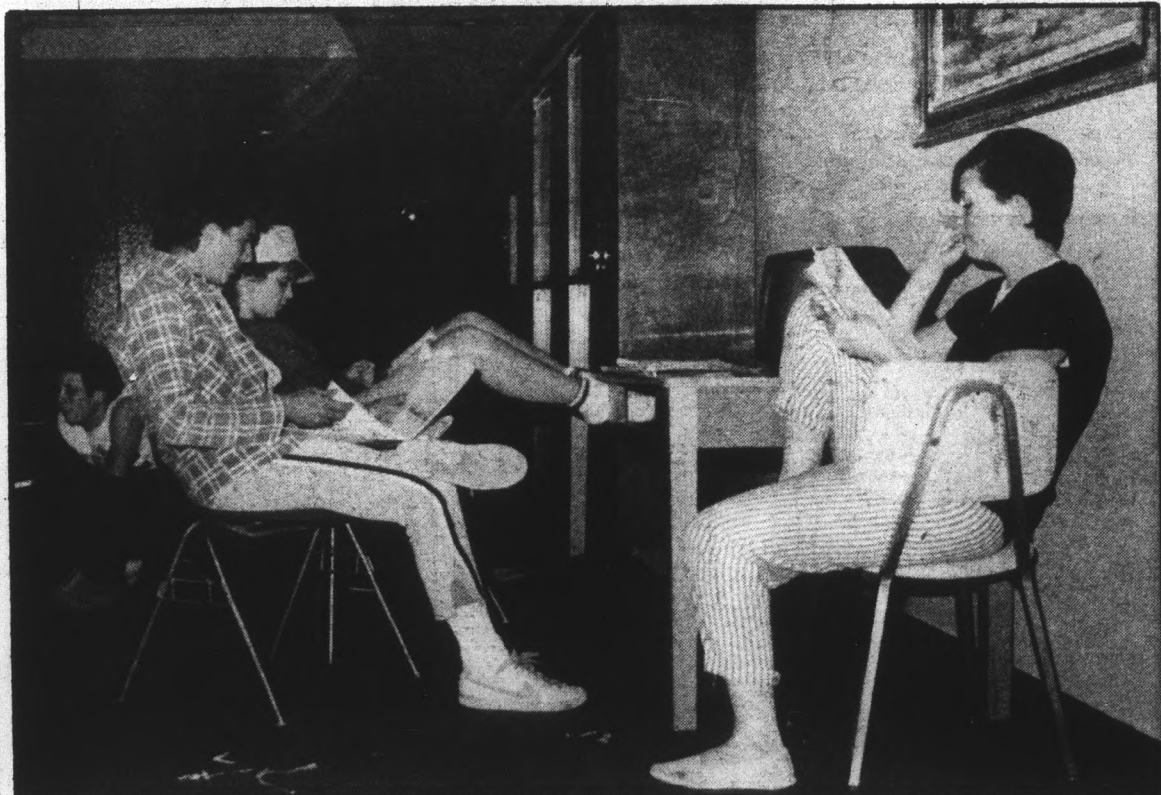
Inside the MU, it is anything but still; a staff of Saga Food Service bakers are preparing tomorrow's breakfasts. Raw dough thumps against the floured board as head baker Maggie Kentner shapes it for cutting into doughnuts or pastries. Doughnuts sizzle in hot grease as another worker diligently cooks them.

Elaine Brabec, a doughnut finisher, grandmother and ASU student, said, "I hate it" — the smell of pastry baking that wafts through the building and outside.

She said after having worked in the MU



12:30 a.m. — Electrical engineering graduate student Arun Rao works on his semiconductor device simulation thesis in his office in the Engineering Research Center.

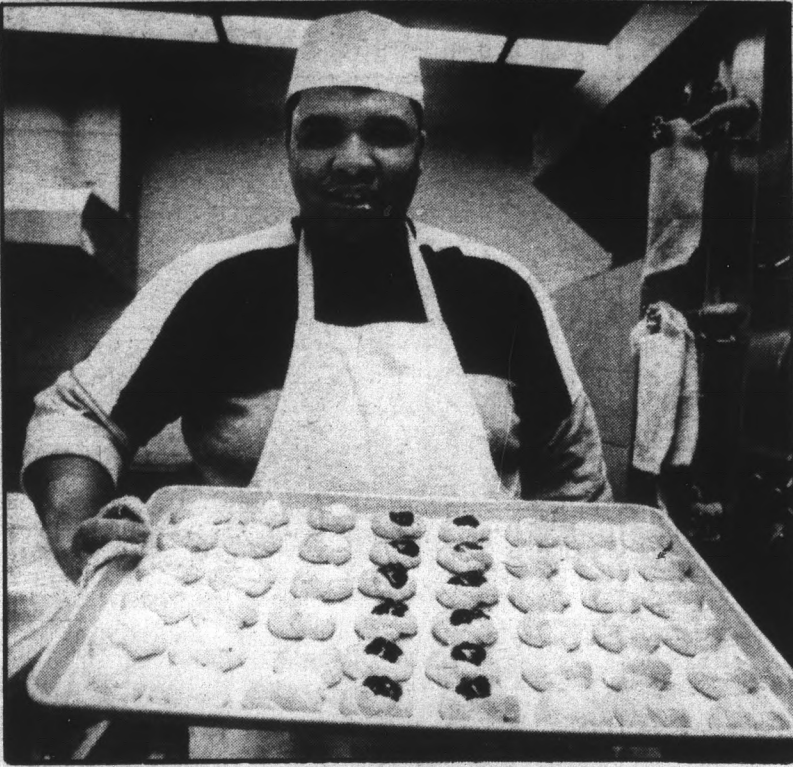


### Manzanita Hall

1:02 a.m. — above — From right, liberal arts freshman Susan Cronin, aeronautic engineering freshman Jim Abranowski, broadcasting freshman Diana Lochridge, business administration junior Joe Korler study in the relative quiet of the lobby.

1:05 a.m. — right — Beth Kaczynski, left, and Jamie Barendick accept their pizza from delivery man Craig Glidden.





1:30 a.m. — James Steward, assistant baker at the MU bakery, proudly displays the result of his late-night toils: a tray of tantalizing danish.

continued from 4

for so long, she can't stand the constant aromas of dough and icing.

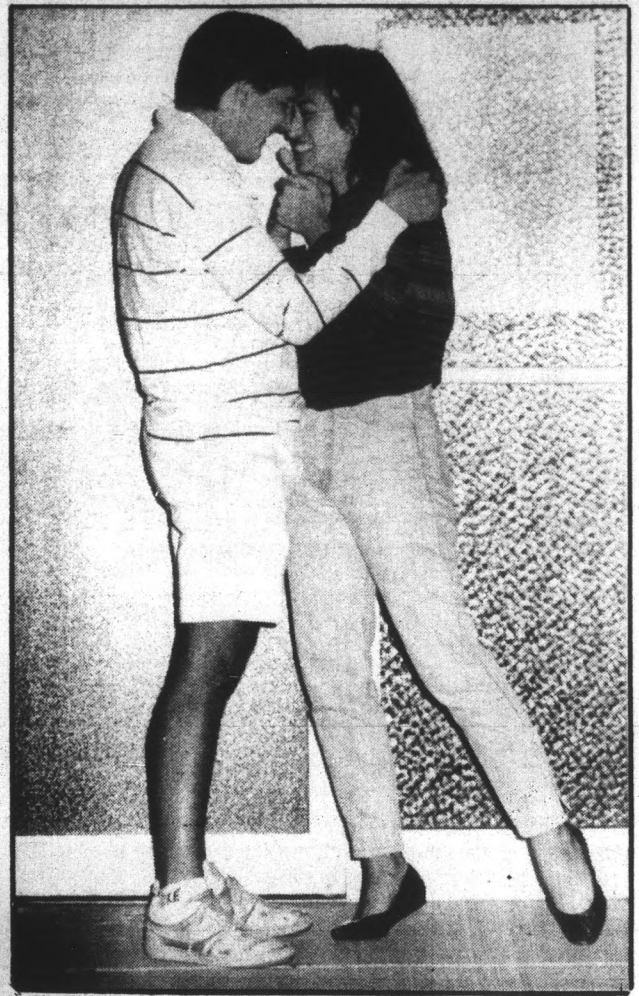
Within the confines of the fence surrounding the Social Sciences Building, a worker has left two bowls of food and water. The nourishment is for the cats who seem to own the University at night. They prowl through deserted walkways and congregate where the food is. Their slurping and lapping can be heard from Tyler Mall, but they are rarely seen. They scurry under bushes, out of the way of the stray human footstep.

Two women leave the Sub Stop restaurant north of campus at 1:46 a.m. Only 14 minutes before closing, the small building is half full. The woman behind the counter sweeps her hand around the room, the gesture accompanying her assertion that "it's a typical crowd."

A couple is leaving, having finished their beer, and as the woman leans over to pull up her pant cuff, the man playfully slaps her on the behind.

The rhythmic slop-slop-slop of a janitor's mop in the Business Administration Building is the only sound on the south side of campus.

The American flag flaps in the slight breeze — the clank of the drawchain against the flagpole is magnified in the eerie stillness of the early morning.

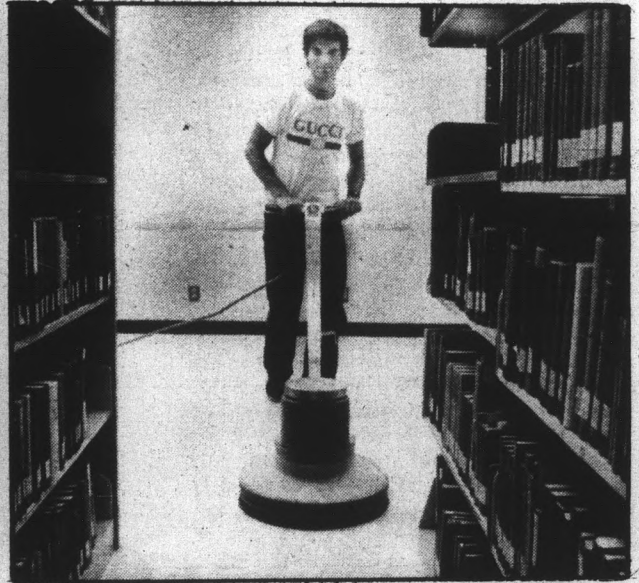


2:05 a.m. — Hollie Fisher says good night to her date, Thomas Sjoberg, at the door of Palo Verde Main.



1:30 a.m. — Marketing junior Douglas Means, left, and engineering freshman Robert Kacer study at the Alpha Epsilon Pi fraternity house.

2:14 a.m. — Lubos Beran, who came from Czechoslovakia last March, pauses during polishing of the Hayden Library floor.



# PURPLE PASSIONATE POSTER

Add passion to your punch with Everclear 190 proof grain alcohol.

**EVERCLEAR ALCOHOL**



## EVERCLEAR POSTER OFFER

For your full color 18" x 22" Everclear poster, send \$3.00 in check, money order or use your Mastercard or Visa to:

Everclear Poster Offer  
800 3rd Avenue West  
Seattle, WA 98119

Name \_\_\_\_\_

Address \_\_\_\_\_

City/State \_\_\_\_\_ Zip \_\_\_\_\_

Signature \_\_\_\_\_

Mastercard  Visa  Account # \_\_\_\_\_ Exp. \_\_\_\_\_

Order shipped within 48 hours. Offer good in US only. Offer void where prohibited by law. No product purchase necessary. Everclear bottled by World Wide Distilled Products Company, St. Louis, MO 63138. Everclear, the ultimate mixer, use in moderation, not intended for consumption unless mixed with non-alcoholic beverages.

# FREDDIES DOWN THE ROAD

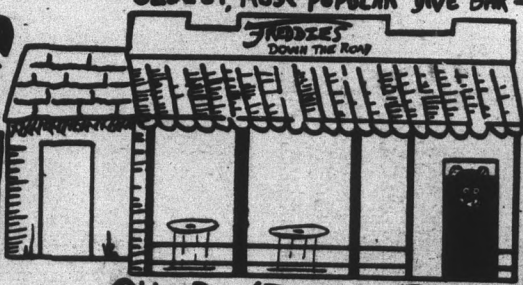
PRESENTS ANOTHER

# WILD PARTY

— OLDEST, MOST POPULAR DIVE BAR —

Nov 22<sup>nd</sup>  
FRIDAY

ARRIVE BY 8:00 TO AVOID WAITING IN LINE



— CHEAPEST DIVE BAR PRICES —

Nov 22<sup>nd</sup>  
FRIDAY

ARRIVE BY 8:00 TO AVOID WAITING IN LINE



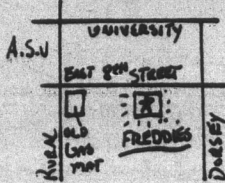
# LIVE MUSIC

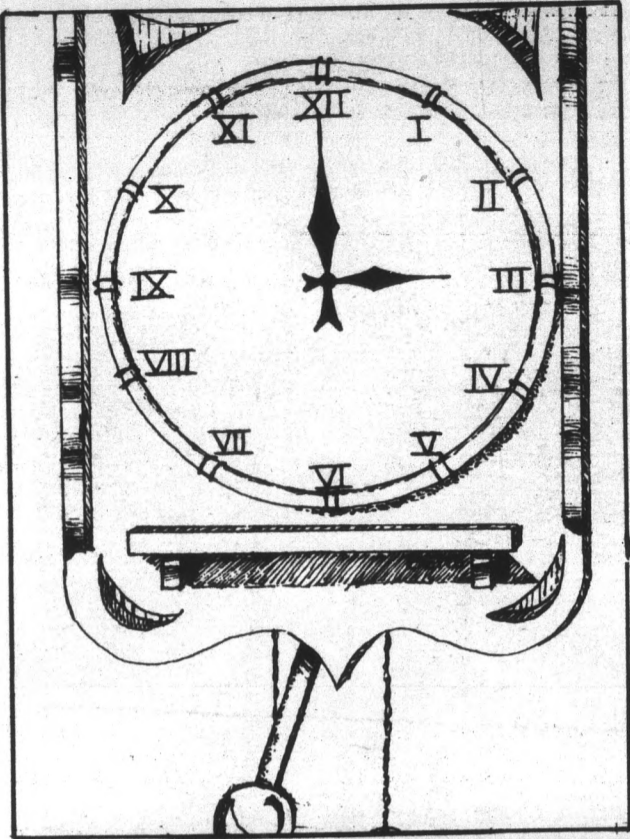
— FEATURING —



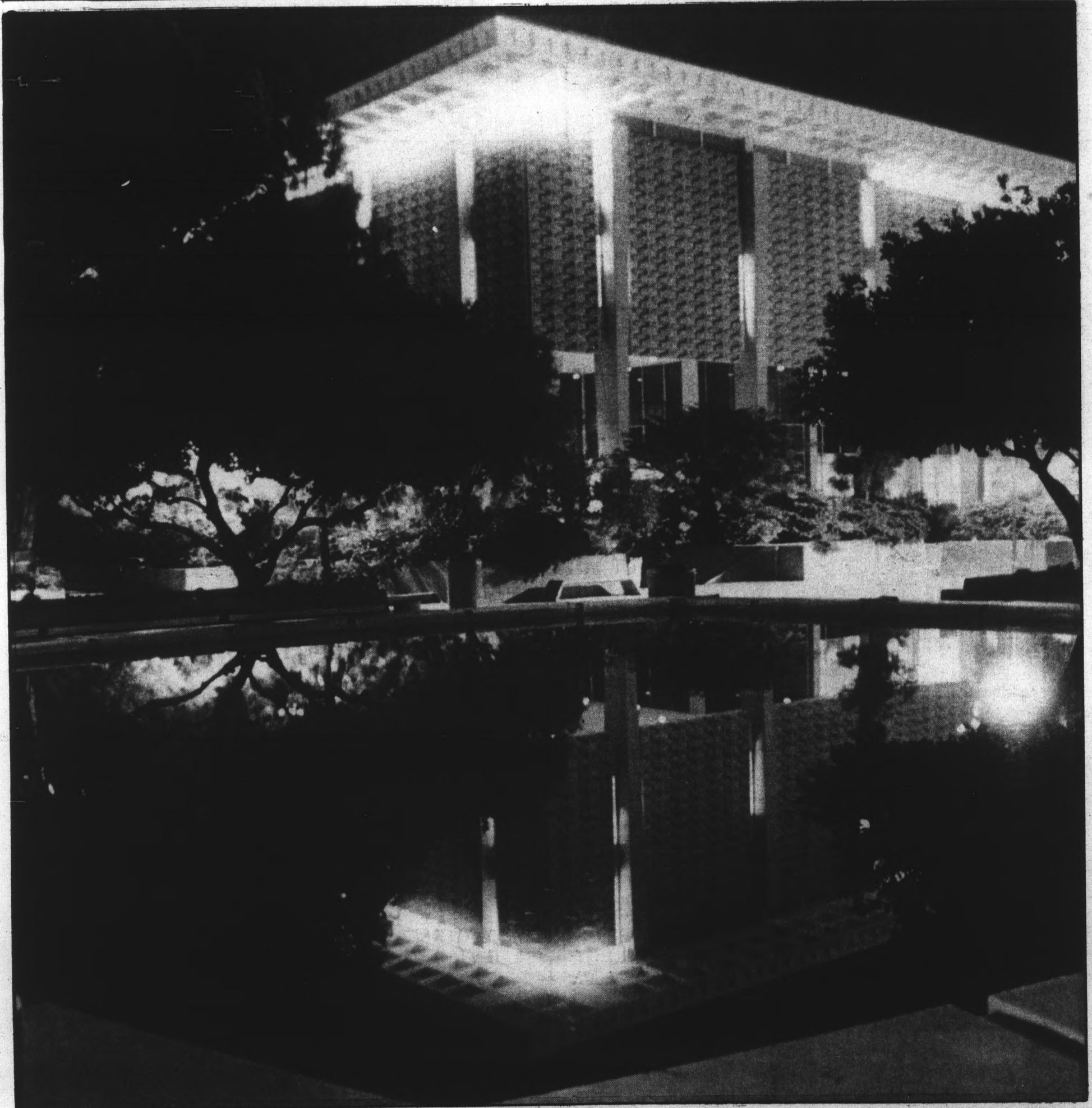
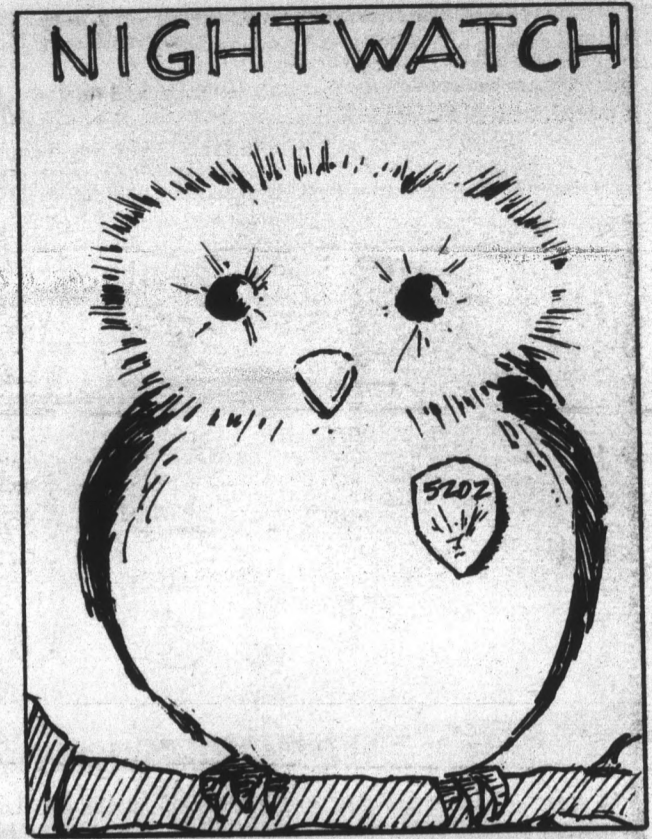
966-9388

# the TRANSIENTS





**3 a.m.  
to  
6 a.m.**



3:15 a.m. — It's the middle of the night, but Hayden Library emits an eerie glow and is reflected in the still Cady Mall Fountain. The photograph was taken with a minute and 20 second exposure.

The  
it that  
way a  
The  
the st  
3:15  
one o  
He w

5:50  
loads  
on th

The time is 3 a.m. The area is quiet, and it's our job to keep it that way. It's Friday, and we're reporters. Or is it the other way around? Forget it, let's get started.

There are 40,000 naked people on this campus, and this is the story of some of them.

3:19 a.m.: We interviewed psychology senior Cory Polak, one of 10 desk assistants at the Best-Hayden-Irish complex. He waits for something to happen. It rarely does.

"Most of the time it's a very unexciting job," he said.

"You have to enjoy working with people." Thanks Cory. You've been a big help.

3:41 a.m.: We move to Sahuaro Residence Hall, searching for excitement. We'll settle for movement.

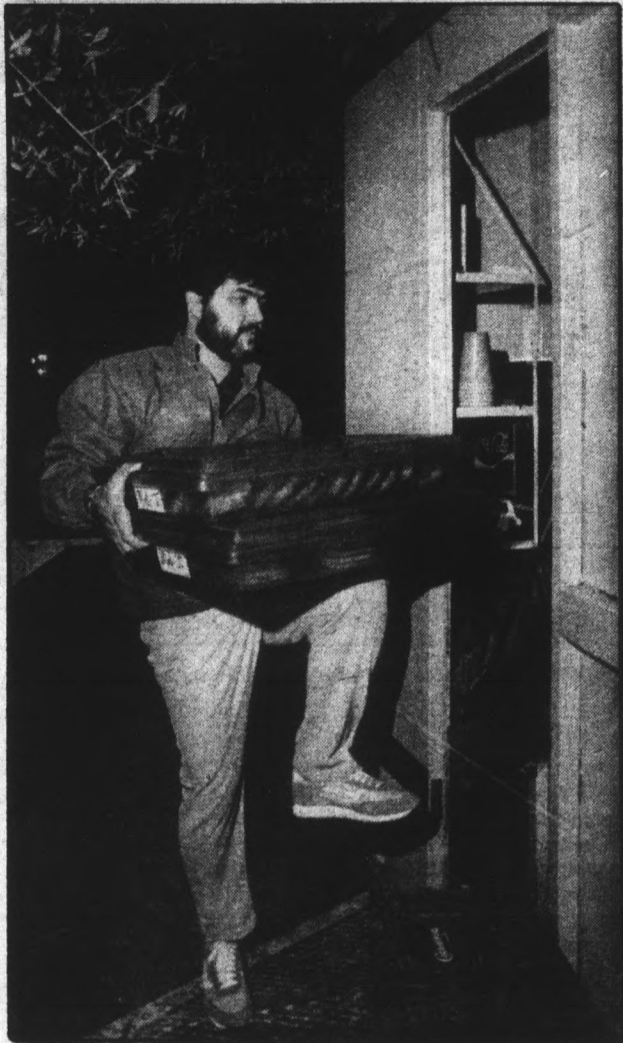
3:42 a.m.: Bill, the photographer, steps on a sprinkler head and wrenches his knee. Like clockwork, man, he does it every time.

Physical education senior Renee Way is working the Sahuaro desk. "It's not that routine, I don't think," said Way, who uses the quiet of the four to eight graveyard shift to study. "You get to meet people — all the residents."

We checked to see if Bill was getting all this down. He was.

But then again, that's his job. And it's still Friday.

4:46 a.m.: We hit McClintock Residence Hall. Bruce



5:50 a.m. — Business management senior Mustafa Seyhun loads doughnuts, cookies and bagels into a Saga mobile cart on the south side of Murdock Hall.



5:45 a.m. — Sterns Produce deliveryman Wayne Harper lugs a load of Big Chief Potatoes into the MU kitchen. Harper said he delivers an average of \$5,000 of produce into the MU a week.

PALO VERDE WEST AND EAST PRESENT ...

# CASINO NITE & DANCE

PLAY BLACKJACK  
CRAPS  
ROULETTE

**TONIGHT**  
**AT P.V. WEST • 8 P.M.**

**ADMISSION**  
\$2 FROM 8:00-8:30  
\$2.50 AFTER 8:30  
INCLUDES 50 CHIPS

FEATURING GEORGE THOMAS FROM KOOL FM • THE LOAN ARRANGER FROM SONOYTA SUBARU (8-9 P.M. ONLY!)

USE YOUR CHIPS TO BID ON FABULOUS PRIZES

**GRAND PRIZES:** 3 DAYS/2 NIGHTS AT THE NEVADA CLUB, LAUGHLIN, NEVADA  
COMPLETE RUSTIC BOOKCASE WATERBED FROM BEST SHOT WATERBEDS  
MEN'S GOLD BULOVA WATCH FROM GOLD ART CREATIONS\*

AND PRIZES DONATED BY THE FOLLOWING BUSINESSES: KOOL, KOPA, KZZP AND K-LITE FM • THE U SHOP  
• YOGURT OASIS • CABLE CAR CONFECTIONS • TOPS LIQUORS • HANNIBALS • GOONY GOLF • D\*A\*S\*H INN • THE  
HAIR CUTTERS • MONTI'S LA CASA VIEJA • THE FOOTLOCKER • PARK LANE • HEADLINES • SHERRI'S • AMC  
THEATERS • SHORT 'N' SASSY • MOTHER TUCKER'S FOOD EXPERIENCE • RUMORS • TOWER RECORDS • LADY  
FOOTLOCKER • GRUMPY JOHN'S BAR-B-Q • MANN'S SUN DEVIL 6 • ARTISTIC GIFTS & TROPHIES • BOOKS ETC.  
• CRIMPERS • BILLY'S "FAMOUS FOR RIBS" • MINGS • SUTTER'S GOLD • ROSITAS • THORBECKE'S GYM • STEVE'S  
ICE CREAM • ASU BASKETBALL TEAM

SPECIAL THANKS TO THE BARE COVER AND RIVIERA FOR OUR DEALERS' T-SHIRTS AND VISORS — THANKS ALSO  
TO CIRCUS/CIRCUS, CAESAR'S PALACE, FRONTIER HOTEL & CASINO, AND TROPICANA CASINOS, PLUS THE LAS  
VEGAS CHAMBER OF COMMERCE AND CONVENTION CENTER FOR DECORATIONS

A SPECIAL RAFFLE AT THIS EVENT WILL BENEFIT THE MARIA T. POSTACCHINI MEMORIAL ENDOWMENT  
SCHOLARSHIP FUND. WIN A 10-SPEED TAKARA HORIZON BICYCLE DONATED BY GARRETT TURBINE AND TEMPE  
BICYCLE SHOP, AND PRIZES FROM MINDERBINDERS. SPECIAL THANKS TO THE ARIZONA AMERICAN-ITALIAN CLUB  
FOR A \$1,000 DONATION, AND TO KINKOS AND PETAL PUSHERS FOR THEIR SUPPORT.

\*LOCATIONS IN LOS ARCOS, METROCENTER, COLONNADE AND FIESTA MALLS. ONLY ONE GRAND PRIZE PER PERSON.



5:30 a.m. — While most people are starting to exercise their eyelids, Keith Rogers treks around the Joe Selleh Track at Sun Angel Stadium. Rogers, 54, has been running in the stadium five days a week since it was built in the spring of 1976.



3:30 a.m. — Chesty, the Sigma Chi mascot, looks pretty bummed out after seeing how the fraternity's little sisters demolished the house in a show of unity for their big brothers.

continued from 7

Roudebush, purchasing and material management senior, said the five full-time workers at the dorm manage to divide the hours between them.

Like their cohorts-in-calm at Sahuaro and Best-Hayden-Irish, they make minimum wage.

"It goes up a nickel or a dime or something. I don't even know," said Roudebush, who puts in about 16 hours a week.

Yeah, nickel and dime. When you come right down to it, it's all nickel and dime.

And pennies. Lots of pennies.

5:02 a.m.: We found ASU police officer Chris Moore breaking into a car behind Sahuaro Hall. But it checks out. Seems marketing major Mark Slenedar locked his keys in the car and called for Moore's assistance. Bill said that was a relief. It sure is tough to rat on one of your own.

And if you can't trust your partners, you're Tender Vittles.

5:34 a.m.: Our first big call came over our police scanner. Howling at Sigma Chi. Code three. We're there.

We were invited inside to take a peek. Papers everywhere, furniture overturned — a real mess.

Curled up on the floor, we spotted a legend. It was Chesty, a 15-year dog on the Pittsburgh Vice Squad. Heard he had the best snout on the force until they put him on cocaine duty at Three Rivers Stadium. He was strung out for years until he set himself straight and got a job as a mascot for the house. It's not glamorous, but it's steady work.

Bill asked Chesty some questions. No soap.

No charges were made, so our job was done here. Bill threw Chesty a Milk Bone, and we took off.

5:48 a.m.: We high-tailed it back to the station. The watch was almost over. Better than some, not as good as others. Looked like ASU would survive for another day.

AT CORNERSTONE



829-1743

**THE U SHOP**

**HOURS:**

Mon.-Fri. 10-9  
Saturday 10-8  
Sunday 12-6

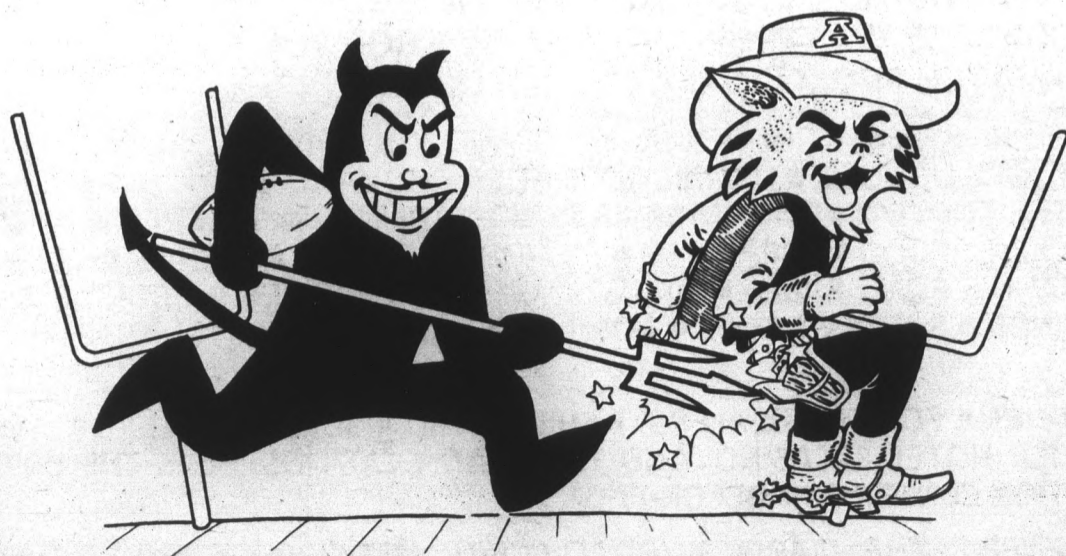
**10% OFF** with this ad

**Go Devils!!**

Plus

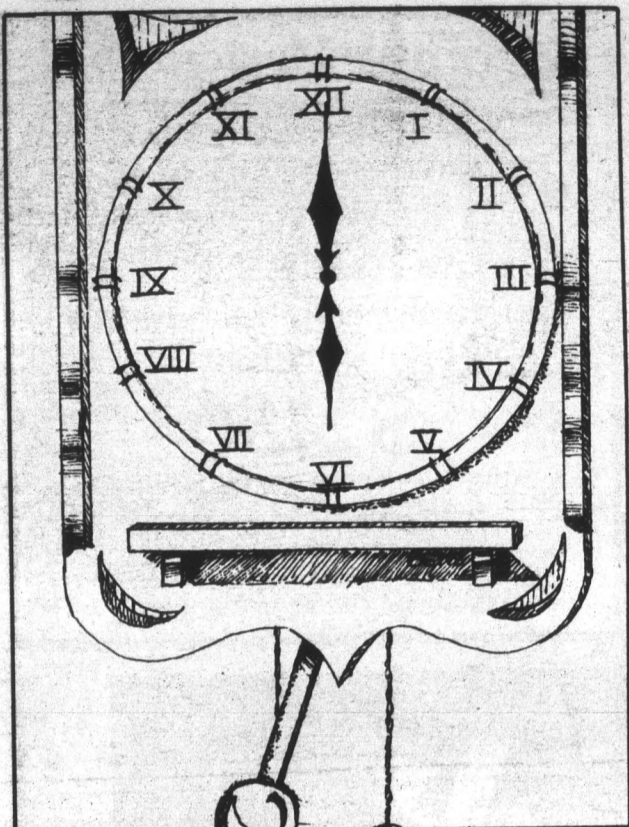
**FREE!**

Fork the Wildcats bumper sticker with purchase Nov. 21, 22, 23 (while supply lasts)



**Fork the Wildcats!**

\*We have "Fork the Wildcat" T-shirts



# 6 a.m. to 9 a.m.



7:35 a.m. — A mob of students try to catch a tram so they can make it to their 7:40 classes on time. One student avoids the melee to read the only campus newspaper.



7:25 a.m. — Kim Magallanez, a junior accounting major, reads the *State Press* next to the Business Administration Annex fountain before her 7:40 management class. She said reading the paper "is a nice way to spend the morning."

The ASU tram at 7:30 a.m. — there is no substitute. For students who have never ridden the tram, it is the equivalent of Disneyland's Mr. Toad's Wild Ride or the Phoenix Zoo's hippo tour.

A first-time rider, who boarded the tram behind Hayden Library and was sandwiched between two experienced riders, waited in vain for the driver to tell him to fasten his seatbelt and show him where the emergency exits were located.

As the tram sputtered to its full 18 mph speed, he realized there would be no tour guide — or beverage service. Instead, the driver shot occasional sullen looks at his riders by means of his overhead mirror.

Drumming up conversation with a fellow rider, the novice rider asked her what she thought of the tram system. "I think the trams are great," said Kelly Grommes, a child development and family studies sophomore. "You have to schedule your classes around it, but I'd rather use it than walk to class."

The first-time rider's friends were waving to people in passing trams (much to his embarrassment), which only brought condescending looks, so he proceeded to question other passengers.

Sophomore Kim Gerace said, "I ride the tram when I wear heels so I won't have to walk the whole way in (them). It's not that far to walk, but it ruins the bottoms of your shoes."

As the tram neared the end of Lot 59 and began to empty, a woman rider muttered, "I knew I should have worn my Sports Bra."

As she firmly clasped her books to her chest, a senior journalism major cast a sympathetic look and said, "It's a bitch to ride the tram, especially when a fat football player is sitting next to you and squishes you off the side."

Business Junior Teresa Kramer said, "It's terrible. At 8:15, there are 500 people trying to get on a tram that holds 100. The best thing they could do is to run more trams at the peak times."



7:20 a.m. — Tom Delk, an employee of the Canteen Food and Vending Corporation, stops by the MU to bring candy and tobacco for all the ASU students. Delk fills each vending machine on campus and has worked the route for three years.



7:30 a.m. — The birth of a new day dawns on the University campus, as seen from the sixth floor of the Business Administration Annex.

continued from 9

Clinging to a pole to avoid slipping out the other side of the tram, the journalism major continued, "I especially hate it when it rains, because you get pelted."

As the driver skillfully maneuvered the U-turn at the end of Lot 59, the inexperienced rider observed boarding techniques of practiced riders.

The more experienced riders placed their left hands on the seat while grasping the pole with their right and sliding into their seats.

It was a maneuver he would have to practice on a McDonaldland park bench before riding the tram again.

The tram lurched to a halt again behind Hayden Library and the rider hopped, not stepped, off the tram.

As the tram passes by the north entrance to Alpha Drive, riders might be surprised to find the front of a fraternity house littered with toilet paper or spraypainted. They shouldn't be.

If it's not freezing your neighbors' underwear, it's turning everything in their room totally upside down.

If it's not splattering the Sigma Alpha Epsilon lions with a balloon full of red paint, it's coloring the Sigma Nu pool with a slingshot and a capsule of green dye.

Talking to most fraternity guys, you will find that the real gung-ho pranksters are not men, but women.

These women are not fraternity guys in drag, but little sisters to the fraternities.

Little sisters are a supplemental organization to the fraternity. Members are invited by fraternity members and pledge to be a little sister.

"We don't even haze our pledges, and the little sisters are hazing us," said Keith Earnest, a 21-year-old Sigma Nu member.

Whether it's toilet papering the Sigma Chi house or soaping up the Theta Delta Chi windows, little sisters can be ruthless.

"Last week they TP'd the house, took all our silverware, turned the dining room tables around and put all our furniture in the kitchen," said Brian Hayer, a 21-year-old Sigma Alpha Epsilon member.

"They really gooned (got us; nailed us) bad," he said.

The little sisters of Pi Kappa Alpha use toilet paper but also bring along rice, shaving cream and flour.

**El Zarape Mexican Food**  
GRAND OPENING  
EXTRAVAGANZA!

Now with larger dining area  
2 Carne Asada Soft Tacos  
with a Special Fresh Sauce  
Rice and Beans

**\$2.50**

WITH THIS AD ONLY. GOOD THROUGH NOV. 28, 1985.

Across Univ. from ASU  
216 E. University, Tempe  
Ask about the \$ave key card.

# Lite BEER Winter Break SWEEPSTAKES

Drop the books and hit the slopes during National Collegiate Ski Week January 4-11, 1986.

**3 GRAND PRIZES:**  
Expense paid trip for two to Steamboat Springs, Colorado.

**50 FIRST PRIZES:**  
Sun Ice Ski Parkas

**75 SECOND PRIZES:**  
Vuarnet Sunglasses

**100 THIRD PRIZES:**  
Obermeyer Ski Sweaters

TRAVEL ASSOCIATES

**ENTRY BLANK LITE BEER WINTER BREAK SWEEPSTAKES**

NAME PLEASE PRINT

---

ADDRESS (NO P.O. BOXES PLEASE)

---

CITY STATE ZIP

---

TELEPHONE AGE

I state that I am of legal drinking age in my state of residence and hold no interest in an alcoholic beverage license.

Mail this entry form to:  
**Lite Beer Winter Break Sweepstakes**  
P.O. Box 4883 Blair, NE 68009

MILLER BREWING CO., MILWAUKEE, WI



**OFFICIAL RULES NO PURCHASE NECESSARY**

- Here's How To Enter:
1. On an official entry form or plain piece of 3" x 5" paper, hand print your name and address.
  2. Mail your entry in a hand-addressed envelope no larger than 4 1/2" x 9 1/2" (#10 envelope) to: Lite Beer Winter Break Sweepstakes, P.O. Box 4883, Blair, NE 68009. Enter as often as you wish, but each entry must be mailed separately. All entries must be received by December 12, 1985. We cannot be responsible for lost, late or misdirected mail.
  3. All grand prizewinners through third prizewinners will be determined in a random drawing on or about December 16, 1985, from among all entries received. Random drawing will be accomplished under the supervision of the D.L. BLAIR CORPORATION, an independent judging organization whose decisions are final on all matters relating to this offer. The first 5,000 entrants will receive a bonus prize of a free issue of Ski magazine.
  4. This sweepstakes is open to college students who are residents of the U.S. and are of legal drinking age in their state at time of entry. The Miller Brewing Company, Philip Morris, Inc., Times Mirror Magazine, Inc., their distributors, affiliates, subsidiaries, advertising and promotion agencies, retail alcoholic beverage licensees and the employees and families of each are not eligible. This sweepstakes is void in the states of OH, MO and TX and wherever prohibited by law. Limit one grand through third prize and one bonus prize per family. Taxes on prizes are the sole responsibility of prizewinners. All federal, state and local laws and regulations apply. The odds of winning a prize depend upon the number of entries received.
  5. Travel prizewinners must agree to depart from and return to their home on dates specified by the Miller Brewing Company. Travel prizewinners and their companions must be of legal drinking age in their state of residence as well as in the state of Colorado. No substitution of prizes permitted. Grand prizewinners may be obligated to sign and return an affidavit of eligibility within 10 days of notification. In the event of noncompliance within this time period, an alternate winner will be selected. Any prize returned to the sponsor or to the D.L. Blair Corporation as undeliverable will be awarded to an alternate winner. The approximate retail value of the grand prize is \$2,500 each; first prize — \$100 each; second prize — \$75 each; third prize — \$25.00 each; bonus prize — \$2.00 each.
  6. For a list of major prizewinners, available after February 7, 1986, send a separate, self-addressed, stamped #10 envelope to: Lite Beer Winter Break Winners List, P.O. Box 4895, Blair, NE 68009.



6:55 a.m. — "Where's my Wall Street... Oh my God!" The person getting the mail in front of the Sigma Chi house can thank his little sisters for the damage.

continued from 10

Last semester they were caught in the middle of the act and a water fight broke out. For those of you that don't know, water and flour don't mix well.

"Until this day, there is still stuff on the carpet," said Jim Gettins, a 22-year-old Pi Kappa Alpha member.

If there were a list of the most-abused fraternity house items, the top two spots would have to go to the Sigma Alpha Epsilon lions and the Sigma Nu pool.

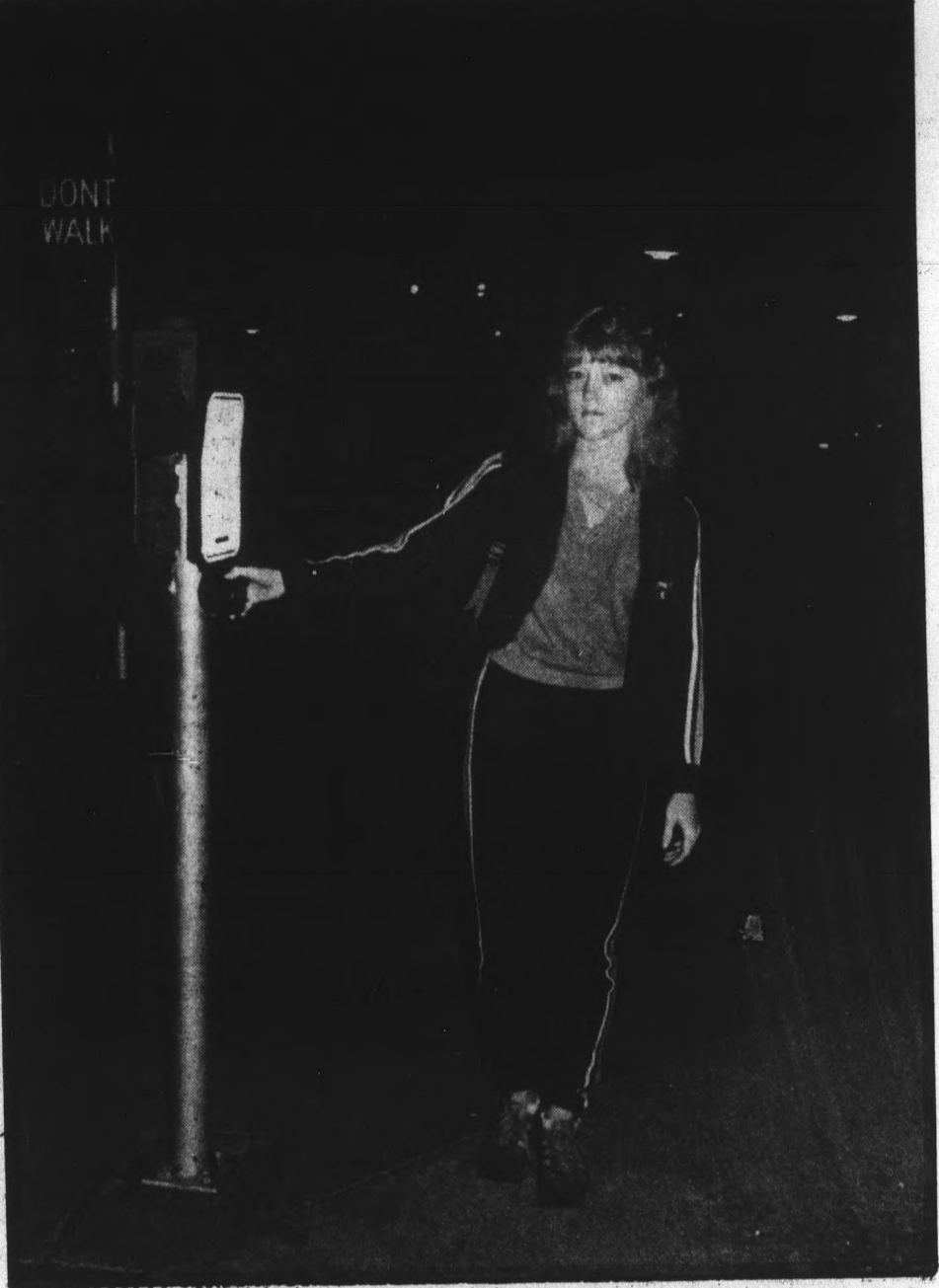
"We have repainted those lions about 100

times," Hayer said.

The Sigma Nu's must guard their pool against dye throwers for two days before their annual September Coors Relays, a swimming relay involving ASU sororities and Sigma Nu.

"We wake up every morning before the relays, and the pool is a different color," Earnest said.

Fortunately for Sigma Nu, the pool doesn't have to be drained — the dye dissolves after a day.



6 a.m. — Carol Kuester waits in the dark for the light at University Drive west of Manzanita Residence Hall on her way to her military science class.

# JONATHAN'S PIZZA

**FAST, FREE DELIVERY**

**FREE LITER OF SOFT DRINK WITH ANY PIZZA PURCHASE. COKE, DIETCOKE, SPRITE, DR. PEPPER.**

**ASU LOCATION**  
**829-1717**

933 E. University  
Tempe Towne Plaza  
*(Across from The Cornerstone)*

**OPEN: Mon - Fri at 4 p.m. Sat. & Sun. at 11 a.m.**

**JONATHAN'S PIZZA**  
829-1717

**\$1.00 off**  
any two or more  
topping pizza

One coupon per pizza.  
Good through 11-30-85.

**JONATHAN'S PIZZA**  
829-1717

**\$5.50**  
any two topping  
12" pizza

One coupon per pizza.  
Good through 11-30-85.



## Investigate the Tax Benefits

Parents of ASU Students  
*Why pay rent when you can own?*

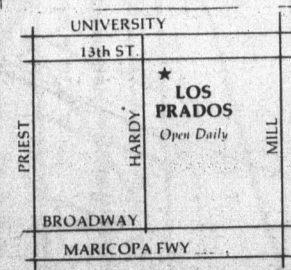
Luxurious and Affordable  
**2 BEDROOM 2½ BATH**  
IN TEMPE, ½ MILE FROM ASU

Los Prados Townhomes has a financing package tailored to students and parents. Inquire about the benefits of home ownership.

Live a half-mile from campus in a luxury townhome with five separate floor plans available, 2 or 3 bedrooms, as well as pools, tennis courts, spas and sun decks.

Call Los Prados or send the coupon below for information on Los Prados ownership. We've made them affordable.

### BELOW MARKET INTEREST RATES



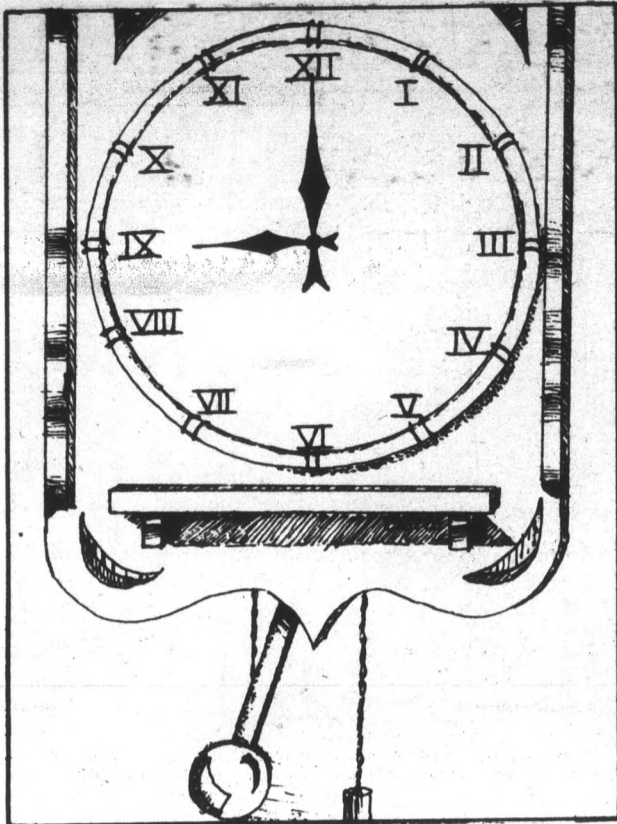
**(602) 966-1800**

Hours: 10-6

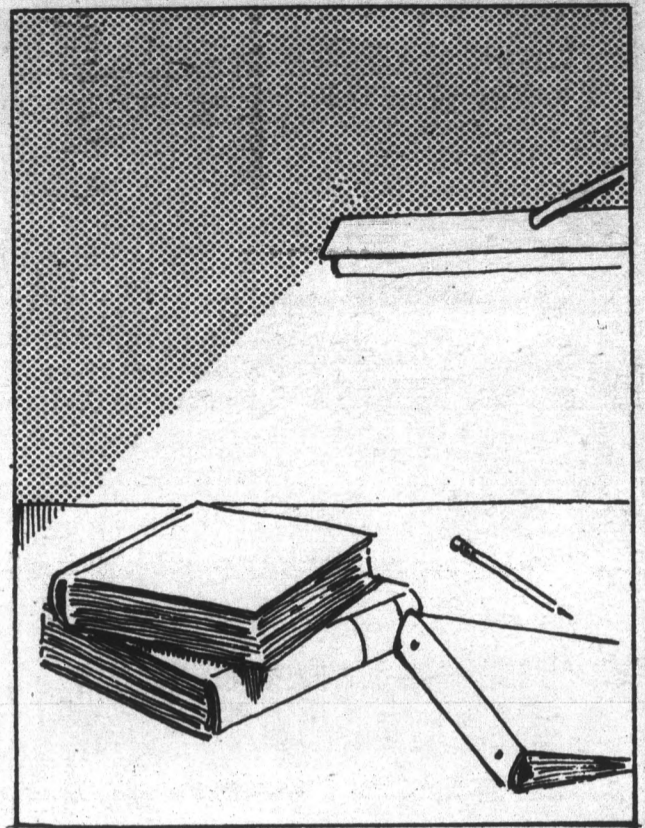
Please send me financing and sales information on Los Prados Townhomes.

Name \_\_\_\_\_  
Street Address \_\_\_\_\_  
City, State, Zip \_\_\_\_\_

Phone \_\_\_\_\_  
Mail to or call collect for information: (602) 966-1800.  
Los Prados Townhomes, 724 W. Fourteenth Street,  
Tempe, Arizona 85281



# 9 a.m. to noon



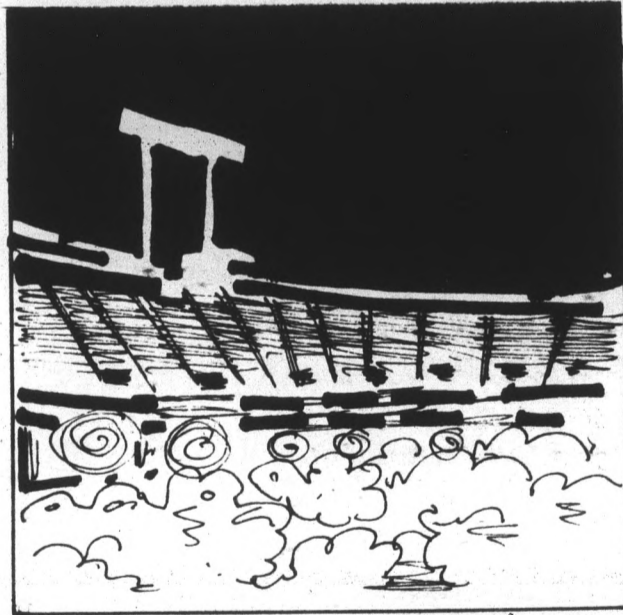
It's nine a.m. on the day before Arizona State's crucial football game against the University of Washington. Excitement on campus is at a fever pitch because the smell of roses is in the air. But before the Sun Devils can keep their Rose Bowl hopes alive against the Huskies, the stage must be set. First come the boundaries; a crew arrives, paint in hand, at Sun Devil Stadium to divide a giant grassy field into five-yard sections.

A three-man team splits the area, painting lines and hash marks and stenciling yard-line numbers in multiples of 10. The finishing touches are applied as "Sun Devils" and "Arizona State" are stenciled on the opposite end zones and the mid-field emblem is added. The stage is ready, the players are rehearsing, but the special effects still are in the works.

ASU fans won't be the only ones to see the Sun Devils trounce Washington, because this game is being televised regionally. Throughout the stadium, technicians are preparing the machinery that will be the eyes and ears of hundreds of thousands of television viewers. Cameras are tested at field level, from the stands and from far above the stands to ensure that viewers will see all the action. While one group of workers is setting the cameras, the producers and directors in the truck monitor everything to guarantee that television viewers will enjoy the game. No doubt the Sun Devils are planning on enjoying it, too. With all things prepared, it's lights, camera . . . well, tune in tomorrow for the action.



9:20 a.m. — ASU groundskeeper Dario Griego puts the finishing touches on the 10-yard-line. Griego said it takes three days to paint the field before each game.



While some in the ASU community — certainly the football team — may have the game in mind, most people have a more immediate concern in getting to their next class. Once every hour, the malls become jammed with students in transit from one building to another. Seniors are walking — they'd be running on any day but Friday — from their upper-division psychology class clear across campus, arriving at the Music Building just in time to say "good morning" to the Aesthetic Perceptions professor. Freshmen make a pitstop to chat at mall intersections along their shuttle from English 101 to the Social Science Building, where they sit watching the clock during a beginning political science or history lecture.

Professor Mervin Britton's Aesthetic Perceptions class, MUP 357, is a class so popular that there's a waiting list just to get in. Even though he offers three sections of the class, the 40-occupant class can't accommodate everyone who wants in on the fun.

"If you were to walk in the class, and not know about it," senior marketing major Scott Johnson said, "you would think, 'oh, what a bunch of idiots.'" But the people taking the course are far from being stupid, Johnson says, in fact "it's one of the best classes on campus."

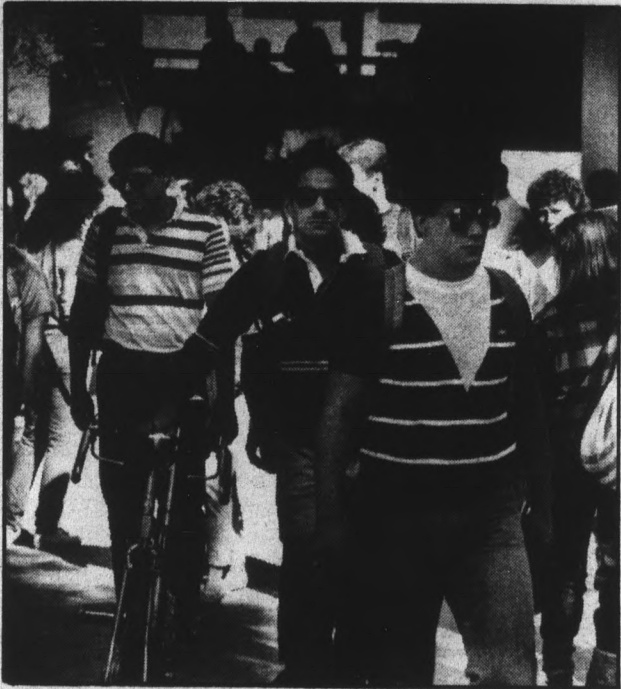
But what makes this class better than the drudgery some students are suffering through while Johnson and his classmates have fun by looking silly? As all students know by



10:15 a.m. — CBS cameraman Jim Rush runs practice tests on the end-zone camera used during the game. The network used six cameras: one end zone, two miniature cameras on the field and three cameras below the press box.



11:40 a.m. — CBS video tape operator Rich Greenstine runs tests on the playback system in the CBS monitoring van. Greenstine, along with two other operators, controlled the editing of the ASU-Washington football game.



11:30 a.m. — Students flock out of a Murdock Hall class, leaving the 450-seat room void of life.

continued from 12

now, the teacher answers the questions.

But this professor told the class at the beginning of the semester that he couldn't explain what would be happening in class — they'd just have to go with the flow. The class has flowed, Jackson says, and the small group has become family through its experience of music, drama and dance.

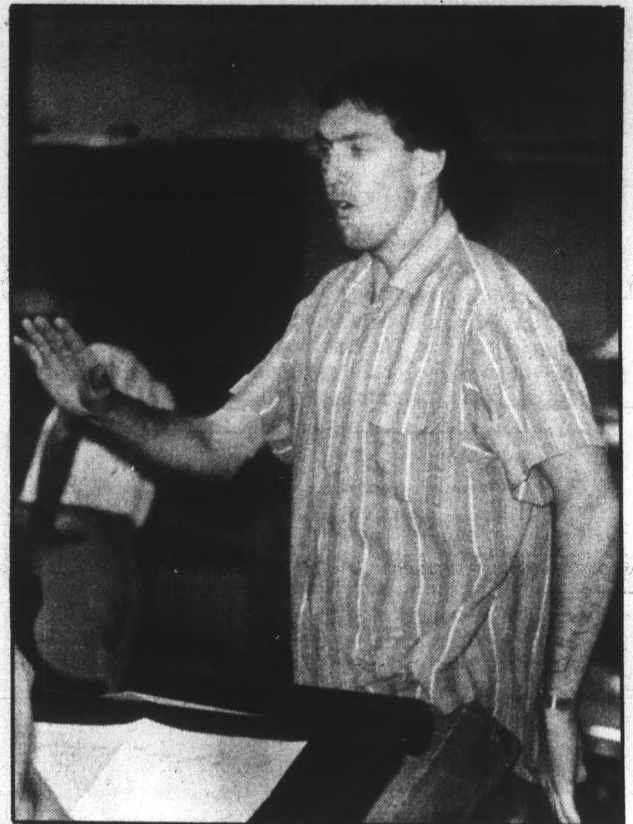
It's been an active family — its members are encouraged to act that way. It's a class, Britton finally defines, in which students learn to understand the art in music through motion. "Everybody has to participate, you can't be a blob in a chair all semester," he says. "You learn to use your body as an instrument."

This interesting use of the human body has enabled Johnson to enjoy music more, he said.

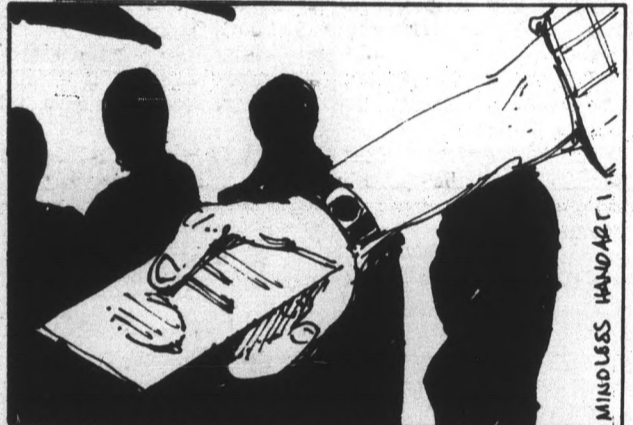
Those with a hold on current events take advantage of the continuous flow of guest speakers coming to campus. Representing every possible philosophy on any given subject, these speakers sound off — and give students the chance to do the same.

Most of the instruments on campus are settling back into the old-fashioned wooden desk chairs occupying most of the campus rooms. Stragglers enter the classrooms one by one, slumping into their seats in various states of consciousness. There they stay until the next class ends and once again the malls become a panorama of the ASU community.

With all the travelers reaching their destinations, the traffic flow on the malls quiets down. The leaflet distributors on Cady Mall relax after moving in a frenzy to disseminate



11:45 a.m. — Marketing senior Scott Jackson isn't trying to "be cool," he's just directing his performers in Aesthetic Performance class.



*animation festival*

Nov. 21-24 • MU Cinema • Admission \$3 • Hotline No. 965-5658  
Showtimes: Wed.-Fri. 7 & 9:30 p.m. • Sat. & Sun. 2, 4:30, 7 & 9:30 p.m.

**BEST BITE SHOP  
SUBS & PIZZA**  
3101 S. MILL AVE. • HUNTINGTON SQUARE • 967-1412

**Extra Large Pizza  
WITH 2 LITERS OF PEPSI**  
ONE ITEM ONLY — WITH THIS AD — EXPIRES 12-31-85

only **\$6.45**

**PEPSI**

Hrs.: Sun.-Thur. 10-10  
Fri.-Sat. 10 A.M.-Midnight

Only a \$1 Delivery Charge Within a 5-mile Radius after 4 p.m.  
**967-1100**

**ATTENTION STUDENTS!**

Your ASU I.D. will get you 40¢ draft & you get to keep the mug.  
Saturday 4 p.m.-1 a.m.  
at

**Tequila Dan's**  
825 South 48th Street • 966-6480  
(SE corner of Hohokam Fwy. & University)  
Mon.-Fri. 11 a.m. to 1 a.m., Sat. 11 a.m. to 1 a.m.

**Tequila Dan's**  
MEXICAN & AMERICAN FOOD

**HUNGER  
AWARENESS  
WEEK**

November 18-22, 1985

Food drive and information table.

Sponsored by:  
Campus Interfaith Council  
&  
Tau Kappa Epsilon

Bring donations and canned food.

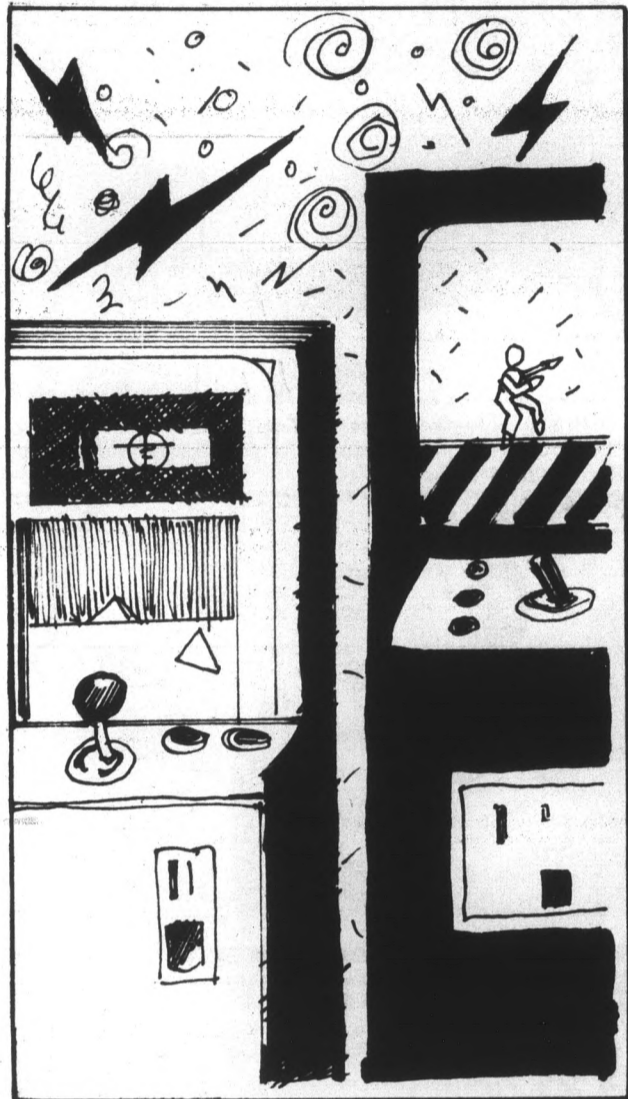
continued from 13

their information to as many passers-by as possible, ignoring the occasional person headed for the MU.

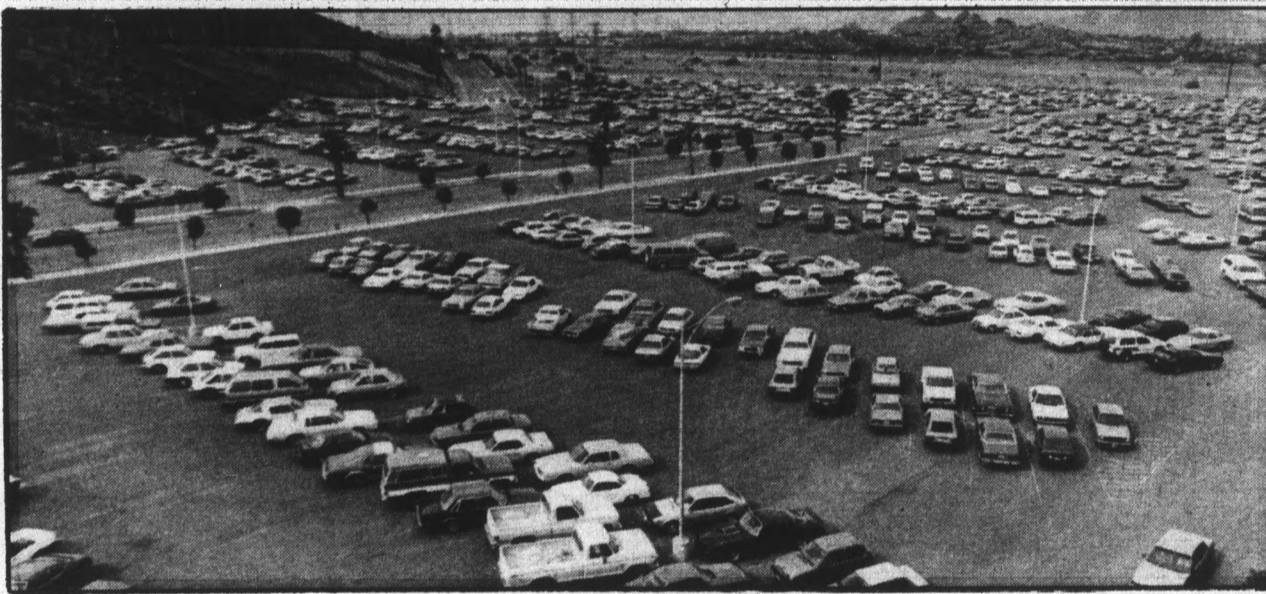
Life continues at the usual pace in the MU, that microcosm of not just the campus but the world. Inhuman noises continuously reverberate from the video games and bells ring from the room set off for the less-often-used pinball machines. Others feel for billiard balls in the pockets of the tables.

Across the hall, the academically-minded are attacking the typewriters, the rat-a-tat-tat of the IBMs conflicting with the space-age noises emanating from the games.

Upstairs, people are grabbing an early lunch, perhaps before going to work. The fast food is followed by a trek to the car, leaving a space for the next person to come along in the endless chain of events during an afternoon at ASU.



10 a.m. — Reed Irvine of Accuracy in Academia discusses proper teaching with members of the ASU community.



11:55 a.m. — Even at the lunchtime hour, parking as far away from campus as Lot 59 isn't easy to find — unless you have an aerial view.



**ATTENTION SKIERS**  
Are you interested  
in becoming a  
**SKI INSTRUCTOR**

If so, call Sunrise Ski School  
1-800-772-SNOW  
or write: P.O. Box 217, McNary, AZ 85930  
On-the-snow training clinics will consist of 2 weekends  
DEC. 7 & 8 and DEC. 14 & 15, 1985  
Owned & Operated By White Mountain Apache Tribe

**ASU PRE★LAW CLUB  
PRACTICE LSAT**

will be given this Saturday, 9 a.m. in  
Language & Lit. Building Room A-18. You  
GRADE IT!! You can sign up on Saturday,  
November 23, 1985 at 8:30 a.m.

Cost: Members \$8  
Non-members \$12 **CALL 966-2304**

**STATE PRESS  
Newsroom  
Staff Openings**

Applications for positions on the News Staff of the STATE PRESS for the Spring Semester 1986 are now being accepted at #15, North Basement, Matthews Center.

There will be openings at most levels — reporter, photographer, copy editing, assistant sports editor, assistant city editor, arts & entertainment writer, sports reporter, city editor, news editor, managing editor, sports editor, copy chief, photo editor, opinion page editor and wire editor.

Applicants must pick up job referral forms from Student Employment in Matthews Center and an application blank at #15, North Basement, Matthews Center.

**Applications will be reviewed beginning Nov. 27, 1985 and until all positions are filled.**

Applicants must be full-time (at least seven hours) students at ASU; but major in any department is acceptable, as is class standing of freshman through graduate.

Newspaper experience is desirable but not mandatory. These are part-time, salaried positions open to any student in good standing.

**AIRLINE CAREERS**

Find out if you qualify for our 12-week training and a career in the Airline/Travel industry. Join over 2500 Graduates placed with more than 90 Airlines

MONDAY-DECEMBER 2  
CAMELHEAD EMBASSY SUITES  
1515 NORTH 44TH  
PHOENIX, AZ  
7:00 P.M.

Airline interviews are scheduled on campus during your training program!



Where Airline Careers Begin!

**INTERNATIONAL AIR ACADEMY**  
Vancouver • St. Louis • Ontario  
Washington • Missouri • California



**BUDWEISER** Reg. & Light **\$8.99**  
24-pack returnable bottles & deposit

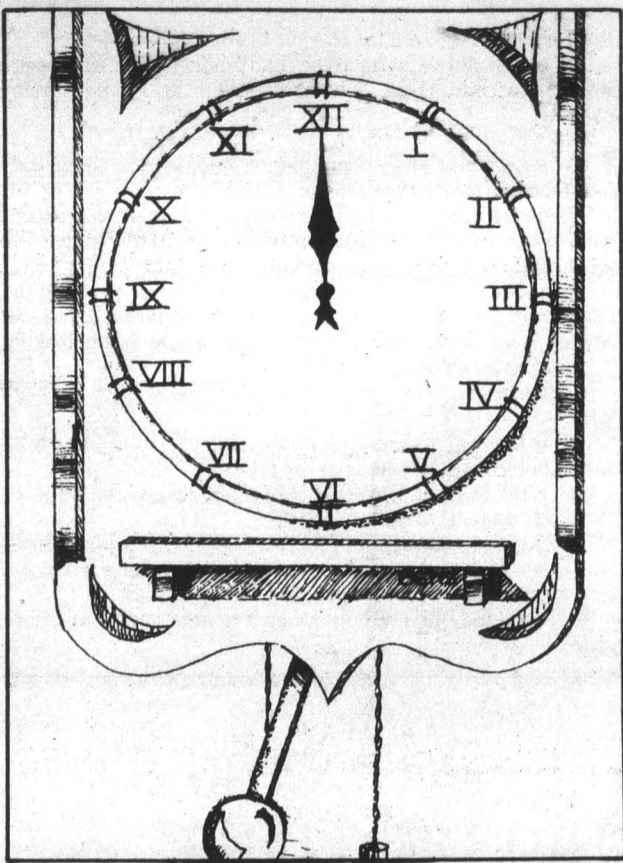
**BUDWEISER** **\$9.99**  
24-pack cans

**COORS** Reg. & Light **\$4.49**  
12-pack bottles

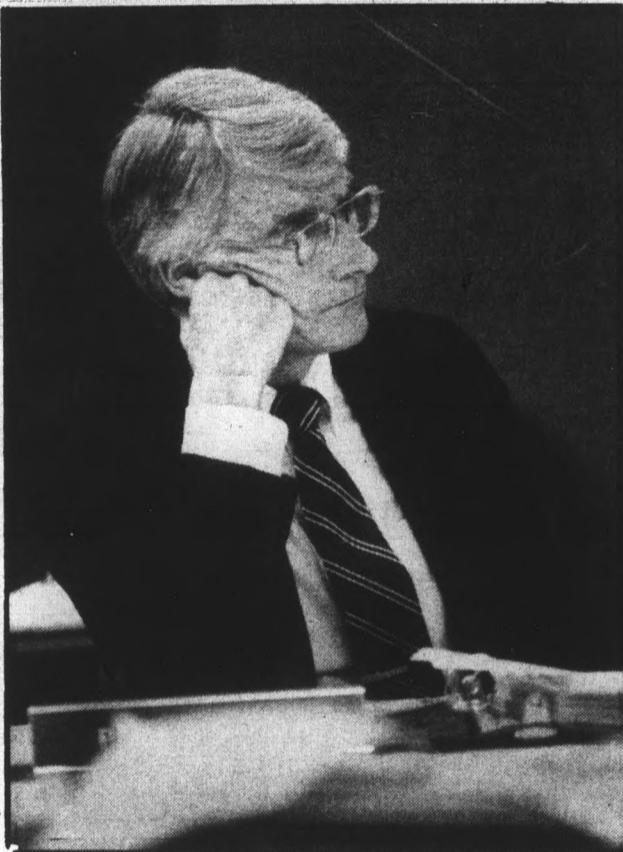
**TROPICO COOLERS** **99¢**  
4-pack bottles

**Kegs Available**

TRY US FOR EVERYDAY LOW PRICES  
1807 E. Baseline Rd. (Baseline & McClintock)  
in the Baseline Town Center  
**345-9200**



# noon to 3 p.m.



High noon — ASU. The fix is in and it's one of those low profile type of seedy, juicy affairs.

Behind the chalky bricks, through the cracks in the mall pavements and out from cross-University telephone booths, at last, the true low-down-'n'-dirty concerning the average obsessions of Joe College Student (and his pal, Judy) come out.

And it's darn messy.

And those people who opted for Target as a future over the glories of higher education always knew this about the college bound.

We're talking about a local dealer. He's cheap. He's quick. The best news is he's not only inexpensive in the first place, but this pug runs blue-light specials.

His name is Casey O'Hara. It's a dog day afternoon when ASU visits his establishment.

O'Hara sells the best lunch in town.

It starts with an 85-cent hot dog. It requires the side-kick of a 45-cent Sprite or Coke Classic, which incidentally is a discount from your average downtown vending machine or Exxon station.

And here's the killer. A New-York-style hotdog complete with gobs of bloody red tomato sauce and enough onions to turn off Dr. Ruth costs one buck.

We won't even talk about what O'Hara can do with a Polish sausage.

ASU's in business when they visit the local campus hotdog dealer, Casey O'Hara. In fact, he is the University's first one-man traveling hotdog emporium.

"Can I help you?" asks O'Hara with a smile.

"Yeah," says your average clinical speechology major with a minor in French because it's a beautiful, eloquent language.

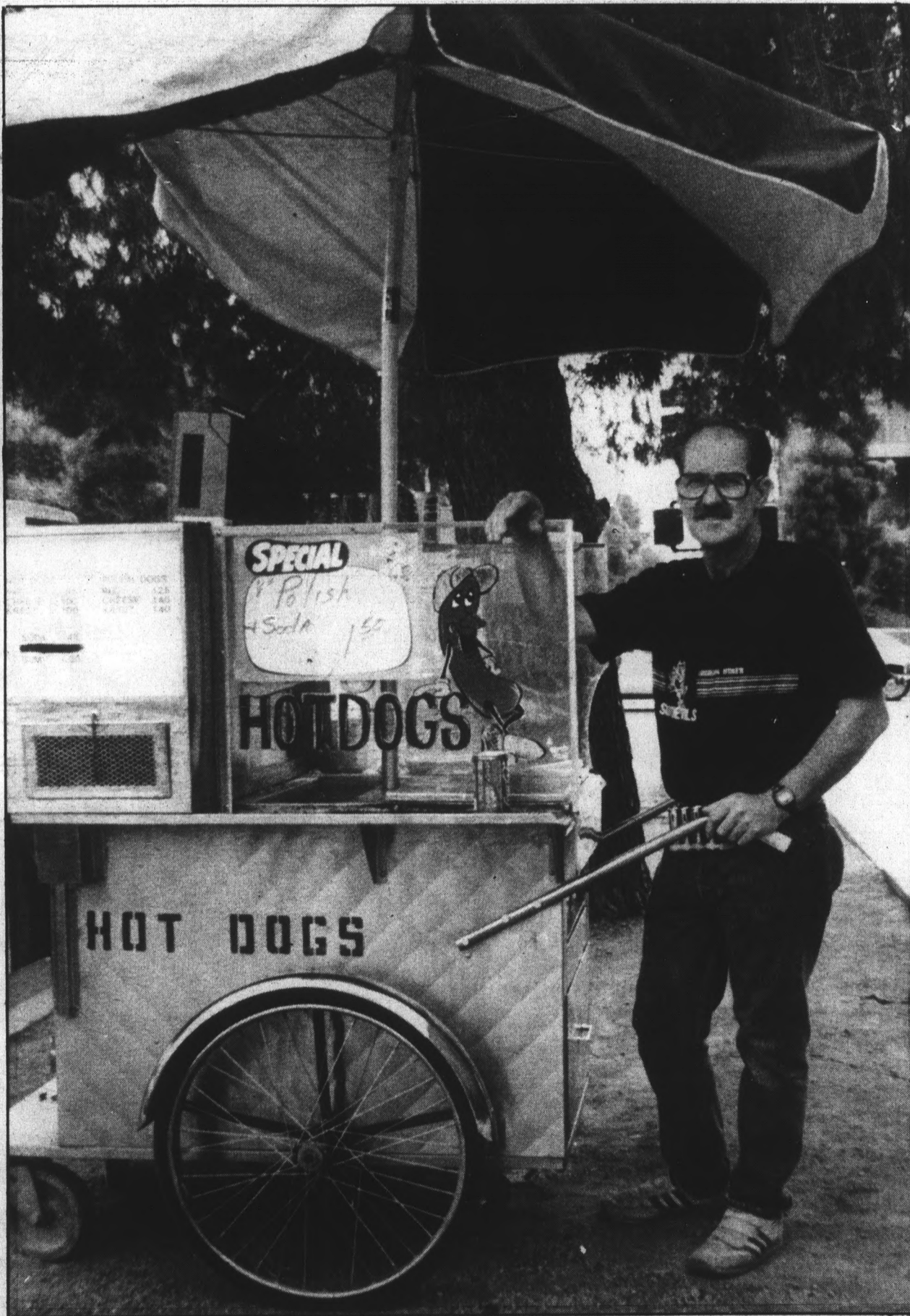
"I wanna hotdog with a Sprite and a pack of gum."

"It's at most a minute away," says O'Hara.

The past owner of two steak/lobster restaurants and five taco franchises has been at ASU for two years now.

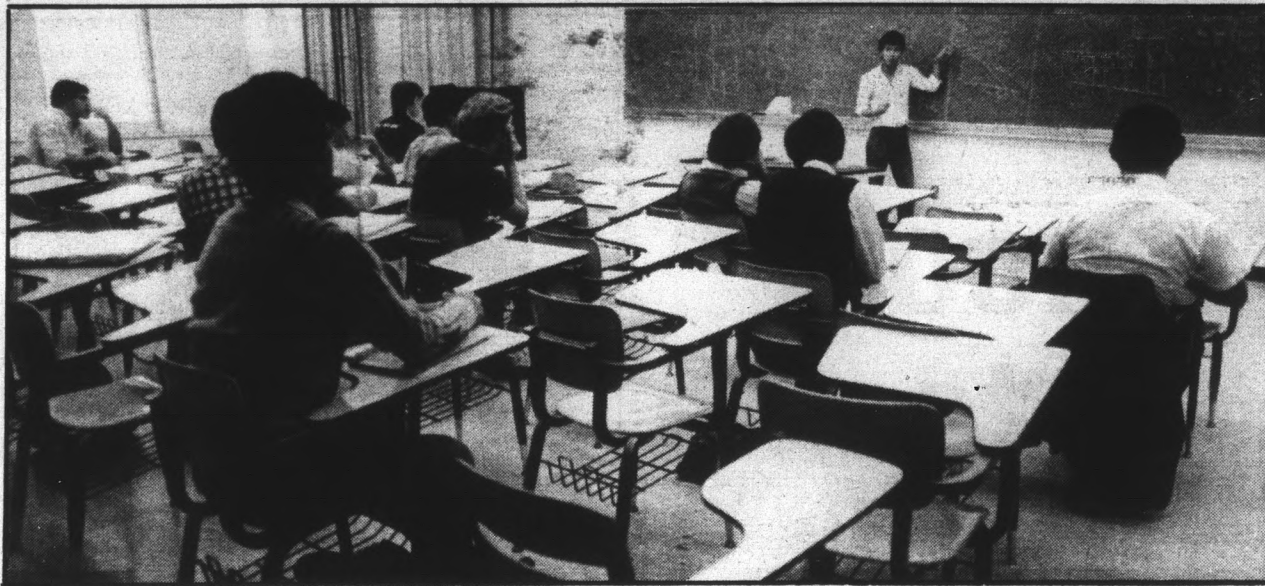
He estimates that 140 hotdogs and 120 cans of soda are passed over his little metal cart that sits on the corner of University Drive and College Avenue every day.

"It rains once in awhile. I still come out. I don't want to disappoint anyone. I'm only sorry that I haven't been doing



12:27 p.m. — Casey O'Hara, above, is having another dog day afternoon at his lunch cart on the corner of University and College avenues. He's no rookie to this business with two years under his change belt as ASU's only hot dog vendor.

2:00 p.m. — ASU President J. Russell Nelson, left, is at a Board of Regents meeting at UA looking . . . a little bored of the regents. After 1986 proposed tuition hikes, maybe all students will be able to afford his hot dogs.



2 p.m. — When certain students say Yuk about electrical engineering class, they're talking about their instructor. Graduate student Tony Yuk is at the board easing the torment of students unwired about ECE 324.

continued from 15

this for 20 years," said the 56-year-old campus uncle. The cart is only a natural for the Illinois native who began working at age 11 at a local drive-in. At 13, he started cooking.

ASU's glad. A student walks away chomping on a dog — maybe the only fast-food in Arizona that's not on a stick.

"There's a killer hotdog," the student mumbles as mustard runs down his chin and lands on the sidewalk under the traffic light. "You can't ask for better than that."

Meanwhile, while O'Hara bags some take-out dogs, all the way down south on I-10 in Tucson, ASU's President J. Russell Nelson is at an Arizona Board of Regents meeting looking a little bored of the regents.

If O'Hara can bag 'em, Nelson really knows how to cook 'em.

This is the regents meeting where a certain unpopular with students 1986 tuition hike is on the table.

We're talking big bucks — \$146 of extra payola from in-staters and \$417 from out-of-staters.

Yes, Nelson spent his day at UA, reportedly drinking iced tea. It seems like the only person who will benefit from this tuition business will be O'Hara, the hotdog dealer.

His lunch may be the only lunch students can afford next year.

**PERM SALE**  
THE ULTIMATE PERM OF THE 80s  
Perms that are soft, silky... sensational!  
That's the "Visible Advantage" Perm

Sea Plasma Perm  
**FOCUS 21**  
4450\* (87.50 value)  
Includes: "Visible Advantage" Perm Hairshaping and Styling Plus FREE Perm Care Kit

**hair performers**  
Includes: Shampoo, Conditioner & Up-Mousse  
**TEMPE HAIR PERFORMERS**  
903 S. Rural  
894-0184

Cinnamon Tree Plaza • 1/2 Blk. N. of Terrace on Rural

Get your hair permed before going home for the holidays.  
Under New Ownership

## Non-smoking travel minded roommate seeks same for fun and adventure.

This semester, move in with a Macintosh™. For starters, it's incredibly light and compact. So you can take it places.

And more important, Macintosh can take you places. From Biology 101 to advanced physics. From beginning French to the Italian Renaissance. From an average student to a Magna Cum Laude.

The point being, Macintosh helps students work better, quicker and more creatively.

And the beauty of Macintosh is, you don't have to know diddley about computers to use one.

So if you're going to have a roommate, why not have one willing to help you with your homework?



© 1985 Apple Computer, Inc. Apple and the Apple logo are registered trademarks of Apple Computer, Inc. Macintosh is a trademark of McIntosh Laboratory, Inc. and is being used with its express permission.



**Information Packet at Computing Reference Library, Trailer 3 (West of Engineering C Wing), which describes SPECIAL CHRISTMAS BUNDLE at Prices too LOW to print here.**

### The ADVERTISING DEPARTMENT of the

# STATE PRESS

is interviewing for an opening in the advertising department sales staff.

Freshmen, sophomores and juniors are preferred, in that successful sales representatives can continue for several semesters.

A State Press advertising sales position is also open to and can provide valuable experience for graduate students.

The rewards include training and experience in a professional newspaper operation and realistic compensation.

Applicants must pick up referral form from Student Employment in Matthews Center and an application blank at the State Press office, Matthews Center.

continued from 16

One more character (he used to be in Tucson, but now he's at ASU) rounds out this examination.

His name is Jim Wade and this man has the longest title. He is ASU's musical equipment repair technician. It's 3 p.m. and Wade works out of Gammage Center room 205 repairing all the University's musical instruments such as those used for the ASU Marching Band and the Symphonic Band.

"In an average week, I see 15 to 30 instruments. I give it a 20 average."

He plays all of them, at least well enough to test them, without being a pro on any, he said.

"My mother was a repair person before me. I've met Duke Ellington and Harry James and others right down the line," he said.

Today, he's meeting ASU students. No autographs, no jam sessions.

The students just stopped by to check out how a special tuba was doing — the doctor is in.



12:44 p.m. — Jeanie Souders, a senior special education major, looks with a view to a kill at the cars that have blocked her truck in at the dirt lot on 7th Street between College Avenue and Forest Street.

3:01 p.m. — Jim Wade, right, ASU's instrument doctor, adjusts a sickly valve on a French horn. The prognosis is good, Wade said.



**COUPON**

**Dairy Queen**  
brazier

**SINGLE BURGER FULL MEAL DEAL**

**CHAR-BROILED**

Look what you get! An all-beef burger. A regular order of crispy, golden fries. Your favorite medium soft drink, and, to top it off, a cool and creamy 5oz. DAIRY QUEEN® Soft Serve Sundae. Head for your participating DAIRY QUEEN® BRAZIER® store, to get the Burger Full Meal Deal! — The best bargain in town.

**WE TREAT YOU RIGHT**

**\$1.89**

ONLY AT:  
**1389 E. APACHE**  
(Between Rural & McClintock)  
Limit 2 per coupon.

**COUPON**

A Special Offer From

**ASU Students . . .**

If you're over 18, you can rent an Escort or other fine car at

**SPECIAL LOW WEEKEND RATES**  
starting at **\$19.96** A DAY  
no mileage  
(2 Day Min.)

(Rates subject to change without notice.)

For Your Car, Call Your ASU Representative  
**968-4072**  
Office located at Rural & University

YOUR LOCAL **NISSAN** DEALER

**SERVICE SPECIAL**

**15% DISCOUNT**  
On Service Work and Counter Parts  
(except new air conditioning unit)

FOR ANY DATSUN **NISSAN** SERVICE TO ALL ASU STUDENTS, FACULTY, STAFF WITH ASU I.D. CARD  
\* TO BE PRESENTED AT TIME OF PURCHASE. \*

**NISSAN QUALITY CIRCLE** Good through Dec. 31, 1985.

We use genuine Nissan Parts & Factory Trained Technicians

**Smith MESA**

**NISSAN**

1701 W. BROADWAY, MESA • 834-3366  
Service Hours: Mon. 7:30 a.m. - 8:30 p.m.; Tues. - Fri. 7:30 a.m. - 5:30 p.m.  
Parts Open Sat. 8:30 a.m. - 12:30 p.m.

**GRAND OPENING**

Come Celebrate Our Grand Opening  
AND GET 20% OFF YOUR TOTAL BILL

Fine Szechuan • Mandarin  
Cantonese Cuisine

- Open Daily
- Cocktails
- Carry Out

*Pearl of the Orient*

**966-5656**  
1112 E. APACHE BLVD., TEMPE  
OFFER GOOD THROUGH NOV. 30, 1985.  
(OPEN ON THANKSGIVING)

**THE MOOSE IS LOOSE IN TEMPE! NOV. 29**

**SONY BLAUPUNKT EPI**

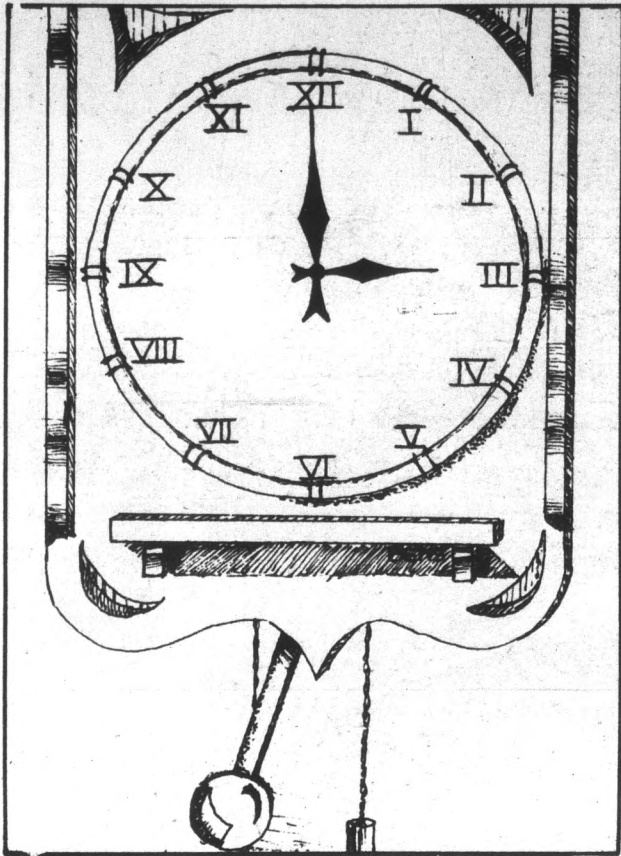
- CAR STEREO
- MOBILE PHONES
- CAR ALARMS
- RADAR DETECTORS

**TRAFFIC JAM**  
Car Stereos

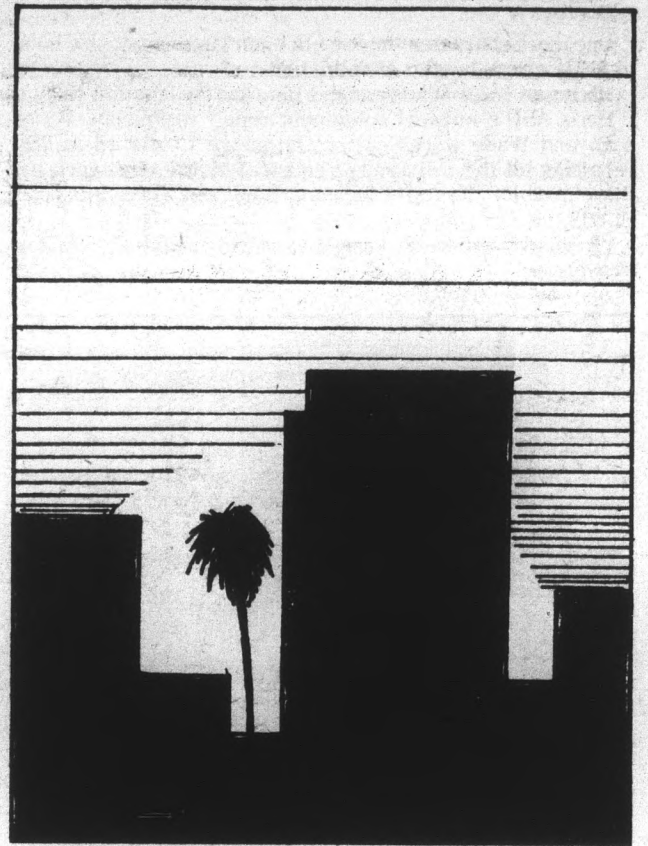
**GRAND OPENING**

10% DISCOUNT WITH THIS COUPON

**105 W. UNIVERSITY**  
1 BLK. W. OF MILL  
**966-7745**



# 3 p.m. to 6 p.m.



4 p.m. — Dan Ibarra, a junior finance major, looks away as Judy Troche injects him with a measles vaccine.

Dan Ibarra rolled up his sleeve, turned his head and winced as the needle pierced his skin.

He had waited for about five minutes this afternoon for a measles shot he needed to bypass the new immunization roadblock in this year's registration process.

"I've taken the shots before, but I couldn't find the records," he said. "I decided to go down and have it done. It was free, and it only took five minutes."

Fortunately for Ibarra, a junior finance major, this is not the way that he, or most other ASU students, spend an average Friday afternoon.

But several students had spent the past weeks waiting patiently in line to get the shot — the only fix enforced by a college administration.

"We've tried to keep the lines down to about 20 minutes," said Dr. Monty Roth, the director of Student Health Services. "More than 80 percent of the target group (all students under 28 years of age) have been vaccinated."

Roth and his staff may have been busy, but the Student Health Center was one of the few campus complexes still doing business at 3 p.m.

As far as the student population goes, life at the center of ASU's campus starts to die down about now.

The malls slowly but surely calm, allowing janitors and other employees in little "beeping" Cushman carts to

reach their destinations at greater speeds. Any leftover tables on Cady Mall have long since been removed, and the libraries and MU are the only complexes still filled with people.

But as the campus empties, other places fill with a student population trying to forget thoughts of bookwork and move on to more pleasurable topics.

Around 4 p.m., a crowd starts to gather at Sub Stop, preparing for 2½ hours of Jazz music performed by a local band. A number of the clientele are members of the two sections of MUS 347, a.k.a. Jazz in America. The instructors require several hours of listening at various Valley locations, and, as the semester starts to wind to a close, many students work overtime to gain extra-credit points and assure themselves of A's.

Marty Katz, Sub Stop's owner, said, "I would say at least 50 percent are Jazz in America students."

Katz, who said about 200 students show up each week, said the forum is not held as a profit-making venture.

"I wouldn't lie to you and say it doesn't make money, but I do it to create an aura of feeling for the place," he said.

Katz said he has used the same band for more than two years and they are all local union band members.

While most ASU students probably

feel like an early afternoon belt and some good tunes to bury the memories of another week at ASU, a certain faction of this campus never seems to lose their passion for work . . . or play.

At the Child Development Laboratory, located behind the Home Economics Building, kids play with energy that would make a 4.0 advertising major green with envy.

Staffed by professionals and graduate students the laboratory acts as a training and community service center.

"We are a loving, caring center," said Joanne Meierdirks, the center's coordinator. "We have a family atmosphere here . . . and we try to be positive with children."

"If they are arguing over a block, we don't say 'you're wrong,' we say, 'hmm, this is a problem; how can we work it out?'"

The most amazing site on campus in the late afternoon emanates from quite an unusual location — one not often frequented by ASU students.

Around 5:30 p.m. this time of year, an incredible red and purple sunset can be seen on the Arizona horizon. Viewed from the top of the 14-story Manzanita Residence Hall, the beauty and serenity of the scenery was in striking contrast to the rushing crowds inside the building.



5:25 p.m. — A crowd at Sub Stop enjoys drinks and a local jazz band as they perform on the restaurant's porch.



5 p.m. — The sun filters through the supports of the KAET satellite dish located on the southwest side of Stauffer Hall.



5:15 p.m. — Moments before sunset, the reflection of the Music Building in irrigation water that filled the meridian on the Gammage Center parkway.



5:46 p.m. — Cars travel on University Drive as seen from the top of Manzanita Residence Hall.



5:30 p.m. — A sunset seen through the water spouting from the fountain located west of Gammage Center.

# T-Shirt Factory Outlet

(Cheap Charlies)

905 S. MILL  
Tempe Center

829-8465 Closeouts • Irregulars • Salesman Samples

OPEN  
M-F 9-8  
Sat. 9-6  
Sun. 12-6

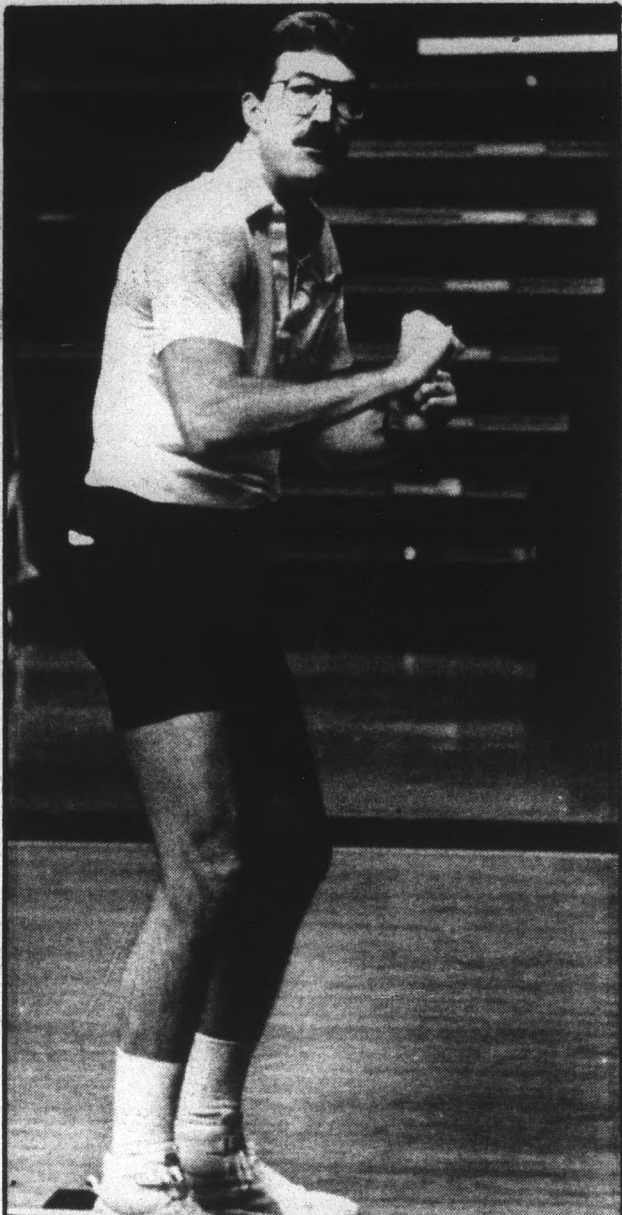
*Going Out Of Business Sale*  
**20% to 50% off everything**  
Over 10,000 shirts



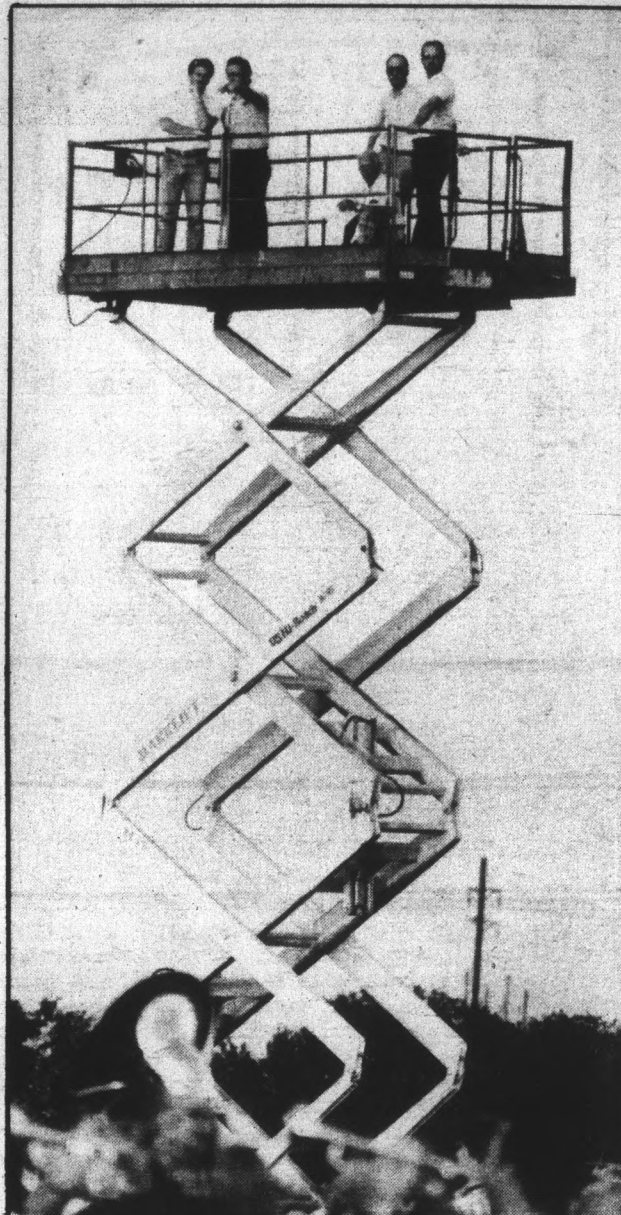
- ASU T-shirts..... Sale \$4.79
  - T-shirts (other) ..... Sale 3 for \$8.79
  - Sweatshirts ..... Sale \$7.99
  - Hooded Sweats..... Sale \$9.99
  - Children's ..... Sale \$1.59 and up
  - Baseball Caps..... Sale 99¢ and up
  - Sleeveless Sweats ..... \$8.99
  - Arizona Sun Club Half Shirts ..... Sale \$4.79
  - Asst. College T-shirts & Sweatshirts .. Sale \$5.59-\$9.99
- Asst. 50% Off Rack (Great Buys)*



4:10 p.m. — Nanette Schrader, a senior psychology major, hitches a ride from Eric Zerkel, 4. Schrader works at the Child Development Laboratory.



4:30 p.m. — Men's basketball coach Steve Patterson demonstrates a move during practice at the University Activity Center.



4:50 p.m. — Marching Band Director Robert Fleming and Richard Strange, the assistant director, survey band formations from high ground. The band practice field is located east of Rural Road.

Law Offices of  
**RANDY C. ROGERS, P.C.**  
1811 S. Alma School #260  
Mesa, AZ 85202  
345-8311

Same Day Appointments  
Generally Available  
Evenings & Weekends

**FREE INITIAL 1/2 HOUR CONSULTATION**  
(WITH THIS COUPON)  
*Offer expires 4-30-86.*

Accidents  
Personal Injury  
Domestic Relations  
Child Custody & Support  
Spousal Maintenance  
Property Settlement  
General Civil Matters

**Personal Injury  
No Recovery: No Fee**

VALUE COUPON

**OROWEAT**

**BAKERY OUTLET**  
1115 W. Broadway Rd.  
Tempe, AZ 85282

(one coupon per person)  
Good 11-21-85 to 11-27-85.

HOURS:  
9-5:30 Mon.-Sat.  
967-8705

FREE 6 package Health Nut muffin  
or 6 package Raisin Muffin  
(Just for visiting our store!)

**MONTI'S LA CASA VIEJA**  
*Finest Dining in an Authentic Frontier Landmark*

**DINNER SPECIALS**  
AFTER 4 P.M.

Monday ..... Filet  
Tuesday ..... Prime Rib **\$5.45**  
Wednesday ..... Sirloin

*Dinners include Baked Potato,  
Salad, Rolls & Butter*

**LUNCH MENU**  
SERVED 11 A.M. TO 4 P.M.

**1/2 lb. Casa Burger with  
choice of side order \$2.85**

3 West First Street  
Tempe • 967-7594

Sun.-Thurs. 11-11  
Fri.-Sat. 11-Midnight

**WEEKEND RETREAT**  
**\$19.85\***

Treat yourself to a great weekend at Tempe's Holiday Inn. Package includes:

- A welcome cocktail
- Complimentary cooked-to-order breakfast
- A deluxe guest room with king size or double beds.
- Heated pool, spa & sun deck

Savor great food and service in our Holiday Inn Restaurant. Then stop in at the Glenn Miller lounge and relax to the sounds of the Big Band era.

**Holiday Inn of Tempe**

915 E. Apache Blvd. Tempe, Arizona 85281  
Please call (602) 968-3451

\*Per person, per night based on double occupancy. Check in Friday, Saturday, or Sunday night.

COUPON

SERVING ASU SINCE 1972

**Papa Jay's Pizza**  
We Also Deliver Ice Cold Beer  
**FAST FREE DELIVERY**

\*Limited Delivery Area

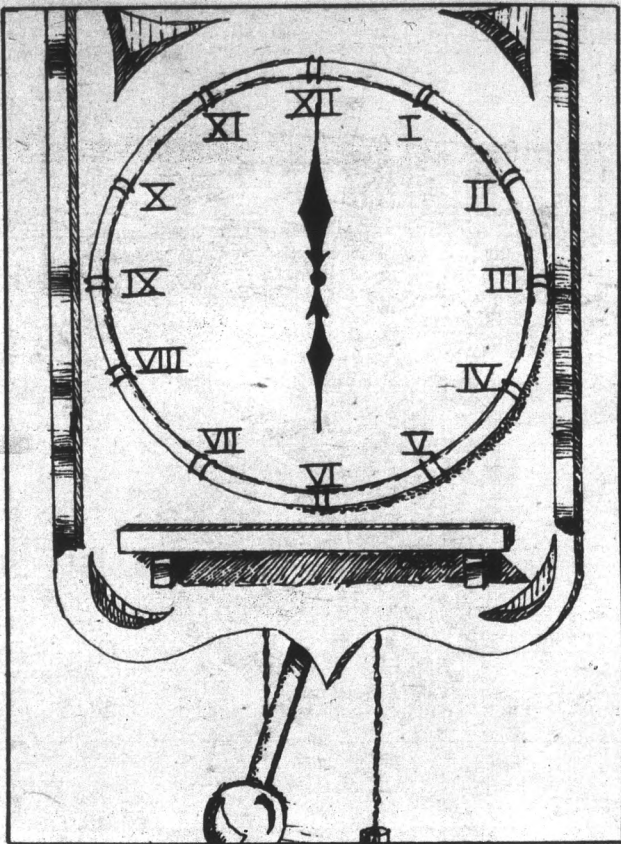
804 S. Ash (Univ. & Mill) **966-4292 or 966-1003**  
Right Next to ASU

**ANY 2 LARGE ONE ITEM PIZZA FOR**  
**only \$9.95**  
(With This Coupon)

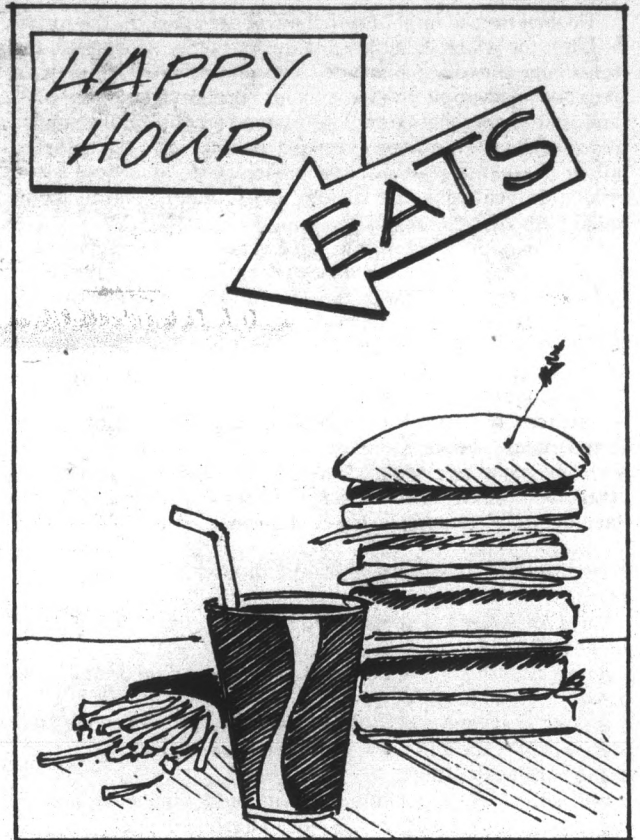
\*On Regular, Not Sicilian Pizza

Good on delivery, take-out or dine-in. Expires 11-30-85.

<p>Save \$2.30</p> <p><b>#1 Sun Devil Combo</b> Any large pizza with your choice of up to 4 toppings. <b>ONLY \$6.95 plus tax</b> Good on delivery, take-out or dine-in. Expires 11-30-85.</p>	<p>Save \$1.95</p> <p><b>#2 Sun Devil Combo</b> Any medium size pizza with your choice of up to 4 toppings. <b>ONLY \$5.95 plus tax</b> Good on delivery, take-out or dine-in. Expires 11-30-85.</p>	<p>Save \$1.80</p> <p><b>#3 Sun Devil Combo</b> Any small size pizza with your choice of up to 4 toppings. <b>ONLY \$4.95 plus tax</b> Good on delivery, take-out or dine-in. Expires 11-30-85.</p>
--	--	---



**6 p.m.  
to  
9 p.m.**



The stately church bell chimes six times, and the ASU campus has taken on a more serene tone. The only remaining activity comes from zealous Community Service Aides who hurry from lot to lot, meter to meter — only 60 minutes left to capitalize on weary students' illegally parked vehicles.

Industriously, these public guardians of justice adorn offenders' windshields with the most popular ornament found at ASU: a good news certificate from Richard Landreth & Co.

The day's end reveals the casualties: 13 rhino boots affixed, six tiger teeth attacks. Perhaps there is something to the claim that parking at ASU is a "zoo" . . . .

The light of day yields to darkness as the chill of fast-approaching November evening begins to take command. The mountains are encompassed by a dark red halo, which slowly sinks to a final ebb.

In other words, it's night. You know, real dark.

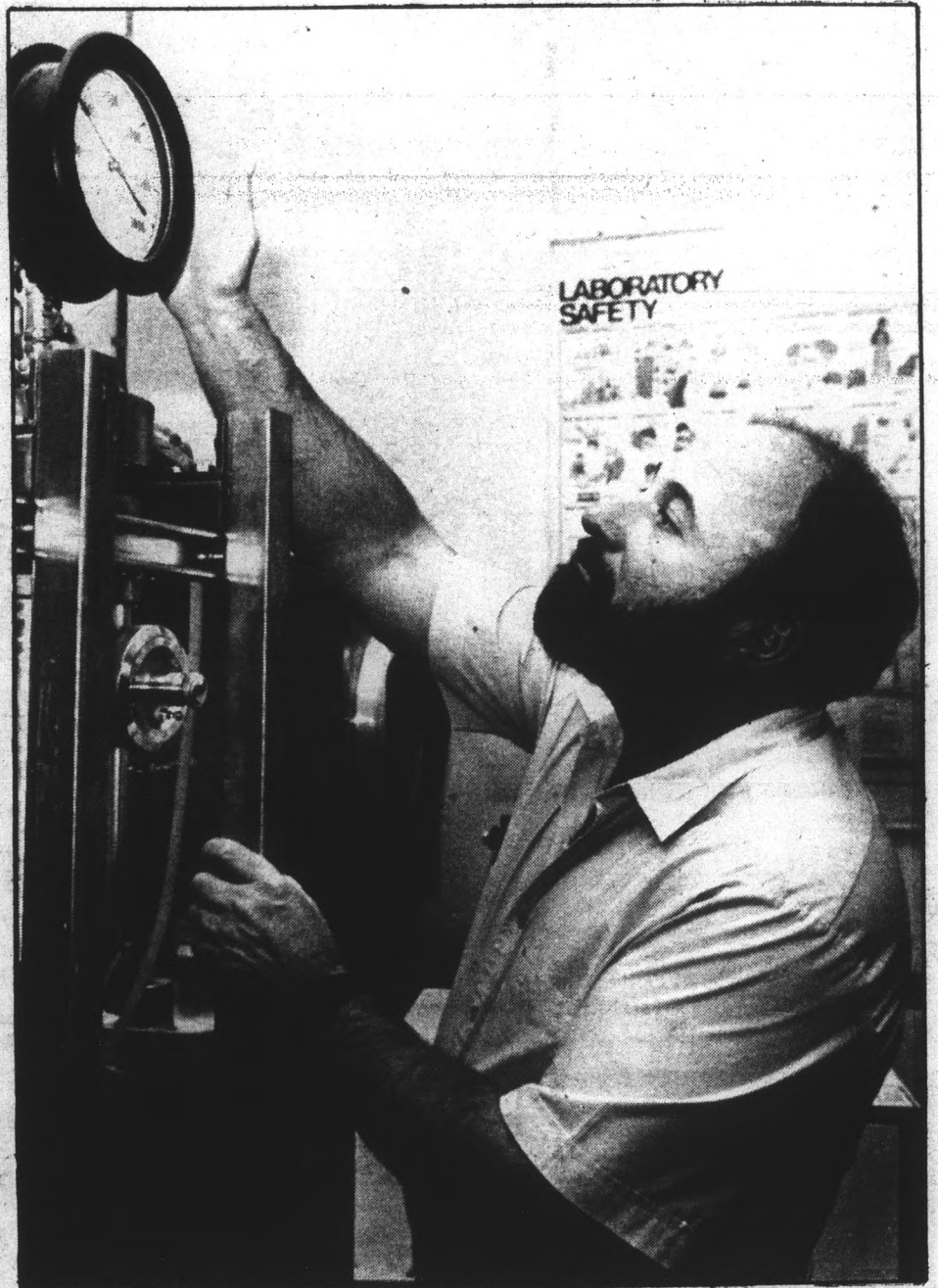
With reruns of "Miami Vice" and "Dallas" providing a sub-par television evening, the ASU campus was perhaps a bit busier than usual. Students whisk down the mall, discussing topics ranging from looming accounting exams to the test the Sun Devil football team will face the next day against Washington.

An obstacle course of skateboard enthusiasts dots the area around the fountain, looking annoyed that someone had the nerve to walk through their "turf."

The MU is swelled with people ripping into pepperoni pizzas and breaking the rack on a game of billiards. A pair of engineering majors try to master each other in a game of chess while the sound of exploding pins strike out from the Friday night bowling league. Despite the din and bustle, some still find a way to catch a quick nap while others slip into the movie theater, looking to escape reality for a few hours.

Meanwhile, back at the lab, taking time

5:30 p.m. — The Eastern Onion Gorilla 'takes it all off' in the lounge of the Manzanita Residence Hall, in celebration of a student's 18th birthday.



8:45 p.m. — Dr. Woodrow Monte checks the gauge on a liquid carbon dioxide extractor. He was extracting nicotine from tobacco in his laboratory in the Home Economics building.

away from his Nutrasweet project, home economics professor Woodrow Monte repairs his Liquid Carbon Dioxide Extractor.

The machine, which often breaks down, uses high pressure to extract dangerous compounds from elements. He was using the machine to extract nicotine from tobacco.

Monte, who is on sabbatical this semester, is working with the physical education department on a study of the effects of tobacco on athletes.

Leaving the lab, we find an august assembly in full swing. They haven't been interesting in 30 years, and they don't get invited to a lot of parties thrown by University administrators, but members of ASU's Faculty Senate find plenty to do on a daily basis at ASU.

The senate is not a social organization, Chairman Bruce Mason said, adding that although the body's executive officers may

be invited to a few socials with ASU officials, it is not a regular occurrence.

Mason said the senate also acts as a grievance committee for faculty members who are unhappy with working conditions or with their salaries.

"People call me and want to know things," he said. "They call me up and tell me their problems."

"They curse the administration, and some of them praise it."

The sixth-hour toll from the clock spells relief for the dedicated staff at the Student Health Center. Having spent 10 hours diagnosing, healing, comforting, and consoling, these fine folks are more than ready to greet the weekend. But this is medicine, which means dedication. The doors to the Student Health Center will not be locked for long. Bright and early Saturday morning, the health team is ready to play ball again.

continued from 21

The last rays of light herald the emergence of the nocturnal wildlife for which ASU is home sweet home. Along with the tenacious, steadfast pre-meds and engineering hopefuls, a number of other interesting species emerge. Nets, mini-pits, and snares are strategically positioned for the capture of the favorite game animal on campus: the kitty cat. The safari is all in the name of academic enrichment, of course. Just where do you think the zoology department gets all those pudgy-tats for research?

Campus nightlife revs into full swing. And the nightlife at this University is well-documented nationally through such forums as Playboy magazine. The fun begins in the dorms, because it's not cool to hit the bars and dance shacks until 9. Attempting to replicate the Devil House, stereo after stereo produces decibel after decibel of pulsating party anthems. The foundations shake, rattle 'n' roll as the necessary staples — courtesy of Domino's — are shipped in. The Tempe Fire Department makes its usual rounds, responding to fire alarms resulting from bizarre attempts at cooking, cigarettes down the laundry chute or Manzy frosh "accidentally" leaning on the fire alarms.

It is getting close to 9 p.m. and students are hitting the bars.

Guys are hitting on girls in the bars. Guys are hitting guys for hitting on their girls in the bars.

Some guys have been barred from the bars. A few are already behind bars.

But not everyone is in the bars. Some are in the parking lots of bars. Others are in cars, going from bar to bar — or from car to bar then bar to car.

But not Ed. He is not in a bar, and he doesn't even own a car. He's unconscious beneath a bus-stop bench.



8:12 p.m. — Twilight skaters, some of them ASU students, rent the tool of the trade at The Cheapskate, across University Drive from campus. The Cheapskate, which rents and sells roller skates, skateboards, unicycles and equipment, depends heavily on ASU students for its clientele. They also outfit those punk skateboarders who terrorize the campus on wheels.

6:30 p.m. — A Faculty Senate party at the ASU solar house at University and Mill gave campus administrators like Charles S. Harris, left, director of collegiate athletics, a chance to relax and chat about the week's events with their co-workers.



**Barloga's**  
 "Chicago's Beef and Pizza Connection"  
**PIZZA UNDER A BUCK!**  
 Bring in this coupon and get a 10" pizza with cheese and one topping for only 99¢.  
 Grand Opening Offer Good From 11-18-85 to 12-1-85.  
 Enter our Free-Pizza-A-Week-For-A-Year drawing.  
 1934 E. University • Fort Knox Plaza • Tempe

THE BEST PRICE & SELECTION IN THE VALLEY  
**"THE MENAGERIE"**  
 50¢ Earrings (over 5,000 pairs)  
 NOT ONLY HIGHER QUALITY  
 BETTER PRICE & SELECTION TOO  
 ASU T-shirts & Hats  
 215 E. 7th Street, Suite 202  
 Tempe, Arizona 85281  
 829-7565  
 Between College & Forest

**KENYA BAGS**  
  
**\$18.00** New Shipment Arrived  
 Over three dozen to choose from  
 Name Brand Shoes And Accessories  
**THE LOFT**  
 707-D S. Forest  
 Tempe • 966-1772

   
 4-Chair Dinette **\$99.95** 4-Drawer Chest **\$29.95**  
**— BED SALE —**  
 Twin Set **\$69.95**  
 Full Set **\$79.95**  
 Queen Set **\$129.95**  
 6-drawer Dresser & Mirror **\$89.95**  
 4-drawer Desk **\$59.95**  
 Sofa & Loveseat **\$169.95**  
**FREE Delivery with \$200 Purchase**  
 2077 E. University  
 Tempe • 966-6252  
**FURNITURE PLUS**  


**SUNDAY MUNCH FROM \$2.25**  
  
 This coupon gets you the burger of your choice, a half order of fries and a cold mug of beer—all for the price of the burger.  
 NOTE: Burger prices range from \$2.25 to \$3.35.  
 You may substitute a soft drink if you like.  
 This offer good only at Round the Corner in Tempe (Southern Palms Shopping Center, corner of Southern and McClintock). It's good only on Sunday. And it's not good with any other offer. (Please tell us you have this coupon when you order.)  
 P.S. It's a very good deal.  
**ROUND THE CORNER**  
 MUST PRESENT COUPON. EXPIRES DECEMBER 1, 1985.  
 © 1985 Round the Corner Restaurants, Inc.

continued from 22

Melvin is at home. He's quietly doing his business homework and smoking text-book pages, far from any bar.

Shadows lengthen. The evening is growing purple, its shapes uncertain in the fleeting taillights. Tempe Butte looms in the darkness.

A saxophone's sound is heard beyond the wall. A night-cool breeze carries video pings down Mill to Grafitti's where neon sings blue in the windows.

A fly tiptoes up a beer bottle's neck. The smell of tequila is pervasive.

The palm and orange trees and street lights seem to gently quiver, then move — just slightly. The movement is hardly perceptible.

The whole barscape starts slowly to rotate to the beat of bar's bands, around and around and around . . .

8 p.m. — To finish out the week, an off-campus food break. Students fill up at Flakey Jake's in the Cornerstone Center at University Drive and Mill Avenue.



6:15 p.m. — One of the many wild cats that live on campus poses for his portrait in a clump of trees on the south side of Wilson Hall. The trees are a quick route to his hideout on the roof.

Faster and faster and faster . . .  
A vague sensation of falling.  
Drunkenness.

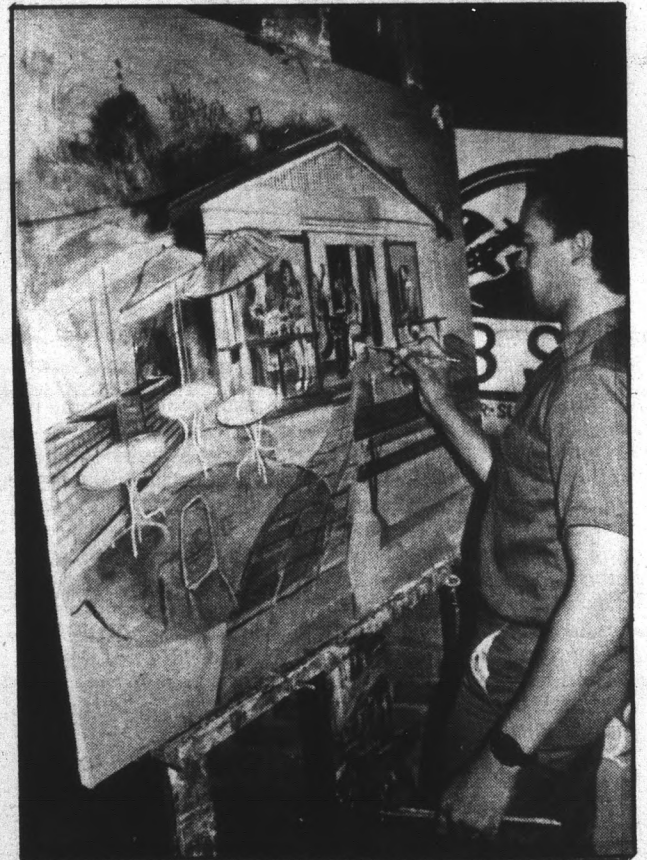
Now that the banks are closed, an amusing psychological phenomenon occurs. It's called memory recall, and it goes something like this: "Gee, I've got a date tonight and I spent my last dollar at Pasta Plus. What will I tell Gertrude?" At this point, the subject remembers that among the many helpful services that his bank provides is the Automatic

Teller Machine. Ah, what a relief! Off our subject dashes to the bank. And into the two-mile line he jumps, along with the rest of the memory-recall subjects. Forty minutes later, our subject approaches the ATM. He can feel the green in his hand. He can taste the great dinner it will buy. In fact, he can do a lot of things — except remember his blasted access code number. Too bad, Gertie . . .

Next, we pass by the offices of ASU's finest. In the squad room, the officers are briefed on what's sure to be a fun-filled evening. Reminders include how to disable a 260-pound drunk, and how to pursue vehicles doing 90 mph down Cady Mall. Confident and composed, the officers hit the streets of ASU.

The night grows ever darker, ever wilder. The ninth hour approaches . . .

7 p.m. — Graphic Design sophomore Herman De Wayne paints a picture of Sub Stop while the weekly band plays. He thought the painting would only take an hour to paint, but he is now on his third Friday.



**Call for daily specials**

**MIKE KWAN'S GOLDEN COIN Chinese Buffet**

1125 E. Apache Blvd. • Tempe  
968-3322

**Menu includes:**

- Sesame Chicken
- Sweet and Sour Pork
- Lemon Chicken
- Smoked Fish
- Shrimp Almondine
- Pepper Steak

- Jade Tree Chicken
- Teriyaki Beef Steak
- Sweet and Sour Almond Turkey
- Chicken Chow Mein
- BBQ Spare Ribs
- Egg Rolls

- Teriyaki Chicken
- Ham Fried Rice
- Beef with Broccoli
- Teriyaki Chicken
- Vegetarian Steak
- Egg Fu Young

**"1984 READERS CHOICE"**  
15 years experience in Chinese Buffet

<b>●LUNCHE●</b>	11 a.m.-3 p.m.	Change in Food Selection Daily	<b>●DINNER●</b>
<b>\$3.54</b>			5 p.m.-9 p.m. <b>\$4.01</b>

All You Can Eat \$1 Off

PANCHO'S PESOS

ONLY \$2.99

This coupon good for \$1 off on Pancho's All-You-Can-Eat Mexican Buffet. Coupon good thru: (Expiration Date) 12/5/85

Reg. \$3.99  
Limit: 1 buffet per coupon, please.  
Offer not good in conjunction with any other discount.

PANCHO'S MEXICAN BUFFET

Here's a good deal. Just clip this coupon and take to Pancho's. It's good for \$1.00 off our famous All-You-Can-Eat Mexican buffet. Use it today . . . and keep the change.



1529 North Scottsdale Road, In Los Arcos Mall

Executive Producer: TORNE MICHAELS  
Producer: JUDITH JACKLIN BELL SHI  
Executive in Charge of Production: IRIS MARCH  
Featuring The Not Ready for Prime Time Players

Not Rated

Now on Stereo Videocassette

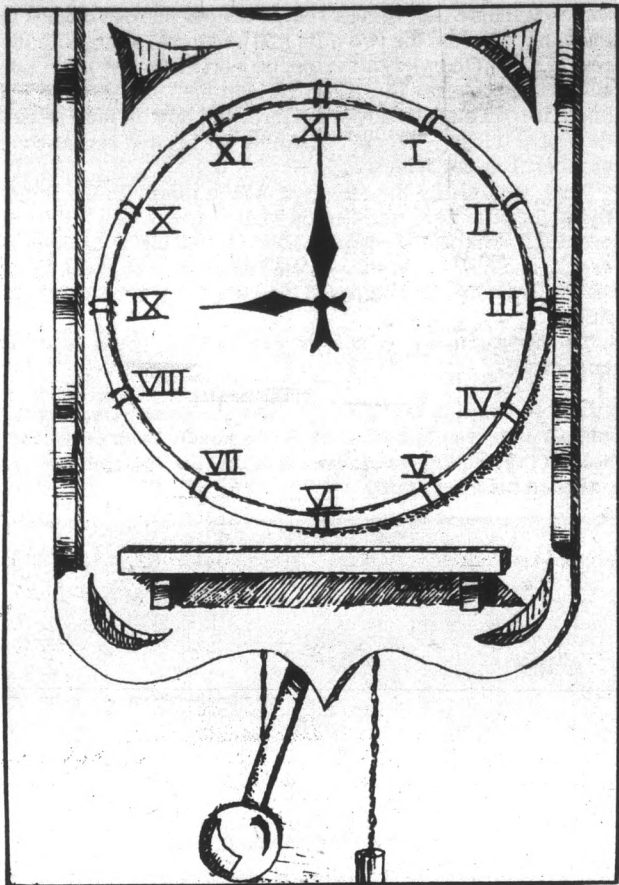
THIS CHRISTMAS GIVE THE GIFT OF LAUGHTER

\$24.98

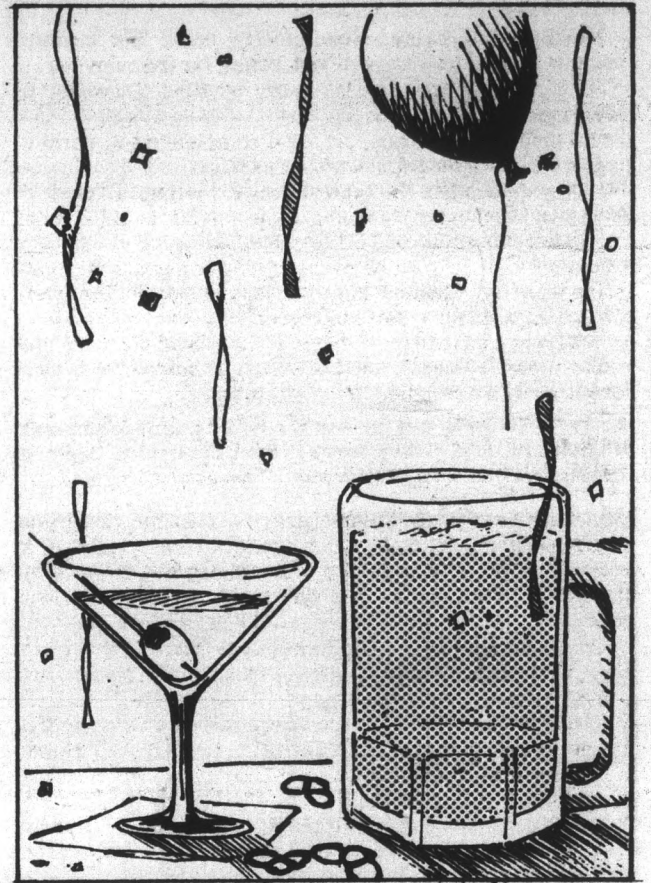
sugg. list

Program Content © 1985  
Above Average Productions Inc.  
© 1985 Warner Home Video Inc.





# 9 p.m. to midnight



The final three hours on the ASU campus can be some of the most active times, especially on a Friday night.

From 9 p.m. to midnight, the campus is stirring with various activity even though the last class ended four or five hours ago and the blackboards have been cleaned.

Within the core of the campus itself, students, faculty and staff, as well as other Valley residents, are milling about, taking advantage of all ASU has to offer, maybe thinking about their weekend freedom.

Rollerskaters cruise the malls at increasing speeds and hang around the "ramp" between Stauffer Hall and the Architecture College. Unwitting people traversing campus from a show at Gammage are often involved in "near-misses" with our eight-wheeled friends.

Skateboard enthusiasts, who are mainly elementary and high school students, try their tricks on the large cement patios located around campus.

Campus security officers, when not busy looking for flashers in Hayden Library, are scanning the campus for any wrongdoing as they test locked doors, keep track of visitors on campus and answer calls given by the dispatcher.

One student who was bored by the whole thing decided to scale the side of the Physical Sciences Building.

However, not only humans are busy scouring the campus for things to do.

Stray cats race from trash bin to trash bin searching for

tidbits of food and hiding from students.

Palomino roaches work their way through the sewers and surface through the covers on the major malls. At the corner of Tyler Mall and Palm Walk, a convention of insects gather to discuss the local situation.

Many graduate students, dedicated to the cause of furthering knowledge, continue their research to prove hypotheses. One student comes close to discovering the formula for cloning people, but, alas, we are safe for another evening.

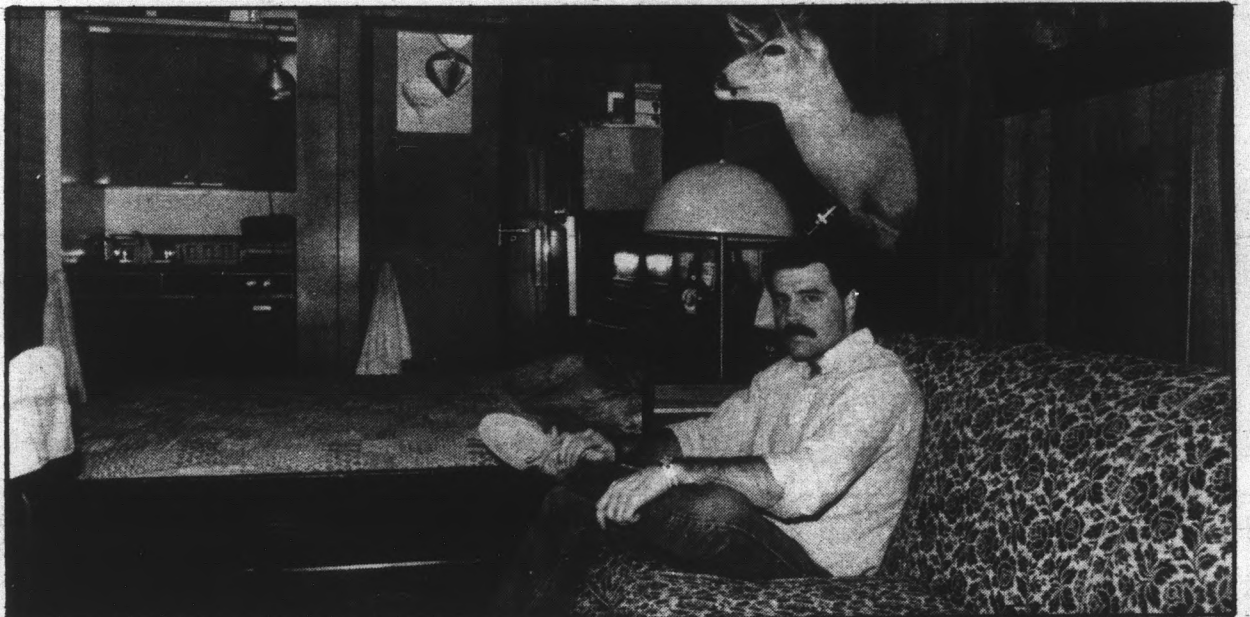
Janitors finish cleaning up the buildings so they, too, can enjoy the weekend. The trash is hauled out, the floors are swept and vacuumed and the drinking fountains are cleaned and polished.

Inside the MU, beeps and buzzes emanate from the basement game room.

"Eight ball in the side pocket," one gentleman says. Off to the other side, two students match skill and strategy in a friendly game of chess. Checkmate.

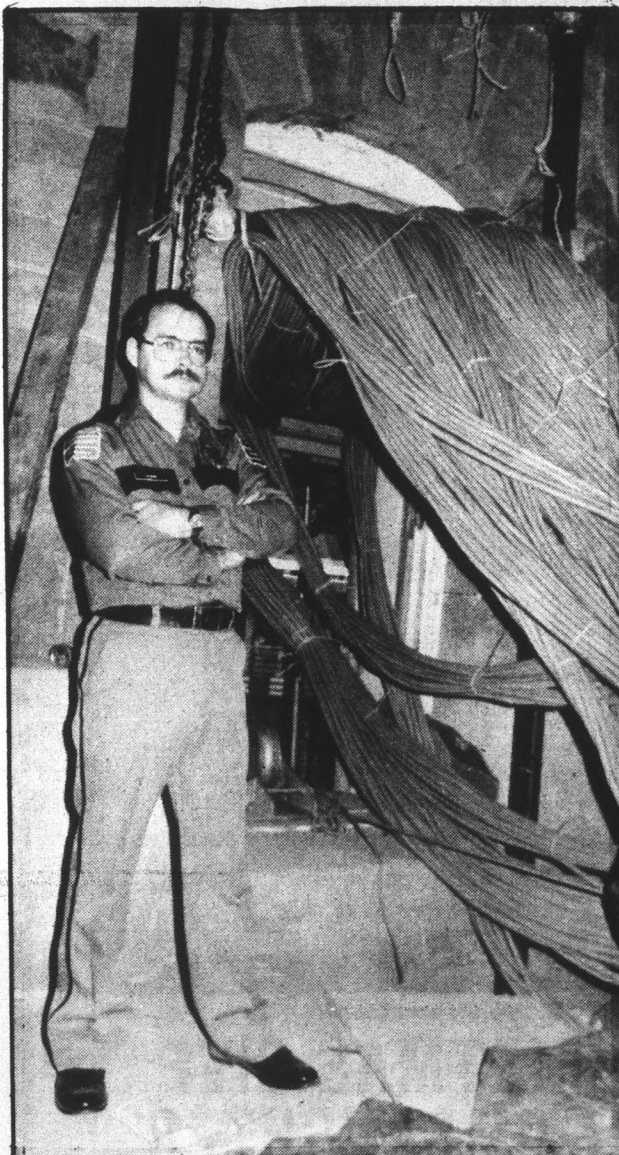
Miss Black ASU was chosen tonight in a ceremony held in the MU. Her stunning beauty and poise gave her the inside track to victory.

The dorms are hopping with people running in and out, as though the Christmas rush was well underway. The elevator looks like a Kansas tornado has swept through Arizona —



9 p.m. — Top — Tom Rankin, who is working on his MBA, sits in his room which is located in the Activity Center. Rankin serves as worker and "protector" of the UAC.

11:53 p.m. — Michael Sosko, a senior in accounting, challenges Miles Baker to a friendly game of chess.



9 p.m. — Jerry Schieber, a guard with Continental Security, protects equipment for AT&T.



11:45 p.m. — At the SAE Theta Ski Party, Tom Welch, center, is surrounded by future "snow bunnies," clockwise from left, Daphne Hudson, Sheila Golden and Tammy Anderson.

junk is scattered everywhere. If the elevator is not being trashed, the alarm button is being pushed by everyone who enters the people-mover.

As you visit the outer perimeter of the campus, the local taverns and shops remain open for student fun.

The Warehouse Deli has a guitar player/singer on stage while students drown their bad memories and sorrows of the past week in pitchers of beer and wine coolers. The workers race to fill orders.

More and more skaters join those already on campus as The Cheapskate rents out a seemingly endless supply of skates.

Sub Stop is still making its fresh sandwiches and the line grows as students gather for late-night snacks.

Panhandlers, Long Island Pizza, Restaurant Mexico and Jack in the Box serve as hang-outs for the hodge-podge of Sun Devil fans celebrating the beginning of a relaxing weekend.

On the other side of campus, the Dash Inn is busier than ever. The preppers, Greeks, geeks, cowboys, jocks and others gather for pitchers of margaritas, a plate of nachos or dinner and MTV.

From the beer-drinking crowd, "quarters" can be heard clinking against glasses. Gales of laughter pervades the restaurant. Customers waiting for a table line the aisles. A

continued from 24

30-minute wait is not uncommon.

A few people who want a quick bite before a movie or skating grab a burger or salad at Burger King. They want to have it their way!

The Cornerstone is hopping. The completely full parking lot is evidence of the popularity of this place.

Flakey Jake's has the typical crowd waiting to "create" their own hamburger. Moaning about the discontinuation of the bucket of beer can still be detected.

Just north of Jake's, the ever-popular Studebakers is glittering with flashing lights and good-looking people. However, few ASU students may be found here.

"Sorry, you have to be 23 to get in," the head doorman and bouncer says. Doesn't he know you shouldn't end your sentences with a preposition?

A look of disappointment crosses the face of a senior. She heads for the Sun Devil Six movie complex across the parking lot. Will it be "Transylvania 5-6000," "Krush Groove" or "Bambi vs. Godzilla"?

On Mill Avenue, the Tempe police are in full force, the largest conglomeration of which are located at Graffiti's. A wide assortment of creatures from across the Valley coagulates into a frenzy of pushing and shoving while the police try to maintain order, and that is just the outside.

The punks are there. The Greeks are there. Others are there, even though better judgment tells them to head to the Dash.

At Tempe Center, a more subdued crowd is pulling out the greenbacks or the American Express and selling their entire life for the most recent release from the Violent Femmes.

A few persons with true culture visit the classical section in Tower Records and, before running to their dorm to blow their minds on Chopin, stop at Baskin-Robbins for two scoops of Quarterback Crunch in a cup.

A few steps away takes you to Tops, a local liquor store. A



11:20 p.m. — Joe Williams, a communication arts sophomore at Mesa Community College and pledge for Phi Beta Sigma, acts as doorman for the Crescent Club which held a social event in the MU Maricopa Room.

# FREE MOVIE

with this coupon and a recorder rental at only \$5.95

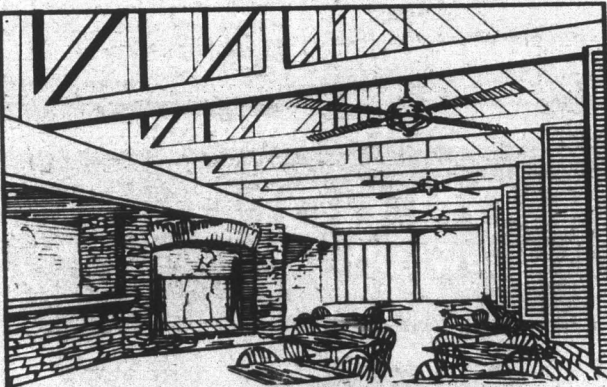


3118 S. Mill • Tempe

966-6722

No membership fee • No deposit

Expires 12-31-85.



## BILL AUSTIN'S OPEN PIT BAR-B-Q

JOIN OUR TEAM AS A FULL TIME OR PART TIME TEAM MEMBER

ALL SHIFTS AVAILABLE

- BEST WAGES
- FLEXIBLE SCHEDULING
- FREE MEALS
- BENEFITS

Positions Include:

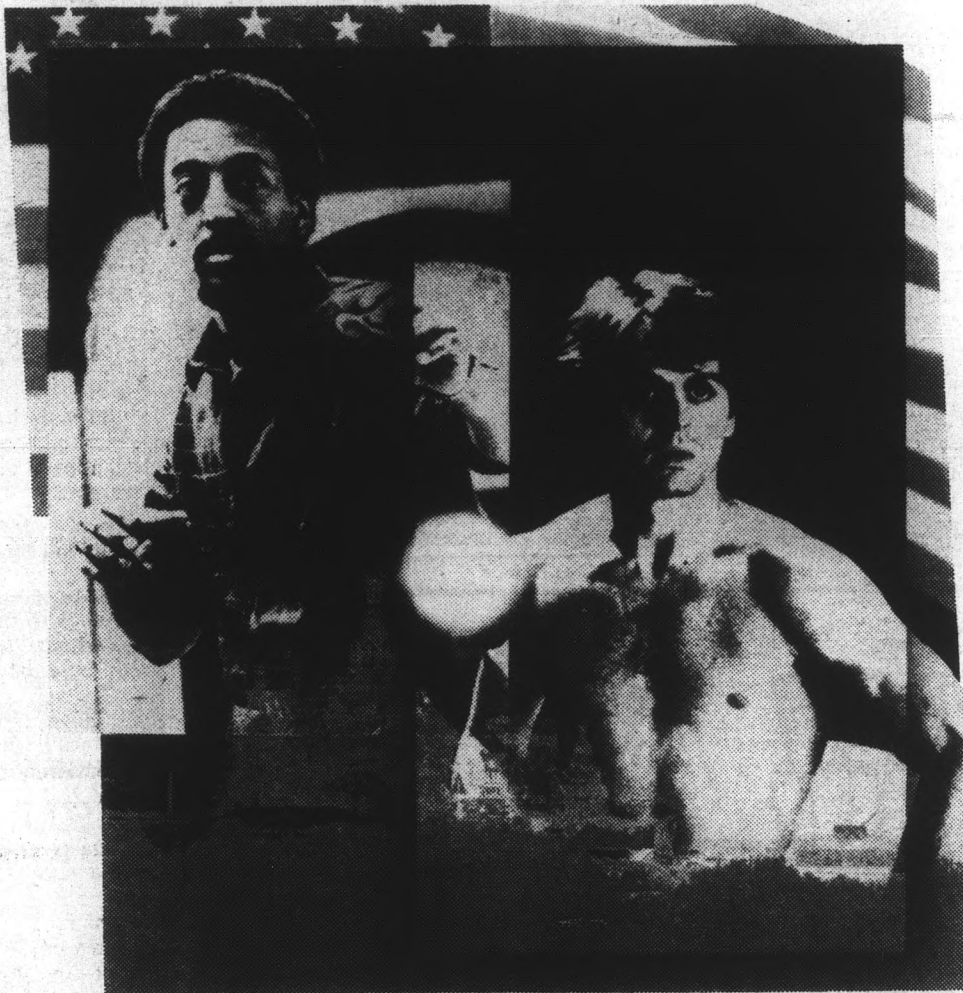
- DINING ROOM SUPERVISOR
- COOKS
- HOSTS/HOSTESSES
- PREP COOKS
- CASHIERS
- DISHWASHERS
- WAITERS/WAITRESSES
- BUSPERSONS
- KITCHEN HELP

For more information, call 345-2306, Monday through Saturday, from 9AM-5PM or visit the restaurant at: 2015 S. Alma School Rd., in Mesa. Equal Opportunity Employer M/F/H.



## AT&T LONG DISTANCE PRESENTS A SPECIAL SCREENING

Two men. Not soldiers. Not heroes. Just dancers. Willing to risk their lives for freedom—and each other.



### A TAYLOR HACKFORD FILM WHITE NIGHTS

COLUMBIA PICTURES PRESENTS A NEW VISIONS PRODUCTION • MIKHAIL BARYSHNIKOV • GREGORY HINES • "WHITE NIGHTS" STARRING: GERALDINE PAGE • HELEN MIRREN • JERZY SKOLIMOWSKI AND ISABELLA ROSSELLINI • MUSIC SCORE BY MICHEL COLOMBIER MUSIC SUPERVISED BY PHIL RAMONE • CHOREOGRAPHY BY TWYLA THARP • SCREENPLAY BY JAMES GOLDMAN AND ERIC HUGHES STORY BY JAMES GOLDMAN • PRODUCED BY TAYLOR HACKFORD AND WILLIAM S. GILMORE • DIRECTED BY TAYLOR HACKFORD

PG-13 PARENTS STRONGLY CAUTIONED

DELPHI

ORIGINAL SOUNDTRACK ALBUM AVAILABLE ON ATLANTIC RECORDS AND CASSETTES

READ THE BOOK

BY TAYLOR HACKFORD

EXCITING NEW

RECEIVED

"SAY YOU SAY ME"

Performed by LIONEL RICHIE

"SEPARATE LIVES"

Performed by PHIL COLLINS and MARILYN MARTIN

### FREE POSTER

TO AT&T CUSTOMERS

STUDENTS PRESENTING THEIR CURRENT AT&T LONG DISTANCE PHONE BILL OR THEIR PERSONAL AT&T CALLING CARD AT THE DOOR OF THE THEATER WILL RECEIVE A FREE MOVIE POSTER.

Brought to you courtesy of



The right choice.

DATE MONDAY NOV. 25 TIME 8:00 P.M.

LOCATION NEED HALL

IN CONJUNCTION WITH ASSOCIATED STUDENTS FILM SERIES

FREE!

Passes are available at the Associated Students Office, MU 208-J.



10 p.m. — After a party at Palo Verde West Residence Hall, a mess was found in the elevator. The fuzzy patch on the right is the fluorescent light covering for the elevator. Some residents say it gets worse on Saturday nights.

continued from 25

dune buggy pulls up and a California golden boy hops out for a six-pack of Moosehead.

Alpha and Adelphi Drives do not escape the pandemonium that has encompassed the ASU area. Parties are in full swing. Crashers are asked to leave.

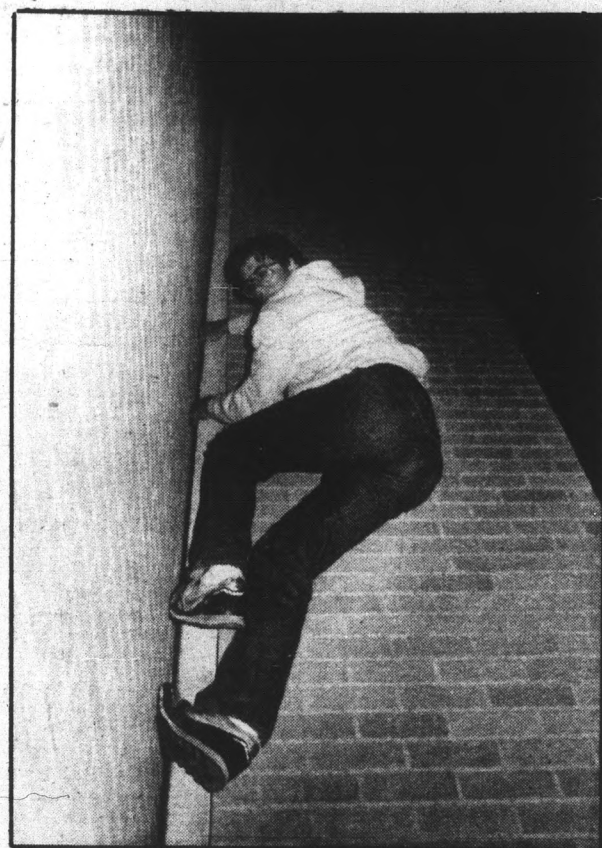
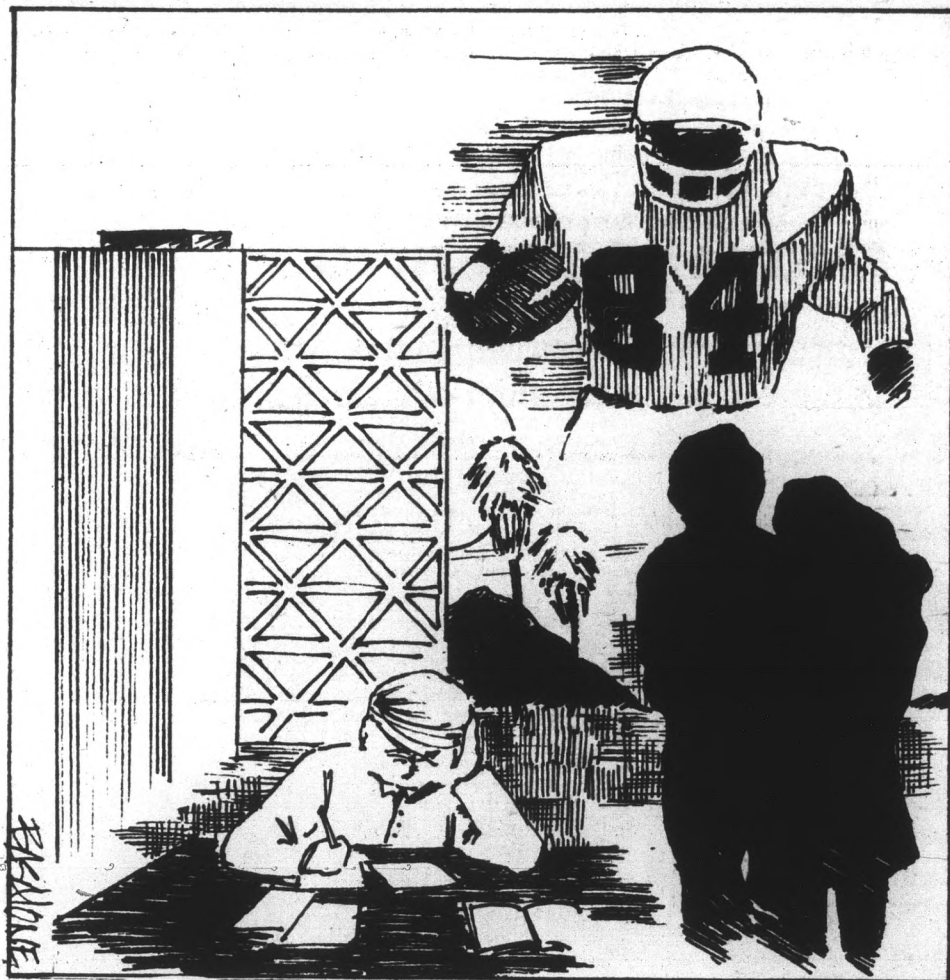
The kegs and kegs of beer are pressurized every five minutes to keep the "juice of life" flowing. Biff and Claire are courting in the corner of the yard while the brothers and little sisters dance their cares away.

Hayden Library has gone through its Friday transition. At 10 p.m., the concerned students are asked to vacate the premises so the librarians can head out to Red Robin in Scottsdale for a 24-ounce strawberry daiquiri.

Northwest of Hayden Library, the financial aid office, University Art Collections and the State Press are silent in Matthews Center. Only two porch lights outside illuminate the building. Matthews Center is deserted, except for the ghosts and spirits of years gone by who tend to their own business of keeping things interesting for mortals who interrupt "their" space.

Still, a bit of sadness befalls those who walk past the University Activity Center and come upon an empty Lot 59. Wait. There is one car just barely visible from the UAC. A lone student with the ever-present backpack, walks to it, unlocks the door, starts the engine and disappears into oblivion.

The clock strikes midnight. Edgar Allen Poe could compose a poem for this occasion. A day in the life of our Arizona State University has come to an end.



9:45 p.m. — Jeff Wax, President of the Outing Club, decides to scale the Physical Sciences Building — just for fun.

### CLASSIFIEDS START HERE

The STATE PRESS disclaims all responsibility for quality and prices of goods and services offered in both classified and display advertising by its advertisers.

### Announcements

HANG GLIDE! Two Saturdays only \$50. Group rates. Certified instruction. Easy, safe, exciting. Windsports 897-7121.

### PRE-LAW STUDENTS!

### There will be a PRACTICE LSAT

Off the Record!  
You Grade It!

This Saturday  
November 23  
Starts at 9 a.m.  
Room A-18  
Language & Lit.

by PRE-LAW CLUB

**COST:**  
Members \$8  
Non-members \$12  
and you can join!!

WALK-IN sign-ups  
on Saturday, 8:30 a.m.

**MORE INFO? CALL:**  
JEFF 966-2304  
TRACI 965-8828  
CLAUDIO 939-6812

11/22

78' FIREBIRD ESPRIT 67,000 miles, excellent condition. \$3000. 838-4638.

ECONOMY 1980 CHEVETTE, excellent condition, stereo air and more, dependable, phone Sandy days 948-5883 evenings, weekends 995-1955.

continued page 27

**SOAK UP  
A NEW  
SPIRIT!**

**WHIP THE  
WILDCATS  
AND WEAR  
GOLD!**

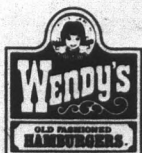
**ASU vs. ARIZONA**  
Sat., Nov. 23 • 7:30 p.m.  
Sun Devil Stadium

**GO FOR THE ROSES PEP RALLY**  
in conjunction with  
Student Athletic Board, MUAB, ASASU

When: Friday, Nov. 22 • 5:30 p.m.  
Where: PV Beach  
Activities: Food, Live Band and Fireworks!

Special thanks to Wendy's Restaurants and Saga Foods

**FREE MEDIUM**  
with the purchase of  
any sandwich, salad bar  
or baked potato.



OFFER EXPIRES DEC. 31, 1985  
NOT VALID WITH ANY OTHER COUPON  
ONLY ONE COUPON PER CUSTOMER PER VISIT  
TAX, CHEESE AND TOMATO EXTRA



OFFER GOOD  
ONLY AT PARTICIPATING  
VALLEY WENDY'S LOCATIONS

**LONDON GOLD**  
FINE JEWELRY  
DIRECT DIAMOND IMPORTERS  
MORE TO CHOOSE FROM • BETTER QUALITY • BETTER PRICE

SOLITAIRE		OTHER STORES	OUR PRICE
14K Mounting			
1/10 ct.	\$300		\$99
1/4 ct.	\$500		\$199
1/2 ct.	\$1,200		\$489
1 ct.	\$2,000		\$989
2 ct.	\$4,500		\$1,999
1 ct. FINE QUALITY			FROM \$2,100
2 ct. FINE QUALITY			FROM \$4,500

18" 14K SOLID GOLD HANDMADE ROPE CHAINS		
	OTHER STORES	OUR PRICE
2mm	\$425	\$117
2.5mm	\$550	\$140
3mm	\$750	\$189
4mm	\$1,300	\$325
5mm	\$1,800	\$520
6mm	\$2,200	\$675

**LARGE SELECTION OF 14K YELLOW GOLD CHARMS**

We guarantee our prices to be the lowest in the valley. Bring us any quote of comparable quality and value, and we'll discount it by an additional 5 percent.

PHOENIX	TEMPE	SCOTTSDALE
936 W. Camelback West of McDonald's in Camelback Village Square <b>277-7080</b> MON.-FRI. 10-7 SAT. 10-5 SUN. 12-5	1814 E. Southern Southern & McClintock, Behind Jewelry Exchange <b>820-3909</b> MON.-FRI. 10-7 SAT. 10-5 SUN. 12-5	8320 N. Hayden Rd. Next to Rick's Cafe in Mercado Del Lago at McCormick Ranch <b>991-4814</b> MON., TUES., FRI. 11-6 WED., THURS., SAT. 11-9 SUN. 12-4

**BRING IN THIS AD FOR 3% DISCOUNT WITH CASH AND STUDENT I.D.**

continued from page 26

Automobiles

1968 MERCEDES 250S, 4D stick, sun roof, good body, runs well, \$2,800 or trade pick up truck. 967-4549.

1974 AUDI FOX, automatic, air, AM FM, four door, new paint, excellent condition. \$950. 894-8454.

1974 TOYOTA CELICA ST four speed, very dependable. AM FM cassette with equalizer. Must sell \$1,100 OBO 894-1590.

1975 FIREBIRD. BRIGHT yellow, PS, AT, AC, steel belted radials, louvers, new point, alarm. Mint condition. \$2,500 OBO 834-9262.

1977 FORD MAVERICK. A1 condition. Four door, six cylinder, air, stereo, new tires. \$800 or best offer. 967-9449 days, 894-8385 evenings.

1977 WHITE T.A. 73,000 miles good motor and trans. A.C. \$850 call 894-2159.

1978 DATSUN B210 air, stereo, 4 speed, excellent condition \$1,250 OBO 840-1666.

1978 FORD FAIRMONT 3 speed. AM FM cassette, Pioneer speakers. \$950 921-0205.

1980 JEEP CJ5, red with many, many xtra's. Must see, priced to sell real quick. Call 967-8038.

1980 RX7, 5 speed, AC, cassette, white with stripes, excellent condition. 894-9410.

1984 TRANS AM. Dark metallic blue, T Top, 5 speed, fully loaded, must sell, best offer. 991-0466.

Babysitting wanted

CHILDCARE, AFTERNOON, evening. Experienced mother. Majoring in elementary education. Toddlers and up. McClintock and Southern. 839-0859.

Bicycles

1984 BIANCHI 10 speed, great condition. \$100. 947-1276 after 5 pm.

For Rent or Lease

BEAUTIFUL NEW large two bedroom, walk to ASU, pool, laundry, 8th street and Gary 968-5238.

LUXURIOUS TWO master bedroom two bath. Pools, tennis, washer, dryer, dishes, linens, phone, month to month lease, Rusty 892-2438.

BEAUTIFUL ONE bedroom one bath, pools, tennis, washer, dryer, dishes, linens, phone. Dec. only, Rusty 892-2438.

ASSUME VA 11% 15 year. No qualifying, two master bedroom two bath. Mountain view patio, tennis, pools, club, washer, dryer. Furniture available, almost new. Beautiful. Three miles ASU. \$71,900 agent owner 892-2438.

FIVE MINUTES to ASU spacious one and two bedrooms \$375 and \$475, pool and jacuzzi, mountain view apartments, 8th street and Alma School Mesa 969-8655.

FOR LEASE, custom four bedroom home, furnished, pool, walk to ASU \$1,200 per month. No first and last or deposit required, kids and pets OK 839-9198 evenings 949-2534 days ask for Buddy. Available 12-1-85.

GRANDES CORTES, prime Tempe location, utilities included. Studios and one bedrooms, swimming, tennis, volleyball, basketball. 966-4117.

SPACIOUS CONDO on lake. \$250 plus 1/2 utilities. Three bedrooms, tennis, pool, rac club, 2 1/2 miles from ASU. Immediate occupancy. Jackson 968-5565.

SPRINGTREE CONDO, available December 1. Two bedroom two bath in this luxury complex. Includes washer dryer, microwave, jacuzzi, pool. \$550. 967-8632.

TOWNHOUSE For rent, 1 1/2 miles from campus. Two bedrooms, one bath. \$369. month, 948-0332.

TWO BEDROOM \$425 mo 48th St. and Broadway 955-6767.

Help Wanted

For Sale

APPLE MACINTOSH computer, ImageWriter printer, MacWrite and MacPaint software, 10 empty disks, mouse, 128K, single diskdrive, carrying case. \$1,500 or offer. After 5:00 pm 829-1072.

BUY, LEASE to own complete professional word processing system. Reduced! Call 252-4504 ext 211, 893-8768.

COMPUTER, NEW K-pro 4, complete letter quality printer with modem. Call evenings 897-0575 \$1,300.

KNOELL HOUSE three bedroom, two bath, large family room, fireplace, pool, newly painted. Close to ASU. 1013 Broadmor Drive, Tempe. 893-2395.

PIONEER SPEAKERS 100 watts. Brand new, never used. Paid \$600 will take \$100 for the pair, moving must sell 954-0627.

WELL EQUIPPED gym for youngsters in Phoenix. Ideal for physical ed student. Can be run part time. 279-1314.

Help Wanted

ARBY'S, A great place to work, is now hiring for all shifts. Above min. pay. Please apply 525 W. Broadway, Tempe.

CHRISTMAS HELP. Jewelers Financial Services is seeking individuals to work as temporary part time credit clerks in their Tempe credit center. Typing 45 wpm required, CRT experience preferred. \$5.53 per hour. Apply in person at 1221 N. College Ave., Tempe. 829-5800.

CRUISESHIP HIRING Information phone 707-778-1066 for details.

EARN \$150 TO \$300 per week. If you are going to be in town over the holidays and between semesters, call 829-8957 to set up an interview.

EARN WHILE you learn. Pay off your education before you graduate. Call Steve 897-0803.

EXPERIENCED AEROBIC instructors wanted. Make \$7 to \$10 per hour. Call Cindy at 968-5111 Mon thru Fri, 9 am to 4 pm.

EXTRA INCOME mailing circulars! Rush stamped addressed envelope to Fink services 501 N. 98th St. Mesa Az 85207.

FIRESTONE REGIONAL Credit in Mesa is taking applications for a part time switchboard operator. Duties include some data entry and filing. Hours 4:00 to 9:00 pm, Monday through Thursday. Half day Friday plus Saturday morning. To apply contact Mr. Brady 962-1234.

NEED HOUSEKEEPER. Paradise Valley area. Housework plus childcare. Salary negotiable. 12 hours of work weekly, flexible. Own transportation required. 991-6879.

NOW EARN more than ever! Plasma donors earn \$30 weekly, over \$120 per mo. New and return donors, University Plasma Center 1015 S. Rural Rd. Tempe call for apt and further info. 968-6139 Special donor program.

OVERSEAS JOBS...Summer, yr. round. Europe, S. Amer., Australia, Asia. All fields. \$900-2000 mo. Sightseeing. Free info. Write IFPC, PO Box 52-A23 Corona Del Mar, Ca 92625.

PARADISE CREAM. Needs ice cream servers. Must have car and work both Tempe and Phoenix stores. Part time, flexible hours. Apply 1044 South Terrace 967-2414.

PART TIME schedules to fit your needs. We are looking for housecleaners, transportation required. Excellent job for housewife, students etc., 231-0333.

RETAIL STOCK help needed to work in major local Department store, part time, \$5 per hour. Call collect 213-687-9640 ask for Mr. Kellison.

STOCKYARDS RESTAURANT now hiring lunch and dinner food servers and evening busboys. Apply in person 10 to 11 am and 1:30 to 3:30 pm 5001 E. Washington.

TELEPHONE RESEARCH, pleasant phone voice, good spelling and handwriting a must. Part time Monday thru Friday 3:30 to 5:00 pm and hour to start, call Mindy at 274-0147.

WAREHOUSE, FURNITURE assembly. Non smoker, MW \$4.50 per hour. Broadway, 40th Street area. 967-3660.

YMCA TRIANGLE Y Ranch Camp in Oracle is now looking for staff to work camp Dec 28 through Jan 3, 1986. Salary plus room and board. 36 positions available. For information, job listings, and applications, write camp office, 516 N. 5th Avenue, Tucson, Arizona 85705 or Call 884-0987 M-F 1-4 pm.

(20 JOB OPENINGS) WANTED PART-TIME SERVICE AND PRODUCTION WORKERS FOR STEVE'S ICE CREAM WE ARE LOOKING FOR ENERGETIC, OUTGOING INDIVIDUALS TO CREATE ICE CREAM CONCOCTIONS FOR CONFECTION-STARVED CUSTOMERS ACCEPTING APPLICATIONS AND GIVING INTERVIEWS SATURDAY 8 A.M.-1 P.M. 11-23-85, MILL AVENUE SHOPS, 4th ST. & MILL AVE. FOR FURTHER INFO CONTACT STU OR CRAIG AT 829-7651. EQUAL OPPORTUNITY EMPLOYER M/F

Help Wanted

FULL OR part time sales with Tempe based landscape design firm. Make \$200 plus per week while working only 20 to 25 hours. Call 839-8854 for interview. Ask for Jeff.

FULL OR part time help wanted, day and night hours. Room for advancement, apply in person at Ted's Charcoal Broiled Hotdogs 1755 E. Broadway Tempe.

GYMNASTICS INSTRUCTOR for gymnastics Academy in North Phoenix. Evening hours. Teaching experience is preferred. Boys and girls position available. 582-5293.

HIRING WAITRESSES, bartenders. Desperado's 524 W. Broadway Tempe, 894-8423.

IMMEDIATE OPENINGS for students interested in earning up to \$7 per hour; gain valuable experience in PR and fund raising; looks great on your resume. Campaign for St. Lukes Polson Management Center call 251-8818.

IMMEDIATE OPENING. A responsible hard working student wanted to do telephone survey work. Position for weekday evenings. Call 962-0665 between 6 and 9 pm.

JONATHANS PIZZA is looking for delivery drivers to staff our ASU location. Drivers must have own insured car. High possible earning potential, apply in person after 3:00 pm daily at Jonathans Pizza 933 E. University or call 829-1717.

LANDSCAPE MAINTENANCE laborers \$4.50 per hour to start, full or part time 839-1921.

MARKETING POSITON available immediately to personable businesslike candidate. Own transportation, salary plus commissions and mileage. Call Eric at 966-9784 9:00 to 10:00 am.

MODEL CALL. Free haircuts. Ultra modern Scottsdale salon. Please call for appts. Rumors Hair Design 8204 N. Scottsdale Rd. 968-1888.

MODELS/TALENT, start your new career today. We can assist you, call the talent scouts at Tondy Studios 264-3530 11 a.m. to 6 p.m.

NEED HOUSEKEEPER. Paradise Valley area. Housework plus childcare. Salary negotiable. 12 hours of work weekly, flexible. Own transportation required. 991-6879.

NOW EARN more than ever! Plasma donors earn \$30 weekly, over \$120 per mo. New and return donors, University Plasma Center 1015 S. Rural Rd. Tempe call for apt and further info. 968-6139 Special donor program.

OVERSEAS JOBS...Summer, yr. round. Europe, S. Amer., Australia, Asia. All fields. \$900-2000 mo. Sightseeing. Free info. Write IFPC, PO Box 52-A23 Corona Del Mar, Ca 92625.

PARADISE CREAM. Needs ice cream servers. Must have car and work both Tempe and Phoenix stores. Part time, flexible hours. Apply 1044 South Terrace 967-2414.

PART TIME schedules to fit your needs. We are looking for housecleaners, transportation required. Excellent job for housewife, students etc., 231-0333.

RETAIL STOCK help needed to work in major local Department store, part time, \$5 per hour. Call collect 213-687-9640 ask for Mr. Kellison.

STOCKYARDS RESTAURANT now hiring lunch and dinner food servers and evening busboys. Apply in person 10 to 11 am and 1:30 to 3:30 pm 5001 E. Washington.

TELEPHONE RESEARCH, pleasant phone voice, good spelling and handwriting a must. Part time Monday thru Friday 3:30 to 5:00 pm and hour to start, call Mindy at 274-0147.

WAREHOUSE, FURNITURE assembly. Non smoker, MW \$4.50 per hour. Broadway, 40th Street area. 967-3660.

YMCA TRIANGLE Y Ranch Camp in Oracle is now looking for staff to work camp Dec 28 through Jan 3, 1986. Salary plus room and board. 36 positions available. For information, job listings, and applications, write camp office, 516 N. 5th Avenue, Tucson, Arizona 85705 or Call 884-0987 M-F 1-4 pm.

Instruction

AMERICAN BARTENDERS SCHOOL Earn \$10-\$20 per hour 1 or 2 week classes (as seen on TV) Job Placement Assistance Call Now 957-3770

Help Wanted

"ASU IS calling on you... to join the ASU Telefund Drive! Gain valuable work experience in P.R. and tele-marketing; nightly bonuses and incentives. Call Sherry McIntosh at 5-6754 after 1:30 pm for more info."

Lost & Found

RED WALLET containing all forms of identification. Lost 11-14-85. Left at phone booth in front of language and literature building. Please call 844-9623. Reward\$\$.

Motorcycles

1974 SUZUKI 125, WINDSHIELD, 70 mpg, 5,000 miles. Just tuned, great condition. \$400 OBO call Duane 967-4848.

1979 XS650 EXCELLENT condition, fun to ride, new tires and seat, includes helmet, \$750 OBO call Sandy at 839-8603.

1980 HONDA CM200T, 5000 miles. Has not been used in three years (not working). \$300. 838-4638.

1982 YAMAHA 650 maxin shaft. Factory new, May 1984. Only 3300 miles! Flawless, apple red with mag wheels. Two black Kiwi helmets and more... Must see. \$1295. obo. 890-2825.

1983 HONDA NIGHT Hawk 550, good condition, \$1,400 or best offer 965-3833.

1984 HONDA ELITE 125 scooter, 2,500 miles, excellent condition, gold with matching trunk, windshield, helmet, \$1,250. 820-4893.

84 HONDA ELITE 125 scooter, gold, 2700 miles, excellent condition, \$1,100. H 820-5585 W 437-3711 Todd.

AERO HONDA 125 scooter, never used two new helmets \$850 982-1942.

BRAND NEW 1985 Honda Elite scooter, moving must sell \$1,000 Blake 946-8547.

Personal

1979 MGB CONVERTIBLE, runs great looks great, alpine stereo and new gold mags \$3,800 968-9421.

ALPHA EPSILON Pi. Neophytes congratulate Art and the rest of the new executive board members. Good luck guys!

ATTENTION JEANNIE Marie Garcia, you are the love of my life!! Always, Tyler Butler Wiley.

CLAIRE WHEELER your ill' is wishing you the best birthday ever! I Delta love you! Valerie.

CRAIG WACASER (ATO) Get psyched for a fun "Night In The Hay" at the Gamma Phi Western tonight!!! Kathy.

DESPERATELY SEEKING! My buddy, my pal, miss you Mark. From a simple farm gal.

HEIDI AND Denise, dont let the cactus bite, have a blast with your men, love Mom and Dad.

HOMOSEXUALS ANONYMOUS. A Christian Fellowship for those who wish to be free from homosexuality. 266-3733.

JAMIFACTS NO. 1, I was best friends with Michael Jackson. Call my dad.

JAMIFACTS NO. 2, L.A. Dodgers, eat lunch with me. Call my dad.

JAMIFACTS NO. 3, Abraham Lincoln was a black man. Call my dad.

JAMIFACTS NO. 4, Chuck Norris was my gardener. Call my dad.

LAMBDA CHI AMs hope you're having a great 1 week. Good luck!! Love, Lisa and Sandy.

MS. PIGGY I'm psyched to party tonight! Love Kermit.

PLEASE HELP us to add a new born to our loving, happy family. Call our lawyers collect: 408-288-7100 or write Box 7575, San Jose, CA 95150. A-20.

Transportation

AAA DRIVEAWAY. Cars to most major cities. U drive. First tank free 277-9979.

Travel

AIRLINE TICKETS: round trip to Chicago, St. Louis, K.C., and N.O. \$225 921-0205.

Personal

SEXUALLY ABUSED? for M.A. thesis. send story to Jennifer P.O. Box 2187 Lawrence, KS 66045.

TODAY'S A day to remember, for its a cool afternoon in November. You'll be ride'in high with the Gamma Phi's. Have you guessed? Luv Karen, Amy, Roseann.

YOU ARE tall, dark, mustached, have a wonderful smile and were with a friend at the career services window Friday am (15th). I was wearing a blue sweater, white jeans and had my hair in a ponytail. I'd like to say more than hello. Please call me at 985-6563.

Roommate Wanted

\$250 PER MONTH plus 1/2 utilities in spacious townhome, male or female, nonsmoker, clean and responsible. Available December 1st 829-8279.

AVAILABLE IMMEDIATELY, male to share three bedroom apartment one block from ASU \$165 mo all utilities included 829-0177.

AVAILABLE IMMEDIATELY, roommate to share new two bedroom two bath apt. \$225 plus half utilities. Bill 966-8162.

BEAUTIFUL FOUR bedroom house with pool, need one or two considerate, clean, fun loving individuals. \$200 plus 1/2 utilities Mark 945-7275.

FOREIGN GRADUATE female student wanted to share apartment 1-1-86. Approx \$185 plus utilities. 949-7938.

FEMALE GRADUATE student needs roommate. Very nice house, extremely close to school, \$215 month, includes utilities. No rowdies. 894-1699.

FEMALE ROOMMATE needed January to share furnished two bedroom two bath apartment at McKellips and Scottsdale Road. \$310 month includes utilities. Call Margaret at work 264-7441 x 3504 or home 994-9452.

FEMALE TO share three bedroom house. \$250 per month includes utilities, close to ASU call Maria at 967-6415 after 5:00 pm.

MALE NONSMOKER to share spacious two bedroom apartment. \$250 including utilities. Security access, exercise room, pool, sauna. Mark, 965-4550 days.

MALE NONSMOKER, \$200 per month plus equal share of utilities, one mile from ASU, available Dec 1st. 966-8270.

NEED PLACE to live spring semester. Very studious female, nonsmoker, looking for same. Need own room near ASU. Linda 582-8047.

ROOMMATE TO share three bedroom home at Dobson, Guadalupe. \$175 month, 1/2 utilities. PennyAnn 345-8005.

ROOMMATE WANTED to share two bedroom one bath. Fully furnished with exception of available room, walking distance to ASU, \$180 per mo plus 1/2 utilities. Stobs need not reply, Jenny 967-1628.

SPACIOUS TWO bedroom one bath Woodlake apartment. Female nonsmoker, clean, considerate, need furniture, available December 21st. \$240 monthly including air 966-2843 Lisa.

Services

ANOREXIA, BULIMIA compulsive over eating, individual and group counseling. Sliding scale fee, health insurance welcome. Free monthly seminars. Ginie Monroe, Phd. candidate, recovered bulimic, 437-9420, 248-8204.

CARS AVAILABLE - 21 or older. All States Drive-away, 992-5200.

EDITING TERMPAPERS, dissertations. Will perfect your English, grammar, sentence clarity and flow, paragraphing, organization, format, plus. Professional, inexpensive. Susan, M.A., 834-8038.

HOME-BIRTH is a safe alternative, receive personal care with a licensed midwife. Pam White 274-3987.

ILLUSION PORTRAITS: The perfect Christmas gift. Glamour, bouclair, fantasy. After 5 p.m. 899-8638, 894-9417.

MOVING SERVICE for mini storage lockers, studio, and one bedroom apts., free estimates, Dan 267-9326.

PORTRAITS FOR Christmas make great gifts. Call now for yours. Gary 966-0938 or leave message.

SINGLE? HERPES? Confidential Connections-a unique, affordable dating service for singles with herpes 241-9874.

Transportation

AAA DRIVEAWAY. Cars to most major cities. U drive. First tank free 277-9979.

Travel

AIRLINE TICKETS: round trip to Chicago, St. Louis, K.C., and N.O. \$225 921-0205.

Travel

AMERICAN AIRLINE ticket to Chicago, Nov. 27th D. 11:00 a.m., return Dec. 1st at 11:22 a.m. \$298. Call 954-5919.

COLLEGE TOURS. Ski trips and spring break in Mazatlan. For information or reservations call Jim Caontos, 968-3651.

T'GIVING ROUNDTRIP ticket to Chicago. Return via Milwaukee or Chicago \$220 call 894-2623 after 10:30 pm or leave message. 831-7491.

Typing

A-1 PROFICIENT professional word processing at Kinko's Copies 933 E. University 966-2035.

A+ PROFESSIONAL WORD processing. Resumes, letters, term papers, manuscripts, dissertations. Accurate, fast service. Cheryl, 892-5279.

AAA WORDprocessing Service. Term papers, resumes, personalized letters, graphic presentations. Reasonable rates. Call Ron 833-5532.

AAKURIT TYPING. Short papers, 1-15 pages, overnight service. Long papers, prompt service. Good rates. Linda 831-0349.

ABLE TO do typing. Word processing, also available. Reasonable rates, close to ASU. Call Pam, 820-9166.

ACCURATE FAST experienced typist, APA, marketing and legal briefs \$1.50 per page call Sharon 833-5687 or Janet 834-0893.

ACCURATE CUSTOM typing, spelling corrected, rush jobs welcome, reasonable. Linda 838-6830.

ALL TYPING needs met by my word processing service. East Mesa, \$2.00 page, Linda 898-3031.

ASU TYPING Center. Professional, fast, accurate, word processing. Term papers, thesis, resumes. Five minute walk from Hayden Library. Same Day Service. Call, 967-0900.

BEST DEAL around! I have a degree in English, 10 years typing experience and a top of the line typewriter. 829-8864.

CALL ME for fast, accurate, quality service at competitive prices. Close to ASU 966-2186.

ELITE OFFICE services for word processing needs. Efficient, accurate, free pickup and delivery 996-9911.

FAST ACCURATE and dependable typing and word processing. Reasonable rates. Candy 956-7699.

HOME TYPING. All phases contact Kristina 894-5430 days or evenings. Approximately 1 mile ASU, or call Lillian, 961-1970, 8:30 a.m. to 3 p.m.

PROFESSIONAL TYPING, 12 years experience word processing, copier. North central Phoenix 277-8182.

PROFESSIONAL TYPING - Fast, reasonable. Excellent spelling and grammar. Call Jaline, 948-4647.

PROFESSIONAL TYPING: One-day turnover, term papers, resumes, reports, etc. Call Esther, 968-2672.

PROFESSIONAL TYPING SERVICE. Competitive rates, spelling and punctuation, corrected. Suzanne Anderberg 921-0464.

QUALITY WORD processing, reasonable rates, spelling and grammar assistance 839-7905.

SHORT OF TIME? I can help. Reasonable. Professional. Guaranteed. Experienced in academic. call Jessie 945-5744.

SUSIE TYPES. Fast, reasonable, close to ASU. 829-8645.

T.S.S. TOTAL Secretarial Services. Typing, resumes, word processing, etc. Tempe 897-9058.

TYPING

**246-3631**



Delivery of dead floral bouquet for life's unpleasant occasions.

**\$20<sup>00</sup>**

*Check guarantee number required.*

**drycleaning**

McKELLIPS & SCOTTSDALE RDS. (ALPHA BETA SHOPPING CTR.)

**STUDENT DISCOUNT**  
**25% OFF DRY CLEANING**

SHOW I.D. CARD WITH INCOMING ORDER

Finally . . . Light and Lean Mexican Food

**LA CASA GRANDE**

MEXICAN FOOD

Healthier dishes prepared in pure vegetable oils. Complete dinners from \$2.95. Cold beer, wine and margaritas.

120 W. University (west of Mill Ave.)  
Monday-Saturday 11 a.m.-10 p.m.  
966-3442



**COMPUTER SALE**

IBM XT COMPATIBLE (2 DRIVES  
256K MONOCHROME MONITOR &  
KEYBOARD, RUN LOTUS, DBASE  
FLIGHT SIMULATOR . . .) **\$888**  
MULTIFUNCTION CARD **\$149**  
20 MB HDRIIVE INSTLD **\$555**

CALL SYMPHONY 829-1350,  
AT 1949 E. BROADWAY TEMPE

**BUY • SELL • TRADE**

Your books at Changing Hands. For quality cloth and paperbacks (no textbooks, please) we pay 30% of our re-sale price in cash or 50% in trade-in credit which may be used to purchase anything in the store. (Sorry, no trade-ins on Sat. or Sun.)

Browse through our three floors of:

- New & Used Books
- Art Prints & Posters
- Calendars & Cards
- Handbound Journals
- New Age Tapes

M-F 10-9 SAT 10-6 SUN 12-5

**CHANGING HANDS**  
414 Mill Avenue 966-0203  
Old Town Tempe

No Schwinn's, Raleighs, Nishikis or Takaras

Just a good line of New Bikes for a hell of a lot less money.

Come See —

Also Repairs, Service & Accessories

**Bob's Bicycle Outlet**  
1908 E. Apache, Tempe  
894-6852

**TRAVELING?**  
UP TO FOUR PEOPLE



Deliver a car for us for cost of gas only. No rental charge. First tank free. Connections for 33 years through 85 offices in U.S. and Canada. For complete information call

952-0339  
**AUTO DRIVEAWAY COMPANY**

**ATTENTION JEWISH STUDENTS**  
(recorded message)

PLEASE CALL  
**941-9268**

**HELP WANTED**

**CAMPUS ADVERTISING REP**

Be responsible for placing advertising materials on your campus bulletin boards. Work on exciting marketing programs for clients such as American Express, AT & T, Sony and Sierra Club. Choose your own hours. Good experience and great money!

For more information call, 1-800-426-5537 9-5 pm. (West Coast time)

Representative Program  
American Passage  
500 Third Ave West  
Seattle, WA 98119

CHICAGO DALLAS LOS ANGELES NEW YORK SEATTLE

**FRIDAYS AT THE**



**ARE BIGGER THAN EVER**

**HAPPY HOUR**

25¢ Tacos, Taquitos, Burgers, Corndogs & Hotdogs

1.50 Teas & Doubles w/ D.H. Keepsake 1/2 Litre

1.00 32oz. Monster Beers

**LADIES' NIGHT**

50¢ Premium Well Drinks  
1.00 Frozen Drinks

7pm-1am Doubles for Singles price w/ 1/2 Litre

Ladies Admitted Free Before 10pm

**PICK UP YOUR ASU VS U of A T-SHIRT FOR THE GAME!**

**AFTER HOURS**

For those 18 & older or w/ valid college ID

**TROLLEY SERVICE**

1.00 each way; if you've had too much to drink, the ride home is on us!



**THE DEVIL HOUSE**

430 N. SCOTTSDALE RD. TEMPE