

thursday

October 3, 1985

state press

Tempe, Arizona

Vol. 68 No. 27

Arizona State University

© Copyright, State Press, 1985

Student groups to protest apartheid

By ED SCHUBERT
State Press

Two student groups with conflicting views on the issue of South African divestment are organizing demonstrations at the Arizona State Capitol next week.

Students Against A Marxist South Africa will demonstrate against the proposed divestment of state funds from countries doing business with South Africa on Oct. 10, while Students Against Apartheid will demonstrate in favor of divestment on Oct. 11.



Dan McQueen, left, and Katy McGregor are members of Students Against A Marxist South Africa, which plans to march at the State Capitol on Oct. 10 against divestment.

SAAMSA President Katy McGregor said divestment will deprive South African blacks of jobs created by American investors.

SAA member Andy English said divestment is needed to end apartheid and foster good will between South Africa's black majority and the United States.

The two organizations have been active on Cady Mall and have strongly differing viewpoints on most aspects of the issue, said members of both groups.

SAA member Bassam Fawaz questioned whether the name of Students Against A Marxist South Africa was intended to imply that all members of his organization were Marxist.

"Some of us would like to see a Marxist government (in South Africa), and some of us don't," said Fawaz, adding that all members of SAA support "black civil rights and democracy."

SAAMSA member Dan McQueen said the title of his organization was not meant to imply that SAA members were Marxist.

However, McQueen said SAA supports the "Marxist dominated" African National Congress, while SAAMSA supports any "broadly-based, multiracial movement in favor of peaceful reform," specifically the United Democratic Front, which opposes divestment.

English said SAA is a "single-issue group" that has members who belong to a number of other organizations, including the Black Student Union.

Fawaz said SAAMSA, while expressing concern over human rights abuses in Marxist countries, was indifferent to human rights abuses in countries that have good relations with the United States, such as Chile and the Philippines.

McQueen said SAAMSA does not support "civil rights abuses by any regime," and added that repressive regimes allied with the United States are under pressure to "clean up their acts."

"I can't think of a single Marxist-Leninist country in the world that is being pressured by the Soviet Union to clean up its act on the human-rights score," he said.

McGregor said, "Marxist Zimbabwe is one of the best examples of violations of human rights."

McGregor said Zimbabwe, formerly Rhodesia, went through a period of upheaval much like what South Africa is experiencing now.

She said the upheaval resulted in the establishment of a one-party state under Robert Mugabe, who is presently "exterminating" his opposition.

Fawaz said, "I'm not fond of Mugabe, but he's better than Ian Smith."

Smith was the leader of the white minority government of Rhodesia before majority rule came to that country.

SAA member Santiago Vega said, "To say South Africa would necessarily go Marxist is a bigoted statement."

"We (the blacks) had our own form of government before colonization."



Staff photos by Rick Wiley

Bassam Fawaz, left, and Andy English are members of Students Against Apartheid, which plans to march at the State Capitol on Oct. 11 in favor of divestment.

He said a post-apartheid government would combine "indigenous forms of government plus the best of Marxism" and democracy.

SAAMSA member Doug Newman said "hundreds of thousands" of blacks are fleeing the economic chaos of Zimbabwe to the relative prosperity of South Africa.

Vega said the economic problems of Zimbabwe and other states neighboring South Africa are the result of deliberate destabilizing efforts by the South African military.

He said one example of these efforts was an attempt last May to destroy a Mobil Oil plant in neighboring Angola.

SAAMSA member McQueen argued that the United States could not afford to lose the "strategic minerals" that South Africa possesses.

But SAA member English said trade should not be a consideration because Marxist Angola sells oil to the United States.

Members of the two groups disagreed on whether a majority of South Africa's blacks favor divestment.

SAA members cited a *London Times* poll that stated 77 percent of South Africa's urban blacks favor divestment.

SAAMSA members cited a poll supervised by the U.S. State Department which said 66 percent of South African blacks oppose divestment.

Club funding bill passed unanimously

By KARI BLAND
State Press

The Associated Students of ASU campus clubs and organizations funding bill "slid through the senate pretty much untouched," said the Appropriations Committee chairman said Wednesday.

Henry Presseller said 76 clubs and organizations received funding under the \$11,297 bill.

The senate unanimously passed the bill with one amendment.

The amendment struck the Organization to Prevent Nuclear Annihilation from the bill on the basis that the group would align ASASU with a "strong political viewpoint," Presseller said.

The group was to receive \$127.

Presseller said the senate was inconsistent in recommending that groups denied funding on the basis of the guidelines re-request funding.

"The senate didn't want these clubs to be funded because we needed to be consistent under the guidelines, yet (clubs) will be told they may return for funding under individual bills," he said.

"What happens when these clubs return for funding? Will they have a fair chance?"

"We can't say, 'let's be consistent' and let them come back later to request funding so

we can throw it out again," Presseller said. "These clubs don't deserve to be shifted around."

Both the Appropriations Committee and the full senate followed the funding guidelines established by former ASASU President Ray Burnell when debating the bill.

The guidelines deny funding to groups that promote any of the following:

- a sexual preference;
- a political viewpoint or candidate;
- a specific religion;
- provide for the purchase of food;
- subsidize a University administrative service;

"It's great to have that stuff (guidelines) down, but they are just too new," Presseller said. "They have never been tested, and we're using it as the true basis of our funding decisions."

"It's critical that we continue discussion and not just pass measures based solely on guidelines."

Presseller said he thinks new language will be added to clarify the guidelines, possibly introducing a disclaimer disassociating ASASU with a club's ideals.

"I don't think the guidelines are saying exactly what people on either side of the issue want," Presseller said. "Even the

people who think they are good don't think they're great."

Presseller said he is not concerned about a presidential veto.

"I don't see much of anything that he'll (ASASU President Dave Varnell) touch," he said.

Presseller said communication between the president's office and the committee was good so "there weren't any surprises on the bill."

"I wasn't trying to dilute the bill so it would just slide through, but the senators were aware of the contents of the bill and had been asking questions before the senate meeting," he said.

Presseller said the clubs received an average of \$152.

The Native American Students Association received \$355, the largest amount, while five clubs received \$75.

Eight sports clubs eliminated during committee deliberations were directed to the intramurals program for funding, Presseller said.

However, the Snow Devil Ski Club was not referred to the intramural account because it does not compete and did not request money for equipment, Presseller said.

The club's \$185 will be used for speakers and films.

Inside Today

ASU's Engineering College is allocating 80 percent of \$10 million toward education. **Page 3.**

An executive controversy at Associated Students of ASU over six funding guidelines is looked at on today's analysis page. **Page 5.**

Finding jobs for ASU war veterans is the main purpose of a new office established in Irish Hall. **Page 6.**

UCLA's John Lee hopes to help the Bruins kick the Sun Devil football team Saturday. **Page 9.**

Analysis.....	5
Bloom County.....	8
Classified.....	11
Nation/world.....	2
Opinion.....	4
Police Report.....	8
Sports.....	9

nation/world state press

Actor Rock Hudson dies at home, ending yearlong battle with AIDS

LOS ANGELES (AP) — Rock Hudson, the cinema idol whose gallant admission of a yearlong battle against AIDS won sympathy and attention for victims of the disease, died Wednesday at his home. He was 59.

"Please God, he has not died in vain," his friend and one-time co-star Elizabeth Taylor said in a statement.

Hudson, star of numerous movies and television programs, "died peacefully in his sleep at 9 o'clock this morning," publicist Dale Olson said.

At the White House, President Reagan issued a statement saying: "Nancy and I are saddened by the news of Rock Hudson's death . . . He will be remembered for his humanity, his sympathetic spirit and well-deserved reputation for kindness. May God rest his soul."

Taylor was one of his closest supporters in his final days, and co-hosted the Sept. 19 AIDS research benefit with actor Burt Reynolds. Hudson donated \$250,000 to the benefit, which grossed more than \$1.2 million, and sent his last public words:

"I am not happy that I am sick. I am not happy that I have AIDS, but if that is helping others, I can, at least, know that my own misfortune has had some positive worth."

He had known for more than a year that he suffered from acquired immune deficiency syndrome, but it became publicly known July 21 when he checked into the American Hospital in Paris.

Hudson's homosexuality had been rumored for years. But even after his illness became known and several magazines ran articles describing Hudson as gay, the actor kept silent.

He married his agent's secretary, Phyllis Gates, in 1955, but the couple separated the following year and were divorced in 1958. Hudson never remarried. People magazine stated this year that the marriage had been set up by Universal Studios to dispel rumors about Hudson.

Kidnapped Soviet diplomat killed by Islamic Liberation Organization

BEIRUT, Lebanon (AP) — Kidnappers of four Soviet Embassy employees killed one of them and said Wednesday the others will die unless Syrian-backed militias halt an offensive against Moslem fundamentalists in the northern port of Tripoli.

The body of cultural attache Arkady Katkov, 32, was found Wednesday, shot once in the head at close range. It was discovered near the Sabra Palestinian refugee camp, which was destroyed by shellfire in Lebanon's decade-long civil war.

An anonymous caller claiming to speak for the Islamic Liberation Organization, which is a Sunni Moslem fundamentalist group, gave the location of the body in a telephone call to a Western news agency.

"We have carried out God's sentence against one of the hostages and we shall execute the others one after the other if the atheistic campaign against Islamic Tripoli does not stop," he said. The four Soviets were abducted Monday in two separate incidents in west Beirut, the capital's Moslem sector.

Two other anonymous phone calls purporting to be from the kidnappers were received. The first said that another of the Soviets had been killed, and the other claimed that the Soviet Embassy would be blown up unless it was evacuated within the next 48 hours.

Clothes Peddler
New & Recycled
Cash For Clothes
Guys - Gals
If you love to find — and wear — unique things, then Clothes Peddler is for you.
10% off with this ad.
WE BUY - SELL - TRADE
Natural Fabric - Current Styles - Good Condition
Jewelry - Shoes - Accessories
We buy only what we can sell, the best.
Tempe Center
915 S. Mill • 966-2300

Z-C.A.R.S.
Complete Auto Repair Service
Personalized Service for your Datsun
Our Labor Rates are up to 27% Lower than Nissan Dealers!
• General Service
• Complete Engine and Transmission Service
• Brake Repair
• Performance Modifications
431 S. Stapley, Suite 26
Inside Stapley Shopping Center
890-8795

AGATHA CHRISTIE'S
Ordeal by Innocence
Once the murder was solved, the real mystery began...

CANNON MCMXXXIV LONDON - CANNON FILMS LTD. PG-13

STARTS TOMORROW!	AMC SUNVALLEY 10 7420 East Main, Mesa 981-6200	UA SCOTTSDALE 5 Scottsdale Civic Center 947-7593	AMC METRO VILLAGE 6 On 31st Ave. 9th Peoria 967-7483	MANN SUPERSTITION S. Longmore/Sprain. Fwy. 834-5767	AMC LAKES 6 Baseline at Rural 838-0806	UA CINEMAS 6 Inside Christown Mall 242-4525
-------------------------	---	---	---	--	---	--

NEW* **THE COMMONS** on Lemon **(BUT THERE ARE ONLY 17 LEFT)**

STUDENT CONDOMINIUMS
PRIVACY WALKING DISTANCE

- 2 BLOCKS FROM CAMPUS
- SPACIOUS... COMFORTABLE... LIKE HOME
- COMPLETELY FURNISHED
- ALL APPLIANCES (Washer/dryer, microwave, dishwasher, refrigerator with icemaker)
- FULL HOUSEWARES PACKAGE
- WALK-IN CLOSETS, STORAGE
- POOL, SPA, SAND VOLLEYBALL COURT

FOR SALE TO PARENTS: The income and tax advantages can pay for much or even all of your student's educational costs.
FOR RENT TO STUDENTS: Condominiums at reasonable prices

CALL TO RESERVE NOW 602-968-6427 425 S. Mill (5th and Mill) Suite 101
Sales by John Ritter, Realty Executives 997-7324

No offer to sell or lease may be made and no offer to purchase or lease may be accepted prior to issuance of the final Arizona Subdivision Public Report

SAVE MONEY AND SUPPORT YOUR UNION



35 MM
24 EXPOSURE
DEVELOP & PRINT
\$4.99
2ND SET OF PRINTS
\$1.69
MUST BE PRINTED AT SAME TIME
FRESH FILM REPLACEMENT
\$1.75

The Picture Place
Memorial Union Lower Level
"If your pictures aren't becoming to you — you should be coming to us."

HARKINS Stereo Theatres 4 Channel Sound TWILIGHT SHOW \$2.50
"Daffy, slapstick Sherlock Holmes." BILL ROCC, KPHO TV 5
"I loved it!" DEWEY HOPPER, KTSP TV 10
"...HILARIOUS..." KEVIN THOMAS, THE LOS ANGELES TIMES

Before Bond there was ... BULLSHOT
HANDMADE FILMS presents BULLSHOT
Starring ALAN SHEARMAN • DIZ WHITE • RON HOUSE
FRANCES TOMELY • MICHAEL ALDRIDGE with BILLY SPANGLER and MEL SMITH as Co-hosts
Written by BOB HOULDE • DIZ WHITE • ALAN SHEARMAN. Music by JOHN DU PREZ
Associate Producer: DAVID WIMBURY Executive Producers: GEORGE HARRISON and DENIS O'BRIEN
Director: DICK CLEMENT Producer: JAN LAUREN

Los Arcos 949-8851
Scottsdale Road and McDowell Road
Exclusive Engagement STARTS FRIDAY!

"Sensitive and sexy..." BILL ROCC, KPHO TV 5
MICHEL DREAMS OF FINDING LOVE, SEX, AND SOCIAL JUSTICE... BUT MOSTLY SEX
Petit Con
STARTS FRIDAY!
Los Arcos 949-8851
Scottsdale Road and McDowell Road

THE MOST ACCLAIMED PICTURE OF THE YEAR!
"...SUPERB..." MARSHA MCCREADIE, ARIZONA REPUBLIC
"...MAGIC..." BILL ROCC, KPHO TV 5
"...EXQUISITE..." BILL JONES, PHOENIX GAZETTE
"A SUCCESS..." NICK SALERNO, SCOTTSDALE PROGRESS
"...ELECTRIFYING..." MICHAEL BURKETT, NEW TIMES
"...PROVOCATIVE..." MAX McQUEEN, MESA TRIBUNE
"...STUNNING..." TOREY MALATIA, KTVK TV 3

KISS OF THE SPIDER WOMAN
CAMELVIEW 945-6178 12:45, 3:00 (5:15 - \$2.60) 7:40, 10:00
70th St North of Camelback Road / Midnight Fri & Sat **Exclusive**

THE CRITICS ARE GOING CRAZY!
"A miraculous comedy... a delightful piece of slapstick... hilariously funny... humor that comes from the heart." -Michael Burkett, New Times
"One of the year's Ten Best!" **THE GODS MUST BE CRAZY**
"...crazy, cross-cultural fun." Max McQueen, Mesa Tribune
CAMELBACK 949-5425
Camelback Rd west of Scotts. Rd
PHOENIX' LONGEST RUNNING HIT!

CAMELBACK 949-5425
Camelback Rd west of Scotts. Rd
GEORGE A. ROBERTS' DAY OF THE DEAD **INVASION USA**
CAMELVIEW 945-6178 12:45, 3:00 (5:15 - \$2.60) 7:40, 10:00
70th St North of Camelback Road
JOURNEY Natty Gann
THOMAS MALL 840-6011
44th Street and Thomas Road
JOURNEY Natty Gann
MAXIE RUTH GORDON in her final role
INVASION USA

COMING SOON - "DANCE WITH A STRANGER"

Phase II

New plans for Engineering College expand instructional opportunities

By DAVID O'BRIEN
State Press

Within the next five years, ASU's College of Engineering and Applied Sciences, which includes 6,670 students, will spend more than \$10 million for expansion into new areas of education.

Clovis R. Haden, dean of the College, said, "Of the \$10 million, over \$8 million will be channeled into our expanded instructional program."

The expansion plan, known as Phase II, will add to and improve upon the original six discipline areas of specialization within the college.

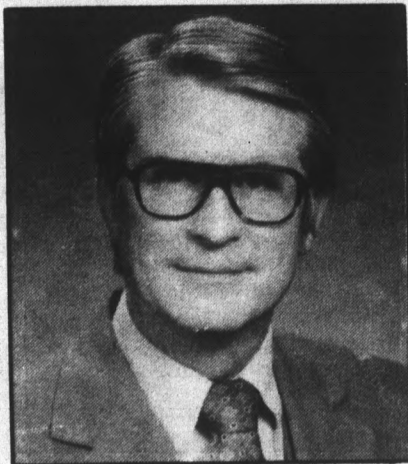
Telecommunications will be offered as the seventh discipline in the College's electrical engineering department.

"We have increased our goals because we have received additional federal support as well as more support from the private sector," Haden said.

"Now, in Phase II, we have shifted our focus to industry and federal government as our sources of finance," he said.

At the end of Phase I, reviewers unanimously decided that the program had surpassed the goals set forth in the first five-year plan, Haden said.

As part of Phase I, the College then opened the new 5-story Engineering Research Center which houses the latest in technological research



Clovis R. Haden

capabilities, Haden said. Haden said the change in emphasis reflected the willingness of national industrial firms to support ASU's Excellence Program.

Rather than increasing the demand on the state legislature for funds, assistance from national industrial experts has helped attract federal support for the College, Haden said.

"The companies play a key role in the important task of securing governmental and state support of our program."

To handle increasing enrollment and

to meet the demands of a modern computerized engineering world, the Advisory Council for engineering was formed in 1979.

Originally composed of 30 local businessmen, the Council's membership has grown considerably, Haden said.

The committee solicited advice from large industrial businesses such as Sperry and Honeywell on curriculum structure and what students need to know in the current world of engineering.

"We went to them, and in return they helped us recruit other members to the Committee for Excellence," he said.

With over 60 members, the committee continues to listen to advice from some of the nation's largest engineering corporations, he said.

"They have helped us reach decisions regarding program makeup, faculty staffing, and expansion of lab facilities," Haden said.

Although they are not required to do so, companies have given money to both the Excellence Program and the engineering scholarship fund, he said.

Haden said the advisory committee's many supporters will help bring ASU's College of Engineering and Applied Sciences to a nationally recognized level of excellence in research and education.

CARPET REMNANTS

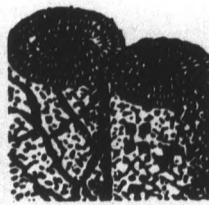
WE MANUFACTURE OUR OWN CARPET AND SELL IT DIRECT TO THE PUBLIC, NO MIDDLE MAN.

- Thousands in stock — 30%-70% off
- Hundreds of room-size remnants — \$29-\$69
- We Deliver



Owned and operated by E'Con Carpet Mills with warehouses throughout the U.S.A.

MESA
1826 W. Broadway
At Dobson/bet. K-mart
and Price Club
890-1152
NORTHEAST
15681 N. Cave Creek
867-2703
WESTSIDE
3161 N. 35th Ave.
bet. Thomas & Osborn
269-3261



VALUE COUPON



BAKERY OUTLET

1115 W. Broadway Rd.
Tempe, AZ 85282

(one coupon per person)
Good 10-3-85 to 10-9-85.

HOURS:
9-5:30 Mon.-Sat.
967-8705

FREE Package of Muffins
Just for visiting our store.

Spend Christmas with the family — on us!

On November 15, we'll award a one-week trip for one from Phoenix to any major airport in the continental U.S. served by major air carriers; or we'll bring your favorite relative to Arizona, if you prefer. We'll automatically enter your name in our drawing when we issue your tickets, or you can enter at our office. You'll find us at the eastern end of The Cornerstone, University and Rural in Tempe.

For fares and reservations, call us at 967-7545.

Reservations must be made 30 days prior to departure and travel begun by December 24, 1985; the trip must last over one Saturday night. This prize is non-transferable and has a cash value of one cent.



Miguel's Music Center IN THE LITTLE ARCHES SHOPPING CENTER

TEMPE

Sales • Rentals • Repairs
Band Instruments & Accessories
Drums ★ Recorders ★ Banjos
★ Sheet Music Etc.

Authorized Dealer for:
ALVAREZ ... GUILD ...
KHONO ... YAMAHA ...
OVATION ... MARTIN
GUITARS

★ SPANISH CLASSICAL
GUITARS ★

•RAMIREZ •CONTRERAS
•BARNABE •CESAR VERA
•SANTOS HERNANDEZ

MIGUEL

A student of Andres Segovia
Guitar Lessons in Folk
& Classical by Miguel

★ ELECTRONICS ★

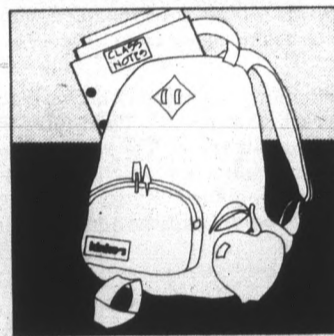
•Amps
•Rhythm Boxes
•Distortion Boxes
•Mini Mixers
•Phase Shifters
•Poly Phase
•Electronic Metronomes

BY ROLAND-IBANEZ &
ELECTROHARMONIX &
OTHERS

122 E. University Dr., Tempe
Open 10 a.m. to 6 p.m. — 6 Days

968-2310

BACK TO KINKO'S



Head over to Kinko's for all of your copying needs this term and discover outstanding quality and abundant services at very affordable prices. We're close to campus, open early, open late and open weekends.



BACK TO KINKO'S

Free highlighter pen with this coupon

MESA TEMPE I TEMPE II
1840 W. Southern 715 S. Forest OPEN 24 HRS.
kinko's 969-3326 894-9588 933 E. University
894-1797

One per customer while supplies last.

Wait no longer! eegee's is here!

on Broadway
just east of Dobson in Mesa

Bring this ad in for a FREE
7 oz. eegee's frozen fruit drink
Good through October 14, 1985

Sandwiches/Slushes/Salads

Introduce yourself to DOLLAR RENT A CAR

and save
an extra \$5



One discount per rental. Not valid in conjunction with any other discount, special rate, promotional offer or as part of any tour package. Car must be returned to original renting location. Present this coupon at time of rental. Offer expires 12-31-86.

Whether you need a car for a day, a weekend or longer,
For reservations and free pick-up call:

829-1523

HOLIDAY INN • TEMPE
(in lobby)

ASU students 18 and older. Cash deposits welcome.

DOLLAR RENT A CAR.



We feature GM and other fine cars.

state
press

Prove all things; hold fast to that which is good.
—St. Paul (1 Thessalonians 5:21)

opinion

letters

Iran belligerent, culture far from civilized

Editor:

In reading Mohamad Naseri's letter to the Editor, I became distressed and rather angry. It seems that he, an obvious supporter of the Iranian culture, is trying to promote good will between our two countries; he may even be attempting to establish a feeling of awe in the American people as to their civilization. In my opinion, they have no civilization since they are not civilized. Any culture that condones terrorist acts as a means of receiving its demands (in their own terrorist jargon) is not, and cannot be considered, civilized.

Furthermore, putting over 2,000 of their countrymen up in front of a firing squad in the later part of 1981 simply because of their political alignment borders on insanity. In my opinion, they are far from being civilized.

I am sure that Mr. Naseri's statement as to Iran's growing prosperity is true. What he failed to say was that their growth stems from technology given to them by the United States. They, in return, thanked us by giving us a hostage crisis that lasted 444 days, burning American flags, and cursing at our president all the while. I ask you; are these

the acts of a "civilized" people?

I praise Iran for integrating women into the workings of their industry and agriculture; they even got them to volunteer (I wonder how). I am hesitant, though, to think that the situation will remain the same since their main function is to supply the absent, holy-war-fighting males with sufficient ammunition and weapons to beat their Iraqi neighbors.

After reading Mohamad Naseri's statement, a question came to mind. Why is he sitting here under the economic security and prosperity of the United States when he

could be enjoying all that Iran has to offer? Also, it seems to me that he was educated in America, too. I would think that a country so rich in wealth would have an excellent educational program. In conclusion, I would like to state that if Mohamad Naseri loves the prosperity of Iran so much, why doesn't he hop on a T.W.A. jetliner to Iran. If he is lucky he won't be hijacked by the people he loves so well.

Bill Gamage
Patriotic American

Trade barrier relief is temporary, ineffectual

Editor:

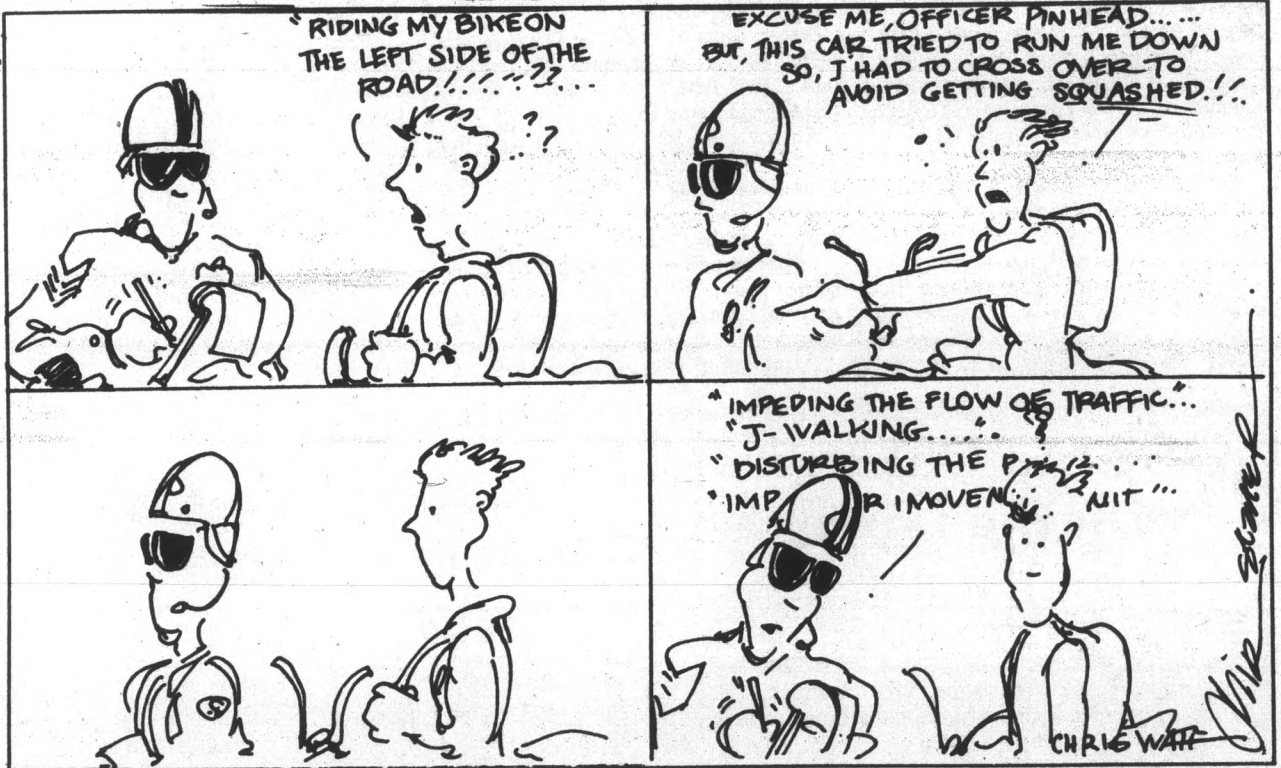
The move in Congress toward trade barriers is not in the best interest of the nation. The relief these barriers give is only temporary and only partially effective.

In the past, expansion has almost been forced upon the Soviet Union. The Soviets depend greatly on oil and wheat and when these resources are cut off they take the necessary actions to correct these deficiencies. Sometimes these corrective measures are drastic. Afghanistan is a prime example. Economic barriers spark unwanted turmoil in the international arena.

During WWII one of the major factors behind Japanese expansion into mainland China was again lack of oil and other valuable resources. Unfair trade coupled with international strife helped to make aggression more favorable to the Japanese.

Economic deficiencies along with unfair trade will always be found at the root of most wars. The United States can't afford to engage in unfair trade. The result of such trade barriers often lead to trade wars which escalate into military confrontations. If the United States decides to implement these trade barriers we will only be adding fuel to the fire.

Ted Miskinnis



Disciple of Scully urges complete infiltration by AIA

Editor:

Like all right-thinking students here I applaud the efforts of Accuracy in Academia to expose liberally biased professors. Unfortunately, however, an article in Friday's State Press (Sept. 27) confirmed a suspicion of mine: AIA will be monitoring only history and political science classes. While I realize that left-wing tendentiousness is most common — and obvious — in the social sciences, it is my sad duty to inform the University community that leftist quackery, like some insidious academic AIDS, has spread to departments hitherto thought immune.

Inspired by the example of Matthew Scully, ASU's quondam Grand Inquisitor, I have been sitting in on classes since the beginning of the semester. If I heard some suspect

statement from a lecturer I probed deeper and even interviewed former students if possible. I don't think that it would be sporting to identify professors by name at this stage, but I want AIA to be aware that the problem is even greater than they feared. Here is a precis of my most shocking findings:

- Item: There is a geology professor who claims that at least half of the earthquakes in the developing world are triggered by the CIA in order to ensure their continuing dependence on American banks and multinationals.

- Item: An architecture professor who exalts the "Stalinist Gothic" school; he maintains that the tower at Moscow State University puts the Notre Dame Cathedral to shame.

- Item: A painting instructor on the Fine Arts faculty who disdains all works save those of the school of "feminist realism." She is especially partial to heroic tableaux of abortion rights demonstrations and "take back the night" marches. Last semester she awarded an A+ to a student's crudely executed representation of Geraldine Ferraro as Joan of Arc, while at the same time rejecting out of hand abstract and naturalist efforts of far greater merit.

- Item: There is a biology professor who is a slavish adherent of the bogus theories of Trofim Lysenko. He says that he mated two rats that had been trained to negotiate a complex maze and that their offspring were able to duplicate this feat soon after birth without prior exposure to it. When I

challenged him to provide proof of these startling results he insisted that not only had the fifth generation of rats masterminded a mass escape from his lab, they'd also absconded with all his research data. For some reason he hadn't yet been able to replicate the experiment successfully. There exists the possibility that this gentleman is insane, so he should be confronted only with great caution.

I could go on and on, but I think I've made my point. Godspeed AIA — and cast your dragnet wide.

Jonathan B. Gerber
Sophomore, Russian

AIA focus is on ideology, not academic standards

Editor:

There has been mention in articles regarding Accuracy in Academia in the State Press of professors with liberal biases. With few exceptions, professors are not biased regarding the subject matter of their studies, but they may have conservative or liberal views. Such views derive from their studies and analyses and not from prejudice. The subject matter of many disciplines, particularly history, politics, and economics, are amenable to various interpretations. There are no orthodox views. A university is a place of education, not training. Training has to do with the inculcation of particular orientations or doctrines. Education is a matter of knowledge and understanding of various views. The educated person is in a better position to think for himself or herself through a greater sophistication and appreciation of alternatives. This is basic to a democratic society which should depend upon the rational informed choices of its citizens. The AIA is not interested with accuracy in academic standards but in purity of ideology.

Mel Firestone
Associate Professor, Anthropology

STATE PRESS

STEVE WATERSTRAT
Editor

TOM BLODGETT
Managing Editor

City Editor W. TIM AHL
Asst. City Editor JOHN CONWAY
Asst. City Editor MELISSA SMYTH
News Editor MEAD SUMMER
Opinion Editor GRAY T. ECHOLS
Asst. Managing Editor WHITNEY PETERSON

Sports Editor MICHAEL KONZ
Asst. Sports Editor JERRY BROWN
Copy Chief JACQUIE CIROU
Arts Editor CINDY PEARLMAN
Asst. Arts Editor PATRICK J. KUCERA
Photo Editor KIP WILLIAMS

The State Press is published Monday through Friday during the academic year except holidays and exam periods, at Matthews Center, Room 15, Arizona State University, Tempe, AZ 85287. Newsroom: 965-2292. Advertising & Production: 965-7572.

The State Press is the only newspaper exclusively published for and circulated on the ASU campus. The news and views published in this newspaper are not necessarily those of the ASU administration, faculty, staff or student body.

Professor seeks student response on bicycle issue

Editor:

I wish to support your editorial on "dodging bicyclists" on campus walkways. There was a time when one could more leisurely think, talk, and in other ways pleasure the senses while walking between classes. At present time, one must be careful to walk a very straight line, look carefully before turning, and be prepared to leap from the path of an errant bicyclist or other fast-moving body on campus.

Persons with less agility because of age, poor health, and/or other disability would appear to be at even greater

risk both physically and psychologically as they attempt to navigate the busy campus walkways.

Seemingly, there must be some alternative to the present situation. One possibility would be to ban bicycles from campus walkways, do away with on-campus bicycle paths, and yet provide several on-campus peripheral bicycle parking areas from which a student could reasonably get to nearby class buildings.

Fred Fehr
Professor, Psychology

analysis

Round 2

Funding passage no solution for ASASU debate

By STEVE WATERSTRAT
State Press

The student senate, for the moment, seems to agree with President Dave Varnell's claim that the established executive funding directive is "just simple, good advice."

But look for future challenges to that wisdom.

Anyone who thinks the battles over funding of campus groups by Associated Students of ASU are over has another thing coming. The \$11,297 slab of ASASU funding handed down by the senate Tuesday still leaves more than half of the \$26,000 pie reserved for campus clubs.

In this first round of appropriations, the senate funded 76 fairly uncontroversial clubs. The process reflected an emphasis on expediency, not policy.

With the bulk of business out of the way, there is now time for debates over what kinds of clubs do not qualify for ASASU funding.

The debates will likely originate in the appropriations committee. Henry Presseller, committee chairman, says his goal last week was to get the funding bill prepared as soon as possible to provide funds right away for non-controversial groups and leave time later for considering groups which fall under the funding directive.

The next step is to define the directive, Presseller said.

"A directive is a guideline, not a policy," he said, predicting that the directive will be questioned in November. The directive states that funding will not be provided for groups which:

- promote a sexual preference;
- advance or inhibit the practice of a particular religion;
- align ASASU with a specific political viewpoint;
- provide for the purchase of food;
- further the campaign of a political candidate;
- subsidize a University administrative service.

Funding policies have been a dividing line between the two most potent figures in ASASU — Varnell and Executive Vice President Chris Cummiskey. Varnell supports the policies, adopted last summer by the Executive Committee (consisting of four executive officers and three senators).

Cummiskey maintains that ASASU is not "aligning" itself with a group by funding it, and advocates funding programs based on their value to the students, regardless of the sponsoring group.

Varnell holds that no matter what the program is, ASASU in effect endorses a group by providing it funding. When a club presents an event funded by student money, publicity flyers usually make a statement like "Co-sponsored by (name of club) and ASASU."

The appropriations committee is far from unanimously in



Staff photo by Rick Wiley

Senate Appropriations Committee Chairman Henry Presseller and Campus Affairs Vice President Amy Young (also a member of the Appropriations Committee) listen to discussion in a meeting of the Executive Committee, which passed funding guidelines for campus clubs and organizations.

favor of the six guidelines, according to Presseller.

"Obviously some people did vote to fund these groups," he said, referring to committee rulings on controversial groups, which often came down to one vote after heated debate.

"I respect the guidelines very much," Presseller said, but added that he thinks they should be evaluated and defined more clearly. He said he is unsure of the validity of the sexual preference guideline and thinks the "specific political viewpoint clause should be better explained."

Amy Young, campus affairs vice president and also a member of the appropriations committee, supports the directive but agrees that it is a guideline. The guidelines, she said, increase the speed and efficiency of the appropriations process, which she said took too long last year.

"The senate should be spending some time on greater

issues in the University," she said.

She said that while some of the groups and programs which fall under the guidelines may seem fairly moderate, funding them would open the way for other more extreme groups to ask for funding.

Presseller said there are other important areas for the senate to cover, but said campus groups deserve individual consideration, and the guidelines should not put too much restriction on what kinds of groups are funded.

"If students aren't exposed to diversity (in college), they're never going to get it," he said.

By perceiving the guidelines as a firm policy, senators avoid thinking and unpleasant debate.

"They're falling back on these guidelines," he said.

Controversy over guidelines nothing new

Ex-president comments on current administration

By W. TIM AHL
State Press

This year's funding controversy between student President Dave Varnell and Executive Vice President Chris Cummiskey, while providing a good deal of current debate, is not something that either man should view as new.

Much more, it is a continuation of last year's battle between President Ray Burnell and Executive Vice President Brian LaCorte — and some of the similarities are striking.

A powerful self-proclaimed "right-wing" leader during his 1984-85 term, Burnell initiated the set of guidelines causing this year's rift.

LaCorte, who happened to sit on the opposite side of the ap-

propriations fence, spent a good deal of time opposing the presidential line-item vetoes that caused so much uproar.

Cummiskey, chairman of the Senate Appropriations Committee, sided with LaCorte in opposition to Burnell's policies, and ran for this year's executive position on a platform advocating a change in the funding guidelines.

Varnell worked voluntarily as an executive assistant to Burnell and was supported by the president during last year's elections.

The lines had already been drawn for a continuation this year — thus the conflict continues.

But this year's version of the war, a "Rocky II" if you will, has strictly focused on six funding guidelines concluding a three-page document prepared by Burnell last year.

"It's not just six items — the items came as a result of the document," he said.

Burnell said he started compiling the document early in his tenure for the purpose of getting a firm set of guidelines — not to reject any specific group appropriations.

The guidelines — five of them — were introduced and utilized the same night the senate was to vote on the \$14,000 funding bill.

Some senators saw the tactic as intimidating — Burnell appearing before the senate, immediately prior to the vote, spelling out exactly what appropriations he would veto.

"The guidelines were used to put things into perspective and to determine what we think is fair," he said.

While the similarities of the two administrations exist, there is one glaring difference.

Burnell and LaCorte stood on different sides of the appropriations issue, but both have attested that they were friends otherwise and each often voiced respect for the other's opinions.

"Brian LaCorte and I remained good friends," Burnell said. "We never agreed on funding, but we realized we were on the same team."

"Brian and I campaigned for each other and that was a little of a different situation."

During last year's elections, Varnell and Cummiskey were adamant opponents — that may still be the case.



Ray Burnell

'The guidelines were used to put things into perspective and to determine what we think is fair.' — Ray Burnell

WORKING
FOR ENERGY
INDEPENDENCE,
NATIONAL SECURITY,
AND A QUALITY
ENVIRONMENT.

**ON CAMPUS
THURSDAY
OCTOBER 17**

Ask your Placement Office for details on our upcoming campus visit, or see our ad in this paper next **Thursday, October 10** for additional information. LLNL is an equal opportunity employer, m/f/h. U.S. citizenship is required.

University of California
**Lawrence Livermore
National Laboratory**
P.O. Box 5510, Dept. JCR, Livermore, CA 94550

Jobs for vets

Office to aid former servicemen

By **ROB KELTON**
State Press

A new Department of Economic Security office on campus will help the more than 1,000 veterans and their dependents at ASU locate jobs, a member of the program said Wednesday.

John Colledge said the office, which is located in Irish Hall, will also offer counseling and career service testing.

"Last year this office didn't work, but this year we didn't want to give up trying," said Ralph Lenzmeier, veterans representative for DES.

The ASU office will have a daily computer printout containing more than 3,500 jobs available to veterans throughout Arizona, Colledge said.

"Each of these jobs will have a job description on a microfiche system (computer catalogue) that the vets will be able to look at," he said.

Veterans will also have access to a weekly DES publication that will list 20 to 25 jobs throughout Arizona, Colledge said.

'They may not want to stay in these positions, but they are a great way to start'
— John Colledge

"These jobs will be working for the Transportation Department, Department of Revenue, Department of Public Safety and others," he said.

Colledge said the ASU office will have nationwide federal job lists before the semester ends.

"These are great career opportunities," he said. "They may not want to stay in these positions, but they are a great place to start."

Lenzmeier said the veterans can find part-time, full-time or temporary jobs at the job service office.

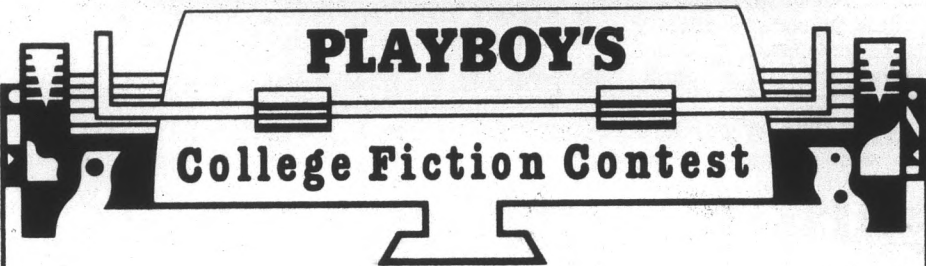
"We've had veterans that only needed to work for two weeks, and we found them jobs," he said.



State Job S
available fo

Lenzme
and secur
Paul Do
office is w
Building t
"We wi
putting up
office," he
Downey

ANNOUNCING:



FIRST PRIZE:

\$3,000 and publication of the winning story in a future issue of PLAYBOY magazine.

SECOND PRIZE:

\$500 and a one-year subscription to PLAYBOY magazine.

DEADLINE FOR ENTRIES:

January 1, 1986

ADDRESS ALL ENTRIES TO:

PLAYBOY COLLEGE FICTION CONTEST
919 N. Michigan Avenue, Chicago, IL 60611

JUDGES:

The editors of PLAYBOY magazine. All decisions are final.

CONTEST RULES

1. No purchase necessary. 2. Contest is open to all college students. No age limit. Employees of Playboy Enterprises, Inc., its agents, affiliates and families are not eligible. 3. To enter, submit your typed, double-spaced manuscript of 25 pages or less, with a 3 x 5 card, listing your name, age, college affiliation, and permanent home address and phone to: PLAYBOY COLLEGE FICTION CONTEST, 919 North Michigan Avenue, Chicago, Illinois 60611. Only one entry per person. All entries must be original works of fiction. All entries must be postmarked by January 1, 1986. Mutilated or illegible entries will be disqualified. 4. Prizes awarded to those entrants whose stories meet PLAYBOY's standard for quality. PLAYBOY reserves the right to withhold prizes if the submitted entries do not meet PLAYBOY's usual standards for publication. All decisions of the judges are final. 5. Winning contestants will be notified by mail, and may be obligated to sign and return an Affidavit of Eligibility within thirty (30) days of notification. In the event of non-compliance within this time period, alternate winners may be selected. Any prize notification letter or any prize returned to Playboy Enterprises, Inc., and undeliverable may be awarded to an alternate winner. 6. PLAYBOY reserves the right to edit the First Prize winning story for publication. 7. Entry authorizes use of any prize winner's name, photograph and biographical information by Playboy Enterprises, Inc., without further compensation to the winner. 8. PLAYBOY reserves the right to publish the winning entries in the U.S. and Foreign editions of PLAYBOY magazine and to reprint the winning entries in any English language or foreign edition anthologies or compilations of PLAYBOY material. 9. Contest is subject to all federal, state and local laws and regulations. Taxes on prizes are the sole responsibility of winning contestants. Void where prohibited by law. 10. All manuscripts become the property of Playboy Enterprises, Inc., and will not be returned. A list of winners can be obtained by sending a self-addressed stamped envelope to Playboy Enterprises, Inc., COLLEGE FICTION CONTEST, 919 North Michigan Avenue, Chicago, Illinois 60611.

A QUALITY TAN AT A COMPETITIVE PRICE

GET 2 VISITS FOR
THE PRICE OF ONE

(Limited time offer)



966-2150

Sun Tan Center

We will honor any other area tanning salons ad specials.

55 E. Broadway
(Corner of Mill & Broadway)
Tempe



LUNCHEON SPECIAL

25¢ DRAFT • 99¢ SUBS

MON.-SUN. 11-4

THURSDAY NIGHT (No Cover)

MOLSON GOLDEN PARTY

Come Party with \$1.10 a Bottle

Molson Golden 4-Close

FREE DELIVERY

Hooter T-shirts

\$3.00



SERVING NY STYLE PIZZA
SUBS, CHICKEN WINGS

801 E. APACHE
894-2662

Veterans in seeking employment



Staff photo by Kevin J. Larkin

State Job Service representatives Paul Downey, left, and John Colledge display a computer list of jobs available for Vietnam veterans.

Lenzmeier said the state agency helps locate and secure jobs for 200 veterans a month.

Paul Downey, a DES office worker, said the office is working with the GI office in the Moeur Building to publicize the new service.

"We will be putting out a newsletter and putting up some posters regarding the new office," he said.

Downey said the job service office will also

help non-veterans in finding jobs.

"We will guide them to the right agencies, but we won't be able to help them as much as veterans," he said.

Colledge said although no one has utilized the service since it opened Monday, he expects veterans to take advantage of the office soon.

"Probably by next week we should start seeing an influx of veterans," he said.

HWARANG-DO

KARATE • KUNG-FU • JUDO

GRAND OPENING • TEMPE LOCATION



ONE WEEK'S
FREE LESSONS
JUST FOR
CHECKING
US OUT!

• SELF-DEFENSE • MEDITATION • WEAPONS

"Get a Kick Out of Life"

1848 E. UNIVERSITY

(1 blk. east of McClintock, Next to Sgt. Peppers)

TEMPE

967-0211

CHIEF INSTRUCTOR — KEN CORONA

HIS AND HERS!

HONDA SCOOTERS

Affordable fun
for two!

Scooters
from \$598!

- No freight
- No prep
- Great on gas!
- Low insurance
- Easy parking
- Low maintenance



SAME DAY FINANCE

western honda
of Scottsdale
6717 E. McDowell
994-8400

MCDOWELL

68th ST.

RURAL

He's been chased,
thrown through a
window, and arrested.
Eddie Murphy is a Detroit
cop on vacation
in Beverly Hills.



**BEVERLY HILLS
Cop**

A PARAMOUNT PICTURE

MUAB

presents

Eddie Murphy

in

"Beverly Hills Cop"

Showtimes

Wed.-Fri.

3:30, 7, 9:30 p.m.

Sat.

7, 9:30 p.m.

ALL SEATS \$1

**PIZZA PLACE special, have a pizza
before the show at a special price!**

SERVING ASU SINCE 1972

Papa Jay's Pizza

We Also Deliver Ice Cold Beer
FAST FREE DELIVERY

*Limited Delivery Area

804 S. Ash (Univ. & Mill)
Right Next to ASU

966-4292 or
966-1003

**ANY 2 LARGE ONE ITEM PIZZA
FOR**

\$9.95

(With This Coupon)

Good on delivery,
take-out or dine-in.
Expires 10-31-85.

Save \$2.30

#1 Sun Devil Combo

Any large pizza with
your choice of up to 4 toppings.

ONLY \$6.95 plus tax

Good on delivery, take-out
or dine-in. Expires 10-31-85.

Save \$1.95

#2 Sun Devil Combo

Any medium size pizza with
your choice of up to 4 toppings.

ONLY \$5.95 plus tax

Good on delivery, take-out
or dine-in. Expires 10-31-85.

Save \$1.80

#3 Sun Devil Combo

Any small size pizza with
your choice of up to 4 toppings.

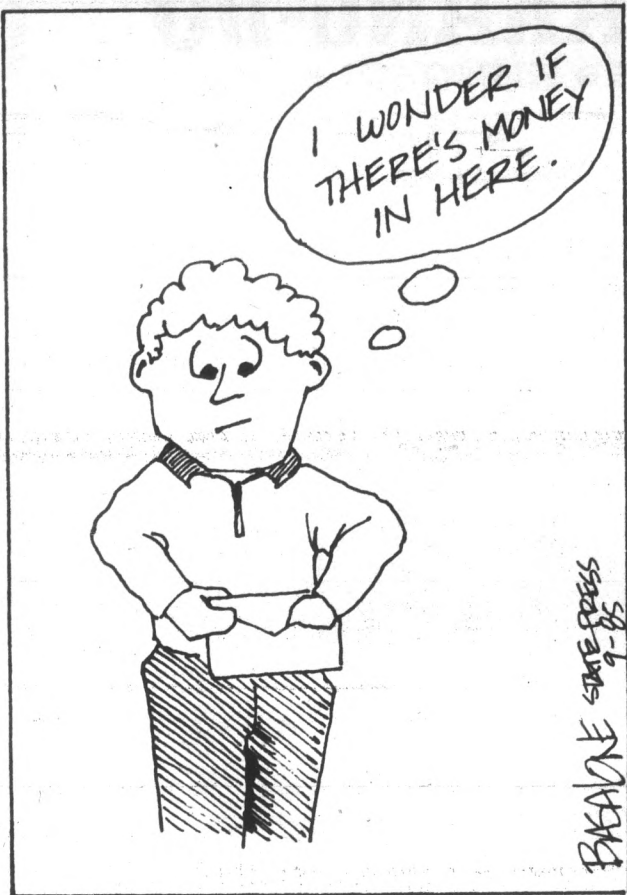
ONLY \$4.95 plus tax

Good on delivery, take-out
or dine-in. Expires 10-31-85.

COUPON



A CLOSER LOOK



BREKANE STATE PRESS 9-85

WHY WE OPEN GREETING CARDS FROM RELATIVES.

police report

University police reported the following incidents in the 24-hour period ending at 6:30 a.m. Wednesday:

- A transient, claiming he was a wide receiver waiting to see ASU football coach John Cooper, was warned of trespassing and escorted off campus for allegedly causing a disturbance in the football locker room Wednesday morning, police said.
- A man who is unaffiliated with the University became intoxicated and refused to pay a \$6 bar tab at Dash Inn early Tuesday, police said.
- An employee of the restaurant called police. Police said when they arrived the man was complaining that his friend had refused to pay the bill.
- He paid the bill after police told him he could be prosecuted for defrauding an innkeeper.
- Before the police left, they advised the man against driving home in his condition.
- Two students suffered injuries after they collided in a bicy-

cle accident between the Arts Building and Neeb Hall Wednesday afternoon, police said.

One student had attempted to mount her bicycle while it was rolling down a walkway. She was hit by the other bicycling student, who was making a left turn around the corner of Neeb Hall.

The victim who was making the turn injured his knee and was treated on the scene by Tempe Fire Department paramedics. The other victim sustained a cut on her head and was transported to the Student Health Center by paramedics.

•A student injured his left hand after he lost control of his bicycle on Tyler Mall Monday morning, police said.

The victim told police the accident occurred while he was making a left turn.

Police transported the victim to the Student Health Center, where he was treated and released.

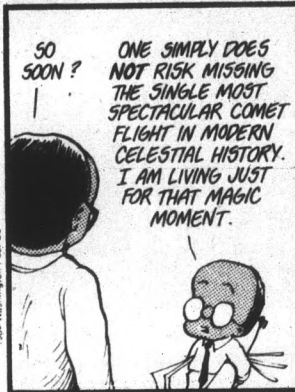
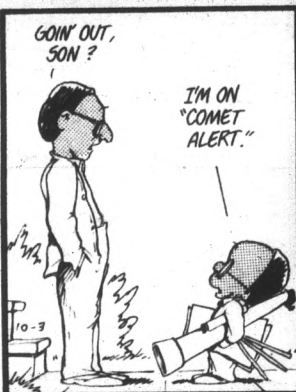
•A student's 1984 Pontiac Fiero was damaged in Lot 27 sometime Monday afternoon, police said.

The owner told police she left the car for 30 minutes. When she returned she found a dent in the right front fender and a scratch that ran from the right passenger side and extended over the hood.

— THERESA WILLEFORD

BLOOM COUNTY

by Berke Breathed



RUNDLE'S LIQUORS & MKT.
730 S. MILL
Corner Mill & University Ave.

CALIF. COOLERS 4-pack \$3.63
MEISTER BRAU BEER 6-pack \$1.89
BEAMERO TEQUILA 750 ml \$5.33
PLAYBOY Used Magazines \$.71

Haagen Dazs Natural Ice Cream, Adult Magazines, Groceries, Ice, Wines, over 40 Imported Beers.

967-9079

PUT SOME YAMAHA EXCITEMENT BETWEEN YOUR LEGS

Riva & YAMAHA

THE FUN ALTERNATIVE TO HIGH GAS PRICES
CHECK THESE DEALS!!!

X C 180 K, L	WAS \$1499	NOW ONLY \$999
X C 125 N	\$1199	ONLY \$999
C V 80 N	\$899	ONLY \$799

WARRANTY VARIES BY MODEL
PRICES EXCLUDE F/P, T.T.L.
FINANCING AVAILABLE • INSURANCE AVAILABLE

YAMAHA DISCOUNT CYCLE CENTER

Scottsdale: 6828 E. Thomas Rd. • 941-5321
Glendale: 5720 N.W. Grand • 931-3753

WAREHOUSE DELI & PUB
Estab. 1975
"GOOD FOOD & DRINK"

SPECIALS LUNCH & DINNER
MON.-FRI. 10:30-2 p.m.
Sandwich of the Day with Homemade Fries
ONLY \$2.36

MOLSON GOLDEN 61¢
on tap Mon.-Thurs. 2-4 p.m.

HAPPY HOUR
MON.-FRI. 10:30 a.m.-7 p.m.
IMPORTS — 94¢
DRAFT BEER Pitcher \$2.36 Glass 49¢
WINE 1/2 liter Glass \$2.36 49¢
WINE COOLER Pitcher \$2.75 Glass 65¢

BREAKFAST
SERVED MON.-FRI. 6 a.m.-10:30 a.m.
\$1.29
3 EGGS, HOMESTYLE POTATOES, TOAST, BUTTER & JAM
CHECK OUT OUR OTHER BREAKFAST ITEMS

LIVE ENTERTAINMENT NIGHTLY
(No Cover, No Min.)
130 E. UNIVERSITY DR. AT FOREST
966-7788 • TEMPE, AZ
Your Hosts: "The Family"

MANN

BARGAIN PRICE \$3.00
ALL SHOWS BEFORE 8 P.M.
MON. THRU FRI.
SATURDAY & SUNDAY FIRST SHOW ONLY

SUN DEVIL 6 829-0344
The Cornerstone • Rural & University

INVASION U.S.A. (R) 1:00, 3:15, 5:15, 7:30, 9:45
COMPROMISING POSITIONS (R) 1:15, 5:15, 9:15
PEE WEE HERMAN (PG) 3:15, 7:15
GHOSTBUSTERS (PG) 1:15, 5:15, 9:30
TEEN WOLF (PG) 3:30, 7:30
BACK TO THE FUTURE (PG) 1:45, 4:30, 7:00, 9:30
NATTY GANN (PG) 1:00, 3:00, 5:00, 7:00, 9:00
BEVERLY HILLS COP (R) 1:15, 5:45, 9:15
WITNESS (R) 3:30, 7:00

SUPERSTITION 5 834-5767
MESA AT SO LONGMORE & SUPERSTITION

NATTY GANN (PG) 12:45, 3:00, 5:00, 7:15, 9:30
CREATOR (R) 12:45, 3:00, 5:10, 7:25, 9:35
PEE WEE HERMAN (PG) 1:15, 3:15, 5:15, 7:15, 9:15
WITNESS (R) 2:00, 7:00
BEVERLY HILLS COP (R) 4:30, 9:10
AGNES OF GOD (PG-13) 1:00, 3:00, 5:00, 7:10, 9:20

MANN POCA FIESTA 4 835-0404
MESA AT 1020 WEST SOUTHERN

MAXIE (PG) 1:00, 3:00, 5:00, 7:00, 9:00
COMPROMISING POSITIONS (R) 1:30, 5:25, 9:20
EMERALD FOREST (R) 3:20, 7:15
GHOSTBUSTERS (PG) 12:15, 4:00, 7:45
WEIRD SCIENCE (PG-13) 2:10, 5:55, 9:40
MARIE (PG-13) 12:30, 2:45, 5:00, 7:15, 9:30

CHRIS TOWN 5 249-2843
5707 NO. 19TH AVE

AGNES OF GOD (PG-13) 12:30, 3:00, 5:15, 7:30, 9:45
NATTY GANN (PG) 12:00, 2:30, 4:45, 7:00, 9:30
INVASION U.S.A. (R) 11:45, 2:15, 4:45, 7:15, 10:00
MARIE (PG-13) 11:45, 2:15, 4:30, 7:00, 9:30
CREATOR (R) 12:30, 3:00, 5:15, 7:45, 10:00

\$2.50 MIDNIGHT MOVIES
FRIDAY AND SATURDAY AT ALL MANN THEATRES — CALL FOR TITLES & TIMES

Donny O'Brien's
THE PLACE TO BE!

thursday!

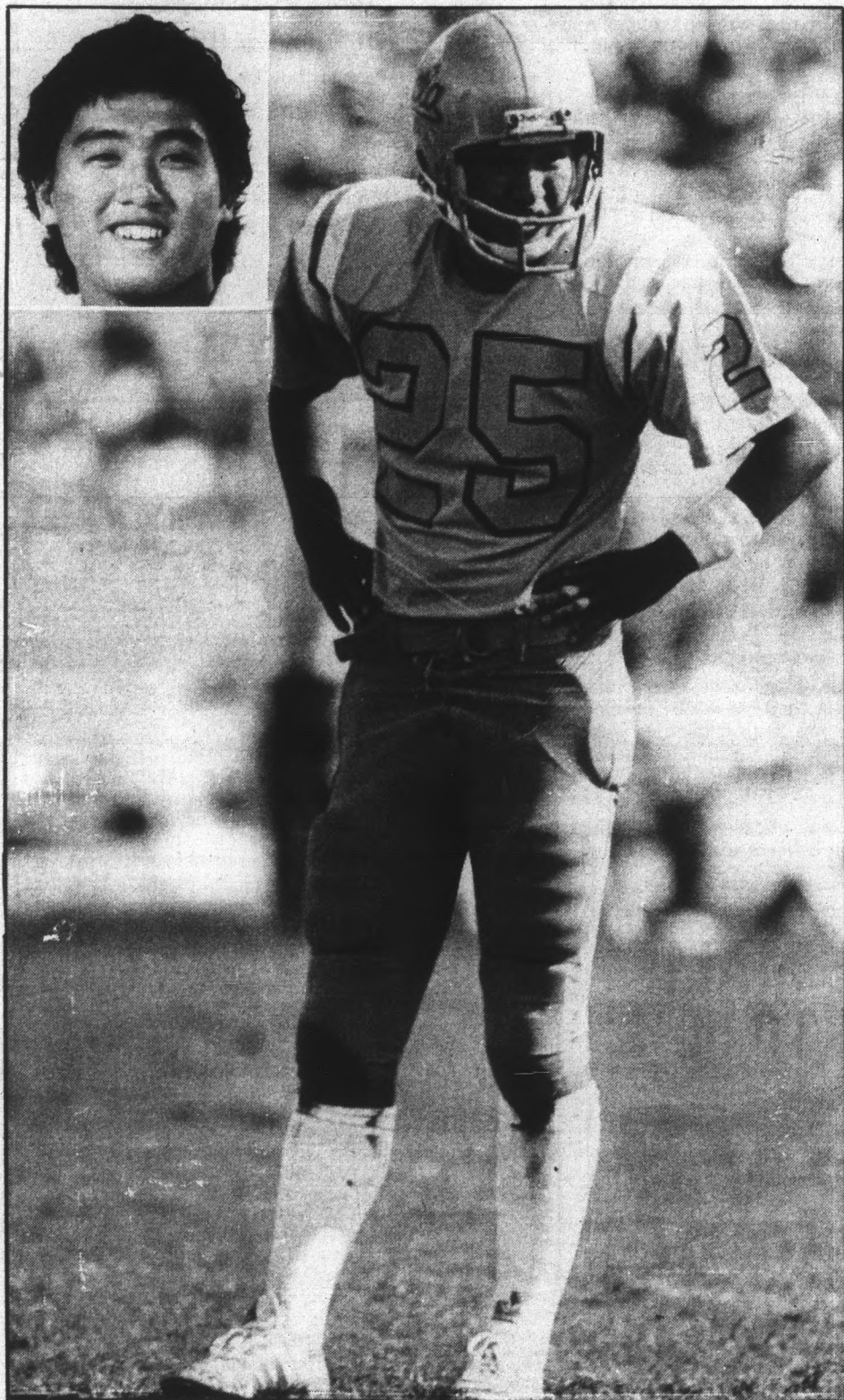
\$1.25 Long Island Ice Teas
\$1.25 Bottled Beer
7 to Close

222 S. MILL, TEMPE • 968-0257

sports



Lee no longer handles Bruin offense single-footedly



UCLA placekicker John Lee will take his uncanny accuracy within 40 yards against ASU.

By BRAD HALVORSEN
State Press

While most placekickers worry about timing and keeping their heads down, UCLA senior John Lee has a unique problem — he doesn't see enough action this season.

"John hasn't had the opportunity to kick the ball this year as he had in years past," UCLA coach Terry Donahue said of his first-team All-American kicker, who will face ASU for the fourth and final time Saturday. "Because, quite honestly, our offense has done a better job getting the ball into the end zone."

Lee adds predictability to the UCLA offensive attack. Anytime the Bruins venture within the opponent's 25-yard line, they can almost count on an automatic three points.

From under 40 yards, Lee has made 44 of 45 field goal attempts, 97.8 percent. Overall, he has made 70 of 82 career attempts for 85.4 percent.

By contrast, Luis Zendejas, former ASU kicking sensation who became the NCAA's all-time leading scorer last year, had a career percentage of 74.3.

Lee has attempted only seven field goals in four games this season, and has yet to miss. During Saturday's 21-14 loss to Washington, the only field goals Lee tried were directed at the kicking net on the sidelines.

This is quite a change from last year, when Lee single-footedly accounted for UCLA's 18-15 victory over San Diego State in the season opener by converting six field goals, tying the NCAA record.

"Last year at this time I had 14 field goals, so I guess it's been kind of slow," said Lee, a native of Seoul, South Korea. "But I guess it's good news for the team because it means we're scoring touchdowns."

"(Last year) we were rated No. 1 by Sports Illustrated, so I thought I would be busy with extra points. It didn't work that way. We got overrated. Our offense would drive the ball well for 50 yards . . . and then it would stall."

ASU coach John Cooper said he realizes the threat Lee poses to the Sun Devil defense.

"John Lee is an offense in himself," Cooper said. "If they don't turn the ball over and their kicking game is solid, he's going to win a lot of games for them."

Lee holds a number of school and national records and has a couple of streaks in progress.

His two extra-point conversions against Washington increased his streak to 77 in a row, breaking the Pac-10 mark of 75 held by Zendejas.

He has hit 96 of 97 extra point attempts for his career, with the lone miss coming in a

win against California in 1982.

Dating back to last season, Lee has a string of 11 straight field goals and has connected on 39 of his last 43 attempts.

His 29 field goals last year broke an NCAA record of 28 set by West Virginia's Paul Woodside in 1982 and tied by Zendejas in 1983.

Lee is closing in on Zendejas' NCAA records of 368 career points (314) and 78 career field goals (70).

He is easily UCLA's leading all-time scorer. With his 314th point against Washington, Lee surpassed 1967 Heisman Trophy winner Gary Beban of 1965-67, who is second on the Bruin list by 100 points.

One of his more memorable moments occurred at Sun Devil Stadium, when Lee kicked a 23-yard field goal, his third of the game, with 51 seconds remaining to boost UCLA to a 39-37 victory over Miami (Fla.) in the 1985 Fiesta Bowl.

All this has led Lee to direct his intentions toward a professional football career.

"The pros are definitely on my mind," Lee said. "It depends on how well I do this year. It's up to me and how I do."

'The pros are definitely on my mind. It depends on how well I do . . .' — John Lee

"The Dallas Cowboys have been my favorite (team) since I was growing up. But they have Rafael Septien, and I don't think I'm ready to challenge him."

Lee kicks well under pressure, as his record from last year shows. He booted a 47-yard field goal as time expired to lift UCLA to a 27-24 victory over Washington State, then provided an 18-yarder with 2:58 left to play the following week during a 17-14 Bruin win over Cal.

Lee has his own attitude toward kicking under pressure.

"The last thing I want to do is make a big thing of it," Lee said. "If you have a casual attitude, you don't miss too many. If you have the same attitude as you do in practice, you'll make most of your field goals, because you make most of them in practice."

"I'm not a superstitious person. I relax and try not to make a big deal out of it. If I miss, no one is going to kill me."

Lee's two field goals helped UCLA to a 21-13 win over ASU last year. Whether he gets an attempt this year, though, makes no difference.

"My goal is to make the attempts I have," Lee said. "If I had no more attempts, that would be fine with me."

However, Lee adds, "I'll kick a few against ASU."

First there was "NIGHT of the LIVING DEAD" then "DAWN of the DEAD" and now the darkest day of horror the world has ever known

GEORGE A. ROMERO'S DAY OF THE DEAD

STARTS TOMORROW!

United Film Distributors Company presents A United Production George A. Romero's "DAY OF THE DEAD" Screenplay by George A. Romero, Directed by George A. Romero. Produced by Chris Anderson. Music by John Harrison. Executive Producer, Michael Calkins. Executive Producer, Tom Savini. Executive Producer, David R. Bell. Executive Producer, Sarah M. Hunsberger. Executive Producer, Richard P. Rubenstein. Screenplay and Story by George A. Romero.

MANN POCA FIESTA 1020 W. Southern 835-0404	AMC SUNVALLEY 10 7420 East Main, Mesa 981-6200	SCOTTSDALE 6 DI Hayden Rd. & McKellips 948-9451	AMC LAKES 6 Baseline at Rural 838-0606
AMC METRO VILLAGE 6 On 31st Ave. at Peoria 987-7483	HARKINS CAMELBACK MALL Camelback & Scotts Rd. 948-5425	UA CINEMAS 6 Inside Christown Mall 242-4525	GLENDALE 9 DI 55th Ave. & Bethany 939-9714

YOUR LOCAL NISSAN DEALER SERVICE SPECIAL

15% DISCOUNT
On Service Work and Counter Parts
(except new air conditioning unit)

FOR ANY DATSUN NISSAN SERVICE TO ALL ASU STUDENTS, FACULTY, STAFF WITH ASU I.D. CARD * TO BE PRESENTED AT TIME OF PURCHASE. *

NISSAN QUALITY CIRCLE Good through Oct. 15, 1985.

We use genuine Nissan Parts & Factory Trained Technicians

Smith MESA

NISSAN

1701 W. BROADWAY, MESA • 834-3366
Service Hours: Mon. 7:30 a.m. - 8:30 p.m. Tues. - Fri. 7:30 a.m. - 5:30 p.m.
Parts Open Sat. 8:30 a.m. - 12:30 p.m.

THE HAIR CUTTERS

Your Campus Hair Care Center

709 S. Forest Ave., Tempe
North of University • Behind the Chuck Box • In Oxford Square
968-5946

\$400 OFF
With This Ad Expires October 21, 1985.

REGULAR PRICES

- Shampoo
- Condition
- Precision Cut
- Blow Dry

MEN \$13 • WOMEN \$15

OPEN MONDAY THROUGH SATURDAY.
TUES., WED. & THURS. TILL 9 P.M.

Pick 'Um

And now for the part you've all been waiting for — the prizes.

First prize will be an ASU sweatshirt from University Sporting Goods. Second place will get 50 percent off any purchase at Poster's Mostly (excluding Patrick Nagel posters). Third prize is a lunch for two at Bandersnatch and fourth place will dig into a 16-inch pizza with a choice of toppings at Gino's Pizza.

Entries must be turned in to the State Press by 3 p.m. Friday in the Matthews Center basement. Only one entry per person. The top four entries will be listed in Tuesday's paper. The Arizona State game will be used as the tie breaker, so just predict the score. Place an "X" in both boxes to predict a tie in any game with the point spread taken into consideration. The teams on the left are the favorites, and the points shown will be subtracted from their final score.

Arizona State _____ vs. UCLA _____
Predict the score.

Favorite		Underdog	
COLLEGE			
<input type="checkbox"/> Florida	5	<input type="checkbox"/> LSU	
<input type="checkbox"/> OHIO STATE	8	<input type="checkbox"/> Illinois	
<input type="checkbox"/> IOWA	11	<input type="checkbox"/> Michigan State	
<input type="checkbox"/> AIR FORCE	3	<input type="checkbox"/> Notre Dame	
<input type="checkbox"/> NEBRASKA	56	<input type="checkbox"/> New Mexico	
<input type="checkbox"/> USC	20	<input type="checkbox"/> Oregon State	
<input type="checkbox"/> Washington	9	<input type="checkbox"/> OREGON	
<input type="checkbox"/> S.M.U.	17	<input type="checkbox"/> ARIZONA (home)	
<input type="checkbox"/> MICHIGAN	10	<input type="checkbox"/> Wisconsin	

PROS		
<input type="checkbox"/> Detroit	6	<input type="checkbox"/> GREEN BAY
<input type="checkbox"/> San Francisco	13	<input type="checkbox"/> ATLANTA
<input type="checkbox"/> MIAMI	5	<input type="checkbox"/> Pittsburgh
<input type="checkbox"/> Chicago	9	<input type="checkbox"/> TAMPA BAY
<input type="checkbox"/> L.A. RAMS	6	<input type="checkbox"/> Minnesota

Name _____
Phone _____

NFL probes allegations of fixed Cowboy games

MIAMI, FLA. (AP) — The National Football League said Wednesday that it is "routinely" investigating three-year-old allegations that five current and former Dallas Cowboys fixed football games in exchange for cocaine.

The Miami News, in a story in Wednesday's editions, said the allegations surfaced in late 1982, but were ignored because FBI officials felt the information was too sketchy. A spokesman for the bureau said it will investigate the handling of the case by its agents.

Cowboys President Tex Schramm called the newspaper story "ridiculous" and "pure sensationalism".

"I hope the NFL and FBI investigate it and do it quick," Schramm said. "It indicates five Cowboys were involved but doesn't even name them."

"We're helpless now . . . every member on the team will be suspect. We're all under a cloud."

A review of most of the Cowboys' games in 1981 and the strike-shortened 1982 season shows the team covered the point spread, used by bookmakers to establish gambling odds, in 15 of 22 games.

NFL spokesman Joe Browne said the league had learned of the allegations about a week ago.

"We are in the process of reviewing them as we routinely do with reports or rumors of this type," he said.

Oliver Revell, FBI executive assistant director, told The News that the bureau would investigate the matter "on my behalf."

Dallas FBI Supervisory Agent Jim Siano said he received the report in February 1983 and filed it away without ever showing it to his superiors or conducting an investigation because the information was too vague to be useful.

"I'm the one who handled the report, and I'm the one that decided what to do with it," Siano said. "Nothing was done here because nothing should have been done."

The News said the statements about the Cowboys were contained in a December 1982 report by former FBI Special Agent Daniel Mitrione, who then was in good standing with the agency but has since pleaded guilty in Miami to federal charges of bribery, conspiracy and possession of cocaine with intent to distribute.

"I think that tells you something about the story right there," said Schramm. "Nobody believes a thing this guy says. The whole thing is ridiculous."

THE POPPER
Gourmet Popcorn Shoppe

Now Serving:
tropical sno
Hawaiian Shave Ice


2 for 1 (with this ad)

Expires Nov. 30, 1985.

Popcorn Flavor of the Week: 15% off w/AD

Reasonable Prices! Sun.-Thurs. 11 a.m.-10 p.m.
Delivery Fri. & Sat. 11 a.m.-12 p.m.

903 S. Rural Rd. 967-4344



HELP ME, RHONDA

Dear Rhonda,

I started ASU this Fall, and I'm having a difficult time adjusting to university life. My roommate has a boyfriend, so I hardly see her at all. I just can't seem to make any friends in my classes. And guys act like I'm invisible. I'm a nice girl from a respectable family, and I've never had this problem before. One of my favorite pastimes back home is rug hooking, but I can't find any groups on campus. Help me, Rhonda. . . how can I become more popular?
Homesick in Home Ec

Dear Homesick:

You really had me going there. I was actually feeling sorry for you. But let's face facts. Guys don't go out with potential nerds. You probably wear coordinated polyester suits to class, too. As a matter of fact, your roommate has already written to me. She's moving in with her boyfriend next week.

Now, if I were you, I'd keep a low profile on the rug-hooking, and take up a hobby with some substance. . . like all-terrain biking. My vast experience has indicated that men go crazy over real women. Those muscular thighs get 'em every time. Or how about wrestling? It's trendy and the men are very physical. And, hey, if you get a little rambunctious, I know a great chiropractor.

One final tip: stilettos and leather. You know, the Benetar look. You'll be sooo cool, you'll need a receptionist to answer your phone.

OK, kid. I hit you with my best shot. I usually reserve that kind of powerful mental energy for sunbathing, but when someone as desperate as you needs help - well, Rhonda puts in the overtime.

Dear Rhonda,

I broke up with Sue over two months ago, but I can't stop thinking about her. She's in my daydreams. I catch glimpses of her on campus. And it doesn't help that I keep running into her in the produce section of Smitty's. Help me, Rhonda.
Get Her Out of My Heart

Dear Get Her Out:

Isn't that a song or something? Well, as far as I'm concerned, any guy who's into fresh vegetables scores high with me. Just send a self-addressed envelope, and I'll personally mail you one dynamite antipasto recipe.


Now, back to matters at hand. As my dear mother, Abigail, always used to say, "Out of sight, out of mind." Take night classes. Transfer to Mesa Community. Pretend you're Sean Penn and contemplate Madonna's navel. Better yet, shop at Safeway. You'll love the romaine. In no time, you'll be cruising again.

On the other hand, my mother also offered this little gem: "Distance makes the heart grow fonder." This dilemma demands a higher authority. Try writing to Ann Landers.

Need some trend-setting advice on your love life, university life or your existence in general? Write to: **HELP ME, RHONDA**, 1990 West Camelback #306, Phoenix, AZ 85015. Sorry, no personal replies.

HELP ME, RHONDA is sponsored by University Towers, ASU's unique private student housing. Watch for University Towers to become the center of campus life - located across the street from the stadium, it will offer student activities with a full-time director of student affairs, food services, retail center, restaurants, parking garage, swimming pool, volleyball courts, sun decks, generous bicycle parking and lots more.
Stay tuned to this column for more UT information or call 894-2300.

"Something New at ASU"



UNIVERSITY TOWERS
Step by our leasing office at the corner of 5th and Forest.

GRAND OPENING WESTRIDGE MALL RAY BAN SUNGLASS SALE • SAVE TO 50%



Expressions Reg. \$30 **NOW \$21⁰⁰** Glacier Glass Reg. \$49 **NOW \$34²⁰** Wayfarer Reg. \$46 **NOW \$23⁰⁰**


Outdoorsman Reg. \$58 **NOW \$40⁰⁰** Wings Reg. \$67 **NOW \$46⁰⁰** Large Metal Reg. \$66 **NOW \$46²⁰**

Save to 50% off suggested retail on our entire stock of Ray Ban Sunglasses by Bausch & Lomb. Choose from over 70 men's and women's styles. Phoenix's largest selection of Wayfarers, Expressions, Metals and more.

Guaranteed Lowest Sunglass prices on all major sunglass brands of any retail store.

Vuarnet, Suncloud, Carrera, Bucci, Gargoyle and many more.

With this ad only through 10-6-85.



Pacific Eyes & T's
THE SUNGLASS LEADER
\$3 to \$300

OPEN 7 days and nights

7611 West Thomas Rd. (Westridge Mall) • 873-2607
3735 East Thomas Rd. (Tower Plaza) • 244-9119

classifieds

Announcements

1979 DATSUN 210 Hatch, perfect cond., cold AC, 64K MI. 952-9911, 835-1429 days, 820-3709 eve., weekends.

FRIENDS MEETING! (Quakers) 9:30 a.m. Sundays, silent worship. Danforth Chapel Welcome! Peace!

Automobiles

1977 FIREBIRD 350cu full power, new battery, good tires. Look runs great \$2,500 Robyn 965-8210.

1979 CHEVROLET MONZA, beige, air conditioning, four speed, tinted windows \$1,500 oBo 964-7861.

1980 TOYOTA TERCEL, four speed, excellent condition, 63,000 miles, new tires, battery \$2,995 966-8311.

1983 PONTIAC 6000LE, great condition. Air, power windows, locks, AM/FM cassette, tilt, cruise, luggage rack, body and interior like new. \$7,600 968-9722.

78' FORD FAIRMONT. Cold air, PS, PB, AT. Runs good. \$1,488. \$750 down. Balance over 7 months, no interest. Discount for cash. 833-7778.

'78 PONTIAC CATALINA. A/C, AT, PS, PB, AM, FM radio, hail dents. Runs good. \$1488 will carry balance after \$750 down. Discount for cash 833-7778.

Business Opp.

OWN A ladies or childrens fashion store. Our 10 year old company can help you open your own business. We supply inventory, fixtures, training, site evaluation, and airfare. Famous lines include Calvin Klein, Gloria Vanderbilt, Lee, Zina, Chic, Levi, Esprit, 100's more. Purchase price \$8,500 to \$18,400. For more information call Ed Brandt 1-405-238-5098.

For Rent or Lease

DELUXE ONE bedroom condo., washer, dryer, jacuzzi, pool 1/2 mile ASU \$295. 964-7861 call now.

MASTER BEDROOM in three bedroom condo \$230 or \$150 to share, washer/dryer, microwave/dishwasher, whole place furnished contact Tracy or Susie 829-7226 Questa Vida immediately.

TWO BEDROOM one bath, furnished town house with pool approximately two miles from ASU 834-6376.

ZENITH 300 baud terminal \$30 per month including delivery call 841-9754.

For Rent or Lease

MUST RENT Dobson Ranch Condo., asking \$700, two bedroom two bath, perfect for students to share 820-0379 or 258-0160.

QUIET TWO bedroom loft condo walking distance ASU. Two car garage, central air conditioning, evaporative cooler, dishwasher, pool and jacuzzi, no pets. Preferred grad student or professional. \$650/mo call Peg Beatty 894-2429.

ROOM FOR rent in home with mother and teenage girl. Female only, South Tempe. \$200 includes utilities. 838-6224.

THREE BEDROOM two bath townhouse, pool plus, only two miles from ASU 839-2480 965-4221.

For Sale

76 OLDSMOBILE CUTLESS Supreme. AT, air, AM/FM cassette, excellent interior, excellent mechanical cond., \$2,000 oBo. 838-6204.

COMPUTER EQUIPMENT for sale: Two CAT acoustical couplers, (modems), with 300 BAUD model #490190-4. Two CAT adapters, one auto CAT model #490401, (modem). Three televideo models #920C, one Omnitec acoustical coupler model #710, one printer digital doc writer II model #LA36-DK. Make offer. Days 277-9239, evenings 978-4649.

ELECTRIC TYPEWRITER 949-9105.

FUTON OAK bed frame. Like new. \$75 OBO. Humidifier \$20 266-4929.

HEAD 180 skis with Solomon 444 bindings. Excellent condition, \$75 273-6657.

KING SIZE water bed complete, Omega speakers, typewriter, sewing machine, rocker, misc. 838-6204.

MUST SELL Dobson Ranch Condo., asking \$59,000 assumable, two bedroom two bath, upgrade shutters, washer dryer mirror and so forth 820-0379, 258-0160.

PIONEER SPEAKERS 100 watts. Brand new, never used. Paid \$600 will take \$100 for the pair, moving must sell 956-2336.

SCHWINN CONTINENTAL extra large frame, Michelin, Sun Tour \$100, after 6:00 963-7535.

Help Wanted

ADVERTISING SALES people needed for local newspaper, part time or full time. Experience desired but not necessary call 968-5622 or 966-4889.

ATTENTION ACCOUNTING majors. Mesa public accounting firm seeks an accountant trainee. A first semester junior desired. Permanent part-time position, flexible hours. Require a minimum of 20 hours per week. Must have a naturalness for numbers. Applications being taken, 9 to 11 a.m. and 3 to 5 p.m., Tues, Wed, and Thurs. at 160 S. Hibbert, Mesa. 834-0922.

BURGER KING. A new Burger King opening soon in Tempe, on Broadway and McClintock, no experience necessary, now hiring for all shifts, part time and full time hours available, flexible work schedules, apply daily at The Burger King site 2019 S. McClintock.

Help Wanted

ARE YOU a psychology, sociology or social science major? We are offering a unique employment opportunity in bilateral training. Interested? Call 953-3731.

"ASU IS calling you... to join the ASU Telefund Drive! Gain valuable work experience in fund raising and P.R.; nightly bonuses and incentives available. Call Sherry McIntosh at 965-6754 after 1:00 p.m. for more info."

CASH PANHANDLERS Pizza is now hiring drivers starting at \$350 per hour. Other benefits included. Must have your own vehicle, apply in person at 106 E. University.

COOKIES FROM home! Are you a cookie person? We are looking for special people for: morning production, office help, store staff, bookkeeping. Full time and part time available. Call for appointment at 894-1944 or stop in at 418 S. Mill Avenue in Tempe.

DAY BARTENDER, female preferred with experience, also hostesses and food servers needed. Apply in person at La Casa Serrano. Southwest corner of Rural and Guadalupe 345-0044.

DOG TRAINING assistant needed for obedience and protection demonstration. No experience necessary. \$40 paid, leave message 829-8143.

DO YOU have severe menstrual cramps? Want quick relief, fast? 100% guaranteed 100% safe, no gimmicks, call "Press to Impress Unlimited 946-8210.

EARN \$100 to \$2,000 per month. Only hard working and reliable individuals need apply. We train, 837-3184.

ENTERPRISING BUSINESS student needed to solve problems for me on own hours, much money to be earned call for interview 251-8603.

EXP SECRETARY/receptionist with good typing and organizational skills. Duties include a variety of office tasks, light record keeping, billing and A/P. Competitive salary and company paid benefits, contact George Schwalin. Data Sales Company 991-2940.

FULL OR part time guard for all areas of the valley, call 820-1919. Internal Security Agency.

GOING HOME for Christmas? Let Avoa help. Call Teri 839-9227.

IMMEDIATE OPENINGS for energetic students; gain valuable experience in P.R. and fundraising, earn up to \$7.00 an hour plus nightly incentives. Campaign for St. Lukes Polson Management Center call 251-8618.

\$5/HOUR START TODAY

Walk from ASU. Blue jean type company. Will train, rapid advancement. Need six people immediately. M-F, 4 to 8 p.m.

MR. DAVISON
966-0582 10/4

GOLDWATERS

Students - Part Time
We are building a staff to receive check and mark merchandise. Will be scheduled 20-25 hours per week between 6 a.m. and 6 p.m. and possibly eight hours on Saturday to fit your availability. Five miles SW ASU.

Apply:
Distribution Center
4405 E. Baseline, Phoenix
10/3

MONEY MOTIVATED? \$10/HOUR DURING TRAINING PERIOD 5 minutes from ASU

Early birds sell industrial tools nationwide via W.A.T.S. telephone system. No cold calling.

EARN WHILE YOU LEARN.
5 HOURS M-F 4 A.M.-9 A.M.
Western Tool
Call 345-8433 10/3

Help Wanted

INSTRUCTIONAL AID III- 2 positions college work study; minimum 20 hrs/wk; \$4.23 hr. Position located at 222 W. Osborn, Ste 108 in Phoenix. Applicants must have transportation; must type 40 wpm, file and do general clerical work; computer experience helpful. Prefer students who plan to work in the helping professions upon graduation. Graduate students encouraged to apply.

JONATHANS PIZZA is looking for delivery drivers to staff four new locations in Tempe and Mesa. Drivers must have own insured car. High possible earning potential, apply in person after 11:00 daily at Jonathans Pizza 933 E. University.

MARKETING RESEARCH interviewers needed. No experience necessary. Quick Test Opinion Center, located in Los Arcos Mall in S.E. Scottsdale. No phone calls please, apply in person.

MARKETING RESEARCH telephone interviewer needed for a new computer interviewing system, must have good communication skills. Permanent part time position 3-9 p.m. and Saturdays, salary \$4.50/\$5.50 per hour 264-4915 Lyn.

MARKETING RESEARCH telephone interviewer needed for a new computer interviewing system, must have good communication skills. Permanent part time position 3-9 p.m. and Saturdays, salary \$4.50/\$5.50 per hour 264-4915.

MCDONLADS NOW hiring for all day shifts, cashier and cook positions open, apply within 1031 E. Apache Tempe.

PARADISE CREAM needs ice cream servers. Must have car and work both Tempe and Phoenix stores. Part time, flexible hours, apply 1044 South Terrace. 967-2414.

PARAMEDICS \$7.50 hr., up IEMTS (C) \$6.50 hr., up. Both full time, plus fringe benefits, moving allowance. Immediate openings, Life Line Ambulance, Prescott, 445-3812 M-F 8 a.m.-5 p.m.

PART-TIME technical writer to work on computer software user guides, contact Carl at 838-7744.

PART TIME afternoons, general office, errands, friendly and outgoing person. Need a good driving record 946-8923.

PART TIME help for housecleaning, filing and help in general, \$6 hr. Evenings and weekends call 945-2003.

PRE SCHOOL needs toddler teachers. Monday through Friday, mornings and afternoons, part-time. Enthusiastic and flexible, Cactus Pre School 437-0153.

PRESTIGE SALES position: If you want a career sales position and desire far above income, with excellent products and sales training, call 1-800-922-9287.

REQUESTING PART time delivery person, dependable with car, 2700 N. 3rd St. Davidson travel 241-1957 ext. 60.

STOCKYARDS RESTAURANT now hiring for all lunch waitress shifts, apply in person 10 to 11 and 1:30 to 3:30. 5001 E. Washington.

STUDENTS EARN \$5.05 per hour for part time work mornings and weekends, Scottsdale area. Call the Arizona Republic 271-9687 between 9 a.m. and 6 p.m.

SUMMER JOBS! National Park Co.'s. 21 parks - 5,000 plus openings. Complete information, \$5. Park Report. Mission Mtn. Co., 651 2nd Ave. WN, Kalispell, MT 59901.

VIDEO MEDIA Productions needs a part time receptionist, also will work on productions 966-6545.

WEEKEND SALES, Greyhound Park and Swap. Some sales experience necessary, spanish speaking helpful. Great job for a student. Call Bud 942-2859.

WORD PROCESSING and computer training school in the east valley is interested in contract agents who can do individual or classroom training on software packages such as Lotus, Multimate, WordStar, Accounting, etc. Please call 831-8090 Computer Learning Center.

Instruction

ASSERTIVE TRAINING classes will begin Monday October 7th. Learn to communicate assertively and increase your confidence, call Cheryl at 966-8610.

SELF AWARENESS program in concentration/meditation. On campus. Four weeks. Sri Chinmoy Centre. 839-4449.

SPANISH TUTOR, twice weekly, Paradise Valley area. 991-3724.

Motorcycles

1982 HONDA C70 Passport. 700 miles, East Mesa. Owned by retired gent. \$450. Call Elouise 965-6129.

1984 AERO 80, excellent condition, \$800. Betsy 967-1366.

Patio Sale

CHECK OUT these hours! Friday Oct. 4th 6 p.m. to 10 p.m. Saturday Oct. 5th 9 a.m. to 5 p.m. 3006 South Price Rd. Tempe.

Personal

1977 DATSUN B-210 hatch-back, four speed, air conditioning, radio, new shocks, great transportation. \$1,500 820-0388.

ADOPTION. HAPPILY married couple unable to have baby, desires to adopt newborn, can give warmth, love security. Confidential, call collect 10 a.m.-10 p.m. (718) 224-3077.

BEAUTIFUL COLOR ariel of Sun Devil Stadium 11x14 only \$1.89. Picture place lower level of Memorial Union. While they last.

FREE 24 HOURS time and temperature. 820-6124.

IF YOU take care of elderly in your home please call 979-0122.

LOW COST nursing care needed. ADHOC study. Supporting a wider range of affordable nursing care in residential and supervisory care settings. If you are for or against call 979-0122 or 266-3351.

PREGNANT? CONSIDER adoption. We may be able to help with housing and medical expenses. For pressure free counseling at no charge, call Southwest Adoption Center. 602-234-2229 or 1-800-423-2229.

SKI PURGATORY, Jan 31-Feb 2. \$140 includes transportation on chartered bus, condos at Purgatory base and two day lift tickets, \$15 deposit call Chris 968-1483.

TROUBLES? I can help! Relationships, career, personal, substance abuse. Reasonable rates. Barara Peters, M.C. 990-4139.

Real Estate

FACING FORECLOSURE or want to sell? We will assume or takeover your existing loans, you walk away. Homes! Condos! Units! Call Southport Financial (714) 859-5821.

Roommate wanted

FEMALE ROOMMATE wanted, University and Rural, own bedroom and bath, call Julie or Susan 968-7842.

RESPONSIBLE NON-SMOKING male-female to share three bedroom house. Own room and bath, nice area near park. Price and Guadalupe, \$200, plus one third utilities. Call Jon or Louann, 897-8298.

ROOMMATE WANTED for modern three bedroom condo., furnished washer, dryer, pool, jacuzzi, utilities included, near ASU \$300 negotiable. 968-4788.

ROOMMATE WANTED: Two bedroom, Pool 1/2 mile from campus, call 829-0789 nights best. \$215 plus half utilities (electric).

SERIOUS FEMALE student wanted to share two bedroom apt., with other female. Clean, Christian nonsmoker, near ASU call 966-1011.

MALE non smoker, quiet apartment complex, very close to ASU. \$230 per month plus 1/2 utilities, own bedroom, own bath contact Jeff 966-6495.

Services

CARS AVAILABLE - 21 or older. All States Drive-away, 992-5200.

EDITING TERMPAPERS, dissertations. Will perfect your english, grammar, sentence clarity and flow, paragraphing, organization, format, plus. Professional, inexpensive. Susan, M.A., 834-6038.

HAVE UNWANTED facial or body hair removed permanently by electrolysis. Free consultation, located in Tempe. Call Sharon at Desert Electrolysis Center 829-7829.

HYPNOSIS, DEVELOP self confidence, remove inhibitions, control stress and anxieties, improve memory and concentration, stop smoking or lose weight, Arizona Hypnosis and Counseling Institute. Lindsay A. Brady certified Hypnotist 966-8571.

Services

INTERNATIONAL STUDENTS: Recently published, guide to green card from student visa. Free details: Immigration Publications, P.O. Box 515-991 Dallas TX 75251.

PAPERS DUE? We can help if you're in a bind. Expert help call 844-1599.

PREGNANT? Want to be? Planned Parenthood can help. 258-4299. Fertility awareness reads your body's language.

DON'T WANT to be pregnant? ...But can't take the pill? Don't take chances. 258-4299. Fertility awareness is natural, effective.

PRIVATE MAIL boxes 50% off first quarter, also all sizes of mini storages McClintock Mini Storage 1450 South McClintock Drive Tempe 468-2212.

RESEARCH PAPERS. 15,278 available! Catalog \$2.00. Toll-free hot line: 1-800-351-0222, Ext. 32. Visa/MC or COD.

RESUME WRITING, typing and printing. Resumes that get attention. Guaranteed satisfaction. 273-6657.

SPECIAL OFFER full set of sculptured nails \$25, fill ins \$15 call Kathy near ASU 966-6111.

Transportation

AAA DRIVEAWAY. Cars to most major cities. U drive. First tank free 277-9979.

Travel

ACCURATE CUSTOM typing, spelling corrected, rush jobs welcome, reasonable. Linda 838-6830.

SOUTHWEST AIRLINE tickets available to L.A., San Diego, Las Vegas, for \$30 per ticket. Chicago round trip for \$250 for information 966-4694 Mike.

Typing

A-TYPING SERVICE, 15 years experience \$1.50 per page call Linda 962-8075 word processing also available.

A-1 TYPIST electronic typewriter picra or elite. Reports, research papers, resumes, etc., Quinet 969-3303.

A-1 WORD PROCESSING at Kinko's Copy, call 966-2035.

ALWAYS AVAILABLE for typing. Call Susan at 833-0373.

CALL ME for fast, accurate, quality service at competitive prices. Close to ASU 966-2186.

CERUSE WORD Processing. Quality guaranteed. Term papers, engineering/scientific, dissertations, theses, letters, resumes, reports, 947-7796.

EXPERT WORD processing/typing. \$1.25 double spaced page. Rough draft available. Rural/Southern. Fran 838-8027.

FAST ACCURATE and dependable typing and word processing. Reasonable rates. Candy 956-7699.

IBM word processing with letter quality printer. Papers proofed. \$1.50 per page. Free pick up and delivery on jobs over \$15. 273-6657.

PROFESSIONAL WORD processing. Term papers, resumes, etc., \$1.25 Double-spaced page, call Shirley Schollmeyer, 831-6598.

SHORT OF time? I can help. Reasonable. Professional. Guaranteed. Experienced in academic. call Jessie 945-5744.

SPELLING PROBLEMS? Will edit spelling, punctuation, and grammar, fast return, accuracy guaranteed. Joan 839-0772.

TERM PAPERS and other typing done, letter bold printing and instructors preference required \$1.25 per page, editing extra call 893-3462.

TYPING TERMPAPERS, manuscripts, resumes, etc. 831-7286.

WORD PROCESSING, storage for dissertations, thesis and term papers. Rush jobs welcome. Nancy, 830-5572.

WORD PROCESSING service. Fast, accurate, reasonable rates call 252-4804 ext. 211 or 893-8768 after 5.

Wanted

QUALIFIED TUTOR for MAE422 mechanics of materials call 897-2116 evenings.

TRAVEL ENTHUSIASTS wanted to join the nation's most reputable Campus Rep. Sales Team. Earn unlimited commissions and free trips promoting ski and beach trips. Call Sunchase Tours Inc. Today! 1-800-321-5911.

THE PIZZA PLACE
IN THE MEMORIAL UNION
Free Coca-Cola
with the purchase of an individual PIZZA
Expires 10-7-85.

ATTENTION!!

PRE-MED and PRE-DENT Students

Committee sign-up for students who will be applying to medical and dental schools next year will be the weeks of
September 30-October 4, 1985
October 7-11, 1985

Please contact the
Pre-Health Professions Office, SS-107

\$5/HOUR START TODAY
Walk from ASU. Blue jean type company. Will train, rapid advancement. Need six people immediately. M-F, 4 to 8 p.m.
MR. DAVISON
966-0582 10/4

GOLDWATERS
Students - Part Time
We are building a staff to receive check and mark merchandise. Will be scheduled 20-25 hours per week between 6 a.m. and 6 p.m. and possibly eight hours on Saturday to fit your availability. Five miles SW ASU.
Apply:
Distribution Center
4405 E. Baseline, Phoenix
10/3

MONEY MOTIVATED? \$10/HOUR DURING TRAINING PERIOD 5 minutes from ASU
Early birds sell industrial tools nationwide via W.A.T.S. telephone system. No cold calling.
EARN WHILE YOU LEARN.
5 HOURS M-F 4 A.M.-9 A.M.
Western Tool
Call 345-8433 10/3

Instruction
ASSERTIVE TRAINING classes will begin Monday October 7th. Learn to communicate assertively and increase your confidence, call Cheryl at 966-8610.
SELF AWARENESS program in concentration/meditation. On campus. Four weeks. Sri Chinmoy Centre. 839-4449.
SPANISH TUTOR, twice weekly, Paradise Valley area. 991-3724.

- Resident manager on site
- Inside Outside Self Storage
- Keys made
- Easy access, first floor level, variety of sizes

Campus Mini Storage
 1020 W. 1st Street, Tempe
 Corner of First & Hardy
968-3133

RENT ONE MONTH GET THE SECOND MONTH **FREE!**

SandcastleDesignCo.

custom screen printing t-shirts, caps, jockers and more



Tempe, Ariz. (602) 829-7817

'The Picture Place'

Memorial Union Lower Level

Enlargement Sale

From Your Negative	From Your Slides
\$.20 3 x 5 \$.50
\$ 1.00 5 x 7 \$ 1.50
\$ 1.75 8 x 10 \$ 2.00
\$ 5.75 11 x 14 \$ 6.25

NO OTHER DISCOUNTS APPLY • NO QUANTITY LIMITATION • OFFER EXPIRES 10-15-85

Dairy Queen




Banana Split
 Reg. \$1.65 **\$1.09**

Offer good only at
 950 S. Mill (Across from Gammage)
 (with coupon)

CHUCK NORRIS

NO ONE THOUGHT IT COULD EVER HAPPEN HERE... AMERICA WASN'T READY... BUT HE WAS

INVASION U.S.A.

CANNON RELEASES PRESENTATION
 MCMXXV CANNON FILMS, INC. R RESTRICTED

SCOTTSDALE 6 DI Hayden Rd. & McKellips 949-9451	AMC FIESTA VILLAGE 6 Alma Sch. Rd. & Southern 982-0668	GLENDALE 9 DI 55th Ave. & Bethany 938-9714	HARKINS CAMELBACK MALL Camelback & Scotts. Rd. 949-5425	BLAIR METRO PARK North Metro Center 987-5911
HARKINS THOMAS MALL 44th St. & Thomas 840-8811	MANN SUN DEVIL 6 960 E. University Tempe 829-0344	AMC SUNVALLEY 10 7420 East Main, Mesa 961-6200	MANN CHRISTOWN 5707 N. 19th Ave. 249-2843	GCC WESTRIDGE MALL 75th Ave. & W. Thomas 849-8888

FASHION AND COMMERCIAL MODELS

FREELANCE (NON-CONTRACT)
 MALE / FEMALE / CHILD

THE ARIZONA RED BOOK FREELANCE MODEL DIRECTORY

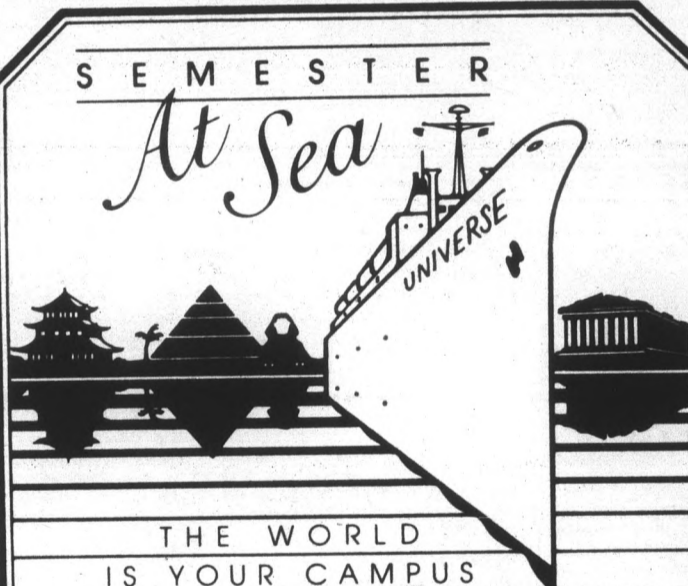
is now interviewing for its second edition!

Numerous models are successfully finding work through our first edition. The Directory is a source guide to aid independent models in finding professional modeling work and to assist qualified newcomers in getting started in the industry.

The Arizona Red Book has wide free distribution in Arizona. No agency commissions. Fee and screening required. Limited number of models accepted.

Contact: Cheryl
 Friday 12-5
 Saturday 9-6
 951-1355

SEMESTER At Sea



THE WORLD IS YOUR CAMPUS

Study around the world, visiting **Japan, Korea, Taiwan, Hong Kong, Sri Lanka, India, Egypt, Turkey, Greece and Spain.** Our 100 day voyages sail in January and September offering 12-15 transferable hours of credit from more than 50 voyage-related courses.

The S.S. **UNIVERSE** is a 500 passenger American-built ocean liner, registered in Liberia. Semester at Sea admits students without regard to color, race or creed.

For details call toll-free **(800) 854-0195**
 or write:
Semester at Sea
Institute for Shipboard Education
University of Pittsburgh, 2E Forbes Quadrangle
Pittsburgh, PA 15260

Representative at Cady Mall
 OCTOBER 2-3 • 9 a.m.-3 p.m.

FAST BUCK!



That's what you get when you become a plasma donor!

Earn \$30 Each Week, Over \$120 Per Month! Receive \$10 Your First Donation And \$20 Your Second Donation In The Same Calendar Week, Monday Through Saturday, Each And Every Week.

968-6139

University Plasma Center

1015 S. Rural Rd.
 Just a short 1-minute run from campus.

HOURS: Mon.-Thurs. 9-6
 Fri. 9-4, Sat. 9-3

Federally Inspected