

wednesday

September 25, 1985

# state press

Tempe, Arizona

Vol. 68 No. 21

Arizona State University

© Copyright: State Press, 1985

## Students raise money for Mexican quake victims



Staff photo by Ron Kuczek Jr.

Mexican-Central American Club members seek donations on Cady Mall for the victims of the Mexican earthquake. From left are finance junior Alida Rejon, business graduate Mirella Martinez, chemical engineering sophomore Monica Abrego and physics graduate Junio Saucedo.

By ED SCHUBERT  
State Press

ASU Hispanic and other concerned students are raising money for victims of last week's back-to-back earthquakes that devastated Mexico City.

Members of the Mexican-Central American Club will have a table on Cady Mall through Friday and will be soliciting donations for the Red Cross Mexican City relief effort, said club president Mirella Martinez.

The money collected will be presented to the Red Cross on behalf of ASU students, faculty and staff during a money-raising telethon Sunday, she said.

Abrego said a \$15 contribution was the largest they have received so far.

Martinez said people have to realize the Mexican disaster is "something that can happen anywhere — including here."

Gonzales said her organization will be selling tickets to the event, and those interested may contact the Career Options and Business Office at 965-4066.

The purpose of the HBA is to "recruit and retain Hispanic students in the University," help students become aware of community issues and "motivate and help each other through school."

Martinez said the MCAC is a "cultural, social" organization interested in fostering "different perspectives of what Latin America is."

"You would have to be (in Mexico City) to understand the pain and fear," she said.

Adrienne Gonzales, co-chairman of the community services committee of the Hispanic Business Association, said her group is helping promote a fund-raising dance Friday night at the Mercado shopping center in Guadalupe.

The dance is being organized by Ayuda Fraternal A Mexico (Brotherly Aid to Mexico), she said.

### Related story, page 5

Martinez said her group raised \$80 in the first two hours on the mall Tuesday, and hopes to raise "at least \$100" for every day it is out.

"Most of the people are passing by," club member Monica Abrego said. "They listen to us but are not interested enough to help."

However, she said "some people have been very generous."

## Students work with architects on beautifying McDowell Road

By COLLEEN MOORE  
State Press

ASU students have teamed up with professional architects to set guidelines for beautifying a six-mile stretch of East McDowell Road in Phoenix.

The students took part in a workshop from Friday to Tuesday along with local architects, ASU faculty members and a New York urban designer.

The purpose of the workshop was to set guidelines for beautifying the section of McDowell Road from Central Avenue to 52nd Street.

The students are enrolled in a graduate urban design class taught by ASU professor Michael Fifield. Fifield was the director of the workshop.

ASU was contacted as an advisory group by the East McDowell Civic Association to give it suggestions, Fifield said.

The workshop was funded by a \$4,500 joint grant from the association and the City of Phoenix. It ended with a public presentation of the guidelines Tuesday.

"It's unusual for students to get this type of experience," Fifield said. "This is the first time we've done anything like this in the department."

Students have been researching the area since the beginning of school, Fifield said. The students did such intensive research that they probably knew more about the McDowell area than the professionals did, he added.

"We've been working late hours," said student team member Leonard Thomas.

"McDowell Road has gone downhill over the last 20-30 years," Fifield said. "It used to be called 'the miracle mile.' There isn't any reason to go there now. We want to turn this section of McDowell Road into a special area."

The streetscape recommendations include adding trees and bushes, eliminating some

billboards and improving the use of signs. The high number of billboards are geared toward automobiles, Fifield said.

"We are recommending that businesses remove some of the signs and come up with better ones," Thomas said. "We are trying to think of landscaping ideas and improvements for bus stops."

The group also considered the impact of the Papago Freeway on the area, Fifield said.

The group's guidelines were based on recognizing two zones of McDowell Road, Fifield said.

"From Central Avenue to Squaw Peak Parkway, there are more businesses," he said. "We suggested a cosmopolitan, urban, formal type of landscaping for that area."

"From east of the Squaw Peak Parkway, there is more of a mixture of businesses and residences. We suggested a more casual, relaxed landscaping for that stretch of McDowell."

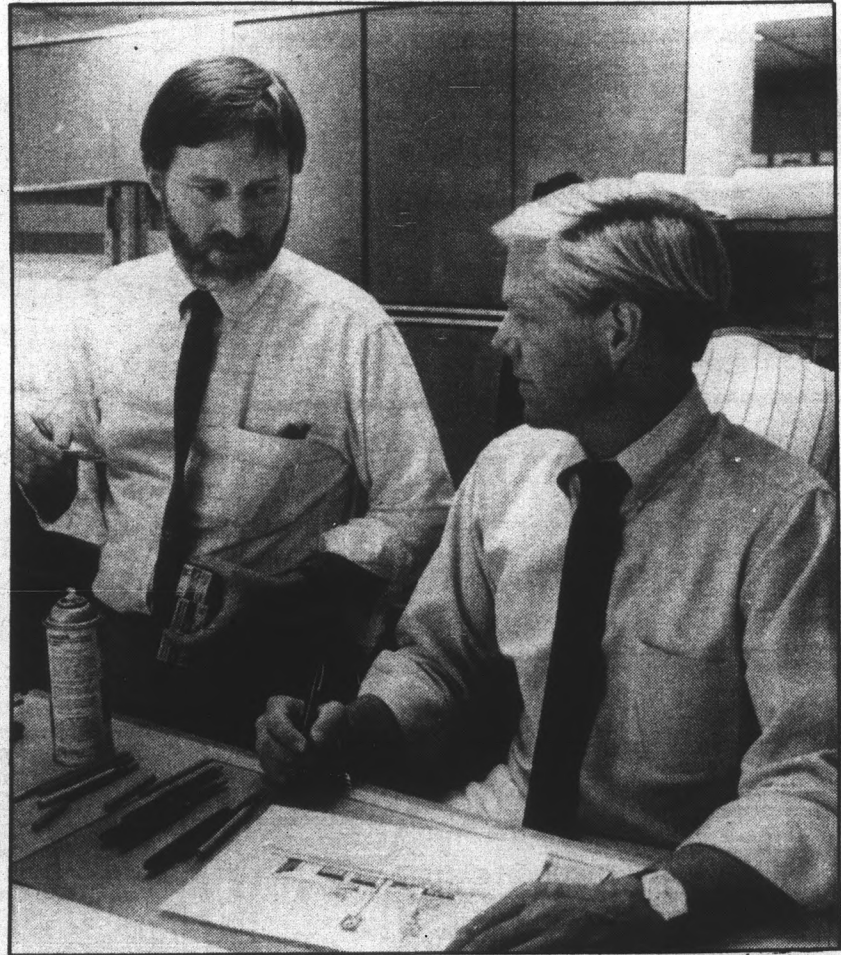
Steven Peterson, an architect and urban designer who flew in from New York to work on the project, said: "We hope McDowell will change from a central core to a fancy frontage road for the Papago Freeway."

"We are trying to make a plan that will take place over 10-15 years. We hope it will be brighter, prettier, quieter and more organized."

The group also suggested integrating more homes into the area between McDowell and the Papago Freeway, as well as the downtown Phoenix area.

"You can't make a city work by putting only businesses downtown," Fifield said.

"We tried to suggest to city officials that perhaps every street shouldn't look the same. We think that is a problem in Phoenix, and it doesn't make for a very memorable city."



Staff photo by Kevin J. Larkin

Mike Fifield, left assistant professor of architecture, discusses details of McDowell redevelopment plan with Bruce Kimball, a faculty member of the design and presentation department. Fifield is the director of the project.

### Inside Today

A safety program for women on self-protection and rape will be presented at residence halls, sponsored by two campus groups. Page 3.

An ASU student was falsely arrested for writing bad checks. Page 5.

A rock star and the wife of the treasury secretary debated in Phoenix whether rock albums should be rated on lyrical content. Page 9.

Baylor's upset of Southern Cal in football will make ASU's job tougher Saturday night when the Sun Devils play USC. Page 15.

Bloom County .....	8
Classified .....	19
Entertainment .....	9
Nation/world .....	2
Opinion .....	4
Sports .....	15

# nation/world

state press

## Soviet foreign minister condemns 'Star Wars' project in U.N. speech

UNITED NATIONS (AP) — Soviet Foreign Minister Eduard A. Shevardnadze said Tuesday that the Reagan administration's Star Wars plan threatens "a nuclear catastrophe" and called for an international program of "Star Peace."

He said the United States has "sinister plans" for the militarization of outer space that would ignite an "uncontrollable and irreversible" global arms race.

"In the final analysis, this is a road leading to a nuclear catastrophe," he said in an address to the 40th U.N. General Assembly.

Secretary of State George P. Shultz, who addressed the assembly Monday, refused to comment on the speech.

It was Shevardnadze's first speech at the United Nations since he succeeded Andrei A. Gromyko as foreign minister earlier this year.

A western ambassador, who requested anonymity, called the speech "tough and arrogant."

Shevardnadze will meet with Shultz in New York Wednesday and with Reagan in Washington Friday when he is expected to outline a new Soviet strategy for breaking the impasse at the U.S.-Soviet arms control talks in Geneva.

## Deng Xiaoping continues purge of Chinese communist party leaders

PEKING (AP) — In a triumph for top leader Deng Xiaoping, the Communist Party promoted five younger policymakers to the ruling Politburo on Tuesday, replacing

old revolutionaries with a new generation to guide China's reform.

But the scale of the transition was less than diplomats and Chinese sources forecast, and there was no replacement in the Politburo Standing Committee for Marshal Ye Jianying, who retired last week.

The Standing Committee is China's top policymaking body. Deng, 81, retained his own post of chairman of the Central Advisory Commission. No one had expected him to step down.

All of the new Politburo appointees are Deng proteges and have advanced rapidly in the party apparatus since he emerged as senior leader in 1978.

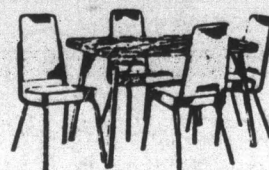
The changes were made during a full meeting of the party Central Committee in Peking. It capped a series of three meetings which Deng used to bring in newcomers to continue market-oriented reforms he launched seven years ago.

Although 10 party elders voluntarily resigned from the Politburo Sept. 16, only six seats were filled, one by a previous alternate, Vice Premier Yao Yilin, 68.

The Politburo Standing Committee, focused around Deng, now has five members instead of six.

## CORRECTION

A photograph in the Sept. 11 issue of the State Press of ASU alumna Agnes Smedley with a group of Chinese military officers was incorrectly credited as a State Press photo. The photo credit actually belongs to the Agnes Smedley Collection of the University Archives. The State Press regrets the error.



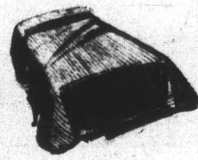
4-Chair Dinette  
**\$99.95**



4-Drawer Chest  
**\$29.95**

### — BED SALE —

Twin Set **\$69.95**  
Full Set **\$79.95**  
Queen Set **\$129.95**



6-drawer Dresser & Mirror **\$89.95**

4-drawer Desk **\$59.95**

Sofa & Loveseat **\$169.95**

— Futon Beds From **\$59.95** —

FURNITURE PLUS

2077 E. University  
Tempe • 966-6252

MasterCard

VISA

ASU

Rural

Harden  
McClintock  
F.P.

## EROTIC BANANA Eating Contest

**\$50.00** 1st prize     **\$25.00** Bar Tab 2nd prize

Wednesday Night Sept 25

The **WOODSHED** SW. Corner Baseline & Mill  
Food & Drink

## JOSEPHINE'S EATERY

30 SUPER SUBS  
6-Ft. PARTY SANDWICHES

903 S. Rural Road  
In the Cinnamon Tree Plaza  
894-2422

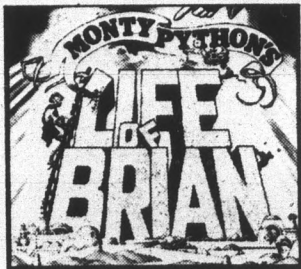
# 75¢ OFF

ANY REGULAR SANDWICH

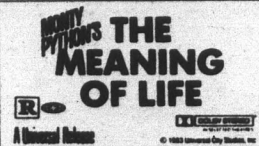
One coupon per customer. Expires 10-11-85.

## MU CINEMA

TONIGHT THROUGH SATURDAY



7:00 P.M.



9:30 P.M.

ADMISSION \$1.00  
cinema hotline: 965-5658

# Tired of "CANNED" Living?

ONLY 19 LEFT!



## THE COMMONS on Lemon STUDENT CONDOMINIUMS

We all know the problems of on-campus living: cramped quarters, no privacy, high costs, strange aromas drifting up from the carpet, yuck!

For those fortunate few who won't procrastinate, we offer just the opposite and, a little bit more. It's called The Commons on Lemon.

### FOR RENT...

Gives you the good life.

For about the same cost as dorm-living, you get the following: a town-home life style with massive amounts of living space, fully furnished with a complete housewares package, a real kitchen with all appliances including refrigerator with ice maker and microwave, washer/dryer, walk-in closets, private parking, pool, spa, barbecues, storage,

computer hook-ups, etc., etc., etc., and it's all NEW! No crunchy sofas, no cigarette burns, nothing!

And... The Commons are only two blocks from ASU, right behind the Lunt Ave Marble Club.

Now, a lot of students are going to read this and we have to be fair. There will only be fifty three town homes. A priority list is being formed — don't be left out!

### FOR SALE...

Make big bucks for Mom and Dad.

Although The Commons is a student rental property, these condominiums are for sale to parents and investors also. Due to new tax legislation, this investment can pay the major portion of a college education — YOURS!

If you or your parents want a chance to participate in this excellent opportunity you need to get your priority number now. Drop in to our office for a complete information package to take home with you. Mom and Dad will thank you.

Either for rent or for sale, kick the can and get off yours. This is truly a limited opportunity. If you don't act quickly, you may have to remain living at... well, we don't want to think about that.

The Commons on Lemon an uncommon opportunity

**TERRA MARKETING**  
REAL ESTATE SPECIALISTS  
425 S. Mill Ave., Suite 101, Tempe, AZ 85281. Phone 968-6427, 968-6437 or 955-0505

# Prevention

## ASASU, Escort Service to offer program on self-defense

By KARI BLAND  
State Press

A program emphasizing protection of women, especially those living in residence halls, from sexual attacks will be presented Oct. 1, 2 and 3 by Associated Students of ASU Women's Services and the Safety Escort Service.

"This is a big issue that faces all women," said Bonnie Johnson, director of Women's Services. "We want to make women aware of all the safety services that are available on campus."

The program will begin with a speaker from the Center Against Sexual Abuse, followed by the film "Not Only Strangers."

The film deals with "date rapes" — being raped by an acquaintance, Johnson said.

The film will be followed by a speaker from the police department who will discuss the safety features available on campus, such as blue-light phones and the new 911 emergency number.

Blue-light phones are phones that are directly connected to the police department and indicate the location of the person in trouble when taken off the hook, Johnson said.

A film about self-protection also will be shown, followed by an explanation of the Safety Escort Service.



"These are more precautionary measures," said Kathy Hays, director of Safety Escort Service. "It's how to avoid being put in an unfavorable circumstance and

what to do if it does happen."

"It is inevitable that women will find themselves in the position of being alone at night," Johnson said.

It is hard to get an accurate figure of how many attacks occur on campus each week because many incidents go unreported, Hays said.

"Some incidents are reported to ASU police, some to Tempe police and some aren't reported at all," she said.

Johnson feels that protecting oneself is a necessary part of living or just being on campus.

"You hear about and read about these things and you say that it could never happen to me, but why take the chance when protection is available?" Hays said.

The program will be presented Oct. 1 in Manzanita Hall at 7:30 p.m. and in Palo Verde Main at 9 p.m.; Oct. 2 in Sahuaro Hall at 8 p.m. for Sahuaro, Ocotillo and Mariposa residents; Oct. 3 at 8 p.m. in the Center Complex for McClintock, Best, Irish and Hayden Hall residents.

It also will be presented to interested students and faculty in the MU Pima Room on Oct. 2 at 1 p.m.

"The day presentation is basically for commuters and people who aren't living in the residence halls," said Hays.

Kiss Off contest today;  
pucker up at Cady Mall

The Breath Savers Great American Kiss Off originally scheduled for Tuesday will be held today from 11:30 a.m. to 1 p.m.

"The booth was late getting into town," said Mike Birdsall, the chairman of the special events committee of the MU Activities Board, the event's sponsor, Tuesday afternoon.

Birdsall said the Kissometer, a special sound-sensitive kissing booth that rates "pucker power", was delayed because of freighting problems.

Birdsall said the committee gained permission to hold the event today and the booth will be set up on Cady Mall east of the fountain.

Gotta problem?  
Gotta complaint?  
Gotta phone?

Call us.

The State Press

965-2292

# JONATHAN'S PIZZA

## FAST, FREE DELIVERY

FREE LITER OF SOFT DRINK WITH ANY PIZZA PURCHASE. COKE, DIET COKE, SPRITE OR DR. PEPPER.

**SEPTEMBER SPECIAL**  
RECEIVE A **SECOND FREE LITER** OF SOFT DRINK WITH EVERY PIZZA PURCHASE THROUGH SEPTEMBER.

**ASU LOCATION**  
**829-1717**

933 E. University  
Tempe Towne Plaza  
(Across from The Cornerstone)

HOURS: 11 A.M.-1 A.M. SUN.-THURS. • 11 A.M.-2 A.M. FRI.-SAT.

**JONATHAN'S PIZZA**  
829-1717

**\$1.00 off**  
any pizza

One coupon per pizza.  
Good through 10-15-85.

**JONATHAN'S PIZZA**  
829-1717

**\$1.00 off**  
any pizza

One coupon per pizza.  
Good through 10-15-85.

**LOS PRADOS townhomes**

## Investigate the Tax Benefits

Parents of ASU Students  
*Why pay rent when you can own?*

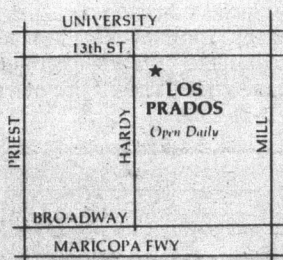
Luxurious and Affordable  
2 BEDROOM 2½ BATH  
IN TEMPE, ½ MILE FROM ASU

Los Prados Townhomes has a financing package tailored to students and parents. Inquire about the benefits of home ownership.

Live a half-mile from campus in a luxury townhome with five separate floor plans available, 2 or 3 bedrooms, as well as pools, tennis courts, spas and sundecks.

Call Los Prados or send the coupon below for information on Los Prados ownership. We've made them affordable.

**BELOW MARKET INTEREST RATES**



Please send me financing and sales information on Los Prados Townhomes.

Name \_\_\_\_\_  
Street Address \_\_\_\_\_  
City, State, Zip \_\_\_\_\_  
Phone \_\_\_\_\_

Mail to or call collect for information: (602) 966-1800.  
Los Prados Townhomes, 724 W. Fourteenth Street,  
Tempe, Arizona 85281

(602) 966-1800

Hours: 10-6

state press

Electricity is not a toy.

—Jackie Kucera

opinion

# Local authorities experiment with new weapon

W. Tim Ahl  
City Editor



A couple of weeks ago, I had what can — at the very least — be called a very enlightening experience. I and a few co-workers headed for the Maricopa County Sheriff's Department and got an up-close-and-personal demonstration of a popular new weapon called a stun gun.

I know, upon hearing the name, I too envisioned Capt. James T. Kirk and his merry band of space warriors heading off to galaxies unknown and zapping George Lucas-type creatures while good old Spock looks on. And I might add that my thoughts about the weapon did not change appreciably when I saw it.

Shaped like a small flashlight with two metal poles that throw volts of electricity, it

looks like something Kirk might pull out of his belt while flipping a switch and screaming "Beam me up, Scottie!"

But this piece of galactic-looking equipment has a rather old-fashioned purpose — to subdue an assailant attempting to endanger a law enforcement official.

From my experience, it would seem that this little jewel, which runs on a 9-volt battery, packs enough punch to stop even the most belligerent antagonist in his tracks.

The amazing part, though, is that 20 seconds later I was back to normal — if there is such a term. No side effects, no pain, but enough force to allow police officers to do their job — nearly the perfect weapon. But not quite; it does have a few disadvantages.

First, the user (hopefully a trained police officer) must come extremely close to an assailant in order to use the weapon because the stun gun must make body contact to be

One advantage of mace is that it can be shot from a fairly reasonable distance.

Secondly, a small portion of the population, about 10 percent, is nearly immune to the weapon. Either a high body fat content or a high pain threshold can affect the weapon's use and endanger the user. And worse, there is no way to tell who might be immune before it is applied.

Third, this weapon, or any like it, poses considerable potential danger in the wrong hands.

The MCSO currently has 40 officers trained to use the weapons and each officer is required to be shocked several times so he knows the limitations of the weapon. Other Valley police departments are using the weapon on an experimental basis.

ASU Police Chief C. Russell Duncan has said he does not see a need for the stun gun on the ASU campus because he does not want any "old-west-type" shootouts.

While there may not be a need for stun guns on this campus, they do provide the police officer with another non-lethal option should force become necessary — something a law enforcer can always use.

## Stun guns provide the police officer another non-lethal option should force be used.

When Cpl. Darwin Barrie of the MCSO applied the shock to my leg during a recent scenario, I lost complete control of my muscular function and immediately dropped to the floor like a pile of used rubbish. Although the 50,000 volt stun is localized, the surprise caused me to become mentally disoriented and passive enough to be controlled by police officers for a short period of time.

effective. This is all right for the trained police officer, but not for the untrained citizen who buys the weapon (at a cost of about \$90) for personal protection.

The stun gun would not be the most adventurous weapon in the hands of a woman trying to protect herself from rape. It could possibly be wrestled away by a man if he could resist the shock momentarily.

## letters

### Bombastic rhetoric based on ignorant perception of reality

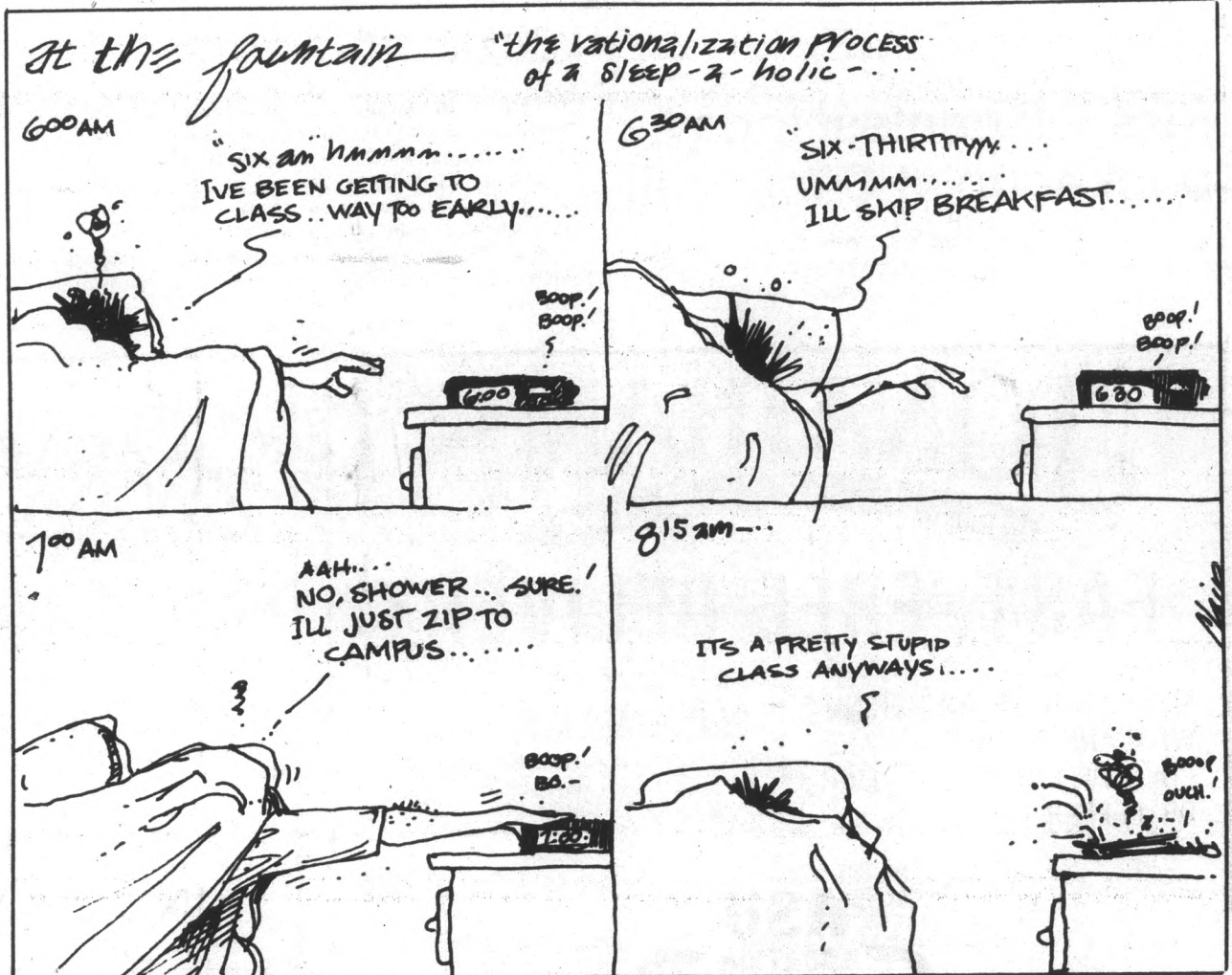
Editor:

My nephew-student brought me a copy of your Sept. 11 issue containing the usual nonsense about South Africa, and I have never read such claptrap in all my life. Example: One Santiago Vega, and a senior to boot, remarks "Marxism is not the worst of all evils, and is preferable to the present system."

Oh yeah? Is that why nobody can get out of the Soviet Gulags, while South Africa is host to more than a million-and-a-half black immigrants from neighboring countries? Try telling that Marxist pap to the black from Mozambique who is earning a living in a relatively free country, while his neighbors are being chopped up by bloodthirsty dictators!

"Worst police state in the history of the world" indeed! Is this what Mr. Vega has learned in four years at ASU? Doesn't the guy read? I will make a solid wager: if South Africa should fall to the Communist dominated African National Congress, I can assure you that should Mr. Vega visit that "worker's paradise," he had better keep his lip buttoned, because if he spouts off such nonsense as he does here, he won't have a head with a lip in it!

Colin Moore  
Phoenix



# Educating fans in high school will reduce disinterest

Editor:

I can understand your disappointment at being deprived of all of the enjoyment you desire at the ASU football games because of the fashion shows regularly displayed by the sorority girls. But try not to be so upset. It's not all their fault.

Football has always been a game students were expected to support — regardless of personal interest — in order to receive social acceptance.

I am more than a few years older than the average student at ASU. When I was in high school all students at my school were required to take four years of P.E. Even girls

who were not on competitive school teams played basketball and softball, as well as various other sports, and also devoted 20 minutes each day to calisthenics. Therefore, all of the girls who watched the games for any of the sports except football understood from personal experience what was happening, and were truly involved, even as spectators.

However, football was another story. About the only girls I knew who really understood the game were cheerleaders, or girls whose boyfriends played football. However, all of the girls I knew were more

loyal in supporting football than they evidently are now at ASU, because many of them would participate in their own competitive sports later in the school year, and be supported in return.

I went regularly to the football game, jumped up and down and yelled when the cheerleaders did, and put on a front of knowingness that would have fooled anyone. I didn't have the nerve to tell anyone I didn't have the slightest idea what was going on. I simply thought to myself at the end of each game, "what a price to pay for social acceptance."

If on the high school level; girls, and also boys who don't play the game, were educated in the basics of football, and if girls were encouraged to participate more actively in sports, the colleges would receive far more genuine enthusiasm for games like football. If weakness is encouraged, what can you expect?

I no longer take up space at the stadium and rob a true lover of football of the privilege of being there. But then, I'm not in a sorority.

Betty L. White  
Junior, Political Science

STATE PRESS

STEVE WATERSTRAT  
Editor

TOM BLODGETT  
Managing Editor

City Editor W. TIM AHL  
Asst. City Editor JOHN CONWAY  
Asst. City Editor MELISSA SMYTH  
News Editor MEAD SUMMER  
Opinion Editor GRAY T. ECHOLS  
Asst. Managing Editor WHITNEY PETERSON

Sports Editor MICHAEL KONZ  
Asst. Sports Editor JERRY BROWN  
Copy Chief JACQUIE CIROU  
Arts Editor CINDY PEARLMAN  
Asst. Arts Editor PATRICK J. KUCERA  
Photo Editor KIP WILLIAMS

The State Press is published Monday through Friday during the academic year except holidays and exam periods, at Matthews Center, Room 15, Arizona State University, Tempe, AZ 85287. Newsroom: 965-2292. Advertising & Production: 965-7572.

The State Press is the only newspaper exclusively published for and circulated on the ASU campus. The news and views published in this newspaper are not necessarily those of the ASU administration, faculty, staff or student body.

# ASU student falsely arrested for bad check writing

By LINDA COULSON  
State Press

Saturday morning, Aug. 24 started out bad and got worse for ASU recreation senior Michael J. DeFranco.

DeFranco answered a knock on the door at 6 o'clock and was presented with an arrest warrant for a crime he didn't commit.

"They told me I was under arrest for writing bad checks, but they wouldn't give me any details about anything or tell me what was going on," DeFranco said.

DeFranco said he was arrested as part of a police roundup of habitual bad-check writers in the Valley, an effort in which 140 arrest warrants were issued and 17 people were arrested.

There were two false arrests, said Richard Gerry, the attorney representing DeFranco.

Gerry said DeFranco and Earl Edwin Gobel Jr., were falsely arrested.

DeFranco was arrested because of a mistaken middle initial, Gerry said.

The Maricopa County Attorney's Office is investigating Michael A. DeFranco, president of Judco Computer Expos-Inc., in Tempe, for writing two checks with insufficient funds to the *The Arizona Republic/Phoenix Gazette*, said Sylvia Lopez, an office spokeswoman.

Michael A. DeFranco admitted responsibility for writing a bad check, dated Sept. 13, 1984, that has been turned into the attorney's office for collection, Lopez said.

Lopez said the investigative work for the Michael J. DeFranco case was submitted from the Phoenix Police Department.

Although charges against Michael J. DeFranco were dropped last week, the county attorney has not officially said he is

innocent, Gerry said.

Lopez said she did not know if the County Attorney's Office has any plans to publicly apologize to Michael J. DeFranco, "although he certainly deserves one."

Gerry said "there's no question that (Michael J. DeFranco) is not the right man, but it has not been officially admitted yet."

Michael J. DeFranco said he was taken to a police van in an unmarked car, where he was frisked, handcuffed and held for more than six hours before being taken to the Maricopa County Jail.

At the jail, Channel 10 television cameras broadcasted the arrival of the prisoners and identified them as suspected habitual bad-check writers, DeFranco said.

"My friends and people that I work with said that they recognized me. My career is shot now because I have an arrest record," DeFranco said.

DeFranco said he was released 26 hours later on his own recognizance.

DeFranco, who works part time at the Wesley Community Center, 1500 S. 10th St., Phoenix, said he is afraid he will be unable to get a job teaching physical education to kids when he graduates in December.

"My future is ruined," he said. "This could happen to anyone."

Gerry said, "It's hard to say at this point who will be sued."

"We will be notifying the county attorney in accordance to a lawsuit to gain compensation for the inconvenience and aggravation suffered from the arrest," Gerry said.

Gerry said the Phoenix Police Department had enough evidence to arrest the right person, but failed to act on it.

"A year is enough time to ascertain who is the right person to arrest," he said.

# Telethon extends helping hand to quake victims

By VICKIE CHACHERE  
State Press

ASU students and professors are being asked to contribute funds through a local Hispanic television station for the estimated 300,000 homeless victims of two earthquakes that took place last week in Mexico, an ASU official said Tuesday.

Frank Hidalgo, University director of community relations, said ASU professors have been sent letters requesting they make cash contributions to a Sunday telethon for Mexico City on KTVW-TV, Channel 33.

An estimated 5,000 people were killed and 11,000 injured in the earthquakes, which struck Mexico Thursday and Friday.

"We are going to have some people out on the mall requesting donations from faculty and staff until Friday," Hidalgo said.

He said the student organizations are being asked to collect donations between Wednesday and Friday and may also continue collecting funds during Saturday's ASU home football game.

"The key is we don't have a lot of time between now and Friday," Hidalgo said, adding that department chairmen will be sent letters requesting their assistance.

Jose Ronstadt, host of "Contrapunto" on KTVW and host of the telethon, said the telethon is being organized in less than a week.

"The local effort has received tremendous support," Ronstadt said.

"From the University we have received commitments of faculty and students that have bilingual skills and will be answering telephones," he said.

The show will be broadcast live from the Phoenix Civic Plaza beginning at noon Sunday. The eight-hour show will be presented in both English and Spanish.

Ronstadt said the telethon is cooperating with a national telethon that will be broadcasted over 360 affiliate stations around the country.

"We are asking people to provide a helping hand in the form of monetary contributions," Ronstadt said.

Phoenix Mayor Terry Goddard and members of the Phoenix City Council have donated the use of the Civic Plaza for the telethon, he said, and added the efforts are also gaining the support of local religious leaders.

A special account at the Arizona Bank has been established through the American Red Cross, he said.

Those wishing to contribute funds can deposit money directly into the account at any Arizona Bank.

"It (the American Red Cross) is the only institution that already has a mechanism in place to insure that the money gets to the people who need it," Ronstadt said, adding it will take very little time for the funds to reach Mexico City.

Musical groups, dancers and singers will perform during the telethon, he said, in addition to interviews and messages from prominent Arizona figures.

Arizona Gov. Bruce Babbitt is expected to send a taped message from South Korea, encouraging viewers to contribute, Ronstadt said.

"We had no way of predicting this kind of catastrophe," Ronstadt said. "We have had six or seven days to put together a major effort."

Ronstadt said a dollar amount has not yet been set as a goal for the telethon.

"It's hard for us to establish a goal," he said. "Our goal is to raise as much money as we can raise."

"We are talking about a purely humanitarian need."

## All dressed up & no place to go?

Starting at 8:00

No Alcohol Served

# COLLEGE NITE

WEDNESDAY

\$3.00 Admission

Must be at least 18 years old  
or have a valid college I.D.

\$1.00 off w/ ASU, MCC  
or SCC picture I.D.

The  
DEVIL HOUSE  
TROLLEY  
Service

Pick-up Points  
5th & Stadium • Manzanita  
Sahuaro Hall • Snow  
8 p.m. to 3 a.m.

# at the devil house

# W. Germans devise alternative defense plans

By ANDREA HAN  
State Press

The West German government sees the American Strategic Defense Initiative as contributing to the arms race and is offering a West European alternative, a West German newspaper editor said Tuesday.

Freidhelm Kemna, editor of the Bonn-based "General Anzeiger," said the Eureka Plan would unite European countries and focus their energies away from military expenditures.

"The Eureka Plan would pool resources, brains and money and contribute them to technological projects," Kemna said.

The plan is still being presented to European countries, Kemna said.

"The problem is deciding who and how much money will be financed from each country," he said.

"There are skeptics who don't think it would work because it is hard to agree on who would run and finance each project," he said.

Kemna said the younger generation in Germany is against the use of nuclear arms and sees American weapons as more dangerous than Soviet weapons.

"The younger people have many fears about SDI. They see the SDI as a movement against the peace effort and a weapon that will set off a new arms race," he said.

Many West Germans have called for the removal of American troops from their country because 750,000 out of 61 million inhabitants are in the military, Kemna said.

"The stretch of land is overpowered by armies and armaments. West Germany is the size of Oregon and is overkilled with military maneuvers from Germans and

Americans," he said.

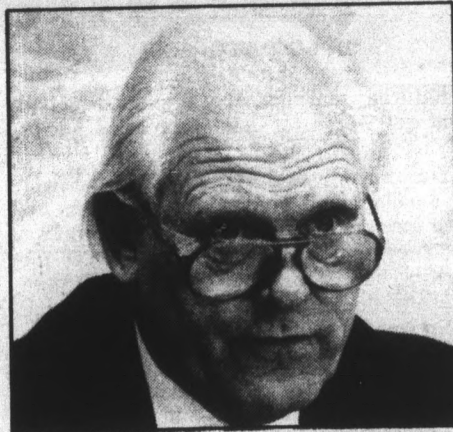
Kemna said withdrawing American troops from West Germany and Soviet troops from East Germany is not the answer to the military problem.

"The problem with taking the Americans out of West Germany is that in the event of an emergency American troops would have to be airlifted in, whereas the Soviets are next door," Kemna said.

Kemna said countries much closer to Germany are afraid that the two Germans will someday unite.

"There is no reason (to believe) in this country or anywhere else that Germany is out on the road to a reunification," he said.

"Europe does feel left out, but the problem is that Europe has never really reached the dimension it needs to have its voice heard," he said.



Staff photo by Rick Wiley

West German newspaper editor Freidhelm Kemna lectures on European views of Soviet-American relations.

**\$20 EYE EXAM**  
including contact lens professional fee

From Arizona's Leading Contact Lens, Eyeglass & Hearing Aid Centers

**HIGH FASHION GLASSES**  
FRAME & GLASS LENSES COMPLETE

**\$21.95**

RED TAG FRAMES  
Standard bifocals complete \$39.95  
No other discounts apply  
Red tag frames only.  
+3.75 to -3.75

PLASTIC LENSES AT ADDITIONAL COST

<p><b>SOFT CONTACT DAILY WEAR PACKAGE \$69.95</b></p> <p>Package includes: 1 pr. soft contact lenses ..... 0 Start-up kit ..... 0 Wearing instructions ..... 0 Service agreement ..... 0 *Complete package ..... \$69.95</p>	<p><b>SOFT COLORS BY CIBA VISION CARE \$44.95 per pair</b></p> <p>Soft contact lenses in four natural colors: blue, green, aqua and amber. One pair per customer. B&amp;L extended wear tinted lenses available \$99.95</p>	<p><b>SOFT CONTACT EXTENDED WEAR PACKAGE \$99.95</b></p> <p>Package includes: 1 pr. extended wear soft lenses . 0 Start-up kit ..... 0 Wearing instructions ..... 0 Service agreement ..... 0 *Complete package ..... \$99.95</p>
--	---	---

Certain Power Restrictions apply. One pair per customer.  
No other discounts apply.

LICENSED DOCTORS OF OPTOMETRY AVAILABLE

**NATIONAL EYE & EAR**

3133 S. Mill (Mill & Southern) Huntington Square Plaza, Tempe  
CALL OR COME IN. PHONE 967-3197

Rated one of the best contemporary hair salons in the Southwest!

Walking distance from ASU

215 E. 7th Street, Tempe, Arizona • 966-5192

**CRIMPERS LTD**

ONE GREAT EXPERIENCE...  
**Ski the Alps**

**"The Innsbruck Express"**  
9 days Escorted

FROM PHOENIX DEPART JAN II

**\$959**

**SPECIAL TOUR FEATURES**

- 6 nights hotel accommodations with private bath (choice of categories)
- 1 night hotel accommodation in Heidelberg on return with special Farewell party
- Breakfast and dinner daily
- Professional Passage Tours Ski Escort
- Transfer to the ski area by deluxe motorcoach
- World class skiing at the five Olympic areas of Igls, Hungerburg, Axamer Lizum, Mutters, and Tulfes.
- Hotel and restaurant taxes and gratuities
- Passage Tours Vacation Kit

**CONTACT DAWN**  
DEPOSIT OF \$100  
DUE BY 10-4-85.  
FREE AIRPORT PARKING

**Ask Mr. Foster**  
Travel Service Since 1888

Formerly Valley Travel  
707 South Forest, Tempe, AZ 85281  
Telephone (602) 967-9403

# Yom Kippur prompts Rabbi to remember 1973 war

By ED SCHUBERT  
State Press

Memories of the 1973 Yom Kippur War between Israel and a Syrian/Egyptian alliance will not be far from the minds of those attending today's Yom Kippur services in the MU Arizona Room, said the Rabbi who presided over the service 12 years ago today.

Rabbi Barton Lee said the sacred Jewish holiday, which is spent in fasting, prayer and repentance, had a greatly heightened meaning in 1973, when it seemed Israel might be "pushed into the sea" by Egyptian and Syrian armies.

The attack was completely unexpected, and Israel fared poorly during the first days of the war, he said.

Lee recalled that he had set his radio alarm the previous night, and awoke on Yom Kippur morning to news that Egyptian forces had made a surprise attack across the Sinai Peninsula and that there was "serious Syrian penetration of the Golan Heights."

Israel captured the Sinai Peninsula from Egypt and the Golan Heights from Syria during the 1967 Six Day War.

By the time Lee arrived at the MU Arizona Room to lead services, "it was clear that the situation was very grave" and Israeli soldiers "were literally being called out of synagogues" to go to war.

Lee said as people began to arrive for services, many concerned about friends and relatives in Israel, there was a refrain of questions such as "What's happening?" "What's going on?" and "Have you heard the news?"

During Sin Shalom, a prayer for world peace, Lee said he "wondered if that would ever happen for the Jews."

"There was a very strong sense that it was a matter of indifference (to the world) if the Jews had a few acres where

we can live as a matter of right, as opposed to sufferance," he said.

A radio was set up in the lobby of the Arizona Room, and when services ended in the afternoon it was clear there was "very, very deep penetration" of Israeli defenses, particularly by the Syrians, he said.

The attack had revealed "tremendous disorganization" within the Israeli military, and Israeli settlements in the Golan Heights had been evacuated, he said.

Students talked of going to Israel as volunteers, and some actually did — even if only to "deliver mail or pick up garbage," Lee said.

**'There was a very strong sense that it was a matter of indifference if the Jews had a few acres where we can live . . .'** — Barton Lee

After an emergency American airlift four days after the start of the war, the tide began to turn in Israel's favor and the war concluded with Israeli armies "within a few miles of Cairo and Damascus," Lee said.

However, he said the victory brought with it "a tremendous loss of life and a shattered sense of security" for Israel.

Lee said the Yom Kippur War caused an "illusory sense of security" that had prevailed in Israel since 1967 to give way to a more realistic sense of insecurity.

Israeli President Chaim Herzog writes in *The Arab-Israeli Wars*: "The Yom Kippur War gains in perspective as it recedes into history, and assumes its place as a war of great historical significance."



Staff photo by Kevin J. Larkin  
Rabbi Barton Lee delivers the traditional call to Jews with the Shofar.



**SAVE \$4<sup>00</sup>**  
Decorate Your Dorm With Poster Prints of Your Favorite Pictures

Turn your favorite 35 mm color photos into gorgeous 20 by 30-inch personal poster prints from Kodak's own labs. Choose from a variety of attractive frame styles. Just bring us your 35 mm color negatives or slides. Special savings so see us today for details.

Reg. \$17<sup>95</sup>  
**SPECIAL \$13.95**

**SUNSET CAMERA**  
Tempe Center • Mill & Univ.  
829-0424

Ask for PROCESSING BY  


**FILM DEVELOPING SPECIAL**  
Get a second set of prints  
**FREE**  
with each roll of color develop & print  
**Check our everyday low prices**

	Standard 3x	Custom 4x
12 exposures	\$2.49	\$3.49
15 exposures	\$3.09	\$4.29
24 exposures	\$4.29	\$6.49
36 exposures	\$6.09	\$8.99

(C-41 process 110, 126, 135 & disc films)

Offer valid Sept. 1 through Sept. 30, 1985.

**CAMPUS DRUG**  
712 S. College (Across the street from ASU).

**FREE MOVIE**  
with this coupon and a recorder rental at only \$5.95



3118 S. Mill • Tempe  
**966-6722**

No membership fees • Proper I.D. required  
Expires 12-31-85.

**We Guarantee The Lowest Fares**

**Travel "18"**  
7155 E. Thomas, Ste. 5  
Scottsdale, AZ 85251  
949-8908 • 949-8888

All major credit cards accepted  
Free ticket delivery  
Reduced parking near the airport

Phoenix to:	ONE WAY	ROUND TRIP
Las Vegas	\$39	\$78
Los Angeles	\$39	\$78
San Diego	\$39	\$78
Chicago	\$149	\$198
Des Moines	\$130	\$198
Minneapolis	\$129	\$198

**And Many More Low Fares**  
Certain restrictions do apply.

Help Prevent Birth Defects  
Support the  
**March of Dimes**  
BIRTH DEFECTS FOUNDATION

**NO appointment**  
**FAMILY HAIR CUTTERS™**

**FREE SHAMPOO WITH THE CUT**  
with this coupon

**\$6**

**A Perfect Cut Every Time**  
No appointment necessary ever! Bring the whole family

**NO appointment**  
**FAMILY HAIR CUTTERS**

University & Rural Rd.  
**CORNERSTONE SHOPPING CENTER**  
968-8008  
Hours: Mon.-Fri. 9-9 • Sat. 9-7 • Sun. 12-5

**Designer Perm**  
**\$26<sup>00</sup>**

**Includes:**  
• Shampoo and Designer Perm  
• Perfect Cut  
• Styling  
• Long hair slightly higher

1981 No Appointments Family Hair Cutters

# police report

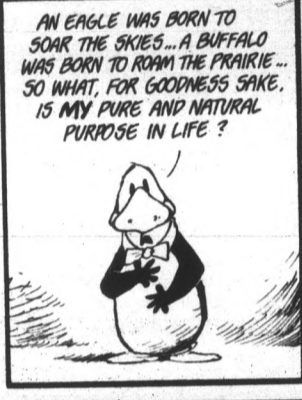
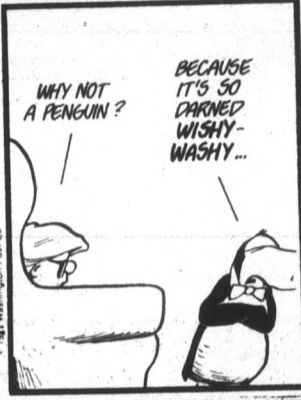
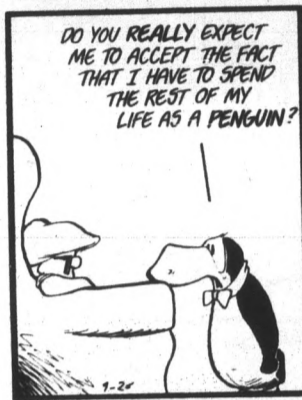
Four juveniles were arrested as runaways after being found in Ocotillo Hall Monday evening, police said. Parents of two of the juveniles had called University police from their homes in Albuquerque, N.M. and told police they suspected their children were staying with friends who are residents of the hall. The two New Mexico residents were returned to their parents. A third youth from Mesa was released to Mesa police pending notification of his parents. The fourth teenager was from Gilbert, and was placed in Durango Juvenile Facility until her parents could be notified. In other activity, University police reported the following activity in the 24-hour period ending at 6 a.m. Tuesday:

- A man found sitting in Lot 46 looking through binoculars at

Manzanita Hall told police he had come to ASU to look at the girls, police said. The man was warned about trespassing laws and was told to leave campus. •A minor was arrested in connection with endangerment on Orange Street Sunday evening, police said. The youth had been driving a Honda scooter with two passengers, which is illegal under Arizona law. None of the riders were wearing helmets or eye protection. The scooter hit a bump causing the driver to lose control of the vehicle, which almost went down in the street. Upon being pursued by police, the driver stopped and the two passengers fled the scene. The driver did not have a driver's license and told police he was currently on probation in connection with running away. The youth was released to his parents and referred to juvenile probation. •Three tumbling mats valued at \$500 each were stolen from the Physical Education West building, room 114 sometime between Friday and Monday, police said. The room had been left unlocked on occasion during the weekend.

## BLOOM COUNTY

by Berke Breathed



### Paparazzi's New York Pizza

Any Large pitcher of beer **\$1.05!**  
(per person with ASU I.D.)

Danelle Plaza  
SW Corner  
Southern & Mill  
Ph. 967-0705

### ATTENTION JEWISH STUDENTS

(recorded message)

PLEASE CALL **941-9268**

### Rory Noel Minck, M.D.

OBSTETRICS AND GYNECOLOGY

TEMPE ST. LUKE'S PROFESSIONAL BUILDING  
SUITE 5-A  
1402 S. MILL AVENUE  
TEMPE, ARIZONA 85281

PHONE: **(602) 967-8043**

Appointments usually available the same day

## 2 PRINTS FOR THE PRICE OF 1

Get two sets of quality Kodak color prints for the price of one when you bring in any size Kodacolor film for developing and printing by Kodak. Offer runs (date) to (date).

**SUNSET CAMERA**  
829-0424  
Tempe Center • Mill & University

Find out how good your prints can be... Ask for quality processing by Kodak.

## Smart Styling with PHD

Perm .... **\$30<sup>00</sup> & Up**  
Cuts ..... **\$9<sup>00</sup>**  
Student Appointment Special (After 4th cut get 5th cut FREE)

Eyelash & Brow Tinting .... **\$8<sup>95</sup>**

Private Booths  
Call Today

Mon.-Sat 9:30-9  
Sunday 11-4

**966-6111** Please Call for Appointment  
Across from the Cornerstone  
**933 E. UNIVERSITY**  
Tempe Towne Plaza  
(S.E. Corner Rural & University)

Tubing Down The Salt River  
**THE SALT RIVER IS THE THRILL THIS YEAR.**

# Fun in the Sun

Ride a Tube Down the Salt River

**TUBE RENTAL AND SHUTTLE BUS SERVICE ALL-DAY RATES**  
\$5 plus sales tax per day per person

Or Shuttle Bus Ticket Only \$2 all day  
2,000 tubes for rent open 7 days a week 9 a.m.-7 p.m.

Located 9 miles north of MESA at the junction of Bush and Usery Highways. For more information, phone (602) 984-3305 or write for your free brochure and river map.

Under permit from Tonto National Forest

**Salt River Recreation Inc.**  
P.O. Box 6568 Mesa, AZ 85206

NO BOTTLES PLEASE

Bring this ad with you for **\$1.00 OFF**  
TUBE RENTAL Monday thru Friday

## HOT STUFF

**\$39<sup>99</sup> and Less**  
Hundreds to choose from

### \$5 off each poster

(limit 2)  
Good at Mesa location only  
Must present coupon  
Expires 10-31-85.

## THE POSTERY

Discount Framed Posters

Open: Mon - Sat. 10-6  
Sun 12-5

1350 W. Southern Mesa AZ 85202  
**969-1610**  
Continental Fiesta Plaza  
Across from Fiesta Mall

1912 E. Camelback Rd  
Phoenix, AZ 85016  
Across from Colonnade

**HOT STUFF**  
UNION ST. GRAPHICS  
1690 UNION ST. SAN FRANCISCO

# entertainment & the arts

state  
press



Staff photo by Kip Williams

Rock star Don Henley and Susan Baker, co-founder of the Parents Music Resource Center, disagree. She says rate records. He told her to back off. The debate rages on. Henley played ASU Friday.

## Rock vs. parents

### Don Henley tells Susan Baker record rating is rock crock

By CINDY PEARLMAN  
State Press

Don Henley, black Wayfarer shades tucked away in his suit jacket pocket, did not want Susan Baker in his limo. He did not want her in the car.

Pat Finn, the goopy Phoenix talk-show host of "Finn and Friends," had asked the rock star and the co-founder of the Parents Music Resource Center to debate the rating of rock records based on occult, sexual or violent lyrical content.

And, when it was over, Henley hopped in the limo waiting outside the studio to book back to his Friday ASU concert, leaving Baker standing in the KPNX-TV parking lot in the green silk dress — the same one she rallied in during the Senate Congressional hearings concerning raunch in rock the day before.

"But, wait," a production assistant demanded. "Baker and Henley can both use the same car."

"Don Henley does not want Susan Baker in his car," said Henley's manager.

Period.  
And, Henley was off.

Throughout the history of rock music, parents have charged rock musicians with using sex to attract teenagers — studio monitor.

Don Henley, decked in black with a legal pad of outlined notes on his lap, sits in a blue chair on the set of "Finn and Friends." He's watching the studio monitor which is explaining to the studio audience of 40 why there is a sudden hoopla over, for example, singing the f-word about demons who are bashing someone's head in.

In an effort to "scum" the rock star up a bit, a production assistant pokes at Henley's face with powder. She manages to loosen his tie — almost right off his neck.

Henley wipes his nose, keeps his tie, clears his throat and stares across the small set at Susan Baker, wife of U.S. Secretary of the Treasury, James Baker. She is the co-founder of PMRC and is asking for what Henley calls censorship of rock music.

... from Elvis Presley to Twisted Sister, an overt expression of sex, violence and drug-taking flirtations and a preoccupation with the occult... — studio monitor.

Henley shuffles through his notes. He rolls his eyes.  
... a Senate congressional committee and hearings that rock music causes brutality to women with a glorification of rape and sadomasochism... — studio monitor.

Henley stares straight ahead. Those eyes are narrowing.  
Henley: "Bad songs are written — tasteless, sloppy, immature songs. I doubt if it harms children. We are not giving

children enough credit. They are not gullible. They are not stupid."

They're on the air.  
Henley: "Who defines what sticker you put on an album?"

Baker: "We're asking the music industry."  
Henley: "I don't trust anyone to rate my records."

Baker: "I don't want rock music to set the agenda for my sex education for my kids."

Henley: "I wonder who in the recording industry is qualified to decide what things mean."

Baker: "We, as parents, are not asking for a series of ratings. We just want a warning that the music is blatant and explicit. We want to read the lyrics."

Henley: "Put the lyrics on the back and let people read them."

Henley looks bored and restless.

Baker: "Look at me satan child. Listen to me... I drink the vomit of the priest."

**'I wonder who in the recording industry is qualified to decide what things mean.' — Henley**

She is quoting from a rock song defined by the PMRC as an "O"—occult and objectionable.

Henley looks over at the studio monitor which is playing his song and the title track from his 1985 LP, "Building the Perfect Beast."

He laughs.  
"Sharper than the serpent's tongue. Quicker than a one-night stand. And, now you will be with me. Glory, hallelujah, building the perfect beast." — Henley

It's occult, Baker says. It is a slap to the Christian music world by this "beast" being an anti-Christ, a world dictator, the PMRC says.

Henley: (shaking his head) "People never cease to amaze me. We have an obsession with our bodies — not our minds — not our souls. We're not working on the whole package. That song is about genetic engineering."

Some yo-yo accused the Eagles, Henley's former band, of being involved with the Symbionese Liberation Army when the song "Desperado" came out, the rock star says.

Baker: "Some songs are more blatant. This other thing ("Building the Perfect Beast") might not be satanic."

Henley puts his water cup down.  
Henley: "Cole Porter's 'I've Got You Under My Skin.' What are we talking about now?"

Something else sort of related to this topic. Is Henley, as previously accused in the '70s, involved with satanism?

Henley: "When the Eagles did 'Hotel California' people thought that we had Anton Levy, founder of the San Francisco Church of Satan, on the album jacket. Some guy had the nerve to say and print that the Eagles joined this. Some people are very confused out there.

"I find myself explaining my songs all the time. I don't like to because people should make up their own minds. Some words have many, many different meanings. I will explain when my songs are misinterpreted as badly as the past examples. We all know the curse words. What about what is tongue-in-cheek?"

Baker: "We don't address that."

Baker: "People who listen to rock music and who love it the most are between the ages of 11-16."

Henley: "That's not necessarily true."  
Baker: (continuing) "Those people are in a process of developing how they relate to the opposite sex. Young kids are depressed, alienated and they don't know about the world."

"People who think this is censorship have missed the boat."

Henley: "Maybe, we should know why the kids are alienated and depressed. Maybe, we should stick our parents, our schools or our society."

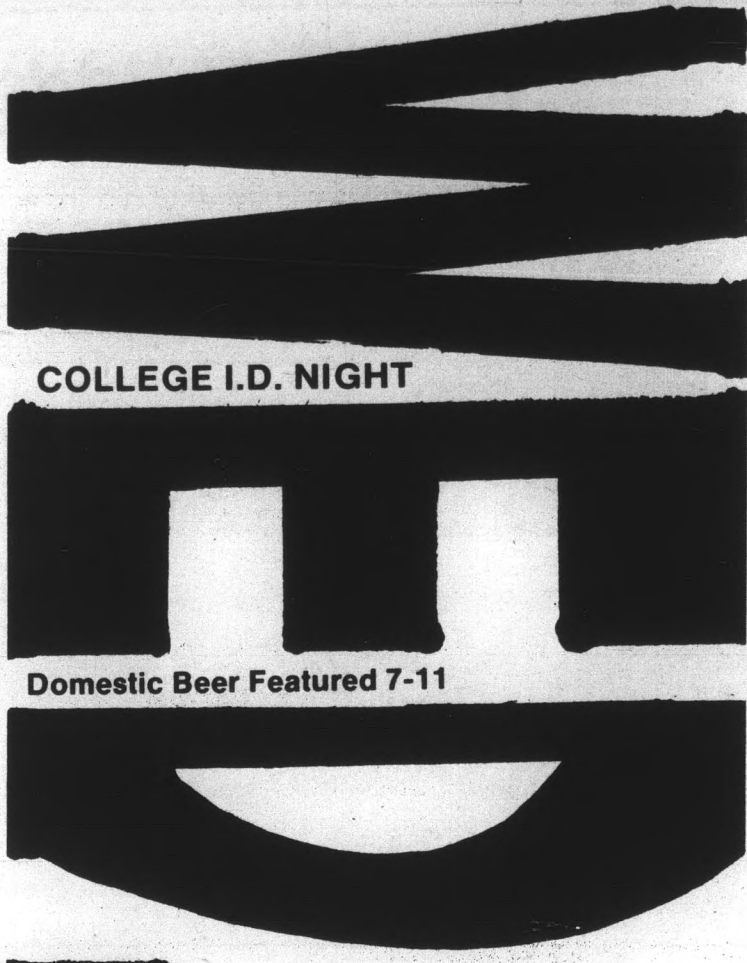
Henley gives Baker a sly smile.

The rock star tells a story for the audience. He is 20 and in college. His English professor tells him to read something (he can't remember) by the boss of literature, William Shakespeare. This teacher and Henley battle all the time. His teacher has six different ways of interpreting Shakespeare.

Henley asks her if she thought Mr. Shakespeare had all that in mind when he sat down and wrote those lines. Henley received a "D" in the course for asking.

Don Henley did not allow Susan Baker in his limo. He blatantly refused to have her in the car. If nothing else, this topic was not up for interpretation.

No smile in his eye. Henley meant it. No ride, no way. It was a beast of a way to end an evening.



**COLLEGE I.D. NIGHT**

**Domestic Beer Featured 7-11**

*graffiti's*

415 S. Mill Ave.  
Downtown Tempe  
Dial "W-O-T-F-U-N-N"

# Tonight

## 'She Stoops' plays Lyceum Theatre

By LISA POLLYEA  
State Press

Just imagine the balmy British evening of March 15, 1773. A hush sweeps the anticipating audience at Covent Gardens, London, England.

Now, envision yourself . . .

The tepid Tempe evening of Sept. 25, 1985.

A tremor of silence, the blanketcurtain lifts at the Lyceum Theatre.

Now, get ready to laugh until your stomach hurts as if you had eaten too much figgy pudding.

The 18th-century British Reconstruction comedy, complete with high-collared velvet coats with tails, is "She Stoops to Conquer" by Oliver Goldsmith. It still provides rollicking humor with ludicrous characters in preposterous situations when ASU productions presents it in the 20th century.

"It's full of comic contrivances and absurdities that don't happen in real life," said director David Vining. "It is a play full of silly, shallow characters."

However, this does not mean that the plot is empty-headed.

The setting is rural 18th century England, the sprawling estate of Mr. Hardcastle (Tony Hodges), who resides with Mrs. Hardcastle (Amy Ressler), their dotting daughter Kate (Jenny Richter) and her son by a previous marriage, Tony Lumpkin, the imp (played by Kevin D. Brown).

Way back, when there were still parentally-arranged marriages, children were supposed to silently accept (and hope and pray) that their future mate was a good catch.

Such is the case of the mismatch arranged by Mrs. Hardcastle for Tony to wed his cousin, Constance Neville (Karen Stern), who is in turn in love with the refined Hastings (Joel McGuire). Alas, Tony is only in love with the good life and wants to keep it that way.

Hastings is on his merry way to the Hardcastle manor with his friend, harlot-hopping Marlowe (Gregg Adams), son of the affluent and influential Sir Charles Marlowe, friend of Mr.

close-



The 18th-century British Recons...

Hardcastle.

Young Marlowe has been chosen like a Kate Hardcastle's future other-half.

Young Marlowe, in the words of Jenny Kate, "is a very two-sided character with brazen barmaids, but when it comes to a simp."

Gregg Adams (Young Marlowe) says plays, "When I meet her I absolutely go ly lose my cool. I talk myself out of the off."

# MATH QUIZ *A+*

1. What do you get when you add 2 hungry students and 1 college I.D.?

## 2 DINNERS FOR THE PRICE OF 1!

2. The diameter of a Lunt Ave. pizza is equally divided by how many pepperoni?

*A Tempe Tradition*

Every Wednesday, Lunt Ave. Marble Club in Tempe has a back to school special for all you people of the scholarly persuasion. Just present your college or faculty I.D. and receive two dinners for the price of one (of equal or lesser value). You don't have to be a genius to figure that one out!

And while you're there, catch the cool party action on Tempe's hottest patio.

Offer good from 4 p.m. until closing.  
Expires September 25, 1985

**Lunt Ave. Marble Club**  
1212 E. Apache Blvd. 967-9192

# Close-up



17th-century British Reconstruction comedy "She Stoops to Conquer" opens tonight in the Lyceum Theatre.

...has been chosen like a rabbit out of a hat to be ... future other-half.

...e, in the words of Jennifer Richter, who plays ... two-sided character who is comfortable with ... but when it comes to a lady of esteem, he's a

(Young Marlowe) said of the character he ... meet her I absolutely go to pieces and complete- ... I talk myself out of the engagement and take

"It's not a joke-type comedy," Vining said. "There aren't a lot of one-liners or clever turns of phrase. Most of the humor comes from the absurd situations."

Performances of "She Stoops to Conquer" will be in ASU's Lyceum Theatre at 8 p.m. Sept. 25-28 and Oct. 1-5, and at 2 p.m. on Sundays Sept. 29 and Oct. 6.

Tickets are \$5 for adults, \$3 for students and senior citizens, and are on sale at the Lyceum from 1 to 3 p.m. weekdays and one hour prior to curtain on performance nights. Tickets are also available at Gammage and Diamond's box offices.



## ONE FREE ROUND

with coupon

### CASEY AT THE BAT

Baseball & Softball Batting Range

Unique Wide Open Hitting  
With a Home Run Fence

Mon.-Fri. 12 p.m.-10 p.m.      Sporting Goods  
Saturday 10 a.m.-10 p.m.      Concessions  
Sunday 12 p.m.-10 p.m.      High Ball

990-7742

On Hayden Rd. — Across from Big Surf

## WAREHOUSE DELI & PUB

Estab. 1975 "GOOD FOOD & DRINK"

NOW SERVING MIXED DRINKS

**SPECIALS**  
**LUNCH & DINNER**  
MON.-FRI.  
10:30-2 p.m.  
Sandwich  
of the Day  
with Homemade Fries  
**ONLY**  
**\$2.36**

**MOLSON GOLDEN**  
**61¢**  
on tap  
Mon.-Thurs.  
2-4 p.m.

**HAPPY HOUR**  
MON.-FRI.  
10:30 a.m.-7 p.m.  
**IMPORTS — 94¢**  
**DRAFT BEER**  
Pitcher Glass  
**\$2.36 49¢**  
**WINE**  
1/2 liter Glass  
**\$2.36 49¢**  
**WINE COOLER**  
Pitcher Glass  
**\$2.75 65¢**

NOW SERVING MIXED DRINKS

**BREAKFAST**  
SERVED MON.-FRI. 6 a.m.-10:30 a.m.  
**\$1.29**  
3 EGGS, HOMESTYLE POTATOES,  
TOAST, BUTTER & JAM  
CHECK OUT OUR OTHER BREAKFAST ITEMS

**LIVE ENTERTAINMENT NIGHTLY**  
(No Cover, No Min.)

**130 E. UNIVERSITY DR.**  
AT FOREST  
**966-7788 • TEMPE, AZ**

Your Hosts: "The Family"

The Valley's Classy Club

## ILLUSIONS

**AFTER HOURS**  
Friday & Saturday Nights

**NEVER A COVER CHARGE**

### WEDNESDAY

Jack Daniels Special  
All Jack Daniels \$1.25

### 50¢ THURSDAY

Ladies Night  
50¢ Well, Wine, Draft AND  
50¢ Daquiris, Margaritas etc . . .  
All night for unescorted ladies  
Ice cream drinks are \$1.25

**Dancing 7 Nights a Week**

**Happy Hour 4-7 Daily**

2515 N. Scottsdale Rd. • Wilshire Plaza  
Open 11 a.m.-1 p.m. Call For Info 941-8322

Munchies  
Always Available  
Thomas  
\* Wilshire Plaza  
Oak  
A little hard to  
find but well  
worth the effort!

# THERE'S SOMETHING NEW COOKIN' AT THE MEMORIAL UNION China Town

Say hello to a good buy . . .

Free *Coca-Cola*

with the purchase of a  
Combination Plate

Expires 10-19-85.

# ASU 'tradition' creates terrific subs; College Street offers good change

By PATRICK J. KUCERA  
State Press

When you have a full-time course load and a full-time work schedule, it is hard to focus on the topic of food.

If you are not able to have a formal lunch or dinner, one of the many ASU fast-food sandwich joints near campus can offer a speedy bite to eat at a reasonable price.

One of those spots that has become a standard ASU tradition is the one, the only Sub Stop, located at 222 E. University Drive.

Having enjoyed this restaurant's brand of sandwich-making for more than three years, I can only give my highest compliments to the owners.

until the cheese is melted. It really does taste like a pizza.

The other sandwich worth mentioning is the "Sun Devil Delight." This creation has your standard ham, turkey and cheese layers, but is outstanding in its field.

One of the best parts about Sub Stop is that the managers feature live jazz bands on certain nights of the week outside on the patio. If the bands are not playing, KJZZ-FM is heard from the public address system.

Sub Stop is open late for those midnight munchies. And what good munchies they are.

One of the main competitors of Sub Stop is a small sandwich shop located just north of University Drive on College Avenue.

College Street Deli offers a variety of submarine sandwiches that are good and plentiful.

The sandwiches are made fresh and a variety of condiments are available to taste.

The sandwiches range from the combination of cheeses and meats to the standard fare of roast beef, turkey or, for those who do not eat meat, vegetarian.

Overall, ASU should be proud to have two great deli restaurants that serve some of the best sandwiches around. Despite the fact that they are in competition with each other, I heartily recommend both for lunch or a snack.

## cuisine

Sub Stop is housed in an older Tempe building and offers seating both inside and outside. Inside, the place is decorated with wooden tables and booths while newspaper stands dot the floors.

On a chalkboard located just inside, the entire Sub Stop menu awaits. The sandwiches are all given their speciality name covering the campus and interesting individuals associated with Sub Stop.

"Hank's Delight" is a concoction of cheese, pepperoni and onions covered with pizza sauce. The entire work is then heated



Terrace Road Apartments

## WALK TO SCHOOL!

1/2 block from Campus, Huge, well-furnished 1-bedroom, 1-bath, and 2-bedroom, 2-baths, all utilities included, cable TV, plus many amenities.

950 S. Terrace Rd.

966-8540

## Wait no longer! eegee's is here!

on Broadway  
just east of Dobson in Mesa

Bring this ad in for a FREE  
7 oz. eegee's frozen fruit drink.  
Good through October 1, 1985.

Sandwiches/Slushes/Salads

### Z-C. A. R. S.

Complete Auto Repair Service  
Personalized Service for  
your Datsun

Our Labor Rates are up to 27%  
Lower than Nissan Dealers!

- General Service
- Complete Engine and Transmission Service
- Brake Repair
- Performance Modifications

431 S. Stapley, Suite 26  
Inside Stapley Broadway Center  
890-8795

## THE PIZZA PLACE

IN THE MEMORIAL UNION

Free Coca-Cola

with the purchase of an individual PIZZA

Expires 9-28-85



RUNDLE'S LIQUORS & MKT.

730 S. MILL  
Corner Mill & University Ave.

- CALIF. COOLERS 4-pack \$3.63
- MEISTER BRAU BEER 6-pack \$1.89
- BEAMERO TEQUILA 750 ml \$5.33
- PLAYBOY Used Magazines \$ .71

Haagen Dazs Natural Ice Cream,  
Adult Magazines, Groceries, Ice,  
Wines, over 40 Imported Beers.

967-9079



Paramount



Nautilus SPORTS/MEDICAL INDUSTRIES, INC.

## YOU CAN FEEL THE DIFFERENCE!

Your First Visit Is Free

- 55 new weight machines
- 15 aerobics classes daily
- 10 heart mate bikes
- 10,000 pounds of free weights
- Separate ladies workout area
- Professional trainers for rent
- Air conditioning
- We have no salesmen!

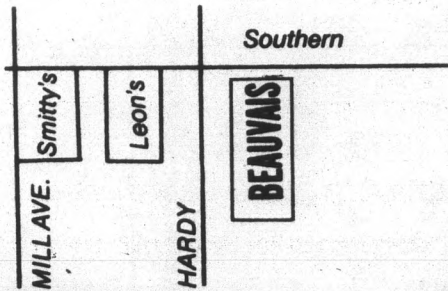
\$25 Membership Fee plus:

- \$3.50 per workout
- \$25 per month

OPEN:

Mon.-Fri. 5 a.m.-1 a.m.  
Sat.-Sun. 8 a.m.-1 a.m.

1102 W. Southern Ave.  
Tempe • 829-6969



# Beauvais'

FITNESS & AEROBIC CENTER

POWER RACK  
BODY BUILDING EQUIPMENT

POLARIS  
from IRON CO.

HEARTMATE  
COMPUTERIZED BICYCLES

# Former student-turned-comic to perform at Neeb Hall show

A. JOHN BLANCO  
State Press

Many comedians talk as if the ability to make people laugh is in their genes.

Not David Spade. In fact, he admits to being a decidedly unfunny kid.

Spade, born in Michigan but a Valley resident for 16 years, was a small, serious kid who did too well in school to have many friends.

"Everyone thought I would go into brain surgery," Spade said.

The medical profession's loss is our gain when MUAB brings Spade and his brand of comedy to ASU Thurs., Sept. 26, for two shows in Neeb Hall at 7 and 9 p.m.

Tom McGillen headlines the "Ladies and Gentlemen Comedy Corner" show and is joined by Spade.

## comedy

Spade is not an unfamiliar face to ASU. Some may remember him from "Greek Sing," a show put on by campus fraternities and sororities that he performed in a couple of semesters back.

Although it was not his first time in front of an audience, Spade said he has rarely found himself more terrified by a crowd.

Being an ASU student at the time meant that Spade was seeking the approval of friends and peers.

Spade did manage to win the audience over.

This particular performance was impressive enough to lead to several other local and national gigs.

He is particularly proud of being booked

as the upcoming opening act for Ray Charles in New York on Oct. 28.

To be a success most comics need a gimmick; Spade describes his as "being young and looking even younger."

One of his standard opening lines is, "Hi I'm David Spade. I'm 10 — that's this many (holding up 10 fingers)."

Spade said a good opening line will usually warm audiences up to the comedian, but not always.

Even the best of comedians can bomb at times, but Spade said the important thing is never to let it show.

A comic should try to ease out of a bad joke so effortlessly that the audience doesn't even realize it failed, he said.

Spade has also found that a joke that is funny in Arizona won't necessarily go over the same in New York.

Consequently, he tailors his material for the area in which he performs.

Being an out-of-town comic can have its advantages. Spade said, "I love doing shows in San Diego because people there hate Arizonans, and I play off this as much as possible."

Spade has made a few connections in California that he hopes will eventually lead to a sitcom or a movie.

He pictures himself in the kind of roles Anthony Michael Hall and Michael J. Fox specialize. "Teenage stuff," he said.

Spade said the main appeal of television and film work is the steady income it would bring.

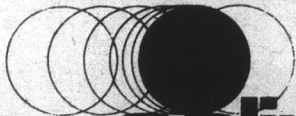
He would never give up the club performances entirely, however.

"I always see myself doing stand up (comedy)," Spade said.

A QUALITY TAN AT A COMPETITIVE PRICE

GET 2 VISITS FOR THE PRICE OF ONE

(Limited time offer)



966-2150

**eclipse** Sun Tan Center

We will honor any other area tanning salons ad specials.

55 E. Broadway (Corner of Mill & Broadway) Tempe

# HWARANG-DO

KARATE • KUNG-FU • JUDO

GRAND OPENING • TEMPE LOCATION



ONE WEEK'S FREE LESSONS JUST FOR CHECKING US OUT!

• SELF-DEFENSE • MEDITATION • WEAPONS

"Get a Kick Out of Life"

1848 E. UNIVERSITY

(1 blk. east of McClintock, Next to Sgt. Peppers)

TEMPE

967-0211

CHIEF INSTRUCTOR — KEN CORONA

The Fresh Alternative



"We Bake Our Own Bread"

OPEN TIL 2 A.M.

(11 P.M. SUNDAY)

THE LATE NIGHT SNACK!

After the show



After the game



After studying



After your roommates have gone to bed



Subway after all

Subway is open late for a fresh sandwich or salad after anything! 17 delicious varieties and Subway fixin's are free!

COUPON

HOURS

10 a.m.-2 a.m. (Mon.-Sat.)

10 a.m.-11 p.m. (Sun.)

FREE FOOTLONG SANDWICH!

buy any footlong sandwich and a medium drink and get a second sandwich (of comparable value) FREE!



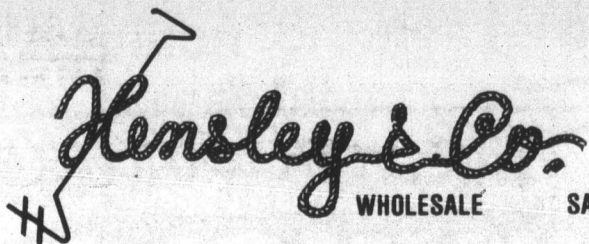
WITH THIS COUPON. NOT VALID WITH OTHER OFFERS. ONE COUPON PER CUSTOMER. EXPIRES 10-4-85.

ASU

4 E. 10th St.

Northeast corner of 10th and Mill

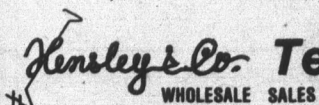
COUPON



and **Anheuser Busch**  
are pleased to be associated with  
the following clubs and programs at  
**Arizona State University:**

- Alcohol Education Week Sponsor
- Alcohol Education Committee
- NCAA Sun Devil Football
- NCAA Sun Devil Basketball
- NCAA Sun Devil Baseball
- Lady Sun Devil Invitational
- Arizona State University Student Foundation
- Sun Devil Band
- **Bud Light** Intramural Softball Tournament
- **Michelob** Intramural Golf
- **Michelob Light** Intramural Football
- **Budweiser** Intramural Supersport
- **Natural Light** Intramural Basketball
- **Michelob Light** Intramural Tennis
- **Budweiser** Intramural Softball
- **Michelob Light** Intramural Volleyball
- Homecoming
- Fraternity and Sorority Events
- ASASU Events

For any information, contact your campus  
representatives: Mike Reina and Doug Ducey  
at **968-2471**.



**Tempe, Arizona 85282 • 2927 South Hardy Drive • (602) 968-2471**

Serving the Greater Phoenix Area

# sports

state  
press

## Bruin spikers outvolley Devils, 3-1

By TOM BLODGETT  
State Press

The ASU volleyball team got a lot out of its match Tuesday night with UCLA — everything but an upset victory.

It was the first ASU volleyball match ever played in the University Activity Center. The crowd was the largest ever to watch a match at ASU — 1,568 fans.

The Sun Devils played well too, winning some respect from the Bruins, but losing the match, 3-1 (15-10, 9-15, 16-14, 15-11).

"We played right with them," ASU coach Debbie Brown said. "We should have won the third game, and I think that would have given us the confidence to push a little harder in the fourth."

It was a new experience for UCLA, too.

"We had a tough match in our opener, but this may be the farthest we've been behind this year," UCLA coach Andy Banachowski said. "It's nice to know we can come back like that."

Indeed it took a third-game comeback by UCLA to swing a match that was close from the beginning.

Tammy Webb kept ASU close early in the opening set, but the Devils had trouble on offense when she was off of the front row.

After falling behind, 4-10, ASU mounted a rally spurred on by a boisterous crowd, closing to 9-12. But it fell short as the Bruins, with some stinging shots by all-American Liz

Masakayan, took a 15-10 decision.

The Devils used their momentum from game one to jump all over the Bruins in the second game. ASU pulled in front, 10-4, and held off UCLA when it closed to within two points.

Christy Nore, whose earlier hitting had helped ASU get the lead, closed out the game by blocking a poor Bruin pass that sailed over the net. The Devils won, 15-9, bringing the fans to their feet in a round of cheering not often heard in the Activity Center.

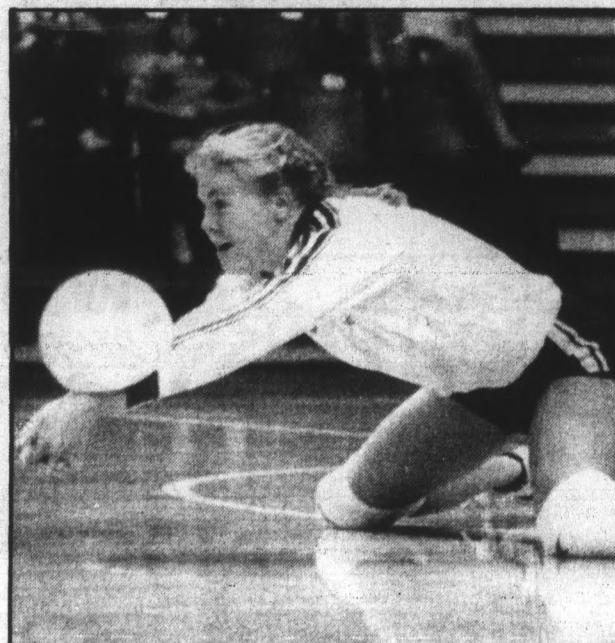
Again the strong finish carried over into the next game as ASU pulled out in front, 7-2. And again UCLA closed to within two points, lingering there until closing the gap at 13-14.

The third game had much the same script as the second but a different ending. ASU's strong finish carried over into the game and the Devils jumped out in front 7-2. UCLA pulled back withing two points before ASU put on another charge.

The Devils got to game point, 14-10. But UCLA played the kind of ball that made it a national champion, winning the next six points and the game, 16-14.

The Bruins' come-from-behind win took a lot of life out of the crowd, but ASU revived them by staying neck-and-neck with UCLA to 11 points each. But UCLA won the last four points for the game, 15-11, and match, 3-1.

Webb led all hitters with 25 kills in the four games. Masakayan topped UCLA with 17.



Staff photo by Ron Kuczek Jr.

Freshman left-side hitter Christy Nore "kept digging and digging," Sun Devil volleyball coach Debbie Brown said.

## Upset of Trojans adds fuel to normal USC-ASU bonfire

By JERRY BROWN  
State Press

Do not expect Sun Devil football coach John Cooper to send any congratulatory letters to Baylor on its upset victory Saturday over Southern California.

Cooper said the Bears' 20-13 win, which dropped USC from the Top 10, will have the Trojans fired up for their meeting with ASU Saturday night at Sun Devil Stadium.

"Baylor didn't do us any favors by beating USC," Cooper said at Tuesday's luncheon with the Valley media. "I would rather see them come in here undefeated and ranked first or second in the country."

Trojan coach Ted Tollner pointed to the inability of his offense to score when deep in Baylor territory as a key to his team's loss to the Bears.

"When you get inside the opponent's 10 (yard line) and can't score, you are creating real problems," Tollner said. "That ineffectiveness and an inability to stop the third-down play on defense hurt us."

Tollner said senior quarterback Sean Salisbury (399 yards passing, four touchdowns in two games) had a good outing, but the running game sputtered.

"It isn't one part of the running game. It seems like each time something else goes wrong," he said. "On one play, a lineman would miss a block, and the next time the back would miss the hole.

"We had a productive day passing, but it doesn't mean a lot when you wind up on the short end of the score."

Tollner said senior tailback Fred Crutcher, who has split duty with sophomore Ryan Knight in USC's first two games, will start and possibly see more playing time against the Devils.

"We'll see how the game will unfold," he said. "Fred may play more this week."

Cooper took time to acknowledge the performances of several players in ASU's 27-0 win over Pacific Saturday.

"I thought Kirk Wendorf played outstanding," Cooper said. "Darryl Harris played well and so did Vinnie Amoia and Channing Williams. If we were lining up today, Channing would start over Mike Crawford at fullback."

The turnaround of receivers Aaron Cox and Paul Day also caught Cooper's eye.

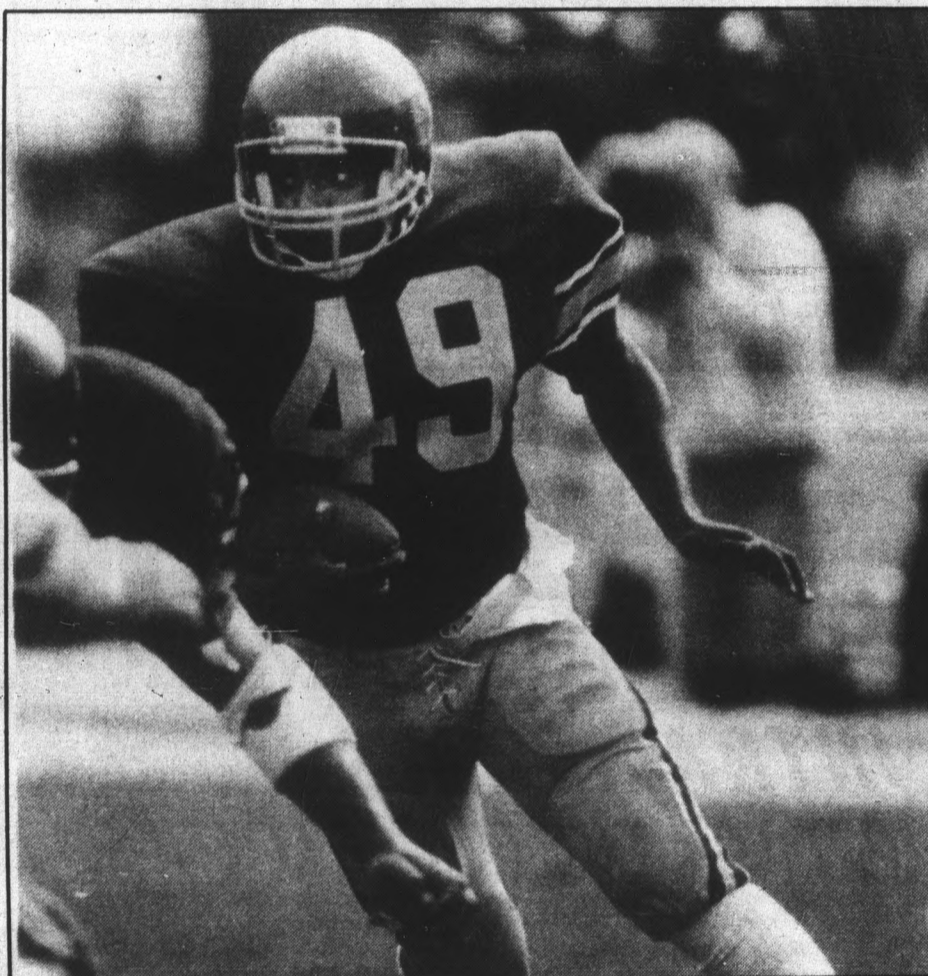
"Not only did they catch the ball well, but they did some blocking too," Cooper said. "We caught just about everything."

But Cooper stressed it would take a near-perfect effort from ASU to beat the Trojans.

"We have to play error-free football, and USC has to help us with some turnovers," Cooper said. "Even against Pacific, we turned over the ball in our territory. We can't afford anything like that this week."

"The defense has to be fanatical. We can't play toe-to-toe with USC. If they knock us off

continued page 18



Southern California senior tailback Fred Crutcher has been sharing time with sophomore Ryan Knight.

## Holmes' final quest for glory costs him legendary status

W. Tim Ahl  
City Editor



Time passes so quickly.

I can remember just a few short years ago when Larry Holmes pinned Muhammad Ali against the ropes in the 10th round of their highly touted heavyweight title fight and pounded him into submission.

Prior to the fight, Ali had looked to be in nearly the best shape of his career.

He had lost almost 40 pounds and completed more than 10,000 situps to prepare for his third bid for the most coveted boxing title in the world.

In the ring, though, it was a different story. All the training in the world would not make a difference against the younger Holmes.

Seeing Ali move was like watching a slow motion replay. He looked good standing still, but the jab and pair of legs which had legendary speed were gone — washed away with time and too many fights.

Following the bout, Holmes, who should have been celebrating, looked as if he had lost a close friend. He had

just destroyed a man he spent the early part of his life idolizing.

Holmes told the press and anybody else who would listen that he was different. He would know when to quit. He said he still respected Ali, but did not have any sympathy for someone who stayed in the sport too long.

Holmes should have taken his own advice. He reminded me a lot of Ali Friday night as he looked helpless in his bout against the smaller but quicker Michael Spinks.

A few short years ago, this fight would never have happened. Holmes in his prime was a destructive fighting

**(Holmes) is now like all the others who reached once too often for glory and found it just beyond their grasps.**

machine — perhaps the best the world has seen. Spinks would have shuddered with fear at the thought of stepping into the ring.

Friday night was different. Holmes is 35 years old, but he fought like a man much closer to 40.

His powerful jab flailed lacklusterly as Spinks bobbed and weaved, easily confusing the normally ring-smart Holmes.

And in the eighth round, the snarl that Holmes used to use to intimidate so many other opponents began to turn into a tired gasp.

Spinks was nowhere near strong enough to take Holmes out, but he was smart enough to stay away and throw enough punches to get the unanimous decision.

If the bout had taken place two years ago, I've got to believe that Holmes would have walked away with an early knockout.

So why did the fight take place at all? Why did a fighter past his prime risk the second-best record (48-0 prior to the Spinks bout) in the history of the heavyweight division?

Glory.

After each of his last four fights, Holmes had seriously contemplated retirement, but each victory brought him tantalizingly closer to surpassing Rocky Marciano's 49 wins without a loss.

Dreams of immortality and unparalleled respect must have filled Holmes' nights each time he considered stepping into the ring for just one more fight.

But now those dreams are gone forever, shattered in the evening heat of a Las Vegas parking lot against a man seven years his junior.

Holmes has nothing to be ashamed of — 48 fights with only one loss is something a man should be proud of. Unfortunately, one miscalculation can steal all the dreams.


In one quick turn the legend is gone, and Holmes is likely to go down in history having to face his own nightmare.

He is now like all the others who reached once too often for glory and found it just beyond their grasp.

**Oak Street Laundry**  
 Conveniently located at Scottsdale & Oak  
**Introductory Offer**  
 20% off (with this ad)  
 Drop Off Laundry Service  
 • Wash, Fold & Iron  
 • Same Day Service  
 Attended Hours:  
 7 a.m.-6 p.m. Mon.-Fri.  
 7 a.m.-4 p.m. Sat. **941-9436**

**The Readerie**  
 27 E. Southern  
 TEMPE, AZ 85282  
 Phone 968-7790  
 Latest Comics  
**SCIENCE FICTION**  
 • Collector Comics  
 • Dungeons & Dragons  
 • T-Shirts  
 • Posters  
 • Dr. Who  
 • Used Books  
 TAKE THE TROLLEY TO  
 Valley Fair Shopping Center  
 S. E. Corner of Mill & Southern  
 Open 7 Days

**CHELSEA'S**  
 ICE CREAM CAFE  
 OVER 33  
 ICE CREAM FLAVORS  
 FROZEN YOGURT  
 SPECIALTY DESSERTS  
 DELI SANDWICHES  
 Value **FREE Double Cone When**  
 NOT VALID WITH ANY OTHER PROMOTION OR DISCOUNT  
 You Buy First at Regular Price.  
 Expires 10-24-85.  
 915 E. Broadway  
 S.E. Corner Broadway & Rural  
 Tempe • 966-8950  
 Daily Sandwich  
 Special \$2.49

**HOOTERS** LUNCHEON SPECIAL  
 25¢ DRAFT • 99¢ SUBS  
 MON.-SUN. 11-4  
 "BEST TOP 40 BAND IN PHOENIX"  
 "SMOKEY"  
 Wed., Thurs. 9-1  
 WEDNESDAY  
 Reverse Happy Hour 8-12  
 3 Well Drinks for \$1.85  
 THURSDAY  
 75¢ Margarita  
 7-Close  
 FREE DELIVERY  
  
 SERVING NY STYLE PIZZA  
 SUBS, CHICKEN WINGS  
 801 E. APACHE  
 894-2662

**13th Annual Arizona Ski Swap 'n Show**  
 FRIDAY, SEPT. 27 — SATURDAY, SEPT. 28 — SUNDAY, SEPT. 29  
 Hours: Friday (8:00 PM-10:00 PM) Saturday (8:00 AM-6:00 PM) Sunday (12:00 Noon-3:00 PM)  
 State Fairgrounds Youth Building  
 Proceeds To Benefit Special Olympics  
 Join the thousands of people who each year, shop-it or swap-it at Arizona's largest Ski Sale. Pick from super deals on Skis, Boots, Bindings, Clothing and accessories or sell your old equipment for easy cash!  
 BIGGER & BETTER SHOW. SEE ALL OF THE NEW SKI EQUIPMENT FOR 1985.  
 CHECK OUT YOUR FAVORITE SKI AREAS.  
 Register Your Equipment:  
 THURSDAY: 8-10  
 FRIDAY: Noon to 10:00 PM  
 SATURDAY: 9:00 AM to 6:00 PM  
 25¢ handling charge per item.  
 For more information: 277-3984  
 Sponsored & Produced By The Phoenix Ski Club  


**BURGER KING** INTRAMURAL HIGHLIGHTS **BURGER KING**

**INTRAMURALS - JUST FOR THE FUN OF IT**

**ADAPTIVE INTRAMURALS**

The Adaptive Intramural Activities Gym in Physical Education West Room W-102 is for temporary or long term disabled\* men and women students, staff and faculty. Open hours are 10 a.m. to 7 p.m. Monday through Friday.  
 Programming includes individual exercise programs, athletic conditioning, bodybuilding, powerlifting, tennis, basketball, swimming and the Perrier Parcourse, in addition to organized tournaments in powerlifting, pool, tennis and swimming. Informal recreation includes video games, computer scrabble, poker, yahtzee, checkers, chess and music. To participate or for further information, visit the Adaptive Intramurals Gym, or call John T. Figy, Coordinator, 965-3090 (P.E. West Room 102).  
 \*In compliance with the Rehabilitation Act of 1973, Section 503 and 504.

**WOMEN'S INTRAMURAL SCHEDULE**

Activity	Entries Taken	Play Begins
Swimming & Diving Meet	Sept. 16-26	Oct. 4 & 5
Flag Football*	Sept. 23-Oct. 2	Oct. 14
Racquetball Singles	Sept. 30-Oct. 10	Oct. 18-20
Racquetball Doubles	Sept. 30-Oct. 17	Oct. 25-27
Cross Country Run	Oct. 21-31	Nov. 12
Powerlifting Meet	Nov. 4-14	Nov. 20

**MEN'S INTRAMURAL SCHEDULE**

Activity	Entries Taken	Play Begins
Flag Football*	Sept. 23-Oct. 2	Oct. 14
Pool	Sept. 23-Oct. 3	Oct. 12 & 13
3-Man Basketball	Sept. 30-Oct. 10	Oct. 21
Racquetball	Sept. 30-Oct. 10	Class A: Oct. 18-20 Class B: Oct. 25-27
Cross Country	Oct. 21-31	Nov. 12
Powerlifting	Nov. 4-14	Nov. 20
Wrestling	Nov. 12-21	Nov. 25 & 26

**COREC INTRAMURAL SCHEDULE**

Activity	Entries Taken	Play Begins
Flag Football Tourney*	Sept. 23-Oct. 7	Oct. 11-13
Team Superstars*	Oct. 7-24	Nov. 2
Racquetball	Oct. 21-31	Nov. 8 & 9
Bowling	Oct. 28-Nov. 7	Nov. 16
Turkey Trot	Nov. 4-20	Nov. 22

**\*\* SPECIAL EVENT \*\***  
 Intramurals Is A Family Affair — Students, Faculty/Staff are invited to bring their families (including kids) out for a night of honest, clean FUN! November 15, 1985; 7-9 p.m. in P.E. East Gym. A family that plays together stays together.

**ONE UP, ONE DOWN TENNIS TOURNAMENT**  
 WILL BE HELD IN NOVEMBER.  
 FOR MORE INFORMATION STOP BY  
 ADAPTIVE INTRAMURAL P.E. WEST  
 ROOM W-102

**INTRAMURAL OFFICE  
 PHYSICAL EDUCATION  
 WEST LOBBY  
 965-5638**

**99¢ WHOPPER LIMIT 5**  
 With this ad only. Offer expires Oct. 8-1985.  
 Limit one coupon per customer.  
 Good only at 740 E. Apache, Tempe.  
 Arent You Hungry?  


**99¢ CROISSAN 'WICH**  
 (Breakfast Hours Only)  
 Please present this coupon before ordering. Limit one coupon per customer. Not to be used with other coupons or offers. Void where prohibited by law.  
 Coupon expires Oct. 8-1985.  
 Good only at 740 E. Apache, Tempe.  


PLEASE CUT OUT THESE COUPONS TODAY!

# Pick 'Um

Well, it's the third week of Pick 'Um, which means you should have the hang of it by now. We had over 200 entries last week, which was 50 more than what we got the first week. This means we should be getting 650 forms by the end of the season. Just be thankful we're the ones doing the counting.

The prizes will remain the same this week, but we're still going to run the little ditty below so everyone gets their money's worth.

First prize will be an ASU sweatshirt from University Sporting Goods. Second place will get 50 percent off any purchase at Poster's Mostly (excluding Patrick Nagel posters). Third prize is a lunch for two at Banderstatch, and fourth place will dig into a 16-inch pizza with a choice of toppings at Gino's Pizza.

Entries must be turned in to the State Press by 3 p.m. Friday in the Matthews Center basement. Only one entry per person. The top four entries will be listed in TUESDAY'S paper.

The Arizona State game will be used as the tie breaker, so just predict the score. Place an "X" in both boxes to predict a tie in any game with the point spread taken into consideration. The teams on the left are the favorites, and the points shown will be subtracted from their final score.

U.S.C. \_\_\_\_\_ vs. ARIZONA STATE (home) \_\_\_\_\_  
Predict the score.

<b>Favorite</b>	<b>Home team in caps:</b>	<b>Underdog</b>
<b>COLLEGE</b>		
<input type="checkbox"/> Auburn	19 <input type="checkbox"/> MISSISSIPPI	
<input type="checkbox"/> GEORGIA	8 <input type="checkbox"/> South Carolina	
<input type="checkbox"/> NEBRASKA	24 <input type="checkbox"/> Oregon	
<input type="checkbox"/> Notre Dame	4 <input type="checkbox"/> PURDUE	
<input type="checkbox"/> Penn State	7 <input type="checkbox"/> RUTGERS	
<input type="checkbox"/> Oklahoma	18 <input type="checkbox"/> MINNESOTA	
<input type="checkbox"/> Texas	17 <input type="checkbox"/> STANFORD	
<input type="checkbox"/> TEXAS A&M	6 <input type="checkbox"/> Tulsa	
<input type="checkbox"/> OHIO STATE	12 <input type="checkbox"/> Washington State	
<input type="checkbox"/> U.C.L.A.	3 <input type="checkbox"/> WASHINGTON (home)	
<b>PROS</b>		
<input type="checkbox"/> Washington	2 <input type="checkbox"/> CHICAGO	
<input type="checkbox"/> SAN FRANCISCO	22 <input type="checkbox"/> New Orleans	
<input type="checkbox"/> Miami	3 <input type="checkbox"/> DENVER	
<input type="checkbox"/> L.A. Raiders	6 <input type="checkbox"/> NEW ENGLAND	
<input type="checkbox"/> DETROIT	5 <input type="checkbox"/> Tampa Bay	

Name \_\_\_\_\_  
Phone \_\_\_\_\_

COUPON

## \$200 OFF ANY LARGE PIZZA

With 3 Toppings Expires 10-31-85.

**BEER & WINE  
NOW SERVED**

**FAST  
DELIVERY**  
Anytime During  
Store Hours  
(3 mile radius)



**968-8575**  
**UNIVERSITY & HARDY TEMPE**

HOURS: Mon.-Thurs. 11 a.m.-10 p.m.  
Fri. & Sat. 11 a.m.-12 midnight  
Sun. 4 p.m.-10 p.m.

COUPON

BUY YOUR TICKETS TODAY ON CADY MALL

Thursday, September 26

## LADIES & GENTLEMEN...

# comedy corner

You didn't know you could laugh so hard!!!



Ladies & Gentlemen Laugh Co. of Arizona & MUAB presents some of the best "up and coming" comedy stars from Phoenix & across the country

**DAVID SPADE  
JOHN HEINZ  
TOM MCGILLEN**

**2 SHOWS**

7:00 p.m.  
& 9:30 p.m.

**NEEB HALL**

\*\$2.00 in advance  
\$2.50 at the door

\*Advance tickets available in the Memorial Union Activities Center • call 965-MUAB for more information

## Super Savings from Carl's Jr.

**Two Famous Star Hamburgers for \$2.29**

Offer good through: January 15, 1986.

Offer good only at: 960 East University In the Cornerstone Shopping Mall Tempe, Arizona

Not valid with any other offer or discount. One coupon per customer visit, please.

**\$1.99 buys you an Old Time Star, Reg. Fries & A Reg. Soft Drink**

Offer good through: January 15, 1986.

Offer good only at: 960 East University In the Cornerstone Shopping Mall Tempe, Arizona

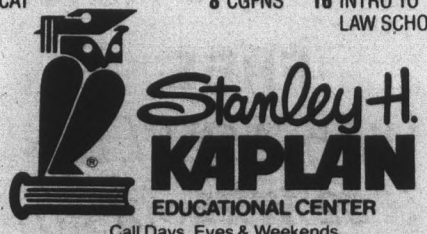
Not valid with any other offer or discount. One coupon per customer visit, please. Limit 3 per coupon.



**Carl's Jr.**

© Carl Karcher Enterprises, Inc. 1984

FOR OVER 45 YEARS

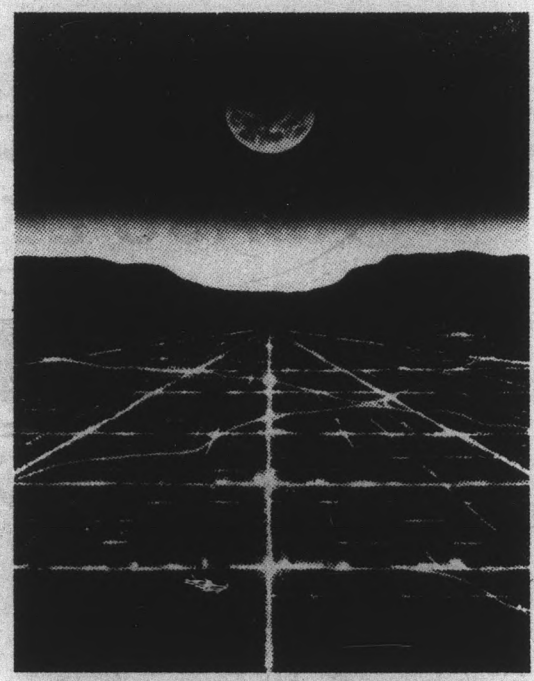


**Stanley H. KAPLAN**  
EDUCATIONAL CENTER  
Call Days, Eves & Weekends

**2 HRS. FREE TUTORING 967-2967**

## ADVANCE

### EXPLORE THE LIMITS OF YOUR CAREER AT APS!



**YOUR INVITED TO ATTEND INFORMAL GROUP MEETING**

**Monday, October 7**  
Academic Services Bldg., #105

TONE: 5-6 pm  
CBT: 6-7 pm

Scheduled Personal Interviews  
October 8 & 9

New graduates...explore the limits of your career at Arizona Public Service Company! With solid management support, state-of-the-art technology and developed career enhancement programs, we'll make the most of your skills and education.


As Arizona's largest supplier of electricity, we offer specialized training programs to new graduates in both engineering and business. The following programs allow you to choose assignments leading up to a permanent position that best matches your qualifications and career interests.

**TONE:** Our Training and Orientation for New Engineers (TONE) program offers on-the-job assignments for new Electrical, Mechanical, Civil and Nuclear Engineering graduates and gives a general, but thorough overview of the company.

**CBT:** Our Corporate Business Training (CBT) program, a 1 year training and development program designed for BS and MBA participants, offers working experience in a variety of departments (business applications) to develop skills and knowledge of the company.

Attend one of our brief presentations and question and answer session to find out more about our company and the exceptional career opportunities awaiting you, the new graduate.

Contact your Placement Office for more details. If unable to attend, please send resume to: **David Bentler, Arizona Public Service Company, P.O. Box 53999, Station 1102, Dept. ASU, Phoenix, AZ 85072-3999.** Equal Opportunity Employer



**Arizona Public Service Company**  
Specializing in Bright Futures

# Trojans

continued from 15

the line, we have to do other things. I'm pleased with the defense play so far, but we haven't played a USC yet."

Tollner and the Trojans are wary of the Devil defense, which is ranked first in the nation in scoring defense (six points per game).

"ASU is experienced, strong and fast on defense. We know what they can do," Tollner said. "They are even more impressive on film than what their stats show."

On offense, Cooper said tailback Darryl Clack, who injured his ankle against Pacific, will practice for the first time this week today under non-contact conditions. Injured nose tackle Dan Saleaumua (groin) and offensive tackle Danny Villa (foot) will not practice today.

"None of the injuries should keep them from playing," Cooper said. "Clack will start if he can, and Mike Crawford may see some time at tail."

The Trojans beat the Devils in Tempe for the first time last September, 6-3, when

very enthusiastic. It will never be easy for us to go in there and win.

"We have to make sure we keep our composure, because we know the crowd will be alive."

Cooper had his first experience with the

**'ASU is experienced, strong and fast on defense. They are even more impressive on film than what their stats show.' — Ted Tollner**

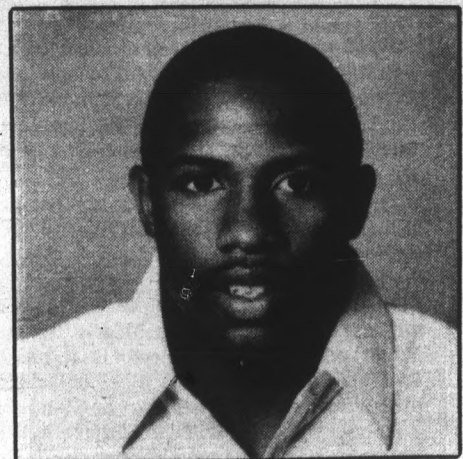
then-ASU kicker Luis Zendejas missed a 27-yard field goal in the game's final minute.

But Tollner said that although the "jinx" may have ended, it will be just as tough to beat ASU at home.

"It will never get easier," he said. "There's always a full crowd that's always

home crowd last Saturday, and although only 59,538 fans attended the game, he was pleased with the atmosphere.

"You had to be impressed with the crowd," Cooper said. "I can't compare it with anywhere I've coached before. It was just great."



Channing Williams

## Work for the STATE PRESS

Be a Classified Ad taker in the Memorial Union

(in your own private booth) 11 a.m. to 2 p.m. and then at the State Press Office from 2 p.m. to 3 p.m.

3 hrs. per day - Mon. Thru Fri.

For information call 965-7572

or visit the State Press Office in Matthews Center

**W E D N E S D A Y**

**MODERN MUSIC ADNES**

\*\*\*\*\* 222 S. MILL, TEMPE 968-0527



**EVERYBODY'S RUNNING TO ...**

### GENTLE STRENGTH COOPERATIVE

A NATURAL HEALTH FOOD STORE

Owned & Operated by Members

OPEN TO EVERYONE!

- Fresh Squeezed Juices •Flour Milled Daily
- Bulk Grains & Oils •Home Grown Veggies
- Valley's Largest Selection of Herbs

**10% OFF**  
on any purchase  
— with this coupon —  
Expires 9-30-85.  
Non-Members only.

234 W. University

(N.E. Corner of University & Ash)

968-4831



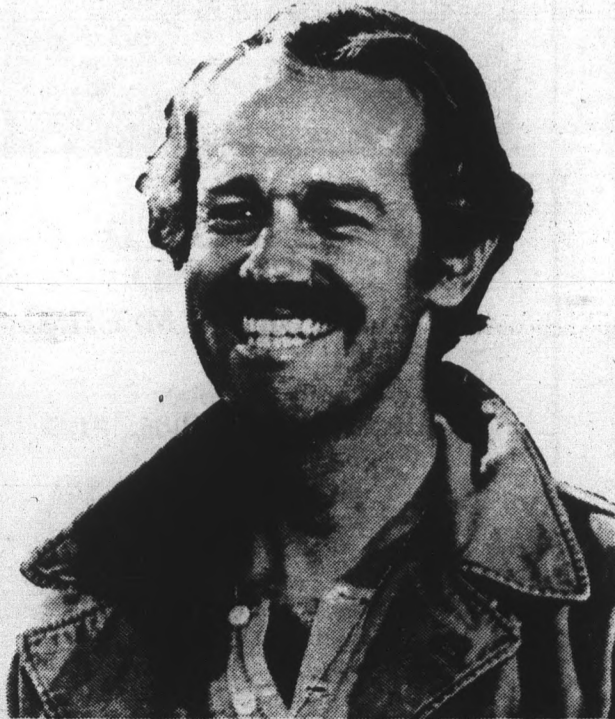
Mon.-Sat.  
9 a.m.-9 p.m.

Sun.  
10 a.m.-8 p.m.

**\$1 DRINKS ALL NIGHT!**

**Donny O'Brien's**

**ASASU LECTURE SERIES**  
presents  
**MIKE FARRELL**  
THE MESSAGE OF **M\*A\*S\*H**



**THURSDAY**  
**SEPTEMBER 26**  
**NOON**

M.U. ARIZONA ROOM

**FREE**  
With ASU I.D.  
\$2 Without

**CLASSIFIEDS START HERE**

The STATE PRESS disclaims all responsibility for quality and prices of goods and services offered in both classified and display advertising by its advertisers.

**Rates, 15 words or less:**  
**\$1.90/day** — 1 to 4 insertions  
**\$1.81/day** — 5 to 9 insertions  
**\$1.72/day** — 10 or more  
**10¢** for each additional word

**965-7572**

**Announcements**

1979 Jeep CJS only 33,000 miles, excellent condition V8-304 P.S. P.B. winch, loaded plus chrome, must see \$6,900 oBo call Gary 965-0582.

FLIGHT ATTENDANT 34 airlines hiring, 3 hour seminar. Airline recruiter limited seating, Travel Vision 945-2601.

HOUSE, THREE bedroom two bath, pool, family room, AC, fireplace near ASU \$750 946-3507.

SCHOLARSHIPS, GRANTS, other student financial aid available. (Freshmen/Sophomores). Free details. Write: Academic Aid Network, PO Box 1726, Brandon, FL 33511.

**Bicycles**

STUDENT DISCOUNT on hundreds of new and used bikes. Low prices on parts and repairs. The Bicycle Discount Center. Tempe Bike Shop, 6th and Mill, Tempe, 966-6896.

**Automobiles**

1977 CELICA NEAR flawless condition in and out, mechanically excellent, automatic, air, \$2,690. 831-0121 833-7935.

1980 HONDA CIVIC, two door five speed transmission, mechanically excellent, new brakes great gas mileage, FM stereo cassette \$2,500 965-9669.

77 PACER 6 CYLINDER automatic runs good, good tires, FM must sell \$300 OBO 955-9285.

78 FIAT SPYDER convertible 75,000K, sheepskins, runs like new, blue book is \$2,750 but must sacrifice for \$2,000 897-0340.

**classifieds**

**Automobiles**

1977 BUICK SKYHAWK, 4 speed V-6 great condition 840-2143 after 5:00.

**For Rent or Lease**

HOUSE FOR rent, three bedroom two bath, pool fireplace, new carpet, paint, \$595 month, Tempe, Gary 345-8716.

MUST RENT Dobson Ranch Condo., asking \$700, two bedroom two bath, perfect for students to share 820-0379 or 258-0160.

NEW LUXURY condo. Two bedroom, two and 1/2 bath. Gorgeous view, six miles from ASU. \$575 month. Rich, Tradewinds Realty 892-6644.

QUIET TWO bedroom loft condo walking distance ASU. Two car garage, central air conditioning, evaporative cooler, dishwasher, pool and jacuzzi, no pets. Preferred grad student or professional. \$650/mo call Peg Beatty 894-2429.

ROOM FOR rent \$240 plus 1/3 utilities, male preferred, access to pool call 966-6796.

**For Sale**

2,500 FOR SALE or trade. 10 x 47 trailer. Two bedroom one bath, partially furnished, new carpet, McClintock and Apache 948-3360.

COMPUTER TERMINAL, printing, with modem and paper. Excellent condition \$300 244-9183.

MEF - 35mm Pentax Camera like new W/50mm - 1.2 lens, with strap Pentax dedicated flash, Toyo 28-75mm 3.5-4.5 Macro Auto Zoom Lens, Albinar case. 838-0511 \$185.00.

MUST SELL Dobson Ranch Condo., asking \$59,000 assumable, two bedroom two bath, upgrade shutters, washer dryer mirror and so forth 820-0379, 258-0160.

PIONEER SPEAKERS 100 watts. Brand new, never used. Paid \$800 will take \$100 for the pair, moving must sell 956-2336.

**For Sale**

HEWLETT PACKARD 10C calculator. Good condition. \$50 or best offer. Call Jay at 968-5038.

SIX USED electric typewriters \$150 each. First come first served, call 947-3284 or 831-1080.

SMITH CARONA 2500 typewriter, heavy duty, electric with case, auto paper feed, \$225. TRS-80 color computer 16K \$120 967-7650.

TWO STORY townhouse close to ASU, two bedroom, one bath, 1100 plus sq. ft. ready to move in. By original owner 483-2691 448,500.

**Furniture**

FURNITURE FURNITURE big discounts. Mattress sale, twin sets from \$49.95, full sets from \$59.95, queen sets from \$89.95. Sofas and love seats from \$173.00. Seven piece bedroom sets from \$89.95. Bunk beds from \$125.00 complete. Bookcases, stereo cabinets, wall units, sleepers, trundle beds, plus much more. 3332 W. McDowell Rd. 233-2236.

**Help Wanted**

"ASU IS calling you... to join the ASU Telefund Drive! Gain valuable work experience in fund raising and P.R.; nightly bonuses and incentives available. Call Sherry McIntosh at 965-6754 after 1:00 p.m. for more info."

EASY WORK - boat rentals at McCormick Lake - 9:30 to 12:30 Mon. - Fri call Cam 829-1658.

EMT SPORTS medic for ASU intramurals: \$3.85 per hour. Starts October 11. Interested? Contact Juliette at 965-5638.

ENTHUSIASTIC PERSON to be Minders Binders ASU promo rep. 5 to 6 hours per week. Posting our flyers around campus earns you \$25 plus benefits. Apply at Minders Binders, 715 S. Hayden.

FULL OR part time guard for all areas of the valley, call 820-1919. Internal Security Agency.

GENERAL LABORER, Apt. complex, 30 hours a week, \$4 per hour. Apply in person at 9605 S. 48th St.

IMMEDIATE OPENINGS for energetic students; gain valuable experience in P.R. and fundraising, earn up to \$7.00 an hour plus nightly incentives. Campaign for St. Lukes Poison Management Center call 251-8618.

INTERNATIONAL FIRM, exciting new product. Full health benefits, \$5 per hour to start, plus many many extras! No selling! Five minutes from campus. Call Brad at 820-4926 M + F.

JONATHANS PIZZA is looking for delivery drivers to staff four new locations in Tempe and Mesa. Drivers must have own insured car. High possible earning potential, apply in person after 11:00 daily at Jonathans Pizza 933 E. University.

**PART TIME HELP WANTED**

Filing PC Typing Delivery Maint. Clerical FLEXIBLE HOURS VAR. POSITIONS AVAIL. IMMED.

Apply in person: M.A.M.A. 520 S. Mill Ave. Tempe, Arizona \$3.50-\$5.50/HR.

9/23

**Help Wanted**

LEARN AND earn \$200-\$600 a week in dynamic growth industry. 20 hours 946-0689.

LOOKING FOR house cleaners, transportation required, given own clientele 949-9478.

LIQUOR SALES clerk 25 to 35 hours weekly. Hours flexible. Must be mature and well groomed specializing in wine sales. No experience necessary. Nice N.E. Phoenix shopping center, 5031 N. 16th Street Phoenix. Apply 10 to 12 M,W and 10 to 4 T,T,H,F.

MODELS/TALENT, start your new career today. We can assist you, call the talent scouts at Tondy Studios 264-3530 11 a.m. to 6 p.m.

MONEY-JOBS: worried about making ends meet with the increase of education costs and talk of aid being tightened? The Army National Guard can help. Have part time jobs and aid available. Earn \$25,000 + toward your education. For details, call Dave Wautelet at 225-5574 or visit the Tempe Armory (across from Sun Devil Stadium).

NEED 25 PEOPLE who are serious about losing weight. 100% nutritional 100% satisfaction guaranteed or your money back. Nothing to lose except weight. Herbal Power 837-3184 Rogers.

NOW HIRING waitresses, Desperado's Bar and Grill 524 West Broadway, Tempe 894-6423.

PARADISE CREAM needs ice cream servers. Must have car and work both Tempe and Phoenix stores. Part time, flexible hours, apply 1044 South Terrace. 967-2414.

PART TIME typist at Kinko's Tempe II, evening and weekend hours 966-2035.

PART TIME campus representatives for fast growing company, good pay, for more information please call 967-0900.

PART-TIME telemarketer wanted. Business student preferred. Hourly plus commission. Call Nancy at Cola-Vend 966-3453.

PART TIME clerical position afternoons preferred, 15 to 25 hours a week. 1 1/2 miles West of ASU call Jill at 966-9100.

QUALITY CONTROL technician, full time Monday thru Friday, 7 a.m. to 3:30 p.m., \$5 per hour. Call Bill Colne at Impra 894-9515.

SALES SUPERVISORY skills needed to work with college students, evenings assisting people with insurance purchases, excellent growth opportunity call Leombruno and Associates. 257-4525.

SECURITY. THE Fiesta Inn. 2100 S. Priest Drive Tempe is now accepting applications for security officer trainee. Part time night shift position. Request application at front desk, no calls.

SKI FREE and earn commission. Now hiring campus reps to promote snow skiing and Mazatlan trips. Must be outgoing and motivated, flexible hours. Contact Mr. Bukley, Adventure Tours LTD 272-9660 collect.

SMALL COMPANY involved in telex, electronic mail and data communications needs student tele marketing person. \$4 per hour plus extras, call Pat 1-800-429-DATA.

**\$10 PER HOUR TO START**

No experience needed/ we will train account representative for National Tool Distribution M-F, 5-10 a.m. Dave Green 966-0582

9/25

**ANYTIME / PART-TIME \$5 to \$7 Per Hour • We Fully Train**

The nation's finest telemarketing firm is now accepting applications for the following shifts: 5-9:30 p.m. • 6:30-9:30 p.m.

Our sales people work in a modern, comfortable business environment contacting established customers on long distance WATS lines. Guaranteed salary or commission, whichever is greater, and averages \$5 to \$7 an hour. Our Tempe office is located approximately five minutes from campus.

PLEASE CALL DIALAMERICA FOR DETAILS. 829-1140

9/27

**Help Wanted**

SUMMER JOBS! National Park Co.'s. 21 parks - 5,000 plus openings. Complete information, \$5. Park Report. Mission Mtn. Co., 651 2nd Ave. WN, Kalispell, MT 59901.

TELEPHONE PROSPECTOR wanted for brokerage firm call David for interview 833-0200.

TELEVISION SURVEY, hours arranged. \$5 per hour plus bonus. Call Mr. Fisher 961-0891.

WANTED: DOORMAN large man only. Small sports bar Mill and Baseline the Woodshed Cash.

**Instruction**

AEROBIC INSTRUCTOR certification workshop, weekend of Sept. 27th at ASU by National Aerobic Training Association 968-7887 or 965-5267.

DO YOU want to get away? We have an exciting fleet of Cessna airplanes for rent from 152's to T210. Stellar Air Park 961-1156.

DO YOU want to learn to fly? It's easier and less expensive than you think. Give us a call for \$20 demo ride. Stellar Air Park 961-1156.

HIGH QUALITY flight instruction. Learn to fly at minimal cost and time. Plane rental available with lessons or with out. Norm 949-9611 or Ken 982-7866.

MASTERING SELF hypnosis, a practical course to improve concentration, confidence and self control. Jim Lane Ph.D. 966-8810.

TOTAL ACCOUNTING course only four weeks including computer processing. Be able to set up complete systems with journals, ledgers, financial statements. Morning or evening classes. Call 833-1888, Universal Accounting Systems 2655 West Guadalupe, Mesa.

**Miscellaneous**

FREE KITTENS 9 weeks old call 968-4457.

MOVING MUST sell. Brand new 12 speed touring bike un-used \$150, cordless Muruphone, \$100, Pacemat exercise mat \$175, All items \$100 under cost 345-9261.

WANTED: TO buy four tickets ASU - So. Cal. Sept 28th ph. 966-4770.

**Motorcycles**

1980 YAMAHA 650 MAXIM, excellent condition, \$1,300, 893-8273. Leave message.

**Personal**

FREE 24 HOURS time and temperature. 820-6124.

GREGGIE JOE, kiss France good-bye and come home so There! Love you or Bethie Lou.

PREGNANT? CONSIDER adoption. We may be able to help with housing and medical expenses. For pressure free counseling at no charge, call Southwest Adoption Center. 602-234-2229 or 1-800-423-2229.

TROUBLES? I can help! Relationships, career, personal, substance abuse. Reasonable rates. Barara Pefers, M.C. 990-4139.

**Pets**

FREE FRISKY PUPPIES, pitbull, collie mix, black with brown and white markings call pam 829-1088.

**Real Estate**

CUSTOM HOME, Broadmor area, family oriented with four bedrooms two 1/2 bath, heated pool, many custom features. Realty Advisers, Florence Doudne 838-1800.

**Roommate wanted**

FEMALE ROOMMATE wanted to share three bedroom two bath at Palm Tree Village. \$230 plus utilities call Kris 966-0540.

FEMALE TO share new one bedroom condo, pool, jacuzzi, washer dryer, one mile to ASU \$250 plus 1/2 utilities call Sue 894-2247.

ROOMMATES NEEDED. Three bedroom townhome in Tempe near ASU. Pool, quiet area. \$100 deposit, \$200 per month. 833-4094, or 968-6745.

SEEKING MATURE responsible yet partying female roommate to share gorgeous two bedroom two bath apt. near ASU. \$300 plus 1/2 phone call 345-0310.

**Services**

CARS AVAILABLE - 21 or older. All States Drive-away, 992-5200.

CUSTOM SEWING, you supply the materials, I will supply the expertise, free estimates call 899-8638.

HORSES HORSES horses. Our very special back to school special. Bargain month of Sept. Pay for one hour Monday thru Friday except Thursday afternoon. 26540 North Scottsdale Rd. Old MacDonald's Farm 585-0239. Weldon Riding Stable 1029 North 52nd St. in Phoenix 244-2388.

HYPNOSIS, DEVELOP self confidence, remove inhibitions, control stress and anxieties, improve memory and concentration, stop smoking or lose weight, Arizona Hypnosis and Counseling Institute. Lindsay A. Brady certified Hypnotist 966-8571.

PREGNANT? Want to be? Planned Parenthood can help. 258-4299. Fertility awareness reads your body's language.

DON'T WANT to be pregnant? ...But can't take the pill? Don't take chances. 258-4299. Fertility awareness is natural, effective.

SINGLE? HERPES? Confidential Connections-a unique, affordable dating service for singles with herpes 241-9874.

**Swap'n Trade**

NEED MONEY or want to save some? Don's Marching Band gigantic swap meet Sept 28th, Coronado High Scottsdale. Spaces \$5.00 990-1414.

**Travel**

ACCURATE CUSTOM typing, spelling corrected, rush jobs welcome, reasonable. Linda 838-6830.

AIRLINE DISCOUNTS: Chicago, Minn, Wiss, North Dakota, etc. \$249 round trip. No restrictions 9-2 11-20 Travel Tips 968-7283.

SOUTHWEST AIRLINE tickets available to L.A., San Diego, Las Vegas, for \$25 per ticket. Chicago round trip for \$190. For information 996-4694.

**Typing**

A-1 WORD PROCESSING at Kinko's Copy, call 966-2035.

A+ PROFESSIONAL WORD processing. Letters, term papers, manuscripts, resumes, dissertations. Accurate, fast service. Cheryl, 892-5279.

AAA WORD Processing Service. Term papers, resumes, customized form letters. Reasonable rates. Call Ron 833-5532.

ACCURATE FAST experienced typist \$1.50 per page call Sharon 833-5687 or Janet 834-0893.

ALL PAPERS typed to your complete satisfaction. Convenient. Reasonable. Mrs. Oakley 967-0802.

CALL ME for fast, accurate, quality service at competitive prices. Close to ASU 966-2186.

PROFESSIONAL QUALITY word processing. Will edit and correct spelling. Carolyn Douglas, 838-0959.

PROFESSIONAL TYPING service; Competitive rates, spelling and punctuation corrected, proof reading, pick-up and delivery available. Suzanne 820-1843.

PROFESSIONAL TYPING, low rate, fast service, discount for students. call Sandy 849-0689.

SHORT OF time? I can help. Reasonable. Professional. Guaranteed. Experienced in academic. call Jessie 945-5744.

SPELLING PROBLEMS? Will edit spelling, punctuation, and grammar, fast return, accuracy guaranteed. Joan 839-0772.

SUSIE TYPES. Fast, reasonable, close to ASU. 829-8645.

TYPING, IBM selectric \$1.20 per page. Cheri 967-3747 evenings.

TYPING - MANUSCRIPTS, term papers, letters, etc. call Terry 345-8262.

TYPING, REASONABLE rates call Rosetta 839-5961.

TYPING TERMPAPERS, manuscripts, resumes, etc. 831-7286.

WORD PROCESSING, storage for dissertations, thesis and term papers. Rush jobs welcome. Nancy, 830-5572.

"WORDS" FROM Estelle Typing, edit and correct spelling, pick up and deliver. Reasonable. 832-0683.

**The ADVERTISING DEPARTMENT of the STATE PRESS**

is interviewing for an opening in the advertising department sales staff.

Freshmen, Sophomores and Juniors are preferred, in that successful sales representatives and interns can continue for several semesters.

The rewards include training and experience in a professional newspaper operation and realistic compensation.

Applicants must pick up referral form from Student Employment in Matthews Center and an application blank at the State Press office, Matthews Center.

## Graduate to a higher degree of calling convenience.



Now you can charge long distance phone calls easily, even though you don't have phone service in your name.

Introducing the Toll-Only Calling Card from Mountain Bell.

With this special card, you won't need a pocketful of change to make a call from a pay phone. And you can forget the hassle of having to call collect or billing a third party—on all the long distance and local calls you make.

No other calling card offers you the convenience and range of service this card offers. With the Toll-Only Calling Card, you can call from anywhere, at any time, to any place inside and

outside your long distance calling area.

Better still, you'll be billed separately for your calls. That means you can call whenever the spirit moves you, and pay for the call at a later date. And save yourself and your roommates a lot of time and trouble trying to figure out who owes what on the monthly phone bill.

For more information about the Toll-Only Calling Card,\* call your local Mountain Bell business office. Find out how you can enjoy a higher degree of calling convenience than you ever knew before.



\*Subject to a one-time charge plus a credit verification and/or a refundable security deposit.