

Workers park on malls; ASU police give tickets

By LINDA COULSON
State Press

ASU police officers are ticketing construction workers from Fletcher & Associates Inc., who are using campus malls for private parking, the associate director of public safety said.

Douglas Bartosh said, "We know that some of the cars and trucks they have on the mall are needed to get the job done, but it's quite obvious that some of the workers are parking their own cars on the mall because it's a nice shady place."

Fletcher & Associates, which is sub-contracted by American Telephone & Telegraph, have been on campus installing telephone cables for ASU's new independent phone system.

However, a private service consultant for AT&T who is working with Fletcher & Associates on the ASU phone-installation job denied that workers are using the mall for private parking.

Dick Kelly said, "Some cars that are not marked (with Fletcher & Associates' name) are on the mall being used for business," he said.

"As far as I know, all the personal cars are parked at the work yard behind Packard Stadium, which was part of the agreement reached at the beginning of the project," Kelly added.

Assistant Director of Parking Services Richard Landreth said any vehicle parked on the mall must have an on-site or mall permit. Other vehicles being used by the construction company must have a temporary permit to park in Lot 59 behind Packard Stadium, he said.

Bartosh said ASU police officers are using common sense and checking to see if vehicles are used for private transportation before they are ticketed.

"One way we can obviously tell the car is not being used for business is when it doesn't have equipment in it," he said.

Safety is one of the primary reasons for the ticketing, Bartosh said.

"The vehicles on the mall have been a matter of safety concern because pedestrians and vehicles just naturally don't get along," he said.

Communications senior Maryann Lague said she agreed.

"All those cars on the mall not only clutter it up, but they make it dangerous to walk or ride around campus," she said.

ASU Police Chief C. Russell Duncan said, "When you try to move that many people down the mall, and you stick trucks in the middle of the flow, you create a problem."

Bartosh said the police department's goal is to limit the number of vehicles on the mall.

monday
September 16, 1985

state
press

Tempe, Arizona

Vol. 68 No. 14

Arizona State University

© Copyright, State Press, 1985



Staff photo by Brian O'Mahoney

Another first

ASU Athletic Director Charles Harris, left, speaks to football coach John Cooper Saturday following Michigan State's 12-3 victory over the Sun Devils. The Spartans' victory spoiled Cooper's debut as ASU coach. Story, page 9.

Regents reject 2 percent salary-increase request

Faculty Association asks for extra 2 percent cost-of-living adjustment

By VICKIE CHACHERE
State Press

The Arizona Board of Regents has rejected an ASU Faculty Association request to increase salaries by an additional 2 percent, a regents' staff member said.

Shari Lewis, assistant director of personnel and government relations, said the board will not readjust current practices which allocate a 2 percent cost-of-living increase along with a 4 percent merit-pay adjustment.

Lewis said the association is asking for an additional 2 percent in cost-of-living increases while retaining merit pay to bring faculty salaries in line with those of other state employees.

"There is no discussion of adjustment among the regents," she said.

Cindy Forrest, a Faculty Association member, said, "What we are trying to do is make the board more aware of the fact that faculty salaries have fallen."

Forrest said salaries have fallen behind annual increases in the Consumer Price

Index, which measures changes in the retail prices of goods and services.

She said economists are projecting the CPI to increase by 4 percent this year, adding that faculty members may have difficulty making ends meet with a general 2 percent pay increase.

"We just did not agree with how the Board of Regents allocated (funds)," Forrest said.

At the board's September meeting in Flagstaff, the regents unanimously agreed to rescind NAU's merit-pay and cost-of-living allocations to be in line with those of ASU and UA.

Lewis said the association is attempting to bring its salaries in line with NAU's former system, which offered the 4 percent cost-of-living adjustment along with a 2 percent merit-pay increase.

Regent President Donald Pitt said the decision to increase the general adjustment may have adverse effects on those universities with a higher percentage of merit pay.



Donald Pitt

"If we don't provide the same allocation at each university, then we pressure unnecessarily those universities which have a higher merit allocation to reduce their allocations," Pitt said.

The proposal would have increased salaries for employee contracts beginning in January 1986.

"The board is very bullish on a strong merit-pay system," Pitt said.

In a statement delivered to the board Sept. 6 at NAU, Forrest said the recommendation stems from discussions with ASU's faculty members and past studies on the cost-of-living increases conducted by the association.

She said the request for readjustment is not a complaint against the current merit-pay system.

"It's not that we are against merit pay," Forrest said. "That is not the case."

Forrest told the regents that "among some faculty cynicism is replacing optimism because . . . many faculty have gained through merit only what they have lost through a lower cost-of-living adjustment."

Forrest added that faculty morale has eroded because they are required to perform at a meritorious level to gain benefits received by all other state employees.

"The Faculty Association is not asking that the concept of merit be abandoned," she said.

Forrest said before merit pay can be considered as a reward, salaries must be brought in line with the CPI.

Evening circulation begins

Starting today the *State Press* is increasing its circulation to 20,000 papers on campus, a new high.

An additional 2,000 papers will be distributed late each afternoon so students attending night classes can get the paper.

Distribution points include:

- The box near the business college on the south end of Cady Mall;
- The Orange Circle box;
- The Armstrong Hall box at McAllister and Terrace;

- The box at the north end of Cady Mall
 - A bundle in the MU;
 - A bundle in Hayden Library;
 - A bundle in the Business Annex;
 - A bundle in Noble Science Library;
 - A bundle in the Education College;
 - A bundle in the Language and Literature Building;
 - The kiosk on Cady Mall by the Language and Literature Building;
 - The kiosk at Tyler Mall and Palm Walk;
 - The kiosk by the Cady Mall Fountain;
- If for some reason cannot find a *State Press*, call us at 965-7572.

Inside Today

A 19-year-old ASU student has opened his own gourmet popcorn store near campus. Page 3.

An Iranian ASU alumnus says the treatment of women in his country is a "tragic" situation. Page 3.

A business group on campus is doing research projects for local businesses. Page 7

Three women golfers will make their collegiate debuts with ASU today at the Brigham Young Invitational. Page 10.

Bloom County	6
Classified	11
Nation/world	2
Opinion	4
Sports	9

nation/world

state press

Reagan drafts tougher trade policy to head off protectionist legislation

WASHINGTON (AP) — President Reagan plans to present a new, somewhat tougher trade policy next week that administration strategists hope will help head off stronger protectionist legislation now before Congress.

A senior administration official, who requested anonymity, said Reagan would call for new legislation and administrative action to "give us more discretionary clout" in dealing with unfair trade practices.

But he said the legislation was unlikely to be ready for submission to Congress when Reagan announces his plan, now scheduled for Sept. 23.

White House Chief of Staff Donald T. Regan said he hopes to have a bill "as quickly as possible." But he said: "It's impossible to tell how you get down to crafting it. There are a lot of players, and you have to talk to a lot of people."

The House Ways and Means Committee is scheduled to vote Thursday on a bill limiting textile imports, despite strong administration opposition.

"We don't want to see quotas," Regan said. "We don't want to see any 25 percent tariff coming."

Beryl Sprinkel, chairman of Reagan's Council of Economic Advisers, told reporters Friday the protectionist measures now before Congress "would substantially raise costs to the American consumer . . . , reduce the availability of quality goods to the American consumer (and) deter economic growth in a very significant way."

"Remember, if we go down that road, it would almost inevitably be followed by action abroad to restrict our exports," Sprinkel said. "This means that more jobs will be lost than now exist, and it would be a disaster."

Derailed train spills 300,000 gallons of sulfuric acid into Texas river

SAN ANTONIO, Texas (AP) — A freight train derailed on a trestle, rupturing 26 of its tankers and spilling up to 300,000 gallons of sulfuric acid into a river, killing fish and forcing the evacuation of about 300 people, officials said Sunday.

There were no serious injuries and no danger to water supplies in the Saturday night accident, authorities said.

Several people who complained of skin irritation from the acid's fumes were treated by emergency medical workers, said Bexar County sheriff's Sgt. Ray Gerlach.

The evacuations were ordered within one mile of the accident on the Medina River south of San Antonio, said Carl Mixon, Bexar County fire marshal. A nearby school was opened for evacuees who had no place to go.

As much as 300,000 gallons of sulfuric acid, which is toxic and highly corrosive, spilled into the river, he said.

The 100-car Southern Pacific train derailed on a railroad trestle that crossed the river. At least 26 acid-laden containers ruptured when they fell to a riverbank below, said Herbie Bart, a spokesman for Southern Pacific's hazardous materials office.

"Some of them (tanks) split wide open and some are just leaking," Mixon said, adding that a cause for the derailment had not been determined.

"It is being contained," he said. "Southern Pacific has a strike team surveying the area. The danger to the public is just in the immediate area and downstream."

The situation would be more serious, he said, if winds picked up, blowing acid fumes through the rural area around the river.

"Even though it's potentially a very dangerous situation, there is no risk at this point," Mixon said.

Skip Francis, district manager of the Texas Water Commission, said an undetermined number of fish were killed up to 1.5 miles downstream from the accident. Vegetation in that section also was destroyed, he said.

The derailment caused at least \$2 million in damage, Mixon said, adding that the bridge on which the accident occurred crumbled.

Committee considers possible sites for \$3 billion giant atom smasher

PHOENIX (AP) — Two areas, one near Phoenix and the other near Tucson, have emerged as the most promising sites in Arizona for a \$3 billion giant atom smasher that the state is trying to lure, the head of a state-formed committee said.

A 10-member committee of experts working with state officials has concentrated its efforts on two of six possible sites in Arizona for the federal research project, said Dr. Albert Weaver, a retired University of Arizona vice president and committee chairman.

One site is southwest of Phoenix, encircling the Maricopa Mountain range, he said. Another is southwest of Tucson, encircling the Sierrita Mountain range.

The "Superconducting Super Collider," the U.S. Depart-

ment of Energy's project also known in Arizona as "Desertron," would have some staggering dimensions.

A circular underground tunnel with a diameter that could stretch 100 miles would be built as a path for protons, positively charged subatomic particles, that magnets would accelerate close to the speed of light, 186,000 miles per second.

The project is expected to have an operating budget of \$250 million a year and would employ approximately 2,500 people.

Appointed earlier this year, the technical committee headed by Weaver and part of a larger task force has been collecting data on each of the six proposed sites, ranging from its scientific to cultural attributes.

The decision on a final site will hinge on specifics of the design that will be selected by the DOE, probably sometime in the spring, he said.

Arizona is one of at least 14 states which have decided to enter the high stakes competition for the project, Weaver said. The State Legislature has allocated at least \$350,000 to prepare the scientific studies. It has agreed to put in another \$150,000 if it is matched by funds from the private sector.

South African newspapers criticize govt. timing of apartheid reforms

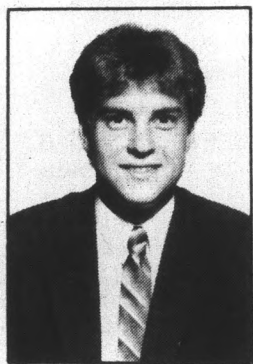
JOHANNESBURG, South Africa (AP) — The white-minority government shrugged off criticism Sunday from white opposition newspapers that modest reforms of apartheid announced last week had come too late to head off limited U.S. sanctions.

South African business executives, under fire from President P.W. Botha for meeting exiled black guerrilla chiefs, were lauded by English-language newspapers for what one called "doing this country a service."

Botha said last week the government would restore South African citizenship to blacks considered citizens of independent tribal homelands, and a presidential commission recommended scrapping "influx-control" laws aimed at keeping blacks out of white areas.

Chris Heunis, who as minister of constitutional development is responsible for drawing up constitutional changes, said on Sunday the moves were not an attempt to ease international pressure for reform.

The changes make no dent in domination of 24 million voteless blacks by 5 million whites, or in an array of discriminatory laws covering housing, education and most public transport.



Dr. Kevin Paustian
Chiropractic Physician
University Office Plaza
1000 E. Apache, Tempe
Suite #107
966-0783

"Gentle Therapy Available for Car Accident Victims"

You are stopped at a traffic light and you see in the rear view mirror a car coming at you rapidly. You realize it is about to hit you as you see smoke coming from the tires and hear the noise of the tires squealing. You are suddenly struck from behind. Your body is whipped backward and then forward. YOU HAVE JUST BECOME A VICTIM OF A REAR-END ACCIDENT — WHIPLASH.

After any accident it is important to have a professional examination. Most symptoms occur 1-2 weeks after the accident, but it is possible for symptoms to appear 3-6 months or even years af-

ter an accident. The most common signals would be neck pain or stiffness; back pain or stiffness; pins and needles in the hands, arms, legs or feet; headaches; dizziness — any of these signals by themselves or in combination.

Dr. Kevin Paustian is especially trained to examine, diagnose and treat accident conditions. He is well qualified because of years of specialized studies. The doctor has been recognized as an expert in caring for persons involved in auto and other kinds of accidents. He can provide accurate reports to insurance companies and lawyers and is ac-

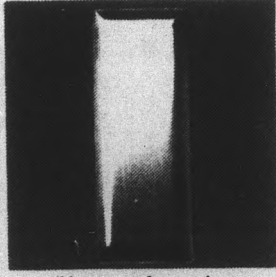
cepted as an expert witness in the courtroom.

Examination and treatment are covered under auto accident policies in Arizona and pay 100% of the bill. This means you pay nothing out of your pocket. Experience shows that failure to treat a person after an injury from an accident can lead to disc damage, degenerative arthritis, and other disabling and crippling disorders that may cause a lifetime of needless suffering. The best advice after an accident is: Call Dr. Kevin Paustian at 966-0783 for an immediate examination.

THERE ARE TWO SIDES TO BECOMING A NURSE IN THE ARMY.

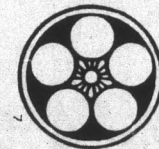


And they're both represented by the insignia you wear as a member of the Army Nurse Corps. The caduceus on the left means you're part of a health care system in which educational and career advancement are the rule, not the exception. The gold bar



on the right means you command respect as an Army officer. If you're earning a BSN, write: Army Nurse Opportunities, P.O. Box 7713, Clifton, NJ 07015. Or call toll free 1-800-USA-ARMY.

ARMY NURSE CORPS. BE ALL YOU CAN BE.



TERIYAKI
OF JAPAN

Valley's Most Authentic
JAPANESE FOOD
at Fast Food Prices

1314 E. APACHE • 894-6883

JOIN THE WINNING TEAM

★ \$5.60 Hour ★

★ \$7.50 per Presentation ★

plus

★ Bonuses ★

FEM INC. 829-8892

Call Mr. Audtree

AFTER 11 A.M.

Ambitious ASU student begins 'popping' business

By COLLEEN MOORE
State Press

Owning a business at 19 and attending ASU full-time doesn't leave a guy very much time for parties, girls and football games, but finance major Charles Kirkland thinks it's worth the effort.

Kirkland opened a gourmet popcorn shop in Tempe on the first day of fall classes. "I've wanted to open up a business since birth," he said at The Popper on Rural Road.

He was so busy during the first week of school that he didn't have time to go through drop/add.

"I wanted to, but I heard that you spend all day in line, so I couldn't," he said.

Being a 19-year-old entrepreneur has its disadvantages, he said.

"I went to a bank for a loan, and they just laughed in my face. My parents said they couldn't help me out, so I got loans from friends of the family," he said.

In addition, there was the problem of leasing space for the shop.

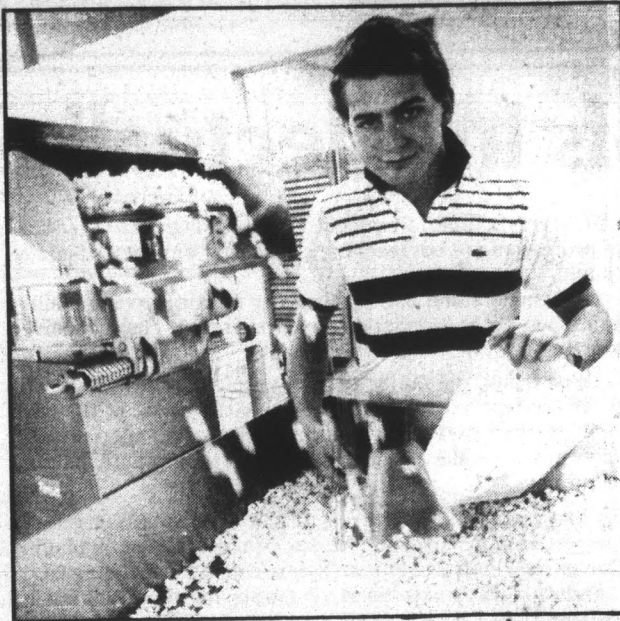
"I wanted to be in The Cornerstone," he said. "But they were evasive and wouldn't really cooperate. Finally, I found an opening in Cinnamon Tree Plaza."

The visitors to the shop will be greeted by an old-fashioned atmosphere reminiscent of a main-street candy store. Rotating ceiling paddle fans mix the aroma of various popcorn flavors stored in their cannisters beneath a glass-topped counter.

"We have just about every flavor you can imagine: pina colada, chocolate, pizza, spearmint, amaretto," he said.

"I want people to come in here and like it so much that they tell their roommates and suitemates about it," he said.

Kirkland puts about 70 hours into his business each week.



Staff photo by Rick Wiley

"The Popper" owner Charles Kirkland rakes white gourmet popcorn over a sifting bin to weed out unpopped kernels. Then he can add flavors like amaretto, carmel, chocolate and pizza (yes, pizza).

"I have to be here a lot," he said. "Sometimes when business is slow or there isn't any popcorn to bag, I do my homework."

Running the business and attending classes has caused Kirkland some time conflicts, but he hopes that will change as the semester gets into full swing.

"One day I had to miss a whole day of classes," he said. "One is taught by a professor who insists that students be on time, and I was late for the first three sessions. Finally I brought him a bag of popcorn and said, 'Please have mercy on me, I just opened a business!' He was really understanding about it."

Kirkland decided to start a business last July while he was at home in Omaha, Neb.

"My mom didn't want me to do it. She said, 'You have to go to summer school,' which I didn't want to do, so I made a deal with her. I said, 'I'll go to summer school if you'll let me open the business.' And she agreed," he said.

He came out for summer school in July, researched suppliers and costs for a few weeks, and looked for a place to do business.

His goal for the business? "To break even!" he said, laughing.

"Some days I'm happy, and on other days depression sets in. Sometimes you can't sleep at night when you think about owing \$2,000 and there's only \$200 in your bank account," he said.

"I try to keep prices as low as possible. I'm afraid people will see 'gourmet' and think 'expensive.' My popcorn is the cheapest I've seen anywhere."

Kirkland's 18-year-old sister, Mary Louise, is an ASU freshman and also a finance major. She spends about 50 hours a week helping out, and likes to make it clear that she isn't under her brother's thumb.

"I like to think of it as working with someone, not for someone," she said, laughing.

ASU alumnus speaks out on Iranian persecution

By ED SCHUBERT
State Press

The situation of women in Iran is one of the most tragic anywhere, said an Iranian ASU alumnus who is promoting an anti-Ayatollah Khomeini student group.

Said Afkary said women in Iran are often publicly whipped for minor infringements of the Islamic Republic's stringent dress laws — such as appearing in public unveiled, or for wearing fingernail polish or lipstick.

Afkary said that if a woman captured by Iran's Revolutionary Guard for anti-government activity is a virgin, she is raped before being publicly beheaded because the Khomeini government claims that Islamic law forbids the execution of virgins.

He said the Revolutionary Guard claims a principle of Islamic law called *sigheh*, or "one night marriage," justifies such rapes.

Afkary said *sigheh* is a verbal formula that allows a man to have sex with a woman without incurring the stigma of adultery and is also used in Iran to justify the existence of prostitution, which is officially forbidden.

According to Jamil Diab, the Imam (spiritual teacher) of the Islamic Cultural Center in Tempe, there is a legal concept within Shi'ite Islam called *muta*, which recognizes short term marriages of a few months or years under certain circumstances, but which does not condone "one night marriage" or prostitution.

"Islamic law does not permit murder, adultery or prostitution under any circumstances," he said.

Neither does Islamic law protect a virgin from execution if she is guilty of a capital crime such as murder, Diab said.

If the Iranian Revolutionary Guard is guilty of crimes prohibited by Islam, then "that is the mistake of the Revolutionary Guard, not the mistake of Islamic law," he said.

Diab said Shi'ite Moslems represent a minority within Islam, and Sunni Moslems do not accept the concept of *muta*.

Afkary's group is called the Organization of Iranian People's Fedaii Guerrillas (OIPFG), which operates on campus as an af-

filiate of the Iranian Student's Association, he said.

OIPFG is a "purely" Marxist-Leninist organization whose goal is a democratic state in Iran, he said.

Afkary said OIPFG should not be confused with the Iranian Communist Party, *Tudeh*, which is composed of "intellectuals who have no connection with the workers."

Another Iranian student, who declined to be identified out of concern for the safety of his family in Iran, said an anti-Khomeini group called the Iranian People Fedaiian (IPF) is active on campus under the auspices of the Committee in Solidarity with the People of Iran.

The IPF shares many of the same goals as OIPFG, but disagrees with its methods, the student said.

He said "The Shah had systematic oppression but was in control. Khomeini has systematic oppression, but is not in control."

The Iranian economy is so weak that employers often "do not have enough money

to pay their workers," the student said.

Afkary said his native province in northeastern Iran had always been very poor, with little running water, electricity or education, but things are "100 percent worse" under Khomeini.

Consumer goods and machine parts are critically short, the currency is almost worthless, the black market is widespread and the "so-called Revolutionary Guard" controls all aspects of daily life, he said.

Nearly 50,000 political prisoners have been executed during the past four years, and 120,000 political prisoners are "facing brutal torture every day in Khomeini's prisons," he said.

Blood is drained from political prisoners for use by Iranian troops fighting Iraq, Afkary added.

Afkary said that he left Iran shortly after Khomeini came to power when the new government began persecuting the Kurdish minority in the northeast.

The persecution of the Kurds gave him a clue to what was coming, he said.



Rated one of the best contemporary hair salons in the Southwest!

Walking distance from ASU

215 E. 7th Street, Tempe, Arizona • 966-5192

CRIMPERS LTD



Bumper Blues?

Don't let it get you down.
Start your day off right
with . . .

**Free Coffee,
Ice Tea & Donuts!**

Commuter Day

WEDNESDAY, SEPTEMBER 18, 1985

Arrive a few minutes early on Wednesday so you can enjoy a free cup of coffee and donuts at the main tram stop in Lot 59. No strings!

As a service to commuter students, information will be available regarding campus clubs, organizations, events, and activities. The latest issue of *Update* will also be on hand.

A representative from Phoenix Transit will be available to answer questions regarding ride sharing and bus transportation and schedules.

We look forward to seeing you there!

Co-Sponsored by: ASU Student Alumni Association
ASU Tenants/Commuter Association

state
press

Greatness after all, in spite of its name, appears to be not so much a certain size as a certain quality in human lives.
—Phillips Brooks

opinion

Lab-focused profs intellectually rape students

Patrick J. Kucera
Asst. Entertainment Editor



Dear President Nelson,

I am writing you because I have a problem that I am sure other students have as well. Please do not think that this is a frivolous matter; it is not. I hope you can help.

This starts my senior year at ASU and I am somewhat concerned about the quality of teaching that I have had in the past three years.

My main concern is over numerous professors who have little or no concern about the classes they teach. To be fair and to give you a little explanation, I will start from the beginning.

During my senior year in high school in Phoenix, I continually heard stories about ASU becoming a "research park" and replacing the regular focus of the University. I paid no attention because I figured I would only be here a short four years and would move on into the world of employment.

Now that I have finished my third year at this institution, I am concerned about those who are just entering ASU and what they can expect.

At this point in my college education, I have more than once considered leaving ASU for another university — one that wants the student to receive a decent education.

How did I come to the conclusion that I was not receiving the best education at ASU? That can be summed up in two words: lousy professors.

It is very simple, President Nelson. A significant number of professors are not teaching classes the way they should be taught.

I can understand if I, by the laws of fate, have one lousy professor, but in the past three years it seems I have received more than my fair share.

To be frank, the majority of my professors are those who come unprepared for class, lecture straight out of the textbook, throw a fuss when a student asks for an appointment, and refuse to make a concerted attempt to stimulate thinking in the class.

I know what the problem is. These "educators" are more interested in discovering the sex life of cabbage or placing lizards in Skinner boxes than they are about instructing us.

Federal and private research grants are important for the University — I'll be the first to admit it. However, it makes me angry when I pay good money (both in tuition and state taxes) to fund the salary of a professor who couldn't care less about the student.

On more than one occasion, I have been tempted to ask for a refund for those classes that have taught nothing. Those professors who lecture out of the book are wasting time.

If a professor is only interested in what he or she is doing in the laboratory after class, then I must ask you, President Nelson, to remove them from the classroom.

I can see no justification for the continued employment of a professor who expects the student to have read material, prepared notes, completed homework, etc. while that professor has done nothing himself.

The majority of my days and nights are spent studying for classes. Is it really too much to ask that a professor spend just five hours a week on a course? The students make the University operate. Without tuition, ASU would cease to exist.

The only thing that has stopped me from leaving ASU in search of greener pastures is the fact that of those professors who have been good, 99 percent have been outstanding.

Of course, being a good professor is not important at this University. One only need look at ASU's treatment of Rosemary Rader, who used to teach Introduction to Christianity within the Department of Religious Studies.

Dr. Rader was one of the best teachers on this campus and the administration would not give her tenure. I am willing to bet that she had some of the best performance reviews, from both faculty and students, on this campus.

I can only hope that you will keep the good teachers like Trish Mumme, Jay Braun, Marie Curtis and Summer Starfield, among others, so that they can teach. Somehow they have managed to do their "outside the classroom" work and still be more than adequately prepared for a 7:40 a.m. class.

I ask you bluntly, President Nelson, why do I have to put up with these "scholarly" buffoons and work my tail off in their class while they spend hours upon hours trying to prove Einstein's theory of relativity was inaccurate by .0000000001 percent and thereby foresake the students who are trying to learn?

Please do not insult my intelligence by suggesting that I put my comments down on the teacher evaluations at the end of the semester. By then, it is too late. An entire semester is wasted because some yahoo cannot take an hour and prepare for class.

I remember, President Nelson, that the motto at ASU's Centennial celebration was "excellence for a new century."

Maybe we could start that excellence by ridding ASU of those who are hindering this University's dynamic potential.

Sincerely,
Patrick J. Kucera

letters

Method for ending apartheid real issue in South Africa

Editor:

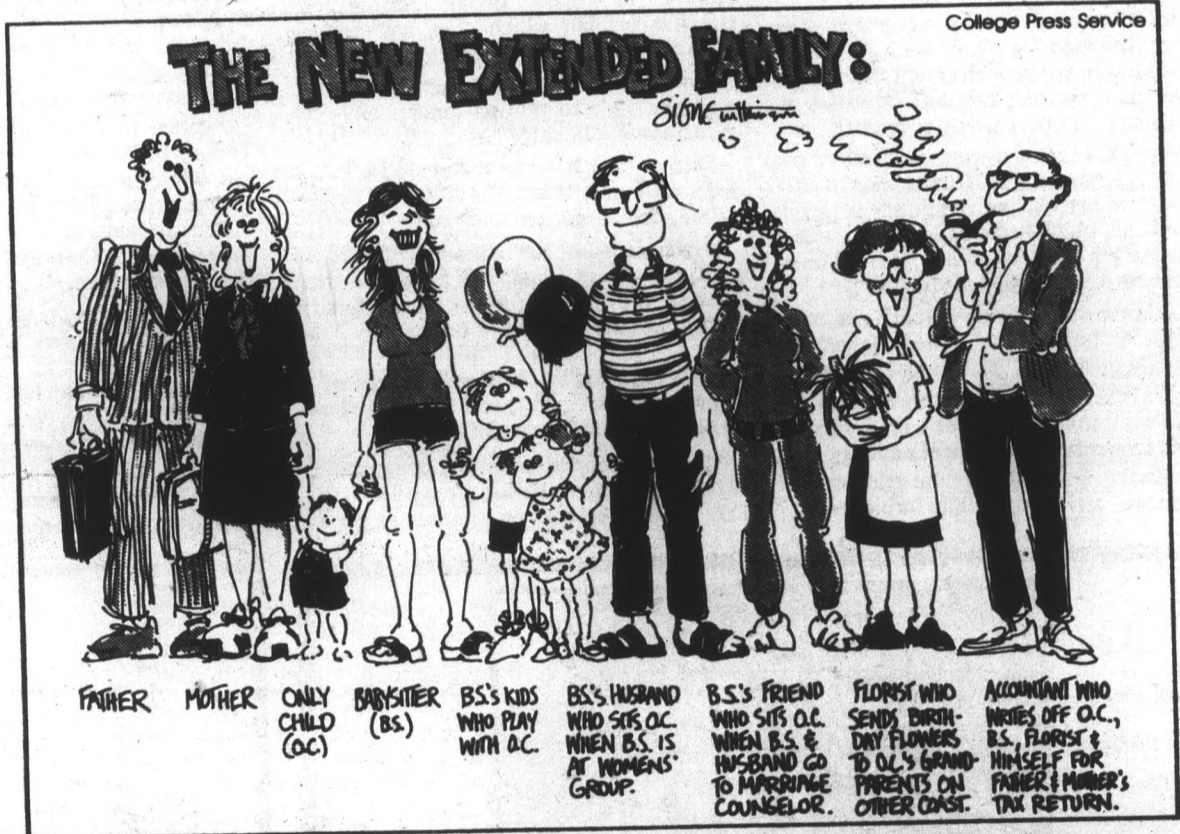
It is interesting to note that the *State Press* has performed a nice turnabout since last semester. Then, the conservative stance of the school paper brought charges of fascism from campus liberals. Now all we have to do is turn to the editorial page to get a daily dose of pro-Marxist rhetoric from Students Against Apartheid — founded, by the way, by the same folks who brought us CISPES. But perhaps it is not important that the only people who say that we have nothing to fear from Marxism in South Africa are themselves Marxists.

Pro-communists have a well-known and somewhat obvious penchant for turning reality upside down. So in the interest of clarity — if not sanity — let's look at a few particulars of the South African situation. Apartheid is not really the issue. I doubt very seriously whether you could find anyone on this campus who supports that system of repression and segregation. Since there is virtually no substantive disagreement over the evil of apartheid on this campus or in this country, we should look at areas where disagreement does exist.

Opinions differ on the question of whether we should try to ruin South Africa's capitalistic economy. Who stands to lose from that destruction? The white South Africans will be the last to lose because they control the vast mineral resources of the land. South Africa does not depend on the West for markets, they could just as easily sell to the Soviet Union. In fact, the West is dependent on South African strategic minerals for their security. Loser number one, the West. As divestment and other trade sanctions hurt the South African economy, blacks will be the first to lose their jobs. And if a civil war develops out of the situation, what will be the outcome? If anyone wonders whether a small, militant, and well-armed population can be victorious against a large population, just ask Israel. Especially when the arsenal of the whites includes nuclear weapons. Loser number two, South Africa's black population.

This is really the nature of the debate. All parties agree that apartheid must end. The disagreement exists over the best way to achieve that end, and over the potential or desirability of another Marxist state in Africa.

Dan K. McQueen
Graduate, History



Destruction of Fine Arts Annex tragic

Editor:

This matter does not bear the grimness of such issues as apartheid or other world problems, but is instead an issue closer to home — to be more specific, here on campus. After reading the Sept. 8 article in the *State Press*, we are concerned about the fate of the Fine Arts Annex on our campus. According to the article, it seems that there are more reasons to raze it than save it. We would like to add some further reasons toward saving the Annex.

It is sad to think that this fine old building, so filled with memories, could be destroyed faster than ASU switches coaches. Our culture is already much too quick to throw away the old — to put the elderly in nursing homes and bulldoze buildings. Since a part of the purpose of a university is to instill a sense of our past, ASU should practice what it preaches by salvaging this beautiful, useful building. It certainly would cost no more for restoration than to build a new structure from scratch.

Students at ASU need places where they can slow down a bit and think about the thousands of students who have passed here before them with their own dreams and aspirations. A new building with sterile rooms and hallways does not promote a sense of tradition and attachment. Every university, even as it grows and erects new buildings, needs to preserve and cherish some of its old buildings as a symbol of the fellowship that holds a good university together. It would be sadly ironic if ASU, at the time of its Centennial, could not see that and chose to raze the Fine Arts Annex. Can such "reasons of the heart" still be heard at ASU — or must the Annex go?

G. Lynn Nelson
Assistant Professor, English
Theresa Kennedy
Senior, Art History

STATE
PRESS

STEVE WATERSTRAT
Editor

TOM BLODGETT
Managing Editor

City Editor W. TIM AHL
Asst. City Editor JOHN CONWAY
Asst. City Editor MELISSA SMYTH
News Editor MEAD SUMMER
Opinion Editor GRAY T. ECHOLS
Asst. Managing Editor WHITNEY PETERSON

Sports Editor MICHAEL KONZ
Asst. Sports Editor JERRY BROWN
Copy Chief JACQUIE CIROU
Arts Editor CINDY PEARLMAN
Asst. Arts Editor PATRICK J. KUCERA
Photo Editor KIP WILLIAMS

The *State Press* is published Monday through Friday during the academic year except holidays and exam periods, at Matthews Center, Room 15, Arizona State University, Tempe, AZ 85287. Newsroom: 965-2292. Advertising & Production: 965-7572.

The *State Press* is the only newspaper exclusively published for and circulated on the ASU campus. The news and views published in this newspaper are not necessarily those of the ASU administration, faculty, staff or student body.

Devil House trolleys provide student transportation to bar

By CARRIL L. MITCHELL
State Press

A new trolley service to the Devil House four nights a week could save drinkers a ride in a paddy wagon.

The Trolley Company is now transporting students from several points on campus to The Devil House bar, the general manager said.

Doug Kylie said the trolleys will run Wednesday through Saturday nights and cost 50 cents for a ride to the bar, but return rides to campus are free.

The Devil House is located across the river from Packard Stadium at 430 N. Scottsdale Rd.

The trolleys stop at Fifth Street and Stadium Drive, Manzanita Hall, Sahuaro Hall, Lemon Street and Rural Road.

Kylie said the trolley rides provide a way for students who live on campus to come to the bar and return without driving and will also keep those who have had too much to drink off the roads.

Steve Kaminsky, the general manager of The Trolley Company, said the com-

pany has three vehicles transporting students to the bar and picks up riders every 15 minutes.

"It's to keep people who've been drinking off the road. That's what The Devil House wanted to do," Kaminsky said.

The trolleys will run from 8:00 p.m. to 1:00 a.m. on Wednesday, Thursday and Saturday nights when there is not a home ASU football game. On Friday nights the trolley will run from 8:00 p.m. to 3:00 a.m., Kylie said.

The trolleys will not start running on nights with ASU football games until the games are over, Kylie said.

Kaminsky said the program is working well.

"We're working together to try and provide good transportation for the students," Kaminsky said.

Kylie said, "I'm not making any money off of this."

The Trolley Company vehicles are used to carry people around Tempe during the day, and the company has been operating for 13 months, Kaminsky said.



Staff photo by Rick Wiley

The Trolley Co.'s Tessie is one of three trolleys used to transport students from ASU to The Devil House bar four nights a week.

Terrace Road Apartments



WALK TO SCHOOL!

1/2 block from Campus, Huge, well-furnished 1-bedroom, 1-bath, and 2-bedroom, 2-baths, all utilities included, cable TV, plus many amenities.

950 S. Terrace Rd. 966-8540

COUPON

UNDER NEW MANAGEMENT
Papa Jay's New York Pizza
We Also Deliver Ice Cold Beer
FAST FREE DELIVERY!
LIMITED FREE DELIVERY AREA

804 S. ASH (UNIV. & MILL)

<p style="text-align: center;"><small>Save \$2.30</small></p> <p>#1 Sun Devil Combo Any large pizza, your choice of up to 4 toppings. ONLY \$6.95 plus tax <small>Good on delivery, take-out or dine-in. Expires 10-31-85.</small></p>	 <p>BEFORE YOU ORDER FROM DOMINO'S, CHECK THEIR REGULAR PRICE OR COUPON PRICE</p> <p>GUARANTEED OUR PRICES ARE CHEAPER AND OUR PRODUCT IS MUCH BETTER</p> <p>966-4292 OR 966-1003</p>	<p style="text-align: center;"><small>Save \$1.95</small></p> <p>#2 Sun Devil Combo Any medium size pizza with your choice of up to 4 toppings. ONLY \$5.95 plus tax <small>Good on delivery, take-out or dine-in. Expires 10-31-85.</small></p>
<p style="text-align: center;"><small>Save \$1.80</small></p> <p>#3 Sun Devil Combo Any small size pizza with your choice of up to 4 toppings. ONLY \$4.95 plus tax <small>Good on delivery, take-out or dine-in. Expires 10-31-85.</small></p>		<p style="text-align: center;">#4 \$2 OFF</p> <p>Any large Sicilian style pizza* with two or more toppings <small>*Extra thick</small> <small>Good on delivery, take-out or dine-in. Expires 10-31-85.</small></p>

The foxiest valley girls buy their earrings @ Dollars!

BELTS \$1.00 EA. OR BUY 5 GET ONE FREE

EARRINGS \$1.00 PR. OR 3 PAIR FOR \$2.50

BRACELETS GOLD & SILVER 18PC SETS \$1.50

TWISTED BEADS 50¢ STRAND BEAUTIFUL SHELL CLASPS \$1.00

Dollar\$ has more than just the most interesting earrings in the Valley. It has the lowest prices.

414 S. Mill #207 Tempe (above Spaghetti Co) 829-1127

DOLLARS FASHION ACCESSORIES

Dollar\$. It's not just our name, it's our price!



Hard Workouts, Hard Bodies.


Start now for **\$10.00**

- Aerobics
- Taekwondo

835-7689


ATA FITNESS CENTERS

1620 W. University at Longmore, Mesa ● Just Five Min. from ASU



A CLASSIC

100% beef *Huge 1/3 lb.*



1.35

BURGER MADNESS

every monday 11am-11pm

Monday Night Football on 4 giant screens

Movie following - Courtesy of Tower Video

1.00 Monster Beers

2.50 Pitchers 1.75 Teas

FREE ORDER OF FRIES w/ purchase of burger

exp. 9-24-85

THE DEVIL HOUSE

JACK IN THE BOX

ENTRY LEVEL MANAGEMENT & PRODUCTION POSITIONS

Shift Leader

We have one of the most progressive and innovative formal training systems to improve your talents as a leader and a supervisor. Opportunities from these positions to corporate management exist for the producers!

Production

Do you like people contact? Learn the basics of fast food from a leader in the industry.

We offer full-time and part-time positions, flexible hours, vacation, medical insurance and promotional opportunities.

Visit our manager at 8030 E. Indian School Rd. to discuss these opportunities:

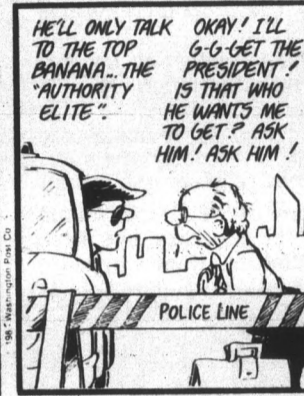
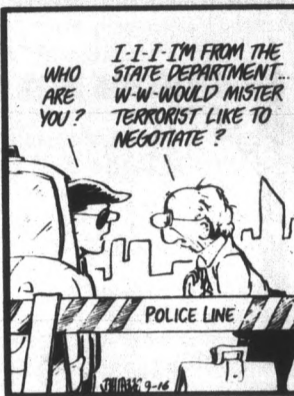
Operated by Foodmaker, Inc.
A subsidiary of Ralston Purina Company
Equal Opportunity Employer

BLOOM COUNTY



by Berke Breathed

BLOOM COUNTY



by Berke Breathed

FOR	OVER	45	Y
			R
THE	F		S
	I		
	R		W
AND	LAST		O
	T		R
IN			D
	T		
	PREPARATION		
	S		
	T		

- | | | | |
|---------------|-------------|---------|------------------------|
| ACROSS | DOWN | | |
| 1 LSAT | 9 VAT | 1 NMB | 9 GRE PSYCH |
| 2 GMAT | 10 TOEFL | 2 VQE | 10 GRE BIO |
| 3 GRE | 11 SSAT | 3 ECFMG | 11 ACHIEVEMENTS |
| 4 MCAT | 12 PSAT | 4 FLEX | 12 NURSING BDS |
| 5 DAT | 13 SAT | 5 NDB | 13 CPA |
| 6 MAT | 14 ACT | 6 NPB I | 14 SPEED READING |
| 7 PCAT | 15 MSKP | 7 NCB I | 15 ESL REVIEW |
| 8 OCAT | | 8 CGFNS | 16 INTRO TO LAW SCHOOL |



2 HRS. FREE TUTORING 967-2967

"COUPON"
DOUBLE BURGER
FULL MEAL DEAL
\$1.99

CHAR-BROILED

Look what you get! An all-beef burger. A small order of crispy golden fries. Your favorite small soft drink. And, to top it off, a cool and creamy 5 oz. DAIRY QUEEN® Soft Serve Sundae. Head for your participating DAIRY QUEEN® BRAZIER® store, to get the Burger Full Meal Deal™ — the best bargain in town.

WE TREAT YOU RIGHT™

ONLY AT:
1389 E. APACHE
(Between Rural & McClintock)
Limit 2 per coupon.

COUPON

BACK TO KINKO'S

Head over to Kinko's for all of your copying needs this term and discover outstanding quality and abundant services at very affordable prices. We're close to campus, open early, open late and open weekends.

BACK TO KINKO'S
Free highlighter pen with this coupon

MESA 1840 W. Southern 969-3326
TEMPE I 715 S. Forest 894-9588
TEMPE II 933 E. University 894-1797
OPEN 24 HRS.

One per customer while supplies last.

4-Drawer Chest **\$29.95**

Table & 2 Chairs **\$69.95**

BED SALE

Twin Set **\$69.95**

Full Set **\$79.95**

Queen Set **\$129.92**

Sofa & Love Seat **\$169.95**

AT THESE PRICES WHY RENT?

Financing Available

FURNITURE PLUS

2077 E. University Tempe • 966-6252

MasterCard, VISA, ASU, Hayden, McClintock, F.P.

Delivery Available

AT CORNERSTONE **THE U SHOP** HOURS:
M-F 10-9
Sat. 10-8
Sun. 12-6

829-1743

The Best Selection for the "TRADITIONAL"

And the... not so traditional!!

ARIZONA STATE UNIVERSITY

We carry Vuarnet

ASU group to study Valley export firms

By KARI BLAND
State Press

ASU students will begin a study, the first of its kind by the group, of the exporting needs of Valley businesses and assess a means for their improvement.

The student organization is interested in developing future international business leaders in the fields of public relations, fund-raising, management and economics, said the group's vice president of projects.

Allison Jacobs said members from the six-year-old ASU chapter of the International Association of Students in Economics and Business Management (AIESEC) will be analyzing the exporting needs of Valley businesses.

AIESEC sent 250 letters to local small- and medium-sized businesses asking for their participation in the marketing research project, she said.

Eighteen businesses have committed to the project.

Two AIESEC members will survey the export opportunities of each participating company for possible improvements, without charging a fee.

The survey will be conducted as a full-fledged marketing research project, Jacobs said.

"If the business is not exporting, we'll recommend how they can and if they are, how they can expand," Jacobs said.

The students will then report their findings, including an analysis of what they found and their recommendations.

"We're hoping that they will pick up our recommendations and act on them," she said.

The project is being sponsored by the Arizona World Trade Association, promoters of foreign trade through seminars, monthly meetings and newsletters, and the Joseph F. Rizzo Company, a Scottsdale export-management-consulting company.

"I hope to learn a little bit more about the exporting industry," Jacobs said. "I've met with executives from the companies and have gained some good ideas from them."

Jacobs also hopes that students will establish beneficial business contacts.

Students must be members of AIESEC to participate in the program, Jacobs said. Applications are available in the Business Building, room 59.

Interested students should attend Friday's meeting in the MU Pinal Room at 4 p.m., she added.

Art school to offer visual arts classes for children

The ASU School of Art will offer visual arts classes for children ages 5 to 15 beginning September 21.

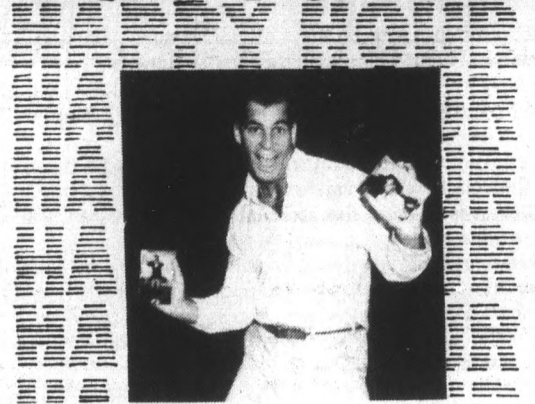
The classes, separated into age groups of 5 through 9 and 10 through 15, are designed to encourage creative expression by giving children access to forms of art including printmaking, sculpture and painting, said Dr. Jon Sharer, coordinator of art education at ASU.

The art processes examined at the Children's Art Workshop will be related to the work of artists, styles, cultures and time periods.

The series of classes, which runs 10 weeks, costs \$27 including all necessary materials. The series will end with an arts exhibition.

More information is available from Sharer, 965-3629, or from the Children's Art Workshop, 965-6981.

HAPPY HOUR HAPPY HOUR



2 for 1

HAPPY HOUR DOUBLE PRINT SPECIAL
EVERY MONDAY AND WEDNESDAY
AT REGULAR LOW PRICE

829-0424 **SUNSET** camera Tempe Center Mill & Univ.

MUAB

SEPTEMBER

- 17 RED SHOES (Free)
- 18-21 KILLING FIELDS

OCTOBER

- 1 JEZABEL (Free)
- 2-5 BEVERLY HILLS COP
- 15 SHAME (Free)
- 16-19 CARMEN
- 29 LA DOLCE VITA (Free)
- 30-31 GHOSTBUSTERS

NOVEMBER

- 1-2 GHOSTBUSTERS
- 3-4 To be announced
- 5 A DOLL'S HOUSE (Free)
- 12 MOULIN ROUGE (Free)
- 13-16 COTTON CLUB
- 19 THE SPY WHO CAME IN FROM THE COLD (Free)

IN THE MU CINEMA
All Seats \$1
Wed.-Fri. 3:30, 7 & 9:30 p.m.
Sat. 7 & 9:30 p.m.

For more information call
965-MUAB

THE HAIR CUTTERS

Your Campus Hair Care Center

709 S. Forest Ave., Tempe

North of University • Behind the Chuck Box • In Oxford Square

968-5946

\$400 OFF

With This Ad
Expires October 21, 1985.

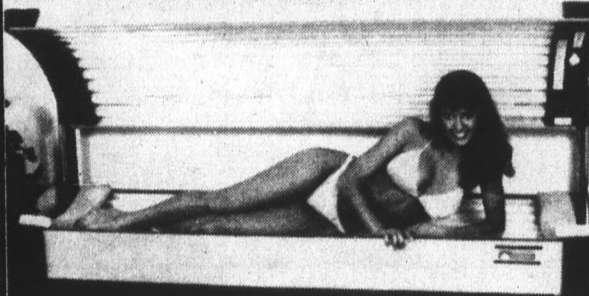
REGULAR PRICES

- Shampoo
- Condition
- Precision Cut
- Blow Dry

MEN \$13 • WOMEN \$15

OPEN MONDAY THROUGH SATURDAY.
TUES., WED. & THURS. TILL 9 P.M.

DON'T LOSE THAT SUMMER TAN!



Sun-Tans 4415 S. Rural #10
Tempe
831-2884



SPECIAL STUDENT RATES

TANNING BED		FULL SET SCULPTURED NAILS	
5 visits	\$20		\$25
10 visits	\$35		
20 visits	\$65		

With coupon. Expires 9-21-85.

With coupon. Expires 9-21-85.

HOOTERS

LUNCHEON SPECIAL
25¢ DRAFT • 99¢ SUBS
MON.-SUN. 11-4

MONDAY

MONSTER CUP NIGHT

22-oz. Well, Wine, Beer \$1.50

\$1.50 Cal. Cooler

(Disc Jockey Mike Burton)

TUESDAY

2 Well Drinks for \$1.85

7-Close, Chicken Wings 15¢

Entertainment

Wed., Thurs.

"SMOKEY"

SERVING NY STYLE PIZZA
SUBS, CHICKEN WINGS

FREE DELIVERY



801 E. APACHE
894-2662

DIET ABSOLUTELY FREE FOR ONE WEEK



Back To School
Special For
New Dieters

New Dieters

Pay for the First Three Weeks and
Receive the Fourth Week Absolutely FREE

This Offer Also Includes A Complimentary GIFT
of Diet Center Products, An Extra \$10.50 Value

Valid At Tempe Diet Center Only

OFFER EXPIRES SEPT. 21, 1985.

No Other Discounts Apply. One Discount Per Person.

OPEN 7 A.M.-6 P.M. DAILY

TEMPE

911 E. Broadway
(Lucky Shopping Center)

967-1371

police report

ASU student Anthony G. Wallace was arrested early Thursday in connection with forgery, police said.

On May 17, Wallace, who was then an employee for ASU, cashed receipts for travel expenses and cash advances that he allegedly had altered with a pen.

An employee in the admissions office noticed a discrepancy in the vouchers and notified police.

After investigating the incident, police arrested Wallace. He was later released on his own recognizance.

In other activity, University police reported the following incidents in the three-day period ending at 6:30 a.m. Sunday:
 • Marshall Tyrone Nickerson, who is not affiliated with the University, was arrested early Friday in connection with bicycle theft, police said.

An officer on patrol noticed Nickerson leave the Sahuaro Residence Hall D-Wing with a wrench in his pocket and ride away on a bicycle.

The officer stopped Nickerson, who gave the officer the bicycle he was riding in addition to a second bicycle that was in his vehicle.

Nickerson was released on his own recognizance.

• John B. Cooper, who is not affiliated with the University, was arrested early Saturday in connection with indecent exposure, police said.

Cooper allegedly exposed himself to two female students at the Sigma Nu fraternity house. He was booked into the Maricopa County jail.

• ASU student David E. Duick was arrested late Friday in connection with refusing to leave the fifth floor of the Manzanita Residence Hall after being advised to do so by the staff, police said.

Duick also gave an ASU officer an incorrect name. He was booked into the Maricopa County jail.

• William Allen Hood was arrested late Saturday in connection with the theft of a billboard at the Ocotillo Residence Hall, police said.

Hood was booked into the Maricopa County jail and the stolen property was impounded.

• Someone activated the sprinkler system and set off the alarm at the Manzanita Residence Hall early Sunday, police said.

The vandal placed paper around the sprinkler heads by the ninth-floor stairway and ignited it. This caused the sprinklers to go off on the eighth and ninth floors.

The Tempe Fire Department responded to the alarm, as well as an ASU plumber and an electrician.

The estimated cost of the damage is unknown.

• A gray Harmen Kadoro stereo receiver valued at \$200 was stolen from a room at the Cholla Apartments Thursday afternoon, police said.

The victim told police he had locked the room and left for approximately one hour. The room was still locked when he returned to find the receiver missing.

There were no signs of damage or of a forced entry.

• A student's purse was stolen from her vehicle late Wednesday or early Thursday, police said.

The victim told police she had put the purse in her locked vehicle in Lot 19 while she went to class.

She also drove to a friend's house and stayed overnight before noticing the purse was missing.

The vehicle had been locked and there were no signs of forced entry.

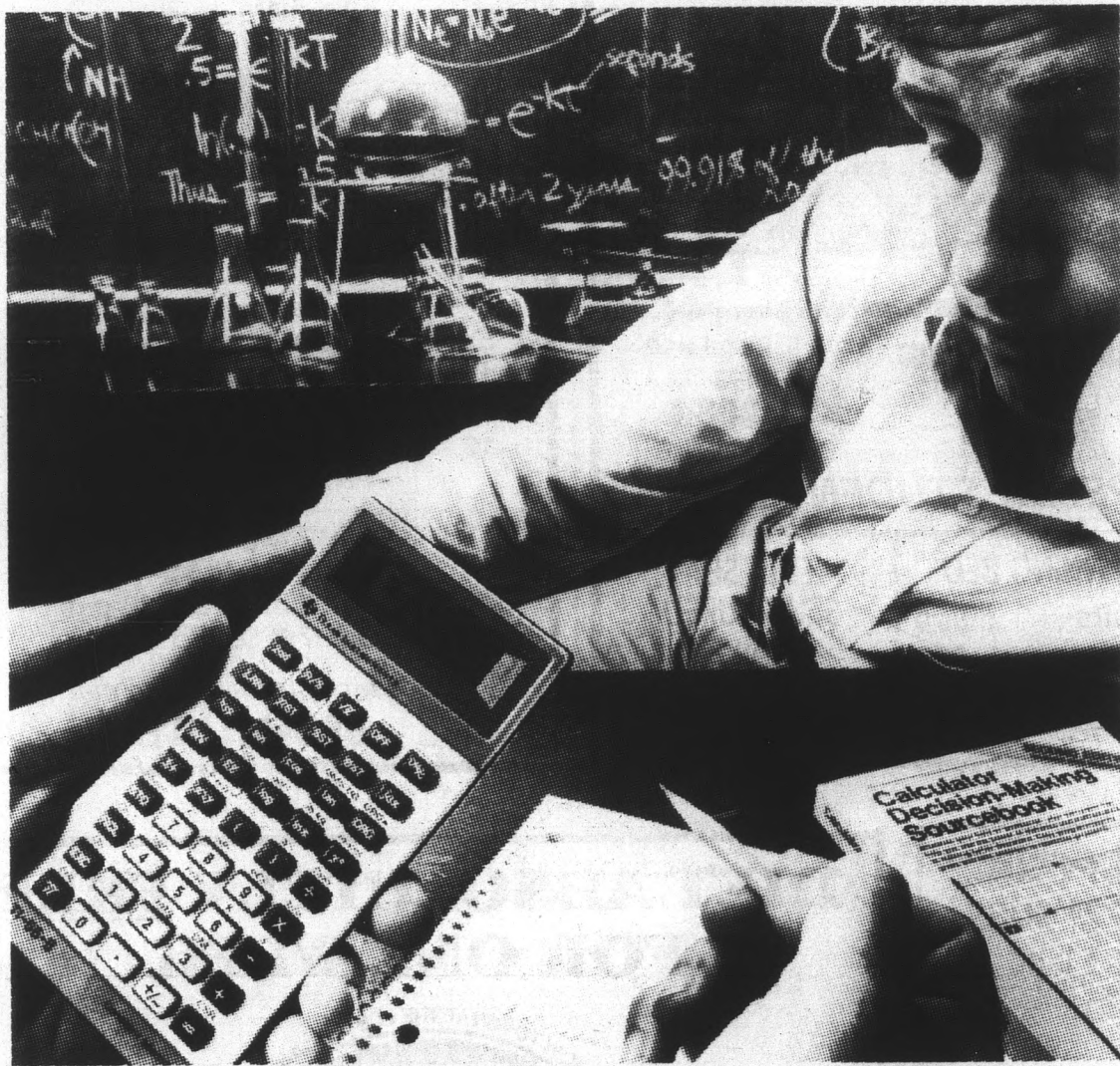
Total value of the purse, which contained bank cards and a wallet, is \$30.

• A student's purse was stolen from a bench in front of Grady Gammage Auditorium late Thursday, police said.

The victim told police she had placed the purse on a bench and forgot it.

Total value of the theft was estimated at \$15.

— THERESA WILLEFORD



Get to the answers faster. With the TI-55-II.

What you need to tackle the higher mathematics of a science or engineering curriculum are more functions — more functions than a simple slide-rule calculator has.

Enter the TI-55-II, with 112 powerful functions. You can work faster and more accurately with the TI-55-II, because it's preprogrammed

to perform complex calculations — like definite integrals, linear regression and hyperbolics — at the touch of a button. And it can also be programmed to do repetitive problems without re-entering the entire formula.

Included is the *Calculator Decision-Making Sourcebook*. It makes the process of using

the TI-55-II even simpler, and shows you how to use all the power of the calculator.

Get to the answers faster. Let a TI-55-II show you how.



TEXAS INSTRUMENTS
Creating useful products and services for you.

ASU PUBLIC EVENTS

AT GAMMAGE CENTER:

ASASU/GC
Present

PETER, PAUL AND MARY

Saturday, September 21 • 8 p.m.

The most successful folk trio in the history of popular music, Peter, Paul and Mary will be making a single Gammage appearance. Come and hear their all-time hits, "If I Had a Hammer," "Lemon Tree," "Blowin' in the Wind," "Puff the Magic Dragon," and many more.

Tickets: \$15

ASASU/GC
Present

GEORGE BENSON

Thursday, September 26 • 7 & 10:30 p.m.

There are few more honored or innovative individuals in contemporary music than George Benson. His distinctive combination of voice and guitar have created new standards of musical excellence.

Tickets: \$16.50

ASASU/GC
Present

MELISSA MANCHESTER

Tuesday, October 8 • 8 p.m.

A contemporary vocalist and TV personality, Melissa Manchester's vocal moods range from ballads ("Don't Cry Out Loud") to light rock ("You Should Hear How She Talks About You"). She'll be at Gammage for one night only.

Tickets: \$14.50

AT KERR CULTURAL CENTER:

THE NEW ART STRING QUARTET

Sunday, September 29 • 4 p.m.

The popular "Friends of Music" Series opens its season with the internationally acclaimed New Art String Quartet — the quartet in residence at ASU.

Tickets: \$5

AT THE UNIVERSITY ACTIVITY CENTER:

ASASU/UAC
Present

DON HENLEY

with Special Guest
Mister Mister

Friday, September 20 • 8 p.m.

One of the original Eagles, Henley is now soaring on his own. His current hit single is "Boys of Summer." Local favorites Mister Mister will start the ball rolling.

Tickets: \$14.50, \$13

ASASU/UAC
Present

KOOL & THE GANG

With Special Guests

Friday, October 4 • 8 p.m.

Their latest album, "Emergency," has just gone platinum, they've had six gold albums in a row and four platinum. Need we say more? Don't miss it.

Tickets: \$17.50

For further information about Gammage Center, ASU Activity Center, Kerr Center, ASU Stevens House and Sundome events, call 965-3434.

TICKET DISCOUNT POLICY:

GAMMAGE CENTER — Students may purchase ONE or TWO tickets for HALF-PRICE with presentation of a valid student I.D. and current activity card. Photo I.D. or current activity card must be presented at the door on night of performance.

KERR CULTURAL CENTER — Students, faculty and staff may purchase ONE ticket for HALF-PRICE with presentation of a valid student I.D. or a faculty/staff card.

NOTE: SPECIAL EVENTS are not included in this discount policy.

sports

state
press

Mistake-plagued Devils fall to Michigan State

By JERRY BROWN
State Press

EAST LANSING, Mich. — If you take a look at the statistics from ASU's season opener Saturday, you would swear new coach John Cooper spent most of his first game as Sun Devil coach smiling.

The Devils amassed 24 first downs to host Michigan State's 16. ASU picked up 228 yards through the air, while the Spartans managed but 94. Total offense belonged to them also, by a comfortable 342 to 217 margin.

But Cooper was not smiling as the final seconds wound down on his initial game. Facts and figures can be misleading sometimes.

And if ever there was a game where statistics did not tell the story, ASU's 12-3 loss to the Michigan State in front of 67,797 fans at Spartan Stadium can be filed under exhibit A.

That's 'A' for anxiety. "We made enough mistakes for a lifetime," Cooper said afterward. "When you score three points you can't be very happy with your offense."

The Devils (0-1) turned the ball over four times and were penalized 10 times for 100 yards in the game.

Again, not the whole story. "We dropped more passes today than we do in a week of practice," Cooper said. "We felt our wide receivers had to make some big plays. They didn't make those plays."

The Spartans (1-0) did not make many big plays when they

had the ball either. But on Saturday, not many was more than enough.

After stuffing the Devils on three plays in the opening series, Michigan State drove 59 yards in four plays, the last 42 by sophomore running back Lorenzo White on a sweep down the sidelines.

"Butch (MSU tight end Butch Rolle) took out his man and it was clear sailing," White said of the run. "Once I got to the outside, I knew it was six."

White picked up 103 yards in the first quarter on his way to a 174-yard performance on a Spartan record 39 carries.

Kicker Chris Caudell missed the extra point wide right but got another chance to kick quickly.

ASU was forced to punt again after three plays, giving MSU the ball on the Devil 41. Seven plays later Caudell redeemed himself with a 31-yard field goal.

But the Spartan offense ran out of gas right there.

After that, the two teams spent the most of the half in the middle of the field. ASU quarterback Jeff Van Raaphorst was picked off twice, but the ASU defense, which got stingier as the game wore on, kept the Spartans from threatening.

The ASU defense allowed only 86 yards total offense after the first quarter, only 25 in the second half. ASU rover back David Fulcher took charge.

"Their defense is just about the best I've ever faced," said Michigan State quarterback Dave Yarema. "That No. 7

(Fulcher) was all over the place. Every time I looked up, he was there."

Fulcher said: "After the first touchdown, I told everyone there was no sense in taking the same whipping as we took a year ago opening day. The 12 points that they scored didn't hurt us. We couldn't put any points on the board."

Van Raaphorst, who completed 22 of 46 passes for 228 yards on the day, offered a concise assessment of his performance.

"I threw very poorly," Van Raaphorst said. "I feel bad for our defense because we let them down. Our coaches did a great job of preparing us."

ASU's only major scoring threat of the half came in the final minute. Devil defensive end Frank Rudolph blind-sided Spartan quarterback Dave Yarema and separated him from the ball. Yarema said he was glad that was the only thing separated.

"I've never been hit that hard before," Yarema said. "I rolled around on the ground for a while, and I had no idea where I was."

Skip McClendon pounced on the ball for the Devils at the Spartan 21 with nine seconds left. Here, however, Cooper made an error that cost ASU a shot at a touchdown.

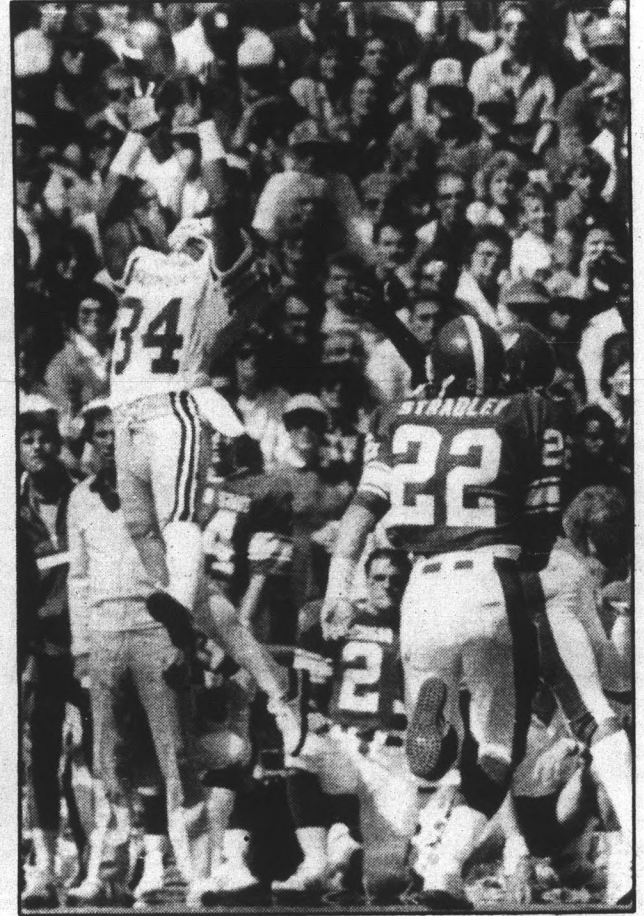
"I thought we had two time outs left," Cooper said. "But we only had one. We were going to take a shot at the end zone, but when we used the last time out we had to go for the field goal."

continued page 11



Staff photo by Brian O'Mahoney

Sun Devil tailback Darryl Clack rushed for 79 yards against Michigan State before leaving the game in the third quarter with a toe injury. Clack will be able to play next week against Pacific.



Staff photo by Kip Williams

ASU sophomore split end Aaron Cox leaps for a Jeff Van Raaphorst pass against the Spartans. Cox had four receptions on the day.

Women's hoop recruit fails entrance requirements

By BRAD HALVORSEN
State Press

Lynne Long, the top local recruit of the ASU women's basketball team, failed to meet University entrance requirements and has enrolled at Central Arizona Community College.

Long, the 1984-85 statewide scoring leader from Tempe Corona Del Sol High School, did not meet the 2.0 grade point average requirement and must graduate from Central Arizona before she can enroll at any four-year university.

"It's a disappointment for us because we are now unable to have somebody of her quality," Coach Juliene Simpson said.

"However, I'm happy that the University did not allow her to be accepted. We would not want to be in a situation like this later on."

Simpson admitted she knew about Long's grade deficiencies when she signed a national letter of intent with ASU in April.

Long was Simpson's only Arizona recruit. One basketball rating source named her Arizona's top recruit.

A 5-foot-7 guard, Long averaged 25 points and 10 rebounds per game during her senior year. She was a member of Corona Del Sol's 1983 state championship team.

Simpson said she was counting on Long to replace senior Jodi Rathbun after the 1985-86 season. Rathbun, the Devils' starting point guard, captained the team last year.

'However, I'm happy that the University did not allow her to be accepted. We would not want to be in a situation like this later on.' — Juliene Simpson

"We did not need that position filled this year, so it's not that important," Simpson said.

"I feel disappointed for her. It was her goal to play at Arizona State University, and she was one year away from being able to help us."

Simpson said she had been considering redshirting Long for the upcoming season. Long's absence will not directly affect the

team this year, but will change recruiting strategies next spring, Simpson said.

Simpson called Long the "fourth of four recruits." She said Long was not needed as much as the other recruits because the Devils need more depth in the inside rather than at guard.

The other three, all junior-college transfers, are Shamona Mosley, a 6-foot

power forward from Los Angeles Technical Junior College; Libby Ripp, a 6-2 center from Oklahoma City University; and Lori Workman, a 6-2 center from Sauk Valley (Calif.) Junior College.

"The other three will help us immediately," Simpson said. "We have gained the experience and also the inside game we need."

Long has a history of family members attending ASU. Her father, Leon Long, played



Juliene Simpson

basketball for the Sun Devils. Her uncle, Morrison Warren, played football, and her grandfather, George Diggs Sr., ran track.

Long has estimated that 45 family members have attended ASU.

Unproven linksters begin season

By BRAD HALVORSEN
State Press

Women's golf coach Linda Vollstedt will take three players who have never competed collegiately into the season-opening BYU Invitational, a three-day tournament starting today at Hobbie Creek Country Club in Provo, Utah.

The youthful team will consist of one junior, one sophomore, two freshmen and a first-year player whose remaining eligibility is still in question.

Only one player — NCAA champion Danielle Ammaccapane — competed regularly with the team last year.

The remaining four players are sophomore Heather Hodur, freshmen Pearl Sinn and Pamela Wright and Eve-Lyne Biron.

Vollstedt said Biron's class standing is in doubt. She will have either three or four years of eligibility left.

The 14-member ASU squad played four qualifying rounds last week and Vollstedt organized her traveling team for the BYU Invitational from the best four composite scores.

Ammaccapane was exempt from the qualifying.

Vollstedt said she feels confident with her squad for this tournament, saying it has "much better" potential than the team which entered the 1984 season opener.

ASU highlights the 12-team field, along with New Mexico, New Mexico State, UCLA and BYU.

Vollstedt said she expects the competition to be respectable, but not top-notch.

The course will favor the quality players, she said.

"It's a tough, tight golf course," Vollstedt said. "It's short, but it's a course where you've got to use strategy. The smart players will score on it."

Vollstedt said her main goal this fall is not winning, but getting her team to solidify.

"My whole objective for the fall is to get everybody used to each other, keep building team unity and find out what I have," Vollstedt said.



Staff photo by Ron Kuczek Jr.

Junior Danielle Ammaccapane will lead a young ASU women's golf team into the BYU Invitational.

"It's not going to surprise me if we win three or four tournaments. But if we don't, I'm not going to be unhappy because the ultimate goal is the NCAA's (tournament) in May."

In the team qualifying rounds, Sinn made the road team after only three rounds, because she had a sizable lead on her teammates. In the first round last Monday, she broke the course record at Alta Mesa Country Club in

Mesa with a 68. She followed with a 76 at Arizona Country Club on Tuesday and a 70 at Phoenix Contry Club on Wednesday.

Wright had the next-lowest qualifying total, a 299 for the four rounds. Hodur followed at 303 and Biron finished at 310.

Senior Julie Cross-Massa and junior Tish Certo missed the cutoff by two strokes at 312.

Monday Night Football "WING-DING"

With each order of
SPICY CHICKEN WINGS
receive additional
1/2 ORDER FREE

15 for \$2.50 45 for \$6.85
30 for \$4.75 60 for \$8.95

THE WOODSHED

SW Corner
Baseline & Mill

831 WOOD

Food &
Drink



FREE MOVIE

with this coupon and a
recorder rental at only \$5.95



3118 S. Mill • Tempe

966-6722

No membership fees • Proper I.D. required

Expires 12-31-85.

THE POPPER POP IN

Gourmet Popcorn Shops

Now Serving:
tropical sno
Hawaiian Shave Ice

2 for 1 (with this ad)

Expires Nov. 30, 1985.

Popcorn Flavor of the Week: **15% off w/ad**

Reasonable Prices! Sun.-Thurs. 11 a.m.-10 p.m.
Delivery Fri. & Sat. 11 a.m.-12 p.m.

903 S. Rural Rd. **967-4344**

THE MENAGERIE

EARRINGS, BANDANNAS,
FLAGS, BACKPACKS, PURSES,
BELTS, SUNGLASSES, LETTERING,
KUSTOM KAPS, ETC.

ASU KAPS \$3.95

10% Discount with this ad

215 E. 7th St., Suite 202
UNIVERSITY COMMONS
829-7565

**EVERYBODY'S
RUNNING TO ...**

**GENTLE STRENGTH
COOPERATIVE**

A NATURAL HEALTH FOOD STORE

Owned & Operated by Members

OPEN TO EVERYONE!

- Fresh Squeezed Juices • Flour Milled Daily
- Bulk Grains & Oils • Home Grown Veggies
- Valley's Largest Selection of Herbs

10% OFF
on any purchase
— with this coupon —
Expires 9-30-85.
Non-Members only.

234 W. University
(N.E. Corner of University & Ash)

968-4831

Mon.-Sat. 9 a.m.-9 p.m. Sun. 10 a.m.-8 p.m.

MONDAY

Donny O'Brien's
THE PLACE TO BE!

95¢ Margaritas

95¢ Domestic Bottled Beer

7 to Close • Dance All Night!

222 SOUTH MILL, TEMPE • 968-0257

Game

continued from 9

Freshman Kent Bostrom's 38-yard attempt was no good, preserving the Spartan's 9-0 lead at the half.

The third quarter featured more yellow flags than a construction site. In one 10-play period, seven penalties were called.

"We had the ball for a half an hour, and we moved it about five yards," Yarema said. "We spent the whole quarter walking backwards and forward."

The fourth quarter proved a little more interesting.

It began with the conclusion of ASU's only scoring drive of the day. The Devils moved to the Spartan 7 before stalling. Van Raaphorst pass on third down slipped past wide receiver Paul Day, who was covered by cornerback Todd Krumm.

Bostrom kicked a 25-yard field goal to pull the Devils to within six, and ASU looked like it was in business when Anthony Parker returned a 61-yard punt by Greg Montgomery 61 yards the other way.

But while the ball sat on the Michigan State 18, a yellow flag rested limply on the ASU 30.

"I don't know if it was clipping," Cooper said. "I really hope it was clipping. We'll have to see."

The penalty pushed the ball back to the ASU 15. Three plays later, running back Mike Crawford was hit by MSU safety Phil Parker after catching a pass. Crawford fumbled and Parker fell on the ball at the ASU 25.

The Devil defense pushed MSU back six yards on the Spartans' three offensive plays, but Caudell had more than enough leg to end the scoring with a 50-yard field goal with 3:32 left.

Cooper said he opened the lockerroom talk with his players with a history lesson.

"I told our team that the last time I came in here I was an assistant at UCLA and we lost 13-3," Cooper said. "Then we went on to win the Pac-10."

He also was complimentary to the victors.

"They did what they had to do to win," Cooper said. "They are a very good, well-coached defensive football team. But that didn't surprise us. We knew that."

classifieds

The STATE PRESS disclaims all responsibility for quality and prices of goods and services offered in both classified and display advertising by its advertisers.

Rates, 15 words or less:
\$1.90/day — 1 to 4 insertions
\$1.81/day — 5 to 9 insertions
\$1.72/day — 10 or more

10¢ for each additional word

965-7572

Announcements

CONGRATULATIONS TO the new little sisters of the Nile, good luck from the Bro's.

FLIGHT ATTENDANT 34 airlines hiring. 3 hour seminar. Airline recruiter limited seating. Travel Vision 945-2601.

HANG GLIDE! Certified instruction. Two Saturdays only \$50. Group rates. Windsports, 897-7121.

JEEP 1984 CJ5 new paint, tires, rebuilt 304V8, two tops, lift kit, excellent condition \$4,000 Chris 840-9093.

Automobiles

1961 FALCON, TWO door, six cylinder, automatic transmission, 64,000 miles, one owner, mint condition, appraisal \$2,490 sell \$1,500 call after 5:00 p.m. 949-0501

1973 FIAT-128 runs good, looks good, \$550 takes it 898-8931.

1977 VEGA White with tan interior. Brand new automatic transmission. Runs well. \$825 obo. Greg, 948-6121.

1978 AUDI FOX, great condition, air conditioning, AM, FM, stereo cassette \$2,500 894-6696.

1979 AUDI FOX, silver four doors, good condition. \$2800 bargainable. Call 954-0011 after 1 p.m.

1979 DATSUN 210 HATCH, four speed, 64K miles, excellent condition, cold AC, 835-1429 days or 820-3709 weekends and evenings.

2002 74' BMW excellent condition, new tires and tune up. Air conditioning, AM FM cassette. Moving back east, \$4000. Days 894-2376 nights 947-8767 947-8767 Sharon.

82 ISUZU MARK-1, four door, air conditioning 25,000 miles \$4,300 994-9116.

COLLECTOR'S ITEM 1967 Chevy Impala. Super sport convertible red white. 427 engine. One owner car. Needs work, but great for restoration project. \$4,000 obo. 967-0763.

GOOD TRANSPORTATION! Two 1981 Chevettas; A/T; 44,000 and 52,000 miles; both run good; good maintenance records; \$2,000 each; contact Elder Thibaudeau at Arizona Tempe Mission, 838-0659.

VW 77 CONVERTABLE, new top, must sell, best offer over \$4,500 839-5096 after 12:00.

Babysitters Wanted

BABYSITTER NEEDED, Hayden and McDowell. Two children 1:00 to 5:00, Mon thru Friday. Must drive \$350 per hour 893-3869.

Bicycles

STUDENT DISCOUNT on hundreds of new and used bikes. Low prices on parts and repairs. The Bicycle Discount Center. Tempe Bike Shop. 6th and Mill, Tempe. 966-6896.

Business Opp.

TELEPHONE SOLICITOR wanted for fund raising project. Earn up to \$5 hour. Evenings 6-10. Call 251-8618.

Day Care

CHILD CARE. Two or three year olds, Southern and Hardy, good references Jeanette 968-2055.

For Rent or Lease

1980 YAMAHA AUTOMATIC motor cycle. Perfect for student on campus. \$350.00 or best offer 899-8706.

For Rent or Lease

FOR RENT, two bedroom one bath townhouse, furnished, pool, approximately two miles from ASU 834-6376.

HOUSE FOR RENT \$595, four bedroom two bath near campus call Michael, days 967-5278 nights and weekends 967-6659.

ROOMMATE WANTED, share fully furnished nice home with spa, your own large bedroom and bath, king size waterbed, house privileges. Approx 44th St. and Thomas close to mall \$250 275-7008.

TOWNHOUSE FOR rent, Dobson and University area, 2.5 miles from ASU. Two bedroom two bath, den, pool, washer, dryer, \$500 monthly call 893-1385.

For Sale

35mm CAMERA MAMIYA-SEKOR 1,000dfl spot and average metering system. Excellent condition \$200.00 949-9512.

'81 PUEGOT, DEPENDABLE transportation, great gas mileage, brand new tires, price negotiable, 835-9709 ask for Sharon.

COMPUTER MODEM, Dec DF 112-AA, 300/1200 baud, auto dial, auto answer, commands give over RS-232C, excellent condition with manual. \$200 call 952-9734.

PIONEER SPEAKERS 100 watts. Brand new, never used. Paid \$600 will take \$100 for the pair, moving must sell 956-2336.

Furniture

FURNITURE FURNITURE big discounts. Mattress sale, twin sets from \$49.95, full sets from \$59.95, queen sets from \$89.95. Sofas and love seats from \$173.00. Seven piece bedroom sets from \$89.95. Bunk beds from \$125.00 complete. Bookcases, stereo cabinets, wall units, sleepers, trundle beds, plus much more. 3332 W. McDowell Rd. 233-2236.

GOOD QUALITY furniture at low prices. New and used furniture. Desks from \$50. Chests from \$48. Lamps from \$20. Terri's Consignment Furniture, 1826 W. Broadway, 969-5545.

OAK WALL unit/room divider, 6 months old, 76 inches high, 60 inches wide, 17 inches deep. \$325 obo, excellent condition 830-9290 leave message. Must sell.

Help Wanted

ARE YOU the life of the party? Earn good money part time as a mobile DJ, will train. 831-9888.

BUSINESS STUDENT with Real Estate interest. Research and office work, 15 to 20 hours per week, flexible. Need car. Call Peggy, Comps Inc. 952-9911.

CENSUS TAKERS \$5.95 per hour. Approximately 3000 census takers are needed to conduct a 1985 special census throughout Maricopa County during October. These are temporary positions that will last from 10 to 12 days. Some evenings and Saturdays will be required. An automobile is desirable but not necessary, applicants must meet the following criteria: US citizen, 18 years of age or older, local resident, available for training, good physical condition, no criminal record, apply Wednesday Sept. 18th at Career Services, Arizona D.E.S. job service. Paid for by the Maricopa Association of Governments.

DIRECT SALES Reps, managers earn \$500 per week to start. Very easy program to sell. Enjoy what your doing. Full or part time. We train. 946-3495.

EARN \$4 to \$8 per hr part time making light deliveries on campus, flexible hours, dependable help required 833-3171.

EARN EXTRA \$ on campus, no experience necessary. Interested? Call Judy, 969-9808.

ENGINEERING TECHNICIAN Second or third year mechanical engineering or technology. Some auto experience desired. Minimum 20 hours per week. Flexible schedule, \$4.50 and up. 956-8200.

\$ FOR Christmas break. Avon can help. Call Teri now 839-9227.

FUTON MAKER wanted, will train, part time afternoons. Apply Sweet Dreams Futon Shop 3622 N. Scottsdale Rd Scottsdale.

HIRING STUDENTS for part time sales, no experience necessary. Need own transportation, Logical Landscapes 839-8854.

Help Wanted

IMMEDIATE OPENINGS for energetic students; gain valuable experience in P.R. and fundraising, earn up to \$5.00 an hour plus nightly incentives. Campaign for St. Lukes Poison Management Center call 251-8618.

JONATHANS PIZZA is looking for delivery drivers to staff four new locations in Tempe and Mesa. Drivers must have own insured car. High possible earning potential, apply in person after 11:00 daily at Jonathans Pizza 933 E. University.

MODELS/TALENT, start your new career today. We can assist you, call the talent scouts at Tondou Studios 264-3530 11 a.m. to 6 p.m.

MONEY-JOBS: worried about making ends meet with the increase of education costs and talk of aid being tightened? The Army National Guard can help. Have part time jobs and aid available. Earn \$25,000 + toward your education. For details, call Dave Wautelet at 225-5574 or visit the Tempe Armory (across from Sun Devil Stadium).

MYSTERY CUSTOMER wanted. Under cover pizza consumer to evaluate delivery, service, and products once every four weeks, must live within the delivery area of our new Domino's Pizza store located at 930 W. Broadway. To become a mystery customer and receive a monthly rebate please call toll free on Monday Sept. 16th. 1-800-521-3674.

NEED SEVERAL people with experience selling door to door, (magazines etc.) \$300 to \$600 weekly, work evenings, ask for Kelly 345-1580.

PANHANDLERS PIZZA is now hiring for morning prep, delivery and all closing positions. If you are energetic and enjoy working with people, contact manager after 2 p.m. 106 E. University Dr. 966-6455.

PARADISE CREAM needs ice cream servers. Must have car and work both Tempe and Phoenix stores. Part time, flexible hours, apply 1044 South Terrace. 967-2414.

PART TIME help for restaurant 9:30 to 1:30 p.m. Mon thru Fri 967-8882.

QUALIFIED AEROBIC instructor needed. Male or female, experience necessary. Call Nancy at 274-2552.

SALES SUPERVISORY skills needed to work with college students, evenings assisting people with insurance purchases, excellent growth opportunity call Leombruno and Associates. 257-4525.

SUMMER JOBS! National Park Co.'s. 21 parks - 5,000 plus openings. Complete information, \$5. Park Report. Mission Mtn. Co., 651 2nd Ave. WN, Kalispell, MT 59901.

WANTED: MIMES, caricature artists, jesters to perform at our outdoor festival Oct. 13 call Laurie between 10 a.m. and 11 a.m. 941-3896 Monday thru Friday.

EARN WHILE YOU LEARN. \$10 TO START.
 We need ambitious people who want \$ and the time left over to spend it. Sell nationwide via Wats, M-F, 5-10 a.m. Mike Barron, 966-0582. 9/20

PART TIME HELP WANTED
 Filing PC Typing Delivery Maint. Clerical
FLEXIBLE HOURS VAR. POSITIONS AVAIL. IMMED.
 Apply in person:
 M.A.M.A.
 520 S. Mill Ave.
 Tempe, Arizona
\$3.50-\$5.50/HR.
 9/16

Help Wanted

PART TIME to work for K through 6th graders to supervise and plan youth programs, contact Scottsdale Jewish Community Center 867-2357.

PART TIME shipper receiver, afternoons Mon thru Sat \$4.50 hr. Contact Patty 252-7681.

Instruction

AEROBIC INSTRUCTOR certification workshop, weekend of Sept. 27th at ASU by National Aerobic Training Association 968-7887 or 965-5267.

BECOMING AN 'A' student. Three hour workshop Tuesday September 17th 2-5 p.m. \$15.80. Register MU Activities Center.

DO YOU want to get away? We have an exciting fleet of Cessna airplanes for rent from 152's to T210. Stellar Air Park 961-1156.

DO YOU want to learn to fly? It's easier and less expensive than you think. Give us a call for \$20 demo ride. Stellar Air Park 961-1156.

LETS GET PHYSICAL! One on one weight training \$70 - \$80 per month call Randy 964-9502.

MASTERING SELF hypnosis, a practical course to improve concentration, confidence and self control. Jim Lane Ph.D. 966-8810.

NATIVE GERMAN former schoolteacher would like to help you with your studies of German language and culture, \$12. per hour or weekly rates, 991-5380.

TOTAL ACCOUNTING course only four weeks including computer processing. Be able to set up complete systems with journals, ledgers, financial statements. Morning or evening classes. Call 833-1888, Universal Accounting Systems 2655 West Guadalupe, Mesa.

Lost & Found

LOST AUGUST 28 or 29. Ladies wedding ring and band. Lost in grass at Travellodge on Mill. Reward. 839-6912.

Miscellaneous

HELP! MUST trade four excellent seats for 7 p.m. George Benson show for 10:30 p.m. show. Contact Cathy 946-8835.

Motorcycles

1980 YAMAHA 850 special vetter fairing and saddlebags, excellent condition must sell 897-1795 \$1,350.

1982 YAMAHA XT 200. Eighty mpg, 7000 miles, very clean and runs excellent. \$550. Kevin 967-0291.

1982 YAMAHA XT200, 80 mpg, 7,000 miles, very clean and runs excellent \$550.

1982 YAMAHA CV80 scooter very cute, red with windshield, custom seat \$700 or best offer 968-3659.

1983 GPZ-550. Header, carb work, tank bag, great shape. \$1800 Bob, 968-3393.

1984 RED AREO 80, excellent condition, runs great. \$750 OBO Marta 967-8909 or 838-2186 leave message.

1985 HONDA V30 magna. 321 miles. Three year warranty 500cc. helmet, \$1750 839-4406 965-4084.

GRADUATED 1979 Yamaha 750 Special truck. Windshield, oil cooler, cover, Bell Star LTD. \$1100, Scott 946-2791.

HEY MODS! Vespa 200 E for sale. Looks great runs well. Call Chip anytime at 829-0042.

MUST SELL Aero 80 scooter, good condition, low miles call 345-8067.

Personal

ALPHA PHI activates love each and every one of their wonderful pledges!

DAVE, BEST of luck in ATO. Your big bro Brian.

GARY, CALL Heidi about Palm Springs. 947-9574.

MAKE A big impression! Send a Micro Banner! Great for birthdays or any special occasion! We have lots of neat ideas for you! Call 234-2430 for more information.

PEE WEE, SHHH! Be quiet! I'm telling you that you make a great Theta. Love Opie.

PREGNANT? CONSIDER adoption. We may be able to help with housing and medical expenses. For pressure free counseling at no charge, call Southwest Adoption Center. 602-234-2229 or 1-800-423-2229.

Personal

ALPHA DELTA PI congratulates our new active members!!! Whitney, Cindy, Jodie, Angela, Patty, Susi, Pi Love!!!

Real Estate

ONE BEDROOM condo, walking distance to ASU. Washer, dryer, dish-washer. \$42,000 call owner 967-1258.

Roommate wanted

FEMALE NON-SMOKER, share three bedroom house, walking distance from ASU. \$250 month, includes utilities, call Maria 967-6415 after 5:00.

FEMALE ROOMMATE needed \$150 per month plus half utilities. Ten minute walk to ASU. No smoking or pets. Call Judy-home, 968-5250, work 8-5 965-5056.

MATURE FEMALE to share three bedroom two bath town house with pool, jacuzzi, washer and dryer. Close to ASU call Bridget day 948-2222 night 990-8930.

Services

CARS AVAILABLE - 21 or older. All States Drive-away, 992-5200.

CRUISESHIPS HIRING data phone 707-778-1066 for directory and job information.

CUSTOM SEWING, you supply the materials, I will supply the expertise, free estimates call 899-8638.

HAVE UNWANTED facial or body hair removed permanently by electrolysis. Free consultation, located in Tempe. Call Sharon at Desert Electrolysis Center 829-7829.

HYPNOSIS, DEVELOP self confidence, remove inhibitions, control stress and anxieties, improve memory and concentration, stop smoking or lose weight, Arizona Hypnosis and Counseling Institute. Lindsay A. Brady certified Hypnotist 966-8571.

IRONING, WILL pick up and deliver. Reasonable, references, 990-1468.

SINGLE? HERPES? Confidential Connections-a unique, affordable dating service for singles with herpes 241-9874.

STAY AWAKE and alert for studying exams etc.. No drugs. No coffee. Call 968-2675.

Typing

1-DAY turn around word processing, typing for short papers, resumes, and letters. No extra charge for rush jobs. Rate includes automatic edit for spelling and punctuation. Call Nora 820-9681 for all your typing needs.

A-1 WORD PROCESSING at Kinko's Copy, call 966-2035.

AAA WORD Processing Service. Term papers, resumes, customized form letters. Reasonable rates. Call Ron 833-5532.

ACCURATE FAST experienced typist \$1.50 per page call Sharon 833-5687 or Janet 834-0893.

ALL PAPERS typed to your complete satisfaction. Convenient. Reasonable. Mrs. Oakley 967-0802.

PROFESSIONAL QUALITY word processing. Will edit and correct spelling. Carolyn Douglas, 838-0959.

PROFESSIONAL TYPING service; Competitive rates, spelling and punctuation corrected, proof reading, pick-up and delivery available. Suzanne 820-1843.

PROFESSIONAL WORD processing. Fast and accurate will edit and correct spelling. Call Terry after 5 p.m. 945-1008.

PROFESSIONAL WORD processing, accurate preparation of term papers, theses, research papers, resumes, etc. Assistance with spelling punctuation, and grammar. On campus pick up and delivery, reasonable rates. Words by Jodi 890-9158.

PROFESSIONAL TYPING, low rate, fast service, discount for students. call Sandy 849-0689.

SHORT OF time? I can help. Reasonable. Professional. Guaranteed. Experienced in academic. call Jessie 945-5744.

SPELLING PROBLEMS? Will edit spelling, punctuation, and grammar, fast return, accuracy guaranteed, Joan 839-0772.

TYPING TERMPAPERS, manuscripts, resumes, etc. 831-7286.


WORD PROCESSING, storage for dissertations, thesis and term papers. Rush jobs welcome. Nancy. 830-5572.

It all adds up!

Birth defects are forever. Unless you help. TO PROTECT THE UNBORN AND THE NEWBORN


March of Dimes

THIS SPACE CONTRIBUTED BY THE PUBLISHER



Rock Bowling
 Sunday 9:30 p.m.-12:30 a.m.
 Unlimited bowling to music
 played by D.J. Gary Simms
 Admission \$6.50
WAYNE ZAHN'S TEMPE BOWL
 1100 Apache Blvd. • 967-1656

HAIR SALON
Looking for Models
 215 E. 7th Street, Tempe, AZ
 966-5192
CRIMPERS LTD



E.B.P.W.
 Would you like to meet women in banking, law, real estate, and other successful professions? The Executive Chapter of Business & Professional Women (PBW) of Phoenix is sponsoring a mentor program for women in their final year of a degree program. Please pick up a Mentor Program application in the main department of your colleges.
"BE A PART OF OUR DYNAMIC NETWORK"

SAVE 50%-70%
 Reconditioned bicycles
 All styles & types
 Complete repairs
 All makes & models
 Accessories & parts
 Trades welcomed
BOB'S
USED BIKE OUTLET
 1908 E. APACHE, TEMPE
 (2 blks. E. of McClintock)
 894-6852

NEW LOCATION
THORBECKE'S GYM
Special Low Rates



Body Building
 Weight Training
 For All Sports
 Power Lifting
 Nutritional & Diet Consulting
966-6621

\$12⁰⁰ per month
 *plus \$50 one-time membership fee

Only one mile on the bike path off Scottsdale Bridge.

THORBECKE'S GYM
 On the south side of Curry Road between Miller & Hayden



GET MUGGED AT THE ARIZONA BANK
 ... when you open the most economical Student Checking Account in Arizona.

That's right! Getting mugged at The Arizona Bank can actually be fun! Merely open a new Student Thrifty Checking Account, and you'll receive a beautiful Kachina Mug, absolutely FREE! Along with your \$25.00 opening deposit, you'll also receive The Arizona Bank 24HR Teller Card, Check Safekeeping, and your first order of checks, FREE. It's our way of saying thank you for making The Arizona Bank your bank.



annual service charge when the account is opened, and every 12 months thereafter for as long as you qualify for the account.

Visit any office of The Arizona Bank and show your student I.D. to open a Student Thrifty Checking Account. Then stop by any of the convenient offices listed below to pick up your free mug. But don't delay. This is a limited offer!

NO MONTHLY SERVICE CHARGE

Write all the checks you wish and make 24HR Teller withdrawals during the year, without paying a monthly service charge. Your only cost is a non-refundable \$24.00

Rural & Baseline Road Office
 906 East Baseline Road • Tempe
 Tempe Main Office
 619 Mill Avenue • Tempe

*Normal service charges only. Check orders, stop payments, insufficient funds charges, etc. are additional. Refer to the Service Charge brochure for complete details.



MANN
BARGAIN PRICE
 \$3.00 ALL SHOWS BEFORE 6 PM
 MON, THUR, FR
 SATURDAY & SUNDAY FIRST SHOW ONLY

SUN DEVIL 6 829-0344
 The Cornerstone • Rural & University
BACK TO THE FUTURE (PG)
 1:45, 4:30, 7:00, 9:30
TEEN WOLF (PG) 1:15, 5:15, 9:15
PALE RIDER (R) 3:15, 7:15
PEE WEE HERMAN (PG)
 1:15, 3:15, 5:15, 7:15, 9:15
AMADEUS (PG) 1:00, 6:30
EMERALD FOREST (R) 4:00, 9:30
EUROPEAN VACATION (PG-13) 1:00, 5:15, 9:30
SILVERADO (PG-13) 2:45, 7:00
YEAR OF THE DRAGON (R)
 1:30, 4:15, 7:00, 9:30

SUPERSTITION 5 834-5767
 MESA AT 50 LONGMORE & SUPERSTITION
GREMLINS (PG) 12:30, 5:00, 9:30
BEVERLY HILLS COP (R) 2:45, 7:20
YEAR OF THE DRAGON (R)
 1:00, 4:00, 7:00, 9:30
PEE WEE HERMAN (PG)
 1:00, 3:00, 5:00, 7:10, 9:20
ST. ELMO'S FIRE (R) 12:45, 5:00, 9:25
EMERALD FOREST (R) 2:45, 7:05
E.T. (PG) 12:30, 4:45, 9:00
BLACK CAULDRON (PG) 2:45, 7:00

MANN POCA FIESTA 4 835-0404
 MESA AT 1020 WEST SOUTHERN
SUMMER HOLIDAY (PG) 12:30, 4:05, 7:40
CHRISTOPHER YOUNG (PG) 2:10, 5:45, 9:20
COMPROMISING POSIT. (R) 1:00, 3:10, 5:20, 10:00
THE CREATOR (R) 8:00
WEIRD SCIENCE (PG-13) 1:45, 5:30, 9:15
AND HALS IN THUNDERBOLT (PG-13) 3:35, 7:20
DESERT WARRIOR (R) 1:30, 4:50, 8:15
AMERICAN NINJA (R) 3:05, 6:25, 9:50

CHRIS-TOWN 5 249-2843
 5707 NO. 19TH AVE
YEAR OF THE DRAGON (R)
 12:45, 3:45, 6:45, 9:45
COMPROMISING POSIT. (R) 12:00, 2:30, 4:45, 10:00
THE CREATOR (R) 8:00
PEE WEE HERMAN (PG)
 12:15, 2:45, 5:00, 7:15, 9:30
AMERICAN NINJA (R) 1:15, 5:30, 9:45
BEVERLY HILLS COP (R) 3:15, 7:30
ST. ELMO'S FIRE (R) 12:15, 4:45, 9:15
EMERALD FOREST (R) 2:30, 7:00

\$250 MIDNIGHT MOVIES
 FRIDAY AND SATURDAY AT
 ALL MANN THEATRES -
 CALL FOR TITLES & TIMES