

tuesday

September 10, 1985

state press

Tempe, Arizona

Vol. 68 No. 10

Arizona State University

Copyright, State Press, 1985

Group forms to battle South African divestment

By ED SCHUBERT
State Press

A new student organization is being formed to combat divestment in American firms with South African ties, the group's founder said Monday.

Katy McGregor, a senior finance major, said the formation of "Students Against Marxism in South Africa" was prompted by the Arizona Board of Regents' decision Friday to divest

state universities' funds in companies conducting business with South Africa.

ASU and UA have \$3.3 million invested in such businesses. "Sanctions and divestment only push the (South African) government to a totalitarian government with no human rights, not even the right to live," she said.

"The major goal of our group is to promote human rights in South Africa" by opposing both the extremes of apartheid

and Marxism, McGregor said.

Students Against Apartheid President Gray Hale said a black majority government in South Africa is more likely to be non-aligned than anti-American and would probably have a mixed economy.

"A lot depends on the way we respond to the national liberation movement" in South Africa, Hale said.

McGregor said she respects the Board of Regents "immensely," but was disappointed by its 4-3 decision in favor of divestment.

McGregor said divestment could pose a threat to "the only viable country" on the African continent.

"We expect (the South African government) to change overnight," yet the United States took years to overcome segregation and discrimination, she said.

"There are still problems with discrimination on the ASU campus," McGregor said.

"There is tremendous pressure on this government right now" even without divestment, and the leaders have "got the hint," she said.

"South Africa has made strides toward ending apartheid" in the last few years, although it still has a long way to go, she said.

"Democracy takes time," she said.

Divestment could undermine the South African economy and push the country into the Soviet orbit, with disastrous consequences for the United States and its allies, she said.

McGregor said a U.S. Senate report stated that South Africa contains needed "strategic minerals" such as platinum, gold and chrome ore, the loss of which would be "catastrophic to the free world."

South Africa produces 80 percent of the free world's platinum, 77 percent of its gold and 48 percent of its chrome ore, she said.

McGregor said she fears South Africa will become part of a "domino effect," and join countries that have fallen in recent years to governments with anti-American policies, including Iran, Vietnam, Laos, Cambodia, Zimbabwe, Ethiopia and Nicaragua.

"Tens of thousands" of blacks have fled Zimbabwe, formerly Rhodesia, to the greater freedom in South Africa, she said.

Students Against Marxism in South Africa has not yet petitioned the Office of Student Life for recognition as a campus club, McGregor said.



Staff photo by Ron Kuczek Jr.

Finance senior Katy McGregor, left, organizer of Students Against Marxism in South Africa, speaks to Gray Hale, president of Students Against Apartheid, about divestment from companies doing business in South Africa.

'Corporate raider' Pickens stresses values in MU talk

A multi-millionaire corporate chairman, told his Monday afternoon audience in the MU, "You can do better than I do."

T. Boone Pickens, 56, "corporate raider" and chairman of the board of Mesa Petroleum Co. in Amarillo, Texas, spoke at a forum organized by the Masters of Business Administration Association.

Pickens, described by Time magazine as a "ruthless but fascinating wheeler-dealer," said he thought members of MBAA, a graduate business student organization, might be interested in his successes in the marketplace.

"You don't have to cheat to win," he said. "You don't even have to bend your principles. I promise you."

In its March 4 issue, Time magazine described Pickens as a man alternately perceived as "a real-life J.R. Ewing," "a dangerous upstart," "a champion of the little guy" and as "a modern David" fighting corporate Goliaths.

Pickens said he did not agree with the term "corporate raider."

He said someone who invests millions in a corporation should be called "a large investor and not a 'corporate raider.'"

Pickens told Time his objective is not to take over a company, but to scare management so it will buy back his shares at a price higher than the market value of the stock.

"Corporate raider" refers to the tactic of acquiring a corporation by buying a significant

portion of the firm's stock, according to Time.

Pickens said the formula for success in business is to "come early, stay late, analyze well and work harder than your competition."

Aspiring entrepreneurs should be willing to take reasonable risks and never forget that "what drives people is profit," he said.

"Don't ever apologize for making money honestly," he said.

"America has by far the greatest number of entrepreneurs," Pickens said. "Free enterprise is the reason people want to come to the United States."

He said business management has "lost the entrepreneurial spirit" due to a lack of the profit motive.

"Ownership is the key to corporate success," he said. "Without ownership, business slips into bureaucracy."

Corporate bureaucracy has displaced the sense of "ownership," which is essential to free enterprise and has wounded the entrepreneurial spirit, Pickens said.

Corporate management sometimes loses sight of the fact that stockholders are the owners of business, he said.

Managers tend to see "stockholders as brilliant when they bought their stock," he said, but the same shareholders are later seen as "dummied-up" when the time comes to make important corporate decisions.

— ED SCHUBERT



Staff photo by Kip Williams

T. Boone Pickens speaks to students Monday in the MU about his success as president and chairman of the board of Mesa Petroleum Co.

Inside Today

The Arizona Board of Regents has granted ASU the authority to request \$33 million in bonding for a new recreation complex and dormitory. Page 5.

Women are more likely than men to be disappointed in their choice for a permanent mate, an ASU study shows. Page 10.

Sun Devil quarterback Jeff Van Raaphorst hopes this year's opener goes better than last year's. Page 11.

Bloom County 6
Classified 15
Collage 7
Nation/world 2
Opinion 4
Sports 11

nation/world

state press

Administration announces terms of proposed immigration reform bill

WASHINGTON (AP) — The Reagan administration favors an immigration bill that would generously admit foreign agricultural workers, limit reimbursements to state and local governments and retain current prohibitions against job bias, Attorney General Edwin Meese III told Congress Monday.

Meese said President Reagan also insists on sanctions for employers who knowingly hire illegal aliens, and favors an amnesty program that would apply to those who entered the United States by Jan. 1, 1980.

The attorney general testified before the House Judiciary immigration subcommittee at its first hearing this session on legislation to control illegal immigration.

An immigration control bill already has cleared the Senate Judiciary Committee and could be considered by the full Senate this month. The separate House and Senate bills differ in many respects, almost ensuring a conference if both measures pass.

"We need make sure employers are not able to hire illegal aliens," Meese said. "We need a cap on reimbursement to state and local governments" for providing services to aliens who would gain legal status under a reform bill.

U.S. remains in advisory position to South Africa despite sanctions

WASHINGTON (AP) — Despite the steps taken Monday against South Africa, the Reagan administration is holding to a policy of persuasion, trying not to hurt the country's economy and the millions of black workers who depend on it.

"We are talking about a sovereign nation and there are limits to what another nation can do," President Reagan said as he issued an executive order restricting loans, computer sales and the purchase of krugerrands. "We cannot give orders to South Africa."

Some of the steps taken by Reagan administratively were contained in a bill Congress was set to enact — over his veto, if necessary. But at least two Congressional provisions were not adopted by the White House.

One would impose a flat ban on the importation of Kruger-

rands within 18 months. The other threatened further economic sanctions in 12 months if there was no significant progress toward ending apartheid.

Secretary of State George P. Shultz, briefing reporters on the executive order, said the actions taken by the administration "were designed to register our view against apartheid, as distinct from actions designed to deprive people of their livelihood."

Economic destabilization of South Africa, Schultz believes, would both cause further suffering to blacks and weaken U.S. leverage on the Pretoria government.

Reagan's ban on Krugerrands imports would be instituted only with the approval of the General Agreement on Tariffs and Trade, the 90-nation organization based in Geneva, Switzerland, that monitors international trade regulations.

Loyalist Thailand soldiers foil coup attempt by former military leaders

BANGKOK, Thailand (AP) — Loyalist troops crushed a coup attempt Monday by 400 to 500 soldiers led by former top military men. Prime Minister Prem Tinsulandona, who had been out of the country, returned hours after the tank-led rebel insurrection and pleaded for unity.

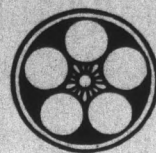
Four people were reported killed and 59 wounded in nine hours of fighting. The acting army chief said three alleged coup leaders had been arrested.

At 6 a.m. rebel soldiers seized the official Radio Thailand and government television Channel Nine. The rebels, calling themselves the "Revolutionary Party," announced they had seized power and dissolved the Parliament and Cabinet.

They moved tanks to the compounds of the Supreme Command, Government House, the First Army Division headquarters and the Public Relations Department, the national media center, all located within a one-square-mile radius.

The rebels, with machine guns and 22 tanks, stormed the army radio station at 9:55 a.m., but gave up five hours later when the government threatened to move in and crush them.

The leaders of the coup announced over Radio Thailand that they had seized power, "to correct the seriously deteriorating situation of the economy."



TERIYAKI
OF JAPAN

Valley's Most Authentic
JAPANESE FOOD
at Fast Food Prices

1314 E. APACHE • 894-6883

CARPET REMNANTS

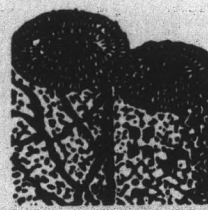
WE MANUFACTURE
OUR OWN CARPET
AND SELL IT DIRECT
TO THE PUBLIC, NO
MIDDLE MAN.

- Thousands in stock — 30%-70% off
- Hundreds of room-size remnants — \$29-\$69
- We Deliver



Owned and operated by E'Con Carpet Mills with warehouses throughout the U.S.A.

MESA
1826 W. Broadway
At Dobson/bet. K-mart
and Price Club
890-1152
NORTHEAST
15601 N. Cave Creek
867-2703
WESTSIDE
3161 N. 35th Ave.
bet. Thomas & Osborn
269-3261



El Zarape Mexican Food
GRAND
OPENING
EXTRAVAGANZA!

BURRO
RED, GREEN OR MACHACA
Rice, Beans and Medium Drink

\$1.99
WITH THIS AD ONLY

Ask about our 99¢ daily special.

Across Univ. from ASU
216 E. University, Tempe

Back To School Savings

Decorate your dorm room
\$10.99 Drag Chutes
NOW \$5.88

Rayban Wayfarer
Sunglasses
\$39.99
NOW \$22.88
Limit two rain checks given.



- Mountain Equipment
- Outdoor Prod.
- Bristlecone
- Dolt



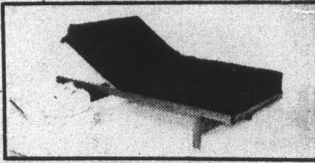
Sale ends 9-19-85. **894-9137**
•Camping
•New & Used Clothing
•Genuine G.I. Surplus
•MASH BASH HEADQUARTERS
1332 E. Apache
(A. J. Bayless Center)

M-F 9-8
Sat. 9-6
Sun. 10-5
MC/VISA

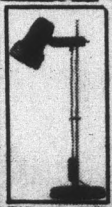
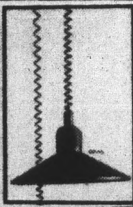
BOOK PACKS

15% OFF

Bed
or
Lounge



hardwood bed frames



Lamps
Lamps
Lamps

Futons
Futons
Futons

Sofabeds



Contemporary Furniture • Futons • Lighting • Accessories

FREE DELIVERY
Near ASU
with this ad
(exp. 9-30-85)

Ask about 90 days
same as cash



sweet dreams

3622 N. Scottsdale Rd.
(Just north of Osborn)
946-5687

High Holiday Happenings

ROSH HASHANAH

Erev Rosh Hashanah Dinner
Sunday, September 15th
5:00pm at Hillel
Students \$4.00
Non-students \$7.00
Payment due Monday, Sept. 9
After September 9th, \$6 & \$10.

Sunday, September 15th
8:00pm Arizona Room - MU

Kiddush and "Birthday of the World"
party will follow services at the
Jewish Student Center - Hillel.

Monday, September 16th
9:30am Arizona Room - MU

Tuesday, September 17th
9:30am Hillel Jewish Student Center



YOM KIPPUR

Tuesday, September 24th
7:00pm Arizona Room -MU
Kol Nidre Service

Wednesday, Sept. 25th
10:00am Arizona Room

Concluding after sunset,
Wed. Sept. 25th - You
are invited to the Hillel
building for 'Break-the-
Fast-Nosh' and to put a
decoration on the Sukkah.

Admission cards are FREE to students,
staff and faculty of ASU and the community
colleges. Admission cards may be obtained
at Hillel 1012 S Mill Ave.
ENTRANCE BY ADMISSION CARD ONLY.

ASU teaching programs, requirements reformed

By VICKIE CHACHERE
State Press

ASU's College of Education will attract better students in the near future, but newly-implemented reforms could cut enrollment by 15 percent, the acting dean of the college said Monday.

Raymond Kulhavy said college officials are upgrading the liberal arts education, but he expects a strictly enforced minimum 2.5 grade point average and a new teacher proficiency exam to eliminate unqualified students from the program.

The college, which has come under fire from state lawmakers, the Arizona Board of Regents and college faculty members, is currently restructuring numerous programs.

"I think the preparedness of the student and the general quality will be greater than in the past," he said.

Kulhavy said he has been called to testify on the status of teacher training in Arizona before a joint legislative committee studying the education colleges at ASU, NAU and UA.

"It's a very political issue right now," Kulhavy said, adding that relations between legislators and College of Education administrators have been strained as a result of poor communication between the two groups.

Kulhavy, who has been meeting with Arizona legislators on a regular basis to discuss the problems in the college, said he believes the lawmakers are willing to work to improve teacher-training programs.

"They are not bothered by the fact that there are problems," he said. "They are bothered when the problems are not (discussed)."

Kulhavy said ASU's Colleges of Education and Liberal Arts are involved in discussions that may lead to an increase in required liberal arts courses and the elimination of specialized courses for education majors.

"If I have my way, the transcripts of our students in the future are not going to be any different from anybody else on this campus," Kulhavy said.

Kulhavy said that in the past education majors were allowed to take specialized math and science courses which emphasized teaching methods rather than the actual curriculum.

Those classes will be eliminated and only classes that offer at least 80 percent of math or science curriculum will be offered to education majors, he said.

Fredric Mitchell, an ASU professor of secondary education, released a report in December that targeted the lack of a solid liberal arts education as a major reason for poor teaching in public schools.

He said by next fall education majors will also be required to complete more hours of course work before they can be certified.

Kulhavy said student waivers for courses will be kept to a minimum and all waivers must be approved by the Dean's Office.

He said the minimum 2.5 GPA required for students will be "rigorously" enforced, and that college officials have begun removing students whose grades fall below that level.

"We are going to (implement) the policy and we are going to enforce it," Kulhavy said.

"By the end of the year we will have seen real progress," he added.

Kulhavy said he also expects a new teacher proficiency exam to cut enrollment in the college, but added it will allow students to recognize areas in which they need to improve.

Prospective teachers will be required to pass the Pre-Professional Skills Test before enrolling in the college beginning Jan. 1, 1986, Kulhavy said.

The PPST was approved by the Arizona Board of Regents

last spring as a replacement test for the state-mandated Arizona Teacher Proficiency Exam.

The PPST tests math, reading and writing skills of education majors.

The ATPE has been accused of discriminating against minorities and was cited as being unfair when more than 50 percent of Arizona's prospective teachers taking the test failed.

Kulhavy said 360 students have enrolled in the College of Education without taking the PPST, but this will be the last group to enter any teacher-training programs before passing the test.

According to a regents' mandate, the 360 students will have to pass a proficiency test before they can receive their certification.

Remedial programs for those failing any of the test components will be offered through student services.

"We are not going to let people drop by the wayside," Kulhavy said.

Kulhavy said ASU is working with local community colleges to encourage students to take the PPST as soon as possible to allow them time to take remedial course work.

He said if students take the test within their first two years of college, they will have more time to improve their skills and administrators are hoping the program will lower failure rates.

"People are going to know beforehand what is expected here," Kulhavy said.

A projected teacher shortage in Arizona and increasing teacher salaries will offset the decline in enrollment caused by the PPST, Kulhavy said.

"We are looking toward a professional-school way of thinking," Kulhavy said, adding that he had contacted the deans of several medical schools and law colleges and is studying the administration of their programs.

For All your Party Needs
Y-KNOT PARTY
Cinnamon Tree Center
903 S. Rural Rd. 967-4495

20% OFF BALLOON BOUQUETS

Quality Overnight Film Processing
Ask about 2 for 1 Special

50% OFF DOZEN ROSES

MC Free delivery to ASU

BOOKS ETC.

A Full Service Bookstore
Located In Tempe Center

OUR SPECIALTIES INCLUDE:
Southwest History • Travel & Nature Business • Computer Books • Science Fiction


CHECK US OUT!

901 S. Mill
(In Tempe Center)

HOURS:
MON.-SAT. 9-8
SUNDAY 12-6

967-1111

DON'T TRUST THE SOVIETS!



Mr. Abdul Halim Shams, former advisor to the late President Amin of Afghanistan, will speak on the lessons of the Soviet invasion of Afghanistan.

Learn of the harsh realities of communist aggression.

Thursday, September 12, 1985 in the Memorial Union West and East Cochise Room
212 at 11:30 a.m. Admission is free!

Donations will be accepted.

Don't miss it!

The decision to end your pregnancy is never easy. But the choice is yours. Alone.

For more than 18 years, we have given women emotional support, and experienced professional medical care. Free pregnancy testing and counseling are provided with the two-day procedure. Two weeks later, your follow-up visit includes a lab test, birth control counseling and caring support for your rights — all without additional cost to you.

- free pregnancy testing
- minors treated
- board certified ob-gyn
- menstrual extraction
- twilight sleep-anesthesia
- ultrasound testing
- se habla Espanol

Specializing in first and second trimester abortions

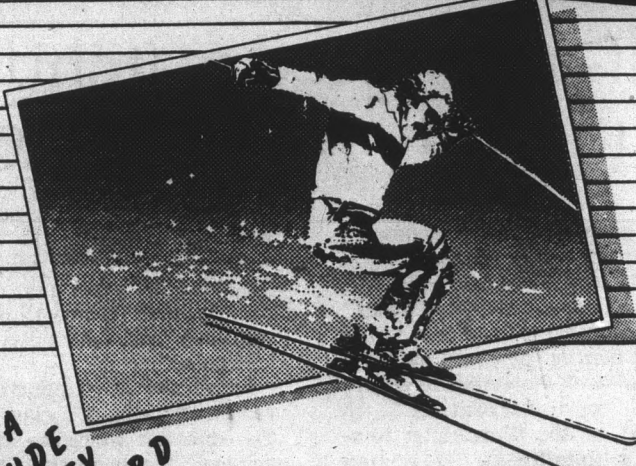
Caring, Understanding and Confidential

Central and Westside Location
Appointments: Monday-Saturday
8:30-5:30
Limited Evening Appointments
24-Hour Hotline 279-2214
Robert H. Tamis, M.D. FACOG Director

Abortion Services of Phoenix
Doctors Medical Plaza South, Suite 220
2720 N. 20th Street, Phoenix

SNOWDEVIL SKI CLUB

SKI FEVER!



SKI: ALTA SOLITUDE PARK CITY SNOWBIRD ONLY \$185

BUS LODGING LIFT TICKETS PARTIES RACES

MEETING TONIGHT 7 P.M. AT **HOOTERS**

CALL 966-5571

NON-ALCOHOLIC BEVERAGES SERVED UNDER 21 WELCOME

CATCH IT!

state press

Man is by nature a political animal.

—Aristotle

opinion

editorial

Bikes provide way around red tape

With the rise in parking rates over the past few years, an ever-increasing number of students have opted to circumvent expensive red tape and develop new means of locomotion to and around campus.

As the number of bicycles continued to increase, interesting trends began to develop. The Student Health Center's Urgent Care center became steadily more inundated with various bicycle-related maladies.

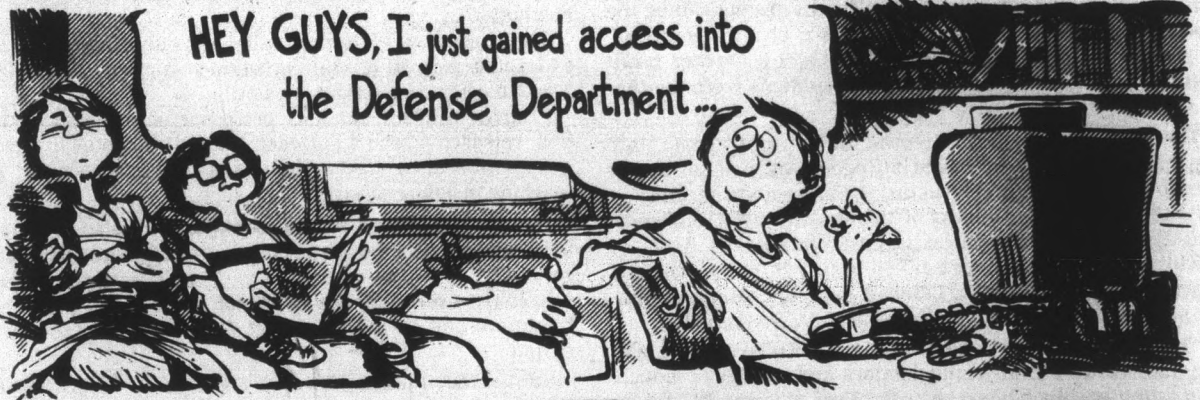
While the University drags on in resolving the problems associated with the automobile, some simple steps point to a favorable response to the bicycle problem(s).

The bike rack was an attentive move. The administration should continue with needed bike racks at other high-traffic buildings, such as the MU, Social Sciences Building and the Physical Sciences Complex.

EDITORIAL BOARD

Steve Waterstrat Gray T. Echols
Jacquie Cirou Cindy Pearlman
Tom Blodgett Mead Summer

Editorials are the written opinions of members of the Editorial Board.



I DON'T KNOW HOW YOU DO IT. YOU PARK A MILE FROM CAMPUS BUT YOU'RE NEVER LATE FOR CLASS. YOU DON'T HAVE A BIKE. HOW DO YOU DO IT?



Self-appointed watchdogs insult students' intelligence

In recent months, we have become increasingly aware of an insidious threat to the principle of academic freedom. A group of self-appointed "watchdogs" known as Accuracy in Academia (AIA) has decided that its members have the right to "monitor" professors to ensure that no "misinformation" is disseminated to the University community.

Who are these people that they think that we are unable to listen to different viewpoints — liberal, conservative or otherwise — and decide for ourselves those in which we believe? Do they think that we merely sit in a classroom and blindly take as Truth everything which passes in front of us?

Your article notes that AIA is interested in "confronting professors with liberal biases." We wonder how they would feel if we sent "monitors" to their meetings to "confront" those with conservative biases.

It is both our and our professors' Constitutional right to speak our minds without fear of reprisal from someone whose attitudes differ.

What follows this "monitoring?" Will they "monitor" our libraries and "confront" librarians who purchase books which disagree with our viewpoints?

We wonder about someone whose sole reason for being in a class is to hamper the education which we are striving to achieve. We hope that Arizona State University recognizes the threat which groups such as AIA pose to academic freedom.

- Steven B. Bitter Sophomore, Undeclared
Delores Christensen Graduate, Business Education
James Fish Senior, Computer Information Systems
Kim Kashktn Senior, Journalism
Stuart M. Schwartz Senior, Computer Science
Michelle P. Vandendop Freshman, Undeclared
Jo Ann Watkins Unclassified
Stephen H. Watson Senior, Mathematics

Is Moses a Benedict Arnold?

The letter of Howard Moses (State Press, Sept. 4) reminds one of the well-orchestrated student campaigns for Human Rights in Vietnam, Iran, and Nicaragua.

South Africa is a sovereign nation. Where did Mr. Moses get the idea that it is morally, politically, or economically right for us, here in the United States, to try to tell South

Africa how to solve their problems? Has Mr. Moses ever stopped to realize that if his implied goals for South Africa are achieved the Soviet Union would control the vital waterways around Cape Hope and control the minerals absolutely essential to the United States?

W.P. Shofstall
Professor Emeritus, Arizona State University

STATE PRESS

STEVE WATERSTRAT Editor

TOM BLODGETT Managing Editor

- City Editor W. TIM AHL
Asst. City Editor JOHN CONWAY
Asst. City Editor MELISSA SMYTH
News Editor MEAD SUMMER
Opinion Editor GRAY T. ECHOLS
Asst. Managing Editor WHITNEY PETERSON
Sports Editor MICHAEL KONZ
Asst. Sports Editor JERRY BROWN
Copy Chief JACQUIE CIROU
Arts Editor CINDY PEARLMAN
Asst. Arts Editor PATRICK J. KUCERA
Photo Editor KIP WILLIAMS

The State Press is published Monday through Friday during the academic year except holidays and exam periods, at Matthews Center, Room 15, Arizona State University, Tempe, AZ 85287. Newsroom: 965-2292. Advertising & Production: 965-7572.

Complex motion

Board of Regents gives go ahead for housing, recreation center plans

By VICKIE CHACHERE
State Press

Plans for a \$23 million student recreation complex and a \$10 million housing complex will be a "massive undertaking" by ASU officials and is scheduled to begin in the next two weeks, a University administrator said Monday.

Carl Harris, assistant vice president for student affairs, said ASU will approach the Arizona Legislature in January to request \$33 million in bonding authority for financing the two projects.

The request to approach the Legislature was approved by the Arizona Board of Regents at their meeting in Flagstaff Saturday.

According to a proposal submitted to the board, financing the recreation center would require students to pay an estimated \$28 activity fee for as long as 17 years.

Betty Turner Asher, ASU vice president for student affairs, said University students will be questioned on their willingness to pay the fee before actual plans for the center are underway.

Harris said William Cabianca, associate vice president for student development, will meet with Associated Students of ASU President Dave Varnell sometime in the next two weeks to formulate plans for conducting a student referendum on the additional recreation fee.

Asher said the 145,000-square-foot complex will contain racquetball courts, a swimming pool, weight rooms and recreation rooms designed for disabled students.

Classroom and office space will also be included in the complex.

The complex will provide facilities for ASU's intramural programs, Asher said, and 35,000 students participated in those sports programs last year.

"For about a decade there has been a tremendous push by students for the University to (construct) some replacement facilities for student recreation," she said.

Asher said the last recreation facility built at the University was completed 20 years ago and facilities currently being used are beyond repair.

She also said 1,500 students were turned away without housing this fall because of a lack of space.

Approximately 5,000 students are currently housed in ASU's residence halls.

"We do not have any family housing and there has been a great deal of pressure to provide some reasonable accommodations for single parents and families," Asher said.

Harris said because the projects are in their "infancy stages," little planning of the recreation complex or the housing projects has been done.

He said architectural designs of the projects and specific features they will include will be determined after the bonding is approved by the Legislature.

ALPHA KAPPA PSI
Professional Business Fraternity

presents

RUSH WEEK

Tues.	9-10-85	Happy Hour
Wed.	9-11-85	Smoker
Thurs.	9-12-85	Wine & Cheese
Fri.	9-13-85	Tourist Party

SEE OUR TABLE ON THE DEAN'S PATIO OF BUSINESS COLLEGE

FOR MORE INFO
CALL 820-6801

JACK IN THE BOX

ENTRY LEVEL MANAGEMENT & PRODUCTION POSITIONS

Shift Leader
We have one of the most progressive and innovative formal training systems to improve your talents as a leader and a supervisor. Opportunities from these positions to corporate management exist for the producers!

Production
Do you like people contact? Learn the basics of fast food from a leader in the industry. We offer full-time and part-time positions, flexible hours, vacation, medical insurance and promotional opportunities. Visit our manager at 8030 E. Indian School Rd. to discuss these opportunities.

Operated by Foodmaker, Inc.
A subsidiary of Ralston Purina Company
Equal Opportunity Employer

COME TO OUR HITCHCOCK MOVIE FESTIVAL

Date
Sept

Location
M.H. CIREMA

Admission
\$1

Time
7/9:30

11 BLACKMAIL
12 JAMAICA INN
13 SHADOW OF A DOUBT
14 DIAL M FOR MURDER
15 MARNIE
16 FRENZY

Your Total Diamond And Gold Center

LONDON GOLD

Direct Diamond Importers
Guaranteed Lower Prices Than Other's
"50 Percent Off"!!

Sapphires!
Sapphires!
Sapphires!

Compare and Save

14K DIAMOND SOLITAIRE

	Other stores	Our price
1/10 ct.	\$300	\$99
1/4 ct.	\$500	\$199
1/2 ct.	\$1,200	\$388
1 ct.	\$2,000	\$989
2 ct.	\$4,500	\$1,999

1 ct. Fine Quality from \$2,400
2 ct. Fine Quality from \$4,500

THE ULTIMATE GUARANTEE

Many stores give assurances that sound good but aren't valuable to the customer. None — absolutely none — even come close — to ours. We guarantee our prices — in writing — to be the lowest in the valley. Bring us any quote of comparable quality and value and we'll discount it by an additional 5 to 50 percent!!!

PHOENIX 936 W. Camelback West of McDonald's in Camelback Village Square 277-7080 OPEN Mon-Fri. 10-6 Sat. 10-5	TEMPE 1814 E. Southern Southern & McClintock Behind the Jewelry Exchange 820-3909	SCOTTSDALE 8320 N. Hayden Rd. Next to Rick's Cafe Around the corner from Exclusively Diamonds 991-4814 OPEN Tues-Fri. 11-6 Wed-Thur. Sat. 11-9
---	--	--

Bring in this ad and get an additional 3% discount with cash.

SHOW US YOUR STUDENT I.D. YOU'LL GET A DINNER

HAPPY HOUR 4-7 Mon.-Fri.
10-12 Sat. evening

FREE hors d'oeuvres (happy hour)

FREE!

This year we're doing it again! Every Sunday (but ONLY on Sunday), Mike Pulos of the Spaghetti Company will give you one FREE dinner* for each dinner you order! It's our 2 for 1 SUNDAY STUDENT SPECIAL. And it's good for the whole school year at both our Tempe and Phoenix locations.

Any day of the week, for lunch or dinner, The Spaghetti Company is known for a great meal at an affordable price. But the SUNDAY STUDENT SPECIAL makes our already terrific prices even better! Our dinners include a full course meal with all the trimmings—from salad to dessert. So, dollar for dollar, when you're hungry and you need a break, you can't beat The Spaghetti Company! ESPECIALLY ON SUNDAYS!

With 2 dinners for the price of 1! But you MUST have your student I.D. card with you to take advantage of this offer.

OPEN AT 12 NOON ON SUNDAYS!

The Spaghetti Company RESTAURANT

PHOENIX South on Central Just Pasta McDowell 257-0380	TEMPE 4th Street and Mill 966-3848
---	---

Steak Di Jon, Stuffed Filet of Sole, Tenderloin, Chicken Picatta, Veal Marsala ARE NOT included in the 2-for-1 special.

Nixon journeys to Canton, Hong Kong

HONG KONG (AP) — Former President Richard M. Nixon flew in from the southern Chinese city of Canton on Monday for a visit.

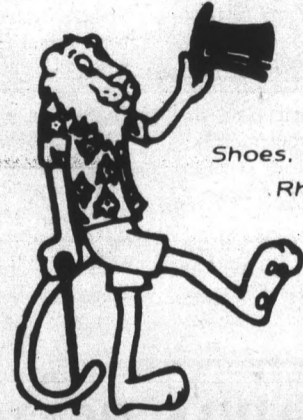
Nixon just completed a six-day tour of China, and earlier visited Japan and South Korea. He is scheduled to go to

Singapore, Malaysia, Thailand, Burma and Pakistan. While in Peking, the 72-year-old former president, whose 1972 visit to China led to restoration of Chinese-U.S. relations, conferred with China's top leader, Deng Xiaoping; Prime Minister Zhao Ziyang, and Communist Party Chairman Hu Yaobang.

BLOOM COUNTY



by Berke Breathed



Buying • Selling • Trading

- Clothing •
- Vintage & Contemporary
- Accessories •
- Shoes, Hats, Gloves • Jewelry •
- Rhinestones, Glass Beads •
- Collectibles • Antiques •

10-6 Mon.-Fri. 11-6 Sat.
722 S. Mill Ave., Tempe
968-6074

BUY • SELL • TRADE
Your books at Changing Hands For quality cloth and paperbacks (no textbooks, please) we pay 30% of our re-sale price in cash or 50% in trade-in credit which may be used to purchase anything in the store. (Sorry, no trade-ins on Sat. or Sun.)
Browse through our three floors of:
• New & Used Books
• Art Prints & Posters
• Calendars & Cards
• Handbound Journals
• New Age Tapes
M-F 10-9 SAT 10-6 SUN 12-5
CHANGING HANDS
414 Mill Avenue 966-0203
Old Town Tempe

OPEN 50¢ FF ANY SUB (w/coupon)
7 a.m.-9 p.m. Mon.-Sat.
8 a.m.-6 p.m. Sundays
PASTA PLUS
SUBS • SALADS
We cater parties
TRY OUR FRESH GARDEN SALAD BAR
Breakfast starts at 7 a.m. Serving Bagels and Omelets, etc.
COUPON

BEFORE THE BUG BITES YOU ENROLL IN THE ASU STUDENT HEALTH INSURANCE PLAN
Stop by the Student Health Center TODAY for full details or call 965-2411.
I.D. cards for students enrolled in this plan can be picked up at the Student Health Center.
Don't let one of those bugs put the bite on you or your budget.
ENROLLMENT ENDS SEPT. 16, 1985.
Mutual of Omaha
People you can count on...
MUTUAL OF OMAHA INSURANCE COMPANY
HOME OFFICE, OMAHA, NEBRASKA

Carpet House
DORMS, APTS., VANS ALL SIZES
USED ROOM SIZES \$10 & UP
NEW CARPET TOO!
1516 E. Van Buren
Phoenix

VISIONS OF HAIR
GRAND OPENING SPECIAL
1/2 off Haircuts Reg. \$18
\$10 off Perm Reg. \$45
Manicure and Pedicure 25% off
First-time clients only.
414 S. Mill Ave., Suite 214, Tempe, AZ • 894-1191

RUNDLE'S LIQUORS & MKT.
730 S. MILL
Corner Mill & University Ave.
LITTLE KINGS ALE 8-pack \$2.97
MEISTER BRAU BEER 6-pack \$1.89
ANDRE CHAMPAGNES 750 ml \$2.97
PLAYBOY Used Magazines \$.71
Haagen Dazs Natural Ice Cream, Adult Magazines, Groceries, Ice, Wines, over 40 Imported Beers.
967-9079

Don't pass up your chance.
Help prevent birth defects.
MARCH OF DIMES
THIS SPACE CONTRIBUTED BY THE PUBLISHER

NEW LOCATION THORBECKE'S GYM
Special Low Rates
Power Lifting
Body Building
Weight Training For All Sports
Nutritional & Diet Consulting
966-6621
\$12⁰⁰ per month
*plus \$50 one-time membership fee
Only one mile on the bike path off Scottsdale Bridge.
THORBECKE'S GYM
On the south side of Curry Road between Miller & Hayden

Guys \$5
Girls \$3
8:30 to 11:30
TERRIFIC TUESDAY
at
Donny O'Brien's
THE PLACE TO BE!
222 S. MILL, TEMPE • 968-0527

collage

TODAY

Delta Sigma Pi will hold recruitment week through Friday on the Business College patio.

Christian Science College Organization will hold its weekly testimony meeting from 5:30 to 6:30 p.m. today in Danforth Chapel.

Chi Alpha Christian Fellowship will meet for worship at 7 p.m. today in Danforth Chapel.

Arizona Council of Black Engineers and Scientists will hold a general meeting at 4:30 p.m. today in the Technology Center, room 317.

ASU Shotokan Karate Club will begin fall workouts at 6 p.m. today in the P.E. East building, room 145.

Fellowship of Christian Athletes will hold a meeting at 7:30 p.m. today in the MU Graham Room.

MU Entertainment Committee will hold an organizational meeting at 3:30 p.m. today in the MU Activities Center.

ASU Cheerleaders will hold tryouts for mike-leader for the football season at 5 p.m. today at the Activity Center.

American Society for Personnel Administrators will hold its weekly meeting at 3:30 p.m. today.

Students Against Apartheid will sponsor a discussion on the Nicaraguan viewpoint on Central America and the South African freedom struggle at 7:30 p.m. today in the MU Pima Room. Guest speaker will be Miguel Gray.

Phi Alpha Delta will hold an organizational meeting at 3 p.m. today in MU room 217.

WEDNESDAY

Lesbian and Gay Academic Union, an organization of support, education and community service, will hold a meeting at 7:30 p.m. Wednesday in MU room 215.

Native American Student Association will hold election of officers at 3 p.m. Wednesday in the MU.

Sigma Delta Chi, Society of Professional Journalists will sponsor a discussion on the transition from school to professional journalism at 2:30 Wednesday in Stauffer Hall, room A15. Adrienne Flynn of the Tempe Daily News and Chris Coppola of the Scottsdale Progress will be guest speakers.

National Academy of Television Arts and Sciences will hold the first meeting of the new semester at 6:30 p.m. Wednesday in the MU Mohave Room.

Delta Sigma Pi will sponsor Apple Fest Wednesday and Thursday in the MU Arizona Room. A computer expert will be on site.

Whitefield Society will hold a discussion group from 11:40 a.m. to 12:30 p.m. Wednesday in the Danforth Chapel Upper Room. The topic will be the Book of Romans.

Whitefield Society will sponsor a reading forum from 4 to 5 p.m. Wednesday in Danforth Chapel. The topic will be Augustine's fifth-century classical work, "The City of God."

Hispanic Business Students Association will hold its first meeting of the semester at 3:30 p.m. Wednesday in the MU Navajo Room.

Recreation Majors Student Association will present a discussion by Rodger Hacker, executive director of the Arizona Parks and Recreation Association, at 12:15 Wednesday in the MU Navajo Room.

ASU-American Federation of Teachers and University Employees, Local #2050 will hold its monthly membership meeting at 4:15 p.m. Wednesday in the MU-Gila Room.

Committee in Solidarity with the People of El Salvador will sponsor a speech by CIA veteran and author Ralph McGee on the war in El Salvador at 7:30 p.m. Wednesday in the ASU Law School's Great Hall.

Liberal Arts College Council of Students will hold a council meeting at 3:30 p.m. Wednesday in the MU Chrysocholla Room.

THURSDAY

Fencing Club will hold an organizational meeting at 7 p.m. Thursday in the MU Apache Room.

Campus Crusade for Christ will hold its weekly meeting from 7 to 8:30 p.m. Thursday at 209 E. 15th St. in Tempe.

American-Arab Students Association will present a discussion on the violaton of Palestinian human and civil rights at 7 p.m. Thursday in the MU Pima Room. Guest speaker will be Dr. Israel Shahak of Hebrew University in Jerusalem.

Students for the John Birch Society at ASU will present a discussion on communist aggression and the

Soviet invasion of Afghanistan at 11:30 a.m. Thursday in the MU Cochise Room. Guest speaker will be Abdul Halim Shams, former diplomatic adviser to the late President Amin of Afghanistan.

Whitefield Society will present a study of the defense of Christianity through the ages from noon to 1 p.m. Thursday in the Danforth Chapel Upper Room.

Black Student Union will hold nominations and elections at 3:30 p.m. Thursday in the MU Mohave Room.

American Indian Science and Engineering Society will hold elections at 6:30 p.m. Thursday in ECG room 324.

Sanctuary will present a discussion on Central America at 7:30 p.m. Thursday at the All Saints Newman Catholic Center. Speakers will be Eugenia Gonzalez and American journalist Kevin McKiernan.

Collage, a free public service provided by the **State Press** to announce meetings of legitimate campus organizations and clubs, is published every Tuesday and Friday. To be included, please obtain a form at the **State Press** reception desk in the basement of Matthews Center. For Tuesday's paper the insert must be filed by **10 a.m. Monday** and for Friday's paper the deadline is **10 a.m. Thursday**. One item per event will be accepted. **Collage** entries are subject to editing due to space limitations or content.

An Invitation to ASU Students

LUNCH WITH THE PRESIDENT

Tuesday, September 17, 1985
11:30 a.m.-12:45 p.m.

President Nelson is hosting a luncheon meeting to provide an opportunity for students to discuss matters of interest to them.

To facilitate discussion the number of participants is limited to nineteen, so interested students should RSVP early. (No cost to participants.)

To RSVP: Call Lin Phillips 965-5606
President's Office

COUPON
DOUBLE BURGER
FULL MEAL DEAL

\$1.99



CHAR-BROILED

Look what you get! An all-beef burger. A small order of crispy golden fries. Your favorite small soft drink. And, to top it off, a cool and creamy 5 oz DAIRY QUEEN® Soft Serve Sundae. Head for your participating DAIRY QUEEN® BRAZIER® store, to get the Burger Full Meal Deal! — the best bargain in town.

WE TREAT YOU RIGHT



brazier

ONLY AT:
1389 E. APACHE
(Between Rural & McClintock)
Limit 2 per coupon.

COUPON

TITLE DEED LOS PRADOS

FROM THE 60's
Investigate the Tax Benefits
Parents of ASU Students
Why pay rent when you can own?

Luxurious and Affordable
2 BEDROOM 2½ BATH
IN TEMPE, ½ MILE FROM ASU

Los Prados Townhomes has a financing package tailored to students and parents. Inquire about the benefits of home ownership.

Live a half-mile from campus in a luxury townhome with five separate floor plans available, 2 or 3 bedrooms, as well as pools, tennis courts, spas and sun decks.

Call Los Prados or send the coupon below for information on Los Prados ownership. We've made them affordable.

BELOW MARKET INTEREST RATES



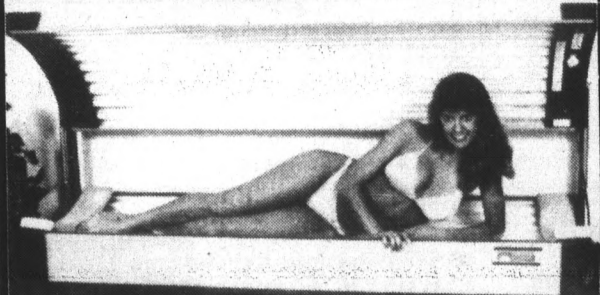
(602) 966-1800

Please send me financing and sales information on Los Prados Townhomes.

Name _____
Street Address _____
City, State, Zip _____
Phone _____

Mail to or call collect for information: (602) 966-1800.
Los Prados Townhomes, 724 W. Fourteenth Street,
Tempe, Arizona 85281

DON'T LOSE THAT SUMMER TAN!



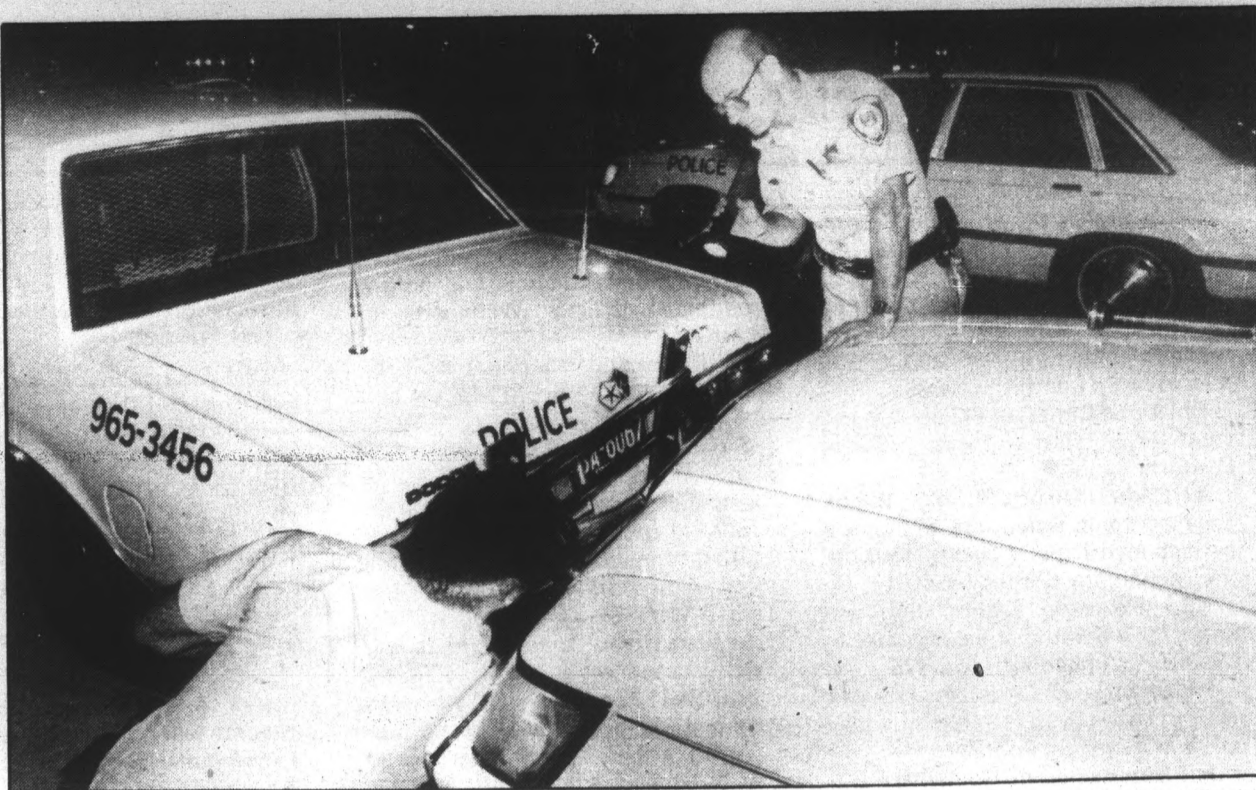
Sun-Tans 4415 S. Rural #10
Tempe
831-2884



SPECIAL STUDENT RATES

TANNING BED	FULL SET SCULPTURED NAILS
5 visits \$20	\$25
10 visits \$35	
20 visits \$65	

With coupon. Expires 9-21-85. With coupon. Expires 9-21-85.



Hooked

Photo by Brian O'Mahoney

ASU Public Safety officers James Kolsterman (holding flashlight) and Bruce Thornhill attempt to free two patrol cars whose bumpers became caught at the intersection of College and University drives at about 1:30 a.m. Saturday. According to Sgt. Henry Villa, the bumpers became hooked when he tried to push Thornhill's stalled vehicle with his own. The two cars were eventually separated without damage.

COUPON

UNDER NEW MANAGEMENT
Papa Jay's New York Pizza
We Also Deliver Ice Cold Beer
FAST FREE DELIVERY!
LIMITED FREE DELIVERY AREA
804 S. ASH (UNIV. & MILL)

<p>Save \$2.30 #1 Sun Devil Combo Any large pizza, your choice of up to 4 toppings. ONLY \$6.95 plus tax <small>Good on delivery, take-out or dine-in. Expires 10-31-85.</small></p>	 <p>BEFORE YOU ORDER FROM DOMINO'S, CHECK THEIR REGULAR PRICE OR COUPON PRICE GUARANTEED OUR PRICES ARE CHEAPER AND OUR PRODUCT IS MUCH BETTER 966-4292 OR 966-1003</p>	<p>Save \$1.95 #2 Sun Devil Combo Any medium size pizza with your choice of up to 4 toppings. ONLY \$5.95 plus tax <small>Good on delivery, take-out or dine-in. Expires 10-31-85.</small></p>	<p>#4 \$2 OFF Any large Sicilian style pizza* with two or more toppings <i>*Extra thick</i> <small>Good on delivery, take-out or dine-in. Expires 10-31-85.</small></p>
---	--	---	--

TAKE THE CHALLENGE — GET THE SPIRIT

TRY-OUTS FOR ASU Mike Leader

Get the opportunity to lead cheers in front of your home football crowd and work with the Western Regional Champions... the ASU Cheer Line.

Information meeting
UAC • TUES., SEPT. 10 • 5 P.M.

SUN DEVIL SUN TAN Celebration

To celebrate the return of our many friends at ASU, **Eclipse Sun Tan Center** will be offering "special prices" until September 30. We're doing this to entice you into visiting our new quarters. You will be pleased to find:

- 6 Suntan beds featuring Woolf System Bellariun "S" lamps.
- More spacious private bedrooms complete with AM-FM radio and individual headsets.
- A clean attractive atmosphere designed to give you the finest in tanning experiences.
- Extended hours to better fit your busy schedule.
7 a.m.-10 p.m. Mon.-Fri., 8 a.m.-6 p.m. Sat., 12-5 p.m. Sun.

For further information and appointments call 966-2150 today!

Serving ASU students for the past 6 years

eclipse
Sun Tan Center

"Where the sun always shines, but never burns."

966-2150
55 E. Broadway
(corner of Mill & Broadway)
Tempe

ASU PUBLIC EVENTS

now hiring for the following student positions: facility maintenance, event clean-up, equipment set-up, and general laborers. Pick up event worker job referral forms at Matthews Center. Interviews are being held now until the positions are filled, 2-4 p.m. at Packard Stadium. Contact Ed Warren, 965-3892.

FREE PIZZA

SAMMY B'S
PIZZA CO.

BUY ANY 14" OR 16" PIZZA AND GET A 14" CHEESE PIZZA FREE.

EXTRA FOR ADDITIONAL INGREDIENTS. NOT VALID WITH ANY OTHER OFFER. COUPON MUST BE PRESENTED AT TIME OF PURCHASE. ONE COUPON PER CUSTOMER. OFFER EXPIRES 9-30-85.

TEMPE
1420 N. SCOTTSDALE RD.
Just South of McKellips

945-8850 **945-8264**

police report

University police reported the following incidents in the three-day period ending at 6:30 a.m. Monday:

•An ASU student had an adverse reaction to his medication and became ill early Sunday at the Mona Plummer Aquatic Center, police said.

Tempe Fire Department paramedics treated the student at the pool before transporting him to Tempe St. Luke's Hospital.

•Students were trapped in stalled University elevators in three separate incidents over the weekend, police said.

The first incident occurred when one student was locked in the Engineering Building G-Wing elevator early Friday.

The Montgomery Elevator Co., which is on call for ASU, was notified after the victim pushed the emergency button inside the elevator.

Although a repairman for the elevator company was on campus, he had not arrived by the time police rescued the victim 30 minutes after the elevator had stalled.

•Another student was stranded in an elevator for 15 minutes in the Art Building Friday afternoon, police said.

The Montgomery Elevator Co. was called, but police had the doors open before a representative from the company arrived.

•The third elevator to stall was in the Palo Verde West Residence Hall Sunday evening, police said.

This time the victim was rescued by the Tempe Fire Department.

Police do not know exactly how long the person had been stuck, but said it was "quite some time."

None of the elevator victims were injured.

•A green Chevrolet Malibu crashed into a concrete wall by the Architecture Building early Sunday morning, police said. Acting on an anonymous phone call, police arrived to find the radio playing, the windshield cracked and the keys missing.

The front hood and grill were also damaged. The car was towed by Dana Brothers Towing.

•Items totaling \$431 were stolen from a student's vehicle parked in Lot 51 sometime between Saturday afternoon and Sunday morning, police said.

The items stolen included a pair of sunglasses, a camera and 30 cassette tapes.

Police said a lock on the car's door had been pried open.

•Two fire extinguishers were stolen from the first and second floors of the Business Administration Building C-Wing late Sunday, police said.

A custodian told police two others were emptied the same night.

Neither the building nor the fire extinguishers had been locked.

The extinguishers cost \$70 each. The cost of refilling each one is \$20.

•A gumball machine on the first floor of the Business Administration Building A-Wing was damaged sometime late Sunday, police said.

The culprits smashed the top of the machine with a blunt instrument, shattering the plexiglass.

All of the gum was taken, but no money was removed.

The building had been unlocked.

— THERESA WILLEFORD

AIRLINE CAREERS

Find out if you qualify for our 12-week training and a career in the Airline/Travel industry. Join over 2,500 Graduates placed with more than 90 Airlines.

A special 2-hour group interview will be conducted in this area for all those interested.

WEDNESDAY, SEPTEMBER 11, 1985
CAMELHEAD GRANADA ROYALE
1515 NORTH 44TH • PHOENIX, AZ
2 P.M. OR 7 P.M.

Airline interviews are scheduled on campus during your training program!



Where Airline Careers Begin!

INTERNATIONAL AIR ACADEMY

Vancouver • St. Louis • Ontario
 Washington • Missouri • California

hp HEWLETT PACKARD CALCULATOR SPECIALS.

Free. Get HP's new \$49* software module when you buy an HP-41.

A deal that has no equal, for a calculator that has no equal.

The HP-41 Advantage:

- contains the most popular engineering programs ever written for the HP-41.
- holds 12K bytes of ROM
- has user-accessible subroutines
- is menu driven

Get the calculator engineers prefer. And get the HP-41 Advantage at the price you prefer. **FREE.**

*Suggested U.S. list price.

	LIST	SALE
HP-11C For scientists, engineers, professors, and students in research, design, and statistics.	\$75.00	\$63.00
HP-12C For business professionals and students who need to calculate depreciation, future value, bond yield, or internal rate of return.	120.00	96.00
HP-15C For mathematicians, scientists, engineers, and statisticians who work with complex numbers.	120.00	96.00
HP-16C For computer programmers, systems analysts, and students doing number base conversions and process emulation.	120.00	96.00
HP-41CV For professionals and students in engineering, science, and research.	225.00	180.00
HP-41CX For professionals and students in engineering, science, and research.	325.00	260.00
HP-71 For professionals in electrical, mechanical, civil, and design engineering.	525.00	420.00
HP-41C/CX PERIPHERALS		
82104A Card Reader	195.00	156.00
82153A Thermal Printer / Plotter	385.00	308.00
82153A Optical Wand	125.00	100.00

SAVE BY MAIL! Call Toll Free

1-800-545-0932

ASK FOR DEPT. C.

SALE ENDS 9/29/85

HOLMAN'S

QUANTITIES LIMITED TO STOCK ON HAND.

401 WYOMING NE • ALBUQUERQUE, NM 87123

Hard Workouts, Hard Bodies.

Start now for \$10.00

- Aerobics
- Taekwondo

835-7689

(Special discount for 24-hr. Nautilus members)

ATA FITNESS CENTERS

1620 W. University at Longmore, Mesa • Just Five Min. from ASU



WRITING CENTER WORKSHOP SCHEDULE

FALL 1985

INVENTION: HOW TO GET STARTED
September 10-11

SENTENCE STYLE I: COMPLEX AND COMPOUND
September 17-18

SENTENCE STYLE II: FRAGMENTS AND RUN-ONS
September 24-25

REVISION STRATEGIES
October 1-2

HOW TO SPOT YOUR OWN GOOFS: EDITING AND PROOFREADING
October 8-9

RESEARCH STRATEGIES
October 15-16

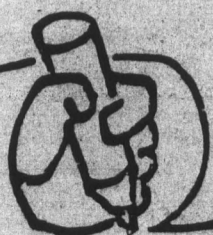
INTRODUCTIONS, THESIS STATEMENT AND DEVELOPMENT
October 22-23

TRANSITIONS AND CONCLUSIONS
October 29-30

DANGLING MODIFIERS AND SENTENCE VARIETY
November 5-6

TUESDAYS AND WEDNESDAYS • 2:40-3:30 P.M.
LL-C133 (Language & Literature Building)

FREE TO ASU STUDENTS
(Limited seating)



Arizona State University Student Alumni Association

"Today's students...preserving the past, enhancing the future"

Friends ... Leadership ... University Awareness ...
 Activities ... Community Involvement ... Spirit ...

and

A GREAT DEAL OF FUN!!

Don't miss our first general membership meeting

When: Wednesday, September 11, 1985 • 3:30 p.m.

Where: Memorial Union West Cochise Room 212

or call the SAA office at

965-5276

ALL ASU STUDENTS WELCOME!!

Study shows both sexes desire communicative relationships

By LINDA COULSON
State Press

Women are more likely than men to be disappointed in their choice for a permanent mate, an ASU study shows.

According to a fall 1984 study by sociologist Mary Laner conducted in two courtship and marriage classes, 22.5 percent of the men surveyed lack the traits women want in a husband, while 17.5 percent of women surveyed lack the traits men want in a wife.

Laner said 253 women and 146 men were asked to rate a list of 27 personality traits as those they would value in a mate and those they believed they personally possess.

Both men and women rated qualities such as communication, trust, sensitivity, affability, warmth and self-assurance high on the list, while a quality such as careful planning was rated low, Laner said.

"A major finding of the study is that both sexes are looking for someone who is communicative," Laner said.

Studies consistently show people do not communicate well with one another, she said.

"In a society where people marry for love, open and extensive communication is extremely important," she added.

The single greatest disappointment, however, will be shared by both sexes, according to the survey.

More than 90 percent of men and women surveyed said they wanted a partner who is prompt, but only 38 percent of the men and 42 percent of the women used that quality to describe themselves.

Laner said several things can be done to avoid disappointment in a relationship.

"People can either modify their expectancies or they can modify their own traits," she said.

She warned against too much change, saying, "There is a danger in bending one's self too far to become what the other person wants."

There is a critical need for compromise without losing one's identity, she said.

"And remember to take into account that people change over a period of time," she added.

"Talk before the marriage," she said. "It's better to find out during the courtship than the marriage that there are things you can't live with."

Unwillingness to modify behavior or to compromise for the sake of a relationship are a few of the factors that contribute to the growing divorce rate in the United States, Laner said.

Laner has studied courtship and marriage for 15 years and is the author of 26 published articles on the subjects.

Business Council activities let students apply knowledge

By KARI BLAND
State Press

To acquaint students with business clubs and organizations, the Business College Council (BCC) is sponsoring an Activities Week, Sept. 9-14, the organization's president said Monday.

Lori Biel said booths will be set up by 18 organizations and will be placed throughout the Business Administration Building every day this week from 7:30 a.m. to 3 p.m.

"Getting involved with a club gears you up to become more interested in your major

and make important contacts with guest speakers," Biel said.

The College of Business offers clubs and organizations ranging from specific majors to honorary organizations, she said.

"Joining a club is complimenting your education," Biel said. "You learn a lot in class, but a club lets you apply that knowledge."

BCC will hold its first meeting on Sept. 17 at 3:30 p.m. in BA 341.

The council meets every other Tuesday and meetings include guest speakers on a

wide variety of business topics, Biel said.

"By getting involved with the council, students will also have the chance to get involved with the administration," Biel said.

BCC acts as a forum for students to express their views and concerns and as a liaison between the Dean's Office and undergraduate students, Biel said. The BCC also recognizes outstanding student and faculty achievements within the college.

"Last year we had between 60 and 70 members and are expecting to increase our numbers this year," Biel said.

BCC will also sponsor Career Day, an opportunity to meet recruiters and executives from major corporations, on Nov. 13.

"It (Career Day) offers students a chance to get to know the recruiters on a more informal basis," Biel said. "It's an educational day."

Between 30 and 40 corporations in the Phoenix area will participate and, Biel said, it is the Council's most successful event.

"It allows students the chance to ask questions about anything before they actually begin working," said John Colombo, BCC vice president of public relations.

MANN
BARGAIN PRICE
\$3.00 ALL SHOWS BEFORE 6 PM
MON THRU FRI
SATURDAY & SUNDAY FIRST SHOW ONLY

SUN DEVIL 6 829-0344
The Cornerstone • Rural & University
BACK TO THE FUTURE (PG) 1:45, 4:30, 7:00, 9:30
TEEN WOLF (PG) 1:15, 3:15, 5:15, 7:15, 9:15
PEE WEE'S BIG ADVENTURE (PG) 1:15, 3:15, 5:15, 7:15, 9:15
YEAR OF THE DRAGON (PG) 1:30, 4:15, 7:00, 9:30
FLESH AND BLOOD (R) 1:45, 6:45
GODZILLA 85 (PG) 4:30, 9:15
SILVERADO (PG) 1:30, 6:45
PALE RIDER (PG) 4:15, 9:30

FRIDAY AND SATURDAY MIDNIGHT SHOWS
TEEN WOLF, BACK TO THE FUTURE, PEE WEE HERMAN, YEAR OF THE DRAGON, GODZILLA 85, PALE RIDER

SUPERSTITION 5 834-5767
MESA AT 50 LONGMORE & SUPERSTITION
YEAR OF THE DRAGON (R) 1:00, 4:00, 7:00, 9:30
PEE WEE'S BIG ADVENTURE (PG) 12:45, 3:00, 5:10, 7:20, 9:20
E.T. (PG) 12:45, 5:00, 9:10
BLACK CAULDRON 3:00, 7:15
ST. ELMO'S FIRE (R) 1:00, 5:00, 9:00
BREAKFAST CLUB (R) 3:00, 7:00
GRENADINE FOREST (R) 12:45, 5:05, 9:25
GREMLINS (R) 3:00, 7:20

FRIDAY AND SATURDAY MIDNIGHT SHOWS
YEAR OF THE DRAGON, E.T., BREAKFAST CLUB, PEE WEE, ST. ELMO'S FIRE

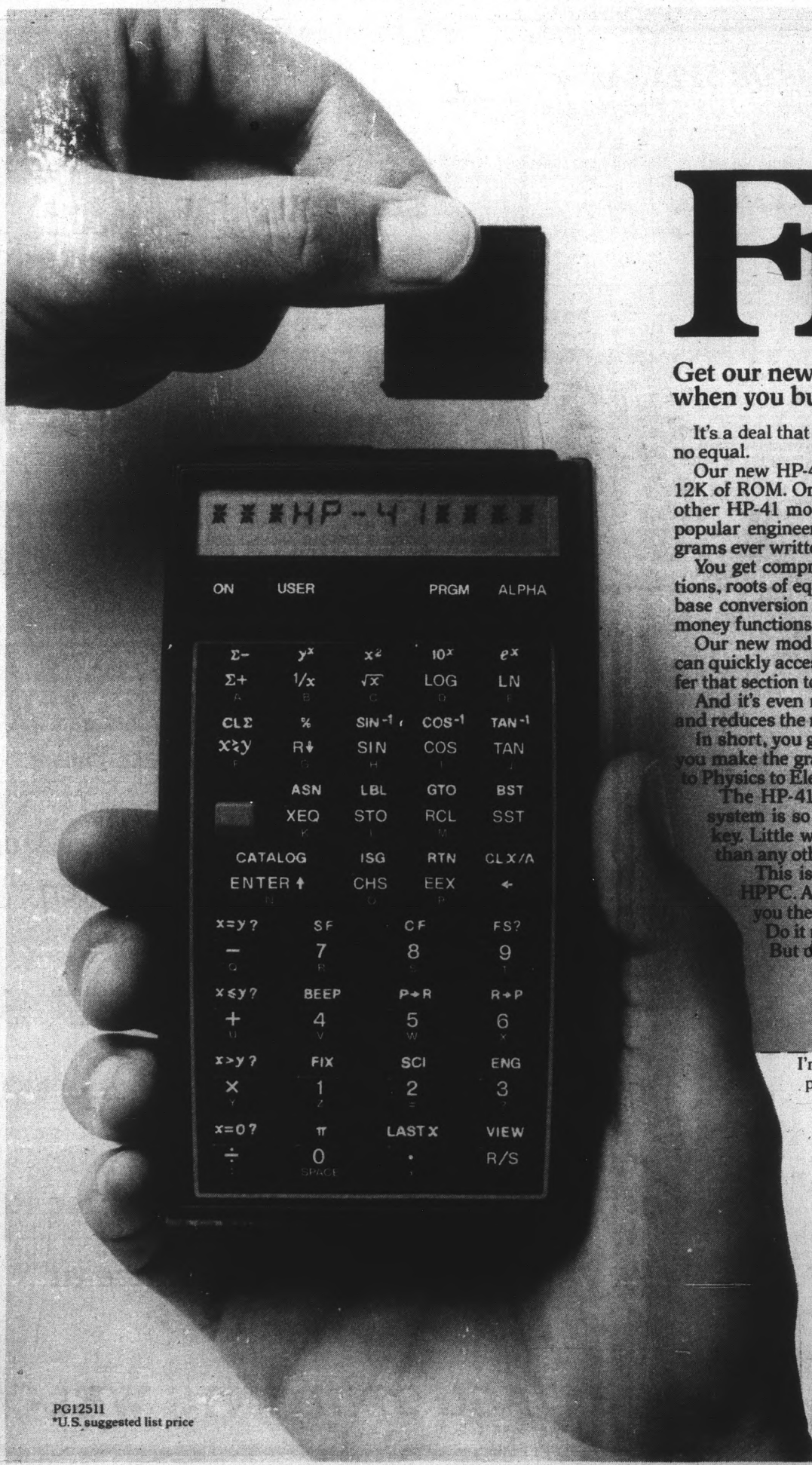
MANN POCA FIESTA 4 835-0404
MESA AT 1020 WEST SOUTHERN
SUMMER RENTAL (PG) 12:30, 4:05, 7:40
GHOSTSTERS (PG) 2:10, 5:45, 9:20
WEIRD SCIENCE (PG) 1:45, 5:30, 9:15
MAD MAX (PG) 3:35, 7:00
COMPROMISING POSITIONS (R) 1:00, 3:10, 5:20, 7:30, 9:40
AMERICAN NINJA (R) 1:15, 5:15, 9:15
PALE RIDER (PG) 3:05, 7:05

FRIDAY AND SATURDAY MIDNIGHT SHOWS
SUMMER RENTAL, GHOSTSTERS, COMPROMISING POSITIONS, AMERICAN NINJA

CHRIS TOWN 5 249-2843
5707 NO. 19TH AVE
YEAR OF THE DRAGON (R) 12:45, 3:45, 6:45, 9:45
AMERICAN NINJA (R) 12:30, 5:00, 9:45
GREMLINS (PG) 3:00, 7:30
PEE WEE'S BIG ADVENTURE (PG) 12:15, 2:45, 5:00, 7:15, 9:30
ST. ELMO'S FIRE (R) 12:15, 4:45, 9:15
BREAKFAST CLUB (R) 2:30, 7:00
COMPROMISING POSITIONS (R) 12:00, 2:30, 4:45, 7:00, 9:30

FRIDAY AND SATURDAY MIDNIGHT SHOWS
YEAR OF THE DRAGON, AMERICAN NINJA, PEE WEE, ST. ELMO'S FIRE, COMPROMISING POSITIONS

\$2.50 MIDNIGHT MOVIES
FRIDAY AND SATURDAY AT ALL MANN THEATRES - CALL FOR TITLES & TIMES



Free.

Get our new \$49* software module when you buy an HP-41.

It's a deal that has no equal, for a calculator that has no equal.

Our new HP-41 Advantage software module packs 12K of ROM. One and a half times the capacity of any other HP-41 module. Large enough to hold the most popular engineering, mathematical and financial programs ever written for the HP-41.

You get comprehensive advanced matrix math functions, roots of equations and polynomials, integrations, base conversion and logic functions, and time value of money functions.

Our new module is also sub-programmable. So you can quickly access just a portion of a program, or transfer that section to your own program.

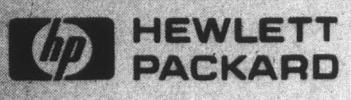
And it's even menu-driven. That eliminates overlays and reduces the number of prompts.

In short, you get everything it's going to take to help you make the grade in everything from Linear Algebra to Physics to Electronics to Statics and Dynamics.

The HP-41 is a deal all its own. Its operating system is so advanced, it doesn't need an "equals" key. Little wonder it's preferred by more engineers than any other calculator.

This is a limited time offer. Call (800) FOR-HP-41. Ask for Dept. 658B. We'll instantly give you the name of a dealer who has no equal.

Do it now. The phone call is free. But our new module won't be for long.



I'm a student who has no equal. Here's my proof-of-purchase to prove it. Please send me my free software module.

Name _____
Address _____
City _____ State _____ Zip _____
Phone Number _____

HP-41 Serial Number _____
Mail coupon with proof-of-purchase to:
Hewlett-Packard Co., c/o Direct Mail
Projects/M-M, P.O. Box 10598,
Portland, Oregon 97209
Offer not redeemable at HP dealer. HP-41 must be purchased between 8/15/85 and 11/15/85. Envelopes must be postmarked by 12/31/85. Good only in U.S.A. Void where prohibited, taxed or restricted by law. HP employee purchases not eligible. Allow 6-8 weeks for delivery.

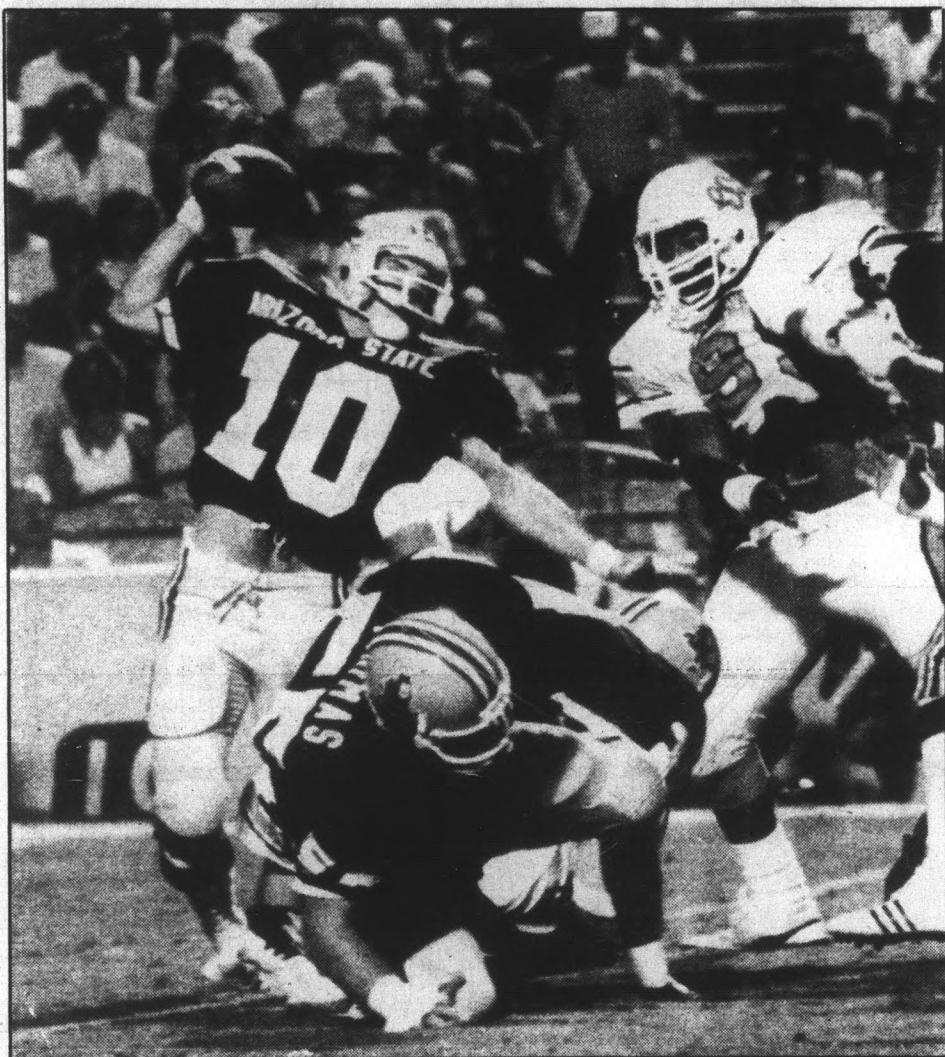
March of Dimes SAVES BABIES
HELP FIGHT BIRTH DEFECTS

PG12511
*U.S. suggested list price

sports

state
press

Van Raaphorst quietly prepares for Michigan State



ASU quarterback Jeff Van Raaphorst hopes to avoid injuries this season. Last season against Oklahoma State, Van Raaphorst suffered knee damage on this play.

Quarterback seeks concentration with aid of self-imposed gag order

By MICHAEL KONZ
State Press

ASU starting quarterback Jeff Van Raaphorst is determined to keep history from repeating itself.

"I don't want a roller coaster year," he said. "I'm going to be disciplined and do the best job I can."

"I want to lead this team to the Rose Bowl."

To help his concentration, Van Raaphorst said he was not going to grant interviews after Saturday's practice.

"If that's OK with you," he said to the press. "I don't want to antagonize anyone."

Van Raaphorst is coming off a season in which he saw the best of times and the worst of times.

The season started off with the worst when he suffered a knee injury against Oklahoma State in the opener. He missed four games as a result.

Van Raaphorst said he is completely over the injury.

"I feel great," he said. "I feel stronger now than I did last year. You don't look forward to injuries. It's the Lord's will who gets hurt."

Van Raaphorst came back to throw for 1,947 yards in his last six games, including 532 yards against Florida State.

He broke eight school records and two conference records during the season, and his 532 yards put him eighth on the all-time NCAA Division 1 passing list for a single game.

This year he will have to contend with the loss of Doug Allen, his top receiver from last year.

"I miss Doug Allen. He was a good guy. He was a leader. He set the practice tempo in his own way. He was a real intelligent receiver."

This season split end Aaron Cox and flanker Paul Day will pick up the slack.

"I feel comfortable with the receivers," he said. "All the guys playing are in a sense new, but they've played before. They were just shadowed by Doug."

Van Raaphorst also has had to contend with public criticisms from head coach John Cooper and offensive coordinator Jim Colletto. Both have said that Van Raaphorst forces the ball, leading to interceptions.

Van Raaphorst said the criticisms do not bother him.

"I haven't been reading the paper," he said. "When I make a mistake, they tell me about it. It's been blown out of proportion. Everyone wants to do well."

Even with his impressive passing statistics, Van Raaphorst said he has to work on parts of his game.

"The biggest thing is cutting down on interceptions," he said. "Also, getting the reads down."

"I'm concentrating on good, clean hand-offs. I'm getting better. I'm not a great faker. I tend to rush my fakes."

"But not everyone can be Houdini."

Van Raaphorst said fans will not see many changes in Cooper's offense from last year.

"I don't think you'll be able to see a lot of differences," he said. "The biggest change will probably be the shotgun. We'll move the ball. I feel comfortable in the offense."

Under .500 blues got you down? How does 9-2 grab ya?

Michael Konz
Sports Editor



For the first time since 1979, the ASU football team really has to prove itself.

That was the year Coach Frank Kush was fired under the most controversy this athletic department has seen. With interim coach Bob Owens (who?) finishing the season, the Sun Devils went 6-6. They later had to forfeit five of those victories because of NCAA penalties and probation.

The program was in shambles.

With what was left of Kush's team, new head coach Darryl Rogers walked in from Michigan State and led the 1980 Sun Devils to a 7-4 record and more importantly, a 44-7 victory over Arizona.

After two more successful seasons, including a victory in the 1982 Fiesta Bowl against Oklahoma, the football program quickly hit the skids.

The nadir came when Rogers, somehow still possessing his reputation as a good coach, told Sun Devil fans that he would remain coach at ASU and then the same night promptly packed his bags and left for the Detroit Lions and the NFL.

(In the perfect example of poetic justice, he led his Lions to a breathtaking 10-10 tie in his professional coaching debut.)

That left ASU with a hole to fill just as the recruiting deadline came near. Fortunately, interim coach Rex Norris did an admirable job of filling in and signing almost all of the players Rogers had originally recruited.

A month later, in comes John Cooper from Tulsa with a reputation for being a hardnose. Kinda like Kush was.

This meant a fresh start for the Sun Devils. Fans immediately began hoping ASU would start going for wins, not ties, and if they did lose, would go down fighting.

The transition began in spring practice, when Cooper took the fans by surprise and made the players work. He didn't cut spring ball a week short like Rogers.

The change continued at Camp Tontozona. Players said they were better prepared for the season, and they meant it. They weren't just repeating catch phrases.

After watching the Sun Devils practice for three hours Saturday, I think the transition has been completed.

It could only be described as a feeling.

It was a feeling I got while I watched the team run (literally) through demanding, and also monotonous, drills.

The players almost seemed to enjoy the practice. They ran

to each drill, gave their fullest, then would run to another drill. Gone were the days of the Rogers' country club. It was time to work.

What will this change in atmosphere and attitude mean in the win-loss columns?

It's simple — more wins, fewer losses, happier fans, better print.

Although Cooper still has to prove he can make ASU a winner again, he has the material to work with.

The Sun Devils have the most returning starters of any Pac-10 team, which gives them the edge on experience.

On offense, Jeff Van Raaphorst, Mike Crawford and Darryl Clack easily give ASU the most balanced backfield in the conference. Moving Aaron Cox to split end, instead of having him share time with Paul Day at flanker, will make the receiving corps even stronger.

On defense, ASU will play more conservatively and intelligently, but with Dan Saleaumua on the line, Greg Battle at linebacker and David Fulcher in the secondary, the Sun Devils can at least hold their own.

The schedule also works to ASU's benefit.

Although Cooper still has to prove he can make ASU a winner again, he has the material to work with.

Although Michigan State is a tough opener, especially in East Lansing, Mich., lightweights Pacific, Utah and Utah State, all at home, will let the Sun Devils recuperate from a perennially-tough conference schedule. ASU plays Washington and Southern California, its most difficult conference foes, at home.

The Sun Devils will have to watch out for Washington State and California on consecutive weekends away. ASU hasn't beaten the Bears in two years, and lousy weather in Pullman could strand Van Raaphorst's air attack.

But now it's nitty-gritty time, and I have to give my prediction. I'm going on the assumption that under Cooper this team will not beat USC and then lose to Utah State. I'll also assume that we beat the hell out of Arizona.

So how will the Devils do?

9-2.

Sport magazine's jinx has worked its wonders again. Even without Beano-Cook's sage advice, the magazine that

picked ASU the national champion last year predicted the same fate for Maryland this season.

Maryland lost to Penn State in its opener, 20-18.

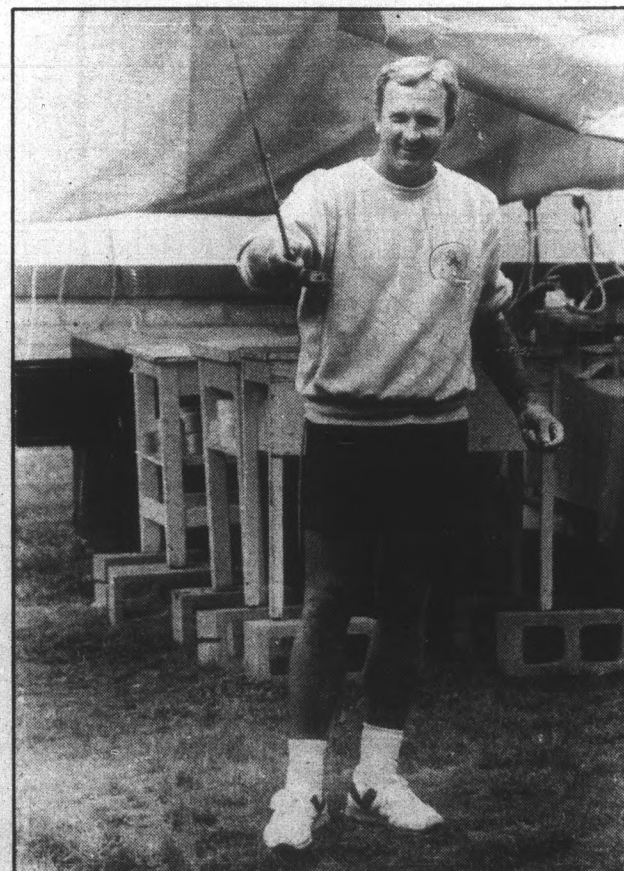
I'll be surprised if the Terrapins finish the season above .500.

...

Sunday was a good day for ex-ASU athletes.

Former Sun Devil baseball player Bob Horner had a pinch-hit triple with the bases loaded to give the Atlanta Braves a 7-3 victory over the St. Louis Cardinals.

Former quarterback Mark Malone, now a starter with the Pittsburgh Steelers, threw five touchdown passes and ran in another to give the Steelers a 45-3 victory over the lowly Indianapolis Colts.



Staff photo by Rick Wiley

ASU football coach John Cooper hopes to land a few wins in the 1985-86 campaign.

Track coach denies offering scholarship to wide receiver

By BRAD HALVORSEN
State Press

ASU track and field coach Clyde Duncan denied Monday the validity of an article in the Sept. 6 edition of the *Tempe Daily News*, quoting him as saying he would give ASU football player Chip Rish a scholarship if he would quit football.

"I never made a statement like that," Duncan said. "I don't know why it's in print."

"I hope Chip Rish eventually plays football. After football, I hope he will participate in track and field. I think it will help both."

Rish, a freshman split end on scholarship for football who plans to run track, also denied the statement.

Rish, who set a state record in the 400-meters this spring while running for Marina High School in Huntington Beach, Calif., said he never talked to Duncan about football.

"Just track," Rish said. "Mainly track."

Rish said Duncan had no qualms about Rish's interest in football.

"No problem," Rish said. "No problem at all."

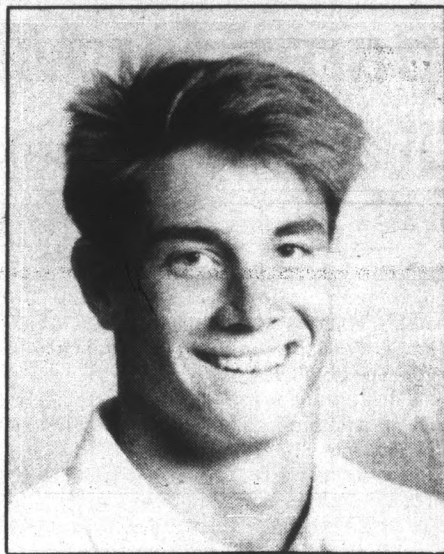
Duncan said the only time he talked to Rish was at a banquet for football players in Scottsdale before Camp Tontozona, the ASU fall training camp.

"Basically, we were introduced," Duncan said. "We have never talked since then."

Rish practiced with the team again Friday after sitting out several practices due to "personal problems." He said the holdout had nothing to do with track.

"(I was) just trying to adjust," Rish said.

"Just trying to adjust to the system. Right



Chip Rish

now I'm back, and I'm going to be returning kickoffs."

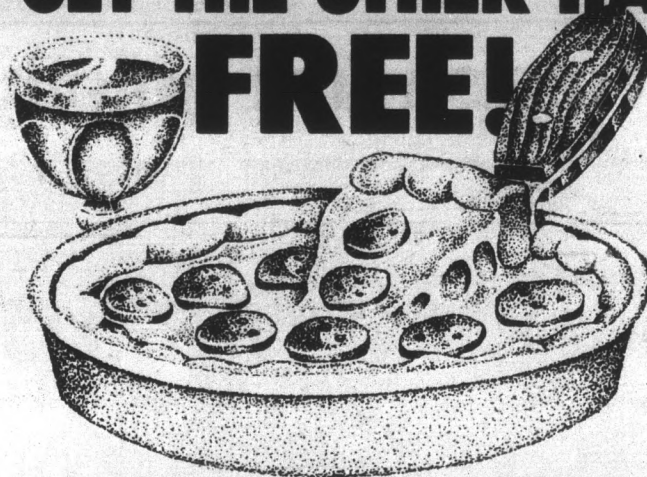
Rish said he plans to run track in the spring, but he also intends to stick with football.

"Track is my No. 1 goal... well, see, they're half," Rish said. "I want to be balanced. When it's track season, I want to do good in track, and when it's football season, I want to emphasize football."

Rish lettered three times in football and four times in track in high school. A two-time state champion in the 400-meters, he also set Orange County records in the 200-meters (21.03) and the 400-meters (45.7).

He earned all-league honors in football in 1984 and 1985.

BUY HALF A PIZZA & GET THE OTHER HALF FREE!



50% off any pizza!

Tuesday 4:00pm—Midnight

(Limit 2 per table, take-out orders excluded)

- Enjoy live entertainment Friday and Saturday nights on our newly remodelled patio.
- Planning a party? Our spacious new patio can be reserved to accommodate all your special events.

Lunt Ave. Marble Club

A Tempe Tradition

1212 E. Apache • Tempe, AZ • 967-9192

HARVEST WESLEYAN CHURCH

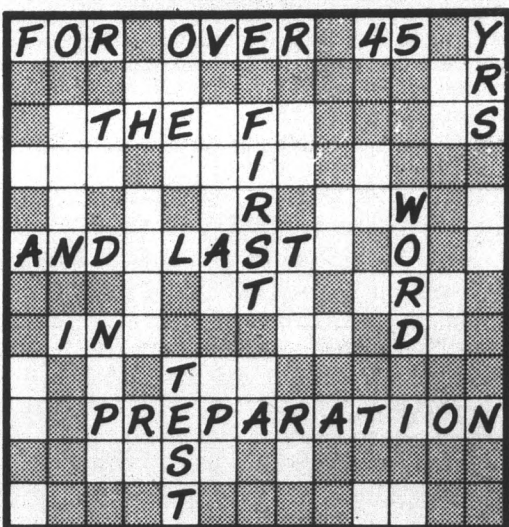
Corner 11th St. & Hardy

A small church with a big heart for ASU STUDENTS

Come and Fellowship
Sunday School 9:45 a.m.
Sunday Services 10:45 a.m. & 6 p.m.

966-2895

David S. Fall, Pastor



ACROSS

- 1 LSAT
- 2 GMAT
- 3 GRE
- 4 MCAT
- 5 DAT
- 6 MAT
- 7 PCAT
- 8 OCAT

DOWN

- 1 NMB
- 2 VQE
- 3 ECFMG
- 4 FLEX
- 5 NDB
- 6 NPBI
- 7 NCB I
- 8 CGFNS
- 9 GRE PSYCH
- 10 GRE BIO
- 11 ACHIEVEMENTS
- 12 NURSING BDS
- 13 CPA
- 14 SPEED READING
- 15 ESL REVIEW
- 16 INTRO TO LAW SCHOOL

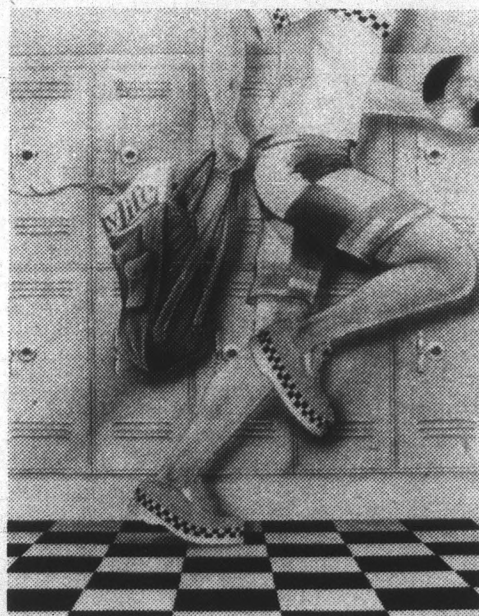


Stanley H. KAPLAN
EDUCATIONAL CENTER
Call Days, Eves & Weekends

2 HRS. FREE TUTORING 967-2967

Back-To-School

WITH CITYLIFE



Make This Year A Hit!

Read *CityLife's* special "Back-To-School" section in the September 11 issue. You'll find great tips on restaurants, nightclubs, movie theaters, entertainment, record stores and more.

CityLife's September 11 issue also will contain details on the popular Record Run contest. Grand prize is a 60-second run through a record store to grab all the albums you can!

Make this year a hit.

Don't miss *CityLife's* special "Back-To-School" section.

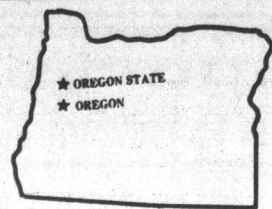
CityLife will be on campus September 11 to give away copies of *CityLife* and its "Back-To-School" section. Plus free gifts!

CityLife is available free Wednesdays at more than 300 Valley locations. For the newsstand nearest you, call 271-8239.

CityLife check it out!



Pac-10 Conference Previews



Brooks looks for Ducks' 2nd straight winning season

This is the second installment of a State Press series on the Pac-10 Conference. Today: Oregon and Oregon State.

By JERRY BROWN
State Press

No one is laughing at the University of Oregon anymore. After a 6-5 campaign in 1984 that included a win over Fiesta Bowl champion UCLA in Los Angeles, the Ducks opened the '85 season with a 42-39 win over conference dark horse Washington State.

Is Oregon ready to "Run for the Roses?" Not yet. Despite an offense that includes a potential all-conference quarterback (Chris Miller) and a potential all-American receiver (Lew Barnes), a slew of question marks on the defensive side of the football has head coach Rich Brooks worried.

'Defensively, we were very inconsistent. Our biggest problem was probably lack of overall team speed.' — Brooks

But first, the good news. Brooks has a returning offense that includes Miller, Barnes and all but one of his running backs.

Miller had the third best passing season in Oregon history last year, completing more than 50 percent of his passes for 1,712 yards and 10 touchdowns. The junior took over the quarterback spot midway through the first game and brought the Ducks from a 17-7 deficit to a 28-17 win over Long Beach State.

"I don't think we've ever gone through a year with the starter coming back with the performance that he had," Brooks said.

Barnes returns as a fifth-year senior after gaining an extra year of experience after the conference ruled he had played little enough as a freshman to gain redshirt status.

Nobody is happier than the Ducks. Barnes caught 37 passes (averaging 17.1 yards per catch),

seven for touchdowns, in only 10 games. He was injured near the end of last season but returned to form this season by catching eight passes for 120 yards and two touchdowns against Washington State.

In the backfield, senior Tony Cherry and junior Kevin Willhite hold the starting spots with senior Scott Holman complementing Barnes at the other receiving spot.

In the line, 11-game starters Ken Warner and Greg Schwab return at center and guard to anchor what is otherwise an inexperienced group. Junior tight end Bobby DeBisschop will have the tough task of replacing Doug Herman, an all-conference selection in '84.

On defense, the Ducks allowed 39 points to WSU in the season opener, which should be a sign of things to come. Only Stanford had a worse total defense last season, as Oregon yielded 369 yards per game. With six starters graduating, it may not get much better.

"Defensively, we were very inconsistent," Brooks said. "Our biggest problem was probably lack of overall team speed. If there's a question mark on our team, it would be on the defensive side."

Linebacker Jerry Mikels, Oregon's leading tackler in 1983, moves to middle linebacker to fill gaps due to injuries.

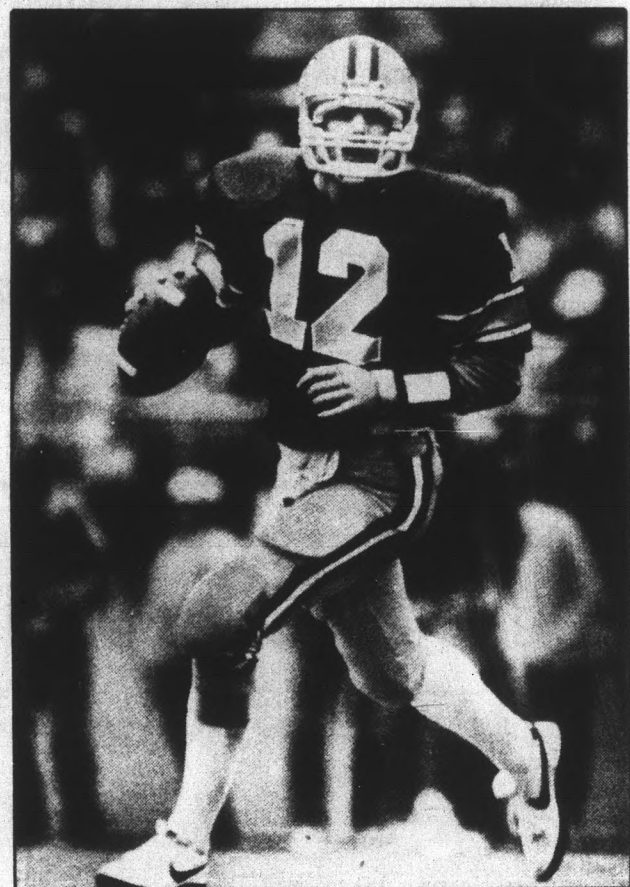
The defensive line is a definite sore spot. "We have young and inexperienced people in the defensive line," Brooks said. "We're thin up front everywhere from a talent and experience situation."

Sophomore Rob Marshall and senior John Byne were starters last year, but Brooks said sophomores Rollin Putzier and Tim Parker could also see playing time.

Mikels is joined at linebacker by junior college transfer Darrin Golka and seniors E.J. Duffy and Dan Devaney.

In the secondary, sophomore Ed Hulbert did not have an interception. Brooks is hoping Hulbert and newcomer Elliot Dunning will be able to cause a few turnovers this season.

Seniors Doug Judge and Dan Wilken return at safety. Each had four thefts last season and Judge was tabbed as an all-conference selection.



Oregon junior quarterback Chris Miller will lead a potent Duck offense.

New Oregon State coach seeks respectability for Beavers

By CHRIS MCKAY
State Press

After Oregon State's 43-28 victory over Idaho in the season opener, new Beaver head coach Dave Kragthorpe needs only one more victory to equal last year's record of 2-9 (1-7 in the Pac-10) under former coach Joe Avezzano.

Kragthorpe came to Oregon State after 10 years (1970-1979) as offensive coordinator for Brigham Young University and three seasons as head coach of Idaho State.

Although he has impressive credentials, Kragthorpe will be faced with trying to turn Oregon State into a serious competitor.

The Beavers will return six of 11 offensive starters, including all-Pac-10 wide-receiver Reggie Bynum. Bynum led the conference in receptions with 51 in 1984 and tops the list

of Beaver candidates for post-season honors.

Against Idaho, Bynum caught 11 passes for 152 yards and a school record four touchdowns. For his performance he was selected Pac-10 Player of the Week.

'Our philosophy is simple. We'll throw the ball from anyplace on the field. I believe the passing game is the only way to go.' — Kragthorpe

Kragthorpe said Oregon State will throw the ball more in 1985.

"Our philosophy is simple," he said. "We'll throw the ball from any place on the field."

"I believe the passing game is the only

way to go," he said. "It's the only way I've coached."

Other players leading the offense include running back Darvin Malone and quarterback Steve Steenwyk. Jim Nielsen returns to do the kicking.

lead the Beavers in scoring.

Last season the Beavers scored only 81 points in Pac-10 competition. They finished last in total offense and rushing, eighth in passing and ninth in scoring.

On the other side of the ball, second-team all-Pac-10 defensive end John Gonzalez returns after a great season. Gonzalez is only one of five defensive starters coming back.

The Beavers graduated three Pac-10 honorees in lineman Angelo Dilulo, defensive back Kenny Taylor (both second-team all-Pac-10) and safety Donald Beavers (honorable mention).

"Basically our defensive philosophy will be much the same as Oregon State played last year," Kragthorpe said.

The Beaver defense allowed 202 points in '84, finishing eighth in the Pac-10.

Hooters

LUNCHEON SPECIAL
25¢ DRAFT • 99¢ SUBS
MON.-SUN. 11-4

- Mon.** — Monster Cup Night
22-oz. Well, Wine, Beer \$1.50
\$1.50 Cal. Cooler
(Disc Jockey Mike Burton)
- Tues.** — 2 well drinks for \$1.85,
7-close, 15¢ chicken wings
- Wed.** — Reverse Happy Hour 8-12,
3 well drinks for \$1.85
- Thurs.** — 4-close
Corona night
\$1.10 bottle
- Fri.** — Happy Hour
3 for 1 drinks
Free Taco Bar

Live Entertainment!

Wed., Thurs. 9-1

SMOKEY

Fri. 5-9:30

HAWTHORNE/HILL

Sun. 9-1

"Ladies Night"
HAWTHORNE/HILL

FREE DELIVERY



SERVING NY STYLE PIZZA
SUBS, CHICKEN WINGS

801 E. APACHE
894-2662

DIET ABSOLUTELY FREE FOR ONE WEEK



Back To School Special For New Dieters

New Dieters

Pay for the First Three Weeks and Receive the Fourth Week Absolutely FREE

This Offer Also Includes A Complimentary GIFT of Diet Center Products, An Extra \$10.50 Value

Valid At Tempe Diet Center Only

OFFER EXPIRES SEPT. 21, 1985.
No Other Discounts Apply. One Discount Per Person.

OPEN 7 A.M.-6 P.M. DAILY

TEMPE

911 E. Broadway
(Lucky Shopping Center)

967-1371

sports update

By the Associated Press

state
press

•GOLFER HURT AT SAGUARO LAKE — Professional golfer Jim Nelford was listed in fair condition Monday at Scottsdale Memorial Hospital after suffering severe injuries in a boating accident a day earlier on Saguaro Lake.

Nelford, 30, a native of Vancouver, British Columbia, had been water skiing and was struck by the boat when it made a pass to pick him up. Hospital officials said Nelford suffered severe lacerations to his right arm, thigh and back.

He underwent 2½ hours of surgery late Sunday night.

Maricopa County sheriff's officials were investigating the accident, which happened near Burro Beach Cove.

Nelford won the 1975 and 1976 Canadian Amateur and turned pro in 1977. In 1984 he lost in a playoff to Hale Irwin in the Bing Crosby Pro-Am, his best finish as a pro. He finished second to Fuzzy Zoeller in the 1983 Sea Pines Heritage Classic, losing by two strokes.

In 1984 he won \$80,470, 76th on the Professional Golfers' Association money list. His career earnings totaled \$364,666 going into the 1985 season.

•BERRA TELLS OF COCAINE USE — New York Yankees infielder Dale Berra testified Monday that he shared cocaine with Dave Parker, John Milner, Lee Lacy and Rod Scurry when all five played baseball for the Pittsburgh Pirates and said his own drug use peaked last summer while he was injured.

"When I got hurt I got depressed and I had a lot of time on my hands for the first time in 10 years and I thought it was the opportune time to do it," said Berra, the fourth major league player to testify at the cocaine distribution trial of Curtis Strong, 38, of Philadelphia.

Los Angeles Dodgers infielder Enos Cabell testified earlier Monday that he snorted cocaine as many as 100 times between 1978 and 1984.

People Power
helps prevent birth defects

March of Dimes
THIS SPACE CONTRIBUTED BY THE PUBLISHER

drycleaning
McKELLIPS & SCOTTSDALE RDS. (ALPHA BETA SHOPPING CTR.)

STUDENT DISCOUNT
25% OFF DRY CLEANING

SHOW I.D. CARD WITH INCOMING ORDER

Round Table Pizza Restaurants

1/2 PRICE TUESDAY!

ASU Students, Faculty and Staff

Present your ASU I.D. and receive a 50% discount on any large pizza.

It's topped with just-picked vegetables, fine natural cheeses, and the leanest meats, on a fresh rolled pizza crust.

(Country Style Included)

— 2 Valley Locations —

TEMPE 1849 N. Scottsdale Rd. <i>(At the corner of McKellips)</i> 947-4396	SCOTTSDALE 7901 E. Thomas Rd. <i>(at Hayden)</i> 994-3360
---	---

ROYALTY
Fiesta Bowl
STYLE

1985 FIESTA BOWL QUEEN CONTEST

Hear Ye! Hear Ye!

Arizona's Fiesta Bowl extends a royal invitation to — all single females between 19 and 24 who are currently enrolled in an Arizona university or junior college and carrying at least 12 hours of credit — to enter the 1985 Fiesta Bowl Queen Contest.

It's much more than being a queen for a day. Reign over nearly 50 Fiesta Bowl events, including the 15th annual Football Classic.

Prizes for the Fiesta Bowl Queen include:

- a \$1,000 scholarship donated by First Interstate Bank of Arizona
- Plaza Three modeling scholarship
- Bullock's wardrobe and ball gown
- Buick courtesy car during December
- plus other gifts

Cash prizes will also be awarded to the 10 semifinalists and four princesses.

\$20 EYE EXAM
including contact lens professional fee

From Arizona's Leading Contact Lens, Eyeglass & Hearing Aid Centers

HIGH FASHION GLASSES
FRAME & GLASS LENSES COMPLETE

\$21.95

RED TAG FRAMES
Standard bifocals complete \$39.95
No other discounts apply
Red tag frames only.
+3.75 to -3.75

PLASTIC LENSES AT ADDITIONAL COST

SOFT CONTACT DAILY WEAR PACKAGE \$69.95	SOFT COLORS BY CIBA VISION CARE \$44.95 per pair	SOFT CONTACT EXTENDED WEAR PACKAGE \$99.95
Package includes: 1 pr. soft contact lenses 0 Start-up kit 0 Wearing instructions 0 Service agreement 0 *Complete package \$69.95	Soft contact lenses in four natural colors: blue, green, aqua and amber. One pair per customer. B&L extended wear tinted lenses available \$99.95	Package includes: 1 pr. extended wear soft lenses 0 Start-up kit 0 Wearing instructions 0 Service agreement 0 *Complete package \$99.95

Certain Power Restrictions apply. One pair per customer.
No other discounts apply.

LICENSED DOCTORS OF OPTOMETRY AVAILABLE

NATIONAL EYE & EAR

3133 S. Mill (Mill & Southern) Huntington Square Plaza, Tempe
CALL OR COME IN. PHONE 967-3197

1985 FIESTA BOWL QUEEN CONTEST
Official Entry Application

(please print or type)

Name _____ Birthdate _____

Present Mailing Address _____ Street _____ City _____ Zip _____

Home Mailing Address _____ Street _____ City _____ State _____ Zip _____

Telephone Number (home) _____ (work) _____

University/College _____ Class (Circle One) Fr So Jr Sr

Number of Credits Carried this Semester _____ Major _____

School Activities _____

Other Activities _____

I certify that all above information is true and correct and agree to allow the Fiesta Bowl use of my photograph and application. I understand that decisions by judges or representatives is final in all matters.

Applicant Signature _____

ALL APPLICATIONS MUST INCLUDE A RECENT PHOTO (non-returnable)

ALL ENTRIES MUST BE POSTMARKED NO LATER THAN THURSDAY, SEPTEMBER 26

ADDRESS ENTRIES TO:
Fiesta Bowl Queen Contest, 5144 E. Camelback Road, Phoenix, Arizona 85018

Sept. 26 — Applications for those who will interview in Phoenix must be postmarked

Oct. 5 — Initial interviews in Phoenix

Oct. 12 — Interviews for semifinalists

Oct. 28 — Queen selection dinner — final judging

Geneva Reds not impressed with 1960 Rose

GENEVA, N.Y. (AP) — Amid Pete Rose's thunderous pursuit of Ty Cobb in the annals of professional baseball, let it be recalled that the chase began 25 years ago in this sleepy and shady corner of upstate New York.

And Rose's first steps — nearly 4,200 big-league hits ago — were taken with a collection of ragamuffins called the Geneva Reds, who finished in the muck of the New York-Pennsylvania League in 1960.

"The vital votes of California are still beyond the reach of Sen. John F. Kennedy of Massachusetts at the Democratic National Convention," cautioned *The Geneva Times* in early July of 1960.

A week before, Pete Rose made his professional baseball debut and *The Times* was just as guarded: "Rose is an aggressive and eager ballplayer at second base... he adds life to the infield."

While the Everly Brothers were scoring on kids' car radios with "Cathy's Clown," Rose was gaped at like a circus oddity. Get this: He actually ran — no, make that sprinted — to first base after a walk. Pretty soon he chased a Cuban kid named Tony Perez off second base and over to third and eventually into the outfield.

"No, I wouldn't have guessed he'd have made it," said Norm Jollow, the 30-year sports editor of what is now *The Finger Lakes Times*. "They called him 'Charlie Hustle,' but Charlie Hotdog was more like it around here. He wasn't a bad hitter, but he couldn't catch. You never know. That club had three major-leaguers — Rose, Perez and Art Shamsky. Who would have thought a team like that would go 54-75?"

You never know. The fellow who led the league in hitting that year was the immortal Pablo Mitchell, at .348 for Erie. Rose, who would set the big-league record with the most 200-hit seasons, had but 15 hits in his first 64 at-bats (.234), but finished at .277 with 89 hits in 85 games for Geneva. The renowned Marv Chalmers was the club's lone .300 hitter.

You never know. At the end of the '60 season, *The Geneva Times* noted where the players were headed for the off-season.

"Pete Rose," *The Times* reported, "will be looking for a job as a sporting goods salesman."

Bob Halaska, Rose's teammate and housemate that season, said Rose had it all figured out.

"He signed a weird contract," recalled Halaska, now a businessman in Las Cross, Wis. "It was called a contingency, and nobody wanted to sign them. If he made it in the 'A' ball, he got a certain amount. If he made it in 'AA,' he got a certain amount. And if he didn't make it, he didn't get anything."

"I told him, 'Why'd you sign that? They'll screw you down the line somehow.'"

"And he said, 'They can't screw me. I'm going to make the majors.'"

CLASSIFIEDS START HERE

The STATE PRESS disclaims all responsibility for quality and prices of goods and services offered in both classified and display advertising by its advertisers.

Announcements

FLIGHT ATTENDANT 34 airlines hiring. 3 hour seminar. Airline recruiter limited seating. Travel Vision 945-2601.

HANG GLIDE! Certified instruction. Two Saturdays only \$50. Group rates. Windsports, 897-7121.

THERE WILL be an organizational meeting at the Fencing Club Thursday Sept. 12, 7 p.m., Room 221, M.U. Contact Jim, 921-0038.

Automobiles

1977 CHEVY Nova, 6 cyl., 4 doors, AC, AM-FM stereo, cassette. Good condition. \$1400. Call 968-4959

1979 DATSUN 200 SX, air cond. 58,000 miles, am/fm, five speed, good condition \$2500 O.B.O. call 943-8892.

1980 CHEVETTE, two door, air condition, manual transmission, red-orange, 65,000 miles. \$2000. 277-3485.

1980 CHEV CITATION, four door hatch back, A/C, 6 cylinders. Excellent condition \$2600 966-4489.

74 MUSTANG GHIA, air, V6, new clutch, genuine sheepskin seatcovers, many extras, very clean and sporty! 967-4164.

SCHOOL SPECIAL 78 Plymouth Horizon, 42,000 miles a/c FWD four door, asking \$1,800. Call after 5:30 967-6156.

1978 FIREBIRD ESPRIT, T-top, very nice condition \$3300 oBo 947-6418.

Babysitters wanted

BABYSITTER WANTED to watch two children in our home, one block from ASU. \$2.00 per hour, variable hours 829-8064.

I NEED a babysitter in my home, full or part time, flexible hours for one two year old, and one four year old. Pay negotiable 829-6749.

Bicycles

19" NISHIKI BICYCLE, maroon and silver, includes master lock, registered, \$125, or best offer, 833-2049.

SCHWIN TRAVELLER III 10 speed \$80 OBO call 262-1131 before 4, 256-7068 after 6.

USED BIKES from \$35 to \$300. They all work. Call Don 829-9618 keep trying.

Business Opp.

EXCELLENT OPPORTUNITY to earn extra income for only \$25 investment. Free training call 966-3235.

TELEPHONE SOLICITOR wanted for fund raising project. Earn up to \$5 hour. Evenings 8-10. Call 251-8618.

For Rent or Lease

BIKING DISTANCE to ASU. Five bedroom three bath home. Rooms \$175 to \$220 plus utilities 345-0388.

BRAND NEW condo. Papago Park Village II. \$220 plus 1/2 utilities, two men to share room. Fully furnished, this place has everything! Call Dave 894-9142 or leave number at 965-4411.

FOR RENT, two bedroom one bath townhouse, furnished, pool, approximately two miles from ASU 834-6376.

ROOM FOR rent, four bedroom house, pool, Alma school and Guadalupe, Mesa, house privileges, \$175 per month 928-1234.

For Sale

1984 AERO 125, 2300 miles, helmet and trunk, \$800 OBO call Gill after 6 p.m. 968-8088.

ALMOST NEW dorm size Kenmore fridge, \$80. 10x12 plush tan carpet, one year old, for dorm, \$70. Art bin and supplies for design graphics. Call Lynn, 894-6612.

COMPUTER EQUIPMENT, 2 CAT acoustical couplers with 300 Baud, 2 CAT adapters, 1 auto CAT model 490401, 2 Teletype models 920C, 1 Omnitec acoustical coupler 710, 1 printer digital DEC writer II, model LA36-DK call 277-9239 or 978-4649.

COMPUTER. HEWLETT Packard HP-88A includes monitor, disk drives, memory expansion, printer, Visicalc word processor, electrical engineering and math software. \$1,950 call eve and weekends 892-4697.

MOVING MUST sell realistic mini cassette recorder \$30, two foot lamp with lamp shade \$10, four wooden folding chairs \$7 each, misc items. Call Connie after 4 p.m. at 967-3873.

For Sale

NICE DINING room table with four chairs \$75. Misc. baby clothes, prices negotiable. 894-2557.

QUEEN SOFA bed, \$175. Yellow black and white plaid. Day bed, red \$75. Queen sofa bed black white and green \$50. 966-9425 message.

REFRIGERATOR 15 years old, runs well, \$50. Call Dave at 899-7230.

SANSUI TURNER, amp, cassette, turntable, equalizer, speakers, beautiful walnut cabinet with double glass doors. \$75. \$150 moving must sell 954-0827.

TECHNICS SA-150, FM-AM stereo receiver. 1 1/2 years left on warranty. 25 wpc. \$90, or best offer. Call Melanie, 345-8263.

TOSHIBA STEREO, separate turn table, speakers with stands \$150 947-6418.

Furniture

FURNITURE FURNITURE big discounts. Mattress sale, twin sets from \$49.95, full sets from \$59.95, queen sets from \$89.95. Sofas and love seats from \$173.00. Seven piece bedroom sets from \$89.95. Bunk beds from \$125.00 complete. Bookcases, stereo cabinets, wall units, sleepers, trundle beds, plus much more. 3332 W. McDowell Rd. 233-2236.

SOFA AND chair, good condition. \$75, obo. 967-7216.

Help Wanted

A RESPONSIBLE hard working student wanted for position in call out research. Position for week day afternoons/evenings call 962-0665 week day evenings.

"ASU is calling you... to join the telefund drive; gain valuable work experience in P.R., fund raising, tele marketing, with nightly bonuses and incentives. Call Jeff Perlus at 965-7501 for more info."

BICYCLE MECHANIC: Experience helpful, flexible hours. Available 949-1978.

BUCKETS OF money is what you won't be making in Comedy Corner this year. If however you are interested in comedic expression and stuff, you'll want to come to the Comedy Corner, Fridays, noon in the Union Cinema. We need actors, writers, singers, audience...call 965-MUAB.

CHRISTMAS STORE needs theater art student to do back drops for display, contact Dennis 345-2352.

EARN \$150 to \$300 per week without hurting your grades. Evening hours and weekly pay for company located close to campus. No experience necessary. Call 829-8957 to set up an appt.

EARN \$4 to \$8 per hr part time making light deliveries on campus, flexible hours, dependable help required 833-3171.

EARN EXTRA money for getting your education. This is a ground floor opportunity with no competition call Jim 962-7709 after 6 p.m.

ENERGETIC PERSONS with strong people skills for bartender, cocktail waitresses and cook, at Tempe's newest sports bar. 1123 S. Rural Rd 967-9092 btwn 10-4.

ENGINEERING STUDENT. Assemble and deliver computer furniture Monday, Wednesday, Friday, 10-3. Saturday 10-5. Non smoker, valid AZ drivers license, three miles west of campus \$4.50 per hour. 967-3660.

ENGINEERING TECHNICIAN Second or third year mechanical engineering or technology. Some auto experience desired. Minimum 20 hours per week. Flexible schedule, \$4.50 and up. 956-8200.

\$ FOR Christmas break. Avon can help. Call Teri now 839-9227.

GOING HOME for Christmas? Need \$? Let Avon help, call Teri 839-9227.

HIGH TECH communications company seeking enthusiastic team players. Totally computerized system, \$5 hr plus bonus. Full-time days or part-time evenings. Needed immediately. Call now for more information. Marketing and computer science students encouraged to apply. ADIA, 246-1143. EO/EC.

HOST-HOSTESS in a formal service restaurant, part-time or full-time, evening-weekends. Applicants should have a neat appearance and an ability to deal with the public. Starting salary \$4.10 per hour plus free meals. Apply in person at: Fuente del Sol Restaurant, (level two) or Marriott Hosts offices (level three), Terminal three, Sky Harbor Airport.

IF YOU have a dynamic personality, good typing and organizational skills, a terrific people sense, and your own car, you may be the perfect part time front office person for this highly successful Phoenix public relations and marketing firm. Flexible hour but minimum of 20 per week. If you fit the bill, call Anne Garcia at 222-4620.

Help Wanted

HOUSEKEEPER WANTED 2:30 - 5:30 p.m. week days, supervise 10 year old twins, light house work, Dobson Ranch area call Chris 820-6349.

IMMEDIATE OPENINGS for energetic students. Apply 122 East University Drive, Suite D Tempe.

INSURANCE INTERNSHIP student in junior or senior year studying insurance, finance, and or marketing, who would like career oriented opportunity. Hours to work comfortably with academic schedule. Office located near Paradise Valley please call Tony Leombruno 9 to 5 at 257-4525 or 996-4525.

LANDSCAPE HELPER. Install plant and rock material. Experience helpful. Full or part time call Chuck Kelly 945-1015.

LIKE KIDS? Wanted junior and senior education majors to teach in Scottsdale pre-school. Call Vicky 949-1874. Ten minute drive from campus.

LIQUOR STORE clerk, flexible hours. Work hours scheduled around class hours. \$4.00 per hour. 278-2603.

LONG JOHN SILVERS at 1202 W. Broadway and 1805 E. Southern now have day positions available for full or part time help. Apply at either Restaurant.

MAGAZINE PASTE-UP person needed for immediate part-time position, please call Kathleen at 897-2720 in Tempe.

MALE MODELS: Versatile male models needed by adventuresome photographer who will be in Phoenix in October. Those selected will earn top dollars. Send recent photos, etc. to J.G., Crosscreek Lane, Suite 1075, Fort Worth, Texas 76109.

MARIE CALLENDERS is looking for clean, hard working students for night and day shifts. Waitress, hostess, cashier, cook and bussing positions available. If interested, please call between 8 and 10 a.m. or 2 and 4 p.m. at 956-7060.

MCDONALDS FULL time maintenance position. \$4.50 to \$5.00 per hour D.O.E. 4:30 a.m. to 12:30 p.m. Free uniform and meal, vacation, insurance. Crew positions with flexible hours to fit school schedules also available apply in person 10823 S. 51st St. (Elliot and the freeway) E.O.E.

MONEY-JOBS: worried about making ends meet with the increase of education costs and talk of aid being tightened? The Army National Guard can help. Have part time jobs and aid available. Earn \$25,000 + toward your education. For details, call Dave Wautelet at 225-5574 or visit the Tempe Armory (across from Sun Devil Stadium).

NEED 25 PEOPLE who are serious about losing weight. 100% nutritional 100% satisfaction guaranteed or your money back, nothing to lose except weight. Herbal power 837-3184 - J. Rogers.

PARADISE CREAM needs ice cream servers. Must have car and work both Tempe and Phoenix stores. Part time, flexible hours, apply 1044 South Terrace. 967-2414.

PART TIME light industrial warehouse and delivery. 15 minutes from ASU, flexible schedule 258-2402.

PART-TIME marketer wanted. Business student preferred. Hourly plus commission. Call Nancy at Cola-Vend 966-3453.

PART-TIME SALES clerk position Monday through Friday, two to six p.m. Rotating Saturdays. Bookstore or library experience helpful. Bookminder's Medical Professional and Technical bookstore, 1302 North 1st Street, 254-0738.

PERFECT STUDENT part time job. General office. Apply in person, 1000 E. Apache Blvd., Suite 219. Apply between 1 and 4 p.m.

PHILIP MORRIS U-S-A needs 10 part time merchandisers, samplers needed 20 hours weekly. Hours flexible \$5 per hour. 20 per mile. Program date 9-16 to 10-1 call Larry 286-3052 leave message.

PHOENIX'S FINEST parking service is now accepting applications for valet drivers. Full and part time, all shifts. \$3.35 per hour plus tips. Apply at Jet Way Parking, 4311 E. Van Buren. 225-9781.

Help Wanted

PART-TIME clerical help needed, 15 to 20 hours per week, non smoking office call 897-2720 for information.

READY FOR KICKOFF! Earn \$300 to \$500 a week part time learning exciting growth industry. Scottsdale 946-0204.

SECURITIES BROKER assistant, part time, evenings, three to four nights a week. Tempe. Salary plus commission. Please call Jim Mitchell, 831-8822.

SENIORS OR grad students. Outgoing, energetic wanted for part time sales, hours flexible, guaranteed salary plus commission, only serious apply in person: Dash Designs, inc. 1841 E. Third St Tempe.

SMALL FAMILY restaurant needs male kitchen help, part time. Vicinity 44th street and Camelback. Call Don 952-9188.

STUDENTS EARN \$5.05 per hour for part time work mornings and weekends. Scottsdale area call the Arizona Republic 271-8687 between 9 a.m. and 6 p.m.

STUDENTS: EARN \$30-70 per day assisting fellow students in applying for credit cards. Work 1-2 days/week. Contact 1-800-932-0528.

SUMMER JOBS! National Park Co.'s. 21 parks - 5,000 plus openings. Complete information, \$5. Park Report. Mission Mtn. Co., 651 2nd Ave. WN, Kalispell, MT 59901.

SURPRISES NIGHT Club now hiring for cocktail waitresses, apply in person between 9 a.m. and 5 p.m. mon thru Friday.

THE DEVILHOUSE is accepting applications for kitchen help. Please apply at 430 N. Scottsdale Rd. after 2:00.

WILL TRADE All American Fitness Center membership in exchange for 14 hours of light delivery work, 833-3171.

Instruction

CENTER FOR body awareness open house. Need istructors, class demonstrations in Aikido, Tai-chi, Kung-fu, Ninjutsu, Yoga, Dance, Aerobics and more. Free Sept 15th, two to five p.m. 414 S. Mill Tempe 894-8347 walking distance from ASU.

DO YOU want to get away? We have an exciting fleet of Cessna airplanes for rent from 152's to T210. Stellar Air Park 961-1156.

DO YOU want to learn to fly? It's easier and less expensive than you think. Give us a call for \$20 demo ride. Stellar Air Park 961-1156.

KARATE TRADITIONAL TAEKWONDO instruction. Not a competition oriented school. Emphasis on improved skills and higher techniques. Small classes. Free trial. 894-5389.

MASTERING SELF hypnosis, a practical course to improve concentration, confidence and self control. Jim Lane PhD. 966-8810.

NATIVE GERMAN former schoolteacher would like to help you with your studies of German language and culture. \$12. per hour or weekly rates, 991-5380.

Miscellaneous

USED CARPETS \$10 for dorms, vans, cars, apts, etc. New remnants too! Carpet House 1516 E. VanBuren Phoenix.

Motorcycles

1979 YAMAHA champ moped. Excellent condition, \$340. obo, 894-9210, 966-1597.

1981 YAMAHA 650 special II, excellent condition, bell helmet available, 252-5828, 838-8555 after 6 p.m.

1983 YAMAHA 750 midnight virago, excellent condition, low miles \$1,650.00 or best call 981-8106.

BEST OFFER, must sell 1984 Honda Elite. Low miles, fully equipped. Call 945-9952 ask for Duane eves 994-5747.

Personal

GARY, CALL Heidi about Palm Springs. 947-9574.

PREGNANT? CONSIDER adoption. We may be able to help with housing and medical expenses. For pressure free counseling at no charge, call Southwest Adoption Center. 602-234-2229 or 1-800-423-2229.

Real Estate

BY OWNER: Ahwatukee three bedroom two bath house, big kitchen, sprinklers, \$74,000, principals only, 961-9616.

FOR SALE by owner two bedroom two bath condo. University Shadows complex, great for students \$60,000 assumable. Pat 894-2075 or 956-9269.

FOUR BEDROOM home near ASU for sale. Leave message with Alan Manetter. at 964-9755.

Roommate Wanted

FEMALE TO share large four room one bedroom divided bath, brand new condo, pool, large storage, furnished, Papago Park II \$250 plus utilities call Sue at 894-2247.

MALE FEMALE roommate to share three bedroom two bath house. Unfurnished room available. Southern and Price, \$185 month plus third utilities. Call after 9 p.m. 820-9522 or leave message with number 965-3566.

NEAT FEMALE or male roommate to share two bedroom two bath apt, furnished, utilities paid, covered parking, dishwasher, close to Thomas Mall \$255. 225-5250 evenings.

ROOMMATE WANTED to share very nice home with pool, washer, dryer, close to campus, off 68th Street. \$200 per month plus one fourth utilities. 949-0943.

Services

CARS AVAILABLE - 21 or older. All States Drive-away, 992-5200.

COIN LAUNDRY and dry-cleaning. All services you do or we do owner operated 25% off any service with this ad. One to a customer. Offer good thru Sept. Attended 9 to 5:30 except Sundays. McKintock Quick Clean 1012 S. McKintock Dr. (between University and Apache) phone 968-0401.

CRUISESHIPS HIRING data phone 707-778-1066 for directory and job information.

HAVE UNWANTED facial or body hair removed permanently by electrolysis. Free consultation, located in Tempe. Call Sharon at Desert Electrolysis Center 829-7829.

HYPNOSIS, DEVELOP self confidence, remove inhibitions, control stress and anxieties, improve memory and concentration, stop smoking or loose weight, Arizona Hypnosis and Counseling Institute. Lindsay A. Brady certified Hypnotist.

SECRETARIAL SERVICE. Word processing, term papers, resume's, transcriptions, copies - enlargement, reduction. Expertise secretarial Glendale 934-2316.

SINGLE? HERPES? Confidential Connections-a unique, affordable dating service for singles with herpes 241-9874.

TRAVEL DISCOUNTS: Chicago, Minn, Wiss, North Dakota, \$265 round trip. No restrictions 9-2 11-20 Travel Tips 968-7283.

ONE WAY ticket Portland/Anchorage. Sept 13th. Regular fare, \$496. Will sell to best offer, 894-5301.

Travel

TRAVEL DISCOUNTS: Chicago, Minn, Wiss, North Dakota, \$265 round trip. No restrictions 9-2 11-20 Travel Tips 968-7283.

ONE WAY ticket Portland/Anchorage. Sept 13th. Regular fare, \$496. Will sell to best offer, 894-5301.

Typing

A-1 WORD PROCESSING at Kinko's Copy, call 966-2035.

ALWAYS AVAILABLE for typing. Call Susan at 833-0373.

EXPERT WORD processing/typing. \$1.25 double spaced page. Rough draft available. Rural/Southern. Fran 838-8027.

HELP WANTED. Part time, typists 55 to 60 wpm. Must have taken CIS 200 or better call 967-0900.

PROFESSIONAL QUALITY word processing. Will edit and correct spelling. Carolyn Douglas, 838-0959.

PROFESSIONAL TYPING service; Competitive rates, spelling and punctuation corrected, proof reading, pick-up and delivery available. Suzanne 820-1843.

PROFESSIONAL WORD processing, accurate preparation of term papers, thesis, research papers, resumes, etc. Assistance with spelling punctuation, and grammar. On campus pick up and delivery, reasonable rates. Words by Jodi 890-9158.

PROFESSIONAL TYPING, low rate, fast service, discount for students. call Sandy 849-0889.

SHORT OF time? I can help. Reasonable. Professional. Guaranteed. Experienced in academic. call Jessie 945-5744.

TYPING, IBM selectric \$1.20 per page. Cheri 967-3747 evenings.

WORD PROCESSING on IBM PC. Research papers, thesis, dissertations, graphics capability. Lisa, days 967-5278 evenings 831-7932.

WORD, PROCESSING, storage for dissertations, thesis and term papers. Rush jobs welcome. Nancy, 830-5572.

EARN WHILE YOU LEARN. \$

MEMORIAL UNION

presents the

SIDEWALK CAFE

CONTEST

RENAME THE SIDEWALK CAFE RESTAURANT

SEPT. 10-SEPT. 25, 1985

AND WIN:

FIRST PLACE — 10-SPEED BICYCLE

**SECOND PLACE — 2 TICKETS TO THE
TINA TURNER CONCERT,
OCTOBER 18**

**THIRD PLACE — 2 DINNERS AT THE
BLACK ANGUS
RESTAURANT**

WINNERS ANNOUNCED OCTOBER 1, 1985

Rules:

1. Entry forms may be obtained at the Sidewalk Cafe, downstairs in the MU.
2. To enter, you must be an ASU student.
3. One entry per person.
4. No purchase necessary.

**SIDEWALK
CAFE**

“Home of the ASU Flame Broiled Burger”