

New language test cuts number of TAs

English skills below par for teaching

By VICKIE CHACHERE
State Press

More than 60 percent of ASU's prospective foreign teaching assistants, who might have been allowed to instruct students four months ago, failed a test that measures their ability to speak English, an ASU administrator said.

Jack Kinsinger, vice president of academic affairs, said that of the 109 students tested since the exam became mandatory in May, 63 percent have failed. Another 14 percent have qualified to teach, but must take refresher courses in English.

This year's application of the exam is the first to consistently test the English skills of teaching assistants on a University-wide basis, said Daryl Kinney, associate director of ASU's American Language and Cultural program.

Kinney said the examination had been required for several years, but the actual testing of students was "sporadic," and allowed a number of students without a strong command of the English language to continue teaching.

The proficiency exam tests students on

their ability to communicate using spoken English, Kinney said.

He said the test is eliminating teaching assistants who previously would have gone into the classrooms without sufficient English-speaking ability.

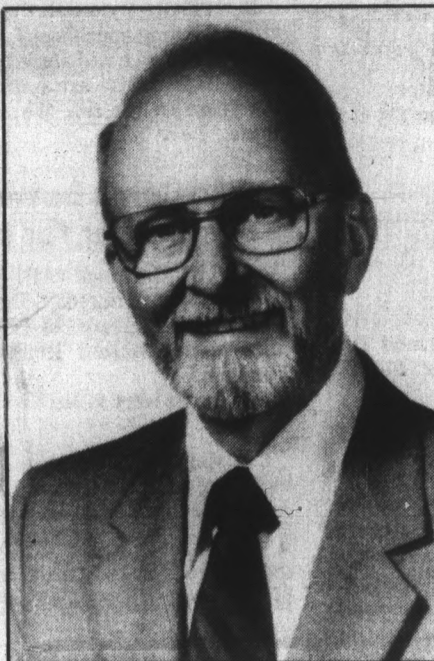
Administering the test was not a regular practice until the faculty senate passed a resolution last May ordering all prospective teaching assistants to take the exam.

The senate's resolution was approved after ASU President J. Russell Nelson issued a mandate requiring the test be administered to all foreign teaching assistants.

Nelson's request was prompted after a study of undergraduate education by the Arizona Students Association targeted teaching assistants who could not properly communicate with their classes as a factor in the decline of undergraduate education.

According to the study, students were especially concerned about the existence of foreign teaching assistants without a command of English in math and science courses.

"We will see about weeding out the pro-



Jack Kinsinger

blems," Kinney said.

She said a score of 300 has been set as the maximum score for the exam, and students scoring 230 and above are allowed to become teaching assistants.

Those scoring 210 to 229 are placed as lab assistants, and those scoring less than 210 are not allowed to instruct other students.

"Just because someone can speak English doesn't mean they are a good teacher, but it does eliminate the language barrier," Kinney said.

Phillip Leonard, chairman of ASU's math department, said students had complained to him about foreign assistants being difficult to understand.

"Let me put it this way . . . we sometimes get complaints," Leonard said.

"When you have someone whose first language is something other than English, you typically have some degree of difficulty," Leonard said.

He said prospective teaching assistants are chosen by the faculty graduate committee, and the students' selection is based on their math ability and their ability to teach.

"I think they are doing the best that can be expected," Leonard said.

Kinney said another exam will be administered on Sept. 4.

friday

August 30, 1985

state
press

Vol. 68 No. 5

Arizona State University

Tempe, Arizona

Copyright, State Press, 1985

Regents meet again to review divestment

Pressure from anti-apartheid groups has resulted in a second meeting of the Arizona Board of Regents finance committee to discuss divestment possibilities.

Donald Shropshire, committee chairman, said the Saturday's conference at UA will weigh the future of the state universities' \$4.3 million holdings in corporations with financial ties to South Africa.

Shropshire said the committee will not receive any additional testimony during the meeting but may decide to review new information if committee members need additional advice.

"I feel that we have spent enough time gathering information," Shropshire said.

"It's time we start absorbing (the information) and put together a meaningful recommendation to the board," he said.

The regents met in July with anti-apartheid groups, investment officials and South African immigrants in a preliminary fact-finding session, Shropshire said.

He said the finance committee will present a recommendation on divestment to the full board during the regents' Sept. 6 meeting at UA.

The regents' review of divestment possibilities was prompted by a request from Tucsonans Against Apartheid presented to the board at their May meeting.

TAA has asked the regents to withdraw \$1.1 million in ASU holdings and \$3.1 million of UA's investments.

According to Night Wind, a TAA member, the group chose

'(The policy) does not provide that we take into account any moral, ethical or political considerations.' — Pitt



Staff photo by Ron Kuczek Jr.

Pop-ular guy

Coca-Cola salesman Steve Wiedmeyer stacks one day's worth of his company's product for use in the Classroom Office Building. Wiedmeyer, who has worked five years for Coke, said now that the school year has started, he is working 10 to 12 hours per day keeping campus pop machines full.

Inside Today

Peace may be closer at hand at ASU than in the Middle East. Leaders of the Arab Student Association and the Israel Action Committee have agreed to talk. Page 5.

The cheerleading squad won a regional championship and is now headed for national competition. Page 9.

She is a typically active college student, taking tennis, aerobics and Chinese. She also is a 75-year-old grandmother. Page 12.

Becoming a coach was a little bit easier for former ASU quarterback Tim Salem than most ex-players. Page 17.

Student ticket sales for football have been "brisk," according to the University's athletic ticket manager. Page 18.

Bloom County	5
Collage	14
Classified	19
Nation/world	2
Opinion	4
Sports	17

universities as the first step in convincing Arizona institutions to divest holdings in South African companies.

Wind said TAA already has convinced Tucson Valley National Bank to halt the sale of gold Krugerrands and are attempting to convince other Arizona businesses to comply.

TAA members also contest that even though U.S. corporations operate under the Sullivan Principles — a list of guidelines designed to eliminate discriminatory practices in the work place — blacks are still subject to segregation and discrimination in South Africa.

A second anti-apartheid group, Students Against Apartheid, also has appealed to the regents for reconsideration of their investment practices.

According to Regent President Donald Pitt, board policy requires universities to consider only the economic securities of investments and the potential monetary yield.

"(The policy) does not provide that we take into account any moral, ethical or political considerations," Pitt said.

Currently, 38 colleges and universities across the country have restructured their investments in companies with South African interests.

Jennus Burton, ASU's assistant vice president of business affairs, said the University invests in companies chiefly dealing in exporting goods to South Africa and not in corporations that employ South African blacks.

Burton said Johnson and Johnson, Exxon, General Motors and IBM are among the corporations with South African interests receiving ASU funds.

— VICKIE CHACHERE

nation/world

Three Mile Island plant reopening blocked by extension of court stay

HARRISBURG, Pa. (AP) — Efforts to immediately reopen the Three Mile Island nuclear plant were thwarted Thursday when a federal court said its earlier order blocking restart is still in effect.

The continuation of the stay, signed by Judge Collins Seitz of the 3rd U.S. Circuit Court of Appeals in Philadelphia, came amid signs that Three Mile Island was getting ready to start up the Unit 1 reactor, which was undamaged in the March 1979 accident that crippled its sister reactor.

A three-judge panel from the circuit court had seemed to pave the way to reopening the plant when it affirmed Tuesday a Nuclear Regulatory Commission order allowing restart.

But the state of Pennsylvania, which has fought the immediate restart of the plant, Thursday petitioned the appeals court to reaffirm its June 7 order temporarily halting TMI's reopening.

The state sought quick action on its request. According to court documents filed by the state, the NRC intended to issue a letter at 4 p.m. Thursday to authorize the plant to immediately restart its Unit 1 reactor.

In its Thursday order, the court said the stay will remain in effect pending appeals of Tuesday's ruling.

"Of course we will abide by the stay," said TMI spokesman Doug Bedell. "We are continuing to maintain the plant in a readiness to restart. We continue to take events as they come," he said.

Moslems battle with Christians, each other for control in Lebanon

BEIRUT, Lebanon (AP) — Rival Moslem militias turned on each other Thursday, fighting for control of west Beirut and the northern port of Tripoli. Christian and Moslem gunners duelled across Beirut's Green Line and in South Lebanon.

Six people were killed and 15 wounded in the battles, police said.

Christian and Moslem militias swapped 22 kidnap victims, including a Lebanese-born Canadian, who were abducted in a recent spree of sectarian kidnapping, police said.

By police count, at least 40 civilians had been kidnapped in the last week by rival militias as they tried to cross the Green Line or drove to Beirut airport.

Validity of Palo Verde financing questioned by auditors' study

PHOENIX (AP) — Preliminary studies have raised serious questions about more than half the cost of the \$9.3 billion Palo Verde Nuclear Power Plant which mean that "in excess of \$1 billion" should likely be charged to stockholders rather than ratepayers, the head of the Arizona Corporation Commission said Thursday.

The decision to build Palo Verde was "the single biggest management error in the state's history," said Richard Kimball, who is stepping down as commission chairman Tuesday and as a commissioner soon thereafter.

A spokesman for Arizona Public Service, which is heading Palo Verde's interstate consortium, said APS might have made different decisions if it had known then what would happen to power supplies.

But the spokesman, Perry Baker, said it would be premature to speculate how many dollars might be chargeable to ratepayers. And he said APS still believed the nuclear plant would save ratepayers money in the long run by replacing costly oil and coal-fired plants.

AT CORNERSTONE



829-1743

THE U SHOP

HOURS:
M-F 10-9
Sat. 10-8
Sun. 12-6

Back to school with the best



Daytripper
The JanSport Daytripper is the perfect shape for holding large notebooks and papers, as well as pens, calculators and other supplies.



Spring Break
The square shape of the JanSport Spring Break makes it ideal for holding large textbooks and notebooks; it's made of Cordura with an outside zippered pocket.

10% off
JanSport packs
with this ad
Expires 9-15-85.

GRAND OPENING !!

THE POPPER

Gourmet Popcorn Shops



10% OFF with ASU I.D.

ALL FLAVORS:

Amaretto	Strawberry	Daiquiri
Cheese	Peanut	And More...
Cherry	Toffee	

903 So. Rural Rd. ASU

967-4344



\$20 EYE EXAM
including contact lens professional fee

From Arizona's Leading Contact Lens, Eyeglass & Hearing Aid Centers

HIGH FASHION GLASSES

FRAME & GLASS LENSES COMPLETE

\$21.95

RED TAG FRAMES
Standard bifocals complete \$39.95
No other discounts apply
Prior order excluded
Red tag frames only.
PLASTIC LENSES AT ADDITIONAL COST +3.75 to -3.75

<p>DAILY WEAR PACKAGE</p> <p>\$69.95</p> <p>Package includes: 1 pr. soft contact lenses . . . 0 Start-up kit 0 Lens solution 0 Wearing instructions 0 Service agreement 0 30 day follow-up 0 *Complete package . . . \$69.95</p>	<p>SOFT COLORS BY CIBA VISION CARE</p> <p>\$84.95 per pair</p> <p>THE EYES YOU WISH YOU'D BEEN BORN WITH</p> <p>Soft contact lenses in four natural colors: blue, green, aqua and amber. One pair per customer.</p>	<p>EXTENDED WEAR PACKAGE</p> <p>\$99.95</p> <p>Package includes: 1 pr. extended wear soft lenses . . . 0 Start-up kit 0 Lens solution 0 Wearing instructions 0 Service agreement 0 30 day follow-up 0 *Complete package . . . \$99.95</p>
--	---	---

Near sighted prescriptions only. Up to -6.00 one pair per customer. No other discounts apply.

LICENSED DOCTORS OF OPTOMETRY AVAILABLE

NATIONAL EYE & EAR

3133 S. Mill (Mill & Southern) Huntington Square Plaza, Tempe
CALL OR COME IN. PHONE 967-3197

NEW IN SCOTTSDALE



HIGHTOP SNEAKERS

BAR & GRILL

FEATURING A TEX-MEX MENU

that includes burgers, salads, chili, tacos, dogs, appetizers and spirits. Also selected sports viewing via satellite dish. Call for daily selection.

Happy Hours: Mon.-Fri. 4-6:30 p.m.

7607 E. McDowell Rd. • 947-1644

Dry rush week proves sobering; rushees questioning new policy

By ROB KELTON
State Press

The first dry rush week since 1973 was not as fun for members, but much more productive than past rush weeks according to ASU fraternity leaders.

Sigma Phi Epsilon President Brian Fries said that although there was some drinking during rush week, many fraternity members actually changed their priorities from getting drunk to staying sober.

"Most houses changed from the usual number-one priority of partying to concentrating on how their individual houses were doing during rush," he said.

According to Bill Polston, Kappa Sigma treasurer, "The guys were kinda bummed that they couldn't drink, but it started getting better as they saw the results."

Ken Yonkers, president of Sigma Nu, said his house members did not have as much fun, but the Greek system benefited from the dry rush.

"More rushees (new members) got into the system than ever before. Rush was dry which made it much more constructive," he said.

According to Yonkers, fraternities will serve alcoholic beverages at parties later in the semester.

Although alcohol was prohibited, there was still some drinking going on during the week, a few rushees said.

"People were still drinking a little, but never together so they wouldn't get busted," said Bob Butler, a freshman Phi Sigma Kappa member.

Some rushees were against the dry rush program.

According to Brad Huestis, a Phi Sigma Kappa member, "Guys were drinking and driving off campus, and it would have been more safe if they were drunk on campus."

Chris Cooke, a member of Sigma Alpha Epsilon, said, "A fraternity is social, and alcohol is a very big part of it. The evenings would have benefited with alcohol."

Some pledges said fraternity members should have been able to see the rushees drunk.

"They should have been able to see both sides of you: one when you were drunk, and the other when you were sober," said Steve Bertanyi, a Sigma Nu pledge.

But some fraternity members said this year's rush brought out the more serious people who wanted to be involved, according to some fraternity members.

"The fact that there was no alcohol meant that most of these guys going through rush were sincere in their actions," said Doug Ducey, president of Pi Kappa Alpha.

Many of the rushees who went through rush and are now fraternity pledges were happy with the program.

"Seeing the members sober gave me a better perspective of what the guys were really like," said Steve Tweedy, a freshman business major.

A few pledges said a rush week that would be both wet and dry would be ideal.

"We should have been able to drink as long as it was supervised," said Rich Essigs, a Pi Kappa Alpha member.

Brent Shuster, a Sigma Nu, said, "They probably should of had dry rush at daytime, but we should of had alcohol at night."

MAKE THIS YOUR YEAR!
JOIN THE **ARIZONA Outing Club**
FIRST MEETING TUESDAY, SEPT. 3, 1985
MEMORIAL UNION ARIZONA ROOM
FOR INFO CALL 990-0699

one dollar will still buy a rock poster
buy one \$3.50 rock poster
get the second one for one dollar.
no limit • expires 15 september 1985

20% off contemporary art posters
coupon required for these discounts

posters mostly

998 • 1922 n.e. corner shea & scottsdale

Photo Finishing Savings

Our everyday low prices

12 exposures	\$2.49
15 exposures disc	\$3.09
24 exposures	\$4.29
36 exposures	\$6.09
Reprints	19¢

CAMPUS DRUGS
712 S. College Ave. • One block north of University

OPEN 50¢ OFF ANY SUB (w/coupon)
7 a.m.-9 p.m. Mon.-Sat.
8 a.m.-6 p.m. Sundays

PASTA PLUS

SUBS • SALADS
We cater parties

TRY OUR FRESH GARDEN SALAD BAR

Breakfast starts at 7 a.m. Serving Bagels and Omelets, etc.

Corner of College & 7th
968-1940

STUDENTS ...Don't miss our 20-20 offer!

Art, architecture, engineering & design students:

Shop for your art supplies from The Valley's most complete selection by SEPTEMBER 20, and save a big 20%.

Shop any other time and you'll receive our standard 10% STUDENT DISCOUNT.

Fine arts materials

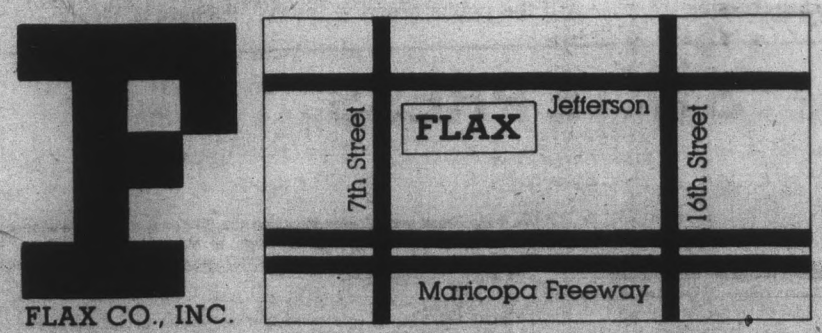
Canvas, paints, stretcher bars, brushes, frames, paper, etc.

Drafting supplies

Parallel rules, triangles, templates, leads, drawing boards, technical pens (all brands) and more.

ALSO

Airbrush equipment & supplies, graphic arts materials and books.



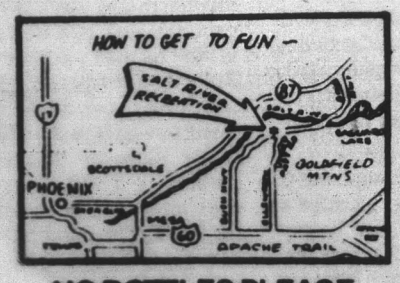
FLAX CO., INC.
10th Street & Jefferson • 254-0840 • Lots of free parking
Hours: Mon.-Fri. 8:30-5:30 Sat. 9-5

Tubing Down The Salt River
THE SALT RIVER IS THE THRILL THIS YEAR.

Fun in the Sun

Ride a Tube Down the Salt River

TUBE RENTAL AND SHUTTLE BUS SERVICE ALL-DAY RATES
\$5 plus sales tax per day per person



NO BOTTLES PLEASE

Or Shuttle Bus Ticket
Only \$2 all day
2,000 tubes for rent
open 7 days a week 9 a.m.-7 p.m.

Located 9 miles north of MESA at the junction of Bush and Utery Highways.
For more information, phone (602) 984-3305 or write for your free brochure and river map.

Under permit from Tonto National Forest

Salt River Recreation Inc.
P.O. Box 6568 Mesa, AZ 85206



Bring this ad with you for
\$1.00 OFF
TUBE RENTAL
Monday thru Friday

editorial

Honor vs. legality

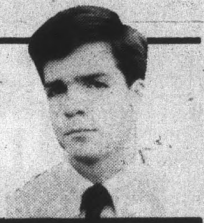
Perhaps the Arizona Board of Regents should deliberate today on what ever happened to the honor of a "man's word" when it meets in special session. That is when it will decide whether to award a \$400,000 settlement to Bob Weinbauer, deposed ASU basketball coach. Weinbauer was fired July 9 without explanation and was told ASU will not "recognize any legal obligation" arising from a 1982 memorandum of understanding on his employment.

The memorandum, which came from former Athletic Director Dick Tamburo, said Weinbauer would receive five one-year contracts in succession, so that he would have time to build a team. But Arizona law does not allow state employees to receive assurance of employment beyond one year. ASU President J. Russell Nelson used the law as an escape clause, creating a furor that still has not died.

A settlement this weekend would avert a potential lawsuit by Weinbauer. It may be the best way for the regents to keep a sticky situation from getting even messier (and costlier). It may be necessary for ASU to maintain credibility with big-name coaches who might apply here in the future. But the board should not settle for those reasons. It should settle because it is the most honorable option. The University and the board should not turn its back on it word and hide in the letter of the law; it should face its obligations.

Survival tips given for next drop/add

Gray Echols
Opinion Editor



It has been said by a number of knowledgeable individuals that if one survives drop/add at a major university, the rest is duck soup. Indeed, for those tortured souls who have suffered the premature purgatory of an ASU drop/add, no further academic endeavor seems quite so insurmountable.

By mid-morning, computer processors, deluged by the endless stream of anxious students, appear as haggard as the average marine after three day's combat. Tempers often flare as desperate students search for open classes and shorter lines.

To happily pre-registered passers-by, the chaotic scene is beheld with a sigh of relief: "Thank Heaven my classes survived the IBM."

Now friends, in a university of 40,000 this sort of torture may not be unavoidable, but for those caught in the midst, the displeasure might be alleviated with proper preparation. A quick glance at the disgruntled line-waiters reveals the obvious cause of frustration: these folks are totally unprepared for an assault on big-time bureaucracy!

Having survived four drop/adds, and being of a generous and compassionate heart, I will now freely release a few of the more useful techniques from my survival method.

Of particular assistance in prevailing in the drop/add battle is a pair of binoculars. This affords clear vision of the "Closed Classes" billboard while maintaining a place in line. A number of colleagues have told me that these little jewels also come in handy during afternoon cheerleading practice.

The next useful item is an ice chest — backpack style. I needn't remind you that this is August, folks, and it gets hot in outdoor lines like the one in the Social Sciences courtyard. Depending on the amount and type of cool beverages you stock, you may also be able to bribe others in line, exponentially hastening your advance to the registrar.

The next piece of equipment may sound a bit strange, but it actually comes in handy for a number of tasks. It's called a crowbar. Now you must recall that because of our balmy winter climate, this campus attracts many Easterners. These brutes are quite accustomed to lines and can become more than a bit forceful in making "progress" to the front. A disciplined hand (with crowbar) can not only rebuff such untoward assaults on common decency but can also serve as a timely introduction to the vigilante attitude found here in the Wild West.

The crowbar is also useful when approaching the door at the on-line site. No, maybe it can't open the inevitably closed class that you so desperately need, but it can do one hell of a job on the door. After all, our psychology professors are constantly haranguing us to "vent those negative feelings — express those passions . . ."

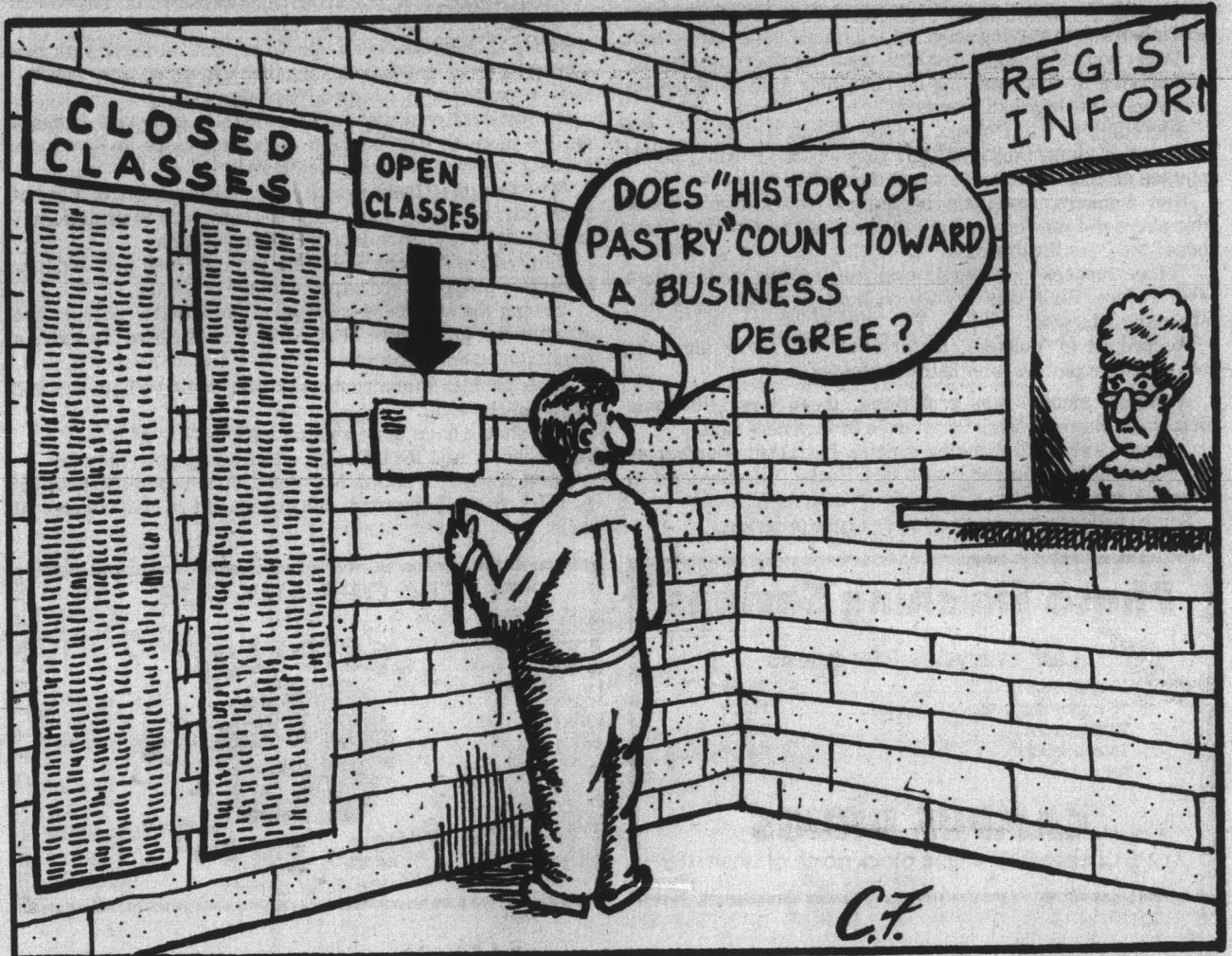
Surprisingly enough, the dazed computer operator may just be able to find you a good class after the conniption fit, especially if the crowbar is ominously poised over her software. A rabid growl usually expedites the whole process nicely.

I realize that these enumerations may seem incomplete, but come on, there's more than one way to skin a cat. The brevity of the above suggestions begs creativity . . .

opinion

state
press

The waiting is the hardest part . . .
—Tom Petty + The Heartbreakers



True University nature defined

Editor:

It amazes me how often it is necessary to repeat certain observations about the nature of a university. The observations are virtually commonplace to anyone with historical perspective, and they should be understood by those who presume to make judgments about the work of a university.

Let me isolate a few of these fundamental precepts. First, the primary purpose of a university is the conservation and enhancement of knowledge and understanding. This is not a matter of opinion, so that someone might say "No, the primary task of a university is to furnish workers for American corporations." If we permit the latter statement to stand, we will eventually discover that we do nothing in a university that the corporation should not do for itself. The university has a responsibility which cannot be duplicated by any other institution.

Second, it is out of the conservation and enhancement of knowledge and

understanding that a variety of other functions are performed by a university. We do study and research and we teach as a result of devotion to our primary purpose. A university faculty member is not a teacher, he is a professor of certain areas of knowledge and skills of knowing. He is a scholar who communicates what he knows in many ways, one of which is encountering students in a classroom or laboratory. In this way, the professor differs from the public school teacher, whose primary concern is with the student himself and with whatever it takes to teach, to nurture, and to prepare the student. But then, the university is not an extension of the public school; it has a different history entirely.

Third, a university, even a modern university, is not a corporation, however huge and bureaucratic it becomes. The standards of evaluation devised for corporations and government are false, phony and irrelevant in a university.

Fourth, in order to attend to its primary purpose, a university is fundamentally a consortium of scholars. In other words, the core and sovereign heart of the university is the faculty. If this is not so, it will fail at its task. A university is neither a democracy nor a hierarchy, nor a corporate administrative bureaucracy. Administration exists to implement the will of the faculty; faculty do not exist to carry out the orders of the administration, the regents or the legislators. It is the scholars who must arrive at decisions among themselves concerning their tasks. They must be free of the imposed stratagems of the political world and the whims of a clamoring public.

Fifth, the university is a public institution which must exist alongside of and equal to the government. It should never be the agent of the government, because it exists to criticize the public it serves, including and especially the political arm of the public order. If, as is

the case in America today, universities must gain their financial support through the generosity of government, it is incumbent upon legislators to find out from the faculty what the task of the university is. It is not the responsibility of legislators or any other non-faculty agency to police the university or to assign its activities.

Finally, if the consortium of scholars that is a university fails in its essential task, it will soon find itself adjusting its labors so that it is "understood" by the society in which it exists. Meanwhile, of course, we should be creating training-institutes outside the university to meet the need of technology, industry, and business. But let us not distort the high function of a university by including all manner of training programs within its purview. If higher education continues on its present course, it will soon be a perfect reflection of the chaotic world of the American marketplace.
Richard E. Wentz

STATE PRESS

STEVE WATERSTRAT
Editor

TOM BLODGETT
Managing Editor

City Editor W. TIM AHL
Asst. City Editor JOHN CONWAY
Asst. City Editor MELISSA SMYTH
News Editor MEAD SUMMER
Opinion Editor GRAY T. ECHOLS
Asst. Managing Editor WHITNEY PETERSON

Sports Editor MICHAEL KONZ
Asst. Sports Editor JERRY BROWN
Copy Chief JACQUE CROU
Arts Editor CINDY PEARLMAN
Asst. Arts Editor PATRICK J. KUCERA
Photo Editor KIP WILLIAMS

The State Press is published Monday through Friday during the academic year except holidays and exam periods, at Matthews Center, Room 15, Arizona State University, Tempe, AZ 85287. Newsroom: 985-2292. Advertising & Production: 985-7572.

The State Press is the only newspaper exclusively published for and circulated on the ASU campus. The news and views published in this newspaper are not necessarily those of the ASU administration, faculty, staff or student body.

Students recommend peace talks

By ED SCHUBERT
State Press

Arab and Jewish students should meet together to peacefully discuss areas of common interest, according to leaders of both groups.

Deborah Beshouri, president of the American-Arab Student Association (ASA), and Bob Shuch, chairman of the Israel Action Committee (IAC), met unofficially and agreed it would be a good idea for members of their organizations to meet.

"I think this would be a very positive step towards a peaceful campus and discussion between Arabs and Jews, who have been antagonistic in the past," said Shuch, a junior in chemical engineering.

According to Beshouri, a senior in psychology, "Arabs and Israelis are brothers, they really are. They share a common

patriarch in Abraham. They are brothers and they should not fight."

The purpose of the ASA is to preserve and promote Arabic culture on social, religious and artistic levels, he said.

"Most people don't realize that if it weren't for Islamic philosophers in the Middle Ages, we wouldn't have Greek philosophy today," Beshouri said.

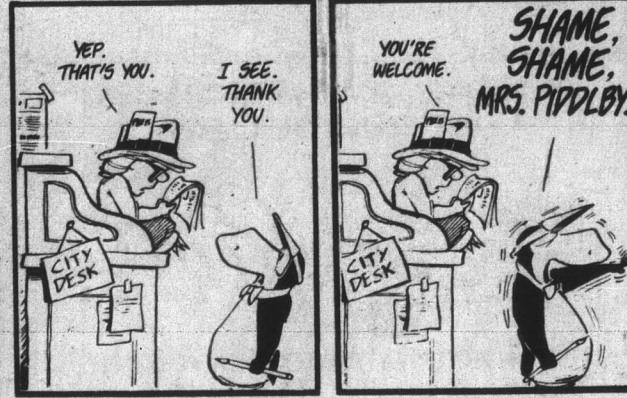
Another purpose of the ASA is to dispel negative stereotypes of Arabs common in American media, Beshouri said.

"The prevailing stereotype today is that all Arabs are terrorists," she said. "Actually, the terrorists represent only a small fraction, but the stereotype makes it hard on all of us."

According to Shuch, the purpose of the IAC "is to give Jewish students an opportunity to participate in politics that relate to their existence and identity."

BLOOM COUNTY

by Berke Breathed



'The Picture Place'
Memorial Union Lower Level

Enlargement Sale

From Your Negative	From Your Slides
\$.20 3 x 5 \$.50
\$ 1.00 5 x 7 \$ 1.50
\$ 1.75 8 x 10 \$ 2.00
\$ 5.75 11 x 14 \$ 6.25

NO OTHER DISCOUNTS APPLY - NO QUANTITY LIMITATION - OFFER EXPIRES 10-15-85

Call Us
243-3260

ALL IMPORTS
5000 S. 16th St.
Phx.

AUTO

Foreign Cars, Foreign Pick-Ups and 4x4's

Bed or Lounge
hardwood bed frames

The Layout Chair
for sitting or sleeping

Futons Futons Futons
Sofabeds

Contemporary Furniture • Futons • Lighting • Accessories

FREE DELIVERY with this ad (exp. 9-15-85)
Ask about 90 days same as cash

sweet dreams
3622 N. Scottsdale Rd. (just north of Osborn)
946-5687

THE VILLAGE OF GILA SPRINGS

Live at the Lake

Enjoy a lifestyle of carefree patio and townhome living. Surrounded by lush parks and your own lakes for fishing and sailing.

Patio Homes from \$93,900
Townhomes from \$89,900

FOUNTAIN COURT 36 creatively designed patio homes, 2-3 bedrooms 1400 to 1800 sq. ft.
LA COSTA ESPANA 48 distinctive 2-4 bedroom townhomes 1400 to 1700 sq. ft.

Below market rate financing • No Closing Costs Limited Time Only
Broker Participation 3%

The Village of Gila Springs in Chandler
Models Open Daily 10 am - 6 pm
Fountain Court 961-1155
La Costa Espana 961-1408
A master planned community by The Marlboro Group & Pima Service Corporation

Chopsticks Restaurant

OVER 12 CHOICES
MENU CHANGES TWICE DAILY

ORIENTAL BUFFET
1324 S. RURAL RD.
TEMPE, AZ 85281
968-2525 • 968-2636
Mon.-Thurs. 11-9
Fri., Sat., Sun. 11-9:30
Special order & take-out available
Chinese Dim Sum every Sat. & Sun. 11-4

Buddhist sect searches for mystical enlightenment

By ED SCHUBERT
State Press

"World peace through universal happiness," is the goal of the Buddhist sect Nichiren Shoshu, according to Kazuyo Nishida, a junior studying interior design and a member of the group.

Nichiren Shoshu has an active club at ASU which engages in outreach activities, such as setting up a table on the mall and holding religious services, Nishida said.

The sect is organized in the United States as Nichiren Shoshu of America (NSA), she said.

The group at ASU presently has "over 40" members from a wide variety of backgrounds, she said.

According to Nishida, this sect represents true or "orthodox" Buddhism, and practices the spiritual discipline of chanting the Nam-myoho-enge-kyo.

Repeating the chant "brings up Buddhad nature," or true enlightenment, she said.

Rasin Moser, a chemistry senior of Turkish descent, said chanting "brings a higher life condition, so that a person can view life from a higher perspective."

"Our highest potential" is manifested by chanting, he said.

Nishida said Nichiren Shoshu differs from Christianity in that Christians "think they cannot be God, that God and human nature are separated."

But chanting the Nam-myoho-enge-kyo can lead to Buddhad nature, which Nishida describes as "a mystical conception of life that is beyond words."

"We can be Buddha," she said.

Ura Siqueira, a former Catholic from Brazil, said she "found what she was looking for" in a religion about "life, people and peace."

Moser said he "had always been looking for different philosophies," and this one "made sense."

Hiroshi Kune, a junior in accounting and an exchange

student from Japan, said she was "born into it."

Nishida is also from Japan, where the sect originated, and said she was an atheist when she first encountered Nichiren Shoshu.

"I was looking for something, going from illusion to illusion," she said.

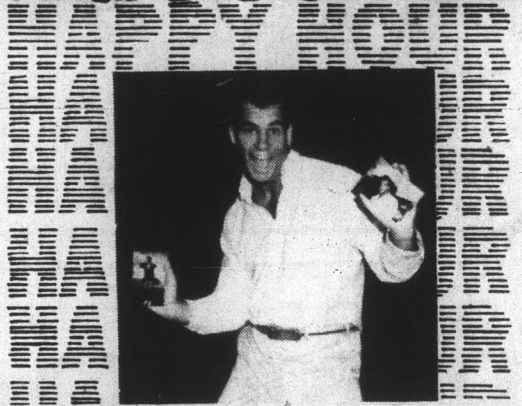
Galen Anstutz, a Shin Buddhist priest and a teaching assistant in ASU's department of religious studies, questioned the claim that Nichiren Shoshu represents "orthodox" Buddhism.

Orthodoxy in Buddhism is usually judged by "sticking to the monastic system," of the sangha, or commune — which neither the Shin or Nichiren sects do, Anstutz said.

However, he cautioned that "Buddhism is very difficult to define because the doctrine is fluid."

Both Nichiren and Shin Buddhism arose in Japan about 800 years ago, and represent two of the youngest Buddhist schools, he said.

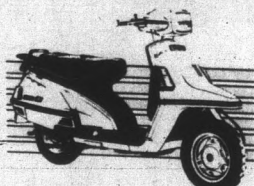
HAPPY HOUR HAPPY HOUR



Develop & Print
2 for 1 HAPPY HOUR DOUBLE PRINT SPECIAL
EVERY MONDAY AND WEDNESDAY
AT REGULAR LOW PRICE

829-0424 **SUNSET** Tempe Center
Camera Mill & Univ.

PUT SOME YAMAHA EXCITEMENT
BETWEEN YOUR LEGS



Riva
by YAMAHA

THE FUN ALTERNATIVE TO HIGH GAS PRICES

CHECK THESE DEALS!!!

	WAS	NOW
X C 180 K, L	\$1499	ONLY \$999
X C 125 N	\$1199	ONLY \$999
C V 80 N	\$899	ONLY \$799

WARRANTY VARIES BY MODEL

PRICES EXCLUDE F/P, T.T.L.

FINANCING AVAILABLE • INSURANCE AVAILABLE

YAMAHA
DISCOUNT
CYCLE CENTER

Scottsdale: 6828 E. Thomas Rd. • 941-5321

Glendale: 5720 N.W. Grand • 931-3753



Get THE WORKS from
CANDY

\$900

wash
cut
condition
blow dry

(Reg. \$15
\$13)

Expires 9-14-85.

ALPHA III STYLISTS



818 W. BROADWAY
#107 • TEMPE
829-9694

DISCOVER FOR YOURSELF WHY



Is The Best Family Steakhouse in America!

Terry Talbott invites everyone to enjoy the great steaks, salads, friendly service and family affordable prices at his Golden Corral Family Steakhouse.

NOW FEATURING TWO NEW ENTREES

- DELICIOUS GOLDEN ROAST CHICKEN (Rotisserie Cooked, Fresh and Juicy)
- FRIED SHRIMP (14 to 16 mouth watering shrimp)
- CRAB SALAD (on our All-You-Can-Eat Salad Bar)
- THE BEST HOMEMADE CHICKEN NOODLE SOUP IN AMERICA!

(All Entrees with your choice of french fries, baked potato or rice pilaf)

FREE beverage refills, and service that's fast, attentive and courteous from people who want to make you a regular customer.

2 7-oz. U.S.D.A. "Choice" Sirloin Dinners

Each dinner includes Texas toast, large baked potato or french fries.

Be sure to try our Potato Bar.

ONLY \$6.99

With this coupon. Expires Sept. 14, 1985.

3231 South Mill Ave., Tempe • 894-1509

2 All-You-Can-Eat Salad Bar

A giant selection of fresh fruits, vegetables, hot breads & dessert.

ONLY \$5.99

Expires Sept. 14, 1985.

3231 South Mill Ave., Tempe • 894-1509

FRIIDAY

Happy Hour 2-7

25¢ burgers, tacos, corn dogs, taquitos & hot dogs
1.00 teas 1.00 doubles w/ D.H. keepsake 1/2 litre
32oz. MONSTER BEERS \$1.00

NO COVER FOR LADIES BEFORE 10:00 *Ladies' Night 7-10*

25¢ Premium Well Drinks 75¢ Frozen Drinks

After Hours 12:30-3

**Anyone 18 years old or w/ valid college I.D.
will be admitted \$2.00 admission**

**THE
DEVIL HOUSE**
430 NORTH SCOTTSDALE RD.

Lack of parking slows movie patronage

By DAVID O'BRIEN
State Press

Last semester, both the ASASU and MUAB film series operated in the red for the first time ever, according to a former advisor to the MUAB film committee.

Dee Shroder attributed the loss of money to a lack of parking spaces available for students wanting to attend the movies.

Until last semester, students were allowed to park in Lot 18, directly behind the MU.

The unavailability of parking spaces near the theaters substantially reduced the number of moviegoers, especially for off-campus students, she said.

James Emmelkamp, ASASU activities vice president, said the location of Neeb Hall presented a problem.

Even given directions "no one could find Neeb Hall," he said.

This semester, in an effort to attract more students to the

campus, the price of a movie will be reduced by 50 cents to \$1. Emmelkamp said lower ticket prices will be offset by an expected greater student turnout.

"Competition of nearby dollar theaters such as University and Valley Art helped us to realize we would have to lower our prices to compete for the student movie viewer," Shroder said.

According to Emmelkamp, the theaters operate on a break-even basis to reduce movie costs to students.

"We're not in it to make money," he said. In the past, Emmelkamp said ASASU and MUAB competed to draw the largest share of movie viewers. Now the two will work together and coordinate their efforts.

All "charged movies" will be shown at the MU. Free sneak previews will still be shown at Neeb Hall, Emmelkamp said.

Until recently, ASASU has shown its movies at Neeb Hall and MUAB has had exclusive rights in the MU.

Shroder said the two have combined their schedules and will show movies in the MU theater.

police report

University Police reported the following incidents in the 24-hour period ending at 8 a.m. Thursday:

•Several vacant rooms on the first floor of the Campus Apartments, 628 E. Apache Blvd., may have been broken into, police said.

Screens on the windows were removed, and police found markings indicating that someone tried to pry the windows open.

Police do not know if entry was made into the rooms, but said it is possible that people are sleeping there.

There will be frequent security checks of the area.

•A light pole in Lot 63 was damaged sometime between 10 a.m. Friday, Aug. 21 and 9 a.m. Wednesday, police said.

Police believe vandals placed a chain around the pole, attached the chain to a vehicle and tried to drive away.

One dent in the pole is approximately three inches long, and the other is approximately four inches long.

The pole has been removed and the cost of replacing it is estimated at \$250.

•A black purse was stolen from room 218 of the Business Administration Building early Wednesday, police said.

A student told police she left the purse in her seat and went to the front of the room when her class had ended.

•A cassette recorder, headphones and a Kodak Vivitar camera were taken from room 243 at Manzanita Residence Hall Wednesday afternoon, police said.

The victim told police she left her room unlocked at 12:30 p.m. When she returned a half-hour later, the front door was open, as was the door to the closet where the items had been stored.

Total value of the items was estimated at \$160.

UNIVERSITY CAR WASH

50¢ OFF AUTOMATIC CAR WASH

Regular Price \$2.25

NOT TO BE USED WITH ANY OTHER OFFER.

OFFER EXPIRES SEPTEMBER 30, 1985.

AUTOMATIC WASH 8 A.M.-6 P.M.

SELF SERVE - 24 HOURS

UNIVERSITY & McCLINTOCK • NEXT TO MINDER BINDERS
UNIVERSITY & VAL VISTA • NEXT TO GAS STATION

MONTI'S LA CASA VIEJA

Finest Dining in an Authentic Frontier Landmark

DINNER SPECIALS

AFTER 4 P.M.

Monday Filet **\$5.45**
Tuesday Prime Rib
Wednesday Sirloin

Dinners include Baked Potato,
Salad, Rolls & Butter

LUNCH MENU

SERVED 11 A.M. TO 4 P.M.

½ lb. Casa Burger with
choice of side order \$2.85

3 West First Street
Tempe • 967-7594

Sun.-Thurs. 11-11
Fri.-Sat. 11-Midnight

Smart Styling with PHD

Perm \$30⁰⁰ & Up

Cuts \$9⁰⁰

Student Appointment Special
(After 4th cut get 5th cut FREE)

Eyelash & Brow
Tinting \$8⁹⁵

Private
Booths
Call Today

Mon.-Sat
9:30-9
Sunday
11-4

966-6111 Please Call for Appointment



Across from the Cornerstone
933 E. UNIVERSITY
Tempe Towne Plaza
(S.E. Corner Rural & University)

Back To School Savings

Decorate your
dorm room
\$10.99 Drag Chutes
NOW \$5.88

Rayban Wayfarer
Sunglasses
\$39.99
NOW \$22.88
Limit two rain checks given.



- Mountain Equipment
- Outdoor Prod.
- Bristlecone
- Dolt

Sale ends 9-19-85.

894-9137



- Camping
- New & Used Clothing
- Genuine G.I. Surplus
- MASH BASH HEADQUARTERS

1332 E. Apache
(A. J. Bayless Center)

M-F 9-8
Sat. 9-6
Sun. 10-5
MC/VISA

BOOK PACKS

15% OFF

THE Artists' Supply Center Shop OF ART

Architectural Engineering Commercial ART SUPPLIES

- Transfer Type & Tapes
- Drafting Supplies
- Artists' Books & Magazines
- Inks, Pens, Berol Markers
- Expanded Selection of Sheet Papers for Artists, Architects, & Engineers

26 E. UNIVERSITY

967-3681



Just across University from the Architecture Building!
½ block east of Mill on University

FREE LUNCH!

Don't you know there's no such thing as a free lunch?
But.

Maybe you can save enough to buy a couple of free lunches
(your fellow students have) with Sav-On Insurance.

CALL US! 820-1620



SAV-ON / ACTION

Insurance Center of Tempe

2062 E. Southern, Tempe, AZ 85282 • 820-1620

Cheerleaders capture championship of Western Division

By KARI BLAND
State Press

After last year's losing football season, the ASU cheerleading squad finally has something to cheer about.

The sixteen-member squad won the Western Divisional Championship in Santa Barbara this summer, which qualifies them to compete in the National Cheerleader Competition this January.

"We set some goals this season and winning this competition was one of them," said Jamie Fioramonti, second-year squad member. "We wanted to prove we were a heck of a lot better than previous squads and we did it."

The squad, which went its separate ways during the summer, got together only two days before the competition to work on its routine.

"We worked day and night for two days on the routine and it all fell together the night of the competition," Fioramonti said.

During the four-day camp, ASU also received three Superior ratings and an award for unity.

Cheerleaders Paula Perkins, Cathy Robinson and Fioramonti received a

superior rating in the Song Leading Program which included dance routines and the remainder of the squad received a superior rating in the Cheerleading Program.

Chad "Sparky" Howard also received a superior rating for his performance in the Mascot Program.

"In the squad before us, the talent was there to win, but this squad has more of the unity to come together and perfect a routine," said Duane Drape, squad member.

In competing in the National Cheerleader Collegiate Competition, the squad has two options.

They can either prepare a videotape of a game's performance showing interaction with the crowd and ASU's fight song, or perform a routine in front of judges.

Local press coverage during the divisional cheerleading competitions led to an offer for the ASU squad to cheer for the San Francisco 49ers sometime during the season.

"Our squad has such high intensity that we all wanted to go out and win," Fioramonti said. "When we walked out on the floor, it was as if someone sprinkled magic dust on us. We were so hot!"



Staff photo by Rick Wiley

ASU Cheerleaders: (left to right, bottom row) Scott Holly, Cindy Grady, Angelica Bonacci, Doug Kalos; (Second Row) Ron Kellum, Kevin McCrary, Wally Caddow, Duane Drape, Eric Grober, Chad Howard; (third row) Paula Perkins, Kae Lynn Helman, Liz Dickey, Cathy Robinson, Jamie Fioramonti; (top) Crista Odell

For All Your Party Needs

Y-KNOT PARTY
967-4495

Cinnamon Tree Center
903 S. Rural Rd.

- Room decorations & banners
- Silk & fresh flowers
- Wedding & party goods
- Invitations & cards
- We imprint

20% OFF BALLOON BOUQUETS

50% OFF DOZEN ROSES

Free delivery to ASU

MasterCard VISA

★ ★ COMING ★ ★

TO CAMPUS DRUG, FRIDAY, AUG. 30
12 noon til 2 p.m.

THE ASU STUDENT MODELS TO
AUTOGRAPH THE PAC-10 ISSUE OF
PLAYBOY MAGAZINE

712 S. College Ave. (1 block N. of Univ.)

★ ★ ★ ★ ★

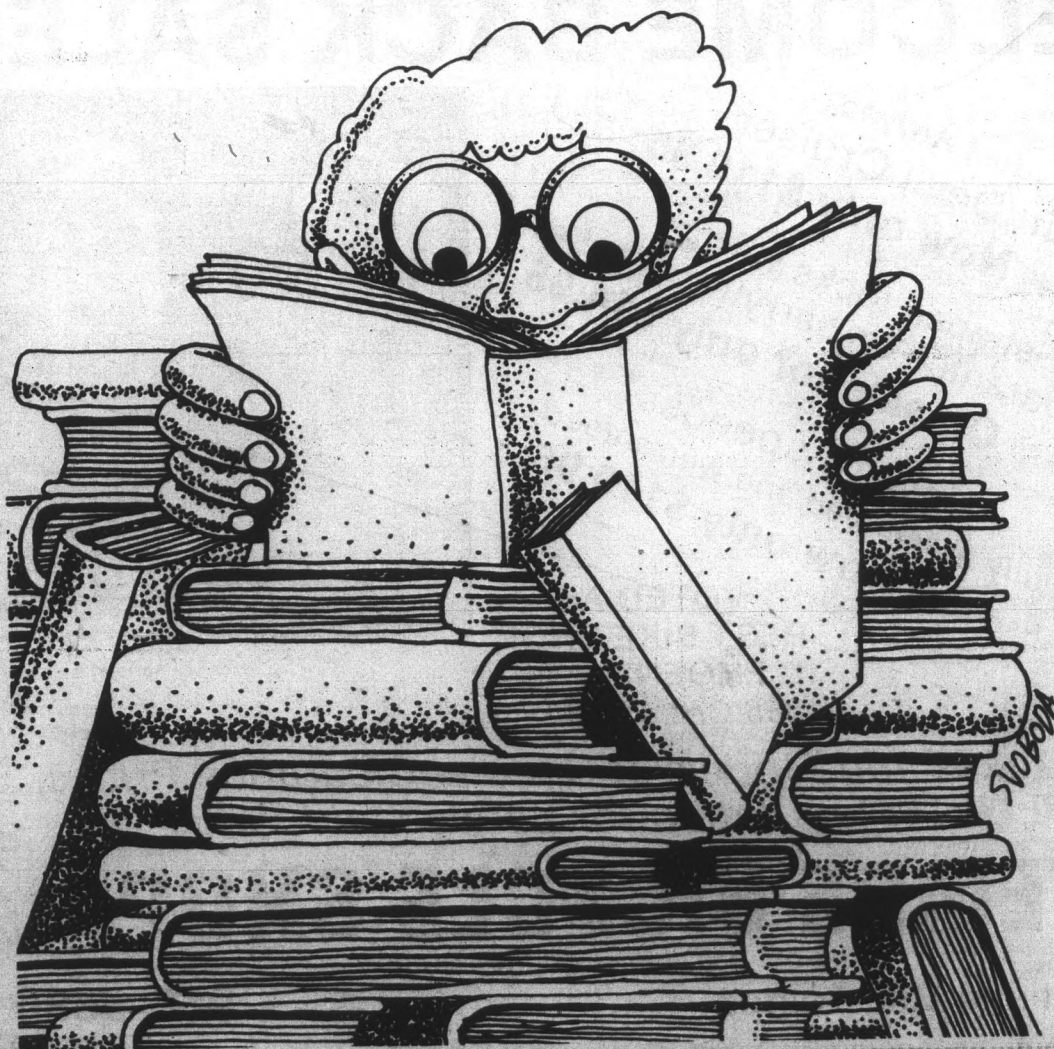
drycleaning

McKELLIPS & SCOTTSDALE RDS. (ALPHA BETA SHOPPING CTR.)

STUDENT DISCOUNT
25% OFF DRY CLEANING

SHOW I.D. CARD WITH INCOMING ORDER

College: a Time to be buried in books, not bills!



Studies, late nights at the library, weekends with friends, and a tight budget—these are your college days. It's not the easiest time to handle unexpected expenses—such as those caused by accident or sudden illness.

The ASU Student Health Insurance Plan can help protect against such expenses.

This coverage provides hospital-surgical protection for covered sickness and accidents including benefits for outpatient care and even major medical expenses. It also provides benefits for X-rays and lab tests performed at the Student Health Center.

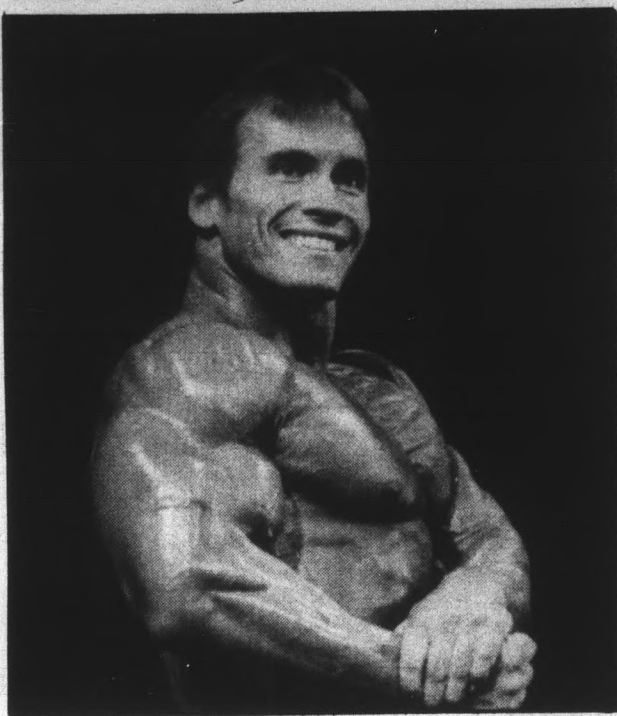
Full details are available at the Student Health Center during regular business hours Monday through Friday or call 965-2411.

But check on this soon... enrollment for this plan ends 20 days after the first day classes start each semester.

The ASU Plan is underwritten by:



The Student Insurance Plan has been approved by the Arizona Board of Regents and the Student Health Advisory Committee.



Staff photo by Kip Williams

Lance Dreher, the guest poser at Gammage Center, was Mr. Universe and Mr. America in 1981.

Top Phoenix physiques capture championship

'Everybody's got to be a macho, macho man.'
—The Village People

Gammage Center wasn't exactly bulging with spectators, but the stage was bulging with contestants at the 1985 American Amateur Union's Mr. and Ms. Phoenix Bodybuilding Championship.

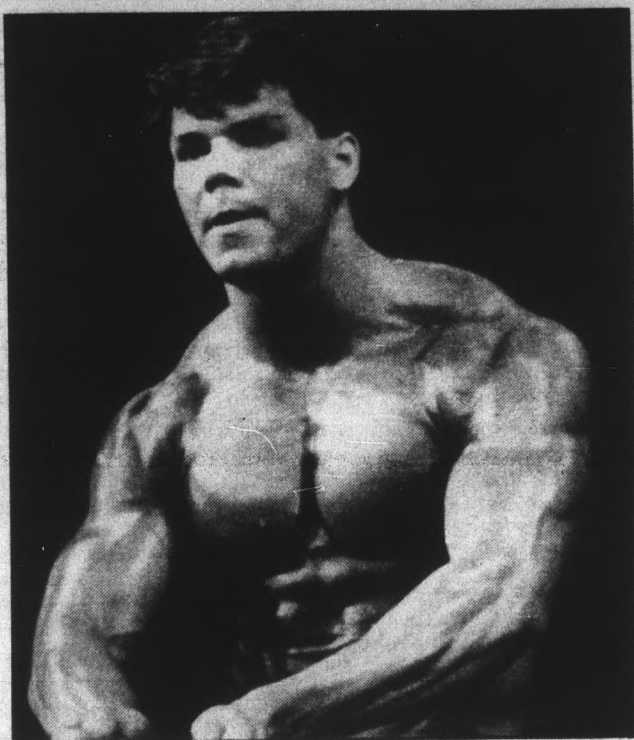
The competition, held Aug. 24, featured one women's open class and four men's classes: men's novice, tall, medium, and short.

Sandra Gembicki, who trains at J.P.'s Body Shop, won the women's class.

John Switzer, who won the novice, medium, and overall Mr. Phoenix titles, trains at Physique Southwest.

David Saenz, from J.P.'s, captured the short class, while Tony Giustina, from Flagstaff Athletic Club, won the tall competition.

Lance Dreher, Mr. America and Mr. Universe of 1981, was the guest poser at the event, sponsored by J.P.'s Productions



Staff photo by Kip Williams

ASU Business junior Mike Howley took second place in the tall class.



Specializing in Photography for Fraternities, Sororities, Clubs and Organizations

Sorority and Fraternity Memory Books

GRAND OPENING SPECIAL

BRING AD & ASU I.D. FOR 4X5 MINI-PACK Reg. \$12.95 FOR \$3.95



Call for Appointment and Weekly Student Prices

252-9667

405 West University Tempe, AZ 85281



Introducing the fantastic new JAZZ TRAX seamless - butter-soft leather upper - Very Special Sole - great for those slippery wood floors - Vikofome insole for cloud-soft cushioning - great buffer between foot and floor. JAZZ TRAX has it all. Light, flexible, strong, and it looks terrific! And — it's also a great street shoe — SHOP EARLY — We have only a limited supply.

15% to 40% OFF

All Leotards and Tights

10% OFF All Shoes

Sale Starts Aug. 26 Ends Sept. 14

Free Tap Attachment (Save up to \$6.40)



Fiesta Square 1710 West Southern • Mesa, Arizona (602) 964-6703 Hours: Mon.-Fri. 10-7; Sat. 10-5

4522 North 19th Avenue • Phoenix (602) 246-2886 Hours: Mon.-Fri. 10-7; Sat. 10-5

Mitchell's Plaza 32nd Street and Thunderbird • Phoenix (602) 992-9591 Hours: Mon.-Thurs. 10-7; Fri. 10-6; Sat. 10-5



BUFFALO EXCHANGE Clothing to Suit Your Style

3 East 5th St. Tempe Mon-Sat 10-6 968-2557

WELCOME BACK SALE

Just Arrived Sun Devil Cruiser Reg. \$140 Now only \$119.95

U-shaped locks with a \$350 guarantee on carrying bracket Was \$18.95 On sale for only \$14.95

New 10-speeds Fully assembled and warranted Reg. \$150 Now only \$119.95

VOTED AS BEST BIKE SHOP IN PHOENIX AREA 1985 Critic's Choice

Many Makes and Models at Special Clearance Prices. PLUS A Reputation for Service and Value

TEMPE BICYCLE SHOP

The old gas station on the corner

6th Street and Mill, Tempe

966-6896



University held liable for student accident

By College Press Service

DENVER, CO (CPS)—In what some higher education attorneys call a "very troubling case for colleges and universities," a judge has ruled that the University of Denver must pay \$5 million to a former student who injured himself jumping on a trampoline at a campus fraternity house.

Among other things, experts fear the ruling fuels an emerging trend for courts to hold colleges more and more accountable for students' behavior.

The trend, which has cost colleges money in legal fees and damage awards to students who have had misfortunes on campuses, is convincing many schools to increase drinking ages, impose tougher dorm regulations and allow more latitude in suspending students.

At DU, student Oscar Whitlock, now confined to a wheelchair, became paralyzed after falling off a trampoline at his university-owned fraternity house four years ago.

Whitlock sued DU, charging that the university, as owner and landlord of the property, was responsible for its safe upkeep.

A Denver District Court jury agreed with Whitlock, and in 1982 awarded the quadriplegic student \$5.2 million in damages.

On Aug. 8, 1985, after several appeals, the Colorado Court of Appeals restored the jury's \$5.2 million award to Whitlock.

"It was really just a question of whether the university, with the many controls it had already placed on the house, such as limiting the size of fraternity signs, the number of people in the building, and so on, was also responsible for seeing that a dangerous piece of equipment, which officials knew about, was removed from the property," said J. Kent Miller, one of Whitlock's attorneys.

"We proved that DU officials knew about (the trampoline) and we even had some of them testify that they were fully aware of the dangers of trampolines and the potential for serious injuries," Miller said. "And we argued that as owner and controller of the property, the school was negligent when it failed to correct what was known to be a potentially dangerous situation."

All of which scares college liability experts.

The appellate court ruling "is a very troubling case for colleges and universities," said attorney George Dikeou, a college liability expert for the National Association of College and University Attorneys.

Indeed, over the last several years courts have placed more responsibility on colleges

'Another student successfully received payment from the University of Alabama for a rape in a house... owned by the school.'

and universities for insuring the safety and welfare of students.

Just last summer, for instance, a state court held the State University of New York at Stony Brook partly responsible for the rape of a student in one of its dorms because officials failed to lock and secure the entryway.

Another student successfully received payment from the University of Alabama for a rape in an off-campus house owned by the school.

About 72 percent of the schools belonging to the Christian College Coalition say they've been sued by students over events ranging from being cut by a broken window to football injuries to, in one case, getting too fat on dorm food.

A host of other schools have been held liable for accidents involving students drinking and misbehaving.

The DU ruling, some experts say, make colleges even more vulnerable.

"Universities own property all over the place," attorney Dikeou said. "Now are they going to be responsible for inspecting and policing everything that goes on any property they own?"

"That's exactly what could happen," said Liz Williams, DU's vice chancellor of financial affairs. "Judgments of this sort are not just hurting the schools involved, but will end up hurting all colleges and universities."

Williams said DU plans to appeal the decision to the state Supreme Court "soon."

Colleges plan to disinvest from S. Africa

By College Press Service

COLUMBUS, OHIO — In January, Edward H. Jennings, president of the 53,000-student Ohio State University, was emphatic:

Ohio State would not sell its shares in companies that do business in segregationist South Africa. While apartheid — South Africa's laws of racial segregation — was "appalling," Jennings explained that OSU would buy and sell stocks by judging "the best possible investment," not by judging a company's politics.

But less than six months later, Jennings convinced OSU's trustees to sell about \$3.3 million worth of interests in firms with South African operations, plus another \$7.5 million over the next five years.

What happened in the interim illustrates how the political and fiscal winds are changing in American college board rooms, and why more schools are bending to student demands to sell investments, however indirect, in South Africa.

Just since last spring, when anti-apartheid protests erupted on an estimated 60 campuses, Iowa and New Mexico Universities have announced plans to sell all their shares in certain firms.

RUNDLE'S LIQUORS & MKT.
730 S. MILL
Corner Mill & University Ave.


LITTLE KINGS ALE 8-pack \$2.97
MEISTER BRAU BEER 6-pack \$1.89
ANDRE CHAMPAGNES 750 ml \$2.97
PLAYBOY Used Magazines \$.71

Haagen Dazs Natural Ice Cream, Adult Magazines, Groceries, Ice, Wines, over 40 Imported Beers.

967-9079

LUTHERAN WORSHIP
Sunday
8 & 11 a.m.
Danforth Chapel

Alleluia
Lutheran Church
1034 S. Mill
894-2610




BREKFAST

from School

Graftitt's is for breakouts... the nitespot to take away the blues and paint the town red... all week long.

Friday and Saturday — Free admission until 9:00 pm. Upstairs opens at 8:00 pm plus free t-shirts to the lucky ones.

Sunday — Two for one all night and \$1.25 for imports. More t-shirts given away.

graftitt's

415 S. Mill Ave. Tempe
Dial W.O.T.F.U.N.

Fast lane

77-year-old student leads active life

By ANDREA HAN
State Press

Dorothy Hineman, 77-year-old grandmother of six, leads a life in the fast lane at ASU.

An avid tennis player and aerobics enthusiast, she is enrolled in aerobics, tennis, Chinese and religion classes.

Her 12-hour class load may seem easy for the average college student, but for Hineman it is difficult because she suffers from asthma and arthritis.

"I have a disadvantage, my muscles don't give. If I didn't exercise, I would really be in a wheelchair," Hineman said.

She took up tennis 11 years ago after doctors told her she needed more exercise.

"In my aerobics class, the instructor is always saying 'keep moving, keep moving.' In tennis, you're always moving, you never plant yourself down," she said.

Hineman, who was born in Cleveland, Ohio in 1908, said she is the oldest student in each of her classes.

"I am the oldest every place I go, but the students are really nice. They help me out and are a lot nicer than I would have been to an older person when I was in college before," she said.

Hineman graduated from the University of Michigan in 1930 with a major in chemistry and a minor in physics before training to become a steel analyst.

"I wanted to work in the steel mills because when I was going to college, they didn't have the high grade steels that we have now," she said. "When I was in school they were just getting started on adding little bits of other elements to make the steel stronger."

During World War II, when the U.S. government needed chemists, Hineman said she worked at the Atlas Powder Plant in Weldon Springs, Mo., where she made TNT for the Army.

She was the first woman hired out of 200 men to work at the plant, she said.

"I enjoyed working there, but the men made it rough on me. They objected to a woman chemist working with them, and as I advanced they didn't like working under me," she said.

Hineman said because of the danger involved in her job, the government built additional plants in case one blew up.



Staff photo by Ron Kuczek, Jr.

Despite suffering from arthritis and asthma, Dorothy Hineman still finds time to fit in time on the tennis court despite her academic schedule.

"We couldn't wear any metal on our bodies. No bobby pins, zippers or bra hooks. The static electricity from the metal would have caused an explosion," she said.

Hineman said she moved to Phoenix in 1950 from St. Charles, Mo.

"I came out here to die. My asthma was so bad that if I lived through the first summer I was lucky."

"I had emphysema and my doctor told me not to teach first or second grades because I would catch colds from the kids," she said.

Hineman said her children worry about her life style.

"They are always telling me to be careful, be careful, that I shouldn't do so much. But if I don't, my body would be really stiff," she added.

CARPET REMNANTS

WE MANUFACTURE OUR OWN CARPET AND SELL IT DIRECT TO THE PUBLIC, NO MIDDLE MAN.

- Thousands in stock — 30%-70% off
- Hundreds of room-size remnants — \$29-\$69
- We Deliver

Direct Carpet Outlet

MESA
1826 W. Broadway
At Dobson/bet. K-mart
and Price Club
890-1152

NORTHEAST
15681 N. Cave Creek
867-2703

WESTSIDE
3161 N. 35th Ave.
Bet. Thomas & Osborn
269-3261

Owned and operated by E'Con Carpet Mills with warehouses throughout the U.S.A.

SHABBAT IN THE PARK

Services & Barbeque at
South Mountain Park
Ramada 1
Friday, Sept. 6, 1985

\$3 (in advance)
\$4 (at the door)

Meet at Hillel Jewish Student Center at 5:30 or at the park at 6:00.

Please R.S.V.P. 967-7563 (before Wed., Sept. 4)

Hillel: Jewish Student Center • 1012 S. Mill Ave.

Police patrols increased for safer streets

Tempe Police will increase patrols on treacherous city roads during September in anticipation of a rise in accidents caused by the influx of ASU students and faculty, Officer Steve Crooks said.

The hazardous roads are: Rural from Broadway to the Salt River; Mill Avenue from Apache Boulevard to Curry Road; Broadway from Mill Avenue to 52nd Street; and McClintock Drive from north of Southern Avenue to Baseline Road.

"There is more potential for accidents when more people are on the roads," Crooks said.

In an effort to reduce the accident rate, the police department will inform motorists, bicyclists and pedestrians of safe driving tips and city traffic laws through a newsletter inserted in city billing notices, a police report said.

According to Crooks, the leading cause of bicycle accidents is the rider's failure to ride with the direction of traffic.

"It's extremely important for bicyclists to ride with the flow of traffic, whether they are on the sidewalk or in the street," he said.

Motorcycle riders are under the misconception they can "split traffic" by driving between two lines of stopped traffic, the police report said.

This maneuver violates state law; however, the law permits motorcycle police officers to split traffic while on patrol, the report said.

THE TOP IN ITS CLASS!

HONDA



- GREAT ON GAS
- LOW INSURANCE
- EASY MAINTENANCE
- EASY PARKING

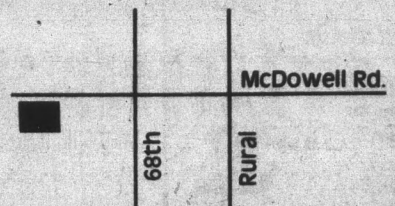
from **\$389!**
NO FREIGHT
NO PREP

ALL MODELS ARE AVAILABLE
"WE'RE AZ'S #1 VOLUME SCOOTER DEALER!"
ONLY 5 MINUTES FROM ASU!

SAME DAY FINANCE

MON.-FRI.	8-9
SAT.	8-6
SUN.	10-6

western honda
OF SCOTTSDALE
6717 E. McDowell Rd.
994-8400





Staff photo by Kevin J. Larkin

Tile-high city

Mike Kalcic (lower) and his brother Jeff add the finishing touches to the tile that they laid on Tower Center. The two, both second generation tile workers, worked for two weeks replacing the old tile more than 100 feet above the ground.

SAVE UP TO \$50 EVERY RING ON SALE

Now's a great time to buy an ArtCarved college ring and save up to \$50. Let your ArtCarved representative show you our incredible selection of Stadium® and 10 or 14 karat gold college ring styles. Every ArtCarved ring is backed by a Full Lifetime Warranty.

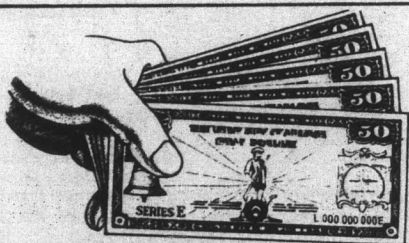
FINAL DAY for Spectacular Savings

ARTCARVED CLASS RINGS

TODAY ASU BOOKSTORE 9-4

Deposit Required © 1985 ArtCarved Class Rings

Winning Hand.



WHO SAYS YOU CAN'T TAKE IT WITH YOU



Limited supply

Now you can play records, cassette tapes or even watch T.V. anywhere with these unique portable Sony products.

Save 50% on a PS-F5. This battery powered linear tracking turntable plays your records in a vertical or horizontal position and has two head-phone jacks - only \$79.95.

For cassette tapes, you'll want a FM-10II. This am/fm cassette player, designed to handle motion, is great for jogging and is only \$99.00.

How about a T.V.? The FD-40A has a 4" screen and comes with headphones, so you don't bother your classmates. Only \$199.00!



SONY



Jerry's

Serving The Valley For 15 Years

Audio-Video and more . . .

334 E. Camelback Rd. sales 263-9410
Phoenix, AZ 85012 service 277-6251

GRAND OPENING

ALL YOU CAN EAT PANCAKE & COFFEE

6-10 a.m.

\$1.69

(with this coupon)

Not valid with any other offer.

15% OFF

Featuring 18-ft. Soup & Salad Bar

(2 homemade soups & averaging 80 items)

(with this coupon)

Not valid with any other special.

MORE Quality

Foods for Less

Precious Dollar\$

ALL YOU CAN EAT OMELETTES

(your choice)

6-11

\$3.79

\$1.50 OFF

With Purchase Of Any 2

"Dinner Entrees"

(with this coupon)

Not valid with any other special.

15% OFF ANY BREAKFAST OR LUNCH ITEMS

(with this coupon)

One coupon per table.

Not valid with any other special.



Restaurant

625 E. Apache

Tempe, Arizona 85281

968-5770

Hours 6 a.m.-10 p.m. Daily

TWO BLOCKS WEST OF RURAL ON APACHE

collage

The Whitefield Society will hold an open forum meeting from 11:40 to 12:30 today in the MU Upper Room.

Alpha Kappa Alpha will hold a Minority Women Greek Rush at 6 p.m. today in the MU.

ASU-American Federation of Teachers and University Employees, Local #2050 will hold its monthly membership meeting at 12:30 today in the MU Yavapai Room.

Al-Anon sponsors meetings for friends and relatives of alcoholics at noon today.

Alpha Kappa Alpha will sponsor a dance at 9 p.m. Saturday in the Palo Verde Main cafeteria.

Alleluia Lutheran Church meets at 8 a.m. and 11 a.m. Sundays in Danforth Chapel for worship.

Sophos will hold an organizational meeting at 4 p.m. Tuesday in the MU Gila Room.

Students of Sign Language Club will hold an organizational meeting at 7 p.m. Tuesday in Stauffer Hall, room A417.

Alpha Eta Rho, an international aviation fraternity, will present a discussion at 7 p.m. Tuesday in the MU

Pinal South Room. Guest speaker will be Frank Schubert of America West Airlines.

ASU Wildlife Society will sponsor a program on Costa Rican wildlife at 7 p.m. Tuesday in the Life Sciences building, room 163. Marty Jakle and Tom Getz will speak.

Arizona Outing Club will present an Arizona slide show at 7:30 p.m. Tuesday in the MU Arizona Room.

Campus Crusade for Christ will hold its weekly meeting from 7 to 8:30 p.m. Thursday at 209 E. 15th St. in Tempe.

Recreation Majors Students Association will hold an organizational meeting at 12:15 Wednesday in the MU Navajo Room.

Native American Student Association will hold a general meeting at 3 p.m. Wednesday in the MU Navajo Room.

PIES, Student Health Center will sponsor a discussion about St. Francis of Assisi at 2 p.m. Wednesday in the MU Arizona Room.

Alpha Phi Omega will hold an introductory meeting at 5:30 p.m. Thursday in MU room 222.

ASU PUBLIC EVENTS

now hiring for the following student positions: forklift operators, truck loaders, and general stagehands. Pick up stagehand job referral forms at Matthews Center. Interviews are August 22-30, 1985, M-W-F: 9-12, 1-5; T-TH: 9-1 at the stagedoor at Gammage Center.

The hair performers

\$7

Includes:
Shampoo
Condition
Cut
w/Blowdry \$11

Special Perms: starting at \$28.95
w/FREE Haircut

With coupon only. Expires 9-30-85.

HOURS: Mon.-Fri. 9 a.m.-9 p.m., Sat. 9 a.m.-6 p.m.

903 S. Rural • Cinnamon Tree • 894-0184

A ROOMMATE IN A ONE BEDROOM? YES!

1 BEDROOM APARTMENTS AVAILABLE

We know that times are tough so we encourage you to find a roommate to share expenses. Our 1-bedrooms are large enough for you both to have plenty of "living room." And we're just around the corner from ASU. Ask about our quiet neighborhood atmosphere and great lifestyle amenities.

PALM TREE VILLAGE 1216 E. Vista del Cerro
966-6729

Home At Last. *Fox & Carlsdon*

ELEK-TEK... SAVES YOU MORE ON CALCULATORS

EL 5510	70	PG 1261	135
EL 5500T	70	PG 1350A	135
EL 5520	85	PG 1500A	150
PC 1250A	70	CE 125	119
PC 1260	75	CE 125P	55
		CE 150	150

HEWLETT PACKARD CALCULATORS

HP-11C Scientific	58
HP-12C Financial	90
HP-15C Scientific	90
HP-15C Programmer	90

FREE! New Advantage software module from HP with the purchase of any HP-41 at Elektek. Offer ends 11/15/85. **FREE!**

HP-41 CALCULATORS AND ENHANCEMENTS

HP-41C	105*	Printer (82143A)	283
HP-41CV	168	HP II Module	95
HP-41CX	245	Dig. Cassette Drive	400
HP-71B Computer	399	HP II Printer	335
Optical Wand	95	Think Jet Printer	375
Card Reader	145	9114A Disk Drive	600

MEMORY EXPANSION MODULES (for HP-41C)

Timer Module	60	HEWLETT Ext. Function Module	60
Quad Module	60	PACKARD Ext. Memory Module	60

*While limited supplies last.

CALL TOLL FREE 800-621-1289 EXCEPT ILLINOIS, ALASKA

Accessories discounted too. MasterCard or VISA by phone or mail. Mail Cashier's check, Money Order, P.O. Check (if you do not). Sorry no C.O.D.'s. Add \$4.00 1st item \$1.00 add'l shipping & handling. Ships to IL address add 7% tax. Prices subject to change. University/College P.O.'s Welcome. WRITE (no calls) for free catalog. 30-day return policy for defective merchandise only. ALL ELEK-TEK MERCHANDISE IS BRAND NEW, 1ST QUALITY AND COMPLETE.

ELEK-TEK, Inc. 1172 S. 19th St. Tempe, AZ 85282

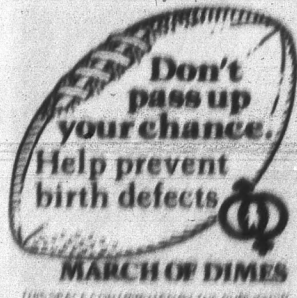
JONATHAN'S PIZZA

Job Opportunities

SEE HELP WANTED

Carpet House

DORMS, APTS., VANS
ALL SIZES
USED ROOM SIZES
10 & UP
NEW CARPET TOO!
1516 E. Van Buren
Phoenix



Welcome back to A.S.U. and the largest, most modern tanning salon in the state of Arizona!

GRAND OPENING

SEPTEMBER 3RD!!

SUN DEVIL TANNING SALON

Pre-Grand Opening Special: Sign up today and get a FREE 15 minute tanning session!!

Taking membership applications starting AUGUST 20th

SPECIAL SEMESTER RATES:

FULL UNLIMITED SEMESTER MEMBERSHIP	\$180
Monthly Unlimited Membership	\$70
12 session membership	\$50
5 session membership	\$25
single session	\$6.50

CALL NOW AND GET THAT HEALTHY LOOK!!

968-4611

120 E. University, Arches Mall

corner of Forest and University • next to the Warehouse Deli.



TAN in AIR-CONDITIONED comfort while listening to your favorite MUSIC!
Built-in HIGH-SPEED FACE TANNER and Pioneer AM/FM Cassette stereo sound system!

Union Carbide plant leaks chemical near West Virginia college campus

By College Press Service
 INSTITUTE, WV — "It makes you worry when the same company has gas leaks here as had the leaks in India," said Adrienne Poindexter, a West Virginia State College junior. "No one wants to be around chemical releases."

But when a Union Carbide plant near the college leaked a cloud of toxic aldicarb oxime, a chemical used in pesticides, Poindexter said, "It took us by surprise. I thought (the warning) was the volunteer fire department signal."

The Aug. 11 leak injured six Union Carbide workers, hospitalized more than 100 area residents, and sent 175 to emergency treatment centers with eye and respiratory irritations and nausea.

Two nights later, a non-toxic leak in a Carbide plant five miles away forced some residents to evacuate their homes.

While the students and administrators on campus at the time were angered and concerned, officials shrugged off the possibility that the accidents would scare students into transferring to other, safer colleges.

The West Virginia State campus was between semesters and deserted except for

maintenance workers, administrators and a few students in the married students' residence.

"In one perspective, it was the ideal time for it to happen," said James Brimhall, WVSC vice president for administrative affairs. "I know how that sounds, but summer session was over and in another two weeks there would be 2,000-3,000 students on campus."

The Wall Street Journal reported that the substance is chemically related to methyl isocyanate, which leaked from the Bhopal, India plant last winter killing more than 2,000 people and injuring thousands. The Bhopal disaster prompted the Institute plant to improve its safety equipment and warning system.

But Union Carbide officials "didn't react well" in the emergency, "and I'm concerned about that," said Brimhall.

Despite a new alarm system (which residents complain sounds like the local volunteer fire department siren) and scheduled emergency radio broadcasts, "I was at home and heard it on TV," Brimhall said.

Loan defaults to cause loss of tax refunds

By College Press Service
 Washington, D.C. — In its latest effort to dramatize how tough it's getting, the Education Department last week said it would sic the Internal Revenue Service on current and former students who don't repay their student loans.

The department said defaulters won't get their 1985 or 1986 tax refunds until they repay their loans.

Department officials predict the agreement with the IRS will recoup \$50 million to \$250 million in past due financial repayments next year.

They hope to corral almost 80 percent of the scofflaws.

The department has publicized ambitious recovery programs before, including ongoing media events like impounding defaulters' cars and temporarily kicking some schools out of financial aid programs.

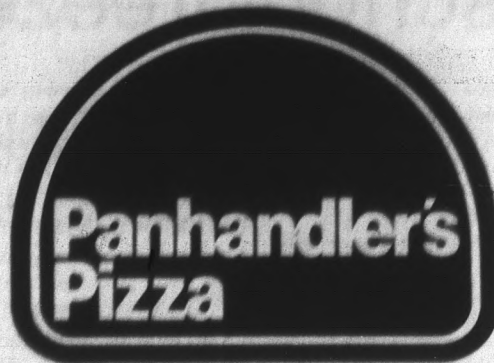
This time, officials add, the recovered money probably won't go directly back into financial aid.

In all, current and former students still owe anywhere from \$1 to \$5 billion, according to various estimates.

"This is the largest single effort in terms of money to be returned to the U.S. Treasury," said Dick Hastings, the department's director of debt collection and management assistance services.

"About 82 percent of the defaulters on our database get income tax refunds," he said.

Hastings plans to mail final payment notices to about one million defaulters this month, giving them two months to pay up or lose their 1985 refunds.



Pan Pizza
 By The
 Slice

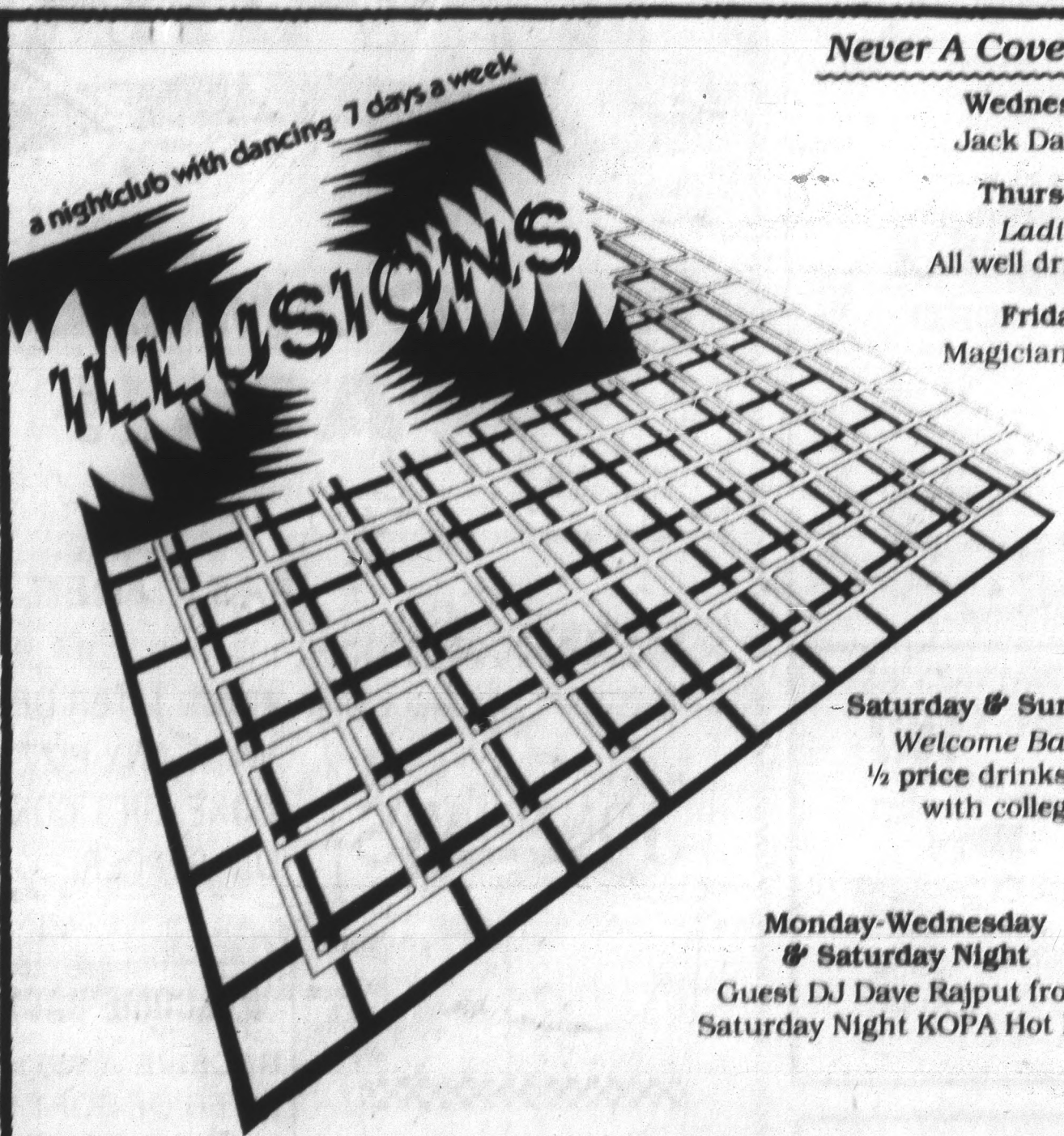
966-6455
 WE DELIVER

Join Us For Lunch!

Buy one slice of pan pizza
 and get the second slice FREE.

Void with other promotions.
 Offer expires 9-15-85.

106 E. University, Tempe • 966-6455



a nightclub with dancing 7 days a week

Never A Cover Charge

Wednesday Night
 Jack Daniels \$1.25

Thursday Night
 Ladies Night
 All well drinks only 50¢

Friday Night
 Magician Fred Cheek

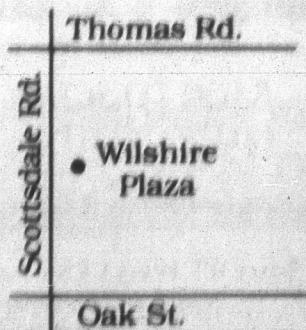
Saturday & Sunday Night
 Welcome Back ASU
 1/2 price drinks all night
 with college I.D.

Monday-Wednesday
 & Saturday Night
 Guest DJ Dave Rajput from
 Saturday Night KOPA Hot Mix

Happy Hour 4-7 Monday-Saturday
 After Hours Friday & Saturday until 3 a.m.
 2515 N. Scottsdale Rd. • Wilshire Plaza
 941-8322

Open 11 a.m.-1 a.m.
 Call for more info

A little hard to find but
 well worth the effort!



Michigan school freezes tuition, gets state funds

By College Press Service

LANSING, MI (CPS)—For the second straight year officials of Michigan's 15 state colleges and universities faced a dilemma: raise tuition and risk losing state funding, or accept Gov. James Blanchard's offer for a bigger slice of the state budget by freezing their tuition rates.

The schools said they needed both more tuition money and more state money to operate.

"We have inadequate resources, even with the generous action of the (state) government," Michigan State President John DiBiaggio said.

But MSU and the other colleges finally accepted the offer last week, rolling back planned tuition hikes of about nine percent.

"Some have not completed their moves to rescind the tuition increases," said Tom Scott, Blanchard's deputy press secretary. "But all have indicated they will."

Students elsewhere won't be that lucky this school year.

A College Board report released last week found it will cost students nationwide much more to go to college this fall.

Tuition and fees will rise eight percent at private four-year colleges, nine percent at public four-year schools, eight percent at two-year private schools and nine percent at public two-year colleges, the College Board found.

"Colleges are playing catch-up from the double-digit inflation periods of the seventies," Cox said.

Administrators say college costs have to keep rising faster than the current inflation rate to raise faculty salaries and pay for increased operating costs and school reforms.

Catching up means increases of 11.9 percent at Miami, 22.7 percent by 1986-87 at Big Bend Community College (Washington) and 22 percent at the University of Washington.

Though higher education may be the only industry in America still raising its prices at a rapid rate, some see a slowing.

"The figures show a slowdown (in the rate of increase), and that's a hopeful sign," said Bill McNamara of the National Association of Independent Colleges and Universities.

"But the question of cost containment is beginning to bother people."

It especially bothers students, who are tired of being "treated like dollar signs" as schools "become more like businesses than learning institutes," said Colorado State University student Jim DeFede.

DeFede led a summer protest of a planned tuition hike by distributing to CSU students applications to cheaper schools, writing legislators and staging rallies and class boycotts.

"We ended up with a 10 percent increase anyway," DeFede said "Tuition has nearly doubled in the past five years."

Lehigh, South Dakota, Pacific Lutheran, West Georgia College, North Dakota State, Nebraska, Georgia and Penn State, among others, say their tuition hikes are to cover needed faculty salary and benefit increases.

"Most of our 9.1 percent increase is necessary to keep up with faculty compensation," said Lehigh Budget Director James Tiesenbrunn. "We tend to lag behind in salary increases because tuition doesn't tend to rise as quickly as inflation."

LABOR DAY WEEKEND
Student Retreat
in the White Mountains

For information, call Good Shepherd Lutheran Campus Center at **967-3543**.

Sunday Worship 10:15 a.m.
 Wednesday Night Fellowship 7 p.m.

1414-1430 S. McAllister Ave.
 (Near Sahuaro Hall)

VALUE COUPON

OROWEAT 

BAKERY OUTLET
 1115 W. Broadway Rd.
 Tempe, AZ 85282

(one coupon per person)
 Good 8-25-85 to 9-3-85.

Priest	Broadway	Hardy
	X	

HOURS:
 9:00-5:30
 Mon.-Sat.
 967-8705

FREE Any French Bread or Rolls

VALUE COUPON

FUTONS MATTRESSES

\$49.00 & UP
 All Sizes
 Decorator Colors

- Convenient
- Comfortable
- Filled With 100% Cotton Felt

Southwest Mattress Futons

Downtown Phoenix
 415 South 1st St., Phx.
 E. Buchanan on 1st St.
 254-5943

OPEN 7 DAYS
 9AM-3PM

IF NO ANSWER OR Evenings Call277-7175
 in Tucson Call327-0097

 **C.C. Cutters & Co.**
 Experienced Stylists Who Care About Your Hair

BACK TO SCHOOL SPECIALS
FREE HAIRCUT w/Perm or Body Wave
 (at regular prices)

Ask about our transfer technique for longer lasting perms.
 Expires 10-1-85.

\$10 OFF WEAVES w/MATRIX SOCOLOR
 Perfect for after-summer regrowth.
 Expires 10-1-85.

INTRODUCTORY OFFER
HAIRCUTS \$7

Corner Lemon & Terrace **968-6685**

JONATHAN'S
 P I Z Z A

WELCOME BACK ASU!

FAST, FREE, DELIVERY

FREE LITER OF SOFT DRINK
 WITH ANY PIZZA PURCHASE:
 COKE, DIET COKE, SPRITE, OR
 DR. PEPPER.

WELCOME BACK SPECIAL
 RECEIVE A **SECOND FREE**
 LITER OF SOFT DRINK WITH
 EVERY PIZZA PURCHASE
 THROUGH SEPTEMBER.

ASU Location
829-1717
 933 E. University

Open 4 p.m.-1 a.m. Sun.-Thurs,
 4 p.m.-2 a.m. Fri. and Sat.
 ASU location opens 11 a.m., 7 days a week

SOUTH TEMPE
838-2227
 4415 S. BURAL

SOUTH MESA
926-1100
 745 W. BASELINE

NORTH MESA
827-1999
 635 N. COUNTRY CLUB

sports

state
press

Presto!

Salem trades helmet for headset in new coaching role

By BRAD HALVORSEN
State Press

Tim Salem still can be found on the Sun Devil practice field this time of the year, but now he dons a whistle and playbook instead of a helmet and shoulder pads.

Salem, who spent the final two years of his five-year college football career as a backup quarterback for ASU after transferring from Minnesota, coaches wide receivers and tight ends for head coach John Cooper.

"It's been in the cards all along," Salem said. "After the game we played with Arizona on Saturday (the 1984 season finale), I was working on Monday. I made the switch in one day."

Salem has a record of being a leader. He takes after his father, Joe, who coached college football for 23 years at schools including NAU, South Dakota State and Minnesota.

The younger Salem spent his recent summers coaching high school football camps in several states.

He also teaches a class at ASU this semester — the theory of coaching football (PED 291).

"I think I could almost coach anything," Salem said. "I've had some great coaches and teachers in my lifetime, and I like to take after them."

Darryl Rogers, head coach from 1980-84, was responsible for giving Salem a spot on the coaching staff. But when Rogers left ASU to coach the Detroit Lions of the National Football League, Salem's job was in Cooper's hands.

"When Cooper came in, I really wanted to stay at ASU," Salem said. "He said stay around, and I'm just happy to be here."

Cooper is also responsible for Salem's teaching job. Rogers taught the class last year, but Cooper handed it over to Salem.

"When Cooper came in, I said, 'Hey, look, it's a class I really want to teach because I think I can give students a great benefit to learn about the game from a real basic standpoint,'" Salem said.

"He said, 'Sure, you talk to the right people, and you can do it all you want.'"

The class will have over 60 students, Salem said, but only a handful are football players.

"I'm going to make it your easiest class of the semester, but you're going to learn the most," Salem tells his students.

Salem began his collegiate playing career at the University



State Press photo

Former ASU quarterback Tim Salem now spends his time instructing receivers on the field and students in the classroom.

of Minnesota in 1980, where his father was head coach. He started at quarterback during his freshman year, completing 82 of 170 passes for 887 yards and two touchdowns.

He was used only as a reserve in his sophomore and junior years, but left Minnesota with a Big Ten record for most consecutive completions (13).

In 1983, he came to ASU and redshirted his first season.

He played sparingly in 1984, his senior year, as a third-stringer behind Jeff Van Raaphorst and John Walker.

"I'm not looking back on that thing (last season)," Salem said. "I'm full steam ahead right now. I'm just trying to get these guys ready to play."

After participating in two Frank Kush football camps during his high school days, along with two Camp Tontozonas, Salem liked the feeling of coaching end at ASU's fall camp.

"Boy, it's nice," Salem said. "It's a hell of a lot nicer than practicing, I'll tell you that."

"You still have to spend a lot of time. You have coaches' meetings and meetings with the players and practice time. You're spending more time being a coach than a player, but at least it's not physical."

Salem said he has adjusted well to coaching his former teammates, and they give him as much respect as any other coach.

"I work my ass off, and they know I do," Salem said.

'You still have to spend a lot of time. You have coaches' meetings and meetings with the players . . . — Salem

"Even now, I run with those guys and stay with them and all that. At least there's some respect for me."

"When I say something, it's not like they say, 'He doesn't know what he's talking about, because I do.'"

Tight end Jeff Gallimore agreed. "He's going to be a top-notch full-time coach," Gallimore said. "It's really odd because we've had grad assistants in the past who have graduated to a full-time coach, and it took them awhile to get respect."

"Tim stepped right in, and all of a sudden he was getting called coach."

Salem is working on a master's degree at ASU in Public Administration. He may stick with his first love — football — and follow his father's footsteps into coaching, but he is taking a one-day-at-a-time attitude for now.

"I've got some other options to look into if I don't want to do coaching," he said. "I can be comfortable and successful. I'm not going to be a millionaire, but how many people are?"

MR. HERO
1800 E. Apache
(Corner McClintock & Apache)
EAT IN & DRIVE THRU SERVICE
FREE! 16-oz. Soft Drink
with purchase of 12" sub sandwich
WITH THIS AD
OPEN:
Sun.-Thurs. until 2 a.m.
Fri. & Sat. until 3 a.m.
968-5740
Good through Sept. 20, 1985.

10% OFF
SECOND CHANCE THRIFT SHOP
Books, Housewares, Clothes, Jewelry, Etc.
BUY
SELL
TRADE
OPEN MON.-SAT.
9 a.m.-5 p.m.
3259 E. McDowell in Phoenix
273-0377
STUDENTS

Interested
in helping others?
Alpha Phi Omega
National Coed Service Fraternity
MEETING & PIZZA PARTIES
Sept. 5, 1985 • 5:30 p.m. • MU Room 222

HOOTERS
FREE DELIVERY

LUNCHEON SPECIAL
25¢ DRAFT
MON.-SUN.

Fri. — Happy Hour 5-8, 3 for 1 well drinks \$1.85
Free Taco Bar
Live Entertainment

Sat. — 5-10, 2 well drinks for \$1.85
Disc Jockey Mike Burton

Sun. — Ladies Night 5-close Half Price Drinks
Happy hour prices on draft beer

SEAVING NY STYLE PIZZA
SUBS, CHICKEN WINGS
FREE DELIVERY

HOOTERS
801 E. APACHE
894-2662

4-Drawer Chest \$29.95

Table & 2 Chairs \$69.95

BED SALE

Twin Set \$69.95

Full Set \$79.95

Queen Set \$129.92

Sofa & Love Seat \$169.95

AT THESE PRICES WHY RENT?

Financing Available

FURNITURE PLUS

Delivery Available

MasterCard
VISA

2077 E. University
Tempe • 966-6252

ASU tops 56,000 tickets sold; students differ on new system

By JERRY BROWN
State Press

Season football ticket sales for 1985 have topped the 56,000 mark although seats have been on sale to students for one day, according to the ASU athletic ticket manager.

Diane Yeager said sales on Wednesday, the first day students were able to buy seats and Thursday morning were brisk.

"The first day went real well — we had a line all day," Yeager said. "Most of the students are buying the tickets individually."

Last year, ASU sold 59,344 season tickets. The University recently abandoned the group lottery system of student ticket sales in favor of a general admission policy for 1985.

"It's going pretty well," Yeager said. "Some people were a bit confused and they panicked. After we explain what the changes are, they don't have any problem. They realized they would have to give up one thing to get another."

A group of disabled students which feared it would not get accessible seating on

Wednesday received proper tickets on Thursday.

Disabled Students Resource Coordinator Tedde Scharf said the problem was "just a plain mix-up."

"There was some miscommunication between the students and whoever they talked to in the ticket office," Scharf said.

Tom Gass, a sophomore computer engineering major standing in line to buy tickets, said he approved of the change.

"Last year I had lousy seats," Gass said. "This way seems a lot fairer for everyone." Sophomore engineering major Todd Christensen agreed.

"This system is better," Christensen said. "This way the frats won't get the best seats all the time. Last year, I was 20 rows up in the end zone."

Pete Morrow, a senior computer information systems major, had a different reaction.

"I don't like it at all," Morrow said. "Now I have to come to the stadium early to make sure I have a decent seat."

ASU archers hit bull's-eye in Festival

By CHRIS McKAY
State Press

The National Sports Festival competition was a showcase for ASU archers past and present as three men and four women placed in the top 10 of their divisions.

Four current Sun Devils were among the leaders, while three alumni also placed.

ASU coach Sheri Rhodes did not attend because it was not a team event.

In the men's division, former ASU standout Rick McKinney finished in second place. Jay Barrs, another former Sun Devil, took third. Freshman Rob Nicholson placed seventh.

McKinney was a silver medalist in the 1984 Summer Olympics.

Rhodes said she expects Nicholson to have a productive season.

"He's a real strong freshman," said Rhodes. "I look for nothing but good things from him."

Nicholson is one of four men and five women Rhodes said she expects to make All-American this year.

In the women's division, Maureen Frank took second, Terri Pesho fourth, Becky Liggett fifth and junior Mickey Dye placed 13th. Graduate Rebecca Wallace finished eighth.

Wallace had defeated Liggett by five shots to win the national championship in May.

Rhodes said she was impressed with Frank's performance, which was helped by her work during the summer.

"Frank has improved a lot," said Rhodes, who was inducted into the ASU Sports Hall of Fame last year. "She just finished a seminar in Colorado with the U.S. team."

Frank moved up from a fourth-place finish at the national tournament.

At nationals the Sun Devils swept the team titles for the fifth time in the last six years.

ASU has taken 19 national titles overall in eight years.

COUPON

UNDER NEW MANAGEMENT
Papa Jay's New York Pizza
We Also Deliver Ice Cold Beer
FAST FREE DELIVERY!
LIMITED FREE DELIVERY AREA
804 S. ASH (UNIV. & MILL)

#1 Sun Devil Combo
Any large pizza, your choice of up to 4 toppings.
ONLY \$6.95 plus tax
Good on delivery, take-out or dine-in. Expires 10-31-85.

#3 Sun Devil Combo
Any small size pizza with your choice of up to 4 toppings.
ONLY \$4.95 plus tax
Good on delivery, take-out or dine-in. Expires 10-31-85.



STOP

BEFORE YOU ORDER FROM DOMINO'S, CHECK THEIR REGULAR PRICE OR COUPON PRICE

GUARANTEED OUR PRICES ARE CHEAPER AND OUR PRODUCT IS MUCH BETTER

966-4292 OR 966-1003

#2 Sun Devil Combo
Any medium size pizza with your choice of up to 4 toppings.
ONLY \$5.95 plus tax
Good on delivery, take-out or dine-in. Expires 10-31-85.

#4 \$2 OFF
Any large Sicilian style pizza* with two or more toppings
**Extra thick*
Good on delivery, take-out or dine-in. Expires 10-31-85.



Go Gold...

Help the Sun Devils spark a new spirit and develop a new tradition. Wear gold to all ASU home football games.

1985 ASU Football Student Ticket Application

ATTENTION STUDENTS

In consultation with the Intercollegiate Athletic Board, the Student Athletic Board and Department of Public Events, the ASU Athletic Department has developed new student seating policies designed to make the best seats equally accessible to all students, and allow groups the same opportunities as individual students. Starting with the 1985 football season, all student sections at athletic events will be general admission. While not perfect, it serves the majority of student concerns. Students arriving to the game first will get the best seats. Saving seats will not be allowed.

Football Student Seating Policy (Full-time ASU students, carrying 7 or more hours)

Season
From Wednesday, August 28 to Friday, September 6, ASU students can purchase football season tickets for \$21.00 at Sun Devil Stadium Ticket Office, 8:30 a.m. to 4:00 p.m., Monday through Friday, and 8:30 a.m. until noon on Saturdays.

- Students wishing to purchase season tickets must fill out the application form and return it to the ticket office along with current activity card and appropriate payment, for each ticket ordered.
- Tickets assigned during the season sale will be ready for pick-up on Monday, September 9. Individuals can pick up tickets by presenting a valid ID and receipt given at time of purchase.

Individual Game
Beginning September 9, ASU students will be permitted to purchase the remaining general admission tickets, after season sales are completed. Tickets can be purchased to any game at any time during regular ticket office hours.

Student tickets not sold by the close of the ticket office on Friday evenings will go on sale to students and general public on Saturdays. Student tickets will not be available after noon on Saturday.

- Individual game prices are \$6.50 for Pacific, Utah, Utah State and Stanford games; \$7.50 for USC and Washington; \$8.00 for Arizona.
- Valid ID must be shown at time of purchase. If more

than one ticket is being purchased, the purchaser must show the appropriate number of student IDs.

Guest Tickets
Students who have not previously purchased student tickets can purchase one guest ticket no sooner than Wednesday of game week. Students pay half price; non-students pay full price.

Spouse Cards
An ASU student who is married and is registered for 7 or more hours may purchase a spouse card. Proof of marriage is required.

ID Cards
Valid identification (activity card and picture ID) must be presented when purchasing tickets, picking up tickets and when gaining admission on a student ticket.

Additional Information

- Student tickets cannot be upgraded to general public tickets.
- Students must enter stadium through student gates.
- Student general admission sections will be color coded.
- Seating on first-come/first-serve basis. No saving seats permitted.
- No one is permitted to exit and re-enter stadium until second quarter.
- No refunds or exchanges.
- Lost, stolen or destroyed tickets cannot be replaced.

1985 Home Schedule

S	21	Pacific
S	28	USC
O	12	Utah
O	19	Utah State
N	9	Washington
N	16	Stanford
N	23	Arizona
Hall of Fame — USC		
Band Day — Utah		
Homecoming — Stanford		

Clip On Dotted Line And Return To Sun Devil Stadium Ticket Office, South Stadium

Name _____

Student ID No. _____ Phone _____

Spouse's Name _____

Proof Of Marriage _____

Contact Name _____ Phone _____
(Group Sales Only)

_____ Football Season Tickets at \$21 each

_____ Spouse Card at \$15 each

Make checks payable to ASU **TOTAL PAYMENT** _____



Announcements

FLIGHT ATTENDANT 34 airlines hiring. 3 hour seminar. Airline recruiter limited seating. Travel Vision 945-2601.

HANG GLIDE! certified instructor/gently sloping hill/our equipment/ two Saturdays \$50 one \$35. Group rates and gift certificates available. Since '79. Arizona Windsports 897-7121.

Automobiles

1971 MGB RUNS perfect, excellent inside and out, new: top, paint, Pirellis etc. \$1,950. 1977 GMC cargo van. Cold air, new tires, runs great, some rust, \$1,250. 230-0288 keep trying.

72 VW Super bug. New interior, 10k miles on rebuilt engine. \$2,000 or best offer. Peggy 834-3155.

MUST SELL my classic car collection. These cars are absolutely like new. Low mileage on all vehicles. One 1964 VW Bug 100% ground up restoration. One 1964 two door Corvair completely original, new condition, four speed with cold AC. One 1963 Corvair convertible, one you can be proud to drive and show anyone. One 1971 Volvo Sport Coupe P1800 completely original low mileage, automatic with air, one owner. Call 964-8553 anytime.

Babysitters wanted

BABYSITTING AND light housekeeping near campus, part time 2:00 p.m. till 6:00 p.m. One child age 3 1/2, hourly wage negotiable 968-2437.

I NEED a babysitter in my home, full or part time, flexible hours for one two year old and one four year old. Pay negotiable.

Babysitting wanted

LOVING MOTHER to care for your children. McClintock, Baseline area. Toddlers and up. 839-8057.

Bicycles

USED BIKES from \$35 to \$300. They all work. Call Don 829-9618 keep trying.

For Rent or Lease

BARGAIN \$280 SUPER nice two bedroom trailer in Phoenix, 15 minutes to ASU adults 955-0074.

BEDROOM FOR rent, furnished, utilities included \$240 894-1485 968-2076.

CONDO FOR rent, one bedroom unfurnished loft, close to ASU, tennis, pool, jacuzzi, evenings 483-8223.

CUTE FURNISHED studio near ASU includes utilities \$280 894-1485, 968-2076.

HOUSE FOR rent \$595. Four bedroom 1 1/2 bath near campus contact Mike days 967-5278 nights and weekends 967-6659.

LOVELY THREE bedroom home at McClintock, Southern 3921 S. Butte. New carpeting and lots of tile, wall paper touches throughout, double garage, prefer faculty or grad student, \$694 Cardon Management 892-7400.

ONE BEDROOM condo for rent. 700 W. University. All appliances plus washer-dryer, pool and rec area. Lynne 831-7774. Computer Realty.

PROFESSORS FAMILY seeks student to help approximately 15 hours per week with child care, errands, light house work in exchange for free room and completely furnished private studio apt. two blocks from campus. 968-5676 evenings.

ROOM AND MEALS for a male student in lovely home. Pool, A/C, private, must see to appreciate. \$295 per month 947-4912.

TOWNHOUSE FOR rent Dobson and University area, 2.5 miles from ASU. Two bedroom two bath, den, pool, washer, dryer, \$500 monthly call 893-1385.

WALK TO campus, delux one and two bedroom fully appienced condominiums. Pool, spa, starting a \$345 JoAnn Mailhoit Realty Executives 831-1010 831-1031.

For Sale

1981 DATSUN 280 ZX. Mint condition. Extended warranty, only 37,000 miles. Has all major options. Non smoker \$8000 or best offer. 437-7803 or 831-8826 evenings.

1981 HONDA EXPRESS 1600 miles - 125 MPG excellent shape no motorcycle license required \$250 firm 938-1348.

\$2,500 FOR SALE or trade. 10 x 47 trailer. Two bedroom one bath, partially furnished, new carpet, McClintock and Apache 948-3360.

81 HONDA PASSPORT good condition \$300 call 964-0411 after 6:00.

BAR AND four bar stools, barlight \$300, dresser \$125, sofa \$40 chair \$10 desk \$80 Craig 893-8883.

Help Wanted

COMPLETE B-W darkroom setup with vivitar enlarger, excellent condition \$275 248-9271 after 5.

BY OWNER three bedroom two large baths, family room, large master bedroom, two car garage, 1709 square feet on quiet cul-de-sac Tempe Schools close to freeway and ASU. FHA appraisal \$74,000 will sell for \$69,900 cal 937-3566.

FURNITURE FOR sale, dressers, tables, etc. High quality, must sell fast call 956-9041 in the evening.

IBM MULTI- function board. Five functions - 384K - utility disk - cable. \$198. 966-4489.

LOVE SEATS, two tapestry floral in earth tones \$350 for pair, excellent condition, evenings or weekends 991-8582.

MOVING, MUST sell brand new 12 speed touring bike, unused. New murephones, two phones in one, cordless. Pacemat exercise mat. All items \$100 under cost 345-9261.

NO DOWN, no qualifying. Three bedroom, two bath, block home. Fenced yard, covered patio, new carpet, tile and kitchen counter. 15 min from ASU. 144 N. Glenview, Mesa 998-4212.

SANSUI TURNER, amp, cassette, turntable, equalizer, speakers, beautiful walnut cabinet with double glass doors. \$75 - \$150 moving must sell 954-0627.

SCOOTER FOR sale, 1984 Honda Aero 80 only \$650. Low Miles, every clean. Call Mark 894-1590.

SCOTTSDALE CONDO one bedroom one bath adult complex, community pool, close to ASU. Asking \$47,900 available for lease-purchase, call Mary ERA Valley Metro Realty 948-0900 or 991-6536.

USED 19 INCH ladies bike. Completely overhauled, new tires, tubes, and brakes \$100 897-2227 after 5:00.

VOLKSWAGEN FIBERGLASS flare fenders. Fits 1967 and similar body styles. Best offer. 964-2393.

WALK TO campus, delux one and two bedroom condominiums fully appienced with your own washer/dryer. Pool, spa, covered parking. Terms available starting at \$43,900 JoAnn Mailhoit Realty Executives 831-1010 831-1031.

Furniture

FURNITURE FURNITURE big discounts. Mattress sale, twin sets from \$49.95, full sets from \$59.95, queen sets from \$89.95. Sofas and love seats from \$173.00. Seven piece bedroom sets from \$89.95. Bunk beds from \$125.00 complete. Bookcases, stereo cabinets, wall units, sleepers, trundle beds, plus much more. 3332 W. McDowell Rd. 233-2236.

FUTON \$59 and up, five drawer chest \$39, desk \$45. Norland Furniture 900 N. Scottsdale Road 966-8731.

SHELVES: 8' x 6' x 12'; one piece set of wooden shelves. Dark stain with varnish, holds turntable, receiver, albums, books, plants and misc. other accumulations, and all at the same time. \$60., 967-6966, 266-2968.

Help Wanted

ACCEPTING APPLICANTS now for retail store in Phoenix 16th and Camelback, part time call Monday through Friday 10-6 265-2354.

ASU IS calling on youto join the ASU telefund drive, gain valuable work experience in fields P.R., fund raising, tele-marketing, with nightly bonuses and incentives available. Call Jeff Perius at 965-7501 for more information.

COMPUTER DATA entry operator, 8:30 to 12:30 daily. Salary start at \$3.50 raising to \$4.00 after one month, Tempe location 966-0558.

EARN \$150 TO \$300 per week without hurting your grades. Evening hours and weekly pay for company located close to campus. No experience necessary. Call 829-8957 to set up an apt.

EARN \$4 to \$8 per hr part time making light deliveries on campus, flexible hours, dependable help required 833-3171.

EARN EXTRA money, set your own hours, call 827-8392 ask for Doug.

EDUCATION MAJORS wanted to take care of children overnight in three homes while parents are away. Call 438-1099.

EXECUTIVE DIRECTOR. Scottsdale Foundation for the Handicapped. 3-5 years related experience. Masters degree preferred. Send letter of application, complete resume, and references. List to Search Committee S.F.H. 7507 E. Osborne, Scottsdale, Az. 85251.

FALL CLASSIC hair show. Models wanted. Must want new look. Created by top stylists at no cost. Model call, 7:00 p.m. Sept. 6 at Regency Resort in Scottsdale. Ask for August Haydon.

\$ FOR Christmas break. Avon can help. Call Teri now 893-8227.

Help Wanted

FULL OR part time graphics and sign work 437-1214.

PRE SCHOOL-DAYCARE needs afternoon teacher for school age children. Six hours per day, Cactus Pre School, 40th Street and Southern in Phoenix. Four Miles from ASU. 437-0153.

GIRL FRIDAY, good skills, Hayden/Thomas-nice office, Scottsdale PT a.m. call Toby 946-9982.

GREAT PART-TIME job. Earn \$6 to \$8 per hour as a delivery person with Dominos Pizza. Full or part-time, flexible day or evening hours. Drivers earn excellent hourly wage + tips and mileage. Many delivery people advance to our management training program. Must be 18 or older with a good driving record, car and insurance. We want dependable clean cut people willing to hustle. Applications will be accepted at 903 W. Broadway in Tempe and all Valley locations after 11 a.m. daily.

GURLEY'S, STETSON Drive at 75th st. Scottsdale. Applications accepted for food, beverage, hostess and bus persons on Tues and Weds Sept. 10th and 11th 9:00 to 11:00 a.m. and 3:00 to 5:00 p.m.

HANDICAPPED WOMAN needs a helper 4:30 p.m. - 8:00 a.m. a few times a week. 838-1554.

HANDY PERSON part-time, very flexible hours. Light repair work, some outside maintenance and painting etc. 5 to 20 hours per week. Cactus Pre School, 40th Street and Southern in Phoenix. Four miles from ASU.

IBM COMERCIAL sales, phone work, part time, new office in ASU vicinity, above average pay, salary plus commission, call Peter 946-9449.

IMMEDIATE JOB openings. Opinion research company needs interviewers absolutely no sales! We will train. \$4.00 hr. O'Neil Associates 894-6726.

INSURANCE INTERNSHIP student in junior or senior year studying insurance, finance, and or marketing, who would like career oriented opportunity. Hours to work comfortably with academic schedule. Office located near Paradise Valley please call Tony Leombruno 9 to 5 at 257-4525 or 966-4525.

JONATHANS PIZZA is looking for delivery drivers and pizza cooks to staff four new locations in Tempe and Mesa. Drivers must have own insured car. High possible earning potential, apply in person after 11:00 daily at Jonathans Pizza 933 E. University.

LAWN MAINTENANCE service needs part time help, no experience necessary \$15 plus hours weekly. Flexible hours 966-3269.

LIQUOR CLERK, part time, nights, Friday and Saturday, over 21, neat, outgoing, reliable. Tempe Liquors 1810 N. Scottsdale Road just South of McKellips 960-2374.

LIQUOR STORE clerk, flexible hours. Work hours scheduled around class hours. \$4.00 per hour. 276-2603.

MALE MODELS: Versatile male models needed by adventuresome photographer who will be in Phoenix in October. Those selected will earn top dollars. Send recent photos, etc. to J.G., Crosscreek Lane, Suite 1075, Fort Worth, Texas 76109.

MCDONALDS now hiring all shifts. No experience needed, flexible hours to work around school schedule, uniform and meal provided, friendly people, vacation bonus pay, activities and incentives, apply in person 1325 W. Broadway EOE.

NOW HIRING at collegiate photo, lower level MU.

PANHANDLER PIZZA now hiring daytime preps, and delivery people. Apply at 106 E. University 966-6455.

PARADISE CREAM needs ice cream servers. Must have car and work both Tempe and Phoenix stores. Part time, flexible hours, apply 1044 South Terrace. 967-2414.

PHOENIX ADVERTISING agency looking for part time assistant to media and account services, prefer student with related degree in junior/senior year. Typing skills a must call Sherri Wols at 257-1113.

POSITIONS NOW available for drivers dispatchers. Now accepting applications for mornings and weekends, apply in person, but call 225-9781 for appointment.

Help Wanted

PART TIME delivery person, depends on car. Davidson Travel 2700 N. 3rd st. 241-1957 ext 56.

PROFESSORS FAMILY seeks student to help approximately 15 hours per week with child care, errands, light house work in exchange for free room and completely furnished private studio apt. two blocks from campus. 968-5676 evenings.

READY FOR KICKOFF! Earn \$300 to \$500 a week part time learning exciting growth industry. Scottsdale 946-0204.

SALES REP wanted by local gift ware wholesaler, approximately 30 hours per week. Exciting product line excellent earning potential for self-motivated individual with reliable transportation. Experience preferred contact Linda 838-7086.

SECRETARY. TEMPE research firm needs part time morning help, must be facile with Wordstar 894-6728.

STOCKYARDS RESTAURANT now hiring lunch waitresses, evening hostess. Apply in person, Monday through Friday 10 to 11:30 a.m., 1:30 to 3 p.m. Stockyards Restaurant, 5001 East Washington.

STRUGGLING THROUGH school? Trying to make ends meet? Minimum wage cramping your social life? Then you owe it to yourself to look into this outstanding income opportunity many people in the valley have given up lucrative careers to devote full time to this business you can get involved with investment of \$29.95 call C.W. Enterprises for interview 239-7573.

TELEMARKETING MCI is interviewing for day and evening telemarketing openings on temporary to permanent basis. Paid training \$5 hour to start, midtown Phoenix location. Benefits plus bonus program. Previous sales experience a plus. Interviews Mon thru Thurs at Arizona Temporary Services 100 W. Clarindon. no. 605 Phoenix call for more details 279-9400.

TELEPHONE PROSPECTOR wanted for brokerage firm, \$4 hr. Call David for interview 833-0200.

UNIVERSITY PLASMA center Has the following part time positions open. Receptionist, phlebotomist, centrifuge tech, campus representative, all positions require around 25 hours per week, Monday thru Saturday. Apply at 1015 S. Rural Rd. in Tempe. (next to Snow.)

WANTED FEMALE part time. University Sporting Goods 1038 S. Mill 968-7725.

Miscellaneous

IMPROVE LEARNING skills and study habits. Buy Midwest Research Inc. Subliminal Tapes call 838-4692 for brochure and information.

USED CARPETS \$10 for dorms, vans, cars, apts, etc. New remnants too! Carpet House 1516 E. VanBuren Phoenix.

Motorcycles

1975 HONDA CB400 4cyl. Excellent condition. New brakes and rear tire. \$450 966-0744.

1975 KAWASAKI KZ400, great condition, many new parts. \$500. 964-2393.

1981 SUZUKI 450L. Black, beautiful, mint condition, driven ten months, 6000 miles. Luggage rack, helmet, \$899 call 830-7423 week nights after 5:00.

1983 HONDA CX650X 9000K miles, convenient to park all over campus, fast, strong, reliable, \$1,575 call Randy 994-4511.

1985 HONDA V30 magna. 321 miles. Three year warranty 500cc. helmet, \$1750 839-4406 965-4084.

Personal

BUTTON MANIA! Meet that babe! Wear that button! Details 967-5655 leave your number.

DO YOU really want to make an impression? Then (say it big... say it with a microbanner!) Send a computer banner anywhere postage free! Choose from over 70 different graphics, 8 writing styles, and 4 colors, for more information call 234-2430.

IF YOU played on the womens soccer team last year please call Debbie at 967-4013 immediately!

Real Estate

BARGAIN-BELOW market-Condo., \$42,000, two bedroom, two full baths, immaculate, adults, owner 998-1796/949-0222.

BEAUTIFUL TWO bedroom condo. biking distance to ASU. Former model, upgraded, includes W/D, refrigerator. Nice complex-pool, tennis, spa. \$59,500, \$4400 down, \$555 payment. Call Barb Mancuso at Merrill Lynch Realty 831-5588 office or 896-8069 home, or call owner Barb Petano 890-0228 for appointment.

CALDWELL BANKER pleasant three bedroom condo near ASU. Two baths, patio, two pools, three tennis courts, \$68,900. Richard Ahern, 994-2200.

FOR SALE by owner two bedroom two bath condo. New Shadows complex, great for students \$60,000 assumable. Pat 894-2075 or 956-9269.

FOUR BEDROOM home near ASU for sale. Leave message with Alan Manetter. at 964-9755.

GREAT INVESTMENT. Super nice. Brentview Manor condo., one bedroom, one bath, fireplace in living room, single level 1 1/2 mile from ASU lowest price in complex \$44,500. No qualifying, low down 30 year fixed mortgage. Whyte Realty 839-2436 968-9338.

NEAR ASU delightfully pleasant two bedroom two story condo, with extra touches, electric heat, new kitchen, nifty pool, covered parking 1 1/2 baths, patio. \$64,900 Richard Ahern, Coldwell Banker 994-2200.

ONE BEDROOM condo, walking distance to ASU. Washer, dryer, dishwasher. \$42,000.

Roommate Wanted

FEMALE, NON-SMOKER, to share two bedroom apartment. \$205 a month, includes utilities. University and Hardy. Call Mary 966-3831.

MALE FEMALE housemate wanted beautiful three bedroom house, two bath, living room, dining room, full kitchen, washer, dryer, air conditioning, ww carpeting, pool, quiet neighborhood, fenced yard, trees, close to ASU. Graduate, faculty, or staff, considerate and clean. \$275 2610 W. Ellis Dr.(48th and baseline) contact Ed Sloate 256-3833 days 431-0972 evenings and weekends.

Real Estate

FREE ROOM & BOARD REALTOR®

If I had a brother, sister or relative attending ASU I'd tell them how to obtain FREE ROOM & BOARD: In order to do that they would simply need to purchase a home in Tempe rather than rent. There are many ways to purchase including co-signers and FHA 245's. Rent money is spent money. Why not have your roommates rent from you? And, when it comes time to graduate and sell, the appreciation may pay for graduate or professional school. Call me for more details or low cash-to-loan homes around ASU.

WE GUARANTEE that if we can't sell your house, we will buy it. THAT'S A FACT!

Ask for Paul Pastore 831-0322

Roommate Wanted

MALE ROOMMATE wanted to share furnished two bedroom apartment. Close to ASU pool, jacuzzi, more. \$215 plus 1/2 utilities 967-2281.

NEAT FEMALE or male roommate to share two bedroom two bath apt, furnished, utilities paid, covered parking, dishwasher, close to Thomas Mall \$255. 225-5250 evenings.

TEACHER NEEDS female to share house. \$210 plus 1/2 utilities. \$75 deposit. Southern and 40th St. Area. Call Deborah 437-2002.

Services

ATTENTION: DON'T be late for class! We will ring your telephone three times, one minute each time for 15 minutes. Only \$5 per week. Tell your friends of this unique wake up service 892-4939.

CARS AVAILABLE - 21 or older. All States Drive-away, 992-5200.

CARS AVAILABLE - 21 or older. All States Drive-away, 992-5200.

LIGHT HOUSEKEEPING in exchange for room and board, reliable junior or senior female preferred 279-3363.

MOVING SERVICE for students, free estimates, daily service, Dan 267-9326.

PIANO LESSONS for adult beginners. Years of experience, very capable, and easier than believed possible 967-2155.

SINGLE? HERPES? Confidential Connections-a unique, affordable dating service for singles with herpes 241-9674.

WEDDING CEREMONIES. Do you need a minister? Call 861-1121.

Travel

ONE WAY. Phoenix, Los Angeles, Seattle, Juneau, Fairbanks, for Saturday August 31st only. Incredible price. 838-2872.

Typing

1-DAY turn around word processing, typing for short papers, resumes, and letters. No extra charge for rush jobs. Rate includes automatic edit for spelling and punctuation. Call Nora 820-9681 for all your typing needs.

ACCURATE FAST experienced typist \$1.50 per page call Sharon 833-5667 or Janet 834-0893.

ALL PAPERS typed to your complete satisfaction. Convenient. Reasonable. Mrs. Oakley 967-0802.

ALWAYS AVAILABLE for typing. Call Susan at 833-0373.

PROFESSIONAL QUALITY word processing. Will edit and correct spelling. Carolyn Douglas, 838-0959.

PROFESSIONAL TYPING service; Competitive rates, spelling and punctuation corrected, proof reading, pickup and delivery available. Suzanne 820-1843.

PROFESSORS FAMILY seeks student to help approximately fifteen hours per week with child care, errands, light housework in exchange for free room and completely furnished private studio apt two blocks from campus. 968-5676 evenings.

PROFESSIONAL TYPING, low rate, fast service, discount for students. call Sandy 849-0689.

PROFESSIONAL QUALITY word processing. Will edit and correct spelling. Carolyn Douglas, 838-0959.

SHORT OF time? I can help. Reasonable. Professional. Guaranteed. Experienced in academic. call Jessie 945-5744.

SUSIE TYPES. Fast, reasonable, close to ASU. 829-9645.

TYPING. 966-2186.

Wanted

HOUSESITTING POSITION desired by UA employee relocating. Four years excellent housesit references. Linda, 1-795-1661, 1-626-7406.

WANTED: LIBRARY modules for TI58/59 calculator 897-8411.

Real Estate

FREE ROOM & BOARD REALTOR®

If I had a brother, sister or relative attending ASU I'd tell them how to obtain FREE ROOM & BOARD: In order to do that they would simply need to purchase a home in Tempe rather than rent. There are many ways to purchase including co-signers and FHA 245's. Rent money is spent money. Why not have your roommates rent from you? And, when it comes time to graduate and sell, the appreciation may pay for graduate or professional school. Call me for more details or low cash-to-loan homes around ASU.

WE GUARANTEE that if we can't sell your house, we will buy it. THAT'S A FACT!

Ask for Paul Pastore 831-0322

ANYTIME / PART-TIME
\$5 to \$7 Per Hour • We Fully Train

The nation's finest telemarketing firm is now accepting applications for the following shifts:
 5-9:30 p.m. • 6:30-9:30 p.m.

Our sales people work in a modern, comfortable business environment contacting established customers on long distance WATS lines. Guaranteed salary or commission, whichever is greater, and averages \$5 to \$7 an hour. Our Tempe office is located approximately five minutes from campus.

PLEASE CALL DIALAMERICA FOR DETAILS.
829-1140

REALTY EXECUTIVES

FREE ROOM & BOARD REALTOR®

If I had a brother, sister or relative attending ASU I'd tell them how to obtain FREE ROOM & BOARD: In order to do that they would simply need to purchase a home in Tempe rather than rent. There are many ways to purchase including co-signers and FHA 245's. Rent money is spent money. Why not have your roommates rent from you? And, when it comes time to graduate and sell, the appreciation may pay for graduate or professional school. Call me for more details or low cash-to-loan homes around ASU.

WE GUARANTEE that if we can't sell your house, we will buy it. THAT'S A FACT!

Ask for Paul Pastore 831-0322

FRIDAYS ARE JUMPING



Happy Hour 4-7 • 2 for 1 Wine & Well • 75¢ Draft
 Fabulous Food Section • PIZZA, WINGS & MORE
The Best Fridays In Town

TOMORROW NIGHT

Escape to San Diego! Win a trip for two
 to San Diego • Three Days • Two Nights
 \$100 Cash • DRAWING AT MIDNIGHT • Other great prizes

\$1 DRINKS ALL NIGHT

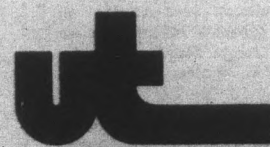
Don't miss it

America West Airlines

The airline with less fare, more care

Courtesy of
DONNY O'S

222 S. Mill • 968-0527



universal
travel

Serving the ASU community since 1960