

thursday

July 18, 1985

summer

state press

Tempe, Arizona

Vol. 10 No. 7

Arizona State University

Copyright, State Press, 1985

Approval

Board affirms support for Nelson, praises president's grant programs

VICKIE CHACHERE

State Press

Flagstaff — The Arizona Board of Regents has reaffirmed its support for ASU President J. Russell Nelson after a review of his performance during the last academic year.

After a five-hour, closed door session during their July meeting at NAU, the regents released a statement which said, "The board has completed a review of the accomplishments of President Nelson during the 1984-85 academic year and his significant accomplishments merit the board's support."

Regent President Donald Pitt said, "His (Nelson's) accomplishments have been significant."

ASU has increased its grants to over \$60 million this year, he said, up more than \$20 million from last year.

Pitt said problems surrounding the dismissal of Bob Weinbauer, ASU's basketball coach, would not affect the board's decision to support Nelson.

"He did not create the problem," Pitt said. "He was caught in dealing with something he did not have sufficient knowledge about."

Nelson said Tuesday he had not received any pressure to resign his post, despite a request for Nelson's dismissal by William Guthrie Packard Jr., an ASU alumnus and a major financial backer of ASU.

Regent Herman Chanen said the board was not pressured to ask for Nelson's resignation, but added they were aware of dissatisfaction among members of the local media and alumni with Nelson's handling of University matters.

In other board matters, the regents took preliminary steps to improve the quality of undergraduate education during their annual retreat at NAU.

Responding to a report issued by the Arizona Students Association earlier this year, board members said admission re-

quirements and merit pay for faculty members may need to be restructured if undergraduate education at ASU, NAU and U of A is to improve.

Regent Donald Shropshire also suggested the board establish a mechanism for evaluating and monitoring undergraduate education and the use of teaching assistants at Arizona's three universities.

"I would like us to concede that it is of equal importance to enhance the quality of student teaching as it is to enhance the educational programs for our student athletes," Shropshire said.

Pitt said such a mechanism already exists to monitor the quality of education for student athletes at the three universities, and agreed that a similar program is needed for all students.

"Athletics seems to require a lot of attention and it seems to drive the attention of the public," Pitt said.

"These institutions exist to educate the people of the state. And although we desire to have a winning athletic program . . . the emphasis should be on academics," he added.

Student Regent Nora Colton, an ASU economics graduate student, also said that professors should continue to incorporate results of the research into their classroom lectures.

ASU President J. Russell Nelson said the universities could help improve the quality of undergraduate education by encouraging talented students to pursue a career in teaching at the university level.

Pitt also called for a balance between teaching and research factors in determining which faculty members receive merit pay.

The system, which has drawn criticism from faculty members and state legislators, often has been criticized for favoring those professors engaged in research and publishing over those who delegate most of their time to teaching.



Flipped out

Joe Orpen, a junior finance and economics major, finds a way to escape sizzling Valley temperatures Monday at the Aquatic Center.

New political science chair stresses research, merit

By MELISSA SMYTH

State Press

The new political science chairman said she does not expect to inherit problems which beset periods of former Chairman Patrick McGowan's administration.

Professor Ruth Jones said, "I don't think my problems will be the same as his. I've been looking at the positive side."

McGowan was the subject of a 1982 departmental vote in which political science faculty members voted 15-13 to remove him as chairman.

The vote was split among teaching and research-oriented faculty, with those emphasizing research voting to retain McGowan.

Then-Liberal Arts Dean Guido Weigand opted to override the faculty recommendation and retain McGowan.

Jones said she never has seen evidence of any major divisions within the department.

McGowan agreed, saying the political infighting took place "in the pages of the State Press and outside of the department."

He said the State Press was used by discontented pro-

fessors who could not effect change within the department.

Jones said she will continue to emphasize the importance of research in the department.

"This University emphasizes research and this department will emphasize research," she said.

In addition, she said she will try to promote a balance of quality teaching and public service and "eliminate those controversies" which beset previous chairmanships.

Jones said the department already is respected "locally, nationally and internationally."

McGowan cited as an example two political science professors whose articles appeared in the June edition of the American Political Science Review.

"That's the major journal" in political science, he said, and having two professors from one department published is noteworthy.

Jones said she felt "proud to be associated with this department."

"It's an exciting time to be at ASU," she said.

The "relatively new" administration is trying to make ASU respected nationally, she said, and "these people are

moving the University forward."

Jones said she is satisfied with the University policy of merit pay that was implemented while McGowan was chairman.

Several professors, both within and outside of the department, have complained that the system is subject to abuse and needs refining.

"You cannot have a first-class institution without merit," she said. "We would lose good faculty members out of this department" if the merit system was not in effect.

"Any department worth its weight will fight to keep merit," she added.

She declined to talk about any potential changes she will make in the department until meeting with the department's seven-member advisory committee.

She did say the department will continue programs designed to make the department more computer-literate.

In addition to emphasizing computers in faculty research, she said she will try to strengthen the political science internship program.

Inside Today

Nelson has trouble avoiding responsibility in Weinbauer firing

Page 4

Amy Grant skips pre-adolescence in new album

Page 6

Weinbauer's lawyer plans \$1.3 million lawsuit over breach of contract

Page 10

campus clips

state press

Athlete drug use serious, not epidemic, study says

Student athletes use no more drugs than other students, say two Michigan State researchers.

"It's a problem any time athletes are using drugs, but it's not an epidemic problem," said researcher Douglas McKeag.

"Serious' would be a good word," he said.

More than 60 percent of the 2,000 athletes studied admitted to trying drugs before going to college, but the study suggests athletes use drugs less often socially than the "average person."

Justice officials challenge Tennessee desegregation plan

Justice officials say the program, which reserves slots in state graduate and professional schools for black students, "creates a new class of victims" instead of achieving racial balance.

Civil rights activists argue that students in the program are admitted to the schools "only if they do well in the two-year program, and if they meet the schools' admissions requirements."

If the plan is deleted, "there will be fewer black doctors and lawyers trained in Tennessee," a civil rights spokesman said.

Standardized tests results leave gaps, educator warns

Standardized college entrance tests often are faulty and fail to measure key student qualities, claims Frank Newman, president of the Education Commission of the States.

Newman concedes the tests may adequately measure academic ability and achievement, but they ignore creativity and motivation.

College stress causes increased campus violence

"Financial aid cuts, tougher academic standards and increased competition have tightened the noose on students, and it comes back in the form of quicker violent acts," said Mike Rollo, University of Florida dean of student affairs.

A growing number of students use their fists to settle disputes, he said, and many roommates now start fighting in "October instead of tugging it out until spring."

Texas A & M recognizes gay students

Protected by an April Supreme Court ruling, Gay Student Service's President Marco Roberts has filed the appropriate papers for official recognition.

The court ruling ended Texas' nine-year official snub of GSS and forced the university to recognize the group.

Members say this summer they will participate in a Houston Gay Pride Week parade, and raise funds to cover the recognition-fight legal fees.

Business prof tags morning cartoons as student 'prime time'

A survey of 1,529 Virginia college students shows 82 percent still watch Saturday morning cartoons.

"When I was in college 15 years ago I watched them and there's no reason to believe they (students) haven't been watching them right through school," says Radford University Professor Albert Smith.

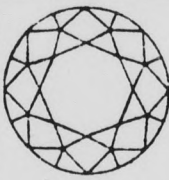
Smith's study, which determines Bugs Bunny and Roadrunner are student favorites, pinpoints opportunities for advertisers trying to attract the college audience.

Summer School Special

HAIR TENDERS
966-6183
907 E. Lemon

Cut \$9.00 **Perms \$25.00**

Open 9:00 a.m.



Member American Gem Society

Mr. Berning has 39 years of diamond cutting experience. He can talk your language. **10% ASU Faculty, Staff and Student Discount.**

- *Large selection of diamond engagement rings.
- *Insurance Appraisals.
- *Jewelry and watch repair
- *Custom designing of jewelry
- *buyers of old gold and diamond jewelry

Joseph M. Berning
Jewelry & Diamond Cutting

967-8917 130 E. University Dr. Tempe, Az 85281

The hair performers

Experience Ala Cuts!

\$10

Men, Women, Teens
Juniors 12 and under \$5

- Consultation
- Cleansing
- Conditioning
- Exclusive professional cut

Perms \$25 and up hairshaping & styling not included

903 S. Rural • Cinnamon Tree • 894-0184

SHOW US YOUR STUDENT I.D. YOU'LL GET A DINNER FREE!

This year we're doing it again! Every Sunday (but ONLY on Sunday), Mike Pulos of the Spaghetti Company will give you one FREE dinner* for each dinner you order! It's our 2 for 1 SUNDAY STUDENT SPECIAL. And it's good for the whole school year at both our Tempe and Phoenix locations.

Any day of the week, for lunch or dinner, The Spaghetti Company is known for a great meal at an affordable price. But the SUNDAY STUDENT SPECIAL

makes our already terrific prices **even better!** Our dinners include a full course meal with all the trimmings-from salad to dessert. So, dollar for dollar, when you're hungry and you need a break, you can't beat The Spaghetti Company! **ESPECIALLY ON SUNDAYS!**

With 2 dinners for the price of 1! But you MUST have your student I.D. card with you to take advantage of this offer.



OPEN AT 12:00 ON SUNDAYS!

The Spaghetti Company
RESTAURANT

PHOENIX
South on Central
Just Pasta McDowell
257-0380

TEMPE
4th Street and Mill
966-3848

Steak Di Jon, Stuffed Filet of Sole, Tenderloin, Chicken Picatta, Veal Marsala ARE NOT included in the 2-for-1 special.

Friday at The DEVIL HOUSE

Happy Hour

FOOD 2-7 BAR

BURGERS
TACOS
CORN DOGS } 25¢
TAQUITOS
HOT DOGS

TEAS - 1.00
DOUBLES - 1.00
W/ D.H. KEEPSAKE
HALF LITER
32 oz MONSTER
BEERS - 1.00

ladies night

PREMIUM
WELL
DRINKS
25¢

FROZEN
DRINKS
75¢

7-10

Transients have rights on campus, but pose legal questions, problems

By MELISSA SMYTH
State Press

For much of the ASU community, the transients who populate the campus have become a familiar sight, part of the sea of faces on Cady Mall.

According to ASU Police Chief C. Russell Duncan, the campus "seems to get more than our fair share" of transients because of Arizona's conducive climate.

"They kind of like to hang out here," Duncan said.

According to Duncan, there is no official police department policy on the homeless who take up at ASU, but he stressed that "transients have the same rights and human freedoms as every other human being does."

That does not mean, he said, that they can utilize all campus facilities at will or that they do not constitute a problem.

"It's a problem," he said. "But it's not the biggest problem we have."

A transient may use the facilities that are open to the public, such as Hayden Library or an open MU lounge, Duncan said.

But areas such as residence halls or TV lounges, which were established primarily for students, faculty and staff, are off-limits.

In addition, Duncan said, if a transient is in an area open to the public but appears to be hindering a student from using the lounge, he may be asked to leave.

Transients who come to ASU to "steal or beg money and food — who want to be parasites on our population" also are discouraged from returning, he said.

Officers have to be careful of the "herding instinct," or desire to round up all transients even when they are not committing a crime, loitering or trespassing, he said.

"I don't think you can say all transients are bad," he said. "I think there are bad transients."

As for arresting transients, Duncan said that only happens when one of them breaks the law or refuses to leave an area after repeatedly being warned to do so.

"We don't try to arrest transients," he said. "I start messing with the transients, and who's next?"

To arrest someone for trespassing, there must be a sign or a verbal "first warning" telling a person he is not welcome to use the facility, Duncan said.

According to the activities log kept by police, there were three arrests involving transients in the six-week period beginning in June.

Two of those arrests involved the same man. It seems he enjoyed playing the piano and was caught in the Music Building one too many times.

But there were 24 incidents in which an officer had to rouse someone who was panhandling, sleeping or passed out on campus.

But are transients responsible for many of the crimes at ASU?

"I think they contribute to the crime on campus," Duncan said. "The amount of that contribution we don't know."

"They contribute enough to the criminal activity on campus that we have now sat up and taken notice."

But Duncan stressed that not all transients are suspect.

"You don't really call (those who commit crimes) transients," Duncan said. "You call them thieves, no matter how they're dressed."

He said it is "a rare occasion" when a transient commits a crime of great magnitude. It is usually the instance "when a backpack gets up and walks away" when a transient is involved.

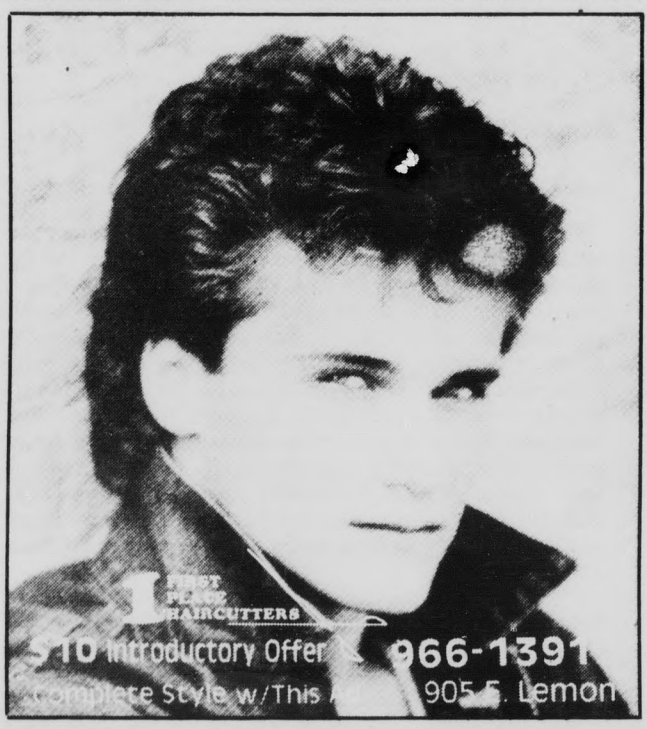
move in NOW

And Take Advantage Of
\$100 OFF SECURITY DEPOSIT

1 & 2 Bedroom Apartments Available Now!

O'CAIRNS MANOR APARTMENTS
1415 E. Apache Blvd.
Tempe

894-0932
(Open Sunday)



HAIRCUTTERS
\$10 Introductory Offer
Complete Style w/This
966-1391
905 S. Lemon

50¢ OFF ANY SUB
(w/coupon)

PASTA PLUS



SUBS • SALADS

Corner of College & 7th
968-1940

TRY OUR FRESH GARDEN SALAD BAR

Breakfast starts at 7 a.m. Serving Bagels and Omelets, etc.

drycleaning

McKELLIPS & SCOTTSDALE RDS. (ALPHA BETA SHOPPING CTR.)

STUDENT DISCOUNT
25% OFF DRY CLEANING

SHOW I.D. CARD WITH INCOMING ORDER

Tubing Down The Salt River
THE SALT RIVER IS THE THRILL THIS YEAR.

Fun in the Sun

Ride a Tube Down the Salt River

TUBE RENTAL AND SHUTTLE BUS SERVICE
ALL-DAY RATES
\$5 plus sales tax per day per person

Or Shuttle Bus Ticket
Only \$2 all day
2,000 tubes for rent
open 7 days a week 9 a.m.-7 p.m.

Located 9 miles north of MESA at the junction of Bush and Usery Highways.
For more information, phone (602) 984-3305 or write for your free brochure and river map.



NO BOTTLES PLEASE

Salt River Recreation Inc.
P.O. Box 6568 Mesa, AZ 85206



Bring this ad with you for
\$1.00 OFF
TUBE RENTAL
Monday thru Friday

TEA-NIGHT AT DONNY O'BRIENS



\$1.25 LONG ISLAND ICE TEAS
\$1.25 BOTTLED BEER

7-CLOSE

only at
DONNY O'BRIENS
222 S. MILL • 968-0527
TEMPE'S COOLEST NIGHTCLUB

opinion

state
press

I know nothing except the fact of my ignorance.
—Socrates

Sinking Greenpeace's flagship won't stem struggles for Earth's ecosystem

Steve Waterstrat
Columnist



On a dark and misty night, off the coast of Spain in the late '70s, Greenpeace environmentalists finished the installation of a new motor in their flagship, the Rainbow Warrior. The old motor had been removed by the Spanish government, which had confiscated the ship during a Greenpeace protest in Spanish waters.

Chained, motorless and facing the harbor, the Rainbow Warrior must have been a helpless sight. But Greenpeace members give up a ship about as easily as they give up their ideals. Spanish authorities gladly let them apply a fresh coat of paint to the captive vessel, which was destined to become state property. They were even persuaded to turn the boat around, facing the open sea, so all sides could be painted.

With their ship pointed toward freedom, Greenpeace finished installing the motor they had smuggled aboard. Upon removal of the restrictive chains, the Rainbow Warrior sped into the endless sea, the Spanish Coast Guard putting up an intense but unsuccessful chase.

Such harrowing escapes have given the Rainbow Warrior an aura of invincibility. It isn't a ship, but a legend. The 160-foot Scottish-made fishing boat, formerly used for research by the British government, has come to symbolize the worldwide underdog struggle of environmentalists. The ship's name is rooted in Native American legend, coming from some of the earliest environmentalist consciousness. It is said that one day, when fish float to the top of toxic streams, eagles fall from polluted skies and deer drop dead in the forests, that a Rainbow Warrior will rise up from the earth to lead the planet's inhabitants to a new and purified world.

The Rainbow Warrior was seen by Greenpeace members and supporters as a simple but palpable incarnation of its grandiose namesake. Reports that "an environmental group's ship" had sunk off New Zealand's coast last week were terribly understated. It was a devastating blow, in material and especially symbolic terms, to the worldwide environmental movement. As long as the Rainbow Warrior sailed, one could still believe that rational conservation measures have a chance on this planet. One swift terrorist bombing later, and that hope is painfully diminished.

It was ironic that the Warrior went down in such a

destructive fashion, with the death of a Greenpeace photographer. No deaths or even a serious injury had ever occurred on a Greenpeace mission. The British-based international group is high on technical expertise, dedicated to effective but safely executed operations. This contrasts with reckless and violent demonstrations by fringe groups, which tend to produce negative results.

At the same time, Greenpeace is definitely an activist organization that does best to focus its activities directly toward a perceived culprit rather than innocent bystanders. To confront Japan and the Soviet Union, the only major countries to still hunt whales, Greenpeace members don't stage a protest in front of the Japanese or Soviet embassies, hassling ambassadors who have nothing to do with the killing. They jump into swift rubber boats, formerly launched from the Rainbow Warrior, and position themselves between the harpoon ship and the whale, presenting the whalers with a "you'll-have-to-go-through-us-first" situation. They try to limit such confrontations to international waters, and despite a few trespassing charges, Greenpeace rarely steps outside the law.

The risks have been real, and there have been numerous close shaves. Greenpeace vessels have been rammed by angry Russian whalers, and members have suffered burned skin while surrounding large ships to protest their dumping toxic wastes into the water. Some of the global activists have been captured and detained by governments. Such was the case when a few members were nabbed by the Soviets after a beach landing on Soviet soil during a reconnaissance mission, long before the days of Rambo, to photograph endangered animals that Greenpeace believed Soviet fur hunters had in cages. The most serious injury was a broken ankle suffered by a man jumping into a raft to retrieve a camera containing incriminating film and keep it out of Soviet hands.

In this and all Greenpeace activities, the activists make no attempt to remain anonymous, as do terrorists like the one(s) who planted the bombs in the New Zealand harbor. Greenpeace activists have no shame for the operations they conduct, which they consider legitimate acts in an international struggle for preservation of the earth's delicate ecosystems. From the high stakes of this desperate battle come the courage and commitment characteristic of Greenpeace.

It would take much more than a couple of bombs to eliminate such characteristics. Danger is a familiar companion to Greenpeace, and members are well aware of the risks involved in acting on their convictions. The sinking of the group's symbol and main form of transportation is a loss that will be felt for some time. But it serves to remind all environmentalists of the odds they face in perhaps the globe's most crucial conflict.

Blame

If Nelson is so ignorant, we're in for more trouble

W. Tim Ahl
Editor



J. Russell Nelson may have the cushiest job in the state of Arizona.

It amazes me that a man can make around \$100,000 a year and claim he does not know what is going on in his school's athletic department.

When he came here in 1981, I certainly did not envy the task he had before him. Academically, the University was in a state of near-shambles and the athletic department was still in the infancy of transition to the powerful Pac-10 from the Western Athletic Conference.

But Nelson quickly seemed to take charge. He is an eloquent speaker who knows how to get the word across, and he at least makes it appear that he knows what he's doing.

But that's where you have to stop and look. He makes it appear that he knows what he is doing.

But it often seems he really doesn't. Nelson has strategically positioned himself out of the spotlight in every controversial issue that has occurred on this campus during the past few months, especially those originating in the athletic department.

When ASU baseball players were taking Nardil and the controversy was reaching its fullest proportions, Nelson claimed ignorance. He told members of the press the first he knew about it was what he read in the newspapers.

Awfully convenient. When you don't know what's going on, when you're ignorant about a topic, it means you don't have to take the blame.

A psychiatrist is giving players an anti-depressant drug. Jim Brock gets nailed by Phoenix newspapers. Nelson reads about it in the papers, and responds by firing Athletic Director Dick Tamburo.

Nelson did well to protect himself. He also did a good job of appearing faithful to the University athletic program by meeting with athletes and telling them he wants ASU to be one of the top athletic institutions in the country.

He may want a top-10 program, but he still obviously doesn't want to know what's happening in the department.

During the latest debacle with ex-basketball coach Bob Weinbauer, Nelson claimed that he had no knowledge of an agreement signed by Tamburo and former Executive Vice President Paige Mulholland that basically promised the coach five years to build a solid program.

That's nice. Mulholland's the hell out of here, on his way to a job in Ohio, and Tamburo no longer works for the University. An illegal agreement is made and the only people Nelson claims knew about it no longer work here. So Nelson figures he can dump the coach.

For awhile it looked as if it might work again. Yep, it looked like our man, the silver fox, might slip through the grips of responsibility once again.

But don't smile yet, Nelson. It's not time for another rebuilding speech. People are upset about this, and you're the only one left to blame.

While members of the Arizona Board of Regents have said they support your decision, some have said the situation could have been handled more tactfully.

State lawmakers are saying that Weinbauer's rights may have been violated, and legislators have said in the *Arizona Republic* that ASU has a long way to go in rebuilding its reputation.

I agree. I sure wouldn't be lining up to coach a team that is supervised by a president who doesn't live up to signed agreements.

If I was ASU's new football coach John Cooper, I'd also be on the telephone right now calling back to Tulsa or any other place that is known for honoring agreements.

A state law that doesn't allow long-term contracts makes it tough enough. A university administration that doesn't live up to agreements, or forms one that it doesn't plan on keeping, makes getting decent coaches a rarity around here.

If Nelson does know what's going on in the athletic department he needs to take charge and really work to straighten this place up. If the president is as ignorant as he claims, then it's time to ask if ASU needs a change.



SUMMER STATE PRESS

W. TIM AHL
Editor

STAFF WRITERS Vickie Chachere
Melissa Smyth
SPORTS WRITER Michael Konz
STAFF PHOTOGRAPHER Kip Williams

The Summer State Press is published Thursdays during summer sessions at Matthews Center, Room 15, Arizona State University, Tempe, AZ 85287. Newsroom: 965-2292. Advertising & Production 965-7572.

The State Press is the only newspaper exclusively published for and circulated on the ASU campus. The news and views published in this newspaper are not necessarily those of the ASU administration, faculty, staff or student body.

GIFT CERTIFICATE

Nelson appoints committee to review general study courses

By MELISSA SMYTH
State Press

ASU President J. Russell Nelson has appointed a committee to examine the University's general study requirements and recommend ways in which they can be improved.

English Professor Alan Johnson said the committee was formed because of "a national concern that students at all levels, even the university level, need much better training for reading, writing and critical inquiry."

"Students should have what is being called a core of common learning," he said.

According to Vice President for Academic Affairs Jack Kinsinger, the current general studies requirements are not meeting student needs.

The quality of general education requirements at ASU "are not as good as they need to be," Kinsinger said.

The current requirements vary widely, causing transfer students to lose credits, Kinsinger said.

"We almost put any community college student in jeopardy," he said.

In addition, general studies requirements are so loosely structured that a student has too wide a variety of classes to choose from.

Kinsinger said he hopes the committee will "narrow the number of courses a student can choose."

He said general education classes should be more substantive and require students to "think analytically and study great theories" instead of "how-to" classes that should be left for professional schools.

Johnson said the committee will determine whether the range of general studies

classes is too broad.

"It's very tempting to pick very easy courses," he said. "You may not be developing a knowledge that will be of service to you."

The professors, who met for the first time in April, formed two subcommittees to lay the groundwork for the new recommendations, he said.

The first subcommittee is examining existing college requirements for graduation. Johnson stressed that the committee will not change the individual college requirements.

"We have to know what the college requirements are," he said. "We want to see what the colleges are doing so as to end up with a harmony between our suggestions and the colleges' practices."

The second subcommittee is examining the general study areas to determine "the main area of knowledge that students should take before graduating," Johnson said.

For example, he said the committee could decide that students should take technology-oriented courses.

General education requirements for mathematics will be examined, he said, because "the level of preparation in number skills, to be brief, is not at all advanced."

This fall semester, the committee will solicit opinions from students and faculty through open forums before making its recommendations to the Faculty Senate, Johnson said.

The Faculty Senate will then vote on the recommendations before submitting them to Nelson for approval.

**\$20 EYE EXAMS
INCLUDING CONTACT LENSES
PROFESSIONAL FEE**

By Licensed Independent Doctors of Optometry

ARIZONA'S HEARING AID, EYE GLASS & CONTACT LENS CENTER

HIGH FASHION GLASSES

FRAME AND LENSES COMPLETE \$21⁹⁵ Red Tag Frame Powers From +3.75 to -3.75

Standard glass bifocals \$39.95 Applies to red tag frames only -no other discounts apply

SOFT CONTACT LENSES
One Pair Per Customer

\$34⁹⁵

Per Pair
BAUSCH & LOMB, HYDROCORVE, CIBA, HYDRON, OCULAR SCIENCES LENSES, which includes at no extra charge, fitting, adjustment and wearing instructions.
LIMITED OFFER.

EXTENDED WEAR SOFT CONTACT LENSES

\$59⁹⁵

Plano to 6.00
No other discounts apply. 1 pair per customer. New patients only.

SOFT COLORS BY Ciba Vision Care

\$84⁹⁵

The eyes you wish you'd been born with soft contact lenses in four natural colors.

- Blue
- Green
- Aqua
- Amber

NATIONAL EYE & EAR

3133 S. Mill (Mill & Southern) Huntington Square Plaza, Tempe
Call or Come In Phone 967-3197

July Special
Buy 2 get 1 free
Unique Cards & Gifts

**• WHATACARD •
• PLUS •**

One E. 7th St
Tempe
M-F 10-4 Sat 12-4
968-7030

Dollar\$ has more than just the most interesting earrings in the Valley. It has the lowest prices.

BELTS \$1.00 EA. OR BUY 5 GET ONE FREE

EARRINGS \$1.00 PR. OR 3 PAIR FOR \$2.50

BRACELETS GOLD & SILVER 18PC SETS \$1.50

TWISTED BEADS 80¢ STRAND BEAUTIFUL SHELL CLASPS \$1.00

Dollar\$ has more than just the most interesting earrings in the Valley. It has the lowest prices.
414 S. Mill #207 Tempe (above Spaghetti Co) 829-1127


DOLLARS FASHION ACCESSORIES
Dollar\$. It's not just our name. It's our prices!



HONDA

MOTORCYCLES

FANTASTIC SAVINGS ON THE ENTIRE CR DIRTBIKE LINE-UP

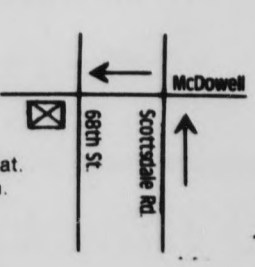


	WAS	NOW	SAVE
CR 500	\$2998	\$2498	\$500
CR 250	\$2898	\$2398	\$500
CR 125	\$2298	\$1998	\$300
CR 80	\$1498	\$1298	\$200

AND WE'LL BEAT ANY PRICE IN TOWN!!

western honda
of Scottsdale
6717 E. McDowell
994-8400

SAME DAY FINANCE



Service open Sat.
Parts open Sun.
SAT 9-6
SUN 10-6
MON-FRI 9-9

FREE 15 MINUTE SESSION

SUNTAN SESSIONS



Tan in AIR-CONDITIONED COMFORT while LISTENING to your favorite MUSIC. Get a deep healthy glow in MINUTES!! FEATURING the NEWEST TECHNOLOGY in the industry:

BUILT-IN HIGH SPEED FACE TANNERS & STEREO MUSIC

FASTER TANNING NO DRY SKIN NO BURNING!!!



SIGN UP TODAY AND GET THAT HEALTHY LOOK!

Cost Per Session	\$7 ⁰⁰	833-6561
5 Session Membership	\$25 ⁰⁰	
"CHEAPER BY THE DOZEN"	\$49 ⁹⁵	
12 Sessions for ONLY		

CALL TODAY

10% STUDENT DISCOUNT

With ASU Student I.D.

500 W. Southern suite 29 (Southern/Country Club Mesa)

FREE 15 MINUTE SESSION

THE HAIR HUTTERS

Your Campus Hair Care Center

709 S. Forest Ave., Tempe
North of University • Behind the
Chuck Box • In Oxford Square
968-5946

\$4.00 OFF

With This Ad
Expires August 17, 1985.

REGULAR PRICES

- Shampoo
- Condition
- Precision Cut
- Blow Dry

MEN \$13 • WOMEN \$15

OPEN MONDAY THROUGH SATURDAY

Let our talents go to your head

entertainment and the arts

Amy Grant's new album not geared to pre-adolescents

By MELISSA SMYTH
State Press

Much has been said and written lately about the emergence of Christian rock from the back burners of contemporary music.

While Christian musicians have been around for years, it is only recently that a select minority has been singled out by magazines and television for brief media blitzes. The most well-known is Grammy award-winner Amy Grant.

While the majority of Grant's listeners are undoubtedly Christians, she has at least been able to capture the attention a major record label, A&M Records.

The folks over at Tower Records even moved her albums from their outdated, understocked "Gospel" section situated in the back of the store, to the general contemporary music section.

While she is not the most masterful virtuoso around, Grant does have the ability to put out a rather solid album with a message that is distinct from that found in most contemporary music.

What remains to be seen is whether she and others like her in the Christian music scene can continue to distinguish themselves by virtue of their playing and songwriting abilities.

With her new album, "Unguarded," Grant has moved away from the more mellow sound of her

previous album, "Age to Age," and adopted a faster, more upbeat sound. There is more guitar work and a relatively rougher edge to this album.

"Love of Another Kind" and "Find a Way," the first two songs of the album, are good examples of this, with danceable beats and choruses that you can sing along with.

"Everywhere I Go" slows down a bit. A synthesizer strain and some background vocals add a nice change of pace.

Unfortunately, Grant makes the mistake of maintaining her more upbeat pace through almost the entire first side of the album, with "I Love You" and "Stepping In Your Shoes," and it can get a bit monotonous.

While innovation is usually welcome in an artist, the listener can get tired of the constant pace of the drums and begin to wish Grant would revert, at least for one more song, to the more melodic sound of her previous album.

The two final songs of side one are not poorly done, especially "Stepping," which has a catchy chorus and has been given wider airplay than many other Christian songs. But the arrangement of the songs is somewhat tedious.

On side two Grant achieves a better balance in the tempo and pace of the songs. The first song, "Fight,"

has the danceable beat of with a bit rougher sound.

"Wise Up" and "Who To Listen To," especially noteworthy.

In "Wise Up" Grant is young audience not to leave a world that too often pronounces:

"Better get smart/And u heart/It's gonna get rough

"Who To Listen To," with Grant's husband Gary Ch but a similar message:

"Better make up your listen to/How can you just/How to know who to with a scam to sell/How ca

The final two songs on th "The Prodigal," sound mo old. They are more melo monious sound.

Grant's sound has definit out her first few albums, geared towards pre- adoles she shows that she is capab more innovative.

COUPON



Papa Jay's New York Pizza
We Also Deliver Ice Cold Beer

FAST FREE DELIVERY!
LIMITED FREE DELIVERY AREA
804 S. ASH (UNIV. & MILL)

#1 Sun Devil Combo
Any large pizza, your choice of up to 4 toppings.
ONLY \$6.95 plus tax
Good on delivery, take-out or dine-in. Expires 8-31-85.



STOP

#2 Sun Devil Combo
Any medium size pizza with your choice of up to 4 toppings.
ONLY \$5.95 plus tax
Good on delivery, take-out or dine-in. Expires 8-31-85.

#3 Sun Devil Combo
Any small size pizza with your choice of up to 4 toppings.
ONLY \$4.95 plus tax
Good on delivery, take-out or dine-in. Expires 8-31-85.

GUARANTEED
OUR PRICES ARE CHEAPER
AND OUR PRODUCT IS MUCH BETTER


966-4292 OR
966-1003

#4 \$2 OFF
Any large Sicilian style pizza* with two or more toppings
*Extra thick
Good on delivery, take-out or dine-in. Expires 8-31-85.

GRAND OPENING

INDIAN BEND GARDENS
27 DELUXE TOWN HOMES

9% LOANS **5% DOWN**



STANDARD FEATURES **PRICES FROM \$76,900**

- Fire Place
- SC Ovens
- Wet Bar
- Garage Door
- French doors.

Rural	Miller X	McKellips
University		McClintock

Another Fine home/by SDC (Phone)994-0455
Sales by REALTY EXECUTIVES • Joanne E. Malhoit 831-1010
S.W. Corner of Miller & McKellips

20% OFF

Entire menu with this coupon, not valid with any other special

Featuring Our Fabulous

18ft. SOUP & SALAD BAR
(all you can eat)

~~\$3.79~~ **\$3.25** M-F 12-5

2 Blocks West of Rural On Apache

The RANCH-HOUSE
Restaurant

625 E. Apache
Tempe, Arizona 85281
968-5770
Hours 6 am - 11 pm Daily

Early Bird Specials Served Between 6 a.m. & 9 a.m. Mon. - Fri.

- 3 Blueberry cakes, 2 links & 2 eggs \$1.99
- 2 eggs, Hashbrowns & tst ... \$1.99
- Biscuit & country sausage covered with gravy, Hashbrowns \$1.99
- Homemade cinnamon roll & coffee \$1.39

PITCHERS!



\$2.95

TUESDAYS & THURSDAYS

Re-Discover the Bandersnatch
a unique eating and drinking alternative

walking distance from campus
125 E. 5th Street, Tempe 966-4438

state
press

e-adolescents

danceable beat of "Love of Another Kind" but it rougher sound.

"Up" and "Who To Listen To" offer a change with funkier, slower beats. The lyrics are ly noteworthy.

"ise Up" Grant is telling her predominantly audience not to leave themselves unguarded in that too often promotes compromise and con-

er get smart/And use your head to guard your s gonna get rough/So you better wise up."

To Listen To," with background vocals from husband Gary Chapman, has a rougher edge ilar message:

er make up your mind/Who to, who not to /How can you learn what is true and y to know who to trust/Here comes a man am to sell/How can you tell?"

al two songs on the album, "Sharayah" and odigal," sound more like the Amy Grant of y are more melodic, with more of a har-sound.

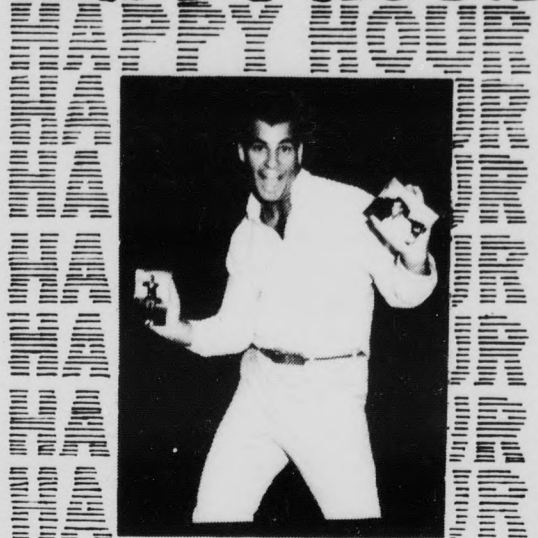
s sound has definitely matured since she put irst few albums, which seem to have been wards pre-adolescents. With "Unguarded" s that she is capable of producing something ovative.

AMY GRANT



Grammy award-winner Amy Grant has a new look and a new sound on her latest album.

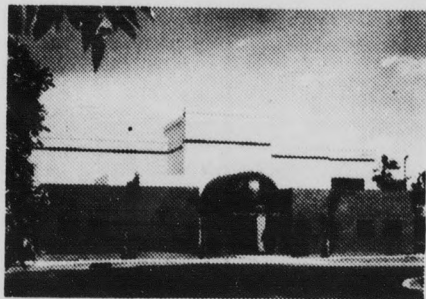
HAPPY HOUR HAPPY HOUR



Develop & Print
2 for 1 HAPPY HOUR DOUBLE PRINT SPECIAL
EVERY MONDAY AND WEDNESDAY
AT REGULAR LOW PRICE
SUNSET CAMERA
Tempe Center • Mill & University • 829-0424

Grand Opening

- Tennis
- Racquetball
- Basketball
- Volleyball
- Swimming
- Fitness
- Aerobics
- Weights
- Childcare
- Hair Salon
- Co-ed Spa
- Masseur
- Suntan Beds
- Multipurpose Gym
- Gymnastics
- Sports Shop
- Teen Center
- Courtside Cafe
- Lounge
- Conference
- Professional Staff
- Steam/Sauna



Inquire About Our Special Introductory Offer

Your SPORTS COUNTRY CLUB

**WESTERN RESERVE CLUB
FAMILY SPORTS CENTER**

Broadway West of Price • Tempe, AZ • 968-9231

ASU & INNSUITES

For Business or Pleasure Travel

COMPLIMENTARY:

- Continental Breakfast "Plus"
- Daily Happy Hour
- Local Phone Calls
- Morning Newspaper
- Inn Room Refrigerator w/juice
- Inn Room Movies, Coffee, Tea



InnSuites
INTERNATIONAL INN & RESORTS



call

800-842-4242

For Information & Reservations

Phoenix Northern InnSuites
1615 E. Northern Ave.
Phoenix, Arizona 85020
(602) 997-6285

Phoenix Airport/ Tempe InnSuites
1651 W. Baseline Rd. at I-10
Tempe, Arizona 85283
(602) 897-7900

Scottsdale InnSuites
1400 N. 77th Street
(Just east of Scottsdale Rd.)
Scottsdale, Arizona 85257
(602) 941-1202

(TEMPE 2.5 MILES SOUTH OF DIABLO)

OFF the WALL



BUY-SELL-TRADE-MIX-MATCH

Hours: 10-6 Mon-Sat

3 East 5th Street
Tempe
968-2557



Buffalo Exchange

NEW

THE COMMONS

■ on Lemon ■

Student Condominiums

FOR SALE

TO PARENTS: Can pay for some or all of their student's schooling

FOR RENT

TO STUDENTS: Condominiums at dorm prices

Call for rental and sales information
968-6427 priority list being formed now
425 S. Mill (5th & Mill) suite 101

No offer to sell or lease may be made and no offer to purchase or lease may be accepted prior to issuance of the final Arizona Subdivision Public Report.

TERRA MARKETING
REAL ESTATE SPECIALISTS
425 S. Mill Ave., Suite 101, Tempe,
AZ 85281. Phone 968-6427. 968-6437

spotlight

Sunday, July 21

This will be the last day to see the graphic art of German artist Josef Beuys, lent to the University Art Collections by the Goethe Institute of Los Angeles. Beuys is a noted performance and graphic artist. The show will include lithographs, silkscreens, woodcuts and a special postcard.

•Rock guitarist Eric "Slowhand" Clapton (Yardbirds, Cream, Blind Faith, Derek and the Dominoes) will appear with special guest Graham Parker & The Shot at Compton Terrace at 8:00 p.m.

Thursday, July 25

•The Boston Pops on Tour, with John Williams conducting, will perform at 8 p.m. in the ASU Activity Center. Valley music lovers may enjoy the festive yet informal atmosphere of the famous Boston Esplanade Concerts when this renowned musical ensemble appears in a benefit for KAET/Channel 8 and Gammage Center for the Performing Arts. The program will provide an opportunity to hear, in person, the music America has thrilled to for years on radio, television and records. Tickets are priced at \$25 and \$20 for concourse-level seats and at \$50 per person for seating at floor tables. Floor tickets include a reception with the orchestra following the concert. Tickets are on sale in advance at Gammage and Diamonds Box Offices.

Sunday, July 28

•The Baroque Era: Paintings and Prints exhibit will end today. It is held in conjunction with the ASU School of Music. Celebrating the tercentenary of master composers Bach, Handel and Scarlatti, the show highlights art produced between 1550 and 1750. Represented will be Rembrandt and other Baroque-era artists.

Tuesday, August 6

•A free concert by the ASU Summer Choir, conducted by ASU School of Music director George Umberson and doctoral student Robin Koozer, is scheduled at 7:30 p.m. at the First United Methodist Church, 215 E. University Drive.

Friday, August 9

•The ASU 1985 Summer Commencement will be at 4 p.m. in the University Activity Center. The public is invited.

Saturday, August 10

•Jazz singing sensation Al Jarreau will perform in concert at the ASU Activity Center at 8 p.m. David Sanborn will be the opening act. All tickets are \$15 and are available at Gammage and Diamonds ticket office and at the Sun Devil Ticket office.

Sunday, August 11

•ASU Art Collections will present "The Jones Road Print Shop: 1971-1981," an exhibit which features graphic work by Jones Road Print Shop printers. The printers are known for their unconventional use of materials and unorthodox techniques. The shop was located in Barneveld, Wisconsin, and was founded by noted printmaker William Weege.

Among the artists represented in the show will be Peter Plagens, Sam Gilliam and Alan Shields.

Also on display in the Art Collections lower foyer are a number of recently acquired prints, until Sept. 1.

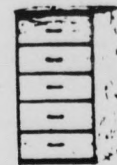
Galley hours are 9 a.m. to 5 p.m., Monday through Friday and 1 to 5 p.m. on Sundays. For additional information call 965-2874.

Wednesday, August 28

"Off the Wall," an exhibit of conceptual, pseudo-historical and blatantly tongue-in-cheek works by three artists, will open in the MU Gallery and run through September 30.



Table with 4 chairs \$99.99



5-Drawer Chest ONLY \$39.95

— BED SALE —

Twin set \$69.95	Full set \$79.95
Queen set \$129.95	King set \$149.95

6-drawer Dresser & Mirror \$89.95

4-drawer Desk \$59.95

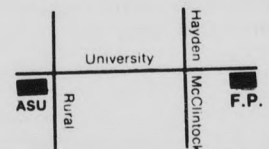
Sofa & Loveseat \$299.95

— Futon Beds From \$59.95 —

2077 E. University Tempe • 966-6252



Delivery Available



Dairy Queen

Banana Split \$1.09

Reg. \$1.55

Offer good only at 950 S. Mill (Across from Gammage) (with coupon)

SSAT-PSAT SAT-ACT-GMAT ACHIEVEMENTS

GRE-LSAT-MAT
GRE-BIO-TOEFL
GRE-PSYCH-PCAT
DAT-MCAT-VAT
OCAT-NMB 1-2-3
NPB-MSKP-NDB
FMGEMS-CGFNS
CPA-NCLEX-RN

**SPEEDREADING-NCB-1
ESL REVIEW-FLEX 1-2-3
INTRO TO LAW SCHOOL**

Stanley H. KAPLAN
EDUCATIONAL CENTER
NUMBER ONE SINCE 1938
CALL DAYS, EVENINGS & WEEKENDS

2 HOURS FREE TUTORING

CALL **967-2967**

For Information About Other Centers OUTSIDE N.Y. STATE CALL TOLL FREE 800-223-1782

LONDON GOLD FINE JEWELRY
DIRECT DIAMOND IMPORTERS
MORE TO CHOOSE FROM • BETTER QUALITY • BETTER PRICE

SOLITAIRE 14K Mounting		18" 14K SOLID GOLD HANDMADE ROPE CHAINS
OTHER STORES	OUR PRICE	
1/10 ct. \$300	\$99	
1/4 ct. \$500	\$199	
1/2 ct. \$1,200	\$499	
1 ct. \$2,000	\$925	
2 ct. \$4,500	\$1,999	
1 ct. FINE QUALITY	FROM \$2,400	
2 ct. FINE QUALITY	FROM \$4,500	

14K DIAMOND ENGAGEMENT SETS FROM \$210

OTHER STORES	OUR PRICE
2mm \$425	\$117
2.5mm \$550	\$140
3mm \$750	\$189
4mm \$1,300	\$325
5mm \$1,800	\$520
6mm \$2,200	\$675

LARGE SELECTION OF 14K YELLOW GOLD CHARMS

We guarantee our prices to be the lowest in the valley. Bring us any quote of comparable quality and value, and we'll discount it by an additional 5 to 50 percent.

PHOENIX	SCOTTSDALE	TEMPE
936 W. Camelback West of McDonald's in Camelback Village Square 277-7080 MON.-FRI. 10-6 SAT. 10-5	8320 N. Hayden Rd. Next to Rick's Cafe in Mercado Del Lago at McCormick Ranch 991-4814 TUE, FRI 11-6 WED, THUR, SAT 11-9	1814 E. Southern Southern & McClintock, Behind Jewelry Exchange 820-3909 MON.-FRI. 10-6 SAT. 10-5

BRING IN THIS AD AND RECEIVE 3% DISCOUNT WITH CASH

Gino's delivers.

We're open for lunch!

Pizzas start at \$3.45.
Subs start at \$2.05.

We use only the finest natural ingredients.

FREE 12" Cheese Pizza with purchase of large 16" pizza. Not valid with any other coupon. Expires 8-25-85.	FREE Quart of Coke with purchase of 14" or 16" pizza. Not valid with any other coupon. Expires 8-25-85.
--	--

GINO'S PIZZA
966-4666
822 S. Mill Avenue

Open Mon.-Thurs. 11 a.m.-midnight
Fri.-Sat. 11 a.m.-2 a.m.
Sun. noon-midnight.

NOW YOU CAN LIVE THE LIFESTYLE YOU ALWAYS WANTED

*ON MILLER BETWEEN McKELLIPS AND CURRY 941-3965
*TWO POOLS & LIGHTED TENNIS COURTS 833-0597

TOWNHOMES AT River Run
PRICED FROM THE 70's

RIGHT ON McKEI LIPS - RIGHT ON MILLER

sports

state
press

Regents reject Weinbauer reinstatement request

BY VICKIE CHACHERE
State Press

Flagstaff — The Arizona Board of Regents has formally turned down an appeal for reinstatement by former ASU basketball coach Robert Weinbauer, Regent President Donald Pitt said.

After a 5-hour, closed-door session, the board released a written statement in support of ASU President J. Russell Nelson's firing of Weinbauer, but also requested ASU to initiate further discussion with Weinbauer's attorneys.

Weinbauer said ASU officials had offered him \$300,000 in exchange for his resignation, but refused to pay after he was fired on July 9.

"The process could have been improved," Pitt said. "The result of the action is affirmed as set forth in the statement.

"We have confidence in President Nelson that he will handle the matter satisfactorily," he added.

Pitt said the University may still have some financial obligations to Weinbauer, but the matter must be solved by University attorneys.

"The board is not initiating litigation against anyone," Pitt, a Tucson attorney, said.

"The board is taking steps to facilitate the opportunity for coach Weinbauer to have further discussions to facilitate a resolution," he said.

Pitt added if ASU cannot reach an agreement with

Weinbauer, the case may be taken before the Arizona court system.

"There is an obligation (by ASU) under that statute, and I am sure what has been requested by the statute will be done," Pitt said.

Pitt declined to give further information on the board's closed-door discussion. Under state law, matters discussed during the regents' executive session are to be kept confidential.

Corpstein said he would like to see multi-year contracts so universities would be 'up-front' with coaches . . .

In a board meeting Friday afternoon, Arizona Senator Pete Corpstein, R-Paradise Valley, asked board members to reconsider the possibility of issuing multi-year contracts to coaches of athletic teams at ASU, NAU and U of A.

Corpstein had introduced legislation during the last legislative session which would have allowed for multi-year contracts, but the bill lacked support in either house.

Corpstein said he plans on introducing similar legislation when the legislative session is resumed in January 1986.

Corpstein said he would like to see multi-year contracts so universities would be "up-front" with coaches and the terms of their contracts.

"Things have changed in the last few years, and there has been a tremendous increase in the number of (professional) teams," Corpstein said, adding that those teams often attract the best coaches because they are able to offer them job security.

"The only way to combat this is to give multi-year contracts," Corpstein said.

Weinbauer's case is not the first where handling of university contracts have been questioned. A lawsuit between a former U of A basketball coach and that university is still waiting to be resolved, Corpstein said.

Corpstein, calling the handling of contracts "a horrible situation," said, "By putting multi-year contracts, I am trying to put in a law that everyone can work under, so we won't get into this situation again."

He said university faculty members also would be included in the law, with tenured faculty members receiving three-year contracts.

Corpstein, comparing the handling of coaching contracts to Watergate, said Dan Devine, president of the Sun Angel foundation — a major backer of ASU sports teams — said multi-year contracts were "the best thing that could be done for the athletic departments in Arizona."

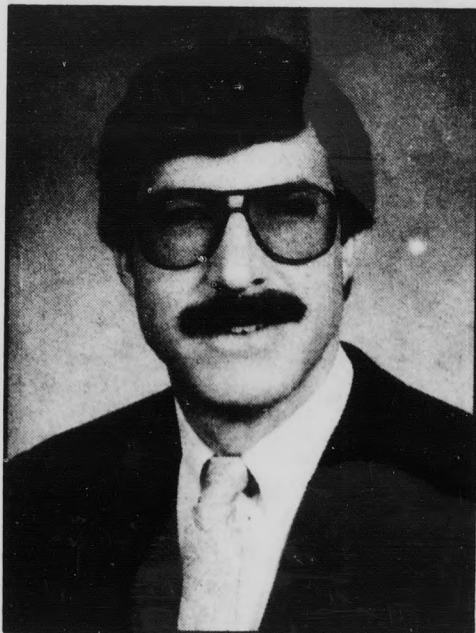
'Fair amount of interest' shown in basketball spot, AD says

By MICHAEL KONZ
State Press

The recent controversy generated by basketball coach Bob Weinbauer's dismissal will not have a "significant affect" on the hiring of a new coach, ASU's athletic director said.

"Coaches like to compete," Charles Harris said. "In that way they're no different than athletes. They see the chance to pursue something and achieve here."

ASU began advertising the open position in *The NCAA News* Wednesday. Harris said there is already a "fair amount of interest" in the job.



Steve Patterson

The ASU job is lucrative because of the Sun Devil program and the Pac-10 conference, Harris said.

"If you look at the school and the conference, they speak for themselves," he said. "The job is prestigious because of those two."

Harris said the restriction of one-year contracts will not deter coaches from applying.

"The contract has become a cause celebre," he said. "I'm not sure that other arrangements such as annuities can't be worked out."

Harris said an annuity is not binding, but if the coach is still employed at the end of the year, he would be paid the sum of money.

ASU does not have a timetable for hiring a new coach, Harris said.

"We will move expediently, but not at the expense of getting the best qualified candidate," he said.

Interim head coach Steve Patterson has said he will apply for the position.

"In my initial conversation with Charles Harris, I was offered the interim position and, at the same time, encouraged to apply for the permanent position," Patterson said.

Patterson, who was an assistant coach under Weinbauer, is not optimistic about his chances.

"I'd say they're less than 50-50," he said. "I know there are some very good people applying. There will be some very qualified competition. (Harris) will give serious consideration to them."

Patterson said his chief advantage is his experience with the ASU basketball program.

"The major factor is that they know me in

the department," he said. "I have an excellent working relationship with the administration. The kids respect me. Those particular qualities are important.

"I have a good rapport with the press and with the ASU community as a whole. You're not necessarily hired on that basis, but it is an important consideration."

Patterson said he realizes that his relationship with recruits during the coming weeks could be a factor in his chances for the post.

"I think I will be under close scrutiny the next few weeks," he said. "But there will be no way to evaluate my bottom-line performance because letter-of-intent day is in November."

Patterson has been in contact with every recruit and returning member of the team. He said every returning member is coming back, but the recruits have been affected by Weinbauer's dismissal.

"The recruits are confused," Patterson said. "My job is to clear up the confusion and assure them that we still want them. It's not fun, and it's not an easy task."

If he is not chosen as the head coach, Patterson said he will return as an assistant coach.

"I believe in Charles Harris and in the direction we're going," he said. "If I didn't, I'd be bailing out. I believe I have a job here, and the mission is incomplete. I think the pendulum will swing back, and ASU will experience great things in the athletic department."

Patterson, 37, came to ASU to replace Doug Collins, who resigned to become a color analyst for CBS Television Sports.

He was a prep All-American at Santa



Charles Harris

Maria (Calif.) High School before going to UCLA after Lew Alcindor graduated.

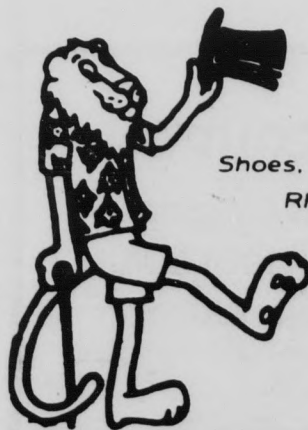
While a Bruin, Patterson was on three NCAA championship teams and finished his collegiate career with a 29-point performance against Villanova in the NCAA Championship game.

He was the 18th selection in the 1971 NBA draft by the Cleveland Cavaliers. He played in Cleveland for four seasons and with the Chicago Bulls for one. He also spent one year in the Italian Pro League.

He was an assistant coach at Santa Rosa (Calif.) Junior College before joining the Sun Devil staff.

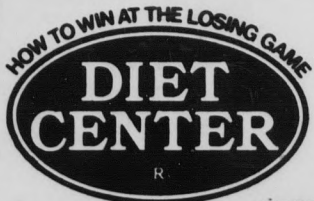
RARE LION RESALE

Buying • Selling • Trading



- Clothing •
- Vintage & Contemporary
- Accessories •
- Shoes, Hats, Gloves • Jewelry •
- Rhinestones, Glass Beads •
- Collectibles • Antiques •

10-6 Mon.-Fri. 11-6 Sat.
722 S. Mill Ave., Tempe
968-6074



Lose 10 pounds in 2 weeks

The Weight loss professionals

You can do it... without shots, drugs, pills or special foods...and without feeling hungry. Your own personal counselor will show you how... and stay with you every step of the way. Your first consultation is free. Call now.



Open Daily 7 a.m.-6 p.m.
Tempe • 967-1371
911. E Broadway
Lucky Shopping Center



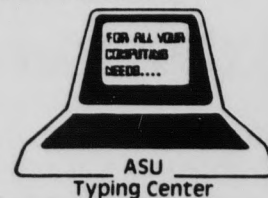
ASU TYPING CENTER

Same day service
5 minutes from ASU library

Professional
Typing • Word processing • Resumes
• Academic • Business • Technical

Phone 967-0900
122 E. University

M-F
9a.m.-5p.m.



Weinhauer might file lawsuit; gives ASU until Friday to pay

By MICHAEL KONZ
State Press

Former ASU basketball coach Bob Weinhauer will file a \$1.3 million lawsuit unless the University pays him the \$300,000 he was offered in exchange for his resignation, his lawyer said Wednesday.

Scott Clark said Weinhauer would file a claim by Monday if ASU does not promise to pay the money.

"In our minds, this has been a last alternative," he said. "Our first goal was for

depends on how successful or unsuccessful Bob is in securing employment."

Weinhauer is basing the suit on a memorandum from former Athletic Director Dick Tamburo that promised him five one-year contracts.

The University said in June it would pay Weinhauer \$300,000 in monthly installments of \$12,000 through 1987, in exchange for his resignation and a promise not to sue the University.

University President J. Russell Nelson

'In our minds, this has been a last alternative. Our first goal was for (Weinhauer) to retain his job. The lawsuit is something of a last resort.' — Clark

(Weinhauer) to retain his job. The lawsuit is something of a last resort. If (ASU) does not honor its agreements, we're forced to take this course of action."

According to state law, Weinhauer must first file a claim, which the University has 60 days to respond to, Clark said.

"You're stating, 'We have an agreement, here's the agreement, now honor it,'" he said.

Clark said the lawsuit would seek the \$300,000 plus at least \$1 million in damages.

"We're assessing the damages right now," he said. "It's difficult because it

has said he will not honor the agreement because it violates Arizona state law.

Clark said he had not researched the case yet, but there was precedent for the claim in Arizona.

"It's clearly a breach of contract," he said. "(Former football coach Frank) Kush received \$250,000 (from ASU). This is a lot different situation, but (the University) has reached some kind of settlement before."

Over the weekend the Arizona Board of Regents supported Nelson's decision to fire Weinhauer without paying him the money.

MODELS WANTED

Males and females needed to model ASU clothing for full color alumni catalogue. \$3.50 per hour + keep what you model. Call 965-7928 by 7/23/85 a.m. for appointment.

STUDENT SPECIAL

SAVE UP TO \$275
On 1st Month Rent
FAMILY OR ADULT

Studio, 1 Bedroom, 2 Bedroom • Cable TV Available
• Laundries • Small Pets Allowed • 2 Pools
• Playground • Ample Parking

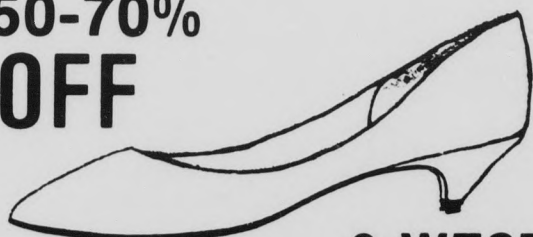
SUNFLOWER APARTMENTS

833-3981 or 833-2511
505 S. Roosevelt — Off Broadway between Price and Dobson

SUMMER CLEARANCE SALE

ALL INVENTORY

50-70%
OFF

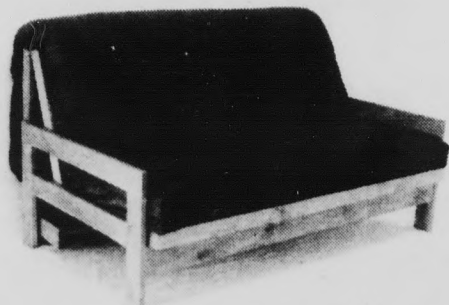


9-WEST
ANNETTA
NOW \$19.00
REG \$37.00



Name Brand Shoes
707-D S. Forest
Tempe 966-1772

COMFORT & STYLE NATURALLY



Futons from \$59⁰⁰
BEDS • SOFABEDS • ACCESSORIES

The Futon Store

2620 W. Broadway #8, Mesa
Broadway Plaza Center, 1 block east of Price
966-8031 • Mon.-Sat. 10-6, Thurs. til 8

Donate plasma. And change someone's life. Do it once or twice a week and you may change the world. Donating is easy. It takes an hour-and-a-half. You can use the time to think. Work a few equations. Maybe even formulate a theory. And plasma pays. \$10 a donation... up to \$100 a month. Earn enough to help support yourself while you ponder the profound. It worked for Einstein.

Imitate the great. Call now for an appointment.

**UNIVERSITY
PLASMA CENTER**
Phone 968-6139
1015 S. Rural Road

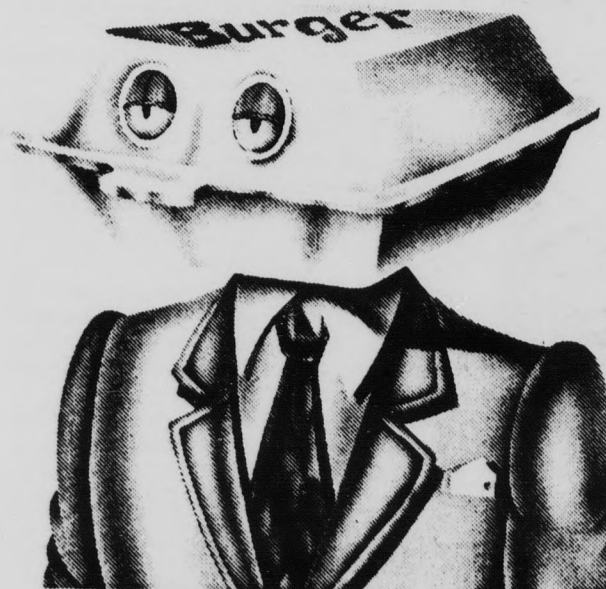
Hours:
Mon, Tues 9-6
Wed, Thur, Fri 9-4
Sat 10-3

All donors who haven't been in this year, bring in this ad for \$5 bonus with your donation

Become a Giant



DON'T BE A STYROHEAD



Daily Food Specials



The biggest, freshest sandwiches are now even fresher - served up on freshly baked bread.

-COUPON-

Mon.-Sat.
10:30am-1am
Sunday
10:30am-11pm

FREE FOOTLONG SANDWICH!

buy any footlong sandwich and a medium drink and get a second one (of comparable value) FREE!



WITH THIS COUPON - NOT VALID WITH OTHER OFFERS
ONE COUPON PER CUSTOMER - EXPIRES 8-1-85

-COUPON-

N.E. Corner
of 10th & Mill
Tempe Center

The HOB-NOB Thrift Shop

Sunglasses \$4.00

Earrings from \$1.00

Tempe's largest selection of quality used clothing and fashion accessories for men and women

414 S. Mill Ave (Mill Ave Shops) Phone 968-7114

classifieds

STATE PRESS PRODUCTION DEPT. STUDENT HOURLY JOBS
Fall Semester 1985

PASTE-UP TECHNICIAN II (Newspage Paste-Up)

You must have class or job paste-up skills and be able to assemble all the elements of an ad: copy, artwork and borders; and produce camera-ready mechanicals. Must be attentive to detail, be extremely neat, reliable, precise, and be able to follow written directions.

DAYS & HOURS
Mon., Tues., Wed., Thurs. 5:30 p.m. till approx. 10:00 p.m.
Sunday 2:30 p.m. to 6:30 p.m.

PLEASE DO NOT APPLY IF YOU CANNOT WORK THESE PUBLISHED HOURS.

Applicants must pick up a referral form from Student Employment in Matthews Center, and a State Press production job application from the reception desk at the State Press office, basement of Matthews Center.

STATE PRESS WANNADS* ARE FOR THE DOGS!

Have home. Want dog. A STATE PRESS reader reported finding just the dog he wanted after scanning the paper for a few days. Both dog and new owner are doing fine.

Visit Room 15 Matthews Center or call 965-7572 (You can be billed)

*Americaneese for Want Ads or Classified

Announcements

BEAUTIFUL TWO bedroom two bath. Pt. South Mountain \$550.00 month. All appliances, nice yard. Bill 438-8159 (home) 224-5999 (office).

AUTOMOBILES

1979 M G Midget convertible. 41000 miles, very good condition must sell immediately. \$2100 or best offer call Jan 946-7663 or 998-3721

'71 Chevy Camaro, runs well \$950 or best offer! 833-8477 after 6:00 p.m.

Business Opp.

EARN EXTRA income in your spare time by becoming a Mr. Bee Pollen distributor. Find out why honey bee pollen is considered "nature's only perfect food". High quality, high demand, high profit products. A very rewarding business opportunity for ambitious individual. No door to door sales. For qualification and details contact Wayne, 966-3235.

EARN EXTRA cash in your spare time, own your own business. For info, send \$2 to Key Publishing Co, 3010 Wilshire Blvd = 221, Los Angeles, Ca 90010.

For Rent or Lease

ASU SPECIAL. Walk to campus, one and two bedroom apartments. Pool. Starting at \$350. \$100 off first month's rent. 910 S. Gary, Desertwide Prop. 838-6631.

ONE BEDROOM apartment with vaulted ceiling available. Tennis courts, spa, much more. Call us about our \$100 move-in special. 275-9722.

PAPAGO HILLS area, large sunny studio in adult complex, heated pool and spa, tennis courts and weight room. \$270 per month. Call 275-9722. \$100 off move-in costs for limited time.

PRIVATE ROOM and bath, kitchen privileges, pool, graduate student preferred. 966-3116 after 4:00 p.m.

VERY NICE 2 bedroom, 2 bath, pool, tennis courts, bike to campus, washer, dryer, refrigerator, \$550 month. Mike or Sherry, 945-1112.

For Sale

77 GMC Van, captains chairs, sofa bed, ice box, paneled, carpeted, and much more. Only \$3,999 968-3186 after 4:00 p.m.

IBM PC Jr. 256K, loaded hardware and software. Great price 894-2184.

USED COMPUTERS: Compact portable, \$899, Columbia portable, \$700, Radio Shack model One with three disk drives, \$499. Computer City Plus, 1620 W. University, (between Alma School and Dobson) 827-8822.

Summer Rates

Studios \$250
1 Bed \$295 or
Furnished \$310

•2 pools •Handball
•Tennis Courts •Laundries
•Volleyball

LAS CASITAS
710 S. Hardy, Tempe
968-0101

For Sale

WHOLESALE! Best flashing arrow sign, \$359 complete. (Four) slight paint damaged signs, \$297. Lighted, no arrow, \$263. Non-lighted \$199. Factory: 1 (800)423-0163, anytime. (Not repossessed).

WHY THROW your money away on rent? Buy a condo. and have your roommate help make the payments. Two bedroom two bath, Italian tile, plush carpet, 15 minutes from ASU. Call after 6:00 p.m. 956-3236.

ZIDEX DOUBLE sided, double density diskettes, \$14.95. Mailing labels .01 each, 200 minimum. Computer City Plus, 1620 W University, (between Alma School and Dobson) 827-8822.

Help Wanted

ADVERTISING INTERN: Phoenix ad agency seeks summer help. Job involves extensive client contact and project coordination skills. Must be self-starter, have own car and not economically dependent on this particular job as a sole source of income. Prefer someone who has completed junior year and who would be available to continue on a part-time basis in the fall. Send letter and resume to: P.O. Box 10629, Phoenix, AZ 85064.

CLOSE TO ASU. Blue jean type company now hiring those who know what the word hustle means. Part-time hours, full-time pay. \$6 hour guaranteed during training period. Sell tools and equipment nationwide via wats. Call Mike Evans 966-6538, 966-8857.

CONSULTING FIRM needs 10 energetic people to set appointments part-time. If you're serious about having fun and making big money, call Nancy at 968-0810. Two minutes from campus.

COUNSELORS-leaders needed for afterschool program. Parttime openings valleywide. \$3.35 to \$4.50 starting. YMCA 258-0077.

JONATHAN'S PIZZA is looking for delivery drivers, pizza cooks, and other key personnel to staff four new locations in Tempe and Mesa. Experience preferred. Apply in person between 3 and 5 only. Monday through Friday at 1949 E. Broadway, Suite A Tempe.

NURSING STUDENT to babysit toddler and infant. Occasional evenings and weekends. Must have experience and references. \$3.00 per hour. Mesa/Tempe area 890-9260.

PHONE PROS only. Appointment setters \$5. hour plus good location. 267-8818 Mr. Robert.

SECRETARY/RECEPTIONIST needed at residential treatment center for adolescence; excellent typing (65 WPM) and phone skills necessary; PC computer experience; able to work under pressure; accurate dependable/responsible; 11,424 annually to begin; send resume P.O. Box 8500, PHX, AZ, 85006 DOE, MFVH.

SUMMER WORK now available to laborers, warehouse personnel, account clerks, receptionists and typists. We offer temporary job assignments with flexible hours and weekly pay. Work as often as you like, take days off as needed and never pay a fee. For further information call Personnel Pool, 966-6205.

AMERICAN BARTENDER SCHOOL

Earn \$10-20 per hour.

"Summer Special \$199.95"

957-3770

Real Estate

CUSTOMIZED TOWNHOUSE, two bedroom, two bath, pool, spa, barbecue, 1 1/2 miles to ASU, \$77,900. Sharon Barthel, 839-2600.

ENERGY EXPERT'S home, 14 W. Palmcroft Drive, 4 bedroom, workshop, darkroom, in shady, mature Date Palm Manor, \$112,500. Realty Advisers 838-1800, Barbara Grant 839-7786.

JUST GRADUATED must sell Palm Harbor 14X65 mobile home. Loaded. Why rent when you can own? Call 890-0217 or 991-9562.

UNIVERSITY SHADOWS. Lovely three bedroom, two bath, townhouse with private location in complex. Beehive fireplace, skylights, community pool, tennis courts. \$63,500. Owner motivated to sell. Realty Advisers 838-1800, Barbara Grant 839-7786 eves.

Roommate wanted

BEIT GOLDA Mier-Jewish house has opening for student interested in kashrut, chumesh. One block from campus. Call 966-2704.

FEMALE TO share home with female 180 - 1/2 utilities. Non smoker. Near ASU 253-1210 254-4187.

FEMINIST PREFERRED. Share two bedroom apt. \$175 - 1/2 electric and phone per month. Pets O.K. Pool, and laundry. ASU 4 miles right down University. Theater, shopping, call Karen 834-1125 evenings.

QUALITY FURNITURE for sale. Less than one year old. Dresser, \$90., desk, \$90. Price is negotiable. 968-3665.

ROOMMATE NEEDED female, nonsmoking, good student, three bedroom townhouse move in August 1st. Hardy/Southern. Call Brooke 948-1614 or Wendy 966-2833.

STUDENT TO share furnished house near ASU. \$240 incl. utilities 894-1485 or 968-2076.

STUDENT, WANT your own room and bath, TV, desk, washer and dryer, heated pool, tennis court, and bike path? You will have to share with middle aged working lady who smokes. One little fat dog and one orphan cat also live there. Vicinity Hayden and McKellips. Call 946-5894 home or 244-5231 work. Must be very neat. About \$238.

MODELS WANTED

Males and females needed to model ASU clothing for full color alumni catalogue. \$3.50 per hour + keep what you model. Call 965-7928 by 7/23/85 a.m. for appointment.

Help Wanted

THE DEVIL house is now accepting applications for a graphic artist. Experienced in typesetting and past-up for ads and fliers. Apply in person 11-5 at 430 N. Scottsdale Road in Tempe.

YMCA HAS part-time positions available valleywide for site-coordinators for Afterschool Childcare Programs. Must be 21. Starting \$4 to \$6 per hour. 258-0077.

Instruction

CONVISER-MILLER CPA review, fastest growing CPA review in the country is seeking student representatives. Free course and commission. Call Kathy 969-8246.

DISCOVERING THE goddess within. A workshop exploring and celebrating the female spirit. Sat July 20th 9-5 \$40.00. Call Cheryl at Assoc. Tempe counseling service 966-8810.

Lost & Found

LOST: A blue three ring binder note book from Mkt 351, either Fall or Spring 1981. 'Saturn Rings' on the front of note book. 991-6103.

Personal

ADOPTION: New Jersey couple, loving, secure, well-educated, wants to adopt a white baby. All expenses plus. Call collect, 201-891-2860 or local, 863-4263.

Roommate wanted

BEIT GOLDA Mier-Jewish house has opening for student interested in kashrut, chumesh. One block from campus. Call 966-2704.

FEMALE TO share home with female 180 - 1/2 utilities. Non smoker. Near ASU 253-1210 254-4187.

FEMINIST PREFERRED. Share two bedroom apt. \$175 - 1/2 electric and phone per month. Pets O.K. Pool, and laundry. ASU 4 miles right down University. Theater, shopping, call Karen 834-1125 evenings.

QUALITY FURNITURE for sale. Less than one year old. Dresser, \$90., desk, \$90. Price is negotiable. 968-3665.

ROOMMATE NEEDED female, nonsmoking, good student, three bedroom townhouse move in August 1st. Hardy/Southern. Call Brooke 948-1614 or Wendy 966-2833.

STUDENT TO share furnished house near ASU. \$240 incl. utilities 894-1485 or 968-2076.

STUDENT, WANT your own room and bath, TV, desk, washer and dryer, heated pool, tennis court, and bike path? You will have to share with middle aged working lady who smokes. One little fat dog and one orphan cat also live there. Vicinity Hayden and McKellips. Call 946-5894 home or 244-5231 work. Must be very neat. About \$238.

Services

ACCURATE TYPING, good service reasonable rates, 838-5656 Agnes.

EDITING TERMPAPERS, dissertations. Will perfect your grammar, word choice, sentence clarity and flow, paragraph construction, organization, etc., for best expression of your ideas. Professional, inexpensive. Susan, M.A., 834-6038.

RENT YOUR terminal, modem, and printer from Computer City Plus. To talk to Vax, Wylbur, or the PDP computer from home. Terminals \$10. a week, printers \$15. a week to ASU Faculty and Students only. Free pick up and delivery. Computer City Plus, 1620 W. University, (between Alma School and Dobson) 827-8822.

Typing

1 DAY turn-around typing, term papers, resumes, newsletters, letters, etc. Call Nora 820-9681.

A-1 KINKO's has word processing on a high quality laser printer. Call 966-2035. 933 E. University.

A-1 TYPIST. Electronic typewriter. PiCa or Elite. Reports, research papers, resumes, etc. Quinet 969-3303

AAA WORD Processing Service. Term papers, resumes, customized form letters. Reasonable rates. Call Ron 833-5532.

ACCURATE TYPING of all types. Word Processing North Central Phoenix location. Why Worry Business Services. 943-3552.

ACCURATE TYPING on word processor. Spelling and grammar capabilities. \$1.50 per page. Nancy Cotton 894-0486.

ALL PAPERS typed to your complete satisfaction. Convenient. Reasonable. Mrs. Oakley 967-0802.

ALL TYPING needs, fast and accurate. \$1.15 per page. Word processing available. Close to ASU, call Bobbie 968-9166.

ALWAYS AVAILABLE for typing. Call Susan at 833-0373.

ASU TYPING Center, fast, professional, accurate word processing. Same day service. 967-0900.

CANDY'S ACCURATE fast and dependable typing and word processing service. Excellent qualifications. Reasonable 956-7699.

EXPERIENCED TYPIST. Fast, professional work, IBM Selectric. \$1.20 per page. Cheri 967-3747 evenings.

EXPERT TYPING, \$1.25 per double spaced page, spelling checker available, rush jobs welcomed. Val, 994-1634.

EXPERT WORD processing/typing. \$1.25 double spaced page. Rough draft available. Rural/Southern. Fran 838-8027.

FAST RETURN. Professional typist will edit spelling, punctuation and grammar. Accuracy guaranteed. Joan, 839-0772.

JUST YOUR type! ...Word Processing. \$1.50 per page, double spaced letter quality printing. Call Cyndi 953-3621.

NORTHWEST PHOENIX, quality typing. Theses, dissertations, research projects. 938-3397.

PROFESSIONAL TYPING. Call Brenda 964-0273.

PROFESSIONAL WORD processing - reports, theses, papers, letters, mailings, etc. Rush jobs okay. 945-0058 evenings.

SUSIE TYPES. Fast, reasonable, close to ASU. 829-8645.

TYPING. 966-2186.

TYPING DONE: theses, term papers, resumes, etc. Will pick up and deliver. Kathy 982-5825.

TYPING, EDITING, assistance in report writing. reasonable rates. Call Barb 968-0223.

TYPING IN my home. Reasonable rates. 899-5925 anytime.

TYPING WANTED 275-2320.

WORD PROCESSING, typing, theses, dissertations. Experienced all styles, will edit, thirteen years experience. Christina, 839-1082.

WORD PROCESSING, storage for dissertations, thesis and term papers. Rush jobs welcome. Nancy, 830-5572.

WORD PROCESSING - typing. Term papers, tape transcription, resumes etc. Phyllis, Tempe-Mesa 834-6816. Kathy, Scottsdale 991-4595.

WORD PROCESSING, term papers, thesis, letter quality printing, \$1.50 per page. Call evenings 894-6052.

YOU WRITE it, I'll type it! Theses, reports, resumes, etc. Grammar and spelling assistance 969-7138.

The ADVERTISING DEPARTMENT of the STATE PRESS

is interviewing for openings in the advertising department staff for the 1985 Fall Semester.

•ADVERTISING INTERNS (Assistant to the Advertising Manager)

Freshmen, Sophomores and Juniors are preferred, in that successful interns can continue for several semesters.

The rewards include training and experience in a professional newspaper operation. . . plus realistic compensation.

Applicants must pick up referral form from Student Employment in Matthews Center and an application blank at the State Press office, Matthews Center.

\$ ARE YOU A RIGHT HANDED FEMALE? \$

If you are . . . and could use \$5⁰⁰/hour for some of your free time . . . please come to the

PSYCHOLOGY BUILDING
Room 134 (Kathy)

8 a.m.-5 p.m.
Monday through Friday

\$ A time for you to be in the experiment will be arranged. **\$**

**BEST BITE SHOP
SUBS & PIZZA**
3101 S. MILL AVE. • HUNTINGTON SQUARE • 967-1412

Extra Large Pizza
WITH 2 LITERS OF PEPSI
ONE ITEM ONLY — WITH THIS AD — EXPIRES 8-31-85

only \$6⁴⁵

SPAGHETTI & SAUCE
(With Garlic Bread)
Buy 1, 2nd Meal 1/2 Off
Only good after 4 p.m.

PEPSI

Only a \$1 Delivery Charge Within a 5-mile Radius after 4 p.m.
967-1100

Hrs.: Sun.-Thur. 10-10
Fri.-Sat. 10 A.M.-Midnight

'COUPON'
**DOUBLE BURGER
FULL MEAL DEAL**

\$1.99



CHAR-BROILED

Look what you get! An all-beef burger. A small order of crispy, golden fries. Your favorite small soft drink. And, to top it off, a cool and creamy 5 oz. DAIRY QUEEN® Soft Serve Sundae. Head for your participating DAIRY QUEEN® BRAZIER® store, to get the Burger Full Meal Deal™ — the best bargain in town.

WE TREAT YOU RIGHT™

ONLY AT:
1389 E. APACHE
(Between Rural & McClintock)

COUPON

**Hard Workouts,
Hard Bodies.**

Start Now For **\$10.00** **835-7689**

Aerobics
• Taekwondo



ATA FITNESS CENTERS
1620 W. University at Longmore
• MESA •
Just Five Min From ASU

kinko's®

• open early
• open late
• open weekends

4¢ self serve
4 1/2¢ full serve **copies**

*white, 8 1/2 x 11, 20 lb.

Kinko's now offers
***Cassette Duplicating**
***Word Processing**

Tempe I 715 S. Forest 894-9588	Tempe II 933 E. University 894-1797	Mesa 1840 W. Southern 969-3326
--------------------------------------	---	--------------------------------------

Copies • Reductions • Enlargements
Passport Photos • Binding • And much more!

BUY • SELL • TRADE

Your books at Changing Hands. For quality cloth and paperbacks (no textbooks, please) we pay 30% of our re-sale price in cash or 50% in trade-in credit which may be used to purchase anything in the store. (Sorry, no trade-ins on Sat. or Sun.)

Browse through our three floors of:

- New & Used Books
- Art Prints & Posters
- Calendars & Cards
- Handbound Journals
- New Age Tapes

M-F 10-9 SAT 10-6 SUN 12-5

CHANGING HANDS
414 Mill Avenue 966-0203
Old Town Tempe

**RUNDLE'S
LIQUORS & MKT.**

730 S. MILL
Corner Mill & University Ave.

ANDRE CHAMPAGNES 750 ml **\$2.97**
LITTLE KINGS 8-pack **\$3.21**
PLAYBOY Used Magazines **\$.71**

Haagen Dazs Natural Ice Cream, Adult Magazines, Groceries, Ice, Wines, over 40 Imported Beers.

967-9079

**TRAVELING?
UP TO FOUR
PEOPLE**



Deliver a car for us for cost of gas only. No rental charge. First tank free. Connections for 33 years through 85 offices in U.S. and Canada. For complete information call

952-0339
**AUTO DRIVEAWAY
COMPANY**

**NO
appointment
FAMILY HAIR CUTTERS™**

**FREE SHAMPOO
WITH THE
CUT**
with this coupon



A Perfect Cut Every Time
No appointment necessary ever! Bring the whole family

**NO
appointment
FAMILY HAIR CUTTERS**

University & Rural Rd.
CORNERSTONE SHOPPING CENTER
968-8008

Hours: Mon.-Fri. 9-9 • Sat. 9-7 • Sun. 12-5

**Designer Perm
\$26⁰⁰**

Includes:

- Shampoo and Designer Perm
- Perfect Cut
- Styling
- Long hair slightly higher

1981 No Appointments Family Hair Cutters