

tuesday

April 30, 1985

# state press

Tempe, Arizona

Vol. 67 No. 134

Arizona State University

Copyright, State Press, 1985



Staff photo by Kip Williams

## Frat-founding

Biology senior Derrick Gray leads fellow members of the Mu Eta chapter of the Alpha Phi Alpha fraternity through a tunnel of arms Friday, as the chapter celebrated its founder's day. The chapter was founded April 26, 1976, by Gerald Richards.

## Guidelines

### ASASU funding policy proposal may be pulled from senate floor, according to legislation sponsor

By KATY MCGREGOR  
Staff Writer

A bill calling for revision of Associated Students of ASU funding policies may be withdrawn from the senate floor tonight, said Chris Cumiskey, a senator from the College of Public Programs.

Cumiskey, one of six senators sponsoring the bill, said the legislation was not ready for presentation and that a newly elected executive committee would look into forming funding guidelines this summer.

The committee will "look for getting fair and consistent guidelines for organizations," Cumiskey said.

The bill was opposed by Nancy Parks, campus affairs vice president, who said the legislation was introduced too late in the semester.

"In my opinion this will take a lot longer than the sponsors of the bill thought," Parks said.

Parks also expressed concern over the section of the bill which removes the ASASU endorsement.

"It's a 180-degree shift in (ASASU) funding standards," she said.

Parks said she had hoped the bill would be considered by the executive committee this summer so more time can be devoted to making the revisions "equitable."

Cumiskey said the bylaw revision could allow the fall appropriations processes to take place earlier in the semester.

Information about funds available to campus organizations will be sent out in August, Cumiskey said.

Cumiskey said hearings will be set in September to "form the policy" which will be presented to the senate at the end of the month.

Cumiskey said next year's ASASU president's funding policies would be made "available to the appropriations committee," who will draft the bill.

tee," who will draft the bill.

Ray Burnell, ASASU president, said "at first glance the bill did not make any substantial impact on the appropriations policy."

Burnell said the bill would not have affected his policy concerning funding of campus organizations.

In other activity, the senate will consider a bill which would decentralize funds to college councils.

Robert Marsland, the bill's sponsor and a senator from the College of Engineering and Applied Sciences, said the bill received favorable response from senators.

'In my opinion this will take a lot longer than the sponsors of the bill thought.' — Parks

"I've talked to a lot of senators and it looks good," he said.

The bill would allow allocation of funds from the senate to college councils only after they were determined a viable organization, Marsland said.

Burnell said he supports Marsland's idea of decentralization, but was concerned about starting the project as early as next semester.

"It's a long-term project," Burnell said, adding that he hoped to see it implemented for the 1986-87 academic year.

"It's time now to put fiscal decentralization on the books," he said.

## Legislature delays decision on university bonds

By VICKIE CHACHERE  
Staff Writer

The Arizona Legislature will decide later this week if Arizona's three universities can issue \$125 million in bonds, an Arizona Board of Regents staff member said Monday.

Shari Lewis, assistant director of personnel and government relations, said a final decision on the legislation, which would pave the way for funding university construction projects, has been delayed until House members can resolve problems with transportation legislation.

She said all appropriation matters will be finalized after the budget is approved.

"We haven't seen the budget, and that is real critical," Lewis said. "But it looks like we are going to get some good things out of it."

Rep. Jim Cooper, chairman of the House Education Committee, said a final decision on the bill will not be made until the end of the session.

"The reason it is being held is we wanted to get some other things settled," Cooper, R-Mesa, said.

"There are some people in the Legislature that want this bill (to pass) real bad," Cooper said.

"You don't want to lose that leverage until you get what you want from them," he said.

According to Cooper, the universities may receive additional funding once the state's budget is approved. He said the universities received an additional \$15 million in funding after the budget was approved last year.

Other legislation that would restructure the repayment plan and lower the interest rate for loans from the Western Interstate Conference for Higher Education will probably die on the House floor, Cooper said.

"It will probably fade away," he said.

Lewis said the board was pleased that the bill was not approved by the House. The regents unanimously decided to oppose the bill when an amendment that would increase the number of years a student must work to repay loans from the program was added to the legislation earlier this spring.

WICHE loans subsidize out-of-state tuition for Arizona students wishing to major in areas not offered through ASU, NAU and U of A.

Discussion of the bill was stalled in the House because of a controversial amendment to the legislation that would increase the number of years needed to repay the loans.

WICHE contracts presently allow students who choose to work in under-served areas to repay one year's loan for each six months of work in the area. The amendment would increase the repayment time to two years for each year of out-of-state study.

"We would like to see the interest rate reduced," Lewis said, adding that the board will attempt to reduce interest rates again during next year's session.

The original WICHE legislation decreased interest repayment rates on the loans from 12 percent to 8 percent.

Lewis said attempts to remove the amendment from the current bill are still underway and a possibility of passing the

legislation still exists.

The bills are the final legislation considered by the House this session, but Cooper said he also plans to investigate alleged discrepancies in the merit pay system at ASU, NAU and U of A.

"There are some discrepancies in the amount of merit pay distributed that need to be explained," he said.

Cooper said he is questioning the amount of merit pay received by professors who are involved in research or have been published.

"(University administrators) have told me that it isn't a factor," Cooper said. "But it reflects what I have seen."

He said this year's session was beneficial to the universities.

"I think it was probably a little tougher," he said. "I think they got what they expected and little more."

"They always ask for so much that they end up getting more than they expected," Cooper added.

In other legislative matters, Gov. Bruce Babbitt signed legislation providing exemption from the Arizona Teacher Proficiency Exam or the Pre-Professional Skills Test for education college students Friday.

Students who completed one or more courses in the education colleges at ASU, NAU and U of A will be admitted into the colleges without having to pass the ATPE or the PPST. The students would be required to pass the exam before receiving their teacher certification.

The exemption will be implemented until January 1986.

# nation/world

state  
press

## Gorbachev promises to help Ortega with Nicaraguan economic troubles

MOSCOW (AP) — Soviet leader Mikhail S. Gorbachev promised Nicaraguan President Daniel Ortega assistance on urgent economic problems Monday. But the Kremlin did not say if it would give Ortega the emergency cash he wants.

Official Soviet reports focused instead on Soviet and Nicaraguan complaints about U.S. policy in Latin America, accusing the Reagan administration of turning the region "into a dangerous seat of tension."

The United States has accused the Sandinistas of imposing a Marxist dictatorship on Nicaragua. A Reagan administration request for \$14 million to aid rebels fighting the Sandinistas was rejected by the House of Representatives last week.

A Nicaraguan source, who requested anonymity, said Ortega came to Moscow seeking \$200 million in emergency cash to counter U.S. economic sanctions imposed over the past four years and pay for food and other necessities.

Reports from the official Soviet news agency Tass did not state whether any Soviet loans or grants were agreed to during Ortega's Kremlin meeting with Gorbachev.

Tass said Nicaraguan and Soviet officials signed an agreement to set up a trade and economic cooperation panel that "to improve the coordination of bilateral cooperation in the economy and broaden its field."

Ortega's visit to the Soviet Union is his second this year and is the key stop in a tour of the Communist nations. He arrived Sunday, and is planning to visit the Soviet Union's six East European allies during his two-week tour.

## Assembly approves bill locating nuclear waste dump in California

SACRAMENTO, Calif. (AP) — Over the objections of Republicans and the Democratic Senate author, the Assembly approved a bill Monday that would locate a low-level nuclear waste dump in northeast San Bernardino County.

The bill by Sen. Alfred Alquist, D-San Jose, originally just ratified an agreement with Arizona to establish a two-state dump in California.

However, Democratic lawmakers added an amendment last week to specify that the site would be in northeast San Bernardino County — in the districts represented by a Republican senator and Republican assemblyman.

The bill was returned to the Senate by a 51-25 vote. Alquist plans to send the bill to a two-house conference committee to attempt to remove the site amendment.

By a separate 42-34 vote, the Assembly voted to kill an attempt by Republican Assemblyman Don Rogers of Bakersfield to remove the San Bernardino County amendment.

The bill is necessitated by a federal law that says states must enter into multi-state compacts to dispose of low-level nuclear wastes by Jan. 1, 1986, or be forced to accept such wastes from other states. With such a compact, the states can take only wastes from the member states.

Low-level wastes are contaminated material from nuclear industries, laboratories and hospitals.

## Israeli military pulls out of Tyre; Moslems, Christians keep fighting

BEIRUT, Lebanon (AP) — Israeli soldiers pulled out of Tyre on Monday and heavy fighting broke out when Moslem militiamen attacked Christian forces corralled in a mountain enclave in south Lebanon.

In Beirut, Moslem and Christian gunmen skirmished in the center of the city after night-long street battles. Rival Christian leaders convened an emergency session in east Beirut in an effort to close ranks against what they consider a Moslem threat to Lebanese Christians.

The Israeli withdrawal from Tyre, the last major city Israel had occupied since 1982, completed the second phase of the pullback that is to be completed in early June.

## State plan would enact toughest child molestation laws in country

PHOENIX (AP) — Arizona child molesters would face the toughest prison sentences in the United States, under a compromise plan announced Monday by the House and Senate judiciary chairmen.

The plan would set a 20-year presumptive prison term, on a first offense, for an adult who has intercourse with a child under age 15.

Senate Judiciary Chairman Peter Kay, R-Phoenix, said if the proposal is enacted into law, it "undoubtedly would be the strongest legislation against sexual offenders against children in the country."

The measure includes prison sentences similar to those previously introduced by Kay. He and House Judiciary Chairman Jim Skelly, R-Scottsdale, had feuded over the issue for months, but Kay eventually endorsed Skelly's plan that would have set mandatory prison terms three to five times longer than if the victim had been an adult.

Gov. Bruce Babbitt, supported by GOP Maricopa County Attorney Tom Collins, vowed to veto the measure on grounds it was so tough it would be counterproductive.

Babbitt has said he supported long prison terms for the most dangerous offenders, but he contended Skelly's original plan did not provide enough flexibility to prosecute lesser offenses.

All of the sentences proposed in the plan could be lengthened or shortened due to aggravating or mitigating circumstances, but once imposed, a sentence could not be shortened by parole or work release.

Anyone convicted twice of sexually abusing a child would be placed under lifetime parole supervision after release from prison.

## Space shuttle launch successful despite equipment malfunctions

CAPE CANAVERAL, Fla. (AP) — Seven astronauts and a mini-zoo of monkeys and rats rocketed away from Earth Monday aboard the space shuttle Challenger on a scientific expedition, but they failed in their attempt to release one of two tiny satellites.

The launch, the second this month for the National Aeronautics and Space Administration, was nearly perfect and the first of the satellites ejected properly from a canister in the cargo bay. But two tries failed to dislodge the second.

The satellite had been intended for use by the Navy to relay signals from remote sensors like those on ocean weather buoys.

It was not immediately known what caused the failure, but there had been prelaunch worry that the batteries — the \$2 drug-store variety 9-volt kind used in transistor radios — might not work after prolonged time in space.

The crew was able to close the canister that had contained the failed satellite, averting a need for a space walk to tie the lid down for reentry.

The satellite that was released is designed to calibrate air traffic control radars. It was built by students at two colleges in Utah and one in New Mexico.

## Attorney may interview reporter in relation to cocaine case, judge says

KINGMAN (AP) — The defense attorney for one of four men charged in a \$1 billion cocaine case has a right to interview a newspaper reporter who witnessed the arrests, Mohave County Superior Court Judge Gary Pope ruled Monday.

Attorney Bob Bula, who represents Edmund Valencia, told Pope he wants to interview Betsy Gillis, a reporter and photographer for The Mohave Daily Miner, who was at a roadblock where Valencia and three other men were arrested last November.

Records indicated Gillis was the only witness to the arrests except for county authorities.

### GOING HOME FOR THE SUMMER? Relax While You Are Away

Ideal for storing:  
•Stereos, TVs, camera equipment  
•Bicycles and mopeds  
•Skis and camping gear  
•Books and clothing

**SENTINEL MINI STORAGE**  
749 E. Gilbert Drive  
(1/2 mile north of University on Rural Rd.)  
967-0022

### ATTENTION JEWISH STUDENTS (recorded message)

PLEASE CALL  
941-9268

## drycleaning

McKELLIPS & SCOTTSDALE RDS. (ALPHA BETA SHOPPING CTR.)

## STUDENT DISCOUNT 25% OFF DRY CLEANING

SHOW I.D. CARD WITH INCOMING ORDER

## THE HAIR HUTTERS

Your Campus Hair Care Center

709 S. Forest Ave., Tempe

North of University • Behind the  
Chuck Box • In Oxford Square

968-5946

**\$4.00 OFF**

With This Ad  
Expires June 1, 1985.

### REGULAR PRICES

- Shampoo
- Condition
- Precision Cut
- Blow Dry

**MEN \$13 • WOMEN \$15**

OPEN MONDAY THROUGH SATURDAY.  
TUES., WED. & THURS. TILL 9 P.M.

## CONTEMPLATING ABORTION?

SEE THE MOST TALKED ABOUT FILM OF THE DECADE

## THE SILENT SCREAM



Wednesday, May 1, 1985 at 12:30 p.m. & 1:15 p.m. A 15-minute discussion will follow each showing. Film presented by S.P.I.R.A.

MU MOHAVE RM. 222 • Everyone invited to attend.

## Gino's delivers.



We're open for lunch!

Compare the high quality and everyday low prices of our pizzas and subs. We use only the finest natural ingredients.

### FREE for lunch

- 2 12-oz. soft drinks with purchase of 12" pizza
- 3 12-oz. soft drinks with purchase of 14" pizza
- 4 12-oz. soft drinks with purchase of 16" pizza

Valid 11 a.m.-3 p.m. Not valid w/any other coupon.  
Expires 5-7-85.

### FREE

12" Cheese Pizza

With purchase of large 16" pizza. Not valid with any other coupon.

Expires 5-7-85

### FREE

Quart of Coke

With purchase of 14" or 16" pizza. Not valid with any other coupon.

Expires 5-7-85

## GINO'S PIZZA

966-4666

822 S. Mill Avenue

Open Mon. 4 p.m.-midnight

Tues.-Thurs. 11 a.m.-midnight

Fri.-Sat. 11 a.m.-2 a.m.

Sun. noon-midnight.

# collage

**Chi Alpha Christian Fellowship** meets at 7 p.m. Tuesdays in Danforth Chapel for prayer, worship and Bible study.

**Baptist Student Union** meets Tuesdays at 7:30 p.m. at 1322 S. Mill Ave.

**Fellowship of Christian Athletes** meets at 7:30 tonight to hear Chicago Bears linebacker Al Harris in the Salvation Army Building at University Drive and Myrtle Avenue.

**Office of Student Life** offers evening services for students seeking counseling, general information and accurate referrals in the MU from 5 to 7 p.m. Tuesdays and Wednesdays.

**Travel and Tourism Students Association** will present the "ASU Centennial Travel Show" from 10 a.m. to 2 p.m. Wednesday in the lower level of the MU.

**The Whitefield Society** meets from 11:40 a.m. to 12:30 p.m. every Wednesday in the "Upper Room" at Danforth Chapel for a discussion on the book of Romans and from 4 to 5 p.m. Thursdays in Noble Science Library to discuss Genesis 1 and 2. The group also meets from 11:40 a.m. to 12:30 p.m. Mondays in the "Upper Room" for "The Quest for God's Will - An Investigation," which will examine the problems in determining God's will for one's life.

**PIES** offers a Chronic Illness Support Group at 2 p.m. every Wednesday in Student Health Center, room 154.

**Hispanic Business Students Association** will have a special elections meeting at 3:30 p.m. Wednesday in the Business Administration Building, room 253. Absentee ballots are available in the general business department, room 319.

**ASU Forensics Team** will hold its organiza-

tional meeting for the 1985-86 season at 3:30 p.m. Wednesday in Stauffer Hall, room 335. People with past experience in debate, acting, public speaking or interpretation are invited to join the squad. Further information is available by calling 965-3825.

**All Saints Catholic Newman Center** holds Bible studies at 3:30 and 7:30 p.m. every Wednesday.

**ASU Fencing Club** meets at 8 p.m. Wednesdays and 11 a.m. Sundays in PE Building West, room 113.

**Liberal Arts College Council** will sponsor a reception in Dean Robert Bininger's honor at 3 p.m. Thursday in the MU Alumni Lounge.

**Spirit of the Senses** will present "Birth and the Spiritual Bond" at 3:15 p.m. Thursday in the MU Mohave Room, featuring the perspectives of new parents, a mother of teenagers and a certified midwife.

**SOPHOS** will have a Summer Sendoff at 4 p.m. Thursday at the Lunt Avenue Marble Club in Tempe.

**Black Student Union** will meet from 4:30 to 5:30 p.m. Thursday in the MU Santa Cruz Room.

**ASU Investors Fund** meets at 5 p.m. every Thursday in MU, room 209. All are welcome to attend.

**University Toastmasters** meet at 5:10 p.m. every Thursday in the MU Coconino Room to improve public speaking skills.

**APES** will meet at 7 p.m. Thursday in the Geology Museum on the first floor of the Physical Science Building, F-wing.

**Delta Sigma Pi** business fraternity will have a new officer transition and planning session meeting at 9:30 p.m. Thursday in the MU Yavapai Room.

**RUNDLE'S LIQUORS & MKT.**  
730 S. MILL  
Corner Mill & University Ave.

**LITTLE KINGS ALE** 8-pack \$2.97  
**Pabst "BOCK" Beer** 6-pack \$2.36  
**ANDRE CHAMPAGNES** 750 ml \$2.97  
**PLAYBOY Used Magazines** \$ .75

Haagen Dazs Natural Ice Cream, Adult Magazines, Groceries, Ice, Wines, over 40 Imported Beers.

**967-9079**

**Speed Listening**

Cut your listening time in half without missing a word.

**VSC®**

**Carter Office Supply**  
Alpha Beta Shopping Center  
Baseline at Rural Road  
839-3926

10% discount with student I.D.



**L.A.C.C.O.S.**

## Liberal Arts Students Faculty and Staff

You are invited to a reception honoring **Dean Robert J. Bininger**

*Retiring Associate Dean of the College of Liberal Arts*

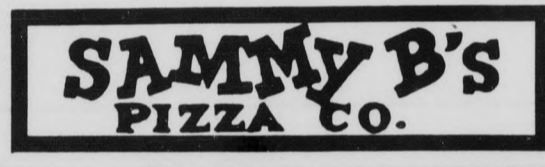
Date: Thursday, May 2, 1985  
Time: 3 p.m.  
Place: The Alumni Lounge, 2nd Floor Memorial Union

SPONSORED BY THE LIBERAL ARTS COLLEGE COUNCIL OF STUDENTS: YOUR STUDENT GOVERNMENT

## Come Help Us Celebrate Our New Liquor License

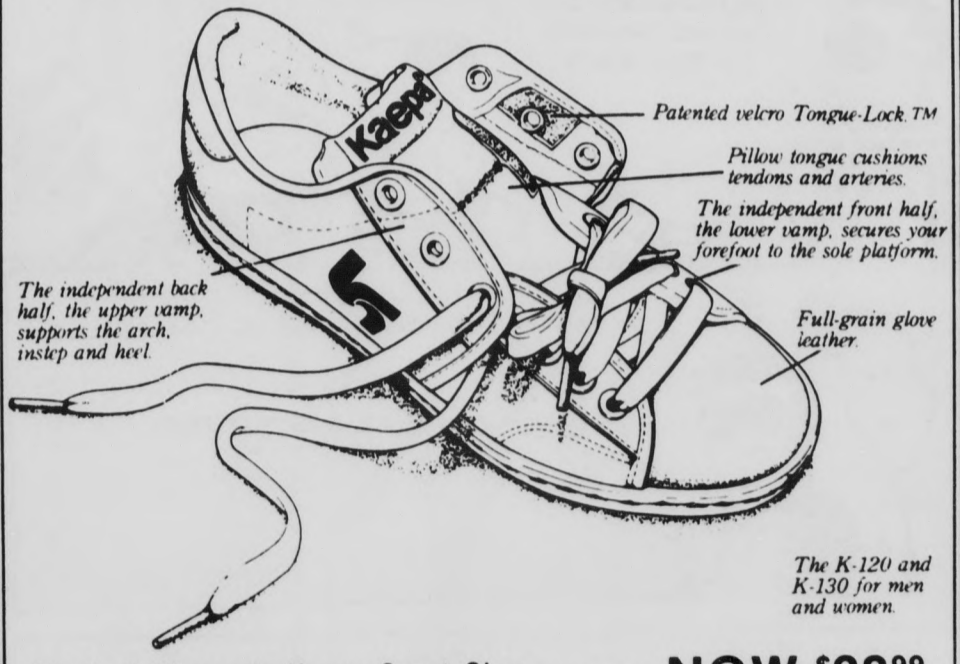
60 oz. Pitcher Beer or Pepsi w/ 14" cheese pizza for \$4.99  
Expires 5-30-85.

Happy Hour 2-7  
Pitcher Bud & Coors \$2.25



**TEMPE**  
1420 N. Scottsdale Rd.  
(Just South of McKellips)  
945-8850 • 945-8264

## SPORTS WEST



Men's & Women's Kaepa Court Shoe Reg. \$44.99 **NOW \$38.99**  
Also ... Ladies' Kaepa Aerobic Shoe Reg. \$39.99 **NOW \$32.99**

894-1799  
Across from Flakey Jakes in **The Cornerstone** ESTABLISHED 1964

## ANOTHER TUESDAY AT DONNY O'S



**WELL, WINE & DRAFT SPECIAL TONIGHT 8:30-11:30**

**SPORTS PLAYOFFS • NHL HOCKEY • NBA BASKETBALL LIVE VIA SATELLITE • BIG SCREEN TV • NIGHTLY**

Only at

**DONNY O'BRIENS**  
222 S. MILL • 968-0527

state press

Blessed is the nation whose God is the Lord... — Psalms 33:12

opinion

America's decline due to secular humanism

Len Munsil Editor



Don't tell my professors, because they know how far behind I am. But I've just completed an interesting book...

Speaking of my departure, a rumor has been sweeping campus that I was shot at the end of last week.

At any rate, the book I was speaking of is entitled "The Second American Revolution..."

The book starts a person thinking about the role of religion in American life, and the acceptance of Judeo-Christian ethics...

ty. It seems the United States is not headed for tolerance and enlightenment, at least regarding Christianity...

The recent NBC mini-series "A.D." graphically portrayed the harassment and persecution of the world's first Christians.

Today, in some countries, that declaration will earn you the same fate as it did the apostles Peter and Paul.

We've seen ASASU President Ray Burnell criticized by two local weekly newspapers because he prayed before making decisions...

We've seen another candidate for an ASASU office criticized by his opponent for publicly discussing his Christian beliefs...

How the City of the Lord controls student government is beyond me — only five of 250 ASASU staff members are involved with that religious group.

One of the funniest moments of my semester came when the paradoxically named Howard Moses of KASR radio called and asked me to debate him about the City of the Lord.

"You can come on the air and deny it if you want to," he said.

Thanks Howard, but a simple call to anyone affiliated with the City of the Lord would have confirmed that they've probably never even heard of me.

But my question is this — what difference does it make? Suppose I was part of the City of the Lord. Why should I have to go on ASU's radio station and defend my membership in the group?

The reaction of students to these smears is representative of the United States today; we are suddenly finding fault with anyone in the public sector who isn't an agnostic or an atheist.

And that is the point of "The Second American Revolution." Judeo-Christian ethics and morals have been removed from their original place as the centerpiece of American society, to be replaced not by

tolerance, but by a dogmatic secular humanist philosophy that is downright anti-religion — especially Christianity.

This intolerance toward religion has been seen in a number of Supreme Court decisions that interpreted the Constitution as demanding a strict "wall of separation" between church and state.

In particular, the First Amendment states; "Congress shall make no law respecting an establishment of religion, or prohibiting the free exercise thereof." The word "Congress" has been interpreted to mean the federal government.

Quite a different interpretation than that made by the Supreme Court, a group of nine men who have decided that display of the 10 commandments in a public school violates the First Amendment.

Alexis de Tocqueville wrote midway through the 19th century: "America is still the place where the Christian religion has kept the greatest real power over men's souls; and nothing better demonstrates how useful and natural it is to man, since the country where it now has the widest sway is both the most enlightened and the freest..."

This nation's Founding Fathers always acknowledged the existence of a higher authority; it was their "Creator," not their fellow man, who endowed them with "certain unalienable rights."

letters

Bigotry pointed out by ace reporter Tulumello

Editor:

One thing can be said with certainty (sic) about Sherry Lowe and her recent column concluding, "the United States is no longer a melting pot." She's no closet bigot!

Mike Tulumello Class of 1978

Student seeks to expand mind by not reading paper

Editor:

I have found over the years that apathy would be synonymous to State Press. Your paper lacks intent, morality and fails to respect vast cultures and the many ideologies that exist in today's societies and among various campus groups.

A college campus is a place for mind expansion and not dogmatic views as portrayed by the State Press — I find it regretful that a college paper has such a narrow view.

I will no longer read your paper.

Tony Peters



STATE PRESS

LEN MUNSIL Editor
Managing Editor STEVE WATERSTRAT
City Editor W. TIM AHL
Asst. City Editor KIM SERTICH
Asst. City Editor SHERRY LOWE
News Editor ROSANNE DUPRAS
Opinion Editor GRAY T. ECHOLS
Wire Editor WHITNEY PETERSON

REPORTERS: Vickie Chachere, John Conway, Timothy Holland, Nicole Massie, Katy McGregor, Carri L. Mitchell, Doug Newman, Melissa Olson, Melissa Smyth
PHOTOGRAPHERS: Todd Green, Ron Kuczek Jr., Kip Williams
SPORTS REPORTERS: Brad Halvorsen, Michael Konz, Dean Obenauer
COPY EDITORS: Bob Heiler, Rebecca Kiessling, Mickaëlle Miller
STAFF ARTIST: Linda Schultzkump
CARTOONIST: Chip Sheean

The State Press is published Monday through Friday during the academic year except holidays and exam periods, at Matthews Center, Room 15, Arizona State University, Tempe, AZ 85287. Newsroom: 965-2292. Advertising & Production: 965-7572.

The State Press is the only newspaper exclusively published for and circulated on the ASU campus. The news and views published in this newspaper are not necessarily those of the ASU administration, faculty, staff or student body.

# ASU students asked to pitch in!

Editor:

I am writing this letter in hopes that fellow ASU students will understand the problem which I am addressing and decide to take the responsibility to do their part. This is my first year here at ASU, and I am very proud to say that I attend this university, but it did not take long to notice the problem we have with trash: somehow it does not seem to make it into the trash containers.

It is quite annoying to stroll through campus and see litter strewn all over our sidewalks and lawns. Even our fountain isn't exempt from a little trash now and then. Our sanitation

department can only do so much. It should be up to the students to make sure that our trash makes it into those green-and-white containers that seem up to now to have no real significance other than providing shelter for our friendly vagabonds displaced from "tent city" in Phoenix. I'm aware that it is a lot easier to just drop it on the ground and walk off, but wouldn't it be great if everyone took the time to walk that extra 10 feet? Let's all pitch in and show just how beautiful our school, which right now rests under a thin layer of trash, can truly be.

Todd Anderson  
Sophomore, Business Management

## BLOOM COUNTY

by Berke Breathed



Dr. Thomas Berndt accepts auto insurance as payment in full.

### "Gentle Therapy Available For Car Accident Victims"

Months ago you were involved in a minor car accident. The hospital released you. They said the minor aches would go away. Now you suffer with neck pain, back pain and headaches. Even a minor accident can cause injuries which may not be immediately noticed. And just because you walk away from an accident does not mean you have escaped problems. Call Dr. Thomas Berndt for an immediate examination after any car accident. Dr. Thomas Berndt accepts all auto insurance as payment in full. Concentrating his concerns with Auto Accident Injuries.

**Dr. Thomas Berndt**  
Chiropractic Physician  
966-0777

1000 E. Apache Blvd. Suite #107, Tempe © 1983

## One test where only you know the score.

(Check One)

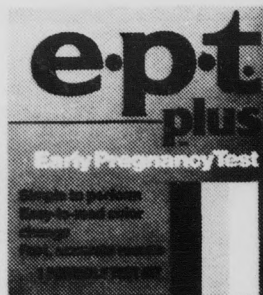
Yes No

Do you want to be the only one who knows when you use an early pregnancy test?

Would you prefer a test that's totally private to perform and totally private to read?

Would you like a test that's portable, so you can carry it with you and read it in private?

And how about a simple, one-step test with a dramatic color change that's easy to read and is 98% accurate?



If you checked "Yes" to the above, EPT PLUS is for you. Use it, and only you will know your test score.

**\$10**  
Introductory Offer  
Complete Style

**1** FIRST PLACE HAIRCUTTERS

**966-1391**  
905 E. LEMON

## Beverage Island

Refresh Yourself with a



7:30 a.m.-1:30 p.m.

Offer good through 5-17-85.

**MILL AVENUE TRAVEL**

LOW FARES FROM PHOENIX:

New York	\$149
Dallas	\$89
Chicago	\$149
San Francisco	\$75
Portland	\$119
Miami	\$139
Minneapolis	\$119

Fares subject to change

CREDIT CARDS ACCEPTED

**CALL NOW AND SAVE!**  
966-6300

# Graffiti

Introducing... **Stroh's "DRINKING BUDDIES"**

**WEDNESDAY, MAY 1 • 9 P.M.**

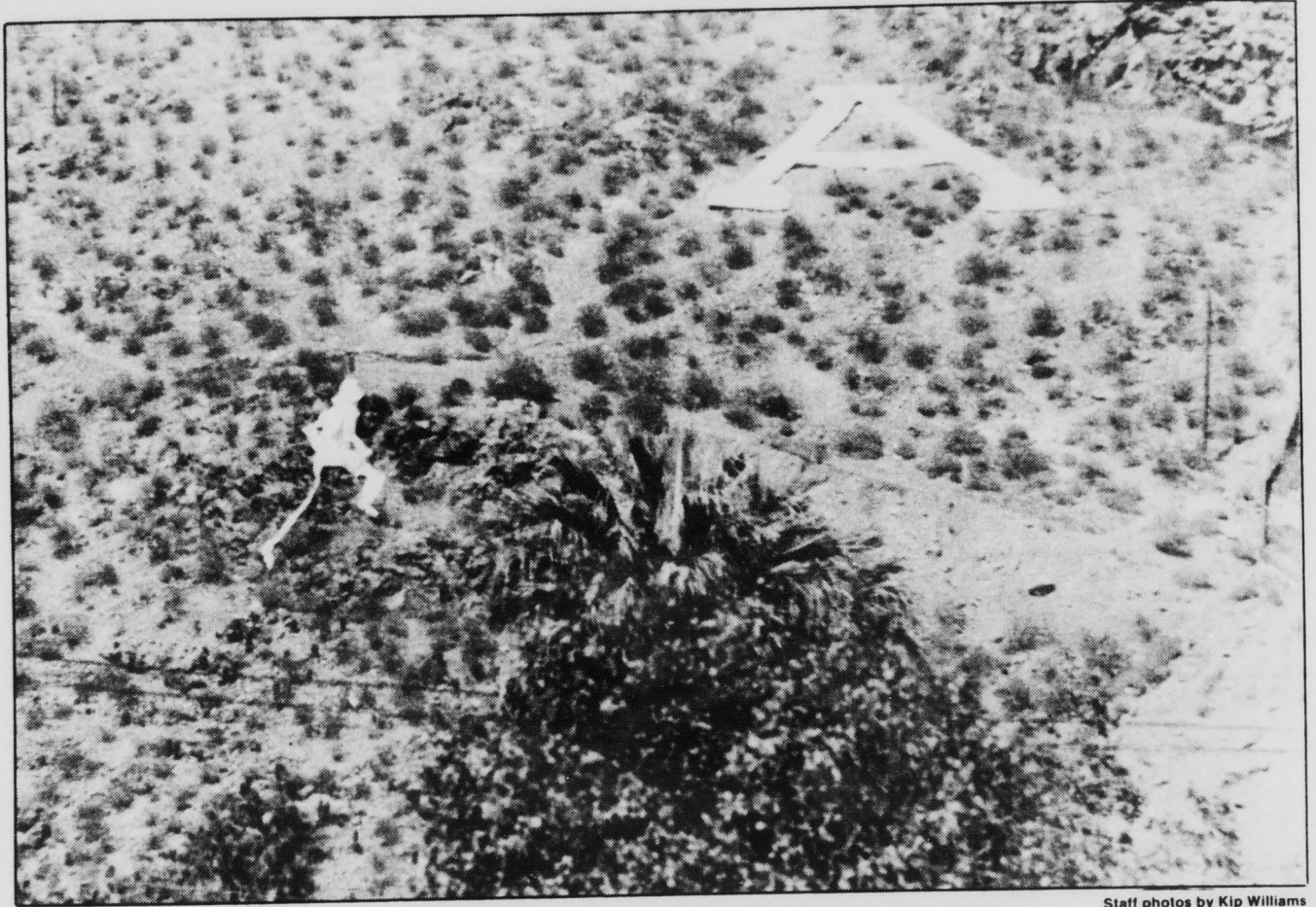
Find your Stroh's Drinking Buddy Wednesday night by matching your Stroh's number on somebody else. Great prizes for those who find their "Stroh's Drinking Buddy." 2 for 1 Stroh's all night.

**Fridays:** During happy hour, come in for a slice of Graffiti's 13-ft hoagie. Every Friday during happy hour.

415 S. Mill Ave.  
Downtown Tempe  
Dial "W-O-T-F-U-N-N"

# Mountain man

## Student builds aluminum foil silhouette



Staff photos by Kip Williams

Above, runners have been seen on Tempe Butte from time to time, but never an aluminum man. The display was part of art education major Vicki Ayres-Hill's three dimensional design class. At right is freshman chemical engineering major Eric Starks' project, which can be seen on Myrtle Avenue, just west of Stauffer Hall.

<b>mann</b> <b>\$3.00 BARGAIN PRICE</b> <small>ALL SHOWS BEFORE 8 P.M. NEW TICKETS TO SATURDAY &amp; SUNDAY FIRST SHOW ONLY</small>	
<b>SUN DEVIL 6 829-0344</b> The Cornerstone • Rural & University BEVERLY HILLS COP (R) 1:30, 5:30, 9:30 COMPANY OF WOLVES (R) 3:30, 7:30 MASK (PG-13) 12:15, 2:30, 5:00, 7:30, 10:00 STICK (R) 12:30, 2:45, 5:00, 7:15, 9:30 JUST ONE OF THE GUYS (PG-13) 12:15, 2:30, 4:45, 7:00, 9:15 CARE BEARS (G) 12:15, 2:00, 3:45 FRATERNITY VACATION (R) 5:00, 7:00, 9:00 SURE THING (R) 1:15, 5:15, 9:15 BREAKFAST CLUB (R) 3:15, 7:15	<b>SUPERSTITION 5 834-5767</b> MESA AT S. LONGMORE & SUPERSTITION MASK (PG-13) 1:45, 4:20, 7:00, 9:40 FRATERNITY VACATION (R) 1:15, 3:15, 5:10, 7:15, 9:25 NINE DEATHS OF THE NINJA (R) 12:45, 2:50, 4:55, 7:00, 9:10 AMADEUS (PG) 1:30, 4:35, 7:45 BEVERLY HILLS COP (R) 1:00, 3:05, 5:10, 7:20, 9:35
<b>MANN POCA FIESTA 4 835-0404</b> MESA AT 1020 WEST SOUTHERN BREAKFAST CLUB (R) 1:00, 4:35, 8:10 SURE THING (R) 2:50, 6:25, 10:00 WITNESS (R) 12:30, 2:50, 5:10, 7:30, 9:50 CREATURE (R) 1:45, 3:45, 5:45, 7:45, 9:45 BABY (PG) 12:45, 4:15, 7:15 GIRLS JUST WANT TO HAVE FUN (PG-13) 2:35, 6:05, 9:35	<b>CHRIS-TOWN 5 249-2843</b> 5707 NO. 19TH AVE JUST ONE OF THE GUYS (PG-13) 12:45, 2:45, 4:45, 7:00, 9:15 LOST IN AMERICA (R) 12:45, 2:45, 4:45, 7:00, 9:15 LADY HAWKE (PG-13) 11:45, 2:00, 4:15, 6:45, 9:30 BEVERLY HILLS COP 12:00, 2:30, 5:00, 7:15, 9:45 CARE BEARS 11:45, 1:30, 3:15 COMPANY OF WOLVES (R) 5:00, 7:15, 9:45

\*Separate admissions for each feature

**GERRY SPECIAL THIS WEEK \$27.00**  
 Reg. \$33 With this coupon. Expires 4-27-85.  
 NATURAL & WHITE

**THE LOFT** NAME BRAND SHOES  
 707-D S. Forest Tempe  
 966-1772

**The foxiest valley girls buy their earrings @ Dollars!**

<b>BELTS \$1.00 EA. OR BUY 5 GET ONE FREE</b>
<b>EARRINGS \$1.00 PR. OR 3 PAIR FOR \$2.50</b>
<b>BRACELETS GOLD &amp; SILVER 18PC. SETS \$1.50</b>
<b>TWISTED BEADS 50¢ STRAND BEAUTIFUL SHELL CLASPS \$1.00</b>

Dollar\$ has more than just the most interesting earrings in the Valley. It has the lowest prices.

414 S. Mill #207 Tempe (above Spaghetti Co) 829-1127

**DOLLARS FASHION ACCESSORIES**  
 Dollar\$ It's not just our name, it's our price!

**Terrace Road Apartments**

**GREAT SUMMER RATES RESERVE NOW FOR FALL**

1/2 block from Campus, Huge, well-furnished 1-bedroom, 1-bath, and 2-bedroom, 2-baths, all utilities included, plus large pool, spacious laundry facilities, and cable TV.

**950 S. Terrace Rd. 966-8540**

**COUPON**

**Papa Jay's**  
 New York Pizza and Video Arcade  
**FAST FREE DELIVERY!** (LIMITED FREE DELIVERY AREA)  
 804 S. ASH (UNIV. & MILL)

<b>#1 Sun Devil Combo</b> Any large pizza, your choice of up to 4 toppings <b>ONLY \$6.95</b> plus tax Good on delivery, take-out or dine-in. Expires 8-31-85.	<p><b>BEFORE YOU ORDER FROM DOMINO'S, CHECK THEIR REGULAR PRICE OR COUPON PRICE</b></p> <p><b>GUARANTEED OUR PRICES ARE CHEAPER AND OUR PRODUCT IS MUCH BETTER</b></p> <p><b>966-4292 OR 966-1003</b></p>	<b>#2 Sun Devil Combo</b> Any medium size pizza with your choice of up to 4 toppings <b>ONLY \$5.95</b> plus tax Good on delivery, take-out or dine-in. Expires 8-31-85.
<b>#3 Sun Devil Combo</b> Any small size pizza with your choice of up to 4 toppings <b>ONLY \$4.95</b> plus tax Good on delivery, take-out or dine-in. Expires 8-31-85.	<b>#4 \$2 OFF</b> Any large Sicilian style pizza* with two or more toppings *Extra thick Good on delivery, take-out or dine-in. Expires 8-31-85.	

**CENTENNIAL TRAVEL SHOW**  
 Planning a Summer Trip?

Come meet various representatives from airlines, hotels, travel agencies, and major attractions around the state.

Wednesday, May 1, 10 a.m.-2 p.m. in the Lower North Courtyard of the MU.

To win a round-trip airfare to Las Vegas, fill out the attached coupon and bring to the travel show.

Name \_\_\_\_\_  
 Phone \_\_\_\_\_  
 ASU I.D. \_\_\_\_\_

# Silhouette as 3-D design assignment

By DOUG NEWMAN  
Staff Writer

The aluminum foil silhouette of a man on the side of Tempe Butte, which roused the curiosity of many people who looked at it Monday, is part of an ASU art class assignment, its creator said.

Art education sophomore Vicki Ayres-Hill, who was responsible for the work, said she "wanted the whole campus to see it."

Eric Borrello, Hill's instructor, said the work was part of an assignment for a three-dimensional design class.

Borrello, an ASU art graduate assistant, said, "the assignment was for the students to find a site and create a sculptural installation — something that interacted with its environment."

"I really wanted them to take some initiative," he said. "I wanted to make them aware of non-traditional art forms."

Hill said the "man" is about 50 feet tall and about 200 feet up the mountain.

The sculpture is made from aluminum foil and plastic, she said.

"I had the option of doing a site sculpture or something with

mirrored glass," she said. "I wanted to do both so I used the foil, which is reflective."

Hill said she attached the foil to the plastic for sturdiness.

"I built it in several pieces," she said. "I made the head, the chest, the legs and the arm separately."

"I made the pieces at home and assembled them right at the site," she said.

The whole project took about 15 hours to complete, she said.

"I talked to someone in the city manager's office before I put my project on the mountain so I would not be arrested," she said.

"I'm glad she went through the right channels," Borrello said. She said the inspiration for the project came from research she had done on a sculptor named Jonathan Borofski.

"Borofski painted a running man on the Berlin Wall," she said.

Hill said, "I do not feel an artist should allow his imagination and creativity to be limited in any way."

"That's why I made my 'man' as big as possible," she said.

"I am glad my students are this ambitious," Borrello said.



**TRAVELING?  
UP TO FOUR  
PEOPLE**

Deliver a car for us for cost of gas only. No rental charge. First tank free. Connections for 33 years through 85 offices in U.S. and Canada. For complete information call

**952-0339  
AUTO DRIVEAWAY  
COMPANY**

**BUY • SELL • TRADE**

Your books at Changing Hands. For quality cloth and paperbacks (no textbooks, please) we pay 30% of our re-sale price in cash or 50% in trade-in credit which may be used to purchase anything in the store. (Sorry, no trade-ins on Sat. or Sun.)

Browse through our three floors of

- New & Used Books
- Art Prints & Posters
- Calendars & Cards
- Handbound Journals

M-F 10-9 SAT 10-6 SUN 12-5

**CHANGING HANDS  
BOOKSTORE**

414 Mill Avenue 966-0203  
Old Town Tempe

**RESUMES**

Professionally typeset inplant from your copy.  
Printed, **NOT** copied!  
Matching Envelopes!

**The Impression Makers**

21 East 7th Street • Tempe  
1/2 blk. E. of Mill, 1 blk. N. of Univ. Dr.

**967-2180 • 967-0120**

**GRAND OPENING SPECIAL**

- Resident manager on site
- Rental self-storage lockers
- Outside RV storage
- Rental mail boxes
- Copying machine
- Keys made

**U-Store-It U-Lock-It U-Keep-The-Key**

**Campus Mini Storage**

1020 W. 1st Street, Tempe

EASY ACCESS • 1 Floor Level Only • Variety of Sizes

**968-3133**

RENT ONE MONTH GET THE SECOND MONTH **FREE!**

**Affordable Cleaners**

**ASU SPECIAL**

ANY GARMENT **89¢** ea.  
Dry Cleaned & Pressed *No limit*

Excluding suede, leather, and wedding dresses. Coupon must be presented when garments are brought in.

**3139 S. MILL or  
847 W. UNIVERSITY**  
(SE Corner of Univ. & Hardy)

EXPIRES MAY 31, 1985.

**SAVE \$5<sup>00</sup>**

on the bigger look of personal poster prints in beautiful frames.

Turn your favorite 35 mm color photos into gorgeous 20 by 30-inch personal poster prints from Kodak's own labs. Choose from a variety of attractive frame styles. Just bring us your 35 mm color negatives or slides. Special savings April 15-May 15, 1985 only, so see us today for details.

Reg. \$17.95  
**Special \$12<sup>95</sup>**

**Sunset Camera**

Tempe Center • Mill & University • 829-0424

**FERRARA HAIR FASHIONS**

Crystal NAIL TIPS with overlay **\$25**  
Reg. \$40

WASH & WEAR PERM **NOW \$25**  
Reg. \$45  
Includes cut & conditioner

CELLOPHANE **NOW \$15**  
Reg. \$17.50

2 for 1 HAIRCUTS **\$10**

Mill & Southern  
Danelle Plaza  
Next to Pumpkin Patch Nursery  
**967-5952**

First time customers only, with coupon. Expires 5-31-85.

**COUPON**

**WAREHOUSE DELI & PUB**  
Estab. 1975  
**"GOOD FOOD & DRINK"**

**SPECIALS LUNCH & DINNER**  
MON.-FRI.  
10:30-2 p.m.  
Sandwich of the Day with Homemade Fries  
**ONLY \$1.99**

**HAPPY HOUR**  
MON.-FRI.  
10:30 a.m.-7 p.m.

**MOLSON GOLDEN 61¢** on tap Mon.-Thurs 2-4 p.m.

**IMPORTS — 94¢**  
**DRAFT BEER**  
Pitcher Glass **\$1.99 49¢**

**WINE**  
liter Glass **\$1.99 49¢**

**WINE COOLER**  
Pitcher Glass **\$2.75 65¢**

**LIVE ENTERTAINMENT NIGHTLY**  
(No Cover, No Min.)

**130 E. UNIVERSITY DR. AT FOREST**  
**966-7788 • TEMPE, AZ**  
Your Hosts: "The Family"

**BREAKFAST**  
SERVED MON.-FRI. 6 a.m.-10:30 a.m.  
**99¢**  
3 EGGS, HOMESTYLE POTATOES, TOAST, BUTTER & JAM  
CHECK OUT OUR OTHER BREAKFAST ITEMS

**HOOTERS**

CHICKEN WINGS **ONLY 15¢**

LONG ISLAND ICE TEA **\$1.50**

LIGHT BEER **60¢**

**GREAT PIZZA**

## police report

A resident of the Phi Gamma Delta fraternity house burned his hands and right thigh Sunday night when an explosive device he was holding blew up, police said. He was taken to Tempe St. Luke's Hospital where he was treated and released. The device resembled a cardboard cylinder with a piece of string sticking out of one end and a metal hook out of the other.

Police said the ASU student told them he found the cylinder in a box in his room about two months ago and placed it in a glass jar. Upon taking it out of the jar, the device blew up with "a big explosion like an M-80," police said the student told them.

Police are referring the matter to the County Attorney's Office for investigation.

A fire started in Room 537 of Palo Verde West Hall early Friday morning when someone stuck a firecracker underneath a student's door, police said. The fire burned four articles of the student's clothing and the floor tile in his room, causing \$50 in damage.

University Police are investigating the disappearance of approximately \$1,800 in advertising receipts from the *State Press*, Lt. Craig Emanuel said.

"Records are showing a discrepancy in the amount mentioned and we're in-

vestigating," Emanuel said. "This investigation is an audit. Right now we're still seizing the records."

Emanuel said there is one suspect in the investigation who works at the *State Press*, but she left the state and police have not been able to locate her.

Police Chief C. Russell Duncan said, "She is an investigative lead. We haven't got the finger of guilt pointed at that individual. We think that that person may have had the time and opportunity, but we don't know."

According to Manager of Student Publications Gil Neal, at least two advertisers were sent bills for ads that they had already paid for.

A secretary for Student Publications could not find the receipts, but remembered at least one instance in which an advertiser had paid cash over the counter for an ad.

In other activity, University Police reported the following incidents in the 48-hour period ending at 5:30 a.m. Monday:

•A student twisted her left ankle when she lost her footing while exiting the stage during a performance at the Lyceum Theater Sunday night, police said. She was taken to Tempe St. Luke's Hospital, where she was treated and released.

— MELISSA SMYTH

## YOU MAKE THE CALL



2 for 1 on All Call  
and premium liquors

SPORTS PLAYOFFS • NHL HOCKEY • NBA BASKETBALL  
LIVE VIA SATELLITE • BIG SCREEN TV • NIGHTLY

HAPPY HOUR FROM 4-7  
2 for 1 WINE, WELL & 75¢ DRAFT — TODAY'S SPECIAL PIZZA

**DONNY O'BRIENS**  
222 S. MILL • 968-0527

PROPER DRESS REQUIRED



SPECIAL BY  
**AUGUSTO**

PERMANENT WAVE **\$35<sup>00</sup>**  
Reg. \$65

FROSTING - HIGHLIGHT **\$35<sup>00</sup>**  
Reg. \$60

BY APPOINTMENT ONLY

**Augusto at (Lia of Italy)**  
7137 STETSON DRIVE (UPSTAIRS)  
**946-9697**

### STATE PRESS PRODUCTION DEPT. STUDENT HOURLY JOBS Fall Semester 1985

#### PASTE-UP TECHNICIAN II (Ad Paste-Up)

You must have class or job paste-up skills and be able to assemble all the elements of an ad: copy, artwork and borders, and produce camera-ready mechanicals. Must be attentive to detail, be extremely neat, reliable, precise, and be able to follow written directions.

#### DAYS & HOURS

Mon., Tues., Wed., Thurs., Fri.  
1:30 p.m. till approx. 5 p.m.

#### TYPESETTER II

You should have class or job experience operating a phototypesetter. You will monitor and process type from two systems concurrently. Some proofreading involved. Must be attentive to detail, be reliable and precise.

#### DAYS & HOURS

Mon., Tues., Wed., Thurs.  
6 p.m. till approx. 9:30 p.m.

**PLEASE DO NOT APPLY IF  
YOU CANNOT WORK THESE  
PUBLISHED HOURS.**

Applicants must pick up a referral form from Student Employment in Matthews Center, and a State Press production job application from the reception desk at the State Press office, basement of Matthews Center. Persons selected for interview will be called for interview during the week of April 30, 1985.

1985 SUN DEVIL  
BASEBALL IS...  
**COMIN'  
AT YA!**

*The Tradition Is  
Alive In 1985*

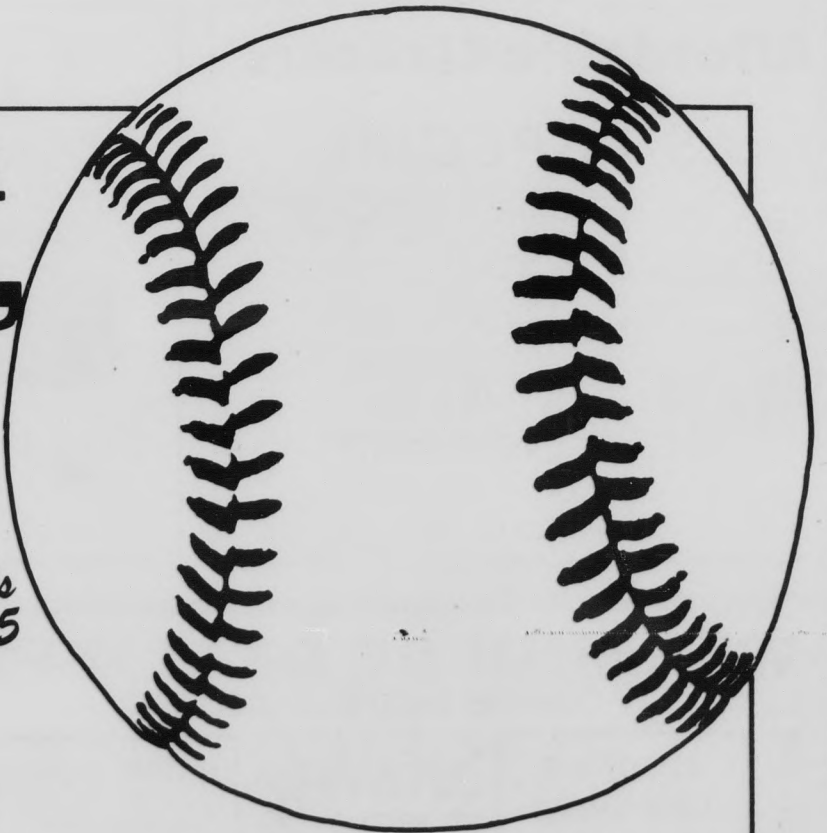
**ASU vs  
NEVADA-LAS VEGAS (DH)**

April 30 5:00pm

**ASU STUDENTS ADMITTED  
FREE WITH ID!**

Tickets Available at Diamonds  
& Sun Devil Ticket Office.

Register to win his/her  
Hondas plus an all-  
expense paid trip for  
two to the Major  
League All-Star Game  
sponsored by Sunny-  
slope Honda!



# sports

state  
press

## Women's golf team coasts to conference crown

By BRAD HALVORSEN  
Sports Writer

The ASU women's golf team may have played a few mediocre tournaments this spring, but when the stakes were high, it came through.

The ASU Gold team claimed its second straight WCAA championship Sunday at Anasazi Golf Course in Paradise Valley by breezing to a 11-stroke victory over UCLA with a final round of 301.

For the team, the victory meant the end of a 3½-month dry spell, in which the Devils placed high in nearly every tournament, but never won.

For ASU coach Linda Vollstedt, the victory was a relief.

"Yes, it was. When I woke up this morning, everything seemed a little nicer," she said.

"We've been up and down this spring. We've had a good tournament here and a bad tournament there. But our goal the whole way was to win nationals and hopefully we're on our way to doing that."

The Devils, ranked as one of the top three teams in the nation throughout the year, were anxious to display their potential after being embarrassed on the same course the week before in the Lady Sun Devil Invitational.

In that tournament, ASU placed a distant fourth behind Tulsa and WCAA foes UCLA and Stanford.

"We were fired up all last week," said Heather Farr, who placed third overall at 72-77-74-223. "We don't like getting beat."

Farr and Danielle Ammaccapane were named to the all-WCAA team after the tournament, along with Stanford's Kathy McCarthy and UCLA's Kristal Parker and Kay Cockerill.

Ammaccapane battled Parker for the lead throughout the entire three-day tournament, but could not overtake the Bruins despite shooting a two-over-par 71-73-74-218.

"I tried (to catch up)," Ammaccapane said. "I was really trying, but she played really well. I didn't lose it and she didn't give it to me. She won it."

Ammaccapane shaved Parker's lead by one stroke over the final two days, but Parker's course-record 68 on Friday was too much to overcome.

She shot an even-par 68-74-74-216, a vast improvement over her 72-80-78-230 at the Lady Sun Devil.

Parker said she easily could have lost to Ammaccapane because her putting on the final day was poor.

"I had a lot of potential birdie putts, eight-footers, that I was missing," Parker said. "But (Ammaccapane) missed her share too."

Ammaccapane agreed.

"It was just frustrating — frustrating all day long," Ammaccapane said. "No putts were going in and that's why I feel I didn't play well."

Defending champion Tina Tombs suffered a disastrous second round and finished next in line for the Devils in seventh place at 74-81-75-230.

"Tina had putting problems and lost her concentration," Vollstedt said of Tombs' middle round. "Then she shot a triple-bogey on 15, a par-three. That's not like her. She was playing out of frustration."

Senior Nancy Moen, who played her final home tournament for ASU along with Tombs, missed the top 10 by one stroke with her 11th-place finish of 79-77-78-234.

Moen's practice since the Lady Sun Devil consisted of hitting one bucket of balls at a driving range and practicing chipping and putting.

She and Heather Farr, who also was unable to practice, were involved in a minor accident after the first round of the



Staff photo by Ron Kuczek Jr.

ASU's Danielle Ammaccapane sinks a putt Sunday in the WCAA championships. Ammaccapane finished second in the tournament.

Lady Sun Devil. Both sustained neck strains.

"Every day I started out slow on the front (nine)," Moen said. "41-41-40 on the front — that's just terrible. But I made up for it a little on the back."

Heather Hodur, a freshman walk-on, completed ASU's lineup at the fifth spot. She entered the third round tied for seventh at 80-75-155, but recorded an 84 to fall well back into the pack.

The Devils shot a final score of 899, with UCLA next at 910. Stanford finished third at 932.

Southern California led the rest at 938, followed by U of A (953), San Diego State (978) and Cal State-Long Beach (1001).

The ASU Maroon team, which was not officially entered in the tournament, recorded a score of 960. Julie Cross and Libby Akers led the way at 241, followed by Tish Certo (243), Jane Harris (246) and Mimi Molina (253).

## Women tracksters place high in 4 events at Drake Relays

By MICHAEL KONZ  
Sports Writer

Among difficult competition, the ASU women's track team posted four top-five finishes at the Drake Relays in Des Moines, Iowa.

Senior Sharon Ware finished second in the 100-meter dash with a time of 11.57. Gwen Torrence of Georgia won the race in 11.53.

Mette Berger took fourth place in the 800-meter race in 2:07.72. Evelyn Adiru of Alabama won in 2:04.76.

Lynn Nelson took fifth in the 5,000-meters in a national-qualifying time of 16:20.89. Cathy Branta of Wisconsin won the race with a meet-record time of 15:31.18.

The ASU team of Ware, Pam Brown, Cathy Miller and Marbella Washington finished fourth in the 4x100-meter relay in 45.76, the slowest time this year.

Women's track and field coach Roger Kerr was pleased with Ware's performance in the 100-meters, but he said circumstances worked against her.

"I thought she ran well, but she was a little sluggish," Kerr said. "She wasn't smooth. I attribute that to two things. First, she normally runs the 4x100 first.

"Second, it was a big meet. There were 203 colleges, and when they've got a lot of people, it's run on a tight time schedule. They don't let you out on the track to warm up. She only came out 10 minutes before she reported in."

In the 4x100-meter relay, Ware ran the second leg behind Brown and again showed her speed.

"Pam Brown did not have a good start,

**'It has to be encouraging, because in (Krumme's) case, she'll place in the conference meet. In (Radford's) case, she'll be fighting for a victory.'**

and we were fourth (after the first leg)," Kerr said. "Sharon blew people away. We were first going into the fourth leg."

Miller, substituting for the injured Tamika Foster, was not able to hold the lead, and the team finished fourth.

Ware repeated her performance in the sprint medley.

"In the trials, Pam ran a good leg," Kerr

said. "When Sharon gave off (the baton), she was ten yards ahead."

The team was disqualified, however, because Washington ran outside of her lane. But according to Kerr, Miller's 60-second fourth leg prevented the team from qualifying for further competition.

Berger should have finished with a better time in the 800-meters, Kerr said.

"Mette was in a race she could have run in

2:05," he said. "All she had to do was hang on and relax. She got tight in the final 110 (meters) and they ran away from her. Her first seven-eighths were as good as they've been all year, but she tried to force it. I've told her a thousand times to keep her technique. She'll have to work on the mental aspect to be good."

Nelson has taken most of the pressure off

herself by running a national-qualifying time, according to Kerr.

"She'll be able to have fun this weekend (at San Diego State)," he said. "But she handles the pressure well."

Kerr said he only knows the results of the 10,000-meter race from the Mt. Sac Relays because assistant coaches Roy Aguayo and Sabrina Stern have not returned from Walnut, Calif.

Susan Radford finished the race in a time of 36:08 while Sarah Krumme finished in 38:18.

Krumme's performance was two minutes faster than her personal record. Radford's split times of 18:03 each at 5,000-meters were better than her previous best at that distance.

"(Aguayo and Stern) were unanimous in their praise," Kerr said. "It's extremely encouraging. (Radford) is finally getting adjusted to Arizona and the conditions."

Both runners are now in contention for top finishes at the conference meet, Kerr said.

"It has to be encouraging, because in Sarah's case, she'll place in the conference meet," Kerr said. "In Susan's case, she'll be fighting for a victory."

# Tracksters live up to expectations

By BRAD HALVORSEN  
Sports Writer

The ASU men's track team lived up to its coaches' expectations last weekend while being overshadowed by the nation's premier athletes in the Mt. Sac Relays and the Penn Relays.

High jumper Ron Kamaka highlighted ASU's performance at the Mt. Sac Relays in Walnut, Calif., by placing second in his heat with a jump of 7-feet, 2 inches.

The ASU quartet of McArthur Osborne, Michael Stahr, Treg Scott and Gary Geyer finished third in the 4x800-meter relay and fourth in the distance medley at the Penn Relays in Philadelphia.

"This is the first time some of our athletes have ever run against the heavy-hitters," said coach Mike Gray, who escorted nine team members to the Mt. Sac Relays.

"In terms of finishes we didn't do too well, but in terms of times and distances we were about on target."

Coach Baldy Castillo traveled to Philadelphia with only four athletes, and said they ran according to expectations.

"The kids did a good job," Castillo said. "It's tough to go back there and run against all the good schools like Georgetown, Villanova and the others."

Castillo said the distance medley team should have finished second, but anchorman Stahr began feeling ill with 150 yards and was overtaken.

Gray said Kamaka was not pleased with his performance, despite finishing second.

"He is on the verge of qualifying for the NCAAs and possibly even breaking the school record," Gray said. "So I think he would have liked to go higher. But he was com-

petitive all the way."

Due to the size of the field, Mt. Sac ran events in several heats but had no finals. The meet spanned four days and featured 324 heats.

Kenny Robinson was the only Devil to compete in an invitational division. The rest were entered in collegiate/open heats.

Robinson ran a respectable time of 10.38 in the 100-meter dash, but finished in last place. The field included several Olympians, headed by four-time Olympic gold medalist Carl Lewis.

Lewis won the race in a world-record time of 9.90, but the mark will not be recognized because it was wind-aided.

In other sprints, Bernard Mathis qualified for the Pac-10 finals by finishing third in his 100-meter heat at 10.67. He also placed fourth in a 200-meter heat at 21.76. Darryl Clack finished fourth in his 200-meter heat in 21.9.

Robinson, Clack, Mathis and Robert Hess finished fifth in the 4x100-meter relay in 40.5.

"That was not a bad time by any means," Gray said. "But we have run better."

Gray said he was not pleased with the performances of 1,500-meter runner Tom Williams and pole vaulter Cedric Fullard. Fullard missed all his attempts with the bar starting at 15-0 and Williams ran a slow 3:59.

"He ran poorly," Gray said. "He did not have a good day. He's basically a steeplechaser, but we thought we'd enter him in the 1,500 to see what he could do. He's capable of running about a 3:48."

ASU hammer throwers Dave Ryer and Terry Payne also participated in California and threw in the 190-foot range.

# Baseball team drops 2 of 3 to UCLA

The spell the ASU baseball team had over UCLA was broken over the weekend, and it could not have come at a worse time for the Devils.

After rallying from a 7-0 deficit to beat the Bruins 9-8 on Friday, ASU lost 11-10 and 6-5 to UCLA on Saturday and Sunday.

ASU (27-31, 12-12 conference) must now win six of its final eight games to avoid the first losing season in modern history (post-1958).

In the series opener, the Bruins jumped on pitcher Jeff Roberts for seven runs in the first two innings. But led by two Barry Bonds home runs and a three-run triple by Keith Bennett, the Devils moved on top and reliever Charles Scott shut down UCLA on one hit over five innings to pick up the win.

The Devils looked like they would come from behind to win again on Saturday, scoring four runs in the top of the ninth to take a 10-8 lead.

But the Bruins won the game with four singles in the ninth, the final one by Hector Cano that scored John Joslyn with the winning run, making a winner out of David Bond (2-0), who pitched the ninth. Kevin Williamson (0-2) gave up all three UCLA runs in the ninth to take the loss.

The Bruin heroics continued on Sunday when pinch-hitter Rick Smith singled home the winning run with two outs in the ninth to give UCLA the win.

Today ASU hosts the University of Nevada-Las Vegas in a double-header beginning at 5 p.m. at Packard Stadium.

*"The earth is but one country,  
and mankind its citizens."*  
From the Bahá'í Sacred Writings

## the Bahá'í Faith

For Information Call:

966-3617 • 965-3983

COUPON

### STUDENT DISCOUNT! SUMMER STORAGE

# \$12 per MONTH (5'x5')

(ADDITIONAL DISCOUNT ON 6 MONTH OR 1 YEAR LEASES)  
ALL SIZES 5'x5' TO 12'x25'

**EASY ACCESS**

- ★ LIGHTED
- ★ FULLY SECURED—24 HRS.
- ★ ON SITE MANAGEMENT
- ★ U-LOCK ★ U-KEEP KEY
- ★ MONTHLY-YEARLY RATES

W	BASELINE ROAD	N	DRIVE
56th ST	★	KYRENE	E

### Baseline Self Storage

5333 South 56th St., Tempe  
(South of Baseline on 56th St. Behind Western Machinery)

HOURS 7 AM-6 PM DAILY  
820-0070

CAL CRAWFORD  
Manager

BRING THIS COUPON

## The ADVERTISING DEPARTMENT of the STATE PRESS

is interviewing for openings in the advertising department staff . . . primarily for the 1985 Fall Semester.

There are openings for:

- ADVERTISING SALES
- ADVERTISING INTERNS

Freshmen, Sophomores and Juniors are preferred, in that successful sales representatives and interns can continue for several semesters.

The rewards include training and experience in a professional newspaper operation and realistic compensation.

Applicants must pick up referral form from Student Employment in Matthews Center and an application blank at the **State Press** office, Matthews Center.

## LEISURE STUDIES AT ASU SUMMER 1985

REC 120 Social Psych of Play  
Instructor: M. Allison  
7:40-9:10 Daily  
Line Number 65932  
3 semester hours

REC 410 Tourism/Commercial Recreation  
Instructor: V. Teye  
9:20-10:50 Daily  
Line Number 65945  
3 semester hours

REC 498 PS: Canoeing  
Instructor: R. Virden  
4:40-6:30 Daily  
Line Number 63954  
3 semester hours

For additional information:  
Department of Leisure Studies  
Dixie Gammage Hall 204  
965-7291

\*All courses offered during the first 5-week session.

## LEISURE STUDIES OFF-CAMPUS FALL 1985

REC 450 Recreation & Aging  
Instructor: R. Robertson  
5:40-8:30 Wednesday  
Line Number 77111  
3 semester hours  
Location: MTASU

REC 463 Senior Internship  
Instructor: G. Greey  
11:40-1:30 Friday  
Line Number 77108  
12 semester hours  
Location: ALASU 505

REC 494 ST: International Tourism  
Instructor: V. Teye  
5:40-8:30 Tuesday  
Line Number 77096  
3 semester hours  
Location: ALASU 406

REC 494 ST: Intro to Adapted Aquatics  
Instructor: S. Townsend  
8:15-4:30 Friday and Saturday  
Line Number 77083  
2 semester hours  
Location: ALASU 301

REC 494 Adapted Aquatics for Spec Populations  
Instructor: S. Townsend  
8:15-4:30 Friday and Saturday  
Line Number 77070  
2 semester hours  
Location: ALASU 301

REC 498 PS: Intro to Travel and Tourism  
Instructor: V. Heller  
5:15-8:05 Thursday  
Line Number 77067  
3 semester hours  
Location: STC/State Capitol

For additional information, please contact  
Department of Leisure Studies  
Dixie Gammage Hall 204  
965-7291

## ASU's AD spot lures nearly 60 job applicants

By JERRY BROWN  
Assistant Sports Editor

Although the deadline to apply for ASU's athletic director position passed last week, the chairman of the search committee said resumes are still coming in.

"The number has been creeping up everyday," said Albert McHenry, chairman of the Intercollegiate Athletic Board and head of the committee. "We have close to 60 applicants now. We will still consider those who are late."

John Wadas, former ASU associate athletic director and currently the University of South Florida's AD, announced last week that he is actively seeking the post vacated by Dick Tamburo.

Tamburo was forced to resign on March 26 after five of the men's athletic programs were placed on probation by the Pacific-10 Conference for various violations.

Frank Sackton, ASU's acting athletic director, said he thinks a new AD will be chosen quickly.

"The search committee really has to have someone in the chair by the beginning of the next school year," Sackton said. "But my guess is it's going to happen a lot sooner."

"There are so many things happening — the football team will be in Tontozona in August. The new person needs a chance to get settled before that."

McHenry said the committee hopes to select five candidates to interview and have the new athletic director "under contract for the normal administrative cycle which begins July 1."

"Ideally, by July 1 we will have made our choice and we fully expect to meet that," McHenry said. "You want to be fair to everyone, and we have a lot of work ahead of us."

McHenry said many of the applicants are ADs at other schools.

"The search has shown ASU is still capable of attracting quality people," he said. "We want someone with a strong athletic background who considers academics a strong priority."

McHenry said the timing for the search was not ideal for him and the other faculty on the board.

"We are all busy," he said. "With finals and all, this is the busiest part of the year for us. This all could have come at a better time — there's no doubt about that."

# classifieds

## Announcements

JRS. SENIORS and Grads. Apply for a Visa, Mastercard and other credit cards every Mon-Tues at the Business Dean's patio 11-3. No cost to apply.

THE CINEMA Tree at Neeb Hall Movie Magic Hotline 965-5658 "For your movie needs."

## Automobiles

1972 SUPER Beetle, must sell, \$1500. Great school transportation. 897-7990.

1974 PINTO stationwagon, auto, 5 new tires, new battery, new transmission, 1 owner, excellent condition. 839-0492.

1976 MG Midget, looks good, needs some work. 244-0318 after 5pm.

1977 MGB everything works, excellent condition. \$2250 963-9293.

1979 MAZDA RX7, super car, sunroof, tent, a/c, sheepskins, radials. Excellent condition \$5800. 967-2448.

1980 MAZDA GLC. Runs great! With air. Great deal! \$2100. Lisa, 968-7645.

1983 RABBIT GTI super nice white with maroon interior. Best offer. 483-2746, 482-2587.

## For Rent or Lease

MINI WAREHOUSE Store for summer. Arizona Rent-A-Storage. South of University and 40th Street. Discount with ad. All sizes available. 3425 S. 40th Street. 437-1153.

NEW 1-BEDROOM apartment, furnished, waterbed, pool, 2 miles from ASU, lease. \$450 month includes utilities. Call 968-1309.

NICELY FURNISHED, 3 bedroom townhouse includes washer, dryer, 1 mile ASU, summer rate \$500. Available June 1. Becky 274-4334.

ONE BEDROOM villa with pool and clubhouse rights, unfurnished, close to ASU. \$360 month. 968-5329 or 946-9000.

SUMMER HOUSING - Male. On campus housing from mid May to mid August. Singles \$500 for summer and doubles \$250. Deposit required to secure space. Call Gary Thomas at 965-8604 or 965-0467.

TOWNHOUSE FOR rent Dobson-University area 2.5 miles from ASU, 2 bath, 2 bedroom den/office, pool, washer/dryer. \$500 month. Call 893-1385.

## For Sale

14x64 FLEETWOOD two bedroom, one bath, evap. cooled, master bedroom refrigerated, corner lot in quiet park. Close to campus. \$10,500. 839-3117.

15 FT. sailboat with trailer. Red hull, white deck, nice boat. Must sell. 835-5905.

COMPUTER-TEXAS Instruments P.C. (IBM Compatible), 256K, dual disk, color 3 plane graphics, modem, Lotus, Wordstar, more. Excellent machine. Must sell. 894-0129.

NEW TERMINAL with monitor \$39 per month. Printers \$25 per month or \$10 per day. Word Star word processor with printer, \$75 per month or \$15 per day. Computer City Plus, sales, service, rental. 1620 W. University (between Alma School and Dobson) Mesa, 827-8822.

WATERBED FOR sale. Queen, waveless, one year old, \$150. Please call 894-0412.

## Furniture

FUTONS FROM \$59. High quality Futon beds, sofa beds, accessories. The Futon Store, 2620 W. Broadway, #8 (Broadway Plaza) Mesa. Free delivery. 966-8031.

## Help Wanted

BARTENDERS. MALE or female. Must be able to work nights and weekends. Apply 2-5pm, M-Th, Doc B.R. Others, 1016 E. Baseline, Tempe.

CASHIER'S FULL or parttime for convenient store. \$4.50 per hour, starting. Apply in person, 9550 N. 90th Street, Scottsdale.

SERVICE STATION attendants. Must be neat, clean and hardworking. \$4.50 per hour plus commission. Apply in person, 9550 N. 90th St., Scottsdale.

CHILD CARE workers for emotionally handicapped. Part-time weekdays. Some potential evenings/holidays. Excellent clinical opportunity. \$4. Devereux Foundation, 6436 E. Sweetwater, Scottsdale, AZ. EOE.

CLOSE TO ASU Blue jean type company now hiring those who know what the word hustle means. Part-time hours, full-time pay. \$6 hour guaranteed during training period. Sell tools and equipment nationwide via wats. Call Mike Evans 966-6538, 966-8857.

ENERGETIC, SELF-MOTIVATED students needed for growing marketing firm. Salary guaranteed during 2-week training period. Expect \$200-400 weekly afterwards. Call 968-1667 between 1-3pm.

EXERCISE INSTRUCTOR with free weight experience. 968-9124.

FREE ROOM/ board in exchange for babysitting nights and weekends. Ideal for serious mature female. Fifteen minute drive to ASU. Call 990-1090.

HANDICAP WOMAN needs help overnight, 3 nights a week, close to ASU. 838-1554.

JOB'S THROUGHOUT U.S.: International company has openings for students. Part-time or full-time in Phoenix Valley and other U.S. cities. No experience necessary. We train you to manage a sales team. Work this summer and continue to be paid while attending next fall and spring semesters. Drive a new company car. For interview for any city call: Mr. Corvino 10am-5pm 832-6998.

## Help Wanted

HELP WANTED Part-time. No experience required. Approximately 20 hours. \$3.35 hour plus commission. Kinney Shoes, Thomas Mall.

LOCAL RADIO station has part time openings for telephone market research positions. No selling involved, close to campus. Call 966-6236, between 9-4.

MANAGEMENT TRAINEE positions with Lady Footlocker, Los Arcos Mall, 949-7340. Ask for Betty.

MCDONALD'S GRAND Canyon now hiring for summer help. Low cost housing available, pay starting at \$3.75/hour is negotiable with experience. Call Bob, 8-5 Monday through Friday at 638-2208.

MONEY-JOBS: Worried about making ends meet - with the increase of education costs and talk of aid being tightened? The Army National Guard can help. We have part-time jobs-GOOD JOBS- and AID available for the taking! For details call Dave Wautelet at 225-5574 or visit the Tempe Armory (across from Sun Devil Stadium).

MOVING COMPANY just relocated to Tempe needs experienced drivers and movers. 968-3735.

NEEDED: WAITERS, hostesses, waitresses, bartenders, cocktail waitress. Inquire after 6:30pm, located on corner of Ninth and Ash, two blocks west of Mill.

NOW HIRING: Cooks and dining room assistants. Apply in person at Red Robin, 1539 N. Scottsdale Rd.

PARADISE CREAM. Help wanted. Ice cream servers. Phoenix and Tempe stores. Must have car. Apply in person, 1044 S. Terrace, Tempe.

REAL ESTATE assistant and secretarial aid. Can learn all about real estate sales. 20 hours per week, hours flexible. Call Dick Shefren, 947-5451.

RETAIL SALES part-time and full-time positions open. Full-time must be available days, some weekends and evenings. Part-time afternoons, evenings and weekends. Apply in person: Cheap Charlie's Factory Outlet, 905 S. Mill, Tempe.

SCOTTSDALE J.C.C. Day Camp hiring for the summer, teens 17 and older needed for counselor positions. Call Carol Hamm at 867-2357.

SUMMER JOBS. Company near campus currently hiring students who will be in town between semesters. Call 829-8957.

SUMMER PROGRAM specialists needed for youth agency: swimming instructors (Must have WSI/CPR training helpful); Also needed: art, pottery, tap, ballet, jazz, baton, cooking, sewing, cheer, pom, gymnastics, camping, drama, modeling, photography, sports, and snackbar manager. Scottsdale Girls Club 948-8020.

PART-TIME phone work, morning and evening shifts available. Show ticket sales for non-profit organization, \$4 per hour plus bonus, no experience necessary, we train. Tempe, 968-9728.

## FINALS HELP

Memorial Union Building  
•Sweet Shop  
•Catering  
•Marketplace  
Days and Nights

Contact:  
Bruce Turner  
Food Service Office  
Memorial Union Building

## FUN 'N SUN

Summer's coming! Spend it poolside. Work 5 a.m.-10 a.m. Monday-Friday selling industrial tools and equipment, nationwide via wats telephone system. \$10 per hour to start during four-week training period. Call now!

Bill Hunt  
966-0582

## Lost & Found

LOST: Light green car cover, in Lot 18 on April 25. Gil Neal, 5-7572.

## Motorcycles

1974 360 Honda motorcycle, low mileage, great condition, \$500. 966-6088.

1979 MOPED Foxi, good condition, low mileage, must sell, \$125 or best offer. Call 968-6018.

1982 YAMAHA Maxim 400, excellent condition, \$750. Call John, 965-9540.

1984 AERO 50. Runs well, 100 miles per gallon, \$450 or offer. Megan, 967-0414.

MUST SELL. 1979 Yamaha DT250 Enduro, 5800 miles, rack on back, looks good, runs great, \$500. Marc or Scott, 966-8700.

## Patio Sale

BEDS, DRESSERS, couch, misc. housewares. 2508 E. 6th St., University Shadows, Tempe. Saturday/Sunday, 10-2. 938-5563.

## Personal

ADOPTION: Stable, happy family in Pennsylvania wants to adopt a newborn child. Unable to have children, but has lots of love to give. Will pay expenses. Call 965-8170.

ALPHA PHI wants to congratulate it's 7 spirited new activists! Alpha Phi love.

FIND A mate/date with your computer and modem (300 BAUD) electronic mail public message board. Ladies free. 838-4732.

GOING HOME For The Summer? Relax while you are away. Ideal for storing: Stereos, televisions, camera equipment, bicycles, mopeds, skis, camping gear, books and clothing. Sentinel Mini Storage, 749 E. Gilbert Drive (1/2 mile north of University on Rural Road), 967-0022.

GORGE, PURGE & GUILT. Intensive weekend workshop for breaking binge-purge cycle. Raddison Resort, June 1-2. \$195 includes hotel. Call Dr. Lemberg or Jackie Bohanski for information, 994-9773.

LOVING AND secure professional California couple wishes to adopt newborn. Will pay all costs. Call collect 714-522-2694/Attorney 714-841-3444.

WHO CHOOSES to starve? An intensive weekend workshop for breaking the self-starvation syndrome. Raddison Resort, June 22-23, \$195 includes hotel. Call Jeanne Phillips or Joyce Brekken, 994-9773.

WOULD THE individuals that witnessed the auto-bike accident at Maple and 10th Street at 8:00am March 29 please call 967-5859.

## Pets

AKC GREAT Dane puppies, fawn males, 8-weeks old, shots, \$200. 965-8052.

## Real Estate

BY OWNER 1 1/2 year North Mesa townhouse. Spacious 2 bedroom with loft, 2 bath, model sharp. No qualifying, assume FHA, low CTM, below market \$68,000. Must sell. 898-8059.

HELP! Baby is on the way. Must sell large condo near Southern/Hardy. Assume \$755 per month, with \$5000 down. 938-7449.

## Roommate wanted

FEMALE ROOMMATE to share townhouse, \$200/month plus 1/2 utilities. Rural and Guadalupe 897-7636, 965-7724, Bonnie.

FEMALE ROOMMATE wanted for summer \$193 month 1/2 utilities, \$125 deposit. Five minutes ASU, furnished. Jennifer 829-7319.

FEMALE, share large master bedroom/bath in furnished house. \$175/month, free utilities, washer, dryer, 1/4 mile from ASU, available May 19th. 894-5311.

FURNISHED, PRIVATE room, nice house, good neighborhood, 3 miles ASU. Responsible female, non-smoker, \$175 month, free utilities, 3 months lease. Mardell 831-5599.

ROOM FOR rent with full house privileges, own phone, washer/dryer and more! 44th and Indian School, 224-5878 or 945-5401.

ROOMMATE WANTED. \$150/month + 1/4 utilities one mile from ASU. Call Helen only after 6:00pm.

TWO FEMALE roommates to share apartment. \$119/month plus 1/4 utilities. Close to campus. Call Shana, 965-8374 or Ginger, 965-8599.

## Roommate Wanted

TWO ROOMMATES, \$250 per month, 1/2 utilities, mile from ASU. Luxury living at Broadmoor Place Condos. Michele 894-6438.

## Services

CARS AVAILABLE - 21 or older. All States Drive-away, 992-5200.

JUST FOR the record Professional Disc Jockey Service 964-3710 call now! Playing at the MU May 2 at 12pm.

SUMMER HOUSE sitter. Mature professional with references. 962-7674 or 964-9393 ext. 24.

## Travel

AAA AUTO Caravan Corp. has cars to drive all USA. 956-4811.

AAA DRIVE-AWAY has free cars to major cities. First tank free, you drive. 277-9979.

AIRLINE AWARDS: Fly most places USA \$349 or less. Stay as long as you want. No restrictions. London \$680, Caribbean \$499. Arthur 968-7283.

## Typing

A-1 KINKO'S has high quality word processing 966-2035, 933 E. University.

A-1 PROFICIENT typing, IBM Selectric. Loraine 833-8365, at University and Dobson in Mesa.

AAA WORD Processing Service. Term papers, resumes, customized form letters. Reasonable rates. Call Ron 833-5532.

AERO SECRETARIAL Service. Typing, word processing. Accuracy and confidentiality guaranteed. Fifteen minutes from university. 225-0099.

ALL TYPING needs, fast and accurate, \$1.15 per page. Word processing available. Close to ASU, call Bobbie 968-9166.

ALWAYS DEPENDABLE typing, excellent spelling, punctuation skills, minor editing included. \$1.50/page. Shirley's Typing 838-5099.

CANDY'S ACCURATE fast and dependable typing and word processing service. Excellent qualifications. Reasonable 956-7699.

CEREUS WORD Processing. Quality guaranteed. Term papers, engineering/scientific, manuscripts, dissertations, theses, letters, resumes. 990-1556.

EXPERT WORD processing/typing. \$1.25 double spaced page. Rough draft available. Rural/Southern. Fran 838-8027.

FAST, ACCURATE typing on IBM. Editing, corrections \$1.50 per page. Nancy 971-1805.

FAST TYPING. All documents. term papers, etc. 1-day turnaround. \$1.25 page. 968-2672.

HIGH QUALITY great prices, word processing and typing. Call 894-9607 J&P Enterprises.

IN SCOTTSDALE resumes, term papers, etc. 949-9428, 7124 E. Earl Dr.

JUST YOUR type!...Word/Proc. \$1.50/page. Letter quality prntg. P/U. Divry on campus. Call Cyndi 953-3621.

NEED PROFESSIONAL typing done? Call Penny between 6:30am-3pm at 271-6664.

PROFESSIONAL TYPING. Excellent spelling and grammar. Fast and reasonable. Call Jaline 990-9595 or 948-4647 eves.

PROFESSIONAL WORD processing, term papers, theses, resumes. Reasonable rates. R and K information processing 863-6820.

TERM PAPERS typed, \$1.15 per page, legible printing required, Ahwatukee area pickup and delivery. 893-8561.

TYPING TERM papers, manuscripts, resumes 831-7286.

WORD PROCESSING, theses/dissertations, experienced in all styles. Will edit spelling, grammar, punctuation. Excellent rates. Christina 839-1082.

WORD PROCESSING, tape transcription, manuscripts, fast turn-around. Kathy, Scottsdale 991-4595. Phyllis, Tempe-Mesa 834-6816.

WORD PROCESSING, typing. Can type anything! Guaranteed word perfect. Located in Tempe 839-3412 after 3:30pm weekdays.

## Wanted

COMPUTER BUFFS, make money just talking! We pay for referrals. It's not a job! Call Cindy at Ace Safe and Vault. 274-4411.

The  
**hair performers**  
**APRIL SPECIAL**  
ALA CUT  
Reg. \$10 **NOW \$7**  
Includes shampoo, cut & conditioner  
**Nexus Perm 50% OFF Color**  
**\$39.50** w/free cut Hilite, Cellophane, Frost  
Participating Designers & w/Coupon Only  
Expires 4-30-85.  
903 S. Rural • Cinnamon Tree • 894-0184

# REACH FOR THE STARS

## FIVE STAR FORD™

Has a special gift for upcoming graduates

# PRE-APPROVED CREDIT\* FROM FORD CREDIT.

Plus \$400 purchase allowance\*\* from Ford Motor Company.



**Vehicles Included in the Plan.**

You may choose a new 1985 Thunderbird, LTD, Tempo, Mustang, Escort, Bronco II or light trucks up to F-250.

**\*Pre-Approved Credit.**

Just meet three simple conditions:

- You must have verifiable employment that begins within 120 days of your vehicle purchase at a salary sufficient to cover ordinary living expenses and your vehicle payment.
- You must have proof that you have graduated or will graduate and be awarded at least a bachelor's degree within 120 days.

• Your credit record, if you have one, must indicate payment made as agreed.

**\*\*\$400 Purchase Allowance.**

Make your best deal...use the \$400 as a down payment or receive a \$400 check directly from Ford after the sale.



## FIVE STAR FORD™

7100 E. McDowell at Scottsdale Rd. 946-3900