

'Penguin lust' comes to ASU

In a bold and calculated move designed to attract readers of the liberal persuasion, the editor of the *State Press* announced Thursday the inclusion of the popular comic strip "Bloom County."

The decision was condemned by both campus conservatives who felt deserted and liberals who resented being pandered to.

"'Bloom County' has been rated one of the favorite comic strips of American college students, despite its obvious left-wing bias," Editor Len Munsil said. "We're hoping it will attract new readers to the opinion page. Besides, it's funny."

Today's inaugural strip is featured on page 5.



Staff photo by Todd Green

Angie Anderson, freshman art major, and Deanne Denton, freshman recreation major, stand next to pool at La Crescenta park Apartments, where they saved a young boy from drowning Thursday.

friday

January 25, 1985

Vol. 67 No. 74

Arizona State University

Copyright, State Press, 1985

**state
press**
Tempe, Arizona

Students save drowning boy in apartment swimming pool

By NICOLE MASSIE
Staff Writer

Two ASU students pulled a drowning boy out of the swimming pool of their Tempe apartment complex Thursday afternoon.

Angie Anderson, a freshman art major, and recreation freshman Deanne Denton were in their second floor apartment at La Crescenta Park Apartments, 1050 S. Stanley Place at approximately 1:20 p.m. when Denton noticed two small children playing near the pool.

"We knew what time it was because my watch stopped when I jumped in the pool," Anderson said.

Erik Hatathlie, 3, and an unidentified child of the same age kept running to the edge of the pool and then running away, Denton said.

Hatathlie had been left in the care of a babysitter while his parents, who are also students at ASU, were in class, apartment manager Barbara Belthuas said.

Hatathlie's parents, Fred and Reba, could not be contacted.

"We were sitting in here doing homework," Denton said. "I was by the window so I kept looking at them. They were playing at the edge of the pool and no one was out there watching them."

"I kept thinking, 'God, I can just see one of them going in,'" Anderson said.

Denton called Anderson to the window to see the potentially dangerous situation for herself. Denton stayed by the window while Anderson went back to working on an art project.

Suddenly, while the children were teasingly pushing each other near the edge of the pool, Hatathlie fell in. His friend "took off running," according to Denton, who then called to Anderson.

"We jumped up and ran down the stairs to the pool," Denton said.

"He wasn't even trying to swim," Anderson said. "I jumped in the pool, grabbed him and threw him to Deanne."

Denton said the boy was in the water approximately 30 seconds before they reached him.

"He was completely underwater. His face was looking up, and he was bobbing up and down," Anderson said.

The boy was breathing on his own when they pulled him out, she said.

"He coughed up some water, but he seemed all right," Anderson said. "He didn't say anything — he was mostly just scared."

Hatathlie's chin had several scrapes, but the students were not certain if he received them during the accident.

Anderson and Denton said an unidentified man was present during the incident, but remained on a flight of steps.

Not knowing where the boy lived, the students took the boy to the apartment complex office, where Belthuas was working.

"We were so scared," Denton said. "I'm still shaking."

"I took him back to his apartment, cleaned him up and changed his clothes," Belthuas said.

"(The babysitter) was pretty young — 11

continued page 10

Prof to continue State Department service

By STEVE WATERSTRAT
Managing Editor

ASU professor Lewis Tambs is still officially operating as U.S. Ambassador to Colombia, but will retain the post only temporarily, a government official said Thursday.

The administration official, who declined to be named, said Tambs will be moved to another State Department position, but did not know when.

Tambs, an history professor currently on unpaid leave, has held the ambassador position since April 1983.

While in Bogota, he was a strong supporter of President Belesario Betancur's crackdown on Colombian drug trafficking, and survived several attempts on his life by traffickers before relocating to Washington, D.C.

ASU President J. Russell Nelson has given Tambs special permission to extend his University leave until January 1987, according to the assistant academic vice president's office.

In a telephone interview from

Washington, Tambs said he is doing administrative work there and will serve in whatever capacity President Reagan chooses for him.

"I'll do what the president wants," Tambs said.

A history department administrator thought last week that Tambs could be reached at the U.S. Embassy in San Jose, Costa Rica. When asked if he might have a job there, Tambs said he could not comment.

"That would be getting ahead of the president, and I would not want to do that," said Tambs, who co-authored the Sante Fe Report, a policy document on Latin America that was incorporated into the 1980 Republican campaign platform.

Tambs would not confirm safety as the reason for his pending reassignment. Colombian drug traffickers have constantly threatened him and "tried to blow up my house twice," but such antagonism "happens all the time" to U.S. ambassadors, he said.

The administration source also declined

to acknowledge that Tambs moved to avoid danger.

"We feel (the move) is in his best interests," the official said.

Tambs said whoever is hired for the Colombian position will continue his advocacy of Reagan's policy.

"The president's policy hasn't changed, nor will the job," he said.

When Tambs began supporting tough anti-drug trade measures, criminal elements in Colombia's cocaine and marijuana industry (who he calls "narcos") expressed their displeasure through threats and bombing attempts.

"The 'narcos' have been out to get me since October of 1983," he said.

Tambs commended the Colombian government for the following actions: the extradition this month of four major suspects to the United States, where they are charged with cocaine smuggling; aerial herbicide spraying of marijuana crops in July of 1984; and the March 1983 dismantling of seven laboratories, resulting in the destruction of 12½ tons of cocaine, one-



Lewis Tambs

fourth of annual U.S. consumption.

"The Colombian government has declared war on the 'narcos,'" Tambs said.

Betancur's crackdown is "very heroic," Tambs said, crediting the president for standing firm after his minister of justice was assassinated, allegedly by "narcos," in April 1984.

Regents approve funds for dorm fire system repairs

By VICKIE CHACHERE
Staff Writer

Funds to repair and upgrade existing fire and safety devices in ASU's 12 residence halls were approved by the Arizona Board of Regents at their Jan. 18 meeting in Tucson, according to Cliff Osborne, ASU's director of residence life.

The regents approved \$309,034 for the repair of fire walls in nine of the residence halls, and replacement of fire alarms and emergency lighting in all 12 halls, he said.

The installation of fire escape ladders in Hayden Hall was also included in the request, Osborne said.

The installation of the new components should be completed by this fall, he said.

As a precautionary measure, ASU is also enclosing gas lines that have been exposed to the elements for several

years, Osborne said.

Osborne said an inspection of residence halls last semester determined that nine of the halls suffered fire wall damage during the installation of a sprinkler system in 1981 and 1982.

"We don't believe this is an eminent danger because of the fire extinguishing system," he said.

Osborne said fire wall damages occurred in Best, Hayden, Irish, Manzanita, Mariposa, McClintock, Sahuaro, Ocotillo and the three Palo Verde residence halls, as well as the Cholla Apartments.

ASU Fire Marshal Andy Anderson said the majority of the damage is to fire walls in equipment rooms, not in living quarters or hallways.

"A fire could spread throughout (the hall), but the sprinkler system would extinguish or confine the fire with no

immediate danger to residents," Anderson said.

Although the damages to the fire walls do not pose any immediate risks to residents, Osborne said he wants the repair work completed as soon as possible.

He said ASU's legal counsel is in the process of reviewing documents to determine if the contractor who installed the sprinkler system is responsible for repairing the damages.

According to supervisor of plans Jan Fontana's review for the state fire marshal's office, any damages to the fire walls during installation of a sprinkler system are the responsibility of the contractor.

"One effort that is on-going right now is we are consulting engineers to design an up-graded system," Osborne said.

Anderson said he would like more smoke detectors in the residence halls, although the number in each dorm varies.

state
press

nation/world

Babbitt to head national group on groundwater contamination

WASHINGTON (AP) — A Washington think tank and the governor of Arizona announced Thursday the formation of a private foundation to try to win a consensus on what to do about groundwater contamination.

Gov. Bruce Babbitt will be chairman of the new foundation, called the National Groundwater Policy Forum, which was organized by the Conservation Foundation in cooperation with the National Governors Association.

Groundwater provides about half the nation's drinking water. A 1983 survey by the Environmental Protection Agency estimated that only 3 percent of water supplies using groundwater were contaminated in excess of actual or projected federal pollution standards.

The EPA's current groundwater protection strategy, announced last August, leaves most decisions to the states.

EPA seeks record fine against firm for alleged chemical mishandling

CHICAGO (AP) — The Environmental Protection Agency announced Thursday it is seeking the largest toxic waste penalty in its history, \$6.8 million, against Chemical Waste Management Inc. of suburban Oak Brook.

The agency filed a civil administrative complaint with EPA's regional hearing clerk Thursday, alleging that the toxic waste-handler violated federal regulations governing the "use, recordkeeping and marking of PCBs between 1980 and 1983" in storing the material.

Company officials could not be reached immediately for comment.

The penalty is the largest ever sought by the federal government under the Toxic Substances Control Act, said EPA spokeswoman Virginia Donohua.

Committee proposes bill banning headphones for motorists, cyclists

PHOENIX (AP) — Headphones would be illegal equipment for motorists and bicyclists in Arizona's largest cities, under a bill approved Thursday by a Senate committee.

The measure, passed 6-2 by the Transportation Committee, would be strong "preventive medicine" to avoid accidents between motorists and emergency vehicles such as police cars or fire trucks, said Sal DiCiccio of the Maricopa County sheriff's office.

Mark Pozzi, 1983 Arizona state champion bicyclist, said the committee had no statistics to prove that wearing headphones caused accidents between motorists and emergency vehicles.

Pozzi said people wearing headphones can still hear traffic sounds if they keep the volume at a reasonable level. "Nobody can legislate common sense," he said.

O'Toole's Pub
An Experience

Friday



GIRLS GET FIRST DRINK Free!

COVER CHARGE GUYS \$2. GIRLS \$1.

LADIES NIGHT

O'Toole's, a delightful pub for cocktails & dancing!

1123 South Rural Road • Tempe, Arizona 85281

Revisions to ASASU budget continuation proposed

By KATY MCGREGOR
Staff Writer

The ASU Associated Students 1985-86 Continuation Budget has passed through the Senate after presidential line-item vetoes and is awaiting approval by Administration officials, ASASU President Ray Burnell said.

Burnell proposed a three-point revision plan for the budget Tuesday night at the ASASU Senate meeting.

Senate Bill 47, drafted by the Senate Finance Committee and sent to Burnell for his signature, requested \$741,829 for the 1985-86 budget.

"We realized we had to cut back (on the budget)," Burnell said.

'Due to added expense, the budget was "overweight" and "needed . . . a diet"'

Throughout the entire budgetary process, a five percent administrative service charge was overlooked when planning the 1985-86 budget, resulting in \$46,000 added to ASASU's original request.

Due to the added expense, the budget was considered "overweight" and "needed to go on a diet," according to Burnell.

Burnell consulted with Vice President for Student Affairs Betty Asher and was advised the additional request for \$46,000 made Senate Bill 47 "unacceptable."

After conferring with the Senate Finance Committee and the three ASASU vice presidents, Burnell vetoed the budget and made recommendations for changes that were unanimously supported.

"Together, it now becomes our task to modify our financial request without compromising its vigorous spirit of service," Burnell said.

The ASASU president stressed the budget items vetoed were "only limiting the rate of increase."

"No program expenditures were cut below their present level," he said.

"When the veto message came back we were all very pleased," said Brigita Bilsens, chairwoman of the Senate Finance Committee. "The cut didn't really affect our programs. It limited the budget where expansion was not as necessary."

Burnell's primary points gave budget priority to the programs of direct student service. Consequently, major consideration was given to Campus Affairs, which encompasses about 30 percent of the direct student services, according to Burnell.

Burnell also suggested limiting the percentage growth in each department's spending and proposed increasing self-generated revenues.

"Increases in self-generated revenues will enable ASASU to take on more responsibilities and provide more services," Burnell said.

"We have, by raising self-generated revenues of \$77,000, lessened our dependence upon University appropriations," Burnell said.

According to Burnell, Asher has agreed that a revised budget of \$39,000 less from the University would be acceptable. Burnell's proposed plan requests \$701,876 from the University.

The budget, originally submitted to the finance committee by Burnell, covered primary goals, one of which included an "aggressive realignment of each (department's) program capabilities to expand its coverage for commuter, graduate,

disabled, and minority students."

Next, the revised budget will be submitted to Asher. If it is approved, it will continue to the University Budget Committee for final approval.



Ray Burnell

HOT LINE
965-5658



Former the
NEEB HALL
Film Series

CINEMA TREE
AT NEEB HALL

presents
THE WELCOME BACK SPECIAL
50¢ — Movies — 50¢
Fri. & Sat. • Jan. 25 & 26

7 p.m. DISCO BEAVER FROM OUTER SPACE
8 p.m. 1941

SUNDAY • JAN. 27
James Stewart Double Feature

6 p.m. MAGIC TOWN
8 p.m. MR. SMITH GOES TO WASHINGTON

PIZZA Co. *OPEN Under New Management*

FREE LITER OF PEPSI
with any med. or large pizza
(with coupon)

— **Free Delivery** —

968-8575
849 W. University at Hardy

OFFER EXPIRES FEB. 28, 1985.

OPEN 11 A.M.-10 P.M.
SUNDAYS 4 P.M.-10 P.M.

The Picture Place

8 x 10 color enlargement
\$1.69
Glossy or Semi-matte finish from your favorite color C41 type negatives

5 x 7 color enlargement
.89¢
Glossy or Semi-matte finish from your favorite color C41 type negatives

Coupon Expires 4/7/85 • No Limit
Coupon Must Accompany Order
No Other Discounts Apply

ARIZONA STATE UNIVERSITY
MEMORIAL UNION (Lower Level)
"operated by Collegiate Photo"

THE Artists' Supply Center
Shop OF ART

Fine Arts & Crafts
ART SUPPLIES

- Painting & Drawing
- Clay & Ceramic Materials
- Silkscreen & Printmaking
- Art Books & Magazines

SPECIAL: Just \$2.70!
18x24 ROUGH NEWSPRINT
50 Sht. Pad Reg. \$4.00

26 E. UNIVERSITY
967-3681

Just across University from the Fine Arts Building!
1/2 block east of Mill on University



Bunky's
RESTAURANT AND LOUNGE



BIG BAND SUNDAY BRUNCH
11 a.m. to 3 p.m.

Sit Down Brunch with Complimentary Champagne
Have Lunch and Dance to the music of Tommy Dorsey, Glenn Miller, Les Brown and Artie Shaw . . .

Big Band Sounds of the Swing Era! Request "Your Song" from your personal deejay (Randy Pollack)

ALSO
Serving Dinner Nightly, 7 Days a Week Until 9 p.m.

EARLY BIRD SPECIAL
4-6:30 p.m. Complete Dinner **\$6.95**

Casual elegance in the heart of Tempe
2700 S. Mill Ave., Tempe
(Mill Ave. between Southern & Broadway)
894-8426



state press

I have not sought, I do not seek, I repudiate the support of any advocate of communism or of any other "ism" which would by fair means or foul change our American democracy. —Franklin Delano Roosevelt

opinion

Vietnam and El Salvador: they don't mix

Gray T. Echols Opinion Editor



Among the more salient international issues to confront Americans in recent years is that of U.S. involvement in Central America. The United States has a long history of military and political intercourse with various nations in this region, and the "Big Stick" policy has, until recently, been the appropriate symbol for America.

It is clear that the United States has vital interests in this volatile region: nearly half of our trade, three-fourths of our imported oil, and more than one-half of our strategic minerals pass through the Panama Canal and the Gulf of Mexico. It is obvious that these interests are threatened by the present political climate. The situation has instigated an interesting debate within America, and the country of El Salvador has been a focal point of this polemical dialogue.

On one extreme is found the sentiment that President Reagan (an able representative of the polar opposite) is launching America into another "Vietnam" quagmire in El Salvador. Certain local campus groups are quick to illustrate the "striking similarities" of early U.S. involvement in Vietnam and contemporary military activity in El Salvador, citing the presence of

military advisers, weapons, etc. Their conclusion is that Mr. Reagan has failed to realize, via the Vietnam experience, that guerrilla warfare in foreign countries is absolutely unmanageable. After all, did we not lose 47,000-plus lives (combat alone), waste untold millions of dollars, and spend 15 grueling years learning these truths? The solution proposed is to simply rid El Salvador and Central America of any and all U.S. influence and let things just, well, err, sort of work out...

This philosophy is, to say the least, naive and dangerous. The analogy drawn between El Salvador and Vietnam is based on gross distortion of historical fact. South Vietnam did not succumb to the guerrillas at all — recall that the Viet Cong were virtually obliterated during the Tet offensive! In fact, the only victory for the Viet Cong was that won thousands of miles away in the U.S. media.

It was the regular North Vietnamese army that eventually vanquished Saigon, not guerrillas. The North Vietnamese army was/is anything but a loosely knit organization. Highly dedicated and disciplined, this army had the distinct advantage of sophisticated Soviet weaponry shipped directly to Haiphong and the Ho Chi Minh trail, which elusively serpentine through Laos, Cambodia, and Vietnam.

The first major assault of this army was repelled with U.S. air support. However, after the U.S. withdrawal in 1975, a second offensive by the North Vietnamese easily dispatched South Vietnamese resistance.

Clearly, the defeat was anything but a monopolized Viet Cong conquest. The victory was accomplished by a highly organized and readily identifiable foe, not by an obscure guerrilla faction.

Now one would be hard-pressed, indeed, to insinuate that El Salvador's guerrilla element has the potential of realizing equality with the Viet Cong, much less the North Vietnamese regulars. The Vietnam War demonstrated that successful military overthrow is contingent not only upon a constant, reliable flow of weaponry, but also upon the guarantee that these arms fall into the possession of highly organized rebels who enjoy wide support from the populace. El Salvador's rebels are sadly lacking in both departments. Quite frankly, they are disconcerted and despised by the people. (Would you support a rebel who threatened to shoot you for voting?) Consider the January 1981 rebel "offensive." Utter flop is a generous description. A general strike among supporting workers that was to coincide with the rebel attack never occurred. Either the workers were not properly informed, or there were no such "supporting workers." I suspect the latter.

El Salvadoran rebels, compared to the Viet Cong, are critically handicapped geographically. This time it is the United States next door while the U.S.S.R. is overseas. Soviet arms that arrive in El Salvador must filter through an elaborate web including Havana, Tripoli, Hanoi, Sofia, and the PLO before arriving in Managua. Hardly the convenience or securi-

ty of the Ho Chi Minh trail. True, Nicaragua and Cuba have been minimally effective, but the U.S. military has been known to discourage any candid attempt to threaten peace in the area. Remember Grenada? The difference between El Salvadoran rebels and the Viet Cong is the difference between night and day. Any attempt at likeness is based on ungrounded verbosity.

The mistakes made in Vietnam were made in the locker room. Kennedy displayed intellectual bankruptcy at the Geneva Conference on Laos, when he emulated Neville Chamberlain by accepting Krushchev's promise to nullify communist aggression in Indochina. And his successors were foolish to wage a war of attrition in an attempt to bring Hanoi to the bargaining table. The lesson to be learned from Vietnam is one that this country has been taught time and time again: the Soviet Union cannot be trusted. Her invidious leaders are the authors and furtherers of a malignant political cancer whose spread must be checked.

Rest assured that Ronald Reagan knows his Vietnam history — very well. This is a guarantee that Vietnam history will not be repeated in El Salvador. President Reagan, in his Caribbean Initiative, is gradually abdicating the "Big Stick" to the badly needed "Big Buck." And it is high time that this sort of program be implemented. The prudent execution of the Caribbean Initiative may be the Marshall Plan that saves Central America from the snare of communism.

letters

Treaty is confirmatory of Soviet comradeship

Editor:

In 1963 the United States and the Soviet Union, along with 109 other countries, signed the Partial Test Ban Treaty. This treaty bans the testing of nuclear weapons in the earth's atmosphere, underwater, and in space. This ban is relatively easy to verify and has been strictly observed by both the Soviets and Americans. However, underground testing of nuclear weapons is still permitted, and, in fact, is carried out by the United States and the Soviet Union on a routine basis.

After having the partial test ban successfully in place for more than 20 years, it seems that now is an appropriate time to extend the partial test ban and to negotiate a Comprehensive Test Ban (CTB) agreement. A CTB would continue to ban testing in the areas mentioned above, plus it would ban underground nuclear testing — the last frontier where testing is permitted.

Since weapons seldom perform as initially planned, much testing and re-testing must be carried out. New weapons cannot reliably be produced in quantity or deployed without first being tested. Therefore, it follows that halting all testing would be a logical and verifiable first step in order to retard further development of nuclear weapons.

Critics have argued since the 1950s that the verification of such an agreement is too uncertain. However, in recent years, verification capabilities have been enhanced considerably. Seismic monitoring techniques have improved greatly, coupled with the fact that the Soviets agreed during the latter stages of the Carter administration that any CTB treaty would include the installation of tamper-proof seismic stations and the principle of on-site inspection. Many seismologists say that such a verification scenario would practically guarantee the verification of underground tests down to one kiloton or less. Furthermore, it is known that both the US and the USSR have the ability to differentiate between nuclear explosions and earthquakes, regardless of size. It seems that earthquakes generate a certain type of shock wave that is quite distinguishable from those generated by nuclear explosions.

Negotiating a comprehensive test ban treaty is by no means a panacea, but it seems to be a logical first step that contains at least four positive components:

1. It would frustrate and decelerate the further development of nuclear weapons.
2. It would be verifiable, so as to ensure compliance.
3. It would be a useful confidence building measure between the parties, which, after a time, could help lead the way to still more meaningful agreements.
4. It would halt any radiological and environmental damage that is presently occurring because of these tests.

Steve Ponton MA, Political Science, 1983

STATE PRESS

LEN MUNSIL Editor

Managing Editor STEVE WATERSTRAT City Editor W. TIM AHL Asst. City Editor ROSANNE DUPRAS Asst. City Editor SHERRY LOWE News Editor KIM SERTICH Opinion Editor GRAY ECHOLS

Sports Editor TOM BLODGETT Asst. Sports Editor JERRY BROWN Copy Chief MICHAEL HUMPHREYS Arts Editor JESSICA KREIMERMAN Asst. Arts Editor CINDY PEARLMAN Photo Editor D. KEVIN ELLIOT

The State Press is published Monday through Friday during the academic year except holidays and exam periods, at Matthews Center, Room 15, Arizona State University, Tempe, AZ 85287. Newsroom: 965-2292. Advertising & Production: 965-7572.

The State Press is the only newspaper exclusively published for and circulated on the ASU campus. The news and views published in this newspaper are not necessarily those of the ASU administration, faculty, staff or student body.

Candid park views sought

Editor:

As a limnologist and a member of the Robert Brewster Stanton society, I am dismayed by the plans for the ASU Research Park described in the State Press (Jan. 23). If the University thinks this smog-laden, traffic-choked Valley needs more business and more technology and more people to run those businesses, let it attract them with an accurate view of the Southwestern environment and the serious resource limitation

inherent in this region. The three artificial lakes planned for the site waste the most precious resource of the Sonoran Desert and delude us into thinking this is not so. The University should associate itself with bike paths and mass transit, not with accelerated evaporation and the illusion that somehow this is Minnesota.

Stuart Fisher Department of Zoology



BLOOM COUNTY

by Berke Breathed



LETTER POLICY

The State Press encourages letters on any topic. To ensure the best chance for timely publication, letters should be typed and double spaced. Include your full name, class standing, major and phone number. If for some reason a letter must be published anonymously, state why and your request will be considered. Send letters to: Letters, State Press, Matthews Center, Arizona State University, Tempe, Az., 85287.

Quotas not used; 'truth' is revealed

Editor:

In reference to Sherry Lowe's "heart warming" column concerning Affirmative Action (Jan. 23), it was apparent that Miss Lowe failed to inform herself on current Affirmative Action policy.

Miss Lowe's overused argument that quota systems are obstacles to quality is no longer true. In fact, quota systems are not even part of current Affirmative Action policy. Affirmative Action, like many organizations, attempts to set prescribed goals, which should not be construed to be quota systems.

The current Affirmative Action plan would never ask an employer to hire an unqualified minority applicant, nor

would it ask a school to admit a minority who did not meet its standards.

The U.S. Government's Equal Employment Opportunity Commission has set up guidelines designed to aid in the achievement of our nation's goals of equal opportunity without discrimination on the grounds of race, color, sex, religion or national origin.

In order to conform to these guidelines, a school or employer may utilize an Affirmative Action plan. This Affirmative Action plan calls for a fair and equal opportunity for qualified applicants, minority and non-minority, to apply for

these positions.

Second, I question how Miss Lowe could possibly understand the discrimination faced by any one race or people, much less compare the degrees of discrimination between different groups.

With the true facts of Affirmative Action stated, it is obvious Miss Lowe's implications of "free ride, handout or just plain laziness" toward minorities are illogical, misinformed and totally irresponsible.

Danny Balanon
Member — Affirmative Action Review Board

BUY • SELL • TRADE

Your books at Changing Hands. For quality cloth and paperbacks (no textbooks, please) we pay 30% of our re-sale price in cash or 50% in trade-in credit which may be used to purchase anything in the store. (Sorry, no trade-ins on Sat. or Sun.)

Browse through our three floors of:
• New & Used Books
• Art Prints & Posters
• Calendars & Cards
• Handbound Journals

M-F 10-9 SAT 10-6 SUN 12-5
CHANGING HANDS BOOKSTORE
414 Mill Avenue 966-0203
Old Town Tempe

PREVENT BIRTH DEFECTS March of Dimes

THE LEFT HANDED SHOP

Novel & Practical Products for Left-handers

Left-handed Scissors, Spiral Notebooks, Pens, Rulers, Calligraphy Sets, Kitchen Utensils, Sporting Goods, Gifts, Novelties and Many More Unique Products Designed Especially for Left-handers

THE LEFT HANDED SHOP
1039 E. LEMON
(SW Corner of Lemon & Terrace)



Mon., Tues., Wed., Sat. & Sun. 10-5; Thurs. & Fri. 10-9
829-0277

T-SHIRT ALLEY

LONG & SHORT SLEEVE T-SHIRTS, SLEEVELESS, LONGSLEEVE & HOODED SWEATSHIRTS, BASEBALL SHIRTS, CAPS, VISORS & MUCH MORE

HUNDREDS OF DESIGNS TO CHOOSE FROM

BRING THIS AD AND SAVE

20% OFF

ANY PURCHASE

OFFER GOOD NOW THROUGH JANUARY 31, 1985.

T-SHIRT ALLEY

1039 E. LEMON
(SW corner of Lemon & Terrace)

829-0277

Mon., Tues., Wed., Sat. & Sun. 10-5; Thurs. & Fri. 10-9



The first true fraternities founded were Kappa Alpha (1825), Alpha Delta Phi (1832), Sigma Phi (1827), Delta Phi (1827), and Psi Upsilon (1833). Beta Theta Pi was the sixth fraternity in order of founding (August 8, 1839). Beta Theta Pi is a social and academic fraternity. Numbers is not our philosophy. "Brotherhood" is. And for those who have misplaced this true ideal, let it be a friendly reminder. The men of Beta would like to extend an invitation to any individual with a true desire to continue a great tradition.

Come join the men of Beta on Sunday, January 27 from 12-4 p.m. on the West Hall lawn for volleyball and a barbeque.

Help us kick off Spring Rush by continuing a great tradition!

"The Beta's are on the move — all the way to Alpha Drive."

GET ON THE FAST TRACK



There are a lot of fast-moving microelectronics companies you could join after graduation. But only one is on the leading edge of CMOS, MOS and Bipolar VLSI: in memories, logic and microprocessors.

Only one is the world's fastest-growing major integrated circuit company. Advanced Micro Devices.

Today AMD is the fifth largest IC company in the U.S. By 1990 our goal is to be Number One in the world!

Your BS, MS or PhD in Electrical Engineering, Solid State Physics, Materials Science or Computer Science could be your ticket to The Fast Track with AMD. Opportunities for graduating engineers are expanding rapidly at our Sunnyvale, California headquarters and at our Austin and San Antonio, Texas facilities.

On Campus Interviews February 8, 1985

If our campus interview schedule is full, contact us directly. Send your resume to Toni Doyle, University Recruiting, Advanced Micro Devices, Dept. ASP-125, MS-57, 901 Thompson Place, P.O. Box 3453, Sunnyvale, California 94088. Or call TOLL FREE (800) 538-8450, ext. 2377.

An equal opportunity employer.



Former interior secretary cautions against growth

By W. TIM AHL
City Editor

ASU and U of A officials have pro-growth attitudes and do not take time to question state government decisions on expansion, according to Stewart Udall, former U.S. secretary of the interior during the 1960s.

"I'm surprised at the pro-growth attitudes of the two universities," Udall said. "Usually universities are the centerpoint of critical analysis of public decisions."

Udall, who spoke in the MU Wednesday, also criticized the rapid growth of Tempe, Mesa and Scottsdale. He said the water table and roads in the area will not support heavy development.

"When you look at the availability of ground water around Phoenix, you can see it's low on carrying capacity," he said.

He also said plans for additional Phoenix freeways do not make sense.

"We're building automobiles as we run out of fuel," he said. "We already have all the highways we'll ever need."

The plan of Phoenix officials to build a domed stadium to

support a National Football League team is another step in unnecessary state expansion, Udall said.

"The domed stadium is a crackpot idea dreamed up by a couple of jocks a few years ago," he said. "We need to throw darts at crazy ideas that come to the forefront of this community."

Udall also said Arizona needs to increase its number of national parks.

He said Arizona is running short on national parks and has three locations that he believes the U.S. Congress should consider.

Canyon De Chelley, Monument Valley and the Sonoran Desert are unique areas to the state, Udall said, and should be set aside by the federal government.

"These areas are singularly distinctive to the state," he said. "I hope (Sen.) Barry (Goldwater) and (Rep.) Mo (Udall) get busy on that this year."

The Grand Canyon and the Painted Desert are the only Arizona areas recognized by the federal government as national parks.

Canyon De Chelley is controlled by the Navajo Indians as part of their reservation, but Udall said he still favors federally funding the land and turning it into a national park.

Udall said the Navajos would still control the land, but they could use federal funds to clean up the land.

"We ought to renew our commitment to reviving Indian culture," he said. "It's fair enough that they have at least some remnant of the land they had."

Arizona residents can also expect the Reagan administration to put the financial burden of supporting Indian reservations on the state, he said.

"They will try to dump the future of Arizona's Indians on the state," Udall said. "We have to be prepared to resist that."

Udall said state officials need to slow down and look before the size of metropolitan cities get out of hand.

"My own gut feeling is that Arizona is going too fast," he said. "We're kidding ourselves if we say 'Let it rip. Lets go,' and don't question our progress."

"If we destroy or ruin the environment, we all lose," Udall said.

police report

A bottle of liquid paper correction fluid exploded early Wednesday evening when it overheated after it was used to hold open a broiler oven door in Cholla Apartments, police said.

Christina Ramirez and Joan Walsh, both ASU students, were making dinner before the accident.

The explosion caused fumes to escape from a chemical in the fluid called hydrocarbonated chloride, which is highly toxic, police said.

ASU paramedics rushed to the scene, but neither student needed medical assistance, police said.

In other activity, University Police reported the following incidents in the 48-hour period ending at 6 a.m. Wednesday:

•A white male indecently exposed himself to an ASU female student Wednesday afternoon in the MU, police said. The man is in

his mid-30s, approximately 6 feet, heavily built with black hair and a receding hair line.

•Ofelia Villapudua, an ASU student, was accidentally sprayed with paint Wednesday afternoon while walking by the remodelers who were painting the F-Wing of the Engineering Building.

Her jacket, sweater, leather purse, sun glasses and math book valued at \$181.96 were damaged from the paint.

•A men's 27-inch red K-Mart 10-speed valued at \$35 was stolen from a bicycle rack at Best Hall B- and C-wings sometime during semester break, police said. The bicycle was locked.

•A checkbook and purse, racketball racket and a Casio pool cue valued at \$220 were stolen Wednesday afternoon from an ASU student's car parked in Lot 40

•Cash and checks valued at \$596.95 were stolen sometime between Monday evening and Tuesday morning from a computer services trailer near Krause Hall, police said. The money was in a manila folder in a desk drawer. There was no sign of forced entry.

•An ASU male student was arrested late Tuesday afternoon for a traffic warrant violation, police said. He was taken to the ASU Police Department and released the same day after paying a \$107.75 traffic violation fine.

•A female ASU student was arrested early Tuesday evening for a traffic warrant violation, police said. She was released the same day after paying a \$100.90 traffic violation fine.

•A green lawn mower valued at \$450 was stolen early Tuesday from the grounds department in the ASU Physical Plant,

police said.

•A black nightstick valued at \$20 was stolen sometime between 6 and 10 p.m. Tuesday from an ASU Police motorcycle while it was parked in the police station's parking lot near University Drive, police said.

•A men's black Huffy Beach Cruiser valued at \$60 was stolen from a bicycle rack on the north side of the Aquatic Complex, police said. The bicycle was locked.

•A men's red Huffy Beach Cruiser was found late Monday afternoon, hanging from an awning roof on the second floor A-Wing of Cholla Apartments, police said.

•A clock, a bottle of Polo men's cologne and a Kodak instamatic camera valued at \$52 were stolen sometime during semester break from room 1440 of Manzanita Hall, police said.

— Sanaa Al-Marayati

2 FOR 1 DINNERS WEDNESDAY
Buy 1 get 1 Free!
A TEMPE TRADITION



2 FOR 1 SUPER SUNDAY FAMILY SUPPER SPECIAL

WILLY'S
TEMPE

NOW OPEN SUNDAY

Tempe's Great Mexican Food Experience
1120 E. Apache • 967-1129
One block East of Rural Rd. • Take-out available
7 DAYS MON.-SUN./LUNCH MON.-FRI.
Mon.-Thurs. 11-11, Fri. 11-1 a.m., Sat. 5 p.m.-1 a.m., Sun. 4-9

Welcome Back Sale

New French Gitane
10-speed Ultralight
Regular \$185
NOW \$129⁹⁵

15-speed Off-Road
Bikes Latest Styles
Regular \$350
NOW \$229⁹⁵

NEW 10-speeds
Lifetime Warranty
Fully Assembled
Regular \$150
NOW \$119⁹⁵



Highest Security U-shaped
Locks w/\$350 Guarantee
List Price \$26.95
NOW \$17⁹⁵

Large selection of bicycles,
locks and accessories at
special sale prices

TEMPE BICYCLE SHOP

The old gas station on the corner
6th Street and Mill, Tempe

966-6896

collage

PIES will present "Guitar Music on the Lawn" with Frank Koonce from noon to 1 p.m. today on Cady Mall.

Marketing Club will meet at 3 p.m. today in BA 129 for orientation.

Hillel Jewish Student Center will hold Shabbat services at 7:30 tonight followed by a "coffeehouse" with live entertainment at 9 at the center, 1012 S. Mill Ave. There will also be a meeting from 7:30 to 10 p.m. Sunday at the center for the panel discussion "One Relationship, Two Religions."

Students for Origins Research will show a slide presentation "Grand Canyon Geology from a Creationist Perspective" at 7:30 tonight in MU Mohave Room 222.

Soul's Gospel Roundup will present the William Brothers and the Jackson Southernaires in concert at 8 tonight at South Mountain High School, 5401 S. 7th St.

ASU Ice Hockey Club will play USC at 8:30 tonight and 7 p.m. Saturday at Oceanside Ice Arena.

International Students Incorporated will offer Bible study from 6 to 7 p.m. Fridays in the Baptist Student Center.

Black Student Union and Residence Life will hold a back-to-school dance party from 9 p.m. to 1 a.m. Saturday at Palo Verde West cafeteria for \$5 per couple and \$3 for singles.

Amnesty International ASU will hold a "Campaign Against Torture" with poetry, performance art and music at midnight Saturday at the Valley Art Theater in Tempe.

Ultimate Frisbee Club will host a competition with 30 frisbee teams from the West from 9 a.m. to 3 p.m. Saturday and Sunday on the ASU Bandfields.

All Saints Catholic Newman Center will hold mass at 8, 9:30 and 11 a.m. and 6 and 7:30 p.m. Sunday at the Newman Center, 230 E. University.

Delta Sigma Pi will meet at 6 p.m. Sunday to hear Lee Cohn, president of the Big 4 Restaurant chain, in the MU Mohave Room.

First Congregational Church, 101 E. Sixth St., Tempe, will offer worship service at 10 a.m. Sundays, with Sunday school starting at 10:15 a.m.

ASU Fencing Club meets at 11 a.m. Sundays and 8 p.m. Wednesdays in PE West Building 113.

Comedy Corner will meet from 2 to 4 p.m. Monday in the MU La Paz Room for a skit-writing meeting.

Angel Flight will meet from 8 to 9 p.m. Monday on the third floor of Old Main for the Angel Flight rush.

Arizona Outing Club meets at 7:30 p.m. Mondays in the MU Pima Room to discuss low-cost Arizona outdoor trips.

Collage, a free public service provided by the State Press to announce meetings of legitimate campus organizations and clubs, is published every Tuesday and Friday. To be included, please obtain a form at the State Press reception desk in the basement of Matthews Center. For Tuesday's paper the insert must be filed by 10 a.m. Monday and for Friday's paper the deadline is 10 a.m. Thursday. One item per event will be accepted. Collage entries are subject to editing due to space limitations or content.

ATTENTION JEWISH STUDENTS
(recorded message)

PLEASE CALL 941-9268

OVERWEIGHT?
Lose 10-29 lbs. in 30 days or your money back. All product 100% guaranteed.

All you got to lose is weight!

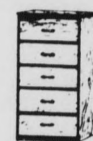
CALL NOW 233-9033

Hours: 6 a.m.-Midnight

DISCOVER FURNITURE PLUS!



Butcher Block Table with 4 vinyl chairs
Reg. \$150 NOW \$99.99



5-Drawer Chest of Drawers
ONLY \$39.95

COUPON — BED SALE — COUPON

Twin set \$85	Full set \$95
Queen set \$139.95	King set \$169.95

FREE FRAME WITH COUPON & PURCHASE OF BED.

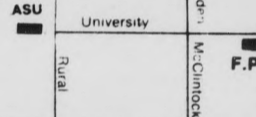
6-drawer Dresser & Mirror \$89.95
4-drawer Desk \$59.95
Sofa & Loveseat \$299.95

— Futon Beds From \$59.95 —



Delivery Available

2077 E. University
Tempe • 966-6252



Women Services present discussions about PMS

As part of the Focus on Women Lecture Series, "PMS (Pre-Menstrual Syndrome), Fact or Fiction" will be discussed from 7-9 p.m. Wednesday.

Craig Seal, M.D., OB/GYN and Pat Kerstner, psychotherapist will speak.

ASU's Women Services, Mesa Lutheran Hospital and Valley Lutheran Hospital are sponsoring the series.

Tickets are \$3 for students with ID and \$5 for the general public.

COUPON

Papa Jay's

New York Pizza and Video Arcade

FAST FREE DELIVERY!
LIMITED FREE DELIVERY AREA

<p>#1 Sun Devil Combo Any large pizza, your choice of up to 4 toppings. ONLY \$6.95 plus tax Good on delivery, take-out or dine-in. Expires 5-31-85.</p>	<p>COME VISIT OUR VIDEO GAME ROOM. OVER 30 GAMES AT THE BEST PRICE IN TOWN!</p>	<p>#2 Sun Devil Combo Any medium size pizza with your choice of up to 4 toppings. ONLY \$5.95 plus tax Good on delivery, take-out or dine-in. Expires 5-31-85.</p>
<p>#3 Sun Devil Combo Any small size pizza with your choice of up to 4 toppings. ONLY \$4.95 plus tax Good on delivery, take-out or dine-in. Expires 5-31-85.</p>	<p>Phone-in orders 966-4292 or 966-1003</p>	<p>#4 \$2 OFF Any large Sicilian style pizza* with two or more toppings *Extra thick Good on delivery, take-out or dine-in. Expires 5-31-85.</p>

Ming's

RESTAURANT AND LOUNGE

明園

966-MING

Famous For Special Peking Duck Dinner Wed. & Sun.

House Specialties

- Lemon Chicken
- Kung Pao Chicken
- Shrimp w/Hot Ginger Sauce
- Scallop w/Hot Garlic Sauce
- Beef w/Mushroom & Snow Peas

Award Winning Szechuan & Mandarin Food

- Friendly Service
- Attractive Decor
- Reasonable Prices
- Carry Out Orders

3300 S. Mill
SW Corner of Mill & Southern
966-6464
Sun.-Fri. 11:30-10 p.m.
Sat. 5-11 p.m.

HOT LINE 965-5658



Former the NEEB HALL Film Series

presents
THE WELCOME BACK SPECIAL
50¢ — Movies — 50¢

Fri. & Sat. • Jan. 25 & 26

7 p.m. DISCO BEAVER FROM OUTER SPACE
8 p.m. 1941

SUNDAY • JAN. 27

James Stewart Double Feature

6 p.m. MAGIC TOWN

8 p.m. MR. SMITH GOES TO WASHINGTON

TRANSPORTATION/LOGISTIC MAJORS

FRITO-LAY, INC.

Will present a 45-minute presentation on Career Opportunities in **Distribution Management** with Frito-Lay. The presentation will be conducted Wednesday, Jan. 30, 1985 at 7 p.m. in Room 222 (Mohave Room) of the Student Union Building. The presentation will be open to interested students pursuing a degree in Transportation/Logistic at the University. On Thursday, Jan. 31, we will interview students majoring in Transportation/Logistics who have signed our interview schedule at the Placement Office.

WHIM humor conference returns

By NICOLE MASSIE
Staff Writer

On one weekend every spring semester, students can forget about the seriousness of college and, without guilt or reservation, demonstrate to the campus how funny they can be.

This spell of relief was initiated through the efforts of ASU English professor Don Nilsen.

"The weekend began as a celebration of my brother's birthday on April 1 four years ago," Nilsen said. "We were just trying to think of something fun to do."

So the Western Humor Irony Conference, or WHIM, was born.

Nilsen is the head of the organization, which holds a conference every year.

This year, the conference will be held the weekend of March 29 to April 1. It will be at the MU and attendance is free for ASU students.

The conference focuses on humor's role in various aspects of human life, Nilsen said.

It lasts 3½ days. Activities include speeches, presentations and joke-telling contests.

"The conference is interdisciplinary," Nilsen said. Professionals and authors analyze the functions of humor from the perspective of their different disciplines.

The conference is important because humor is involved in all professions, he said. "It concerns the philosopher, writer,

historian and countless others."

Each speaker gives a presentation on an aspect of humor germane to their profession, he said.

Psychologists may speak on the nature of humor; historians may talk on the epistemology of humor or how people's sense of humor has changed over time, Nilsen said.

Ethnic stereotypes may be the subject of a social scientist's presentation, he said.

Besides hearing all about humor, a student can participate in the conference by showing his knowledge of what he thinks is funny in a joke-telling contest.

All students are encouraged to enter. The entrance fee of \$2-\$3 provides the prize money for the funniest person on campus, Nilsen said.

Authors such as Alvin Schwartze, Jack Prelutsky, Laurence Peter, Stanly Marvin Handlman and Larry Wilde will be speaking at the 1985 conference, Nilsen said.

WHIM tries to maintain a balance of humor and learning during the conference by "getting the scholars to be humorous and the humorists to be structured," he said.

When the conference ends, excerpts of the papers which were read are published at ASU under the heading WHIMPSY, (Western Humor and Irony Membership Proceeding Serial Yearbook), he said.

"Last year's conference had 1,000 people in the audience and featured 150 professionals and a dozen different authors," Nilsen said.

Schools offer warranties on graduates

CHARLESTON, S.C. (AP) — Trident Technical College guarantees its products — its graduates.

In fact, any Trident graduate who does not satisfy an employer within a year of graduation will receive remedial training free of cost.

"I believe in our students, our faculty and our staff. We're proud of our product and we're ready to be held accountable," said Dr. William Orth, president of Trident Tech. The foundation will provide funds for remedial courses at the 5,000-student school.

Trident is not alone these days in offering warranties on its products. Other schools, mainly institutions that train classroom teachers, are offering similar guarantees. The warranties, school officials agree, come at a time when the public is demanding more accountability in education.

The guarantees generally work the same way: If a student is found by his employer to be deficient in an area he studied in earning his degree, remedial work is provided at no cost to either student or employer.

Students can either return to class or in some instances, particularly in the case of teachers, a professor will visit

the student on the job.

"The intent was not to suggest we have problems. Students don't go out with a 50,000-mile warranty in hand. It's up to the employer to identify the problem," said Dr. Daniel Burke, the dean of the College of Education at the University of Northern Colorado in Greeley.

Burke started the college's quality assurance partnership for first and second-year graduates last spring after a spate of reports criticized the state of public education in America.

"The partnership is an effort on our part to say we need to link up more closely with the agencies which employ our graduates as to how we need to train our people," said Burke.

Northern Colorado's College of Education, the fifth largest in the nation, awards approximately 1,000 teaching diplomas a year, he said.

Burke has also started a second program in which third-, fourth- and fifth-year graduates are awarded a free course of additional study for excellent performance as teachers.

After three semesters of the program, no students have returned for remedial work; employers have

nominated four for additional study.

Orth, who announced the one-year warranties that go into effect this spring, said he hopes employers see it as a guarantee of the value of the salaries they pay Tech graduates.

Trident is apparently one of the first schools to offer a warranty in a variety of subject areas; the two-year school offers associate degrees in such areas as health, business, engineering and industrial technology.

Doane College, a 625-student liberal arts college in Crete, Neb., is believed to have been the first school to offer a warranty on its graduates who majored in teaching.

No employers have requested retraining for the 30 graduates who have been covered by the warranty since it took effect in the spring of 1983. Lowell Dodd, professor of education, said Thursday.

Other schools with warranty programs include Oregon State University, University of Virginia, Purdue University and Eastern Washington University, according to the Washington-based American Association of Colleges for Teacher Education, which represents some 720 teaching colleges.

Court OKs proof of draft sign-up law

By the College Press Service

A Court OK of a law forcing Tennessee students to prove they've registered for the draft before they can enroll at a state school could mean students in other states soon may have to prove it too, draft opponents say.

But at the same time, the U.S. Department of Education last week said students' honesty in signing military registration forms has been so complete the department won't require colleges to prove their students' registration in order to get student aid.

Until now, students' signatures on a form swearing they'd signed up for the draft had been proof enough that they'd actually signed, but as of Jan. 1, colleges themselves would have been responsible for proving students who wanted federal aid had registered.

Tennessee's new law requires students to sign forms certifying they've registered with Selective Service just to enroll in a state school, much less to qualify for federal aid.

As a result, Memphis State University refused to let 19-year-old Thomas Vogel start classes because he refused to sign the compliance form.

Vogel then sued the University and the state, claiming the law unconstitutionally involved the state in enforcing federal Selective Service laws.

Pointing to a controversial July 1984 Supreme Court ruling upholding the Solomon Amendment — the federal law which requires students to prove they've registered for the draft before they can get federal financial aid — U.S. District Judge Thomas Wiseman recently approved the Tennessee law.

"As the nation's defense goes, so goes that of the state," Wiseman said.

No one is sure how much such laws help. "I don't believe we've ever found a non-registrant because (he) refused to sign a college compliance sheet," said Selective Service spokesman John Lamb. "There is no requirement for col-

leges to do anything like turn over the names of students who don't sign a compliance form."

In fact, the Selective Service has prosecuted only 17 of the estimated 500,000 non-registrants, Lamb said.

Both Lamb and the Education Department said they're impressed with the number of students who have complied with the registration law and the Solomon Amendment.

Edward Elmendorf, assistant secretary of education, last week said he was so impressed with students' "honesty" that he was relieving colleges of the chore of proving students were telling the truth when they signed their compliance statements.

Still, registration opponents say they expect more states will keep trying to link college to the military in other ways.

A number of states — Massachusetts, Maine, Pennsylvania, California and West Virginia among them — already have toyed unsuccessfully with laws to keep non-registrants from getting state aid, said Nora Leyland, a spokeswoman with the Committee Against Registration for the Draft (CARD).

"I foresee more states enacting Solomon-like bills trying all kinds of aid and access to draft registration," she said. "It's not going to automatically happen in every state because the political horizons are so different. But I think some states will definitely try."

The Selective Service's Lamb, however, said such state laws will affect many students.

"The Solomon Amendment was terrifically helpful (in getting students to register)," she said. "We saw a tremendous jump in registration in the fall when many students were returning to school and applying for aid."

"It's very difficult at the national level to tell if the Tennessee law has made much of a difference," Lamb said, since only a small percentage of eligible students have failed to register.



COOKIES FROM HOME

418 SOUTH MILL AVENUE
TEMPE, ARIZONA 85281

We need ENERGETIC, ENTHUSIASTIC and BRIGHT PEOPLE for positions as COOKIE SALES REPRESENTATIVES... Interested?

Come by TODAY between 10 A.M. to 4 P.M. for an interview... must have own car.

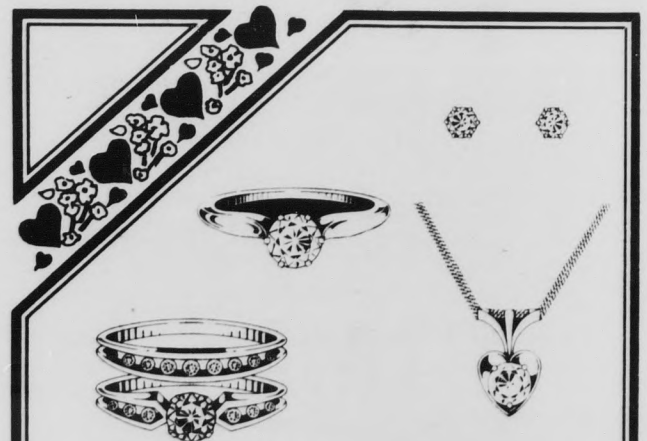
THE Artists' Supply Center
Shop OF ART

Architectural Engineering Commercial ART SUPPLIES

- Transfer Type & Tapes
- Drafting Supplies
- Artists' Books & Magazines
- Inks, Pens, Berol Markers
- Expanded Selection of Sheet Papers for Artists, Architects, & Engineers

26 E. UNIVERSITY
967-3681

Just across University from the Architecture Building!
½ block east of Mill on University



Take advantage of this special event. We had an opportunity to buy a limited number of fine ¼ carat size loose brilliant cut diamonds that we can sell for 30% less than our regular prices.

These diamonds are excellent for Engagement Rings, Diamond Earrings, Pendants and Valentine Jewelry. They are exceptionally brilliant and beautiful.

Layaways accepted.

The quantity is limited, so come early and save!!

Joseph M. Berning
JEWELRY & DIAMOND CUTTING

130 E. UNIVERSITY DR. "IN THE ARCHES" 967-8917

MEMBER AMERICAN GEM SOCIETY



Discount coupon books selling quickly

By PATRICK J. KUCERA
Staff Writer

Memberships for a new club that provides discounts at local restaurants and entertainment establishments are selling more rapidly than expected, the assistant director of ASU ticketing services said Wednesday.

Vivienne Gardner said booklets for the Entertainment '85 club have been selling at a rapid pace, and could possibly be on the verge of selling out.

"On campus, we have sold more than 2,500," Gardner said. "All together they have sold most of them."

Entertainment '85 is a booklet containing coupons for numerous Valley restaurants, movie theaters and sporting events. A membership card included with the booklet will allow members to obtain two-for-one dinner specials at many of Phoenix's more elite restaurants.

The booklet also contains coupons for hotels and services nationwide.

Gardner said the booklets have been selling well at ASU and around the Valley.

"I think it is really successful," she said. "People who are buying it realize they are ahead."

One of the most widely used coupons offers a discount for events at Gammage Center, Gardner said.

Members "are beginning to really use them for shows at Gammage," she said.

Although memberships are on the verge of selling out, Gardner said some booklets are available through Gammage

Box Office and the University Ticket Agency located in the basement of the MU. The booklets are also being sold by other Phoenix agencies such as the Arizona Special Olympics.

Gardner said the memberships were selling rapidly over the Christmas break and more had to be ordered.

"It has really caught on here at the MU," she said. Part of the proceeds from the booklet will be given to the ASU Learning Disability Component, she said.

When the booklets were first sold, the disability component received \$4 for each one sold. After 1,000 had been sold, the amount increased to \$5 for each book.

Membership in Entertainment '85 costs \$20 per person.

The booklets contain approximately \$6,000 worth of discounts, according to Mike Parkinson, ASU director of marketing and promotions.

He said the Phoenix area has sold a large number of memberships, making it one of the most profitable markets for the company.

"Phoenix, for the first year, has done better than any other market," Parkinson said.

The Entertainment company also provides discount coupons for major cities across the United States including Boston, New York, Chicago, Atlanta and Seattle.

"In Seattle, there is a waiting list of organizations that want to sell the book for fund-raising activities," Parkinson said. "The books usually sell out in a matter of weeks."

Hohokam village uncovered in Marana

By VICKIE CHACHERE
Staff Writer

Archaeologists from ASU and the Central Arizona Project (CAP) have uncovered a 14th-century Hohokam village and are beginning to excavate the area, according to Tom Lincoln, a CAP archaeologist.

Lincoln said work on the four-mile area located near the town of Marana in Southern Arizona will begin in March and will continue through May.

Another six years of field work and 18 years of study will result from the project, he said.

Lincoln said two separate communities existed on the northern and southern ends of the site.

"They (archaeologists) are in the

field now, but they haven't done too much," Lincoln said. "The major work will begin in March."

Lincoln said the sites were identified during a federal government inspection of areas that are being used for CAP waterways and reservoirs.

According to Project Director Glen Rice, the site is being mapped with the use of a magnetometer which can locate the presence of ashes in burned structures.

Rice, an ASU archaeology professor, said the mapping is being conducted by Pima Community College.

Two students from ASU will be directing the research and other students will participate in the excavation of artifacts, Rice said.

Lincoln said archaeologists are presently trying to determine the relationships between the two communities.

"What we have identified through the survey work is a series of sites that are (associated) with each other," Lincoln said.

The different sites include separate farming and housing areas and an urban center which includes a structure Lincoln describes as a "platform mound."

He said the mound is a man-made, elevated area that was the site of the village leader's home. A compound wall surrounds the mound, with the houses located outside the wall.

MATH (MAJORS/MINORS/APTITUDE) . . .

You're Needed All Over the World.

Ask Peace Corps Math volunteers why their degrees are needed in the classrooms of the world's developing nations. Ask them why ingenuity and flexibility are as vital as adapting to a different culture. They'll tell you their students know Math is the key to a solid future. And they'll tell you that Peace Corps adds up to a career experience full of rewards and accomplishments. Ask them why Peace Corps is the toughest job you'll ever love.

PEACE CORPS

Peace Corps Representatives will be on Arizona State University's Cady Mall from 9:30 a.m. until 2:30 p.m. on January 28, 29 and 30. If you are familiar with the Peace Corps and would like an on-campus interview, pick up an application at Career Services, complete it and sign up for an appointment. Try putting yourself where you're needed . . . Put yourself in the Peace Corps! For more information, call (602) 965-7994.

FRIDAY!

TEMPE TEA PARTY
FROM 7-9

3 FOR 1 OR 5⁰⁰ PITCHERS OF ICE TEAS!

12 MID-1AM 98 KUPD 12 MID-1AM 98
98 DRINKS 1.98 BOTTLES

ICE TEAS MIDNIGHT SPECIAL AFTER HOURS TILL 2 A.M.

SATURDAY

FROM 7pm - 11pm

1⁰⁰ HEAD AND HEINEY

.75 BUD LIGHT BUD

1⁰⁰ ICE TEAS ALL NIGHT
WHEN YOU BUY THE GLASS!

DEVIL HOUSE

New center aids to prepare students as entrepreneurs

By JONATHAN HIGUERA
Staff Writer

Preparing business students to join the fastest-growing sector in the economy, small business enterprises, will be a major thrust of the new Hahn Center, according to the dean of the College of Business Administration.

"Over the last 10 years, numbers have shown there have been more than 20 million new jobs," said L. William Seidman. "The new jobs have not come from the old, large industries but from the new, smaller enterprises."

Seidman was a guest recently on the television program "Face the State," and discussed what can be done to increase the number of small businesses with headquarters in Arizona.

"The state of Arizona has done well in attracting large plants," Seidman said. "Now it should concentrate on attracting businesses with headquarters here and self-owned industry."

"Arizona's problem is having much of its industry located outside of the state," he said.

Seidman made the following suggestions to remedy the problem of industries not located in Arizona:

- Create sources of capital for new businesses.
- Create networks for new businesses.
- Adjust the tax situation to benefit small businesses.

When the new Hahn Center is complete, Seidman said the facility will be another tool in reaching these objectives.

"Through the Hahn Center, we can emphasize the training of entrepreneurs in the community as a major objective of the college," he said. "And it broadens the kind of

training we can give the student."

The Hahn Center was the result of the largest single donation to the College of Business Administration.

Charles C. Hahn and his wife Donna gave \$500,000 to establish the facility, located in the Business Administration Building.

Seidman said business students will be able to complete internships through the center, gaining on-the-job experience in free enterprise and owning a small business.

A board of advisors consisting of Hahn and his wife, members of the business community, ASU faculty and Seidman will meet next week to get the project underway.

"We will be able to take a different approach than other, similar centers," Seidman said. "Many others focus on research, we focus on the hands on aspect."



William Seidman

Drown

continued from 1

or 12," Belthuas said. "I told her what happened and she didn't say much of anything. She just kept sitting on the couch, watching television."

Belthuas said she asked the babysitter if she had a phone number where Hatathlie's parents could be reached.

"She just said that they went to school," Belthuas said.

Belthuas contacted Tempe Police. Officer Sandra Rucker, who responded to the call, said she did not know if any action would be taken against the babysitter.

Terrace Road Apartments



WALK TO SCHOOL!

½ block from campus. Huge, well furnished 1-bedroom, 1-bath, and 2-bedroom, 2-baths, all utilities included, plus many amenities. New cable hookups.

950 S. Terrace Rd. 966-8540

Dollar\$ has more than just the most interesting earrings in the Valley. It has the lowest prices.

BELTS \$1.00 EA. OR BUY 5 GET ONE FREE

EARRINGS \$1.00 PR. OR 3 PAIR FOR \$2.50

BRACELETS GOLD & SILVER 18PC. SETS \$1.50

TWISTED BEADS 50¢ STRAND BEAUTIFUL SHELL CLASPS \$1.00

Dollar\$ has more than just the most interesting earrings in the Valley. It has the lowest prices.

414 S. Mill #207 Tempe (above Spaghetti Co) 829-1127

DOLLARS FASHION ACCESSORIES

Dollar\$. It's not just our name, it's our prices!



Get that Great "X"

★ PERM SPECIAL ★



FREE HAIRCUT WITH PERM

COMPLETE SERVICE

Save \$13.95 MUST BRING COUPON **ONLY \$29⁰⁰**

OPEN 7 DAYS A WEEK

GREAT EXPECTATIONS
PRECISION HAIRCUTTERS

NO APPOINTMENT NECESSARY

FIESTA MALL	964-6661	COLONADE MALL	274-2765
WESTRIDGE MALL	849-0406	PARK CENTRAL MALL	266-0376

NOW BIGGER SANDWICHES FOR THE SAME PRICE

CALL AHEAD FOR FAST TAKE-OUT SERVICE 894-6941

PHILLY PIZZA & STEAKS

4 EAST UNIVERSITY N.W. CORNER UNIVERSITY & MILL

NEVER A COUPON NEEDED

NEW EVERYDAY LOW PRICES

COMPARE

14" PEPPERONI TAKE-OUT PRICES

PIZZA HUT	15-in.	\$10.10	DOMINO'S	16-in.	\$8.00
PETER PIPER	14-in.	\$4.75	GINO'S	14-in.	\$5.10
APPETITO'S	16-in.	\$5.75	GODFATHERS	14-in.	\$8.85

OUR EVERYDAY PRICE ONLY \$4.11

	CHEESE	ONE-ITEM	TWO-ITEM	THREE-ITEM
SMALL	\$1.95	\$2.43	\$2.91	\$3.39
LARGE	\$3.45	\$4.11	\$4.77	\$5.43

WE DELIVER, \$5 MINIMUM ORDER, 2-MILE RADIUS, \$1 DELIVERY CHARGE

894-6941

WIN A NEW VIDEO TAPE RECORDER

NO PURCHASE REQUIRED. ENTRY FORMS AVAILABLE AT ALL LOCATIONS.



Smile

Staff photo by Ron Kuczek Jr.

Senior history major Lori Mantoni tries to force a smile on Spike the purebred pomeranian. Spike is owned by Larry Fenner who raises pomeranians.

CARPET REMNANTS

WE MANUFACTURE
OUR OWN CARPET
AND SELL IT DIRECT
TO THE PUBLIC, NO
MIDDLE MAN.

- Thousands in stock
— 30%-70% off
- Hundreds of room-size
remnants — \$29-\$69



MESA
1826 W. Broadway
At Dobson/bet K-mart
and Price Club
890-1152

NORTHEAST
12408 N. Cave Creek
At Cactus/
Home Depot Ctr.
867-2703

WESTSIDE
3161 N. 25th Ave
Bet. Thomas & Osborn
269-3261

•We Deliver

Owned and operated by E'Con
Carpet Mills with warehouses
throughout the U.S.A.



Chopsticks
Restaurant

OVER 12
CHOICES



MENU
CHANGES
TWICE DAILY

ORIENTAL BUFFET

1324 S. RURAL RD.
TEMPE, AZ 85281
968-2525 • 968-2636

Mon.-Thurs. 11-9
Fri., Sat., Sun. 11-9:30

Special order & take-out available
Chinese Dim Sun
every Sat. & Sun. 11-4

TIMOTHY HUTTON CAPTURES NEW YORK CITY IN "TURK 182!"

Academy Award winner **Timothy Hutton** plays a very new kind of hero in "Turk 182!" As the fighting mad, hip and resourceful Jimmy Lynch, he sets out to prove you can battle City Hall to right a wrong. His older brother, a firefighter, is injured while saving a child from a burning tenement. But since he was off-duty and having a drink in the local bar, an uncaring city bureaucracy has refused him a pension.

Crusader Excites City

When the mayor is too busy running for re-election to hear his case, Jim-



TIMOTHY HUTTON (right) is Jimmy Lynch and ROBERT URICH (center) is his big brother Terry in this rousing adventure-drama.



TIMOTHY HUTTON stars in "TURK 182!" as Jimmy Lynch, a young man whose crusade to redeem his brother's reputation rallies an entire city to his side.

my Lynch takes matters into his own hands. Using only his wits, Jimmy sets out to prove that you can fight City Hall, and the entire city rallies behind the mysterious crusader known as Turk 182.

Hutton proves riveting as Jimmy Lynch, a budding artist pushed into action to fight for his brother's life—and justice. Recently starring with **Sean Penn** and **Lori Singer** in "The Falcon and the Snowman", Hutton has followed his Oscar-winning debut in "Ordinary People" with extraordinary performances in films such as "Taps", "Daniel" and "Iceman".

Joining Hutton in this exciting urban adventure are **Robert Urich**, **Kim Cattrall**, **Robert Culp**, **Darren McGavin** and **Peter Boyle**.

FEBRUARY MEANS "MISCHIEF" FOR MOVIEGOERS

Doug McKeon is burning up—he's getting dangerously close to college without hitting a "home run" with any girl, much less **Kelly Preston**, the cutest one in the class. Let's face it—it's the 1950's, and Doug would settle for a "single". That is, until big city buddy (and screen newcomer) **Chris Nash** arrives at school and bets that he can help Doug hit a grand slam.

A winning cast

The cast of "Mischief" is particularly hip. **Doug McKeon** is best known as the "suck-face" kid in "On Golden Pond". **Kelly Preston**, soon to be seen in the upcoming "Secret Admirer", played the luscious damsel in distress in "Metal



"Please, Marilyn—it's been 18 years!"



Boy & girl in search of a contact lens.

Storm". **Catherine Mary Stewart**, who plays **Chris Nash's** girlfriend, was a smash hit as the lead in both "Night of the Comet" and "The Last Starfighter".

Major league mischief

Together, Doug, Kelly, Chris and Catherine stir up more rowdy "mischief" than little Nelsonville, Ohio can take in one year. We're talking major league tomfoolery here: motorcycles on sidewalks, cars on fire hydrants, parents on the war-path, romance on the sly. In short, all the things that make life worth living before college.

The cars may have changed, but the action in the back seat has not!

Comet

Profs prepare to renew study of heavenly body

By JOHN CONWAY
Staff Writer

ASU physics professors this weekend will renew their observation of Halley's comet, which is currently 550 million miles away from the earth, according to physics professor Susan Wyckoff.

Scientists will be scanning the heavens again this Saturday and expect to sight the comet for the first time in six weeks.

Halley's comet, approximately four kilometers in diameter at its center, is a combination of ice and dust fused together, Wyckoff said.

Professor Peter Wehinger and Wyckoff were working on the team of scientists that recently viewed Halley's comet as it crossed Jupiter's orbit and began to evaporate, entering its coma stage.

"What we hope to study," she said. "is the coma and the tail."

Wyckoff said she is most interested in the coma, a large steam cloud that develops as the snowball-like comet approaches the sun.

"The nucleus of the comet is a dirty snowball," Wyckoff said. "When it gets to a distance equal to the earth-sun distance, the comet's tail will develop."

"The tail is caused by light pressure from the sun that pushes the dust particles away out of the comet's at-

mosphere," Wyckoff said.

The comet's tail, which is expected to be millions of miles long, is made up of dust particles which will shine as they begin to receive and reflect the sun's light, Wyckoff said.

By knowing the chemical make-up of these parts of Halley's comet, Wyckoff and her associates will be able to conclude what the comet's nucleus is composed of.

Wyckoff said the information will help astronomers and scientists understand the chemical make-up of the snows and the coma and the proportion in which those chemicals are present.

According to Loretta McKibben, secretary of the International Halley Watch Center, the team of ASU scientists are especially interested in Halley's spectra because "it (the comet) is the pristine material from the original solar system material."

The comet's spectra is a graphical record of the comet's white light after it is divided into its various colors.

The various colors allow scientists to determine the chemicals present in the comet, McKibben said.

The spectra "may tell a lot about the origins of our solar system," McKibben said.

Wyckoff and Wehinger are scientists in the ASU Center for the International Halley Watch, an organization made up of seven centers that gather data from astronomers around the world who have observed the spectra of Halley's comet.

Wyckoff said the comet will be studied with ground-based telescopes and from a telescope mounted in the Space Shuttle's cargo bay during a flight scheduled for March 1986.

"The comet will be observed (from the space shuttle) in ultra violet light that has the signatures of the water molecules in the comet's coma," Wyckoff said.

"Halley's comet will not enter the earth's atmosphere," Wyckoff said. "It will be closest to the earth in April 1986, when the distance will be 39 million miles."

The comet has come as close as a few million miles to the earth in centuries past, Wyckoff said.

"Halley's comet is in a completely separate orbit that is very elliptical and comes around the sun every 76 years," Wyckoff said.

"Probably by November or December 1985, one should be able to see the comet with binoculars if the person goes outside of the city, away from the city lights," Wyckoff said.

According to McKibben, Edmund Halley's determination that comets orbit dispelled the then-popular belief that comets were evil spirits, signs sent from the devil or a sign that the world was coming to an end.

"Halley figured out that comets return, and that it was a part of our solar system, not a planet, but a member," McKibben said.



Susan Wyckoff

ONE RELATIONSHIP TWO RELIGIONS?



Panel & Discussion on
Interdating & Inter marriage

Sunday, January 27 • 7:30 p.m.-10 p.m.

Hillel: 1012 S. Mill

Call for
daily specials

MIKE KWAN'S GOLDEN COIN

Chinese Buffet
1125 E. Apache Blvd.
Tempe
968-3322



Menu includes:

Sweet and Sour Pork
Lemon Chicken
Smoked Fish
Shrimp Almondine
Pepper Steak

Teriyaki Beef Steak
Sweet and Sour Almond Turkey
Chicken Chow Mein
BBQ Spare Ribs
Egg Rolls

Ham Fried Rice
Beef with Broccoli
Teriyaki Chicken
Vegetarian Steak
Egg Fu Young

WE SERVE BEER & FRUIT COCKTAIL
"1984 READERS CHOICE"

•LUNCH•

11 a.m.-3 p.m.

\$3.33

•DINNER•

5 p.m.-9 p.m.

\$3.77

Change in Food
Selection Daily



\$10.00 GIFT CERTIFICATE

Start the New Year right at MR. BROWN'S. Present this Gift Certificate for a full \$10.00 savings when your selections from our dinner menu total \$20.00 or more (excluding wine and liquor). This Certificate is good Monday through Thursday 5-10 PM. Offer expires January 31, 1985. One Gift Certificate per party please. not valid with any other discount.



MR. BROWN'S

Broadway West of Price Rd. • 968-8991

alphagraphics®

Printshops Of The Future

"FOR THE PROFESSIONAL
LOOK IN TERM PAPERS"

BINDING • WIDE SELECTION OF PAPER
TRANSPARENCIES FOR PRESENTATIONS

5¢ Full
Service
Copies*



4¢ Self
Service
Copies

*8 1/2" x 11" UNBOUND ORIGINALS

122 E. UNIVERSITY DR. • 968-7821

(In The Arches Shopping Center)



Horsing around

Chico, the half Arabian and half quarter horse police patroller gets a well deserved peck on the cheek from liberal arts major Susan O'Donnell. Chico's patrol partner is ASU Police Officer Ben Mayor. The two were making their usual rounds of Cady Mall Wednesday afternoon.

Staff photo by Ron Kuczek, Jr.

DISTINGUISHED TEACHING AWARD NOMINATIONS
 College of Liberal Arts

Nominate your Most Distinguished Teacher

ELIGIBILITY: Any College of Liberal Arts Teacher, including Teaching Assistants/Associates

DEADLINE: February 1, 1985

Nomination forms can be picked up at the Memorial Union Information Desk, in the Office of the College of Liberal Arts (SS 109), and in each department office in the College.

**BEST BITE SHOP
 SUBS & PIZZA**
 3101 S. MILL AVE. • HUNTINGTON SQUARE • 967-1412

Extra Large Pizza
 ONE ITEM ONLY — WITH THIS AD — EXPIRES 4-30-85.

only \$5.95

SPAGHETTI & SAUCE
 (With Garlic Bread)
 Buy 1. 2nd Meal 1/2 Off
 Only good after 4 p.m.

PEPSI

Hrs.: Sun.-Thur. 10-10
 Fri.-Sat. 10 A.M.-Midnight

Only a \$1 Delivery Charge Within a 5-mile Radius after 4 p.m.
967-1100

Try Us **HOOTERS** WELL DRINKS

3 FOR 1 FRIDAYS
 4 p.m.-7 p.m.

"FREE MUNCHIES"
 TWO FOR ONE WELL DRINKS
 DAILY 4 P.M.-7 P.M.

801 E. APACHE • 894-2662

LEWIS CAMERA EXCH.
Film Processing Special
Develop and Print:

- 12 exp. \$1.99
- 15 exp. \$2.49
- 20 exp. \$3.09
- 24 exp. \$3.69
- 36 exp. \$5.49

Stop by and pick up your student discount card today!

ASU UNIVERSITY RURAL CURRY
 WE ARE HERE N ▶

These prices available with this ad only. Exp. date 2-1-85.

We offer the best selection of photo supplies and our darkroom inventory is the most complete.

LEWIS CAMERA EXCH.
 1236 N. Scottsdale Rd., Tempe
968-9321

ASU offering bluegrass courses

By DOUGLAS L. ALEXANDER
Contributing Writer

Country music has not taken over ASU yet, but it will have its chance.

Three new courses in bluegrass music are being offered this semester under the prefix title MUS 194: Fundamentals of Bluegrass Banjo, Old-Time Country Fiddling-Intermediate and Bluegrass Ensemble.

The banjo class, which meets Tuesday nights, is an introduction to three finger bluegrass picking.

Students must have their own banjo, but experience is not required.

It is being taught by Chuck Meeder, founder and director of the Phoenix School of Folk and Country Music.

"I'm looking forward to teaching the course," Meeder said. "It's real exciting, because the usual University musical offerings are for a large orchestra."

He said, "In this style you can play by yourself or in small groups because most bluegrass musicians know the same numbers."

Peter Rolland, ASU mathematics professor, proposed the bluegrass program to the ASU curriculum about three years ago.

Few colleges offer performance-oriented courses for

bluegrass music, Rolland said.

He originated the fiddling classes, but the banjo and ensemble courses are new offerings.

The intermediate fiddling class meets Mondays at 6:20 p.m. Students are required to have basic skills on either fiddle, violin, viola or mandolin. They will learn how to play old time fiddle-tunes with an emphasis on good style, memorization and playing by ear.

The bluegrass ensemble class meets at 8 p.m. Mondays under Rolland's instruction. The course is open to anyone with basic skills on a suitable bluegrass instrument, such as banjo, guitar, mandolin, fiddle, bass or dobro.

Students must provide their own instrument. They will study instrumental and vocal ensemble techniques in bluegrass and old-time string band music.

The students will form practice groups and receive teaching on arranging the groups' music.

The fiddle and banjo classes still have a few openings left. The ensemble course is only half full, however. Each course is worth one credit and continuing ASU students can enroll for free. Outside enrollees will be charged \$51 per class with a \$10 late surcharge.

All three class sessions meet at Mesa High School. For more information, contact Chuck Meeder at 437-9260 or Peter Rolland at 969-9744.

HARKINS Stereo Theatres 4 Channel Sound **TWILIGHT SHOW \$2.50**
SHOWTIMES: BETWEEN 4:30 & 6:30

THE CRITICS ARE GOING CRAZY!!
"One of the year's Ten Best," Max McQueen, MESA TRIBUNE
"...zany, far-out comedy treat." BILL ROCZ.
"Side-splitting humor... one of the best comedies of recent years... the audience actually cheered..."
-Nick Salerno, Scottsdale Progress
"A miraculous comedy... a delightful piece of slapstick... hilariously funny... humor that comes from the heart."
-Michael Burkett, New Time

THE GODS MUST BE CRAZY!!
CAMELBACK 949-6425
Camelback Rd west of Scotts Rd 1:00 (5:20 - \$2.50) 7:40, 9:55


CITY HEAT CLINT EASTWOOD
AND **2010** PG
CAMELVIEW 949-6178
79th St North of Camelback Road

CRITICS RAVE! **A PASSAGE TO INDIA**
BEVERLY HILLS Cop
Eddie Murphy **THE RIVER**
COTTON CLUB **Maria's Lovers**

LOS ARCOS 949-8851
Scottsdale Road and McDowell Road **AMADEUS**
Perils of Gwendoline

THOMAS MALL 840-6611
44th Street and Thomas Road **CITY HEAT PLUS**
GHOULIES **PLUS HOT MOVIES**
COMING SOON: "THE BROTHER FROM ANOTHER PLANET!"
Tuesday is KDKB \$1.50 Day!

It's a jungle out there & you've got to have some...
HOT MOVIES
A rockin' comedy hit.



Starts Today!

HARKINS LOS ARCOS MALL Scotts Rd. & McDowell 949-8851		
WESTDALE 35th Ave. & Van Buren 286-1729	BLAIR METRO PARK North Metro Center 997-5911	MANN POCA FIESTA 1020 W. Southern 835-0404
SCOTTSDALE 6 DI Hayden Rd. & McKellips 949-9451	MANN CHRISTOWN 5707 N. 19th Ave. 249-2843	HARKINS SHEA PLAZA 32nd St. & Shea 996-1200
MANN SUN DEVIL 6 960 E. University-Tempe 829-0344	GLENDAL 9 DI 55th Ave. & Bethany 939-9714	HARKINS THOMAS MALL 44th St. & Thomas 840-6611

WESTERN CRUISE LINES
S.S. AZURE SEAS
The world's leader in short cruises.

THE MAZATLAN ALTERNATIVE

THIS YEAR, DURING SPRING BREAK ENJOY A TOTAL CRUISE EXPERIENCE IN JUST FOUR DAYS ABOARD THE S.S. AZURE SEAS. SAIL MARCH 11 TO PICTURESQUE ENSENADA AND ENJOY THE MANY SIGHTS OF SAN DIEGO. FOR JUST ONE LOW FARE ALMOST EVERY SOLITARY THING IS INCLUDED: Round-trip airfare between Phoenix and Los Angeles; transfers; port taxes; four nights accommodations; all meals; live entertainment; movies; parties, dance bands; plus many more shipboard activities. DISCOVER THE VALUE AND EXCITEMENT OF CRUISING THIS SPRING!

SPACE IS LIMITED. BOOK EARLY.


FROM \$590*

*Price is per person, double occupancy for medium inside double stateroom

FOR BROCHURE AND ADDITIONAL INFORMATION, CALL THE AMERICAN EXPRESS VACATION STORE IN MESA.

#8 Bell Square (Near Fiesta Mall)
1457 West Southern (at Longmore)
(602) 898-1500
9:30 a.m.-5:30 p.m. Monday-Saturday

THE AMERICAN EXPRESS VACATION STORE
Why take a chance when you take a vacation?™



Win This Computer Or Skiing At Purgatory

Benefit yourself and the Alpha Kappa Psi Business Fraternity!

Yes, AKP, with Wabash and Apple Computer, are offering you a CHANCE to win the insanely great Macintosh™ personal computer.

Apple Computer has a great special price for students, faculty and staff of ASU. The Macintosh and a printer can be purchased for only

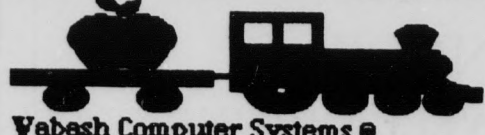

Macintosh \$1,550 **Printer \$438**

NEW LOWER PRICES COMING!

And that's all you need. Yes, discover what people at Harvard, Yale, Stanford, BYU, and the University of Michigan already know.

And if you should win one, why then you've greatly benefited. See the ALPHA KAPPA PSI members for a CHANCE, and further details. They will display the computer at these locations:

Jan. 14-18 Student Book Store, On College Ave.
Jan. 21-25 Memorial Union
Jan. 28-Feb. 1 Dean's Patio, College of Business

Sponsored by  and 

Macintosh is a trademark licensed to Apple Computer Inc. © 1984 Apple Computer Inc. MCL283Y
Apple and the Apple logo are registered trademarks of Apple Computer Inc.

Incentive

ASU program gives encouragement to Hispanic women

By MELISSA SMYTH
Contributing Writer

About 40 Hispanic teen-agers will get a chance to prepare themselves for the rigors of college this spring when ASU begins a program designed to familiarize them with the University.

The program, "Understanding the University Experience," began in the 1984 spring semester and is open to Phoenix elementary school 8th-grade Hispanic girls and their mothers.

According to Dr. Jo Anne O'Donnell, associate dean of student life and founder of the program, Hispanic women need extra assistance and support in pursuing an education.

"Hispanic females are the most under-represented in higher education. They face some cultural barriers that some of the men do not, as far as encouragement to achieve outside of the home," she said.

According to Julia Emmons, associate director of the program, Hispanic culture and tradition does not encourage young women to seek higher education.

"Most Hispanic women are brought up to look forward to being a homemaker, to being taken care of, to being dependent rather than independent," she said.

O'Donnell said, "We want to help them understand the relationship between the home environment and the academic qualifications needed for college. The parents need to understand what this means in terms of their education. This is their study environment."

In addition to lectures and counseling the participants will be involved in other activities including tours of classrooms, libraries and laboratories, a visit to campus while classes are in session, career counseling and an overnight stay in one of the dormitories.

'The girls and their mothers will attend a series of lectures designed to expose them to the University.'

O'Donnell said that in 1979, only 2.8 percent of Mexican-origin women over the age of 25 completed four years of college.

"I think it's safe to presume it has not changed significantly. It's the lowest rate among major ethnic groups in the country," she said.

Beginning Feb. 12, the girls and their mothers will attend a series of lectures and counseling sessions designed to expose them to the University and the programs it offers.

Hispanic students and faculty at ASU will speak during the sessions, as well as alumni and members of the business community.

"Part of what we try to do is expose them to a variety of role models," O'Donnell said.

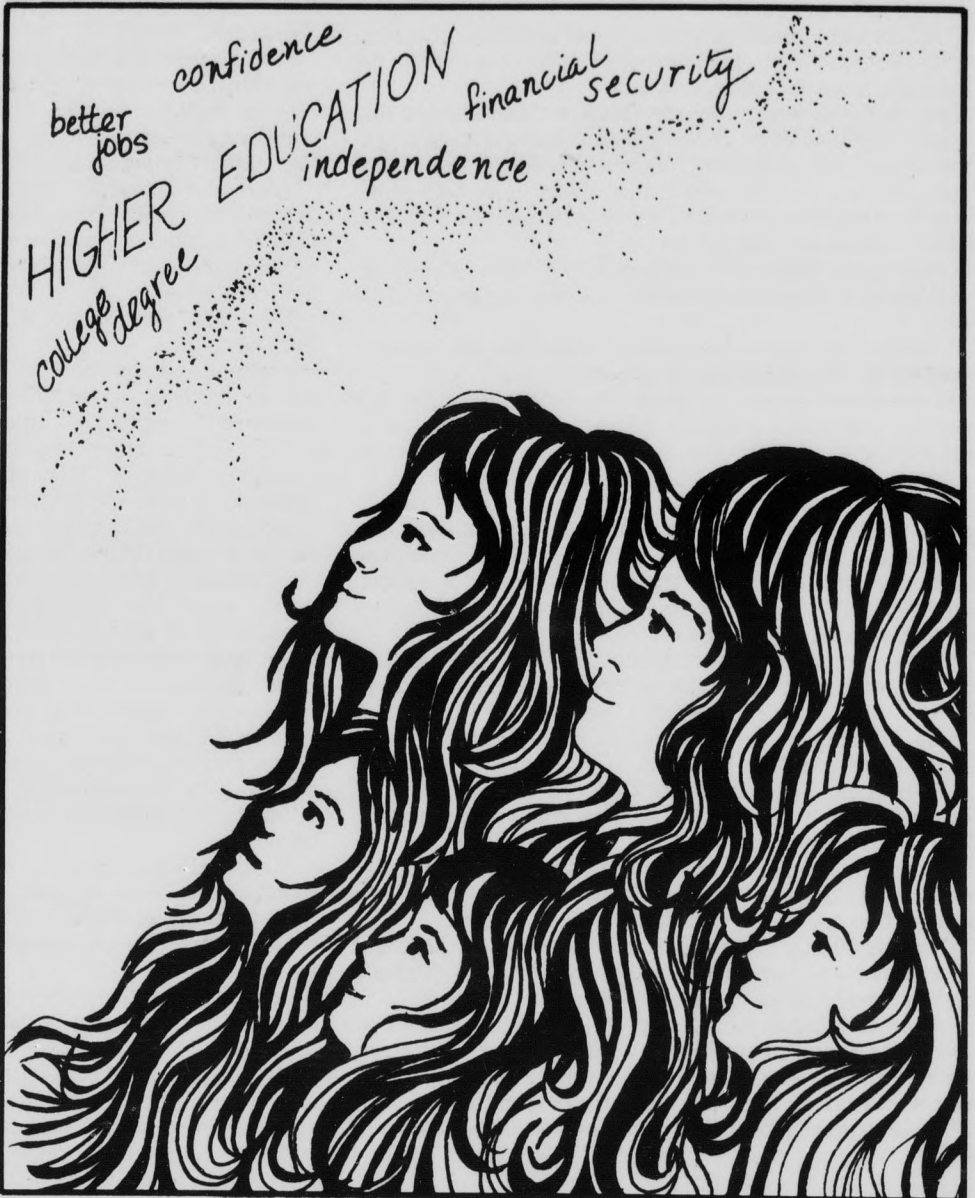
ASU is providing money for the program, although it was originally funded by a grant from the federal government, O'Donnell said.

"The federal government often likes to give 'seed' money for certain projects, and after they are established they like to see others pick it up," she said.

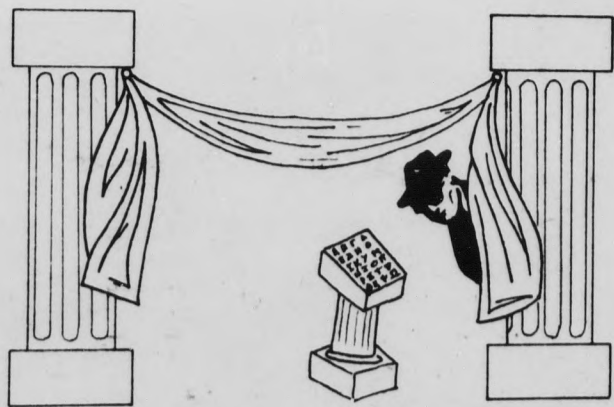
The amount of money intended for the program is unknown, she said.

"They mentioned that several of the mothers who had participated were now enrolled in some college classes," O'Donnell said.

Emmon said girls who had previously participated in the program were "more anxious to pursue the college track."



COME DISCOVER
THE GREEK SYSTEM
**FRATERNITY
RUSH**



RUSH TOURS

January 28 at the Memorial Union, Arizona Room
Check-In: 4:00, Orientation: 4:30
Tours: 5:00-11:00 (dinner included)
Fee: \$5.00
For Further Information Contact:
The Interfraternity Office at 965-3806 or
The Greek Life Office at 965-0692
(No bids will be given out from Jan. 16 to Jan. 29,
so tours will be important.)

**BICYCLE
BARGAINS**



**NEW
12-SPEED**
List Price \$220
NOW \$129.95
Complete with chromolly
frame alloy wheels

NEW 10-SPEED
List Price \$149.95
NOW \$119.50
Fully assembled and complete warranty

**WE WILL MEET OR BEAT
THE PRICE OF ANY
COMPARABLE PRODUCT.**

College Cycle
909 EAST LEMON
Serving ASU since 1946

Cuts may hurt middle-income students

By the College Press Service

If rumors about the 1986 Department of Education budget prove true, one of every four students who apply for federal financial aid won't get it.

Students from middle-income families and those attending private or out-of-state schools would suffer most under the proposals, financial aid experts said.

Trial balloons sent up by the Office of Management and Budget (OMB) in early January signal that the Reagan Administration may try to limit students to no more than \$4,000 a year in financial aid, and disqualify families that make more than \$30,000 a year from the Guaranteed Student Loan (GSL) and Pell grant programs.

The budget proposals should reach Congress in February. Congress will then accept, reject, or approve figures of its own.

It could be months before Congress and the president actually agree on funding figures.

"If the proposals are accepted — of course, we hope they won't be — it means a serious restriction to graduate study loan aid and to all kinds of undergraduate aid," said Charles Saunders of the American Council on Education (ACE).

Financial aid directors around the country agree that the proposals could hurt needy and middle-income students.

"A \$30,000 income cap would have a significant impact on our student population, on a tremendous amount of middle-income families," said Edmond Vignoul, University of Oregon financial aid director.

Under current rules, students from families earning more than \$30,000 a year must pass a "needs test" to get federal aid.

Now the administration wants to cut off such students regardless of need.

"Without the loans and grants, their options will be limited and this obviously will have a detrimental effect on our enrollment," Vignoul said.

"As many as 25 percent of the students we process loans for wouldn't qualify with a \$30,000 income ceiling," said Taft Benson, Texas A&M's spokesman.

"It would eliminate a great number of students who might otherwise benefit from higher education," he said. "Students might not get an education because of lack of resources."

Benson said the \$4,000 aid cap did not affect students at moderately-priced institutions, but students at private or out-of-state schools, who usually receive more than \$4,000 per year, would have to find other financing or other schools.

"About 10 percent of our aid population would be adversely

affected by the \$4,000 cap," said John Klacik of Western Washington University.

"And I was kind of surprised to hear that the \$30,000 income limit would affect about 50 percent of our GSL student population," he said.

Klacik said the proposals are "a direct attack on what I consider the principles of financial aid: provide students access to higher education, encourage choice between institutions and acknowledge the persistence to get through four years of college."

"Part of my concerns are the dichotomy," he said. "We talk about cutting access and choice at the same time we talk about excellence in education. If cuts need to be made, I've heard more intelligent proposals that would target funds more precisely."

The OMB may make other drastic proposals, ACE's Saunders said.

Educators expect the OMB to try again to eliminate \$412 million in Supplemental Grants, \$76 million in State Student Incentive Grants and \$17 million in graduate fellowships for women and minorities, he says.

Another recycled OMB plan would freeze next year's education budget, WWU's Klacik said.

Meanwhile, the Department of Education, burdened with changing leadership and an uncertain future, is reviewing all the proposals, but officials refuse comment.

"We know what the administration has proposed," a department spokesman said. "But we can't comment until Congress is in session and we get our programs over there to weigh them against the administration's."

Education experts hope Reagan's recent nomination of William Bennett to replace outgoing Education Secretary Terrel Bell is a reprieve from the administration's plan to dismantle the department.

Whether Congress accepts those plans, of course, is open to debate.

"Some (OMB) proposals are similar to those made when Reagan was first elected," A&M's Benson comments. "Congress rejected them then, and I hope Congress continues its foresight and sensitivity to students needing money for education."

Despite Benson's memory, Congress did in fact pass many Reagan student aid cuts in 1981. It tended to resist more cuts in subsequent years.

"Bi-partisan support in Congress for financial aid has been strong for a long time," Oregon's Vignoul said. "I hope their attitude won't change significantly."

RUNDLE'S LIQUORS & MKT.
730 S. MILL
Corner Mill & University Ave.

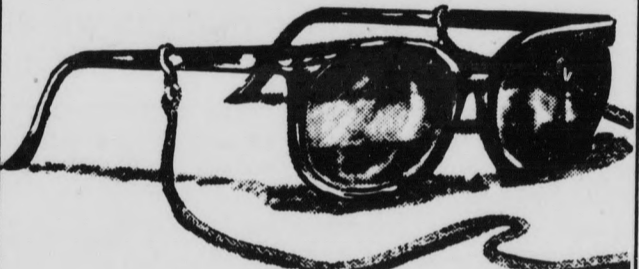
ANDRE CHAMPAGNES 750 ml \$2.97
PABST BOCK BEER 6-pack \$2.36
PLAYBOY Used Magazines \$.75

Haagen Dazs Natural Ice Cream,
Adult Magazines, Groceries, Ice,
Wines, over 40 Imported Beers.

967-9079

Memory Lane
Out-of-Print
Records
Buy • Sell
Fort Knox Plaza
1940 E. University Dr.
Tempe
968-1512
Tues.-Wed.-Sat. 9 a.m.-6 p.m.
Thurs.-Fri. 11 a.m.-8 p.m.

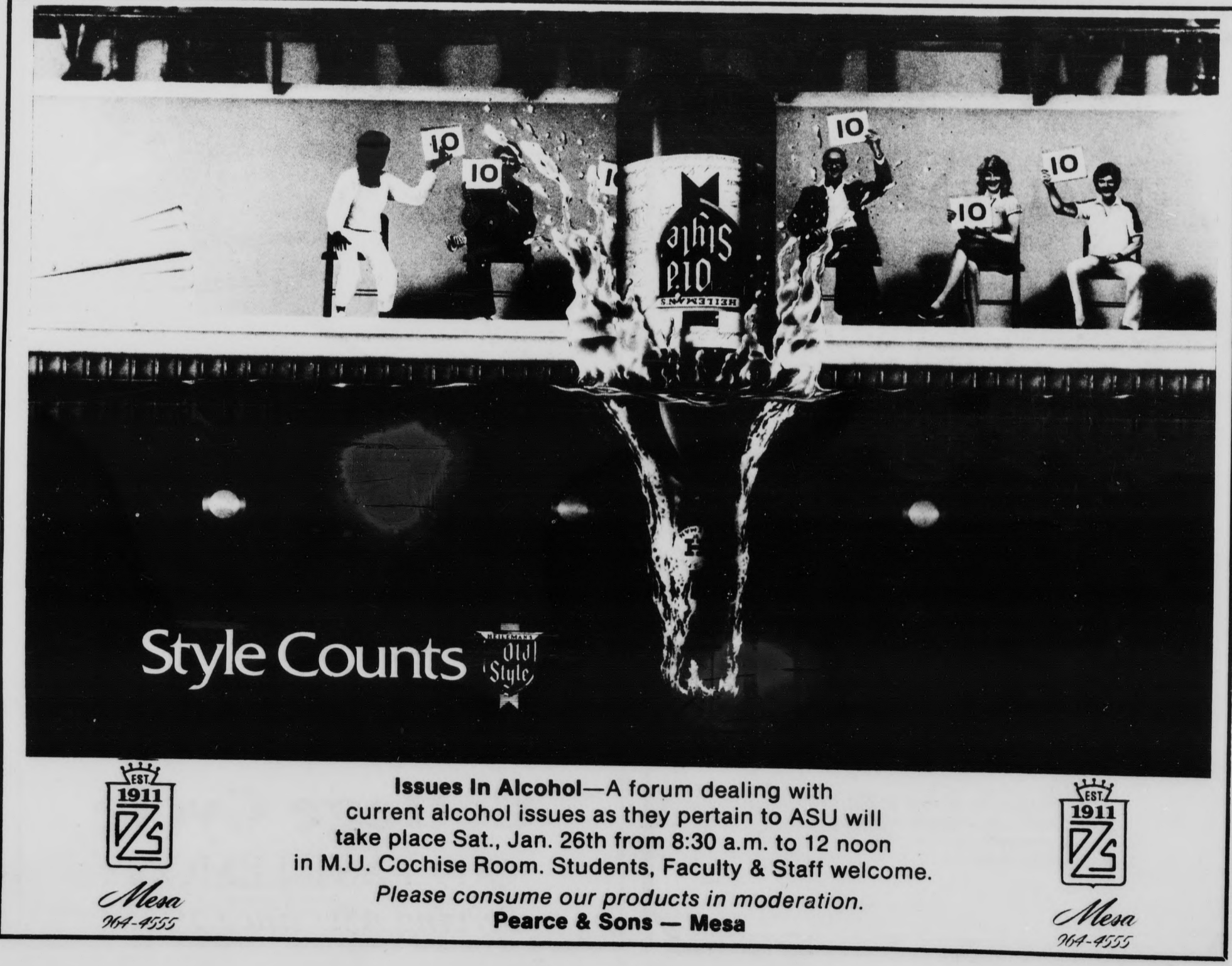
VUARNET®
25% OFF
WITH THIS AD AND
CURRENT ASU STUDENT ID



January 25-31, 1985
THE SUNGLASS CO.

Fiesta Mall
Chris-Town Shopping Ctr.
Metrocenter

Paradise Valley Mall
Thomas Mall
Los Arcos Mall
Colonnade



Style Counts

Issues In Alcohol—A forum dealing with current alcohol issues as they pertain to ASU will take place Sat., Jan. 26th from 8:30 a.m. to 12 noon in M.U. Cochise Room. Students, Faculty & Staff welcome.

Please consume our products in moderation.
Pearce & Sons — Mesa

EST. 1911
Mesa
964-4555

sports

state
press

Challenge

Lady gymnasts expect tough meet with No. 1 Utah



Kim Neal will bolster ASU's lineup against Utah in the floor exercise and vault. Neal is coming off a cold which kept her from competing so far this season.

By TOM BLODGETT
Sports Editor

There are two ways to look at competing against a top-ranked team: as a chance for an upset or as an opportunity to gain experience against top-notch competition.

The fourth-ranked ASU women's gymnastics team hopes for a little of both Saturday when it renews its rivalry with No. 1 Utah at 2 p.m. in the University Activity Center.

The men's team will also be in action against Brigham Young University and Long Beach Junior College.

But the main attraction will be the Lady Devils and Utes, who have clashed in tight battles for the national championship the last two seasons. Utah won both titles on its way to four consecutive NCAA crowns.

"It's going to be a fun meet," said John Spini, women's gymnastics coach. "We want to know what they look like so we'll know what we're going to need to win nationals."

have to have the best team to beat Utah. They have a quality program."

If Spini's team is to win, it will have to do it without the services of senior gymnast Theresa Campos, who tore ligaments in her knee during workout Tuesday. Campos competes in balance beam and uneven parallel bars.

Spini said the team has the depth to cover for her absence on beam, but she may be missed on bars.

"I wish the others had her desire to compete," Spini said. "She's such a team person, I love to have her on the floor."

Campos said, "I was very disappointed. This is my senior year, and it has been the best year competing for me."

"I wanted to do something special for my last year. I wanted to make All-American on beam."

Campos' knee will undergo arthroscopic examination to see if it needs surgery. If it does not, she may be back in four to six weeks.

Spini: 'I think our team is strong enough to compete with Utah. It's fun to go against talent when you have talent.'

Spini can make appropriate adjustments in his team's routines and preparation schedule after this meet.

"It's still early so we have time to back up if we have to," he said.

But make no mistake about it; Spini believes his team can win the meet and at nationals, which will be held in the Utes' own Special Events Center.

"I think our team is strong enough to compete with Utah," he said. "It's fun to go against talent when you have talent."

Spini expects Utah to "compete very clean."

"They'll have the attitude of having the best team and they'll be using their reputation."

Spini believes Utah, despite the loss of NCAA all-around champion Megan Marsden, is the team to beat, particularly since it will host nationals.

"Four times (champion) in a row — that's hard to beat," he said. "You are going to

The Devils' lineup will be strengthened by the return of Kim Neal and Jackie Brummer. Neal will compete for the first time this season. Brummer thus far has only been on bars.

The vault lineup should benefit the most from their presence.

"With the lineup (Utah coach) Greg (Marsden) sent down, I really think we'll be a couple tenths (score) stronger than Utah vaulter for vaulter if Kim and Jackie are in there," Spini said.

Spini should have Lisa Zeis, Becky Rashoff and Shari Mann competing in the all-around for ASU.

The ASU men are more interested in getting a good score toward NCAA qualification than they are in beating Brigham Young; the Sun Devils are expected to be an easy victor.

"We're aiming for a 280," said Don Robinson, men's gymnastics coach. "We should be able to do it."

Athletic department suffers lack of communication, support

Jerry Brown

Asst. Sports Editor



Quick, name an ASU men's athletic team *not* called on the carpet by the NCAA since the Devils joined the Pac-10 conference.

Football? Bzzzz. Do the names Kevin Rutledge, Rick Lynch and Fred Miller ring a bell?

Track? Nice try, that sport is usually safe from such nonsense. But then again, this is ASU. Forfeits and scholarship reductions are commonplace and track is no exception. And save your breath on men's cross country, they were wrapped up in this puppy, too. Len Miller is the name to remember here (at least that's what we're told). Hope you mailed him a Christmas card. Baldy Castillo, where, oh where can you be?

Wrestling. Wrong. This just happened recently, so if you were out of town over break, don't take it too hard. Only one scholarship in each of the next three years went by the boards, so the grapplers should still be in the running for Frank Sackton's "Mr. Clean" award.

Gymnastics? Nope. Again only one scholarship, but how can you cheat in gymnastics? Why would you cheat in gymnastics? A little extra chalk on the hands and you've got it made, right?

How about basketball? Nah. They're still one scholarship short because of Henry Bibby's premature salutation to Eric Holloway a couple of years ago. Other than that, the hoopsters are clean. But you can bet your spare work-study money that once they make a serious run for the Pac-10

crown, somebody will be snooping around the gym.

Baseball. The cornerstone of ASU athletics. Surely it has escaped the blitzkrieg of sanctions. The Six-Pac crowns, the trips to Omaha, the national titles . . .

Wrong, probation breath.

Remember the Six-Pac title ASU won last year? Forget it. The Stanford Cardinal, which finished umpteen games behind the Devils last year, has been declared division champs for 1984. Meanwhile the Devils are ineligible for the crown in 1985 and lost a slew of starters for the first quarter of the season. (Only a "sympathetic" review board reinstated the players for the major portion of the season.)

OK, what do we have left? Chess? Fencing? Hockey? These are all clubs, so they aren't recognized or controlled. (Even so, I'm sure we're using loaded bishops in some of the

Communication is paramount in any situation where two entities deal with the same problems and situations.

big chess matches.)

Well, I think we're all out of sports and . . . wait a minute, GOLF! The men's golf team! Wait, let me look. Nope, it's clean. No probation. No scholarship loss. White as snow, baby, our golf team is ready to roll!

On Feb. 11, the Arizona State University men's golf team will be at the Phoenix Country Club for a tournament. Tickets are available at all the usual locations.

Rah.

It should come as no surprise that some of the ASU coaches are steamed at the administration for hanging them out to dry over the holidays. The same grumbling, though perhaps not as loud, was heard over the summer during the troubles

with the track program.

Some coaches feel they receive little or no support from the administration. There is fear of job security among many coaches, while others fear the probationary status (or the misinterpretation of the status) will cause long-lasting damage to the their reputations, and the reputations of their programs. Given the track record of hirings and firings in ASU's athletic department, those fears aren't without base.

The administration, on the other hand, claims that the job of running the programs is up to the coaches with the help of "student services," which it is presently whipping into shape.

And when the allegations hit the fan, the administration was in no hurry to shoulder the blame — at least not publicly.

And *that* version, according to the coaches, has them tried, convicted and sentenced before the ink dries on the probation reports.

That's a lousy way to run an athletic program, and the coaches know it.

The media want to know what happened. The fans want to know what happened. Most importantly to the coaches, the parents of ASU athletes want to know why their children always come out losers when the smoke clears.

Administrators can't be naive enough to think that athletic coaches check 500-page rule books each time a paper is pushed. There are administrative positions in which double-checking for possible rule violations is part of the job description. However, coaches must keep a close tab on what is and is not legal. And although a few feel the only way to stay competitive in their sports is to bend the rules to the fullest, not breaking those rules should be just as important.

Communication is paramount in any situation where two entities deal with the same problems and situations.

But if the current cold war between the coaches and the administration does not come to some sort of cease-fire, the long-standing tradition of athletic excellence at ASU is in serious jeopardy.

Netters sweep Antelopes, USIU

By MICHAEL KONZ
Sports Writer

The men's tennis team started off its season with convincing victories over Grand Canyon College and United States International University this week.

The Sun Devils defeated the Antelopes 9-0 and defeated USIU, a team of mostly foreign players, 7-2.

Belken said ASU played well Thursday against USIU, the more difficult opponent.

"Everybody played well," Belken said. "We expected them to be a good team, and they were. It was kind of a dress rehearsal (against Grand Canyon). (USIU) was our first show."

The Sun Devils were led by No. 1 player Keith Thomas who defeated Deon Joubert 6-7, 6-4, 6-0.

Belken said Thomas showed the right stuff in the top position.

"Thomas showed us that he can play No. 1 by coming back 6-0 in the third set," Belken said.

ASU's second seed, Andy Roediger, lost to Michael Gutter 6-4, 7-6.

"Andy was so intense in his first match as a Sun Devil that

he was not at the right level to play," Belken said.

Brien Sullivan defeated Joe Casper, the lone American USIU player, 3-6, 6-1, 6-4.

Jim Baumann lost to USIU's Ulf Samuelsson, 7-5, 6-3. Baumann is recovering from an off-season knee injury, and Belken said this contributed to the loss.

"Baumann's loss is due to a lack of match play," Belken said. "You can come back to practice, but it's a world of difference between that and match play."

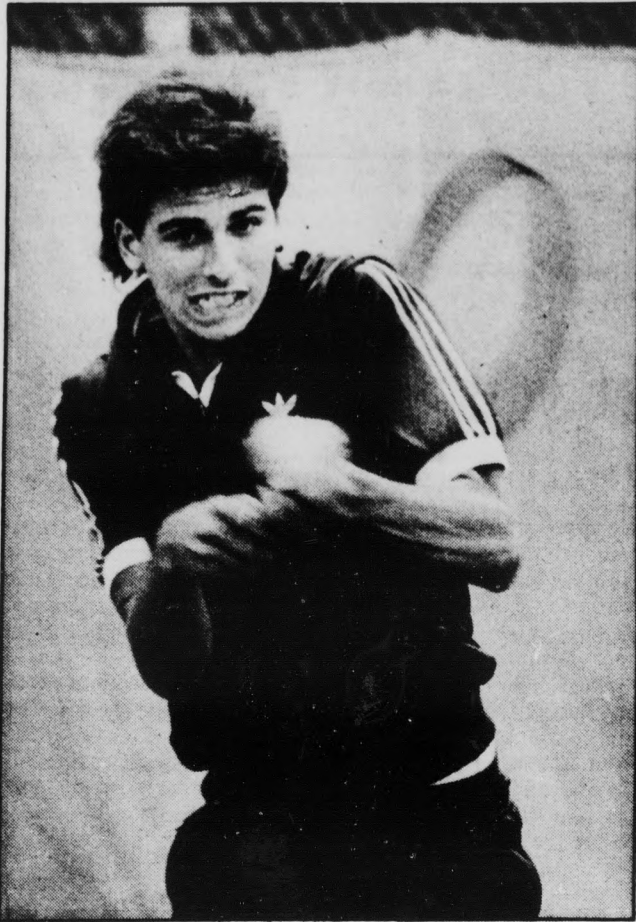
Freshman Mike Holten defeated Ola Larsson 6-4, 4-6, 6-4. Belken said Holten exhibited poise in the victory.

"Holten was at 4-4 in the third set when he broke the other player's serve and came back to serve a strong game," he said.

In doubles ASU swept three victories, never being extended to three sets.

Coach Lou Belken said ASU was more talented than Grand Canyon.

"We outclassed them," Belken said. "We were just so much better talent-wise. There were no bad performances. In that match we won four out of nine matches 6-0, 6-0."



Staff photo by Ron Kuczek Jr.

Jeff Karp backhands a return during Wednesday's match with Grand Canyon.

ELECTRICAL ENGINEERS

Our Hi-Rel Technology Begins With You

High reliability — that's the key to creating both sophisticated microelectronics products and your successful professional growth at Micro-Rel.

High reliability for your professional growth means that we're made up of individuals who thrive on top performance to achieve personal goals. These are also people who are relied upon by Micro-Rel to produce some of the world's most advanced microelectronic circuitry.

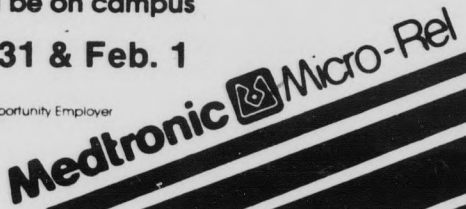
As a division of Medtronic, Inc. we supply the microelectronics industry with custom IC's and Hybrids that are used in many special purpose applications. With us, you will help produce products that perform life enhancing functions and also serve the broader customer electronics market.

Micro-Rel offers the ideal opportunity for you to move forward in the electronics field. Visit your placement office today to sign-up for a personal interview or send your resume to: Micro-Rel, Dept. C-85, 2343 W. 10th Place, Tempe, AZ 85281.

We will be on campus

Jan. 31 & Feb. 1

An Equal Opportunity Employer



WHAT IS A BUDDY?

The Right Words

(At the Right Time)
He knows a few jokes, can recite the starting lineup for the 1959 New York Yankees and occasionally manages good advice. But sometimes words aren't necessary... and he knows it.

A Good Listener

He's not just going through the motions... what you think and how you feel are important to him.

Generosity

Nobody would probably want it, but he really would give you the sweater off his back.

Strength

Pushed to the wall, you might not back him in the college pub arm wrestling tournament. But in a difficult situation, it's nice to know he'll go to the mat for you.

A Helping Hand

When he's around, you don't have to look for volunteers.



Responsibility

Everyone has an idea of what the ideal buddy, or friend, would be like. But it actually boils down to just one thing — taking responsibility for each other. That's real friendship.

Please think about it the next time you and your friends are in a drinking situation. Even when you are having a good time, you have the obligation to be responsible for your own behavior, so that you don't endanger or embarrass others. And you have the responsibility to look out for your friends.

It means not getting behind the wheel when you've had too much to drink. Instead, call a friend for assistance in getting home. And it means not letting your friends drive when they've had too much of a good time.

During the next few weeks, Anheuser-Busch will be introducing a new program on your campus called the Buddy System.

We will be talking about using the telephone when you are faced with a potential drunk driving situation. And we will be giving you other suggestions on how to hold parties in a safe, responsible way. We urge you to make the Buddy System a part of your social life. After all, what good is a party without your friends?



A Program For Responsible Drinking From Anheuser-Busch

Know when to say when, enjoy in moderation.

Cash for Clothing at Buffalo Exchange

Monday-Saturday
10 AM - 6 PM



3 East 5th Street
Tempe, Arizona
968-2557



"Paper Moon Graphics"

Mayfair leads linksters at UCLA

By MICHAEL KONZ
Sports Writer

Men's golf coach George Boutell was pleased with his team's second place finish at the UCLA Invitational golf tournament, considering the team had not competed in a tournament in two months.

"For the first tournament of the semester and the first one in two months, it was fine," Boutell said. "I thought we could have won, but it was a good trip for us.

"We made mistakes and still finished second. It makes you think that if we do the right things, we win by 20 strokes."

ASU shot 1147 in finishing two shots behind host-school UCLA. Stanford tied the Sun Devils for second place. New Mexico State took fourth with a score of 1151.

ASU was led by freshman Bill Mayfair who shot 220 and finished fourth individually.

Mayfair's score was the fifth lowest round ever played on the golf course in Industry, Calif.

Boutell said Mayfair was not intimidated by his competition.

"Mayfair played great," Boutell said. "He's going right along. He's starting to think about winning. He's starting to see that these guys put their pant legs on one at a time."

Tom Breitfeller had the second lowest Sun Devil score with 228. Mike Loustalot followed with a score of 230.

Boutell was not pleased with the entire team's performance.

"I'm not happy with (Rich) Bietz and (Greg) Cesario," Boutell said. "We have some work to do."

Bietz finished with a score of 233, 27 shots off the lead. Cesario shot 242, including a final round score of 87.

Although he wasn't surprised with the Bruin's victory, Boutell was surprised that USC finished in 11th place.

"It was not a great score for (UCLA)," Boutell said. "But the first three teams were not a surprise. New Mexico State was surprising, and USC was surprising. They have a good program but they shot awful and finished second to last."

Boutell said inconsistencies arose in teams' scores because of the course. ASU was additionally hurt by the lack of tournament play.

"It's a screwy course," Boutell said. "But any place we would have gone we would have been inconsistent because it was the first tournament in two months."

The key to overcoming any inconsistency is practice, according to Boutell.

"We need to play more," Boutell said. "We don't need to work on anything. We have swing problems here and there, but who doesn't?"

Boutell's confidence in the team is riding high after a swing through California.

"This team can beat anybody," he said.

The Brotherhood of Phi Kappa Psi will be holding a meeting in the Pima Room, Memorial Union at 3:00 p.m. on Friday, Jan. 25, 1985. Anyone interested in finding out about fraternity life is encouraged to attend. Refreshments will be served.

Recovering wrestlers face northern foe

When ASU wrestles NAU on Saturday, coach Bobby Douglas will find out how well his team has recovered from being on the road for 23 consecutive days during January.

Douglas said the team is not at 100 percent, but he is pleased with the team's performance.

"We're wrestling well," Douglas said. "It was a great effort (on the road trip). We're at 70 percent, which isn't bad for being on the road for 23 days."

Douglas said it usually takes a week to 10 days for a team to recover from a road trip.

ASU will have to forfeit the 118-pound

class because of an injury to freshman Chip Park. This will cost ASU six points and Douglas said this puts additional pressure on the wrestlers in the higher weight classes.

"It puts awfully more pressure on (Gary) Bairos in the 126-pound class," Douglas said. "It puts him in a must-win situation. With that pressure, you tend to make mistakes."

In addition to Bairos, Douglas said Jim Lefebvre in the 134-pound class and Adam Cohen at 142-pounds share in the pressure to make up the six points.

"We need a fall (worth six points) in those first three matches," Douglas

said. "But that's why we won so many matches — because of those three."

Douglas said he isn't sure who ASU will face on the mat because NAU's wrestlers often change at the beginning of a semester. However, he said it is good for both teams to meet.


"We're looking forward to wrestling," he said. "They have good fan participation, and it's good for wrestling in the state to have two in-state teams wrestling."

Going into Flagstaff, Douglas is confident he has the team to do the job.

"This is a great ASU team, no doubt about it," Douglas said.

— MICHAEL KONZ

COFFEEHOUSE



FRIDAY, JANUARY 25
Shabbat Services
are at 7:30 p.m.
COFFEEHOUSE at 9 p.m.
Live Music, Beer & Munchies!
at HILLEL
JEWISH STUDENT CENTER
1012 South Mill Ave.



CLANCEY'S NIGHT CLUB

NEW FACE FOR 1985

FRIDAY
HAPPY HOUR 4:30-7:30.
Bottomless glass of margaritas.
\$2.25 & 60¢ longneck Bud & Bud Light.
FREE Mr. B's Pizza.

FRIDAY & SATURDAY
CLANCEY'S TEA PARTY WEEKEND
from 7:30 till closing.
Long Island Ice Teas & Draft are 2 for 1.

Sunday: Major Lingo
Metal Monday: Phoenix's Own Surgical Steel

919 East Apache
Tempe • 966-7770

Tonight — Feb. 2
From Las Vegas: **Little Sister**



ASU's Zendejas inks contract to play with USFL's Out

By TOM BLODGETT
Sports Editor

Luis Zendejas, ASU's record-breaking place kicker, signed a contract Thursday to play with the Arizona Outlaws of the United States Football League.

The club introduced Zendejas at a press conference at East High School, which houses the Outlaws' training facilities and administrative offices.

"I know the field, I know the people and I know the media around here," Zendejas

said. "I can still continue in school while I play. This semester I carry 14 hours."

Zendejas said he will consider joining the National Football League later. His contract with the Outlaws lasts one year, but has a one-year option.

"If they want to exercise that option, that's fine with me," Zendejas said.

Zendejas said he does not think he will jeopardize his future bargaining power with the NFL by signing with the USFL.

"If I'm the best kicker here, they'll take me no matter what," he said.

The Outlaws, who play their home games at Sun Devil Stadium, impressed Zendejas in earlier workouts.

"They are a pretty good team," he said. "They have some great receivers, great quarterbacks. They are a very developed team, a very tough team."

The opportunity to kick field goals played a part in Zendejas' decision.

"I wanted to go to a place where I'd have a chance to kick a lot of field goals," he said. "I know coach Kush is not going to go for it all the time."

"I came here for the same reason I came to Arizona State — I knew I'd have a chance to kick."

Several people in the Outlaws organization expressed their delight with the signing.

"We have said from the start that we'll be doing things the 'Arizona way' with Arizona people," said Bill Tatham Jr., president and

general manager of the Outlaws. "Luis certainly fits into that category."

Coach Frank Kush, who coached at ASU from 1958 to 1979, also was pleased with Zendejas' signing.

"The only disappointing thing is he broke most of my son's records at ASU," Kush said.

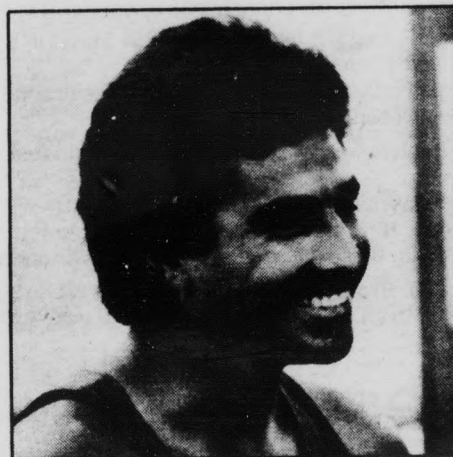
Zendejas, who was an All-American as a junior at ASU, owns many school, conference and collegiate records.

His most notable achievement was breaking the NCAA's career scoring mark with 368 points.



State Press file photo

Luis Zendejas will continue kicking in the Sun Devil Stadium, but now it will be as a member of the Arizona Outlaws.



Luis Zendejas

FOREIGN AUTO PARTS

Flint DISTRIBUTING

Parts & accessories for all imported cars and trucks



REGIONAL DISTRIBUTOR

Student Discount With Valid I.D.

968-8687

IN THE TEMPE CENTER

MasterCard OPEN SEVEN DAYS A WEEK Visa



10% Discount to ASU Students

PERM SPECIAL

Perm **25⁰⁰** (Reg. \$45.00)
(Includes: Cut & Shampoo)

Hair Cuts **\$7⁰⁰**
Eyelash & Brow Tinting ... **\$5⁹⁵**

Private Booths
Call Today



MY HAIR GOT A



966-6111

Call For Appointment
M-F 9-5 Sun 11-4
623 E. University
Tempe Tempe Plaza
(S.E. Corner of Blvd & University)

PURPLE PASSIONATE POSTER

Add passion to your punch with Everclear 190 proof grain alcohol.

EVERCLEAR ALCOHOL



EVERCLEAR POSTER OFFER

For your full color 15" x 22" Everclear poster, send \$3.00 in check, money order or use your Mastercard or Visa to:

Everclear Poster Offer
500 3rd Avenue West
Seattle, WA 98119

Name _____
Address _____
City/State _____ Zip _____
Signature _____

Mastercard Visa Account # _____ Exp. _____

Order shipped within 48 hours. Offer good in US only. Offer void where prohibited by law. No product purchase necessary. Everclear bottled by World Wide Distilled Products Company, St. Louis, MO 63128. Everclear, the ultimate mixer, use in moderation, not intended for consumption unless mixed with non-alcoholic beverages.

BUY ONE SANDWICH AND GET ONE FREE

UP TO \$4.25 VALUE
(Tues.-Fri. only)
EXPIRES 2-28-85.



bagel factory, restaurant, deli & bakery

1043 E. Lemon
Tempe, AZ 85281
829-0526 • 829-0490

BUY ANY SANDWICH & HAVE A FREE BEER ON US OR A GLASS OF WINE. \$2.75 minimum (Tues.-Fri. only from 11 a.m. to 6 p.m.) EXPIRES 2-28-85.

SPECIALIZING IN 14 VARIETIES OF BAGELS INCLUDING: HOMEMADE MARBLE RYE BREAD & LOW CALORIE BIALYS

COMPLETE BAKERY SECTION

10 KINDS OF HOMEMADE CREAM CHEESES

JOIN US FOR HAPPY HOUR TUESDAY-SATURDAY FROM 4 P.M. TO CLOSE — 2 FOR 1 BOTTLED BEER

WE ALSO HAVE COORS AND BUD ON TAP AT ONLY \$1.89 PER PITCHER

FEATURING OUR NEW POTATO SKINS ONLY \$2.99

PLUS 20% OFF ON ALL MENU ITEMS FOR SORORITIES & FRATERNITIES (I.D. Required)

ALSO COMPLETE CUSTOM CATERING SERVICE (With Free Delivery Within 2 Mi. of Store)
Monday 7:30 a.m.-4 p.m.
Tuesday-Thursday 7:30 a.m.-9 p.m.
Friday 7:30 a.m.-10 p.m.
Saturday 8 a.m.-10 p.m.
Sunday 8 a.m.-4 p.m.

BUY ONE DOZEN BAGELS & GET 3 PASTRIES OF YOUR CHOICE FREE. (Tues.-Fri. only) EXPIRES 2-28-85.

Hoops

Lady cagers return home for conference contests

By BRAD HALVORSEN
Sports Writer

Playing at home for the first time in more than a month, the ASU women's basketball team will try to record its first conference win of the season this weekend against



Kirsten Cummings

UCLA and third-ranked Cal State-Long Beach.

ASU (0-2 WCAA, 8-7 overall) will tip off against the Bruins at 7:30 p.m. Friday and face the 49ers at 8 p.m. Saturday. Both contests will be played in the University Activity Center.

UCLA will be looking to regain its pride after taking a 118-62 beating from Long Beach State earlier this week. The Bruins post a respectable 9-7 record but have lost all three conference games at the hands of Cal State-Fullerton, San Diego State and the 49ers.

"UCLA is a very disciplined team and it should be a very disciplined game," ASU coach Juliene Simpson said. "We feel we can stay on the floor with UCLA and beat them."

Whereas several of ASU's opponents have based their game around one player, the Bruins feature a balanced attack, which may work to the Devils' advantage.

"The teams we were not able to contain were the teams with stars," Simpson said. "We lost those games."

The Bruins have three players in double figures in scoring, led by forward Jackie Joyner with 13.6 points and 7.9 rebounds per

game: Guard Anne Dean averages 13.4 points with 6-foot-4 center Annette Keur just behind at 12.7.

The Bruins will be looking for revenge from last year when ASU pulled out a 79-78 decision at the Activity Center.

Saturday night will offer a different atmosphere as the Devils take on a potent 49er ball club, coming off their 56-point thrashing of UCLA. Outscoring its opponents by nearly 30 points a game, Long Beach State averages 91.2 points per game compared to the Devils' 71.4.

Led by possible future All-American Kirsten Cummings, a 6-foot-3 forward, the 49ers have exceptional height and a solid core of players off the bench.

"I don't think there's going to be any one key to winning this ball game," Simpson said. "I think there's going to be many keys to beating Long Beach State."

Although containing Cummings would appear to be one of these keys, Simpson said she has other plans.

"I don't think you ever stop Kirsten Cummings," Simpson said. "I think she stops herself. They have such a good lineup, I don't think we can concentrate on stopping one person."

Averaging 17.2 points and 10.5 rebounds per game, Cummings is flanked by 6-foot-2 guard/forward Cindy Brown (19.8 points, 9.8 rebounds) and 5-foot-9 guard Jackie White (15.4 points).

Simpson will be going at the weekend with a tired and injured ball club coming off three straight road trips. Starters Jodi Rathbun and Beckie Smatana and reserve center Rhonda Woolery are still have not completely overcome their injuries and may once again see limited playing time.

Leading the team at 13.9 points per game, Rathbun is still having trouble with a sprained toe. Smatana, recovering from a concussion, twisted her ankle in practice Wednesday. Woolery is also recuperating from a concussion.

Simpson will start the same five from last weekend's California road trip, with Patti Pepler at point guard, Sherry Poole and Robin Connolly at the wings, Barb Smith at power forward and Camilla Mullertz at center.

"Any team can be beaten on any given night but I feel our first step is UCLA," Simpson said. "I think how we play Friday night will determine where we are mentally for Saturday night."

diversified travel inc.

57 E. Broadway
Broadway Plaza Shopping Ctr.
At Mill and Broadway
967-7855

SKI SEASON IS HERE!

CALL US NOW FOR SKI PACKAGES

The **hair performers**

Annual Perm Sale
50% OFF Perms \$20-\$30
Does not include styling & shaping. Long hair slightly higher.
All Hair Cuts \$10
(Includes cut, shampoo and conditioner only.)
Sculptured Nails \$25

903 S. Rural • Cinnamon Tree • 894-0184

Attention: Foreign Car Owners

SAVE UP TO 70% ON RECYCLED FOREIGN AUTO PARTS
MG, TRIUMPH, HONDA, DATSUN, TOYOTA, VW and OTHERS

All Models Foreign
3024 So. 40th Street, Phx. (near 40th & University)
437-0185
*Mention this ad & get an additional 5% off!

PREPARE FOR:
LSAT • GMAT • GRE
MCAT • DAT • GRE PSYCH
GRE BIO • MAT • PCAT • OCAT
VAT • TOEFL • SSAT • PSAT
SAT • ACHIEVEMENTS • ACT

- Permanent Centers open days, evenings and weekends
- Low hourly cost. Dedicated full-time staff
- Complete TEST-N-TAPE facilities for review of class
- Lessons and supplementary materials
- Courses taught by skilled instructors
- Opportunity to make up missed lessons
- Voluminous home-study materials constantly updated by researchers expert in their field
- Opportunity to transfer to and continue study at any of our over 120 centers

MSKP • NATIONAL MED BOARDS
FMGEMS • FLEX • NDB
NPB • NCB • NCLEX-RN • CGFNS
CPA • SPEED READING
ESL INTENSIVE REVIEW
INTRODUCTION TO LAW SCHOOL

Stanley H. KAPLAN
EDUCATIONAL CENTER

Visit Any Of Our Centers And See For Yourself Why We Make The Difference
Call Days, Evenings & Weekends
TEST PREPARATION SPECIALISTS SINCE 1938

Permanent Centers in More Than 120 Major U.S. Cities & Abroad
For Information About Other Centers
OUTSIDE N. Y. STATE CALL TOLL FREE 800-223-1782

TOP 20

O'Toole's Pub
An Experience

VIDEO

COUNTDOWN

EVERY SATURDAY!!
STARTS 8:30-11

\$1 DRINKS & BOTTLE BEER DURING COUNTDOWN

COVER CHARGE
GUYS \$2.
GIRLS \$1.

HOT DANCIN' TUNES

PROPER ID & DRESS REQUIRED

1123 South Rural Road • Tempe, Arizona 85281

ASU losing streak extended to 3 games

By JERRY BROWN
Assistant Sports Editor

EUGENE, Ore. — Blair Rasmussen scored 30 points and the Oregon Ducks thwarted several second-half charges by ASU, leading the Ducks to a 81-72 victory over ASU.

The loss was the third consecutive for the Sun Devils. ASU's record now stands at 7-9 overall and 2-4 in Pac-10 play. Oregon is 9-10 and 2-4.

Oregon quickly broke a halftime tie and established a seven-point lead in the second half, despite an ASU rebounding advantage.

But ASU guard Ron Singleton came off the bench and pulled the Devils to

within three points midway through the half.

Again Oregon's lead crept to six, but a three-point play by Eric Holloway kept the Ducks in check.

The Devils started putting the full-court press on without success.

An ASU turnover and slam by Oregon's Greg Trapp forced the Devils to call a timeout with 2:40 left and the score 64-57.

ASU was now forced to foul, but the Ducks hit their free throws down the stretch to keep the Devils at bay.

ASU never got closer than five points in the final minute.

The two teams see-sawed back and

forth in the early going. Warren Everett, in a rare starting role, converted a three-point play to give ASU an early 7-4 lead.

But the Ducks rallied to take a 12-9 lead. Eight of the points came inside from Rasmussen, who controlled the inside early on.

The Devils were plagued with early foul trouble, and were over the limit less than halfway through the half.

Neither team could manage more than a four-point lead during the half. Singleton came off the bench to score eight points. He hit four long-range jumpers, the last coming with 40 seconds left to tie the game.

Alumni game kicks off baseball season

By ANDREA HEISLER
Sports Writer

The ASU baseball team, fourth-place finisher at the 1984 College World Series, will kick off the 1985 season Saturday with the annual Alumni exhibition game at Packard Stadium.

Game time is 1 p.m.

The game will feature members of ASU's 1965 championship club, including Rick Monday and Sal Bando, along with other ASU greats.

Also honored will be Alvin Davis, former ASU first baseman and last year's American League Rookie of the Year.

Davis, 25, a member of the American League All-Star team for the Seattle Mariners in 1984, will join Monday and Bando, along with Ken Landreaux, Bob Horner, Larry Gura and Reggie Jackson as former ASU athletes who have participated in a major league All-Star game.

Other festivities of the day will include an unveiling of

several improvements of ASU's Packard Stadium, including several sets of Halide lights, a smaller and lighter backstop, and five giant No. 1 signs with the national championship years of 1965, 1967, 1969, 1977 and 1981 painted on them.

The current Sun Devil squad officially begins the season Thursday against Cal-Santa Barbara. ASU will enter play ranked third by Baseball America and fourth by Collegiate Baseball.

"This will be a fun year," said 13-year head coach Jim Brock. "We have excellent power, more speed than last year and the pitching staff is much deeper. I get goosebumps watching practice."

Brock, who should earn his 700th career coaching victory in 1985, will field an opening-day lineup of: Mike Devereaux, RF; Rick Morris, 2B; Barry Bonds, CF; Louie Medina, 1B; Don Wakamatsu, C; Drew Siler, 3B; Brent Hahn, DH; Ed Serrano, LF; and Keith Bennett, SS.

The lineup will change somewhat when the five Devil players who were declared ineligible become eligible.



SIMMONS
Art Supplies Inc.

STUDENT DISCOUNTS

ART & DRAFTING SUPPLIES

MESA/TEMPE 2308 E. University Tempe, AZ 85281 894-2868

SCOTTSDALE 7502 E. Indian Sch. Rd. Scottsdale, AZ 85251 941-2488

ASU 203 E. 7th St. Tempe, AZ 85281 967-6172



RARE LION RESALE

Buying • Selling • Trading



- Clothing •
- Vintage & Contemporary
- Accessories •
- Shoes, Hats, Gloves • Jewelry •
- Rhinestones, Glass Beads •
- Collectibles • Antiques •

10-6 Mon.-Fri. 11-6 Sat.
722 S. Mill Ave., Tempe
968-6074

IBR

The Bartender's Cherry

From Winnipeg, Manitoba, Canada to Key West, Florida, bartenders pulled together to create probably the most awesome bar book ever, and International Bar Research thinks you should know about it...

The Bartender's Cherry

Send check/money order for \$7.50 + \$1.50
P + H to: IBR 244-F Rocco Dr.,
Harrisonburg, VA 22801

Name _____
Address _____
City _____
Zip _____

A Special Offer From



ASU Students . . .

10% DISCOUNT

If you're over 18, you can rent an Escort or other fine car at

SPECIAL LOW WEEKEND RATES

starting at **\$21.96** A DAY no mileage
(2 Day Min.)

(Rates subject to change without notice.)

For Your Car, Call Your ASU Representative
968-4072
Office located at Rural & University

WINTER SALE!

50% OFF



Colossal Savings on ESPRIT, SANTA CRUZ, CALIF. STYLE and more.
Largest Selection of . . .

ESPRIT

in the area . . .

The Village Boutique

708 S. Forest
Tempe • 869-1611

Open 10-6 MON.-SAT.
THURS. EVE. TILL 8:30
JUST N. OF UNIVERSITY
BETWEEN MILL AND COLLEGE

Grand Opening

- 2 Swimming Pools
- Therapy Pools
- Patios w/Storage (some)
- Plush Carpets, Drapes & Mini Blinds
- Bike Racks
- Large Kitchen
- CATV Hook-up
- Sound Proofing
- Energy Efficient
- Small Pets Welcome
- Family Apartments

STUDIO from \$300
1 BDRM from \$330
2 BDRM from \$405

\$100 Move-In Allowance
(With This Ad and 6 Month Lease)

Foxfire

1701 E. 8th Street
966-4655
An Evans-Withycombe Property

SPORTS WEST

FULL LINE SPORTING GOODS & APPAREL

THIS WEEK'S SPECIAL:

MEN'S LEATHER REEBOK COURT SHOE

NOW \$32.99
Reg. \$42.99



LADIES' REEBOK AEROBIC SHOE
NOW \$29.99
Reg. \$37.99

All warm-ups
10%-40% OFF

Across from Flakey Jakes in
894-1799



Announcements

KRISHNAMURTI TALKS on Death and Right Way of Living. Videotapes shown each week. Call 967-3222 for information and reservations.

Automobiles

1974 PORSCHE 914 convertible low mileage excellent condition, priced for sale \$5500 or best offer. Call 967-3108.

1977 HONDA Civic. Good condition, runs well, new tires, 30 mpg in city \$1100. Evening or weekends 820-6858, days 949-3958.

1979 SPITFIRE. Excellent condition, less than 20,000 miles. \$2750. 952-2062.

1981 CHEVROLET Camaro, V-6, only 28,000 miles, PS, PB, AC, automatic, immaculate condition. \$6099. 938-7386.

GHOSTBUSTER CARS, one car blue, one gold. Cadillacs. Excellent runners. \$1000 each. Also 1975 Cad limo \$6000. 838-8382.

THE CINEMA Tree at Neeb Hall Movie Magic Hotline 965-5658 "For your movie needs."

Babysitters Wanted

BABYSITTERS NEEDED Peace of Mind babysitting referral service needs dependable and caring babysitters for full or part-time and occasional jobs. Must have transportation. 893-3869.

CHILD CARE housework T-W-F, 5-9, \$3.35 hour. Dishes, laundry, vacuum, sweep outside. Tempe 894-9270.

HOUSEWORK-CHILD care T-W-F 5-9, \$3.35 hour. Dishes, laundry, vacuum, sweep outside. Tempe 894-9270.

Bicycles

YELLOW SCHWINN 10-speed. Good condition, \$65. Call Dave at 273-1604.

Business Opp.

MAKE 2-3X your cost on hundreds of products! Gift items, novelties, carded merchandise, 2500 others! \$5 (refundable) brings catalogue, confidential price list. Wells Wholesale Distributor, 4715 Alcon Drive, Camp Springs, MD 20748.

classifieds

The STATE PRESS disclaims all responsibility for quality and prices of goods and services offered in both classified and display advertising by its advertisers.

For Rent or Lease

2 BEDROOM, 2 bath condo. Partially furnished, \$495. Call 277-3652.

BEAUTIFULLY FURNISHED condo for rent. Two bedrooms, one bath, washer, dryer. \$525 per month. Call 839-2061.

CLOSE TO ASU furnished rooms for rent. Near 7th St. and Mill \$125 per month plus utilities. Male preferred. Call Margaret 829-9228.

CLOSE TO ASU rooms for rent near Terrace and Broadway. Furnished \$185 plus utilities. Male or female. Call Margaret 829-9228.

FOR RENT: 3 bedroom, 2 bath house. One block from ASU. Move in today. \$650. 820-3034.

FOR RENT new two bedroom Tempe condo. Close to ASU. Furnished or unfurnished. \$575 month plus utilities. 968-5777 or 996-6080.

TWO BEDROOM, 1 1/2 bath, patio, pool, spa, laundry facilities, close to ASU, shopping. Four month lease. 966-6310, 966-7804.

WALK TO campus. Special \$100 off first month. Darling 2 bedroom Cape Cod apartment. All appliances, laundry room, pool. \$375. 910 S. Gary, Tempe. 968-5238 or Desert Wide 838-6631.

For Sale

10x50 DETROITER mobile home 1/2 block from ASU. Ideal for student \$5000. Must sell 899-6604.

14x56 MOBILE HOME, two bedroom, Chandler, \$9500. 963-7552.

EXCELLENT IBM Correcting Selectric III. Best offer. 966-0961. evenings.

PORT HARD-COPY terminal with serial port, built-in acoustic coupled modem, upper and lower case. 820-1629.

SAVE \$\$\$ on little use, best quality computer with monitor and software, good condition electric typewriter, Scuba wetsuit, flotation device and others. To obtain specific list from Mike U's box go to D.S.R. office just down the hall of ASU infirmary.

TELEVIDEO TERMINAL with modem. Perfect for remote access to ASU, etc. Free professional instructions. Get a jump on your computer work. Like new \$500. 839-7541.

Furniture

BED SALE. Quilted mattress, box springs, free frame with bed purchase. Twin \$85, full \$95, queen \$139. Furniture Plus, 2077 E. University, Tempe 966-6252.

CHEST of five drawers \$39, wall units \$79, dinette set \$99, sofas and loveseats from \$299. Furniture Plus, 2077 E. University, Tempe 966-6252.

FUTON BEDS twin \$59, full \$79, Queen, \$99. Furniture Plus, 2077 E. University, Tempe 966-6252.

FUTON PACKAGE: Futon with solid wood platform. Twin, \$139; full, \$174; queen, \$199; king, \$239. Special expires 2-15-85. Kinsani, 233-1281.

Furniture

MUST SELL desks, dressers, refrigerator. Super buys 820-1841.

WATERBED KING sized. Deluxe heater etc. with sheets, comforter. Must sell 820-1841.

WATERBED TWIN size \$75 with heater, new mattress. Small couch good condition \$40. Chuck 966-5424.

Help Wanted

AIRLINES HIRING, \$14-\$39,000! Stewardesses, reservationist! Worldwide! Call for guide, directory, newsletter. 1-(916) 944-4444 ext. Arizona State Air.

ASU IS calling on you... to join the ASU Telefund Drive! Gain valuable work experience in fields of P.R., fund raising, tele-marketing, and earn good money at the same time! Call Bill Graves at 965-3022 or 965-7501 for more information.

BOWLERS NEEDED for spring leagues! No experience needed. No monetary gain but plenty of benefits. Contact MU Recreation Center 965-3642.

CERTIFIED AND experienced aerobics instructors wanted. Make \$7-10 per hour. Call Fit-For-Life. 966-5111. Ask for Stacey Webb.

CHILD CARE workers for emotionally handicapped. Part-time weekends. Some potential evenings/holidays. Excellent clinical opportunity. \$3.35/hr. E.O.E. Devereux Center, 6436 E. Sweetwater, North Scottsdale.

CLERICAL PART-TIME evening and Sat. 9-5. Near ASU 941-5225.

CRUISESHIPS HIRING, \$16-\$30,000! Caribbean, Hawaii, world. Call for guide, directory, newsletter. 1-(916) 944-4444 ext. Arizona State Cruise.

EARN \$150-\$300 per week without hurting your grades. We need 5 outgoing people. No experience necessary. Call 829-8957.

FAMILY IN Tempe needs dependable housekeeper 1 1/2 days per week. 838-8411.

FLORIST DELIVERY driver, days, M-W-F or T-Th-S. Need transportation 758 E. McDowell, Phoenix 252-4773.

GRAND CANYON summer job openings, complete details \$2. Write: Canyon, Box 30444, Tucson, AZ 85751.

HELP WANTED waitresses and female bartenders full and part-time. Desperados Bar and Grill, 524 W. Broadway, Tempe 894-6423.

LEATHERBY'S FAMILY Creamery now accepting applications for the following positions: waiters, waitresses, busboys, dishwashers, ice cream dispensers, ice cream makers and cashiers. Full and part-time positions available. Contact Shelly at 7730 E. McDowell Road, Scottsdale between 10:30 am and 6:30 pm daily. 994-3824.

LINE COOKS wanted, full and part time. Red Robin, 1539 N. Scottsdale Rd., Los Arcos Mall. Apply in person.

Help Wanted

LIQUOR STORE clerk. Flexible hours. \$4 per hour. 276-2603.

LOCAL NEWSPAPER in the east Valley area is hiring afternoon motor route drivers. Permanent part-time employment for those who have good transportation. Call Frank at 994-0766 for interview.

NEED CONTRACT reviewer. Salary DOE. No law students. Apply in person 1230 W. 23rd Street, Tempe.

NEEDED: JOURNALIST reporter part-time student, also need advertising representative. Statewide automotive trade publication. Send qualifications and phone number to: A.A.T., Star Route 2, Box 180, Cave Creek, AZ 85331.

NOW HIRING lunch waitresses, evening cocktail and part-time cook. Apply in person 10-11:30 am and 1:30-3:30 pm. 5001 E. Washington.

PART-TIME DELIVERY person needed by local giftware wholesaler. Approx. 12 hours per week (flexible). Requires reliable transportation. Van or stationwagon preferred. \$4 hr. plus mileage. Contact Linda Greenwald 839-7092 week of 1-27-85.

PAY OFF those Christmas bills and have fun too. Sell Avon. Call Kim 831-1863.

RANCH AUTO center has following positions open: cashiers all shifts full or part-time, driveway sales for Mobil station full or part-time, lubrication technician for Mobil express lube full time. Apply in person at Mobil Service Station, 7555 E. Camelback, Saturday 1-26 from 11-3. Must be neat clean and willing to work.

SALES MANAGER trainee. An excellent opportunity exists for the above-average individual who wants to get ahead. We're looking for a person in this area to join our management staff-based on performance, position offers generous weekly training fee, plus commission. No experience necessary. We train. Call Ms. Hunter 951-9286, leave message. E.O.E.

SALES MANAGER trainee. An excellent opportunity. Generous weekly training fee plus commission plus benefits. No experience. World Book-Childcraft. Call Ms. Hunter 951-9286 or 897-9334.

SCRIBE-TUTOR. Partially sighted student needs help with composition of papers. \$5.00 hour, Shawn 967-9800.

SMALL TEMPE firm seeking highly energetic sales orientated individuals pursuing excellent pay. Work own hours. 831-0374

SUMMER JOBS! National Park Co.'s. 21 parks - 5,000+ openings. Complete information, \$5, Park Report, Mission Mtn. Co., 651 2nd Ave. WN, Kalispell, MT 59901.

TELEPHONE OPERATOR: Positive professional attitude only. Apply in person: 7040 3rd Avenue in Scottsdale, 85251. All hours.

WANTED PERSONABLE woman 25 years or older to deliver lunches 11 am to 2 pm Monday through Friday. Valid AZ drivers license required. Call 829-9730 for an appointment.

Jewelry

COME HELP the new Hob Nob Etc. celebrate its opening at 720 S. Mill. We have 300 dozen pairs of earrings for you to try on. Buy four pairs and get the 5th pair free. Bring your friends and get the most fantastic earrings and accessories at big discount prices!

Motorcycles

1977 HONDA CB400F super sport. New battery. Good tires. Excellent condition \$650. 966-3518.

1982 KAWASAKI GPZ750 perfect condition. \$2000 or best offer. 965-8445.

1983 HONDA EXPRESS. Excellent condition, \$375 or best offer. Call Sheryl, 829-6740 after 9:30 p.m.

1979 SUZUKI GS-1000. Only 26,000 miles, burgandy color, stepped seat, 4 to 1 header. Call 838-7025. First \$1100 takes it.

FOR SALE: 1979 American moped. Like brand new. Less than 600 miles. \$220 cash. 1980 Jawa moped. Excellent condition. Less than 600 miles. \$220 cash. 964-7468.

Personal

DO YOU know who had a brand new baby? The Hob-Nob thrift shop! It's called the Hob Nob Etc. and everybody in there is brand new. 720 S. Mill across the street from Jack in the Box!

THE NEW Hob Nob Etc. at 720 S. Mill has 300 dozen pairs of earrings. Come in and see all the outrageous accessories for men and ladies.

Real Estate

DON'T RENT. Invest!!! Two br luxury condo, 10 min. from ASU. 7K down, \$470/mo. Htd pool, fireplace. 966-7513.

Roommate wanted

FEMALE, townhouse \$225, brand new washer and dryer, pool, microwave, 7 miles ASU. ASAP 964-2136.

IMMEDIATE FREE room, board, house, for the right non-smoker, dependable person. Exchange some assistance, physically disabled ASU graduate. Nice, 15 minutes ASU, 273-7775.

ROOM AND meals for male student in a comfortable private home. Pool, heat, a/c, phone. May see now. Available to move in January 1. Complete \$295 per month. 947-4912.

Services

ADOPTIONS ARRANGED. No medical or legal expense to mother. Call Attorney Robinson, 946-5344.

CARS AVAILABLE - 21 or older. All States Drive-away. 992-5200.

COMPUTER TERMINALS for rent with modem, \$35 per month. 246-6172.

Travel

CHINA-KOREA: Hong Kong, 19 days, Shanghai, Beijing, Zian, Hangzhou, Gullin, Seoul, Hong Kong. July 8 - July 27. \$2999. Dr. R. Axford, 839-3255.

Typing

A-1 TMC secretarial typing, word processing, students, business, resume writing. 967-6965.

AAA TYPING. Close to ASU, 414 S. Mill Avenue #205. High quality typing. Call 894-5234.

ACCURATE WORD processing and typing available at Kinko's-Tempe II, 933 W. University. 966-2035.

ALL PAPERS typed to your complete satisfaction. Convenient. Reasonable. Mrs. Oakley 987-0802.

CEREUS WORD processing. Quality guaranteed. Term papers, engineering/technical, manuscripts, dissertations, theses, letters, resumes, 990-1556.

EXPERIENCED TYPING and word processing. Specializing in resumes, term and research papers. Reasonable rates. 926-0585.

FAST RETURN. Professional typist will edit spelling, punctuation and grammar. Accuracy guaranteed. Joan 839-0772.

N.C.S. TYPING services. Typing and word processing. Term papers, letters, resumes, etc. Call Nora 820-9681.

PROFESSIONAL TYPING: Term papers, resumes, letters, etc. Spelling and grammar included. Linda Brewer, 839-7905.

PROFESSIONAL WORD processing, typing. Rush jobs ok. Neat, accurate, fast. Near ASU. Call 945-0058 evenings.

WORD PROCESSING, editing, extra copies, and document storage available. Close to ASU. Robin 829-6598.

Need a CRT? Modem? Coupler? Printer?

\$40 per month

Lease • Purchase • Rent

Rent applied towards purchase

\$5 cash or credit For All Paid Referrals

Contact: Business Resource Service
3464 W. Earll #C • Phoenix, AZ 85018
Ask for Charlie 269-6916

HOT LINE 965-5658

Former the **NEEB HALL** Film Series

CINEMA TREE AT NEEB HALL

presents

THE WELCOME BACK SPECIAL

50¢ — Movies — 50¢

Fri. & Sat. • Jan. 25 & 26

7 p.m. DISCO BEAVER FROM OUTER SPACE
8 p.m. 1941

SUNDAY • JAN. 27
James Stewart Double Feature

6 p.m. MAGIC TOWN
8 p.m. MR. SMITH GOES TO WASHINGTON

FAMILY PLANNING INSTITUTE

WOMEN'S HEALTH CARE CENTER

All services personal and confidential by a professional & caring staff — OB-GYN physicians

Free Pregnancy Testing with immediate results

Early pregnancy detection also available

Contraceptive Care Clinic Counseling available

Abortion Services Evening hours & Saturday appointments available

TEMPE 968-7471
2525 S Rural Rd. Ste 4C
PHOENIX 997-7493
9100 N 2nd Street

STUDENT REGENT SELECTION COMMITTEE

is now accepting applications for the 1985-86 Student Regent position.

Pick up an application today in MU 208-J.

Deadline to apply: 4:30 p.m. — Feb. 6, 1985

Interviews on **February 8 & 9, 1985**

Questions? **Call 965-3161**

NEED A JOB???

WINTER AND SUMMER FULL TIME AND PART TIME

We print a computerized directory, listing hundreds of potential employers offering thousands of jobs nationwide.

Early application is recommended.

Satisfaction guaranteed.

Order your 1985 Directory NOW!!

Send your check or money order for \$7.95 to

STUDENT EMPLOYMENT DIRECTORY

#2 WindJammer Cove | FT. COLLINS, CO 80524 | or call... toll free 1/28 | **1-800-621-8387, Ext. 592**

Instruction

KARATE, TAEKWONDO physical and mental training for a better life. Traditional instruction small classes 894-5389.

PIANO LESSONS: specialty adult beginners, years of experience. Easier than believed possible. 967-2155.

Set Your Nights



On Fire At

Donny O'Briens

We have the best Friday Happy Hour in town.
2 for 1 Wine, Well and Draft & Fabulous Munchies

DONNY'S WEEKLY SPECIALS

TUESDAY

*Back By
Popular Demand
It's an Open Bar
8:30-11:30
Guys \$5 — Gals \$3
Well, Wine & Draft*

WEDNESDAY

*All New
You Call
The Shots
2 for 1 on all Call
and Premium Liquors
7-Close*

THURSDAY

*All New
Girls Just Wanna
Have Fun
Girls Open Bar 8-10:30
Well, Wine & Draft
\$2
Guys 75¢ Draft 8-Close*

Donny O'Briens

222 S. Mill