

monday

October 1, 1984

Vol 67 No. 24

Arizona State University

Copyright, State Press, 1984

state
press
Tempe, Arizona

Resident tuition of \$990 OK'd by regent committee

By W. TIM AHL
Staff Writer

The Arizona Board of Regents Finance Committee approved a proposal Saturday that would raise resident tuition fees to \$990 for the 1985-86 school year at the state's three universities.

If the motion is approved by the regents at their Oct. 12 meeting at NAU, the \$40 tuition increase would be the lowest since 1978.

The proposal set non-resident tuition at \$3,844 at ASU and U of A, a \$144 increase from present rates. The out-of-state tuition proposal for NAU at \$3,244 represents a \$44 increase.

Associated Students of Arizona, a combination of the three universities' student governments, submitted a tuition report and asked the regents to minimize tuition hikes for next year. The report was the result of ASA's five-month study on tuition costs.

"We believe that the past two years of steep increases has brought the tuition rate to a comfortable level," ASUA President Eric Stevenson said during the presentation.

"It's time for more reasonable increases and these ranges are a guide of student affordability," he added.

All three of the new tuition requests fell within the guidelines set by ASA, according to ASASU President Ray Burnell.

"This is the first time students have ever requested a tuition increase, and the regents were more than willing to listen to us," Burnell said.

According to finance committee chairman Jack Pfister, the tuition rate was set as a reference for budgeting purposes and could easily be changed before the regents vote on tuition rates.

After hearing the ASA presentation, regent Donald Schropshire proposed that resident tuition be established at \$990 and out-of-state tuition be set at \$3,800 for ASU and U of A, and \$3,200 at NAU.

Regent Donald Pitt requested a \$44 increase in out-of-state tuition for the three state universities.

"I don't believe that \$44 will do that much damage to our out-of-state marketing," Pitt said.

The tuition motion was passed by the finance committee with Pfister offering the only dissent. He claimed the proposed resident tuition was too low.

Pfister said he wanted a 10 percent increase in resident tuition, which would have pushed the cost to \$1,050 for the 1985-86 school year.

"Because past boards did nothing about tuition increases, the burden to make up for lost time is on us," Pfister said.

William Reilly was the only regent to request less than \$990 for resident tuition, asking that the committee approve a \$980 rate. He eventually voted in favor of the proposal, but implied he may request lower in-state tuition rates at the regents' October meeting.

Burnell said he was happy the committee voted to keep in-state tuition under \$1,000. He said breaching the \$1,000 mark would cause students to perceive the increase as higher than it really is.

"We believe that in-state students have endured sizable increases in the past and we would rather not run headstrong into the \$1,000 wall. We realize that we will have to overcome that rate soon, but we would rather do it patiently," Burnell said.



Staff photo by Michael Conner

Riding high

An unidentified bicycle was parked illegally Sunday at an Adelphi Drive fraternity. Police did not report citing anybody for driving a flag on Sunday.

ASU asks 13.8 percent budget hike for '85-86

ASU President J. Russell Nelson presented a \$176 million budget request for the 1985-86 fiscal year to the Arizona Board of Regents Finance Committee on Saturday.

If the request is approved, it will be a 13.8 percent increase from the 1984-85 actual budget approved by the regents and the Arizona Legislature last March.

The majority of the request, \$164 million, will be used to support existing campus programs and pay faculty salaries and benefits.

The request also proposed an additional \$4.7 million to support existing operations at ASU-West campuses and expand course loads there.

The regents will vote on ASU's budget, as well as budget requests from U of A and NAU, at their next monthly meeting at NAU on Oct. 12.

"It seemed to me that the committee went along with our proposals, but all that could change by the time we get to Flagstaff," Nelson said.

"They made some suggestions for improvement and we

will take care of those," he said.

The finance committee requested that ASU administrators rewrite the first item in their \$10.7 million decision package. The committee said too much information had been placed under one heading and the wording was vague. The decision package includes funding requests for new projects and programs.

The first item was a \$3 million request for funds to "support instruction for community needs." The funding request is to "allow the university to strive toward excellence in several areas of emphasis as identified in the University's Mission and Scope statement."

"I have a great deal of trouble dealing with this amount of money grouped the way it is," said regent Esther Capin.

Regent Jack Pfister also criticized other areas of ASU's decision package for "not having enough sizzle."

Nelson agreed with the committee, and said that it is difficult to make maintenance programs exciting.

ASU's decision package is aimed at increasing

maintenance and faculty support in the University's infrastructure, according to Nelson.

The budget's infrastructure clauses include financing support personnel to assist faculty members and maintaining quality services within the University, Nelson said.

"Infrastructure is hard to sell, but ours shows poorly in comparison to other universities," he said.

The committee was also concerned with the amount of money requested for the two operating ASU-West branches.

The \$4.7 million ASU is asking for the existing branch campuses is the same amount requested last year. The regents cut last year's request to \$1.9 million.

"I'm a little nervous about stepping forward because of possible effects on other universities" from ASU-West expansion, said regent Donald Schropshire.

After the regents approve budgets for the state's three universities later this month, the proposals are sent to the Legislature which will set final budget spending allowances sometime in March.

—W. TIM AHL

Student claims University violated law in towing car

By PATRICK J. KUCERA
Staff Writer

An ASU student, claiming his constitutional rights were violated, was in Tempe small claims court Friday seeking a \$499 judgement against the University for towing his car.

Steven Miner, a finance and real estate major, said he and his brother went to Tempe Center at Mill Avenue and University Drive, on July 23 for breakfast and left the center for an hour. Miner returned to find his car had been towed.

Miner alleges the University violated federal, state and local laws by towing his 1979 Pontiac Trans Am.

"I filed suit because my constitutional rights were violated," Miner said. "There

was no due process of law."

Miner claims his Fifth Amendment right to "not be deprived of life, liberty or property without due process of law" was violated.

In court Friday, Miner told Gary Morris, small claims hearing officer, state and local laws regarding the size and shape of signs were not properly followed by ASU.

"I think I have the right to a correct sign," Miner said, while presenting the court with pictures and diagrams showing how signs must conform to current laws.

Mary Stevens, representative counsel for ASU, challenged Miner's claim that Tempe codes affect ASU.

Stevens contends that Miner disregarded posted signs and proceeded to leave the center. She added that the University will

have cars towed if the owners are no longer patrons of the center.

Stevens proceeded to call witnesses to testify that Miner knowingly violated parking rules.

Roger Lee High, a spotter for the University and Dana Bros. Towing, told the court Miner and his brother did not eat breakfast, but parked their car and immediately headed for campus.

"He didn't even stop at Appetito's, but just walked through the annex," High said.

He said he knew Miner was going to campus because he had seen him do it on previous occasions.

Miner claimed that he ate breakfast at Tempe Center and produced receipts.

But Stevens asked that the receipts be

disallowed as evidence because they did not have dates printed on them.

Stevens said even if Miner ate breakfast and then walked to the campus, he would still be violating ASU parking codes.

Although he was only charged about \$40 for the towing, Miner said that Dana Bros. bent the "rear inner panel" of his Pontiac Trans Am while towing it, and his \$499 suit reflects the towing charge and damages.

Stevens had witnesses testify the car was in good condition and towing the car would not have bent the rear panel, and said Miner had waited a month before claiming damages.

Morris said he is taking the case "under advisement" and plans to make a ruling sometime today.

nation/world

state
press

Company holds warship hostage over repair job dispute

BOSTON (AP) Navy crewmen remained Sunday aboard a warship that was being held hostage by a civilian shipyard in a dispute over an \$8.5 million repair job, while the Navy, armed with a court order, made plans to remove the vessel.

The Navy said it was removing the USS Connole because the repair work was unsatisfactory, but the shipyard denied that and said the Navy had endangered its workers.

Cmdr. Dan Davidson, Navy regional information officer, said the Navy had intended to remove the frigate Saturday. However, the Boston Shipyard Corp. placed cranes in front of and behind the 438-foot Knox class anti-submarine ship to keep it from being moved.

"It will not be practical or possible now to move the ship until at least Monday," Davidson said, in part because "the shipyard has not yet removed their impediments."

A woman at Boston Shipyard's executive offices refused to comment and declined to give her name. But a written statement handed out at the shipyard gate reiterated the company's claim that the yard would close if the Connole were removed and that the corporation has not had proper "access to address the issue."

Davidson said the Navy crew that always stays with the Connole remained aboard Sunday, and that all yard workers had left the ship Saturday night. The ship is based in Newport, R.I.

Mine found in gulf made by Soviets, Egypt says

CAIRO, Egypt (AP) — The Egyptian military confirmed Sunday that a mine found by the British in the Gulf of Suez was Soviet-made.

In an announcement distributed by the state-run Middle

East News Agency, the armed forces general command said the mine, found Sept. 12 about 20 miles south of the Suez Canal, was of Soviet origin.

It said that parts of the mine — of a type heretofore unknown to demolitions experts here — were flown to Britain for examination.

The announcement gave no indication who laid the mine, which Egyptian officials believed is linked to explosions which have damaged 19 ships in the Red Sea and Gulf of Suez since July 9.

Egyptian officials suspect the explosions were caused by mines planted by Libya to disrupt shipping in the area.

Union, coal companies try to prevent strike

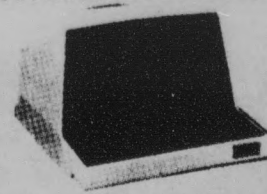
CHARLESTON, W.Va. (AP) — United Mine Workers representatives and three coal companies continued contract negotiations Sunday in an effort to avert a threatened strike by thousands of miners at midnight.

The three companies chose not to accept a pact negotiated by the Bituminous Coal Operators Association and signed Friday by association officials and UMW President Rich Trumka. Trumka said the holdouts would pay for demanding separate talks.

"If we are required to go on strike, then obviously the price of a settlement would go up," Trumka said. "I couldn't ask the membership to go on strike to accept the same contract that the rest of the membership did without a strike."

CORRECTION

A Sept. 19 story headlined "President Nelson appoints new deans" incorrectly stated that ASU Nursing Dean Janelle Krueger was the first woman with a doctoral degree to teach in the ASU nursing college. Krueger was the first woman Ph.D. to teach at the U of A College of Nursing.



Do Your
Computer Work
At Home!

Save Time and Effort

CRT with coupler

or

Printer with coupler

\$50⁰⁰
per month

BRS LEASING, INC.

3914 E. McDowell • 277-3282

Rentals / Service / Sales

CINEMA 'N' DRAFFHOUSE

SERVING • BEER • WINE
PIZZA • POPCORN • SANDWICHES

NOW SHOWING
GREMLINS

MONDAY NIGHT FOOTBALL

Tonight

Cincinnati Bengals vs. Pittsburgh Steelers

30-FOOT SCREEN
FREE ADMISSION

SOAPS 'N' SALADS

11 a.m.-2 p.m. Monday-Friday

The Cornerstone
930 E. University 829-7100



Alpha III Stylist

Style Cut Inc.

\$900

FOR NEW CUSTOMERS
WITH THIS AD.

- shampoo
- cut
- condition
- blow dry

818 W. Broadway #107, Tempe
1/2 Block East of Hardy

829-9694



The Ears Have It
Their Way at Dollar's

Unique & Fashionable Earrings

Only \$1 a pair or 3 pr. for \$2.50

Also

Belts only \$1 ea. or 6 for \$5

Dollar's Fashion Xcessories

414 S. Mill #207, Tempe
Above Spaghetti Co.
829-1127



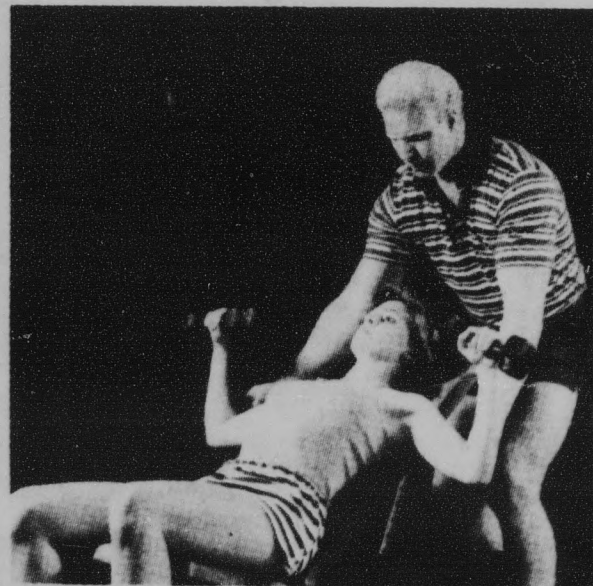
Let's Go to the Movies



★ ★ ★ ★ ★
UNION CINEMA
★ VALLEY PREMIERE ★
"Places in the Heart"
Starring Sally Field
TODAY! OCT. 1 • 7 & 9:45 P.M.
No charge

ALL FILMS ARE SHOWN IN THE UNION CINEMA ON THE LOWER LEVEL OF THE MEMORIAL UNION. SHOWTIMES ARE 7:15 and 9:45 P.M. EACH EVENING. OPENING PARKING FOR ALL AT (NO CHARGE) IS AVAILABLE AFTER 7:00 P.M. IN LOT #19 DIRECTLY SOUTH OF THE BUSINESS COLLEGE.

ALL TUESDAY FILMS ARE AT NO CHARGE. WEDNESDAY THROUGH SATURDAY FILMS ARE \$1.50 WITH ASU-ID.



ONE ON ONE, INDIVIDUAL WEIGHT TRAINING IS HERE.

At L&M Fitness, you won't find the typical "meat market" approach to physical fitness. No lines of Nautilus machines with lines of

people waiting to use them. In fact, at L&M, there's never a wait for anything.

Because L&M is the fitness center with a difference: personalized, private weight training sessions.

You'll have complete use of our weights and workout area for an hour and fifteen minutes three times a week—along with the personal guidance of Leigh Mitchell. Leigh can work with you to reach your personal degree of fitness and physical appearance.

You'll work to achieve your fitness goals—not what some giant fitness center thinks all their members should work for.

Because your training sessions are made by appointment, there's never a wait at L&M. You'll find complete weightlifting equipment, and a cooled sun deck for working out. Plus, we're right above a dance studio—the perfect combination for physical well-being.

So if you're tired of the "meat markets," try personalized training at L&M. You'll appreciate the attention. And so will your body.

L&M FITNESS 414 S. Mill, Tempe • Above the Center for Body Awareness • 968-9124

Campus clubs seek funds from Senate

By MARY ANNE PEREZ
Staff Writer

Funding for up to 100 campus clubs and organizations will be considered by the Associated Students Senate Tuesday, climaxing more than two weeks of preparations by the Senate Appropriations Committee.

The committee will present a proposal to set aside \$14,000 for clubs and organizations that have presented justification for funding.

Club representatives, after submitting applications and descriptions of their club's purpose and planned activities for the year to the committee, had 10 minutes to justify funding from the Senate.

Although all funding requests will be presented together, the Senate can accept or amend funding for each club, said Brian LaCorte, ASASU executive vice president and president of the Senate.

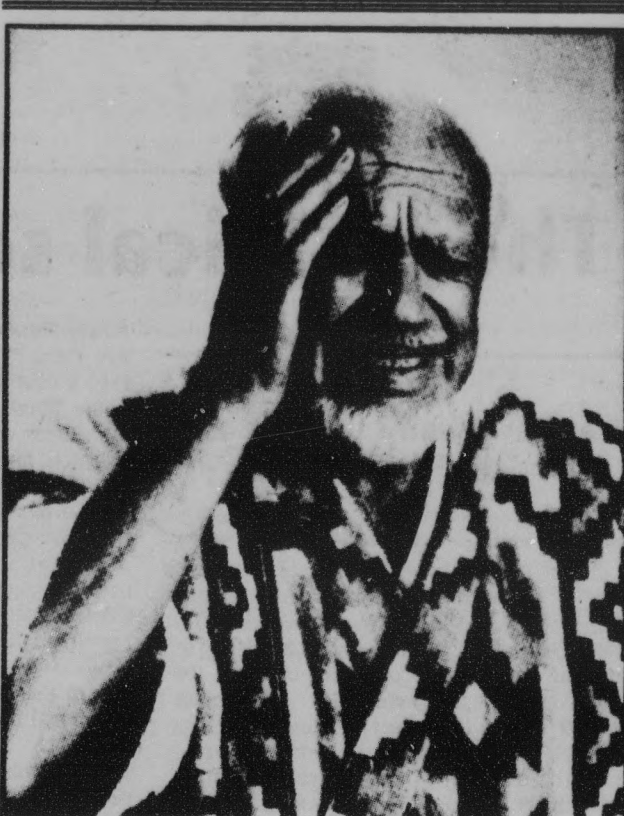
The Senate Appropriations Committee, headed by Chris Cumiskey, of the College of Public Programs, compiled information from the club representatives and met Saturday to "formulate figures and compile them into a bill to be presented to the Senate Tuesday," LaCorte said.

Sixty percent of the Campus-Clubs-and-Organizations budget will be considered for appropriation to the various groups.

Although club representatives have already had their chance to voice reasons for receiving funds, LaCorte said anyone wishing to address the Senate concerning funding for his or her club should speak with him before the meeting to get clearance.

Calling it a "quick-and-easy process," LaCorte said the Senate would "affect as many as 100 clubs and organizations in one bill," instead of each club approaching them separately in a time-consuming manner.

After the Senate decides to accept or amend amounts for each club, ASASU President Ray Burnell will receive the bill and either sign or veto it, LaCorte said.



Dr. Thomas Berndt accepts group, union, auto, and industrial insurance plans.

House incumbents may debate ASU candidates

By SANAA AL-MARAYATI
Staff Writer

Associated Students of ASU will sponsor a debate with two University staff members and two legislators from the Arizona House of Representatives District 27 if the incumbents decide to debate, according to the ASASU political union director.

Darren Chuckrey said, however, the initial response from both incumbents was negative.

Democrats Richard Dagger, ASU political science professor, and Steve Ponton, an assistant librarian at the Noble Science Library, will run against Republican incumbents Doug Todd and Bev Hermon for the two District 27 seats in the Arizona House of Representatives in the general election Nov. 6.

"Once they heard the University wanted to get involved, they had a more positive response in participating in the debate," Chuckrey said.

Students at ASU "usually have a laid-back attitude with politics, but this debate should bring some sparkle and get students to participate," Chuckrey said.

He said the incumbents should make a definite response sometime today.

Friday, Dagger said a campaign for the state Legislature "ought to be more than a battle of the road signs."

A debate would give voters an opportunity to see the candidates and hear their positions on certain issues, he said.

Dagger said he does not know what to expect from the debate.

"First I have to get a hold of ASASU to find out a definite date and set up the ground rules for the debate," Dagger said. "Then I will think of strategies for the debate."

There has not been a definite date set for the debate, but it would be in the MU sometime at the end of October, Chuckrey said.

Both Ponton and Dagger said they would like to broadcast the debate on American Cable Channel 13, but station manager Ivan Johnson said he has not decided if he wants to air the debate.

Todd and Hermon could not be reached for comment Friday; however, from a previous interview with the State Press, they gave a reluctant response towards a debate with their opponents.

Hermon said she is apprehensive about speaking with a political scientist.

"I think they are using this (debate) as a campaign strategy," Hermon said. "They are simply out for publicity."

Todd said during the previous interview he wanted more time to think about the debate.

Chuckrey said he is trying to persuade Senator Juanita Harelson and Carolyn Maxon, Harelson's opponent for the only Senate District 27 seat in the Arizona Legislature, to participate in the debate.

Chuckrey said nothing is definite yet, but Harelson and Maxon should respond by today on whether they will participate.

Ponton could not be reached for comment Friday.

"Professional Therapy Can Help Millions Of Headache Sufferers"

Headaches are the most common health complaint in America today. And we should not assume that chronic or recurring headaches are normal. If you have headaches, call Dr. Thomas Berndt for an immediate examination. Dr. Thomas Berndt accepts group, union, auto, and industrial insurance — Concentrating his concern with Headache Problems.

Dr. Thomas Berndt
Chiropractic Physician
966-0777
1000 E. Apache Blvd. Suite #107, Tempe © 1983

HUGE HUGE HUGE HUGE HUGE HUGE HUGE HUGE HUGE HUGE HUGE HUGE HUGE HUGE

EVERY MONDAY

BURGER MADNESS

1.00 ^{1/3 lb.} **HUGE DEVIL BURGER**

11am - 9pm
LUNCH - DINNER

EVERY MONDAY!

MONDAY NIGHT FOOTBALL \$2.50 PITCHERS

DEVIL HOUSE

HUGE HUGE HUGE HUGE HUGE HUGE HUGE HUGE HUGE HUGE HUGE HUGE HUGE HUGE

state press

A teacher affects eternity; he can never tell where his influence stops. —Henry Brooks Adams

opinion

The political science department: Lenin lives

Matthew Scully Columnist



One morning about a year ago I was sitting in the office of the chairman of the political science department engaged in a discussion of academic freedom. He was arguing that since political bias in the classroom is unavoidable, instructors should be free to profess whatever opinions they please, no matter how extreme; and I that there ought to be certain minimal restraints. As our chat was ending I got up to leave, and only then noticed that on his desk sat a small bust of V.I. Lenin. It was a bit of a shock. There I was, discoursing on an abstract definition of academic freedom, and right in front of me was the perfect symbol of where his definition had taken us. The chairman explained that, yes, he was indeed a socialist, and that in fact his lecture that afternoon would describe how the invasion of Grenada demonstrated Lenin's theory of imperialism. A few days later, after I had written on the subject, the chairman sent over a letter calling my views "totalitarian." Somehow the accusation never hit home.

Debating our political science professors over a definition of "academic freedom" is like consulting the Marquis de Sade on the proper limits of "sexual freedom," such is the abandon with which they exercise it. My definition is this. Academic freedom is the right of an instructor to teach his subject without undue pressure or interference. The key words here are "teach his subject." So long as he does that, no interference is warranted.

If you take the definition any further, what you have is academic license. You give instructors license to venture far beyond their subjects and toward matters nearer to their hearts. Take the most ridiculous example here at ASU, the POS 101 class taught by Professor Mark Reader. Walk into Pro-

fessor Reader's class any old day and you are going to hear about nuclear war. It is in fact a course about nuclear war, or rather about Mark Reader's all-consuming dread of nuclear war, and of violence of any sort. Not too long ago men like Reader were heard muttering on street corners as they passed out their political manifestoes. Now they become college professors.

One day last week you could have heard his observations on nuclear deterrence. They came at the end of a film on the horrors of nuclear war, one of two such films he showed last week. The film ended, and before the lights were turned on Professor Reader allowed us a few moments of silence in which to contemplate the gruesome scenes we had watched. And then he stood to recite his incantation on the immorality of it all.

Now Mark Reader's thoughts on nuclear deterrence are no doubt very stimulating. On that subject, at least, he is articulate if not altogether coherent. But the subject at hand happens to be Political Ideologies. That is after all the name of the course. His students, then, are entitled to ask when Professor Reader plans to move on to other subjects. If his answer is that no subject is more critical than the threat of nuclear incineration, then I say by that reasoning let's devote every class at the University to the subject. Perhaps we could make ASU a "Peace Academy."

Over against this we have the example of Professor Richard Dagger's POS 101 class, the very same course. While Reader's students are busy trying to make sense of the anti-nuclear propaganda assigned to them, busy memorizing all the appropriate slogans for their exam, Professor Dagger's class will be reading a variety of serious books that includes "On Liberty," by John Stuart Mill, Marx's "Communist Manifesto," "Free To Choose" by Milton Friedman and a recent work on conservative thought by George F. Will — a fair and balanced selection. Now Professor Dagger is no conservative. In fact he is running for the Legislature as a Democrat. But apart from being a Democrat and a politician, he is a college professor; he apparently makes a distinction between those

capacities.

Elsewhere in the department other causes are being waged with equal ardor. In Professor Richard Ashley's Global Politics course (POS 160) it is the modest cause of establishing a "new international order." This cause has led Professor Ashley to found a whole new discipline for himself: he is not merely a political scientist, he is a "peace researcher."

In his class on Monday of last week, the peace researcher explained how, by applying "critical theoretical methods," we could discover the root causes of terrorism. It seems terrorism is simply "the natural result of an unjust world order" — of "structural violence" and "global inequality and a mal-distribution of resources." "Terrorism is proof that we need a new world order." It is merely a result of the repressive imperialism of — who else? — the United States. And Soviet repression? Well, that just doesn't fall within the discipline.

All of this goes under the name of bold and critical thinking, of getting beyond "misperceptions." "Much of what we 'know' about international relations," Professor Ashley tells us in the course syllabus, "is ideological. It is really a byproduct of ritual political posturing and habitual sloganeering, not careful, probing analysis. In particular, this 'knowledge' tends to regard the current order of things as necessary and natural." And then, to improve his students' analytical habits, this exercise: "Sometime within the first four weeks, entirely without warning, Professor Ashley will say something totally absurd in his lectures. He will say it with a straight face, his usual bearing and total authority." I thought I was on to the trick the first day I attended his class. And then again on the next day, and the day after that. But no. I'm afraid searching for absurdities in Professor Ashley's lectures is like searching for ants at a picnic. They just come to you.

Slightly more clever than Reader and Ashley is Professor Dickinson McGaw, the preppy proletarian who teaches Current Issues in National Politics, POS 330. There is something ridiculous about a man in an Izod preaching egalitarianism. In this class,

students learn about legislation by dividing up into three "parties" — liberal, conservative and radical — in a mock senate. Each student is encouraged to join at different times at least two parties, so that you have roughly one-third representation in all three.

Now what is wrong with that? Well, let's think. In the real U.S. Senate there is no radical party, for the simple reason that there aren't enough radicals around to form one. You and I and everyone else outside the political science department know that radicals are not a serious force in American politics. To be realistic, then, Professor McGaw should designate one radical for every hundred or so liberals and conservatives, or he could assume the role himself. You see the game. The whole course is designed to put the "radical perspective" on equal footing with "conventional perspectives," never mind that Professor McGaw is probably the lone radical in the class.

Do not mistake the point. No one is arguing that these men are not entitled to believe whatever nonsense they please. That right is secure. Nor is there any suggestion of conspiracy here. No doubt among themselves there are fierce doctrinal disputes about who is true to the faith and who is not, whose "empirical model" or "methodology" is superior, who is a revisionist or a Trotskyite or whatever. I do not even think them very insidious. When you consider that Ronald Reagan's strongest support comes from college-age voters, these men seem more poignant than dangerous. Hardly anyone pays them much attention.

Their real offense is that they waste a great deal of everyone's time. Instead of teaching, they pass their days advancing the holy cause, as if the University existed for no purpose other than to provide them a means of venting their grievances against society. When they should be in their classrooms educating, they are at the barricades exhorting and indoctrinating. If radical political change is their aim — very well, let them go out and pursue it. Perhaps in this capitalist society of ours mass politics is their true vocation. Teaching certainly is not.



letters

The sequel to 'Have a nice day!'

Editor: I am writing this letter in response to the letter by Ellen Sweeney printed in last Friday's State Press. In her letter, Ms. Sweeney described some problems she had collecting her financial aid checks. She described this experience as being "typical of ASU encounters of the financial aid kind." Unfortunately, it is apparent Ms. Sweeney has no real sense of the service the typical ASU student receives from our office. If she were to speak to students who worked with this office two years ago, she would find that a dramatic improvement has taken place. I have worked as a peer adviser for two years. In that time, I have seen the waiting time in line go from a couple of hours to a few minutes. Moreover, the time to process the vast majority of applications has dropped from eight or nine months to six or eight weeks. I regret that Ms. Sweeney had problems in receiving her aid. Our office has improved much, but perfection is a difficult level to reach. Contrary to the rumors that Ms. Sweeney heard, an interview for employment in our office doesn't consist of practicing a few pat responses. There is a considerable amount of information and regulations that every peer adviser must master, and the interview process is designed to select individuals who can learn the material and who are genuinely concerned about the students' welfare. Finally, if I happened to serve you, Ms. Sweeney, I was sincere when I wished you "Have a nice day." I hope that in the future Ms. Sweeney does not rush to such quick and easy generalizations. We have worked hard to instill a level of student confidence in our office. I believe that a vast majority of students would agree they were served quickly and efficiently. Have a nice day, Ms. Sweeney. David Adam Peer Adviser, Student Financial Assistance Office

STATE PRESS LEN MUNSIL Editor STEVE WATERSTRAT Managing Editor City Editor JIM McCLEARY Asst. City Editor WAYNE BAKER Asst. City Editor M.K. REINHART Opinion Editor INGRID TUULING News Editor MICHAEL HUMPHREYS Sports Editor TOM BLODGETT Asst. Sports Editor JERRY BROWN Arts Editor MARIA KHAN Photo Editor MICHAEL CONNER Copy Chief KIM SERTICH The State Press is published Monday through Friday during the academic year except holidays and exam periods, at Matthews Center, Room 15, Arizona State University, Tempe, AZ 85287. Newsroom: 965-2292. Advertising & Production: 965-7572. The State Press is the only newspaper exclusively published for and circulated on the ASU campus.

On the docket: Reagan vs. the Fourth Amendment

Don Slutes
Columnist



What is a "police state"?

A police state is a place where agents of the government, e.g., policemen, are unrestrained in their pursuit of lawbreakers. It is a place where innocent citizens must endure the same indignities as criminals during police investigations. It is a place where the word "privacy" has little meaning.

A police state is a thing that we in the United States are glad we don't have, yet to some of us it is only an abstraction — like "communist dictator," "police state" is a slogan with a negative connotation, while the real meaning behind it is less understood.

Our Founding Fathers knew about police states. They experienced the insensitivity of an English king for whom personal rights were an annoying impediment to government policy. Thus when the Founding Fathers got the chance to form their own government, they took the opportunity to right the wrongs they felt had been perpetrated upon them. This impulse, in part, resulted in the Fourth Amendment to the U.S. Constitution forbidding unwarranted search and seizure — in effect forbidding agents of the government to violate rights of privacy, property and personal sovereignty that the government was established to protect.

A majority of the jurists on the current U.S. Supreme Court, however, seem unconcerned about this noble and necessary prohibition. They share with many political conservatives in this country a powerful desire for "law and order," suspecting that personal rights are an annoying impediment to law enforcement.

In a decision during its last term, the Court greatly reduced the effectiveness of the so-called "exclusionary rule," first applied by the Court in 1914 as a corollary to the Fourth Amendment. The "exclusionary rule" prohibits the use of illegally obtained evidence — evidence acquired with an invalid search warrant, or no search warrant at all — in court

cases. One of the most fervent dissenters, Justice William J. Brennan Jr., characterized the Court's action as "strangulation" of the rule.

Court observers expect the Miranda ruling — whence comes the police habit of reading a suspect his or her rights — to suffer similar damage.

The Burger court has begun the process of reversing the progressive strides made by the Warren court in the area of Fourth Amendment safeguards, progress that angered conservatives who now use the logically suspect, but emotionally rallying, exhortation of "victims' rights" to promote their cause. They point out that the Warren decisions served to defend the rights of the criminal. They reason that the defense of criminals at the expense of victims is wrong.

In fact, "reason" has nothing to do with this argument. First of all, no one is a criminal until proven to be one in a court of law (remember "innocent until proven guilty"?). Second, as an innocent citizen, a suspect is entitled to the same rights anyone else has, including the right not to have his or her house broken into without a warrant, or the right not to be stopped on the street by a police officer who cannot show "probable cause." Third, just exactly where does a special class of rights assigned to "victims" fall into this scheme? The much-maligned "rights of the criminal" that were so unceasingly upheld by the Warren court apply primarily to the restrictions placed on the government in pursuing lawbreakers; victims and potential victims of crime have these same rights. What the "law and order" crowd is trying to do is somehow equate criminal activity by members of society (which violates citizens' "rights," making them "victims") with the safeguards of personal liberty that were built into our criminal justice system.

The call for the protection of "victims' rights" is a sham. Do we really want to participate in the erosion of our personal liberties on the basis of some conservative's erroneous equation, and take a fateful step closer toward the "police state"?

Unfortunately, the outlook is very bad. The re-election of Ronald Reagan, as has been pointed out many times, will likely afford him the opportunity to appoint as many as five new justices to the Supreme Court. The president's inclinations and the inclinations of his supporters lead to the inescapable conclusion that a Reagan Court will have a severely negative effect on personal liberty as expressed by the Fourth Amendment.

TERMINAL RENTALS

Decwriters and CRTs

Upper Case CRTs \$40

Upper/Lower Case \$45

Call 966-3105

Computer Terminal Service

Delivery Available

YOUR LOCAL DATSUN DEALER SERVICE SPECIAL

15% DISCOUNT

On Service Work and Counter Parts
(except new air conditioning unit)

FOR ANY DATSUN SERVICE TO ALL ASU STUDENTS, FACULTY, STAFF WITH ASU I.D. CARD TO BE PRESENTED AT TIME OF PURCHASE.

Good through Dec. 31, 1984.



We use genuine Nissan Parts & Factory Trained Technicians

Automotive Accessories

Air Conditioning • Speed Controls

Smith

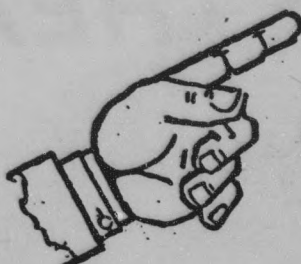
MESA DATSUN

1701 W. BROADWAY, MESA • 834-3366

Service Hours: Mon. 7:30 a.m. - 8:30 p.m. Tues. - Fri. 7:30 a.m. - 5:30 p.m.
Parts Open Sat. 8:30 a.m. - 12:30 p.m.

Mac TEMPE CENTER
JEWELERS
FOR ALL YOUR JEWELRY NEEDS
Diamonds, Watches
14k Chains, Pendants
Sorority-Fraternity Jewelry
Watch & Jewelry Repairing
966-7587

ATTENTION!!



**PRE-MED
and
PRE-DENT
Students**

Committee sign-up for students who will be applying to medical and dental schools next year will be the week of October 8-12, 1984.

Please contact the
Pre-Health Professions Office, SS-107

**ATTENTION
JEWISH
STUDENTS**
(recorded message)

PLEASE CALL
941-9268

THE WAREHOUSE DELI

Estab. 1973

"Good Food and Drink"

SPECIALS LUNCH & DINNER

MON.-FRI.
10:30-7 p.m.

Sandwich
of the Day
with Homemade Fries

ONLY
\$1.99



MOLSON & HEINEKEN

61¢

IMPORTS
Mon.-Thurs.
2-4 p.m.

HAPPY HOUR

MON.-FRI.
10:30 a.m.-7 p.m.

IMPORTS — 94¢

DRAFT BEER

Pitcher Glass

\$1.99 49¢

WINE

½ liter Glass

\$1.99 49¢

WINE COOLER

Pitcher Glass

\$2.75 65¢

BREAKFAST 6 a.m.-10:30 a.m. Mon.-Fri.

99¢ — SUPER SPECIAL — 99¢

Also Featuring "THE LITE WAIT"

One Egg, 2 Bacon or Sausage,
Toast, Butter & Jam

\$1.29

Coffee Included

LIVE ENTERTAINMENT NIGHTLY

(No Cover, No Min.)

130 E. UNIVERSITY DR.

AT FOREST

966-7788 — TEMPE, AZ

Your Hosts: "The Family"

An Arizona tradition in family healthcare.

- Family Practice
- Pediatrics
- Internal Medicine
- Obstetrics/Gynecology
- Laboratory
- X-ray

897-0800

Office hours: 8 am until 5 pm
Monday through Friday
Evening hours by appointment

**THOMAS-DAVIS
MEDICAL CENTER**

6301 S. McClintock Drive at Guadalupe, Tempe
Open to the public.

YOM KIPPUR

Friday, October 5
7 p.m. • Arizona Room, MU
Kol Nidre service

Saturday, October 6
Beginning at 10 a.m.
Arizona Room, MU

On Yom Kippur canned goods and your admission card are both needed to admit you to the Yom Kippur service. The canned goods fulfill the mitzvah of tzedakah (charity).

Admission cards are FREE to students, staff and faculty of ASU and the community colleges. Admission cards may be obtained at Hillel, 1012 S. Mill Ave.

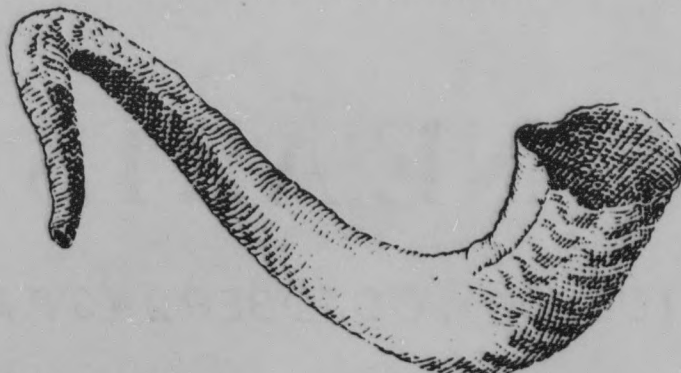
Concluding at Sunset, Saturday,
October 6 'Break-the-Fast-Dinner'
after services at Hillel.

Payment due October 3.

Students\$4

Non-students\$7

At the door\$6 & \$10



Brand New

- 2 Bedroom 1 1/2 Bath
- Pool & Spa
- Patios & Barbeques
- Plush Carpeting
- Walk or Bike to ASU

966-6310

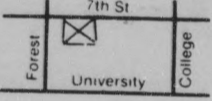
Apache Villa Apartments
1205 E. Apache

**Whirla
Whip**



Buy one, get one FREE!

Present this coupon to any participating Whirla-Whip merchant and with the purchase of any regular size Whirla-Whip or yogurt with one ingredient, you'll receive a second one of equal value FREE. Limit one coupon per customer per visit. Not good with any other offer.



Redeemable at
UNIVERSITY COMMONS
(7th St. & College)
894-6225

EXPIRES 10-31-84.

Explosion

ASU natural gas system free of potentially dangerous pipes

By SHERRY LOWE
Staff Writer

Although natural gas that caused the demolition of an east Phoenix condominium duplex Tuesday is in widespread use at ASU, there is no danger of an explosion, a University worker said Friday.

"We have a bunch of (natural-gas) here at ASU," said Gene Jennings, assistant supervisor of ASU's plumbing shop.

However, Jennings said ASU's natural gas is carried by an iron pipe, not plastic piping which Arizona Public Service officials determined was the cause of last week's incident in Phoenix.

He said most of the natural gas at ASU is used in the University's Physical Facilities, near University Drive and McAllister Avenue.

Jennings said most of the natural-gas explosions are the result of human error.

"Any time you're dealing with natural gas, there's some possibility of problems," Jennings said. "A lot of times, people just don't handle the natural-gas pipes properly."

Martha McKinley, Arizona Public Service senior public information representative, said the utility is removing all pipes made of a plastic known as Polyethylene Type 3306.

In 1982, APS determined this plastic incapable of holding up over long periods of time.

"ASU uses an all-black iron pipe, welded and wrapped before it goes in," Jennings said. "We don't use any

plastic."

According to McKinley, about 40,000 natural-gas pipes in Arizona are made of plastic. To date, APS has removed about 30,000 of these.

"One of the pipes that hasn't been removed is in the Tempe area," McKinley said.

She said the pipe is in the 900 block of East Morningstar Lane between Elliot and Warner roads.

Evacuation procedures have begun in the area due to a risk of natural-gas explosion.

Jennings said periodic checks are made of all natural-gas lines at ASU to avoid ruptures in the pipe line.

Jennings did not know the last inspection date of ASU natural-gas lines.

McKinley said APS conducts a routine service program on a regular basis.

She said the utility checks gas lines which they own at ASU about once a year. Other gas lines at ASU are owned by the state of Arizona.

According to Jennings, all inspections of ASU natural-gas lines owned by the state are by a private contractor.

In order for APS to prevent future natural-gas explosions, a program on gas safety is being launched, McKinley said.

"We're sending out gas sniffer cards with each bill next month," McKinley said.

She said the cards will help natural-gas users become familiar with the smell, making it easier to identify possible problems.

Psychologist



MUSIC • ART • DANCE • THEATRE

Now
*is the time to form
a more perfect union*

JOIN



FINE ARTS COLLEGE COUNCIL

TUESDAY, OCTOBER 2 • 3 P.M. • COCONINO ROOM 217 • MEMORIAL UNION

Psychologists start stress research program



Two ASU psychologists have begun researching stress and recovery from stress among older adults, according to Alex Zautra, associate professor in psychology and one of the researchers.

Zautra and John Reich, professor in psychology, have received a \$152,000 grant from the National Institute on Aging, which they applied for a year ago along with others nationwide.

The results of the study will show "how older people cope with the stresses of daily living," Reich said.

Zautra said the research will deal with the "psychological and social factors involved, among who recovers and who doesn't, from stressful situations."

The researchers will use data collected from a sampling of 240 Valley residents between the ages of 60 and 75, some of whom have lost a spouse or have been confronted with a serious illness in the last six months.

Interviewers from the same age group, chosen for their ability to work as empathetic listeners, will conduct initial interviews and follow-up telephone calls once a month for 10 months.

National studies show that among people aged 60 to 75, one in five reports suffering a serious health problem and 5 to 10 percent face the death of a spouse.

"We are not approaching this study assuming that these groups have a poor quality of life, but they are at risk," Reich said.

Zautra said older people face stress like the loss of physical functioning and the loss of opportunity while younger people face stress in the form of a greater number of changes in their lives.

He said older people also face the loss of loved ones due to death or institutionalization.

However, Zautra said, "there are many older people in the Southwest who lead quite satisfying lives."

Reich previously studied cognitive processes, stress and coping, while Zautra researched gerontology at the Center for Geriatric Studies at Columbia University a year ago.

Zautra and Reich hope to complete their two-year study by July 1986.

Zautra said the research will help counseling and self-help programs reduce the vulnerability people feel when faced with stress later in life.

The researchers will work in cooperation with the Mesa Senior Center, hospitals, churches and other community service agencies.

COUPON

TIME SQUARE BURGERS

(Formerly Zip's Square Burgers)

COUPON

1/4 lb. 89¢ ea.

Time Burger

Limit 3 w/coupon.

Expires 11-30-84.

Calling All White Castle Lovers!

3/\$1.00

Square Castle Burgers

Reg. Price

N.Y. Style Sandwiches Also Available

3105 S. MILL AVE., TEMPE
N.E. Corner Mill & Southern

967-6083

national screenprint

T-Shirts

Caps

Jackets

Poles

Visors

Towels

Shorts

Sweats

2121 S. Priest Dr.
966-7237

2 FOR 1 DINNERS WEDNESDAY

Buy 1 Get 1 Free!

A Tempe Tradition

LUNCH

10% off lunch with ASU I.D.

Offer good through 10-19-84.

Wacky WILLY'S

NOW OPEN FOR LUNCH!

Happy Hour 3-7 Nightly

Tempe's Great Mexican Experience

1120 E. Apache, Tempe • 967-1129

1 Blk. E. of Rural Rd. Take-out available

Mon.-Thurs. 11-11, Fri. 11-1 a.m., Sat. 5-1 a.m.

Cafe Honda

Elite™

ELITE™ \$1298

Aero™ 50

AERO™ 50** \$618

Spree™

SPREE™** \$398

Aero™ 80

AERO™ 80* \$828

Aero™ 125

AERO™ 125* \$998

Gyro™

GYRO™** \$548

Free Delivery to ASU area!

HONDA OF ARIZONA

4646 N. 7th Street
Phoenix, Arizona 85014

police report

An ASU student was assaulted by a man in Lot 63 early Sunday and required three stitches to close a laceration on the back of her head, police said.

According to University Police, the student had met the man in a bar and had driven him to the Cholla Apartments parking lot. When she declined his offer to come up to his room, he began to beat her with his hands and fists, police said.

The woman managed to drive away and called her mother from a convenience store telephone, police said. When she was unable to tell her mother where she was, the store clerk took the phone and gave their location. The student's mother arrived and transported her daughter to Tempe St. Luke's Hospital where she was treated and released, a hospital spokesman said.

Police said the student was dazed and could not recall how she escaped from the man or what happened in the period between the beating and her arrival at the convenience store. She will aid in prosecution, police said.

Another assault occurred early Saturday when an ASU student reported that she had been beaten by her boyfriend, police said.

The student was in her room in the Cholla Apartment's A-Wing when an ASU student came in and began hitting her in the face, police said. He threw her out into the hallway and left the scene shortly thereafter. Police said there were several witnesses, but are not sure what provoked the attack.

The student said she will aid in prosecution, according to police.

Also Saturday, a 17-year-old ASU student became intoxicated at a residence life-sponsored event at Ocotillo Hall and was taken by ambulance to Tempe St. Luke's Hospital for treatment, according to police reports. The student suffered from an "alcohol overdose," according to reports, and

Tempe paramedics were called to the scene.

A hospital spokesman said the student was taken to the hospital early Saturday, but was not treated.

In other activity, ASU Police reported the following incidents between Friday afternoon and 1 p.m. Sunday:

•An ASU student's 1978 white Volkswagen Rabbit received \$300 worth of damage early Saturday when a tan Honda backed into it and immediately drove away, police said. The student's car was parked on Adelphi Drive.

•A woman's purse, containing \$800 in cash, was taken from the Murdock Hall area Friday afternoon, police said. The woman left her tan, nylon purse on a bench near the building and when she returned four hours later it was gone.

•Two women, one an ASU student, were involved in a car accident Friday afternoon that may have resulted in a shoulder injury to one of the women, according to police reports. The accident occurred at the intersection of 6th Street and Packard Drive and damage to the vehicles, a 1977 brown Chevrolet and a 1978 blue Chevrolet, was estimated to be significant.

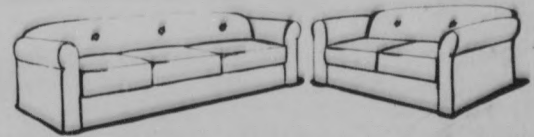
•An ASU employee reported seeing a man looking up women's dresses in Hayden Library Saturday afternoon, according to police. When the man, not an ASU student, was confronted by police, he denied the accusations and said he had been looking at books. The man had no identification.

•A Cholla Apartment resident's purse was taken from her room on the A-Wing's 8th floor while she was in the shower Saturday afternoon, police said. The room was left unlocked and her brown Gucci purse, \$45 in cash and various identification cards were valued at \$140.

•An ASU student who left his bicycle unattended for a few minutes reported that it was stolen late Saturday from Ocotillo Hall's D-Wing, police said.

— M.K. REINHART

Grand Opening Sale!



Sofa & Love Seat
Only \$289⁹⁵! Regular \$379.95



— BED SALE —
Twin set \$85 Full set \$95
Queen set \$139.95 King set \$169.95

Brand New 5-pc. Dinette Set
Now only \$99⁹⁹ Reg. \$150
6-drawer Dresser & Mirror \$89⁹⁵
4-drawer Desk \$59⁹⁵
Chest of 5 Drawers \$39⁹⁵



2077 E. University
Tempe • 966-6252
666 E. Southern
Mesa • 898-3124



People Power

helps prevent birth defects

HISTORICAL TRAVEL AND TOURS

7155 E. Thomas Rd.
Suite 5 • Scottsdale
949-8888 • 949-8908

CREDIT CARDS ACCEPTED
FREE TICKET DELIVERY

Phoenix to:

	ONE ROUND WAY TRIP
Chicago	\$145 \$289
New York	\$195 \$321
Las Vegas	\$39 \$78
Dallas	\$89 \$178
Miami	\$165 \$330
Minneapolis	\$150 \$300
St. Louis	\$139 \$269
Cleveland	\$175 \$350
Detroit	\$150 \$300

OR CALL OUR ON-CAMPUS TRAVEL CONSULTANTS

Philanne Scully 829-9257
Mike Hawe 968-0292

WE GUARANTEE THE LOWEST POSSIBLE AIRFARES TO ANYWHERE YOU WANT TO GO!

All airfares subject to change without notice.

あなたの希望する職業を。 あなたの国、日本で。*

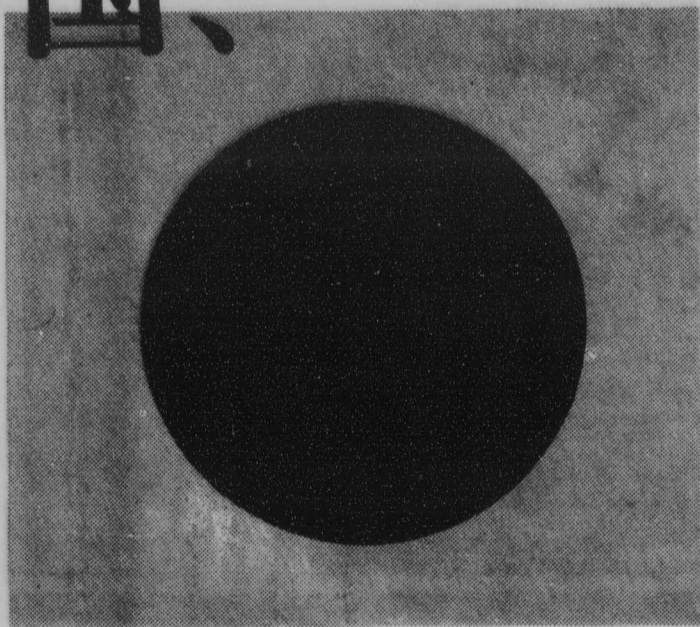
Together we can make it happen — as Nippon Motorola Ltd. offers you the opportunity to come home to family, friends and a brilliant future with the world leader in microelectronic components and systems. Our Information Systems Group, Communications Sector, Automotive and Industrial Electronics Group and the Semiconductor Products Sector currently have outstanding career openings available at our ultra-modern facilities in Tokyo and Aizu Wakamatsu. If you are a recent or soon-to-be college graduate and a Japanese citizen with an interest in working back home, consider the following opportunities:

Design Engineer • Assembly, Manufacturing • Final Test Engineer • Quality Control Engineer • Plastic Engineer • Production Supervisor • Facilities Engineer
Positions require BS/MS
Electrical/Mechanical Engineering

Materials, Traffic
Position requires BS Materials Management

MIS Programmer/Analyst
Position requires BS Computer Science, Math or Business

Process Engineer
Position requires BS Chemical Engineering, Chemistry or Solid State Physics



Financial Analyst
Position requires BS Finance/Accounting

Shipping/Receiving Administration
Position requires BS/BA

What could be... is. At Nippon Motorola Ltd. The career you want. In the country you love. For immediate consideration, send your resume to: Ron Smith, Motorola Inc., Semiconductor Products Sector, 1140 S. Priest Dr., Tempe, AZ 85281, Dept. IN28.



MOTOROLA INC.

Nippon Motorola Limited
An Equal Opportunity/Affirmative Action Employer

What could be... is.

*Imagine the career you want. In the country you love, Japan

sports

state press

Execution

ASU destroys Cardinal behind Clack, Fulcher

By STEVE RICHMAN
Sports Writer

ASU Defensive Coordinator Al Luginbill was able to sum up Saturday afternoon's 28-10 victory over the Stanford Cardinal in one word: "execution."

After last week's loss to Southern California, coach Darryl Rogers said there wasn't a lack of effort, only execution.

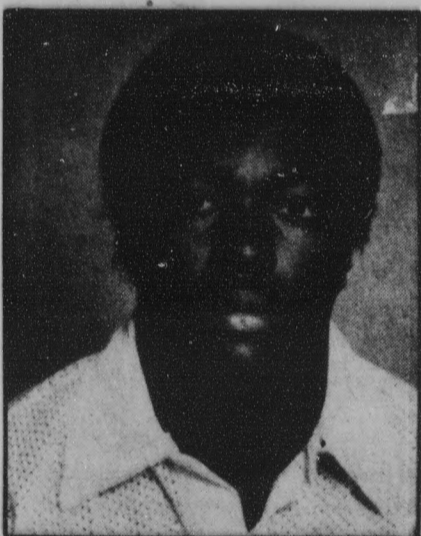
This time, he got both effort and execution.

The defense played another outstanding game, holding the Cardinal to 10 points. The difference in the outcome was caused by the offense, which came together against Stanford.

Rogers also stressed how important it was for both quarterback John Walker and tailback Darryl Clack to get untracked and regain confidence.

Walker completed 13 of 23 pass attempts for 186 yards and one touchdown.

Clack, who did not play against San Jose State two weeks ago, and managed only 7 yards rushing on seven attempts against USC, said he played one of his best all-around games. The 6-0, 205-pound junior



Darryl Clack

rushed for 160 yards and a touchdown on 26 carries.

He also caught three passes for 77 yards, including a 65-yard scoring play.

His pass reception for a touchdown came early in the third quarter and broke open a tight 7-3 game and turned out to be the game-winning score.

With about four minutes gone in the quarter, Walker tossed a screen pass to Clack near the sideline. Clack turned upfield, broke one tackle, cut back to the other side of the field and romped for a touchdown.

Clack: 'I never got down mentally because I knew my time would come. I worked hard this week and I really felt good in practice.'

Stanford coach Jack Elway and Cardinal linebacker Garin Veris said there was a defensive breakdown on the play.

"We had a couple of chances to tackle Clack," Elway said. "We had poor tackling throughout the game. It's just that simple."

Later in the quarter, Clack took a pitch from Walker and scampered 84 yards for another score. He ran outside and suddenly zoomed down the sideline past several defenders. Once he got through the secondary, no one was going to catch the ASU 4x100 sprinter.

Afterward, Clack said he was ready for the game mentally and physically.

"I really never got down mentally because I knew that my time would come," Clack said. "I worked hard this week and I felt really good in practice."

Rogers agreed practice was important for Clack.

"This past week was Darryl's best week of practice," Rogers said. "To be effective, he needs to put out in practice. The results from the hard work were shown today."

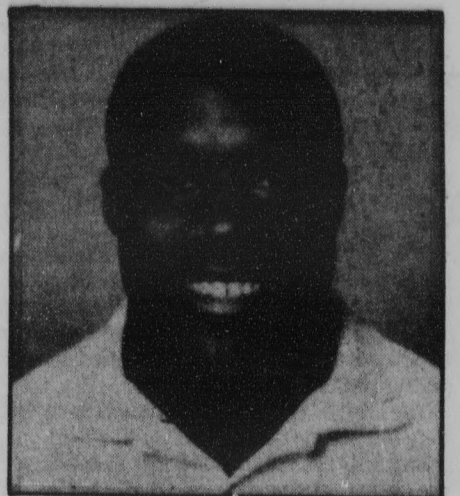
ASU's first score came from an unexpected source. Walker dropped back and handed off to Clack, who in turn, handed off

to Tom Onofrio for what looked like a reverse. Onofrio then put on the brakes and passed to Doug Allen in the end zone for a touchdown.

Onofrio, a senior punt-return specialist, said ASU only practiced the play a couple of times Thursday.

"I used to be a quarterback," Onofrio said. "I felt that as long as I threw the ball out towards the end zone, Allen would be able to catch up to it."

Even though the pass was a little low, Rogers said it turned out to be very effective.



David Fulcher

Stephen had five tackles and 2½ quarterback sacks.

"To beat Stanford, we had to contain Paye and Henley," Stephen said. "If we could stop them, we knew that we could stop about two-thirds of their offense."

For the game, Henley netted only 19 yards on seven carries. Going into the game, he led the Cardinal with 18 pass receptions. Against ASU, he came up empty.

Luginbill, who called Paye a franchise, said ASU had to force Paye toward the middle of the field so he couldn't scramble.

"By forcing Paye to the middle, we forced Stanford to execute and it couldn't," Luginbill said.

Because of the constant pressure on Paye from the defensive line, the Devils didn't need to blitz as often as they had expected to, Luginbill said.

"We used speed on Stanford," Stephen said. "We were just too quick for them."

Elway said ASU's defense was outstanding. He said the Sun Devils were able to execute while the Cardinal wasn't.

"We couldn't get anything established because of ASU's outstanding defense," Elway said. "Good teams have a big effect on other teams, and that was apparent today."

"The throw was just bad enough to be a good throw," Rogers said. "If it were any higher, it probably would have been incomplete."

On the other side of the ball, the ASU defense played its third straight solid game. Until the Cardinal scored its lone touchdown in the opening minutes of the fourth quarter, ASU's defense hadn't allowed a touchdown in 11 quarters.

"Our kids rose to the occasion," Luginbill said. "Even with the injuries to Greg Battle and Jimmy Williams, I felt that our defense really held together."

Going into the game, Rogers said the Sun Devils would have to contain John Paye, Thomas Henley and Emile Harry. The defense did its job on Paye, who was forced to scramble for much of the game.

"All of the defense is responsible for ineffectiveness of the other team," Rogers said.

Paye had 14 completions in 26 passing attempts, but for just 103 yards. Paye was sacked five times, and was forced to leave the game in the fourth quarter due to a hand injury.

Leading the charge on defense were David Fulcher and Scott Stephen. Fulcher had 11 tackles, including three unassisted.

GRAND OPENING
FORD & HAIG
TOBACCONIST

Your store for cigars, pipes, tobacco, lighters, and imported cigarettes (cloves, too).

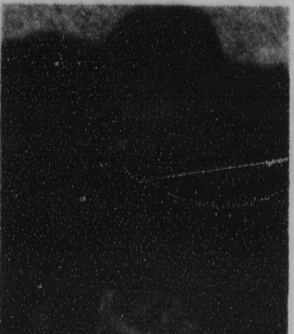
10% discount on above items with the mention of this ad. Come in and register for free drawing.



THE CORNERSTONE
Rural & University **968-2182**

THE UNICEF SHOP

Cards and Gifts from Around the World.



A non-profit organization working for children in over a hundred countries.
2100 E. Camelback (Town & Country Mall)
Mon-Sat 10-6 956-0781

Save Money On Holiday Fares!

- Chicago \$289
- Miami \$330
- New York City \$341
- Denver \$98
- San Francisco \$120
- Salt Lake City \$199
- Las Vegas
- Los Angeles
- San Diego \$78



*Round trip — seats are limited. Special restrictions may apply.

966-6300
Call now for reservations!

MILL AVENUE TRAVEL AGENCY
414 S. Mill #110, Tempe

The **hair performers**

MEN'S HAIRCUT	WOMEN'S HAIRCUT	APPLE PERM
☑ Shampoo	Shampoo	\$32.50
☑ Conditioners	Conditioners	w/Free Haircut
☑ Haircut	Haircut	Lowest Price Ever!
☑ Blow Dry	☑ Blow Dry	w/coupon only
\$6.75	☑ Iron Curl	
	\$8.25	
SCULPTURED NAILS	STAR PERM	
\$19.50	\$24.95	
	w/Free Haircut	


All offers good for first time client only.
903 S. Rural • Cinnamon Tree • 894-0184

HEY ASU STUDENTS

Jim's Auto Supply

30% average discount on all parts and accessories, except tools and special priced items.

HOURS: 8-7 Daily (Mon.-Fri.); 8-5 Sat.



Hayden & University
1828 E. UNIVERSITY Next to Minder Binder's **968-5888**

Spikers nailed by tough Trojans

By TOM BLODGETT
Sports Editor

One might expect ASU volleyball coach Debbie Brown to be a little frustrated after her team, ranked No. 15 in the nation, was swept for the third straight time in a conference match.

But Brown found a lot to smile about after the Sun Devils lost to No. 1 USC 3-0 (18-16, 15-9, 15-10) Friday night.

"More than frustrated, I'm encouraged by the way we played," Brown said.

The Devils finally won a conference match Saturday against Cal State-Fullerton 3-1 (11-15, 15-5, 15-7, 15-10).

Though the Devils (6-4 overall, 1-3 WCAA) suffered through their fourth sweep of the season Friday night — they were swept only once last year — they proved to be a formidable opponent for USC, particularly in the first game.

A lapse led directly to ASU's loss in the first game and put the Sun Devils in a hole in the second.

ASU jumped out to a 5-1 lead in the first game, much to the delight of an overflow crowd at P.E. East.

USC rallied to tie the game 9-9, but then the game turned into a tug-of-war.

The Trojans proved opportunistic, scoring off several free balls from ASU. But they found no point to be easy as a tenacious ASU defense fought hard to keep the ball in play.

In the end, the Trojans' Leslie Devereaux snuffed ASU's hopes, blocking two consecutive bad passes by the Devils and giving USC a winning margin.

The Devils' problems continued early in the second game; they fell behind quickly 6-0.

But ASU erased the lead just as quickly. The Devils scored six points off Sherri McKibbin's serve, getting several big kills from Tammy Webb.

After taking a 9-8 lead, the Devils fell into their second lapse.

They lost the last seven points of the second game and fell behind 10-2 in the third.

Again ASU would rally, closing the margin to two points before falling.

The Devils had several sparkling performances, particularly from Webb, who had 16 kills and only two attack errors for a .519 hitting percentage.

"I felt I had one of my better games tonight (Friday)," Webb said. "Things just haven't been coming together this season until now."

Brown also lauded the blocking of Suzy Boggess.

"I don't know how many blocks she had, but she really put a wall up there," Brown said. "Even when she didn't block it, they would sometimes hit it straight into the defense."

ASU warmed up for its conference matches with a 3-0 sweep of New Mexico State on Thursday.

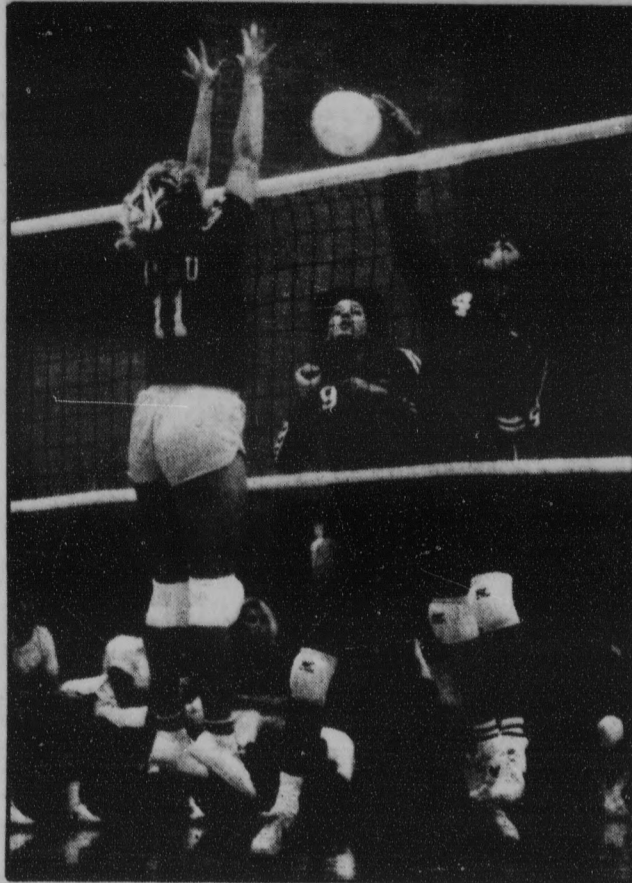


Photo by Ron Kuczek Jr.

ASU's Sherri McKibbin taps the ball over the net as teammate Suzy Boggess (9) looks on and New Mexico State University's Gwyn Leabo defends. ASU downed the Roadrunners 3-0 Thursday night, but lost 3-0 to No. 1-ranked U.S.C. Friday.

Compliment Your Ears Fashionably At Dollar'S

Earrings only \$1 a pair or 3 pr. for \$2.50
Also
Belts only \$1 ea. or 6 for \$5

Dollar'S Fashion Xcessories
414 S. Mill #207, Tempe
Above Spaghetti Co.
829-1127

FAMILY PLANNING INSTITUTE

WOMEN'S HEALTH CARE CENTER

All services personal and confidential by a professional & caring staff — OB/GYN physicians

Free Pregnancy Testing
with immediate results
Early pregnancy detection also available

Contraceptive Care Clinic
Counseling available

Abortion Services
Evening hours & Saturday appointments available

TEMPE
968-7471
2525 S. Rural Rd., Ste 4C

PHOENIX
997-7493
9100 N. 2nd Street

MasterCard VISA

kinko's®
WORD PROCESSING
Complete Resume Package \$9⁹⁵

Includes:
• Word Processing
• 10 copies on the copy of your choice
• 10 matching envelopes and 10 blank sheets
• Six-month storage

***\$8⁹⁵ for Resume only**

Full Service Word Processing
Specializing in: *letters *resumes
*term papers *reports

933 E. University, Tempe • 966-2035

THE PROFESSIONAL TYPE

AT DIET CENTER YOU HAVE NOTHING TO LOSE BUT WEIGHT. TOGETHER WE CAN MAKE IT HAPPEN!

• Natural program based on sound nutrition
• Private, daily counseling • No shots, drugs or prepackaged foods • Lifetime maintenance

Tempe • 967-1371
University Medical Center
2525 S. Rural Rd., Suite 6-N

Counselor
Joan Shwartz
(Lost 55 lbs.)

HOW TO WIN AT THE LOSING GAME
DIET CENTER

VISA MasterCard

NO CIVILIAN BAND CAN MAKE YOU THIS OFFER.

If you're a musician who's serious about performing, you should take a serious look at the Army.

Army bands offer you an average of 40 performances a month. In everything from concerts to parades.

Army bands also offer you a chance to travel.

The Army has bands performing in Japan, Hawaii, Europe and all across America.

And Army bands offer you the chance to play with good musicians. Just to qualify, you have to be able to sight-read music you've never seen before and demonstrate several other musical skills.

It's a genuine, right-now, immediate opportunity.

Compare it to your civilian offers. Then write: Army Opportunities, P.O. Box 7715, Clifton, NJ 07015.

ARMY BAND. BE ALL YOU CAN BE.

CAMPUS CLEANERS & COIN-OP LAUNDRY

- Dry Cleaning
- One Day Service
- Finished Shirts
- Drop-Off Laundry
- Alterations
- Suede & Leather
- Pillow Renovation
- Night Clothes Chute
- We Clean Hats

827 S. RURAL UNIVERSITY & RURAL
967-9650
OPEN 7 a.m.-10:30 p.m.



Brock hires assistant for recruiting

By MICHAEL KONZ
Sports Writer

The ASU baseball team has hired Bill Schmidt as graduate assistant coach in charge of recruiting in the California area.

Head Coach Jim Brock said hiring Schmidt will improve recruiting in that baseball-rich area.

"It's a graduate assistant position, but it has a great deal more responsibility than that," Brock said.

The position was created to increase recruits to meet the depletion caused by graduation.

"We've had five years of having a barren ballclub coming back each year," Brock said. "Now we're looking at a massive rebuilding year. We'll bring in three times as many recruits this year as we usually do."

California recruiting had previously been handled by assistant coaches Tim Kelly and Jeff Pentland as part of their recruiting duties.

"We needed a coach who would have fewer on-field coaching responsibilities," Brock said. "He needs to be free to handle his (recruiting) responsibilities."

Though he is only 25, Schmidt has logged

several years of baseball experience.

A 1977 graduate of Magnolia High School in Southern California, Schmidt led the baseball team to the title game of the California Interscholastic Federation.

He returned to his alma mater for a year in 1981 as head coach. He led a young team to the quarterfinals of the CIF tournament.

Schmidt was assistant coach at Santa Anna Junior College from 1981 to 1984. During his tenure, Santa Anna was ranked No. 1 in the nation.

Schmidt's work in California has given him the knowledge necessary for recruitment.

"He has an incredible knowledge of the players in Northern and Southern California," Brock said. "I was impressed."

Brock said Schmidt will hold the position for two years.

"It's a two-year commitment," Brock said. "At the end of two years, we'll have to look at the situation. Right now we're looking at this season and next season."

For now, Brock is just pleased to have Schmidt on the team.

"He's a bright personable young guy," he said. "The need was there, and we're just glad to have him on board."

classifieds

The STATE PRESS disclaims all responsibility for quality and prices of goods and services offered in both classified and display advertising by its advertisers.

Automobiles

1977 VW Scirocco, good condition, stereo, 4 speakers, 4 speed, great mileage, \$2495 or offer. 829-0243 after 6:30 pm.

1980 RABBIT a/c, sunroof, am/fm, cloth interior, excellent condition, \$3800. Pam, 998-7794.

CHEAP TRANSPORTATION. 1980 Dodge 1/2 ton pickup. Battery low but otherwise runs fine. Asking \$600. Been sitting for awhile. 966-1030.

LOST CAR title, expired plates? Avoid the long lines. Let us title and register your car. Fast and convenient service. Open till 8 Tuesday - Thursday, Saturday 8 to 12. Sunburst Business Services, 275-9877.

RARE BOHEMIAN Jazz Cafe window sticker from Auckland, New Zealand, \$250. Comes with 1967 Volvo 122. Great for getting around in town, runs on regular. Scott 840-1090.

Bicycles

LOW COST bicycles and accessories. Repairs all makes. Student discounts. Tempe Bicycle Shop, 966-6896.

MENS' 26", 3 speed bike. Excellent condition, \$45. Call evenings, 968-1449.

UNIVEGA 10-SPEED, 4 years old, like new, sports touring bike, \$200 or best offer. Call after 8, 967-8359.

Books

CREATE IDEAS! Order your "Idea Developers" catalog of books and tapes today. HFM publications, 1835 E. Manhattan Dr., Tempe, AZ 85282.

Business Opp.

MAKE MONEY while losing weight. No gimmicks. 833-3795.

For Rent or Lease

FOR RENT, nice furnished 2 bedroom, 2 bath townhouse, 2 miles from campus. Washer, dryer, dishwasher, pool, tennis courts, rec room. At University Shadows for mature persons. Lease, \$550 monthly. 892-8604, 968-0727.

ONE BEDROOM condo for rent, 700 West University, walking distance to ASU. \$385 per month. Call Mike between 2:00 and 5:00, 978-9499.

ROOMMATED WANTED through December. 2 bedroom apartment in Mesa, \$150 per month plus 1/2 electric. Ride to ASU and back if needed. Call Kathy at 964-5148 after 6.

For Sale

DORM REFRIGERATORS! Two cubic feet, 90 day warranty, \$65 each. Pacific Sales. 500 in stock. Dave, 945-8362.

STEREO BRAND new, never used, cassette deck, turntable, receiver, speakers. Cost over \$400. \$165 takes everything. 954-9541.

Furniture

BED SALE, mattress, box springs and frame: twin \$85, full \$95, queen \$139, king \$169. Furniture Plus, 2077 East University, Tempe, 966-6252.

DON'T BUY that futon til you've seen ours. Call Sweet Dreams, we'll tell you why. \$20 off all futons. 946-5687.

DRESSER, 6 drawers with mirror \$89.95, desk \$59.95, sofa and loveseat \$289.95, dinette with 4 chairs \$99.99. Furniture Plus, 2077 East University, Tempe, 966-6252.

HOLIDAY INN Scottsdale is remodeling! Desks, table and chair sets, carpet, mirrors, lamps, pictures, drapes, and more. On sale now! 5101 N. Scottsdale Road, Scottsdale. 9:30 to 5:30, Monday through Friday.

Hair Dressing

LAMAUR INC. model call Friday, 10-5-84, 7pm. Models must be able to make change in hair style: and/or color or perm. Male & female. Sheraton Plaza Tempe, 4400 Rural Road.

Help Wanted

BLUE JEAN type of company now hiring those who know what the word hustle means. Part-time hours, full-time pay. \$250 per week salary during 4 week training period. Sale tools and equipment nationwide via Watts. Close to ASU. Call Mark Allen, 966-8857.

FLOWER SELLERS needed for part-time work in Tempe area. Earn 40%. Must have own transportation. Call 437-1268 9:00-5:00.

Help Wanted

HOST OR hostess, \$4 per hour, Friday and Saturday nights, 9:00 p.m. to 5:00 a.m. Accepting applications 7:00 a.m. till noon ending October 5th.

INTERESTED in teaching English as foreign language? Contact the TESL Clearinghouse. 8033 Sunset Blvd., Suite 164, Los Angeles, CA 90046.

LIQUOR STORE clerk, flexible hours, four dollars per hour. Phone 276-2603.

LOCAL NEWSPAPER in the east Valley area is hiring afternoon motor route drivers. Permanent part-time employment for those who have good transportation. Call Hank at 994-0766 for interview.

MIND CLEANING? Start now with new business. Campus Maids. Earn high wages. For interview call 967-3560.

NEED EXPERIENCED volleyball referee, male or female. Apply at Bandersnatch Pub, 125 E. 5th St., Tempe, 966-4438. Ask for Mike or Robin.

NOVELIST NEEDS a college woman to do research for novel. English or drama background preferred. Must be studious and have excellent work attitude. Must be able to make a commitment for 20 hours per week until the end of the year. \$4 per hour. Call John Arnold, 967-7170 or 967-7362.

PART-TIME, \$5.50 per hour, shipping/receiving, flexible hours after school, weekends. No experience needed. Tom, 258-0132.

PART-TIME MONDAY through Friday, lunch-time sandwich maker and counter help. 829-0049.

PIZZA TIME Theater is now accepting applications. Full and part-time, weekends, day and night. 1000 E. Broadway, Tempe, Arizona, 85283.

RED ROBIN now hiring line and prep cooks. Apply in person, 1539 N. Scottsdale Road, Los Arcos Mall.

SALAD COOK and waitress position available. 11:00-3:00. Salad Jungle, 966-5589, 208 W. Southern.

SALES: COLLEGE students \$500+ per week, part-time, Scottsdale area, Sky-High Promotions, 834-8327.

SECURITIES BROKER assistant. Part-time evenings and weekends. Phone work. Please contact Jim Mitchell, 831-8822.

SECURITY OFFICERS, full or part-time. Car and phone necessary. Uniforms furnished. Internal Security Agency, 820-1919.

SUMMER JOBS. National Park Co's. 21 parks, 5000 openings. Complete information \$5. Park report. Mission Mtn. Co., 651 2nd Ave. W.N., Kalispell, MT 59901.

WAIT PERSONS, bus persons, part-time line cook, hostesses, bartenders, split-shift or part-time. Gurley's, a restaurant in Scottsdale, 4341 N. 75th St. Apply 9:00 to 11:00 a.m. or 3:00 to 5:00 p.m., Monday and Tuesday.

NEW YORK STATE OF MIND?
Are We Money Motivated?
Earn up to \$800/week from 3 to 8 p.m. while still in school!
Nationwide wholesale distributor wants aggressive and enthusiastic individuals who are tired of working for minimum wage.
GUARANTEED \$6/HR. DURING TWO-WEEK TRAINING PERIOD.
CALL 829-0225 10/5

Instruction

WANT TO learn to fly? We guarantee 40 hours flying time and pilot supplies for \$1700. Call 961-1156, Stellar Executive Air Service.

Jewelry

X-CESSORY FREAKS! Earrings \$1 pair. Belts \$1. Fashion at a bargain @ Dollar! \$1 414 South Mill #207, Tempe, 829-1127.

Lost & Found

FOUND: Black puppy, near University and Forest. Call 840-2140.

Motorcycles

HONDA CB400T, 900 miles for \$1200 or best offer. Call 833-9199 from afternoon till midnight.

Motorcycles

MUST SELL: moped, excellent condition, ready for delivery, \$325. 964-7468.

Personal

EXPERIENCED BODY-BUILDER available to train and consult men and women. Discount spa membership available, too. Kevin, 894-1839.

HYPNOSIS: DEVELOP self-confidence, remove stress, improve memory and concentration, become more outgoing, stop smoking or lose weight. Arizona Hypnosis Center, Lindsay A. Brady, RH, certified hypnotist, 10 years experience, 966-8571.

Roommate wanted

RESPONSIBLE FEMALE. Furnished private room. Nice house, good neighborhood, 3 miles ASU. \$175 includes utilities, non-smoker. 831-5599.

ROOMMATE WANTED to share quiet two bedroom home, 1 1/2 miles to ASU, \$150 per month, 1/2 utilities. Sue, 968-3543.

ROOMMATE WANTED: \$200 per month. Call Ninah after 6 pm at 894-2113.

TEMPE ROOMMATE Service. Free roommate service for ASU students. Have several furnished rooms and houses near ASU available. Rates from \$145 to \$225 per month, 829-9228.

Services

CARS AVAILABLE - 21 or older. All States Drive-away, 992-5200.

DON'T LIKE to clean? Let us do it! Campus Maids, 967-3560. Dorms, apartments, condos, inexpensive.

THE PHOENIX Rape and Battering Hotline. If you need help call 256-3074. If interested in volunteering call 966-4291 or 957-3543.

Travel

AIRLINE COUPONS. \$250 to NYC. Special low fares to most cities, USA. Call Brent 829-7300.

JIM'S BACK with the cheapest Christmas flights in the Valley. Free delivery. Holiday Travel, 948-0990.

Typing

ACCURATE TYPING, word processing. All types. Fast turnaround. N. Central Phoenix location. Why Worry Business Services. 943-3552.

ACCURATE WORD processing and typing. Term papers, resumes, cover letters and repetitive letters. 946-2886.

ACCUTYPE SERVICES: Fast and accurate. \$1.50 page. 12-6 or after 5 call Linda, 838-6830 or Nancy, 830-5572.

ALL TYPING done fast and accurate. \$1.15 a page. Word processing available. Close to ASU. Call Bobbi 968-9166.

ANN'S TYPING service. \$2 per page. 838-8804.

AT YOUR service, University and Mill area. Quality typing to your Specs. Information Keyboarding Lab, 966-7111.

NCS TYPING: fast and accurate. Reasonable rates. Pick up and delivery also available. Call 820-9681.

NORTHWEST PHOENIX, quality typing. Theses, dissertations, research projects. 938-3397.

PROFESSIONAL QUALITY word processing. Will edit and correct spelling. Carolyn Douglas, 838-0959.

PROFESSIONAL TYPING- Excellent spelling and grammar. IBM Selectric or word processing. Fast and reasonable. Call Jaine 990-9595 or 948-4647.

PROFESSIONAL TYPING: Term papers, resumes, letters, etc. Spelling and grammar included. Linda Brewer, 839-7905.

TYPING. Expert word processing plus letter quality print for theses, manuscripts, etc. Reliable perfectionist with reasonable rates. Myra, 956-4233.

TYPING- IBM Selectric- one day service, 831-1932, Mary.

WILL TYPE theses, term papers or reports. Have IBM correcting Selectric II. Call 820-4978.

WORD PROCESSING, typing. Can type anything. Guaranteed word perfect. Located in Tempe. 839-3412.

Wanted

PAYING CASH for gold, silver and diamonds, class rings. Mill Avenue Jewelers, 414 S. Mill Avenue.

C.C. Cutlers & Co.
Introductory Offer

Haircuts	Socolor Weavings	Perms
\$6	\$30	\$25

Choice of 1 or 2 colors

Specializing in Hair Designs for Young Adults

968-6685
Corner of Lemon & Terrace
Hours: Mon. 10-6 Tues.-Fri. 10-7 Sat. 10-5

Don't Buy That Futon til You've Seen Ours



\$20 OFF All Futons
10% OFF All Frames
(WITH THIS AD)
sweet dreams

SLEEP SHOP & FURNITURE CO.
3622 N. Scottsdale Rd.
Scottsdale • 946-5687
Free Delivery • Near ASU

ASU CHEERLEADER AND MASCOT TRYOUTS

Applications at M.U. Information Desk

Orientation: Oct. 3, 1984
Activity Center • 6 p.m.
Tryouts: Oct. 8-13
Application deadline: Oct. 3 • 4 p.m.

CLASSIFIEDS START HERE

March of Dimes SAVES BABIES
HELP FIGHT BIRTH DEFECTS

Announcements

DON'T LOSE those summer blonde highlights! Take advantage of this money saving offer. Colorweaving, highlighting, streaking and painting hair, 10+ up. Contact Lori, 894-6063; Terri, 877-2568.

SINGLE DRAMA lovers!!! This organization is devoted to going to plays with other theater lovers who also are single. Call Matt Gerson at 960-0690 for details.

JUST OPENED!

What A Card!

* A VERY TINY BUT VERY COOL SHOP

* WE HAVE THE MOST BEAUTIFUL MOST COSMIC MOST OUTRAGEOUS CARDS IN ARIZONA!

* ALSO INCREDIBLE GARNET, AMETHYST, AQUAMARINE, AND MORE, NECKLACES, RINGS, PENDANTS, FROM \$9

* '85 CALENDARS * EXOTIC GIFTS

1 E 7TH ST. TEMPE CORNER-MILL & 7TH ONE BLOCK N. OF UNIV.

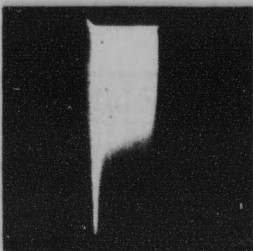
Automobiles

1975 FIAT X1-9 sports car, excellent condition, stereo cassette, owner since 1976. Red-brown with gold stripe. For more details call office, 965-1812 or home, 967-3826. \$2950.

THERE ARE TWO SIDES TO BECOMING A NURSE IN THE ARMY.



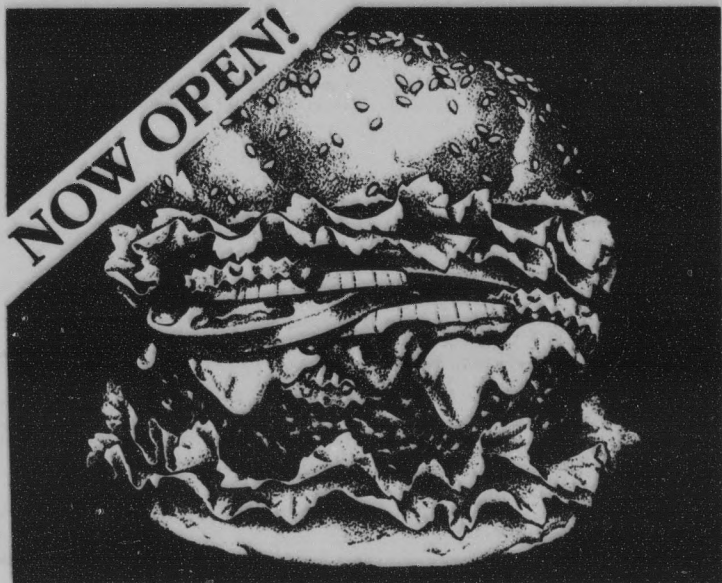
And they're both represented by the insignia you wear as a member of the Army Nurse Corps. The caduceus on the left means you're part of a health care system in which educational and career advancement are the rule, not the exception. The gold bar



on the right means you command respect as an Army officer. If you're earning a BSN, write: Army Nurse Opportunities, P.O. Box 7713, Clifton, NJ 07015.

ARMY NURSE CORPS. BE ALL YOU CAN BE.

THE ULTIMATE HAMBURGER EXPERIENCE!



Picture this. Generous, freshly-ground half-pound USDA patties grilled to order on gigantic, just baked sesame buns right from our ovens.

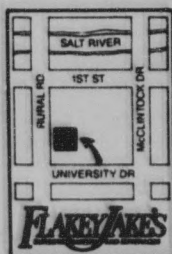
After we grill your burger to order and place it on a fresh-baked bun — that's where the challenge begins — YOU dress them with lettuce, tomato, veggies and onions; spice it up with all the pickles, salsa and condiments; and ladle on rich melted cheese. America's Best Burger™ — and YOU created it!

We get so enthusiastic about our burgers, we sometimes forget to mention our fries, baked potatoes, hot dogs, meaty chili, sauteed onions, old fashioned hand-dipped milk shakes, chocolaty brownies and cookies and long-neck beers and wines.

AMERICA'S BEST BURGER™ is the one you build yourself at . . .

FLAKEY JAKE'S

BURGERS, BAKERY AND BEVERAGES



TEMPE
715 S. Rural Road
(In the Cornerstone Mall)

VISA AND MASTERCARD ACCEPTED

Well Drinks * Margaritas * Draft

99¢

ALL DAY * ALL NIGHT

SPECIAL PURCHASE PROGRAM!

✓ STUDENTS
✓ FACULTY
✓ STAFF
... ONLY!

Macintosh PERSONAL COMPUTER

ONLY! **\$1,550⁰⁰***



FEATURES:

Built-in Disk Drive, 3.5 Disk with 400K bytes of storage, and utilizes 32 bit microprocessor. Complex computer commands are replaced by easy to use icons and pull down menu.

Save \$895⁰⁰

IMPORTANT

Because of the special nature of this program, you must fill out and bring with you a special ASU order form. These forms are available at the Computer Services Reference Library.

Also, special prices on Lisa 2, Lisa 2/5, Lisa 2/10 and Imagewriter printers are being offered.

In addition CompuShare is offering discounts on peripherals.

Available at any CompuShare Location

COMPUSHARE

PERSONAL COMPUTER CENTERS
SALES • TIME SHARING • EDUCATION • SERVICE

MESA
Poca Fiesta Center
1110 W. Southern
898-0610

PARADISE VALLEY
Village Square Center
4621 E. Cactus
953-1884

PHOENIX
Metro Village Center
2851 W. Peoria
943-4858

Macintosh™ is a trademark of Apple Computer, Inc. Authorized Dealer

*Price does not include tax or shipping.