

wednesday

September 19, 1984

Vol. 67 No. 16

Arizona State University

Copyright, State Press, 1984

state  
press

Tempe, Arizona

## Fraternities unable to pay University for lease debts

By SHERRY LOWE  
Staff Writer

Some ASU fraternities are not financially able to pay the University for debts totaling more than \$165,000, a University official said Tuesday.

"Some of the fraternities have built up balances and are not in a position to make payments," said Gerald Snyder, comptroller for the ASU Comptroller's Office.

The \$165,000 debt is the total owed by all 15 fraternities on campus, Snyder said.

Each fraternity leases its house from the University and some are behind in payments, he said.

Snyder said the ASU administration has the authority to evict fraternities unable to pay debts to the University.

"It's in the leases and contracts the University has with the individual fraternities," Snyder said.

Snyder said the leases and contracts are the result of negotiations that took place with the Alpha Drive Association of Fraternities last summer.

The Alpha Drive Association of Fraternities, an organization of all house corporations on Alpha Drive, represents the houses in any contracts signed with the University or outside sources. Each fraternity has a house corporation which gives houses authority to enter into contracts.

The representatives for the association are fraternity alumni who are officers from each house corporation.

Ron Paquin, chairman of the association, said the association signed the contract which stated fraternities would be evicted if they did not meet their lease payments to the University.

Paquin said because the association entered into the contracts for the fraternities, it is responsible for houses on Alpha Drive that do not meet payments.

"We negotiated with the University for all the houses (which) have overdue balances," he said.

However, Paquin said, "Each house corporation is responsible for their own house."

Snyder said the contract outlines a payment plan for the fraternity houses.

He said a bill is issued every 30 days to each house, and as long as payments are received, the University will not evict any fraternity.

"The University is not aggressively pursuing the situation because many of the fraternities cannot make a full payment at one time," Snyder said.

He said the agreement, signed last summer, requires fraternities to pay back debts every 30 days, including an interest charge of 12 percent.

Each fraternity must pay the debts while maintaining current payments to the University, he said.

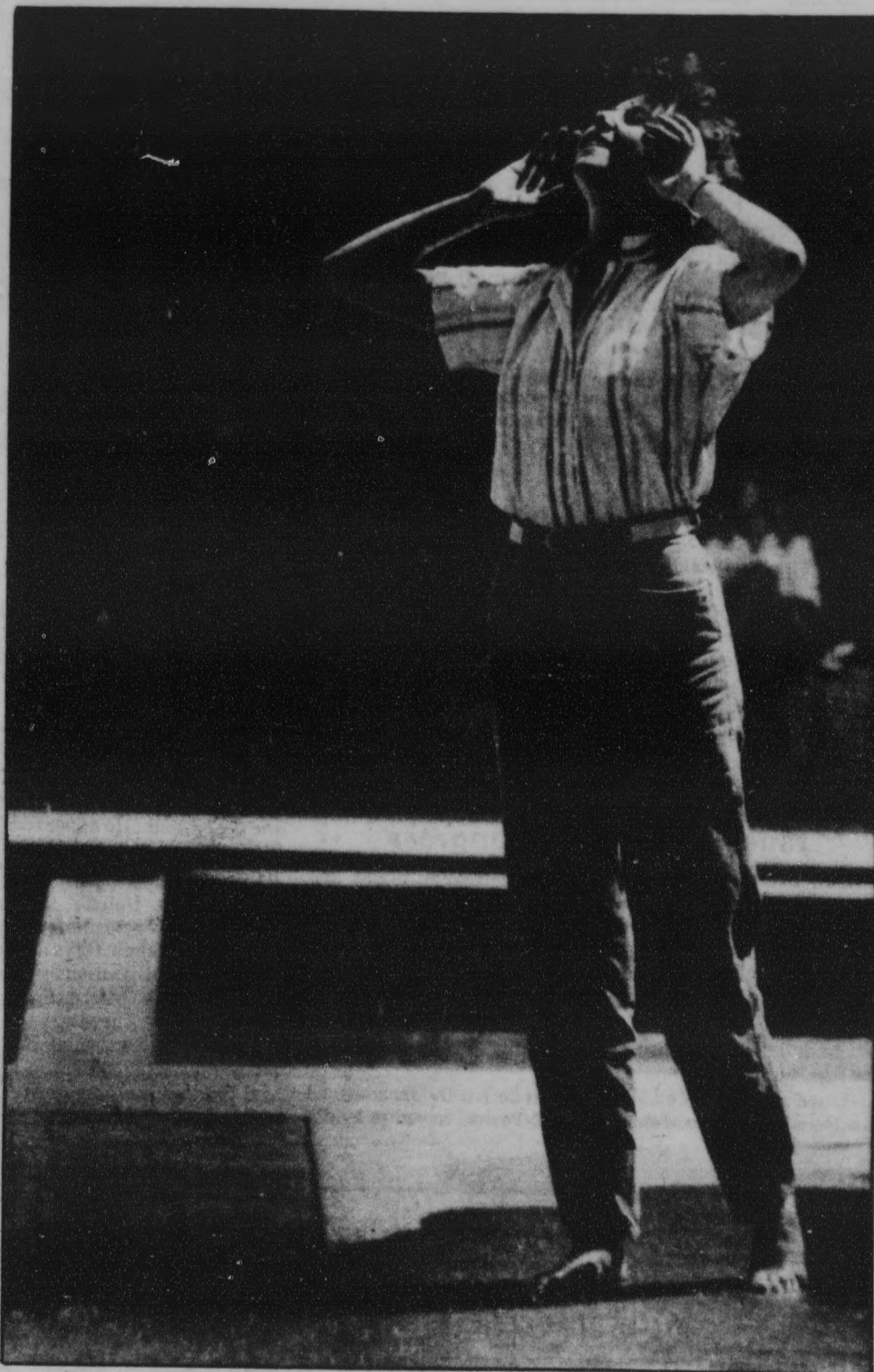
According to Snyder, fraternity debts today are somewhat smaller than they have been in the past.

Snyder said one fraternity is more in debt than the others. He would not give the name of that fraternity.

He said various University problems are the result of past payments owed by fraternities.

"For one, the cost to the University, and a loss of income," Snyder said.

Paquin also would not identify which houses are not meeting their payment deadlines.



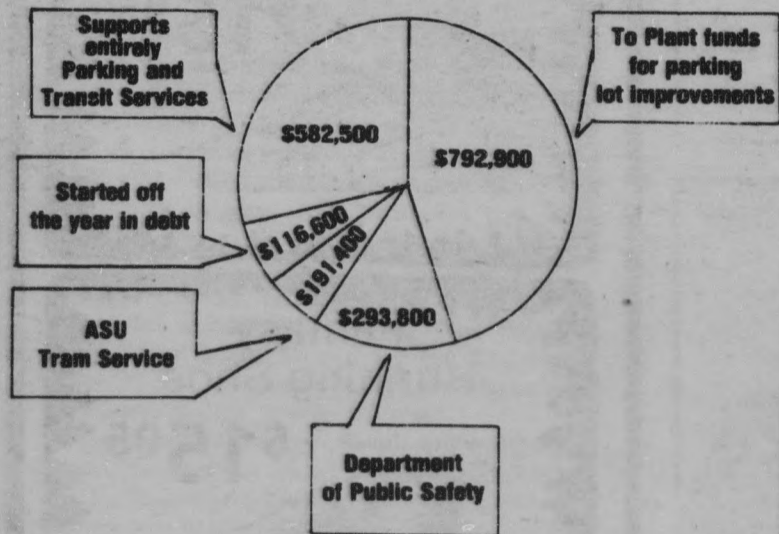
Staff photo by Tina Gerson

### In our mi(d)st

Senior accounting major Barbara Dommer finds relief after her tax accounting course on Monday by the spraying fountain near the new business building.

## Parking income estimate increases by \$.3 million

### 1984-85 Estimated Parking Fee and Citations Revenue = \$1,979,100



#### Parking Decal Price Change

	Cheapest Auto Decal	Revenue
1981-82	\$5	\$510,464
1982-83	\$25	\$834,500
1983-84	\$30	\$1,655,600 (est)
1984-85	\$33.50	\$1,979,100 (est)

By MARY LOU FULTON  
Staff Writer

The University collected \$1.6 million in parking fees and citations last year. In 1984-85, the ASU Local Budget Request estimates \$1.9 million will be collected.

Where has all that money gone? Where will this year's money go?

Initially, it goes into an account labeled Parking Fees and Citations. From there, it is disbursed to several other accounts. These are the accounts and their allotments:

- Plant Funds, \$792,900.
- Parking and Transit Services, \$582,500.
- ASU Department of Public Safety, \$293,800.
- ASU Tram Service, \$191,400.

Parking Fees and Citations started out the year \$116,600 in debt. The above totals \$1,977,200, the amount expected to be generated this year through parking revenues.

ASU Police Chief C. Russell Duncan, head of Parking and Transit Services, said he thought the \$116,600 debt resulted from last year's construction costs, but was unsure because he only assumed responsibility for parking and transit in January 1984. Former director Ed Hickcox is now the assistant director.

The largest part of parking revenues goes to Plant Funds, then disbursed for parking lot improvements. The 1983-84 Plant Funds, estimated at \$644,700, were used to upgrade lots 42, 37, 44 and 57 and add control gates and call boxes for some lots, Duncan said.

He said the next major project will be resurfacing and lighting Lot 59 at Sun Devil Stadium, but that will not begin until the department is assured of this year's projected \$792,900 share of the revenue. He estimated the cost for upgrading Lot 59 at more than \$1 million.

The next largest chunk, \$582,500, goes to fund Parking and Transit Services. This department is responsible for the sale and distribution of decals, adjudication of parking citations through the appeals process, supervision of lot attendants, the Rideshare Program

and the Parking Authority Information System, a computer system which keeps records of decals sold and citations issued.

Of the \$582,500, about \$351,000 is spent on salaries for Parking and Transit Services employees. Duncan estimated there were six full-time employees and a number of part-time employees.

The ASU Department of Public Safety gets \$293,800, down from last year's \$502,300. This amount pays the salaries of the people who write tickets and of some police officers who patrol the lots.

Duncan was responsible for reducing the amount allotted to the DPS, saying "parking money should not go to DPS, it should go to parking improvements."

The ASU Tram Service gets the remaining \$191,400. There are six trams and five drivers.

For the first time, revenues from event parking for football games and concerts will go into the parking fees and citations fund. It is projected that event parking will generate \$95,000 in fiscal 1984-85.

Commenting on the additional income, Duncan said, "Now they're paying their fair share." Persons displaying a valid ASU decal will not have to pay extra for event parking, Duncan added.

Despite all the figures, many wonder whether they are getting more for their \$33.50 decal in 1984 than their \$5 decal in 1981.

Duncan says yes, and cited improved tram service, more lot patrols, emergency call boxes and improved lighting and paving of lots as proof.

"Parking is a cooperative venture," Duncan said. "You're helping to defray the costs of parking all over campus (by parking in the perimeter lots). Everyone pays their share of the parking costs and to some extent, (students) pay a bigger share. We have a stratified system here."

And what do those who park in lot 59 get?

"The odds of finding a parking space are a lot better now . . . you get benefits. We're going to pave and light the parking lot next year," he said.

# nation/world

state  
press

## Court upholds Abscam conviction

WASHINGTON (AP) — The U.S. Court of Appeals refused today to overturn the 1980 Abscam conviction of former Rep. John Jenrette of South Carolina for bribery and conspiracy.

The court said, "We find Jenrette's contentions meritless." He maintained that he had been the target of an FBI vendetta.

Jenrette, who was defeated in a bid for re-election in 1980, was convicted of conspiracy and of accepting a \$50,000 bribe in the Abscam investigation and was sentenced to two years in prison and fined \$20,000.

The court said it could see no basis to grant Jenrette a new trial.

The South Carolina Democrat had appealed the conviction on the ground that he was trapped into committing a crime and that he had been the target of a political vendetta by the FBI.

The Abscam operation involved a fictitious FBI-created entity, Abdul Enterprises, which supposedly was operated by wealthy Arabs interested in investing in the United States. Jenrette was convicted of accepting a bribe from an FBI agent posing as an Arab sheik in return for agreeing to introduce an immigration bill.

## Compromise immigration bill faces filibuster in Congress

WASHINGTON (AP) — Opponents of a compromise immigration bill vowed Tuesday to block floor action in the House and Senate to kill the measure, which would grant legal status to millions of immigrants who have entered the United States illegally since 1981.

Rep. Kent Hance, D-Texas, told a news conference that the bill emerging from a House-Senate conference committee is a "sham" that would discourage illegal aliens from applying for legal status.

Hance said he has enough votes to defeat the measure on the House floor. Sen. John Tower, R-Texas, vowed to lead a

filibuster against the compromise measure when it reaches the Senate floor.

Tower said in a statement that the bill is discriminatory and he "will do everything in my power to prevent its becoming law." With Congress scheduled to adjourn Oct. 5, Hance said, "that should be a sign that this bill is not going to get out."

Hance argued that few aliens will try to gain legal status because they will have to provide documents to show they had been working and might become liable for back taxes that had not been paid.

"It's a disincentive for people to seek legalization," Hance said.

## Soviet journalist says British agents drugged, kidnapped him

MOSCOW (AP) — Soviet journalist Oleg Bitov, granted asylum in Britain a year ago as a defector, turned up in Moscow on Tuesday and said British intelligence agents drugged and abducted him in Italy and tried to use him in an anti-Soviet campaign.

In London, the British government said Bitov came to Britain "entirely of his own free will" and his allegation that he had been kidnapped was absurd.

The 52-year-old Bitov had been missing from London for the past month. He appeared at a Moscow news conference to claim he had been forced to defect and had played along with British intelligence until he could return to the Soviet Union.

The Soviet Union's state-run news media on Tuesday publicized his return as "a flight from nightmarish captivity," and the Soviet news agency Tass denounced what it called "a base provocation by British intelligence."

Bitov was the foreign cultural editor of the Soviet Writer's Union weekly Literaturnaya Gazeta, or Literary Gazette. Last year while covering the Venice Film Festival, he disappeared on Sept. 9. Britain announced that he had defected and granted him asylum in January. His wife, Lyudmilla, and their daughter remained in the Soviet Union.

# posters mostly

20% off framing  
for the full month of september!

20% off posters with this ad!

contemporary, sports, music, old masters, movies,  
southwest, and a whole lot more  
also custom frames, mounts,  
and home and office consultations.

998 · 1922


n.e. corner  
shea & scottsdale




Crimpers, still the finest salon  
for quality at a good price.

**Crimpers Ltd.**

215 E. Seventh St. (Behind Campus Book Center)  
Tempe • 966-5192



## FAMILY PLANNING INSTITUTE



## WOMEN'S HEALTH CARE CENTER

All services personal and confidential by a  
professional & caring staff — OB/GYN physicians

**Free Pregnancy Testing**  
*with immediate results*

Early pregnancy detection also available

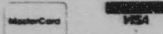

**Contraceptive Care Clinic**  
*Counseling available*

**Abortion Services**

Evening hours & Saturday appointments available

TEMPÉ  
968-7471  
2525 S Rural Rd. Ste 4C

PHOENIX  
997-7493  
9100 N 2nd Street



## BALLOONS ALACARTE

Flowers, Plants  
and Gifts

Personalized  
balloon bouquets  
for all occasions.

(602) 966-6789  
414 S. Mill Ave.  
Suite 206  
Tempe

By **alacarte**  
of Scottsdale, Inc.

## HAPPY NEW YEAR L'SHANA TOVA

Join us for dinner  
**EREV ROSH HASHANAH**

Wednesday, September 26

5 p.m. at Hillel

Students \$4

Non-students \$7

Payment due September 20

After September 20, \$6 and \$10

To assure adequate seating for the campus  
community, entrance to High Holiday  
Services will be by admission card only.  
Admission cards are available at Hillel.

**Hillel: Jewish Student Center**  
1012 S. Mill Ave. • 967-7563

### SERVICES

Wednesday, September 26

8 p.m. • Arizona Room  
(Kiddush to follow at Hillel)

Thursday, September 27

9:30 a.m. • Arizona Room

Friday, September 28

9:30 a.m. • Alumni Lounge

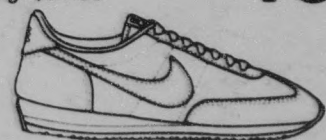


## This Week's Winner!

Nike Oceania  
Running Shoe

Reg. \$24.95  
**\$15<sup>95</sup>**

Reg. \$24.95



Navy Blue

Fantasy  
Running Shoe

Off White, Violet  
Reg. \$27.95  
**\$15<sup>95</sup>**

Off White, Violet  
Reg. \$27.95



1038 S. Mill Ave.  
(Across from Gammage)

**University** 968-7725  
sporting goods

# Couple detained at Sun Devil Stadium

By SANAA AL-MARAYATI  
Staff Writer

A two-year-old ASU policy stating that football spectators may not leave Sun Devil Stadium until after the first quarter was tested at Saturday night's game.

A scuffle occurred when a stadium gatekeeper attempted to prevent a man and his wife from leaving the stadium. According to police reports, the man's wife was ill and they were trying to exit through a gate for disabled spectators when Stanley Beecher approached them and told them they could not leave before the end of the first quarter.

When Beecher blocked the man's

way, he became angry and grabbed the employee, police said. A pushing match began but was ended quickly by nearby police officers.

There were no injuries and no charges were brought by the employee, according to police reports.

According to Herman Frazier, director of athletic facilities, the policy was designed by the athletic department to provide better service for the people in the stadium.

There are exceptions to the rule in the case of an emergency, Frazier said, but the man did not inform the gatekeeper of his wife's condition.

"When you let over 70,000 people in a

stadium, you cannot let everybody out of the stadium or there will be a problem," he said, adding that during the first quarter people are still entering the stadium.

There are only two entrances allowing people to go in and out of the stadium, located at the north and south ends, he said.

People are allowed to leave the stadium at any time during the game, Frazier said, but without a pass they cannot come back in.

In order to get permission to leave the stadium, a person must obtain a pass from a ticket supervisor, located at the south entrance of the stadium.

## police report

University Police reported the following incidents in the 24-hour period ending at 6 a.m. Tuesday:

•An unidentified man exposed himself to a female ASU student on the fourth floor of Hayden Library early Monday evening, police said. He was described as an older man with graying hair, dark skin and a medium to light build.

•Police said two custom-made sheepskin seat covers were taken from a 1981 Fiat Spider and damage was done to the convertible top of the ASU student's car behind the Theta Delta Chi fraternity house Monday afternoon. Total loss and damage was \$800.

•A snake was found at the Cholla Apartments Monday morning, police said. The snake was transported to the ASU Animal Research Center.

•Police said a brown leather wallet, valued at \$70, was taken after it had been left unattended at the Manzanita Hall bike racks Monday afternoon.

•A woman, not affiliated with ASU, backed her car into a state vehicle which an ASU employee had parked at an elementary school near Southern Avenue and Rural Road Monday night, police said.

— ROSANNE DUPRAS

### Barb's Dark Room SALE

From 110-126, 135 or Disc Color Neg.

12 .....	\$2.70
15 .....	\$3.50
24 .....	\$4.60
36 .....	\$6.40
2nd print .....	\$.10

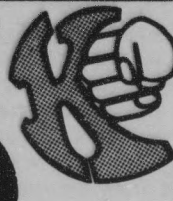
NO OTHER DISCOUNTS APPLY. EXPIRES NOV. 10, 1984.

215 East 7th St., Suite 110, Tempe, AZ 85281 • 968-5667

Self Defense  
Strength and Agility  
Confidence and Control  
International Kenpo Karate Association  
Certified by Ed Parker  
10th Degree Black Belt  
Special Introductory Course \$15

## kenpo karate

MEN • WOMEN • CHILDREN • chinese karate  
Come in or call for information  
1/2 Mile North of ASU  
1020 N. Scottsdale Road  
966-1080



FREE DRINK COUPON

Japanese Food To Go

### HAPPY BOWL SAMURAI 侍

Teriyaki Chicken • Happy Bowl Katsu  
• Tempura • Curry • Samurai Steak

7 Days A Week  
530 W. University • 966-2211



## Häagen-Dazs

•Cholesterol Free  
•Lactose Free  
•No preservatives  
•32 calories

### Tofutti

903 S. Rural  
(Rural and Terrace Rd.)  
967-2340

## GRAND OPENING

### FORD & HAIG TOBACCONIST

Your store for cigars, pipes, tobacco, lighters, and imported cigarettes (cloves, too).

10% discount on above items with the mention of this ad. Come in and register for free drawing.

THE CORNERSTONE  
Rural & University 968-2182





# BURGER KING®



## INTRAMURAL HIGHLIGHTS

### INTRAMURAL SPORTS

ASU undergraduate and graduate students are encouraged to participate in intramural sports regardless of skill level or previous sports experience. Last year, about 12,000 ASU students participated in Intramurals for a total of 57,000 times! Intramurals emphasizes the enjoyment of sports participation and competition. Men and women may participate together in Corec Intramurals, or separately in the Men's or Women's programs. Faculty and staff may also participate in the Corec Program. ASU photo IDs and valid activity cards are required for all participants.

Entry forms for events are available in the Intramural Office, 8 a.m. to 4:30 p.m. weekdays. The office is located in the P.E. West Building Lobby. Sign ups are for both individual and team sports. Some team sports require attendance at a Managers Meeting to enter the sport.

Individuals wanting to be placed on a team should check at our office for the time and location of the Individual's Meeting. At these meetings, teams of interested individuals will be formed for volleyball, football, basketball and softball.

### MEN'S INTRAMURAL SCHEDULE

	Entries Taken	Play Begins
Swimming & Diving	Sept. 18 - 27	Oct. 5 & 6
Flag Football*	Sept. 24 - Oct. 4	Oct. 15
Pool	Sept. 24 - Oct. 4	Oct. 13 & 14
3-Man Basketball	Oct. 1 - 11	Oct. 22
Racquetball	Oct. 1 - 11	Class A: Oct. 19 - 21 Class B: Oct. 26 - 28
Cross Country	Oct. 22 - Nov. 1	Nov. 12
Wrestling	Nov. 5 - 15	Nov. 19 & 20
Powerlifting	Nov. 12 - 29	Dec. 3

### WOMEN'S INTRAMURAL SCHEDULE

	Entries Taken	Play Begins
Swimming & Diving Meet	Sept. 18 - 27	Oct. 5 & 6
Flag Football*	Sept. 24 - Oct. 4	Oct. 15
Racquetball Singles Tourney	Oct. 1 - 11	Oct. 19 - 21
Racquetball Doubles Tourney	Oct. 1 - 18	Oct. 26 - 28
Cross Country Meet	Oct. 22 - Nov. 1	Nov. 12
Powerlifting Meet	Nov. 12 - 29	Dec. 3



### October 5 — Diving October 6 - Swimming

Pick up your entry form today!  
Entries are due Thursday, Sept. 27  
at the Intramural Office,  
P.E. Building West Lobby.

### INTRAMURAL OFFICE PHYSICAL EDUCATION WEST LOBBY

965-5638

99¢ WHOPPER® SANDWICH

Limit 5

Offer expires Oct. 3, 1984.

Limit one coupon per customer. Good only at 740 E. Apache, Tempe.

With this ad only

### Have it your way. BURGER KING



## opinion

Why should there not be a patient confidence in the ultimate justice of the people?

—Abraham Lincoln

state  
press

### Stadium policy idiotic

It must have come as quite a surprise to two ASU football fans Saturday night to discover they had suddenly been transported to the Soviet Union.

The couple merely attempted to leave Sun Devil Stadium during the first quarter of Saturday's game. According to police reports, the man told a gatekeeper his wife was ill and needed to be taken home. Director of Athletic Facilities Herman Frazier refuted that charge, saying the gatekeeper was not told of the woman's condition.

That, however, is irrelevant. What followed is not. Something took place that, although it may be commonplace in the communist bloc, is not to be expected at ASU.

The gatekeeper told the couple they could not leave the stadium, because an ASU policy prohibits departures before the end of the first quarter. He proceeded to physically prevent the couple from leaving. A scuffle ensued and the police were called in.

Now when the Sun Devils are playing a weak team like San Jose State, we can sympathize with a desire to keep fans in the stadium as long as possible. But in America you generally can't prevent people from moving from place to place whenever they please, for whatever reason they please.

The unconstitutional practice of keeping people from leaving football games at any time should be corrected immediately, or at least stipulated on the tickets. Either that or we could buy a red flag emblazoned with hammer and sickle to fly over Sun Devil Stadium.

# Democrats court disaster

Len Munsil  
Editor



A common theme these days among those pushing Walter Mondale for president goes something like this: "We must have a liberal president so that the Supreme Court will return to the practice of upholding civil liberties."

"What kind of Supreme Court will we have," wailed New York Gov. Mario Cuomo at the Democratic National Convention, "if Ronald Reagan is allowed to appoint its members for another four years?"

A good question. After all, the next president may appoint as many as five new justices.

It should be quite clear by now, despite all attempts to make it otherwise, that the judicial branch of government is every bit as political as the other two branches. One need only observe how often Democrats have raised the issue of Supreme Court appointments during this presidential campaign.

No one doubts that Reagan, if re-elected, will attempt to appoint conservative justices. Likewise, rest assured Mondale will try to pack the court with liberals. But history tells us Supreme Court appointees don't always behave as expected. On the bench today is William Brennan, one of the liberal ringleaders since 1957 — the year he was appointed by Republican Dwight D. Eisenhower. And Democrat John F. Kennedy selected National Football League Hall of Famer Byron White, who has voted with the conservatives on many important issues.

Eisenhower also appointed liberal Chief Justice Earl Warren, who had been a Republican. Eisenhower later was fond of saying the biggest mistakes he made as president were sitting on the Supreme Court. Reviewing the decisions of the Warren Court, and even those of the early Warren E. Burger Court, we can see that ol' Ike had a point. For the Warren Court handed down a series of decisions that were further to the left, philosophically, than most American citizens wanted.

Some of the unpopular decisions — especially in areas of school desegregation and First Amendment rights of free speech — were necessary. (Although the Court's muddled handling of pornography, which is not protected by the First Amendment, should not be included in those necessary First Amendment victories).

But other decisions, especially those in law enforcement and personal privacy, went overboard to protect "rights" that do not exist. In virtually every case dealing with the rights of suspected criminals vs. law enforcement officials, Brennan and his liberal cohorts ruled in favor of the criminals. In the process they set precedents used successfully by defense lawyers to allow obviously guilty defendants to go free. Is that the kind of justice America wants?

And in *Roe v. Wade*, the Court ruled that a woman's personal privacy gave her the "right" to kill her unborn child. Perhaps the problems with that decision were best articulated by Justice White in his dissenting opinion:

"I find nothing in the language or history of the Constitution to support the Court's judgments. The Court simply fashions and announces a new constitutional right for pregnant women and, with scarcely any reason or authority for its action, invests that right with sufficient substance to override most existing state abortion statutes."

The conservative backlash against those opinions was to be expected, and was in fact caused by Court liberals slamming their radical philosophy of life down the throats of the American people. Those decisions are directly responsible for the current strength of the right-to-life movement; provided a following for people like the Rev. Jerry Falwell and his Moral Majority; and may have indirectly caused what we are blessed with today — a conservative president.

To answer Mario Cuomo's question — the kind of Supreme Court we will have if Reagan is re-elected is the kind of court the majority of American people want: A Supreme Court that shows more interest in putting criminals behind bars than turning them loose on society due to technicalities; a Supreme Court that respects the fundamental right of the unborn to live; and a Supreme Court that realizes pornography is not a victimless crime.

Perhaps someone should tell Mario Cuomo and the rest of the Democratic hierarchy about this quirk, this flaw in their strategy. But I'd prefer to see them continue raising the issue. Each time they do, the Democrats put more votes in the pocket of President Reagan.

## Pop rebels should stop criticizing, start analyzing

Steve Waterstrat  
Managing Editor



Today's college-age generation has been subjected to unwarranted insults from certain graying activists past their prime.

Recently Abbie Hoffman, not in jail at the present time, said students have "designer brains" that account for a lack of social awareness and a high probability to vote for Ronald Reagan.

Speaking at West Virginia's Marshall University last week, the former yippie (I hate that word) and Chicago Seven defendant lectured students for their lack of commitment to disturbing the peace, saying, "I accept none of the despair you carry around in your heads."

Despair? By my observation, students today are trying to get a grasp on the problems threatening the nation and the planet, without jumping to hasty conclusions, and tend to be more interested in formulating their views than shouting them in the streets. Reading is usually more educational than ranting.

But apparently, Hoffman would rather explain the relative quiet on campuses as being caused by students filled with despair and apathy.

I don't think Abbie can handle the fact that today's students listen to reason and behave rationally rather than follow has-beens like him around, soaking up their catchy phrases like good pupils of the revolution.

Some of the professors I know at ASU have the same attitude. Their students are a decadent bunch of apathetic slobes because they don't throw down their textbooks and follow "the cause."

It appears that "the cause" refers to fighting the system, even without clear ideas for specific changes and how to implement them. The precepts of their cause include: The government, especially the current one, is bad. Nuclear war is bad. Big business is bad. What the heck, most institutions in the real world are bad, especially the ones with power.

Today's student is a little more sophisticated than that, a little more skeptical about accepting one person or group's package of perceptions about the world. They want more facts, less bull.

That frustrates these guys. They long for the old days when a hoarse cliché could send the troops into battle at the universities. To-

day, attempts at the old techniques fail miserably, and they direct their exasperation at the students by ridiculing their lack of awareness. It provides a relieving feeling of superiority.

A certain professor at ASU condemned his class last spring as inferior to him in insight, since members of this generation "haven't pondered the state of nothingness" that would result from a devastating global nuclear war. As if students today don't realize what's facing us; one needn't sit around in horror meditating on the concept of total annihilation. What is needed is non-partisan instruction dealing with ways to soften some of the hideous situations that need to be dealt with.

But most no-nuke activists choose instead to remain in awe of the destructive potential of the world powers and insist that we must unseat the current administration to save ourselves from certain "nothingness."

There's certainly nothing wrong with being in awe of the potential destruction of the planet, but after the initial shock, one must advance his or her thinking beyond run-like-hell instincts and ponder the best possible courses of action. Some students obviously do not blame Reagan for the evolution of weapons that were developed 40 years ago, and realize the enormous task involved in managing such a powerful arsenal while

contending with constituents at home and threatening adversaries abroad.

This is not necessarily to forgive Reagan for his policies, but to attempt to understand the reasoning behind them, and contrast it with the possible alternatives.

Many students still are pondering. Solutions don't come quickly these days.

But the Abbie-types cannot accept this. They feel they know the clear and present dangers in this society, and what the appropriate responsive behavior should be.

But then, maybe I'm being too kind. I've been assuming the Abbie types strongly believe in their causes. But one cannot help but question their sincerity at times. Many of them seem to like the image or glamour of being the non-conformist revolutionary — a pop rebel.

When I heard Hoffman speak at Scottsdale Community College two years ago, he told the crowd that some people thought he had mellowed. But just to show the audience he hadn't changed, he read a tag he claimed to have removed from the mattress in his hotel room (at the posh Granada Royale in Scottsdale).

"Do not remove tag under penalty of law," he read proudly.

Breaking the law just to be breaking the law. No, the pop rebel had not changed much at all.

## letters

### Scully column had no value

Editor:

Matthew Scully's column (Sept. 14) angered me, but not because I am a Democrat. I was angered by his simple-minded critical approach when delivering a harangue against the Democratic Party. I value the criticism of most Republicans because without intelligent examination of its flaws, the Democratic Party could not grow and improve. But I place little value on the opinions of those who have nothing better to do than vocalize their personal prejudices.

I commend Mr. Scully for including statements made by Gov. Mario Cuomo regarding St. Francis of Assisi and Charles Darwin. Mr. Scully insinuated Gov. Cuomo does not separate politics from religion

because he referred to St. Francis in his speech at the Democratic convention. Why is he concerned with the separation of church and state when his mentor, Mr. Reagan, openly advocates prayer in public schools? I always thought separation of church and state was an inviolable rule.

With regard to the tolerance of liberals, which you referred to in your piece, I believe you made a critical error. You assume the concept of tolerance involves no "value judgments" regarding the conduct of others. I have made a value judgment regarding your column, Mr. Scully. It had no value; it was poorly conceived and it should not have been printed. I am, however, tolerant of your views.

Scott James Cooley

### 'Proud' Greek responds to critics

Editor:

To Steve Winter and Larry Davidoff: I am not only proud to be a member of Sigma Nu Fraternity, but also of the Greek system. I organized and led the charity project which you attacked in your letter (Sept. 18), and I feel a public response is needed.

Obviously your views of the Greeks are very low, since your defensiveness turns to ridiculous stereotyping. I always accept constructive criticism, but not senseless argumentation surrounded by insulting comments (such as calling my fraternal brothers "snobbish rich kids" and "frat rats").

The purpose of our food drive was not to "better the image" of Greeks, or earn respect, as you put it, but rather to aid the Salvation Army in feeding Arizona's hungry. We have done the same project

three times before, with no publicity, and have always enjoyed giving to those less lucky than ourselves. For this year's food drive we included 10 representatives from each sorority in team competition as an incentive to collect more food.

I hope you don't truthfully feel we are all rich snobs at Sigma Nu, for this is false. If you could look outside your tunnel you'd realize the great majority of students at ASU are financially stable, (not just Greeks) so much that they (including yourselves) can afford to attend a fairly expensive university. But if I am wrong, if the Greeks are so rich, and you are so poor, this project had you in mind. Feel free to drop by the Salvation Army and pick up your 49-cent can of beans.

Steve McCarley

## more letters

### An obvious solution

Editor:

Cheryl Hopkins' letter (Sept. 14) identifies a serious deficiency in many ASU classrooms, including the new Business Annex. The tablet chairs in these rooms are unsatisfactory for note taking, and for the large number of left-handed students on the campus they constitute a total disaster.

Ms. Hopkins also identifies the obvious solution — tables. With suitable tables, all students have sufficient space, and lefties are not discriminated against. Perhaps Ms. Hopkins should schedule her classes in the "old" business building. Back in the 1960s, planners of that structure recognized the problems of students in general, and southpaws in particular, and provided tables in each of the 32 classrooms. Sometimes, it seems, older really is better.

William Huizingh

### Staff dedicated to fitness

Editor:

Thank you for your article about "Devilfit," the faculty, staff and spouses fitness program. But, the article failed to emphasize that Devilfit is open to all ASU staff and spouses of staff and faculty members as well as to faculty.

Staff members and spouses make up at least 50 percent of our membership, and we feel they deserve acknowledgement for their dedication to improving their fitness levels and life quality.

More information is available by calling the Devilfit Office in the P.E. East Building, 965-1021 or 965-3913.

Laura Borsdorf, Exercise Specialist;  
Scott Coulter, Exercise Technician,  
Devilfit

### Food drive not a 'circus'

Editor:

I have to question the intentions of Mr. Winter and Mr. Davidoff (Sept. 18, "Food drive upsets non-Greeks") in their letter to the editor. Are they really "amazed to the point of disgust" at a philanthropic project or is it just another attempt to liven up the opinion page? I hope the latter because the generalizations and accusations stated force the reader to disregard the letter as petty bigotry. I'm curious about their insights in simplifying the intentions of the participants to "having no regard for the poor, but only bettering the Greek society."

As a former Interfraternity Council philanthropic chairman and philanthropic chairman of Theta Delta Chi fraternity, I have seen the hard work that goes into these projects. Obviously the main objective of the Greek system is not philanthropics, but neither are the fraternities and sororities interested only in parties and social life.

The "circus" allusion to the food drive seems unjustified. No rule exists that states doing philanthropic projects be a mundane experience; a little creativity and originality increases participation and enjoyment by all.

I commend the *State Press* for mentioning the food drive. I fail to see how a small article constitutes "all the hoopla" and I encourage similar articles on other facets of Greek life. The Greek system is indeed newsworthy, but letters written to spark retaliation on the part of the Greeks are not.

Geoff Griffith  
Senior, Finance/Biology

COUPON

## TIME SQUARE BURGERS

(Formerly Zip's Square Burgers)

COUPON

1/4 lb. 89¢ ea.  
Time Burger  
Limit 3 w/coupon.  
Expires 11-30-84.

Calling All White Castle Lovers!

# 3/\$1.00

Square Castle Burgers  
Reg. Price

N.Y. Style Sandwiches Also Available

3105 S. MILL AVE., TEMPE  
N.E. Corner Mill & Southern 967-6083

## TERMINAL RENTALS

Decwriters and CRTs

Upper Case CRTs \$40  
Upper/Lower Case \$45

Call 966-3105

### Computer Terminal Service

Delivery Available

## New 20" x 30" poster prints by Kodak!



ONLY \$12.95 EACH

Made from 35 mm Kodacolor film negatives or transparencies.

**Sunset Camera**  
Tempe Center  
Mill & University  
829-0424

Ask for Kodak

### Barb's Dark Room Enlargement Sale

From Your Negative	From Your Slides
\$ .20 ..... 3 x 5 ..... \$ .50	
\$ 1.00 ..... 5 x 7 ..... \$ 2.00	
\$ 2.50 ..... 8 x 10 ..... \$ 3.00	
\$ 6.00 ..... 11 x 14 ..... \$ 6.50	
\$25.00 ..... 16 x 20 ..... \$25.00	
\$30.00 ..... 20 x 30 ..... \$30.00	

NO OTHER DISCOUNTS APPLY • OFFER EXPIRES 10-1-84  
PRESENT COUPON WITH ORDER • NO QUANTITY LIMITATION  
• 215 East 7th Street • Suite 110 • 968-5667  
• Tempe, Arizona 85281

## INTERESTED IN HIGH HOLIDAY SERVICES?

*Come Pray . . . Come Learn*

TO JOIN US, CONTACT

Eli Artsi  
965-3714

Ed Schubert  
966-2704



Dr. Thomas Berndt accepts group, union, auto, and industrial insurance plans.

### "Dr. Berndt's Therapy For Neck Pain Proven Effective- Praised By Patients And Doctors"

Last night you spent hours watching TV slumped in your favorite easy chair. Then you slept on your stomach. You woke up this morning with severe neck pain. All kinds of incorrect postures and unexpected movements can cause neck pain. And sometimes days, weeks or even months pass before any pain results. If you have neck pains call Dr. Thomas Berndt for an immediate examination. Dr. Thomas Berndt accepts group, union, auto and industrial insurance. Concentrating his concerns with Neck Problems.

Dr. Thomas Berndt

Chiropractic Physician  
**966-0777**

1000 E. Apache Blvd. Suite #107, Tempe © 1983

ASSOCIATED STUDENTS LECTURE SERIES  
Presents

# FEAR and WEATHERING at ARIZONA STATE

An Evening with  
HUNTER S. THOMPSON

TONIGHT!

8:00 p.m. Wednesday, September 19,  
in the MU Arizona Room  
Free with A.S.U. I.D., \$2.00 without

# Exemption

## Tax-deduction ruling may not affect Sun Angel, University contributions

By PATRICK J. KUCERA  
Staff Writer

The recent Internal Revenue Service ruling eliminating tax deductions for contributions to scholarship funds for ticket purchases may not have an adverse effect on the University or the Sun Angel Foundation, a member of the Sun Angel Board of Directors said Tuesday.

Keith Turley, chairman of the board and chief executive officer for Arizona Public Service, said he felt most members of the support organization still would contribute.

"My reaction is that it does not hurt (ASU's) ability to function," Turley said. "I would hope the tax deduction would not have been the reason behind the contributions."

Turley said he has no plans to withdraw from the Sun Angel Foundation because he believes the contributions to support the foundation and the University are more important than a tax deduction.

"I believe most people are not motivated by the tax deduction," Turley said.

The *State Press* reported Monday the IRS ruling was retroactive to 1980. Members who received any deduction on federal taxes because of the contributions to the Sun Angels would have to pay back the government if the deduction is discovered during an audit.

Turley said he was surprised by the unexpected IRS decision.

"I was unaware it was under consideration by the IRS," he said. "I don't know what we can do about it."

The Sun Angel Foundation Board of Directors plans to meet on Thursday to discuss the recent ruling.

"I hope we can put together a package (to counter the ruling's effect)," Turley said. "We have a product to sell."

The IRS rule affects every college and university that gives preferential treatment in ticket purchases to contributors who donate to scholarship funds.

The Sun Angel office has had many members calling to inquire about the effect of the IRS decision and what the foundation will do, according to a foundation official.

Jo Smith, assistant executive director for the foundation, said members have called asking "what's going on?"

Smith said no action will be taken until the board meets Thursday.

She also said the IRS ruling could affect 50 percent of the Sun Angel membership.

ASU Executive Vice President Paige Mulholland said Tuesday that speculation and "wild guesses" are the only thing that has come from the IRS ruling. "Each member will have to decide for himself whether or not to purchase tickets without the tax exemption."

Turley said he felt the IRS decision will be something ASU and the Sun Angels can handle.

"I think we will just have to weather the storm," Turley said.

## Police to begin enforcing rules covering bikers

By VICKIE CHACHERE  
Staff Writer

Beginning today, ASU Police will be upgrading enforcement of regulations governing bicyclists on Cady Mall.

Deanna Betar, a University protective service officer, will be patrolling the Cady Mall area. She said the main purpose of the enforcement against those riding on the mall is not to issue citations, but to provide a safer campus environment.

"My responsibility is the safety of the campus," Betar said.

"If I feel a warning is sufficient, and the person dismounts his bike, then I feel that I have done my job."

"I am out here to get bikes walked, not to write citations," she said.

The policy, which has been in effect for four years, has not been strictly enforced in the past, Betar said.

"Make sure that you are walking your bike, not standing on the pedal and pushing it."

"Ignorance of the law will not excuse you," she said.

The fine for riding in a restricted area will be \$18.

According to Larry Angel of the ASU Police, the enforcement will be limited to Cady Mall.

"We have had numerous bike accidents," Angel said. "Bicycles are running into each other and into pedestrians."

Betar said that bicyclists do not have enough time to react to the often unpredictable movements of pedestrians, and that the enforcement of the policy also will protect the bicyclist from injury.

Angel said there have been no legal decisions made concerning skateboard riding on Cady Mall.

Unicyclists, however, will be handled in the same way as those on bicycles, Betar said.

Betar stressed the need for bicyclists to carry identification.

"There is practically nothing you can do on campus that doesn't require identification," she said, adding that those not carrying identification will be detained until their identity can be confirmed.

"What we want to do is to get the pedestrian and bicycle traffic to flow smoothly together," Betar said. "We just want a safe place for our students."

# To every roommate about to become a friend.



Right now, about the only thing you have in common is the same room. But you and those strangers who moved in with you are going to crack a lot of books and burn a lot of midnight oil together.



You're going to discover the people behind the nametags, the ones inside the roommates. And who knows? Before the term is over, your roommates may very well turn out to be good friends.

To each of you we say, let it be Löwenbräu.



## Löwenbräu. Here's to good friends.

# Research park director prepares occupant info

By W. TIM AHL  
Staff Writer

The names of the first three or four tenants to occupy the ASU research park will be released within two weeks, according to the park's director Reginald Owens.

Information about the tenants, including names, is being withheld by park administrators until negotiations are complete, Owens said.

Final approval by the Arizona Board of Regents came last weekend on a City of Tempe bond resolution enabling the park's board of directors to begin marketing the 323-acre park at Elliot and Price roads to potential tenants and sign them into leases, Owens said.

The regents approved a \$12.5-million bond resolution, \$1.5 million more than expected, to finance the building of roads and utilities around the park.

The extra \$1.5 million will allow the park to guarantee interest payments to investors on the bonds for the first two years, Owens said.

Interest payments on the bonds alone will run over \$800,000 a year, Owens said. So the money made available by the regents will guarantee safety to investors.

Construction on the park is scheduled to begin in early November and planning specifications on the 300 million square-foot,

40-tenant park are now complete, Owens said.

J.R. Pooler, Tempe engineering projects coordinator, said construction bids for the infrastructure, water and sewage lines and storm drains, are set to begin late this month and will be completed by October, Pooler said.

"General contractors will probably do most of the bidding and they will probably split the work among sub-contractors," Pooler said.

The cost to complete the \$11-million infrastructure are covered by the bonds approved by the regents.

Each firm will choose its own architect to design its building, but the firms will have to meet specifications set by the research park board, Owens said.

"The tenants will have architectural license, but we expect it to be a modern and high-techish design," Owens said.

Deborah Rhoades, an environmental psychologist retained by the research park board, said a large conference center and two multi-tenant starter buildings will be the first complexes completed and she hopes they will set the design scheme for the rest of the park.

She also said the landscaping will be suitable to a desert environment and will use a minimum amount of water.

## Program offers qualified tutors free of charge

Tutors are available, free of charge, in business, mathematics, modern languages, the sciences, the humanities and other areas through the Educational Support Program (ESP).

"Drop-in" help labs will be available for QBA 221 (Quantitative Business Analysis); MAT 106, 270, 271, 290, and 291; and chemistry and physics classes.

ESP, in Matthews Center, Room 47, is open until 9 p.m. Tuesdays and Thursdays.

# LANCEY'S NIGHT CLUB

Every Wednesday, It's **PENNY NIGHT**

**1¢** Well Drinks, Wine & Draft

**25¢** Juice Drinks & Pitchers  
(from 7:30-12)



Cover: \$4.75 men — \$3.25 ladies at the door 7:30-12  
Band starts at 9 Drink special ends at 12  
Doors close at 1

**Tonight!**  
**Thrills Galore**



Remember: **LADIES NIGHT** Tomorrow  
Upstairs/Downstairs Excitement!

919 E. APACHE  
**966-7770**

TOWER RECORDS

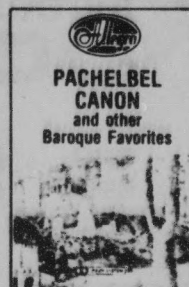
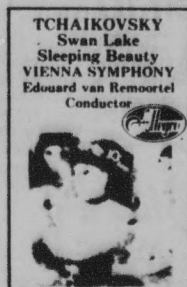
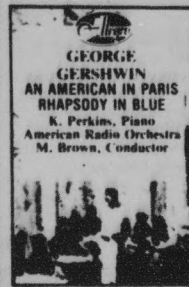
# RELAX TO CLASSICS

## Record & Cassette Sale

Pull up your favorite chair, kick your shoes off & relax to classics at unheard of sale prices, thousands to choose from!

### ALLEGRO CASSETTES

**4 FOR \$10<sup>00</sup> or 2<sup>99</sup> EACH**



**BEETHOVEN:** Sym. No. 9 in D 'Choral', Jascha Horenstein cond.  
**PUCCHINI:** Highlights from La Boheme; Gabriele Santini, cond.  
**CARLOS MONTOYA:** Malaguena 2 sets of Variaciones Orchestra; Toque de Lavarte, Bolero, Alegria & others.  
**HANS HAGAN & HIS ORCHESTRA:** The World's Most Beloved Melodies.  
**VIVALDI:** Flute, Oboe & Bassoon Concerti; Jean-Pierre Rampal, flute; Louis de Froment & Piero Santi, Cond.

### ALLEGRO LP's

**5 FOR \$10<sup>00</sup> or 2<sup>44</sup> EACH**

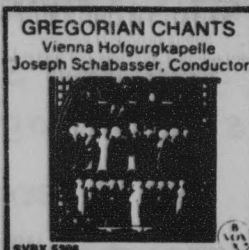
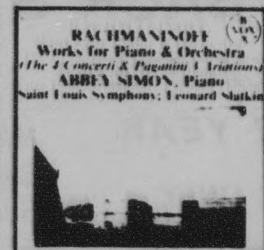
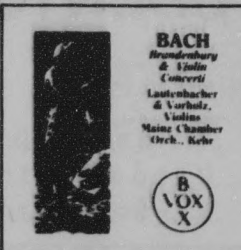
### VOX TURNABOUT LP's & CASSETTES

**3 FOR \$10<sup>00</sup> or 3<sup>44</sup> EACH**



**THE AGE OF RAGTIME:** "The Entertainer," "Maple Leaf Rag" Roger Shields, piano.  
**HANDEL:** Water Music; Minnesota Orch.; Skrowaczewski, cond.  
**BACH:** Brandenburg; Concert Nos. 1, 2 & 3.  
**THE SPANISH GUITAR:** Works by Albeniz, Granados, Turina & De Falla.  
**GREGORIAN CHANTS FOR CHRISTMAS:** Choir of the Vienna Hofburgkapelle; Josef Schabasser, director.

### VOX BOXES LP's 6<sup>99</sup> 3 LP SET



**ERIK SATIE:** Complete piano music; Frank glazer, piano.  
**TCHAIKOVSKY:** The Comp. Orch. Music, Vol. III; Utah Sym. Orch.; Maurice Abravanel, cond.  
**LISZT:** 19 Hungarian Rhapsodies; Louis Kentner, pianist.  
**ALICIA de LARROCHA:** Tchaikovsky, Chopin, Mozart, Beethoven & others.  
**GERSHWIN:** Comp. Works for Piano & Orch. & for Orch.; Jeffrey Siegel; St. Louis Sym.; Leonard Slatkin  
**BEETHOVEN:** Chamber Music for Flute (comp.) Jean-Pierre Rampal, flute.  
**CHOPIN:** Works for Piano & Orch. (comp.) Abbey Simon, piano; Hamburg Sym. Heribert Beissel.

SALE ENDS OCTOBER 7

OPEN 9AM TO MIDNIGHT • 365 DAYS A YEAR

# TOWER RECORDS



**TEMPE**  
821 S. Mill  
at University

**CHRISTOWN**  
5617 N. 19th Ave.  
Christown Village

The **hair performers**

<p><b>WOMEN'S HAIRCUT</b></p> <ul style="list-style-type: none"> <li><input checked="" type="checkbox"/> Shampoo</li> <li><input checked="" type="checkbox"/> Conditioners</li> <li><input checked="" type="checkbox"/> Haircut</li> <li><input checked="" type="checkbox"/> Blow Dry</li> <li><input checked="" type="checkbox"/> Iron Curl</li> </ul> <p><b>\$8.25</b></p>	<p><b>MEN'S HAIRCUT</b></p> <ul style="list-style-type: none"> <li><input checked="" type="checkbox"/> Shampoo</li> <li><input checked="" type="checkbox"/> Conditioners</li> <li><input checked="" type="checkbox"/> Haircut</li> <li><input checked="" type="checkbox"/> Blow Dry</li> </ul> <p><b>\$6.75</b></p>
<p><b>CUSTOM PERMS</b></p> <p><b>\$20-\$30</b></p> <p><small>Does not include Hair Shaping &amp; Styling</small></p>	<p><b>SCULPTURED NAILS</b></p> <p><b>\$19.50</b></p>

All offers good for first time client only.  
 903 S. Rural • Cinnamon Tree • 894-0184

Introduce yourself to **DOLLAR RENT A CAR**

and save an extra **\$5** *it's our Million Dollar Style*

One discount per rental. Not valid in conjunction with any other discount, special rate, promotional offer or as part of any tour package. Car must be returned to original renting location. Present this coupon at time of rental. Offer expires 12-31-84.

Whether you need a car for a day, a weekend or longer, For reservations and free pick-up call: **829-1523** HOLIDAY INN • TEMPE (in lobby)

ASU students 18 and older. Cash deposits welcome. **DOLLAR RENT A CAR.** The new standard in DOLLAR InterRent rent a car system worldwide car rental.

We feature Ford and other fine cars.

# Leaders

## President Nelson appoints

By SANAA AL-MARAYATI  
Staff Writer

The three new deans appointed by ASU President J. Russell Nelson this summer bring to the University a combined 41 years of teaching and administrative experience.

After a nationwide search by ASU Vice President of Academic Affairs Jack Kinsinger, Nelson said he was able to find "people who have a stature in the field to lead the faculty members in the colleges, and a vision of how the schools ought to be."

Paul Bender left the University of Pennsylvania Law School after 24 years of teaching to serve as dean for the ASU College of Law.

Janelle Krueger from Colorado joined ASU as dean for the College of Nursing.

Samuel A. Kirkpatrick from Texas A & M came to ASU as dean for the College of Liberal Arts.

Bender, a 1957 alumnus of Harvard Law School, is a co-author of "Political and Civil Rights in the U.S."

Now at ASU, he said his main objective is to keep the school one of the best in the country.

"I hope to lead the direction with a collegial cooperation," said Bender, who served as a law clerk for U.S. Supreme Court Justice Felix Frankfurter for one year.

Bender, also a law clerk for New York Federal Court of Appeals Justice Learned Hand for another year, said he will work with the faculty to change the present teaching system because some faculty have said they are dissatisfied.

"The curriculum is still similar to the curriculum of 100 years ago," he said. "Instead of having the instructor ask a question and the student answer, have the student participate in certain cases."

Bender said in the future he wants students and faculty members to provide legal services on campus to those who cannot afford it.

Bender said the college will publish a journal next semester.

"Jurimetrics," presently published at Pennsylvania State University, will be transferred to the ASU College of Law. Students will help to collect and edit law reviews for publication in the journal.

Bender said internships are an important asset for students in receiving experience.

Internship programs have been designed for students to work in law firms to get practical experience, he said.

"I would like this school to become a pleasant place for students. I want students to feel useful on what they are doing. I want this school to provide leadership for other schools," Bender said.

Bender was an assistant to a solicitor general of the U.S. Department of Justice, which represents the U.S. Supreme Court, for the



Janelle Krueger

★ ALL AMERICAN AEROBICS CENTER 1848 E. University Tempe, Arizona

★ ALL AMERICAN TRAINING CENTER 1850 E. University Tempe, Arizona

**966-4110**

**YOU'RE WORTH IT!**

EXPERIENCE THE FINEST AND MOST COMPREHENSIVE TRAINING AND AEROBIC CENTER IN ARIZONA

**WELCOME BACK STUDENTS!**

**\$75.00 PER SEMESTER**

**\$150.00 PER YEAR**

NEW MEMBERS ONLY

M-F ..... 6 a.m.-11 p.m.  
 Sat. .... 6 a.m.-8 p.m.  
 Sun. .... 9 a.m.-6 p.m.

**EXCELLENT**

★ FACILITIES ★ INSTRUCTORS ★ CLASSES ★

3000 SQ. FT. AEROBIC AREA PROFESSIONALLY TRAINED ALL LEVELS

5000 SQ. FT. TRAINING AREA SAFE & ENTHUSIASTIC FUN & CREATIVE

With Coupon

**LAST DAYS OF SPECIAL OFFER!**

**2 for 1 STUDENT SPECIAL**

NEW MEMBERS ONLY

(Limited to first 100 Memberships)

# STUDENTS

## ...Don't miss our 20-20 offer!

**Art, architecture, engineering & design students:**

Shop for your art supplies from The Valley's most complete selection by SEPTEMBER 20, and save a big 20%.

Shop any other time and you'll receive our standard 10% STUDENT DISCOUNT.

**Fine arts materials**

Canvas, paints, stretcher bars, brushes, frames, paper, etc.

**Drafting supplies**

Parallel rules, triangles, templates, leads, drawing boards, technical pens (all brands) and more.

**ALSO**

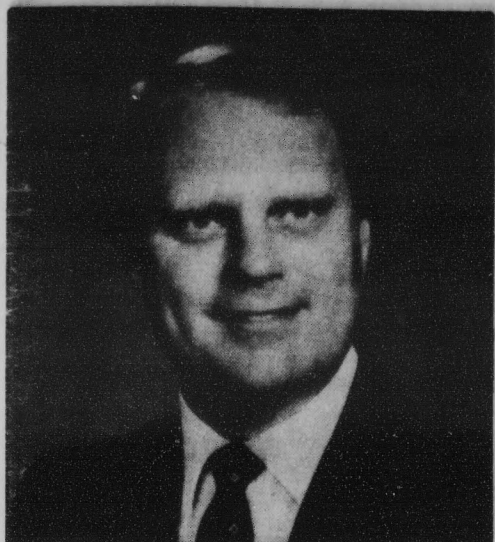
Airbrush equipment & supplies, graphic arts materials and books.



**FLAX CO., INC.**  
 10th Street & Jefferson • 254-0840 • Lots of free parking  
 Hours: Mon.-Fri. 8:30-5:30 Sat. 9-5

summer through  
 He ser  
 Commis  
 from 196  
 Nursin  
 bachelo  
 Clevelan  
 As a d  
 work wi  
 municat  
 "I wa  
 munity  
 teach at  
 toral deg  
 Preser  
 how to p  
 She s  
 teaching  
 who are

# oints new deans



**Samuel A. Kirkpatrick**

summers of 1963 and 1964 and again in 1964 through 1965.

He served as a general council for the U.S. Commission on Obscenity and Pornography from 1968 to 1970.

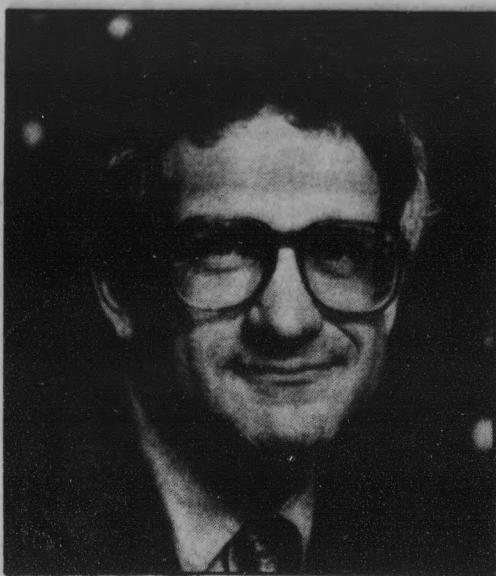
Nursing Dean Janelle Krueger received her bachelor's degree from St. Luke's Hospital in Cleveland, Ohio, in 1948.

As a dean at ASU, Krueger said she wants to work with the faculty to establish better communication.

"I want to work with the faculty to do community assessment," said the first women to teach at the ASU College of Nursing with a doctoral degree.

Presently, students are taking courses on how to prevent illnesses, according to Krueger.

She said she wants to establish more teaching emphasis on learning to help people who are ill already.



**Paul Bender**

"We don't have enough people to take care of the very ill," she said.

Krueger said there is strong support from the University to assist in establishing an even better college.

She first came to Arizona and began teaching at the U of A in 1971 after completing her master's and doctoral degrees at the University of Cleveland in 1969.

Kirkpatrick received his a doctoral degree in political science from Pennsylvania State University.

Now at ASU, Kirkpatrick, the former director-for the Bureau of Government Research at Penn State, said the College of Liberal Arts has a bigger responsibility than other colleges on campus because it is responsible for students who have not decided on a major.

"We want to insure that every student receive a firm grounding in science and humanity," he said.

Kirkpatrick, who later became chairman of the political science department at Texas A & M, is conducting a study with the faculty on what kind of problems exist in the college. However, he said he doesn't think there are any major problems.

"Arizona is a great place to be for a good education, a place that is getting better rapidly for a better education," he said.

## MAY DEPARTMENT STORES COMPANY

One of the largest and most successful department store companies in the United States, invites you to drop by and meet a May representative to informally discuss career opportunities in retailing. Please bring a resume or data sheet, if available.

WEDNESDAY, SEPTEMBER 19, 1984  
10 a.m.-12 noon and 1 p.m.-2:30 p.m.  
MEMORIAL UNION ROOM 220

May Mission:  
*Excellence in Retailing*

## ASU Safety Escort Service

is available  
for **YOU**

Call  
**965-1515**  
for a **FREE** escort.

Volunteers needed call **965-1516**

*Safety Escort . . .  
Don't leave home without one!*

# BACK TO SCHOOL STUDENT SPECIALS

FEATURING FOUR  
NEW 10-SPEEDS  
AT REDUCED PRICES!



- BENOTTO** Reg. \$259  
NOW only **\$199**
- PEUGEOT** Reg. \$189  
NOW only **\$159**
- ASAHI** Reg. \$159  
NOW only **\$125**
- RALEIGH** Reg. \$229  
5-speed cruiser NOW only **\$185**

Stop by and see our complete selection of these quality, low-priced bicycles.

### Bike Locks

The ultimate in bicycle security, the Citadel comes with \$350 guarantee against bike theft. This hardened alloy steel shackle and housing resists even bolt cutters more effectively than case-hardened chain. Utilizes 7 pin round key cylinder in recessed housing with hardened anchorage. Completely vinyl covered.

A/Citadel Lock Reg. 29.95

While They Last! Now Only **\$25.95**

**KRYPTONITE**

B/KRYPTONITE Lock Reg. 30.99

Now Only **\$26.99**

Protect your bicycle with a lock so theft-proof that it comes with a guarantee of up to \$350 if your bike is stolen. A double locking, hardened shackle and bar. Coated with thick vinyl to protect your bicycle's finish. Includes two cylinder type keys.

C/Master Lock Reg. 25.00

Now Reduced 15%

Now Only **\$16.95**

Provides excellent protection for your bicycle. Cable is covered with thick vinyl and key lock is made of hardened steel. A lightweight solution to theft protection.

Cable & Lock Set High Quality, special price!

Now Only **\$5.99**

## DOMENICIS CYCLING IMPORTS

1032 S. Terrace  
Tempe, AZ 967-7700



Hours: Sunday . . . . . 11-4  
Mon., Wed. & Fri. . . . . 9-6  
Tues. & Thurs. . . . . 9-8  
Saturday . . . . . 9-5

# Molson Makes It Golden



Imported by Martini Importing Co., Inc.  
Great Neck, NY © 1984

# Tunnel

## Engineering college gains facility

By PATRICK J. KUCERA  
Staff Writer

In an effort to further understand the theories of fluid mechanics, the College of Engineering and Applied Sciences has gained a wind tunnel which will be transported from Maryland to ASU by November.

Bill Saric, professor of mechanical and aerospace engineering, is in charge of taking over the wind tunnel, which belonged to the National Bureau of Standards (NBS).

"According to Saric, the tunnel is 'one of a kind,' and will enhance ASU as well as draw research grants."

"The wind tunnel already exists at the NBS," Saric said. "I was asked if I wanted to take it over and transfer it to ASU."

Saric, who arrived at ASU at the beginning of this semester, said the wind tunnel will be dismantled in Gaithersburg, Md., near Washington, D.C., and shipped to ASU.

"We hope the tunnel will be here within six weeks," he said. Saric said the wind tunnel, once in place, will have a building placed around it.

The probable site for the wind tunnel will be the roof of the F-wing of the Engineering Center. Saric said solar panels, now on the

roof, will be moved to accommodate the facility.

According to Saric, the wind tunnel is "one of a kind," and will enhance the University as well as draw research grants to ASU.

"It's a unique facility, because of the way it's designed," he said.

The prefabricated building used to house the wind tunnel will be 30 feet wide, 100 feet long and 25 feet high.

Last Saturday, the Arizona Board of Regents approved construction and housing for the tunnel at ASU.

Saric said he was approached about the use of the wind tunnel while he was on the faculty of Virginia Polytechnic Institute, but he decided to come to ASU.

Saric said the tunnel should be in full operation by January 1985, and then the University would gain research grants to help fund the entire operation.

He said the tunnel will be used for research not only in fluid mechanics, but also in unsteady air dynamics, a field Saric finds interesting.

"I have been writing proposals for this (research)," Saric said.

According to the Board of Regents, the primary source of funding for the tunnel's housing is the Garrett Research Fund.

Preliminary estimates for the cost of the building are \$60,000 to \$80,000.

### Word-building skills taught at workshop

A workshop teaching notetaking and vocabulary building skills to adult re-entry students will be held from 1 to 3 today in the MU Room 221.

Linda Heeman, instructional specialist with Veterans Affairs and Upward Bound at ASU, will lead the workshop.

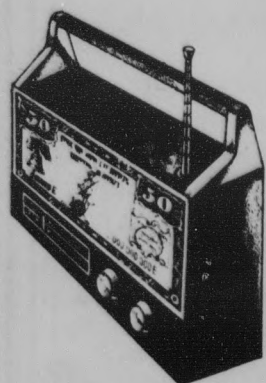
Participants will learn to build their word power by studying vocabulary development, analogies and contextual cues. They also will learn notetaking strategies and reading recall.

The cost is \$3. For registration information, call the Student Life office at 965-6547.

**ATTENTION JEWISH STUDENTS**  
(recorded message)

PLEASE CALL  
**941-9268**

**Sound Investment.**



Take stock in America.  
Buy U.S. Savings Bonds.

**Mac TEMPE CENTER**  
**JEWELERS**  
FOR ALL YOUR JEWELRY NEEDS  
Diamonds, Watches  
14k Chains, Pendants  
Sorority-Fraternity Jewelry  
Watch & Jewelry Repairing  
**966-7587**

**drycleaning**  
McKELLIPS & SCOTTSDALE RDS. (ALPHA BETA SHOPPING CTR.)  
**STUDENT DISCOUNT**  
**25% OFF DRY CLEANING**  
SHOW I.D. CARD WITH INCOMING ORDER

**END OF SEASON SALE!**  
**50% OFF**  
Largest selection of **ESPRIT** in the area  
**The Village Boutique**  
708 S. Forest, Tempe • 968-1611  
(off Univ. between Mill & College)

**Bojo's GRINDERS**  
**4 PM HAPPY HOUR**  
**BUDWEISER OR COORS 32-OZ. BEER & CHICKEN WINGS \$1.99**  
Super Mug - 6 Chicken wings - TILL 8 PM MON-FRI  
OPEN FRIDAY & SATURDAY TILL 2 A.M.!

<b>Bojo's Coupon</b> HOT MEATBALL GRINDER JR. <b>\$1.</b> WITH THE WORKS Expires 9-25-84 One coupon per customer	<b>Bojo's Coupon</b> POLISH SAUSAGE <b>\$1.</b> WITH THE WORKS Expires 9-25-84 One coupon per customer	<b>Bojo's Coupon</b> HOT PASTRAMI SANDWICH ON ONION ROLL <b>\$1.</b> WITH PICKLE Expires 9-25-84 One coupon per customer	<b>Bojo's Coupon</b> CHARBROILED HAMBURGER <b>\$1.</b> WITH THE WORKS Expires 9-25-84 One coupon per customer
---	---	---	--

**829 S. RURAL RD. • 967-7023**  
**• FREE DELIVERY •**

**NO appointment**  
**FAMILY HAIR CUTTERS™**  
**FREE SHAMPOO WITH THE CUT**  
**\$6** with this coupon

**A Perfect Cut Every Time**  
No appointment necessary ever! Bring the whole family

**NO appointment**  
**FAMILY HAIR CUTTERS**  
University & Rural Rd.  
**CORNERSTONE SHOPPING CENTER**  
**968-8008**  
Hours: Mon.-Fri. 9-9 • Sat. 9-7 • Sun. 12-5

**Designer Perm \$26.00**  
Includes:  
• Shampoo and Designer Perm  
• Perfect Cut  
• Styling

1981 No Appointments Family Hair Cutters

# sports

state  
press

## Jekyll'n'Hyde

### Rogers hopes right version of ASU plays Trojans

By TOM BLODGETT  
Sports Editor

Will the real ASU football team please stand up?

Already this season the Sun Devils have experienced total decimation (a 45-3 loss to Oklahoma State) and total domination (a 48-0 win against San Jose State) in just two games.

So the natural question is: Which team will show up to play Southern California Saturday night? Coach Darryl Rogers does not know the answer.

"We still think Oklahoma State is a fine football team," Rogers said. "But San Jose State is not the same caliber."

Rogers fits USC in the former category. The Associated Press ranked the Trojans No. 17 this week.

"USC is larger, has a little more diversified attack, a similar blocking scheme," Rogers said. "The conference schedule makes this game of greater magnitude."

The game is the Pac-10 opener for both ASU and Southern Cal.

Like Oklahoma State, Rogers said USC has the ability to dominate the line of scrimmage.

"Anytime you play someone who blew you off the scrimmage then you fear the next opponent who can do that," Rogers said. "But we have a chance to make up for that."

Certainly ASU showed San Jose State a different look than it showed OSU. ASU started nine different players against the Spartans who were in reserve roles the week before.

Some more changes, though less drastic, still may be in order. The fullback spot may hold the biggest surprise.

Fullback Channing Williams is back in practice, but his shoulder still has not completely healed.

Last week, John Grier started at that position, but another change may be in order for this week.

"I think our fullback now is Vinnie Amoia," Rogers said. "After what I've seen the last two Saturdays, you have to go with Vinnie Amoia."

Amoia is a walk-on who also is on the ASU wrestling team.

Mike Crawford may start at tailback this week, but Darryl Clack definitely will play this week, his hip and shoulder apparently healed.

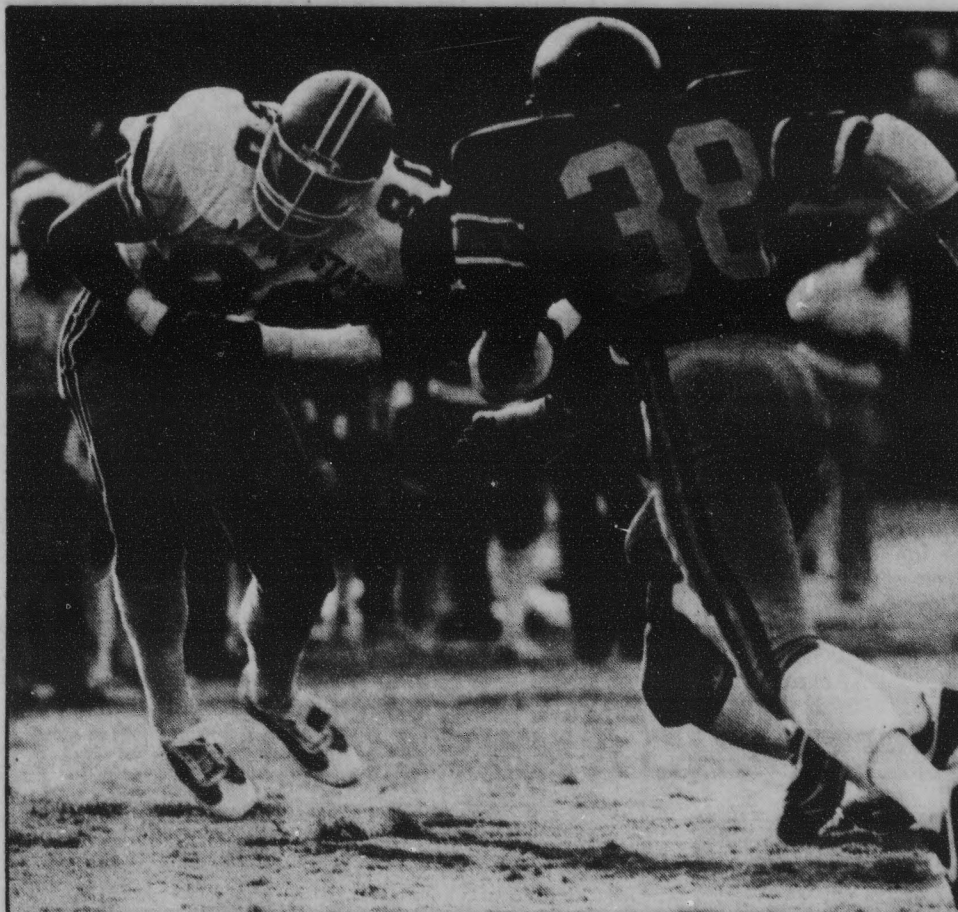
Rogers said Clack had a good practice Monday and stressed that Clack was held out of Saturday's game only because of injuries.

"Our experience has shown Darryl Clack to be a top-rate back when he's healthy, but he loses something when he is hurt," Rogers said. "There's no sense playing him when he's not healthy."

"It (holding him out) has nothing to do with disciplinary reasons."

Rogers also said John Walker is the expected starter at quarterback right now. However Jeff Van Raaphorst had a better practice than Rogers expected and still may start.

Most of last week's changes in the secondary will stand. Either Darrin Willis or Bruce Hill will start at cornerback.



ASU's Curt Arons catches a pass against USC in last year's contest. The Devils won that one 34-10. State Press file photo

## Van Raaphorst, Crawford have earned Southern Cal start

Jay Taylor  
Sports Columnist

Darryl Rogers' living room probably isn't a very pleasant place to be this week. I can't imagine him being in a very good mood.

When the 1984 football season started, the farthest thing from Darryl's mind was a quarterback controversy. Or a tailback controversy.

He now has both.

Jeff Van Raaphorst won the starting quarterback spot in spring practice last year so convincingly that his rival, Stein Koss, was moved to tight end. A new era was upon us, and Rogers gave Van Raaphorst the vast majority of practice time at Camp Tontozona to prepare him for the season.

But shades of 1982, the starting quarterback went down with a knee injury in the season-opening 45-3 loss to Oklahoma State. Before his injury, Van Raaphorst completed 10 of 29 passes for 115 yards and was intercepted three

times, a somewhat less stellar performance than had been expected of the highly-touted sophomore.

Freshman John Walker stepped in and turned in a good performance against San Jose State, going eight of 15 for 141 yards and two touchdowns and no interceptions. The next thing you know, people were calling for him to be the new starter.

He shouldn't be.

Consider the circumstances the two operated under. Van Raaphorst was throwing against a defense that looked like it had at least 14 players on the field at all times. The Cowboys were unbelievable.

But on the other side of the coin, Walker was playing against a San Jose State defense that strongly resembled an average high school squad.

Van Raaphorst should start if his knee is healthy. He has the experience with the system, the confidence of the players and the ability to make more things happen. The Devils are forced to play too conservatively with Walker at the helm, and ASU cannot beat USC this week with an offense as one-dimensional as the one they used last week against the Spartans.

According to Rogers, Van Raaphorst practiced better than expected Monday, but no decision has been made yet on who will start. If Van Raaphorst doesn't, it could be a long evening.

And then we have the tailback dilemma. The oft-injured Darryl Clack was kept out of the Spartan game because of some "nagging" injuries (a hip pointer and a bruised shoulder). Crawford played the majority of the game and turned in a career best of 132 yards.

Rogers said that seeing Crawford play so well would probably help Clack's healing process immensely.

The point here is that Clack should not need that kind of motivation to want to play. He should want to play every game, not just the big ones.

Crawford obviously wants to play, and should be given the opportunity. He is at least the equal of Clack as a runner and also gives the added dimension of being able to throw the ball very well. He deserves to be the starter.

The Sun Devils are good with either Crawford or Clack. They are better when both can play to keep each other fresh. But Crawford has earned his chance to be No. 1.



## FESTA CHICKEN

*A Party!* IN EVERY BITE.

- We Deliver
- Carry Out
- Dine In
- Catering

*We have weekly specials*

Famous for our Delicious Chicken Breast

**HAPPY HOUR**  
7 days a week 4-7  
**75¢ DRINKS**

Visit the **Chicks Nest**

"Newest Cocktail Lounge in Tempe"

1458 N. Scottsdale Rd. (2½ blocks south of McKellips) 945-8580

(11 a.m.-10 p.m. Restaurant) (11 a.m.-1 a.m. Lounge)

## THE WAREHOUSE DELI

Estab. 1975 "Good Food and Drink"

<p><b>SPECIALS</b> <b>LUNCH &amp; DINNER</b> MON.-FRI. 10:30-7 p.m.</p> <p style="text-align: center;">Sandwich of the Day with Homemade Fries</p> <p style="text-align: center; font-weight: bold;">ONLY <b>\$1.99</b></p>	<p>MOLSON &amp; HEINEKEN <b>61¢</b> plus tax IMPORTS Mon.-Thurs. 2-4 p.m.</p>	<p><b>HAPPY HOUR</b> MON.-FRI. 10:30 a.m.-7 p.m.</p> <p><b>IMPORTS — 94¢</b> <b>DRAFT BEER</b> Pitcher Glass <b>\$1.99 49¢</b></p> <p><b>WINE</b> ½ liter Glass <b>\$1.99 49¢</b> <b>WINE COOLER</b> Pitcher Glass <b>\$2.75 65¢</b></p>
---	---	--

**BREAKFAST** 6 a.m.-10:30 a.m. Mon.-Fri.  
**99¢ — SUPER SPECIAL — 99¢**

Also Featuring "THE LITE WAIT"  
One Egg, 2 Bacon or Sausage,  
Toast, Butter & Jam **\$1.29**  
*Coffee Included*

**LIVE ENTERTAINMENT NIGHTLY**  
(No Cover, No Min.)  
130 E. UNIVERSITY DR.  
AT FOREST  
**966-7788 — TEMPE, AZ**  
Your Hosts: "The Family"

# Huskers avoid upset curse; retain No. 1 ranking in poll

**By The Associated Press**  
For the first time this season, the nation's top-rated college football team has maintained its No. 1 ranking.

The Nebraska Cornhuskers, 38-7 winners over Minnesota, made it two weeks in a row at the top of The Associated Press poll. They received 37 of 59 first-place votes and 1,151 of a possible 1,180 points from a nationwide panel of sportswriters and sportscasters.

Auburn, the preseason No. 1 team, dropped its opener to Miami and Miami promptly lost to Michigan after attaining the No. 1 ranking.

Clemson, idle last weekend, remained in second place with 15 first-place ballots and 1,063 points, while Texas defeated Auburn 35-27 and climbed from fourth to third with four first-place votes and 1,046 points. Michigan, which had been third, lost to Washington 20-11 and skidded to 16th.

Miami, which was tied with Iowa for fifth place last week, defeated Purdue 28-17 and moved into fourth place with one first-place vote and 897 points. Ohio State crushed Washington State 44-0 and vaulted from ninth to fifth with 860 points while Brigham Young rose from eighth to sixth with 817 points following a 38-15 trouncing of Tulsa.

Penn State, a 20-17 winner over Iowa, jumped from 12th to seventh with 745 points — Iowa fell to 14th — and UCLA slipped from seventh to eighth after struggling past

Long Beach State 23-17. The Bruins also received the other two first-place votes.


Rounding out the Top 10 are Washington, with 718 points, and Boston College, which also was 10th a week ago. The Eagles, who were idle over the weekend, received 698 points.

Pitt dropped out of the poll after a 42-10 trimming by Oklahoma as Alabama also lost its second game in a row, bowing to Georgia Tech 16-6, and fell out of the Top 20.

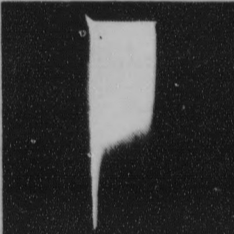
West Virginia, 3-0 after beating Virginia Tech 14-7, moved into the Top 20 for the first time this season, as did Georgia, which was idle last weekend.

1. Nebraska	2-0-0
2. Clemson	2-0-0
3. Texas	1-0-0
4. Miami, Fla.	3-1-0
5. Ohio State	2-0-0
6. Brigham Young	3-0-0
7. Penn State	3-1-0
8. UCLA	2-0-0
9. Washington	2-0-0
10. Boston College	2-0-0
11. Oklahoma	2-0-0
12. Oklahoma State	2-0-0
13. Southern Methodist	1-0-0
14. Iowa	1-1-0
15. Florida State	2-0-0
16. Michigan	1-1-0
17. Southern California	1-0-0
18. West Virginia	3-0-0
19. Auburn	0-2-0
20. Georgia	1-0-0

**THERE ARE TWO SIDES TO BECOMING A NURSE IN THE ARMY.**



And they're both represented by the insignia you wear as a member of the Army Nurse Corps. The caduceus on the left means you're part of a health care system in which educational and career advancement are the rule, not the exception. The gold bar on the right means you command respect as an Army officer. If you're earning a BSN, write: Army Nurse Opportunities, P.O. Box 7713, Clifton, NJ 07015.



**ARMY NURSE CORPS. BE ALL YOU CAN BE.**

VUARNET SUNGLASSES  
VANS TENNIS SHOES  
BUCCI SUNGLASSES  
TOWN & COUNTRY  
BOOGIE BOARDS  
SANTA CRUZ

SIMS G & S  
MAUI G & S  
GOTCHA CATCHIT  
POWELL VARIFLEX

10% Off

All Clothing

Except Sale Items

Expires 11-1-84.



**TNT SURF N SPORTS**  
SURF AND NEW WAVE CLOTHING

HOURS: Monday-Friday 11 a.m.-8 p.m. Sat. 11 a.m.-6 p.m.

4427 S. Rural Rd.  
820-0594

10% Off

All Skateboard Accessories

Except Sale Items

Expires 11-1-84.

We'll guarantee you a suntan in one hour . . .



. . . Just one treatment on the ultra tan high-intensity suntan machine is equivalent to 7-9 treatments on conventional UV-A sun beds.

Try our complimentary high intensity face tan treatment for the ultimate in tanning.

Student Fall Special

10 sessions \$35 with student I.D.

Conventional UV-A sunbeds

The Suntan Store

Exclusive importers in North America for ScandaSol, commercial or home use

7117 3rd Ave., Suite #109  
Scottsdale • 990-1581

Visa • MasterCard

NEEDED IMMEDIATELY

The Graduate Students Association needs interested graduate student to serve on the following councils or committees:


- Research and Grants Council
- Advisory (GSAAC) Council
- Newsletter Committee
- Events and Activities Committee

These are purely volunteer positions, however, they are invaluable ways to gain experience and insight as well as have contact with other graduate students. For detailed information please contact: David Romero, Director, or come by the G.S.A. office, Rm. 208-R, or call 5-3161/5-1248.

GRADUATE STUDENT RESEARCH PROGRAM applications available at the ASASU or G.S.A. offices after September 14. Deadline for Fall award will be November 1, 1984.

G.S.A. First Meeting will be held on September 27 at 1 to 2 p.m., Graham Room 216, Memorial Union. This will be an orientation and getting to know each other time where we can discuss new projects and goals.

**Graduate Student Association**  
Rm. 208-R, Memorial Union, ASASU Offices  
965-3161/1248  
Office hours: MWF 9:30-1:30  
TTh 1:30-5:00



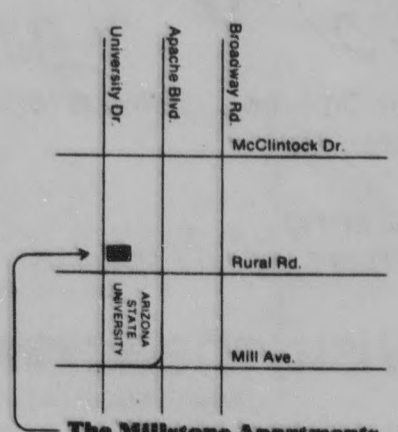
The Millstone Apartments

NEW ONE BLOCK TO ASU

- 2 Bedroom/2 Bath
- Swimming Pool
- Jacuzzi
- Barbeques
- Water Included
- ★Only \$450<sup>00</sup> Per Month★

- Range/Oven
- Dishwasher
- Garbage Disposal
- Refrigerator
- Unfurnished
- Draperies

966-2393



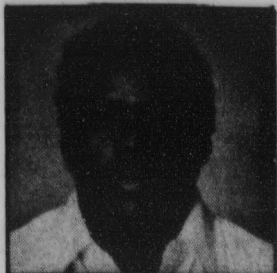
University Dr. Apache Blvd. Broadway Rd. McClintock Dr. Rural Rd. Mill Ave. ARIZONA STATE UNIVERSITY

The Millstone Apartments

(University & Rural)

1005 EAST UNIVERSITY  
TEMPE, ARIZONA 85281

## State Press Sun Devil Athletes of the Week



**Mike Crawford**

Sun Devil running back Mike Crawford has been named *State Press Sun Devil Male Athlete of the Week* for his 132-yard performance in the Devils' 48-0 shutout over San Jose State.

Crawford's performance, the best in his two years at ASU, included a one-yard touchdown run and a 51-yard touchdown reception.

Other nominees included quarterback John Walker, who tossed two touchdown passes in his first start at ASU; cornerback Eric Allen, who intercepted two Spartan passes Saturday; tennis player Michael Holten, who captured the singles title at the Sedona Invitational; and runner Dan Fisher, who won at the Nevada-Las Vegas Invitational.



**Therese Arildsen**

Tennis player Therese Arildsen has been named the *State Press Sun Devil Female Athlete of the Week* for her performance last weekend in the Sedona Invitational.

Arildsen won the tournament's singles title, defeating the No. 1 seed, Jackie Ranger of U of A, 6-0, 6-1 for the title.

Other nominees for the honor this week include:

Volleyball player Regina Stahl, who tallied 61 assists in two matches last week for the Sun Devils;

Volleyball player Susie Merson, who had 18 kills in those matches;

Cross country runner Julie Seleine, who finished fourth at the Nevada-Las Vegas Invitational.

Tennis player Vanessa Miller, who finished third in the singles bracket of the Sedona Invitational.

## Men take singles, doubles tennis titles

By BRAD HALVORSEN  
Sports Writer

When men's tennis Coach Lou Belken labeled his 1984-85 squad "the deepest team ASU has ever had," he was not joking.

The third-year coach's squad supported his belief last weekend, when ASU individuals won both the singles and doubles brackets at the Sedona Invitational.

Freshman Mike Holten opened his collegiate career with a bang, winning the singles championship over Jose Wasserfire of U of A, 7-6, 3-6, 6-1.

"We're not surprised by Michael winning the tournament," Belken said. "He's extremely talented and has had some very big wins as a junior."

"He's a freshman and he'll make freshman mistakes, but as far as talent goes, he's among the top kids in the country."

In beating Wasserfire, Holten accomplished a feat two other prominent Devils could not. Both Jim Baumann and Andy Roediger were eliminated by the Wildcat's top player.

"That's not a bad loss," Belken said of Roediger's 4-6, 6-4, 6-2 loss to Wasserfire in the semi-finals. "Wasserfire will

play No. 1 for U of A this year.

"We think Andy can beat him and he didn't do too badly against him."

"I was also expecting Jim to beat him just because he's beaten him before. Some days one player wins and other days the other does."

ASU's Keith Thomas, last year's No. 1 singles player, failed to join Holten and Roediger in the quarterfinals, losing two close sets to Ian Aier of U of A, 6-4, 6-4.

"There was one service break in each set, and he played a decent match," Belken said. "He just got broken."

Thomas rebounded in doubles action, however, teaming with Roediger to win the doubles title over Holten and Baumann, 6-4, 6-4.

"It did not surprise me at all to see two of our teams in the finals," Belken said. "They're both good teams. I would say that they were the two best teams there."

Belken said the doubles match will have no effect on determining which team will earn No. 1 status this year.

The Devils will compete next September 27 in the Kachina Open in Tempe.

PEOPLE  
ARE SMILING ABOUT  
OUR WEDNESDAY SPECIAL



It's 2 for 1  
on All Drinks  
in the House!  
7 to 1

**THE WOODSHED**  
Food & Drink

Mill & Baseline  
831-WOOD

Total Sports  
Coverage on  
Satellite TV

- Big Screen TV
- 3 Televisions
- Best Wine Burgers
- Best Bar T-shirt
- Happy Hour 2 Drafts 80¢
- #1 Softball Tavern



**BACK TO SCHOOL SALE!**

COPIES  
**3 1/2¢**

SELF SERVE COPIES

4 1/2¢ FULL SERVICE COPIES

offer applies to white & 11" x 17" bond only

Full Service Word Processing Now Available

**kinko's copies**

**Two Tempe Locations**

933 E. University  
Rural & University  
894-1797

715 S. Forest  
Forest & University  
894-9588

M-Th... 7 a.m.-9 p.m.  
Fri... 7 a.m.-8 p.m.  
Sat... 9 a.m.-6 p.m.  
Sun... 10 a.m.-8 p.m.

Also: 1840 W. Southern, Mesa • 969-3326  
Offer expires Sept. 30, 1984

\*Professor Publishing \*Binding \*Kroy Lettering \*Typewriters

**COME DOWN TONIGHT & PARTY**

**Donny O'Briens**

222 S. Mill • 968-0527

# Spikers move up one notch despite first loss of season

By MICHAEL KONZ  
Sports Writer

Despite a loss to top-ranked Pacific, the ASU women's volleyball team climbed a notch to 10th place in the Tachikara Collegiate Volleyball Coaches Association Poll.

ASU also defeated the University of Nevada at Las Vegas during the week, moving its record to 3-1.

For the third week in a row, the University of Pacific was atop the poll. The Tigers have a 6-0 record, including a three-game sweep over ASU.

ASU wasn't the only Western Athletic Association team to find itself riding high in the poll, as the WCAA dominated the poll with five teams in the Top 10, three of them in the Top 5.

Stanford, USC and UCLA were 2-3-4 again this week, but placed in a different order.

Stanford and USC both jumped over UCLA into second and third place, respectively, while the Bruins dropped to fourth. UCLA is 5-1 this season, while Stanford has won the only game it played. The Trojans (7-1) have the league's best record.

San Diego State (ninth) and ASU complete the WCAA's reign in the Top 10.

U of A, another member of the WCAA,

was right behind ASU in 11th place.

There were some significant changes in the poll as teams began to enter their seasons.

Western Michigan dropped six places after it opened the season 2-3. Louisiana State fell out of the poll after being ranked 17th last week, and Tennessee dropped out from 19th place.

Moving into the Top 20 were Pepperdine and Oregon.

- |                      |      |
|----------------------|------|
| 1. Pacific           | 6-0  |
| 2. Stanford          | 1-0  |
| 3. USC               | 7-1  |
| 4. UCLA              | 5-1  |
| 5. Nebraska          | 5-0  |
| 6. Cal Poly SLO      | 7-1  |
| 7. Hawaii            | 9-1  |
| 8. Texas             | 7-0  |
| 9. San Diego State   | 11-1 |
| 10. Arizona State    | 3-1  |
| 11. Arizona          | 2-1  |
| 12. Colorado State   | 4-0  |
| 13. Western Michigan | 2-3  |
| 14. Purdue           | 7-3  |
| 15. San Jose State   | 1-1  |
| 16. Illinois State   | 6-0  |
| 17. Brigham Young    | 6-5  |
| 18. Northwestern     | 10-3 |
| 19. Pepperdine       | 9-2  |
| 20. Oregon           | 5-4  |

**COUPON**



## Papa Jay's

New York Pizza and Video Arcade

Over 25 videos 10 for \$1 everyday

**FAST FREE DELIVERY!** Limited free delivery area.

**#1 Sun Devil Combo**

Large pizza with your choice of up to 4 toppings.

**ONLY \$6.95** (plus tax)

Good on delivery, take-out or dine-in.  
Expires 9-30-84.

**#2 \$2.00 Off**

Large Sicilian Pizza\* with two or more toppings.

\*Extra thick pizza

Good on delivery, take-out or dine-in.  
Expires 9-30-84.

Tempe: 804 S. Ash (University & Mill)  
**966-1003 • 966-4292**

**State Press Advertising 965-7572**

highlight  
and *write*  
quick as a flash

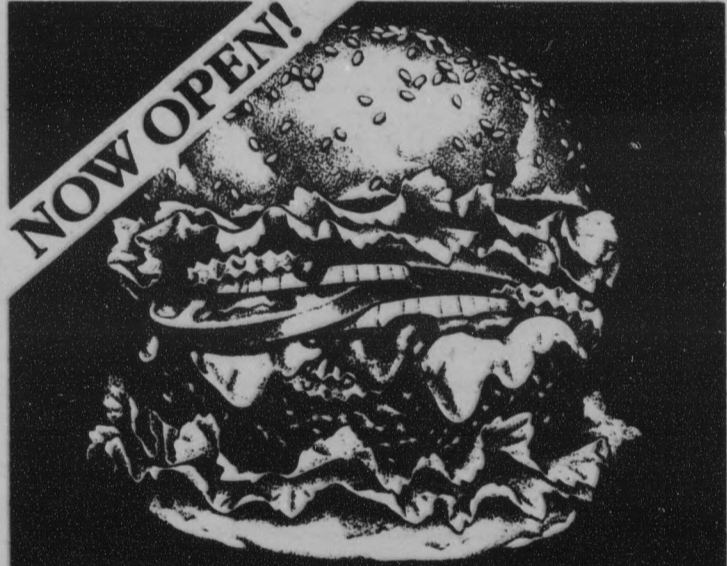
**TEXTAR** more than just a highlighter

Switch from highlighting to jotting notes without changing pens. Textar comes in six bright fluorescent colors, each with a blue ballpoint pen.



Available now at your college store.

## THE ULTIMATE HAMBURGER EXPERIENCE!




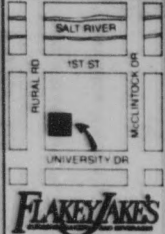
Picture this. Generous, freshly-ground half-pound USDA patties grilled to order on gigantic, just baked sesame buns right from our ovens.

After we grill your burger to order and place it on a fresh-baked bun — that's where the challenge begins — YOU dress them with lettuce, tomato, veggies and onions; spice it up with all the pickles, salsa and condiments; and ladle on rich melted cheese. America's Best Burger™ — and YOU created it!

We get so enthusiastic about our burgers, we sometimes forget to mention our fries, baked potatoes, hot dogs, meaty chili, sauteed onions, old fashioned hand-dipped milk shakes, chocolaty brownies and cookies and long-neck beers and wines.

AMERICA'S BEST BURGER™ is the one you build yourself at . . .





**TEMPE**  
715 S. Rural Road  
(In the Cornerstone Mall)

VISA AND MASTERCARD ACCEPTED

## Sportswear Racket



**Cateyes**

**\$8-\$10**

Over 15 Colors

**Blues Brothers**

**\$8**

Lots of Colors



**SUNGLASS HEADQUARTERS**

**Hey Girls — Check It Out!**

**New Arrivals**

Star India

Paris Blues

Bolt for Gals

Santa Cruz

**Sportswear Racket**

894-1045

915 Mill Ave.  
Tempe Center

Mon.-Sat. 10-6  
Sunday 12-5

## Sorority joins men cagers in charity softball

Delta Delta Delta sorority of ASU in conjunction with the ASU men's basketball team is sponsoring a softball tournament and raffle to raise money for Children's Cancer Research.

The event will be from 10 a.m. to 4 p.m. Sunday at Chaparral Park in Scottsdale.

Prizes will be awarded throughout the day. Raffle tickets at \$2 may be purchased by calling Liz Brown at 967-9333.



**Birth defects are forever. Unless you help.**

## classifieds

The STATE PRESS disclaims all responsibility for quality and prices of goods and services offered in both classified and display advertising by its advertisers.

### Announcements

LESBIAN AND GAY Academic Union is an organization of support, education and community service. Meetings held Wednesdays, 7:30, MU 219.

SINGLE DRAMA lovers!!! This organization is devoted to going to plays with other theater lovers who also are single. Call Matt Gerson at 990-0660 for details.

### Automobiles

**LIPMANS AUTOMOTIVE**  
Specializing in Imports

BMW • FIAT • ALFA  
ROMEO • MGB •  
TOYOTA • DATSUN

Convertibles!

BUY - SELL - TRADE

711 N. Scottsdale Rd.  
(2 blocks North of ASU Stadium)

Weekdays 9-8  
Sat & Sun 9-6

966-4363



9/28

### Automobiles

1978 DATSUN 200SX, mechanically excellent, very clean, \$2150. Dan, 996-3444.

1978 Toyota Celica, lift back, 5 speed, with sun roof, amfm stereo, new tires, good condition, \$3500. Debbie, 285-5111, 9-5.

1980 4x4 Datsun, 231 Buick engine, 350 turbo transmission. Conversions totally. \$9500, asking \$6000. 829-7125.

1980 HONDA Accord-LX, 10-miles, loaded, excellent condition, a/c, \$5950 or best offer. 820-8709.

MGB 1979 limited edition, air-conditioning, power windows, power locks, much more. Glenn at 966-1808, 897-9480.

OLDSMOBILE 1979 Cutless Supreme, a very nice car, \$3500. Call after 6 pm, 946-9233.

### Babysitters wanted

BABYSITTERS NEEDED: full-time, part-time or occasional. Set your own hours. 19 years and up, own transportation, no fees. Peace of Mind Babysitting Referral, 893-3869.

### Bicycles

24" PEUGEOT 12-speed. Good for touring. Needs a little work. \$120. Call Joe, 947-1163.

PREMIER CANCELLED condition, 2t

### Books

CREATE IDEAS! Order your "Idea Developers" catalog of books and tapes today. HFM publications, 1835 E. Manhattan Dr., Tempe, AZ 85282.

DO-IT DATEBOOK. Make the most of your time. Ask for it at the bookstore.

### Business Opp.

SELL YOURSELF successfully - Resumes tailor made to fit your professional image. Contact Ayersman-Zaharf Services Ltd., 820-5247, 968-7289.

### For Rent or Lease

A THREE bedroom house for sale. Nothing down. No qualifying. 144 N. Glenview, Mesa. \$570 per month, 224-1663.

ATTRACTIVE CONDO, 2 bedroom, 1 1/2 bath, equipped kitchen, poolside, \$450. per month, lease, close to ASU. 945-0758.

Southern and Roosevelt at "Mistwood" condos: We are looking for a cooperative and mature coed to share our new, fully furnished, 3 bedroom unit. 1 bedroom is vacant and available at \$275 per month without utilities. Call evenings, Karin at 967-8486 or Kelli, 967-8352.

### For Rent or Lease

FOUR BEDROOM, one bath house. Unfurnished, \$350 monthly. Not a misprint. 254-3520, 1-10 p.m.

ONE BEDROOM furnished mobile home in quiet adult park. Excellent for single or couple. \$210/ month plus utilities. 966-3557.

UNFURNISHED 2 bedroom, carpet, drapes, airconditioning/ evap cooling. No pets. Graduate student. \$345/ month. 955-7076.

### For Sale

10x50 DETROITER mobile home, half block from ASU, low space rent, very nice. \$9200. Call 899-6604.

12x65 MOBILE home. 3 bedroom, 1 1/4 bath, washer, dryer, 2 storage sheds, awning both sides. Asking \$9500, negotiable. 829-1295, after 5:00 pm.

A THREE bedroom house for sale. Nothing down. No qualifying. 144 N. Glenview, Mesa. \$570 per month, 224-1663.

FOR SALE: Okidata U93 printer. Used only two months. Transfer maintenance agreement. \$850. Call 867-4265.

IBM-PC 64k, 2ss drives, color/ graphics card, \$1500. Epson MX80FT printer, \$350. 948-9355.

STEREO BRAND new, never used, cassette deck, turntable, receiver, speakers. Cost over \$400, \$165 takes everything. 954-9541.

### Furniture

DON'T BUY that futon til you've seen ours. Call Sweet Dreams, we'll tell you why. \$20 off all futons. 948-5687.

HOLIDAY INN Scottsdale is remodeling! Desks, table and chair sets, carpet, mirrors, lamps, pictures, drapes, and more. On sale now! 5101 N. Scottsdale Road, Scottsdale. 9:30 to 5:30, Monday through Friday.

QUEEN SIZE custom made box bed with mattress and headboard. Excellent condition. Call 829-1708.

SCOTTSDALE USED Furniture, 2200 N. Scottsdale Rd., behind Kwan's, 949-0380. Beds, desks, bookcases. Dressers, \$49.

SOUTHWEST FUTON Factory Direct, Kings \$139, Queens \$109, Fulls \$89, Twins \$69, Cots \$59. All wood couch platforms, bed, frames, convertibles. 254-5943 or 277-7175. Open evenings, days, weekends. Factory 415 S. First St., downtown Phoenix.

### Help Wanted

ACCEPTING APPLICATIONS at Leo's - 20 openings, that's right! Our new concept in health food restaurants is looking for attractive, intelligent and assertive employees. Starting wage will be from \$3.50 to \$4.00 per hour, depending on experience. Rapid expansion will create room to grow. Apply September 18, 19 or 20 at 528 West Broadway, next door to the Backstage Lounge.

AVON REPRESENTATIVES needed. Some on-campus and nearby territories still available. Part or full time. Earn Xmas and travel money with the USA's number one beauty company. Call Diana, 967-1714.

CHILD CARE workers for emotionally handicapped. Part-time weekends. Some potential evenings/holidays. Excellent clinical opportunity. \$3.35/hr. E.O.E. Devereux Center, 6436 E. Sweetwater, No. Scottsdale.

COUNTER KITCHEN help for small sandwich shop. \$3.35 per hour. Located at Priest and University. For interview call 829-6730.

DISSATISFIED? EARN \$300-\$500 weekly helping others become healthy. Complete training. Call 964-9502 between 10am-3pm.

EARN \$200-300 per week without hurting your grades. We need three out-going people. No experience necessary. Call 829-8957.

FINANCE OR marketing major, part-time cold calling. NYSE firm. Call Greg or Merrill, 956-2929.

FLORAL DELIVERY part-time. Call for interview, 252-4773. Must have good driving record. Neat appearance important.

### Help Wanted

FASHION MODELS needed: attractive models 19-28 needed immediately for informal runway. \$10-25/ hour + commission. No experience necessary. Full and part-time. Car + phone necessary. Apply at Reflections by Dawn. Town and Country Center, 20th Street and Camelback.

HOUSE CLEANERS: We are looking for enthusiastic energetic housekeepers. We pay the highest in the Valley! Reliable transportation a must. Give us a call at Visible Difference, 231-0333.

JALEN'S BIG and Tall has a part-time position open for a well groomed, dependable cashier. Must type 40 words per minute. Must be available for evenings and weekends. Call 956-8830 for appointment.

LIQUOR STORE clerk. Flexible hours. Four dollars per hour. 276-2603.

NEED 100 people to lose weight now! PT/ FT earn \$500-3k per month. Call 964-9502 after 10am.

PART-TIME HELP for printing company. Need own transportation. Call Dave at 966-1808.

PART-TIME SALAD bar, orders. Apply at Bonanza, 3339 S. Rural Road.

PART-TIME evenings, and Saturday 9-5 general office help needed at photography studio near ASU. Call between 9:00 a.m. and 8:00 p.m. 941-5225.

PIZZA TIME Theater is now accepting applications. Full and part-time, weekends, day and night. 1000 E. Broadway, Tempe, Arizona, 85283.

POOL CLEANER, morning hours, reliable, neat appearance, truck required. \$6 plus/ hour, negotiable. 955-6300.

PREP COOK day time, 8:00 to 3:00. Apply at Bonanza, 3339 S. Rural Road.

SECURITY OFFICERS, full or part-time. Car and phone necessary. Uniforms furnished. Internal Security Agency, 820-1919.

THE MARINE Corps officer selection team is currently receiving applications for pilot and ground officer openings. Contact Capt. Johnson, 261-3880.

WANTED: STUDENT for live-in care of 2 young children for single parent. Will adapt to your class schedule. Room, board and salary. Call Howard: days, 252-3417; nights, 834-7085.

### Instruction

AEROBICS BEGINNING to intermediate classes. Monday, Wednesday, Friday, 5 to 6 at Tempe Saint Lukes Hospital. For more information call Julie, 897-7658.

**EARN EXTRA MONEY**  
**Arizona School of \*BARTENDING\***  
Job Placement Assistance  
Start Any Day  
Terms Available  
**275-MIXX**  
4035 E. McDOWELL  
Minutes From Campus

**LEARN TO TYPE**  
30 words a minute possible in four (4) weeks  
Ask for "ASU Special" when you call  
**966-7111**  
Information Keyboarding Lab  
23 W. 7th St., Suite 104  
Tempe, AZ 85281  
Just across Mill from ASU  
Visa/Mastercard Accepted

### Help Wanted

**ANYTIME / PART-TIME**  
**\$5 to \$7 Per Hour • We Fully Train**  
The nation's finest telemarketing firm is now accepting applications for the following shifts:  
12 noon-5 p.m. • 5-9:30 p.m. • 6:30-9:30 p.m. • Weekends  
Our sales people work in a modern, comfortable business environment contacting established customers on long distance WATS lines. Guaranteed salary or commission, whichever is greater, and averages \$5 to \$7 an hour. Our Tempe office is located approximately five minutes from campus.  
**PLEASE CALL DIALAMERICA FOR DETAILS.**  
**829-1140**

### Instruction

SELF DEFENSE. Instruction in Taekwondo, (Korean karate), highly effective traditional training. Beginner or advanced, 894-5389.

THE WAY of Judaism, taught by Rabbi Barton Lee, Wednesdays, 3:30 - 5:30, Hillel, 1012 S. Mill Avenue. 967-7563.

TUTORING: ENGLISH/ essays; English grad. Reasonable rates. Call Tim, 962-1319.

TUTOR WANTED for TXC 122. Urgently needed. Call Holly, 965-9643, early mornings or evenings.

WANT TO learn to fly? We guarantee 40 hours flying time and pilot supplies for \$1700. Call 961-1156, Stellar Executive Air Service.

WHAT A deal! Only \$8 per hour for French, Math, basic language tutoring. Call Taoufik, 966-3770.

### Motorcycles

1975 HONDA GL1000 (gold wing), 16,000 original miles. Fully dressed. Price negotiable. 931-4989.

1981 SUZUKI GS250T, 1800 miles, like new, sissy bar/ luggage rack/ helmets, \$700. Days: 273-4671, nights: 968-3615.

HONDA MOTORCYCLE, 1981 CMT200, red, 11,000 miles, good condition, \$350. Call Brian, 254-6156, days; 996-1029, nights.

### Real Estate

\$4000 DOWN 3- bedroom townhouse, jacuzzi, fireplace, garage, \$80,000. Jeanne-Sue, 948-0900, ERA Valley Metro Realty.

TWO BEDROOMS, two bath condo near ASU, \$89,000. Low down, good financing. 968-1145 or 941-5220.

### Roommate wanted

FEMALE NONSMOKER. Own room, bathroom in nice south Tempe area. Furnished, near ASU, Kiwanis park. Large back yard. Washer, dryer. \$250 includes utilities. Randy 897-2490.

SEEKING RESPONSIBLE, m/f roommate to share 3bedroom condo, completely furnished. Also has washer, dryer, dishwasher, pool, + jacuzzi. \$300 utilities included. 968-4788, Ann.

TOWNHOUSE TO share, Scottsdale. Private room and bath available, including covered parking, washer, dryer, swimming pool, \$250 per month plus 1/2 utilities. 951-2633 days, 991-2005 evenings.

### Services

CARS AVAILABLE - 21 or older. All States Drive-away, 992-5200.

COMPUTER TERMINALS for rent with modem, 246-6172.

HAVE UNWANTED facial or body hair removed permanently by electrolysis. Free consultation. Located in Tempe. Call Sharon, Desert Electrolysis Center 839-1885.

PET, PLANT, garden tender. Going out of town? Responsible animal lover with green thumb will feed and exercise your pet and also care for your plants. \$6 per day or arrangement. 829-8323. Tempe area preferred.

PROFESSIONAL PHOTOGRAPHY. commercial studio offering the highest quality work. From portraits to portfolios and composites. Shonnard Photo-graphics, Inc. 966-2609.

**LIMOUSINES**  
• Discreet Drivers  
• Best Rates in Town  
• Bar - TV Set-ups  
• Ski Boat Rentals Available  
-For All Special Occasions  
**981-2150**

### Swap'n Trade

TRADE HOUSES over Christmas with family in Pennsylvania or have family live in your vacant house/apartment. Will pay rent, be liable for damages. Call Jessie, 965-0877.

TRADE HOUSES over Christmas with family in Pennsylvania or have family live in your vacant house/apartment. Will pay rent, be liable for damages. Call Jessie, 965-0877.

### Travel

AIRLINE COUPONS. \$250 to Boston. Special low fares to most cities, USA. Call Brent 829-7300.

### Travel

#### CHEAPEST AIRFARES POSSIBLE

Don't be left in the heat. Book your holiday flights early. Some flights will go up Sept. 21.

**SUN DEVIL TRAVEL**  
Eastside ASU  
Corner Lemon/Terrace  
**894-2971** 9/19

### Typing

\$1.25 PAGE. Perfectionist at work. Spelling and punctuation edited. Drop-off and pick-up available on campus. Judi, 969-6856.

AARDVARK WORDPROCESSING. Professional typing and editing on wordprocessor for students and professors. Resumes, research papers, theses, dissertations, manuscripts, etc. Elizabeth, 834-3370.

ACCURACY/ SPEED/ specialties. Call Teresa (apa/ mkt) at 962-0079 or Linda (elite/ eng/ math) at 969-5775.

ACCURATE, FAST, experienced typist. IBM Selectric \$1.25 per page. Dissertations, theses, legal briefs. Call Sharon 833-5687.

ACCURATE TYPING, word processing. All types. Fast turnaround. N. Central Phoenix location. Why Worry Business Services. 943-3552.

ACCURATE WORD processing and typing. Term papers, resumes, cover letters and repetitive letters. 946-2886.

ACCUTYPE SERVICES: Fast and accurate. Only \$1.50 a page. After 5 call Linda, 838-6830 or Nancy, 830-5572.

ALL PAPERS typed to your complete satisfaction. IBM Selectric. Near ASU. Reasonable. Mrs. Oakley, 967-0802.

ALL TYPING done fast and accurate. \$1.15 a page. Word processing available. Close to ASU. Call Bobbi 968-9166.

ALWAYS AVAILABLE for typing. Call Susan at 833-0373.

ANN'S TYPING service. \$2 per page. 838-8804.

HIGH QUALITY, great prices. Word processing and typing. Call J & P Enterprises. 894-9607.

NCS TYPING: fast and accurate. Reasonable rates. Pick up and delivery also available. Call 820-9681.

NORTHWEST PHOENIX, quality typing. Theses, dissertations, research projects. 838-3397.

PROFESSIONAL TYPIST will edit spelling, punctuation, and grammar. Fast return/ accuracy guaranteed. Joan 839-0772.

PROFESSIONAL QUALITY word processing. Will edit and correct spelling. Carolyn Douglas, 838-0959.

PROFESSIONAL TYPING - Excellent spelling and grammar. IBM Selectric or word processing. Fast and reasonable. Call Jaline 990-9595 or 946-4647.

SWIFT SECRETARIAL Service in Scottsdale, 949-9428. Resumes, contracts, term papers, etc. Reasonable rates.

TYPING. Expert word processing plus letter quality print for theses, manuscripts, etc. Reliable perfectionist with reasonable rates. Myra, 956-4233.

WORD PROCESSING, typing. Can type anything. Guaranteed word perfect. Located in Tempe. 839-3412.

WORD PROCESSING. Editing, extra copies and document storage available. Substantial student discount. Close to ASU. Robin, 829-6586.

**WORD PROCESSING PROFESSIONAL, FAST AND ACCURATE**  
\$1.25 per page with notice and coupon  
Just 5 min. from ASU Library  
**THE COMPUTER TERMINAL**  
122 E. University Dr.  
**967-0900**  
Exp. 9-30-84. 9/19

### Wanted

FOOTBALL TICKETS: Need 4 together (or 2 pair) for ASU/USC. Bill, 968-6282.

PAYING CASH for gold, silver and diamonds, class rings. Mill Avenue Jewelers, 414 S. Mill Avenue.

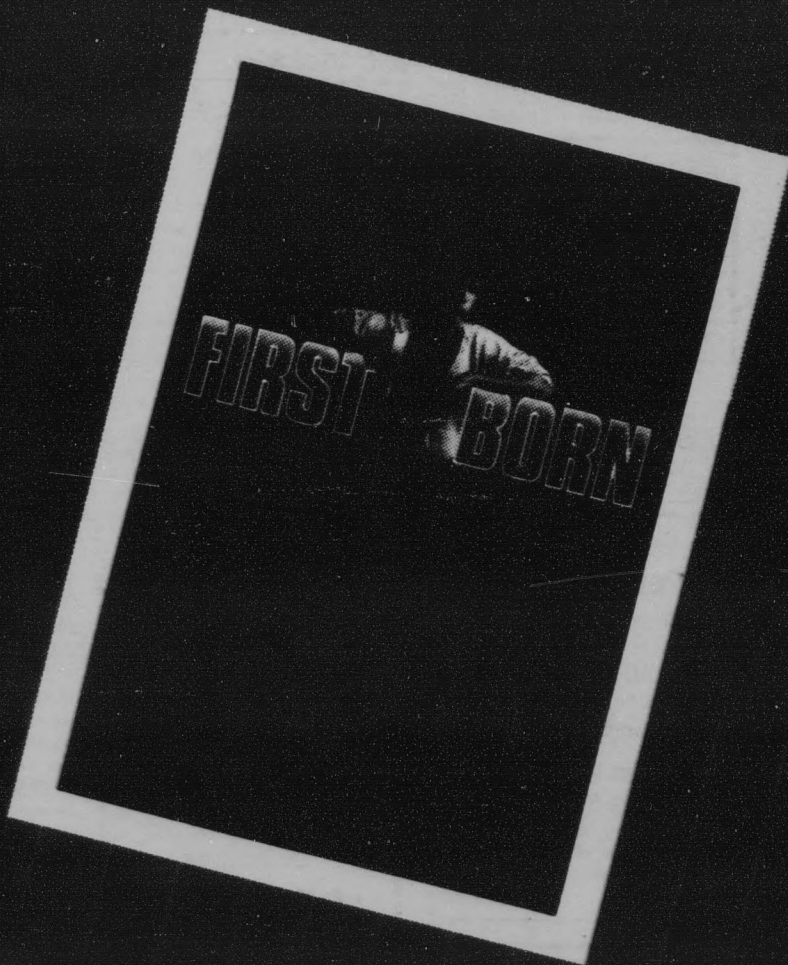
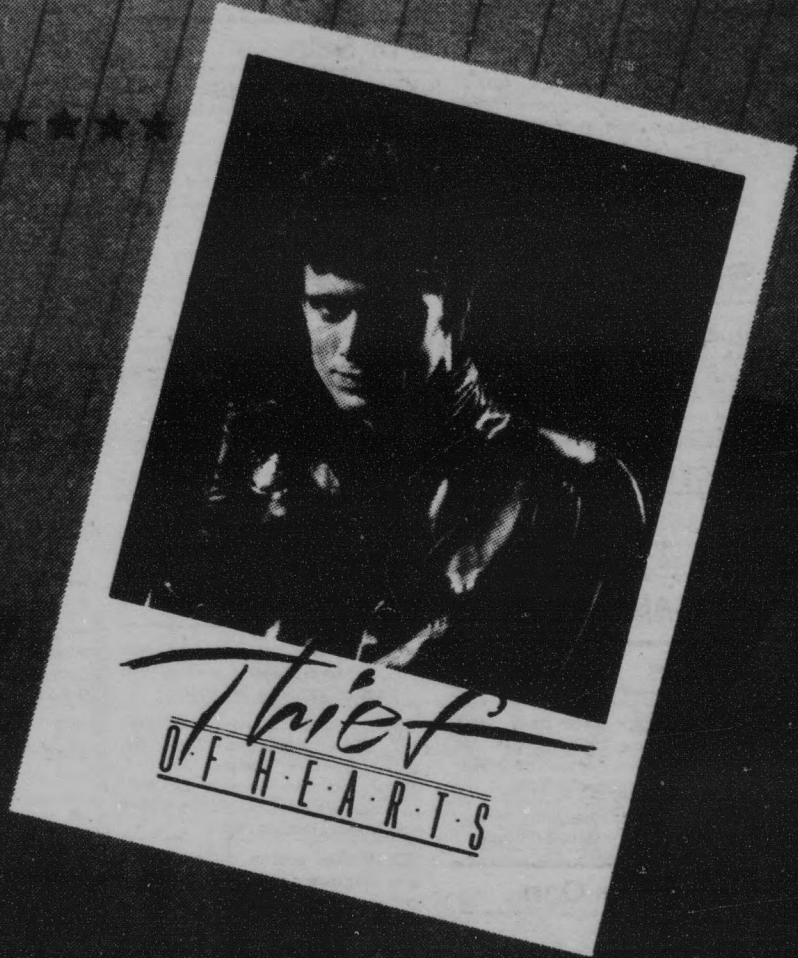
**ADVERTISING SALES REPRESENTATIVES for the state press**

The STATE PRESS has openings for advertising sales representatives for the academic year 1984-85. We prefer freshmen, sophomores and juniors, as successful representatives can continue for several semesters.

The rewards include training and experience in a professionally run newspaper situation and a realistic commission.

Applicants must pick up referral form from Student Employment in Matthews Center and an application blank at the STATE PRESS office, Matthews Center.

COMING SOON TO THEATRES NEAR YOU



FROM PARAMOUNT PICTURES