

Nelson to announce selection for executive job at dedication

By Jerry Brown
Staff writer

A site dedication and flag raising ceremony will be held tomorrow to honor the long-awaited 300-acre ASU west campus.

The site, at 43rd Avenue and Thunderbird Road, has been set aside by legislators since 1962 for development of the campus, and a \$1 million appropriation approved last year

by lawmakers allowed commencement of the project.

ASU President J. Russell Nelson will officiate the site dedication ceremony.

Nelson also will announce at the 9 a.m. ceremony who has been selected as the new chief executive officer for the west campus.

Special Assistant to the President Troy Crowder said Tuesday he felt the executive post would be filled by someone from within

the University.

"I would think the choice would be from current administration," Crowder said.

ASU Executive Vice President Paige Mulhollan said the University plans to have a fully-operating campus, which will be located between 43rd and 51st avenues on Thunderbird Road, within a few years.

"The programs, however, will not wait for the buildings," Mulhollan said. "West side

residents will be able to complete many degree programs and choose among nearly 300 upper division and graduate courses at ASU-West locations this fall."

Mulhollan said almost 65 of the ASU-West courses are recent additions made possible by the appropriations.

"An even larger number of courses will be offered at ASU-West in the spring," Mulhollan said.



thursday
July 19, 1984
Vol. 9 No. 7
Arizona State University

summer
state press
Tempe, Arizona

© Copyright, State Press, 1984



Staff photos by Michael Conner

Mutt and Jeff

Jeff Schaeffer takes a few minutes of the day to play "rock fetch" with his dog, Zack. Schaeffer points out the rock to Zack who then happily dives in and retrieves it. Schaeffer is a senior in the College of Business.

Regents OK development phases of research park

Board approves new director, faces teaching issue

By M.G. Khan
Staff writer

The marketing and development phase of the ASU Research Park was unanimously approved by the Arizona Board of Regents during its July meeting last weekend in Flagstaff.

The regents approved the form of tenants' master sublease and the documents describing conditions, covenants and restrictions on use of the property, subject to final review by the board's legal counsel.

ASU President J. Russell Nelson said that, after review by legal counsel, negotiations with potential tenants can be completed.

He said business matters for the 323-acre park, located at Price and Elliot roads in Tempe, will be transferred within the next few days from the University to a not-for-profit corporation authorized earlier by the regents to develop and manage the ASU Research Park. The corporation, Price-Elliot Research Park Inc. will be headed by Reginald W. Owens who resigned from the University to take the corporate post of executive director. The corporation is controlled by a board made up of representatives from ASU and the private sector.

Owens said he expects groundbreaking for the first buildings later in the fall.

Upon completion, the park is expected to create about 8,000 new jobs, increase the population by 20,000 to 30,000 and transform Arizona into another "Silicon Valley," according to Owens.

The park will house tenants engaged in research that should complement the interests of University researchers. The research park will provide long-range financial returns

to ASU through tenants' ground leases and other contractual agreements, and it will offer ASU students and faculty members opportunities to work both on and off campus with prominent private researchers.

The ASU Research Park will be supported by a \$367,800 budget from the University in 1984-85. In addition, a City of Tempe bond issue for public improvements for the research park will come to the regents for approval in September.

After 1985, according to Owens, the park will be self-supporting. When the park has been fully developed, it will be worth about \$500 million and will provide \$5 million a year for an ASU research endowment fund.

In other business at the July meeting, the regents approved the appointment of a new director of Career Services at ASU.

Jean E. Eisel, who has served as assistant dean of Career Services at Ohio State University's five Colleges of the Arts and Sciences for the past nine years, will assume the new post on Aug. 1. She is replacing Robert F. Menke, who retired in December after 37 years as director of ASU Career Services.

Before joining Ohio State, Eisel was director of Career Services and Testing at Wittenburg University in Springfield, Ohio, where she also served as an assistant to the vice president. She has been a counselor at the College of St. Francis in Joliet, Ill., from which she received a bachelor's degree in mathematics, and an assistant director in the placement office at Boston College from which she received a master of education degree in counseling psychology.

Eisel currently is a candidate for a doctor of philosophy degree in guidance and counseling at Ohio State. She is a

member of the College Placement Council Inc., Midwest College Placement Association, National Cooperative Education Association, and the American Management Association.

A third decision the board made last weekend deals with a compromise resolution which would give "conditional admission" to education students who fail a state-required basic skills test.

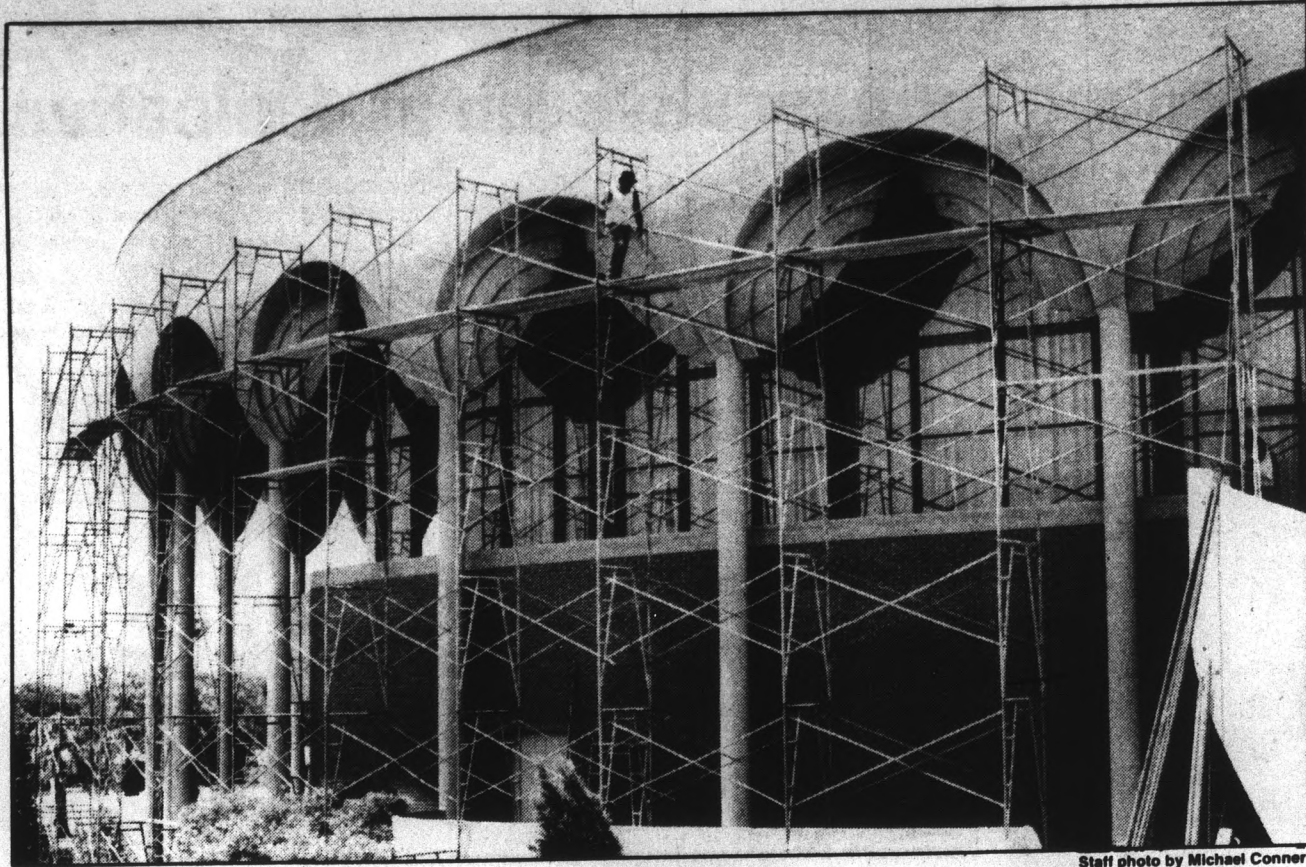
The compromise was made to comply with a new state education law and federal civil rights statutes. The Arizona Legislature earlier this year approved a requirement, effective Aug. 3, that all students must pass the reading, grammar and mathematics portions of the Arizona Teacher Proficiency Exam before admission to state education colleges — including ASU.

The State Board of Education decided July 12 that 80 percent would be considered the passing score on the three sections.

The compromise resolution dictates that students who fail the exam while meeting all other admission requirements would be admitted on the condition they take remedial classes. Those students would be required to pass the exam before graduation, but students who passed the exam the first time would not be forced to take it a second time for state certification.

Many regents expressed disappointment with the compromise resolution because of its potential bias against minority groups. However, legal counsel for the board said that although the state law requires students to pass the test, the compromise is legal because it complies with the intent of the law.

The regents reportedly will consider the issue when they meet with legislators later this year at a meeting slated for discussions on tuition.



Staff photo by Michael Conner

Facelift

Gammage Center is going to have its "upper face" replaced with new pink Quartz, campus officials said. The project is scheduled to be completed by Sept. 26 at a cost of \$135,000.

Affordable Cleaners

ASU SPECIAL

ANY GARMENT **89¢** ea.
Dry Cleaned & Pressed No limit

Excluding suede & leather; excluding wedding dresses. Coupon must be presented when garments are brought in.

847 W. University
(SE Corner of Univ. & Hardy)

(EXPIRES AUGUST 10, 1984)



SUMMER FUN 1984:

AT THE UNIVERSITY
ACTIVITY CENTER:

ASASU/UAC Present
ROD STEWART

Sunday, July 22 • 8 p.m.

Don't miss this performance by one of rock and roll's finest singer/songwriters. Tickets: \$15, \$13

For information about Gammage Center, ASU Activity Center, Kerr Center, and ASU Stevens House events, call 965-6681.

RARE LION RESALE



A fine selection of retro-vogue clothing costumes, jewelry and accessories.

BUYING • SELLING
TRADING

722 S. Mill Ave., Tempe
968-6074

Summer Specials

With coupon only.

1/2 OFF Haircuts

First time clients only.

Focus 21 Perm **\$29.50**
Sculptured Nails **\$19.50**

The

hair performers

9-9 Mon.-Fri. • Sat. 9-6

903 S. Rural Rd. • **894-0184**



This is a sign that she needs our help.

The woman in the photograph is making the sign for "help" in the American Sign Language. But more than that, she's telling us that she has the kind of speech or hearing difficulty that can make phone service difficult to use.

Helping people like her is the whole idea behind our Telecommunications Center for Disabled Customers.

At the Center, we can take care of establishing or disconnecting phone service, handle the certification or monthly adjustment of long distance discounts, explain phone bills and answer other phone service questions. We can't get you phones, but we'll be happy to explain how to obtain any specialized phones and equipment that may be needed.

If you or someone you know could use our help, we'd like to hear from you. Call us, toll-free, at our Telecommunications Center for Disabled Customers from 8:30 a.m. to 5:30 p.m., Monday through Friday. (The numbers are listed below.) Or call at your convenience and leave a recorded message. We want to do everything we can to help you with your special phone needs.

Telecommunications Center for Disabled Customers.
1 800 525-3156-Voice 1 800 525-6028-TTY

For the way you live.



Mountain Bell

Ca

Th
Dist

ASU prof
Michael O'
Research A

Nominate
deans, the
year in rese

Brown, 4
received hi
president of
sidered a le
tice, with
marketing.
than 70 arti
journals, in
of Health C

Cialdini,
1971 after
the Univers
New York.

"Influence,
used and ca
professional
the Journal
Applied So

O'Keefe
known for
spans chem
received
England, in
had contin
Foundation
prestigious
ternational

Fa
to

An ASU
tion has be
Advisory
Stroke Cou

Linda M
sultants in
cil, an a
Neurologi

McCay
tegrating
She holds
degree in
ty.

The Inst
tional Inst
vice, Dep

G

An ASU
ple's Rep
Troy P
Ministry
study per

Twenty
mafrost
problems

Pewe v
semester

Ind

Applica
gram in I

An Ex
number

CR

Prin

B

campus briefs



Three profs receive college's Distinguished Research Award

ASU professors Stephen W. Brown, Robert B. Cialdini and Michael O'Keeffe are the Graduate College Distinguished Research Award recipients for 1985-86.

Nominated by their department chairmen and college deans, the three will be freed from teaching to spend a full year in research and graduate student advisement.

Brown, 40, is professor of marketing at ASU, where he received his doctorate in 1971. Recently elected national president of the American Marketing Association, he is considered a leading researcher in marketing theory and practice, with special emphasis on health and medical care marketing. His publications include four books and more than 70 articles, and he serves on the editorial boards of five journals, including the Journal of Marketing and the Journal of Health Care Marketing.

Cialdini, 39, professor of social psychology, came to ASU in 1971 after completing doctoral and post-doctoral studies at the University of North Carolina and Columbia University in New York. His more than 40 publications include the recent "Influence," a popular book on how manipulation tactics are used and can be avoided. He is an editorial consultant to six professional journals, and has served as associate editor of the Journal of Personality and Social Psychology, and the Applied Social Psychology Annual.

O'Keeffe, 50, professor of chemistry, is internationally known for his research in the structure of crystals, work that spans chemistry, physics, mathematics and mineralogy. He received his doctorate from the University of Bristol, England, in 1958. Since coming to ASU in 1963, O'Keeffe has had continuous research support from the National Science Foundation. He has published more than 100 articles in such prestigious journals as Science, Britain's Nature and the international Acta Crystallographica.

Faculty associate appointed to national advisory council

An ASU faculty associate in the department of communication has been appointed to a four-year term on the National Advisory Neurological and Communicative Disorders and Stroke Council.

Linda McCay, also co-director of Arnold/McCay Consultants in Scottsdale, will be one of 16 members of the council, an advisory group for the National Institute of Neurological and Communicative Disorders and Stroke.

McCay has conducted seminars on managing stress and integrating the analytical and creative regions of the brain. She holds a bachelor's degree in education and a master's degree in communication from North Texas State University.

The Institute, located in Bethesda, Md., is a unit of the National Institutes of Health, under the U.S. Public Health Service, Department of Health and Human Services.

Geology professor studying permafrost in China

An ASU faculty member is spending six weeks in the People's Republic of China.

Troy Pewe, professor of geology, was invited by China's Ministry of Railroads and National Academy of Science to study permafrost conditions in Manchuria.

Twenty percent of Manchuria's land area is in the permafrost zone, a condition that causes many construction problems.

Pewe will return to ASU in time for the start of the fall semester.

Industrial engineering program offering tuition stipends

Applications are now being taken for ASU's Re-entry Program in Industrial Engineering.

An Exxon Foundation grant has made possible a limited number of tuition stipends for students who complete the

master of science degree in engineering in 19 to 24 months. Students can begin classes Aug. 27, in January or next summer.

The program offers eight areas of concentration, including information (computer) systems and computer-aided processes. The Re-entry Program director is Mary Anderson, associate professor of industrial engineering.

The program is open to men and women who have held a bachelor's degree in any field for at least two years, and who are unemployed in a technological field or underemployed in terms of their potential, Anderson said.

Two semesters of calculus are a prerequisite for the program, which features lectures by industry and university professionals and advice on writing resumes, interviewing for a job and choosing an employer.

Students also can take advantage of a paid, half-time internship with an area company to get hands-on experience while completing their degree work.

For more information, telephone Anderson at 965-3185.

Engineering professors honored for paper published in journal

Two ASU professors of industrial engineering were honored recently as authors of the best paper published in a national engineering education journal.

Hewitt H. Young and David D. Bedworth received the 1984 William Elgin Wickenden Award for their paper on "CAD/CAM for Undergraduates at Arizona State University," which appeared in the April 1983 issue of "Engineering Education," the official publication of the American Society for Engineering Education.

The ASU professors were presented with \$1,000 and a plaque at the society's annual conference held last month in Salt Lake City, Utah.

Young has been a faculty member at ASU since 1967 and served as chairman of the industrial engineering department from 1967 to 1976.

Recently, he has been active in CAD/CAM (computer-aided design, computer-aided manufacturing) teaching and research and put together a proposal which resulted in a \$2 million grant of CAD/CAM equipment from IBM to the University.

Bedworth has been on the ASU faculty since 1963. His research and teaching interests lie in the areas of computer-aided manufacturing, microcomputer applications in engineering and time-series analysis and forecasting.

He is the author of almost 40 publications including two textbooks, one of which, "Industrial Systems," won the 1974 book-of-the-year award from the Institute of Industrial Engineers.

The William Elgin Wickenden Award was established in 1978 by the society's publications committee and the General Motors Foundation to encourage excellence in writing.

ASU center receives \$173,000 for American Indian education

The ASU Center for Indian Education has received a \$173,000 grant from the U.S. Department of Education to provide graduate level training for Indian students.

The American Indian Leadership program for 1984-85 will support nine College of Education graduate students in master's, doctoral and education specialist programs.

Rachel Moses, program director, said the leadership effort is based on the same educational philosophy as that of the Center for Indian Education.

"The participants will be individuals who are deeply concerned with education as the path to the ultimate acquisition of knowledge," she explained. "This program is ideally situated in an atmosphere of many American Indian cultures. It will constantly strive to provide the students with the necessary balance of cultural experience."

She said those selected will be chosen on the basis of past academic performance, work experience and future goals.



TERIYAKI OF JAPAN

CRITIC'S CHOICE

**BEST FAST
JAPANESE RESTAURANT**

NEW TIMES BEST OF PHOENIX '84

1314 E. APACHE • 894-6883

DEVIL HOUSE

STARTS TODAY



4 GREAT BURGERS FOR 1.00

EVERY TUES.-FRIDAY 2-7

ALSO Pitchers 2.50

1/2 Litres Long Island Tea 1.75

Devil House
NITE TIME
THURSDAY
College Countdown
\$1 OFF ADMISSION W/ ASU PICTURE ID

FRIDAY \$1 ADMISSION & SATURDAY 7-9
3 FOR 1
LONG ISLAND ICE TEAS
894-6779 DEVILHOUSE 894-0533
430 N. SCOTTSDALE RD.



Do Your Computer Work At Home!

Save Time and Effort

CRT with coupler
or
Printer with coupler

\$50.00 per month

BRS LEASING, INC.

3914 E. McDowell • 277-3282

Rentals / Service / Sales

IMPROVE YOUR PERFORMANCE ON THE ARIZONA TEACHER PROFICIENCY EXAM!

NEXT CLASS:

Friday, July 20, 6:00—9:00 pm
CONTINUING ON
Saturday, July 21, 8:30 am—2:30 pm
(8 full hours preparation)

For Registration Information,
Call THE DELTA GROUP
137 E. San Miguel
263-0073

opinion

The convention system has its faults, of course, but I do not know of a better method for choosing a presidential nominee.

—Harry S. Truman

state
press

letters

Forced retirement takes needed jobs

Editor:

I recently read in the Republic that all institutions that discriminated against age would not be receiving Federal Funds. That means, then, that ASU will not be having a Financial Aids department and other nice things they get from Federal Funds. That will certainly cut the enrollment figures.

When I first read in the white sheet that people were to be fired at age 70 I went through a very uncomfortable trauma. I am still in that trauma. It is firing, you know, for I do not wish to retire. In fact, I cannot retire, I will have to find another job, and you know that will not be easy.

My boss wants and needs me to continue on a regular basis. He has asked personnel to tell him what he must do to see that that happens.

I cannot help having a birthday. I like my job and working with the students. I hope this is a premature decision to get rid of the 70-year-old personnel. In fact, it certainly should be on an individual basis instead of carte blanche. I am sure there are many who want to retire at age 70. That is different from being fired at age 70 — and having to go out and look for another job.

Am I the only victim crying out in the desert?

Name withheld

Mining strike takes personnel off streets

Editor:

The Department of Public Safety recently claimed highway fatalities were up, due in part to inadequate highway patrols. One of the reasons cited by the Department for this inadequacy was a personnel shortage caused by the large number of officers assigned to strike duty at Clifton-Morenci.

As the officers assigned at that location are primarily protecting the interests and property of the Phelps Dodge Corporation, taxpayers ought to ask why we are paying for Phelps Dodge to increase our highway death rate.

Wat Tyler

Graduate student, humanities

SUMMER STATE PRESS

DON SLUTES
Editor

REPORTERS..... Jerry Brown
M.G. Khan
PHOTOGRAPHER..... Michael Conner
SPORTS WRITER..... Tom Blodgett

The Summer State Press is published Thursdays during summer sessions at Matthews Center, Room 15, Arizona State University, Tempe, AZ 85287. Newsroom: 965-2292. Advertising & Production 965-7572.

The State Press is the only newspaper exclusively published for and circulated on the ASU campus. The news and views published in this newspaper are not necessarily those of the ASU administration, faculty, staff or student body.

LETTER POLICY

The State Press encourages letters on any topic.

Letters should include your full name, major and class standing; we'd also like your phone number in case we have any questions. If for some reason you want your letter published anonymously, tell us.

Letters should be typed to ensure the best chance for faithful reproduction.

Letters will be subject to editing for grammar, newspaper style and length at the discretion of the editor.

Address letters to: Letters, State Press, Matthews Center, ASU, Tempe, AZ 85287.

Questions

Mondale must show Demos' plan or face rocky road in November

Jerry Brown
Staff writer



Now that the Democratic Convention has wound down to the finale and the world waits to see just what Walter Mondale is made of, it may be helpful to take one step back and get a perspective on where 18 months of campaigning have left the American people.

All the yelling and pointing of fingers that has gone on since Mondale announced his candidacy in January of 1983 has boiled down to one week of "togetherness" in San Francisco.

But for a party that has accused the other side of setting smokescreens, the Democrats have spent this week putting on a pretty good charade of their own.

For this week, all is forgotten and wounds heal at the speed of sound. In one week, 18 months of hostility between Mondale and Hart, Mondale and Jackson and Jackson and Jews has been reconciled. And tonight, the three men who seemed to have inseparable differences only days ago, will join raised hands and tell Americans they are a team.

But the smokescreen is beginning to clear.

Now that the pomp and hoopla are past, the question many asked when the convention opened is still unanswered as Mondale takes to the podium this evening: What is the Democratic Party?

On Monday night, Mario Cuomo gave the Democrats a reason. On Tuesday night, Jesse Jackson gave the Democrats a purpose. Now tonight, Mondale must give the Democrats a plan.

It must not be an easy task. Why else would he have waited so long? As he gets ready to battle Ronald Reagan,

Mondale will need something better than a phrase from a hamburger commercial. He needs an appeal that will give the party something to rally around when the California love-in is over.

Attacking Reagan will not be enough. Mondale must tell the American people more of what he wants, instead of harping on what he doesn't want. A clear set of ideas is desperately needed.

Democrats keep saying Reagan is some kind of boogey man who will trigger the end the world. The fear factor that has been so much a part of the Mondale campaign needs to be put aside in favor of more rational charges on cut and dried issues.

The economy and the deficit have been jumped on also. But will telling those who are doing well that they will be plunged into poverty in six months make them more charitable to those who are in trouble now?

Mondale and the Democrats are right about one thing. The Reagan administration probably doesn't do enough to help the poor. But let's not fool ourselves into thinking the poor have been forsaken, either.

Reagan has confidence on his side. Through whatever means he has used, he has the economy rolling, and that scores big points with a majority of Americans. But there are many things, such as his approval of recent Supreme Court decisions, that Reagan can and must be called upon to explain if Mondale hopes to make a race of his candidacy.

Time is running short and Democrats are still scrambling for answers. Did Jackson's apologies satisfy Jews enough to heal the wounds accumulated during the campaign? Did Jackson lose some of his black supporters by knuckling under to the party? Will Republican and non-Republican whites turn out in November as a racial statement against blacks?

Those question will not be answered tonight, but if Mondale doesn't tip his hand to the world and start moving, the Democrats are in big trouble.

Ferraro adds pizzazz to Mondale's bid, but must show she's qualified

Tom Blodgett
Sports writer



When Geraldine Ferraro stood in front of the Minnesota House of Representatives and said, "There's an electricity in the air," she hit the nail on the head.

America could not help but get caught up in the moment. There is a certain amount of excitement involved when history is fashioned.

Walter Mondale had announced that Ferraro, a 48-year-old member of the House of Representatives, was his choice to run for vice president.

That Ferraro would be the first woman to run for the vice presidency on the ticket of a major party has put many women into a state of euphoria for the past week.

In a fund-raiser for female candidates at the San Francisco Opera House Tuesday, many women in attendance cried and cheered while Ferraro addressed them.

Ferraro, a virtual unknown until the recent weeks' events vaulted her into the national spotlight, is now the symbolic embodiment of the women's movement, of 64 years of struggle since women won the right to vote.

And she is a triumphant symbol, a good symbol. Ferraro strikes one as intelligent and articulate. She certainly leaves a favorable impression.

But the issue is not simply one of a woman running for vice president. If women are truly to move forward with her impending nomination, then it cannot be.

Ferraro must stand up on her own two feet as an acceptable candidate on the ticket. Acceptability, as it is used here, means more than just being a woman, for if that were the sole criterion then Phyllis Schlafly would qualify.

She must be qualified to carry out the duties of the vice presidency, and perhaps more importantly, qualified to carry out the duties of the presidency in case of emergency.

In short, she must be judged by the same standards by which we judge other candidates for that position.

Although Ferraro herself has asked that this be the case, it appears that many women, in their euphoria, are not listening.

In fact, it appears at times that the Democratic Party has forgotten that Walter Mondale, not Geraldine Ferraro, is running against President Reagan.

Even Gary Hart has gotten the process backwards. It was Sen. Hart, still hoping to win the nomination, who said

Monday, "I am pleased to join in the consensus. I believe she will be the vice president of the United States."

"The only issue before the (Democratic) convention is which candidate has the best chance of getting her elected."

For the Democrats, this bit of insanity is good news. Perhaps voters will be so swept up in the cause of voting for Ferraro, the candidate with pizzazz, for vice president that they will forget they are voting for the drab and dull Mondale for president.

Before Mondale announced his intentions to put her on the ticket, the polls were unclear on just what effect a woman running for vice president would have on his chances.

Most showed that Mondale would lose just as many, or even more, votes as he would gain. But that was before a flesh-and-blood candidate was on the ticket.

Now pollster Lou Harris says he expects an automatic 5 percent gain for Mondale. Speaker of the House Tip O'Neill went so far as to predict a pick-up of 10 percent (although we must consider the source on that pick).

It is probably safe to say that Ferraro's effect cannot be judged until it takes a more definite shape several weeks from now.

Ferraro is still a new face to the nation at large. Voters will be getting important impressions of her over the next several weeks.

The first few weeks of this campaign will be critical to the Mondale-Ferraro ticket if they hope to cut into the 18-point lead which Reagan enjoys in some polls.

Mondale must erase the impression that he gave into women's interest groups to avoid a fight at the convention when he selected Ferraro as his running mate.

Mondale denies this, but his words ring hollow with many voters. There is strong evidence that he was responding to such pressure.

And Ferraro must show that she stacks up against Vice President George Bush as a candidate. Going purely on their respective resumes, it is no contest. Bush came into his current office with much more experience.

But Gerri is hardly a slouch in the political game. As stated before, she leaves a favorable impression.

Insiders in the Democratic Party contend that she is a quick learner and she has demonstrated a "go-for-the-jugular" aggressiveness early in the campaign. She will bring out issues to the voters.

Unfortunately for the Democrats, this aggressive style could make her prone to make mistakes. She is still trying to convince people that she said the President's policies were un-Christian, and not the man.

The final assessment of Ferraro the candidate is still far off. But her presence on the Democratic ticket promises to keep things lively in a campaign that otherwise promises to be a (ho-hum) Republican landslide.

Coll cha

By Jerry B
Staff writer
ASU's Co
ferent app
school ye
better-tra
the quality
dent receiv
College.

"ASU ha
for educat
said. "And
should be
tinues."

Under th
ments of
special ed
Division of
Juniors o
will be the
sion which
education
to classroo

Stout sai
ty has been
"We hav
this plan,"
faculty wil
He said
the past tw
least" a r

Cath
need
for a

GIVE
MA
OF

TO T
CO
W
(
r
PLE
94

T

T

T

T

T

T

T

T

T

T

T

College of Education adopts changes to aid future grads

By Jerry Brown
Staff writer

ASU's College of Education will take a different approach beginning with the 1985-86 school year, one designed to graduate better-trained teachers and help improve the quality of the overall education each student receives, according to the Dean of the College.

"ASU has always been the premier school for education in this state," Robert Stout said. "And we are making the moves that should be done to make sure that continues."

Under the new plan, the current departments of elementary, secondary, and special education will merge to form the Division of Teacher Preparation.

Juniors enrolled for the 1985 fall semester will be the first taught under the new division which will cover subjects common to all education majors, from child development to classroom management.

Stout said response from education faculty has been positive.

"We have received very good response on this plan," Stout said. "I think most of the faculty will take to the changes."

He said the plan has been in the works for the past two or three years and "is not in the least" a result of changes at NAU and its

Center for Educational Excellence.

Alleen Nilsen, chairwoman of the University's Task Force for Excellence in Teacher Preparation said the change was the result of local and national reports criticizing the quality of education.

"The concern that people have shown in education has made these kinds of changes possible," Nilsen said. "The faculty has heard the critics and wants to do something about it."

Stout said the plan must be passed by administration and "will also get a look by the Regents" before going into effect.

"(ASU Vice President for Academic Affairs) Jack Kinsinger has had a look and agrees with us, but he wants to wait and see the final product before deciding on it," Stout said.

The new plan calls for the creation of an assistant dean in the College of Education and three other advisory positions, instead of the current chairmanships that oversee the three departments. Stout said the new plan will help improve communication within the college.

"I am glad to see us moving in the right direction," he said. "The changes are exciting, and I am happy to see them."

The changes will not affect the education college's other five departments.

Catholic service needs volunteers for aid program

The Tri-City Catholic Social Service urgently needs volunteers for "Adopt-a-Neighbor" — shopping, telephone reassurance and mealtime assistance and visiting programs.

Anyone interested in the programs should call Martha at Tri-City Catholic Social Services, 252-9010.

GIVE TO MARCH OF DIMES

TO THE JEWISH COMMUNITY WITH LOVE
(recorded message)

PLEASE CALL
941-9268

Rentals  Sales

Aaron's
Arizona Tux Shops

Style for style, we guarantee the lowest prices in the valley!!

Mon.-Fri. 10 a.m.-9 p.m. 217 W. University Dr. Tempe
Sat. 10 a.m.-6 p.m. 966-7235
Sun. 12 p.m.-5 p.m.

Over 30 Styles to Choose From

"ROSES DAY"

IS TODAY AND EVERY DAY WITH LOVE



Yes, we're up to our delighted noses in lovely roses. And that means good news for YOU — or that special person you choose to delight with a dozen.

\$19.50 a dozen boxed & delivered

Tempe Florist

715 S. Forest Dr.
(Behind Chuckbox)

966-4515

Express your thoughts with Special Care™

Registered Trademark of Florists' Transworld Delivery Association



Terrace Road Apartments

Special Summer Rates and New Cable Hookups

½ block from Campus. Huge, well furnished 1-bedroom, 1-bath, and 2-bedroom, 2-baths, all utilities included, plus many amenities.

950 S. Terrace Rd.

966-8540

COUPON



Papa Jay's New York Pizza and Video Arcade

Over 25 videos 10 for \$1 everyday

FAST FREE DELIVERY! Limited free delivery area.

#1 Sun Devil Combo

Large pizza with your choice of up to 4 toppings.

ONLY \$5.95 (plus tax)

Good on delivery, take-out or dine-in. Expires 8-15-84.

#2 Dinner Combo

Mix or match any 2 — lasagna, stuffed shells, or manicotti dinners.

ONLY \$7.99 (plus tax)

Good on delivery, take-out or dine-in. Expires 8-15-84.

Daily Lunch Special!

Buy 2 slices of Pizza and get your first Draft Beer or Soft Drink for 25¢. Expires 8-15-84.

Tempe: 804 S. Ash (University & Mill)
966-1003 • 966-4292

O'Toole's Pub
An Experience

T.G.I.F. ^{almost} Every Thursday!!

½ Liter Ice Teas

\$1
8-12

Beer/Wine
25¢ - 50¢
8-10 / 10-12

Dance to our Hot New Videos!!
1123 S. Rural Rd. ~ Tempe

Delays in bidding, engineering keep Lot 42 shut for fall start

By M.G. Khan
Staff writer

Construction on Lot 42, which began on July 9, may continue into the beginning of the fall semester despite attempts to speed up the work, according to the ASU director of public safety.

C. Russell Duncan said the backed-up schedule is due in part to delays in planning, engineering and bidding on the project, which is expected to exceed its \$200,000 budget by approximately \$138,000. The entire cost will be paid for by revenues from the sale of parking decals and from fines collected for citations.

Originally, construction on the lot, located east of the College of Law, was slated for completion by the first day of the fall semester, Aug. 23. However, Duncan says the date of completion now will fall somewhere in mid-September unless weather interrupts the work.

In an effort to open the lot as soon as possible, the University agreed to pay the construction company, Broderick Contracting

Co., an extra \$6,000 to work an extra hour each day, Monday through Friday, and to work weekends.

Duncan said the shortage of parking spaces caused by the closure of the 483-space lot may be an inconvenience, but adequate parking will be available in other lots, including 49, near the Student Health Services, and 59, near Sun Devil Stadium.

Lot 42 previously was unpaved, although lighting was installed less than six months ago. It was determined that the lot would have to be permanently surfaced in order to comply with city regulations on clean air.

Duncan said paving the lot also would benefit drivers, however.

"Parking in the lot was disorganized," he said. "It was bare land with a few sign posts and some faint lines. With the new construction, we'll gain 20 to 30 spaces."

In addition to the creation of new spaces, the lot, which will be designated for open and limited decals, will be more aesthetically appealing, Duncan added.

BRAND NEW NOW RENTING

Worthington Place Apartments

Beautiful brand new apartments designed in a New England Cape Cod atmosphere.

Featuring:

- Pool and Jacuzzi
- Sand Volleyball
- Extra Large Private Balconies and Patios
- Private Storage
- Covered Parking
- Washer/Dryer Hookups
- Mini Blinds

Worthington Place

616 S. Hardy • 839-1292
Just North of University on Hardy

Managed By
EAGLE PROPERTY MANAGEMENT



Most major label new \$8.98 list LP's

\$5.99

- ALWAYS!! Great selection at low prices
- Thousands of guaranteed used LP's, new LP's & imports
- Buttons, t-shirts, blank tapes
- Video rentals \$2.50 per day TDK SA-90 - \$2.99 ea. no limit
- We pay cash for used LP's & cassettes in good condition.

Reel Rock records

933 E. University
1 blk. E. of Rural Rd.
Tempe Towne Plaza
968-6544
Mon-Sat 11-8

A Special Offer From



ASU Students...

If you're over 18 you can rent an Escort or other fine car at

SPECIAL LOW WEEKEND RATES

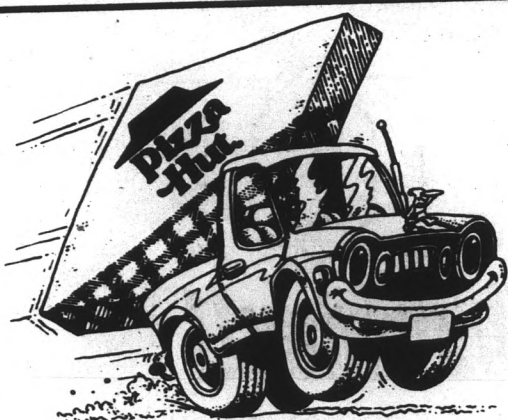
starting at **\$15.96** A DAY (2 Day Min.) no mileage

(Rates subject to change without notice)

For Your Car, Call Your ASU Representative

968-4072

Office located at Rural & University



A SPECIAL INVITATION
From Rick Howard
Restaurant Manager
and Crew Members

\$300 OFF
ANY LARGE PIZZA
or \$2.00 off any medium pizza

Present this coupon at any participating Pizza Hut® restaurant and get \$3.00 off any large pizza or \$2.00 off any medium pizza. One coupon per customer per visit at all participating Pizza Hut® restaurants. Not valid with other coupons, discounts, or promotions.

Offer good through 12-31-84.

1/20 cent cash redemption value.

Pizza Hut
1030 E. Apache
Tempe, Az. 85281

Eat-in or Carry-Out
Phone 829-8907

FREE DELIVERY
Phone 829-8907

Banquet Room
Available **FREE**
of charge

Any Large Pizza
at Medium Pizza Price.

Present this coupon at any participating Pizza Hut® restaurant and get any large pizza at medium pizza price. One coupon per customer per visit at all participating Pizza Hut® restaurants. Not valid with other coupons, discounts, or promotions.

Offer good through 12-31-84.

1/20 cent cash redemption value.

\$300 OFF
ANY LARGE PIZZA
or \$2.00 off any medium pizza

Present this coupon at any participating Pizza Hut® restaurant and get \$3.00 off any large pizza or \$2.00 off any medium pizza. One coupon per customer per visit at all participating Pizza Hut® restaurants. Not valid with other coupons, discounts, or promotions.

Offer good through 12-31-84.

1/20 cent cash redemption value.

I'VE GOT IT!
I'VE GOT IT!



Looking For A Safe Way To Pick Up Extra Cash?

Try plasma donation! It's easy, painless and takes only a few hours each week.

\$10 is paid for each donation and you can donate every 72 hours. That's up to \$100 a month! Plus you can win even more — in weekly and monthly cash drawings.

New donors will receive an additional \$5 with this ad for their first donation.

So don't look for pennies from heaven — look for us instead!

University Plasma Center
1015 S. Rural Road 968-6139

Open:
Mon.-Fri.
Wed. & Sat.

8 to 7
9 to 6

Licensed by the FDA

music video • innovative

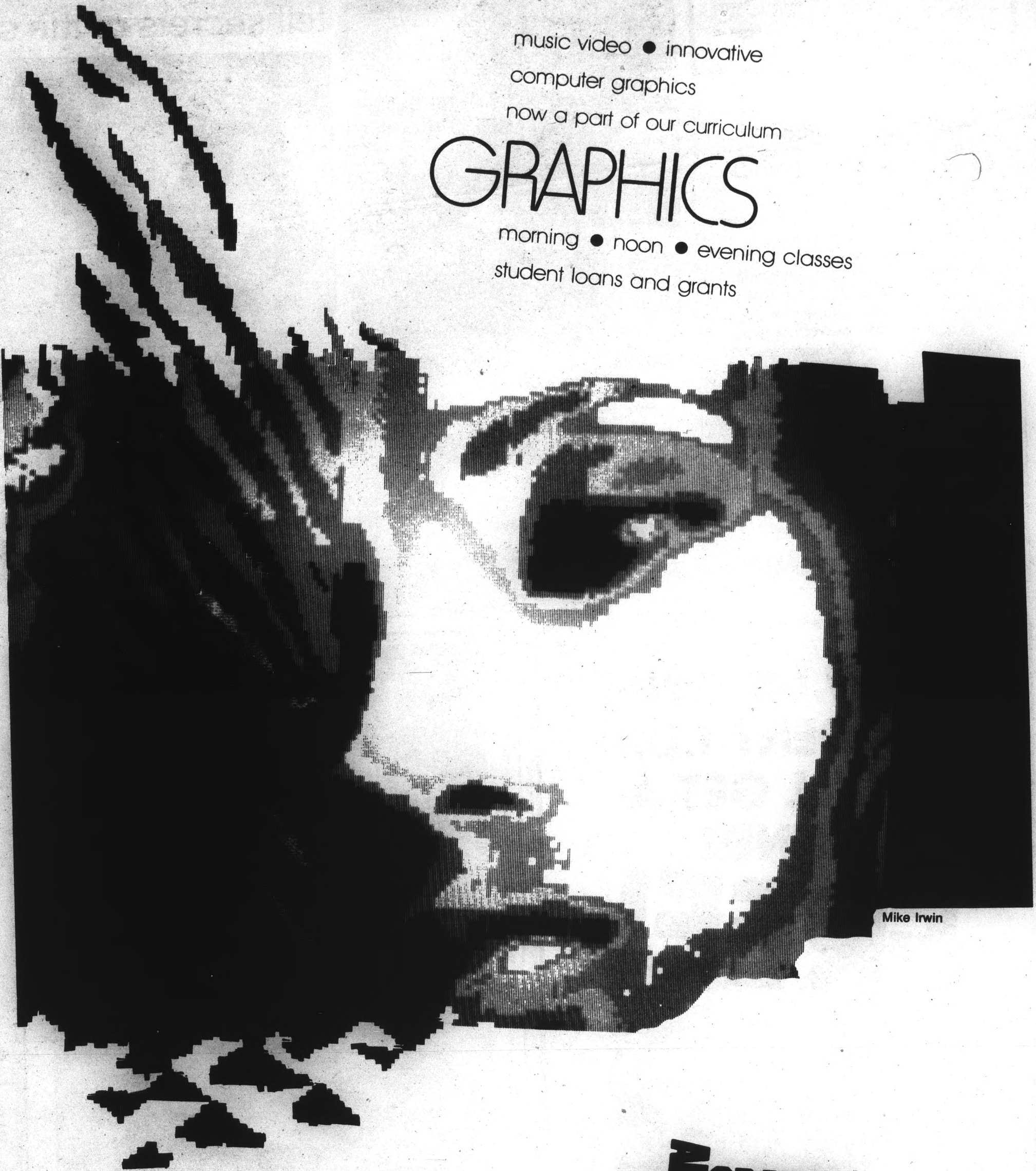
computer graphics

now a part of our curriculum

GRAPHICS

morning • noon • evening classes

student loans and grants



Mike Irwin

**COLLINS GRAPHIC
DESIGN
SCHOOL**

1735 E. McDowell Rd. Phoenix, Az. 85006 252-5549

DHANLAXMI R. MERCHANT, D.D.S.
SIERRA DENTAL ASSOCIATES
 University Medical Center
 Suite 2 North 2525 S. Rural Rd., Tempe
966-9936
 Mon.-Fri. 8 a.m.-5 p.m. • Sat. By Appointment

- Free Oral Exam & Treatment Plan
- Cosmetic Bonding
- All Crown & Bridge Work
- Partial & Full Dentures
- Periodontal Problems
- Convenient to ASU

All Insurance Welcome
10% Off to ASU Students
 Bring this ad for additional 10% off on your first visit.

**YOU'LL LEARN THINGS IN
 O.C.S. THEY NEVER HEARD
 OF IN ENGINEERING SCHOOL.**

Army Officer Candidate School (O.C.S.) It's a 14-week challenge to your mental and physical toughness.

It isn't easy. But you'll learn what's deep inside you. That you have what it takes. You'll come out strong, sure in your ability to lead, and in great shape. You'll be a commissioned officer in the Army, ready to exercise leadership skills civilian companies put a premium on.

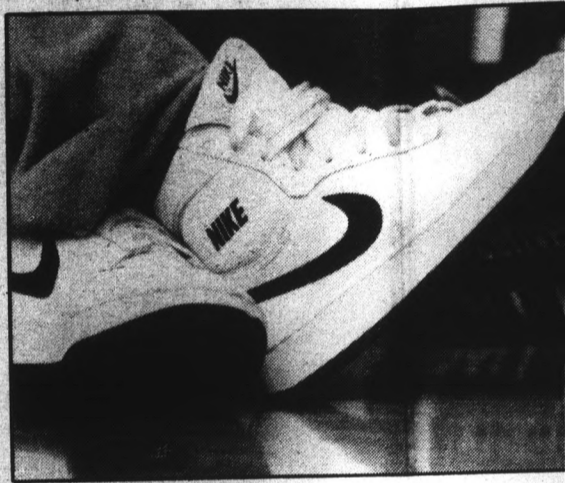
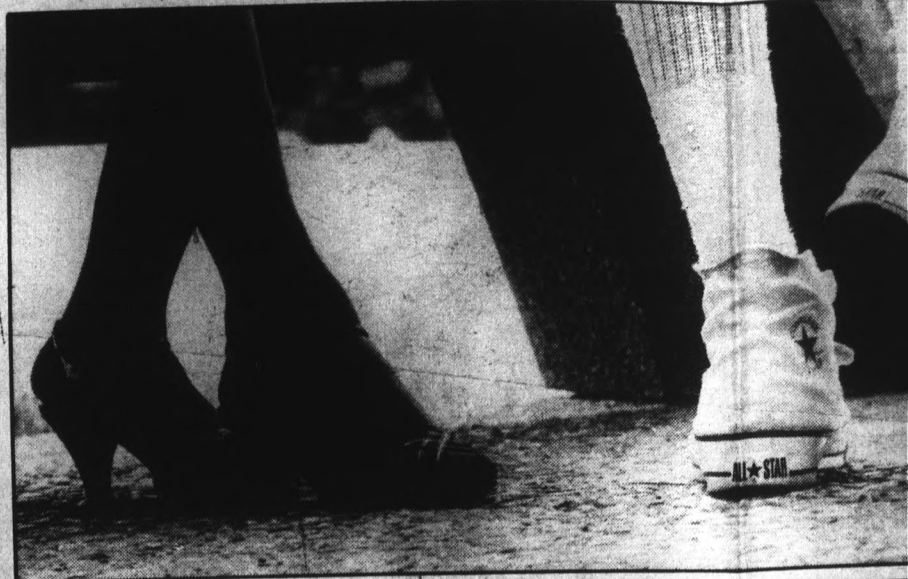
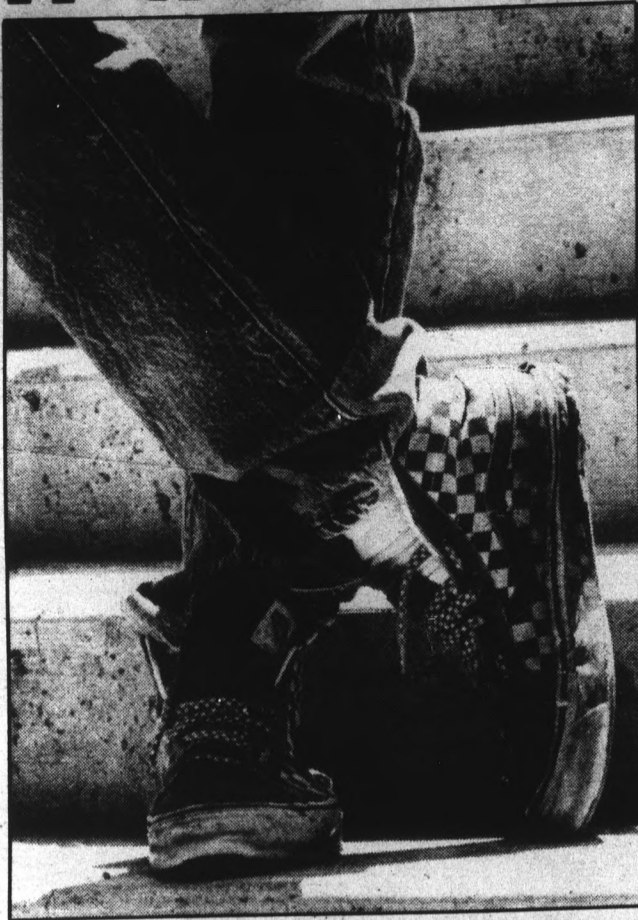
If you're about to get your degree in engineering, the O.C.S. challenge could be just what you're seeking. Call your local Army Recruiter.

967-1611

ARMY. BE ALL YOU CAN BE.

If the shoe fits . . .

Varied tastes in shoes tell secrets of the sole



Here's part of the ASU foot patrol, clockwise from bottom left: Chuck Meeder, a junior in finance; Eric Frestedt, a Gilbert High School junior taking summer classes at ASU; Jacqueline Booker, library employee, and her son Mark Evans; Charmaine Tso, a senior studying land reclamation.

"These they'll do, over you. Just sto around, but those shoe you." Never in been reach combing o from the world of sl

**SHOW US YOUR
 STUDENT I.D.
 YOU'LL GET A
 DINNER
 FREE!**

This year we're doing it again! Every Sunday (but ONLY on Sunday), Mike Pulos of the Spaghetti Company will give you one FREE dinner* for each dinner you order! It's our 2 for 1 SUNDAY STUDENT SPECIAL. And it's good for the whole school year at both our Tempe and Phoenix locations.

Any day of the week, for lunch or dinner, The Spaghetti Company is known for a great meal at an affordable price. But the SUNDAY STUDENT SPECIAL

makes our already terrific prices **even better!** Our dinners include a full course, meal with all the trimmings—from salad to dessert. So, dollar for dollar, when you're hungry and you need a break, you can't beat The Spaghetti Company! **ESPECIALLY ON SUNDAYS!** With 2 dinners for the price of 1! But you **MUST** have your student I.D. card with you to take advantage of this offer.



OPEN AT 12:00 ON SUNDAYS!

The Spaghetti Company
 RESTAURANT

PHOENIX
 South on Central
 Just Past McDowell
 257-0380

TEMPE
 4th Street and Mill
 966-3848

Steak Di Jon, Stuffed Filet of Sole, Tenderloin, Chicken Picatta, Veal Marsala ARE NOT included in the 2-for-1 special.



Confetti's

10320 N. Scottsdale Rd.
 Bayless Revco Village

948-6404

HOURS: 10-9 Mon.-Fri., 10-6 Sat., 12-6 Sun.

oes
sole

"These boots are made for walking, and that's just what they'll do, one of these days these boots are gonna walk all over you..."

Just stop right there, O faithful reader! Take a look around, but don't smell the roses. Instead, check out all of those shoes walking around you or as the song goes, "over you."

Never in this writer's life has such a plateau of awareness been reached concerning the various types of shoes that are combing our beautiful earth. If I have anything to remember from the year of 1984, it will be my discovery of the wide world of shoes.



Some say that a fellow's pet reflects his personality. Taking this a step further, it would seem certain that footwear, too, tells a story about the person who wears it.

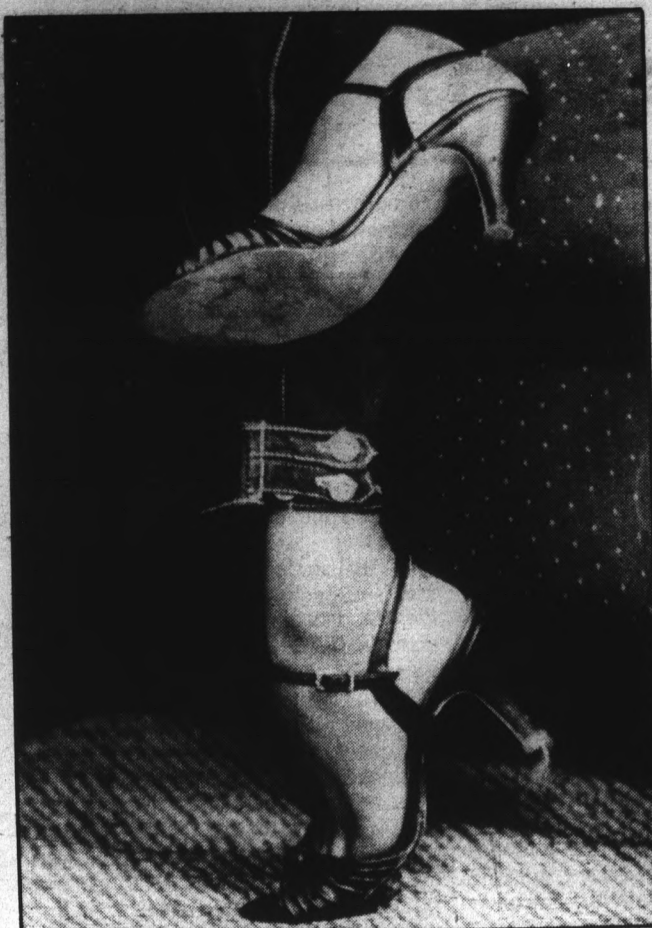
(As for myself, well, I go through mood changes. I therefore have many different types of shoes for each mood or character. When

Photos and text
by M.D. Tyree

I'm feeling athletic, I'll throw on my Tiger Extenders. When I'm feeling down to earth, you guessed it, on go the Birkenstocks. The hiking boots go on when I'm on my way to Flagstaff, or at least wishing I was there.)

You can see for yourself the vast mix of footwear right here at ASU. Yes sir (or ma'am, if you prefer), this campus has them all. From thigh-high riding boots to enticing espadrilles.

*Converse, Bass, and Vans are some you may see;
But no matter where you are, you'll always find a Nike.
Tiger, Birkenstock, Hush Puppy I like best;
But it's Adidas, Pony, and Candies that I detest.
Tony Lamas, London Fog and Gucci are some of the finer few;
But Thom McAn, Dexter and Buster Brown will always do.*



This dangerous-looking pair of high heels belongs to Uma Krishnan, a junior in marketing.



The author.

\$45⁰⁰ **\$74⁰⁰**
SINGLE VISION **BIFOCAL**
ONE PRICE INCLUDES:
 Frame & Lenses; glass, plastic, tinted
 or photogrey

OPTECA
 EYE CARE

TEMPE TOWNE PLAZA
 933 E. University
 Tempe, AZ 85281
 (Just East of Rural on Univ.)

CALL TODAY & SAVE
894-8377

THE HAIR CUTTERS

Your Campus Hair Care Center
 709 S. Forest Ave., Tempe
 North of University • Behind the
 Chuck Box • In Oxford Square
968-5946

\$300 OFF
 With This Ad
 Expires August 30, 1984.

REGULAR PRICES
 • Shampoo • Condition
 • Precision Cut • Blow Dry

MEN \$12 • WOMEN \$14

OPEN MONDAY THROUGH SATURDAY.

Wacky WILLY'S

Where You Can Eat, Drink,
and Get a Little Crazy!

Tuesday: T-N-T SPECIAL

All the Tostadas you can eat
for just \$3.95. Plus all Tequila
Drinks are 1/2 off all night long.

Wednesday: 2 FOR 1

Any two dinners of equal value
for the price of one
all night long.

**OPEN FOR LUNCH
HAPPY HOUR 3-7 NIGHTLY**

Wacky Willy's

Tempe's Great Mexican Food Experience.

Wacky WILLY'S

Mon.-Thurs. 11:00 AM to 11:00 PM 1120 E. Apache
 Fri. 11:00 AM to 1:00 AM One Block East
 Sat. 5:00 PM to 1:00 AM of Rural Rd.
TAKE OUT 967-1129

CLANCEY'S
 NIGHT CLUB

919 E.
APACHE
TEMPE
966-7770

Tonight!

Ladies Night

Girls Admitted Free All Night and Drink
1¢ Well, Wine & Draft Downstairs 7:30-9

Guys 2:1 Well, Wine & Draft All Night

One of Northern Californias' Hottest
Bands: **Some Bodies Kids.**



Sunday
4-8
Pre-Rod
Stewart
Concert
Party

Monday
300⁰⁰
Guitar
Give-away
with
Surgical
Steel

Friday Happy Hour 4:30-7:30

Free Pizza! Courtesy Mr. B's
60¢ Bud & Bud Lt. • \$2.25 Bottomless Margaritas

Friday & Saturday 7:30-Close

2:1 Long Island Ice Tea
2:1 Draft Bud or Bud Light

police report

The ASU Police Department reported the following activity between July 12 and 17:

- July 12 • An ASU student reported the theft of a tool box, tools, speakers and speaker covers from his Volkswagon parked in Lot 51W. The suspects pried open a window, but no damage was done to the vehicle. The loss was estimated at \$175.
- An ASU student reported the theft of a silver-gray turntable and a brown leather wallet from his room in Palo Verde West. The two items were valued at \$170.
- An ASU student received burns to his left and right forearms when he brushed against a 220-volt transformer in the Classroom Office Building. Tempe paramedics responded and administered first aid to the victim who later was taken by ambulance to Desert Samaritan Hospital.
- July 13 • An ASU student reported the theft of a brown car cover from a vehicle parked in Lot 51W. The cover was valued at \$60.
- An ASU student reported the theft of a Huffy 10-speed silver men's bicycle. The bike, valued at \$40, was locked.
- An ASU student reported that three subjects threw objects through four windows at 406 Adelphi Drive. The damage was estimated at \$350.

- Three women reported their purses stolen from the University Activity Center during the Lionel Richie concert. All three were later recovered and returned to the victims. Only one had missing contents, including identification and \$5 cash.

July 14 • An ASU student was stopped by ASU Police who discovered he had in his possession a refrigerator belonging to the University. The subject said the refrigerator was obtained by his girlfriend, also an ASU student. The subject was arrested, photographed and fingerprinted, then released on his own recognizance pending further investigation.

July 15 • An ASU student reported the theft of his bike from the north side of the Engineering Research Center. The bike, which was not locked, was valued at \$200.

July 16 • An ASU student reported the theft of a men's 12-speed silver bicycle from the entry area of Palo Verde West. The bike was valued at \$180.

• An ASU student reported the theft of a 10-speed red Free Spirit bicycle from the Engineering Research Center. The bike was valued at \$100.

• An ASU employee reported damage

to numerous parking meters in Lot 27 and on Gammage Parkway. No cost was determined.

• An ASU employee reported the theft of a blue women's 10-speed Huffy bicycle from the racks at the northeast corner of the College of Law. The bike was valued at \$90.

• A man was found in the trash dumpster looking for food and throwing trash out on the ground at Palo Verde East. The subject was advised of littering laws and told to clean up the area.

July 17 • An ASU student reported the theft of a men's 27-inch blue Schwinn Le Tour bicycle from the Palo Verde East courtyard. The bike was valued at \$220.

• An ASU employee reported the theft of two Motorola radios and one Motorola charger taken from the east hat check area of Gammage Center. Their combined value was \$1558.

• An ASU student reported damage to the door at 414 Adelphi Drive. The dead bolt lock was bent and the molding was broken, but nothing was stolen. Damage was estimated at \$50.

• An ASU student reported the theft of a blue Velcro wallet which contained identification, two concert tickets and \$5 cash. The wallet was taken from an unlocked practice room in the Music Building.

winning play by Bill C. Davis, "Mass Appeal," produced by the Priory Players of the Western Dominican Province, at 8 p.m. July 20 at the Center, 203 E. University Drive in Tempe.

Collage is a weekly listing of events and meetings sponsored by clubs and organizations in the campus community. To have your notice published, fill out a Collage form, available at the front desk in the basement of Matthews Center. Deadline for inclusion is noon Tuesday for the following Thursday's edition.

collage

Friends of Doctor Who, aiming to prevent "Doctor Who" from being canceled, will meet at 3:30 p.m. today in MU Coconino Room 217.

All Saints Catholic Newman Center will present the award-

IDRIES SHAH:

METAPHYSICS

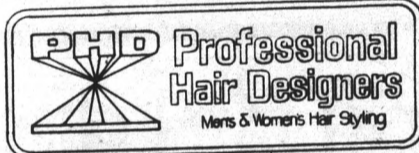
I don't know how it is with other subjects, but I do know that many people who imagine that they can talk and think about metaphysics wouldn't know it if they found it in their soup.

Reflections

Octagon Press \$7.95

Available at:
CHANGING HANDS BOOKSTORE

or promptly by mail from
SHK Book Service, Dept. C-1
P.O. Box 176, Los Altos, CA 94022



Summer Perm Special!!

22.95 reg. 45.00

(Includes: Cut & Shampoo)



- Hair Cuts..... \$7.00
- Cellophanes (Reg. \$30.00) \$15.00
- Eyelash & Brow Tinting..... \$5.95

Avoid the need for mascara. Look great this summer around the pool.

933 E. University 966-6111
Tempe Towne Plaza Call For Appointment
M-Sat. 9-9 Sun. 11-4

At Diet Center, you have nothing to lose but weight.

- Lose weight fast • Keep it off forever • Private, daily counseling • Low prices, no contracts

Call today for more information



Over 1,850 locations, USA, Canada and England

University Medical Center • 2522 S. Rural Rd., Suite 6-N
967-1371



Shopping Adventures at the Friendliest, Healthiest Place in Town

- | | | |
|-------------------------|-------------------------|----------------------------|
| 1 Farm fresh vegetables | 4 Bulk foods and spices | 7 Natural skin & hair care |
| 2 Organic produce | 5 Vitamins and minerals | 8 Books and magazines |
| 3 Local fruits | 6 Delicatessen | |

SPECIAL With this ad
25¢ Frozen Yogurt Cone



Gentle Strength Co-op
40 East Fifth Street
Tempe, AZ 85281
Ph. 968-4831

Expiration date July 26
Limit one per Customer

Owned by Members — Open to Everyone.



REVERSE HAPPY HOUR

TUESDAY & THURSDAY 10 p.m.-Close

Beer • Wine • Well

125 East 5th Street
Crawling distance from A.S.U.

entertainment & the arts

state press

Local artists display ceramic, dyed crafts in MU Gallery show

Local artists Betsy Benjamin-Murray and Michael E. Whitehurst will present an exhibition of their works at the ASU Memorial Union Gallery, now through August 3.

A Tempe resident, Benjamin-Murray will exhibit resist-dyed silk Japanese kimonos, fans and floral and other landscape scenes.

Whitehurst, who resides in Phoenix, will present a series of porcelain containers and platters.

Benjamin-Murray studied various dyeing techniques in Japan from October 1981 to June 1983 as a graduate research student at Kyoto Seika University and the Natural Dyeing Institute in Yamashina.

"If you just put dye on a fabric, it will run so you have to find ways to hold it in place," explains Benjamin-Murray. She added that there are several ways of putting dye on fabric including stencil (katazome), paste (yuzenzome) and wax (ryoketsuzome).

Each process will be represented in the exhibit.

Benjamin-Murray holds a bachelor of science degree in art education from the Massachusetts College of Art and a master of arts degree in art education from ASU.

She has taught dyeing techniques, textiles, ceramics

and fibers at ASU, Phoenix College, Glendale Community College and Luke Air Force Base.

Benjamin-Murray has exhibited her works widely and is currently a member of Arizona Designer Craftsman, as well as founding president of the Arizona Women's Caucus for Art.

Michael E. Whitehurst will exhibit recent works of porcelain jars, containers and jugs employing a variety of colors.

He studied advanced ceramic techniques at ASU from 1976-79 specializing in glaze research, Chinese ceramic art history and calligraphy and kiln technology.

Whitehurst served as the president of CLAY (Craftsmen Living Among You) in 1981 and was awarded first prize at the association's annual juried show at the Heard Museum in 1979 and 1981.

Among his exhibition credits are the Scottsdale Festival II, the Mind's Eye Gallery in Scottsdale, the Tucson Festival of the Arts and the Flagstaff Community Arts Center.

Gallery hours are 9 a.m. to 5 p.m., Monday through Friday.

spotlight

Thursday, July 19

• Two fun-filled Fellini romps will parade across the Scottsdale Center for the Arts screen at 7 p.m. July 19 and 20, and at 1 p.m. and 7 p.m. July 21. First up is the highly-praised and often disparaged "8½" in which Marcello Mastroianni plays a film director (based on you-know-who). The second feature is "Juliet of the Spirits," which takes a surrealistic look at the sex lives of people in unusual costumes.

• Tired of the same old Thursday night routine of seeing Fellini movies at the Scottsdale Center for the Arts? Then why not check out the Valley Art Theatre's Thursday Night Concerts (and see Fellini tomorrow night). Tonight's concert features rhythm and blues band Small Paul and Drivin' Wheel (voted Best of Phoenix in "another weekly newspaper"). The show starts at 8 p.m. and tickets are \$3.50 or \$2.50 for KSTM Stormcard holders. Valley Art Discount Cards will be honored!

Friday, July 20

• Get out your handkerchiefs. Two Academy Award-winning tearjerkers will sash their way onto the Valley Art screen July 20 and 21. "Tender Mercies" shows at 6 p.m. and 10:15 p.m.; "Terms of Endearment" shows at 8 p.m.

Saturday, July 21

• Maze featuring Frankie Beverly will appear on the Celebrity Theatre stage at 7 p.m. and 10:30 p.m. Beverly is described by the L.A. Times as "handsome and charming" and "more sensitive" than Teddy Pendergrass, but not without "macho qualities." Toss in an appearance by Michael Henderson and you've got quite an evening. Reserved seat tickets are \$13.50 and \$12.50 and are available at all Diamonds outlets.

• With stars like Leslie Howard, Olivia DeHavilland and Bette Davis and a title like "It's Love I'm After," one really can't go wrong. The 1937 film begins at 8 p.m. on KAET-TV, Channel 8.

Sunday, July 22

• The Valley Art is showing a pair of films, one of which has not been shown on Channel 15 recently. The Mel Gibson/Anthony Hopkins version of "The Bounty" unreels at 3:30 p.m. and 8:05 p.m. July 22 and at 8:05 p.m. July 23. "Breaker Morant" plays at 1:30 p.m. and 6 p.m. July 22 and at 6 p.m. July 23.



Macho yet sensitive Frankie Beverly and his group Maze will appear at the Celebrity Theatre July 21.



This is "This Is Spinal Tap," the legendary documentary about the legendary British rock legends. The film will be shown at the legendary Valley Art Theatre July 27 and 28.

Tuesday, July 24

• Schmaltzy, puff-jazz composer Bob James is scheduled to perform at the Scottsdale Center for the Arts in two shows at 7 p.m. and 10 p.m. Most famous for his theme for the ex-TV series "Taxi," James has "pleased millions with his flowing melodies and impeccable technique." All that for only \$15! Tickets are available at the Center Box Office. For more information call 994-ARTS.

• The Valley Art Theatre continues to parade its Bad Taste with another stomach-wrenching double bill July 24 and 25. "Andy Warhol's Dracula" shows at 6 p.m. and 9:45 p.m., with John Waters' infamous "Pink Flamingos" at 7:50 p.m., in which the star, Divine, proves that he/she is "the filthiest person on Earth." Better leave Grandma at home.

Wednesday, July 25

• Hey, kids! The Scottsdale Center for the Arts is presenting a classic Disney double-bill: "Peter Pan" and "Snow White and the Seven Dwarfs" beginning at 1 p.m. and 7 p.m. Tickets are \$2.50 for students, seniors and SACA members (you know who you are) and \$3 for everyone else.

Thursday, July 26

• The Scottsdale Center for the Arts continues its "Cult Film Festival" with showings of "Charly" and "David and Lisa" at 7 p.m. July 26 and 27 and at 1 p.m. and 7 p.m. July 28. Tickets are the usual prices, OK?

• Tired of the same old Thursday night routine of seeing cult films at the Scottsdale Center for the Arts? Then why not check out the Valley Art Theatre's Thursday Night Concerts (and see the films tomorrow night). The July 26 concert features The Results, close personal friends of M.G. Khan. The show starts at 8 p.m. and tickets are \$3.50 or \$2.50 for KSTM Stormcard holders.

Friday, July 27

• "This is Spinal Tap," the acclaimed pseudo-rock pseudo-documentary, will be shown at 8 p.m. and midnight, along with the less-acclaimed pseudo-hip "Streets of Fire" at 6 p.m. and 9:50 p.m. July 27 and 28.

Ongoing exhibits

• Some vestiges of "Ceramic Festival I" — the ASU crockery collection — can be found, resting quietly, in Matthews Center through August 12.

• "A Gallery of Beauties" is the result when the University Art Collections presents an exhibition of prints by 12 master printmakers depicting beautiful women, in the Matthews Center Gallery through July 29.

• The Scottsdale Center for the Arts is hosting, through July 29, the Eighteenth Southwest Invitational art exhibition featuring the works of 38 contemporary Arizona artists juried by Richard Koshalek, director of the Museum of Contemporary Art in Los Angeles.

• The Memorial Union Gallery is hosting a display featuring porcelains by Michael E. Whitehurst and resist-dyed silk by Betsy Benjamin-Murray through Aug. 3. Gallery hours are 9 a.m. to 5 p.m. Monday through Friday.

• An exhibition of works by artists from Woman Image Now, an ASU student art organization, will reside in the lobby of Gammage Center through Aug. 31. The exhibition can be seen during regularly scheduled tours of the building from 1:30 p.m. to 3:30 p.m., Tuesdays, Thursdays and Saturdays, or by attending performances in the Center.

• "Sign, Symbol, Script," an exhibit of artifacts representing the evolution of writing, can be found through Sept. 9 at the Arizona Museum of Science and Technology in Phoenix.

• The Boulton Collection of musical instruments from around the world can be viewed from 11 a.m. to 4 p.m., Monday through Friday on the fifth floor of the Music Building.

Medley of artists breathes new life into Monk's works

A "tribute album" can be a pretty dull affair — lots of mooning around about the dear-departed-close-personal-friend, and lots of lamenting about the enormous loss to the world of music.

If one only read the slightly overwrought liner notes to "That's The Way I Feel Now — A Tribute to Thelonius Monk," a recent addition to the "tribute album" repertoire, one could get the same kind of maudlin impression.

Don't bother with the text, go straight to the music.

The music of Thelonius Monk, one of the true originals in jazz history, is interpreted here using an amazing variety of styles. The collection is sure to make jazz purists cringe a few dozen times, but the point is made convincingly that Monk's music is well-suited to these wide-ranging approaches.

The first cut serves as a fitting fanfare: a multi-trombone, 47-second blast of "Thelonius," arranged by Bruce Fowler, leading into a rousing "Little Rootie Tootie" from the NRBQ, one of the album's highlights.

Donald Fagen and Steve Khan team up for a rendition of "Reflections" that could be termed "mellow," but not unpleasant, though my interest began to wane during Fagen's synthesizer solo (employing his trademark fake harmonica whine). Dr. John (Mac Rebennack) contributes to two cuts: a solo piano version of "Blue Monk" and quartet reading of "Bye-Ya" with Steve Slagle, alto sax, Steve Swallow, bass, and Ed Blackwell, drums.

Always good for some fun, Carla Bley's band checks in with a wonderful "Misterioso," featuring the talents of tenorist Johnny Griffin, a one-time Monk sideman. Sharon Freeman contributes a very moody "Monk's Mood," using five French horns plus rhythm section and celeste.

Mark Bingham's three-guitar arrangements aren't something you might expect to work, but, in their own strange way, they do. The unison/octave electric guitar lines of "Brilliant Corners" and "Jackie-ing" make for some en-



joyable and unique moments. More electric guitars can be found on Chris Spedding and Peter Frampton's "Work" — another surprising and rewarding moment. (Peter Frampton??)

Some of the experiments are less accessible. Something called Shockabilly contributes a barely recognizable "Crisis Cross," while the infamous Was (Not Was) and Sheila Jordan regale with "Ba-Lue-Bolivar-Ba-Lues-Are" — weird, but fun. And in a truly strange moment, John Zorn and friends manage to honk out the tune of "Shuffle Boil" using "game calls," saxophone, clarinets, guitars, electronics, etc.

One of the oddest appearances is that of Todd Rundgren's name on the list of contributors. Not known for his jazz leanings, Rundgren teams up with alto saxophonist Gary Windo for a loopy, cartoonish "Four in One."

Some straighter-ahead arrangements also find their way into the package. NRBQ's Terry Adams and some former Monk associates, including Roswell Rudd, read "In Walked Bud;" Randy Weston applies his spare, bluesy solo piano style to "Functional;" and the eclectic Joe Jackson contributes a near-muzak (but nice) arrangement of "Round Midnight," with none other than Jackson on piano.

Another of the album's highlights, "Friday the Thirteenth," features Bobby McFerrin and Bob Dorough in a vocalise extravaganza, with Dave Samuels on vibes and marimba. This cut was, for me, almost worth the (sale) price of the whole 2-record set. Not worth much of anything, however, is a six-minute, tack piano (!) rendition of "Pannonica" by Barry Harris. I think maybe I missed the point.

My biggest complaint with this particular tribute is the proliferation of Steve Lacy tracks. Steve's insistent soprano sax is found in duets with Charlie Rouse's tenor ("Ask Me Now"), Elvin Jones' drums ("Evidence") and Gil Evans' pianos ("Beshma Swing" — it doesn't). If this weren't enough, Steve tosses in a solo version of "Gallop's Gallop" complete with obligatory multiphonics. (I had almost forgotten about the solo-sax-with-multiphonics craze.) It's almost as if Lacy had nothing better to do than hang around the studio and cut Monk tributes in between the other musicians' sessions.

Despite a few drawbacks, this release is a fitting tribute, true to the nature of Monk's witty and original music. The jazz purists may grumble, but anyone so close-minded about such an open-ended and freewheeling art form deserves some grief. For me, the diversity of this collection is its most compelling feature.

— Don Slutes

BUY • SELL • TRADE
your books at Changing Hands. For quality cloth and paperbacks (no textbooks, please) we pay 30% of our re-sale price in cash or 50% in trade-in credit which may be used to purchase anything in the store. (Sorry, no trade-ins on Sat. or Sun.)

Browse through our three floors of:
• New & Used Books
• Art Prints & Posters
• Calendars & Cards
• Handbound Journals

M-F 10-9 SAT 10-6 SUN 12-5
CHANGING HANDS BOOKSTORE
414 Mill Avenue 968-0203
Old Town Tempe

TRAVELING?
UP TO FOUR PEOPLE

Deliver a car for us for cost of gas only. No rental charge. Connections for 32 years through 80 offices in U.S. and Canada. For complete information call

952-0339
AUTO DRIVEAWAY COMPANY

CAMPUS CLEANERS & COIN-OP LAUNDRY

- Dry Cleaning
- One Day Service
- Finished Shirts
- Drop-Off Laundry
- Alterations
- Suede & Leather
- Pillow Renovation
- Night Clothes Chute
- We Clean Hats

827 S. RURAL UNIVERSITY & RURAL
967-9650
OPEN 7 a.m.-10:30 p.m.

Joe Bob Briggs.
He's like a lot of movie critics.
Only different.

He drives a 1972 Toronado, with curb feelers. He likes his beer in quarts. And his popcorn without butter. He's Joe Bob Briggs, American. And he's the world's first drive-in movie critic. Joe Bob writes with a lack of style all his own. And his column is as much social satire as it is movie reviews. He's brash, funny and very off-the-wall. And he's only in CityLife. Look for "Joe Bob Goes to the Drive-In." You'll laugh. You'll cry. You'll kiss the other critics good-bye.

CityLife The last word in entertainment news.
Available Wednesday's at more than 300 Valley locations.

ASU bleacher bums' rudeness proves unwelcome at ballpark

Tom Blodgett
Sports writer

One of the best cases for not having beer in Packard Stadium, or in any other ASU sporting facility, presented itself at Phoenix Municipal Stadium (where beer is sold) on the Fourth of July.

A crowd of 10,000-plus was on hand to see the game and the annual fireworks display. Included in that crowd were a portion of ASU's own bleacher bums.

Now the bleacher bums have come under a great deal of fire the past year. Some of the local media have called them an embarrassment.

The bums claim they're just enjoying the good old American pastime the way it was meant to be enjoyed.

Having the dubious honor of sitting in the same section as these delightful creatures, who had beers in their hands nearly all the time, I had the pleasure of listening to them for a whole wonderful ball game.

Some of the obnoxious highlights, above and beyond their normal crude heckling of the opposition:

- Telling a little girl that she shouldn't wear stripes because they make her look fat;
- Hopping over the fence and taking a seat in the opposition's bullpen;
- Meeting requests for them to sit down with verbal abuse, etc.

Somewhere along the line, some kids began to throw paper, peanuts and other projectiles at them. And finally, in the bottom of the ninth inning, a person sitting adjacent to the bleacher bums blew up.

The bums immediately befriended the hot-tempered man and set to work in rectifying the situation.

Now certainly the kids were wrong in throwing objects at them. It is easy to see how someone could lose their cool if it happened long enough.

One expects more out of people who are old enough to be mistaken for adults

But there is an appropriate response for such a situation, and it is not to get up, storm toward a possible suspect and threaten him with physical violence.

One expects more out of people who are old enough to be mistaken for adults.

Furthermore, when a security officer did arrive, the bums played the role of innocents much to the rest of the section's disbelief. But then who else is going to appeal to a security guard who is 6-foot-3, weighs about 270 pounds and has a beer in his hand.

The bums have grown tiresome. Criticism of them is completely legitimate and yet the only way they deal with it is to call the critic a "jerk" and a few other choice words.

My wish is that this crew graduates soon and moves to Upper Volta.

C.C. CUTTERS & CO. SUMMER SPECIALS

Matrix Minking \$20	Weaving \$30	So-color Hint-of-Tint \$12.50 <small>(Deep conditioning color)</small>
-------------------------------	------------------------	--

(Your choice of 1 or 2 Hair Colors)

CALL US TODAY FOR YOUR FREE MATRIX SO COLOR CONSULTATION AND FOR OUR NEW CUSTOMERS . . .

(with this ad)

Haircuts \$6	Perms \$22.50	Deep Conditioners \$6
------------------------	-------------------------	---------------------------------

Hours: Mon. & Sat. 10-5, Tues.-Fri. 10-7
Address: 1036 S. Terrace on the Corner of Lemon & Terrace
Phone: **968-6685**



Gino's delivers.

Free 12" Cheese Pizza

with purchase of Large Pizza

Get a free 12" Cheese Pizza valued at \$3.25 when you purchase a Large Pizza with this coupon. Additional items on Small Pizza .60 each.

Not valid with any other coupon.
Expires Aug. 15, 1984.

Open Mon.-Thurs. 4 p.m.-midnight
Fri. 4 p.m.-2 a.m., Sat. noon-2 a.m.
Sun. noon-midnight

GINO'S PIZZA
966-4666

822 S. Mill Avenue
We've been delivering in Tempe since 1970.

905 S. Mill
Tempe Center
Tempe, Arizona 85281
(602) 829-1743

THE U SHOP

Come into our present location and look for us at the Cornerstone (Rural & University) August 1984.

Largest selection of **ESPRIT** in the area

Large selection of Tee Tops, shirts, slacks, skirts, shorts, dresses, bathing suits, hats, visors, tote bags, shoes and much more.

Santa Cruz

The Village Boutique

708 S. Forest, Tempe • 968-1611
(off Univ. between Mill & College)

FAMILY PLANNING INSTITUTE

WOMEN'S HEALTH CARE CENTER

All services personal and confidential by a caring staff.

- Free Pregnancy Testing with immediate results
- Pre-Marital Blood Testing \$15 with same day results
- Abortion Services
- Contraceptive Care Clinic
- Counseling available
- OB/GYN physicians

Evening hours & Saturday appointments now available

TEMPE
968-7471
2525 S. Rural Rd., Ste. 4C

PHOENIX
997-7493
9100 N. 2nd Street

CONTEMPORARY GRAPHICS INC.

JAGUAR

CONTEMPORARY GRAPHICS INC.

FRAMED PRINTS
(From \$29.95)

Contemporary Graphics offers a fine poster and print collection. We have carefully selected each print to bring the popular classics to the contemporary favorites. Each print in our collection represents a thoughtful integration of image, design, and typography.

Accent your home or office with one of our fine prints.

120 E. University Tempe, Az
967-5625

966-2150

eclipse
sun tanning

Introducing
Gail Camelin, Manicurist

Manicures 7.95
Fill-ins 14.95
By Appointment Only

Pedicures 14.95
Sculptured Nails 29.95
Tips 29.95

We Feature
Klafsun Tanning Booths & Beds

43 E. Broadway
Corner of Mill & Broadway
Tempe, Az.

M-F 9-8 PM
Sat. 9-6 PM

Looking For a New Wardrobe?

BUFFALO EXCHANGE
BUY-SELL-TRADE
New and Used Clothing

3 East 5th St.
Tempe, AZ
968-2557

"Paper Moon Graphics"

classifieds

The STATE PRESS disclaims all responsibility for quality and prices of goods and services offered in both classified and display advertising by its advertisers.

**STATE PRESS
WANNADS* ARE
THE CAT'S MEOW!**

**STATE PRESS
WANNADS*
REALLY WORK**
Visit Room 15
Matthews Center
or call
965-7572
(You can be billed)

*Americane for
Want Ads or Classified

Announcements

GAY CHRISTIANS! Christ died to take away your sins, not your sexuality! Be yourself at Casa de Cristo, an evangelical church where gay and non-gay Christians worship Christ together. Sunday services, prayer meetings and more! For more information call 265-2831.

INTERN IN Senator Dennis DeConcini's office this fall for credit. Apply at ASASU by August 1 or call 261-6756.

Automobiles

1971 VW Superbeetle. Air-conditioned. AM-FM stereo. Well-maintained. Runs great. \$1595. 831-0187.

LOS PORTICOS Apartments of Scottsdale, brand new apartments. Close ASU. 1221 N. 85th Place (two blocks south of McDowell on 85th Place. 85th Place is one block east of Granite Reef). Available: two bedroom, two bath and one bedroom, one bath apartments. Pool, spa, and much more. Starting at \$360. Call Will Heller of Hellermark Realty, 988-8425, 994-4733.

For Rent or Lease

DELUXE 2 bedroom, 2 bath, townhouse. Fireplace, poolside, washer-dryer connections. Walking distance ASU. \$550. monthly. 967-0082 evenings.

NICELY FURNISHED three bedroom townhouse. One mile from ASU. \$575. Will rent by the room at \$200. 274-4334.

ROOMS AND houses for rent in fall. Reserve now to avoid the rush. Rooms \$150-\$200, homes \$600-\$800. Close to ASU. 829-9228 Dean.

TWO BEDROOM, two bath, Dobson, University. Pool, tennis, furnished. Available August 1st, \$475. 938-5563.

TWO BEDROOM, one bath, refrigerated house. Two blocks ASU. Unfurnished, nice yard, water paid. \$395. 965-4376, 968-0659.

TWO BEDROOM, one bath, unfurnished house. One mile ASU. Evaporative cooled, stove, refrigerator. \$375. 965-4376, 968-0659.

For Sale

OLYMPIC TICKETS- August 4 through 10. Mens/ womens volleyball, track including mens 100 meter finals. \$5 to \$45. 966-5487.

OWN YOUR own mini computer. \$750. Call Powell, Trinity Computer Leasing, 265-4774.

Help Wanted

GOVERNMENT JOBS. \$16,559 - \$50,553/ year. Now hiring. Your area. Call 1-805-687-9000 extension R-9624.

GUESS WHAT? The Hob-Nob Thrift Shop is one year old. Don't miss our special sales every day. Hurry and celebrate with us. 221 W. University.

HOB-NOB needs part-time help. Accepting applications between 12:00 and 3:00. 221 West University.

OPPORTUNITY for one full time student to serve as campus representative for Zeb Pearce and Sons, wholesaler of beer and wine coolers. Applicants must be at least 20 years of age, own dependable transportation and be in good academic standing. Prefer applicants actively involved in recognized campus business or fraternal organization. Job will require 15-20 hours weekly including some evenings and Saturdays. Salary structure to be discussed. Contact Doug Williams, 257-1024.

Help Wanted

INTERNS WANTED. Fortune 500 company looking for aggressive individuals. Responsibilities include telephonics, proposal creation, demonstrations, paperwork. Keith, 264-4971.

JANITOR POSITION. Scottsdale-Phoenix. Quality oriented company. 2-4 hours per night; between 5:00 and 10:00 p.m., Monday-Thursday and Friday or Saturday. \$3.75 per hour plus bonuses. 274-0979.

PART AND full time, \$4 to \$8 an hour. New business opening in Phoenix. Multiple positions: snack bar, cashiers, floor sales, maintenance, paper packer/ collators, and secretaries. Interviews conducted in the Zuni Room, Raddisson Resort, Scottsdale, 7601 E. Indian Bend Road, July 23, 24, 25, 26, 27, 1:00 to 4:00 p.m. Minimum age 18. Will train.

PART-TIME service station attendant. Must be neat, clean and willing to work. Apply in person. 7555 E. Camelback.

WANTED COCKTAIL waitress, evening, full or part-time. Apply after 6:00 p.m. Ninth and Ash Restaurant, 850 S. Ash.

WE ARE looking for men and women to join our marketing team. Earn \$1,000 to \$5,000 per month. Professional training. Success oriented. Flexible hours. Full and part-time. Call Bittersweet, Inc. 837-1133 or see College Job Placement Office.

Instruction

SKYDIVING, the sport of the age. Complete training. For info call Tom at 892-5797.

TYPE/KEYBOARD
Learn in four weeks.
Ask for "ASU Special"
when you call
966-7111.

KEYBOARDING LAB
23 W. 7th St., Suite 104
Tempe, AZ 85281
Just across Mill from ASU
Visa/Mastercard Accepted 7/5

Real Estate

CUL-DE-SAC STREET of faculty and professionals. Five miles from ASU. Low maintenance landscaping, energy saving construction, floor plan for privacy, contemporary design. \$5,000 below appraisal at \$105,000. 839-0287.

Roommate wanted

FEMALE TO share townhouse at Lakes beginning August 1st. 2 1/2 miles ASU. \$189. + 1/2. Sharon 965-7296 or Kathy 897-6164.

FULLY FURNISHED master bedroom available in nice Tempe home. Close to ASU. Sleeps 2 or 1 comfortably. Call Tracy before 5:00, weekdays only, 263-7626.

MALE TO share townhouse with same. Non-smoker. \$180 a month, 1/2 utilities. Close ASU. 947-0680.

ROOMMATE WANTED to share three bedroom townhouse. \$200 plus 1/2 utilities. Carport, pool. Ninah after 6:00, 894-2113.

ROOM WITH own bath in large house in Scottsdale. Pool, clean, furnished. \$200, utilities. 947-7376.

Services

BABYSITTING. Responsible 14 year old available days during summer. Vicinity Rural and Guadalupe. Jennifer 838-3803.

CARS AVAILABLE - 21 or older. All States Drive-away, 992-5200.

COMPUTER TERMINALS for rent with modem. 246-6172.

EDITING TERM papers, dissertations, etc. You write draft. I perfect grammar, word choice, sentence clarity and flow, paragraph construction, etc., for most effective expression of your ideas. Professional, inexpensive. Susan, 834-6038.

FEMALE TO share house with two others. \$150 a month plus 1/2 utilities. Tempe location. 967-7770, 949-2410.

HOUSESITTING POSITION desired by working woman wishing to relocate. Excellent housesit references. Linda (Tucson), 328-5304.

STATISTICS TUTORING. Experienced, qualified tutor for QBA 221, PSY 230, other. Call Dan, 968-2054 or leave message, Psy 250.

Transportation

DRIVER NEEDED to east coast this summer, expenses shared. Call Lee or Rich, 949-7145.

Typing

A-1 RESUMES and repetitive letters. Make that important first impression with professional typeset appearance. Cynthia Grant, 968-3627.

ACADEMIC TYPING. Will edit spelling, punctuation, and grammar. Fast return/accuracy guaranteed. Joan 839-0772.

ACCURATE, FAST, experienced typist. IBM Selectric \$1.25 per page. Dissertations, theses, legal briefs. Call Sharon 833-5687 or Teresa 962-0079.

ALL PAPERS typed to your complete satisfaction. IBM Selectric. Near ASU. Reasonable. Mrs. Oakley, 967-0802.

ALL TYPING done fast and accurate. 1.00 a page. Word processing available. Close to ASU. Call Carin or Bobbi 968-9166.

ANY TYPING? Fast, accurate, professional typing- word processing. Excellent quality. \$1.25- page. Call Linda, 962-8075.

AT YOUR service, University and Mill area. Quality typing to your Specs. Keyboarding Lab, 966-7111.

CALL CAROLINE for your typing needs, reasonable rates, quality work, near Rural- Southern 967-9226.

CUSTOM TYPING. Correcting Selectric. Near College Avenue between Broadway and Southern. 966-0961, call after 6:00.

EXPERIENCED TYPIST. Fast, professional work, IBM Selectric. \$1.00 per page. Cheri, 967-3747 evenings.

FAST, ACCURATE typing. \$1.25/page. Call Teresa at 962-0079 or Linda at 969-5775, elite typing available.

LETTER QUALITY word processing. \$1.25 per page (double space), spelling edited, draft copy available. Must be legible. Dobson Ranch area (Baseline, Price). Trish, 839-1951.

NEW MOON Secretarial, 414 South Mill #205. Quick, quality, accurate typing. Call 894-5234. Graphics/ resumes. Reasonable rates.

NORTHWEST PHOENIX, quality typing. Theses, dissertations, research projects. 938-3397.

Typing

ALWAYS AVAILABLE for typing at \$1.25 per page. Call Susan at 833-0373.

PROFESSIONAL WORD processing, typing, mailings, theses, papers, letters, reports, etc. Rush jobs okay. 945-0058 evenings.

PROFESSIONAL QUALITY word processing. Will edit and correct spelling. Caroline Douglas, 838-0959.

PROFESSIONAL TYPING, word processing, resumes, reports, etc. Call Carol, 834-3056 or leave message 964-2693.

PROFESSIONAL TYPING. Close to ASU. Call Brenda, 964-0273.

QUALITY WORD processing. Reasonable prices. Economical revisions. Can communicate with ASU computers. Pamela Polom, 438-1178.

RESUMES TYPED or typeset. Close to campus. \$5 per page and up. Call 894-5234, New Moon Secretarial and Graphics.

STATE-OF-THE-ART WORD processing. Quality guaranteed. Term papers, theses, letters, resumes. 990-1556, 244-1259.

STUDENT DISCOUNT for fast, accurate, high quality typing. Will edit grammar, punctuation, spelling. Christina, 839-1082.

TMC SECRETARIAL Typing, word processing, students, business, resumes. 7 days a week. 967-6965 or 897-1595.

TYPIST. PROFESSIONAL, academic, scripts, resumes, you name it. Near ASU. 968-7068.

YOU WRITE it, I'll type it! Theses, reports, resumes etc. Grammar and spelling assistance. 969-7138.

WORD PROCESSING
PROFESSIONAL, FAST AND ACCURATE
\$1.25 per page with notice
Just 5 min. from ASU Library
THE COMPUTER TERMINAL
122 E. University Dr.
967-0900
Exp. 8-20-84. 8/9

**State Press
WANT ADS WORK!**

Do you have "wanna" problems? Wanna sell something . . . Wanna buy something . . . Wanna rent . . . Wanna travel . . . Wanna et cetera?

Just place an ad in the State Press Classifieds and let it go to work for you.

NOW . . . You can place your ad **3** ways:

1. Call **965-7572**, place your ad by phone . . . and *Charge It!*
2. Come to the State Press counter . . . North Basement, Matthews Center . . . place your ad, pay cash . . .

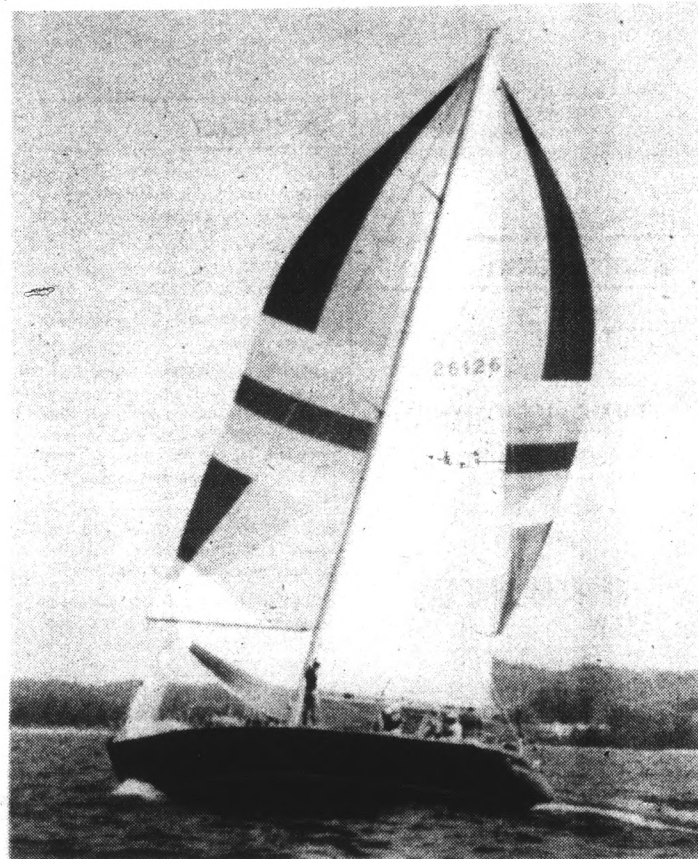
OR

3. USE YOUR VISA OR MASTERCARD AT THE COUNTER OR OVER THE PHONE.



965-7572

SHOOT THE BREEZE WITH YOUR FRIENDS



**AT
DONNY O'BRIENS**

TONIGHT

*1/2 price Long Island
Ice Teas All Night!!
50¢ Draft Beer
7 pm to 10 pm*

SUNDAY

Reverse Happy Hour
9-1
2 for 1 well & wine
75¢ Bud & Miller
FREE PIZZA 10-12

*ENJOY A
COOL REFRESHING
DRINK ON OUR
SPACIOUS
PATIO*

TUESDAY

It's an **OPEN BAR!**
8:30-11:30
Guys \$4 Girls \$2
Be there for the
wildest night in town!

DONNY O'BRIENS • 222 S. Mill, Tempe • 968-0527

Hig
of
sul
tha
Thi
lar
tak
of
Sta

T

By J
Staff
Tw
ring
repre
Legis
Ric
Dem
Bev

'Ed
imp
for
anc
are

Hous
study
Juan
A t
Hink
Scott
Da
run f
'I
mem
perso