

wednesday

February 29, 1984

State Press

Arizona State University

Vol. 6, No. 62

© Copyright, State Press, 1984

Where's the pool?!

ASU diver Robert Zell practices his diving skills Tuesday.

Staff photo by Tim



Stolen exam investigation focusing on printing center

By Jim McCleary
Staff writer

Exams printed at the University Printing Service will no longer remain there overnight as a result of a stolen test that ended up in the hands of hundreds of accounting students, according to the ASU detective investigating the incident.

Rick Zell said the altered security policy at the printing service is designed to put responsibility for the test in the hands of individual professors.

Zell's investigation will include a "walk

through" of each step involved in the exam's production and interviews with personnel in the accounting department and the printing service.

"I assume it was either taken from the department or the printing service," Zell said.

Suspicion that an exam had been stolen arose 24 hours before exam day, Feb. 17, when an anonymous caller informed the department that the exam was for sale.

It became evident the exam was available to students before Feb. 17, when a copy was

given to a teaching assistant one hour before the test was scheduled to be administered.

The exam was given to all sections of ACC 211 and 212 — a total of more than 2,400 students.

It has been reported that exams were being sold up to 10 days prior to exam day and for as much as \$60.

Further evidence of the number of students who saw the exam before Feb. 17 surfaced Monday when results of the exam indicated the average scores were 19 percent higher than usual.

Officials in the accounting department have vowed to boost the security of exams before they are administered, but declined to give details.

Zell said a similar situation occurred several years ago at the printing service. There was evidence at that point that the building had been broken into, he said.

Arvilla Johnson, a supervisor at the printing service, has said there was no indication of breaking and entering at any time while the accounting test was on the premises.

House, Senate committees considering funding measures for west-side campus

By Robert S. Beamesderfer
Staff writer

An ASU west-side campus could move closer to becoming a reality this week as both the House and Senate consider funding measures.

This morning the House Education Committee will consider H.B. 2376, sponsored by Glendale Republican Reps. Sterling Ridge and Pat Wright, which would provide \$3 million for personnel, program enhancement, library purchases and planning.

Friday, the Senate Appropriations Committee will address

'Things are looking good for a west-side campus.'

a proposal sponsored by Senate Education Chairman Anne Lindeman, R-Phoenix, which would appropriate \$1 million for the project.

Both measures provide for continued funding past the 1984-85 fiscal year.

Ridge said, "We may not get the whole \$3 million we asked for, but I'm sure we'll get enough to get the project started."

"My hope is that it will move very quickly," he added. The

bill was originally scheduled for last week's meeting, but was held over until the committee reconvened Monday.

Due to the late meeting Monday night, Committee Chairman Jim Cooper, R-Mesa, limited the hearing to discussions of another bill interrupted by the end of last week's meeting.

Cooper will start the meeting at 8 a.m., half an hour early to accommodate the measure's hearing.

Ridge said the bill faces little opposition from committee members, who support the concept of a branch campus for the west Valley.

"If there's any opposition it's on where our priorities go and how we spend limited funds," he said, adding that he is "confident" he has the committee votes to approve the measure.

Ridge also said "neither NAU or U of A are going to oppose it" and Gary Munsinger, U of A executive vice president, told him he would speak in favor of the measure.

The House bill also is slated for hearing in the House Appropriations Committee.

Ridge said his bill and the Senate version have good chances for passage because of the bipartisan effort by legislators from both houses.

"I think things are looking good for a west-side campus," he said.

Support for the measures comes from the Arizona Board of Regents and the ASU Faculty Association, as well as ASU.

Senate Appropriations will meet at 9 a.m. Friday.

inside today

Transportation Club takes to the sky

Page 6

Anthropology exhibit features ancient dwellings

Page 10

Grapplers have Pac-10 title wrestled away by Oregon State

Page 14

Care package

Student Life program serving 'non-traditional' students

By Rosanne Dupras
Staff writer

The typical 18- to 24-year old university student is becoming less typical on college campuses around the country, according to a report from Seattle University, and ASU is no exception.

In fact, one-third (almost 16,000) of ASU students are 25 or older.

To meet a wide variety of needs these students encounter, the ASU Office of Student Life has developed Contact for Adult Re-Entry (C.A.R.E.), an adult re-entry program.

"The program is going very well," said JoAnne O'Donnell, associate dean of Student Life. "We've developed every year — last year we had five workshops, and this year we have 12."

"We've been fortunate to get some quality presenters that help our credibility and visibility," O'Donnell said.

"The program is really just getting off its feet," said Julie Townley, a graduate intern who works with the program.

During the 1983-84 academic year, 12 workshops have been coordinated in skills development and career exploration. 250

re-entry students have attended the eight workshops given so far.

"People are coming in asking for help — it's really exciting," Townley said. "Also, there is a lot of interest in the community."

In the area of skills development, the program has given workshops in writing improvement, test-taking and math skills improvement.

The spring career development seminars being offered include: "Small Business Management," "Careers in Travel and Tourism" and "Career Change: Exploring New Options."

C.A.R.E.'s goal in these seminars is to provide an informal setting where representatives from the campus and the community can meet with students to discuss the process leading to success in specific careers.

Included in the panel discussions will be descriptions of each panelist's occupation, the particular educational preparation recommended, types of personal characteristics and skills needed and an overview of entry-level salary and opportunities for career advancement.

"Many people are changing careers and preparing for the

work world in a new field," Townley said.

She said re-entry students have a need for social interaction with their peers as well as the need for formal information.

As a result of this interest, a weekly series of "brown bag lunches" is planned to begin by the middle of March.

According to the Seattle University report, the traditional student has limited commitments, is campus-focused and comes to a university for formal learning.

The non-traditional student, on the other hand, generally has multiple commitments, is not campus-focused and is interested in informal learning, according to the report.

The multiplicity of attitudes, interests, values, expectations and motivations of older students have drawn them back to campuses across the country.

They have returned for career advancement, intellectual stimulation, self-fulfillment and personal satisfaction, the report said.

"Retired people, especially men, come here after selling their businesses. Older women — the kids are raised, and they want to get the things they weren't able to get when they were younger," O'Donnell said.

nation/world state press

Hart scores upset in New Hampshire

CONCORD, N.H. (AP) — Sen. Gary Hart captured an upset lead over former Vice President Walter F. Mondale, jolting the Democratic frontrunner in New Hampshire's debut presidential primary election.

Mondale said New Hampshire voters "didn't want the debate to end," and also ran John Glenn said: "I think it's a whole new ballgame."

Mondale vowed to "redouble his efforts" and said he was confident of winning the nomination.

DC-10 overshoots runway in New York

NEW YORK (AP) — A Scandinavian Airlines jumbo jet carrying 177 people skidded off a Kennedy Airport runway while landing in light rain and fog on Tuesday, and came to rest in a 12-foot-deep creek. Authorities said a dozen people suffered minor injuries.

Some passengers were forced to jump from a door into the water, where they swam to safety, according to Tom Young, spokesman for the Port Authority of New York and New Jersey, operator of the airport.

Others, he said, escaped by jumping down chutes, and still others walked on a wing and climbed down a ladder.

Syrian-Lebanese summit imminent, news agency says

BEIRUT, Lebanon (AP) — A Syrian-Lebanese summit will be held within 48 hours to find a way to end the violence in Lebanon, the Syrian news agency said Tuesday. There were new reports that President Amin Gemayel was ready to announce cancellation of Lebanon's pact with Israel as a concession to Syria.

Government sources in Lebanon had said the summit might begin this weekend. But SANA, the official Syrian news agency, said Gemayel will visit Damascus "within the next 48 hours" for talks with President Hafez Assad of Syria.

Assad has demanded that the U.S.-arranged May 17 agreement be abrogated before he will receive Gemayel, and one government source said: "The agreement is finished, but the time for declaring its abrogation has yet to be set."

Supreme Court refuses to stay execution

WASHINGTON (AP) — The Supreme Court refused Tuesday to spare the life of a convicted murderer who is scheduled to die in Louisiana's electric chair early Wednesday.

The court, by a 6-2 vote, turned down an emergency plea for a stay of execution for Johnny Taylor Jr., 30, of Prichard, Ala.

Taylor is scheduled to be executed between midnight and 3 a.m. Wednesday, Louisiana time.

Court deals setback to women's rights movement

WASHINGTON (AP) — The Supreme Court, dealing a major setback to women's rights groups, ruled Tuesday that the federal government may not cut off all aid to a college because of illegal sex discrimination in a particular program.

By a 6-3 vote, the court handed the Reagan administration a legal victory and dealt women's rights groups what they described as a major defeat.

"Institutions that are discriminating will be allowed to get federal dollars, and that has not happened in our country

before, said Bernice Resnick Sandler, executive director of the Project on the Status and Education of Women. The group is a clearinghouse for information on issues of concern to women.

The court decision gave a narrow interpretation to a section of a 1972 federal law banning sex discrimination at colleges that receive federal aid.

Iraq claiming major victory in war with Iran

NICOSIA, Cyprus (AP) — Iraq said Tuesday it won the biggest victory of the 3½-year war by crushing an Iranian attack and driving Iranian forces back across the border near the southern city of Basra.

"Iraq's flag was hoisted at the last fortified position held by the Iranians at the Iraqi village of al Beidha ... and all enemy forces have been crushed except for those who surrendered," a battle commander said in a cable to Iraqi President Saddam Hussein. The contents of the cable were aired by the official Iraqi News Agency.

Iran had no reports on action near Basra, Iraq's second largest city; Iraq said more than 30,000 Iranians were killed in three days.

Two tax measures pass House committee

PHOENIX (AP) — A new, \$8.1 million tax on soda pop and a \$1.5 million tax break for parents of private-school children cleared the House Ways and Means Committee on Tuesday.

The soda tax, killed in the Senate Finance Committee last week, bubbled up again as an amendment in the House tax-writing committee and was approved 9-6.

The measure would allow the state to charge sales tax beginning July 1, on the estimated 28 million cases of soda that are sold in Arizona each year. The bill would raise \$8.1 million a year if the sales tax reverts to four percent as scheduled July 1.

But most lawmakers now expect the tax will drop no lower than 4.5 percent and could stay at 5 percent indefinitely.

The school bill, backed by Education Committee Chairman Jim Cooper, would allow parents to deduct tuition payments of up to \$700 from their state income taxes.

Audit finds 22 percent of benefit recipients ineligible

PHOENIX (AP) — More than one-fifth of the unemployment benefits paid out in Arizona during a 12-month period went to people who weren't looking for work or were otherwise ineligible, according to an audit released Tuesday.

The audit, conducted from July 1982 to June 1983, found that an average error rate of 22.4 percent over the 12 months, with an 18.96 percent error rate at the beginning of the audit period and a 26.93 percent rate at the end.

With an average error rate of 22.4 percent, \$38.3 million of the \$171.3 million in benefits paid during the 12-month fiscal year was paid to ineligible recipients, the audit said.

Arizona's unemployment-insurance program is part of the state Department of Economic Security. Funding comes from taxes paid by employers and from the federal government.

CORRECTION

An item in Tuesday's *State Press* mistakenly omitted the name of the organization which sponsored yesterday's speech by Professor Douglas Arner, titled "The Moral Incentives to the Religious Life." The Center for Christian Studies sponsored the lecture.

THE JOYNT 606 S. Mill
Old Town Tempe
WE DELIVER 967-7926
BEER • WINE

Large 16" Cheese Pizza
\$4.24
EXTRA TOPPINGS 50¢ EACH Expires 3-19-84

Get the

Wilson Camera 

edge

Student Discounts
ON PROCESSING AND
DARK ROOM SUPPLIES

Custom Processing
Available

We use Kodak for
a good look

Complete Selection of
Telescopes & Accessories
Rentals

ASU TEMPE
204 E. University
894-8337

(Behind the Chuckbox)

Off-Shore Active Wear Shorts

Regularly \$17.00

Now \$11.00



For Great Spring Looks, Shop
University Sporting Goods.

We have the looks!

University
sporting goods

1030 S. Mill 968-7725

(Across from Gammage)



Godfather's Pizza®

a pizza you can't refuse®

Team Up With the Godfather.

\$2.00 OFF Large Pizza
\$1.00 OFF Medium Pizza
50¢ OFF Small Pizza

CALL AHEAD & HAVE YOUR ORDER READY

Eat-in only. Not valid
with any other offer.
Offer expires 3-6-84
with this coupon.

Good Only At

10th Street & Mill • 894-1234



New student lounge opens in MU Thursday

By Deanna McCormick
Staff writer

After nearly two years of planning and construction, the student lounge in the basement of the Memorial Union will open Thursday for studying, eating and lounging.

The lounge, temporarily named "Student Commons," will seat 285 students, according to Floyd Land, acting director of the Memorial Union.

The lounge is one large room, 5,100 square feet, and includes several different areas, one of which contains a large-screen television and several comfortable chairs.

There are also tables set up for study groups of about six people, or for smaller groups of two or four.

In the center of the lounge, which is decorated in blue, burgundy and tan, there are several couches arranged for students' relaxation.

Land said a snack bar is scheduled to be built by July. There is already a snack area, set up for students to eat in, located near the TV area.

There is also a patio that will be furnished with umbrella-covered tables by the end of March. Coin-operated lockers will also be

installed by then.

Land said the project cost approximately \$95,000 and the funding came from the use of facilities such as food services, revenue from video games and money that has been set up in reserves.

ASU students helped plan the lounge, which was designed by former ASU student Gloria Hauser of Hauser Designs, Scottsdale. Hauser designed the decor of the lounge, including the paint, furniture and carpeting.

The space for the lounge became available in 1982 after it was vacated by the University Bookstore.

Students helped to plan the lounge in the form of a study committee and a renovation committee, which helped to determine what was needed in the lounge, Land said.

Land said that students also may be able to participate in the official naming of the lounge by way of a contest, which has not yet been scheduled.

Land said the lounge is part of a project that includes the new ticket office, the Student Life offices and Sweet Stuffs.

The lounge will be open to the students during regular MU hours, said Land.



Staff photo by David Petkiewicz

This luxurious new student lounge in the basement of the Memorial Union opens tomorrow. The lounge, to be known as the "Student Commons," features a wide-screen television and will eventually include a snack bar.

Proposal to allow voters to decide drinking age

By The Associated Press

PHOENIX — A proposal to give voters a chance to decide the issue of raising the drinking age from 19 to 21 won approval Tuesday of the Senate Judiciary Committee.

The proposed referendum, passed by a 6 to 0 vote, would give Arizonans the choice between an initiative petition now being circulated and a referendum offered by the Legislature.

But backers of the drive to restore the drinking age to its pre-1972 level voiced skepticism that an age rollback would have much effect without improving enforcement.

"If this is seen as a cure-all to traffic deaths, it's an illusion," said William O. Smith, chairman of the Governor's Task Force on Traffic Safety.

"This is just one aspect of the problem, which includes advertising, enforcement and education at home and in the schools," Smith said.

Roger Garrett, spokesman for the Arizona Licensed Beverage Association, said the real problem is existing drinking laws are not enforced. The association opposes the bill.

"We don't enforce the laws we have," Garrett said. "All the problems we have could be handled by enforcing the current laws."

He said enforcement dropped off sharply when the lawmakers transferred liquor enforcement agents from the Liquor Department to the Department of Public Safety.

He said the 69 liquor agents at that time were transferred

to other duties and by last year the number assigned to liquor enforcement was reduced to 17.

An amendment aimed at keeping things status quo would allow 19- and 20-year-olds to continue working in bars and restaurants.

If approved by the Legislature, the proposal would go on the November general election ballot — possibly giving voters a choice between the initiative and the legislative referendum.

The initiative petition is being spearheaded by Reps. Jim Cooper, R-Mesa, and Earl Wilcox, D-Phoenix.

In a related matter, a House committee has rejected a bill that would limit liability of tavern owners in civil damage suits resulting in lawsuits against drunken drivers.

ASU college to offer series for Centennial

The College of Public Programs at ASU will celebrate the University's Centennial Year with a series of open programs dealing with a variety of social and governmental issues.

The Academic Excellence Series will include 15 events, many of them open to the public without charge and scheduled through Feb. 14, 1985.

Topics include aging, community conflict, criminal justice, housing, communications, water resource policy, tourism, public policy minority issues and the changing family.

Seven programs are on next month's calendar. The series begins March 9, with "Trends in Decentralization: Cuts, Costs and Consequences."

The series continues March 17, with "Minority Administrators in the West: Perspectives and Problems."

"Bureaucracy and Freedom," a two-day conference featuring national and international scholars, will examine whether bureaucracies make us more free or more controlled. The session is scheduled March 23 from 9 a.m. to 5 p.m. in the MU and is free.

"Communicating '84," a one-day seminar from 8 a.m. to 4 p.m. March 24, features national photojournalists and editors from Newsweek, Sports Illustrated and other publications.

A two-and-a-half-day conference March 28-30, examines "Community Conflict: The View From School and City."

A symposium examining "The Role of Bureaucracy in a Representative Government," is scheduled March 29, from 7:30 p.m. to 10:30 p.m. in the MU.

Self Defense
Strength and Agility
Confidence and Control

Certified by International
Kenpo Karate Association
Ed Parker 10th Degree Black Belt

kenpo

chinese karate

MEN • WOMEN • CHILDREN

Come in or call for appointment

Tempe-Mesa
1020 N. Scottsdale Road
966-1080

PERM SALE — 50% OFF
Now \$15-\$30

ALL HAIRCUTS \$10
(Includes cut, shampoo and conditioner only)

Sculptured Nails \$19.50

The
hair performers

NEW SUNDAY HOURS 12 p.m.-6 p.m.
903 S. Rural Rd. • 894-0184

Ben Franklin Press

WEDDING ANNOUNCEMENTS
AND STATIONERY

10% Discount on any order of
\$200 or more
(Item ordered from same book)
With this Ad

HOURS
M-F 8:30 - 5:00
Wed til 8:00

104 W. University
968-7959

THE WAREHOUSE DELI
"Good Food and Drink"

Estab. 1975

SPECIALS
LUNCH & DINNER
MON.-FRI.
10:30-7 p.m.

Sandwich with
Homemade Fries
Small Drink or
Beer

ONLY \$1.99

MOLSON & HEINEKEN
61¢ plus tax

IMPORTS
Mon.-Thurs.
2-4 p.m.

HAPPY HOUR
MON.-FRI.
10:30 a.m.-7 p.m.

IMPORTS — 94¢
DRAFT BEER

Pitcher	Glass
\$1.99	49¢

WINE

½ liter	Glass
\$1.99	49¢

WINE COOLER

Pitcher	Glass
\$2.75	65¢

BREAKFAST 6 a.m.-10:30 a.m. Mon.-Fri.
99¢ — SUPER SPECIAL — 99¢

Also Featuring "THE LITE WAIT"
One Egg, 2 Bacon or Sausage,
Toast, Butter & Jam **\$1.29**
Coffee Included

LIVE ENTERTAINMENT NIGHTLY
(No Cover, No Min.)

130 E. UNIVERSITY DR.
AT FOREST
966-7788 — TEMPE, AZ
Your Hosts: "The Family"

PERM SPECIAL
Regular \$40
Now \$29.50

Sculptured Nails Special
Regular \$45 / **Now \$35**
with coupon • walk-ins welcome

Between Us Designs in Hair
formerly Darlene's Hair Fashions

1820 E. Southern • at McClintock • Cowboy's Plaza
838-0622

WE USE REDKIN AND NEXUS PRODUCTS

opinion

Man must evolve for all human conflict a method which rejects revenge, aggression and retaliation. The foundation of such a method is love.

—Martin Luther King, Jr.

state press

letters

ASU gala a fitting symbol

Editor:

Recently you published a letter protesting the \$130 per couple gala scheduled for March 3. Perhaps there is another side to the question.

From The New York Times, quoting Charles Z. Wick, a member of Mr. Reagan's Kitchen Cabinet: "Mr. Wick said he thought that economically pinched Americans of today enjoyed viewing the luxurious Washington way of life of the Reagan Administration members, much as Americans who suffered in the Depression enjoyed watching Hollywood stars in their movies. 'During the Depression,' said Mr. Wick, 'when people were selling apples and fac-

tories were still and guys were jumping out of windows because they lost everything, people would go to the movies. They loved those glamour pictures showing people driving beautiful cars and women in beautiful gowns, showing that people were living the glamorous good life.'"

The gala evening festivities commemorating the Centennial of ASU perhaps provide a symbol of hope for faculty members who have seen salary increases and program support gradually disappear during the recent past.

Vernon S. Gerlach
Professor, Department of Education

The real road to success

Editor:

I didn't know that cheating on exams was a right of the students. After my angry letter regarding the stolen ACC 211 test (State Press, Feb. 22) denouncing the low-lives who stole the test and the students who purchased and cheated off it, to my surprise I received four phone calls that afternoon. The first two callers wanted to write a rebuttal to my letter. That was amazing. Somebody felt he had a right to cheat and defend his position.

Even more amazing, I received a phone call from the person who claimed to have stolen the test. He was upset with me because I was making it hard for him to

earn a living. He said he had made \$400 off this test but apparently had sold it to too many people and it got widely circulated. He felt I was angry because I did not receive a copy before and offered to mail a copy of the next test to me to make it up.

Astounding. This man feels it is his right to steal tests and sell them to finance his way through college.

It's time professors cracked down on cheating in their classes. Hard work, not cheating, is the road to success — or at least that is what I have learned.

Martin Martens
Senior, Graphic Communications

Violence and diplomacy

Jessica Kreimerman
staff writer

When I was in 12th grade, my ethics teacher posed a hypothetical situation to my class: Imagine you are a young person in a Nazi concentration camp. The head honcho calls you over and offers you your life if you become a guard, shooting at anyone who tries to escape.

As a Jew, I had only one answer to give my ethics teacher. I'd prefer death. The big question is, would you rather be a victim or an aggressor?

A new group has been in the news lately. It calls itself Jewish Direct Action. Its first direct action, accompanied by a press release and everything, was to bomb some Soviet building in New York. The group's members said their reason for the action was to free Anatoly Scharansky and other captured Jews in the Soviet Union. Three million, to be exact.

This group has pledged to destroy Soviet-American relations until its requests have been honored. Well, I don't know who they are or what they're planning to achieve, but I am sick of being 'represented' by groups that advocate violence as a solution to the world's problems.

I'm not saying I wouldn't like those three million Russian Jews to be freed from repression. But we must think in larger terms than only one certain group in one certain area. Americans generally consider everyone in the Soviet Union as "trapped" within their circumstances. So while we're at it, why don't we simply ask the Russian government to "let all the people go" — not only my people, all the people. And see how Chernenko reacts to that.

On the other hand, as a Mexican Jew, I am perhaps a bit more aware than many Americans about the state of Argentinian, Moroccan, Iranian and other Jews. They all live in openly repressive or semi-repressive states. As a matter of fact, you could say that those Jews who live in the developed countries are the only ones who actually have first-class citizen rights.

It is groups like the JDA and the already notorious Jewish Defense League that are making Judaism seem an undesirable condition. Very soon, Jews will be equated with violence like the Shiite Muslims, better known to the world for their truck attacks on foreign embassies.

The worst thing about taking the violent road to "freedom" is that it may engender

division among Jews who already have first-class citizen rights in countries like the United States.

The lobbying power exerted by Jewish groups in this country is known to be one of the most effective roads to making the Jewish cause heard. Now, why should we want to shift public opinion against what has been proved to work?

The JDA's demands are ridiculous. First of all, why should the Soviet Union care if its relations with the United States are tampered with? It doesn't seem to be making much of an effort at ameliorating them anyway.

And if the United States does not let a whole country threaten it with extortion, why should it allow anyone to twist and try to change its foreign policy through terrorism?

I have always believed in Israel. Throughout my life I've tried to understand the meaning of Judaism and its effect on the lives of others. For me, it's a combination of faith, act and culture, and it is to be practiced daily. I don't believe in killing people in the name of religion. I don't believe in terrorism.

I believe in man and in the equality of one human being with another. No one should be more privileged in life or liberty. And if three million Jews are stuck in Russia, I'll lobby, I'll write letters, I'll write an editorial. But I will also write letters for the other millions of people, like the Russian Baptists and Seventh-day Adventists and the Third World political dissidents, who are living in relative slavery.

I want the people who commit these transgressions to face up to what they are doing. But I will not stoop to their level to achieve such an end.

What happens when democracy and diplomacy and rationality fail? I don't know what to do after that. But they have failed. Does that mean that we have to participate in their savage ways to prevent them? That's how wars start. But then how do we prevent them from further barbarities? The JDA may have a point there. They're probably desperate.

But a handful of people who commit ludicrous acts "in the name of liberty" should not be taken as representatives of a whole people.

Just as we should not consider all black people responsible for the acts of radical black groups, or all Muslims responsible for the acts of radical Muslim groups, the JDA should be considered as a group of radicals who have lost their way in the world of diplomacy and international understanding.

Foul-mouthed baseball fans an embarrassment

Editor:

Being an avid baseball fan, I have attended almost all of ASU's home games. In doing so, I have come across a situation that is both very exciting, but also extremely unappealing. I am referring to the fan support — in particular, a group of vocal fans that routinely position themselves behind the home dugout.

I must start off by stating that these particular fans are truly outstanding. They are loyal, well-informed, interested and very supportive. What is so upsetting is the abuse they hurl at the umpires, the visiting team and even our innocent, defenseless batboys.

I realize that umpires have always been and will continue

to be the target of fans' aggression. And I do believe that the local crowd should provide a homefield advantage by psyching out the opponent. But the line must be drawn somewhere.

Most of the comments from this group are cheap, rude, crass and unsportsmanlike. I have heard references about the alleged nighttime employment of the wives and mothers of the visiting players and umpires. Suggestions have been made concerning their sexual preferences and activities. Injured opponents have been ridiculed without regard to the extent of their injuries. And the list goes on.

I believe all this energy could be put to a more productive

and appealing use. Rather than maligning our opponents, why not direct the vocal support at our Sun Devils and their outstanding play.

I think my point can best be summed up by an incident in a nationally televised games between DePaul and Notre Dame. Late in the second half, the ND fans tossed debris onto the court in an apparent attempt to thwart a DePaul runaway. Digger Phelps, ND's coach, through the public address system pleaded with the home fans, saying, "We can win this game without that stuff. Don't lower yourselves!" How about it, ASU?

J. Steve Santacruz

LETTER POLICY

The State Press encourages letters on any topic. Letters should be typed, double-spaced. Include your full name, class standing, major and phone number.

All letters are subject to editing at the discretion of the opinion page editor.

Address letters to: Letters, State Press, Matthews Center, ASU, Tempe, AZ 85287.

STATE PRESS

TRACY FLETCHER
Editor

DON SLUTES
Managing Editor

City Editor CHRIS COPPOLA
Asst. City Editor MICHAEL HUMPHREYS
Sports Editor JAY TAYLOR
Asst. Sports Editor TOM BLODGETT
Opinion Editor MATTHEW SCULLY
Entertainment Editor MARY PAT BRADY
News Editor LEN MUNSIL
Asst. Entertainment Editor MARIA KHAN
Photo Editor BOB MILES
Copy Chief INGRID TULING



police report

University Police reported the following activity in the 24-hour period ending at 6 a.m. Tuesday:

- An ASU security officer injured his right shin Monday evening while attempting to aid a female spectator who had passed out in the Packard Stadium bleachers. He was transported to Tempe St. Luke's Hospital for treatment.
- While demonstrating a hip throw, an ASU student fell and injured her wrist late Monday. A Tempe rescue squad responded and transported the student to Tempe St. Luke's Hospital where she was treated and released.
- An ASU student and another man were seen climbing the Tempe Butte and drinking beer. The student fled from an ASU officer but was caught near the University Activity Center. Both men were warned of trespassing violations.
- Police observed an ASU student unlawfully entering the University Activity Center by waiting for someone to exit late Monday. They escorted him out of the building and warned him of the penalties for trespassing and theft of services.
- Four wire wheel covers were taken from an Oldsmobile parked in Lot 57, an ASU student reported Monday afternoon. He valued the wheel covers at \$225.
- An ASU research associate told police her calculator was taken from her desk in Room 104 of the Animal Research Center sometime between Feb. 17 and Feb. 22. She valued the calculator at \$200.
- An ASU student reported the theft of her bicycle Monday

evening. The light blue Schwinn-men's 10-speed was taken from the east side of the Education Lecture Hall and valued at \$200.

- An ASU employee and student were involved in a non-injury car accident at Alpha Drive and Sixth Street Monday afternoon. The total damage loss was less than the minimum amount necessary for report.
- Police interviewed a man who was observed near the south campus residence halls and reported him as acting very suspicious. A record check on the non-student was negative.
- An ASU student was warned of trespassing violations early Tuesday after he was observed harassing people by the Engineering Center A-wing, police said. According to police reports, the student is capable of unpredictable behavior and was told to leave.
- A fire alarm malfunction occurred at the Theta Delta Chi fraternity house Monday evening. Police checked the area and found no problems.
- The ASU Bookstore alarm will not reset and is in need of repair, according to police reports. It continually shows trouble in the system.
- A University police officer found a bicycle early Tuesday that had previously been reported stolen to the Tempe Police Department. The bicycle was turned over to Tempe police.

— M.K. Reinhart

Bangkok Express

The Valley's First Fast Food Thai Restaurant

Selected Thai & Oriental Cuisines

11 a.m. to 8 p.m. (Closed Sundays)

510 W. Broadway (Across from Black Angus)
966-8231

Architecture workshop to discuss legal pitfalls inherent in profession

The College of Architecture and Environmental Design at ASU is offering a two-day workshop on the "Law and Professional Practice for Architects."

The intensive review of the current legal problems inherent in architectural practice will include the following topics: "Pitfalls and Problems in the Architect/Client Relationship," "Avoiding Legal Liability" and "Professionalism, Ethics and Advertising."

Program dates and times are Friday, March 2, from 3:30 to 5 p.m. for a lecture in MU Room 215, and Saturday, March 3, from 8:30 a.m. to 4:30 p.m. for a workshop in MU Room 211.

Registration fee for the program is \$155.

Each participant will receive 0.6 CEU (continuing education units) upon completion of the course.

To register, call the Professional Development Office of the College of Architecture and Environmental Design at 965-2378.

HAPPY HOUR



self-serve
COPIES
3¢
letter size

kinko's copies

Mesa 969-3326
1840 W. Southern

Tempe 894-9588
University and Forest

Special price good Mon.-Fri. 6 p.m. to closing through Feb. 29, 1984.

NEW!

Fresh Baked Whole Wheat buns, for that change of pace

Schlotzsky's

TEMPE CENTER

18 E. 10th St. & Mill OPEN 11 to 8 968-0056

Attention: Foreign Car Owners

SAVE UP TO 70% ON RECYCLED FOREIGN AUTO PARTS
MG, TRIUMPH, HONDA, DATSUN, TOYOTA, VW and OTHERS

All Models Foreign

3024 So. 40th Street, Phx. (near 40th & University)

437-0185

*Mention this ad & get an additional 5% off!

RUN FOR ASSOCIATED STUDENTS EXECUTIVE OFFICE

Petitions for the four executive offices:

- President
- Executive Vice President
- Campus Affairs Vice President
- Activities Vice President

will be available beginning February 29 in the Associated Students Offices — 208 Memorial Union.

THERE WILL BE A MEETING FOR ALL PROSPECTIVE CANDIDATES ● WEDNESDAY, FEBRUARY 29, 6 P.M. IN THE M.U.

Women's Services

CAMPUS SURVEY

Women's Services wants to serve you, the women of ASU. We would like your input on the types of programs you would like us to present. Please check as many as interest you.

- | | |
|---|---|
| <input type="checkbox"/> Career preparation | <input type="checkbox"/> Alcohol and drug abuse |
| <input type="checkbox"/> Safety awareness | <input type="checkbox"/> Commuter services |
| <input type="checkbox"/> Health and fitness | <input type="checkbox"/> Nontraditional roles of women |
| <input type="checkbox"/> Child care | <input type="checkbox"/> Religious/spiritual groups |
| <input type="checkbox"/> Foreign students | <input type="checkbox"/> Women's rights |
| <input type="checkbox"/> Women in politics | <input type="checkbox"/> Services available on the ASU campus and the community |
| <input type="checkbox"/> Assertiveness training | <input type="checkbox"/> Other |
| <input type="checkbox"/> Self-image/positive thinking | |

AGE

- | | | |
|--------------------------------|--------------------------------|--------------------------------|
| <input type="checkbox"/> 18-22 | <input type="checkbox"/> 27-30 | <input type="checkbox"/> 41-50 |
| <input type="checkbox"/> 23-26 | <input type="checkbox"/> 31-40 | <input type="checkbox"/> 51-60 |

Commuter Dorm

Most convenient time to attend a workshop:

- | | |
|---------------------------------------|--------------------------------------|
| <input type="checkbox"/> 12 to 5 p.m. | <input type="checkbox"/> 5 to 9 p.m. |
|---------------------------------------|--------------------------------------|

NAME _____

ADDRESS _____

PHONE _____

Please bring your completed survey to the Associated Students Office on the second floor of the Memorial Union, or the Office of Student Life in the basement of the Memorial Union. Feel free to stop by and visit the Women's Services Office or call 965-1253. We are here to serve you. Thank you.

Women's services
ASSOCIATED STUDENTS



Take off

ASU Transport Club tours airline

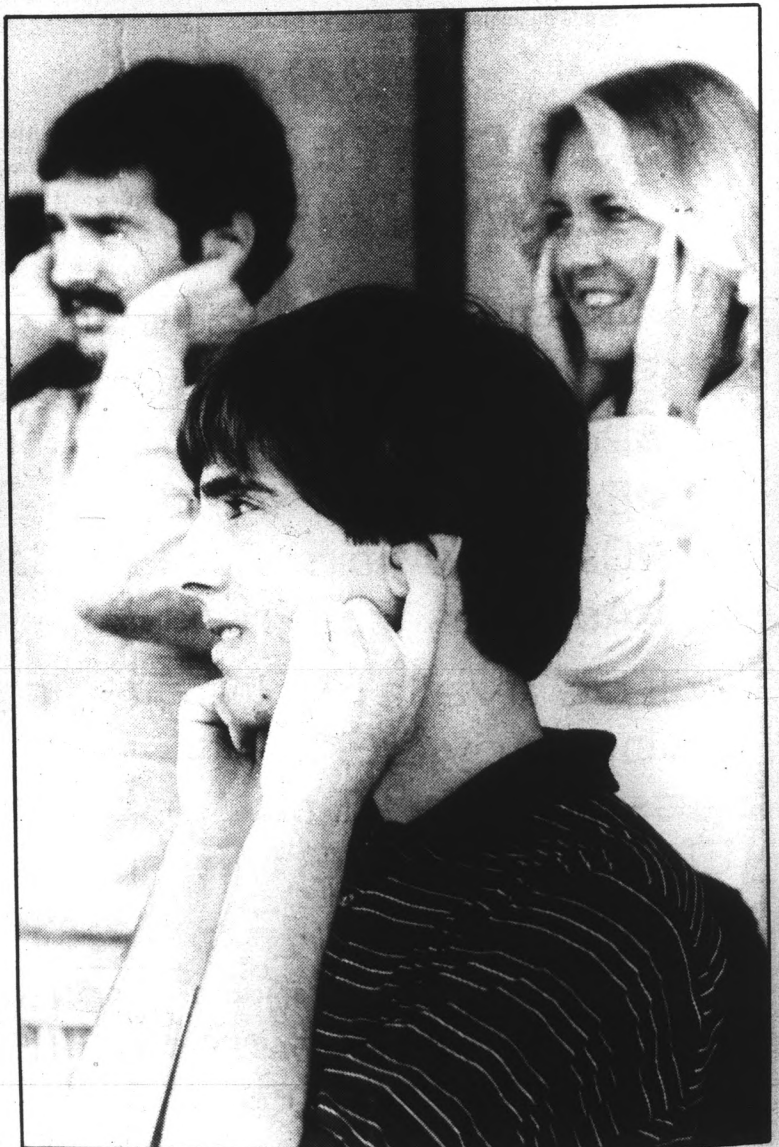


Staff photos by Bob Miles

Michael LeBeau, a senior transportation major, learns a few of the operational details of a Boeing 757 cockpit from an Eastern Airlines co-pilot.



More than 20 ASU Transportation Club members were able to apply classroom knowledge to the real world recently when the group toured the Eastern Airline's facilities at Sky harbor International Airport. The tour included a round trip flight to Tucson aboard the state-of-the-art Boeing 757 commercial aircraft. In the photo at top, club members are briefed on Eastern's operations area where luggage is ticketed and sorted for the proper flight. Other areas toured by the club include ticket counter operations and flight operations where planes are fueled, cleaned, loaded with supplies and boarded. At right, club members plug their ears from the noise of a docking jet.



PHARMACY CENTER



OPEN 7 DAYS A WEEK. SAVINGS GOOD THROUGH SATURDAY, MARCH 3, 1984.

REPUBLIC MONEY ORDERS
Issued only **39¢**

4 WAYS TO AVOID CATCHING A COLD

- Be defensive. A good diet, plenty of sleep and exercise to build resistance.
- Keep humidity up. Too dry air keeps your nose from fighting colds. 20 to 45% relative humidity is suggested.
- Keep away from colds. Whenever possible, avoid crowds during the flu season.
- Don't smoke. Smoking irritates mucous membranes and destroys bacteria in the nose and throat.



NEW! PHARMACY Hours For Your Shopping Convenience

Monday-Friday
8:30 a.m. to 9 p.m.
Saturday
8:30 a.m. to 7 p.m.
Sunday
10 a.m. to 5 p.m.

PHOTO CENTER

PHOTO COUPON

100 QUALITY DEVELOPING OFF & PRINTING

Regular-size prints from one roll or disc of color-print film.

Limit one roll or disc per coupon. Compatible C41 process film only. Coupon must accompany order.

Good through March 3, 1984.



DRYER'S ICE CREAM

2⁹⁹



PEPSI, DIET PEPSI, FREE.

2 litre bottle

1⁰⁹



SAVE 50%

ACME PICTURE FRAMES

50% off

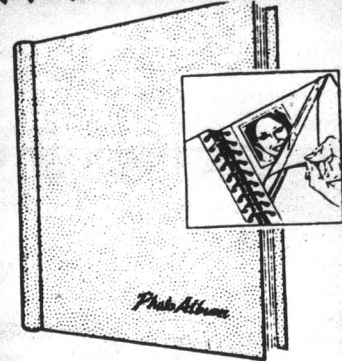


PHOTO ALBUM
100 page

4⁹⁹



MEXICAN POTS

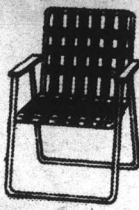
2 for **5⁰⁰**



PABST BLUE RIBBON

12 pk./ 12 oz. cans

2⁸⁹



LAWN CHAIR

webbed

6⁹⁹



BARBEQUE GRILL

#8088

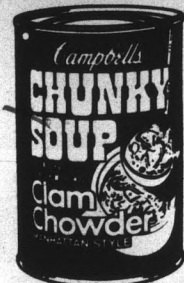
29⁹⁹



DELSEY BATHROOM TISSUE

4-pack

89¢



CAMPBELL'S CHOWDER

10 3/4-oz.

49¢



SUPER X AA EGGS

1 dozen

99¢



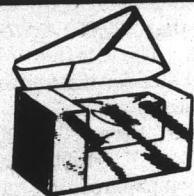
QUAKER STATE 10-40 MOTOR OIL

79¢



AIR-POT DRINK PUMPER

3⁹⁹



ENVELOPES

Reg. 100s
Legal 50s

2 for **1⁰⁰**

THOMAS ENGLISH MUFFINS

6-pack

79¢



SMALL COFFEE & DANISH

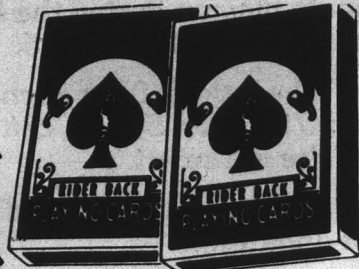
49¢



CIGARETTES ASSORTED BRANDS

Carton

7⁴⁹



TRUMP PLAYING CARDS

29¢



BORSKI VODKA

1.75 litre

6⁷⁹



POTTER'S CANADIAN WHISKEY

1.75 litre

8¹⁹

OFFERS GOOD AT YOUR HUNTINGTON SQUARE SUPER X STORE, 3201 S. MILL AVE. • 894-6747

KAET grows to PBS station from small part-time station

By Lisa Phillips
Staff writer

When KAET, Channel 8, began broadcasting from a small studio in ASU's Engineering Building Jan. 30, 1961, few people associated with the fledgling station thought it would become the success it is now.

The ASU-owned public broadcasting station has grown from a small part-time station primarily designed to broadcast University courses to one of the top PBS stations in the nation.

KAET got its start when ASU granted Dick Bell, then director of ASU's Bureau of Broadcasting, permission to apply for a license to establish a non-commercial educational television station and begin broadcasting.

The first such station had gone on the air in 1953 at the University of Houston, and the U of A had established a station in 1959.

KAET received its license, obtained a

That system became a reality in the late 1960s when the federal government appointed a committee to examine non-commercial educational television.

The first public broadcasting legislation was drafted in 1968, and federal money became available for the first time.

With the help of this money, KAET became more independent in the 1970s and grew in popularity.

"You saw an unparalleled growth rate," Ellis said. "It's unbelievable how fast it grew without advertising."

At some point in the 1970s, KAET officials decided the federal and state funding was not enough to continue improving its programming.

"We wanted to improve the programming, and we needed some more dollars coming in," Ellis said. "That's when we decided to seek help from the community."

Money pledged by viewers during KAET's funding drives now accounts for more than



grant for equipment, built a studio in the Engineering Building and went on the air Jan. 30, 1961.

KAET General Manager Dick Bell resigned in June 1961. His successor, Robert Ellis, continues to act as KAET's general manager today.

KAET originally broadcasted only when school was in session.

"One of our priorities at that time was to become a full-time station," Ellis said. "We realized there were a lot of gaps in the programming we were offering people."

The station received more money through grants and began showing programs other than University courses — mostly live local programming. These programs were shared by many non-commercial stations through what Ellis calls "the great bicycling arrangement."

The programs were mailed from station to station in a pre-determined order. It often would take three or four months for the program to be shown everywhere and simultaneous broadcast was unknown, Ellis said.

"Somehow we all managed to survive," he said. "But we realized we needed an interconnecting system."

half of the station's income, Ellis said, adding that pledges have made up for recent cuts in federal funding.

This community support has allowed KAET to grow into one of the top PBS stations in the nation on a per capita basis, according to Ellis.


"Our ratings over the past few years have been respectable," he said. "For the past four or five years, we have ranked in the top five stations as far as the number of people that tune in on a weekly basis."

KAET reaches more than 400,000 Arizona households each week. The station also ranks first in its market size for the number of people who support the station.

Ellis said "Sesame Street," "The MacNeil/Lehrer NewsHour," "Masterpiece Theater" and some opera programming have been among the most successful shows for KAET.

He said the station will produce more "local programming with national impact" in the future. Last year's live open-heart surgery broadcast is an example of such programming.

"We've reached another level," Ellis said. "And we're still not completely satisfied with programming achievements."



HEY ASU STUDENTS
Jim's Auto Supply

30% average discount on all parts and accessories, except tools and special priced items.

HOURS: 8-7 Daily (Mon.-Fri.); 8-5 Sat.

Hayden & University
1828 E. UNIVERSITY Next to Minder Binder's **968-5888**



TRAVEL ONE DOES IT FREE!

CALL US FOR A SPRING BREAK!

894-1329
717 MILL AVE
TEMPE

SPRING BREAK
March 10-18

DON'T FALL BEHIND

	LSAT	DAT	GMAT	GRE	MCAT
Prepare Now For:	Mar. 3 June 18	Apr. 14	Mar. 17 June 16	Apr. 28 June 9	Apr. 28
Classes Starting:	Jan. 11 Jan. 20 Feb. 2	Feb. 18	Jan. 24 Feb. 13 Apr. 24	Mar. 8 May 3	Jan. 29 Mar. 5

Stanley H. KAPLAN
Educational Center

Classes now available for DAT, PSYCH, GRE-BIO, NLE, TOEFL, VAT, MAT, MSKP, OCAT, CPA.
2 HOURS OF FREE TUTORING
Speedreading & ESL classes starting mid-Sept.

CALL TODAY 967-2967

For information about other centers in more than 80 major U.S. cities and abroad, CALL TOLL FREE 800-223-1782.

NAVY NUCLEAR ENGINEERING

Any better offers?
\$24,000 to \$54,000 after six years.
If you are 19 to 26 years of age majoring in math, chemistry, physics or engineering and would like to learn more about this opportunity

CALL COLLECT (619) 293-6746

CALL BETWEEN THE HOURS OF 9 A.M. TO 5 P.M. MONDAY THROUGH WEDNESDAY

STUDY LESS LEARN MORE

Complete concentration. It's the key to unlocking the mind.

Under the personal one-to-one guidance of a medical doctor, you'll learn how to relax, use total concentration to get more out of your studies in less time, and have total memory recall during examinations.


You'll be more motivated, and you'll learn SELF-HYPNOSIS.

Overcome negative behavior patterns.

ARIZONA INSTITUTE OF MEDICAL HYPNOSIS

LLOYD H. KOELLING, M.D. — DIRECTOR
946-4286

It Pays To Be First!



Donate plasma during the first full week of the month and enter our drawing for \$25.

You'll be paid \$10 for each donation and you can donate every 72 hours. So you can make \$45 during the first week — if you're a winner!

New donors will receive an additional \$2 with this ad for their first donation.

Early birds get started! The sooner you donate — the sooner you may win!

Call now for an appointment!

Associated Biosciences Donor Center

1015 S. Rural Rd. **968-6139**
Open Monday-Friday 8 a.m.-7 p.m.
Wed. & Sat 9 a.m.-6 p.m.

Federally Inspected

State
Da
By Juli
Contrib
You
most c
pus lif
Saturd
Christi
Senior
At AS
Marico
Memor
floors
servin
Toda
salad b
"Pri
Groves
preside
the ea
dance,
still hol
Grow
due to
sixth
enroll
Of th
are co
becom
classro
Grow
restrict
tendan
"Stu
and d
"Why
that re
Hele
educat
would
"If
friend
wante
like to
dances
Bob
a com
in the
"I d
just go
Wen
manag
campu
Cla
inte
pro

Dances' appeal declines over time

By Julie Knapp
Contributing writer

You would have to be twice the age of most college students to recall it, but campus life at ASU once centered around the Saturday night dance, the Harvest Ball, the Christmas Formal, Homecoming and the Senior Prom.

At ASU, the major dances were held in the Maricopa Room on the second floor of the Memorial Union, with its bandstand and oak floors installed for the specific purpose of serving as a ballroom.

Today, the room is used as a cafeteria and salad bar.

"Priorities have changed," said Ted Groves, Associated Students activities vice president. "Dances died out on campus in the early 1970s because of lack of attendance, although sororities and fraternities still hold individual dances."

Groves said the lack of social activity is due to the size of the University, which is the sixth largest in the country and has an enrollment of more than 40,000 students.

Of those 40,000, approximately 75 percent are commuters who find little time to become involved in activities outside the classroom.

Groves said he also believes the alcohol restriction on campus discourages dance attendance.

"Students can go off campus and dance and drink all they want," Groves said. "Why would they want to attend a dance that restricts alcohol?"

Helen Andrade, a 21-year-old physical education major, said the absence of alcohol would not pose a problem for her.

"If the music was good enough, my friends and I could always go out later if we wanted to drink," Andrade said. "I would like to see more dances on campus — any dances."

Bob Romero, 27, math education major, is a commuter struggling to find enough hours in the day for work and school.

"I don't have time for dances," he said. "I just go to classes and then go home."

Wendy Westermann, 21, communication-management major, expressed a need for campus dances.

"We have them at our sorority all the time," she said. "We rent a hotel ballroom to avoid the problem of alcohol on campus, though."

The Residence Hall Association recently conducted a major advertising campaign to draw students to its dance, but only 20 couples came, Groves said.

"ASU has become so compartmentalized," Groves said. "I would like more tradi-



tional activities on campus, but we don't have the space to socialize.

"Until the students express a desire for dances, there's nothing student government can do about it," he said.

Class to assist interior design professionals

A new non-academic credit professional development course directed toward the interests of the practicing interior designer will be offered by the ASU College of Architecture and Environmental Design.

A two-day course in quick sketching techniques will provide participants with hands-on experience in color perspective sketching through a series of rapid 20-minute sketches with felt-tip markers and color pencils.

Kingsley Wu, associate professor of art and design, department of creative arts, Purdue University, will conduct the class, scheduled from 1 to 5 p.m. March 2 and from 8:30 a.m. to 5 p.m. March 3 in the Ritter School extension on the ASU campus. Cost for the course is \$175.

STILL WANT TO GO TO ...

MAZATLAN ... NO PROBLEM!

SPRING BREAK MARCH 10-17
8 DAYS / 7 NIGHTS

LIMITED RESERVATIONS SIGN UP TODAY!!!

TRIP INCLUDES:

- * ROUND TRIP TRANSPORTATION — TEMPE/NOGALES
- * ROUND TRIP TRAIN NOGALES/MAZATLAN
- * 5 NIGHTS LODGING AT THE HOTEL PLAZA GAVIOTAS
- * MEXICAN FIESTA WITH MARIACHIS, BEER & FOOD
- * 15% HOTEL TAX
- * FULLY ESCORTED BY PROFESSIONAL TOUR GUIDES

\$185⁰⁰ PER PERSON
QUAD OCCUPANCY

* SLEEPER ON TRAIN AVAILABLE FOR AN ADDITIONAL \$25 PER PERSON

FOR MORE INFORMATION PLEASE CONTACT:
CRAIG ORRAJ 967-4630
SCOTT WEISENBURGER 957-4400
GROUP TRAVEL SPECIALISTS 241-1000

COLLEGE LIFE presents

THURSDAY NIGHT AT THE SOAPS



with **BOB HORNER**

SPEAKING ON

"FIVE THREATS TO RELATIONSHIPS"

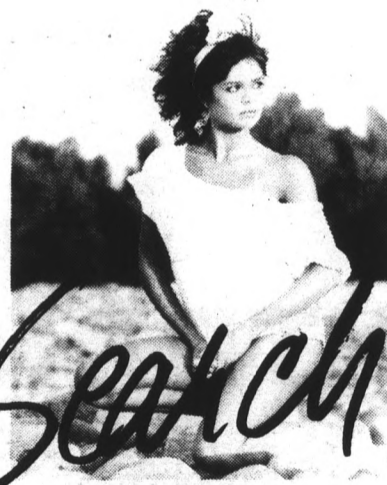
THURSDAY, MARCH 1st

7:30 PM

PALO VERDE MAIN CAFETERIA

SPONSORED BY *campus crusade for christ*

THE 1985 SILVER ANNIVERSARY WOMEN OF ASU CALENDAR



The Search is On

The 1985 Pi Kappa Alpha Fraternity Women of ASU calendar will be our 25th anniversary edition. This will be the biggest, classiest and most spectacular calendar we've ever produced; but we need girls.

Six of our girls on the 1984 edition had never modeled before. So whether you have a professional portfolio or not, we cordially invite you, the Women of ASU, to be a part of the 1985 Women of ASU calendar.

Interviews will be held this Friday, March 2, in the Memorial Union, Coconino Room 217, from 8 am to 5 pm.

Interviews will be conducted by: Richard Petrillo, of Photographic Productions; Linda Durso, stylist; Richard Biegel, executive producer of the 1984 Women of ASU calendar. Casual dress, shorts, jeans are preferred.

T H E S E A R C H I S O N

La Ciudad

Hohokam pithouse exhibition to coincide with ASU

By Tisa Striegler
Staff writer

A stone entrance and a sunken living room are symbols of elegance in today's society, but for the Hohokam Indians it was a way of life.

A slightly scaled-down version of a Hohokam pithouse is part of the Anthropology Museum's new display, "La Ciudad: A Hohokam Village," which opens Friday in conjunction with ASU's Centennial celebration.

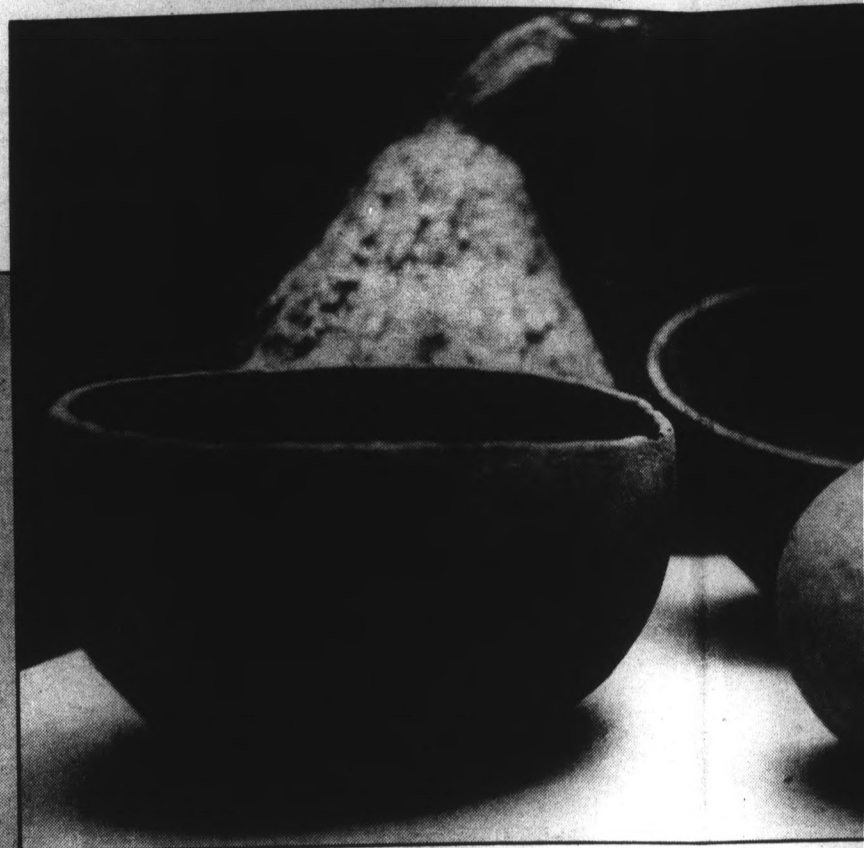
"The display was not originally planned to coincide with the Centennial, but because of extended excavations, it worked out that way," said Glen Rice, director of the office of cultural resource management in the department of anthropology and principal investigator for the La Ciudad archaeological project.

"This is the first organized show with a cohesive story we've had, and we don't expect it to be our last," Rice said.

Of the approximately 7,500 artifacts recovered at the site,



Pottery and other tools used to process grains the Hohokam's grew are part of the Museum's exhibit.



Vegetables are used in one display to emphasize the various uses of Hohokam

several key ones are included in the exhibit. Other items on display include an amethyst arrowhead, pottery, jewelry, incense holders carved in animal shapes and ceremonial burial ornaments.

Most of the items on display came from a 15-acre site excavated to prepare for the new Papago Freeway. Excavation resulted from federal laws protecting cultural resources.

The contract of \$1.3 million was awarded to the anthropology department after bidding and is the largest such award the department has ever received. The sizable funding of this pro-

ject enabled 205 of the app-

said Rice. To-

cluded in the "Excavation August 1983," another year This excavation Hohokam site Snaketown, a



announces

INTRAMURAL SOFTBALL

MEN'S & WOMEN'S DIVISIONS

12" Slowpitch Softball
8-10 people per team
Class A and B Leagues
\$10 Entry Fee

INTRAMURAL OFFICE
PHYSICAL EDUCATION
WEST LOBBY
965-5638

ENTRY DEADLINE

Entries will only be accepted at the Softball Meeting on Thursday, March 1 in the P.E. West West Gym, at 3:30 p.m. Entries should include a minimum of eight (8) team members' names and corresponding ASU I.D. numbers, along with the \$10 entry fee. We encourage you to pick up an entry form now at the Intramural Office, P.E. West Lobby. Please complete it before attending the meeting. Only complete entries will be accepted at the meeting.

COREC DIVISION

16" Slowpitch Softball
All games on Friday afternoons
5 men and 5 women per team
Class A and B Leagues
(Faculty & staff also eligible)
\$10 Entry Fee

INDIVIDUALS MEETING

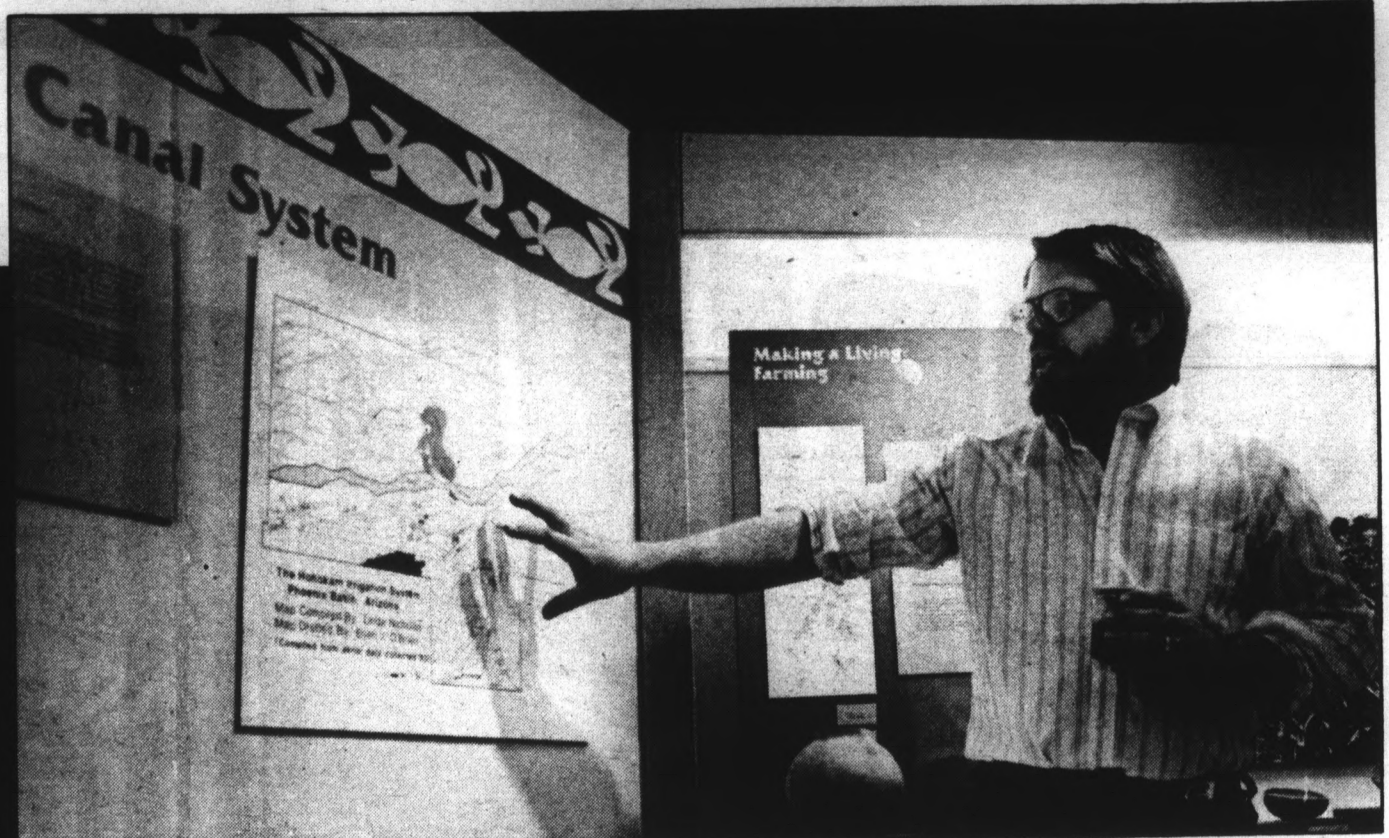
Individuals interested in joining a softball team should attend a meeting today, Wednesday, Feb. 29, in P.E. West 157 at 3:30 p.m. Please bring \$1.50 for the entry fee.

with ASU Centennial



The various uses of Hohokam pottery.

Staff photos by Tina Gerson



Glen Rice, principal investigator for the La Ciudad project, explains the canal system constructed by the Hohokams.

"Snaketown, was first excavated in 1934, and again in 1964, by Emil Haury of the University of Arizona at Tucson," Rice said.

The theme of the exhibit is organized around three controversial and still unresolved questions on the Hohokam: Chronologically, when did they begin? How were their villages organized? And, what was their economy like?

"Since about 1980, there have been new hypotheses and the

for other resources.

"We also found a large arena possibly used for ball games or dances," Rice said.

The Hohokam, who resided in the Valley along the Salt and Gila rivers from about 300 A.D. to 1400 A.D., were irrigationists and agriculturalists. The apparently sudden disappearance about 1400 A.D. of this once flourishing society has

'The display was not originally planned to coincide with the Centennial, but because of extended excavations, it worked out that way.'

ject enabled graduate and undergraduate students to excavate 205 of the approximately 270 to 300 Hohokam houses at the site, said Rice. Tools utilized by the archaeologists at the site are included in the exhibit.

"Excavation began in September 1982 and was finished in August 1983," said Rice. "We will be working on the project for another year and half recording and analyzing data."

This excavation is the second largest excavation of a Hohokam site conducted this century. Only the excavation of Snaketown, a site on the north bank of the Gila River, is larger.

data we found supported the new theories," Rice said.

Some supporting data unearthed included houses constructed in a circular fashion with a central courtyard and a ramada at one end, as well as cultivation of wild native barley as a winter crop, which the Indians grew in surplus and traded

been a mystery challenging archaeologists ever since.

The Anthropology Museum is open Monday through Thursday from 8 a.m. to 9 p.m., and Friday from 8 a.m. to 5 p.m. The Museum will be open this Sunday only from noon to 5 p.m. in conjunction with the Centennial celebrations.



That's Italian!

1819 N. SCOTTSDALE RD.

(One block north of McDowell)

Hours: Mon.-Thurs. 11 a.m.-11 p.m., Fri.-Sat. 11 a.m.-12 p.m., Sun. 11 a.m.-10 p.m.

Famous for a Full Line of Italian Dishes and Sandwiches Also Magnificent Pizzas

BEER & WINE

945-7167

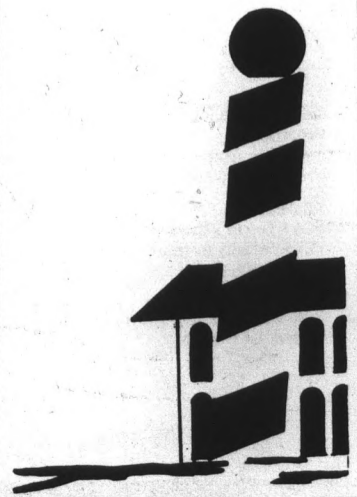
3' - 4' & 6' SUBMARINES

OUR SPECIALTY
Submarines • Pizza • Ravioli
Lasagna • Spaghetti



PRESENT COUPON & STUDENT I.D. FOR THESE SPECIALS

<p>COUPON #1 WITH ANY DINNER OR LARGE PIZZA AT REGULAR PRICE, ENJOY UNLIMITED WINE ONLY \$2 PER PERSON</p> <p><small>Not valid with other coupons. Dine-in only. Valid Sunday through Thursday until 3-11-84.</small></p>	<p>COUPON #2 WITH ANY DINNER OR LARGE PIZZA AT REGULAR PRICE, ENJOY A 60-oz. PITCHER OF COORS ONLY 99¢</p> <p><small>Not valid with other coupons. Dine-in only. Valid Sunday through Thursday until 3-11-84.</small></p>
<p>COUPON #3 Buy any large at Regular Price and get a 14" Cheese Pizza for \$1.99. (Toppings are extra)</p> <p>1 Topping 50¢ extra 2 Toppings \$1.25 extra 3 Toppings \$2.00 extra</p> <p><small>Dine-in or pick-up only. Valid Sunday through Thursday until 3-11-84.</small></p>	<p>COUPON #4 TWO LASAGNA DINNERS (including salad and garlic bread) ONLY \$6.50</p> <p><small>Not valid with other coupons. Dine-in only. Valid Sunday through Thursday until 3-11-84.</small></p>



SPRING SALE!

STARTS TOMORROW!



Oscar de la Renta & OTHERS!

1984 CUSTOMER MAILING LIST - DON'T MISS OUT!!!

We're in the process of updating our mailing list, and we need your help! If you'd like to receive advance notice on our sales (via a brochure mailed to your home) please come into our store and fill out a 1984 Mailing List card. Or if you're already receiving our mailers, simply bring your entire mailer into the store! THERE IS NO PURCHASE REQUIRED! We value your business and thank you for your cooperation.

ENTIRE STOCK OF FULLY-LINED SUITS from Oscar de la Renta & other makers! Linen-look freshness with a classic or fashion touch! VALUES \$90-120 (shown at left) **NOW \$39⁹⁹ - 49⁹⁹**

YVES SAINT LAURENT **FLEECE JOGGING SUITS** A front runner in dashing sportswear! VALUE \$34 **NOW \$9⁹⁹** **FIRST 3 DAYS ONLY!** Limit 2 per customer!

Tommy Vandierck **OXFORD SHIRTS** Beautiful pastels in the finest poly-cotton! VALUE \$25 **NOW \$10⁹⁹** **FIRST 3 DAYS ONLY!**

Oscar de la Renta **POLO SHIRTS** A prestige polo with all the important details found only in the finest quality sportswear! VALUES \$25-28 **NOW \$7⁹⁹ - 9⁹⁹** **SOLID & TIPPED STRIPED**

Cheeno's & OTHERS! **TWILL PANTS** Sought-after quality at a sensational price! VALUES \$20-25 **NOW \$12⁹⁹**

8 LOCATIONS

PHOENIX
19th Ave. and Thunderbird
Phone 866-1690

PHOENIX
6011 North 7th Ave.
7th Ave. and Bethany Home
Phone 265-4760

PHOENIX
35th Ave. and Northern
Phone 841-2951

PHOENIX
28th St. and Indian School
Phone 955-7804

PHOENIX
Paradise Hills Shp. Ctr.
32nd and Shea
Phone 867-2964

MESA
Fiesta Village Shp. Ctr.
Alma School & Southern
Phone 835-9089

TEMPE
Tempe East Shp. Ctr.
935 E. Broadway
Phone 966-4987

SCOTTSDALE
McDowell Plaza
7750 East McDowell
Phone 949-8067

- SALE STARTS THURS., MARCH 1, 7AM-10PM
- REGULAR STORE HOURS Mon. through Fri, 9:30am-9pm Sat, 9:30am-7pm; Sun, 12noon-5pm
- Not all colors and styles available at all stores
- Layaway and exchange privileges



Fashion Gal

By Steve Sports w
What
better y
team?
Monda
Center,
recorde
UCLA B
The en
seemed
night's g
Again
the gam
entire g
ASU c
effort of
season,
but I fel
basketb
The fi

Jim De
during
the Bru

sports

state
press

Thump

Devils drub Bruins 76-67 for second win in row

By Steve Richman
Sports writer

What has happened to the ASU men's basketball team? Or better yet, what has happened to the UCLA men's basketball team?

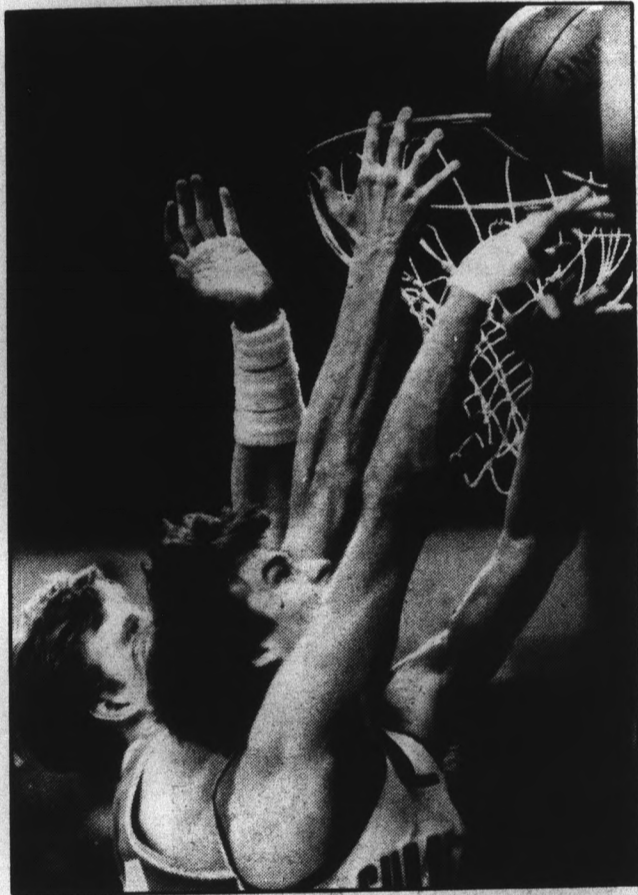
Monday night, before a crowd of 4,978 in the Activity Center, the Sun Devils (11-14 overall and 6-9 in the Pac-10) recorded their second straight upset as they defeated the UCLA Bruins 76-67.

The enthusiasm and intensity the Devils showed last night seemed to carry over from the second half of last Saturday night's game with the Oregon Ducks.

Against the Bruins, the Devils were able to take control of the game from the outset, and set the pace and tone for the entire game.

ASU coach Bob Weinbauer was extremely pleased with the effort of his team. "This had to be our biggest win on the season," said Weinbauer. "Not only did we out-hustle UCLA, but I felt that we played a full 40 minutes of good, consistent basketball."

The first 10 minutes of the game proved to be good for both



Jim Deines battles with UCLA's Stuart Gray for the rebound during action Monday night. The Sun Devils outrebounded the Bruins 42-27, helping ASU to an upset victory.

teams. The Bruins were forced to shoot from the perimeter due to a 2-3 zone played by the Devils, but Ralph Jackson was able to hit a couple of outside jumpers to pace the offense.

For the Devils, Chris Beasley hit his first two jumpers while Phil McKinney was able to score from under the basket.

The Bruins have a reputation of being a running, fast-break type team. While the first half was fast-paced, the Devils were able to stay with the Bruins and build a seven-point halftime lead.

One big reason for the halftime lead was the Devils' ability to control the game from under the basket. "Rebounding has been a strong point for us all season," Weinbauer said. "And I felt that because we out-hustled UCLA we were able to create some of our own breaks."

In the second half, the Devils were able to come out and continue to play with the intensity they had during the first half.

"At halftime I told my players that I wanted them to go out and dominate the first two minutes of the second half," Weinbauer said. "We know that UCLA is an explosive team and that we needed to play a strong second half in order to win."

The Devils did come out and play a strong second half. They were able to build leads of as much as 12 points, but more importantly, they were able to maintain the poise and intensity they needed to ultimately gain the victory.

The Bruins were led by senior forward Kenny Fields, who scored 16 points and gathered seven rebounds. Other top contributors for the Bruins were Ralph Jackson (13 points and eight assists), Gary Maloncon (10 points) and Stuart Gray (with a team high 11 rebounds).

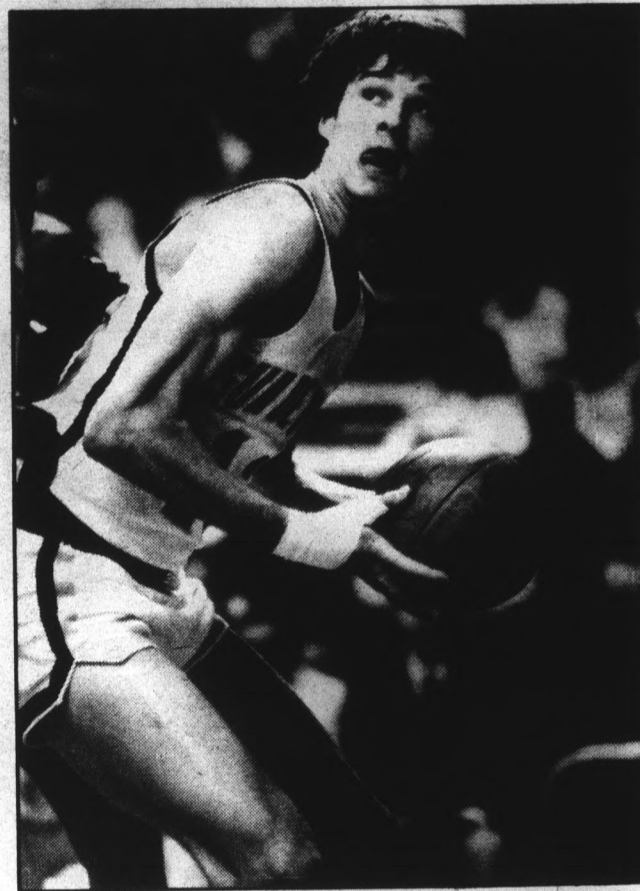
The Bruins' best chance to get back into the game came with just over 10 minutes left to play. ASU had a 12-point lead, but the Bruins were able to cut the lead to six by causing a couple of turnovers. The momentum was definitely in UCLA's favor, but due to a required TV commercial time-out, play was stopped. This turned out to be the major turning point in the game.

ASU took over possession and inbounded the ball. Warren Everett passed to Bobby Thompson under the basket who scored and was fouled. Thompson was able to convert the free throw to complete the three-point play. "That was the big play in the game," said Weinbauer. "Instead of UCLA only trailing by six points or less, we were able to rebuild the lead to nine points."

Although the Bruins were able to cut the lead back down to four points with just over three minutes left, it seemed that they were disheartened by the change in momentum that had occurred earlier in the half.

The game ended with the Devils rebuilding their lead to nine points. The final score of 76-67 was a good indication of how well the Devils played. "The score reflects that this win was not a fluke," said Weinbauer. "We played our best game of the season and we deserved to win."

The Devils hit the road and conclude the season with games against the Cal Bears in Berkeley on Thursday, the Stanford Cardinal in Palo Alto on Saturday and end the season with the



Staff photos by Tina Gerson

Jim Deines looks to go to the basket in Monday night's victory over UCLA. Deines finished with 18 points during the contest.

Trojans of Southern Cal in Los Angeles next Tuesday.

With a possible finish at the .500 level, it is imperative that the Devils don't let their victories over the Bruins and Ducks affect their play against their remaining opponents.

"We can't afford to suffer a letdown in any of our remaining games," added Weinbauer. "A finish at the .500 level would be a good way for our team to finish the season."

ASU 76, UCLA 67

UCLA (67)

Maloncon 5-8 0-0 10, Fields 8-18 0-0 16, Gray 2-8 1-3 5, Jackson 6-11, Miguel 1-2 3-6 5, Gaines 2-4 2-2 6, Hatcher 0-3 0-0 0, Miller 5-7 0-1 10, Wright 0-2 2-2 2. Totals 29-63 9-16 67.

ASU (76)

Deines 4-7 2-2 10, Beck 4-12 6-7 14, McKinney 5-9 2-2 12, Beasley 7-16 5-6 19, Vaughns 1-2 2-2 4, Attaway 0-0 0-0 0, Thompson 3-9 1-1 7, Everett 1-2 1-3 3, Holloway 3-3 1-2 7, Kleckner 0-0 0-0 0, Williamson 0-0 0-0 0, Burns 0-0 0-0 0. Totals 29-60 20-25 76.

Halftime — ASU 36, UCLA 29. Fouled out — Miller. Rebounds — UCLA 27 (Gray 11), ASU 42 (McKinney 12). Assists — UCLA 20 (Jackson 8), ASU 21 (Beasley 6). Total Fouls — UCLA 22, ASU 16. A — 4,978.

THE
HAIR
KUTTERS

Your Campus Hair Care Center

709 S. Forest Ave., Tempe

North of University • Behind the
Chuck Box • In Oxford Square

968-5946

\$3⁰⁰ OFFWith This Ad
Expires May 31, 1984.

REGULAR PRICES

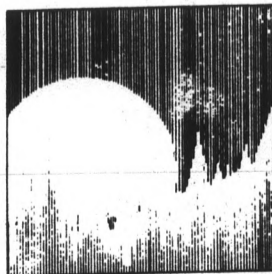
• Shampoo • Condition
• Precision Cut • Blow Dry

MEN \$12 • WOMEN \$14

OPEN MONDAY THROUGH SATURDAY.

TUES., WED. & THURS. TILL 9 P.M.

ASASU/GAMMAGE presents

An Evening with Windham Hill
Live

featuring

William Ackerman

Alex deGrassi

Shadowfax & Liz Story

March 22, 8:00 p.m.
at Gammage CenterTICKETS \$8.50, \$9.50 available at Gammage and
Diamonds box offices. For reservations call 965-3434.

Wrestlers finish second in conference meet

By Vicki Serna
Sports writer

Arizona State's wrestling team fell short of winning a Pac-10 championship this past weekend.

Four points short.

In its effort to relive the glory of a conference title, which the Sun Devils won just four years ago, the grapplers of ASU were edged by Oregon State.

ASU settled for second place behind the defending champion Beavers.

Before the championship, coach Bobby Douglas said this 1984 Sun Devil team was the best-conditioned team he had put on the mat.

The Sun Devils were in top shape to win the conference. Douglas was confident, yet not overconfident. He knew his team had one of the best chances to capture the championship crown. And the team was physically and mentally prepared for a victory. But victory wasn't in the cards for the Devils.

ASU took second place with 94 points, while Oregon State wrestled its way to the championship with 98 points. Washington State came in third with 57.25 points, Stanford took fourth with 33.50 and Oregon crept into fifth place with 21.75 points.

"I was very disappointed, not at the way we wrestled but at the outcome of the tournament," Douglas said. "Oregon

(State) beat us head to head in competition; that was the difference."

However ASU did come home with three winners who captured their respective weight divisions.

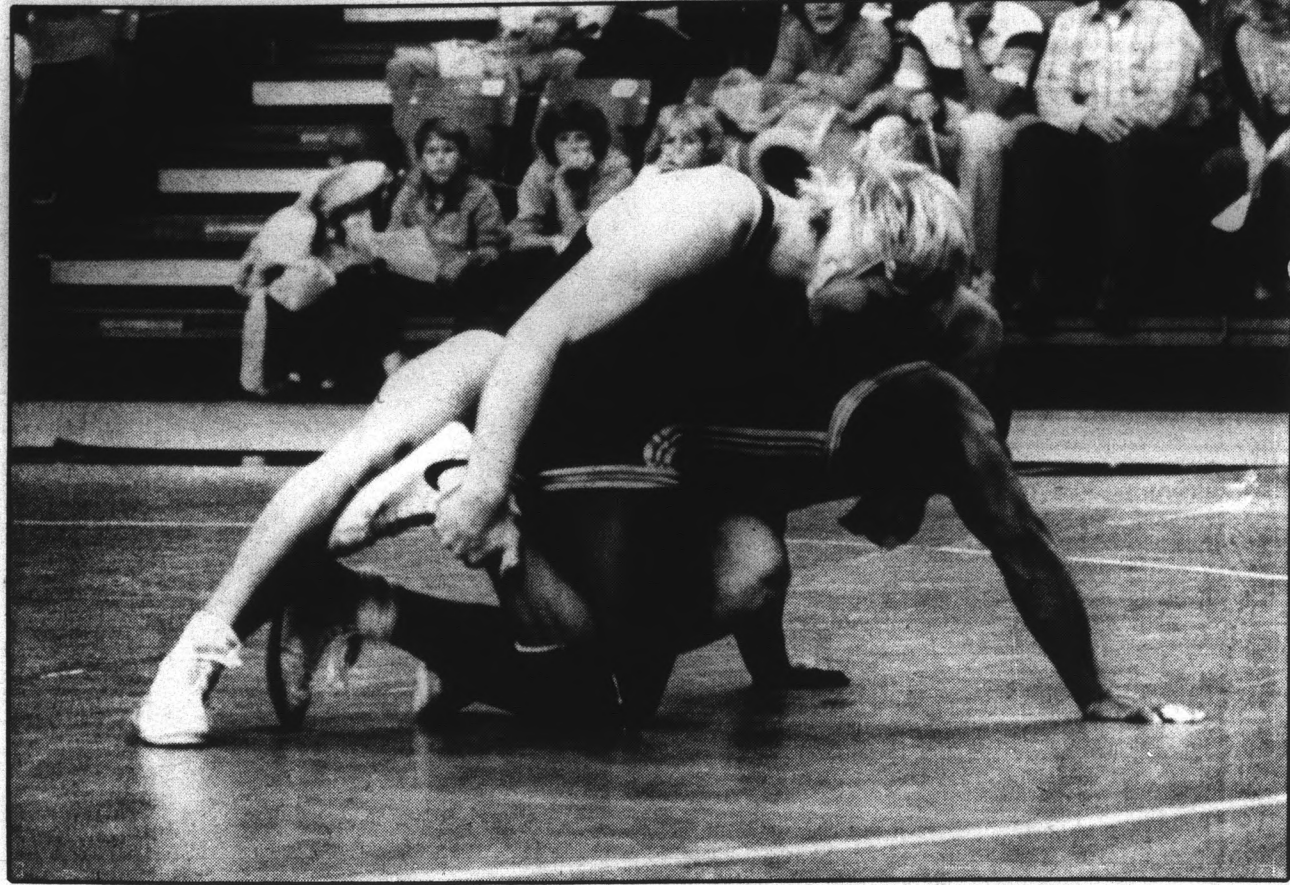
ASU senior Tom Riley won his 134-pound weight class. In first round action he received a bye, but the second time around he went up against Reagan Ross of Oregon and pinned him in 6:08. Next Riley met Bob Siegwarth of Washington State for the final round. Riley prevailed 4-3 and won the championship.

Sun Devil Eddie Urbano, a junior, got a bye in the first round and defeated Oregon's Rafe Mumford 21-5 in the second round.

In the final round Urbano defeated Scott Cardwell of Oregon State 11-3. Urbano reigned as champion in the 150-weight class.

The third winner the Devils boast is junior Tom Kolopus who received a first-round bye and pinned Oregon's James Terry in the second round.

In the final round Kolopus soundly defeated Jeff Wilson of Stanford 16-4. Kolopus was the Pac-10 wrestling champ in the 177-pound class.



ASU's Tom Kolopus wrestles an opponent into submission during a recent home meet. Kolopus won the Pac-10 wrestling championship in the 177-pound weight class, but the Sun Devil team finished second behind Oregon State.

Championship results, p. 16

Five Sun Devils finished in second place in their weight divisions: 118-pound junior Jim Lefebvre; junior Gary Bairos in the 126-weight division; Chris Bodine, a senior, in the 158 class; 190-pound freshman Mike Davies; and freshman heavyweight Rod Severn.

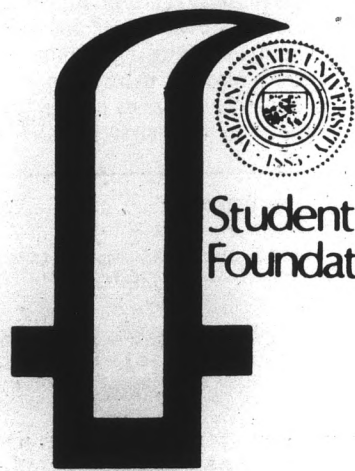
ASU freshman Dennis Roberts took third place in the 167-weight division.

"We made some mistakes and that's what cost us the tournament," Douglas said. "We went in knowing we had some problems. Roberts was at 60 percent because of an injury."

Eight of the Sun Devil wrestlers will have one last chance at performing this year in the NCAA Championships March 8-10. The eight wrestlers representing ASU will be Lefebvre, Bairos, Riley, Urbano, Bodine, Kolopus, Davies and Severn. The championship will be held in East Rutherford, N.J.

One of the goals of the team has been to finish as one of the top 10 teams in the nation. They will have a chance to do that in New Jersey.

Douglas said the results of the NCAA Championships will "depend on how well we prepare within the next seven days. We've worked to improve and we're going to work to get ready."



Student
Foundation

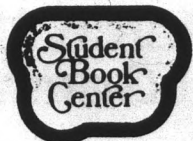
\$5,000

IN

SCHOLARSHIPS

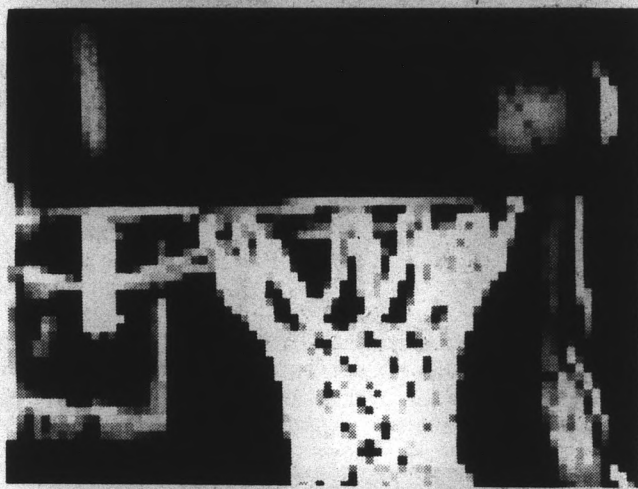
Each Spring, the ASU Student Foundation awards a Leadership Scholarship to a student in each of ASU's ten colleges (including the School of Social Work, excluding the Graduate College). The Scholarships are valued at \$500, and are awarded as a \$300 cash scholarship and a \$200 book/supply scholarship. The book/supply scholarship will be provided by the Student Book Center.

Applications and details available in
Office of Student Life, located in the
Memorial Union Room 48.



APPLICATION DEADLINE MARCH 5, 1984.

GREAT STUFF!



SUNS BASKETBALL

San Antonio Spur vs. Phoenix Suns

Saturday, March 3

See "The Iceman," George Gervin

"Pennant Night" — the first 3,000 fans
receive Phoenix Suns pennants!

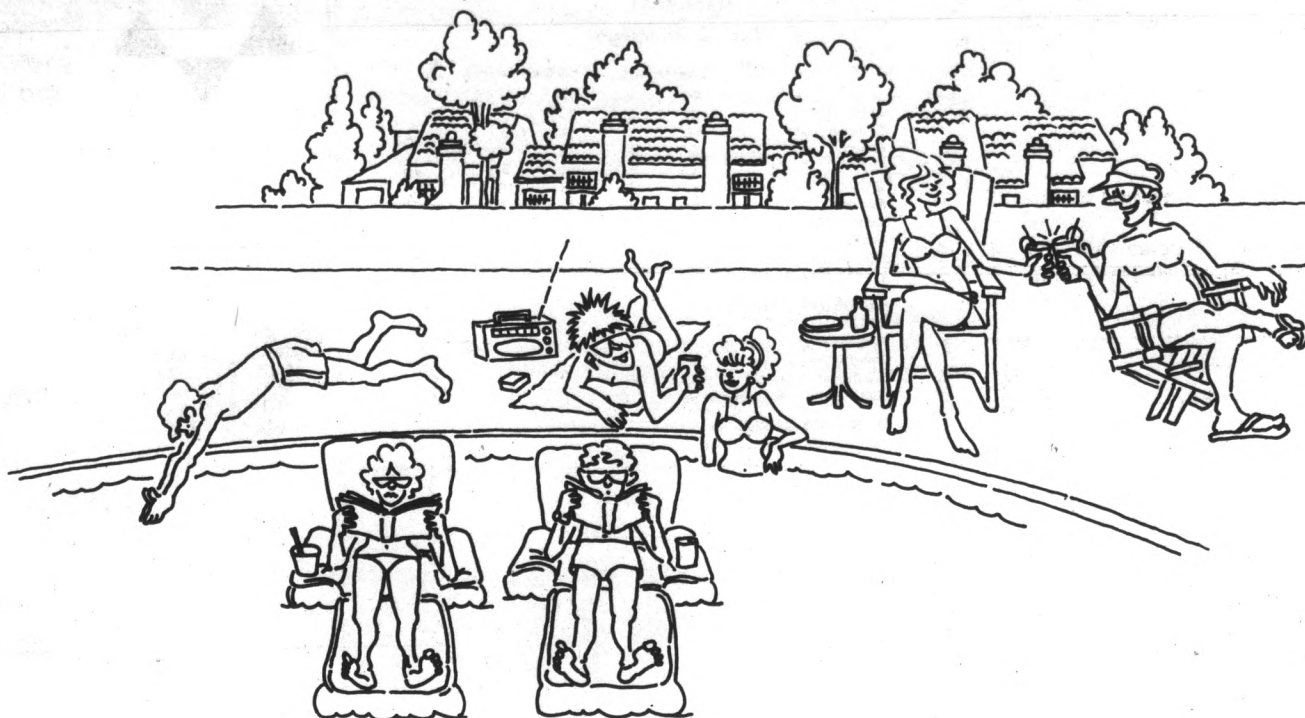
★ ★ ★ **Special ASU Discount** ★ ★ ★
★ ★ ★ **\$8⁰⁰ seats just \$4⁰⁰** ★ ★ ★

Note: There is a small handling charge
for each transaction and final day of
ticket sales is Thursday, March 1.



Discount tickets available only at the
ASU Intramural Sports Office
P.E. West Lobby
9 a.m.-4 p.m.





**YOUR PARENTS
DESERVE A
NICE TAX BREAK,
AND THE
CHANCE TO
MAKE A LOVELY
CAPITAL GAIN...**

**AND THE JOY
OF KNOWING
YOU ARE WELL
AND HAPPY
LIVING IN THEIR
NEW CONDO
NEAR A.S.U.**

What's in it for you? Visit Dartmouth Trace or Casa Los Cerros Condominiums. You'll find life's basic necessities: like unique contemporary design, French doors, all appliances, vaulted ceilings, fireplace, tiled entry, pool, Jacuzzi, recreation area . . . and more. If you can tolerate luxury, read on.

What's in it for the folks? You think they'll never go for this? You might be surprised. Strangely enough, there are very strong, sound financial advantages . . . even beyond tax deductions and probable profits.

Let's talk. If anyone can make the right offer to your parents, it is probably U.S. Home. We're the nation's largest home builder, and we have some very good ideas.



**CASA LOS CERROS
condominiums**

pre-construction sale from the 50's
Baseline, just west of the freeway, Tempe
438-8627



**DARTMOUTH TRACE
condominiums**

from the 50's
1 block west of Dobson, 2 blocks north
of University, at 640 North May, Mesa
969-1928

America calls us home™



LISTED ON THE NEW YORK STOCK EXCHANGE



numbers

Baseball

Six-Pac baseball

	W	L	T
1. Southern Cal	9	2	
2. ASU	14	4	
3. California	10	4	1
4. UCLA	8	4	
5. Stanford	9	8	
6. Arizona	9	12	

Batting Average — Oddibe McDowell .500, Todd Brown .400, Ted Dyson .360, Barry Bonds .311, Luis Medina .309, Romy Cucjen .295, Mike Devereaux .291, Steve Murray .283, Don Wakamatsu .271, Bob Grandstaff .224.

Home runs — Todd Brown 5, Romy Cucjen 5, Oddibe McDowell 4, Barry Bonds 4, Ted Dyson 2, Luis Medina 2, Don Wakamatsu 1, Bob Grandstaff 1.

Runs batted in — Oddibe McDowell 18, Barry Bonds 17, Luis Medina 14, Romy Cucjen 13, Todd Brown 11, Bob Grandstaff 8, Don Wakamatsu 7, Steve Murray 6, Mike Devereaux 5, Ted Dyson 3.

Stolen base — Oddibe McDowell 10, Mike Devereaux 9, Steve Murray 4, Barry Bonds 3, Romy Cucjen 3, Don Wakamatsu 2, Bob Grandstaff 1, Todd Brown 1, Ted Dyson 1.

Slugging percentage — Todd Brown .844, Oddibe McDowell .800, Ted Dyson .680, Romy Cucjen .590, Barry Bonds .557, Luis Medina .545, Mike Devereaux .327, Steve Murray .326, Don Wakamatsu .328, Bob Grandstaff .293.

Pitching wins — Doug Henry 4-1, Jeff Roberts 3-0, Jose Rodiles 3-2, Kendall Carter 2-0, Randy Rector 1-0, Dave Graybill 1-0.

Earned run average — Jeff Roberts 0.81, Dave Graybill 1.86, Doug Henry 1.88, George Thorpe 2.25, Jose Rodiles 2.69, Kendall Carter 2.80, Randy Rector 3.19, Gilbert Villanueva 3.77, Kevin Williamson 17.23.

Strikeouts — Doug Henry 27, Dave Graybill 18, Jose Rodiles 17, Kendall Carter 16, Gilbert Villanueva 12, Jeff Roberts 11, Kevin Williamson 6, Randy Rector 5, George Thorpe 5.

Saves — Dave Graybill 2, Doug Henry 2, Kendall Carter 1.

Basketball

Pac-10 standings

	Conference		All Games	
	W	L	W	L
Washington	13	2	20	5
Oregon State	12	3	19	6
Oregon	9	6	14	11
UCLA	7	6	14	9
Stanford	7	8	18	10
Arizona	6	8	9	15
Arizona State	6	9	11	14
Southern Calif.	5	10	10	18
California	4	10	11	13
Washington State	4	10	10	14

SATURDAY'S RESULTS
 USC 80, UCLA 72
 Arizona State 60, Oregon 56
 Arizona 69, Oregon 56
 Washington State 71, California 62
 Washington 68, Stanford 63

MONDAY'S GAMES
 Arizona State 76, UCLA 67
 Arizona 55, Southern California 49

SCORING

	G	FG	FT	PTS	AVG
1. A.C. Green, OSU	13	77	85	239	18.4
2. Dettlef Schrempf, WASH	13	91	48	230	17.7
Kenny Fields, UCLA	12	84	44	212	17.7
4. Keith Jones, STAN	13	88	53	229	17.6
5. Blair Rasmussen, ORE	13	93	41	227	17.5
6. Chris Beasley, ASU	12	79	51	209	17.4
15. Steve Beck, ASU	12	58	35	151	12.6

REBOUNDING

	G	O-D-T	AVG
1. Pete Williams, ARIZ	11	44-69-113	10.3
2. John Revelli, STAN	13	39-69-108	8.3
3. Stuart Gray, UCLA	12	24-74-98	8.2
4. A.C. Green, OSU	13	39-62-101	7.8
5. Dettlef Schrempf, WASH	13	20-74-94	7.2
9. Jim Deines, ASU	12	33-49-82	6.8
10. Phil McKinney, ASU	12	32-47-79	6.6

BLOCKED SHOTS

	G	NO	AVG
1. Blair Rasmussen, ORE	13	21	1.6
2. Phil McKinney, ASU	12	13	1.1
Charlie Simpson, USC	11	12	1.1
4. Stuart Gray, UCLA	12	12	1.0
Otis Jennings, WSU	12	12	1.0

ASSISTS

	G	NO	AVG
1. Ralph Jackson, UCLA	12	67	5.6
2. Keith Morrison, WSU	12	54	4.5
Brock Brunckhorst, ARIZ	11	50	4.5
4. Bobby Thompson, ASU	12	46	3.8
5. Chris Harper, ORE	13	46	3.5
6. Chris Beasley, ASU	12	41	3.4

STEALS

	G	NO	AVG
1. Keith Morrison, WSU	12	24	2.0
2. Bobby Thompson, ASU	12	22	1.8
Chris Washington, CAL	12	21	1.8
4. Larry Friend, USC	13	21	1.6
Dettlef Schrempf,	13	21	1.6

FIELD GOAL PERCENTAGE (min. 4 FG made per game)

	FGM-FGA	PCT
1. A.C. Green, OSU	77-118	.652
2. Dettlef Schrempf, WASH	91-143	.636
3. Stuart Gray, UCLA	49-78	.628
4. Ricky Brown, WSU	61-102	.598
5. Pete Williams, ARIZ	54-91	.593

FREE THROW PERCENTAGE (min. 2 FT made per game)

	FTM-FTA	PCT
1. Blair Rasmussen, ORE	41-46	.891
2. Ron Holmes, USC	44-50	.880
3. Steve Beck, ASU	35-40	.876
4. Keith Ramee, STAN	51-60	.850
Chris Beasley, ASU	51-60	.850

Men's golf

Lamar Intercollegiate

Teams — Oklahoma State 850, Houston 857, Oklahoma 858, Texas 874, Arizona State 877, Lamar 881, Texas A & M 892, Texas Christian 894, Louisiana State 894, Houston Baptist 899, New Mexico State 903, Arkansas 917, North Texas State 919.

Individual medalist — Billy Ray Brown, Houston, 210.

ASU scores — Rich Bletz 216, Jim Carter 219, Barry Conser 221, Roger Thorne 230, Don Leisey 232.

Wrestling

Pac-10 Championships

Teams — Oregon State 98, Arizona State 94, Washington State 57.25, Stanford 33.50, Oregon 21.75.

Individual weight class champions: 118 — Jamie Wise, Oregon State. 126 — Walt Markee, Oregon State. 134 — Tom Riley, Arizona State. 142 — Cliff Berger, Oregon State. 150 — Eddie Urbano, Arizona State. 158 — Gary Jones, Oregon State. 167 — Pat Gibson, Oregon State. 177 — Tom Kolopus, Arizona State. 190 — Jim Baumgardner, Oregon State. Hwt. — Wendell Ellis, Washington State.



SHABBAT MORNING SERVICE

Saturday, March 3
10:30 a.m.

Honoring our Program
Director Dan Cooper
and Elissa Pearlman

Lunch follows the service.
Reservations only 967-7563.
Hillel • 1012 S. Mill Ave.



Friday, March 2

Shabbat Services
at 7:30 p.m.

Hillel • 1012 S. Mill Ave.

Followed by an
Oneg Shabbat
at the ASU Bayit

320 E. 14th St. at 9 p.m.

CONTACT LENS SPECIAL

with Student I.D.

	PER PAIR
Hard Lenses	\$39.00
B&L Soflens®	\$59.00
B&L Extended Wear	\$99.00
Permalens Extended Wear	from \$119.00

AO, Hydrocurve, Polycon II available at similar savings
FAST SERVICE — 24 Hours in most cases!

FREE TINT with purchase of any new pair of prescription, plastic-lens eyeglasses

VisiCare only \$19.50
Extended Warranty

UNLIMITED REPLACEMENTS and Savings on Solutions

REC SPECS- \$29.00
Protective Eyewear (non-prescription)

MESA OPTICAL

46 N. Central 253-1388 Sunnyslope 546 E. Dunlap 944-1965
123 W. Main 964-8142 Downtown Mesa

SATISFACTION GUARANTEED

THE GRADUATE STUDENT ASSOCIATION

MARCH SCHEDULE OF EVENTS

GENERAL MEETING: Monday, March 5
12 noon-1:30 p.m.
• Guest Speaker: E. Aynne Henry, Ph.D. Psychologist
• Subject: Study, Stress and Intimate Relationships
• Where: MU Navajo Room #219
Refreshments provided

Also this month
WORKSHOPS and SEMINARS
presented by
G.S.A. and C.A.R.E.
Contact for Adult Re-Entry

March 6: Small Business Management
1-3 p.m. — MU Room #222
\$2 Registration Fee
March 27: Careers in Travel & Tourism
1-3 p.m. — MU Room #211
\$2 Registration Fee

For more information:
G.S.A. — ASASU ... 5-3161, 5-1248
C.A.R.E. — Student Life ... 5-6547



PROFESSIONAL HAIR DESIGNS

PERM SPECIAL
\$22.50 (Includes Cut & Shampoo)
(Reg. \$29.95)



HAIRCUT \$7.00
MANICURES \$6.00
SCULPTURES ... \$25.00
NAILTIPS \$15.00
CELLOPHANES \$15.00
1/2 OFF (Reg. \$30)

933 E. UNIVERSITY TEMPE TOWNE PLAZA
Mon.-Sat. 9-9
Sunday 11-4

966-6111
NO APPOINTMENT NECESSARY
(Next to Greasy Tony's)

Sat., March 3 • 1 p.m.
414 ADELPHI DRIVE
PROCEEDS TO BENEFIT ASU GREEK SCHOLARSHIP FUND

Sun Devil golfers fifth in Texas meet

By Tom Blodgett
Assistant sports editor

The ASU men's golf team gave some indication of good things to come by finishing fifth at the Lamar Intercollegiate in Beaumont, Texas.

"We did pretty well," coach George Boutell said. "It may not seem like it finishing in fifth, but three of the teams (that finished ahead of ASU) were the top three teams in the country."

The Sun Devils were led by newcomer Rich Bietz, who finished ninth in his first collegiate tournament with a three-round score of 216.

Bietz, a junior from McClintock High School, has never played before because of a heavy school load as a pre-med major.

Boutell said Bietz was on the squad as a freshman but did not compete because of scholastic demands. He was not even on the squad all of last season or last fall because for the same reason. As a result, he still has three years of eligibility remaining.

"As a coach it's pretty nice to know you'll have that guy around a couple more years," Boutell said.

Bietz led the team in both rounds of qualifying for the

tournament. His finish at the tourney was also best among the Sun Devils.

Also contributing heavily to the Sun Devils' success was 1983 NCAA champion Jim Carter, who finished 16th with a 219 score, and Barry Conser, whose total of 221 placed him 21st.

Rounding out the field for the Sun Devils were Roger Thorne (230) and Don Leisy (232).

"That's not good but they both helped us out," Boutell

Tourney results, p. 16

said. "Between those two we got a good round every day and the other three guys' scores counted every day."

The top four of five individual scores from each day's round were counted toward the team's score.

"Leisy shot a 73 in the second round, which was our low score on a day which was otherwise just awful," Boutell said.

Boutell said the course was windy and very hard. The tourney's field also provided stiff competition.

"We beat a lot of good teams," he said. "It was a good tournament."

continued page 18

Carpet House
DORMS, APTS., VANS
ALL SIZES
USED ROOM SIZES
\$10 & UP
NEW CARPET TOO!
1516 E. Van Buren
Phoenix

TO THE JEWISH
COMMUNITY
WITH LOVE
(recorded
message)
PLEASE CALL
941-9268

PASS
EXAMS
FREE SAMPLE
FOR
INFORMATION
CALL 991-6497
MON.-FRI. 1-9 P.M.
Mention this ad.

DRIVE CARS
FREE
Cars Available
Many Points U.S.A.
We are I.C.C. licensed and
insured. Must be 21 years or
more.
SCHEALL DRIVEAWAY
991-5533

COUPON
DELIVER ALSO
COUPON
DELIVER ALSO
THE JOYNT
from 2-10 p.m.
2 Dinners for
\$5.49 Reg. \$8.50
Choice of:
•Lasagna
•Cheese or
Spinach
Manicotti
•Baked Ziti
Includes 2 dinner salads
and garlic breads
75c extra for carryouts
THE JOYNT
606 S. Mill
967-7926
Expires March 19, 1984.

WEDNESDAY WE SERVE YOU THE BEST FOR 1/2 PRICE



- Heinekens & Moosehead 1/2 Price
- Stolichnaya & Tanguray 1/2 Price
- Chevas Regal & Jack Daniels 1/2 Price
- All Call & Premium Liquor 1/2 Price
- All Import Beer 1/2 Price

ONLY AT

DONNY O'BRIENS

222 S. Mill

Sun Devils finish fifth at WCAA swimming meet

By Jay Taylor
Sports editor

The fifth-place finish of the ASU women's swim team in the WCAA Championships last weekend may not seem wonderful on the surface, but in fact it was encouraging, according to coach Bob Gillett.

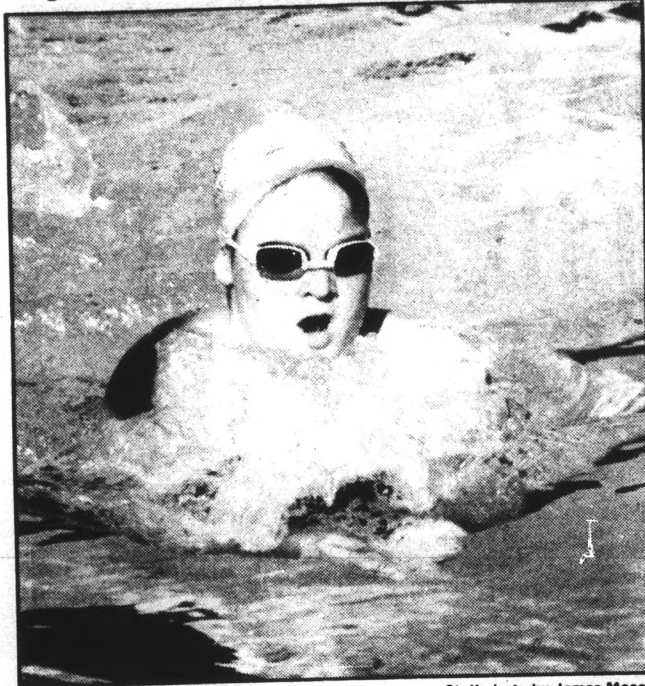
"We swam all right individually," he said. "It wasn't as bad as the fifth-place finish makes it seem; at least I don't think so."

The Devils garnered 237 points in their fifth-place finish. Powerhouse Stanford waltzed away with the title scoring 633 points. USC was second at 520, the U of A third at 296, UCLA fourth with 240, San Diego State sixth at 122 and Long Beach State rounded out the field with 55 points.

The reason Gillett was so encouraged by the performance of his team was that they were not tapered or shaved for the meet, while most of the other teams were. The Devils continued to work out hard right up to the meet.

Gillett said this was a calculated risk, but it was one he felt he needed to take in order to have a better chance to do well at the NCAA meet March 15-17.

"We run the risk of not doing as well at nationals if we peak our girls for conference," Gillett said. "It takes the edge off.



Staff photo by James Moser

ASU's Michelle Merchant became the first person in three years not from Stanford or USC to win an event in the WCAA swimming championships. Merchant won the 100-yard breaststroke.

You might miss one (NCAA qualifying time) that you should have had, but that was a risk that I felt I needed to take.

"It would have been a case of gross negligence to peak Michelle (Merchant) for the conference meet."

Obviously Merchant did not need to be peaked for the WCAA meet. She became the first person since 1981 who was not from Stanford or USC to win an event in the conference meet when she grabbed the 100-yard breaststroke title in 1:04.55

Merchant's time in the 100 breaststroke also qualified her for this summer's Olympic trials.

"Michelle is swimming very positively right now," Gillett said. "She swam three great races at the WCAA, and her enthusiasm has rubbed off on the rest of the team."

"I'd like to see her score in all her events at NCAA's."

Assistant coach Jim Puleo seconded Gillett's praise of Merchant. "I think she is going to blow their doors off at na-



Staff photo by David Petkiewicz

ASU's Beda Liirvaag has been one of the Devils top performers all season. She could challenge Florida's Tracy Caulkins for the 400 IM title in the NCAA Championships

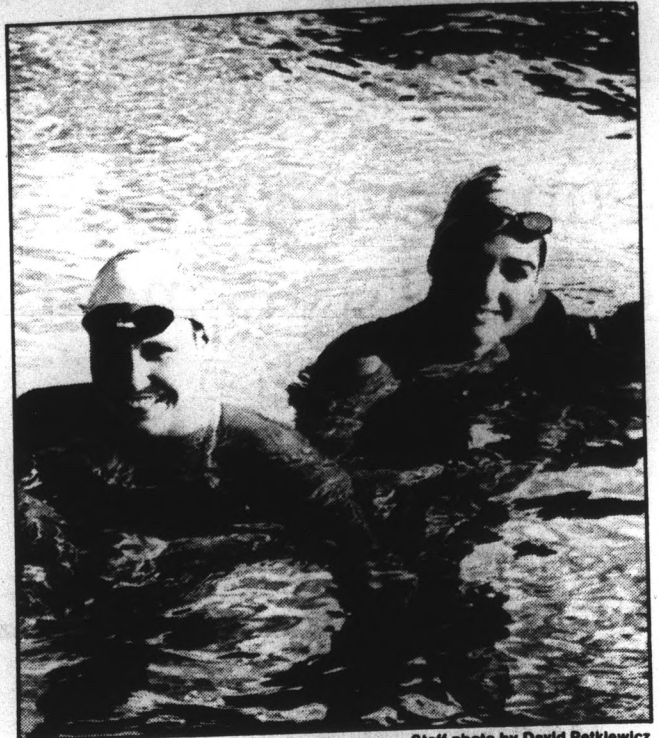
nationals," he said. "I think she will make all the big (championship) finals."

In addition to her win, Merchant was second in the 200 individual medley (2:04.86) and the 200 breaststroke (2:18).

But Merchant was not the only Sun Devil to perform well. Stephanie Lister was second in the 100 backstroke in 58.02 and fifth in the 200 back in 2:06.50.

Beda Liirvaag was eighth in the 100 butterfly in 57.65 and third in the 400 IM in 4:23.16. Puleo said her times were not indicative of her potential at the NCAA's.

"It's tough with Beda, because she's never been rested



Staff photo by David Petkiewicz

Freshmen Stephanie Lister (left) and Cheryl Gillett have been two reasons why the Sun Devils have been so strong this year. Both made the championship finals in their events at the WCAA Championships.

before, and she's scared of it," he said. "I think once she gets rested, she'll push (Florida's Tracy) Caulkins in the 400 IM." Freshman distance freestyler Cheryl Gillett was hampered by a knee injury (possibly cartilage damage) and did not perform up to her usually high standards. She still managed to grab fourth place in the 1,650 freestyle in 16:39.

Possibly the biggest plus for ASU was qualifying all five relay teams for the NCAA's.


"Only 12 to 13 teams in the country are able to get all five relays to NCAA's," Puleo said. "I think that says a lot for our versatility."

The Devils were hurt at the WCAA meet by their lack of depth. In events where they would place one person high in the standings, other schools were placing two people well down the list and still getting more points than ASU.

In many cases, those finishing down in the standings were swimming times that were not fast enough to qualify for NCAA's.

"Depth won't be as important at nationals," Gillett said. "We have enough people in individual events to hopefully get us into the top 10 which is our goal."

Terrace Road Apartments



WALK TO SCHOOL!

1/2 block from Campus. Huge, well furnished 1-bedroom, 1-bath, and 2-bedroom, 2-baths, all utilities included, plus many amenities.

950 S. Terrace Rd. 966-8540

Billy's
FAMOUS FOR RIBS

FEATURING THE BEST RIBS IN THE VALLEY

NOW OPEN FOR BREAKFAST, LUNCH & DINNER
Sunday-Saturday 6 a.m.-11 p.m.
Bar open until 1 a.m. Friday & Saturday

BILLY'S FAMOUS CHAMPAGNE BRUNCH
11 a.m.-3 p.m. Saturday & Sunday
Includes complimentary champagne

Home of the "Double-Day" Happy Hour
All drinks 2 for 1 4-6/11 p.m.-1 a.m. Sun.-Sat.

1301 E. Broadway, Tempe • 967-1614
Think Billy's for complete carry-out & catering.

RAPE
is a violent word!

As a service to the ASU community, MUAB Host and Hostess Committee will sponsor Citizens Against Crime. This national crime safety awareness organization is the largest of its type in the world.

WEDNESDAY, FEBRUARY 29
12 NOON
MEMORIAL UNION • PIMA ROOM

This is not a self-defense program but a self-protection program that may be the most important 45 minutes of your life. Self-protection in your home, in your car, on the street and alternatives if attacked are subjects that will be detailed.

Representing Citizens Against Crime:

Ms. Margaret Giller
Regional Vice President
2 1/2 years in crime prevention

Mr. Edward Pelsue
Retired Police Officer,
Law Enforcement and
Crime Prevention

Saving lives through education is the foundation of this organization.

muab Host & Hostess Committee

Ma
Oly

By Jeff S
Contribu
More t
his pers
men's
Yugosl
"The
gold me
months
everybo
"Ever
said. "T
between
It mig
ing at t
About
on the f
son at S
Howev
his fami
"Whe
was tol
highligh
a sudd
Mah
quently
with th
he retir
"I'll
far as t
ly won'
Mah
in histo
silver r
Cup ch
uneasy
"It's
they ki
comfor
becaus
me."
With
with th
"I'll
credibi
"But
else. W
years
five to
the ind
Mah
circuit
takes p
"It's
wife, I
ble."

G

continue

Okl
Houst
Oklah
Coug
Tex
Sun D
Longh
Hou
the to
Andre
stroke
Bou
Sun D
Rafae
Tha
Oklah
ed.
Tha
spot f
"Th
level,
going
Tea
day a
Care
Bie
once
him t
Bo
sion
NCA

TH

THIS S

Mahre has different Olympic viewpoint

By Jeff Shain
Contributing writer

More than one week later, Phil Mahre still hasn't changed his perspective concerning his winning performance in the men's slalom at the Winter Olympics in Sarajevo, Yugoslavia.

"The Olympics just turns into another race for us," the gold medalist said. "We're on the (World Cup) circuit four months a year. The only reason it's more special is that everybody in the United States is keyed on it."

"Every four years the people realize that we race," he said. "They really don't realize that we spend four years between Olympics competing for the United States."

It might be easier though to understand his point upon looking at the circumstances surrounding his performance.

About an hour before Mahre went down Mount Bjelasnica on the first of his two runs, his wife Holly was giving birth to a son at Scottsdale Memorial Hospital.

However, Phil Mahre didn't find out about the addition to his family until later that afternoon.

"When I was leaving the (Olympic) village for awards, I was told I had a baby boy," Mahre said. "It was, I think, the highlight of the day. The medal really wasn't important all of a sudden."

Mahre is a very private and emotional man. Tears frequently come to his eyes when he speaks of his family. It is with that sense of commitment to his wife and children that he retires from the sport next month.

"I'll miss the competition and the regimen I go through as far as training goes, but I won't miss the travel and I certainly won't miss all the attention you get."

Mahre has had more success in skiing than any American in history. In addition to his gold medal at Sarajevo, he won a silver medal at Lake Placid and has been the overall World Cup champion for the last three years. However, he gets uneasy when his superstar status is mentioned.

"It's really difficult when you meet young kids because they kind of put you up on a pedestal," he said. "I'm real uncomfortable with that. When a little kid can't talk to me because he thinks you're a superstar, that's frustrating for me."

With retirement almost upon him, what will Phil Mahre do with the rest of his life?

"I'll stay in the industry," he said. "That's where my credibility is."

"But I'd eventually like to get out of it and do something else. What is hard for me is to say that I've done this for 20 years and it's all that I've really done. It'll probably take me five to 10 years to really figure out what I want to do outside the industry."

Mahre contends that he could still race on the World Cup circuit for many years, but his sense of family responsibility takes precedence.

"It's no place to raise a family. If it was just me and my wife, I could probably go on. With two kids it's just not possible."

Golf

continued from page 17

Oklahoma State, ranked second in the nation, upset No. 1 Houston by seven strokes for the tournament title. Oklahoma, ranked third, finished just one stroke behind the Cougars.

Texas finished in fourth place, 24 strokes off the pace. The Sun Devils, who shot an 877, were just three shots behind the Longhorns.

Houston's Billy Ray Brown, the 1982 NCAA champion, won the tournament with a score of 210. He edged out Oklahoma's Andrew Magee and Oklahoma State's Andy Dillard by one stroke.

Boutell said the field was the strongest of the year for the Sun Devils, with the sole exception of this coming weekend's Rafael Alarcon Invitational held in Guadalajara, Mexico.

That tournament will also feature Oklahoma State and Oklahoma. Of the fifteen teams competing, eleven are ranked.

That includes ASU, which should move up from its No. 13 spot following its strong showing in the Lamar Invitational.

"This next tournament will be important to us on a national level," Boutell said. "It will give us a reading on how we're going to finish at NCAA's."

Team qualifying to make the trip to Mexico began yesterday at the Phoenix Country Club. It will continue today in Carefree.

Bietz, however, will not make the trip. His class schedule once again will keep him out of action, but Boutell expects him to begin playing regularly after that.

Boutell said the team will become more involved with division play after this weekend, which will be important for NCAA qualification. The Sun Devils are in District Eight.

classifieds

The STATE PRESS disclaims all responsibility for quality and prices of goods and services offered in both classified and display advertising by its advertisers.

Automobiles

1973 CHEVROLET CAPRICE. 350, AC. Not pretty, but runs. New radiator, tires. First \$300. 894-0857.

1978 TOYOTA CELICA 5-speed, AC, top condition. \$2985. Festus, 985-9622.

Bicycles

FUJI 12-SPEED / 24-inch in excellent shape, \$125. Call Chris, 831-2131.

Clothing

ATTENTION FASHION conscious girls! \$1 belts, \$1 earrings. Where? Dollars, 414 S. Mill #207 above Spaghetti Company. 829-1127.

LADIES PANTIES: All sizes, colors, and styles. Only \$1.00 each. Call, 969-1270.

WONDERFUL VINTAGE clothing: 50s and earlier! And costume rental! Sweetest Charity (formerly Dynabelle's) 3704 N. Scottsdale Road, 941-2989; 137 W. McDowell, 256-6620.

For Sale

12x54 TWO BEDROOM, one bath mobile home. Tempe family park. Washer, dryer, plus. \$9,950. 897-2210.

OFFICE DESK 36x72, matching credenza and chair. All for \$225. Professor Dauten, 966-1809 or 965-2969.

PEAVY CS400 amplifier. Excellent. \$325. Peavy 900 9 channel mixer. Equalizers, effects, gain, more. \$250. 894-0657.

RODNEY DANGERFIELD tickets. 1st row \$35, 3rd row \$25. Sunday, March 4. Call John, 968-9815.

SURPLUS! JEEPS, houses, boats, land! Call for directory, guide, newsletter. 916-944-4440 Ext. Arizona State Jeep.

TICKETS FOR sale: Pretenders, Yes, Van Halen. Good seats. 966-7597.

Help Wanted

AIRLINES HIRING! Stewardesses, Reservationists! \$14 - \$39,000. Worldwide! Call for Directory, Guide, Newsletter. 1-(916)944-4440x Arizona State Air.

CRUISESHIPS HIRING! \$16-\$30,000! Caribbean, Hawaii, World. Call for Guide, Directory, Newsletter. (916)944-4440 Ext. Arizona State Cruise.

EXTRA INCOME part-time, 20 sales ladies to promote our nutrition food product. Must have car. 987-4423.

NOW HIRING wedding photographers part-time. Photography experience preferred, professional appearance. Apprenticeship precedes solo assignments. Call Candid Wedding, 945-2550.

OPINION POLL, friendly person who enjoys phone work, Permanent part-time, evenings, Sundays. 274-6200, Melody after 3:00 p.m.

OVERSEAS JOBS. Summer, year round. Europe, South America, Australia, Asia. All fields. \$900 - \$2000 month. Sightseeing. Free information, write IJC, PO box 52-A23 Corona Del Mar, CA 92625.

PART-TIME SALES help wanted immediately. Need car. Call 8:30 a.m. to 5:30 p.m. 266-9060.

PHONE SALES people needed full or part time. Easy sales, great money. Call for information; Mark at All American Training Center, 966-4119 or Yogurt Oasis, 968-9512.

REAL ESTATE Research Analysts needed. Part-time. Minimum wage. Potential college credit available. 9:00 - 5:00. 965-9720.

SALES PERSONNEL needed to sell olympic fund raising coupon book. Financially rewarding. Call Mark at All American Training Center, 966-4119 or Yogurt Oasis, 968-9512.

Help Wanted

STUDENT CLERK - typist. New work study position in office of Field Services, Farmer Education building, #105. General office work, part-time, flexible hours. Excellent opportunity for student interested in public education. Must qualify for work study. For further information call 965-3538. Apply at Student Employment office, Matthews Center, ASU. 965-5186.

SUMMER CAMP job. Information and applications at placement office. Sign up for interviews March 6 and viewing of video of camp in action. Camp Tatiyee for the Handicapped, Show Low, AZ. Director, Margaret "Midge" White. 964-5575.

TAL PROGRAMMER 1 plus years experience with Tal and Tandum system. Financial services background helpful. Full time, day hours. Long term temporary assignment. Never a fee. Several positions available. Tempe area. Career Path Temporary Services. 1550 E. University, Mesa, Arizona. 969-3700.

WAITERS/ WAITRESSES, fountain persons, cashiers, and experienced cooks needed for immediate day and night full and part-time employment at Swensen's/ Mesa. Applicants must be available for employment through the summer. Interviews Wednesday - Friday 3:00 - 4:30 p.m. at 1159 E. Main at Stapley. No phone calls please.

WANTED OUT-GOING person to coordinate, commentate, fashion shows and parties. Call before 9:30 a.m. 934-7100.

WANTED STUDENT architect to draw blueprints for 4-plex; tri-level apartments. Call, 936-9825.

WANTED WHOLESALE purchase representatives to sell sporting goods. Send resume to: 318 South Westfall, Suite 5, Tempe, AZ 85281.

WATER RESOURCES Department of Agricultural Corporation. Local and state level administration and engineering. Civil Engineering Degree. Some experience preferred. Extensive O.J.T. Excellent salary and benefits. Send resume to/ or call: W.A. Case, P.O. Box 877, Corcoran, CA. 93212. 209-992-5011.

SUMMER STAFF WANTED
for
Camp Akela/
Shadow Valley Ranch
A children's
resident camp
Prescott, AZ
Interviews during first week
in March. Contact Career
Services for applications.

SENIOR NURSE STUDENTS
ADVENTURE... CHALLENGE
... PROFESSIONALISM!
An exciting job with opportunities for world-wide travel, career development, professional growth, excellent benefits. BSN graduates or senior students are eligible. If you're going to be someone, special... Be a Navy Nurse!
For more information, call collect (602) 256-7632 between 9 a.m. - 5 p.m. Mon.-Wed.

Instruction

SELF DEFENSE Traditional Taekwondo, (Korean Karate). Personalized class instruction. Very effective, very affordable. 894-5389.

Help Wanted

HELP WANTED: PART-TIME EVENINGS

National Marketing Company has openings for sales-minded people interested in part-time employment. Openings are available on the evening and weekend shifts. Our sales people work in a modern, comfortable business environment contacting established customers on long distance WATS lines. Earnings, which include salary and bonus, average \$4-\$6 per hour, paid weekly. These are permanent positions with no seasonal layoffs. If you have a good, clear speaking voice, proper grooming for a business office, enthusiasm and competitive spirit, our experienced management team will train you to sell our nationally recognized products (while being paid, of course). Our Tempe office is located approximately five minutes from campus.

Please call DIALAMERICA for details.
829-1140

Lost & Found

A MEDIUM size gold twisted hoop earring on Valentines day. 2/14/84. Reward. Please call, 955-8984.

LOST FEBRUARY 20, our best friend! Stocky, brown and white Beagle mix - named "Max". Reward. 968-6020.

Motorcycles

1981 KAWASAKI 550 LTD, excellent condition. \$950 or best offer. 894-6359, David.

Personal

FELLOW STUDENTS! Please contact lady who fell off tram on parking lot Valentines Day about 5:30 p.m. Please call 949-5769 after 7:00 p.m.

NEED A job? You will need a good resume to get one. For advice on your resume call Steve at 437-0800 anytime.

NEED HELP completing your financial aid application? Contact Educational Research Systems, Inc. at 827-0889.

PAYING TOO much for auto or cycle insurance? Have a few tickets or DWI? Call Apollo Insurance for a competitive bid. 951-2255.

SKI VAIL / Beaver Creek, call toll free 1-800-222-4840 or consult your travel agent for discount rates on lodging, lifts and rentals.

THE DELTA Sigma Phi 'Ultimate Vacation Party' was so good they had to make me leave. Richard Nixon.

Pets

GERMAN SHEPHERD puppies. AKC champion sired, black & tan, exceptional temperament. 897-2586.

Real Estate

FOR SALE, townhouse in new development. Two bedroom, 1 1/2 bath. \$59,900. Close ASU. 829-8496.

MARLBOROUGH PARK Estates. McKellips and College. 2500 square feet, four bedroom, three bath, spa, solar hot water, large rear yard, five minutes from campus. By owner, \$129,000. Evenings, 990-0719.

TEMPE TOWNHOUSE. Two story, three bedroom, 1 1/2 baths, breakfast bar, community pool, tennis. \$84,900, OWC with \$3,995 down. Martha, 831-7032.

THREE BEDROOM, 1 1/2 bath, low down, \$440 month includes space rent, clean, 1981 mobile home. 948-3888.

Roommate wanted

FEMALE ROOMMATE wanted to share three bedroom condo. Fully furnished, private room, pool, fireplace, laundry facility, very nice. One mile from ASU. 967-0125.

MALE - TO rent one room in four bedroom house with three other males. \$137.50 plus 1/4 utilities. Two miles from ASU. Dave - 829-8083.

MALE/FEMALE roommate wanted for two bedroom apartment, one block from ASU. \$190 a month, utilities included. Mike, 968-4940, 948-0902.

RESPONSIBLE FEMALE. Furnished private room. Nice house, good neighborhood, 2 1/2 miles ASU. \$150 includes utilities, non-smoker. 831-5599.

TWO VACANT rooms. \$150 per month includes utilities. Only 3/4 mile from ASU. Call, 967-9965.

Services

ADOPTIONS ARRANGED. No medical or legal expense to mother. Call attorney, Robinson, 946-5344.

CARS AVAILABLE - 21 or older. All States Drive-away, 992-5200.

GOOD STUDENTS save 25% on auto insurance. Qualified non-smokers save 18%. Call Steve, 831-0121. Farmers ASU representative.

HAVE UNWANTED facial or body hair removed permanently by electrolysis. Free consultation. Located in Tempe. Call Sharon, Desert Electrolysis Center 839-1885.

MOVING? CALL student movers - low rates, high dependability, local or long distance. 967-0864.

RESIDENCY SERVICE helps cut red tape. No fee until in-state status granted. References. Ask for Lee, 863-0273.

Transportation

DRIVER NEEDED to East Coast at semester end. Expenses negotiable. Call Lee, 949-7145.

Travel

AFFORDABLE FLORIDA \$316 round-trip. Car - \$40 "weekly" free mileage! Can't beat that! Fantastic deals everywhere. Jim - Holiday Travel. 948-0990.

CHINA - HONGKONG - Japan: 22 days, Dr. Roger Axford, 839-3255, July 15 - August 8, 1984, \$2995.

FREE AIRPORT parking with ticket and vacation package purchase at the lowest rates. Please call Sundance Travel at 968-5900 or 275-2400.

SPRING BREAK in Las Vegas. Meet the Party Animals. Party, fun and sun. 994-4754.

Typing

A-1 PROFICIENT typist, IBM Selectric. Pam, 969-2098.

AAAAH. FORMER secretary desires all types of typing. Location Southern and Rural. Fran, 838-8027.

ABLE TO do accurate and fast typing with Electronic Communicator typewriter. Pam, 820-9166.

ACCURATE TYPING, University and Dobson area. 964-3784.

ADVANCED WORD Processing Center. Offers the most advanced word processing applications (not just a home computer), with a letter quality printer. Prices competitive or better than typing services (as low as 50 per page!), free pick-up and document storage. Legal background and 115 WPM. Profit from these advantages, call 829-2314.

ALL PAPERS typed to your complete satisfaction. IBM Selectric. Near ASU. Reasonable. Mrs. Oakley, 967-0802.

ALL TYPING done fast and accurate. 1.00 a page. Word processing available. Close to ASU. Call Carin or Bobbi 968-9166.

ALWAYS AVAILABLE for typing at \$1.25 per page. Call Susan at 833-0373.

A-PLUS Typing. Term Papers, Resumes, securities and finance papers a specialty. Papers completed on Electronic memorywriter. Call Judy 839-0401.

A TOP-NOTCH secretarial service. Quality typing or word processing. IBM equipment. 20 years experience. McKellips/ Scottsdale Roads. Dana 941-5111.

AT YOUR service, University and Mill area. Quality typing to your Specs. Keyboarding Lab, 966-7111.

CLOSE TO campus. 414 S. Mill #205, 894-5234. Graduate, undergraduate typing, graphics. Professional work, reasonable rates.

CONVENIENT TO campus. Fast, friendly, fair, professional typing and graphics. Call 24 hours, 894-5234.

EXPERIENCED, ACCURATE, cheerful typist near Southern and Rural. \$1.50 a page. 831-7337.

FAST, ACCURATE typing, \$1.25/page. Call Teresa at 962-0079 or Linda at 969-5775, elite typing available.

FORMER LEGAL secretary types term papers, manuscripts, letters, resumes, takes dictation. Minor editing. Margie, 994-3759.

JUST YOUR Type academic typing. Will edit spelling, punctuation. Fast return. Accuracy guaranteed. Joan, 839-0772.

MCCORMICK RANCH, typing, dissertations, manuscripts, research papers, fast, accurate, \$1.50, Xerox Memorywriter. Jeanne, 948-3888.

NORTHEAST MESA, Professional word processing. Letter quality printer. Cassette transcription. Experienced editor. Reasonable rates. 981-3531.

NORTHWEST PHOENIX, quality typing. Theses, dissertations, research projects. 938-3397.

RESUMES, REPORTS, term papers, letters. Accurate and fast! \$1.20 per page. Call Bob at 967-4744.

TYPING BY Paper Impressions - resumes, reports, letters etc. Electronic memory typewriter, cassette transcription. Reliable, fast accurate. Pick-up / delivery on campus. Call Darlene 831-2080.

TYPING, EDITING class papers, resumes, letters. Twenty years experience. Scottsdale - Tempe area. 945-7430, Barbara Andersen.

WORD PROCESSING. Dissertations, theses, research papers, resumes and cover letters. Rosemary, 966-8368.

Wanted

PAYING CASH for gold, silver and diamonds, class rings. Mill Avenue Jewelers, 414 S. Mill Avenue.

Help prevent
LOW BIRTHWEIGHT
The most common
birth defect



MARCH OF DIMES

THIS SPACE CONTRIBUTED BY THE PUBLISHER

CLOTHING

**TOP NAME BRANDS: STUBBIES • ADIDAS •
GLORIA VANDERBILT • OCEAN PACIFIC • CALVIN KLEIN •
CHIC • WILSON • JORDACHE • DANSKIN • CAMPUS •
CHRISTIAN DIOR • GENNARA • CARRERA • PANAMA JACK**

LADIES' LEOTARDS

Regularly \$15.00

SPECIAL \$4.99

SAVINGS OF

65%

SWEAT SHORTS

Regularly \$10.00

SPECIAL

SAVINGS OF

80%

STUBBIES SHORTS

Regularly \$17.99

NOW \$9.99

SPECIAL SELECTION OF MEN'S AND LADIES'
OXFORD CLOTH BUTTON-DOWN

DRESS SHIRTS

Reg. \$30.00

SPECIAL \$8.99

SAVINGS OF

60%

SPECIAL SELECTION OF

MEN'S SLACKS

Values to \$30.00

NOW ONLY \$5.99

SAVINGS OF

80%

MEN'S CALVIN KLEIN, JORDACHE, SASSON,

GENNARA SLACKS

Reg. to \$36.00

NOW \$12.99

SAVINGS OF

60%

MEN'S AND LADIES' FAMOUS NAME

SWEATERS

WOOLS, SHETLANDS, RAGG WOOLS,
COTTON, STRIPES, ARGYLES,
ASSORTED COLORS AND STYLES

MEN'S \$7.99 LADIES' \$7.99

VALUES TO

\$40⁰⁰

LADIES' RUGBY SHIRTS

Reg. \$22.00

NOW \$9.99

CHIC JEANS

Reg. \$32.00

NOW \$19.99

GLORIA VANDERBILT TOPS

Reg. \$26.00

NOW \$12.99

MEN'S TOP DESIGNER

DRESS SHIRTS

SAVE UP TO \$30.00

PANAMA JACK T-SHIRTS & SWEAT SHIRTS

Regular \$9.99-\$23.99

NOW \$5.99-\$12.99

SPECIAL ASSORTMENT OF LADIES'

PLEATED SLACKS

SPRING COLORS

NOW \$7.99

LADIES' TOP NAME FASHION SLACKS

Values to \$30.00

NOW \$9.99-\$12.99

SUN PACIFIC, OFFSHORE AND OTHER

CALIFORNIA-LOOK TOPS

\$5.99 UP

MEN'S HAND-LOOMED STRIPE

SHETLAND SWEATERS

Reg. \$36.00

NOW \$19.99



**MOST ITEMS
50% OFF
SOME 60%-70%**

Friday, March 2 10 am - 9 pm
Saturday, March 3 10 am - 8 pm

Am
By Rob
Staff wr
An an
fund an
Wendes
tee.
House
Sterling
lower th
same an
Ridge
ty" beca
"Then
we're co
The m
tions Co
Doug
more su
is on the

© Cop

He
asp

By Way
Staff wr
State
tests t
asparta
ing may
ment sp
Depart
aware
made by
of the p
what inf
Mary
Health
said a
market
the test
decision
"We'
(Thurs
then," s
Howe
tion ma
dicated
charge
toxic ch
when st
"Our
said.
The f
tion has
has de
charges
lack of s
McCa

W
By Chri
City edi
Powe
the Me
much o
major t
At AS
alarms
swamp
ficials s
after th
Howe
was del
restore

ins