

friday

February 24, 1984

state press

Tempe, Arizona

Vol. 66 No. 80

Arizona State University

© Copyright, State Press, 1984

Stolen accounting exam forces professors to toss grades

By Jim McCleary
Staff writer

About 2,400 students who took a common accounting exam last Friday evening will have their grades disregarded because an exam presumably was stolen and copies sold to students prior to the testing day, according to one professor who wrote the test.

Kumen Jones, professor of accounting, said an anonymous caller informed him on Thursday that copies of the exam were for sale.

It was evident that the exam had ended up in the hands of some students when a teaching assistant was given a copy of the exam an hour before it was scheduled to be administered, Jones said.

The common final was taken by all sections of ACC 211 and 212. Nearly 1,200 students are enrolled in each course.

Jones is the coordinator for the ACC 211 sections and Professor Diane Pattison, who could not be reached for comment Thursday, coordinates the ACC 212 sections.

There will be no retest given because, according to Jones, "I'm not going to have (students) spend another Friday evening taking a test."

The two remaining exams this semester will be averaged for the final grade, Jones said.

He and Pattison type the exams themselves. Within an hour after the exams are typed, they are taken to the University Printing Service, Jones said.

The exams are usually printed a week in advance, and remain in the possession of either Jones or Pattison until they are distributed on exam day, Jones said.

Arvilla Johnson, a supervisor at the University Printing Service, said she has "come down hard" on the employees she oversees, and does not suspect foul play or breaking and entering.

There are three students who work at the printing service, Johnson said.

"I have no indication of where it could have happened in

this department. That's what is so spooky," she said.

Johnson added that in the future security will be tightened when exams are being printed.

Most every test printed in her department remains in the building overnight, Johnson said.

Jones said the results of the exams that will be disregarded are currently being calculated, but he does not expect the grades to be unusually high.

"I suspect there won't be a lot of difference in scores on this test," he said.

The accounting department has "taken additional steps" to assure that a similar situation will not occur in the future, Jones said.

He added that he has little evidence concerning the culprit but said if caught, he would "love it" if the penalty involved a jail term.

"If they find that sleazy roach, I hope they bust him," Jones said.



Meltdown

Charles Sargent, an associate professor in geography, has a hard time keeping up with the drips from his melting ice cream cone. Sargent was satisfying his sweet tooth Wednesday on Cady Mall.

Staff photos by Tina Gerson

Student playwright undeterred by vandalism, threats

By M.K. Reinhart
Staff writer

Despite vandalism to his car, a threatening note on his door and an invitation to "go back to Russia," the author of the upcoming Student Experimental Theatre production, "Saints," said the show will go on.

Michael Fenlason said he is bewildered by the recent criticisms aimed at the play which have appeared on recent *State Press* opinion pages.

He is even more mystified as to how anyone other than cast and crew members managed to obtain copies of the script.

Fenlason, a 22-year-old political science major, came home Monday afternoon to find an obscene note on his door, he said.

Obscenities were written on the window of Fenlason's car and the words, "go back to Russia" were scratched on the hood while the vehicle was parked near Drama City Wednesday evening.

He filed a criminal damage report with ASU Police later

that evening concerning the incidents.

ASU Police said they received a criminal damage report from Fenlason shortly after 8 p.m. Wednesday.

"I can imagine parts of the play offending people, but not to the point of violence," he said.

The *State Press* published a letter on Feb. 16 from Calvin Morris, a political science major, in which he labeled the play a "dramatized version of *Das Capital* (sic)," called the author a "disgrace to this campus" and condemned the ASU administration for allowing the play to be presented.

Another letter followed the next day, defending Fenlason's right to free speech. Wednesday, the play's director, Kevin Browne, wrote a rebuttal to Morris's letter and invited him to attend the production. A letter questioning the mix of politics and theater was published Thursday.

"Saints" is based on the relationship between a 17-year-old idealist and his idol, a famous but reclusive black poet. The poet, played by Bobbie Pride, is a cynical Vietnam veteran

who comes out of hiding to attend an arts conference staged by the boy's father.

Throughout their dialogue, the poet attempts to instill in the youth, played by James Palmer, a sense that nothing he does will make a difference in the state of world affairs, Fenlason said.

"There are some statements in the play that some people may think of as anti-American," Fenlason said, citing conversations between the players regarding American imperialism and disagreement with the U.S. invasion of Grenada.

"Believe it or not, the play started out to be a comedy... it is not on a political spectrum. It is anti-apathy."

Fenlason said certain statements in the play are meant to have shock value in order to combat national passivity.

Fenlason, who has been writing plays for about four years, said the characters in his play are liberal, but he falls somewhere in between.

Ford visit includes Gammage talk

By Tisa Striegler
Staff writer

Former President Gerald Ford will conduct an informal question and answer session today at noon in Gammage Center.

Ford is expected to open the session with several general remarks and then answer questions from the audience on a variety of topics.

Students with an ASU I.D. will be admitted free while those without I.D.'s will be charged \$2.

Ford's appearance is being sponsored

by the Associated Students and the American Enterprise Institute, a think-tank group based in Washington, D.C.

The former president will be on campus most of the day lecturing in several classes and attending social functions.

Ford was honored last night at a dinner hosted by the Dean's Council of 100 held at the Plaza Club in Phoenix. The council is a group of 100 prominent Valley businessmen who are major contributors to the College of Business Administration.

Ford has visited more than 115 colleges and universities since leaving office.

inside today

Amended
tuition bill
passes
Senate
committee

Page 3

Students
developing
Centennial
photo project
to focus
on ASU

Page 10

Sun Devil
grapplers
hope to pin
Pac-10
title

Page 14

nation/world

state press

Shultz worried about damage to U.S. influence in Mideast

WASHINGTON (AP) — Secretary of State George P. Shultz was described Thursday as worried that the failure of U.S. policy in Lebanon could cause considerable harm to American interests throughout the Middle East, and busy developing a strategy to reassert U.S. influence in the region.

One key Shultz aide said he was willing to accept the blame for that failure — if someone has to take the blame — even though President Reagan declared that Shultz "has not failed" in Lebanon.

But this official said the Lebanon situation "is infinitely more complicated than that" and that "all along the way, there have been only limited options we could take."

Justice Department fails to find wrongdoing in briefing paper caper

WASHINGTON (AP) — The Justice Department said Thursday it had been unable to discover in an eight-month investigation how Ronald Reagan's presidential campaign obtained former President Jimmy Carter's briefing papers in 1980, but said it "uncovered no credible evidence that the transfer violated any criminal law."

The department also said it had found no evidence of "any plan or conspiracy by Reagan election officials to obtain the Carter briefing materials or any other confidential, internal Carter documents."

The department concluded there were no government documents among the briefing materials and that the Reagan camp never had the final version of Carter's briefing materials for his crucial Oct. 28, 1980 debate with Reagan.

Partisan squabbling characterizes deficit reduction issue

WASHINGTON (AP) — Negotiators from the White House and Congress resumed talks Thursday on reducing federal budget deficits with no agreement in sight, but plenty of partisan bickering over what to do and who is to blame for the red ink.

Meanwhile, the tax-writing committees in the House and Senate began work on their own deficit-reduction packages. In his nationally broadcast news conference Wednesday

night, President Reagan — who called for the talks to find a \$100 billion "down payment" on eliminating deficits — urged the bargainers to "get down to business."

On Capitol Hill, Democrats insisted that taxes and military spending cuts are necessary to achieve deficit reductions.

"What first must be settled is whether military spending and the huge revenue losses caused by the 1981 tax bill are open for consideration," said Majority Leader Jim Wright, D-Texas, representing House Democrats at the talks.

Iran claims thrust into Iraq cuts Baghdad-Basra highway

By The Associated Press

Iran claimed its biggest victory Thursday in 3½ years of war with Iraq, saying its forces thrust 25 miles into southern Iraq and cut the Baghdad-Basra highway in two places.

But Iraqi military communiques said the new Iranian offensive in the Basra region was "totally wiped out with thousands of Iranian bodies left on the battlefield."

The Iraqi communiques said Tehran had claimed victory to divert public attention in Iran from the crushing of its offensives and its huge losses.

The communiques were monitored in Nicosia, Cyprus. Foreign correspondents are not allowed near the battlefield, and the conflicting claims could not be independently verified.

Alcohol-related bills combined

PHOENIX (AP) — Moves to raising the state's legal drinking age and to limit tavern owner liability in drunken-driving cases will be linked in an effort to enhance chances for legislative approval, Rep. Burton Barr, R-Phoenix, said.

Liquor and insurance industry representatives are said to support the move, but backers of a statewide initiative for raise the drinking age to 21 instead of 19 oppose it.

CORRECTION POLICY

It is the policy of the State Press to acknowledge and correct errors when they occur. If you see an error, call our newsroom at 965-2292 to let us know. All corrections will appear on this page.

Affordable Cleaners

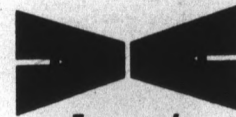
ASU SPECIAL

ANY GARMENT **89¢** ea.
Dry Cleaned & Pressed *No limit*

Excluding suede & leather; excluding wedding dresses. Coupon must be presented when garments are brought in.

847 W. University
(SE Corner of Univ. & Hardy)

(EXPIRES FEB. 29, 1984.)



Aaron's
Arizona Tux Shops

ALL TUXEDOS RENT
From **\$29.95 to \$35.95**

(Discount Prices to Students, Musicians & Waiters)

Tuxedos . . . Our Only Business

Hours:

Monday-Friday 10 a.m.-9 p.m.

Saturday 10 a.m.-6 p.m.

Sunday 12 p.m.-5 p.m.

217 W. University Drive, Tempe
966-7235



That's Italian!

1819 N. SCOTTSDALE RD.

(One block north of McDowell)

Hours: Mon.-Thurs. 11 a.m.-11 p.m., Fri.-Sat. 11 a.m.-12 p.m., Sun. 11 a.m.-10 p.m.

Famous for a Full Line of
Italian Dishes and Sandwiches
Also Magnificent Pizzas

BEER &
WINE

945-7167

3' - 4' & 6'
SUBMARINES

PRESENT COUPON & STUDENT I.D. FOR THESE SPECIALS

OUR SPECIALTY
Submarines • Pizza • Ravioli
Lasagna • Spaghetti



COUPON #1
WITH ANY DINNER OR
LARGE PIZZA AT
REGULAR PRICE, ENJOY
UNLIMITED WINE
ONLY \$2 PER PERSON

*Not valid with other coupons. Dine-in only.
Valid Sunday through Thursday until 3-11-84.*

COUPON #2
WITH ANY DINNER OR
LARGE PIZZA AT
REGULAR PRICE, ENJOY A
**60-oz. PITCHER OF
COORS ONLY 99¢**

*Not valid with other coupons. Dine-in only.
Valid Sunday through Thursday until 3-11-84.*

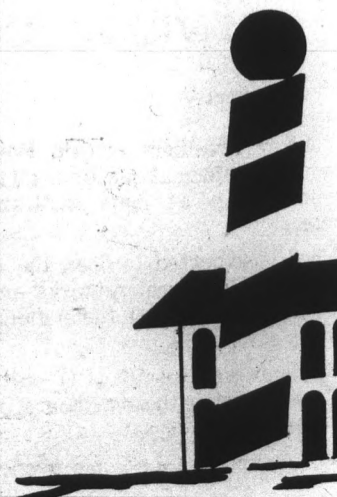
COUPON #3
Buy any large at Regular Price
and get a 14" Cheese Pizza for
\$1.99.
(Toppings are extra)

1 Topping **50¢ extra**
2 Toppings **\$1.25 extra**
3 Toppings **\$2.00 extra**

*Dine-in or pick-up only. Valid Sunday
through Thursday until 3-11-84.*

COUPON #4
**TWO
LASAGNA
DINNERS**
(including salad and garlic bread)
ONLY \$6.50

*Not valid with other coupons. Dine-in only.
Valid Sunday through Thursday until 3-11-84.*



Amended tuition bill approved by senate committee; regents expected to oppose measure

By Robert S. Beamesderfer
Staff writer

The Senate Committee on Government Thursday voted 7 to 1 to recommend passage of a heavily amended version of a bill which would set minimum tuition rates at Arizona universities.

The amendment to S.B. 1061, offered by Committee Chairman Anne Lindeman, R-Phoenix, changes the tuition formula of the original bill, which would have raised student contributions to the cost of education to 25 percent for residents and 100 percent for non-residents over three years.

Bob Huff, Arizona Board of Regents executive director, said although the amended version is better than the original, the regents would still be opposed to it.

"(The members of the committee) are taking unto themselves to set the tuition rate, which by tradition has been the function of the regents," Huff said. "In effect, it takes it away from the board because it prescribes the way and the when tuition will be set."

Sen. Juanita Harelson, R-Tempe, who cast the only dissenting vote, said, "It's one more nibble in the plot of the legislature to run the universities."

In previous hearings on the bill, Harelson said it would turn the universities into a funding source.

Mike Proctor, chairman of the Arizona Students Association, said, "We're opposed to any action which reduces regent authority."

"The amended bill doesn't reduce regent authority, but it reduces the flexibility the regents have," he said.

Lindeman's amendment, which replaces the original bill, would require the Board of Regents to set tuition before the annual October budget request using a cost-of-

education formula based on the total budget request divided by the full-time-equivalent enrollment for the current year.

As amended, the bill sets the Board of Regents' current contribution rates of 20 percent for residents and 85 percent for non-residents as minimum amounts to be charged by the board.

If the formula in the bill were used for the next school year, ASU resident tuition would be \$1,032 and non-resident tuition would be \$4,383, based on the University's \$160.8 million budget request for next year.

Huff said, "It would impose a differential tuition rate at each campus, which is not the current state of affairs," and which the board opposes.

The regents' formula for cost of education does not include spending for organized research and public service, which are part of the total budget, and is calculated by taking the budget for the current year and dividing it by the projected full-time-equivalent enrollment.

The amendment also eliminates a clause which would have put the current 22-to-1 formula for adding and deleting faculty used by the board into law.

The amended legislation also requires the board to establish tuition according to the bill's formula after the legislature approves the university budgets.

The House Education Committee will consider a similar bill when it reconvenes Monday afternoon.

House Bill 2410, sponsored by Committee Chairman Jim Cooper, R-Mesa, would set the minimum contribution rates at 25 percent for residents and 100 percent for non-residents with the cost of education based on the current Board of Regents policy.

Cooper said his bill is "serious" and not designed to force action by the regents.

ASU STUDENTS STUDY ABROAD — SUMMER 1984

GREAT BRITAIN

June 4-July 5

THE JUSTICE SYSTEM OF GREAT BRITAIN

LONDON — HARLAXTON —
LINCOLN — EDINBURGH

OFFERED BY
THE CENTER FOR THE STUDY OF JUSTICE
6 SEMESTER HOURS OF CREDIT

DIRECTED BY:
DR. THOMAS V. SCHADE

PROGRAM FEE:
\$1,679 INCLUDES
TUITION
AIR EXTRA

LIMIT 20

GREECE

May 21-June 10

CLASSICAL GREECE

ATHENS — THESSALONIKI —
CORFU — OLYMPIA
AEGEAN CRUISE

OFFERED BY
THE DEPARTMENT OF HISTORY

3 SEMESTER
HOURS OF CREDIT

DIRECTED BY:
DR. KEVIN K. CARROLL

PROGRAM FEE:
\$2,138 INCLUDES
TUITION AND AIR

LIMIT 30

MEXICO

July 9-August 10

INTEGRATING LITERACY

GUANAJUATO — MEXICO CITY

OFFERED BY
THE CENTER FOR BILINGUAL EDUCATION

6 SEMESTER HOURS OF CREDIT

DIRECTED BY: DR. BARBARA FLORES

LIMIT 30

RUSSIA

June 30-July 23

GERONTOLOGY IN THE USSR

MOSCOW — KIEV —
LENINGRAD — HELSINKI

OFFERED BY
THE DEPARTMENT OF HOME ECONOMICS
3 SEMESTER HOURS OF CREDIT

DIRECTED BY: DR. GEORGE A. HUGHSTON

PROGRAM FEE: \$2,573 INCLUDES
TUITION AND AIR FROM CHICAGO

LIMIT 25

ITALY

June 23-July 28

ITALIAN — HISTORY — ART

FLORENCE,
ITALY

OFFERED BY
THE DEPARTMENT OF FOREIGN LANGUAGES
7 SEMESTER HOURS OF CREDIT

DIRECTED BY: DR. PIER R. BALDINI

PROGRAM FEE: \$850 INCLUDES TUITION
AIR AND BOARD EXTRA

LIMIT 35

FOR PROGRAM INFORMATION AND APPLICATION FORMS CONTACT THE OFFICE OF
SUMMER SESSIONS — ACADEMIC SERVICES BUILDING, ROOM 110, OR TELEPHONE
965-6563. REGISTRATION NOW IN PROGRESS — DON'T DELAY — ENROLL TODAY.

DEVILHOUSE

FRIDAYS

5-7 - FREE FOOD - 5-7

2 FOR 1 DRINKS	PIZZA CHIPS MUNCHIES	2 FOR 1 DRAFTS
-------------------	----------------------------	-------------------

TEMPE TEA PARTY

NEW HOURS
7-8

Coors Bud
1.99
Pitcher

60 OZ
Pitcher

LONG ISLAND ICE TEA

1.99

Burger & A Brew
\$1.99
Every Saturday
11 a.m. to Midnight

NEW HOURS
7-8

Coors Bud
1.99
Pitcher

ADMISSION ONLY 1.00 ALL NIGHT



CCIFER'S

DRINK & DANCE, CONSTABULAIRE

- ★ Mon., Tues., Wed., Fri. is 2 for 1 Well, Bud & Coors Longnecks (4 p.m.-1 a.m.)
- ★ Wed. — Bikini Contest at 8 p.m.
1st Place — \$50
2nd Place — \$25
3rd Place — \$10
To Enter Call 967-5542
- ★ Thursday is Ladies Night!
For The Ladies We Serve 2 for 1 Well, Wine & Draft. Free Admission.
- ★ Saturday is College Night
Free Admission with College I.D.
\$1 All Bottled Beer 4 p.m.-1 a.m.
- ★ DJ Mon.-Thurs. / Live Rock Fri. & Sat.

Located in Danelle Plaza at
Southwest Corner of Southern & Mill

opinion

Nobody ever expected me to be President.
— Abraham Lincoln

state
press

Fore!

Look around campus today and you stand a fair chance of meeting up with the 38th President of the United States. Thanks to the Associated Students Lecture Series and the American Enterprise Institute — co-sponsors of his appearance here — Gerald R. Ford will be with us for the entire day, coming and going to various points throughout ASU.

When he takes a look at his schedule for the day, Mr. Ford may find himself longing for the relatively easy pace of the presidency. In all he has eight or nine different engagements, including two classroom lectures and a speech at Gammage Center, after which he will answer questions from the audience. The latter — his main appearance — takes place at noon.

All this for a very modest fee — well below what he usually receives — which the former President agreed to as a favor to the University. We appreciate this opportunity and welcome Jerry Ford to our campus.

letters

Spending limit fair

Editor:

In response to your editorial concerning spending limits for the Associated Students elections, I would like to congratulate the ASASU Senate for its dedication to responsible leadership. I also congratulate the *State Press* for raising issues that go far beyond the spending limit in question.

It is unfortunate that those who wish to oppose a spending limit have forgotten that this is a University and not a high rollers political playground.

Everyone should take part in the ASASU elections. We should not limit ourselves to those students who can afford to run.

Eddie Goitia
International Business

'Equal time' an unknown concept

Editor:

I write in response to Keith Fiedler's letter of Feb. 23, "A Simple Question," which he wrote in response to Sharon Van Epps' and June Brashears' letter of Feb. 22, "A Natural Journalistic Flair." To answer Keith's question of why some are offended by the *State Press* editors expressing themselves "freely and artistically," it is because Sister Tracy and Brother Matthew have — and present — only one view of major issues affecting us all. While they have the luxury of an entire newspaper for use in expressing their own

(generally uninformed) personal opinions, the rest of us are lucky to get a line or two in the "Letters to the Editor" column. A newspaper — any newspaper, but particularly a university newspaper — should give equal time to both, or all, sides of major issues. But it is clear to all that the concept of "equal time" is unknown in the *State Press* offices.

M. Katharine Johnston
Junior, English Major

Democrats on a desperate search for substantial campaign issue

Tracy Fletcher
Editor



First the good news. The American electorate survived the First Big Test of the Democratic candidates in Iowa this week. But with that morsel of good news comes a mountain of bad — there are still 39 caucuses and primaries before the Democratic Party meets in July to decide which of its presidential candidates to place opposite Ronald Reagan on the November ballot.

If the Democratic candidates' antics surrounding the Iowa caucus and the preparation for next week's primary in New Hampshire are any indication, we face a long, unpleasant, tedious five months of preliminary campaigning.

A little mud flies during any campaign. That's the nature of politics. But as the Democratic candidates find fewer and fewer legitimate issues around which they can rally public opposition to President Reagan, they will be driven to new lows in their attempts at character assassination.

Most of the issues the Democrats chose to place on their agenda earlier this year have provided only limited campaign ammunition.

Their cries of "voodoo economics" faded as Reagan's policies brought a strong economic recovery. As the improving economy lowered inflation and slowly brought unemployment under control, the Democrats lost some of their favorite political whipping boys. So they began creating new ones.

The "gender gap" is just one figment of the liberal imagination. It arose despite the fact that in the 1980 election President Reagan was supported by a plurality of women voters who traditionally vote Democratic. Recent polls show the President has the support of more than 40 percent of all women likely to vote in 1984. You no longer find the "gender gap" on the front page of your morning newspaper.

The "hunger" issue was next, taking each of the Democratic candidates into the soup kitchens of America for a few brief but well-publicized minutes. Then came Grenada. Even after the buildup of Cuban military influence on the island was verified and the American people voiced support for the President's decision, the Democrats still attacked the move. Some even equated it to the Soviet invasion of Afghanistan.

One legitimate issue — the budget deficit — has also been taken from the Democrats. President Reagan demonstrated little leadership when he threw Congress a budget with a projected \$180 billion shortfall and instructions to work together to pull it out of the red.

But from a purely political standpoint, the President's move on the budget was good strategy. No matter where he suggested cuts, he would have been attacked. His budget puts the blame for the deficit where it belongs — on the liberals in

Congress, who are less concerned with balancing the federal budget than with dishing out money to appease the demands of special interest groups. Reagan's budget has put the Democrats on the defensive; since he sent it to Congress they have refused to participate in the bipartisan budget effort.

In the foreign policy arena, the Marines are being withdrawn from Lebanon. The President's victory in Grenada remains secure. And he is planning a number of trips before the election to land some "tangible" foreign policy successes.

What once were the hot political "issues" of the liberal agenda are no longer issues at all. And looking at some of the blows thrown during the past week, the candidates seem on the verge of desperation.

Habitual rhetorician Fritz Mondale called the President "intellectually lazy," "forgetful," and said he provided "leadership by amnesia." Mondale has never been one to make concrete appraisals of any policy stance — including his own. His latest barrage of attacks shows that he prefers spending his time talking personality rather than policy.

And the hoopla around the presidential campaign wouldn't be complete without the chorus of baying media hounds. Sam Donaldson, the most obnoxious hound in the White House press corps, asked President Reagan during Wednesday's press conference what he thought of Mondale's charges. Like the Democrats, this leading network journalist could think of no more substantial points on which to question the President.

In their utter frustration at the success of Reagan's conservative policies, the Democrats have even taken to praising Soviet leaders in order to place blame on the President for all our troubles.

Consider George McGovern, for example. He will not find a place in history as the 41st president of the United States, but his recent rhetoric will be recorded as some of the most absurd ever uttered during a presidential campaign. Commenting on the death of Yuri Andropov, McGovern said: "It is a modern tragedy that one of the Soviet Union's most intelligent and realistic leaders has served and died during the administration of the most ill-informed and dangerous man ever to occupy the White House."

Poor George needs a refresher in Soviet history. Andropov, one of the most ruthless leaders of the KGB, did nothing to curtail the Soviet expansion in Afghanistan, Poland, Central America and the Middle East. And it was presumably under his instructions that the Soviets walked away from the arms negotiations.

Sen. Gary Hart has best captured the tone of the 1984 Democratic campaign. After finishing second in Iowa, he announced that he would wage a "guerrilla campaign" against Mondale. That is exactly what the Democratic candidates are reducing the campaign to — indiscriminate sniping at the President and at one another.

Perhaps the liberals' cherished Vietnam analogy is finally applicable. If the Democratic presidential campaign continues on the same course, it will be a protracted, agonizing and humiliating ordeal for the American people.

more letters

The bicycle alternative

Editor:

Last night I had the unfortunate experience of hearing a girl on a bicycle get hit by a car on Rural Road. The sound of metal striking flesh is not one I will soon forget.

It's way past time for ASU to develop an integrated traffic philosophy and show more concern for its bicyclists. While mammoth revenues are being generated by the new parking system, nothing is being done to re-channel future growth's traffic problems towards its most viable alternative.

Bicycle paths on campus have not been kept up and are nonexistent near new construction. I've seen many bicyclists get tickets for riding on the sidewalk but I've never seen a pedestrian even get reprimanded for walking on a bicycle path. Hundreds of bicycles get ticketed simply because there aren't enough bicycle racks.

I'm sure a large percentage of ASU's employees and students live within five miles of campus and would prefer to ride bicycles to school if they didn't have to live so dangerously to do so. Bicycles are convenient, they don't pollute, they save gas and are good exercise. ASU could be instrumental in developing a bicycle path system in Tempe.

And just think — if the parking department can charge motorcyclists \$120 for the same area as a car's parking stall, just think what it could make on bicycles!

John E. Pingel



STATE PRESS

TRACY FLETCHER
Editor

DON SLUTES
Managing Editor

City Editor CHRIS COPPOLA
Asst. City Editor MICHAEL HUMPHREYS

Sports Editor JAY TAYLOR

Opinion Editor MATTHEW SCULLY
News Editor LEN MUNSIL
Photo Editor BOB MILES

Asst. Sports Editor TOM BLODGETT
Asst. Entertainment Editor MARY PAT BRADY
Asst. Entertainment Editor MARIA KHAN
Copy Chief INGRID TUULING

more letters

Why of course: zombies!

Editor:

I can't express how impressed I am that the *State Press* is still the champion of my moral fiber. Even though I have graduated into the real world, I can still count on articles like Chris Coppola's "See the Music, Lose the Meaning" to keep me on the straight and narrow path to righteousness.

Unfortunately, Mr. Coppola can't even understand what he is seeing on the screen, unless he happens to be watching Channel 10 news to get ideas for his column. This has led to his gross misinterpretations of the themes of visual music. For example, "humans climbing a wall and then being blown

up" in Billy Idol's "Dancin' With Myself" are not humans at all, but zombies! Furthermore, that they arise again and persist until they reach their goal says more to me about personal determination than gruesome slaughter.

But then, those that are easily led, Mr. Coppola, will always worry about what surrounds them. By the way, if you set this letter to music, it may prove dangerous to your mental health.

Debra L. Wykle
Alumnus, Class of 1983

A look at history of Cyprus issue

Editor:

We wish to comment on a talk given at ASU Wednesday by Ambassador Petros Voskarides on the Cyprus issue — a important question in American foreign policy.

The 1960 London and Zurich agreements, signed by the Turkish and Greek-Cypriot communities and by Greece, Turkey, and the United Kingdom, created the Republic of Cyprus as an independent state based on the partnership of the two communities on an equal footing.

However, there has not been a single Turkish-Cypriot member since 1964 in the "House of Representatives" of the so-called "Republic of Cyprus" whose bi-communal partnership had been abrogated in December 1963 by brute force and armed violence.

United Nations peacekeeping forces were stationed on the island under a Security Council mandate of March 1964. Despite their presence, the violence reached serious levels again in 1967. (Statement for the House Foreign Affairs Committee, by Richard Hass, Special Cyprus Coordinator for the U.S. State Department, Nov. 2, 1983.)

Between 1967-1974, massacres initiated by Greek-Cypriots resulted in the slaughter and disappearance of thousands of Turkish-Cypriot children, women and men. These events, documented by the United Nations, are not easily forgotten.

In July 1974 the Turkish intervention was precipitated by a coup in Cyprus sponsored by the military junta then ruling Greece that has the explicit purpose of ENOSIS or the incorporation of the island into Greece. What's more, the end of

British rule on Cyprus had featured guarantee against such a development in a treaty signed by Britain, Greece, Turkey and Cyprus. The Turks acted when the other signatories did not. (Wall Street Journal, Nov. 29, 1983)

The Turkish-Cypriots have been trying to negotiate with their former partners for a bi-zonal federated republic for nine years, only to be torpedoed by the whims of the Greek Cypriots.

Mr. Kyprianou's foreign minister, Nicos Rolandis resigned this summer because the Greeks were not forthcoming in negotiations. (Wall Street Journal, Nov. 29, 1983)

The recent declaration of independence by the Turkish-Cypriots is more an expression of frustration with obstructions to a lasting solution on Cyprus than a true desire for establishing a new nation.

We find it extremely important to insulate the conduct of U.S. foreign policy regarding Cyprus from the pressures of the Greek lobby whose advise has been totally rooted in their ethnic sympathies rather than their concern for peace in the region and the unity in NATO. To restore the fairness of U.S. foreign policy on Cyprus, the Congress should pass a resolution recognizing both governments within their domains, and at the same time should call on both sides to return to the negotiation table to confirm the principles of a future Cyprus settlement along the lines of a bi-zonal, bi-national federal republic.

Turkish Student Association

THE JOYNT 606 S. Mill
Old Town Tempe
WE DELIVER 967-7926
BEER • WINE

Large 16" Cheese Pizza
\$4.24
EXTRA TOPPINGS 50¢ EACH Expires 3-19-84

A Special Offer From



ASU Students...

If you're over 18 you can rent an Escort or other fine car at

SPECIAL LOW WEEKEND RATES

starting at **\$19.96** A DAY
no mileage
(2 Day Min.)

(Rates subject to change without notice)

For Your Car, Call Your ASU Representative

968-4072

Office located at Rural & University

"Be Prepared For Graduation"

a talk by

Michael Rensberger

Recruiter — Southwestern Life

SUNDAY
FEBRUARY 26, 1984
6:30 P.M.

PINAL ROOM • MEMORIAL UNION

- Learn interviewing techniques
- Listen to what recruiters look for in graduates
- Know what to expect in today's job market

Sponsored by
Delta Sigma Pi
The Professional Business Fraternity

O'Toole's Pub

**Try Us For Lunch,
And Treat a Friend!**

Bring This Coupon to

O'Toole's Pub
2 for 1
Food

Buy one and get the second item of the same or less value FREE!

Daily Happy Hour 4 to 8

1123 S. Rural Road Tempe

DOUBLE PLAY!



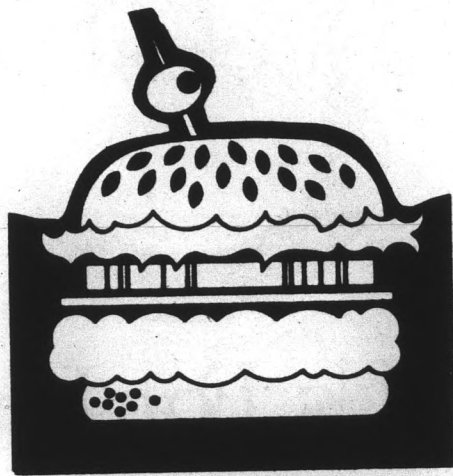
Enjoy ASU baseball & basketball for the price of the baseball ticket plus...

\$1.00

	BASEBALL	BASKETBALL
Saturday February 25	ASU vs Texas 4:00 p.m.	ASU vs Univ. of Oregon 7:30 p.m.
Use your ticket to get in FREE to Women's Tennis on Saturday at 1:00!		
Monday February 27	ASU vs Oklahoma State 6:00 p.m.	ASU vs UCLA Bruins 9:00 p.m.

Ticket Prices: \$3.00 Reserve Adult \$1.50 Reserve Junior \$2.50 General Adult \$1.25 General Junior
Tickets available at Diamond's, Select-A-Seat and Sun Devil Ticket Office

Greatest Hamburger on Earth!



Create your own burger with generous amounts of

- Tomatoes
- Lettuce
- Onions
- Pickles
- Pickle Relish
- Mayonnaise
- Hot Melted Cheese
- Hot Melted Cheese with Jalapenos
- Sauerkraut

FREE FRENCH FRIES FREE
Order a burger and receive a free order of fries.
DOC'S B.R.OTHERS
BAR RESTAURANT
DINE-IN ONLY.
NOT VALID WITH ANY OTHER OFFER.
Expires 3-16-84.

HAPPY HOUR
2 for 1
CALL, WELL, WINE
3 p.m.-8 p.m. Daily



BUCKET OF MOLSONS BEER!!!
\$6.50
6 Beers/Bucket

DOC'S B.R.OTHERS
BAR RESTAURANT

Lake Country Village Shopping Center
Rural @ Baseline 897-2862

HOURS: 11 a.m. to 11 p.m. everyday

Study finds advisement program poor

By Julianne Holroyd
Staff writer

The ASASU Senate Commission on Academic Development has completed a report on the student advisement facilities available at ASU, calling them insufficient and in need of reform.

The commission has studied the advisement program since the beginning of the fall semester, said Ray Burnell, ASASU executive vice president, who formed the commission.

Observations by the commission were made through surveys, existing reports and direct questioning of ASU students.

The commission found the advisement program lacking in several areas: accessibility of advisers, misinformation or lack of information given to students by advisers, perceived lack of interest of the advisers, lack of coordination between college advisement systems and the narrow scope of academic advisement.

"If the advisement program is not as good as it could be, then it's the commission's job to find out why," Burnell said.

The commission will present its report to the Faculty Senate, which has also compiled

a report on the academic advisement programs, according to Bill Davey, chairman of the Student Policy Committee of the Faculty Senate.

"We will look at the reports of the students and the faculty, and then file a joint report recommending solutions for the advisement program problems," he said.

Burnell said, "Our commission is not trying to work against ASU. We're trying to encourage it to work with us in alleviating these problems."

"Our major effort this year is to revive our potential to become involved in the education we came to receive," Burnell said.

"It is our duty as the student government to supplement and complement the University's education," he said. "We have been lacking in that area."

The government is concerning itself more and more with academic services for ASU students, said Burnell.

Burnell said the commission was not attempting to take responsibility away from ASASU Campus Services. "We're just trying to expand the realm of service to include education," he said.

police report

An oak altar, a wooden cross and several banners were damaged in the Danforth Chapel Wednesday morning, according to ASU Police reports.

The altar was apparently pushed from its platform, causing the body of the altar to collapse. The cross, which was freestanding on a raised platform, fell and broke at the joint, police said.

Church banners which had hung on the walls of the chapel were strewn around the room and their hangers were bent. A lectern was broken also.

Police said they transported a student suspect to ASU Police headquarters shortly after checking the chapel area, but so far no charges have been levied.

In other activity, ASU Police reported the following incidents:

- An ASU student told police four Mountain Bell telephones were taken from the home team locker room at Sun Devil Stadium Wednesday evening. He valued the phones at \$400.

- Police said Wednesday that students stealing Carnation milk crates will be prosecuted if they are found to have the crates in their possession. Crates have disappeared from several cafeterias around campus, particularly the MU, according to police.

The Phoenix Carnation office estimated its losses due to crate theft last year at \$750,000. At least 150,000 crates, valued at \$5 each, were taken last year, a company official said.

- Police found a door to the Old Main Building open late Tuesday and reported evidence of forced entry. The door led to a room which has access to the ASU tunnel system, but officers found nothing unusual when they checked the tunnels and the building.

- An ASU graduate student told police Tuesday morning she sustained injury to her back when she fell from one of the trams last week in Lot 59 near Packard Drive.

— M.K. Reinhart

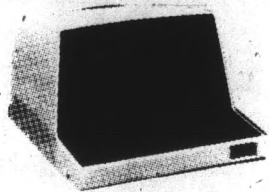
Pre-Law Pre-Dent
Pre-Med
co-sponsored

Happy Hour

SATURDAY
FEBRUARY 25, 1984

BACKSTAGE OFF BROADWAY
TEMPE

Non-Members Welcome



Do Your
Computer Work
At Home!

Save Time and Effort

CRT with coupler
or
Printer with coupler

\$50⁰⁰
per month

BRS LEASING, INC.

3914 E. McDowell • 277-3282

Rentals / Service / Sales

MERLE NORMAN COSMETICS

The Place for the Custom Face®

Learn How to Make Up
Your Face . . . FREE

Call for your appointment
TODAY!

Walk-ins Welcome
Ear Piercing

Southern Palms Plaza 831-6655
1628•10 E. Southern, Tempe

SHOW US YOUR STUDENT I.D. YOU'LL GET A DINNER FREE!

This year we're doing it again!
Every Sunday (but ONLY on Sunday),
Mike Pulos of the Spaghetti Company
will give you one FREE dinner* for
each dinner you order! It's our 2 for 1
SUNDAY STUDENT SPECIAL. And it's good
for the whole school year at both our
Tempe and Phoenix locations.

Any day of the week, for lunch or
dinner, The Spaghetti Company is known
for a great meal at an affordable
price. But the SUNDAY STUDENT SPECIAL

makes our already terrific prices **even better!** Our dinners include a full course
meal with all the trimmings—from salad
to dessert. So, dollar for dollar, when
you're hungry and you need a break,
you can't beat The Spaghetti Company!
ESPECIALLY ON SUNDAYS!
With 2 dinners for the price
of 1! But you MUST have
your student I.D. card
with you to take advantage
of this offer.



OPEN AT 12:00 ON SUNDAYS!

And, to make our 2 for 1 Sunday Student Special
even more special, we're going to have
HAPPY HOUR in the bar all Sunday long
for students!

The Spaghetti Company
RESTAURANT

PHOENIX
South on Central
Just Past McDowell
257-0380

Steak Di Jon, Stuffed Filet of Sole,
Tenderloin, Chicken Picatta, Veal
Marsala ARE NOT included in the
2-for-1 special.

TEMPE
4th Street and Mill
966-3848

Careers In Speciality Retailing

Volume Shoe Corporation is committed to excellence in retailing. We're
the nation's largest self-service footwear retailer operating over 1,300
Payless ShoeSource stores in 34 states. Our high standards of
excellence have resulted in profit performance and growth
unequaled in the industry. Continuing this unparalleled
growth, over 150 new stores will be opened during
the next year.

Our leadership status in the industry provides many
exciting and rewarding career opportunities in both the
corporate and field operations areas. A structured,
fast-track management training program is offered
along with highly competitive salary and benefit
packages. Volume Shoe Corporation's high
standards of excellence can provide you
with many opportunities for personal
and professional career development.

For information about career
opportunities with Volume Shoe
Corporation, schedule an appointment
with us through the placement office.

**VOLUME SHOE
CORPORATION**

3231 East 6th P.O. Box 1189 Topeka, Kansas 66601
AN EQUAL OPPORTUNITY EMPLOYER M/F
A Division of The May Department Stores Company



ASU Transit Service gains computer link with Phoenix to help carpoolers

By Lisa Phillips
Staff writer

ASU's carpooling program has been improved to more efficiently match potential carpoolers with others interested in sharing a ride to school from the same area, a University official said.

Ed Hickox, assistant director of Parking and Transit Services, said ASU now has full-time access to a City of Phoenix computer that matches carpooling applicants to drivers with similar schedules.

Students, faculty or staff who are interested in sharing a ride can register for the program and receive a computer print-out of names and phone numbers of others in their area.

Previously, the city computer could be accessed at ASU only when the city provided a terminal, usually during registration,

Hickox said. Parking Services now has its own terminal, he said.

Hickox said the improved program is too new to determine whether more people are applying for the service, but he believes the increased availability of the service combined with the recent consolidation of the ASU Police Department and Parking and Transit Services will increase the number of applicants.

"The more people that get in the system, the more effective it will be," Hickox said. "It doesn't just link you up with people coming to ASU, it could be people who work in Tempe or somewhere nearby."

He said the program is useful for people who don't have transportation to school or don't want to pay the full price for an ASU parking permit.

Female graduate students eligible for \$1,000 award

The ASU Faculty Women's Association is accepting nominations of ASU women graduate students for the Second Annual \$1,000 FWA Distinguished Achievement Award.

The award will honor a graduate student who has been in residence at ASU for at least one year and has distinguished herself in scholarship, research and leadership. Send a letter of nomination and a letter of support from the appropriate department chair to Professor Norma Pike, HPE, Physical Education Building West. Include copies of the nominee's undergraduate and graduate transcripts and a copy of her total curriculum.

Only one nominee from each department will be considered this year. A review process at departmental level is advised to ensure a democratic process in selecting the department's nominee. Deadline for receipt of materials is March 1, 1984.

Study in Latin America offered

Applications are now being accepted for ASU students to study in Mexico or Bolivia during the Fall 1984 semester.

Any student who can effectively read, speak and write Spanish is eligible to participate in the exchange program.

In addition to their university studies, participants will live in private homes for cultural immersion in the daily life of the people and their language.

The application deadline is March 20.

To obtain a brochure and application form, contact the ASU Center for Latin American Studies, 965-5127.

THE JOYNT
from 2-10 p.m.
2 Dinners for \$5.49 Reg. \$8.50

Choice of:
•Lasagna
•Cheese or Spinach
•Manicotti
•Baked Ziti

Includes 2 dinner salads and garlic breads
75¢ extra for carryouts

THE JOYNT
606 S. Mill
967-7926
Expires March 19, 1984.

COUPON

Mac TEMPE CENTER
JEWELERS

FOR ALL YOUR JEWELRY NEEDS

Diamonds, Watches
14k Chains, Pendants
Sorority-Fraternity Jewelry
Watch & Jewelry Repairing

966-7587

IN ARMY NURSING YOU KEEP ADDING NEW SKILLS.

It's important that you're treated with the dignity and respect accorded an Army officer. And it's important to work in a modern medical center, earn a top salary, and travel. But perhaps the most important aspect of Army Nursing is the dedication to education. In Army Nursing you have the opportunity to attend professional conferences, pursue advanced degrees and study a variety of nursing specialties.

If you're a student working on your BSN or if you already have a BSN and are registered to practice in the United States or Puerto Rico, look into Army Nursing. Stop by or call us:

967-6559
ARMY NURSE CORPS. BE ALL YOU CAN BE.

NAVY NUCLEAR ENGINEERING

Any better offers?
\$24,000 to \$54,000 after six years.

If you are 19 to 26 years of age majoring in math, chemistry, physics or engineering and would like to learn more about this opportunity

CALL COLLECT (619) 293-6746

CALL BETWEEN THE HOURS OF 9 A.M. TO 5 P.M. MONDAY THROUGH WEDNESDAY

YOUR BSN IS WORTH AN OFFICER'S COMMISSION IN THE ARMY.

Your BSN means you're a professional. In the Army, it also means you're an officer. You start as a full-fledged member of our medical team. Write: Army Nurse Opportunities, P.O. Box 7713, Burbank, CA 91510.

ARMY NURSE CORPS. BE ALL YOU CAN BE.



Come Enjoy Our Friday Happy Hour Tonight From 4:30 To 7:30

- Featuring:
- Bottomless Glass of Margarita
 - 50¢ Longneck Buds
 - FREE Mr. B's Pizza!



ON STAGE TONIGHT & SATURDAY: NICE BROTHERS

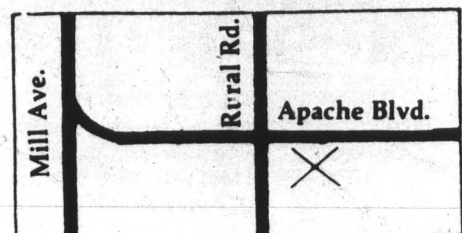
Both Nights Enjoy 2 for 1 Long Island Ice Teas & 2 for 1 Mugs of Beer

BEGINNING TUESDAY:

The Long Awaited Return of WINDFALL



919 E. APACHE TEMPE
966-7770



ASU supports NAU plan for center

By Wayne Baker
Staff writer

The University administration will support NAU's efforts to establish a Center for Excellence in Education despite doubts about the proposal's feasibility, an ASU official said.

Jack Kinsinger, vice president for academic affairs, said NAU's proposal to establish the center, which was recently approved by the Arizona Board of Regents, is "going to be on a rocky road" because the normal proposal process was bypassed.

However, Kinsinger said "it's clear" to the administration "the regents expect the other two universities to support it."

At the board's Feb. 18 meeting in Tucson, the regents approved the concept of the center in Flagstaff and authorized the NAU administration to go before the state legislature to ask for \$1 million to initiate the center's establishment.

NAU President Eugene Hughes presented the proposal to the board without taking it through subcommittee and administrative channels.

NAU was directed to further develop a detailed report for presentation to the board next month.

The report is to include a three-year budget projection, a statement of impact

on students in the colleges of education at ASU, U of A and NAU, reactions by ASU President J. Russell Nelson and U of A President Henry Koffler, and a coordinating mechanism for activity under the direction of the center.

At the regents meeting, Nelson and Koffler expressed their doubts about the establishment of the center.

Koffler said he was "troubled by (NAU's) statewide efforts," and the proposal contained "complexities" which "demand very close examination of the efforts."

Nelson said there were "some good things" in the proposal that might not require the establishment of a center for excellence.

Included in NAU's proposal are provisions for establishing off-campus field sites in Phoenix, Tucson, Yuma, the Colorado River area, Douglas and the Navajo Reservation.

Robert Stout, dean of ASU's College of Education, said it was unclear how NAU's center will affect the education schools at the other two state universities.

"I'm sure it would affect us in some way," Stout said. "We'll have to wait and see how it will develop before we can determine its effect."

collage

NSSLHA meets from 9 a.m. to noon today in the MU Cochise Room for a colloquium with Noel Matkin, a professor of audiology at the University of Arizona.

Liberal Arts College Council of Students will have a regular meeting today from 1:40 p.m. to 2:30 p.m. in the MU Apache Room.

Hispanic Business Students Association will hold a car wash with refreshments available at the Valley Fair Union 76 Station, on the corner of Southern and Mill avenues from 9 a.m. to 3 p.m. Saturday.

The Newmans: A new organization for the ASU community of faith will meet at 5:30 p.m. in the lounge of the Newman Center (intersection of University and College) for a fun athletic competition. A volleyball match will begin at 5:45 p.m.

ASU Theatre will have auditions for Shakespeare's "Much Ado About Nothing" at 2 p.m. Saturday and 5 p.m. Sunday in Gammage Center Room 108. Audition scenes are available from the

department of theatre office.

First Congregational Church, 101 E. Sixth St., will have 9:30 a.m. adult forum and Sunday school, 10:30 a.m. coffee and fellowship and 11 a.m. morning worship on Sunday. Also, an all-church retreat is planned for March 3-4 in Prescott. The Saturday workshop will be led by Frank Williams, a family life specialist from the University of Arizona. Reservations for the retreat will be accepted through Feb. 26.

Fellowship of Christian Athletes will have a picnic at 2 p.m. Sunday in Daley Park, on College Street south of Apache Boulevard.

Alleluia Lutheran Church begins its Sunday evening lecture series "Encountering Non-Christian Religions + An Appreciative Glimpse" by Dr. Edgar Senne's speech on Islam at 7:30 p.m. Feb. 26 in the MU. Admission is \$1.

Water Polo Club will have its first official practice from 5:30 p.m. to 7:30 p.m. Monday in the Aquatic Complex. Anyone interested is welcome, but it is important to be at the first practice. Practices will be held Monday through Friday from 5:30 p.m. to 7:30 p.m.

Writer's Group at ASU will have an open-microphone poetry and fiction reading at 7:30 p.m. Monday in the MU Montgomery Lounge.

TAILOR MADE AUTO SEAT COVERS

- SHEEPSKIN • COTTON
- LEATHER • VELOUR
- MOTORCYCLE SEATS
- TRUCK SEATS
- FREE RIDE TO ASU

THE SEAT SURGEON

1885 E. Apache, Tempe
1-1/2 blks. E of McClintock
966-1199

EUROPE by CAR

RENT or BUY
LOWEST PRICES
FOR STUDENTS, TEACHERS

EUROPE BY CAR
9000 Sunset Boulevard
Los Angeles, Calif. 90069
Phone: (213) 272-0424

Mail this ad for Special Student/Teacher Tariff.
 RENTAL LEASE PURCHASE

FOREIGN AUTO PARTS

Flint DISTRIBUTING

Parts & accessories for all imported cars and trucks



Student Discount With Valid I.D.

968-8687
IN THE TEMPE CENTER

OPEN MONDAY THRU SATURDAY



University of Southern California

GRADUATE PROGRAM IN JUDICIAL ADMINISTRATION

The University of Southern California's School of Public Administration and Law Center jointly offer a program leading to a Master's Degree in Public Administration with a specialization certificate in Judicial Administration. The 36 unit MPA includes: coursework in the basics of public administration applicable to the court environment; research, systems analysis, finance, budgeting and personnel, as well as courses in civil and criminal procedure.

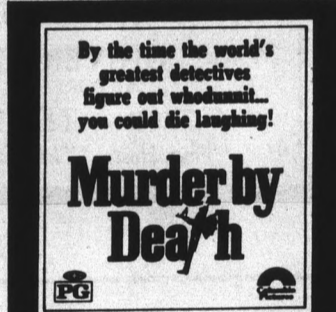
SIGN UP FOR FEBRUARY 28 INTERVIEW WITH DR. DONALD FULLER. CALL CAREER SERVICES, 965-7173.

Spend a night at Ford Theater

"Get off to a great start with Ford"



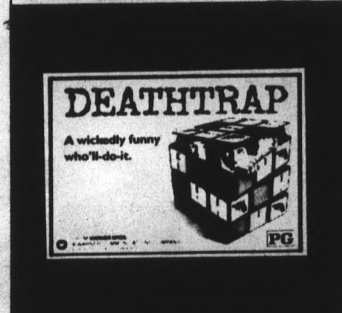
DATE: Feb. 26-Sun. Feb. 27-Mon.
TIME: 8:00 p.m. 8:00 p.m.
PLACE: Union Cinema
ADMISSION: \$1.00



DATE: Mar. 4-Sun. Mar. 5-Mon.
TIME: 8:00 p.m. 8:00 p.m.
PLACE: Union Cinema
ADMISSION: \$1.00



DATE: Mar. 18-Sun. Mar. 19-Mon.
TIME: 8:00 p.m. 8:00 p.m.
PLACE: Union Cinema
ADMISSION: \$1.00



DATE: Mar. 25-Sun. Mar. 26-Mon.
TIME: 8:00 p.m. 8:00 p.m.
PLACE: Union Cinema
ADMISSION: \$1.00

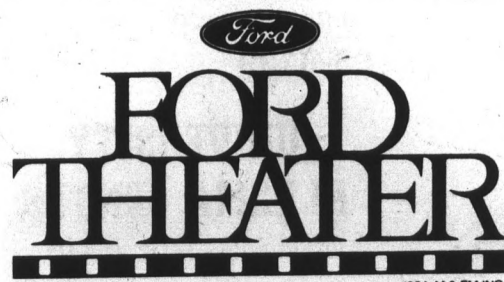


DATE: Apr. 1-Sun. Apr. 2-Mon.
TIME: 8:00 p.m. 8:00 p.m.
PLACE: Union Cinema
ADMISSION: \$1.00



DATE: Apr. 8-Sun. Apr. 9-Mon.
TIME: 8:00 p.m. 8:00 p.m.
PLACE: Union Cinema
ADMISSION: \$1.00

ARIZONA STATE (009)
MUAB



The above motion picture presentations are brought to you by the Ford Division of the Ford Motor Company.



OPEN THE NEW WRANGLER SEASON WITH
THE RIB MARKET
 (Famous Ribs and...)
 JOIN US FOR EXCELLENT SEATS, BRUNCH & BUS TRANSPORTATION TO & FROM GAME.
\$25 per person
 CALL FOR DETAILS.
831-6992
 2051 S. Dobson Rd., Mesa, AZ

DRIVE CARS FREE

Cars Available
 Many Points U.S.A.
 We are I.C.C. licensed and insured. Must be 21 years or more.
SCHEALL DRIVEAWAY
991-5533

Centennial exhibition to feature photojournalism students' work

By Deanna McCormick
 Staff writer

Photojournalism students at ASU are busy compiling a photo exhibition that will serve as a statewide showcase of the University as part of this year's Centennial.

The exhibit will be displayed in Gammage Center beginning March 1, consisting of about 50 final shots selected from about 100 original pictures, said Frank Hoy, ASU journalism professor.

It will then travel to most of the major cities in Arizona to help kick off "ASU Day" in each city, said Dennis Pettie, a member of the Centennial Commission.

A full day of entertainment in each city will

be devoted to celebrating ASU's Centennial, said Pettie.

Pettie is arranging the photos into what he calls a "contemporary montage" that will give an overall view of ASU.

The Alumni Association will be taking the photos to major cities such as Flagstaff, Tucson, Prescott and Yuma, where they will be displayed in different locations throughout each city.

The Centennial Commission is supplying the photojournalism students with the film, paper and mounting for the photos, which Hoy said will cut down on the cost to the students.

All three of the photojournalism classes have the opportunity to contribute photos to the

The photo of fire about 50 photos taken by photojournalism

show. Students advanced.

Marissa Huth, will probably be seated behind his

Submitting so required of every classes, said Hoy awards will be given students will be work receives.

All of the photos white and will be prints. All of the students, faculty a photo of what to be sports, art, te

After the show return to ASU a June for three w

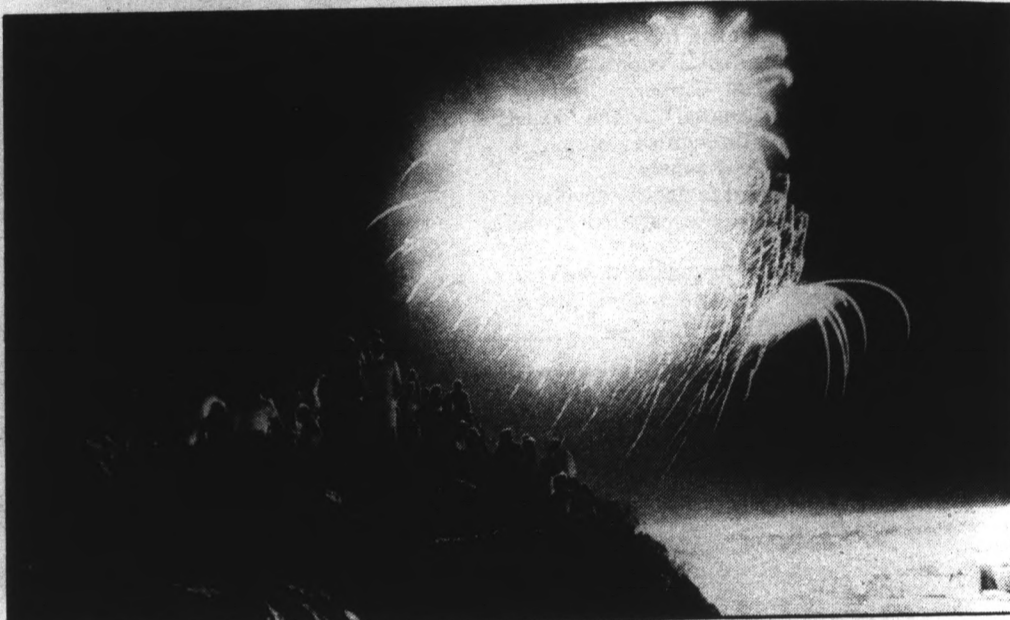


Terrace Road Apartments

WALK TO SCHOOL!

1/2 block from Campus. Huge, well furnished 1-bedroom, 1-bath, and 2-bedroom, 2-baths, all utilities included, plus many amenities.

950 S. Terrace Rd. 966-8540



THE WAREHOUSE DELI

Estab. 1975 "Good Food and Drink"

SPECIALS LUNCH & DINNER
 MON.-FRI.
 10:30-7 p.m.
 Sandwich with Homemade Fries
 Small Drink or Beer
ONLY \$1.99

MOLSON & HEINEKEN
61¢ plus tax
 IMPORTS Mon.-Thurs.
 2-4 p.m.

HAPPY HOUR
 MON.-FRI.
 10:30 a.m.-7 p.m.
IMPORTS — 94¢
DRAFT BEER
 Pitcher Glass
\$1.99 49¢
WINE
 1/2 liter Glass
\$1.99 49¢
WINE COOLER
 Pitcher Glass
\$2.75 65¢

LIVE ENTERTAINMENT NIGHTLY
 (No Cover, No Min.)
 130 E. UNIVERSITY DR. AT FOREST
966-7788 — TEMPE, AZ
 Your Hosts: "The Family"

BREAKFAST 6 a.m.-10:30 a.m. Mon.-Fri.
99¢ — SUPER SPECIAL — 99¢

Also Featuring "THE LITE WAIT"
 One Egg, 2 Bacon or Sausage, Toast, Butter & Jam **\$1.29**
 Coffee Included

Call for daily specials

MIKE KWAN'S GOLDEN COIN

Chinese Buffet
 1125 E. Apache Blvd.
 Tempe
968-3322




Menu includes:

Sweet and Sour Pork	Teriyaki Beef Steak	Ham Fried Rice
Lemon Chicken	Sweet and Sour Almond Turkey	Beef with Broccoli
Smoked Fish	Chicken Chow Mein	Teriyaki Chicken
Shrimp Almondine	BBQ Spare Ribs	Vegetarian Steak
Pepper Steak	Egg Rolls	Egg Fu Young

WE SERVE BEER & FRUIT COCKTAIL

LUNCH 11 a.m.-3 p.m. **\$3.33**
 Change in Food Selection Daily

DINNER 5 p.m.-9 p.m. **\$3.77**



THIS IS PRESIDENTS WEEK . . . I CANNOT TELL A LIE!


Become a plasma donor!
 \$10 is paid for each donation and you can donate twice weekly (but please wait 72-hours between donations).
 That's up to \$100 a month — no lie! And that can buy a lot of cherry pie!
 New donors "chop" out this ad for an extra \$2 for your first donation.
 Call now for appointment.
968-6139

UNIVERSITY PLASMA CENTER
 1015 S. Rural Rd.
 Mon.-Fri. 8 a.m.-7 p.m.
 Wed. & Sat. 9 a.m.-6 p.m.
 Federally Inspected

SOCIETY OF WOMEN ENGINEERS AND INSTITUTE OF ELECTRONICS AND ELECTRICAL ENGINEERS




sponsor



Hughes Helicopters, Inc.
 5000 East McDowell Road
 Mesa, Arizona 85205

TOUR

FRIDAY, FEBRUARY 24, 1984

Meet at entrance of Engineering G-Wing at 1:45 p.m.
 Cars depart at 2:00 p.m.
 Tour begins at 2:30 p.m.

Sign up on SWE bulletin board on second floor of EGG (near room 227).



The photo of fireworks to the left and this shot of clouds over Sun Devil Stadium at sunset are two of about 50 photographs by ASU students that will be part of an exhibit in Gammage Center. Both were taken by photojournalism major Andy Arenz.

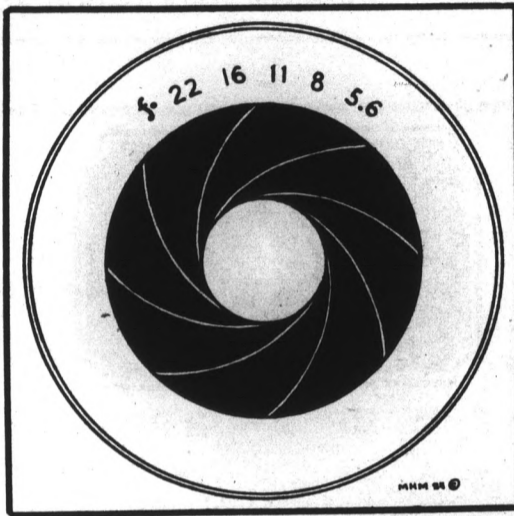
show. Students range from beginning to very advanced.

Marissa Huth, a beginning student, said she will probably submit a photo of a student seated behind his drum set.

Submitting something for the show is required of every student in the photojournalism classes, said Hoy. He added that no individual awards will be given as part of the project, but students will benefit from the exposure their work receives.

All of the photos will be shot in black and white and will be either 8 x 10, 11 x 14 or 16 x 20 prints. All of the photos will either be of students, faculty or staff and will most likely be a photo of what that person excels in, whether it be sports, art, teaching or studying, said Hoy.

After the show has toured the state, it will return to ASU and be on display in the MU in June for three weeks.



RUNDLE'S
LIQUORS & MKT.
730 S. MILL
Corner Mill & University Ave.
CALIF. COOLERS 4-pk. \$2.99
MEISTER BRAU BEER \$1.89
FRATELLI BIANCO WINE \$1.99
PLAYBOY Used Magazines \$.47
Haagen Dazs Natural Ice Cream, Adult Magazines, Groceries, Ice, Wines, over 40 Imported Beers.
967-9079

Dentistry
Student Special
FREE EXAM & X-RAY
Call For Appointment
12 Minutes From Campus
DR. BRIAN D. FOW, D.D.S.
7555 Osborn Rd., Suite 201
Scottsdale, AZ • 949-1234

HAPPY HOUR
4-7 Monday through Friday

53¢ 12-oz. Glass
\$1.97 60-oz. Pitcher
Coors, Bud, Miller Lite
80¢ Bottled Imports

HEINEKEN ON TAP — \$3.40 A PITCHER

Sub Stop
"Sub Specialists of Arizona"
On University Between College & Forest
967-7744 • 7:30 a.m. to 2 a.m. nightly

PERM SALE — 50% OFF
Now \$15-\$30
ALL HAIRCUTS \$10
(Includes cut, shampoo and conditioner only)
Sculptured Nails \$19.50

The **hair performers**
NEW SUNDAY HOURS 12 p.m.-6 p.m.
903 S. Rural Rd. • 894-0184

Attention: Foreign Car Owners

SAVE UP TO 70% ON RECYCLED FOREIGN AUTO PARTS
MG, TRIUMPH, HONDA, DATSUN, TOYOTA, VW and OTHERS

All Models Foreign
3024 So. 40th Street, Phx. (near 40th & University)
437-0185
*Mention this ad & get an additional 5% off!

NATIONAL STUDENT SPEECH LANGUAGE HEARING ASSOCIATION and ASASU
Is Pleased to Announce a Special Colloquium
"Late Identification of Childhood Hearing Loss: A Personal Problem" and
"Parent Programming: What Do We Mean When We Say Counseling?"
Presented by: NOEL MATKIN, Ph.D.
Professor of Audiology, University of Arizona
Friday, February 24, 1984 • 9 a.m.-12 p.m.
Memorial Union Cochise Room
Reception Following in the Speech and Hearing Clinic Lobby

NEW!
delicious
TUNA Schlotzsky

Schlotzsky's

TEMPE CENTER
18 E. 10th St. & Mill OPEN 11 to 8 968-0056

© 1984. SEAGRAM DISTILLERS CO., N.Y., N.Y. AMERICAN WHISKEY-A BLEND. 80 PROOF.
"Seven-Up" and "7UP" are trademarks of the Seven-Up Company.

Science

ASU professors win award to finance fields of research

By Tisa Striegler
Staff writer

Two ASU engineering professors are among the first to receive the recently established Presidential Young Investigator Awards designed to fund various fields of research.

G. Paul Neitzel, an associate professor of mechanical and aerospace engineering, and Ronald Roedel, an associate professor of electrical engineering, were among six Arizonans who received the award. Approximately 1,500 engineers and scientists competed in the national competition but only 200 awards were given out.

Roedel said, "I am overwhelmed and incredibly pleased because it (the award) will help my research immeasurably."

Roedel actually received notice of the award on Saturday but said he did not open the envelope until Sunday evening because it was "too thin." He said thin envelopes usually contain rejections so he did not open it right away. Having anticipated bad news, he was pleased to find the envelope contained an award notice.

Roedel said the biggest benefit of the award would be for the graduate students who work with him in his research. He said

The two professors competed with 1,500 other scientists and engineers across the nation for the award.

they will be supported in their work with better and newer equipment and material at a standard "they're not used to."

Roedel's research is in the area of compound semiconductors. "This is a study of semiconductors made from more than one element," Roedel said. He is currently studying the use of galliumarsenide (GaAs) as an alternative to silicon. "It has some

special features not found in silicon," Roedel said. GaAs is currently used in solar cells, lasers and high-speed integrated circuitry.

"I feel terrific about receiving it," said Neitzel. "The funds will be used in my research on fluid dynamics."

Fluid dynamics is the study of any fluid material and its movement. Neitzel described

This new program was instituted to encourage recent doctoral grads to enter the field of research at universities.

ed it as a "far-reaching science with widespread applications over many disciplines."

"My current research interest lies in the area of fluid mechanics applied to crystal growth processes," Neitzel said. "More specifically, I'll be studying the instability of crystal growth."

The National Science Foundation, at the urging of President Reagan, instituted this new program to encourage recent doctoral graduates to enter the field of research at universities and other facilities. Applicants must have received their Ph.D. within seven years prior to the award. Each recipient will be given \$25,000 a year for five years.

Additional funds can be raised in a matching funds program. The Foundation will match funds donated by industry to the awardee up to \$37,500 a year, raising the total possible research money to \$100,000 annually for five years.

"I have high expectations of getting the maximum award," said Roedel. "People like Paul and I who are doing research in areas of high industry interest will have the best possibility of earning the maximum. But scientists like the guy in Tucson who is doing research in the dynamics of the galaxy (Simon White) will probably only get the \$25,000 a year," Roedel added.

Official says scientists to depend on librarians

By Lisa Phillips
Staff writer

The increasing need by scientists for rapid access to and filtration of information will lead to the development of partnerships between scientists and librarians in the future, according to ASU's vice president for academic affairs.

Jack Kinsinger said librarians increasingly will become "knowledge engineers" as the information explosion and ways to cope with it become increasingly important issues.

Kinsinger's comments came Thursday in the first of a series of lectures sponsored by the Noble Science and Engineering Library.

He said universities will have to rely increasingly on non-traditional sources of funding, such as industry grants, to finance the technology to facilitate information gathering.

"Typically, libraries have not been big on grants," Kinsinger said. "But seed money can be an important source of funds."

The two main problems facing librarians as they attempt to aid scientists in gathering information for research are the abundance of information and the duplication of knowledge, Kinsinger said.

The primary obstacle to developing the "library of the future," in which information can be easily and rapidly gathered, is the printed page, Kinsinger said.

"The bottleneck in the page business is getting it into the data base," he said. "There is an inability to transform the printed page and store it digitally without using people."

Kinsinger said buying information directly in computer form without ever seeing the printed page is one solution to the problem.

"Once this happens, we will see books diminish in importance," he said. "I think the storage ability and cost effectiveness are already here."

Laser disks will probably replace more traditional forms of information storage in the future because of their ability to store massive amounts of information — both words and pictures — that may be realistically reproduced, he said.

BIRTH DEFECTS
KILL

PREVENT
BIRTH DEFECTS
March of Dimes

Women's services ASSOCIATED STUDENTS

MINORITY WOMEN'S DAY:
WOMEN IN HIGHER EDUCATION
FEBRUARY 24, 1984 • MEMORIAL UNION

- 1:30-2:30 Career Opportunities
Juanita Soto, Career Services Advisor
- 2:30-3:30 Choosing a Major
Rosie Horace, Assistant Director
Minority Recruitment
- 3:30-4:30 Women and Stress

Co-sponsored by Women's Services, Minority Women's Association, and Minority Affairs Board.
For more information, please call 965-1253.



FEATURING
THE BEST RIBS
IN THE VALLEY

NOW OPEN FOR BREAKFAST, LUNCH & DINNER

Sunday-Saturday 6 a.m.-11 p.m.

Bar open until 1 a.m. Friday & Saturday

BILLY'S FAMOUS CHAMPAGNE BRUNCH

11 a.m.-3 p.m. Saturday & Sunday

Includes complimentary champagne

Home of the "Double-Day" Happy Hour

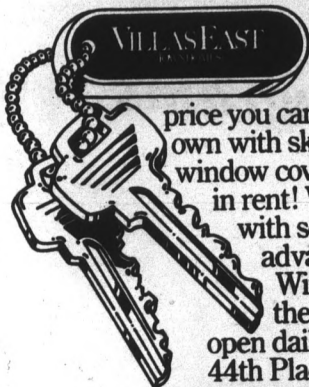
All drinks 2 for 1 4-6/11 p.m.-1 a.m. Sun.-Sat.

1301 E. Broadway, Tempe • 967-1614

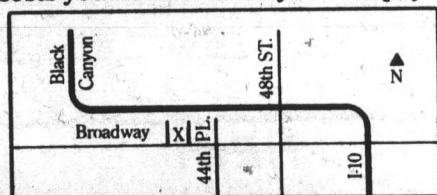
Think Billy's for complete carry-out & catering.

IF YOU APPRECIATE LIVING OFF CAMPUS, LIVE IN SOMETHING THAT APPRECIATES.

Villas East Townhomes, 44th Place and Broadway, from \$457 per month.



Living off campus gives you a lot more luxury and privacy, but now it can give you equity, too! Villas East Townhomes at 44th Place and Broadway offer the best in off campus living at a price you can afford! As little as \$457 a month. Imagine a place of your very own with skylights, a private patio, coffered ceilings, oak cabinets, a complete window covering package and pool that costs you no more than you now pay in rent! Why wait 'til you're through with school to enjoy the many advantages of home owning? With Villas East Townhomes they can be yours now. Models open daily, 11:00 a.m. to 6:00 p.m. 44th Place and Broadway. 438-8878.



With a sales price of \$42,900, down payment \$2,200. Loan balance \$40,700. P & I \$376.11. APR 10.6475% (30 years).

sports

state press

Corraled ASU errors prove costly in 6-4 loss to Texas

By Jay Taylor
Sports editor

ASU baseball coach Jim Brock had a simple explanation for his team's 6-4 loss to Texas last night in front of 4,173 fans at Packard Stadium.

"I don't think we played well," he said. "I don't think we've been playing well all year long."

Once again the Devils were hurt by poor defense. They made three errors against the Longhorns, one each by Romy Cucjen, Steve Murray and Bob Grandstaff.

When the game started, it looked like the Sun Devils would have no trouble getting runs off a Texas staff that has been badly depleted by injury.

Brock: 'I don't think we played well. I don't think we've been playing well all year long.'

Oddibe McDowell led off the ASU first with a single up the middle, and after Cucjen grounded out, Barry Bonds walked. Designated hitter Todd Brown then continued his torrid hitting streak by blasting a three-run homer over the 370-foot sign in right-center field to give the Devils a 3-0 lead.

The Longhorns came back with a run in the top of the second when Dennis Cook led off with a single off starter Kendall Carter. With one out Darren Loy laced a double down the left field line, moving Cook to third, and Cook then scored on Steve Labay's ground out.

Texas tied the game in the fourth when Loy walked with two outs and Labay hit a homer to left. Carter was then lifted for Doug Henry and he got out of the inning. Brock said Carter was not at his sharpest last night.

"Kendall didn't have his best stuff," he said. "He struggled most of the night."

Henry (4-1) was tagged for the winning runs in the fifth. Bill Bates led off with a walk and moved to second on a wild pitch. Doug Hodo also walked, bringing up David Denny, who laid down a sacrifice bunt. Henry fielded it cleanly, but Grandstaff dropped the throw at third, scoring Bates and putting runners at second and third with no outs.

David Wrzesinski then hit a bloob single over second scoring two runs to make the score 6-3 Longhorns.

Brock called Grandstaff's error the most important of the game.

"That was the key play, the one that hurt us the most," Brock said. "He took a couple steps toward the ball, then had to go back looking for the base and try to catch the ball, and he couldn't do it."

The Devils added a run in the bottom of the fifth to close the gap to 6-4. Cucjen walked to lead off and after Bonds struck out, Brown also walked. Pinch hitter Dave Tinoco hit a high chopper to third for a base hit loading the bases. But successive ground outs by Don Wakamatsu and Grandstaff were able to score only one run.

Texas coach Cliff Gustafson was pleased with his team's

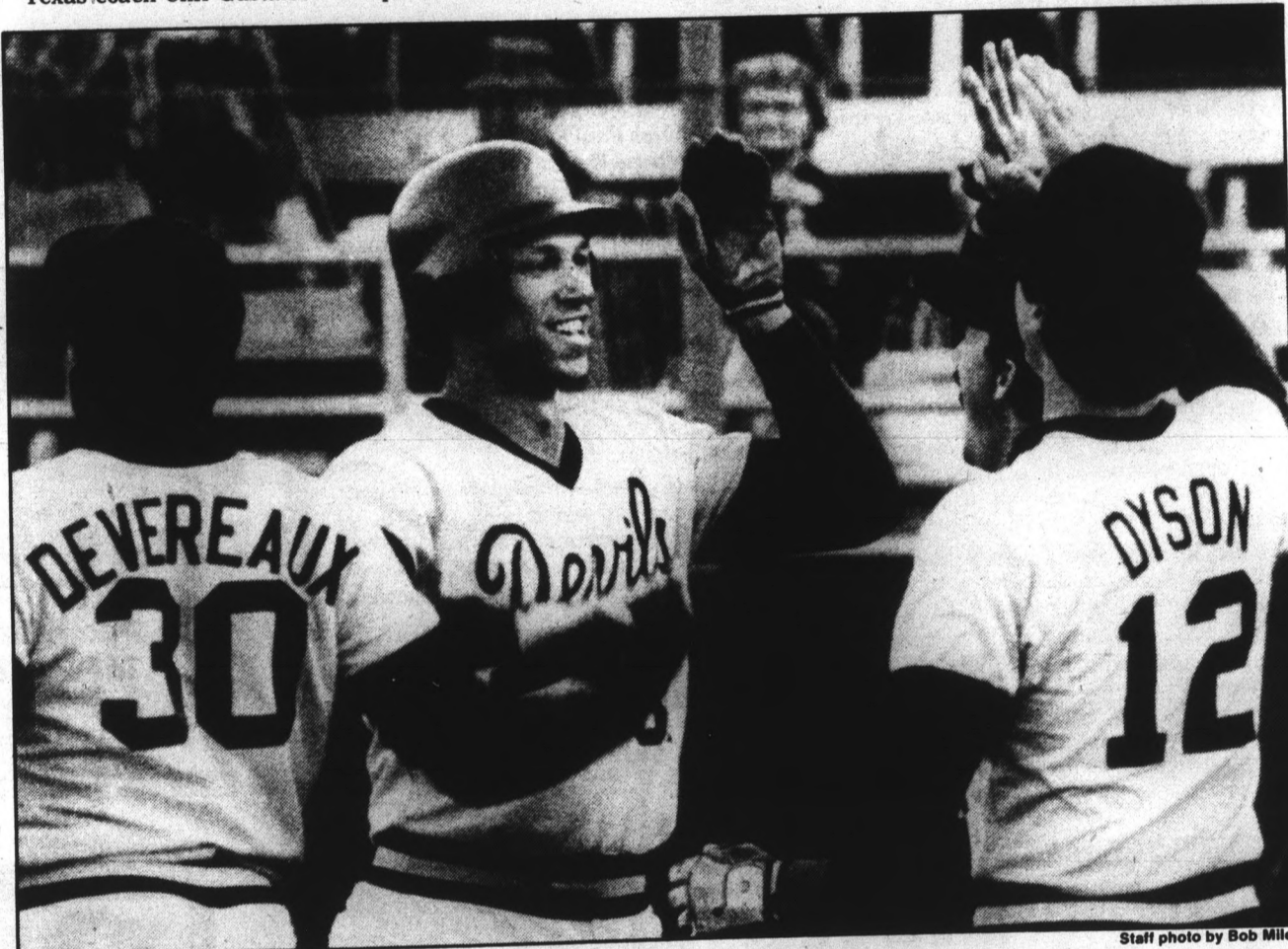
performance, especially that of winning pitcher Greg Swindell (1-0).

"We got exceptional pitching tonight," he said. "Swindell did a great job for us, and the whole team played hard and had very good intensity. The only importance of this game was to make sure we got a win out of here."

Brock's views were almost exactly the opposite.

"We had no intensity tonight," he said. "We started all right, but we fell off early. We have to learn to play in this league, and these games are good for that reason."

The two teams meet again tonight at 7 p.m. at Packard Stadium, and the series will conclude Saturday with a game at 4:30 p.m.



Staff photo by Bob Miles

Todd Brown, center, is welcomed home by teammates Mike Devereaux and Ted Dyson after hitting a three-run home run in yesterday's game with Texas. Brown's shot came in the first inning.

Texas 6, ASU 4

Texas	010	230	000-6
Arizona State	300	010	000-4

Ruffin, Swindell (5), Boudreaux (9) and Loy, Carter, Henry (4) and Wakamatsu. WP-Swindell (1-0). LP-Henry (4-1). HR-Brown (4), Labay (1).

HAPPY HOUR



kinko's copies

Mesa Tempe
969-3326 894-9588
1840 W. University
Southern and Forest

Special price good Mon.-Fri. 6 p.m. to closing through Feb. 29, 1984.

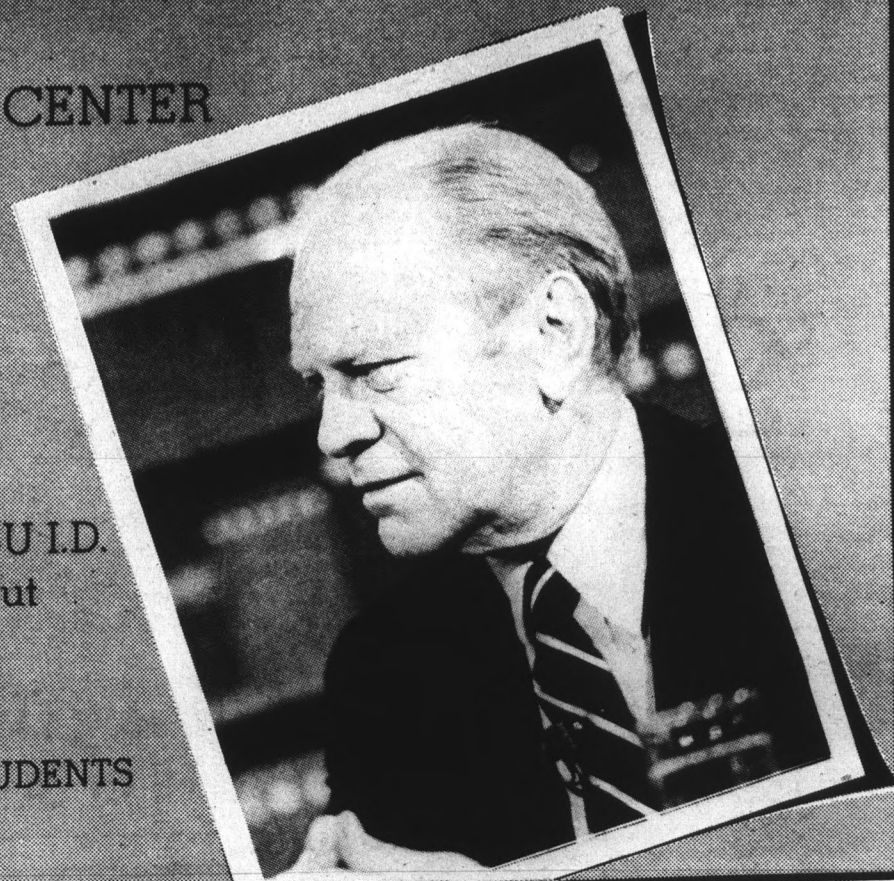
PRESIDENT GERALD R. FORD

GAMMAGE CENTER

FRIDAY
FEBRUARY 24
1984
12:00 P.M.

FREE with ASU I.D.
\$200 without

Sponsored by
ASSOCIATED STUDENTS
LECTURE SERIES



ASU grapplers favored to reign in Pac-10 meet

By Vicki Serna
Sports writer

The ASU wrestling team goes into the Pac-10 Championship meet this Sunday riding on a six-game winning streak and heavily favored to be the victors.

Head coach Bobby Douglas appears confident about the outcome of the match.

"I think we have a great chance of winning the title," he said.

Douglas, who was recently named the assistant coach of the U.S. Olympic freestyle wrestling team, is in his 11th season as the Sun Devil head coach.

This year, the Devils broke their record of 15 dual match victories, which stood through three previous seasons. They will go into the conference championship with a 17-6 dual record.

The site of the Pac-10 Championship is Corvallis, Ore., and according to Douglas, the grapplers of ASU will be ready.

"Eddie Urbano, Tom Kolopus and Tom Riley are in position to win their weight classes," he said. "Jim Lefebvre, Mike Davies and Chris Bodine have shown improvement in recent weeks, and go into the championship in good shape."

Last year, Urbano was the conference runner-up and this season he is ranked among the nation's top 150-pound wrestlers. He sports the best record on the Devil squad with 34 wins and three losses.

About Urbano, Douglas said, "he should win the conference tournament." This will be his last conference performance in a Sun Devil uniform. He is a senior.

Kolopus, a junior, holds a 27-4 record and has proven he's a steady performer for the Devils. He will be defending his 177-pound weight class.

Senior Riley, who will also be defending his 134-pound weight class in the Pac-10, is ranked tenth on the career win list at ASU with 72.

Bodine, a senior, is also a returning Pac-10 champ.

In order to win the conference Douglas said, "we need a good performance from the 118, 126 and 167. They are the key to winning

the conference. Other than that, we have an excellent chance at winning all the other classes."

Douglas said one of the toughest teams to watch will be Oregon State University.

"We'll be going into the championships with three conference champions," he said. "But Oregon (State) will be going in with four champions."

There is still one minor problem right now and that's with injuries. Dennis Roberts, one who needs to wrestle well, has a problem with his knee. But Douglas doesn't appear worried. "Right now he's nursing an injury but he'll be ready to go for the conference."

"This is the best conditioned team that we've put out on the mat since I've been here," Douglas said. "And if condition plays a role in winning, then we should win the tournament."

The lineup for the Devils includes junior Jim Lefebvre (17-8), 118-pound weight class; junior Gary Bairos (18-11) in the 126 weight class; Riley (24-8-1) in the 134 weight class; freshman Paul Bronstein (2-21) in the 142 weight class; Urbano in the 150 weight class; Bodine (12-8) in the 158 weight class; freshman Roberts (10-15-2), 167 weight class; Kolopus, 177 weight class; freshman Davies (24-13-1), 190 weight class and heavyweight freshman Rod Severn (14-7-1).

Under the direction of Douglas, ASU wrestling teams have produced two first place conference winners. The Devils also finished as high as fifth place in the NCAA tournaments (the highest ever in ASU wrestling history).

The team's schedule this season included an 18-day road trip which involved 10 dual meets and two tournaments in the Midwest and East. Douglas said "this type of schedule is required for a team to prepare itself for the nationals."

Douglas and company have proved that it was beneficial.

"Our goal all year long has been to win the conference," Douglas said. "We've worked hard for that goal so they (ASU) want to go in and win it."

DISTINGUISHED TEACHING AWARD NOMINATIONS

College of Liberal Arts

Nominate your Most Distinguished Teacher

ELIGIBILITY: Any College of Liberal Arts Teacher, including Teaching Assistants/Associates

DEADLINE: February 24, 1984

Nomination forms can be picked up at the Memorial Union Information Desk, in the Office of the College of Liberal Arts (SS 109), and in each department office in the College.



Papa Jay's New York Pizza

FAST... FREE... DELIVERY
(Limited free delivery area)

We Deliver For Lunch, Too!

\$2 OFF Chicago Style Deep Dish Pizza with two or more toppings.

Available dine-in, take-out or delivery. Not valid with any other offer. Expires 5-10-84.

C O U P O N S

Sun Devil Combo
Any large pizza with your choice of up to 4 toppings.

ONLY \$5.95 (plus tax)

Good on delivery, take-out or dine-in. Expires 5-10-84.

We Deliver Beer & Soft Drinks
Video Arcade! 10 tokens for \$1 Every Day

804 S. ASH (Mill & Univ.) 966-1003 • 966-4292 • 967-9689

Beautiful Buy



SALE PRICE
\$99⁹⁵

SILADIUM® COLLEGE RINGS

Your college ring is now more affordable than ever. Save on an incredible variety of Siladium ring styles with custom features that express your taste and achievements. Each Siladium ring is custom made, with careful attention to detail. And every ArtCarved ring is backed by a Full Lifetime Warranty. Don't miss out. It's the perfect time to get a beautiful buy on a great college ring. See your ArtCarved representative soon.


SPECIAL OFFER!
\$25 off any 14K gold ring

ARTCARVED
CLASS RINGS, INC.

FEBRUARY 21 THRU 24

ASU BOOKSTORE

Deposit Required. Master Card or Visa Accepted © 1984 ArtCarved Class Rings, Inc.



formerly
UPSTAIRS PUB
4th & MILL
2nd level of the MILL AVE. SHOPS above the SPAGHETTI CO.

ON STAGE Thurs., Fri. & Sat.

SECOND WIND

ALL NEW HAPPY HOUR
7 days a week 3:30-7:30
Sundays — All Night Happy Hour 3 for 1

WEEKLY SPECIALS!! 8-12

- MON. "2 FOR 1"
Well, Wine & Draft
- TUES. "QUARTER BEER NIGHT"
- WED. "BEAT THE CLOCK"
Prices go up on the hour
8:00 draft 35¢ 10¢/draft per hr.
well 70¢ 20¢/well
- THURS. ALL YOU CAN DRINK
8-11 Guys \$5 - Girls \$4 (Includes Cover)
- FRI. HAPPY HOUR 4:30-7:30
Free Munchies

Martin, Wilson released from jail; Blue, Aikens remain behind bars

FORT WORTH, Texas (AP) — Willie Wilson and Jerry Martin, two of four 1983 Kansas City Royals serving sentences on cocaine convictions, were released from prison Thursday, nine days ahead of schedule.

Charlotte Barron, the executive assistant at the Federal Correctional Institute here, said Wilson and Martin requested that the time of their release and their destination not be disclosed.

An Associated Press photographer was told the two players had left when he arrived at the prison at 7 a.m. CST.

The players began serving their 90-day sentences Dec. 5 after pleading guilty to misdemeanor charges of trying to obtain cocaine. According to Barron, the two were released nine days early for good behavior and "extra good time for their work."

Two other 1983 Royals began serving similar sentences at the federal prison after Wilson and Martin. But pitcher Vida Blue, a former Cy Young Award winner, and first baseman Willie Aikens were not scheduled for release until late March or early April. Prison officials said neither player has received time off for good behavior.

Baseball Commissioner Bowie Kuhn suspended Wilson, Martin and Aikens from baseball for one year and said his successor could review the suspensions May 15. None can play in spring exhibition games, except perhaps informal intrasquad games, but they are allowed to practice with a team.

The commissioner's office was asked by federal authorities not to investigate Blue until their investigation

was finished. A spokesman from the commissioner's office said Thursday the federal investigation has been completed and Blue's case was now being looked at by investigators for baseball.

Wilson and Martin are expected to appear at a hearing in New York next week in conjunction with a grievance filed by the Major League Baseball Player's Association. The grievance asks that Kuhn be required to show just cause for the suspensions.

Martin's attorney, William Simpson, said the former Royal outfielder will probably report to the New York Mets' training camp as a free agent.

"He's very hopeful to be playing baseball this time next week," Simpson said. "We are very close to an agreement. In fact we have what both sides consider a verbal agreement. We just don't have a contract signed."

Wilson, an all-star outfielder, has been retained by the Royals and is expected to report to training camp at Fort Myers, Fla., after he has visited his family in suburban Kansas City, team officials said.

"Willie and I talked about it when I visited him last month," said Royals' General Manager John Schuerholz. "Whenever he is ready to come, that means whenever he has been with his family and he reaches the point where he is ready to come down here and get his mind fully on baseball, we'll be glad to have him."

Aikens has been traded to the Toronto Blue Jays. Blue already had been released by the Royals when the charge was filed against him.

PASS EXAMS

FREE SAMPLE FOR INFORMATION CALL 957-4697 MON.-FRI. 1-9 P.M. Mention this ad.

Carpet House
DORMS, APTS., VANS ALL SIZES USED ROOM SIZES '10 & UP NEW CARPET TOO! 1516 E. Van Buren Phoenix

Another Miller Special Reserve Success Story

ATTILA THE HUN

The lovable guy who conquered everything between the Caspian and the Rhine talks about plundering, pillaging and success.

MSR: Attila, does success mean a lot to you?

ATTILA: Right. Remember, it's not how you play the game, but whether you win! (HEARTY LAUGH)

MSR: Have you always wanted to be successful?

ATTILA: Yes; in fact, the obsession to succeed hit me when I was just a little Hun. I knew I wasn't cut out to be just another nine-to-five barbarian. My goal was Hun Number One by 451!

Sure enough, by 451 A.D., I'd done so much conquering, I held all the real estate between the Caspian and the Rhine.

MSR: What is the secret of your success?

ATTILA: Diligence, perseverance and humility.

And having a humungous army certainly helped.

MSR: Speaking of armies, historians don't have too many kind words about yours.

ATTILA: Historians are just a small group of guys who wish they had real jobs. They don't like *anybody*, let's face it.

MSR: Does being the Hun Honcho have any drawbacks?

ATTILA: (ATTILA PAUSES, STROKES BEARD) Nope.

MSR: What about advantages?

ATTILA: Well, I don't have to wait in line in restaurants anymore. Nobody laughs when I order quiche. And now I can have my armor custom-made, which is much better than off-the-rack armor.

MSR: So you dress for success.

ATTILA: Exactly.

MSR: What do you do after work?

ATTILA: Well, after a long, tough day of plundering, pillaging and whatnot, I like to put the business day behind me.

I do what any other guy does, you know, get together with friends and associates, tell a few jokes, a few war stories and have a few beers.

MSR: I see you drink new Miller Special Reserve.

ATTILA: Right. It's one of the rewards of success. A legend in its own bottle. Smooth, mellow, with no bitter aftertaste.

MSR: Yes, but isn't it expensive?

ATTILA: (INCREDULOUS) So what! Listen, if I don't deserve it, and if my friends don't deserve it... who does? Am I right?

MSR: Right. Mind if I have one?

ATTILA: Help yourself.

MSR: I guess nothing succeeds like success.

ATTILA: Especially if you have 750,000 Huns behind you!

Why settle for any beer when you can have new Miller Special Reserve. After all, if you don't deserve it, who does?

If you don't deserve it, who does?



© 1983 Miller Brewing Co., Milwaukee, Wis. Available in limited areas.



"The obsession to succeed hit me when I was just a little Hun."



"My goal was Hun Number One by 451."



"If I don't deserve it, who does?"



Any time's a wild time when you add the great taste of Two Fingers...and this wild Two Fingers T-shirt! To get yours, send your name, address, style preference and size (men's style S, M, L or women's French cut S, M, L) along with \$7.50, to: Two Fingers T-shirt Offer, 266 North Rocky River Dr., Berea, Ohio 44017. Please allow 6 weeks for delivery.



Two Fingers is all it takes.

© 1983 TWO FINGERS TEQUILA - 80 PROOF IMPORTED & BOTTLED BY HIRAM WALKER INC., BURLINGAME, CALIF.

Combined gymnastics squad showcased in Southwest Cup

By Tom Blodgett
Assistant sports editor

The ASU gymnastics teams may be hobbling from injuries, but they still hope to post season-high performances Sunday night when they are showcased in the Southwest Cup at the University Activity Center.

The meet follows the Arizona Wranglers game in Sun Devil Stadium. The gymnastics competition is scheduled to start at 6 p.m.

This will be gymnastics fans last chance to see the combined men's and women's squads perform in a home meet this season. It is the women's last home meet while the men still have one more remaining on the schedule.

The meet will be a critical one for the men. The team needs a high score toward qualification in the NCAA championship meet. The team has appeared for the past 10 seasons.

The Devils have had their share of problems posting high enough scores for qualification. According to coach Don Robinson, injuries have played a major role.

"We've been licking our wounds," Robinson said. "We've had little injuries that if they happened to a football player, they'd still be playing."

"But in gymnastics, if someone has a hand injury then they can't swing the high bar. If they hurt an ankle, they can't punch a double back."

The most recent injury was to Mike Zerrillo, which forced him to miss the UCLA Invitational two weeks ago. But he should be healthy for the Southwest Cup.

Zerrillo's absence hurt the team; the Devils finished a disappointing seventh in the meet.

Despite their poor showing, the Devils did have some high moments. David Branch's first place in the floor exercise with a 9.90 had to be the brightest.

"He beat out all the Olympians — Mitch Gaylord, Tim Daggett," Robinson said. "I'll guarantee those guys will be on the Olympic team."

Branch, the defending NCAA champion on the floor, will not be competing in the Olympics as he is an event specialist.

"It's really a shame the world will not get a chance to see him perform," Robinson said. "He's a better performer than any performer I've ever seen."

"David's got a lot more choreography in his routine. It fits together better than the others I've seen."

Branch will certainly be invited to participate in the NCAA tournament. Several of his teammates also should go.

"Even if we didn't qualify this year, we have several peo-

ple who have scored high enough this year that they would probably go as individuals," Robinson said.

Among those individuals are Jeff Vanyek, Brad Rot, Kevin McCole and J.T. Fletcher.

But if those individuals would like to qualify as a team, they will have to start performing now.

"The next four meets will qualify us or disqualify us," Robinson said.

Robinson feels his team needs to score in the 275 range in order to qualify.

The competition in the men's meet will be close. The other teams traveling to Tempe for this meet are New Mexico, Oklahoma and Cal State-Fullerton.

"From what I've seen, they are probably scoring about the same as us," Robinson said of his team's opponents. "New Mexico has beaten us twice, but they only had to score about 272 to do it."

"So it should be a dang good shooting match as far as the men are concerned."

The women's team, ranked second in the nation, should have much more breathing room between itself and its opponents. New Mexico is ranked 15th in the nation using scoring for a rank; Oklahoma is No. 15 according to a vote of the coaches.

ASU is vastly superior to both squads. The Devils should show that Sunday as they will be going with a full-strength squad for the first time this season.

The team's overwhelming strength, matched only by Utah this season, will be accentuated by the addition of Becky Rashoff. Rashoff, one of the nation's top gymnasts will make her ASU debut at the meet.

"She will be an all-around contender for the national championship," women's coach John Spini said. "We plan on her being a big part of an ASU national championship team."

Spini originally planned to redshirt Rashoff, who just graduated from high school last December, this season.

But Spini learned that a technicality would cost her a year of eligibility this season even if she did not compete. So there was no reason for her to be redshirted.

Spini said the freshman is comparable to teammates Kim Neal and Shari Mann in that she is strong in all four events. And like Neal and Mann, she is an Olympic hopeful.

Rashoff will probably compete in just two events now as she is barely event-ready. Spini has tentatively penciled her in for the vault and the balance beam.

continued page 19

This Week!



DATE: Feb. 26-Sun. Feb. 27-Mon.
TIME: 8:00 p.m. 8:00 p.m.
PLACE: Union Cinema
ADMISSION: \$1.00

FORD THEATER

MUAB

ARIZONA STATE (009)

**EASY MONEY...
TEMPE
PLASMA CORP.**
933 E. UNIVERSITY
SUITE 112
PHONE 894-1338 FOR APPT.

10... CASH FOR EACH
DONATION BONUS.
5... NEW DONOR BONUS
WITH THIS AD.

PAPARAZZI'S SUPER PIZZAS

ASU SPECIAL
**16" Cheese Pizza
ONLY \$4.50**

(Additional items 50¢. Expires Feb. 29, 1984.)

967-0705

FREE DELIVERY

(Limited Area)

Hours: 4-11 Sunday-Thursday
4-12 Friday & Saturday

201 West Southern Ave., Suite 328, Tempe
(SW corner of Southern & Mill, Danelle Plaza)



Join us for brunch & booze
before & after the
Arizona Wrangler game.

Open Sunday at 10 a.m.

Bloody Marys . . . \$1.75

125 E. 5th St.
1 Block West of Sun Devil Stadium

Sun Devils to end rough homestand with Oregon, UCLA

By Steve Richman
Sports writer

The ASU men's basketball team enters this weekend with one of its toughest challenges this season. The last homestand includes games with Oregon Saturday, Feb. 25, and the Bruins of UCLA Monday, Feb. 27.

The Devils (9-13 overall and 4-8 in the Pac-10 prior to last night's game with Oregon State), will first take to the basketball court against a very hot Oregon team. The Ducks are coming off an impressive sweep of both UCLA and USC in Los Angeles, and a less-than-impressive performance in their big loss at the hands of the Washington Huskies.

The Ducks are enjoying one of their best seasons in recent memory. Oregon had not won nine league games since finishing the 1977 Pac-8 season in the runner-up spot at 9-5.



Staff photo by Tina Gerson

Warren Everett slams home the basketball during a recent ASU road game. The Sun Devils hope to close in on a .500 record after this weekend's games.

The Ducks are currently in third place in the Pac-10, two games behind co-leaders Oregon State and Washington, and one and a half games in front of fourth place UCLA.

Oregon boasts one of the best "big men" in the Pac-10. Seven-foot center Blair Rasmussen has been a dominant force in the Oregon attack so far this season. His scoring average is currently 17.1, thanks to a career high 37-point effort against Washington State last week. Rasmussen is also Oregon's current team leader in rebounding and free throw shooting.

The Ducks won the first meeting between the two teams 80-69 in Eugene. In that game, the Ducks were led by Chris Harper, who had 26 points, and Rasmussen, who led the Ducks in rebounds with eight.

"Oregon is a hot team," ASU coach Bob Weinbauer said. "They had two big wins in Los Angeles (USC and UCLA) and they beat UCLA in a little miracle."

After the sweep in Los Angeles, the Ducks proceeded to play one of their worst games in their loss to Pac-10 co-leader Washington.

In that contest, the Ducks, who have been in the top 10 nationally in field goal percentage all season, shot an anemic 37.5 percent from the field. Another key to that loss was the low point production from Rasmussen (eight points).

According to Oregon coach Don Monson, the Ducks will need a strong performance against both Arizona schools to fully rebound from the big loss to Washington. "We are going to Arizona in the worst possible situation," said Monson. "Arizona is coming off its best victory of the season and we just suffered our worst loss of the year."

After the game with the Ducks, the Devils will wrap up the homestand against the Bruins of UCLA. The Bruins, once ranked as high as seventh by The Associated Press, are currently enveloped in a streak which has seen them lose five of their last seven games.

"UCLA has been struggling," claims Weinbauer, "but they have every bit of talent that they had at the beginning of the year. Sometimes a team will lose its confidence. That's what has happened to them."

With UCLA's confidence at a possible season low, the Devils will attempt to take advantage of the situation and gain a big upset.

The Bruins have been led all season by senior forward Kenny Fields, who is currently their leading scorer at an average of 16.8 points per game. By scoring 14 points in their overtime victory against the Cal Bears in Berkeley two weeks ago, Fields became only the sixth player in school history to record 1,500 career points. He also ranks 15th on UCLA's career rebounding list with 620 including 146 (6.6 average) this year.

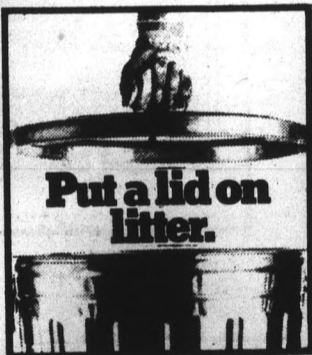
Rounding out the Bruins' offensive scoring punch is their senior point guard Ralph Jackson (11.3 ppg) and their big center Stuart Gray (10.0 ppg).

Jackson is about to become only the second player in school history to pass for 500 career assists. With nine assists two weeks ago against Cal and Stanford, Jackson improved his career total to 497.

The first meeting between these two teams Jan. 5 marked the Pac-10 season opener for both teams. In that contest, the Bruins won by a score of 79-57 due largely to Kenny Fields' 21 points.

Other major contributors were Stuart Gray with 15 points and 11 rebounds, and Ralph Jackson who added 11 points and nine assists.

Even though the Devils have had an up-and-down season, they have the opportunity to finish the season at the .500 level. To reach this goal they will have to win five of their last six games; but with Oregon losing big to Washington in their last game, and with UCLA struggling, the Devils will indeed have a chance to obtain that goal.



A Very Rocky Weekend!
DOUBLE FEATURE
FRIDAY & SATURDAY • FEB. 24 & 25



7:00 p.m.



9:15 p.m.

'ROCKY III'

**SUNDAY NIGHT
FOREIGN AND CLASSIC FILMS**

Feb. 26 ***Gallipoli** 6 p.m.

Australia, 1981; This internationally acclaimed film, directed by Peter Weir, deals with the disastrous WWI assault on Turkish-held heights which led to the resignation of Winston Churchill as Lord of the Admiralty. Starring Mel Gibson (The Road Warrior).

Rocky I 8:00 p.m.

1976: The story of a two-bit boxer who just wants to go the distance. This film launched the career of Sylvester Stallone and won the Academy Award for best picture. "Adrian..."

*All foreign films co-sponsored with "ASU's Friends of International Films."

Friday & Saturday Double Feature
\$2 with ASU I.D. — \$3 without

Admission for last show only & Sunday
Double Feature — \$1.50 w/I.D. — \$2 without

Movie Information 965-5658

ASSOCIATED STUDENTS
OF ARIZONA STATE UNIVERSITY

coupon
EAT FOR LESS

Wacky **AT**
WILLY'S

**Where You Can Eat,
Drink, and Get Crazy
Every Night of the Week!**

Bring in this coupon any day of the week to take advantage of our fabulous prices!

Combinations

- 1. Cheese Enchilada, Beef Taco, Rice & Beans 3.60
- 2. Beef Enchilada, Bean Tostada, Rice & Beans 3.60
- 3. Green Chili, Bean or Meatos Burro, Enchilada Style, Rice & Beans 3.60
- 4. Green Chili, Bean or Meatos Chimichanga, Rice & Beans 3.60
- 5. Taco Salad 3.60
- 6. Hamburger w/French Fries 3.60

In fact you don't even have to bring the coupon with you. These are the insanely low prices we charge all the time!

Wacky
WILLY'S (formerly Willy & Guillermo's)
1120 E. Apache 967-1129

coupon ✂

numbers

WCAA Conference Basketball Standings

Conference	All Games			
	W	L	W	L
USC	8	0	19	3
Cal State Long Beach	6	1	14	5
San Diego State	4	3	18	3
Arizona State	4	3	15	6
UCLA	3	4	14	8
Cal State Fullerton	3	4	13	8
Arizona	1	6	7	13
Stanford	0	8	4	18

Women's Gymnastics

UCLA-McDonald's Invitational

Teams — UCLA 187.35, ASU 182.00, Utah State 174.55, USC 174.40, Cal State-Northridge 164.85.
All-Around — Trina Trinti, UCLA, 38.35. **Vault** — Donna Kemp, UCLA, 9.50. **Uneven Parallel Bars** — Trina Trinti, UCLA, 9.75. **Balance Beam** — Karen McMullin, UCLA, 9.60. **Floor Exercise** — Trina Trinti, UCLA, 9.70.
Top ASU performers: All-Around — Shari Kwiatkowski, 37.25. **Vault** — Shari Kwiatkowski, Shari Mann, 9.40. **Uneven Parallel Bars** — Jackie Brummer, 9.65. **Balance Beam** — Lisa Zeis, 9.45. **Floor Exercise** — Shari Kwiatkowski, 9.35.

Women's Basketball

Name	Scoring		
	G	PTS	AVG
Hampton	22	433	19.7
Rathbun	23	273	11.9
Smatana	17	179	10.5

Name	Rebounding		
	G	REB	AVG
Hampton	22	225	10.2
Poole	23	103	4.5
Rathbun	23	88	3.8

Gymnastics Coaches Poll

- Utah
- Arizona State
- CSU Fullerton
- UCLA
- Florida
- Arizona
- Alabama
- Georgia
- Ohio State
- Oregon State
- Louisiana State
- New Hampshire
- UC Berkeley
- USC
- Oklahoma
- Pittsburg

Baseball team leaders

Batting average — McDowell .520, Brown .429, Dyson .375, Bonds .365, Wakamatsu .333, Medina .319.

Home Runs — Bonds 4, Cucjen 4, Brown 3, McDowell 2, Dyson 2, Medina 2.

RBI — Bonds 17, Medina 14, McDowell 12, Cucjen 11, Grandstaff 8, Brown 7.

Pitching wins — Henry 4-0, Roberts 2-0, Carter 2-0, Rodiles 2-2.

ERA — Roberts 1.38, Graybill 1.72, Henry 1.93, Carter 2.06, Thorpe 2.25, Rodiles 2.69.

Strikeouts — Henry 24, Rodiles 17, Carter 15, Graybill 15, Villanueva 10.

Men's Basketball

Name	Scoring		
	G	PTS	AVG
Beasley	22	382	17.4
Beck	21	204	9.7
Deines	22	176	8.0
Holloway	20	156	7.8
Thompson	22	129	5.9

Name	Rebounds		
	G	REB	AVG
Deines	22	156	7.1
Holloway	20	102	5.1
McKinney	21	105	5.0

"Welcome Home"

Come in and enjoy Pizza Hut® Pan Pizza at our new restaurant.

There's a great taste experience waiting for you right up the street from Arizona State.

Your new Pizza Hut® just walking distance from the University.

Now open with Pan Pizza and all the other good things Pizza Hut® is famous for.

And if you call our take out number, 829-8800, we'll even deliver right to your door.

So come by and enjoy Pizza Hut® Pan Pizza at our Grand Opening!



1030 Apache Blvd., Tempe, AZ
 Mgr: Chuck Cummings 829-8907
 Special Delivery 829-8800

Bring in this coupon during our...

\$3 off any large Pan Pizza, or \$2 off any medium Pan Pizza.

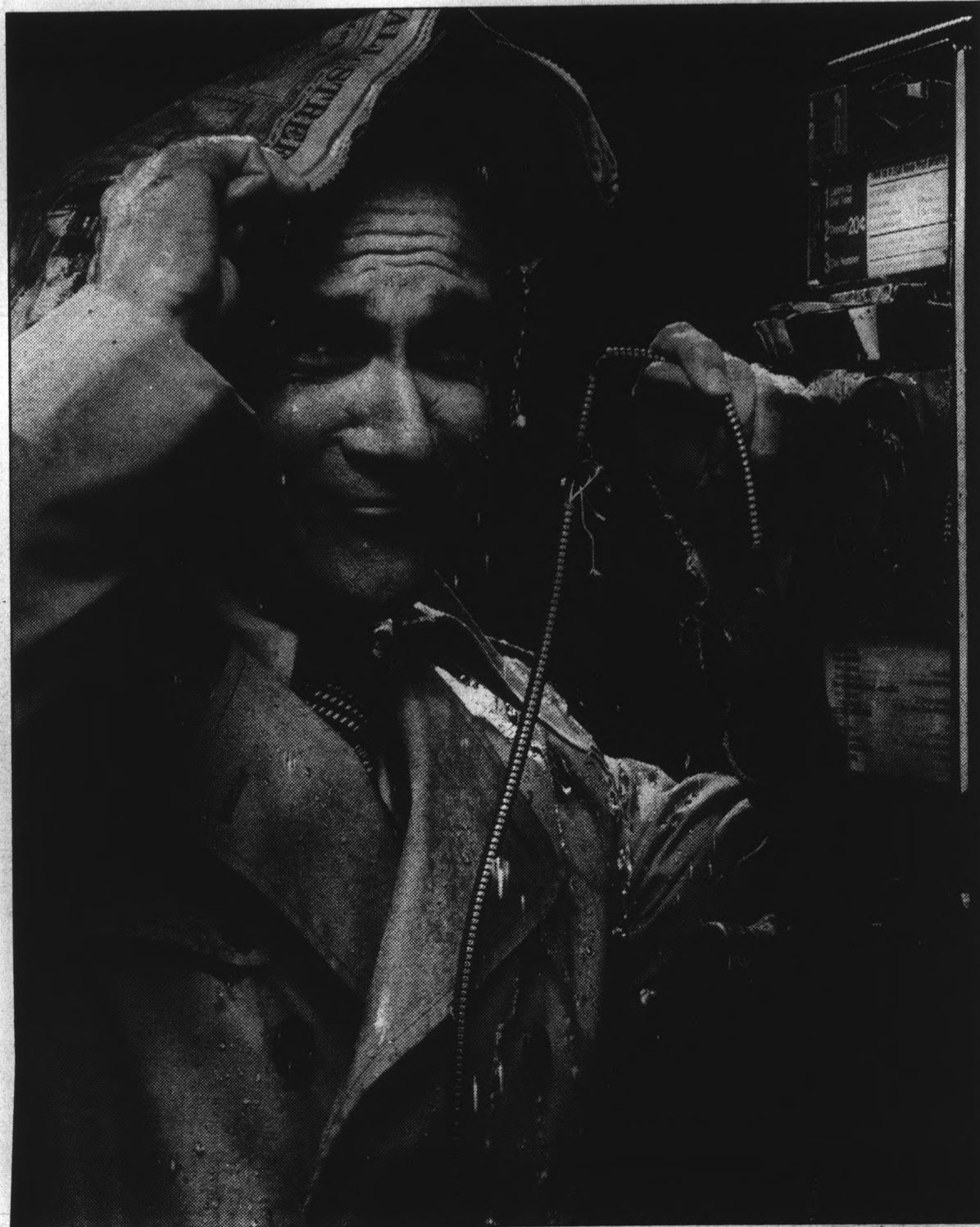
Hurry; offer expires soon. One coupon per pizza per party per visit at the Pizza Hut® restaurant address shown.

1030 Apache Blvd., Tempe, AZ.

Please mention coupon when ordering. Not valid in combination with any other offer. 1/20 cent cash redemption value. Good only through March 30, 1984.



©1984 Pizza Hut, Inc.



Put yourself in his place.

Alone in the middle of the night. Facing an emergency. And the only available telephone is out of order.

You wouldn't want to trade places with him. But someday you may be forced to. Because nobody bothered to tell us a phone was broken.

This shouldn't happen to anyone. So please, write down the number of a damaged or out of order pay phone. And report it at the first opportunity to our repair service. The number is listed in the Customer Guide at the front of the White Pages.

We'll come out and fix the phone right away. Before someone has a desperate need for it. Someone like you.

For the way you live.



Mountain Bell

Much-improved netters face three dual matches, busiest part of schedule

By Dean Obenauer
Sports writer

The Sun Devil men's tennis team (4-4 overall) will get back into the swing of things this weekend as it travels to Albuquerque, N.M., where it will serve against the University of New Mexico, Oklahoma and Texas Tech in dual matches.

The team's last two outings have been big improvements on the earlier part of the season.

"We have been playing much better lately," coach Lou Belken said. "We will need more production out of the bottom of our lineup."

Playing the No. 1 singles for the Sun Devils will be Keith Thomas.

"Keith has been playing very well for us," Belken said. "He is sure to have a good weekend."

The Devils' next four spots fluctuate from tournament to tournament depending on the kind of team they face.

Junior returner Dewey Grattan, sophomore returnee Jim Baumann, Jeff Karp and senior Alex Levie round out the second through fifth spots.

"We expected the bottom of the lineup to be our biggest strength this season," Belken said. "I have faith that they are going to turn it around before long."

The Devils are in the middle of the busiest part of their schedule. They are going to have to turn it around quickly if they hope to come out of the stint with wins.

"This is obviously a very busy time of the season for us," Belken said. "This tournament and the next couple of weeks are going to be a good indicator on how the rest of the season is going to go."

The Devils will be opening their Pac-10 season shortly after the team's next few road tournaments.

"We will be opening the season against Pac-10 defending champion Stanford," Belken said. "We are getting prepared for the Pac-10 schedule with that in mind."

Belken took over as head coach of the tennis team last year after acting as head professional at the Scottsdale Racquet Club for the last nine years.

In just his second season he has already altered the face of the ASU tennis team.

Last year's 8-19 overall record came with a very young team participating in the toughest conference in the country.

"There is no doubt that we play in the toughest conference in the country," Belken said.

Cup

continued from page 16

Rashoff's presence will give ASU added strength on the balance beam, the team's most critical event. Spini feels the team has shown improvement in the event.

The Devils have stayed on the beam more and more as the season has progressed.

In their last home meet against Stanford, the first two performers fell, but Suzie Gamble changed the tide with a solid routine and the last four gymnasts stuck their routines.

In the UCLA Invitational last weekend, five of the six beam workers managed to stay on. Now Spini hopes he can find a lead-off gymnast for the event who can consistently start the team off on the right foot.

The leading candidates are Carole Bresnahan and Lyn Schmitt. Bresnahan, a sophomore, has handled lead-off chores lately.

Schmitt, a junior co-captain, is the team's steadiest gymnast on the beam. Spini said she only has fallen once this season.

The team's health is also a major concern of Spini's. Only four of the 10 women on the squad are completely healthy.

Football team schedules time for walk-ons

Any full-time student who would like to try out for the ASU football team should sign up in the football office, Room 166 in the Activity Center, by Monday, Feb. 27, 1984.

Any pertinent information concerning practice will be given out at that time.

classifieds

The STATE PRESS disclaims all responsibility for quality and prices of goods and services offered in both classified and display advertising by its advertisers.

Automobiles

1972 FORD PINTO, 4 cylinder, 4 speed, interior and exterior in good condition. Runs good. \$800, OBO. Call, 838-6281 evenings.

1978 TOYOTA CELICA 5-speed, AC, top condition. \$2995. Festus, 965-9622.

73 CAPRI \$600; 73 Regal \$700; 71 Toronado \$400; 73 Bonneville \$400. 968-4212.

MOTORCYCLE BMW R100RS, jet black, immaculate condition step up to a legend. \$2,500. For information call 253-4358.

Bicycles

SCHWINN CRUISER \$55; Schwinn Continental 10-speed \$85; Schwinn 5-speed \$75; 10-speed with sit-up handle bars \$60. 968-8944.

Clothing

ATTENTION FASHION conscious girls! \$1 belts, \$1 earrings. Where? Dollars, 414 S. Mill #207 above Spaghetti Company. 829-1127.

LADIES PANTIES: All sizes, colors, and styles. Only \$1.00 each. Call, 969-1270.

Help Wanted

HELP WANTED: PART-TIME EVENINGS

National Marketing Company has openings for sales-minded people interested in part-time employment. Openings are available on the evening and weekend shifts. Our sales people work in a modern, comfortable business environment contacting established customers on long distance WATS lines. Earnings, which include salary and bonus, average \$4-\$6 per hour, paid weekly. These are permanent positions with no seasonal layoffs. If you have a good, clear speaking voice, proper grooming for a business office, enthusiasm and competitive spirit, our experienced management team will train you to sell our nationally recognized products (while being paid, of course). Our Tempe office is located approximately five minutes from campus.

Please call DIALAMERICA for details.
829-1140

For Rent or Lease

FEMALE GRADUATE student wanted to share large apartment. Have own bath and bedroom. Non smoking preferred. \$220 per month plus 1/2 utilities at the brand new Broadway Village Apartments. Call anytime, 835-9844.

GRAND OPENING specials, \$100 off first months rent. New luxury condos, close to ASU. Two bedroom 1 1/2 bath, fireplace, tile entry, private patio, refrigerator, common pool. Six month lease, \$445. Desert Wide Properties, 838-6631.

For Sale

12x54 TWO BEDROOM, one bath mobile home. Tempe family park. Washer, dryer, plus. \$9,950. 897-2210.

CALIFORNIA COOLERS \$2.99, Meister Brau \$1.89, Fratelli Bianco \$1.99, Old Playboys 47 cents, imported beers, cold wines, Rundle's, University and Mill.

MAZATLAN TRIP, \$150 worth \$188. Call Diana, 941-2212.

OFFICE DESK 36x72, matching credenza and chair. All for \$225. Professor Dauten, 966-1809 or 965-2968.

SURPLUS! JEEPS, houses, boats, land! Call for directory, guide, newsletter. 916-944-4440 Ext. Arizona State Jeep.

Help Wanted

AIRLINES HIRING! Stewardesses, Reservationist \$14-\$39,000. Worldwide Call for Directory, Guide, Newsletter. 1-(916)944-4440x Arizona State Air.

COUNTER PEOPLE wanted. Apply at Haagen-Dazs, Fiesta Village, Southern and Alma School. After 6:00 p.m. preferred.

CRUISESHIPS HIRING! \$16-\$30,000! Carribean, Hawaii, World. Call for Guide, Directory, Newsletter (916)944-4440 Ext. Arizona State Cruise.

DEALERS WANTED for charity Casino Affair March 3, ABC games. 954-7458.

DOORMAN/BOUNCER 20 hours weekly, \$5 cash per hour, fun Tempe sports bar. Large individuals only apply 2:00 to 4:00 p.m., The Woodshed, 19 W. Baseline.

EASY MONEY! Part-time work can earn full time salary. Earn \$5-\$10 an hour marketing, day or evenings. Call Doug noon to 4:00, 894-9886.

EXTRA INCOME part-time, 20 sales ladies to promote our nutrition food product. Must have car. 997-4423.

GRAND CANYON summer job opportunities. Complete, confidential details - \$2.00. Write: Canyon, Box - 30444T, Tucson, Arizona 85751.

MARKETING COMPANY near campus needs outgoing people who can work evening hours and enjoy dealing with the public. No experience is necessary to earn a realistic \$200 to \$400 per week. Call 829-8957.

MCDONALD'S NOW hiring part-time days. Flexible hours. Apply at stores, Baseline & Rural and Ahwatukee. See manager for application.

MODELS: MICHELLE'S swimwear, 414 Mill Ave. Apply Monday Friday, 3:30-8:00. 11:00-6:00 Saturday, 278-4560.

NEED EXTRA income? Earn \$8.00-\$10.00 per hour setting appointments by phone. Totally flexible hours and close to campus. Will train. Call, 967-8090.

OVERSEAS JOBS. Summer, year round. Europe, South America, Australia, Asia. All fields. \$900-\$2000 month. Sightseeing. Free information, write IJC, PO box 52-AZ3 Corona Del Mar, CA 92626.

PARK COLLEGE is taking applications for adjunct faculty members at Williams Air Force Base resident center. In the areas of management, psychology, humanities and natural science. 968-2808.

WAITERS/ WAITRESSES, fountain cooks, cashiers, and experienced cooks needed for immediate day and night full and part-time employment at Swensen's Mesa. Applicants must be available for employment through the summer. Interviews Wednesday - Friday 3:00 - 4:30 p.m. at 1159 E. Main at Stapley. No phone calls please.

Help Wanted

WANTED OUT-GOING person to coordinate, commentate, fashion shows and parties. Call before 9:30 a.m. 934-7100.

WANTED STUDENT architect to draw blueprints for 4-plex; tri-level apartments. Call, 938-9825.

WATER RESOURCES Department of Agricultural Corporation. Local and state level administration and engineering. Civil Engineering Degree. Some experience preferred. Extensive O.J.T. Excellent salary and benefits. Send resume to/ or call: W.A. Case, P.O. Box 877, Corcoran, CA. 93212. 209-992-5011.

SUMMER STAFF WANTED

for
Camp Akela/
Shadow Valley Ranch
A children's
resident camp
Prescott, AZ

Interviews during first week in March. Contact Career Services for applications.

2/22

SENIOR NURSE STUDENTS ADVENTURE... CHALLENGE... PROFESSIONALISM!

An exciting job with opportunities for world-wide travel, career development, professional growth, excellent benefits. BSN graduates or senior students are eligible. If you're going to be someone, special... Be a Navy Nurse! For more information, call collect (602) 256-7632 between 9 a.m.-5 p.m. Mon.-Wed.

2/29

Instruction

SELF DEFENSE Traditional Taekwondo, (Korean Karate). Personalized class instruction. Very effective, very affordable. 894-5389.

Lost & Found

Friday FREE Lost and Found

LOST

LOST FEBRUARY 20, our best friend! Stocky, brown and white Beagle mix - named "Max". Reward. 968-6020.

Courtesy of:



WESTERN SAVINGS

The foresight people.

Miscellaneous

GIRLS! I have solid 14K gold finger-nails. (Regular \$40 - \$50 stores). Now only \$25.00, going fast! Jodie, 948-7582.

Motorcycles

1979 HONDA EXPRESS \$250. 829-7301.

Personal

DEAR WAN, Happy Birthday! Wow, the big 22! Enjoy! Celebrate! 'Love you', 'Mother'.

NEED HELP completing your financial aid application? Contact Educational Research Systems, Inc. at 827-0889.

PAYING TOO much for auto or cycle insurance? Have a few tickets or DWI? Call Apollo Insurance for a competitive bid. 951-2255.

PRIVATE ADOPTION may be the solution to your unplanned pregnancy. Childless professional couple from California wants to adopt an infant and will pay all related expenses. Call collect 213/831-9540.

SEDEGE YOU fox, I love you! Every day is beautiful when you're around. Let me make you happier. Love your little Squish Butt! Niche. P.S. I'll miss you tomorrow.

SKI VAIL / Beaver Creek, call toll free 1-800-222-4840 or consult your travel agent for discount rates on lodging, lifts and rentals.

Personal

MARLIN PERKINS says: "I've traveled the world promoting wildlife, but the Delta Sigs are doing a better job" ... Pack your bags Delta Sigs and dates, the Ultimate Vacation is here.

Pets

GERMAN SHEPHERD puppies. AKC champion sired, black & tan, exceptional temperament. 897-2586.

Real Estate

FOR SALE, townhouse in new development. Two bedroom, 1 1/2 bath. \$59,900. Close ASU. 829-8496.

LARGE EXTRA clean three bedroom Suggs home. Corner lot. RV parking. Close to ASU. Evenings Alberta 967-0359. Red Carpet Weary, 968-3414.

OLD TOWN Tempe area. Oversized house on oversized irrigated lot. Four bedrooms plus two complete guest quarters. First time offered. Good terms. 46 East 15th St., Tempe. Call evenings, Alberta 967-0359. Red Carpet Weary, 968-3414.

TEMPLE TOWNHOUSE. Two story, three bedroom, 1 1/2 baths, breakfast bar, community pool, tennis. \$64,900, OWC with \$3,995 down. Martha, 831-7032.

THREE BEDROOM, 1 1/2 bath, low down, \$440 month includes space rent, clean, 1981 mobile home. 948-3888.

Roommate Wanted

FEMALE ROOMMATE wanted to share three bedroom condo. Fully furnished, private room, pool, fireplace, laundry facility, very nice. One mile from ASU. 967-0125.

FEMALE TO share two bedroom, poolside, apartment. One mile from ASU. \$138 month plus utilities. Call, 829-7301.

LARGE ROOM in large furnished house in Scottsdale, pool, responsible adult share with two males and one female. Scott, Rex, 947-7376.

NON OR light smoker to share three bedroom house. Approximately three miles from ASU. \$150 a month plus 1/2 utilities. Call 831-5697 after 5:30.

RESPONSIBLE FEMALE. Furnished private room. Nice house, good neighborhood, 2 1/2 miles ASU. \$150 includes utilities, non-smoker. 831-5599.

SHARE TWO bedroom furnished apartment. Close to ASU. \$170 plus electric. 829-8911 evenings.

TWO VACANT rooms. \$150 per month includes utilities. Only 3/4 mile from ASU. Call, 967-9965.

Services

ADOPTIONS ARRANGED. No medical or legal expense to mother. Call attorney, Robinson, 946-5344.

CARS AVAILABLE - 21 or older. All States Drive-away, 992-5200.

COLOR DRAPING for less and look your best. Color Connection. Kathy, 839-5640.

GOOD STUDENTS save 25% on auto insurance. Qualified non-smokers save 18%. Call Steve, 831-0121. Farmers ASU representative.

HAVE UNWANTED facial or body hair removed permanently by electrolysis. Free consultation. Located in Tempe. Call Sharon, Desert Electrolysis Center 839-1885.

MOVING? CALL student movers - low rates, high dependability, local or long distance. 967-0864.

RESIDENCY SERVICE helps cut red tape. No fee until in state status granted. References. Ask for Lee, 838-0273.

WEIGHT PROBLEM? Don't wait! Physician approved plan, lose pounds quickly and safely. For information and free sample call Claire Tait, R.N. 8:00 to 11:00 a.m. 897-0599.

LIMOUSINE SERVICE

- DISCREET DRIVERS
 - BEST RATES IN TOWN
 - BAR-TV SET-UPS
 - BOAT RENTALS
- FOR ALL SPECIAL OCCASIONS
981-2150

2/28

Travel

AFFORDABLE FLORIDA \$316 round-trip. Car - \$40 "weekly" free mileage! Can't beat that! Fantastic deals everywhere. Jim - Holiday Travel. 948-0990.

Travel

CHINA - HONGKONG - Japan; 22 days. Dr. Roger Axford, 839-3255, July 15 - August 8, 1984, \$2995.

FREE AIRPORT parking with ticket and vacation package purchase at the lowest rates. Please call Sundance Travel at 968-5900 or 275-2400.

HELP! I need a ride one way to Show Low, Sunrise Friday or Saturday. Art, 967-5004.

JAPAN TOUR: July 8 - 29. Now taking applications for delegates (ages 18 - 30) World Youth Visit Exchange Association. Homestays. Approximately \$1500. For details call 968-0755.

NEED SOMEONE to split round trip plane ticket to Florida. I need Florida to Phoenix. Jim, 968-1748.

SPRING BREAK in Los Vegas. Meet the Party Animals. Party, fun and sun. 994-4754.

Typing

\$1.25 PER page. Accurate, fast. Pick-up and delivery on campus. Judi, 969-6856.

A-1 PROFICIENT typist, IBM Selectric. Pam, 969-2098.

AAAAH. FORMER secretary desires all types of typing. Location Southern and Rural. Fran, 838-8027.

AAAAH. FORMER secretary desires all types of typing. Location Southern and Rural. Fran, 838-8027.

ACCURATE TYPING, University and Dobson area. 964-3784.

ACCURATE, FAST, experienced typist. IBM Selectric \$1.25 per page. Disertations, theses, legal briefs, APA format, our specialty. Call Sharon 833-5687 or Teresa 962-0079.

ALL PAPERS typed to your complete satisfaction. IBM Selectric. Near ASU. Reasonable. Mrs. Oakley, 967-0802.

ALL TYPING done fast and accurate. 1.00 a page. Word processing available. Close to ASU. Call Carin or Bobbi 968-9166.

ALWAYS AVAILABLE for typing at \$1.25 per page. Call Susan at 833-0373.

A-PLUS Typing. Term Papers, Resumes, securities and finance papers a specialty. Papers completed on Electronic memorywriter. Call Judy 839-0401.

A TOP-NOTCH secretarial service. Quality typing or word processing. IBM equipment. 20 years experience. McKellips/ Scottsdale Roads. Dana 941-5111.

AT YOUR service, University and Mill area. Quality typing to your Specs. Keyboarding Lab, 966-7111.

CLOSE to campus. 414 S. Mill #205, 894-5234. Graduate, undergraduate typing, graphics. Professional work, reasonable rates.

CONVENIENT to campus. Fast, friendly, fair, professional typing and graphics. Call 24 hours, 894-5234.

EXPERIENCED, ACCURATE, cheerful typist near Southern and Rural. \$1.50 a page. 831-7337.

FAST, ACCURATE typing, \$1.25/page. Call Teresa at 962-0079 or Linda at 969-5775, elite typing available.

FORMER LEGAL secretary types term papers, manuscripts, letters, resumes, takes dictation. Minor editing. Margie, 994-3759.

JUST YOUR Type academic typing. Will edit spelling, punctuation. Fast return. Accuracy guaranteed. Joan, 839-0772.

MCCORMICK RANCH, typing, disertations, manuscripts, research papers, fast, accurate, \$1.50, Xerox Memorywriter. Jeanne, 948-3888.

NEED A typist? Call Helen, 832-7700.

NORTHEAST MESA, Professional word processing. Letter quality printer. Cassette transcription. Experienced editor. Reasonable rates. 981-3531.

NORTHWEST PHOENIX, quality typing. Theses, dissertations, research projects. 938-3397.

PROFESSIONAL WORD processing, typing; mailings, theses, papers, letters, reports, etc. Rush jobs okay. 945-0058 evenings.

TYPING BY Paper Impressions - resumes, reports, letters etc. Electronic memory typewriter, cassette transcription. Reliable, fast accurate. Pick-up / delivery on campus. Call Darlene 831-2080.

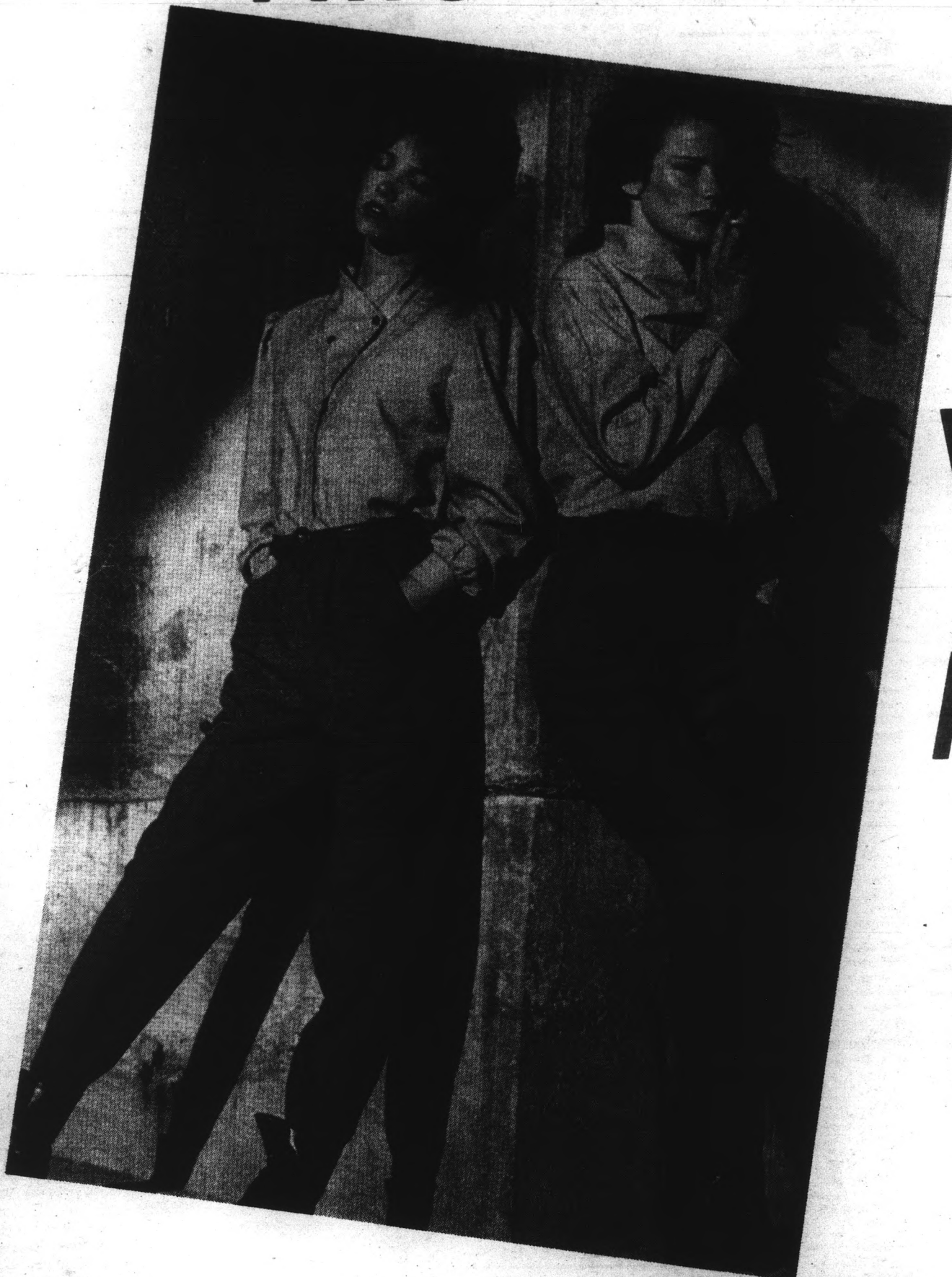
WORD PROCESSING. Dissertations, theses, research papers, resumes and cover letters. Rosemary, 966-8368.

X-CELLENT QUALITY on correcting typewriter; editing, dissertations, theses, etc. Begin \$1.35. Northwest Mesa. Leah, 962-1059.

Wanted

PAYING CASH for gold, silver and diamonds, class rings. Mill Avenue Jewelers, 414 S. Mill Avenue.

DON'T JUST HANG OUT THIS WEEKEND



COME TO WHERE THE ACTION IS!

DONNY O'BRIENS

FRIDAY

SATURDAY

SUNDAY

*The Most Happening
HAPPY HOUR IN TOWN!*

Super Selection of
Complimentary Hors
D'oeuvres & Great
Drink Prices

BRING A DATE
DOWN AND DANCE,
OR COME WITH A
FRIEND AND MEET
SOMEONE NEW!

*Reverse Happy Hour
9-1*

**2 for 1 Well & Wine
75¢ Bud & Miller
Free Pizza
10-12**

222 S. Mill, Tempe • 968-0527