

Legislation would amend reduction of retirement benefits

By Robert S. Beamesderfer
Staff writer

ASU faculty members covered under optional retirement plans may get a reprieve from a law which reduced contributions to those plans.

Two bills, one introduced in the House by Rep. Jim Ratliff, R-Sun City, and another being sponsored by Sen. Anne Lindeman, R-Phoenix, are designed to remedy what critics have called a "dangerous precedent."

The new law, part of the special prisons session, reduces contributions to state and optional retirement plans from the state and employees from 7 percent each to 6.27 per-

cent each.

Contributions to the optional plans have a direct effect on the amount of benefits employees receive when they retire. Benefits in the state plan are based on the highest salary earned and the number of years an employee worked.

Ratliff's measure, H.B. 2259, would reinstate the 7 percent contribution rate to the optional plans affecting university employees, including 1,160 ASU faculty.

However, the bill would not increase contributions to the state retirement plan.

"This bill's going to have a difficult time passing in the Senate," Ratliff said. But it

has a good chance of passing the House, he added.

Mary Jo Livix, executive director of the Faculty Association, said, "We were expecting it and feel it's vitally necessary."

Rep. Jim Cooper, R-Mesa and chairman of the House Education Committee, said he is "not that much committed one way or another," but thinks the bill will pass his committee.

"I think it will probably go because it's living up to a commitment we have" to pay the contribution rate originally established, Cooper said.

Lindeman, chairman of the Senate Education Committee, said she will introduce a

bill which would "open a one-month window" allowing anyone in an optional plan to enroll in the state plan.

"We understand the problem and we're looking at various ways to solve it," Lindeman said.

Livix said she could not comment specifically on Lindeman's bill without seeing it, but "if it offers another period of choice for faculty to change plans we would support it."

"There are a number of faculty who would be interested in another open enrollment period" allowing them to change retirement plans, she said.

University must decide how to implement merit pay plan

By Wayne C. Baker
Staff writer

The implementation of a merit pay system based on a Board of Regents policy is now in the hands of the University faculty and staff.

Board Executive Director Robert Huff, calling the plan an "umbrella policy," said the three state universities will have to decide how to implement it.

"The regents have laid out what is required and will leave it up to the universities to implement," Huff said.

An ASU faculty merit pay committee has announced it will be holding open hearings next week to determine how to carry out the regents' policy.

Huff presented the plan Jan. 12 to the Senate Education Committee which must veto the plan or it will become effective July 1, 1984.

However, Sen. Anne Lindeman, R-Phoenix, said the committee was "pretty satisfied" with the board's presentation of the plan and does not foresee any action that might repeal it.

Lindeman, who chairs the Education Committee, was the sponsor of the bill that required the Board of Regents to determine a plan of salary adjustment based on performance evaluation.

The policy would effect salary compensation based on performance evaluations for faculty, professional staff, administrators

and classified staff.

According to the regents' plan, faculty will be evaluated at least once every 12 months based on the following:

- A written evaluation considering teaching effectiveness, research and scholarly growth, and professional service. When teaching effectiveness is used as a criterion, an assessment of student opinion will be used in the evaluation.
- An assessment of the faculty member's performance by the department administrator. This will include peer review.
- A discussion with the faculty member on the evaluation of past performance and expectations for the future.

Chris Smith, assistant history professor and president of the American Federation of Teachers Local 2050, said he feels the regents' salary adjustment plan must provide "strong cost-of-living increases across the board."

The regents' policy does not include a specific reference to cost-of-living adjustments but does not prevent ASU from considering this in its implementation.

However, the policy does include provisions for compensation based on market, equity, promotion and reclassification adjustments.

Smith said he was wary of the effectiveness of the regents' policy.

"I don't know how it will work on this campus. It seems to be stated in general terms," he said.

Lawsuit filed over concert sales tax

By Jim McCleary
Staff writer

A lawsuit has been filed by the promoter of the Rolling Stones concert at ASU against the Arizona Department of Revenue questioning the assessment of a \$44,782 sales tax.

Under state law, religious and educational institutions are exempt from the state's sales tax.

Jim O'Connell, director of administration for public events, said since the December 1981 Rolling Stones concert was co-sponsored by the University and Feyline Presents Inc., it should be considered an event at an educational institution.

"Anything that we take on and are willing to put our name on is a project of the University. The Department of Revenue has a different idea," O'Connell said.

He said there was a "contractual arrangement" and ASU was not simply renting the facility to Feyline.

However, Greg Smith, public information officer for the DOR, said there was no risk involved with ASU's participation in the event, which excludes the University as a promoter.

"If you look at the contract, it's clear that

ASU is renting the facility. The risk was in the hands of (Feyline), not ASU," Smith said.

According to the suit, Feyline paid the tax under protest on Jan. 19 after the state Board of Tax Appeals upheld the Department of Revenue tax request.

If the suit is won by the DOR, Smith said it would continue to pursue other promoters who fail to pay taxes even if the University is the co-sponsor of the event.

He said if the decision goes against Feyline, future concerts at ASU should not be in danger, but a serious examination of the entire financial package will be needed to continue competing with other markets.

Evening Star Productions currently has a DOR lien on them for similar concerts at ASU, O'Connell said.

ASU's rental fee for Sun Devil Stadium depends on the price and number of tickets sold. Each ticket sold for \$7 or more will bring the University \$1.50 in rent. Tickets sold for \$6.99 or less bring in 50 cents.

O'Connell said around 66,000 tickets were sold, bringing about \$99,000 in rent to the University.

Grad students gain deferred payment plan

By Jerry Brown
Staff writer

ASU graduate students will be allowed to pay their tuition by monthly payments in the future, according to acting controller Barry Brunz.

Brunz said the program should be available to graduate students on the University payroll by Feb. 15. The system will take the money out of the paychecks and will include a slight service charge.

"This program really will help the graduate students that are on a tight budget," Brunz said. "It will keep them from paying that big chunk at the beginning of the semester."

Although the change will only affect graduate students, Brunz said that a plan allowing all students to pay on a deferred basis has been discussed, but no decision has been made.

friday

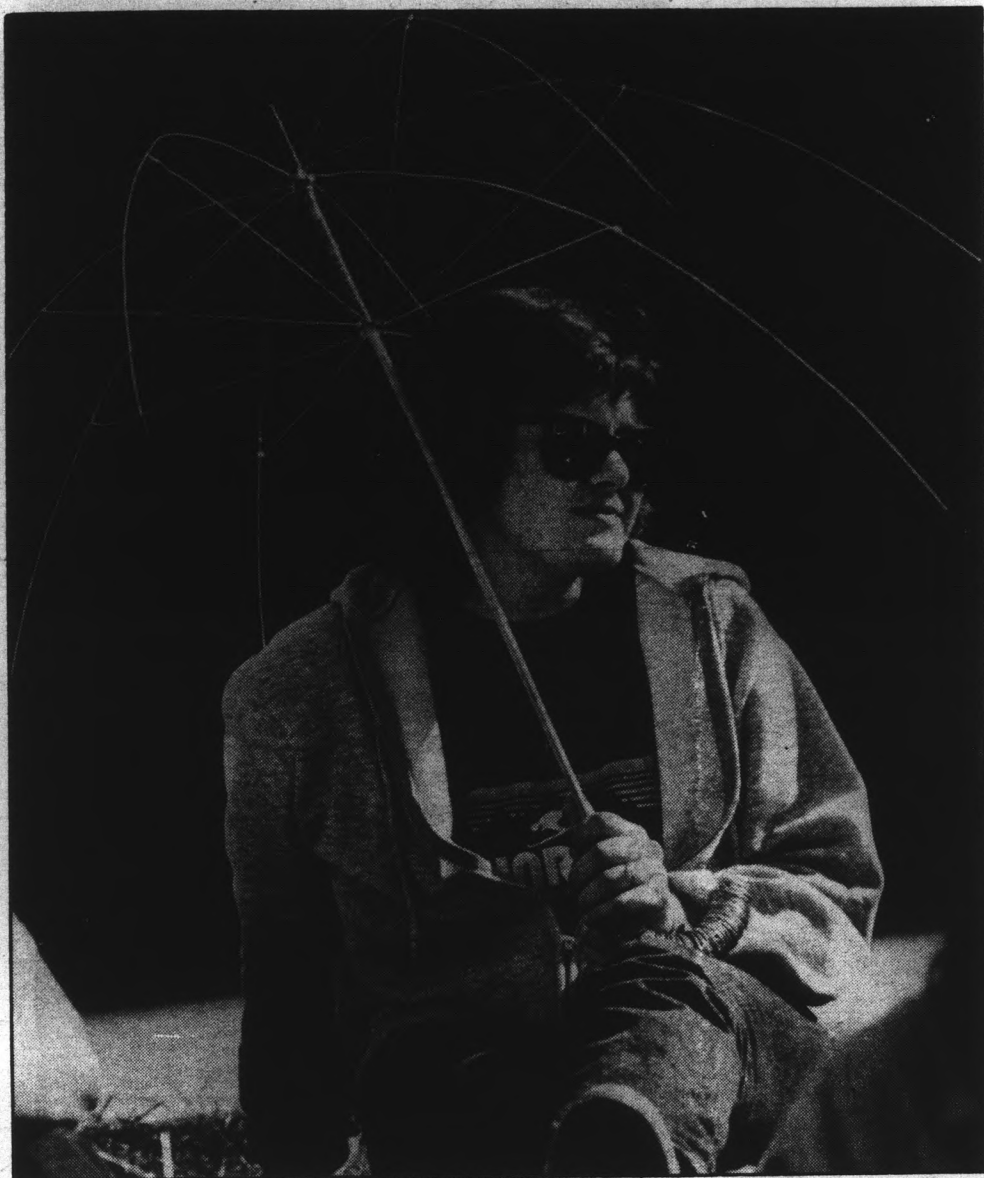
January 27, 1984
Vol. 66 No. 65

Arizona State University

© Copyright, State Press, 1984

state
press

Tempe, Arizona



Staff photo by Tina Gerson

Para-parasol

Sophomore recreation major Chanda Whipple shades herself from the blistering Arizona sun Thursday with her project for a 3-D art class.

Inside Today

Survey compares professors' salaries
Page 3

Tempe mosque nearing completion
Page 10

Sun Devil cagers facing double jeopardy in Oregon
Page 15

nation/world

state press

American woman killed in El Salvador

SAN SALVADOR, El Salvador (AP) — An American woman traveling with her family along the Pan-American Highway in eastern El Salvador was shot to death Thursday, said a Roman Catholic priest who administered the last rites.

The priest, who asked not to be named, said people believed to be leftist guerrillas fired on the vehicle carrying the woman, her husband and several children between El Divisadero and Santa Rosa de Lima, about 127 miles east of San Salvador.

Soviets increase Cuban military forces

WASHINGTON (AP) — The Soviet Union has increased the size of Cuba's navy and MiG-23 fighter force for the first time in several years, U.S. intelligence sources said Thursday.

A 2,300-ton Soviet-built frigate and a 2,100-ton diesel-powered submarine were delivered in recent days in Havana, said the sources who spoke only on condition they remain anonymous.

Prisoner executed in Florida

STARKE, Fla. (AP) — Quoting Christ's words on the cross, Florida's oldest death row inmate died in the electric chair Thursday for arranging the killing of a private detective,

becoming the third man executed in the state in less than five years.

"The only this is, 'Forgive them, Father, for in their ignorance they know not what they do.' And that's it." Those were the last words of Anthony Antone, 66, heard in a clear voice over a microphone in the death chamber.

He was pronounced dead at 7:08 a.m., seven minutes after the first surge of 2,000 volts coursed through his body. His anonymous executioner, wearing a black hood, received \$150 for the job.

GTE Phoenix move will provide 200 jobs

PHOENIX (AP) — GTE Communications System has announced that it is moving its worldwide headquarters to Phoenix from Stamford, Conn.

Company officials said Thursday the move will involve relocating about 200 employees and hiring up to 200 staff and research employees locally.

GTE Communications Systems has 29,000 employees worldwide and makes and services systems and equipment for voice, data and video telecommunications.

CORRECTION POLICY

It is the policy of the State Press to acknowledge and correct errors when they occur. If you see an error, call our newsroom at 965-2292 to let us know. All corrections will appear on this page.

Palm & Card Readings

Palm \$5
Card \$15

Past • Present • Future

Madam Ray

Price & Univ.
Minutes From Campus
967-9801

Mac TEMPE CENTER

JEWELERS

FOR ALL YOUR JEWELRY NEEDS

Diamonds, Watches
14k Chains, Pendants
Sorority-Fraternity Jewelry
Watch & Jewelry Repairing

966-7587

THE HAIR CUTTERS

Your Campus Hair Care Center

709 S. Forest Ave., Tempe

North of University • Behind the
Chuck Box • In Oxford Square

968-5946

\$300 OFF

With This Ad
Expires March 3, 1984.


REGULAR PRICES

• Shampoo • Condition
• Precision Cut • Blow Dry

MEN \$12 • WOMEN \$14

OPEN MONDAY THROUGH SATURDAY.
TUES., WED. & THURS. TILL 9 P.M.

Birth defects are forever. Unless you help.



RUNDLE'S LIQUORS & MKT.
730 S. MILL
Corner Mill & University Ave.
967-9079

CALIF. COOLERS 4-pk.	\$2.99
MEISTER BRAU BEER	\$1.89
FRATELLI BIANCO WINE	\$1.99
PLAYBOY Used Magazines	\$.47

Haagen Dazs Natural Ice Cream, Adult Magazines, Groceries, Ice, Wines, over 40 Imported Beers.

Lei TAKEE OUTEE

• ORIENTAL FOODS
• SUBMARINE SANDWICHES
— Video Games —

FREE DRINK
(55¢ value)
Bring this ad and receive a free soft drink w/purchase of over \$1.50.

620 S. College • 968-3049
(Across from Student Book Center)



DRIVE CARS FREE

Cars Available Many Points U.S.A.

We are I.C.C. licensed and insured. Must be 21 years or more.

SCHELL DRIVEAWAY
991-5533

THE JOYNT
from 2-10 p.m.

2 Dinners for \$5.49 Reg. \$8.50

Choice of:
• Lasagna
• Cheese or Spinach Manicotti
• Baked Ziti

Includes 2 dinner salads and garlic breads
75¢ extra for carryouts

THE JOYNT
606 S. Mill
967-7926
Expires Feb. 7, 1984.

NAVY NUCLEAR ENGINEERING

Any better offers? \$24,000 to \$54,000 after six years. If you are 19 to 26 years of age majoring in math, chemistry, physics or engineering and would like to learn more about this opportunity


CALL COLLECT (619) 293-6746

CALL BETWEEN THE HOURS OF 9 A.M. TO 5 P.M. MONDAY THROUGH WEDNESDAY


SHOE SALE

Saucony "Dixon"
Reg. \$57.95
43⁹⁵





Nike "Old Equator"
Save \$20
Reg. \$49.95
29⁹⁵
Sizes Avail. 1-7, 1-7½, 1-8, 2-9, 1-13, 1-13½, 1-14. Hurry, While They Last!



Adidas "TRX Trainer"
Save \$10
Reg. \$39.95
29⁹⁵
Sizes Avail. 1-7, 1-8½, 1-9, 2-10, 2-12. Save, While Quantities Last!

Sport Shoe Clearance!

BROOKS	Brooks "Sundance" 1-7, 1-7½, 3-8, 3-9, 2-9½, 2-10, 2-10½, 1-11½, 1-12, 1-13. Reg. 54.95	34.95
NIKE	Nike "Legend" 1-6½, 1-7½, 1-8, 1-13, 1-13½. Reg. 59.95	49.95
NIKE	Nike "New Equator" 1-8½, 1-9, 2-9½, 2-10, 1-10½, 1-11½, 1-13. Reg. 64.95	44.95
NIKE	Nike "Centurion" 1-8, 1-8½, 2-9, 1-12, 2-12½, 1-15. Reg. 49.95	29.95
ADIDAS	Adidas "Summit" 1-7, 2-8, 1-8½, 1-12. Reg. 24.95	17.95
PUMA	Puma "Silvercat" 1-7½, 2-8, 1-8½, 2-9, 1-9½, 1-12, 1-13. Reg. 44.95	29.95
SAUCONY	Lady "Dixon" 1-6½, 1-7, 3-8½, 1-9. Reg. 57.95	43.95
SAUCONY	Brooks "Lady Hawk" 1-7, 2-7½, 1-8½, 1-9½. Reg. 37.95	29.95

University sporting goods

968-7725 1038 South Mill
(Across from Gammage)

Your Friendly Hometown Store

State Press

Salaries in to

By Lisa Ph...

Staff writer

A recent ty salaries universities salaries in the nation salaries we

The sur Center for issue of the lists 1982-8 compares and comp other state

The figu not includ instruction justed to r

The sur to be the associate fessors. A fessors at categories

The ave Arizona c and was s Wyoming

Arizona \$25,272. women's California York (\$26 of Colum (\$25,965).

Within ASU to Graduate

TU

TH

9

W

(o

Offe

Or

B

C

T

Pr

&

O

T

C

M

co

O

4

F

G

Salaries of ASU faculty rank in top 10, national study finds

By Lisa Phillips
Staff writer

A recent survey comparing average faculty salaries at more than 2,700 colleges and universities shows that overall men's salaries in Arizona were the fourth highest in the nation last year and overall women's salaries were the eighth highest.

The survey, compiled by the National Center for Education Statistics in the latest issue of the Chronicle of Higher Education, lists 1982-83 salaries by both rank and sex, compares salaries between Arizona schools and compares average state salaries to other states.

The figures represent average salaries, not including fringe benefits, for full-time instructional staff. The numbers were adjusted to represent a nine-month period.

The survey showed men's salaries at ASU to be the highest in Arizona for professors, associate professors and assistant professors. Average salaries for female professors at ASU were lower in all three categories than both U of A and NAU.

The average faculty salary for men in all Arizona colleges and universities is \$33,025 and was surpassed only in Alaska (\$43,658), Wyoming (\$33,548) and California (\$33,522).

Arizona women's salaries average \$25,272. The seven states with higher women's salaries were: Alaska (\$38,569), California (\$27,816), Nevada (\$27,679), New York (\$26,816), Wyoming (\$26,422), District of Columbia (\$26,083) and New Jersey (\$25,965).

Within Arizona, the survey compared ASU to U of A, NAU, the American Graduate School of International Manage-

ment, the Arizona College of the Bible, the College of Ganado and Grand Canyon College.

Male full professors at ASU earned an average salary of \$40,200. Men of the same rank earned an average of \$39,700 at U of A and \$36,900 at NAU. Female full professors earned an average of \$31,700 at ASU, \$34,800 at U of A and \$38,400 at NAU.

Average salaries for male associate professors were \$30,500 at ASU, \$30,100 at U of A and \$29,000 at NAU. Average salaries of female associate professors were \$25,500 at ASU, \$28,200 at U of A and \$28,100 at NAU.

Male assistant professors at ASU, U of A and NAU were paid \$26,100, \$24,700 and \$23,100 respectively. Female assistant professors at ASU, U of A and NAU made an average of \$21,700, \$22,500 and \$22,600.

The other Arizona schools included in the survey were lower for both men and women in all categories.


The survey also compares women's salaries to men's salaries in each state.

Women faculty in Arizona, on the average, earned 23 percent less than men. Women in five other states ranked lower when their average salaries were compared to those of men in their state, with women in New Mexico experiencing the greatest average salary difference at 29 percent.

The states with the smallest salary gaps between males and females were Alaska (12 percent) and Nevada (13 percent).

Nationwide, the study showed the average salary of women was \$23,487, while the average salary of men was \$29,001 — a 19 percent difference.

ARIZONA STATE UNIVERSITY / 1885-1985

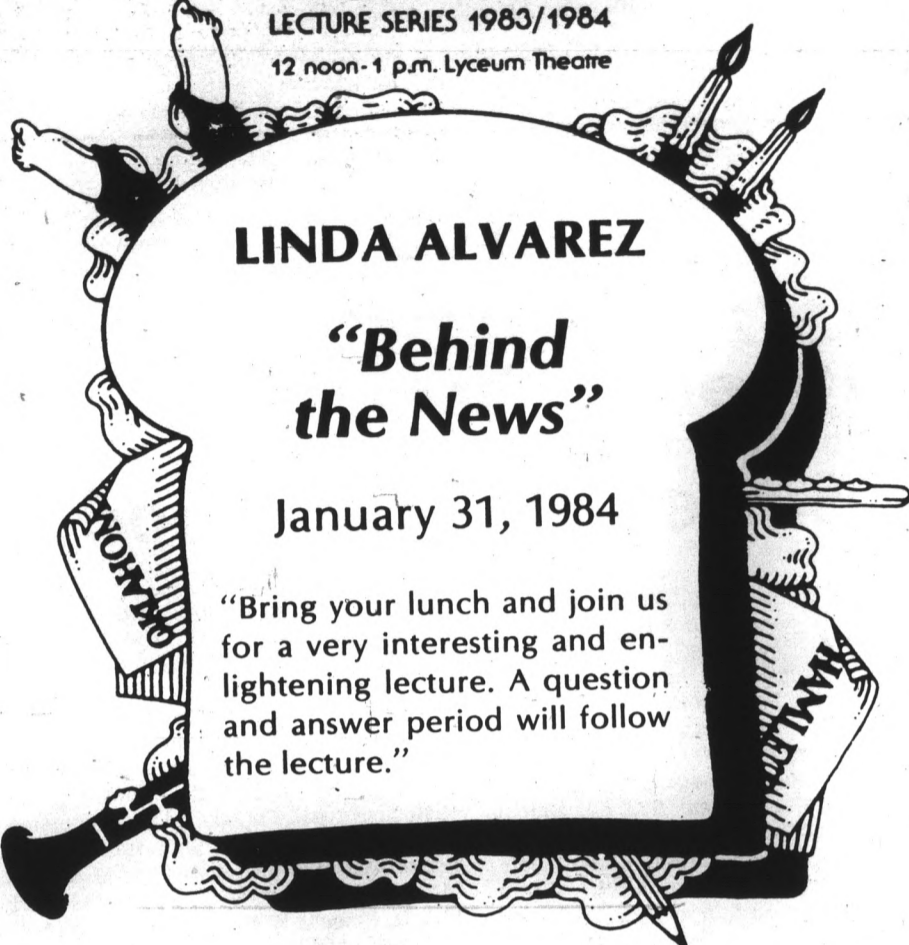


EXCELLENCE FOR A NEW CENTURY

College of Fine Arts

LECTURE SERIES 1983/1984

12 noon - 1 p.m. Lyceum Theatre



LINDA ALVAREZ

"Behind the News"

January 31, 1984

"Bring your lunch and join us for a very interesting and enlightening lecture. A question and answer period will follow the lecture."



933 E. University, Tempe
966-2508

TUESDAYS: REVERSE HAPPY HOUR 10-CLOSE
POOL TOURNEY 8 P.M.

THURSDAYS: IT'S MILLER TIME!
PITCHERS OF MILLER & LITE \$1.50 8-11



99¢ Pitcher
with this coupon
(on Reg. \$3.25 pitcher)

Offer good on Friday only.
One coupon per person.

SUNDAYS

- LADIES DRINK FOR 1/2 PRICE (All Day Long)
- FREE POOL FROM 3 TO 7
- 75¢ LONGNECKS FROM 9 TO 12

HAPPY HOUR 4-7 MON. THRU FRI.
40¢ Mugs ● \$2.50 Pitchers ● 95¢ Well

DON'T LIMIT YOUR TAN

**Body Wrap
Only \$14.95**

Tanning Bed Special
Purchase a bed membership & receive an equal number of booth visits free!

**Tanning Booth
Only 5 Visits for \$5**



First time customers.
Must bring coupon. Limit one coupon per person.



eclipse
sun tanning

43 E. Broadway (Broadway & Mill)
966-2150

Bed by appt. 7 a.m.-10 p.m.
Hours 9 a.m.-8 p.m.

ECLIPSE
Formerly Golden Glo

Must bring coupon.
Offer expires 4-1-84.



introducing
Billy's Famous Champagne Brunch
11 am-3pm Saturday and Sunday
includes complimentary champagne*

Home of the "Double-Day" Happy Hour
All Drinks 2 for 1
4-6pm/11pm-1am 7 days a week

*must be 19 years of age

ALL YOU CAN EAT!
BBQ Spare Ribs • BBQ Chicken
Your Choice **5.95** per person complete dinners
*tax, gratuity and beverage not included
Coupon good Sunday thru Thursday thru 2/15/84

10% OFF
ALL HOME AND OFFICE DELIVERIES — 967-1614
Coupon good Sunday thru Thursday thru 2/15/84

1301 E. Broadway, Tempe • 967-1614
"We're good and we want you to know it!"

GRAND OPENING THIS WEEK

opinion

One man with courage makes a majority
—Andrew Jackson

state
press

letters

Soviets misunderstood

Editor:

Maybe I have a right to respond to charges in the Jan. 24 *State Press* that I am uninformed, amusing, absurd and unintelligent. In fact, the charges arise because the letter-writers are poorly informed about propaganda and have little knowledge about history.

The worst misinformation is given in Michael Jones' statement that the United States tried unilateral disarmament in the 1960s and '70s. United States military expenditure was greater than that of the USSR in every year from 1945 to at least 1979. And even the CIA admitted it had been overestimating Soviet defense spending.

Now that essential parity in nuclear weapons exists — the rational time for serious disarmament, since no one has an advantage to forfeit — the conservatives clamour for more arms "to catch up" with the Soviets. It is not a case of catching up. One need only shop at the U.S. Government Printing Office outlets to learn our government thinks, "victory is possible" in nuclear warfare. Or that "this admittedly somewhat muscular" policy of attaining complete nuclear superiority over the USSR "on their own terms" is the solution to U.S. geopolitical woes.

I have indeed read Solzhenitsyn and "The Great Terror" by Robert Conquest. I prefer to inform myself by reading writers of the left, center and right, while people on this campus appear to prefer only the latter, and are even unfamiliar with the views of many of their sources.

Political literature, including history books, should always be read with an understanding of what the author wants to prove. People like Solzhenitsyn with an axe to grind and who don't and can't cite summary evidence are unreliable as historical sources. That Stalinism was horrible is not debatable. Conquest's book does contain summary data, and even though he is anti-Soviet, his conclusions shows that your

fanatic claim that Stalin "systematically executed as many as 20 million" is 20 times too high.

It is now fashionable to condemn Stalin and mildly defend Hitler, because this seems to identify the Soviet Union with Hitler's racist war party and thus justify our war-crusade against the Soviet Union. Historical reality published in your college history texts and by innumerable mainstream western historians is ignored. Mr. Jones implied the USSR wanted World War II. Prior to WWII, the only respectable attempts at preventing war were made by the Soviet Union itself, though these were ignored.

The French and particularly British governments gave Hitler everything he wanted in an attempt (successful) to channel his war drive toward the East. In fact, 90 percent of German military activity during WWII occurred in the Soviet Union.

Hitler was backed by the most prominent world capitalists of his time. Corporate profits increased, not decreased, during Nazi years, while the German people and even German capitalism overall were abused by international capital through Hitler's war on the Soviet Union. Immediately after the invasion was launched, the German high command realized Germans had been totally misled about the USSR. Hitler has done to Germany what he, in "Mein Kampf," claimed the German Communists were trying to do. I sincerely hope the American people won't be similarly defrauded into a far more devastating war.

I hope I have given hack readers of history and propaganda incentive to think and read more deeply and especially to evaluate political literature more realistically. Perhaps some might then join in the attempt to check this war you are, seemingly unknowingly, brewing.

Phil Rosen
Masters Program, Biology

Praise for Currin

Editor:

John Currin's essay on abortion and natural law was nothing less than brilliant.

David Beychok
College of Law

ASASU and you

Editor:

Chris Coppola (*State Press*, Jan. 25) may be correct in citing ASASU as recipient of the "Unknown Acronym Award." For those who don't know who or what we are, ASASU represents the Associated Students of Arizona State University. ASASU's constitution describes in its preamble our many functions for the students of this University.

Among our many duties, we represent all students in the faculty senate, provide student input to the Arizona Board of Regents and the State Legislature, provide various services such as the Safety Escort Service, Women's Services, the lecture and concert series, and provide funding for all campus clubs and organizations. I encourage you to find out more about us. Our office in the Memorial Union is open during the regular school day. Find the senator who represents your college and voice your opinion. Find your college councils and take an active part in determining policies and curriculum.

Mr. Coppola asked what ASASU really stands for; ASASU stands for you.

Howard Snader
Senator, College of Liberal Arts

In spite of Democrats, State of the Union improving

Matthew Scully
Opinion Editor



To judge by the enthusiastic response Wednesday night to President Reagan's call for a reduction in the federal deficit, we have at last a consensus in Congress in favor of fiscal restraint. As far as one could tell listening to his State of the Union address on television, on this point there was no sign of dissent on either side of the aisle. But will it last for long, this spirit of common purpose? Hardly a day. At this very hour, on the morning after the speech, you can be sure that Congress is back in the business of spending money it doesn't have. On this and other paradoxes, a few reflections.

1) Yes, Congress behaved very well last night — it always does when the public is watching. But turn your back for one moment and the deficit rises by another 20 billion. The Capitol rings with solemn warnings about fiscal irresponsibility, but no one hears them when it comes time to vote on particular appropriations. What members of Congress do hear are the pleadings of their various constituencies for federal aid, in return for which they expect a little aid themselves at the next election.

I doubt many congressmen feel a personal responsibility for the federal deficit. Most of them are quite proud of their skill in extracting subsidies for their constituents. They lead a double life of fiscal prudence and profligacy. The same men who in Washington preach economic restraint return home to boast of all benefits they secured for their states or districts. It seems never to occur to them that there is a connection here: all those local subsidies, taken together, are what brought the deficit to \$200 billion. Only when congressmen begin to make that connection in their minds, when they feel an individual rather than a corporate responsibility for federal spending, can the deficit be reduced.

2) The problem with that proposal is that it will never happen. As long as there are opportunities, there will be opportunists. The next best thing is to take part of the responsibility away from Congress and entrust it to the president, who is more likely to hold himself personally accountable. This is the idea behind the "line-item veto," a reform Mr. Reagan asked for in his address. Give the president power to veto particular appropriations in the budget without having to reject the entire bill — the same power exercised by the governors of 43 states. That way congressmen will be subject to fewer pressures back home; they can legitimately

claim that they tried to secure this or that appropriation for their constituents, but couldn't. It is a necessary reform, though one wishes our representatives had the simple courage to restrain themselves.

3) It was certainly paradoxical to hear Democrats, in reply to the speech, criticizing the "Reagan deficit." Their line is that military expenditures are the principal cause of our economic troubles; if only Reagan would end this massive arms build-up, everything would be just fine.

Military spending accounts for 23 percent of the federal budget. Apart from defense, Mr. Reagan has proposed no new spending programs. Who then is responsible for the rise in spending? Congress, which from 1954 to 1981 was controlled by the Democrats. Congress cannot escape the blame for non-military expenditures, most importantly for the "entitlement" programs, which no Democrat dared to mention last night.

4) With all the bad news about the economy — unemployment down to 7.3 percent, inflation at less than 4 percent — the Democrats have had to reach for Old Reliable: the "compassion" issue. They tried this in their carefully staged televised response to the President's address, with

'But will it last for long, this spirit of common purpose? Hardly a day.'

amusing results. The program consisted of informal discussions between Massachusetts Governor Michael Dukakis, the host, and various other Democratic leaders, along with heart-rending interviews with ordinary citizens — victims of Mr. Reagan's assault on the poor and underprivileged, who testified to his "insensitivity to human needs." These "victims" read their lines superbly.

But not so superbly that one could entirely forget the last time these same Democrats were in power. Those days of 20 percent inflation also left behind a few victims, though back then we didn't hear as much about them. The only "human need" to which Reagan has been insensitive is the need of the Democratic politicians for more money and more power. Their problem now is that the old "fairness" rubrik just won't work anymore, no matter which of their sorry presidential candidates attempts to use it. Very soon the Party of Compassion will itself be in need of a little compassion, the compassion we conservatives have for dying institutions.



more letters

Questions we never ask about presence in Lebanon

Editor:

We recently have been hearing and reading about the Jesse Jackson trip to Syria. Most of it, but not all, were against him going on the trip.

How is it so wrong to make Assad look humanitarian? But no one wanted to write about the reasons why Lt. Goodman was taken prisoner. He was on an attack mission against Syrian positions and shot down. Why was the Air Force attacking? In whose interest was it? Why are they there in the first place?

The obvious answer to this question is that it is "Israel's" interests that was involved. After the "Israeli" invasion of Beirut in

1982, the mass murder of civilians in Sabra and Shatila camps by "Israel" and its puppets in Lebanon, why didn't the other so-called peacekeeping forces get directly involved? Why are we making 120 million Arabs our enemy? What right do we have to send the Sixth Fleet or the New Jersey destroyer (the strongest naval ship in the world) to attack Labanese soil?

I wish one day I could read about someone asking the same questions so that other people would begin asking the origin of Jackson's visit.

Suheel Ghareib

Freshman, Business Administration

Rally 'too picture-perfect'

Editor:

While passing the Memorial Union Monday, I saw a number of anti-abortionists marching and holding a mock funeral. I also noticed several beautiful children in strollers whose mothers were displaying signs saying something to the effect "this child could have been an abortion."

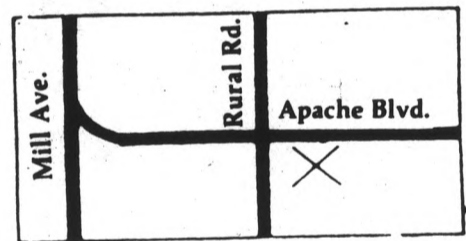
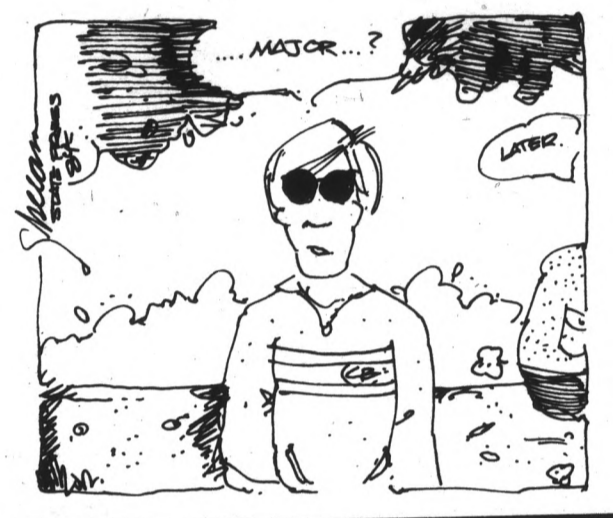
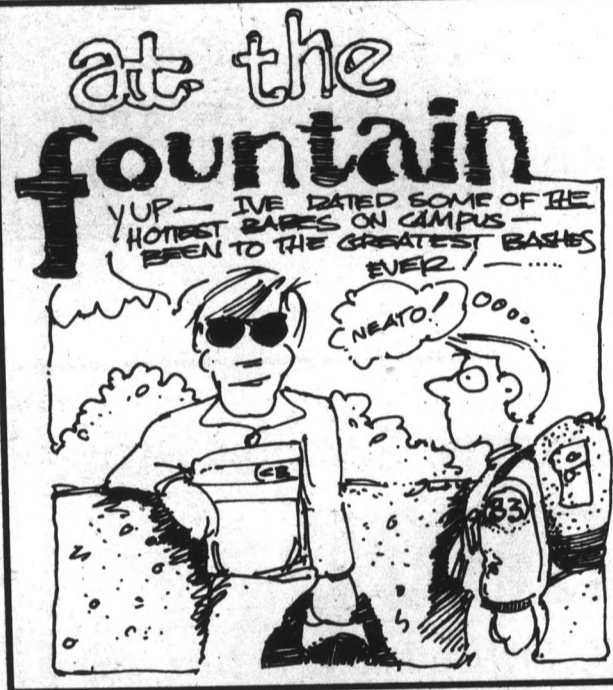
I am very happy to see mothers who are proud of their children and have the abilities needed to care for them, but the scene was too picture-perfect. Where was the mother whose child is in a wheelchair due to severe mental and physical handicaps — the mother who must devote every minute of every day of her life to the child? Where was the adolescent who has been physically, emotionally, and sexually abused by his her family — and has nowhere to turn? Where are the parents who have no parenting skills whatsoever? Where is the mother and father whose energies have been completely drained by an autistic child?

I could go on and on with examples such as this that I see every day. And what are we doing about it? Make sure that this continues by taking away one's choice to an abortion? How many of the people holding anti-abortion signs have been willing to adopt emotionally disturbed or disabled children? How many have even visited children's hospitals, orphanages, detention centers or drug abuse centers and listened to the life history of these children? People who see it on television news programs, say, "How terrible," and change the channel.

Life would be happier for more people if time was taken to care for the children that needed help instead of walking back and forth on a sidewalk with a sign. Society needs to be aware of all sides of the issue.

Wake up anti-abortionists. Take a look at what is around you.

Jamie Strelow
Graduate, Recreation



919 E. APACHE
966-7770

HAPPY HAPPY HOUR!!

Bottomless Glass of Margaritas
55¢ Michelobs
FREE MR. B'S PIZZA!
Tonight from 4:30 to 7:30

It's a Long Island Ice Tea Weekend at Clancey's

Friday & Saturday
2 for 1 Long Island Ice Teas
2 for 1 Mugs of Beer

It's Live Rock, Every Night!



Premiering from the Great, White North

The Cads of Badness

Financial aid drops for current year, federal percentage of grants climbs

By the College Press Service

WASHINGTON, D.C. — Financial aid for college students has decreased 21 percent — over \$2 billion — since 1980, according to a just-released study by the College Board.

From a high of \$18 billion in 1981-1982, the amount of financial aid available for students has dropped to a low of just over \$16 billion for the current academic year.

"And that \$2 billion decline is even greater when inflation is taken into account," said College Board spokesman Janice Gams. "Aid had been cut by one-fifth in inflation-adjusted terms."

In addition, the study reports "a switch in the trend from grants to loans which has been remarkable," Gams said.

In 1970-71, for instance, grants accounted for nearly two-thirds of all financial aid expenditures, while loans and work-study benefits accounted for the other third.

By 1975-76, grants constituted over 80 percent of all financial aid, loans 17 percent and college work study 3 percent.

For the current year, however, loans and grants each account for 48 percent of student aid, and college work study the remaining 4 percent.

At a time when college financial aid experts are growing increasingly concerned about the level of long-term debt college students are incurring, the decline in the amount of available grant money promises

to have far-reaching implications.

At the same time, "the early 1980s have seen a major change in the relationship of costs, income and aid for college," the report said. "Adjusted for inflation, costs have increased, but income and financial aid per full-time equivalent students have not.

"Thus," the study stated, "in contrast to what can be said generally about the past two decades (when income and financial aid awards actually stayed ahead of college costs), college has become relatively more difficult for families to afford in the 1980s."

But the results of "Trends in Student Aid: 1963-1983" should also "be put in the context of how much financial aid has really grown over the past years," Gams said.

The federal role in financial aid has swelled in the last two decades, from 40 percent to 80 percent of all aid assistance.

Financial aid from all sources — federal, state and institutions — has skyrocketed from only \$546 million in 1963-64 to a high of \$18 billion in 1981-82, the study said.

Except for the last three years, student aid increased five times faster than college spending in the last 20 years.

Tuition and room and board at private schools has increased from \$2,105 to \$8,537 in the last two decades, while the cost of attending a public school rose from \$1,026 to \$3,403 over the same period, the study said.

Free Tutoring

EDUCATIONAL SUPPORT PROGRAM (E.S.P.)

MATTHEWS CENTER — ROOM 47 965-6658

APPLY NOW! (Tutor Availability Limited)

TUTORING IN:

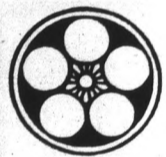
- * Study Skills
- * Business
- * Sciences
- * Modern Languages
- * Mathematics
- * Computer Sciences
- * Math Lab (Daily 12:40 p.m.-4:30 p.m.)

Lecture to honor noted director

The ASU department of dance will present a free public lecture to commemorate the 100th birthday of noted musical director and composer Louis Horst on Monday, Jan. 30.

Gertrude Schorr, former dancer with Denishawn, Humphrey-Weidman and the Martha Graham Dance Company and Nik Krevitsky, former dancer and writer-critic for "Dance Observer," will be the featured speakers.

They will discuss Horst and his work at 10:30 a.m. in the studio theater, Room 132 of the Physical Education Building East.



TERIYAKI OF JAPAN

10¢ SAKE

ONE OUNCE CUPS WITH PURCHASE OF ANY ENTREE

Also serving beer & wine

Just a few of our entrees . . .

Beef Teriyaki, Chicken Teriyaki, Suki-yaki, Tonkatsu

1314 E. APACHE • 894-6883

SCHOLARSHIPS

to



MEDICAL / OSTEOPATHIC SCHOOL

U.S. CITIZEN, GPA 3.5
BETWEEN 19 AND 35 YEARS OLD
FULL TUITION, BOOKS AND AUTHORIZED FEES
PLUS \$579 PER MONTH

FOR DETAILS CALL
NAVY MEDICAL PROGRAMS
(COLLECT)

(602) 256-7632

Navy Officers Get Responsibility Fast.

Another Miller Special Reserve Success Story

ROBIN HOOD

The main merry man talks about the British tax structure, the price of arrows, and success.

MSR: Robin, since your motto is "Steal from the rich, give to the poor," I was wondering . . .

ROBIN: Whoa, not so fast. I was misquoted. What I really said was "Steal from the rich, give some of it to the poor."

MSR: Some of it?

ROBIN: Sure. To be successful, you've gotta watch the bottom line.

And you don't have to be a Wall Street financial analyst to know that if you give all your money away, you'll go out of business. So, we give 76% to the poor and we keep 24%.

MSR: I assume a good portion of that 24% goes to taxes.

ROBIN: Texas?

MSR: No, taxes.

ROBIN: Oh that. Actually, I don't believe in giving the Sheriff of Nottingham our hard-earned money just so he can take his wife to Las Vegas.

MSR: Well, then where exactly does this mysterious 24% go?

ROBIN: Hey, we've got expenses.

MSR: What sort of expenses?

ROBIN: Have you priced arrows lately? Talk about highway robbery. Then there's payroll, overhead, entertainment . . .

MSR: Entertainment?

ROBIN: Listen, after a long, exhausting day of swashbuckling and bushwhacking, my Merry Men and I like to relax and have a good time.

MSR: What do you do?

ROBIN: Well, we come here to our favorite saloon, throw a few darts, have a few beers, and watch Little John eat a few sides of beef.

MSR: Speaking of beer, I see you and your Merry Men drink new

Miller Special Reserve.

ROBIN: Special Reserve is more than just beer. It's a legend in its own bottle. Smooth, mellow, with no bitter aftertaste.

MSR: But isn't it expensive?

ROBIN: So what? Hey, if I don't deserve it, who does?

MSR: So money is no object?

ROBIN: Not when it's somebody else's! (HEARTY LAUGH) C'mon, have a beer.

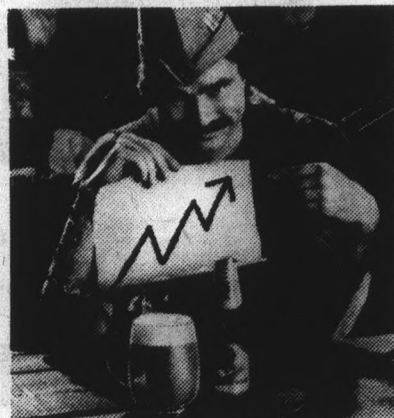
MSR: You talked me into it.

Why settle for just any beer when you can have new Miller Special Reserve. After all, if you don't deserve it, who does?

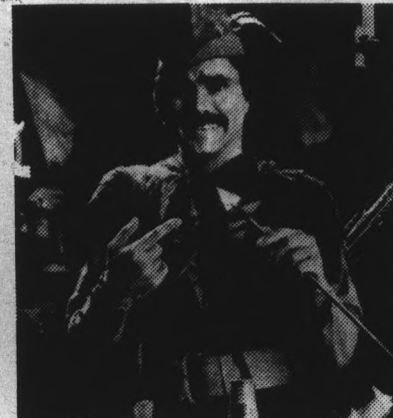
If you don't deserve it, who does?



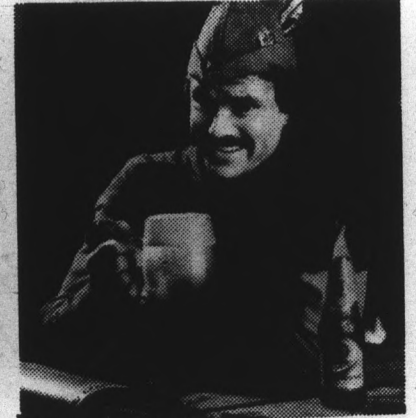
© 1983 Miller Brewing Co., Milwaukee, Wis. Available in limited areas



"To be successful, you've gotta watch the bottom line."



"Have you priced arrows lately? Talk about highway robbery!"



"If I don't deserve it, who does?"

Moved

Restructuring of periodical service 'well received,' library officials say

By Beth Walz
Contributing writer

The move of periodical services to the third floor of Hayden Library five months ago has been well received by students, library officials said.

The new system has a variety of advantages for students, including shorter lines, no enforced time limit and thus no subsequent fines, and no need for identification to check out a periodical.

"The general response is positive," said Jane Conrow, head of Access Services.

The students now are receiving faster service, Conrow said, and have the added luxury of browsing through the periodicals, which had been restricted to graduate students.

Student complaints stemming from backpack and purse searches upon leaving the periodical service have been minimal, according to library workers.

Doris Maxwell, a library worker, said, "Students really don't mind having their backpacks checked. I haven't run into any problems yet."

Scott Cooley, a student library employee, said, "Very few people complain about the

backpack check. The overall response is positive."

The new system, however, does have the potential for increased thefts, officials said.

"It is hard to say what the percentage of stolen magazines is at this point. I'm waiting for a year to go by before I have statistics taken," Conrow said.

Students in the library agree that it would be easy to steal a periodical, but feel with the free access system imposed, incentive to steal magazines might drop.

"It takes a certain mentality. They don't have consideration for others," Cooley said, referring to students involved in library crimes.

Conrow added that the security system has cut library costs by reducing labor, which had been required to operate the service when it was located on the lower level of Hayden.

In addition, within six weeks lockers will be installed in the periodical services area; however, backpack and purse searches are expected to continue. The revamped periodical service is one of a series of on-going changes at Hayden Library.



Terrace Road Apartments

WALK TO SCHOOL!

1/2 block from Campus. Huge, well furnished 1-bedroom, 1-bath, and 2-bedroom, 2-baths, all utilities included, plus many amenities.

950 S. Terrace Rd.

966-8540



4th & MILL
2nd level of the MILL AVE. SHOPPS above the SPAGHETTI CO

GRAND OPENING

This Weekend
Cosmo Topper

Door prizes & free drink give-aways throughout the night.

3 for 1 HAPPY HOUR
MON.-THUR. 3:30-7:30 FRI. TIL 8:30

WEEKLY SPECIALS!! 8-12

* MON. - "2 FOR 1"

* TUE. - "QUARTER BEER NIGHT"

* WED. - "BEAT THE CLOCK"

prices go up on the hour
8:00 draft 25¢ .10/draft per hr.
well 50¢ .20/well

* THUR. - ALL YOU CAN DRINK

8:00-11:00 Guys \$5.00 - Girls \$4.00
(Includes cover)

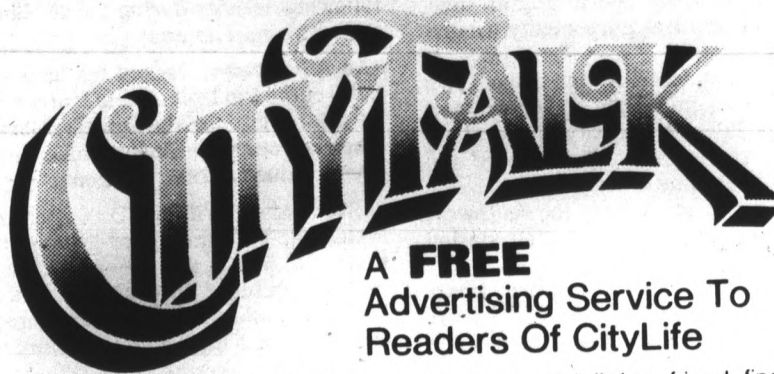
* THUR., FRI. & SAT. - LIVE ROCK & ROLL

CHECK YOUR NEW TIMES or KSTM FM-107 FOR DETAILS

CityLife

The Last Word in Entertainment News

PRESENTS



A FREE Advertising Service To Readers Of CityLife

Classified ads in CityLife offer you the chance to talk to a friend, find a roommate, trade a skill or post a community notice. And, the price is right — the cost of a stamp.

CityLife, the Valley's fast-growing entertainment weekly, is delivered to 50,000 Phoenix homes and distributed free from more than 250 newsstands at ASU, other college campuses, shopping malls, galleries, nightclubs and other selected locations.

CATEGORIES AVAILABLE TO USE:

- Free To You** You can't buy or sell things here, but you can give away. A kitten. A couch to haul away. A marketplace for freebies.
- Person To Person** A birthday wish. A friend to meet or greet. Wise counsel. Thought for the day. Your way to get into print.
- Community Notices** A bulletin board for non-profit organizations. Post your notice here for CityLife followers. And leaders, too.
- Ticket Exchange** Bought tickets for the concert, but now must leave town? Need your money back more than the front row seat? LIMIT HERE IS 4 tickets, not over \$20 each.
- Work Wanted** State your skills and background. Someone may be looking just for you. Not for commercial purposes.
- Roommates Wanted** A place to share your space. Tell what you've got, where and how much. You can state your sex, your preference for a roommate's sex, but not both. And, let's keep it clean.
- Swap** You can trade items here, a car for a truck, tapes and records, books, but NO CASH TRANSACTIONS.
- Barter** Be part of the cashless society. Trade your sewing skills for someone else's painting. Yard work for car work. This is a service exchange. NO CASH TRANSACTIONS.

HERE ARE THE REST OF THE RULES

1. CityLife reserves the right to edit, properly classify or decline any advertisement.
2. NO PHONE MESSAGES ACCEPTED. NO PHONED CHANGES ACCEPTED. All ads must be mailed in or brought to the drop box in the lobby of *The Arizona Republic/The Phoenix Gazette*, 120 E. Van Buren, Monday through Friday, 8 a.m. — 5 p.m.
3. All messages will be run for **two consecutive weeks**, unless otherwise noted on the message form. COMMUNITY NOTICES MAY RUN UNTIL THE REQUESTED DATE ON THE MESSAGE FORM.
4. DEADLINES. Ads must be received by 5 p.m. Friday for publication the following Wednesday.
5. Space limitations may cause publication to be delayed.

You Get Up To 4 Lines (Approximately 30 words) FREE.

MUST PRINT OR TYPE

Name _____
Address _____ Apt. _____
City _____ Zip _____ Phone _____
Starting Date _____ must be included for verification
Ad Should Run: One Week _____ Two Weeks _____
IF COMMUNITY NOTICE, Ad Should Run Until (Date) _____

MESSAGE (30 Words Or Less) Print or Type Only

1	2	3	4	5	6
7	8	9	10	11	12
13	14	15	16	17	18
19	20	21	22	23	24
25	26	27	28	29	30

CHECK CATEGORY:

- Person to Person Roommates Wanted Swap
 Community Notices Free to You Barter
 Ticket Exchange Work Wanted

MAIL TO:

CityLife Classifieds
P.O. Box 1950
Phoenix, AZ 85001

Or drop in box in lobby
120 E. Van Buren, Phoenix
Weekdays 8 a.m. to 5 p.m.

police report

University and Tempe police each received reports Wednesday concerning an indecent exposure incident purportedly occurring Monday evening.

An ASU student described the suspect as a white male, medium weight and 5 feet 7 to 5 feet 8 inches tall. He has wavy hair, about one inch above his collar, and a beard and moustache, according to the student.

The incident occurred near the southwest corner of the experimental testing station near Lot 65.

A suspect of the same description, wearing a jean jacket and a light-colored shirt and exposing himself near McAllister Avenue and Apache Boulevard, was reported to the Tempe Police Department 15 minutes earlier. Police report no suspects.

In other activity, ASU Police reported the following activity during the 24-hour period ending 2 a.m. Thursday:

•An ASU student locked his bicycle to the patio of the Phi Delta Theta fraternity house before he left for the semester break and when he returned, the light-blue Raleigh 10-speed, valued at \$225, was gone.

•ASU student William D. Sutton was arrested early Thursday for driving while intoxicated. Sutton was observed driving in a reckless manner through the Palo Verde West parking lot, when his car jumped the curb into the First Interstate Bank parking lot, causing a blowout of the right front tire, according to police reports.

—M.K. Reinhart

Services scheduled for retired ASU professor, published math author

Lucas Nicolas Hendrik Bunt, 78, math teacher at ASU for seven years, died Sunday at Desert Samaritan Hospital in Mesa.

Born in Edam, Holland, Bunt was a graduate of the University of Amsterdam, where he received his master's degree in mathematics. He received his doctorate at the University of Groningen.

Bunt moved to the United States in 1968 and taught math at ASU until 1975 when he retired from teaching. During his tenure, he published two books dealing with the history and teaching of math.

He is survived by his wife, Elizabeth; son Hendrick of Eindhoven, Holland; daughter Lydia Van Welzenis of Eindhoven, and six grandchildren.

Services will be held at 10 a.m. Saturday at the University United Presbyterian Church, 139 E. Alamenda Drive. Friends may call Friday from 5 p.m. to 8 p.m. at Tempe Mortuary, 405 E. Southern Ave.

Affordable Cleaners

ASU SPECIAL

ANY GARMENT **89¢** ea.
Dry Cleaned & Pressed No limit

Excluding suede & leather; excluding wedding dresses. Coupon must be presented when garments are brought in.

847 W. University
(SE Corner of Univ. & Hardy)

(EXPIRES FEB. 29, 1984.)

A Special Offer From



ASU Students...

If you're over 18 you can rent an Escort or other fine car at

SPECIAL LOW WEEKEND RATES

starting at **\$19.96** A DAY
no mileage
(2 Day Min.)

(Rates subject to change without notice)

For Your Car, Call Your ASU Representative

968-4072

Office located at Rural & University



EVERYDAY SPECIALS

\$1.29 BREAKFAST
Every Day
7 a.m.-10 a.m.

DAILY SUB SPECIALS
Offering 22 Varieties
of SUBS
All day long

DINNER SPECIAL
16" Cheese Pizza
Only **\$4.00**
(additional items \$1)
Nightly
5-9

PARTY SUBS
Available —
UP TO 6 ft. Long

Appetito's
Tempe Center (Univ. & Mill)

HOURS:
Mon.-Sat. 7 a.m.-2 a.m.
Sunday 7 a.m.-11 p.m.
967-8091

A.S.U. FRATERNITY

RUSH

JANUARY 27th thru FEBRUARY 2nd

* SCHEDULE *

* JAN. 27th 6:00 p.m.

- CHECK IN

- BOOTHS

- ORIENTATION

COCHISE ROOM 212

MEMORIAL UNION

* JAN. 28th 9:00 A.M.

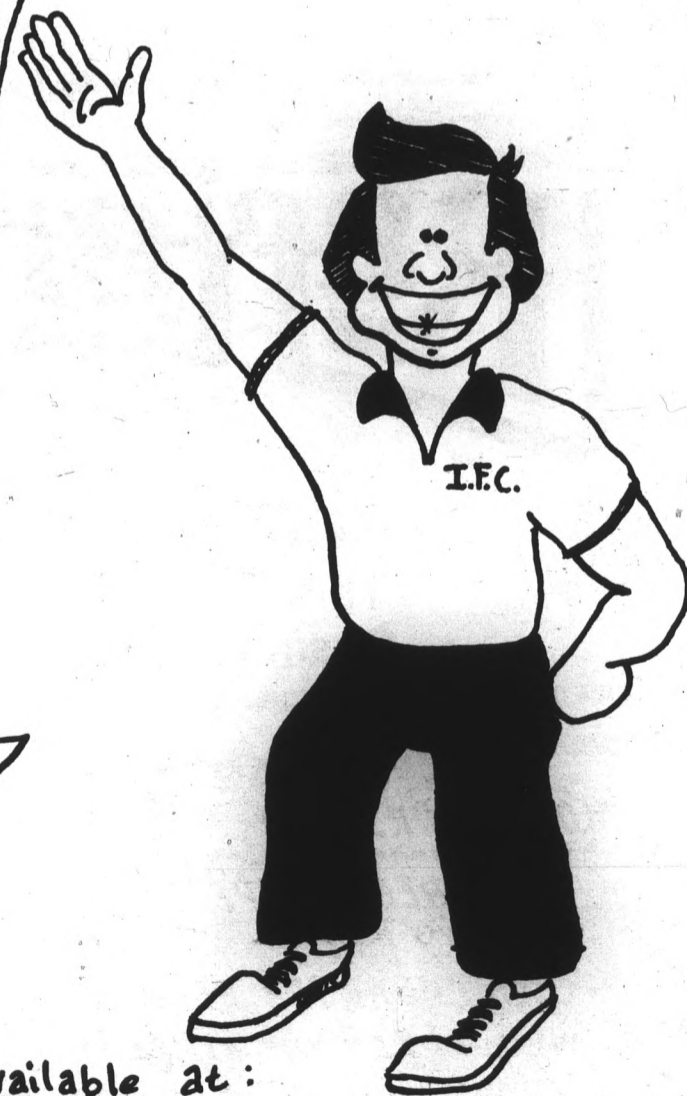
- RUSH TOURS

COCHISE ROOM 212

* JAN. 29th - FEB. 2nd

- OPEN RUSH

SEE EM' ALL!



Registration forms available at:

- M.U. information desk
- student life office
- I.F.C. office - M.U. Rm. 208D

For more information contact: John Vaughan - I.F.C. Rush Chairman - 965-9351 or 965-8594

Express

ASU considered for experimental train system; proposed route would link parking lots, campus

By Julianne Holroyd
Staff writer

A new transit system may be on its way to ASU.

A section of the M-Bahn magnetic transit system, developed and run successfully for 10 years in Germany, may be installed at ASU.

The system, which would be the first of its kind in the United States, would cost nearly \$3 billion.

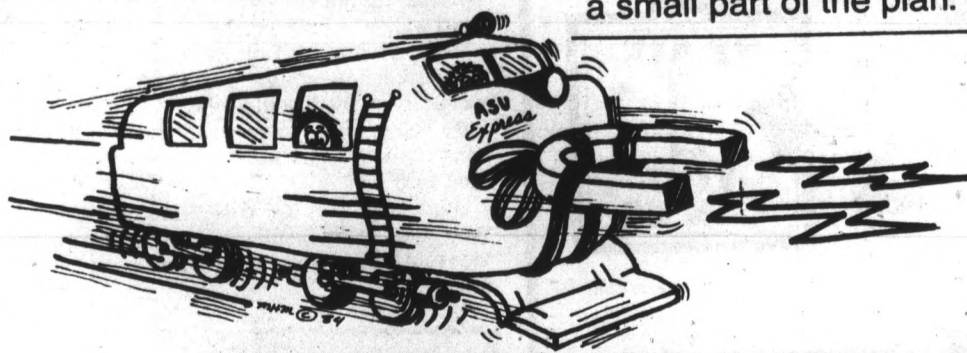
"We're planning to use the transit system for a 230-mile area," said Leonard Pearlstein, chairman of the citizens' group interested in the system. "ASU is a small part of the plan."

ASU was chosen as a site that would give the system a workout to demonstrate its capabilities.

The train uses two different magnets that alternately pull to propel it along, Pearlstein said.

According to Dale Garman, the director of University Planning and Analysis, a definite

'We're planning to use the transit system for a 230-mile area. ASU is just a small part of the plan.'



route has not yet been decided upon.

Garman is trying to put together a committee to discuss an appropriate location for the system.

Pearlstein speculates that the train would run from the stadium parking lot to other parts of campus and perhaps areas off campus.

"We don't know much about the cost of the train or its construction," said Garman.

But, because the train uses an electrical system, it would have to be elevated from the ground.

A representative from the M-Bahn company will be coming to ASU from Germany to discuss the train system, Garman said.

Campus officials have not officially approved the system.

Judge rejects request to issue restraining order for sweetener

By The Associated Press

WASHINGTON — Several private consumer groups, including two from Arizona, failed Thursday in their effort to have the new artificial sweetener aspartame removed from store shelves until health questions about the product can be answered.

U.S. District Judge Barrington D. Parker refused to issue a temporary restraining order against the sweetener because, he said, the consumer groups had not made a convincing enough argument about its alleged harmful effects.

"It is a matter of great public concern, but you did not make a strong showing," Parker told James S. Turner, attorney for Community Nutrition Institute.

Turner, on behalf of the institute and the Arizona Dietetic Association and the Central Arizona District Dietetic Association, submitted affidavits alleging that aspartame in the food supply poses a serious hazard to food consumers.

Among the affidavits was one from Woodrow C. Monte, an ASU nutritionist, reporting on 20 cases of aspartame-related side effects. Parker said, however, that Monte was not a medical doctor, did not examine any of the alleged sufferers and received most of his information over the telephone.



THE CHURCH ON MILL
First Southern Baptist Church

Student Discipleship Rally

SUNDAY, FEBRUARY 5, 1984

9:30 a.m.

IN THE WORSHIP CENTER

Featuring the music of

Revised Edition

of Waco, Texas

●The teaching of Ken Brumley

●Special emphasis on Campus Discipleship Groups

The hair performers

ANNUAL PERM SALE

50% OFF

Now \$15⁰⁰-\$30⁰⁰

ALL HAIRCUTS \$10.00
(Includes cut, shampoo and conditioner only)

SCULPTURED NAILS \$19.50

CINNAMON TREE CENTER

903 South Rural

(Between University and Terrace)

894-0184

Hours: Mon.-Fri. 9 a.m.-9 p.m.
Saturday 9 a.m.-6 p.m.
New Sunday Hours 12 p.m.-6 p.m.

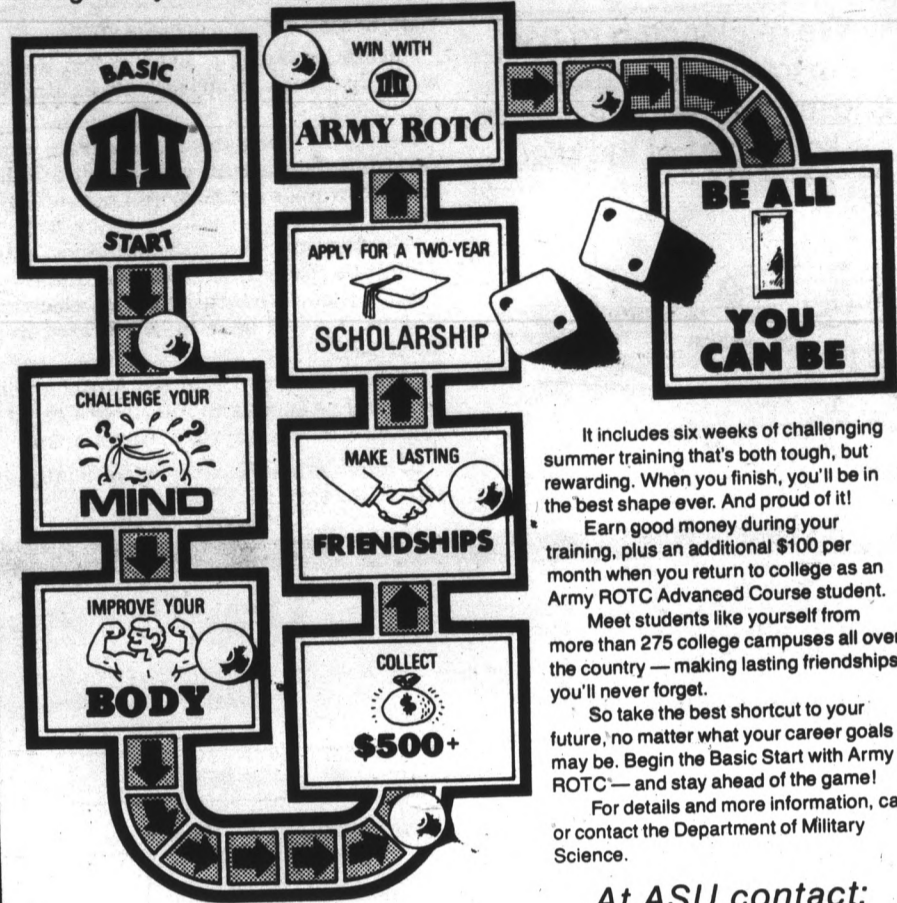
WELCOME BACK, ASU STUDENTS.
COORS TO YOU,
ALL SEMESTER THROUGH!

THE BEST OF THE ROCKIES IS YOURS.

© 1983 Adolph Coors Company, Golden, Colorado 80401 - Brewer of Fine Quality Beers Since 1873

Stay ahead of the game!

Reinforce your college degree by getting a better start through Army ROTC's special Two-Year Program.



It includes six weeks of challenging summer training that's both tough, but rewarding. When you finish, you'll be in the best shape ever. And proud of it! Earn good money during your training, plus an additional \$100 per month when you return to college as an Army ROTC Advanced Course student. Meet students like yourself from more than 275 college campuses all over the country — making lasting friendships you'll never forget. So take the best shortcut to your future, no matter what your career goals may be. Begin the Basic Start with Army ROTC — and stay ahead of the game! For details and more information, call or contact the Department of Military Science.

At ASU contact:
Ken Schwartz
 Old Main, Rm. 228
 or call 965-3318/19

Army ROTC. Be all you can be.

Shrine

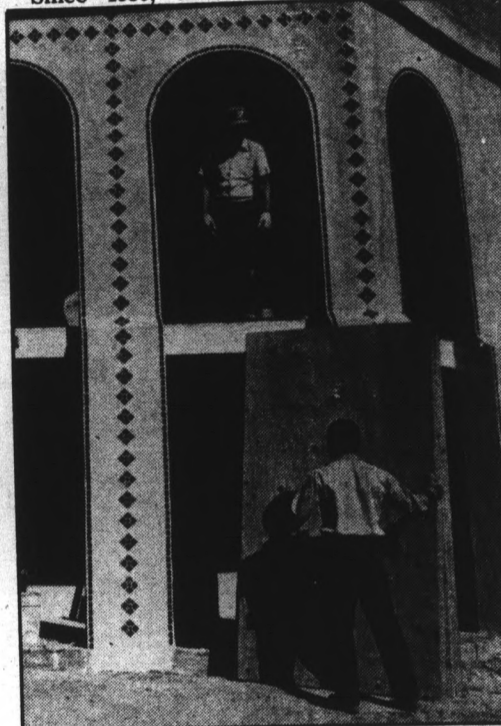
Mosque nears completion despite attacks, vandalism

By M.K. Reinhart
 Staff writer

Tempe's Islamic Cultural Center, plagued in the past by bombings and vandalism, is just weeks away from completion of a Moslem mosque. The project has proceeded smoothly since construction began April 27, the center's president said.

Rauf Diab said the dedication ceremony for the center could be only four weeks away, providing Arizona Public Service connects the utilities.

Since 1980, the current Islamic center,



Once completed, the two-story Moslem mosque will contain 14,000 square feet of space.

located at 616 S. Forest Ave., has been the target of at least 10 attacks, including shots fired at the house and several Molotov cocktail and pipe bomb explosions, he said.

A complete investigation was conducted by the Tempe Police Department, and although a \$5,000 reward was offered by the center and there are several leads, no suspects have been found, Diab said.

"The overall community has been very helpful and receptive," he said. "We are not going to let the actions of a few" change the plans of the center.

According to Tempe Police, the construction site is no longer an area of concern because no incidents have occurred since last summer.

"We patrol a little bit more in that area," said Ray Golz, Tempe public information officer, adding that any construction site is patrolled more frequently.

"We haven't had any problems (at the site) at all . . . but should we notice any increase in activity," the area would be watched more closely, Golz said.

The center also provides its own security guards and guard dogs, Golz said.

Diab said he thinks the attacks were a reaction to the planned construction of the mosque.

The two-story, 14,000-foot square shrine is a replica of the Dome of the Rock mosque, an Islamic pilgrimage site in Jerusalem. As the only such replica in the world, it has received international acclaim, he said.

The budget for the project has remained consistent with the \$1.5 million estimate made three years ago. It will finance the mosque, as well as eight apartment units and space for two retail shops, all of which will be owned and operated by the Islamic center, Diab said.

He said most of the funding has come from private contributions, adding that when the shrine is completed, the house on Forest, which currently serves as the Islamic center, will be

Construction work corner of Sixth St

torn down to ma

struction.

Many voluntee

the constructio

laborers are wor

The complex

aluminum, cen

several differen

ceramic tiles a

which Moslems

prayer and the

characteristic.

The upper flo

will be reserve

floor services

classrooms for

Arabic and Isla

"I don't con

laborers. I cons

said, adding th

project do so

showing it to

necessarily as a

The mosque'

Bicycle Bargains



NEW 10-SPEEDS
 Regular \$150
NOW \$109.50

NEW ONE-SPEED
 CRUISERS
 Regular \$160
NOW \$125

Hundreds of
 Bikes at Special
 Sale Prices

TEMPE BICYCLE SHOP

The old gas station on the corner
 6th Street and Mill, Tempe
 966-6896

Writing Center Workshops

Who are they for?

Any ASU student interested in improving his/her writing skills.

What are they?

A series of workshops devoted to specific writing problems. Registration for each individual workshop required. Sign up on the bulletin board adjacent to LL B-537 — by noon on Friday preceding each workshop. (No phone reservations.)

When are they held?

Starting January 31, every Tuesday afternoon from 3:00 to 4:30 for six weeks.

Where are they held?

LLC-33 (in the basement of the Language and Literature Building).

Why are they being held?

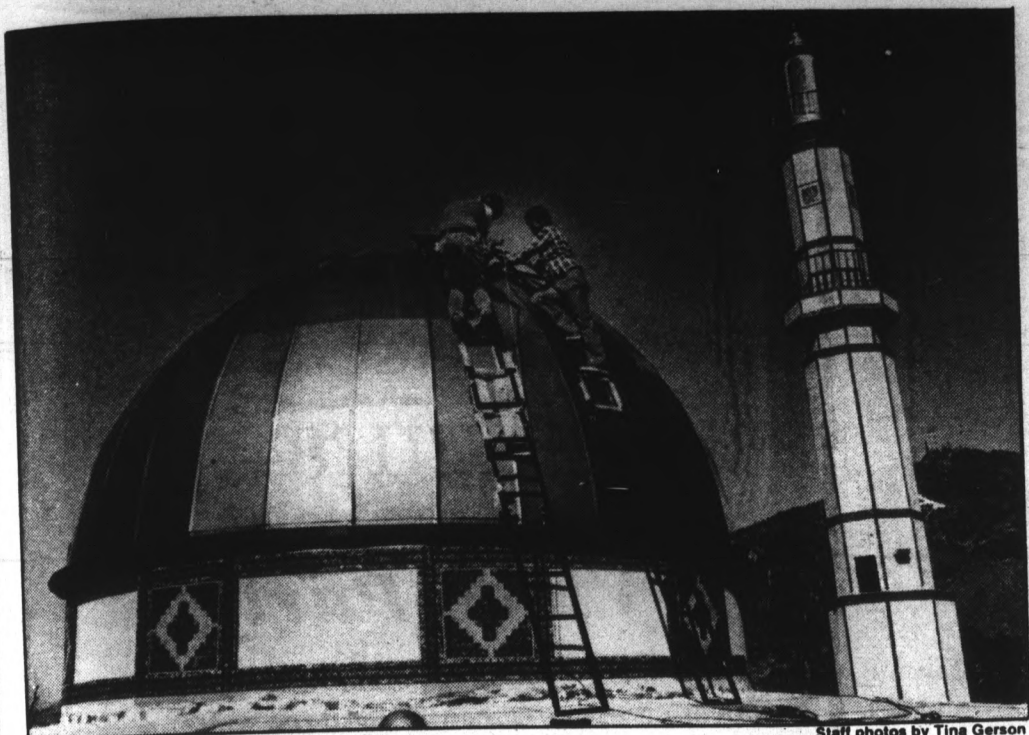
In response to suggestions/recommendations.

How will they be conducted?

Each workshop will be taught by one of the Writing Center staff: Al DeCiccio, Sandie Nagy, Chris Schmitt, Nancy Stegall, M. Clare Sweeney, Carol Williams.

Here's the workshop schedule:

- Jan. 31 Agreement (subject-verb, pronoun)
- Feb. 7 Sentence Style
(Frag, Run-ons and dangling mod)
- Feb. 14 Thesis Statement and Development
- Feb. 21 Coherence
- Feb. 28 Appropriate Research Strategies
- Mar. 6 Revision/Editing Strategies



Staff photos by Tina Gerson

Construction workers labor to complete the Islamic Cultural Center Moslem mosque located on the corner of Sixth Street and Forest Avenue.

torn down to make room for the additional construction.

Many volunteers have donated their time to the construction of the shrine and some laborers are working at close to cost, he said.

The complex structure is made from steel, aluminum, cement and stucco. It includes several different angles, domes, hand-painted ceramic tiles and a minaret, the tower from which Moslems were traditionally called to prayer and the mosque's most identifiable characteristic.

The upper floor of the two-story structure will be reserved for prayer and on the lower floor services will be held. There will be classrooms for the center's instruction in Arabic and Islamic studies as well, Diab said.

"I don't consider many of them to be laborers. I consider them to be artists," Diab said, adding that many who are working on the project do so to enhance their business by showing it to potential customers, and not necessarily as a way to make money.

The mosque's design was done by computer

and was a combined effort of several people, both Moslems and non-Moslems, Diab said.

The chief architect for the project, David Udkow of Associates in Architecture and Design, had studied the Dome of the Rock, and Diab said Udkow's knowledge of the holy shrine was instrumental in creating the exact type of structure the center had in mind.

Diab said his father, Jamil Diab, is the Imam, or spiritual leader, of the Tempe Islamic Cultural Center and one of three permanent trustees in Arizona.

The other two trustees are the director of the Phoenix mosque, located at First and South Mountain avenues, and a colonel in the Saudi Arabian Air Force, he said.

Diab said he would like to "establish close ties with the University and try to bring both cultures closer together."

"If it's good for the Moslems, it's good for the whole community," he said.

Diab said the mosque is open to everyone. "All we ask is that when you attend, you come and respect."

DISTINGUISHED TEACHING AWARD NOMINATIONS

College of Liberal Arts

Nominate your Most Distinguished Teacher

ELIGIBILITY: Any College of Liberal Arts Teacher, including Teaching Assistants/Associates

DEADLINE: February 24, 1984

Nomination forms can be picked up at the Memorial Union Information Desk, in the Office of the College of Liberal Arts (SS 109), and in each department office in the College.

HAPPY HOUR

4-7 Monday through Friday



53¢ 12-oz. Glass
\$1.97 60-oz. Pitcher
Coors, Bud, Miller Lite
80¢ Bottled Imports

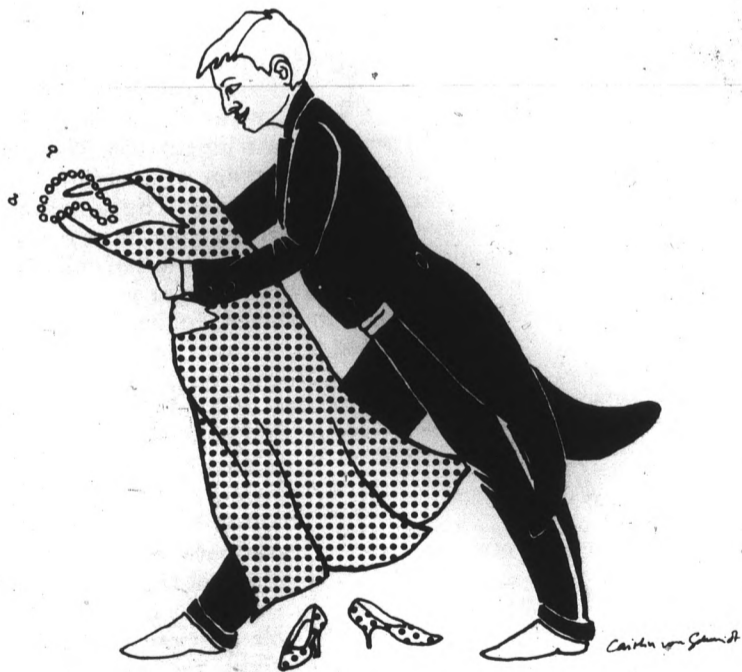
Sub Stop

"Sub Specialists of Arizona"

222 E. University, Tempe

967-7744 • 7:30 a.m. to 2 a.m. nightly

IF YOU LOVE CLOTHES



You'll Love Us

BUFFALO EXCHANGE



Buying • Selling • Trading

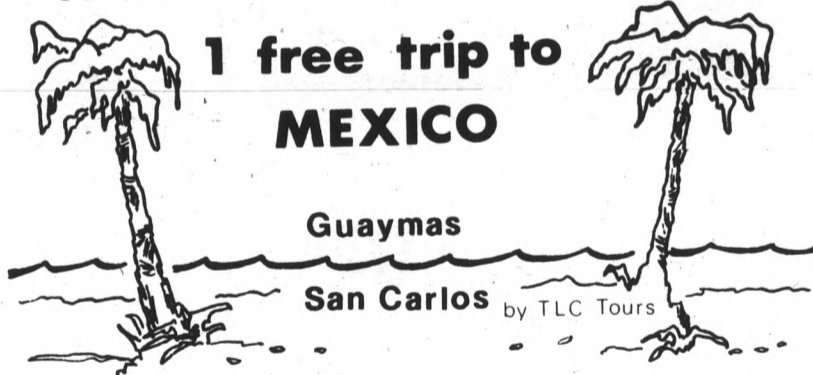
TEMPE
3 East Fifth Street
968-2557

Hours:
10 to 6 Mon.-Sat.
Closed Sundays

Budweiser
KING OF BEERS

Welcomes back A.S.U. with

1 free trip to
MEXICO



Guaymas

San Carlos by TLC Tours

Every **FRIDAY** Every

\$1.75 Pitchers of BUD **4-7** 75 Drinks
FREE FOOD

Budweiser
KING OF BEERS

Great Giveaway

TEMPE TEA PARTY

8-9

1.99
DEVILHOUSE

Pitchers of
Long Island
Iced Tea

SATURDAY — BURGER & BREW

1/3 lb. Devilburger with Ranch Fries
and a Cold Beer for **\$1.99**

collage

P.I.E.S. hosts Dr. Thomas Walsh today from 12:30 p.m. to 2 p.m. in Student Health Room 158 for "Humor and Healing," a fun healing experience dealing with how laughter affects our health.

Graduate Student Association has scheduled an organizational meeting for resident and teaching assistants and campus interns for 1 p.m. today in the MU Coconino Room.

Institute of Industrial Engineers will meet at 3:30 p.m. today at the America West boarding gate of Sky Harbor International Airport for a tour of airport facilities.

Episcopal Campus Ministry has scheduled an Open House for 7 tonight at Danforth Chapel. "Come join us for an evening of singing and sharing about the Canterbury community."

National Association of Accountants on Campus (NAAC) is having a carwash from 10 a.m. to 2 p.m. Saturday, Jan. 28, at the Union '76 gas station at the southeast corner of Southern and Mill.

First Congregational Church, 101 E. 6th St., will have Sunday school and

adult forum at 9:30 a.m., coffee and fellowship at 10:30 a.m. and morning worship service at 11 a.m. on Sunday, Jan. 29. The sermon will be delivered by the Rev. Kenneth A. Falk. The adult forum will welcome Dr. Mark Reader, associate professor of political science at ASU, as the second speaker in the series "Peace Study - 1984."

African Student Organization meets at 1 p.m. Sunday, Jan. 29, in MU Room 240 for a general meeting to discuss proposed events.

Pi Sigma Epsilon has scheduled a 6 p.m. meeting Sunday, Jan. 29, in the MU Navajo Room to reacquaint active members and welcome all interested people.

Mortar Board, the national leadership, scholarship and service honorary for seniors, is beginning membership selection. Information sheets will be available in the MU basement beginning Monday, Jan. 30.

Christian Science Organization will have a testimony meeting at 2:40 p.m. Monday, Jan. 30, at Danforth Chapel. All are welcome.

The Writer's Group at ASU will have an open fiction and poetry reading, 10-minute limit, at 7:30 p.m. Monday, Jan. 30, in the MU Montgomery Lounge.

ASU students declared heroes for saving accident victim's life

Two ASU students received certificates of commendation for bravery at last night's Paradise Valley Town Council meeting for saving a Scottsdale man's life.

Roommates Roger Walker Jr. and Patrick Maloney are credited with pulling the man out of his burning car Dec. 26.

Rian Emmett, 26, the accident victim, said he "owes his life" to them.

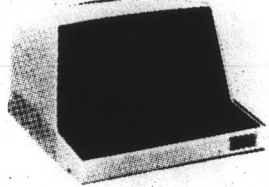
Walker and Maloney said they saw a fire on the road in the rearview mirror while driving home after Christmas dinner at about 1 a.m.

Walker turned his car around and found a car they had passed earlier had crashed into another car.

Emmett, unconscious, was trapped in his flaming vehicle.

Paradise Valley Police Chief Peter Wainwright said he was pleased to see people "get involved in hazardous situations to help others."

Maloney said he felt good about doing what they had done. Walker added, "I'm just glad we could help."



Do Your Computer Work At Home!

Save Time and Effort

CRT with coupler

or

Printer with coupler

\$50⁰⁰ per month

BRS LEASING, INC.

3914 E. McDowell • 277-3282

Rentals / Service / Sales

ASU CONDO CLOSE-OUT from \$41,900*!!

Washer, Dryer & Refrigerator included!

5% DOWN AND YOU OWN IT!

*10.9% interest rate only through 2-29-84.

TEMPE VILLAS
1111 E. University

Details call:
Nels C. Fors

967-7477 • 839-8200

COLDWELL BANKER
1212 E. Baseline, Tempe, AZ

Beta Theta Pi

133 E. BROADWAY

SPRING RUSH '84

presents

Music Video Party

Come to the Beta house tonight at 8:30 p.m. and watch your favorite videos on a wide-screen TV in stereo while enjoying unlimited food and beverage.

For more information, contact
Richard Joseph, Rush Chairman
966-5195 or 967-9965.

Take Charge At 22.



In most jobs, at 22 you're near the bottom of the ladder.

In the Navy, at 22 you can be a leader. After just 16 weeks of leadership training, you're an officer. You'll have the kind of job

your education and training prepared you for, and the decision-making authority you need to make the most of it.

As a college graduate and officer candidate, your Navy training is geared to making you a leader. There is no boot camp. Instead, you receive professional training to help you build the technical and management skills you'll need as a Navy officer.

This training is designed to instill confidence by first-hand experience. You learn by doing. On your first sea tour, you're responsible for managing the work of up to 30 men and the

care of sophisticated equipment worth millions of dollars.

It's a bigger challenge and a lot more responsibility than most corporations give you at 22. The rewards are bigger, too. There's

a comprehensive package of benefits, including special duty pay. The starting salary is \$17,000 — more than most companies would pay you right out of college. After four years, with regular promotions and pay increases, your salary will have increased to as much as \$31,000.

As a Navy officer, you grow, through new challenges, new tests of your skills,

and new opportunities to advance your education, including the possibility of attending graduate school while you're in the Navy.

Don't just take a job. Become a Navy officer, and take charge. Even at 22.

NAVY OPPORTUNITY INFORMATION CENTER
P.O. Box 5000, Clifton, NJ 07015

I'm ready to take charge. Tell me more about the Navy's officer programs. (OG)

Name _____

Address _____

City _____

State _____ Zip _____

+College/University _____

Age _____ Year in College _____ GPA _____

▲Major/Minor _____

Phone Number _____ (Area Code) _____ Best Time to Call _____

This is for general recruitment information. You do not have to furnish any of the information requested. Of course, the more we know, the more we can help to determine the kinds of Navy positions for which you qualify.

Navy Officers Get Responsibility Fast.

state
press

sports

Baseball team will have stronger infield this year

This is the first of a three-part series previewing the top-ranked ASU baseball team. Today the State Press analyzes the infield.

By Dean Obenauer
Sports writer

The No. 1 nationally ranked Sun Devil baseball team, under the direction of 13th-year coach Jim Brock, is hoping to start off its season with a stronger infield than it did last season.

"If you compare it (this year's infield) to last year's you would have to break it down further," Brock said. "We had two entirely different situations.

"We had the same people in the infield positions almost all of last year, but in the first part of last year they were absolutely brutal as they took us out of a number of ball games," he said. "The double play was something we just couldn't turn.

"As the ball club turned around," he continued, "the infield went from being very bad to being excellent by the time they got to Omaha."

Romy Cucjen is the only regular starter returning to the infield. Playing shortstop last season, he tallied 45 runs batted in while hitting five home runs en route to a .306 batting average.

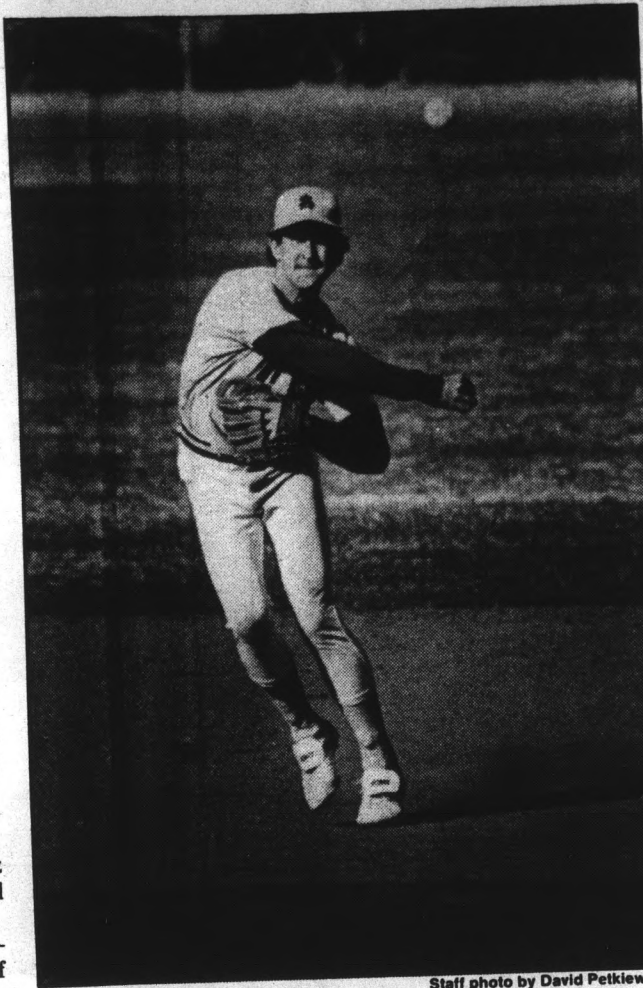
"Cucjen is one of those players who really turned around (last season)," Brock said. "He did not play that well earlier in the year coming off an ankle operation. It was mid-season until he finally started playing well. When he started playing well, he played awfully well."

In fall workouts this season, Cucjen maintained a .413 batting average.

Although the Devils have lost third baseman Bert Martinez to the Texas Rangers organization the Devils have gained from it.

Bob Grandstaff, the California junior college player-of-the-year in 1983, will definitely fill in at the corner. Grandstaff started off well, batting .448 in the fall season.

"Grandstaff, although he is new to our program, has played a lot more third base than Bert had within the last year," Brock said.



Staff photo by David Petkiewicz

ASU's Romy Cucjen may be the only returning player to start in the Sun Devil infield, but the team is expected to be stronger around the horn this season.

At second base the Devils will be missing Greg Steen, who is now playing in the California Angels organization.

"It is very difficult for anyone to play as well defensively as he (Steen) did," Brock said. "He was an outstanding player."

Battling it out for the second base job during the fall season have been recruits Steve Murray and George Lopez. Murray has been given the nod to start this weekend in the annual alumni game.

"Murray looks like he is going to be a good infielder," Brock said. "He turns the double play at least as well as Steen and maybe even a little better."

First base has been Brock's biggest dilemma. Ever since Reggie Mosley was expelled from the team, the position has been the weak link of the infield.

Last season's returning starter Tim McNaughton and junior college transfer Luis Medina have been competing for the first base spot. Medina, who batted .350 in the fall, will be starting this weekend.

"McNaughton came on about halfway through the season and did play defensively well for a while," Brock said. "This year Medina has played first a lot but he is not a polished first baseman yet. It is one of the areas we are working at."

The catching spot will be handled by all-Pac-10 selection Don Wakamatsu, who hit .340 with five home runs and 43 RBIs last season.

The weakest part of the infield will be depth this year.

"(Our depth is) very, very poor. We are kind of getting used to that, it hasn't caught up with us yet," Brock said.

For the last couple of years the Devils have been in a situation where one backup infielder coming in for an injured player has shuffled the entire lineup around.

"(Our depth is) very, very poor. We are kind of getting used to that, it hasn't caught up with us yet," Brock said.

Backing up Grandstaff at third is freshman Drew Siler. Freshmen Shawn Gilbert and Lopez are two other players who will be coming off the bench to fill in for an injured starter.

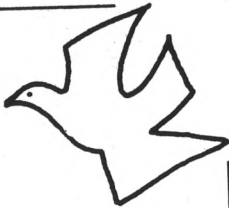
"We are covered," Brock said. "But any time you have to make more than one change to take care of one injury you kind of hurt yourself."

THE LUTHERAN
CHURCH OF THE
GOOD SHEPHERD

invites you to
join in worship

SUNDAYS • 10:15 a.m.
1430 South McAllister Ave.

A campus ministry of the ALC & LCA



TERMINAL RENTALS

Decwriters and CRTs

Upper Case \$34
Upper/Lower Case \$40

Limited Supply
Call 966-3105/838-2427

Computer Terminal Service
Delivery Available

Attention: Foreign Car Owners

SAVE UP TO 70% ON RECYCLED FOREIGN AUTO PARTS
MG, TRIUMPH, HONDA, DATSUN, TOYOTA, VW and OTHERS

All Models Foreign

3024 So. 40th Street, Phx. (near 40th & University)

243-3291

*Mention this ad & get an additional 5% off!



THE JOYNT 606 S. Mill
Old Town Tempe
WE DELIVER 967-7926
BEER • WINE

Large 16" Cheese Pizza
\$4.24

EXTRA TOPPINGS 50¢ EACH Expires 2-15-84

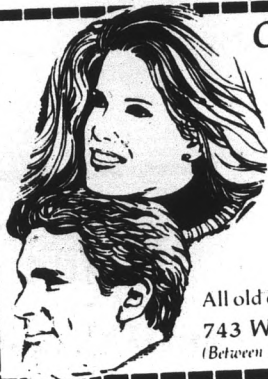
COLONIAL CLIPPER

Introductory Offer
1/2 Price \$8.50 Wet Cut
\$4.25

\$40 Perms \$20
Zotz • Relaxer • Jheri Curl
Sculptured Nails
\$45-\$22.50

Fill-ins always \$12.50
We guarantee all work

All old customers bring in 2 cuts get 1 free.
743 W. University
(Between Mill & Hardy) 968-4006



RARE LION RESALE

A fine selection of
retro-vogue clothing
costumes, jewelry
and accessories.

BUYING • SELLING
TRADING

722 S. Mill Ave., Tempe
968-6074



Introduce yourself to
DOLLAR
RENT A CAR

and
save
an extra

\$5

it's
our
Million
Dollar
Style

Whether you need a car for a
day, a weekend or longer,
For reservations and
free pick-up call:

ASU students 18
and older. Cash
deposits welcome.

We feature Ford and other fine cars.

829-1523
HOLIDAY INN • TEMPE
(in lobby)

DOLLAR
RENT A CAR



Papa Jay's New York Pizza

FAST... FREE... DELIVERY
(Limited free delivery area)

Serving ASU & TEMPE for nearly 13 years

\$3 OFF any large
Sicilian* Style Pizza
with two or more toppings.

Good on delivery, take-out or dine-in.
Expires 5-10-84.
*Extra Thick Crust

Sun Devil Combo
Any large pizza with your
choice of up to 4 toppings.
ONLY \$5.95 (plus tax)
Good on delivery, take-out or dine-in.
Expires 5-10-84.

We Deliver Beer & Soft Drinks
Video Arcade! 10 tokens for \$1 Every Day

804 S. ASH (Mill & Univ.) 966-1003 • 966-4292 • 967-9689



Sun Devil golfers finish fifth in first tournament of spring

By Vicki Serna
Sports writer

The ASU men's golf team returned last Wednesday from a two-day golf outing and a fifth-place finish in the UCLA-Bill Bryant Memorial College Tournament.

The Sun Devils, who had not participated in competition for two months, were itching for a chance at victory in the tournament that was held at Industry Hills Golf Course in California.

"We were really looking to finish higher than fifth," said assistant coach Gregg Vincent. "In fact, we were actually thinking of winning."

But even though the Devils could manage only a fifth-place finish, Vincent said he was happy with the players' performance.

Two of ASU's golfers finished in the top 10. Senior Roger Thorn grabbed fifth-place honors with scores of 77-78-72-227.

"It was a really good tournament for him," Vincent said. "We were happy with him."

Teammate Jim Carter finished in seventh place with scores of 77-76-77-230. Carter, a senior, captured the 1983 NCAA championship during a playoff at Fresno State last June.

"Jim Carter played really well," Vincent said. "He kept playing steady."

Vincent was satisfied with the play of the other Sun Devils.

"The other team members played fairly well under the conditions," Vincent said. "The course was extremely hard and that's why the scores were really high."

Senior Barry Conser led the remaining ASU players with a top-15 finish. He fired rounds of 79-82-75-236.

Tom Breitfeller and Don Leisy tied at 242 for the 54-hole event. Breitfeller's scores were 81-78-83, while Leisy's scores were 79-82-81. Both are juniors.

Sun Devil Hank Gardner, a senior, came home with a score of 82-78-84-244.

In team finishes, USC won the tourna-

ment, with the University of the Pacific finishing second. San Jose State followed in third and Stanford edged out the Devils for fourth.

The tournament was played on the par 72, 6,712-yard Eisenhower Course.

The tournament, in its fifth year, took on a new name this year in honor of Bill Bryant, who died last April after more than 30 years of service to the Southern California Junior Golf Association. This was the first year it has become a memorial, and was renamed in honor of Bryant's accomplishments.

Carter was just one of the many well-recognized college golfers in the all-star field that included more than 70 players.

Other top collegiate golfers who competed were Duffy Waldorf from UCLA, the winner of the University of the Pacific Autumn Invitational; USC's Sam Randolph, the Stanford Fall Tournament champion; Ken Earle of UOP, the Southwest Intercollegiate titlist; and Jeff Wilson also of UOP, who won the Nevada-Reno Wolfpack Classic.

Vincent said the team has been rapidly improving since its first match in early October when it took seventh place at the Louisiana State University Invitational.

"Team-wise, we're definitely improving," he said. "We finished seventh at the LSU Invitational, but then we won the Southwestern Invitational (one month and two matches later)."

He said the Sun Devils were vastly improving in the fall but then slowed down slightly during the break. "But we're increasing and improving," he said. "We kind of peaked out for the fall."

The ASU men's golf team was ranked sixth in its conference last year.

The Sun Devils' next competition will be the Henry Homberg Invitational in Beaumont, Texas.

Vincent said it's still early to predict any situations but he indicated it should be a good tournament because of its strong field.

WELCOME BACK INTO THE SWIM OF THINGS

help



Don't let the hectic first weeks of a new semester pull you under. If you can spare just a few hours a week — you can earn up to \$100 a month! And study at the same time! Or just catch up on current events. New donors bring this ad for an additional \$2 for your first donation. So give us a yell — and find out how plasma donation can be a real lifesaver!

University Plasma Center

1015 S. Rural Rd., Tempe

968-6139

Open Mon.-Fri. 8-7; Wed.-Sat. 9-6

Federally Inspected

NEEB HALL

FILM SERIES

DOUBLE FEATURE
FRIDAY & SATURDAY • JAN. 27 & 28

Raiders of the Lost Ark
7 & 11:30 p.m.

Star Wars
9:15 p.m.

IN 35MM DOLBY SOUND

SUNDAY NIGHT
FOREIGN AND CLASSIC FILMS

Small Change 6 p.m.

France 1976; This warm and tender comedy traces children on their way to adolescence and adulthood. Directed by Francois Truffaut.

Treasure of Sierra Madre 8 p.m.

1948; John Huston's Oscar-winning film starring his father Walter and Humphrey Bogart in a story of two penniless prospectors in lure of sudden wealth.

Friday & Saturday Double Feature
\$2 with ASU I.D. — \$3 without

Admission for fast show only & Sunday
Double Feature — \$1.50 w/I.D. — \$2 without

SPECIAL — Free admission for Darth Vader look-alikes.

Movie Information 965-5658

ASSOCIATED STUDENTS
OF ARIZONA STATE UNIVERSITY

SHOW US YOUR STUDENT I.D. YOU'LL GET A DINNER FREE!

This year we're doing it again! Every Sunday (but ONLY on Sunday). Mike Pulos of the Spaghetti Company will give you one FREE dinner* for each dinner you order! It's our 2 for 1 SUNDAY STUDENT SPECIAL. And it's good for the whole school year at both our Tempe and Phoenix locations.

Any day of the week, for lunch or dinner, The Spaghetti Company is known for a great meal at an affordable price. But the SUNDAY STUDENT SPECIAL

makes our already terrific prices even better! Our dinners include a full course meal with all the trimmings—from salad to dessert. So, dollar for dollar, when you're hungry and you need a break, you can't beat The Spaghetti Company! ESPECIALLY ON SUNDAYS! With 2 dinners for the price of 1! But you MUST have your student I.D. card with you to take advantage of this offer.



OPEN AT 12:00 ON SUNDAYS!

And, to make our 2 for 1 Sunday Student Special even more special, we're going to have HAPPY HOUR in the bar all Sunday long for students!

The Spaghetti Company RESTAURANT

PHOENIX
South on Central
Just Past McDowell
257-0380

Steak Di Jon, Stuffed Filet of Sole, Tenderloin, Chicken Picatta, Veal Marsala ARE NOT included in the 2-for-1 special.

TEMPE
4th Street and Mill
966-3848

Hoopsters face next step in tough northwest swing

By Tom Blodgett
Assistant sports editor

The ordeal is hardly over for the ASU men's basketball team after its game with Oregon State.

The Sun Devils (7-8 overall, 2-3 Pac-10 conference prior to last night's game with the Beavers) will face the University of Oregon tomorrow night in Eugene.

The Ducks are putting teams who visit the state into double jeopardy. No longer is Oregon State the only school with a good basketball team.

Under coach Don Monson, the Ducks are the most improved team in the league. They have jumped to a 4-2 start in the Pac-10, including a 62-51 upset of UCLA.

"Oregon's victory over UCLA has given them a great deal of confidence," ASU coach Bob Weinbauer said.

That's Oregon's best start in conference play since 1976-77. Their nine wins this season match their output of the last two seasons.

Monson is hoping his team will continue to become more consistent.

"Basketball is consistency," he said. "We need to play good offense and good defense longer than what we have."

"We're coming back home and it's important that we continue to play well there."

Oregon's offense seems to be doing well. The Ducks have a team shooting percentage of .548.

"Oregon has a high team shooting percentage," Weinbauer said. "That tells me they're taking high-percentage shots from steals on defense, back-door plays and lay-ups."

In contrast, the Devils have had trouble getting the ball to go through the hoop. Only three times this season — and at no time in conference play — have the Devils shot over 50 percent.

Five times this year the team's shooting percentage has dipped below 40 percent.

"Our team shooting percentage is discouraging, there's no doubt about that," Weinbauer said. "What's bewildering is that the type of shots we're getting are excellent."

"With very few exceptions, we're shooting from good spots on the floor. The ball just isn't going into the basket."

Weinbauer feels the problem may be the team's confidence.

"If we weren't getting shots in the players' range, then I'd say we're doing something wrong offensively. But that's not the case. It's strictly a confidence factor."

ASU will have to work especially hard against the Ducks to score. Oregon has held opponents to a field goal percentage of .448.

According to Monson, that just further helps the team's offensive success.

"You start the offense on the defensive end of the court," he said. "After we've rebounded the ball, we have to be thinking break."

The Ducks' primary weapon is 7-foot center Blair Rasmussen, an all-Pac-10 player.

"He's a very good offensive center, the best shooting-center in the conference," Weinbauer said.

Rasmussen leads Oregon in scoring at 16.1 points per game, and is second in rebounding at 5.5 per game.

Rasmussen also leads the conference in blocked shots with 1.6 rejections per game.

Joining Rasmussen in the frontcourt will be forwards David Brantley and Greg Trapp.

Brantley has provided steady support, averaging 11.5 points and 5.2 boards per game.

Trapp leads the Ducks in rebounding with an average of 5.6 caroms per contest.

Guards Gary Gatewood (10.1 ppg) and Chris Harper (10.2 ppg) help keep the scoring balanced between frontcourt and backcourt.

MAKE YOUR SHABBAT SPECIAL at HILLEL

Shabbat Dinner 6 p.m.
Friday, January 27
R.S.V.P. by Jan. 24
\$3.50 in advance, \$4.50 after Jan. 24.



SHABBAT SERVICES
at 7:30 p.m.

"AN ADVENTURE IN JEWISH MYSTICISM: ADAM, EVE, GOD, AND THE MATTER OF SEXUALITY"

with Larry Moses
Executive Director of the Bureau of
Jewish Education of San Francisco
8:30 p.m.

Hillel: 1012 S. Mill Avenue

Sue and Carter

May your life together be filled with happiness and the special feeling that only comes to those in love.

Congratulations on your engagement.

Best wishes today and always.

Love,
Caryn.

FOREIGN AUTO PARTS

Flint DISTRIBUTING

Parts & accessories for all imported cars and trucks



Student Discount With Valid I.D.

968-8687
IN THE TEMPE CENTER

OPEN MONDAY THRU SATURDAY

CASINO NIGHT

ROULETTE
BLACK JACK
POKER
CRAPS



SATURDAY
JANUARY 28
8 P.M.

Hillel:
Jewish Student Center
1012 S. Mill Ave.
Just south of 10th Street on Mill

ONLY \$2.50
for \$500 in Play Money and two free drinks.
Play all night and participate in Auction for great prizes.



We're cleaning out the 'Attic!

Cash in on Athletic Attic's First Annual Clearance Sale!

STARTS SAT., JAN. 28 thru FEB. 4

40% ON ALL WARM-UPS
(Nike, Adidas, Winning Ways)

25% ON ALL FLEECE
(Your Choice of Puma, Adidas & Nike)

20% ON ALL NYLON RUNNING SUITS
(We sell pants & jackets separately, too!)

30% ON DANCE & AEROBIC WEAR
(Including Danskin, Flexitard & Carushka)

ALSO 20% to 30% on Selected Running Shoes

Your East Valley's Specialists For All Your Running Needs

Southern Palms Shopping Center
3136 S. McClintock
(Next to Pier II)
820-3545
HOURS: Mon., Tues., Fri. 10-6
Wed., Thurs 10-8
Sat. 10-6, Sun. 12-5
VISA / MASTERCARD

MAZATLAN '84 SPRING BREAK with "COLLEGE TOURS"

7 DAYS — 7 NIGHTS \$188 3 DEPARTURE DATES
BY HOLIDAY TRAIN 600 STUDENTS EACH DAY

MARCH 9-16 • TRIP 3A MARCH 10-17 • TRIP 3B MARCH 11-18 • TRIP 3C

PRICE INCLUDES: Lodging (4 to a room) in beach front hotels (except two hotels, which are condominiums located one block from the beach • Round trip train transportation from Nogales to Mazatlan • Free cocktail party every night in Mazatlan (all you can drink for 1 hour — Free) • Free College Tours T-shirt • Coed tournaments and beach events (Best tan contest for guys and girls, Ladies wet T-shirt contest, Volleyball, Tug-of-war, Frisbee, and Soccer tournaments, Sand sculpting contest, Beer relay, Green Weenie race and Kamakazi race).

IF THERE ARE ANY OTHER TRIPS OFFERED TO MAZATLAN DURING SPRING BREAK, CHECK THEM OUT. THEY CAN'T COMPARE. YOUR COLLEGE TOURS I.D. CARD IS WORTH OVER \$150 IN EXTRA BENEFITS THAT OTHER TOURS CANNOT GET.

NOTICE!

ONLY "College Tours" students with their I.D. cards will receive these Extra Benefits.

- OPTIONS: A Sleeping cabin on the train — \$25 per person additional
B Oceano Palace or El Pescador Hotel — \$30 per person additional
C El Cid Hotel-Country Club — \$75 per person additional
D Two people per room in base package hotel — \$50 per person additional
E Two people per room in the Los Sabalos Hotel — \$100 per person additional
F Fly to Mazatlan

NOTE!!! This year ALL flight packages are 1 day and 1 night longer than last year.

Fly From Phoenix or Tucson March 9-16: \$329 (Same Price as Last Year) March 10-17: \$339 March 11-18: \$319 (\$10 Less Than Last Year)

FLY TO MAZATLAN FROM PHOENIX OR TUCSON AND SPEND TWO EXTRA NIGHTS IN MAZATLAN!

To insure your reservation, fill out the information below and send a \$25 non-refundable check or money order for train reservations or a \$50 non-refundable check or money order for airline reservations to COLLEGE TOURS, 4554 N. CENTRAL, SUITE 101, PHOENIX, AZ 85012. Phone number in Phoenix 263-8520.

NAME _____ PHONE _____
ADDRESS _____ CITY _____ STATE _____ ZIP _____
ROOMMATES 1. _____ 2. _____ 3. _____
TRIP 3-A (MARCH 9-16) _____ TRIP 3-B (MARCH 10-17) _____ TRIP 3-C (MARCH 11-18) _____
Check options desired: A. Sleeping Cabin _____ B. Oceano or El Pescador _____ C. El Cid _____ D. 2 per room, base hotel _____ E. 2 per room, Los Sabalos _____ F. Fly to Mazatlan: Fri. _____ Sat. _____ Sun. _____ Phoenix _____ Tucson _____
Please write trip number on check.

COLLEGE TOURS is a Division of CERVENIK-ANDERSON TRAVEL, INC.

ASU

AIM HIGH ELECTRICAL ENGINEERS AERONAUTICAL ENGINEERS

If you are an Electrical or Aeronautical Engineering Senior or Graduate with a 2.3 GPA or higher, you may be eligible to join America's Leading Edge of Technology as a member of the Air Force's Science and Engineering Team.

As an Air Force Engineer you will enjoy the opportunity of working with the highest quality technological programs available.

Air Force Engineers receive competitive salaries, managerial responsibilities, as well as numerous Air Force benefits including 30 days of vacation with pay each year, complete medical and dental care - and much more.

Contact your Air Force Representative today.

SSGT Kathy O'Mahony
2020 S. Mill Ave., Suite 115
Tempe, AZ 85282
(602) 261-3740



O'Toole's Pub

An Experience!

This Weekend Try The "New" O'Tooles! Never A Cover

Try Tempe's Newest and Most Exciting Happy Hour! Friday and Saturday 4 til 8 p.m. Great Drink Specials and Free Munchies!

The New "Back Bar" is open! Grand Opening Special A Shot and draft Budweiser \$1.00 This Friday and Saturday Only! 8 til 10 p.m.

1123 South Rural Road
Tempe, Arizona



SHOP FOR
YOUR BIKE
WHERE YOU
GET THE
BEST SERVICE
AS WELL AS
LOW PRICES

Stop in and see
for yourself —
you will be
pleasantly
surprised!

COLLEGE CYCLE
Serving ASU since 1946
909 E. Lemon (Across from Snow)
966-0842

BACK TO SCHOOL SALE!

COPIES 2 1/2¢

SELF SERVE COPIES

4 1/2¢ FULL SERVICE COPIES

(Offer applies to white, 8 1/2 x 11, 20 lb. bond only.)

Professors — Ask about Professor Publishing Service.

kinko's copies

University and Forest

894-9588

Hours: M-F 7 a.m.-8 p.m.

Sat. 9 a.m.-6 p.m.

Sun. 10 a.m.-6 p.m.

and at our Mesa store

1840 W. Southern

969-3326

Offer expires Jan. 31, 1984.

*Binding *Color Copies *Kroy Lettering *Self-service Typewriters

Dev aga

By Steve R
Contributin

The com
weather a
people, bu
team sprin
tions of r
another Co

The road
Not only v
tional cha
second-ran
nial nation

But for
terested in
ty ranking
club's fir
at 1 p.m.
ASU alum

While t
the team
alumni th
play a "f
this year'

ASU's c
lead the

Devils to unveil 1984 edition against alumni team Saturday

By Steve Richman
Contributing writer

The coming of spring means beautiful weather and hours of relaxation to many people, but to the No. 1-ranked ASU baseball team spring brings the hopes and aspirations of returning to Omaha, Neb., for another College World Series.

The road to Omaha will be long and hard. Not only will the team face defending national champion Texas, but it will also face second-ranked Oklahoma State and perennial national power Southern Cal.

But for now the Devils are more interested in getting ready to support their lofty ranking. That support will begin with the club's first game of the year this Saturday at 1 p.m. at Packard Stadium against the ASU alumni team.

While the alumni game is not included in the team's final record, it does give the alumni the chance to see old friends and play a "friendly" game of baseball against this year's version of the Sun Devils.

Due to the possibility of conflicting commitments with the alumni, ASU officials currently are unsure of who will be playing this year.

But if last year's game was any indication, there should be plenty of familiar faces on the field.

The 1983 game, which marked the 25th anniversary of the contest, featured such major-league players as the Los Angeles Dodgers' Ken Landreaux, Floyd Bannister of the Chicago White Sox and Hubie Brooks of the New York Mets.

In that game, the alumni built a large early lead and then held on for a 9-8 victory.

The alumni game is considered more of a showcase for past and present players than a contest to be won or lost.

According to Sun Devil coach Jim Brock, the alumni game is important because it is the "first opportunity for the team to play before a crowd." Also, it will prove to be a test of how well the team will play under game conditions.




Staff photo by David Petkiewicz

ASU's Oddibe McDowell, who is perhaps the nation's finest collegiate baseball player, will lead the Sun Devils against their alumni on Saturday.

Call for daily specials


MIKE KWAN'S GOLDEN COIN
Chinese Buffet
1125 E. Apache Blvd.
Tempe
968-3322



Menu Includes:

Sweet and Sour Pork Lemon Chicken Smoked Fish Shrimp Almondine Pepper Steak	Teriyaki Beef Steak Sweet and Sour Almond Turkey Chicken Chow Mein BBQ Spare Ribs Egg Rolls	Ham Fried Rice Beef with Broccoli Teriyaki Chicken Vegetarian Steak Egg Fu Young
---	---	--

WE SERVE BEER & FRUIT COCKTAIL

 •LUNCHE• 11 a.m.-3 p.m. \$3.33	Change in Food Selection Daily	•DINNER• 5 p.m.-9 p.m. \$3.77
---	-----------------------------------	---

THE WAREHOUSE DELI

"Good Food and Drink"

Estab. 1975

<p>SPECIALS LUNCH & DINNER MON.-FRI. 10:30-7 p.m.</p> <p>Sandwich with Homemade Fries Small Drink or Beer</p> <p style="text-align: center;">ONLY \$1.99</p>	<p>WATCH THIS SPACE FOR OUR NEXT "SUPER" SPECIAL</p>	<p>HAPPY HOUR MON.-FRI. 10:30 a.m.-7 p.m.</p> <p>IMPORTS — 94¢ DRAFT BEER Pitcher Glass \$1.99 49¢</p> <p>WINE ½ liter Glass \$1.99 49¢ WINE COOLER Pitcher Glass \$2.75 65¢</p>
--	--	--

BREAKFAST 6 a.m.-10:30 a.m. Mon.-Fri.
99¢ — SUPER SPECIAL — 99¢

Also Featuring "THE LITE WAIT"
One Egg, 2 Bacon or Sausage,
Toast, Butter & Jam **\$1.29**
Coffee Included

LIVE ENTERTAINMENT NIGHTLY
(No Cover, No Min.)
130 E. UNIVERSITY DR.
AT FOREST
966-7788 — TEMPE, AZ
Your Hosts: "The Family"

WELCOME BACK!

Now Serving Cocktails

Join us for **HAPPY HOUR M-F 4-7**
Featuring Premium Well Drinks
\$1.25
and Pitchers of Bud & Bud Light
\$2.75

125 E. 5th St. in Old Town Tempe

INTRODUCTORY OFFER... \$13.95 PER SET

DORM DUDS™



- WEAR-TO-CLASS
- PAJAMAS
- JOG WEAR
- LOUNGE WEAR
- DORM WEAR
- CASUAL WEAR
- PLAY-IN
- WORK-IN
- BEACH COVER-UPS

Great Gift Idea!

AUTHENTIC O.R. SCRUBWEAR
— COMFORTABLE, LOOSE-FITTING —
50/50 BLEND (Cotton & Polyester)

DORM DUDS™ for only \$13.95 per set... 2 sets for \$25.00
Order two sets to **MIX & MATCH**

	XS	S	M	L	XL
Women	6-10	12-16	18-20	42-44	46-48
Men	32-44	36-38	40-42	44-46	48-50

COLORS: Green, Pink, Blue, Red, Yellow

PLEASE INDICATE PREFERENCE

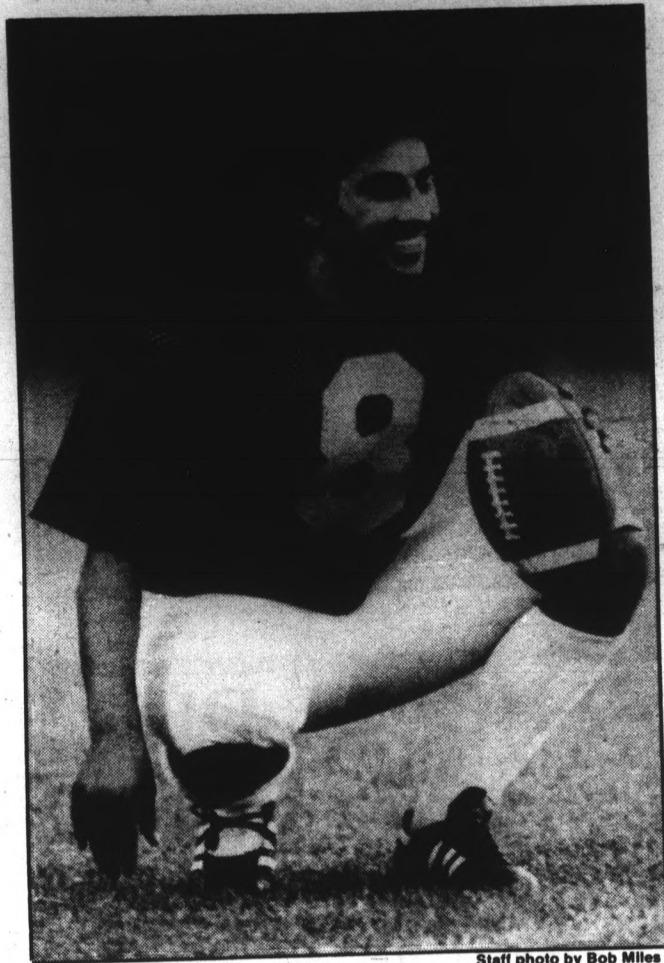
SIZE: _____ COLOR: _____

WOMEN _____ WOMEN _____
MEN _____ MEN _____

Name _____
Address _____
City _____ State _____ Zip _____

Send check or money order to: (Price includes postage and handling)
SURGICAL CORP. OF AMERICA
34 EVANS TERMINAL ROAD • HILLSIDE, NEW JERSEY 07205

New NCAA touchback rule a mistake



Staff photo by Bob Miles

ASU kicker Luis Zendejas will have to hold back on his kickoffs next season. The NCAA has passed legislation which will bring the ball out to the 30-yard line on some touchbacks.

Jay Taylor
Sports Editor



What (if anything) the NCAA Football Rules Committee was thinking of when it made its yearly rule changes recently is not easy to figure out — possibly even for it.

In one of the most senseless rule changes in recent memory, the NCAA has changed the touchback rule on kickoffs.

Before the change, as we all know, any kickoff that was downed in the end zone or kicked out of the end zone was brought out to the 20-yard line. It was always a good rule, and there was absolutely no reason whatsoever to change it.

So the NCAA, in its infinite wisdom, changed it.

Now the rule states that any kickoff that travels beyond the end zone on the fly will be brought out to the 30-yard line instead of the 20.

The committee, made up of athletic directors and coaches from all NCAA divisions, has made a big mistake.

Why on earth would it institute a rule that in effect penalizes a team for having an outstanding kicker — like the Sun Devils' Luis Zendejas — who can consistently kick the ball out of the end zone?

And that is exactly what this new rule does.

Having a kicker who can kick the ball 70 yards is no longer an advantage, it's a disadvantage. It costs a team, in effect, a 10-yard penalty for having a player who is too good.

Next year, rather than let their kickers boom the ball out of the end zone and know the opposing team will start with poor field position, coaches must now tell their kickers to kick

shorter and risk runbacks.

According to Mike Earle of the NCAA office, the committee instituted the change "in order to get the kickoff back into the game."

He said the committee debated at length what to do in order to achieve this lofty goal, and came up with the 30-yard solution.

In doing this, it ignored the most sensible and logical choice — moving the spot of the kickoff back from the 40- to the 35-yard line.

Earle said the committee decided not to do that because it would penalize the division IAA, II and III schools who don't have kickers like Zendejas who can kick the ball out of the end zone.

It also didn't like the idea of a team trying an onside kick having to give the ball up in its own territory.

Any difference in this area is more psychological than strategic. If a team tries an onside kick, it is already in a desperate situation. If the other team recovers, the kicking team is sunk, whether the recovery comes at midfield or the 45-yard line.

The rule should not have been changed in the first place, but if it had to be changed, the spot of the kick should have been moved back to the 35.

There are few kickers even in the professional ranks who can kick the ball 75 yards. Moving the ball back would bring the kickoff back into the game very effectively and eliminate an absurd rule.

Moving the spot of the kickoff back has been very effective in the pros. Most of the kickoffs are returned, and those that aren't and do sail through the end zone come out to the 20-yard line, where they are supposed to.

Hopefully, the NCAA will realize the mistake it made, and reverse it as it did with the two-shot foul rule in basketball.

If not, it will be a long time before most people get used to the sight of touchbacks being brought out to the 30-yard line.

ADOPT ADULT announces **FREE**

THE ULTIMATE GIFT: YOU

GIVE SOMEONE SPECIAL THIS HUMOROUS, YET REALISTIC, 8-X-14" ADOPTION CERTIFICATE AND MAKE IT "OFFICIAL": "I'M ALL YOURS!" TO RECEIVE YOUR **FREE** ADOPTION CERTIFICATE, SIMPLY CLIP AND MAIL TO: DELI-POON-JAB PRODUCTIONS, P.O. BOX 34722, PHOENIX, AZ. 85067

NAME _____
ADDRESS _____ STATE _____ ZIP _____
CITY _____

PLEASE INCLUDE \$2.00 FOR POSTAGE AND HANDLING

Custom Printed T-Shirts
FACTORY DIRECT

● Sororities
● Fraternities **967-2127**
● Clubs

UNIVERSITY SCREEN PRINT
807 S. Ash, Tempe
Official Supplier Greek Week '83

THE MEN OF
KAPPA SIGMA FRATERNITY
cordially invite you to our

Little Sister Rush

Thursday, Jan. 26 • 8:30 p.m.
Beverage & Cheese Party
(Dressy attire)

Friday, Jan. 27 • 4 p.m.
Volleyball & Bar-B-Q
then
Boondocker at 9 p.m.

For ride or more information
967-9688

THE ONLY THING BETTER THAN BEING AT THE TOP OF YOUR CLASS... IS TO BE IN A CLASS BY YOURSELF.

At Silicon Systems incorporated, we clearly stand alone (in a class by ourselves), as the nation's #1 independent designer and manufacturer of application specific integrated circuits. Our phenomenal growth and success is attributed to the bright, eager minds we've assembled to rocket us to our leading position.

From our new 15,000 square foot Wafer Fab facility (truly in a class by itself) to our outstanding people, we offer an environment where careers are fostered and developed to maximize each employee's full potential.

You are about to step out of the classroom setting, but your learning won't end there. Through our unique training program, you will be exposed to all major areas, that will enable you to have a full scope of the workings of our Company.

We will be conducting campus interviews on **Monday, February 13, 1984**. Please make arrangements with the Placement Office to schedule an appointment.

Consider Silicon Systems incorporated, and place yourself in a Class above the rest.

silicon systems
INNOVATORS IN INTEGRATION
Equal Opportunity Employer M/F

State Press

The STATE PRESS... ability for quality... and services off... and display ad... isers.

Annou

WANTED: SMO... and make extra

VOL

DELI
Served
12

1012
Small c

Auton

1967 AUSTIN
Complete. A C

1972 FORD F
new tires. \$
968-3259.

1973 MAVER
excellent co
offer. 1977 D
new clutch,
tion. \$850 or

1978 DODGE
new paint a
offer. 968-20

Bicyc

3-SPEED \$
Schwinn Be
5-speed Cru

LADIES 10
Silver gray
condition.
967-0864.

Book

BUY your book
quality of
textbooks
re-sale pr
in credit
purchase
(Sorry, no
Browse th

•New
•Art
•Calc
•Han

M-F 10-9
CH

414 Mill A

Busi

ATTENTIO
tunities,
products.
enthusias
50%; wo
appt. cal
9-3:00.

SSS

H

H

The STATE PRESS disclaims all responsibility for quality and prices of goods and services offered in both classified and display advertising by its advertisers.

Announcements

WANTED: SMOKERS who want to quit and make extra money. Call 941-2199.

VOLLEYBALL and DELI - LUNCH
Served Thursdays
12 Noon at
Hillel
1012 S. Mill Ave.
Small charge for lunch.

Automobiles

1967 AUSTIN - HEALY, 3000 Mark III. Complete. A classic. \$5,500. 948-9688.
1972 FORD Pinto very good condition, new tires. \$900 or best offer. Call 968-3259.
1973 MAVERICK, 2 drive, 68,000 miles, excellent condition. \$1200 or best offer. 1977 Datsun B210, 98,000 miles, new clutch, good second transportation. \$850 or best offer. Call, 968-3406.
1978 DODGE Colt, runs good, 25 mpg, new paint and interior. \$1900 or best offer. 968-2056.

Bicycles

3-SPEED \$50, Schwinn Varsity \$80, Schwinn Beach Cruiser \$85, Schwinn 5-speed Cruiser \$150. 968-8944.
LADIES 10-SPEED Univega bicycle. Silver gray. New gears. Excellent condition. \$100, obo. Call Ingrid, 967-0864.

Books

BUY • SELL • TRADE
your books at Changing Hands. For quality cloth and paperbacks (no textbooks, please) we pay 30% of our re-sale price in cash or 50% in trade-in credit which may be used to purchase anything in the store. (Sorry, no trade-ins on Sat. or Sun.)
Browse through our three floors of:
•New & Used Books
•Art Prints & Posters
•Calendars & Cards
•Handbound Journals
M-F 10-9 SAT 10-6 SUN 12-5
CHANGING HANDS BOOKSTORE
414 Mill Avenue 968-0203
Old Town Tempe 1/27

Business Opp.

ATTENTION STUDENTS sales opportunities. "First Class" body care products. We're looking for bright enthusiastic people, start out earning 50%; work your own schedule. For appt. call 946-1446 or 949-9491 M-W 9-3:00.

For Rent or Lease

FOR RENT, two bedroom condominium. "Scene One", Pool-spa. 1/2 mile from ASU. Call 991-2868.
FURNISHED ROOM and bath in private home. Two miles from ASU. For young lady, share home and cleaning with widow. Your own food and telephone. \$25 per month. 967-1027.
NEW 2 bedroom, 2 bath near ASU. \$50 move in allowance, \$389 per month. 992-9330.
SCOTTSDALE. THREE bedroom, one bath furnished townhouse. Washer, dryer, pools. \$450. Call Mardi Markwell, 954-5919 or 938-5563 evenings.

TWO BEDROOM, two bath 2 1/2 miles south ASU. Private villa. Faculty, staff only. 967-7917 after 5:00.
TWO BEDROOM 1 1/2 bath condo plus loft, one study. Partially furnished. Dobson Ranch area. Available February 1. Call, 253-9014 evenings and weekends.

For Sale

ATARI 800, (48K), program recorder and basic software, \$325. 965-3982, 993-9521 after 6:00.
CALIFORNIA COOLERS \$2.99, Meister Brau \$1.89, Fratelli Bianco \$1.99, Old Playboys 47 cents, imported beers, cold wines, Rundle's, University and Mill.
DIGITAL DECWRITER II hardcopy terminal. Includes modem, basket, side shelf. Excellent condition. \$600, obo. Call Ingrid, 967-0864.
DURAN DURAN tickets. Two on main floor. Row 15, center stage. Make an offer. 965-9791.
MARY KAY Cosmetics all products consultant cost moving sale. 969-0320, evenings.

ONE TICKET for Broadway Musical, "Evita" Friday, January 27th. Excellent seat, Grand Tier. \$17.50. 965-3394 or 834-1099.
TWO ROUND trip coupons via Continental Airlines to any of its destinations only \$150 each. Some restrictions. Call for information. 834-8188, Earl.
WATERBED WITH padded sideboards, liner, heater, two sets of sheets. \$100. Chris, 965-4644 before 4:00.
WHOLESALE, ONE carat diamond, VS-1 quality, \$2,500; 5/8 carat diamond earrings, excellent condition, \$700; 1/4 carat diamond solitaire pendant, \$275. Call Kurt, 894-8594.

Furniture

ATTENTION APARTMENT dwellers! Furnish your entire apartment for less than \$800. Classic Consignment Anniversary Sale, 1874 E. Apache, Tempe. 966-8041.
HUGE SOFA sleeper sale. Fulls and queens from \$199.99. Double bed \$79.95. Dinette set \$139.95. Sofa and loveseat \$269.95. Furniture Plus, 666 E. Southern, Mesa. 898-3124.

USED APARTMENT furniture, excellent condition, low prices, best offer. 967-6143.

Help Wanted

PART-TIME SALES help wanted immediately. Need car. 8:30 a.m. to 5:30 p.m. Call, 266-9060.

Help Wanted

ACCOUNTING MAJOR. Phoenix advertising agency seeks accounting major, part-time, to do billing, receivables, payables, general ledger, payroll - all on computer. Prefer graduating senior or graduate student who has own transportation and can work at least 15 hours per week. Send resume and letter to: Lambesis and Associates, 5150 North 16th Street, Suite B232; Phoenix, AZ 85016. No phone calls, please.

ACTRESSES, STUDENTS, models. Wanted for part-time fun work as Buffalo Rick's Wild West Saloon Girls. Call Connie or Peg, 945-8157 or 992-4578.

AIRLINES ARE hiring! Flight attendants, reservationists! \$14-39,000. Worldwide! Call for directory, guide, newsletter. (916) 944-4440 ext. ASUAIR.
CRUISESHIPS ARE hiring! \$16-\$30,000! Caribbean, Hawaii, world. Call for guide, directory, newsletter 1-(916) 944-4440 ext. ASUCRUISE.

IN THE Army Reserve our toughest jobs come with either a \$2,000 enlistment bonus or up to \$4,000 in educational assistance (after completion of Army training). Besides the bonus you'll earn over \$73 one weekend a month. And over \$1,100 per summer your first two summers (your initial training). There are limited openings in various fields including Administration, supply, transportation. Call your local Army Reserve Recruiter today to see if you qualify for a bonus. In Tempe 967-1611. Phoenix 265-1955. 249-2320, 965-0376.

LIQUOR SALES clerk 25-35 hours weekly, hours flexible. Must be mature and well groomed specializing in wine sales. No experience necessary. Nice North East Phoenix shopping center. 5031 N. 16th St. Apply 10:00-4:00 Tuesday, Thursday and Friday. 10:00-12:00 Monday and Wednesday.

MODELS: MICHELLE'S swimwear, 414 Mill Ave. Apply Monday through Friday, 3:30 - 8:00, 11:00 - 6:00 Saturday.
MULTI-TALENTED person with Humanities background. Tasks will vary: research, typing, dictation to household chores. 10 to 15 hours a week. Put typed resume and qualifications in campus mail addressed PEBE 107B... soon.

PART-TIME JOBS! \$200 - \$400 week. 5:30 to 8:30 p.m. weekdays. Week-ends: afternoons. Jack 894-6126.
PART-TIME ILLUSTRATOR with layout and paste-up experience. Scottsdale airport area. 968-9455.

PART-TIME MAIL order business from your home, minimum investment \$20. No inventory requirement. Send self stamped addressed envelope for free information. Tara products, 4435 S. Rural, Suite 151, Tempe, AZ 85282.

PART-TIME AIDE desired. Call 243-1715, ASAP. Salary negotiable.
STUDENT JOBS. Let us pay your tuition! Part-time work. \$110 - \$290 per week. 966-0874. 12-3 only.

STUDENT to help clean office building. Two to three hours, five nights weekly in Mesa. Call, 835-6950 ask for Kathy.

SUMMER JOBS. National Park Co's. 21 parks, 5000 openings. Complete information \$5.00. Park Report. 651 2nd Ave. W.N., Kallapell, MT 59901.

THE MOLLY Corporation is looking for fun, energetic and personable part-time driver tour guides. For more information call 941-2957.

TRAVEL FREE. Why pay for your spring break trip when you can go with your friends free! Be a rep for your College Travel Club! Call 966-9557 or 998-8971.

SENIOR NURSE STUDENTS ADVENTURE... CHALLENGE... PROFESSIONALISM!

An exciting job with opportunities for world-wide travel, career development, professional growth, excellent benefits. BSN graduates or senior students are eligible. If you're going to be someone, special... Be a Navy Nurse!
For more information, call collect (602) 256-7632 between 9 a.m.-5 p.m. Mon.-Wed. 1/31

Help Wanted

WANTED: CREATIVE, energetic individual to work consistently 2-4 hours per week, placing and filling posters on campus. Earn \$500 or more each school year. 1-800-243-8679.

YMCA CAMP in Oracle is looking for students to work at camp this summer. Good salary, plus room and board. Write or call Mr. Tom Dinkins, 516 N. 5th Avenue, Tucson, AZ 85705, 884-0987 for information and applications.

Instruction

CLASSICAL GUITAR lesson by ASU music graduate. Close to campus. 967-5112.

SELF DEFENSE Traditional Taekwondo, (Korean Karate). Personalized instruction. Very effective, very affordable. 894-5389.

TENNIS LESSONS, beginner through advanced intermediate. Satisfaction guaranteed. Call now for details. Bob 967-8918(H), 967-4700(W).

Lost & Found

Friday FREE Lost and Found FOUND

PSYCHOLOGY BOOK found in bookstore parking lot. Call Jim at 829-8247.

LOST

LOST GIRLS watch. Surtime with pink band. If found please call, 829-9229 mornings and evenings.

Courtesy of:
WESTERN SAVINGS
The foresight people.

Motorcycles

1980 HONDA Express Moped, only 1100 miles, runs the same as when purchased, Great! Baskets included, only \$265. 100 mpg. Gary, 964-7857.

1981 KAWASAKI 750 LTD sharp! Clean, good rubber, only 7,100 miles. \$1,495, OBO. Paul, 966-0503.

1982 SUZUKI SP250 dirt/ street bike. Full floater, rear suspension, 80 mpg. 1,400K. \$1,090. Mark, 894-5410.

MOTORSCOOTER, HONDA Urban Express. Brand new. Must sell. \$775. 70 mpg, economical. Helmet included. 831-0840.

MUST SELL this week, 1982 KZ550. Excellent condition, new tires, chain, battery. \$1,500, offer. Tom, 994-8388.

Personal

BLACK GLOVES, skinny ties, rhinestones, jackets, leather belts, and more at the Hob-Nob Thrift Shop located 221 W. University.

ENOUGH DIETING? Personal counseling does cure eating disorders. Find out what you really want in life. Licensed Psychotherapist, fifteen years experience, recovered bulimic, published specialist in the treatment of bulimarexia and anorexia. Ginnie Monroe 945-7391.

JOANNE, HAPPY Birthday. I love you today, tomorrow - forever. Remember what Michael J. says - "You will always be the lady in my life". Spark.

PERFECT LOVER certificate. Official, 8 1/2 x 11, frameable. Send name and \$3.00: Perfect Person Institute, Box 221, Glendale, AZ 85311.

PRIVATE ADOPTION may be the solution to your unplanned pregnancy. Childless professional couple from California wants to adopt an infant and will pay all related expenses. Call collect 213/831-9540.

Help Wanted

HELP WANTED: PART-TIME EVENINGS
National Marketing Company has openings for sales-minded people interested in part-time employment. Openings are available on the evening and weekend shifts. Our sales people work in a modern, comfortable business environment contacting established customers on long distance WATS lines. Earnings, which include salary and bonus, average \$4-\$6 per hour, paid weekly. These are permanent positions with no seasonal layoffs. If you have a good, clear speaking voice, proper grooming for a business office, enthusiasm and competitive spirit, our experienced management team will train you to sell our nationally recognized products (while being paid, of course). Our Tempe office is located approximately five minutes from campus.
Please call DIALAMERICA for details. 829-1140 1/31

Personal

AVID BOARD gamer seeks players with Strat-O and APBA experience. John, 277-4652 after 7:00 p.m.

SAVE BIG money! Use your SunSaver Coupon Book. To get your free copy call 253-6120.

SKI VAIL / Beaver Creek, call toll free 1-800-222-4840 or consult your travel agent for discount rates on lodging, lifts and rentals.

THE HOB-NOB Thrift Shop is now open Sundays 12:00 - 4:00. 221 W. University.

Real Estate

AFFORDABLE HOUSES, townhouses, foreclosures. Why rent? Invest! For information call Mrs. Topper, 948-2825. John Hall and Associates, 948-0550.

CHARMING TWO bedroom with garage. Beautiful secluded yard. Bike to ASU! Great terms. Assume without qualifying. \$59,900. Radmull Ramney ERA, 994-3939 or Janell, 994-1312.

COZY, SHARP two bedroom, two bath home with pool privileges. Appliances included. Asking \$54,900. Evenings, Ray, 838-2631. Red Carpet Weary, 968-3414.

FOR SALE on Dobson Road near Southern, nice townhouse. Good for student living and investment. \$44,600. Community pool. Neria, ERA - American ERA, Realtors, 838-4950.

NEAT, CLEAN two bedroom single level villa near pool. Perfect for retirement or beginners. \$51,900. Evenings, Chris, 838-2646. Red Carpet Weary, 968-3414.

RETIRED PROFESSOR'S home. Custom three bedroom home. One mile from ASU in serene setting. Full library edition, fireplace, mature fruit trees. Only \$99,500. Terms preferred. Evenings, A.J., 829-0505. Century 21, Southland, 964-7770.

TEMPE TOWNHOUSE. Two story, three bedroom, 1 1/2 baths, breakfast bar, community pool, tennis. \$64,900, OWC with \$3,995 down. Martha, 831-7032.

THREE BEDROOM home with fireplace near ASU. Large yard. Priced at \$48,900. Evenings, Ray, 838-2631. Red Carpet Weary, 968-3414.

TWO BEDROOM furnished mobile home 10x45, full length awning. \$4,000 cash. Children welcome. 967-5152.

TWO BEDROOM furnished mobile home 10x45, full length awning. \$4,000 cash. Children welcome. 967-5152.

TWO BEDROOM furnished mobile home 10x45, full length awning. \$4,000 cash. Children welcome. 967-5152.

TWO BEDROOM furnished mobile home 10x45, full length awning. \$4,000 cash. Children welcome. 967-5152.

TWO BEDROOM furnished mobile home 10x45, full length awning. \$4,000 cash. Children welcome. 967-5152.

TWO BEDROOM furnished mobile home 10x45, full length awning. \$4,000 cash. Children welcome. 967-5152.

TWO BEDROOM furnished mobile home 10x45, full length awning. \$4,000 cash. Children welcome. 967-5152.

TWO BEDROOM furnished mobile home 10x45, full length awning. \$4,000 cash. Children welcome. 967-5152.

TWO BEDROOM furnished mobile home 10x45, full length awning. \$4,000 cash. Children welcome. 967-5152.

TWO BEDROOM furnished mobile home 10x45, full length awning. \$4,000 cash. Children welcome. 967-5152.

TWO BEDROOM furnished mobile home 10x45, full length awning. \$4,000 cash. Children welcome. 967-5152.

TWO BEDROOM furnished mobile home 10x45, full length awning. \$4,000 cash. Children welcome. 967-5152.

TWO BEDROOM furnished mobile home 10x45, full length awning. \$4,000 cash. Children welcome. 967-5152.

TWO BEDROOM furnished mobile home 10x45, full length awning. \$4,000 cash. Children welcome. 967-5152.

TWO BEDROOM furnished mobile home 10x45, full length awning. \$4,000 cash. Children welcome. 967-5152.

TWO BEDROOM furnished mobile home 10x45, full length awning. \$4,000 cash. Children welcome. 967-5152.

TWO BEDROOM furnished mobile home 10x45, full length awning. \$4,000 cash. Children welcome. 967-5152.

TWO BEDROOM furnished mobile home 10x45, full length awning. \$4,000 cash. Children welcome. 967-5152.

TWO BEDROOM furnished mobile home 10x45, full length awning. \$4,000 cash. Children welcome. 967-5152.

TWO BEDROOM furnished mobile home 10x45, full length awning. \$4,000 cash. Children welcome. 967-5152.

TWO BEDROOM furnished mobile home 10x45, full length awning. \$4,000 cash. Children welcome. 967-5152.

TWO BEDROOM furnished mobile home 10x45, full length awning. \$4,000 cash. Children welcome. 967-5152.

Services

CARS AVAILABLE - 21 or older. All States Drive-away, 992-5200.

HAVE UNWANTED facial or body hair removed permanently by electrolysis. Free consultation. Located in Tempe. Call Sharon, Desert Electrolysis Center 839-1885.

RESIDENCY SERVICE helps cut red tape. No fee until in state status granted. References. Ask for Lee, 863-0273.

TIRED OF being ripped off on auto repair? Guaranteed, expert work done by professionals. ASU area. Dennis, 820-0094.

Travel

ARIZONA MOUNTAIN Inn, Flagstaff. Cozy, custom cottages in the pines. Kitchens, fireplaces, one to five bedrooms. Winter wonderland specials, ski packages. 1-774-8959.

CHINA - HONGKONG - Japan; 22 days. Dr. Roger Axford, 839-3255, July 15 - August 8, 1984, \$2995.

Typing

\$1.50 PER page, 10% cash discount. Rush service, call Cindy (formerly Business Office Service) 829-8450.

A-1 RESUMES, repetitive cover letters. Professional, typeset appearance. Cynthia Grant, 968-3627.

AAAAH. FORMER secretary desires all types of typing. Location Southern and Rural. Fran, 838-8027.

ACCURATE, FAST, experienced typist. IBM Selectric \$1.25 per page. Dis-sertations, theses, legal briefs, APA format, our specialty. Call Sharon 833-5687 or Teresa 962-0079.

ACCURATE TYPING, downtown near Fifth on Mill. Quick, quality typing, graphics. Call 24 hours. 941-7099, 894-5234.

ACCURATE TYPING University and Dobson area. 964-3784.

ALWAYS AVAILABLE for typing at \$1.25 per page. Call Susan at 833-0373.

A-PLUS Typing. Term Papers, Resumes, securities and finance papers a specialty. Papers completed on Electronic memorywriter. Call Judy 839-0401.

A TOP-NOTCH secretarial service. Quality typing of word processing, IBM equipment. 20 years experience. McKellips / Scottsdale roads. Dana 941-5111.

AT YOUR service, University and Mill area. Quality typing to your Specs. Keyboarding Lab, 968-7111.

CONVENIENT to campus. Fast, friendly, fair, professional typing and graphics. Call 24 hours, 894-5234.

FAST, ACCURATE typing, \$1.25/page. Call Teresa at 962-0079 or Linda at 969-5775, elite typing available.

FORMER LEGAL secretary types term papers, manuscripts, letters, resumes, takes dictation. Minor editing. Margie, 994-3759.

JOH-REE SERVICES. Typing, word processing, term papers, reports, resumes, letters. \$1.25 double spaced page. Call Marie anytime, 966-4786.

MANUSCRIPT TYPING in my home. Phone 997-1123, Jean.

NORTHEAST MESA, Professional word processing. Letter quality printer. Cassette transcription. Experienced editor. Reasonable rates. 981-3531.

NORTHWEST PHOENIX, quality typing. Theses, dissertations, research projects. 938-3397.

PROFESSIONAL QUALITY word processing. Will edit and correct spelling. Carolyn Douglas, 838-0959.

STUDENTS. TYPING done in my home. Reasonable rates. Call Marian at 945-1619.

TYPING BY Paper Impressions - resumes, reports, letters etc. Electronic memory typewriter, cassette transcription. Reliable, fast accurate. Pick-up / delivery on campus. Call Darlene 831-2080.

WORD PROCESSING, typing. Can type anything. Guaranteed word perfect. Located in Tempe. 839-3412.

X-CELLENT QUALITY on correcting typewriter; editing, dissertations, theses, etc. Begin \$1.35. Northwest Mesa. Leah, 962-1059.

Wanted

CASH FOR color TV's needing repair. Will pickup. Call, 968-4042.

INDIVIDUALS THAT have experienced Anorexia Nervosa and are working toward recovery, ASU graduate students would like to speak with you for research purposes. Confidentiality is respected. Please contact Brian at 968-8962 or Stacey at 966-3472.

PAYING CASH for gold, silver and diamonds, class rings. Mill Avenue Jewelers, 414 S. Mill Avenue.

WANTED SENIOR marketing student. Let us be your first client. Call 941-2199.

TV'S SSSS CARS SSSSSS SSSS WATCHES SSSSS SSSS

MONEY TO LOAN!
FOR ANYTHING THAT DON'T EAT
BARGAIN PRICES ON UNREDEEMED PLEDGES
SEAT SURGEON PAWN
966-1199
1885 E. APACHE @ TEMPE @ 1/4 MI. E. of McChinch 82228

SSSS MUSICAL INSTRUMENTS SSS STEREOS SSSS

WALK-INS WELCOME!

Head Lines
HAIR STYLING SALON

31 EAST NINTH STREET
TEMPE CENTER
967-3722

WELCOME BACK SPECIAL
Zoto's Perms
\$29.00
Reg. \$35 and up
Expires Feb. 28, 1984.
With this coupon.
Long hair extra.

We Simply Serve Up The Best Friday Happy Hour D'oeuvres & Drinks In Town



FEATURING 2 FOR 1 WELL & WINE & 75¢ DRAFTS
ALSO

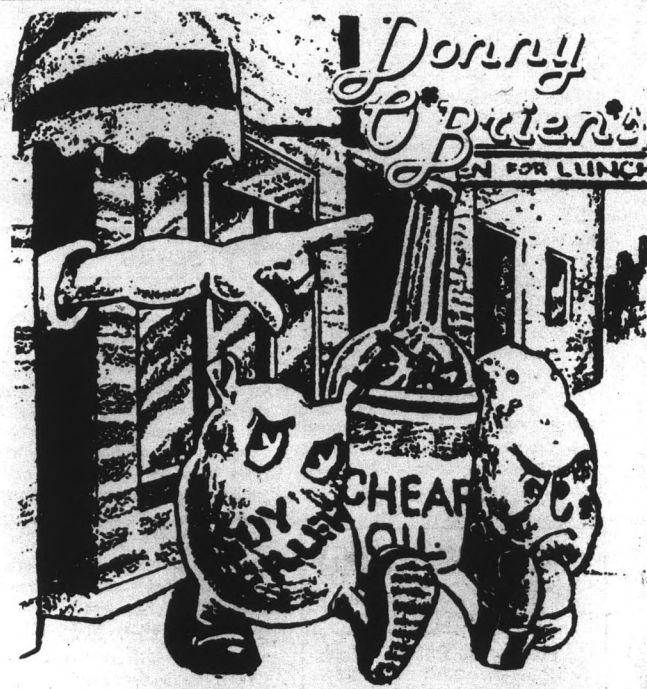
- Honey Glazed Baked Ham
- Homemade Potato Salad
- Sun Deviled Eggs
- Spicy Chicken Wings
- Fresh Relish Tray
- Crisp Cheese Nachos

THE FUN STARTS AT 4:00. BE THERE!

Donny O'Brien's has purchased the rights to Authentic Chicago Stuffed Pizza. Our pizza is skillfully prepared from authentic old Italian recipe and is made to order.

968-0527

This Saturday bring your date down for pizza & afterwards party down in our bar to the latest rock videos and wildest light show around.



INGREDIENTS USED IN MOST PIZZAS/
NEVER MAKE IT THROUGH OUR DOOR!

Chicago Stuffed Pizza

Try Our:

HOT CHICAGO STUFFED PIZZA

968-0527

\$2.00

OFF any Regular Chicago Stuffed Pizza or any large thin crust pizza with this coupon, eat-in or take-out.

Exp. 2-6-84.

\$2.00

\$3.00

OFF Any Deluxe Chicago Stuffed Pizza with this coupon, eat-in or take-out.

\$3.00

DONNY O'BRIEN'S

222 S. Mill