

thursday

January 26, 1984

state
press

Tempe, Arizona

Vol. 66 No. 64

Arizona State University

© Copyright, State Press, 1984

Committee passes regent renewal; board decides to support measure

By Robert S. Beamesderfer
and Wayne Baker
Staff writers

A three-year extension of the student position on the Arizona Board of Regents passed its first test by receiving approval from the House Education Committee Wednesday.

The committee voted 12 to 1 to recommend passage of H.B. 2053, sponsored by Committee Chairman Jim Cooper, R-Mesa, without any discussion or attempts to amend the measure, which extends the student regent position until May 1987.

The Board of Regents pledged Wednesday to support the bill as written despite having voted at its January meeting to back an amendment to make the position permanent.

While the bill does not give the student regent a vote, it keeps the current rotation among the three universities of the one-year position.

Rep. Jim Skelly, R-Scottsdale, who cast the only dissenting vote, said after the hearing, "I've opposed it for years and I still oppose having a student representative on the board. The students have an organization to represent them."

Rep. Pat Wright, R-Glendale, who was previously opposed to a student regent position, joined the majority, saying the idea seemed "better and better."

Rep. Jesus "Chuy" Higuera, D-Tucson, said he was "disappointed the responsibilities of the student regent had not been expanded to a voting position," but offered no amendment to the bill.

Although the regents voted to support Cooper's bill if amended, Board of Regents Counsel Steve Smith told the committee the board supports the bill as written.

Sherry Lewis, the board's Legislative liaison, said because Cooper is strongly opposed to making the bill permanent she decided it should be supported in its original form.

"The number one priority is to keep a (student regent) position," she said.

Arizona Students' Association Chairman Mike Proctor, the only student representative to address the committee, said ASA supported the bill as written, which breaks with tradition for student groups who have always pushed for a voting position.

Cooper is opposed to a voting student regent and to making the position permanent because it would provide student lobbyists with a better opportunity to push for the vote in the future.

Regents President Tio Tachias said he was not aware of why the board's lobbying approach was changed.

"I personally would have supported an amendment to remove the 'sunset' clause of the bill," Tachias said.

However, he said he would rather have the Legislature approve the extension of the student regent position rather than risk it not being approved due to lobbying for permanency.

Student Regent Kathleen Clark of NAU said she feels the "sunset" clause which mandates the three-year review in Cooper's bill is unnecessary.

"There've been six student regents so far. We've proven ourselves to be responsible," Clark said.

Proctor, who is also Associated Students of U of A president, said there is a better chance of passing a bill amended to make the position permanent than one that is amended to grant a voting privilege.

A Senate measure similar to Cooper's bill, but granting a voting privilege to the student regent, has been introduced by a majority of the Education Committee.

Smith said the regents will support the Senate bill in addition to supporting the House bill. "The support for (Cooper's) bill should not be construed that the board does not want a voting student regent," Smith said.

Budget allocation plan delayed for review

By Jerry Brown
Staff writer

A plan that would require all academic departments to give up one percent of their budgets — to be reallocated on the basis of program merit — has been referred to the Faculty Senate Financial Committee, Senate Chairman John Evans said.

The plan, introduced by Vice President for Academic Affairs Jack Kinsinger at Tuesday's Senate meeting, was opposed by several members of the English department.

Professors Loyce Helms and Alan Johnson felt the plan would not be beneficial to department interests. Helms raised questions about the plan and its effect on the department.

"It's a touchy matter right now," Helms said. "I don't think the loss of funds would hurt the department, but losing thousands of dollars certainly won't help."

Helms wants the matter discussed, and he said Kinsinger was agreeable to further study.

"I don't know at this point whether the plan is good in the long run," Helms said, "but I know I want to know more about it before it takes effect."

Kinsinger wants the allocations to come out of the lowest priorities of each department's budget. But Evans thinks that those opposed to the plan feel it may affect faculty salaries.

"I think the faculty opposed to the plan feel it may not be fair to their department," Evans said. "But they are also conscious of the possible decrease in their paychecks."

Gat scan

If the people in Wilson Hall are superstitious, they may have been in for big trouble Monday as two black cats spent the day outside their windows.

Photo by Darryl Webb

Report on potential hospital uses released

By Jim McCleary
Staff writer

Suggestions compiled by ASU President J. Russell Nelson for possible uses of the Arizona Children's Hospital include the Northlight Gallery and the University Archives.

The report containing potential uses for the hospital was released Tuesday by Paige Mulhollan, executive vice president. Both he and Nelson insisted the plan represents only suggestions.

The plan, which included 33 possibilities ranging from cancer research to meteorite studies, was submitted to the now-defunct Children's Hospital Site Committee. Nelson, a member of the committee, said he compiled the list from suggestions from each vice president.

The committee set three criteria for the proposals: The facility must operate in University and community interests; only a minimal amount of remodeling will be allowed; and no undergraduate instruction may be located there.

The committee made its recommendation to Gov. Bruce Babbitt last week that ASU eventually control the hospital, which will offer out-patient care at least until July 1, 1985. The hospital is located at 200 N. Curry Road.

Earlier this week, Nelson told the *State Press* that the hospital is equipped with labs and operating rooms but said, "we will not receive it as a hospital."

The medical equipment at the hospital would be useful in cancer research, Nelson said.

Nelson was not available Wednesday to comment on the report.

The building's equipment and furnishings would also be useful for phytopathogenic research, a bio-medical research program, or a College of Nursing physiology laboratory, the plan said.

Nelson, in a letter to the committee, said, "the University could rapidly relocate these programs to Children's Hospital."

Mentioned as possible tenants for the hospital in Nelson's report were the Northlight Gallery and the University Archives.

The Northlight Gallery is currently located in the Fine Arts Annex, which ASU Fire Marshal Andy Anderson labeled a fire hazard last summer.

Anderson said he has set no deadline for the first-floor gallery to be out of the building.

According to the report, the colleges of Public Programs, Liberal Arts and Business Administration requested consideration for assignment to the hospital and indicated they would operate in the community's and the University's interests.

There are units currently on campus which the plan indicated could be "totally or partially" relocated at the hospital, thereby freeing critical campus space.

Designated for possible relocation were the Lyric Opera Costume Warehouse and the General Stores and Receiving Services.

Today
inside

ASASU proposing
\$1 million
Centennial endowment

Page 3

Che and 'Evita'
heading for Gammage

Page 7

Freshman cager
hurdles height handicap
to gain starting role

Page 13

nation/world

state press

Union is 'standing tall,' Reagan states

WASHINGTON (AP) — President Reagan gave Congress and the nation Wednesday night an economic and foreign policy agenda showing little change of course in the election year, declaring "America is back, standing tall" under his leadership.

Reagan's State of the Union address shunned any major new taxes to close the huge federal deficit, and said that would only be a "Band-aid solution" for "an illness that has been coming on for half a century."

But he did ask Congress to act on a Constitutional amendment that would give him "line-item" veto power on appropriations bills: he could scuttle particular projects without killing entire bills.

New Soviet missile spotted in East Germany

WASHINGTON (AP) — A new, more accurate Soviet medium-range nuclear missile that could pose a wider threat to Western Europe has been spotted in East Germany for the first time, U.S. intelligence sources said Wednesday.

That sighting of an SS-22 rocket could mark the start of the weapon's deployment on Soviet allied territory in response to placement of new U.S. intermediate-range missiles in Western Europe, said the sources, who spoke only on condition they remain anonymous.

The 560-mile-range SS-22, developed to replace old SS-12 missiles, never before has been deployed outside the Soviet Union, the sources said.

LOWEST AIRFARES AVAILABLE

CALL 967-0575 CALL

Plan your travel now & save
GO TRAVELMORE FOR LESS

3225 S. Hardy Drive, Suite 107, Tempe

MIGUEL'S MUSIC CENTER

(In The Arches)

For All Your Musical Needs

Sheet Music • Lessons • All Instruments
Repairs • Amps • Etc.

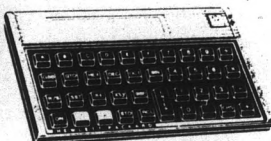
122 E. UNIVERSITY DRIVE
TEMPE, ARIZONA • 968-2310

DISCOUNT PRICES

SMITH-CORONA® brother

hp HEWLETT
PACKARD

Texas Instruments



We handle the full line of Hewlett-Packard and Texas Instruments calculators and accessories. We also carry Smith-Corona and Brother typewriters — both electric and electronic.

See us for all your office supply needs.
Office Products Warehouse won't be undersold.

OFFICE PRODUCTS WAREHOUSE

968-1198 • 1755 W. University

52nd St. & University • Tempe
2 miles west of campus



Welcomes Back
The Ladies
of ASU

Come Experience Our Wild Upstairs/Downstairs Ladies Night

DON'T

Doors Open at 7:30

GENTLEMEN
REMAIN UPSTAIRS

LADIES

Admitted FREE All Night and remain Downstairs (that's the bad news) until 9:00, drinking 1¢ Well, Wine and Draft (that's the good news!)

(that's the bad news) until 9:00, drinking (here's the good news) 2 for 1 Well, Wine and Draft.

EXCITEMENT

TONIGHT!

Tonight On Stage:
The Cads of Badness

CLANCEY'S
919 EAST
APACHE
966-7770

Harkins Stereo Cinemas Twilight Show only \$2.00
All Movies in 4-Channel Stereo SHOWTIMES BETWEEN 4:30 & 8:30

"...beautiful... original...
an important movie"
-Marsha McCreadie, Arizona Republic
"It's clearly the best family
movie I've seen since 'E.T.'"
-Al Owens, KPNX-TV
"...makes me want to shout
from the rooftops..."
-Nick Salerno, Scottsdale Progress
clever and often humorous...
a feast for the senses...
-Max McQueen, Mesa Tribune

NEVER CRY WOLF

A TRUE STORY

4 CHANNEL DOLBY STEREO

CAMELVIEW
PLAZA CINEMA
945-6178

SPECIAL ROADSHOW ENGAGEMENT!

Sorry, no passes or discount admissions
including twilight shows and bargain day shows.

CAMELVIEW 945-6178
70th St. North of Camelback

CRITICS RAVE!

"Hitchcock's best all around
movie... classic masterpiece of
suspense... the biggest movie
news of the year... a perfect four
rose movie." Bill Rocz, KTSP TV 10

"Alfred Hitchcock's greatest
film... you will not see a more
finely made film this year or
next." Gene Siskel, Chicago Tribune

"Vertigo is Hitchcock
at his heads-up best."
Max McQueen, Mesa Tribune

JAMES STEWART
KIM NOVAK

PG

VERTIGO

CAMELVIEW 945-6178
70th St. North of Camelback

Exclusive
Engagement

"ONE OF THE
YEAR'S 10 BEST."

—Judith Crist, WOR-TV

—Rex Reed, New York Post

—Gary Franklin, KNXT-TV Los Angeles

—Kathleen Carroll, New York Daily News

—Jeffrey Lyons, Sneak Previews



CARMEN

A FILM BY CARLOS SAURA

LOS ARCOS 949-8851
Scottsdale Rd. & McDowell

PHOENIX
EXCLUSIVE

"One of the years
10 best."

—New York Times, Judith Crist,
San Francisco Chronicle,
Boston Globe, Aquarian Magazine

HEAT AND DUST

JULIE CHRISTIE and SHASHI KAPOOR

Tuesday is KDKB \$1.50 Day
EXCEPT "NEVER CRY WOLF"

Fund to honor ASU centennial

By Rosanne Dupras
Staff writer

Associated Students of ASU are proposing to establish a \$1 million endowment in honor of the University's Centennial celebration.

The proposal is currently in the Government Operations Committee of the ASASU Senate. It will be presented at the next Senate meeting Tuesday.

Howard Snader, senator for the College of Liberal Arts, said, "There was no problem with (the endowment fund proposal) in the Government Operations Committee. Our major concern is the long-term effects, when the fund gets bigger."

Initially, a gift of \$137,000 — which will come from what is now an emergency fund — will be given. However, there will still be an emergency fund for the Senate.

Then a subsidy of up to \$10,000 will be provided from the endowment to attract a full professor with an "outstanding" teaching reputation.

The subsidy will remain in effect until

there are sufficient funds to support a visiting professorship for one semester in addition to full-time equivalent faculty.

Until the principal of the endowment fund reaches \$1 million, half of each year's earnings will be returned to the fund.

The other half could supplement the salary of an existing regular or visiting faculty member, who will be known as the ASASU Centennial Professor.

When the principal reaches \$1 million, the endowment will support a Centennial University chair.

If the chair is not filled, accumulated earnings will be added to the principal. The ASU vice president for business affairs will be responsible for investing the monies.

The goal of the ASASU proposal is to have the chair/professorship rotated yearly among ASU's 10 colleges. The professor will be selected by the dean of the college to which it is assigned, but approval of the ASU president and vice president of academic affairs will be necessary also.

The Tempe Planning and Zoning Committee gave unanimous approval Tuesday night for development of a twin-tower housing project aimed at attracting ASU students.

The \$10 million project is slated to be located on 2.4 acres at Forest Avenue between Fifth and Sixth streets, the same land where the city recently constructed a temporary parking lot west of the Greyhound station.

The proposal should go before the city council for approval within three weeks, according to a spokesman for the mayor's office.

The developer plans to construct 173 apartments in two eight-story towers with a monthly rental fee of around \$700. The project is expected to be completed in the fall of 1985.

City to vote on proposal for buildings

Blood needed for low supply at city hospital

Due to a major accident last weekend at Phoenix International Raceway, which left one person dead and another critically injured, the state of Arizona is short on B-negative blood, according to a St. Joseph's Hospital spokesman.

The injured person has required more than 170 units of B-negative blood, which has depleted supplies, the spokesman said.

The spokesman said that as of Sunday, the supply of B-negative blood had been exhausted. However, "there is a steady dribble coming in" from other states, he said. Persons who have B-negative blood are asked to consider donating at any blood bank in the Valley, the spokesman added.

Lee's TAKEE OUTEE

- ORIENTAL FOODS
- SUBMARINE SANDWICHES
- Video Games —

FREE DRINK (55¢ value)
Bring this ad and receive a free soft drink w/purchase of over \$1.50

620 S. College • 968-3049
(Across from Student Book Center)

Attention: Foreign Car Owners

SAVE UP TO 70% ON RECYCLED FOREIGN AUTO PARTS
MG, TRIUMPH, HONDA, DATSUN, TOYOTA, VW and OTHERS

All Models Foreign

3024 So. 40th Street, Phx. (near 40th & University)
243-3291

*Mention this ad & get an additional 5% off!

YOU CAN AFFORD THE LOOK YOU LOVE AT ...

WORLD BAZAAR!

- Desk & Swag Lamps
- Scented Candles
- Cane Hampers
- Storage Trunks
- Matchstick Blinds
- Silk Flowers
- Potpourri
- Set of Mugs
- Incense
- Dressing Tables & Rattan Chairs

Coupon Valid Thru Feb. 29, 1984

BACK-TO-SCHOOL SALE

20% Off

ALL REGULARLY PRICED MERCHANDISE IN STORE WITH THIS COUPON

World BAZAAR MARYVALE MALL 247-4113
A DIVISION OF MUMFORD, INC. FIESTA MALL 833-7094

INJURED?

Auto Accidents Faulty Products Motorcycle Crashes Dog Bites Slip & Fall

NO FEE UNLESS YOU COLLECT

Who will pay for your medical bills? Lost Wages? Pain and Suffering? **Protect your rights** by contacting us QUICKLY.

Free telephone or office consultation. We make hospital and house calls. No attorney's fees unless you collect. **FREE pre-recorded information** FREE telephone or office consultation

Call a Lawyer

263-0183

Solomon, Reilhan & Blake, P.C. • 3802 N. 19th Avenue, Phoenix

HAPPY HOUR

4-7 Monday through Friday

53¢ 12-oz. Glass
\$1.97 60-oz. Pitcher
Coors, Bud, Miller Lite
80¢ Bottled Imports

Sub Stop

"Sub Specialists of Arizona"

222 E. University, Tempe
967-7744 • 7:30 a.m. to 2 a.m. nightly

bowling is a gas...

at the MEMORIAL UNION LANES

Sunday 5:00 p.m. Weekenders (co-ed 4's) Starts 2/5
Sunday 7:45 p.m. Threes a Charm (coed 3's) Starts 2/5
Monday 5:30 p.m. Sun Devil Singles (co-ed advanced) Starts 2/6
Tuesday 5:15 p.m. Fac/Staff Doubles Starts 2/7
Tuesday 7:00 p.m. Lite Beer Taste Greats (co-ed 4's) Starts 2/7
Wednesday 5:30 p.m. Lite Beer Less Fillings (co-ed 4's) Starts 2/1
Wednesday 8:00 p.m. Twotimers (co-ed doubles) Starts 2/8
Thursday 5:00 p.m. High Rollers (co-ed 3's) Starts 2/2
Thursday 7:30 p.m. Devils and Dames (co-ed 4's) Starts 2/9

Most leagues — \$3.50 a week

The Memorial Union Rec. Center leagues are a good way to make new friends or get together with those you never have time to see. THE MAJORITY OF THESE LEAGUES ARE FOR ALL SKILL LEVELS, FROM BEGINNERS TO ADVANCED. All leagues are open to students, faculty, staff, alumni and their families. Simply pick the league you wish to bowl and return this sheet to the M.U. Recreation Center, or phone 965-3642.

BOWL 2 GAMES FOR THE PRICE OF ONE.
Any time there is open bowling. Bring this coupon to THE MU RECREATION CENTER. NOW UNTIL FEBRUARY 15.

state
pressHumanity is the essence of man.
—Thomas Aquinas

opinion

What is really at stake in the abortion issue

Guest Editorial • John Currin

Eleven years ago the Supreme Court legalized abortion, thereby starting one of the most emotional moral, social and legal debates in recent American history. Arguments about one's unfettered right to privacy, women's rights and doctrines of social utility have made abortion an accepted way of life. The respected journal "The New Republic," although rejecting extreme "pro-choice" claims and expressing doubts about the morality of abortion, has condoned the practice because of "social efficiency" and because America has reached "a point in the moral evolution of society" at which the present state of things becomes the touchstone of morality and justice.

These arguments, though shared by many sensitive, intelligent Americans, ignore what is truly at stake: mankind. Those who wish to rear this new creature of moral and social evolution should first consider its cost to human dignity and to human rights, for any firm principle of human rights must rest on the bedrock of inalienable natural rights as derived from natural law, and any refusal to extend these rights to all members of humanity — including unborn children — endangers the rights of all humanity.

The tradition of natural law and natural rights has endured since antiquity as one of the vital ingredients of Western civilization, and the political and legal systems of the West, as well as occidental conceptions of equality, freedom and justice, are founded on this tradition.

Modern rationalistic natural rights — as voiced by such cardinal documents of Western liberalism as Thomas Paine's "The Rights of Man," the American Declaration of Independence, and the French Declaration of Rights — separated natural rights from the primacy of natural law, and postulated the existence of self-evident, abstract rights in the individual. This sparked the rejection of natural law and natural rights by utilitarians, pragmatists and positivists. Legal and political theory fell into the hands of the historical school of thought, which, by exalting the unique, unrepeatable and diverse qualities of things,

set all firm values adrift in an ever-evolving sea of becoming, making them relative to a specific time and place, thus shattering further natural law and natural rights.

This repudiation of natural law and natural rights entailed certain dangers, as the historian and philosopher Ernst Troeltsch recognized in a 1922 essay on natural law. He saw in his native Germany the collapse of the eternal, rational order of natural law into a condition of skepticism and relativism; he discerned its replacement with a deification of the State, with an individualized morality separated from the law and the common good, and with a brutal, romantic cynicism. Hitler's barbaric regime was the realization of Troeltsch's fears.

The inhumanity of Hitler's Germany (and Stalin's Russia) aroused the modern concern for human rights, and has led to the revival of natural rights, which, in its ra-

has; and it is aware that man needs to live in a society which must be politically arranged so that individual good may be promoted while the common good is protected. Law, the ordinance of right reason, is the means through which men are secure so that they may achieve their good, which is necessary to their dignity. That which is essential to human dignity and allows for the achievement of human good constitutes natural rights; the right of existence, because it is necessary for life, precedes all other rights. The right reasonableness of law cannot permit an arbitrary preference for one group over another, nor can it allow an abstract right, such as the right of privacy, to be an absolute in itself and prevent other persons from attaining their good.

The assertion that the unborn child has natural rights seems to some an absurdity because, as "The New Republic" said: "it would accord the rights and privileges of

cell blastocyst does not remain as a mere blastocyst. Similarly, those aspects of human nature that touch upon human dignity are derived from actual human essence. Unborn children, who are made of this human essence, are thus persons who must be accorded the same dignity and rights common to all persons. This point eluded Justice Blackmun when he remarked that unborn children are not persons because the law has never recognized them as such.

Likewise, philosopher Michael Tooley recently argued that because unborn children lack those qualities that determine human worth, such as consciousness of their existence over time, they cannot be persons. This proposition is contradictory: it denies that man has a nature, but fails to realize that the very act of perceiving one's existence demonstrates man's rational nature.

A firm commitment to human rights and civil liberties has become a cherished ideal in America, and there is a renewed appreciation for the importance of natural law and natural rights as a firm foundation of civil rights. Inherent dignity and inalienable rights are intrinsic to all persons because they exist as human beings, for that which enables them to exist as human beings and nothing else is determined by actual human essence.

The innate dignity and rights that many Americans boldly champion are also intrinsic to unborn children, but some of the same Americans have chosen to ignore their cause. These Americans have made the inhuman practice of abortion second to social utility, to personal morality, and to egocentric will masked as the right of privacy and the right of "pro-choice." Shunning natural rights based on natural law and making justice part of a historical environment, they have embraced the relativism of moral evolution that not only threatens to place human rights at the mercy of cynicism, but also hopes to blind us to the fact that the abortion of 1.6 million human beings each year is nothing less than the recession of humanity.

John Currin is a graduate student in history at ASU.

'This newly recovered natural rights tradition has yet to be reconciled with modern society.'

tionalistic form, is embodied in the Universal Declaration of Human Rights of the United Nations — the principal document on human rights for the postwar world.

This newly recovered natural rights tradition has yet to be reconciled with modern society, for the forces of skepticism, relativism and moral indifference still pervade the world. Restoration of natural rights depends on two events: first, the return of natural rights to its natural law foundation; and second, the recognition that all human beings, including unborn human beings, possess these rights.

Natural law is not a set of ideal decrees. It is an understanding of an ordered universe where all things act for a good, which is the realization of their essential nature; it acknowledges that man follows an inclination to this good in a way similar to other animals and through reason, which only he

citizenship . . . to a 64-cell blastocyst." But the refusal to understand that this 64-cell blastocyst is a human being entitled to the rights common to all humans and not just a collection of cells is the true absurdity.

Those who believe unborn children are nothing more than mere protoplasm see human embryos and fetuses as living yet transitional beings with only the potential for human life, which spontaneously and mystically — perhaps about the second or third trimester — emerge as human beings. Human embryos and fetuses, unlike ova and sperm, are not beings in their own right, but stages in the development of human beings. At conception, the potential for human life, residing in ova and sperm is actualized, and the resulting formation of cells is a being possessing actual human essence — the stuff of human existence.

The actual human essence is why the 64-

letters

A liberal's view of *State Press*, ASASU

Editor:

ASU's liberals (all six of us) were sitting around the other day moaning and groaning about how conservative the *State Press* and ASASU have become. But after talking for a while, we realized that what bothered us wasn't just that they're conservative. They're wimpy.

In the case of the *State Press*, there is no doubt that the current crop of editors are somewhat to the right of Jesse Helms on most political issues. But the worst part of the conservative stronghold has been the lack of aggressive reporting. It's not that the reporters or editors are so overwhelmingly conservative that right-wing ideas dominate the news pages. (Most issues they cover don't break down into conservative-liberal viewpoints.) The problem is that the editors and reporters don't look below the surface of any major campus issue.

For instance, we have seen no explanation of the current problems ASU is facing with funding the west-side campus. If *State Press* reporters would look into it, they would probably see that regent parochialism (and behind-the-scenes maneuvers by the University of Arizona and Northern Arizona University) is causing big dents in ASU's budget request. But the *State Press* misses all this.

Stories are written days after the news actually happened and the reporters seemingly fail to ask tough questions. As a result, the stories are shallow, and don't get to the meat of what's really going on. With a few exceptions, reporting is superficial, limp and lifeless.

The same can be said of the lobbying efforts by ASASU President Walter Batt this year. With all of the political savvy of a Smurf, Batt has led feeble efforts to the Board of Regents. For the most part, he doesn't go to the meetings when the regents consider major issues. Batt missed several key committee meetings on tuition last fall, even though the student presidents from NAU and the UofA were there. Sadly, one of those meetings was held in the Memorial Union's

Alumni Lounge, just a stroll down the hall from his ASASU office.

At the one appearance he did make, Batt's presentation was inconsistent and rambling. Because of an ego squabble with the other two presidents, Batt disagreed with them on his approach with the regents about tuition. As a result, the other two were smooth and organized. Batt's presentation wasn't.

We shouldn't expect too much from ASASU, after all. We must keep in mind that the purpose of ASASU is to use student fees to fund socializing by junior politicians. (Visit their offices in the MU to see for yourself. There often doesn't seem to be too much work going on.) But, we should expect the junior politicians to take time out from their socializing to represent us now and then. And the time is ripe.

With the Legislature and Board of Regents beginning what looks to be a major turf battle over who should set tuition (the odds are favoring the Legislature to win, especially if the regents don't act sooner), it's important for ASASU to step up its lobbying effort.

Batt has made some remarks early this semester that indicate he might be willing to urge the regents and legislators to keep tuition low. But don't expect too much. If his performance last semester is any indication, we expect a lobbying campaign that looks good on the surface but really has no depth. For while we hear of him talking to a legislative committee, he probably will not make the effort behind the scenes, where decisions about tuition will ultimately be made.

So, it seems ASU's "conservative wave" — which some say has drowned the *State Press* and ASASU — isn't really that big a wave after all. It just shows that conservative waters run shallow.

Bill Adair
Junior, Political Science

Editorial unreasonable

Editor:

Regarding your editorial on equal pay for comparable work, dated Jan. 24, "Mr." Tracy Fletcher seems to have a well of shallowness from which to draw when it comes to her rationality.

Webster's dictionary defines rationality as 1) the quality or state of being rational, and 2) the quality or state of being agreeable to reason.

Vicky Martinez
Secretary

A reply in verse

Editor:

In response to the editorial in last Tuesday's *State Press* on equal pay for comparable work, I am reminded of the poem by Siegfried Sasson entitled "The Case for the Miners." It begins like this:

Something goes wrong with my synthetic brain
When I defend the strikers and explain
My reasons for not blackguarding the miners
"What do you know?" exclaim my fellow-diners
(Peeling their plovers eggs of lifting glasses
Of mellowed Chateau Rentier from the table.)

Ignorance of a situation is not justification for condemning the revolt against it. Perhaps the editor has never personally felt the sting of sex discrimination. Perhaps she has not had to "take a job" at below "comparable pay" in order to provide for herself and her children. Perhaps she has never been sexually accosted in the course of her daily endeavours. For these ignorances no one can condemn her.

I must, however, disagree with the mentality of ignoring the facts. When our society realizes that it is as important to care for our young, ill, needy, old and dependent as it is to be rid of the garbage at our back door, then we will be enlightened enough to talk about job comparability. But can we, as a society, wait that long? Are we to shy away from intelligent contemplation and examination of critical problems for fear of the bureaucratic costs? I pray not!

As I write this, a historical female figure comes to mind. I believe she was quoted as saying, "Let them eat cake."

Terri L. DiBona
Junior, Department of Education

Senate approves budget plan after compromising with Batt

By Rosanne Dupras
Staff writer

The Associated Students Senate has approved a nearly \$720,000 budget for the 1984-85 school year, which now goes to ASASU President Walter Batt for approval.

The measure, Senate Bill 61, was introduced by the Senate Committee on Finance at a special session Tuesday.

Brian LaCorte, senator for the College of Public Programs, introduced the bill, which requested an appropriation of \$717,258 to fund the continuation budget.

He said the committee based the final bill on discussions between the Senate and Batt. "We looked at (the Finance Committee's) recommendations and at (Batt's) recommendations in deciding these figures," LaCorte said.

LaCorte said that compromises had been made — particularly in the marketing and operating expenditures of concerts — to accommodate both Batt and ASASU Activities Vice President Ted Groves.

Groves said the concert program will be able to run smoothly with the money that

was allocated to it. "We have \$55,000 to put our own shows on, so it shouldn't be a problem as long as we have the people to run it," he said.

"I got just about everything I wanted back," said Groves.

Batt had previously vetoed sections which Groves had requested.

Groves said a turnaround occurred in the special session when the Senate went back to the Finance Committee's original recommendations.

Groves said the budget, when completed, will be a 7 to 10 percent increase over last year's budget.

ASASU Executive Vice President Ray Burnell said, "At this point, (Batt) can line veto (the budget) or approve what we have. If he chooses to line veto, it will come back to us again."

Burnell said the senators and the vice presidents will be working with Batt this week to go over different lines of the budget.

The Senate will meet this Tuesday night at 5:30 to vote on the final bill.

police report

An ASU custodian found a bag containing \$100 in a trash box Tuesday evening and reported it to the University Police.

James W. Spigner was in Krause Hall Room 115, when he came across the cash. Police contacted the parking supervisor who told them to place the money in the night depository.

In other activity, ASU Police reported the following incidents in the 24-hour period ending midnight Tuesday:

•An ASU student told police Tuesday morning her blue men's 10-speed bicycle, valued at \$110, was taken from the

Sahuaro Hall bike rack.

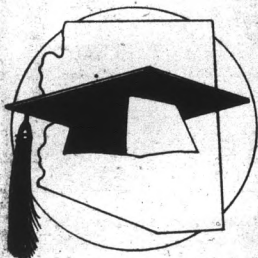
•An ASU student reported the theft of her FM Toshiba radio, valued at \$76. She said the radio was taken from study room 315 of Noble Library.

•An automobile accident, involving an ASU student and employee, caused \$100 worth of damage to the right front end of the ASU employee's car. The staff member was heading east in Lot 53 Tuesday morning when the student backed out of her parking space and hit the employee's car. There were no injuries.

•ASU Police impounded several pieces of traffic control devices from the C-wing of Best Hall early Tuesday. The equipment was identified as being from the city of Scottsdale and its police department was notified.

— M.K. Reinhart

\$6,350,000 IN STUDENT LOANS PROCESSED IN THE LAST THREE MONTHS!!



THE MAJORITY OF THESE STUDENTS RECEIVED THEIR MONEY IN LESS THAN THREE WEEKS!!

If you need a student loan and would like this fast service, ask us for a HEAF application (Higher Education Assistance Foundation).

Call us at 955-0363 for names of participating lenders.

Return your HEAF application to the financial aid office and request that it be sent to one of these lenders.

YOU'LL GET FAST SERVICE, TOO!!

ARIZONA STUDENT LOAN FINANCE CORPORATION

3900 East Camelback Road, Suite 409 North
Phoenix, Arizona 85018
(602) 955-0363

THURSDAY COLLEGE COUNTDOWN

DRINKS & DRAFTS:

5 1 FOR 8-9

4 1 FOR 9-10

3 1 FOR 10-11

2 1 FOR 11-12

The DEVILHOUSE welcomes back A.S.U.

894-6779

MEN \$3

LADIES \$2

MUSIC
Rock N Roll
Funk
New Wave

DEVILHOUSE

Tempe Tea Party

1.99

Darth Vader to promote Dolby at Neeb

By Julianne Holroyd
Staff writer

Dolby stereo has come to Neeb Hall. Friday, Darth Vader will be prowling campus to promote Neeb's first Dolby showing, slated for Friday night, the double feature "Star Wars" and "Raiders of the Lost Ark."

Lee Groves, the theater's manager, installed the unit himself. "Neeb Hall is now equipped second to none in Arizona," he said.

Neeb now has seven speakers and 500 watts of amplification, 35 mm projectors and a four-track stereo decoder, which completes its Dolby unit.

The four-track decoder is not a Dolby decoder, but a smart decoder, Groves said, serving the same function. A Dolby decoder would have cost \$2,000 more, Groves said.

According to Groves, about 12 theaters in the Valley have Dolby stereo and many still have 16 mm projectors.

With the unit, Neeb can play regular or Dolby movies. The system also can simulate stereo out of the regular monophonic movies, Groves said.

Neeb Hall is part of Associated Students and is funded by student government.

Lee's younger brother, Ted Groves, ASASU activities vice president, appropriated \$2,600 from the ASASU Senate to install the four-track unit.

Ted Groves has scheduled 52 films for the spring semester. Every Friday, Saturday and Sunday night a double feature will be shown.

ASU rents films in a package deal from non-theatrical release distributors which do not compete with commercial theaters, Ted Groves said. These distributors rent films to classrooms and campuses. ASU, a state institution, cannot rent from commercial distributors, which enables Neeb to obtain films later but cheaper.

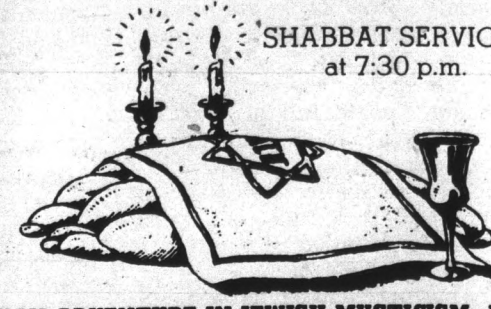


Staff photo by James Moser
Lee Groves, an ASU student and Neeb Hall theater manager, operates one of two 35mm movie projectors used with the theater's new Dolby sound equipment.


MAKE YOUR SHABBAT SPECIAL at HILLEL

Shabbat Dinner 6 p.m.
Friday, January 27
R.S.V.P. by Jan. 24
\$3.50 in advance, \$4.50 after Jan. 24

SHABBAT SERVICES at 7:30 p.m.



"AN ADVENTURE IN JEWISH MYSTICISM: ADAM, EVE, GOD, AND THE MATTER OF SEXUALITY"
with Larry Moses
Executive Director of the Bureau of Jewish Education of San Francisco
8:30 p.m.
Hillel: 1012 S. Mill Avenue



SHOP FOR YOUR BIKE WHERE YOU GET THE BEST SERVICE AS WELL AS LOW PRICES

Stop in and see for yourself — you will be pleasantly surprised!

COLLEGE CYCLE
Serving ASU since 1946
909 E. Lemon (Across from Snow)
966-0842

★ ★ ★ ★ ★

THE MEN OF
KAPPA SIGMA FRATERNITY
cordially invite you to our
Little Sister Rush

Thursday, Jan. 26 • 8:30 p.m.
Beverage & Cheese Party
(Dressy attire)

Friday, Jan. 27 • 4 p.m.
Volleyball & Bar-B-Q
then
Boondocker at 9 p.m.

For ride or more information
967-9688

★ ★ ★ ★ ★

TREAT YOURSELF ROYALLY.


\$1.09
(WITH COUPON)




We're having a real sale on a real treat. Two mounds of smooth & creamy Dairy Queen® smothered with our delicious Hot Fudge & Hot Butterscotch and topped with chopped pecans. The Double Delight!

WE TREAT YOU RIGHT™ Offer expires 5-8-84.
950 S. Mill (Across from Gammage)
966-1957

SCHOLARSHIPS



to

MEDICAL / OSTEOPATHIC SCHOOL

U.S. CITIZEN, GPA 3.5
BETWEEN 19 AND 35 YEARS OLD
FULL TUITION, BOOKS AND AUTHORIZED FEES
PLUS \$579 PER MONTH

FOR DETAILS CALL
NAVY MEDICAL PROGRAMS (COLLECT)
(602) 256-7632

Navy Officers Get Responsibility Fast.

MAZATLAN '84
SPRING BREAK with "COLLEGE TOURS"

7 DAYS — 7 NIGHTS BY HOLIDAY TRAIN **\$188** 3 DEPARTURE DATES
600 STUDENTS EACH DAY

MARCH 9-16 • TRIP 3A MARCH 10-17 • TRIP 3B MARCH 11-18 • TRIP 3C

PRICE INCLUDES: Lodging (4 to a room) in beach front hotels (except two hotels, which are condominiums located one block from the beach • Round trip train transportation from Nogales to Mazatlan • Free cocktail party every night in Mazatlan (all you can drink for 1 hour — Free) • Free College Tours T-shirt • Coed tournaments and beach events (Best tan contest for guys and girls, Ladies wet T-shirt contest, Volleyball, Tug-of-war, Frisbee, and Soccer tournaments, Sand sculpting contest, Beer relay, Green Weenie race and Kamakazi race).

IF THERE ARE ANY OTHER TRIPS OFFERED TO MAZATLAN DURING SPRING BREAK, CHECK THEM OUT. THEY CAN'T COMPARE. YOUR COLLEGE TOURS I.D. CARD IS WORTH OVER \$150 IN EXTRA BENEFITS THAT OTHER TOURS CANNOT GET.

NOTICE! ONLY "College Tours" students with their I.D. cards will receive these Extra Benefits.

OPTIONS: A Sleeping cabin on the train — \$25 per person additional
B Oceano Palace or El Pescador Hotel — \$30 per person additional
C El Cid Hotel-Country Club — \$75 per person additional
D Two people per room in base package hotel — \$50 per person additional
E Two people per room in the Los Sabalos Hotel — \$100 per person additional
F Fly to Mazatlan

NOTE!!! This year ALL flight packages are 1 day and 1 night longer than last year.

Fly From Phoenix or Tucson March 9-16: \$329 (Same Price as Last Year) March 10-17: \$339 March 11-18: \$319 (\$10 Less Than Last Year)

To insure your reservation, fill out the information below and send a \$25 non-refundable check or money order for train reservations or a \$50 non-refundable check or money order for airline reservations to COLLEGE TOURS, 4554 N. CENTRAL, SUITE 101, PHOENIX, AZ 85012. Phone number in Phoenix 263-8520.

NAME _____ PHONE _____
ADDRESS _____ CITY _____ STATE _____ ZIP _____
ROOMMATES 1. _____ 2. _____ 3. _____
TRIP 3-A (MARCH 9-16) _____ TRIP 3-B (MARCH 10-17) _____ TRIP 3-C (MARCH 11-18) _____
Check options desired: A. Sleeping Cabin _____ B. Oceano or El Pescador _____ C. El Cid _____ D. 2 per room, base hotel _____ E. 2 per room, Los Sabalos _____ F. Fly to Mazatlan: Fri. _____ Sat. _____ Sun. _____ Phoenix _____ Tucson _____

Please write trip number on check.
COLLEGE TOURS is a Division of CERVENIK-ANDERSON TRAVEL, INC. ASU

State Press

e &

Life

By M.G. K...

Assistant e...

There is l...

to-riches s...

teresting is...

and expos...

that accom...

fame.

"Evita"...

and her ris...

the late 194...

Eva was...

Argentina.

Juan Peron...

star in Bue...

him. Durin...

through a...

vote. She...

financed...

number of...

funds, how...

bank accou...

But acco...

Che in the...

concern.

"In its e...

ruption of...

said, "it's...

communic...

them. It's...

how she g...

wanted."

Florence...

member o...

Wolfe as...

plays the...

mances.

The pro...

Prince, wh...

entertainment & the arts

state
press

Life of Eva Peron to be staged on campus

By M.G. Khan
Assistant entertainment editor

There is little as intriguing as a true rags-to-riches story. The only story more interesting is one which takes the celebrated and exposes the often ignored corruption that accompanies the rise to power and fame.

"Evita" is based on the life of Eva Peron and her rise to power in Argentina during the late 1940s and early 1950s.

Eva was born poor and illegitimate in Argentina. She met Argentinian President Juan Peron after she had become a radio star in Buenos Aires and eventually married him. During her time in power, Eva pushed through a bill giving women the right to vote. She also established a fund which financed 1,000 schools and doubled the number of hospitals in Argentina. Other funds, however, were channeled into Swiss bank accounts for personal use.

But according to Tim Bowman, who plays Che in the production, the work has a deeper concern.

"In its entirety, the play is about the corruption of a person by the use of media," he said, "it's about how she (Eva) used her communication to the people to manipulate them. It's about her abuse of that media — how she got people to do exactly what she wanted."

Florence Lacey, as Eva, heads the 34-member cast which includes John Leslie Wolfe as Juan Peron. Donna Marie Elio plays the role of Eva at matinee performances.

The production is directed by Harold Prince, who has gained a reputation by pro-

ducing "The Pajama Game," "Damn Yankees," "West Side Story," "A Funny Thing Happened on the Way to the Forum" and "Fiddler on the Roof." As a director and producer, Prince has been responsible for "Cabaret" and "Zorba" among others. His direction of "Evita" earned him his 15th Tony Award.

According to Bowman, Prince's contributions to "Evita" are a major factor of the production's excellence.

"The best element is the direction, the way it's put together," he said, "I think it's his (Prince's) best work."

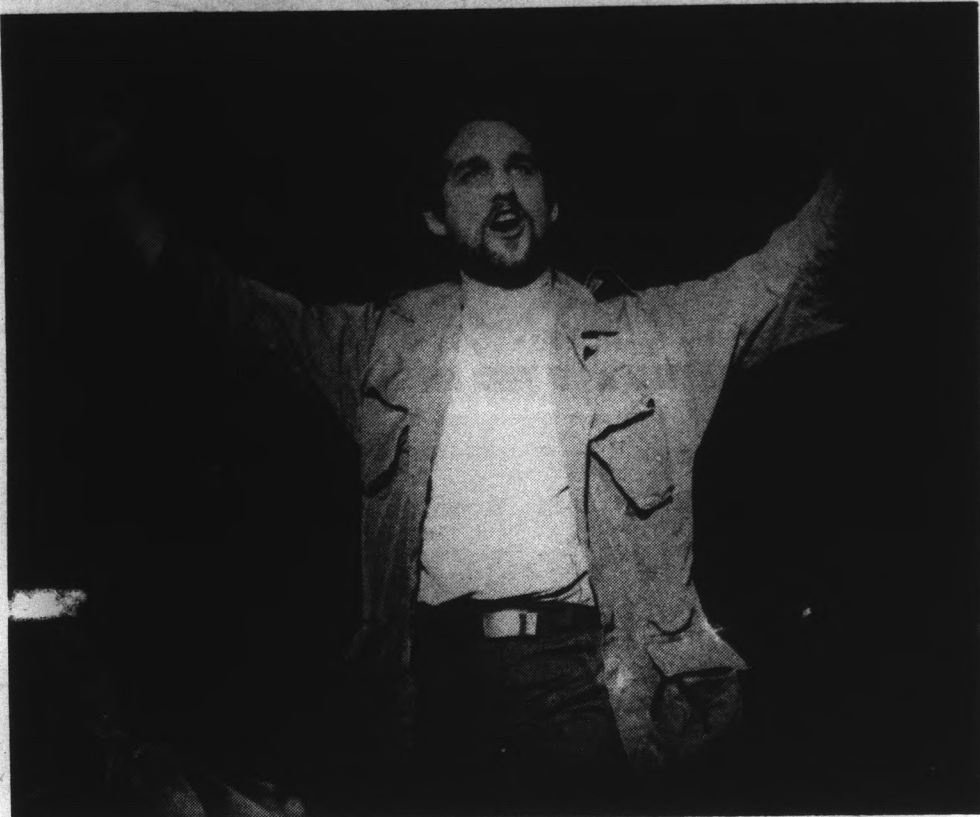
Bowman said authenticity is a priority in the show, and except for a meeting between Che and Eva, everything is factual.

"Everything about her is a fact," he said, "even to the costumes."

Bowman said his character acts as a reminder of the evolving corruption of Eva, rather than directly participating in the plot. He said the character of Che Guevarra is never explored, but simply stands as a symbol of decency.

He explained that "Evita" is based on a studio recording on which a man named Che appeared. When Prince and producer Robert Stigwood decided to take "Evita" to the theater, they change the anonymous Che to Che Guevarra. According to Bowman, the change was made partly to emphasize the spirit of revolution.

"Evita," with lyrics by Tim Rice and music by Andrew Lloyd Webber, opened on Broadway in 1979 where it became the 18th longest-running musical in theater history. The production has won seven Tony awards,



Tim Bowman, as Che, in a scene from the award winning musical "Evita."

the New York Drama Critics' Circle Award and six Drama Desk Awards. In addition to the touring company which will perform at Gammage, there have been two other national companies, as well as productions in South Africa, Madrid, Mexico City and

several other cities including London where the musical originated in 1978.

"Evita" will be presented at Gammage Center Jan. 27-29. Shows will be at 8 p.m. on Jan. 27 and at 2:30 p.m. and 8 p.m. on Jan. 28 and 29.



To protect your privacy, don't waste words with unwanted callers.

Your phone is part of your home. And at Mountain Bell, we understand that when someone uses your phone to invade your privacy, it's like an unwanted visitor coming through your front door. But we want you to know that you can have the last word with these callers. By not wasting any words with them at all.

If the caller is a salesperson using a hard sell, you don't have to listen. Just say you're not interested, and hang up.

If you get an obscene call, or the caller remains silent, don't stop to listen. Above all, don't talk to them. Hang up on their hang-ups. And if these callers keep after you or threaten you, get in touch right away with the police and your local Mountain Bell service representative. We'll help you find other ways to deal with these calls.

No matter what kind of unwanted calls you get, let your actions speak louder than their words. By hanging up. It's the best way we know to protect the privacy of your home. And your phone.

For the way you live.



Mountain Bell



Papa Jay's New York Pizza

FAST...FREE...DELIVERY
(Limited free delivery area)

Serving ASU & TEMPE for nearly 13 years

\$3 OFF any large Sicilian* Style Pizza with two or more toppings.

Good on delivery, take-out or dine-in.
Expires 5-10-84.
*Extra Thick Crust

Sun Devil Combo
Any large pizza with your choice of up to 4 toppings.

ONLY \$5.95 (plus tax)

Good on delivery, take-out or dine-in.
Expires 5-10-84.

C O U P O N S

We Deliver Beer & Soft Drinks
Video Arcade! 10 tokens for \$1 Every Day

804 S. ASH (Mill & Univ.) 966-1003 • 966-4292 • 967-9689

Charm, humor characteriz

By Ric Alpers

Entertainment Writer

During World War II, friends were put into the same combat squads under the theory that friends would fight harder to save friends. This was called the "buddy system."

"The Buddy System" is also the name of Twentieth Century-Fox's newest film starring Richard Dreyfus and Susan Sarandon.

It is a film about love and friendship and relationships and growing up and... well, it's a film about people; real people facing real problems.

It is the story of Joe Denniston and Emily Price (Dreyfus and Sarandon) and how they met and how nothing would quite ever be the same after they met.

Joe, a would-be novelist and part-time inventor, makes his living as a security guard at a posh private school. The same school where Emily, an unwed mother, has enrolled her son, Tim (Wil Wheaton), by faking an appropriate address. When Joe finds this out and Tim is faced with expulsion, Tim, quickly sizes up the situation and offers his mother to Joe as a bribe.

Charmed by the boy's brass, Joe meets Emily and they quickly discover they don't like each other.

Charm is the key descriptive word for this film. The film is charming — something rare in films today. It has magic and a sense of warmth and humor all its own that should leave the viewer with a feeling of contentment — all is right with the world. It explodes the myth that friends can't be lovers and lovers can't be friends and suggests that friendship may just be the highest and purest form of love after all.

As Joe, Dreyfus shows the same impish appeal that he had in "The Goodbye Girl." However, this character has more maturity; he is the same dreamer, but he is slowly realizing that it just might be the wrong dream.

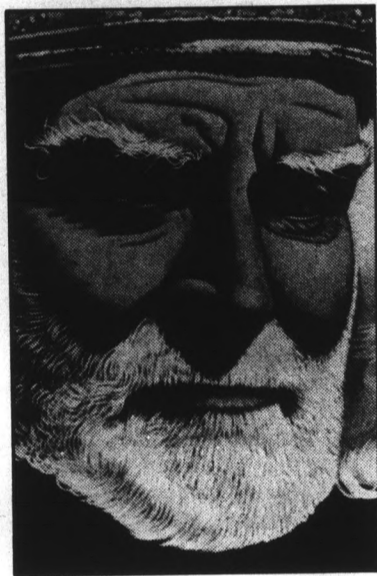
He is in love with a girl (Nancy Allen) who does not love anyone but herself. He wants to be a novelist, but all he has to show are five unfinished novels. It is through his meeting with



Susan Sarandon, Wil Wheaton and Richard Dreyfus in "The Buddy System."

Tim and, through Tim, with Emily which although dreams are nice, reality can be nicer. Sarandon might be the most versatile actress today. After roles in "The Rocky Horror Picture Show," "Baby" and "Atlantic City," she now shows adept at romantic comedy.

Emily still lives at home with her mother who has never let Emily forget a single moment. This, Emily has failed her court stenographer times. In fact, it took her five tries to get her



**MOBIL PRESENTS
LAURENCE OLIVIER'S
KING LEAR**

STARRING LAURENCE OLIVIER

- Colin Blakely
- Anna Calder-Marshall
- John Hurt
- Jeremy Kemp
- Robert Lang
- Robert Lindsay
- Leo McKern
- Diana Rigg
- David Threlfall
- Dorothy Tutin

Host: Peter Ustinov
Thursday January 26
7:00-10:00 PM

Recommended by the National Education Association
Closed captioned for the hearing impaired
Available in paperback from Penguin Books

Mobil Showcase Network



SOME COLLEGE COURSES ARE MORE EXCITING THAN OTHERS.



How many college courses teach you how to shoot the rapids? Or rappel a cliff? Or find your way out of a forest with nothing but a map and compass to guide you?

At least one does — Army ROTC.

And you could find yourself doing any one of a number of exciting adventure training activities like these in the Army ROTC program.

Activities that develop your stamina. And your self-confidence.

But adventure training isn't the only way you develop. You'll also learn the basics of leadership and management by attending ROTC classes, along with the subjects in your major.

And you'll be excited about two other benefits Army ROTC offers. Financial assistance. Up to \$1,000 a year for your last two years of Army ROTC. And the opportunity to graduate with both a degree and a commission in today's Army — including the Army Reserve and Army National Guard.

ARMY ROTC. BE ALL YOU CAN BE.

At ASU contact:
Ken Schwartz
Old Main
Room 228
or call
965-3318/19

Drury's timely new novel explores

"Decisions" by Alan Drury

Doubleday

"Decision" — is a novel about the justice system of the United States, with a plot that is frightening yet so plausible one wonders why it hasn't happened yet.

A man of sincere, though severely warped, convictions stages a bombing at the dedication of a nuclear power plant. His target, a Supreme Court justice, survives, but his daughter is killed, and the daughter of another justice sustains injuries from which she will never recover. The bomber then silences his own lover and 6-month-old son by throwing them down a mine-shaft.

He is apprehended by outraged men more interested in justice than legal technicalities. Although there is little doubt of his guilt, the

evidence against him is largely circumstantial.

With the prosecuting attorney, who is also the attorney general of South Carolina, acting as cheerleader, public outcry demands a speedy trial and a televised execution. A nationwide climate of vigilantism develops almost overnight.

Inevitably, the case is appealed to the Supreme Court: one woman and eight men with impeccable qualifications and diverse views about the legal issues involved. But the Court is also composed of two grieving fathers and seven sympathetic friends.

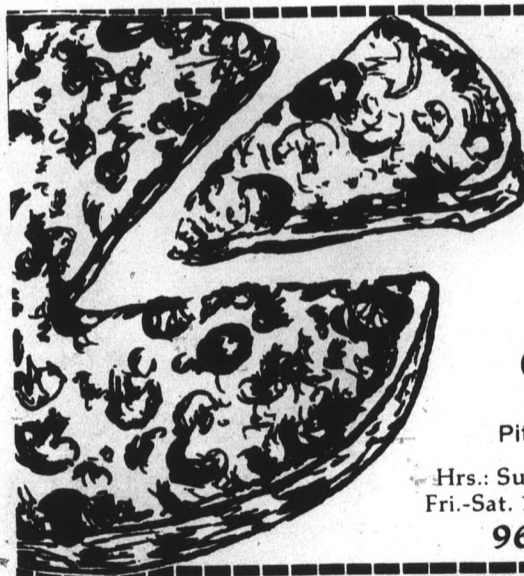
The book is appropriate and timely. Because Supreme Court justices are human beings and public figures, it is hardly inconceivable that the Court might be forced to

rule on a

lives of its r
It is also
creasingly
sometimes
"Decision"
troubled so
country ha
tion."

The burc
cuser, is d
innocent de
rightly so.
conviction
"Decision"

When the k
it comes as
totally un



**BEST BITE SHOP
SUBS & PIZZA**

3101 S. Mill Ave.
Huntington Square

LARGE 16"
PIZZA

1 Item Only

ONLY \$4.50

Only good after 4 p.m.

Pitcher Bud \$1.50 — 4-7 p.m.

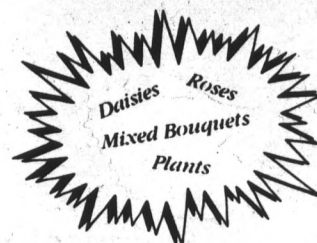
WITH THIS AD.
EXPIRES
2-15-84.

Hrs.: Sun.-Thurs. 10-10
Fri.-Sat. 10 a.m.-Midnight

967-1412

We Deliver
After 4 P.M.
967-1100

10% OFF coupon



Sales & Wire
Orders Not
Included

**CHECK OUR
WEEKLY SPECIAL**

Free Delivery
to ASU

ROSEBUD FLORIST

15 W. 6th Street
Tempe, AZ
968-0781 • 966-2775



Characterize new Dreyfus film



Will Wheaton and Richard Dreyfuss star in "The

h Tim, with Emily which shows him that are nice, reality can be nicer. be the most versatile actress working in films in "The Rocky Horror Picture Show," "Pretty antic City," she now shows that she is equally comedy. s at home with her mother (Jean Stapleton) t Emily forget a single mistake. Because of failed her court stenographer's exam seven took her five tries to get her driver's license.

Sarandon brings to Emily a sense of lost innocence that is more misplaced than lost, and a core of strength that is just waiting to be released.

Wheaton, who makes his debut as Tim, is another one of those marvelous children more wise and understanding than many adults. As Tim, he is the catalyst that brings Joe and Emily together and the glue that holds them together. Wheaton is a fine young actor, natural and unaffected.

Dreyfus, Sarandon and Wheaton are supported by the equally fine performances of Allen and Stapleton.

As Carrie, Joe's love interest, Allen is flighty, insincere and, ultimately, capable of loving only herself. Yet, she is likeable.

Cinema

Finally, Joe can no longer be angry with her, only sorry for her. Stapleton is fine as Emily's mother who learns the hard way that children must be let go or they will leave. She is a sad, lonely woman who could never get close to anyone because she never let anyone get close to her.

The film, under the direction of Glenn Jordan, is smoothly paced and executed. Slow and leisurely, yet tight when it needs to be, the film unfolds the story of two ordinary people. The characters are fully drawn and we learn to care about each of them.

A word must be said about the screenplay by Mary Agnes Donoghue. That word is wonderful. In fact, according to producer, Alain Chammas, the script was so good, it was filmed almost exactly as it was written — something rare in an industry that has almost no respect for the written word.

"The Buddy System" is one of those "small" films that will be remembered long after some of the "blockbusters" have come and gone. It is a fine motion picture from top to bottom. Don't be surprised if it reappears next year around Academy Awards time.

explores dangers of justice system

largely cir- rule on a matter that touches the personal lives of its members.

, who is also rule on a matter that touches the personal lives of its members. It is also true that the American public is increasingly disturbed by legal loopholes that sometimes seem to benefit only the guilty. "Decision" reiterates a problem that has long troubled society. "For too long justice in this country has turned on the nicety of the situation."

and diverse rule on a matter that touches the personal lives of its members. The burden of proof, placed upon the accuser, is designed to make the conviction of innocent defendants nearly impossible — and rightly so. Unfortunately, it can make the conviction of a guilty party also as difficult.

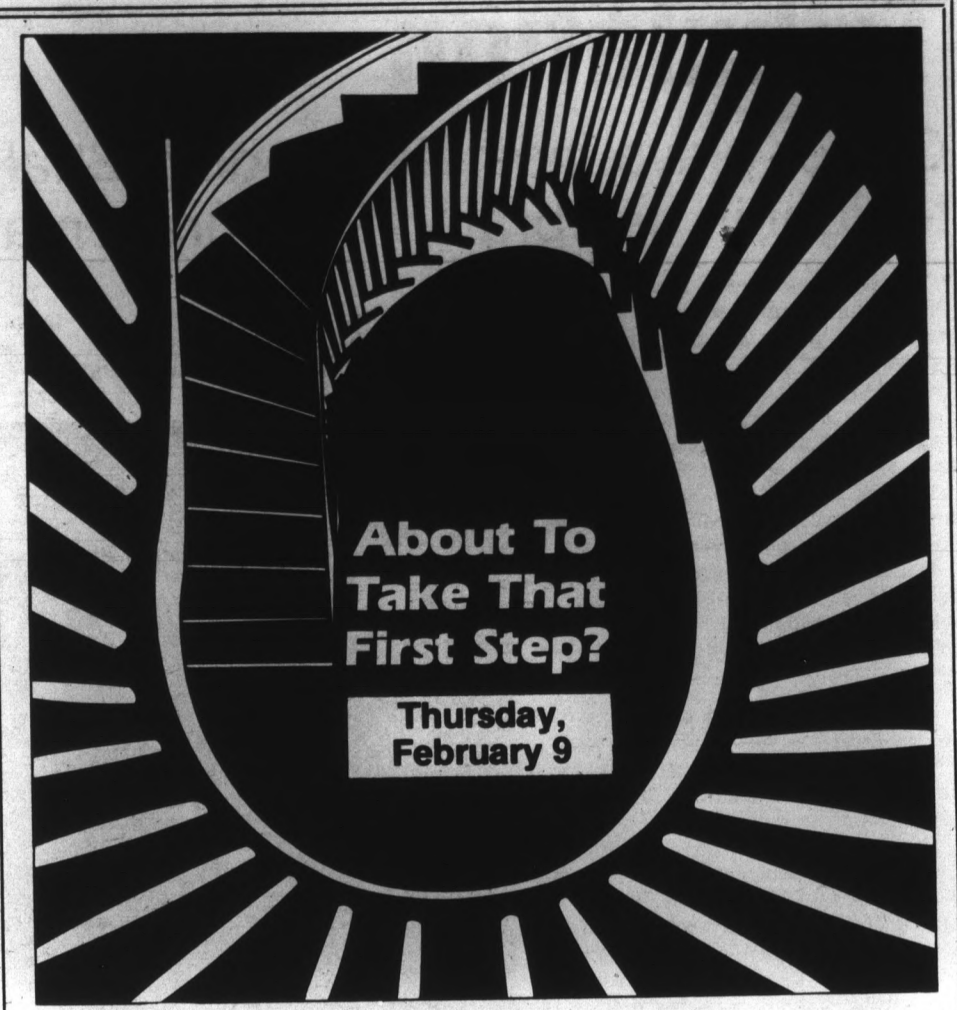
and timely. rule on a matter that touches the personal lives of its members. "Decision" provides a sad example of this. When the killer finally gets what he deserves, it comes as an indiscriminate act of violence, totally unrelated to his own crimes. His

punishment and retribution can be attributed neither to the judicial system or the brand of frontier justice favored by the highly visible segments of the public.

At first, the reader will be frustrated by this book, because it provides no comforting solutions. One must realize, however, that the problems are not literary devices to be dismissed when the last page is finished. Within this work of fiction, Drury, who spent 20 years as a Washington news correspondent, has exposed a disturbing truth: the system does not always work.

"Decision" is well-written and stimulating. It is also an important statement about a premise Americans cannot afford to take for granted: equal justice under law.

— Andrea S. Meyer



TAKE THAT FIRST IMPORTANT CAREER STEP HERE

University of California
**Lawrence Livermore
National Laboratory**

Ask your Placement Office for details on our upcoming Campus visit, or see our ad in this paper next Thursday, February 2 for additional information.

LLNL is an equal opportunity employer, m/f/h
P.O. Box 5510, Dept. JCR, Livermore, CA 94550

OP
ITH
S AD.
PIRES
5-84.
00

CASINO NIGHT

ROULETTE
BLACK JACK
POKER
CRAPS



SATURDAY
JANUARY 28
8 P.M.

Hillel:
Jewish Student Center
1012 S. Mill Ave.
Just south of 10th Street on Mill

ONLY \$2.50
for \$500 in Play Money and two free drinks.
Play all night and participate in Auction for great prizes.



EVERYDAY SPECIALS

\$1.29 BREAKFAST
Every Day
7 a.m.-10 a.m.

DAILY SUB SPECIALS
Offering 22 Varieties of SUBS
All day long

DINNER SPECIAL
16" Cheese Pizza
Only \$4.00
(additional items \$1)
Nightly 5-9

PARTY SUBS
Available — UP TO 6 ft. Long

Appetito's
Tempe Center (Univ. & Mill)

HOURS:
Mon.-Sat. 7 a.m.-2 a.m.
Sunday 7 a.m.-11 p.m.
967-8091

Bicycle Bargains



NEW 10-SPEEDS
Regular \$150
NOW \$109.50

NEW ONE-SPEED CRUISERS
Regular \$160
NOW \$125

Hundreds of Bikes at Special Sale Prices

TEMPE BICYCLE SHOP
The old gas station on the corner
6th Street and Mill, Tempe
966-6896

Tribulation

Olivier plays most demanding Shakespeare role tonight in celebrated PBS presentation of 'Lear'

William Shakespeare and Laurence Olivier, undisputed masters in their respective arts, again will couple talents, this time in a made-for-television production of "King Lear."

Because of the grandness of "King Lear," extra attention was paid to the special effects as well as to the set, which is a studio transformed into heath, moors and medieval buildings inspired by photographs of Stonehenge.

One of the most acclaimed special effects comes in the pivotal storm scene when 900 gallons of water drench Olivier, who reportedly insisted the

Larry...."

Hurt added, about Olivier, "If you ask where that sort of acting comes from, the truth is I just don't know, and I was there."

The production, this year's International Emmy Best Drama Award winner, will air tonight at 7 p.m. on KAET-TV, Channel 8 on Mobil Showcase Network.



Laurence Olivier as King Lear and John Hurt as the fool in the pivotal storm scene from Shakespeare's "King Lear."

Films

water be cold. The scene, which demanded considerable technical work, took three days to film.

The tragedy, directed by Michael Elliott, was taped over a three-week period using 14 different settings. Among the props were 2,000 clumps of heather from Ilkley Moor in Yorkshire, a four-ton oak tree and a dead rabbit, which Lear catches with his belt and eats raw. Olivier suggested that he actually eat the raw organs of the rabbit, but was persuaded to have the rabbit filled with smoked salmon instead.

In addition to Olivier in the titular role, the cast will include Diana Rigg as Regan, Dorothy Tutin as Goneril, Anna Calder-Marshall as Cordelia, Leo McKern as Gloucester, Robert Lindsay as Edmund and David Threlfall as Edgar. John Hurt will appear as the Fool, Lear's loving, sharp-witted advisor.

The cast of the tragedy, nearly all of whom are accustomed to top-billing, primarily accepted their roles because it provided an opportunity to work with Olivier who has been labeled "King of the English-speaking theater."

"We're all there for one reason," said Colin Blakely who plays Kent, "for

Choir to perform Bach, Berger

Internationally acclaimed St. Olaf's choir will appear at Gammage Center for an evening of selected classical and modern choral pieces.

Founded in 1903 as part of St. Olaf's College in Minnesota, the choir has been touring since 1912. By 1920 the choir was appearing in major concert centers and has been recognized as one of the premier college choirs since then.

Currently under the direction of Kenneth Jennings, the choir plans to perform, among others, the Magnificat by Jen Berger, "The Spirit Also Helpeth" by Johann Sebastian Bach and three double choruses by Robert Schumann.

The choir consists of 60 members and concentrates on a cappella pieces, but occasionally sings with instrumental accompaniment. Gammage Center will host St. Olaf's Choir Tuesday, Jan. 31, at 8 p.m.

Tickets for the performance are priced from \$5 to \$12.

Concerts

DRIVE CARS FREE

Cars Available Many Points U.S.A. We are I.C.C. licensed and insured. Must be 21 years or more.

SCHELL DRIVEAWAY 991-5533

THE HOT LOUNGE



FREE POOL 11 a.m.-2 p.m. Sun.-Fri. Jack Daniels Night Monday 7-10 p.m. \$1 3129 S. Mill 967-9781 Tempe (N.E. Corner of Mill & Southern)

A LITTLE LOW ON CASH?

Become a Plasma Donor
It's easy & relaxing

IMMEDIATE CASH

Payment After Each Donation
Call 894-1338 for an appointment.

Tempe Plasma Corp.
Corner of Rural Rd. & Univ. Blvd.
Tempe Towne Plaza
This ad worth \$5. New donors only.

TERIYAKI OF JAPAN

10¢ SAKE

ONE OUNCE CUPS WITH PURCHASE OF ANY ENTREE

Also serving beer & wine

Just a few of our entrees . . .
Beef Teriyaki, Chicken Teriyaki, Suki-yaki, Tonkatsu

1314 E. APACHE • 894-6883

BACK TO SCHOOL SALE!

COPIES 2 1/2¢

SELF SERVE COPIES

4 1/2¢ FULL SERVICE COPIES
(Offer applies to white, 8 1/2 x 11, 20 lb. bond only.)

Professors — Ask about Professor Publishing Service.

kinko's copies

University and Forest
894-9588 Hours: M-F 7 a.m.-8 p.m.
Sat. 9 a.m.-6 p.m.
Sun. 10 a.m.-6 p.m.

and at our Mesa store
1840 W. Southern
969-3326
Offer expires Jan. 31, 1984.

*Binding *Color Copies *Kroy Lettering *Self-service Typewriters

Q. Where can students rent computer equipment reasonably?

A. At BFA Corporation, the computer people who offer SALES-SERVICE-LEASING

Liberty Electronics Freedom 100 CRT
Omnitex Data 710 Acoustic Coupler
Integral Data Systems "Microprism" Printer (Including Cables)

TAKE NOTE!

PURCHASE:
CRT and A/C = \$625.00
CRT and A/C and Printer = \$1125.00

12 MONTH LEASE:
CRT and A/C = \$60.00/mo. & \$1.00 Buy Out
CRT and A/C and Printer = \$105.00/mo. & \$1.00 Buy Out
(Also includes depot maintenance!)

BFA CORPORATION
4426 N. Saddlebag Trail
Scottsdale, AZ 85261
994-5400

sports

state
press

Setback?

Favored Beavers find help through early suspensions

By Tom Blodgett
Assistant sports editor

Two teams hoping to upgrade their fortunes in the Pac-10 conference square off tonight when ASU travels to Corvallis, Ore., to face the Oregon State Beavers.

The Sun Devils (7-8 overall, 2-3 conference) are coming off their worst loss (a 71-49 defeat at the hands of the U of A) in the last two years.

The Beavers (10-4, 3-2), who were the pre-season favorites to win the conference crown, hope to put last weekend behind them. Oregon State was swept at the hands of Washington and Washington State on the road.

The Beavers snapped their short losing string Monday by defeating Stanford, 73-68.

Oregon State, however, should be even a stronger team than anticipated in the pre-season. The Beavers have gained bench experience through some unexpected circumstances.

Three Oregon State players were suspended by coach Ralph Miller for the first six games of the season. They included two key members of last year's team, A.C. Green and Darryl Flowers.

The third player is reserve forward Tyrone Miller, a crowd favorite at the Beavers' home arena, the Gill Coliseum.

"The only good thing that comes out of losing three players like we did is the fact that people like (Darrin) Houston and (Rick) Berry and some of the others have a chance to really get their feet wet in a hurry," Miller said.

Berry, a freshman, and Houston, a sophomore, played well in the interim.

Berry averaged 7.8 points and 2.7 rebounds per game. He hit on 81.3 percent of his free throws.

Houston scored 9.8 points and dished out three assists per game. He has played so well that he's kept Flowers, one of the Pac-10's top freshmen of a year ago, out of the lineup.

With Green and Flowers back in the fold, the team is all the stronger.

Green, a forward, joins center Steve Woodside and forward

Charlie Sitton to make a formidable front line.

Sitton became Oregon State's all-time leading scorer last weekend. His 14 points against Washington gave him 1,293 tallies in his career, five ahead of Ray Blume.

"They have the strongest front line in the conference," ASU coach Bob Weinbauer said.

"We'll face another match-up zone, but what concerns me is the fact that their three inside people can dominate any of our inside people. We do not have very good match-ups against Oregon State."

Another concern is the home crowd. Gill Coliseum is one of the toughest arenas for teams to win on the road.

"They've struggled the past couple of games," Weinbauer said, "but on their home court, they're as tough as anyone in the conference."

The Devils hope they can get some added offensive assault weapons before invading Corvallis. Senior guard Chris Beasley is the lone ASU player scoring in double figures this year.

"It's obvious if we're going to improve, we must get scoring help for Chris Beasley," Weinbauer said.

"There seems to be very little we can do about inside scoring. At some point our inside people have to make their offensive presence felt on the floor."

From the outside, however, freshman guard Bobby Thompson may be able to help out. Thompson scored a career-high 14 points in the Arizona game.

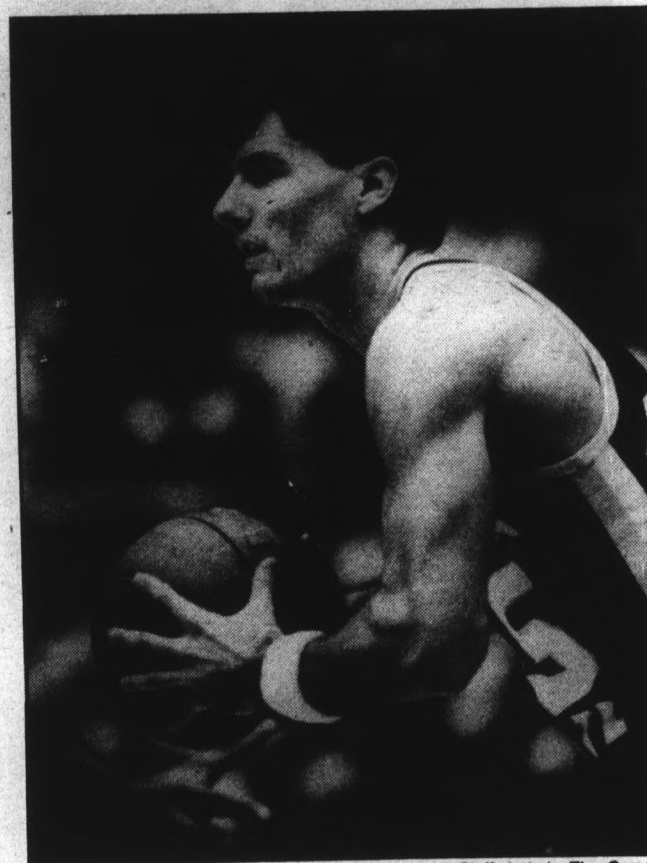
"Bobby could really help us," Weinbauer said. "But we felt Bobby should have been scoring from the beginning."

"It's too bad it took so long for him to fit into the flow."

Without last year's offensive punch, the Devils will have to resort to other tactics in hopes of upsetting the Beavers.

"I don't foresee a wide-open game like last year (a 108-93 Beaver win in Corvallis)," Weinbauer said. "We need to take care of the ball with better shot selection."

"I don't think we want to run up and down the court with them."



Staff photo by Tina Gerson

ASU's Chris Beasley has been providing all the offensive punch for the Sun Devils this season. The senior guard has averaged 18.8 points per game.

WALK-INS WELCOME!

Head Lines

HAIR STYLING SALON

31 EAST NINTH STREET
TEMPE CENTER
967-3722

WELCOME BACK SPECIAL

Zoto's Perms
\$29.00

Reg. \$35 and up
Expires Feb. 28, 1984.

With this coupon.
Long hair extra.

INSURANCE COMPANY WON'T PAY YOUR ACCIDENT CLAIM?

Accident, Personal Injury and Wrongful Death Claims Handled Professionally

KNOLLMILLER, HERRICK, BROWN & ARENOFSKY
"Tempe's Largest Law Firm"

Close to Campus between Rural & McClintock
1232 E. Broadway, Suite 120, Tempe

Call for free evaluation of your case, in person or by phone, whichever is more convenient.

Telephone: 968-7261

GET THIN!

And learn how to stay that way

Tens of thousands of people all across the United States and Canada are learning what it takes to lose those extra pounds and keep them off... at the Diet Center! We offer a nutritionally sound program of rapid weight loss and permanent control.

LOSE 17 TO 25 POUNDS IN JUST SIX WEEKS!

... And that rate of reduction can be sustained until you have reached your ideal weight. Many have lost 100 pounds and more without excess hunger or loss of energy... in fact, you'll probably never feel greater! Call today.



967-1371

2525 S. Rural Rd., Suite 6-N



TWIN PRINTS
Get Second Set of Prints FREE
Jan. 1-Feb. 15, 1984

Includes PRO-PRINTS!
When you have a roll of Color Print Film Developed and Printed.

PHOTOTRON SYSTEM

| | |
|----------------------------|-------------------------------|
| | Our Everyday Low Prices . . . |
| 12 exposure | \$2.49 |
| 15 exposure disc | \$3.09 |
| 20 exposure | \$3.69 |
| 24 exposure | \$4.29 |
| 36 exposure | \$6.09 |
| Reprints | 19¢ |

In by 9:30 a.m. — Back by noon following day.

CAMPUS DRUGS
COLLEGE AVE. 1 BLOCK NORTH OF UNIV.

The most talked about Fraternity since 1839

133 E. Broadway

Beta Theta Pi

1984 SPRING RUSH SCHEDULE

Friday, Jan. 27 — *Music Video Party*
8:30 p.m. at the Beta House

Saturday, Jan. 28 — *West Coast Party*
8 p.m. at the Beta House

Sunday, Jan. 29 — *Happy Hour at Juantanameras*
7 p.m. — Located at the base of the Pointe South Mountain

Tuesday, Jan. 31 — *Cocktail & hors d'oeuvres Reception*

Marriott's **Camelback Inn**
RESORT AND GOLF CLUB
(602) 948-1700
(Invitation only)

For more information, contact Richard Joseph, Rush Chairman, 966-5195 or 967-9965.



WE'VE GOT A RACE SO CHALLENGING YOU'LL NEED FOUR LEGS TO ENTER.

Anyone can enter the American Express Ride & Stride, February 5th. All you need is a good two-wheeler. And one good partner. It's a nonprofit event. Sponsored by both the American Express Company and The Arizona Daily Star to benefit the Sportsmen's Fund. And all it takes is running, biking and thinking to compete. Or win. You and your partner negotiate a pre-marked course that runs up and down and in and around both Tucson and Old Tucson. Switching

from running to biking at the designated mandatory changeover points. Simply put, while your partner's running, you're riding. And vice versa. The first team with both partners across the finish line wins. Now pick your passion. There's a 26-miler with three mandatory changeover points. And a 10-miler with one mandatory changeover point. Both will make you run. Ride. Whew. And think. So get your act together and enter the Ride & Stride today.

| Division | Class |
|--------------------------------|---|
| 1. OPEN DIVISION* | A. Male B. Female C. Mixed Male/Female |
| 2. FAMILY DIVISION | A. Husband/Wife B. Mother-Son/Daughter C. Father-Son/Daughter |
| 3. AGE DIVISION | A. Junior (12-15)** B. Senior (34-45) C. Masters (46-59) D. Grandmasters (60+) |
| 4. ORGANIZATION/GROUP DIVISION | A. Corporate/Merchant B. Military/Civil C. Educational/Other |

*Includes 16-33 age group
**Entry for 10-mile race

- Your \$35.00 (per team) entry fees includes the pre-race "Pasta Party" with beer and live entertainment at Old Tucson on February 4th at 5:30PM. And a race kit with Official Ride & Stride T-Shirt and other running "things."
- Before the Pasta Party they'll be a mandatory pre-race briefing 4:10PM at Old Tucson.
- Bring your bicycle for a pre-race bike inspection on February 4th at the Tucson Community Center parking lot. A-H, 8AM-11AM; I-Q, 11AM-2PM; R-Z, 2PM-5PM.



CUT ALONG DOTTED LINE

| RACE | DIVISION | CLASS | TEAM NUMBER |
|------|----------|-------|-------------|
| | | | |

OFFICE USE ONLY

AMERICAN EXPRESS RIDE & STRIDE CHALLENGE

Please bill my American Express® Card Account (account no.) _____ Expiration Date _____

Sponsored by **The Arizona Daily Star**

Last Name _____ First Name _____ Male Female _____ Birth Date _____ T-Shirt Size _____
 Last Name _____ First Name _____ Male Female _____ Birth Date _____ T-Shirt Size _____

Mailing Address _____ Street _____ Include Apt. No. or C/O _____ Area Code _____ Phone _____
 City _____ State (Country if not USA) _____ Zip Code _____

Exact Name of Organization or Group (complete only if entering Division 4) _____

SIGNATURE _____ DATE _____ PARENT'S SIGNATURE IF UNDER 18 YEARS _____

SIGNATURE _____ DATE _____ PARENT'S SIGNATURE IF UNDER 18 YEARS _____

In consideration of the acceptance of my entry in the American Express Ride & Stride Challenge, I, the undersigned, intending to be legally bound, hereby, for myself, my heirs, executors, administrators, successors and assigns, waive and release any and all rights, claims for damages, losses, costs, including attorney's fees, and expenses I may have against American Express Travel Related Services Company, Inc., its parent and affiliates, The Arizona Daily Star, the City of Tucson, Pima County, the State of Arizona, the Sportsmen's Fund, and any and all sponsors and their representatives, successors, and assigns for any and all injuries suffered by me in said event and its related activities, or for any action or omission of such parties. I understand that running and cycling are inherently dangerous sports in which I participate at my own risk. I hereby attest and verify that I am physically fit and have sufficiently trained for this competition and that my physical condition has been verified by a licensed medical doctor. I consent to receive medical treatment which may be deemed advisable in the event of injury, accident and/or illness during the American Express Ride & Stride Challenge. I hereby grant full permission to any and all of the foregoing to use any photographs, video-tapes, motion pictures, recording, or any other record of this event for any legitimate purpose. NO REFUNDS, TRANSFERS OR EXCHANGES. PROCEEDS TO BENEFIT THE SPORTSMEN'S FUND Send-A-Kid-To-Camp program.

TO ENTER MAIL TO: American Express Ride & Stride Challenge, c/o The Arizona Daily Star, P.O. Box 26807, Tucson, Arizona 85726 OR CALL: (602) 747-0815

State Press
 Bec
 thro
 By Dean O
 Sports wri
 Steve B
 freshman
 team spor
 just that
 In the fi
 Devil, he s
 shooting f
 three fro
 brought o
 minutes o
 Since th
 to develop
 for him.
 "I had
 Beck said
 to work h
 I made th
 Beck fi
 in the op
 team's fi
 Beck has
 Since o
 way, Bec
 per outin
 game lea
 center Ji
 game.
 "I have
 said. "In
 guys, so
 coach str
 Out of
 recruited
 type gam
 "Our
 was usec
 high sch
 Weinha
 Steve in
 emergen
 minute
 playing
 "We r
 for a lo
 change
 In doi
 he cons
 Beck pl
 ward.
 The s
 challen

Beck wins a spot in lineup through a competitive edge

By Dean Obenauer
Sports writer

Steve Beck is one of the six outstanding freshman recruits that the ASU basketball team sports this year — but he is more than just that.

In the first game Beck entered as a Sun Devil, he scored 16 points on seven for eight shooting from the floor and was two for three from the free throw line. He also brought down three rebounds in just 14 minutes of play.

Since that first outing Beck has continued to develop into what is now a starting role for him.

"I had it (a starting job) on my mind," Beck said. "I understood that I would have to work hard and when I got my opportunity I made the best of it."

Beck finally broke into the starting lineup in the opening of the Pac-10 season. In the team's first five conference appearances, Beck has started in four.

Since conference play has gotten under way, Beck is scoring an average 9.2 points per outing. His six-rebound average per game leads the entire Sun Devil squad with center Jim Deines second with 5.8 boards a game.

"I have always crashed the boards," Beck said. "In Detroit I played against a lot of big guys, so I had to learn how to rebound. Our coach stressed it a lot."

Out of high school, Beck was highly recruited despite playing more of a forward-type game than a guard.

"Our concerns earlier were that Steve was used to playing the forward spot out of high school," ASU basketball coach Bob Weinbauer said. "We were trying to blend Steve into the guard position, but with the emergence of Chris Beasley as a 35- to 40-minute player he wasn't getting enough playing time."

"We needed to get Beck in the ballgame for a longer period of time so we made a change in our offense," Weinbauer said.

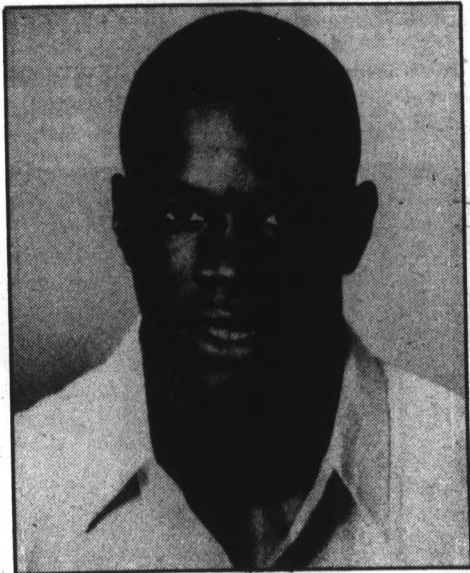
In doing so, Weinbauer has gone to what he considers a three-guard offense with Beck playing the third guard or a weak forward.

The surprise is that Beck has met the challenge head-on as a freshman. Another is

that he has done so well inside against the taller players. The only statistic that has dropped for Beck since conference play began is his shooting accuracy (35.3 percent from the floor) and can be accounted for by the skyscrapers he has had to shoot over. He has shot 90.9 percent from the line.

Another reason Beck has done so well might be that he is too much of a competitor to worry about little things like the four to six inches of height that he gives away to opponents.

"He is one of the only ball players ever



Steve Beck

that I never have to tell to be more competitive," Weinbauer said.

In his last outing against the U of A, he grabbed eight rebounds for the Devils.

Against nationally ranked UTEP, Beck exploded off the hardwood to bring down a season and career-high eight boards. He also accumulated seven rebounds against the University of Southern California and Washington.

"He has great quickness, terrific strength and good position," Weinbauer said. "You have to have that to be a good rebounder."

"Steve has all of those facets and he has become a better rebounder than a lot taller people than him because of that."




CALL US FOR A SPRING BREAK!

SPRING BREAK
March 10-18

894-1329
717 MILL AVE
TEMPE





Terrace Road Apartments

WALK TO SCHOOL!

½ block from Campus. Huge, well furnished 1-bedroom, 1-bath, and 2-bedroom, 2-baths, all utilities included, plus many amenities.

950 S. Terrace Rd. 966-8540



Family Planning Institute
Women's Health Center

FREE Pregnancy Testing
Immediate Results

Premarital Bloodtesting
\$15.00 Same Day Results

Evening Hours Available

Contraceptive Care Clinic
 Confidential Counseling
 Pregnancy Termination
 Caring Professional Staff

Established 1976

TEMPE • 968-7471
2525 S. Rural Rd., Ste. 4-C
Mon.-Fri. Lab Hours 8-3

PHOENIX • 997-7493
9100 N. 2nd Street
Mon.-Sat. Lab Hours 9-3

Mac
TEMPE CENTER

JEWELERS

FOR ALL YOUR
JEWELRY NEEDS

Diamonds, Watches
14k Chains, Pendants
Sorority-Fraternity Jewelry
Watch & Jewelry Repairing

966-7587

50¢ OFF ALL YOU CAN EAT

Choose from 12 Items



CHUNGS

Beer & Wine Served
Menu or Buffet
Eat In or Take Out

OPEN 7 DAYS
829-1222

CHINESE BUFFET ½ mile E. of Mill on University


WELCOME BACK INTO THE SWIM OF THINGS

Don't let the hectic first weeks of a new semester pull you under. If you can spare just a few hours a week — you can earn up to \$100 a month! And study at the same time! Or just catch up on current events. New donors bring this ad for an additional \$2 for your first donation. So give us a yell — and find out how plasma donation can be a real lifesaver!

University Plasma Center

1015 S. Rural Rd., Tempe **968-6139**
Open Mon.-Fri. 8-7; Wed.-Sat. 9-6
Federally Inspected



We're cleaning out the 'Attic!

Cash in on Athletic Attic's
First Annual Clearance Sale!

STARTS SAT., JAN. 28 thru FEB. 4

40% ON ALL WARM-UPS
(Nike, Adidas, Winning Ways)

25% ON ALL FLEECE
(Your Choice of Puma, Adidas & Nike)

20% ON ALL NYLON RUNNING SUITS
(We sell pants & jackets separately, too!)

30% ON DANCE & AEROBIC WEAR
(Including Danskin, Flexitard & Carushka)

ALSO 20% to 30% on Selected Running Shoes

Your East Valley's Specialists For All Your Running Needs

Southern Palms Shopping Center
3136 S. McClintock
(Next to Pier II)
820-3545
HOURS: Mon. Tues. Fri. 10-6
Wed. Thurs. 10-8
Sat. 10-6 Sun. 12-5
VISA / MASTERCARD

Netters to open against powerful WAC opponents

By Vicki Serna
Sports writer

The ASU men's tennis team will have a chance to prove itself this weekend when it battles two of the toughest teams on its schedule.

According to coach Lou Belken, the team has its work cut out for it. It will compete against San Diego State and the University of New Mexico.

Neither team is in the same conference as the Devils. However, they are two of the top teams in the Western Athletic Conference.

On Saturday the Devils will face San Diego State at 11 a.m. "Last year we defeated San Diego State in two close matches," Belken said.

And this season the Aztecs could implement some new strategy. "They (San Diego) have lost three of last year's starters," Belken said. He indicated it will be a good match-up and said, "it will also be an early test for us."

The Devils, on the other hand, are coming off a 0-10 record in the Pac-10 but are looking forward to a successful season. Their overall record was 8-19.

Belken pointed out that injuries have hampered the Devil lineup. These injuries are not too serious.

ASU will be matched up against the University of New Mexico Lobos on Sunday at 11 a.m.

"Last year we were 1-1 against New Mexico," Belken said. But New Mexico will be hoping to go one up on the Devils this year in this meeting.

"They have a very young team just like us," he said, "and they had one of the best recruiting seasons probably in New Mexico history."

Belken said the lineup for upcoming Devil matches is still uncertain, but he intends to start freshman Keith Thomas at No. 1.

Thomas and teammate Jeff Kark, who have been playing doubles together since both were 12 years old, have won one national championship and one international championship.

The challenge has arrived for the Devils, who are hoping to improve last season's record. "We've been talking for a semester and a half about how much better we're going to be and now it's time to see," he said.

This year the Sun Devils have one of the toughest schedules ever with 32 dual matches against highly ranked teams such as conference rivals USC, Stanford, Cal and the University of Arizona.

Both matches this weekend will be played at the Whiteman tennis courts.

Applications taken for sports writer

The State Press is now taking applications for sportswriter. This is a full-time position, Monday through Thursday afternoons, and applicants must be free during those times.

Experience is preferred, but is not necessary for this position. Applicants do not have to be journalism majors.

Applications may be picked up at the State Press offices, located in the basement of Matthews Center, between 8 a.m. and 5 p.m. Monday through Friday.

March of Dimes
BIRTH DEFECTS FOUNDATION

SAVES BABIES

HELP FIGHT BIRTH DEFECTS



THE JOYNT
from 2-10 p.m.

2 Dinners for \$5.49 Reg. \$8.50

- Choice of:
- Lasagna
- Cheese or Spinach Manicotti
- Baked Ziti

Includes 2 dinner salads and garlic breads

75¢ extra for carryouts

THE JOYNT
606 S. Mill
967-7926

Expires Jan. 31, 1984.

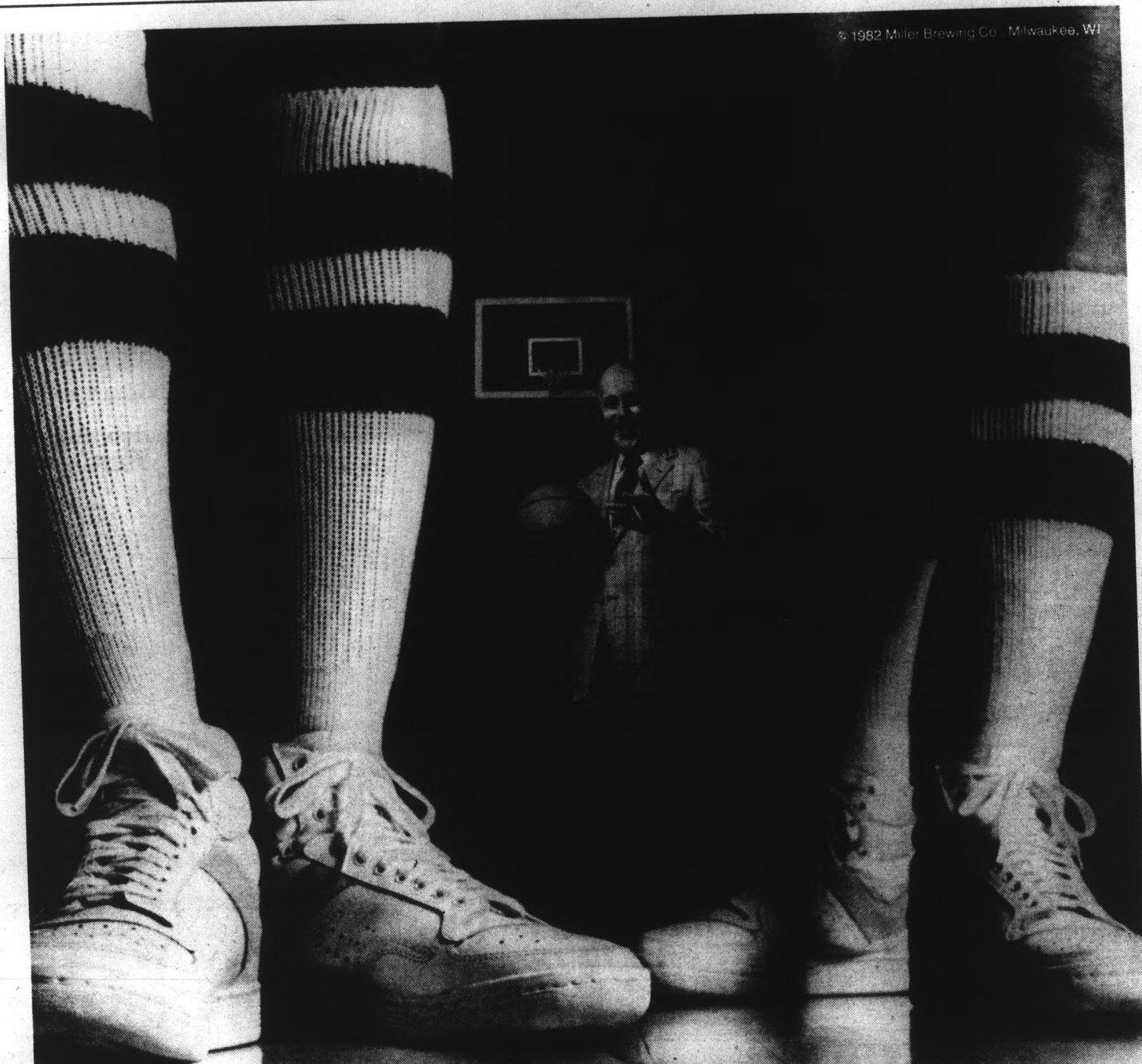
NAVY NUCLEAR ENGINEERING

Any better offers? \$24,000 to \$54,000 after six years.

If you are 19 to 26 years of age majoring in math, chemistry, physics or engineering and would like to learn more about this opportunity

CALL COLLECT (619) 293-6746

CALL BETWEEN THE HOURS OF 9 A.M. TO 5 P.M. MONDAY THROUGH WEDNESDAY



DRINKING BEER IS LIKE PUTTING TOGETHER A BASKETBALL TEAM. START OFF WITH A COUPLE OF TALL ONES.

Red Auerbach



EVERYTHING YOU ALWAYS WANTED IN A BEER. AND LESS.

The STAT... sibility for... and servic... and displ... tisers.

Ann

FUTURE Lines w... presentat... merchan... 967-7448.

WANTED and make

V

DE Ser

10 Sm

Aut

1967 Al... Comple... 1980 D... mileage... \$3,999.

Bo

BU your quali... textb... re-sa... in cr... purch... (Sorr... Brow... M-F

414

Bu

ATTE... tuniti... produ... enth... 50%... appt... 9:30

F

FOR... nium... from... FUR... hom... lady... wide... \$25... NEW... mov... 992-

The STATE PRESS disclaims all responsibility for quality and prices of goods and services offered in both classified and display advertising by its advertisers.

Announcements

FUTURE LINES. Become a Future Lines wholesale sportswear representative and purchase quality merchandise at wholesale prices. 967-7448.

WANTED: SMOKERS who want to quit and make extra money. Call 941-2199.

VOLLEYBALL and DELI - LUNCH
Served Thursdays
12 Noon at Hillel
1012 S. Mill Ave.
Small charge for lunch.
1/26

Automobiles

1967 AUSTIN - HEALY, 3000 Mark III. Complete. A classic. \$5,500. 948-9688.

1980 DATSUN 210. New tires, low mileage, 31,500 miles, air, tape deck. \$3,999. Call, 967-3822.

Books

BUY • SELL • TRADE
your books at Changing Hands. For quality cloth and paperbacks (no textbooks, please) we pay 30% of our re-sale price in cash or 50% in trade-in credit which may be used to purchase anything in the store. (Sorry, no trade-ins on Sat. or Sun.)

Browse through our three floors of:
• New & Used Books
• Art Prints & Posters
• Calendars & Cards
• Handbound Journals
M-F 10-9 SAT 10-6 SUN 12-5
CHANGING HANDS BOOKSTORE
414 Mill Avenue 966-0203
Old Town Tempe 1/27

Business Opp.

ATTENTION STUDENTS sales opportunities, "First Class" body care products. We're looking for bright enthusiastic people, start out earning 50%; work your own schedule. For appt. call 946-1446 or 949-9491 M-W 9-3:00.

For Rent or Lease

FOR RENT, two bedroom condominium. "Scene One", Pool-spa. 1/2 mile from ASU. Call 991-2868.

FURNISHED ROOM and bath in private home. Two miles from ASU. For young lady, share home and cleaning with widow. Your own food and telephone. \$25 per month. 967-1027.

NEW 2 bedroom, 2 bath near ASU. \$50 move in allowance, \$389 per month. 992-9330.

For Rent or Lease

SCOTTSDALE. THREE bedroom, one bath furnished townhouse. Washer, dryer, pools. \$450. Call Mardi Markwell, 954-5919 or 938-5583 evenings.

TWO BEDROOM, two bath 2 1/2 miles south ASU. Private villa. Faculty, staff only. 967-7917 after 5:00.

For Sale

ATARI 800, (48K), program recorder and basic software, \$325. 965-3982, 993-9521 after 6:00.

CALIFORNIA COOLERS \$2.99, Meister Brau \$1.89, Fratelli Bianco \$1.99, Old Playboys 47 cents, imported beers, cold wines, Rundle's, University and Mill.

DURAN DURAN tickets. Two on main floor. Row 15, center stage. Make an offer. 965-9791.

QUICK SALE! 12 x 52, two bedroom mobile home near ASU. Adult park. \$6,500. 968-9858.

WATERBED WITH padded sideboards, liner, heater, two sets of sheets. \$100. Chris, 965-4644 before 4:00.

WHOLESALE, ONE carat diamond, VS-1 quality, \$2,500; 5/8 carat diamond earrings, excellent condition, \$700; 1/4 carat diamond solitaire pendant, \$275. Call Kurt, 894-6594.

Furniture

ATTENTION APARTMENT dwellers! Furnish your entire apartment for less than \$800. Classic Consignment Anniversary Sale, 1874 E. Apache, Tempe. 966-8041.

HUGE SOFA sleeper sale. Fulls and queens from \$199.99. Double bed \$79.95. Dinette set \$139.95. Sofa and loveseat \$269.95. Furniture Plus, 666 E. Southern, Mesa. 898-3124.

USED APARTMENT furniture, excellent condition, low prices, best offer. 967-6143.

WATERBED FOR sale queen-size with new motionless mattress. Call 829-1648, best offer. I'll bargain.

Help Wanted

ACCOUNTING MAJOR. Phoenix advertising agency seeks accounting major, part-time, to do billing, receivables, payables, general ledger, payroll - all on computer. Prefer graduating senior or graduate student who has own transportation and can work at least 15 hours per week. Send resume and letter to: Lambesis and Associates, 5150 North 16th Street, Suite B232, Phoenix, AZ 85016. No phone calls, please.

ACTRESSES, STUDENTS, models. Wanted for part-time fun work as "Buffalo Rick's Wild West Saloon Girls." Call Connie or Peg, 945-8157 or 992-4578.

AIRLINES ARE hiring! Flight attendants, reservationists! \$14-39,000. Worldwide! Call for directory, guide, newsletter. (916) 944-4440 ext. ASUAIR.

CRUISESHIPS ARE hiring! \$16-\$30,000! Caribbean, Hawaii, world. Call for guide, directory, newsletter 1-(916) 944-4440 ext. ASUCRUISE.

DISABLED GRADUATE student is looking for personal aide. \$4 hour, 10 hours or less per week. Kevin, 965-0444.

Help Wanted

INTERESTED IN starting an advertising career? Student to sell magazine advertising, Phoenix area for two to three months. Commission only. If interested, send qualifying letter and details by 1-31 to Uni Communications, PO Box 2258 Prescott, AZ 86301.

IN THE Army Reserve our toughest jobs come with either a \$2,000 enlistment bonus or up to \$4,000 in educational assistance (after completion of Army training). Besides the bonus you'll earn over \$73 one weekend a month. And over \$1,100 per summer your first two summers (your initial training). There are limited openings in various fields including Administration, supply, transportation. Call your local Army Reserve Recruiter today to see if you qualify for a bonus. In Tempe 967-1611. Phoenix 265-1955, 249-2320, 965-0376.

LIQUOR SALES clerk 25-35 hours weekly, hours flexible. Must be mature and well groomed specializing in wine sales. No experience necessary. Nice North East Phoenix shopping center. 5031 N. 16th St. Apply 10:00-4:00 Tuesday, Thursday and Friday. 10:00-12:00 Monday and Wednesday.

MODELS: MICHELLE'S swimwear, 414 Mill Ave. Apply Monday through Friday, 3:30 - 8:00. 11:00 - 6:00 Saturday.

MULTI-TALENTED person with Humanities background. Tasks will vary: research, typing, dictation to household chores. 10 to 15 hours a week. Put typed resume and qualifications in campus mail addressed PEBE 107B ... soon.

PART-TIME JOBS! \$200 - \$400 week. 5:30 to 8:30 p.m. weekdays. Week-ends: afternoons. Jack 894-6126.

PART-TIME ILLUSTRATOR with layout and paste-up experience. Scottsdale airport area. 996-9455.

PART-TIME MAIL order business from your home, minimum investment \$20. No inventory requirement. Send self stamped addressed envelope for free information. Tara products, 4435 S. Rural, Suite 151, Tempe, AZ 85282.

PART-TIME SALES help wanted immediately. Need car. 8:30 a.m. to 5:30 p.m. Call, 266-9060.

PERSONAL ATTENDANT to assist handicapped student on weekday morning hours. Call this number, 965-9223.

STUDENT JOBS. Let us pay your tuition! Part-time work. \$110 - \$290 per week. 966-0874. 12-3 only.

STUDENTS CHILD Care Center, two blocks south ASU hiring substitute teachers for spring semester. Kids are 1 - 5 years old. Volunteers needed Monday through Friday. 894-9370.

STUDENT TO help clean office building. Two to three hours, five nights weekly in Mesa. Call, 835-6950 ask for Kathy.

BUSINESS AND TECHNICAL MAJORS

Highly responsible positions for college seniors and graduates (through age 34) in financial and logistic support. The Navy Supply Corps needs highly qualified, dynamic individuals to lead and manage large inventory and financial networks. Salary \$18,500 to start, \$34,000 after four years. Excellent benefits package. Need BA/BS, U.S. citizenship. Call Naval Management Programs, 256-7632 collect between 9 a.m.-5 p.m. Mon.-Wed. 1/26

SENIOR NURSE STUDENTS ADVENTURE... CHALLENGE... PROFESSIONALISM!

An exciting job with opportunities for world-wide travel, career development, professional growth, excellent benefits. BSN graduates or senior students are eligible. If you're going to be someone, special... Be a Navy Nurse!
For more information, call collect (602) 256-7632 between 9 a.m.-5 p.m. Mon.-Wed. 1/31

Help Wanted

SUMMER JOBS. National Park Co's. 21 parks, 5000 openings. Complete information \$5.00. Park Report. 651 2nd Ave. W.N., Kalispell, MT 59901.

THE MOLLY Corporation is looking for fun, energetic and personable part-time driver tour guides. For more information call 941-2957.

TRAVEL FREE. Why pay for your spring break trip when you can go with your friends free! Be a rep for your College Travel Club! Call 966-9557 or 998-8971.

WANTED: CREATIVE, energetic individual to work consistently 2-4 hours per week, placing and filling posters on campus. Earn \$500 or more each school year. 1-800-243-8679.

WANTED: ONE male strip dancer for bachelorette party, Saturday, January 28. Price negotiable. Leave name and number at 965-5146.

YMCA CAMP in Oracle is looking for students to work at camp this summer. Good salary, plus room and board. Write or call Mr. Tom Dinkins, 516 N. 5th Avenue, Tucson, AZ 85705, 884-0987 for information and applications.

Instruction

CLASSICAL GUITAR lesson by ASU music graduate. Close to campus. 967-5112.

NIHONGO NO gakusei clesu nee! Exchange Japanese for English language tutoring. Call Bob at 967-4744.

SELF DEFENSE Traditional Taekwondo, (Korean Karate). Personalized instruction. Very effective, very affordable. 894-5389.

TENNIS LESSONS, beginner through advanced intermediate. Satisfaction guaranteed. Call now for details. Bob 967-6918(H), 967-4700(W).

LEARN TO TYPE

30 words a minute possible in four (4) weeks
Ask for "ASU Special" when you call
966-7111

Keyboarding Lab
23 W. 7th St., Suite 104
Tempe, AZ 85281
Just across Mill from ASU
Visa/Mastercard Accepted
1/26

Motorcycles

1981 KAWASAKI 750 LTD sharp! Clean, good rubber, only 7,100 miles. \$1,495. OBO. Paul, 966-0503.

1982 SUZUKI SP250 dirt/ street bike. Full floater, rear suspension, 80 mpg. 1,400K. \$1,090. Mark, 894-5410.

MOTORSCOOTER, HONDA Urban Express. Brand new. Must sell. \$775. 70 mpg, economical. Helmet included. 831-0840.

MUST SELL this week, 1982 KZ550. Excellent condition, new tires, chain, battery. \$1,500, offer. Tom, 994-8388.

Personal

AVID BOARD gamer seeks players with Strat-O and APBA experience. John, 277-4652 after 7:00 p.m.

BLACK GLOVES, skinny ties, rhinestones, jackets, leather belts, and more at the Hob-Nob Thrift Shop located 221 W. University.

ENOUGH DIETING? Personal counseling does cure eating disorders. Find out what you really want in life. Licensed Psychotherapist, fifteen years experience, recovered bulimic, published specialist in the treatment of bulimarexia and anorexia. Ginnie Monroe 945-7391.

PERFECT LOVER certificate. Official, 8 1/2 x 11, frameable. Send name and \$3.00: Perfect Person Institute, Box 221, Glendale, AZ 85311.

SAVE BIG money! Use your SunSaver Oupoun Book. To get your free copy call 253-8120.

Help Wanted

HELP WANTED: PART-TIME EVENINGS

National Marketing Company has openings for sales-minded people interested in part-time employment. Openings are available on the evening and weekend shifts. Our sales people work in a modern, comfortable business environment contacting established customers on long distance WATS lines. Earnings, which include salary and bonus, average \$4-\$6 per hour, paid weekly. These are permanent positions with no seasonal layoffs.
If you have a good, clear speaking voice, proper grooming for a business office, enthusiasm and competitive spirit, our experienced management team will train you to sell our nationally recognized products (while being paid, of course). Our Tempe office is located approximately five minutes from campus.
Please call DIALAMERICA for details.
829-1140
1/31

Personal

SKI VAIL / Beaver Creek, call toll free 1-800-222-4840 or consult your travel agent for discount rates on lodging, lifts and rentals.

THE HOB-NOB Thrift Shop is now open Sundays 12:00 - 4:00. 221 W. University.

TO SUSAN in MGT 301. This is a shy persons way of saying hi and I hope you have a nice day! Werks.

Real Estate

CHARMING TWO bedroom with garage. Beautiful secluded yard. Bike to ASU. Great terms. Assume without qualifying. \$59,900. Radmall Ramney ERA, 994-3939 or Janell, 994-1312.

COZY, SHARP two bedroom, two bath home with pool privileges. Appliances included. Asking \$54,900. Evenings, Ray, 838-2631. Red Carpet Weary, 968-3414.

FOR SALE on Dobson Road near Southern, nice townhouse. Good for student living and investment. \$44,600. Community pool. Neria, ERA - American ERA, Realtors, 838-4950.

NEAT, CLEAN two bedroom single level villa near pool. Perfect for retirement or beginners. \$51,900. Evenings, Chris, 838-2646. Red Carpet Weary, 968-3414.

THREE BEDROOM home with fireplace near ASU. Large yard. Priced at \$48,900. Evenings, Ray, 838-2631. Red Carpet Weary, 968-3414.

TIRED OF dorm living? Invest in two bedroom townhouse at "The Oaks". \$39,900. Owner will carry with low down. Merry, 897-1555, ERA - American ERA, Realtors 838-4950.

TWO BEDROOM furnished mobile home 10x45, full length awning. \$4,000 cash. Children welcome. 967-5152.

ARBOUR PARK

1901 E. Apache Blvd.
Tempe, Arizona

Furnished, utilities included. Brand new one bedroom apartments in a park-like setting. Tennis courts, jogging track, jacuzzi, weight room, clubhouse, racquetball courts, cable television available.

CALL 894-2946
2/1

Roommate Wanted

ABSOLUTELY HUGE house! Non-smoking female student. Furnished room, includes utilities, kitchen privileges, pool. ASU one mile. \$185 plus security. Julie or Eileen ASAP, 829-1687.

FEMALE NON-SMOKER to share four bedroom home one mile from ASU. Private furnished room, air conditioned, washer, dryer, cable, dishwasher, quiet neighborhood. \$120 month, 1/4 utilities. Contact Fred or Wendy, 894-6881.

FEMALE ROOMMATE wanted. \$125 plus 1/4 utilities. One mile from campus. Available February. Evenings, 968-3259.

LOOKING FOR a better place to live? Nice three bedroom, two bath house. To rooms available February 1. Roomy, quiet home. Close ASU. Looking for responsible, creative and positively honest people to share this house. Interested? Chad, 894-8311 before 7:30 a.m. or after 6:00 p.m. \$180 month, \$175 deposit, 1/4 utilities.

NICELY FURNISHED. Only a few rooms left. Houses and townhouses. See with pools. \$125 thru \$185. No fee. 897-7030.

THREE BEDROOM townhouse, washer, dryer, pool, dishwasher, 3 1/2 miles. \$125, 1/4 utilities. 829-6895 after 8:00.

Services

ADOPTIONS ARRANGED. No medical or legal expense to mother. Call attorney, Robinson, 946-5344.

CARS AVAILABLE - 21 or older. All States Drive-away, 992-5200.

FORTRAN / BASIC tutoring. Complete tutoring including on-line work from private terminal. Dave 966-0430 after 5:00.

GOOD STUDENTS save 25% on auto insurance. Qualified non-smokers save 18%. Call Steve, 831-0121. Farmers ASU Representative.

HAVE UNWANTED facial or body hair removed permanently by electrolysis. Free consultation. Located in Tempe. Call Sharon, Desert Electrolysis Center 839-1885.

TIRED OF being ripped off on auto repair? Guaranteed, expert work done by professionals. ASU area. Dennis, 820-0094.

Services

VALENTINE'S DAY

Say "I Love You" with a plush "hot stuff" devil holding a bouquet of red heart foil balloons.

-A- BALLOON -A- FAIRE
279-4200
MCIVISA Valleywide Delivery
1/26

Travel

ARIZONA MOUNTAIN Inn, Flagstaff. Cozy, custom cottages in the pines. Kitchens, fireplaces, one to five bedrooms. Winter wonderland specials, ski packages. 1-774-8959.

CHINA - HONGKONG - Japan; 22 days, Dr. Roger Axford, 839-3255, July 15 - August 8, 1984, \$2995.

Typing

\$1.50 PER page, 10% cash discount. Rush service, call Cindy (formerly Business Office Service) 829-8450.

A-1 RESUMES, repetitive cover letters. Professional, typeset appearance. Cynthia Grant, 968-3627.

ACCURATE TYPING, downtown near Fifth on Mill. Quick, quality typing, graphics. Call 24 hours. 941-7099, 894-5234.

ACCURATE TYPING University and Dobson area. 964-3784.

ALL PAPERS typed to your complete satisfaction. IBM Selectric. Near ASU. Reasonable. Mrs. Oakley, 967-0802.

ALWAYS AVAILABLE for typing at \$1.25 per page. Call Susan at 833-0373.

A-PLUS Typing. Term Papers, Resumes, securities and finance papers a specialty. Papers completed on Electronic memorywriter. Call Judy 839-0401.

A TOP-NOTCH secretarial service. Quality typing or word processing. IBM equipment. 20 years experience. McKellips / Scottsdale roads. Dana 941-5111.

CONVENIENT TO campus. Fast, friendly, fair, professional typing and graphics. Call 24 hours, 894-5234.

FAST, ACCURATE typing, \$1.25/page. Call Teresa at 962-0079 or Linda at 969-5775, elite typing available.

FORMER LEGAL secretary types term papers, manuscripts, letters, resumes, takes dictation. Minor editing. Margie, 994-3759.

JOH-REE SERVICES. Typing, word processing, term papers, reports, resumes, letters. \$1.25 double spaced page. Call Marie anytime, 966-4786.

MANUSCRIPT TYPING in my home. Phone 997-1123, Jean.

NORTHEAST MESA, Professional word processing. Letter quality printer. Cassette transcription. Experienced editor. Reasonable rates. 981-3531.

NORTHWEST PHOENIX, quality typing. Theses, dissertations, research projects. 938-3397.

PROFESSIONAL QUALITY word processing. Will edit and correct spelling. Carolyn Douglas, 838-0959.

RESUMES, REPORTS, term papers, letters. Accurate and fast! \$1.15 per page. Call Bob at 967-4744.

STUDENTS. TYPING done in my home. Reasonable rates. Call Marian at 945-1619.

TYPING BY Paper Impressions - resumes, reports, letters etc. Electronic memory typewriter, cassette transcription. Reliable, fast accurate. Pickup / delivery on campus. Call Darlene 831-2080.

WORD PROCESSING service. Special discount for Master's/ Doctorate thesis: \$1.50/ double spaced page (usually \$2.00-2.50/page). Call Suzie at Diversified Professionals, Inc., 246-9842, evenings at 955-6119.

WORD PROCESSING, typing. Can type anything. Guaranteed word perfect. Located in Tempe. 839-3412.

Wanted

CASH FOR color TV's needing repair. Will pickup. Call, 968-4042.

INDIVIDUALS THAT have experienced Anorexia Nervosa and are working toward recovery, ASU graduate students would like to speak with you for research purposes. Confidentiality is respected. Please contact Brian at 968-8962 or Stacey at 966-3472.

PAYING CASH for gold, silver and diamonds, class rings. Mill Avenue Jewelers, 414 S. Mill Avenue.

WANTED SENIOR marketing student. Let us be your first client, Call 941-2199.

OFFICIAL ARIZONA STATE UNIVERSITY STUDENT HEALTH PLAN

Visit or call the Student Health Insurance office in the Student Health Center for information regarding:

Enrollment • Spouse & Children coverage
Coverage information • Premium information
Claim forms • Advice • Brochures

Enrolled students must pick up Student Health I.D. card for verification of coverage.

LAST DAY TO ENROLL FOR SPRING/SUMMER FEBRUARY 6, 1984.

Office Hours: 9 a.m.-12 Noon • 1 p.m.-4 p.m.

965-2411

Carroll & Associates representing Keystone Insurance Company

OPEN
9-8 M-F
9-6 Sat.
12-6 Sun.
Open evenings



905 S. Mill
Tempe Center
829-1743

SIDEWALK SALE

30%-75% SAVINGS

SUN DEVIL CONCESSION CLEARANCE

| | Reg. | Sale |
|--|----------|--------|
| •ASU Jerseys | \$13 | \$4.99 |
| •Sweats | \$15 | \$5.99 |
| •Youth sweats | \$12 | 4.99 |
| •Adult T's | \$9 | \$3.99 |
| •ASU Homecoming jerseys | \$13 | \$2.99 |
| •Youth jersey | \$11 | \$3.99 |
| •Key chains, hat pins | \$3 | \$1.49 |
| •Binoculars, kazoos & pennants | \$3 | 99¢ |
| •Coasters | \$1 | 29¢ |
| •Hats | \$7-\$12 | \$1.99 |
| •Painter caps - ASU | \$5 | 99¢ |
| •Devil horns | \$3 | \$1.49 |
| •License plate holders — seat cushions | \$5 | \$1.99 |
| •Pens, buttons & pom-poms | \$3 | 79¢ |

MISPRINTS & IRREGULARS

| | | |
|-------------------------------|------|--------|
| •Baseball caps | \$5 | \$1.99 |
| •Sweaters — white & maroon | \$25 | \$6.99 |
| •Gym shorts | \$7 | \$2.99 |
| •Painter hats (various logos) | \$4 | 99¢ |

U-Shop Final Markdowns

| | | |
|--------------------------------------|-----------------|-----------------|
| •Long pants | \$23.95-\$25.95 | \$7.99 |
| •Handpainted rag sweats | \$19.95 | \$9.99 |
| •Polar fleece jackets | \$34.95-\$39.95 | \$26.99-\$29.99 |
| •Warm-up jackets | \$21.95 | \$17.99 |
| •Rugby shirts | \$26.95-\$39.95 | \$20.99-\$31.99 |
| •IZOD sweaters | \$25.95-\$31.95 | \$20.99-\$25.99 |
| •Assorted merchandise (some defects) | | \$1.99 and up |
| •Great junk box | | 99¢ each |

January Sale & Clearance

Save Up To 50%

GALS

- Active Separates
Tops, Pants, Sweats, etc. **\$9.99-\$15.99**
- IZOD's **\$9.99**
Short sleeve with collars
Assorted stripes
- Oxfords **\$9.99-\$17.99**
Dee Cee or Polo
- Tights & Leotards **\$3.99-\$24.99**
by Exquisite Form & Barely Legal
- Swimwear **\$12.99-\$20.99**
1-piece or 2-piece
by Lightning Bolt

GUYS

- Sweaters **\$15.99-\$19.99**
by Op & Jockey
- Shorts & Swims **\$9.99**
- Long Sleeve T's **\$9.99**
- Short Sleeve Collars **\$9.99**
- Sweat Shirts **\$9.99-\$17.99**
Ocean Pacific or Hobie
Long Sleeve, Sleeveless, Hoods, etc.

HOT NEW ARRIVALS, LOTS OF COLORS!

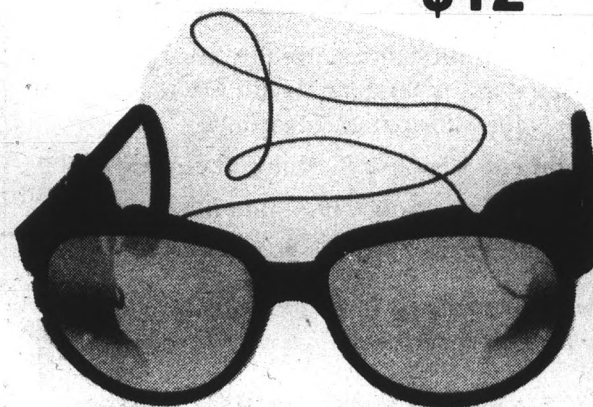
Sweats
\$9.99
S, M, L



CAT EYE
'Phonets'
\$10



Glacier Glass
\$12



The Sportswear Racket **894-1045**
active sportswear specialties
915 S. Mill
Tempe Center
M-S 10-6
Sun. 12-5

Le
By Rob
Staff wr
ASU
tional r
from a
those pl
Two h
Rep. Ji
being sp
Phoenix
critics
dent."
The r
session
optiona
employ

© Co

Soph
Thurs

Inside