

Pay policy merits student input, prof says

By Lisa Phillips
Staff writer

The use of student evaluation to help determine faculty merit pay will provide teachers with feedback that could lead to a more effective classroom performance, Faculty Senate President John Evans said.

Evans said that while he could not speak for other faculty members, he believes the use of student evaluation as a part of merit pay determination is a "very good idea."

"A teacher will know if his students believe he or she is presenting material effectively," he said. "I think it should eliminate whatever carelessness might

have been present in preparation."

The Arizona Board of Regents Compensation Plan Task Force recommended to the board last week that student evaluation be one component in the determination of merit pay. The board will vote on the recommendation at its December meeting.

If the committee's plan is adopted by the board, it will be up to the regents to determine how the student evaluation process will be conducted.

Chris Smith, president of the ASU chapter of the American Federation of Teachers, said the federation has not taken an official stance on the role of student evaluation in merit pay distribution, but indicated he is in

favor of it.

"The people in your classes are in a good place to judge your performance," Smith said. "I think it's a very valid part to be considered."

Evans said he believes a standardized student evaluation system would "contribute to the overall fairness" of a merit pay program.

He said he believes students will be fair in their teacher evaluations, adding that very bad and very good responses will balance each other out.

"I don't think an effective teacher needs to worry about retaliation from students," he said.

Smith said that although he thinks care must be given to the type of form used, the task of developing a system in which students would give fair evaluations "is not insurmountable."

Evans said he also would like to see peer evaluation incorporated into the merit pay determination process. Currently, peer evaluation is used "infrequently," he said.

"(Teaching) value should be as high as research and publication" when determining merit pay, Evans said.

He said he thinks peer evaluation should include "round-table discussions," where faculty within departments can set aside time to discuss the "art of teaching."

wednesday

November 16, 1983

state
press

Tempe, Arizona

Arizona State University

Vol. 66 No. 49

2 Sections

© Copyright, State Press, 1983



Staff photo by Larry Woodall

It came from beyond

ASU art students wander among their creations of inflated plastic sculptures on the lawn between Stauffer Hall and the Art Department. The students were creating Tuesday afternoon.

Night use of Architecture Building halted after prank

By Sandy Sstek
Staff writer

Students have been banned from working in the Architecture Building at night until further notice, because a prank over the weekend constituted a dangerous fire hazard, according to the Dean of the College.

Gerald McSheffrey said the building will be closed at night as a result of toilet paper being distributed throughout the second floor of the building.

"If there had been an electrical fault or a match or cigarette had been lit, the whole place would have caught on fire," McSheffrey said.

"The fact is that it happened and there could have been serious damage. We can't allow this to happen because we have a lot of flammable material — paper and wood — in the building," he added.

According to ASU Fire Marshal Andy Anderson, the building was closed for two hours Monday morning to clean up the paper which had been "strewn all over the second

floor work area, piled high in aiseways and on worktables, and draped over light fixtures."

"I consider it an extreme fire hazard," Anderson said. "Someone really had a good time. If someone had lit a match to it, the whole place would have gone up in flames."

McSheffrey said the students were provided the privilege of working on their class projects late at night without supervision.

"There is just no way one can guarantee the safety of students in these circumstances," he said. "The building has always been left open on the basis that the students would be responsible for the building."

"We now have no guarantee unless the students come to me with a plan for guaranteeing that the building would be used for working purposes only," McSheffrey said. "I hate to have to do this but we have no alternative but to restrict the hours to normal school hours."

"Many of the students do not have the drawing materials they need at home," he said. "We'd like to keep it open as a

convenience for the students, but they have abused their privilege."

He said other incidents have occurred at the building in which windows were broken, apparently from the inside.

"We want to be insured that the building will be treated in a reasonable way," McSheffrey said. "The students are responsible for maintaining proper standards of use within the building."

He said the building was open seven nights a week, with about 30 to 50 students using the equipment during the night.

According to Roger Schluntz, chair of Architecture, other mischievous pranks, which caused minor damage, have occurred.

Schluntz said the equipment in the building attracts non-students to the building and some thefts have occurred.

"Until the faculty are satisfied that students will assume the responsibility, the building will remain closed at night," he said. "With the privilege comes the responsibility."

Expansion of ASU boundaries likely to continue

This is the second of a two-part series examining the University's trend toward expansion, which has involved numerous real estate transactions. Today, the State Press looks at four transactions that ASU officials could face, and their implications to ASU's future.

By Jim McCleary
Staff writer

The past several years have seen the growth of ASU beyond the main-campus boundaries, and indications point to that trend continuing.

Negotiations are pending on several possible transactions involving ASU. All the transactions are uncertain at this point, but may be decided within the next year.

An informed source within the University has indicated that a Scottsdale Hotel has offered to buy the Kerr Cultural Center from ASU. The center was donated to the University several years ago.

Although ASU officials deny they will sell the property, the general manager of the hotel indicated that the center has desirable qualities.

ASU President J. Russell Nelson has said the University is not out to make money by selling property.

In the past, ASU has provided a convenient outlet for lucrative corporations or wealthy individuals with property to donate, many times for tax purposes.

Jennus Burton, director of cash and property manage-

A growing concern

Last of a series

ment, said, "We don't have a large number of people standing in line to give us property."

He said the University gets the largest number of potential donors from September through December, because that is the last opportunity that "people can change their tax rate."

ASU also may gain control of another piece of property without a monetary transaction if a recommendation is made to transfer the Arizona Children's Hospital to ASU.

Although no decision has been made on the fate of the hospital, Gov. Bruce Babbitt has said the public interest would be served best if ASU operated the facility.

The University also is looking at a possible purchase of U.S. Forest Preserve land adjacent to ASU's Camp Tontozona, which has a history of financial troubles.

University officials have said the additional land would not further the budgetary problems currently faced by the camp, but could actually improve its financial situation.

The University could become the recipient of another land gift if Arizona Public Service decides to donate an undetermined amount of land to ASU for construction of a golf course.

One member of the Arizona Board of Regents has said a

golf course provides the most feasible use for the land. He said the land could not be used for any type of office space because it is near a power plant which creates noise that would disrupt working conditions.

A Scottsdale hotel looking to expand has offered the University an undisclosed amount of money to purchase property which had been donated to ASU, according to an ASU official.

Jim O'Connell, director of administration for public events, said ASU was approached by the Stouffer Hotel Corporation, which controls the Cottonwoods Resort, with an offer to purchase the Kerr Cultural Center, which officially became ASU property in February 1981.

Rick Suhl, general manager of the Cottonwoods Resort, has been with the company for only a few weeks but said he has been informed that the resort would like to purchase property in the area, possibly the Kerr Cultural Center.

"We're trying to work on an expansion plan for the area. The Kerr Cultural Center would be ideal for expansion," he said.

However, Suhl could not say if the company has approached ASU or how much Stouffer Hotel Corporation would be willing to pay for the property.

O'Connell said unless serious financial problems arise, "I see no possibility of it being sold."

continued page 6

nation/world

state
press

Soviets leave arms talks early

GENEVA, Switzerland (AP) — The Soviet delegation left the medium-range nuclear arms talks after 35 minutes Tuesday, the shortest session during nearly two years of negotiations, but U.S. officials said the two sides will meet Thursday. The brief meeting came one day after the arrival in Britain of the first of 572 new U.S.-built cruise and Pershing 2 missiles scheduled for employment in Western Europe if the negotiations fail to produce an accord. Chief Soviet negotiator Yuli A. Kvitsinsky refused to comment to reporters as he left the U.S. delegation building where the session took place, but 20 minutes later the office of U.S. negotiator Paul H. Nitze announced that the talks would continue Thursday.

Mexico attacks invasion of Grenada

WASHINGTON (AP) — Mexico delivered a strong attack Tuesday on the U.S.-led invasion of Grenada, calling it a clear violation of the charters of the United Nations and the Organization of American States. Mexican Foreign Secretary Bernardo Sepulveda, addressing an OAS foreign ministers meeting, said the Grenadian intervention represented an unfortunate revival "of a practice we thought had been eliminated. "To our understanding, there is no motive that legitimizes the presence of foreign forces in that country," said Sepulveda.

Western TV crews detained in Poland

WARSAW, Poland (AP) — Police detained about 40 Western TV cameramen, reporters and their Polish assistants for more than an hour Tuesday after they tried to cover the interrogation of the Rev. Henryk Jankowski, friend and confessor of Solidarity founder Lech Walesa, witnesses said.

Jankowski was called in by the prosecutor in the Baltic port of Gdansk to discuss accusations that he abused religious freedom by inciting disturbances in his sermons. The charge, which carries a maximum 10-year prison sentence, is rare in Poland.

About 100 uniformed policemen and 200 supporters of the outlawed Solidarity labor federation were on hand when Jankowski and his lawyer, Jacek Taylor, arrived at the prosecutor's office at 9 a.m., Western witnesses said.

Police kept the Solidarity backers away from the building while the priest and his attorney entered. Then they detained the journalists, most of them members of television camera crews from the United States, West Germany and Sweden, witnesses said.

CORRECTION POLICY

It is the policy of the State Press to acknowledge and correct errors when they occur. If you see an error, call our newsroom at 965-2292 to let us know. All corrections will appear on this page.

SUPERCOPY CENTERS



Print quality copies

- Kodak 250
- Xerox 9500

Complete bindery services

Postal Service Station

Southern Palms Shopping Center

McClintock & Southern 3136 S. McClintock Dr.

*with current activity card only

No minimum

White 20 lb.

8 1/2 x 11

(Expires Dec. 31, 1983)

Hours: Mon.-Fri. 8:30-5:30, Sat. 10-4

AUTO INSURANCE

AS LOW AS

69¢ A DAY!

EVEN IF YOU HAVE UP TO TWO MINOR VIOLATIONS

Of course we can't write daily policies but we can cover your car with liability insurance for as low as 69¢ a day. We represent many different insurance companies and because of this, we can get you some of the lowest rates available.

GOOD RECORD, BAD RECORD, EVEN DWI'S! CHECK OUR RATES.

*Based on married male, living in Phoenix, age 23 or older, with up to two minor violations.

MOTORCYCLES ALSO

EXECUTIVE INSURANCE SERVICES

Complete Insurance Services

Telephone: (602) 956-0507

Mon.-Fri. 9 a.m.-5 p.m. Appointments Available

2515 E. Thomas Road • Phoenix, Arizona 85016

Häagen-Dazs

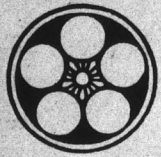
HAPPY HOUR 4-7:30 p.m. Scoops 2 for 1

WE DELIVER Pints, Quarts and Cakes

20% OFF WITH ASU I.D.

903 S. Rural 967-2340

HOURS: Sun. Thurs. 11-12 a.m. Fri. & Sat. 11-1 a.m.



TERIYAKI OF JAPAN

Japanese Fast Food Concept Serving Japanese Imported Beers, Plum Wine, and Sake.

1314 E. APACHE • 894-6883



HUNGER AWARENESS WEEK

Arizona State University

NOVEMBER 13-19, 1983



Information tables on Cady Mall

CASH AND FOOD DONATIONS • MON.-FRI.

•WEDNESDAY — "STREET ALLIANCE"

Dance Company • West Lawn • 11:30-12:30

TODAY!

12:30 Hunger Awareness Week Keynote • West Lawn

STATE SENATOR ALFREDO GUTIERREZ

•THURSDAY — Day of Fasting for World Hunger Awareness

Rice Supper to break the fast

5:30 p.m., Newman Center, 230 E. University

Cooperating Organizations: Students for Hunger Awareness, Campus Interfaith Council, ASASU

German consul assails U.S. press

By Mike Rynearson
Staff writer

A passive U.S. media has created a void of information for most Americans on affairs in West Germany and has angered many German-Americans as a result, a high-ranking West German official said Tuesday.

Heinz Lewalter, the consul general of the West German Embassy in Los Angeles, said the U.S. media treat West Germany, one of the United States' staunchest allies, with little or no regard in their respective media.

Lewalter, who spoke to an ASU German history class of approximately 60 students, said German immigrants, many coming to the United States during Hitler's rise to power, are becoming upset at the lack of coverage of their homeland.

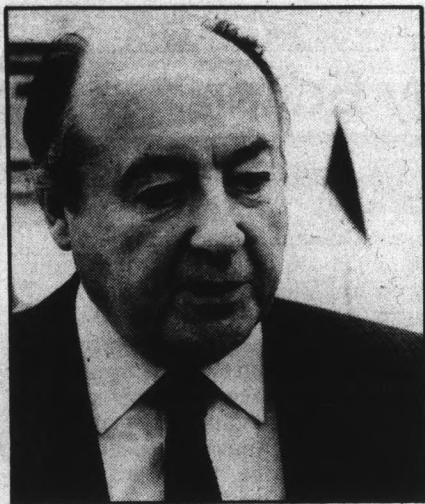
As a result of the virtual ignoring of West Germany by U.S. news media, to many Americans Germany only brings to mind Oktoberfest, sauerkraut, wurst and beer, Lewalter said.

"The people in Germany are well informed on U.S. news and culture," Lewalter said. "In German papers on the front page every day there is U.S. news about what President Reagan said or what Congress did on the day before."

"When the president of West Germany came to the United States on an

invitation by President Reagan, the U.S. media coverage of his visit was almost nothing."

More recently though, West Germany has been thrust into the international news spotlight, but in a way many Germans rather would have avoided.



Heinz Lewalter

As a means of countering the Soviet imbalance of medium-range nuclear missiles in Europe, NATO plans to deploy 572 Pershing and cruise missiles in western Europe within the next five years, including a substantial number to West Germany.

As a result, there is an uneasiness throughout West Germany, which is already heavily laden with advanced conventional and nuclear weaponry, according to Lewalter.

"There is a military buildup in West Germany that the world has never seen before, all under the supervision of the United States," Lewalter said.

"At the same time, Russia has warheads aimed at every town and factory in West Germany. We in Germany feel it and we don't like it."

Lewalter said West Germany's main concerns are Soviet SS 20 missiles and the Backfire Bomber, both intermediate-range weapons capable of striking West German soil from within the eastern bloc.

"We would like the Russians to do away with these weapons, along with the United States, to a zero level, but it appears as though the Soviets want to maintain some kind of superiority," Lewalter said.

"We don't like these missiles in our back yard, but if you put everything together into what you cherish as freedom, you do it anyway, with hopes that the Geneva talks will succeed."

"We have learned from past experiences that when dealing with the Communists, if you show any signs of weakness you give up all hope of getting something in return," Lewalter said.

COUPON

FREE DINNER

Buy one of our delicious combination dinners and get the second one of equal or lesser value

FREE.

Susie's
Mexican Cafe/Lounge

2405 E. University
(Between Price & Dobson)

OPEN
Mon.-Sat.
11-9

966-7091

HAR

IN TEMPE

HAIRSTYLES FOR THE EIGHTIES
STYLED BY SANDY

Thanksgiving Specials
\$5 OFF Men's and Women's Cuts
\$10 OFF All Perms
\$5 OFF Colors, Cellophanes and Hennalucents

Call For Appointment
414 S. Mill Ave. #101
(Next to Spaghetti Co.)

894-1191

Campers
ATHLETIC

The Class of the 80's

IT'S A "CRAZY" SALE

Crazy Horse Sweaters	Reg. \$23.95 NOW \$17.95
Turtle Necks	Reg. \$12.95-\$15.95 NOW \$8.95
Skirts	Reg. \$27.95 NOW \$12.95
Tennis Shirts	Reg. \$19.95 NOW \$12.95

Make great Christmas gifts.
We monogram too.

SHETLANDER
BY
CRAZY HORSE

EARLY WINTER SERVICE SPECIALS

COUPON

MOTORCRAFT OIL and OIL FILTER SPECIAL

Includes up to 5 quarts of Motorcraft oil, Motorcraft oil filter and installation.

TOTAL SPECIAL PRICE PARTS AND LABOR

\$10.18

Any Applicable Taxes Extra Valid Nov. & Dec. 1983 Ford Cars & Lt. Trucks Only

COUPON

OVER-THE-COUNTER SPECIAL

15% discount off manufacturer's suggested list price on parts and accessories purchased over the counter.

TOTAL PARTS DISCOUNT

15% OFF

Any Applicable Taxes Extra Valid Nov. & Dec. 1983

COUPON

AUTOMATIC TRANSMISSION SERVICE

Includes band adjustment, screen cleaning, adjustment of manual and throttle linkage. Includes replacement of fluid and gasket. Ford built vehicles only. Does not apply to vehicles equipped with automatic overdrive or transaxle automatic transmissions.

TOTAL SPECIAL PRICE AS DESCRIBED

\$42.95

Any Applicable Taxes Extra Valid Nov. & Dec. 1983 Ford Cars & Lt. Trucks Only

COUPON

MOTORCRAFT ENGINE TUNE-UP SPECIAL

Solid state tune-up includes installation of Motorcraft spark plugs, inspection of choke, throttle linkage, spark plug wires and distributor cap, adjustment of carburetor and timing. Eights and Econolines slightly more.

TOTAL SPECIAL PRICE - PARTS AND LABOR

4-cylinder	6-cylinder
\$29.95	\$39.95

Any Applicable Taxes Extra Valid Nov. & Dec. 1983 Ford Cars & Lt. Trucks Only

CALL FOR APPOINTMENT NOW!

FORD

We Honor

MasterCard, VISA, Discover, American Express, or your personal check

WE FIX CARS FOR KEEPS. ASK FOR DETAILS.

LIFETIME SERVICE GUARANTEE

If you ever need to have your Ford, Mercury, Lincoln or Ford Light Truck fixed, you pay once and we'll guarantee that if the covered part ever has to be fixed again... the repairing dealer will fix it free. Free parts. Free labor. Covers thousands of parts. Lasts as long as you own your vehicle. This limited warranty covers vehicles in normal use. And excludes routine maintenance parts, belts, hoses, sheet metal, and upholstery.

SERVICE AND PARTS HOURS
7 a.m. until 6 p.m. Mon. through Fri.

Ralph Thomas
Ford
Dolphin Ford

946-3900 7100 E. McDowell at Scottsdale Rd.

state
press

The only thing necessary for the triumph of evil is
for good men to do nothing.
—Edmund Burke

opinion

Grenada a small victory in U.S.-Soviet struggle

At times it is hard to concentrate on affairs of school and work. The mind easily wanders to young men waging war in the Caribbean or keeping the "peace" in Lebanon.

The inevitable question is raised: Why did the United States invade Grenada, a small island nation with fewer than 100,000 citizens? The complex and frightening answer has little to do with Grenada, which is but a small part of a larger strategy. The island is a pawn in the continual struggle for global supremacy between the United States and the Soviet Union.

There are two philosophies on the nature of the people of the U.S.S.R. Some believe they are like Americans — inherently peace loving. That might be true if they were allowed to think for themselves, but instead they are indoctrinated into the Soviet ideology almost from the time of birth. They are taught in school that the country comes first, and the state is more important than the individual. They are brainwashed by the country's media, which are controlled by the government, into thinking other nations

are out to get them. Meanwhile, Soviet leaders carry out an expansionist policy of subversion, occupation and outright war.

Their goal? To take over the countries surrounding the United States, bringing our country to its knees by cutting off our supply of oil and other natural resources. The much-maligned and often-ridiculed "domino theory" is no longer a theory. It is happening right now. Soviet influence is being felt in most parts of the world, including the Americas. As the Communist influence moves ever closer to the United States, the outrage in this country grows at each attempt to turn it back.

Those who oppose our involvement in the bloodbaths of other nations are justified in their honest concern. No one wishes to see U.S. guns used against innocent people by murderous regimes. Until the groups supported by the United States in Nicaragua and El Salvador show more regard for

human life, arms shipments to those countries should be halted.

But the case of Grenada is much different. A clear-cut coup by Soviet-sponsored Cubans took control of the government and assassinated its leader. There is no doubt the Communist government posed a threat to the nearly 1,000 American students there — that was made obvious when the students returned to the United States and were grilled by the ever-dubious American media. President Reagan made the right move in denying Communism another foothold in the Americas.

Yet Reagan will, as always, have his detractors. Some U.S. congressmen originally denounced the invasion, but quickly changed their minds after viewing a congressional fact-finding report. When confronted with the facts of the invasion first-hand, even lawmakers who thrive on criticizing Reagan supported his decision.

At some time, those who chastise each U.S. military action as "imperialism" must ask themselves a few questions: At what point is military defense justified? If not in Grenada — where Soviet interference is obvious — then where? Mexico?

Where does our country make a stand to defend the rights and freedoms we often take for granted, including the very right to protest the invasion of Grenada?

The right to be critical of your government does not exist in Communist-controlled countries. It must be defended by the United States.

Obviously there are many problems with our own country that need to be solved. But the chance to solve them will be gone if we bow to oppression. The No. 1 priority of this nation must be to protect international freedom and peace. The Soviet Union has distinguished itself as the leading threat to these principles. Any effort toward advancing equality, freedom and justice — the ideals that set this country apart from all others — depends upon containing Soviet aggression.

Len Munsil • Copy Editor

letters

Say 'no' to nuclear weapons

Editor:

John Orth's letter (Nov. 9) includes many now-typical distortions of the goals and principles of peace activists on the ASU campus and elsewhere. First, the Peace Movement has not just "finally hit ASU." The group which sponsored this week's activities, Citizens for a Non-Nuclear Future (CNNF), has been here for several years and some of its members have been working for peace for almost 20 years. Second, the nuclear freeze is no one's "claim to fame." It is simply one of many alternatives supported by various segments of the population.

Third, Mr. Orth obviously misunderstands the meaning of the word "humanist," since there is nothing in its meaning or in the philosophy of Humanism which would lead to any of his conclusions relative to nuclear weapons of any size.

Perhaps some of Mr. Orth's misperceptions result from *State Press* coverage — what little there is. In the same issue as his letter, there appeared a photo of a member of CNNF captioned "Friar Freeze" as if, indeed, the freeze was a main topic this week. Another inaccuracy appeared in a related article in which it was stated that Nina Mohit, one of the panelists that day, assisted in relocating residents of

islands the U.S. government destroyed to test nuclear weapons. In fact, if the reporter had been paying attention he would have heard her say that the relocation was carried out by the U.S. military in the late 40s and early 50s and he would also have noticed that she is not nearly old enough to have been involved in any way at that time. This might seem like a small error, but it demonstrates the lack of attention to accurate reporting that has characterized *State Press* coverage of nuclear issues.

Mr. Orth is right about one thing, though. Prevention of nuclear war requires more than the events on campus this week. Nuclear war will be prevented by people throughout the world saying no. No to governments which continue policies leading to extinction. No to military personnel who want to test the toys they've developed. No to arms manufacturers who want to continue reaping excessive profits from taxpayers, and no to politicians who vote on the basis of political payoff rather than serious consideration for future generations.

Lyn Brewster
Graduate Student, Political Science

Lone scholar distracted

Editor:

Recently, I visited the new Science and Engineering Library. I thought libraries were made for people to study in quietly and to do research as well. Although I tried to study, the noise level was so intense, I left.

The noise level was so high that I wonder why some people even go to a library. It seems that the library is nothing more than a chat session for some people.

There are several ideas which can be tried to bring the noise level down to a respectable amount. One of these ideas is for the student simply to ask the noise boxes to be quiet. However, no matter how straight-forward the student is, the problem is that a majority of the people are talking. This leaves the studiers asking a majority of people to be quiet.

Another idea is for the student to complain at the reference desk. This is another good idea, but seemingly does not work. The front desk will send a police officer around the library. Usually this will quiet things down for about five minutes. Then, as usual, the noise will rise to the same level.

I only wish that the people who choose to talk would be kind enough to leave the library and leave us serious students in quiet.

Name withheld upon request

'Radical' label incorrect

Editor:

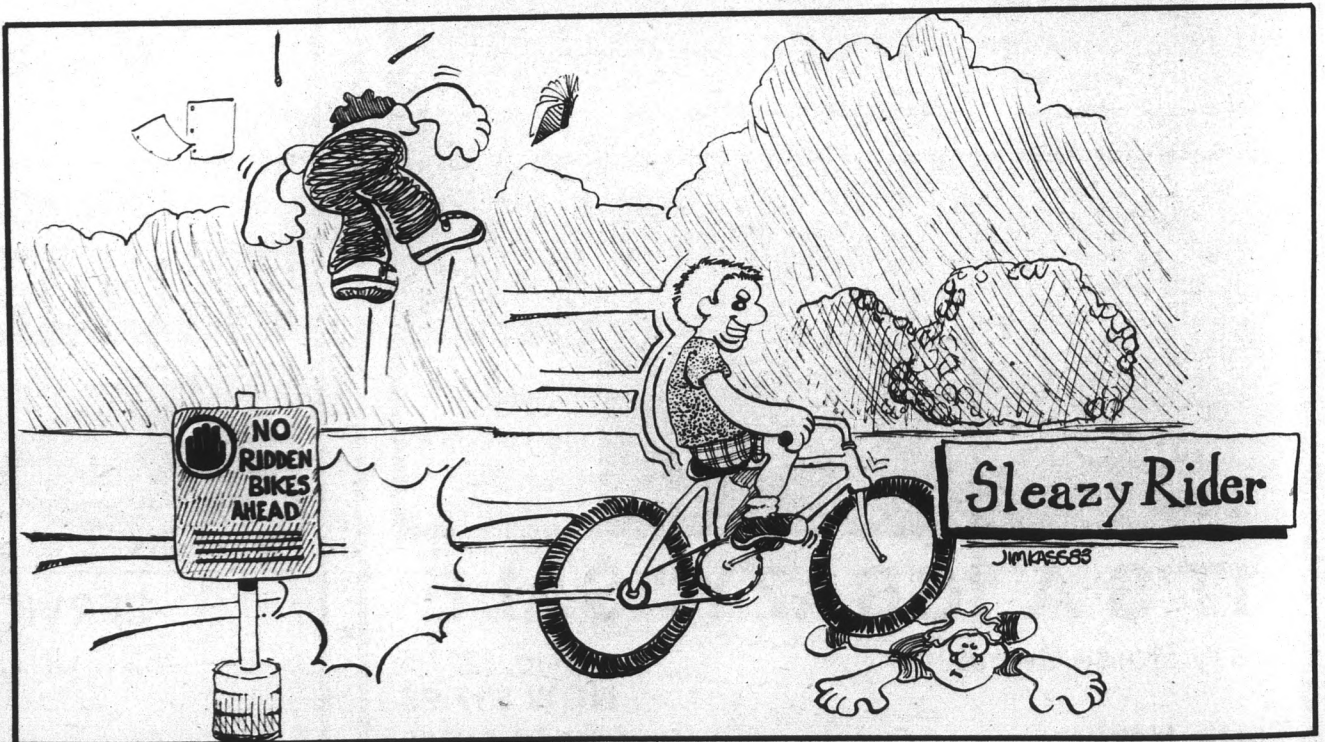
The editors of the *State Press* continually amaze me in how they take every opinion that does not agree with their own narrow view of the world, label it radicalism, and write it off as a liberal plot to undermine the interests of the United States. I am referring to Tracy Fletcher's column of Nov. 9 in which she addressed the analogy between Lebanon and Vietnam.

Yes, Ms. Fletcher, I do realize that the two regions are physically different. One would have to be extremely uninformed not to be aware of this rather obvious fact. What is unfortunate is that you and the rest of your conservative camp fail to see the equally obvious fact that once the U.S. makes a commitment to "preserve its national interests" in a war-torn region, be it Lebanon, Vietnam, or anywhere else, it becomes virtually impossible to avoid eventually assuming a combatant role.

Perhaps it is impossible to get away from the Vietnam analogy. Perhaps this is because so many like yourself fail to appreciate the full significance of the Vietnam experience. Perhaps it is because so many like yourself prefer to believe that the press "fabricated falsehoods" about Vietnam and the U.S. involvement, rather than looking at the hard, cold, and ugly facts about that war. In your column you state that after the departure of American troops from Vietnam, the country experienced mass violence and upheaval. What about before the troops left, Ms. Fletcher? Was Vietnam not experiencing mass violence while the U.S. was still present?

Perhaps one of the greatest misfortunes is that you and other extreme conservatives fail to see any analogies between Vietnam and the U.S. military presence in various regions today. Is this perhaps due to your fear of supporting another mistake? Even more unfortunate is the fact that supposedly educated and sophisticated people still follow our government blindly (right or wrong) and attach labels such as ideologues and radical to those who do not.

Roxanne L. Wilson
Senior, Management



STATE PRESS

TRACY FLETCHER
Editor

TOM BICKFORD
Managing Editor

City Editor CHRIS COPPOLA
Asst. City Editor MICHAEL HUMPHREYS
Opinion Editor MATTHEW SCULLY
News Editor DON SLUTES
Photo Editor ANDY ARENZ

Sports Editor JAY TAYLOR
Asst. Sports Editor KEN SAIN
Scenes Editor MARY PAT BRADY
Asst. Scenes Editor MARIA KHAN
Copy Chief ANDREA S. MEYER

REPORTERS: Wayne Baker, Bob Beamesderfer, Rosanne Dupras, Deanne Hutchison, Jim McCleary, Asha Nathan, Lisa Phillips, Mary Kay Reinhart, Mike Ryneason, Sandy Sietek
PHOTOGRAPHERS: Bob Miles, David Petkiewicz, Larry Woodall
SPORTS WRITERS: Tom Blodgett, Dean Obenauer, Vicki Serna
COPY EDITORS: Len Munsil, Ingrid Tuuling, Steve Waterstrat
STAFF CARTOONIST: Chip H.J. Sheehan, Jim Kass
STAFF ARTIST: Myra Messick Styer
STAFF AIDE: Patrick Kucera

Workshop teaches students priorities for career success

By Rosanne Dupras
Staff writer

If students want to succeed in the business world, according to the president of Communicate with Confidence, Inc., they should learn to brag.

Carol Karpeck told students attending a workshop at ASU Tuesday that job seekers should sell themselves and make themselves known.

Also, Karpeck said that people wanting to start a career need to look at themselves in a new way and assess themselves honestly.

Karpeck's workshop, "The Multi-Committed Woman," was part of "Women and Work" week, sponsored by Associated Students' Women's Services.

"Students have the misconception that they can do anything they want as long as they work hard," said Karpeck.

In the pursuit of high academic achievement, students tend to place the same high expectations on themselves in all fields, she said.

"They say, 'I'll get A's in everything — athletics, social life and in a career.'" She added that having this misconception leads to "trouble."

People's high expectations of themselves and others can be detrimental when identity is equated with behavior, Karpeck said.

The lack of qualities that she called "admirable," such as patience, perseverance and self-composure, is viewed as undesirable, but may not be, according to Karpeck.

She used the example of punctuality. "What makes you think that being on time is the right thing to do for you?" she said.

Karpeck said there are many people who have been procrastinators and have still been successful, but she added that "in business, you have to be on time to succeed."

"You've got to build strength in yourself. You determine what are the qualities that are important for you," she said.

"For what values would you die?" she asked. She said while individuals may have idealistic goals for those around them, the real key is how much one is willing to give of one's self to others.

Karpeck said there are obstacles in business that will require flexibility. "You have to start at the bottom and build up."

Misconceptions in business, which Karpeck defined as "anything other than the academic world of teaching or being a student," can lead to discouragement and lack of self-esteem, she said.

Confidence and self-esteem have to come from within, she said. She stressed the importance of understanding one's own values, emotions, priorities and interaction with others based on those things.

Karpeck told the audience, "You only have a limited amount of energy, and we all have the same amount of hours in a day. You can't do it all . . . you will fail at some things; you will absolutely bomb some things, but that doesn't mean you're a failure," she said.

Karpeck said it is important to recognize one's accomplishments, and one's expectations must be realistic.

"Are you a loyal, trusting friend? That should give you a sense of accomplishment," she said.

BE OUR GUEST AT A SPECIAL SCREENING

Thursday, November 17th
7:30 P.M.

NEEB HALL

Sponsored by the Neeb Hall Film Series and ASASU.

"ROUSING AND FUNNY!"

—Vincent Canby, THE NEW YORK TIMES

"A flashy, gritty movie with lots of laughs."

—Loudon Wainwright, LIFE MAGAZINE

"A brash, beautiful, deeply American film."

—Sheila Benson, LOS ANGELES TIMES

"Grand entertainment."

—Richard Schickel, TIME MAGAZINE

"The most sheerly enjoyable big movie this year."

—Peter Rainer, LOS ANGELES HERALD EXAMINER

"Visually spectacular."

—NEWSWEEK

"For sheer entertainment, it's superb."

—John Dillin, CHRISTIAN SCIENCE MONITOR

"A terrific motion picture. Go see it."

—Joel Siegel, Good Morning America, ABC-TV

**BILL & KATHY'S
HARD HAT
PIZZARIA**
UNDER NEW OWNERS

Come in and taste the greatest subs in the Valley at the lowest prices!

We have a variety of subs . . . pizzas . . . dinners . . .

ORDERS TO GO
966-2211
530 W. UNIVERSITY
Just Blocks Away From Campus

IMPORT AUTO CENTER

MERCEDES SPECIALISTS

994-3222
3018 N. Scottsdale Rd. • Scottsdale, Arizona
Just North of Thomas

Complete Auto Repairs & Service
All Makes & Models, Foreign & Domestic Compact

TUNE-UP SPECIAL
Starting From \$39.95 (plus tax)

Includes new plugs, points, condenser (if needed), adjust timing and carburetor, check compression, adjust for emissions test, service air filter and PCVB valve, inspect wires, belts, hoses and cables. (Additional parts and labor extra if needed)

Tune-ups, Engine Work, Brakes, Steering System, Timing, Belts & Chains, Fuel Injection System, Alternators, Clutch & Flywheel, Generators, Differentials, Starter & Solenoids, Radiators, Batteries, Water & Fuel Pumps, Electronic Ignition, Shocks, Air Conditioning, Heating & Cooling, Carburetors, Mufflers, Electrical System, Trouble Shooting, Front Ends, Normal Maintenance, Lube, Oil, Filter, Emissions Test, Front Wheel Drive, Gear Box Work, Transmission Service, Etc., etc.

Alfa Romeo
Aspen
Audi
Austin Healy
BMW
Capri
Chevrolet
Citroen
Colt
Courier
Cricket
Datsun
Detomoso
English Ford
Ferrari
Fiat
Hillman
Honda
Horizon
Jaguar
Lamborghini
Lancia
Lotus
Luv
MG

Maserati
Mazda
Mercedes
Monza
Mustang II
Omni
Opel
Peugeot
Pinto
Porsche
Renault
Rolls Royce
Rover
Saab
Seville
Siesta
Simca
Starfire
Subaru
Sunbird
Toyota
Triumph
VW
Vega
Volvo
Etc., etc.

We Also Serve Beer & Wine

From the Sea

Includes your choice of soup or a tossed green salad, French fries and hot biscuits with honey (Baked potato available after 5 p.m.)

Fried Clam Strips
Tender, luscious and deep fried 4.55

Shrimp Feast
Golden fried, crispy outside and tender inside 6.45

Ocean Cod
A thick cut, panbroiled or grilled 4.85

Fisherman's Catch
Clams, shrimp and tender cod 6.45

Fish 'n Chips
Tender pieces of cod, tempura breaded 4.85

COCO'S
1717 S. Rural Rd.
Tempe, AZ 85281
Just 2 miles S. of University

Try our delicious Deep Fried Zucchini served with our special sauce for dipping

Come in daily and try our new Featured Items

Hours:
Sun.-Thurs. 6 a.m.-12 a.m.
Fri. & Sat. 6 a.m.-1 a.m.
Served Breakfast All Day

THE RIGHT STUFF

How the future began.

A ROBERT CHARTOFF-IRWIN WINKLER PRODUCTION OF A PHILIP KAUFMAN FILM
"THE RIGHT STUFF" CHARLES FRANK SCOTT GLENN ED HARRIS LANCE HENRIKSEN
SCOTT PAULIN DENNIS QUAID SAM SHEPARD FRED WARD KIM STANLEY
BARBARA HERSHEY VERONICA CARTWRIGHT PAMELA REED Music by BILL CONTI
Director of Photography CALEB DESCHANEL Based on the Book by TOM WOLFE
Produced by IRWIN WINKLER and ROBERT CHARTOFF
Written for the Screen and Directed by PHILIP KAUFMAN

PG PARENTAL GUIDANCE SUGGESTED
SOME MATERIAL MAY NOT BE SUITABLE FOR CHILDREN

DOLBY STEREO
SELECTED THEATRES

NOW A BANANIUM PAPERBACK BOOK

A LADD COMPANY RELEASE

PRESENTED BY 70MM & TRACK 14

IN SELECTED THEATRES

A better place to be
Holiday Inn
 Tempe/ASU
 Apache at Rural
 968-3451

More about

Expansion

continued from page 1

Miriam Boegel, assistant vice president for public events, said the center currently is operating with a deficit. However, once the estate question has been cleared up, the center should be self-supporting.

The estate includes interest from investments designed to finance the center.

Such a form of financial support is required because the Arizona Board of Regents prohibits property gifts without an endowment, or other operational funding, from a source outside the University.

ASU's acquisition of the Kerr Cultural Center became a complicated legal situation, which ended up in the Arizona Supreme Court, O'Connell said.

Louise Lincoln Kerr lived in a house which is now Kerr Cultural Center, and owned the majority of the land between McDonald and Lincoln drives in Scottsdale.

About 10 years before her death, Kerr began disposing of portions of her land holdings, offering the center to ASU.

Kerr was in the process of establishing the endowment fund and including the gift in her will when she died in 1977.

She had not signed the will donating the property to ASU at the time of her death.

Her daughter took the case to court questioning the legality of upholding an unsigned will.

"The legality of the will was affirmed in the highest court in the state," O'Connell said.

The center was then in ASU's control.

The property has not been appraised, but O'Connell estimated it is worth close to \$1 million.

Since the property was a gift, ASU should not be required to support the center financially, O'Connell said. However, if the

endowment could no longer support the facility, the University would be expected to support it, he said.

Operating the center will cost between \$40,000 and \$60,000 a year, he said.

Camp Tontozona, which in August was targeted for sale, has become the center of another real estate question for ASU officials: whether to purchase a 29.4-acre parcel of land adjacent to the camp.

President Nelson was considering the sale of the 7.7-acre facility north of Payson mainly due to its financial losses over the past 10 years.

In March, a proposal from the Board of Regents called for the purchase of the adjacent U.S. Forest Preserve, which would make the purchase of Tontozona more attractive to a "resort-minded entity." The University then would have leased the facility from the new owner.

Nelson later announced that the University would not sell the camp but suggested instead that the land still be purchased to "permit long-term development and better access."

The camp's financial troubles became public in August when Frank Sackton, former vice president of business affairs, stated in a financial report that the camp had lost \$935,000 in the past 10 years and spent \$1,122,516 on expenses in the same period.

Sackton said ASU does not have the resources to purchase the property at this point and would have to rely on outside sources for funds. He identified the Sun Angel Foundation as a possible source for support.

Even though the camp has been financially unsound in the past, Sackton said the additional land would not place an extra burden on the University.

He said the camp would be more functional with the extra land "because it would permit private access and more acreage for future use. It would also make it more attractive to rent out."

Larry Soehlig, land and minerals staff officer for the U.S. Forest Service, said any use of the land by the University would not disturb the environment or the wildlife because the land is relatively insignificant and small.

ASU officials have been in contact with the Forest Service and

Soehlig said possibly dis-

Sig Palm, vice land, sa-

the land to A-

However, say that. By

deal."

Palm said

ty to ASU "a-

and ASU."

ASU could

mittee appoi-

mines the pu-

the facility.

Jim West,

nor is in fav-

which would

Babbitt als-

focus on high-

or as a high-

The 110,000

care for app-

Clement, div-

The hospita-

Hospital in J-

the Children

same service

He said th-

but overall "

An 11-men-

was appoint-

should have

ding to G.M.

Sollenberg

utilization"

it, will make

Nelson said

Jan. 1975 to June 1982
 177 Arizonians died of malnutrition

"HUNGER IN ARIZONA"



will be addressed by

AZ STATE SENATOR ALFREDO GUTIERREZ

former majority leader

currently member of committee of health, aging, and welfare

12:30 p.m.
 Wed.
 Nov. 16



West
 Lawn of
 Cady Mall

A HUNGER AWARENESS WEEK ACTIVITY

UNIVERSITY THEATRES

1025 E. Broadway (East of Rural in Tempe) 829-6666

A Horror Thriller "THE BEING" (R)

C Marlon Brando & Martin Sheen in "APOCALYPSE NOW" (R)

B Walt Disney's Special Computer Effects "TRON" (PG)

D Stephen Spielberg's "POLTERGEIST" (PG)

MIDNIGHT MOVIES EVERY FRIDAY AND SATURDAY NIGHT FOR ONLY A DOLLAR!

ONLY \$1.50 AT ALL TIMES!

COMPLETE AUTO PAINTING STUDENT SPECIAL
 \$20 FREE body work w/paint job
\$179⁹⁵ with coupon
 Quality Work GUARANTEED
 Insurance Estimates Welcome
 Vinyl Top Coloring — Body Side Mouldings
Ron's Auto Body & Painting
 234 W. 4th St., Tempe
 967-3597
 EXPERT BODY WORK

WAIST AWAY!

Personal Fitness Programs Inc.

— INTRODUCES —

Complete body conditioning and muscle toning instruction for men & women on an individual basis.



DAVE W. HART
 OWNER/INSTRUCTOR

- National Powerlifting Champion
- National Record Holder
- 4 Years Nutritional Study

This coupon good for \$5 off first month session.

Weekly Progress Charts
 Beginning, Intermediate & Advanced Training

Start shaping up now for the holidays!

Call 967-1952 or write to:
 Personal Fitness Programs
 P.O. Box 669, Tempe 85281

Minority Recruitment Project

presents

PRE-MED STATE-WIDE CONFERENCE



SATURDAY
 NOVEMBER 19, 1983
 9 a.m.-6 p.m.
 UNIVERSITY OF ARIZONA

College of Pharmacy — Room 325
 (Corner of Warren and Mabel — Southwest of University Hospital)



- Application Procedures
- First hand information on Medical School
- Meet your fellow Pre-Med students from all over the state

If you have further questions regarding the Conference, please call the Minority Recruitment Project in Tucson, 626-7146.

Soehlig said, "We have classified the land as land we would possibly dispose of."
 Sig Palm, Payson district ranger who oversees the Forest Service land, said he has heard no opposition to the possible sale of the land to ASU.
 However, he said, "To say nobody will be affected — I can't say that. By and large, there isn't anything that will be a big deal."
 Palm said his department supports the transfer of the property to ASU "as long as it is used for the furtherment of Tontozona and ASU."

ASU could acquire the Arizona Children's Hospital if a committee appointed by Gov. Bruce Babbitt earlier this year determines the public interest would be served best if ASU operated the facility.

Jim West, Babbitt's press secretary, has indicated the governor is in favor of a use for the public good, possibly the arts, which would involve the University.

Babbitt also has recommended the facility be used by ASU to focus on high technology in the fields of science or mathematics, or as a high-technology museum.

The 110,000-square-foot hospital at 200 N. Curry Road provides care for approximately 115 patients a day, according to Michael Clement, division of family health services director.

The hospital's in-patient service was moved to St. Joseph's Hospital in July. Clement said the physicians and nurses from the Children's Hospital were transferred and are providing the same services they always have.

He said the move to St. Joseph's concerned a few employees but overall "the move was done with little fuss."

An 11-member committee, all with art and cultural interests, was appointed by the governor this summer to determine who should have access to the facility and for what purpose, according to G.M. Sollenberger, the committee chairman.

Sollenberger said the committee is waiting for a "plan of utilization" from President Nelson and, shortly after receiving it, will make a recommendation to the governor.

Nelson said he should have the utilization plan ready in the

next several days.

Nelson would not identify any specifics of his plan but said the University will "conform to guidelines of the committee."

The committee will not necessarily follow one of Babbitt's suggestions that the facility be utilized by ASU in the area of mathematics or science, Nelson said.

However, he said his proposal "does not preclude mathematics or science" interests using the facility.

Since both the hospital and the University are state-owned facilities, there would be no monetary transaction involved in the transfer.

Securing water rights and generating funds are the major obstacles holding up the construction of a proposed ASU golf course, which would be located at Rural Road and University Drive.

A parcel of land was slated for ASU by Arizona Public Service in October for the construction of an 18-hole championship golf course to be developed by the Sun Angel Foundation.

According to Sun Angel Director Dan Devine, the land and water rights are almost "wrapped up" and planning for fund raisers will begin in the next month.

Devine said if the Sun Angels could not support construction through donations, "we would probably borrow funds." He said those funds would not come from the University or the Legislature.

The cost of construction would be between \$3 million and \$4 million, Devine said.

When asked if the course could become a private club for the Sun Angel Foundation, Devine said, "It will be controlled jointly by the Sun Angels and ASU. The University would have final jurisdiction."

Regent A.J. "Jack" Pfister said the course would be open to the public and ASU students and "depending on how successful it is, there would be a possibility that it would be restricted to ASU only."

The land would be used as a golf course rather than for another facility because the APS power plant generates noise that would disturb offices ASU might build there, Pfister said.



COLONIAL CLIPPERS
(with coupon only)

- \$7.50 Wet Cut \$5.50
- Perms \$20 and up
includes jerricurl with hair designers
- \$11 Wet Cut \$9.50
- \$45 Perms \$35
with designers director
- Nail Designers \$22.50
- Fill-ins \$12.50

743 W. University
Between Mill & Hardy
968-4006

606 S. Mill
Old Town Tempe

THE JOYNT

WE DELIVER 967-7926

BEER PIZZA WINE

Large 16" Cheese Pizza

\$4.24

EXTRA TOPPINGS 50¢ EACH

Affordable Cleaners

ASU SPECIAL

ANY GARMENT **89¢** ea.
Dry Cleaned & Pressed *No limit*

Excluding suede & leather; excluding wedding dresses. Coupon must be presented when garments are brought in.

847 W. University
(SE Corner of Univ. & Hardy)

(EXPIRES 12-31-83.)

Quantitative Systems Club
presents
KEN BANDELIN
of Motorola

WEDNESDAY, NOV. 16 • 4:30 p.m.
BA-129

Topic: **Careers In Data Processing**

Anyone interested is welcome.

Self Defense
Strength and Agility
Confidence and Control

Certified by International
Kenpo Karate Association
Ed Parker 10th Degree Black Belt

kenpo

karate

MEN • WOMEN • CHILDREN •
Come in or call for appointment
Tempe-Mesa
1020 N. Scottsdale Road
966-1080



**GRADUATE STUDENTS
LOOKING FOR GRANT MONEY?**

Find out the how, what, and where
of getting research funding
at the

**GRANT WRITING
WORKSHOP**

Co-sponsored by
Graduate Student Association
Office of Research and Sponsored Programs

FRIDAY, NOVEMBER 18, 1983

Time: 1:30 p.m.
Place: Language and Literature
Bldg. C-57

Open to all interested ASU
graduate students/faculty/staff.

NO CHARGE.

CHIP AND SCRATCH SALE
Bicycles Damaged On Our Outside Display



UP TO \$100 OFF
Large Selection To Choose From

OVERSTOCKED!
ASSORTMENT OF SIZES AND COLORS OF TIRES
SOME VALUED AS MUCH AS \$9.95
YOUR CHOICE \$3⁰⁰ EACH

TEMPE BICYCLE SHOP
The Old Gas Station On The Corner
6th Street and Mill, Tempe **966-6896**

Then get in on the ground floor in our undergraduate officer commissioning program. You could start planning on a career like the men in this ad have. And also have some great advantages like:

- Earning \$100 a month during the school year
- As a freshman or sophomore, you could complete your basic training during two six-week summer sessions and earn more than \$1100 during each session
- Juniors earn more than \$1900 during one ten-week summer session

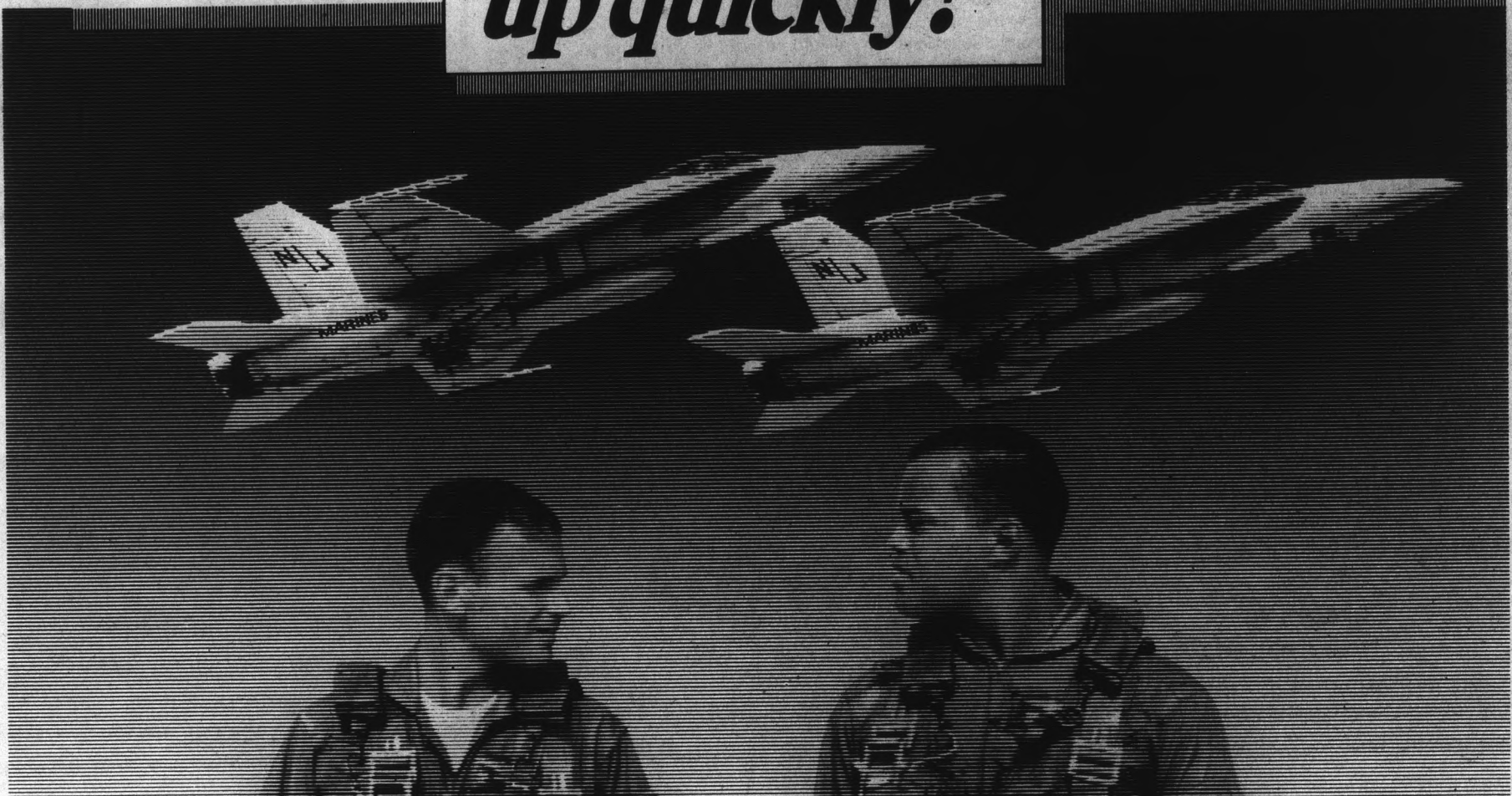
- You can take free civilian flying lessons
- You're commissioned upon graduation

If you're looking to move up quickly, look into the Marine Corps undergraduate officer commissioning program. You could start off making more than \$17,000 a year

Want to move up quickly?

Maybe you can be one of us.

**The Few.
The Proud.
The Marines.**



Marines

See your Officer Selection Officer, Capt P. B. Johnson on November 16-18, 1983
or call (602) 261-3880 collect.

Ticket discount possible for Moody Blues concert

By M.K. Reinhart
Staff writer

As many as 1,000 tickets for the Nov. 30 Moody Blues concert at Gammage Center may be offered to ASU students at a \$2.50 discount as part of a developing student discount program, Associated Students Activities Vice President said.

Ted Groves said he will decide by the end of this week if the concert will be discounted for students and hopes to have a permanent program by next semester, providing students with day-of-the-show discounts for many ASASU/Public Events co-sponsored concerts at the University Activity Center and Gammage Center.

Groves said most events are "too expensive" and the University is "not being responsive to student needs."

Groves, who promised discount tickets to students as part of his campaign platform last spring, has the support of Miriam Boegel, assistant vice president for ASU Public Events, and Jim O'Connell, administration director for public events.

Groves has asked the ASASU Senate for \$3,000 to contract ASU's Public Opinion Research Center to gauge student attitudes about the discount program.

"We have no idea who is going to our concerts," he said. "We don't have enough information to know what program or what level of discount will work, so we have to experiment."

According to O'Connell, the research center will not only provide an attitude

evaluation of those who purchase discount tickets, but more importantly, it will be able to show the respondents' motivation.

"If (the discount program) will generate more ticket sales, then it's something we'd like to do. But if it causes a loss of money, then it's something we can't afford to do," O'Connell said.

"Until we know that we are stimulating more ticket sales, we are giving away money," he said.

The relatively short confirmation notice given by many performers and the requirement of both administrative approval and publicity for student discounts make the discount program difficult, O'Connell said.

"It is the time lag to get the specific information to the specific market (the students) that has thwarted us so far," he said, citing both the Diana Ross and Lionel Richie concerts as examples of this time bind.

According to Groves, all pop-rock and country-western shows are co-sponsored by ASASU and ASU Public Events. ASASU receives 60 percent of all ticket sales and Public Events picks up the remaining 40 percent.

Groves said the expense of offering discount tickets would be "another expense we would share together."

"Theoretically (the discount program) will generate additional ticket sales from people who wouldn't have bought tickets otherwise," but statistical proof is needed to insure that theory, Groves said.

Are You Guilty of neglecting your hair and nails?



Terry Brubaker
Hair & Nail Designer

Get ready for graduation or the holidays.

- Jazzing Colors with a blow dry style \$15 \$20
- Shampoo, Conditioner, Hair Cut, Blow Dry \$15
- Perms Regular & Body \$25 and up
- Sculpture Nails \$35
- Tips \$25

New Services: Makeover consultations for career-minded professionals. Hair weaving by appt.

ANY HAIR

225 W. University Suite 113, Tempe

(1/4 mile west of Mill)

829-8483

Hours: 8 a.m.-9 p.m.

Attention: Foreign Car Owners

SAVE UP TO 70% ON RECYCLED FOREIGN AUTO PARTS
MG, TRIUMPH, HONDA, DATSUN, TOYOTA, VW and OTHERS

All Models Foreign

3024 So. 40th Street, Phx. (near 40th & University)

243-3291

*Mention this ad & get an additional 5% off!

THANKSGIVING SPECIALS

1. All Sweats! 15% OFF
Tops & Bottoms
2. Dee Cee Cords Just \$14.88
Bibs or Painters
3. MA1 Flight Jackets 15% OFF

Closed Thanksgiving Day



Camping, Clothing & Surplus

Expires 11-23-83.

894-9137

Limited to stock on hand.

1332 E. Apache

(A. J. Bayless Center)

Build a career on your language skills at the Monterey Institute of International Studies



Graduate Study — The Monterey Institute specializes in graduate language studies and career-oriented programs for students with strong language backgrounds. Master's degrees are offered in the following areas: International Management (MIBA), International Policy Studies, Language Studies, Translation and Interpretation, Teaching English to Speakers of Other Languages (TESOL).

Undergraduate Study — The Monterey Institute offers Junior and Senior level coursework leading to the BA degree in a variety of languages, International Policy Studies, and social sciences.

Intensive Summer Language, June to August — Intensive course for beginning and intermediate language students. Up to 12 semester units of credit. Arabic, Chinese (Mandarin), English (ESL), French, German, Italian, Japanese, Korean, Portuguese, Russian and Spanish. Language houses available.

A school representative will visit this campus:

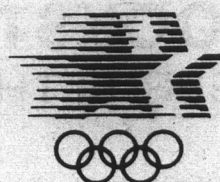
NOV. 17, 9:00-5:00

Please make arrangements with:

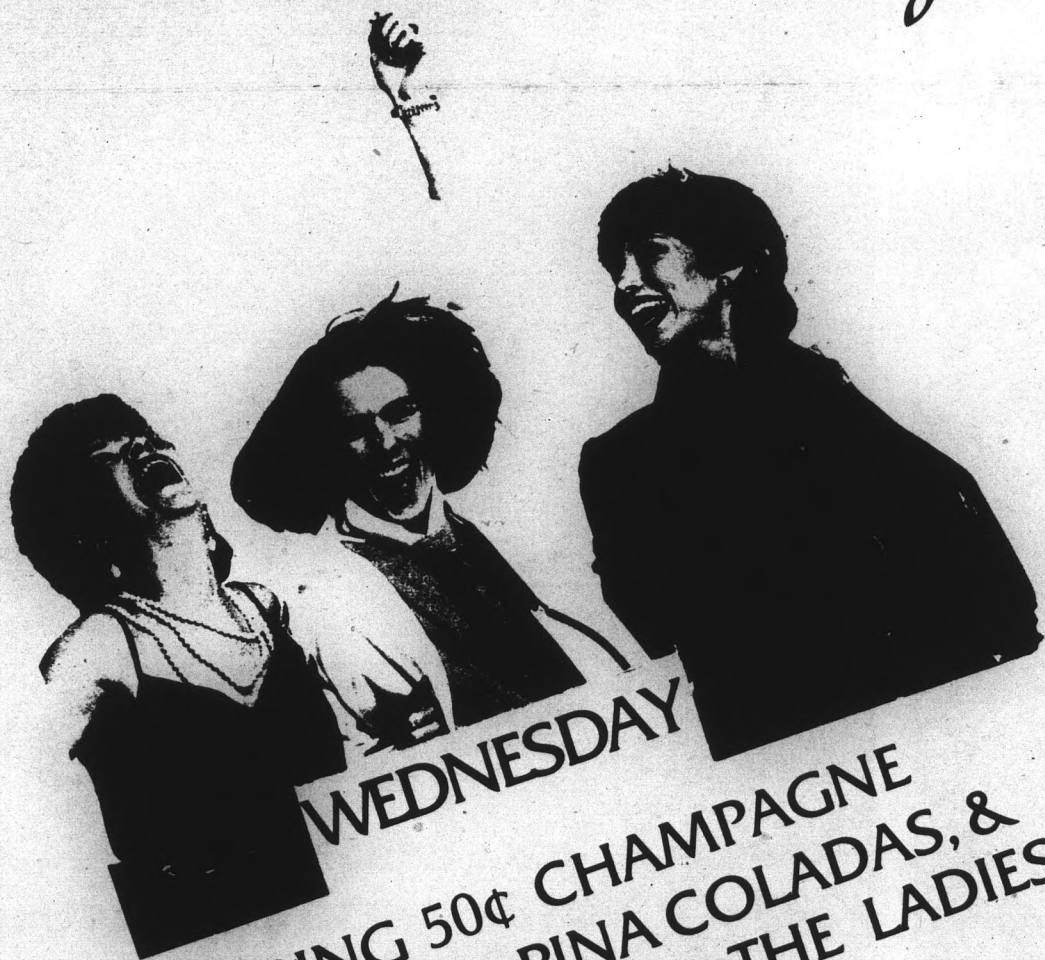
CAREER CENTER

For more information, contact Monterey Institute of International Studies, Office of Admissions, 425 Van Buren, Monterey, CA 93940.

Press Translators and Conference Interpreters for the 1984 Olympic Games, Los Angeles.



It's Ladies Night



FEATURING 50¢ CHAMPAGNE
95¢ DAQUIRIS & PINA COLADAS, &
75¢ WINE COOLERS FOR THE LADIES
NIGHT!

AT

DONNY O'BRIENS

222 S. MILL

RUNDLE'S
LIQUORS & MKT.
730 S. MILL
Corner Mill &
University Ave.

FOLOMANI LAMBRUSCO \$1.99
MEISTER BRAU BEER \$1.79
CANADA DRY MIXERS 28 oz. \$.49
PLAYBOY Used Magazines \$.47

Haagen Dazs Natural Ice Cream,
Adult Magazines, Groceries, Ice,
Wines, over 40 Imported Beers.

967-9079

LEE'S TAILORING

- Fashion Designing for Ladies
- Custom Suits for Gentlemen
- Alterations

894-1055
Broadway & McClintock
Alpha Beta Shopping Center



BALLOONS ALACARTE

Flowers, Plants and Gifts

Personalized balloon bouquets for all occasions.

(602) 966-6789
414 S. Mill Ave.
Suite 206
Tempe

By **alacart**
of Scottsdale, Inc.

THE JOYNT
2 CAN DINE FOR
\$5.49 Reg. \$8.50
Expires Dec. 14, 1983.

Choice of:
• Lasagna
• Cheese or Spinach Manicotti
• Baked Ziti

Includes 2 dinner salads and garlic breads


THE JOYNT
606 S. Mill
967-7926

CARRY OUTS
75¢ ADDITIONAL

COUPON

"TRIUMPHANT FILM MAKING.."
- LOS ANGELES TIMES

"There are sequences in this movie that make your jaw drop open out of genuine amazement." - NEWSWEEK



NEVER WOLF

EXCLUSIVE
CAMELVIEW 945-6178
70th St.-North of Camelback

SPECIAL ROADSHOW ENGAGEMENT!
*City, no passes or discount admissions including twilight shows and bargain day shows.

4 CHANNEL DD DOLBY STEREO CALL 947-8778 FOR GROUP RATES & SPECIAL SHOWINGS.

NEW AT SUB STOP

PARADICE CREAM

1 scoop 75¢ 2 scoops \$1.35
w/coupon get 2nd scoop free



Sub Stop
"Sub Specialists of Arizona"
222 E. University, Tempe
967-7744 • 7:30 a.m. to 2 a.m. nightly

THE BEAUTIFUL BUY

This Week



Siladium® College Rings
Now only
\$79.95

With the price of fine jewelry today, it's good to know that a jewelry-quality Siladium ring is now more affordable than ever. Save — and choose from a variety of beautiful styles. Then personalize your ring with custom options that express your tastes, your interests, your achievements.

Every fine Siladium ring is crafted with careful attention to detail, and backed by the ArtCarved Full Lifetime Warranty. Now, at these special savings, the value is exceptional! Don't miss this opportunity to get a beautiful buy on a fine Siladium ring. Visit the ArtCarved Ring Table soon.

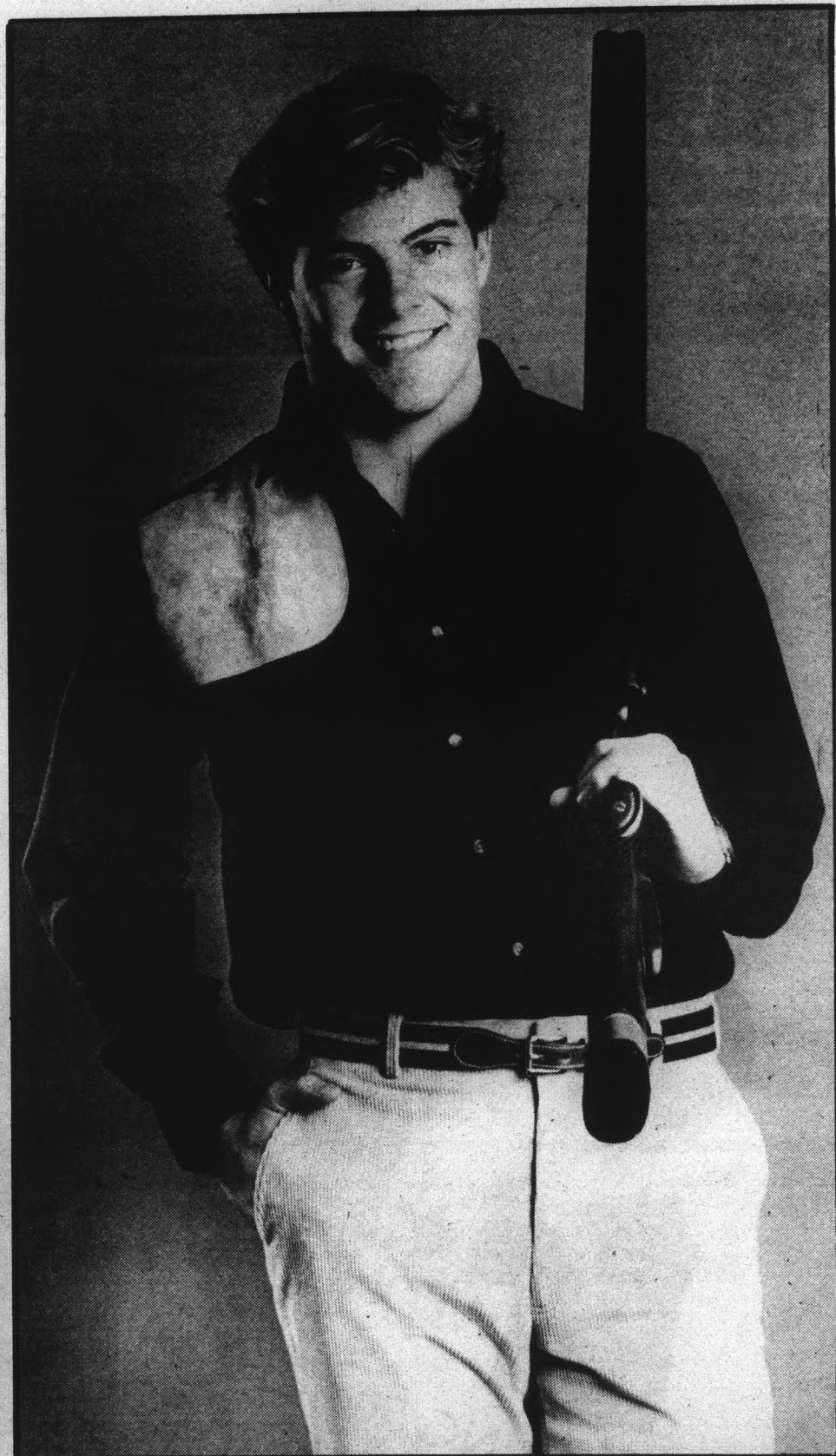
ARTCARVED®
CLASS RINGS, INC.

ASU BOOKSTORE
NOVEMBER 14 THRU 18

SPECIAL OFFER

Master Card or Visa Accepted.

© 1983 ArtCarved Class Rings, Inc.



On target for fall.

Dax's cotton flannel shooting patch shirt and wide wale corduroy slacks for the country gentleman look.



706 South Forest • Tempe • 967-8747
Monday thru Saturday • 10-6
Thursdays until 8:30
In the Oxford Square Shops,
just north of "The Warehouse".

police report

ASU Police reported the following activities occurred between noon Thursday and noon Tuesday:

- A Kodak slide projector and accessories, valued at \$300, were stolen from a room in the Classroom Office Building Thursday. The accessories included a 200-meter zoom lens, tray and remote controls.
- A Hobart food slicer, valued at \$250, was stolen from the kitchen of the Phi Delta Theta fraternity house sometime between Saturday and Monday.
- Gerald Pittsinger reported his 1983 white Chevrolet received \$200 worth of damage in a private property accident that occurred at the Sigma Alpha Epsilon fraternity house Monday.
- A blue Schwinn Cruiser bicycle, valued at \$99, was stolen from the bike racks on the west side of Palo Verde Main A-wing Monday.
- An ASU student reported the loss of his wallet, containing his identification and \$30, from his brown nylon backpack

while it was on his desk in a room of the Physical Education West Building Friday.

- An ASU student requested a lock be cut from her blue Schwinn Varsity men's 10-speed bicycle on the north side of Best C-wing Monday. Someone had placed another lock on her bicycle, in addition to her own lock.
- A red Schwinn men's 10-speed bicycle, valued at \$200, was stolen from the bike racks on the west side of Palo Verde Main A-wing sometime between Saturday and Monday.
- Cash totaling more than \$17 was stolen from a purse while it was stored on a shelf in a room at Hayden Library Saturday. The owner of the purse told police she believes that a Latin American male in his late 30s, about 5-8 and 150 pounds with dark hair, took the items.
- A light blue 10-speed Sundance men's bicycle, valued at \$25, was stolen from the east side of Sahuaro Hall B-wing between Thursday and Saturday.

— Sandy Sistek

Latin studies center to show films on Mexican Revolution

Two films about the Mexican Revolution will be shown at ASU on Nov. 17.

Screenings will be held at 3:30 p.m. and 7 p.m. in Language and Literature Building Room C57. The showings are free and open to the public.

"The Ragged Revolution" provides an incisive look at the realities behind the romantic myths of the Mexican Revolution (1911-1917).

"The Justice of Pancho Villa" examines the life of the Mexican bandit and revolutionist (1877-1923) and his fight for liberty and freedom.

The films are part of a series sponsored by ASU's Center for Latin American Studies.

Computer clinic scheduled to offer small-group training

A two-day beginning computer seminar for adults is scheduled at ASU for Nov. 25 and 26.

Computer Clinic '83 will meet from 8 a.m. to 5 p.m. in ASU's Microcomputer Research Clinic.

Participants will receive small group instruction on Apple computers. They can expect to learn more than one programming language and acquire skills for use with most home computers.

The fee for each clinic is \$150 per person.

Computer Clinic '83 is sponsored by the ASU Alumni Association in cooperation with the ASU College of Education.

Additional information and registration is available from the ASU Alumni Association, 965-3566.

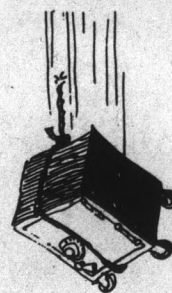
The hair performers

Free Haircut with \$24.95 perm
(Expires 11-30-83.)

All Hair Cuts \$10.00
(Includes cut, shampoo and conditioner only)
Sculptured Nails \$19.50

Come in now! Register to win 1984 Autograph GT.

903 S. Rural • Cinnamon Tree • 894-0184



I'VE GOT IT!
I'VE GOT IT!



Looking For
A Safe Way
To Pick Up
Extra Cash?

Try plasma donation! It's easy, painless and takes only a few hours each week.

\$10 is paid for each donation and you can donate twice weekly (but please wait 72 hours between donations). That's up to \$100 a month! Plus you can win even more — in weekly and monthly cash drawings.

New donors will receive an additional \$2 with this ad for their first donation.

So don't look for pennies from heaven — look for us instead!

University Plasma Center

1015 S. Rural Road
Tempe, AZ 85281

602 / 968-6139

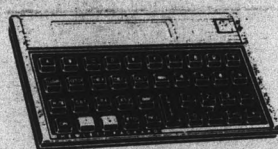
HOURS:
Mon, Tues, Thurs, & Fri: 8 a.m.-7 p.m.
Wed. & Sat: 9 a.m.-6 p.m.

Federally Licensed

SP

DISCOUNT PRICES

hp HEWLETT
PACKARD



SMITH-CORONA®



Texas Instruments



We handle the full line of Hewlett-Packard and Texas Instruments calculators and accessories. We also carry Smith-Corona typewriters — both electric and electronic.

See us for all your office supply needs.

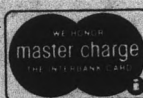
Office Products Warehouse won't be undersold.

We will meet or beat any legitimate price.

OFFICE PRODUCTS WAREHOUSE

968-1198 • 1755 W. University

52nd St. & University • Tempe
2 miles west of campus



LEADERSHIP I

You are invited to participate in a leadership workshop designed to access and develop an individual's qualities.

WEDNESDAY, NOVEMBER 16 TODAY!
3:00-8:00

- Factors for Success — Joseph Bacchus, First Interstate Bank
- Time Management — Student Life Office
- Goal Setting — Earl Cobb, Motorola
- Dinner Speaker — Ana Maria Martel, Brown and Bain

Registration will be at 2:30
Room 212, Cochise, MU

Sponsored by Associated Students, Minority Affairs Board

GO!

WITH A WINNER...

Lamson Colleges has a Proven record...

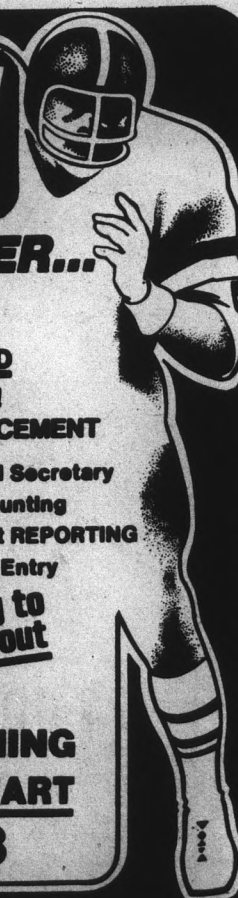
96.9% PLACEMENT RECORD

OUR STUDENTS GET HIRED!
LOCAL AND NATIONAL PLACEMENT

- Administrative Asst.
- Land Survey
- Word Processing
- Clerical
- Legal Secretary
- Accounting
- Court REPORTING
- Data Entry

Something to
CHEER About

DAY & EVENING
CLASSES START
JAN. 3



ENROLL NOW FOR CLASSES

• FINANCIAL AID AVAILABLE • CREDITS TRANSFERABLE

Lamson Colleges
Career Education Since 1889
550 W. WASHINGTON
Tempe Campus 968-7211 PHX. 258-7947 Northwest Campus 841-2067

WEEKLY SAVERS



WE SELL



OPEN 24 HOURS
 MONDAY - FRIDAY CLOSES SATURDAY 11 p.m.
 REOPENS SUNDAY 9 a.m.
 PHARMACY HOURS
 MONDAY - SATURDAY 8 a.m. - 9 p.m.
 SUNDAY 10 a.m. - 8 p.m.

SALE BEGINS WED., NOV. 16
 PRICES GOOD THROUGH SAT., NOV. 19

COME IN TODAY! Offers good at this location only.

Visit your new Drugstore/
 Food Mart at
HUNTINGTON SQUARE
 3201 SOUTH MILL AVENUE
 At Southern Ave. • Tempe
 PHONE 894-6747

 <p>VALIANT HOT-POT 15/2306 3.59</p>	 <p>GRADE AA LARGE EGGS 1 dozen We limit quantities 79¢</p>	<p>COUNTRY MEAL BREAD 24 oz. 73¢</p> 	 <p>COKE 2 ltr. 1.09</p>
 <p>HOYLE PLAYING CARDS Poker, Pinochle, Jumbo Face 89¢</p>	 <p>2% LOWFAT MILK 1/2 Gal. 79¢</p>	 <p>COUNTRY MARKET CHIPS 5 oz. 59¢</p>	 <p>OIL OF OLAY 6 oz. 4.99</p>
 <p>ACUTRIM 20 tabs. 3.49</p>	 <p>LITTLE DUTCH BOY COOKIES (box) 79¢</p>	 <p>CANDY BARS M&M & Mars Brand 5 for 1.00</p>	 <p>OLD MILWAUKEE & OLD MILWAUKEE LIGHT 12-pack 2.69</p>

PLUS: THESE SPECIAL DEPARTMENTS

PHOTO CENTER

- Speedy film service
- Quality photo-finishing
- Cameras & accessories
- Fresh film



\$100 OFF
 Our fine photo-finishing service on all color print or disc film. Limit one coupon per customer and coupon must accompany purchase. Expires 11-15-83.

BEER, WINE & LIQUOR CENTER

- COLD BEER •DINNER & DESSERT WINES •VODKA •WHISKEY
- SCOTCH •AND MORE



BORSKI VODKA
1.75 ltr.
6.75

POTTERS CANADIAN WHISKEY
7.99

SNACK BAR

- HOT & COLD DRINKS •SANDWICHES
- MICROWAVE OVEN TO USE



Small Coffee & Danish only **49¢**

Small Hot Chocolate only **29¢**

PHARMACY

OUR SUPERX PHARMACISTS OFFER YOU MANY TIME-SAVING AND MONEY-SAVING SERVICES.

- PHONE-AHEAD REFILL SERVICE
- QUALITY PRESCRIPTIONS
- EVERYDAY LOW PRICES



Pharmacy Hours:
 Mon.-Sat. 8 a.m.-9 p.m.
 Sunday 10 a.m.-8 p.m.
894-6747

Your SUPER-X at Mill & Southern has just lowered the price of over 4,000 prescription items. Call for a price quote. You'll see what a difference we make.
894-6747

sports

Section B

wednesday

November 16, 1983
Vol. 66 No. 49

Arizona State University

© Copyright, State Press, 1983

state press

Tempe, Arizona

Pressure

Young backcourt to play big role on defense

By Ken Sain
Assistant sports editor

This is the first of a two-part series previewing the ASU basketball team. The Sun Devils, under the direction of second-year head coach Bob Weinbauer, will open the season this Sunday, Nov. 20, against Athletes-in-Action in an exhibition game. Today, the State Press examines the backcourt of the Sun Devils.

Bob Weinbauer has earned a reputation of relying heavily on his guards every season. During his tenure at Penn, he was notorious for having his guards apply full-court pressure for the entire game.

That reputation should return this year.

Last year the Devils did not pressure as often as Weinbauer-coached teams have in the past. One reason could have been the presence of all-offense, no-defense Byron Scott.

But Scott has taken his talents to the NBA, and Weinbauer has decided to return to a pressure-type defense. The guards will be alternated often, to apply pressure.

"If you have seen our teams in the past, we have got to keep fresh guards in the game," he said.

Weinbauer signed six freshmen, three of whom can be considered guards. Kevin Warren, another guard, transferred to ASU after playing for Weinbauer at Penn.

Warren will not be eligible to play for the Devils until January.

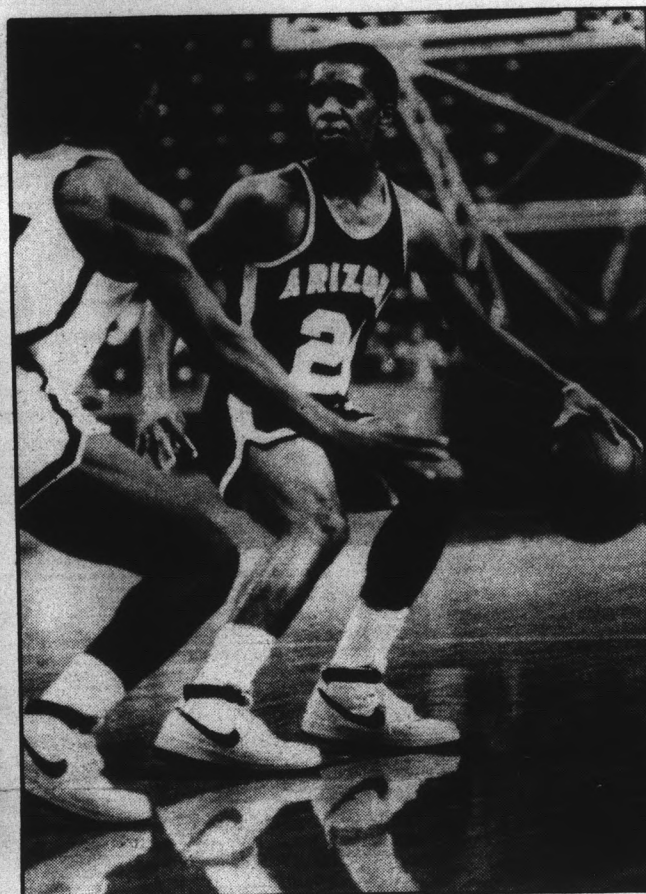
ASU is expected to start Chris Beasley and Kenny Vaughns this Sunday. Beasley, a 6-1 senior, did not start for the Devils

at the beginning of the year but worked his way into the starting rotation by the start of the conference slate.

"Chris Beasley shot the ball reasonably well in spurts," Weinbauer said. "Defensively he gave us some spurts. He has had some problems with getting the ball down this year, but that will come around."

Vaughns saw limited action for the Devils last year, but felt the experience he earned will help the team. He will start at the point guard spot.

"Mainly, I have to run the team," Vaughns said. "I've been



Bobby Thompson

When Weinbauer goes to the bench he will have plenty of talent available. Bobby Thompson, Steve Beck and Greg Ataway all should see time at the guard spot.

Thompson was considered the best of the group when first recruited, but Weinbauer said all would play. Weinbauer is impressed with Thompson's court awareness.

"He has complete knowledge of the game. He makes excellent decisions and never seems to put himself in a bad position."

Weinbauer said Thompson rarely makes a bad pass or a mistake, and given some experience he may challenge Vaughns for the starting job.

Beck could swing between guard and forward. According to Weinbauer, Beck needs to improve on his ball handling.

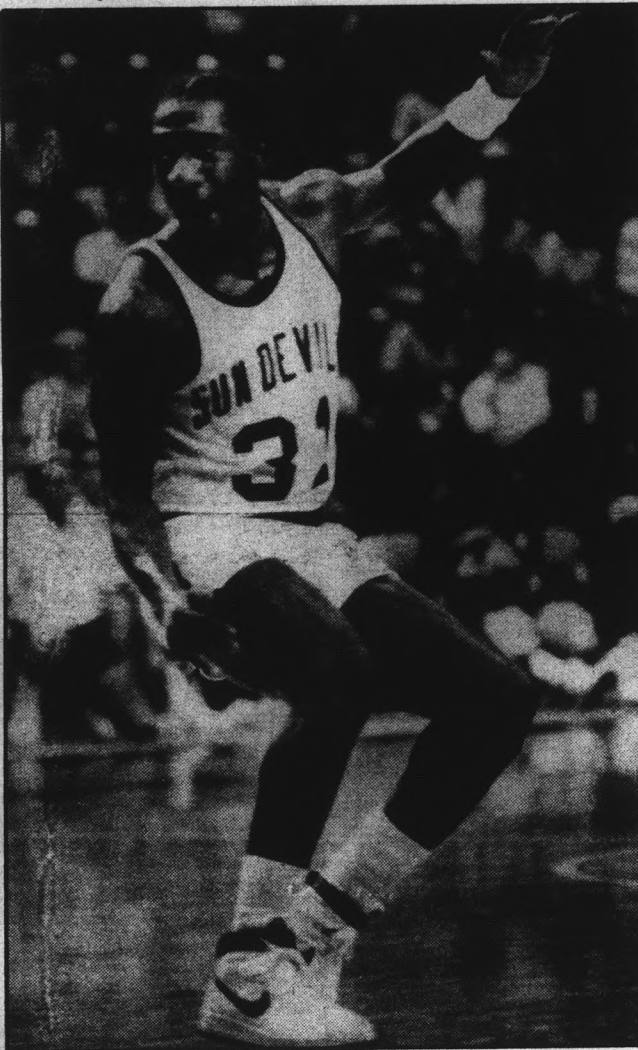
Ataway needs to improve on his strength, but is the best pure shooter on the team, according to Weinbauer.

All three of the freshmen could play key roles during the conference schedule, but until they gain some experience they will not have much chance to start.

The guards will play a key role in the Devils' season. The coaches will substitute liberally and try to keep the guards fresh so they can pressure the opposing offense.

Weinbauer is also stressing the transition game in practice. In many ways, this team will look a lot like the Weinbauer team that went to the Final Four in 1979.

The guards are young and inexperienced, and if ASU is forced to rely on the freshmen early, the Devils' season could be quite long.



Kenny Vaughns

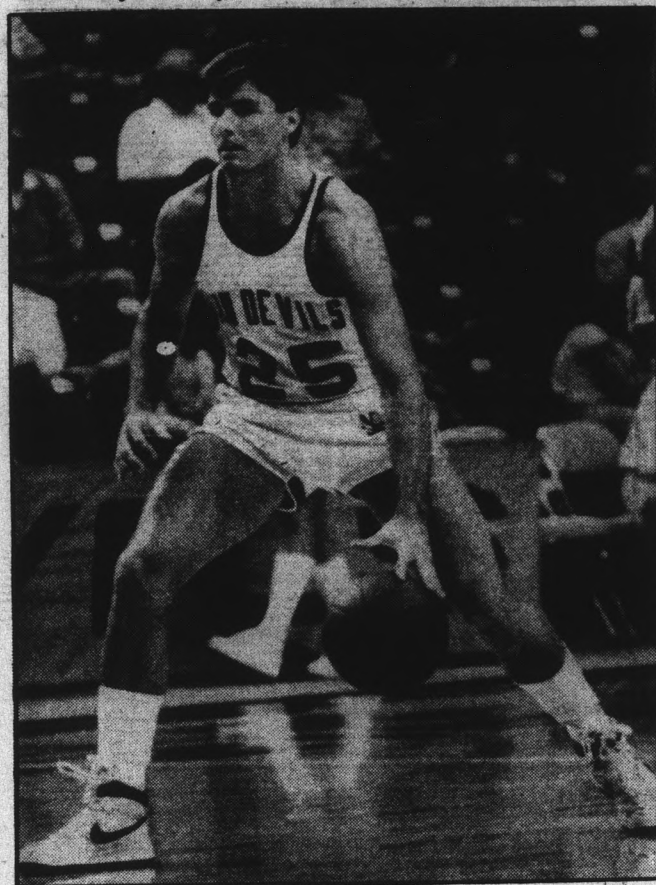
around more than anyone else. As point guard, I have to push the ball down the floor, because we have guys who can get down the court — Billy Jordan and Chris Beasley.

"I think we'll catch people by surprise this year."

Weinbauer feels comfortable with Vaughns at point guard. Last year Vaughns came in for a sidelined Scott against UCLA in the final regular season game.

The Devils were able to run out the clock and won the game on a Paul Williams jumper. That win put ASU in the National Invitational Tournament.

"Kenny has never been a point guard before," Weinbauer said. "He is making the transition well."



Chris Beasley

paradice
cream

Gourmet Frozen Yogurt Filled with Flavor, Not Air!

Sample spoon your way thru Paradise and get 25¢ off any yogurt purchase with this ticket.

- Strawberry • Coconut • Pineapple
- Banana • Blueberry • Raspberry

You'll Taste The Difference!

Paradice Cream, 1044 S. Terrace, Corner of Lemon & Terrace
One coupon per customer. Coupon expires 12/15/83



Established 1976

TEMPE • 968-7471
2525 S. Rural Rd., Ste. 4-C
Mon.-Fri. Lab Hours 8-3

Family Planning Institute

Women's Health Center

FREE Pregnancy Testing
Immediate Results

Premarital Bloodtesting
\$15.00 Same Day Results

Evening Hours Available

Contraceptive Care Clinic
Confidential Counseling
Pregnancy Termination
Caring Professional Staff

PHOENIX • 997-7493
9100 N. 2nd Street
Mon.-Sat. Lab Hours 9-3



Pac-10 killer San Jose State will try to pass by Sun Devils

By Dean Obenauer
Sports writer

The San Jose State football team loves to upset Pac-10 squads. Since 1981 the Spartans, who meet ASU at Sun Devil Stadium Saturday night, have a 6-3 record against teams from that conference.

"They (the team) welcome that challenge," Spartans' coach Jack Elway said. "It becomes extra special."

The first Pac-10 team to fall victim to San Jose State this year was Stanford. The San Jose State outscored Stanford 23-10 to stun the Cardinal on its home turf. In the following game the Spartans downed Oregon, who after the next two conference games would sit atop the Pac.

"Jack is a good football coach. They have a program that is very well respected," said Sun Devils' coach Darryl Rogers. "San Jose State has a very good record against Pac-10 football teams."

Under Elway's guidance the Spartans have a record of 8-7 against Pac-10 football teams.

When the Sun Devils meet the Spartans in a 6:12 p.m. duel they will be facing a giant-killing football team. Game time was moved up to accommodate WTBS-TV of Atlanta, which will televise the game nationally on its cable system.

San Jose State will bring its radical passing attack into Sun Devil Stadium to test ASU's youthful defense. This year the Devils have struggled against pass-happy squads.

"They have a very radical but very sound passing game, if that is possible," Rogers said. "Their formations and movements really tax anybody's defense and they don't

stay in anything very long."

Junior quarterback Jon Carlson is the present signal caller for the Spartans. He has completed 141 of 260 attempts for 1,817 yards and 11 aerial touchdowns.

"We believe in the passing game," said Elway, father of former Stanford star and current Denver Broncos' quarterback John Elway. "We have success with it and our running backs can catch the football."

The Spartans were off to a fine start this year with a 4-1 record, including 2-0 in the Pacific Coast Athletic Association race for the California Bowl. But recently they have struggled.

They have lost three of their last four games, including last week's 30-26 heart-breaker to the University of Pacific. With four seconds remaining in the game, Pacific threw an 85-yard Hail Mary touchdown pass that was deflected by San Jose State's defenders.

"The football team is shook up over the way we did lose," Elway said. "It was a tough loss."

The Spartans are in the same position ASU was last week. They are coming off a two-game losing streak, with both being close losses.

"We play extremely well on some occasions," Elway said, "only not to play so well on others."

With two games remaining the Spartans need at least one victory to extend their consecutive winning-season streak to six.

The Spartans sport a powerful passing attack equipped with a slew of fine receivers. Five receivers have caught 30 or more passes.

continued page 3



Bartley's Bikes

10 Speeds • Mountain
Bikes • Cruisers
Raleigh • KHS
One Day Repair
All Brands

2051 S. Dobson, Mesa
South of Baseline
820-2982

**ACCIDENT AND
INJURY CLAIMS**
KNOW YOUR LEGAL RIGHTS
Call 957-2010

**FREE
ATTORNEY CONSULTATION**
No Recovery — No Fee

BUSINESS COLLEGE CAREER DAY

Wednesday
Nov. 16

- Come and talk to major corporations
- What they look for in graduates
- Discover career possibilities
- Excellent way to meet contacts

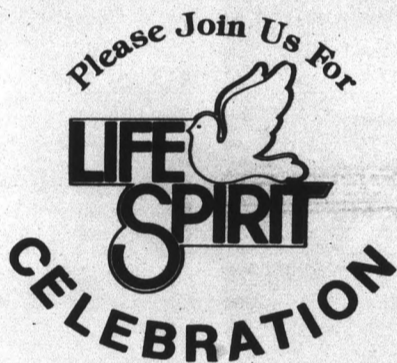
Meet on Dean's Patio
9 a.m.-2 p.m.

DRIVE CARS FREE

Cars Available
Many Points U.S.A.

We are I.C.C. licensed and
insured. Must be 21 years or
more.

SCHEALL DRIVEAWAY
991-5533



60 minutes of Creative Christian
Fellowship in an inviting atmos-
phere of discussion and sharing,
praise and reflective Bible study.

SATURDAY MORNINGS
9:30-10:30
Danforth Chapel
Arizona State University

Sponsored by LifeSpirit Fellowship at ASU
and Tempe Seventh-day Adventist Church

WANT HELP GETTING INTO
MEDICAL, LAW OR OTHER
GRADUATE SCHOOL?
FINDING A JOB?

THE APPLICANT'S ADVISOR
by A. M. Richard, M.D.

Practical guidance and advice on
application completion and inter-
viewing.

Please send your name and
address with a check for \$6.50 to:
American Publishing Company
6612 Bonnie Ridge Drive
Baltimore, Maryland 21209
(301) 486-3611

Quantity discounts available.

Women's services ASSOCIATED STUDENTS

WOMEN AND WORK

NOVEMBER 16, 1983 • 11:30-12:30 • Room 219, Navajo
Mentoring Workshop... what is it, what is in it for me?
Mary Kay Graham, Consultant and Trainer,
Vice President of Impact for Enterprising Women

NOVEMBER 16, 1983 • 10:00-2:00 • Room 212, East and West Cochise
Networking Reception

(Attend and meet the women's organizations on this campus and in the community,
especially those groups that will help you further your career... networking groups.)

NOVEMBER 16, 1983 • 2:30-4:30 • Room 217, Coconino
Executive Women's Panel Discussion and Reception

Janet Lee, Stockbroker, Kidder & Peabody & Company Incorporated
President, Corporate Business and Professional Women

Carol Ward, President, Marjon Ceramics
Outstanding Woman of the Year for Phoenix

Mary Jane Boyd, Tax Partner, Peat, Marwick, Mitchell & Company
The only woman Big Eight Partner in the Valley

Also: Current Fashions for Today's Executive Display
Goldwater's Careers Incorporated
In conjunction with Delta Sigma Pi Business Fraternity

FOR MORE INFORMATION CALL 965-1253

TRAILWAYS INTRODUCES THE INCREDIBLE



SHIP NATIONWIDE. ONLY \$11.95!

Redbox™ makes shipping simple, fast and incredibly
inexpensive.

You can buy a Redbox™ container at any Trailways terminal or
authorized dealer and ship it nationwide, all for one low price—
\$11.95. Fill it up (maximum 75 lbs.) and bring it in to one of our ter-
minals. Trailways takes care of the rest. It's that simple.

We offer overnight delivery within 500 miles, and 24 hour
delivery for a 1,000 mile shipment. It's that fast.

And your \$11.95 includes carton, \$100 free valuation, and
transportation anywhere Trailways goes. It's that inexpensive.

So stop by your Trailways terminal or authorized dealer today. Buy
our new Redbox™ container and make shipping simple, fast and in-
credibly inexpensive.

5005 N. BLACK CANYON ROAD
246-8971

This offer good on Trailways, Inc. and participating carriers for interstate non commercial use only.
Rates are terminal-to-terminal. Special Express Services are also available on request. Check with
terminal agent for restricted articles and destinations not served under this service. One time
use only.



For Redboxes...

Go Big Red!
Go Trailways

More about

San Jose

continued from page 2

Senior wide receiver Eric Richardson leads the team with 43 receptions for 704 yards and seven touchdowns. That places him fifth in SJSU career receiving with 63 catches.

Although the Spartans are known as a passing team, they have a solid rushing attack.

Senior running back Bobby Johnson has compiled 849 yards on the ground. Johnson has four 100-yard games to his credit this season. Fullback Dave Criswell has rushed for 10 TD's and combined with Johnson, could give ASU problems.

"He (Johnson) is an outstanding athlete who is having an outstanding year," Elway said. "He can run and he can catch the ball. He has all that versatility that allows him to be that threat."

The Spartans' pass defense has been their biggest problem this year, while their rushing defense has been ranked among the finest in the nation.

"Statistics can be deceiving," Elway said. "We are up there in rushing, but dead last in passing in our conference."

They have given up an average of only 85.8 yards on the ground per game, but allow 234.4 yards through the air.

San Jose State has 40 sacks to its credit this year, including three safeties. Inside linebacker Dave Albright leads the Spartans with 103 tackles. Defensive end Terry McDonald leads the team in quarterback sacks with 12.

"They will blitz," Rogers said. "They put a lot of pressure on the quarterback."

"Because of the way they throw the ball, few people realize how sound San Jose State is defensively," Rogers said. "They're always high in defensive rushing statistics. But they do carry an added burden with the amount they throw the ball. That keeps their defense on the field quite a bit."

Pick 'em

Steven David walked away with the top prize in last week's Pick 'em contest, missing only three games. There was a tie for second place between Kyle Taylor and Sun Hwa Hang, both with four misses. But Kyle was only 10 points off on the tie-breaker, while Sun Hwa missed by 13. This week is the last week for Pick 'em.

ASU _____ VS. SAN JOSE STATE _____
Predict the score.

Home team in caps:

- | | | |
|--|-----|---|
| Favorite | | Underdog |
| <input type="checkbox"/> WASHINGTON | 8½ | <input type="checkbox"/> Washington St. |
| <input type="checkbox"/> UCLA | 5½ | <input type="checkbox"/> USC |
| <input type="checkbox"/> California | 10½ | <input type="checkbox"/> STANFORD |
| <input type="checkbox"/> OREGON | 9½ | <input type="checkbox"/> Oregon St. |
| <input type="checkbox"/> PITTSBURGH | ½ | <input type="checkbox"/> Penn State |
| <input type="checkbox"/> SMU | 8½ | <input type="checkbox"/> Arkansas |
| <input type="checkbox"/> NOTRE DAME | 4½ | <input type="checkbox"/> Air Force |
| PRO GAMES | | |
| <input type="checkbox"/> Washington | 3½ | <input type="checkbox"/> L.A. RAMS |
| <input type="checkbox"/> San Francisco | 7½ | <input type="checkbox"/> ATLANTA |
| <input type="checkbox"/> DENVER | 1½ | <input type="checkbox"/> Seattle |
| <input type="checkbox"/> L.A. Raiders | 1½ | <input type="checkbox"/> Buffalo |
| <input type="checkbox"/> MIAMI | 6½ | <input type="checkbox"/> Baltimore |
| <input type="checkbox"/> PITTSBURGH | 7½ | <input type="checkbox"/> Minnesota |
| <input type="checkbox"/> San Francisco | 1½ | <input type="checkbox"/> LA RAMS |

Name _____
Phone _____

CREATIVE OFFICE SERVICES

WE DO MORE

- TYPING
- WORD PROCESSING
- RESUMES
- BINDING

- Quality Work
- Fast Service
- Competitive Prices
- Confidentiality
- All work done on premises

33 N. Alma School Rd.
Ste. 102A
Mesa, Ariz. 85201
834-1276
OFFICE HOURS: 9-4



SUN DEVIL HAIRCUTTERS

Pride of the Sun Devils

FALL SPECIAL

\$5.00 OFF

Men & Women (Reg. \$13)
Perm Special / \$10 OFF

Good only at
130 E. University
in the Arones
966-5462

Hours: Mon-Fri. 9-6 Sat. 9-5
SERVING ASU SINCE 1964

ImageMakers
HAIR STYLING

TOTAL MAKE-OVER SPECIAL



Designer Cut, Make-over **\$35**
Perm, Cut, Make-over **\$49**
Designer Cut, Blow Dry **\$17**

7162 E. Stetson Dr., Scottsdale
949-5373

FOCUS
BEAUTY SUPPORT PRODUCTS

We Copy Resumes
HIGH QUALITY COPIES

COPIES
4¢
SELF SERVE COPIES
4 1/2¢ FULL SERVICE COPIES

New ASU Location!

kinko's copies

University and Forest
894-9588 Hours: M-F 7 a.m.-8 p.m.
Sat. 9 a.m.-6 p.m.
Sun. 10 a.m.-6 p.m.

and at our Mesa store
1840 W. Southern
969-3326

We bind term papers.
Professors — Ask about Professor Publishing Service.

The National Academy of
Television Arts and
Sciences

presents

ALFRED R. SCHNEIDER
VICE PRESIDENT
AMERICAN BROADCASTING COMPANIES, INC. (ABC)


Thursday
November 17, 1983
1 p.m.
Memorial Union • Pima Room

WANNA MAKE A DIFFERENCE?

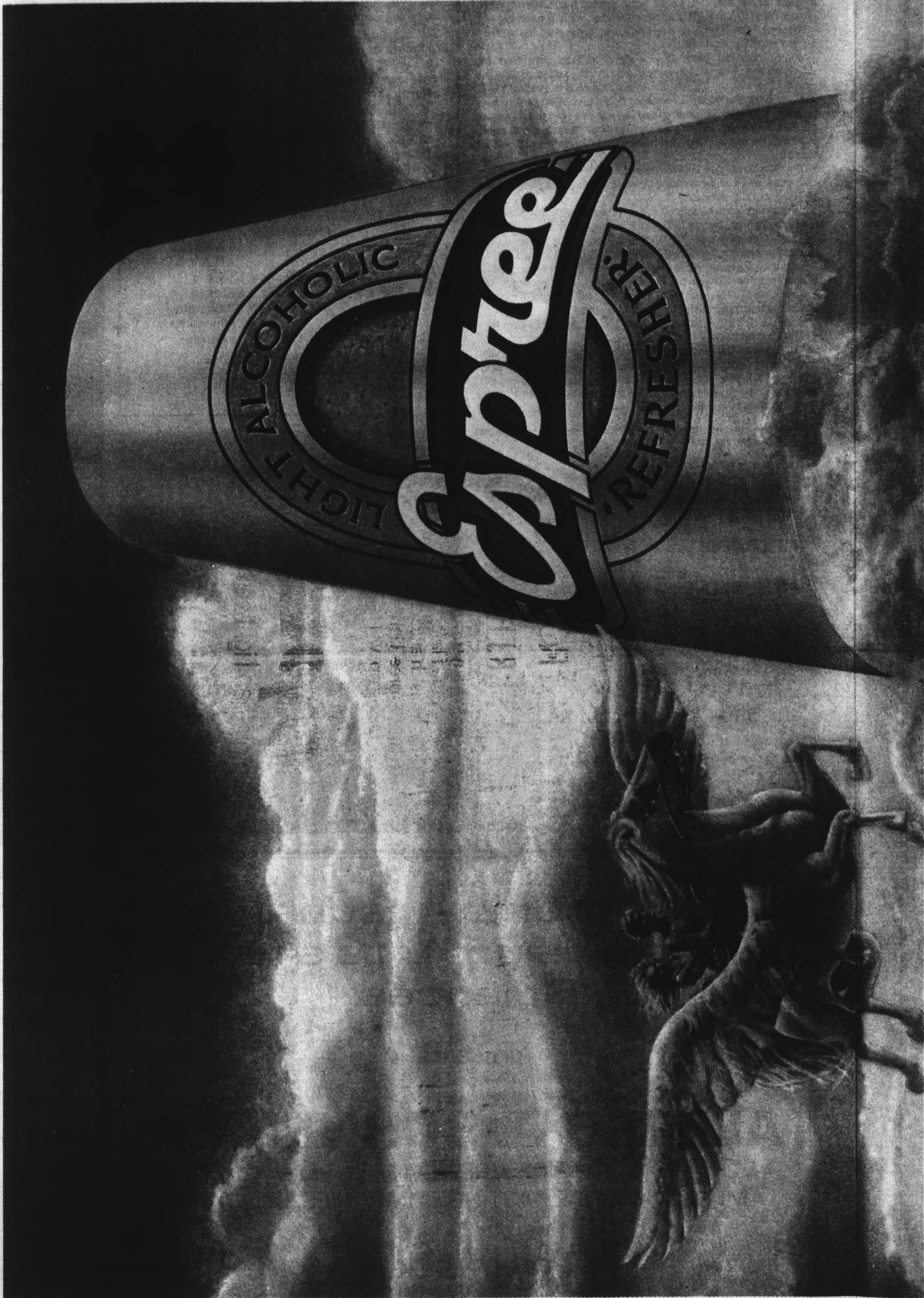
Here's your chance ...
to register to
VOTE

COLLEGE REPUBLICANS
and
UNITED DEMOCRATS
will be on the mall
NOVEMBER 17
12 noon to 2 p.m.

Sponsored by:



Arizona Students' Association
Your link to
making ASU better!



TO SET YOURSELF FREE FROM THE COMMONPLACE
 IS TO SET FREE THE SPIRIT.

There is a drink unlike any drink man has ever known. Seemingly weightless, its unique flavor doesn't assault your taste buds; it embraces them. Yet for all its character, it contains even less alcohol than white wine. Espree Light Alcoholic Refresher. Each sparkling sip will feel like the first.



The lighter than light sparkling spirit



Espree made with Grain Neutrals, Spices and Natural Flavors. 8 Proof. 5.0% Alc. by Volume. Seven Ounces. 13 calories per 5.0 oz. serving.

Edison lifting ASU's fortunes

By Tom Blodgett
Sports writer

Quick! Who is the only ASU volleyball player to be honored this year as the WCAA athlete of the week?

No, Lisa Stuck has not been so honored this year, though the second-team all-American is probably the most logical choice.

Nor is it Valentina Vega, although she has been nominated for the honor this week.

The answer is Terri Edison, who won the honors for the week of October 31 when she led the Devils to an upset victory over USC. Since that time, she has consistently produced for ASU, both on the attack and in blocking.

Edison, a 6-2 senior middle blocker from Placentia, Calif., has developed into one of the finest players in the conference at her position.

She is the second-leading blocker in the WCAA with 7.6 per game, trailing only Stanford all-American Kim Oden. She also ranks eighth in the conference in hitting percentage.

Edison's play has been a key to the team's recent turnaround, and may help the Devils gain an WCAA tournament berth.

"She's really made a difference," ASU head coach Debbie Brown said. "I can't say she's the only reason, but she's played a significant role."

Edison had been counted on from the beginning of the season to produce for the Devils. But her development into one of the conference's premier middle blockers may be a surprise to some people.

According to Edison, it might have come sooner if she had seen more action in earlier years.

"When I first came here, I wasn't given the chance to play," Edison said. "I think the coach (Dale Flickinger) felt an obligation to play the older kids."

"If I had started earlier I might have come around earlier."

Her home state of California is the state for volleyball players, but Edison's pursuits were not always in that area. She quit the sport for a short time to be a cheerleader.

"My parents said 'you are not going to get a scholarship cheerleading,'" Edison said. So she came back to the courts in high school and played on a team that reached the California Interscholastic Federation playoffs four straight years.



Staff photo by Andy Arenz

ASU's Terri Edison, right, has intimidated opponents with her blocking all season.

"Our coach was the basketball coach and he was not really educated in volleyball. But he had a lot of heart and discipline. He would come out there with his manual and coach us."

After her senior season, she tried out for the American National Volleyball Association club, and there she caught Flickinger's eye. He recruited her for ASU.

Much of Edison's last season has been spent on the road. The Devils' schedule has included just eight home matches.

"Having to be gone this much can be quite tough," Edison said, "especially keeping up on grades."

Edison is a recreation and tourism major. She has an internship next year with Club Med.

"I'd like to live in Greece," she said. "People think I'm nuts, but I'd like to get away."

But for now, all of Edison's playing comes on the court. Oddly enough, a big block or kill does not thrill her as much as another duty: playing decoy.

"When you see that big thing coming at you and yelling, who wouldn't think the set is coming that way," Edison said. "That's more exciting to me."

continued page 7

DON'T FALL BEHIND

	LSAT	DAT	GMAT	GRE	MCAT
Prepare Now For:	Dec. 3 Mar. 3	Apr. 14	Jan. 28 Mar. 17	Feb. 4	Apr. 28
Classes Starting:	Oct. 31 Jan. 11 Jan. 20	Feb. 18	Dec. 6 Jan. 24	Dec. 8	Dec. 17 Jan. 29 Mar. 5



Classes now available for DAT, PSYCH, GRE-BIO, NLE, TOEFL, VAT, MAT, MSKP, OCAT, CPA.
2 HOURS OF FREE TUTORING
Speedreading & ESL classes starting mid-Sept.

CALL TODAY **967-2967**

For information about other centers in more than 80 major U.S. cities and abroad, CALL TOLL FREE 800-223-1782.

Papa Jay's New York Pizza



FAST... FREE... DELIVERY
(limited free delivery area)

Serving ASU & TEMPE for nearly 13 years

\$3 OFF any large Sicilian* Style Pizza with two or more toppings.

Good on delivery, take-out or dine-in.
Expires 12-30-83.
*Extra Thick Crust

SUN DEVIL COMBO
Any large pizza with your choice of up to 4 toppings.

ONLY \$5.95 (plus tax)
Good on delivery, take-out or dine-in.
Expires 12-30-83.

We Deliver Beer & Soft Drinks

Video Arcade! 10 tokens for \$1 Every Day

804 S. ASH (Mill & Univ.) 966-1003 • 966-4292 • 967-9689

Need an Unusual Gift?

Hallmark is sticky, Shmaltz is a drag, Boynton's so kicky, And Ziggy went zag?

THE WORDWRIGHT WILL RESCUE YOU!

I'll custom-craft a people-pleasing card, poem, letter, or whatever you want. Guaranteed original, and just 75¢ per line.

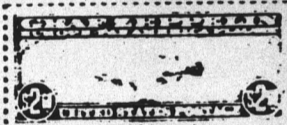
Wordwright, Ltd.

P.O. Box 14793
Phoenix AZ. 85063

MILITARY MEDALS FLAGS



C & S STAMPS



Fort Knox Plaza
1936 E. University
829-8909



COMPLETE BARTENDING COURSE

Your ticket to steady work, meeting people, and making money!

Now at two convenient locations:

TEMPE:
1537 E. Apache
894-6565

PHOENIX:
2740 W. Peoria
863-4845

Helps You Shake Those Minimum Wage Blues! Call Us Today.

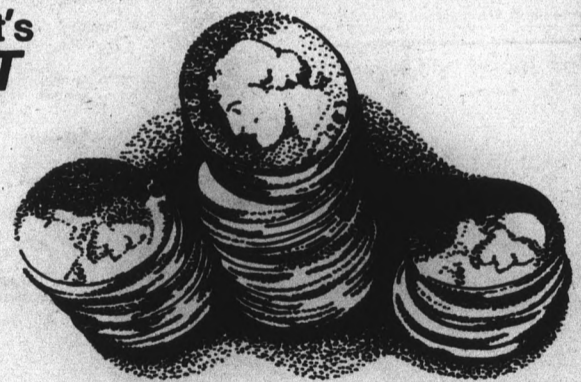
- Wine tasting instruction
- Learn 130 different drinks
- Cash register operation
- Stocking & inventory of liquor
- Customer service training
- Placement assistance

CLANCEY'S NIGHT CLUB

presents...

every Wednesday, it's **PENNY NIGHT**

1¢ Well drinks,
Wine & Draft
25¢ Juice drinks
& pitchers
(from 7:30-12:00)



Live Music from Wisconsin with **Thrills Galore**

Cover: \$4.50 men — \$3 ladies at the door 7:30-12
band starts at 9 drink special ends at 12
doors close at 1

Remember: **LADIES NIGHT** Tomorrow

Upstairs/Downstairs Excitement!

919 E APACHE
966-7770

More about Edison

continued from page 6

Middle blocker is a demanding position. Brown feels Edison has all the tools to be successful.

"She's an excellent athlete," Brown said. "She's the quickest player on the team and she reaches highest on her approach. Being big doesn't slow her down."

Edison and her teammates have not slowed their quest for the playoffs.

"We played against Stanford (two years ago) and we played like a junior high team," Edison said. "I would really like to make the final four."

Announcements

COMPUTER CLASS, last week to register, Saturday November 19, 8-5 p.m., Granada Royale, 44th/McDowell. Learn basic and advanced concepts, job opportunities, micro computers, and get your computer grades up. All in one day! \$25 per session. Register now, call 231-0333.

CRESTWOOD CAREER Academy. Train to be a Medical or Dental Assistant. Call 820-1232 today. January classes.

FRIENDS MEETING! (Quaker Service.) 9:30 a.m. Sundays, Danforth Chapel, ASU. Silent worship - Fellowship. (966-5638.)

GAY AND Christian? Try Lambda Campus Christian Fellowship! Yes! Jesus loves you! Call 265-1102 anytime!

HANG GLIDE this weekend! Certified instruction, equipment plus five flights for only \$45, complete. Group rates and gift certificates available. Windsports, 897-7121 (daily 10:00-6:00).

Automobiles

\$200 DOWN, Chevrolets, Fords, trucks, vans, small cars. Fine cars, lowest prices, honest dealing. L.J.'s, 156 E. Main, 962-1333.

67 MUSTANG, 289 auto, silver with black top, very clean. Original miles and owner. \$1800. 820-8541.

'78 HONDA Civic, 3 door, large engine, Pioneer AM/FM, 50,000 miles, \$2300. Call 968-5118.

Bicycles

SPECIAL LOW student prices on new and used bicycles. Expert repairs on all makes at discount prices. Tempe Bicycle Shop, 8th and Mill. 966-6896.

For Rent or Lease

LEASE TOWNHOUSE, 3 bedroom, 2 bath, unfurnished. One mile from ASU. \$480 per month. Ann, 274-7563.

For Rent or Lease

TWO BEDROOM furnished, close to ASU, \$390. Call 829-0755. Available immediately.

For Sale

LAMBRUSCO \$1.99, Meister Brau Beer \$1.79, old Playboys .47, cold wines, imported beers, Rundle's, University and Mill.

ROADRUNNER BATTERIES, \$24.95. Two year guarantee, with exchange. 1527 East Van Buren, 256-2484.

TICKETS FOR sale. Lionel Richie, Moody Blues and other concerts. Good seats, face value, 962-3890.

SEWING MACHINE

Free arm, brand new, never used. 1984 best model, still in carton, full original guarantee, does everything. Cost \$500, must sacrifice \$165. I also have the beautiful Cabinet that came with it. Usually home.

954-9541 11/18

Furniture

ATTENTION ASU students, come visit Arizona Sleep Shops grand opening in Mesa. Southern and Country Club. 833-0933.

COMPLETE TRUNDLE bed, with innerspring mattress, \$169.00. Arizona Sleep Shops. 833-0933.

FIVE DRAWER chest, only \$29.95. Arizona Sleep Shops, 1328 South Country Club. 833-0933.

FIVE PIECE bedroom set: Dresser, mirror, nightstand, headboard, chest, \$189. Matching desk, \$49. Arizona Sleep Shops, 1328 South Country Club. 833-0933.

LIVINGROOM SPECIAL: Sofa, loveseat, coffee table, two end tables, two lamps. \$279. Arizona Sleep Shops, 1328 South Country Club. 833-0933.

THREE PIECE wall units, \$179. Bookshelves, \$35. Lamps, \$10. Twin beds, \$59. Doubles, \$69. Arizona Sleep Shops, 833-0933.

Help Wanted

ATTENTION PART-TIME: Immediately for out-going women to show new fashion jewelry line. Earn extra money, get free gifts and have opportunity to buy all your jewelry wholesale. 14k and 18k gold overlaid jewelry. Life time guarantee. Call Enza for appointment, 231-0333.

CHILD CARE workers for emotionally handicapped. PT weekends. Some potential evenings / holidays. Excellent clinical opportunity. \$3.35/hr. E.O.E.

MAKE MONEY while enjoying the sunshine. Individuals needed for part-time work selling fresh cut flowers in the Tempe area. Call evenings at 243-6308.

BUS-PERSON Monday - Friday, 12 to 2 p.m.; Friday and Saturday 6 to 10 p.m., \$3.50 plus tips. 949-1557.

Help Wanted

OVERSEAS JOBS, summer, year round. Europe, S. America, Australia, Asia. All fields. \$500 - \$1200 monthly. Sightseeing. Free info. Write IJC, Box 52-A23, Corona Del Mar, CA 92625.

PART-TIME TECHNICIAN. Assistant engineers in project development. Serve as liaison between Mexican and Mesa facilities in technical matters; write procedures and specifications related to production. Requires 3 years towards Bachelors, with emphasis in Mechanical Engineering; drafting and technical writing experience preferred. Bi-lingual, English/Spanish highly desired. If qualified, please apply in person at our plant located at Dobson and Williams Field roads in Chandler. Or send your resume, including salary history to B. Amstwald, Rogers Corporation, P.O. Box 700, Chandler, Arizona 85224. E.O.E.

PART-TIME Sales Rep. Local business forms company looking for mature sales rep. High salary plus commission, plus car expense, flexible hours. 944-9642.

REAL ESTATE license needed for telemarketing position. Salary plus commission. Part-time in our Tempe office. Perfect job for beginners and students. Call Lita, 268-5315 or call 893-3115, ext. 311.

RELIABLE PERSON needed to assist disabled student. Free room and board. Position available 1/10/84. Contact Don, 965-8448. Apply now.

SHIPPING CLERK wanted: 1:00 p.m. to 5:00 p.m., \$5 per hour in Phoenix, 258-0132.

SUMMER JOBS. National Park Co's. 21 parks, 5000 openings. Complete information \$5.00. Park Report, 651 2nd Ave. W.N., Kallispell, MT 59901.

Instruction

WILL TUTOR ACC 211, 212, 321, 322, 331, 500 and 501. Call Marcia, 967-4788 before 10 a.m. or after 5 p.m.

Jewelry

14K GOLD jewelry 50-75% off retail prices! Chains, earrings, rings, diamonds. Going out of business sale! Joseph Ford Gold Exchange, 968-8637.

Motorcycles

1972 YAMAHA 175CC, low mileage, dependable transportation to the campus. \$250. Call 968-7338.

1979 VW Super Beetle convertible. Ultra-clean, very low mileage. "Cherry." \$9,500. Michael 990-9300.

1982 HONDA MB-5. Great condition, with helmet. \$380. 829-9123.

75 KAWASAKI 900 Z-1, 20,000 miles, mint condition. Extras include: king queen seat, back rest, book rack. Eats GPZ's for lunch. \$1500. 820-8541.

HONDA EXPRESS, 50cc, good condition. Includes Arizona license, car rack, Masterlock. \$199 firm. Call Mark, 965-0690.

YAMAHA QT-50, three months old, includes license plates and ASU parking sticker. \$225. 969-0863.

Personal

HYPNOSIS: DEVELOP self confidence, get rid of stress and tension, improve memory and concentration, stop smoking or lose weight. Lindsay Brady, Certified Hypnotist, 968-8571.

Help Wanted

MAKE \$10-\$30 HOURLY. FULL- OR PART-TIME.

Doing surveys, servicing displays and selling memberships for health spas. Easy, profitable and fun.

ALSO POSITIONS OPEN FOR:
AEROBIC INSTRUCTORS - PHOTO MODELS, SPA ATTENDANTS AND OFFICE WORK.

East Phoenix: 956-2200
Tempe: 894-1263

An equal opportunity employer. 11/16

HELP WANTED: PART-TIME EVENINGS

National Marketing Company has openings for sales-minded people interested in part-time employment. Openings are available on the evening and weekend shifts. Our sales people work in a modern, comfortable business environment contacting established customers on long distance WATS lines. Earnings, which include salary and bonus, average \$4-\$6 per hour, paid weekly. These are permanent positions with no seasonal layoffs. If you have a good, clear speaking voice, proper grooming for a business office, enthusiasm and competitive spirit, our experienced management team will train you to sell our nationally recognized products (while being paid, of course). Our Tempe office is located approximately five minutes from campus.

Please call DIALAMERICA for details.
829-1140 11/23

Personal

SKI VAIL / Beaver Creek, call toll free 1-800-222-4840 or consult your travel agent for discount rates on lodging, lifts and rentals.

Real Estate

2 TWO BEDROOM townhouses starting at \$51,900. Town anytime. Evenings, Ray, 838-2841. Red Carpet Weary, 968-3414.

ASSUME VA 12%, Dobson Ranch Condo. \$394 PITI, \$10,000 CTM. All appliances and drapes. 838-2316, 820-2299.

CUTE TWO bedroom townhouse at 'The Oaks'. Owner flexible, will carry with low down. \$39,900. Merry, 897-1555. ERA-American ERA, Realtors, 838-4950.

DOLL HOUSE. Two bedroom townhouse close to ASU. Great terms, \$53,900. Julie, 838-2414. ERA-American ERA, Realtors, 838-4950.

DUPLEX JUST blocks from ASU. Eves, Glenda, 268-2441. Red Carpet Weary, 968-3414.

THREE BEDROOM Suggs beauty. High 70's. Seller's anxious and will refinance. Eves, Canie, 966-8009. Red Carpet Weary, 968-3414.

TWO SHARP two bedroom, two bath patio homes. \$49,000 and \$57,000. Good terms. Alberta, 967-0359. Red Carpet Weary, 968-3414.

WEST CENTRAL Tempe. Spotless three bedroom plus separate block bonus room. Owner will refinance. Alberta, 967-0359. Red Carpet Weary, 968-3414.

Roommate Wanted

FEMALE, NONSMOKER, private room, bath, furnished, brand new condo. Price, University. \$200, 1/2 utilities. 833-3316.

FEMALE ROOMMATE wanted for townhouse, McClintock / Southern. \$132 per month, 1/2 utilities. Libby 968-2320 or 956-2200.

MALE ROOMMATE wanted for unfurnished room in large 4 bedroom, 2 bath house two miles from ASU. Pool, laundry, fenced yard, a/c. Quiet. No smoking, pets. \$150 plus 1/4 utilities. 967-3872.

NON-SMOKING FEMALE to share three bedroom house. \$180 per month plus 1/2 utilities. 234-2401 or 946-7490.

TWO ROOMMATES for four bedroom house. \$137.50 month plus utilities. 2 miles from ASU. Call Trish, 829-8063.

UNDERGRAD MOVING me and needs someone to lease. Large room \$100 plus share utility November free! Jeff 445-316. Leave message or 968-6940.

Help Wanted

CAMPUS REPS NEEDED to pass flyers and do campus promotions.

Apply at **DONNY O'BRIENS** 222 S. Mill 11/18

Services

ALPHA RESUME. Full services discount with ad. 1000 E. Apache, Suite 105, Tempe. 967-7247.

AUTO AND life insurance at low competitive rates, student discounts available. Be sure to ask for Steve Dabbs at 966-0222, 966-3494.

CLASS / WORK Unlimited. All papers, reports typed, copied. Tutoring available. Also, job searches, resumes written, typed, copied. 241-0208.

COLOR DRAPE analysis and face design by Judy. 839-0401.

DO YOU need money for school? We can locate scholarship, fellowship, grant and loan sources that you qualify for through our computer search. For more information contact: International Scholarship Services, P.O. Box 40280, Santa Barbara, CA 93103. Phone, (805)569-0568.

HAVE UNWANTED facial or body hair removed permanently by electrolysis. Free consultation. Located in Tempe. Call Sharon, Desert Electrolysis Center 839-1885.

SAVE TUITION dollars, residency counselling cuts red tape, no fee until residency is granted. 966-8085.

TIRE OF being ripped off on auto repair? Guaranteed, expert work done by professionals. ASU area. Dennis, 820-0094.

LIMOUSINE SERVICE

•DISCREET DRIVERS
•BEST RATES IN TOWN
•BAR-TV SET-UPS
FOR ALL SPECIAL OCCASIONS
981-2150 11/22

Travel

AIRLINE COUPONS, first class, Thanksgiving, Christmas, Anywhere U.S.A. No restrictions. Cheap! Call 829-8551.

AC TRAVEL Save 10-50% on airline tickets and hotel rooms anywhere in the U.S., 994-4754.

CHINA - HONGKONG - Japan; 22 days, Dr. Roger Axford, 839-3255, July 15 - August 8, 1984, \$2995.

DRIVE CARS free to most points of the United States, over 21. Scheall Driveaway, 991-5533.

FREE CARS available for all major cities. Call us now, AAACON Auto Transport. 264-0201.

Typing

\$1.00 PAGE typing. Pickup and delivery on-campus. Knowledge all format styles. 20 years experience. Susan 962-1201; Debbie 963-3122. Call evenings.

\$1.50 / page. 10% cash discount, rush service available, papers, resumes, technical symbols. Business Office Services 894-1517.

A-1 EXCELLENT Typing. Highest quality. Term papers, theses, resumes, etc. IBM Electronic. Call Linda, 899-7562.

A-1 PROFICIENT typist, IBM Selectric. Pam, 968-2098.

A-1 PROFICIENT typist IBM Selectric, Loraine 833-8365, University and Dobson in Mesa.

AAAAH. FORMER secretary desires all types of typing. Location Southern and Rural. Fran, 838-8027.

AAKURIT TYPING. 10-15 pages, overnight service. Reasonable rates. Call Linda after 6:00 p.m. 831-0349.

CACTUS COMPUTER SERVICE

A Div. of Four Star Enterprises, Inc.
2125 E. Broadway Road
Suite #1
Tempe, Arizona 85282
829-9185

•Complete Word Processing
•Student Typing
•Personalized Letters
•Resumes
•Mailing Lists
•Transcribing
•Authors Welcome
•Copies
•Free Estimates
•Thesis

"Professional Quality Is Our Top Priority" 11/29

Typing

ACADEMIC EXPERTISE, utilizing word processing, providing outstanding quality and accuracy. Specializing in dissertations, theses. Precision Typing. 838-1327.

ACADEMIC TYPING. Will edit spelling, punctuation, and grammar. Fast return, accurate, reasonable. Joan 839-0772.

ACCURATE TYPING, downtown near Fifth on Mill. Quick, quality typing, graphics. Call 24 hours. 941-7099, 894-5234.

ACCURATE TYPING all kinds, reasonable rates, excellent service. Agnes Lindstrom 838-5656.

ACCURATE - ACCOMMODATING. Typing. Term papers, theses. Why Worry Business Services, North Central Phoenix, 943-3552.

ALL TYPING done fast and accurate. .90 a page. Word processing available. Close to ASU. Call Carin or Bobbi 968-9166.

ALWAYS AVAILABLE for typing at \$1.25 per page. Call Susan at 833-0373.

ALWAYS DEPENDABLE, typing editing, term papers, books, dissertations, resumes. Excellent skills. Shirley's Typing Service 838-5099.

A-PLUS Typing. Term Papers, Resumes, securities and finance papers a specialty. Papers completed on Electronic memorywriter. Call Judy 839-0401.

CLOSE TO campus. 414 S. Mill #205, 894-5234. Graduate, undergraduate typing, graphics. Professional work, reasonable rates.

EXPERIENCED, ACCURATE, cheerful typist near Southern and Rural. \$1.50 a page. 831-7337.

FAST, ACCURATE typing, \$1.25/page. Call Teresa at 962-0079 or Linda at 969-5775, elite typing available.

HAVE YOUR papers, theses, manuscripts typed professionally with word processor on letter quality printer. Ten years experience. Call Mrs. Walker, 898-1624. Mesa area.

JOH-REE SERVICES. Typing, word processing, term papers, reports, resumes, letters. \$1.00 double spaced page. Call Marie anytime, 968-4786.

NORTHWEST PHOENIX, quality typing. Theses, dissertations, research projects. 938-3397.

PROFESSIONAL COPY reader will edit term papers, theses, dissertations. Typing available. Student discount. Ruth, 897-6299.

QUALITY TYPING by an executive secretary. Experience includes legal, medical, engineering, computer, etc. Leah, 962-1059.

TERM PAPERS, resumes, charts, etc. Editing done. 832-7273.

TYPING BY Paper Impressions - resumes, reports, letters etc. Electronic memory typewriter, cassette transcription. Reliable, fast, accurate. Pick-up / delivery on campus. Call 831-2080.

TYPING SERVICE. Experienced secretary types reports, letters, resumes, etc. Fees below current rates. 992-1465 evenings.

TYPING THESES, dissertations, term papers, etc. Eight years experience. Accurate fast service, spelling corrected. 949-9207.

WORD PROCESSING, IBM PC, English, French, and German translations, resumes. North Central Phoenix. Ruth, 264-7713.

WORD PROCESSING, typing. Can type anything. Guaranteed word perfect. Located in Tempe. 839-3412.

YOU WRITE it, I'll type it! Thesis, papers, reports, etc. and complete resume service. 969-7138.

WORD PROCESSING PROFESSIONAL, FAST AND ACCURATE \$1.25 per page Just 5 min. from ASU Library **SECRETARIAL SERVICES** 122 E. University Dr. 967-0900 Exp. 12/83 11/17

Wanted

ASU STUDENTS please help. I need several pairs of tickets for the ASU - UofA football game on November 26. Call me at 968-1819 evenings.

NEED MONEY? Paying top dollar for gold jewelry, diamonds, class rings, pocket watches, and silver coins. Free in home estimates. Call anytime, Joe 968-8637.

PAYING CASH for gold, silver, diamonds, class rings. Mill Avenue Jewelers, 414 S. Mill. 968-5867.

COMING

FRIDAY, NOVEMBER 18
in the
State Press

PAC-10
BASKETBALL
CONFERENCE
PREVIEW

•A review of all 10 teams
•Predicted order of finish

Don't miss it!

★ STARTS TODAY ★



THANKSGIVING SKI SALE

APACHE SUNRISE SKIER
APPRECIATION DAY
•Free lift ticket
with purchase•
Wednesday, Nov. 16

Sale Hours:
WEDNESDAY, NOV. 16
6 p.m. to 10 p.m.
THURSDAY & FRIDAY
9:30 a.m. to 9 p.m.
SATURDAY
9:30 a.m. to 6 p.m.
SUNDAY
11 a.m. to 6 p.m.
*Everything
for SKIING!*

Don't Wait,
Don't Delay

- SKIS from \$79.99
- BINDINGS from \$29.99
- BOOTS from \$49.99
- POLES from \$7.99

COMPLETE
ROSSIGNOL
SKI PACKAGE
\$149.99
Reg. \$286.00
TYROLIA 170 D STEP-IN BINDINGS
BRAKES • LOOK POLES • MOUNTING
OTHER SKI PACKAGES FROM
\$149.99 to \$299.99

- BIBS from \$29.99
- PARKAS from \$29.99
- SWEATERS from \$19.99
- SUITS from \$79.99

Gloves, Goggles, Jr. Apparel & Equipment, Cross Country,
Hats, Underwear, Tee-necks, and more, **MUCH** more.

Alpine Ski Keller

PHOENIX

Town & Country Center
20th St. & Camelback Rd.
955-8740

Phoenix' Largest Ski Specialists

TEMPE

Corner McClintock & Broadway Rd.
1753 E. Broadway
968-9056

Alpine Ski & Sports

Pat
thun
sell

C
By W
Staff
Se
ing
retir
says
plet
Bil
Web
camp
into
"A
defin
Th
built
Del E
"If
Ariz
City,
Davi
He
"M
Davi
very
Ac
devel
and
from
Univ
Ha