

Swelling enrollment forces ASU to expand boundaries

A growing concern

First of a series

This is the first of a two-part series examining the University's trend toward expansion, which has involved numerous real estate transactions. Today, the State Press looks at three areas that have exemplified much of this effort, and the opposition they have experienced.

By Jim McCleary
Staff writer

In recent years, ASU interests have spread throughout Maricopa County — from Mesa to Sun City — as the land available for on-campus expansion is quickly consumed.

Growth has forced the University into the real estate business as well as the education business, with officials looking elsewhere to provide adequate facilities for ASU's swelling enrollment.

In the fall semester of 1973, enrollment at ASU was 28,724. The University's population has increased 40 percent in the past 10 years; it's currently 40,239.

President J. Russell Nelson said the increasing number of students and the decreasing amount of on-campus land represents the ultimate reason for ASU's real estate dealings.

"The University is short on ground space relative to the number of students," he said.

When asked if the University was in real estate because of potential monetary gains, Nelson said, "We are not out to buy property to trade in property."

He said the University would "like to acquire" the land bordered by University Drive, Apache Boulevard, Rural Road and Mill Avenue "within the next 25 years."

Jennus Burton, director of cash and property management, said that when the University purchases property, "in most cases we buy at market value."

He noted that the purchase of Cinnamon Tree Apartments — now Cholla Apartments — was one exception because the previous owners were anxious to sell, even below market value.

However, questions have been raised concerning the academic validity of some of the land transactions.

The proposed west-side campus would further promote ASU's dominance of upper-division college education in Maricopa County.

Planning for a fourth university in the county has not been seriously considered because of the bleak economic conditions facing the Legislature.

Nonetheless, construction of a branch campus will not be cheap, and some legislators have insisted they will oppose it because of the lack of finances.

And at least one member of the Board of Regents said the west-side campus has become an obvious "political issue."

Another property situation involving the University is the proposed research park, part of the Excellence in Engineering program, which President Nelson says will not be dominated by the College of Engineering and Applied Sciences.

However, smaller, less powerful departments on campus have expressed concern that the object of such a park is to promote ASU's engineering interests. They have said they fear the park will not be available to them.

Although ASU owns the land where the park will be located, financial support still will be needed from the University and the state Legislature.

ASU's most recent land deal was the purchase of Tempe

See editorial, p. 4

Center, which the University will completely control within the next 10 years.

University officials say none of the \$5.5 million required to purchase the property will come from state or University appropriations.

However, if ASU becomes unable to continue payments on the facility, the Legislature could enter the picture and lend the University funds to continue payments.

The Legislature lent ASU \$3.5 million in 1982 for repairs on Sun Devil Stadium. The loan could be used as a precedent, if needed, in the Tempe Center purchase.

Although the state budget is suffering from financial drought, and off-campus courses have experienced declining enrollments, plans for construction of ASU's west-side campus have not been hampered.

A 300-acre parcel of land has been reserved for construction of an ASU west-side campus on 54th Avenue and Thunderbird Road.

According to a study conducted by Frank Sackton, former vice president for business affairs, the west Valley, with a population of 330,000, is the largest metropolitan area in the United States without the services of a four-year university.

U.S. Census Bureau figures indicate the area's population will triple within 20 years.

A task force headed by Paige Mulhollan, executive vice president, was established to study enrollment projections,

tuesday
November 15, 1983

state
press

Tempe, Arizona

Arizona State University
Vol. 66 No. 48

© Copyright, State Press, 1983

and the type and level of programming to be offered at the west-side campus.

Mulhollan said he does not rule out the possibility of the west-side branch ultimately becoming Arizona's fourth university if the population increases as predicted.

However, at this point, the branch campus has some advantages over a four-year university, Mulhollan said.

He said the branch campus could utilize services on the Tempe campus such as administration and library services. The credibility of a degree from an ASU branch campus would be higher than that of a new university, he said.

He also said the existence of a four-year university in that area now would be "duplicating what Glendale College does very well."

Sackton agreed with Mulhollan, saying, "It's reasonable . . . to start an upper-level university initially and if the population becomes as great as the U.S. Census Bureau says, the Board of Regents would have to determine the need for a fourth university in the Arizona system."

However, he said, "This is not the way to go right away."

Regent A.J. "Jack" Pfister, said until the University makes a detailed plan for the west-side campus, he could not predict which way the board would vote on a \$4.4 million initial request for the branch.

He said the proposed campus has "been talked about in the Legislature. It's a political issue — there's no doubt about it."

According to a report issued to the regents in September, off-campus enrollment among full-time students declined by 6.9 percent since last year.

A total of 319 off-campus courses were offered in the first six months of 1983, while 456 were offered during the same period in 1980.

However, Mulhollan said, "The enrollment has been directly related to the number of courses we offer and we have offered steadily fewer sections over the past three years because of budget problems."

Although the branch campus has been approved by the board, the Legislature, from where ultimate funding will come, has some skeptics.

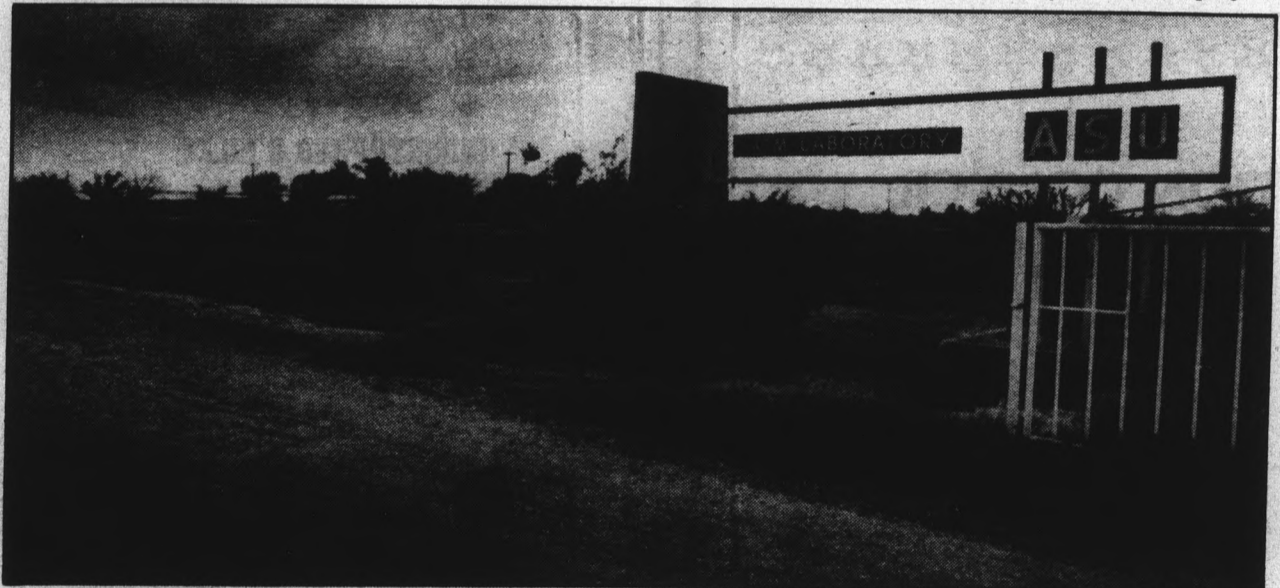
Rep. Bob Denny, R-Phoenix, said he currently opposes the west-campus because adequate funding and support from constituents does not exist.

"I have not seen, from my area, a big support for a west-side campus," said Denny, who represents District 15 in West Phoenix. "It's going to cost money and I don't see it in the cards where (the Legislature will) get the money for it. I would not vote for it."

Rep. James Ratliff, R-Phoenix, who also represents District 15, said the ASU branch would be a financial imposition on taxpayers. He also said he would vote against it.

"I think it's imposing a burden on taxpayers. I will not support it — I never have," Ratliff said.

continued page 8



Staff photo by David Petkiewicz

ASU's farm laboratory will be leveled to construct the Research Park, which should be completely functional in the 1990s. The farm is currently operated by the department of agriculture.

Officials expect 1983-84 parking revenue to rise

By M.K. Reinhart
Staff writer

The number of parking citations issued during the 1983-84 school year will be at least 30 percent lower than in the past several years, but the revenue from fines will be greater, University officials said.

Ed Hickcox, director of Parking and Transit Services, expects ASU to collect \$1.8 million in parking revenue this year, a greater amount than in the past due in large part to across-the-board fine increases.

Parking revenue includes income from fines and citations, permit sales, meters and paid parking, Hickcox said.

University Police Chief C. Russell Duncan attributed the decline in parking citations to increased fines, controlled access to inner-campus lots and a greater number of people parking off campus.

Hickcox also said fines and controlled lots have discouraged potential violators.

"The fine system has acted as a deterrent to violators," Hickcox said. In the past, some motorists were not intimidated by \$3 fines, but this year's average \$18 ticket commands a little more attention, he said.

Duncan said he expects the department to issue 70,000 parking tickets this year, compared to an average 100,000 citations issued in previous years.

About \$632,000 of the \$1.8 million will be used for lot improvements, many of which already have been completed or currently are underway.

Since July 1, eight lots have been reconstructed. "Tiger teeth" and control booths were installed to provide controlled-access parking.

Parking revenue also has paid for paving and striping Lot 40, formerly the Wigwam Lodge, and Lot 3. Additional repaving is planned for lots 27, 51 and 53.

Hickcox said \$30,000 will be spent on a sweeper, which will be used to clean glass and other debris from campus lots. Funds also will be used to improve lighting, specifically in Lot 42.

Most of the remaining revenue will be used to pay Department of Public Service officers and to help fund the Parking and Transit Services, a totally self-supporting department, Hickcox said.

More than \$500,000 of the parking revenue will pay for DPS services. University Police patrol campus lots, write citations, and provide traffic control and an escort service, as well as any other services commuters might need.

According to Hickcox, the Parking and Transit Services spends \$444,000 on wages and salaries, and other operating expenses. Parking revenue also supports the tram system, an annual expense of about \$154,000.

According to Hickcox and Anne Richard-

son, director of the parking services commission, the major change in this year's parking program has been the reassignment of lots.

Instead of designating lots for students, staff and faculty, the current program now allows all members of the ASU community to purchase a decal for any lot, at a price which corresponds to its proximity to campus.

She said the "heaviest brunt" from the reforms has been placed on the students. However, "they have been given as much of a break as we could manage," she said.

According to Duncan, the new program has led to lots being filled to capacity, rather than the consistent overcrowding of past years. "Last year, a parking permit was a hunting license," he said. This year, parking spots are available even during the peak periods around 10 a.m., he said.

nation/world

state
press

Europe's first cruise missiles arrive in London

LONDON (AP) — Europe's first cruise missiles arrived Monday at a U.S. air base west of London, provoking outcries from Britain's opposition lawmakers and anti-nuclear protesters who called the step "a major tragedy."

But the British government said it could easily withdraw the low-flying missiles if U.S. and Soviet negotiators reach an arms-control agreement in Geneva in talks scheduled to last six more weeks.

Just after dawn, a U.S. Air Force C-141 Starlifter transport landed at Greenham Common in the countryside 50 miles west of London. Armed soldiers ringed the plane as helicopters hovered and workers unloaded two crates containing the U.S. missiles.

Several hours later, Defense Secretary Michael Heseltine informed Parliament of the missiles' arrival, shouting to make himself heard above opposition lawmakers who screamed "shame! shame!"

U.S. proposes missile cut

WASHINGTON (AP) — The United States Monday proposed to the Soviet Union that both sides cut the number of medium-range nuclear missiles in Europe, the State Department announced. The proposal would limit NATO and Warsaw Pact forces to 420 warheads each.

State Department spokesman Alan Romberg said Paul Nitze, chief U.S. delegate to the intermediate-range arms

reduction talks in Geneva, Switzerland, presented the U.S. offer to the Soviet delegation today.

Romberg noted that under the offer the total proposed U.S. intermediate-range force of 420 single-warhead missiles would equal 140 three-warhead Soviet SS-20 missiles, "which is the number they have proposed to limit their SS-20 forces in the range of Europe."

Greyhound strikers to resume talks

PHOENIX (AP) — Greyhound Chairman John W. Teets said Monday that the company will resume talks with strikers Tuesday, but he added the bus line already has all the qualified drivers it needs to start rolling again this week as scheduled.

As strikers in five cities burned or tore up back-to-work notices Monday in defiance of a company deadline, Greyhound said it would have buses operating again Thursday in 27 states but without cross-country service.

Greyhound, which normally carries 60 percent of the inter-city bus traffic, said it would resume abbreviated operations with new hires and non-strikers.

CORRECTION POLICY

It is the policy of the State Press to acknowledge and correct errors when they occur. If you see an error, call our newsroom at 965-2292 to let us know. All corrections will appear on this page.



AT GAMMAGE CENTER:

CHRISTOPHER PARKENING

Guitar

TONIGHT • 8 p.m.

Christopher Parkening, who first commanded national attention when still in his teens, now ranks as America's leading virtuoso of the classical guitar. Andres Segovia has declared, "Christopher Parkening is a great artist — one of the most brilliant guitarists in the world."

Tickets: \$9, \$8, \$7

(This performance is part of the Student Series.)

LES BALLETS TROCKADERO DE MONTE CARLO

Wednesday, November 16 • 8 p.m.

Thursday, November 17 • 8 p.m.

Here come the TROCKS for an encore Gammage appearance. With men dancing the women's as well as the men's roles, these magnificent dancers present ballet classics and modern works while satirizing the styles and conventions of dancers and choreographic tradition. If you missed them last season, don't make the same mistake this year.

Tickets: \$13, \$12, \$11

AT THE UNIVERSITY ACTIVITY CENTER:

ASASU/UAC

Presents

LIONEL RICHIE

With Special Guest Stars

THE POINTER SISTERS

Wednesday, November 16 • 8 p.m.

You don't want to miss this performance by Grammy-award winning singer/songwriter/producer Lionel Richie whose hits include "Truly," "You Are," "My Love," "Sail On," and "Three Times A Lady," and featuring The Pointer Sisters as Special Guest Stars.

Tickets: \$15, \$12.50

AT THE KERR CULTURAL CENTER:

CHRISTOPHER O'RILEY

Piano

TONIGHT • 8 p.m.

"O'Riley's pianism was technically sure, refined, and very personal. Fast passages had ring and clarity; lyrical sections had singing legato lines. Best of all, the soloist exuded a feeling of ease, spirit, and vitality."

—Robert Croan, Pittsburgh Post-Gazette

Tickets: \$7 (\$1 for ASU students with I.D.)

LAURA MOYA

Music and Dances of Spain

Friday, November 18 • 8 p.m.

Spend a delightful evening of entertainment as Kerr Center presents Laura Moya in a program of the music and dances of Spain.

Tickets: \$5 (\$1 for ASU students with I.D.)

MUSICA DOLCE

Saturday, November 19 • 8 p.m.

With a vital interest in medieval, renaissance, and baroque music and playing on period instruments, Musica Dolce recreates the spirit of music written for festive occasions in the great European courts. Featuring Barbara Bailey, viola de gamba; Roberta Chorlton, baroque violin; Janet Green, recorders; Darlene Tillack, recorders; and guest artists Scott Saari, lute; and Warren Hoffer, tenor.

Tickets: \$5 (\$1 for ASU students with I.D.)

For information about Gammage Center, ASU Activity Center, Kerr Center, and ASU Stevens House events, call 965-3434.

Student Series events are available to full-time ASU students. One ticket may be purchased for \$1 to Student Series events by presenting a photo I.D. and activity card. A maximum of two \$1 tickets may be purchased by presenting two photo I.D. cards and two activity cards. One guest ticket, at full price, may be purchased with a student ticket.

PIANO & ORGAN RENTALS
Allen Plano & Organ Co.
Monthly or Daily
Your Choice of Color or Style
242-4321 • Phx.
833-2332 • Mesa

Carpet House
DORMS, APTS., VANS
ALL SIZES
USED ROOM SIZES
\$10 & UP
NEW CARPET TOO!
1516 E. Van Buren
Phoenix

The **hair performers**
Free Haircut with \$24.95 perm
(Expires 11-30-83.)
All Hair Cuts \$10.00
(Includes cut, shampoo and conditioner only)
Sculptured Nails \$19.50
Come in now! Register to win 1984 Autograph GT.
903 S. Rural • Cinnamon Tree • 894-0184

WANT HELP GETTING INTO MEDICAL, LAW OR OTHER GRADUATE SCHOOL? FINDING A JOB?
THE APPLICANT'S ADVISOR
by A. M. Richard, M.D.
Practical guidance and advice on application completion and interviewing.
Please send your name and address with a check for \$6.50 to:
American Publishing Company
6812 Bonnie Ridge Drive
Baltimore, Maryland 21209
(301) 486-3611
Quantity discounts available.

BUDGET CAR WASH
Student Special
\$1.00 OFF
Reg. Car Wash Price with Student I.D.
28 W. University
967-3578

join the great

american smokeout
Nov. 17
AMERICAN CANCER SOCIETY
Student Group and ASU Student Health

☆☆☆☆☆☆☆☆☆☆☆☆☆☆☆☆☆☆☆☆

EDUCATION COUNCIL

PRESENTS

CAROLYN WARNER
Superintendent of Schools in Arizona

EDUCATION: A TOPIC OF CONCERN

NOV. 16 AT 7:00PM
EDUCATION LECTURE HALL

☆☆☆☆☆☆☆☆☆☆☆☆☆☆☆☆☆☆☆☆

Women gaining powerful jobs in work force, manager says

By Deanne Hutchison
Staff writer

Significant advances are being made slowly but steadily by women in obtaining positions of power in the work force, according to the manager of consumer affairs at Arizona Public Service.

Jane Brand's speech Monday, "Is It Still a Man's World?" was the opening presentation of "Women and Work" week, sponsored by Women's Services.

Brand said women are now concentrating on obtaining positions that pay more as well as give them more power in their jobs, because they have already obtained other rights such as equal pay for equal work.

Brand said one of the big problems for women in the work force is that many feel they have to be a "superwoman."

"These women expect more of themselves than they can reasonably do," she said.

They expect to have a significant, successful career and to be a good wife, mother and housekeeper, Brand said.

"As a result, their personal life usually suffers," she said.

The answer to this problem is for women to realize that it is all right for them to make a choice of the kind of life they want to have and not feel it is necessary for them to do all the traditional functions as well as have a career, she said.

"They need to be comfortable knowing they have a choice and that they can pick just one or two things," she said. "But it is a difficult decision to make."

Part of the reason women feel they must do everything is that men expect it from them, she said.

"It is still a primarily male-driven society," she said. "And women also don't expect men to do all the things they expect of themselves."

Brand said her work career has not been filled with the type of horror stories she has

'One of the big problems is many women feel they have to be a 'superwoman.'

heard from some women, though she began her manager's job as the only woman at APS in that type of position.

"Five years ago, when I was hired, I was the only woman that reported directly to an officer in the company," she said. "Things are getting better though. Now, of about 200 managers there are about a handful of women managers."

"Women and Work" week will continue through Thursday. More information is available from Women's Services at 965-1253.

SPECIAL OFFER!
\$25 off any 14K gold ring

SAVE ON STYLE

SILADIUM® COLLEGE RINGS NOW ONLY \$79.95



We've got what you want—a handsomely styled selection of college rings at a price you can afford. SILADIUM® College Rings carefully crafted in the ArtCarved tradition from a fine and durable jeweler's metal.

Add your choice of custom options to the design you select and you'll have a ring you'll want to wear for years to come.

But don't delay. Visit the ArtCarved Ring Table and get your ring at a price that's too good to last!

ARTCARVED
CLASS RINGS, INC.

NOVEMBER 14 THRU 18
ASU BOOKSTORE

DEPOSIT REQUIRED. MASTERCARD OR VISA ACCEPTED. ©1982 ARTCARVED CLASS RINGS, INC.


DRIVE CARS FREE

Cars Available
Many Points U.S.A.

We are I.C.C. licensed and insured. Must be 21 years or more.

SCEALL DRIVEAWAY
991-5533

ROFFLER OF TEMPE
HAIR CARE
for men & women



\$10 • shampoo
• haircut
• blowdry (with this ad)

Full Roffler Product Line
833 South Rural Rd. & University Drive
Mon.-Sat. 8:30 a.m.-6:00 p.m. **967-5454**
Call for an appointment

WEEKEND VALUE AT



COMPLIMENTARY:

- ★ Pre-Game Happy Hour From 4:30 to 6:00
- ★ Continental Breakfast
- ★ HBO Movies
- ★ Local Paper
- ★ Local Phone Calls
- ★ In-Room Coffee/Tea/Juice
- ★ Tennis

\$35⁰⁰
per night 1-4 persons

 Phoenix Northern InnSuites
1615 E. Northern Ave.
Phoenix, Arizona 85020
(602) 997-6285

 Phoenix Airport/ Tempe InnSuites
1651 W. Baseline Rd. at I-10
Tempe, Arizona 85283
(602) 897-7900

 Scottsdale InnSuites
1400 N. 77th Street
(Just east of Scottsdale Rd.)
Scottsdale, Arizona 85257
(602) 941-1202

CALL FOR INFORMATION & RESERVATIONS
800 - 842-4242



MENTION OR PRESENT AD AT CHECK-IN

Score Big Savings at Arby's!



Before or after the game, stop by Arby's. With our delicious line-up of sandwiches and these coupons, you're sure to come up a winner!



2

Arby's® Regular Roast Beef Sandwiches

\$219

Offer expires November 27, 1983. Valid at all participating Arby's including Broadway & Roosevelt. One coupon per customer per order.  ASU

2

Introducing: Arby's® New Bac'n Cheddar Deluxe Sandwich

\$289

Offer expires November 27, 1983. Valid at all participating Arby's including Broadway & Roosevelt. One coupon per customer per order.  ASU

state
press

Our manifest destiny is to overspread the continent allotted by Providence for the free development of our yearly multiplying millions.
—John Louis O'Sullivan

opinion

'Manifest Destiny' leads students into wilderness

Tracy Fletcher
Editor



There was a time in American history when the frontier began at the edge of civilization and ended only at the Pacific Ocean. Pioneers drove ever westward, staking claim to all territory in between, all in the name of fulfilling the nation's "Manifest Destiny."

President J. Russell Nelson seems to have torn a page from the history books and has adopted his own version of "Manifest Destiny" for the University. This destiny stops only at national recognition for ASU research and "Engineering Excellence." If the plans for growth ever materialize, one will be able to look breathlessly over the expanse of the Valley of the Sun to behold ASU extending as far as the eye can see.

Over the past two years, ASU has acquired a list of real estate holdings so extensive it seems President Nelson spent most of

his childhood cleaning up in Monopoly. Starting the list is the 1982 purchase of the \$3.5 million Cinnamon Tree Apartments, now Cholla Apartments. Last semester, the University shelled out \$272,000 to purchase the Wigwam Lodge for additional parking space. And at the beginning of this semester, President Nelson swung a \$5.5 million deal to purchase Tempe Center.

Considering the swelling enrollment at the University, these acquisitions are justified. ASU has experienced a 40 percent growth in enrollment in the past 10 years and all available land on campus has been consumed by the construction of additional classroom and parking space. The University needs room to grow.

But Nelson and the Arizona Board of Regents have designs which extend far beyond the campus. Let's take a quick inventory of the more distant acquisitions: ASU now owns 300 acres slated for development of a westside campus, property in Sun City for a branch campus for retirees and land for a University golf course. The Administration also is requesting \$300,000 to develop 320 acres into a Research Park.

ASU's real estate interests don't stop there. President Nelson looks longingly at

the 10.4 acres adjacent to Camp Tontozona in Payson and also to assume operations of the Arizona Children's Hospital. The Administration has stated clearly its desire to purchase all the land bordered by Apache Boulevard on the south, University Drive on the north, Rural Road on the east and Mill Avenue on the west.

Although the acquisitions near campus are necessary to accommodate the growing University, the other real estate interests cannot be as easily justified. Financial and human resources can be spread only so thin. The state budget office is predicting a \$200 million shortfall this year; Gov. Bruce Babbitt has already given the state universities a thumbs-down on a 20 percent budget request increase for 1984-85.

The expansion of the University to every last corner of the Valley can only come at the expense of the Tempe campus. The University has muddled through three consecutive years of bare-bones budgeting. Last year, 10 percent was lopped off each department allocation. Faculty and staff members haven't received cost-of-living increases since July 1982. While resources have been pumped into the University's endless quest for national recognition in

engineering and research, other departments have gone hungry.

The Administration's priorities must be realigned. Increased appropriations to create 71 additional staff positions and to adequately pay University employees are necessary. So are funding requests to improve campus facilities and to better educate students. The same cannot be said of the requests for \$4.4 million for development of the westside campus (the request does not even include the cost of buildings), \$300,000 for the Research Park, or funding for golf courses and retirement branch campuses.

One must wonder what price the University will have to pay for this desired image. The Administration has so long been wrapped up in attempts to build a national reputation for academic and research "excellence," it no longer sees the academic problems and economic realities in its own backyard.

In considering the University's future, the Administration and the Legislature must take heed of a fundamental rule of nature: It doesn't matter the expanse of the branches, without nourishment at the root, a tree will never grow.

letters

Editors abet 'ad hominem violence'

Editor:

For the third consecutive year, Citizens for a Non-Nuclear Future has sponsored the local sessions of the Union of Concerned Scientists' national convocation on nuclear issues at ASU. (We are not, as one uniformly uninformed letter writer suggested, a new phenomenon at ASU.) It is time to assess that experience.

Once again, a few hundred students attended one or more of the various sessions. Once again, the panels, exhibits and other programs demonstrated the variety of ways in which humans globally are attempting to come to grips with the possibility of nuclear extinction. And once again, the majority of students were unmoved, neither pro nor con, but self-absorbed with Walkmans and G.P.A.s, football games and sex.

None of that was new. What was new was a mood of unreason on the part of a handful of violent people, who would rather rip down the opposition's posters than write their own and call anti-nuclear advocates names than engage in serious debate. Such an opposition discredits itself before it speaks a single word.

Such disreputable behavior might not merit comment,

were it not for the plain possibility that a publicly-funded university institution has acted as catalyst for this sort of conduct. In three years I have seen the *State Press* go from merely being one-sidedly conservative through indulging in rather inane, veiled slurs against political foes to currently publicizing direct personal attacks and even libels against university professors and registered campus organizations, including our own. Simultaneously, the *State Press* has questioned the right of political groups to organize on campus and gnawed away at the edges of academic freedom. In response, students have written with further libels against professors who have wounded their delicate egos or upset their political preconceptions. All this is rather ugly, and it can only encourage, however unwittingly, the even uglier manifestations of reactionary consciousness that have begun appearing at ASU.

That the *State Press'* new reliance on ad hominem argument has prompted a new level of ad hominem violence among the lower depths of the student community is not surprising. But it is shameful.

Myron L. Scott
Graduate Student, Political Science

Sain explained

Editor:

It would be a shame if James B. Vetter purchased ASU basketball tickets for only the games that he wishes to see or is able to see and expects to have top notch seating. As one of the students interviewed by Mr. Sain, assistant sports editor, on the subject of season tickets, I found out the basic facts before answering his questions. A simple phone call to the ASU ticket office informed me that they could not guarantee students the same seats for every game unless they purchased season tickets. In other words, Mr. Vetter, you might be able to sit real close to the court for the U.S. International game, but when Oregon State and UCLA come to town you might end up having a pigeon's view of the game. Next time, Mr. Vetter, why don't you do your homework before you start ripping people apart. Mr. Sain should be acclaimed for his accurate reporting rather than disdained for his allegedly inaccurate reporting.

Kenneth J. Westenskow
Freshman, Electrical Engineering

Sign up!

Editor:

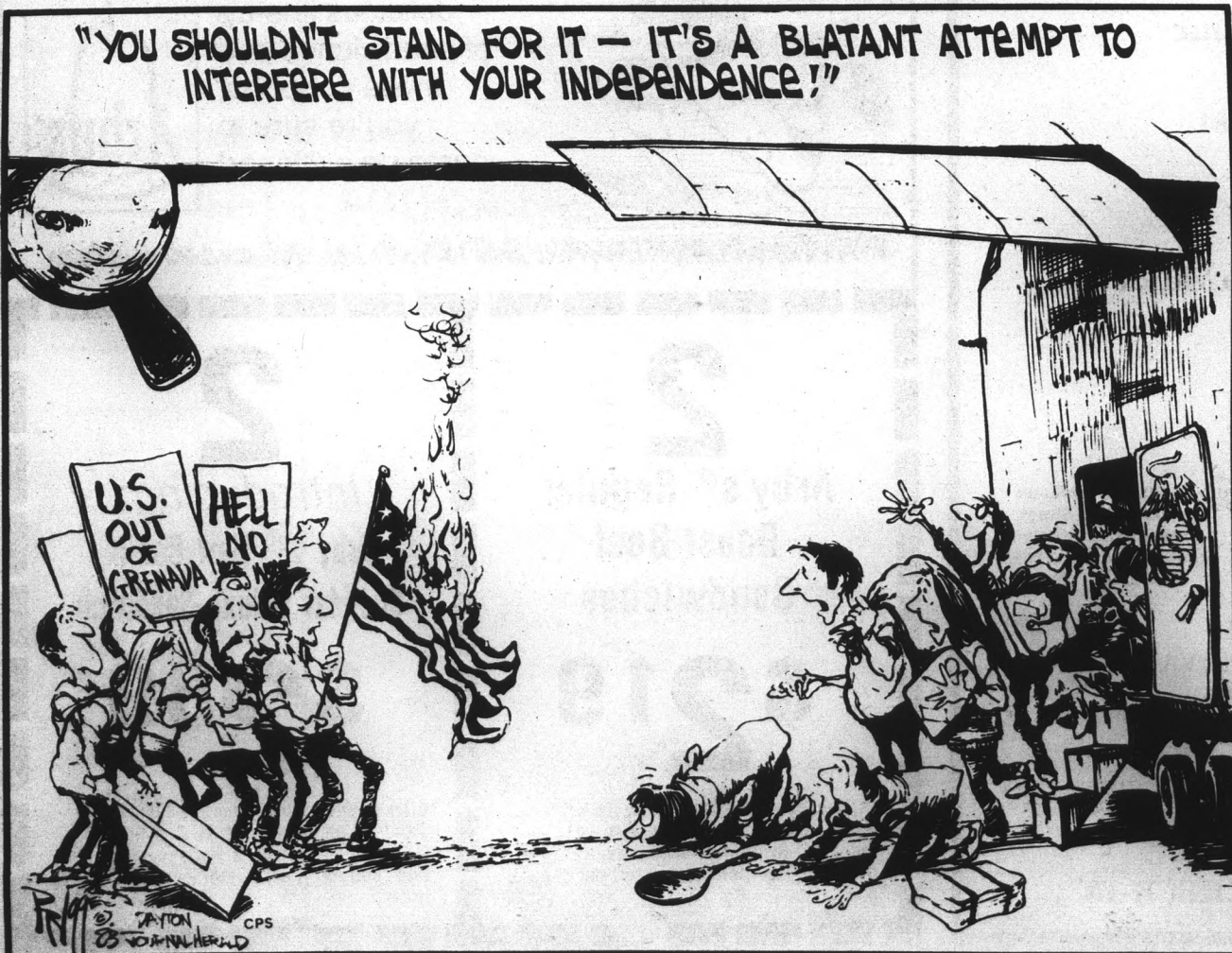
It has finally happened! I have finally gotten my dollar's worth from my college paper! I haven't laughed this hard in years. I am of course referring to the blazing article by Jay Heiler (Tuesday, Nov. 8) in reference to the New Times article by Michael Tulumello (Nov. 2-8).

Thank you, Jay, for bringing the complete ludicrousness of the *State Press* to its almost certain peak!

In response to the woman who suggested a poll of the *State Press*. How does a Coalition for a More Responsible *State Press* strike you. We are already formed, meet on Friday nights at 7 p.m. in the Memorial Union, and have already started circulating petitions! Come and join us.

Terri L. DiBona
Junior, Education

P.S. Mr. Scully, would you please remind the Conservative Students Coalition that the Mall is no place for student activists? Thank you!



STATE PRESS

TRACY FLETCHER
Editor

TOM BICKFORD
Managing Editor

City Editor CHRIS COPPOLA Sports Editor JAY TAYLOR
Asst. City Editor MICHAEL HUMPHREYS Asst. Sports Editor KEN SAIN
Opinion Editor MATTHEW SCULLY Scenes Editor MARY PAT BRADY
News Editor DON SLUTES Asst. Scenes Editor MARIA KHAN
Photo Editor ANDY ARENZ Copy Chief ANDREA S. MEYER

The *State Press* is published Tuesday through Friday during the academic year except holidays and exam periods, at Matthews Center, Room 15, Arizona State University, Tempe, AZ 85287. Newsroom: 965-2292. Advertising & Production: 965-7572.

The *State Press* is the only newspaper exclusively published for and circulated on the ASU campus. The news and views published in this newspaper are not necessarily those of the ASU administration, faculty, staff or student body.

police report

Four washing-machine hoses were removed from washers on the 12th floor of Manzanita Hall early Sunday morning, causing the area to flood, according to University Police.

Police said a resident turned the water off and informed her resident assistant. ASU Police Officer Tony Alizio responded to the call at 4 a.m. When he observed smoke in the east trash chute, he activated the fire alarm.

The Tempe Police Department was notified and the building was evacuated until about 5:45 a.m., police said. The cause of the fire is unknown.

Police reported the following activities occurred between noon Wednesday and noon Monday:

- A videotape recorder, valued at \$1,530, was stolen from a classroom in Payne Hall sometime between Nov. 7 and Nov. 8.
- A Fairchild solid-state line-scan camera, Chemical Stores credit card, clock and a tan rotary-type telephone, with a total value of \$3,286, were stolen from a room in the Engineering Building Wednesday. There were no signs of forced entry.
- A diamond ring, valued at \$1,000, was lost Saturday at Sun Devil Stadium during the football game.
- A white pickup truck, valued at \$300, was stolen from Lot 57 behind Alpha Drive sometime between Nov. 4 and Nov. 13.
- Four wire hubcaps, valued at \$200, were stolen from an ASU employee's vehicle parked in the loading dock behind Hayden Library Sunday.
- The telephone receiver was pulled from the pay telephone located at Tyler Mall and Palm Walk, causing \$100 worth of damages Sunday. Mountain Bell was notified of the incident.
- A resident assistant reported that three white males pulled

down an outside light after entering the third floor of B-wing unescorted early Sunday morning, causing an estimated damage of \$100.

•ASU student Camillo Eugene Volini was assaulted with an axe by ASU student Robert Scott behind the Pi Kappa Alpha parking lot Saturday night. Volini sustained what appeared to be scratches on the palm and fingers and a deep laceration on his right ring finger. The axe was impounded.

•ASU student John Basalone was taken to Tempe St. Luke's Hospital by ambulance for acute alcohol poisoning from Sahuaro Hall early Saturday morning.

•ASU student Paul D. Webster sustained injury to his mouth while practicing gymnastics on the horizontal bar in the Physical Education West building Friday. Webster was taken to Tempe St. Luke's Hospital by a friend.

•ASU student Michael E. Zerrillo received an injury to his head while practicing a tumbling exercise on the floor at the Physical Education West building Friday. Zerrillo was taken to Tempe St. Luke's Hospital by a friend.

•ASU student Tim A. Tejada was arrested for criminal damage after being seen throwing oranges at a 1981 Volkswagen at 601 Alpha Drive Thursday.

•Tracy Ann Kiser was arrested on a traffic warrant from the Mesa Police Department and released to the Mesa Police with a bond of \$552 Thursday. Kiser was originally cited on College Avenue and University Drive for not having a motorcycle operator's permit. Her 1974 Vespa motorcycle was impounded.

•An ASU student reported \$25 worth of damage to the lower part of the dash of her white 1976 Ford Mustang after someone attempted to remove the stereo and power booster Thursday.

•An ASU student reported \$25 worth of damage to the lower part of the dash of her white 1976 Ford Mustang after someone attempted to remove the stereo and power booster Thursday.

— Sandy Sistek

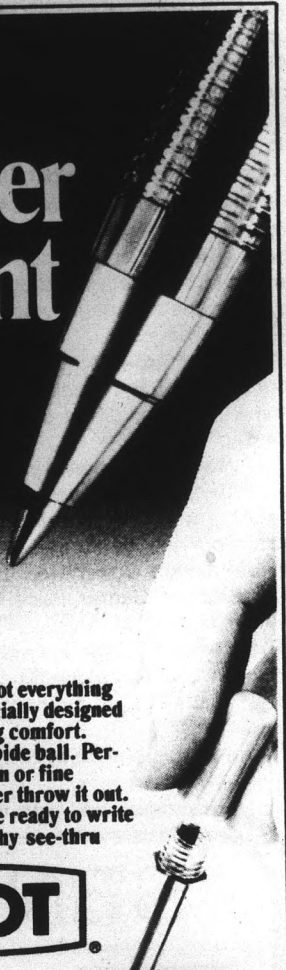
JOSEPHINE'S EATERY
903 SOUTH RURAL ROAD
PHONE ORDERS 894-2422
Good Tuesday-Wednesday Only

COUPON

FREE MEDIUM DRINK WITH PURCHASE OF SANDWICH & PRESENTATION OF THIS COUPON.

30 Super Subs — Look for our Sandwich Specials

Pilot.
The better ball point pen.



When it runs out you won't have to.

The exciting Pilot Ball Point. It's got everything going for it. Smoother writing. Specially designed finger ribbing for continual writing comfort. Stainless steel point. Tungsten carbide ball. Perfectly balanced. A choice of medium or fine points. And best of all...you'll never throw it out. Just slip in a 39c refill and you're ready to write again. So next time your old scratchy see-thru pen runs out, run out and get a 69c Pilot Ball Point pen... plus a few refills.

PILOT

Self Defense
Strength and Agility
Confidence and Control

Certified by International
Kenpo Karate Association
Ed Parker 10th Degree Black Belt

kenpo
chinese karate

MEN • WOMEN • CHILDREN
Come in or call for appointment

Tempo-Mesa
1020 N. Scottsdale Road
966-1080

ICE CREAM CONE SPECIAL
DOUBLES 79¢ EACH (Reg. \$1.04)
Limit 6 cones per coupon through 11-30-83.

OPEN THANKSGIVING
Honeys slightly higher.
Cups — 10¢ extra.

KITCHIE'S
ICE CREAM
PIZZA SANDWICHES

915 E. BROADWAY
LUCKY CENTER — TEMPE
966-8950



The Lesbian and Gay Academic Union
will feature
ROSE WEITZ, Ph.D.
Director of Women's Studies
speaking on
**"Accommodation to Rebellion,
The Redemption of Lesbianism"**
THURSDAY, NOVEMBER 17
8 p.m.
SOCIAL SCIENCES
ROOM 103 (Women's Studies)

A better place to be

Holiday Inn
Tempe/ASU

Apache at Rural
968-3451

THE HAIR HUTTERS

Your Campus Hair Care Center

709 S. Forest Ave., Tempe
North of University • Behind the
Chuck Box • In Oxford Square

968-5946

\$300 OFF
With This Ad
Expires December 20, 1983.

REGULAR PRICES

- Shampoo
- Condition
- Precision Cut
- Blow Dry

MEN \$12 • WOMEN \$14

OPEN EVENINGS
TUES., WED. & THURS. TILL 9 P.M.

YOUR LOCAL DATSUN DEALER SERVICE SPECIAL

15% DISCOUNT
On Service Work and Counter Parts
(except new air conditioning unit)

FOR ANY DATSUN SERVICE TO ALL ASU STUDENTS, FACULTY, STAFF WITH ASU I.D. CARD TO BE PRESENTED AT TIME OF PURCHASE.
Good through December 31.

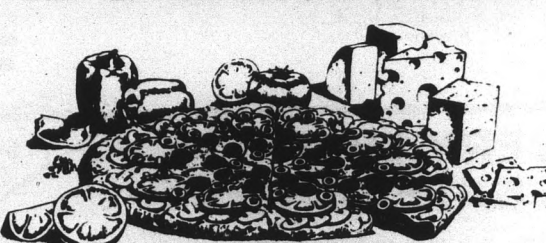
Your Local **A-R-A** Automotive Accessories—
Distributor for Air Conditioning Service & Sales

- Sound Systems •Air Conditioning •Speed Controls
- Alarm Systems •Computers
- Clocks •Replacement Parts

Smith MESA DATSUN
1701 W. BROADWAY, MESA • 834-3366
Special Monday Hours: 7:30 a.m.-9 p.m.
Parts Open Sat. 8:30 a.m.-12:30 p.m.

Round Table Pizza Restaurants

1/2 PRICE TUESDAY!



ASU Students, Faculty and Staff . . .

Every Tuesday

Present your ASU I.D. and receive a 50% Discount, with purchase of any drink, on any Large Pizza.
(Country Style Included)

Offer valid on sit-down meals only.

— 4 Valley Locations —

TEMPE 1849 N. Scottsdale Rd. (Alpha Beta Center) 947-4396	SCOTTSDALE 4416 N. Miller (at Camelback) 994-3285	PHOENIX 5515 N. 7th St. (at Missouri) 279-0924
7901 E. Thomas Rd. (at Hayden) 994-3360		

collage

P.I.E.S. and American Cancer Society Student Group are sponsoring events to coincide with "The Great American Smokeout," including an information table on the mall through Thursday, Nov. 17. A film titled "Smoke, Why Not?" will be screened at noon tomorrow; psychologist David Hoffman will discuss a special "stop smoking program" from 1:30 p.m. to 2:30 p.m. Nov. 17. The film and the psychologist both may be found in Room 158 of the Student Health Service.

Citizens for a Non-Nuclear Future is hosting a panel discussion on nuclear weapons and U.S. interventionism from 11:30 a.m. to 1 p.m. today in the MU Pima Room. A regular meeting will take place at 7:30 p.m. tomorrow in the MU Yuma Room.

ASU Subchapter of Arizona Civil Liberties Union will hold an informational meeting at noon today in College of Law Room 141 (practice courtroom). A short film, "Travelling Hopefully," about ACLU founder Roger Baldwin, will be shown.

SPMAA (Student Purchasing Management Association of Arizona) is hosting two speakers at 2 p.m. today in the MU East Cochise Room. Scheduled are Linda Grass, general manager of purchasing for Valley National Bank, and Mark Hayes, senior buyer for Phelps Dodge, who will discuss internships available at Phelps Dodge.

Theta Chi Fraternity is sponsoring a free-throw competition from 3 p.m. to 5 p.m. today and tomorrow in Physical Education West men's gym. First prize is \$25 and other prizes will be awarded.

The Memorial Union Activities Board's Host and Hostess Committee, which meets at 3 p.m. every Tuesday in MU Coconino Room, offers the opportunity to serve the campus and surrounding community. "Feel free to drop in."

Israel Action Committee is meeting at 3:30 p.m. today at Hillel Student Center, 1012 S. Mill Ave., to discuss "Anti-Judaism: Is Israel an Answer?"

The Memorial Union Activities Board's Special Events Committee, involved in planning campus events, meets at 4 p.m. every Tuesday in MU Graham Room. Everyone is welcome to attend.

National Association of Accountants on Campus is meeting

today at Cottonwoods Resort in Scottsdale. The schedule is as follows: 5:30 p.m. social; 6:30 p.m. dinner; 7:30 p.m. speaker Leroy Johnson will give a presentation on "Securities Fraud."

ASU Circle K meets at 7 p.m. every Tuesday in MU Navajo Room.

Phi Alpha Theta History Club will sponsor a book sale from 9 a.m. to 3 p.m. tomorrow in front of the Social Sciences Building on Cady Mall.

The Memorial Union Activities Board's Executive Committee meets at 3 p.m. every Wednesday in the MU Gila Room. All MUAB committee members are welcome.

ASPA (American Society for Personnel Administration) will meet at 5 p.m. tomorrow in the Howard Johnson's Frontier Room to hear Charlotte Cloninger, director of women's affairs for the Greyhound Corporation, speak on "the professional edge."

Arizona Commission for the U.S.-German Tricentennial and Phi Alpha Theta History Club will sponsor a free lecture by Norman Kincaide, a doctoral candidate in the history department, on "The Great War Adventure: Motivation, Experience and Disillusionment" at 6:30 p.m. tomorrow at the Newman Center, 230 E. University Drive, Tempe.

Black Business Students Association will meet at 4:30 p.m. Thursday, Nov. 17, in the MU to hear a representative from the NAACP offer "alternative organizations with which business people can affiliate."

University Toastmasters will continue to hammer away at those public speaking skills at 5:15 Thursday, Nov. 17, upstairs in the MU.

Native American Student Association will meet at 6 p.m. Thursday, Nov. 17, in the MU Santa Cruz Room to discuss the next fund-raising project and the upcoming workshop and benefit dance.

Campus Crusade for Christ will meet from 7 p.m. to 9 p.m. Thursday, Nov. 17, at 205 E. 15th St., for Thursday Night Live.

Lesbian and Gay Academic Union will meet at 8 p.m. Thursday, Nov. 17, in Social Sciences Room 103 to hear Rose Weitz, director of Women's Studies, speak on "Accommodation to Rebellion: The Redefinition of Lesbianism."

SENIOR BSN STUDENTS



AIR FORCE
A great way of life.

Why wait to start your nursing career? The Air Force has a special program for Senior BSNs. If selected, you can enter Air Force active duty soon after graduation—without waiting for the results of your state board.

To apply, you must have an overall 3.0 GPA and meet other basic requirements.

As a newly commissioned nurse, you'll attend a five month internship at a major Air Force facility. It's an excellent way to prepare you for the wide range of experiences you'll have as an Air Force nurse professional.

For more information contact:

MSgt Bill Casselbury
261-4971
2020 South Mill, Suite #113
Tempe, AZ 85282
Call collect (602) 261-4971

EVERY DAY IS SALE DAY!
WE HAVE THE SAME LOW PRICES 365 DAYS A YEAR!

SAVE Money On Your Next Pair of Glasses

\$45.00
Single Vision

\$74.00
Bifocals
EXECUTIVE BIFOCALS \$15 EXTRA
NO LINE BIFOCALS \$35 EXTRA

Includes your choice of any frame in stock, and lenses (glass or plastic), tint or photogrey, no charge for oversize. Designer frames. No extra charges.

Gas Permeable Hard Contact Lenses **\$99.00**

FAMILY OPTICIANS

In The Arches 120 E. University Tempe • 967-1999
McDowell Square 5134 W. McDowell Phoenix • 278-0031
1802 W. Bethany Home Phoenix 246-0147

TINTED SOFT CONTACT LENSES FOR \$121.00
(Your choice of Blue, Green, Light Brown, Dark Brown, Aqua)

SPECIAL for ASU STUDENTS FACULTY & STAFF

EYE EXAMINATION

\$20.00
for eyeglasses

\$25.00
for contact lenses

Dr. Taddonio
Optometrist
120 E. University
(In The Arches)
Tempe
967-1999

COUPON

DOUBLE BURGER FULL MEAL DEAL \$1.99



CHAR-BROILED

Look what you get! An all-beef burger. A small order of crispy golden fries. Your favorite small soft drink. And, to top it off, a cool and creamy 5 oz. DAIRY QUEEN® Soft Serve Sundae. Head for your participating DAIRY QUEEN® BRAZIER® store, to get the Burger Full Meal Deal™ — the best bargain in town.

Dairy Queen
brazier

WE TREAT YOU RIGHT™

© AM D Q Corp. 1983

Good through 11-21-83.

ONLY AT:

1389 E. APACHE
(Between Rural & McClintock)

COUPON

CENTER FOR BODY AWARENESS
"Feel the difference"

- Aerobics
- Ballet
- Karate
- Jazz
- And More

414 S. Mill Ave.
894-8347

Walking Distance from ASU



DANCE & EXERCISE WEAR 10% OFF

Students support hunger awareness

By Rosanne Dupras
Staff writer

Sen. Alfredo Gutierrez, D-Phoenix, will visit campus Wednesday at 12:30 p.m. on the West Lawn in support of Hunger Awareness Week, which continues through Friday on Cady Mall.

A food drive will be held this week as part of a variety of activities sponsored by Associated Students, Campus Interfaith Council and Students for Hunger Awareness.

Melanie Smyth, a junior English major and a member of Students for Hunger Awareness, said, "It's something that concerns me. Hunger is a lot more prevalent than we think it is."

According to statistics from the Scottsdale-based organization, Food for the Hungry, people are dying of hunger worldwide at a rate of 28 per minute, 40,000 per day and 14,700,000 per year.

Non-perishable food items and money donated at the

Hunger Awareness table on Cady Mall this week will be distributed locally and given to migrant farm workers in Arizona.

Mike Shapiro, senator for the College of Public Programs, said, "Basically, we're trying to get the word out that there's hunger in the United States; there's hunger in Arizona."

"We're targeting Arizona with the food we're donating," Shapiro said.

Smyth said the problem of undernutrition, or "people just not getting enough food over a gradual period of time," is an aspect of the hunger problem that is not seen as much.

Smyth began to get more involved in the hunger movement after going on a trip to Tijuana, Mexico, with the ASU Campus Ambassadors.

Thursday has been proclaimed as a day of fasting for the hungry, followed by a rice supper at 5:30 p.m. at the Newman Center. An interfaith service for Ending World Hunger will also be held Thursday night at 6:30 at the Newman Center.

Custom Printed T-Shirts
FACTORY DIRECT

● Sororities
● Fraternities **967-2127**
● Clubs



Official Supplier Greek Week '83

Official to talk on inflation, labor

A university economist and former government official will discuss inflation and its effect on the labor market in a talk at ASU on Nov. 18 at 3:30 p.m. in Business Administration Building Room 129.

Daniel S. Hamermesh's talk on "Inflation and Labor Market Adjustment" will focus on his analysis of more than 25 years of industry response to inflation.

Hamermesh is expected to argue against the generally accepted notion that inflation has the welcome side effect of enabling employers to restructure wages to reflect demands in various areas of the market.

The lecture is sponsored by the Barry M. Goldwater Chair of American Institutions.

ACCIDENT AND INJURY CLAIMS
KNOW YOUR LEGAL RIGHTS
Call 957-2010
FREE ATTORNEY CONSULTATION
No Recovery — No Fee

MIGUEL'S MUSIC CENTER
(In The Arches)

For All Your Musical Needs

Sheet Music • Lessons • All Instruments
Repairs • Amps

122 E. UNIVERSITY DRIVE
TEMPE, ARIZONA • 968-2310

STUDENT SPECIAL

Shampoo & Cut **\$7.00**
WITH THIS COUPON

OPEN SUNDAY 12-5 p.m.



966-2679 Expires 12-31-83. (New Year's Eve)

6 W. 7th St. Tempe

ASASU/UAC presents

Lionel Richie



SPECIAL GUEST STARS
POINTER SISTERS

TOMORROW NIGHT, 8 p.m.
ASU Activity Center
All seats reserved \$15.00 & \$12.50
On sale NOW at Gammage and all Diamonds
Rolling Stone Records and Happy Trails

KQ-1060

Coca-Cola
Trade-mark ©
CONCERT SERIES 1983



HEY ASU STUDENTS
Jim's Auto Supply

30% average discount on all parts and accessories, except tools and special priced items.

HOURS: 8-7 Daily (Mon.-Fri.); 8-5 Sat.

1828 E. UNIVERSITY Hayden & University
Next to Minder Binder's **968-5888**

More about

Expansion

continued from page 1

"Maybe 20 years from now the need might be there," he said. However, Sen. Anne Lindeman, R-Phoenix, chairman of the Senate Education Committee, has spent 10 years fighting for approval of a west-side campus. But she said the grim budget outlook makes it difficult to predict whether the proposal would pass in the Legislature this year. "The only political thing has been getting the Board of Regents to approve it," she said.

The land where two schools stood from 1891 to 1956 before being demolished to build Tempe Center will once again fall into the hands of academia when ASU assumes the property in roughly 10 years.

The 10.6-acre parcel at Mill Avenue and University Drive, where the Eighth Street School and Tempe High School once were located, was first put up for sale in 1956.

It was then that the University saw its first opportunity for acquisition of the property.

Among other factors, legal problems arose and the University never purchased the land at that time, according to Burton.

The Sechrist family realized the value of the land as a shopping area, purchased it and built Tempe Center. Sechrist Enterprises, headed by Milt Sechrist, currently owns the property.

The center consists of 500 parking spaces and more than 112,000 square feet of building space.

Burton said the University has attempted to purchase the site on several occasions, and was unsuccessful until September.

However, Sechrist said to the best of his knowledge, the only time the University expressed interest in purchasing the facility was in September.

ASU officials approached Sechrist Enterprises for use of eminent domain, Burton said.

He said the company then agreed to sell the proposal was introduced to the Board of Regents.

Sechrist said he did not consider the University's purchase of the property as a threat of eminent domain.

He said ASU told him that "if they could not do that they would condemn it."

"It was not with a great deal of enthusiasm that the agreement," he said.

The Board of Regents, at a meeting on Sept. 1, approved ASU's request to purchase the site for a down payment of \$1.5 million.

A spokesman in the Office of Cash and Property said the escrow is expected to be closed this week and then will make the downpayment.

At that point, ASU will be considered the owner of the property.

"None of (the downpayment) will be state appropriations," he said.

The \$1.5 million downpayment will come from the University's land sale at Mill and Broadway Drive (payments from Tempe Center leases through August) and an annual internal loan installment payment to the University Apartments (\$367,000) and payments from the Tempe Center (\$250,000), Burton said.

The remaining \$4 million will come from Tempe Center payments and internal loan installment payments to the University Apartments, he said.

"They (Tempe Center tenants) will be leasing the property. We are determined to make it a viable shopping center for at least 10 years," he said.

At that time the University will determine how to use the land.

President Nelson has expressed interest in using the land for family housing, parking and landscaping, academic buildings, or extension of the fine arts facilities.

Papa Jay's New York Pizza



FAST... FREE... DELIVERY
(Limited free delivery area)

Serving ASU & TEMPE for nearly 13 years

<p>\$3 OFF any large Sicilian* Style Pizza with two or more toppings. <small>Good on delivery, take-out or dine-in. Expires 12-30-83. *Extra Thick Crust</small></p>	<p>SUN DEVIL COMBO Any large pizza with your choice of up to 4 toppings. ONLY \$5.95 (plus tax) <small>Good on delivery, take-out or dine-in. Expires 12-30-83.</small></p>
---	---

We Deliver Beer & Soft Drinks
Video Arcade! 10 tokens for \$1 Every Day

804 S. ASH (Mill & Univ.) 966-1003 • 966-4292 • 967-9689

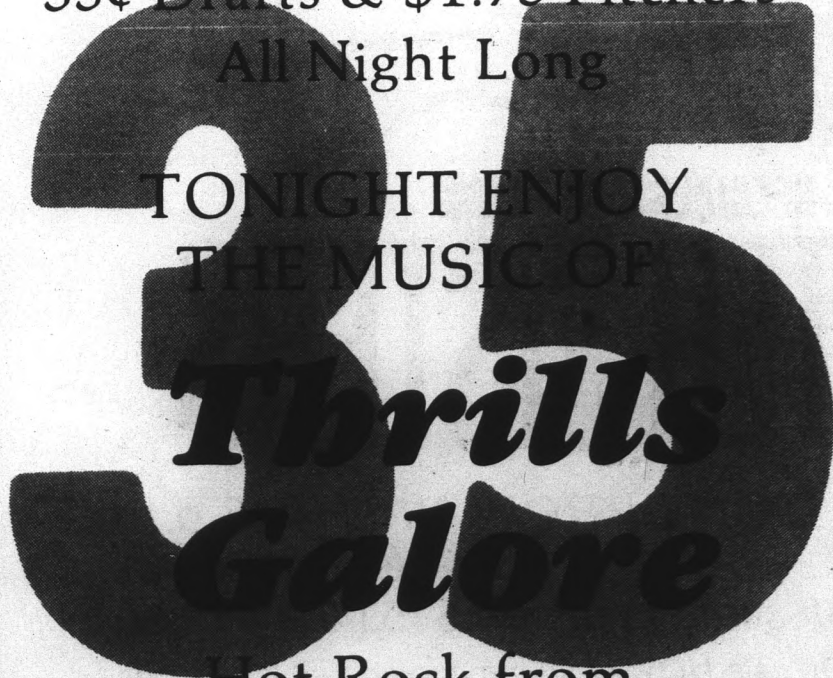
Häagen-Dazs
HAPPY HOUR 4-7:30 p.m. Scoops 2 for 1
WE DELIVER Pints, Quarts and Cakes
20% OFF WITH ASU I.D.
903 S. Rural 967-2340
HOURS: Sun. 11 a.m. - 12 a.m. Fri. & Sat. 11 a.m. - 12 a.m.

STATE-WIDE MINORITY PRE-MED CONFERENCE
Saturday November 19, 1983 9 a.m.-6 p.m.
University of Arizona College of Pharmacy, Room 325 (Corner of Warren and Mabel)
For more information call 965-2344 or 626-7146.



Tonight at CLANCEY'S is
BUDWEISER NIGHT

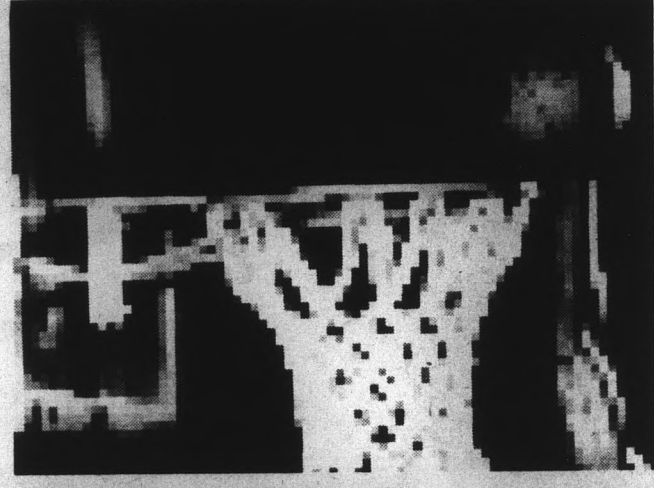
35¢ Drafts & \$1.75 Pitchers All Night Long



Hot Rock from Wisconsin!

See ya there.

GREAT STUFF!



SUNS BASKETBALL

Milwaukee Bucks vs. Phoenix Suns
Friday, November 18

Special ASU Discount

\$8⁰⁰ seats just \$4⁰⁰

Note: There is a small handling charge for each transaction and final day of ticket sales is Thursday, Nov. 17.

Discount tickets available only at the ASU Intramural Sports Office
P.E. West Lobby
9 a.m.-4 p.m.



...
 and Sechrist Enterprises and threaten-
 Burton said.
 en agreed to sell the property and the
 the Board of Regents.
 consider the University's request to
 threat of eminent domain.
 that "if they could not buy it willingly
 t."
 deal of enthusiasm that we accepted
 at a meeting on Sept. 10, unanimously
 purchase the site for \$5.5 million with
 lliion.
 ce of Cash and Property Management
 d to be closed this week. The Universi-
 -payment.
 e considered the owner, Burton said.
 ment) will be state appropriations or
 ons," he said.
 ayment will come from the Univer-
 and Broadmor Drive (\$500,000), rental
 nter leases through August (\$400,000),
 nstallment payment from the Cholla
 nd payments from leases at Tower
 said.
 n will come from Tempe Center rental
 an installment payments for Cholla
 tenants) will be leasing from (ASU).
 ke it a viable shopping center for at
 sity will determine how best to utilize
 pressed interest in using the land for
 nd landscaping, academic and support
 the fine arts facilities in that area.

During the past several years, ASU has undergone a metamorphosis, from a teaching-concentrated institution to a research-concentrated institution.
 Among other changes in this direction, a bill was signed by Gov. Bruce Babbitt on April 27 to establish a Research Park on a 320-acre University-owned parcel of land at the intersection of Price and Elliot roads.
 ASU currently operates a farm lab on the land under the department of agriculture.
 The park is part of the Excellence in Engineering program at ASU, and officials say the park is designed to promote research projects in every college and department on campus.
 The park also is expected to entice high-tech companies to relocate in the Valley.
 Nelson said the park will involve "University activities" and said it would not be controlled by engineering interests.
 He added that the director of the park will report directly to him, which will enable him to monitor activity at the park.
 Nelson said the park will concentrate on "activities related to the interests of the University which includes Engineering and Applied Science."
 The Board of Regents has approved a total of \$300,000 to begin design and planning of the park.
 During a board meeting in September, a request was approved for the University to contract with a non-profit corporation which would operate the park under a 50-year lease. Net revenues from the park would be turned over to the ASU Foundation.
 University officials anticipate the research park growing into a \$400 million investment, providing thousands of jobs in the early 1990s when it is completely operational.
 When completed, it will be one of only a few University-owned research parks in the country.

Tomorrow, the State Press will examine several areas that have implications for the future of ASU, including the possibility of acquiring the Arizona Children's Hospital.

ASU SNOW DEVIL SKI CLUB
 presents:
SKI FEVER
 SKI BEAUTIFUL VAIL & BEAVER CREEK
 \$269⁰⁰ January 7-14

For more info join us at 7 p.m., Nov. 15 at Clancey's (Rural & Apache) or call Mary Ellen, 996-3103.
 Meeting: Utah trip for Thanksgiving discussed, movie, deposit & full presentation of Vail trip.

LEE'S TAILORING
 •Fashion Designing for Ladies
 •Custom Suits for Gentlemen
 •Alterations
894-1055
 Broadway & McClintock
 Alpha Beta Shopping Center

UNIVERSITY GOLF
 Executive Golf Course
 Night Lighted Golf Driving Range & Pro Shop
 Miniature Golf

Pay for 1 game of miniature golf — receive 1 FREE with coupon. Save \$1.75.

2200 E. University Tempe Good through Dec. 31, 1983. **968-3245**

U.S. INSTITUTE OF BARTENDING
 Helps You Shake Those Minimum Wage Blues! Call Us Today.

COMPLETE BARTENDING COURSE

- Wine tasting instruction
- Learn 130 different drinks
- Cash register operation
- Stocking & inventory of liquor
- Customer service training
- Placement assistance

Your ticket to steady work, meeting people, and making money!

Now at two convenient locations:

TEMPE: 1537 E. Apache 894-6565	PHOENIX: 2740 W. Peoria 863-4845
--	--

CHIP AND SCRATCH SALE
 Bicycles Damaged On Our Outside Display



UP TO \$100 OFF
 Large Selection To Choose From

OVERSTOCKED!
 ASSORTMENT OF SIZES AND COLORS OF TIRES
 SOME VALUED AS MUCH AS \$9.95
 YOUR CHOICE \$3⁰⁰ EACH

TEMPE BICYCLE SHOP
 The Old Gas Station On The Corner
 6th Street and Mill, Tempe **966-6896**

DOMINO'S PIZZA
 THE PIZZA PEOPLE™ OF ASU

968-5555
 903 S. Rural

HOURS:
 11:00am-1:30am Sun.-Thurs.
 11:00am-2:30am Fri. & Sat.

\$1.00 OFF any 16" pizza.
 One coupon per pizza.
 Expires: 12/15/83
 Fast, Free Delivery™
968-5555
 903 S. Rural SP

\$.50 OFF any size pizza.
 One coupon per pizza.
 Expires: 12/15/83
 Fast, Free Delivery™
968-5555
 903 S. Rural SP

Limited delivery area.
 Our drivers carry less than \$10.
 ©1983 Domino's Pizza, Inc.

**HELP US
STRIKE OUT
BIRTH DEFECTS
MARCH OF DIMES**

**Mac TEMPE CENTER
JEWELERS**
FOR ALL YOUR JEWELRY NEEDS
Diamonds, Watches
14k Chains, Pendants
Sorority-Fraternity Jewelry
Watch & Jewelry Repairing
966-7587

TIMEOUT LOUNGE

**FREE POOL 11 a.m.-2 p.m.
Sun.-Fri.**
Jack Daniels Night
Monday 7-10 p.m. \$1
**3129 S. Mill 967-9781
Tempe (I.E. Corner of Mill & Southern)**

**SELF-SERVICE
TYPEWRITERS**

Good quality copies
require good
quality typing.
Do your typing at
kinko's copies
Tempe Store
715 S. Forest
894-9588
Open 7 days a week
Mesa Store
1840 W. Southern
969-3326


ANY HAIR Curls & Waves
\$45 & up
ANY HAIR Curl Retouch
\$30
ANY HAIR Relaxer Perm
\$20
ANY HAIR Press & Curl
\$15
ANY Style Cut
\$7 & up
ANY HAIR Color
\$18 & up
ANY HAIR INC.
225 W. University
Suite 113, Tempe
(1/4 mile west of Mill)
829-8483
Hours: 8 a.m.-9 p.m.



GET A PART-TIME JOB IN OUR BODY SHOP.

It feels great to work your body into top condition. To push it to the limit. And then exceed it. But it takes training. To get fit. And to stay fit. And the Army National Guard will give you that training. And we'll give you the incentives to keep working at it. Incentives like a good paycheck, new skills, college tuition assistance, and many other valuable benefits.

In the Guard, you'll train to keep your body in condition while you practice your military skills. You'll be doing something good for yourself, your community and your country. Start shaping your future today by giving us one weekend a month and two weeks a year. **Call your local Army Guard recruiter or call toll-free 800-638-7600.***

*In Hawaii: 737-5255; Puerto Rico: 721-4550; Guam: 477-9957; Virgin Islands (St. Croix): 773-6438; New Jersey: 800-452-5794. In Alaska consult your local phone directory.



It pays to get physical.

A1CASH14113NP

State
S
G
L
By De
Sports
The
goals
defeat
With
down
Devils
stead
40 or m
"We
points
"We j
of the
The
the Pa
streak
65,058
The
Devils
Howe
bowls
Eve
another
ASU
scored
on its
burst
In
togeth
first d
dive-o
plays
for a
game
"In
for us
said.
well.
contr
But
story
(2-8 o
"In
ball
has
wher
the w
The
in the
SERVICE

sports



Gee, Wally!

Leave it to Beavers to end ASU losing skid, 38-3

By Dean Obenauer
Sports writer

The ASU football team reached all of its goals except one Saturday night en route to defeating the Oregon State Beavers, 38-3.

With 21 seconds left in the game and a first down on the Beavers' 8-yard line, the Sun Devils trotted toward the locker room instead of trying to meet their goal of scoring 40 or more points.

"We wanted to get 485 yards and get 40 points," ASU quarterback Todd Hons said. "We just missed 40 but we (reached) most of the goals."

The Devils, now 5-3-1 overall and 3-2-1 in the Pac-10, snapped their three-game losing streak in front of a Homecoming crowd of 65,058, many of whom left early.

The victory was supposed to keep the Devils in the running for a bowl bid. However, the latest information from minor bowls is that ASU will not be invited.

Even so, the Devils were ready to add another conference victory.

ASU wasted no time putting points on the scoreboard. It marched 64 yards in 11 plays on its opening drive, scoring on a 10-yard burst by tailback Darryl Clack.

In the next series, the Beavers put together their only drive of the game. On first down from their 20-yard line, OSU ran a dive-option play gaining 19 yards. Five plays and 60 yards later the Beavers settled for a field goal, their only points of the game.

"In the first half we had some things going for us," Oregon State coach Joe Avezano said. "Offensively we moved the ball pretty well. We kind of kept the game somewhat in control."

But in the second half it was a different story. The Devils scored 24 points while OSU (2-8 overall, 1-6 Pac-10) failed to tally any.

"In the second half it wasn't even a football game," Avezano said. "Our offense has (deteriorated) to a point right now where it is a little tough to get things done, the way we played the second half."

The Devils allowed 83 yards total offense in the first quarter and 29 yards in the se-



Staff photo by Bob Miles

Spoiler

The word "spoiler" has become synonymous with the Arizona Wildcats over the last two years. The Cats knocked ASU out of the Rose Bowl last year, and put a damper on UCLA's bid to host the Rose Bowl.

cond quarter. In the second half the youthful defense gave up just 11 yards.

Oregon State's Ladd McKittrick was one victim of the "Cactus Crunch" defense. He completed just six of 21 passing attempts for 52 yards, because of the ASU blitz.

The Sun Devil offense also got into the act. ASU compiled a season high 576 total yards — a balanced attack of 291 yards rushing and 285 passing.

Quarterback Todd Hons was red-hot, completing 12 passes in a row at one point and finishing the night 20-of-26 for 202 yards and

two touchdowns.

"I thought Todd threw very accurately," Sun Devil coach Darryl Rogers said. "Offensively we had some long drives and good consistent play."

ASU tight end Don Kern had a fantastic night, catching nine passes for 89 yards.

"They laid off the tight end and we just started dinking it off to him," Hons said. "Don did a great job of getting open."

Hons' only low point was when he threw an interception in the end zone after getting a first down at the OSU 8 on a fourth-down

run by Crawford.

The Darryl Clack-Bryce Oglesby showdown was easily won by Clack, who carried the ball 24 times for 132 yards while Oglesby was held to 35 yards on 11 carries. Clack's finest run came when he scooted down the sideline for a 41-yard gain on the Devils' first possession of the second quarter.

On the next play, reserve tailback Mike Crawford tucked the ball under his arm, then pulled up and threw a 41-yard touchdown strike to Paul Day. Crawford is now 5-for-5 on the season for 176 yards and two touchdowns. He was 2-for-2 Saturday for 73 yards.

"Mike Crawford may be asked to play quarterback," Rogers joked. "But he wouldn't be worth doodlehoop as a passer if he wasn't such a good runner. He really hits the open receivers."

The real star of the game was ASU place kicker Luis Zendejas. Zendejas, with his five point-after-touchdown kicks and 37-yard field goal, set more records. The field goal was set up by a Kevin Graven interception.

Zendejas now holds the NCAA three-year record for points scored (274) by kicking. He also broke the Pac-10 record for kick-scoring as well as tying the record for field goals in a career. Each record was previously held by former University of Washington place kicker Chuck Nelson.

"Luis (Zendejas) is going to be the most prolific kicker in the history of the NCAA," Rogers said. "He wants to earn the records legitimately and he will."

The game had a lot of firsts for ASU. Wide receiver James Hood caught the first TD pass of his career on a 19-yard toss from Hons. It was the capper to a 76-yard, eight-play drive.

The Devils' final score came on a blocked punt by Willie Green that Bruce Hill recovered at the 8 and ran in for a touchdown.

"More than anything else, we still know the fight song," Rogers said. "We hadn't sung it in three weeks."

SERVICE

FIAT
LANCIA
FERRARI

• All mechanical repairs
• Factory recommended service
• Complete stock of mechanical & body parts
• Convertible top replacement

Specializing in Fiat's since 1972

1862 E. University Dr.
Tempe 967-7805

Mon-Fri
8 AM - 5:30 PM

MERLE NORMAN COSMETICS
The Place for the Custom Face®

Learn How to Make Up
Your Face ... **FREE**

Call for your appointment
TODAY!

Walk-ins Welcome
Ear Piercing

Southern Palms Plaza 831-6655
1628•10 E. Southern, Tempe

SUPERCOPY CENTERS

Print quality copies

- Kodak 250
- Xerox 9500

Complete bindery services

Postal Service Station

Southern Palms Shopping Center
McClintock & Southern
3136 S. McClintock Dr.

Hours: Mon.-Fri. 8:30-5:30, Sat. 10-4

NEW AT SUB STOP

PARADICE CREAM

1 scoop 75¢ 2 scoops \$1.35

w/coupon get 2nd scoop free

Sub Stop
"Sub Specialists of Arizona"
222 E. University, Tempe
967-7744 • 7:30 a.m. to 2 a.m. nightly

DON'T FALL BEHIND

	LSAT	DAT	GMAT	GRE	MCAT
Prepare Now For:	Dec. 3 Mar. 3	Apr. 14	Jan. 28 Mar. 17	Feb. 4	Apr. 28
Classes Starting:	Oct. 31 Jan. 11 Jan. 20	Feb. 18	Dec. 6 Jan. 24	Dec. 8	Dec. 17 Jan. 29 Mar. 5

Classes now available for DAT, PSYCH, GRE-BIO, NLE, TOEFL, VAT, MAT, MSKP, OCAT, CPA.

2 HOURS OF FREE TUTORING
Speedreading & ESL classes starting mid-Sept.

CALL TODAY 967-2967

For information about other centers in more than 80 major U.S. cities and abroad, CALL TOLL FREE 800-223-1782.

Steam rolled

ASU squashes Beavers 38-3



Staff photo by Andy Arenz



Staff photo by David Petkiewicz

Sun Devil free safety Kevin Graven (right) makes a touch-down-saving block of a pass intended for Oregon State wide receiver Larry Clemons. Beaver fullback Bryce Oglesby, (upper right) is taken to the ground by ASU's Mario Montgomery, Brian Noble and Willie Green after a three yard gain. Oglesby, who came into the game as the Pac-10's leading rusher, was limited to 35 yards by the ASU defense. Mike Copeland (upper left) celebrates with James Hood, 86, after Hood caught a 19-yard touch-down pass from Todd Hons. Hood's first career touch-down was just one of the highlights in ASU's 285-yard passing attack Saturday night.



Staff photo by David Petkiewicz

State
C
By W
Staff
The
a rep
roses
Aft
drea
over
ture
minu
Wi
back
flank
seco
Ma
stay
goal
Th
60 ya
have
Th
of U
feren
UC
Satu
Was
Br
trem
way
"v
"Yo
coul

COUPON
WE
DELIVER
ALSO

Cats spoil Bruins' bid for Roses

By Wayne Baker
Staff writer

The University of Arizona football team is quickly earning a reputation as a spoiler in the annual Pac-10 run for the roses.

After capping its 1982 season by dashing ASU's Rose Bowl dreams with a 28-18 victory in Tucson, the Wildcats (6-3-1 overall, 3-3-1 Pac-10) put a big dent in UCLA's Pasadena picture with a come-from-behind 27-24 win in the final two minutes of Saturday's Pac-10 confrontation.

With a crowd of 42,640 chanting "U of A," Wildcat quarterback Tom Tunnicliffe connected on an eight-yard pass to flanker Jay Dobyns to put the Cats ahead, 26-24, with 61 seconds remaining in the game.

Max Zendejas' extra point made the score 27-24, where it stayed when UCLA kicker John Lee missed a 37-yard field goal attempt with just three seconds to play.

The Bruins, led by quarterback Rick Neuheisel, had driven 60 yards from their own 20 to set up the field goal that would have tied the score.

The Bruins' loss, combined with Washington's 24-0 shutout of USC, put Washington in the driver's seat for the conference championship and a trip to Pasadena Jan. 2.

UCLA (5-4-1 overall, 5-1-1 Pac-10) must beat USC next Saturday and hope Washington State ties or defeats Washington in order to secure a Rose Bowl bid.

Bruin coach Terry Donahue called U of A's victory "a tremendous college football game that could have gone any way."

"We just weren't able to stop them offensively," he said. "You have to figure out a way to win by one point and we couldn't do it."

In spite of the loss, Neuheisel still entertains Rose Bowl hopes.

"Crazier things have happened in the Pac-10. We're not out of it by any means," he said.

The game's first score came on a 53-yard Zendejas field goal 5:17 into the game.

UCLA came back nine plays later with an 80-yard drive capped by a five-yard run by Bruin tailback Danny Andrews. A three-yard touchdown run by U of A fullback Chris Brewer put the Wildcats in front 10-7.

The Arizona scoring drive was set up by a fumble recovery on the UCLA 49 by free safety Allen Durden, and by passes of 11 and 22 yards from Tunnicliffe to split end Brad Anderson.

U of A coach Larry Smith said Tunnicliffe told him, "There was no way we were going to lose to UCLA."

Tunnicliffe said, "We played one of the finest teams in the nation. Everybody knew what their jobs were and we just went out and executed."

UCLA took the lead for the second time late in the fourth quarter on a seven-yard pass from Neuheisel to tight end Paul Bergmann, making the score 24-20.

The UCLA defense held U of A scoreless throughout the third quarter and most of the fourth.

Wildcat linebacker Ricky Hunley said playing on national television (the game was televised on CBS) added to his defensive effort.

"Playing on TV added some emotion and intensity to our team. There was no holding back with family and friends from all over the country watching," Hunley said.

"Our defense didn't want to give up the big play," he said. As the final second ticked off the clock, screaming fans raced out onto the field and tore down the goal posts.

union cinema

THE BLACK STALLION RETURNS

The continuing adventure of a boy and his Arabian stallion. An around the world treat.

TUES. & WED. • NOV. 15 & 16
7 & 9:30 p.m.

\$1.50 w/I.D. • \$2 w/o

LOWER LEVEL OF MEMORIAL UNION



SUN DEVIL HAIRCUTTERS

"Pride of the Sun Devils"

FALL SPECIAL

\$5.00 OFF

Men & Women (Reg. \$13)
Perm Special / \$10 OFF

Shampoo,
Conditioning,
Precision Cut,
Blow Dry

Good only at
130 E. University
(In the Arches)
966-5462

New customers only.

Expires 12-16-83.

Hours: Mon.-Fri. 9-6, Sat. 9-5

SERVING ASU SINCE 1964

Roffler Specialists

UNIVERSITY THEATRES

1025 E. Broadway (East of Rural in Tempe) 829-6666

A Horror Thriller "THE BEING" (R)

C Marlon Brando & Martin Sheen in "APOCALYPSE NOW" (R)

B Walt Disney's Special Computer Effects "TRON" (PG)

D Stephen Spielberg's "POLTERGEIST" (PG)

MIDNIGHT MOVIES EVERY FRIDAY AND SATURDAY NIGHT FOR ONLY A DOLLAR!

ONLY \$1.50 AT ALL TIMES!

MODEL SEARCH

Meet Doug Asch, President of Prestige Models in New York City

SAT., NOV. 12, 1983 11 AM-4 PM

L'Image/Casablancas

Modeling, Personal Development and Career Center
CAMELVIEW PLAZA - 6900 EAST CAMELBACK ROAD
SCOTTSDALE, ARIZONA 85251 (602) 941-4838

COUPON

THE JOYNT

2 CAN DINE FOR \$5.49 Reg. \$8.50 Expires Dec. 14, 1983.

Choice of:
• Lasagna
• Cheese or Spinach Manicotti
• Baked Ziti

Includes 2 dinner salads and garlic breads

THE JOYNT
606 S. Mill
967-7926
CARRY OUTS 75¢ ADDITIONAL

COUPON

Affordable Cleaners

ASU SPECIAL

ANY GARMENT 89¢ ea. No limit
Dry Cleaned & Pressed

Excluding suede & leather; excluding wedding dresses. Coupon must be presented when garments are brought in.

847 W. University
(SE Corner of Univ. & Hardy)
(EXPIRES 12-31-83.)

Paradice Cream

Gourmet Frozen Yogurt
Filled with Flavor, Not Air!

Sample spoon your way thru Paradice and get 25¢ off any yogurt purchase with this ticket.

- Strawberry • Coconut • Pineapple
- Banana • Blueberry • Raspberry

You'll Taste The Difference!

Paradice Cream, 1044 S. Terrace, Corner of Lemon & Terrace
One coupon per customer. Coupon expires 12/15/83

\$1.00 OFF ANY P.C. Shirt or Shorts w/coupon

Women's services ASSOCIATED STUDENTS

WOMEN AND WORK

NOVEMBER 15, 1983 • 11:30-12:30 • Room 219, Navajo
The Multi-Committed Woman
(How to handle all that life offers to you... how to be a supermom.)
Carol Karpeck, President, Communicate with Confidence, Inc.

NOVEMBER 15, 1983 • 10:00-2:00 • Cady Mall
Alums on the Mall... Kick off for Day on the Job Program.
(Meet with recent ASU graduates and hear about their first few years out of college and on the job... also sign up for the Day on the Job Program.)
In conjunction with the Alumni Association.

Women and Law, ASU Law School
11:00-11:30 Color Me Beautiful
11:30-12:00 How to Dress Professionally (Casual Corner)
12:00-12:30 How to Interview
12:30- 1:00 First Year Lawyering
2:00- 3:00 How to Open and Operate Your Own Law Firm
3:00- 4:00 Challenges Unique to Female Attorneys
In conjunction with the Women's Law Student Association

NOVEMBER 15, 1983 • 7:00-9:00 • Room 222, Mohave
Your Professional Image, Your Competitive Edge.
(Professional seminar including image development, professional dressing, and wardrobe planning for all facets of your lifestyle. There will be a small fee of \$4 for students and \$5 for adults. Please call for reservations by November 14 at 965-1253.)
Kathy Rodgers, Personal Style and Image Consultant, Image of Success

FOR MORE INFORMATION CALL 965-1253

HELP WANTED:

WILL PAY STUDENTS TO STUDY

No prior experience necessary. All applicants will be eligible to earn up to \$100 a month — for just a few hours each week. It's easy and studying while earning is encouraged!

Or just sit and do nothing — we'll still pay!

New applicants bring this ad for an extra \$2 for your first visit. And don't forget to bring your books! \$10 is paid for each donation and you can donate twice a week.

Call now for an appointment
968-6139

University Plasma Center

HOURS:
Mon., Tues., Thurs. & Fri.
8 a.m.-7 p.m.
Wed. & Sat.
9 a.m.-6 p.m.

1015 S. Rural Road
Tempe
Federally Inspected

SP

Volleyball team picks up three victories

By Tom Blodgett
Sports writer

At one time this season, the ASU volleyball team looked to be hopelessly under water, and at 5-11, a .500 winning percentage seemed out of reach for the season.

But after last week's matches, the Devils are now 13-14, having won eight of their last 11 matches. A post-season playoff berth remains within reach.

The Devils opened with a sweep of Northern Arizona at P.E. East, 3-0 (15-11, 15-9, 15-12). The Devils played sloppy ball at times, as exemplified by their 17 service errors. The Lumberjacks (16-7 overall) showed improvement over previous years but never really tested ASU.

Valentina Vega led the Devils with an incredible 19 kills and 12 digs in just over 2½ games.

ASU took to the road afterwards for a three matches in three nights, opening with No. 4 UCLA on Thursday.

The Devils, playing with the confidence they found after beating USC and Hawaii, pushed the Bruins hard before falling in a close four-game match, 3-1 (15-13, 15-13, 11-15, 15-10).

"The games were very close," ASU head coach Debbie Brown said. "We had a little trouble adapting, a little trouble getting adjusted."

The Devils were led by Lisa Stuck with 15 kills and Vega with 13. ASU also got two block solos and 11 block assists from Teri Edison.

UCLA's Patty Orozco and Michelle Boyette shared team honors with 12 kills. Orozco had five service aces for the Bruins and her team had 15 for the match.

The Devils played one of their best matches of the season the next night against Cal State-Fullerton. ASU blew out the Titans 3-0 (15-3, 15-6, 15-10).

"We got to try a lot of different lineups and play all of our girls a lot," Brown said. "That's good so we can see for the

future what we have."

The Devils had outstanding games from Vega and Stuck. Vega had 15 kills and no errors in just 18 attempts. Her hitting percentage was an incredible .833.

Stuck had 11 kills and only one error in 16 attempts. Her hitting percentage was .625, also remarkable.

"I don't think Lisa and Val have ever played such an error-free game," Brown said. "The others played pretty well."

Heather Forbes had a game-high 41 assists. The team hitting percentage was .367, a season high.

The team wrapped up its weekend against Cal State-Long Beach, winning 3-1 (15-8, 15-3, 8-15, 15-10).

Tammy Webb topped the team with 15 kills. Stuck had 12 kills and a .360 hitting percentage. Vega added 11 kills.

The jury is still out on a playoff berth for the Devils. Originally, it appeared the Devils could not possibly gain one as schools would be chosen according to region and ASU is located in the talent-rich West.

But now there is some discussion of wild-card berths. In all, 28 teams will be chosen for the NCAA tournament.

"I would think they believe we are one of the top 28 teams in the country," Brown said. "I've talked to some other coaches and they are definitely aware of how strong we are and how difficult our schedule has been."

A poll of the top 20 teams according to the committee which chooses the teams for the tournament has not ranked the Devils in over a month. But ASU is ranked 17th in the Tachikara-Collegiate Volleyball Coaches' Association poll.

"We have been very competitive," Brown said. "That would be part of my argument. We have never lost 3-0. I would hope that would work in our favor."

The Devils close out the home and conference slates Friday against Arizona.

IMPORT AUTO CENTER

MERCEDES SPECIALISTS

Alfa Romeo
Aspen
Audi
Austin Healey
BMW
Capri
Chevette
Citroen
Cobra
Covisair
Crisler
Datsun
DeLorean
English Ford
Ferrari
Fiat
Hillman
Honda
Horizon
Jaguar
Lamborghini
Lancia
Lotus
Lynx
MG

994-3222
3010 N. Scottsdale Rd. • Scottsdale, Arizona
Just North of Thomas

Complete Auto Repairs & Service
All Makes & Models, Foreign & Domestic Compact

Maserati
Mazda
Mercedes
Mitsubishi
Mustang II
Oldsmobile
Opel
Porsche
Renault
Rolls Royce
Rover
Saab
Seville
Suzuki
Subaru
Sunbird
Toyota
Triumph
VW
Volvo
Etc., etc.

TUNE-UP SPECIAL
Starting From \$39.95 (plus tax)

includes new plugs, points, condenser (if needed), adjust timing and carburetor, check compression, adjust for emissions test, service air filter and PCV valve, inspect wires, belts, hoses and cables. (Additional parts and labor extra if needed)

Tune-ups, Engine Work, Brakes, Steering System, Timing, Belts & Chains, Fuel Injection System, Alternators, Clutch & Flywheel, Generators, Differentials, Starter & Solenoids, Radiators, Batteries, Water & Fuel Pumps, Electronic Ignition, Shock, Air Conditioning, Heating & Cooling, Carburetors, Mufflers, Electrical System, Trouble Shooting, Front Ends, Normal Maintenance, Lube, Oil, Filter, Emissions Test, Front Wheel Drive, Gear Box Work, Transmission Service, Etc., etc.

STUDY LESS LEARN MORE

Complete concentration. It's the key to unlocking the mind.

Under the personal one-to-one guidance of a medical doctor, you'll learn how to relax, use total concentration to get more out of your studies in less time, and have total memory recall during examinations.

You'll be more motivated, and you'll learn SELF-HYPNOSIS.

Overcome negative behavior patterns.

ARIZONA INSTITUTE OF MEDICAL HYPNOSIS

LLOYD H. KOELLING, M.D. — DIRECTOR
946-4286

GOING HOME FOR CHRISTMAS

	All Round Trips
LOS ANGELES	\$ 78.00
SAN DIEGO	70.00
SAN FRANCISCO	130.00
DENVER	130.00
CHICAGO	250.00
KANSAS CITY	200.00
NEW YORK	311.00
OMAHA	200.00
DETROIT	296.00
MINNEAPOLIS	279.00

All fares have restrictions and are subject to availability.

BOOK YOUR FLIGHTS NOW!



In Scottsdale

TRAVELWORKS

Hours:
M-F 10-9
Sat. 10-6
Sun. 12-5

LOS ARCOS MALL 945-1010

TREAT YOURSELF ROYALLY.

99¢



(WITH COUPON)

We're having a real sale on a real treat. Three thick layers of real hot fudge and crisp, crunchy peanuts. With cool and creamy DAIRY QUEEN® soft serve in between. The Peanut Buster Parfait™.



WE TREAT YOU RIGHT™ Offer expires 12-31-83.

950 S. Mill (Across from Gammage)
966-1957

College of Fine Arts

LECTURE SERIES 1983/1984

12 noon-1 p.m. Lyceum Theatre

RICHARD WHITNEY

Chairman

Arizona Commission
of the Arts

**"Government Support
for
the Arts"**

NOVEMBER 15, 1983

Bring your lunch and join us
for a very enlightening lecture

©College of Fine Arts, Arizona State University

Rafers

UPSTAIRS PUB

4th & MILL

2nd level of the MILL AVE. SHOPPS above the SPAGHETTI CO

3 for 1 HAPPY HOUR

MON.-THUR. 3:30-7:30 FRI. TIL 8:30

WEEKLY SPECIALS !! 8-12

* MON. - "2 FOR 1"

* TUE. - "QUARTER BEER NIGHT"

* WED. - "BEAT THE CLOCK"

prices go up on the hour

8:00 draft **25¢** .10/draft per hr.
well **50¢** .20/well

* THUR. - SHOTS OF SCHNAPPS - 50¢

* FRI. & SAT. - LIVE ROCK & ROLL

CHECK YOUR NEW TIMES or KSTM FM-107 FOR DETAILS

Hoopsters sign two recruits

The ASU men's basketball team has gotten off to an early start in next year's recruiting wars by signing two local prep stars to national letters-of-intent during the early signing period.

Vernon Johnson, a 6-6, 205-pound forward/center from Phoenix South Mountain High School, and Mark Carlino, a 6-6, 195-pound forward from Scottsdale Saguro, are Bob Weinbauer's latest recruits.

Johnson led the Rebels to the 1983 AAA state championship as a junior. He averaged 12 points and 14 rebounds per game.

"Vernon's got tremendous jumping ability to go along with speed," said South Mountain coach Don Petroff. "He will be a great addition to ASU's program."

Carlino's Sabercats lost by one point to South Mountain in the state semifinals last season. Carlino averaged 12.7 points and 7.3 rebounds per game.

"Mark has improved his game a great deal during the summer and has become one of the top players in the state of Arizona," said Saguro coach Tim O'Brien.

CLASSIFIEDS START HERE

Announcements

COMPUTER CLASS, last week to register, Saturday November 19, 8-5 p.m., Granada Royale, 44th/McDowell. Learn basic and advanced concepts, job opportunities, micro computers, and get your computer grades up. All in one day! \$25 per session. Register now, call 231-0333.

CRESTWOOD CAREER Academy. Train to be a Medical or Dental Assistant. Call 820-1232 today. January classes.

HANG GLIDE this weekend! Certified instruction, equipment plus five flights for only \$45, complete. Group rates and gift certificates available. Windsports, 897-7121 (daily 10:00-6:00).

STUDENTS INTERESTED in studying international business abroad, for 3 hours credit, are invited to attend an informal meeting on Tuesday, November 15 at 3 p.m., Room BA 341.

THE LESBIAN and Gay Academic Union will feature Rose Weitz, Ph.D., Director of Women's Studies speaking on: 'Accommodation to Rebellion: The Redefinition of Lesbianism'. Thursday, November 17, 8:00 p.m., Social Sciences room 103 (Women's Studies).

Automobiles

\$200 DOWN, Chevrolets, Fords, trucks, vans, small cars. Fine cars, lowest prices, honest dealing. L.J.'s, 156 E. Main, 962-1333.

'78 HONDA Civic, 3 door, large engine, Pioneer AM/FM, 50,000 miles, \$2300. Call 998-5118.

Bicycles

SPECIAL LOW student prices on new and used bicycles. Expert repairs on all makes at discount prices. Tempe Bicycle Shop, 6th and Mill. 966-8896.

Books

BUY • SELL • TRADE your books at Changing Hands. For quality cloth and paperbacks (no textbooks, please) we pay 30% of our re-sale price in cash or 50% in trade-in credit which may be used to purchase anything in the store. (Sorry, no trade-ins on Sat. or Sun.) Browse through our three floors of:

- New & Used Books
- Art Prints & Posters
- Calendars & Cards
- Handbound Journals

M-F 10-9 SAT 10-6 SUN 12-5
CHANGING HANDS BOOKSTORE
 414 Mill Avenue 968-6203
 Old Town Tempe 11/15

For Rent or Lease

LEASE TOWNHOUSE, 3 bedroom, 2 bath, unfurnished. One mile from ASU. \$480 per month. Ann, 274-7563.

TWO BEDROOM furnished, close to ASU, \$390. Call 829-0755. Available immediately.

For Sale

LADIES SNOW ski jacket. Excellent condition, large, \$36. Call after 5:30 p.m., 946-2332.

LAMBRUSCO \$1.99, Meister Brau Beer \$1.79, old Playboys .47, cold wines, imported beers, Rundle's, University and Mill.

ROADRUNNER BATTERIES, \$24.95. Two year guarantee, with exchange. 1527 East Van Buren, 256-2484.

TICKETS FOR sale, Lionel Richie, Moody Blues and other concerts. Good seats, face value, 962-3690.

SEWING MACHINE

Free arm, brand new, never used. 1984 best model, still in carton, full original guarantee, does everything. Cost \$500, must sacrifice \$165. I also have the beautiful cabinet that came with it. Usually home.
954-9541 11/18

Furniture

ATTENTION ASU students, come visit Arizona Sleep Shops grand opening in Mesa. Southern and Country Club. 833-0933.

COMPLETE TRUNDLE bed, with innerspring mattress, \$169.00. Arizona Sleep Shops. 833-0933.

FIVE DRAWER chest, only \$29.95. Arizona Sleep Shops, 1328 South Country Club. 833-0933.

FIVE PIECE bedroom set: Dresser, mirror, nightstand, headboard, chest, \$189. Matching desk, \$49. Arizona Sleep Shops, 1328 South Country Club. 833-0933.

LIVINGROOM SPECIAL: Sofa, loveseat, coffee table, two end tables, two lamps. \$279. Arizona Sleep Shops, 1328 South Country Club. 833-0933.

THREE PIECE wall units, \$179. Bookshelves, \$35. Lamps, \$10. Twin beds, \$59. Doubles, \$69. Arizona Sleep Shops, 833-0933.

Help Wanted

MAKE \$10-\$30 HOURLY. FULL- OR PART-TIME.

Doing surveys, servicing displays and selling memberships for health spas. Easy, profitable and fun.

ALSO POSITIONS OPEN FOR:
 AEROBIC INSTRUCTORS — PHOTO MODELS, SPA ATTENDANTS AND OFFICE WORK.

East Phoenix: 956-2200
 Tempe: 894-1263

An equal opportunity employer. 11/16

HELP WANTED: PART-TIME EVENINGS

National Marketing Company has openings for sales-minded people interested in part-time employment. Openings are available on the evening and weekend shifts. Our sales people work in a modern, comfortable business environment contacting established customers on long distance WATS lines. Earnings, which include salary and bonus, average \$4-\$6 per hour, paid weekly. These are permanent positions with no seasonal layoffs. If you have a good, clear speaking voice, proper grooming for a business office, enthusiasm and competitive spirit, our experienced management team will train you to sell our nationally recognized products (while being paid, of course). Our Tempe office is located approximately five minutes from campus.

Please call DIALAMERICA for details.
829-1140 11/23

Help Wanted

ATTENTION PART-TIME: Immediately for out-going women to show new fashion jewelry line. Earn extra money, get free gifts and have opportunity to buy all your jewelry wholesale. 14k and 18k gold overlaid jewelry. Life time guarantee. Call Enza for appointment, 231-0333.

CHILD CARE workers for emotionally handicapped. PT weekends. Some potential evenings/holidays. Excellent clinical opportunity. \$3.35/hr. E.O.E.

MAKE MONEY while enjoying the sunshine. Individuals needed for part-time work selling fresh cut flowers in the Tempe area. Call evenings at 243-6308.

BUS-PERSON Monday - Friday, 12 to 2 p.m.; Friday and Saturday 6 to 10 p.m., \$3.50 plus tips. 946-1557.

NEED EXTRA income? Earn \$8 to \$10 per hour setting appointments by telephone. Work own hours, will train. Close to ASU. 967-0212.

OVERSEAS JOBS, summer, year round. Europe, S. America, Australia, Asia. All fields. \$500 - \$1200 monthly. Sightseeing. Free info. Write IJC, Box 52-A23, Corona Del Mar, CA 92625.

PART-TIME TECHNICIAN. Assistant engineers in project development. Serve as liaison between Mexican and Mesa facilities in technical matters; write procedures and specifications related to production. Requires 3 years towards Bachelors, with emphasis in Mechanical Engineering; drafting and technical writing experience preferred. Bi-lingual, English/Spanish highly desired. If qualified, please apply in person at our plant located at Dobson and Williams Field roads in Chandler. Or send your resume, including salary history to B. Arnsward, Rogers Corporation, P.O. Box 700, Chandler, Arizona 85224. E.O.E.

RELIABLE PERSON needed to assist disabled student. Free room and board. Position available 1/10/84. Contact Don, 965-8448. Apply now.

SUMMER JOBS. National Park Co's. 21 parks, 5000 openings. Complete information \$5.00. Park Report. 851 2nd Ave. W.N., Kalspell, MT 59901.

Instruction

WILL TUTOR ACC 211, 212, 321, 322, 331, 500 and 501. Call Marcia, 967-4788 before 10 a.m. or after 5 p.m.

Jewelry

14K GOLD jewelry 50-75% off retail prices! Chains, earrings, rings, diamonds. Going out of business sale! Joseph Ford Gold Exchange, 968-9637.

Motorcycles

1972 SUZUKI 750 Sairing. Good shape. Runs great. Helmets. Sacrifice, \$625. 893-0414.

HONDA EXPRESS, 50cc, good condition. Includes Arizona license, car rack, Masterlock. \$199 firm. Call Mark, 965-0890.

Personal

HYPNOSIS: DEVELOP self confidence, get rid of stress and tension, improve memory and concentration, stop smoking or lose weight. Lindsay Brady, Certified Hypnotist, 966-8571.

J. C. H. Jr. Here is your very own personal that I promised. Hope you enjoy it as much as you do Snickers bars. Smiles.

Help Wanted

Personal

PEBBLES, I bet cookies and cream would get rid of any fress. Love, Bam Bam.

SKI VAIL / Beaver Creek, call toll free 1-800-222-4840 or consult your travel agent for discount rates on lodging, lifts and rentals.

Real Estate

ASSUME VA 12%, Dobson Ranch Condo. \$394 PITI, \$10,000 CTM. All appliances and drapes. 838-2316, 820-2299.

Roommate wanted

FEMALE, NONSMOKER, private room, bath, furnished, brand new condo. Price, University. \$200, 1/2 utilities. 833-3316.

FEMALE ROOMMATE wanted for townhouse, McClintock / Southern. \$132 per month, 1/2 utilities. Libby 968-2320 or 956-2200.

MALE ROOMMATE wanted for unfurnished room in large 4 bedroom, 2 bath house two miles from ASU. Pool, laundry, fenced yard, a/c. Quiet. No smoking, pets. \$150 plus 1/4 utilities. 967-3872.

ONE MONTH free rent, room in furnished apartment, \$200. Loretta, 947-1065.

TWO ROOMMATES for four bedroom house. \$137.50 month plus utilities. 2 miles from ASU. Call Trish, 829-9083.

UNDERGRAD MOVING home and needs someone to take over lease. Large room in house. \$185 plus share utilities. Rest of November free! Jeff 445-3168, leave message or 966-6940.

Services

ALPHA RESUME. Full services discount with ad. 1000 E. Apache, Suite 105, Tempe. 967-7247.

AUTO AND life insurance at low competitive rates, student discounts available. Be sure to ask for Steve Dabbs at 966-0222, 966-3494.

CLASS / WORK Unlimited. All papers, reports typed, copied. Tutoring available. Also, job searches, resumes written, typed, copied. 241-0208.

COLOR DRAPE analysis and face design by Judy. 839-0401.

DO YOU need money for school? We can locate scholarship, fellowship, grant and loan sources that you qualify for through our computer search. For more information contact: International Scholarship Services, P.O. Box 40280, Santa Barbara, CA 93103. Phone, (805)569-0598.

HAVE UNWANTED facial or body hair removed permanently by electrolysis. Free consultation. Located in Tempe. Call Sharon, Desert Electrolysis Center 839-1885.

TIRED OF being ripped off on auto repair? Guaranteed, expert work done by professionals. ASU area. Dennis, 820-0094.

Travel

AIRLINE COUPONS, first class, Thanksgiving, Christmas, Anywhere U.S.A. No restrictions. Cheap! Call 829-8551.

A/C TRAVEL Save 10 - 50% on airline tickets and hotel rooms anywhere in the U.S., 994-4754.

DRIVE CARS free to most points of the United States, over 21. Scheall Driveaway, 991-5533.

FREE CARS available for all major cities. Call us now, AAACon Auto Transport. 264-0201.

NEED TWO students for NE Christmas trip. \$75 each way. Call 834-8025, 7:30 p.m. - 10:30 p.m.

Typing

A-1 EXCELLENT Typing. Highest quality. Term papers, theses, resumes, etc. IBM Electronic. Call Linda, 899-7582.

CACTUS COMPUTER SERVICE

A Div. of Four Star Enterprises, Inc.
 2125 E. Broadway Road
 Suite #1
 Tempe, Arizona 85282
 829-9185

- Complete Word Processing
- Student Typing
- Personalized Letters
- Resumes
- Mailing Lists
- Transcribing
- Authors Welcome
- Copies
- Free Estimates
- Thesis

"Professional Quality Is Our Top Priority" 11/29

Typing

\$1.50 / page. 10% cash discount, rush service available, papers, resumes, technical symbols. Business Office Services 894-1517.

A-1 PROFICIENT typist IBM Selectric. Loraine 833-8365, University and Dobson in Mesa.

A-1 PROFICIENT typist, IBM Selectric. Pam, 969-2086.

AAKURIT TYPING. 10-15 pages, overnight service. Reasonable rates. Call Linda after 6:00 p.m. 831-0349.

ACADEMIC EXPERTISE, utilizing word processing, providing outstanding quality and accuracy. Specializing in dissertations, theses. Precision Typing. 838-1327.

ACADEMIC TYPING. Will edit spelling, punctuation, and grammar. Fast return, accurate, reasonable. Joan 839-0772.

ACCURATE, FAST, experienced typist. IBM Selectric \$1.25 per page. Dissertations, theses, legal briefs, APA format, our specialty. Call Sharon 833-5687 or Teresa 962-0079.

ACCURATE TYPING, downtown near Fifth on Mill. Quick, quality typing, graphics. Call 24 hours. 941-7099, 894-5234.

ACCURATE TYPING all kinds, reasonable rates, excellent service. Agnes Lindstrom 838-5656.

ACCURATE - ACCOMMODATING. Typing. Term papers, thesis. Why Worry Business Services, North Central Phoenix, 943-3552.

ALL PAPERS typed to your complete satisfaction. IBM Selectric. Near ASU. Reasonable. Mrs. Oakley, 967-0802.

ALL TYPING done fast and accurate. 90 a page. Word processing available. Close to ASU. Call Carin or Bobbi 968-9166.

ALWAYS AVAILABLE for typing at \$1.25 per page. Call Susan at 833-0373.

ALWAYS DEPENDABLE, typing editing, term papers, books, dissertations, resumes. Excellent skills. Shirley's Typing Service 838-5099.

A-PLUS Typing. Term Papers, Resumes, securities and finance papers a specialty. Papers completed on Electronic memorywriter. Call Judy 839-0401.

CLOSE TO campus. 414 S. Mill #205, 894-5234. Graduate, undergraduate typing, graphics. Professional work, reasonable rates.

EXPERIENCED TYPIST. Fast, professional work, IBM Selectric. \$1.20 per page. Sheri, 967-3747 evenings.

EXPERIENCED, ACCURATE, cheerful typist near Southern and Rural. \$1.50 a page. 831-7337.

FAST, ACCURATE typing, \$1.25/page. Call Teresa at 962-0079 or Linda at 968-5775, elite typing available.

JOH-REE SERVICES. Typing, word processing, term papers, reports, resumes, letters. \$1.00 double spaced page. Call Marie anytime, 966-4786.

NORTHWEST PHOENIX, quality typing. Theses, dissertations, research projects. 938-3397.

PROFESSIONAL COPY reader will edit term papers, theses, dissertations. Typing available. Student discount. Ruth, 897-6299.

QUALITY TYPING by an executive secretary. Experience includes legal, medical, engineering, computer, etc. Leah, 962-1059.

QUALITY WORD processing both personal and business. Competitive prices. Document storage, pickup and delivery. One day service in most cases. 964-9242 - 24 hour answering.

TERM PAPERS, resumes, charts, etc. Editing done. 832-7273.

TYPING BY Paper. Impressions - resumes, reports, letters etc. Electronic memory typewriter, cassette transcription. Reliable, fast, accurate. Pick-up / delivery on campus. Call 831-2080.

TYPING SERVICE. Experienced secretary types reports, letters, resumes, etc. Fees below current rates. 992-1465 evenings.

TYPING THESES, dissertations, term papers, etc. Eight years experience. Accurate fast service, spelling corrected. 949-9207.

WORD PROCESSING, IBM PC, English, French, and German translations, resumes. North Central Phoenix. Ruth, 264-7713.

WORD PROCESSING, typing. Can type anything. Guaranteed word perfect. Located in Tempe. 839-3412.

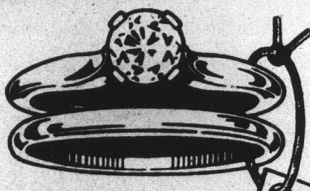
Wanted

ASU STUDENTS please help. I need several pairs of tickets for the ASU - UofA football game on November 26. Call me at 966-1819 evenings.

NEED MONEY? Paying top dollar for gold jewelry, diamonds, class rings, pocket watches, and silver coins. Free in home estimates. Call anytime, Joe 968-8637.

PAYING CASH for gold, silver, diamonds, class rings. Mill Avenue Jewelers, 414 S. Mill. 968-5967.

THE JOYNT 606 S. Mill Old Town Tempe
WE DELIVER 967-7926
BEER PIZZA WINE
Large 16" Cheese Pizza
\$4.24
EXTRA TOPPINGS 50¢ EACH



Are bargain diamonds a girl's best friend?

Hardly. Because they tend to be inferior stones, usually not worth the discount price. That's a bargain you can't afford. Instead, come in and see our collection of quality gems, fairly priced. We base our price on cutting, color, clarity and carat weight. As American Gem Society Jewelers we guarantee the quality of every diamond we sell. You can be sure of getting good value for your money. It's a friendly way of doing business. We have a staff of Registered Jewelers and 37 years of Diamond Cutting and Jewelry experience to help you select your diamond.

Joseph M. Berning
JEWELRY & DIAMOND CUTTING

130 E. UNIVERSITY DR. "IN THE ARCHES" 967-8917
 MEMBER AMERICAN GEM SOCIETY

INTRODUCTORY OFFER
HAIRCUTS \$6.00 PERMS \$22.50
HENNAS \$12.50



C. C. Cutlers & Co.
 Hair styles for young men & women.
 1036 S. Terrace
 (Corner of Lemon & Terrace)
 Tempe • 968-6685



CHOPSTICKS BUFFET

Oriental Buffet
 featuring
 Cantonese & Traditional Chinese Food

LUNCH
\$3.35
 all you can eat

DINNER
\$3.95
 all you can eat

Special Orders & Take Out Avail.
 12 different kinds of Chinese food to choose from

Chopsticks Restaurant
 1324 S. Rural (across from Holiday Inn)
 968-2636 Open 11am-9pm EVERYDAY 968-2525



BALLOONS ALACARTE

Flowers, Plants and Gifts
 Personalized balloon bouquets for all occasions.
 (602) 966-6789
 414 S. Mill Ave. Suite 206
 Tempe

By **alacarte** of Scottsdale, Inc.

DON'T LOSE IT!
 Keep Your Summer Tan At **Sun-Tans**

SPECIAL RATES WITH THIS AD

UNLIMITED
 44-15 S. Rural Tempe
 831-2884

NOW TANNING BOOTHS ONLY \$1 VISIT
TANNING BEDS ONLY \$3 VISIT
 Between Nautilus and Fairlans Bowling



ATTENTION STUDENTS

FREE T-SHIRTS

\$49
 6 MONTH MEMBERSHIP

FREE GET WAISTED T-SHIRT

STOP BY 24 HOUR NAUTILUS @ RURAL & THE FREEWAY AND PICK UP YOUR FREE "GET WAISTED" T-SHIRT. SUPPLIES ARE LIMITED AND STUDENT I.D. IS REQUIRED. SO HURRY DOWN TO THE CLUB AND GET YOUR T-SHIRT TODAY. IT'S THE BEST WAY IN TOWN TO "GET WAISTED."

TEMPE Rural Rd. South of Freeway 831-8081

24 HOUR NAUTILUS SUPER SPAS

TEMPE	Rural Rd. South of Freeway	831-8081
CHANDLER	Alma School and Elliot	839-9904
PHOENIX	3rd Ave. & Indian School	241-9570
N.W. PHOENIX	35th Ave. & Bell Rd.	843-3247
EAST MESA	801 S. Power Road	981-1362
SCOTTSDALE	7750 E. McDowell	941-8296
MARYVALE	51st Ave. & Indian School	245-1170
PV/SCOTTSDALE	Scottsdale Rd. & Shea	991-2911
MESA	Country Club & Southern	834-7283

(UNDER CONSTRUCTION)

MasterCard VISA
 (CLOSED SUNDAYS)

P

By Li Staff
 The deterr teach more Facul
 Eva for of use of pay d
 "A believ activ elimin

N

By Sa Staff
 Stu ture l over t ding t Gen as a r cond "If cigar fire." "Th seriou have buildi Acc buildi up th

E

This i sity's real e trans tions

By Ji Staff
 The beyon that t Neg involv point. An that a Cente sever Alt gener desir ASU not of In lucra to don Jen