

wednesday

November 2, 1983

state  
press

Tempe, Arizona

Vol. 66 No. 42

Arizona State University

© Copyright, State Press, 1983



### Sign off

Kate Manzo, a political science major, seems to be disregarding a sign posted in the ally near the central heating and cooling plant. The sign is for cars — not people — that might be steered in the wrong direction.

## Batt: higher tuition should include better service

By Bob Beamesderfer  
Staff writer

Although state financial problems necessitate a tuition increase for the 1984-85 school year, students deserve better service for their money, according to the president of Associated Students of ASU.

Walter Batt said if students are expected to pay more, they should be able to expect more service in the form of better class availability and smaller class sections.

The state has "the road problem, the flood problem and the prison problem," he said. "Students understand the state has a lot to deal with" and higher education is not likely to receive more money this year.

"Education shouldn't be shoved down the tubes," he added.

But despite any fiscal shortage, ASU should get more of the Legislature's appropriation, Batt said.

He said the University needs a greater share of funds because of space shortages, a lack of research support and a greater student population than the other state univer-

sities.

Batt said he believes ASU will fare better when the Legislature convenes next year than it has in the past.

ASU's budget request reflects a 24-percent increase in general fund appropriation, 8 percent more than either U of A's or NAU's.

Batt also wants the Arizona Board of Regents to continue the tuition set-aside policy, which provides 10 percent of tuition increase money for student financial aid awards.

"I want them to make sure they include the 10 percent set-aside in this year's tuition package," he said.

According to Paul Barberini, director of student financial assistance, \$200,000 of this year's \$390,000 set-aside was used with state matching funds for grants to "high need students."

Matching funds brought the total to \$590,000 for the State Student Incentive Grant, a federally funded, state administered program, he added.

Barberini said he agrees with continuing the set-aside policy, which serves about 600 students who "are from families who cannot support (them)."

"When we're talking about high need students, these are people who are borrowing a large amount — usually the maximum — and are working a good number of hours," he said.

"I don't think there is an understanding of the importance," because losing the set-aside would mean losing matching funds, he said.

ASU also could lose federal aid money if the set-aside is not continued, because students dependent on grants from the fund might not remain in school, Barberini said.

If ASU fell below a cutoff point, federal financial aid funding would decrease because those programs provide aid on the basis of enrollment, he said.

The Arizona Board of Regents will hold a hearing on tuition at ASU this Thursday at 1:30 p.m. The open hearing will be held in

the Alumni Lounge on the second floor of the MU.

Batt said before the regents set tuition rates they should consider "the total cost" of education at ASU, including the cost of books, parking, food, transportation and housing, which are aside from tuition.

The Board of Regents formula for determining tuition based on student contribution to the cost of education should be applied, because it "should probably be fair considering all the factors," he said.

"In reality, that's an increase," because an increase in the University budget would increase the cost of education, he said.

The regents policy currently sets student contribution to the cost of education at 20 percent for residents and 85 percent for non-residents. The board set tentative rates for budget purposes last month by applying the policy to this year's budget.

Annual tuition figures of \$835 for residents and \$3,547 for ASU non-residents were adopted for the board's budget submission at the October meeting.

By Wayne Baker  
Staff writer

The Del E. Webb Development Corporation has donated nearly 40 acres of land northwest of Phoenix to the ASU Foundation so the University can build a senior adult education campus, a company spokesman said.

Steve Tuttle, public information director for the corporation, said the agreement calls for approximately 40 acres of land worth "in excess of \$1.5 million" to be given to ASU for an expansion of the off-campus courses currently offered in Sun City.

The land is located directly west of Sun City on Bell Road and is to be used as a branch campus for area retirees.

The deal was finalized Thursday afternoon, after a year of negotiations, Tuttle said.

He said the exact acreage of the land has yet to be determined.

"The entire parcel isn't staked out yet," he said. "It may be a few tenths more than 40 acres or it may be a few tenths less."

Tuttle added that because the exact size of the land has not been determined, its precise value has not been assessed.

"(The value of the land) wasn't that important before the deal was finalized," he said. "We were interested in the intent to donate the land."

Obadiah Harris, ASU director of retirement program development, previously said the University's "ideal goal" would be to have the campus operational by fall semester 1984.

He estimated enrollment could reach as high as 3,000 when the campus opens for instruction.

The University currently offers extension courses to the residents of Sun City and Sun City West — traditional retirement communities.

According to Tuttle, 1,200 retirees are enrolled in the classes, which are taught in rented office space in the Bell Professional Plaza, 17220 Boswell Blvd.

Harris previously said ASU approached Del E. Webb Development Corp. one year ago because the University was not keeping up with the enrollment demands of Sun City residents and because Del Webb was the biggest land owner in the area.

The courses were first offered in fall semester 1980, with an enrollment of 450 retirees. That figure increased to 1,300 student-retirees last spring.

## Land gift to assist ASU in developing retirement campus

# nation/world

state press

## House invokes War Powers Act

WASHINGTON (AP) — The House called on President Reagan Tuesday to withdraw troops from Grenada within 60 days as provided in the War Powers Act which Congress passed during the Vietnam era to prevent lengthy, undeclared wars.

The vote was 403-23.

The measure now goes to the Senate, where a spokesman for the Senate Foreign Relations Committee said it is expected to be acted upon quickly.

The Senate passed an identical resolution last Friday as an amendment to a bill extending the national debt limit so that the government could borrow more money.

But on Monday, senators defeated the debt limit measure, even though it could be reconsidered and passed with or without a war powers provision.

## Government struggles to revive federal borrowing authority

WASHINGTON (AP) — Like a consumer whose credit cards were revoked, the government began living on its cash Tuesday as congressional leaders searched in vain for a way to revive federal borrowing authority.

At a White House meeting with President Reagan, Senate Republican Leader Howard Baker said he intends to delay further consideration of the debt bill until next week. There is inadequate support for passage, a Baker aide noted, saying Baker is willing to "wait and see if there is a crisis and how

people react to it."

House Speaker Thomas P. O'Neill seemed to have the same thing in mind. When a crisis occurs, he told reporters, "we can accomplish things that you can't accomplish a month previously."

## Druse, Lebanese shell each other

BEIRUT, Lebanon (AP) — Druse and Lebanese army gunners shelled each other's positions Tuesday in a town overlooking the Marine compound in Beirut, while their leaders 3,000 miles away in Geneva met in attempts to end the civil war.

Artillery explosions from the fighting could be heard in the Marine compound, where FBI demolition experts from Washington scrutinized the crater left by a terrorist truck-bomb that killed more than 230 American servicemen.

In Israel, a senior official who refused to be identified said his country would seal off Israeli-occupied southern Lebanon if the Lebanese conference in Geneva decided to scrap a troop-withdrawal pact between Lebanon and Israel.

## CORRECTION POLICY

It is the policy of the State Press to acknowledge and correct errors when they occur. If you see an error, call our newsroom at 965-2292 to let us know. All corrections will appear on this page.

THEY THOUGHT HE COULDN'T DO THE JOB. THAT'S WHY THEY CHOSE HIM.

Assignment: The Lipson Project

Purpose: To study Alaskan wolves and determine if they were destroying the vanishing caribou deer.

The man they chose expected to confront danger, adversity, solitude and, he hoped, the truth.

But he never expected to embark upon a voyage of self-discovery. One that would ultimately transform his life.

## NEVER CRY WOLF

A TRUE STORY



WALT DISNEY PICTURES PRESENTS A CARROLL BALLARD FILM NEVER CRY WOLF CHARLES MARTIN SMITH BRIAN DENNEHY ROY MILLER

WALKER HART LEWIS ALLEN JACK COLFFER JOSEPH STRICK CARROLL BALLARD

CAMELVIEW 945-6178 70th St. North of Camelback

EXCLUSIVE ENGAGEMENT PREMIERES FRIDAY! SPECIAL ROADSHOW ENGAGEMENT

**50¢ OFF** ALL YOU CAN EAT  
Choose from 12 items  
**CHUNGS**  
  
CHINESE BUFFET

Lunch: 3.10 Dinner: 3.81  
Beer & Wine Served  
Menu or Buffet  
Eat In or Take Out  
OPEN 7 DAYS  
829-1222  
Corner Univ. & Hardy

**Dry, Brittle Hair?**  
Ask the professional stylists at  
**ANY HAIR INC.**  
for **THERAPPE** SHAMPOO  
225 W. University, Ste. 113  
1/4 mile west of Mill  
829-8483 • 967-9030  
ANY HAIR CUT \$5 — Mon., Tues. & Wed.

WALT DISNEY PICTURES PRESENTS A CARROLL BALLARD FILM NEVER CRY WOLF CHARLES MARTIN SMITH BRIAN DENNEHY ROY MILLER WALKER HART LEWIS ALLEN JACK COLFFER JOSEPH STRICK CARROLL BALLARD  
CAMELVIEW 945-6178 70th St. North of Camelback  
EXCLUSIVE ENGAGEMENT PREMIERES FRIDAY! SPECIAL ROADSHOW ENGAGEMENT

What has the ten-year debate been all about?  
BE INFORMED ABOUT  
  
—NOT PUZZLED BY—  
Constitutional language of the Equal Rights Amendment

**CAMPUS CLEANERS & COIN-OP LAUNDRY**

- ☑ Dry Cleaning
- ☑ One Day Service
- ☑ Finished Shirts
- ☑ Drop-Off Laundry
- ☑ Alterations
- ☑ Suede & Leather
- ☑ Pillow Renovation
- ☑ Night Clothes Chute

827 S. RURAL UNIVERSITY & RURAL  
967-9650  
OPEN 7 a.m.-10:30 p.m.

WEDNESDAY:  
Live music,  
**COWBOYS**  
3131 S. McCLINTOCK, TEMPE VALLEY PLAZA SHOPPING CENTER (Corner Southern & McClintock)  
838-1178  
**CONCERT NIGHT**  
**THE "VARMINTS"**  
plus \$1.00 well, wine & beer all night long.

# Tardy requests from teachers cause late textbook arrivals

By Asha Nathan  
Staff writer

Late textbook orders received from departments and faculty by the ASU bookstore are responsible for more than 80 percent of the instances in which books are not available at the beginning of each semester, said Doug Hanson, bookstore director.

"There are sometimes very good reasons for late orders," he acknowledged, saying that courses are added or dropped, and professors are changed. When this happens, the bookstore works on getting the books in on time.

He said that for the most part, however, late orders were just that — late.

Other reasons for late arrivals are requisitions for books that are either out of

stock or out of print, according to Hanson.

"Some books are lost or damaged in shipment," he said. "And then there's a certain amount of human error involved, too."

Hanson said improved communication between the departments and the bookstore would certainly help in getting books on time.

"Last spring, we invited people who deal with book orders from the various departments and explained the process involved to them," he said. "We think that was a step in the right direction."

"There are about 4,000 textbook titles that we must stock every semester," he said. "I'm not sure the faculty and students realize what is involved in getting books on to the shelves."

# Legal office serves students, solves problems out of court

By M.K. Reinhart  
Staff writer

Working with a staff of four, the Associated Students Legal Assistance Office provides as many as 100 ASU students a week with free legal advice and keeps at least 90 percent of court, according to the office's law clerk.

Third-year law student Dave Knopf said the office, located in the ASASU complex, does not generally go to court or handle contested claims, but "99 percent of all student problems can be resolved out of court."

Knopf said the most common student complaint involves landlord-tenant relations, followed by domestic relations, consumer problems and torts, though the office does not handle student-to-student or student-University problems.

Attorneys Douglas MacArthur and Michael Keeney both maintain their own practices in the Valley and work part time as the legal service consultants.

Secretary Carolyn Sigler not only handles the clerical duties in the office, but takes care of uncontested divorce cases and other

areas which only require forms or additional paperwork. However, Knopf said, no legal paperwork goes out of the office without final approval of a lawyer.

As the office intern, Knopf said he makes \$5 per hour and spends most of his time writing demand letters or pleadings for students referred to him by the attorneys.

"For students, (the service) is perfect because a student is generally one of limited means," Knopf said. "They've got nothing to lose by coming here."

He said merchants and landlords are often guilty of intentionally trying to cheat students, especially those from other countries who are not familiar with the language.

"Fifty dollars to the average working guy is not a lot of money, but to a student it's at least a week's worth of groceries," Knopf said.

Legal Assistance is funded through ASASU, but remains independent of them. It operates with a budget of \$62,930 and, according to ASASU President Walter Batt, is "one of the best services that we offer."

paradice cream

## Gourmet Frozen Yogurt

### Filled with Flavor, Not Air!

Sample spoon your way thru Paradise and get 25¢ off any yogurt purchase with this ticket.


- Strawberry
- Banana

- Coconut
- Blueberry

- Pineapple
- Raspberry

**You'll Taste The Difference!**

Paradice Cream, 1044 S. Terrace, Corner of Lemon & Terrace  
One coupon per customer. Coupon expires 12/15/83




# SOUTHWEST INTERNATIONAL PARTS

## WHOLESALE VOLKSWAGEN AND JAPANESE REPLACEMENT PARTS

549 South 48th Street #101, Tempe, AZ 85281  
OPEN MONDAY THRU FRIDAY 8 AM-5 PM  
"We are a Wholesale Distributor for VW and Japanese Replacement Parts. Large Inventory To Meet All Your Needs."

**CALL TOLL FREE (800) 221-2268**  
**IN ARIZONA CALL (602) 829-9133**

Jerry Weintraub and Concerts West present



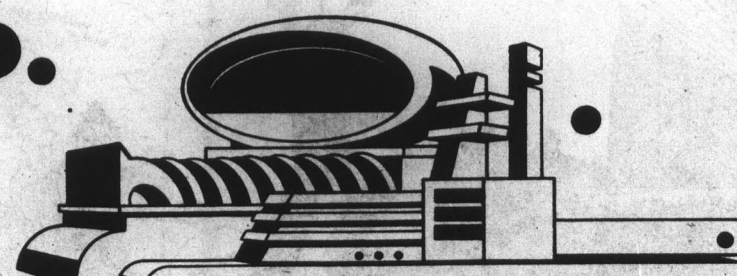
# THE MOODY BLUES

at the  
**ASU ACTIVITY CENTER**


**WEDNESDAY  
NOVEMBER 30  
8 p.m.**

**TICKETS \$11.50**

Available at the Gammage Box Office and  
any Diamond's Select-A-Seat outlet.



The new album, THE PRESENT, now available on Polygram Records and Tapes.  
A Threshold Records LTD., Production.

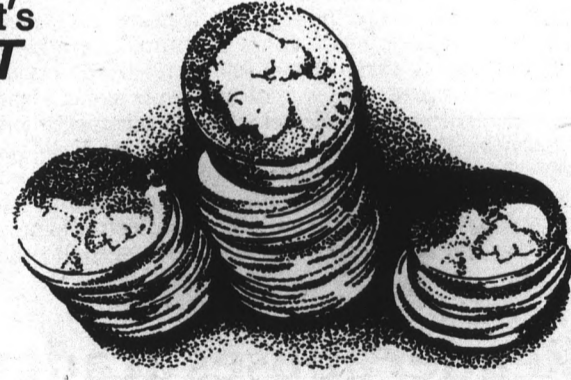


presents ...

every Wednesday, it's  
**PENNY NIGHT**

**1¢ Well drinks,  
Wine & Draft**

**25¢ Juice drinks  
& pitchers**  
(from 7:30-12:00)



**LIVE ENTERTAINMENT**

with special guest from the Hot Land of Las Vegas

# LITTLE SISTER

Cover: \$4.50 men — \$3 ladies at the door 7:30-12  
band starts at 9 drink special ends at 12  
doors close at 1

Remember: **LADIES**  
**NIGHT Tomorrow**

*Upstairs/Downstairs Excitement!*

**919 E APACHE**  
**966-7770**

state  
pressThe ultimate result of shielding men from folly is  
to fill the world with fools.  
—William Tecumseh Sherman

opinion

## Reagan faces risks despite current popularity

**Chris Coppola**  
City Editor



For those of us who enjoy taking an occasional hop, skip and jump around the globe for purposes of examining the overall state of affairs, the past week and a half has been quite a whirl.

What on the surface appeared to be a period of turmoil, frustration, confusion, and violence could, in coming weeks, come to mean a campaign theme of sorts.

Ronald Reagan doesn't have to officially announce that he is running for re-election — he has already told us.

While the likes of Mondale, Cranston and Glenn are whistle-stopping across the country in drone-like fashion, President Reagan has been embroiled in some of the most heated foreign policy decisions — and consequences — the nation has seen in more than 10 years.

And although one could hardly believe that the losses and conquests experienced by American military personnel were the result of purely political designs, one cannot deny that Mr. Reagan and his advisers recognized the opportunity to begin capitalizing on emotion just a few months before 1984, though not without risk.

No sooner had the smoke cleared from the kidnapping of several of President Reagan's staff members at Augusta National Golf Course, when we learned of the death of

what proved to be more than 200 "peacekeeping" Marines stationed in Beirut as the result of a terrorist's suicide mission.

Reaction from the Beirut tragedy still was spewing full force when we were told of the invasion of Grenada by about 2,000 U.S. combatants and forces from five other Caribbean nations in an effort to rescue Americans on that tiny island and to eradicate what were described as "leftist thugs."

At first glance, clearly, the timing couldn't have been worse. President Reagan, while fully aware that planning for the Grenada invasion was underway over the weekend, was confronted with the unexpected Beirut tragedy.

He found himself with the task of once again rejustifying the Marine presence in Lebanon, and restating the United States' commitment — in "now more than ever" terms — to staying there. And it came after a bitter fight with Congress that ended in authorization to keep the Marines there for another 18 months.

But if the timing of the Beirut and Grenada situations was bad, President Reagan managed to come out looking better than even the most staunch right-winger could have hoped.

American military powers have since rescued U.S. citizens there, mopped up Cuban troops, gagged the U.S. press, and restored order.

Undoubtedly, nobody in a correct state of mind is pleased about the tragedy in Beirut, nor could they be pleased about loss of American lives in Grenada.

But the calculated risk of Grenada has ap-

peared to pay off as far as Mr. Reagan is concerned.

It's not difficult to see the line President Reagan's supporters will assume come 1984, in terms as blunt as we could ever expect to hear, resurrecting visions of Ike, or Teddy Roosevelt. They will describe a man who said "bully" to the leftist thugs who were backed by the evil Cubans, who were backed by the still more evil Soviets, all to save American lives.

Those supporters might very well say of Mr. Reagan that when confronted with the tragic death of more than 200 American Marines who had been trying to make peace in Lebanon, he would not back down. He told us the terrorist act meant we had to reaffirm our commitment and get tough.

And finally, those supporters might say that he would not let the Grenada conflict become another Iranian hostage crisis, conveniently sparking a responsive chord in anyone who might by chance remember election year 1980. Indeed, they may cry, America is once again prepared to butt heads around the globe.

When given the present emotional context of the recent events (exemplified by the marked increase in response Marine recruiting offices reported last week), who could blame them for shouting praise? But, despite his apparent rise from the ashes, Mr. Reagan's risk factor is in no way behind us. We still know that the Marine presence in Lebanon, whether or not a matter of recommitting ourselves to "peacekeeping," constitutes clear danger that has been proven by more than one terrorist attack. The Marines are a target in Lebanon. They are trained to advance continually, not to play

the role of sitting duck.

Any momentary military heroics that occur on a tiny Caribbean isle will not deter critics from continuing to ask "Why?" when talking about U.S. presence in Lebanon.

And some of the more vehement critics might even begin to allege that Grenada was simply a testing ground by which American forces could be better prepared for battle, say, in areas a little further southwest.

At present, even House Speaker Tip O'Neill, primarily in reference to Grenada, has been hesitant to "criticize the country." (Which, ironically, was in direct contrast to Senate Majority Leader Howard Baker, who, after the Beirut massacre, reportedly requested that the President reconsider keeping the Marines there.)

It all reflects the instability of the times, which has been prompted by loss of American lives as well as the saving of American lives.

President Reagan must realize that the commitments of the present should not necessarily erase any chance for rethinking the course in the future.

We are fickle society, as is proven all too often. And if ardent Reagan supporters think that the nation's present emotional state will offset any future backfires, then perhaps Mondale and company will stand a chance.

President Reagan should realize this. Otherwise, the campaign strategy that obviously has been launched may lead to a Rose Garden campaign plan that any incumbent would be foolish to resort to in light of the lessons of 1980.

## letters

### Indoctrination efforts prevent free exchange of ideas

Editor:

My experience with Professor Patrick McGowan confirms the substance of Matthew Scully's article (Oct. 27). The class I took was an interdisciplinary one (POS 598 — Technology and Development, Spring 1983), with several instructors. Patrick McGowan gave the first two lectures. I listened to him intimidate those whose opinions differed from his own and even resort to very colorful four-letter words when his logic was questioned. This was no free exchange of ideas or rational comparison of ideologies; it was strident political indoctrination. The sad part is that a few students, their naivete shining all over their faces, were madly taking notes as if someone had finally made sense out of the world political situation. I do not know if the other lecturers provided a balance for McGowan's views because a schedule conflict

kept me from completing that course.

As Mr. Scully suggested, the line between academic license and academic freedom is difficult to define. And certainly, the ideological battle between capitalism and socialism is a bitter one. While most of us in this country enjoy the benefits of capitalism, many in the world do not, which makes the system biased and callous toward the poor.

On the other hand, while socialism seems fair to everyone on paper, it does not transfer well to real-life situations. Government control of industry leads to unmanageable bureaucracies which make those in capitalistic society seem tiny by comparison. Also, in every society, there are producers and non-producers. When the producers are taxed exorbitantly, as is necessary to maintain socialistic welfare

societies, they reach a point when they simply stop producing because they can see no tangible reward for their extra effort. As a result, the economies of these nations are flaccid and cannot continue their welfare policies without constantly increasing taxes. The whole system fosters a cycle of diminishing returns.

Perhaps with the problems inherent in both systems, less classroom time should be spent bitterly espousing one philosophy over another and more time should be spent in the attempt to develop new ideas which may lead to a concept of government which does work more equitably for all.

Patricia Hall  
Graduate, Communication

### Reader abuses academic freedom

Editor:

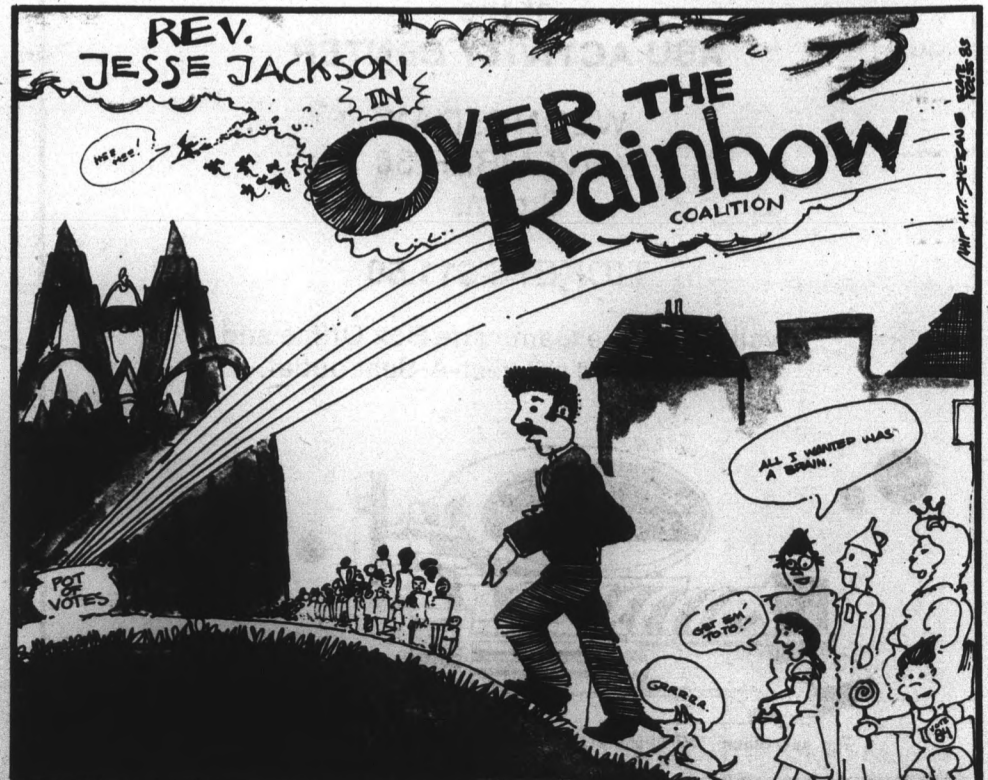
As long as we are naming names (Beth Sand's letter, Oct. 28), I'd like to comment further on Professor Mark Reader.

While a junior in the political science department, I took Professor Reader's POS 101 (Political Ideologies). The orientation of the class was mostly Professor Reader's ideologies, with a little Adam Smith and somewhat more Karl Marx thrown in. During one lecture, Professor Reader told the class, mostly freshmen and sophomores, about some people he knew in Montana who had blown up a high tension power line because of their concern about electro-magnetic radiation. I challenged him to justify that act, which he considered a noble and valid expression of protest. I considered it to be an extreme form of vandalism at best, and terrorism at worst. I asked Professor Reader about the hospitals and schools on the power grid. He excused the action by saying that hospitals have emergency generators. What about the people, the homes and offices that used the power? He said that there were no private homes on the grid. (How could he, or the bombers, know

that?) What, I asked, about the people, the consumers who will have to pay for the repairs through their utility bills? At this point he adopted a characteristic pose. He backed up against the chalkboard, stuck his hands in his pockets, and muttered "yes" to everything I said. In other words, he refused to answer a valid question from a student concerned about some of the things he said.

He used academic freedom to espouse a narrow belief that would seem to justify blowing up a high tension tower because a few people were concerned about the effects of EMR. I am not opposed to academic freedom any more than I am opposed to the freedom of speech. But the views of a professor who can influence a large number of fairly impressionable young men and women should be responsible, and that person should be prepared to answer questions put to them by responsible students without building a wall of silence between themselves and students who do not accept as gospel everything a professor says.

Mark S. Everett  
Graduate Student, Political Science



Editor:  
I d  
tising  
State  
artic  
the a  
(?) f  
trina  
inter  
enrol  
I a  
stim  
to p  
nece  
goal  
them  
one e  
visi  
succ  
Ho  
failu  
Free  
and s  
unde  
Facu  
all fa  
Th  
shoul  
pleas  
"repr  
sity c

We  
insu  
mor  
S

L  
•F  
•C  
•G  
•A  
B  
Alp

COUPON  
WE  
DELIVER  
ALSO

**more letters**

**Political science chairman defends teaching philosophy**

Editor:

I deeply appreciate the unsolicited and unexpected advertising for the political science course I teach provided by State Press Opinion Page Editor Matthew Scully in his recent article "Academic Freedom or Academic License?" Under the assumption that Mr. Scully actually is read by the naive (?) freshman he seeks to protect from "ideological indoctrination," I suspect that his criticisms will increase student interest in my courses and therefore increase my enrollments.

I am also pleased to note that my choice of textbooks has stimulated Mr. Scully sufficiently to read parts of them and to publish his critical reactions. Apart from imparting necessary but often trivial facts and skills, my chief teaching goal is to help my students think critically and express themselves clearly. Even though Mr. Scully has never taken one of my courses and, as far as I know, has never even visited one of my classes, his article provides evidence of the success of my teaching philosophy.

However, on a deeper level, I am troubled by Mr. Scully's failure to articulate clearly what he means by "Academic Freedom." This concept applies to every faculty member and student at ASU. For Mr. Scully's information it is defined under the heading "Standards of Professional Conduct for Faculty Members" which appears on the back of the contract all faculty sign with the University each year.

The "Standards" statement is rather long and Mr. Scully should read it sometime in its entirety. But until he does, please permit me to follow his example of selective but "representative" quotation: Each member of every university community has a special obligation to preserve intellec-

tual freedom, to practice intellectual honesty . . . As teachers, faculty members encourage the free pursuit of learning in students . . . As scholars, faculty members are guided by a deep conviction of the worth and dignity of the advancement of knowledge . . . Thus, their primary responsibility is to seek and state the truth as they see it in the field of their competence . . . Provided they do not consume class time in holding forth on matters utterly unrelated to the subject matter, they are given the freedom to select and present the material in each course in the way they believe will best achieve the stated goals of the course . . ." (my emphases).

The definition of Academic Freedom at ASU is not "absolutist" — textbooks, syllabi, and lectures must relate to the course description in the University Catalog. Moreover, "personal convictions" are entirely appropriate and protected as long as they are identified as such, are based upon professional competence, and are related to the course content.

Finally, and most importantly, what are the purposes of a research university such as ASU in a free society such as ours? Rather than blandly talking about the unholy trinity of teaching, research and science, I would rather identify for other functions of a university.


First, we convey useful "factual" information in our teaching and research such as which states are permanent members of the U.N. Security Council (USA, USSR, PRC, UK, France) or which African country experienced the greatest amount of military intervention in politics between 1960 and 1982 (Ghana). Second, we teach useful and enjoyable skills such as computer programming, French con-

versation, painting, and how to estimate statistically the relationship between individuals' social class and their political party preferences. Third, we socialize students so that they may become contributing and responsible members of American society. Fourth, in our teaching and research we seek truth, often by examining "outrageous hypotheses" such as that the earth is round, not flat; that humans are the product of genetic and evolutionary processes shared with other species; and that conflict in Central America and the Caribbean today is more the consequence of historical patterns of socio-economic "underdevelopment" than it is the product of recent Cuban and Soviet "interventions."

Along with other self-styled neo-conservatives like George Will, Mr. Scully wants to limit university education in political science to the imparting of "facts" and simple political socialization aiming to support the present U.S. political-economic system and its current role in the world at large. At heart this is a totalitarian project aiming to limit what can be taught in inherently controversial subjects like political science.

I for one have a broader view of the role of universities in our free society and I am pleased that Academic Freedom at ASU permits me to impart "facts," to impart skills, to socialize students into the present system, and, yes, even to entertain outrageous hypotheses such as that State Press Opinion Page Editors can learn some truths from free and honest intellectual exchange.

Pat McGowan  
Professor and Chair, Political Science



**Bartley's Bikes**  
10 Speeds • Mountain Bikes • Cruisers  
Raleigh • KHS  
One Day Repair  
All Brands  
2051 S. Dobson, Mesa  
South of Baseline  
820-2982

**DRIVE CARS FREE**  
Cars Available  
Many Points U.S.A.  
We are I.C.C. licensed and insured. Must be 21 years or more.  
SCHEALL DRIVEAWAY  
991-5533

**LEE'S TAILORING**  
• Fashion Designing for Ladies  
• Custom Suits for Gentlemen  
• Alterations  
894-1055  
Broadway & McClintock  
Alpha Beta Shopping Center

**THE JOYNT**  
2 CAN DINE FOR  
**\$5.49** Reg. \$8.50  
Expires Nov. 11, 1983.  
Choice of:  
• Lasagna  
• Cheese or Spinach Manicotti  
• Baked Ziti  
Includes 2 dinner salads and garlic breads  
**THE JOYNT**  
606 S. Mill  
967-7926  
CARRY OUTS  
75¢ ADDITIONAL  
COUPON

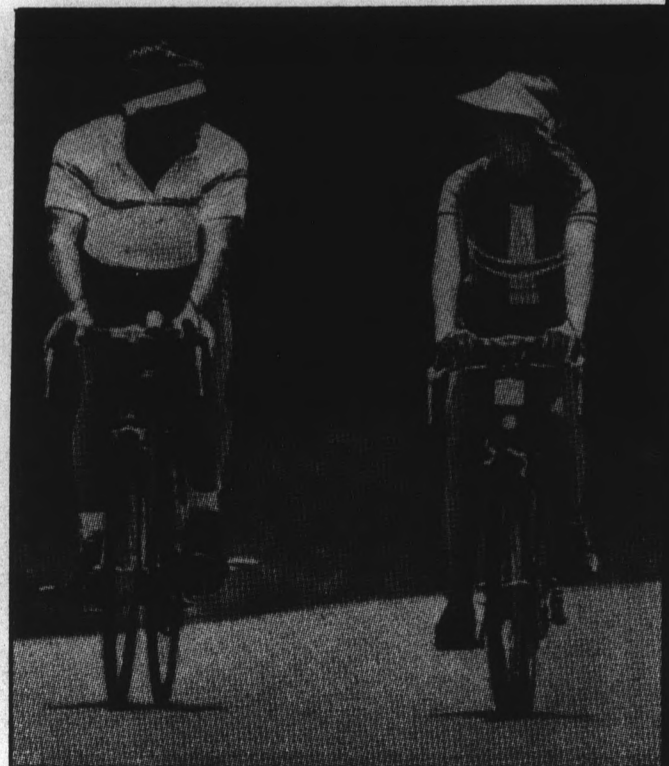
**WAREHOUSE CLEARANCE SALE**  
*OUR LOST, YOUR GAIN*

10-Speeds  
starting at  
**\$109.50**

Nishiki International  
Reg. \$380  
**SALE \$299**

Fuji Royale 25"  
Reg. \$360  
**Sale \$250**

Gloves  
Reg. \$16.95  
**Sale \$8.95**



**20% OFF**  
on all  
non-sale items

**TEMPE BICYCLE SHOP** 966-6896  
The old gas station on the corner • 6th Street and Mill, Tempe

# police report

Five members of the Lambda Chi Alpha fraternity were released with a warning after they were caught with a City of Tempe yield sign taken from Broadway Road as a part of an initiation Monday, University police said.

Police said the men were seen at about 10:30 p.m. by officers at 414 Adelphi Drive taking the sign from a car they had been driving, but were not charged. The sign was returned to Tempe authorities.

In other activity, a Mesa man was arrested and transported to Mesa police at about 3 a.m. Monday on a Mesa warrant for failure to appear in court.

Police said Dave Adam Chamberlin was originally cited for failure to obey a traffic control device at the corner of University Drive and Lot 60.

Police said Chamberlin was also cited for failure to possess and display his driver's license. His bond has been set at \$177, police added.

Cash totaling \$15 was found at the ASU Football Game Saturday night by a spectator who saw it dropped by a subject who was dressed as the Incredible Hulk, police said.

Police said the subject had been paged, but did not show up to claim the money. The cash was impounded for safe keeping.

ASU Police Officer Alfred Z. Campoy was giving a battery jump to a Tempe police unit in Lot 48 at about 12:40 a.m. Monday when the battery exploded, causing acid to splash

onto his face and clothes, police said.

Police said Campoy was taken to Tempe St. Luke's Hospital on the advice of the Tempe paramedics. He was treated and then taken home.

In other activity, police reported:

- A black leather wallet containing \$7, a Mastercard, First Interstate Bank card, driver's license, student identification and activity card was stolen from the restroom on the first level of the Hayden Library on October 21.

- An ASU employee reported about \$205 worth of damages to a maintenance door at 601 Alpha Drive on Friday at about 8:30 a.m. The employee told police that the door had been pried open and nothing had been removed.

- William D. Tonnesen was cited on Forest Avenue and University Drive for failure to stop at a red light Monday.

- ASU student Jamie Susanne Young was cited on the corner of University Drive and Lot 60 for failure to obey the traffic light.

- Amy Lynn Robinson was cited on the corner of Forest Avenue and Lemon Street for failure to stop for a stop sign.

- ASU student Mark F. Sabota was cited at Forest Avenue and Lemon Street for failure to stop at a stop sign.

- Irene Rueben was cited at Forest Avenue and Lemon Street for failure to ride her bicycle on the right side of the road.

—Sandy Sistik

## Conference to feature Asian studies

The Western Conference of the Association for Asian Studies will be hosted by ASU Nov. 10-12.

About 400 Asian scholars from the West and Midwest will attend the session.

Registration for the conference, which is open to the public, will be held from 7 p.m. to

9 p.m. Nov. 10 and 7:30 a.m. to 9:15 a.m. on Nov. 11, and will cost \$10.

The conference will feature programs on Philippine-U.S. relations, a Pacific Basin roundtable, contemporary politics, linguistics, art and social conditions.

For specific details, call the ASU Center for Asian Studies, 965-7184.

## diversified travel inc. Wants You to Know:

Our Sabre Computers are telling us

Holiday-time reservations are filling fast — call us A.S.A.P. to get Super Saver Fares while they last! Faculty, Students, Group Leaders — CALL US FOR ARRANGEMENTS — Ski Trips, Research Trips, etc. (Any destination is not foreign to us and our services are free.)

We're **diversified travel inc.** 64 EAST BROADWAY, SUITE 2  
United Bank Building  
TEMPE 967-7855 • 967-1900  
Same location since 1970

## GRAND OPENING

## Lee's TAKEE OUTEE

620 S. College  
968-3049



QUALITY FAST  
FOOD AT  
AFFORDABLE  
LOW PRICES!

DINE IN OR  
TAKE OUT!

PLAY THE  
VIDEO GAMES!

### MENU

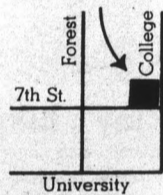
A. Teriyaki Chicken \$2.49  
B. Sweet & Sour Pork \$2.49  
C. Mushroom Egg Foo Yung \$1.89

Above orders served  
with rice or soft noodles.

Egg Roll each 94¢  
Chicken Fingers (5 pcs.) \$1.79  
Beef on a Stick (3 pcs.) \$1.29  
Won Ton Soup 94¢  
Fried Won Ton Chips 50¢  
1/3 lb. Hamburger \$1.89  
Fish Sandwich \$1.59  
French Fries 65¢

### FREE DRINK

(55¢ value)  
Bring this ad and  
receive a free soft  
drink w/purchase  
of over \$1.50.



TRY OUR HOUSE SPECIAL HOT CHILI SAUCE  
— DAILY SPECIAL —



## Here's timely news about long distance rate periods.

Suppose you begin a fifteen minute, out-of-state long distance call at 10:58 p.m. on Monday. You'll talk for two minutes during the 40% 5-11 p.m. evening discount period. And thirteen minutes in the following 60% 11 p.m.-8 a.m. night discount period.\*

In the past, you would have paid the earlier 40% discount rate for the entire call. But that's changed. Now you pay the amount applicable to each period. That same Monday night call will be charged two minutes at the evening rate and thirteen minutes at the night rate.

The same applies to calls made before 8 a.m. on weekdays. Calling time is billed at the night rate before 8 a.m., and at the full weekday rate afterwards. So if you want to save 60% on your long distance call, be sure to finish the call before 8 a.m.

Find out more about long distance rate periods in the Customer Guide. It's in the front of the White Pages. Or call your service representative. For the best times to call long distance.

For the way you live.



Mountain Bell

\*Discount rates for in-state long distance calls may vary from out-of-state rates. Check the Customer Guide or call your service representative.

# ASU BASKETBALL



# TRY IT ON FOR SIZE!

**ADVANCE SEASON TICKETS FOR STUDENTS ON SALE NOW! NOVEMBER 3-5**

Available at the ASU Ticket Office  
Open Monday-Friday 8:30-4, Saturday 8:30-Noon.

Bring your ID (Current Student Activity Card).

Applications can be picked up at Memorial Union, ASU Ticket Office and Dorm Lobby Desks.

**\$16.50 for Total Season**

## 1983-84 SUN DEVIL BASKETBALL SCHEDULE

Date	Opponent
Nov. 20	ATHLETES IN ACTION (exh.)
Nov. 29	U.S. INTERNATIONAL
Dec. 2-	FIESTA CLASSIC - ASU
Dec. 3	(Western Carolina, St. Mary's, Seton Hall)
Dec. 6	Northern Arizona University
Dec. 10	University of Oklahoma
Dec. 16-	Dallas Morning News Classic
Dec. 17	(ASU, SMU, Centenary, New Orleans)
Dec. 22	UNIVERSITY TEXAS - EL PASO
Dec. 28-	Connecticut Mutual Classic
Dec. 29	(ASU, Connecticut, Penn State, Columbia)
Jan. 5	at UCLA
Jan. 7	SOUTHERN CALIFORNIA
Jan. 12	WASHINGTON STATE
Jan. 14	UNIVERSITY OF WASHINGTON
Jan. 20	University of Arizona
Jan. 26	Oregon State University
Jan. 28	University of Oregon
Feb. 2	STANFORD
Feb. 4	CALIFORNIA
Feb. 9	University of Washington
Feb. 11	Washington State
Feb. 17	UNIVERSITY OF ARIZONA
Feb. 23	OREGON STATE UNIVERSITY
Feb. 25	UNIVERSITY OF OREGON
Feb. 27	UCLA
Mar. 1	California
Mar. 3	Stanford
Mar. 6	Southern California



Home Games in CAPS

**FOR MORE INFORMATION, CALL 965-2381**

# Queen, court selected to reign over Fiesta Bowl celebrations

Rosanna Rascon, a senior marketing major at ASU, has been chosen the 1983 Fiesta Bowl Queen.

The Fiesta Bowl Queen runner-up and two of the three Fiesta Bowl princesses selected at Sunday's Queen Selection Dinner are also ASU students.

Rascon, 22, was one of ten contest finalists named last week. She will receive a \$1,000 scholarship, a Bullock's wardrobe and other gifts.

Runner-up Leona Hakos, a 21-year-old senior telecommunications major, and each of the princesses will receive \$500 scholarships.

ASU students Barbara Carrera, a senior communications major, and

**The court will reign over several events, including the Fiesta Bowl Parade and game.**

Wanda Jones, also a senior communications major, were selected as princesses.

The third Fiesta Bowl princess,

Kelly Barr, is a student at the U of A.

Rascon and the members of her court will reign over several Fiesta Bowl events, including the kickoff luncheon, the National Pageant of Bands, the Fiesta Bowl Parade and the Fiesta Bowl football game, to be held Jan. 2 at Sun Devil Stadium.

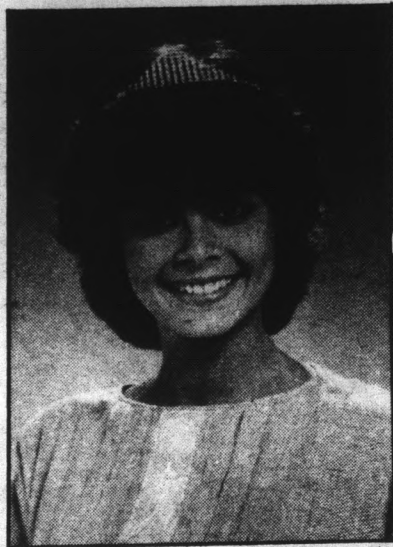
The 10 finalists were judged on beauty, congeniality, interest in people, academic achievement, community involvement and employment experience.

All the finalists received a \$100 scholarship, a trophy, a Fiesta Bowl watch and game tickets.

Rascon is a member of Delta Gamma sorority, an intern at Motorola and a Sun Angel hostess.

Hakos is a member of the National Academy of Television Arts and Sciences and works part time for KASR radio at ASU.

Carrera is a member of the ASU Public Relations Club and Women in Communications and is the campus representative for Coors at ASU. She



**Rosanna Rascon** is also involved with the Newman Center.

Wanda Jones is a member of Devil's Advocates, the Arizona Academy, Grace Community Church, the Residence Hall Association and is ASU's 1983 woman of the year.

**UNIVERSITY THEATRES**  
 1025 E. Broadway (East of Rural in Tempe) 829-6666

A "Walt Disney Classic Snow White & the Seven Dwarfs" & "The Footloose Fox" (G)	C "Eddie & The Cruisers" (R)
B "War Games" (PG)	D "Revenge of the Ninja" (R)

MIDNIGHT MOVIES EVERY FRIDAY AND SATURDAY NIGHT FOR ONLY A DOLLAR!  
**ONLY \$1.50 AT ALL TIMES!**

**We Copy Resumes**  
 HIGH QUALITY COPIES

**COPIES**  
**4¢** SELF SERVE COPIES  
 4 1/2¢ FULL SERVICE COPIES

**New ASU Location!**

**kinko's copies**

University and Forest  
 894-9588 Hours: M-F 7 a.m.-8 p.m.  
 Sat. 9 a.m.-6 p.m.  
 Sun. 10 a.m.-6 p.m.

and at our Mesa store  
 1840 W. Southern  
 969-3326

We bind term papers.  
 Professors — Ask about Professor Publishing Service.

**COMPLETE AUTO PAINTING STUDENT SPECIAL**

\$20 FREE body work w/paint job

**\$179<sup>95</sup>** with coupon

Quality Work **GUARANTEED**  
 Insurance Estimates Welcome

Vinyl Top Coloring — Body Side Mouldings

**Ron's Auto Body & Painting**  
 234 W. 4th St., Tempe  
 967-3597

**EXPERT BODY WORK**

The **HOB'NOB THRIFT SHOP**

221 W. University (Just West of Mill)  
 Tempe, Arizona 85281 (602) 968-7114

A Fantastic Variety of Men and Women's Clothing:  
 Bermudas, Blouses, Hawaiians, Sweaters, Levis, Ties,  
 Vintage Clothing, Dresses, Belts, Shoes, T-Shirts,  
 Sunglasses, Jewelry, Comic Books and Much More!!!

**SCOV DISCOVER READING SPEED READING DISCOVER READING SPEED READING DISCOVER READING SPEED READING DISCOVER**

**SPEED READING COURSES**  
 NOVEMBER 7 THRU DECEMBER 2

A special four-week course, based on the Sack-Yourman Speed Reading Program, will be offered to graduates, undergraduates, faculty, staff and the community. This special program requires pre- and post-reading rate testing, reading of timed passages, and development of college level vocabulary.

**REGISTRATION:** Nov. 2 thru Nov. 4  
 Wednesday thru Friday  
 10 a.m.-2:30 p.m.  
 Payne Hall - Reading Center  
 Room B-112

**SECTIONS:**  
 A. Monday & Wednesday 12:15 p.m.- 1:30 p.m.  
 C. Wednesday 6:00 p.m.- 8:30 p.m.

**FEE:** \$30

**LOCATION:** FARMER BUILDING 101

FOR MORE INFORMATION: CALL 965-7766

**CLEARANCE**

**UP TO 50% OFF**  
 SHIRTS... SHORTS... T-SHIRTS  
 THIS WEEK ONLY!

	sug. retail	clearance
<b>MENSWEAR</b>		
•Ocean Pacific Shorts Swims, cottons, cords, asst. styles Our entire stock!	\$18-\$20	<b>\$9.99</b>
•Muscle T-shirts	\$8-\$12	<b>\$5.99</b>
•Tennis Shorts By Jantzen or Jockey	\$15-\$25	<b>\$9.99</b>
•Golf Shirts, Tennis Shirts	\$18-\$20	<b>\$9.99</b>
•Screen Print T's Hundreds of short sleeves By Op, Bolt, G&S, Sundeck, Hobie, etc.	\$10-\$12	<b>\$5.99</b>
•Long Sleeve T's Our entire stock!		<b>\$9.99</b>
<b>KIDSWEAR</b>		
•Ocean Pacific Shorts Asst. sizes 22-30 Our entire stock!	\$15-\$18	<b>\$8.99</b>
•IZOD Short Sleeves Also Ocean Pacific, Lightning Bolt	\$18-\$20	<b>\$9.99</b>
•Kids Tennis Shorts By IZOD & Court Casual	\$15-\$20	<b>\$7.99-\$9.99</b>

**The Sportswear Racket**

M-S 10-6 Sun. 12-5  
 915 S. Mill Tempe Center  
 894-1045

# Counseling group fills rapidly; another bulimia class offered

By Wayne Baker  
Staff writer

A counseling group for women suffering from eating disorders, sponsored by the Counseling and Consultation Center, filled so rapidly this semester that the Student Health Service has formed another to handle the overflow, according to a student health program coordinator.

Barbara Thomas said the program, which began last week, will concentrate on counseling women that suffer from bulimia, an eating disorder suffered primarily by women.

It is characterized by binge eating followed by starvation, inducing vomiting or even taking laxatives to lose weight.

Thomas said the group sponsored by the Counseling Center filled up early in the semester but inquiries about the disease kept coming into her office.

She said the first group was limited in the amount it could handle because it was in the form of a class. The enrollment closed soon after the class began, she said.

Thomas said the new program "will be an ongoing counseling program. Anyone can come at any time," she said.

Connie Copenhaver, the director of the original group, said the need for an increase in group counseling arose because she could no longer handle individual counseling and the therapy group she ran had already been in progress for five weeks.

Copenhaver said the 10-week program, which is offered every semester, is currently servicing eight bulimic people, and she is counseling 15 individual cases each week.

Thomas estimated that if one of every 10 people who call to inquire about bulimia enrolls in the group, the enrollment could be as much as 20 women by the end of the semester.

"I get more inquiries about bulimia than any other area that can create health problems," she said.

Copenhaver said her office gets three to

five new inquiries a week.

There are currently seven people in the new program, which offers basic nutritional information, knowledge of the physical complications of bulimia, and counseling and support for the women enrolled.

Thomas said the increase in the number of bulimia sufferers at ASU is an indication that it is an escalating problem on campus. She also said this represents a national trend.

"Bulimic people have always been around, but it's now increasing in its incidence," she said.

One reason for this is that people are now accepting bulimic behavior and almost bragging about it, she said.

"People used to be ashamed about it; now they are saying 'Hey, I can have my cake and eat it too,'" Thomas said.

She also said the media perpetuates the idea that thinness is ideal.

"Thirty years ago women who were featured in magazines were like Marilyn Monroe and Jane Russell — full-bodied women," she said. "They would look porky compared to some of the women in Playboy now."

Another reason college women might succumb to bulimia is the amount of stress a student has and the rapid changes they have to undergo, Thomas said.

Copenhaver said there seems to be a rise in the incidence of bulimia because the problem is receiving more attention than it has in the past.

Thomas estimated one-third to one-fourth of all college women are involved in some form of bulimic activity, whether it be on a daily basis or a couple of times a year.

She said some of the physical problems involved with bulimia are an erosion of the enamel on the teeth from excessive vomiting, a general chemical imbalance, a disrupted menstrual cycle, and hair and skin changes.

**YOU CAN LOSE 10 POUNDS  
IN JUST 2 WEEKS!  
17-25 LBS. IN JUST 6 WEEKS!**

**DOCTORS APPROVE OF THIS SENSIBLE WEIGHT-LOSS PROGRAM**



- Nutritionally balanced diet
- Private daily counseling
- Free nutritional behavior modification classes
- No strenuous exercise
- No shots •No drugs •No contracts

**DIET CENTER®**

*"The Natural Way to Lose Weight!"*

TEMPE • 967-1371

University Medical Center  
2525 S. Rural Rd., Suite 6-N

**In January There Will Be a Physical Attraction  
Between College Students & TAOS**

**1984 Collegiate Winter Carnival**

**SKI**

**SKI**

- 5 full days of skiing
- LUXURY accommodations on the mountain
- FREE beer on the bus
- Departing and welcome receptions
- Service taxes
- On site staff

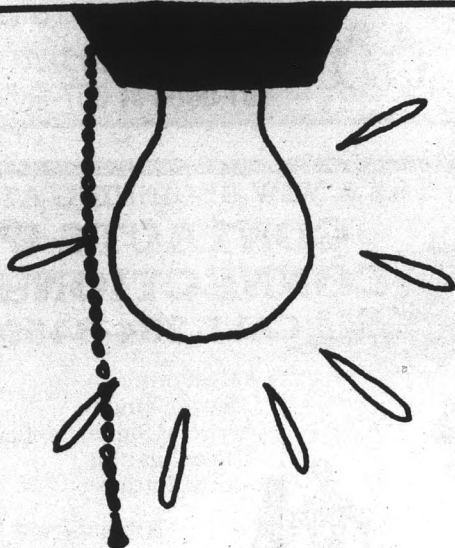
- Free shuttle
- Cross country skiing facilities
- Access to art galleries and unique gift shops
- Access to sightseeing of Indian reservations
- Ski school available
- Hot tubs at lodging and a whole lot of fun...

**Secure Your Space Now!**

Call your Campus Representative  
at: **839-7076 (3-6 p.m.)**

or call Scholastic Travel Corp.  
collect (214) 739-3270.

**ONLY  
\$175**



**TURN ON  
M.U.A.B.**

**Pop-Ups**

- Nov. 1 — "Sybil & Chuck"
- Nov. 8 — "The Quip"
- Nov. 15 — "These Kids"

**Film**

- Nov. 2 — Fastimes at Ridgemont High
- Nov. 3-6 — Ghandi
- Nov. 8-9 — The Toy
- Nov. 10-13 — High Road to China
- Nov. 15-16 — The Black Stallion Returns

**Publicity**

Meetings Friday at 2:00 in the  
Santa Cruz Room of the M.U.

**Special Events**

Nov. 7 — College Bowl  
The Varsity Sport of the Mind  
Sign up by Nov. 4

**Host and Hostess**

Check out our  
Get-a-way Tours!

**Fine Arts**  
Nov. 2 — Fiddlers Festival  
Nov. 10 — Music Moods  
Nov. 10 — Society for Creative  
Anachronisms

For info on Memorial Union Activities Board, call 965-6641.

Self Defense  
Strength and Agility  
Confidence and Control

Certified by International  
Kenpo Karate Association  
Ed Parker 10th Degree Black Belt



# kenpo

chinese karate

Men - Women - Children  
Come in or call for appointment

1020 N. Scottsdale Road  
Tempe, AZ  
966-1080

ENJOY THE BEST

# Häagen-Dazs

WE DELIVER  
Pints, Quarts and Cakes

**20% OFF WITH ASU I.D.**

903 S. Rural  
967-2340

HOURS:  
Sun. Thurs. 11-12 a.m.  
Fri. & Sat. 11-1 a.m.

## Import/Sport Car Specialists

Over 100 to choose from  
Priced from \$595

**10% DISCOUNT**  
W/ASU I.D.

### Lipman's Automotive

966-4788  
711 N. Scottsdale Rd., Tempe

## ATTENTION

"Undecided" Students in  
the Liberal Arts College  
**THE TIME IS HERE!**

Early Bird  
Advisement  
for Spring  
Registration  
from October 24  
to November 8



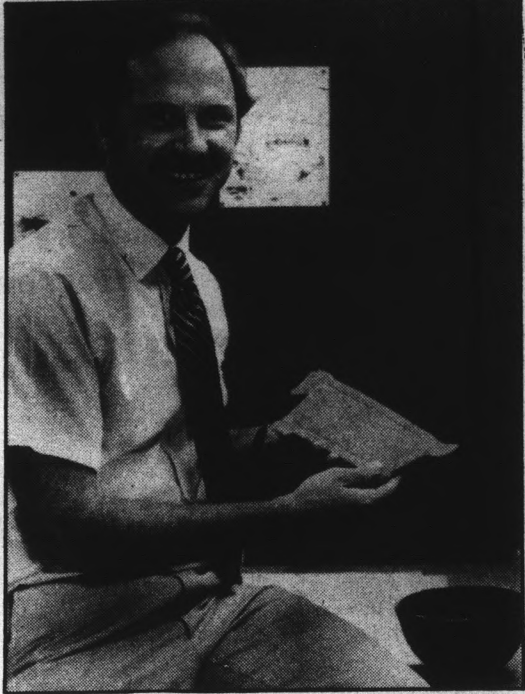
**Avoid the last minute rush**  
Make an appointment today  
in Social Sciences 111.  
Come in or call 965-2954.

## Anthropology department offers course on ancient civilizations

By Mike Rynearson  
Staff writer

There is a new underground movement springing up at ASU, and within a year it could have swelling ranks, according to an ASU anthropology professor.

Charles L. Redman is not a radical, but his underground movement is a new course being offered next spring, entitled Buried Cities and Lost Tribes.



Charles L. Redman

Redman, a new arrival to the ASU anthropology department, said the new class — ASB 294 — is a culmination of everything that makes archaeology interesting, including human origin and findings of the past, such as King Tut's tomb and 11 other monumental discoveries from around the world.

Other topics of discussion will be Biblical archaeology, the beginnings of art, agricultural and urban revolutions, the American Southwest, and the possibility of extraterrestrial contact, according to Redman.

He also said he would be on the lookout for local archaeological digs, so his students would be able to witness the procedure and attain hands-on experience, but he added that class size might make this impossible.

Redman, who has directed archaeological expeditions in the American Southwest, Morocco, Turkey and Iran, will supplement his lectures with approximately 15 movies and thousands of slides, many of which he took himself.

"Many people come up to me and tell me that they find archaeology fascinating, but have never had the time to get involved with it," Redman said.

"This class is geared at those people," he said. "It will be taught at a basic level, with no prerequisites other than an interest in archaeology."

Redman said the new course is aimed at the non-professional, but he expects many anthropology majors to enroll in it also.

He added that his goal is to make the class interesting and fun for everyone in attendance.

ASB 294 will meet on Tuesday and Thursday from 1:40 p.m. to 2:55 p.m. It is a three-credit course and will be offered only during the spring semesters.

## Prof blames

By Rosanne Dupras  
Staff writer

The vital geographic location of the primary consideration for the U.S. involvement there, according to a science professor Marvin Alisky.

Grenada lies south of Puerto Rico, Venezuelan oil fields and south of Dominican Republic, Haiti, Cuba and "Grenada is a satellite. It's 92 Venezuelan oil fields. We moved to free world ever needs oil, there it is reason, I think location is paramount," Alisky said.

Alisky said Grenada is 12 miles by the size of south Tempe.

"What you've basically got is an aircraft carrier," he said.

Another consideration in the Grenada conflict is the Cold War, Alisky said.

Grenada sits on the deep-water through which 50 percent of the Caribbean is shipped, according to Alisky.

He said Grenada's new airport could be a Cuban supply route as far away as east, Venezuela to the south, and Central America to the west.

"Cuba is a branch office of our No. 1 — it's a satellite that's right on our doorstep, miles from Florida," he said.

The Cubans are lying to the world, Alisky said.

However, he said Cuba and Nicaragua at least had some local roots "for their revolutions. Grenada does not, Alisky said.

"It is a miniature Afghanistan on a bean, on the defense doorstep of the United States," he said.

Grenada would have been of unlimited value to the Soviet Union, Alisky said.

COUPON

### FREE DINNER

Buy one of our delicious combination dinners and get the second one of equal or lesser value

With coupon only.

**FREE.**

### Susie's

Mexican Cafe/Lounge

2405 E. University  
(Between Price & Dobson)

OPEN Mon.-Sat. 11-9  
966-7091

Wishing you a happy and healthy New Year



### Wish friends and family "Happy Holidays" with CHIMARK CARDS

- Five unique designs
- Festive colored self mailers
- Free delivery
- \$5 per package of 10 cards

CALL TO ORDER TODAY  
991-0004 or 867-3564

ImageMakers  
HAIRSTYLING

### TOTAL MAKE-OVER SPECIAL

Designer Cut, Make-over \$35  
Perm, Cut, Make-over \$49  
Designer Cut, Blow Dry \$17

7162 E. Stetson Dr., Scottsdale  
949-5373

FOCUS  
BEAUTY SUPPORT PRODUCTS

### TRY A NEW BEGINNING AT CONTACTS & CONNECTIONS

CALL 234-3459

- Meet other Jewish singles
- Special 3-month offer
- No obligation consultation

Interviews Available On Campus



## THE WAREHOUSE DELI

Estab. 1975 "Good Food and Drink"

<p><b>SPECIALS LUNCH &amp; DINNER</b> MON.-FRI. 10:30-7 p.m.</p> <p>Sandwich with Homemade Fries Small Drink or Beer</p> <p>ONLY \$1.99 tax incl.</p>	<p><b>EVERY SUNDAY</b></p> <p><b>65¢ IMPORTS</b></p> <p>WITH THIS AD Noon-7 p.m.</p>	<p><b>HAPPY HOUR</b> MON.-FRI. 10:30 a.m.-7 p.m.</p> <p><b>IMPORTS — 94¢</b></p> <p><b>DRAFT BEER</b> Pitcher Glass \$1.99 49¢</p> <p><b>WINE</b> ½ liter Glass \$1.99 49¢</p> <p><b>WINE COOLER</b> Pitcher Glass \$2.75 65¢</p>
-------------------------------------------------------------------------------------------------------------------------------------------------------------------	------------------------------------------------------------------------------------------	-------------------------------------------------------------------------------------------------------------------------------------------------------------------------------------------------------------------------------------------------------

**BREAKFAST** 6 a.m.-10:30 a.m. Mon.-Fri.  
**99¢ — SUPER SPECIAL — 99¢**

Also Featuring "THE LITE WAIT"  
One Egg, 2 Bacon or Sausage, Toast, Butter & Jam \$1.19  
Coffee Included

**LIVE ENTERTAINMENT NIGHTLY**  
(No Cover, No Min.)  
130 E. UNIVERSITY DR. AT FOREST  
966-7788 — TEMPE, AZ  
Your Hosts: "The Family"



**KATY**



**TIM**



**FRANCINE**

MEET OUR TEAM OF PHOTOFINISHING COUNSELORS

Hi, Remember Us? We are Barb's Dark Room ready to serve your photo-finishing needs with our "Try Us" Coupon. Come on in to our new store at our old location and take advantage of us.

<p>15 EXPOSURE PRINT &amp; PROCESS (Limit One Per Coupon)</p> <p><b>\$2.99 PER ROLL</b></p> <p>Borderless Glossy or Matte Prints</p> <p>From Kodacolor II and C-41 Type Films — 110, 126, or 135 Size Film 100 ASA Film Only Coupon Expires Nov. 18, 1983. 1 Day Service Mon.-Thurs. on C-41 Process Barb's Dark Room</p>	<p>24 EXPOSURE PRINT &amp; PROCESS (Limit One Per Coupon)</p> <p><b>\$4.19 PER ROLL</b></p> <p>Borderless Glossy or Matte Prints</p> <p>From Kodacolor II and C-41 Type Films — 110, 126, or 135 Size Film 100 ASA Film Only Coupon Expires Nov. 18, 1983. 1 Day Service Mon.-Thurs. on C-41 Process Barb's Dark Room</p>	<p>36 EXPOSURE PRINT &amp; PROCESS (Limit One Per Coupon)</p> <p><b>\$5.99 PER ROLL</b></p> <p>Borderless Glossy or Matte Prints</p> <p>From Kodacolor II and C-41 Type Films — 110, 126, or 135 Size Film 100 ASA Film Only Coupon Expires Nov. 18, 1983. 1 Day Service Mon.-Thurs. on C-41 Process Barb's Dark Room</p>
---------------------------------------------------------------------------------------------------------------------------------------------------------------------------------------------------------------------------------------------------------------------------------------------------------------------------------------	---------------------------------------------------------------------------------------------------------------------------------------------------------------------------------------------------------------------------------------------------------------------------------------------------------------------------------------	---------------------------------------------------------------------------------------------------------------------------------------------------------------------------------------------------------------------------------------------------------------------------------------------------------------------------------------

For Additional Information Call Us At 968-5667  
UNIVERSITY COMMONS BUILDING 215 East 7th Street Tempe, Arizona 85281  
"If your pictures are not becoming to you, you should be coming to us."

# blames island's location for dispute

upras

ographic location of Grenada was consideration for the United States' there, according to ASU political or Marvin Alisky.

south of Puerto Rico, north of the oil fields and southeast of the public, Haiti, Cuba and Jamaica. s a satellite. It's 92 miles from l fields. We moved because if the er needs oil, there it is. So for that k location is paramount," Alisky

Grenada is 12 miles by 10 miles — h Tempe.

ve basically got is an unsinkable er," he said.

nsideration in the analysis of the ict is the Cold War, Alisky said.

its on the deep-water channel n 50 percent of the Caribbean oil is rding to Alisky.

nada's new airport could serve the route as far away as Angola to the la to the south, and "embroiled" ica to the west.

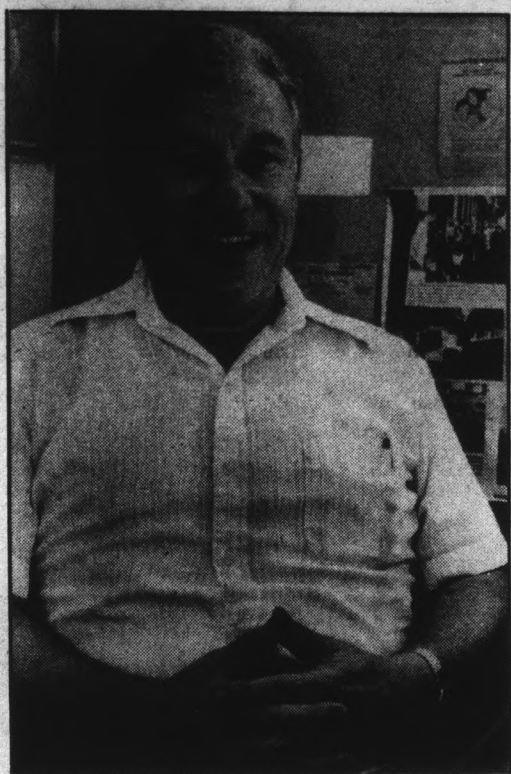
branch office of our No. 1 adversary lite that's right on our doorstep, 90 orida," he said.

are lying to the world, according

he said Cuba and Nicaragua "at me local roots" for their Marxist renada does not, Alisky said.

miniature Afghanistan in the Carib- defense doorstep of the United id.

ould have been of unlimited value to on, Alisky said.



**Marvin Alisky**

The countries surrounding Grenada — Trinidad, Barbados and Dominica — asked President Reagan for help, said Alisky.

"Jamaica voted out its pro-Castro prime minister in 1980 and put in Seaga and democracy. Then they asked for our help," he said.

Alisky said the Soviet Union has been strongly tied to Grenada and its current struggles.

He said, "The Soviet Union maintained an embassy in this tiny country with which they had no trade, no tourists, no cultural ties, no historical ties and no geographical proximity.

"Why were 33 Soviet diplomats in Grenada? To control the island?" he said. "Why was a three-star U.S.S.R. general made the Soviet ambassador to Grenada?"

"The ambassador, Gennadiy I. Sazhenev, is a well-known KGB agent," Alisky said.

He said the latest research conducted by experts on the Caribbean government, with the aid of the Hoover Institution of Stanford plus other experts on the Soviet Union, has documented additional information on Sazhenev.

The researchers have found that Sazhenev formerly was deputy defense minister of the Soviet Union and that he went to Havana in 1961 as third secretary of the Soviet Embassy there before Khrushchev began building missile sites in Cuba.

When President Kennedy issued his demand for the Soviet nuclear missiles aimed at American cities to be removed from Cuba, the recently-promoted First Secretary Sazhenev was transferred to another post, Alisky said.

In later years, Marxist guerrillas began assassinating high-level Argentine officials within weeks after the Soviet general arrived in Buenos Aires, Alisky said.

Other researchers, Alisky said, found that Sazhenev is only one of 60 Russians ever awarded the military medal Order of Admiral Nakhimov, which is listed as the Soviet Union's third-highest military award.

Having the embassy in Grenada in the first place was the final proof of the strong Soviet tie to the situation, Alisky said.

**ACCIDENT AND INJURY CLAIMS**  
**KNOW YOUR LEGAL RIGHTS**  
 Call 957-2010  
**FREE**  
**ATTORNEY CONSULTATION**  
*No Recovery — No Fee*

**BALLOONS ALACARTE**

Flowers, Plants and Gifts  
 Personalized balloon bouquets for all occasions.  
 (602) 966-6789  
 414 S. Mill Ave. Suite 206 Tempe  
 By **alacarte** of Scottsdale, Inc.

**Attention: Foreign Car Owners**  
 SAVE UP TO 70% ON RECYCLED FOREIGN AUTO PARTS  
 MG, TRIUMPH, HONDA, DATSUN, TOYOTA, VW and OTHERS  
**All Models Foreign**  
 3024 So. 40th Street, Phx. (near 40th & University)  
**243-3291**  
 \*Mention this ad & get an additional 5% off!

The **hair performers**  
**Free Haircut with \$24.95 perm**  
 (Expires 11-30-83.)  
**All Hair Cuts \$10.00**  
 (Includes cut, shampoo and conditioner only)  
**Come in now! Register to win 1984 Autograph GT.**  
 Located next to Domino's • No Appointment Necessary  
 903 S. Rural • Cinnamon Tree • 894-0184

**BoBo Chinese Buffet**  
*All You Can Eat*  
 11 a.m.-4 p.m. Lunch **only \$2.79**  
 4 p.m.-9 p.m. Dinner **only \$3.38**  
 Menu Changed Daily  
 Serves Domestic & Import Beer  
 502 S. Dobson, Mesa Open 7 days a week  
**898-8222**

**SKI SALE**  
 •SKI BIBS & JACKETS— **15% OFF**  
 •SKI GLOVES **10% OFF**  
 •KNIT CAPS 99¢ •WOOL \$5.99  
**Peace SURPLUS** Camping, Clothing & Surplus  
 Expires 11-9-83.  
**894-9137**  
 Limited to stock on hand. 1332 E. Apache (A. J. Bayless Center)

**MUAB Fine Arts proudly presents**  
**FIDDLER'S FESTIVAL**  
**Wednesday, Nov. 2**  
 1:30 - 3:00  
 West Hall Lower  
**FEATURING**  
 Hog Calling  
 Square Dancing  
 Parade Bluegrass Band  
 Concert Fiddle Set  
 Fiddle Band  
**MUAB**

**ASU STUDENTS LIVE IN LUXURY!**  
 Research a great investment.  
**BROADMOR II TOWNHOMES**  
 Located on Mill Avenue just south of Broadway  
**968-5591 or 967-6420**  
 Come on by, you can be living in luxury by next semester — or sooner!  
 Open Daily 11-6

**Papa Jay's New York Pizza**  
**FAST... FREE... DELIVERY**  
 (Limited free delivery area)  
 Serving ASU & TEMPE for nearly 13 years

**\$3 OFF any large Sicilian\* Style Pizza** with two or more toppings.  
 Good on delivery, take-out or dine-in. Expires 12-30-83.  
 \*Extra Thick Crust

**Sun Devil Combo**  
 Any large pizza with your choice of up to 4 toppings.  
**ONLY \$5.95 (plus tax)**  
 Good on delivery, take-out or dine-in. Expires 12-30-83.

We Deliver Beer & Soft Drinks  
 Video Arcade! 10 tokens for \$1 Every Day  
 804 S. ASH (Mill & Univ.) 966-1003 • 966-4292 • 967-9689

# The looks and labels you like... for less

**Men's famous maker active tops**  
sold elsewhere  
past season at \$18

marshalls price **8.99**

First quality, short sleeve nylon/cotton or polyester/cotton tops, assorted collar styles. S-M-L-XL.

**Misses' and juniors' designer denim jeans**  
if first quality, regular  
price elsewhere \$30

marshalls price **19.99**

First quality and irregulars from top designers, so you're sure to find the perfect fit in relaxed baggie, pleated trouser and western looks. Cotton/spandex stretch or 100% cotton, solids and stripes. Irregular, slight imperfection will not affect fit, wear. Sizes 3/4 to 13/14.



**marshalls**  
*Brand Names for Less!*



**TEMPE:** Southern Palm Center  
Intersection of Southern Ave.  
and McClintock Drive.

**COLONNADE MALL:**  
18th Street and  
East Camelback Road

**DEER VALLEY SHOPPING CENTER:**  
43rd Avenue and West Thunderbird  
Road

•open Monday thru Saturday 9:30 a.m. to 9:30 p.m.  
open Sunday 12 noon to 5 p.m.

•Marshalls refund policy...Simply return your  
purchase with your sales slip within thirty days

•use our convenient layaway

State Press  
S  
La  
H  
by Dean O  
ports writ  
He dropp  
is arm an  
As the ba  
reached up  
elected b  
From the  
ured Sanc  
as been c  
Despite  
ince his fi  
As a jun  
aign and  
pot in the  
He pass  
asses. In  
han 100 y  
ards and  
n a Fiesta  
Averagi  
ecame th  
Despite  
himself at  
head coach  
ASU qu  
Hons e  
S  
Sh  
&  
OPEN  
12-5  
S  
E

sports

state press

# Lack of respect

## Hons refuses to let the boo-birds get him down

By Dean Obenauer  
Sports writer

He dropped back to pass . . . under a heated rush he cocked his arm and threw the pigskin toward the intended receiver.

As the ball spiraled on its way, a 6-foot-5-inch defensive end leaped up and batted it away. The quarterback caught the deflected ball and started up the field.

From the very down quarterback Todd Hons took over injured Sandy Osiecki's signal-calling duties last season, he has been criticized.

Despite that criticism, Hons has matured and improved since his first game as a Sun Devil quarterback.

As a junior last year he led the Sun Devils on a 10-2 campaign and just short of a Rose Bowl berth, as well as the No. 6 spot in the nation.

He passed for 2,338 yards and had nine aerial touchdown passes. In every appearance last year he threw for no less than 100 yards. His finest game came when he threw for 329 yards and was named ASU's most valuable offensive player in a Fiesta Bowl win over Oklahoma.

Averaging just more than 172 yards a game in the air, Hons became the fourth-ranked passer in the Pac-10 last season.

Despite those accomplishments, he still had to prove himself at Camp Tontozona before this season. Sun Devil head coach Darryl Rogers let it be known that Osiecki would

have to clearly beat out Hons in order for Hons to lose his No. 1 Sun Devil quarterback status.

Hons, though not playing any better than Osiecki, got the nod from Rogers and has started every game this year.

"I am getting more confident," Hons said. "I'm reading the defenses and executing well. I feel like I'm really in control now."

Although he has continued to improve this season, there are still those coaches in the stands who show their appreciation of Hons by booing.

"I try to block things out like that," he said. "If you let something like that get to you it is going to make things worse on yourself. I just block that out and play my game and try to do the best job I can."

Even the most pessimistic fans have had problems booing him in his latest appearances.

In the last three games, he sports 63 completions in 93 attempts. That is a completion percentage of 68, for 876 yards and six TD strikes. His seven-game total of 10 touchdown passes exceeds his 1982 season total by one.

He now ranks fifth in Sun Devil career passing annals with 3,578 yards. That puts him just 818 yards behind Joe Spagnola.

For the season, Hons has completed 125 of 198 tosses for 1,569 yards, with seven interceptions. His season completion

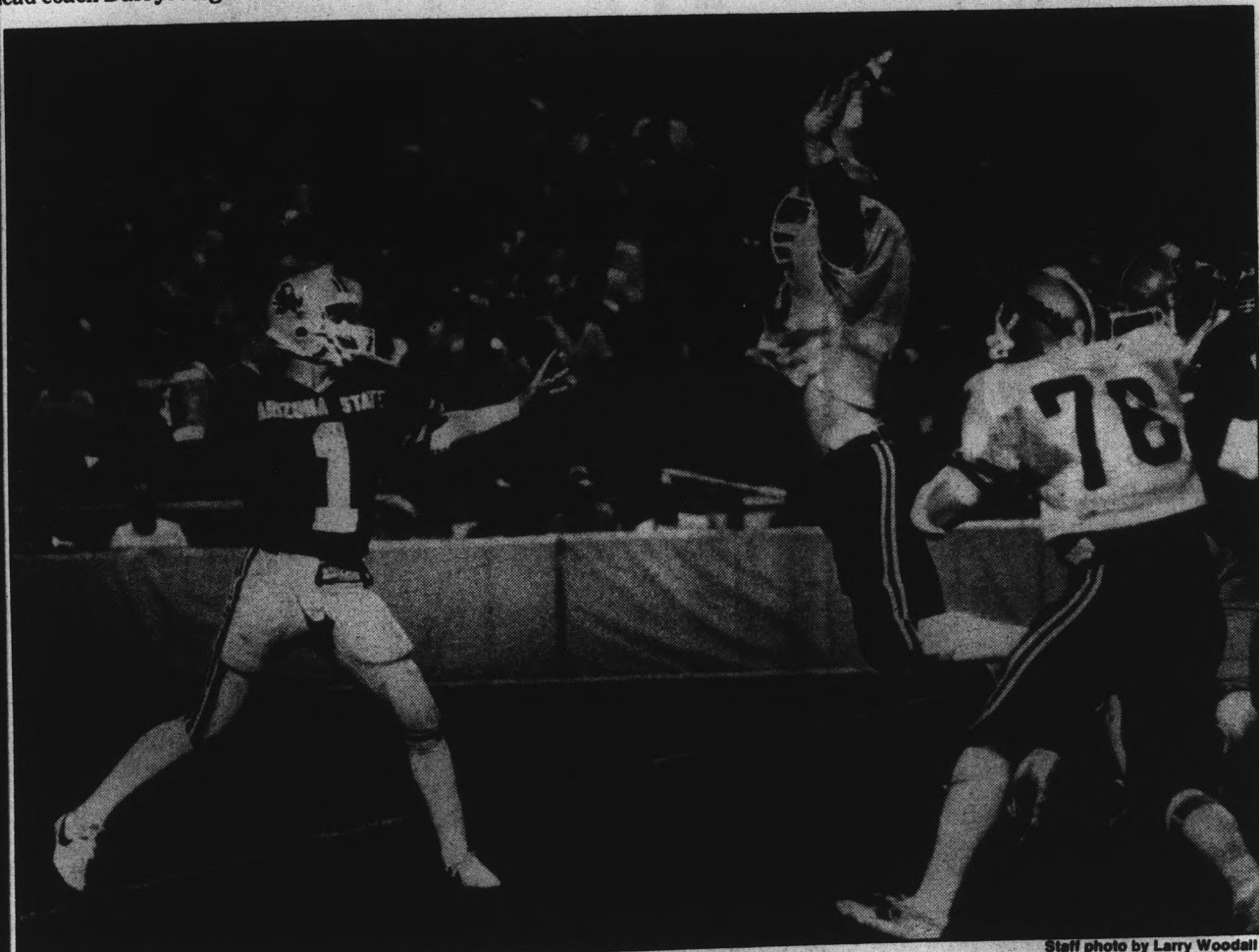
percentage is just over 63.

Against Washington State, Hons set an all-time Sun Devil completion record by connecting on 29 passes, surpassing Mark Malone's previous one-game high of 28.

His 321-yard performance against WSU was the fifth 300-yard effort of his career. That puts him one game behind Dallas Cowboy quarterback Danny White's school record of six 300-yard games.

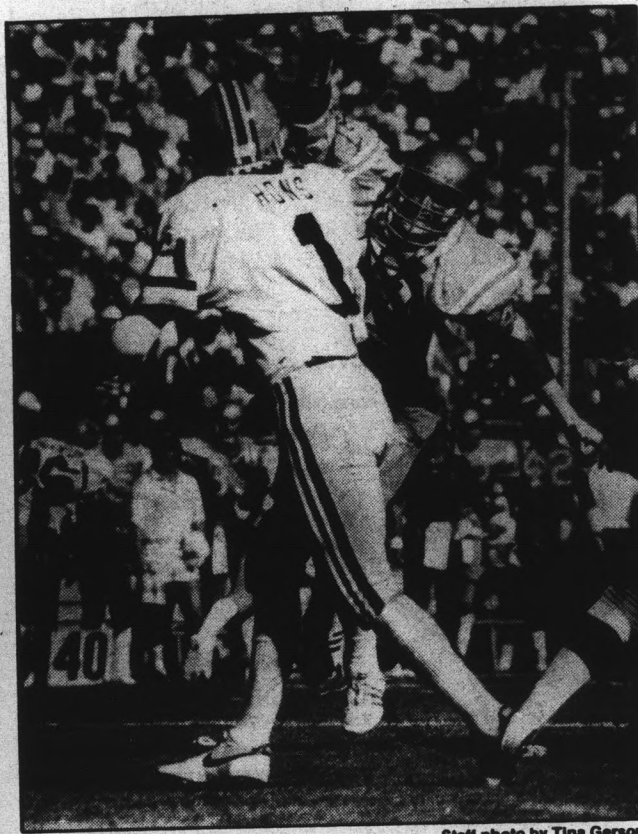
Hons had three of his seven interceptions against WSU. Two of them may not have been his fault.

"When Washington State got us 10 points down and knew we had to throw, they were very effective," Rogers said. "Late in the game, practically every time Todd threw, he got hit. He took a pounding because we didn't protect him."



Staff photo by Larry Woodall

ASU quarterback Todd Hons spent most of the second half against Washington State facing a fierce pass rush. Despite that, Hons enjoyed one of his best games ever.



Staff photo by Tina Gerson

ASU quarterback Todd Hons gets off a pass despite an attempt by UCLA's Doug West to bat it down.

Every opposing coach who has played the Devils this year has had nothing but positive things to say about Hons. Besides his quickness, all respect his accurate arm.

Before coming to ASU, Hons won all-American quarterback honors at El Camino Junior College in Torrance, Calif. He was also named the most valuable player in the California junior college system.

In his juco career he threw for over 2,911 yards and compiled 22 TDs while completing 208 of 369 passes (.564) in 1980.

But Hons does not like to talk about past accomplishments. The Devils are in contention for a Rose Bowl berth, and at the moment, that is what he is concentrating on.

And if he should lead the Devils to Pasadena, then he may get some respect.

### STUDENT SPECIAL

Shampoo & Cut

\$7.00

WITH THIS COUPON

OPEN SUNDAY 12-5 p.m.

OLYMPIC HAIRCUTTERS



966-2679 Expires 12-31-83. (New Year's Eve)

6 W. 7th St. Tempe

### STUDENT LEADERS

APPLICATIONS FOR

**Omicron Delta Kappa**

National Leadership Honor Society

are available in the Office of

Student Life and in the Associated

Students Office, Room 208-J.

Applications are due Nov. 16.

# Pick 'em

Shame, shame, shame. After consecutive weeks of more than 400 entries in the Pick 'em contest, this week only 250 people entered the weekly contest. But we're not complaining. This week's winner is Tim Barney, who will claim the \$10 gift certificate to the Bare Cover clothing store and two "Shipwreck" banana splits from Yogurt Oasis. Second prize went to Cindy Fangman. She will receive a large pizza from Pizza Hut. Third prize went to Scott Peters and Co. Scott missed only three to claim the Budweiser goody bag from Hensley and Co. The sports desk will lay odds Scott had some help in picking the teams. No more than two entries per person.

ASU \_\_\_\_\_ at California \_\_\_\_\_  
Predict the score.

Home team in caps:  
Favorite

Underdog

### COLLEGE

- |                                         |     |                                        |
|-----------------------------------------|-----|----------------------------------------|
| <input type="checkbox"/> LSU            | 1½  | <input type="checkbox"/> Alabama       |
| <input type="checkbox"/> AUBURN         | 6½  | <input type="checkbox"/> Maryland      |
| <input type="checkbox"/> NORTH CAROLINA | 7½  | <input type="checkbox"/> Clemson       |
| <input type="checkbox"/> MIAMI (Fla.)   | 10½ | <input type="checkbox"/> East Carolina |
| <input type="checkbox"/> ARIZONA        | ½   | <input type="checkbox"/> Washington    |
| <input type="checkbox"/> Washington St. | 15½ | <input type="checkbox"/> OREGON ST.    |
| <input type="checkbox"/> UCLA           | 9½  | <input type="checkbox"/> OREGON        |

### PRO GAMES

- |                                     |     |                                       |
|-------------------------------------|-----|---------------------------------------|
| <input type="checkbox"/> Baltimore  | ½   | <input type="checkbox"/> N.Y. JETS    |
| <input type="checkbox"/> Buffalo    | 4½  | <input type="checkbox"/> NEW ENGLAND  |
| <input type="checkbox"/> PITTSBURGH | 5½  | <input type="checkbox"/> San Diego    |
| <input type="checkbox"/> WASHINGTON | 11½ | <input type="checkbox"/> St. Louis    |
| <input type="checkbox"/> Dallas     | 6½  | <input type="checkbox"/> PHILADELPHIA |
| <input type="checkbox"/> MINNESOTA  | 8½  | <input type="checkbox"/> Tampa Bay    |
| <input type="checkbox"/> Cincinnati | 7½  | <input type="checkbox"/> HOUSTON      |

Name \_\_\_\_\_  
Phone \_\_\_\_\_

# numbers

The Nebraska Cornhuskers have not given up the top spot in the AP poll this year, and this week is no different.

Nebraska stayed on top, followed closely by Texas. Moving up this week are Miami (Fla.) and Maryland after winning big this weekend in two tough contests.

The University of Washington remains the only Pac-10 team still ranked among the nation's best. This week they will travel to Tucson to face the Wildcats.

Here are this week's rankings.

1. Nebraska
2. Texas
3. Auburn
4. Georgia
5. Miami, Fla.
6. Illinois
7. SMU
8. Maryland
9. Florida
10. North Carolina
11. Oklahoma
12. BYU
13. Michigan
14. Ohio State
15. Iowa
16. Boston College
17. West Virginia
18. Notre Dame
19. Alabama
20. Washington

### Pac-10 Football Standings

Team	Conference			Overall		
	W	L	T	W	L	T
1. UCLA	4	0	1	4	3	1
2. Washington	3	1	0	6	2	0
3. USC	3	1	0	3	4	1
4. Arizona St.	2	1	1	4	2	1
5. Oregon	2	2	0	3	5	0
6. Arizona	2	2	1	5	2	1
7. Washington St.	2	3	0	4	4	0
8. Cal	1	3	1	3	4	1
9. Oregon St.	1	4	0	2	6	0
10. Stanford	1	4	0	1	7	0

### Team leaders

Player	Rushing		Avg.	TD's
	Att.	Yds.		
D. Clack	99	568	5.7	5
M. Crawford	95	387	4.1	3
D. Wright	61	242	4.0	1

## IMPORT AUTO CENTER

**MERCEDES SPECIALISTS**

994-3222

3618 N. Scottsdale Rd. • Scottsdale, Arizona  
Just North of Thomas

Complete Auto Repairs & Service  
All Makes & Models, Foreign & Domestic Compact

**TUNE-UP SPECIAL**  
Starting From \$39.95 (plus tax)

includes new plugs, points, condenser (if needed), adjust timing and carburetor, check compression, adjust for emissions test, service air filter and PCVB valve, inspect wires, belts, hoses and cables. (Additional parts and labor extra if needed)

Alfa Romeo, Acura, Audi, Austin Healey, BMW, Capri, Chevrolet, Citation, Colt, Courier, Cricket, Datsun, Delorean, English Ford, Ferrari, Fiat, Hillman, Honda, Horizon, Jaguar, Lancia, Lotus, Luv, MG, Maserati, Mazda, Mercedes, Monza, Mustang II, Opel, Peugeot, Pinto, Porsche, Renault, Rolls Royce, Rover, Saab, Seville, Sika, Simca, Starfire, Subaru, Sunbird, Toyota, Triumph, VW, Volvo, etc., etc.

Tune-ups, Engine Work, Brakes, Steering System, Timing, Belts & Chains, Fuel Injection System, Alternators, Clutch & Flywheel, Generators, Differentials, Starter & Solenoids, Radiators, Batteries, Water & Fuel Pumps, Electronic Ignition, Shocks, Air Conditioning, Heating & Cooling, Carburetors, Motors, Electrical System, Trouble Shooting, Front Ends, Normal Maintenance, Lube, Oil, Filter, Belts, Tires, Front Wheel Drive, Gear Box Work, Transmission Service, Etc., etc.

## Micro Computer SEMINAR

Understanding Microcomputers for the Small Business & Accounting Professional

**November 4, 1983**  
Pointe Resort  
Lunch Provided / Student Discount

**TOPICS:**

- The History of the Microcomputer
- Computer Fundamentals
- Hardware Options
- Spreadsheets
- Financial Accounting
- Word Processing / Data Base
- How to Select a Microcomputer

For More Information Phone  
**Sage Seminars • 867-2068**



### COLONIAL SPECIALS

with coupon only!

- Hair cuts (wet) \$5.50, reg. \$7.50
- Zoto's Perms \$20 and up \$35, reg. \$45

thickens fine limp hair, makes thick hair beautiful

- Sculptured nails \$22.50
- Fill-ins \$12.50

— complete hair care —  
**COLONIAL CLIPPERS**  
968-4006 743 W. Univ., Tempe  
Expires end of week.

## THE JOYNT


606 S. Mill  
Old Town Tempe

**WE DELIVER 967-7926**

**BEER PIZZA WINE**

**Large 16" Cheese Pizza \$3.99**

EXTRA TOPPINGS 50¢ EACH



## A LITTLE LOW ON CASH?

Become a Plasma Donor  
It's easy & relaxing

### IMMEDIATE CASH

Payment After Each Donation  
Call 894-1338 for an appointment.

## Tempe Plasma Corp.

Corner of Rural Rd. & Univ. Blvd.  
Tempe Towne Plaza

This ad worth \$2. New donors only.

# DONNY O'BRIEN'S

222 S. Mill, Tempe  
968-0527

has

## THE HAPPIEST HAPPY HOUR IN TEMPE

Featuring 2 for 1 Well & Wine  
75¢ Bud & Miller

And Serving Delicious FREE Hors D'oeuvres Every Day

MONDAY	TUESDAY	WEDNESDAY	THURSDAY	FRIDAY
Italian Sausage & Wine Coolers <b>95¢</b>	Chicken Wings & Bud Light <b>95¢</b>	Pizza & Margaritas <b>95¢</b>	Taco Bar & Strawberry Daiquiris <b>95¢</b>	Super Selection & Tequila Sunrises <b>95¢</b>

# Freshmen off to fast start at ASU

By Jay Taylor  
Sports editor

Most of the time in collegiate sports, athletes are not expected to perform at a championship level until they have gained some experience.

ASU swimmers Stephanie Lister and Beda Leirvaag started performing at that level in the first meet of their freshman year.

They both qualified for the NCAA Championships in the Maroon and Gold intrasquad meet held last Saturday at the Aquatic Complex. Lister, from Kailua, Hawaii, qualified in the 200-meter backstroke. Leirvaag, who hails from Oslo, Norway, made it in the 200-meter individual medley.

Swimmers qualify for the NCAA meet by meeting a predetermined time set by a committee. The qualifying time is based on times from the previous year's NCAA meet.

Although Lister and Leirvaag are only freshmen, women's swimming coach Bob Gillett was not surprised at their performances.

"They are both fine athletes, with almost unlimited potential," he said. "We are looking for really big things from both of them during the season."

Lister was somewhat surprised at qualifying, though.

"I was really happy about making my cut time, because usually I do better at the end of the season when we taper and do sprints real hard," she said. "I was hoping I would, and it was kind of a goal of mine, but it's so early that I really didn't expect it."

Leirvaag was also surprised at making the NCAA meet. She had been swimming events measured in yards, rather than meters, and didn't know how her times would convert.

"I was surprised," she said. "I really didn't know I could do it in meters at all. My time was about three seconds faster than I was at this time last year."

Gillett said it will be an advantage to both swimmers to have made the NCAAs so early in the year.

"It allows them to swim with the confidence of knowing during the season that they will be there (at the NCAAs) at the end of the year," he said.

Gillett said qualifying early eases the pressure on the swimmers during the season. He added that it also keeps them from having to peak too early.

"If the girls go into the conference meet still having to make their cut time, a lot of the time, it can cause them to peak earlier than we'd like," Gillett said. "We like them to qualify early so they will peak at the nationals."

Gillett uses a cyclic training schedule in which the team trains hard for two to three weeks, then eases off a bit for two to three weeks.

The team is currently on a very tough three-week cycle, which will end with a meet against the Mission Viejo Swim Club on Nov. 12.

"With the cycles, if they are capable of doing cut times, we'll do it," he said. "The standard answer this time of year is that I should just be concerned with training, but I like to go fast all year long."



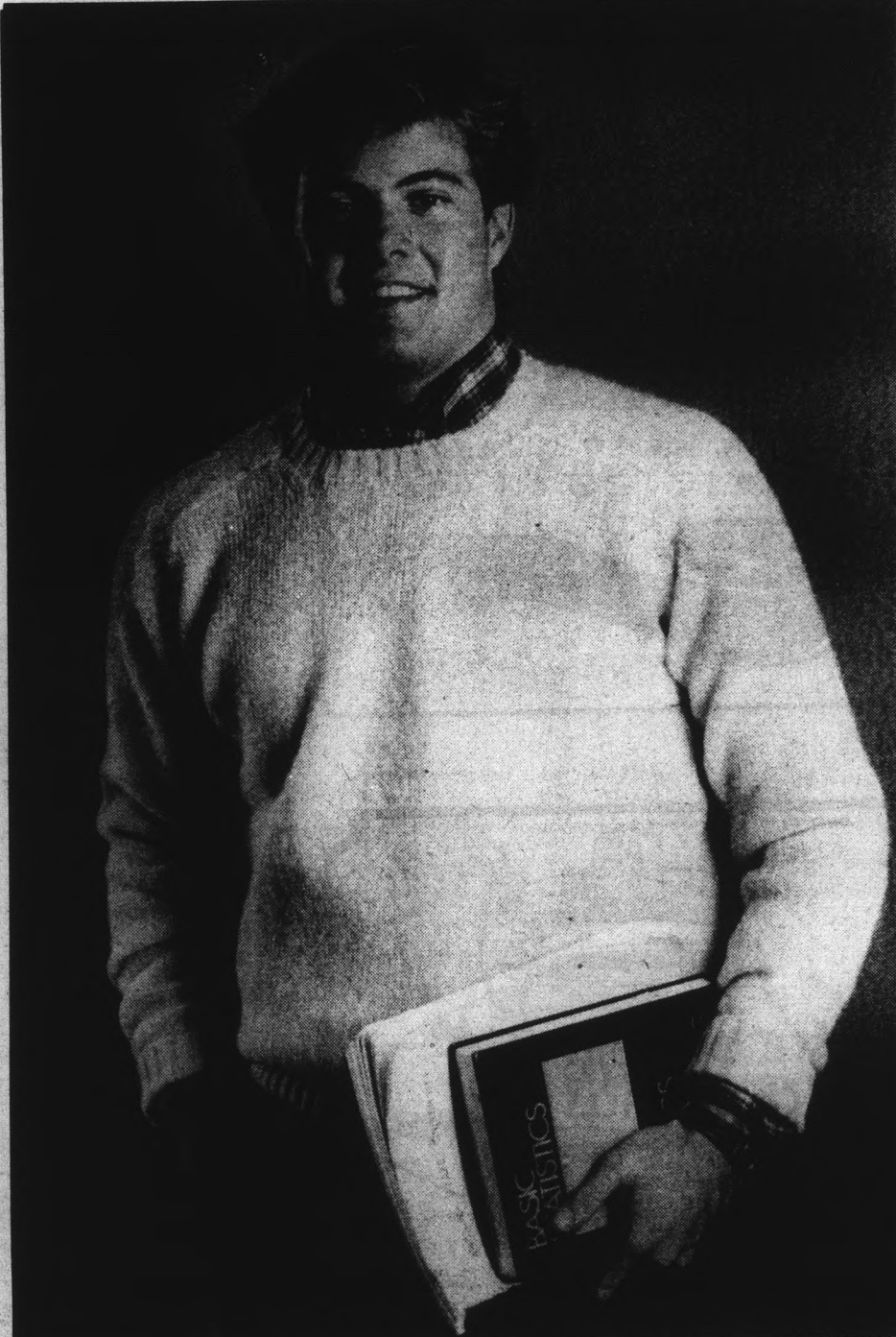
Stephanie Lister

Staff photo by Larry Woodall



Beda Leirvaag

Staff photo by Larry Woodall



## Basic Sweaters 101

See that you get an "A" wearing Dax's Shetland wool crew neck. Available in 8 classic colors.

\$35.00



706 South Forest • Tempe • 967-8747  
Monday thru Saturday • 10-6  
Thursdays until 8:30  
In the Oxford Square Shops,  
just north of "The Warehouse".

## OUR NURSING SCHOLARSHIPS WILL HELP YOUR MEDICAL PLANS.



If high tuition costs are jeopardizing your future in medicine, Army ROTC may have just what the doctor ordered:

An Army ROTC scholarship.

ROTC recently set aside hundreds of scholarships solely for nursing students like yourself.

Each one covers full tuition, books and other supplies, and pays you up to \$1,000 each school year it's in effect.

So make an appointment to find out more about an Army ROTC scholarship.

Contact your Professor of Military Science today.

**ARMY ROTC BE ALL YOU CAN BE.**

At ASU contact:  
Ken Schwartz  
Old Main, Rm. 228  
or call 965-3318/19

# Devils hope to keep momentum against Aztecs

By Tom Blodgett  
Sports writer

Hoping to carry the momentum of its recent upset of fifth-ranked Southern California, the ASU volleyball team goes on the road to face 10th-ranked San Diego State tonight.

In the two teams' previous meeting at P.E. East, the Aztecs defeated ASU 3-1 (9-15, 15-12, 15-7, 15-12). San Diego State raised its all-time record against the Sun Devils to 9-1.

But the victory over USC should give teams sufficient notice the Devils are ready to blossom.

"We're not going to be complete darkhorses," ASU head coach Debbie Brown said. "I think we can go over and beat San Diego State."

Despite the upset, the Devils remained at the No. 17 position in this week's Tachikara-Collegiate Volleyball Coaches

Suwara: "This may be the best Arizona State team I've seen."

Association poll for the fifth week in the row.

However, there were several shakeups among the top seven, which had remained the same during that same period of time.

The University of Pacific dropped to fourth after losing to Stanford. The Cardinal moved from up from third to second, and USC dropped to sixth, thanks to losses to ASU and Arizona.

San Diego State dropped from the seventh spot to No. 10 after losing to Texas. The Longhorns took the Aztecs' previous spot.

San Diego State coach Rudy Suwara believes his team is a true title contender.

"I believe we can live up to our ranking and contend for the

WCAA and NCAA titles," Suwara said. "We should be in the thick of the hunt."

Most of his confidence stems from the play of all-Americans Vicki Cantrell and Toni Himmer.

Cantrell leads the conference in kills. Himmer spent much of the early season injured, but she returned to action for the first time against ASU at the end of September.

"Toni Himmer is the finest all-around middle blocker in women's collegiate volleyball," Suwara said. "If she can stay healthy, she'll have another great year."

While the Aztecs have Himmer, the Devils have a middle blocker of their own who has been playing quite well.

Terri Edison was named the WCAA co-player of the week for her performances against Cal State-Long Beach and USC.

The 6-4 senior had 22 kills against only two errors in 34 attempts for a .588 hitting percentage in matches last week. She also had 3 block solos and 9 block assists.

Sharing honors with Edison was Arizona outside hitter Melissa McLinden.

Both teams also have outstanding setters. San Diego State's Karen Schwartz leads the conference in assists. ASU's Heather Forbes has received high praise from Brown recently.

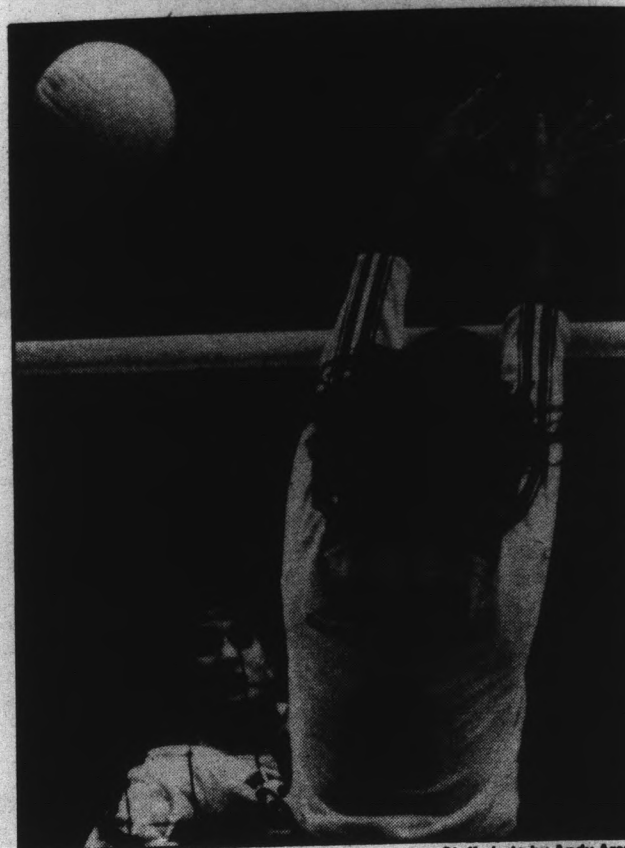
"Heather's setting very well," Brown said. "She's mixing it up very well."

Suwara was impressed by the Devils when the two teams met earlier.

"This may be the best Arizona State I've seen," Suwara said.

The Devils need this victory to continue their recent surge in conference standings. The Devils are currently 7-11 overall and 3-6 in the WCAA. The Aztecs are 25-8 overall.

Following this match, the team will head to Los Angeles to compete in the UCLA-National Invitational Volleyball Tournament on Friday and Saturday.



Staff photo by Andy Arenz

ASU's Terri Edison, left hits a shot past San Diego State's Vicki Cantrell. Edison was named the WCAA's co-player-of-the-week this week.

## "SOPHIES FIRE, CHARIOTS OF CHOICE": The Image of Jews in Recent Films

a discussion with

**David Kader**

Professor of Law at ASU

Friday, Nov. 4 • 8:30 p.m.

Hillel • 1012 S. Mill Ave.



Services at 7:30 p.m.

Are bargain diamonds  
a girl's best friend?

Hardly. Because they tend to be inferior stones, usually not worth the discount price. That's a bargain you can't afford. Instead, come in and see our collection of quality gems, fairly priced. We base our price on cutting, color, clarity and carat weight. As American Gem Society Jewelers we guarantee the quality of every diamond we sell. You can be sure of getting good value for your money. It's a friendly way of doing business. We have a staff of Registered Jewelers and 37 years of Diamond Cutting and Jewelry experience to help you select your diamond.

*Joseph M. Berning*

**JEWELRY & DIAMOND CUTTING**

130 E. UNIVERSITY DR. "IN THE ARCHES" 967-8917  
MEMBER AMERICAN GEM SOCIETY

# NOW YOU CAN MAKE ANY PRESENTATION LOOK BETTER THE KROY WAY™

When you're preparing something for someone else to read, good presentation is half the battle. Come in to a Kroy Copy Center, and we'll show you how to create great-looking reports, resumes, charts and graphs, flyers, and even copies The Kroy Way™

We'll help you set your own bold, eye-catching headlines with Kroy® lettering machines. For your typing, we have state-of-the-art typewriters. We'll show you how to put things together at a layout station. And when you're through, we'll get you all the high-quality copies you need.

It's all very easy, fast, inexpensive, and fun. And backed by the Kroy Letter-Perfect™ Guarantee. Next time, get your idea read and remembered. Do it The Kroy Way™

## FREE 10 COPIES

(8 1/2 x 11; coupon not for use with any other offer.)  
Offer expires December 31, 1983.

411 S. Mill, Tempe 914 E. Camelback, Phoenix  
(Across from Spaghetti Co.) (Across from Entz-White)  
966-9353 279-9972

940 E. University, Tucson  
(1/2 block West of the Main Gate)  
882-8872

**KROY Copy Center™**

## KROY Copy Center™

LETTERING • FLYERS • RESUMES • REPORTS • SELF-SERVE COPIES 3¢

All lettering styles used in this ad available in a Kroy Copy Center. Kroy® The Kroy Way™ Kroy Copy Center™ Kroy® lettering machines, Kroy Letter-Perfect™ Guarantee are trademarks of Kroy Inc.

# Wildcats win first conference crown in cross country meet

Vicki Serna sports writer

Two members of the ASU men's cross country team spent their Halloween running the Pac-10 conference championships at Stanford Golf Course in California. Both runners placed in the top 50. Sun Devil runner Mike Stahr finished 34th in the conference with a time of 32:09. Teammate Mike Scannell was 47th in 34:05. ASU did not compete with a full team because, as head coach Len Miller explains, the others were not performing at the level he wanted.

Miller said Stahr finished as well as expected, but could have done better. "He (Stahr) started out with the winner," Miller said, "but went out too fast. If he had started at a slower pace, he might have come up 10 places ahead. And Mike (Scannell) just didn't have a good race at all," he said.

The U of A Wildcats won the Pac-10 title. It was the Wildcats' first Pac-10 title in cross country, as they placed five runners in the top 11 spots.

The undefeated Wildcats were led by Jimmy Ansberry, who placed third in the conference. He came into the race with an Achilles heel injury and six of seven U of A runners were still weak from the flu.

The U of A won with 38 points, six ahead of second-place Oregon, the defending champion. UCLA was third with 74 points and Stanford claimed 80 points for fourth place. California ran fifth with 126 points, while Oregon State had 139 points for sixth place. Washington's 151 points were good for

seventh place. Miller remains hopeful for next year's cross country team. "I think in a year, for the first time ever, ASU will place a team in the Pac-10 championships," he said.



Photo by Len Miller  
Mike Scannell runs ahead of the pack during a recent cross country meet.



Helps You Shake Those Minimum Wage Blues! Call Us Today.

## COMPLETE BARTENDING COURSE

Your ticket to steady work, meeting people, and making money!

- Wine tasting instruction
- Learn 130 different drinks
- Cash register operation
- Stocking & inventory of liquor
- Customer service training
- Placement assistance

Now at two convenient locations:

TEMPE:  
1537 E. Apache  
894-6565

PHOENIX:  
2740 W. Peoria  
863-4845

We Also Serve Beer & Wine

From the Sea

Come in daily and try our new Featured Items

Includes your choice of soup or a tossed green salad. French fries and hot biscuits with honey (Baked potato available after 5 p.m.)

**Fried Clam Strips**

Tender, tasty and deep fried. 4.55

**Shrimp Feast**

Golden fried, crispy outside and tender inside. 6.45

**Ocean Cod**

A thick cut, pan-broiled or grilled. 4.85

**Fisherman's Catch**

Clams, shrimp and tender cod. 6.45

**Fish 'n Chips**

Tender pieces of cod, tempura breaded. 4.85

# COCO'S

1717 S. Rural Rd.  
Tempe, AZ 85281

Just 2 miles S. of University

Try our delicious Deep Fried Zucchini served with our special sauce for dipping

Hours:  
Sun.-Thurs. 6 a.m.-12 a.m.  
Fri. & Sat. 6 a.m.-1 a.m.  
Breakfast Served All Day

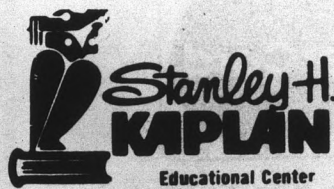
## DON'T FALL BEHIND

	LSAT	DAT	GMAT	GRE	MCAT
Prepare Now For:	Dec. 3 Mar. 3	Apr. 14	Jan. 28 Mar. 17	Feb. 4	Apr. 28
Classes Starting:	Oct. 31 Jan. 11 Jan. 20	Feb. 18	Dec. 6 Jan. 24	Dec. 8	Dec. 17 Jan. 29 Mar. 5

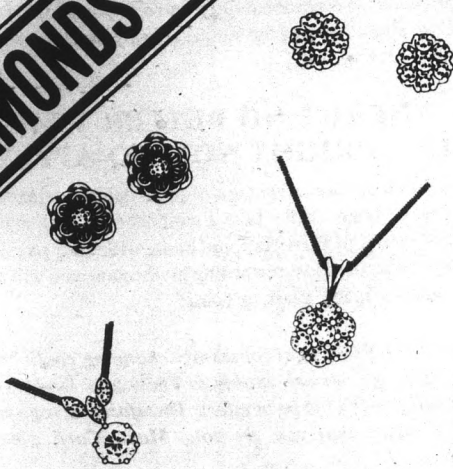
Classes now available for DAT, PSYCH, GRE-BIO, NLE, TOEFL, VAT, MAT, MSKP, OCAT, CPA.  
**2 HOURS OF FREE TUTORING**  
Speedreading & ESL classes starting mid-Sept.

CALL TODAY **967-2967**

For information about other centers in more than 80 major U.S. cities and abroad, CALL TOLL FREE 800-223-1782.



# DIAMONDS



Pendants & Earrings  
**Special Savings**  
**20%**

Christmas layaways welcome

*Joseph M. Berning*  
Jewelry & Diamond Cutting  
130 E. University Dr.  
Tempe, AZ. 85281  
Member American Gem Society  
**967-8917**

## ASU STUDENTS STUDY ABROAD — SPRING SEMESTER 1984

### FLORENCE (ITALY)

COURSES INCLUDE BEGINNING & INTERMEDIATE ITALIAN, COMPOSITION & CONVERSATION, LITERATURE, BEGINNING DRAWING, ART OF FLORENCE, ECONOMIC HISTORY & ITALIAN CIVILIZATION

PROGRAM FEE: \$2,995

APPLICATION DEADLINE EXTENDED TO NOVEMBER 18, 1983

### LONDON (ENGLAND)

COURSE OFFERING INCLUDES ENGLISH, HISTORY AND ECONOMICS. ATTEND CLASSES IN THE UNIVERSITY OF LONDON UNION. PROGRAM OFFERED IN COOPERATION WITH THE AMERICAN INSTITUTE FOR FOREIGN STUDY.

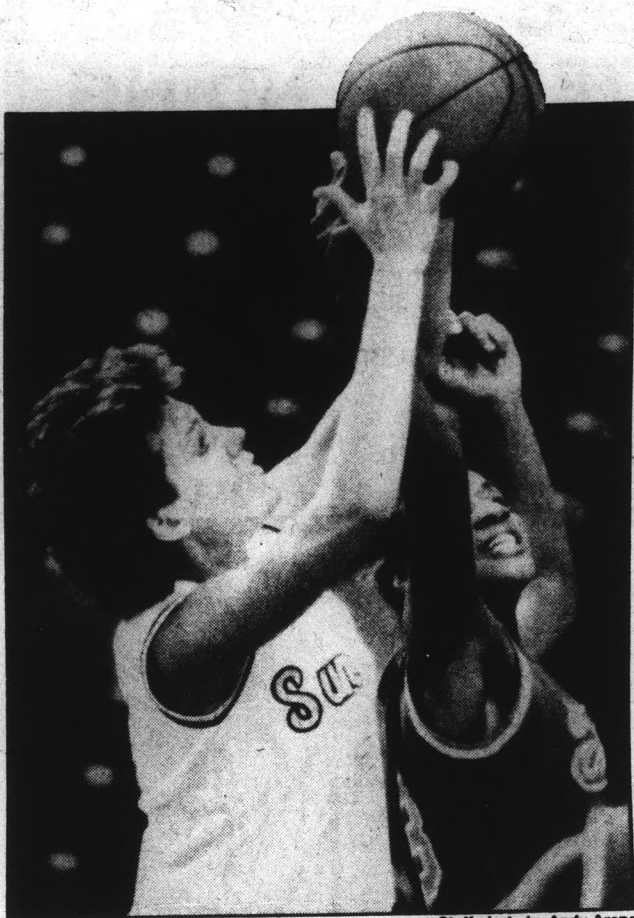
PROGRAM FEE: \$2,825

REGISTRATION NOW IN PROGRESS  
DON'T DELAY — ENROLL TODAY

FOR PROGRAM INFORMATION AND APPLICATION FORMS CONTACT THE OFFICE OF SUMMER SESSIONS — ACADEMIC SERVICES BUILDING, ROOM 110, OR TELEPHONE 965-6563. ALL PROVISIONS GOVERNING SCHOLARSHIPS, GRANTS, AND LOANS APPLY TO THESE PROGRAMS.

# Rookies

## Freshman could play important role in women's season



Staff photo by Andy Arenz

ASU's Teri Sharkey, left, a part-time starter for the Sun Devils last season has left the team to concentrate on academics.

By Tom Blodgett  
Sports writer

Every day, in the early afternoon, the sound of basketballs bouncing on the hardwood can be heard in the University Activity Center.

But it is not the men's basketball team at work as one is inclined to believe at first. The women are the ones preparing for the season.

The women's basketball season will not tip off for another two weeks, but anticipation is running high for the Sun Devils. ASU is ranked 14th in the nation by the Women's Basketball News Service.

But the Devils are missing some key ingredients from last year's team, which finished with a 23-7 record and advanced to the second round of the NCAA tournament.

Like the men's team, the women will be relying heavily on one of the nation's top freshman classes.

"This is the most excitement we've had in getting ready for a season," women's basketball coach Juliene Simpson said. "We have some young freshmen and they add enthusiasm and hustle to practice."

Probably three, and perhaps as many as four, of those frosh will be starting.

Currently, the three frosh listed with the starting unit are point guard Patti Pepler, wing Sherry Poole, and post Rhonda Woolery.

"The starting lineup has changed from time to time because of freshman inconsistency," Simpson said. "But the most consistent have been Rhonda and Sherry Poole."

Two other frosh stand to be coming off the bench early for ASU. They are Robin Connolly and Ramona Lomeli.

The development of the freshmen will play a major role in how far ASU goes this season.

"How quickly our freshmen mature and adjust to our system will be the key in determining our success," Simpson said.

The Devils have at least one position that is secure for an upperclassman. All-American and Wade Trophy candidate

Kym Hampton returns to lead the team at the post.

If pre-season practice is any indication, Hampton could be headed for her finest season. Simpson has praised her attitude on the floor.

"She knows what it takes to be an all-American," Simpson said. "She knows she has to put out an effort not only when she wants to pour it on, but all the time."

Hampton comes into this season already as ASU's all-time leading scorer and rebounder.

The Devils did lose one post player who was a part-time starter last year. Teri Sharkey decided to forego her senior year of eligibility in order to concentrate on school.

The other starter will probably be sophomore Jodi Rathbun at wing, the team's second leading scorer among returners from last year.

Both Rathbun and Hampton represented the United States at the William Jones Cup this summer in Taiwan. The experience in international competition should benefit both players.

"Just the experience of playing against other countries' best players should help them out," Simpson said. "They also have to watch how the other countries train."

The Devils will also have plenty of returning players to add depth. Barb Smith has moved to center and will see plenty of playing time behind Hampton.

Other returners include Anna Van, Maria Wise and Linn Henley. Henley, who is co-captain with Hampton, is injured and will not return until at least January.

Rounding out the roster are freshmen Carla Bishop and Dana Daniels, transfer Becky Smatana and walk-on Peggy Hall, giving the Devils more depth in numbers than in years past.

The schedule figures to be tough, as the Devils will face a brutal conference slate which includes defending national champions and top-ranked USC, No. 6 Long Beach State, as well as San Diego State and UCLA, both of which broke into the top 20.

**SUN DEVIL HAIRCUTTERS**  
"Pride of the Sun Devils"

**FALL SPECIAL**

**\$5.00 OFF** Shampoo, Conditioning, Precision Cut, Blow Dry

Men & Women (Reg. \$13)

Perm Special / \$10 OFF

Good only at

**130 E. University** (In the Arches) Refler Specialists

966-5462

Hours: Mon.-Fri. 9-6, Sat. 9-5

Expires 12-16-83

**SERVING ASU SINCE 1964**

# Students Can Now Qualify For a MasterCard.

### Qualifying for a MasterCard will never be this easy for you again.



#### IT'S EASY TO GET STARTED.

This is but a sample of what is available to you when you carry a MasterCard. There is much, much more, and it's completely described in our Credit Card Service Guide you will receive - and it's all yours for just \$30. And you take NO RISK; you're protected by First National's Unconditional Guarantee: if you should fail to get a MasterCard after following the simple step-by-step instructions, you will receive a full refund.

#### THERE'S NO BETTER TIME THAN RIGHT NOW TO APPLY.

So if you'd like to take advantage of these special relaxed requirements to get a MasterCard - take a moment right now to fill out the coupon and mail it to First National along with your payment. This could prove to be the most rewarding investment you will make this year... and for many years to come!

*Special Note: Because of constantly changing credit conditions and bank policies, we are unable to know how long this special program will continue to be in effect. Therefore, we urge you not to delay. To ensure that you get your MasterCard, please reply promptly.*

..... **MAIL NO-RISK COUPON TODAY** .....

• First National Bancard, P.O. Box 20785, San Jose, Ca. 95160 •

• Yes! I want to take advantage of the special relaxed requirements that enable students to qualify for a MasterCard. The MasterCard offered in this special program is the same one that is honored by 3 million businesses around the world, and is good for shopping, dining, traveling, and Cash Advances. I am enclosing \$30 with the understanding that I am also protected by First National's Unconditional Guarantee: if I fail to get a MasterCard after following the simple step-by-step instructions outlined in the Credit Card Service Guide, I will receive a prompt and full refund. •

• Print Name \_\_\_\_\_

• Address \_\_\_\_\_

• City \_\_\_\_\_ State \_\_\_\_\_ Zip \_\_\_\_\_

• School \_\_\_\_\_

• Phone ( ) \_\_\_\_\_ Best time to call \_\_\_\_\_

..... **Az St 1** .....

**hillel at arizona state university**

INVITE YOU TO A **PARTY** AT

**TIMOTHY O'TOOL'S**  
1123 S. Rural Rd.  
North of Apache on Rural Rd. in Tempe

**SUNDAY, NOVEMBER 6 • 7 P.M.**

HAPPY HOUR PRICES WILL BE IN EFFECT FROM 7-9:30 ON WELL DRINKS.

**BY INVITATION ONLY**

You can get an invitation by calling  
**Hillel • 967-7563**  
Jewish Student Center

State liquor law requires proper I.D. be shown.

#### ENJOY THE CONVENIENCE, SECURITY, AND PRESTIGE OF A MASTERCARD.

But why do you need a MasterCard now? Here are just a few of the reasons why:

**ESTABLISH YOUR CREDIT HISTORY.** The special relaxed requirements make this the easiest, fastest, and most certain way for you to establish your credit history. In addition, a MasterCard is the perfect credit reference to get credit with merchants and department stores for T.V.'s, furniture, clothes, sporting goods, major appliances, and auto loans. So you are now able to build an excellent credit rating starting from scratch.

**SHOPPING AND TRAVEL CONVENIENCE.** With a MasterCard, you have charge privileges at more than 3 million places around the world. So you can travel, dine, or shop for things like a new stereo without carrying cash or having to worry about getting your check cashed where they don't know you. Or you can order mail-order gifts... reserve a hotel or motel room... send flowers... even reserve tickets to concerts, sporting events, and shows of all types.

**HELP IN AN EMERGENCY.** Charge gas, car repairs, and servicing... at home or while traveling. For medical bills, MasterCard is accepted by physicians, dentists, optometrists, hospitals, pharmacies, and veterinarians.

**CHECK-CASHING CONVENIENCE.** A MasterCard is the perfect I.D. to help you get your check cashed where they don't know you. Or get a Cash Advance at more than 100,000 Banking Institutions around the world.

**CHOOSE YOUR OWN PAYMENT PLAN.** You can pay the full amount of your bill at the end of the month, or if you prefer, you can extend your payments over 36 months on a revolving charge plan. Either way, you have the flexibility that only a credit card can offer.

**HAVE YOU GOT A CASE OF THE "WANNAS?"**

- Wanna ...
- buy something
- sell something
- rent something
- send a message
- make an announcement

**THE ONE SURE CURE FOR THE "WANNAS" ... STATE PRESS WANNADS\***

Visit Room 15 Matthews Center or call 965-7572 (You can be billed)

\*Americaneese for Want Ads or Classified

**Announcements**

**ATTENTION FRATERNITIES:** Earn money through contests. 969-6999, Tim.

**BUDDHIST MEDITATION:** Free introductory lecture, Wednesday, November 2, 6 week course follows. For info, 978-3659 or 898-9328.

**FRIENDS MEETING!** (Quaker Service.) 9:30 a.m. Sundays, Danforth Chapel, ASU. Silent worship - Fellowship. (966-5638.)

**GAY AND Christian?** Try Lambda Campus Christian Fellowship! Yes! Jesus loves you! Call 265-1102 anytime!

**HANG GLIDE** this weekend! Certified instruction, equipment plus five flights for only \$45, complete. Group rates and gift certificates available. Windsports, 897-7121 (daily 10:00-6:00).

**classifieds**

The STATE PRESS disclaims all responsibility for quality and prices of goods and services offered in both classified and display advertising by its advertisers.

**Automobiles**

1979 FORD RANCHERO, new interior / tires, AM/FM, eight track and air. 965-9786 after 5 p.m.

\$200 DOWN, Chevrolets, Fords, trucks, vans, small cars. Fine cars, lowest prices, honest dealing. L.J.'s, 156 E. Main, 962-1333.

\$400 CASH, 1972 Capri. Excellent running and needs minor repair. L.J.'s, 156 E. Main, 962-1333.

\$800 DOWN, 1977 Cutlass. Beautiful car with all the equipment. Steal price this week \$1200 plus tax and license. We carry contracts with no finance charge. L.J.'s, 156 E. Main, 962-1333.

"70" FIAT Spyder, fair body, good interior, runs well. Best offer over \$750. Call Lee, 968-5884.

**Bicycles**

SPECIAL LOW student prices on new and used bicycles. Expert repairs on all makes at discount prices. Tempe Bicycle Shop, 6th and Mill. 966-6898.

**Books**

DO-IT DATEBOOK. \$9.95 ASU book store, student book center.

**Business Opp.**

AMBITIOUS BUSINESS majors preferred. Pre-paid Legal Services Incorporated looking for hard working individuals with some marketing knowledge. Call 966-6008 for appointment.

**Clothing**

VINTAGE CLOTHING for women! Hats, purses, shoes and a large selection of jewelry. Clothing for every day to the exotic. Contemporary and antique items. The Freeway to Alma School Road on the corner of Alma School and Ray Road in Basha's Shopping Center, Chandler. Worth the trip. Rethreads, 963-8387.

**For Rent or Lease**

LUXURY CONDO, two bedroom, two bath, two miles from ASU. Two pools, three tennis courts. All appliances including washer, dryer. \$450 monthly. Available mid November. Call Jeff, 954-9588 or 962-5383.

RENT / FEMALE, private room and bath. Pool, jacuzzi, recreation room, quiet. 1 1/2 miles ASU, 247-7444.

TWO BEDROOM townhouse at the Lakes, unfurnished. Includes washer, dryer, dishwasher and refrigerator. Also includes all clubhouse facilities. \$450 per month, 897-2858.

**For Sale**

12 x 60 WHITTIER, adult Tempe park. Two bedroom, 1 1/2 baths, fully wired 6 x 8 shed, bright, clean home. All Star, 984-1254 or Rory, 894-0519.

BUMPER POOL table, very solid, good condition. Must sell. \$75 or best offer. Call G. 965-0070 between 12 p.m. and 6 p.m.

FIX UP in Tempe park. Two bedroom, 1 1/2 baths, 12 x 64, small pets allowed, some furniture, \$7,900 OBO. All Star, 984-1254 or Rory, 894-0519.

MATCHING GIBSON front loading washer and dryer, \$500 set, \$300 each. Both are electric. Freezer, \$150. All are in excellent condition. I also am accepting offers for a friend on his Harley. Call Roberta, 945-1689.

MOBILE HOME: 14 x 64, three bedroom, 2 1/2 baths, 4605 S. Priest, washer, dryer. Call Joyce, 897-0780.

STORAGE ROOM sale, also Irish Setter, male, for good home, gentle, well mannered, good security. Keep trying anytime, 247-7444.

TEMPE FAMILY park. 10 x 50 Liberty. Spacious kitchen, raised ceiling, washer and furniture included. \$6,700. All Star, 984-1254 or Rory, 894-0519.

**For Sale**

THE NEW York Times is available at a 30% discount Monday thru Friday. Sunday edition available for \$2.50. Call 965-9832.

**Furniture**

ATTENTION ASU students, come visit Arizona Sleep Shops grand opening in Mesa. Southern and Country Club. 833-0933.

COMPLETE TRUNDLE bed, with innerspring mattress, \$169.00. Arizona Sleep Shops. 833-0933.

FIVE DRAWER chest, only \$29.95. Arizona Sleep Shops, 1328 South Country Club. 833-0933.

FIVE PIECE bedroom set: Dresser, mirror, nightstand, headboard, chest, \$189. Matching desk, \$49. Arizona Sleep Shops, 1328 South Country Club. 833-0933.

FOR SALE: Single bed, like new, \$95. Call 966-2024 after 4:00 p.m.

LIVINGROOM SPECIAL: Sofa, loveseat, coffee table, two end tables, two lamps. \$279. Arizona Sleep Shops, 1328 South Country Club. 833-0933.

SCOTTSDALE USED Furniture, 2200 N. Scottsdale Road in Scottsdale Plaza (behind Kwan's), 949-0380. Beds, bookcases, desks.

THREE PIECE wall units, \$179. Bookshelves, \$35. Lamps, \$10. Twin beds, \$59. Doubles, \$69. Arizona Sleep Shops, 833-0933.

**Help Wanted**

ATTENTION PART-TIME: If you are looking for a part-time job that pays as well as a full-time job, you've found it. Earn up to \$7 per hour. We're looking for people to work Monday through Friday, 3:30 to 8:30, in our public relations department. We're located in Central Phoenix. For an interview call after 11:00 a.m. Ask for Jeff 258-7054.

BREAK AWAY big for the holidays. Represent the worlds largest beauty company. Call Jane, 968-9327.

DOC'S B.R. Others Restaurant, greatest hamburgers on Earth, is accepting applications for grill cooks, bakers, cashiers, ice cream makers, meat cutters, bartenders, bus boys and shift supervisors. Salary commensurate with experience. Apply in person between 9 a.m. and 3 p.m. M-F at 1016 E. Baseline, Tempe, next to Penney's.

EARN EXTRA money. Set your own hours fund raising. For information call 965-5020 or 898-3786.

JANITOR SUPPLY and sanitary chemical salesman for local territory. Drawing account, expenses and profit sharing with field training. Territory available immediately. Must have chemical and janitor supply sales experience. Permanent position. Crain Chemical Company, POB 20973, Dallas, TX 75220, phone 214/358-3301.

JOURNALISM STUDENTS: Doc's B.R. Others Restaurant, greatest hamburgers on Earth, needs freelance writers and photographers to produce features for its monthly in-house newspaper. Will pay \$10 for each article used. Contact Steve Koppes at B.R. Others, 897-2862, between 9 a.m. and 3 p.m. for information.

NEEDED: TUTOR for SOC 390. Fee negotiable. Denise, 967-4255.

**Help Wanted**

NEEDED, WAREHOUSE delivery man, 30 hours a week. Godber's Gifts, 965-0909. Call between 9 a.m. and 5 p.m.

NEED EXTRA income? Earn \$8.00 to \$10.00 per hour by telephone. Work own hours, will train. ASU close. 967-0212.

OPINION POLL, friendly person who enjoys phone work. Permanent part-time, evenings, Sundays. 274-6200, Melody.

PART-TIME DELIVERY driver, mornings, apply in person at Commercial Blueprint, 114 E. 7th St., Tempe.

PART-TIME EXPERIENCED telephone solicitors, \$4 per hour, plus bonus. Call Susan at Conti Commodity, 947-6900.

PIZZA MAKER. Two years experience making pizzas by hand. Tony's Italian Food, 967-2941.

SHIPPER NEEDED to pack boxes to be sent out UPS or PP. Full time, 9-5, \$5 per hour, in Phoenix, 258-0132.

**Instruction**

WANTED: TUTOR for MET 381, heat trans. thermo dynamics. Call Al, 948-8246.

**Jewelry**

14K GOLD jewelry 50-75% off retail prices! Chains, earrings, rings, diamonds. Going out of business sale! Joseph Ford Gold Exchange, 968-8637.

**Lost & Found**

LOST YELLOW gold chain bracelet, vicinity of Law parking or Engineering complex. Reward. 965-6586.

REWARD FOR the return of my sky blue briefcase which disappeared from Room 51, Payne Hall, Wednesday, October 26th around 8:00 p.m. In it are all of my notes and papers for this semester plus two important text books. Please return. No questions asked. 832-0167.

**Motorcycles**

1983 YAMAHA RIVA Scooter, only 2,100 miles. 835-6587, after 6:00 p.m.

CLASSIC WHITE 1983 Honda 305 "Dream". Rebuilt engine. New tires. Looks very good, runs great. \$350 firm. 894-1928.

**Help Wanted**

**R.N.'s**

**BROADEN CAREER HORIZONS**

Nurses needed for new Substance Abuse Center in Mesa. No FA experience required... will train. Full-time and part-time R.N.'s for nights. N.A.'s, part-time for weekend nights.

898-3342 SUMMIT PLACE 11/4

**MAKE \$10-\$30 HOURLY. FULL- OR PART-TIME.**

Doing surveys, servicing displays and selling memberships for health spas. Easy, profitable and fun.

ALSO POSITIONS OPEN FOR: AEROBIC INSTRUCTORS - PHOTO MODELS, SPA ATTENDANTS AND OFFICE WORK.

East Phoenix: 956-2200 Tempe: 894-1263

An equal opportunity employer. 11/8

**HELP WANTED: PART-TIME EVENINGS**

National Marketing Company has openings for sales-minded people interested in part-time employment. Openings are available on the evening and weekend shifts. Our sales people work in a modern, comfortable business environment contacting established customers on long distance WATS lines. Earnings, which include salary and bonus, average \$4-\$6 per hour, paid weekly. These are permanent positions with no seasonal layoffs. If you have a good, clear speaking voice, proper grooming for a business office, enthusiasm and competitive spirit, our business office management team will train you to sell our nationally recognized products (while being paid, of course). Our Tempe office is located approximately five minutes from campus.

Please call DIALAMERICA for details. 829-1140 11/23

**STEREO**

BRAND NEW, never been used. In unopened original individual cartons. AM/FM stereo receiver, cassette deck plays and records, turntable, speakers. Full original guarantee. Cost \$400, sacrifice \$140. Usually home.

CALL 954-9541. 11/4

**Personal**

ATTENTION SCOTTSDALE! Seeking blonde, red sweater, white car. Lost you near Los Arcos Mall, Saturday nite. Contact Frank, nice shirt, red Camaro, 968-7624.

HYPNOSIS: DEVELOP self confidence, get rid of stress and tension, improve memory and concentration, stop smoking or lose weight. Lindsay Brady, Certified Hypnotist, 966-8571.

**Real Estate**

MOBILE HOME for sale. Two miles from ASU. Adult park, swimming pool, jacuzzi, 14 x 65. 1820 W. University, Space 3, 894-0396.

**Roommate wanted**

BEAUTIFUL HOME! Female roommate, responsible, mellow. Furnished, first quality extras. West Mesa, \$150 plus 1/2 utilities. 841-6472 or 964-8053 after 8 p.m.

FEMALE, NONSMOKER, share lovely apartment at Sunscape. Private bedroom and bath. Pool and jacuzzi. Call Kelly, 954-6931 days, 946-4930 evenings.

MALE ROOMMATE wanted. \$192 month includes utilities, pool, laundry, furnished, close to campus. 967-6964 after 5:00.

MALE ROOMMATE needed. Own room in three room apartment. Close to campus. Sixth and Forest. Call Rich, 967-4077.

ROOMMATE WANTED: Three bedroom, two bath house. Laundry, pool. \$165 plus utilities. Call 947-0140, evenings

SHARE LARGE house with two students. Includes extras. Master bedroom, \$225; other bedrooms \$175. Close to campus. 820-1575.

**Services**

ADVANCED WORD Processing Center: Offers the most advanced word processing applications (not just a home computer). Prices competitive or better than typing services, free pick-up, and document storage. Excellent background and skills enable me to proficiently complete your legal brief, cover letters (as low as 45 cents each), research paper, theses, group project, etc. Profit from these advantages, call 829-2314.

ALPHA RESUME. Full services discount with ad. 1000 E. Apache, Suite 105, Tempe. 967-7247.

AUTO AND life insurance at low competitive rates, student discounts available. Be sure to ask for Steve Dabbs at 966-0222, 966-3494.

COLOR DRAPE analysis and face design by Judy. 839-0401.

HAVE UNWANTED facial or body hair removed permanently by electrolysis. Free consultation. Located in Tempe. Call Sharon, Desert Electrolysis Center 839-1885. Student discount.

SAVE TUITION dollars, residency counseling cuts red tape, no fee until residency is granted. 966-8085.

**Travel**

CHINA - HONGKONG - Japan; 22 days, Dr. Roger Axford, 839-3255, July 15 - August 8, 1984, \$2995.

DRIVE CARS free to most points of the United States, over 21. Scheall Driveaway, 991-5533.

FREE CARS available for all major cities. Call us now, AAACon Auto Transport, 284-0201.

WANTED: THREE good drivers. Split driving and gas to Cleveland, Ohio. Leave November 17, back at ASU November 27. Call Michael, 965-0871 if interested.

**Typing**

\$1.00 PAGE typing. Pickup and delivery on-campus. Knowledge all format styles. 20 years experience. Susan 962-1201; Debbie 963-3122. Call evenings.

\$1.50 / page. 10% cash discount, rush service available, papers, resumes, technical symbols. Business Office Services 894-1517.

A-1 EXCELLENT Typing. Highest quality. Term papers, theses, resumes, etc. IBM Electronic. Call Linda, 899-7562.

A-1 PROFICIENT typist, IBM Selectric. Pam, 969-2098.

A-1 PROFICIENT typist IBM Selectric, Loraine 833-8365, University and Dobson in Mesa.

**Typing**

A-1 TYPING, IBM Correcting Selectric II. Excellent rates starting at .75 page straight copy. Julie, 965-6563 (days), 946-1354 (evenings).

AAAAH, FORMER secretary desires all types of typing. Location Southern and Rural. Fran, 838-8027.

AAA TYPING, editing, resumes, papers, letters. Twenty years experience. Scottsdale - Tempe. 945-7430, Barbara Andersen.

ACADEMIC TYPING. Will edit spelling, punctuation, grammar. Fast return and accuracy guaranteed. Joan 839-0772.

ACADEMIC EXPERTISE, utilizing word processing, providing outstanding quality and accuracy. Specializing in dissertations, theses. Precision Typing. 838-1327.

ACCURATE TYPING all kinds, reasonable rates, excellent service. Agnes Lindstrom 838-5656.

ACCURATE TYPING, downtown near Fifth on Mill. Quick, quality typing, graphics. Call 24 hours. 941-7099, 894-5234.

ACCURATE - ACCOMMODATING. Typing. Term papers, theses. Why Worry Business Services, North Central Phoenix, 943-3552.

ALL PAPERS typed to your complete satisfaction. IBM Selectric. Near ASU. Reasonable. Mrs. Oakley, 967-0802.

ALL SECRETARIAL services. Quality typing, fast, accurate. Resumes. Cover letters. IBM Electronic. 20 years experience. McKellips - Scottsdale roads. Dana. 941-5111.

ALL TYPING done fast and accurate. .90 a page. Word processing available. Close to ASU. Call Carin or Bobbi 968-9166.

ALWAYS AVAILABLE for typing at \$1.25 per page. Call Susan at 833-0373.

ALWAYS DEPENDABLE, typing editing, term papers, books, dissertations, resumes. Excellent skills. Shirley's Typing Service 838-5099.

A-PLUS Typing. Term Papers, Resumes, securities and finance papers a specialty. Papers completed on Electronic memorywriter. Call Judy 839-0401.

FAST, ACCURATE typing, \$1.25/page. Call Teresa at 962-0079 or Linda at 969-5775, elite typing available.

FORMER LEGAL secretary will type papers, over night if necessary. \$1.00 page. Satisfaction guaranteed. 267-7628.

JOH-REE SERVICES. Typing, word processing, term papers, reports, resumes, letters. \$1.00 double spaced page. Call Marie anytime, 966-4786.

PROFESSIONAL TYPING. Excellent spelling and grammar. IBM Selectric. Pickup and delivery. Call Jaine 948-4647.

PROFESSIONAL TYPING. IBM Correcting Selectric, accurate spelling, punctuation, quality work guaranteed. (Elloit/Alma School roads) Joyce 838-1480.

STUDENT DISCOUNT for fast, accurate, high quality typing. Will edit grammar, punctuation, spelling. Christina 839-1082.

TERM PAPERS; resumes, charts, etc. Editing done. 832-7273.

TYPING \$1.75 per page, editing extra. Carolyn, 838-0959.

TYPING SERVICE. Experienced secretary types reports, letters, resumes, etc. Fees below current rates. 992-1465 evenings.

TYPING THESES, dissertations, term papers, etc. Eight years experience. Accurate fast service, spelling corrected. 949-9207.

WORD PROCESSING for college theses, reports, and resumes in Paradise Valley area. 996-2780.

WORD PROCESSING. Knowledge of APA and Turabian reference styles \$1 double spaced page. Accurate. 263-5776.

**Wanted**

ASU - UofA football tickets for November 26, 1983 game. Call Marty, 831-9603.

NEED MONEY? Paying top dollar for gold jewelry; diamonds, class rings, pocket watches, and silver coins. Free in home estimates. Call anytime, Joe 968-8637.

PAYING CASH for gold, silver, diamonds, class rings. Mill Avenue Jewelers, 414 S. Mill. 968-5967.

THREE UNIVERSITY of Arizona football tickets. Non-student will pay best price! Bruce Larsen, 946-5437.

**PIZZA**  
TASTE & COMPARE

Slice  Cheese  
and  
Med. Soft Drink or  
10-oz. Coors or Bud  
**99¢**  
Daily Mon.-Fri. 2-5 p.m.

**The Joynt**  
606 S. Mill Ave.  
967-7926

**Are You Guilty of neglecting your hair and nails?**



**Terry Brubaker**  
Hair & Nail Designer

Terry can give your hair those new sheer transparent colors or a super natural spicing.

Come in and see Terry for all your nail care needs, too.

Jazzing Colors **Now \$10**  
Reg. \$18.75

Shampoo, hair cut and blowdry **Now \$12**  
Reg. \$18

Sculpture Nails **Now \$25**  
Reg. \$45

**ANY HAIR**  
225 W. University  
Suite 113, Tempe  
(1/2 mile west of Mill)  
**829-8483**  
Hours: 8 a.m.-9 p.m.

# WEEKLY SAVERS



**OPEN 24 HOURS**  
MONDAY - FRIDAY CLOSES SATURDAY 11 p.m.  
REOPENS SUNDAY 9 a.m.  
PHARMACY HOURS  
MONDAY - SATURDAY 8 a.m. - 9 p.m.  
SUNDAY 10 a.m. - 8 p.m.

**SALE BEGINS WED., NOV. 2**  
**PRICES GOOD THRU SATURDAY, NOV. 5**  
**COME IN TODAY!** Offers good at this location only.

Visit your new Drugstore/  
Food Mart at  
**HUNTINGTON SQUARE**  
3201 SOUTH MILL AVENUE  
At Southern Ave. • Tempe  
PHONE 894-6747

**PLANTERS SNACKS**  
Assorted flavors

**79¢**

**G.E. LIGHT BULBS**  
4-Pk.  
60-75-100

**1.79**

**GRADE AA LARGE EGGS**  
1 dozen  
We limit quantities

**79¢**

**BIG-K COLA**  
Asst. flavors  
2 liter

**59¢**

**GRAND AWARD CHRISTMAS CARDS BOXED**

**50%**

**ENVELOPES 2 for 1.00**

**DOVE DISH DETERGENT**  
23 oz.

**99¢**

**TEXACO ANTI-FREEZE COOLANT**  
1 Gallon

**2.99**

**SUPER-X SANDWICH BAGS**  
150 ct.  
Fold & Close Tops

**69¢**

**PHOTO FRAMES**  
Goldtone with non-glare glass;  
3 1/2"x5", 5"x7", or 8"x10".

**59¢**

**MR. COFFEE FILTERS**  
Box of 100

**59¢**

**SUPER-X FABRIC SOFTENER**  
Sheets for the dryer

**1.19**

## PLUS: THESE SPECIAL DEPARTMENTS

**SNACK BAR**  
•HOT & COLD DRINKS •SANDWICHES  
•MICROWAVE OVEN TO USE

Small Coffee & Danish only **49¢**

Small Hot Chocolate only **29¢**

**BEER, WINE & LIQUOR CENTER**  
•COLD BEER •DINNER & DESSERT WINES •VODKA •WHISKEY  
•SCOTCH •AND MORE

**CALIFORNIA COOLER**  
4-pk. **2.99**

**BUDWEISER BEER**  
**7.99/ Case**

**SNACKS & BAKED GOODS**  
•Chips •Cookies  
•Pastries •Candies  
•Cake

**NATURAL HEARTH BREAD**  
24 oz. **73¢**

**SATHER COOKIES**  
5 1/2-7 oz. **2 for \$1**

**FROZEN & DAIRY**  
•Dinners  
•Desserts  
•Ice Cream  
•Fresh Milk

**CARNATION ICE CREAM**  
1/2 Gal. **1.39**

**BANQUET FRIED CHICKEN**  
2 lb. box **2.59**

90

By M. Staff v.  
A c  
lently  
year  
has r  
studen  
ficials  
Paul  
assist  
cover  
appli  
them  
plicat  
He s  
with  
studen  
Educa  
"Ou  
and v  
"Whe  
we w  
author  
Las  
report  
and p  
fraud

M

By Ro  
Staff v.  
Com  
ing no  
promp  
preach  
Studen  
"We  
the ma  
Shel  
ped a  
cause  
"We  
this; v  
areas  
Ann  
said t  
studen  
last fe  
"I d  
Boles  
ing ac  
Boles  
clearl  
"W  
near V  
Stu  
the fre  
Boles  
Will  
develo  
on the  
Cab  
they'r  
mall,  
Alth  
lawn  
camp  
"Ob  
they'v  
evang  
Sno  
have b  
not ha  
He  
whate  
minist  
As f  
"We p  
Hall a  
Sno  
that t  
have a  
He s  
in the