

tuesday

November 1, 1983

state  
press

Tempe, Arizona

Vol. 66 No. 41

Arizona State University

© Copyright, State Press, 1983

## Student refuses bike citation; charged with resisting arrest

By Sandy Sisteck  
Staff writer

An ASU student was arrested and charged with violating a traffic sign and resisting arrest early Monday after she refused to accept a citation and then struggled with officers, University Police said.

Police said Mary Elizabeth Kibler, 32, of 2108 S. Rural Road, was arrested on Cady Mall after she refused to accept a citation for riding her bicycle along the mall, then refused to produce identification.

Kibler then declined to cooperate with officers who attempted to take her into custody, police said. She was later released on her own recognizance.

Kibler initially could not be handcuffed because she would not stay still, police said.

They said Kibler tried to fight the arresting officers, and after resisting, was forced to the ground, where the officers placed her hands behind her back and handcuffed her.

ASU Police Officer Claressia Hall had

observed Kibler riding her bicycle on Cady Mall, and stopped Kibler after calling for her to stop twice, police said.

Police said Kibler told Hall that she was going to Hayden Library to get a paper signed and was not going to accept a ticket. Hall asked Kibler several times to present some identification, but she told Hall that she did not have to give her name or social security number, police said.

They said Hall called the police dispatch for a backup after Kibler said she was leaving. Hall had taken hold of her handlebars to keep her there, police said.

Sgt. Larry Angel and Officer Bruce Thornhill arrived on the scene, and when Kibler resisted their attempts and again said she was leaving, Thornhill placed her under arrest.

Police said that further investigation revealed Kibler was wanted on an outstanding traffic warrant under her maiden name from another police jurisdiction.

## Tempe takes over parking lot next to Greyhound bus station

By Mike Rynearson  
Staff writer

The City of Tempe, through a nine-month land lease, has assumed control of a privately owned dirt parking lot used primarily by ASU commuter students because of a need for additional Tempe employee parking, according to a city official.

Bill Peterson, director of public works, said the parking lot, located west of and adjacent to the Greyhound Bus Terminal on College Avenue and Fifth Street, was utilized by students because parking decals weren't required, its use was free and it was close to the north end of campus.

The lot was leased from its two private owners and will no longer be open for students during day-time peak hours until the lease expires.

Peterson said the lot, which will be graded and covered with temporary asphaltic emulsion, will be open exclusively to Tempe employees from 6 a.m. to 7:30 p.m. during weekdays.

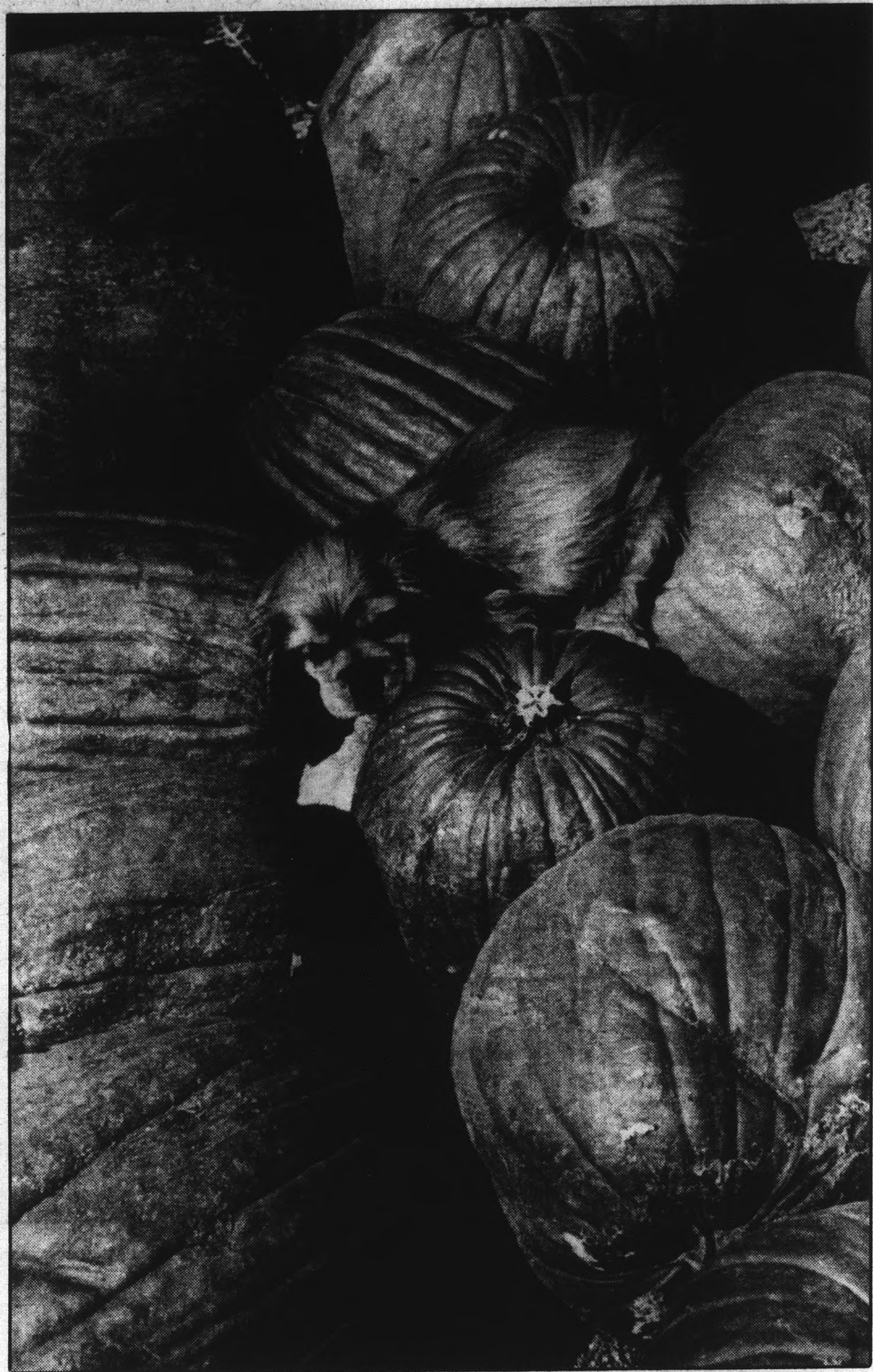
During weekends and other off-peak hours, the lot will revert back to open parking. On football nights, however, the principal owner, Phoenix lawyer Richard Raskin, will charge for game parking.

Peterson said the lot was needed for additional city employee parking because a new Tempe Police Department building is going to be constructed at the site of the present police station at 120 E. Fifth St. He added that the adjoining parking lot, where employees presently park, is going to be consumed by the construction.

Upon the completion of the new police facility, which will include a parking ramp, the land lease will revert back to its owners, according to Peterson.

Peterson said Raskin has long-term plans for the use of the land and believes Raskin will begin building some kind of structure on the site within a year after the lease expires. Peterson said he is not certain what type of building Raskin would build and for what purpose he would use it.

Raskin could not be reached for comment.



Staff photo by David Petkiewicz

### Pumpkin pup

Sprite, a nine-week-old cocker spaniel, carefully inspects the pumpkins at a local dealer as he searches for "The Great Pumpkin." Sprite was brought by Theresa Fedel, an ASU student, to help find a pumpkin.

## Program of study requirement deferred a semester

By Lisa Phillips  
Staff writer

A high level of non-compliance with a new University policy requiring students with 87 credit hours to complete a program of study form prior to registration has led administrators to postpone the program until next semester.

Ron Winterhof, associate registrar, said the Registration Advisory Committee, along with the colleges, determined that a "high number of students had not complied" with the policy.

Winterhof said the exact number of students failing to complete their programs of study had not been determined. He would not speculate on why students had not complied.

Vice President for Academic Affairs Jack Kinsinger issued a memorandum to each academic department last week informing them that it would be necessary to postpone the program until next semester.

Kinsinger said the colleges were having difficulty processing the program of study forms in time for registration. The deadline for completion of the program of study for students who wished to pre-register was Oct. 14.

"We've had to put it on hold because the colleges couldn't handle it," Kinsinger said. "It is a very time consuming pro-

cedure."

However, Sue Blumer, assistant director for student services in the College of Public Programs, said she does not believe the processing delays occurred in the colleges.

She said a large number of students completing their pro-

**'This semester's process involved three to four times the usual number because all students with 87 hours were completing their forms at once.'**

gram of study near the cutoff date had made it impossible for the registrar to process all the forms in time for pre-registration.

Winterhof, who said he did not believe the registrar's office

was having problems processing the forms, said the program should run more smoothly next semester.

He said this semester's process involved three or four times the usual number of students because all students with 87 hours or more were completing their forms at once.

The number of students required to complete the program of study forms will level off after several semesters, Winterhof said.

"We have a very good start on (the program), and we'll be that much more ahead next time," he said. "I think everyone did a good job."

Kinsinger said the program should be easy to maintain once it is re-implemented and becomes familiar within the University.

Winterhof said students who have already completed a program of study form are at an advantage because they are "better informed" than a student who didn't complete it.

"Many students have their program of study, and that should help them," he said. "It tells them exactly what they will need to do to graduate."

Winterhof said the best way to encourage better compliance next semester would be to contact the students and make them aware of the procedure on a regular basis.

# nation/world

state  
press

## Peronist Party defeated in election

BUENOS AIRES, Argentina (AP) — Raul Alfonsin and his left-of-center Radical Civic Union on Monday won Argentina's first general elections in a decade, to replace the military government. It was a stunning defeat for the Peronist Party which has dominated national politics for nearly 40 years.

The military government that has ruled since a 1976 coup said Alfonsin and vice presidential running mate Victor Martinez, both attorneys, had received 7.43 million of the more than 14 million ballots cast in Sunday's elections — good for 318 votes in the electoral college. The college will meet Nov. 30 to ratify the results.

The government says the new leadership will take over by January 1984, but could move up the date.

## Tire fire could burn until 1984

WINCHESTER, Va. (AP) — A mound of 7 million used tires covering five acres caught fire Monday, sending up a mushroom-shaped cloud of oily black smoke that drifted over three states. Officials said it could burn into 1984.

The cloud climbed almost one mile high and spread over a corner of Virginia and the panhandles of West Virginia and Maryland.

"It could be out of control for several days and may even burn to the first of the year," said Tyree Cather, an assistant fire chief in Frederick County.

No injuries were reported and no one had to be evacuated, Cather said.

"As far as the people downwind right now, we don't believe they're in any danger," said Cory Gabrielsen, an official with the state Office of Emergency and Energy Services.

But the elderly and people with chronic health problems were warned to avoid the smoke if possible.

## All 'non-essential' Marines to return to warships

BEIRUT, Lebanon (AP) — All "non-essential" staff from the Marine contingent in Beirut will move to U.S. warships offshore because of the Oct. 23 terrorist bombing at the airport, Maj. Robert Jordan said Monday.

In announcing the new security measure, the Marine spokesman also said the latest casualty toll from the truck-bomb that destroyed a Marine installation at the airport is "over 230 dead, over 70 wounded." He said search operations were nearly complete.

"We're fairly confident we've got just about everybody," Jordan said. One or two bodies may still be in the rubble of what had been the four-story headquarters of the Marine Battalion Landing Team, he said, "but indications are we've found everybody we're going to find."

A simultaneous bombing at the headquarters of French forces killed at least 58 soldiers. The French and Americans are part of a multinational force deployed in Beirut for more than a year at the government's request to help keep the peace in Lebanon, wracked by years of civil war.

The Reagan administration has accused Iranian-backed terrorists of engineering the double blast and has vowed unspecified retaliation. Iran denies involvement. Lebanese police say they have no clues about the identity of the terrorists and have made no arrests.

## CORRECTION POLICY

It is the policy of the *State Press* to acknowledge and correct errors when they occur. If you see an error, call our newsroom at 965-2292 to let us know. All corrections will appear on this page.



UNIVERSITY  
GOLF  
Executive Golf Course  
Night Lighted Golf Driving  
Range & Pro Shop  
Miniature Golf

2 Can Play Goony Golf  
For The Low Price of 1

with coupon

2200 E. University  
Tempe

Good through  
Dec. 31, 1983.

968-3245



LITTLE  
KING

"Where a sandwich is a complete meal"

PROUDLY ANNOUNCES ITS  
BUY ONE, GET  
ONE FREE OFFER

Present this coupon when ordering at a Little King Restaurant and when you purchase a king-size sandwich you will receive a regular size sandwich absolutely FREE.

We Serve COCA-COLA Corner Southern & McClintock  
1726 E. Southern, Tempe • 897-1810



**Fantasy Shirts**  
P.O. Box 92531-K  
Rochester, NY  
14692  
315-789-7997

Write for free catalog

Colors: lt. blue, tan, gold  
Sizes: S-M-L-XL  
Price: \*6 & \*1 postage

Write or call for details on custom orders and bulk rates



**Affordable Cleaners**

**ASU SPECIAL**

ANY GARMENT **89¢** ea.  
Dry Cleaned & Pressed No limit

Excluding suede & leather; excluding wedding dresses. Coupon must be presented when garments are brought in.

**847 W. University**  
(SE Corner of Univ. & Hardy)

(EXPIRES 12-1-83.)

**Parachute into Paris Blues**



**HOBIE HOUSE**

Tempe  
37 E. Broadway  
(Broadway & Mill) 968-6676

Phoenix's only authorized  
Windsurf, Laser and  
Hobie Cat dealer.

Makeup and hair by  
The Lion's Den



**ANY HAIR** Curls & Waves  
**\$45 & up**

**ANY HAIR** Curl Retouch  
**\$30**

**ANY HAIR** Relaxer Perm  
**\$20**

**ANY HAIR** Press & Curl  
**\$15**


**ANY Style** Cut  
**\$7 & up**

**ANY HAIR** Color  
**\$18 & up**

**ANY HAIR INC.**  
225 W. University  
Suite 113, Tempe  
(1/4 mile west of Mill)  
**829-8483**  
Hours: 8 a.m.-9 p.m.

**DOMINO'S PIZZA DELIVERS™ FREE.**


**\$1.50** \$1.50 OFF any 16" extra large 3 or more item pizza.  
One coupon per pizza.  
Expires: 11/30/83



Fast, Free Delivery™  
903 S. Rural  
Phone: 968-5555

SP-2

**\$1.00** \$1.00 OFF any 12" med. 3 or more item pizza.  
One coupon per pizza.  
Expires: 11/30/83



Fast, Free Delivery™  
903 S. Rural  
Phone: 968-5555


SP-2

The best custom-made pizza is hot, fresh, has real dairy cheese, an assortment of carefully selected toppings on a perfect gold crust...and is delivered to you in thirty minutes or less. Call us.

**968-5555**  
903 S. Rural

**HOURS:**  
11:00am-1:30am Sun.-Thurs.  
11:00am-2:30am Fri. & Sat.

Our drivers carry less than \$20.00.  
Limited delivery area.  
©1983 Domino's Pizza, Inc.



# Senate to consider proposal for attracting more teachers into computer science field

By Deanne Hutchison  
Staff writer

The explosive growth of the computing field has precipitated a need for doctorates in computer science, and a proposal to establish such a program at ASU will be considered by the Faculty Senate at its next regular meeting.

According to the chairman of the computer science department, William Lewis, a shortage of faculty in the area of computer science all over the United States has intensified the need for ASU to offer the degree.

"We have a student-teacher ratio of 40 to one in the computer science department," he said. "The average ratio (in other colleges on campus) is about 23 to one."

Lewis said the institution of a doctorate in computer science will attract students to enter the field, resulting in the hiring of additional faculty.

Even though the department will probably find enough faculty to fill its needs, there will be a major attempt to encourage students to apply their degrees to teaching careers, Lewis said.

Simply producing more doctorates in computer science may help satisfy the need for faculty, he said.

But a major reason for the shortage of computer science faculty in the United States is that industries are taking a large share of the doctorate graduates, Lewis said.

A report developed at a meeting of the heads of 83 university computer science departments in the United States and Canada, called "A Discipline in Crisis," showed that the supply of new doctorate graduates covers about 20 percent of the demand for graduates in the work force.

And according to the report, there is no matching growth of university budgets in computer science to attempt to fill the demand.

"In 1980, approximately 265 Ph.D. com-

puter scientists graduated from colleges and universities in the United States," the report said. "More than 170 of the total were absorbed into industry and government, leaving fewer than 100 for academia."

The report also said that unless this trend is reversed, "the country will soon lose its lead in computer technology because enough computer experts cannot be trained and because the basic research to ensure a continuing supply of new concepts for the long-term future cannot be conducted."

One company, Hewlett-Packard, has helped ease the shortage of faculty by offering graduate assistant positions to computer

Simply producing more doctorates in computer science may help satisfy the need for faculty.

science students studying for their doctorates. The company requires that students intend to use their degree to teach computer science, Lewis said.

The new degree program at ASU also will help the department to be eligible for various types of funding which will help build the program, Lewis said.

"The computer science department at ASU is only three years old," Lewis said. "In building the program, we started at the bachelor's level and then the master's level. This (doctorate) is the capstone degree of the three."



"FINEST  
PIZZA  
IN  
TEMPE"

★ TONIGHT AT TONY'S! ★  
★ ONE PENNY 60-oz Pitcher ★  
★ of Beer or Soda with ★  
★ Purchase of Any Large Pizza ★  
(One pitcher per pizza. Tuesdays only. Must bring coupon.)

ALSO IN



75¢ Well Drinks  
All Tuesday Night!!  
Live Entertainment Every Night!!

EVERY WEDNESDAY  
Happy Hour Prices ALL NIGHT!!

107 E. BROADWAY, TEMPE • 967-2941

TUESDAY

IS

25¢ BEER

at the

DEVIL  
H'OUSE



enjoy 25¢ beer  
and your favorite  
rock and roll

430 N SCOTTSDALE RD

state  
press

A free press can of course be good or bad, but, most certainly, without freedom it will never be anything but bad.

—Albert Camus

opinion

## Libel actions a constraint on free speech

Bob Beamesderfer • Staff Writer

The press serves its readers by examining and reporting on the public actions of public officials. For the most part, this service to society is protected by the First Amendment, but there is a growing civil threat from libel actions.

Many editors view the libel threat as a "deterrent to scandal-mongering and other lower forms of journalism," as pointed out in Columbia Journalism Review article on changes in the American Civil Liberties Union's libel policy.

The ACLU once regarded defamatory statements about individuals as having "little relation . . . to the purposes for which freedom of speech is safeguarded. In the absence of an overriding public interest, therefore, the right to sue for libel has not in itself been regarded as a violation of civil liberties."

The ACLU now "regards the existence of the right of action for defamation to be violative of the First Amendment . . . when the speech relates to . . . a subject of public concern. For this purpose, public concern can be deemed to relate to anything having an impact on the social or political system or climate."

More liberal interpreters of the First Amendment have concluded the right to speak freely is without qualification.

Justices Hugo Black and William Douglas have said, "an unconditional right to say what one pleases about public affairs" is "the minimum guarantee of the First Amendment." Basically, Black and Douglas interpreted the First Amendment as providing absolute protection from libel actions.

The Supreme Court in 1964 afforded the press near total immunity from libel actions filed by public officials except in cases where "actual malice" could be proven. To be accountable, the press had to have acted

with reckless disregard for the truth, i.e., it published statements it knew to be untrue. Over the years, the Court defined anyone on the public payroll as an official and added public figures to the standard.

The Court has diminished this protection by continually redefining what constitutes a public figure and recently ruling that plaintiff attorneys to compel "defendants to reveal their thoughts, editorial decisions and newsroom discussions" related to the alleged defamatory article.

Beyond the constitutional question of libel is the financial dilemma defamation suits create, especially for smaller publications which don't have the resources to retain libel lawyers on a round-the-clock basis.

The Milkweed, a one-man Wisconsin tabloid that publishes milk marketing reports, was sued for publishing an article based on information obtained from the Farmers Home Administration under the Freedom of Information Act. The information dealt with the \$20 million loan application of a dairy cooperative.

It cost Publisher Peter Hardin \$20,000, four months of working days and five trips to Syracuse, New York — the cooperative's home base — to fight the year-long litigation.

The case was dismissed because the alleged libel came under the "fair and true" standard of New York State's Civil Rights Law.

Even publications that are financially stable have spent large sums of money to defend themselves against libel actions.

Barron's National Business and Financial Weekly spent \$300,000 defending itself in a

defamation suit over a single word. The Dow Jones publication ran a headline over a letter from singer Frank Sinatra's attorney that read, "Sinatra's Mouthpiece." The attorney sued even after Barron's ran a note in the following issue saying their dictionary defined the word as "spokesman" and that it had not intended to cast "aspersions."

Barron's won the case with the judge ruling that Rudin's reputation was intact, even if the word was "in poor taste."

ACLU Executive Director Ira Glasser made a good point in the Columbia Journalism Review when he wrote, "Libel actions place a price on free speech, a price that the speaker or writer frequently cannot pay." He correctly argues that suits are being used more often by powerful officials in government, business and unions to smother criticism.

The old view of libel is one of a conflict between free speech and the right of a person to protect his reputation. Many lawyers now view protection of reputation as a property right and when such a right conflicts with First Amendment rights, the choice must be for civil liberties.

Juries have also been awarding multi-million dollar settlements in cases. Recently, these punishment awards have not been based upon the Constitution or the tenets of law prescribed for libel cases.

Martin Garbus, a New York trial lawyer writing in The Nation, said judges may charge juries with duties involving "malice" and "reckless disregard," but if juries conclude the article is false, they usually conclude the defendant is guilty of libel, even if he has only been negligent.

All of these aspects of libel — the cost of

defense, the examination of working policies, suits brought over publication of truthful information and high-dollar awards by anti-press juries — have clearly obstructed the news gathering process. They may even seriously repress free speech by precluding the public's right to know about the actions of officials on the public payroll.

Editors and publishers now base decisions to publish on more conservative viewpoints from their legal counsel, rather than on an overriding need for the public to be informed. These are viewpoints taken to save the high cost of litigation, not to serve as an examiner of public actions.

The highest cost is to the public. Their right to criticize public officials and policies is absolutely protected by the First Amendment — a right essential to the survival of this or any democracy.

Suggestions to clearing up the muddiness of the libel issue have ranged from a right of reply and the removal of punitive damages, to eliminating libel for cases involving public officials or figures and their policies and actions. Public individuals would retain some protection of reputation.

Anthony Lewis of the New York Times has suggested a differentiation by the courts between attacks on policy or ideas from "particularized charges of wrong doing."

This would provide the "minimum guarantee of the First Amendment" by allowing open discussion by the press on public issues and affairs without fear of vindictive libel suits.

The public's right to know far outweighs any public official's right to a civil law cloak against criticism.

Given the Court's reluctance to make new law through the review of recent cases, it is the responsibility of Congress to clear the air with a new legislative definition of libel.

## letters

### Criticism of political science department unfounded

Editor:

First, let me say that I have restrained myself in the past when Matthew Scully has unleashed one of his feeble attacks on "liberals" or "socialists," or whined about the various interest group booths on Cady Mall. The State Press is a shoddy excuse for a college newspaper, not only in the journalistic quality of the production, but also in its insular editorial capacity. Mr. Scully is just an example of this mediocrity.

But one can tolerate unrelenting ignorance only so long. Mr. Scully's latest burst of babble (Academic Freedom or Academic License?, Oct. 27) is worse than all of his previous gibberish combined.

Mr. Scully attacks the political science department, in particular Professors Mark Reader, Dick McGaw and Patrick McGowan, apparently because of their "broad view of

academic freedom." Mr. Scully really never does tell us exactly what he is objecting to. All he does is list assigned textbooks, articles and arbitrary passages from the aforementioned professors' classes. He is unclear as to whether he objects to these particular political philosophies, or just to political philosophies in general. Political ideology and philosophy are simply a part of the study of politics and government. To eliminate them is to be left with nothing more than the empty list of labels (Marxist, liberal, socialist, conservative) that he so carelessly banter about.

Mr. Scully seems to enjoy engaging in such name-calling. But intellectual discourse should transcend such immature impulses. This is the root of Mr. Scully's problem. He does not understand the concept of intellectual political discourse. He does not want to engage in a meaningful dialogue. He wants his own, uninterrupted, unchallenged, unilateral

discourse. What's wrong Mr. Scully? Does a mutual exchange make you feel threatened?

The professors you mention and the publications to which you refer are attempting to encourage people to re-examine our traditional philosophies and seek significantly different answers to problems that plague our society, and have been, increasingly, since World War II. Economics, Mr. Scully, does not begin and end with supply side theory. These people have no less respect and devotion to their country than you do, perhaps they are just asking that we examine alternative theories and be willing to admit certain inadequacies and shortcomings in our present system of political economy.

One hopes that even freshmen are not so gullible as to believe what they read in Mr. Scully's column.

Jay S. Thorne  
Senior, Political Science

### Police cycles a hazard

Editor:

In the recent article dealing with the proposed acquisition of the ASU Police by the Department of Public Safety (DPS), Chief C. Russell Duncan made some humorous remarks.

According to the Chief, the ASU Police Department is not an entity that specializes in writing traffic violations, and the ASU Police Department is fully qualified. I am not doubting the integrity of the University Police, only their lack of discretion.

The writing of traffic citations covers two areas: the first dealing with illegal parking and the second with the bicyclists. On any given day you can observe an ASU Police Officer giving citations to bicyclists who "break the law" by riding their bicycles on Cady Mall. Assuming that most college students can read the posted signs, this action does seem warranted. However, when it comes to racing a motorcycle on the mall packed with students, faculty, staff and visitors, to catch an offending bicyclist, it seems quite absurd. Blocking walkways or chasing down a bicyclist (with a motorcycle) to issue a ticket shows lack of civic safety. It would seem to be apparent to the police officer that riding a motorcycle on the mall could cause greater injury than the offending bicyclist. It disturbs me to see such actions by our police department that would endanger so many for so few.

David Newhart  
Graduate Student, Food Chemistry



**more letters**

**'Bias' unavoidable in classroom**

Editor:

It is interesting that the *State Press* Opinion Page Editor who enjoys freedom of the press would deny academic freedom to professors. The case he attempts to build against me for teaching radical politics demonstrates once again the importance of academic freedom.

The POS 501 graduate course which I taught in the fall semester of 1981 and 1982 (not "last" semester) included radical readings because they are an important part of the literature. Mr. Scully, however, fails to mention that the course also included readings from such conventional authors as Robert Dahl, Graham Allison, Mancur Olson, Edward Tufte, Randall Ripley, Robert Lineberry, Eric Nordlinger, Thomas Dye, and Charles Lindblom (who is not a "Marxist").

Similarly, POS 433 Interest Groups (not a "300" level course last summer) included radical readings. But again, the Opinion Page Editor fails to mention that the course also examined readings from such conservative and liberal authors as: James Madison, Alexis de Tocqueville, Milton Friedman, Edward Banfield, James Q. Wilson, Walter Heller, Arthur Okun, Richard Leftwich, James S. Coleman, Martin Feldstien, and Daniel Moynihan. The two courses, therefore, were not as one-sided as the Opinion Page Editor suggests. Perhaps Mr. Scully should have solicited the opinion of and checked his facts with those he intends to attack before going to press.

I do, however, admit to "bias": I believe that "radical" political analysis may provide insight into our present experience. I use "radical" in the etymological sense of getting to the roots of things. I think that the roots of many of our problems may stem from the nature of our political economy.

It may possibly be that the requirements of capitalist organization are related to such phenomena as: cutting taxes more for the rich than for the poor, cutting the social safety nets from under the poor, 10 million people unemployed, health care cost increments of more than 12 per cent a year, soaring interest rates that depress the economy and prevent lower income people from buying their own homes, the graduation of students who can't read or think, more prisoners per capita than any other country, barriers to minority achievement, increasing business concentration through merger and bankruptcy, corporate contamination of the environment, military presence throughout the globe, in-

tervention in Central American and Middle Eastern wars, and the expenditure of billions of dollars for an arms race that increases our insecurity and threatens the survivability of the planet. If inquiry into the root causes of these problems and thinking about alternative ways of dealing with them are "radical," so be it.

I admit my "biases" Mr. Opinion Page Editor because I, like everyone else, has them. I would argue that social scientists who deny their biases are either naive, irrelevant, or nefarious. Neither journalism or social science is as unproblematic as the line from Nick Nolte's recent movie, "Under Fire," would imply: "Photographers don't take sides; they take pictures." But social scientists, like photo-journalists, subtly and perhaps unconsciously take sides, and their biases are reflected in their selection of subject, perspective, methods, and inclusion and exclusion of information. Bias, in short, is unavoidable.

Some of us may be unaware of our biases. We may think that we are neutral or objective when we reiterate dominant beliefs and familiar interpretations. We probably do not recognize the biases that lie hidden in these orthodox view that reside unconsciously in our minds.

The so-called "neutral" professors like everyone else must select certain facts, ideas, and books; present them within a conceptual framework; and suggest interpretations. At every stage, their assumptions and preferences — their biases — determine what will be presented as truth to the students.

The best that we can do is to provide students with alternative choices of professors, declare frankly where we stand, warn our students to be skeptical, and encourage independent and critical thinking on both sides of the lecturn. Truth is exclusive but we seek it anyway. Sometimes our search for truth is unpopular, but Americans generally believe that democracy is well served by the search for truth. That is why we have academic freedom to protect professors and freedom of the press to protect journalists. We hope that truth will win out in the marketplace of ideas. And that is why, Mr. Scully, I would defend your right to publish even though you would deny me my right to teach.

Dickinson McGaw  
Associate Professor



AT GAMMAGE CENTER:

**"OLIVER!"**

Tuesday, November 1 • 7 p.m.  
Wednesday, November 2 • 7 p.m.

Bring the entire family to this spectacle of color, music, and dance. It's the Broadway hit musical and classic family favorite that is based on Dickens' *Oliver Twist*. All performances of "Oliver!" begin at 7 p.m.

Tickets: \$14, \$12, \$10

**JEAN-LUC PONTY**

Thursday, November 3 • 8 p.m.

Don't miss this single performance by this great jazz violinist!

Tickets: \$12.50

**"AMADEUS"**

\*Friday, November 4 • 8 p.m.  
Saturday, November 5 • 2:30 & 8 p.m.  
Sunday, November 6 • 2:30 & 8 p.m.

This fascinating hit play promises to be one of the most popular productions ever presented at Gammage.

\*The November 4 performance is part of the Student Series.

Tickets: \$17, \$15, \$13 (evening performances)  
\$16, \$14, \$12 (matinee performances)

**BALLET NACIONAL ESPANOL**

Tuesday, November 8 • 8 p.m.

Spanish Ballet is a distillation of the refined elegance of the Spanish Royal Court, the vigorous and charming rustic spirit of Spanish folk dancing and the fiery excitement of the gypsies' flamenco style. Ballet Nacional Espanol's company of 50 promises to enchant you with the extraordinary versatility of the dance which has emanated from Spain since the Middle Ages.

Tickets: \$9, \$8, \$7

AT THE UNIVERSITY  
ACTIVITY CENTER:

ASASU/UAC  
Presents

**LIONEL RICHIE**

With Special Guest Stars  
**THE POINTER SISTERS**

Wednesday, November 16 • 8 p.m.

You don't want to miss this performance by Grammy-award winning singer/songwriter/producer Lionel Richie whose hits include "Truly," "You Are," "My Love," "Sail On," and "Three Times A Lady," and featuring The Pointer Sisters as Special Guest Stars.

Tickets: \$15, \$12.50

AT THE KERR  
CULTURAL CENTER:

**ANTONIO MENESES**

Cello

Thursday, November 10 • 8 p.m.

The remarkable talent of this Brazilian cellist captured worldwide attention when he won the 1982 Tchaikovsky Competition in Moscow. You won't want to miss him when he appears at Kerr Center.

Tickets: \$7 (\$1 for ASU students with I.D.)

For information about Gammage Center, ASU Activity Center, Kerr Center, and ASU Stevens House events, call 965-3434.

Student Series events are available to full-time ASU students. One ticket may be purchased for \$1 to Student Series events by presenting a photo I.D. and activity card. A maximum of two \$1 tickets may be purchased by presenting two photo I.D. cards and two activity cards. One guest ticket, at full price, may be purchased with a student ticket.

**COUPON** WIN A **\$100 ESPRIT WARDROBE**

No purchase necessary. Just drop this coupon at the Village Boutique.

Name \_\_\_\_\_  
Address \_\_\_\_\_  
Telephone # \_\_\_\_\_

708 S. Forest, Tempe • 968-1611  
(N. of University between Mill & College)  
OPEN: Mon.-Sat. 10 a.m.-6 p.m.

Largest Selection of ESPRIT in the Area  
**THE VILLAGE BOUTIQUE**

Self Defense  
Strength and Agility  
Confidence and Control

Certified by International  
Kenpo Karate Association  
Ed Parker 10th Degree Black Belt

**kenpo**  
chinese karate

MEN • WOMEN • CHILDREN • Come in or call for appointment

Tempo-Mess  
1020 N. Scottsdale Road  
**966-1080**

**ENTER THE  
SIDEWALK SWEEPSTAKES**

**WIN \$50  
WIN \$500**

**A Weekly Drawing  
Every Friday  
For \$50**

**GRAND PRIZE \$500 DRAWING  
FRIDAY, DECEMBER 9**

Obtain entry blanks at the  
Sidewalk Cafe counter.

**SIDEWALK  
CAFE** Lower Level  
Memorial Union

# Goddard, Dunn make final voter appeals at ASU

By Len Munsil  
Copy editor

Phoenix mayoral candidates Terry Goddard and Pete Dunn criticized each other and made their final appeals to city voters before today's election in a debate televised live from the MU Sunday.

Dunn called attention to Goddard's anti-freeway record on several occasions, amid groans and boos from an audience estimated at 300 people, and pushed his experience in the Arizona Legislature as qualifying him to head the government of the ninth-largest city in the United States.

Goddard again denied he was anti-freeway, saying his opposition to the Papago Freeway was constructive criticism, and advocated a "new vision" for the city involving the people.

One of the highlights of the debate, the last of nearly 60 joint appearances, was a question from ASU student Bill Adair, a reporter for the Tempe Daily News, who was one of three Valley media panelists to question the candidates.

Adair asked both to name two reasons why they would vote for the other, and two reasons why they would not.

Both turned the question into a chance to attack the other. Goddard said Dunn had shown "occasional flashes of humor," while Dunn called Goddard "a pleasant, nice-looking young man."

However, each spent much longer on the second part of the question.



Pete Dunn and Terry Goddard

"I think you have to look behind the man and see what he represents," said Goddard. "He represents a continuation of politics as usual — the same group of a powerful few that has controlled this city for years."

Dunn said Goddard did not have the experience to be an effective mayor. "He has a lack of experience in government," said Dunn. "(The position of mayor) should not be on-the-job training."

Panelist Jon Kolbe of the Phoenix Gazette asked if there should be a ceiling on campaign contributions from individuals in a

mayoral race. Dunn, who received a \$21,000 donation from Charles Keating, a Phoenix builder, said it should be up to voters to decide whether a candidate is getting too much money from one person.

"I would treat Mr. Keating the same way I would treat anyone who came to me," he said. "City government should be open and accessible to all people."

Goddard said large contributions do affect officeholders, and the bottom line was that he did not accept any large contributions,

while Dunn did.

Dunn accused Goddard of trying to stop the Papago Freeway, and then saying he was in favor of it. He asked Goddard to explain when he changed his mind on that and other issues, and why.

Goddard said Dunn was overemphasizing the freeway criticism. "To be an active citizen with some constructive criticism doesn't mean you're against all of (the freeway plans)," said Goddard.

"And if you're such a big backer of freeways, where were you during all those discussions we had about the route?" Goddard asked.

Goddard said if his ideas and suggestions had been followed, the freeway would have been built at great savings to the taxpayers.

Goddard asked Dunn how he could be the best candidate to implement the new district system of electing councilmen when he was opposed to it.

Dunn responded by saying he was the only candidate with experience working with a district system of representation, in the Arizona Legislature.

In closing, Goddard called Dunn "the picked candidate" of a powerful group, including Arizona Republic publisher Darrow Tully, the head of Arizona Public Service, and other civic leaders.

Dunn denied he was anyone's picked candidate and said his integrity and experience qualified him to be Margaret Hance's successor as mayor of Phoenix.

## Famous Pizza & Subs

with Greek Specialties

Now Offers

### Happy Hour

4-9 p.m. Everyday

ALL DRINKS 2 for 1

(Except bottled beer)

50¢ OFF ANY PIZZA

Gyro • Souvlaki  
Pastitso • Mousaka

966-6565

106 E. University Dr., Tempe

## ATTENTION

"Undecided" Students in the Liberal Arts College  
**THE TIME IS HERE!**

Early Bird Advisement for Spring Registration from October 24 to November 8



Avoid the last minute rush  
Make an appointment today in Social Sciences 111.  
Come in or call 965-2954.

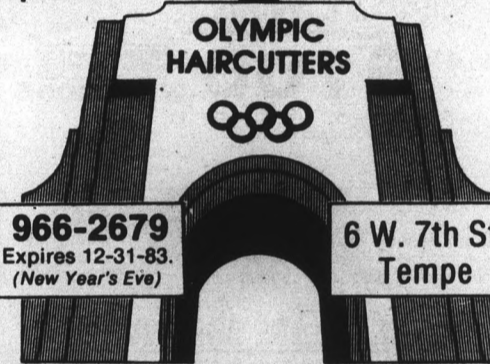
## STUDENT SPECIAL

Shampoo & Cut

\$7.00

WITH THIS COUPON

OPEN SUNDAY 12-5 p.m.



966-2679 Expires 12-31-83. (New Year's Eve)

6 W. 7th St. Tempe

AIM HIGH



## Technology's Leading Edge

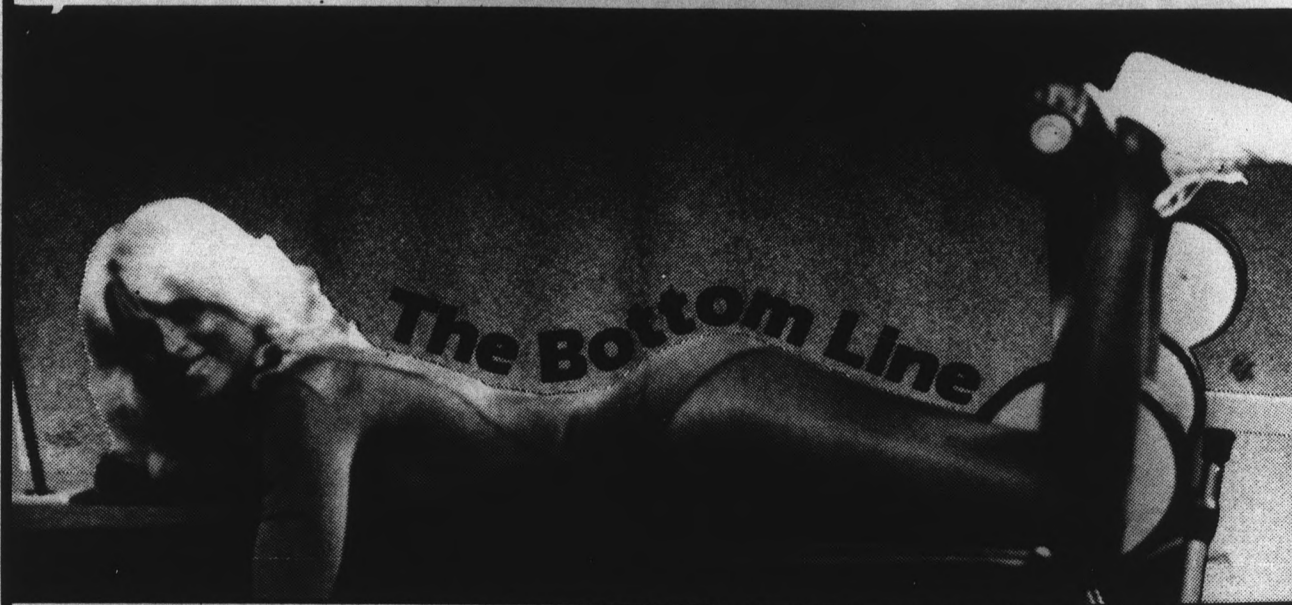
Be a science or engineering officer in the Air Force. If you have a science or engineering degree, maybe you can qualify to join our dynamic team. See an Air Force recruiter today.

SSGT Kathy O'Mahony  
2020 S. Mill Ave., Suite 115  
Tempe, AZ 85282  
(602) 261-3740



A great way of life.

## Nautilus



In only 20 minutes, three times a week, Nautilus works to isolate each area (including thighs & waist) to burn calories and replace body fat with lean muscle. And that's the bottom line.



2 for 1 Offer \$120 2 people join for 1 low price.

Sun Devil  
NAUTILUS • AEROBICS

933 East University  
Tempe, Arizona 85281  
968-9487

# Phoenix firm reports ASU parking data

By Mike Rynearson  
Staff writer

In the midst of a complex comprehensive study of ASU's parking and transit woes, a Phoenix consulting firm presented its preliminary findings last week to a board of ASU officials and was given consent for further study and data computations, the director of planning and facilities management said.

Jack Shafer said the dialogue between the department of planning, the design board and BRW Inc., the firm hired to do the survey, went well, and everyone was very pleased with BRW's progress.

Shafer said the presentation was in a rough form because the survey is only about 65 percent complete and much of the data has not yet been fully analyzed.

The presentation was in two parts. The first was a data document listing all of the numerical findings, including traffic flow.

The second part was the issues document, which took the first look at what and where the problems are, according to Shafer.

The parking and transit committee was very concerned with the traffic flow and potential safety hazards of two areas of campus, and BRW's findings helped substantiate their beliefs, Shafer said.

The first problem is the area along University Drive, College Avenue and parts of Rural Road adjacent to campus where, according to Shafer, the high traffic volume traveling at a high rate of speed creates a hazard to pedestrians and bicyclists.

The second problem is the traffic congestion on the interior arteries of campus stemming from Cady Mall, where there is a large volume of pedestrians, bicyclists, service carts, police carts and emergency vehicles, Shafer said.

Shafer said there were no shocking revelations in BRW's presentation, although some of the numbers that BRW revealed came as mild surprises.

"There were areas such as the safety aspects of University Drive which we have been concerned about for a long time, but until BRW showed us the actual counts, we had nothing to quantify our beliefs with," Shafer said.



**CREATIVE OFFICE SERVICES**  
WE DO MORE

- TYPING
- WORD PROCESSING
- RESUMES
- BINDING

- Quality Work
- Fast Service
- Competitive Prices
- Confidentiality
- All work done on premises

33 N. Alma School Rd.  
Ste. 108  
Mesa, Ariz. 85201  
834-1276  
OFFICE HOURS: 9-4

*union cinema*

**FASTIMES AT RIDGEMONT HIGH**  
*Fast... Awesome!*

TUES. & WED. • NOV. 1 & 2  
7 & 9:30 p.m.  
\$1.50 w/l.D. • \$2 w/o

LOWER LEVEL OF MEMORIAL UNION

**INTRODUCTORY OFFER**  
HAIRCUTS \$6.00 PERMS \$22.50  
HENNAS \$12.50

*C.C. Cutters & Co.*  
*Hair styles for young men & women.*

1036 S. Terrace  
(Corner of Lemon & Terrace)  
Tempe • 968-6685

**THE JOYNT** 606 S. Mill  
Old Town Tempe

**WE DELIVER 967-7926**

**BEER PIZZA WINE**

**Large 16" Cheese Pizza \$3.99**  
EXTRA TOPPINGS 50¢ EACH

**ACCIDENT AND INJURY CLAIMS**  
KNOW YOUR LEGAL RIGHTS  
Call 957-2010

FREE  
ATTORNEY CONSULTATION  
No Recovery - No Fee

**MERLE NORMAN COSMETICS**  
The Place for the Custom Face®

Learn How to Make Up Your Face... **FREE**

Call for your appointment **TODAY!**

*Walk-ins Welcome*  
*Ear Piercing*

Southern Palms Plaza 831-6655  
1628•10 E. Southern, Tempe

**DEVILS' FOOD PIZZA**  
and  
**DO ME A FLAVOR ICE CREAM**

**FEATURE:**  
Cheese Pizza Slices  
**2 for \$1**

Large Choc. Chip Cookies  
Flavored Popcorn  
Cotton Candy  
Natural Apple Cider  
Low-Cal Yogurt Whips



CREATE YOUR OWN DELICIOUS FLAVOR

**DAILY SUB SPECIALS**

EAST OF CHUCKBOX AT  
216 E. UNIVERSITY • 967-8636

**TUESDAY**

**IT'S AN OPEN BAR**

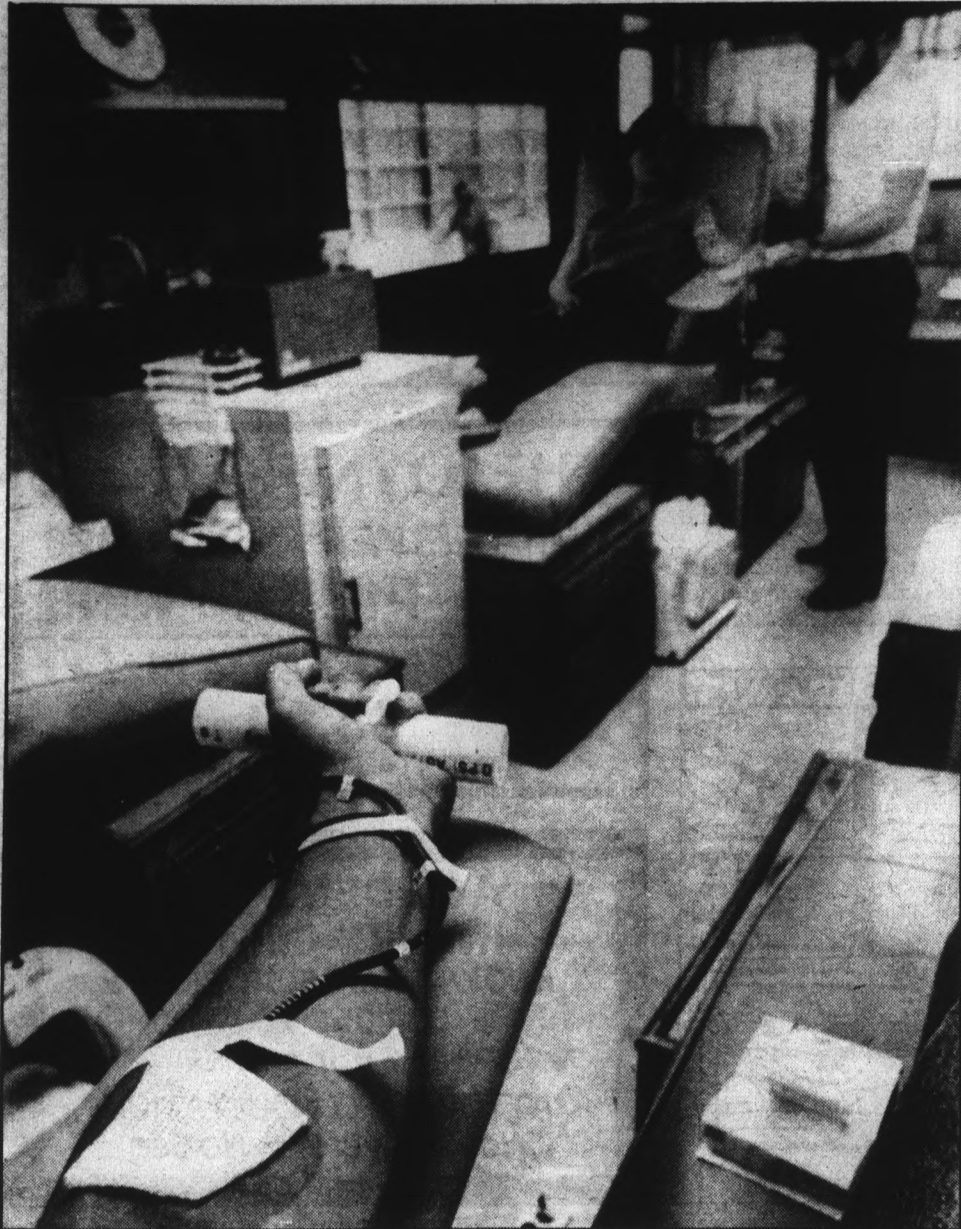
FROM 8:30 TO 11:30

GIRLS \$2.00  
GUYS \$4.00

COME ON DOWN AND MINGLE  
AT

**DONNY O'BRIEN'S**

222 S. MILL, TEMPE



Staff photo by David Petkiewicz

### Fill 'er up

The arm of a first-time donor squeezes a pipe to get the blood flowing while Chris Connell prepares Candy Lawson for the donating process. United Blood Services began its ASU blood drive Monday and will be at various campus locations until Nov. 10.

## ASU STUDENTS LIVE IN LUXURY!

Research a great investment.

### BROADMOR II TOWNHOMES

Located on Mill Avenue just south of Broadway

968-5591 or 967-6420

Come on by, you can be living in luxury by next semester — or sooner!

Open Daily 11-6



Helps You Shake Those Minimum Wage Blues! Call Us Today.

## COMPLETE BARTENDING COURSE

Your ticket to steady work, meeting people, and making money!

- Wine tasting instruction
- Learn 130 different drinks
- Cash register operation
- Stocking & inventory of liquor
- Customer service training
- Placement assistance

Now at two convenient locations:

TEMPE: 1537 E. Apache 894-6565  
PHOENIX: 2740 W. Peoria 863-4845



### Family Planning Institute

Women's Health Center

**FREE Pregnancy Testing**  
Immediate Results

**Premarital Bloodtesting**  
\$15.00 Same Day Results

**Evening Hours Available**

Contraceptive Care Clinic  
Confidential Counseling  
Pregnancy Termination  
Caring Professional Staff

Established 1976

TEMPE • 968-7471  
2525 S. Rural Rd., Ste. 4-C  
Mon.-Fri. Lab Hours 8-3



PHOENIX • 997-7493  
9100 N. 2nd Street  
Mon.-Sat. Lab Hours 9-3

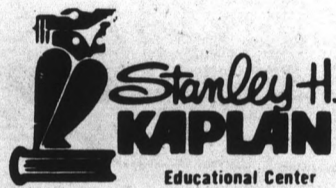
## DON'T FALL BEHIND

	LSAT	DAT	GMAT	GRE	MCAT
Prepare Now For:	Dec. 3 Mar. 3	Apr. 14	Jan. 28 Mar. 17	Feb. 4	Apr. 28
Classes Starting:	Oct. 31 Jan. 11 Jan. 20	Feb. 18	Dec. 6 Jan. 24	Dec. 8	Dec. 17 Jan. 29 Mar. 5

Classes now available for DAT, PSYCH, GRE-BIO, NLE, TOEFL, VAT, MAT, MSKP, OCAT, CPA.

**2 HOURS OF FREE TUTORING**

Speedreading & ESL classes starting mid-Sept.



CALL TODAY **967-2967**

For information about other centers in more than 80 major U.S. cities and abroad, CALL TOLL FREE 800-223-1782.

### diversified travel inc. Wants You to Know:

Our Sabre Computers are telling us

Holiday-time reservations are filling fast — call us A.S.A.P. to get Super Saver Fares while they last! Faculty, Students, Group Leaders — CALL US FOR ARRANGEMENTS — Ski Trips, Research Trips, etc. (Any destination is not foreign to us and our services are free.)

We're diversified travel inc.

64 EAST BROADWAY, SUITE 2  
United Bank Building  
TEMPE 967-7855 • 967-1900  
Same location since 1970



UPSTAIRS PUB

4th & MILL  
2nd level of the MILL AVE. SHOPPS above the SPAGHETTI CO

**3 for 1 HAPPY HOUR**  
MON.-THUR. 3:30-7:30 FRI. TIL 8:30

-----  
**WEEKLY SPECIALS !!** 8-12

- \* MON. - "2 FOR 1"
- \* TUE. - "QUARTER BEER NIGHT"
- \* WED. - "BEAT THE CLOCK"  
prices go up on the hour  
8:00 draft **25¢** .10/draft per hr.  
well **50¢** .20/well
- \* THUR. - SHOTS OF SCHNAPPS - **50¢**
- \* FRI. & SAT. - LIVE ROCK & ROLL

CHECK YOUR NEW TIMES or KSTM FM-107 FOR DETAILS

# police report

ASU Police reported the following activities occurred between Thursday and Sunday:

- ASU student John Goldsworthy was cited for driving with an unsecured load at Stadium Drive just north of University Drive at 2:16 a.m. Friday. An ASU officer later observed Goldsworthy running a red light at McAllister Avenue and University Drive, and saw a bundle of straw fall from his vehicle. Police said he admitted taking the straw from the archery fields without permission, and returned it.
- An ASU student reported damage occurred at the east practice field when a subject drove a red pickup with a white camper top across the field and through the banner flags at the end of the field Friday.
- ASU student Richard Biegel was arrested for giving false information to avoid getting a citation and was released on his own recognizance about 10:30 p.m. Sunday. Biegel was originally cited for driving on a sidewalk at Cady Mall.
- A tennis racket stringing machine valued at \$900 was stolen from the Whiteman Tennis Center equipment room Friday. The door was locked and there was no forced entry.
- A 40-piece tool kit valued at \$100 was stolen from a room in Matthews Center Friday. An ASU employee told police that students, staff and faculty have access to the room to check out equipment.
- Robert N. Tucker was arrested for criminal trespassing at the MU Sunday at 4:45 p.m. Tucker is in the Tempe City Jail awaiting arraignment.
- A Nishiki Century 10-speed bicycle valued at \$200 was stolen from the bike racks outside of the Physical Education West building Sunday about 6:30 p.m. The student told police someone had taken his keys from inside of the gym, unlocked the bicycle and returned the keys to the gym.

•ASU student Andrew James Dillard was arrested by the Department of Public Safety on a bench warrant Saturday about 11 p.m. A bench warrant is an order given when a person does not comply with a court order. When a bench warrant is issued, no bond can be set.

•An ASU student reported \$720 in checks stolen from a book drawer sometime over the weekend. There were no signs of forced entry.

•An ASU employee reported a student had returned six books, valued at \$195, that his roommate had stolen from Hayden Library Friday. Police said the student would not give any more information.

•Two stereo speakers valued at \$200 were stolen from the living room of the Theta Chi fraternity house at 410 Adelphi Drive Friday. There are no suspects.

•ASU student Bryon O. Pope was arrested on charges of one count of residential burglary, one count of theft of a credit card and two counts of fraudulent use of a credit card Friday about 8 p.m.

•The front license plate of an ASU student's blue 1980 Toyota was stolen while it was parked in Lot 16 sometime between October 24 and October 27.

•Four envelopes containing \$50 each and an ASU student's wallet containing \$40 were stolen from the coaches' locker room at Packard Stadium about 1:50 p.m. Sunday. The employee who reported the theft told police that the door was unsecured.

•An ASU student reported University budget requests missing from a room in the Social Science Building Friday about 4 p.m., with the total loss unknown.

•An ASU student reported damage amounting to about \$450 to the convertible top and support bar of her 1980 MG while it was parked in Lot 51 Friday.

•A briefcase containing several items, valued at \$145, was stolen from a room in Payne Hall Friday. There are no suspects.

•An ASU student reported \$1,000 worth of damage to her 1978 Fiat while it was parked in Lot 59 Friday.

—Sandy Sistek

## Corporate exec to address business graduate students

J.W. Marriott, president and chief executive officer of the Marriott Corporation, will address the Masters of Business Administration Association, a newly formed group of ASU business graduate students, at 2:30 p.m. Nov. 3 in the MU Cochise Room.

The lecture is the first in a Chief Executive Officers (CEO) Series sponsored by the student organization. Marriott is expected to discuss a variety of topics including the characteristics of the hospitality industry.

## MIGUEL'S MUSIC CENTER

(In The Arches)

For All Your Musical Needs

Sheet Music • Lessons • All Instruments  
Repairs • Amps

122 E. UNIVERSITY DRIVE  
TEMPE, ARIZONA • 968-2310

**DON'T LOSE IT!**  
SPECIAL RATES WITH THIS AD

Keep Your Summer Tan At Sun-Tans



4415 S. Rural  
Tempe  
831-2884

NOW TANNING BOOTHS ONLY \$1 VISIT  
TANNING BEDS ONLY \$3 VISIT  
Between Nailtills and Fairlans Bowling

## School to sponsor one-day seminar for local designers

The ASU College of Architecture and Environmental Design will offer a one-day seminar titled "A Business System for Designers" at the Fiesta Inn Conference Center in Tempe on Nov. 4.

The course, which will extend from 8 a.m. to 5 p.m., is designed for independent designers, small general contractors, the wholesale showroom or the architectural office wishing to create a cost-effective interiors division.

A \$65 registration fee includes the cost of a luncheon. The fee for those seeking continuing education credit is \$75.

For more information, contact the College of Business Administration at 965-2378.

## MR. HERO

Centrally located drive-thru service  
McClintock & East Apache, Tempe



**FREE! 16-oz. Soft Drink** with purchase of 12" sub sandwich with this ad

**Happy Hour**  
4-7 p.m. Daily

BEER ON TAP OR IN BOTTLES

Try our delicious **steak sandwich** with peppers, onions, mushrooms and cheese.

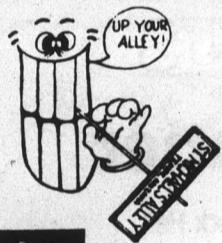
We also serve a full sandwich menu.

968-5740

Good through Jan. 1, 1984.

Open:  
Sun.-Thurs. until 2 a.m.  
Fri. & Sat. until 3 a.m.

## ST. MICHAEL'S ALLEY



All Import Beers

**85¢**

All The Time

112 E. UNIVERSITY DR.  
TEMPE  
894-1321

Open 10:30 a.m. to 10 p.m. daily

## SUPERCOPY CENTERS



Print quality copies

- Kodak 250
- Xerox 9500

Complete bindery services

Postal Service Station

Southern Palms Shopping Center

McClintock & Southern  
3136 S. McClintock Dr.

\*with current activity card only  
No minimum  
White 20 lb.  
8 1/2 x 11  
(Expires Dec. 31, 1983)  
Hours: Mon.-Fri. 8:30-5:30, Sat. 10-4

**EVERY DAY IS SALE DAY!**  
**WE HAVE THE SAME LOW PRICES 365 DAYS A YEAR!**

**\$45.00**  
Single Vision

**\$74.00**  
Bifocals

EXECUTIVE BIFOCALS \$15 EXTRA  
NO LINE BIFOCALS \$35 EXTRA

Includes your choice of any frame in stock, and lenses (glass or plastic), tint or photogrey, no charge for oversize. Designer frames. No extra charges.

Gas Permeable Hard Contact Lenses **\$99.00**

## FAMILY OPTICIANS

In The Arches  
120 E. University  
Tempe • 967-1999

McDowell Square  
5134 W. McDowell  
Phoenix • 278-0031

1802 W. Bethany Home  
Phoenix  
246-0147

**TINTED SOFT CONTACT LENSES FOR \$121.00**  
(Your choice of Blue, Green, Light Brown, Dark Brown, Aqua)

**SPECIAL for ASU STUDENTS FACULTY & STAFF**

EYE EXAMINATION

**\$20.00**  
for eyeglasses

**\$25.00**  
for contact lenses

**Dr. Taddonio**  
Optometrist

120 E. University  
(In The Arches)  
Tempe

967-1999

## Attention Electrical Engineers

**Campus Interviews**  
Monday, November 7

Micro-Rel, a division of Medtronic, Inc., is leading the way in the development and manufacturing of state-of-the-art micro-electronics used in cardiac pacemakers and other medical devices.

Our Tempe facility is presently looking for imaginative, talented electrical engineering graduates to fill entry-level positions in IC and Hybrid Engineering. These positions not only provide present challenges, but are by design, a step into the future for mankind.

We invite you to take advantage of this opportunity to join in our exciting Hi-Rel technology by visiting with our recruiter on campus.

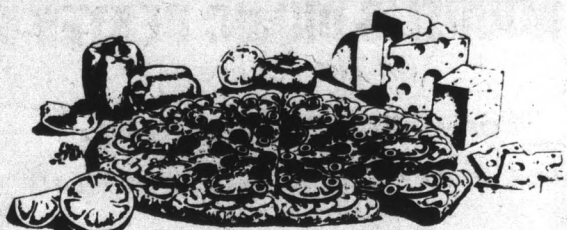
Contact your College Placement Office to schedule an appointment, or send your resume to: Medtronic/Micro-Rel, 2343 West 10th Place, Tempe, Arizona 85281.

An Equal Opportunity Employer

**Medtronic** **Micro-Rel**

# Round Table Pizza Restaurants

## 1/2 PRICE TUESDAY!



ASU Students,  
Faculty and Staff . . .

Every Tuesday

Present your ASU I.D. and receive  
a 50% Discount, with purchase of  
any drink, on any Large Pizza.

(Country Style Included)

Offer valid on sit-down meals only.

— 5 Valley Locations —

- |   |  |  |
|---|--|--|
| <b>TEMPE</b><br>1849 N. Scottsdale Rd.<br>(Alpha Beta Center)<br>947-4396 | <b>SCOTTSDALE</b><br>4416 N. Miller<br>(at Camelback)<br>994-3285<br><br>7901 E. Thomas Rd.<br>(at Hayden)<br>994-3360 | <b>PHOENIX</b><br>5515 N. 7th St.<br>(at Missouri)<br>279-0924 |
|---|--|--|

# Bush babies

## Anthropology department raises African primates

By Asha Nathan  
Staff writer

Although they are about six inches long and weigh about 10 ounces, they have long canine teeth and can "give you a good chomp," according to Leanne T. Nash, associate professor of anthropology.

They are *galago senegalensis* — otherwise known as bush babies.

The Anthropology Building at ASU houses 24 of these tiny gray animals, which are among the smallest primates in existence, according to Nash. She said the name bush babies probably originated from the sound another species of galago makes, which sounds like a baby's cry.

She said they are found in "most of the woodland habitats in sub-Saharan Africa." ASU started with six "wild caught" animals from East Africa in

1974. The rest have all been born here, she said.

Bush babies do not usually live longer than 10 years, she said.

"We have three female animals that are nine years or older," she said. "One interesting thing is that we also had three males, who at eight or more years of age have died of apparent old age."

"It is beginning to appear that perhaps females have greater longevity than males," she added, saying that sexual maturity occurs at about one year in females and probably about the same time in males.

While the primates live on insects, fruit and acacia gum in the wild, Nash said they are fed on apples, oranges, bananas, mealworms and a commercial high-protein primate diet here.

She said milk becomes part of the menu for a pregnant or lactating

female, but all the other animals in the cage drink it too.

Nash's area of interest is infant development and mother-infant relationships. She said in most day-active primates the infant is carried by the mother for at least six months, as in the case of monkeys, and for several years in the case of large apes.

However, many of the nocturnal primates, such as bush babies, leave their infants in a nest, and usually after

**'We interact with them as little as necessary. Most of our studies are strictly observational.'**

about two weeks the mother will carry the infant to the place where she is foraging and "park" the infant on a branch in the vicinity.

"This means there may be some difference in the mother-infant relationship, as compared to day-active primates," he said.

"I was interested in nocturnal animals because of those differences," Nash said. "There has been a lot of data gathered about mother-infant relationships in day-active primates, both in the wild and in captivity. We want to compare the data we gather with that."

She said she had previously become interested in bush babies through personal experience. "They are easy to handle and relatively easy to house."

It was a combination of these reasons that led to her research.

The furry animals have a "repertoire of about 15 to 20 vocalizations," according to Nash.

The main cry, a sort of loud, high-pitched bark, serves as an alarm call. A

mother gets her with a barely distressed infant male who is interested female will give a

The sexual female is very female seems to perceive start pursuing her quite ready, she said

"We interact with necessary," said studies are strictly

She said the weekly to keep u Since the research said they try to r bance of the anima

"We are certain terest in them, so closed-circuit tele on one of the l cages," she said.

The animals are cycle with a dim day. Their active a.m. and goes on u

Nash said they between 10 a.m. and they are fed. They the middle of the a

She said the tele only one-fourth of possible to go quit tually seeing the c

"You're doing w percent of the time know, because I've them.

"It's quite un ability to display ding "not many un country have gala know of has this public display."



Photos by Roy Barnes

## GIVE TUESDAY, NOVEMBER 1, TOP PRYOR-ITY

Columbia Pictures  
AND  
Anderson's Fifth Estate  
PRESENT



### Comedy Party Tuesday, November 1

Hosted by Comedian  
Howard Dean

Featuring Dan Horn and Michael Bailey

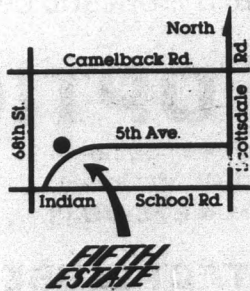
Win "Here and Now" theatre passes, sound tracks and T-shirts from Columbia Pictures.

Also, a framed movie poster from "Hang in There" — Tempe

Limited Seating, So Arrive Early



6820 Fifth Ave., Scottsdale  
994-4168



LISTEN TONIGHT AT 8 P.M. TO KASR (660 AM) FOR "ENGLISH MADNESS" AND WIN PRIZES FROM COLUMBIA PICTURES NEW RELEASE "EDUCATING RITA"

## ASSOCIATED STUDENTS OF ARIZONA STATE UNIVERSITY

### Events for November

Residence Hall Program "Successful Career Women"	Nov. 2 7-8:30	McClintock Hall
Kwame Ture (Stokely Carmichael)	Nov. 2 7:30	Life Science 191
Celebration Sun Devil Style Homecoming 1983	Nov. 7-10 11:30 daily	On The Mall
President's Council	Nov. 7 & 21 4:30	MU Gila Room
Student Senate	Nov. 8 & 22 5:30	MU Mohave Room
Career Planning with Resume Writing and Interviewing	Nov. 8 1:30-3	MU Santa Cruz Room
Jerry Riopelle Tickets — \$8.50	Nov. 10 8	Gammage
Career Preparation Week	Nov. 14-18	Memorial Union
Minority Affairs Leadership Workshop	Nov. 16 3-8:30	Memorial Union
Lionel Richie \$12.50 & \$15.00	Nov. 16 8 p.m.	UAC
Graduate Student Association Grant- Writing Workshop	Nov. 18 1:30	Language & Literature C-57
Community Resources	Nov. 22 1:30-3	MU Santa Cruz Room
Jerry Falwell \$2 w/I.D. - \$7 w/out	Nov. 29 7:30	Gammage
Moody Blues	Nov. 30 8	UAC

All events are open to the public and free unless noted.

# can primates

mother gets her offspring's attention with a barely audible hoot, while a distressed infant gives a little click. A male who is interested in chasing a female will give a soft hoot, she said.

The sexual receptivity period of a female is very brief, but the male seems to perceive its oncoming and will start pursuing her, although she's not quite ready, she said.

"We interact with them as little as necessary," said Nash. "Most of our studies are strictly observational."

She said the animals are weighed weekly to keep up on their progress. Since the research is behavioral, she said they try to minimize any disturbance of the animals.

"We are certainly aware of the interest in them, so we have installed a closed-circuit television, which focuses on one of the large social-grouped cages," she said.

The animals are on a reversed light cycle with a dim red light during the day. Their active period begins at 10 a.m. and goes on until 9 p.m.

Nash said they tend to be fairly active between 10 a.m. and 11 a.m., right after they are fed. They tend to take a nap in the middle of the afternoon.

She said the television camera covers only one-fourth of the cage, so it is quite possible to go quite a while without actually seeing the creatures.

"You're doing well if you see them 25 percent of the time — even in the wild. I know, because I've done field work with them."

"It's quite unique that we have the ability to display them," she said, adding "not many universities around the country have galagos and none that I know of has this kind of facility for public display."



They may not be saying much now, but these furry primates have a repertoire of from 15 to 20 vocal sounds, according to Leanne T. Nash, associate professor of anthropology.

**COUPON**  
**DOUBLE BURGER FULL MEAL DEAL \$1.99**



Look what you get! An all-beef burger. A small order of crispy golden fries. Your favorite small soft drink. And, to top it off, a cool and creamy 5 oz. DAIRY QUEEN® Soft Serve Sundae. Head for your participating DAIRY QUEEN® BRAZIER® store, to get the Burger Full Meal Deal™ — the best bargain in town. **WE TREAT YOU RIGHT™**



© AM D Q Corp. 1983

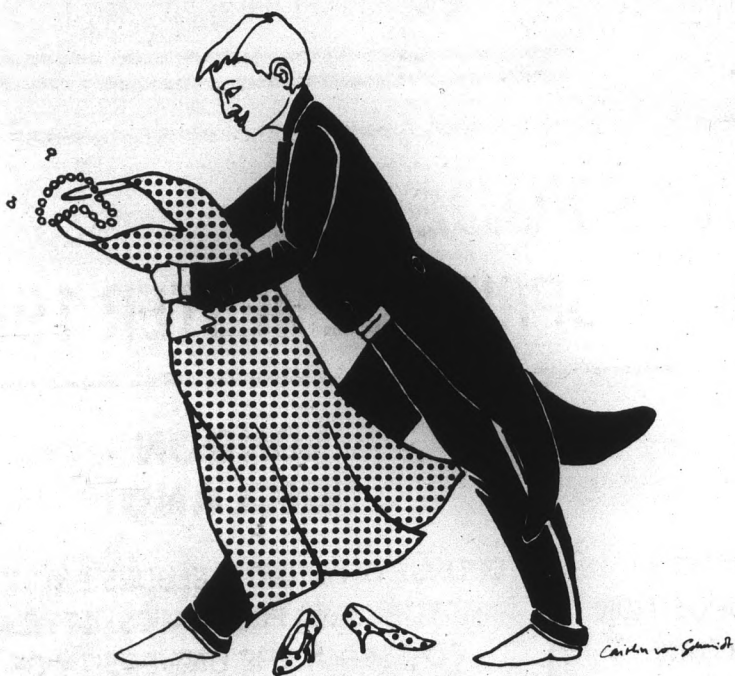
Good through 11-10-83.

ONLY AT:

**1389 E. APACHE**  
 (Between Rural & McClintock)

**COUPON**

**IF YOU LOVE CLOTHES**



You'll Love Us  
**BUFFALO EXCHANGE**



Buying • Selling • Trading

TEMPE  
 3 East Fifth Street  
 968-2557

Hours:  
 10 to 6 Mon.-Sat.  
 Closed Sundays

**CLANCEY'S**  
 NIGHT CLUB

Tonight at CLANCEY'S is  
**BUDWEISER NIGHT**  
 35¢ Drafts & \$1.75 Pitchers  
 All Night Long

TONIGHT ENJOY  
**Hot Modern Rock**  
 with

**Listen**



# collage

Christian Campus Ministry is meeting from noon to 1 p.m. today in the MU Yuma Room "for prayer and fellowship for campus concerns."

ASU Theatre is holding auditions for the Mainstage Production of Tom Stoppard's "Rosencrantz and Guildenstern are Dead" at 3 p.m. today and 7 p.m. tomorrow in Language and Literature Building Room 19 and Room 37.

The Memorial Union Activities Board's Host and Hostess Committee, which meets at 3 p.m. every Tuesday in MU Coconino Room, offers the "opportunity to serve the campus and surrounding community. Feel free to drop in."

The Memorial Union Activities Board's Special Events Committee, involved in planning campus events, meets at 4 p.m. every Tuesday in MU Graham Room. Everyone is welcome to attend.

National Association of Accountants on Campus is holding an organizational meeting with a panel discussion on electronic data processing (EDP) auditing at 4:30 today in MU Santa Cruz Room. Elections for various positions will follow discussion. Those participating in Thursday's tour of E.F. Hutton will meet at 1:30 p.m., Nov. 3 at Dean's Patio. Professional dress is required.

ASU Circle K meets at 7 p.m. every Tuesday in MU Navajo Room.

Millionaires-To-Be Club is holding the final

meeting of the semester at 7 tonight in MU Coconino Room. The guest speaker will be Eldon Barmore, president of the Rio Salado Bank, who will give his views on banking and success. "Help plan for next year."

Arizona Outing Club is meeting at 8:45 tonight in Life Sciences Center Room 191 to view the award-winning mountain film "El Capitan," "depicting the three-man ascent of the nose."

The Memorial Union Activities Board's Executive Committee meets at 3 p.m. every Wednesday in MU Gila Room. All MUAB committee members are welcome.

SOPHOS (Sophomore Honorary) will meet from 3:30 p.m. to 4:30 p.m. tomorrow in the MU Yuma Room to discuss upcoming events.

Public Relations Club will meet at 3:30 p.m. tomorrow in Stauffer Hall Room 207 to hear Dave Jensen from Garrett Corp. discuss "Career Planning for Corporate Communications."

Israel Action Committee will meet at 7 p.m. tomorrow at Hillel Student Center, 1012 S. Mill Ave. "We will be having an Israel Opportunities Fair. Spend a summer, semester or year in Israel." In addition, at 3:30 p.m. Nov. 3 at Hillel, Aharon Kileman, political science department chairman, will speak on current Middle East politics.

Citizens for a Non-Nuclear Future will meet at 7:30 p.m. tomorrow in MU Pima Room for "Poetry for Peace" readings by David

Chorlton and William Jenkins. "Bring your own poem for peace."

French Club will meet at 2:40 p.m. Nov. 3 in Language and Literature Building Room A46 to elect certain officers, speak French for practice ("no matter what level you are at") and play some French games.

Alpha Mu Gamma Foreign Language Honors Society will meet at 3:30 p.m. Nov. 3 in Language and Literature Building Room A46 to recruit new members. "Applicants do not need to be foreign language majors!! Please come for further info."

Black Business Students Association will meet at 4:30 p.m. Nov. 3 in MU Yavapai Room 209 to: 1. Vote in committee members, 2. vote


on dress code and 3. simulate CEO problems/opportunities.

University Toastmasters will once again be meeting to "improve public speaking skills" at 5:15 p.m., Nov. 3, upstairs in the MU.

Native American Students Association will meet at 6 p.m., Nov. 3 in MU Santa Cruz Room.

American Association of University Women will meet at 7:30 p.m., Nov. 3 in MU Pima Room to view the slide show "Know Your Weapons" by Sheila Tobias from the U of A.

P.I.E.S. will sponsor a demonstration/lecture on massage at 7:30 p.m., Nov. 3 in Room 158 of the health center.



**HEY ASU STUDENTS**

## Jim's Auto Supply

**30%** average discount on all parts and accessories, except tools and special priced items.

**HOURS: 8-7 Daily (Mon.-Fri.); 8-5 Sat.**

Hayden & University  
**1828 E. UNIVERSITY** Next to Minder Binder's **968-5888**

## Video Odyssey



**50 TOKENS FOR \$5**

7027 E. Camelback Rd.  
Across from Camelback Mall Cinema

990-2248

**COUPON**

## SENIOR BSN STUDENTS



Why wait to start your nursing career? The Air Force has a special program for Senior BSNs. If selected, you can enter Air Force active duty soon after graduation—without waiting for the results of your state board.

To apply, you must have an overall 3.0 GPA and meet other basic requirements.

As a newly commissioned nurse, you'll attend a five month internship at a major Air Force facility. It's an excellent way to prepare you for the wide range of experiences you'll have as an Air Force nurse professional.

For more information contact:

**MSgt Bill Casselbury**  
 261-4971  
 2020 South Mill, Suite #113  
 Tempe, AZ 85282  
 Call collect (602) 261-4971



A great way of life.



**Do Your Computer Work At Home!**

Save Time and Effort

CRT with coupler  
 or  
 Printer with coupler

**\$50<sup>00</sup>** per month

**BRS LEASING, INC.**

3914 E. McDowell • 277-3282  
 Rentals / Service / Sales



## BALLOONS A LA CARTE

Flowers, Plants and Gifts

Personalized balloon bouquets for all occasions.

(602) 966-6789  
 414 S. Mill Ave.  
 Suite 206  
 Tempe

By **alacart**  
 of Scottsdale, Inc.

## ASU STUDENTS

### STUDY ABROAD — SPRING SEMESTER 1984

<p style="text-align: center;"><b>FLORENCE (ITALY)</b></p> <p style="text-align: center;">COURSES INCLUDE BEGINNING &amp; INTERMEDIATE ITALIAN, COMPOSITION &amp; CONVERSATION, LITERATURE, BEGINNING DRAWING, ART OF FLORENCE, ECONOMIC HISTORY &amp; ITALIAN CIVILIZATION</p> <p style="text-align: center;"><b>PROGRAM FEE: \$2,995</b></p> <p style="text-align: center;"><b>APPLICATION DEADLINE EXTENDED TO NOVEMBER 18, 1983</b></p>	<p style="text-align: center;"><b>LONDON (ENGLAND)</b></p> <p style="text-align: center;">COURSE OFFERING INCLUDES ENGLISH, HISTORY AND ECONOMICS. ATTEND CLASSES IN THE UNIVERSITY OF LONDON UNION. PROGRAM OFFERED IN COOPERATION WITH THE AMERICAN INSTITUTE FOR FOREIGN STUDY.</p> <p style="text-align: center;"><b>PROGRAM FEE: \$2,825</b></p> <p style="text-align: center;"><b>REGISTRATION NOW IN PROGRESS DON'T DELAY — ENROLL TODAY</b></p>
---	---

FOR PROGRAM INFORMATION AND APPLICATION FORMS CONTACT THE OFFICE OF SUMMER SESSIONS — ACADEMIC SERVICES BUILDING, ROOM 110, OR TELEPHONE 965-6563. ALL PROVISIONS GOVERNING SCHOLARSHIPS, GRANTS, AND LOANS APPLY TO THESE PROGRAMS.

## sports

state  
press

## Heroics

## Substitute quarterback sinks Sun Devils, 29-26

By Ken Sain

Assistant sports editor

A playwright doing the script for the ASU-Florida State game in Sun Devil Stadium Saturday night would probably be accused of using too much fantasy in his production.

Who would believe a seldom-used back-up quarterback could come in and lead the Seminoles to a come-from-behind, back-and-forth, last-second victory?

Probably only the 69,986 fans who watched the game.

"I thought the game started a little slow, but it heated up towards the end," ASU football coach Darryl Rogers said following Florida State's 29-26 victory over the Sun Devils Saturday night.

With starting quarterback Kelly Lowrey sitting on the bench due to a knee injury, backup QB Bob Davis led the Seminoles down the field in 1:22 to give FSU the lead

with only six seconds remaining.

Davis' 10-yard touchdown pass to Jessie Hester was the final act in a remarkable play.

The sad part for ASU fans was the Devils' inability to run out the clock after recovering a Seminole fumble with 2:58 remaining and ASU clinging to a 26-22 lead.

Backup tailback Mike Crawford, filling in for the injured Darryl Clack, lost four yards on ASU's first play. The next play Crawford went around right end on a pitchout but gained only three yards.

Todd Hons' pass to Don Kern on third-and-11 fell short and the Devils were forced to give FSU the ball back with 1:28 to play.

After rolling out to his right on first down for five yards, Davis threw two consecutive incompletions. But the Devils' defense was unable to hold the Seminoles on a fourth-and-five as Davis threw a 16-yard pass to

tight end Tom Wheeler.

Davis hit on five of his last seven passes to give Florida State the win.

The first half proved to be an uncharacteristic defensive showdown that ended in a 7-7 tie. ASU's blitzing defense surprised FSU's offense.

"They had us utterly confused on offense," Florida State's head coach Bobby Bowden said. "They have a great defensive scheme. I'm going to go home and try to learn it."

Florida State only scored one touchdown during the second and third quarters.

But the game lasts a full 60 minutes and Rogers understood that after the game. He was disappointed the Devils were unable to run out the clock after recovering Roosevelt Snipes fumble on the ASU 45 with better than three minutes to go.

"I would have like the series before to keep the ball, but we couldn't," Rogers said. "For 58 minutes we played excellent football. Whoever got the ball last, it looked like they would win it."

Florida State managed to score first with 8:41 remaining in the first quarter when Lowrey plunged over from the 1 on a quarterback keeper. There were only 10 Devils on the field defending, but even so the Devils almost kept him out.

There were at least four instances during the game in which ASU had only 10 players on the field.

Lowrey just broke the plane of the end zone to score, and in some players' opinions, the ball never crossed the goal line.

ASU came back with only 2:24 left in the half and scored from the 1 on a pitch-out to Mike Cade.

Perhaps the most unique play of the year occurred two plays before the score, when Crawford threw the tailback option to quarterback Todd Hons for a 12-yard gain.

The third quarter saw the Sun Devils score first to take a 10-7 lead, but Florida State came right back to go ahead 14-10.

Luis Zendejas connected on a 39-yard field goal after Hons passed for 43 yards on three passes to put ASU in field goal range.

Snipes countered with a 12-yard run to score for the Seminoles. A 25-yard pass from Lowrey to Weegie Thompson set up the scoring play.

The fourth quarter was more like the offensive show the two teams were expected to put on. Both offensive arsenals were forced to punt but once as the teams amassed 31 points in the final stanza.

Zendejas kicked a 24-yard field goal after the ASU offense stalled at the FSU 6-yard line. Crawford, who rushed for 111 yards in 29 attempts, ran for 37 yards on that drive.

The Devil defense held Florida State on the next series as the Seminoles failed on a third-and-three when linebacker Billy Robinson sacked Lowrey. On that play Lowrey was forced to leave the game due to an injury. He may not play for several weeks.

Hons threw a 49-yard touchdown pass to Crawford to give the Devils a 19-14 lead. Rogers decided to try for the two-point conversion, but Hons' pass was deflected by FSU's Alphonso Carreker.

It only took five plays for Davis to regain the lead for the Seminoles. His 38-yard TD pass to Snipes, and two-point conversion pass to Thompson put Florida State up by three points with 10:11 remaining.

A 35-yard pass to Doug Allen from Hons regained the lead for the Devils with only 5:08 left in the game. ASU covered 80 yards in nine plays.

The next Seminole drive saw Snipes fumble on the seventh play. ASU's Fred Gaddis recovered the ball and many fans started leaving, feeling ASU had won the game.

But the Devils were unable to hold on to the ball and Davis had one last chance. Davis said after the game that Florida State called two plays in the huddle before every down. One play was used when the ASU blitz was anticipated, and the other for a normal defense.

The strategy almost backfired as Davis anticipated the blitz on the second play, but ASU dropped back into zone coverage. Mario Montgomery almost intercepted the pass, but it slipped out of his hands. After that, Davis was poised in leading his team to a win.

Hons had one last chance to win the game with two seconds remaining, but his pass to Paul Day fell short.

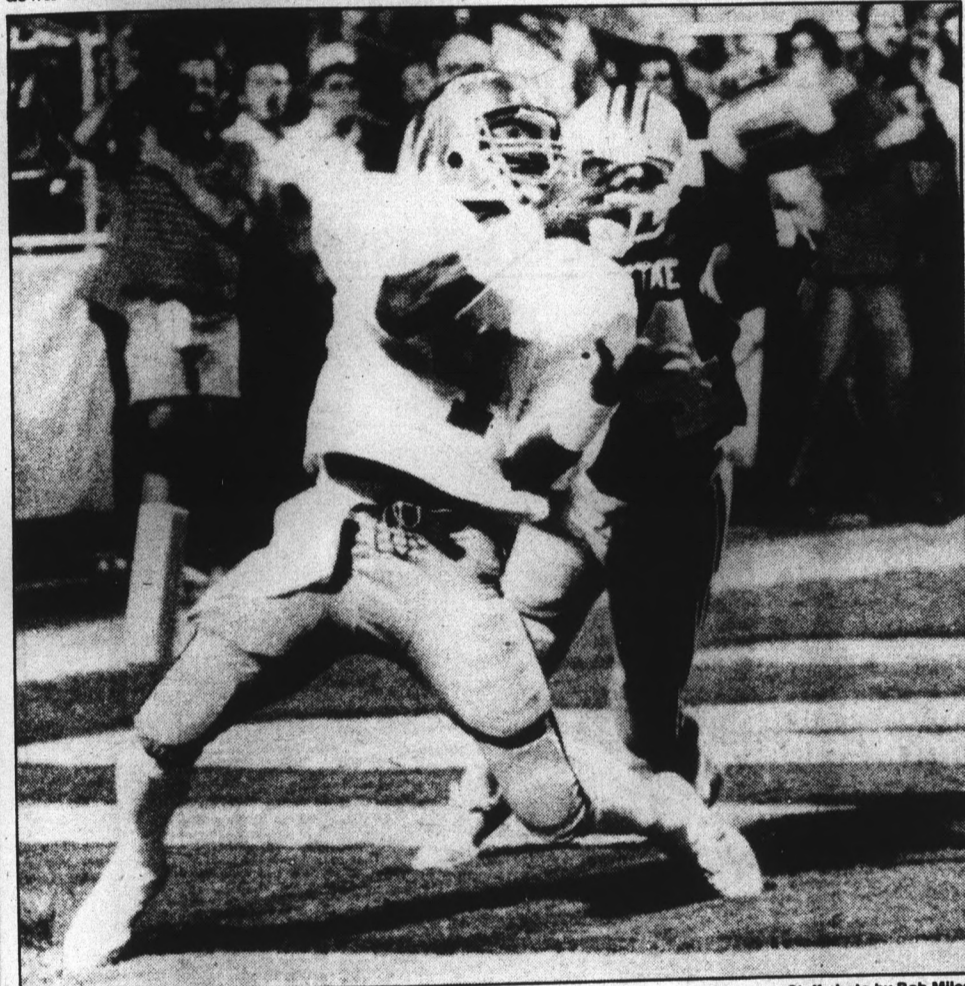
Game notes: — "Be it ever so humble, there's no place like home."

The ASU football fortunes at home have been quite impressive over the years, but after Florida State walked away with a victory Saturday night, things might have changed.

Under Rogers' direction, the Sun Devils lost only once in their first 20 games at home. However, the Devils own a mediocre 4-3 record in Sun Devil Stadium including the final home game of last year.

The Devils will get back to the conference schedule next week when they travel to Berkeley to tangle with the California Golden Bears in their final road game of the year.

The Devils are 4-0 in games in which Clack has played in the second half. They own an 0-2-1 record in games he has had to sit out the second half because of an injury.



Staff photo by Bob Miles

Florida State's Jessie Hester makes the game winning-catch with ASU's Mario Montgomery defending. Hester's grab with six seconds remaining in the game gave the Seminoles a 29-26 win.

**Timothy O'Tooles**  
hillel at arizona  
state university

INVITE YOU TO A  
**PARTY**  
AT  
**TIMOTHY O'TOOLES**  
1123 S. Rural Rd.  
North of Apache on Rural Rd. in Tempe

**SUNDAY, NOVEMBER 6 • 7 P.M.**  
HAPPY HOUR PRICES WILL BE IN EFFECT  
FROM 7-9:30 ON WELL DRINKS.

**BY INVITATION ONLY**  
You can get an invitation by calling  
Hillel • 967-7563  
Jewish Student Center

State liquor law requires proper I.D. be shown.

**NOT JUST FOR THE BIRDS**

Francis of Assisi loved animals.  
But his real business was PEOPLE!

Eight hundred years later we Capuchins —  
followers of Francis — are still in the  
"People Business." As a community of  
priests and brothers we spread the Gospel  
message of peace and justice to our age.

Interested? Let's talk.

Fr. Matt Eishoff, Capuchin  
Capuchin Vocation Office  
200 Foothill Blvd.  
La Canada, CA 91011  
(213) 790-6319

**CAPUCHINS**

**A LITTLE LOW ON CASH?**

Become a Plasma Donor  
It's easy & relaxing

**IMMEDIATE CASH**

Payment After Each Donation  
Call 894-1338 for an appointment.

**Tempe Plasma Corp.**  
Corner of Rural Rd. & Univ. Blvd.  
Tempe Towne Plaza  
This ad worth \$2. New donors only.

# Davis improves on old script

By Tom Blodgett  
Sports writer

For ASU football fans, it must have seemed like an instant replay of an old script. At least until the end.

The Sun Devils had forced an opponents' starting quarterback out with a knee injury in the second half for the second consecutive year on the last Saturday in October.

Again, the back-up came on to lead his team down the field toward a possible victory late in the game.

The one difference was that this year, the Devil defense did not hold. While Florida State might have borrowed Southern California's act, they improved the finale for themselves.

Last year's cast was USC starter Sean Salisbury and backup Scott Tinsley. This year the parts were played by Florida State signal callers Kelly Lowrey and Bob Davis.

Davis came on late in the third quarter and threw two touchdown passes, leading the Seminoles to a 29-26 victory over ASU.

But don't expect Davis' memories to remain crystal clear through the years. The 6-foot-4 junior was playing without his contact lenses, for which he had just traded in his glasses within the past couple of weeks.

"I can see fine," Davis said, "but I can't see numbers. I had to throw to jersey colors."

Davis woke up Saturday morning and promptly lost one of his lenses. He decided to play the game without the other.

Florida State head coach Bobby Bowden almost didn't call on Davis.

"They (ASU) come at you so fast that I thought we needed a quarterback with a little bit more mobility," Bowden said. "But (Florida State quarterback coach) Mike Kruczek said to go with Bob and have Eric Thomas ready."

Bowden is glad he went with Kruczek's advice. Davis completed eight of 12 passes for 140 yards. He was never sacked.

"Some people had been asking me why I didn't play Bobby Davis more, and I had told them because he had never been in a pressure situation before," Bowden said. "The only times he had played were when we were way ahead."

"Well, he got pressure tonight, and he performed just super. It takes adversity to find some heroes."

Davis' fate as the hero was sealed on Florida State's last offensive series when he took the Seminoles 82 yards on 10 plays without a timeout in the last minute to score the winning touchdown, a 10-yard toss to Jessie Hester.

"I just wanted to throw it wide so it would be either a touchdown or out of bounds and we could get another play off," Davis said.

Davis said he was not too nervous when he took over at the helm.

"If I show that I'm nervous, they (his teammates) are going to second guess my ability," Davis said.

## BUDGET CAR WASH

Student Special

**\$1.00 OFF**

Reg. Car Wash Price with Student I.D.

28 W. University  
967-3578

## JOSEPHINE'S EATERY

903 SOUTH RURAL ROAD  
PHONE ORDERS 894-2422

Good Tuesday-Wednesday Only

### COUPON

FREE MEDIUM DRINK WITH PURCHASE OF SANDWICH & PRESENTATION OF THIS COUPON.

30 Super Subs — Look for our Sandwich Specials

## PIZZA

TASTE & COMPARE

Slice  Cheese

and Med. Soft Drink or 10-oz. Coors or Bud

**99¢**

Daily Mon.-Fri. 2-5 p.m.

### The Joynt

606 S. Mill Ave.  
967-7926

## Custom Printed T-Shirts

FACTORY DIRECT

- Sororities
  - Fraternities
  - Clubs
- 967-2127**

## UNIVERSITY SCREEN PRINT

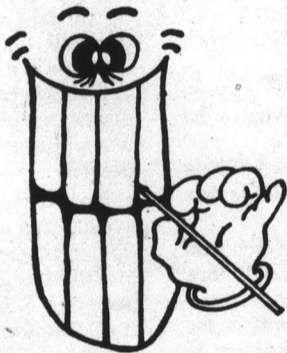
Official Supplier Greek Week '83

Share lunch with us on TUESDAYS

11:30-1:00 every week

Only \$1.25

Hillel • 1012 S. Mill



## Import/Sport Car Specialists

Over 100 to choose from  
Priced from \$595

**10% DISCOUNT**  
W/ASU I.D.

### Lipman's Automotive

966-4788

711 N. Scottsdale Rd., Tempe

## CHOPSTICKS BUFFET

### Oriental Buffet

featuring Cantonese & Traditional Chinese Food

LUNCH  
**\$3.35**  
all you can eat

DINNER  
**\$3.95**  
all you can eat

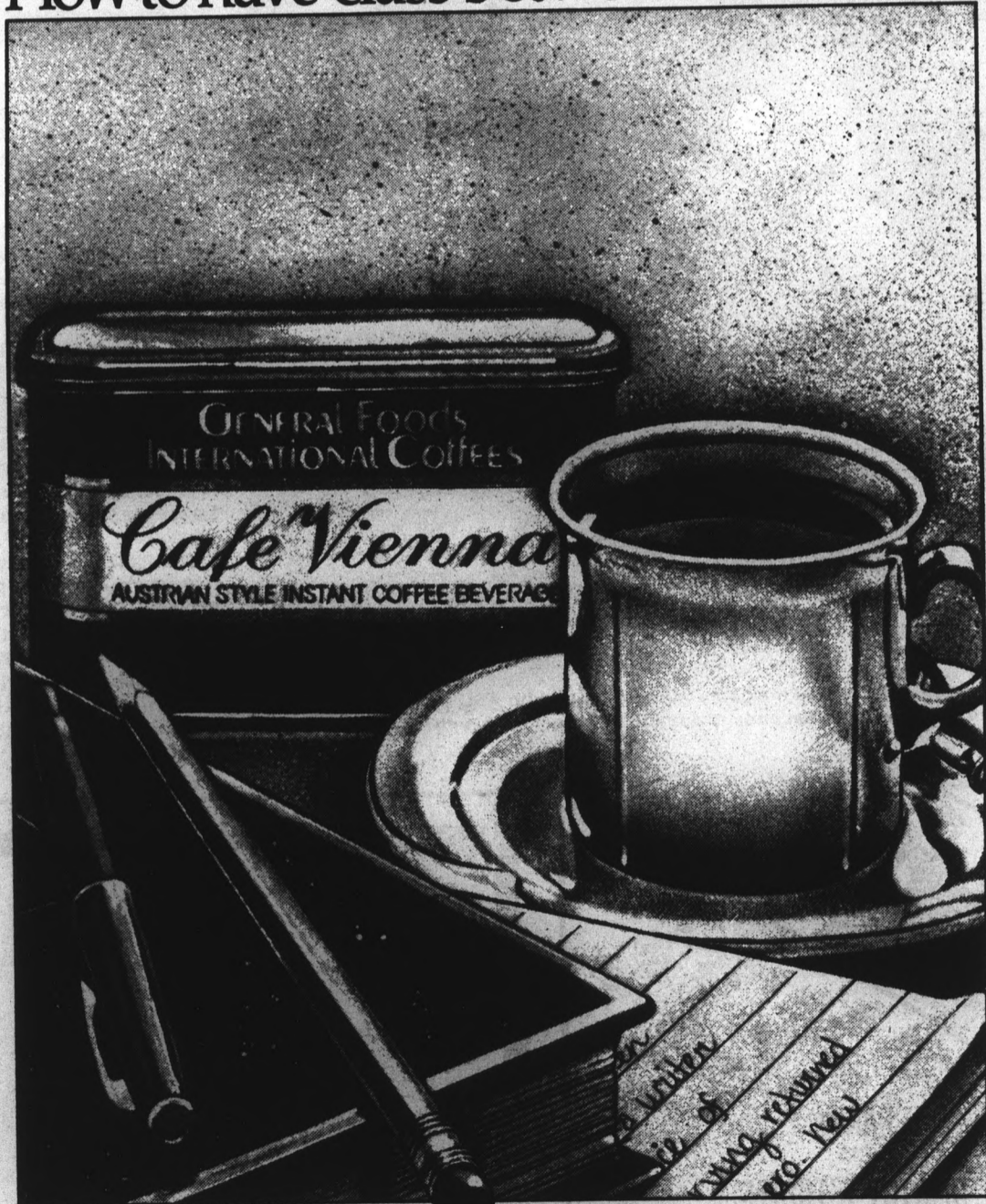
Special Orders & Take Out Avail.  
12 different kinds of Chinese food to choose from

### Chopsticks Restaurant

1324 S. Rural (across from Holiday Inn)

Open 11am-9pm EVERYDAY  
968-2636 968-2525

## How to have class between classes.



Indulge yourself in a warm cup of Cafe Vienna. It's a light and cinnamon touch of class. And just one of six deliciously different flavors from General Foods® International Coffees.



GENERAL FOODS® INTERNATIONAL COFFEES  
AS MUCH A FEELING AS A FLAVOR



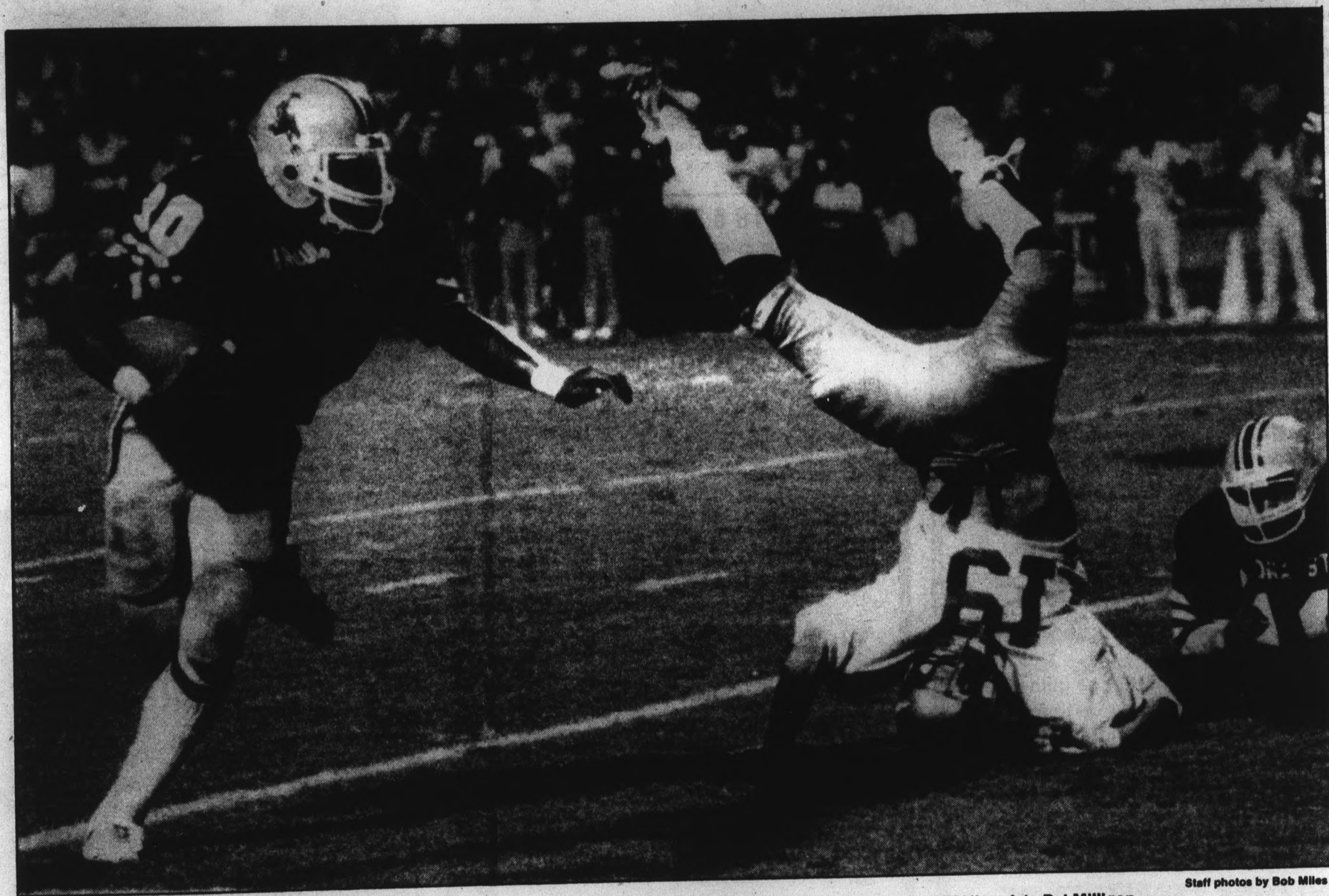
© General Foods Corporation 1983

# A few TICKS on the CLOCK

## Seminoles beat the Devils with a final seconds pass

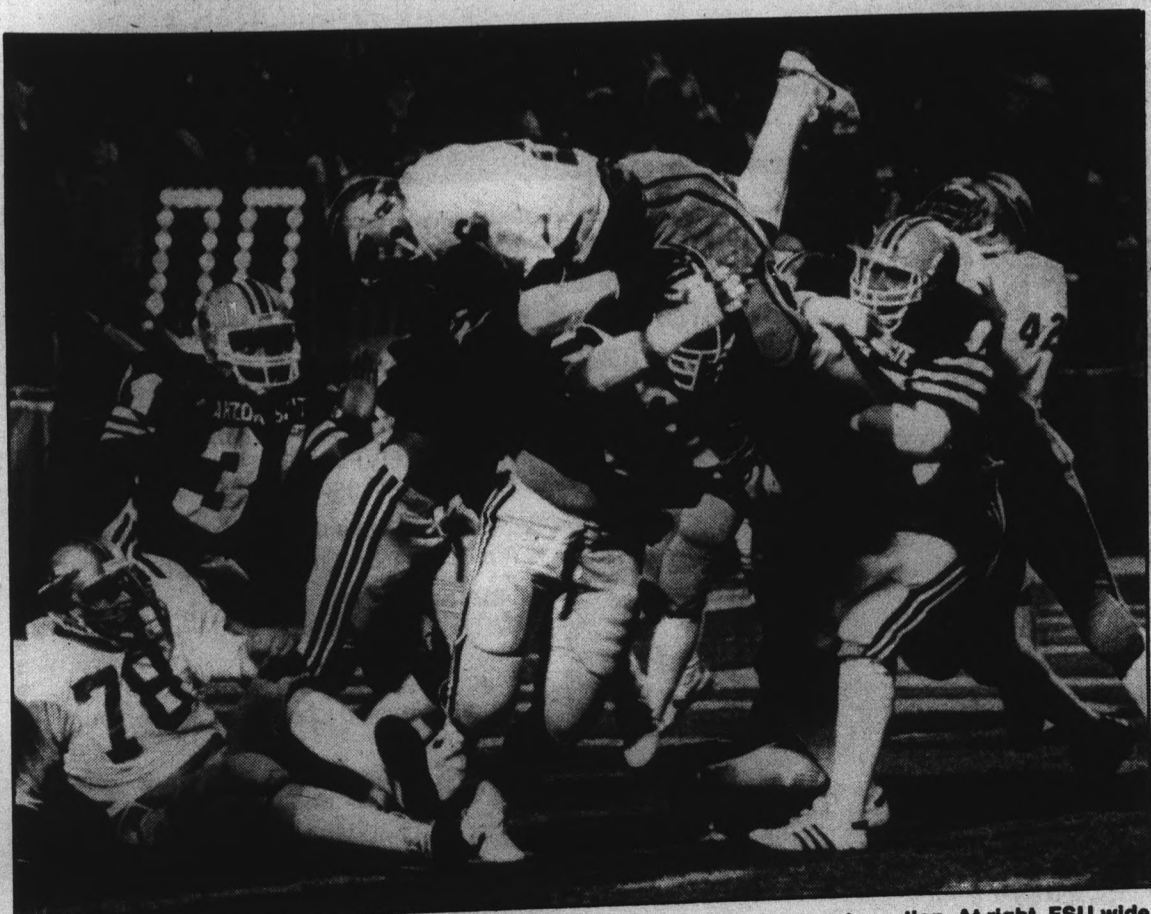


After catching a pass from Mike Crawford, ASU quarterback Todd Hons gains 12 yards before being run out of bounds at the FSU 1-yard line by tackle Isaac Williams.

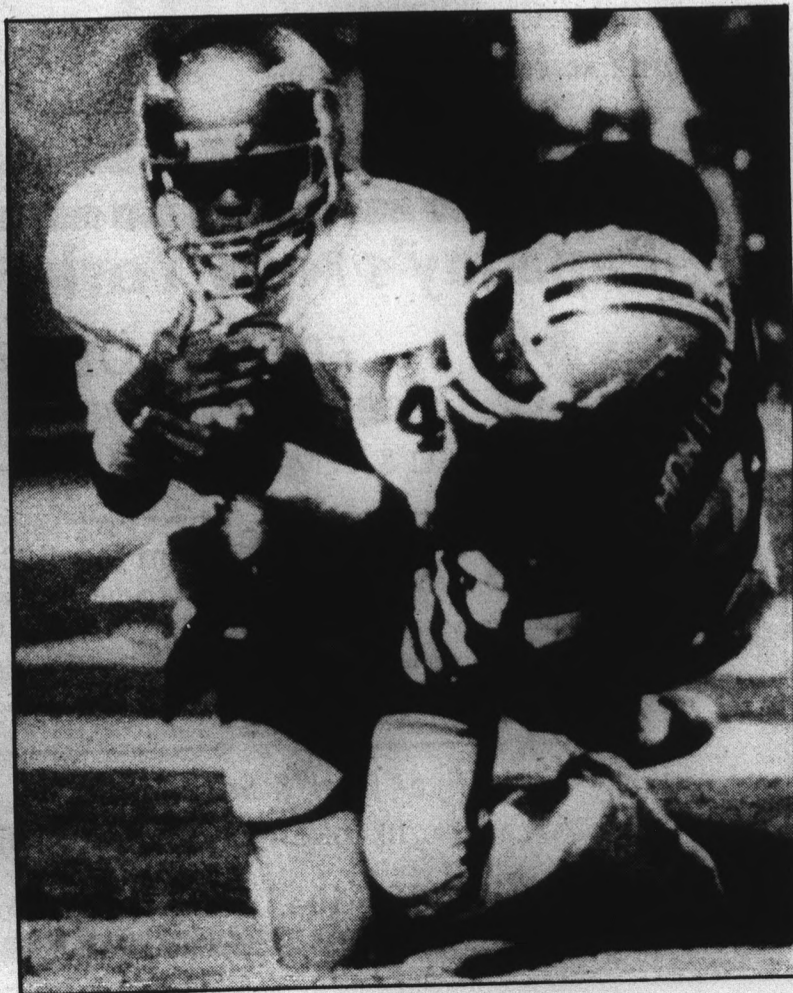


Staff photos by Bob Miles

ASU running back Mike Crawford picks up a few extra yards thanks to a head jarring block by fullback Tex Wright on FSU's safety Pat Milligan.



The ASU goal-line defense stacks up FSU tailback Greg Allen during first quarter action. At right, FSU wide receiver Jessie Hester makes the game winning catch with six seconds remaining on the clock. ASU cornerback Mario Montgomery defends. The Seminoles beat the Sun Devils 29-26.



# Crawford provides in pinch, but Sun Devils still fall

By Dean Obenauer  
Sports writer

In the beginning there were three — Darryl Clack, Mike Cade and Mike Crawford.

Clack was definitely the tailback of ASU's future, and the question was who would back him up when he grew tired.

Following spring drills the 6-foot-1, 206 pound Cade was the No. 2 tailback. The season before, he had seen limited action, rushing 26 times for 63 yards.

Then along came Crawford.

When Crawford suited up at Camp Tontozona last summer he battled Cade for the reserve tailback position. Just when it looked as if the senior Cade had won the rights to the No. 2 spot, he suffered an injury.

The rib injury took Cade out of the picture and Crawford took over.

Many critics were skeptical of how Crawford would adapt to the Pac-10. The season before he was playing for Moorpark College in Moorpark, Calif., where he rushed for 1,329 yards on 264 carries.

He was the second-leading junior college rusher in the state, and led the nation's junior colleges in scoring with 140 points while finishing fourth in the nation in rushing. He was also named a first team all-American.

He had the credentials, but he still had to prove that he could compete in the Pac-10.

In the first game of the season he rushed for 26 yards on five attempts. He also had one reception for nine yards.

In the UCLA game he got his big opportunity.

Clack was knocked out of the game on the Sun Devils' opening drive. With Cade still injured, the tailback duties were turned over to Crawford.

He responded by carrying the pigskin 24 times for a tough

72 yards and one touchdown.

After the game Crawford said that it was only the beginning and that he had not proved himself yet. The next three games he saw limited action coming off the bench to relieve Clack.

And then it happened again. Clack suffered a hip pointer early in the Washington State game. Crawford again came out and performed well, only to have ASU lose. It was the second time in the season the Sun Devils failed to win with Clack not carrying the ball at least 11 times.

With Clack's hip pointer continuing to nag him, Crawford found himself starting for the first time this season last Saturday against Florida State.

"If I get a shot, I should perform," Crawford said.

And perform he did. In his first career start at ASU, Crawford rushed for 111 yards on 29 carries. He caught two passes for 56 yards and a touchdown, and completed a pass for 12 yards. Crawford is the Sun Devils' second leading rusher this year with 387 yards. Clack still leads with 568.

Crawford has completed three passes this season for 96 yards. He has yet to throw an incomplete pass while throwing one for a touchdown.

"I knew from the start of the week that I was going to start," Crawford said. "I was getting hyped up since Monday."

One reason that Crawford performed so well was the relief provided by Cade. Cade came off the bench to rush for his first career ASU touchdown. Despite gaining only eight yards, Cade got the yardage when it was needed most.

In this week's game against Cal-Berkeley, Clack should be able to play. With the improvement of Crawford, the Devils do not have to rely as much on the injured Clack as they used to.



Staff photo by Larry Woodall

ASU tailback Mike Crawford rambles for some of his game-high 111 yards against Florida State. Crawford, a sophomore, started in place of the injured Darryl Clack.

**ENJOY THE BEST**  
**Häagen-Dazs**  
WE DELIVER  
Pints, Quarts and Cakes  
**20% OFF WITH ASU I.D.**  
903 S. Rural  
967-2340  
HOURS:  
Sun, Thurs. 11-12 a.m.  
Fri. & Sat. 11-1 a.m.

**TRIUMPH TR-6 SHOCK CONVERSIONS**  
Adjustable Air Shock Kit will  
1) Provide far better road handling  
2) Help correct rear wheel sag  
3) Increase lift  
4) Provide easy adjustment  
For More Information Call  
British sports car parts & service  
THE MG SHOP  
936 E. Gilbert Dr. Tempe, AZ 967-5631

**DWI's CAN BE BEATEN!**  
GARY PETER KLAHR  
539 E. McDowell  
254-5166/253-6143  
nights & weekends  
But you need experienced counsel — not a "cut-rate" legal clinic. 15 years experience. Graduated first in law school class. Former city councilman. Experienced in criminal, drug, traffic, divorce, custody, collection & accident cases. Reasonable fees (DWT's as low as \$350).

**STUDY LESS LEARN MORE**  
Complete concentration. It's the key to unlocking the mind.  
Under the personal one-to-one guidance of a medical doctor, you'll learn how to relax, use total concentration to get more out of your studies in less time, and have total memory recall during examinations.  
You'll be more motivated, and you'll learn SELF-HYPNOSIS.  
Overcome negative behavior patterns.  
**ARIZONA INSTITUTE OF MEDICAL HYPNOSIS**  
LLOYD H. KOELLING, M.D. — DIRECTOR  
946-4286

**IMPORT AUTO CENTER**  
MERCEDES SPECIALISTS  
994-3222  
3018 N. Scottsdale Rd. • Scottsdale, Arizona  
Just North of Thomas  
Complete Auto Repairs & Service  
All Makes & Models, Foreign & Domestic Compact  
**TUNE-UP SPECIAL**  
Starting From \$39.95 (plus tax)  
includes new plugs, points, condenser (if needed), adjust timing and carburetor, check compression, adjust for emissions test, service air filter and PCVB valve, inspect wires, belts, hoses and cables. (Additional parts and labor extra if needed)  
Tune-ups, Engine Work, Brakes, Steering System, Timing, Belts & Chains, Fuel Injection System, Alternators, Clutch & Flywheel, Generators, Differentials, Starter & Solenoids, Radiators, Batteries, Water & Fuel Pumps, Electronic Ignition, Shocks, Air Conditioning, Heating & Cooling, Carburetors, Mufflers, Electrical System, Trouble Shooting, Front Ends, Normal Maintenance, Lube, Oil, Filter, Emissions Test, Front Wheel Drive, Gear Box Work, Transmission Service, Etc., etc.

**SUN DEVIL HAIRCUTTERS**  
"Pride of the Sun Devils"  
FALL SPECIAL  
**\$5.00 OFF**  
Men & Women (Reg. \$13)  
Perm Special / \$10 OFF  
Good only at  
130 E. University  
(In the Arches)  
966-5462  
Hours: Mon.-Fri. 9-6, Sat. 9-5  
SERVING ASU SINCE 1964

**Papa Jay's New York Pizza**  
FAST... FREE... DELIVERY  
(Limited free delivery area)  
Serving ASU & TEMPE for nearly 13 years  
**\$3 OFF** any large Sicilian\* Style Pizza with two or more toppings.  
Good on delivery, take-out or dine-in.  
Expires 12-30-83.  
\*Extra Thick Crust  
**Sun Devil Combo**  
Any large pizza with your choice of up to 4 toppings.  
**ONLY \$5.95** (plus tax)  
Good on delivery, take-out or dine-in.  
Expires 12-30-83.  
We Deliver Beer & Soft Drinks  
Video Arcade! 10 tokens for \$1 Every Day  
804 S. ASH (Mill & Univ.) 966-1003 • 966-4292 • 967-9689

**NO TIME TO BURN?!**  
Tan safely with the fastest UL listed sun lounge in the valley.  
★ PURCHASE A BED MEMBERSHIP AND RECEIVE AN EQUAL AMOUNT OF BOOTH VISITS FREE!!  
★ 5 VISITS FOR \$5 IN TANNING BOOTH (Or \$5 OFF bed membership)  
★ FREE BED VISIT WITH 3 BODY WRAPS.  
1st time customers. Must bring coupon. Limit one coupon per person.  
**GOLDEN GLO**  
43 E. Broadway (Broadway & Mill)  
Hours 9 a.m.-8 p.m.  
MasterCard VISA 966-2150

# Nelson finishes third as ASU gets fifth in WCAA x-country

By Vicki Serna  
Sports writer

The word "superb" is powerful. Webster's New Collegiate Dictionary defines it as "the highest degree by grandeur, excellence, brilliance and competence."

According to head cross country coach Roger Kerr, Lynn Nelson's performance this weekend was just that — superb.

Nelson, along with her teammates, competed in the WCAA conference championships last weekend in Tucson. The Sun Devils came in fifth place with 93 points. Nelson finished third behind two top Stanford runners.

Both top finishers were All-Americans and placed in the top 20 last year at the NCAA Championships.

Regina Jacobs, winner of the race with a time of 17:41, placed 19th in last year's NCAA championships. Coming in two seconds later was Allison Wiley (Stanford). She finished eighth last year during the NCAA championships.

Wiley outkicked Nelson during the end of the race and beat her by seven seconds.

Nelson, a junior, ran a time of 17:50 and outran another top Stanford runner, also an all-American.

Pattisue Plumer lacked the power to catch up with the speeding Nelson and had to settle for a fifth-place finish behind teammate Cory Schubert, a freshman.

Kerr, proud of Nelson and the team, described her running as "superb" and said she led the race during the first mile.

"Jacobs took the lead from her (Nelson) at the mile-and-a-half mark and led the race through the two-mile mark," Kerr said.

According to Kerr, the third-place finish by Nelson was a "tremendous accomplishment."

Nelson, who has performed remarkably well for ASU, has finished in first place four times in her previous six cross country meets and invitationals.

Other ASU runners who competed were

freshman Wendy Sihner, who finished 13th with a time of 18:58 and beat teammate Julie Seliene, the team's No. 2 runner. Seliene's time was 19:07 and placed her 16th.

"Wendy had a great race," Kerr said. "She was scared as can be because she's freshman. But she held on very well."

"Julie did not run terrible, but she didn't run too well. Give her a couple of weeks and she'll be back up there," he said about his freshman runner.

Mickey Doane finished 30th with a time of 20:13. Kerr said he expects vast improvements from her in the next two weeks when she should move up 10 or 15 places.

"Mickey had a very good last mile. She probably passed about 10 people overall during the race," Kerr said.

Sandy Beech was participating in the race with leg problems and Kerr suspects that is the reason she did not place as high as he had hoped.

The Sun Devils' other competitors in the conference meet were Heike Thiem, Sarah Krumme and Leslie Winnale.

Top team Stanford, placing four of their runners in the top five slots of the race, finished first in the conference, followed by UCLA.

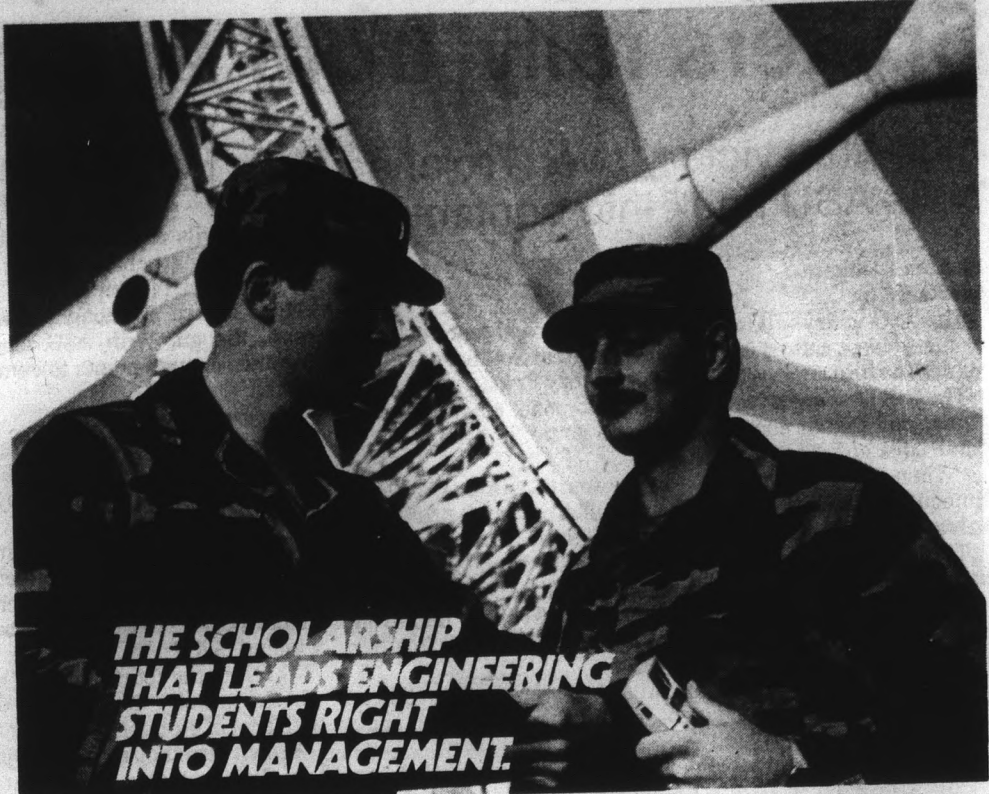
U of A and San Diego State tied for third place.

Kerr commented on the team finishes. "I think Stanford ran very well, and Arizona ran its best meet this year."

He also believes the team needs the individual efforts of each of the runners. "We need help from the pack runners if we're going to be where we need to be."

The Sun Devils will rest up next week to prepare for the NCAA Regionals at the University of Oregon on Nov. 12.

The top three finishers in the regionals will advance to the NCAA Championships Nov. 21 at Lehigh University in Bethlehem, Penn.



**THE SCHOLARSHIP THAT LEADS ENGINEERING STUDENTS RIGHT INTO MANAGEMENT.**

There's a lot more to an Army ROTC scholarship than tuition, books, lab fees, supplies and up to \$1,000 per school year for living expenses.

There's leadership. You start sharpening your ability to lead while you're still in engineering school. So when you graduate as a second lieutenant, you're ready to take charge.

You're trim, fit. You know how to motivate people. And you're capable of man-

aging the thousands of dollars worth of equipment you're in charge of.

And as you progress, you'll discover increasing opportunities to advance your engineering skills, to attend graduate school, while you serve your country.

All the while, you'll be acquiring the management skills that industry leaders look for.

So look into an Army ROTC scholarship. Talk it over with the Professor of Military Science on your campus.

At ASU contact:

**ARMY ROTC. BE ALL YOU CAN BE.**

Ken Schwartz  
Old Main, Rm. 228  
or call 965-3318/19

or Jim Ernzen  
Old Main, Rm. 202  
or call 965-3318

**SELF-SERVICE TYPEWRITERS**

Good quality copies require good quality typing. Do your typing at **kinko's copies**

Tempe Store  
715 S. Forest  
894-9588  
Open 7 days a week

Mesa Store  
1840 W. Southern  
969-3326

**AUTO INSURANCE AS LOW AS 69¢ A DAY!**

EVEN IF YOU HAVE UP TO TWO MINOR VIOLATIONS

Of course we can't write daily policies but we can cover your car with liability insurance for as low as 69¢ a day.\*

We represent over 12 different insurance companies and because of this, we can get you some of the lowest rates available.

**GOOD RECORD, BAD RECORD, EVEN DWI's! CHECK OUR RATES.**

\*Based on married male, living in Phoenix, age 23 or older, with up to two minor violations.

**MOTORCYCLES ALSO**

**EXECUTIVE INSURANCE SERVICES**  
Complete Insurance Services

Telephone: (602) 956-0507  
Mon.-Fri. 9 a.m.-5 p.m.  
Appointments Available  
2515 E. Thomas Road • Phoenix, Arizona 85016

**Score Big Savings at Arby's!**

Before or after the game, stop by Arby's. With our delicious line-up of sandwiches and these coupons, you're sure to come up a winner!

In January There Will Be a Physical Attraction Between College Students & TAOS

**1984 Collegiate Winter Carnival**

**SKI SKI**

- 5 full days of skiing
- LUXURY accommodations on the mountain
- FREE beer on the bus
- Departing and welcome receptions
- Service taxes
- On site staff

- Free shuttle
- Cross country skiing facilities
- Access to art galleries and unique gift shops
- Access to sightseeing of Indian reservations
- Ski school available
- Hot tubs at lodging and a whole lot of fun...

**Secure Your Space Now!**

Call your Campus Representative at: **839-7076 (3-6 p.m.)**

or call Scholastic Travel Corp. collect (214) 739-3270.

**ONLY \$175**

**2** Arby's® Regular Roast Beef Sandwiches **\$219**

**2** Introducing: Arby's® New Bac'n Cheddar Deluxe Sandwich **\$289**

Offer expires November 27, 1983. Valid at all participating Arby's including Broadway & Roosevelt. One coupon per customer per order.

# Spikers rally from two-game deficit to top USC

## First-time victory over Trojans pulls ASU back into contention

By Tom Blodgett  
Sports writer

The ASU volleyball team, counted down and just about out by many fans, rallied from behind to defeat Southern California for the first time in the school's history Friday night.

The Devils were down two games to none, 8-2 in the third game, and match point in the fourth game, but managed to come back on both occasions.

"When they fell behind 4-0 in the fourth game, I called a timeout and said 'I guess you guys like to play better from behind,'" ASU head volleyball coach Debbie Brown said.

This was the upset the team had long awaited. The Devils had never beaten the Trojans in fourteen previous meetings.

During the ASU seniors' careers, the Trojans definitely spoke loudest. But Lisa Stuck, Terri Edison and Heather Forbes got in the final word.

"I heard the seniors talking, and they were saying 'this is our last shot at USC; we've got to beat them,'" Brown said. "I'm very happy for them."

The trio put together fine games and exemplified the Devils' character in leading them to victory.

"I just wanted to get even," Edison said. "I'm psyched. We finally beat them."

At the start of the match it appeared the Devils were bound to lose to another contender for the national championship. The Trojans are ranked fifth in the country by the Collegiate Volleyball Coach's Association.

The Devils saw their early 2-0 lead evaporate as USC scored eight straight points to lead 8-2. ASU closed to within three points before another Trojan surge gave them game one, 15-8.

The Devils battled USC tooth and nail in the second game to a 6-6 tie when another Southern Cal streak put ASU in the hole, 12-6. Again, the Devils closed to within three, 13-10, but the Trojans held on for a 15-10 win.

The third game looked to be a replay of the first. The Devils again lost eight consecutive points after grabbing a 2-0 lead. But an Edison-Forbes block of Tracy Clark, who led all hitters with 21 kills, turned momentum in the game.

The Devils reeled off five straight points to close within one. USC edged out in front again, 11-7, but those were the last points they scored in the game.

With a P.E. East crowd of 408 encouraging them, the Devils scored eight straight to close the match to 2-1. Stuck

polished the game off, cranking a spike right into the teeth of a USC double block, with the ball landing on the Trojan side of the net.

The Devils dug another hole for themselves in the fourth game, falling behind 4-0 and later 9-3. But the Devils kept rallying back into the game.

USC looked as though it would survive this game's barrage, though. With ASU closing in, the Trojans scraped together enough points to come within one of closing out the match.

They never got that one.

Down 14-12 with USC serving for match, the Devils got two kills from Stuck, one from Edison, one from Valentina Vega, and one attack error each by USC's Leslie Devereux and Dana Smith to win 16-14.

The fifth game fell easily into place for the Devils. With momentum having completely shifted, ASU scored eight straight points after falling behind 3-0 to take command. The Trojans closed to within 11-8, but ASU let them have no more, winning 15-8.

"I felt in the fourth game if we could win it, then we could win the match," Brown said. "I felt like SC was not playing with a lot of emotion."

Brown also thought the Trojans were hurt when their captain, Smith, started making attack errors late in the match.

"Dana is the most unemotional of them all," Brown said. "She tends to lead by example with her skills. When her game broke down, so did the team's."

The block proved to be ASU's most effective weapon of the evening.

"We had an exceptional block," Brown said. "(USC) hit a lot into the block."

For the match, ASU had seven block solos and 18 block assists against only one blocking error. By contrast, USC had five solos and eight assists with two errors.

Edison was the biggest reason for the block's success. The 6-foot-4 middle blocker accounted for three solos and eight assists.

On offense, ASU ran a potent and balanced attack. Stuck (19), Vega (18), Edison (15) and Tammy Webb (13) were all in double figures on kills. Edison led the team with just one attack error, posting a .538 hitting percentage.

In addition to Clark, USC also got 15 kills from Devereux and 12 kills from Janice Johnson. ASU's hitting percentage of .301 topped USC's .225.

Forbes led both teams with 46 assists, and also had a block solo and three block assists.

The evening before, ASU stormed through Cal State-Long Beach in three straight games, 15-7, 15-8, 15-10.

"I thought we came out putting pressure on ourselves to win," Brown said. "We knew we were better and we wanted a win."

"We were playing tight, but when we loosened up we played much better."

The Devils were led by Vega's 12 kills and Forbes' 37 assists. Forbes also had a solo block and two assists.

"They were excellent blocks," Brown said. "She just wrapped her hands around the ball and there was no place for it to go but down."

The schedule does not ease up for the Sun Devils this week. They play a conference match with San Diego State tomorrow night, and then play in the UCLA-National Invitational Volleyball Tournament Friday and Saturday.

In the NIVT, the Devils will be in a pool with top-ranked Hawaii, as well as Cal-Santa Barbara, Washington and Cal State-Fullerton.

"It should be real challenging," Brown said. "It would be a big boost to our confidence if we can come away with some wins."



Staff photo by Andy Arenz

ASU volleyball players Heather Forbes, left, and Tammy Webb block an opponent's hit in a recent home match.

**THE JOYNT**  
2 CAN DINE FOR  
**\$5.49** Reg. \$8.50  
Expires Nov. 11, 1983.

Choice of:  
•Lasagna  
•Cheese or Spinach Manicotti  
•Baked Ziti  
Includes 2 dinner salads and garlic breads

**THE JOYNT**  
606 S. Mill  
967-7926  
CARRY OUTS  
75¢ ADDITIONAL

COUPON

**VALLEY CHIROPRACTIC LIFE CENTER**  
DR. DAVID J. BROTMAN

**FREE SPINAL EXAMINATION & CONSULTATION**

Includes:  
•palpatory exam of the spine  
•orthopedic testing  
•range of motion studies  
•spinal balance test

**ALSO FOR ASU STUDENTS**  
**1st ADJUSTMENT FREE**

Call Now  
**966-1416**  
818 W. BROADWAY ROAD #104  
TEMPE (Just E. of Hardy)

**LARRY and ALAN**

Thanks for being the best coaches ever for Derby Days.

Love,  
**Sigma Sigma Sigma**

**UNIVERSITY TREATERS**  
1025 E. Broadway (East of Rural in Tempe) 829-6666

Walt Disney Classic  
A "Snow White & the Seven Dwarfs" & "The Footloose Fox" (G)  
C "Eddie & The Cruisers" (R)  
B "War Games" (PG)  
D "Revenge of the Ninja" (R)

MIDNIGHT MOVIES EVERY FRIDAY AND SATURDAY NIGHT FOR ONLY A DOLLAR!

**ONLY \$1.50 AT ALL TIMES!**

SHHHH...!  
THE WOODSHED  
Your Satellite TV Headquarters

Mill & Baseline

**Micro Computer SEMINAR**  
Understanding Microcomputers for the Small Business & Accounting Professional

**November 4, 1983**  
Pointe Resort  
Lunch Provided / Student Discount

**TOPICS:**  
•The History of the Microcomputer.  
•Computer Fundamentals  
•Hardware Options  
•Spreadsheets  
•Financial Accounting  
•Word Processing / Data Base  
•How to Select a Microcomputer

For More Information Phone  
**Sage Seminars • 867-2068**

**BETWEEN THE BUNS**

**5 DRAFTS OR WELL DOUBLES always \$1.25**

1/3 & 1/2 lb. Burgers  
Chili • Sandwiches • Salads  
1/2 lb. Top Sirloin  
Complete Dinner — \$7

Stop & say "hi" to  
**STEVE RUNYAN**  
now mixing at the bar

Now Open Sundays

Video Games • Pool  
Electric Darts  
Now Shuffleboard

Bus with us to ASU  
Scottsdale Rd. & McDowell  
In Papago Plaza  
990-2233

**25¢ BEER**  
at the  
**DEVIL HOUSE**  
Tonight!

**Carpet House**  
DORMS, APTS., VANS  
ALL SIZES  
USED ROOM SIZES  
\$10 & UP  
NEW CARPET TOO!  
1516 E. Van Buren  
Phoenix

**PIANO & ORGAN RENTALS**  
Allen Piano & Organ Co.  
Monthly or Daily  
Your Choice of Color or Style  
242-4321 • Phx.  
833-2332 • Mesa

**LEE'S TAILORING**  
• Fashion Designing for Ladies  
• Custom Suits for Gentlemen  
• Alterations  
894-1055  
Broadway & McClintock  
Alpha Beta Shopping Center

**DRIVE CARS FREE**  
Cars Available  
Many Points U.S.A.  
We are I.C.C. licensed and insured. Must be 21 years or more.  
SCHEALL DRIVEAWAY  
991-5533

**Mac TEMPE CENTER JEWELERS**  
FOR ALL YOUR JEWELRY NEEDS  
Diamonds, Watches  
14k Chains, Pendants  
Sorority-Fraternity Jewelry  
Watch & Jewelry Repairing  
966-7587

**THE HOT LOUNGE**  
FREE POOL 11 a.m.-2 p.m.  
Sun.-Fri.  
Jack Daniels Night  
Monday 7-10 p.m. \$1  
3129 S. Mill 967-9781  
Tempe (N.E. Corner of Mill & Southern)

# classifieds

The STATE PRESS disclaims all responsibility for quality and prices of goods and services offered in both classified and display advertising by its advertisers.

## CLASSIFIEDS START HERE

### Announcements

**ATTENTION FRATERNITIES:** Earn money through contests. 968-6899, Tim.

**BUDDHIST MEDITATION:** Free introductory lecture, Wednesday, November 2, 8 week course follows. For info, 978-3659 or 898-9328.

**GAY AND Christian?** Try Lambda Campus Christian Fellowship! Yes! Jesus loves you! Call 265-1102 anytime!

**HANG GLIDE this weekend!** Certified instruction, equipment plus five flights for only \$45, complete. Group rates and gift certificates available. Windsports, 897-7121 (daily 10:00-6:00).

### Automobiles

1979 FORD RANCHERO, new interior / tires, AM/FM, eight track and air. 965-9766 after 5 p.m.

\$225 DOWN. 1973 Nova two door, automatic. Steal price \$695. LJ's, 156 E. Main, 962-1333.

\$375 CASH. 1970 Riviera. Hurry on this one. LJ's, 156 E. Main, 962-1333.

\$400 CASH. 1972 Capri. Excellent running and needs minor repair. LJ's, 156 E. Main, 962-1333.

\$600 DOWN. 1977 Cutlass. Beautiful car with all the equipment. Steal price this week \$1200 plus tax and license. We carry contracts with no finance charge. LJ's, 156 E. Main, 962-1333.

"70" FIAT Spyder, fair body, good interior, runs well. Best offer over \$750. Call Lee, 968-5884.

### Bicycles

SCHWINN VARSITY 10-speed \$85, girl's varsity \$90, Schwinn beach cruiser \$75. All excellent condition, 968-8944, 941-7063.

SPECIAL LOW student prices on new and used bicycles. Expert repairs on all makes at discount prices. Tempe Bicycle Shop, 6th and Mill. 966-6896.

### Books

DO-IT DATEBOOK. \$9.95 ASU book store, student book center.

HERPES! THIS Herpes brochure by a physician is a must for the sexually active. How to avoid, detect and treat. Send \$4.00 to Antler Publishing, Box 43394 Tucson, AZ 85733.

### Business Opp.

**AMBITIOUS BUSINESS** majors preferred. Pre-paid Legal Services Incorporated looking for hard working individuals with some marketing knowledge. Call 966-6008 for appointment.

### For Rent or Lease

LUXURY CONDO, two bedroom, two bath, two miles from ASU. Two pools, three tennis courts. All appliances including washer, dryer. \$450 monthly. Available mid November. Call Jeff, 954-9588 or 962-5383.

RENT / FEMALE, private room and bath. Pool, jacuzzi, recreation room, quiet. 1 1/2 miles ASU, 247-7444.

TWO BEDROOM townhouse at the Lakes, unfurnished. Includes washer, dryer, dishwasher and refrigerator. Also includes all clubhouse facilities. \$450 per month, 897-2858.

### For Sale

10-SPEED. Mens Luxury Line Sport Racer, blue, excellent condition, \$100. Call after 4 p.m., 899-0264.

12 x 60 WHITTIER, adult Tempe park. Two bedroom, 1 1/2 baths, fully wired 6 x 8 shed, bright, clean home. All Star, 984-1254 or Rory, 894-0519.

FIX UP in Tempe park. Two bedroom, 1 1/2 baths, 12 x 64, small pets allowed, some furniture, \$7,900 OBO. All Star, 984-1254 or Rory, 894-0519.

MATCHING GIBSON front loading washer and dryer, \$500 set, \$330 each. Both are electric. Freezer, \$150. All are in excellent condition. I also am accepting offers for a friend on his Harley. Call Roberts, 945-1669.

### For Sale

MOBILE HOME: 14 x 64, three bedroom, 2 1/2 baths, 4605 S. Priest, washer, dryer. Call Joyce, 897-0760.

ROADRUNNER BATTERIES, \$24.95. Two year guarantee, with exchange. 1527 East Van Buren, 256-2484.

STORAGE ROOM sale, also Irish Setter, male, for good home, gentle, well mannered, good security. Keep trying anytime, 247-7444.

TEMPE FAMILY park. 10 x 50 Liberty. Spacious kitchen, raised ceiling, washer and furniture included. \$6,700. All Star, 984-1254 or Rory, 894-0519.

**STEREO**  
BRAND NEW, never been used. In unopened original individual cartons. AM/FM stereo receiver, cassette deck plays and records, turntable, speakers. Full original guarantee. Cost \$400, sacrifice \$140. Usually home.  
CALL 954-9541.

### Furniture

ATTENTION ASU students, come visit Arizona Sleep Shops grand opening in Mesa. Southern and Country Club. 833-0933.

COMPLETE TRUNDLE bed, with innerspring mattress, \$169.00. Arizona Sleep Shops. 833-0933.

FIVE DRAWER chest, only \$29.95. Arizona Sleep Shops, 1328 South Country Club. 833-0933.

FIVE PIECE bedroom set: Dresser, mirror, nightstand, headboard, chest, \$189. Matching desk, \$49. Arizona Sleep Shops, 1328 South Country Club. 833-0933.

FOR SALE: Single bed, like new, \$95. Call 966-2024 after 4:00 p.m.

LIVINGROOM SPECIAL: Sofa, loveseat, coffee table, two end tables, two lamps. \$279. Arizona Sleep Shops, 1328 South Country Club. 833-0933.

SCOTTSDALE USED Furniture, 2200 N. Scottsdale Road in Scottsdale Plaza (behind Kwan's), 949-0380. Beds, bookcases, desks.

THREE PIECE wall units, \$179. Bookshelves, \$35. Lamps, \$10. Twin beds, \$59. Doubles, \$99. Arizona Sleep Shops, 833-0933.

### Help Wanted

BREAK AWAY big for the holidays. Represent the worlds largest beauty company. Call Jane, 966-9327.

COMPUTER RELATED JOBS - Accountants, engineers, finance, programmers, sales, retail. Free info. Write CIM-A, 9371 Kramer, Unit 1, Westminster, CA 92683.

DELIVERY DRIVER part-time, three hours per day, Monday-Friday. Own car, Arizona drivers license plus insurance. Call 267-7542.

DOC'S B.R. Others Restaurant, greatest hamburgers on Earth, is accepting applications for grill cooks, bakers, cashiers, ice cream makers, shift cutters, bartenders, bus boys and meat supervisors. Salary commensurate with experience. Apply in person between 9 a.m. and 3 p.m. M-F at 1016 E. Baseline, Tempe, next to Penney's.

EARN EXTRA money. Set your own hours fund raising. For information call 965-5020 or 898-3766.

JANITOR SUPPLY and sanitary chemical salesman for local territory. Drawing account, expenses and profit sharing with field training. Territory available immediately. Must have chemical and janitor supply sales experience. Permanent position, Crain Chemical Company, POB 20973, Dallas, TX 75220, phone 214/358-3301.

JOURNALISM STUDENTS: Doc's B.R. Others Restaurant, greatest hamburgers on Earth, needs freelance writers and photographers to produce features for its monthly in-house newspaper. Will pay \$10 for each article used. Contact Steve Koppes at B.R. Others, 897-2862, between 9 a.m. and 3 p.m. for information.

NEEDED: TUTOR for SOC 390. Fee negotiable. Denise, 967-4255.

NEED EXTRA income? Earn \$8.00 to \$10.00 per hour by telephone. Work own hours, will train. ASU close. 967-0212.

### Help Wanted

OPINION POLL, friendly person who enjoys phone work. Permanent part-time, evenings, Sundays. 274-6200, Melody.

OVERSEAS JOBS- Summer year round. Europe, South America, Australia, Asia, All fields. \$500-1200 monthly. Sightseeing. Free information. Write IJC Box 52-AZ-3 Corona Del Mar, CA 92625.

PART-TIME EXPERIENCED telephone solicitors, \$4 per hour, plus bonus. Call Susan, 947-8900 before 4 p.m.

PART-TIME DELIVERY driver, mornings, apply in person at Commercial Blueprint, 114 E. 7th St., Tempe.

PART-TIME EXPERIENCED telephone solicitors, \$4 per hour, plus bonus. Call Susan at Conti Commodity, 947-8900.

PIZZA MAKER. Two years experience making pizzas by hand. Tony's Italian Food, 967-2941.

SHIPPER NEEDED to pack boxes to be sent out UPS or PP. Full time, 9-5, \$5 per hour, in Phoenix, 258-0132.

TEMPORARY PART-TIME to start. Typist needed, \$4.50 per hour. Call Jake Feldman, 966-1990 before 2 p.m.

**R.N.'s BROADEN CAREER HORIZONS**  
Nurses needed for new Substance Abuse Center in Mesa. No FA experience required... will train. Full-time and part-time R.N.'s for nights. N.A.'s, part-time for weekend nights.  
898-3342  
SUMMIT PLACE 11/4

### Instruction

MATH TUTOR 106, 115, 117, 118, 141, 270. \$3.50 hour. Call Tod, 967-5236 before 4 p.m.

WANTED: TUTOR for MET 381, heat trans. thermo dynamics. Call AI, 946-8246.

### JEWELRY

14K GOLD jewelry 50-75% off retail prices! Chains, earrings, rings, diamonds. Going out of business sale! Joseph Ford Gold Exchange, 968-8637.

### Lost & Found

REWARD FOR the return of my sky blue briefcase which disappeared from Room 51, Payne Hall, Wednesday, October 26th around 8:00 p.m. In it are all of my notes and papers for this semester plus two important text books. Please return. No questions asked. 832-0187.

### Motorcycles

CLASSIC WHITE 1963 Honda 305 "Dream". Rebuilt engine. New tires. Looks very good, runs great. \$350 firm. 894-1928.

### Personal

A FANTASTIC variety of earrings at the Hob-Nob Thrift Shop, 221 W. University, 968-7114.

ATTENTION THRIFT shoppers: Have you taken advantage of the great prices at the new thrift shop in town? The Hob-Nob, 221 W. University, 968-7114.

HEY GUYS! Hawaiians, sweaters, jackets, bermudas, button downs, all waiting to be taken advantage of at the Hob-Nob Thrift Shop, 221 W. University, 968-7114.

HYPNOSIS: DEVELOP self confidence, get rid of stress and tension, improve memory and concentration, stop smoking or lose weight. Lindsay Brady, Certified Hypnotist, 966-8571.

### Real Estate

MOBILE HOME for sale. Two miles from ASU. Adult park, swimming pool, jacuzzi, 14 x 65. 1820 W. University, Space 3, 894-0396.

### Roommate wanted

BEAUTIFUL HOME! Female roommate, responsible, mellow. Furnished, (first quality extras. West Mesa, \$150 plus 1/2 utilities. 841-6472 or 964-6053 after 8 p.m.

### Roommate wanted

FEMALE, NONSMOKER, share lovely apartment at Sunscape. Private bedroom and bath. Pool and jacuzzi. Call Kelly, 954-8931 days, 946-4930 evenings.

MALE ROOMMATE wanted. \$192 month includes utilities, pool, laundry, furnished, close to campus. 967-8964 after 5:00.

MALE ROOMMATE needed. Own room in three room apartment. Close to campus. Sixth and Forest. Call Rich, 967-4977.

ROOMMATE WANTED: Three bedroom, two bath house. Laundry, pool. \$165 plus utilities. Call 947-0140, evenings

SHARE LARGE house with two students. Includes extras. Master bedroom, \$225; other bedrooms \$175. Close to campus. 820-1575.

### Services

ADVANCED WORD Processing Center: Offers the most advanced word processing applications (not just a home computer). Prices competitive or better than typing services, free pick-up, and document storage. Excellent background and skills enable me to proficiently complete your legal brief, cover letters (as low as 45 cents each), research paper, theses, group project, etc. Profit from these advantages, call 829-2314.

ALPHA RESUME. Full services discount with ad. 1000 E. Apache, Suite 105, Tempe. 967-7247.

AUTO AND life insurance at low competitive rates, student discounts available. Be sure to ask for Steve Dabbs at 966-0222, 966-3494.

COLOR DRAPE analysis and face design by Judy. 839-0401.

HAVE UNWANTED facial or body hair removed permanently by electrolysis. Free consultation. Located in Tempe. Call Sharon, Desert Electrolysis Center 839-1885. Student discount.

**CAN YOU TYPE? YOU CAN!**  
in just 6 weeks  
Microcomputer Instruction  
Flexible hours to your schedule  
Small classes  
Individual help  
Learn to type or brush up skills  
**KEYBOARDING LAB**  
CALL 966-7111  
23 W. 7th St., Tempe  
Just across Mill from ASU  
Visa/Mastercard Accepted  
11/1

### Travel

DRIVE CARS free to most points of the United States, over 21. Scheall Driveaway, 991-5533.

FREE CARS available for all major cities. Call us now, AAACon Auto Transport. 284-0201.

WANTED: THREE good drivers. Split driving and gas to Cleveland, Ohio. Leave November 17, back at ASU November 27. Call Michael, 965-0871 if interested.

### Typing

\$1.00 PAGE typing. Pickup and delivery on-campus. Knowledge all format styles. 20 years experience. Susan 962-1201; Debbie 963-3122. Call evenings.

\$1.50 / page. 10% cash discount, rush service available, papers, resumes, technical symbols. Business Office Services 894-1517.

A-1 EXCELLENT Typing. Highest quality. Term papers, theses, resumes, etc. IBM Electronic. Call Linda, 899-7562.

A-1 PROFICIENT typist, IBM Selectric. Pam, 969-2098.

A-1 TYPING, IBM Correcting Selectric II. Excellent rates starting at .75 page straight copy. Julie, 965-6563 (days), 946-1354 (evenings).

AAA TYPING, editing, resumes, papers, letters. Twenty years experience. Scottsdale-Tempe. 945-7430, Barbara Andersen.

### Typing

ACADEMIC TYPING. Will edit spelling, punctuation, grammar. Fast return and accuracy guaranteed. Joan 839-0772.

ACADEMIC EXPERTISE, utilizing word processing, providing outstanding quality and accuracy. Specializing in dissertations, theses. Precision Typing. 838-1327.

ACCURATE TYPING all kinds, reasonable rates, excellent service. Agnes Lindstrom 838-5656.

ACCURATE, FAST, experienced typist. IBM Selectric \$1.25 per page. Dissertations, theses, legal briefs, APA format, our specialty. Call Sharon 833-5687 or Teresa 962-0079.

ACCURATE TYPING, downtown near Fifth on Mill. Quick, quality typing, graphics. Call 24 hours. 941-7099, 894-5234.

ACCURATE - ACCOMMODATING. Typing. Term papers, theses. Why Worry Business Services, North Central Phoenix, 943-3552.

ALL PAPERS typed to your complete satisfaction. IBM Selectric. Near ASU. Reasonable. Mrs. Oakley, 967-0802.

ALL SECRETARIAL services. Quality typing, fast, accurate. Resumes. Cover letters. IBM Electronic. 20 years experience. McKellips-Scottsdale roads. Dana. 941-5111.

ALL TYPING done fast and accurate. .90 a page. Word processing available. Close to ASU. Call Carin or Bobbi 968-9166.

ALWAYS AVAILABLE for typing at \$1.25 per page. Call Susan at 833-0373.

ALWAYS DEPENDABLE, typing editing, term papers, books, dissertations, resumes. Excellent skills. Shirley's Typing Service 838-5099.

APA FORMAT, theses, dissertations, legal briefs, market research. 15 years experience. IBM Selectric. Janet, 834-0893.

A-PLUS Typing. Term Papers, Resumes, securities and finance papers a specialty. Papers completed on Electronic memorywriter. Call Judy 839-0401.

CALL CAROLINE for your typing needs, reasonable rates, quality work, near Rural-Southern 967-9226.

EXPERIENCED TYPIST. Fast, professional work, IBM Selectric. \$1.20 per page. Sheri, 967-3747 evenings.

FORMER LEGAL secretary will type papers, over night if necessary. \$1.00 page. Satisfaction guaranteed. 267-7628.

JOH-REE SERVICES. Typing, word processing, term papers, reports, resumes, letters. \$1.00 double spaced page. Call Marie anytime, 966-4786.

PROFESSIONAL TYPING. Excellent spelling and grammar. IBM Selectric. Pickup and delivery. Call Jaine 948-4647.

PROFESSIONAL TYPING. IBM Correcting Selectric, accurate spelling, punctuation, quality work guaranteed. (Elliot/Alma School roads) Joyce 838-1480.

PROFESSIONAL TYPING. Neat, accurate, fast. IBM Selectric. Rush jobs okay. 85 cents/page. Call 945-0058, evenings.

STUDENT DISCOUNT for fast, accurate, high quality typing. Will edit grammar, punctuation, spelling. Christina 839-1082.

TERM PAPERS, resumes, charts, etc. Editing done. 832-7273.

TYPING \$1.75 per page, editing extra. Carolyn, 838-0959.

TYPING SERVICE. Experienced secretary types reports, letters, resumes, etc. Fees below current rates. 992-1465 evenings.

TYPING THESE, dissertations, term papers, etc. Eight years experience. Accurate fast service, spelling corrected. 949-9207.

WORD PROCESSING for college theses, reports, and resumes in Paradise Valley area. 996-2780.

WORD PROCESSING. Knowledge of APA and Turabian reference styles \$1 double spaced page. Accurate. 263-5776.

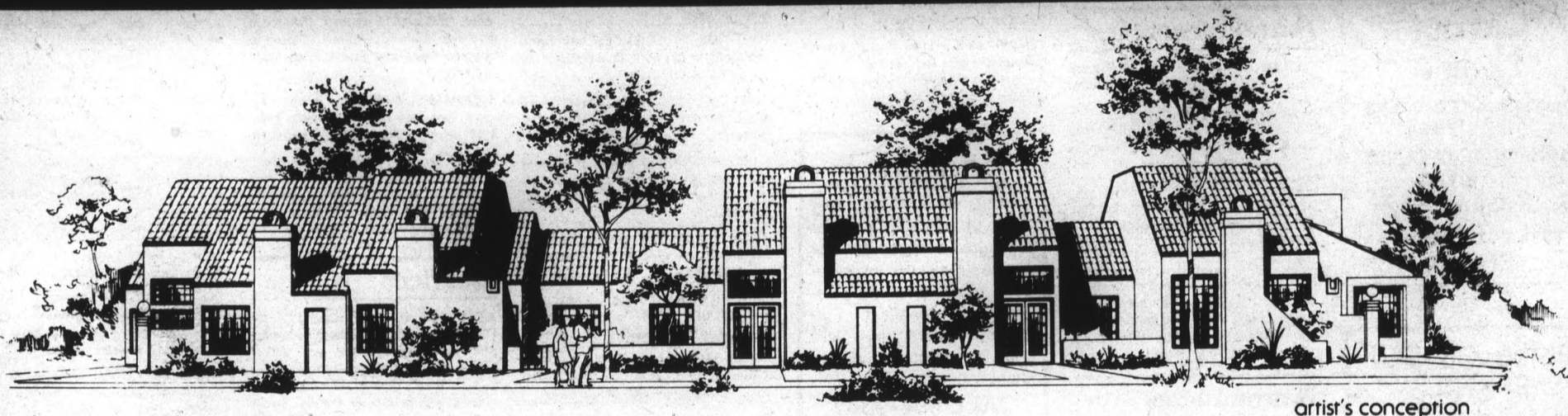
### Wanted

NEED MONEY? Paying top dollar for gold jewelry, diamonds, class rings, pocket watches, and silver coins. Free in home estimates. Call anytime, Joe 968-9637.

PAYING CASH for gold, silver, diamonds, class rings. Mill Avenue Jewelers, 414 S. Mill. 968-5967.

THREE UNIVERSITY of Arizona football tickets. Non-student will pay best price! Bruce Larsen, 946-5437.

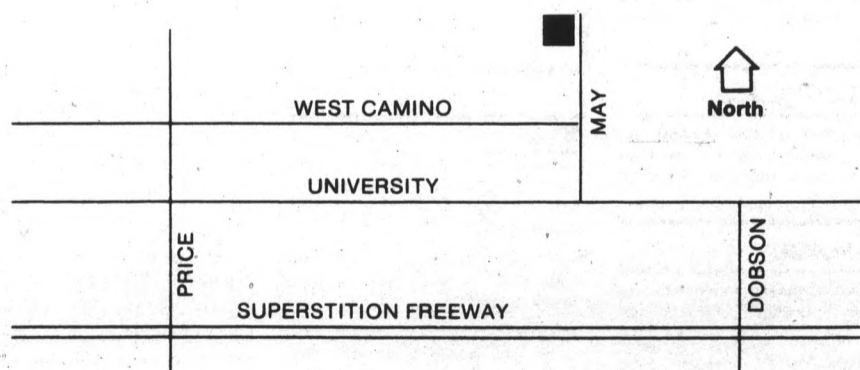
# SPECIAL PRICES! SPECIAL OFFERS! ASU STUDENTS & FAMILIES



## DARTMOUTH TRACE

### Luxury 1-2-3 Bedroom Condominiums in a Townhouse Setting

Move in to a better lifestyle with the freedom and luxury of your own place. Enjoy more privacy for study, income tax savings for you and your folks, growing equity during the year, and no mortgage interest payments until July 1984. Talk it over with your parents. They'll like the good sense it makes!



#### FEATURES INCLUDE:

Community Pool, Spa, Ramadas, Park with Barbeque, Continuous Clean Range, Dishwasher, Disposer, Ceramic Tile at Entry, Wood-Burning Fireplace, Vaulted Ceilings, Sun Screens, Mini-Blinds, And More.

*Just 2 Blocks North of University,  
One Block West of Dobson on North May.*

Call us at 969-1928. We're open  
daily from 10 a.m. to 7 p.m.

