

wednesday

October 26, 1983

state  
press

Tempe, Arizona

Arizona State University

Vol. 66 No. 38

© Copyright, State Press, 1983

## Workers shooting fireworks from butte terminated for possession of alcohol

By Lisa Phillips  
Staff writer

Several employees of a firm contracted to provide fireworks at ASU football games were ordered off the Tempe Buttes and later fired for being in possession of alcohol during Saturday's game, officials said.

Ray Stout of Fireworks Productions, Inc., said he fired eight individuals after they were asked to dispose of the alcohol but refused. None of the individuals was an ASU student, he said.

"They had been warned about taking beer up there," Stout said. "Drinking on the butte is inexcusable."

ASU Assistant Police Chief Norman Peck said no charges were made by ASU Police against the individuals, and none of the alcohol in their possession was confiscated.

"We let their boss handle it once they came off the butte," he said.

Peck said several of the individuals were carrying beer cans when they were ordered off the butte, and a couple of them "were quite tipsy."

ASU Police were notified by security guards on the butte that the people setting off the fireworks had alcohol, according to Peck. The guards are responsible for preventing people from climbing the buttes during a game, he said.

Miriam Boegel, ASU director of public events, said the situation on the butte was "a major safety question that had to be resolved."

"We had a prior report and we were watching it," she said. Boegel said the individuals were given the choice of taking the alcohol out to their cars or ceasing the fireworks.

"There was some reluctance to get rid of the alcohol," she said. "They were then asked to leave."

Stout said his employees are usually dependable and had been warned when they were hired that it was illegal to drink while handling fireworks.

Peck said ASU has contracted Stout's firm for a number of years to handle the fireworks, and this is the first problem he has encountered.

Stout said he will retain the ASU fireworks contract.

## Millionaires-To-Be Club can't afford to operate

By Steve Waterstrat  
Copy editor

The Millionaires-To-Be Club of ASU is folding due to lack of funds.

The club has no money to provide publicity for the speakers it invites to campus, resulting in small audiences, said Bill Foy, the club's president.

The basic function of the club is to invite successful members of the community to speak at ASU, where anyone is welcome to hear their formulas for success.

"It's unfair to the speakers to have 10 or 15 people show up," said Foy, "and the return on my time just isn't worth it."

The last speaker Foy has booked is Eldon Barmore, president of Rio Salado Bank. Barmore will give his insights on success at 8 p.m., Nov. 1, to anyone interested enough to show up at the MU Cochise Room.

Foy, a senior business major, will not

solicit anymore speakers this semester, he said.

"I'm very hesitant about booking people and having nobody show up," he said.

Thirteen people attended the most recent Millionaires-To-Be meeting, which featured a talk by syndicated columnist Art Mollen, a Phoenix doctor who commands \$2,000 per speech, but spoke to the club for free.

Foy stressed that Millionaires-To-Be meetings are open to the public free of charge. The club has no official roster, he said, and no dues.

Although the absence of dues is one reason the club has been unable to pay for publicity, Foy said he prefers not charging them.

The Associated Students of ASU delegates funds to clubs that submit budgeted requests by the end of September, but Foy said he missed that deadline.

A member of the club last year, Foy said

he found out he would be president just before school started this fall, getting him off to a disorganized start.

School and work have not left him the time

**'I'm very hesitant  
about booking  
people and having  
nobody show up.'**

he would like to put into running the club, he said.

But he said the club should only be dormant temporarily.

"Next semester we could get off to a fresh start," Foy said.

He would like to remain active in the club

if he "can get some people to help out," he said.

He would like to continue the success the club had last year, Foy said, when Scott Goldman, a sophomore business major, was president.

At the club's last meeting, Goldman said he "spent \$200 of my own, and put in about 30-40 hours a week" promoting the club last year.

Foy said he does not have that kind of time or money.

ASASU can provide funds to clubs in need, according to Vice President Ray Burnell.

"The club can go through an individual senator, who will write up a bill and take it through the legislative process," Burnell said.

In this way, a club that misses the deadline for submitting budgets can still get financial help from ASASU, he said.

## Women's leaders trade barbs before packed house

By M.K. Reinhart  
Staff writer

Two of the nation's foremost women's leaders clashed in a debate on women's rights issues, amidst cat-calls, hoots, howls and often deafening applause from a mixed audience in the MU Arizona Room Tuesday.

Phyllis Schlafly and Sarah Weddington exchanged opposing ideas on topics ranging from abortion to pension funds, each prompting numerous outbursts from an overflow crowd estimated at more than 600 people.

Schlafly, an accomplished author, attorney and journalist who spearheaded the "Stop ERA" organization, began her 15 minute opening statement with some background into her initial involvement in politics and women's rights.

In an age when the feminist movement was in full swing, Schlafly said she "saw a need for somebody to articulate the other side."

"Women are not some sort of subgroup that all think alike," she said, adding that

the National Organization of Women is "not for women's achievement... they are for a different sort of agenda than I am."

She said that NOW and other feminist organizations' views of equal rights for women "are simply not in the mainstream."

Schlafly said such groups contend that "the number one woman's right is the right to kill her unborn baby."

Weddington, who at 26 won the landmark Roe vs. Wade abortion case before the Supreme Court, often referred to various legal precedents throughout the evening and was adamant in her response.

"I do believe in the U.S. Constitution, the right to make as many choices as possible. But if medicine and the courts can't decide when life begins, then that is a question that should be left to the individual."

But according to Schlafly, "You don't get rid of it simply by saying you don't know if it's life or not."

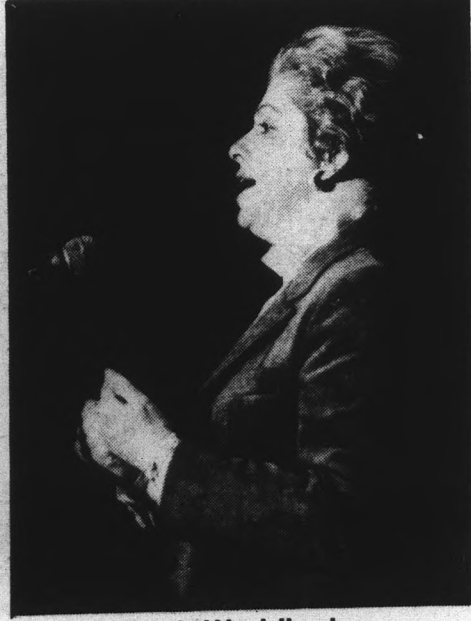
"I don't know how you can deny that it is



A row of women clap in response to one of Phyllis Schlafly's comments. The Schlafly-Sarah Weddington debate filled the Arizona Room of the MU Tuesday night with supporters of both sides.



Phyllis Schlafly



Sarah Weddington

(human life)," she said. "It's not going to grow into an animal or a plant or anything else."

Turning to other topics, Schlafly proceeded to attack the equal-pay-for-equal-work issue.

"If women were more qualified (then men) they wouldn't need quotas," she asserted. "I think the American woman is the most fortunate creature that ever lived."

Weddington agreed, but for different reasons.

"We are the most privileged, but we didn't win those privileges with the help of Ms. Schlafly or her friends," she said. "We have rights because women went out and worked for them."

Men and women will never receive equal average pay, according to Schlafly, as long as many women remain out of the work

force to raise children.

"The notion of compensatory work is the latest gimmick," on the part of equal rights proponents, she said. It is their attempt "to put their own subjective values on jobs."

"I find it so odd," Weddington retorted, "that Ms. Schlafly thinks that women make less, and if they are willing to accept it, leave it at that."

Discussion on the social security and pension systems prompted a comment by Schlafly that Weddington "does not understand the social security system."

"It is the most pro-woman system we have," Schlafly said.

"Women have the right to try, but it's only you who will decide whether they will succeed or not," she said in closing.

Weddington concluded that, "The problem is not women, the problem is lack of equality."

# nation/world

state press

## U.S. Marines invade island to "restore democracy"

BRIDGETOWN, Barbados (AP) — Hundreds of U.S. Marines and paratroopers invaded the Caribbean island of Grenada in a lightning airborne strike Tuesday, under orders to protect American residents and "restore democracy" in the tiny Marxist-ruled state.

President Reagan called the swift pre-dawn operation "completely successful" in its initial stages. But armed Grenadian resistance continued through the day, and casualties were reported — an unspecified number of American soldiers were hurt, and three Cubans killed.

The Americans clashed with a Cuban work force that had been extending a runway at the Point Salines airport. Thirty Soviet advisers and 600 Cubans were captured in the invasion, U.S. officials said. There was no immediate word on losses within the 1,200-member Grenadian armed forces.

Reagan said the 1,900 Marines and Army Ranger paratroopers, who were later backed up by 300 troops from six Caribbean nations, seized the two main airports on the mountainous, 21-mile-long island.

## Marines in Lebanon dig in

BEIRUT, Lebanon (AP) — U.S. Marines were ordered into sand-bagged bunkers Tuesday and told to "shoot to kill" anyone approaching their camp after three trucks that officials feared might be filled with explosives drove nearby.

The Pentagon said the death toll from Sunday's terrorist bombing of a U.S. Marine command post rose to 214 as six more bodies were recovered and one man died of injuries in a military hospital in West Germany.

The suicide strike was carried out by a man driving a truck packed with a ton of explosives. It was the bloodiest attack against the U.S. military since Vietnam.

The Marine commander, Col. Timothy Geraghty, told reporters more bodies were still in the rubble. About 70 Americans were injured, many of whom are being treated in military hospitals in West Germany, Italy and Cyprus.

French spokesman Lt. Col. Philippe De Longeaux said 38 French troops were killed, 15 wounded, and 20 were missing in the bombing at a French command seconds after the attack on the Americans.

About 300 Marine troops arrived at the camp to replace their fallen comrades and the Marine commandant, Gen. Paul X. Kelley, arrived to inspect the jagged concrete

wreckage of the Marine building.

## Vickers granted stay of execution

PHOENIX (AP) — A federal judge has granted a stay of execution for Robert Wayne Vickers, who was scheduled to be executed Nov. 2 in the 1978 murder of a prison cellmate.

District Judge William P. Copple on Monday granted the stay of execution sought by the American Civil Liberties Union. Vickers had been scheduled to die in the gas chamber at Arizona State Prison at Florence in the stabbing death of inmate Frank Ponciano.

A brief filed by the ACLU contends Vickers' rights were violated under Arizona statutes which provide for a jury to determine guilt or innocence and a judge to determine the sentence, if any.

According to the ACLU, the Eighth Amendment of the U.S. Constitution requires that a jury be involved in the death-penalty issue for sentencing.

## Consumer costs rise; inflation remains low

WASHINGTON (AP) — Prices for cars, food, and housing accelerated in September, pushing overall consumer costs up 0.5 percent in the biggest one-month increase since May, the government reported Tuesday. However, inflation for the first three quarters of the year was still at the slowest pace in a decade.

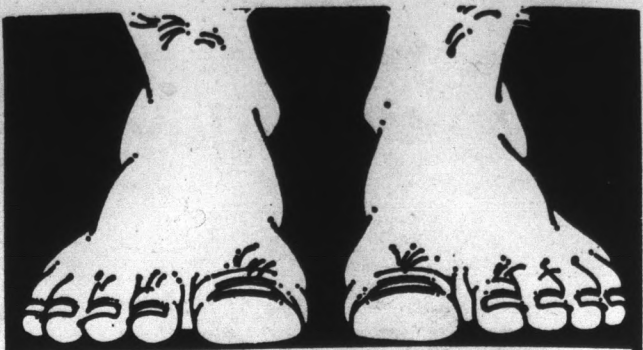
Both private and government economists said the recent pickup in prices was no cause for alarm. But White House spokesman Larry Speakes injected a note of caution.

"While this monthly increase is small, and inflation remains at a very low level, this month's increase reminds us that keeping inflation under control requires constant vigilance," Speakes said.

Food and beverage costs rose 0.4 percent — twice the August increase and the biggest gain since last April — as the crop-damaging effects of last summer's drought drove prices higher for fruits, vegetables and poultry.

## CORRECTION POLICY

It is the policy of the State Press to acknowledge and correct errors when they occur. If you see an error, call our newsroom at 965-2292 to let us know. All corrections will appear on this page.

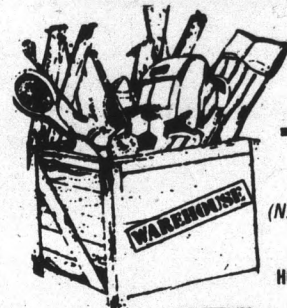


# SHOE SALE

## \$5.00 OFF

Any Running Court, Cleat, Basketball Shoe (Except Sale Shoes)

# WAREHOUSE SPORTS



### TEMPE

1606 E. Apache (Just West of McClintock) 968-9544

### MESA

1916 W. Baseline (N.E. Corner of Dobson & Baseline) 839-0781

HOURS: Mon.-Thurs. 9 a.m.-9 p.m. Fri.-Sat. 9 a.m.-6 p.m. Sun. 12-4 p.m.



WE RENT MOUNTAIN BIKES, TOURING BIKES AND PANNIERS

CAMPAGNOLO, SUN TOUR, WOODRUP, HOLDSWORTH

TOURING CLASSES AND TRIPS

## Bicycle Harbor Tempe

WATCH FOR THE SPECIALS OF THE MONTH

**Feature Bike THIS MONTH**

### Nishiki Cresta

(A GOOD BEGINNING TOURING BIKE)

**\$300**  
Reg. \$369.95

ONE THE LARGEST SELECTIONS OF MOUNTAIN BIKES IN TEMPE  
Stumpjumper, Mt. Fiji, Cyclo-Pro Ram, Peugeot  
Exclusive "Mantis" Mtn. Bike Dealer

*Come in and talk with the people who know touring.*

5128 S. Rural Rd. (North of Baseline)  
**839-4580**

NISHIKI, FUJI, SPECIALIZED BICYCLES

**Sun Devil NAUTILUS • AEROBICS**

933 East University  
Tempe, Arizona 85281  
968-9487

**haste makes waist.**

Nautilus is the state of the art in conditioning for men and women. With 20 minutes of exercise, three times a week, you can achieve results fast. With personalized supervision, you can burn up calories, tighten flabby muscles, and take inches off your waist.

**\$40 OFF**  
1 YEAR  
**V.I.P. MEMBERSHIP**  
with coupon

# Grounds crew planting flowers for ASU centennial celebration

By Wayne Baker  
Staff writer

The ASU grounds maintenance crew is out to beautify the campus for the University's centennial celebration next year.

According to Ed Peck, assistant director for buildings and grounds maintenance, construction began this week on the lawn west of Hayden Library to plant flower beds around the circular crosswalks.

The project is the grounds crew's contribution to the University's centennial celebration beginning in March, he said.

Peck said the project will cost close to \$2,000 and will be funded entirely by the grounds plant development fund.

The estimation includes curbing and watering system costs, he said.

Donald Dickerman, supervisor of grounds maintenance, said the actual construction began earlier this week and should be completed within 2½ weeks.

He said the project was in the planning stages for three weeks.

Dickerman, who designed the layout, said the floral display will include rings of blue-gray junipers, dark purple chrysanthemums, beige and light blue snaps, pink petunias and blue pansies.

Peck said between two and four workers will be working on the project at one time.

He said the grounds crew project was the result of a request by President J. Russell Nelson that the entire University participate in the centennial celebration.

"This is a fairly significant year and we really want to put forth maximum effort," Peck said.

Dickerman said another flower project has received approval by the facilities planning management and was due to be underway this week.

The second flower bed will be on the northwest corner of Lemon Street and Rural Road, he said.

The \$1,800 project will form rings around the 50-foot palm trees already there, he said.

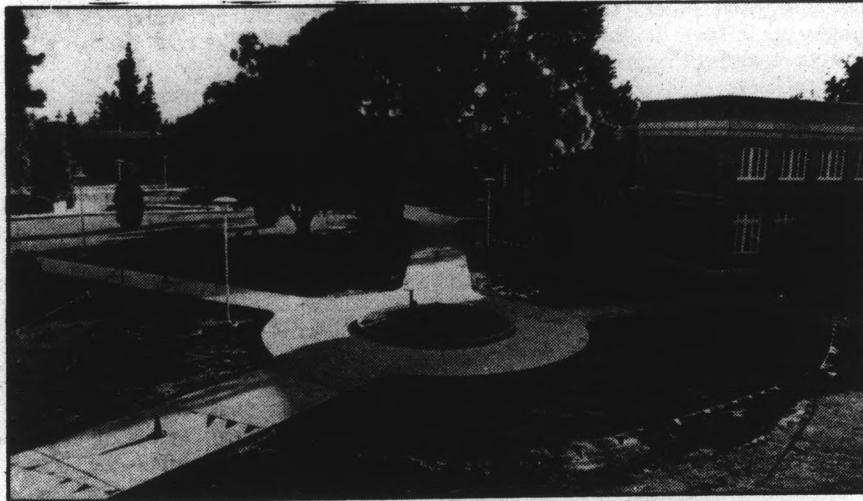
The rings will be comprised of yellow

submitted to Miriam Boegel, would write the words "Arizona State University" in gray plant materials on the southwest lawn of Grady Gammage Auditorium.

Boegel said funding for the project is questionable.

"We have to weigh the costs of this project against others that we've got going," she said.

Dickerman said if the proposal



Staff photo by David Petkiewicz

This 50 foot ring of dirt, just west of Hayden Library, will soon be filled with flowers to help celebrate the upcoming centennial celebration at ASU.

and blue pansies, red petunias, gold chrysanthemums and green and blue junipers.

Peck said the labor on both projects was being donated by the grounds maintenance crew.

He added that another project is currently under consideration by the director of ASU public events.

Peck said the proposal, which was

received approval, it could be completed within two weeks.

"We feel this is important because Gammage is a front door to the campus for people traveling from Apache to Mill," he said.

Peck said the total cost for the project would be close to \$3,000 and grounds maintenance would be unable to fund the work.

*Ps-s-s-st — pass it on.*

A secret too good to keep is the extraordinary gift shop tucked in a corner of the

University Art Collections  
Second Floor, Matthews Center

**THE GALLERY STORE**

To: V. J. P.

Very Important Patron

From: The Purple Feather



You are cordially invited to meet with Wendy and take advantage of her \$5 shampoo, conditioner & cut or her \$20 to \$35 perms (styling included).

RSVP: The Purple Feather

1047 W. University Dr.  
Tempe, Arizona  
968-2053



# BURGER KING®

## INTRAMURAL HIGHLIGHTS



### INTRAMURAL SPORTS

ASU undergraduate and graduate students are encouraged to participate in intramural sports regardless of skill level or previous sports experience. Intramurals emphasizes the enjoyment of sports participation and competition. Men and women may participate together in Corec Intramurals, or separately in the Men's or Women's programs. Faculty and staff may also participate in the Corec Program.

Entry forms for all events are available in the Intramural Office, 8 a.m. to 4:30 p.m. weekdays. The office is located in the P.E. West Building Lobby. Sign-ups are for both individual and team sports. Some team sports require attendance at a Managers Meeting to enter the sport.

### SIGN UP FOR INTRAMURALS!

#### COREC INTRAMURAL SCHEDULE

Activity	Entries Taken	Play Begins
Team Superstars	Oct. 17-27	Nov. 4, 5, 6
Bowling	Oct. 31-Nov. 10	Nov. 19

#### WOMEN'S INTRAMURAL SCHEDULE

Activity	Entries Taken	Play Begins
Cross Country Meet	Oct. 31-Nov. 10	Nov. 14
Arm Wrestling Meet	Nov. 14-23	Dec. 1
Powerlifting Meet	Nov. 14-Dec. 1	Dec. 5

#### MEN'S INTRAMURAL SCHEDULE

Activity	Entries Taken	Play Begins
Cross Country	Oct. 31-Nov. 10	Nov. 14
Wrestling	Nov. 7-17	Nov. 21 & 22
Arm Wrestling	Nov. 14-23	Dec. 1
Powerlifting	Nov. 14-Dec. 1	Dec. 5

CONGRATULATIONS  
to the  
GOOD SPORTS AWARD  
INTRAMURAL VOLLEYBALL TEAMS!

- Men's A — Sigma Nu
- Men's B — Killer B's
- Women's A — No Bozo's
- Women's B — Best A Dorm
- Corec A — "Snow" Storm
- Corec B — (tie) Venturies and the Finns



INTRAMURAL SPORTS OFFICE  
Physical Education West Bldg. Lobby  
965-5638

### TEAM SUPERSTARS

November 4, 5, 6

TEAM: 4 men and 4 women

EVENTS: Bowling  
Freestyle Relay  
Obstacle Course  
800M Track Relay  
Tug-of-War  
Volleyball

ENTRY FEE: \$20

ENTRIES DUE: October 27  
Tomorrow!

See the full page ad in today's State Press for details!



Please cut out this coupon!

99¢ WHOPPER

LIMIT 5

With this ad only.



Offer expires Nov. 9, 1983.

Limit one coupon per customer. Good only at 740 E. Apache, Tempe

Aren't You Hungry?



state press

Patience is the best remedy for every trouble  
—Titus Maccius Plautus

# opinion

## Reagan must show patience on Taiwan issue

Guest Editorial • Bruce Mason

Next April, if all goes as planned, President Ronald Reagan will visit the People's Republic of China. If past experience is any guide, he will be fascinated by perhaps the oldest continuing culture on earth; relish the wonderful foods of almost infinite variety; and be told by his hosts that all would be well between Peking and Washington if only the U.S. would cease its support for the Republic of China on Taiwan.

I have some friendly advice to the President. Without being impolite — a guest in another's home should almost never be — Reagan should acknowledge the suggestion but take no action to implement it. We have gone far enough for the time being. The present arrangement is quite simply in our own best interest. It is pragmatically sensible to continue to act as if there is but one China *de jure*, while *de facto* continuing to have diplomatic and trade intercourse with the two parts of China. It is after all they — the two governments — who insist on one *de jure* status. Furthermore, as among the most pragmatic of people themselves, the Chinese understand. Increasingly, they are

unofficially recognizing each other. One should not get caught up in their militant rhetoric; it is their actions and our interests which must guide our policies.

Since the Nationalist leaders of China fled to Taiwan in 1949-50, the two capitals (of the one China) have kept up a constant barrage of propaganda to the effect that there is but one China and that the United States, as well as other countries, must make a choice: it must be Peking or Taipei; it cannot be both! But, of course, it has been both, and it should continue to be both unless or until they work out their own solution to unification. Why should the U.S. unify China if China is not itself unified?

It is true, of course, as the balance of interests in the Far East has changed in recent years that the U.S. has found it necessary to shift *de jure* recognition from

Taiwan to Peking, but we should be clear as to why this has happened. The root cause was the Soviet Union, not the debate between the two capitals over which one truly represents the one China. There is no foreseeable likelihood that the People's Republic can attack and defeat Taiwan; nor for the reverse to be possible. To help maintain the present reality in which sometimes aggressive insults are tempered with increasingly peaceful relationships between two areas of China, the U.S. should continue to supply the Republic of China (Taiwan) with defensive weapons while cautiously dealing with Peking. I would be perfectly content to have the Chinese throwing insults at each other across the Taiwan Straits for the indefinite future. Especially, since the evidence mounts that the people of both the mainland and Taiwan are increasing their

social intercourse that may yet eventuate in a peaceful rapprochement.

Chinese families split by the Civil War are meeting in Hong Kong, New York and elsewhere bringing on a kind of unofficial peace. Trade relationships are increasing between them. The U.S. can, and does, trade with both. It can, and does, have official and unofficial representation in both capitals. And Americans and Chinese from Taipei and Peking are visiting each other's fascinating countries. Things are not all that bad.

Americans tend, at times, to be convinced that change is progress, but, of course, often it is not. Patience — a common and admirable trait in the Orient — is useful in the Occident. Mr. President: Enjoy your meal, take a walk on the Wall, and smile when Peking issues its "us or them" ultimatum.

They don't mean it, at least not now.

Bruce Mason is a professor of political science at ASU. His column is one of a series of guest editorials written by faculty members for the State Press.

## letters

### ASU environment poses problems for foreign students

Editor:

I read Jessica Kreimerman Oct. 18 article concerning the challenge that foreign students at ASU face, and as a foreign student myself I heard echoes of my own experience since coming to the university.

I dearly missed my family and friends, but they could not understand why I chose to come so far. Making friends was difficult with people, holding such different interests and ideas, and so many of them ignored me or were actually rude. I met two students who had gone to school in the same town as I; they had been at ASU for a year, and scarcely responded when I attempted to strike a conversation, an act I believe would not have happened had we been home. The food was different, the water tasted bad, the radio stations did not play my music, the summer heat was intense, and there was scarcely anything green growing except patches sprouting between the expanses of concrete.

Many times people did not understand what I said. I thought my accent sounded ignorant, so I tried to conceal it

by speaking quietly and infrequently, eventually learning to speak like the man on the six o'clock news while in public. I was surprised at the stereotypes an accent alone could generate. I was equally surprised at the discrimination and, at times, racism. Having white skin, I was fortunate not to be the object of such discrimination (at least by white Americans), but I was under the impression that the western United States was somewhat more open-minded than that of other parts. And so many students seemed to love to "party." I was not used to hearing so much talk of fun and excitement, nor the casual discussion of failing a test.

Was this the way all Americans were? Even though I was foreign to this environment I knew they were not, for I am an American, and I am from North Carolina, raised in what most Americans know as the South.

To any foreign students who may agree with the feelings expressed in Ms. Kreimerman's article, I would like to say that ASU and its surrounding environment are not what America is, but what a part of it is. One of America's largest

universities in one of America's largest metropolitan areas is not typical of the majority of the United States, nor of other universities or cities for that matter. Is any particular spot in your homeland representative of the entire country? I invite you to become acquainted with America and its people. The acquaintance will no doubt be reciprocated. It may not be easy, but it could very well be worthwhile for both of us.

I have been here for slightly more than a year and the people are still often times rude, the water still tastes bad, and by God, I miss tomatoes grown in clay. But, I have met many good people and experienced many great things. I may one day go back, I may continue to stay, or hopefully I will move on to still other places. Wherever I do go I will carry with me the memories and the experiences of the people I have met and the places I have seen, and I will be able to tell other people of them. Maybe it will inspire these people to learn more about their fellow human beings. At the very least, I know it has done so for me.

Kenneth Rohla

### Fletcher overstates feminist fallacies

Editor:

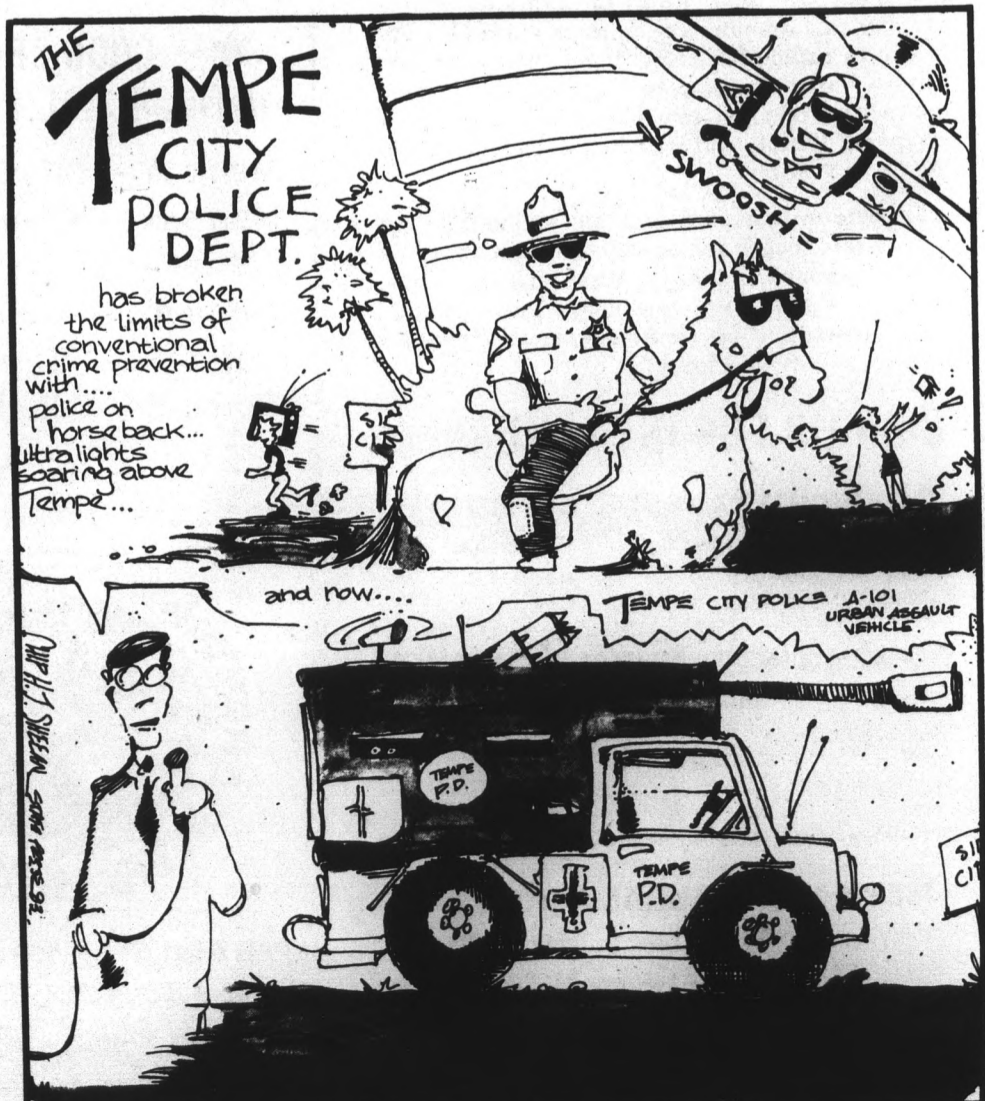
In response to Tracy Fletcher's editorial of Oct. 25 predicting the outcome of the Schafly-Weddington debate on women's rights, I would like to ask: where do you come up with your rash generalizations that Schafly represents "mainstream American women" and that Weddington promotes "fallacies concerning the 'rights' of women"?

I consider myself to be a part of mainstream American women, but I certainly don't agree with Schafly's interpretation of equal rights and what it will mean for women. Is it a fallacy for women (and other minorities) to want to be treated fairly and equally under the law? To earn equal pay for equal work? (Women are still earning 62 cents for every \$1 that men make, for comparable work.)

Just because a person believes in the right of a woman to choose to have an abortion (or not) does not mean they are unethical and have no respect for individual life. A woman's decision to have an abortion (or not) is a very personal one, and no one — especially the government — should have the "right" to make that decision for her.

And just because a person is a feminist does not mean they do not know how to conduct themselves at public debates; we are not all radical feminists. There are a lot of feminists (men and women) that believe strongly in equality. I am a feminist but I represent the "fallacies" of being labeled radical, unethical and having no respect for individual life. I think other feminists would agree with me.

Hope Kingsley  
Junior, Communications



## STATE PRESS

TRACY FLETCHER  
Editor

TOM BICKFORD  
Managing Editor

City Editor CHRIS COPPOLA  
Asst. City Editor MICHAEL HUMPHREYS  
Opinion Editor MATTHEW SCULLY  
News Editor DON SLUTES  
Photo Editor ANDY ARENZ

Sports Editor JAY TAYLOR  
Asst. Sports Editor KEN SAIN  
Scenes Editor MARY PAT BRADY  
Asst. Scenes Editor MARIA KHAN  
Copy Chief ANDREA S. MEYER

The State Press is published Tuesday through Friday during the academic year except holidays and exam periods, at Matthews Center, Room 15, Arizona State University, Tempe, AZ 85287. Newsroom: 965-2292. Advertising & Production: 965-7572.

The State Press is the only newspaper exclusively published for and circulated on the ASU campus. The news and views published in this newspaper are not necessarily those of the ASU administration, faculty, staff or student body.

**Don't Wait, Don't Delay**

This Is It, The Valley's Biggest

# SKI SALE

**COMING THIS SUNDAY**



AT THE  
**Ramada**  
**TOWNEHOUSE**  
 (Del Webb)

**SUNDAY**  
**OCT. 30**  
 11 a.m. to 7 p.m.  
 Kino & Coronado Rooms  
*EVERYTHING FOR*  
*SKIING ON SALE*  
**RAMADA**  
**TOWNEHOUSE**  
 100 W. CLARENDON  
 PHOENIX

## SAVE 20% to 70%



### SUPER SKI SALE BARGAINS



- |          |                         |          |                         |
|----------|-------------------------|----------|-------------------------|
| SKIS     | from \$59 <sup>99</sup> | PARKAS   | from \$19 <sup>99</sup> |
| POLES    | from \$7 <sup>99</sup>  | BIBS     | from \$29 <sup>99</sup> |
| BOOTS    | from \$49 <sup>99</sup> | SWEATERS | from \$19 <sup>99</sup> |
| BINDINGS | from \$29 <sup>99</sup> | SUITS    | from \$69 <sup>99</sup> |

GLOVES, GOGGLES, JR. APPAREL & EQUIPMENT, CROSS COUNTRY,  
 HATS, UNDERWEAR, TEE-NECKS, AND MORE, MUCH MORE.

**FREE SPECIAL SUNRISE LIFT TICKETS FIRST 100 PEOPLE.**

*All sales final — No lay-away.  
 Limited to stock on hand.*

**If questions, call 955-8740 or 968-9056.**

# Ex-Gov. Castro decries Latin American military aid

By Steve Waterstrat  
Copy editor

The United States places too much emphasis on military rather than economic aid to Central America, said Raul H. Castro, former ambassador to three Latin American countries and former governor of Arizona.

"I get the feeling we're going back to gun-boat diplomacy," Castro told a small audience at the Lyceum Theatre Tuesday. The speech was sponsored by the College of Fine Arts.

The United States should aid Central American allies through social development benefitting average citizens rather than through military aid, said Castro, who

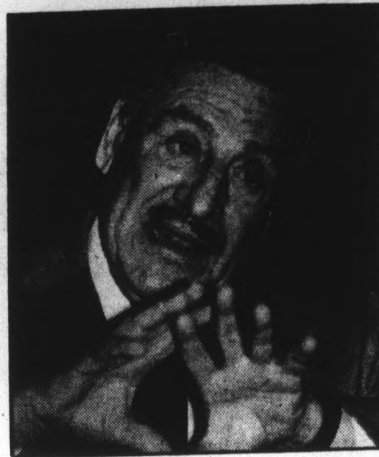
resigned as governor in 1977 to accept the position of ambassador to Argentina, which he held through 1980.

Economic aid given to the governments of El Salvador, Honduras, Mexico, Guatemala and Panama, supposedly to benefit common people, often "ends up in Swiss banks and places like that," Castro said.

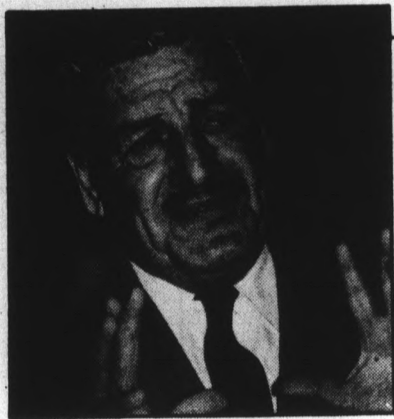
"I don't believe in the trickle-down theory in international economics," he said.

Sending doctors, nurses, architects and teachers to help countries in need is better than dumping money or military advisers on them, Castro said.

"The putting-out-the-fire-with-a-check policy of the United States is not very effective" in dealing with problems in Central



'The putting-out-the-fire-with-a-check policy of the United States is not very effective' in dealing with problems in Central America.



'If we are to counter Soviet influence (in Central America), we must help the people, who are peasants, to make a better life for themselves.'

America, said the Mexican-born Castro, who served as ambassador to El Salvador from 1964-68.

The major problem with Central American countries is "the vacuum between" the "marble-palace elite and the people who have nothing," with no middle class, Castro said.

"A country cannot prosper without a middle class," he said.

The large volume of "peasants without enough to eat" creates the opportunity for communist influence, Castro said.

"If we are to counter Soviet influence (in Central America), we must help the people, who are peasants, to make a better life for

themselves," he said.

Doing this, he said, is the best way to avoid discontent among the masses and the danger of revolution.

"Communism only grows where there is poverty," he said.

Castro summarized the problem by saying the U.S. often fails to realize the diversity of Central American countries.

They have individual needs and problems, making a close observation of the countries by non-military advisers necessary for long-term solutions, he said.

Holding a law degree from the University of Arizona, Castro has a private law practice in Phoenix.

## Affordable Cleaners

### ASU SPECIAL

ANY GARMENT **89¢** ea.  
Dry Cleaned & Pressed *No limit*

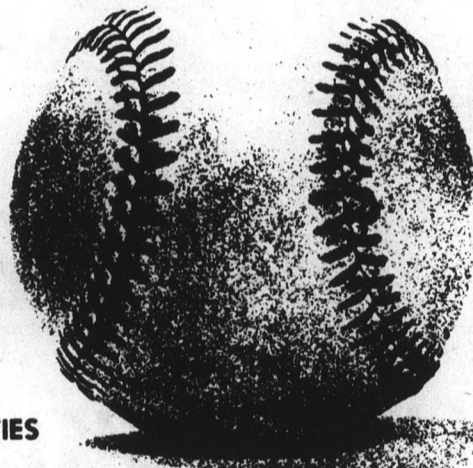
Excluding suede & leather; excluding wedding dresses. Coupon must be presented when garments are brought in.

847 W. University  
(SE Corner of Univ. & Hardy)

(EXPIRES 12-1-83.)

# YOU'VE GOT TO PLAY HARDBALL

## WHEN IT COMES TO YOUR CAREER



THAT'S WHY NSA OFFERS YOU THESE EXCITING CAREER OPPORTUNITIES

### ELECTRONIC ENGINEERING

There are opportunities in a variety of research and development projects ranging from individual equipments to very complex interactive systems involving large numbers of microprocessors, mini-computers and computer graphics. Professional growth is enhanced through interaction with highly experienced NSA professionals and through contacts in the industrial and academic worlds. Facilities for engineering analysis and design automation are among the best available.

### MATHEMATICS

You'll work on diverse agency problems applying a variety of mathematical disciplines. Specific assignments might include solving communications-related problems, performing long-range mathematical research or evaluating new techniques for communications security.

### COMPUTER SCIENCE

At NSA you'll discover one of the largest computer installations in the world with almost every major vendor of computer equipment represented. NSA careers provide mixtures of such disciplines as systems analysis and design, scientific applications programming, data base management systems, operating systems, computer networking/security, and graphics.

### LINGUISTS

NSA offers a wide range of challenging assignments for Slavic, Near Eastern and Asian language majors involving translation, transcription and analysis/reporting. Newly-hired linguists can count on receiving advanced training in their primary language(s) and can plan on many years of continued professional growth.

### THE REWARDS AT NSA

NSA offers a salary and benefit program that's truly competitive with private industry. There are assignments for those who wish to travel and abundant good living in the Baltimore-Washington area for those who wish to stay close to home. Countless cultural, historical, recreational and educational opportunities are just minutes away from NSA's convenient suburban location.



# NSA

Fort George G. Meade, Maryland 20755

An Equal Opportunity Employer, U.S. Citizenship Required.

On campus recruiting  
November 4, 1983.

To find out more about NSA career opportunities, schedule an interview through your college placement office. For additional information on the National Security Agency, write to National Security Agency, Attn: M322, Fort George G. Meade, Maryland 20755.

# CLOSE OUT SALE!

## 50% OFF EVERYTHING

Super Savings on Sportswear & Surfswear

- Op — G&S — Off Shore Shorts & Shirts
- Bathing suits



**inThing**  
CASUAL SPORTSWEAR

While supply lasts.

Sale ends 10-29-83.

Huntington Square  
3121 S. Mill, Tempe ● 968-5840

NEVER A COVER CHARGE

R. M. HARLFINGER & CO.  
PRESENTS ...

# SUDS SITY SUPER BARS

TEMPE'S NEWEST  
**NOW OPEN**

910 NORTH HAYDEN ROAD  
TEMPE, ARIZONA

Open Daily 3 p.m. • Sat.-Sun. Noon

- 7200 SQ. FT. OF FUN
- OUTDOOR PATIO
- 25¢ POOL TABLES (3)
- 25¢ FOOS BALL
- VIDEO GAMES
- FULL STEREO SOUND
- 2 COLOR TVs

- HANDICAP PARKING
- HANDICAP RESTROOMS
- 110 CAR PARKING
- CARRY OUTS TILL 1 A.M.

## SUDS SITY SUPER BARS

want you to enjoy yourself, but caution you to the dangers of DRUNK DRIVING! If you have had too much to drink: walk, ride, call a cab, or call a friend!

PITCHERS OF BEER  
*Large 60-oz.*

Pitchers of  
MIXED DRINKS

*Large 60-oz. Size*

\$	3.	9	9
----	----	---	---

BAR POUR ONLY  
EVERY DAY ALL DAY

MILLER — MILLER LITE

\$	2.	4	9
----	----	---	---

EVERY DAY ALL DAY

**WEDNESDAYS**  
**"MEN'S NIGHT OUT"**

**MON. & THURS.**  
**"HEAD & HEINE DAYS"**

*Large 60-oz.*  
PITCHERS  
OF BEER

**\$ 1 99**

HEINEKEN &  
MOOSEHEAD  
*12-oz. Bottles*

**99¢**

# FREE DRINK

This coupon good for one (1) FREE DRINK of your choice when presented to SUDS employee.

NAME \_\_\_\_\_

ADDRESS \_\_\_\_\_

CITY \_\_\_\_\_ ZIP \_\_\_\_\_

One Coupon Per Visit Per Day

ASU

Expires Nov. 1, 1983.

# police report

ASU Police reported the following activities occurred between Friday and Monday:

•A triple-beam balance scale valued at \$500 was stolen from a laboratory room in the Engineering Building F-wing Monday. The scale and weights were inscribed with the words "Soils Lab."

•An ASU employee reported \$375 worth of damage to three Simplex fire detection heads, after they had been pulled loose from their ceiling mounts on the eighth floor of the Cholla Apartments A-wing Monday.

•An ASU student reported property damage to her 1977 Oldsmobile while it was parked in Lot 41 Monday, with an estimated repair cost of \$400. The student told police paint chips from another vehicle were on the door and rear panel of her car.

•A men's Univega 12-speed bicycle valued at \$350 was stolen from the bike racks east of the Psychology Building Monday. The bicycle had been locked with a cable and master lock.

•A blue Schwinn Traveler bicycle valued at \$60 was stolen from the west side of the Sahuaro Hall stairwell Monday. The bicycle was locked with a cable lock.

•An ASU employee reported damage to the north wall of the second floor of the Fine Arts Annex over the weekend, as different colors of paint were apparently thrown on it. Police said it appears a hole was kicked in the wall on the east side of the room. The west wall in the men's restroom also had paint on it.

•A women's silver Schwinn 10-speed bicycle valued at \$180 was stolen from the west side of the Physical Education West Building near the swimming pool.

•A men's Custom Cruiser bicycle valued at \$169 was stolen from the east side bike racks at Sahuaro Hall Monday. The bicycle had been locked.

•An ASU student reported the right rear window of his 1979 Chevrolet was shattered Friday. The damage was estimated at \$150.

— Sandy Sistek

## ASU to offer computer clinic for Valley children

A five-week computer clinic for Valley children is being sponsored by the ASU elementary education department Nov. 7 through Dec. 8.

Three classes will be offered: Mondays from 5 p.m. to 7 p.m. for 12- to 14-year-olds; Wednesdays from 4 p.m. to 5:30 p.m. for 6- to 8-year-olds; and Thursdays from 5 p.m. to

7 p.m. for 9- to 11-year-olds.

There will be a \$50 fee per student.

In-person advance registration is required and will be held in ASU's Payne Hall Room 203 from 8 a.m. to 5 p.m., Monday through Friday.

For more information, contact Gary Bitter at 965-6719 or Mack Ralston at 965-3339.

## Center to sponsor computer software course

A software quality assurance short course will be offered Nov. 7 and 8 by the ASU Center for Professional Development.

The program is designed for software developers, technical management personnel, quality control staff and all others involved in the production of computer software.

A basic knowledge of the software

development process is expected of all participants in the course. There is a \$295 registration fee.

The program will be conducted from 8:30 a.m. to 3:30 p.m. both days in the Engineering Sciences Center at ASU.

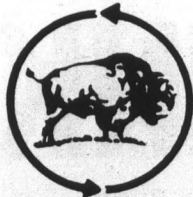
Additional information may be obtained by calling 965-1740.

LISTEN  
TO  
YOUR  
CLOSET

FREE YOURSELF  
FROM  
UNWANTED  
CLOTHING  
Sell what you  
don't wear.  
Get what you  
really want.



BUFFALO EXCHANGE



3 EAST 5th STREET  
TEMPE  
968-2557  
MON-SAT 10-6

Women's services  
ASSOCIATED STUDENTS

## MINORITY WOMEN'S DAY

THURSDAY, OCTOBER 27, 1983

2:00-4:00

Alumni Lounge, Memorial Union

All minority women are invited to attend and participate in an informal get-together to meet other minority women and give program ideas. For more information, please call 965-1253.



Diamonds are also a guy's best friend. Dax features Argyle patterns in vests and long sleeve crew neck sweaters.



706 South Forest • Tempe • 967-8747  
Monday thru Saturday • 10-6  
Thursdays until 8:30  
In the Oxford Square Shops,  
just north of "The Warehouse".

State Press  
Mo  
for  
By the Col  
After th  
ted, threa  
aid this fal  
Moreove  
getting a  
Thanks  
issue, they  
only have  
chopping  
some of t  
apply for  
Some an  
ly arbitra  
processing  
long certa  
"Studen  
money ar  
director a  
to be over  
Dallas M  
dent Fi  
Washingt  
education  
"This y  
"Things  
much, m  
years ago  
Aid off  
uncertain  
male stud  
register  
The lav  
alone, acc  
After th  
law last s  
permanen  
military r  
He argu  
that thos  
students'  
But ove  
the ruling  
til the full  
The Ed  
ing sure  
deadline  
comply w  
The rec  
Departm  
"Thing  
plementi  
dent aid  
ferent gr  
July 1, t  
things."  
Moreov  
law after  
sometim  
More t

# More college students applying for aid despite fewer programs

By the College Press Service

After three years of watching aid programs being cut, gutted, threatened and frozen, more students have applied for aid this fall, aid officials across the country report.

Moreover, the students are having a relatively easy time of getting aid, they said.

Thanks largely to education's new status as a hot political issue, they said the Reagan administration and Congress not only have spared many of the programs that were on the chopping block as recently as last spring, but have eased some of the confusion that convinced many students not to apply for aid since 1981.

Some areas that have been cleared up include the seemingly arbitrary changing of eligibility requirements, the late processing of aid applications and the uncertainty over how long certain programs might last.

"Students do seem to feel more confident that there is aid money around for them this year," said Diana Mateer, aid director at the University of Phoenix. "The big scare seems to be over."

Dallas Martin, director of the National Association of Student Financial Aid Administrators (NASFAA) in Washington, D.C., said, "There's an awful lot of fanfare over education right now, and we are entering a campaign year."

"This year, so far, is going fairly smoothly," he said. "Things are much more stabilized and predictable. It's a much, much better environment than we had a couple of years ago."

Aid officials warn there is still potential trouble in the uncertainty over the new draft-aid law, which requires all male students born between 1960 and 1965 to certify they have registered for the draft in order to get financial aid.

The law affected an estimated 15,000 students at ASU alone, according to University officials.

After the U.S. Department of Education implemented the law last spring, a Minnesota judge first temporarily and then permanently ordered the government to stop making military registration a prerequisite for student aid.

He argued the prerequisite, which also includes a section that those not eligible for the draft must sign, violated students' First Amendment rights.

But over the summer, the U.S. Supreme Court overturned the ruling. It said the law should be implemented at least until the full Supreme Court gets a chance to review it.

The Education Department, which is responsible for making sure colleges enforce the law, then kept changing the deadline by which schools had to start requiring students to comply with the law.

The requirement took full effect on Oct. 1, said Education Department spokesman Duncan Helmrich.

"Things were going great until the injunction (against implementing the law) was lifted," said Robert Misenko, student aid director at the University of Minnesota. "All the different grace periods and compliance dates — beginning with July 1, then Aug. 1, then Sept. 1 — really complicated things."

Moreover, the full Supreme Court review may abolish the law after all, though a decision in the case won't come until sometime in 1984.

More than 30,000 students returning to his campus still

needed to sign the compliance form, Misenko said.

Aid directors elsewhere say they have had little trouble convincing students to sign the forms. "Students are more than willing," reported Melvin Lindsey, aid chief at Miami-Dade County Community College.

"We've also had to make a window in order to get students' GSLs (Guaranteed Student Loans) processed," Misenko added. "For some reason, the government has required that the draft compliance forms must be signed before we can process GSLs."

Otherwise, there have been no major changes in this year's aid eligibility requirements.

"Congress had frozen all eligibility requirements for federal financial aid through 1986," NASFAA's Martin said. The freeze effectively ended the Reagan administration's attempt to make it harder for financially independent students to get federal aid.

The administration wanted to make students live away from home for two years, as opposed to the current one-year requirement, in order to be eligible to get aid as an independent.

If the change had occurred, "there clearly would have been

**'I just hope people don't get the false illusion that just because Congress stabilized the money, our worries are over. Students are still swimming upstream.'**

some students made ineligible" for aid, Martin said.

Congress' final aid package for fiscal year 1984, which started this month, also increases Pell Grant room and board allowances from \$1,000 to \$1,600, and forbids secondary loan agencies from discriminating against students from schools with high default rates.

"Overall," said Martin, "it's a livable package."

Perhaps as a result, aid directors said the relative calm had brought "scared off" students back into aid offices.

But others worry that it may be too early to relax.

"The cuts may have stopped," Misenko warned, "but students are still losing ground, especially as tuition continues to climb at public institutions."

On top of that, "come every spring or summer, the Education Department will always have something to confuse us or make life complicated," he added.

"I just hope people don't get the false illusion that just because Congress has stabilized the money, all our worries are over. Students are still swimming upstream."

**50¢ OFF** ALL YOU CAN EAT  
Choose from 12 items  
**CHUNGS**  
Lunch: **3.10** Dinner: **3.81**  
Beer & Wine Served  
Menu or Buffet  
Eat In or Take Out  
OPEN 7 DAYS  
**829-1222**  
Corner Univ. & Hardy

**TRY A NEW BEGINNING AT CONTACTS & CONNECTIONS**  
CALL 234-3459

- Meet other Jewish singles
- Special 3-month offer
- No obligation consultation

Interviews Available On Campus

**SUN DEVIL HAIRCUTTERS**  
"Pride of the Sun Devils"

**FALL SPECIAL**

**\$5.00 OFF** Shampoo, Conditioning, Precision Cut, Blow Dry  
Men & Women (Reg. \$13)  
Perm Special / \$10 OFF

Good only at  
**130 E. University**  
(In the Arches)  
**966-5462**  
Hours: Mon.-Fri. 9-6, Sat. 9-5  
**SERVING ASU SINCE 1964**



## CAN YOU BUY GOOD TASTE?

Yes! Now you can acquire good taste for a couple of bucks. Just wear shirts and visors that say "Dos Equis." After all, those are foreign words. And anyone in college knows people who wear stuff with foreign

words and alligators have good taste.

So, order your kind of good taste in Dos Equis sportswear today. And remember to eat your peanut butter and jelly sandwiches over the sink.

Order by mail. Send to "Dos Equis Offer" P.O. Box 10102, Portland, Oregon 97210. Send check or money order. Add 10% or \$1 minimum, whichever is greater, for postage and handling.

Yes, both my socks match, so rush me the following "Your Kind of Taste" Sportswear.

Allow four weeks for delivery.

T-Shirts	Size	Qty.
Muscle Shirts	Size	Qty.
Baseball Jersey	Size	Qty.
Sun Visor	Size	Qty.
Golf Hat	Size	Qty.

Tan \$4.50  
 Black \$4.50  
 White/Red \$6.00  
 White/Red \$3.00  
 White/Red \$3.50

**DOS EQUIS**  
THE UNCOMMON IMPORT.

# Hiking

## ASU Outing Club falls for Supai

Photos and story by Bob Miles

Hiking down a canyon trail filled with rocks and illuminated only by moonlight can be an ankle-busting experience.

But for 17 members of the ASU Outing Club, a moonlight hike to Havasupai Canyon Oct. 22-23 proved to be more of an eye-opening experience.

Havasupai Canyon, located approximately 130 miles north of Prescott, contains scenery unique in nature.

An underground stream feeds a series of 100-200 feet high waterfalls cascading down into pools of blue-green water. Thick groves of cottonwood trees provide shade. Curtains of travertine cliffs jet up on three sides.

Havasupai Canyon, one of the smallest and most isolated Indian reservations in the United States, is a favorite backpacking trip for the Outing Club.

Because of the popularity of the trip with members and the restricted entrance to the canyon, the club usually makes the trip a least once each semester.

The trail leading down to the falls begins at Hualapai Hilltop and winds approximately seven miles through desert and space-confining canyons before reaching Supai Village. For the next three miles, hikers are treated to the eye-popping waterfalls.

Supai Village is home for the small tribe of Havasupai Indians who make a living from tourism. A horseback ride from the hilltop to the waterfalls costs \$40.

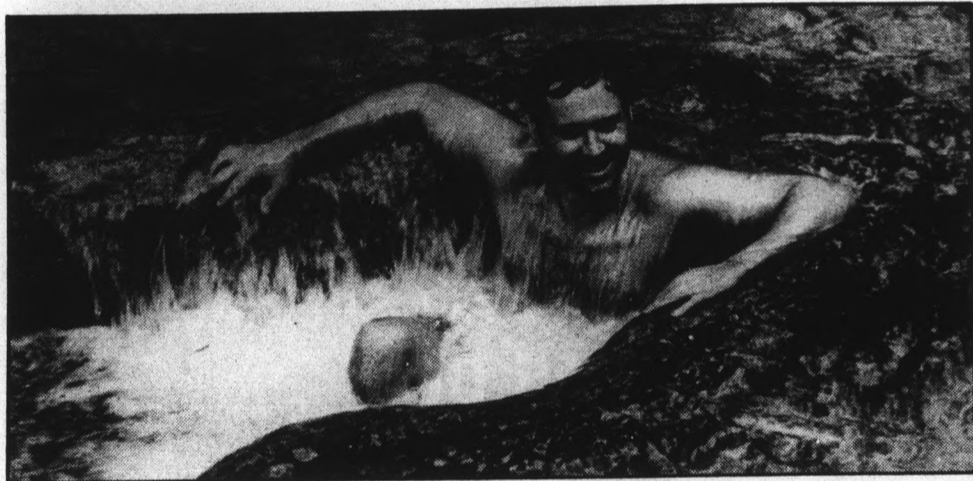
But for Outing Club members, the only way to see Havasupai Canyon is on foot with all the essentials of living for a few days strapped to their backs.

It is the outdoor philosophy of the Outing Club that attracts more than 200 ASU students as members.

The Outing Club's next meeting will be Tuesday, Nov. 1, at 7:30 p.m. in LSC 191. The meeting will be followed by the rock-climbing movie "El Capitan" at 8:45 p.m. Admission to the movie is free for club members (\$3 per semester) or \$1 for non-members. The club normally meets each Monday at 7:30 p.m. in the Pima Room of the MU.



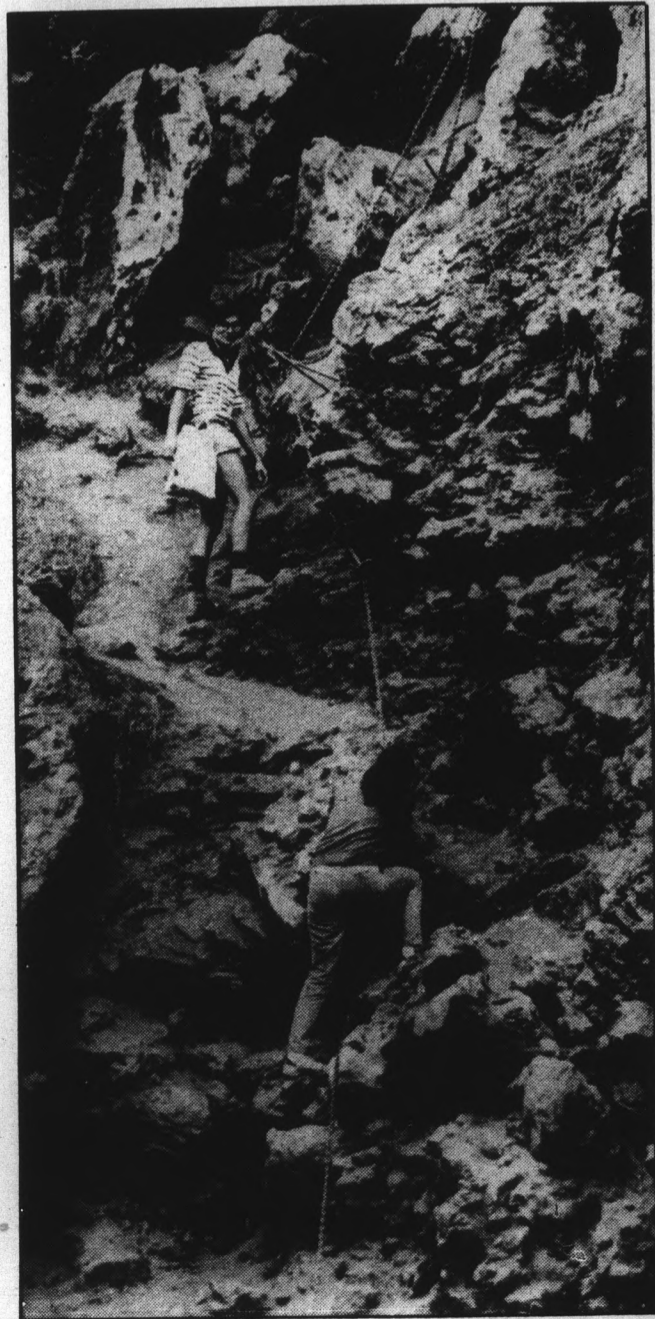
Reinhard Neder catches his first glimpse of Havasu Falls by peering over a 125-foot cliff.



Bruce Herman enjoys the whirlpool effect of water rushing from Mooney Falls.



Lori Kadin shivers following a swim in the pool of water formed at the base of Mooney Falls. Below, Manfred Koch and Kadin hike the last two miles to the parking lot on Hualapai Hilltop. The final mile to the hilltop climbs more than 1,000 feet.



Reinhard Neder and Ines Faiss use chains staked to a cliff to climb out of the canyon Mooney Falls flows into.



# War of words

## Phoenix mayoral candidates to square off in ASU debate

By Mark Isaacs  
Contributing writer

The Pete Dunn and Terry Goddard bandwagons are rolling to ASU Sunday night for a televised debate, and the question on the minds of people following the Phoenix mayoral election is, "Why?"

The answers, according to Associated Students Political Union Director Steve Strom, are quite simple and clear.

Despite its Tempe location, it is the University's responsibility to serve the greater Phoenix community, he said. In addition, he said the debate will bring prestige to ASU as an active and impartial center for political discussion.

"We're concerned about more than just our side of the river," Strom said. "We have football games and social events for campus residents, but for commuters, who compose two-thirds of the University population and many of whom are from Phoenix, we don't do very much.

"This is our chance to meet some of their needs," he said. Besides doing something for "the Phoenix housewife or working graduate student who attends ASU," Strom said, hosting the final confrontation between the mayoral candidates before next Tuesday's primary will enhance ASU's reputation as a debate headquarter.

"After the gubernatorial and senatorial debates held in Neeb Hall last year, we are beginning to be seriously recognized as a debate center," Strom said. This debate will help further establish that reputation, he added.

The key to being acknowledged as a reputable debate center, according to Strom, is to provide as neutral a setting as possible. Strom, in conjunction with ASASU Activities

**'After the debates held in Neeb Hall last year, we are beginning to be recognized as a debate center.'**

Vice President Ted Groves, has been laboring since August to achieve that environment.

"I have notified most of the student political organizations on campus and at the community colleges, and the New Times, Arizona Republic and radio and TV stations about the debate," Strom said.

Between the publicity accorded by those sources, and KTVK, Channel 3, which will broadcast the debate, Strom hopes to attract a diverse audience representing all elements

of the political spectrum.

"It's important that we have a good mix," Strom said of the debate, which will be held in the MU Arizona Room. "As this will be their last hurrah before the election, the candidates are very concerned about a partisan crowd."

Strom said the Dunn camp was especially worried about holding the debate at ASU, which they consider a liberal environment, and withdrew from the agreed-upon event at one point, claiming schedule conflicts.

But intensive negotiations involving the candidates, debate co-sponsors the League of Women Voters and Groves assuaged the Dunn camp worries.

"They agreed upon a panel that would be acceptable to both sides, pre-screened audience questions, and one question per candidate to the other at the end of the debate," Strom said.

Strom said Sunday night's debate, the last of nine during one of the most hotly-contested mayoral races in Phoenix history, could be the "decisive event" that determines the election.

"With 30 percent of registered voters still undecided, this could be it," he said. "We're just glad to help the voters."

**UpDike**  
Photography  
11x14 Portrait  
\$85. Retail Value  
**NOW ONLY**  
**\$10.95**  
Today At  
The Fountain

**DRIVE CARS**  
**FREE**  
Cars Available  
Many Points U.S.A.  
We are I.C.C. licensed and insured. Must be 21 years or more.  
**SCEALL DRIVEAWAY**  
**991-5533**

**Palm & Card**  
**Readings**  
Palm ..... \$5  
Card ..... \$15  
Past • Present • Future  
**Madam Ray**  
Price & Univ.  
Minutes From Campus  
**967-9801**

**BILL & KATHY'S**  
**HARD HAT**  
**PIZZARIA**  
UNDER NEW OWNERS  
Come in and taste  
the **greatest** subs  
in the Valley at  
the **lowest** prices!  
We have a variety  
of subs ...  
pizzas ...  
dinners ...  
**ORDERS TO GO**  
**966-2211**  
530 W.  
**UNIVERSITY**  
Just Blocks Away From Campus


# "Outrageous."

John Giese, Radio Funnyman

Out of the ordinary.  
That's CityLife. With a new twist on local entertainment news.  
Whether you're looking for something conventional to do. Or something totally off the wall, CityLife's got it covered.  
With news on night clubs, sporting events, concerts, movies, restaurants, plays and galleries.  
Plus stories and interviews with trend setters in the world of music, art, and cinema.  
And it's all free each week in CityLife.  
Pick one up Wednesdays.

And start getting a different perspective of what's going on around town.

Available along the Central corridor, on area college campuses, at shopping centers and other selected locations.



**The last word**  
in entertainment news.

# Gynecology services available

Program provides birth control, counseling for female students

By Mike Rynearson  
Staff writer

A lack of awareness among many female students of the availability of the complete gynecological service on campus has kept those who may be seeking such programs away from the Student Health Service, an official said.

But according to April Calmelat, the nurse practitioner who runs the Extended Gynecology Service at the Health Service, the volume of patients using the service still has created a three-week appointment backlog.

She is the only member of the EGS staff and already has a load of 1,200 individuals who translate into more than 3,000 visits a year. She said as a result of her heavy workload she is three weeks behind in her appointments.

The program, which began four years ago as a full-time service, is a complete gynecological service, including examinations, testing and birth control counseling and service.

Previously, any gynecology health care was limited, provided for by visiting doctors on a part-time basis.

Student cost for the EGS service is \$19 a year, which includes all testing and routine lab work, a complete examination, a one-hour birth control and venereal disease education class and any follow-up examinations or birth control counseling.

After the session is over, if the person wishes to receive

birth control pills, Calmelat issues a prescription, which can be filled in the Health Service pharmacy. The dispensing of birth control pills at ASU began in September 1982.

For those who wish an alternative birth control method, Calmelat said diaphragms, foams, condoms, and counseling on fertility awareness and rhythm are available.

Calmelat also said vaginal sponges are available off campus, and IUD insertion can be performed in Health Service by one of the two visiting gynecologists who come to campus

Student cost for the EGS service is \$19 a year, which includes testing, routine lab work and a complete examination.

for four-hour stints one day a week. These same doctors also deal with all major gynecological problems.

"The biggest problem that I have is trying to find room to see people who are already in the program and are having problems," Calmelat said.

Calmelat said on occasion she also gets requests for counseling on opposite matters — trying to get pregnant.

"If someone wants to get pregnant after trying for a long period of time, and is having difficulty doing so, I also counsel them," Calmelat said. "If it's a problem that I feel is more major than fertility awareness, then I refer them off campus."

To cope with the additional interest in the program, EGS is now in the process of enlarging its staff, she added.

## Speaker will address cameras in courtroom

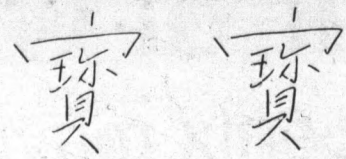
Cameras in the courtroom are the subject of a Nov. 2 address by Dennis Russell of the ASU department of journalism and telecommunications.

The speaker will examine the history of electronic coverage of court proceedings, from the 1935 Bruno Hauptmann trial to the Supreme Court's landmark ruling in Chandler vs. Florida in 1981.

He will also explore the history of cameras in the courtroom in Arizona: the appellate experiment, the trial-court experiment, and the state Supreme Court decision making camera coverage permanent in Arizona's trial courts.

The public is invited free of charge to hear the address, which will be presented at 2 p.m. in the Maricopa County Board of Supervisors' Auditorium, 205 W. Jefferson St., Phoenix.

Additional information about the lecture is available at 965-4007.



## BoBo Chinese Buffet

All You Can Eat

11 a.m.-4 p.m. Lunch **only \$2.79**  
4 p.m.-9 p.m. Dinner **only \$3.38**

Menu Changed Daily

Serves Domestic & Import Beer

502 S. Dobson, Mesa  
898-8222

Open 7 days  
a week

## ATTENTION

"Undecided" Students in  
the Liberal Arts College

**THE TIME IS HERE!**

Early Bird  
Advisement  
for Spring  
Registration  
from October 24  
to November 8



*Avoid the last minute rush*  
Make an appointment today  
in Social Sciences 111.  
Come in or call 965-2954.

# Sweet Stuffs

and

## Your Sweet Tooth Make a Good Match

DREYERS  
ICE CREAM

HOMEMADE  
FUDGE

ASU  
SUCKERS

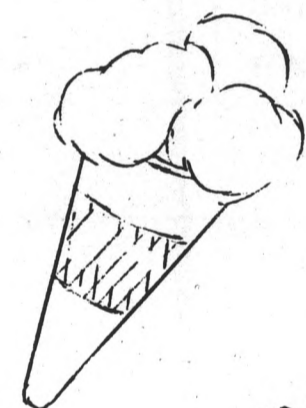
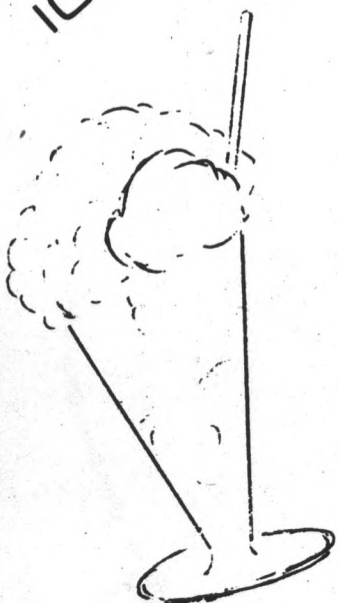
HALLOWEEN  
CANDIES

SPECIALTY  
CHOCOLATES

FROZEN  
YOGURT

BULK CANDY  
DELIGHTS

SOFT SERVE  
ICE CREAM



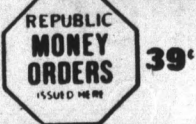
**OPEN**  
Mon.-Thurs. 10-8 p.m.  
Fri. 10-5 p.m.

Located in the  
**THE GRAND  
MARKETPLACE** T.M.

# WEEKLY SAVERS



WE SELL



39¢



**OPEN 24 HOURS**  
 MONDAY - FRIDAY CLOSES SATURDAY 11 p.m.  
 REOPENS SUNDAY 9 a.m.  
**PHARMACY HOURS**  
 MONDAY - SATURDAY 8 a.m. - 9 p.m.  
 SUNDAY 10 a.m. - 8 p.m.

SALE BEGINS WED., OCT. 26  
 PRICES GOOD THRU SATURDAY, OCT. 29  
**COME IN TODAY!** Offers good at this location only.

Visit your new Drugstore/  
 Food Mart at  
**HUNTINGTON SQUARE**  
 3201 SOUTH MILL AVENUE  
 At Southern Ave. • Tempe  
 PHONE 894-6747

**GRADE AA LARGE EGGS**  
 1 dozen  
 We limit quantities  
**79¢**

**HOT OR COLD FOAM CUPS**  
 6.4 oz. size  
 51 count  
 SAVE 20¢  
**49¢**  
 Reg. 69¢

**NATURAL HEARTH BREAD**  
 24 oz.  
**79¢**

**BANQUET FRIED CHICKEN**  
 2 lb. box  
**2.39**

**2% LOWFAT MILK**  
 1/2 Gal.  
**79¢**

**PEANUT BUTTER KISSES**  
**79¢**

**CARNATION ICE CREAM**  
 1/2 Gal.  
**1.39**

**HIBACHI DOUBLE GRILL**  
**5.99**

**ISOPROPYL ALCOHOL**  
 1 Pint  
**49¢**

**PEPSI ALL FLAVORS**  
 2 litre  
**1.09**

**ALL PAPERBACK BOOKS**  
**20% OFF**

**HERSHEY & MARS FUN SIZE BARS**  
 16 oz.  
**1.79**

## PLUS: THESE SPECIAL DEPARTMENTS

**SNACK BAR**  
 •HOT & COLD DRINKS •SANDWICHES  
 •MICROWAVE OVEN TO USE

Small Ice Cream Cone  
**25¢**

Small Soft Drink  
 only  
**25¢**

**BEER, WINE & LIQUOR CENTER**  
 •COLD BEER •DINNER & DESSERT WINES  
 •VODKA •WHISKEY •SCOTCH •AND MORE

**SKOL VODKA**  
 1.5 ltr.  
**6.89**

**BUD OR BUD LIGHT**  
**7.99**  
 A Case

**PHOTO CENTER**  
 •Speedy film service  
 •Quality photo-finishing  
 •Cameras & accessories  
 •Fresh film

**\$1.00 OFF**  
 Our fine photo-finishing service on all color print or disc film. Limit one coupon per customer and coupon must accompany purchase.  
 Expires 10-31-83.

**PHARMACY**  
 OUR SUPERx PHARMACISTS OFFER YOU MANY TIME-SAVING AND MONEY-SAVING SERVICES.  
 •PHONE-AHEAD REFILL SERVICE  
 •QUALITY PRESCRIPTIONS  
 •EVERYDAY LOW PRICES

Pharmacy Hours:  
 Mon.-Sat. 8 a.m.-9 p.m.  
 Sunday 10 a.m.-8 p.m.  
 894-6747

VALUABLE COUPON

**\$3.00 OFF**

**ANY NEW PRESCRIPTION AT SUPERx**

Good only at your Huntington Square SUPERx, In Tempe. Phone 894-6747

\*Not transferable between SUPERx Stores. Limit 1 prescription per coupon. Coupon must accompany order. Doctor will be contacted for refill authorization. Void where restricted by law. Does not apply to insurance or government prescription-payment plans. Offer voids all other discounts.

Expires 10-31-83.

# Pieces of gold

## Puzzled players attempt to 'decipher' answers to mys

By Rosanne Dupras  
Staff writer

Anyone solving a gold and black jigsaw puzzle called Decipher may never have to worry about financial aid again.

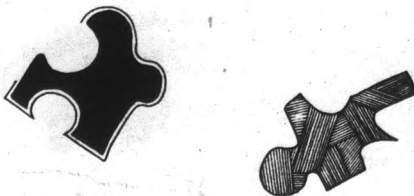
The real motivating factor behind the puzzle, which has a mysterious code on both sides, is probably the \$100,000 that will be awarded to the person who breaks the code.

"It's like a sophisticated pet rock — a great present for your smart-aleck brother-in-law," said Warren L. Holland Jr., the 30-year-old Virginian who developed the puzzle.

The game looks like a small black box of expensive perfume at first glance. In fact, Holland said he got the idea after shopping at cosmetic counters.

"My friends thought I was crazy the way I would buy things and not use them. I would buy lots of perfume and cosmetics and look at the boxes . . . I bought some pretty expensive boxes," said Holland.

Inside the box is not perfume, but a bright red velveteen pouch. Inside the pouch are 150 gold pieces with black figures on them.



Piecing it together is only the beginning, though. The reason Holland calls his invention a "puzzle within a puzzle" is that on both sides of the completed jigsaw are rows of numbers that form a coded message.

The puzzle is a cipher, or code, which involves the substitution of numerals for letters to encode the message.

Holland said, "Most anybody can put the puzzle together in a couple of hours."

Assembling the puzzle is not such an easy task since the color doesn't vary and there are numbers on both sides of the pieces.

Discovering what numeral represents which letter is the clue to deciphering the game. "I'm the only one who knows the correct answer," Holland said.

The solution to Decipher is locked in a safe deposit box at the Chase Manhattan Bank in New York City. Holland undergoes periodic polygraph tests to verify that he hasn't told the answer to anyone.

"I typed the correct solution on a new IBM typewriter, and burned the ribbon when I was done," he said. "My friends thought I had read too many spy novels."

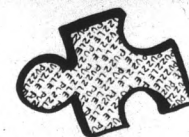
Holland said when he got out of graduate school, where he studied business administration, he went into construction in partnership with a fellow student and his father.

He said after seven years he "became discouraged . . . I was doing art photography in my spare time and wanted to integrate creativity into my working life."

"I got to a point where I had to learn how to live a little bit. My business life was no fun," Holland said.

"When I was in college," he said, "I had a lot of crazy ideas, but I never did them. I just went to work." He said he created the cipher "just doing research, like you do when you're in college . . . and I created my own code."

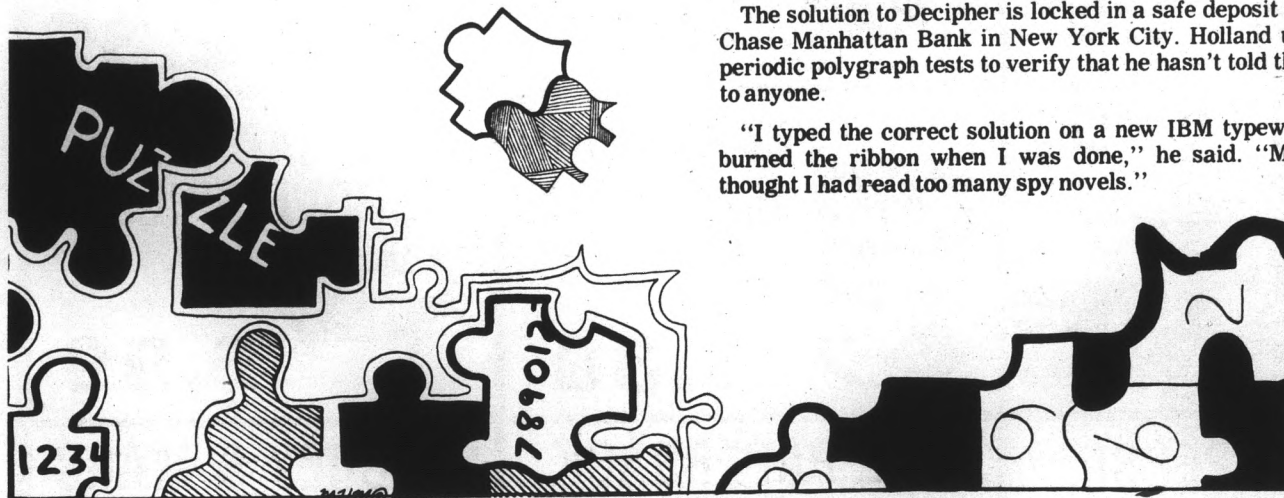
Holland first became intrigued with the idea for his game after reading an article about Thomas Jefferson Beale, a native Virginian, and the three ciphers he wrote in the 1820s.



According to legend, the ciphers give information about a treasure of gold and jewels, including where Beale buried it, which is said to be somewhere in the Blue Ridge Mountains.

"It's almost a cult," Holland said. "People come down from all over the country, digging up people's farms . . . cows falling into holes . . . people getting arrested."

He said the problem with the legend is that most experts think it was a practical joke. "The other problem," he said, "is that even if it is real, you have to dig up other people's property."



### NOT JUST FOR THE BIRDS

Francis of Assisi loved animals.  
But his real business was PEOPLE!

Eight hundred years later we Capuchins — followers of Francis — are still in the "People Business." As a community of priests and brothers we spread the Gospel message of peace and justice to our age.

Interested? Let's talk.

Fr. Matt Eishoff, Capuchin  
Capuchin Vocation Office  
200 Foothill Blvd.  
La Canada, CA 91011  
(213) 790-5319



INVITE YOU TO A  
**PARTY**  
AT

**TIMOTHY O'TOYLES**  
1123 S. Rural Rd.  
North of Apache on Rural Rd. in Tempe

**SUNDAY, NOVEMBER 6 • 7 P.M.**  
HAPPY HOUR PRICES WILL BE IN EFFECT  
FROM 7-9:30 ON WELL DRINKS.

**BY INVITATION ONLY**

You can get an invitation by calling  
Hillel • 967-7563  
Jewish Student Center

State liquor law requires proper I.D. be shown.

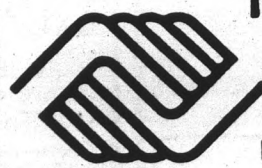
The greatest cowboy who ever rode into the wild west . . . from Poland.



Gene Wilder, Harrison Ford  
Warner Brothers  
Directed by Robert Aldrich

Wilder is a young Polish rabbi sent to America in 1850 to become the spiritual leader of a congregation in San Francisco. He aimlessly sets off alone on the long journey across the untamed west. He is destined to perish after losing all his food and practically all of his possessions and traveling in the wrong direction for days, until he is befriended by a kind-hearted bank robber (Harrison Ford). Ford doesn't have the heart to send the rabbi across the wild west alone, so the odd couple are off toward San Francisco together. Along the journey Harrison robs a bank, and together they encounter Indians on the warpath, a monastery full of speechless monks and a band of outlaws.

October 28, 8:30 p.m. • Shabbat Services 7:30  
Hillel • 1012 S. Mill Ave.

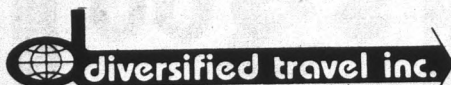


**Thrift Connection**  
612 Mill Ave.  
894-6189

Everything for the Student  
New & Used

- Books & Magazines
- Furniture
- Jewelry
- Appliances
- Children's Toys & Clothes
- Household Items
- Soda \$3 a Case
- Clothes

Operated by Tempe Boys & Girls Clubs



**Wants You to Know:**

*Our Sabre Computers are telling us*

Holiday-time reservations are filling fast — call us A.S.A.P. to get Super Saver Fares while they last! Faculty, Students, Group Leaders — CALL US FOR ARRANGEMENTS — Ski Trips, Research Trips, etc. (Any destination is not foreign to us and our services are free.)

We're  **diversified travel inc.**

64 EAST BROADWAY, SUITE 2  
United Bank Building  
TEMPE 967-7855 • 967-1900  
Same location since 1970

WITH THIS COUPON

**20% OFF SALE**  
**HALLOWEEN**  
Wigs • Make-Up • Masks • Props • Costumes  
**ORIGINAL COSTUMES DESIGNED**  
Rentals • Sales

THEATRICAL MATERIALS • TRIMMINGS



**TROTTER BROTHERS THEATRICALS**  
620 W. Van Buren, Phoenix, AZ 85003  
254-0817

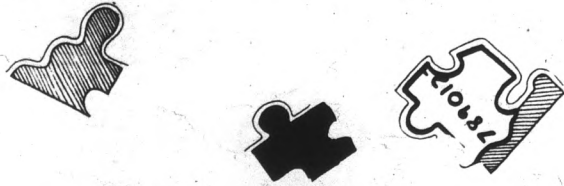
WITH THIS COUPON

# to mysterious code

which is against Virginia state law."

Decipher players face better odds, Holland said, because his cipher is real and solvable, and his "treasure" is insured.

Lloyd's of London, the pioneers in underwriting risks, declined his request to insure Decipher after they sent the puzzle to Scotland Yard for study. The experts said it could be solved, so Lloyd's turned him down.



"We went through 10 to 20 brokers . . . and finally ended up with Admiral Insurance Company (of New Jersey)," Holland said.

So now he, along with all the Decipher players who register for the contest, waits for the March 1, 1984 deadline when the submitted solutions will be reviewed for the first time by Holland.

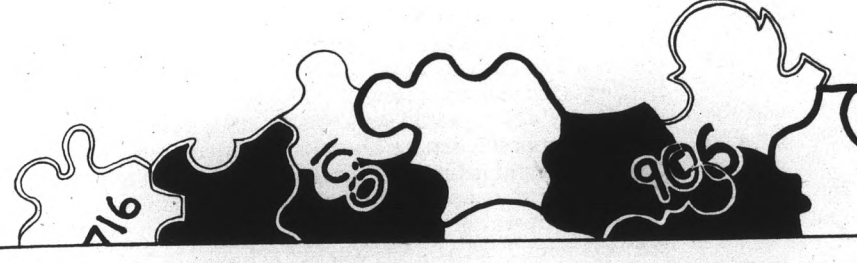
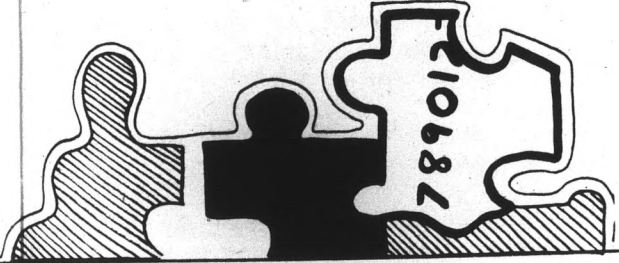
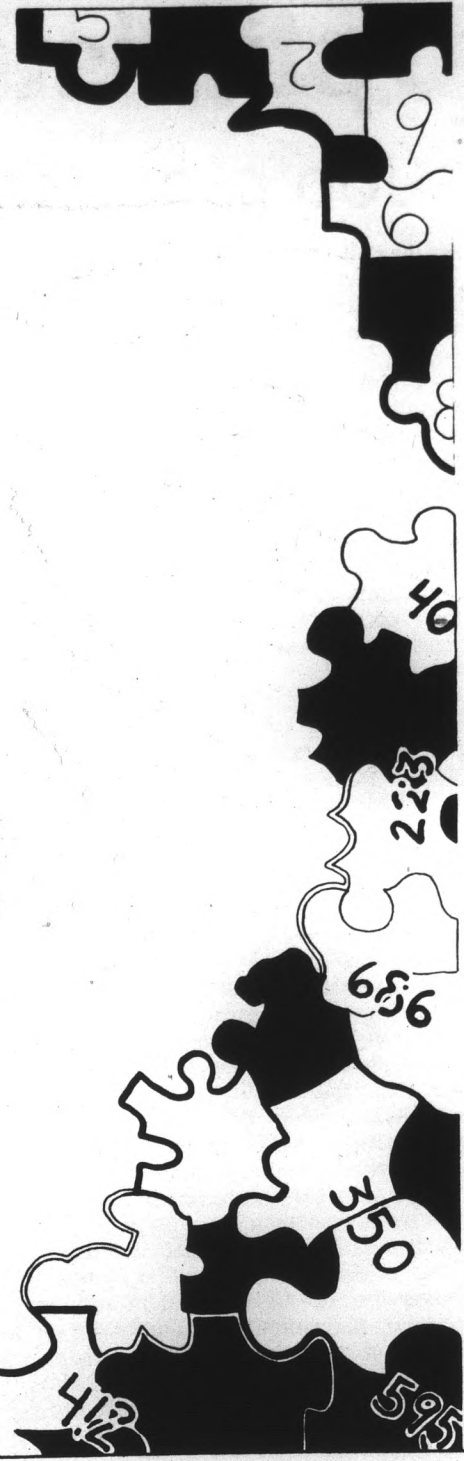
"If the cipher isn't solved by that time, I'll release some clues and extend the deadline for another year," he said.

Until the deadline, Holland will continue to promote his product around the country. "A lot of the local markets don't find out about it until I come around."

"I'm looking for some real big things at Christmas time — it's the biggest market. If things go real well, maybe we'll make a sequel — like 'Son of Decipher', or 'Revenge of Decipher'," Holland said.



The man behind the puzzle . . . Warren Holland found inspiration in a box.



**OPEN THE DOORS TO A PROFESSIONAL CAREER IN CHIROPRACTIC**

**Northwestern College of Chiropractic**

As the need for specialized health care continues to grow, Northwestern College can help you enter a secure and satisfying career as a Doctor of Chiropractic. Committed to high standards in education and research, Northwestern College of Chiropractic offers you comprehensive chiropractic training on a modern campus distinguished for its excellent facilities and dedicated teaching staff.

If you would like to know how Northwestern College of Chiropractic can help you achieve your career goals, complete the form below or call the admissions office COLLECT at (612) 888-4777.

Please send me more information on Northwestern College of Chiropractic

Name \_\_\_\_\_  
 Address \_\_\_\_\_  
 City \_\_\_\_\_ State \_\_\_\_\_ Zip \_\_\_\_\_  
 Phone (\_\_\_\_) \_\_\_\_\_ Years of college experience \_\_\_\_\_

SEND TO: Northwestern College of Chiropractic, Admissions Office, 2501 West 54th Street, Bloomington, Minnesota 55431 • (612) 888-4777

**Dry, Brittle Hair?**

Ask the professional stylists at **ANY HAIR INC.** for **THERAPPE SHAMPOO**

225 W. University, Ste. 113  
 1/4 mile west of Mill  
 829-8483 • 967-9030  
 ANY HAIR CUT \$5 — Mon., Tues. & Wed.

**COMPLETE AUTO PAINTING STUDENT SPECIAL**

**\$20 FREE** body work w/paint job

**\$179<sup>95</sup>** with coupon

Quality Work **GUARANTEED**  
 Insurance Estimates  
 Welcome

Vinyl Top Coloring — Body Side Mouldings

**Ron's Auto Body & Painting**

234 W. 4th St., Tempe  
**967-3597**

**A LITTLE LOW ON CASH?**

Become a **Plasma Donor**

It's easy & relaxing

**IMMEDIATE CASH**

Payment After Each Donation

Call 894-1338 for an appointment.

**Tempe Plasma Corp.**

Corner of Rural Rd. & Univ. Blvd.  
 Tempe Towne Plaza

This ad worth \$2. New donors only.

**DON'T FALL BEHIND**

	<b>LSAT</b>	<b>DAT</b>	<b>GMAT</b>	<b>GRE</b>	<b>MCAT</b>
Prepare Now For:	Oct. 1 Dec. 3	Oct. 8	Oct. 22	Oct. 15 Dec. 10	Oct. 1
Classes Starting:	Aug. 29 Oct. 5 Oct. 31	Call now and prepare	Aug. 30	Aug. 17 Oct. 18	Call now and prepare

Classes now available for DAT, PSYCH, GRE-BIO, NLE, TOEFL, VAT, MAT, MSKP, OCAT, CPA.

**2 HOURS OF FREE TUTORING**  
 Speedreading & ESL classes starting mid-Sept.

**CALL TODAY 967-2967**

For information about other centers in more than 80 major U.S. cities and abroad, CALL TOLL FREE 800-223-1782.

**Family Planning Institute**  
 Women's Health Center

**FREE Pregnancy Testing**  
 Immediate Results

**Premarital Bloodtesting**  
 \$15.00 Same Day Results

**Evening Hours Available**

Contraceptive Care Clinic  
 Confidential Counseling  
 Pregnancy Termination  
 Caring Professional Staff

Established 1976

**TEMPE • 968-7471**  
 2525 S. Rural Rd., Ste. 4-C  
 Mon.-Fri. Lab Hours 8-3

**PHOENIX • 997-7493**  
 9100 N. 2nd Street  
 Mon.-Sat. Lab Hours 9-3

# Optimistic

## Job prospects for students improving

By the College Press Service

After months of issuing gloomy forecasts, college placement officers around the country have grown more optimistic in recent weeks about students' job prospects this year.

"I think recruiting is going to be up by 15 to 20 percent nationally from last year," said Victor Lindquist, placement director at Northwestern University in Evanston, Ill., and author of the Endicott Report, a national survey of student placements.

"That's still down from what it was two years ago, much less three years ago," he added. "I don't see any sudden turn. This is going to be a gentle turn."

Lindquist and others have little hard data on which to base their optimism, but they take heart from the trickle of recruiters moving back onto campuses as fall recruiting season starts.

"The big thing is that we've been on a downward curve for some time," said Jack Shingleton, Michigan State University placement director and author of another annual national student job survey.

"I think we've bottomed out, and we've started back up," he said.

It would have been hard for student job prospects to sink much lower. "I don't know how it could get any worse than it was in '83," Lindquist said. "Hiring of graduates was off by 41 percent nationally last year."

Shingleton said the number of firms recruiting at Michigan State is about the same as last year, but the companies plan to hire more graduates this time.

"One of the Big Eight accounting firms was telling me that it was planning to hire 10 percent more people than last year," he reported.

At the University of Texas-Austin, "it looks better than last year for sure," said Glen Payne, associate placement director at Texas' business school.

"Last year 490 firms came to campus," Payne said. "This year we're back up to 600, and so far they're not canceling at nearly the rate they were last year at this time."

One of every five firms that signed up to recruit at the University of California-Berkeley last fall canceled, Berkeley placement head James Briggs said. He said the number of scheduled interviews is up slightly this year, and the firms he's talked to are more confident.

"People finally believe that we're in a recovery," he said. "They're more optimistic, and companies anticipate a return to growth."

"Last year was the worst we'd seen since the early 70s," said Don Wood, education placement director at the University of Northern Iowa. "This year remains difficult, but recruitment is up."

It seems to be rising most significantly among business and marketing majors, and from high technology companies.

The hard-hit energy industry's recruiting is still off. It hit bottom last year when Dallas-based Dresser, Inc., a supplier of oil exploration equipment, that is ranked 83rd on the Fortune 500, told more than 100 Michigan State students that they had jobs, but then had to renege on the offers.

"Dresser will never come on this campus again," Shingleton said.

James Papalexsis of Dresser's personnel office said "Those were entry-level jobs in remote, rural areas."

"Rather than have people relocate and then impose reductions in the work force, we decided not to bring them on board."

Dresser, which used to hire about 800 new graduates annually, still has "a few thousand" employees laid off and so will keep this year's campus recruiting "very limited," Papalexsis said.

Some energy firms, however, are starting to show up again at Texas, Payne said.

Phillips, Gulf, Conoco and Shell have returned after a year's absence.

Energy recruitment "almost ceased to exist" last year, Payne said. "Banks and accounting came through the recession almost like there wasn't one." He observed a minor slowdown in recruiting by high-technology companies.

"IBM had been sending 25 interviewers," he said. "Last year it was down to about 12 or 15. It's back to 20 this year."

The market for teachers still appears to be sluggish, despite the rash of new proposals for higher teacher salaries and more teaching hiring.

Yet "the school population is still declining, and budgets are still tight," said Northern Iowa's Wood. "I think that

**'It's going to depend on whether the basic industries perk up. It's like dropping a pebble in a pond. One sign of recovery is college recruitment.'**

things will pick up dramatically in a few years, though. They have to. So few people are going into education, and more children are coming along. Already, enrollment is up for kindergarten and first grade."

Berkeley's Briggs said some recruiters are returning with a greater appreciation for liberal arts majors. They show increased interest in hiring generalists, and are softening their formerly strict requirements for technical training.

He said liberal arts majors are having good luck among management, financial services and retailing recruiters.

But some of the placement officers' tentative optimism rests on timing.

Lindquist, for example, believes the 1984 presidential elections will inspire "a lot of economic pump priming in the next few months. If we get a sense of euphoria about the economy out of that, it will improve Reagan's chances and it will improve campus recruitment."

"If you really want a good handle on what's going to happen, talk to (Federal Reserve Chairman) Paul Volcker," Lindquist said. "It's going to depend on whether the basic industries perk up, and if we see construction of new plants. It's like dropping a pebble in a pond. One of the ripples of economic recovery is college recruitment."

**THE JOYNT** 606 S. Mill  
Old Town Tempe  
**WE DELIVER 967-7926**  
**BEER PIZZA WINE**  
**Large 16" Cheese Pizza**  
**\$3.99**  
EXTRA TOPPINGS 50¢ EACH

## STATE PRESS

### Newsroom Staff Openings

Applications for positions on the News Staff of the STATE PRESS for the Spring Semester 1984 are now being received at #15, North Basement, Matthews Center.

There will be openings at most levels — reporter, photographer, copy editing, assistant sports editor, assistant city editor, arts & entertainment writer, sports reporter, city editor, news editor, managing editor, sports editor, copy chief, photo editor and opinion page editor.

Applicants must pick up job referral forms from Student Employment in Matthews Center and an application blank at #15, North Basement, Matthews Center.

**Applications close 4 p.m. Monday, November 14, 1983.**

Applicants must be full-time (at least seven hours) students at ASU; but major in any department is acceptable, as is class standing of freshman through graduate.

Newspaper experience is desirable but not mandatory. These are part-time, salaried positions open to any student in good standing. Applicants must be available Wed., Nov. 23, for indoctrination and VDT training prior to break-in week Nov. 28-Dec. 2.

**IF YOU'RE PAYING FOR AIRPORT PARKING ...**

**YOU'RE NOT PAYING ATTENTION**

**SAVE \$\$\$!**

**SAVE TIME!**

**PLAN YOUR HOLIDAY TRAVEL NOW!**

So pay attention. Next time you plan a trip, do what our customers do. If you book your trip with Valley Travel or Sky Harbor Travel Service you can pull right into our FREE parking lot and we will chauffeur you right to your terminal. When you return to Phoenix we'll pick you up and deliver you to your car. All this free of charge if you purchase your ticket from Valley Travel or Sky Harbor Travel Service.

**SKY HARBOR TRAVEL SERVICE**

3800 E. Airline Dr.  
Division of Valley Travel  
Phoenix, AZ 85005  
Phone: 244-1668

College St.

ASU Campus

Forest Dr.

**VALLEY TRAVEL**

**LOCATED JUST 1/2 BLOCK NORTH OF ASU, VALLEY TRAVEL IS THE TRAVEL SERVICE FOR ASU STUDENTS!**

OPEN  
Monday-Friday 8:30 a.m.-5:30 p.m.  
Saturday 10 a.m.-4 p.m.

W. Al Pasley's

# VALLEY TRAVEL


**707 S. FOREST DR.**

**967-9403**

**Alpha Eta Rho**  
presents  
**"Aviation Fun Days"**  
When: Sat., Oct. 29 and  
Sun., Oct. 30  
from 9 a.m.-dusk  
Where: Falcon Field  
Mesa, Arizona  
What: Open Cockpit  
Bi-plane Rides &  
Hot Air Balloon  
Rides  
Who: Everyone Invited

**LEE'S TAILORING**  
•Fashion Designing  
for Ladies  
•Custom Suits for  
Gentlemen  
•Alterations  
**894-1055**  
Broadway & McClintock  
Alpha Beta Shopping Center

**INTERNATIONAL  
CAREER?**



A representative  
will be on the campus  
WEDNESDAY,  
NOVEMBER 2, 1983  
to discuss qualifications for  
advanced study at  
**AMERICAN  
GRADUATE SCHOOL**  
and job opportunities  
in the field of  
**INTERNATIONAL MANAGEMENT**

Interviews may be scheduled at  
CAREER SERVICES  
108 ACADEMIC SERVICES  
BLDG.

**AMERICAN GRADUATE SCHOOL  
OF INTERNATIONAL MANAGEMENT**  
Thunderbird Campus  
Glendale, Arizona 85306

**Are You Guilty  
of neglecting your  
hair and nails?**



**Terry Brubaker**  
Hair & Nail Designer

Terry can give your hair  
those new sheer transparent  
colors or a super natural  
spicing.  
Come in and see Terry for  
all your nail care needs, too.

Jazzing Colors **Now \$10**  
Reg. \$18.75

Shampoo, hair  
cut and blowdry **Now \$12**  
Reg. \$18

Sculpture Nails **Now \$25**  
Reg. \$45

**ANY HAIR**  
225 W. University  
Suite 113, Tempe  
(1/4 mile west of Mill)  
**829-8483**  
Hours: 8 a.m.-9 p.m.

**PIZZA**  
TASTE & COMPARE

Slice  Cheese  
and  
Med. Soft Drink or  
10-oz. Coors or Bud

**99¢**  
Daily Mon.-Fri. 2-5 p.m.

**The Joynt**  
606 S. Mill Ave.  
967-7926

**BLACK CAT SPECIALS**  
Thousands of costumes to choose from.  
Be a soldier, spaceman or valley girl.

- SCRUB SUITS — 15% OFF
- SURGICAL MASKS & HATS — 49¢ each
- CAMOUFLAGE, O.D. GREEN, KHAKI  
MILITARY CLOTHES — 15% OFF

 **Peace**  
SURPLUS

Camping, Clothing & Surplus  
Expires 10-31-83.  
**894-9137**  
1332 E. Apache  
(A. J. Bayless Center)

Limited  
to stock  
on hand.

**DESERT HAWGS**  
Harley Davidson Specialists

**TUNE-UP SPECIAL**

HONDA  
YAMAHA  
KAWASAKI  
SUZUKI  
BMW


**39<sup>95</sup>** & parts  
Factory Mechanic

Sales, Service,  
Accessories

**1711 E. APACHE**  
**TEMPE • 966-4919**

Mon.-Fri. 10-6  
Saturday 10-5

*It's Ladies Night*



**WEDNESDAY**

**FEATURING 25¢ CHAMPAGNE  
95¢ DAQUIRIS & PINA COLADAS, &  
75¢ WINE COOLERS FOR THE LADIES  
NIGHT!**

**AT**

**DONNY O'BRIENS**  
222 S. MILL

# Conservation hotline saving ASU money

## Energy-aware observers point out waste problems in campus buildings

By Rosanne Dupras  
Staff writer

Thanks to savings-minded students, faculty and staff, the ASU energy conservation hotline has been accomplishing the goals it was created for.

"In the last fiscal year, we saved about \$14,000 to \$15,000 from calls to the hotline, which is about \$30,000 annually," said Ron Griffen, manager of University utilities.

People who are familiar with certain sections or buildings on campus can point out energy waste problems by calling the hotline.

"There are a lot of things that people can spot who are there on a day-to-day basis that we might never know about," Griffen said. "A lot of things that were suggested to us a year ago have saved us money."

The conservation hotline has "substantially" contributed to the University's energy saving, said Herb Miller, Physical Plant director.

"For this year, I don't see any real problems," Miller said. "The increases (in energy consumption) we were projecting are being pushed into next year — they'll happen sometime in 1984-85," he said.

"The difference between the actual consumption of energy and what we projected is a real small amount — that's why we're doing all right," Griffen said.

The Arizona State Legislature appropriates funds that will be spent for utilities after the University estimates its utility cost for the fiscal year, Griffen said.

"Each month, we get in 80 or so utility bills, and we request a sum of money, then draw against it," he said.

Griffen said no difficulties in paying utility bills for this fiscal year are being projected.

Multi-step rate increases from Arizona Public Service are expected to begin on Jan. 1, 1984, but the dates are tentative at this point, according to APS spokesman Grant Smith.

"We have asked for them, but we have to wait until the State Corporation Commission rules on our request," Smith said.

He said the dates of the upcoming multi-step rate increases are contingent on the condition of the Palo Verde Nuclear Generating Station.

Smith said an increase of less than 1 percent had been delayed earlier this fiscal year.

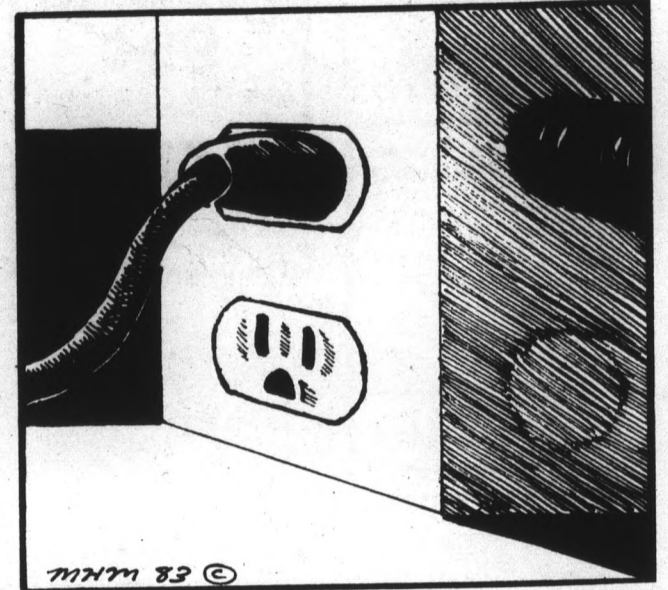
This delay helped to offset high energy consumption that occurred during July, August and September, Griffen said.

If Legislature funding does not meet utility costs, the deficit must be made up through conservation or other means, said Victor Zafra, vice president for Business Affairs.

"I would think that our planning is good enough that there shouldn't be a real problem with it this year," Zafra said. Zafra said it would be too late in the year to meet the utility

costs from funds intended for academic programs, but the funds could come from renovation or construction projects.

"When we got a fixed budget earlier, the Legislature didn't increase our budget, and we were expecting the rate increases, so we planned for it . . . The Vice President's Council cut programs at that time," Zafra said.



The conservation hotline, 965-SAVE (7283), is manned by Walt Dollbaum, who is working with Griffen in the conservation project.

**ACCIDENT AND INJURY CLAIMS**  
**KNOW YOUR LEGAL RIGHTS**  
 Call 957-2010  
**FREE**  
**ATTORNEY CONSULTATION**  
 No Recovery — No Fee

**UNIVERSITY TREASURES**  
 1025 E. Broadway (East of Rural in Tempe) 829-6666  
 Walt Disney Classic  
 A "Snow White & the Seven Dwarfs" & "The Footloose Fox" (G) | C Rodney Dangerfield in "EASY MONEY" (R)  
 B "WAR GAMES" (PG) | D Richard Greer "BEYOND THE LIMIT"  
 MIDNIGHT MOVIES EVERY FRIDAY AND SATURDAY NIGHT FOR ONLY A DOLLAR!  
**ONLY \$1.50 AT ALL TIMES!**

**ENJOY THE BEST**  
**Häagen-Dazs**  
 WE DELIVER  
 Pints, Quarts and Cakes  
**20% OFF WITH ASU I.D.**  
 903 S. Rural  
 967-2340  
 HOURS:  
 Sun. Thurs. 11-12 a.m.  
 Fri. & Sat. 11-1 a.m.

**THE JOYNT**  
**COUPON**  
**2 CAN DINE FOR \$5.49** Reg. \$8.50  
 Expires Nov. 11, 1983.  
 Choice of:  
 • Lasagna  
 • Cheese or Spinach Manicotti  
 • Baked Ziti  
 Includes 2 dinner salads and garlic breads  
**THE JOYNT**  
 606 S. Mill  
 967-7926  
 CARRY OUTS 75¢ ADDITIONAL  
**COUPON**

**WEDNESDAY:**  
 Live music,  
**COWBOYS**  
 3131 S. McCLINTOCK, TEMPE,  
 VALLEY PLAZA SHOPPING CENTER  
 (Corner Southern & McClintock)  
 838-1178  
**CONCERT NIGHT**  
**THE "VARMINTS"**  
 plus \$1.00 well, wine & beer all night long.

SHHH...!  
 THE WOODSHED  
 Your Satellite TV Headquarters

sports



# Pow Wow

## Seminoles will meet Devils this Saturday night

By Ken Sain  
Assistant sports editor

When Bobby Bowden took over the head coaching reigns of the Florida State football program in 1976, he looked around the country for program after which he could model his own.

There was a school in the Southwest that was building a strong program which impressed Bowden. That school, Arizona State University, finished the previous year ranked second in the nation after defeating Nebraska in the Fiesta

Bowl.

Bowden decided then that he would model his program after that of ASU.

Saturday night Bowden's Seminole team will face off against the Sun Devils in Sun Devil Stadium at 7:30 p.m.

"I don't think you could put two teams on the football field that are as offensively alike as Arizona State and Florida State," Bowden said.

ASU head coach Darryl Rogers has built a reputation of of-

fensive football in the west coast in his 19 years of coaching. Bowden has earned the same reputation on the east coast in his 18 years of coaching.

Saturday night's match-up could be a replay of the inaugural Fiesta Bowl. Arizona State outscored the Seminoles 45-38 in the '71 classic.

One reason a high-scoring game could be expected would be the Seminoles defense. After surrendering 142 points in only four games their defensive unit has been marked questionable.

"We have really struggled this year defensively," Bowden said. "We were hoping to come into the year with some improvement on defense, but as it was, we did not make any progress defensively and have made little each week."

Rogers does not agree with Bowden's appraisal of his defense.

"Florida State has played much better on the defensive side of the ball as the season has progressed," Rogers said.

The Seminoles will come into Tempe with a 4-3 record, but they could be the one of the best 4-3 teams in the history of college football.

Their schedule includes seven teams that have been ranked in somebody's Top 20 this season. Two of FSU's losses have come to traditional powers Auburn and Pittsburgh. Both of those games were on the road.

The other loss suffered by the Seminoles was at the hands of Tulane with their on-again off-again quarterback Jon English. Again, the game was on the road.

The Seminoles are looking at the game against the Sun Devils to turn around their season. Florida State went into the season with a consensus ranking of No. 6.



Florida State tailback Greg Allen is one of the top running backs in the nation, averaging 117.9 yards per game. Allen has rushed for over 100 yards five times this season.



Bobby Bowden has been one of the nation's outstanding coaches for the past six years. In that span, he has taken the Seminoles to four bowl games.

Their three losses have hurt them, but if the Seminoles can win all of their remaining four games they should earn a bowl berth.

Easy to say, but the schedule is not in FSU's favor. They will play ASU on the road, then South Carolina at home, and close the season with Miami at home and Florida on the road.

Kelly Lowrey will lead the offense for the Seminoles, but scorecards will be necessary to keep track of the offensive players.

The Seminoles are so deep at every position on offense that Bowden decided to platoon the entire offensive unit except for Lowrey.

Even star running back Greg Allen, who led the nation in scoring a year ago, will share time with Roosevelt Snipes. The offensive line will also move in and out.

Bowden has become famous for this type of offensive philosophy. In the last meeting between the Devils and Seminoles, he used a two-quarterback system to perfection. Jimmy Jordan and Wally Woodham alternated quarters in leading the Seminoles to a 31-3 victory over the Devils in Tampa.

### ARIZONA HUSQVARNA

*A Great Deal on a Great Bike!!*

This great mountain bike comes with 18 speeds, a rear rack, chrome moly tubing, and weighs only 33 lbs. Choose between blue or black, and 23- or 19-inch. You'll love it!



LAGUNA MOUNTAINEER

**ON SALE FOR \$445<sup>00</sup>**  
Regular \$599

1725 W. UNIVERSITY, TEMPE • 966-6633

### WOMEN'S HEALTH CENTER

PERSONALIZED and CONFIDENTIAL CARE

- Free Pregnancy Testing
- Free Abortion Counseling
- PreMenstrual Syndrome Program
- Low Cost Sterilization
- Additional Gynecologic Services Available

#### NEW DRUGS AVAILABLE FOR

- Painful Periods
- Birth Control
- Vaginal Infections

#### TWO LOCATIONS

**PHOENIX**  
Community Medical Plaza  
1840 W. Maryland, Suite C  
246-9792 or 242-8649

**TEMPE**  
3030 S. Rural  
Suite #7  
894-5534

Please call for an appointment.

# Pick 'em

Welcome to another *State Press* Pick 'em contest. This week 448 people set a season record by entering the contest, but only three came out as winners.

The first prize winner is Paul Lindquist, who missed only one game. He wins a \$10 gift certificate from the Bare Cover clothing store, and two "Shipwreck" banana splits from Yogurt Oasis.

Second place went to Dennis Werbeach, who also missed one but was 12 points behind Paul in the tie-breaker. He wins a large pizza from Pizza Hut restaurant.

Third place went to Tim Howe. Tim missed one too, but he was so far off the tie-breaker that he'll have to settle for third. He receives a Budweiser goody bag, courtesy of Hensley and Co.

In case of a tie, the winner will be the person who comes closest to predicting the final score of the ASU-Florida State game.

Also, don't forget to put your name and phone number on your entry.

Entries will be accepted at the *State Press* offices until 5 p.m. Friday in the basement of Matthews Center.

Florida State \_\_\_\_\_ at ARIZONA STATE \_\_\_\_\_  
Predict the score.

Home team in caps:  
Favorite

- |   |    |  |
|---|----|--|
| <input type="checkbox"/> Penn State     | 3½ | <input type="checkbox"/> BOSTON COLLEGE  |
| <input type="checkbox"/> Michigan       | 1½ | <input type="checkbox"/> ILLINOIS        |
| <input type="checkbox"/> AUBURN         | ½  | <input type="checkbox"/> Florida         |
| <input type="checkbox"/> North Carolina | 3½ | <input type="checkbox"/> MARYLAND        |
| <input type="checkbox"/> MIAMI(Fla.)    | 2½ | <input type="checkbox"/> West Virginia   |
| <input type="checkbox"/> ALABAMA        | 7½ | <input type="checkbox"/> Mississippi St. |
| <input type="checkbox"/> UCLA           | 2½ | <input type="checkbox"/> Washington      |
| <b>PRO GAMES</b>                        |    |  |
| <input type="checkbox"/> Dallas         | 7½ | <input type="checkbox"/> N.Y. GIANTS     |
| <input type="checkbox"/> CHICAGO        | 1½ | <input type="checkbox"/> Detroit         |
| <input type="checkbox"/> Green Bay      | 4½ | <input type="checkbox"/> CINCINNATI      |
| <input type="checkbox"/> MIAMI          | ½  | <input type="checkbox"/> L.A. Rams       |
| <input type="checkbox"/> ATLANTA        | ½  | <input type="checkbox"/> New England     |
| <input type="checkbox"/> SAN FRANCISCO  | 5½ | <input type="checkbox"/> N.Y. Jets       |
| <input type="checkbox"/> L.A. RAIDERS   | 2½ | <input type="checkbox"/> Seattle         |

Name \_\_\_\_\_  
Phone \_\_\_\_\_

# numbers

## Pac-10 Football Standings

Team	Conference			Overall		
	W	L	T	W	L	T
1. Washington	3	0	0	6	1	0
2. UCLA	3	0	1	3	3	1
3. Oregon	2	1	0	3	4	0
4. Arizona St.	2	1	1	4	1	1
5. USC	2	1	0	2	4	1
6. Arizona	2	2	1	5	2	1
7. Cal	1	2	1	3	3	1
8. Washington St.	1	3	0	3	4	0
9. Stanford	1	3	0	1	6	0
10. Oregon St.	0	4	0	1	6	0

## STUDENT SPECIAL

Shampoo & Cut

\$7.00

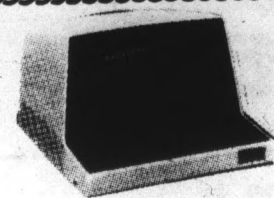
OPEN SUNDAY  
12-5 p.m.

WITH THIS  
COUPON



966-2679  
Expires 12-31-83.  
(New Year's Eve)

6 W. 7th St.  
Tempe



Do Your  
Computer Work  
At Home!

Save Time and Effort

CRT with coupler

or

Printer with coupler

\$50<sup>00</sup>  
per month

**BRS LEASING, INC.**

3914 E. McDowell • 277-3282

Rentals / Service / Sales

## CLEARANCE SALE

Men's & women's  
3-speed bicycles  
Red & White Only

COME IN WHILE  
THEY LAST



Reg. \$160

Sale \$109<sup>50</sup>

10-speeds starting at \$129<sup>50</sup>  
and many more at special low prices

**TEMPE BICYCLE SHOP**

The old gas station on the corner  
• 6th Street and Mill, Tempe

966-6896

# TIRED

of not finding a place to  
sit and eat your lunch?

# THEN

come down to the  
**UNION CINEMA**

and

**Brown Bag It with Bugs Bunny**

Each  
Wednesday  
beginning

**OCT.  
26**



11:30-  
12:00

and

12:15-  
12:45

Sponsored by the MUAB Film Committee and Saga Foods



## Student Alumni Association

The ASU Student Alumni Association  
announces the organization of a

## STUDENT SPIRIT GROUP FOR SUN DEVIL BASKETBALL GAMES

This 75-member group will

- host a special pre-season event with the team
- create and participate in organized cheers at games
- work closely with the Sun Devil Pep Band and cheerleaders
- attend post-game parties with the coaches and players

The membership cost of \$30 includes

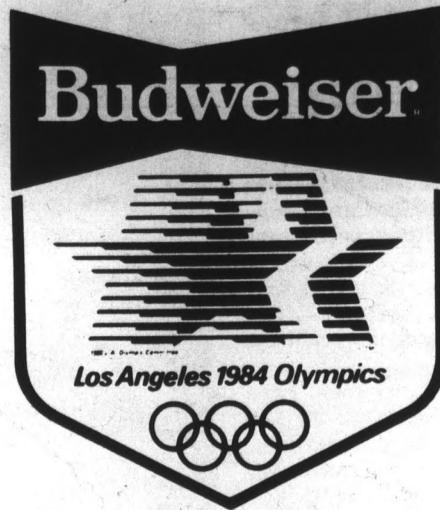
- a season ticket to all home games
- a specially designed shirt
- membership in the Student Alumni Association
- and other surprises throughout the season

If interested in participating in this organization, fill out the form below and mail it with your check to: ASU Student Alumni Association, Alumni Center, Tempe, AZ 85287, or call Jeff Abraham at 965-3566.

Name \_\_\_\_\_

Address \_\_\_\_\_

City \_\_\_\_\_ State \_\_\_\_\_ Zip \_\_\_\_\_



# TEAM SUPERSTARS November 4, 5, 6

*Sponsored by Budweiser and ASU Intramural Sports*



## ENTRY DEADLINE

Sign up today, the deadline is tomorrow!

\$20 entry fee and entry due by Thursday,

October 27,

Intramural Sports Office,

P.E. West Lobby.

## EVENTS

- Bowling
- Volleyball
- Freestyle Relay
- Obstacle Course
- 800M Track Relay
- Tug-of-War

## TEAM ELIGIBILITY

1. A team is 4 men and 4 women.
2. Each participant must be a full-time (7 hours) undergraduate or graduate student at Arizona State University, full-time faculty or staff.
3. Each participant must have an ASU Photo I.D. and current Activity Card or a full-time faculty or staff I.D.
4. Other specific sport eligibility restrictions outlined on entry form.
5. All teams receive Budweiser Team Superstar T-shirts.

**AWARDS:** 1st Place — 8 Arizona Athletic Club Limited Memberships

### RUNNERS-UP:

Minder Binder's — 8 Hamburgers & Drinks  
 The Dash Inn — 8 Dinners  
 The Devil House — 8 Dinners & 8 Drinks  
 The Warehouse Deli — 8 Meals and 8 Medium Drinks

The Dirty Drummer — 8 Hamburgers & Drinks  
 Hooters — 8 Pizzas  
 Bandersnatch — 8 Brunches & 8 Drinks  
 Greasy Tony's — 8 Sub Sandwiches & 4 Pizzas

*Plus other prizes donated by Budweiser*

Paid for by ASU Intramural Sports

# Sun Devils suffer losses to Cardinal and Pacific

By Tom Blodgett  
Sports writer

Renewed confidence was the theme this weekend for the ASU volleyball team, although the squad came back with two more losses.

Considering the Sun Devils' opponents, second-ranked University of Pacific and third-ranked Stanford, the team could not have hoped for an improved record.

But the Devils played well against UOP and came within a whisker of upsetting the Cardinal.

"We came as close as you can come without actually doing it," ASU head coach Debbie Brown said of the loss to Stanford.

ASU's record fell to 5-11 overall, and 1-6 in the WCAA. Stanford was the only conference foe of the two opponents.

The Cardinal had given ASU fits in the past. In 1981, Stanford humiliated the Devils in the first round of the NCAA tournament's South regional.

Last year, the Devils managed to win only one game in the team's two matches. Earlier this season, ASU lay down meekly for the Cardinal in a match at P.E. East, falling in a four-game rout.

But the return match in Palo Alto proved to be a different story.

ASU dug a hole for themselves early by losing the first two games, 15-6, 15-7. But then, ASU changed the momentum completely around, whipping the Cardinal 15-4, 15-3 in games three and four.

"They were doing real well, as the scores indicate, in those games," Brown said. "Even in the first two games we played well. There were some real long rallies."

The fifth game was the closest of the night. The teams traded leads until finally Stanford turned out the lights with a 15-11 victory.

"The fifth game was real close," Brown said. "But it ended real fast. They got two or three quick points at the end."

The key to this turnaround was the team's attitude, according to Brown.

"This was a fun match for the girls," Brown said. "They're playing well enough to beat some teams."

"If we keep working hard and playing like that, eventually we're going to knock someone off."

Brown was pleased with all facets of the Devils' game and the performances of her key players.

"I thought Heather (Forbes) had some good sets," Brown said, "and Lisa (Stuck) started hitting like I've seen her do before."

Indeed, the senior co-captains did have good games. Stuck had a season-high 25 kills and dug 24 balls defensively. Forbes dished up 47 assists.

Supplementing the Devils' attack were Valentina Vega with 15 kills and Tammy Webb with nine.

Like its previous match in Tempe, the Cardinal had a more balanced attack.

All-American Kim Oden was the leader with 14 kills. Barbara Fontana added nine more and had 19 digs to lead the Cardinal.

The Cardinal's team hitting percentage was just .195, almost half of what it was in Tempe (.387).

Only one Cardinal — Bobbi Broer — had more than a .300 hitting percentage and she only had one kill.

One difference in the match could have been the quality of officiating.

"I don't want to make any excuses, especially when we didn't win," Brown said, "but there were some calls that really hurt us."

One call came at a crucial point in the fifth game with ASU in the lead and serving.

Stuck got a nice hit off the block, but the referees said they didn't see the blockers touch the ball. Brown said that in a back-and-forth game such as the last one, losing a point like that could hurt.

In addition, Brown felt the officials did not call several double hits by the Cardinal caused by tough serving.

"That took away from our serving," Brown said.

On the prior evening against Pacific, the Devils did not play quite as well as they would against the Cardinal, but nevertheless, the team did not fold.

"We played fairly well," Brown said. "It wasn't like we should be upset over the way we played."

"I feel if we had played just a little bit better, we could have won."

That would have been no small feat, as the UOP team came into the match undefeated in 15 prior matches. Only top-ranked Hawaii can claim the same feat.

"The top teams in the country are all real close this year," Brown said. "No one is just going to walk away with it. That should make it real exciting."

If there was an area which ASU could have improved upon, Brown felt it would have been defending Pacific's Julie Maginot and Eileen Dempster.

"If we had just improved our defense against those two," Brown said, "it might have been enough to win the match."

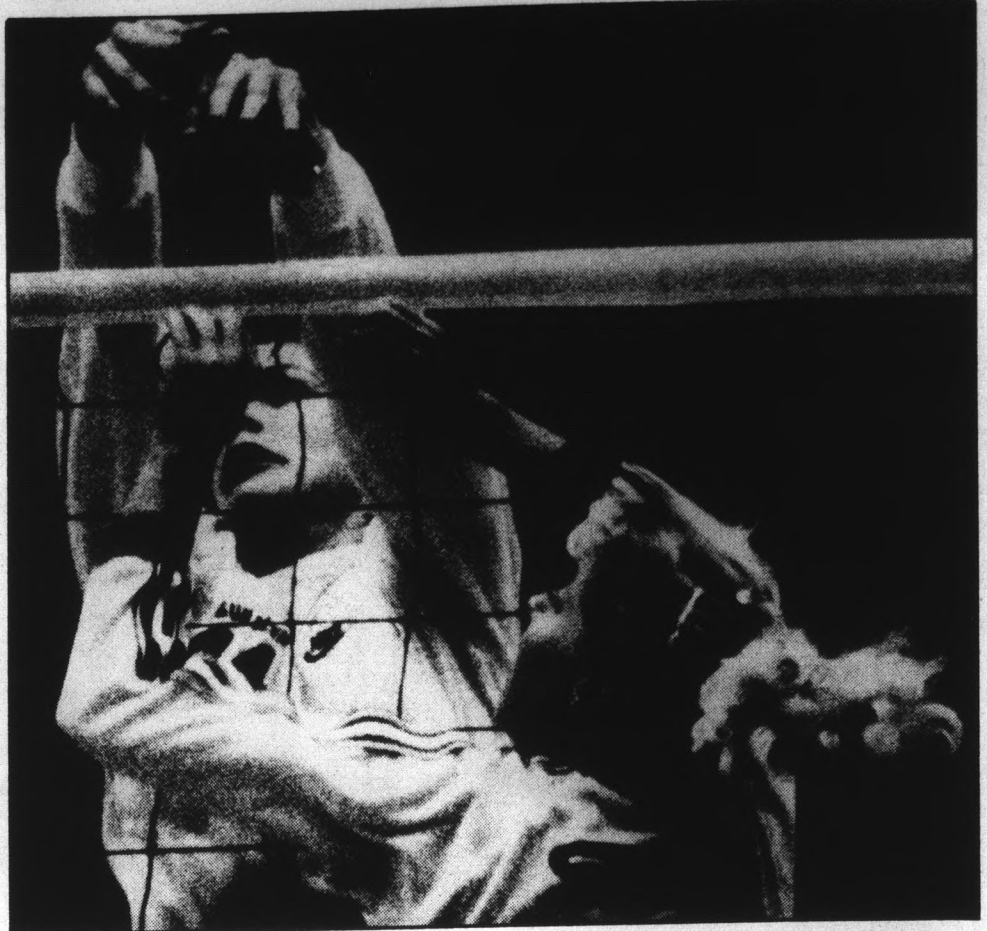
"We had some good rallies and did some nice things with the ball."

Maginot tied Stuck with game honors in kills. Each girl recorded 23. But Maginot's hitting percentage was an excellent .439.

Dempster was not far behind, downing 16 balls for kills and recording a .429 hitting percentage.

But the Tigers' attack was not solely concentrated in their hands. Therese Boyle and Robin Burns each had 14 kills. Boyle's hitting percentage was .345.

In addition to Stuck, Vega, Webb and Terri Edison once again added punch to the ASU attack. Vega had 17 kills and a .333 hitting percentage. Webb had 12 kills and Edison added 11.



Staff photo by Andy Arenz

ASU's Lisa Stuck attempts to intimidate San Diego State's Karen Schwartz. The Devils keep coming closer to upsetting a national powerhouse.

## LEARN TO FLY

SOLO IN LESS THAN 30 DAYS . . . ONLY **\$499<sup>00</sup>**  
From now thru Nov. 30, 1983.

We at Chandler Air Service are offering our PIPER BLUE SKY SOLO COURSE. This program is designed to take you from ground instruction through your first solo flight in 30 days for \$499.



Call today to schedule an INTRODUCTORY FLIGHT LESSON and find out more about this unique, inexpensive way to start flying.

- \*FLIGHT TRAINING
- \*AIRCRAFT RENTAL
- \*PILOT SUPPLIES
- \*AEROBATIC FLIGHT TRAINING

**CHANDLER AIR SERVICE, INC.**  
CHANDLER MUNICIPAL AIRPORT  
**963-6420**

*Come in daily and try our new Featured Items*

*We Also Serve Beer & Wine*

*Special Features*

*Includes your choice of soup or a tossed green salad, French fries and hot biscuits with honey. (Baked potato available after 5 p.m.)*

- Chicken Fried Steak**  
Tender beefsteak, floured and fried. Served with spicy sausage country gravy. 4.98
- Chicken, Cheese and Bacon**  
A boneless, fried chicken breast covered with Jack and Swiss cheeses, topped with crisp bacon. 3.99
- Ground Beefsteak**  
A half pound of ground beef garnished with an onion ring. 4.75  
Sautéed fresh mushrooms, add .50
- Grilled Beef Liver**  
With lots of grilled onions. 4.65  
Bacon, add .70
- Hawaiian Chicken**  
A boneless, fried chicken breast topped with fresh pineapple, sweet & sour sauce and green onions. 3.65

**COCO'S**

1717 S. Rural Rd.  
Tempe, AZ 85281

Just 2 miles S. of University

*Try our delicious Deep Fried Zucchini served with our special sauce for dipping*

*Hours: Sun.-Thurs. 6 a.m.-12 a.m.  
Fri. & Sat. 6 a.m.-1 a.m.  
Breakfast Served All Day*

## HOW TO LIVE WITH HERPES

Herpes. You can't cure it. But you can control it and lead a happy, normal life. Research shows that two grams daily of the anti-oxidant BHT (butylated hydroxytoluene) for 60 days (with a 200 - 500 mg dosage, depending on body weight, after that) work to destroy the infectious qualities of the herpes virus. Studies show that BHT also helps your body attack cancer cells and slow the aging process.

Call now 1-800-222-9080

**ORDER SAFE, EFFECTIVE BHT FROM THE PRIVACY OF YOUR OWN HOME TODAY.**

MC    VISA    AM. EXP.    CHECK/M.O.

CARD # _____	QTY.
EXP. DATE _____	250 mg. 120-Capsule Bottle <b>\$8.50</b>
NAME _____	500 mg. 120-Capsule Bottle <b>\$14.00</b>
ADDRESS _____ APT. # _____	500 mg. 250-Capsule Bottle <b>\$20.00</b>
CITY _____	(Las Vegas res. add 5.75% sales tax)
STATE _____ ZIP _____	

**AMT. ENCLOSED \$ \_\_\_\_\_**

**MONEY BACK GUARANTEED. FREE SHIPPING IF YOU MAIL THIS WITHIN 10 DAYS.**

Mail To: **LIFO, INC.**   **Call now 1-800-222-9080**  
3110 Polaris, Suite 25, Dept. A1020, Las Vegas, NV 89102

# Student travels to New York for marathon

By Vicki Serna  
Sports writer

It was raining in New York last Sunday, but it wasn't pouring. It was a sweet drizzle, and probably the only people who complained about the weather were the 17,000 runners who entered the New York Marathon.

One of those runners was ASU student Maria Trujillo, who is still recovering — not from the rain but from the race itself.

Trujillo, who was running in her fourth marathon, finished 11th among the women competitors in the well-recognized New York Marathon. Her time was 2:38.32.

"My goal for this marathon was to break 2:45 because that is the qualifying time for the Olympics," she said.

And she did.

The 24 year-old computer science major will be in Los Angeles this summer participating in her ultimate goal, the Olympics.

However, she won't be strutting the red, white and blue uniform that the Americans will be performing in. Instead she will be running for her home country, Mexico.

"I'm very proud to be representing my country," she said.

She will be taking a break from ASU next semester to continue her extensive Olympic training. But she will return to school after the Olympics.

Trujillo surprisingly started running just four years ago and has entered only four marathons during the past year.

However, her accomplishments have included a third-place finish in the Phoenix Marathon with a time of 2:44.59 and a ninth-place spot in the Boston Marathon in the women's division with a time of 2:46. She also competed in the World University Games in Canada last July. Although she wasn't pleased with her time of 2:57, she still managed a fourth-place finish.

Describing the New York Marathon, Trujillo said she "felt really well. I started out with the pace pretty fast, but after

**Trujillo surprisingly started running just four years ago, and has entered only four marathons in the past year.**

about five minutes into the race, it started to rain," she said.

"During the last mile, I started to run slower and as I could see the finish line, two of the girls passed me at the very end."

Trujillo explains that each time she runs a marathon she acquires new knowledge about herself and her running.

"After the first marathon, I wanted to do more and run faster," she said. "Every time I run a marathon, I learn something new. For example, during the New York Marathon, it was raining so much that I kept refusing to drink the water and that really hurt me in the end. So I

learned that next time I'll drink water during the race."

According to Trujillo, training for marathons takes up a lot of time and "it sure does interfere with school," said the full-time student. "But in order to be competitive with the top runners you must take that time to train."

Her college running career consists of two years at Hartnell College in California and two years here at ASU.

Head cross country coach Roger Kerr, who has helped Trujillo tremendously, said she was happy with her performance yet disappointed. "She had sore legs for a couple of days before the race," Kerr said. "And the rain caused her to become tight in her legs around the 20-yard mark."

Trujillo has much to look forward to in the next nine months — hard training sessions, vigorous workouts and of course, the Olympics. She would also like to run one more marathon before the Olympics.

But she likes to reflect on her past achievements.

"I remember the first marathon I wanted to enter. I thought I could give it a try and I'm glad I did. It's a great accomplishment to actually finish a marathon."

Kerr, who coached Trujillo during her two-year running career here at ASU, said she was the top runner in cross country one year and the second-best runner the next year. She also set the school record in the 10,000 meters at 34:26.

He also believes she has a good chance to perform well at the Olympics. "It's still early to tell, but I think she has a great shot to finish respectably at the Olympics."

Invitation to apply for

## STATE PRESS EDITORSHIP

The ASU Student Publications Advisory Board is now soliciting applications for the State Press editorship for the Spring Semester 1984.

Applicants for the position of editor:

- must have a cumulative grade index of 2.20 or better;
- must have either two semesters' service on the staff of the **State Press** or responsible editorial experience with a commercial, college, or university newspaper; and
- must have been a full-time student at ASU for at least the two consecutive semesters prior to applying.

Candidates must also:

- submit at least two letters of recommendation from university faculty members and/or professional journalists;
- list on the application form the titles of all journalism courses completed and the grades earned in those courses;
- submit at least two examples of a news story, feature story, or editorial written for the **State Press** or another newspaper; and describe on the application form the functions and responsibilities of previous positions held on the staff of the **State Press** or other newspapers.

Candidates must pick up at the **State Press** office, Matthews Center North Basement, application forms. The completed forms must be typewritten.

Applicants for the position of editor must be available for one or more interviews by the Board between 3 and 6 p.m. Tuesday, November 15, 1983, Matthews Center Conference Room.

**The deadline for receipt of applications will be Friday, November 4 at 4 p.m.**

Applicants will be notified of interview date and location when applications are turned in.

Applicants need not be journalism majors; candidates from all disciplines are invited, graduate and undergraduate.

Edward H. Peplow, Jr.  
Manager, Student Publications  
Matthews Center, North Basement  
Phone 5-7572

## IT'S ABOUT TIME.



Your time. That's what it takes to help others through Peace Corps. To pass along skilled trades like carpentry or welding. To demonstrate better methods of farming or family planning. To work on schools and irrigation systems. A year or two can make a world of difference. Don't you think it's about time you called?

The Peace Corps has an especially large number of openings for May and June in programs like: agriculture, forestry, biology, math, health care, civil engineering, and education. The Peace Corps also has a new office on the Arizona State University campus. The address is:

Peace Corps Liaison Office  
Agriculture Bldg., Room 113  
Arizona State University  
Tempe, AZ 85287

Or Call: (602) 965-7994

Ask to speak with **BRAD BENTZ**,  
the Peace Corps' campus representative.

# Archer claims his sixth title; will relax before L.A. Games

By Vicki Serna  
Sports writer

Baseball has Reggie Jackson, basketball has Julius Erving and archery has Rick McKinney.

McKinney, ASU's assistant archery coach, is a six-time national archery champion and is preparing for the 1984 Olympics.

Last week he competed in the 32nd World Championships in Long Beach, Calif. and came out victorious.

He also claimed that same championship six years earlier, in 1977.

Other honors for McKinney include intercollegiate champion for three years while at

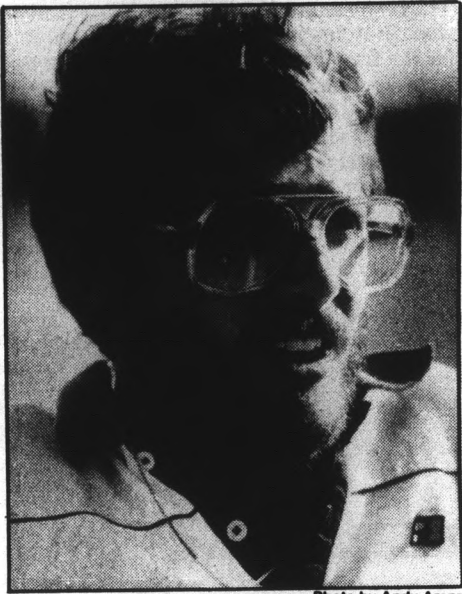


Photo by Andy Arenz

**Rick McKinney**

ASU, 1977 national champion and 1979-1983 national champ.

The 30-year-old archer became interested in archery when he was 10 and has been "shooting" for 20 years.

"It started with my dad," he said. "He was interested in it and he started getting all of his boys interested in it. It's very enjoyable."

The tournament last weekend included approximately 125 men from 40 countries.

McKinney tied for first place with American Darrell Pace at 2,617 points. But McKinney was awarded the honor because of a tie-breaking rule which awards the title

to the competitor who has the most 10-point arrows in the tournament. Pace had 116 while McKinney had 124.

After the tournament was over, McKinney claims he still wasn't aware of what had happened.

"I was still in a self-hypnotic trance. Archers keep themselves at a very controlled emotional stage," he explains. "We have to in order to perform. I finally came out of the trance about six hours after I won."

McKinney has put away his bow and arrow for a while. He needs a good rest — at least a month, he said.

He started a heavy competitive schedule last summer and is looking forward to a rest.

"From May until last weekend I traveled all over the place," he said. "During that time I probably spent about three weeks at home."

Some of his tournament travels took him to places like Seattle, Washington, Sacramento, St. Louis, Indiana and Colorado Springs.

McKinney, like any other athlete, has to keep in shape. He does it by running, lifting weights and staying mentally tough.

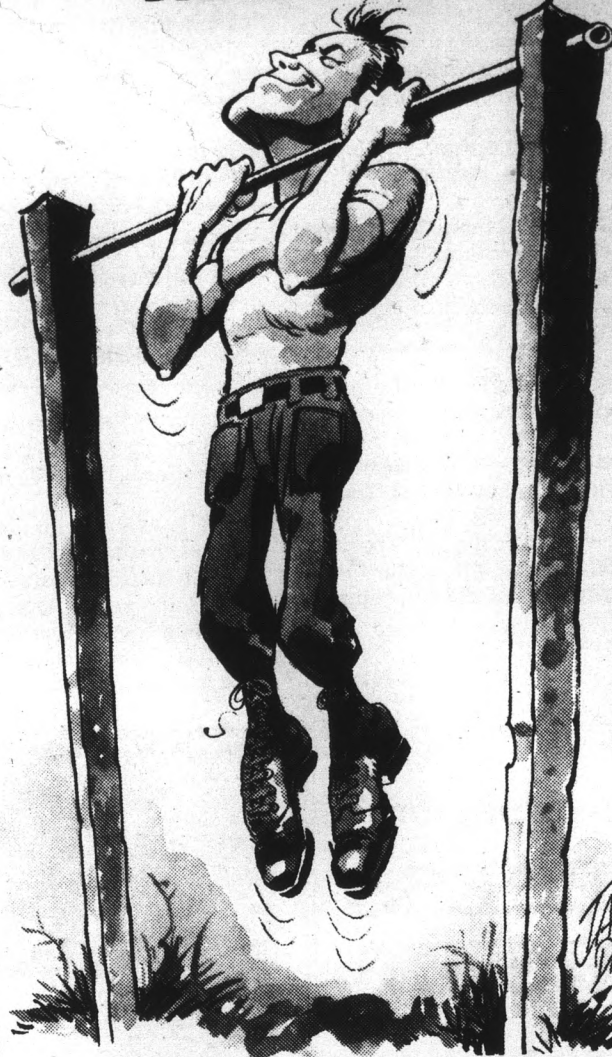
"Part of my conditioning is to run a mile or two every other day," he said. "I also lift weights three times a week. You have to be in shape in order to perform at the level of an athlete. An archery tournament usually lasts for four days, and you're out there in the hot sun from 9 a.m. til 4 or 5 in the afternoon, and if you're not in shape, you'll run out of gas."

Although archery is not a popular sport, McKinney estimates that some 5 million people shoot archery, either as recreation, hunting or as a sport. That's a large percentage of the world, he said.

McKinney classifies himself as a 10-year overnight success and says that Phoenix is a "hot spot for archery. It's a great training area. Here at ASU archery is a very dominant force in the world."

McKinney's future holds many bright possibilities. He'll be trying out for the Olympics at the tryout tournament. He seems confident about being in L.A. next summer. He is also developing a weightlifting program with ASU archery coach Sheri Rhodes. And of course, he is hoping to win the gold medal at the Olympics.

# WE'LL PAY YOU TO GET INTO SHAPE THIS SUMMER.



If you have at least two years of college left, you can spend six weeks at our Army ROTC Basic Camp this summer and earn approximately \$600.

And if you qualify, you can enter the ROTC 2-Year Program this fall and receive up to \$1,000 a year.

But the big payoff happens on graduation day. That's when you receive an officer's commission.

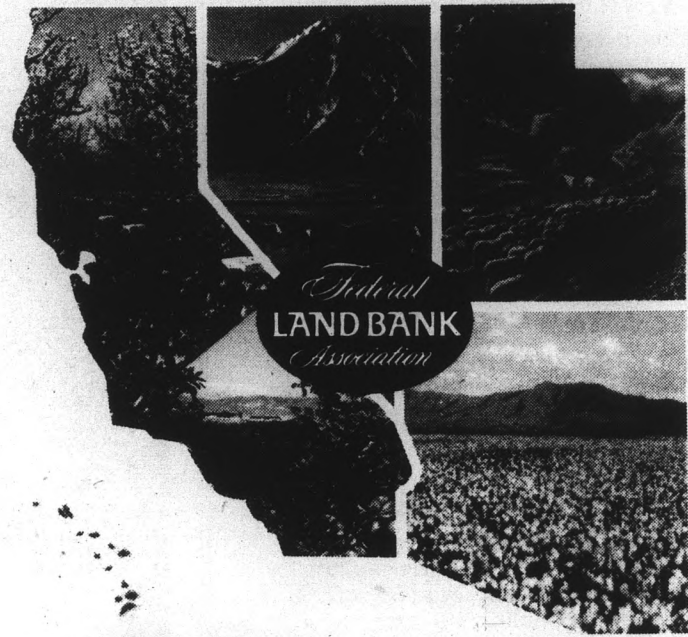
So get your body in shape (not to mention your bank account).

Enroll in Army ROTC. For more information, contact your Professor of Military Science.

**ARMY ROTC. BE ALL YOU CAN BE.**

At ASU contact:  
**Ken Schwartz**  
Old Main, Rm. 228  
or call 965-3318/19

# Your Career in Agricultural Finance



## Your future a vital role serving modern agriculture

A career with the Federal Land Bank System can be challenging and rewarding. You will be working with farmers and ranchers helping them with their long-term financial requirements. Your career development will include preparation of loan applications, appraising farms and ranches and closing loans.

Credit is a major force behind modern agriculture. As you advance with the Land Bank you have a continuing opportunity to help farmers and ranchers reach their goals. As a result you contribute to agriculture's progress.

**Contact your placement center** for details and an appointment with our training officer who will be on campus

**NOVEMBER 2**

An Equal Opportunity Employer



# Win Wheels

Each time you donate plasma during the contest period your name will be entered in our drawing for a 10-speed bike.

Your chances of winning increase with each donation — and so do your earnings!

\$10 is paid for each donation and you can donate twice weekly (but please wait 72 hours between donations). You can earn up to \$100 a month — in just a few hours of time!

Plus — you may win a 10-speed bike! Now that's a "wheel deal!"

**University Plasma Center**  
**1015 South Rural Rd. 968-6139**

**NEW HOURS:** Mon., Tues., Thurs. & Fri. . . . . 8 a.m.-7 p.m.  
Wed. & Sat. . . . . 9 a.m.-6 p.m.

New Donors — Bring in this ad for an additional \$2 with first donation.

SP

# Swim team showcases talents in intrasquad meet

By Jay Taylor  
Sports editor

A national record highlighted the Maroon and Gold intrasquad meet for the ASU men's swimming team Saturday at the Aquatic Complex.

Neil Cochrane, a freshman from Aberdeen, Scotland, set a Scottish national mark of 1:50.3 in the 200-meter freestyle, pacing the Maroon team to a victory over the Gold.

Cochrane finished just ahead of senior Mike Orn, the defending NCAA champion in the 200-freestyle. Orn, a member of the Swedish Olympic team, finished in 1:50.6.

Head coach Ron Johnson also singled out Scott Brackett's time of 8:11 in the 800-freestyle and Peter Berggren's 2:19 clocking in the 200-breaststroke as excellent performances.

Johnson was very pleased with the performance of his team Saturday.

"It was a good swim overall," he said. "Cochrane's and Orn's times were especially outstanding for this time of the year."

Johnson said that he was especially pleased with the meet because the good performances came with four of the team's top swimmers out with the flu.

NCAA all-Americans Scott Geerts (200-freestyle) and Jeff Holshevnikoff (100-, 200-freestyle) both missed the meet, along with sophomore Karl Elias and freshman Paul Easter.

"The neat thing about the meet is that although we didn't see the whole team, we still swam well," Johnson said. "With four

of our top swimmers out of the water with the flu, we still had a very good showing."

Other than the flu, Johnson said that the team has been relatively injury-free this season.

He said that there are quite a few tender shoulders, but added that that is just an "occupational disease" this time of year.

He also said that the team has been healthier this year than they normally are early in the fall season.

Johnson had said going into the meet that one of his main objectives was to see what events the freshmen would swim best in.

After the meet, he said he was still undecided about what events many people would be swimming.

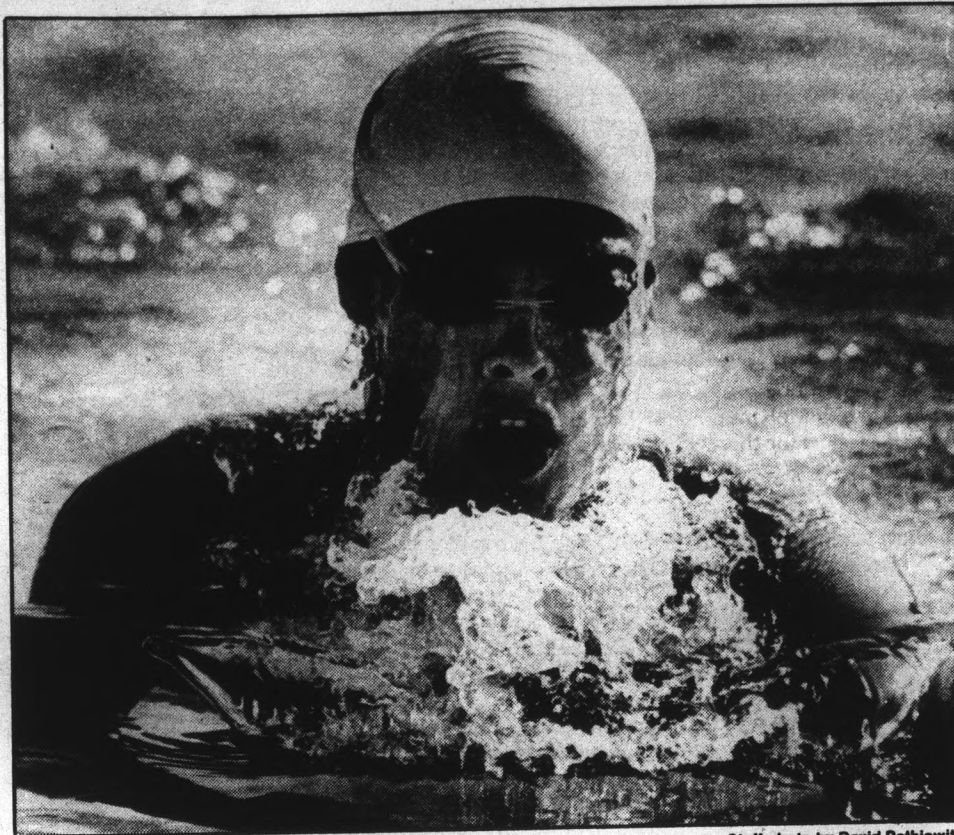
"There is still a question mark in the case of many of our freshmen," he said. "So many of them are so versatile that we just can't decide where we want to swim them."

"We will have to make a decision within the next couple of weeks, so we can get them into a training program for the right distance."

Johnson said that the development of the 14 freshmen on the squad is the key to how far the team will go this year.

"We are looking for development from everyone, but especially in the freshmen," he said. "This is absolutely the best group of freshmen we've ever had here."

In addition to Cochrane, Johnson said that good performances were turned in by freshmen Andrew Jameson and John Laderer.



Staff photo by David Petkewitz

Senior swimmer Mike Orn is the defending champion in the 200-meter freestyle. Saturday, however, he placed second in that event to freshman Neil Cochrane, who set a Scottish national record with a time of 1:50.3.

*the Varsity Sport of the Mind*

## COLLEGE BOWL

1983-84 CAMPUS CHAMPIONSHIP

**Dates:** Entries due Nov. 4  
Competition begins Nov. 7

**Location:** Memorial Union

**Sign-Up:** M.U. Activities Center  
(Lower Level)  
965-6649

Honors Office  
(Social Sciences, Rm. 103)  
965-2359

**Put Your Mind To It!**

## CREDIT FOR STUDENTS



VISA® and MasterCard® Credit Cards Now Available to Students through TIMESAVER's BankAction Program!

No Minimum Income or Job Requirements. Savings account and fees required. Mail this coupon for complete information.

Send to: Timesaver Headquarters Building / Student Dept / 12276 Wilkins Avenue / Rockville, MD 20852

Name \_\_\_\_\_  
Address \_\_\_\_\_  
City \_\_\_\_\_ State \_\_\_\_\_ Zip \_\_\_\_\_  
Phone ( ) \_\_\_\_\_  
School Attending \_\_\_\_\_  
Status: Fr  Soph  Jr  Sr  Grad

There's Never Been a Better Time to Get VISA® and MasterCard® Credit Cards! Apply Today!

© 1983 Timesaver, Inc.

NOW YOU CAN  
MAKE ANY  
PRESENTATION  
LOOK BETTER  
THE KROY WAY™

When you're preparing something for someone else to read, good presentation is half the battle. Come in to a Kroy Copy Center, and we'll show you how to create great-looking reports, resumes, charts and graphs, flyers, and even copies The Kroy Way.™

We'll help you set your own bold, eye-catching headlines with Kroy® lettering machines. For your typing, we have state-of-the-art typewriters. We'll show you how to put things together at a layout station. And when you're through, we'll get you all the high-quality copies you need.

It's all very easy, fast, inexpensive, and fun. And backed by the Kroy Letter-Perfect™ Guarantee. Next time, get your idea read and remembered. Do it The Kroy Way.™

FREE  
10 COPIES

(8½ x 11; coupon not for use with any other offer.)  
Offer expires December 31, 1983.

411 S. Mill, Tempe 914 E. Camelback, Phoenix  
(Across from Spaghetti Co.) (Across from Entz-White)  
966-9353 279-9972

940 E. University, Tucson  
(1/2 block West of the Main Gate)  
882-8872

**KROY Copy Center.™**

**KROY Copy Center.™**

LETTERING • FLYERS • RESUMES • REPORTS • SELF-SERVE COPIES 30¢

All lettering styles used in this ad available in a Kroy Copy Center. Kroy® The Kroy Way.™ Kroy Copy Center.™ Kroy® lettering machines. Kroy Letter-Perfect™ Guarantee are trademarks of Kroy Inc.

# Pittman retires after serving 30 years

By Dean Obenauer  
Sports writer

How do you say goodbye to a legend in her own time? Anne Pittman announced her retirement from coaching the ASU women's tennis team after 30 years of service.

And service it was. Pittman was never paid for her duties as coach of the Devils. Instead she received her usual paycheck as a physical education teacher.

"I have been handling tennis as a part of my teaching load," Pittman said.

Coaching the women's team is a full-year job. Not many people could accomplish what she has in women's tennis. Her dedication toward establishing a tennis program at ASU has been an uphill battle.

"If you walk away from something, quit before they have preparation to carry on, you are pretty sure that they don't think that it is terribly important," she said. "And 'they' includes the (ASU) president, vice-president, the athletic department and everybody else."

But now she feels that it is finally time for another person to step into her tennis shoes. This comes only after the 1983 budget proposal.

"As of July 1, 1983, they assured me they had a salary and a budget line to hire a women's coach," Pittman said. "That has never been in the athletic budget for the whole time I have been here."

For the last 10 years, Pittman has been urging that the budget be raised in order to support a coach's salary. "They have been very happy to get free labor and not put it in. It (the new proposed salary) will be almost commensurate with the men's coach's salary. But then, women are second-rate anyway."

In actuality, the women's physical education department launched all lady Devil sports now played as part of the NCAA.

The women's P.E. teachers thus assumed the role as a part of their teaching.

"The combination teacher-coach is a common thing around the country," Pittman said. "However, most places I know give them a tad of money occasionally just as sort of a pat on the back."

When former ASU president John Schwatta first came to ASU, Pittman sent him a letter welcoming him to the University and told him of the four national championships that the women had won the previous year. Schwatta returned her a note back and said "Dear Dr. Pittman, I know you're justly proud of your program."

That was all Pittman needed to read.

"That is like when you go to a French movie and they talk



Staff photo by David Petkiewicz

The ASU women's tennis coach, Dr. Anne Pittman, will retire after coaching the team for 30 years. Pittman has never been paid for coaching the team during her tenure.

for 30 minutes long and then they flash the letters on 'How nice,'" she said.

The question is who will take Coach Pittman's place. "I think I've seen one member of the athletic board at a game one time," she said. "Outside of that, the committee that will pick the incoming person is an overall committee that, as far as I know, not a single one of them has been down to those tennis courts to watch us play marbles, tennis or anything."

Pittman's contributions have been many. Since 1954, when she took over as the coach of the Sun Devil women's tennis team, she has done more for women's intercollegiate tennis than anybody else.

She was very influential in setting up the Intermountain Tennis Conference in 1962.

Under Fred Miller the Devils went into the Western Collegiate Athletic Association, a women's conference consisting of Pac-10 schools as well as other California teams.

In 1973, Pittman was the first woman to coach the United States women's tennis team in the World University Games. She was also named the Lady Champion coach of the year in 1975 prior to winning the national championship in '71, '72 and '74.

Pittman takes a lot of pride in the fact that 99 percent of her girls graduate. She also boasts that her girls get significantly high grades compared with the major male Sun Devil teams.

Her ASU career record of 311-61 puts her in the same category of a Paul "Bear" Bryant or a John Wooden, but the recognition is less, due to the fact that women's tennis falls under "B" sports and football and basketball are major.

With her record, the Whiteman Tennis Center could be changed to the Pittman Tennis Center.

"Maybe when I die, I'll leave them all of my cash and they'll build me a stadium," Pittman joked. "I've worked all this time for free, why not buy myself a stadium?"



presents...

every Wednesday, it's  
**PENNY NIGHT**

**1¢** Well drinks,  
Wine & Draft  
**25¢** Juice drinks  
& pitchers  
(from 7:30-12:00)



**LIVE ENTERTAINMENT**  
WITH SPECIAL GUEST

**LISTEN**

Cover: \$4.50 men — \$3 ladies at the door 7:30-12  
band starts at 9 drink special ends at 12  
doors close at 1

Look for our Brand New  
Ladies Night Tomorrow Night  
Upstairs/Downstairs Excitement!

919 E APACHE  
966-7770

**Spaghetti  
Feast**

**Tonight!**

**THE GRAND  
MARKETPLACE™**

ASU MEMORIAL UNION

**5-6:30 p.m.**

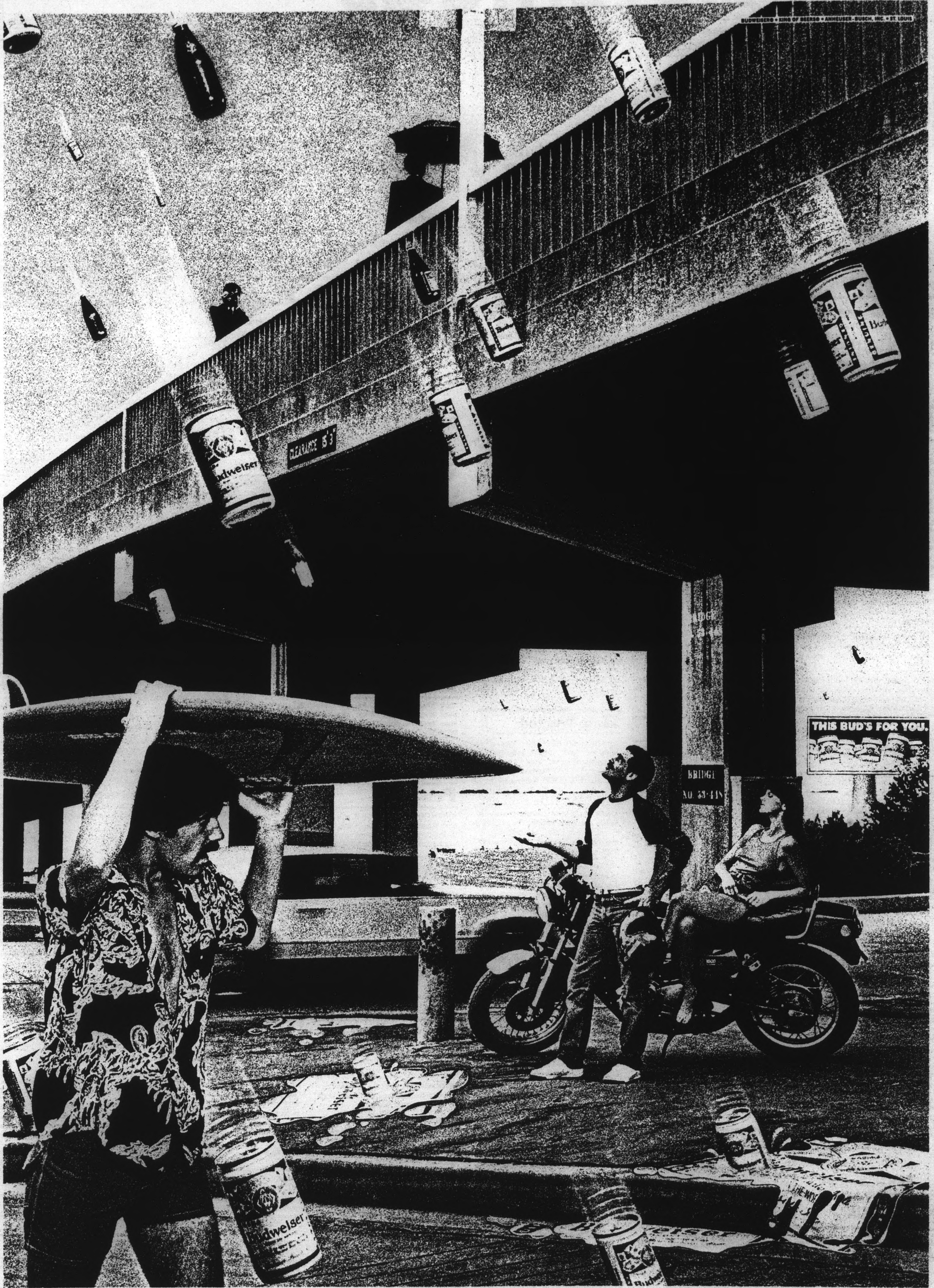
Complete Spaghetti Dinner  
including  
Choice of Sauce  
and  
Garlic Bread

**ONLY \$2.95**

Purchase one dinner at  
this low price and get a  
second dinner at 1/2 price!

**TRY OUR STEAK NIGHTS  
EVERY TUESDAY**





**Li  
st**

By De  
Staff  
The  
posing  
passe  
The  
gradu  
arts a  
single  
both.  
Unde  
gram  
Prese  
requi  
of a fo  
Oth  
quire  
scien  
Curr  
quire  
under  
algeb  
requi  
Stu  
credi  
scien  
quire  
Tw  
also  
Curre  
clude  
Acc  
philos  
the c  
long

**L**

By Li  
Staff  
Leg  
under  
ment  
the A  
year.  
Phoe  
We  
legis  
conv  
rece  
"A  
shou  
woul  
siona  
sibili

**A**

By M  
Staff  
A li  
prop  
unan  
due i  
Ac  
libra  
throu  
moni  
At  
esco  
Burr  
met  
the c  
"w  
to m  
were  
Ba  
show  
morr  
He  
nigh