

Staff photo by Larry Woodall

In... Out

Christopher Doran, an English major, energizes before his evening English class. Doran partakes in a yoga breathing exercise called "Prana Yam," which he claims is a "good way to energize."



By Tom Bickford
Managing editor

Rhonda U. brought a history of mediocre writing skills to ASU. She wasn't a bad writer in high school, but she wasn't completely satisfied with her abilities either.

She thought the English department at ASU, the sixth largest university in the nation, would provide the means to help her improve her writing.

When deciding which English 101 section to take, Rhonda gave the listings in the fall schedule only a cursory glance.

She assumed that since all the sections appeared the same in the schedule — each listed an identical course prefix, course title and was taught by "new staff" — she would learn from an equally qualified and experienced teacher, regardless of the section she chose.

She was wrong. Rhonda chose the section of English 101 she did because it fit into her schedule. She ended up in a Freshman Composition class taught by a first-semester teaching assistant, someone who had never taught a class.

Had she chosen another section, she may have ended up in a section of English 101 taught by a full professor — a known commodity with 12 years of teaching experience.

Rhonda says she has learned "very little" so far this semester in her English 101 class. She is disappointed.

"I don't think this TA knows what she's doing," Rhonda says. "This class is sad compared to the ones I had in high school."

Rhonda's situation is not unique. Every ASU student must earn credit for Freshman Composition to graduate. It is the only composition course — in fact, the only course — every student at the University must take or

test out of.

As stated in the Bulletin for First Year English 1983-84: "Unless students are exempted from First Year English, they must satisfy the University Composition requirements by successfully completing ENG 101 and 102; or ENG 105, the advanced First Year English course; or ENG 107 and 108, the First Year English sequence for foreign students."

To take English 105 instead of English 101 and 102, a student must have English ACT

See editorial, p. 4

are approximately 25 students per section, or a total of approximately 4,475 students.

There are 82 English TAs this semester. Of those, 27 have no prior teaching experience at ASU.

When a student looks at the schedule to decide which section of Freshman Composition to take, he is given a line number, a course title, the time of the class and the fact that a "new staff" member will be the instructor.

No other details are given.

COLLEGE OF LIBERAL ARTS										COLLEGE OF LIBERAL ARTS										
COURSE	COURSE	FOOTNOTE	SEM	MEETING	DAYS	ROOM														
ENG 101	FRESHMAN COMPOSITION		2	8:40-9:30	WTF	LL C 101														
ENG 101	FRESHMAN COMPOSITION		2	8:40-9:30	WTF	LL C 102														
ENG 101	FRESHMAN COMPOSITION		2	8:40-9:30	WTF	LL C 103														
ENG 101	FRESHMAN COMPOSITION		2	8:40-9:30	WTF	LL C 104														
ENG 101	FRESHMAN COMPOSITION		2	8:40-9:30	WTF	LL C 105														
ENG 101	FRESHMAN COMPOSITION		2	8:40-9:30	WTF	LL C 106														
ENG 101	FRESHMAN COMPOSITION		2	8:40-9:30	WTF	LL C 107														
ENG 101	FRESHMAN COMPOSITION		2	8:40-9:30	WTF	LL C 108														
ENG 101	FRESHMAN COMPOSITION		2	8:40-9:30	WTF	LL C 109														
ENG 101	FRESHMAN COMPOSITION		2	8:40-9:30	WTF	LL C 110														
ENG 101	FRESHMAN COMPOSITION		2	8:40-9:30	WTF	LL C 111														
ENG 101	FRESHMAN COMPOSITION		2	8:40-9:30	WTF	LL C 112														
ENG 101	FRESHMAN COMPOSITION		2	8:40-9:30	WTF	LL C 113														
ENG 101	FRESHMAN COMPOSITION		2	8:40-9:30	WTF	LL C 114														
ENG 101	FRESHMAN COMPOSITION		2	8:40-9:30	WTF	LL C 115														
ENG 101	FRESHMAN COMPOSITION		2	8:40-9:30	WTF	LL C 116														
ENG 101	FRESHMAN COMPOSITION		2	8:40-9:30	WTF	LL C 117														
ENG 101	FRESHMAN COMPOSITION		2	8:40-9:30	WTF	LL C 118														
ENG 101	FRESHMAN COMPOSITION		2	8:40-9:30	WTF	LL C 119														
ENG 101	FRESHMAN COMPOSITION		2	8:40-9:30	WTF	LL C 120														
ENG 101	FRESHMAN COMPOSITION		2	8:40-9:30	WTF	LL C 121														
ENG 101	FRESHMAN COMPOSITION		2	8:40-9:30	WTF	LL C 122														
ENG 101	FRESHMAN COMPOSITION		2	8:40-9:30	WTF	LL C 123														
ENG 101	FRESHMAN COMPOSITION		2	8:40-9:30	WTF	LL C 124														
ENG 101	FRESHMAN COMPOSITION		2	8:40-9:30	WTF	LL C 125														
ENG 101	FRESHMAN COMPOSITION		2	8:40-9:30	WTF	LL C 126														
ENG 101	FRESHMAN COMPOSITION		2	8:40-9:30	WTF	LL C 127														
ENG 101	FRESHMAN COMPOSITION		2	8:40-9:30	WTF	LL C 128														
ENG 101	FRESHMAN COMPOSITION		2	8:40-9:30	WTF	LL C 129														
ENG 101	FRESHMAN COMPOSITION		2	8:40-9:30	WTF	LL C 130														
ENG 101	FRESHMAN COMPOSITION		2	8:40-9:30	WTF	LL C 131														
ENG 101	FRESHMAN COMPOSITION		2	8:40-9:30	WTF	LL C 132														
ENG 101	FRESHMAN COMPOSITION		2	8:40-9:30	WTF	LL C 133														
ENG 101	FRESHMAN COMPOSITION		2	8:40-9:30	WTF	LL C 134														
ENG 101	FRESHMAN COMPOSITION		2	8:40-9:30	WTF	LL C 135														
ENG 101	FRESHMAN COMPOSITION		2	8:40-9:30	WTF	LL C 136														
ENG 101	FRESHMAN COMPOSITION		2	8:40-9:30	WTF	LL C 137														
ENG 101	FRESHMAN COMPOSITION		2	8:40-9:30	WTF	LL C 138														
ENG 101	FRESHMAN COMPOSITION		2	8:40-9:30	WTF	LL C 139														
ENG 101	FRESHMAN COMPOSITION		2	8:40-9:30	WTF	LL C 140														
ENG 101	FRESHMAN COMPOSITION		2	8:40-9:30	WTF	LL C 141														
ENG 101	FRESHMAN COMPOSITION		2	8:40-9:30	WTF	LL C 142														
ENG 101	FRESHMAN COMPOSITION		2	8:40-9:30	WTF	LL C 143														
ENG 101	FRESHMAN COMPOSITION		2	8:40-9:30	WTF	LL C 144														
ENG 101	FRESHMAN COMPOSITION		2	8:40-9:30	WTF	LL C 145														
ENG 101	FRESHMAN COMPOSITION		2	8:40-9:30	WTF	LL C 146														
ENG 101	FRESHMAN COMPOSITION		2	8:40-9:30	WTF	LL C 147														
ENG 101	FRESHMAN COMPOSITION		2	8:40-9:30	WTF	LL C 148														
ENG 101	FRESHMAN COMPOSITION		2	8:40-9:30	WTF	LL C 149														
ENG 101	FRESHMAN COMPOSITION		2	8:40-9:30	WTF	LL C 150														

scores of 25 or better out of a possible 36 or English SAT scores of 600 or better out of a possible 800. With an English ACT score of 23 or 24 or an English SAT score of 540 to 590, a student may take the English 105 placement test.

There are 179 sections of Freshman Composition offered this semester — 41 of them are taught by faculty and 138 by TAs. There

Oftentimes the instructors don't know until three or four days before classes begin which sections they will teach.

"When a student looks at the schedule, all he sees is 'new staff,'" said Martin Orzeck, a doctoral student who has taught English at ASU for 13 semesters and currently is teaching English 102. "The chances are just as great that he will end up with a TA just off

tuesday

October 11, 1983

Vol. 66 No. 29

Arizona State University

© Copyright, State Press, 1983

state
press
Tempe, Arizona

Regents drop surcharge; tuition may still increase

By Bob Beamesderfer
Staff writer

Despite tentative establishment of 1984-85 tuition rates and removal of a \$95 surcharge by the Arizona Board of Regents this past weekend, several regents say state financial woes could lead to tuition increases when the board sets actual rates next month.

The board, at its October meeting, voted 7-1 to drop the \$95 tuition surcharge imposed last spring and, for budget purposes, tentatively set the resident registration fee at \$835 — down from the \$850 levied for 1983-84, which included the surcharge.

However, non-resident tuition and fees were tentatively set at \$3,547 for ASU and U of A students — an increase from the \$3,315 for 1983-84.

Non-resident tuition and fees at NAU were tentatively set at \$3,130, up from this year's \$2,995.

But according to Regent A.J. Pfister, tuition rates may rise further because of requested increases in the universities' budgets and large state budget deficits projected for next year.

"The Legislature said last year, if the budgets increase, then tuition should increase," Pfister said after Saturday's meeting. "It may well turnout we'll be faced with the same situation this year."

ASU's 1984-85 budget request, which the board approved on Saturday, reflects a 17.2 percent increase over the 1983-84 budget.

Pfister, chairman of the regent finance committee, told board members Friday that indications are less money will be available next year from state coffers.

Pfister said, although the revenue picture

is not clear, the state's budget shortfall probably will be worse this year than last year.

Board members unanimously opposed extending the emergency surcharge, which was tacked on to tuition last April as a stopgap measure to help offset last year's state budget deficit.

The regents were opposed to establishing the actual rates without going through what board member Esther Capin called "the regular tuition setting process."

Capin voted against the tuition rates, saying her vote was a protest because the board had not studied all the factors it normally uses when deciding what students will pay for one year of education.

She said the board usually considers the current yearly cost of educating a student, student contribution to that cost, other state's university tuition rates, the revenue forecast and the university system's revenue needs.

Student Regent Kathleen Clark said after Saturday's meeting she was surprised the board removed the \$95 emergency surcharge.

"I feel the climate has changed," she said. "We are taking a conscious, responsible look at tuition. I think we're going to arrive at an equitable and reasonable level of tuition."

Associated Students President Walter Batt told the board, "The increase in fees is inevitable and students understand that they must share the cost, but if there is going to be an increase, it should show in an increase in services."

continued from page 6

Necessary evils hinder First Year English

By Tom Bickford
Managing editor

Rhonda U. brought a history of mediocre writing skills to ASU. She wasn't a bad writer in high school, but she wasn't completely satisfied with her abilities either.

She thought the English department at ASU, the sixth largest university in the nation, would provide the means to help her improve her writing.

When deciding which English 101 section to take, Rhonda gave the listings in the fall schedule only a cursory glance.

She assumed that since all the sections appeared the same in the schedule — each listed an identical course prefix, course title and was taught by "new staff" — she would learn from an equally qualified and experienced teacher, regardless of the section she chose.

She was wrong. Rhonda chose the section of English 101 she did because it fit into her schedule. She ended up in a Freshman Composition class taught by a first-semester teaching assistant, someone who had never taught a class.

Had she chosen another section, she may have ended up in a section of English 101 taught by a full professor — a known commodity with 12 years of teaching experience.

Rhonda says she has learned "very little" so far this semester in her English 101 class. She is disappointed.

"I don't think this TA knows what she's doing," Rhonda says. "This class is sad compared to the ones I had in high school."

Rhonda's situation is not unique. Every ASU student must earn credit for Freshman Composition to graduate. It is the only composition course — in fact, the only course — every student at the University must take or

test out of.

As stated in the Bulletin for First Year English 1983-84: "Unless students are exempted from First Year English, they must satisfy the University Composition requirements by successfully completing ENG 101 and 102; or ENG 105, the advanced First Year English course; or ENG 107 and 108, the First Year English sequence for foreign students."

To take English 105 instead of English 101 and 102, a student must have English ACT

See editorial, p. 4

are approximately 25 students per section, or a total of approximately 4,475 students.

There are 82 English TAs this semester. Of those, 27 have no prior teaching experience at ASU.

When a student looks at the schedule to decide which section of Freshman Composition to take, he is given a line number, a course title, the time of the class and the fact that a "new staff" member will be the instructor.

No other details are given.

COLLEGE OF LIBERAL ARTS										COLLEGE OF LIBERAL ARTS									
COURSE																			

news briefs

Male profs still earn more than female profs

WASHINGTON, D.C. (CPS) — The average male faculty member last year made over \$5,000 more than his female colleague, and continued to get higher raises than her, according to a new study by the National Center for Education Statistics (NCES).

The gap between men's and women's faculty salaries has widened steadily since a 1977-78 low of \$3,500. Last year it reached \$5,374, the NCES reported.

"Much of the overall difference (in men's and women's salaries) is due to women being at the lower level positions on their faculty," said Tom Snyder, an NCES analyst.

Indeed, the report showed there were 76,508 male professors last year, compared to only 9,654 female profs. At the instructor level, however, 11,735 were women, while 10,527 were men.

Snyder believes the salary-gender gap will narrow as more women work their way up the ladder and achieve more seniority.

"Another reason for the discrepancy," Snyder said, "could be the salary differences among different fields of study. More men, for example, teach in engineering and computer science fields, which usually have higher pay scales than other fields."

Male faculty members also got higher raises last year — seven percent — compared to 6.7 percent for women. Men out-earned women at every academic level, the study showed.

Overall, male teachers earned an average \$28,394 in 1982-83, compared to \$23,020 for women. The salary difference between men and women varied from \$1,100 for beginning instructors to nearly \$4,000 for professors.

"The growing gap (between men's and women's salaries) clearly shows that there is still a lot of discrimination against women in education," said Judy Touchton, associate director

for the American Council on Education's Office of Women in Higher Education.

Nigerian students suffering financial hardships

WASHINGTON, D.C. (CPS) — As many as half the 20,000 Nigerians studying in the United States may now be suffering "financial hardship" — scrambling to pay tuition, room and board, and other debts — according to a new study by the National Association of Foreign Student Advisors (NAFSA).

Based on a survey of 50 colleges, NAFSA Executive Vice President John F. Reichard estimated "as many as 10,000 to 12,000 students nationally" could be significantly in debt.

In August, NAFSA advised American colleges to try to solve the escalating problem of Nigerian student debt by not allowing Nigerians on certain government scholarships to enroll this term unless they pay in advance.

Some help may be on the way from their homeland, Nigerian Embassy spokesmen here said. But the Nigerian government reportedly is sending American colleges less than a quarter of the money owed.

The Nigerian debt to American campuses has been growing for two years. In 1981, the Nigerian government temporarily stopped payment to students on certain types of Nigerian state scholarships because of the nation's economic troubles.

CORRECTION

It was incorrectly reported in the Sept. 30 issue of the State Press that under a proposed plan, students would be issued decals allowing them unlimited parking in residential areas. The residents themselves would be issued the permits.

Self Defense
Strength and Agility
Confidence and Control

Certified by International
Kenpo Karate Association
Ed Parker 10th Degree Black Belt



kenpo karate

MEI • WOMEN • CHILDREN • chinese karate

Come in or call for appointment
Tempo-Mean
1020 N. Scottsdale Road
966-1080

ACCIDENT AND INJURY CLAIMS

KNOW YOUR LEGAL RIGHTS

Call 957-2010

FREE
ATTORNEY CONSULTATION
No Recovery — No Fee

COUPON

FREE DINNER

Buy one of our delicious combination dinners and get the second one of equal or lesser value

With coupon only. **FREE.**

Susie's

Mexican Cafe/Lounge

2405 E. University
(Between Price & Dobson)

OPEN Mon.-Sat. 11-9
966-7091



HAR

IN TEMPE

HAIRSTYLES FOR THE EIGHTIES.
STYLED BY SANDY

Back to School Specials
\$5 OFF Men's and Women's Cuts
\$10 OFF All perms
\$5 OFF Colors, Cellophanes and Hennalucents

Call For Appointment
414 S. Mill Ave. #101
(Next to Spaghetti Co.)

894-1191

Pursue a Rewarding Career
Shape the Future of Jewish life
Enjoy Freedom and Flexibility

A WISE CHOICE

A Career as a Jewish Professional

Courses Leading to Degrees in:
Rabbinical Studies
Jewish Education
Cantorial Studies
Jewish Communal Service
Graduate Studies

Hebrew Union College-
Jewish Institute of Religion
Cincinnati, New York, Los Angeles, Jerusalem

Mr. David Meyer of the Hebrew Union College-Jewish Institute of Religion, Los Angeles Campus, will be on campus on Tuesday, Oct. 11, 1983. Call Betty Blitz at 967-7563 to schedule an appointment.

On October 13, 1983 at 6:30 p.m. in Memorial Union Room 215 a Technical Presentation will be given by Rich Perrin, General Manager, NCR Corporation, C/S, CO. Career opportunities for interested parties in the semiconductor fields, EE and Computer Science. Wine and Cheese Reception to follow presentation, location to be given afterward.

UNIVERSITY THEATRES

1025 E. Broadway (East of Rural in Tempe) 829-6666

A "KRULL" (PG)	C Stephen King's "CUJO" (R)
B Bob & Doug McKenzie in "STRANGE BREW" (PG)	D John Travolta in "STAYING ALIVE" (R)

KOPA 1 "Dawn of the Dead" (R)
2 "Strange Brew" (PG)

MIDNIGHT MOVIES EVERY FRIDAY AND SATURDAY NIGHT FOR ONLY A DOLLAR!

ONLY \$1.50 AT ALL TIMES!

INSURANCE AWARENESS WEEK

OCTOBER 10-14

The Insurance Fraternity is not trying to sell you anything, promote any company or any particular company's policies. We are here to make you a wiser insurance consumer and to prevent you from being ripped off by insurance companies. Our booth will be on the mall from 11-2 daily to answer any of your questions.

Guest Speakers

Tuesday, 7:40 a.m., BA-402: Attorney Bill Jones — "Rights of Consumers"
9:15, BA-353: Miss Teresa Hays — CPCU — Personal Insurance Expert
12:15, BA-353: Mr. Lanny Hair — Executive Agent

Wednesday, 8:30 & 10:30, BA-353: Mr. Williams — Owner, President and Attorney for Homeland Ins. Co. — Industry Professional
1:30, BA-353: Mr. Bob Cowie — Owner & President — "The Role of the Independent Agent" (No Ins. Fraternity Meeting Today — Elections next meeting, Oct. 26, 1:30, MU 209)

Thursday, 9:15, BA-353: Mr. Nate Sacks — Commercial and Personal Ins. expert
12:15, BA-353: Dr. Less Tenney — "The new Social Security Reform Laws and how they affect you"

DON'T FALL BEHIND

Prepare Now For:	LSAT Oct. 1 Dec. 3	DAT Oct. 8	GMAT Oct. 22	GRE Oct. 15 Dec. 10	MCAT Oct. 1
Classes Starting:	Aug. 29 Oct. 5 Oct. 31	Call now and prepare	Aug. 30	Aug. 17 Oct. 18	Call now and prepare

Classes now available for DAT, PSYCH, GRE-BIO, NLE, TOEFL, VAT, MAT, MSKP, OCAT, CPA.
2 HOURS OF FREE TUTORING
Speedreading & ESL classes starting mid-Sept.

CALL TODAY **967-2967**


Stanley H. KAPLAN Educational Center

For information about other centers in more than 80 major U.S. cities and abroad, CALL TOLL FREE 800-223-1782.

YOU CAN LOSE 10 POUNDS IN JUST 2 WEEKS!

17-25 LBS. IN JUST 6 WEEKS!

DOCTORS APPROVE OF THIS SENSIBLE WEIGHT-LOSS PROGRAM



- Nutritionally balanced diet
- Private daily counseling
- Free nutritional behavior modification classes
- No strenuous exercise
- No shots •No drugs •No contracts

DIET CENTER®

"The Natural Way to Lose Weight!"

TEMPE • 967-1371 University Medical Center
2525 S. Rural Rd., Suite 6-N

Faculty women seek larger role with request for policy changes

By Lisa Phillips
Staff writer

The Faculty Women's Association has sent a memo to Academic Affairs Vice President Jack Kinsinger outlining initiatives the administration should take to improve the status of women at ASU.

The memo was drawn up by FWA President Susan Wyckoff after she surveyed the women faculty members and found "an awfully large number" were "greatly disturbed by the injustices and inequities operating on this campus."

ASU President J. Russell Nelson said he could not comment on the administration's ability to meet all of FWA's requests. He added that some of the requests "might not even be legal."

The memo urges Kinsinger and other administrators to give immediate attention to increasing the percentage of women faculty at the full professor rank in the next two years.

Currently, 8 percent of full professors are women. The FWA calls for an increase to 12 percent by 1984-85 and to 18 percent by 1985-86.

The memo encourages the University to promote women from within the University in addition to seeking full professors from outside ASU to achieve the goal of more women in high-ranking positions.

The request to increase women at the full professor rank also calls for the University to grant women in full professorships immediate tenure and give them sufficient money to initiate research programs.

The memo states that sufficient funds to ensure a thorough search for candidates must be appropriated and that positions should be filled on a first-come, first-serve basis.

The memo also details a request by the FWA to designate women to fill 50 percent of all visiting professorships in the next five years.

"This program of adding high-ranking, high-quality women faculty to ASU is certain to significantly improve the overall status and visibility of ASU nationwide," Wyckoff said in the memo.

She also said the addition of women to high positions would "improve the morale and status of women faculty at ASU" and "inject women into vital levels of the existing power structure."

Nelson said it is important for the University to consider other minority groups in addition to women when making

any promotional decision.

Another request detailed in the memo calls for a new University policy that would allow openings for assistant professors to be filled by women of higher rank from outside the University without penalty to the department.

This policy would permit departments to hire associate or full professors to fill an assistant professor rank.

The memo also calls for a "University-wide affirmative action watch" to find qualified women for appointment to high-ranking positions at the faculty, college and administration levels.

The FWA also requests funding to establish an honorary professorship to be filled by an eminent woman from outside the University.

The chair would carry tenure and a research fund. The woman would hold the position for five years, and then another woman from a different field would be chosen to occupy the chair.

Wyckoff said departments and colleges would nominate candidates, and Kinsinger and a committee of women would make the actual selection for the chair.

The FWA would establish an endowment fund to defray the research fund costs that would accompany the chair, according to the memo. A drive by the FWA to collect \$10,000 is planned for this year, according to Wyckoff.

The memo also requests immediate funds to improve the Women's Studies Program. Wyckoff said the department is in need of a larger research budget, an additional faculty member, a graduate assistant and a full-time staff member.

The FWA also requests a University policy that would extend the probationary period of an untenured woman who takes maternity leave.

Currently, faculty members are evaluated after five years to determine whether to grant tenure, Wyckoff said. She said a woman who has a baby has to sacrifice professional time and should be allowed additional time before being evaluated for tenure.

The final FWA request is the establishment of a fund to bring consultants to the University in the spring of 1984 to educate women faculty members on how to move up through the University ranks.

Wyckoff indicated she would be meeting with Kinsinger on Thursday to discuss the memo.

"I'm not sure how much of this is possible," she said. "But it's time to see some action."

COUPON
**FREE FRIES,
FREE DRINK,
WITH
A CATCH.**



only
\$1.39

CHARBROILED
Good through 10-17-83.

The catch? Buy our juicy 1/3 pound* Double Burger (it's "More Burger Than Bun"™). Do that and we'll treat you to a small order of fries and a small drink. A big, juicy 100% pure beef Double Burger. Crispy, golden fries. Your favorite soft drink. All for the price of the burger. At your participating DAIRY QUEEN BRAZIER store.



© AM D Q Corp. 1983 *pre-cooked weight

ONLY AT:

1389 E. APACHE
(Between Rural & McClintock)

COUPON

TUESDAY

It's an...

open

Ladies \$2.00 • Men \$4.00

8:30 til 11:30

Donny O'Briens

222 Mill Avenue • Tempe, AZ

Never a cover charge.

state
pressIf I should not be learning now, when should I be?
—Lacydes

opinion

ASU's 'academic excellence' a doubtful claim

Tracy Fletcher
Editor

Rhonda U. — a typical ASU freshman — is not getting the education she is paying for. She is dissatisfied with what she is learning and more importantly with what she isn't learning in her English 101 class.

She enrolled in the course not only to fulfill University requirements, but also with hopes of improving her writing skills. She has spent seven weeks trying to learn how to write under the instruction of a first-year graduate student who has absolutely no teaching experience.

Rhonda's situation is not unique; it is representative of the inconsistencies and inadequacies in the Freshman Composition program at ASU. Most students cannot write when they graduate from high school. Under the present freshman English program, many will remain unable to do so.

Writing is one of the most difficult skills to

master; it is even more difficult to teach. Ideally, it should be taught by competent, experienced professors.

Currently, 138 of 179 Freshman Composition sections are taught by graduate teaching assistants who have no teaching experience.

The English department simply does not have the resources to provide such experienced instructors for all sections of Freshman Composition. But that hardly explains why many TAs have shown no aptitude for teaching. If a TA has no teaching experience, the department should require him to spend at least one semester out of the classroom learning how to teach from an experienced faculty member.

Considering the circumstances, you would expect the department chairman to be eager to explain the problems in the Freshman Composition program. Yet when the *State Press* approached Nicholas Salerno to comment on the program, he refused a personal interview. Instead, he requested the reporter submit a list of written questions and that his answers be printed verbatim. Although not usual newspaper procedure, we agreed to his terms, expecting to get thorough answers.

Salerno's answers, however, reflect an apathetic and somewhat arrogant attitude toward the responsibilities of his department. When asked if the system for teaching Freshman Composition could be improved and how, and if any changes were being planned, Salerno demonstrated a remarkable talent for economy of phrase. He answered simply, "Possibly." No explanation, no elaboration, just "possibly."

The rest of his answers were equally informative and thoughtful.

When asked if a TA could teach a Freshman Composition class as well as a faculty member, Salerno responded, "I hope so."

Salerno can "hope" all he wants; his department is not providing adequate writing instruction to freshmen who come to ASU hoping to receive an education.

The ability to write provides a foundation for a student's intellectual development; it is essential to the formulation and organization of ideas. Its teaching is far too great a responsibility to be entrusted to graduate students with absolutely no classroom experience.

Salerno correctly states "language is all-

important," yet he cannot bring himself to acknowledge the fact that his department does not provide students the tools to master it.

Salerno's taciturn responses, while shedding little light on the problems of teaching freshman English, serve to illuminate a larger problem at ASU. The administration's ambitions for a national reputation for research continue to take priority over educational concerns. Professors divert their energies from classroom activities to research and publication. Funding is channeled into institutional image builders.

The administration seemingly is unaware that students are less concerned about the University's reputation among national scholars or big private investors than about the education they receive. ASU cannot continue building its reputation upon appearances rather than educational realities.

In its longing for national recognition, the University has neglected its most basic responsibilities to students. Until the administration balances priorities, its claims of "academic excellence" are about as meaningful as Nick Salerno's insights on teaching freshman English.

letters

'Ideal' models mislead women;
weight obsession a serious problem

The Counseling Center and the Student Health Center have been swamped this fall and for the past several years with young women who are seeking help for severe eating disorders — anorexia and bulimia. These campus services are attempting to meet the need with individual and group counseling, but cannot keep up with the requests because of the epidemic nature of the problem. According to recent statistics, one-fourth to two-third of college women between the ages of 18 and 22 may be suffering from an eating disorder.

When your newspaper prints Ford Modeling Agency's "ideal" weight for a woman who is 5'9" as 115 to 120 pounds, who can fit into a size six dress, women all over campus who don't measure up to this "ideal" consider themselves overweight. 120-130 pounds is normal weight for a woman of medium build who is 5'6". Please don't contribute to the media's unhealthy emphasis on being super thin; women will only resort to drastic means — starvation, purging, fanatic

exercise, abuse of laxatives, diuretics, amphetamines — in order to conform.

Being healthy, being involved with others, simply being a person is what life is all about — not being a ridiculously low number on a scale. Eating disorders become an all-consuming, controlling lifestyle. The focus must be taken off what one weighs and centered on what one is. Anorexic women may have bodies some other women envy, but rarely do they have full and rewarding lifestyles.

Moreover, these disorders are life-threatening. Three-thousand anorexics and 2,000 bulimics died in this country last year due to this obsession with weight. Surely we need to reconsider our notions of beauty to avoid the devastation and tragedy that is besetting so many of our young women today.

Connie Copenhaver, Ph.D.,
Counseling and Consultation
Barbara Thomas, Ph.D.,
Student Health

Reader's hope lifted
by Leary revelations

Editor:

I would like to comment on the presentation of Timothy Leary here on campus on Tuesday, Oct. 4. I feel his claim to being a cheerleader for our generation is justified.

Our generation is one in which we have become sophisticated to the point where we are aware of all of the gloom and doom that makes up the great enigma — Life. We know that racism, discrimination, injustice, inhumanity and threats of our own self-destruction are real in our world, and that a fair society is unlikely to be seen in our time.

And yet Timothy Leary has given us a little bit of optimism and faith in our own ability, as a generation, to change and improve society. Judging by the response to Leary's discussion of the tidal wave of power that our generation has, I'm glad to note that there is not as much apathy among us as some people would like to believe. We are the ones who will replace the "dinosaurs" in power now. I hope that we will do as Leary urges — "Turn on, tune in and take charge of the twenty-first century."

Sharyn Israel
Senior, Social Work

Glendale plan doubtful

Editor:

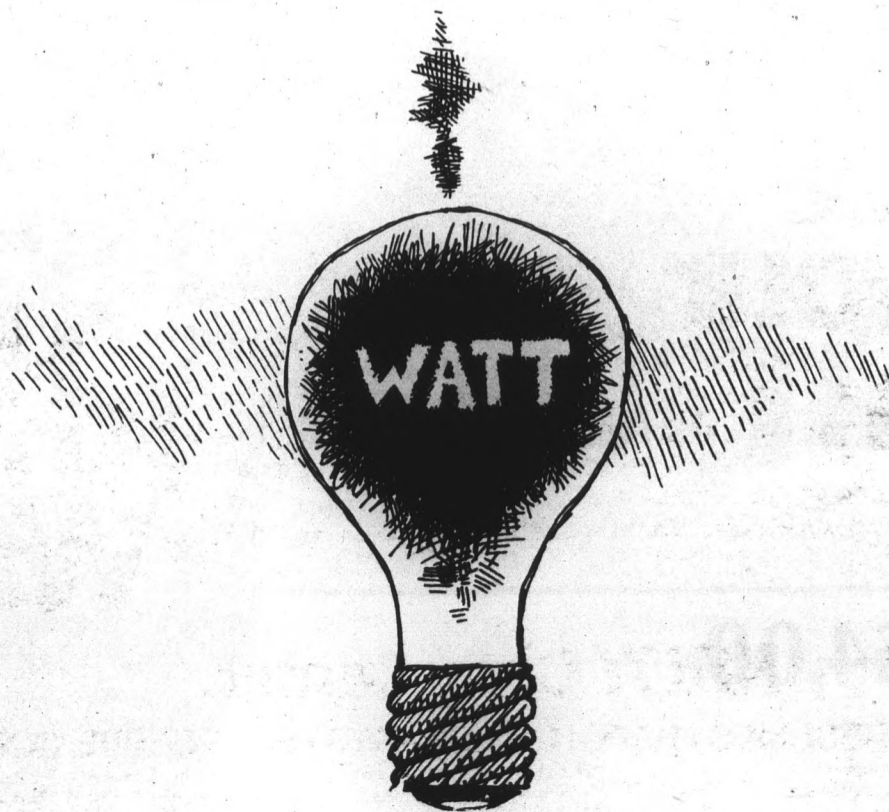
While I appreciate the reasoning behind ASU's desire to be able to service the west-side with the creation of a Glendale campus, I do not understand why it is supposed to be primarily for upper division and graduate studies. Anybody who knows anything at all about upper division courses and especially post-graduate work must realize that advanced studies require extensive library (and often laboratory) facilities. These are absolutely essential to any serious research effort of the sort typically pursued in graduate work. Are we supposed to believe that the west-side campus will eventually have its own full-fledged library system? A dubious proposition, in my book, in light of the fact that the main-campus libraries are not very highly regarded as research facilities (I believe they rank around 50th in the country among university libraries of ASU's category).

In short, it would make a lot more sense to restrict the offerings of the west-side campus to big-draw, lower division undergraduate courses, and concentrate on developing the research credibility of the main campus.

G. A. Clack
Professor of Anthropology

LETTER POLICY

The *State Press* encourages letters on any topic. Letters should be typed, double-spaced. Include your full name, class standing, major and phone number. All letters are subject to editing at the discretion of the opinion page editor. Address letters to: Letters, *State Press*, Matthews Center, ASU, Tempe, AZ 85287.



Police chief, usher explain stadium alcohol rules

By M.K. Reinhart
Staff writer

Alcohol in Sun Devil Stadium is illegal but still inevitable, according to officials who discussed the subject in the MU Rendezvous Lounge Monday.

University Police Chief C. Russell Duncan and stadium usher Mary Pipia fielded questions, clarified policy and responded to concerns from a student audience about the tougher stadium alcohol policy as part of Alcohol Education Week.

"Of course there will always be bootlegging. It is an unrealistic expectation to think otherwise," Duncan said.

"For those who want to beat the system, they can beat it. But those aren't the signals we're trying to send out," he said, adding that he is not in favor of searches and other



Mary Pipia

harsher methods of enforcement because it would only create animosity.

Duncan said his department is trying to say, "It's OK to be sober during a football game."

Confiscation of alcohol by security officials is a "last ditch effort" taken if patrons refuse to comply with initial usher requests, Duncan said.

"As a normal rule, we ejected about 40 people per game last year for drunkenness," he said, adding that after three home games, this season's total is two.

"For most people, it's a game," Duncan said. "It's hide-and-go-seek. I hide my bottle and you try to find it."

Although this year's ushers work a bit harder at confiscating liquor, Pipia, a second-year employee, said there was no "turning of heads" in the past.

"We're much more aware of looking harder this year," she said, adding that while last season's ushers were instructed to take any alcohol they saw, they generally did not search extensively.

"It's a pretty effective policy, but you really can't keep all alcohol out no matter how you enforce it," Pipia said.

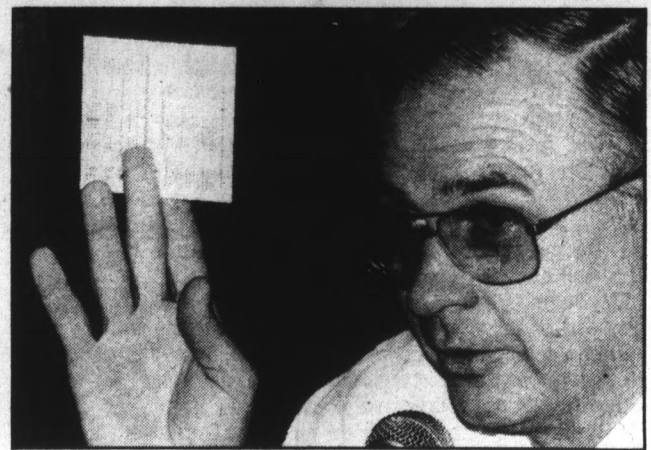
Duncan called the stadium ushers "the key to the enforcement policy," but noted that they take quite a bit of abuse as a result of their role.

According to Pipia, most of the abuse is verbal, but it is frequent.

"Basically, people realize that they're breaking the rules, but we do take a lot of verbal abuse," she said.

Duncan said the enforced alcohol policy has proven far more effective than anyone had hoped, judging by the amount of bottles and cans collected on the mornings following the games.

"We feel very heartily that the effectiveness is better than we thought it would be. We were looking for a 50 percent im-



C. Russell Duncan

provement, and the percentage is actually closer to 95 percent," he said.

Several of the questions from the audience centered around the Sun Angel Foundation and tailgate parties.

"To be perfectly honest, I have never been exactly comfortable with (tailgate parties)," Duncan said, because "it sends mixed signals."

Duncan said Sun Angel tailgate parties have been moved from the residence hall lots, relieving some of the concerns among north campus residents.

"Tailgate parties are beyond the periphery of our control," he said. "Anybody parked in a parking lot rents that space when they pay for parking."

The general public causes more alcohol-related problems for police at the stadium than students do, Duncan added.

Going to Law School?

Find out how!

M.U. ROOM 219
WEDNESDAY & THURSDAY
OCTOBER 12 & 13

"How to Get Into Law School"

"Law as a Career"

Continuous showing
between 9 a.m. and 3 p.m.

Come at your convenience

Interested students who did not
receive the Pre-Law Newsletter for
September may register in SS-111 and
pick one up in the Pre-Law room.

As Professional
Jewelers, we at
Joseph M. Berning
specialize in
**the science
of Gems**
and
**the art of
Jewelry**



Our professional
services include:

- 3 Registered Jewelers
(American Gem Society)
- Gem Identification
- Diamond Appraisals
- Insurance Appraisals
- Estate Jewelry Appraisals
- Custom Designing of Jewelry
- Jewelry Making on Premises

Joseph M. Berning

JEWELRY
& DIAMOND CUTTING

130 E. UNIVERSITY DR. "IN THE ARCHES" 967-9917

MEMBER AMERICAN GEM SOCIETY

**TRY VINCE'S
NEW THICK CRUST
PIZZA.**

PEPPERONI	SALAMI
MUSHROOM	MEATBALL
ANCHOVY	BLACK OLIVE
SAUSAGE	CHEESE

**\$1.00 OFF
ANY PIZZA**

**VINCE'S
Pizzeria**

**Spice
up your
flyer.**

The next time you need a poster or flyer, put a little pizzaz into it. Do it The Kroy Way.™

At a Kroy Copy Center, we'll help you set your own bold, eye-catching headlines with Kroy® lettering machines. For your typing, we have state-of-the-art typewriters. We'll show you how to put things together at a layout station.

And when you're through, we'll get you all the high-quality copies you need. It's all very easy, fast, inexpensive, and fun. And backed

by the Kroy Letter-Perfect™ Guarantee.

Next time, get your idea read and remembered. Do it The Kroy Way.™

**The
Kroy
Way.™**

KROY Copy Center.

LETTERING • RESUMES • REPORTS • CHARTS • SELF-SERVE COPIES 3¢

411 South Mill, Tempe
(Across from Spaghetti Company)
966-9353

914 E. Camelback, Phoenix
(Across from Entz-White)
279-9972

940 E. University, Tucson
(1/2 block West of Main Gate)
882-8872

All lettering styles used in this ad available in a Kroy Copy Center. Kroy® is a registered trademark of Kroy Inc.

Board approves increase in ASU budget

By Bob Beamesderfer
Staff writer

ASU President J. Russell Nelson said Monday he was "pleased" and "satisfied" with action taken on the University's budget request by the Arizona Board of Regents.

"I was pleased at the thoroughness of consideration of the budget," Nelson said. "The board addressed the issues in a thoughtful way. From ASU's position, I was satisfied with the outcome."

The board voted Saturday 7-1 to approve a modified 1984-85 ASU budget request asking for \$160.9 million, a 17.2 percent increase in spending over the current budget.

The regents approved an alternative request by ASU to reconstruct the personal services and benefits funds to the amounts originally appropriated and use nearly \$1 million in unexpected tuition and fee collections from increased enrollment to offset unfunded utility costs.

University officials had been forced to leave some faculty positions unfilled because salary savings were needed to pay utility costs.

The University originally asked the board to allow use of the extra tuition and fees income and a transfer of operating funds to pay for more classes. The additional class sections and teaching positions are needed for the spring semester, officials said.

Both Regent Donald Shropshire and Regent Thomas Chandler expressed concern about whether they had authority to allow ASU to spend the extra tuition collection this year. Regent Esther Capin and Regent Carolyn Warner, superintendent of public instruction, said ASU should be

allowed to spend the money now because the students who brought in the money will be able to benefit from it.

Approval of the request by the board allowed ASU to ask for an additional \$1 million for operating expenditures. The \$1 million of unanticipated registration and tuition money was already in the University's base budget request.

Adjustment of the base increased ASU's request by \$972,919.

The regents stopped short of approving ASU's \$4.4 million west-side branch campus request and asked University officials to submit a detailed plan for the expansion to the board at least 10 days before its December meeting.

Although the regents' Finance Subcommittee had recommended approval of the request in order to show legislators the cost of providing service to the west Valley, board members were reluctant to approve a large request without a detailed plan.

ASU Executive Vice President Paige Mulhollan said there was no disadvantage to presenting the request separately from the other budget requests.

Nelson told the board it "was a developmental proposal" which was "designed to show the start-up costs."

"We don't want anyone to get an idea that the campus can be started up for \$500,000," he said.

ASU's budget request includes: \$6.8 million for new programs, including \$3.7 million for the engineering excellence program; a request for \$2.3 million for 71 additional faculty positions; and a request for continuation of \$1.8 million of engineering excellence funding approved last spring.

More about

Tuition

continued from page 1

"The increase in enrollment has decreased the quality of the university experience at ASU," he added.

ASU President J. Russell Nelson said Monday he is still considering various factors and is working on a statement he will present to the regents in November.

The regents will meet at ASU to study tuition Thursday, Nov. 3.

The board has invited the university presidents to present their views, and has invited the three student government presidents to present student views at the session, which takes place one day before the regents regular monthly meeting.

New rates were calculated by applying a board policy establishing student contributions to the cost of education against the current 1983-84 budget.

Under the policy, contribution for residents is set at 20 percent of the cost of their education and contribution for non-residents is set at 85 percent of that cost.

Associated Students President Walter Batt told the board, "The increase in fees is inevitable and students understand that they must share the cost, but if there is going to be an increase, it should show in an increase in services."

"We need a more equitable distribution of state funds," Batt said Monday. "I think we would favor a moderately larger increase because this institution is growing" and the other two universities are not.

"But I definitely don't favor any increase in tuition if the state Legislature does not provide ASU's fair share in appropriations for the number of students we have here."

"I think the regents have to develop a better, more stable relationship with the state Legislature," he said.

Batt said the enrollment increase at ASU combined with tuition and fee increases amount to less student services per person when compared to the declining enrollment at NAU and U of A. Both had slight decreases in fall 1983 enrollment.

"When you have an increase in fees and a decrease in students, that translates to more quality and service... because you have less students to serve," he said.

JOSEPHINE'S EATERY
903 SOUTH RURAL ROAD
PHONE ORDERS 894-2422
Good Tuesday-Wednesday Only

COUPON

FREE MEDIUM DRINK WITH PURCHASE OF SANDWICH & PRESENTATION OF THIS COUPON.

30 Super Subs — Look for our Sandwich Specials

union cinema

THE CHOSEN

Chaim Potok's best selling novel.
An intelligent, compassionate portrait of the Jewish American experience in the '40s.

TUES. & WED. • OCT. 11 & 12
7 & 9:30 p.m.
\$1.50 w/I.D. • \$2 w/o

LOWER LEVEL OF MEMORIAL UNION

Night Classes in Floral Design

Do your own Design!

Floral Design — Basic
Dried & Silk Design
Christmas • Decoration

FOR INFORMATION CALL
966-4515

Ask for Hella at
Tempe Florist
Instructor is "Designer of the Year '83"
—Arizona—

CAREERS IN JEWISH LIFE

Tuesday, October 11
12:45 p.m.

at Hillel
1012 S. Mill Ave.

With David Meyer, Student Rabbi at Hebrew Union College in Los Angeles

Dentistry

Student Special
FREE EXAM & X-RAY

Call For Appointment
12 Minutes From Campus

DR. BRIAN D. FOW, D.D.S.
7555 Osborn Rd., Suite 201
Scottsdale, AZ • 949-1234

THE HAIR CUTTERS

Your Campus Hair Care Center

709 S. Forest Ave., Tempe
South of University • Behind the Truck Box • In Oxford Square

968-5946

\$3.00 OFF
With This Ad
Expires October 31, 1983

REGULAR PRICES
• Shampoo • Condition
• Precision Cut • Blow Dry

MEN \$12 • WOMEN \$14

OPEN EVENINGS
TUES., WED. & THURS. TILL 9 P.M.

EVERY DAY IS SALE DAY!

WE HAVE THE SAME LOW PRICES 365 DAYS A YEAR!

SAVE Money On Your Next Pair of Glasses

\$45.00 Single Vision
\$74.00 Bifocals
EXECUTIVE BIFOCALS \$15 EXTRA
NO LINE BIFOCALS \$35 EXTRA

Includes your choice of any frame in stock, and lenses (glass or plastic), tint or photogrey, no charge for oversize. Designer frames. No extra charges.

Gas Permeable Hard Contact Lenses **\$99.00**

FAMILY OPTICIANS

In The Arches 120 E. University Tempe • 967-1999
McDowell Square 5134 W. McDowell Phoenix • 278-0031
1802 W. Bethany Home Phoenix 246-0147

TINTED SOFT CONTACT LENSES FOR \$121.00
(Your choice of Blue, Green, Light Brown, Dark Brown, Aqua)

SPECIAL for ASU STUDENTS FACULTY & STAFF

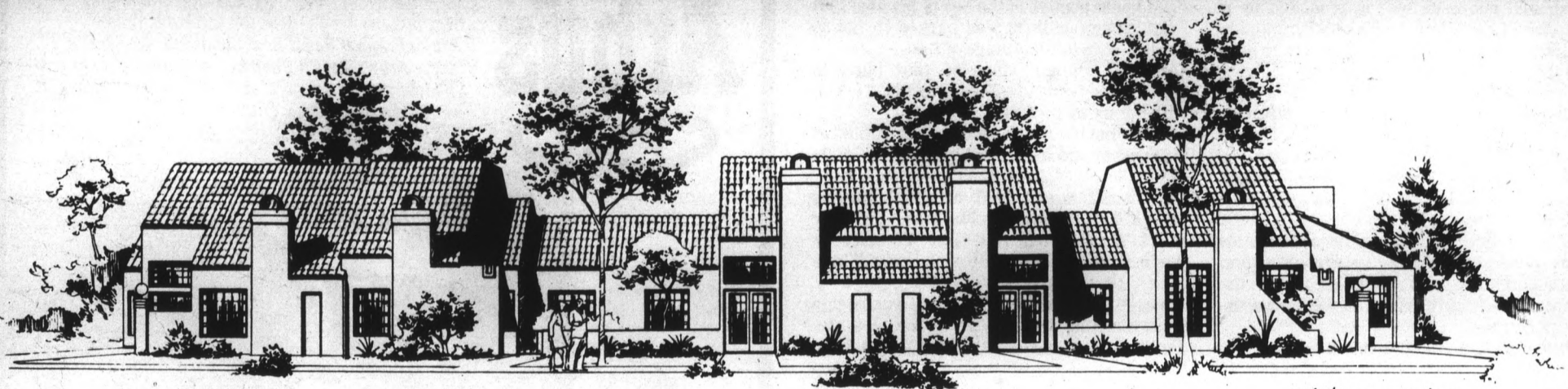
EYE EXAMINATION

\$20.00 for eyeglasses
\$25.00 for contact lenses

Dr. Taddonio
Optometrist
120 E. University (In The Arches)
Tempe
967-1999

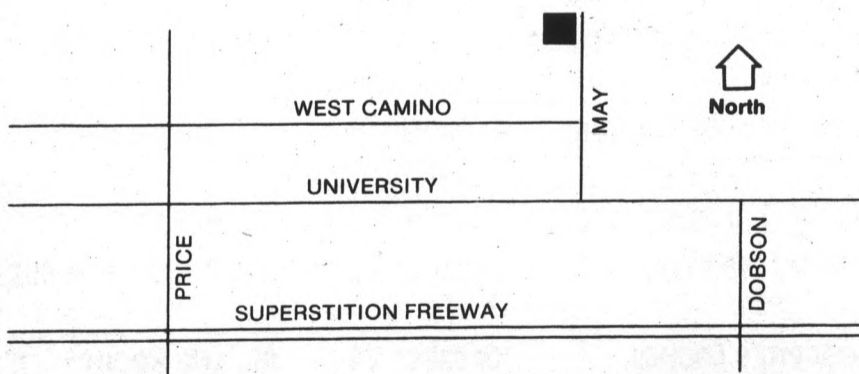
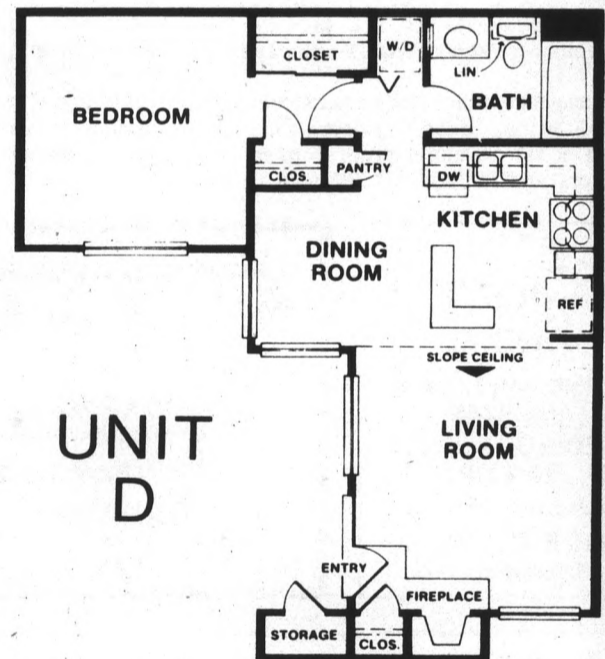
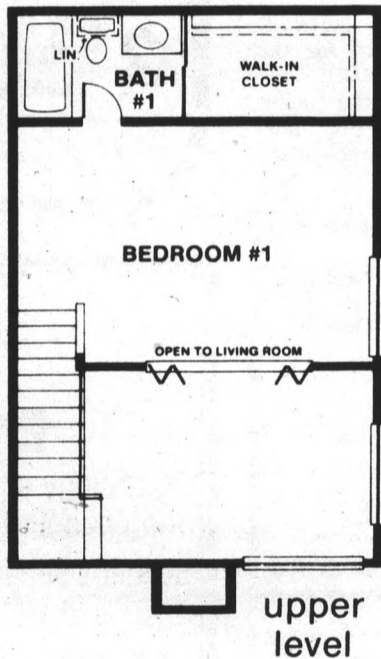
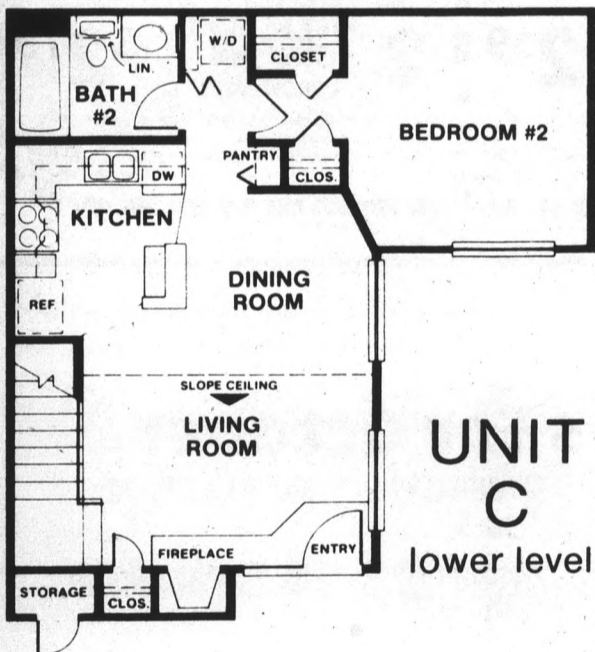
US HOME PAYS ALL

Your Mortgage Interest Payments for Six Months*



artist's conception

DARTMOUTH TRACE



Just 2 Blocks North of University,
One Block West of Dobson on North May.

STANDARD FEATURES

Continuous Clean Range, Dishwasher, Disposer, Ceramic Tile at Entry, Wood-Burning Fireplace, Vaulted Ceilings, Sun Screens, Mini-Blinds, And More!

BUY NOW AT GRAND OPENING PRICES

Call us at 969-1928. We're open daily from 10 a.m. to 7 p.m.

America calls us home™

US·HOME®

LISTED ON THE NEW YORK STOCK EXCHANGE



*Cash price \$51,950. Down payment \$2,100. Loan amount \$49,850. Approximate principal, insurance and tax payment \$63.30 months 1-6. Approximate PITI payment \$603.00 months 7-12. Approximate PITI payment \$603.00 years 2-30. Modest association fee additional. APR 13.5 Representative FHA Financing.

police report

An ASU student received cuts and bruises when he was struck by a man after being forced to withdraw money from an automatic banking machine in front of the University Bookstore late Friday night, according to University Police.

The victim, who asked to remain unidentified, told police he was approached by a male who forced him to make withdrawals of \$150 and \$100 from his account and to give him the money at about 11 p.m.

The victim was threatened with a concealed knife and was struck by the suspect. He received treatment at Tempe St. Luke's Hospital for cuts and bruises, police said.

He told police the suspect was a black male, 6 feet 2 inches, who was approximately 20-25 years old.

In other activity, three Hispanic males were observed taking a gray Schwinn Supersport 10-speed bicycle from the northwest side of the Aquatic Center Saturday, police said.

Two witnesses told police the bicycle was taken about 1:40 p.m., after one of the three suspects cut the bicycle lock and rode away.

He then placed the bicycle in a small yellow station wagon and all three left the scene in the car, heading westbound on Sixth Street from the Aquatic Center.

Police said the owner of the bicycle had been located and told police she would press charges.

In other activity, police report:

•ASU tennis equipment valued at \$1,700 was stolen from a room in the Whiteman Tennis Center last Wednesday or Thursday. The equipment included three bags, seven rackets and a pair of eyeglasses.

•An ASU student reported damage to the right lower portion of the bed of his blue 1983 Ford pickup while it was parked in Lot 59 Friday, with total damage of \$300.

•An ASU student reported that between Sept. 25 and Sept. 30 someone forged a check with her name for \$100.

•A Schwinn black 10-speed bicycle valued at \$160 was stolen from 612 Alpha Drive Saturday.

•A Nishiki men's red 10-speed bicycle valued at \$150 was stolen from the bike racks at Sahuaro Hall last Tuesday or Wednesday. The bicycle was locked to a rack.

•One hundred dollars in cash was stolen from a wallet which was on top of a student's desk in a room in Palo Verde Main Friday.

•Seven fire control relays were stolen after the fire control panel located on the second-floor stairwell of the Cholla Apartments F-building was forced open Saturday.

A Nishiki men's maroon 10-speed bicycle valued at \$150 was stolen from a bike rack at Sahuaro Hall between Friday and Sunday.

—Sandy Sisteck

Software engineering class offered

An introduction to the field of software engineering is the subject of a short course which will be conducted Oct. 18-19 by the ASU Center for Professional Development.

The program, which will be held from 8:30 a.m. to 3:30 p.m. in the Engineering Center, is intended for computer programmers and managers and for others interested in the

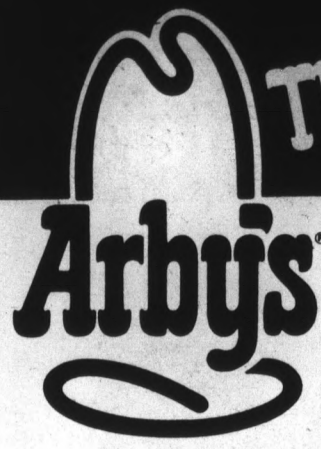
application of software engineering methods.

A basic knowledge of the software development process is required for the course. The registration fee is \$295.

Additional information about the course content is available at 965-3190. For information concerning enrollment procedures, call 965-1740.


Roast Beef.

The Way You Love It.



Juicy, tender and lean...stacked high and mighty delicious the Arby's way. We serve it simple—**Arby's Original Roast Beef Sandwich.** We serve it fancy—**Arby's Beef'n Cheddar**—all dressed up in hot cheddar cheese sauce; and **Arby's Super**—topped off with ripe red tomatoes, crispy lettuce and Arby's sauce. Any way you cut it, if you really love your roast beef...

Welcome to Arby's. You're right where you belong.



2 Arby's® Regular Roast Beef Sandwiches \$219	2 Arby's® Super Roast Beef Sandwiches \$279
Offer expires October 22, 1983. Valid at all participating Arby's including Broadway & Roosevelt. One coupon per customer per order. ASU	Offer expires October 22, 1983. Valid at all participating Arby's including Broadway & Roosevelt. One coupon per customer per order. ASU

Carpet House

DORMS, APTS., VANS
ALL SIZES
USED ROOM SIZES
\$10 & UP
NEW CARPET TOO!
1516 E. Van Buren
Phoenix

The
hair performers

Free Haircut with \$28.95 perm
All Hair Cuts \$9.50
(Includes cut, shampoo and conditioner only)

Free Ear Piercing
with purchase of \$7.50 earrings

Located next to Domino's • No Appointment Necessary
903 S. Rural • Cinnamon Tree • 894-0184

Rafers

UPSTAIRS PUB

4th & MILL
2nd level of theMILL AVE. SHOPPS above theSPAGHETTI CO

3 for 1 HAPPY HOUR

MON.-THUR. 3:30-7:30 FRI. TIL 8:30

WEEKLY SPECIALS !! 8-12

- * MON.- "2 FOR 1"
- * TUE.- "QUARTER BEER NIGHT"
- * WED.- "BEAT THE CLOCK"
prices go up on the hour
8:00 draft **25¢** .10/draft per hr.
well **50¢** .20/well
- * THUR.- SHOTS OF SCHNAPPS- **50¢**
- * FRI. & SAT.- LIVE ROCK & ROLL

CHECK YOUR NEW TIMES or KSTM FM-107 FOR DETAILS

ASSOCIATED STUDENTS

OF ARIZONA STATE UNIVERSITY

Events for October

Psychology of Women: The Changing Roles	October 11 1:30-3	MU Yuma Room
Student Senate	October 11 5:30	MU Mohave Room
Louis Rhodes-ACLU "The Constitutionality of Roadblocks"	October 12 12	MU Rendezvous Lounge
Congressman John McCain Visitation	October 12 12-1	MU Union Cinema
Residence Hall Program "Stress and Anxiety"	October 12 7-8:30	Palo Verde Main
Alcohol Education Week	October 10-14	On The Mall
Minority Women's Day	October 22 9-12	MU South Pinal Room
President's Council, Associated Students	October 24 4:30	MU Gila Room
Networking: Women Helping Women	October 25 1:30-3	MU Yuma Room
Student Senate	October 25 5:30	MU Mohave Room
Phyllis Schafley vs. Sara Weddington "Debate on Women's Issues"	October 25 8	MU Arizona Room
Residence Hall Program "Sex Roles"	October 26 7-8:30	Sahuaro Hall
Phoenix Mayoral Debate	October 30 6	MU Arizona Room

All events open to the public

Nelson says female faculty should review service time

By Lisa Phillips
Staff writer

Women should re-evaluate the amount of time they spend in community and University service in order to increase their chances of achieving tenure or promotion, ASU President J. Russell Nelson said Monday.

In a speech to the Faculty Women's Association, Nelson said women are asked to serve on committees within the University more often than male faculty members.

"This is a kind of natural consequence of having low numbers of individuals and wanting those individuals to be represented on committees," he said.

Nelson encouraged women to evaluate their time and determine how many committees they are able to serve on without decreasing the time they spend on teaching and research.

"Service is important," he said. "But we should not expect service to be a substitute for appropriate creative work and teaching."

The faculty handbook, which encourages faculty members to spend

equal time in service, teaching and research, is under revision, according to Nelson.

Nelson advised women to consider finding a mentor to help them advance their career.

"It is important to have someone to assist you by sharing their experiences," he said. "A mentor can be terribly important."

Nelson said Vice President for Academic Affairs Jack Kinsinger will be meeting soon with the deans of various colleges to discuss promotion and tenure procedures.

Nelson also said a committee appointed to review faculty grievance procedures will be publishing its findings as early as February.

The committee will also be making recommendations regarding changes and improvements in the faculty grievance procedure, he said.

Nelson said he was concerned with the growing tendency to involve lawyers in grievance procedures, because the system is designed to be "collegial."

New B.A. program considered

By Deanne Hutchison
Staff writer

A new bachelor of arts degree program which would stretch across disciplines in the College of Liberal Arts is currently being considered by a faculty committee, according to a member of the committee.

David Foster, a foreign language professor on the committee, which represents several departments within the college, said the program was proposed to meet the needs of students who would like to study and receive a degree in more than one area.

This would include not only students in liberal arts, but other colleges as well, Foster said.

"For example, if a student majoring in physics would like to include history as his area of study, he could do it under this program," Foster said. "Right now a student who wants a history of science degree has no place to go."

Foster said there are other areas that do not offer a degree at ASU and that the new interdisciplinary program in liberal arts would fulfill many of those needs.

"I am in the foreign language department and there is no undergraduate degree in Italian, for instance," he said. "But the interdisciplinary program would offer a

degree in Italian studies and this degree would take the place of the B.A. in Italian that we don't offer."

He said there are also several area studies degrees that are not offered on campus. Area studies deal with areas such as Latin America or Asia, for example.

"The degree is meant to bring together common academic themes in different areas of study," he said.

The degree program has been in committee before, Foster said.

"I was on a committee about ten years ago, but for some reason it was decided that the program was not feasible and it was not approved," he said.

Foster said this program, however, is based on the interdisciplinary programs that already exist on campus, such as women's studies or medieval and renaissance studies.

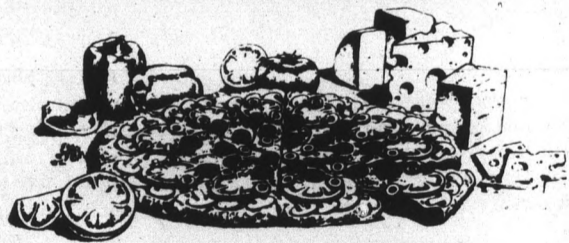
If it is approved, Foster said, students who choose to enter the program will be able to select the areas they wish to study and will set up their personal program in consultation with an advisor.

"This is not meant to be a wishy-washy alternative degree program like there were in the '60s," he said. "It will be something solidly academic."

A better place to be
Holiday Inn
Tempe/ASU
Apache at Rural
968-3451

Round Table
Pizza Restaurants

1/2 PRICE TUESDAY!



ASU Students, Faculty and Staff . . .

Every Tuesday

Present your ASU I.D. and receive a 50% Discount on any Large Pizza.

(Country Style Included)

Offer valid on sit-down meals only.

— 5 Valley Locations —

SCOTTSDALE	TEMPE	PHOENIX
4416 N. Miller (at Camelback)	1849 N. Scottsdale Rd. (Alpha Beta Center)	5515 N. 7th St. (at Missouri)
994-3285	947-4396	279-0924
7901 E. Thomas Rd. (at Hayden)		2855 W. Cactus Rd. (at 28th Dr.)
994-3360		866-0425

Say "I do" to Zales diamond wedding specials!

Solitaires, bridal sets, wedding bands, duos, trios — Zales has them all. Many are even marked at savings of 20% to 25% off their original prices. And at Zales we offer convenient credit and a 90-day refund policy, so ask for details.

WIN AN ENCHANTED WEDDING!

All-expense-paid grand prize includes:

- Wedding on the Queen Mary or in your hometown, coordinated by a "Bride's Magazine" consultant.
- Honeymoon trip on the Orient Express.
- \$10,000 Zales jewelry wardrobe.

14 additional prizes:

- 7-Day Caribbean cruise.

Air transportation courtesy of American Airlines. No purchase necessary, void where prohibited. Sweepstakes ends Oct. 31. Ask for details at any Zales.



Solitaire, 14 karat gold \$99



Jacket wedding band, 14 karat gold (Solitaire not included.) \$299



Solitaire bridal set, 14 karat gold \$399

Save 20-25% on a special collection of diamond wedding jewelry.

ZALES
The Diamond Store
is all you need to know.™



MAJOR CREDIT CARDS ACCEPTED: Zales Credit Card • MasterCard • VISA • American Express • Carte Blanche • Diners Club • Illustrations enlarged. Sale prices effective on selected merchandise. Entire stock not included. Original prices shown on every item. All items subject to prior sale. Items illustrated not necessarily those on sale.

ORGANIZE YOUR LIFE
WITH THE ULTIMATE:
**THE DO-IT
DATEBOOK**
ONLY 9.95 at The Student
Book Center & THE ASU
BOOKSTORE. ASK FOR IT!



**Do Your
Computer Work
At Home!**

Save Time and Effort

CRT with coupler
or
Printer with coupler

\$50⁰⁰
per month

BRS LEASING, INC.
3914 E. McDowell • 277-3282
Rentals / Service / Sales

**ENJOY THE BEST
Häagen-Dazs**

Student Discounts
on all scoops, Pints
and Quarts. Receive
20% OFF when you
present your ASU
Student I.D. Card.

Free Delivery
on all Pints,
Quarts and Cakes.

903 S. Rural HOURS:
Sun.-Thurs.
11-12 a.m.
Fri. & Sat.
11-1 a.m.
Cinnamon Tree Plaza
967-2340

More about
Composition

continued from page 1

"People with degrees other than English may apply," Guinn said. "It's not mandatory that they have a degree in English to be a TA."

She said applicants are required to submit to the committee copies of transcripts, three letters of recommendation and two letters stating their qualifications to teach English 101.

In addition, Guinn said, if the applicants have English degrees, they are required to submit writing samples, which also are used to determine whether they are qualified to teach.

But if the applicants do not have English degrees, the letters stating why they are qualified to teach English 101 are used to determine writing skills, she said.

"Ninety-nine percent of our people have strong English backgrounds — most likely a degree in English," Guinn said.

She said students can remain TAs for a maximum of nine years — three while pursuing their master's degrees and six while pursuing their doctorates. TAs working toward master's degrees are paid \$6,150 per year for teaching two courses per semester. TAs working toward doctorates are paid \$6,550.

Guinn said the First Year English Committee decides on a list of possible texts for Freshman Composition. TAs choose from that list the texts they want to use in the classroom.

"In a sense it's open, but in a sense it's not," she said, referring to how much latitude TAs have in teaching the course. "If they are going through the texts, then they have to be teaching from one of the variety of modes that's listed."

For example, it is recommended that Freshman Composition students be required to write about 5,000 words per semester. It is also recommended that several writing assignments be completed out of class.

During a given class period, students may spend time listening to the TA lecture. Other class periods may be spent scribbling feverishly to meet an in-class deadline.

**'I can't deny it —
English 101 students are being
taught by apprentices.'**

Guinn said all first-year TAs are required to attend a three-hour training seminar each week. Guinn, who teaches the seminar, said she "works with them on teaching the course."

She said she teaches the TAs the theory behind rhetoric and composition. Also during the seminars, TAs discuss the success of classroom tactics they have tried.

Robert Hall, a first-semester TA with a bachelor's degree in English, said the seminars are "very helpful" in improving his teaching skills.

"You get to hear the way other professionals have been doing this for years, and you can't help but learn from experience," he said. "It's an exchange of ideas."

Robyn Zappala, also a first-semester TA with a bachelor's degree in English, said she, too, has found the seminars helpful.

"We learn a lot of the theory behind teaching rhetoric and composition," she said. "What's really good is that we all talk about what we're doing in class, what works and what doesn't."

Guinn said first-year TAs are given guidance in addition to the seminars.

They are observed in class by a faculty member as often as four times a semester, she said, adding that the TAs don't know when those observations are coming. Guinn said a report, which is given to her and used to help the TAs improve their teaching methods, is filled out based on the observations.

Guinn said given these procedures, she feels the students are being well served by the TA system.

"There's going to be a disparity in the quality and experience of TAs," she said. "There not all going to come from the same mold."

"But I don't think they are being slighted," she said, referring to those students who end up in a class taught by an inexperienced TA. "They are all good people, and they have texts to

follow."

Others within the English department, however, are not as certain the students are best served by the present system.

"Ideally, English 101 should be taught by full-time, experienced faculty," Ferrell said. "But if we did that, we'd have no graduate program, unless we had another way to subsidize it."

Alice Robertson, a ninth-semester TA currently teaching English 101 and pursuing her doctorate in English, agreed, "This system benefits the department as much as the TAs and the students because it creates the graduate program. A lot of these people wouldn't be graduate students if there weren't a TA program."

Ferrell said a shortage of funds also prevents the English department from assigning experienced faculty members to all Freshman Composition sections.

"I can't deny it — English 101 students are being taught by apprentices," he said. "But we are stuck with a system that makes that almost unavoidable because of financing. With our budget, there is no way we could afford to have faculty members teach Freshman Composition."

The 1983-84 operating budget for ASU is \$133.8 million. Of that, \$2,379,383 went to the English department, with \$2,333,383 paying salaries.

The ASU con-
continue opera-
million for 198-
The Arizona

Salerno interview . . .

Nicholas Salerno, chairman of the department of English, refused a personal interview on the Freshman Composition system. He agreed to be interviewed only on the condition that the reporter submit a list of questions and that his written answers be printed verbatim.

Here is the interview:

1) Q. Do you think Freshman Composition is one of the most important courses any student takes? Why or why not?

A. Yes. Language is all-important.

2) Q. Do you think the students of Freshman Composition are best served by the TA system? Why or why not?

A. To a great extent, it is simply a matter of economics. I don't know, historically, when or where or how the current system — which has been accepted nationally for decades — got started. It would now be economically impossible to use tenure-track faculty exclusively for elementary composition courses.

3) Q. Given the importance of Freshman Composition — i.e., for a lot of people in the technical fields, it may be the only English course they take — do you think the students might be better served if the course were taught by faculty, by a known commodity, as it were? Why or why not?

A. (Same answer as number two.)

4) Q. Is it feasible to have the course taught by faculty? Why or why not?

A. (Same answer as number two.)

5) Q. Do TAs do as good a job of teaching as the faculty? Why or why not?

A. I hope so.

6) Q. One point that stands out in my mind is the possible disparity in quality and experience of TAs. For example, line number A may get you a first-semester TA, whereas line number B

may get you a ninth-semester (some courses are even taught by faculty). Is a new TA as qualified to teach an older TA? If so, how? If not, are the students who get the less experienced TAs being cheated?

A. The least experienced TAs receive the most help and guidance.

7) Q. Does it seem paradoxical to you that one of the most important classes at this University is taught by some of the most inexperienced people? Why or why not?

A. Paradoxical? I suppose so. But experience or the lack of it is not the whole question.

8) Q. I've been told by several people during the course of my interview that faculty don't teach Freshman Composition because it bores them because they don't want to come down out of their "ivory towers." Do you agree with this? Why or why not?

A. Every English professor teaches composition in every literature course. Those who don't teach First Year English are teaching courses in areas of specialization which they love enough to earn Ph.D.s in. If they have personal reasons for not wanting to teach composition, I don't know about them. And when departmental needs have mandated their teaching composition, I have never received an answer.

9) Q. What is the salary of a TA working on a master's, on a doctorate? What is the salary of the lowest tenure-track faculty?

A. Check with Academic Vice President's office.

10) Q. Most people I talked to in economics as the major reason Freshman Composition is not taught by faculty. Do you agree? Why or why not? If not, what is the reason?

A. (Same answer as number two.)

Papa Jay's New York Pizza
FAST . . . FREE . . . DELIVERY
(Limited free delivery area)

Serving ASU & TEMPE for nearly 13 years

\$3 OFF any large Sicilian* Style Pizza with two or more toppings.
Good on delivery, take-out or dine-in.
Expires 11-31-83.
*Extra Thick Crust

SUN DEVIL COMBO
Any large pizza with your choice of up to 4 toppings.
ONLY \$5.95 (plus tax)
Good on delivery, take-out or dine-in.
Expires 11-31-83.

We Deliver Beer & Soft Drinks
Video Arcade! 10 tokens for \$1 Every Day

804 S. ASH (Mill & Univ.) 966-1003 • 966-4292 • 967-9689

INFORMAL DANCE Concert


Dance

Experimental Works by Faculty Choreographers
OCTOBER 13 & 14 • 8 p.m.

Dance Studio Theater • PEBE 132
\$2 General
\$1 Students and Senior Citizens

TICKETS AVAILABLE AT THE DOOR

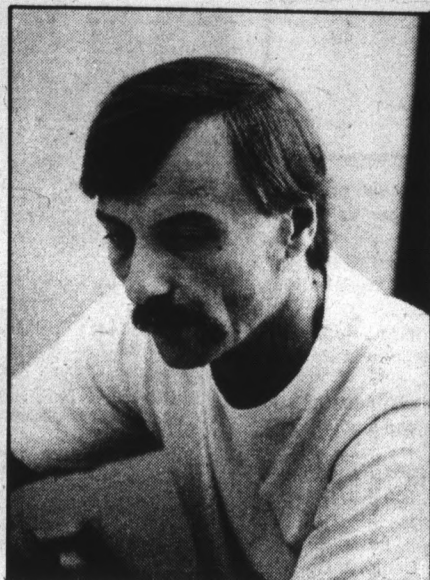
FOR INFORMATION CALL **965-5029**



"C
KIN
ava
• T
• T
• M
• M
• D
All
tion



Susan Davis



Robert Hall



Robyn Zappala

The ASU continuation budget request — what it would cost to continue operating the University at the current level — is \$154 million for 1984-85.

The Arizona Board of Regents has approved a 1984-85

operating budget for ASU of \$161 million. The budget is subject to approval by the State Legislature.

Jim Hogan, assistant budget director for ASU, said it is impossible at this time to predict the 1984-85 funding level for the English department.

"It really depends upon what packages are approved," he said. "They might approve all or none. The English department at this point can't tell if it will even receive any money beyond continuation funds."

However, there are those in the English department that, regardless of the funding level, think students receive better instruction under the TA system than if faculty members taught all Freshman Composition courses.

Susan Davis, for example, a ninth-semester TA seeking a doctorate in English and teaching English 102, says TAs generally display a greater degree of enthusiasm toward Freshman Composition than faculty.

"I really think the students are better off under this system," she said. "Some of the faculty members are too high up in the

'Some of the faculty members are too high up in the 'ivory tower' to come down and teach Freshman Composition.'

'ivory tower' to come down and teach English 101."

But Nicholas Salerno, chairman of the English department, disagreed in a written interview.

"Every English professor teaches composition in every literature course. Those who don't teach First Year English are teaching courses in the areas of specialization which they loved enough to earn Ph.D.s in. If they have personal reasons for not wishing to teach composition, I don't know about them. And when departmental needs have mandated their teaching composition, I have never received an argument." (See box for text of written interview with Salerno.)

Davis, the elected student member of the First Year English Committee, said the committee is aware "that there is a wide disparity in quality of TAs and that some students are not getting as good an education."

"The committee recognizes that TAs affect everyone on this campus," she said, "and we're working on it."

She said the committee has considered a system in which TAs would be paid for the first semester but not teach. The TAs would instead learn teaching methods under the direction of a faculty member.

"This way you would give them a whole semester of training," Davis said. "You wouldn't turn an inexperienced TA loose on a class."

She said no plans have been made to implement the system.

The committee also has considered eliminating the teaching of English 101 as a five-week summer course and specifying in the University catalog that English 101 is a prerequisite to English 102.

11) Q. Again, in the course of my interviewing I ran across the suggestion that the Freshman Composition system is really for the benefit of the department and the TAs more than the students, in that without the TA system there would be no graduate program. Is this true? Why or why not?

A. There are about 350 students in our graduate program. This semester there are 82 TAs. Does that answer your question?

12) Q. Describe the relationship between the graduate program and the TA system. Would one exist without the other and vice versa? Why or why not.

A. Same answer as number 11.

13) Q. Is the Freshman Composition system successful? Why or why not? How is its success measured?

A. I know no way of measuring its success short of a long-term follow up of each student's need for and command of language and composition after graduating.

14) Q. Could the system be made better? Why or why not? How?

A. Possibly.

15) Q. Are there any changes in store for the Freshman Composition system? What if any?

A. Possibly.

16) Q. Several other schools around the nation I've talked to have systems different than ours. One of the most intriguing systems allows TAs to learn their first semesters without teaching. They are under direct supervision of a faculty member and learn everything firsthand from that member. They are still paid the same amount, but don't start teaching until the second semester. Is something like this feasible at ASU? Why or why not?

A. (Same answer as number two.)

A more crucial issue at the moment is the use of part-time lecturers. They are hired at the last minute, at virtually slave-labor salaries. You cannot build a sound composition program on that basis.

MERLE NORMAN COSMETICS

The Place for the Custom Face®

Learn How to Make Up Your Face . . . FREE

Call for your appointment TODAY!

Walk-ins Welcome Ear Piercing

Southern Palms Plaza 831-6655
1628•10 E. Southern, Tempe

Hobie House

37 E. BROADWAY, TEMPE • 968-6676

IF YOU SURF IT

SAIL IT

THRASH IT

or JUST WANT TO WEAR IT,

WE GOT IT!

VUARNET

SKATEBOARDS

WINDSURFER

BUCCI

HACKY-SACK



FITNESS FOR FUN

Sport and Surf Clothing

Equipment and accessories . . . and much more!

T-SHIRTS • SHORTS • SHOES • WARM-UPS

VANS OFF THE WALL
styles 98 or 95

from \$19.95

SHORT SLEEVE T-SHIRTS

G&S Catchit \$7.49
Town & Country
Lightning Bolt
Sex Wax and other

SKATEBOARDS • ROLLER SKATES • WEIGHTS

Scottsdale
McCormick Ranch
Paseo Village
Shopping Center
991-4554

Tempe
Southern Palms Center
1628 E. Southern
Corner Southern and McClintock
831-5445

"CELEBRATION SUN DEVIL STYLE" Homecoming 1983

KING and QUEEN APPLICATIONS are now available at:

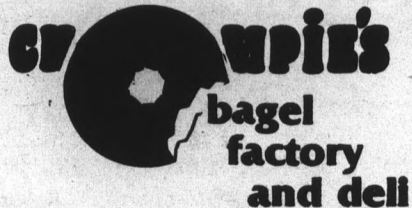
- The Office of Student Life
- The Associated Student Office
- M.U. Information Desk
- Matthews Center
- Dormitories

All return applications are due in The Association Student Office by October 21, 5 p.m.

FREE BAGELS
Buy 1 doz. — get 3 FREE!

OR \$1 OFF any lb. of meat or smoked fish
Valid Monday-Friday

FREE ½ lb. plain cream cheese with any dozen frozen Bagels.
When Available 3-7 p.m.
Valid Monday-Friday



HOME OF THE GIANT BAGEL

TEMPE-MESA
1660 W. Southern (E. of Dobson)
962-4100
Open 7 days

PHOENIX-PARADISE VALLEY
10858 N. 32nd St. (Fairlanes Shopping Center)
971-8010
Closed Monday

FREE DINNER
BUY 1 dinner — get 1 FREE!

Of equal value or less. (On all items up to \$4.95)
Valid Monday-Friday

½ OFF LUNCH
Buy one lunch — get the 2nd for ½ price.

Of equal value or less. (On all items up to \$3.95)
Valid Monday-Friday

collage

BRW, Inc., a Phoenix consulting firm, will hold two open forums today at noon and 1:30 p.m. in the MU Pima Room to discuss ASU parking and traffic issues. Everyone is welcome to bring any complaints or suggestions.

Women's Services will be presenting the third lecture in the Re-entry Series from 1:30 p.m. to 3 p.m. today in the MU Santa Cruz Room. "The Psychology of Women: The Changing Roles" will be discussed. For more information, call Monica Wilson-Thomas, coordinator of the Women's Re-entry Program, at 965-1253.

Women in Communications Inc. is meeting at 1:40 p.m. today in the MU Navaho Room. Featured speaker is Linda Alvarez, news anchor-woman for KPNX-TV, Channel 12.

Golden Key National Honor Society is meeting at 3 p.m. today in MU Cochise Room. It is important that all members attend.

Investors Club is meeting at 4:30 p.m. today in the MU Santa Cruz Room. "We will be reviewing our portfolio and discussing new areas to research."

National Academy of Television Arts and Sciences is meeting at 5:15 p.m. today in the "parking lot w/satellite dish near Stauffer Hall" to embark on the field trip to United Cable, followed by social hour at Backstage in Scottsdale.

PSI CHI — The National Honor Society in Psychology — is meeting at 6:30 p.m. today in Psychology Building Room B205 to hear Dr. David Yandell discuss the clinical applications of biofeedback. The public is welcome.

The Millionaires Club is meeting at 7 tonight in MU Coconino Room to hear Dale Hillard give insights on how to improve your skills for speaking in public.

Society for Technical Communication is meeting at 8 tonight at the

Spaghetti Company, 1418 N. Central Ave. In attendance will be KMCR radio director Doug Myrland, author of "The Official Silicon Valley Guy Handbook."

Campus Interfaith Council will host an open house from 10 a.m. to 1 p.m. tomorrow at the Danforth Chapel Mall. All religious organizations will be represented and refreshments will be served.

Transportation Club will meet at 3 p.m. tomorrow in MU Room 209. Guest speaker will be Hal Franke, chief labor negotiator for the American Trucking Association.

Lutheran Campus Ministries Student Organization will meet at 6:30 p.m. tomorrow at 1430 McAllister Ave. for fellowship and study of current topics.

All Saints Catholic Newman Center hosts Catholic Student Fellowship at 7 p.m. every Wednesday at the Center, 230 E. University Drive, Tempe (967-7823). Everyone is welcome to attend.

As part of Hunger Awareness Week, there will be a Hunger Awareness Meeting at 12:30 p.m. Oct. 13 upstairs in Danforth Chapel. All welcome.

National Association of Accountants on Campus will meet at 4:30 p.m. Oct. 13 in MU Pima Room with Beta Alpha Psi and ASWA for a CMA/CPA/CIA panel discussion.

University Toastmasters will meet at 5:15 p.m. Oct. 13 in the MU Coconino Room to discuss "developing speaking skills."

ASU Western & Rodeo Club will meet at 6 p.m. Oct. 13 in Agriculture Building Room B250 to discuss club activities. New members welcome.

Campus Crusade for Christ will meet from 7 p.m. to 9 p.m. at 205 E. 15th St. for Thursday Night Live.

The P.I.E.S. Program is hosting William Eaton and Music for Dreaming at 7:30 p.m. Oct. 13 in the MU Montgomery Lounge.

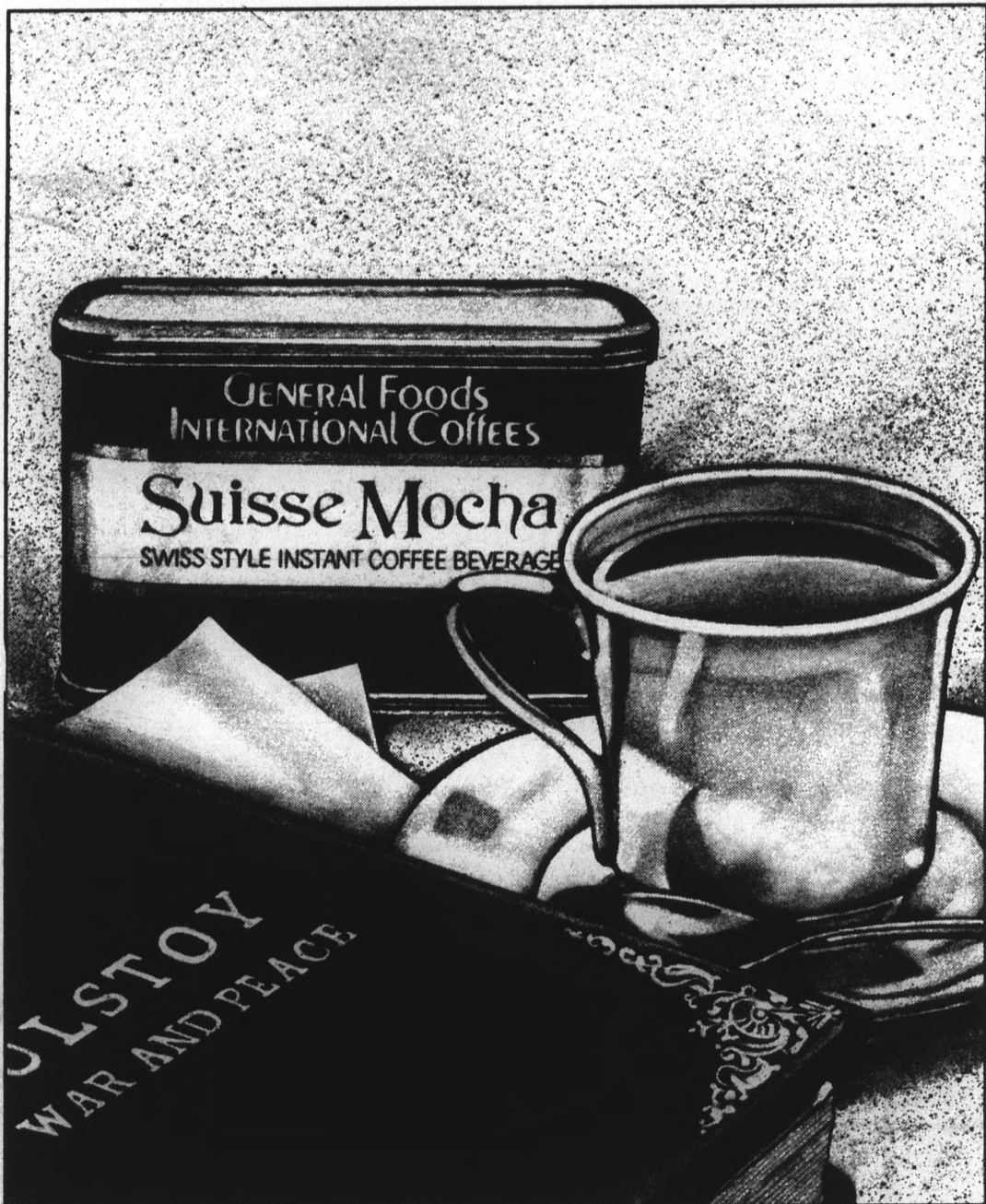
BIRTH DEFECTS
MAIM

BIRTH DEFECTS
RETARD

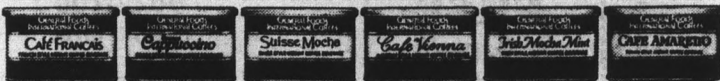
BIRTH DEFECTS
KILL

PREVENT
BIRTH DEFECTS
March of Dimes

How to make peace with Tolstoy.



If the academic wars are getting you down, declare a cease-fire. Take a break with a rich and chocolaty cup of Suisse Mocha. It's just one of six deliciously different flavors from General Foods® International Coffees.



GENERAL FOODS® INTERNATIONAL COFFEES.
AS MUCH A FEELING AS A FLAVOR



© General Foods Corporation 1983

GAMMAGE CENTER

AT GAMMAGE CENTER:

NATIONAL SYMPHONY ORCHESTRA
Mstislav Rostropovich,
Music Director

Thursday, October 13 • 8 p.m.

Often referred to as the "Orchestra of the Presidents," the National Symphony Orchestra enjoys a worldwide reputation for excellence. Be in the audience for this opening presentation in Gammage's Orchestra Series.

Tickets: \$17.50, \$16.50, \$15.50

CARLOS MONTOYA
Guitar

Wednesday, October 19 • 8 p.m.

Montoya is always an innovator and, for that reason, always a tremendously exciting performer to hear. He and his music are inseparable; he does not perform it — he lives it!

Tickets: \$10, \$9, \$8

MEL TORME AND GEORGE SHEARING
In Concert

Friday, October 21 • 8 p.m.

Get ready for a fabulous evening of music as these two giants of the entertainment business join together for a single Gammage performance.

Tickets: \$12.50, \$11.50, \$10.50

CLEVELAND QUARTET

Monday, October 24 • 8 p.m.

"Second to none, string quartet playing doesn't come better than this." —Boston Globe

Tickets: \$9, \$8, \$7

AT THE KERR
CULTURAL CENTER:

MARTIN BEST
Voice and Lute

Friday, October 14 • 8 p.m.

Martin Best's talents as a lutenist/vocalist have graced audiences in the United States and Europe. Popular with Early Music lovers, Mr. Best's program will feature Medieval Music.

Tickets: \$7 (\$1 for ASU students with I.D.)

DIANE CUMMINGS
Violin

Tuesday, October 18 • 8 p.m.

Accompanied by pianist Walter Cosand, Diane Cummings will perform Handel's "Sonata No. VI," Prokofiev's "Sonata, Opus 115," and Franck's "Sonata in A Major."

Tickets: \$5 (\$1 for ASU students with I.D.)

BACH WEST

Sunday, October 23 • 4 p.m.

Bach West — with Darleen Kliever (soprano), Cynthia Rosin (violin), Katherine Kelly (violin), Marjorie Yates Lockwood (flute), Ralph Lockwood (keyboards) — will perform music by Bach, Myslivecek, and Brahms. Featured guest artists will be Holly Marable (violin) and Li Kuo Chang (viola).

Tickets: \$5 (\$1 for ASU students with I.D.)

For further information on all Gammage Center, University Activity Center, Kerr Center, and ASU Stevens House programming, call the Gammage Box Office, 965-3434.

*Student Series events are available to full-time ASU students. With the exception of "Evita," one ticket may be purchased for \$1 to Student Series events by presenting a photo I.D. and activity card. A maximum of two \$1 tickets may be purchased by presenting two photo I.D. cards and two activity cards. One guest ticket, at full price, may be purchased with a student ticket. NOTE: Special Student Series tickets for "Evita" will be available at one-half the published reserved seat ticket price.

sports

state
press

Volleyed

Spikers gain split over weekend

By Tom Blodgett
Sports writer

The ASU volleyball team had a good news, bad news weekend. The good news is the team snapped its losing streak. The bad news is it happened after four matches instead of three.

The volleyball team proved it is still alive and kicking Saturday night by downing Cal State-Fullerton in three games, but fell to UCLA the prior evening.

Friday night's match with the Bruins was an up-and-down affair for the Sun Devils; they fell in four games.

The women came pumped up and looking for an upset, and as a result, the first game was the closest.

UCLA took advantage of poor passing by ASU and built a 9-4 lead. But from that point, the Devils started putting Bruin errors to work for them and even gained a short-lived lead at 11-10.

The critical point came with UCLA serving for the first game at 14-13. UCLA got away with an apparent illegal pass on a set. The ball landed out on the ensuing spike, and the team celebrated its reprieve.

But the Devils were called for a touch on the block attempt. The controversial calls gave the Bruins game point, 15-13.

They also deflated the team's morale.

The second game was the low point of the season to date. Service errors and poor passing continually plagued the team and the Devils were skunked 15-0.

It was the first time ASU had been shut out since the NCAA South regionals against Stanford in 1981.

ASU head coach Debbie Brown said the call ending the first game probably played a part in the poor second game, but she was not about to lose sleep over it.

"We couldn't get anything going," Brown said. "It seemed like we were dwelling on our mistakes instead of fighting. There was no team effort."

UCLA coach Andy Banachowski felt the key was how well

his team played after losing its service.

"We sided out well," he said. "Obviously we had to, for them to go and score no points."

At that point the Devils could have easily packed it up and gone home. But instead they showed the crowd some team character.

The Devils pounced on UCLA errors and their own blocking and defense helped them close the gap in the match with a 15-5 win.

"Arizona State decided they were going to play," Banachowski said. "We certainly weren't the same team."

But Brown didn't feel her team was overly dominant.

"It was almost a reversal from the second game," she said. "I didn't feel we won the points as much as we relied on their mistakes."

The Bruins would not allow the Devils an opportunity to even the match. They jumped out to a 9-2 lead, and an ASU rally proved to be too little, too late. UCLA turned out the lights with a 15-8 victory.

"Overall, I'm pretty pleased," Banachowski said. "If you throw out the third game, I'd be really happy."

Brown, naturally, was not nearly as pleased.

"I feel we broke down in the two most fundamental areas of the game — passing and serving."

The Devils committed a horrendous 21 serving errors, and had receiving errors to boot.

UCLA's Patty Orozco led both teams with 16 kills. Lisa Stuck led ASU with 15.

But neither girl was her team's most effective hitter. UCLA's Merja Connolly (nine kills, .533 hitting percentage) and the Devils' Valentina Vega (12 kills, .529 percentage) both hit consistently well at the net.

Vega played her toughest volleyball of the season, hitting the floor often trying to salvage balls.

"I had the desire to get to know the floor," she said.

continued page 17



Staff photo by Andy Arenz

Ronda Fletcher, left, and Lisa Stuck combine to block a shot in Saturday's action against Cal State-Fullerton. The Sun Devils ended their four-game losing streak with a 3-0 victory over the Titans. Stuck recorded a game high 14 kills.

COLONIAL CLIPPER
Coupon not necessary.

\$6 WET CUTS for	\$4.50
\$20 PERMS for	\$16.50
\$30 PERMS for	\$25.00
with junior stylist	
\$45 PERMS for	\$35.00
with senior stylist	
Cut, shampoo & blow dry	\$10.50
\$11 WET CUT	\$9.50

Manicures

Sculptured	\$22.50
Fill-ins	\$12.50

We guarantee all work.

743 W. University
(between Mill & Hardy) 968-4006

TERMINAL RENTALS
Decwriters and CRTs

Upper Case \$34
Upper/Lower Case \$40

Limited Supply
Call 966-3105

Computer Terminal Service
Delivery Available

UNIVERSITY GOLF
Executive Golf Course
Night Lighted Golf Driving Range & Pro Shop
Miniature Golf

2 Can Play Goony Golf For The Low Price of 1
with coupon

2200 E. University
Tempe Good through Dec. 31, 1983. 968-3245

SERENDIPITY
An Arts and Crafts Fair

October 18, 19 and 20
West Lawn of the Memorial Union

October 22
Apache Boulevard and College
Open parking adjacent to Fair

On the Campus of
Arizona State University
8:30 a.m. to 4 p.m. each day

Experience the excitement of "Serendipity." A tempting array of wares created by some of the finest Arizona and International Artisans. An opportunity to purchase high quality arts and crafts.

Sponsored by:
MUAB Host & Hostesses

ASU Students, Faculty and Staff We Want Your Input !!!

A long-range and short-range Traffic Circulation and Parking Study is being prepared for the ASU Campus. The Study will address:

- Access to the Campus
- Bus Service
- On-Campus Circulation
- Parking, Etc.

You can give your input on transportation and parking problems and suggested possible solutions in three ways:

1. Call Barb, at ASASU, 965-3161, and she will record your comments.
2. Attend the following meetings on Tuesday, 11 October 1983, in the Pima Room (Room #218) of the Memorial Union:
 - 12:00 - 1:00 p.m. - Faculty and Staff
 - 1:30 - 2:30 p.m. - Students
3. Write your concerns below, clip this coupon and drop in the Campus Mail.

Transportation Problems: _____

Possible Solutions: _____

Other Comments: _____

Grandstaff to take over ASU's third base duties

By Ken Sain
Assistant sports editor

When Bert Martinez finished his tenure with the ASU baseball team at the end of last season, Sun Devil mentor Jim Brock immediately started looking around for a replacement.

The first replacement Brock found was an incoming freshman from San Diego, Eddie Williams. Williams was considered one of the best prospects in the nation, so Brock covered himself by signing Bob Grandstaff, the Junior College Player-of-the-Year in California last year.

Williams was the fourth player taken overall in last June's free agent draft. In the next round, Grandstaff was drafted by the same New York Mets' organization.

After a summer of negotiations, Williams signed with the Mets for more than \$150,000. The Mets turned around and offered Grandstaff a little less than that.

"The biggest reason I didn't go pro was the Mets signed Eddie Williams — a third baseman — for \$150,000 and offered me about \$40,000," Grandstaff said.

"It wasn't so much Eddie Williams that shielded me away from the Mets, as it was the possibility of me advancing a level every year."

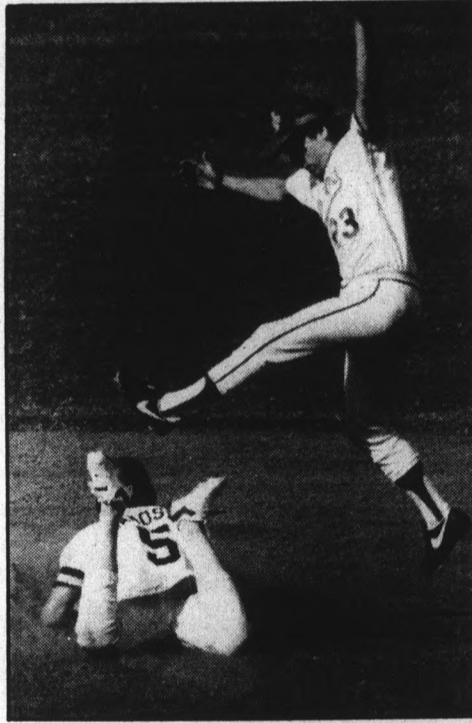
So Grandstaff came to ASU. Simple, right? Not quite.

The Devils did not recruit Grandstaff with the same zeal as some of the other colleges at first.

Grandstaff said he was very close to attending Nebraska to play for the Cornhuskers. The Devils got a late start in recruiting, mainly because of the loss of two assistant coaches during the year — Ben Hines and Jim Frye.

He was also recruited by Cal State-Fullerton, Miami and the U of A. But the tradition of ASU and the opening at third

continued page 16



Staff photo by Bob Miles

Bob Grandstaff slides into second base during the weekend series with the New Mexico Lobos. The Devils will be looking to Grandstaff to start at third base this spring. ASU won three of the four games this weekend against the Lobos and are currently preparing for their rematch with Brigham Young this weekend.

'In my senior year I decided to quit the team. We were having a bad year, and I had a lot of injury problems.'

Brock didn't mind settling for second best. Grandstaff leads the list of top recruits ASU will have playing this spring.

According to Grandstaff, the Mets would have been a good opportunity for him to go pro. A scout assured him of playing in A-league ball his first year.

"I have four close friends in the Mets organization," Grandstaff said. "One guy that I went to school with (Steve Springer) ended up being most valuable player on their A-league team."

But the possibility of roaming around the minor leagues for years without a chance of moving to the majors sent Grandstaff to ASU.

DRIVE CARS FREE

Cars Available
Many Points U.S.A.
We are I.C.C. licensed and insured. Must be 21 years or more.

SCEALL DRIVEAWAY
991-5533

HAPPY HOUR AND AFTERNOON OF JEWISH MUSIC

Tuesday, October 11 • 3:30 p.m.
at Hillel: 1012 S. Mill Ave.

With David Meyer
Musician and Student Rabbi from Hebrew Union College in Los Angeles.



5 DRAFTS
OR
WELL
DOUBLES
always
\$1.25

1/3 & 1/2 lb. Burgers
Chili • Sandwiches • Salads
1/2 lb. Top Sirloin
Complete Dinner — \$7

Stop & say "hi" to
STEVE RUNYAN
now mixing at the bar

Now Open Sundays

Video Games • Pool
Electric Darts
Now Shuffleboard

Bus with us to ASU

Scottsdale Rd. & McDowell
In Papago Plaza
990-2233

LEE'S TAILORING

- Fashion Designing for Ladies
- Custom Suits for Gentlemen
- Alterations

894-1055

Broadway & McClintock
Alpha Beta Shopping Center

Mac TEMPE CENTER JEWELERS

FOR ALL YOUR JEWELRY NEEDS

- Diamonds, Watches
- 14k Chains, Pendants
- Sorority-Fraternity Jewelry
- Watch & Jewelry Repairing

966-7587

Take stock in America.
Buy U.S. Savings Bonds.



ANY HAIR Curls & Waves
\$45 & up

ANY HAIR Curl Retouch
\$30

ANY HAIR Relaxer Perm
\$20

ANY HAIR Press & Curl
\$15

ANY Style Cut
\$7 & up

ANY HAIR Color
\$18 & up

ANY HAIR INC.

225 W. University
Suite 113, Tempe
(1/4 mile west of Mill)
829-8483

Hours: 8 a.m.-9 p.m.

TO: ASASU
208 Memorial Union
Tempe, Arizona
Attention: Barbara Phalen

Your free diamond ring... makes the perfect gift.

For Christmas

This Week!

October 10 thru 14
ASU BOOKSTORE

Deposit required. MasterCard or Visa Accepted.

© 1983, ArtCarved Class Rings, Inc.

Conser paces golfers at LSU tourney

By Jay Taylor
Sports editor

The ASU men's golf team opened its season last weekend with a seventh-place finish in the Louisiana State University Invitational Tournament. The Sun Devils had a three-day total of 872, 25 strokes behind team champion University of Houston.

Barry Conser, an ASU senior, finished second individually in the prestigious tournament with a score of 211, five under par.

Conser shot 71-68 in the first two rounds and entered the final round tied for the lead with Houston's John Slaughter. Conser shot an even-par 72 on the final day, but Slaughter fired a five-under 67 to take the individual crown.

Coach George Boutell said he was fairly pleased with the team's performance.

"The guys played pretty good," Boutell said. "Seventh place certainly isn't devastating, but I was hoping for us to place in the top three."

Boutell said the other teams in the tournament had all played in other tournaments this season, while this was ASU's opener.

He also said the field was very strong, with six or seven of

the top 10 teams in the nation playing. Perennial powers Houston, Florida State, Texas and LSU were some of the teams involved.

The Devils' Jim Carter, last year's NCAA champion, had a shaky performance, with scores of 74-75-77 for a total of 226. That total was 15 shots higher than his score in the same tournament last year. Boutell said he was not concerned with Carter's performance, though.

"Jim was really nervous after winning the NCAA last year," Boutell said. "He felt a lot of pressure. If he had shot what he did last year, we would have finished second in the tournament."

"It's good that he got this out of his system," he added. "The same thing happened to the guy who won the NCAA two years ago. He played terribly all fall, then in the spring he got it back together. Jim just put a lot of pressure on himself, and I'm sure he will play better as the year goes on."

Tom Breitfeller (69-75-71-215) and Don Leisy (74-74-71-219) also turned in good performances, said Boutell.

The team's next action will be Oct. 21-22 at Stanford. Boutell said the tournament is important because NCAA tournament berths are determined by how teams do against other teams in their region.

THE RECORD TRADER

HEAVY METAL IMPORTS  NEW & USED LPs & CASSETTES

WHERE THE PRICES MELT

Posters Buttons 903 S. Rural Tempe
966-5039

Time Warp Game Room

featuring
Dragons Lair • Pole Position

Token Special
8 for \$1 with coupon

903 S. Rural, Tempe 829-1093

Walk-on basketball tryouts set

The ASU basketball team will hold walk-on tryouts on Monday, Oct. 17 from 6 to 8 p.m. in the University Activity Center.

Anyone interested in trying out for the team must report at that time.

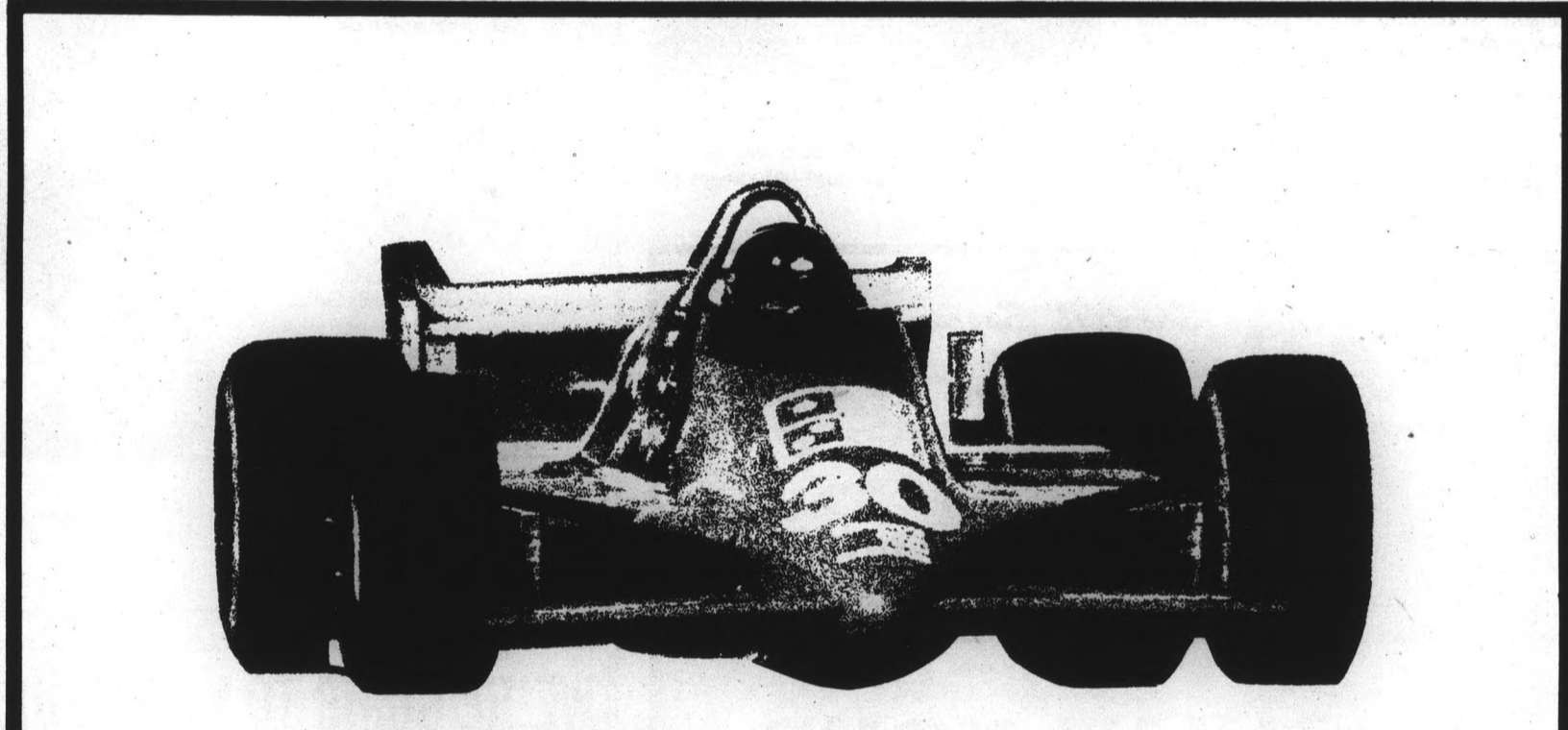
Last year's Sun Devil squad had a 19-14 record overall, with a 12-6 mark in Pac-10 play, good enough to tie for second place in the conference.

The Devils also played in the National Invitational Tournament.

The Devils defeated Cal State-Fullerton in the first round of the NIT before falling in the second round to Texas Christian's Killer Frogs.

The cagers return six lettermen from last year's squad: Jim Deines, Chris Beasley, Warren Everett, Kenny Vaughns, Billy Jordan and Phil McKinney.

All players must have their own equipment, including shoes. For further information, or if there are any questions, contact David Weber at 965-4515.



Be our guest at the Miller High Life 150 Qualifying Time Trials . . . team up with a winner

Domino's Pizza, the front runner in free delivery, is proud to present a world class racing team: The Domino's Pizza Team Shierston. This season our team will be driving the HOT ONE #30 in racing events throughout the PPG Indy Car World Series. The team will swing into action at Phoenix International Raceway on October 29.

We invite you to team up with the Domino's Pizza HOT ONE at the Miller High Life 150 races at Phoenix International Raceway. Receive a coupon good for free general admission to the time trials and practice session Friday, October 28, with purchase of any pizza. One ticket per order. Offer good at participating locations while supplies last. Remember to ask for your ticket when ordering.



Domino's Pizza Delivers™
968-5555
903 S. Rural Rd.

HOURS:
11:00am-1:30am Sun.-Thurs.
11:00am-2:30am Fri. & Sat.

Limited delivery area.
Our Drivers carry less than \$10.

©1983 Dominos Pizza, Inc.



**Take stock in America.
Buy U.S. Savings Bonds.**

BUDGET CAR WASH

Student Special
\$1.00 OFF
Reg. Car Wash Price
with Student I.D.

28 W. University
967-3578

PIANO & ORGAN RENTALS

Allen Piano & Organ Co.

Monthly or Daily
Your Choice of
Color or Style

242-4321 • Phx.
833-2332 • Mesa

\$1.50

\$1.50 OFF any 18" extra large 2 or more item pizza.
One coupon per pizza.
Expires: 11/15/83

Fast, Free Delivery™
968-5555
903 S. Rural Rd.



SP

\$1.00

\$1.00 OFF any 12" medium 2 or more item pizza.
One coupon per pizza.
Expires: 11/15/83

Fast, Free Delivery™
968-5555
903 S. Rural Rd.



SP

More about

Grandstaff

continued from page 14

base brought Grandstaff to Tempe. "Grandstaff was the most sought after JC player on the coast last year," Brock said.

Grandstaff and senior Romy Cucjen seem to be the only infielders to have positions locked up in the starting line-up. Second base was left vacant after Greg Steen used up his last year of eligibility, and Tim McNaughton will have a tough fight to hold on to first base.

Baseball has not always been the No. 1 sport for Grandstaff. During his high school career at Marina High School in Huntington Beach, Cal., Grandstaff was a better football player. It was during his senior year that he decided to change priorities.

"In my senior year I decided to quit the team. We were having a bad year and I had a lot of problems with injuries. It was then that I thought I should concentrate on baseball."

But the pros do not believe in letting prospects get away. As a junior-college transfer, Grandstaff will be eligible for the draft again in June.

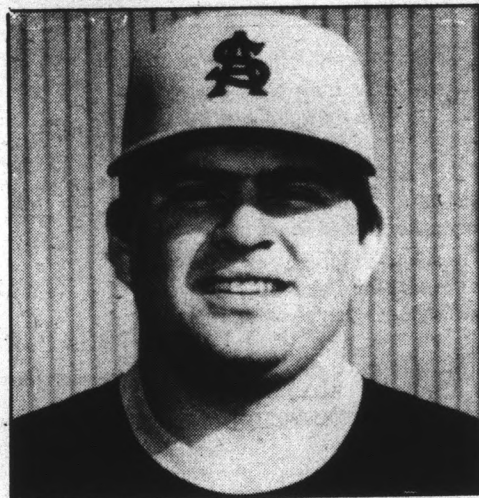
Grandstaff is not sure of what he will do if drafted again.

"It will depend on what type of year I have," he said. "If I have a good year, and if I'm drafted by a team that I feel has a need for third basemen in their organization, then

I'll give it a lot of consideration.

"I enjoyed playing ball in Alaska this summer with (junior catcher Don) Wakamatsu and Oddibe (McDowell, a senior center fielder)."

With Eddie Williams playing ball for the Mets, the Devils will manage quite handily with Grandstaff.



Bert Martinez has left the ASU baseball team for the fortunes of the Texas Rangers minor league system. Bob Grandstaff was recruited to fill the third base slot left vacant by Martinez.

Share lunch with us on Tuesdays at Hillel



11:30 to 1 weekly

ONLY \$1.25
1012 S. Mill

—COUPON—

Supercuts for Guys 'n' Gals

Short 'n' Sassy
FULL SERVICE SALON

HAIRCUT \$7.50
With Shampoo & Conditioner

PERM \$30.00
(style & cut) (Reg. \$40)



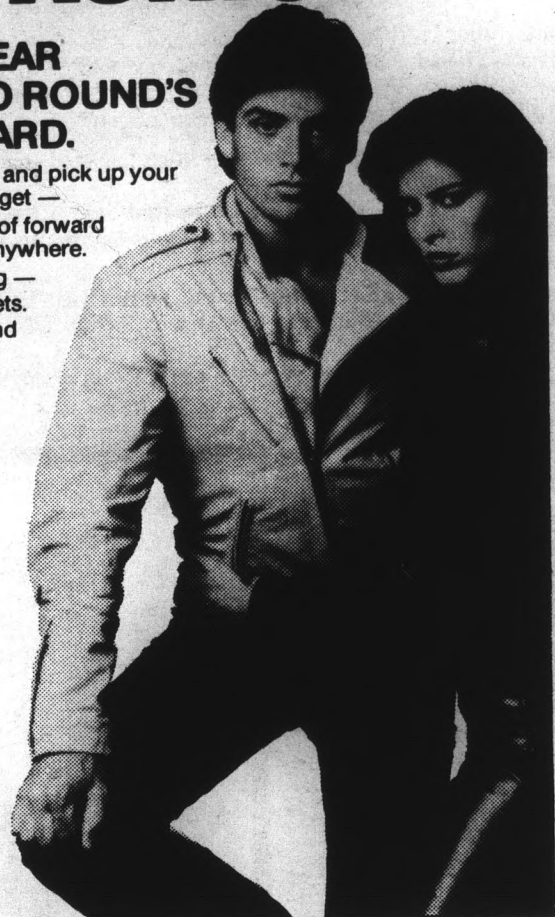
1460 N. Scottsdale Rd. **994-1801**
Tempe

GET A 4.0 IN FASHION

SAVE 10% ALL YEAR WITH MERRY GO ROUND'S STUDENT I.D. CARD.

Cruise into Merry Go Round and pick up your FREE Student I.D. Card and get —

- 10% off the largest selection of forward fashions for guys and gals anywhere.
- 10% off all clothing, including —
- Hot leather pants and jackets.
- High fashion shirts, tops and sweatshirts.
- Parachute pants, dress slacks and designer jeans.
- Fashion Accessories — ties, belts and hats.



Chris-Town Mall • Metrocenter Mall

SHOW US YOUR STUDENT I.D. YOU'LL GET A DINNER FREE!

This year we're doing it again! Every Sunday (but ONLY on Sunday), Mike Pulos of the Spaghetti Company will give you one FREE dinner* for each dinner you order! It's our 2 for 1 SUNDAY STUDENT SPECIAL. And it's good for the whole school year at both our Tempe and Phoenix locations.

Any day of the week, for lunch or dinner, The Spaghetti Company is known for a great meal at an affordable price. But the SUNDAY STUDENT SPECIAL

makes our already terrific prices **even better!** Our dinners include a full course meal with all the trimmings—from salad to dessert. So, dollar for dollar, when you're hungry and you need a break, you can't beat The Spaghetti Company! **ESPECIALLY ON SUNDAYS!** With 2 dinners for the price of 1! But you **MUST** have your student I.D. card with you to take advantage of this offer.



OPEN AT 12:00 ON SUNDAYS!

The Spaghetti Company
RESTAURANT

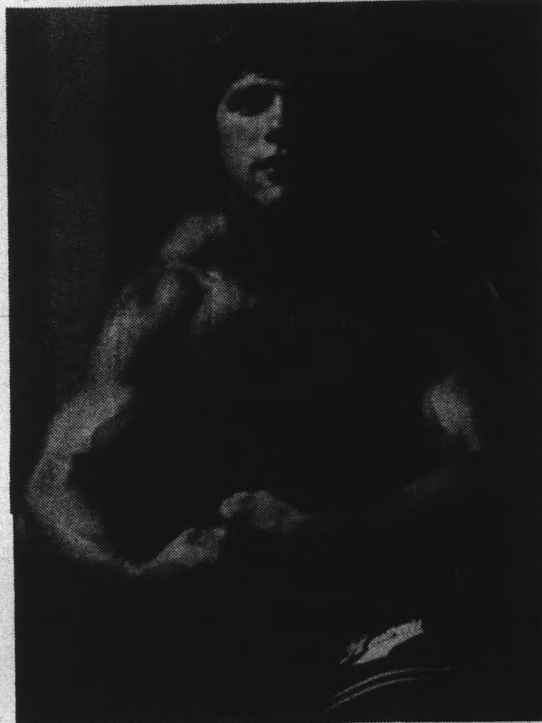
PHOENIX
South on Central
Just Past McDowell
257-0380

TEMPE
4th Street and Mill
966-3848

*Tenderloin dinner is excluded.

WE'RE GOING TO KICK YOUR "BUTS" . . .

And we'll prove how we can!



- BUT #1**
But I don't have enough time.
REBUT #1
We are open 90 hrs./wk. It takes only 1½ hours per week to work out and feel great.
- BUT #2**
But I'm too tired.
REBUT #2
No wonder you're out of shape.
- BUT #3**
But I don't have enough money to join.
REBUT #3
Well, if you act now . . .

LAST CHANCE SPECIAL \$40
(10/1/83 - 12/31/83)

So if **BIG BUTS** made you miss us before — now is the time to act before you get too much behind . . .



Sun Devil

NAUTILUS • AEROBICS

933 East University
Tempe, Arizona 85281
968-9487

Pick 'em

Due to the extra amount of time required to grade all the Pick 'em entries each week, the results to this weekly contest will be announced on Wednesday from this point on.

Consequently, no results are listed for last week's contest in today's paper. Look for the results in tomorrow's edition.

Enough about last week; it's time to think about this week's contest. Again this week, there are 14 games in which to choose the winner.

This week's tie-breaker matches the ASU Sun Devils against the Southern Cal Trojans. ASU will take a 3-0-1 record into Los Angeles against the Trojans' 2-2-1 mark.

First place will lay claim to a \$10 gift certificate to the Bare Cover clothing store and two "Shipwreck" banana splits from Yogurt Oasis.

Second prize takes home a large pizza from Pizza Hut restaurant.

Third prize is a Budweiser goody bag courtesy of Hensley and Co.

All entries must be turned in by 5 p.m. Friday at the State Press office, located in the basement of the Matthews Center.

ASU _____ vs. USC _____
Predict the score.

Home team in caps:

- | | |
|--|--|
| Favorite | Underdog |
| COLLEGE | |
| <input type="checkbox"/> ARIZONA | 14½ <input type="checkbox"/> Oregon |
| <input type="checkbox"/> UCLA | 8½ <input type="checkbox"/> WASHINGTON ST. |
| <input type="checkbox"/> WASHINGTON | 15½ <input type="checkbox"/> Stanford |
| <input type="checkbox"/> CALIFORNIA | 9½ <input type="checkbox"/> Oregon State |
| <input type="checkbox"/> Ohio State | 1½ <input type="checkbox"/> ILLINOIS |
| <input type="checkbox"/> Texas | 12½ <input type="checkbox"/> ARKANSAS |
| <input type="checkbox"/> ALABAMA | 4½ <input type="checkbox"/> Tennessee |
| PRO GAMES | |
| <input type="checkbox"/> N.Y. JETS | 3½ <input type="checkbox"/> Miami |
| <input type="checkbox"/> Buffalo | 2½ <input type="checkbox"/> BALTIMORE |
| <input type="checkbox"/> SAN FRANCISCO | 6½ <input type="checkbox"/> New Orleans |
| <input type="checkbox"/> PITTSBURGH | 5½ <input type="checkbox"/> Cleveland |
| <input type="checkbox"/> Washington | 5½ <input type="checkbox"/> GREEN BAY |
| <input type="checkbox"/> L.A. Raiders | 3½ <input type="checkbox"/> SEATTLE |
| <input type="checkbox"/> L.A. RAMS | 4½ <input type="checkbox"/> Atlanta |

Name _____

Phone _____

More about Split

continued from page 13

The Devils finally got a breather Saturday night and ended their four-game losing skid. All four losses had come at the hands of teams ranked from third to seventh nationally.

Cal State-Fullerton, the hapless victim in the match, was obviously outclassed from the start.

The Titans jumped out to a 6-2 lead in the first game, but the score was tied when Fullerton reached eight points. The teams battled evenly until 11-up, then ASU took control.

The Devils scored 12 consecutive points to win the first game 15-11 and gain an 8-0 lead in the second. Fullerton mounted a temporary rally to 8-6, but once again ASU pulled away, winning game two 15-9.

The final game was never in doubt as ASU completed its sweep with a 15-6 win.

ASU big guns at the net were at it again Saturday. Stuck recorded 14 kills, with Tammy Webb adding eight and Vega six.

Stuck overwhelmed the Titans with her thunderous hits. Any good set in her area was good for a point or side out.

Stuck said improved passing helped the Devils to victory.

"When the passes are good, the sets are good, and when the sets are good, the hits just seem to go down," she said.

Brown agreed with Stuck's assessment. "When the passing is there, (setter) Heather (Forbes) can do more things (with the ball)."

"They played fairly well," Brown said.

PIZZAS
Thick or Thin
Paparazzi's
DINE IN OR TAKE OUT
NEW YORK STYLE
14" CHEESE
\$3.25
Each Additional Item 75¢
WE DELIVER
DANELLE PLAZA
967-0843
With coupon. Good thru 10-14-83.

75¢ OFF each BANANA SPLIT
Limit 4 per coupon.
Good through 10-24-83.



Your choice of toppings and ice cream flavors with all the trimmings.
915 E. Broadway
(Lucky Center)
Tempe • 966-8950

SOUTHWEST INTERNATIONAL PARTS

WHOLESALE VOLKSWAGEN AND JAPANESE REPLACEMENT PARTS

549 South 48th Street #101, Tempe, AZ 85281
OPEN MONDAY THRU FRIDAY 8 AM-5 PM
"We are a Wholesale Distributor for VW and Japanese Replacement Parts. Large Inventory To Meet All Your Needs."
CALL TOLL FREE (800) 221-2268
IN ARIZONA CALL (602) 829-9133

Just Arrived

New Line of Bicycles



takara *i love it.*

Come In and Check Them Out

Tempe Bicycle Shop

The Old Gas Station On The Corner Of 6th & Mill
966-6896

TIMEOUT LOUNGE



FREE POOL 11 a.m.-2 p.m. Sun.-Fri.
Jack Daniels Night
Monday 7-10 p.m. \$1
3129 S. Mill 967-9781
Tempe (N.E. Corner of Mill & Southern)

INTRODUCTORY OFFER
HAIRCUTS \$6.00 PERMS \$22.50
HENNAS \$12.50



C.C. Cutters & Co.
Hair styles for young men & women.
1036 S. Terrace
(Corner of Lemon & Terrace)
Tempe • 968-6685

We Copy Resumes
HIGH QUALITY COPIES

COPIES 4¢

SELF SERVE COPIES
4½¢ FULL SERVICE COPIES

New ASU Location!

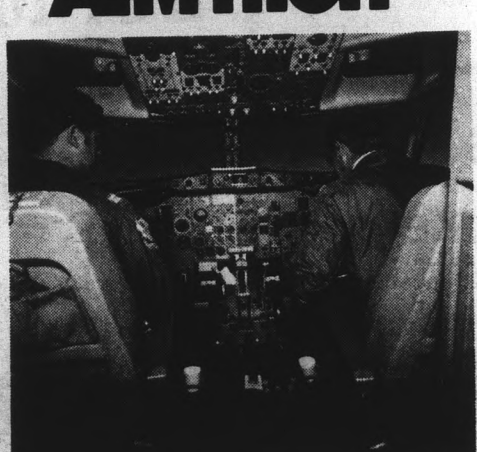
kinko's copies

University and Forest
894-9588 Hours: M-F 7 a.m.-8 p.m.
Sat. 9 a.m.-6 p.m.
Sun. 10 a.m.-6 p.m.

and at our Mesa store
1840 W. Southern
969-3326

We bind term papers.
Professors — Ask about Professor Publishing Service.

AIM HIGH



Want more than a desk job?

Looking for an exciting and challenging career? Where each day is different? Many Air Force people have such a career as pilots and navigators. Maybe you can join them. Find out if you qualify. See an Air Force recruiter today.

SSGT Kathy O'Mahony
2020 S. Mill Ave., Suite 115
Tempe, AZ 85282
Call 261-3740

AIR FORCE
A great way of life.

Elway's performance hasn't merited Broncos' investment

Dean Obenauer
Sports Writer

Once upon a time there was a fantastic college football player.

He was a Heisman Trophy candidate who was respected and admired by all who saw him perform.

He got ink in every sports page in the country every time he dropped back to pass.

Then one day he graduated from his university and was drafted by a team in the National Football League.

He commanded a large salary upon his college credentials and helped his team sell season tickets more quickly than ever.

The fans couldn't wait to see the boy wonder.

But the player — due to pressure, strain and intense competition — never made it in the NFL.

The following could be about any number of college stars who suit up for NFL teams every year.

There used to be a time when rookies were rookies and veterans were veterans.

Nowadays it seems that those who are successful in college football come into the pro ranks with big wallets, big heads and big cars.

And the veterans, who lived through the years of no free agency with extreme dedication, are repaid with operation scars.

Now the veterans are paid well, but they didn't just dance into the league on a red carpet.

Enter John Elway.
Elway is the epitome of the modern-day athlete.

He's a franchise player, so give him a franchise.

He was one of the finest college quarterbacks ever.

But does that make him the next Joe Namath?

He was an exceptional athlete on the baseball field and even played one summer for a New York Yankees farm club.

He had it all — including a lawyer.

The Baltimore Colts won rights to him by losing, but he didn't care.

Elway simply said "No way," and the phrase hit all the presses in the country. Elway said it was too cold in Baltimore and he did not want to live in snow.

But the way he has played this year, the heaters on the bench would have kept him nice and cozy during those blizzards in Baltimore.

What is most upsetting is that he demanded the Colts bend for him. He didn't just imply it, he went to the press and screamed it at the top of his lungs.

The citizens of Baltimore were in an uproar. They could hardly believe that Elway had the audacity to publicly slam their city.

I'm from the southwest and have no intention of moving any farther east than Rural Road, but a person must have some tact when going on the record nationally.

It looked as though he would go to the Yankees.

Even Colt back-up Art Schlichter bet that he would be suiting up in pinstripes, not a football helmet.

So the Colts and Bob Irsay traded the wonder boy away to the Denver Broncos. Everybody knows that it doesn't snow in Denver.

He signed a series of five one-year contracts for approximately \$1 million per year for a total of five million bucks.

He got his money and he got his name in the paper, but what has he given the fans that pay his salary?

Veteran quarterback Terry Bradshaw, who has won more Super Bowls than any other quarterback in the history of the game, said last year that he didn't feel he could ever demand what Elway did, even after Bradshaw's accomplishments.

He said he didn't always enjoy the snow in Pennsylvania, but it was his job to play there. He said that is the price you pay to play in the NFL.

But it wasn't the snow that Elway was shy of. It was the 0-8-1 record that the "Dolts" played to last season.

The fact is that Elway was bluffing. He and his lawyer, Marvin Demoff, knew that he was going to play football.

Even George Steinbrenner wouldn't have paid Elway more than \$70,000 to play the outfield. His stock was in football, not baseball.

So this football season he found himself being pursued by some pretty large unamused defensive ends, all trying to rip his head off for a den trophy.

Again and again Elway was intimidated, as his statistics show.

Through the end of September, he completed 34 of 73 tries for 384 yards and one touchdown. He also hurled four interceptions and sported a 46.6 completion percentage.

In his first two games he was replaced by back-up Steve DeBerg because he could not move the offense, let alone put any points on the board.

DeBerg came off the bench to carry the team to victory both times.

Elway then started and played the next two games until the final gun. Both resulted in losses for the Broncos.

DeBerg started last Sunday and led the Broncos to another win, raising their record to 3-3.

After Sunday's game DeBerg was 59 for 91 with five touchdowns and three interceptions.

Ironically, the Colts are in the penthouse for the first time in a couple of years. Their 4-2 record sits atop the AFC East, tied with the Buffalo Bills.

The way former ASU standout Mike Pagel is playing, there is some doubt the handsome Elway could be the signal caller in Baltimore anyway.

Bradshaw, in his first three seasons with the Steelers, compiled a pass-completion percentage of only 38 percent after being one of the most highly recruited quarterbacks in NFL history.

I'm not saying that Elway will not be a fine quarterback in the future, but right now he is ineffective and hardly worth the money he is paid.

small-group tutoring

- Quality instruction
- Low rates
- Group & private tutoring available

838-1871

\$2.00 off one session per person with ad

ATTENTION SKIERS

Are You Interested In Becoming A **SKI INSTRUCTOR**

If so, join us at the **DOUBLETREE INN** (Fashion Square), 4710 N. Scottsdale Rd., Banyon Rm. **October 12 • 7:30 p.m.**

NO PRIOR TEACHING EXPERIENCE IS NECESSARY.

On-the-snow training clinics will consist of two weekends **October 29 & 30 • November 5 & 6**

P.O. Box 217, McNary, AZ 85930 • 1-800-772-SNOW
OWNED & OPERATED BY WHITE MOUNTAIN APACHE TRIBE

HEY ASU STUDENTS

Jim's Auto Supply

30% average discount on all parts and accessories, except tools and special priced items.

HOURS: 8-7 Daily (Mon.-Fri.); 8-5 Sat.

Hayden & University
1828 E. UNIVERSITY Next to Minder Binder's **968-5888**

U.S. INSTITUTE OF BARTENDING

COMPLETE BARTENDING COURSE

Your ticket to steady work, meeting people, and making money!

Now at two convenient locations:

TEMPE: 1537 E. Apache 894-6565

PHOENIX: 2740 W. Peoria 863-4845

Helps You Shake Those Minimum Wage Blues! Call Us Today.

- Wine tasting instruction
- Learn 130 different drinks
- Cash register operation
- Stocking & inventory of liquor
- Customer service training
- Placement assistance

ST. MICHAEL'S ALLEY

All Import Beers

85¢

All The Time

112 E. UNIVERSITY DR. TEMPE **894-1321**

Open 11 a.m. to 11 p.m. Daily

NOW OPEN

Joh-REE Services

Word Processing
Letters
Reports
Term Papers
Accurate Typing
Reasonable Rates

2 Blocks West of Mill & University
225 W. University Suite 111
966-4786

Video Odyssey

50 TOKENS FOR \$5

7027 E. Camelback Rd.
Across from Camelback Mall Cinema
990-2248

COUPON

COMPUSHARE

"Teaching People To Use Personal Computers"

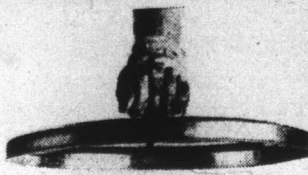
\$29 Student Annual Membership Fee includes instruction and first two hours computer time free. Then, time-sharing by the hour. Apple, IBM, TI, TRS-80, Xerox, Fortune. All with printers.

Mon.-Fri. 10 to 9, Sat. 10 to 6

Metro Center 2851 W. Peoria 943-2938	Poca Fiesta-Mesa 1110 W. Southern 898-0610	Paradise Valley 4625 E. Cactus Rd. 953-1884
---	---	--

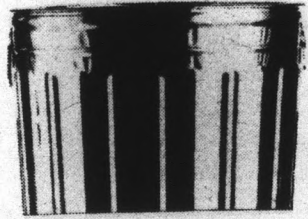
classifieds

The STATE PRESS disclaims all responsibility for quality and prices of goods and services offered in both classified and display advertising by its advertisers.



**Oct. 22
Put a lid on
litter.**

A lot of people in Arizona just throw their litter wherever they want. A little here, a little there. It all adds up. And pretty soon, Arizona won't be so pretty. That's why on October 22, everyone is asked to pick up their litter. With all of our trash, it's our turn to clean up. Arizona has a national clean-up day.



**CLASSIFIEDS
START
HERE**

Announcements

DAVID MEYER, office of Admissions, Hebrew Union College, Western Campus, will be visiting on Tuesday, October 11 to meet with those interested in careers as Rabbis, Cantors, Jewish Communal workers, and Jewish Educators. For more information or to make an appointment, call Betty Blitz at 987-7563.

GAYS, LESBIANS, all are welcome-Oasis Metropolitan Community Church. Sundays 8:00 p.m.- Danforth Chapel.

GOLDEN KEY Honor Society, important general meeting, please attend! Tuesday October 11, M.U. Cochise room, 3:00.

HANG GLIDE this weekend! Certified instruction, equipment plus five flights for only \$45, complete. Group rates and gift certificates available. Windsports, 897-7121 (daily 10:00-6:00).

PARENTS COMING to visit and need a nice place to stay? Try Bed and Breakfast. 990-0682.

SINGLE PARENT families. Group starting at Tri City Jewish Community Center, Wednesday, October 12, 7:30 p.m. Designed around issues of support, socials and family activities. 897-0588.

"THE CONGREGATIONAL Church of the Valley is meeting for Sunday worship at 9:30 a.m., at the Cook Christian Training School on University, west of Priest. You are invited."

Automobiles

1974 PINTO station wagon. 4-speed, AC, reliable. \$500.00. 899-1954.

1977 CJ7 Jeep. Power steering, AM-FM cassette stereo, excellent condition. \$4,500. Call evenings, 997-8877.

Automobiles

1978 CAMERO excellent condition. AM-FM cassette, air, cruise. \$4,095 or best offer. 820-8553.

1980 MONTE Carlo. Perfect, maroon, removable roof! Loaded. Wire wheels, sporty! Best offer. Claudia, 963-9476.

\$225 DOWN Chevys, Fords, Vans, economy cars. Best running cars and lowest prices around. Many cars priced under \$1,000. We finance. LJs' Auto Sales, 156 East Main, 962-1333.

V.W. BUS, 1968, rebuilt engine, new upholstery, must sell, good deal. AM-FM cassette. \$1200. 968-6155.

Bicycles

SPECIAL LOW student prices on new and used bicycles. Expert repairs on all makes at discount prices. Tempe Bicycle Shop, 6th and Mill. 966-6896.

Books

DO-IT DATEBOOK. \$9.95 ASU book store, student book center.

Business Opp.

MAKE EXTRA cash, sell a safety product. Contact Arcos Research, Tempe. 966-2639.

NEED MONEY? Can't fit a job into class schedule? May have what you're looking for. Call Mike, 965-2316 days, 252-2775 evenings.

For Rent or Lease

NEAR ASU. Two bedroom, two bath condo. Washer and dryer, dishwasher and pool, very clean. Call after 6:00. 899-2215.

REMODELING SPECIAL \$100 off. Small, comfortable two bedroom 4-plex. \$310.00 per month. 833-0327.

TOWNHOUSE FOR rent: \$400 month, three bedrooms, one bathroom, air-conditioning and community pool. Call 897-1129.

WALK TO ASU. Brand new one bedroom condominiums with mini blinds, stove, dishwasher, disposal, washer and dryer, pool, jacuzzi. \$325. Joanne, Computer Realty, 894-2931, 831-1031.

For Sale

COLLEGE SWEATSHIRTS! Harvard (grey)- Yale (white)- Princeton (navy)- Dartmouth (kelly)- North Carolina (lt. blue)- USC (white)- others. \$12.50 each postpaid. S- M- L- XL. Send check to LMG, Box 317, Brookhaven, MS 39601. COD orders call 1-601-835-1085.

HERPES! THIS Herpes brochure by a physician is a must for the sexually active. How to avoid, detect and treat. Send \$4.00 to Antler Publishing, Box 43394 Tucson, AZ 85733.

IT'S MAGIC! Musical greeting cards for birthday and Christmas. Open them up and a tune plays. \$3.00 each. Robert Galvin Company, 4051 Higel, Box 15695, Department SP, Sarasota, Florida 33579.

For Sale

OLD MILWAUKEE \$1.79, California coolers \$2.99, Fratelli Blanco \$2.89, used Playboy magazines .47. Cold imported beers, ice, wines, liquors. Rundle's, corner University and Mill.

SANYO COMPACT stereo system includes cassette, turntable, speakers, AM-FM stereo. \$150.00. 893-1894.

SIAMESE KITTEN for sale \$20.00. Female two months old. Call Cherril, 965-8608 after 6:00 p.m.

THE NEW York Times is available at a 30% discount Monday thru Friday. Sunday edition available for \$2.50. Call 965-9932.

STEREO

BRAND NEW, never been used. In unopened original individual cartons. AM/FM stereo receiver, cassette deck plays and records, turntable, speakers. Full original guarantee. Cost \$400, sacrifice \$140. Usually home. **CALL 954-9541.**

10/14

Help Wanted

ACTIVISTS WANTED: Feminists, Environmentalists and others. Full time paid staff positions fighting the injustices of Reaganomics. Call ACORN between 9:00 a.m. and noon. For interview, 253-1297.

ATTENTION HAVE you ever thought about being in Playboy magazine? If you are 18-22, attractive, possess good personality and interested in making 13K-15K call Brian, evenings. 963-8494.

BREAK AWAY big for the holidays. Represent the worlds largest beauty company. Call Jane, 966-9327.

DELIVERY DRIVER part-time, three hours per day, Monday-Friday. Own car, Arizona drivers license plus insurance. Call 287-7542.

DRIVERS FOR ice-cream vending trucks. High earnings. Call between 9:00 and 12:00 a.m. 253-6288.

GOURMET DININGROOM seeking responsible individuals. Experienced only. Waiters, broiler cooks, sautee cooks, waitresses, cocktail waitresses, bartenders. The Grand Hotel, 201 W. Apache Trail, Apache Junction, 85220.

MUSICIAN NEEDED for Baptist Church. Call 268-9614 for more information.

OPINION POLLS friendly person who enjoys phone work. Experienced preferred. 274-6200, Melody, evenings and Sundays.

OVERSEAS JOBS- Summer- year round. Europe, South America, Australia, Asia, All fields. \$500-1200 monthly. Sightseeing. Free information. Write J/C Box 52-AZ-3 Corona Del Mar, CA 92625.

PART-TIME HELP needed working conventions and meetings. \$5.00 per hour to start. Flexible hours. 265-9909.

Help Wanted

PART-TIME LIBRARY clerk and general office assistant needed for Central Phoenix law office. Including errands, xeroxing, filing, and special projects. \$4.40 an hour, start. 264-4442.

PART-TIME sales help needed. Apply in person at The House of Candles, 7126 Fifth Ave. Scottsdale. 9:00-5:30.

GIRLS, GIRLS I have a few openings left, part-time and full time. Phone, light paper work. Nice office surroundings. Apply at Unifam, 4415 S. Rural, Fairlanes Village after 10:00 a.m. No phone calls.

WRITER- PASTE-UP- layout artist for a company news letter. Close to ASU. \$7 to \$8 an hour. For interviews apply at 3116 South Roosevelt, Tempe.

Jewelry

14K GOLD jewelry 50-75% off retail prices! Chains, earrings, rings, diamonds. Going out of business sale! Joseph Ford Gold Exchange, 968-8637.

Lost & Found

PASSPORT LOST between October 30, 1982 and November 1, 1982, at M.U. Saled Afkary, 820-8548.

Motorcycles

1979 KAWASAKI KZ400. Great condition, completely tuned and serviced on September 16, 1983. Asking \$650. Contact Graham 277-9350, weekdays only 8:30 to 4:30.

1981 YAMAHA XJ550H Max. Excellent condition, 4,000 miles, burgundy, adjustable back rest, many extras. Must sell. \$1,800, OBO. 991-2571.

SUZUKI GS450L, 1982 bought new in 83, low miles, warranty remaining, \$1150. 953-9167.

Personal

A FANTASTIC variety of earrings at the Hob-Nob Thrift Shop, 221 W. University, 968-7114.

AMANDA, MOM hopes you had a Happy Birthday! We'll go celebrate soon Pi Phi love and mine, Trecla.

ATTENTION THRIFT shoppers: Have you taken advantage of the great prices at the new thrift shop in town? The Hob-Nob, 221 W. University, 968-7114.

GRETA, SUNSHINE Woman- keep smiling! Thanks for all the goodies. I really appreciate it. Love ya, Carrot Woman.

HEY GUYS! Hawaiians, sweaters, jackets, bermudas, button downs, all waiting to be taken advantage of at the Hob-Nob Thrift Shop, 221 W. University, 968-7114.

MIKE NICHOLS, Pi Kappa Alpha big bro, get psyched for a great year. Surprise me! You're the bestest. Love and oatmeal cookies, Ill sis, Cath.

MISS MUFFETT- Thanks for being so understanding and helpful. I love you lots, Charlie Brown.

Help Wanted

MAKE \$10-\$30 HOURLY. FULL- OR PART-TIME.

Doing surveys, servicing displays and selling memberships for health spas. Easy, profitable and fun.

ALSO POSITIONS OPEN FOR:
AEROBIC INSTRUCTORS — PHOTO MODELS,
SPA ATTENDANTS AND OFFICE WORK.

East Phoenix: 956-2200
Tempe: 894-1263

An equal opportunity employer. 10/14

HELP WANTED — PART-TIME

National Marketing Company has openings for sales-minded people interested in part-time employment. Openings are available on the evening and weekend shifts. Our sales people work in a modern, comfortable business environment contacting established customers on long distance WATS lines. Earnings, which include salary and bonus, average \$4-\$6 per hour, paid weekly. These are permanent positions with no seasonal layoffs. If you have a good, clear speaking voice, proper grooming for a business office, enthusiasm and competitive spirit, our experienced management team will train you to sell our nationally recognized products (while being paid, of course). Our Tempe office is located approximately five minutes from campus.

Please call DIALAMERICA for details. 829-1140 10/14

Personal

NICOLE, THANKS for listening. I really needed to tell somebody. Alpha Chi love, your ill' sis.

Pets

CUTE, LOVABLE Shepard- mix puppies. Free to good homes. Call 894-8331. Must leave soon. Moving.

Real Estate

ABOVE THE Salt in south Scottsdale area. Two fine three bedroom homes or two bedroom patio homes available in the 50's. Red Carpet Weary. 968-3414.

BIKE TO ASU. Near new three bedroom home only \$52,500. Low down assumable FHA loan. Ideal student investment. Owner/agent, 968-3261.

BRAND NEW deluxe condominiums. Close to ASU. Fully appliance including washer and dryer. Excellent investment. Financing begins at 8%. Pool, jacuzzi. \$41,900. Computer Realty. Joanne, 894-2931, 831-1031.

HOUSE, TOWNHOUSES, foreclosures. Why rent? Invest. For information call, Gloria Topper 948-2825, John Hall and Associates, 948-0550.

REDUCED \$1100 and very anxious to sell this sharp two bedroom patio home near ASU. Quick possession possible, \$56,900. Ray, 838-2631 evenings. Red Carpet Carolyn Weary 968-3414.

QUICK POSSESSION possible. Neat three bedroom home with fireplace and large fenced yard. Bike to ASU. \$48,900. Chris, 838-2646 evenings. Red Carpet Carolyn Weary, 968-3414.

THREE BEDROOM, two bath patio home with large yard, refrigerator, washer, dryer. Very low down, 50's. Red Carpet Weary. 968-3414.

Roommate Wanted

MALE OR female, non-smoker. Four bedroom house with pool. \$130 a month plus 1/4 utilities. Area; Baseline and McClintock. Call, 820-3316 or 269-3101, ask for Clay.

WALK TO ASU. Seeking roommates, share large four bedroom house, very private, washer, dryer, squeaky clean bathrooms. John 962-0759 between 7:00 and 2:30.

Services

ALPHA RESUME. Full services discount with ad. 1000 E. Apache, Suite 105, Tempe. 967-7247.

AUTO AND life insurance at low competitive rates, student discounts available. Call Steve Dabbs. 966-3494.

CUSTOM SEWING, alterations, hems and mending. Fast and reasonable service. Jean, 234-3106.

INDIVIDUAL TUTOR for Algebra. Three years experience, certified teacher. \$10 an hour. 894-8114.

LOSE 15 to 20 pounds in a couple of weeks. No calories to count. Physician approved nutritional plan. Free counseling. Ms. Tait, R.N. Call Monday-Friday, 9:00-12:00 noon. 897-0599.

SPANISH TUTORING in my home. All levels. Also translations done and term papers edited. 963-5116.

TIRED OF being ripped off on auto repair? Guaranteed, expert work done by professionals. ASU area. Dennis, 820-0094.

Travel

AIRLINE COUPONS roundtrip. Hawaii, \$199. Eastcoast \$250. Alaska, \$350. Travel expires November 22. Thanksgiving slightly more. 829-8551.

DRIVE CARS free to most points of the United States, over 21. Scheall Driveaway, 991-5533.

FREE CARS available for all major cities. Call us now, AAACon Auto Transport. 264-0201.

N.Y. \$288, cheap limited roundtrip Christmas fares to all major cities. Holiday Travel, Jim, 948-0990.

Typing

\$1.50/PAGE. 10% cash discount, rush service available, technical symbols. 8:30-4:30, Monday-Friday, 1 mile from campus. Business Office Services, 894-1517.

A-PLUS Typing. Term Papers, Resumes, securities and finance papers a specialty. Papers completed on Electronic memorywriter. Call Judy 839-0401.

Typing

A-1 PROFICIENT typist IBM Selectric, Loraine 833-8365, University and Dobson in Mesa.

A-1 PROFICIENT typist, IBM Selectric. Pam, 969-2098.

A-1 RESUMES, repetitive cover letters, research papers, theses. Fast, accurate, professional. When quality counts, call Cyndy, 968-3627.

AAAAH. FORMER secretary desires all types of typing. Location Southern and Rural. Fran, 838-8027.

AAA TYPING, editing, resumes, papers, letters. Twenty years experience. Scottsdale- Tempe. 945-7430, Barbara Andersen.

ACADEMIC TYPING. Will edit spelling, punctuation, grammar. Fast return and accuracy guaranteed. Joan 839-0772.

ACCURATE, FAST, experienced typist. IBM Selectric \$1.25 per page. Dissertations, theses, legal briefs, APA format, our specialty. Call Sharon 833-5687 or Teresa 962-0079.

ACCURATE AND reliable. Will edit spelling and punctuation. \$1.20 page. Call Debbie, 894-1478.

ACCURATE TYPING, term papers, theses, resumes, etc. Smith Corona typewriter, \$1.00 per page. Narci 966-4256.

ACCURATE TYPING all kinds, reasonable rates, excellent service. Agnes Lindstrom 838-5656.

ALL SECRETARIAL services. Quality typing, fast, accurate. Resumes. Cover letters. Cassette transcription. IBM Electronic. 20 years experience. McKellips- Scottsdale roads. Dana. 941-5111.

ALL TYPING done fast and accurate. .90 a page. Word processing available. Close to ASU. Call Carin or Bobbi 968-9166.

ALWAYS DEPENDABLE, typing editing, term papers, books, dissertations, resumes. Excellent skills. Shirley's Typing Service 838-5099.

APA FORMAT, theses, dissertations, legal briefs, market research. 15 years experience. IBM Selectric. Janet, 834-0893.

ALL PAPERS typed to your complete satisfaction. IBM Selectric. Near ASU. Reasonable. Mrs. Oakley, 967-8002.

CORRECTING TYPEWRITER. 30 years experience: legal, medical, electronics, construction, performing arts, education, computer. Graduate and instructor also. Leah, 962-1059.

EXPERIENCED TYPIST. Fast, professional work. IBM Selectric. \$1.20 per page. Sheri, 967-3747 evenings.

FAST, ACCURATE typing, \$1.25/page. Call Teresa at 962-0079 or Linda at 969-5775, elite typing available.

NEED TYPING done at \$1.25 per page? Call Susan at 833-0373.

QUICK QUALITY, accurate typing. Three blocks from campus. Electronic memory writer. Experienced in all phases of typing. Also charts, graphs, typesetting, professionally done, reasonable rates. Tempe location. Call 24 hours. New Moon Secretarial. 894-5234, 941-7099.

STATE OF- the art word processing for your papers. Quality guaranteed, reasonable prices. 990-1556 evenings.

TYPING \$1.75 per page, editing extra. Carolyn, 838-0959.

TYPING. NEAT, fast, rush jobs accepted. \$1.75 per page. 838-0980, Lori.

\$1.40/PAGE. TYPING, term papers, thesis all types. North Central Phoenix. Why Worry Secretarial Service, 943-3552, 943-3149.

VERY ACCURATE, neat, technical, term papers, resumes. \$1.25 page, cover sheets free. Call Michele evenings, 247-8211.

WORD PROCESSING. Knowledge of APA and Turabian reference styles \$1 double spaced page. Accurate. 263-5776.

WORD PROCESSING for college theses, reports, and resumes in Paradise Valley area. 996-2780.

Wanted

NEED MONEY? Paying top dollar for gold jewelry, diamonds, class rings, pocket watches, and silver coins. Free in home estimates. Call anytime, Joe 968-8637.

PAYING CASH for gold, silver, diamonds, class rings. Mill Avenue Jewelers, 414 S. Mill. 968-5967.

WANTED: FOOTBALL tickets to ASU UofA game. Will pay top dollar. Please call, 252-3417.

X HOPSTICKS BUFFET

Oriental Buffet

featuring
Cantonese & Traditional Chinese Food

LUNCH

\$3.35

all you can eat

DINNER

\$3.95

all you can eat

Special Orders & Take Out Avail.
12 different kinds of Chinese food to choose from

Chopsticks Restaurant

1324 S. Rural (across from Holiday Inn)

968-2636
Open 11am-9pm
EVERYDAY
968-2525

A MESSAGE TO THE MOST IMPORTANT PERSON WE KNOW...

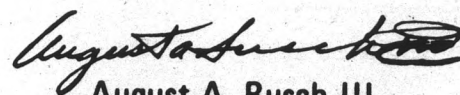
THE BEER DRINKER.

At Anheuser-Busch, brewing is an art. No one takes more time or goes to more effort or expense than we do in brewing the most popular family of beers in the world.

We take great pride in this distinction, yet this distinction carries with it certain responsibilities.

Beer is a beverage to be enjoyed by adults socially—with family and friends at home...in your clubs, restaurants and at special events. It is also the beverage of moderation, and good judgment should be used when you drink.

Thankfully, the vast majority of those who consume beer do so in moderation. Nevertheless, anything less than responsible consumption of alcoholic beverages is detrimental to the individual and society. We at Anheuser-Busch certainly are concerned about you, our valued customer. Accordingly, we are dedicated to the support of research, education, and treatment programs aimed at combatting alcoholism and alcohol abuse.



August A. Busch III
Chairman of the Board
and President



ANHEUSER-BUSCH, INC. • ST. LOUIS

HENSLEY & COMPANY and ANHEUSER-BUSCH
are the sponsors of **Alcohol Awareness**
Week at Arizona State University.

Participate for your sake . . .
and everyone else's.