

Police to crack down on fans carrying alcohol into Sun Devil football games

By M.K. Reinhart
Staff writer

The sign at the entrance of Sun Devil Stadium reads: "No Alcoholic Beverages Allowed," and the ASU Police mean business.

If the sign isn't enough, anyone purchasing a football ticket will receive a small flyer which clearly states that ice chests, chillers, thermoses, bottles and cans are not allowed in the stadium.

The apparent alcohol crackdown is largely a result of the "blatant" behavior of the fans, said Frank Caulfield of the University Police Department. Just prior to this year's Fiesta Bowl, the ASU administration decided to stress a policy that always has been in effect, he said.

"The fans turned around and did it to themselves," Caulfield said, adding that just the "presence" of alcohol had an adverse effect on the crowd.

In an atmosphere already charged with energy, "It just added fuel to the fire," he said.

Caulfield said alcohol has been a contributing factor in nearly every ejection or arrest from Sun Devil Stadium.

Walter Batt, president of Associated Students, said he

thinks students will cooperate with the enforcement, but added that some will continue to bring in alcohol.

"People who have had too much to drink become a nuisance to others," and the policy will help tone things down, Batt said.

Caulfield said there has been "all kinds of media coverage" since the decision to enforce the ban.

"It's unfair to put the public in the position where they don't know what the expectations are," he said.

Caulfield said any offenders will be asked by an usher or security person to surrender the alcohol. As long as the individual is compliant, there will be no further action, he said.

If an individual in possession of alcohol refuses to relinquish it, a police officer will be summoned, and if there is still resistance, the offender will be ejected from the stadium, Caulfield said.

If inebriated, regardless of whether alcohol is found, the individual will be removed from the stadium, Batt said.

Paul Lee of the University Police said arrests will be made if necessary.

continued page 9

friday

August 26, 1983

state
press

Tempe, Arizona

Arizona State University

Vol. 66 No. 5

© Copyright, State Press, 1983



Staff photo by Larry Woodall

Batting 1.000

Two, four, six, eight. At two bucks a crack, not one of these ticketed car owners will have much to cheer about once they return to their autos. The parking along Forest Avenue is limited to two hours and controlled by parking meters and the Tempe Police. Fines for parking on Tempe streets appear

to be a bargain compared to the newly raised fines for parking and sticker violations in ASU's designated lots.

1,000 more parking decals available to student drivers

By Mike Rynearson
Staff writer

Largely the result of lot restriping, 1,000 parking decals for lots 40 and 42 will be made available to students beginning today at 9:30 a.m. in the MU, according to the associate vice president for business affairs.

Bill Phelps said an estimated 700 parking stalls became available when each space in the lots was narrowed from nine feet to eight feet as part of the revamped parking program now in effect.

An additional 100 spaces also became available when the Wigwam Lodge property was leveled and converted into parking.

The remaining 200 will come from the excess faculty/staff allotment for the two lots.

"We didn't know how many spaces we were going to pick up from the restriping when we planned decal distribution last May," Phelps said.

Seventy-five percent of all permits that Parking and Transit officials knew would be available for lots 40 and 42 were slated for faculty/staff, with the remaining 25 percent going to students.

"At that time we thought that a 75-

percent allotment was realistic," Phelps said.

On Aug. 15, the student allotment sold out and an extra 500 permits were transferred from the faculty/staff share.

These decals sold out within 24 hours, Phelps said.

Since Aug. 16, no decals for lots 40 and 42 have been available to students.

Only faculty/staff have been allowed to purchase permits since then, but sales have slowed substantially in the last few days, Phelps said.

"We've only been selling about eight or nine a day," he said. "We've decided that we've waited long enough. Permits have been available to faculty since May and to staff since June, so we can only assume that those that need them have them already."

"As a result, we're making available all remaining permits to students," Phelps said.

The permit costs \$40 for the 1983-84 school year.

If someone already has purchased a decal and wishes instead to have a lot 40 or 42 decal, officials will be accepting exchanges.

The decal must be scraped off the window, with the number clearly visible, and brought to the MU.

More fire extinguishers to be added to campus areas near fuel storage

By Sandy Sistek
Staff writer

Thirteen fire extinguishers will be added to areas around campus where fuel is stored as a result of a fire that occurred in the Anthropology Building early Wednesday, ASU's fire marshal said.

Andy Anderson said the fire prompted the University Police to ask Physical Plant Grounds Supervisor John Gotts to provide a list of all locations where fuel is stored so extinguishers could be installed. Officials believe the fire started after a grounds worker apparently fueled a gas-powered weed cutter and attempted to start it in the building.

Grounds worker David Underwood apparently set a can of fuel down, and when he pulled the engine-starter rope, the engine burst into flames, police said.

Police said Underwood could not find an extinguisher anywhere in the building, so he pulled the fire alarm.

But Anderson said the building has seven visible extinguishers located in the fire hose cabinets.

"There were three extinguishers located on the floor (where the fire occurred)," Anderson said. "All of the buildings are well covered. There were the three extinguishers on the lower level that he could find without any problem, but he was probably too excited and in a hurry to find them."

"He should not have started the motor up in the building," he said. "But we probably should have had (an extinguisher) located in the room."

Anderson said there are more than 1,700 extinguishers located in campus buildings.

He said as a safety precaution, the 13 extinguishers will be added to the sheds located around campus where fuel and ground equipment is stored.

He could not recall any similar incident occurring on campus.

"It is not something that happens very often," Anderson said.

He said part of the problem could have been a lack of communication between the Physical Plant and his office.

"We didn't get the word that the fuel and motor equipment was stored in those buildings," Anderson said. "But the advantage now is that we can go back and catch up on the rest of the areas where a problem could occur."

Gotts said all the buildings at ASU are already equipped with fire prevention equipment.

"The buildings are already equipped with hoses, alarms, extinguishers and sprinkler systems," he said. "The 13 new extinguishers will be added as safety prevention for the sheds."

He said the sheds that will receive ex-

continued page 9

nation/world

state press

Block signs grain deal with Soviet Union

MOSCOW (AP) — Agriculture Secretary John Block Thursday signed a five-year, 45-million-ton grain deal with the Soviet Union in a low-key ceremony that Block called a "very, very important occasion."

Block, the first U.S. Cabinet member to sign an agreement in Moscow since the 1979 Soviet intervention in Afghanistan, has hailed the grain deal as a mark of improvement in trade ties strained by embargos, propaganda battles and policy disputes.

He and Foreign Trade Minister Nikolai S. Patolichev signed the accord in a paneled and plush-carpeted office on the fifth floor of the building shared by the trade and foreign ministries.

Reagan's budget cuts hit low-income families hardest

WASHINGTON (AP) — President Reagan's budget cuts have hit twice as hard at major programs benefitting low-income families as they have at other domestic programs, congressional economists said Thursday.

House Speaker Thomas P. O'Neill Jr., who requested the report from the non-partisan Congressional Budget Office, indicated the findings will become ammunition for Democrats in next year's election battles.

The study "cuts through the smokescreen of Reagan public relations to the harsh truth of the Reagan record," O'Neill said in a statement issued with copies of the report. "That

truth will have major consequences in 1984."

O'Neill, D-Mass., added that while the president "projects the image of a man concerned about the welfare of the average American family... he has denied millions of American families the basics of the American dream."

AT&T contract talks stumble

WASHINGTON (AP) — Communications workers and several American Telephone & Telegraph Co. subsidiaries stumbled in contract talks Thursday, shattering the promise of labor peace raised five days earlier when tentative agreement was reached on a new national pact.

The walkout by the Communications Workers of America, the largest of the Bell System's unions, was to have ended Thursday. But the deadline set by the union leadership on Sunday, when a three-year national contract was accepted, passed without successful conclusion of local bargaining in several areas.

As the strike moved well into its third week, thousands of workers who belong to two smaller AT&T unions went back to work because local pacts had been negotiated to mesh with the national contract.

CORRECTION POLICY

It is the policy of the State Press to acknowledge and correct errors when they occur. If you see an error, call our newsroom at 965-2292 to let us know. All corrections will appear on this page.

COMPUSHARE

\$29 Student Annual Membership Fee includes instruction and first two hours computer time free. Then, time-sharing by the hour. Apple, IBM, TI, TRS-80, Xerox, Fortune.
Mon.-Fri. 10 to 9, Sat. 10 to 6

Metro Center 2851 W. Peoria 943-2938
Poca Fiesta-Mesa 1110 W. Southern 898-0610
Paradise Valley 4625 E. Cactus Rd. 953-1884

COUPON
ARIZONA'S NEWEST CONCEPT IN HAMBURGERS

ZIPS SQUARE BURGERS

A REPLICA OF THE FAMOUS WHITE CASTLE
BARGAIN PRICE of 3 for \$1

THIS COUPON GOOD FOR 1 SMALL ORDER OF FRIES WITH THE PURCHASE OF 3 ZIPPERS OR MORE. EXPIRES SEPT. 23, 1983.

3105 S. MILL AVE., TEMPE • 967-6083

The Haircutting Company

Wants You To Come In



WITH THIS AD

\$10.00 for a
WASH, CUT & BLOW DRY

PERMS, HAIRCOLORING & FROSTINGS

838-4641

5152 S. Rural Rd.

Hours: Mon.-Sat. 9-5:30

Mon.-Fri. eves til 8

(NEXT TO PIZZA HUT)

IN ALPHA BETA SHOPPING CENTER

COUPON

Darlene's Hair Fashions

Perm \$23
Shampoo & Style \$7.50
Shampoo & Cut \$6.50
Manicure only \$5
Pedicure \$12

(Includes hair cut. Long hair slightly higher.)

REDKEN products for both men and women

1820 E. Southern, Tempe **838-0622**

COUPON

Birth defects are forever. Unless you help.

BROKEN SPEAKER?

• Loudspeaker rebuilding & repair (home/auto/pro)
• JBL/EV/GAUSS/ALTEC warranty station
• Raw speakers • Custom crossovers
• Free estimates • Custom designs

THE SPEAKER SHOP
3030 N. 24th St. • 956-1824
NEW LOCATION:
1515 E. APACHE, TEMPE
(Next to Tang's) • 829-9110

FIGHTING ARTS UNLIMITED
Martial Arts Supply Co.

10% OFF
High Quality Student Uniforms

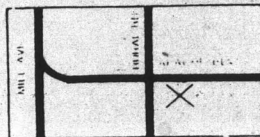
Name Brand Protective Equipment
Regularly \$20-\$25

TEMPE LOCATION
831 S. Rural
894-5404

Hours: 10-6 Mon.-Sat.
One coupon per person.
Offer expires 9-7-83.

CLANCEY'S NIGHT CLUB

IT'S LIVE ROCK, EVERY NIGHT.



919 East Apache
Tempe
966-7770

FRIDAY
AUGUST 26

SATURDAY
AUGUST 27

SUNDAY
AUGUST 28

MONDAY
AUGUST 29

TUESDAY
AUGUST 30



**CHOICE
CHOICE
CHOICE**

**ASU,
LET'S GET
DRAFTED!**

Listen

CLANCEY'S TEA PARTY
from 7:30 till closing
Long Island Ice Teas 2 for 1
2 for 1 Drafts
\$1.50 cover.

HAPPY HOUR 4:30-7:30
California Coolers 90¢
Heineken 90¢
Jack Daniels 75¢
plus FREE Godfather Pizza

CLANCEY'S LEMONADE NIGHT
from 7:30 till closing
2 for 1 Lynchburg Lemonade
and 2 for 1 draft beer



\$1.50 cover

\$2 Pitchers & 50¢ Mugs

\$1 cover

Bottle Beer Night
85¢ Heinekens
75¢ Michelobs
65¢ Bud & Coors Longnecks
\$1.00 Well
\$1.00 cover

BUD LIGHT

Budweiser

Now On Tap

DRAFT BEER NIGHT
35¢ mugs and \$1.75 pitchers
plus next week... LISTEN

Displaced dorm tenants allowed into Hayden Hall

By Wayne Baker
Staff writer

Dorm residents assigned to Hayden Hall but currently living at the Cholla Apartments can begin to move back any time, said Gene Berg, resident hall director for Hayden Hall.

The 160-occupant residence hall had been closed due to installation of air conditioning for the entire building. Individual controlling units were being placed in each room.

Students who had been assigned to Hayden were temporarily sent to the Cholla Apartments across Rural Road.

Cathy Cummer, resident hall director for Cholla Apartments, said not all Hayden residents want to go back there.

"Hayden people have been telling us they're happy so we're trying to make arrangements for them to stay," she said.

Previously, Hayden residents at Cholla had been paying Hayden rates. If they decide to stay, she said, however, they will have to transfer their contracts to Cholla rates.

Hayden residents currently pay \$645 for a room in the fall semester as opposed to anywhere from \$849 to \$1330 a semester at Cholla.

The first floor of the dorm reopened Aug. 15. The second floor became available for occupancy on Tuesday, and the third floor should be open by Tuesday, according to Berg.

Students originally assigned to Hayden Hall were notified of the necessary relocation by mail prior to move-in week.

Of the 58 spaces available on the second floor, approximately two-thirds have been

filled as the students relocate from Cholla, Berg said.

There are still 34 spaces that are closed on the third floor.

Cummer said only a few Cholla residents complained about the doubling and tripling up that went on to accommodate the displaced students.

"We're a little cramped but originally we weren't overassigned, so we had the room," she said.

Berg likewise reported that not all the spaces in Hayden were assigned.

"We assigned less spaces so there'd be no

'Hayden people have told us they're happy, so we're trying to arrange for them to stay.'

overflow, but if everyone comes back from Cholla we'll be close to full," he said.

As for moving back, Berg said students have the responsibility for it themselves.

"It would be too hard to accommodate everyone's schedule, so students will have to move on their own," he said.

However, Cummer said her hall was trying to appropriate a University vehicle to assist those students who want to move back.

"We goofed in not making arrangements to help. Hayden thought we were going to do it and we thought they were," she said.

THE **Artists' Supply Center**

Shop OF ART

Architectural Engineering Commercial

ART SUPPLIES

- Mecanorma Transfer Type
- Inks, Pens, & Markers
- Drafting Supplies
- Expanded Selection of Sheet Papers for Artists, Architects & Engineers
- Artists Books & Magazines

26 E. UNIVERSITY

967-3681

Just across University from the Architecture Building!
1/2 block east of Mill on University

BACK TO CLASS SALE!

Save Up To 50% Now on Brand Names Like

• Ocean Pacific	• Jantzen	• Court Casual	• IZOD
• Lightning Bolt	• Jockey	• Sportif	• G&S
• H.D. LEE	• Sex Wax	• Pipeline	• Hobie

G U Y S		<i>Compare at</i>	SALE
• Op Shorts <i>cords & cottons all styles & colors</i>		\$18-\$20	\$11⁹⁹
• Jockey Golf Shirts <i>solids w/pocket</i>		\$18-\$25	\$11⁹⁹
• Tennis Shorts <i>classic white or asst.</i>		\$15-\$25	\$11⁹⁹
• Swimwear, Bermudas, Boardshorts, Madras, etc.	\$15-\$25		\$9⁹⁹-\$17⁹⁹

B L O T W I	BACK PACKS & GYM BAGS	reg. \$10	\$3⁹⁹
--------------------	----------------------------------	-----------	-------------------------

G A L S		\$5.50-\$7.50	\$4¹²-\$5⁶²
• Tights 25% off			
• Leotards 25% off		\$10-\$11	\$7⁵⁰-\$7⁸²
• Shorts <i>Bermudas, Volleys, Madras, Sheeting</i>		\$18-\$25	\$9⁹⁹-\$17⁹⁹
• Swimwear Clearance		\$20-\$35	\$12⁹⁹-\$17⁹⁹
• Lady Lee Cotton Straights		\$25	\$15⁹⁹
• IZOD Shirts		\$18-\$20	\$11⁹⁹

The Sportswear Racket **894-1045**

active sportswear specialties

915 S. Mill
Tempe Center

M-S 10-6
Sun. 12-5

Where is your camera lens cover?

In your pocket?
Lost?
Don't know?

Every time you lose a lens cover, you risk damaging a very expensive lens. Now, FlapCap solves the problem of loss, because you never remove FlapCap from the camera. When you take a photo, you flip it open. When you're finished shooting, you flap it shut.

Imagine, no more fumbling around to get the cover off. No more misplacing. And no more danger of scratching that expensive lens.

FlapCap will not interfere with any lens, including wide angle, and will not cast a shadow.

Send now for your FlapCap at only \$7.99, a very small price to protect a major investment.

FREE BONUS OFFER: Send for FlapCap now and you receive a free plastic lens wrench for changing lenses without any danger of scratching and nicking your valuable equipment.

Yes, FlapCap fits ALL major 35mm lens sizes.

Send my FlapCap today. I have enclosed \$7.99 (plus \$1.00 for postage and handling). AZ residents add 6% sales tax (48¢ per cap).	How many of each	Lens size
Name _____	_____	49mm
Address _____	x _____	52mm
City/State/Zip _____	= _____	55mm
		58mm
		Total caps ordered
Send to: FlapCap	+ \$1.00 for 1	
P.O. Box 24178	+ \$2.00 for 2	
Tempe, AZ 85282	3 or more, we pay postage	

What is worth in anything, but so much money as
'twill bring?

—Samuel Butler

opinion

ASU would regret total loss of Tontozona

Chris Coppola
City Editor



It's peculiar, but we humans have a habit of not paying much attention to a lot of things until we are in danger of losing them.

Whether faced with discarding old and useless possessions while cleaning out an attic or garage, or faced with the prospect of a relative's death, the importance — or meaning — just isn't fully realized until we're faced with the loss.

Such has been the case with the coveted Camp Tontozona, a 7.5-acre plot of land situated amid the cool pine country outside of Payson, and owned by ASU.

For most people, at ASU and throughout the Valley, Camp Tontozona brings to mind one week in August — training week.

But the principal users of the camp also include the geology department, for a five-week national field program each summer; the department of elementary education; the School of Music, for three, week-long music camps; the foreign language department, for a German camp attended by high school students for about two to four days a year; and additional, infrequent uses including marriage counseling and industrial tech education.

The now-famous report issued by former Vice President for Business Affairs, Frank Sackton, has recommended the camp be combined with 29.4 acres of adjacent forest land that would be purchased by the Sun Angel Foundation at a cost of \$370,000, and then, as a result of its enhanced value, sold in a complete package to an organization or corporation, with the University reserving its right to lease the site to suit its own requirements.

The report offers two additional recommendations if the first cannot be accomplished: selling the camp to a non-profit organization or a commercial resort on a mutually co-operative basis, but ensuring ASU the use of about 25 percent of the camp's present capacity; or selling it outright at a public auction.

The report concludes that present utilization of the camp is only 23 percent of yearly capacity. It also places the value of the camp at about \$500,000.

Clearly, the recommendations of the Sackton report have left the next move in the hands of the Sun Angels, a booster group that has been working hard to overcome its image — accurate or not — as a group of local fat-cats who get the best seats at football games and force students living in residence halls to move their cars on the nights football games are played.

The Sun Angels have already indicated their preference for the first option, which was suggested by foundation

member Dan Mardian last spring as a result of previous studies concerning the camp's feasibility. It was those studies which first prompted concerns among the Sun Angels about the camp's possible sale, and especially about the prospect of the football team losing its training area.

The foundation has met with a potential buyer, Barney Swartwood, president of Suburban Development, about the possibility of a sale. Swartwood is reportedly in the process of purchasing Kohl's Ranch, a resort located about one mile from the camp.

It's tempting to conclude that the Sun Angels, in attempting to save Tontozona, have purely athletic concerns in mind, which would only contribute to the organization's past image problems.

But if the University's right to lease the camp is assured, then the Sun Angels would actually be doing a favor for many more groups within the University that otherwise would have to look elsewhere for its requirements to be met. In that event, the camp could remain a University resource of sorts.

All of this is unfortunate, in a way, but probably necessary.

Anyone who has ever been to Camp Tontozona knows that the facility means much more than football or camps or seminars of any kind.

The pine-covered mountains that enshroud the camp, combined with the gentle Tonto Creek working its way through a small nearby canyon, provide as tranquil a setting as one could imagine. Even the most strident city dweller would likely succumb to its beauty.

But "progress" is the key word today. Building ASU for the future, for growth, for "high-tech," and for students who will attend the University 20 years from now. And, when faced with this, the financial considerations, as usual, are the overriding ones.

Perhaps the money saved by ASU if it does not fully operate the camp will bring more resources to programs that could use help. It may even help offset future state funding cuts.

Regardless of the result, one thing does seem clear: a sale of some sort will occur during the next year.

And, regardless of whether ASU retains leasing rights, another signal of the "progressive" age this University has entered into will have unfolded.



Staff photo by Bob Miles

letters

U.S. and Cuba both using force in Central America

Editor:

While Tracy Fletcher has Fidel Castro labeled as a bearer of false peace promises in Central America, President Reagan's antics seem to have escaped any critical examination. Reagan has shown a similar military adventurism in the region:

- 1) The U.S. has spent \$243.5 million in economic aid to El Salvador alone in this fiscal year, and in Nicaragua an additional \$80 million in defense spending to support the rebels.
- 2) U.S. Naval forces are now conducting training operations off Nicaragua's Atlantic

and Pacific coastlines.

3) 5,500 American troops are arriving in Honduras for operation Big Pine II, an operation scheduled to continue into 1984.

4) Salvadoran soldiers are being trained by the U.S. at Fort Benning, Georgia, and in Honduras.

5) The 58,000 ton battleship New Jersey, with a task force of guided-missile escorts, is patrolling Nicaragua's Pacific coast. The carrier Coral Sea is off Nicaragua's eastern coast.

Miss Fletcher claims Castro is talking out

of both sides of his mouth, that he offers to negotiate while at the same time arming Cuban insurgents. Just what is our President doing?

Reagan has called the revolution in Central America an upheaval that must be brought under control by "whatever means" are "prudent and necessary." He too wants to negotiate peace, but insists on a show of military strength to bring the sides together.

It is true that the problems in Central America cannot be resolved by the United

States without establishing and following a consistent plan of "strength, confidence and purpose." Reagan, then, has two options.

The United States must either threaten to use its forces and carry out such threats, or withdraw all military activities and support the region with only economic aid and an offer to help initiate negotiations. The decision is the President's, but it must come only after consulting Congress, whose wisdom has been neglected by the President throughout this entire conflict.

Thomas R. Burke
Broadcasting

Student resents poll implications

Editor:

According to a Tempe newspaper poll, the average ASU student is a male, 26 years old, a Republican who wants job security and he also believes in God. Well, for what it's worth, some of us at ASU resent being thought of in such mundane terms.

First of all, being a Republican means being in favor of wasteful spending. I say wasteful because any freshman knows that two Trident submarines are all that is needed to deter a Soviet attack; overkill is not an overused term.

Second, the goal of job security seems repulsive to those of

us who wish to be valued for our creativeness and not how well we adapt ourselves to some corporation. The corporate man is a hero only as long as he can retain the benefits produced by his wage slaves.

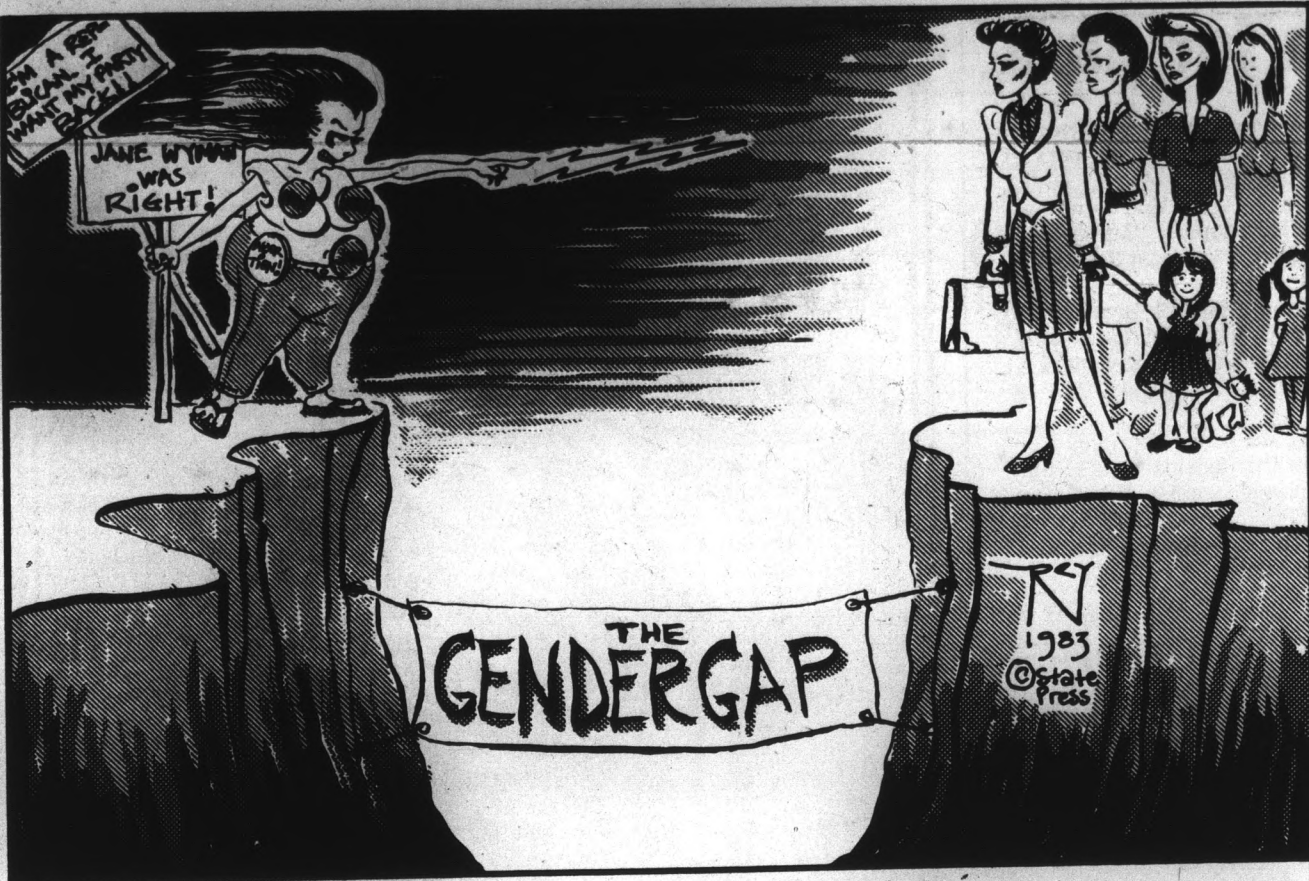
Last, if the average ASU student believes in God, he probably also believes in Heaven. Well, if Heaven exists and if it is full of retired, stamp-licking Republicans, I can only pray that I never go to Heaven. It would be worse than Hell.

Steve DeCasse
Junior, Political Science

LETTER POLICY

The State Press encourages letters on any topic. Letters should be typed, double-spaced. Include your full name, class standing, major and phone number. All letters are subject to editing at the discretion of the opinion page editor.

Address letters to: Letters, State Press, Matthews Center, ASU, Tempe, AZ 85287.



COUPON

TERIYAKI OF JAPAN
Japanese Fast Food Concept

FREE PEPSI WITH THE PURCHASE OF A MEAL.
Good through 9-31-83.

1314 E. APACHE • 894-6883

"ONE OF THIS YEAR'S TOWERING ACHIEVEMENTS! ...VIRTUALLY A FLAWLESS MOVIE, AND ONE I WILL NOT SOON FORGET."
—Jeffrey Lyons, WPIX-TV

"HEAD AND SHOULDERS ABOVE ALMOST ANYTHING ELSE YOU'LL SEE!"
—Archer Winsten, N.Y. Post

"DON'T MISS 'THE BOAT'!"
—Guy Flatley, Cosmopolitan

A FILM BY MARKUS IMHOOF
THE BOAT IS FULL
A QUARTER FILMS INCORPORATED RELEASE

ARIZONA PREMIER presented by Friends of International Films
FRI., AUG. 26 • 7:30 p.m. • PSYCHOLOGY 102-B
SAT., AUG. 27 • 3 p.m. • PSYCHOLOGY 102-B
SAT., AUG. 27 • 11 a.m. • CAMELVIEW THEATER
A MINIMUM DONATION OF \$2.50

NEW!
delicious
TUNA Schlotzsky

Schlotzsky's

TEMPE CENTER
18 E. 10th St. & Mill OPEN 11 to 8 968-0056

★ **BARNEY'S** ★
DISCOUNT BEVERAGE SALES

Beer ★ Wine ★ Snacks ★ Kegs
Juice ★ Soda

* Close By -
Lowest Prices In Area
1042 S. Terrace - 894-8885

ASU RURAL TERRACE B

Affordable Cleaners
Summer Sizzler

ANY GARMENT **79¢** ea.
Cleaned & Pressed No limit
Excluding suede & leather; excluding wedding dresses. Coupon must be presented when garments are brought in.

Scottsdale: 7919 E. Thomas Rd.
Tempe: Southern & Mill (Across from Smittys) & Southeast corner of Univ. & Hardy
Mesa: Dobson & Baseline (Alpha Beta Ctr.)

EXPIRES 12-31-83.

GET EXCITED
at Cracker's Attitude Adjustment Hour

All non-specialty drinks just 95¢
11 a.m. to 6 p.m.
\$1.50 after 6 p.m.
Monday thru Friday

TREMENDOUS MUNCHIES!
4-6 p.m.
Barbequed Beef Ribs, Hot Dogs, Egg Rolls & More
(2 Drink Minimum)

DJ
Monday & Tuesday
7 p.m.-1 a.m.

Ladies Nights
Mon. & Tues.
50¢ Drafts
\$1 Cocktails

CRACKERS
THE PLACE

Come Play In Our VIP CASINO
Wednesday thru Saturday • 5 p.m. to 1 a.m.

WIN FABULOUS PRIZES!
(i.e. Water Beds, Calculators, Watches, Pen Sets, etc.)

BLACK JACK • POKER • BACKGAMMON • CHESS
Watch NFL Football on our big screen & enjoy 50¢ drafts
CRACKERS DRESS CODE: Just a Bit of Class Please!

1420 E. APACHE, TEMPE • 968-9375

THE HAIR CUTTERS

Introducing
Rene Fosnight
Formerly of
CC Cutters

\$3.00 OFF STYLE CUT
Reg. \$12 Men • \$14 Women
(Offer good with all stylists.)
With This Ad. (Expires 9-1-83.)

709 S. Forest Ave., Tempe
North of University • Behind the Chuck Box • In Oxford Square
968-5946

"OPEN EVENINGS"
TUES., WED. & THURS. TILL 9 PM

Regents study design for park

By Bob Beamesderfer
Staff writer

The Arizona Board of Regents cleared the way for ASU's Research Park Office to advertise for a master plan design consultant for the development of the 320-acre site in southeast Tempe, according to a board member.

Donald Pitt, a Tucson member of the board, said the study session, held at the U of A, allowed regents to view a presentation of the results from the recent urban design planning session for the park.

According to Regent Esther N. Capin, the board has requested additional information be supplied to the board at the regular September meeting.

Reginald G. Owens, the director of the

park, has said that he expects the regents to approve additional funding for the park at the September meeting.

Regent William G. Payne said the project has his unqualified support. "My mind is made up," he added. "We ought to get moving on this."

"It's probably an essential for a private university in terms of financial survival," he said, adding that the research park at Stanford University had helped that institution grow.

In other action, the board approved a request that allows the Phoenix Suns to play an exhibition game against the Boston Celtics on Oct. 10 in the University Activity Center. Regent Pitt, part-owner of the Suns, abstained from the vote.

Seminar to benefit women students

Not all ASU women are 18- to 22-year-old sorority sisters.

There are also 4,000 returning women older than the college student's mean age.

Many are seeking a second degree and have definite educational goals, but many are returning to finish a degree they started years ago or are starting college for the first

time and need help setting concrete goals.

AWARE, the Association of Women's Active Return to Education, invites returning students and interested members of the University community to a seminar designed to stimulate effective goal-setting techniques.

The seminar will begin at 11:45 a.m. Sept. 6 in the MU.

Mac TEMPE CENTER
JEWELERS
FOR ALL YOUR JEWELRY NEEDS
Diamonds, Watches
14k Chains, Pendants
Sorority-Fraternity Jewelry
Watch & Jewelry Repairing
966-7587

TERMINAL RENTALS
Decwriters and CRTs
Upper Case \$34
Upper/Lower Case \$40
Limited Supply
Call 966-3105
Computer Terminal Service
Delivery Available

Something funny is brewing at Elsinore Castle...



STRANGE BREW DAVE THOMAS RICK MORANIS PAUL DOOLEY MAX VON SYDOW
PG PARENTAL GUIDANCE SUGGESTED
MGM UA

Starts Today!	AMC FIESTA VILLAGE Alma School Rd. & Southern 962-0666	MANN CHRISTOWN 5707 N. 19th Ave. 249-2843	AMC TOWN & COUNTRY 20th St. & Camelback 957-3500
METRO PARK North Metro Center 997-5911	CALL THEATERS FOR SHOW TIMES	GLENDALE 7 DI 55th Ave. & Bethany 939-9714	LOS ARCOS Scotts. Rd. & McDowell 949-8851

Now!
WE DELIVER TO ASU

FREE DELIVERY **FREE DELIVERY**

WE GO THE DISTANCE
So you don't have to!

We now deliver your favorite pizza, including our great Pizza Hut Pan Pizza...right to your door.
JUST CALL: 990-1110

Limited delivery area. Mon.-Fri. 4 p.m. 'til closing, Sat. 11 a.m. 'til closing, Sun. 12 noon 'til closing. Printed in USA.
© 1983 Pizza Hut, Inc.

BUY ANY PAN PIZZA AND GET THE NEXT SIZE SMALLER WITH SAME NUMBER TOPPINGS FOR 99¢

Good only through 9-4-83.

Your Home Taste
Pizza Hut
990-1110
1420 N. Scottsdale Rd.

Please mention coupon when ordering. Limited delivery area. Not valid with any other Pizza Hut® offer. No delivery of alcoholic beverages.
© 1983 Pizza Hut Inc. 1/20 Cent Cash Redemption Value.

PRANKSTERS
GAR & BRILL
1024 East Broadway 967-8875 1024 East Broadway
Tempe, AZ

GAR & BRILL — BOOD & FEVERAGE

EVERY WEDNESDAY:
★ CANADIAN CLUB PARTY ★
Chicken Wings 11¢ apiece
All day, all night
Labatts 99¢
Labatts hats and shirts to be given away.

EVERY THURSDAY:
2 for 1 any liquor drink
7 till closing

EVERY FRI. & SAT.:
★ STROH & STROH LIGHT MERCHANDISE GIVEAWAY PARTY ★
Stroh & Stroh Light hats, shirts, mirrors to be given away.
MOLSON 99¢
Molson hats, shirts, mirrors to be given away.
Party goes on from 4 till closing both Friday & Saturday nights.

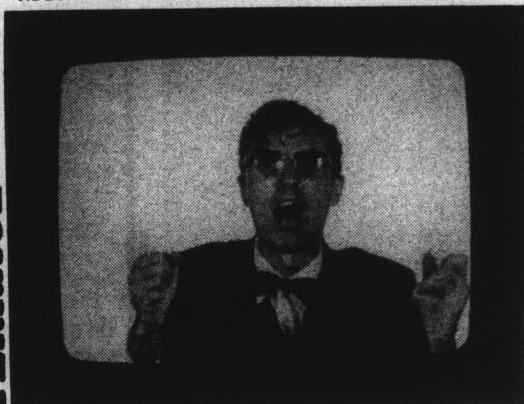
EVERY SUNDAY: **WHAT A DEAL!**
2 for 1 **PIZZA**
(Buy a large, get a large FREE;
Buy a small, get a small FREE)
All day, all night

HAPPY HOUR EVERY DAY 4 to 7 (Mon.-Sat.)
OPEN 11 a.m.-1 a.m. For Orders To Go Call 967-8875
Stop in and try our new menu items.
1024 E. Broadway • Located just east of Rural on Broadway

COME ON IN AND WATCH SPORTS EVENTS ON OUR BRAND NEW 10-FT. TV SCREEN!

Coca-Cola
Trade-mark®
CONCERT SERIES 1983

VIDEO PHOTO KEN STORCH



COMPTON
TERRACE

*Feyline presents
and evening with the*
TALKING HEADS
THIS SUNDAY
7:30 p.m.
Advance tickets \$10.50



COMPTON
TERRACE

Feyline presents

DEF LEPPARD

and special guest
URIAH HEEP

Monday, September 12
7:30 p.m.
Advance tickets \$11.00
ON SALE NOW



GAMMAGE
AUDITORIUM

ASASU & Feyline present
An Evening with
STEPHEN STILLS
Wednesday, September 21
8:00 p.m.
All seats reserved \$12.50
At Gammage
Auditorium/ASU
On sale Aug. 29 • Gammage box
office & all Diamonds



ASU ACTIVITIES
CENTER

An Evening with
DIANA ROSS
Sunday, October 2 8:00 p.m.
All seats reserved
Gold Circle Seating \$17.50
\$15.00 & \$12.50
Tickets available at Gammage
Box Office and all Diamonds
On sale Sept. 2
Brought to you by Feyline



COMPTON
TERRACE

*Marcus Enterprises &
Thea-Lee Productions present*
SUNSHINE '83
Sunday, October 9 2:00 p.m.
Advance tickets \$16.00
On Sale Tomorrow
On Sale Now
SPYRO GYRA • Tito Puente
Art Blakey & The Jazz Messengers
Freddie Hubbard • Rare Silk
Francine Reed

YOUR CONCERT STATION

98KUPD
FM

Tickets on sale at Rolling Stone Records, Happy stores and Diamonds Box
Offices. All prices shown are subject to a service charge. You are welcome
to bring 6 pack sized coolers or small thermos bottles up to 1 gallon in size,
but no cans, glass bottles or alcoholic beverages and no chairs.

Designs by Cody Smith



Staff photo by Andy Arenz

Streamer cleaner

Karen Kyle, special events director for Associated Students of ASU, is left with the task of tidying up after a student government-sponsored band played for students on the lawn

in front of Hayden Library. The Thursday afternoon event featured the jazz band Pop Boys and entertained more than 300 persons, Kyle said.

GRAND OPENING SALE!

COPIES 2 1/2¢

SELF SERVE COPIES

3 1/2¢ FULL SERVICE COPIES
(Offer applies to white, 8 1/2 x 11, 20 lb. bond only.)

New ASU Location!

kinko's copies

University and Forest

894-9588

Hours: M-F 7 a.m.-8 p.m.
Sat. 9 a.m.-6 p.m.
Sun. 10 a.m.-6 p.m.

and at our Mesa store

1840 W. Southern

969-3326

Offer expires Sept. 17, 1983.

Professors — Ask about Professor Publishing Service.

The

hair performers

COME IN THIS WEEK

Sign up for hair fashion models and special team prices.

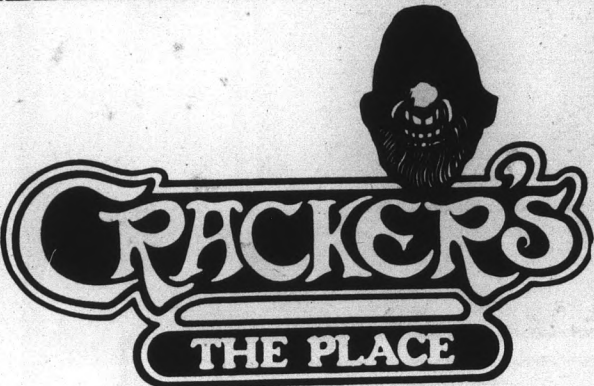
— Refreshments on us —

THIS WEEK: FOCUS 21 Mega-perm

\$24.95

(8-23-83 to 8-31-83)

903 S. Rural • Cinnamon Tree • 894-0184



We're Under New Ownership

So Let's Get Acquainted!!!

Your First Drink & We Mean Any Drink

FREE

(with this ad & ASU I.D.)

Sorry, but because of your ability to drink amazing amounts of ice cold beer, this offer does not apply to pitchers!

Monday & Tuesday are **LADIES NIGHTS**

Draught Beer — 50¢

Well drinks — \$1.00

Also Enjoy our DJ & DANCING

Dress Code: A Bit of Class Please

1420 E. APACHE • 968-9375

THE BEAUTIFUL BUY

Final Day!

Siladium[®] College Rings
Now only

\$99.95



With the price of fine jewelry today, it's good to know that a jewelry-quality Siladium ring is now more affordable than ever. Save—and choose from a variety of beautiful styles. Then personalize your ring with custom options that express your tastes, your interests, your achievements.

Every fine Siladium ring is crafted with careful attention to detail, and backed by the ArtCarved Full Lifetime Warranty. Now, at these special savings, the value is exceptional! Don't miss this opportunity to get a beautiful buy on a fine Siladium ring. Visit the ArtCarved Ring Table soon.

ARTCARVED
CLASS RINGS, INC.

ASU BOOKSTORE

Today!

SPECIAL OFFER!
\$25 off any 14k gold ring

Deposit Required. MasterCard or Visa Accepted.

© 1983 ArtCarved Class Rings, Inc.

More about

Alcohol

continued from page 1

"It's going to be tough," he said, adding that there will be no purse or body searches. "Fans won't be searched, but the obvious will definitely be dealt with," he said.

According to Dan Devine, executive director of the Sun Angel Foundation, the University of Notre Dame has expressed an interest in copying ASU's alcohol policy.

Devine said Notre Dame currently has a more relaxed policy and added it "makes ASU look good" to have such a school consult with the University.

"Naturally there are going to be some problems," Devine said. "But people ought to go to a game to watch the game. The real fans will be the majority," and will be cooperative, he said.

More about

Fire

continued from page 1

tinguishers are located behind other buildings, including sheds attached to Mariposa Hall and the band storage room located on the practice fields.

Gotts said the sheds are equipped with small hand equipment including lawn mowers, edgers, weed cutters and wheelbarrows. The larger equipment is stored in one room by the Physical Plant every evening, he added.

He said there are required guidelines that the employees should abide by.

"An employee should not fuel anything when it is running or fuel anything on the lawn areas," Gotts said. "We are also required not to burn the grass and not to start motors inside of buildings."

He said the employees use a safety-type gasoline can and the weed cutter itself has a plastic gasoline tank.

"The tank is modern technology and this may have been part of the problem," Gotts said. "It is awkward to start because you have to sit the mower on the ground and brace it."

collage

Alleluia Lutheran Church is presenting a contemporary gospel group, "Spirit Song," in concert tonight at 7:30 in the Alleluia Student Center, 1034 S. Mill Ave.

All Saints Newman Center, located at College Avenue and University Drive, is hosting Mass on the Grass tonight at 7:30. Refreshments, music and a dance will follow.

Pi Sigma Epsilon will meet on Monday, Aug. 29 at 3:15 in the MU.

Collage is published every Tuesday and Friday. Forms are available at the State Press reception desk in the basement of Matthews Center. Deadlines for publication are 10 a.m. Monday for Tuesday's edition and 10 a.m. Thursday for Friday's edition. For further information, call the news editor at 965-2292.

Own Part of Your Food Store.

Gentle Strength Co-op, Inc. is a non-profit natural food store that is owned by the individual members on an equal basis. As an owner, you can help direct the running of the food store by voting on specific issues, responding to surveys, voicing your opinion, or even running for an elected position on our board of directors. As an owner, you can participate in holistic health workshops, natural food cooking classes, newsletter article writing, hiking in the Arizona mountains, and many other ongoing events. Meet lots of interesting people as well. Best of all, as an owner, you are entitled to lower food prices in our store. Try us out for a week and see how good it is to own part of a Natural Food Store by using the coupon below.

20% OFF Your Food

Good for member prices for one week, which is 20% off non-member price. Give coupon to membership desk for one week temporary membership.

Expires Sept. 15, 1983.

GENTLE STRENGTH CO-OP Natural Foods

40 E. Fifth St., Tempe

968-4831

Open:
9-9 Mon.-Sat.
10-6 Sun.



HAIR
IN TEMPE

HAIRSTYLES FOR
THE EIGHTIES
STYLED BY
SANDY

Back to School Specials
\$5 OFF Men's and Women's Cuts
\$10 OFF All perms
\$5 OFF Colors, Cellophanes and Hennaluents

Call For Appointment
414 S. Mill Ave. #101
(Next to Spaghetti Co.)

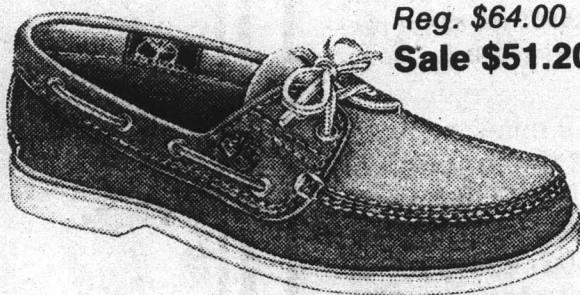
894-1191

Timberland

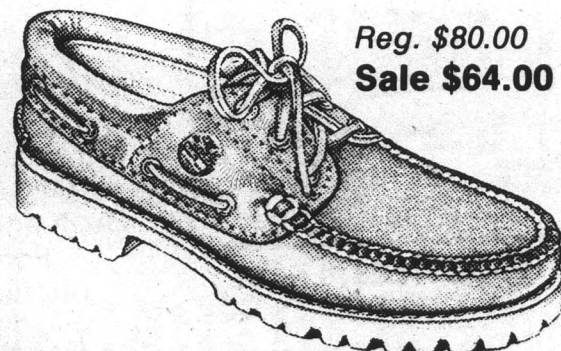


TIMBERLAND HANDSEWNS AT STUDENT PRICES.

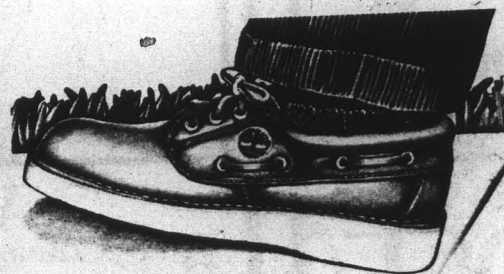
Here's a lesson in handsewns for students of economy. Shoes with premium leathers look better and last longer. And it's never too early to learn to become comfortable with success.



Reg. \$64.00
Sale \$51.20



Reg. \$80.00
Sale \$64.00



Reg. \$70.00
Sale \$56.00



inThing
CASUAL
SPORTSWEAR

968-5840

3121 S. Mill, Tempe
Huntington Square

A new breed of shoes weighing only 18 ounces!

GRAND OPENING SPECIAL!!!

FREE FROZEN YOGURT Buy one frozen yogurt any size, and get one 4-oz. size FREE with this coupon.

Tastes just like ice cream, but has 1/2 the calories. "Naturally" delicious. New flavors daily, 15 toppings. Expires Sept. 6, 1983.

Just 3 minutes from ASU

YOGURT TIME
Huntington Square Shopping Center
3103 S. Mill
N.E. corner Southern & Mill

WOMEN'S HEALTH CENTER

PERSONALIZED and CONFIDENTIAL CARE

- Free Pregnancy Testing
- Free Abortion Counseling
- PreMenstrual Syndrome Program
- Low Cost Sterilization
- Additional Gynecologic Services Available

NEW DRUGS AVAILABLE FOR

- Painful Periods
- Birth Control
- Vaginal Infections

TWO LOCATIONS

PHOENIX
Community Medical Plaza
1840 W. Maryland, Suite C
246-9792 or 242-8649

TEMPE
3030 S. Rural
Suite #7
894-5534

Please call for an appointment.

Encore

Campus station to resume b

By Lisa Phillips
Staff writer

Beginning next week, new wave enthusiasts living in ASU dorms will once again be able to tune in to a campus radio station that caters to their musical tastes.

KASR (66 on the AM dial) is a radio station operated by and for ASU students. It will resume broadcasting for the fall semester on Monday. The station's format is 90 percent new wave music and 10 percent punk and reggae.

The station maintains 10-watt transmitters in every dorm except Manzanita and the Cholla Apartments, Dave Lutter, operations and traffic manager for KASR, said. Signals from these transmitters can be picked up inside the dorms and up to 300 feet away from the buildings.

"If our listeners want to go out and catch a few rays, they can still listen to KASR provided they don't go more than 300 feet from the dorm," he said.

Lutter added that studies have shown KASR to be the most popular radio station in the dorms. The new wave station captured a campus share of 17, while the next most popular station had a 12 share.

"The music we are playing is basically what students want," Lutter said. "If we could broadcast in the entire Valley, we would clean house in the ratings."

The University originally designated funds to be used for a campus radio station three years ago, Lutter said. KASR is currently operating on surplus from those same funds.

Additional budget requests submitted by the station have been denied, he said.

KASR does not utilize commercials in their programming. While the station would like to carry advertising spots, businesses are reluctant to advertise on a station that only reaches the dorms at ASU, Lutter said.

The station, which has been in operation for more than 10 months, provides hands-on experience for more than 50 students interested in broadcasting.

Lutter, a sophomore majoring in broadcasting, considers KASR to be mutually beneficial to listeners and station volunteers.

"The station benefits us too, because broadcasting is a field where you need prior experience to get a job," he said. He added that

Dave Lutter, KASR, is a spinner. He says the station is the most popular of ASU dorms.

BICYCLE SALE

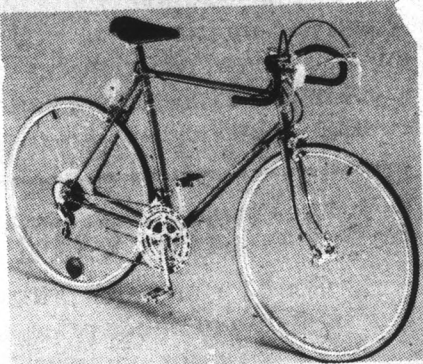
For example:

**Nishiki Century
10-Speeds**

List Price \$160

Sale Price \$139.95

Fully Assembled
25-year Warranty
30-day Free Check-up



Sale Prices on Locks, Cables and Equipment

Where you get the most for your money.

COLLEGE CYCLE

909 East Lemon
(Off Rural Road across from Snow)

966-0842

SERVING ASU
SINCE 1946

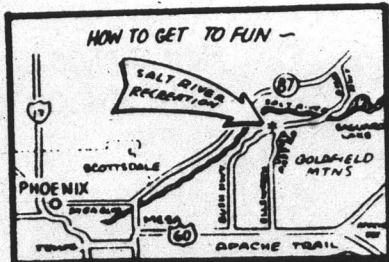
Tubing Down The Salt River
**THE SALT RIVER IS
GOING TOTALLY
TUBULAR**

Fun in the Sun

Ride a Tube
Down the Salt River

TUBE RENTAL AND
SHUTTLE BUS SERVICE
ALL-DAY RATES
\$5 per day per person

Or Shuttle Bus Ticket
Only \$2 all day
2,000 tubes for rent
open 7 days a week 9 a.m.-7 p.m.



NO BOTTLES PLEASE

Located 9 miles north of
MESA at the junction of
Bush and U.S. Highways.
For more information,
phone (602) 984-3305 or
write for your free
brochure and river map.

Salt River Recreation Inc.
P.O. Box 6568 Mesa, AZ 85206



Bring this ad with you for
\$1.00 OFF
TUBE RENTAL
Monday thru Friday



Holiday Inn
MESA/CHANDLER
1600 S. Country Club Drive
at the Superstition Freeway in Mesa
964-7000



NOW APPEARING:
**FREDDIE DURAN &
RHYTHM HOUSE**

Coming Next:
UP TOWN
Sept. 6-Oct. 1

Coors and **92KUPD** present

Occupational Therapy Night

2 FOR 1 COORS • WED., AUG. 31, 1983

7 p.m. to 1 a.m. Cover: \$2 weekdays • \$3 weekends



**BRING HOME A
PORTAVIDEO™ &
HUMPHREY
BOGART...**
**AND YOU CAN
PLAY IT AGAIN
FOR FREE.**

Rent a Portavideo™
and a movie for a night
and the second showing
is on the house.

PORTAVIDEO™
Take home movies.

New
Additions:

- Porky's
- Fitzcarraldo
- Sophie's Choice
- 48 Hours
- Bad Boys
- Still Smokin'
- Class of 1984
- The Missionary
- First Blood
- Mad Max
- Road Warrior
- The Beastmaster
- My Tutor

VIDEO WORKS

Thousands of Great Movies! (All ratings)

Through September 15 rent a recorder and one movie and receive the second movie FREE! (Please present ad & ASU I.D.)

3118 S. MILL (Smitty's Center), TEMPE • 966-6722

Time broadcasting Monday



Contributing photo by Deborah Doukakis

Dave Lutter, operations and traffic manager for KASR, is shown here in his role as campus wax-spinner. The sophomore broadcasting major says the station's format reflects the true tastes of ASU dorm residents.

the six to seven volunteer hours he puts in each day at the station will pay off when he graduates.

A study conducted by a marketing class in the spring showed that KASR's programming

'The music we play is basically what students want. If we could broadcast across the Valley, we would clean house in ratings.'

was similar to that desired by ASU students, Lutter said.

However, campus awareness of KASR's new wave programming is not as high as Lutter would like.

'If you took a random sample of students walking down Cady Mall, chances are that 90 percent of them would not even know ASU had a radio station,' he said. 'We just have not had that much exposure.'

GAY and CHRISTIAN? It is possible to be both!

GAY CHRISTIAN OUTREACH SERVICES (GAYCOS)

- 24-hr. Counseling
- Literature
- Church Services
- Youth Groups and other groups
- General Information

CALL 24-HR. HELP LINE 277-0101

THE WAREHOUSE DELI

"Good Food and Drink"

Estab. 1975

SPECIALS

LUNCH & DINNER

MON.-FRI.
10:30-7 p.m.

Sandwich with
Homemade Fries
Small Drink or
Beer

ONLY
\$1.99 tax incl.

NEW

H
O
T
W
I
N
G
S

HAPPY HOUR

MON.-FRI.
10:30 a.m.-7 p.m.

IMPORTS — 94¢

DRAFT BEER
Pitcher Glass
\$1.99 49¢

WINE
½ liter Glass
\$1.99 49¢

WINE COOLER
Pitcher Glass
\$2.75 65¢

BREAKFAST 6 a.m.-10:30 a.m. Mon.-Fri.

99¢ — SUPER SPECIAL — 99¢

Also Featuring "THE LITE WAIT"

One Egg, 2 Bacon or Sausage,
Toast, Butter & Jam

\$1.19

Coffee Included

LIVE ENTERTAINMENT NIGHTLY
(No Cover, No Min.)

130 E. UNIVERSITY DR.
AT FOREST

966-7788 — TEMPE, AZ
Your Hosts: "The Family"

SUB STOP

"SUB SPECIALISTS OF ARIZONA"

Catering
6 Foot Subs
Party Trays
Whole Wheat
Sub Buns



Sponsors
of KMCR
Jazz
91.5 FM
National Public Radio

STOP IN AND TRY . . .

ALL IMPORTS 80¢

Heineken Draft

80¢ Glass \$3.40 Pitcher

Domestic Draft

60¢ Glass \$2.25 Pitcher

222 E. UNIVERSITY, TEMPE
967-7744

Croissants for Breakfast
(Made fresh daily)

— Special Coffees —

Cappucino, Espresso
Fresh ground — gourmet blend
... to go

HOURS: 7:30 A.M. TO
2:00 A.M. NIGHTLY

DOMENICIS CYCLING SPORTS

53 E. BROADWAY TEMPE, AZ 85282
(602) 967-7700

PRE-SCHOOL
BIKE TUNE-UP
15.00!

FREE!
KANGAROO
WALLET/KEYCHAIN
with 25¢
Purchase or more

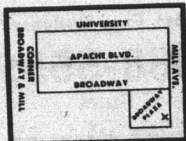
MIYATA	310	319.00	285.00
	710	390.00	351.00
PEUGEOT	PB	189.00	169.00
	PB	249.00	229.00
RALEIGH	Rampar	149.00	129.00
	Record	209.00	189.00

MASTER
LOCK
"300" GUARANTEE
SPECIAL 10"!!

LOCKS & Cables From 7.50
Waterbottle 24oz. 2.50
Zetal Pump 8.50



BENOTTO



EXPIRES SEPT. 23, 1983

WELCOME BACK

All Students Get Free Admission
Tuesday thru Thursday with I.D.

Except Concert Dates

FRANCINE REED

9-1 • Aug. 26 & 27

BUDDY RICH ORCHESTRA

2 Shows • 8 and 10:30 • Aug. 28

CALL FOR TICKET INFO

CARTOON

9-1 • Aug. 30



CHUY'S

396 SOUTH MILL AVE 966-4980

ASU police seek to improve safety on walkways

By Deanne Hutchison
Staff writer

The potential dangers of carts driving on campus walkways may be reduced if options to be suggested by the ASU Police Department are accepted by the administration.

"We have to do something about the mix of feet and wheels," said Frank Caulfield, who works in research and development for the Department of Public Safety.

According to the Vehicle Control Regulations manual, driving a motorized vehicle on the sidewalks and walkways around campus is prohibited, Caulfield said.

But some campus services have exempted themselves from this rule. Caulfield said there are exceptions to the rule and it is difficult to know where to draw the line.

"The day-to-day work must be done," he said. "We can't expect maintenance men who are cutting large limbs off the trees to carry them away."

Caulfield was recently assigned the job of formulating some solutions to the problem of the many carts running errands on campus during peak hours of walkway use.

He is expected to deliver his suggestions to the administration Monday morning.

Though the problem is not new, recent reports of near-miss accidents have caused a new surge of attempts to cut down on motorized traffic on the malls.

Bob Szoradi, production manager for the State Press, said he called the department Wednesday afternoon to complain of a close call he witnessed. A three-wheeled Cushman cart nearly hit a blind girl and her seeing-eye dog, he said.

"The dog handled it well, but it was a case where the guy in the Cushman could have easily stopped and let her go by but instead he hurried on through in front of her," Szoradi said.

Caulfield said reports of this type are rare but "just because we've been fortunate enough to have a lack of incidents does not mean the probability is not there."

Darel Eschbach, data communications director, said computer services also uses carts for repair calls and for a courier service.

"The courier service moves computer printouts to various points around campus," he said. "They try not to coincide with class changes but it doesn't always work out like that because there are so many people on the campus."

University Media Systems is another group that runs

vehicles on campus.

Director Warren Fry said, "A part of the system is the mail services and we have seven vehicles to deliver mail. At maximum saturation times we have six of the vehicles on campus."

Fry said the only way to cut down on the number of vehicles used for delivering mail is for the mail to be delivered late.

The circulation department delivers media equipment daily.

"We have such a limited supply of media equipment that one projector may go to five different places in one week," he said.

Cutting back on deliveries of this equipment would mean having to purchase more slide, movie and overhead projectors, he said.

"All of the drivers are requested to go around the perimeter of the campus," Fry said. "We try to do everything possible to keep traffic off campus, but a lot of times it is unavoidable and students have to walk around a vehicle because it is on the walkways."

give to the **MARCH OF DIMES** **mothers march**
THIS SPACE CONTRIBUTED BY THE PUBLISHER

MATTRESS SALE

Still in Factory Wrappers

Twin Sets	\$49.95
Full Sets	\$59.95
Queen Sets	\$89.95
King Sets	\$149.95
5-drawer chests	\$34.95
7-piece bedroom suite	\$189.95
Complete with bedding.	
Available in oak, pecan, walnut.	
Coffee table set	\$69.95

While They Last
272-7241

MUCH!! MUCH!! MORE!!
BETTER BUY FURNITURE
1130 N. 35th Ave.



Now Open In Tempe Center!

"Just like old fashioned ice cream, but 1/2 the calories."

- Free Samples
- 18 Different Toppings
- Soft Drinks & Shakes

FREE Home-Baked Cookie
with purchase of any size yogurt.
Offer good through 9-2-83.

HONEY TREAT FROZEN YOGURT Tempe Center
Alpha Beta Center
Scottsdale & McKellips Rds.



11:00 "Domino's Pizza, may I take your order please?"



11:01 The pizza dough is hand formed, the old fashioned way.



11:04 100% real dairy cheese. Fresh, not frozen, toppings



11:12 Baked to Domino's Pizza perfection in 8 minutes.



11:14 Specially equipped delivery cars ensure a hot, safe trip.



11:23 Domino's Pizza Delivers™ within 30 minutes at no additional charge.

Free Pepsi! 4 free cups of Pepsi with any 16" pizza. One coupon per pizza. Expires: 9/7/83

Fast, Free Delivery™
968-5555
903 S. Rural

The Domino's Pizza Countdown!

The moment you place your order, the Domino's Pizza team leaps into action. When you want pizza, call the professionals. Domino's Pizza Delivers™.

968-5555
903 S. Rural

HOURS:
11:00am-1:30am Sun.-Thurs.
11:00am-2:30am Fri. & Sat.

Our drivers carry less than \$20.00. Limited delivery area. ©1983 Domino's Pizza, Inc.

\$1.25 OFF any 16" extra large 2 or more item pizza. One coupon per pizza. Expires: 9/7/83

Fast, Free Delivery™
968-5555
903 S. Rural

\$.75 OFF any 12" medium 2 or more item pizza. One coupon per pizza. Expires: 9/7/83

Fast, Free Delivery™
968-5555
903 S. Rural

sports

state
press

Flack

Darryl's doghouse proves no place for running back Clack

By Michael Phillips
Sports editor

Last year, Darryl Clack led the ASU football team in rushing on the way to becoming one of the most talked about Sun Devil running backs in memory.

This year, some say he's in his coach's doghouse. In an article appearing Aug. 24 in The Phoenix Gazette, coach Darryl Rogers is quoted as saying: "Right now, I'm not sure he'll ever play another down for us." Clack has been unimpressive since the beginning of fall practice, reportedly because of injury.

But the Gazette story, written by veteran sports writer Doug McConnell, presents a different picture.

In his article, McConnell says Rogers has been disappointed in Clack's lack of speed.

"He's not as quick as he was last year and he's not working at it either," Rogers reportedly said during a McConnell interview.

"I don't understand how anybody in his right mind could say that," said ASU running back coach Ivy Williams. "Clack has been hurt. Of course he's slow. It's difficult to run on one leg."

In a statement published by the ASU sports information office, Rogers said: "Someone apparently has taken something totally out of context."

"Darryl Clack has been hampered by nagging injuries during preseason practice. He'll be the first to admit he has not been himself."

"But he'll heal, and when he does, we expect him to be the outstanding running back he was a year ago."

"Anyone who thinks the coaching staff has had a change of opinion on Darryl's ability is totally mistaken."

A spokesman for the Gazette said McConnell was undergoing knee surgery this week and was unavailable for comment.

However, Gazette sports writer Dennis Brown said the paper will stand by McConnell's story.

"It's an interesting situation," he said. "We had a meeting, talked a little bit about the story and our assistant sports editor said there's no reason not to stand behind it."

Caught between the Gazette story and Rogers' statement is Clack.

"I heard about that (the McConnell article)," Clack said. "Those statements are all false. He (Rogers) didn't say any such thing."

According to Williams, Clack is suffering from a hip pointer, a pulled groin muscle and a sprained ankle.

The 5-10" 200-pound sophomore said that both his ankles are sprained, but he hopes to return to full strength by next week.

"There's nothing holding him back besides the injuries," Williams said. "He's going to be a fine football player."

"Both (ASU fullbacks) Tex Wright and Tony Lombardi have been hurt too," Williams continued. "But nobody questions that."

"Because Clack is so high profile, he gets all the attention."

continued page 16



Contrary to published reports, coach Darryl Rogers (above), says running back Darryl Clack is not in the doghouse.



Sophomore running back Darryl Clack has not seen action in practice this week due to injuries.

FOREIGN AUTO PARTS

Flint DISTRIBUTING

Parts & accessories for all imported cars and trucks



Student Discount With Valid I.D.

968-8687
IN THE TEMPE CENTER



OPEN MONDAY THRU SATURDAY



TNT-SURF-N-SPORT

Surf and New-Wave Clothing

START SCHOOL BACK IN STYLE

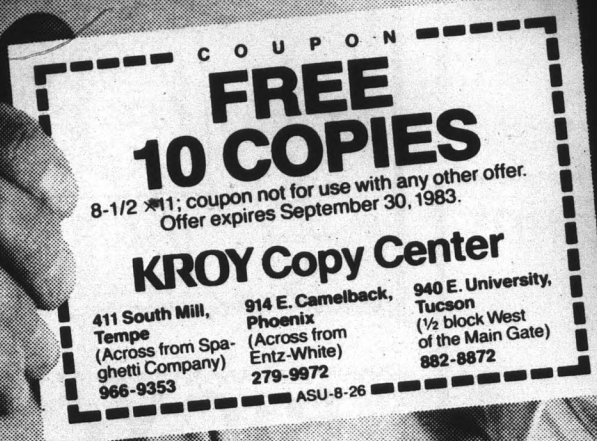
PIPELINE • OFFSHORE • LOCAL MOTION
G&S • INSTINCT • CATCH IT • LANCE
MR. ZOGS • GOTCHA • PARACHUTE PANTS

Vuarnet's and Bucci's
Morey Boogie Boards

Gotcha Long Sleeve Surf Shirts
2 FOR ONLY \$19

820-0594
In The Fairlanes Village
4427 S. Rural Rd. (past the freeway)

Make your idea look better for less.



The Kroy Way.

There's a new place in town where you can make just about anything you want printed look better for less.

It's a Kroy Copy Center. Come on in. We'll help you set your own bold, eye-catching headlines with Kroy® lettering machines. For your typing, we have state-of-the-art typewriters. We'll show you how to put things together at a layout station.

And when you're through, we'll get you all the high-quality copies you need.

It's all very easy, fast, inexpensive, and fun. Next time, get your idea read and remembered. Do it The Kroy Way.

KROY Copy Center
LETTERING-FLYERS-RESUMES-REPORTS-CHARTS-COPIES



We feature your favorite games:
 DRAGON'S LAIR
 STAR TREK
 SINISTAR
 CHEXX

PINBALL WIZARD
 120 E. UNIVERSITY (In The Arches)

WANT TO FEEL and LOOK BETTER?
Special Rates With This Ad
 TANNING BOOTHS — 3 Visits — \$3
 TANNING BED
 3 1/2-hr. Visits
\$15
 Also Professional Licensed Massage

Sun-Tans and Massages
 UNLIMITED
 4415 S. Rural Rd. #10
 Tempe • 831-2884
 Next to 24-Hr. Nauticus

NEW!
 Fresh Baked Whole Wheat buns,
 for that change of pace

Schlotzsky's

TEMPE CENTER
 18 E. 10th St. & Mill OPEN 11 to 8 968-0056



Billy Lewis
 BETTER WOMEN'S FASHIONS
 AT DISCOUNT PRICES

entire summer stock now 60% off regular comparative prices

Southern Palms Center
 Southern & McClintock
 M-F 10-9, Sat. 10-6, Sun. 12-5
839-1900

Back to School SALE!!

- Any Tennis Racket **30% OFF** (Expires 9-1-83.)
- All Backpacks **20% OFF** (Expires 9-1-83.)
- Buy a T-shirt and get a **free transfer** (Expires 9-1-83.)
- Any NFL Jersey **25% OFF** (Expires 9-1-83.)

MALONE'S SPORTING GOODS
 3217 S. Mill (Huntington Square), Tempe • 894-2798




Do Your Computer Work At Home!

Save Time and Effort

CRT with coupler
 or
 Printer with coupler **\$50⁰⁰** per month

BRS LEASING, INC.
 3914 E. McDowell • 277-3282
 Rentals / Service / Sales

**Looking for Living Quarters,
 But Only Have Pennies To Spend?**



STUDENT APARTMENT \$125 PER MONTH MUST SHARE SPACE

Become a plasma donor! \$10 is paid per donation and you can donate twice weekly (but please wait 72 hours between donations). That's up to \$100 a month! And that's enough to turn your dream place into a reality!

New donors, bring in this ad for a \$2 bonus for your first donation.

Call now for an appointment.

968-6139
University Plasma Center
 1015 S. Rural Road, Tempe, AZ
 Open Monday-Saturday 8 a.m.-6 p.m.
 federally licensed SP-2

A Special Offer From



ASU Students...

If you're over 18 you can rent an Escort or other fine car at

SPECIAL LOW WEEKEND RATES
 starting at **\$19.96** A DAY no mileage (2 Day Min.)
 (Rates subject to change without notice)
 For Your Car, Call Your ASU Representative

968-4072
 Office located at Rural & University

BICYCLE SALE

- New 10-Speeds Reg. \$150 **NOW \$109.50**
- 1-Speed Balloon Tire Cruisers Reg. \$169.50 **NOW \$129.50**
- Fuji Royale II 12-Speeds Reg. \$350 **NOW \$299.50**
- 3-Speeds Men's or Ladies' Reg. \$160 **NOW \$135**

High security locks with \$350 on sale at \$16.95!
 Other locks and accessories at special sale prices.



TEMPE BICYCLE SHOP
 The old gas station on the corner • 6th Street and Mill, Tempe

966-6896

Celtics to visit UAC to play Suns

By Ken Sain
Sports writer

The Arizona Board of Regents voted to allow the Phoenix Suns of the National Basketball Association to play an exhibition game against the Boston Celtics in the University Activity Center Oct. 10.

The Suns were originally scheduled to play the Celtics in Alaska, but promoters in Anchorage backed out of the deal. Boston had been guaranteed funds for the trip, so the Suns scheduled two games against the Celtics.

The Suns will host Boston on Oct. 8 at Veterans Memorial Coliseum in Phoenix.

"We thought it might be advantageous for us to play there (Activity Center)," the Suns' business manager, Bob Machen, said. "A few years ago we played a playoff game there against Kansas City, and we drew very well from the east side of the Valley."

"We felt if we played a game there it may rekindle interest in the east Valley for the Suns."

Phoenix had scheduling problems in the 1979 playoffs against the Kings. The Board of Regents allowed the Suns to play at the Activity Center in a game which drew a sellout crowd of more than 14,000 fans.

If the Regents had not permitted the Suns use of the UAC, the Suns were considering playing the game in San Diego.

Ticket prices for the game have not been set, but according to a Suns official there is a chance that students may receive a discount.

Phoenix has qualified for the playoffs the past six years. Boston has won 13 NBA Championships, more than any other team in NBA history.

The Celtics last title came in 1980-81. Larry Bird, Kevin McHale, Robert Parrish, and Cedric

"Cornbread" Maxwell are some of the stars expected to play for the Celtics.

Dennis Johnson, a former all-star with the Suns, should also see action for the Celtics. Johnson went to the Celts in a trade for backup center Rick Robey in June.

The Suns are expected to play many of their regulars, and also take a look at rookies Dereck Wittenburg of NCAA champion North Carolina State, and Kevin Magee, who skipped the NBA last year to play in Europe.

ASU graduate Paul Williams was selected in the second round by the Suns in June's collegiate draft but was cut by the team earlier this week.

ASU President J. Russell Nelson and Executive Vice President Paige Mulhollan were in Tucson at the Board of Regents meeting and were unavailable for comment.

The only Regent who did not vote in favor of the Suns-Celtics game was Donald Pitt of Tucson. Pitt, a minority owner of the Suns, abstained.

**CHANGING
HANDS
BOOKSTORE
NEW &
USED
BOOKS**

414 Mill, Tempe
Arizona 85281
966-0203



Aren't You Hungry?

39¢ Hamburgers

ANY DAY/ANY TIME
7 DAYS A WEEK
DRIVE THRU OPEN UNTIL 2 A.M.

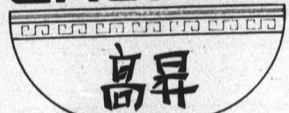
GOOD ONLY AT
BROADWAY & PRIEST



50¢ OFF ALL YOU CAN EAT

Choose from 12 Items

CHUNGS



CHINESE BUFFET

Lunch: Dinner:
3.10 3.81

Beer & Wine Served
Menu or Buffet
Eat In or Take Out

OPEN 7 DAYS
829-1222
Corner Univ. & Hardy

— Notice —

Discount U-Copy Card Now Available For ASU U-Copy Machines

Due to inflationary pricing in the copy industry and rising costs of operations, the coin operated copy machines on campus will increase its coin vend to 10¢ per 8½"x11" copy. However, because of an automated meter system designed and manufactured by General Meters Corp.™ of Beverly Hills, U-Copy can still offer copy prices as low as 5¢ to students purchasing copy cards of depreciating value.* These cards are easily used in the meter, and eliminate the need for bulk amounts of change. To familiarize the student body with this system, U-Copy is offering a complimentary copy card worth 5 copies:

ASU U-COPY COPY CARD

To receive your complimentary copy card for the new copy card system at ASU, please bring your Fall Semester 1983 Schedule & Billing Statement to the Library Copy Center located on the third floor of the Hayden Library.

One card per customer only.
Offer expires August 26, 1983 at 11 a.m.

*U-Copy depreciating card price schedule

Color	Value	Price	% Discounted
Blue	\$ 20 = 200 copies	\$ 15.00	25%
Green	\$ 30 = 300 copies	\$ 21.00	30%
Yellow	\$ 50 = 500 copies	\$ 32.50	35%
Brown	\$100 = 1,000 copies	\$ 60.00	40%
Purple	\$200 = 2,000 copies	\$100.00	50%

NOTE:
Cards can be purchased at ASU:

- Hayden Library Copy Center
Located on the third floor
- ASU Noble Science Library
Located on the first floor

Welcome
Back **ASU!**

5¢ BEER

ALL DAY!

FRIDAY, AUGUST 26, 1983

Grand Opening

Cannery Row

705 S. FOREST DR.

½ BLOCK N. OF UNIVERSITY

More about

Clack

continued from page 13

Clack gained all that attention on the football field last year. He was the first freshman to lead the Sun Devils in rushing since Leon Burton managed the feat in 1955.

He led the team in touchdowns, and his average of 5.8 yards-per-carry, was tops in the Pac-10.

"It was all twisted around," Clack said in reference to the quotes attributed to Rogers in the Gazette story. "What was meant, was

that while I was injured, I wasn't going to be at full strength."

Clack has not been actively practicing with the team, according to Rogers, but would probably return to his rushing duties Monday.

Rogers said he would not consider planting something in the press in order to motivate his star running back.

"If I was going to say anything, I'd say it to Darryl Clack," Rogers said.

Hey, trivia buffs!

Well sports fans, here it is again, the State Press sports trivia quiz.

Hey, we're up to our elbows in responses, but you still have time to get your entry in before the contest closes Wednesday, Aug. 30, at 5 p.m.

First prize in this extravaganza will be a large pizza, two dinner salads and a pitcher of beverage at Round Table Pizza, 1849 N. Scottsdale Road, Tempe.

Second prize is a t-shirt, courtesy of Fitness for Fun, 1628 E. Southern, Tempe.

Now all you have to do is put your name and phone number in the spaces below, clip out the form and drop it in the official trivia quiz box located in the Matthews Center basement.

Winners will be announced in the Sept. 2 issue of the State Press. In case of a tie, we will select a winner from a special drawing to be held in the State Press newsroom Sept. 1.

Good luck sports fans.

NAME _____

PHONE NUMBER _____

1. Who is the all-time leading (yardage and receptions) receiver in ASU history?

- John Mistler
- John Jefferson
- Larry Walton
- 2. Who is the Sun Devils' all-time leading rusher?
 - Gerald Riggs
 - "Whizzer" White
 - Woody Green
- 3. What ASU coach had the highest winning percentage during his career?
 - Dan Devine
 - Frank Kush
 - Darryl Rogers
- 4. Who is the only former Sun Devil in the Pro Football Hall of Fame?
 - J.D. Hill
 - Curley Culp
 - Charley Taylor
- 5. How many members of last season's Fiesta Bowl team went on to professional football?
 - 14
 - 10
 - 12
- 6. What is the longest winning streak in ASU football history?
 - 18
 - 21
 - 26

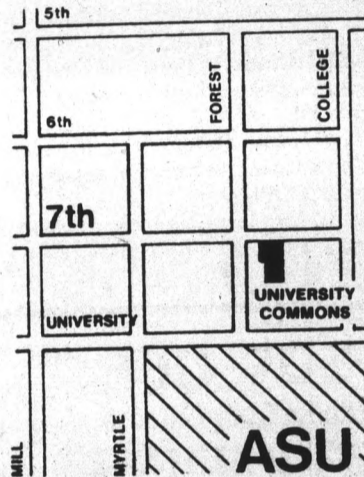
UNIVERSITY COMMONS RETAIL CENTER

215 E. 7th STREET TEMPE, ARIZONA
Arizona State University Area



NOW OPEN:

- Campus Athletic
- Crimpers
- The Bare Cover
- The Foot Fetish
- Barb's Dark Room
- Steak Out



STUDENTS ... Don't miss our 20-20 offer!

Art, architecture, engineering & design students:

Shop for your art supplies from The Valley's most complete selection by SEPTEMBER 20, and save a big 20%.

Shop any other time and you'll receive our standard 10% STUDENT DISCOUNT.

Fine arts materials

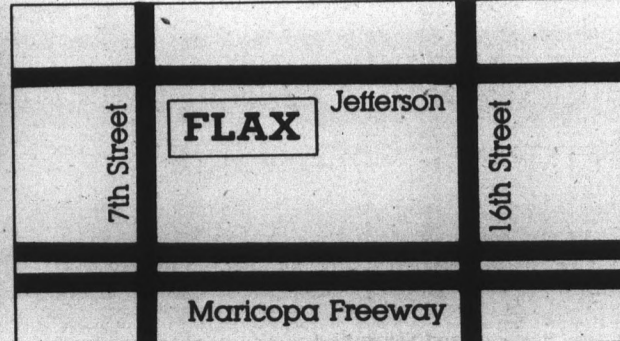
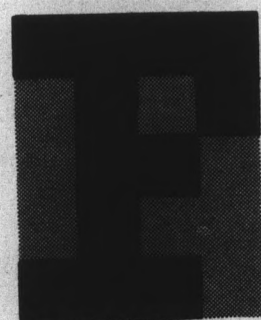
Canvas, paints, stretcher bars, brushes, frames, paper, etc.

Drafting supplies

Parallel rules, triangles, templates, leads, drawing boards, technical pens (all brands) and more.

ALSO

Airbrush equipment, animation supplies, transfer lettering/tapes.



10th Street & Jefferson • 254-0840 • Lots of free parking
Hours: Mon.-Fri. 8:30-5:30 Sat. 9-5

Carpet House
DORMS, APTS., VANS
ALL SIZES
USED ROOM SIZES
*10 & UP
NEW CARPET TOO!
1516 E. Van Buren
Phoenix

PIZZAS·PIZZAS
Deep Dish 12" • Dine In Or Take Out
CHEESE \$3.25
Each item 75¢.
New York Style Pizzas
PAPARAZZI'S
DANELLE PLAZA
967-0843 With coupon. Good through 9-2-83.

BUBBLES OF JOY
Balloon Bouquets
for all occasions
party decor
talking, foils & hot air balloons
993-3346 • 831-6840

Hoie House
37 E. BROADWAY, TEMPE • 968-6676
IF YOU SURF IT
SAIL IT
THRASH IT
or JUST WANT TO WEAR IT,
WE GOT IT!
VUARNET WINDSURFER BUCCI
SKATEBOARDS HACKY-SACK

SUN DEVIL CAR WASH & GAS
Tom Selleck & LINDA EVANS might wash their car with us.
★Automatic (exterior only)
• Fully attended 7 a.m. to 6 p.m.
• We wash vans & trucks too!
• Courtesy towel drying
\$2.50
★Do-It-Yourself
• Open 24 hours
• Foaming brush & engine degreaser
• Spec. equipped Rec-V bay
50¢
APACHE & McCLINTOCK
(Across from Pep Boys)
968-4922

Published by the State Press as a campus community service.

CODE OF CONDUCT (Effective August 10, 1983)

5-301 — PREAMBLE

A. Jurisdiction and Authority

1. The educational process is ideally conducted in an environment that encourages reasoned discourse, intellectual honesty, openness to constructive change and respect for the rights of all individuals. This Code of Conduct is designed for the promotion and protection of such an environment at each of the state universities.

2. The administration at each of the state universities is to assist the Board in the enforcement of the rules and regulations set forth under this Code, but the authority of the administration is subject to the ultimate authority of the Board.

B. Philosophy

1. The educational process is ideally conducted in an environment that encourages reasoned discourse, intellectual honesty, openness to constructive change and respect for the rights of all individuals. This Code of Conduct is designed for the promotion and protection of such an environment at each of the state universities.

2. Acceptance of membership in the university community amounts to neither a surrender of those individual rights accorded to all citizens of this country nor a means for escaping the attendant fundamental responsibilities of that citizenship. Membership in the university community brings rights as well as responsibilities. This Code of Conduct shall be implemented by the adoption of sets of procedural rules appropriate for the various segments of the university community, which shall provide for the full protection of individual rights and freedoms.

C. Purpose and Intent

1. The primary purpose for the enactment of this Code of Conduct is to set forth in a clear and concise manner the rules and regulations of conduct expected of those who join the university community, or who are present on the university campus or participating in any university sponsored activity.

2. It is intended that the sanctions listed in this Code be imposed and enforced for the protection of the university community and for the maintenance of order and stability, both with respect to activities occurring on the university campus and with regard to all university-sponsored activities.

D. Limitations Upon Code Coverage

1. The adoption of this Code of Conduct does not prohibit any university or the Arizona Board of Regents from adopting or maintaining additional conditions, rules, regulations and procedures not in conflict with this Code and which address matters not covered by this Code. Charges brought pursuant to this Code may be combined with charges brought pursuant to other conditions, rules or regulations, provided administrative procedures for enforcement of the Code are used to resolve the charges.

2. Among the matters specifically excluded from coverage under this Code are the following:

a. Rules and regulations which have been or will be adopted by each university which pertain to the control of vehicles on university property.

b. Regulations and procedures relating to student academic performance, other than academic dishonesty matters. E.g., grade appeal procedures.

c. Student housing regulations and contracts where sanctions are not imposed that extend beyond the student housing setting.

3. The Code is not intended to interfere with the internal corporate affairs of organizations such as the Associated Students, sororities, fraternities, honor societies, and similar organizations, but such organizations are otherwise subject to this Code.

E. Violations of Law and Code Regulations

Members of the university community may be accountable to both civil authorities (city, state or federal) and to the university for acts which constitute violations of law and of this Code. Disciplinary action at the university may proceed during the pendency of criminal proceedings and will not be subject to challenge on the ground that criminal charges involving the same incident have been dismissed or reduced. There is no legal basis for any claim of double jeopardy and no right to immunity may be urged in any administrative proceeding.

5-302 (R7-4-101) — Definitions

In this Code of Conduct, unless the context otherwise provides or requires:

1. "Aggravated violation" means a violation which resulted or foreseeably could have resulted in significant damage to persons or property or which otherwise posed a substantial threat to the stability and continuance of normal university or university-sponsored activities.

2. "Board" means the Arizona Board of Regents.

3. "Cheating" means intentionally using or attempting to use unauthorized materials, information or study aids in an academic exercise.

4. "Controlled substance" means a drug or substance listed in schedules contained in A.R.S. §§ 36-2512 through 36-2516.

5. "Distribution" means sale or exchange for personal profit.

6. "Fabrication" means intentional and unauthorized falsification or invention of any information or citation in an academic exercise.

7. "Faculty" means all employees of the Arizona Board of Regents in teaching, research, or service, whose notice of appointment is as lecturer, instructor, assistant professor, associate professor, professor or otherwise designated as faculty on the notice of appointment. Graduate students who serve as assistants, associates or otherwise, are academic appointees as well as graduate students but are not members of the faculty.

8. "Group" means a number of persons who are associated with each other and who have not complied with university requirements for registration as an organization.

9. "Illegal drug" means any drug whose use, possession or distribution is prohibited or restricted by provisions of Title 13 of the Arizona Revised Statutes, and includes, without limitation, narcotic drugs, dangerous drugs, marijuana and peyote.

10. "Organization" means a number of persons who are associated with each other and who have complied with university requirements for registration.

11. "Plagiarism" means intentionally or knowingly representing the words or ideas of another as one's own in any academic exercise.

12. "President" means the president of the university or a designee.

13. "Reckless" means conduct which one should reasonably be expected to know would create a substantial risk or harm to persons or property or which would otherwise be likely to result in interference with university or university-sponsored activities.

14. "Student" means any person registered or enrolled in one or more classes except a faculty member or full-time employee who takes any courses as a privilege of employment. Graduate students who serve as assistants, associates or otherwise, and all other students employed part-time are classified as students rather than faculty or other university employees.

15. "University" means the appropriate university involved: The University of Arizona, Arizona State University, Northern Arizona University, and any other university governed by the Arizona Board of Regents.

16. "University campus" means all land, buildings, facilities and other property owned, used or controlled by the university.

17. "University community" means university students, administrative and staff personnel, members of the faculty and all other university employees.

18. "University property" means all real and personal property owned by the university or owned by the Arizona Board of Regents and used by the university and includes all such property in the possession of or subject to the control of the university.

19. "University-sponsored activity" means any activity on or off the campus which is initiated, aided, authorized or supervised by the university.

20. "Weapon" means any object or substance designed to inflict a wound, cause injury, or incapacitate, including, without limitation, all firearms, pellet guns, switchblade knives, knives with blades five or more inches in length, and chemicals such as "mace" or tear-gas, but excluding normally available over-the-counter self-defense chemical repellents.

5-303 (R7-4-102) — Prohibited Conduct

The following misconduct is subject to disciplinary action:

1. All forms of student academic dishonesty, including cheating,

fabrication, facilitating academic dishonesty and plagiarism.

2. Intentionally or recklessly causing physical harm to any person on the university campus or at a university sponsored activity, or intentionally or recklessly causing reasonable apprehension of such harm.

3. Unauthorized use, possession or storage of any weapon, explosive device or fireworks on the university campus or at a university sponsored activity.

4. Initiating or causing to be initiated any intentionally false report, warning or threat of fire, explosion or other emergency on the university campus or at a university-sponsored activity.

5. Intentionally or recklessly interfering with normal university or university sponsored activities, including, but not limited to, studying, teaching, research, university administration, or fire, police or emergency services.

6. Knowingly violating the terms of any disciplinary sanction imposed for an earlier violation of this Code.

7. Unauthorized use, possession or distribution or possession for purposes of distribution of any controlled substance or illegal drug on the university campus or at a university-sponsored activity.

8. Intentionally or recklessly misusing or damaging fire safety equipment.

9. Intentionally furnishing false information, including false identification, to the university.

10. Forgery, unauthorized alteration or unauthorized use of any university document or instrument of identification.

11. Intentionally and substantially interfering with the freedom of expression of others on the university campus or at a university-sponsored activity.

12. Theft or misappropriation of property or of services on the university campus or at a university sponsored activity; knowing possession of stolen property on the university campus or at a university-sponsored activity.

13. Intentionally or recklessly destroying, damaging or misappropriating university property or the property of others on the university campus or at a university-sponsored activity.

14. Failure to comply with the directions of university officials, including campus police officers, acting in good faith and in the performance of their duties.

15. Failure to comply with other published rules and regulations of conduct that may from time to time be adopted by the Board or the university, including, without limitation, restrictions on the sale or possession of alcoholic beverage on the university campus or at university-sponsored activities.

16. Unauthorized presence in or use of the university campus, facilities or property.

5-304 (R7-4-103) — Sanctions

A. In addition to any other interim or final action which may be taken to enforce this Code, any person, whether a member of the university community or not, may be ordered to leave the university campus when the president, or such other officer or employee designated by the president to maintain order on the university campus, has reasonable grounds to believe the person is committing any act which interferes with or disrupts the lawful use of university property by others or has reasonable grounds to believe any person has entered upon the university campus for the purpose of committing such an act.

B. One or more of the following sanctions may be imposed for violation of the disciplinary regulations set forth in Section 5-303 (R7-4-102):

1. **EXPULSION:** Permanent separation of the person from the university. As applied to faculty and other university employees, expulsion may involve dismissal and termination of employment or nonrenewal of an employment contract. An indication of expulsion will appear on the student's transcript or be maintained in the permanent file of the university employee. The person will also be barred from the university campus.

2. **SUSPENSION:** Separation of the person from the university for a specified period of time. Permanent notification may appear on the student's transcript or in the file of the university employee. Except where any administrative decision under this Code indicates otherwise, a person suspended under this Code shall not participate in any university sponsored activity, may be barred from the university campus, and where such person is a faculty member or other university employee, any suspension shall be without pay or other benefits incidental to the person's employment position.

3. **PROBATION:** This sanction shall be applicable to students only and may include forfeiture of campus privileges for a definite period of time. Additional restrictions or conditions may also be imposed. Appropriate university officials shall be notified of the imposition of such sanctions.

4. **FORFEITURE:** This sanction shall only be applicable to faculty members or other university employees, and shall include forfeiture of the right or expectation to an increase in pay, sabbatical leave, or summer employment for a definite period of time.

5. **WARNING:** The person is warned that further misconduct may result in more severe disciplinary action.

6. **RESTITUTION:** Payment to the university or to other persons, groups, or organizations for damages incurred as a result of the violation of this Code.

C. Imposition of any sanctions shall take into account the following:

1. Sanctions shall be imposed pursuant to the administrative procedures referred to in Section 5-306 (R7-4-105).

2. Mitigating factors may be considered. Factors to be considered in mitigation shall be the present demeanor and past disciplinary record of the individual charged with a Code violation, as well as the nature of the offense and the severity of any damage, injury or harm resulting from it.

3. Repeated violations or an aggravated violation of any section of this Code may result in the imposition of a more severe sanction.

4. Attempts to commit acts prohibited by this Code shall be subject to sanctions of the Code to the same extent as completed violations.

5-305 (R7-4-104) — Groups and Organizations

A. Student, faculty and employee groups or organizations may be charged with violations of this Code.

B. Such a group or organization and its officers may be held collectively or individually responsible when violations of this Code by those associated with the group or organization have received the tacit or overt consent or encouragement of the group or the organization or its leaders, officers or spokespersons.

C. The officers or leaders or any identifiable spokesperson for such a group or organization may be directed by the president of the university to take appropriate action designed to prevent or end violations of this Code by the group or organization who can reasonably be said to be acting on its behalf. Failure to make reasonable efforts to comply with such a directive shall be considered a violation of Paragraph 14, of Section 5-303 (R7-4-102) of this Code, both by the officers, leaders or spokesperson for the group or the organization and by the group or organization itself.

D. Sanctions for group or organization misconduct may include revocation of the use of university facilities for a definite period of time or denial of recognition or registration, as well as other appropriate sanctions, permitted under this Code.

5-306 (R7-4-105) — Enforcement of the Code

A. The provisions of this Code shall be enforced through use of the following administrative procedures:

1. Faculty shall be subject to those procedures set forth in Article X.C. of the Conditions of Faculty Service. (ABOR Policy No. 6-201 K.3.)

2. Administrators shall be subject to those procedures set forth in Article VIII of the Conditions of Administrative Service. (ABOR Policy No. 6-101 H.1.)

3. All other university employees shall be subject to the applicable grievance procedures existing at the university.

4. Students shall be subject to the Student Disciplinary Procedures adopted by the Board.

B. For purpose of enforcement of this Code, a group or organization shall be subject to the same procedures as the majority of its members would be subject to if charged on an individual basis with a violation of this Code.

5-307 — Miscellaneous Provisions

A. The several sections and provisions of this Code are hereby declared to be independent and severable and if any section, subdivision, word, sentence or clause be held void or non-enforceable such holding shall not affect the validity or enforceability of any other part or parts of this Code which can be given effect without the invalid or non-enforceable portion.

B. The list of prohibited misconduct set forth in Section 5-303 (R7-4-103) shall be interpreted broadly and is not designed to define misconduct in exhaustive terms.

C. The board reserves the right to take necessary and appropriate action to protect the safety and well-being of the university community.

D. Any prior existing Code of Conduct is repealed except that any pending action or proceeding shall not be affected by this Code and will

be subject to the Code provisions in effect at the time the action or proceeding was originally brought.

STUDENT DISCIPLINARY PROCEDURES (Effective August 10, 1983)

5-401 — General

A. The purpose of this policy is to establish administrative procedures applicable to students for the fair enforcement of the rules and regulations set forth in the Code of Conduct while preserving due process of law. A student accused of a violation of the Code of Conduct, or any student group or organization similarly accused, shall be subject to the procedures set forth in this policy.

B. In summary, the administrative process set forth in this policy provides for (1) an informal review of the charges and a conference with the student or student group so charged, and (2) a formal hearing before the University Hearing Board. At either stage, any decision reached by the university officer or hearing body considering an alleged violation of the Code of Conduct is advisory in nature and is subject to the consent and approval of the President of the university.

C. Formal rules of evidence shall not be applicable to any of the administrative procedures, formal or informal, set forth in this policy. Deviation from the prescribed procedures set forth in this policy shall not necessarily invalidate a decision or proceeding unless significant prejudice to the respondent or the university may result.

5-402 — Definitions

A. The definitions provided in the Code of Conduct shall also be applicable to this policy except where otherwise indicated. Please note that the Code of Conduct includes within the definition of "President" the President's designee.

B. The following additional definitions are included in this policy:

1. "Complainant" means any individual member of the university community initiating the procedures set forth in this policy.

2. "Day" means normal business day not including Saturday, Sunday and any officially recognized university holiday.

3. "Dean of Students" means the administrative officer bearing such title or a designee.

4. "Respondent" means a student, or any student group or organization, against whom procedures under this policy have been initiated.

5. "University Advocate" means an individual appointed by the President to investigate complaints of Code of Conduct violations when called upon to do so and, where necessary, to prepare charges thereon and present the same in appropriate administrative proceedings under this policy.

5-403 — Interim Action

A. Except as otherwise indicated, student disciplinary action taken by the university to enforce the Code of Conduct shall be in accordance with the procedures set forth in Section 5-404 below.

B. While generally the status of a student accused of a violation of the Code of Conduct should not be altered until a final determination has been made in regard to the charges filed against the student, the President may suspend a student for an interim period pending resolution of any administrative action, formal or informal, brought under this policy whenever there is evidence that the continued presence of the student on the university campus poses a substantial threat to any individual or to the stability and continuance of any normal university function. Such interim suspension shall become effective immediately without prior notice.

C. A student suspended on an interim basis pursuant to Paragraph B above shall be given an opportunity to appear before the President, within five days from the effective date of the interim suspension. An informal hearing shall then be held on only the following issues:

1. The reliability of the information concerning the student's conduct, including matter of the student's identity; and

2. Whether the conduct and surrounding circumstances reasonably indicate that the continued presence of the student on the university campus poses a substantial threat to any individual or to the stability and continuance of any normal university function.

5-404 — Disciplinary Procedures

A. Initiation of Procedures

1. Except as otherwise provided in Subparagraph 2 below, disciplinary procedures shall be initiated through written referrals. A written referral accusing a student or a student group or organization of violating the Code of Conduct shall be on a form approved by the University Advocate and available at the office of the Dean of Students. The written referral must be signed by a complainant and filed with the Dean of Students.

2. If the alleged violation of the Code is student academic dishonesty, procedures will be initiated at the department or college level pursuant to Paragraph B.3 below, and will not be dealt with by the Office of the Dean of Students.

3. In all cases, informal procedures shall first be initiated in an effort to resolve the matter.

B. Informal Procedures

1. Upon receipt of a referral, the Dean of Students shall proceed as follows:

a. Consult with the complainant, and conduct a review and investigation to (1) ascertain the facts and (2) determine if the matter should be pursued.

b. Confer with the respondent to ascertain the respondent's position, and to report the findings and recommendations to be made.

2. The findings, decisions and sanctions, if any, to be recommended shall be reduced to writing on a form prepared by the Dean of Students and submitted to the President, who may approve, disapprove, modify or otherwise render a determination.

a. If the respondent is willing to accept the written recommendation of the Dean of Students, the respondent shall acknowledge acceptance by signing the form in an appropriately designated place. If the recommendations as submitted are approved by the President, all action on the referral shall be considered closed.

b. In any event, unless the recommended or approved sanction includes expulsion, suspension for more than ten days, forfeiture of university privileges for more than ten days, or restitution, the respondent shall have no right to further administrative proceedings and the matter shall be concluded at this stage.

c. In all other cases where the respondent refuses or fails to accept the recommendations or final determination, the respondent shall complete a form entitled "Request for Hearing Before the Hearing Board," available from the Dean of Students with whom the form shall be filed. The request form shall be filed within ten (10) days of receipt of notice of the decision or recommendation. The completed request form together with the initial referral and the recommendations of the Dean of Students shall be forwarded to the University Advocate. The University Advocate shall then proceed as outlined in the formal procedures described in Paragraph C. below.

3. If a student is accused of academic dishonesty, the matter shall be dealt with informally by the appropriate department, college or school, or other academic unit through procedures established at each university. Only if the recommendation resulting from such informal process is either suspension for more than ten days or expulsion from a program or from the university shall the respondent be entitled to initiate the formal hearing procedures established herein, in which case, if the student fails to accept the recommendations made, or if the determination approved by the President is not acceptable, the student shall proceed with the filing of a "Request for Hearing Before the Hearing Board" as outlined above. In all other cases, particularly where the recommendation is failure of the course or failure on a specific academic exercise, a student will be accorded no further proceedings under this policy, but may be accorded additional appeal rights under procedures adopted at each university, such as grade appeal procedures.

4. If a respondent seeks a formal hearing before the University Hearing Board, a request for hearing form must be timely filed, i.e. within ten (10) days after receipt of the approved recommendation or determination. A respondent is deemed to have received notice of a decision or recommendation within five (5) days of its being mailed, by registered or certified mail, to the respondent's most recent address listed with the university. The time for filing may be extended where good cause is shown for doing so.

C. Formal Procedures

1. University Hearing Board: Formal procedures under this policy involve a hearing before the University Hearing Board. The University Hearing Board shall be composed of five members, of which two shall be students, two shall be faculty members, and one shall be a non-faculty employee. Terms of office of the members of this administrative body shall be in accordance with rules established by the President of the university. Student members shall be selected by the President

from a list of five nominees submitted by the Associated Students; faculty members shall be selected by the President from a list of five nominees submitted by the Faculty Senate; the non-faculty employee shall be selected by the President. Alternate members for each group shall be selected by the President in a similar manner in order that a hearing may proceed in the absence of a regular member of the Board. The chair of the Hearing Board shall be selected by the President. All members of the Hearing Board shall be present and voting for a proceeding to be conducted by the Hearing Board.

2. The following procedural guidelines shall be applicable in proceedings before the University Hearing Board.

a. The University Advocate shall prepare and file a statement of charges with the University Hearing Board. The statement shall contain at least the following:

(1) A statement of the specific Code provisions alleged to have been violated by the respondent.

(2) A short and plain statement of the particulars of the offense including, if known, the time, date and place of the alleged violation.

(3) The name of the complainant who initiated the case referral.

b. The chair of the University Hearing Board shall cause a written notice to be given to the parties at least twenty (20) days prior to the date set for hearing, which notice shall include:

(1) A statement of the time, place and nature of the hearing.

(2) A statement of the legal authority and jurisdiction under which the hearing is to be held.

(3) A copy of the statement of charges.

(4) The name and university address of the chair or person to whom all correspondence, motions or pleadings should be directed.

(5) A summary of the rights of the respondent as applied to the hearing proceedings, and a copy of any available literature regarding procedures to be followed in the proceedings.

c. A copy of the notice shall be served upon the respondent by delivery to the respondent in person or, after the exercise of due diligence to locate the respondent, by registered or certified mail, to the most recent address listed by the respondent with the university.

d. The failure of a respondent to appear at a scheduled hearing will be treated as a guilty plea to the charges pending.

e. At least six (6) days prior to the hearing date, the parties shall have exchanged a written list of the names and addresses of the witnesses whom the respective parties may call to give testimony at the hearing, along with a concise statement of the substance of the testimony of each witness, and a copy of any affidavits or written exhibits to be offered into evidence at the hearing. A party may be barred from submitting nondisclosed evidence or testimony for non-compliance with this rule. Rebuttal witnesses need not be disclosed.

f. Any party may challenge a Hearing Board member on the grounds of personal bias. The challenge shall be made in writing and submitted to the chair of the Hearing Board at least three days prior to the date of hearing. The chair shall either sustain or deny the challenge. In the event the chair is challenged and there remain members of the Hearing Board who have not been challenged, the chair shall appoint a temporary chair to act on the challenge. If a member of the Hearing Board sincerely believes that he or she cannot give the party or parties a fair and impartial trial and base his or her decision solely on the evidence submitted, then the member should seek disqualification.

g. The chair of the Hearing Board shall have the authority to issue subpoenas for the attendance of witnesses and for the production of books, records, documents and other evidence and shall have the power to administer oaths. The subpoena shall be in writing and shall be served upon the witness in person. Members of the university are expected to comply with subpoenas issued pursuant to this procedure unless compliance would result in significant and unavoidable personal hardship or substantial interference with normal university activities.

h. The chair shall preside over and conduct the hearing and shall rule upon all matters of procedure including the admission of evidence. The hearing will be conducted in two steps: an initial proceeding shall be held for the purpose of determining the guilt or innocence of the accused; if a determination of guilt is made, a supplemental proceeding shall follow for the purpose of determining the appropriate sanction to be imposed. The hearing shall be conducted as follows:

(1) The hearing and deliberations shall be conducted in an executive session closed to the public, except for the immediate members of the respondent's family and for the respondent's representative. An open hearing will be held if requested by the respondent.

(2) The chair shall exercise control over the hearing to avoid needless consumption of time and to prevent the harassment or intimidation of witnesses. Any person, including the respondent who disrupts a hearing or who fails to adhere to the rulings of the chair may be excluded from the proceedings.

(3) A Hearing Board legal advisor may sit in attendance at the hearing and will be accorded the privileges of Hearing Board members, but shall not vote. The legal advisor may comment on questions of procedure and admissibility of evidence and will otherwise assist in the conduct of the hearing and will perform such other duties and functions as are set forth herein. A person may not serve as both a Hearing Board legal advisor and the University Advocate in any proceeding.

(4) The hearing shall be conducted in a fair and expeditious manner. The chair, as presiding officer, may, upon request and for good cause, or on his own, grant a postponement or continuance of the hearing.

(5) A mechanical or stenographic record of the hearing shall be made and, it shall be transcribed on request of any party, and the cost of such transcript shall be paid by the party making the request. All matters made part of the record shall be maintained by the chair and shall be kept for a period determined reasonable by the university.

(6) Except as noted in (7) below, the testimony of any witness shall be given under oath. Prospective witnesses, other than the complainant and the respondent may be excluded from the hearing during the testimony of other witnesses.

(7) The affidavit of a witness, whose presence cannot be obtained after reasonable efforts to do so, may be admitted into evidence, but only if such affidavit contains the notarized signature of the witness.

(8) The burden of proof shall be upon the charging party who must establish the guilt of the respondent by a preponderance of the evidence.

(9) At the initial proceeding, the chair shall first read the offense portion of the statement of charges to the respondent and the respondent shall plead the same. In the absence of a plea the chair shall enter a plea of not guilty for the respondent. Each party shall then be allowed an opportunity to make an opening statement and offer evidence in support of or against the charges. Each party shall have the opportunity to question those witnesses testifying for the opposing party. Each party, in turn, may offer rebutting evidence. When the submission of evidence has been concluded, each party may argue the case to the Hearing Board with the charging party opening and closing the argument.

(10) Irrelevant, immaterial or unduly repetitious evidence shall be excluded. The Dean of Students may not be called to testify as a witness in regard to a matter with which the Dean has dealt. The Hearing Board members may take judicial notice of matters which would be within the general experience of university students. The parties may stipulate as to facts.

(11) The respondent in any disciplinary proceeding may be accompanied by an advisor, who may be an attorney. The advisor may not appear in lieu of the respondent. A respondent who wishes to be represented by an attorney must inform the University Hearing Board and the charging party at least five (5) days prior to the scheduled date of the hearing. The advisor or the respondent, but not both, may examine and cross-examine witnesses and summarize the evidence in final argument to the Hearing Board.

i. Decisions of the Hearing Board shall be by majority vote of the members present and voting. A determination of guilt shall be followed by a supplemental proceeding in which either party may submit evidence or make statements concerning the appropriate sanction to be imposed. The past disciplinary record, if any, of the respondent shall not be supplied to the Board by the University Advocate prior to the supplemental proceeding. The Board shall then reach a final decision as to sanction.

j. The decision of the Hearing Board, a brief statement of the reasons for such decision, and finding of facts shall be reduced to writing, and forwarded to the President as a recommendation. A copy shall be mailed to all parties.

k. Upon receipt and review of the recommendation of the Hearing Board, the President shall approve, disapprove, amend or otherwise issue a final decision in writing. A copy of this final decision shall be mailed to the parties and the date of mailing shall be the effective date of the decision.

D. Motion for Rehearing Before the Hearing Board

1. The party aggrieved by the President's decision may file with the President not later than ten (10) days after the effective date of the decision, a written motion for rehearing or review specifying with particularity the grounds on which the motion is based.

2. The opposing party may similarly file a response within ten (10) days after service of the motion. The President may request submission of written briefs or schedule oral argument.

3. Rehearing may be granted for any of the following causes materially affecting a moving party's rights:

a. Irregularity in proceedings before the Hearing Board, or any order or abuse of discretion, whereby the moving party was deprived of a fair hearing.

b. Misconduct of the Hearing Board, President or prevailing party.

c. Accident or surprise not preventable by ordinary prudence.

d. Newly discovered material evidence which with reasonable diligence could not have been discovered and produced at the hearing.

e. Excessive or insufficient sanctions.

f. Error in the admission or rejection of evidence at the hearing.

g. The decision is the result of passion or prejudice.

h. The decision is not justified by the evidence.

4. The President may affirm, modify or grant rehearing before the Hearing Board as to all or any party and on all or any part of the issues for any of the reasons in Subparagraph 3 above. The order granting rehearing is to specify with particularity the grounds on which rehearing is granted and the rehearing will only cover the matters so specified. Procedures on rehearing shall, to the extent applicable, conform to the procedures utilized in the original proceedings conducted by the University Hearing Board.

5. Any supporting affidavits must be submitted with the motion. Any opposing affidavits must be submitted with or prior to submission of the response.

5-405 - Disciplinary Files and Records

A. Case referrals may result in the development of a disciplinary file in the name of the respondent which shall be voided if the respondent is found innocent of the charges. The file of a respondent found guilty of any charges will be retained as a disciplinary record for three years from the date of the letter providing notice of final disciplinary action. Disciplinary records may be retained for longer periods of time or permanently, if so specified in a sanction.

B. Disciplinary records may be voided by the President for good cause, upon written petition of the person affected. Factors to be considered in review of such petition shall include:

1. The present demeanor of the person.

2. The conduct of the person subsequent to the violation.

3. The nature of the violation and the severity of any damage, injury or harm resulting from it.

C. There is no further administrative appeal from denial of petition to void disciplinary records.

D. Disciplinary records designated as "permanent" shall not be voided without unusual and compelling justification.

COLONIAL CLIPPER
Everyday Low Prices
\$6 WET CUTS for \$4.50
\$20 PERMS for \$16.50
\$45 PERMS for \$35.00

Manicures
Hot Oil \$6.50
Sculptured \$22.50
Pedicure \$12.50

We guarantee all work.
Call now for your appt.

743 W. University
(between Mill & Hardy) 968-4006

PIZZAS • PIZZAS
Thick or Thin • Dine In Or Take Out
14" CHEESE \$3.25
Each item 75¢.

New York Style Pizzas
PAPARAZZI'S
DANELLE PLAZA
967-0843
With coupon. Good through 9-2-83.

NEEB HALL
FILM SERIES

THE SEMESTER'S SCHEDULE

S E P T E M B E R

2,3	The Verdict	7:00 & 10:00 pm
4	And Justice For All	6:00 & 8:30 pm
9, 10	Return of the Secaucus 7	7:00 pm
	Easy Rider	9:00 pm
11	Lenny	6:00 & 8:30 pm
16, 17	Sophie's Choice	7:00 & 10:00 pm
18	Paper Chase	6:00 & 8:30 pm
23, 24	The Man Who Fell to Earth	7:00 & 10:00 pm
25	Atomic Cafe	6:00 & 8:30 pm
30	★ The Discreet Charm of the Bourgeoisie	7:00 pm
	Dersu Uzala	9:15 pm
	(Double Feature)	

O C T O B E R

1	★ ★ The Discreet Charm of the Bourgeoisie	7:00 pm
	Dersu Uzala	9:15 pm
	(Double Feature)	
2	★ ★ Dersu Uzala	7:00 pm
7, 8	★ ★ Gandhi	5:30 & 9:30 pm
9	Lolita	7:00 pm
14, 15	Tootsie	7:00 & 9:30 pm
16	Some Like It Hot	7:00 pm
	James Dean Festival	
21	Giant	7:00 pm
	East of Eden	10:45 pm
	(Double Feature)	
22	East of Eden	7:00 pm
	Rebel Without A Cause	9:15 pm
	(Double Feature)	
23	Giant	7:00 pm
28, 29	Texas Chainsaw Massacre	7:00 pm
	Night of the Living Dead	8:45 pm
	(Double Feature)	
	Texas Chainsaw Massacre	Midnight
30	Texas Chainsaw Massacre	7:00 pm

N O V E M B E R

4, 5	Missing	7:00 & 9:30 pm
6	All the President's Men	8:00 pm
11, 12	Eating Raoul	7:00 & 9:30 pm
13	La Cage aux Folles	8:00 pm
	Jack Nicholson Festival	
18	The Postman Always Rings Twice	7:00 pm
	The Shining	9:30 pm
	(Double Feature)	
19	One Flew Over The Cuckoo's Nest	7:00 pm
	The Postman Always Rings Twice	9:30 pm
	(Double Feature)	
20	One Flew Over The Cuckoo's Nest	7:00 p.m
	The Shining	9:30 p.m
	(Double Feature)	
25, 26 27	*Thanksgiving (no films)	

D E C E M B E R

2, 3	Hollywood Outtakes and Rare Footage	7:00 & 9:30 pm
4	Casablanca	7:00 pm

Movie Information 965-5688

\$1.50 with I.D. • \$2 without

ASSOCIATED STUDENTS
OF ARIZONA STATE UNIVERSITY

state press ADVERTISING
Rings Up Sales!

BETA THETA PI
The TRUE Fraternity Spirit

We currently have openings in our Fall '83 Pledge Class. Eight are housing vacancies.

Come by and meet the brothers... and/or call 967-9965 for information.

Worship Sundays — 10:15 a.m.

Good Shepherd
Lutheran Campus Center
(ALC & LCA)

1414 & 1430 S. McAllister Ave.
(Across from Sahuaro Hall)
Telephone — 967-3543

Attention: Foreign Car Owners

SAVE UP TO 70% ON RECYCLED FOREIGN AUTO PARTS
MG, TRIUMPH, HONDA, DATSUN, TOYOTA, VW and OTHERS

All Models Foreign
3024 So. 40th Street, Phx. (near 40th & University)
243-3291
*Mention this ad & get an additional 5% off!

Appetito's
967-8091

Homemade Cooking & Daily Specials
Breakfast / Lunch / Dinners

Tempe Center University & Mill (Next to Low Cost) Mon.-Sat. 7 a.m.-2 a.m. Sun. 7 a.m.-11 p.m.

State Press
CL
Ann
HERPES sday 3:30 ber 1. Call
SPORT cepting r and coac strat - 0 -
Aut
1965 MER sedan, ne mileage,
1972 DA excellent after 5:00
1974 BUIC tires, ru evenings
1976 OP runs ane \$1,700.96
1977 TOY Excellen 829-0433
1980 FI Low mil sell. \$720 evenings
74 COM car. Mak
79 TOY 5 - spee Excellen Call 264-
FOR SA AC. Gre Liz, days
FOR SA 1981 2- mag wh coated, Firm \$4,
Bal
CHILD vironme Experie 968-329-
CONGR ter off extensi home teacher
Bid
26" Pe new tire
BENNO only 4 n \$275.8
QUALI transpo Schwinn
Bo
BU your quali text re-se in c purch (Sor Brow
M-F
414
Fo
TWO \$125 laundr 273-12
WALK home and g Apach
We ins mo S

CLASSIFIEDS START HERE

Announcements

HERPES SUPPORT group meets Thursday 3:30-4:30, first meeting September 1. Call 968-8086.

SPORTS FANS: Football league accepting new members. Select, draft and coach your own team. Based on strat-o-matic. Call Paul, 965-9321.

Automobiles

1965 MERCEDES Benz 190. Four door sedan, new interior and paint, good gas mileage, \$3,000. 968-2524.

1972 DATSUN 1200, good condition, excellent gas mileage, \$750. 839-3654 after 5:00.

1974 BUICK Regal, AC, full power, good tires, runs well, \$1,150. 829-1473 evenings, weekends.

1976 OPEL Isuzu, two door, 4 speed, runs and looks great, only 58,000, \$1,700. 968-5671 evenings.

1977 TOYOTA Celica, LB, 5 speed, AC. Excellent condition, new interior. Call 829-0433.

1980 FIAT SPYDER 2000 convertible. Low miles, loaded with extras, must sell. \$7200, best offer. Rose, 241-1999; evenings, 867-8270.

Babysitting wanted

CHILDCARE, FULL time great environment 18 months to 3 years. Experienced. Available 7:30 to 5:00. 968-3292, near ASU.

CONGREGATIONAL CHILD Care Center offers kindergarten, preschool, extensive day care near ASU. Small home like atmosphere. Qualified teachers. 967-2275.

Bicycles

26" Peugeot 12 speed. Good shape, new tire. \$225. Call Joe, 947-1163.

BENNOTTO 10-SPEED bicycle, rode only 4 miles, weighs 13 pounds. Asking \$275. 831-8885, after 5:30 p.m.

QUALITY REBUILT 10-speeds; also transportation 5-N-10 speeds \$45-\$95, Schwinn beach cruiser \$85. 968-8944.

Books

BUY • SELL • TRADE your books at Changing Hands. For quality cloth and paperbacks (no textbooks, please) we pay 30% of our re-sale price in cash or 50% in trade-in credit which may be used to purchase anything in the store. (Sorry, no trade-ins on Sat. or Sun.) Browse through our three floors of:

- New & Used Books
- Art Prints & Posters
- Calendars & Cards
- Handbound Journals

M-F 10-9 SAT 10-6 SUN 12-5
CHANGING HANDS BOOKSTORE
414 Mill Avenue 968-0203
Old Town Tempe 8/26

For Rent or Lease

TWO ROOMS, non-smokers preferred. \$125 per month, utilities included, laundry facilities. Close ASU. 839-3398, 273-1255. Rich.

WALK TO ASU. Two bedroom mobile home for sale. Cheaper than renting and get your money back, too. 1101 E. Apache #52. Call 829-9108.

For Rent or Lease

TWO ROOMS, non-smokers preferred. \$125 per month, utilities included, laundry facilities. Close ASU. 839-3398, 273-1255. Rich.

WALK TO ASU. Two bedroom mobile home for sale. Cheaper than renting and get your money back, too. 1101 E. Apache #52. Call 829-9108.

For Rent or Lease

DRIVE CARS FREE
Cars Available Many Points U.S.A.
We are I.C.C. licensed and insured. Must be 21 years or more.
SCHEALL DRIVEAWAY
991-5533

For Rent or Lease

BRAND NEW New England style two bedroom condos for rent. \$385 a month. Walking distance to ASU. 968-3108.

COMPLETELY FURNISHED, all utilities paid, kitchen privileges, 1 1/2 mile ASU. Friendly atmosphere, \$150 month. Mr. Shelly 967-4648 or leave message, 967-1766. 1123 N. Frances, Tempe.

TWO BEDROOM, two bath condo. 1150 sq. ft., attached parking, room for washer, dryer. Holds four people. \$450 month, 1/2 mile from Campus. 820-8333.

TWO BEDROOM, one bath, 6702 E. Cheery Lynn. No pets. \$335 per month. 998-3142, 946-0117.

For Sale

BACKPACKS MONOGRAMMED JanSport, Caribou, best quality. \$23. Mike, 894-5327.

FIBERGLASS CANOE, 17 feet, with or without new trolling motor and mount. Price negotiable. 894-1829.

GOLF CLUBS, two complete sets; \$100 each. Ladies and mens starter sets; \$45 each. 839-1296.

MOPED- GARELLI Gran Sport, only 1,800 miles, like new. \$350 or best offer. 965-3391, 836-6774.

RADIO SHACK TRS-80 color computer, can be used as terminal to ASU. 16K memory. Programmable and basic. \$195. 829-1331.

TRAILER, CLOSE TO ASU, 22 ft. Shasta, self-contained. Air, bath, hot water, LP gas refrigerator, holding and fresh water tanks, tandem axle. \$2,500. 968-2255.

USED ROOM size rugs \$10 and up. New carpet specials for dorms, apartments, cars, vans. Carpet House, 1516 East Van Buren, Phoenix.

Furniture

A NEW seven piece bedroom set complete with bed, \$195. Four piece living room set new sofa, love seat, chair and ottoman from \$199. Desks from \$40.95. Five drawer chest new \$32.95. Mattress sale; twin sets complete \$55, full size sets \$65, queen size \$99. Plus dinettes. Plus trundle beds. Plus much more. 3332 Furniture at 3332 West McDowell Rd. 233-2236.

BEDROOM SPECIAL: Brand new dresser, mirror, nightstand, headboard \$119 with this ad. Matching five drawer chest \$39.95. Arizona Sleep Shops. 4805 N. 27th Ave., 246-0187.

BEDS, BOOKCASES, beer signs- everything! Scottsdale Used Furniture, 2200 N. Scottsdale Rd, behind Kwan's. 949-0380.

BEDS FOR sale reasonable prices. King size water bed, full size with box spring and frame, twin with box spring and frame. Linens included. 967-2783.

DESKS, DESKS, desks, four drawer student desk, \$49, seven drawer desk \$69. Arizona Sleep Shops, 4805 N. 27th Ave., 246-0187.

HIDE-A-BED, \$85; dinette, \$150; single bed, \$50; chest of drawers, \$65; king size bed, \$95; double bed, \$85; and couch, \$100. 962-7727.

MATTRESS, BOXSPRINGS sets: X-firm twins \$89, fulls \$99, queens \$139. Arizona Sleep Shops, 4805 N. 27th Ave., 246-0187.

PRESSED WOOD bedroom set. Like new. \$135; 965-9823.

THREE PIECE wall units with shelves, drawers and built in writing desk. All three units yours for only \$159, Arizona Sleep Shops, 4805 N. 27th Ave., 246-0187.

TWO BRAND new twin beds with mattress, box springs and frame, \$100 each. 991-8155.

Furniture

A NEW seven piece bedroom set complete with bed, \$195. Four piece living room set new sofa, love seat, chair and ottoman from \$199. Desks from \$40.95. Five drawer chest new \$32.95. Mattress sale; twin sets complete \$55, full size sets \$65, queen size \$99. Plus dinettes. Plus trundle beds. Plus much more. 3332 Furniture at 3332 West McDowell Rd. 233-2236.

BEDROOM SPECIAL: Brand new dresser, mirror, nightstand, headboard \$119 with this ad. Matching five drawer chest \$39.95. Arizona Sleep Shops. 4805 N. 27th Ave., 246-0187.

BEDS, BOOKCASES, beer signs- everything! Scottsdale Used Furniture, 2200 N. Scottsdale Rd, behind Kwan's. 949-0380.

BEDS FOR sale reasonable prices. King size water bed, full size with box spring and frame, twin with box spring and frame. Linens included. 967-2783.

DESKS, DESKS, desks, four drawer student desk, \$49, seven drawer desk \$69. Arizona Sleep Shops, 4805 N. 27th Ave., 246-0187.

HIDE-A-BED, \$85; dinette, \$150; single bed, \$50; chest of drawers, \$65; king size bed, \$95; double bed, \$85; and couch, \$100. 962-7727.

MATTRESS, BOXSPRINGS sets: X-firm twins \$89, fulls \$99, queens \$139. Arizona Sleep Shops, 4805 N. 27th Ave., 246-0187.

PRESSED WOOD bedroom set. Like new. \$135; 965-9823.

THREE PIECE wall units with shelves, drawers and built in writing desk. All three units yours for only \$159, Arizona Sleep Shops, 4805 N. 27th Ave., 246-0187.

TWO BRAND new twin beds with mattress, box springs and frame, \$100 each. 991-8155.

Furniture

A NEW seven piece bedroom set complete with bed, \$195. Four piece living room set new sofa, love seat, chair and ottoman from \$199. Desks from \$40.95. Five drawer chest new \$32.95. Mattress sale; twin sets complete \$55, full size sets \$65, queen size \$99. Plus dinettes. Plus trundle beds. Plus much more. 3332 Furniture at 3332 West McDowell Rd. 233-2236.

BEDROOM SPECIAL: Brand new dresser, mirror, nightstand, headboard \$119 with this ad. Matching five drawer chest \$39.95. Arizona Sleep Shops. 4805 N. 27th Ave., 246-0187.

BEDS, BOOKCASES, beer signs- everything! Scottsdale Used Furniture, 2200 N. Scottsdale Rd, behind Kwan's. 949-0380.

BEDS FOR sale reasonable prices. King size water bed, full size with box spring and frame, twin with box spring and frame. Linens included. 967-2783.

DESKS, DESKS, desks, four drawer student desk, \$49, seven drawer desk \$69. Arizona Sleep Shops, 4805 N. 27th Ave., 246-0187.

HIDE-A-BED, \$85; dinette, \$150; single bed, \$50; chest of drawers, \$65; king size bed, \$95; double bed, \$85; and couch, \$100. 962-7727.

MATTRESS, BOXSPRINGS sets: X-firm twins \$89, fulls \$99, queens \$139. Arizona Sleep Shops, 4805 N. 27th Ave., 246-0187.

PRESSED WOOD bedroom set. Like new. \$135; 965-9823.

THREE PIECE wall units with shelves, drawers and built in writing desk. All three units yours for only \$159, Arizona Sleep Shops, 4805 N. 27th Ave., 246-0187.

TWO BRAND new twin beds with mattress, box springs and frame, \$100 each. 991-8155.

Furniture

A NEW seven piece bedroom set complete with bed, \$195. Four piece living room set new sofa, love seat, chair and ottoman from \$199. Desks from \$40.95. Five drawer chest new \$32.95. Mattress sale; twin sets complete \$55, full size sets \$65, queen size \$99. Plus dinettes. Plus trundle beds. Plus much more. 3332 Furniture at 3332 West McDowell Rd. 233-2236.

BEDROOM SPECIAL: Brand new dresser, mirror, nightstand, headboard \$119 with this ad. Matching five drawer chest \$39.95. Arizona Sleep Shops. 4805 N. 27th Ave., 246-0187.

BEDS, BOOKCASES, beer signs- everything! Scottsdale Used Furniture, 2200 N. Scottsdale Rd, behind Kwan's. 949-0380.

BEDS FOR sale reasonable prices. King size water bed, full size with box spring and frame, twin with box spring and frame. Linens included. 967-2783.

DESKS, DESKS, desks, four drawer student desk, \$49, seven drawer desk \$69. Arizona Sleep Shops, 4805 N. 27th Ave., 246-0187.

HIDE-A-BED, \$85; dinette, \$150; single bed, \$50; chest of drawers, \$65; king size bed, \$95; double bed, \$85; and couch, \$100. 962-7727.

MATTRESS, BOXSPRINGS sets: X-firm twins \$89, fulls \$99, queens \$139. Arizona Sleep Shops, 4805 N. 27th Ave., 246-0187.

PRESSED WOOD bedroom set. Like new. \$135; 965-9823.

THREE PIECE wall units with shelves, drawers and built in writing desk. All three units yours for only \$159, Arizona Sleep Shops, 4805 N. 27th Ave., 246-0187.

TWO BRAND new twin beds with mattress, box springs and frame, \$100 each. 991-8155.

Help Wanted

CAMPUS REP for the University Plasma Center. Salary plus bonuses, call for an interview ask for Mr. Rose or Ms. Gorke. 968-6139.

"FULL TIME students needed to raise money from ASU alumni. Hours are 5:30-9:30 p.m. Sunday through Thursday. Must have good phone voice and good personality. \$3.50 hour plus incentives. Apply at Student Employment in Matthews Center."

INTERNATIONAL HERBAL nutrition company needs distributors. Make money selling herbal diet and health products. Call Herbalife distributor. 897-9665.

MODELS NEEDED by professional photographer for part-time photo modeling jobs. Prefer photogenic, outgoing, open-minded, well built women, ages 18-29. If selected, will help train in make-up, posing, etc., (no charge). Phone Fielder Studio, 968-8343. 824-C, S. Mill.

NEED MODELS for September hair show, must be prompt and reliable. For further details call C.T.A. at 968-2592 ask for John or Elaine.

Help Wanted

CAMPUS REP for the University Plasma Center. Salary plus bonuses, call for an interview ask for Mr. Rose or Ms. Gorke. 968-6139.

"FULL TIME students needed to raise money from ASU alumni. Hours are 5:30-9:30 p.m. Sunday through Thursday. Must have good phone voice and good personality. \$3.50 hour plus incentives. Apply at Student Employment in Matthews Center."

INTERNATIONAL HERBAL nutrition company needs distributors. Make money selling herbal diet and health products. Call Herbalife distributor. 897-9665.

MODELS NEEDED by professional photographer for part-time photo modeling jobs. Prefer photogenic, outgoing, open-minded, well built women, ages 18-29. If selected, will help train in make-up, posing, etc., (no charge). Phone Fielder Studio, 968-8343. 824-C, S. Mill.

NEED MODELS for September hair show, must be prompt and reliable. For further details call C.T.A. at 968-2592 ask for John or Elaine.

Help Wanted

LIQUOR STORE clerk. Flexible hours. Four dollars per hour. Phone 276-2803.

Help Wanted

PART-TIME, NATIONAL marketing co. has openings for sales minded people interested in part-time employment. Openings are available on 5:00-9:30 p.m. evening shift and weekends. Our sales people work in a modern comfortable business environment, contacting customers on long distance Watts lines. Earnings which include salary and bonus average \$4.00-\$6.00 per hour, paid weekly. If you have a good clear speaking voice, enthusiasm and competitive spirit, our management team will train you to sell our nationally recognized product to established customers only. Our Tempe office is located approximately 5 minutes from campus. Please call Dial America for details. 829-1140.

PART-TIME WAITRESS wanted. Lunch hours. Close to ASU. Salad Jungle, 208 W. Southern, Tempe. 966-5589.

SMALL - GROUP Tutoring hiring tutors for all subjects, and typists. Set own hours, good pay. 838-1871.

STOCKYARDS RESTAURANT now hiring dinner waiters- busboys- cocktail-hostess. Apply in person 5001 East Washington.

Help Wanted

PART-TIME, NATIONAL marketing co. has openings for sales minded people interested in part-time employment. Openings are available on 5:00-9:30 p.m. evening shift and weekends. Our sales people work in a modern comfortable business environment, contacting customers on long distance Watts lines. Earnings which include salary and bonus average \$4.00-\$6.00 per hour, paid weekly. If you have a good clear speaking voice, enthusiasm and competitive spirit, our management team will train you to sell our nationally recognized product to established customers only. Our Tempe office is located approximately 5 minutes from campus. Please call Dial America for details. 829-1140.

PART-TIME WAITRESS wanted. Lunch hours. Close to ASU. Salad Jungle, 208 W. Southern, Tempe. 966-5589.

SMALL - GROUP Tutoring hiring tutors for all subjects, and typists. Set own hours, good pay. 838-1871.

STOCKYARDS RESTAURANT now hiring dinner waiters- busboys- cocktail-hostess. Apply in person 5001 East Washington.

Help Wanted

HELP WANTED
Donny O'Brien's

- Models
- Cocktail waitresses
- Bartenders
- Hostess
- Pizza Delivery

Apply Sat. & Sun. 3-6.
222 S. Mill, Tempe
968-0257 8/26

Lost & Found

Friday FREE
Lost and Found
FOUND

FOUND: VICINITY of Frat Row. 140 pound black Lab, has purple collar, no tags. 965-0624.

LADIES GOLD Seiko quartz watch on August 22. Vicinity of Palo Verde West, sentimental value. Please return. Reward. Call 931-0418.

LOST: PIG charm. Sentimental value. Reward. 965-4934.

Lost & Found

FOUND: VICINITY of Frat Row. 140 pound black Lab, has purple collar, no tags. 965-0624.

LADIES GOLD Seiko quartz watch on August 22. Vicinity of Palo Verde West, sentimental value. Please return. Reward. Call 931-0418.

LOST: PIG charm. Sentimental value. Reward. 965-4934.

Lost & Found

Courtesy of:

WESTERN SAVINGS
The foresight people.

Roommate wanted

Roommate wanted

TEMPE ROOMMATE SERVICE
897-7030

"Providing ASU & MCC students with beautifully furnished and unfurnished houses and townhouses."

"No Fee!" "No Fee!"

- Many with pools -

Are you . . .

- Planning to return to ASU or MCC this fall?
- Tired of dorm life?
- Tired of apartment living?
- Staying in the area?
- Tired of searching for a place to live?

if you are, give us a call. We can help you meet your living needs!

897-7030 8/26

Help Wanted

STUDENT PART-TIME, full time jobs, 15 to 20 positions. \$125 to \$250 week. Call 968-1843, 10:00-2:00 p.m.

Help Wanted

THE NEW York Times is looking for a student to run their own distribution service of the newspaper to the ASU community. For further information call T. Keller at 1-800-631-2500.

WANTED: INDIVIDUAL to deliver and set-up waterbeds on as needed basis. Must be familiar with waterbeds and have own truck and tools. 966-7147.

Instruction

JAZZ DANCE- exercise classes, near campus. Beginning and intermediate levels. Call "World of Dance." 276-3765.

PIANO LESSONS: Specialty, adult beginners. Years of experience. Faculty, take note. 967-2155.

SMALL - GROUP Tutoring: Students - Serious about classes, grades, but having troubles? We can make the difference. All courses offered. 838-1871.

Miscellaneous

AUTO INSURANCE at competitive rates, student discount available also renters, motorcycle, life and health insurance. Call Steve Dabbs, 966-3494.

MODELS PORTFOLIOS and composites. Payment plan available. Custom photo finishing too! The Focal Plane Connection. 967-7006.

PRO OR amateur photographers. We have studio, lighting, models. Available for private shoots. The Focal Plane Connection. 967-7006. (Across from Tempe center.)

Motorcycles

KAWASAKI 250 LTD (street) \$500, excellent condition, low miles, 70+ mpg. 829-1845.

Personal

CONGRATULATIONS CHI Omega pledges! Have a great semester, you're the best class yet. Love S.H.

DO YOU need to lose weight? Try the effective nutritionally complete Herbalife diet program. 897-9665.

PRIVATE P.O. boxes for rent. Mill Ave. Shops, suite 207, 414 S. Mill, Tempe. 967-3776.

SINGLE? ADVERTISE yourself or respond to someone else's ad in "Cupid's Request," a new ad listing which offers a positive approach to meeting people. For information send a self addressed, stamped envelope to: P.O. Box 17629, Fountain Hills, AZ 85268.

TWO HAPPY- go lucky PI Phi foxes are looking for calendar type men who are interested in having a "wild" semester. Call K.C. at 965-9245 or L.R. at 965-8752.

YOUNG PROFESSIONAL couple wish to adopt and provide a good home for a Caucasian infant, certified to adopt. Will pay medical bills. Wish to remain anonymous. Please contact our attorney Charles Friedman. 264-7433.

Real Estate

CONDO ON Malibu Drive in Tempe. Must sell! Three bedroom, two bath, fireplace, pool, \$2,000 and assume 13 1/2% mortgage. 829-8827, 938-7449. Must sell! Make offer!

Roommate wanted

Roommate wanted

Real Estate

FORECLOSURE TOWNHOUSE, two bedroom, patio, pool, \$41,900, near ASU. Call George. Canyon Investments. 274-5675.

LUXURY TOWNHOUSE near ASU. Amenities, \$98,500, negotiable depending on terms. Glenn 968-3261, Tradewinds Realty.

Roommate wanted

DISABLED GRAD student seeks responsible male, female for assistance and light duties in east Phoenix home. Will exchange furnished bedroom, salary. 15 minutes ASU. 273-7775.

FEMALE ROOMMATE wanted to share nice bedroom in four bedroom house close to ASU. \$145 a month. 897-7030.

MALE ROOMMATE wanted to share house, nice furnished bedroom. \$165. Only a mile 1/2 from ASU. 897-7030.

MALE STUDENT share a room in a lovely private home. Meals included. Pool. Near ASU. \$285.00 completed. Call Annie, 947-4912.

NEAT, NON-SMOKING, responsible female needed to share furnished two bedroom apartment with female graduate student. Two miles from campus. \$184, utilities included. Move in now or by October 1. 967-4455.

NEED NON-SMOKING graduate age person to share home with owner. Approximately 1/2 mile west of ASU. \$200 a month, includes own room, utilities, own refrigerator- freezer, use of washer, dryer, soaps and paper products. No water beds. Deposit. Law, engineering, psychology, or mental health student may be more compatible. Quiet environment. References exchanged. 967-1895 after 2:00 p.m.

PARKING HASSLES? Non-smoking female to share large two bedroom furnished apartment. Walk to campus. Prefer graduate student. \$208 a month, all bills paid. Alane, 829-6988.

RESPONSIBLE FEMALE, prefer grad student, grad assistant. Three bedroom, two bath, furnished, washer, dryer, five minutes ASU, 48th St., Southern. 967-4724 after 7:00 p.m.

RESPONSIBLE FEMALE. Furnished private room. Nice house, good neighborhood. 2 1/2 miles ASU \$150. includes utilities. Non-smoker. 831-5599.

ROOMMATE NEEDED, exchange room and board for housekeeping, cooking and childcare. Apply Saturday at 3320 S. Los Feliz or leave message at 820-8333. Prefer student teacher.

SHARE HOUSE. Three bedroom, two bath, 1/2 mile campus, \$150 month, 1/2 of bills. Susan, leave message at EOP.

TEMPE ROOMMATE Service, furnished rooms in houses. No fee. Reasonable rates. Call 897-7030.

Real Estate

FORECLOSURE TOWNHOUSE, two bedroom, patio, pool, \$41,900, near ASU. Call George. Canyon Investments. 274-5675.

LUXURY TOWNHOUSE near ASU. Amenities, \$98,500, negotiable depending on terms. Glenn 968-3261, Tradewinds Realty.

Real Estate

CONDO ON Malibu Drive in Tempe. Must sell! Three bedroom, two bath, fireplace, pool, \$2,000 and assume 13 1/2% mortgage. 829-8827, 938-7449. Must sell! Make offer!

Real Estate

CONDO ON Malibu Drive in Tempe. Must sell! Three bedroom, two bath, fireplace, pool, \$2,000 and assume 13 1/2% mortgage. 829-8827, 938-7449. Must sell! Make offer!

Real Estate

Roommate wanted

Services

SAVE TUITION dollars, residency counseling cuts red tape, no fee until residency is granted. 966-8085.

THE FOCAL Plane Connection is a full service photography studio and lab. (Across from campus.) 967-7006.

Tv/Radio Service

COLOR PORTABLE TV, 19" RCA XL100 solid state, 1 year old, has AM-FM radio built in. Just like new, guaranteed. \$225. 249-4423.

NICE COLOR portable 19", works excellent, \$140 guaranteed. 249-4423.

Travel

DRIVE CARS free to most points of the United States, over 21. Scheall Driveway, 991-5533.

HAVE A great semester from Sun Devil Travel. We promise cheapest airfares, best service. 894-2971.

HOLIDAY TRAVEL cheapest prices, reserve Christmas seating now- pay later, free ticket delivery. Jim 948-0990.

SUN DEVIL TRAVEL

- Cheapest fares
- Hurry for Christmas bargains
- One block eastside ASU

Airport parking available
894-2971 8/23

Typing

A-1 RESUMES, repetitive cover letters, research papers, theses. Fast, accurate, professional when quality counts, call Cyndy, 968-3627.

A-1 WORD processing with the IBM PC. Letter quality printing. Increased accuracy with computerized spelling verification. Fast, economical revisions and updates. Cassette transcription capabilities. Pick-up and delivery available. Visa and MasterCard. Confidential and professional with reasonable rates. Call 831-0014.

ACCURATE TYPING, term papers, theses, resumes, etc. Smith Corona typetronic, \$1.00 per page. Narci 966-4256.

ACCURATE, FAST, experienced typist. IBM Selectric \$1.25 per page. Disertations, theses, legal briefs, APA format, our specialty. Call Sharon 833-5687 or Teresa 962-0079.

ALWAYS DEPENDABLE, typing editing, term papers, books, dissertations, resumes. Excellent skills. Shirley's Typing Service 838-5099.

A-PLUS Typing. Term Papers, Resumes, securities and finance papers a specialty. Papers completed on Selectric. Call Judy 839-0401.

CUSTOM TYPING. Correcting Selectric. Near College Avenue between Broadway and Southern. 966-0961.

FAST, ACCURATE typing, \$1.25/page. Call Teresa at 962-0079 or Linda at 969-5775.

NEED TYPING done at \$1.25 per page? Call Susan at 833-0373.

QUALITY TYPING reasonable rates, near 43rd Avenue and Bell Road. 938-3397.

QUICK, QUALITY, accurate work at reasonable rates. Electronic memory writer. Pick-up and delivery available. Experienced in all phases of typing. Also charts, graphs and art work done here. Call Marilyn at 946-2666.

STUDENT DISCOUNT for fast, accurate, high quality typing. Will edit grammar, punctuation, spelling. Christina 839-1082.

WORD PROCESSING. Knowledge of APA and Turabian reference styles \$1 double spaced page. Accurate. 263-5776.

WORD PROCESSING for college theses and reports, in Paradise Valley area. 996-2780.

Services

\$4.50 "ANY hair cut," \$19.50 "any hair perm". Student I.D. required. Any Hair Inc, 225 W. University, Suite 113. Hours 8:00 a.m.- 9:00 p.m. 967-9030. One block west of Mill-University square (Tempe).

ALPHA RESUME. Full services discount with ad. 1000 E. Apache, Suite 105, Tempe. 967-7247.

HAVE UNWANTED facial or body hair removed permanently by electrolysis. Free consultation. Located in Tempe. Call Sharon, Desert Electrolysis Center 839-1885. Student discount.

LOSE 15 to 20 pounds in a couple of weeks. No calories to count. Physician approved nutritional plan. Free counseling. Ms. Tait, R.N. Call Monday-Friday, 9:00-12:00 noon. 897-0599.

NEED MONEY for college? Grants, scholarships and low interest loans with deferred payments are available for you. Write for free information: Student Financial Research, 703 N. First, Gladewater, TX 75647.

RESEARCH PAPERS! 306 page catalog: 15,278 topics! Rush \$2.00. Research, 11322 Idaho, #206M, Los Angeles, 90025. (213)477-8226.

Donny O'Brien's

WEEKENDS ARE JUMPING

WATCH THE
NFL GAMES
 = ON OUR =
BIG SCREEN TV'S
 STARTING AT
 12 NOON
 SATURDAYS & SUNDAYS
BEER SPECIALS



. SUNDAYS .
REVERSE
HAPPY HOUR
 = 10 PM TO 1 AM =
2 for 1 WELL
AND WINE
75¢ BUD
AND MILLER LITE
FREE PIZZA
 - 10 TO 12 MIDNITE -
COME, EAT
and PARTY

AT DONNY O'BRIEN'S!

COME ON DOWN AND DANCE!

★ WITH OUR D.J. DAVE ★

WINNER OF THE BATTLE OF THE D.J.'S AND
NO. 1 MODERN MUSIC VIDEO JOCKY

222 S. Mill, Tempe
 968-0527
 (Across from Flour Mills)

NEVER A COVER PROPER DRESS REQUIRED

Georg
 sign a
 in hop
 S
 fo
 By As
 Staff
 Cor
 Stadi
 of mo
 game
 offici
 Min
 for p
 some
 keep
 progr
 stadi
 She
 east
 level

Inside