

thursday

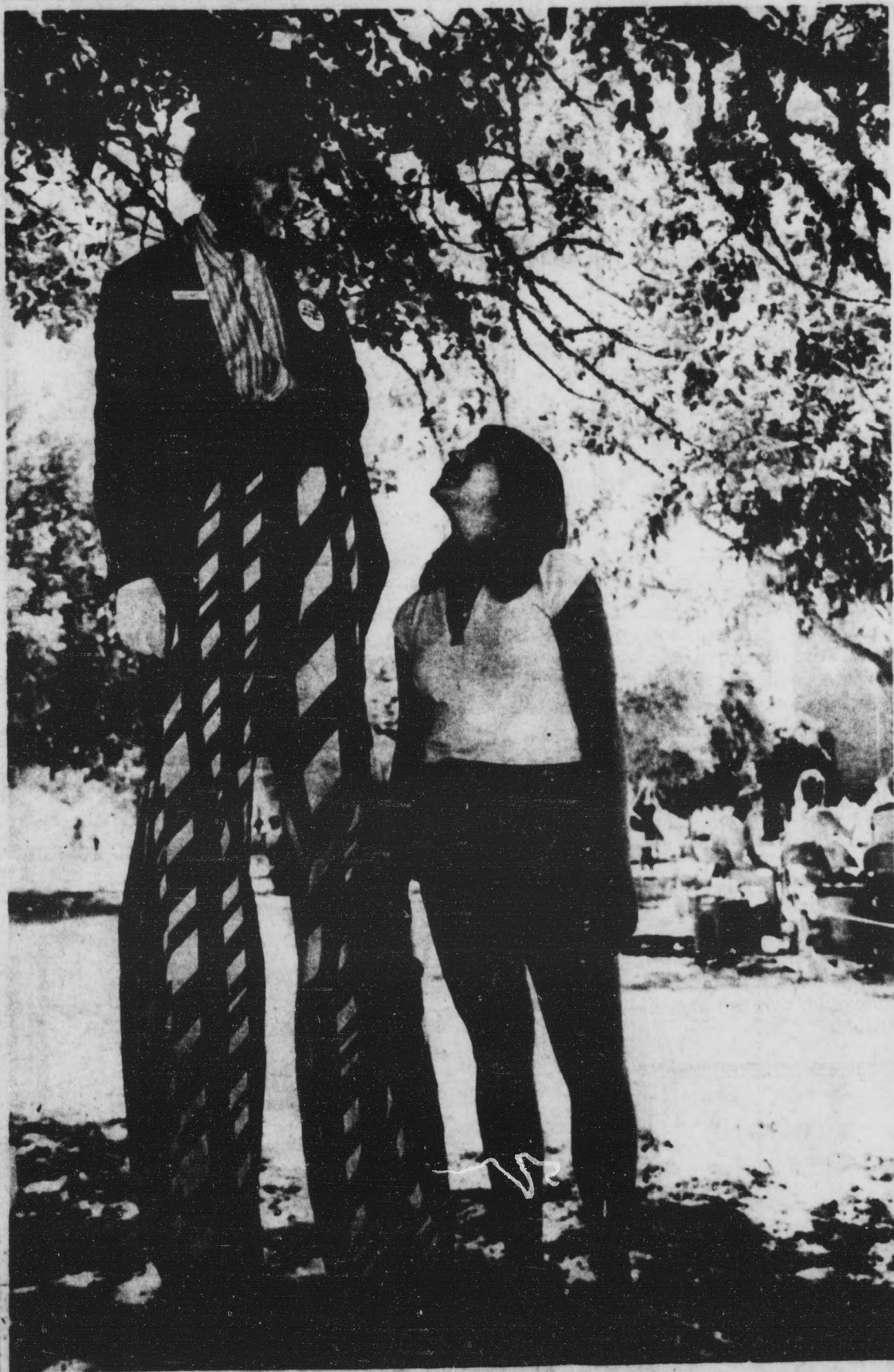
Arizona State University

state press

Tempe, Arizona

September 6, 1979

Vol. 62, No. 7



Arnold Wheels explains to Jackie Thai, a sophomore computer major, how he got so tall. Wheels was promoting the Leisure Learning Fair on campus Wednesday. [State Press staff photo]

Fee hike faced

Schools concur on budget plan

By Jacqueline Gaillard

Student presidents at Arizona's three universities have agreed on a budget formula to determine the cost of education — the first step in establishing the expected tuition increase in 1980.

However, a request by the ASU administration to include research and public service programs in the cost of education might delay approval of the budget outline by the Arizona Board of Regents.

Robert Huff, regents' staff executive coordinator, presented copies of the proposed formula to Associated Students presidents Susie Eastridge of ASU, Flip May of UA, and Mike Ceballos of NAU at a meeting Tuesday.

Editorial, page 4

Huff said the staff report represents only an outline of the current budget for the three universities.

"We are not talking about a tuition increase at this point and we are not talking about competition between the schools," Huff said. "At this point all we are trying to do is come up with a solid and sensible budget formula."

The regents will receive copies of the outline at their Friday meeting in Tucson.

Huff said the outline approved by student leaders might be held up by ASU administration. He added that V. Alonzo Metcalf, ASU administrative vice president, informed him Tuesday morning the school wants 50 percent of organized university research and public service programs to be included in the cost of education at ASU.

Eastridge said the report was a "good assessment" of the cost of education but the next step will be crucial — to determine exactly how much students will have to pay next fall.

"It is inevitable that tuition will go up," Eastridge said. "What we would like to see is the increase spread over four years or so, rather than one big jump."

John Parker, ASU institutional studies and planning director, said, "The position of ASU in those areas where faculty are actively involved should be included in the cost of education."

He added that areas budgeted under public service programs include KAET-TV, Gammage Center for the Performing Arts, community service projects and the Center for the Executive Development.

However Huff said no political motivation was involved in arriving at the figures in the budget outline.

"This is as they are, not as someone wanted them to be," Huff said.

Inside Today

Radio-rooters beg for bucks

Page 3

Disabled students' parking shortage

Page 7

Airships: Tomorrow's workhorses?

Page 10

Cal's coach hopes for macho

Page 15



In the news briefly

from the Associated Press

PUNTER'S SUIT 'NATIONAL DILEMMA,' SAYS FRED MILLER

PHOENIX — The \$1.1 million sought in a complaint that Kevin Rutledge was "harassed into quitting" the ASU football team is symptomatic of a nationwide problem in collegiate sports, ASU athletic director Fred Miller says. "The primary issue here is discipline in team sports," Miller said Wednesday. "If the complaint does turn into litigation, and the findings should go against us, it could very well destroy the structure of amateur sports as we know it today." Head football Coach Frank Kush called the charges, brought by Rutledge's father, "absurd and ridiculous."

COURT SAYS OWNER MUST WATER GOLF COURSE

PHOENIX — Homeowners whose largely \$100,000 residences border a now-parched Tempe golf course won a court order Wednesday that the course's Canadian owners must resume watering. Maricopa County Superior Court Judge A. Melvin McDonald also ordered DOC Enterprises Ltd., an Arizona company owned principally by Canadians, to halt its planned residential development of the Shalimar Country Club golf course.

900 REPORTEDLY DEAD AS HURRICANE FIZZLES

CHARLESTON, S.C. — The fearsome winds of a hurricane David dwindled to a stiff breeze driving heavy rains Wednesday in the hilly Piedmont region of the Carolinas. But in the Caribbean islands they were still counting the dead, buildings lay in shambles on Florida shores and scenic Savannah, Ga., was cluttered with thousands of felled oak trees. The storm was one of the worst in the Atlantic this century. It killed at least 900 persons in a sweep through Dominica, Puerto Rico and the Dominican Republic and left millions of dollars in damage when it side-swiped Florida.

WOMAN SIGNS NBA CONTRACT

LOS ANGELES — Former UCLA and Olympic star Ann Meyers became the first woman ever signed to a National Basketball Association contract Wednesday when the Indiana Pacers announced that she has agreed to a one-year pact. To play, the 24-year-old, 5-foot 9-inch, 140-pound feminine star must make the roster, but even if

she doesn't, owner Sam Nassi said she will have some type of non-playing job for the Pacers.

TUCSON PAPER ASKS DENIAL OF OFFICIAL'S RETRIAL REQUEST

TUCSON — A Tucson newspaper has asked the Arizona Court of Appeals to reject Pima County Attorney Stephen D. Neely's request for a rehearing in its order to throw out the subpoenas of two reporters. The Tucson Citizen Tuesday filed its response to Neely's request, saying the court was correct in finding that the subpoenas were invalid because they were issued as part of an improper investigation. Neely asked for a one-man grand jury after Citizen reporters Cheryle M. Rodriguez and Dan M. Huff wrote a story in May in which an unidentified deputy county attorney said he used cocaine regularly. He also said others in the office used cocaine and marijuana.

SADAT AND BEGIN AT ODDS OVER JERUSALEM

HAIFA, Israel — Anwar Sadat and Menachem Begin differed over the future of Jerusalem and reported no progress on the Palestinian question, but they reached agreement in summit talks Wednesday on three immediate issues — Mount Sinai, peace-keeping patrols and oil. The Egyptian president and Israeli prime minister, ending two days of meetings, announced agreements "in principle" on an early Israeli evacuation of the area of the biblical Mount Sinai.

FILM INDUSTRY THREATENS STRIKE

LOS ANGELES — Negotiators for 24,000 film craftsmen and technicians headed back to the bargaining table Wednesday, armed with a strike mandate that could shut down the entire motion picture and television industry for the first time in 33 years. With the fall television season about to get under way, network spokesmen said a prolonged walkout could mean that viewers expecting to find new programs would get mostly re-runs instead.

PHOENIX-TUCSON COMMUTER IDEA BLASTED BY RAIL OFFICIAL

TUCSON — The idea of commuter rail service between Tucson and Phoenix is being discouraged by a Southern Pacific official who says there is not enough demand and it would hinder freight trains.

MOPED SALE

Single-speed Automatics
Double-speed Automatics
Four-speed Manuals

New starting at **'275** + tax

Used starting at **'89** + tax

Full Service Department.
Financing Available.

Western Moped

1724 W. 10th Place
Tempe, Arizona 85281
967-7438

Monday - Friday 9-6 • Saturday 9-1

ON BROADWAY



CAST AGREES!

Due To Popular Demand,
One More Week of
the Same Performances
With ORIGINAL STARS!!

Jordache, Sasson,
Great Escape, and the
latest Disco look:
(Spandex (by Sasoon))

Buy one pair of jeans at the regular price — Get a second pair of equal or less value at ½ PRICE!!

BROADWAY PLAZA

57 E. Broadway
968-1003

With this ad. Expires Sept. 11, 1979

HOURS: Mon., Wed., Fri., Sat. 10-6; Tues. & Thurs. 10-8
We Have Gift Certificates

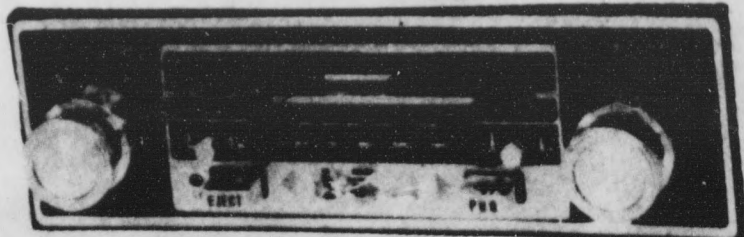
SALES & SERVICE



AUTO SOUND
1018 N. SCOTTSDALE RD., TEMPE
In Hayden Plaza East
968-8616

In Dash AM/FM Cassette with
a Pair of Speakers INSTALLED

ONLY \$149⁹⁵



TANCREDI MODEL TC-5000 with Auto Reverse, Locking Rew/FF
with your choice of speakers from Sparkomatic, Majestic or Roadstar.
All with 1-year over-the-counter exchange.

LARGEST SELECTION OF CAR STEREO SPEAKERS IN THE VALLEY!

EXPERT INSTALLATION

TWO LIPS



THE ALTERNATIVE NIGHTCLUB PRESENTS

TWO SHOWS

NIGHTLY

9 PM &

11 PM

Tuesday

through

Saturday

SHOW

BAND

featuring

RICK UNGER and
Special Guest Star HANS OLSON

... And On Sunday

TWO LIPS JAZZ JAM

6 - 12

And Monday Evenings:

MATTHEW WASHINGTON

Exclusive Jazz Performance

252-3230
1324 N. Central Ave.
(2 blocks South of McDowell)

ASASU emergency budget sought

Panel asks for \$58,000 to fund radio station

By Sherry Wheatley

A group pushing for a campus radio station asked the ASASU Senate on Wednesday to relinquish its entire \$58,000 emergency fund to help put ASU on the air.

The radio committee will use the proposed money to help the campus radio station get off the ground.

Bill Williams, bureau radio coordinator, said the station is still a year and a half away. Although the site has been selected and a station manager has been hired, there is still a lot of legal work involved, he added.

But Keith Jennings, College of Public

Programs representative, said that at least two other organizations are competing for the same radio band (90.3 FM) and the senate must act on the proposal before the Federal Communications Commission awards that band to someone else.

"We're going to have to get this station organized as soon as possible," Jennings said. "If we don't get it now ASU may never have a campus radio station."

Lori Tanner, ASASU activities vice president, called a motion to table the proposal until more information could be made available

to the senate.

The senate then postponed a vote on the proposal.

In other action Laleen Collins, Arizona Student Association board member, presented a set of ASA bylaws to be approved by the senate. It called for various minor adjustments in hiring policies and other office procedures.

Proposal 3, which allows ASASU to pay the Terak Corporation \$3,150 for an interface bought for the computer used to compile ASASU's faculty and course evaluations, was passed unanimously.

Few ASU women use gynecological clinic

By Ellen Haggerty

The ASU Extended Gynecological Clinic is suffering from an identity crisis: no one is taking advantage of it. The clinic's coordinator said she believes few women are even aware of the birth control service.

Eight to 15 patients a day take advantage of the clinic, which has room for 20 to 25, Janet Sherman said.

"We feel we can handle more patients. We want the students to know it's here," Sherman added.

Officially titled "Extended Gynecological Clinic," the service was added to the Student Health Center on Feb. 28.

Posters promoting the clinic were put on bulletin boards around campus, Student Health

Center Director Dr. Richard Jones said.

"It's slow to start like any new program," Jones said. "I think it will start to pick up."

Up until the Board of Regents lifted the seven-year ban on birth control on the three state universities, the care provided by the gynecological clinic was not available.

The clinic has received about 400 patients since it opened, said clinic receptionist Eva Gillespie.

Any ASU full- or part-time student can receive a year of full clinic services for \$18. Services include health history, complete physical examination, and laboratory care.

Each patient decides on a contraceptive method, although no prescription for contraception

can be filled at the Student Health pharmacy.

Students choosing the diaphragm are fitted at the clinic and given a prescription to be filled off campus.

The Intrauterine Device will be inserted at the clinic at the physician's discretion.

Checkups after three months, and again after six months are advised, followed by regular yearly examinations.

Services are available by appointment from 8 a.m. to 4 p.m. on weekdays.

Prior to making an appointment, students must have attended an educational program provided by the clinic on a regular basis. Information

regarding these meetings can be obtained by calling 965-4709.

The clinic operates with a gynecological consultant, a nurse practitioner, a medical technologist, a nurse educator, an office manager and a nursing assistant.

"We have a very fine educational program," Sherman said.

The nurse educator is planning to extend her classes to the dorms, Sherman added. The classes are held at the clinic.

Q: Where is the Gallery Store?

**A: Matthews Center
Second Floor**

Q: What is the Gallery Store?

**A: A shop where you buy the most artistic cards and ethnic stuff on campus.
OPEN 12 to 4 WEEK DAYS**

Guaranteed Lowest Keg Prices In The State!

Or We Will Pay The Difference In Cash ★

NO CHARGE!!
No Rental Fees On Our Keg Equipment
ASK THE OTHER GUYS 1/2 BARRELS (15.5 Gal.)

Schlitz Malt	29.50	Michelob Dark	35.40
Coors	28.75	Schlitz Dark	29.95
Olympia	26.50	Olympia Dark	26.50
Miller Lite	25.50	Michelob Light	35.40
Anheuser Busch		Lowenbrau Dark	33.95
Natural Light	29.40	Budweiser	29.40
Pabst	21.75	Michelob	35.40
Old Milwaukee	22.95	Miller	24.50
Lowenbrau Light	33.95	Schlitz	23.95
Heineken	62.95		

1/4 BARRELS (7.75 Gal.)

Budweiser	18.00	Schlitz	17.50
Michelob	19.00	Schlitz Malt	17.50
Coors			17.50

SPECIALS OF THE WEEK

Pabst 12-Pack \$2.99	Ron Rico Rum \$5.99 ^a quart	Molson \$2.99 ^a six-pack
Gordon's Vodka \$4.99 ^a quart	Calvert Gin \$4.99 ^a quart	Arandas Tequila \$5.99 ^a quart

IMPORT BEER SALE OF THE WEEK

Stingo! Stingo: is for dark beer lovers only.

Not a beer, but a dark ale with all the full rich flavor of truly stout ale.

\$2.99 (4-pack) Regularly \$3.54

IMPORT BEER LOVERS

WE NOW HAVE

50 DIFFERENT BRANDS OF IMPORTED BEER

ONE ON SALE EACH WEEK

★ If, after a purchase, you find a keg, tap & tub cheaper somewhere else, we will refund the difference in cash.

JERRY'S LIQUORS

1217 South Rural Rd.

966-TOLL

Just Off Campus

If you cut the cost we won't be lost

This weekend in Tucson the Arizona Board of Regents will be wrestling with a formula to compute how much students in this state should pay for next year's education.

Under extreme pressure from the Legislature to hit students — especially non-residents — hard, the board and its central staff have spent the last few weeks meeting with student leaders, university administrators and legislators in an effort to find a compromise.

As of now, no one knows exactly how much students at ASU, UA and NAU will have to fork out, but one thing appears inevitable: there will be an increase. The question, it seems, is how much.

Last year the regents developed a formula to base tuition on the Consumer Price Index. Thus, as the CPI rose, so would students' costs.

But legislators who earlier this year pushed for a massive increase this semester are afraid that system still would allow students to attend school without paying their "fair share."

As an alternative, Rep. Jim Cooper, R-Mesa, has proposed a system under which both resident and out-of-state students would pay flat percentages of the "cost of education" at the universities. Roughly, he's talking about residents paying 20 to 25 percent and non-residents 85 to 90 percent.

This formula is what the regents will be kicking



chet barfield

around Friday and Saturday. A report prepared by the board's staff outlines "education costs" as those including instruction and student service expenditures, along with academic and institutional support allocations.

According to the report, education costs-per-student vary at the three state universities, as do the present percentages students pay. If the proposed flat percentage is established, students at UA would face the largest tuition increase, NAU the second and ASU the least to bring the figures in line.

There's bound to be plenty of debate on this, and plenty of friction between the universities as a result. But regardless of what the final outcome may be, if

the "percentage base" system is adopted, it's time ASU administrators start looking at ways this university could cut its overall costs.

The proposed system would involve an initial increase to bring tuition in line with agreed cost of education percentages.

But once the formula is locked in, if the University should manage to reduce costs somehow, students, in turn, would pay less in subsequent tuition.

Robert Lawless, the regents' fiscal director, said Wednesday that students would be entitled to tuition decreases if their university trims the fat.

"It would be nice to see things lean both ways," he said.

There are countless ways this university could become more cost-efficient if the powers that be put their hearts, minds and No. 2 pencils into it.

Almost every administrative office on this campus is a bureaucratic tangle of red tape. There's so much duplication of effort, paper work and time, it's hard to believe the machine could not be running a lot smoother.

If students are to become "shareholders" in their own university, as one letter-writer put it, they deserve the right to have their investment protected.

There's no reason ASU can't grow without waste, and in so doing pass the savings along to students who already are breaking their backs to stay in school.

Opinion

state press

Fate determines many things, no matter how we struggle.
—Otto Weininger

Letters to the Editor

No ifs, ands, butts: that lousy ad turns up the other cheek

Editor:

I am writing in regard to the advertisement which covered the back page of your Aug. 29 edition. The ad was for a new line of men's pants called "Cheeks."

It dismays me that your publication could be so insensitive as to print such a blatantly sexist ad just for the sake of the Almighty Buck. The whole concept is exploitive and offensive to men, but the depiction of men posing in tight pants is what is particularly degrading.

All men must share the blame. Men have allowed themselves to be manipulated by the so-called "weaker sex" since the Garden of Eden. Sure, traditionally men have held the positions of power and wealth in the societies of the world. But who has quietly reaped the benefits while their husbands work their way to heart disease, high blood pressure, alcoholism and an early grave? And who do you suppose first came up with the notion that it's an honor to die on the battlefield? Five will get you 10 she never was seen with a spear in hand.

This ad is just a further perpetration of men as oppressed objects of the selfish desires of female fantasies. It is offensive and has no place in a campus publication. Let's keep these vulgar exploitations of the male body out of "our" paper and leave them in the discos where they belong.

I am only thankful that this revolting incident occurred early in the semester when I don't have anything better to do than write letters.

James Sauer



Is this a runaround? You bet!

Editor:

Would you like to get residency? There is a list of items which you must have in order to be considered. Before being considered you must turn your application in.

I picked up an application approximately two weeks before Aug. 31 from a gentleman in the fee status office. I walked into the office and explained to him that I wished to file for residency. He immediately walked over to a file cabinet and handed me an application along with a six-page book of guidelines and a sheet with some criteria on it. He then informed me to fill out the application, get the required material and turn it all in by Aug. 31.

When Aug. 31 came around I was told by two female secretaries that they could not accept my application. I asked why, and they told me the deadline was Aug. 30.

There is a line on the criteria sheet that says check with the office for submissions Deadlines. I informed the ladies that I was told Aug. 31. Immediately one of the secretaries said that I must have "misunderstood," not, "Who told you this information sir," or "When were you told this sir." She just assumed that I "misunderstood."

I went home and picked up the criteria sheet,

brought it back and pointed out that it said check with the office for submission deadline. The other secretary told me, "Well there is a sign on the wall." Again I tried to explain that I was told Aug. 31, therefore there was no need to check for a sign. I tried to get them to question me about who gave me my information, but they did not seem to be interested in finding out that maybe someone in the office goofed.

Instead, the "kind" secretary said, "It's not our fault you are turning in your application late."

I'll bet she didn't say that to the line of people who were there Aug. 30. That's right, I was there Aug. 30, but the line was long and I had a class so I decided to come back on what I was told was the last day, only to find two very rude secretaries who seem to feel that anyone in the fee status office couldn't possibly be wrong.

Once again I made a trip home, and tried calling the man to which the applications were to be given, Richard Coyne. Then is when I found out that Mr. Coyne usually doesn't talk to students over the phone, only by appointment.

So I can talk to Mr. Coyne if I wait until October 10, his first open date. The deadline for appeal letters is October 4 . . . Catch 22!

Anthony V. Stimul
Graphic Communications

STATE PRESS NEWSROOM STAFF

Editor
Managing Editor
City Editor
News Editor
Copy Chief
Sports Editor
Photo Editor
Arts & Entertainment Editor
Assistant City Editor
Assistant Sports Editor
Reporters

Sports Reporter
Photographers

Staff Artist
Editorial Cartoonist
Copy Editors

Chet Barfield
Mary Gillespie
Jim Muhlstein
Geoff Gilbert
Tamera Thornton
Bob Petrie
Tom Tingle
Steve Allnatt
Mark Scarp
Jim Elsleger
Jacqueline Gaillard
Ellen Haggerty
Suzanne McElfresh
Dave Walker
Sherry Wheatley
Perry Sams
Denny Collins
Mike Fioritto
Matthew Liu
Christina Jepsen
Karer Portik
Tim Boyczko
Clare Gramer
Dave Neibergall
Lori Weinraub



Another Letter

**Call that coverage?
We deserve better!**

Editor:

Your coverage of the MEChA scholarship awards (Becas para Progreso) was unjustly done by your reporters.

A lot of hard work and effort was put into surpassing the \$2,000 goal mark set so that 29 scholarships could be given to eighth grade and high school graduates as incentives for continuing their education. A more comprehensive article should have appeared in the State Press.

If this is the type of coverage the State Press is giving the Chicano campus community then it is following the same format of *The Arizona Republic* and *Phoenix Gazette* in their coverage of the Chicano area community.

Your policy on coverage should either be updated or canned altogether.

Ruben Vasquez
Co-Chairman

Movimiento Estudiantil Chicano de Aztlan



THE THIRD CAREER
Paperback Book Exchange
All Books Half Price
Buy Five & Get One Free
WITH AD
in the Wilshire Plaza.
994-5384 2515 N. Scottsdale Rd.
Scottsdale

Wendy's QUALITY IS OUR RECIPE
790 W. Broadway, Tempe
FREE HAMBURGER
Get a Free Single Hamburger with the Purchase of ANY 2 HAMBURGERS at the Regular Price. Valid at All Valley Locations With This Coupon.

PARTY & DISCO
ASU vs CAL
Post Game Celebration
Saturday
Sept. 8
10:30 p.m.
ADMISSION \$2.00

JOIN US FOR SUDS, DANCING AND ENTERTAINMENT
HILLEL
Union of Jewish Students
Baker Center
213 E. University
967-7563

3 1/2¢ Xerox COPIES
Redeem this coupon along with your valid fall fees receipt at any of our stores, and receive FREE an AlphaGraphics STUDENT DISCOUNT MEMBERSHIP CARD good for 3 1/2¢ Xerox copies, if you present your card to our copyist as you place your order.*

alphagraphics®
STUDENT DISCOUNT MEMBERSHIP CARD
Good for an Unlimited
of 3 1/2¢ Xerox C
Coupon Miracle
Member
Name
*8 1/2" x 11 unbound originals

--VALUABLE COUPON--
BACK TO ASU
BONANZA
Waterslide Country
Welcomes you to
2 hours of WATERSLIDING
for the price of 1 hour.
You pay only \$3.00
Reg. price \$6.00
Bring in this coupon today!
Offer starts Tuesday Sept. 4th
and
Expires on Sunday Sept. 30th
-One Coupon Per Customer Per Visit-
WATERSLIDE COUNTRY
3650 So. 48th St.
Phoenix, AZ
(602) 968-4741



Playdough art

Billie Jean Slack, a senior ceramics major, carves and molds a caly bowl to her satisfaction in the Art Building. Each bowl takes several hours to complete. [Staff photo by Tom Tingle]

Color therapy and dope presentations scheduled

The Friends of Alternatives will be giving two discussions on color therapy and the effects of marijuana at 7:30 p.m. today and Sept. 13 in the MU.

The first presentation, "Color Therapy: Rainbow Rays Make for Healthier Days," will deal with the "spectro-chrome metry" treatment system developed by Indian scientist Dinshah Ghadiali.

The second lecture, "Finding Out What You're Not Supposed to Know: Gettin' High," will address the controversy about the effects of marijuana on the body.

Admission is free. For information call 967-8991.



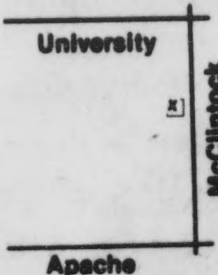
THIS SPACE CONTRIBUTED BY THE PUBLISHER **March of Dimes**

**FREE GIFT
WITH ANY BIKE
PURCHASE**



Peugeot 10-Speeds \$145 & up
Centurian 10-Speeds
Roller Skates
Mopeds
Tubeless Tires For No Flats

**BIKES 'n' THINGS IS
CLOSE TO ASU**



1020 S. McClintock 968-4511

Job tension, stress clinic is scheduled

A Stress Management Clinic for nurses will be presented Sept. 20-Nov. 29 by the ASU College of Nursing continuing education program.

The program is designed to help the professional nurse learn to cope more effectively with stress in the work environment.

Those attending the clinic will learn to identify common stressful factors in their surroundings; recognize conditioned programming of personal behaviors that influence work relationships; identify personal strengths that can help eliminate negative thought patterns, self-recrimination and self-defeating statements; and recognize others' reactions to work situations.

Course fee is \$36 per person. Preregistration is required, and all enrollments must be received by Sept. 13, 1979. For information and registration forms, contact the Continuing Education Program, ASU College of Nursing, Dixie Gammage Hall, room 125, or call 965-7431.

The women of
KAPPA DELTA
want to welcome back
all Greeks, students
and faculty to
ASU

ARIZONA CUSTOM T-SHIRTS

Welcomes Everybody Back

Fraternities, Sororities, and other groups.
Check our group rates!!

961 E. Guadalupe
Rural & Guadalupe

Tempe
839-6244



HELP!!
WE ARE THE LARGEST IN
OUR FIELD AND NEED
PHONE PEOPLE

For The Easiest Sales You've
Ever Had. We Offer:

1. Weekly Advance.
2. Daily & Weekly Contests.
3. Weekly Bonuses.
4. Excellent Selling Atmosphere.

Experience Helpful, But Not Necessary.
We Train. The Right Person Can Make \$200
to \$250 Dollars a Week. We Have Been in
Tempe Since 1973. Call Mr. Cohen at

966-8527



Bluegrass Country Saloon

3rd ANNUAL DANCE CONTEST



"GRAND FINALS"

1st Place Winners of
Past 8 Weeks Compete
For Grand Prizes
Sept. 11.

BILL HALLOCK Sept. 4 - 8
GRAND JUNCTION 9 - 10
COYOTE 11 - 15

WEEKLY SPECIALS

Mon. 10c Beer 7:30-10:30
Tues. 2 for 1
Weds. FREE DRINKS & COVER
FOR LADIES 7:30-10:30
Thurs. 25c Drinks

FRIDAY & SATURDAY 7:30-9:00

FREE BEER

**BLUEGRASS COUNTRY
SWING LESSONS**
**SOUTHWEST'S HOTTEST
DANCE FORM**

\$10 GIVES YOU
10 Hours of Lessons
10 FREE DRINKS
5 Admissions
4 Weekend Passes
GRADUATION PARTY

946-4859

2003 N. Scottsdale Rd. • 2 Blks. N. of McDowell

Artist defends drawing

Poster 'legal,' but reproduction frowned upon

The fact that a University Theater poster is similar to the work of another artist is probably legal, but it is looked down upon by professionals, an ASU graphics design professor said Wednesday.

"As long as something is changed about it it's not considered illegal, but it's not considered a good practice among designers," Thomas Hall said.

The poster was printed by the Bureau of Publications at a cost of 20 cents each, or \$2,000 for 10,000 posters.

Drawn by Dave Knox, assistant to the art director of the ASU Bureau of Publications,

the poster is a near-exact reproduction of an illustration by James Marsh that appeared in the March-April edition of *Graphics*, a Swiss design journal.

Knox has been a full-time salaried employee of the Bureau of Publications for five years.

"It's just not considered creative. It's something that happens, but the acceptability is questionable," Hall added.

The Bureau of Publications editor said that use of other artists' works in illustrations is "a very common practice."

"They wanted a drawing and Dave revised the drawing that appeared in a publication,"

Dean Smith said.

Knox said he changed the original drawing and that his work was not illegal.

"I was just contracted to do a job. If there are any complaints, contact the theater department," he said.

Dr. William Akins, chairman of the theater department, said there is a resemblance between the two illustrations, but Knox "obviously worked his design in a different way."

"I certainly would have preferred that it not have occurred in this way, but it's done and we have to live with it," he said.

Disabled parking policy subject of meeting

By Dave Walker

ASU disabled students will meet with administrators Friday to discuss a change in a parking policy they claim has forced them to "park in Lot 59 and ride the tram to campus," a disabled student said Wednesday.

The meeting has been called in an effort to clear up the situation that has left only 22 spaces available to the ambulatory disabled (those who are able to drive) on campus, said Alan Besser, a counselor for the ASU Center for Disabled Students.

"We feel the number of spaces available to handicapped commuters has been unfairly reduced. The trams are not equipped to handle wheelchairs," he said.

Richard Coyne, University manager of citation appeals and delinquent accounts, himself confined to a wheelchair, said he had been asked to attend the meeting.

Coyne explained the recent changes in ASU parking procedures.

"To begin with, students, faculty and staff confined to wheelchairs or students physically impaired will be not affected by the change," he said.

According to Coyne, there are 900 students, faculty and staff at ASU who are handicapped in some way. Less than 300 of these commute. The commuters are considered ambulatory disabled, he said. Heart patients, people with high blood pressure, reformed drug ad-

dicts, alcoholics are the people affected, Coyne added.

In the past, these commuters were issued a "D" parking permit which allowed them to park in any lot on campus except for the two or three lots reserved for faculty and administration. This semester there have been spots

designated in every lot for handicapped parking.

Four to eight stalls in each lot have been reserved. When these spaces are filled, there are more than 60 reserved places available in lot 59 (east of the football stadium) for handicapped parking, that are considered by Coyne to be in a

"prime location" near the tram stop.

"I think this is what they mean by having to ride the tram. If a student is confined to a wheelchair or is impaired, he or she shouldn't be in the position of having to ride the tram. There are always marked and reserved places near the

center of campus for the disabled," Coyne said.

These spaces are designated after an OK from ASU health services.

Coyne added the number of reserved spaces has been increased this year and more will be added in the near future when work on three lots, now under construction is completed.

on monday night play Pro-Football

WIN UP TO \$1,000

WEEKLY ODDS GAME ENDS JANUARY 20th, 1980

\$1,000	2	\$2,000	1 in 100	1 in 100
\$100	12	\$1,200	1 in 100	1 in 100

TICKETS AVAILABLE AT ALL FRY'S FOOD STORES IN ARIZONA. TOTAL CASH PRIZES \$22,700

AND A TRIP FOR TWO TO THE SUPER BOWL

All cash prize winners of the "On Monday Night Play Pro-Football" game are eligible to play and to win Fry's Super Bowl Sweepstakes.

SUPER BOWL PACKAGE INCLUDES:

- Two Round Trip Tickets To Los Angeles
- Two (2) Super Bowl XIV Tickets
- Lodging For Two (2)
- Super Bowl Banquet
- Super Bowl Champagne Brunch

4 SUPER BOWL PACKAGES WILL BE AWARDED

Complete Rules Posted in all Fry's Food Stores. No Purchase Necessary. You Must Be 18 Years Of Age Or Older To Enter And Win.

fray's

MC CLINTOCK DR. & SOUTHERN CURRY & SCOTTSDALE RD.
OPEN 6 a.m. til MIDNIGHT MON.-SAT. 9 a.m. til 8 p.m.
SUN. 9 a.m. til 6 p.m.

GOOD LUCK ON YOUR SEASON OPENER

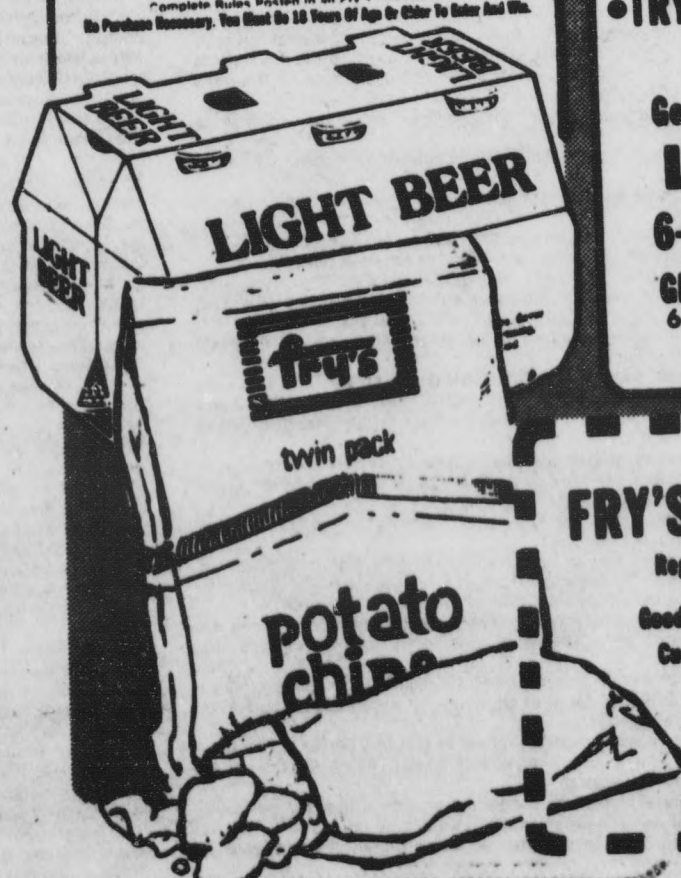



Prices Effective Thru September 11, 1979

- KEG BEER AVAILABLE
Michelob Or Budweiser
- A COMPLETE SELECTION OF WINE
- TRY OUR NEW GENERIC BEER
(No Brand Name)

Generic (No Brand Name) LIGHT BEER \$1.45
6-Pack 12-oz. Bottles

GENERIC (NO BRAND NAME) REGULAR BEER \$1.35
6-Pack



COUPON SPECIAL

ONE BAG WITH THIS COUPON
FRY'S POTATO CHIPS
Regular or Dip 8-oz. Twin Pack
Good at McClintock Dr. & Southern and Curry & Scottsdale Rd. Fry's Only.

49¢

WITHOUT COUPON 83¢

Effective September 6 Thru September 11, 1979

Refund Amount 34¢ Plus Tax 2¢ No. 201

Air Conditioned GUN SHOW COLLECTORAMA

Mesa Centennial Hall
201 N. Center, Mesa
September 8 and 9
150-200 tables, \$16 each
\$1.50 Adult Admission
Call: L. Stewart, 838-9631,
or F. Weiss, 962-6372 for
information.

THERE'S ROOM FOR DOUBT - CHUTZPAH IN THE PRAYER BOOK OR CAN AN ATHEIST COME TO SHUL?

A discussion following
SHABBAT SERVICES
Friday night
September 7, 7:30 p.m.

Hillel - Union of
Jewish Students

Baker Center
213 E. University Dr.
967-7583

Registration, Facility Use Policies and Rules Set Forth

As a service to students, the STATE PRESS and the Dean of Students office present below University rules and regulations pertaining to registration of student organizations and policies governing the use of University facilities.

They were adopted by the University Scheduling Board. Inquiries should be directed to the Scheduling Coordinator, Matthews Center, phone 965-6116. The rules and regulations are subject to annual review by the University Scheduling Board.

They are contained in a booklet, "Policies and Procedures — Activities, Conduct, Rights and Responsibilities at Arizona State University." Copies of the complete booklet are available without charge from the Dean of Students office in Matthews Center.

In addition to the material reprinted below, the booklet contains the "Code of Conduct" adopted by the Arizona Board of Regents; and the section of Arizona Revised Statutes covering "Interference with Peaceful Conduct of Educational Institutions."

I. POLICY

A. Every campus organization, i.e., a student, faculty, or staff group of at least ten members which operates or wishes to operate within the University structure shall register with the University. Student organizations shall follow the registration procedures prescribed by the Vice President for Student Affairs. Faculty and staff organizations shall follow such registration procedures as are prescribed by the Academic Vice President and the Vice President for Business Affairs, respectively. Registration shall be necessary before the facilities of the University are made available to any campus organization.

B. The Office of Dean of Students shall administer the registration of student organizations, and shall maintain a listing of all currently registered student organizations.

C. Registration shall be permitted unless the University finds that an organization seeks to accomplish its local or national objectives, goals and purposes or activities by the use of violence and advocates and incites immediate action which will probably materially and substantially interfere with the discipline and normal activities of the University and the rights of others, constituting a clear and present danger to the property, personnel and orderly function of the University. In determining whether an organization shall be permitted to register, the University, through the Office of Dean of Students or the Office of the appropriate Vice President, should make proper inquiry as to the past conduct, declarations and stated objectives of the organization. Inquiry should also be made as to whether the organization advocates the violation of the law and the disregard of University regulations and whether there is a probability that such advocacy has incited or will incite and produce closely related lawless action.

D. If registration is denied by the Office of Dean of Students, the Office of the Academic Vice President, or the Vice President for Business Affairs, the organization may appeal the decision to the University Review and Advisory Board.

E. Each student organization shall have a University advisor whose assignment shall be to assist the organization membership in developing a constructive program within the framework of University policy. An advisor shall be a member of the faculty or staff at Arizona State University.

F. Registration of an organization by the University does not constitute University endorsement or approval of the policies and activities of the organization. It does, however, signify the willingness on the part of the organization to comply with the policies of the University and the Arizona Board of Regents.

G. A registered organization shall neither represent nor imply, in any manner, in its contacts with the public that it speaks for or in the name of the University.

H. A registered organization shall not use the name of Arizona State University, nor abbreviations, nicknames, or other familiar forms thereof, as part of its own name.

I. The Office of Dean of Students shall assist registered organizations with the scheduling of a special use of a university facility under the policies of the University and the Arizona Board of Regents.

II. REGISTRATION PROCEDURE

A. INITIAL REGISTRATION

1. A student organization with at least ten members may seek registration at any time during the school year by submitting a completed Student Organization Registration Form, together with the organization's constitution and by-laws, if any, to the Office of Dean of Students. If no constitution has been adopted, a statement of purpose, signed by the University advisor and the student president of the organization, may be substituted.

2. The registration form shall include the following:

- Name of the organization.
- Date of application for registration.
- The signature of the presiding officer, i.e., the highest elected or appointed officer of the organization, such as President or Chairman, and his/her address.
- The signature of the University advisor.

3. The Office of Dean of Students shall notify the organization in writing of its completed registration.

B. REGISTRATION RENEWAL

1. In order to retain its registration, a student organization shall complete and submit each year a Student Organization Registration Form to the Office of the Dean of Students not later than the end of the fourth week of each fall semester. The registration form shall be accompanied by a copy of the organization's constitution and by-laws or statement of purpose, if not previously filed, and any additions, deletions or alterations to the constitution or statement of purpose previously submitted.

2. The Office of Dean of Students shall notify the organization in writing of its completed registration renewal.

C. TERMINATION OF REGISTRATION

The registration of a student organization may be terminated for the following reasons:

1. Failure to renew registration in the manner specified shall result automatically in termination of registration.

2. By written request of a student organization signed by the presiding officer and the University advisor, the registration of an organization may be terminated at any time.

3. The Dean of Students may, after investigation of a complaint against a student organization, direct termination of registration as a sanction for violation of University regulations. The decision of the Dean of Students may be appealed to the University Trial Board.

III. MEMBERSHIP

1. Membership in a registered organization shall be limited to members of the University community, i.e., students, faculty, staff and their spouses.

2. Membership shall be extended to qualified members of the University community without regard to race, color, creed or religion, sex, national origin, age, or physical or mental handicap.

3. An officer of a student organization shall be enrolled for at least seven semester hours of University credit.

4. A guest of a registered organization shall not assume the role of membership or exercise any privileges derived therefrom, nor serve on any of its committees.

5. A student on academic probation is not eligible to hold office but may continue as a member of an organization.

IV. CONDUCT

A. Registered organizations and their members are subject to all state

and federal laws and to the rules and regulations adopted by the University and the Board of Regents. Violations shall be handled in accordance with the procedures set forth in the Code of Conduct.

B. In the event the majority of the members or the officers of a registered organization shall vote in favor of, actively encourage, join the preparation of or directly take part in the commission of an offense specified in the Code of Conduct, a complaint may be filed against the organization. The complaint or statement of charges shall be processed against the president or someone appointed by him/her to represent the organization and, in the event of a trial, the organization shall be entitled to the same procedural due process granted to an individual. The sanctions which may be imposed against an organization include probation, denial of the use of University facilities for a definite period of time or permanent cancellation of registration. The filing of a complaint or statement of charges against an organization shall not affect, in any way, the filing and processing of a complaint or statement of charges against an individual member of the organization.

C. The Dean of Students shall process all complaints filed against registered student organizations. After an investigation of the matter, the Dean of Students shall report his findings in an oral conference with the representative of the accused organization and shall advise the representative what sanction, if any, he intends to impose on the organization. If the accused organization accepts the findings and recommended sanction of the Dean of Students all action on the complaint shall be considered closed. In the event the accused organization refuses or fails to accept the findings and recommended sanction, the decision of the Dean of Students may be appealed to the University Trial Board. Appeal from a decision made by the University Trial Board may be made to the University Review and Advisory Board (see Code of Conduct, II. The Maintenance of Order with Justice; Administrative Procedures).

V. SCHEDULING, ADVERTISING ON CAMPUS

i.e., Posters, Distributing Literature or Other Material on Campus, Banners

A. SCHEDULING EVENTS

All inquiries or requests involving scheduling of special uses of University facilities should be referred to the Scheduling Coordinator, Office of Dean of Students.

B. ADVERTISING ON CAMPUS

Posters and handbills are the general media for advertising events and activities on University property.

1. All advertising must be factual, and should not mislead or misrepresent the real nature of the event, activity, service, or commodity advertised.

2. Advertising posted or distributed on University property by a registered campus organization or an off-campus company or group may not claim nor imply endorsement or sponsorship by the University.

3. Advertising by student organizations of campus activities not open to the public must be confined to the campus.

4. An off-campus company or group should inquire at the Dean of Students Office regarding University policies prior to posting or distributing any material on University property.

5. All advertising shall be done in accordance with the policies of the University and the Arizona Board of Regents.

C. POSTERS

Twelve kiosks and numerous University bulletin boards are provided for the display of posters and other advertisements.

1. All posters must bear the name of the sponsoring organization.

2. All posters must display the Office of Dean of Students' date stamp on the lower right hand corner.

3. All posters not displaying the sponsoring organization's name, and the Office of Dean of Students' date stamp shall be removed and discarded.

4. Poster size is limited to 14" x 22" and no more than two posters shall be displayed per kiosk.

5. Posters will be removed after two weeks display, or the day following the date of the scheduled event under policies supervised by the Office of Dean of Students.

6. University bulletin boards are supervised by the individual responsible for the building in which they are located and whose approval is necessary prior to the posting of any posters or other advertisements.

7. All posters or other advertisements posted in areas other than the campus kiosks or University bulletin boards shall be removed and discarded.

D. HANDBILLS, PAMPHLETS, OR OTHER MATERIAL

All handbills, pamphlets, or other literature distributed by hand on University property must bear the name of the sponsoring organization.

1. Literature distributed:

a. Shall not contribute unduly to the problem of littering on campus.

b. Shall not physically interfere with academic or administrative functions on campus.

c. Shall not interfere with the normal operation of the residence halls.

d. Shall not be left unattended, or unsupervised on University property by sponsoring organizations.

2. The distribution of handbills, pamphlets, etc., or other material is restricted to areas outside of University buildings, unless prior approval has been obtained from the individual responsible for the particular building.

E. INDIVIDUAL ANNOUNCEMENTS

1. Individual members of the University community may use the kiosks for personal announcements.

2. Such announcements are removed weekly.

F. BANNERS

Agencies or departments of the University or registered campus organizations wishing to display a banner must submit a facility request form to the Office of Dean of Students at least fourteen calendar days prior to the date the banner will be displayed.

1. There are four locations on campus from which banners may be displayed:

a. Over Orange Drive between the Engineering Complex and the Swimming Pool.

b. Over College Avenue just South of the intersection with Lemon Drive.

c. Both sides of the pedestrian bridge over University Drive.

2. Banners may be displayed for a period of ten calendar days.

3. Banner size is restricted to a maximum of 36' x 32'.

4. The Office of Dean of Students should be consulted regarding other banner specifications as required by Physical Plant.

5. Use of the banner locations by an off-campus company or group shall not be authorized.

VI. SALES, SOLICITATION ON CAMPUS

A. The sale or distribution of food and/or beverages on University property, except by those firms under contract to the Arizona Board of Regents, is prohibited.

B. Sales of services and/or commodities on University property by or on the behalf of any off-campus company or group which is not under contract to the Arizona Board of Regents is prohibited.

C. Solicitation of funds on University property by an off-campus company or group is prohibited.

D. Sales of services and/or commodities, or solicitation of funds on University property by registered campus organizations is subject to review and authorization by the Office of the Dean of Students.

E. Sales of services and/or commodities, or solicitation of funds on University property may not be conducted by any individual(s) for personal gain.

F. All registered campus organizations are required to submit a formal request to the Office of Dean of Students for authorization to sell or solicit on University property.

G. Authorization to sell or solicit will be limited to a period of one five-day class week. Extensions beyond this period will be considered on the basis of a new application.

H. Sales or solicitation will be conducted only by authorized members of the registered campus organizations and will be limited to a specific Mall area and adjacent to the Mall so as to permit the free flow of

pedestrian traffic.

1. Tables will be allocated for vending and soliciting in accordance with VII. Activities on the University Malls (see below).

2. Vendors and solicitors will be required to remain behind the table. They may not circulate in the pedestrian traffic lanes to confront customers, or otherwise obstruct the free flow of traffic as specified in the Code of Conduct. Posters may be placed on the table informing the public of what is being sold, or the purpose of the contributions.

I. University tables must be properly checked out from the Office of Dean of Students.

VII. ACTIVITIES ON THE UNIVERSITY MALLS

A. Registered campus organizations may schedule activities on the University Malls by securing and completing a Mall Facility Use Form from the Office of Dean of Students.

B. Tables and chairs may be furnished in connection with an activity, provided notice of at least seven calendar days is given from the time the Mall Facility Use Form is submitted. There is no charge for this service. Tables and chairs may be obtained, subject to the following limitations:

1. Tables will not be placed in an area which restricts pedestrian traffic or otherwise interferes with the access to buildings.

2. Tables and chairs may be picked up any time after 8:30 a.m. and must be returned prior to 4:30 p.m. unless special prior arrangements have been made.

3. Tables and chairs must be received by a student member or University advisor of a registered campus organization, or an officer of a registered staff or faculty organization.

4. Tables must be manned by members of the registered campus organization.

5. Responsibility for transporting the tables and chairs to and from desired locations on the Mall rests with the registered campus organizations.

6. Requests are limited to one table and two chairs unless special prior arrangements have been made.

7. Failure to return tables/chairs to their storage area by the above specified time, unless special prior arrangements have been made, may result in the loss of this privilege by the registered campus organization.

8. Agencies or departments of the University wishing to schedule activities on the University Malls shall follow the same procedures as prescribed for registered campus organizations.

9. Off-campus companies or groups, except for agencies of the state or federal government; subject to approval by the Office of the Dean of Students are not authorized to place a table, booth, stand, etc., or other structure on the University Malls.

C. Only members of a registered campus organization may staff a table on the Mall, distribute materials or solicit on behalf of a registered organization. A guest of a registered organization acting as a resource person may be present, provided that a member of the registered organization also be present at all times.

D. The use of any record player, tape recorder, or other type of amplification equipment in connection with the use of tables, booths, etc., on the Mall is not authorized without the prior approval of the Dean of Students Office.

VIII. SCHEDULING THE OUTDOOR ACTIVITIES AREAS

A. Outdoor Activities Areas have been provided for use by students and other members of the University community.

B. The following locations have been approved by the University Scheduling Board for outdoor activities:

1. Old Main Park east of the Language and Literature Building.

2. Lawn area behind the southeast corner of the Memorial Union.

3. Lawn area east of West Hall.

4. Palo Verde Main Lawn.

5. Gammage Auditorium Lawn.

C. A registered organization wishing to present an off-campus speaker, or program outdoors, other than a musical activity; or wishing to incorporate the use of amplification as part of its presentation outdoors, may request the use of any of the Outdoor Activities Areas by submitting a Facility Request Form to the Scheduling Coordinator, Office of the Dean of Students, at least seven calendar days prior to the event.

1. The use of amplification on or in connection with the use of the Outdoor Activities Areas must have prior approval of the Office of the Dean of Students.

a. Controlled volume amplification shall be allowed in all of the Outdoor Activities Areas for speakers only.

b. Outdoor musical presentations of any variety shall be restricted to the lawn area back of the southeast corner of the Memorial Union, the Palo Verde Main Lawn, and the Gammage Auditorium Lawn.

2. Any amplification system used in connection with an activity presented at one of the Outdoor Activities Areas must be checked out from the Audiovisual Center.

a. The use of Audiovisual Center equipment is contingent upon availability.

b. A student I.D. and driver's license or equivalent is required to check out equipment from the Audiovisual Center.

3. For scheduling convenience, the Scheduling Coordinator, Office of the Dean of Students, should be consulted prior to planning an event regarding electrical requirements, irrigation, or other Physical Plant work schedules in any of the Outdoor Activities Areas.

USE OF UNIVERSITY FACILITIES

I. GENERAL POLICY

Arizona State University is an educational institution provided and maintained by the people of the State of Arizona. Its academic buildings, campus properties and facilities shall not be utilized for activities inconsistent with its general educational purpose. The Board of Regents delegates to the President authority to establish facility use fees where appropriate. No contractual commitment involving University funds shall be made without the approval of the appropriate University Vice President.

II. UNIVERSITY FACILITIES

A. University facilities may be used by faculty, staff and students for cultural, educational and recreational activities.

B. Other institutions, state or federal agencies, charitable or civic organizations, or commercial organizations, may, at the discretion of the University, use University facilities.

C. A sponsoring organization may be responsible for the applicable facility use fee, if any, and all other costs incurred as the result of an event, including but not limited to, guarantees, insurance, security, and staging arrangements.

D. University Scheduling Board

1. The University Scheduling Board will schedule all special uses of University facilities. Regular academic, intercollegiate, Performing Arts Series, Departmental Seminars, non-credit continuing education activities, and other similar day-to-day normal or other academically related uses of University facilities will not be scheduled by the University Scheduling Board. Facilities subject to scheduling by the University Scheduling Board include, but are not limited to: Gammage Center for the Performing Arts, Sun Devil Stadium, Sun Angel Stadium, Packard Stadium, Physical Education Buildings East and West, Armstrong Hall, Memorial Union, Neeb Hall, Murdoch Hall, Music Building, University Activity Center, ASU Swimming Pool, Apache Tennis Courts, Whitman Tennis Court Center, and all University playing or recreational fields.

2. University facility use fee-schedules for special uses will be developed by the officer responsible for the facility. These University facility use fee-schedules shall be subject to review and application by the University Scheduling Board.

3. Any facility request denial or approval or fee application may be appealed in writing to a committee of the President and Vice Presidents.

4. The permanent assignment of a University facility to a student organization for instructional or training purposes, or purposes other than regular organizational "business" meetings shall not be authorized.

5. A University Facility Request Form must be submitted no later than seven calendar days prior to the date the facility will be utilized. The

continued page 9

University Scheduling Board shall render a decision within four days from the receipt of the request. A University Facility Use Application must be submitted no later than fourteen calendar days prior to the date the facility will be utilized. A decision will be rendered within ten days.

6. Facilities will be scheduled with a preference for University-sponsored uses, subject to availability and all applicable fees and costs.

7. Facilities will be scheduled for off-campus organizations on the basis of space availability, provided that they do not conflict with normal activities of the University community, and subject to all applicable fees and costs.

E. No commitment regarding University facilities shall be made without advance approval by the University Scheduling Board.

III. SCHEDULING UNIVERSITY FACILITIES, SERVICES AND ACTIVITIES

A. The University Facility Request Form will be used to schedule all activities, facilities and services presented on campus by registered university organizations. Forms are available in the Office of Dean of Students.

B. The University Facility Use Application will be used to schedule all activities, facilities and services presented on campus by non-university groups. Forms are available in the Office of Dean of Students.

C. Sponsoring organizations must complete all applicable parts of the appropriate form, obtain the necessary signatures, and return it to the Office of Dean of Students.

D. A registered organization wishing to use a University facility, subject to approval by the University Scheduling Board, must contact one of the following regarding the availability of the facility, before the form is submitted to the Office of Dean of Students:

College of Business Administration	Dean's Office
Gammage Center for the Performing Arts and University Activity Center	Director's Office
College of Law	Dean's Office
Memorial Union	Director's Office
Music Building	Music Department
Sun Devil Stadium, Sun Angel Stadium, Packard Stadium	Athletic Director's Office
Physical Education Building East, Physical Education Building West, ASU Swimming Pool, Apache Tennis Courts, Recreation Fields	Intramurals-Club Sports Recreation
All other classrooms and lecture halls	Central Room Scheduling Office (Moeur Building)

E. A non-University group wishing to use a University facility, subject to approval by the University Scheduling Board, may contact the Scheduling Coordinator in the Office of Dean of Students.

F. All fees and costs involved in the use of the facility will be determined and applied solely by the University Scheduling Board, consistent with policy stated in IV, Application of Facility Use Fee Schedule (see below).

G. Sponsoring organizations may be expected to post in advance rental fees and other costs, including insurance, security, guarantees, and special arrangements as established by the University Scheduling Board.

IV. APPLICATION OF FACILITY USE FEE SCHEDULE

A. INTRODUCTION
In accordance with the section Use of University Facilities, I, General Policy, and subject to authority as delegated by the President, the following policy on the assessment of fees and costs for the special use of University facilities is adopted by the University Scheduling Board.

B. CATEGORIES
University Scheduling Board shall consider requests for the special use of University facilities on the basis of the following priority use preference. Each category within this priority use preference shall be assessed all fees and costs appropriate to that category.

- University**
1. University-wide events and activities, e.g., Commencement, Sun Devil Football, Gammage Series Events, Freshman Orientation Assembly, Registration.
- Colleges, Schools, Academic Divisions, Departments and Agencies of Arizona State University**, e.g., English Department, College of Liberal Arts, Associated Students, Memorial Union, ICA Department, ASU Student Foundation.
- Registered Organizations**, e.g., Faculty Women's Association, Phi Beta Kappa, Young Republicans. To be included in this category the requesting organization must meet the University's requirements for and be a registered faculty, staff or student organization.

- Non-University**
4. Non-Profit/Tax-Exempt Organizations. To be included in this category the requesting organization must be qualified for exemption under section 501(c) of the Internal Revenue Code (Non-Profit, Tax-Exempt Status).
- Commercial Organizations.**

C. DEFINITIONS
Fees and costs are defined as follows:
1. **Extraordinary Costs.** Those costs associated with the special use of a University facility beyond the minimum ordinary costs incurred when the facility is used. Extraordinary costs are always applicable.
2. **Costs.** All minimum normal and ordinary operating expenses incurred by the University as a result of the use of the facility. Ordinary costs are as follows: facility prepared and operable for use, minimum supervisory personnel, cleanup and waste removal.
3. **Base Rental Fee.** The fixed minimum rental fee established for the use of a particular facility. The base rental fee includes and is greater than the minimum ordinary costs associated with the special use of that particular facility.
4. **Admission-Charged Fee.** The fixed minimum rental fee established for the use of a particular facility when admission is charged by non-University organizations. The admission-charged fee includes the minimum ordinary costs associated with the special use of that particular facility, and is generally expressed as a fixed dollar amount (greater than the Base Rental Fee) or a percentage of the gross receipts, whichever is greater.

D. APPLICATION OF FEES AND COSTS
Category shall be determined by the University Scheduling Board and the appropriate fees/costs shall be applied in accordance with the following:

- Units in Category 1 shall not be assessed a fee for the special use of a facility, unless there are extraordinary costs associated with its use.
- Units in Category 2 shall be assessed all extraordinary costs associated with the special use of a facility. If admission is charged, costs shall be assessed.
- Units in Category 3 shall be assessed all costs associated with the special use of a facility. If admission is charged, a base rental fee shall be assessed.
- Units in Category 4 shall be assessed a base rental fee associated with the special use of a facility. If admission is charged, an admission-charged fee shall be assessed.
- Units in Category 5 shall be assessed a base rental fee associated with the special use of a facility. If admission is charged, an admission-charged fee shall be assessed.

Merit sanction or endorsement of any non-university activity by a university affiliated group or individual shall in no way alter category. University Scheduling Board may consider requests to alter category when made by units in Categories 1 or 2, provided that such co-sponsorship of a non-university activity has direct and legitimate relevance to the educational interests of the University, and that:

- The co-sponsoring unit assumes full budgetary responsibility for all assessments and liabilities resulting from the special use of the University facility.
- The co-sponsoring unit has a participatory role in the decision-making process in determining the time, place, and manner of the non-university activity.
- A full accounting is made available to the University Scheduling Board by the co-sponsoring unit of all funds expended and received as a result of the non-university activity.
- The non-university activity be consistent with the normal and specific function or purpose of the co-sponsoring unit.

E. GENERAL POLICY

- The University Scheduling Board shall receive all requests for the special use of a University facility, determine the fee category, and apply the appropriate fee/cost for that category.
- Neither the director of the facility nor the University Scheduling Board shall assess a fee other than the one applicable under this policy. Any applicant dissatisfied with the fee applied may appeal to a committee of the President and Vice Presidents in accordance with the policies of the University Scheduling Board.
- Each facility director shall be responsible for a facility use fee schedule using language consistent with this policy to describe the fees and costs associated with the special use of the facility and shall submit the schedule to the University Scheduling Board for review and application.

- Any unit requesting a donation before the event or at the door, or in any other manner wherein such donation is a prerequisite for admittance shall have its use treated as one for which admission is charged and the appropriate fee applied.
- The current application of the policy, IV, Application of Facility Use Fee Schedule, may be amended by the University Scheduling Board subject to review and authorization by the President of the University.
- Authorization for the use of a University facility by the University Scheduling Board shall not mean that Arizona State University, nor any of its constituent agencies, departments, or divisions in any way support, sanction, or agree with the policies/activities of the applicant.

V. SPONSORED EVENTS

A. COLLEGE-SPONSORED EVENTS
Academic units of the University sponsor addresses, seminars and colloquia at the institution involving off-campus speakers. Such undertakings will be coordinated with the University Scheduling Board for purposes of scheduled convenience. However, responsibility for the events — including invitations to speakers — shall remain with the deans of the respective colleges.

B. SPECIAL GUEST LECTURES
Special guest lecturers may speak on scholarly or scientific topics before classes, seminars or other academic meetings solely at the invitation of the faculty members responsible for the academic content of the occasion.

C. PERFORMING ARTS BOARD
The management of Gammage Center for the Performing Arts in conjunction with the Performing Arts Board is responsible for presenting to the University community and the general public a full session of concerts, plays, dances, popular attractions and special entertainment events. The management of the Center determines ticket prices, University discounts, and contractual arrangements with the respective performing artists.

D. EVENTS SPONSORED BY REGISTERED ORGANIZATIONS

- Sponsoring of Off-Campus Speakers**
a. A request to invite an outside speaker to the campus will be considered only when made by an officer and a University advisor of a registered student organization or an officer of a faculty or staff organization.
b. A request to invite an outside speaker to the campus must be submitted in writing by an officer of the organization to the University Scheduling Board. To assist the University in providing a suitable forum for the speaker and to avoid any conflict with academic functions and the normal activities of the University, the request shall contain the following information:
(1) The name of the sponsoring organization.
(2) The signature of an officer and a University advisor of a registered student organization or an officer of a faculty or staff organization.
(3) The proposed date, time, location and anticipated attendance of the meeting.
(4) The name of the speaker and the topic of the speech.
c. A request to sponsor a speaker must be submitted not later than seven calendar days prior to the date of the proposed speaking engagement. The Board shall render a decision within four days from the receipt of the request.
d. The sponsoring organization will not publicize the appearance of any outside speaker until approved by the University Scheduling Board.
e. The fact that the speaker may be provocative and strike at prejudices or preconceptions and may hold views contrary to and disliked by the campus and the surrounding community is not a permissible basis for the denial of the right of the faculty, staff or student organization to hear him. (See Code of Conduct, IV, D, "Outside or Off-Campus Speakers," page 23.)
f. A request may be denied if the University Scheduling Board determines, after proper inquiry, that the proposed speech would probably constitute a clear and present danger to the normal activities and the essential purpose of the University (see Code of Conduct, IV, D, Outside or Off-Campus Speakers, pages 23 and 24).

g. When a request to invite an outside speaker is denied, an appeal may be made by the sponsoring organization to the University Review and Advisory Board for de novo consideration. The Review and Advisory Board shall have the power to grant or deny the request, and its decision shall be final. If the request is not acted upon by the Board within three days following the filing of the written application for appeal, it shall be deemed granted, and the speaker's invitation shall be issued.

h. The extension of an invitation to speak on the campus shall not constitute endorsement of a speaker nor approval of his views by the University or the sponsoring organization, and no speaker or sponsoring organization shall represent nor imply, in any manner, that the speaker has been endorsed or that his views have been approved by the University. The University may require that the meeting be chaired by a member of the administration or faculty.

i. A speaker is subject to all state and federal laws and all University rules and regulations. By his acceptance of the invitation to speak, he shall assume full responsibility for any violation of such laws or rules committed by him while on the campus.

j. The University shall assess the sponsoring organization all applicable fees and costs associated with the use of a University facility for the appearance of an off-campus speaker.

k. Sponsoring organizations are subject to all state and federal laws and to the rules and regulations adopted by the University and the Board of Regents. Violations shall be handled in accordance with the procedures set forth in the Code of Conduct.

2. Sponsoring of Entertainment

a. A request to sponsor entertainment on the campus for the University community and/or the public will be considered only when made by an officer and the advisor of a registered student organization, or an officer of a faculty or staff organization.

b. A request to sponsor entertainment must be submitted in writing and accompanied by all supporting documents to the University Scheduling Board at least seven calendar days prior to the date of the proposed entertainment. The Board shall render a decision four days from the receipt of the request.

c. Approval by the University Scheduling Board will be contingent upon the receipt and review of the following:

- The completed University Facility Request Form.
- The availability and suitability of the requested facility.
- Entertainment will not be scheduled which will interfere with the pursuits of the classroom, library, offices, on- and off-campus living areas, or the Health Service.

3. Performance or Entertainment Before an Audience

a. All members of the University community have the right of freedom of speech and the right to assemble and to petition for redress of grievances, in a peaceful and orderly fashion. However, the exercise of these rights carries with it the responsibility not to interfere with nor obstruct the rights of others to use University facilities for their normal activities and functions.

b. There is no absolute right on the part of any organization or on the part of individual members of the University community to assemble and hear a speech at any particular time or place and under any and all circumstances.

c. No non-member of the University community may speak, perform, or entertain before an audience on the University campus except as a result of an invitation by a registered organization, and the written approval of the University of the time, place, and manner of such appearance.

d. Non-members of the University community are required, while on campus, to observe and comply with the rules and regulations adopted by the University or the Board of Regents, and with all state and federal laws.

VI. OFF-CAMPUS ORGANIZATIONS

A. State or federal agencies, charitable or civic organizations, or commercial organizations may use University facilities at the discretion of the University, subject to availability and all applicable fees and costs.

B. A request to use University facilities must be submitted no later than fourteen calendar days prior to the date the facility will be utilized. The University Scheduling Board shall render a decision within ten days from the receipt of the request.

C. Facilities will be scheduled for off-campus organizations on the basis of availability, provided that such use does not conflict with the normal activities of the University community, and subject to all applicable fees and costs.

D. Off-campus organizations are responsible for facility use fees and other costs to be incurred as a result of the event, including, but not limited to, guarantees, insurance, security, and staging arrangements.

E. The off-campus organization assumes full responsibility for any loss or damage resulting from such use and agrees to hold harmless and indemnify the University as to any loss or claims arising out of the use of such facility.

VII. CAMPUS LIVING UNITS

Emphasis within the Sororities, Fraternities, and Residence Halls at Arizona State University is on individual student responsibility and intellectual, cultural and social development. Through the Panhellenic Council, the Interfraternity Council, and the various Hall Councils, students may become active participants in the decision-making processes which directly affect student lives. The following rules and procedures should be noted:

A. CLOSING HOURS

Sororities, fraternities, and Residence Halls are closed between 12 midnight and 6 a.m., Sunday through Thursday nights, and between 2 a.m. and 6 a.m. on Friday and Saturday nights.

B. OPEN HOUSE

Campus living units may schedule open house (visitation) hours for parents, faculty, and invited guests in accordance with University policy. The following maximum limits have been established:

- Sunday through Thursday — 12 noon to 12 midnight.
- Friday and Saturday — 12 noon to 2 a.m.

Members of the opposite sex must be escorted to and from the main lobby area by their host or hostess.

C. ALCOHOLIC BEVERAGES

1. On-campus possession and/or consumption of alcoholic beverages by those of legal age (19 years or older) will be allowed only in the residence halls and/or in other campus living units.

a. Consumption of alcoholic beverages in the residence halls and/or in other campus living units by residents thereof, who are of legal drinking age, will be permitted only in the private living quarters and/or in other limited access areas which are so designated by the Housing Office, and approved by the Dean of Students Office.

b. Consumption of alcoholic beverages in areas other than the above is prohibited.

2. Personal consumption of alcoholic beverages by residents of legal drinking age or their invited guests (also of legal drinking age), in private living quarters in the residence halls and/or other campus living units, shall not unduly interfere with the rights of others, nor cause the normal operation of the residence hall and/or campus living unit to be disturbed or disrupted.

a. Housing Office shall adopt uniform guidelines for the governance of personal consumption of alcoholic beverages in private living quarters in the various residence halls. The Coordinator for Fraternity Programs and the Interfraternity Council shall adopt uniform guidelines for the governance of personal consumption of alcoholic beverages in private living quarters in the various fraternity houses.

b. Such guidelines shall be subject to review and approval by the Dean of Students Office.

c. Complaints alleging violations of such guidelines will be processed through the appropriate administrative and/or judicial channel.

3. Consumption of alcoholic beverages by residents of legal drinking age in limited access areas of the residence halls which have been so designated by the Housing Office and approved by the Dean of Students Office, shall be subject to the following considerations:

a. Use of any designated and approved limited access area by residents of legal drinking age requires the prior authorization of the unit director, or other appropriate officer responsible for the enforcement of this policy in the residence hall.

b. Only residents of the residence hall where the designated and approved limited access area is located may attend an activity involving the consumption of alcoholic beverages. A request to invite certain non-resident guests will be considered on the basis of a written application submitted by the Unit Director to the Housing Office.

c. Residents who are not of legal drinking age may attend or otherwise participate in an activity involving the consumption of alcoholic beverages in a designated and approved limited access area, provided that such residents do not consume any alcoholic beverage. Residents are expected to assume the burden of responsibility for proving through accurate and dependable means his/her legal eligibility for possessing and/or consuming any alcoholic beverage.

d. Each residence hall and/or other campus living unit through its unit directors, councils, or other appropriate officers may adopt such other rules and procedures, consistent with this policy, which are deemed necessary for the use of a designated and approved limited access area.

e. Such rules and procedures shall be subject to review and approval by the Housing Office.

f. Complaints alleging violations of this policy, or of such other rules and procedures, as might be adopted by a residence hall or other campus living unit, will be processed through the appropriate administrative and/or judicial channel.

4. An activity in a designated and approved limited access area which involves the consumption of alcoholic beverages may not be advertised or otherwise represented as being open to anyone other than residents of the residence hall where the limited access area is located, or to authorized, invited guests.

5. Consumption of alcoholic beverages is not permitted in the main lobby area of a residence hall.

6. The sale of alcoholic beverages on campus is prohibited.

7. Students desiring to reside in areas where consumption of alcoholic beverages is not permitted should make their desire known at the time of application for housing.

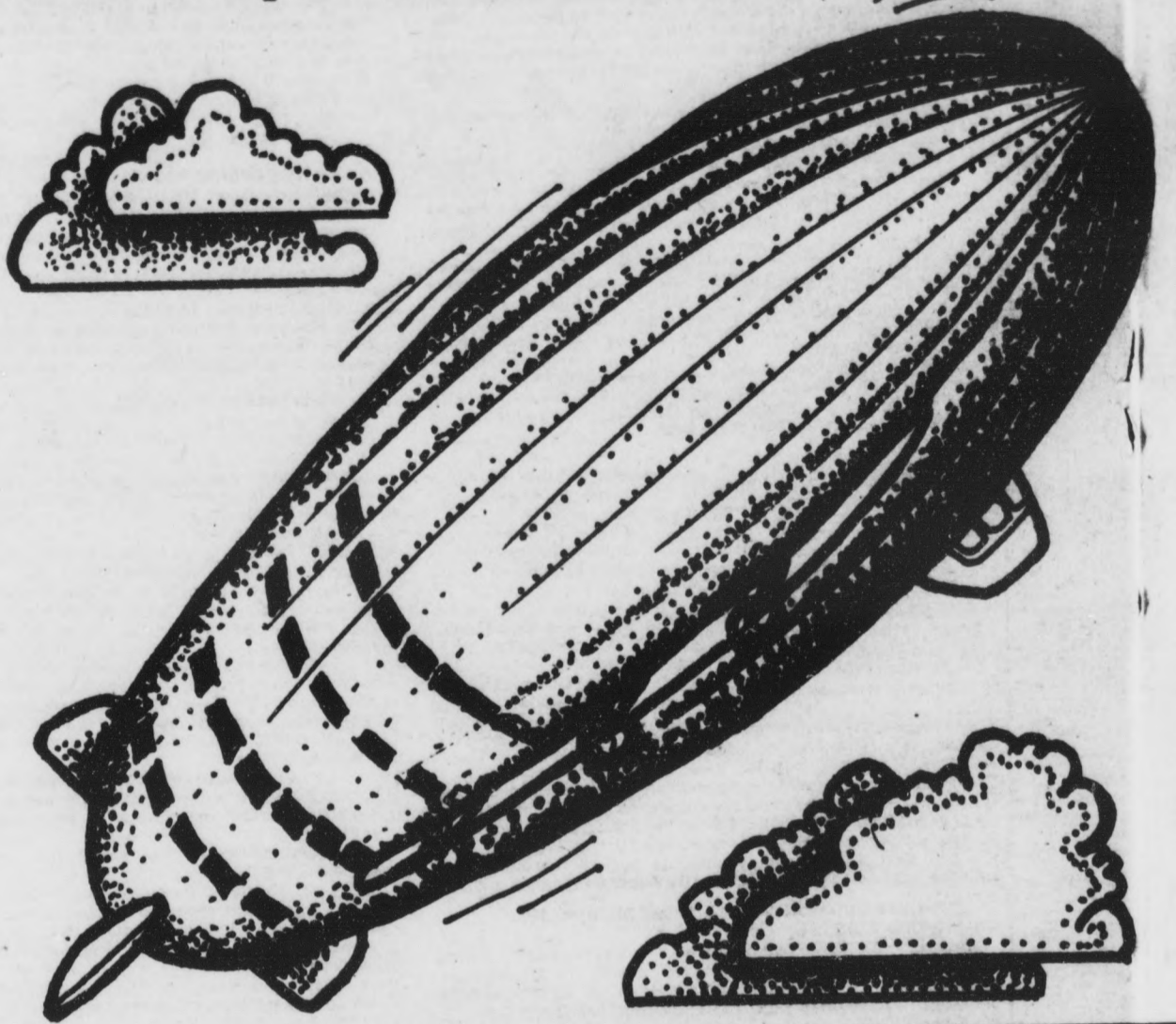
D. STUDENT RESPONSIBILITY

Students residing on campus shall assume full responsibility for any and all personal conduct, including knowledge of campus living unit regulations. A student residing on campus may be subject to university judicial proceedings concerning the following:

- Conduct which is disruptive to other residents or willful destruction of property.
- Violation of State or Federal laws regulating the possession of firearms, explosives (including fireworks) or other dangerous weapons. Firearms and ammunition brought to the campus must be registered and stored with the Unit Director of the campus living unit.
- Violation of State or Federal laws regulating the possession, distribution, sale, or use of illegal drugs or narcotics.
- Violation of any State or Federal law.
- Violation of Open House regulations.
- Violation of any other University rule or regulation.
- Commission of any offense specified in the Code of Conduct.



Airships might reappear as tra



THE MEMORIAL UNION ACTIVITIES BOARD

is seeking applications for the position of:

- Chairperson of Gallery
- Chairperson of Entertainment
- and
- Chairperson of MUAB

APPLICATION DEADLINE IS SEPT. 10

For applications and more information, please stop by the

Memorial Union Activities Center
(lower level of the M.U.)
or call 965-6649



Gentle Strength Co-op

- ★ Fresh juices
- ★ Imported and domestic cheeses
- ★ Whole grains
- ★ Herbs
- ★ Yogurt
- ★ Raw honey
- ★ Produce
- ★ Dried fruit and nuts

Member Owned,
Open To The Public

Hours: Mon. - Fri. 10-7, Sat. 9-6
Open Sundays 12-6

38 EAST FIFTH ST., TEMPE
968-4831

LONDON (AP) — Airships, those ponderously graceful whales of the skies virtually made extinct by a string of catastrophes half a century ago, are ready to make a comeback.

The world's energy crisis and Space-Age technology have revived interest in airships as a safe and economical mode of long-distance air travel.

"The airship's a cheap magic carpet in today's world," said top British designer John Wood, who has developed the AD-500, considered the most promising of the new generation of aerial leviathans.

Aeronautical engineers around the world are looking to the airship, which pioneered aviation 50 years ago, as a craft of the future.

Some talk of huge nuclear-powered ships capable of hauling 200 tons around

the world nonstop. Others envisage airships as luxury liners, fishing boats, aerial cranes — the workhorse of the skies.

Supporters of the airship say it will cut transport costs and noise pollution. And they stress that modern airships are safe.

Airships these days are filled with helium, an inert gas, instead of the highly inflammable hydrogen used in the old crafts.

"You could cook your dinner on an open fire inside an airship these days without worrying about an explosion," Wood said.

Roger Munk, one of Wood's 20-man design team, said, "There's as much similarity between our ship and airships like the Hindenburg as a 747 and the planes of the 1930s."

Wood's AD-500, the first commercial



HAVE A BALL THIS FALL at the MU RECREATION CENTER FALL SCHEDULE

Sunday	3:00 p.m.	Community Church League (Coed-Foursome)
Monday	4:30 p.m.	Best Ball Doubles (Advanced)
	6:30 p.m.	Sun Devil Singles Classic (Advanced)
Tuesday	6:30 p.m.	Faculty/Staff/Student (Coed-Fivesome)
Wednesday	5:00 p.m.	The Rolling Rookies (Coed-Foursome)
	8:00 p.m.	Mazatlan Vacation Trip (Coed-Foursome)
Thursday	4:30 p.m.	The Greek League (Fraternity members only)
	7:30 p.m.	Terrible Threesomes (Coed)
Friday	4:00 p.m.	Disneyland Vacation Trip (Coed-Foursome)

Individuals welcome . . . Teams adored!

All the leagues are open to students, faculty, staff, alumni and their families. If you haven't ever experienced the fun of the Recreation Center Leagues now is the time to start, because the majority of the leagues allow bowlers of all skill levels a chance to win. You may sign up individually or as a team. Phone 965-3642. All leagues start the week of Sept. 17th.

**BOWL
FOR
FREE**

Bring this ad and bowl a game on us.
Offer good 'til Sept. 30, 1979. Limit one per day.



It is true
what they
say
about
Oriental
women.

Emmanuelle
Show Times:
Wed., Thurs.
Mon., Tues.
5:00, 8:25
Fri.
5:00, 8:25, 12:00
Sat.
1:30, 5:00, 8:25,
12:00
Sun.
1:30, 5:00, 8:25

**Emmanuelle
In Tokyo**

Co-Features, Both Theatres
HER, SHE, HIM

Wed., Thurs., Mon., Tues.
6:45

Fri. 8:45, 10:10
Sat. 3:15, 6:45, 10:10
Sun. 3:15, 6:45

HAYDEN EAST 966-3300

GLEN AIR 965-2200

as transit system of the future

Research on dirigibles uncovers possible energy-saving measure

airship built in Britain since the 1930s, is a 165-foot "envelope" with a skin of titanium-coated polyurethane reputed to be as tough as steel.

The project's Venezuelan backer, Aerovision, has ordered 21 of the \$1.35 million crafts. Both the British and U.S. navies are showing interest, and British fishery officials are evaluating the craft for policing fishing zones.

Wood says the AD-500, powered by two Porsche three-liter engines, can carry 2.5 tons and 14 passengers at a speed of 70 miles per hour.

"We're not trying to compete with Concorde or supersonic fighters. But I believe airships have a major role in aviation as long-haul carriers," Wood said.

"What makes airships special is their endurance. Our ship can stay airborne for 36 hours using a maximum of 300 gallons of fuel. Some helicopters use that amount in less than an hour."

Despite their bulk, airships don't require anything like the power needed to carry fixed-wing aircraft through the sky.

There is theoretically no limit to the size or range of the airships. Experts say one that can carry a bigger cargo than a jumbo jet, at a fraction of the cost, is feasible technically.

Giant airships vanished from the skies after a series of catastrophes that climaxed in the crash of the Hindenburg, pride of pre-World War II Germany's fleet on May 1937 at Lakehurst, N.J. Thirty-five of the 97 passengers and crew were killed.

But now at least four major airship projects are underway in Britain, and others are being conducted in the United States, the Soviet Union, West Germany, Japan and Australia.

Among them:

—One British designer is building a

"sunship," powered by millions of solar cells covering its vast surface area.

—West German Theodor Wuellenkemper is working on a 400-foot craft capable of carrying 30 tons of freight.

—The Soviets are reported to be trying for a nuclear-powered craft that can carry 180 tons or 1,800 passengers at 190 mph. British experts say nuclear airships could stay aloft for six years at a stretch.

—British businessman Colin Dawson wants to develop airship liners "with individual cabins, large open spaces, promenade walks, even a ballroom" to carry travelers from London to Los Angeles in 3-4 days.

—European Ferries Ltd., which runs ferries in the English Channel, plans to have two 50-seat, 100-mph flying "thermoskyships" going between London and Amsterdam by 1982. It has sunk \$4.5 million in the project.

—Morris B. Jobe, president of the U.S. Goodyear Aerospace Co., builder of 302 airships during the years, has told a Senate committee that giant workhorse airships with helicopter-type rotors that could lift up to 160 tons are within the scope of existing technology.

The problem, like everything else, is money. The aviation lobby naturally is not keen on anything that will cut into its profits. And outside of the Soviet Union and West Germany, governments have been reluctant to finance airships until their worth is proven.

But Britain's Financial Times noted, "If the economic case for the airship can also be demonstrated . . . it may well be that the world's aerospace industries will have at least one alternative answer to the growing problems of fuel shortages and soaring fuel bills.

"The time may well yet come when these elegant, silent, silver shapes are once again seen in profusion in the skies."

Expose Yourself!
POP-UP AUDITIONS
SEPTEMBER 11, 12 & 13

Sign up by September 10
in the M.U. Activities Center

(lower level of the
Memorial Union)

Sponsored by the

MUAB

ENTERTAINMENT COMMITTEE

CONTESTING YOUR NON-RESIDENT TUITION STATUS?

Tuition status appeals are financially important administrative law proceedings at which the student must prove his Arizona domicile for the requisite period of time by clear and convincing evidence as defined by law and consistent with the expectations of the Board. Seeking subsequent relief through the Superior Court from an unsuccessful appeal is a difficult, time-consuming, and generally financially prohibitive proceeding for the student.

Steven B. Yarbrough is available to represent you in your appeal to the University Appeals Board on Tuition. Attorney's fees may be contingent, i.e., payable only if resident status is granted.

STEVEN B. YARBROUGH, Attorney
Hocker, Yarbrough & Gilcrease
1650 W. Alameda Drive
Tempe, Arizona 85282
967-9401

Let's go to
the Movies

Watership Down

Watership Down

Watership Down

Watership Down

SEPT. 6 thru 9 — Thurs. thru Sun.
7:00 p.m. & 9:30 p.m.

Sunday, 7:00 p.m. only

UNION CINEMA

lower level of Memorial Union

\$1.50
University I.D.
\$2.00
Public Admission

MUAB
FILM COMMITTEE

Thursday is "her" day

Ladies Only Please

*It's a tradition and an event.
It's ladies night at Sun Devil Lounge.
Thursdays 6 p.m. to 9 p.m.
25¢ Cocktails, Wine, Coors.
Gentlemen admitted at 9 p.m.*

Rural at Apache
Tempe





Prone to get better

Architecture sophomore Jim Howarth appears to have come up with a good formula for passing between-class time: a good book, lots of rays and an open space beside a fountain. [Photo by F.C. Moor]

Stinko ginkgo trees smell bad, but fan club still loves them

CHICAGO (AP) — Clayton Fawkes says he thinks he shall never see a poem lovely as a ginkgo tree.

Fawkes loves ginkgos, whose scientific name is *ginkgo biloba*. But some people call them stinko ginkgos because their plum-size fruit smells like rancid butter and is sometimes irritating to the skin.

"Ginkgos are the oldest living species of trees. They existed 10 million years ago," said Fawkes, 66, a retired chemistry and biology teacher.

A year ago, Fawkes became so interested in ginkgos that he formed a club with the sole purpose of spreading the word about them. Two people joined.

But Fawkes spread the ginkgo gospel so thoroughly that now there is a big gang of ginkgo hunters.

"We have 221 members from

10 states," proudly said Fawkes, who says he is the world's greatest ginkgo sleuth.

"Ginkgos really are common all over. They have been found in the 102 counties in Illinois."

His club is called the Illinois Golden Fossil Tree Society. The name was chosen because it seemed more descriptive and elegant than a Chinese name for the tree, "Duck's Foot" or "Maidenhair Tree."

In the early 1880s, the ginkgo was brought to the United States and today is valued as an ornamental tree because of its slow growth and apparent immunity to smog, disease and pests.

"If you can stand the smell, you have just got to like the tree," Fawkes said. "Rotten apples don't smell too good, either. We don't think there is anything strange about being a

ginkgo hunter. The trees are easier to find than a moose or a deer and they don't get away.

"We are dedicated to learn about ginkgos, appreciating them and locating them. We estimate there are 10,000 in Illinois alone."

Fawkes said his club has measured 100 ginkgos with girths of 100 inches or more.

SICILIAN BAKERY

25¢
Coffee

Try our large selection of sandwiches also.

15 Donuts for \$1.89

Donuts and Bread
Canoli's & Italian Cookies

33 E. Broadway

966-9508

10% OFF
any bicycle, accessories or repair

Domenic's Cycling

Broadway Plaza
Broadway & Mill

967-7700
Expires 10-10-79.



55 PINBALL and VIDEO GAMES IN OUR GAME ROOM

FREE Malibu UFO's

Your Place to Race. Present ASU I.D., Get One Lap FREE

1616 N. Hayden Rd.
941-2437
Next to Big Surf



A Warner Communications Company

Bargains Bargains Bargains

- Painter Pants, White..... \$ 9.99
- Painter Pants, Khaki..... \$11.50
- Backpack, U.S. Army..... \$ 4.95
- G.I. Khaki Pants..... \$ 5.95
- Sleeping Bag (Mk. 4) Reg. \$24.95..... \$19.88
- Mt. Tan Backpack (great for books)..... \$13.95
- Parachute, 22' Drag (room decoration) \$ 8.95
- Parachute Cover, 9' x 12'..... \$15.95
- Laundry Bags..... \$ 2.95
- Corduroy Jeans..... \$12.95

PEACE SURPLUS

520 S. Mill, Tempe 894-9137

The Valley's Own HYGRADE with LOOSELY TIGHT



Join the UNION STATION'S Rock 'n Roll Club
LOOSELY TIGHT Tues. - Sat. • HYGRADE Sun. - Tues.

UNION STATION

1st Drink of the Nite
FREE to all ASU
Students with valid I.D.

441 E. Main
Mesa
964-9339

\$1.00 Cover Weekdays • \$2.00 Cover Weekends.
Sunday Ladies Nights 4 drinks free with \$1.50 admission.



Easy pickin's

Daniel Brawner, an English graduate student, demonstrates guitar techniques on the MU West Mall. Brawner is a beginning guitar teacher for the leisure learning program sponsored by ASASU. The program has instruction in playing guitar as well as guitar construction. (Staff photo by Matthew Liu)

State Press accepting applications for staff

The State Press is accepting applications for reporters and photographers to work this semester. These are paid positions.

Applicants can apply at the State Press offices in the basement of Matthews Center.

Help us reach our goal
Help prevent birth defects

MARCH OF DIMES



THIS SPACE CONTRIBUTED BY THE PUBLISHER

Prepare For: **OCTOBER**

LSAT/GMAT

Call Days Evenings & Weekends



967-2967

GRE
MCAT • DAT
GRE PSYCH
GRE BIO
VAT • OCAT

For Information About Other Centers In More Than 80 Major US Cities & Abroad
Outside NY State CALL TOLL FREE: 800-223-1782

Agency to hold hearing on pesticides

The U.S. Environmental Protection Agency will hold a public hearing to gather information on the use of agricultural pesticides in the state from 8 a.m. to 5 p.m. today, Friday and Saturday in the Navajo Room of the Adams Hotel, First Street and Adams in Phoenix.

The EPA inquiry is the outgrowth of a

hearing held in June by the House Subcommittee on Oversight and Investigations of the Interstate and Foreign Commerce Committee.

At that hearing, residents of a Scottsdale housing development adjacent to fields of cotton and other crops testified that they had suffered illnesses from airplane-sprayed pesticides.

Special classes to offer reading and study skills

Reading help is available for ASU students.

The ASU Reading Center will be conducting classes designed to increase reading speed and comprehension, vocabulary and overall study skills from Sept. 10 to Oct. 19.

Lynn Davey, college reading program coordinator, said students taking the course typically can expect to gain from 50 to 130 percent in reading speed, with good to excellent comprehension. Classes are structured to meet group and individual needs.

Registration will be from 8 a.m. to 5 p.m. Thursday and Friday in the Reading Center, room B-112 of Payne Hall. The fee is \$35. Information is available at 965-7766.

Pool it

Call: **965-3161**



At Last! Now you can afford contact lenses and glasses.

Soft Contacts **\$89⁹⁵**
Hard Contacts **\$59⁹⁵**

20% Discount on Your First Pair of Glasses.
50% Discount on Your Second Pair of Glasses.

120 E. UNIVERSITY • TEMPE • 966-8440
(In the Archway)

Coupon good only with ad. Expires 10/1/79.

Dooley's
968-2446

JUSTIN TYME
RETURNS TO OUR TAVERN
Special Drink Prices
for their engagement.
Cover Charge.

STARK NAKED

RETURNS TO
OUR NIGHT CLUB
One of Your
Favorite Bands.



Muzak is what makes the worker go round

Pacific News Service

You're midway through the report your boss asked you to type. It's 10:20 a.m.; you've been working since 8:00 a.m. Your coffee break is in ten minutes.

You may be hungry and grumpy, but for some reason you're not slacking off. Your tempo is faster than it was an hour ago. You clack away at the typewriter like a slaphappy woodpecker.

There's a reason. It's called functional music, known as Muzak.

Muzak isn't piped into just offices. Factories use it. LBJ liked Muzak so much he had it piped in at the LBJ Ranch. NASA thought enough of it to pipe it into the Apollo XI spacecraft. Buzz Aldrin and Neil Armstrong listened to it before the moon landing.

It's on elevators, in funeral parlors, hospitals, restaurants and every major airport. An Illinois agronomist piped Muzak to a cornfield and reported a triple yield.

According to the company's statistics, well over 100 million people all over the world are exposed to Muzak.

Muzak, whose motto is "Caring for People," is the oldest and best-known of several companies specializing in the psychological and physiological

applications of background music. Founded some 45 years ago, the Muzak company is a wholly-owned subsidiary of Teleprompter, the largest cable TV outfit in the United States.

"The biggest compliment I get about our music," says Bert Mitchell, the white-haired Nebraskan who heads the Western Regional office in San Francisco, "is when people don't even realize Muzak is playing in the background."

The idea behind Muzak is to erase boredom, and when piped into offices or factories, to increase employee productivity.

Background music has been going on for centuries, according to Mitchell. "It started with the pyramids. The Egyptians used to play drums to increase output of slaves while building the pyramids. It takes your mind off how tedious a job can be.

"It's a very, very tricky business. There has to be a certain level of familiarity to the music so that people feel at home with it, so they're comfortable with it. But if the music is too familiar, then people may start humming to it, and get distracted from their work. Then it's no longer background music."

Muzak's music director's full-time job is to go to

Broadway shows, to watch TV and to travel the world in search of new songs.

New tunes are then analyzed by computer and categorized by tempo, rhythm, type of instrumentation, and number of instruments used. Each selection is given a "mood rating," ranging from 2, for slow, soft, soothing, music, to 7 for fast, abrasive, punchy music.

Selections with a low stimulus factor have about 100 beats a minute, usually are played with just strings and have less than 16 instruments in the orchestra. Selections with a high stimulus rating use strings, woodwinds, a lot of brass and percussion and have about 150 beats a minute.

The low stimulus selections are played when workers are wide-awake or have a full-stomach and are at their most productive level, usually in the morning or after lunch.

Worker's minds tend to wander at specific times of the day, according to Muzak surveys. "When we are combatting strong worker boredom and fatigue, we play busy, harsh music, but since the volume is so low, most workers don't realize that they're hearing it," Mitchell said.

City workshop to teach about special children

The City of Tempe Parks and Recreation Department, in conjunction with the Joseph P. Kennedy, Jr. Foundation, will sponsor a "Let's Play to Grow" workshop from 8:30 a.m. to 3:00 p.m. on Sept. 8, at the Tempe Community Center, 3500 S. Rural.

"Let's Play to Grow" is a nationwide program oriented toward guiding parents in constructive use of their special child's leisure time.

Through an abundance of adapted games, music skills, exercises and many other activities, parents become increasingly capable of maximizing their child's potential.

"Let's Play to Grow" involves one family member or the entire household. Brothers, sisters, grandparents, aunts and uncles all play an equally important role.

For information, contact the Tempe Community Center at 968-8387.

CARPETS

For DORMS, APTS., CARS. ALL SIZES. New & Used.

\$750

9x12 Used Rugs

CARPET HOUSE

1516 E. Van Buren Phoenix

DRIVE CARS FREE

Cars Available Many Points U.S.A.

We are I.C.C. licensed and insured. Must be 21 years or more.

SCHEALL DRIVEAWAY 991-5533

There are better ways to handle a tough semester of math.

The Slimline Business Analyst-II™ for business and finance.

The Slimline TI-50™ for science and math.

Choose the Texas Instruments calculator that's right for your major.

When you're working in a specialized field, you need a specialized calculator. That's why Texas Instruments designed the Slimline Business Analyst-II™ for business and finance . . . and the Slimline TI-50™ for science and math. Each provides the tailored power and the reliability you'll need as you learn to solve the problems you'll face as a professional. And each has a price you'll appreciate as a student.

Slimline Business Analyst-II. Sleek LCD calculator with versatile business capabilities.

Solving financial problems with the Slimline Business Analyst-II can make working with your old calculator seem like pencil-and-paper arithmetic. The functions required to perform many common business, financial and statistical calculations are built in to help you make quick, accurate evaluations of many complex business situations.

Special financial keys are used to handle time and money problems such as compound interest, annuity payments, mortgage loans, investment yields, amortization schedules and more.



Statistical and linear regression capabilities provide the power you'll need to boil down data and automatically handle problems such as sales and earnings forecasts.

Profit margin calculations concerning cost, selling price and margin can be performed rapidly when any two of the variables are known. Other features include a four-function data register with Constant Memory™ feature that retains its contents even when the calculator is turned off. Two miniature batteries provide up to two years of operation in normal use. And TI's APD™ automatic power down feature helps prevent accidental battery drain.

The Business Analyst-II, with detailed owner's manual and suede-look vinyl wallet with pockets for notes, \$45.00*.

The Slimline TI-50 packs 60 powerful functions into a handsome, compact package.

The pocket-portable Slimline TI-50 is a remarkably powerful LCD slide-rule calculator. Yet it's as thin as a pencil and weighs only three ounces!

Its 60 versatile functions can help you handle a wide range of college math problems. Capabilities include common and

natural logarithms. Six trigonometric operations that can be performed in three angular modes (degrees, radians or grads). Two constant memories that retain their contents even when the calculator is turned off. And more.

Seven built-in statistical functions simplify the task of boiling down large sets of data points so you can perform accurate analyses and draw reliable conclusions.

The power of the Slimline TI-50 is made easy to use by TI's AOS™ algebraic operating system, which provides 15 sets of parentheses and accepts up to four pending operations. That means you can enter most problems just as they're written, left to right.

Two miniature batteries provide up to two years of normal operation. And TI's APD™ automatic power down feature helps prevent accidental battery drain.

The Slimline TI-50 includes a detailed owner's manual and a durable vinyl wallet, \$40.00*.

Make sure your next calculator has the specialized power to handle the problems unique to your major. See the Business Analyst-II and the Slimline TI-50 at your college bookstore or other TI dealer today.



Texas Instruments technology—bringing affordable electronics to your fingertips.

TEXAS INSTRUMENTS
INCORPORATED

*U.S. suggested retail price © 1979 Texas Instruments Incorporated

SPORTS

Macho coach, macho Cal visit campus for opener

By Jim Elsager

Ten years ago at Berkeley, Calif., the issue of the day was what type of paint to use on protest signs. Attention centered around idols like Timothy Leary and Led Zeppelin, and Roger Theder was trying to be a macho assistant football coach at Stanford while being pummeled by poses from the flower children of San Francisco.

The signs have gone radioactive, Leary wears a suit and lectures legally and Zeppelin uses more energy than it produces. Theder has left the lilly field of Stanford and is now a macho head coach at California.

Flowers are out and machoism is in. And the beat goes on.

When Cal comes to Sun Devil Stadium Saturday to take on ASU, machoism might be the only thing that keeps the Golden Bears alive after the referee signals the opening of the 1979 season for both teams.

The reasons are multiple, and seemingly endless. Depth, scheduling, talent, depth, fans and depth are all migraines in the mind of Theder.

"The only thing I can say about the scheduling is I don't have any control over it," Theder said. "That's up to the administration."

What the administration did for the second-year head coach was give him a complete look at

the PAC this year, as Cal will be the only club to play every conference team, and give him a good look at football eastern style, with a trip to Michigan planned for the fourth game.

"It puts a lot of pressure on a young football team," Theder said. "All we can do is prepare



Roger Theder

for it and try to come out of it the best we can."

How young is young? Theder's training camp looked like freshman orientation week. The roster reads like a "Who's Who Out of High School This Year."

"You can't hide it, we're young, with half of our players being freshmen," Theder said. "But we have some front-liners who will give us the leadership. We will be playing freshmen quite a bit. We have to."

Two places where Theder definitely will have to is at the cornerback spots, where all possible starters are freshmen except for sophomore Ahmad Anderson.

And if that isn't enough to make you want to contribute to the "Roger Theder Underprivileged Fund," there is always the free safety problem. Junior Ron Coccimiglio has the starting spot all sewn up, but after the stitching comes undone there is nothing but freshmen and a walk-on.

"I'm not sure what (Frank) Kush's problems are at ASU," Theder said, "except from what I read in the papers. I understand he has somewhat of a problem there. I think our problem may be similar. We have no depth whatsoever at defensive back, and we could run into trouble if we lose a player."

Theder's comparison to Kush's continued page 16

Look Your Best with CONTACT LENSES

Soft \$99⁹⁵

- Soft Lenses for Astigmatism Now Available
- Same Day Delivery for Soft Lenses
- Trial Wearing Period for Contact Lenses

Hard \$79⁹⁵

— Fill Your Doctor's Prescription —

DR. W. G. AMES, Optometrist

2916 N. 68th St., Scottsdale, Ariz.
Open Monday thru Saturday

For Appointment or Information

941-5228



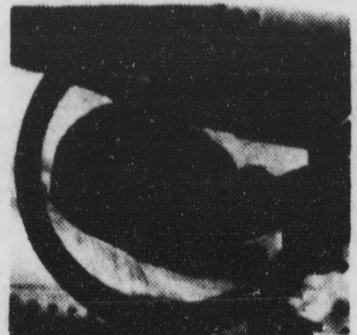
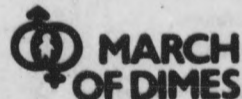
Shabbat at the GRAND CANYON Sept. 14-16



services under the stars

Limited space — \$15.00 fee includes meals.
Reservations must be made by Sept. 10th.
For more information call Hillel — 967-7563

Help prevent **LOW BIRTHWEIGHT**
The most common birth defect



Go Back To School In Style!...



EHRHARDT'S SCHWINN

A choice of FREE extras with each new SCHWINN

Centurian Ventura
fully assembled

Sale Price \$119.95

20% OFF any lock or backpack

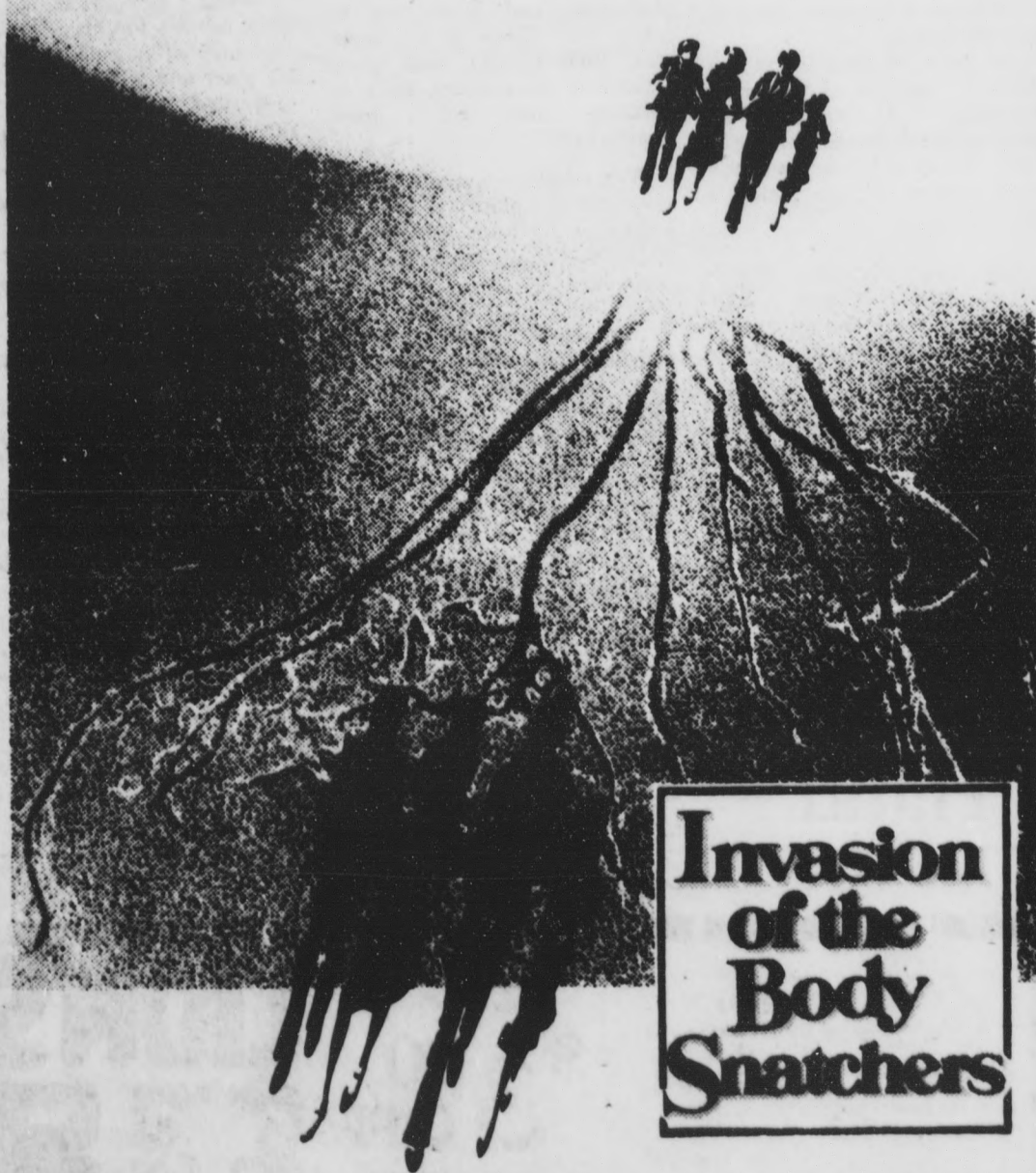
NEW & USED



SALES & SERVICE

716 Mill Ave. • 967-2137

From deep space...



Invasion of the Body Snatchers

The seed is planted...terror grows.

THURS FRI & SAT SEPT 6 7 & 8 7:00 & 9:30 p.m.

NEEB HALL

ALSO SUN SEPT 9 7 p.m.
STAR TREK EXTRAVAGANZA

More about

Misanthropic flowers out, macho football in at Cal

continued from page 15

problems is keenly accurate, both teams having secondary sickness. But the similarities don't end there.

Kush has kept it no big secret that his offensive line is open to question, and Theder has no choice but to draw another parallel.

"We have enough players to lose some people," said Theder, "but on the offensive line and particularly at center there is a little weakness, similar to Kush's from what I understand."

Theder has been playing Chinese checkers with the centers, moving David Heck, 6-foot-1, 250, from guard to center to get some experience and Don Hudson, 6-foot-3, 265, from center to tackle to avoid having all freshmen tackles. Freshman Harvey Salem looks like he will be the other tackle at 6-foot-6, 240, with another freshman and a lightly-used junior as backups.

The guards sail under just about the same flag, with freshman Tim Galas, 6-foot-1, 245, a probable starter on the right side and senior Mike Harmon at 6-foot-3, 245, throwing in the experience.

It is with this line that the Bible-carrying quarterback of the Golden Bears, Rich Campbell, will have to live. And not known as a rollout quarterback, it is with this line that Campbell might become another depth problem while trying to stand in the pocket and throw.

Last year Cal used the pocket about 95 percent of the time, according to Theder. With injuries on the front line coming at a rate of one a game, Campbell found staying in the pocket a little hazardous.

Last year the Sun Devils played pickpocket with Campbell and sacked the sophomore for 82 yards in losses in a 35-21 win.

No one questions Campbell's ability after last year when he threw for 2,287 yards (Cal single season record).

The question of the month is whether Campbell can learn how to roll when the holes open in the pocket, or whether he can improve on his audibleizing

when the defense has blitz written all over it.

"Last year we had a piecework offensive line," Theder said. "This year we have a group that has worked together for a while and should give Rich more protection. Rich had some problems with the audibles and the injuries hurt us as far as protection went."

Injuries hurt more than Campbell's ability to stand up during a game, as the Bears lost three starters in the ASU game alone last year, two on defense and one on offense, and went on to lose 11 during the season.

But the work "Uncle" is not being written into the Cal charter yet, and Theder thinks his team might even stand a chance of pulling out more than an eighth-place finish in the PAC.

"If a team is going to beat us

About 1,100 tickets for Saturday's ASU-California game go on sale at 8:30 a.m. today at the ASU ticket windows at Sun Devil Stadium. The remaining tickets include 100 unsold seats from Cal's allotment.

they're going to have to stop our passing game," he said emphatically, "and I'm not sure too many can. There is no doubt that Rich is the best quarterback in the country. He is an amazing talent and a great quarterback."

With ASU's secondary, the promotional pitch of Theder might be food for thought for Kush and his "inexperienced" secondary.

The clash might produce some memorable statistics this year, with Campbell likely to throw for x-amount of miles and ASU's running backs figuring to run forever.

Cal's running backs appear complimentary at best for the aerial show, with Paul Jones looking to wind up his career with a 1,000-yard season after

rolling off 831 last year for a 3.8 per-carry average. The 6-foot-2, 225-pound senior will be accompanied by a couple of radar racers in 5-foot-10, 185-pound Allen Blackmon and sophomore Mike Carnell at 6-foot-1, 185. The receivers, Floyd Eddings, Holden Smith, Michael Buggs and Matt Bouza, all started at one time or another last season and combined for 69 receptions and 1,347 yards.

As far as Cal's defense goes, it doesn't.

"We're an offense-minded team and that's what's going to have to carry us," Theder said. "We do have an excellent group of linebackers, which is one reason we have changed to a 5-2 defense. We want to get the linebackers in play as much as possible, and with that alignment the outside linebackers act as defensive ends."

The defense didn't get hit as hard by graduation as did the offense, but after giving up 2,458 yards rushing last year and 26.3 points per game, and again with no depth and no formulated talent, talking about what the Bears will do defensively is like talking turkey to a chicken.

Last year ASU rolled up 421 yards on the ground against Cal, and there are more backs waiting to do the same this year.

Theder's first year as head coach wasn't for his scrapbook, especially after getting off to a 5-1 start and winding up 6-5. A 45-0 loss to UCLA in the seventh game marked the end for Cal football 1978.

But true to his optimistic personality and "never say Uncle" attitude, Theder is looking forward to returning to Sun Devil Stadium.

"I think the fans are great there," he said. "Fans like that motivate our kids as well as the other team's. It can become an adversity, but that's part of the game. I like the stadium and didn't find any problems there at all last year."

Despite the loss, Theder refuses to get angry. Maybe the flower children got to him.

Pool-shot master will visit campus

Jack White, nationally-known trick pool-shot artist, will make his annual stop at ASU on Friday. White will appear at 10 a.m. and 2 p.m. in the MU Arizona Room. Admission is free.

Help us reach our goal  **MARCH OF DIMES**
Help prevent birth defects

THIS SPACE CONTRIBUTED BY THE PUBLISHER

Free

One Loaf of Manager's Special Bread With This Coupon
(Limit One Coupon Per Customer)

featuring . . .

Whole Grains, Natural Food, Breads & Cereals

9:30 - 5:30
Mon. - Sat.
Closed Sunday



OROWEAT BAKERY THRIFT STORE
1115 W. Broadway, Tempe

WORLD AUTO SPECIALISTS
1127 E. Curry Rd., Tempe
"For Service That's Out of This World"

We specialize in Imports including

Toyota
BMW
Volkswagen

Datsun
MGB
Fiat

and more

968-3041

5 min. from campus

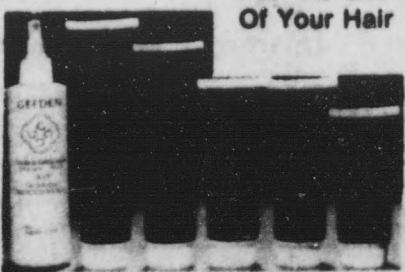


Winning Hand.



Buy U.S. Savings Bonds.

GEFDEN
Pre-Purified Nucleic Acid Hair Care Products



For The Life Of Your Hair

\$3.00 OFF

Any GEFDEN Product

(With minimum service of \$12.00)
Good Thru Sept. 79

968-8144

LION'S



Haircutters

45 E. Broadway
Broadway & Mill Ave.

Only One Coupon Redeemable After Each \$12.00 or More Service per Customer

6-PACK OF COORS

\$1.49

WITH ANY Pick-Up or Delivery Order

With Coupon At

Out-R-Inn

Pizza & Subs

We Deliver Campus Area

1045 LEMON ST. 967-8898 or 967-8897

Perry Sams

Two hobbled Sun Devils still questionable for Cal

Just a few notes and quotes on Tuesday night's ASU football practice . . .

Walking-wounded quarterback Mike Pagel, with a sore ankle, ran through light contact drills, including wind sprints. Pagel still is questionable as the backup quarterback for the Cal game Saturday, team physician Joseph Reno said. Kush listed freshman Sandy Osiecki as his second-string passer behind senior Mark Malone.

Center Marty Van Gorder, recovering from a knee injury, was in uniform but not ready for hitting. He is listed as doubtful for Saturday.

Most of the practice was punting, kicking and passing.

Kush said of the workout, "We're working on our timing, and learning to recognize different defenses (in passing situations), and we're working on the kinds of offenses they'll be throwing at us."

Kush was more satisfied with the practice than previous ones, saying, "They're picking up quite a bit on enthusiasm — firing off the ball a little better. I just wish we had another week."

Darrin Nelson, who helped Stanford slip and slide past ASU 21-14 on a rainy Tempe afternoon Nov. 11, won't play halfback for the Cards this year. He decided to sit out this season after being hampered by a hamstring in the

preseason. He gained 1,107 yards, including 80 against ASU, in 1978.

But ASU still will have to face Jim Brown, a junior fullback who surprised ASU with 108 yards rushing to earn offensive MVP honors on the TV game.

As exciting as Nelson or Brown was Stanford's free-spirited marching band, who planned to present a "Salute to Smuggling" at half-time of the 1978 tilt.

Security forces pulled them off the field after five minutes, citing muddy field conditions. The band had formed a peculiar five-pointed leaf and struck up the Tubes' "White Punks on Dope."

Sun Devil fans won't be able to catch the band or game in Tempe this season, because it's being played in Palo Alto, Calif., Nov. 3.

In addition to 11 delayed ASU TV games on Channel 10 (Hawaii excluded from the TV package), two Valley radio stations will carry all 12 Sun Devil football broadcasts. They're K-104-FM and KARZ-AM, and play-by-play will be handled by Tom Dillon with color commentary by Doug Gerlach.

Besides the games played by the newest members of the Pac-10 this week, Southern Cal plays Texas Tech away, Stanford plays at Tulane, Oregon visits Colorado, Oregon State travels to New Mexico, Washington hosts Wyoming and UCLA plays Houston at home.

British swimming sensation to tread for Sun Devil men

The gold medalist of the 1,500-meter freestyle swimming competition in Sunday's World Cup in Tokyo is attending classes at ASU.

Andy Astbury, a freshman from Leeds, Yorkshire in Great Britain, actually signed a letter of intent in early August. He was delayed in getting to ASU because of his swimming competition, which was

highlighted in winning the gold medal with a record time of 15 minutes, 36.26 seconds. Astbury bested the American contestant, Casey Converse of UA, who finished second with 15:37.98.

"Andy's a real big addition to our swim program," said ASU head swimming coach Ron Johnson. "He's probably the the finest swimming prospect out of Great

Britain, and one of the top freestylers in the world. He's easily a potential Olympic gold medal winner in the 1,500-meter freestyle."

One thing Johnson is concerned about, though, is that ASU is Astbury's first taste of the American school system.

"I'm sure he's scared out of his wits, even though he did do very well in school over there," he said.



**ENS. DOMBECK
WILL BE ON THE MALL
Friday
September 7
from 10 to 2**

Stop by
or
Telephone collect
(213) 590-2257



ENS. Deborah Dombek

**TOP OFF YOUR DEGREE
WITH A COMMISSION
IN THE COAST GUARD.**

**HELP
OTHERS
HELP
YOURSELF
IN
THE
COAST
GUARD**

up to
40% DISCOUNT
With ASU ID
VITAMINS • MINERALS • HERBS
831-6881

BODY RENEWAL

- Swedish Massage • Cranial Massage
- Connective Tissue • Spinal Massage
- Reflexology • Hydrotherapy
- Magnetic

John Loewenstein, Ms.T.

Licensed Massage Therapist
Member of A.M.T.A.

House Calls • 275-6461 • Hours by Appointment

SAVE-ON BEAUTY SUPPLIES

All Your Beauty Needs

- Redken • KMS
- Jhirmack • Clairol
- Henna • Jojoba Products
- Hand Dryers • Curling Irons

NOW
**10% Discount with this
ad & ASU I.D. thru Sept.**

1022 N. SCOTTSDALE RD.
Hayden East - Woolco Plaza
967-7388



The Scottsdale Center for the Arts

presents an exciting fall season

Emlyn Williams as Dylan Thomas Growing Up . . .
*the incomparable actor in his renowned
one-man performance. 8 p.m. Saturday, September 8*

Valley Shakespeare Festival . . .
*featuring the Old Globe Theatre of San Diego in Macbeth.
The Comedy of Errors, Julius Caesar. September
29-October 21*

Piano Series . . .
*six recitals by international pianists, beginning with
Emanuel Ax. October 27*

Jazz Series . . .
*six of the biggest names in jazz, opening with the N.Y.
Jazz All-Stars. November 3*

In the Gallery this fall . . .
*Sam Scott, Paul Hirschler Collection of Tapestries, Millie
Ehrlich, Bruce Rod, Arizona National Painting Competition*

Plus . . . Cinema Series, art classes, lectures

Special rush rates available for
Students/Senior Citizens:
All available seats 1/2 price one-half hour before curtain time
for Center-sponsored events and some other events.
For details and availabilities, check with the
Box Office prior to the event.

**Tickets and information: call 994-ARTS
SCOTTSDALE CENTER FOR THE ARTS**
owned and operated by the City of Scottsdale



Tony Zeno

Devil 'star' Zeno to sign pro pact

By Bob Petrie

Former ASU basketball forward Tony Zeno will sign an NBA contract with the Indiana Pacers this afternoon.

But terms of the contract, which will be inked in Indianapolis, were not disclosed by Zeno, who was on campus Wednesday to visit friends.

"Let's just say that it's (the contract) something that's made me quite happy," said Zeno, who was selected in the second round by Indiana in the 1979 NBA player draft in June. "I'm very satisfied with dealing with them (the Pacers)."

Zeno was represented in contract talks by Robert McDonald of Phoenix.

The 6-foot-8 forward started 25 of the 30 Sun Devil games last season, averaging 12.2 points and 9.2 rebounds and shot 47.2 percent from the field.

He scored 29 points, a college-career high, against Oregon State.

Yet, many observers were surprised at how high Zeno was selected in the draft. He was the 32nd pick overall.

"Yeah, but they (the Pacers) told me I'd be their second pick during a camp I went to a month and a half before the draft," said Zeno, who at times was criticized for not playing team basketball during his career at ASU. "They told me I'd fit well into their program because their style of game best suits the way I play — which is a freelance type of game."

Zeno, a four-year starter for the Sun Devils, played his high school basketball at Washington High School in Los Angeles, where he was selected to all-city and all-league teams. His brother Mike is a sophomore forward on UA's basketball team.

Midnight Run sign up now

Preregistration for the 10,000-meter Midnight Run will be held by mail now through Saturday.

The run, sponsored by the Arizona Women's Track Coaches Association, is scheduled for midnight, Sept. 15 at Sun Angel Stadium.

Fees are \$4 for those 14 and under who preregister and \$5 for those older than 15. On race day, the registration fee is \$6.

Those who preregister can obtain entry forms at various locations on campus — including dorms, kiosks and classrooms — as well as many Valley sporting goods stores.

Sue Humphrey, an assistant ASU women's track coach, also is handling the forms. Humphrey can be reached at 965-4320.

Forms must be mailed to The Midnight Run, 3640 E. Turney Ave., Phoenix, 85018, and must be postmarked by Sept. 8.



**SOUP
SALAD AND
SANDWICHES**

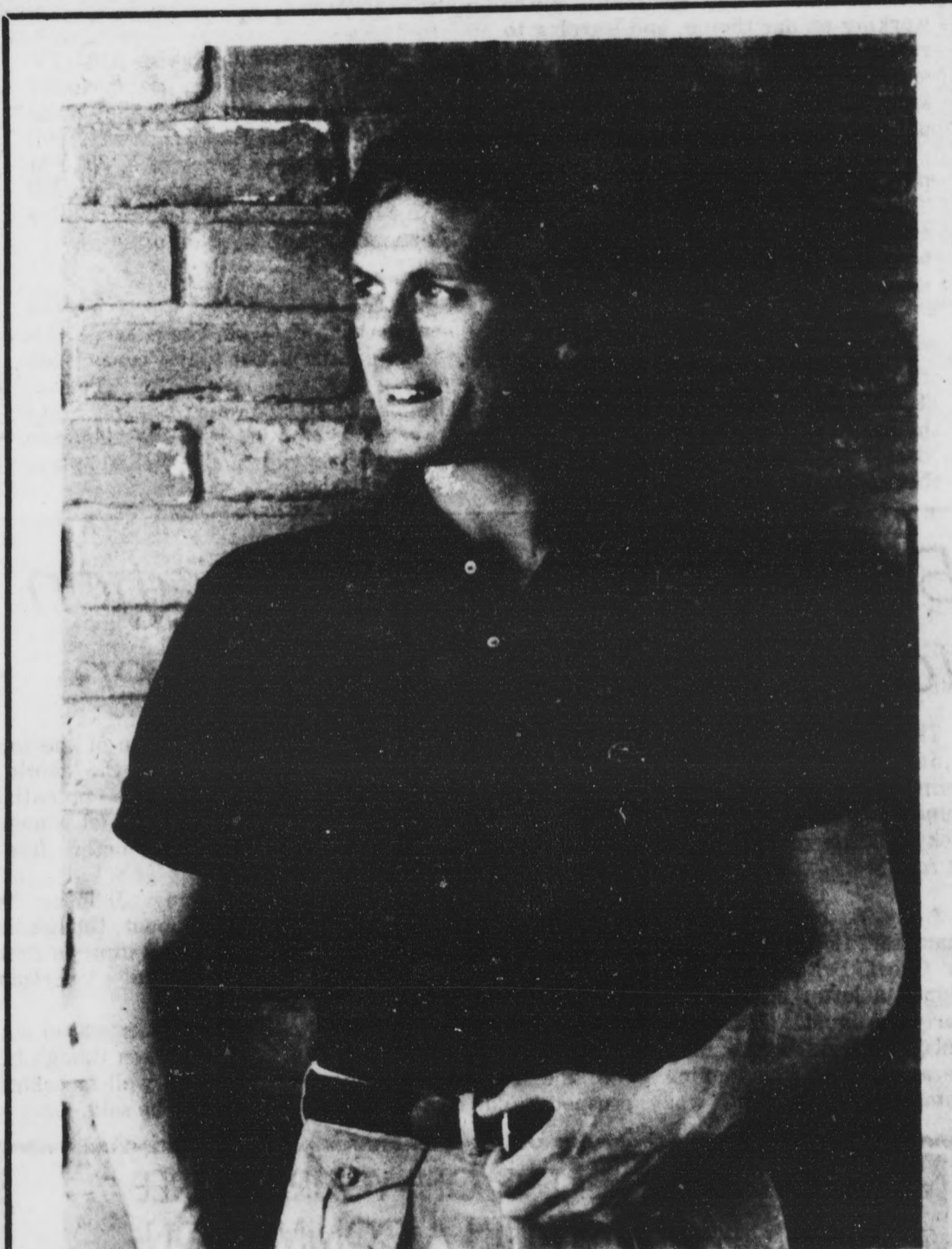
TRY US FOR LUNCH
OR DINNER
OPEN 10:30 TO 8:00

701 S. MILL 894-2777

**ASU
SUPPORT GROUP FOR
GAY STUDENTS**

Gay Academic Union

meets every Thursday
Memorial Union, Rm. 216
7:30 p.m.



Gators Galore! New Shipment Huge Color Selection




706 South Forest • One block north of University • Tempe • 967-8747
Monday thru Saturday 10-8 • Thursdays until 8:30



Eskil's Clogs
When your feet need a friend

You can't look neat if your feet are beat. Eskil's invites you in for a test run or a test hope, skip and jump. You see, you can do almost anything in a pair of Eskil's genuine Swedish Clogs. We carry the largest selection of sizes and styles in the valley.

**Open 6 days,
Mon.-Fri.
Sat. 10am-6pm**



**We carry
Nurses'
Whites
967-0221**

**12 east 10th street at mill, opposite
ASU music hall, tempe, arizona**

Pool it



Call:
965-3161

Announcements

MUSIC, DANCE, Acting or Art Majors interested in playing or displaying talents at November All-American Festival - Call 941-0057. 9/12

INDIANS UNITE - Pick up native student information today. Activities sponsored by American Indian Crusade. 9/18

THE ARIZONA Civic Dance Theater will hold auditions on Sunday, September 8th at 1:00 p.m., at the Lydia Torea Dance Conservatory, 3950 W. Bethany Home Road. Needed: Dancers M/F trained in ballet and/or jazz. For further information, please call 841-0028. 9/17

PHOENIX RALLY Organization, Beginner's road rally, Friday, September 7, registration 7:00 p.m. Southeast corner Thomas Mall. 9/17

CASH FOR photographs, poems, short stories, articles. Arizona Writer and Photographer magazine (formerly Arizona Writer's Marketing Guide) will begin appearing at the end of October. This magazine pays for quality photographs, etc. Send your work now (deadline soon) to Box 2039, Phoenix, AZ 85001. 9/17

WINNING'S A SNAP! Enter the Nikon/Nutshell Photo Contest for your share of \$11,250 in prizes. Pioneer Camera Shop, Inc., 19 East Ninth Street, Tempe, has details. 9/16

Automobiles

1985 PONTIAC Tempest station wagon, air conditioned, power steering, power brakes, great condition, low mileage. \$700. 946-6375. 9/16

1972 VW BUS, new Porsche engine, new red paint, new radial tires, with air. 894-1637. 9/17

FORMER STUDENT must sell 1972 VW. 68,000, AM/FM radio. Furniture, miscellaneous. Julie, 967-1114, 248-7180. 9/12

Books

YOUR #1 SOURCE FOR

SCIENCE FICTION

New & Used Paperbacks & Hardcover • SF Wargames
COMICS FOR COLLECTORS
The One Book Shop
708 Forest Ave., Tempe
Just 1/2 Block North of ASU!
9/12

For Sale

RIVER TUBING

Get your tubes early at the Exxon station.
The corner of McKellips and Mesa Drive.
Open Sundays. 9/8

Help Wanted

PART-TIME

National Marketing Company has openings for sales-minded people interested in part-time employment. Openings are available on the following shifts - morning, afternoon, evening and weekends. Our sales people work in a modern, comfortable business environment contacting customers on long distance WATS lines. Earnings which include salary and bonus average \$4.00 - \$6.00 per hour, paid weekly. These are permanent positions with full-time shifts available during holidays.

If you have a good, clear speaking voice, proper grooming for a business office, enthusiasm and competitive spirit, our experienced management team will train you to sell our nationally recognized products (while being paid of course). Our Tempe Office is located approximately 5 minutes from campus.

Please call DIALAMERICA for details.
884-1139 9/14

Business Opp.

WOULD YOU like a business of your own? You don't need an office to start. Begin at home, full or part-time. Ideal for husband and wife teams. Call 254-7428. No obligation. No information over the telephone. Let's have coffee and talk. 9/17

Bicycles

SUPER LIGHTWEIGHT Colin Laing hand-made all Cocumbus, Aya Zeus, way less. Durace, 968-8996 after 8:00. 9/17

For Rent/Lease

RENTAL CONSULTANTS, 610 W. Broadway, Suite 105. Phone 894-2890. We specialize in Tempe rentals. One year of current housing information for \$15 fee. 9/14

FEMALE 18-25. Free rent is exchanged for keeping executive's 3 bedroom house clean. Paradise Valley area. 971-7390, Tommy. 9/20

LOVELY FURNISHED room, male or female student. Excellent area. Large pool and patio. 247-0800. 9/17

TOWNHOUSE FOR RENT. Two bedroom, 1 1/2 bath, pool. Close to ASU. 275-4533 evenings. 9/17

CONDO/TOWNHOUSE for lease or rent. Olympic size pool, two bedroom, one bath. Ideal for couple or singles at \$200 each. Call Abe, 274-8877, or 278-8435. 9/16

LA PAZ APARTMENTS
Large 1 & 2 bedroom units, furnished, pool, laundry, etc.
AVAILABLE NOW
Only 2 blocks off campus at
1011 E. Lemon, Tempe
Phone 967-2544

For Sale

PABST BOCK BEER, \$1.89; Riunite Lambrusco, \$2.59; Haagen Daz natural ice cream, package liquors, over 30 imported beers. Rundles, corner University and Mill, 967-9079. 9/28

SEWING MACHINE, Free Arm, never used, 1979, best model, still in carton. Full original guarantee. Does everything. Cost \$489, must sacrifice, \$185. I also have the beautiful cabinet that came with it. Private Home. 946-2127. 12/7

FENDER MUSTANG electric guitar with case. Excellent condition. 946-7647. 9/12

CANON AE-1 with winder. 20mm 1/2.8. Two months old. 968-8996 after 8:00. 9/17

ONE-WAY AIRLINE ticket from Phoenix to Newark airport. Good until 12/15/79. \$95 firm. 968-1076 after 4 p.m. 9/17

MOPED, like new, low mileage, gas saver. \$375. 839-3255 after 5 p.m. 9/11

GIGANTIC GARAGE SALE
Antiques, hand-made ceramics and drawings, and stained glass. Furniture, king waterbed, 750-Honda parts, more. Saturday and Sunday: 1005 East Spence, behind Holiday Inn, Tempe. 9/16

For Sale

10-SPEED Lambert Pro bike, \$75. Call Natalie, 991-0558. 9/11

9' x 12' USED carpets, \$7.50 for dorms, vans, cars, apartments, etc. Carpet House, 1516 E. Van Buren, Phoenix. 9/12

LADIES LEATHER sandal sale. \$5.00, \$10.00, \$15.00, \$25.00. Backdoor Shop, 707 South Forest, Tempe, 968-1772. 10/12

Help Wanted

LOCAL AMWAY distributor expanding business. Seeks singles or couples, part-time or full time, no obligation. 833-1997. 10/2

GREENHOUSE HELP needed. 28th Street and southern. \$3.00/hour to start. Apply in person any afternoon or call 278-0190 for information. 9/17

EXPERIMENTAL OFF-SHORE fishing project, men and women wanted as fishing crew on 85-foot Catamaran "Fairweather One." Catalina Island area. Training provided. Must furnish own food and gear for part share of catch. Children ok. 272-7078. 9/11

PERSON NEEDED to handwrite or type addresses on envelopes in your own home. 831-8881. 9/14

PART-TIME HELP WANTED. Flexible hours. Local gift manufacturing company, no experience necessary. Call 894-2091 or apply in person. 730 West 22nd Street, Tempe. 9/17

MALE AND FEMALE students can earn extra \$\$ each week while on campus delivering announcements. This is a very pleasant, enjoyable part-time job. Call Diane, 834-3341. 9/16

TWO HOURS for \$100? This could happen to you. Join our team, IOF, 944-2207. 9/16

TEACHER ASSISTANT. \$621 - \$790 (Adobe Mountain School). Federally funded on yearly basis. Prefer experience at elementary or secondary level with at least 3 months experience working with juvenile offenders. Apply: Arizona State Personnel Division, 1831 W. Jefferson, Phoenix, AZ 85007. 9/16

LIQUOR SALES clerk specializing in wine sales. No experience necessary. Must be mature and well groomed. 20 to 30 hours weekly. Hours flexible. Store in good Northeast Phoenix shopping center. 248-9615. 9/11

WANTED: PART-TIME receptionist Tuesday - Thursday - Saturday. Apply in person, 45 E. Broadway, Broadway and Mill. 9/18

WONDERFUL ELDERLY housebound woman needs full or part-time live-in help. Room, board, salary to considerate companion. Northwest Mesa. 962-9273. 9/17

ATTENTION: Drama and Speech majors. You could earn from \$5 - \$10 per hour while practicing and improving voice habits. 941-0045. 9/19

CAMERA SHOP needs experienced salesperson. 9:30 - 1:30 p.m. 968-5134. 9/13

COLLEGE STUDENTS: need morning, afternoon, evening work? Here it is! Telephone sales, one block from campus. 968-4853. 9/14

WORK YOUR own hours cleaning occupied homes in Scottsdale. Must have phone, transportation. Starting salary, \$3.25. 941-0090. 9/28

STUDENTS - part-time work. Nurses aides, homemakers, RN's and LPN's. Earn extra money in your spare time. Work staff relief in hospitals and home care. Pick your own hours and days. Call 254-5148 for interview. 9/14

DELIVERY DRIVERS part-time. Must have economy car, know the Valley area. Flexible hours. Call 267-7500. 9/16

PART-TIME WEEKEND clerical position. Light typing, filing, phones. Camelback Hospital. 955-8200, ext. 206. 9/12

TOWER PLAZA Cinema is hiring an assistant manager. Days, nights, weekends. Perfect job for school. Apply in person at Tower Plaza Cinema, 3841 E. Thomas. 9/17

PART-TIME CLEANING homes. Make your own schedules. \$3.25/hour to start. Must have own transportation. 991-2222 for an appointment. 9/17

Real Estate

Century 21

FREE ROOM & BOARD

If I had a brother, sister or relative attending ASU, I'd tell them how to obtain 'FREE ROOM & BOARD.' In order to do that they would simply need to purchase a home in Tempe rather than rent. There are many ways to purchase including co-signers and FHA 245's. Rent money is spent money. Why not have your roommates rent from you? And, when it comes time to graduate and sell, the appreciation may pay for graduate or professional school. Call me for more details or low cash to loan homes around ASU.

WE GUARANTEE that if we can't sell your house, we will buy it. THAT'S A FACT!!

Ask for Paul Pastore
831-1114 or 831-5889 9/16

Help Wanted

ARIZONA ATHLETIC CLUB. Positions open in all departments. Apply in person Thursday, September 6, between 3:00 and 6:00 p.m. 1425 W. 14th Street, Tempe. 9/6

DISTRIBUTORS WANTED. Become a part of the Neo-life Company. All our vitamin products are completely natural. Call 267-8368. 9/17

CHINESE RESTAURANT cashier/hostess, bartender, cocktail waitress, waiter and waitress (Chinese speaking preferred). Experience not necessary. Nice personality please. Evening shift and weekend days. 833-3577 for appointment. 9/17

SHAKLEE CENTER, 19 West Alameda Dr., Suite 101. 968-9476, business opportunities unlimited. Call for appointment or drop by. Open 9 a.m. - 7 p.m. 9/28

NEEDED: Full/part-time bicycle mechanics. Must be dependable and avid bicyclist. Bicycle Harbor, 5110 S. Rural, Tempe. Apply in person only. 9/17

BUSINESS EXPANDING: Need five ambitious people. Part-time. Call Keith after 4 for appointment, 967-8661. 9/17

Arizona
Contractors Supply
NOW HIRING
\$3.00/hour to start
*Will Train
*Rapid Advancement
CALL MIKE BARRON
258-0055 9/18

Instruction

THE PHOENIX School of Folk Music. Guitar and banjo programs in Phoenix, Tempe and Paradise Valley. For a brochure of classes call 955-9545. 9/14

★ HAVE FUN ★
learning a **BACKUP CAREER** & making **GOOD** money as a **BARTENDER**

We offer a personalized program with flexible training hours for students. Near campus.
For a Course Description, Call:
275-MIXX
ARIZONA SCHOOL OF PROFESSIONAL BARTENDERS 9/21

Lost/Found

LOST: an Yves Saint Laurent sport jacket. Off white in color, lost in Tempe area. Fifty dollar reward. Call Chris, 994-1014. Lost Aug. 24th. 9/13

LOST: red blanket, night before student football ticket sales at stadium ticket office. Call 968-2041. 9/7

FOUND: Books and backpack that fell from top of car on Tuesday or Wednesday. Call 965-4502, Mr. Waide, to identify. 9/6

Personal

WANTED: AMERICAN and United Airline discount coupons. 277-0720. 9/20

AMERICAN AND United Airline Discount coupons for sale. 264-9454. 9/20

Roommate Wanted

MATURE FEMALE roommate wanted. Non-smoker to share luxury one bedroom apartment at the Cedars, Scottsdale Road and McKellips. \$150/month, utilities included, beautiful furnishings, 3 pools, sauna, jacuzzi, bar-b-ques, tennis, excellent landscape. Needed immediately. Ask For Debbie, 948-7427. 9/17

ROOMMATE WANTED: male, non-smoker to share 2 bedroom, furnished apartment in Scottsdale. \$115 plus 1/2 electricity. 948-6375. 9/17

Real Estate

Services

IMPROVE YOUR GRADES! Send \$1.00 for your 306 page catalog of collegiate research. 10, 250 topics listed. Box 25097G, Los Angeles, California, 90025. (213) 477-8226. 11/9

GOOD STUDENTS save 25% on Auto Insurance. Non-smokers save 15%. Call Steve Lundell, Farmers Insurance, ASU Representative. 835-1480. 9/28

STUDENT'S CHILD Care Center has some openings for 4 and 5-year-olds, whose parents are low income. Call 894-9370 immediately. 9/14

3 1/2¢ XEROX COPIES
with your **alphagraphics®**
Student Discount Membership Card
Find our other ad in this paper to get your **FREE CARD** 9/25

Typing

PROFESSIONAL TYPING SERVICE
means:
Fast Service
Reasonable Rates
Guaranteed Accuracy
STUDENT WORK OUR SPECIALTY
EDITING SERVICE ALSO AVAILABLE
IBM Selectric Equipment
966-4103
SPECIAL OFFER -- one time 5% Discount with this ad --
New Customers Only! 9/25

NEATNESS COUNT? At professional typing service, we're perfectionists! IBM Selectric. 966-4103, p.m. 9/12

PROFESSIONAL SECRETARY will do your typing, term papers, tabulations. Reasonable rates. 274-7836 after 5:00. 9/11

TYPING, 18 years experience, 13 in law, IBM Correcting Selectric II. 264-7099, Julie. 12/7

TYPING: IBM Electronic. Term papers, research papers, dissertations, manuscripts, tape transcription. Scottsdale. Jeannique, 948-8635. 10/2

GRADUATE COLLEGE expertise. Quality typing. Dissertations, theses, and research papers. Patti, 839-1790. Debby, 969-4524. 9/20

TYPING, IBM SELECTRIC. Manuscripts, Theses, Dissertations, Term Papers. 85 cents per page. Call Janet, 834-0893. 9/21

TYPING: IBM Selectric, rush jobs accepted large or small. Professional and very reasonable. 831-5738. 9/17

TYPING, correcting Selectric typewriter, South Tempe area. 831-8770. 10/5

TYPING: Theses, Dissertations, Term Papers, etc. Professional secretary, accurate, spelling corrected, reasonable rates. 949-9207. 9/16

TYPING - ACCURATE - IBM Selectric. Call Gwen, 839-6294. 9/19

TYPING, NEAR ASU. Research papers, theses, dissertations. English degree. Editing. 7 years experience. 967-4443. 9/28

EXPERIENCED TYPIST. Theses, dissertations, engrg/tech. reports. 838-0802. 9/26

TYPING: IBM Selectric, rush jobs accepted. Large or small. Professional and very reasonable. 831-5738. 9/11

Wanted

JAZZ - ROCK - Country - Spiritual guitarist needed. Solid musicianship required. Call Vince at 967-1382. Mahalo. 9/12

NEEDED! Attendants, readers, study aids for Disabled Students. Salaried and volunteers. Contact Alan at 965-6482 or 6484. 9/18

MODELS WANTED for non-profit organization (not an agency). Experience helpful but not required. For details, write Phoenix Independent Models Association, 2125 S. 48th St., Suite 101, Tempe 85282. 9/13

SIX ATTRACTIVE women for semi-nude photo calendar. Daily fee paid. Contact Terrence at 941-1933, leave message. 9/11

CASH FOR YOUR JEWELRY
All Gold, Diamond, Emerald, Ruby or Sapphire Jewelry.
Gold chains, collections or individual pieces.
Estates our speciality.
279-1711 12/7

SUMMER SPORTS CLEARANCE

RUNNING SPECIAL

<u>NEW BALANCE</u>	REG	SALE
355 TRAIL	33.95	27 ⁹⁹
320	31.95	24 ⁹⁹
<u>NIKE</u>		
LDV	39.95	33 ⁹⁹
Mens & Ladies ROADRUNNERS	24.95	18 ⁹⁹
Mens & Ladies OCEANIA	19.95	16 ⁹⁹
ELITE	32.95	27 ⁹⁹
Mens & Ladies WAFFLE TRAINER	29.95	23 ⁹⁹

SPORTSWEAR SALE

MEN'S SPORT SHIRTS
FROM **6.99**

LADIES SPORT SHIRTS
FROM **4.99**

T-SHIRTS FROM **1.99**

OTHER SHORTS FROM **1.99**

Fashion for action



tennis shirts
white, beige, brown, blue
REG 12.95 **11.99**



tennis shorts
white, beige, brown, blue
REG 14.95 **9.99**

running tops
REG 8.95 **5.99**

running shorts
REG 10.95 **7.99**

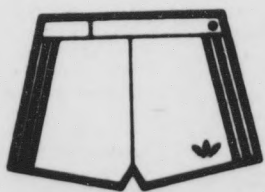
mexico short
REG 8.95 **6.99**

soccer shirts
REG 8.95 **6.99**

other Adidas shorts & T's
also on SALE

sunglasses
REG 10.00 **6.99**

SALE



COMPETITIVE SWIMWEAR

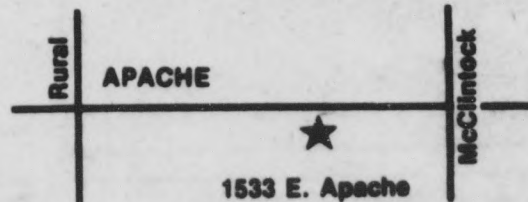
Hundreds of the latest looks for men and women. Fashion colors and prints in Lycra and Nylon for adults and children.

Hurry and save

50% OFF

SUPER SPECIALS ON ARENA SWIMWEAR

Ladies Lycra Racerback Suit	Reg. \$27	\$11⁹⁹
Men's Lycra Suits	Reg. \$12.00	\$7⁹⁹



NOW IN TEMPE

Alpine Ski Keller

Next to Tang's Imports

1533 E. Apache, Tempe 968-9056